

2007
2008

TENNESSEE HIGHER EDUCATION FACT BOOK

amount of income tax paid by the government. In fact, when you look at companies that pay income tax, you find that many of the individuals who do it benefit from the fact that the corporations are carrying a very heavy federal tax burden. As we noted, corporations pay a tax rate of 17 percent on the first \$25,000, 22 percent on the next \$25,000, 34 percent on the next \$25,000, and 48 percent on everything above that. In the case of giant corporations such as GE, this adds up to an effective tax rate of 50 percent—almost half of the total income of the 100 largest billion-dollar corporations are paid in taxes!

Other important revenue taxes are the estate and inheritance tax, and the

536



TENNESSEE
HIGHER EDUCATION
COMMISSION

Business 5/12
1 Regulatory Taxes
Regulate certain busi
2 Revenue Taxes
Finance govt prop
Propertional Taxes
Income Taxes
Sales Tax



**2
0
0
7
-
2
0
0
8**

Tennessee Higher Education Fact Book

Tennessee Higher Education Commission
Parkway Towers, Suite 1900
404 James Robertson Parkway
Nashville, TN 37243-0830
Phone: (615) 741-3605
Fax: (615) 741-6230
www.state.tn.us/thec/

TABLE OF CONTENTS

<u>TENNESSEE HIGHER EDUCATION COMMISSION</u>	1
HISTORY	1
COMMISSION MEMBERS AND DIRECTORY	2
GOVERNANCE STRUCTURE	5
TENNESSEE PUBLIC INSTITUTIONS DIRECTORY	6
TENNESSEE INDEPENDENT COLLEGES AND UNIVERSITIES ASSOCIATION	8
<u>SECTION 1: ENROLLMENT & TRANSFERS</u>	9
HEADCOUNT BY SECTOR: 2007	10
PUBLIC HIGHER EDUCATION ENROLLEMENT TRENDS: 1997-2007	11
HEADCOUNT ENROLLMENT BY INSTITUTION: 1997, 2002-2007	12
FULL-TIME ENROLLMENT BY SECTOR: 2007	13
FULL-TIME ENROLLMENT BY INSTITUTION: 1997, 2002-2007	14
TENNESSEE TECHNOLOGY CENTERS ENROLLMENT: 2006-2007	15
HEADCOUNT ENROLLMENT CHARACTERISTICS: 2007	16
AVERAGE ACT SCORES OF INCOMING FRESHMAN BY INSTITUTION: 2007	17
PERCENT OF FULL-TIME AND PART-TIME ENROLLMENT BY INSTITUTION: 2007	18
HEADCOUNT BY STUDENT LEVEL: 2007	19
HEADCOUNT BY STUDENT LEVEL, PERCENT CHANGE: 1997-2007	20
GENDER HEADCOUNT BY INSTITUTION: 2007	21
STUDENT AGE HEADCOUNT BY INSTITUTION: 2007	22
RACE HEADCOUNT BY INSTITUTION: 2007	23
UNDERGRADUATE HEADCOUNT BY RACE, PERCENT CHANGE: 1997-2007	24
OFF-CAMPUS AS A PERCENTAGE OF TOTAL ENROLLMENT: 2007	25
HEADCOUNT BY RESIDENT STATUS: 2007	26
HEADCOUNT BY MAJOR FIELD: 2007	27
UNDERGRADUATE TRANSFERS FROM PUBLIC UNIVERSITIES TO OTHER PUBLIC INSTITUTIONS: 2007	28
UNDERGRADUATE TRANSFERS FROM PUBLIC COMMUNITY COLLEGES TO OTHER PUBLIC INSTITUTIONS: 2007	29
<u>SECTION 2: PERSISTENCE & ATTAINMENT</u>	30
DEGREES AWARDED BY INSTITUTION:2006-2007	31
TENNESSEE TECHNOLOGY CENTERS CERTIFICATES & DIPLOMAS AWARDED: 2006-2007	32
DEGREES AWARDED BY MAJOR FIELD AT TENNESSEE PUBLIC INSTITUTIONS: 2006-2007	33
GRADUATION RATES: FALL 2001 & SUMMER 2001 RETURNING FALL 2002 MATCHED TO GRADUATES THROUGH 2006-2007	34
SIX YEAR GRADUATION RATE BY INSTITUTION AND RACE	35
DEGREES/CERTIFICATES AWARDED BY GENDER AND INSTITUTIONS: 2006-2007	36
DEGREES/CERTIFICATES AWARDED BY RACE AND INSTIUTIONS: 2006-2007	38
JOB PLACEMENT RATES TENNESSEE COMMUNITY COLLEGES: 1998-2007	40
JOB PLACEMENT RATES BY COMMUNITY COLLEGE: 2006-2007	40
TENNESSEE TECHNOLOGY CENTERS PROGRAM COMPLETION & PLACEMENT RATES: 2005-2006	41

SECTION 3: FISCAL**42**

STATE APPROPRIATIONS RELATED TO HIGHER EDUCATION AS A PERCENTAGE OF STATE REVENUES SREB STATES AND THE U.S.: 1985-86, 1995-1996, 2005-2006	43
MEDIAN TUITION AND FEES FOR A PUBLIC UNIVERSITY UNDERGRADUATE RESIDENT BY SREB STATES: 1995-1996, 2000-2001, 2005-2006	44
MEDIAN TUITION AND FEES FOR A PUBLIC COMMUNITY COLLEGE RESIDENT BY SREB STATES: 1995-1996, 2000-2001, 2005-2006	44
ANNUAL TUITION AND MANDATORY FEES FOR TENNESSEE PUBLIC INSTITUTIONS: 2007-2008	45
ANNUAL TUITION AND MANDATORY FEES FOR RESIDENT UNDERGRADUATE STUDENTS BY INSTITUTION: 1997-1998, 2002-2003, 2006-2008	46
AVERAGE UNDERGRADUATE RESIDENT TOTAL TUITION AND MANDATORY FEES BY INSTITUTION TYPE: 1997-2008	47
PERCENTAGE OF FAMILY INCOME NEEDED TO PAY FOR COLLEGE AT PUBLIC 4-YEAR INSTITUTIONS IN SREB STATES & THE U.S.: 2005	48
PERCENTAGE OF FAMILY INCOME NEEDED TO PAY FOR COLLEGE AT PUBLIC COMMUNITY COLLEGES IN SREB STATES & THE U.S.: 2005	48
STATE APPROPRIATIONS FOR TENNESSEE PUBLIC HIGHER EDUCATION BY FORMULA UNIT: 2003-2008	49
STATE APPROPRIATIONS FOR TENNESSEE PUBLIC HIGHER EDUCATION BY NON-FORMULA UNIT AND SPECIALIZED PROGRAM: 2003-2008	50
STUDENT SUPPORT HISTORICAL ANALYSIS: 1997-2008	51
TOTAL REVENUE PER FTE-TN UNIVERSITIES: 1997-2008	52
TOTAL REVENUE PER FTE-TN COMMUNITY COLLEGES: 1997-2008	52
STUDENT SHARE OF TOTAL PER STUDENT SUPPORT: 1997-2008	53
TENNESSEE STUDENT ASSISTANCE CORPORATION GRANTS & SCHOLARSHIPS BY PROGRAM: 2006-2007	54
TENNESSEE STUDENT ASSISTANCE AWARD BY SECTOR: 2006-2007	54
TENNESSEE EDUCATION LOTTERY SCHOLARSHIP REQUIREMENTS	55
TENNESSEE EDUCATION LOTTERY SCHOLARSHIP PROGRAM SUMMARY REPORT: 2005-2007	56
TENNESSEE EDUCATION LOTTERY SCHOLARSHIP PROGRAM HOPE AWARDS BY INSTITUTION: 2005-2007	58
PEER FACULTY SALARY COMPARISON: 2006-2007	59
TENNESSEE TECHNOLOGY CENTER AVERAGE SALARY COMPARISON	59
AVERAGE ANNUAL FACULTY SALARY, ALL RANKS AT PUBLIC UNIVERSITIES: 1996-2007	60
AVERAGE ANNUAL FACULTY SALARY, ALL RANKS AT COMMUNITY COLLEGES: 1996-2007	60

SECTION 4: GLOSSARY**61**

DEFINITIONS	62
ABBREVIATIONS	63



History

The Tennessee Higher Education Commission was created in 1967 by the Tennessee General Assembly to achieve coordination and foster unity with regard to higher education. The Commission coordinates two systems of higher education, the University of Tennessee institutions governed by the *University of Tennessee Board of Trustees*, and the state universities, community colleges, and technology centers governed by the *Tennessee Board of Regents*. There are currently nine public universities, 13 two-year institutions, and 27 technology centers in Tennessee that serve over 220,000 students.

The Commission is composed of nine lay members appointed by the Governor, with six year terms, representing congressional districts of the State; three Constitutional Officers who are ex-officio voting members (Comptroller of the Treasury, State Treasurer, and Secretary of State); two ex-officio student members who serve two year terms; and, the Executive Director of the State Board of Education, as an ex-officio non-voting member.

Our Vision

From the Tennessee Higher Education Commission 2005-2010 Master Plan

Through the establishment of a public agenda built upon civic, corporate, and community partnerships, Tennessee higher education will be able to better serve the broad needs of the state and create a workforce that is able to compete in the Knowledge economy. Such partnerships will ensure that all students are prepared for post-secondary education and have access to high quality educational programs that expand knowledge creation and civic responsibility.

Tennessee Higher Education Commission

2007-2008 Commission Members

Katie Winchester, Chair, Dyersburg

Gen. (Ret.) Wendell Gilbert, Vice-Chair, Clarksville

Jack Murrah, Vice-Chair, Hixson

A C Wharton, Jr., Secretary, Memphis

Sue Atkinson, Nashville

Riley Darnell, Secretary of State

David C. Holt, non-voting ex-officio, UT, Health Science Center

Greg Isaacs, Knoxville

Wm. Ransom Jones, Murfreesboro

Charles Mann, Columbia

John Morgan, Comptroller

Gary Nixon, non-voting ex-officio, Executive Director, State Board of Education

Dale Sims, State Treasurer

Robert White, Johnson City

Sondra Wilson, voting ex-officio, Tennessee Technological University

Tennessee Higher Education Commission Staff Directory

Executive Division

Richard Rhoda, Executive Director
Lovella Carter, Executive Secretary II
Beth Fuller, Director of the Institute of Public Health

Academic Affairs

Linda Doran, Associate Executive Director of Academic Affairs
Betty Dandridge Johnson, Assistant Executive Director of Academic Affairs
Bettie Teasley, Director of Academic Affairs and Interagency Grants

Fiscal Affairs

Jim Vaden, Associate Executive Director of Fiscal Affairs
O.W. Higley, Jr., Assistant Executive Director of Fiscal Affairs
Russ Deaton, Director of Fiscal Analysis
Dennis Raffield, Director of Facilities Planning
Jason Cavender, Director of Business and Finance
Shanta Wilson, Accounting and Personnel Officer
Patsy Majors, Accounting Technician I
Corsina Wiley, Administrative Assistant III
Susan Douglas, Administrative Secretary
Tiffany Geasley, Information Resource Support Specialist III
Heather King, Information Resource Support Specialist II

Policy, Planning, and Research

David Wright, Associate Executive Director of Policy, Planning and Research
Erin O'Hara, Research Director
Takeshi Yanagiura, Research Director
Katrina Miller, Research and Planning Analyst
Chris Brewer, Director of Student Information Systems
Chris McDavid, Associate Director of Student Information Systems
Gopal Ojha, Data Management Specialist

P-16 Initiatives/Gear-UP Tennessee

Deborah Boyd, Associate Executive Director for P-16 Initiatives
Troy Grant, Director of Student Outreach and Counselor Support
Wendy Tabor, GEAR UP Program Public Relations Specialist
Kathleen Tone, GEAR UP Program Research and Planning Analyst
Maria Meador, GEAR UP Program Administrative Assistant III
Stephanie Bolton, Regional Coordinator – GEAR UP (West TN)
Flora Craig, Regional Coordinator – GEAR UP (East TN)

Legal and Regulatory Affairs

Will Burns, Associate Executive Director, Legal and Regulatory Affairs
Rosie Padgett, Administrative Assistant III

Postsecondary School Authorization (PSA)

Stephanie Bellard, Assistant Executive Director for Postsecondary School Authorization
Ronald Williams, Director for Postsecondary School Authorization
Dick Mansfield, Assistant Director for Postsecondary School Authorization
Teresa Warren, PSA Technical Educational Specialist
Lee Cunningham, Investigations Officer
Tamara Dodd, Investigations Officer
Eboni Wiley, Educational Specialist III
Sheena Walker, Educational Specialist III
Melissa Stevenson, Executive Secretary II

Veterans Education

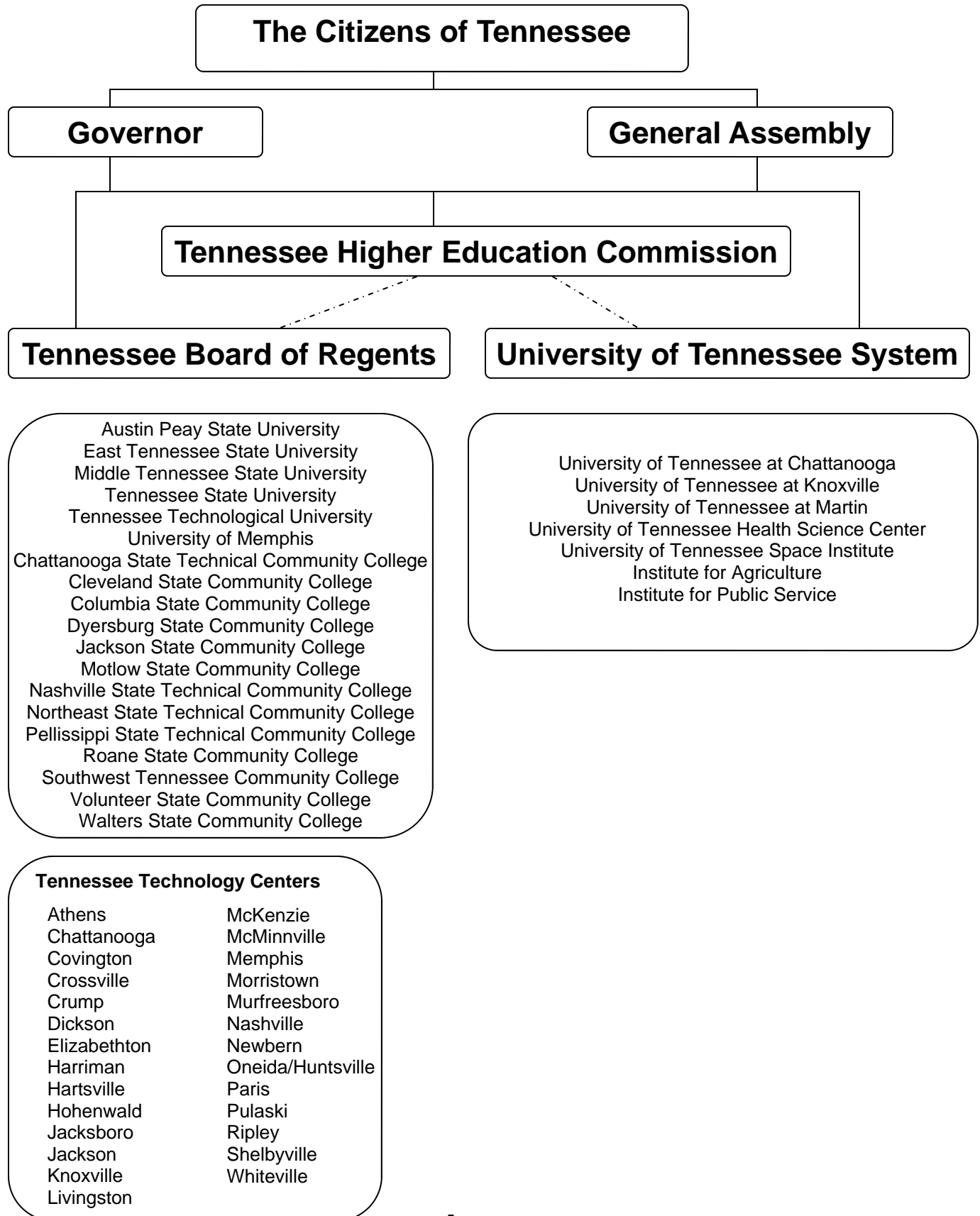
Tom Morrison, Assistant Executive Director of Veterans Education
Debbie Gardner, Director of Veterans Education
Frank Cowherd, Educational Specialist III
Bob Purvis, Educational Specialist III

Workforce Investment Act

Rosevelt Noble, Director of Workforce Investment Act
Nina Hibbler, Technical Educational Specialist
Sandy Kinslow, Jr., Technical Educational Specialist
Kristen Pryor, Educational Specialist III

Tennessee Higher Education Commission
Parkway Towers, Suite 1900
404 James Robertson Parkway
Nashville, TN 37243-0830

Tennessee Public Higher Education Governance/Coordination Structure



Tennessee Public Institutions Directory

Universities

Austin Peay State University
Clarksville, TN
www.apsu.edu
931-221-7011

East Tennessee State University
Johnson City, TN
www.etsu.edu
423-439-1000

Middle Tennessee State University
Murfreesboro, TN
www.mtsu.edu
615-898-2300

Tennessee State University
Nashville, TN
www.tnstate.edu
615-963-5000

Tennessee Technological University
Cookeville, TN
www.tntech.edu
931-372-3101

University of Memphis
Memphis, TN
www.memphis.edu
901-678-2000

University of Tennessee, Chattanooga
Chattanooga, TN
www.utc.edu
423-425-4111

University of Tennessee, Knoxville
Knoxville, TN
www.utk.edu
865-974-1000

University of Tennessee, Martin
Martin, TN
www.utm.edu
800-829-8861

University of Tennessee Health Science
Center
Memphis, TN
www.utmem.edu
901-448-550

University of Tennessee Space Institute
Tullahoma, TN
www.utsi.edu
888-822-8874

System Offices

Tennessee Board of Regents
1415 Murfreesboro Road
Suite 350
Nashville, TN 37217
www.tbr.state.tn.us
615-366-4400

University of Tennessee
Knoxville, TN 37996
www.tennessee.edu
865-974-1000

Community Colleges

Chattanooga State Technical
Community College
Chattanooga, TN
www.cstcc.cc.tn.us
423-697-4400

Northeast State Technical
Community College
Blountville, TN
www.nstcc.cc.tn.us
423-323-3191

Cleveland State Community
College
Cleveland, TN
www.clsc.cc.tn.us
423-472-7141

Pellissippi State Technical
Community College
Knoxville, TN
www.pstcc.cc.tn.us
865-694-6400

Columbia State Community
College
Columbia, TN
www.coscc.cc.tn.us
931-540-2722

Roane State Community
College
Harriman, TN
www.rsc.cc.tn.us
865-354-3000

Dyersburg State Community
College
Dyersburg, TN
www.dscc.edu
731-286-3200

Southwest Tennessee
Community College
Memphis, TN
www.southwest.tn.edu
901-333-STCC

Jackson State Community
College
Jackson, TN
www.jscc.edu
731-424-3520

Volunteer State Community
College
Gallatin, TN
www.vsc.cc.tn.us
615-452-8600

Motlow State Community
College
Lynchburg, TN
www.mscc.cc.tn.us
931-393-1500

Walters State Community
College
Morristown, TN
www.wsc.cc.tn.us
423-585-2600

Nashville State Technical
Community College
Nashville, TN
www.nsc.edu
615-353-3333

Tennessee Public Institutions Directory

Tennessee Technology Centers

Athens
www.athens.tec.tn.us
423-744-2814

Chattanooga
www.chattanooga.tec.tn.us
423-697-4433

Covington
www.covington.tec.tn.us
901-475-2526

Crossville
www.crossville.tec.tn.us
931-484-7505

Crump
www.crump.ttc.edu
731-632-3393

Dickson
www.dickson.tec.tn.us
615-441-6220

Elizabethton
www.elizabethton.tec.tn.us
423-543-0070

Harriman
www.harriman.tec.tn.us
865-882-6703

Hartsville
www.hartsville.tec.tn.us
615-374-214

Hohenwald
www.hohenwald.tec.tn.us
931-796-5351

Jacksboro
www.jacksboro.tec.tn.us
423-566-9629

Jackson
www.jackson.tec.tn.us
731-424-0691

Knoxville
www.knoxville.tec.tn.us
865-546-5568

Livingston
www.livingston.tec.tn.us
931-823-5525

McKenzie
www.mckenzie.tec.tn.us
731-352-5364

McMinnville
www.mcminnville.tec.tn.us
931-474-8324

Memphis
www.memphis.tec.tn.us
901-543-6100

Morristown
www.morristown.tec.tn.us
423-586-5771

Murfreesboro
www.murfreesboro.tec.tn.us
615-898-8010

Nashville
www.nashville.tec.tn.us
615-425-5500

Newbern
www.newbern.tec.tn.us
731-627-2511

Oneida/Huntsville
www.huntsville.tec.tn.us
423-663-4900

Paris
www.paris.tec.tn.us
731-644-7365

Pulaski
www.pulaski.tec.tn.us
931-424-4014

Ripley
www.ripley.tec.tn.us
731-635-3368

Shelbyville
www.shelbyville.tec.tn.us
931-685-5013

Whiteville
www.whiteville.tec.tn.us
731-254-8521

Tennessee Independent Colleges and Universities Association

Member Institutions

Aquinas College
Nashville

Baptist College of Health Sciences
Memphis

Belmont University
Nashville

Bethel College
McKenzie

Bryan College
Dayton

Carson-Newman College
Jefferson City

Christian Brothers University
Memphis

Crichton College
Memphis

Cumberland University
Lebanon

Fisk University
Nashville

Free Will Baptist Bible College
Nashville

Freed-Hardeman University
Henderson

Hiwassee College
Madisonville

John A. Gupton College
Nashville

Johnson Bible College
Jackson

King College
Bristol

Lambuth University
Jackson

Lane College
Jackson

Lee University
Cleveland

LeMoyne-Owen College
Memphis

Lincoln Memorial University
Harrogate

Lipscomb University
Nashville

Martin Methodist College
Pulaski

Maryville College
Maryville

Meharry Medical College
Nashville

Memphis College of Art
Memphis

Middle Tennessee School of Anesthesia
Madison

Milligan College
Milligan College

Rhodes College
Memphis

Southern Adventist University
Collegedale

Southern College of Optometry
Memphis

Tennessee Wesleyan College
Athens

Trevecca Nazarene University
Nashville

Tusculum College
Greeneville

Union University
Jackson

University of the South
Sewanee

Vanderbilt University
Nashville

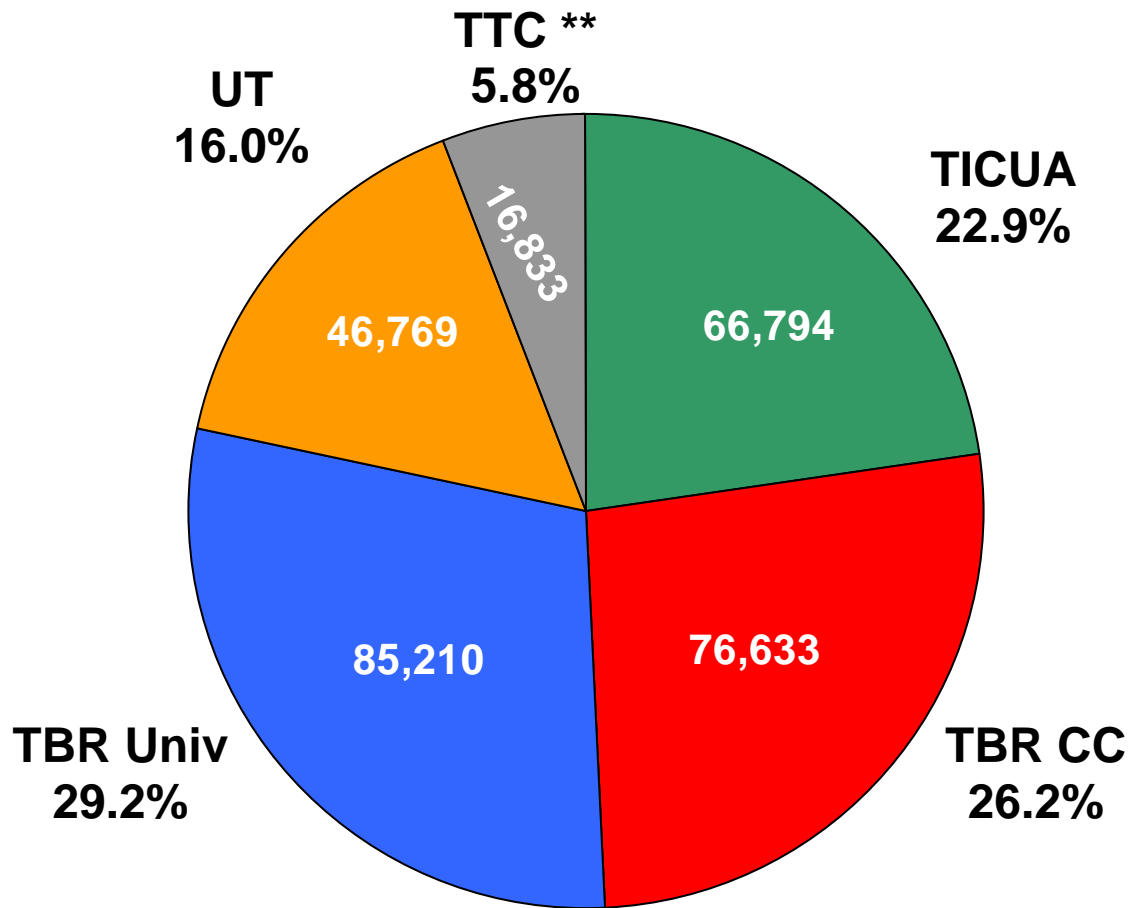
Section 1:



ENROLLMENT & TRANSFERS

Headcount by Sector *

Fall 2007

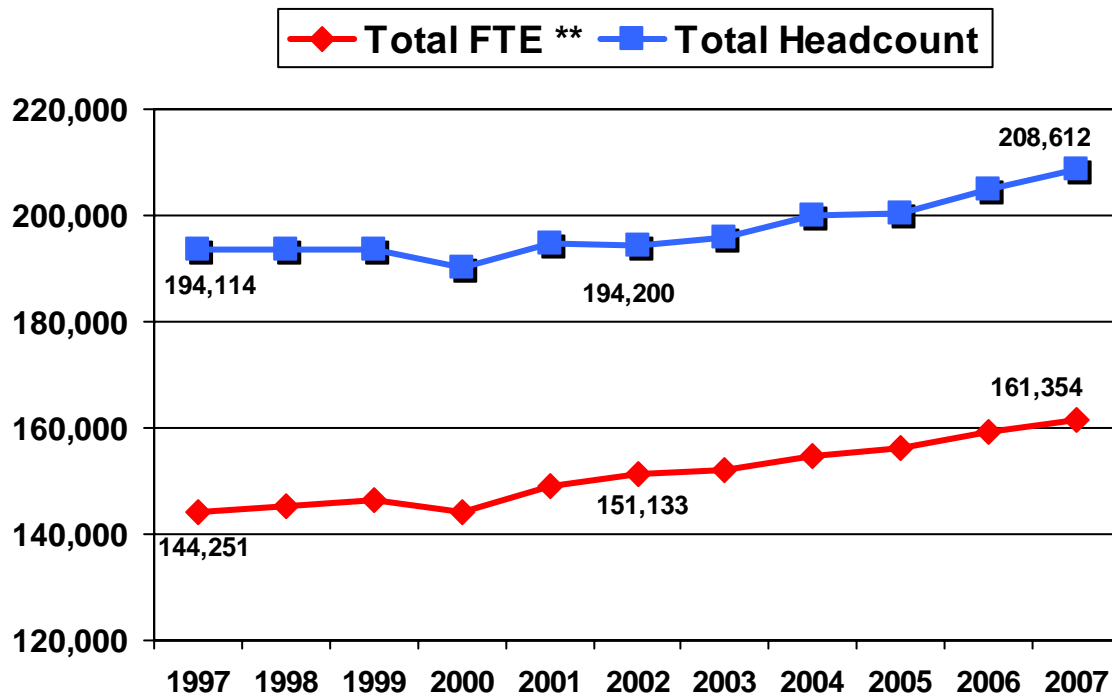


Total Enrollment in Tennessee Higher Education
292,239

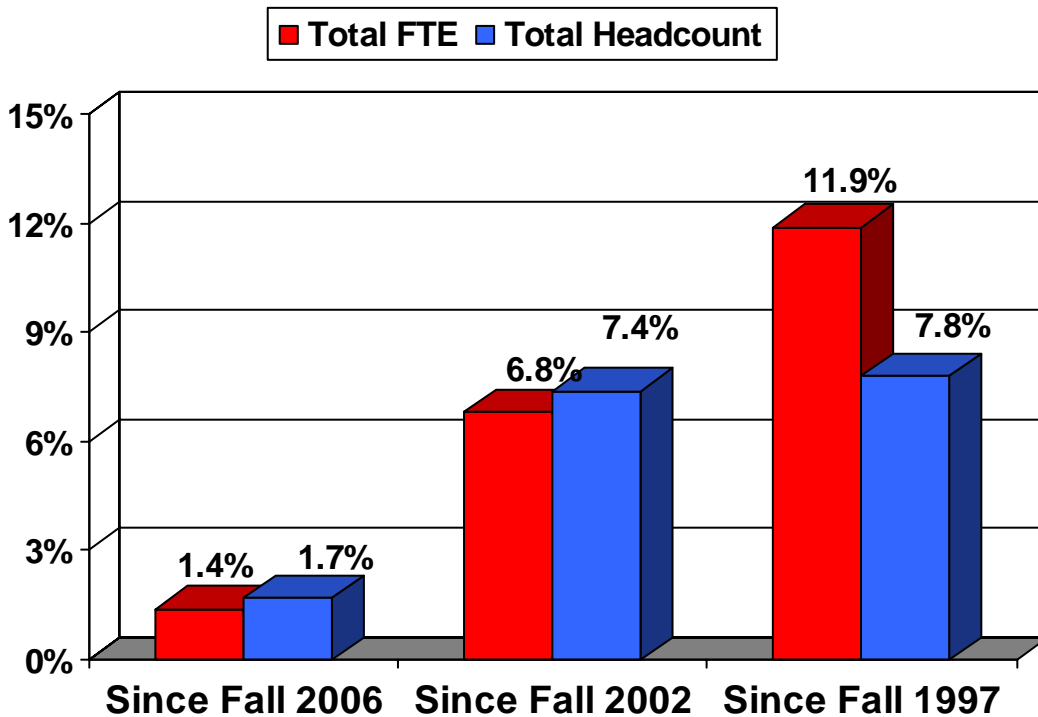
* Total excludes proprietary institutions and independent non-profit institutions not affiliated with Tennessee Independent Colleges and Universities Association that have an approximate enrollment of 70,000 students.

** Tennessee Technology Center (TTC) headcount reflects Fall 2006 data, which is the most recently available for the fall term.

Public Higher Education* Enrollment Trends Fall 1997 - Fall 2007



Fall 2007 Percent Change



* Does not include Tennessee Technology Center Enrollment.

** **Full Time Equivalent (FTE) Enrollment:** For undergraduate students, the total number of credits taken divided by 15. For graduate students, the total number of credits taken divided by 12. For students in clock hour courses, the total number of clock hours divided by 900.

Headcount Enrollment Fall Terms 1997 and 2002-2007

Institution	1997	2002	2003	2004	2005	2006	2007
Universities							
Austin Peay	7,803	7,482	7,623	8,650	8,814	9,207	9,084
East Tennessee*	11,596	11,365	11,624	11,869	11,894	12,390	13,118
Middle Tennessee	18,366	21,163	21,744	22,322	22,554	22,863	23,246
Tennessee State	8,625	8,881	9,024	9,100	8,880	9,038	9,065
Tennessee Tech	8,262	8,890	9,107	9,217	9,312	9,733	10,321
Univ. of Memphis	19,851	19,797	19,911	20,668	20,465	20,562	20,376
TBR Total	74,503	77,578	79,033	81,826	81,919	83,793	85,210
UT Chattanooga	8,528	8,524	8,528	8,689	8,656	8,923	9,558
UT Knoxville**	25,410	25,945	25,219	25,671	26,294	26,560	27,385
UT Martin	5,997	5,714	5,770	6,098	6,478	6,888	7,171
UTMHC	2,050	2,039	2,067	2,139	2,260	2,425	2,655
UT Total	41,985	42,222	41,584	42,597	43,688	44,796	46,769
Total Universities	116,488	119,800	120,617	124,423	125,607	128,589	131,979
Community Colleges							
Chattanooga	8,434	8,411	8,120	8,121	7,836	8,060	8,108
Cleveland	3,484	3,127	3,161	2,962	3,027	2,947	2,999
Columbia	4,165	4,506	4,613	4,697	4,747	4,522	4,633
Dyersburg	2,649	2,362	2,515	2,477	2,457	2,586	2,568
Jackson	3,633	3,949	3,993	3,963	3,859	4,099	4,379
Motlow	3,389	3,631	3,478	3,539	3,407	3,833	4,113
Nashville	6,901	6,874	6,766	7,021	7,198	7,192	7,077
Northeast	3,800	4,592	4,836	5,085	4,860	5,145	5,237
Pellissippi	8,170	7,795	7,563	7,562	7,686	8,188	8,608
Roane	5,587	5,233	5,385	5,331	5,155	5,353	5,404
Southwest***	14,107	11,039	11,629	11,791	11,556	11,446	10,617
Volunteer	6,835	6,979	6,991	7,044	7,150	7,370	7,065
Walters	6,185	5,902	6,214	5,905	5,879	5,738	5,825
Total CC	77,039	74,400	75,264	75,498	74,817	76,479	76,633
Grand Total	193,527	194,200	195,881	199,921	200,424	205,068	208,612

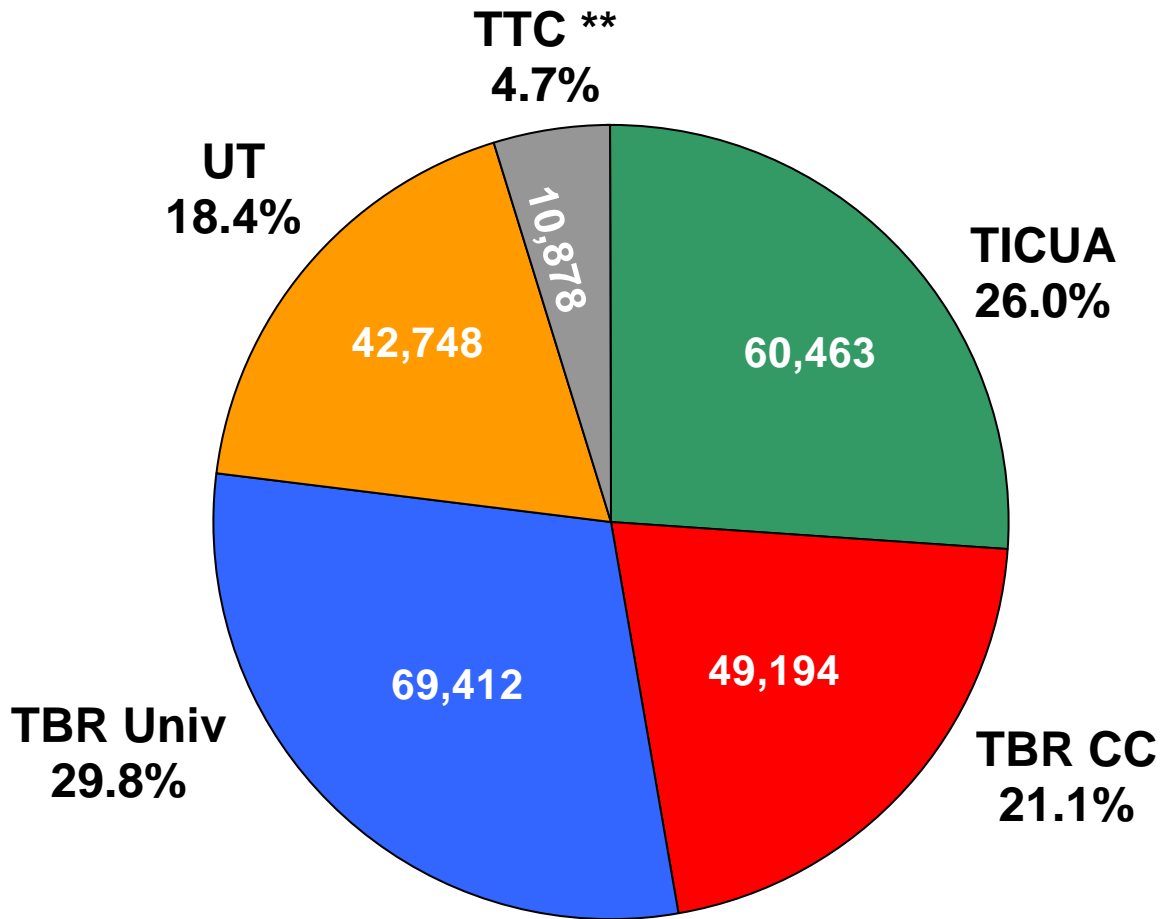
* Includes ETSU Medical and Pharmacy School

** Includes UT Space Institute and UT Veterinary College

*** Contains combined totals for State Technical Institute of Memphis and Shelby State Community College for 1997

FTE by Sector *

Fall 2007



Total FTE in Tennessee Colleges and Universities
232,695



Of Fall 2007 Total FTE...

- ♦ UT campuses and TICUA institutions, which tend to enroll greater percentages of full-time students, account for a greater share of FTE enrollment than of headcount enrollment.
- ♦ Community colleges account for 21.1 percent, 5.1 percentage points fewer than their headcount total.

* Excludes proprietary institutions and independent non-profit institutions not affiliated with Tennessee Independent Colleges and Universities Association (TICUA).

** Tennessee Technology Center (TTC) FTE reflects Fall 2006 data, which is the most recently available data for the fall term.

FTE Enrollment Fall Terms 1997 and 2002-2007

Institution	1997	2002	2003	2004	2005	2006	2007
Universities							
Austin Peay	5,968	6,079	6,278	6,939	7,336	7,443	7,139
East Tennessee*	9,549	9,664	9,936	10,070	10,185	10,594	11,224
Middle Tennessee	15,455	18,151	18,735	19,037	19,139	19,355	19,525
Tennessee State	7,168	7,703	7,716	7,662	7,462	7,464	7,465
Tennessee Tech	7,287	7,554	7,509	7,559	7,562	7,900	8,312
Univ. of Memphis	15,452	15,696	15,720	16,128	15,910	15,946	15,747
TBR Total	60,879	64,846	65,894	67,394	67,593	68,702	69,412
UT Chattanooga	6,816	7,050	7,138	7,326	7,317	7,564	8,168
UT Knoxville**	21,819	23,221	22,730	23,141	23,642	24,016	24,673
UT Martin	5,607	5,311	5,265	5,570	5,833	5,968	6,108
UTMHSC	1,949	1,977	2,008	2,062	3,412	3,583	3,799
UT Total	36,191	37,559	37,141	38,099	40,205	41,131	42,748
Total Universities	97,070	102,404	103,035	105,494	107,797	109,833	112,160
Community Colleges							
Chattanooga	5,227	5,264	5,186	5,124	4,890	5,054	5,044
Cleveland	2,376	2,200	2,224	2,088	2,103	2,034	2,022
Columbia	2,820	3,108	3,082	3,145	3,120	2,963	3,003
Dyersburg	1,533	1,657	1,819	1,770	1,744	1,693	1,668
Jackson	2,328	2,713	2,743	2,702	2,573	2,791	2,953
Motlow	2,287	2,556	2,436	2,465	2,392	2,566	2,739
Nashville	3,357	3,757	3,769	3,889	4,074	4,083	4,063
Northeast	2,422	2,968	3,112	3,334	3,142	3,374	3,387
Pellissippi	5,217	5,208	5,013	4,963	4,963	5,149	5,446
Roane	3,720	3,767	3,775	3,850	3,603	3,738	3,764
Southwest***	7,852	7,141	7,361	7,561	7,332	7,306	6,794
Volunteer	4,236	4,525	4,426	4,483	4,553	4,677	4,427
Walters	3,807	3,867	4,067	3,864	3,826	3,872	3,884
Total CC	47,181	48,729	49,013	49,238	48,315	49,300	49,194
Grand Total	144,251	151,133	152,048	154,732	156,112	159,133	161,354

* Includes ETSU Medical and Pharmacy School

** Includes UT Space Institute and UT Veterinary College

*** Contains combined totals for State Technical Institute of Memphis and Shelby State Community College for 1997

Tennessee Technology Centers Academic Year 2006-2007 Enrollment

School	Headcount	FTE*	Contact Hours
Athens	523	220	198,387
Chattanooga	1,621	728	654,798
Covington	328	139	125,239
Crossville	1,004	324	291,937
Crump	404	252	226,842
Dickson	1,120	459	413,015
Elizabethton	907	485	436,850
Harriman	452	205	184,399
Hartsville	371	215	193,415
Hohenwald	1,064	393	354,063
Jacksboro	365	169	152,507
Jackson	1,274	525	472,362
Knoxville	1,298	516	464,159
Livingston	1,513	411	369,808
McKenzie	448	263	236,329
McMinnville	513	291	262,092
Memphis	1,550	868	781,555
Morristown	1,565	629	565,735
Murfreesboro	5,577	407	365,984
Nashville	1,310	644	579,916
Newbern	378	195	175,510
Oneida/Huntsville	613	229	206,046
Paris	658	361	325,115
Pulaski	1,140	346	311,737
Ripley	838	180	161,689
Shelbyville	1,073	505	454,258
Whiteville	377	168	151,225
Total	28,284	10,128	9,114,972

* FTE equals contact hours divided by 900.

Headcount Enrollment Characteristics Tennessee Public Institutions of Higher Education Fall 2007

Characteristics	Public Universities		Public Community Colleges		Total Public Institutions	
	#	%	#	%	#	%
Resident Type						
In-State	113,392	85.9%	74,093	96.7%	187,485	89.9%
Out-of-State	15,318	11.6%	1,774	2.3%	17,092	8.2%
Foreign	3,269	2.5%	766	1.0%	4,035	1.9%
Status						
Full-Time	97,040	73.5%	37,547	49.0%	134,587	64.5%
Part-Time	34,939	26.5%	39,086	51.0%	74,025	35.5%
Level of Instruction						
Freshman	31,839	24.1%	39,968	52.2%	71,807	34.4%
Sophomore	21,025	15.9%	22,730	29.7%	43,755	21.0%
Junior	21,114	16.0%	--		21,114	10.1%
Senior	29,970	22.7%	--		29,970	14.4%
Other Undergraduate	3,276	2.5%	13,935	18.2%	17,211	8.3%
Total Undergraduate	107,224	81.2%	76,633	100.0%	183,857	88.1%
Graduate/Professional	24,755	18.8%	--		24,755	11.9%
Gender						
Male	56,997	43.2%	29,564	38.6%	86,561	41.5%
Female	74,982	56.8%	47,069	61.4%	122,051	58.5%
Race						
Caucasian	96,719	73.3%	58,977	77.0%	155,696	74.6%
African-American	25,100	19.0%	13,021	17.0%	38,121	18.3%
Hispanic	2,402	1.8%	1,291	1.7%	3,693	1.8%
Other	5,058	3.8%	1,591	2.1%	6,649	3.2%
Unclassified	2,700	2.0%	1,753	2.3%	4,453	2.1%
Grand Total	131,979		76,633		208,612	



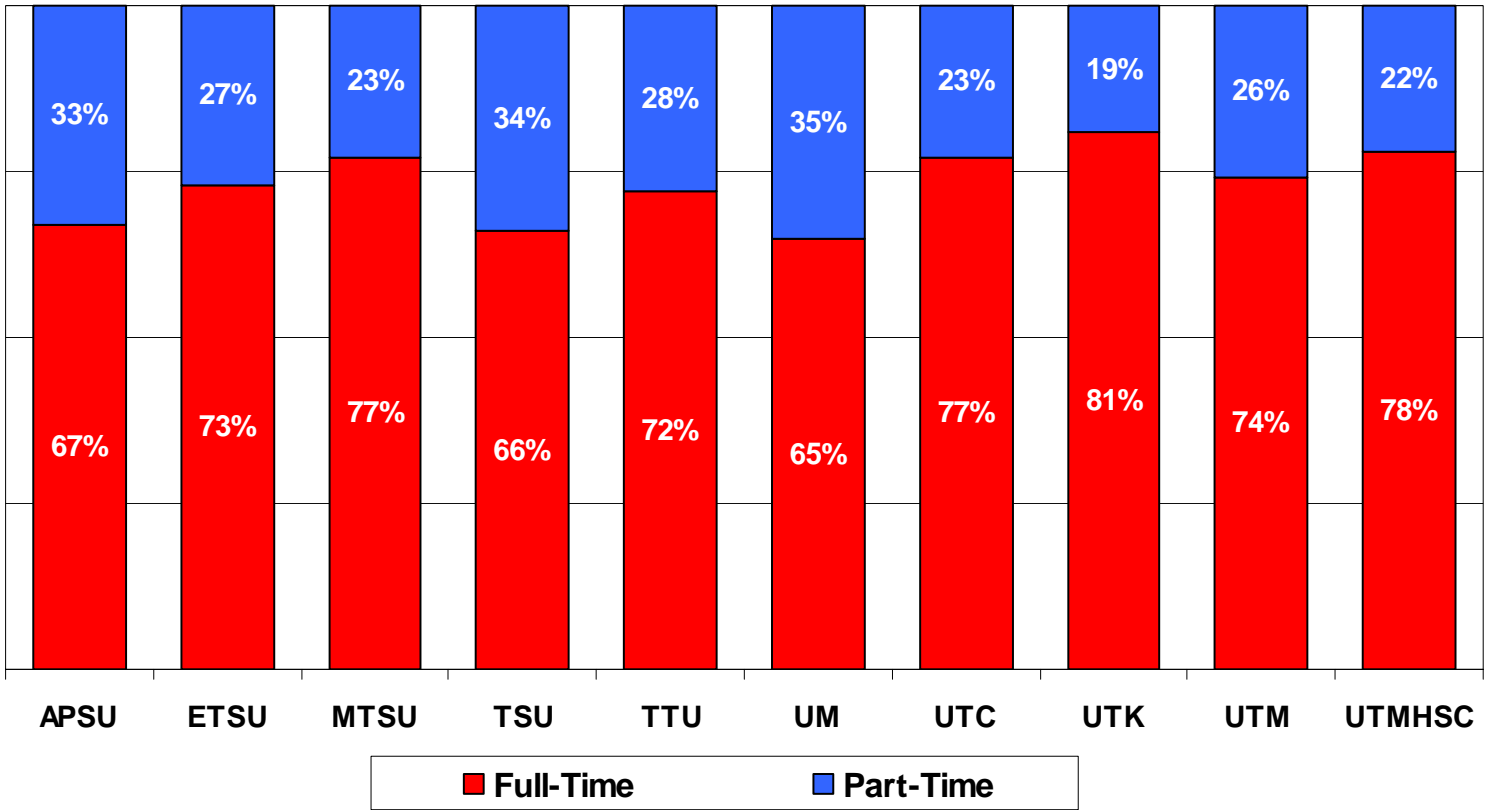
- ◆ Three-quarters (73.5 percent) of public university students enroll full-time compared to less than one-half (49.0 percent) of community college students.
- ◆ Minority students comprise 24.6 percent of public university headcount and 20.8 percent of community college enrollment.

Average ACT Scores of Incoming Freshmen Fall 2007

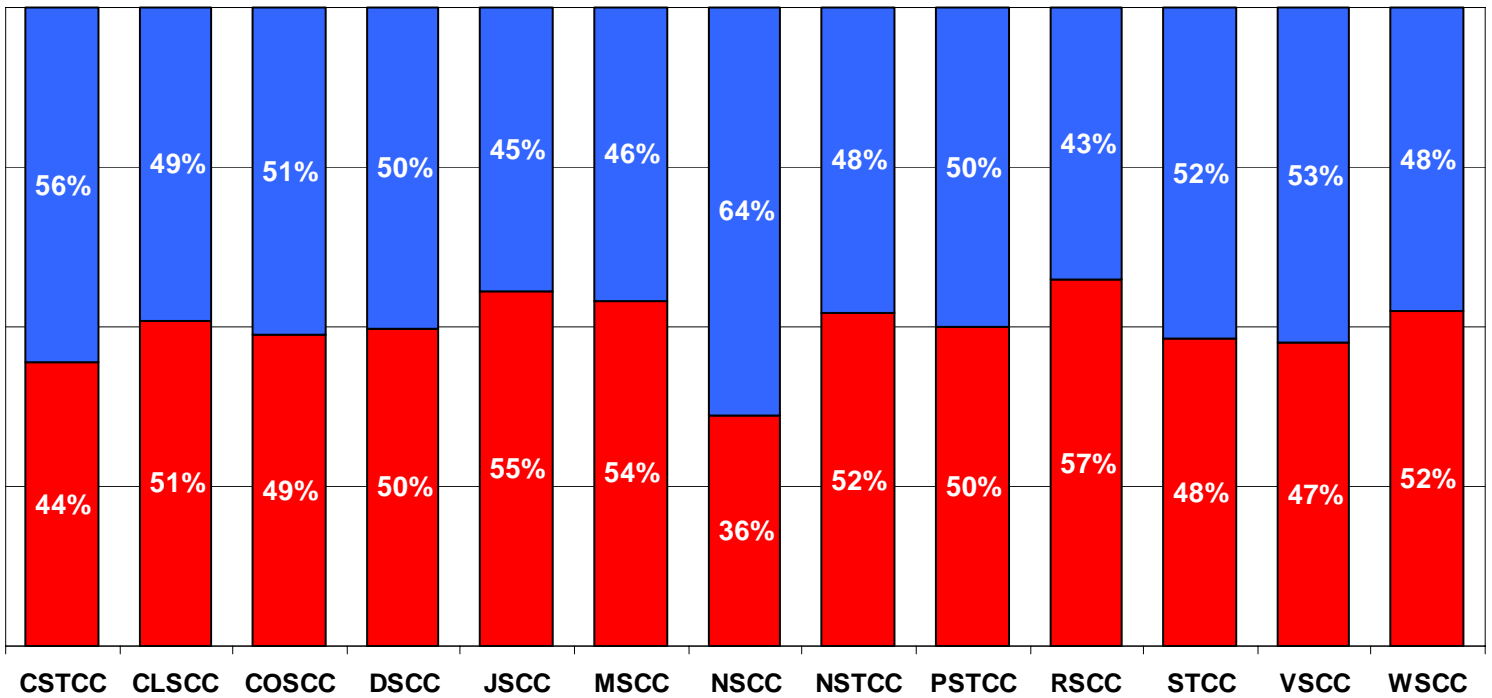
Institution	Total First Time Freshmen	Percent with ACT Score	Average ACT Score
Universities			
Austin Peay	1,394	81.4%	21.7
East Tennessee	1,866	80.9%	22.1
Middle Tennessee	3,576	94.9%	22.2
Tennessee State	1,228	85.7%	18.1
Tennessee Tech	1,312	90.9%	22.5
University of Memphis	2,017	95.4%	22.0
UT Chattanooga	1,947	95.8%	21.8
UT Knoxville	4,265	92.9%	25.2
UT Martin	1,277	91.4%	21.9
Community Colleges			
Chattanooga	1,269	76.0%	18.2
Cleveland	546	72.2%	19.2
Columbia	1,094	78.2%	19.2
Dyersburg	585	70.3%	18.8
Jackson	920	74.0%	18.4
Motlow	1,029	75.3%	18.8
Nashville	1,160	51.5%	17.4
Northeast	997	72.0%	18.4
Pellissippi	1,527	73.1%	20.0
Roane	1,071	78.4%	19.5
Southwest	2,587	67.0%	16.7
Volunteer	1,251	81.6%	18.7
Walters	1,144	78.5%	19.3

Percent of Full-Time and Part-Time Enrollment by Institution Fall 2007

Public Universities



Public Community Colleges



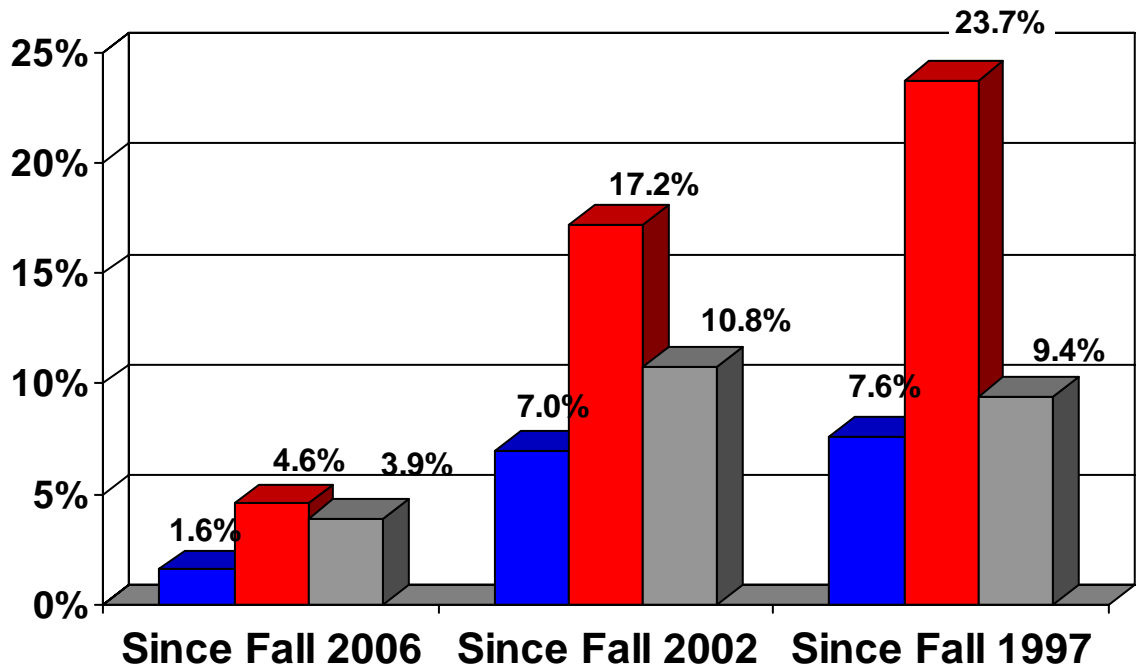
Headcount by Student Level Fall 2007

Institution	First-Time Freshmen		Total Undergraduate		Graduate & Professional	
	#	% of Total Headcount	#	% of Total Headcount	#	% of Total Headcount
Public Universities						
Austin Peay	1,388	15.3%	8,331	91.7%	753	8.3%
East Tennessee*	1,866	14.2%	10,665	81.3%	2,453	18.7%
Middle Tennessee	3,576	15.4%	20,883	89.8%	2,363	10.2%
Tennessee State	1,228	13.5%	7,132	78.7%	1,933	21.3%
Tennessee Tech	1,312	12.7%	8,060	78.1%	2,261	21.9%
Univ. of Memphis	2,017	9.9%	15,799	77.5%	4,577	22.5%
TBR Total	11,387	13.4%	70,870	83.2%	14,340	16.8%
UT Chattanooga	1,947	20.4%	8,194	85.7%	1,364	14.3%
UT Knoxville**	4,265	15.6%	21,209	77.4%	6,176	22.6%
UT Martin	1,277	17.8%	6,715	93.6%	456	6.4%
UTMHC	0	0.0%	236	8.9%	2,419	91.1%
UT Total	7,489	16.0%	36,354	77.7%	10,415	22.3%
Total Universities	18,876	14.3%	107,224	81.2%	24,755	18.8%
Public Community Colleges						
Chattanooga	1,269	15.7%	8,108	100%	0	n/a
Cleveland	546	18.2%	2,999	100%	0	n/a
Columbia	1,094	23.6%	4,633	100%	0	n/a
Dyersburg	585	22.8%	2,568	100%	0	n/a
Jackson	920	21.0%	4,379	100%	0	n/a
Motlow	1,029	25.0%	4,113	100%	0	n/a
Nashville	1,036	14.6%	7,077	100%	0	n/a
Northeast	997	19.0%	5,237	100%	0	n/a
Pellissippi	1,527	17.7%	8,608	100%	0	n/a
Roane	1,071	19.8%	5,404	100%	0	n/a
Southwest	1,966	18.5%	10,617	100%	0	n/a
Volunteer	1,251	17.7%	7,065	100%	0	n/a
Walters	1,144	19.6%	5,825	100%	0	n/a
Total Comm Colleges	14,435	18.8%	76,633	100%	0	n/a
Grand Total	33,311	16.0%	183,857	88.1%	24,755	12%

*Includes ETSU Medical and Pharmacy Schools

**Includes UT Space Institute and UT Veterinary College

Headcount by Student Level Percent Change Fall 1997 to Fall 2007



Notes on First-Time Freshmen:

- ◆ The greatest enrollment increase by level has been among first-time freshmen.
- ◆ UT Chattanooga headcount of first-time freshmen, at 20 percent of total enrollment, is the highest at public four-year institutions.
- ◆ Motlow State maintains the highest percentage of first-time freshmen of all community colleges with 25 percent of total enrollment.

Headcount by Gender Fall 2007

Institution	Male		Female	
	#	%	#	%
Universities				
Austin Peay	3,404	37.5%	5,680	62.5%
East Tennessee*	5,439	41.5%	7,679	58.5%
Middle Tennessee	10,733	46.2%	12,513	53.8%
Tennessee State	3,071	33.9%	5,994	66.1%
Tennessee Tech	5,016	48.6%	5,305	51.4%
Univ. of Memphis	7,777	38.2%	12,599	61.8%
TBR Total	35,440	41.6%	49,770	58.4%
UT Chattanooga	4,116	43.1%	5,442	56.9%
UT Knoxville**	13,365	48.8%	14,020	51.2%
UT Martin	3,007	41.9%	4,164	58.1%
UTMHSC	1,069	40.3%	1,586	59.7%
UT Total	21,557	46.1%	25,212	53.9%
Total Universities	56,997	43.2%	74,982	56.8%
Community Colleges				
Chattanooga	3,077	38.0%	5,031	62.0%
Cleveland	1,161	38.7%	1,838	61.3%
Columbia	1,655	35.7%	2,978	64.3%
Dyersburg	758	29.5%	1,810	70.5%
Jackson	1,488	34.0%	2,891	66.0%
Motlow	1,537	37.4%	2,576	62.6%
Nashville	2,931	41.4%	4,146	58.6%
Northeast	2,492	47.6%	2,745	52.4%
Pellissippi	4,069	47.3%	4,539	52.7%
Roane	1,790	33.1%	3,614	66.9%
Southwest	3,828	36.1%	6,789	63.9%
Volunteer	2,569	36.4%	4,496	63.6%
Walters	2,209	37.9%	3,616	62.1%
Total Comm Colleges	29,564	38.6%	47,069	61.4%
Grand Total	86,561	41.5%	122,051	58.5%

*Includes ETSU Medical and Pharmacy Schools

**Includes UT Space Institute and UT Veterinary College



Females constitute the majority of higher education enrollment. This has been the case nationally since 1978 and in Tennessee since 1979.

Student Headcount by Age Fall 2007

Institution	Ages 24 & Under		Ages 25 & Over	
	#	%	#	%
Universities				
Austin Peay	5,087	56.0%	3,997	44.0%
East Tennessee*	8,545	65.1%	4,573	34.9%
Middle Tennessee	17,258	74.2%	5,988	25.8%
Tennessee State	5,509	60.8%	3,556	39.2%
Tennessee Tech	7,116	68.9%	3,205	31.1%
Univ. of Memphis	11,816	58.0%	8,560	42.0%
TBR Total	55,331	64.9%	29,879	35.1%
UT Chattanooga	7,203	75.4%	2,355	24.6%
UT Knoxville**	21,020	76.8%	6,365	23.2%
UT Martin	5,555	77.5%	1,616	22.5%
UTMHSC	968	36.5%	1,687	63.5%
UT Total	34,746	74.3%	12,023	25.7%
Total Universities	90,077	68.3%	41,902	31.7%
Community Colleges				
Chattanooga	4,840	59.7%	3,268	40.3%
Cleveland	1,767	58.9%	1,232	41.1%
Columbia	3,107	67.1%	1,526	32.9%
Dyersburg	1,595	62.1%	973	37.9%
Jackson	2,703	61.7%	1,676	38.3%
Motlow	2,875	69.9%	1,238	30.1%
Nashville	3,379	47.8%	3,697	52.2%
Northeast	2,967	56.7%	2,270	43.3%
Pellissippi	5,851	68.0%	2,757	32.0%
Roane	3,399	62.9%	2,005	37.1%
Southwest	5,907	55.6%	4,708	44.4%
Volunteer	4,629	65.5%	2,436	34.5%
Walters	3,856	66.2%	1,969	33.8%
Total Comm Colleges	46,875	61.2%	29,755	38.8%
Grand Total	136,952	65.7%	71,657	34.3%

*Includes ETSU Medical and Pharmacy School

**Includes UT Space Institute and UT Veterinary College



Currently, adult learners account for 34 percent of the total headcount in the public sector (39 percent among community colleges and 32 percent among universities). Traditional enrollment increased throughout the last decade. However, adult enrollment decreased as a share of this overall figure.

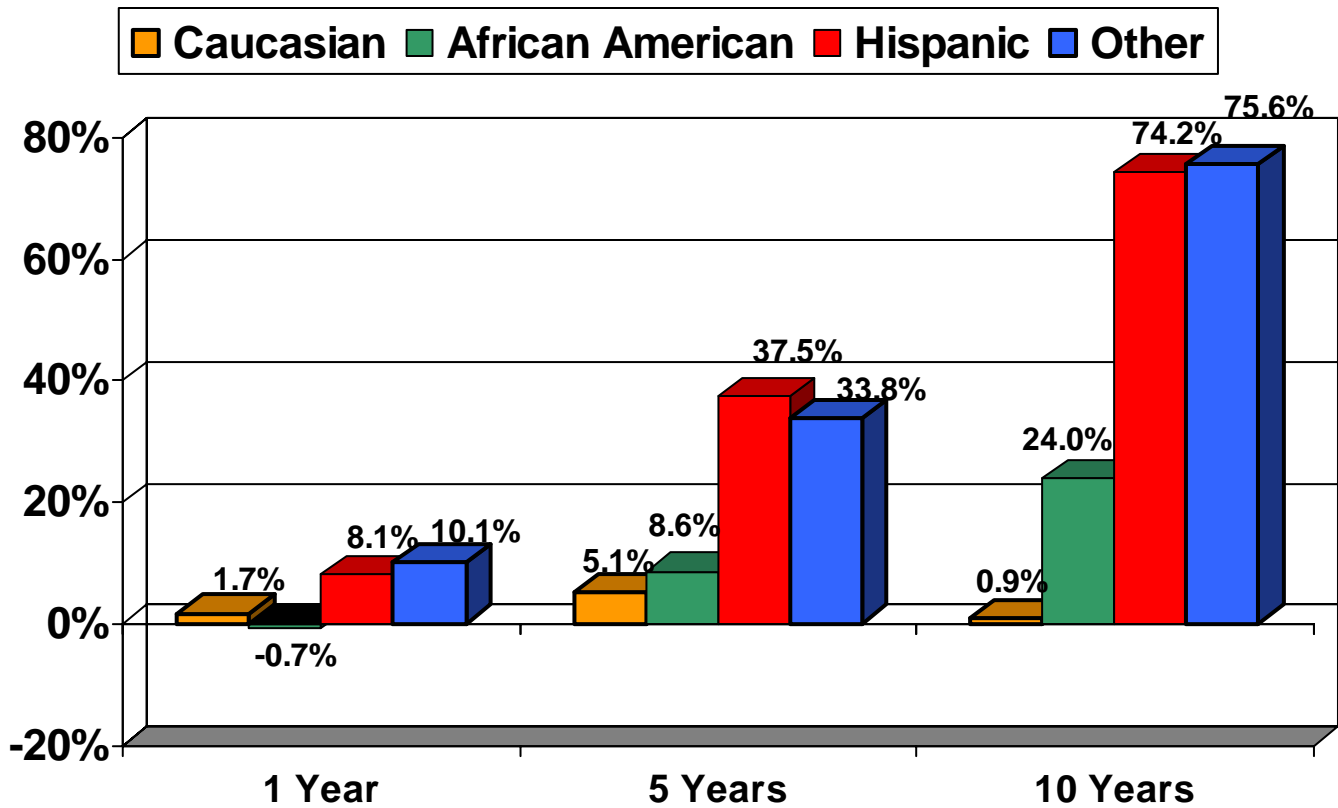
Headcount by Race Fall 2007

Institution	Caucasian		African-American		Other/ Not Reported	
	#	%	#	%	#	%
Universities						
Austin Peay	5,830	64.2%	1,499	16.5%	1,755	19.3%
East Tennessee*	11,623	88.6%	608	4.6%	887	6.8%
Middle Tennessee	18,468	79.4%	3,160	13.6%	1,618	7.0%
Tennessee State	1,971	21.7%	6,763	74.6%	331	3.7%
Tennessee Tech	9,195	89.1%	401	3.9%	725	7.0%
Univ. of Memphis	11,564	56.8%	7,339	36.0%	1,473	7.2%
TBR Total	58,651	68.8%	19,770	23.2%	6,789	8.0%
UT Chattanooga	7,432	77.8%	1,663	17.4%	463	4.8%
UT Knoxville**	22,800	83.3%	2,250	8.2%	2,335	8.5%
UT Martin	5,902	82.3%	1,032	14.4%	237	3.3%
UTMHSC	1,934	72.8%	385	14.5%	336	12.7%
UT Total	38,068	81.4%	5,330	11.4%	3,371	7.2%
Total Universities	96,719	73.3%	25,100	19.0%	10,160	7.7%
Community Colleges						
Chattanooga	6,333	78.1%	1,415	17.5%	360	4.4%
Cleveland	2,714	90.5%	135	4.5%	150	5.0%
Columbia	4,044	87.3%	343	7.4%	246	5.3%
Dyersburg	2,051	79.9%	438	17.1%	79	3.1%
Jackson	3,518	80.3%	723	16.5%	138	3.2%
Motlow	3,586	87.2%	289	7.0%	238	5.8%
Nashville	4,120	58.2%	1,927	27.2%	1,030	14.6%
Northeast	4,706	89.9%	133	2.5%	398	7.6%
Pellissippi	7,505	87.2%	604	7.0%	499	5.8%
Roane	5,043	93.3%	138	2.6%	223	4.1%
Southwest	3,761	35.4%	6,136	57.8%	720	6.8%
Volunteer	6,107	86.4%	580	8.2%	378	5.4%
Walters	5,489	94.2%	160	2.7%	176	3.0%
Total Comm Colleges	58,977	77.0%	13,021	17.0%	4,635	6.0%
Grand Total	155,696	74.6%	38,121	18.3%	14,795	7.1%

*Includes ETSU Medical and Pharmacy Schools

**Includes UT Space Institute and UT Veterinary College

Undergraduate Headcount by Race Percent Change Fall 1997 to Fall 2007



- ◆ Over the past decade, the greatest numeric growth in student headcount within the public sector has come from African-American students. Their increase of over 7,400 students represents a 24 percent increase.
- ◆ Although much smaller in overall numbers, Hispanic students realized the greatest percentage increase in enrollment. These students have increased by 38 percent (1,026 students) over the past 5 years and 74 percent (1,599 students) over the last decade.

Off-Campus as a Percent of Total Enrollment *

Fall 2007

Institution	Off-			Off-		
	Total Headcount	Campus Headcount	Percent of Total	Total FTE	Campus FTE	Percent of Total
Austin Peay	9,513	1,853	19.5%	7,448	993	13.3%
East Tennessee	13,364	1,512	11.3%	10,397	532	5.1%
ETSU Med. School	493	0	0.0%	493	0	0.0%
Middle Tennessee	23,004	297	1.3%	19,373	127	0.7%
Tennessee State	10,684	301	2.8%	7,466	165	2.2%
Tennessee Tech	10,666	1,888	17.7%	7,906	482	6.1%
Univ. of Memphis	22,496	2,421	10.8%	15,979	612	3.8%
TBR Univ	80,707	6,419	8.0%	61,614	1,918	3.1%
		0			0	
UT Chattanooga	9,211	333	3.6%	7,584	105	1.4%
UT Knoxville	26,405	510	1.9%	23,528	383	1.6%
UTMHSC	2,474	0	0.0%	3,587	0	0.0%
UT-Space	201	0	0.0%	92	0	0.0%
UT-Vet	276	0	0.0%	426	0	0.0%
UT Martin	7,089	1,138	16.1%	5,975	419	7.0%
UT Total	45,656	1,981	4.3%	41,192	907	2.2%
Univ Total	126,363	8,400	6.6%	102,806	2,825	2.7%
Chattanooga	9,297	2,500	26.9%	5,077	897	17.7%
Cleveland	3,541	888	25.1%	2,036	220	10.8%
Columbia	5,477	2,650	48.4%	2,965	1,224	41.3%
Dyersburg	3,233	1,518	47.0%	1,695	693	40.9%
Jackson	4,516	797	17.6%	2,792	358	12.8%
Motlow	4,873	2,769	56.8%	2,570	1,309	50.9%
Nashville	7,661	1,247	16.3%	4,099	571	13.9%
Northeast	5,787	1,190	20.6%	3,376	400	11.8%
Pellissippi	9,964	3,370	33.8%	5,164	1,197	23.2%
Roane	7,310	4,874	66.7%	3,753	2,454	65.4%
Southwest	15,785	4,240	26.9%	7,333	1,312	17.9%
Volunteer	8,398	2,659	31.7%	4,678	970	20.7%
Walters	6,893	3,351	48.6%	3,877	1,534	39.6%
TBR 2 Year	92,735	32,053	34.6%	49,415	13,139	26.6%
Grand Total	219,098	40,453	18.5%	152,221	15,964	10.5%

* Unduplicated Headcount

Headcount by Resident Status *

Fall 2007

Institution	In-State		Out-of-State		Foreign	
	#	%	#	%	#	%
Universities						
Austin Peay	7,668	83.3%	1,319	14.3%	97	1.1%
East Tennessee**	11,170	90.2%	1,633	13.2%	315	2.5%
Middle Tennessee	21,307	93.2%	1,612	7.1%	327	1.4%
Tennessee State	6,584	72.8%	2,344	25.9%	137	1.5%
Tennessee Tech	9,703	99.7%	344	3.5%	274	2.8%
Univ. of Memphis	17,870	86.9%	1,887	9.2%	619	3.0%
TBR Total	74,302	88.7%	9,139	10.9%	1,769	2.1%
UT Chattanooga	8,610	96.5%	828	9.3%	120	1.3%
UT Knoxville***	21,867	82.3%	4,425	16.7%	1,093	4.1%
UT Martin	6,671	96.8%	361	5.2%	139	2.0%
UTMHSC	1,942	80.1%	565	23.3%	148	6.1%
UT Total	39,090	87.3%	6,179	13.8%	1,500	3.3%
Total Universities	113,392	88.2%	15,318	11.9%	3,269	2.5%
Community Colleges						
Chattanooga	7,508	93.2%	563	7.0%	37	0.5%
Cleveland	2,908	98.7%	45	1.5%	46	1.6%
Columbia	4,564	100.9%	35	0.8%	34	0.8%
Dyersburg	2,535	98.0%	31	1.2%	2	0.1%
Jackson	4,350	106.1%	23	0.6%	6	0.1%
Motlow	4,058	105.9%	51	1.3%	4	0.1%
Nashville	6,466	89.9%	256	3.6%	355	4.9%
Northeast	5,075	98.6%	155	3.0%	7	0.1%
Pellissippi	8,393	102.5%	175	2.1%	40	0.5%
Roane	5,355	100.0%	33	0.6%	16	0.3%
Southwest	10,157	88.7%	274	2.4%	186	1.6%
Volunteer	6,957	94.4%	83	1.1%	25	0.3%
Walters	5,767	100.5%	50	0.9%	8	0.1%
Total Comm Colleges	74,093	96.9%	1,774	2.3%	766	1.0%
Grand Total	187,485	91.4%	17,092	8.3%	4,035	2.0%

*Resident status determined by permanent address and citizenship status.

**Includes ETSU Medical School

***Includes UT Space Institute and UT Veterinary College

Headcount by Major Field

Fall 2007

Major Field	Undergraduate	Graduate & Professional	Total
Agriculture	2,365	283	2,648
Architecture & Related Programs	438	55	493
Area, Ethnic & Cultural Studies	178	13	191
Biological Sciences/Life Sciences	3,512	652	4,164
Business Management & Administrative Services	21,217	2,310	23,527
Communications	4,491	374	4,865
Computer & Information Sciences	2,243	281	2,524
Education	4,019	5,604	9,623
Engineering	8,428	1,317	9,745
English Language & Literature/Letters	1,990	504	2,494
Foreign Languages & Literatures	754	87	841
Health Professions & Related Services	23,142	4,716	27,858
Home Economics	3,534	161	3,695
Law & Legal Studies	526	872	1,398
Liberal Arts & Sciences	34,264	235	34,499
Library Science	1	202	203
Mathematics	584	238	822
Multi/Interdisciplinary Studies	5,663	71	5,734
Other *	14,620	2,923	17,543
Parks, Recreation, Leisure & Fitness Studies	2,475	492	2,967
Personal & Miscellaneous Services	132	0	132
Personal Improvement & Leisure Programs	75	0	75
Philosophy, Religion, & Theology	271	74	345
Physical Sciences	1,985	457	2,442
Protective Services & Public Affairs	4,664	899	5,563
Psychology	3,912	806	4,718
Social Sciences	4,575	710	5,285
Technology Education/ Industrial Arts	648	0	648
Trades and Industrial	1,000	16	1,016
Visual & Performing Arts	6,603	403	7,006
Undeclared	25,548	0	25,548
Grand Total	183,857	24,755	208,612

* Includes non-degree seeking students and students with no reported major.



Business management, health professions, and liberal arts and sciences account for 42 percent of total degree credit enrollment.

Undergraduate Transfers from Public Universities to other Public Institutions Fall 2007

Transfers From

Transfers To	Austin Peay	East Tennessee	Middle Tennessee	Tennessee State	Tennessee Tech	Univ. of Memphis	UT Chattanooga	UT Knoxville	UT Martin	Grand Total
Public Universities										
Austin Peay	-	2	33	10	8	10	7	14	24	108
East Tennessee	3	-	8	4	20	7	17	46	4	109
Middle Tennessee	46	21	-	28	43	25	55	81	26	325
Tennessee State	11	2	36	-	5	14	11	2	4	85
Tennessee Tech.	10	8	38	1	-	4	9	11	16	97
Univ. of Memphis	8	4	34	29	6	-	26	43	32	182
UT Chattanooga	10	15	26	2	11	8	-	31	8	111
UT Knoxville	14	46	46	4	21	37	42	-	10	220
UT Martin	9	1	13	3	2	17	6	13	-	64
UTMHSC	1	1	2	1	1	13	1	5	7	32
Univ. Total	112	100	236	82	117	135	174	246	131	1,333
Public Community Colleges										
Chattanooga	2	13	21	3	15	5	158	24	1	242
Cleveland	2	4	1	0	2	0	11	9	1	30
Columbia	9	3	59	4	8	2	7	20	12	124
Dyersburg	1	0	5	2	1	20	0	5	38	72
Jackson	3	0	12	3	1	18	3	6	86	132
Motlow	3	2	103	10	20	3	5	5	4	155
Nashville	27	4	59	33	39	5	12	11	11	201
Northeast	1	167	3	1	3	0	1	9	0	185
Pellissippi	1	29	11	5	11	5	14	144	4	224
Roane	3	20	7	1	27	1	5	39	0	103
Southwest	0	0	9	12	0	104	6	4	8	143
Volunteer	34	0	68	11	61	6	12	22	7	221
Walters	0	30	3	0	2	0	4	17	0	56
CC Total	86	272	361	85	190	169	238	315	172	1,888
Grand Total	198	372	597	167	307	304	412	561	303	3,221

**Undergraduate Transfers from Public Community Colleges
to other Public Institutions
Fall 2007
Transfers From**

Transfers To

	CSTCC	CLSCC	COSCC	DSCC	JSCC	MSCC	NSCC	NSTCC	PSCC	RSCC	STCC	VSCC	WSCC	Grand Total
Public Universities														
Austin Peay	6	0	19	2	9	9	39	2	5	2	5	48	6	152
East Tennessee	15	31	6	1	4	1	2	260	77	35	0	4	190	626
Middle Tennessee	26	7	206	24	32	196	118	10	31	16	27	179	17	889
Tennessee State	12	1	17	1	10	12	132	0	3	0	33	120	0	341
Tennessee Tech.	78	17	30	1	2	148	61	15	59	201	0	175	19	806
Univ. of Memphis	4	0	6	49	44	1	2	0	1	0	404	3	0	514
UT Chattanooga	236	58	15	1	2	11	9	0	10	9	9	11	7	378
UT Knoxville	17	25	25	1	10	5	6	0	267	58	7	19	77	517
UT Martin	0	0	0	65	77	6	8	0	0	2	10	4	0	172
UTMHSC	0	0	0	1	1	0	0	0	1	0	4	0	0	7
Univ. Total	394	139	324	146	191	389	377	287	454	323	499	563	316	4,402
Public Community Colleges														
Chattanooga	-	44	1	0	1	13	4	3	5	8	9	3	6	97
Cleveland	21	-	0	0	2	1	1	0	7	12	0	1	1	46
Columbia	1	1	-	2	4	10	21	0	1	0	4	22	0	66
Dyersburg	0	0	0	-	22	1	1	0	1	1	24	2	1	53
Jackson	3	1	5	38	0	0	3	0	0	0	1	5	0	56
Motlow	5	2	13	1	0	-	17	1	3	2	5	25	0	74
Nashville	9	0	29	0	8	14	-	0	5	3	0	38	3	109
Northeast	2	1	0	0	0	0	0	-	1	2	6	1	31	44
Pellissippi	10	5	4	0	0	3	12	10	-	60	0	0	20	124
Roane	10	7	0	0	1	2	0	4	84	-	2	4	10	124
Southwest	1	0	1	7	4	1	1	0	0	0	-	0	0	15
Volunteer	5	2	9	0	5	12	62	1	6	8	2	-	1	113
Walters	2	1	0	0	1	1	1	14	21	7	1	1	-	50
CC Total	69	64	62	48	48	58	123	33	134	103	54	102	73	971
Grand Total	463	203	386	194	239	447	500	320	588	426	553	665	389	5,373

Section 2:



PERSISTENCE & ATTAINMENT

Degrees Awarded by Institution Academic Year 2006-2007

Institution	Associate	Bachelors	Certificate	Masters	Ed. Specialists	Professional	Doctoral	Total
Universities								
Austin Peay	131	1,058	0	215	10	0	0	1,414
East Tennessee*	0	1,698	16	496	10	52	54	2,326
Middle Tennessee	0	3,636	10	556	59	0	17	4,278
Tennessee State	114	991	19	336	35	0	46	1,541
Tennessee Tech	0	1,354	0	433	272	0	22	2,081
Univ. of Memphis	0	2,441	16	849	18	113	112	3,549
TBR Total	245	11,178	61	2,885	404	165	251	15,189
UT Chattanooga	0	1,116	0	366	13	0	27	1,522
UT Knoxville**	0	3,496	22	1,490	13	211	246	5,478
UT Martin	0	958	0	170	0	0	0	1,128
UTMHC	0	102	0	84	0	326	84	596
UT Total	0	5,672	22	2,110	26	537	357	8,724
Total Univ.	245	16,850	83	4,995	430	702	608	23,913
Community Colleges								
Chattanooga	692	-	81	-	-	-	-	773
Cleveland	252	-	77	-	-	-	-	329
Columbia	526	-	12	-	-	-	-	538
Dyersburg	215	-	36	-	-	-	-	251
Jackson	419	-	23	-	-	-	-	442
Motlow	409	-	10	-	-	-	-	419
Nashville	527	-	104	-	-	-	-	631
Northeast	535	-	157	-	-	-	-	692
Pellissippi	635	-	30	-	-	-	-	665
Roane	671	-	90	-	-	-	-	761
Southwest	745	-	421	-	-	-	-	1,166
Volunteer	663	-	203	-	-	-	-	866
Walters	597	-	291	-	-	-	-	888
Total CC	6,886	-	1,535	-	-	-	-	8,421
Grand Total	7,131	16,850	1,618	4,995	430	702	608	32,334

* Includes ETSU Medical and Pharmacy Schools

** Includes UT Space Institute and UT Veterinary College

Tennessee Technology Centers 2006-2007 Certificates & Diplomas Awarded

School	Certificates	Diplomas	Total
Athens	30	125	155
Chattanooga	311	0	311
Covington	52	45	97
Crossville	56	105	161
Crump	55	124	179
Dickson	30	257	287
Elizabethton	130	291	421
Harriman	38	118	156
Hartsville	33	99	132
Hohenwald	58	178	236
Jacksboro	89	76	165
Jackson	107	199	306
Knoxville	35	316	351
Livingston	25	200	225
McKenzie	54	118	172
McMinnville	17	144	161
Memphis	201	546	747
Morristown	84	276	360
Murfreesboro	18	162	180
Nashville	163	201	364
Newbern	41	74	115
Oneida	38	51	89
Paris	84	180	264
Pulaski	49	210	259
Ripley	76	90	166
Shelbyville	92	241	333
Whiteville	20	75	95
Total	1,986	4,501	6,487
	30.6%	69.4%	100.0%

Degrees Awarded by Major Field

Tennessee Public Institutions Academic Year 2006-2007

Major Field	Undergraduate	Graduate & Professional	Total
Agriculture	446	64	510
Architecture & Related Programs	76	33	109
Area, Ethnic & Cultural Studies	65	3	68
Biological Sciences/Life Sciences	635	119	754
Business Management & Administrative Services	4,374	936	5,310
Communications	1,098	94	1,192
Computer & Information Sciences	347	95	442
Education	591	2,229	2,820
Engineering	1,282	399	1,681
English Language & Literature/Letters	494	126	620
Foreign Languages & Literatures	175	21	196
Health Professions & Related Services	3,696	1,083	4,779
Home Economics	770	74	844
Law & Legal Studies	111	261	372
Liberal Arts & Sciences	4,220	32	4,252
Library Science	0	75	75
Mathematics	135	68	203
Multi/Interdisciplinary Studies	1,289	24	1,313
Other *	0	6	6
Parks, Recreation, Leisure & Fitness Studies	545	213	758
Personal & Miscellaneous Services	32	0	32
Personal Improvement & Leisure Programs	44	0	44
Philosophy, Religion, & Theology	72	23	95
Physical Sciences	257	97	354
Protective Services & Public Affairs	980	286	1,266
Psychology	1,024	203	1,227
Social Sciences	1,267	141	1,408
Technology Education/ Industrial Arts	168	0	168
Trades and Industrial	281	3	284
Visual & Performing Arts	1,042	110	1,152
Grand Total	25,516	6,818	32,334

* Other represents students with no major reported.



Approximately 53 percent of the degrees awarded are in the fields of business management, education, health professions, and liberal arts and sciences.

Graduation Rates

Fall 2001 and Summer 2001 Returning Fall 2001 Matched to
Graduates through 2006-07

Institutions	Total #, First-Time, Full-Time Freshmen	Grads from Admitting Institution		Grads from Other Institutions		Total Public Higher Education Graduates Matches	
		NO.	%	NO.	%	NO.	%
TBR Universities							
Austin Peay	892	245	27.5%	49	5.5%	294	33.0%
East Tennessee	1,476	552	37.4%	85	5.8%	637	43.2%
Middle Tennessee	2,827	1,215	43.0%	153	5.4%	1,368	48.4%
Tennessee State	1,260	496	39.4%	33	2.6%	529	42.0%
Tennessee Tech	1,086	424	39.0%	100	9.2%	524	48.3%
Univ. of Memphis	1,871	654	35.0%	73	3.9%	727	38.9%
Sub-total	9,412	3,586	38.1%	493	5.2%	4,079	43.3%
University of Tennessee							
UT Chattanooga	1,065	433	40.7%	101	9.5%	534	50.1%
UT Knoxville	3,898	2,208	56.6%	284	7.3%	2,492	63.9%
UT Martin	1,085	439	40.5%	84	7.7%	523	48.2%
Sub-total	6,048	3,080	50.9%	469	7.8%	3,549	58.7%
Total Universities	15,460	6,666	43.1%	962	6.2%	7,628	49.3%
Community Colleges							
Chattanooga	1,065	214	20.1%	80	7.5%	294	27.6%
Cleveland	549	108	19.7%	49	8.9%	157	28.6%
Columbia	775	207	26.7%	114	14.7%	321	41.4%
Dyersburg	498	81	16.3%	65	13.1%	146	29.3%
Jackson	680	153	22.5%	56	8.2%	209	30.7%
Motlow	740	184	24.9%	127	17.2%	311	42.0%
Nashville	393	67	17.0%	24	6.1%	91	23.2%
Northeast	676	159	23.5%	79	11.7%	238	35.2%
Pellissippi	916	183	20.0%	139	15.2%	322	35.2%
Roane	837	200	23.9%	112	13.4%	312	37.3%
Southwest	1,382	168	12.2%	45	3.3%	213	15.4%
Volunteer	956	172	18.0%	90	9.4%	262	27.4%
Walters	1,005	276	27.5%	111	11.0%	387	38.5%
Total CC	10,472	2,172	20.7%	1,091	10.4%	3,263	31.2%
Grand Total	25,932	8,838	34.1%	2,053	7.9%	10,891	42.0%

Six Year Graduation Rate

By Institution and Race

Cohort Year:	1999			2000			2001		
Institution	Total	Black	White	Total	Black	White	Total	Black	White
TBR Universities									
Austin Peay	35.8%	33.0%	36.9%	37.4%	36.8%	39.8%	33.0%	28.5%	36.3%
East Tennessee	43.5%	22.8%	44.7%	46.5%	43.0%	46.7%	43.2%	24.2%	45.4%
Middle Tennessee	45.5%	42.9%	45.7%	46.8%	45.0%	47.2%	48.4%	42.8%	49.3%
Tennessee State	45.4%	47.3%	23.2%	42.0%	43.3%	28.0%	42.0%	43.2%	33.6%
Tennessee Tech	50.0%	26.7%	51.2%	50.4%	34.6%	52.4%	48.3%	32.8%	49.4%
Univ. of Memphis	37.3%	28.5%	41.6%	37.2%	29.4%	40.8%	38.9%	28.4%	44.0%
TBR Univ. Total	43.4%	40.1%	44.6%	43.8%	39.4%	45.8%	43.3%	37.5%	46.0%
University of Tennessee									
UT Chattanooga	51.8%	51.3%	52.3%	52.8%	50.7%	53.6%	50.1%	49.6%	50.7%
UT Knoxville	64.0%	56.4%	64.9%	66.7%	62.7%	66.8%	63.9%	48.3%	65.6%
UT Martin	47.2%	34.7%	49.7%	48.5%	41.1%	50.8%	48.2%	37.8%	51.3%
UT Total	59.2%	50.1%	60.6%	60.8%	52.0%	62.0%	58.7%	45.8%	60.9%
Total Universities	49.8%	42.3%	51.9%	50.5%	42.3%	52.9%	49.3%	39.5%	52.4%
Community Colleges									
Chattanooga	24.5%	14.3%	27.1%	24.1%	9.1%	27.7%	27.6%	12.0%	31.1%
Cleveland	30.0%	26.1%	31.1%	32.5%	3.7%	34.7%	28.6%	28.6%	27.7%
Columbia	38.9%	25.0%	40.6%	42.8%	32.3%	43.8%	41.4%	18.4%	43.9%
Dyersburg	31.0%	18.2%	34.1%	30.1%	13.5%	34.6%	29.3%	9.5%	33.3%
Jackson	31.6%	22.6%	33.9%	33.2%	13.4%	40.0%	30.7%	15.7%	35.7%
Motlow	45.7%	20.9%	47.8%	39.7%	14.3%	42.2%	42.0%	28.9%	43.1%
Nashville	20.9%	11.7%	24.7%	20.1%	12.6%	24.6%	23.2%	14.4%	28.3%
Northeast	32.8%	36.4%	33.1%	31.9%	25.0%	32.2%	35.2%	16.7%	36.1%
Pellissippi	30.0%	18.0%	30.5%	32.8%	15.2%	34.6%	35.2%	7.9%	38.2%
Roane	36.3%	27.8%	38.5%	39.0%	10.5%	39.9%	37.3%	10.7%	38.3%
Southwest	14.7%	11.2%	19.3%	15.5%	12.7%	19.5%	15.4%	12.1%	22.4%
Volunteer	35.0%	13.2%	38.0%	29.8%	17.7%	31.6%	27.4%	15.5%	28.6%
Walters	32.8%	25.6%	33.8%	36.4%	25.0%	37.3%	38.5%	30.6%	38.9%
Total CC	30.5%	14.9%	34.2%	31.0%	13.5%	35.0%	31.2%	13.9%	35.3%
Grand Total	42.7%	33.4%	45.2%	43.3%	33.0%	46.0%	42.0%	29.7%	45.4%

**Degrees Awarded By Gender and Institutions
Academic Year 2006-07**

	Associate	Bachelors	Certificate	Masters	Ed. Specialist	Professional	Doctoral	Total
Universities								
Austin Peay								
Female	94	710	0	160	7	0	0	971
Male	37	348	0	55	3	0	0	443
East Tennessee								
Female	0	1,044	9	344	7	22	33	1,459
Male	0	654	7	152	3	30	21	867
Middle Tennessee								
Female	0	1,998	8	367	39	0	7	2,419
Male	0	1,638	2	189	20	0	10	1,859
Tennessee State								
Female	105	695	12	248	22	0	29	1,111
Male	9	296	7	88	13	0	17	430
Tennessee Tech								
Female	0	689	0	275	219	0	13	1,196
Male	0	665	0	158	53	0	9	885
Univ. of Memphis								
Female	0	1,459	13	526	15	46	55	2,114
Male	0	982	3	323	3	67	57	1,435
Total TBR Univ.								
Female	199	6,595	42	1,920	309	68	137	9,270
Male	46	4,583	19	965	95	97	114	5,919
UT Chattanooga								
Female	0	688	0	242	11	0	18	959
Male	0	428	0	124	2	0	9	563
UT Knoxville*								
Female	0	1,843	18	900	11	130	118	3,020
Male	0	1,653	4	587	1	81	127	2,453
UT Martin								
Female	0	562	0	116	0	0	0	678
Male	0	396	0	54	0	0	0	450
UTMHSC								
Female	0	94	0	66	0	161	53	374
Male	0	8	0	18	0	165	31	222
Total UT								
Female	0	3,187	18	1,324	22	291	189	5,031
Male	0	2,485	4	783	3	246	167	3,688
Total Universities								
Female	199	9,782	60	3,244	331	359	326	14,301
Male	46	7,068	23	1,748	98	343	281	9,607

* Gender information not reported for 5 graduates (3 masters, 1 doctoral, and 1 educational specialist.)

Degrees/Certificates Awarded By Gender and Institutions Academic Year 2006-07

	Certificate		Associate		Total	
	Female	Male	Female	Male	Female	Male
Chattanooga	59	22	455	237	514	259
Cleveland	32	45	166	86	198	131
Columbia	12	0	374	152	386	152
Dyersbrg	36	0	164	51	200	51
Jackson	14	9	298	121	312	130
Motlow	10	0	296	113	306	113
Nashville	67	37	298	229	365	266
Northeast	57	100	314	221	371	321
Pellissippi	10	20	366	269	376	289
Roane	47	43	488	183	535	226
Southwest	230	191	520	225	750	416
Volunteer	105	98	442	221	547	319
Walters	99	192	406	191	505	383
Total Community Colleges	778	757	4,587	2,299	5,365	3,056

Total Degrees/Certificates Awarded in the Public Sector

	Certificate	Associate	Bachelors	Masters	Ed. Specialist	Professional	Doctoral	Total
Female	838	4,786	9,782	3,244	331	359	326	19,666
Male	780	2,345	7,068	1,748	98	343	281	12,663
Total *	1,618	7,131	16,850	4,992	429	702	607	32,329

* Gender information not reported for 5 graduates (3 masters, 1 doctoral, and 1 educational specialist.)

Degrees Awarded by Race and Institution Academic Year 2006-07

	Associates	Bachelors	Certificates	Masters	Ed. Specialist	1st Professional	Doctoral	Grand Total
Austin Peay	131	1,058	0	215	10	0	0	1,414
White, Not Hispanic	78	719	0	160	9	0	0	966
Black, Not Hispanic	29	162	0	28	0	0	0	219
Hispanic	9	56	0	6	1	0	0	72
Other	15	121	0	21	0	0	0	157
East Tennessee	0	1,698	16	496	10	52	54	2,326
White, Not Hispanic	0	1,561	14	424	10	41	46	2,096
Black, Not Hispanic	0	56	1	22	0	4	2	85
Hispanic	0	19	0	4	0	1	0	24
Other	0	62	1	46	0	6	6	121
Middle Tennessee	0	3,636	10	556	59	0	17	4,278
White, Not Hispanic	0	3,059	7	460	48	0	13	3,587
Black, Not Hispanic	0	388	2	55	11	0	1	457
Hispanic	0	69	0	10	0	0	0	79
Other	0	120	1	31	0	0	3	155
Tennessee State	114	991	19	336	35	0	46	1,541
White, Not Hispanic	86	171	3	130	13	0	30	433
Black, Not Hispanic	22	801	16	188	21	0	12	1,060
Hispanic	5	3	0	4	0	0	1	13
Other	1	16	0	14	1	0	3	35
Tennessee Tech	0	1,354	0	433	272	0	22	2,081
White, Not Hispanic	0	1,242	0	374	240	0	11	1,867
Black, Not Hispanic	0	53	0	20	28	0	2	103
Hispanic	0	11	0	5	2	0	0	18
Other	0	48	0	34	2	0	9	93
Univ. of Memphis	0	2,441	16	849	18	113	112	3,549
White, Not Hispanic	0	1,600	9	544	10	90	71	2,324
Black, Not Hispanic	0	694	5	156	8	13	21	897
Hispanic	0	41	0	8	0	0	2	51
Other	0	106	2	141	0	10	18	277
UT Chattanooga	0	1,116	0	366	13	0	27	1,522
White, Not Hispanic	0	867	0	297	13	0	23	1,200
Black, Not Hispanic	0	205	0	43	0	0	2	250
Hispanic	0	16	0	7	0	0	0	23
Other	0	28	0	19	0	0	2	49
UT Knoxville	0	3,496	22	1,490	13	211	246	5,478
White, Not Hispanic	0	3,073	14	1,217	10	182	160	4,656
Black, Not Hispanic	0	200	6	114	2	20	12	354
Hispanic	0	46	0	26	0	2	3	77
Other	0	177	2	133	1	7	71	391
UT Martin	0	958	0	170	0	0	0	1,128
White, Not Hispanic	0	805	0	151	0	0	0	956
Black, Not Hispanic	0	120	0	11	0	0	0	131
Hispanic	0	8	0	1	0	0	0	9
Other	0	25	0	7	0	0	0	32
UTM HSC	0	102	0	84	0	326	84	596
White, Not Hispanic	0	77	0	63	0	248	57	445
Black, Not Hispanic	0	24	0	16	0	43	7	90
Hispanic	0	0	0	1	0	7	0	8
Other	0	1	0	4	0	28	20	53
University Total	245	16,850	83	4,995	430	702	608	23,913
White, Not Hispanic	164	13,174	47	3,820	353	561	411	18,530
Black, Not Hispanic	51	2,703	30	653	70	80	59	3,646
Hispanic	14	269	0	72	3	10	6	374
Other	16	704	6	450	4	51	132	1,363

Degrees Awarded by Race and Institution Academic Year 2006-07

	Certificate	Associate	Total			Certificate	Associate	Total
Chattanooga	81	692	773		Northeast	157	535	692
White, Not Hispanic	67	574	641		White, Not Hispanic	141	491	632
Black, Not Hispanic	8	92	100		Black, Not Hispanic	1	12	13
Hispanic	1	6	7		Hispanic	2	9	11
Other	5	20	25		Other	13	23	36
Cleveland	77	252	329		Pellissippi	30	635	665
White, Not Hispanic	70	236	306		White, Not Hispanic	26	564	590
Black, Not Hispanic	5	4	9		Black, Not Hispanic	1	30	31
Hispanic	0	3	3		Hispanic	0	7	7
Other	2	9	11		Other	3	34	37
Columbia	12	526	538		Roane	90	671	761
White, Not Hispanic	11	485	496		White, Not Hispanic	87	636	723
Black, Not Hispanic	1	27	28		Black, Not Hispanic	0	15	15
Hispanic	0	8	8		Hispanic	2	5	7
Other	0	6	6		Other	1	15	16
Dyersburg	36	215	251		Southwest	421	745	1,166
White, Not Hispanic	31	183	214		White, Not Hispanic	153	308	461
Black, Not Hispanic	5	28	33		Black, Not Hispanic	244	393	637
Hispanic	0	1	1		Hispanic	4	12	16
Other	0	3	3		Other	20	32	52
Jackson	23	419	442		Volunteer	203	663	866
White, Not Hispanic	17	349	366		White, Not Hispanic	184	574	758
Black, Not Hispanic	6	59	65		Black, Not Hispanic	14	46	60
Hispanic	0	7	7		Hispanic	2	10	12
Other	0	4	4		Other	3	33	36
Motlow	10	409	419		Walters	291	597	888
White, Not Hispanic	8	381	389		White, Not Hispanic	275	578	853
Black, Not Hispanic	1	15	16		Black, Not Hispanic	4	10	14
Hispanic	0	4	4		Hispanic	5	3	8
Other	1	9	10		Other	7	6	13
Nashville	104	527	631		CC Total	1,535	6,886	8,421
White, Not Hispanic	63	366	429		White, Not Hispanic	1,133	5,725	6,858
Black, Not Hispanic	24	113	137		Black, Not Hispanic	314	844	1,158
Hispanic	4	10	14		Hispanic	20	85	105
Other	13	38	51		Other	68	232	300

**Job Placement Rates
Tennessee Community Colleges
1998-99 to 2006-07**

Academic Year	Total Placeable*	Total Placed	Percent Placed
1998-99	3,511	3,300	94%
1999-00	3,936	3,548	90%
2000-01	4,055	3,627	89%
2001-02	3,773	3,381	90%
2002-03	3,759	3,396	90%
2003-04	4,003	3,643	91%
2004-05	4,081	3,746	92%
2005-06	4,163	3,849	92%
2006-07	3,996	3,726	93%

**Job Placement Rates
Tennessee Community Colleges 2006-2007**

Institution	Total Placeable*	Total Placed	Percent Placed
Chattanooga	409	391	96%
Cleveland	192	186	97%
Columbia	250	227	91%
Dyersburg	132	117	89%
Jackson	226	204	90%
Motlow	75	74	99%
Nashville	374	343	92%
Northeast	259	251	97%
Pellissippi	185	175	95%
Roane	425	394	93%
Southwest	585	537	92%
Volunteer	363	338	93%
Walters	521	489	94%
Total	3,996	3,726	93%

* *Placeable* is defined as the number of graduates eligible for placement in a job related to the field in which they received their degree.

Tennessee Technology Centers 2005-06 Program Completion & Placement Rates

	Enrollment	Completed	Percent Completed	Placed	Percent Placed
Athens	195	144	73.8%	128	88.9%
Chattanooga	930	581	62.5%	557	95.9%
Covington	123	99	80.5%	86	86.9%
Crossville	264	186	70.5%	146	78.5%
Crump	234	187	79.9%	168	89.8%
Dickson	402	288	71.6%	259	89.9%
Elizabethton	423	313	74.0%	285	91.1%
Harriman	126	81	64.3%	69	85.2%
Hartsville	242	181	74.8%	137	75.7%
Hohenwald	277	191	69.0%	167	87.4%
Jacksboro	148	116	78.4%	95	81.9%
Jackson	563	390	69.3%	334	85.6%
Knoxville	525	365	69.5%	305	83.6%
Livingston	300	212	70.7%	181	85.4%
McKenzie	243	181	74.5%	124	68.5%
McMinnville	192	122	63.5%	94	77.0%
Memphis	991	704	71.0%	565	80.3%
Morristown	526	430	81.7%	392	91.2%
Murfreesboro	331	227	68.6%	182	80.2%
Nashville	809	493	60.9%	385	78.1%
Newbern	208	133	63.9%	122	91.7%
Oneida/Huntsville	129	72	55.8%	61	84.7%
Paris	406	302	74.4%	244	80.8%
Pulaski	213	150	70.4%	138	92.0%
Ripley	202	165	81.7%	138	83.6%
Shelbyville	452	373	82.5%	329	88.2%
Whiteville	167	120	71.9%	92	76.7%
Grand Total	9,621	6,806	70.7%	5,783	85.0%

Section 3:



FISCAL



- ♦ Nationally, the percentage of state tax revenue devoted to higher education has decreased over the last 20 years.
- ♦ This has also occurred in Tennessee, though it has occurred more recently in Tennessee than in the nation as a whole.
- ♦ SREB states mirror the trend while devoting a larger share of state revenues to higher education.

State Appropriations Related to Higher Education as a Percentage of State Tax Revenues SREB States and the US

	1985-86	1995-96	2005-06	
United States	13.6	10.6	9.5	National Rank
SREB states	16.0	12.6	11.6	
Alabama	23.1	18.2	16.5	1
Arkansas	16.4	12.5	10.6	19
Delaware	10.4	8.5	7.6	42
Florida	12.4	9.3	8.9	29
Georgia	13.6	11.9	12.3	12
Kentucky	13.5	10.5	12.1	13
Louisiana	14.9	12.1	12.9	9
Maryland	11.4	10.0	8.7	30
Mississippi	19.4	16.2	13.3	7
North Carolina	19.3	14.8	14.4	2
Oklahoma	14.4	11.9	10.8	18
South Carolina	17.3	13.3	10.2	21
Tennessee	16.8	14.6	10.9	17
Texas	19.8	15.1	14.3	3
Virginia	15.9	11.0	9.3	26
West Virginia	12.6	11.8	7.6	41

Note: The state appropriations include funds for medical and health programs, state-level financial aid programs for students, state funds for private colleges and universities, and state funds for coordinating or governing boards of public colleges and universities.

Six SREB states also provide significant additional local funding for higher education operations. State appropriations exclude dollars for capital construction and debt payments. Also excluded are funds from sources other than state tax funds, including all funds from student fees, federal sources, and local sources.

Source: Illinois State University *Grapevine* Survey, as reported in SREB Fact Book on Higher Education, 2007

**Median Tuition and Fees
Public University Undergraduate Resident**

State	1995-96	SREB Rank	2000-01	SREB Rank	2005-06	SREB Rank
Georgia	\$1,884	5	\$2,410	5	\$3,044	1
Florida	1,798	4	2392	4	3,268	2
Oklahoma	1,666	2	1993	1	3,270	3
Louisiana	2,017	9	2368	3	3,346	4
North Carolina	1,618	1	1993	1	3,410	5
West Virginia	2,050	11	2486	6	3,922	6
Mississippi	2,385	12	2787	9	3,994	7
Alabama	2,024	10	3007	11	4,466	8
Tennessee	1,932	6	2813	10	4,500	9
Arkansas	1,970	7	3046	12	4,700	10
Texas	1,790	3	2692	8	4,788	11
Kentucky	1,970	8	2549	7	4,814	12
Virginia	4,022	16	3645	14	5,730	13
Maryland	3,260	14	4312	16	6,376	14
Delaware	3,268	15	4237	15	6,389	15
South Carolina	3,060	13	3624	13	6,668	16

**Median Tuition and Fees
Public Community College Resident**

State	1995-96	SREB Rank	2000-01	SREB Rank	2005-06	SREB Rank
North Carolina	\$557	1	\$910	1	\$1,324	1
Texas	715	2	1,123	4	1,430	2
Mississippi	970	4	1,050	3	1,726	3
Georgia	1,128	10	1,474	12	1,742	4
Arkansas	897	3	1,032	2	1,840	5
Louisiana	1,060	8	1,360	8	1,877	6
Florida	1,073	9	1,455	11	1,911	7
Virginia	1,429	15	1,159	5	2,134	8
Delaware	1,330	14	1,676	14	2,196	9
Oklahoma	1,135	11	1,447	10	2,270	10
Tennessee	1,030	7	1,429	9	2,395	11
West Virginia	1,301	13	1,536	13	2,624	12
Alabama	1,260	12	1,710	15	2,700	13
Maryland	1,886	16	2,366	16	2,927	14
Kentucky	980	5	1,180	6	2,940	15
South Carolina	1,000	6	1,300	7	3,000	16

Annual Tuition and Mandatory Fees 2007-08

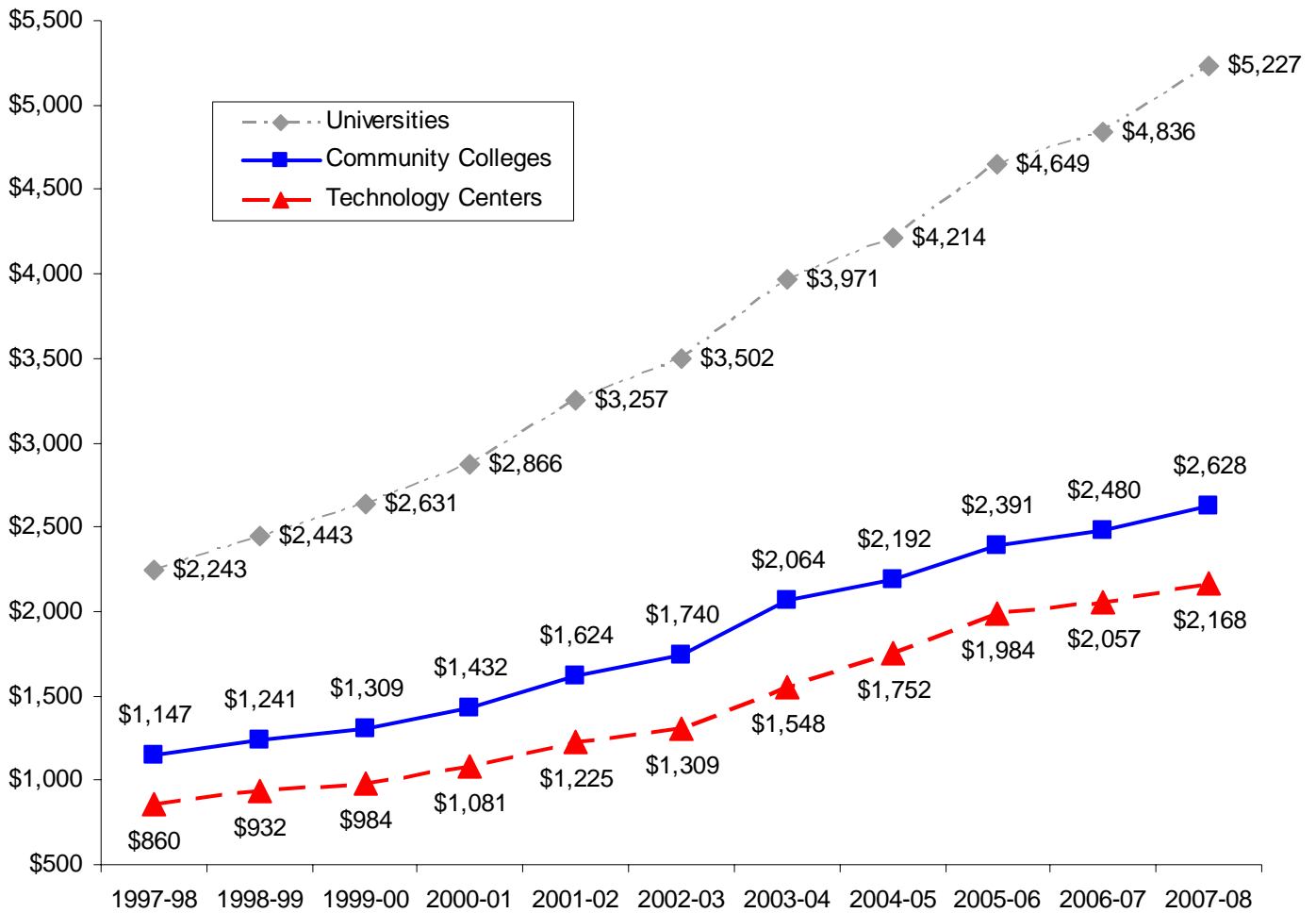
Institution	Undergraduate		Graduate	
	Resident	Non-Resident	Resident	Non-Resident
Austin Peay	\$5,238	\$15,514	\$6,626	\$16,902
East Tennessee	\$4,887	\$15,163	\$6,275	\$16,551
Middle Tennessee	\$5,278	\$15,554	\$6,666	\$16,942
Tennessee State	\$4,856	\$15,132	\$6,244	\$16,520
Tennessee Tech	\$4,980	\$15,256	\$6,368	\$16,644
University of Memphis	\$5,802	\$16,630	\$6,990	\$17,818
UT Chattanooga	\$5,062	\$15,024	\$5,854	\$15,816
UT Knoxville	\$5,932	\$18,174	\$6,720	\$18,962
UT Martin	\$5,005	\$15,045	\$5,803	\$15,843
Chattanooga				
Chattanooga	\$2,641	\$9,717	n/a	n/a
Cleveland	\$2,627	\$9,703	n/a	n/a
Columbia	\$2,605	\$9,681	n/a	n/a
Dyersburg	\$2,635	\$9,711	n/a	n/a
Jackson	\$2,617	\$9,693	n/a	n/a
Motlow	\$2,623	\$9,699	n/a	n/a
Nashville	\$2,589	\$9,665	n/a	n/a
Northeast	\$2,625	\$9,701	n/a	n/a
Pellissippi	\$2,657	\$9,733	n/a	n/a
Roane	\$2,645	\$9,721	n/a	n/a
Southwest	\$2,649	\$9,725	n/a	n/a
Volunteer	\$2,625	\$9,701	n/a	n/a
Walters	\$2,627	\$9,703	n/a	n/a
Technology Centers				
Technology Centers	\$2,168	n/a	n/a	n/a

Annual Tuition and Mandatory Fees Resident Undergraduate Student

Institutions	1997-98	2002-03	2006-07	2007-08	1 Yr. Change	5 Yr. Change	10 Yr. Change
Austin Peay	\$2,262	\$3,454	\$4,837	\$5,238	8.3%	51.7%	131.6%
East Tennessee	2,100	3,311	4,637	4,887	5.4%	47.6%	132.7%
Middle Tennessee	2,186	3,426	4,766	5,278	10.7%	54.1%	141.4%
Tennessee State	2,098	3,252	4,534	4,856	7.1%	49.3%	131.5%
Tennessee Tech	2,116	3,266	4,562	4,980	9.2%	52.5%	135.3%
University of Memphis	2,412	3,704	5,256	5,802	10.4%	56.6%	140.5%
UT Chattanooga	2,200	3,550	4,688	5,062	8.0%	42.6%	130.1%
UT Knoxville	2,576	4,056	5,576	5,932	6.4%	46.3%	130.3%
UT Martin	2,240	3,498	4,665	5,005	7.3%	43.1%	123.4%
University Average	2,243	3,502	4,836	5,227	8.1%	49.3%	133.0%
Chattanooga	1,160	1,771	2,507	2,641	5.3%	49.1%	127.7%
Cleveland	1,142	1,737	2,483	2,627	5.8%	51.2%	130.0%
Columbia	1,142	1,731	2,471	2,605	5.4%	50.5%	128.1%
Dyersburg	1,142	1,731	2,481	2,635	6.2%	52.2%	130.7%
Jackson	1,142	1,731	2,483	2,617	5.4%	51.2%	129.2%
Motlow	1,148	1,735	2,479	2,623	5.8%	51.2%	128.5%
Nashville	1,144	1,725	2,455	2,589	5.5%	50.1%	126.3%
Northeast	1,144	1,751	2,491	2,625	5.4%	49.9%	129.5%
Pellissippi	1,172	1,761	2,503	2,657	6.2%	50.9%	126.7%
Roane	1,146	1,745	2,485	2,645	6.4%	51.6%	130.8%
Southwest	1,139	1,731	2,485	2,649	6.6%	53.0%	132.6%
Volunteer	1,142	1,737	2,471	2,625	6.2%	51.1%	129.9%
Walters	1,142	1,735	2,469	2,627	6.4%	51.4%	130.0%
Community College Average	1,147	1,740	2,482	2,628	5.9%	51.0%	129.2%
Technology Centers	860	1,309	2,057	2,168	5.4%	65.6%	152.1%

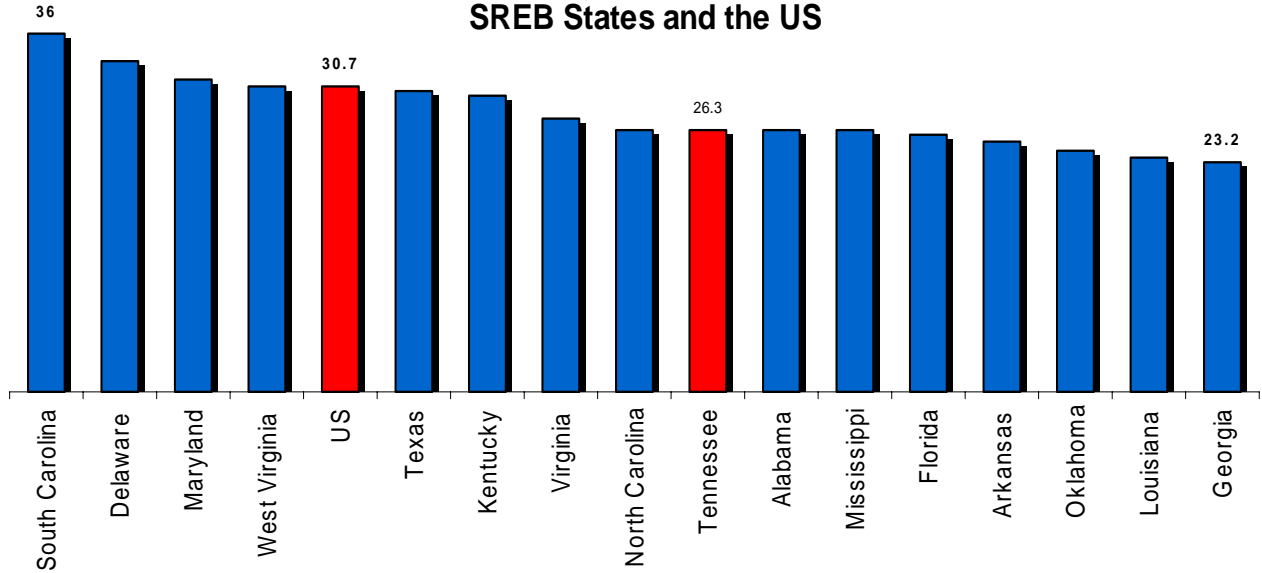
* Annual tuition and mandatory fees are unadjusted for inflation.

Average Undergraduate Resident Total Tuition and Mandatory Fees by Institution Type *



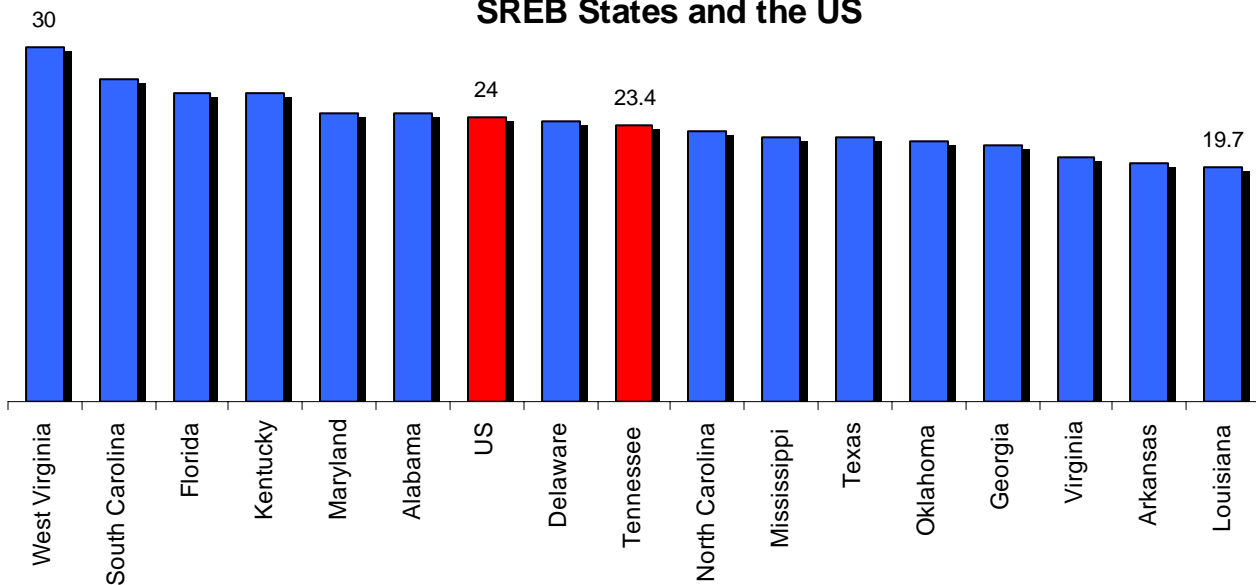
* Unadjusted for inflation and enrollment.

**Percentage of Family Income Needed to Pay for
College* at Public 4-Year Institutions 2005
SREB States and the US**



Tuition in Tennessee public colleges and universities is moderate, both nationally and in relation to SREB peers. Net attendance costs in public institutions amount to about one-fourth of (median) family income.

**Percentage of Family Income Needed to Pay for
College* at Public Community Colleges 2005
SREB States and the US**



*Net cost of attendance (tuition and room and board less federal, state need and non need based aid, and institutional aid) by income quintile, as a percent of family income in that quintile.

State Appropriations *
Tennessee Public Higher Education
Formula Units **

	2003-04	2004-05	2005-06	2006-07	2007-08
Universities					
Austin Peay	\$29,596,500	\$30,308,300	\$31,376,000	\$32,795,400	\$36,196,500
East Tennessee	51,644,200	53,144,000	55,158,700	57,050,000	63,070,900
Middle Tennessee	81,268,000	83,473,400	86,677,800	91,033,500	100,775,700
Tennessee State	36,687,300	37,868,300	39,531,600	39,980,600	42,553,700
Tennessee Tech	40,822,400	42,108,700	43,676,200	44,934,200	49,204,400
University of Memphis	101,263,600	104,008,900	107,921,200	112,292,700	123,224,900
UT Chattanooga	38,318,800	\$39,325,900	40,815,900	42,115,600	46,033,200
UT Knoxville	158,547,800	163,632,200	169,972,400	176,228,900	195,397,500
UT Martin	27,157,500	27,904,800	29,177,700	30,502,900	33,231,400
Subtotal	\$565,306,100	\$581,774,500	\$604,307,500	\$626,933,800	\$689,688,200
Community Colleges					
Chattanooga	\$20,846,600	\$21,552,400	\$22,307,600	\$22,965,900	\$24,993,200
Cleveland	9,067,600	9,374,400	9,665,000	9,962,500	10,830,700
Columbia	11,227,400	11,880,500	12,246,900	12,837,600	14,015,400
Dyersburg	6,049,600	6,252,100	6,481,600	6,887,300	7,581,500
Jackson	10,638,700	11,051,200	11,475,000	11,875,500	13,096,600
Motlow	8,777,100	9,128,200	9,429,800	9,908,100	10,910,000
Nashville	12,888,600	13,350,400	13,840,500	14,656,700	16,285,700
Northeast	10,401,300	10,741,600	11,114,200	11,830,900	13,156,400
Pellissippi	17,959,300	18,474,100	19,157,900	19,983,000	21,961,000
Roane	15,656,800	16,193,700	16,736,600	17,390,600	19,061,900
Southwest	34,328,600	35,461,600	36,539,000	37,077,300	40,042,000
Volunteer	15,434,000	15,943,800	16,506,900	17,362,000	19,159,800
Walters	15,681,100	16,250,900	16,795,300	17,568,300	19,355,100
Subtotal	\$188,956,700	\$195,654,900	\$202,296,300	\$210,305,700	\$230,449,300
Total Colleges and Universities	\$754,262,800	\$777,429,400	\$806,603,800	\$837,239,500	\$920,137,500
Technology Centers	\$41,797,900	\$43,496,400	\$44,798,400	\$48,937,700	\$53,607,000
Total Academic Formula Units	\$796,060,700	\$820,925,800	\$851,402,200	\$886,177,200	\$973,744,500

*Excludes capital funds

** Public universities, community colleges, and the technology centers.

State Appropriations Tennessee Public Higher Education Non-Formula Units * and Specialized Programs

	2003-04	2004-05	2005-06	2006-07	2007-08
Medical Education					
ETSU College of Medicine	\$23,365,900	\$23,734,500	\$24,755,000	\$25,233,100	\$29,028,900
ETSU Family Practice	4,188,800	4,564,200	4,884,600	4,978,900	5,677,800
UT College of Medicine	40,140,700	41,234,300	43,006,200	43,836,900	49,340,900
UT Family Practice	6,354,900	6,971,500	7,651,600	9,174,400	10,161,400
UT Memphis	58,096,000	60,527,900	63,052,100	64,270,000	71,168,300
UT College of Vet Medicine	13,288,000	13,813,800	14,516,000	14,796,400	16,631,600
Subtotal	\$145,434,300	\$150,846,200	\$157,865,500	\$162,289,700	\$182,008,900
Research and Public Service					
UT Ag. Experiment Station	\$20,533,000	\$21,518,900	\$22,429,800	\$23,063,000	\$25,183,200
UT Ag. Extension Service	24,358,400	25,679,400	26,818,500	27,336,500	30,095,000
TSU McMinnville Center	441,900	458,800	477,700	486,900	531,200
TSU Institute of Ag. & Environmental Research	n/a	n/a	n/a	n/a	2,173,000
TSU Coop Education	n/a	n/a	n/a	n/a	1,927,000
UT Space Institute	7,200,900	7,210,300	7,540,300	7,685,900	8,282,000
UT Institute for Public Service	4,633,900	4,800,300	4,930,000	5,025,200	4,980,000
UT County Tech Asst. Service	1,111,000	1,236,500	1,320,700	1,346,200	1,605,300
UT Municipal Tech Adv. Service	1,488,700	1,629,100	1,746,800	1,780,500	2,743,100
Subtotal	\$59,767,800	\$62,533,300	\$65,263,800	\$66,724,200	\$77,519,800
Other Specialized Units					
UT University-Wide Admn.	\$3,062,400	\$3,400,100	\$3,764,900	\$3,837,600	\$4,564,500
TN Board of Regents Admn.	3,760,200	3,824,400	4,070,400	4,149,000	4,871,700
TN Student Assistance Corp.	43,666,400	43,716,900	43,756,800	45,883,000	49,836,900
TN Higher Education Comm.	1,935,900	2,012,000	2,068,000	2,107,900	2,381,500
TN Foreign Language Institute	294,800	313,100	328,300	334,600	372,200
Contract Education	2,330,100	2,330,100	2,330,100	2,375,100	2,542,700
Subtotal	\$55,049,800	\$55,596,600	\$56,318,500	\$58,687,200	\$64,569,500
Total Specialized Units	\$260,251,900	\$268,976,100	\$279,447,800	\$287,701,100	\$324,098,200
Total Formula and Specialized Units	\$1,056,312,600	\$1,089,901,900	\$1,130,850,000	\$1,173,878,300	\$1,297,842,700
Program Initiatives					
Campus Centers of Excellence	\$17,112,500	\$17,598,800	\$18,002,400	\$18,350,100	\$19,635,500
Campus Centers of Emphasis	1,229,000	1,280,900	1,312,000	1,337,300	1,429,600
Ned McWherter Scholars	251,800	401,800	401,800	401,800	401,800
UT Access & Diversity	n/a	n/a	n/a	n/a	6,448,900
TBR Access & Diversity	n/a	n/a	n/a	n/a	11,391,100
THEC Grants	2,509,600	2,509,600	2,522,300	4,441,900	2,715,900
Research Initiative	0	0	2,500,000	6,500,000	6,500,000
Subtotal	\$32,367,900	\$21,791,100	\$36,003,500	\$40,425,200	\$48,522,800
Total Operating	\$1,088,680,500	\$1,122,958,000	\$1,166,853,500	\$1,214,303,500	\$1,346,365,500

* Non-formula units refers to higher education entities other than universities, community colleges, and technology centers. Examples of non-formula units include the UT Veterinary School, the Space Institute and the Centers of Excellence.

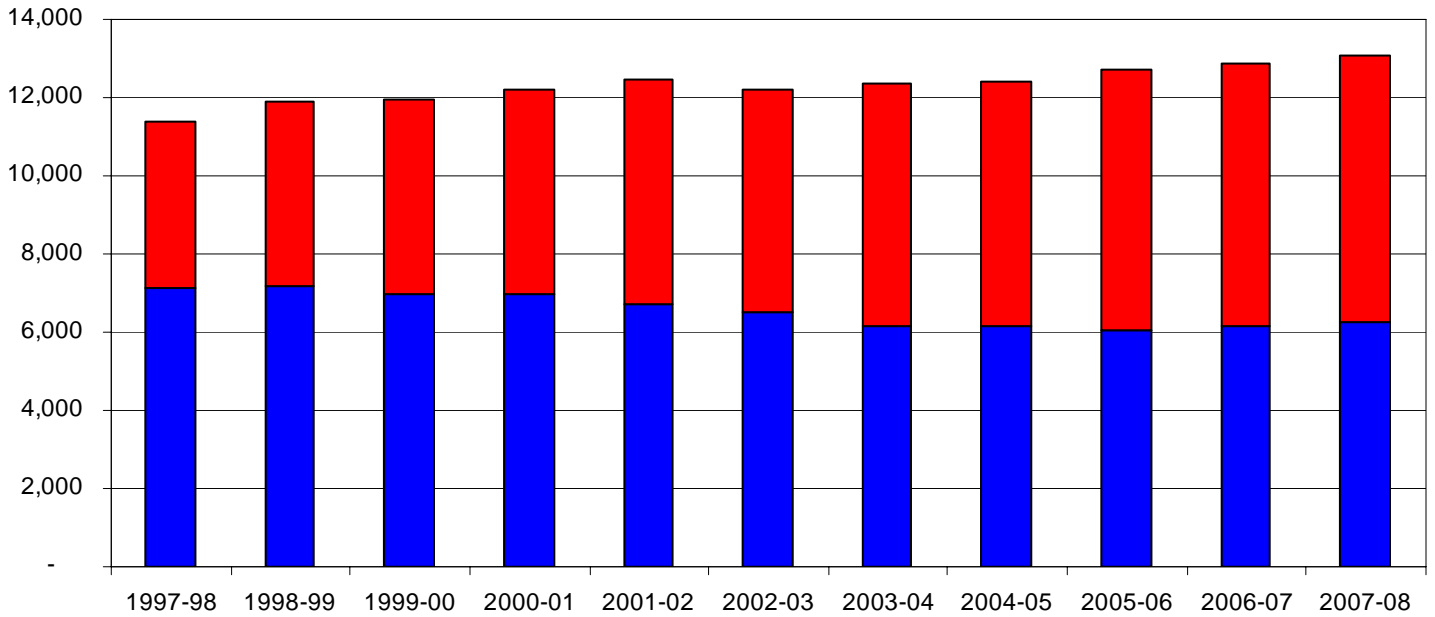
Student Support Historical Analysis

INFLATION ADJUSTED TO 2006-07 DOLLARS

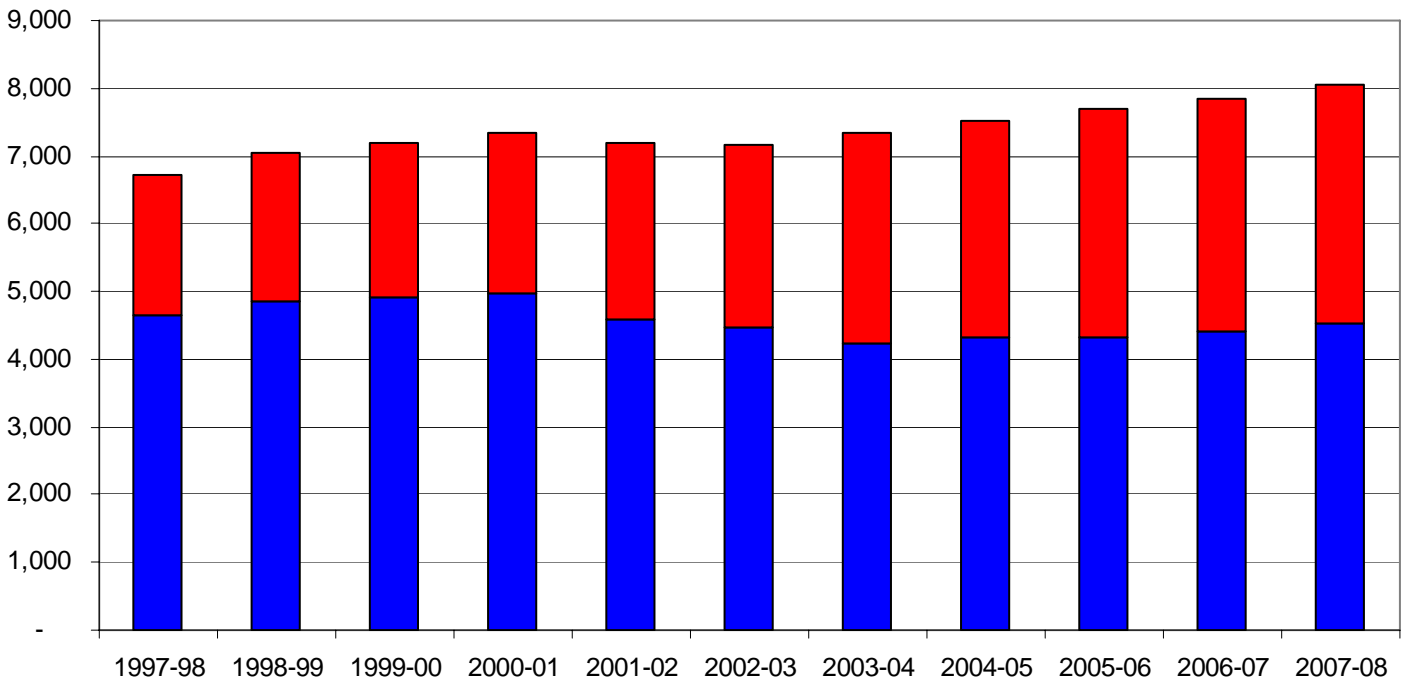
Four-Year Institutions	1997-98	1998-99	1999-00	2000-01	2001-02	2002-03	2003-04	2004-05	2005-06	2006-07	2007-08	% Change 1998-2008
State Appropriations	\$671,412,320	688,773,928	676,380,453	668,130,201	658,928,412	646,739,452	619,594,446	633,637,515	624,688,369	648,994,300	673,536,914	0.3%
Tuition & Fees	\$402,135,706	453,123,920	485,555,610	504,631,723	558,464,793	572,210,836	620,794,369	642,269,922	692,884,539	708,155,200	732,350,375	82.1%
FTE	94,458	95,834	97,141	96,010	97,839	99,673	100,304	102,726	103,636	105,500	107,394	13.7%
Average Student Support	\$11,365	11,915	11,961	12,215	12,443	12,229	12,366	12,420	12,713	12,864	13,091	15.2%
Student Share	37.5%	39.7%	41.8%	43.0%	45.9%	46.9%	50.0%	50.3%	52.6%	52.2%	52.1%	
Two-Year Institutions	1997-98	1998-99	1999-00	2000-01	2001-02	2002-03	2003-04	2004-05	2005-06	2006-07	2007-08	% Change 1998-2008
State Appropriations	\$219,289,662	226,990,717	227,303,701	226,048,703	222,336,152	217,746,844	207,712,916	212,584,849	208,650,046	217,576,000	223,349,742	1.9%
Tuition & Fees	\$97,436,103	102,248,772	105,903,987	108,657,401	126,957,127	131,749,483	152,766,724	157,310,711	163,233,633	168,485,465	172,720,655	77.3%
FTE	47,181	46,635	46,349	45,550	48,503	48,729	49,014	49,238	48,315	49,300	49,193	4.3%
Average Student Support	\$6,713	7,060	7,189	7,348	7,202	7,172	7,355	7,512	7,697	7,831	8,051	19.9%
Student Share	30.8%	31.1%	31.8%	32.5%	36.3%	37.7%	42.4%	42.5%	43.9%	43.6%	43.6%	

- Data adjusted for inflation to 2006-2007 dollars using SHEEO's Higher Education Cost Adjustment
- State appropriations include recurring general operating revenues.
- Tuition/fees include all in-state and out-of-state tuition and mandatory fee revenues.

**Total Revenue per FTE - TN Universities
Inflation Adjusted ***

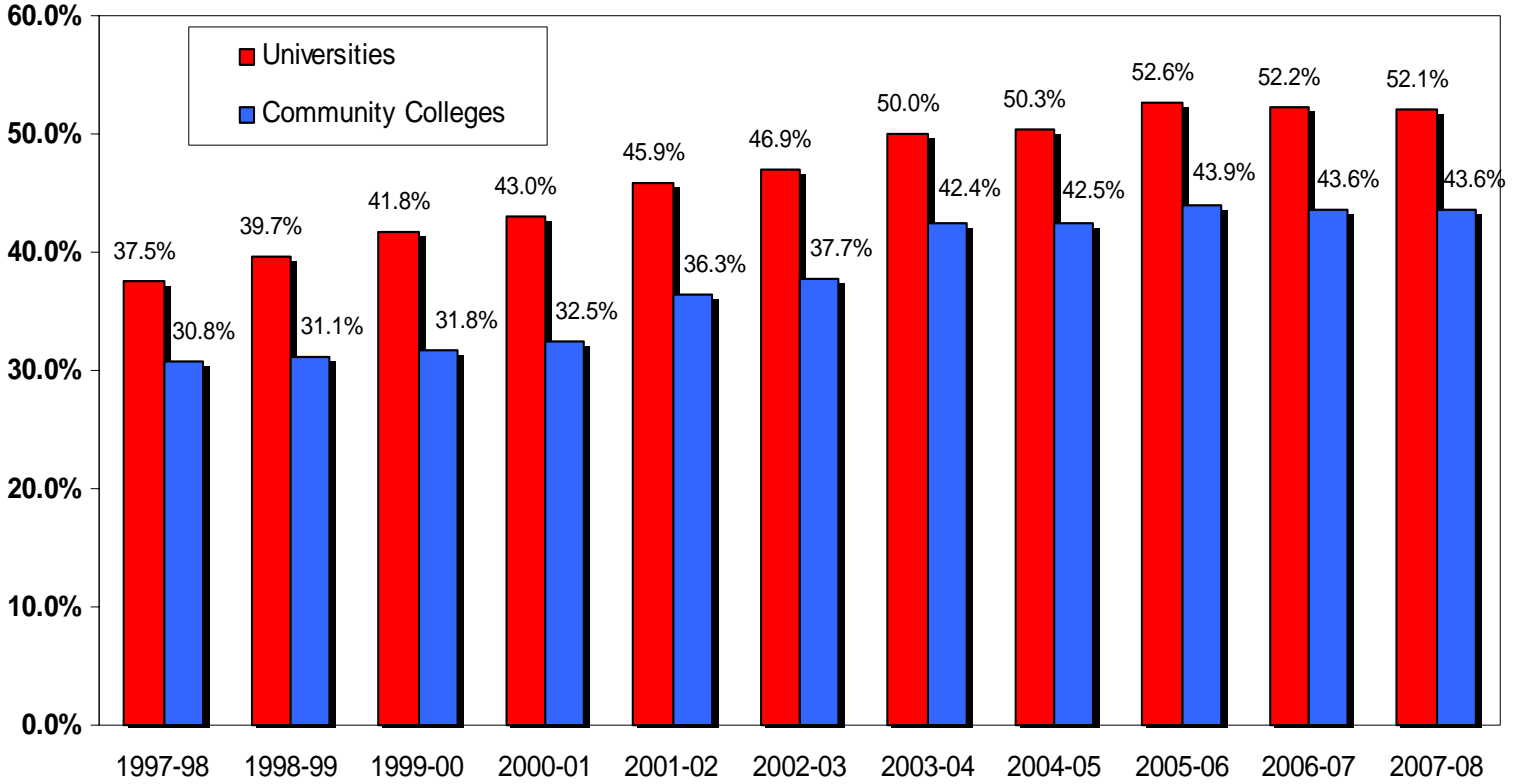


**Total Revenue per FTE - TN Community Colleges
Inflation Adjusted ***



* Data adjusted for inflation to 2006-2007 dollars using SHEEO's Higher Education Cost Adjustment.

Student Share of Total Per Student Support



**Tennessee Student Assistance Corporation
Grants and Scholarships 2006-2007
By Program**

Award Name	Number of Recipients	Total Awarded
Tennessee Student Assistance Award	20,551	\$42,502,085
Dependent Children Scholarship	29	\$138,191
Minority Teaching Fellows	112	\$530,227
Ned McWherter Scholars	180	\$523,500
Robert C. Byrd Honors Scholarship	544	\$765,542
Tennessee Teaching Scholars	190	\$747,537
TOTAL	21,606	\$45,207,082

**Tennessee Student Assistance Award 2006-2007
By Sector**

Institution Type	Number of Recipients	Total Awarded
Board of Regents/Four-Year	6,711	\$13,689,091
University of Tennessee System	2,889	\$6,131,466
Board of Regents/Two Year	4,952	\$4,964,868
Tennessee Technology Centers	1,004	\$693,133
Independent/Four-Year	4,659	\$17,317,033
Independent/Two-Year	61	\$221,867
Proprietary Institutions	1,250	\$2,074,999
Out-of-State Institutions	80	\$114,625
TOTAL	21,606	\$45,207,082
AVERAGE AWARD		\$2,092

Tennessee Education Lottery Scholarship Requirements

Scholarship Type	Minimum High School GPA	Minimum Composite ACT Score	Family Adjusted Gross Income	Amount (4-yr.)	Amount (2-yr.)
HOPE (base)	3.0	<u>or</u> 21	N/A	\$3,800	\$1,900
General Assembly Merit Scholarship (GAMS)	3.75	<u>and</u> 29	N/A	\$4,800	\$2,900
ASPIRE (HOPE with need supplement)	3.0	<u>or</u> 21	\$36,000 or less	\$5,300	\$3,400
Access Award	2.75	<u>and</u> 18-20	\$36,000 or less	\$2,650	\$1,700
Wilder-Naifeh Technical Skills Grant	N/A	N/A	N/A	N/A	\$2,000



- ◆ The Tennessee Education Lottery Scholarship program expended \$191 million in 2006-07, up from \$136 million the year before.
- ◆ Enhanced by growth in the Dual Enrollment Grant program for high school students and the addition of another college cohort, the number of students served grew to 67,000 in 2006-07, up from 56,000 the year before.

**Tennessee Education Lottery Scholarship Program
Summary Report
2007-2008 TELS Summary Report**

	2005-2006		2006-2007	
	Actual Recipients		Actual Recipients	
	Students	\$	Students	\$
HOPE				
Independent / Four-Year	7,134	\$25,376,393	5,637	\$20,042,753
Independent / Two-Year	77	135,938	60	103,313
Private/Business Trade	48	146,330	52	188,100
University of Tennessee System	11,437	37,808,755	9,644	34,398,172
Board of Regents / Four-Year	14,518	50,135,977	12,682	44,663,425
State Tech/Community Colleges	7,061	12,742,521	5,536	8,947,104
TOTAL	40,275	\$126,345,913	33,120*	\$108,342,867
HOPE w/ GAMS**				
Independent / Four-Year	-	-	1,279	\$5,980,472
Independent / Two-Year	-	-	0	0
Private/Business Trade	-	-	2	9,600
University of Tennessee System	-	-	1,638	7,585,931
Board of Regents / Four-Year	-	-	995	4,589,640
State Tech/Community Colleges	-	-	25	55,514
TOTAL	-	-	3,939*	\$18,221,157
HOPE w/ Aspire**				
Independent / Four-Year	-	-	2,230	\$10,990,456
Independent / Two-Year	-	-	38	118,250
Private/Business Trade	-	-	12	62,850
University of Tennessee System	-	-	2,552	12,529,319
Board of Regents / Four-Year	-	-	4,533	22,033,210
State Tech/Community Colleges	-	-	2,454	7,071,278
TOTAL	-	-	11,629*	\$52,805,363
HOPE Access Grant				
Independent / Four-Year	25	\$54,000	18	\$41,075
Independent / Two-Year	1	1,575	1	850
Private/Business Trade	0	0	0	0
University of Tennessee System	48	95,122	54	131,175
Board of Regents / Four-Year	124	257,100	145	333,129
State Tech/Community Colleges	67	82,497	97	133,487
TOTAL	265	\$490,294	315*	\$639,716
Wilder-Naifeh Technical Skills Grant				
	10,023	\$7,860,163	9,725*	\$8,079,913

*Totals represent a distinct count of students and are not always a sum of the numbers in the section. Students can attend multiple institutions throughout an academic year, but these students are only counted once in each section total.

** Prior to 2006-07, Hope w/GAMS and Hope w/Aspire were included in HOPE totals.

**Tennessee Education Lottery Scholarship Program
Summary Report
2007-2008 TELS Summary Report**

	2005-2006		2006-2007	
	Actual Recipients		Actual Recipients	
	Students	\$	Students	\$
HOPE Foster Care Grant				
Independent / Four-Year	0	\$0	2	\$4,564
Independent / Two-Year	0	0	0	0
Private/Business Trade	0	0	0	0
University of Tennessee System	6	16,970	2	731
Board of Regents / Four-Year	15	50,052	9	22,691
State Tech/Community Colleges	8	19,536	4	6,619
TOTAL	29	\$86,558	17	\$34,604
Dual Enrollment Grant				
Independent / Four-Year	388	\$162,610	599	\$281,700
Independent / Two-Year	52	24,080	96	47,400
Private/Business Trade	0	0	0	0
University of Tennessee System	574	244,800	841	362,800
Board of Regents / Four-Year	97	48,757	250	133,800
State Tech/Community Colleges	3,825	1,400,359	5,735	2,449,822
Technology Centers	529	179,750	785	325,400
TOTAL	5,465	\$2,060,356	8,306	\$3,600,922
Math & Science Teachers Program				
Independent / Four-Year	0	\$0	0	\$0
University of Tennessee System	0	0	0	0
Board of Regents / Four-Year	0	0	0	0
TOTAL	0	\$0	0	\$0
ALL PROGRAMS				
Independent / Four-Year	7,547	\$25,593,003	9,765	\$37,341,020
Independent / Two-Year	130	161,593	195	269,813
Private/Business Trade	48	146,330	66	260,550
University of Tennessee System	12,065	38,165,647	14,731	55,008,128
Board of Regents / Four-Year	14,754	50,491,886	18,614	71,775,895
State Tech/Community Colleges	10,961	14,244,912	13,851	18,663,823
Technology Centers	10,552	8,039,913	10,510	8,405,313
GRAND TOTAL	56,057	\$136,843,284	67,732	\$191,724,541

*Totals represent a distinct count of students and are not always a sum of the numbers in the section. Students can attend multiple institutions throughout an academic year, but these students are only counted once in each section total.

Source: Tennessee Student Assistance Corporation

**Tennessee Education Lottery Scholarship Program
HOPE
(05-06 includes General Assembly Merit and Aspire)
Awards By Institution**

	2005-2006		2006-2007	
	Actual Recipients		Actual Recipients	
	Students	\$	Students	\$
University of Tennessee System				
UT Chattanooga	2,621	7,113,678	1,955	6,820,865
UT Knoxville	7,024	24,428,437	6,257	22,502,201
UT Martin	1,786	6,246,840	1,440	5,023,806
UT Health Science Center	6	19,800	14	51,300
TOTAL	11,437	37,808,755	9,644*	34,398,172
Board of Regents / Four Year				
Austin Peay	1,470	5,057,277	1,199	4,155,100
East Tennessee	2,335	8,076,336	2,096	7,350,275
ETSU Pharmacy	0	0	0	0
Middle Tennessee	5,034	17,243,122	4,679	16,496,376
Tennessee State	531	1,842,981	345	1,179,325
Tennessee Tech	2,385	8,224,070	2,119	7,475,631
University of Memphis	2,763	9,692,192	2,292	8,006,718
TOTAL	14,518	50,135,977	12,682*	44,663,425
State Tech / Community Colleges				
Chattanooga	498	877,449	420	675,572
Cleveland	343	646,666	250	420,362
Columbia	609	1,081,655	501	821,224
Dyersburg	225	414,434	148	236,007
Jackson	458	844,559	358	574,955
Motlow	555	901,926	404	660,857
Nashville	216	371,338	168	241,970
Northeast	512	969,483	412	687,861
Pellissippi	962	1,669,780	796	1,253,108
Roane	833	1,641,606	644	1,049,018
Southwest	238	428,830	186	277,144
Volunteer	711	1,269,295	613	984,964
Walters	901	1,625,501	657	1,064,063
TOTAL	7,061	12,742,521	5,536*	8,947,104

*Totals represent a distinct count of students and are not always a sum of the numbers in the section. Students can attend multiple institutions throughout an academic year, but these students are only counted once in each section total.

2006-07 Peer * Faculty Salary Comparison

Institution	Avg. Faculty Salary	Peer Avg. Faculty Salary	Percent of Peer Avg.
Austin Peay	\$53,546	\$61,745	86.7%
East Tennessee	\$55,360	\$64,845	85.4%
Middle Tennessee	\$59,736	\$67,568	88.4%
Tennessee State	\$54,455	\$64,329	84.7%
Tennessee Tech	\$59,834	\$63,334	94.5%
University of Memphis	\$68,039	\$75,200	90.5%
UT Chattanooga	\$59,677	\$63,205	64.4%
UT Knoxville	\$72,531	\$83,966	86.4%
UT Martin	\$55,270	\$60,952	90.7%
Community Colleges	\$43,822	\$49,842	87.9%

Tennessee Technology Center Average Salary Comparison

Tennessee	\$35,707	TN as %
Alabama	\$50,315	71.0%
Georgia	\$41,814	85.4%
Kentucky	\$44,137	80.9%
Louisiana	\$38,034	93.9%
Oklahoma	\$45,266	87.9%



Why Compare Faculty Salaries?

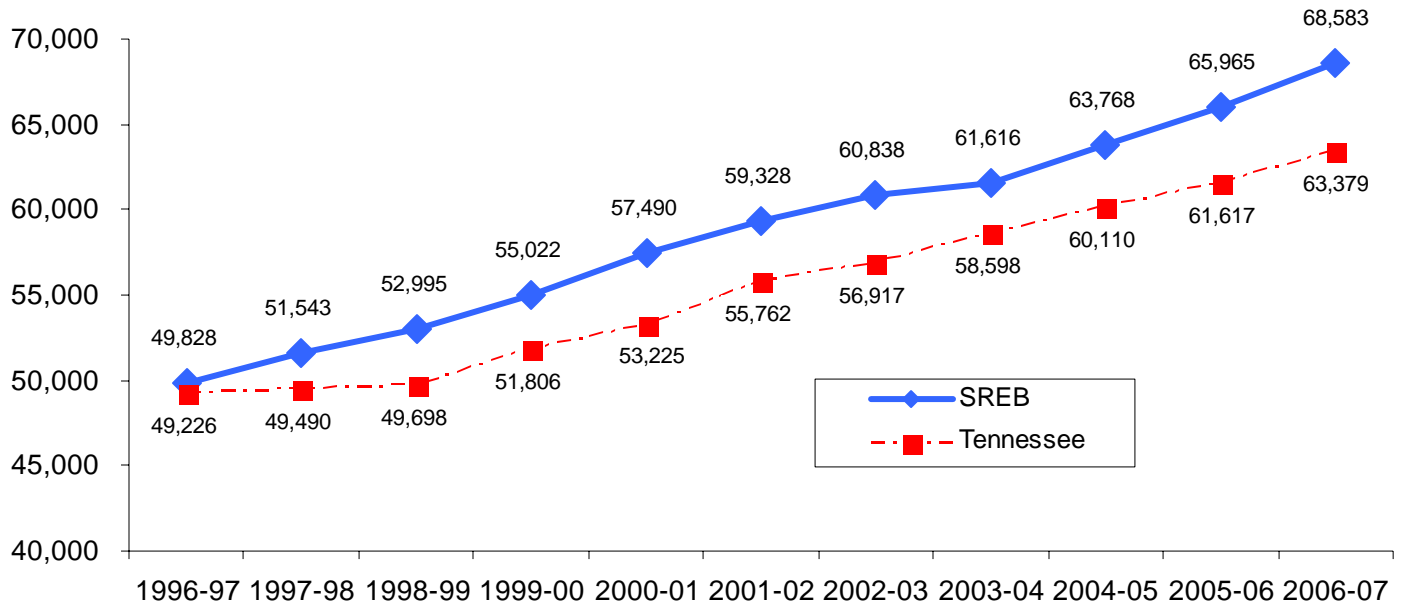
Personnel costs are the major component of institutional budgets, typically constituting three-fourths of operating expenses. Average faculty salaries and how those salaries compare to peer institutions are a proxy for the relative financial health of the institution and are a major multiplier in the public higher education funding formula in Tennessee.

Through the mid-1990s, average salaries in Tennessee public colleges and universities were close to the average for peer institutions in Southern Regional Education Board (SREB) states. For the last decade, salaries have hovered around 95 percent of the SREB average.

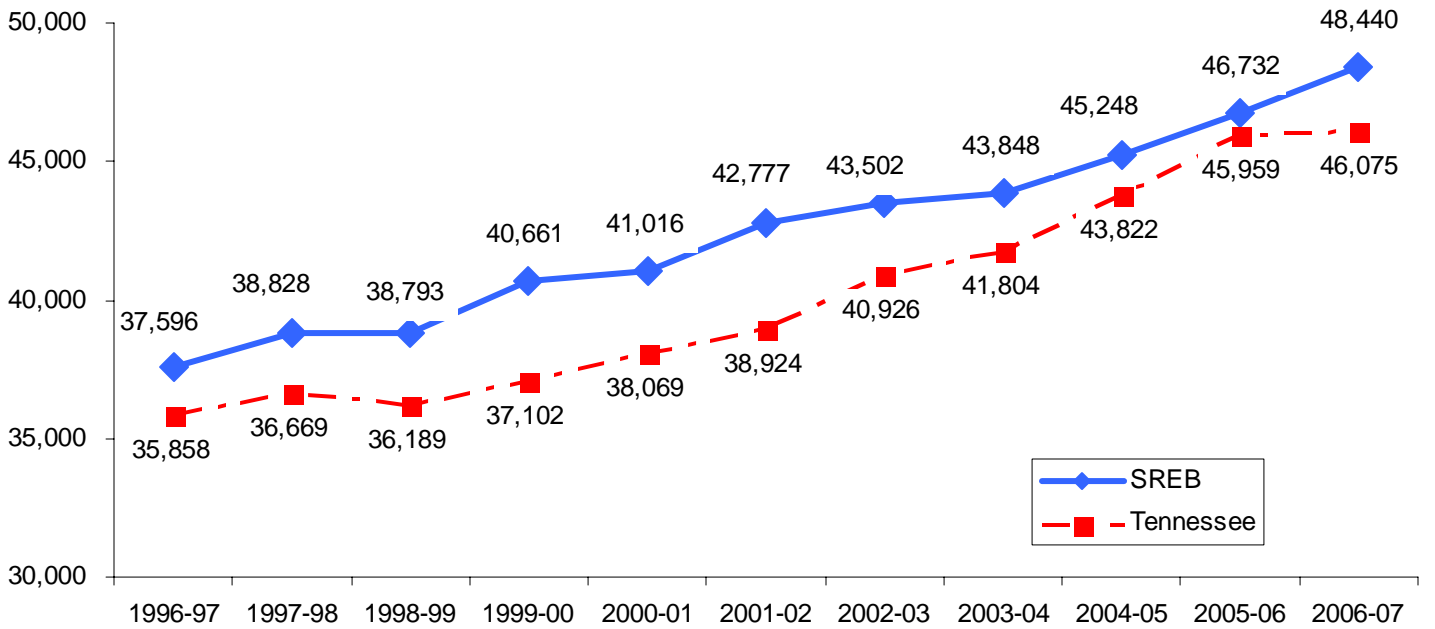
* Peer institutions are comparable SREB, public institutions selected by THEC in conjunction with UT and TBR, that are used in the funding formula, performance funding and data analysis.

Average Annual Faculty Salary, All Ranks

Public Universities



Public Community Colleges



Section 4:



GLOSSARY

Definitions

Auxiliary Enterprise: An entity that exists to furnish goods or services to students, faculty, or staff, and that charges a fee directly related to the cost of the goods or services (essentially self-supporting). Examples include: residence halls, food services, college stores, parking lots, etc.

Census Date: The date on which all degree credit headcount and full-time equivalent enrollment reports are generated for all Tennessee public institutions. The census date is the 14th calendar day from the beginning of classes, including the day on which classes begin.

Degree Credit: Credit that the institution designates as regular, occupational, or certificate, extension or co-op.

Full Time Equivalent (FTE) Enrollment: For undergraduate students, the total number of credits taken divided by 15. For graduate students, the total number of credits taken divided by 12. For students in clock hour courses, the total number of clock hours divided by 900.

Full-Time Student: A student who is enrolled for 12 or more hours of degree credit.

Mandatory Fees: A required fee for all students.

Part-Time Student: A student who is enrolled for less than 12 hours of degree credit.

Restricted Current Funds: Funds expendable for operating purposes but restricted by donors or other outside agencies as to the specific purpose for which they must be expended.

Southern Regional Education Board (SREB): The nation's first interstate compact for higher education, the SREB is a coalition of educators, government officials, and civic leaders interested in advancing knowledge and improving the social and economic life of the South.

Special Student: At the undergraduate level, a student who does not hold a Bachelor's or advanced degree and who is not working toward a certificate or degree. At the graduate level, a student who holds a bachelor's degree or higher, is not working toward a degree and is not a post-doctoral student.

Abbreviations

APSU:	Austin Peay State University
CSTCC:	Chattanooga State Technical Community College
CLSCC:	Cleveland State Community College
COSCC:	Columbia State Community College
DSCC:	Dyersburg State Community College
ETSU:	East Tennessee State University
JSCC:	Jackson State Community College
MSCC:	Motlow State Community College
MTSU:	Middle Tennessee State University
NSCC:	Nashville State Technical Community College
NSTCC:	Northeast State Technical Community College
PSTCC:	Pellissippi State Technical Community College
RSCC:	Roane State Community College
STCC:	Southwest Tennessee Community College
TBR:	Tennessee Board of Regents
TICUA:	Tennessee Independent Colleges and Universities Association
TSU:	Tennessee State University
TTC:	Tennessee Technology Centers
TTU:	Tennessee Technological University
UM:	University of Memphis
UT:	The University of Tennessee
UTC:	The University of Tennessee, Chattanooga
UTK:	The University of Tennessee, Knoxville
UTM:	The University of Tennessee, Martin
UTMHSC:	The University of Tennessee, Memphis, Health Science Center
VSCC:	Volunteer State Community College
WSCC:	Walters State Community College



School of Business



TENNESSEE HIGHER EDUCATION COMMISSION
404 JAMES ROBERTSON PARKWAY
NASHVILLE, TENNESSEE 37243-0830
(615) 741-3605

WWW.STATE.TN.US/THEC

Other important revenue taxes are the estate and inheritance tax, and the p

Business 5/12
① Regulatory Taxes
Regulatory certain bu
Revenue Taxes
Finance cost propo
Proportional Taxes
Revenue Taxes
and other Tax