

2009

DECEMBER
QUARTER

APPRENTICES & TRAINEES

Australian vocational
education & training statistics



Australian Government
Department of Education, Employment
and Workplace Relations

Australian vocational education and training statistics

Apprentices and trainees

December quarter

2009

Highlights

There were 414 900 apprentices and trainees in-training as at 31 December 2009, a decrease of 0.6% from the previous year.

In the 12 months to 31 December 2009, compared with the previous year:

- commencements decreased by 6.0%, to 271 400
- completions increased by 3.5%, to 159 400
- cancellations and withdrawals decreased by 8.7%, to 122 000.

For seasonally adjusted data, comparing the December quarter 2009 with the September quarter 2009:

- commencements in trades occupations increased by 4.3%
- commencements in non-trades occupations increased by 1.7%
- completions increased by 1.2%
- cancellations and withdrawals decreased by 0.9%
- in-training numbers increased by 0.2%.



Australian Government

Department of Education, Employment
and Workplace Relations

© Commonwealth of Australia, 2010

This work has been produced by the National Centre for Vocational Education Research (NCVER) on behalf of the Australian Government and state and territory governments, with funding provided through the Australian Government Department of Education, Employment and Workplace Relations. Apart from any use permitted under the *Copyright Act 1968*, no part of this publication may be reproduced by any process without written permission. Requests should be made to NCVER.

The views and opinions expressed in this document are those of NCVER and do not necessarily reflect the views of the Australian Government or state and territory governments.

ISSN 1440-0359

TD/TNC 100.04

Cataloguing title:

Australian vocational education and training statistics: Apprentices and trainees, December quarter 2009

Comments and suggestions regarding this publication are welcomed and should be forwarded to NCVER.

Published by NCVER

ABN 87 007 967 311

Level 11, 33 King William Street, Adelaide SA 5000

PO Box 8288, Station Arcade, Adelaide SA 5000, Australia

Phone: (08) 8230 8400

Fax: (08) 8212 3436

Web: <<http://www.ncver.edu.au>>

Email: <ats_req@ncver.edu.au>

Contents

Apprentice and trainee directions	4
Introduction	4
Overall trends	4
Tables	6
Terms	18
Technical notes	19
Notes on figures and tables	20

Tables

Quarterly training activity	6
1 In-training by state/territory and selected training characteristics, as at 31 December 2009 ('000)	6
2 In-training by state/territory as at the end of each quarter, 2004–2009 ('000)	6
3 Commencements by state/territory and selected training characteristics, December quarter 2009 ('000)	7
4 Commencements in each quarter by state/territory, 2004–2009 ('000)	7
5 Completions by state/territory and selected training characteristics, December quarter 2009 ('000)	8
6 Completions in each quarter by state/territory, 2004–2009 ('000)	8
7 Cancellations and withdrawals by state/territory and selected training characteristics, December quarter 2009 ('000)	9
8 Cancellations and withdrawals in each quarter by state/territory, 2004–2009 ('000)	9
9 In-training as at the end of each quarter by selected training characteristics, Australia, 2004–2009 ('000)	10
10 Commencements in each quarter by selected training characteristics, Australia, 2004–2009 ('000)	10
11 Completions in each quarter by selected training characteristics, Australia, 2004–2009 ('000)	12
12 Cancellations and withdrawals in each quarter by selected training characteristics, Australia, 2004–2009 ('000)	12
13 In-training in top 20 training packages by state/territory, as at 31 December 2009 ('000)	14
14 Commencements in top 20 training packages by state/territory, December quarter 2009 ('000)	14
Training activity: 12-month ending series	15
15 Commencements in 12 months ending 31 December, Australia, 2004–2009 ('000)	15
16 Completions in 12 months ending 31 December, Australia, 2004–2009 ('000)	15
17 Commencements by occupation and state/territory, 12 months ending 31 December 2009 ('000)	16
18 Commencements by industry skills councils, 12 months ending 31 December 2009, Australia ('000)	17
Seasonally adjusted commencements	17
19 Seasonally adjusted commencements in each quarter, by state/territory, 2004–2009 ('000)	17

Figures

1 In-training, seasonally adjusted, 1999–2009 ('000)	5
2 Commencements, completions and cancellations/withdrawals, seasonally adjusted, 1999–2009 ('000)	5
3 Trade and non-trade commencements, seasonally adjusted, 1999–2009 ('000)	5

Introduction

This publication presents estimates of apprentice and trainee activity in Australia for the December quarter 2009. The figures in this publication are derived from the National Apprentice and Trainee Collection no.63 (March 2010 estimates).

The most recent figures in this publication are estimated (those for training activity from the June quarter 2008 to the December quarter 2009). Estimates take into account reporting lags that occur at the time of data collection. Consequently, the figures in this publication may differ from those published in earlier or later reports.

Estimated data are presented in this publication on a seasonally adjusted, quarterly and 12-month ending series basis. The 12-month ending series is particularly useful in showing longer-term data trends, but is less useful in identifying turning points.

The seasonally adjusted data involve the use of a mathematical model to smooth out fluctuations due to seasonal influences. Seasonally adjusted data are useful to illustrate trends from one quarter to the next, but cannot be further disaggregated.

Further details on the estimation methodology and seasonally adjusted data tables can be found at <http://www.ncver.edu.au/publications/2257.html>.

Overall trends

In-training

The number of apprentices and trainees in-training as at 31 December 2009 was 414 900, a decrease of 0.6% from one year earlier. In-training numbers increased in New South Wales, Northern Territory and the Australian Capital Territory over this period.

For the 12 months ending 31 December 2009

Commencements

The number of commencements in the 12 months ending 31 December 2009 was 271 400, a decrease of 6.0% from one year earlier.

Of this:

- trades commencements decreased by 17.1%
- non-trades commencements decreased by 1.2%.

State and territory commencements in the 12 months to 31 December 2009, compared with the previous year, showed:

- | | |
|---------------------------|--|
| ■ New South Wales (-5.8%) | ■ Western Australia (-7.2%) |
| ■ Victoria (-3.3%) | ■ Tasmania (-15.2%) |
| ■ Queensland (-8.0%) | ■ Northern Territory (-3.1%) |
| ■ South Australia (-8.4%) | ■ Australian Capital Territory (+6.2%) |

Completions

The number of completions in the 12 months ending 31 December 2009 was 159 400, 3.5% higher than the 154 000 completions recorded in the 12 months ending 31 December 2008.

Cancellations and withdrawals

The number of cancellations and withdrawals in the 12 months ending 31 December 2009 was 122 000, 8.7% lower than the 133 600 cancellations and withdrawals in the 12 months ending 31 December 2008.

Seasonally adjusted data

In-training

The number of apprentices and trainees in-training increased over the last two quarters, up 0.2% between the June quarter 2009 and the December quarter 2009.

Commencements

Trades commencements have increased over the last two quarters, up 8.7% between the June quarter 2009 and the December quarter 2009.

Non-trades commencements have increased over the last three quarters, up 5.6% between the March quarter 2009 and the December quarter 2009.

Completions

The number of completions have increased over the last four consecutive quarters, up 4.3% between the December quarter 2008 and the December quarter 2009.

Cancellations and withdrawals

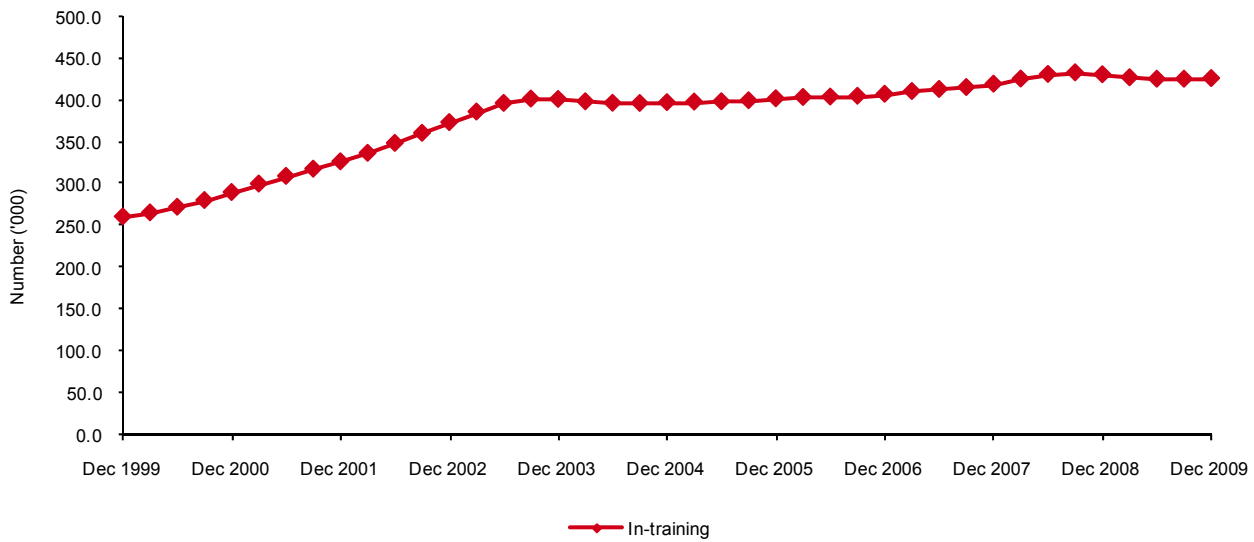
Cancellations and withdrawals have declined over the last five quarters, down 11.5% between the September quarter 2008 and the December quarter 2009.

For more information on seasonally adjusted data, see the technical notes on page 19.

Additional seasonally adjusted data tables are available at <http://www.ncver.edu.au/publications/2257.html>.

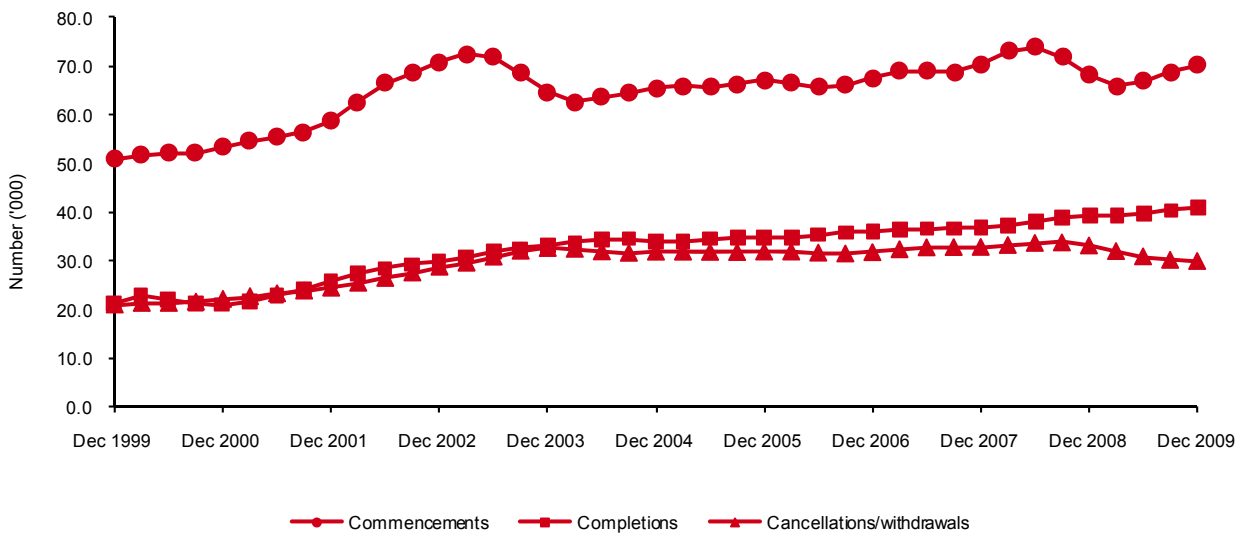
For more information on concepts and definitions used in this publication, see **Terms** listed on page 18.

Figure 1 In-training, seasonally adjusted¹, 1999–2009 ('000)



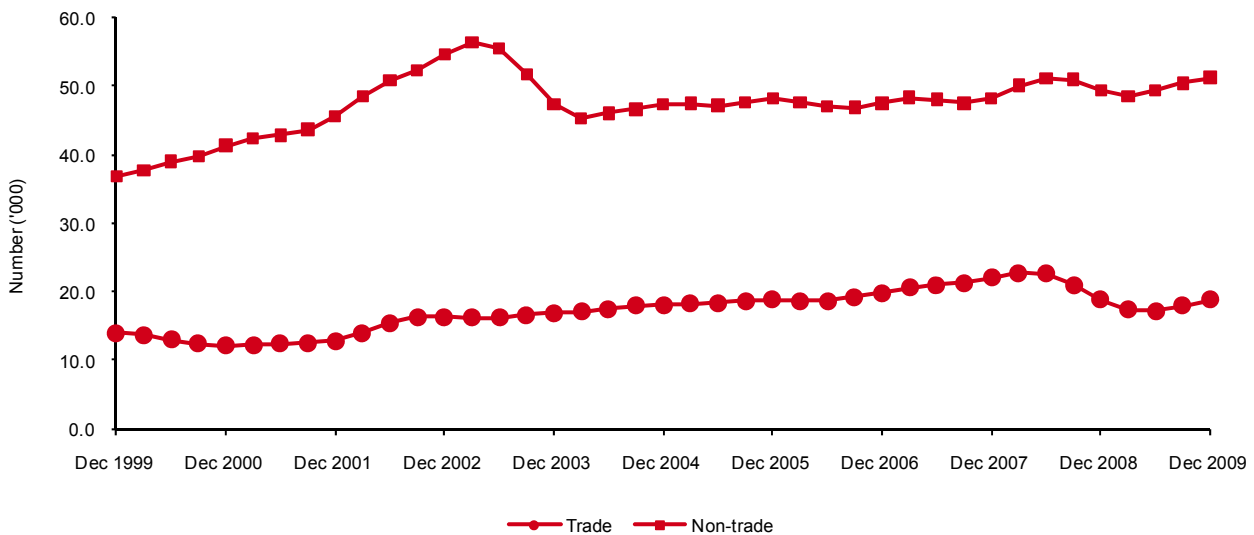
For notes on figures and tables, see page 20.

Figure 2 Commencements, completions and cancellations/withdrawals², seasonally adjusted¹, 1999–2009 ('000)



For notes on figures and tables, see page 20.

Figure 3 Trade and non-trade^{3,4} commencements, seasonally adjusted¹, 1999–2009 ('000)



For notes on figures and tables, see page 20.

Tables

Quarterly training activity

Table 1 In-training by state/territory and selected training characteristics, as at 31 December 2009 ('000)

		NSW	Vic	Qld	SA	WA	Tas	NT	ACT	Australia
Age	19 years and under	34.5	31.1	30.1	9.0	12.6	3.2	1.1	2.0	123.6
	20 to 24 years	36.2	31.1	20.2	8.0	9.7	2.9	0.9	2.2	111.3
	25 to 44 years	44.9	28.3	25.5	9.6	9.8	3.5	1.4	2.0	125.0
	45 years and over	22.8	12.4	9.9	4.0	3.5	1.4	0.4	0.7	55.1
Sex	Males	87.3	67.5	57.8	20.2	25.8	7.2	2.5	4.3	272.8
	Females	51.2	35.4	27.9	10.4	9.8	3.7	1.2	2.6	142.1
Occupation (ANZSCO) group	Managers and professionals	6.8	3.4	4.1	1.3	1.6	0.3	0.1	0.4	18.0
	Technicians and trade workers	53.2	48.9	43.5	12.7	20.7	5.4	2.0	3.1	189.5
	Community and personal service workers	18.2	13.5	7.4	1.8	3.6	1.1	0.5	1.4	47.5
	Clerical and administrative workers	25.4	12.5	12.4	6.0	2.5	1.6	0.4	0.7	61.6
	Sales workers	14.9	12.7	7.7	4.2	2.1	1.2	0.3	0.6	43.6
	Machinery operators and drivers	12.4	7.7	6.7	2.6	3.3	0.7	0.2	0.3	33.9
	Labourers	7.4	4.3	3.9	2.0	1.9	0.7	0.2	0.3	20.7
AQF qualification level	Certificate I or II	10.7	7.2	6.4	3.6	2.5	1.5	0.4	0.5	32.9
	Certificate III	97.5	80.1	64.2	21.3	28.0	7.9	2.9	5.0	307.0
	Certificate IV	29.1	13.8	13.9	5.5	4.0	1.4	0.3	1.0	68.9
	Diploma/advanced diploma	1.2	1.8	1.1	0.2	1.1	0.2	0.1	0.4	6.2
Full-time status	Full-time	108.6	74.0	62.3	22.8	32.1	8.6	3.2	5.0	316.7
	Part-time	29.9	28.9	23.4	7.8	3.5	2.3	0.6	1.9	98.3
Total⁵		138.5	102.9	85.7	30.6	35.7	10.9	3.8	6.9	414.9

For notes on figures and tables, see page 20.

Table 2 In-training by state/territory as at the end of each quarter, 2004–2009 ('000)

Quarter	NSW	Vic	Qld	SA	WA	Tas	NT	ACT	Australia
31 December 2004	118.6	118.1	70.2	32.6	26.2	12.8	2.8	5.9	387.1
31 March 2005	122.3	118.9	75.9	33.6	28.1	13.2	3.2	6.4	401.6
30 June 2005	120.5	116.2	76.8	33.4	29.3	13.1	3.3	6.2	398.7
30 September 2005	120.6	116.2	78.0	33.7	30.1	12.8	3.2	6.4	401.1
31 December 2005	120.2	111.8	74.9	33.1	29.5	12.4	3.0	5.9	390.9
31 March 2006	125.4	113.6	81.0	33.9	31.5	12.9	3.2	6.6	408.2
30 June 2006	123.1	110.9	82.3	33.6	32.1	12.6	3.2	6.7	404.5
30 September 2006	124.4	110.1	84.3	33.1	32.2	12.5	3.2	6.6	406.3
31 December 2006	124.1	105.1	81.0	32.7	31.7	12.3	3.0	6.2	396.1
31 March 2007	129.4	107.6	87.8	32.4	33.9	12.8	3.3	6.9	414.1
30 June 2007	128.7	107.3	89.7	31.6	34.4	12.8	3.3	6.7	414.5
30 September 2007	130.9	106.8	91.5	31.8	34.7	13.0	3.3	6.8	418.8
31 December 2007	130.7	100.8	87.4	30.3	34.0	12.7	3.2	6.2	405.3
31 March 2008	137.3	105.5	93.4	31.7	36.2	13.3	3.6	6.9	427.8
30 June 2008	139.8	107.2	95.3	32.3	36.7	13.4	3.7	6.9	435.3
30 September 2008	141.3	107.6	94.4	32.4	36.9	13.1	3.7	6.8	436.1
31 December 2008	137.9	103.0	87.6	31.5	35.8	12.2	3.5	6.1	417.5
31 March 2009	141.3	105.7	90.5	31.9	37.3	12.3	3.8	6.9	429.7
30 June 2009	139.8	106.1	89.5	32.2	36.7	12.0	3.9	7.0	427.3
30 September 2009	139.6	106.5	89.8	31.9	36.4	11.8	4.0	7.3	427.2
31 December 2009	138.5	102.9	85.7	30.6	35.7	10.9	3.8	6.9	414.9

For notes on figures and tables, see page 20.

Table 3 Commencements by state/territory and selected training characteristics, December quarter 2009 ('000)

		NSW	Vic	Qld	SA	WA	Tas	NT	ACT	Australia
Age	19 years and under	6.2	7.0	5.2	1.7	1.9	0.6	0.1	0.4	23.1
	20 to 24 years	3.2	2.9	1.7	0.7	1.0	0.2	0.1	0.2	10.1
	25 to 44 years	6.7	4.7	3.7	1.3	1.8	0.4	0.2	0.2	19.0
	45 years and over	3.6	2.3	1.9	0.5	0.7	0.2	0.1	0.1	9.3
Sex	Males	11.2	9.3	7.1	2.5	3.4	0.8	0.2	0.5	34.9
	Females	8.6	7.6	5.5	1.6	2.0	0.7	0.2	0.4	26.6
Occupation (ANZSCO) group	Managers and professionals	1.0	0.4	0.6	0.2	0.4	0.0	0.0	0.0	2.6
	Technicians and trade workers	4.7	4.2	3.5	1.2	1.8	0.5	0.1	0.3	16.3
	Community and personal service workers	3.1	3.2	1.5	0.3	0.8	0.2	0.1	0.2	9.4
	Clerical and administrative workers	4.8	3.2	2.7	0.9	0.6	0.3	0.1	0.1	12.6
	Sales workers	2.5	3.2	1.9	0.8	0.5	0.2	0.1	0.1	9.4
	Machinery operators and drivers	2.1	1.5	1.5	0.4	0.8	0.1	0.0	0.0	6.5
	Labourers	1.5	1.0	1.0	0.4	0.5	0.1	0.1	0.1	4.6
AQF qualification level	Certificate I or II	2.3	2.2	1.9	0.7	0.7	0.2	0.1	0.1	8.1
	Certificate III	12.7	11.7	7.9	2.9	3.6	1.0	0.3	0.6	40.6
	Certificate IV	4.6	2.8	2.6	0.6	0.9	0.3	0.1	0.1	12.0
	Diploma/advanced diploma	0.1	0.2	0.2	0.0	0.3	0.0	0.0	0.0	0.9
Full-time status	Full-time	14.7	9.8	8.1	2.8	4.7	1.0	0.3	0.5	42.0
	Part-time	5.0	7.1	4.5	1.4	0.7	0.5	0.1	0.4	19.5
Existing worker	Existing worker	6.8	4.5	4.7	1.4	1.9	0.5	0.2	0.2	20.1
	Newly commencing worker	13.0	12.4	7.9	2.8	3.5	1.0	0.3	0.6	41.5
Total⁵		19.7	16.9	12.6	4.2	5.4	1.5	0.4	0.9	61.5

For notes on figures and tables, see page 20.

Table 4 Commencements in each quarter by state/territory, 2004–2009 ('000)

Quarter	NSW	Vic	Qld	SA	WA	Tas	NT	ACT	Australia
31 December 2004	16.8	19.3	10.5	4.7	4.2	1.6	0.5	0.9	58.4
31 March 2005	23.8	21.3	17.0	6.6	6.2	2.3	1.0	1.6	79.8
30 June 2005	16.1	20.2	12.7	5.0	5.0	2.1	0.6	1.0	62.6
30 September 2005	16.4	20.4	12.4	5.4	4.9	1.8	0.5	1.2	63.0
31 December 2005	16.3	18.0	10.6	4.3	4.4	1.5	0.4	0.9	56.6
31 March 2006	25.9	22.8	18.4	6.6	6.9	2.4	0.8	1.8	85.6
30 June 2006	15.6	18.2	13.5	4.4	5.2	1.7	0.5	1.2	60.4
30 September 2006	17.4	17.9	13.5	4.7	4.9	1.8	0.6	1.2	61.9
31 December 2006	17.6	16.0	12.1	4.6	4.9	1.8	0.4	1.1	58.5
31 March 2007	27.1	21.7	19.7	6.5	7.4	2.4	0.8	1.7	87.4
30 June 2007	17.1	17.6	15.6	4.8	5.2	1.9	0.5	1.0	63.8
30 September 2007	19.6	17.7	15.1	5.3	5.4	1.9	0.6	1.2	66.8
31 December 2007	18.2	14.7	12.5	4.1	5.1	1.8	0.5	0.9	57.9
31 March 2008	28.8	22.4	19.8	7.0	7.8	2.7	0.9	1.8	91.1
30 June 2008	22.3	18.6	17.2	5.4	6.0	2.1	0.7	1.1	73.3
30 September 2008	20.8	18.1	13.5	5.0	5.7	1.8	0.6	1.0	66.6
31 December 2008	18.1	16.0	10.5	4.6	5.4	1.7	0.4	0.8	57.7
31 March 2009	27.0	20.6	16.9	6.0	7.0	2.2	0.8	1.8	82.2
30 June 2009	18.5	17.2	12.9	5.2	5.3	1.7	0.6	1.1	62.7
30 September 2009	19.7	17.9	13.7	4.8	5.4	1.7	0.6	1.2	65.0
31 December 2009	19.7	16.9	12.6	4.2	5.4	1.5	0.4	0.9	61.5

For notes on figures and tables, see page 20.

Table 5 Completions by state/territory and selected training characteristics, December quarter 2009 ('000)

		NSW	Vic	Qld	SA	WA	Tas	NT	ACT	Australia
Age	19 years and under	2.0	3.5	3.2	0.7	1.2	0.3	0.1	0.2	11.2
	20 to 24 years	3.4	3.3	2.8	1.1	1.5	0.5	0.1	0.3	13.0
	25 to 44 years	4.1	3.7	3.1	1.0	1.1	0.5	0.1	0.2	13.8
	45 years and over	2.7	2.1	1.4	0.4	0.4	0.3	0.0	0.1	7.3
Sex	Males	6.8	6.4	5.9	1.8	2.6	0.7	0.2	0.4	24.9
	Females	5.4	6.2	4.5	1.5	1.5	0.8	0.2	0.4	20.4
Occupation (ANZSCO) group	Managers and professionals	1.1	0.4	0.4	0.1	0.1	0.0	0.0	0.1	2.3
	Technicians and trade workers	3.1	2.5	3.5	0.8	1.9	0.4	0.1	0.2	12.6
	Community and personal service workers	1.5	2.8	1.5	0.3	0.7	0.3	0.1	0.2	7.4
	Clerical and administrative workers	3.0	2.4	1.9	0.8	0.4	0.3	0.1	0.1	8.9
	Sales workers	1.4	2.4	1.3	0.7	0.3	0.2	0.0	0.1	6.4
	Machinery operators and drivers	1.0	1.2	0.9	0.2	0.3	0.1	0.0	0.0	3.6
	Labourers	1.2	0.9	1.0	0.3	0.4	0.1	0.1	0.0	4.0
AQF qualification level	Certificate I or II	1.8	1.6	1.7	0.5	0.8	0.3	0.1	0.1	7.1
	Certificate III	7.8	8.6	7.2	2.0	2.9	1.0	0.2	0.5	30.2
	Certificate IV	2.5	2.2	1.4	0.6	0.3	0.2	0.0	0.1	7.4
	Diploma/advanced diploma	0.1	0.2	0.1	0.0	0.1	0.0	0.0	0.1	0.5
Actual duration of training	Two years or less	9.4	10.5	7.8	2.5	2.5	1.0	0.3	0.6	34.5
	More than two years	2.8	2.2	2.7	0.8	1.6	0.5	0.1	0.1	10.8
Full-time status	Full-time	9.5	7.0	6.9	2.9	3.5	1.0	0.3	0.5	31.6
	Part-time	2.7	5.6	3.6	0.3	0.6	0.5	0.1	0.2	13.7
Total⁵		12.2	12.6	10.4	3.2	4.1	1.5	0.4	0.8	45.3

For notes on figures and tables, see page 20.

Table 6 Completions in each quarter by state/territory, 2004–2009 ('000)

Quarter	NSW	Vic	Qld	SA	WA	Tas	NT	ACT	Australia
31 December 2004	9.4	12.4	8.2	1.9	2.6	1.4	0.3	0.9	37.2
31 March 2005	11.9	10.2	6.1	2.9	2.4	1.2	0.3	0.5	35.4
30 June 2005	8.8	11.3	6.6	2.4	2.1	1.4	0.3	0.6	33.4
30 September 2005	8.2	10.0	6.4	2.6	2.2	1.3	0.2	0.6	31.5
31 December 2005	8.4	12.2	8.4	2.2	3.0	1.2	0.3	0.8	36.6
31 March 2006	12.0	10.5	7.0	3.1	3.0	1.1	0.4	0.6	37.6
30 June 2006	9.4	10.7	6.6	2.3	2.6	1.2	0.2	0.5	33.6
30 September 2006	8.5	10.0	6.4	2.4	2.6	1.2	0.3	0.6	32.0
31 December 2006	9.6	12.1	9.4	2.5	3.0	1.2	0.3	0.8	38.9
31 March 2007	12.9	10.4	7.0	4.1	2.8	1.1	0.3	0.6	39.2
30 June 2007	9.4	9.6	7.7	3.1	2.3	1.1	0.2	0.5	33.8
30 September 2007	9.4	9.9	7.0	2.5	2.7	1.1	0.3	0.6	33.4
31 December 2007	9.6	12.1	9.9	3.2	3.2	1.4	0.3	0.8	40.4
31 March 2008	13.4	9.7	7.4	3.1	3.1	1.3	0.2	0.5	38.8
30 June 2008	10.7	9.3	8.6	2.5	2.7	1.3	0.2	0.5	35.8
30 September 2008	10.4	9.5	7.8	2.5	3.0	1.3	0.2	0.6	35.3
31 December 2008	11.8	11.9	10.4	3.1	3.8	1.7	0.4	0.9	44.1
31 March 2009	14.2	9.9	7.8	2.9	3.3	1.3	0.2	0.5	40.0
30 June 2009	10.8	9.4	8.3	2.6	3.5	1.2	0.2	0.6	36.7
30 September 2009	11.1	10.1	7.9	2.8	3.6	1.3	0.3	0.5	37.4
31 December 2009	12.2	12.6	10.4	3.2	4.1	1.5	0.4	0.8	45.3

For notes on figures and tables, see page 20.

Table 7 Cancellations and withdrawals² by state/territory and selected training characteristics, December quarter 2009 ('000)

		NSW	Vic	Qld	SA	WA	Tas	NT	ACT	Australia
Age	19 years and under	3.1	3.3	3.1	0.8	1.0	0.3	0.1	0.3	12.0
	20 to 24 years	2.5	2.4	1.6	0.4	0.5	0.2	0.1	0.2	7.8
	25 to 44 years	2.4	2.0	1.7	0.4	0.6	0.2	0.1	0.1	7.5
	45 years and over	0.8	0.6	0.6	0.1	0.2	0.1	0.0	0.0	2.4
Sex	Males	5.6	4.9	4.6	1.1	1.4	0.5	0.2	0.4	18.6
	Females	3.2	3.3	2.4	0.7	0.9	0.4	0.1	0.2	11.2
Occupation (ANZSCO) group	Managers and professionals	0.2	0.2	0.3	0.0	0.1	0.0	0.0	0.0	0.9
	Technicians and trade workers	3.7	3.3	3.4	0.6	1.0	0.3	0.1	0.3	12.7
	Community and personal service workers	1.4	1.2	0.7	0.1	0.3	0.1	0.0	0.1	3.9
	Clerical and administrative workers	1.3	1.2	0.8	0.3	0.2	0.1	0.0	0.0	4.0
	Sales workers	1.1	1.4	0.7	0.4	0.2	0.2	0.0	0.1	4.0
	Machinery operators and drivers	0.5	0.4	0.5	0.1	0.2	0.0	0.0	0.0	1.8
	Labourers	0.7	0.5	0.7	0.2	0.2	0.1	0.0	0.1	2.5
AQF qualification level	Certificate I or II	1.2	1.1	1.0	0.4	0.4	0.2	0.0	0.1	4.4
	Certificate III	6.3	6.1	5.2	1.2	1.5	0.6	0.2	0.4	21.5
	Certificate IV	1.3	0.9	0.8	0.2	0.2	0.1	0.0	0.1	3.5
	Diploma/advanced diploma	0.1	0.1	0.1	0.0	0.1	0.0	0.0	0.0	0.4
Duration until cancelled/withdrawn	Two years or less	8.2	7.7	6.3	1.7	2.0	0.8	0.2	0.6	27.5
	More than two years	0.6	0.5	0.7	0.1	0.2	0.1	0.0	0.0	2.2
Full-time status	Full-time	6.8	5.2	4.8	1.1	1.8	0.6	0.2	0.4	21.0
	Part-time	2.0	3.0	2.2	0.7	0.4	0.3	0.1	0.2	8.8
Total⁵		8.8	8.2	7.0	1.8	2.2	0.9	0.3	0.6	29.8

For notes on figures and tables, see page 20.

Table 8 Cancellations and withdrawals² in each quarter by state/territory, 2004–2009 ('000)

Quarter	NSW	Vic	Qld	SA	WA	Tas	NT	ACT	Australia
31 December 2004	9.6	10.5	6.1	2.3	2.0	0.9	0.4	0.7	32.5
31 March 2005	9.6	10.2	5.7	2.3	1.8	0.8	0.4	0.7	31.6
30 June 2005	9.6	10.6	5.7	2.3	1.8	0.8	0.4	0.7	32.0
30 September 2005	9.5	10.3	5.6	2.0	1.9	0.7	0.4	0.7	31.1
31 December 2005	9.2	10.1	6.0	2.2	2.0	0.8	0.4	0.7	31.4
31 March 2006	10.1	10.7	6.2	2.1	2.1	0.8	0.4	0.8	33.1
30 June 2006	9.3	10.0	6.0	1.9	1.9	0.8	0.4	0.7	31.0
30 September 2006	9.3	9.1	6.2	2.0	2.2	0.8	0.4	0.8	30.9
31 December 2006	9.2	9.0	6.9	1.9	2.4	0.8	0.4	0.8	31.4
31 March 2007	10.6	9.5	7.2	2.0	2.5	0.8	0.4	0.8	33.6
30 June 2007	9.7	8.6	7.0	1.9	2.4	0.9	0.4	0.8	31.7
30 September 2007	9.7	8.9	7.5	1.9	2.5	0.8	0.4	0.8	32.5
31 December 2007	10.0	8.8	7.9	2.0	2.6	0.9	0.4	0.8	33.4
31 March 2008	10.1	8.7	7.7	2.0	2.5	0.9	0.4	0.7	33.1
30 June 2008	10.3	8.2	7.8	1.8	2.9	0.9	0.4	0.7	33.0
30 September 2008	10.4	9.1	7.7	1.9	2.7	1.0	0.4	0.7	33.9
31 December 2008	10.2	9.2	7.6	1.9	2.7	0.9	0.4	0.7	33.6
31 March 2009	10.3	8.4	7.1	1.9	2.2	0.9	0.4	0.6	31.8
30 June 2009	10.0	7.8	6.3	1.7	2.5	0.8	0.4	0.5	30.1
30 September 2009	9.8	8.0	6.6	1.9	2.3	0.8	0.3	0.5	30.4
31 December 2009	8.8	8.2	7.0	1.8	2.2	0.9	0.3	0.6	29.8

For notes on figures and tables, see page 20.

Table 9 In-training as at the end of each quarter by selected training characteristics, Australia, 2004–2009 ('000)

		31 Dec 2004	31 Mar 2005	30 June 2005	30 Sept 2005	31 Dec 2005	31 Mar 2006	30 June 2006	30 Sept 2006
Age	19 years and under	118.7	133.2	132.2	129.9	124.0	139.0	135.8	132.4
	20 to 24 years	104.1	103.5	105.2	108.9	108.4	107.9	108.6	112.0
	25 to 44 years	115.6	115.8	113.6	114.5	111.8	113.4	112.5	113.8
	45 years and over	48.7	49.0	47.7	47.8	46.7	47.8	47.6	48.0
Sex	Males	252.8	264.4	263.1	265.5	259.7	272.8	270.6	271.8
	Females	134.3	137.1	135.6	135.5	131.1	135.3	133.9	134.4
Occupation (ANZSCO) group	Managers and professionals	5.0	5.2	5.2	5.3	5.4	6.2	6.8	7.9
	Technicians and trade workers	157.2	169.9	169.5	172.8	172.3	184.4	182.9	184.6
	Community and personal service workers	43.1	44.9	44.7	45.5	43.5	44.8	44.1	44.2
	Clerical and administrative workers	56.6	57.1	56.4	56.0	53.3	54.5	54.1	54.3
	Sales workers	47.2	46.6	46.3	46.1	44.5	45.7	45.1	44.9
	Machinery operators and drivers	45.7	44.7	44.1	43.9	42.4	42.1	41.0	40.9
	Labourers	32.4	33.2	32.6	31.5	29.5	30.5	30.5	29.4
	AQF qualification level	Certificate I or II	49.6	50.5	50.8	49.0	44.5	46.0	45.3
Certificate III	297.8	309.7	306.1	309.0	304.4	317.8	314.7	316.2	
Certificate IV	38.5	40.1	40.5	41.6	40.7	42.8	43.0	44.6	
Diploma/advanced diploma	1.2	1.3	1.3	1.4	1.4	1.6	1.5	1.7	
Full-time status	Full-time	303.3	315.8	312.7	315.3	309.9	324.7	322.3	323.7
	Part-time	83.8	85.8	86.0	85.8	80.9	83.5	82.2	82.5
Total⁵		387.1	401.6	398.7	401.1	390.9	408.2	404.5	406.3

For notes on figures and tables, see page 20.

Table 10 Commencements in each quarter by selected training characteristics, Australia, 2004–2009 ('000)

		31 Dec 2004	31 Mar 2005	30 June 2005	30 Sept 2005	31 Dec 2005	31 Mar 2006	30 June 2006	30 Sept 2006
Age	19 years and under	22.5	40.9	23.2	21.8	22.3	42.4	22.0	21.7
	20 to 24 years	10.0	12.5	11.5	11.9	9.7	13.7	10.8	11.6
	25 to 44 years	18.2	19.1	19.9	20.8	17.2	21.0	19.3	20.3
	45 years and over	7.7	7.2	8.0	8.5	7.3	8.5	8.3	8.3
Sex	Males	34.6	49.7	35.6	37.0	32.2	53.2	34.3	35.4
	Females	23.8	30.0	27.0	26.1	24.4	32.5	26.2	26.4
Occupation (ANZSCO) group	Managers and professionals	0.7	1.1	0.9	0.9	1.1	1.8	1.6	2.1
	Technicians and trade workers	14.9	30.0	13.1	15.7	14.9	31.3	13.7	15.3
	Community and personal service workers	8.9	10.6	9.3	9.5	9.0	11.6	9.0	9.3
	Clerical and administrative workers	9.2	12.9	12.9	11.5	9.8	14.0	11.8	12.1
	Sales workers	9.3	10.5	10.4	9.8	9.3	11.7	9.7	9.6
	Machinery operators and drivers	8.9	6.4	8.2	8.8	6.6	7.0	7.6	7.7
	Labourers	6.5	8.2	7.8	6.8	6.0	8.3	7.1	5.9
	AQF qualification level	Certificate I or II	11.2	14.8	13.0	10.5	9.9	14.2	10.7
Certificate III	41.0	57.4	42.3	45.0	40.4	61.8	42.2	43.1	
Certificate IV	6.0	7.4	7.1	7.3	6.1	9.3	7.4	8.9	
Diploma/advanced diploma	0.2	0.3	0.2	0.3	0.2	0.4	0.2	0.3	
Full-time status	Full-time	42.8	61.6	44.9	46.5	40.7	65.7	44.2	45.1
	Part-time	15.6	18.2	17.7	16.5	15.9	19.9	16.2	16.8
Existing worker	Existing worker	16.7	16.1	17.7	18.3	15.0	18.0	17.5	18.3
	Newly commencing worker	41.7	63.7	44.9	44.7	41.6	67.6	42.9	43.6
Total⁵		58.4	79.8	62.6	63.0	56.6	85.6	60.4	61.9

For notes on figures and tables, see page 20.

Table 9 (continued)

31 Dec 2006	31 Mar 2007	30 June 2007	30 Sept 2007	31 Dec 2007	31 Mar 2008	30 June 2008	30 Sept 2008	31 Dec 2008	31 Mar 2009	30 June 2009	30 Sept 2009	31 Dec 2009
127.2	142.6	141.1	138.6	131.9	150.2	148.9	144.5	134.4	144.1	138.1	131.6	123.6
111.2	110.7	112.4	116.0	113.8	113.1	114.9	116.8	113.1	110.9	111.1	113.6	111.3
111.2	113.4	113.5	116.1	113.0	117.0	121.0	123.3	119.8	122.7	124.7	126.9	125.0
46.5	47.4	47.5	48.2	46.7	47.6	50.5	51.5	50.2	51.9	53.4	55.1	55.1
266.2	279.4	278.9	281.5	273.7	289.6	291.6	291.8	279.6	285.9	282.4	280.3	272.8
129.8	134.6	135.6	137.3	131.6	138.2	143.6	144.3	137.9	143.8	144.9	146.9	142.1
8.3	9.2	10.2	11.9	12.3	13.7	14.5	15.6	14.9	16.8	17.5	18.7	18.0
183.5	196.1	195.5	197.4	194.7	209.2	209.5	207.9	200.8	205.2	199.6	195.7	189.5
42.1	44.7	45.3	46.1	43.6	45.3	46.6	46.7	44.8	47.8	48.8	49.4	47.5
52.6	54.1	54.5	55.0	52.3	54.9	58.7	58.8	55.7	58.6	60.5	62.5	61.6
44.0	44.2	44.2	44.8	42.6	44.8	45.6	46.1	44.3	45.0	44.8	45.0	43.6
38.8	38.3	37.7	37.2	35.4	35.0	35.3	36.3	34.1	33.4	33.2	33.3	33.9
26.8	27.6	27.1	26.4	24.5	25.0	25.0	24.7	23.0	22.9	22.9	22.6	20.7
40.7	41.7	41.8	41.0	37.4	39.6	40.7	39.9	36.7	37.8	37.6	36.2	32.9
309.4	324.1	323.6	326.4	317.7	334.4	336.0	335.7	320.8	326.1	319.5	316.0	307.0
44.4	46.3	46.8	48.7	47.3	50.0	54.4	55.8	55.4	60.6	64.6	68.8	68.9
1.6	1.9	2.3	2.7	3.0	3.8	4.3	4.7	4.6	5.2	5.5	6.2	6.2
318.0	331.6	330.1	333.2	324.5	340.9	344.0	342.5	327.8	333.9	327.9	325.6	316.7
78.2	82.5	84.5	85.6	80.8	87.0	91.3	93.6	89.7	95.8	99.3	101.7	98.3
396.1	414.1	414.5	418.8	405.3	427.8	435.3	436.1	417.5	429.7	427.3	427.2	414.9

Table 10 (continued)

31 Dec 2006	31 Mar 2007	30 June 2007	30 Sept 2007	31 Dec 2007	31 Mar 2008	30 June 2008	30 Sept 2008	31 Dec 2008	31 Mar 2009	30 June 2009	30 Sept 2009	31 Dec 2009
23.5	43.4	24.0	23.3	23.8	46.4	25.9	22.9	22.1	37.7	20.3	19.9	23.1
10.1	14.1	11.5	12.8	9.9	14.5	12.3	12.3	9.5	13.0	10.6	11.8	10.1
17.5	21.4	19.8	22.0	17.2	22.2	23.6	22.1	18.2	22.2	21.7	22.8	19.0
7.4	8.4	8.4	8.8	7.1	7.9	11.5	9.2	8.0	9.4	10.1	10.5	9.3
33.6	54.4	35.7	38.6	33.3	56.6	39.8	37.7	32.3	48.6	34.0	34.8	34.9
24.8	32.9	28.0	28.2	24.6	34.4	33.6	28.9	25.4	33.6	28.7	30.2	26.6
1.9	2.1	2.4	3.0	2.2	2.9	2.8	3.0	2.2	4.1	3.4	3.8	2.6
16.4	33.7	15.5	17.8	17.1	36.5	18.5	16.3	15.0	28.2	13.3	13.6	16.3
8.9	12.1	10.0	10.1	8.9	11.8	11.6	10.3	9.4	12.8	10.7	10.4	9.4
10.7	14.1	12.5	12.5	10.1	15.0	16.0	12.6	10.7	15.0	14.0	14.7	12.6
9.2	10.5	9.6	10.3	8.4	12.2	10.9	10.8	9.5	10.5	9.7	10.6	9.4
5.8	6.9	7.4	7.2	6.0	5.9	7.1	7.7	5.5	5.7	6.3	6.4	6.5
5.6	8.0	6.4	5.9	5.2	6.8	6.4	5.8	5.4	5.9	5.2	5.4	4.6
10.0	13.1	10.4	9.6	9.1	12.6	11.0	9.5	9.4	10.8	8.9	8.4	8.1
40.4	64.0	44.3	46.7	41.0	66.3	48.5	45.9	38.6	56.1	39.6	40.4	40.6
7.9	9.7	8.4	9.8	7.2	10.9	12.9	10.3	9.1	14.2	13.2	14.9	12.0
0.2	0.5	0.7	0.7	0.6	1.2	0.9	0.9	0.7	1.1	1.0	1.3	0.9
42.2	66.9	45.7	49.4	41.6	68.8	51.8	46.8	39.1	59.4	41.9	44.1	42.0
16.3	20.5	18.1	17.5	16.3	22.2	21.5	19.8	18.6	22.8	20.8	20.9	19.5
15.3	18.5	17.9	19.6	14.9	18.7	23.2	19.6	16.5	21.8	22.5	24.1	20.1
43.1	68.8	45.9	47.2	43.0	72.3	50.2	47.0	41.2	60.4	40.2	40.9	41.5
58.5	87.4	63.8	66.8	57.9	91.1	73.3	66.6	57.7	82.2	62.7	65.0	61.5

Table 11 Completions in each quarter by selected training characteristics, Australia, 2004–2009 ('000)

		31 Dec 2004	31 Mar 2005	30 June 2005	30 Sept 2005	31 Dec 2005	31 Mar 2006	30 June 2006	30 Sept 2006
Age	19 years and under	7.7	7.1	5.0	5.0	8.1	7.6	5.5	5.2
	20 to 24 years	10.2	12.9	9.5	8.8	10.2	13.8	10.1	9.4
	25 to 44 years	12.8	10.5	12.6	11.6	12.0	10.9	11.8	11.3
	45 years and over	6.5	4.9	6.4	6.2	6.4	5.1	6.3	6.1
Sex	Males	20.0	20.7	18.1	17.4	20.0	22.3	18.5	17.7
	Females	17.2	14.7	15.3	14.1	16.7	15.3	15.1	14.3
Occupation (ANZSCO) group	Managers and professionals	0.5	0.5	0.5	0.4	0.6	0.6	0.5	0.4
	Technicians and trade workers	7.2	10.6	6.2	5.9	7.8	11.8	7.1	6.8
	Community and personal service workers	5.9	4.6	5.2	4.9	6.6	5.5	5.6	5.3
	Clerical and administrative workers	8.6	7.2	7.8	6.6	7.4	7.6	6.9	6.7
	Sales workers	5.3	4.9	4.8	4.7	5.3	4.6	4.8	4.4
	Machinery operators and drivers	4.8	4.1	5.0	5.2	4.8	4.1	5.2	4.8
	Labourers	4.8	3.6	3.9	3.8	4.2	3.5	3.5	3.5
AQF qualification level	Certificate I or II	8.1	6.5	5.7	5.6	7.5	5.9	5.2	4.9
	Certificate III	25.6	26.0	24.0	22.6	24.9	27.7	24.5	23.0
	Certificate IV	3.2	2.8	3.7	3.2	4.1	3.9	3.7	4.0
	Diploma/advanced diploma	0.2	0.1	0.1	0.1	0.2	0.1	0.1	0.1
Actual duration of training	Two years or less	28.7	24.3	25.6	23.9	28.3	26.0	25.6	24.7
	More than two years	8.4	11.1	7.8	7.6	8.3	11.6	8.0	7.3
Full-time status	Full-time	27.0	28.8	25.8	23.7	25.8	30.5	25.2	24.3
	Part-time	10.2	6.6	7.7	7.8	10.8	7.1	8.4	7.7
Total⁵		37.2	35.4	33.4	31.5	36.6	37.6	33.6	32.0

For notes on figures and tables, see page 20.

Table 12 Cancellations and withdrawals² in each quarter by selected training characteristics, Australia, 2004–2009 ('000)

		31 Dec 2004	31 Mar 2005	30 June 2005	30 Sept 2005	31 Dec 2005	31 Mar 2006	30 June 2006	30 Sept 2006
Age	19 years and under	12.1	11.9	11.4	11.1	11.8	12.4	11.5	11.6
	20 to 24 years	8.3	8.2	8.1	8.2	8.3	8.7	8.1	8.0
	25 to 44 years	9.1	8.7	9.3	8.9	8.5	9.1	8.6	8.6
	45 years and over	3.0	2.7	3.1	3.0	2.7	2.9	2.8	2.7
Sex	Males	19.7	19.1	19.5	19.1	19.3	20.1	18.9	18.9
	Females	12.8	12.4	12.5	12.0	12.1	13.0	12.0	12.0
Occupation (ANZSCO) group	Managers and professionals	0.4	0.4	0.4	0.4	0.4	0.4	0.4	0.5
	Technicians and trade workers	10.1	10.3	10.5	10.2	10.5	11.4	11.1	11.0
	Community and personal service workers	4.1	4.1	3.9	3.7	4.2	4.5	3.7	3.8
	Clerical and administrative workers	4.8	4.6	4.8	4.6	4.3	4.7	4.5	4.5
	Sales workers	6.0	5.6	5.2	4.8	5.2	5.6	5.0	5.0
	Machinery operators and drivers	3.1	3.1	3.5	3.6	3.1	3.0	3.0	2.8
	Labourers	4.0	3.5	3.7	3.9	3.7	3.5	3.2	3.2
AQF qualification level	Certificate I or II	7.3	6.5	6.3	6.3	6.4	6.2	5.5	5.6
	Certificate III	22.6	22.3	22.9	22.1	22.4	24.1	22.5	22.4
	Certificate IV	2.5	2.6	2.7	2.7	2.5	2.8	2.8	2.8
	Diploma/advanced diploma	0.1	0.1	0.1	0.1	0.1	0.1	0.1	0.1
Duration until cancelled/ withdrawn	Two years or less	30.1	29.1	29.4	28.8	29.0	30.7	28.5	28.5
	More than two years	2.4	2.5	2.6	2.4	2.4	2.4	2.5	2.4
Full-time status	Full-time	23.0	22.9	23.5	23.1	22.4	23.8	23.2	22.9
	Part-time	9.5	8.7	8.5	8.1	9.0	9.3	7.8	8.0
Total⁵		32.5	31.6	32.0	31.1	31.4	33.1	31.0	30.9

For notes on figures and tables, see page 20.

Table 11 (continued)

31 Dec 2006	31 Mar 2007	30 June 2007	30 Sept 2007	31 Dec 2007	31 Mar 2008	30 June 2008	30 Sept 2008	31 Dec 2008	31 Mar 2009	30 June 2009	30 Sept 2009	31 Dec 2009
8.3	7.4	5.4	5.4	9.1	7.5	6.3	6.4	10.5	7.7	6.6	7.3	11.2
11.1	14.5	10.2	10.2	11.8	15.1	10.9	10.9	12.9	14.9	11.1	11.1	13.0
12.5	11.6	12.1	11.7	12.8	11.0	12.1	12.0	13.6	11.8	12.6	12.6	13.8
6.9	5.7	6.2	6.0	6.8	5.1	6.5	6.0	7.2	5.6	6.4	6.4	7.3
21.6	23.4	19.0	18.8	22.5	23.4	19.7	19.6	25.1	24.5	20.5	20.5	24.9
17.3	15.7	14.9	14.6	17.9	15.4	16.1	15.7	19.0	15.6	16.2	16.9	20.4
0.8	0.7	0.8	0.7	1.0	0.7	1.2	1.1	2.0	1.1	1.4	1.2	2.3
9.4	12.9	7.9	8.1	10.4	13.8	9.1	9.0	11.8	14.6	9.8	9.7	12.6
6.6	5.4	5.3	5.3	7.2	5.9	6.3	6.0	6.8	5.5	5.9	6.0	7.4
7.5	7.4	6.7	6.6	7.7	7.2	6.9	7.0	8.4	7.1	7.2	7.4	8.9
4.8	4.5	4.6	4.8	5.2	4.3	5.0	5.3	6.1	4.6	5.1	6.1	6.4
5.1	4.5	5.0	4.8	4.9	3.6	4.1	3.9	4.9	3.8	4.4	3.9	3.6
4.7	3.8	3.6	3.3	3.9	3.3	3.3	3.0	4.0	3.3	2.9	3.1	4.0
6.8	5.8	4.8	4.7	6.6	4.9	4.8	5.0	6.9	4.7	4.8	5.6	7.1
27.2	29.0	24.7	24.1	28.4	29.2	26.0	25.2	30.9	30.2	26.6	26.0	30.2
4.7	4.3	4.2	4.4	5.2	4.5	4.9	4.9	5.9	4.8	5.0	5.6	7.4
0.2	0.1	0.1	0.1	0.2	0.2	0.2	0.2	0.4	0.3	0.3	0.3	0.5
29.8	26.9	25.8	25.3	30.6	26.1	27.3	26.7	33.5	27.1	28.0	28.6	34.5
9.1	12.3	8.0	8.1	9.8	12.6	8.5	8.6	10.6	13.0	8.7	8.9	10.8
27.7	32.4	26.3	25.7	28.9	31.7	27.2	26.7	31.8	32.5	27.9	27.3	31.6
11.2	6.8	7.5	7.7	11.5	7.1	8.6	8.6	12.3	7.6	8.8	10.1	13.7
38.9	39.2	33.8	33.4	40.4	38.8	35.8	35.3	44.1	40.0	36.7	37.4	45.3

Table 12 (continued)

31 Dec 2006	31 Mar 2007	30 June 2007	30 Sept 2007	31 Dec 2007	31 Mar 2008	30 June 2008	30 Sept 2008	31 Dec 2008	31 Mar 2009	30 June 2009	30 Sept 2009	31 Dec 2009
12.1	13.3	12.2	12.3	13.4	13.5	13.2	13.1	13.6	12.8	11.5	11.2	12.0
8.4	8.8	8.3	8.5	8.7	8.7	8.4	8.7	8.6	8.3	7.7	7.6	7.8
8.3	8.8	8.4	8.8	8.5	8.4	8.7	9.1	8.7	8.2	8.0	8.6	7.5
2.7	2.7	2.9	2.8	2.7	2.5	2.7	2.9	2.7	2.6	2.8	3.0	2.4
19.2	20.7	19.4	19.9	20.6	20.3	20.5	20.9	20.7	19.7	18.7	18.8	18.6
12.2	12.9	12.4	12.5	12.8	12.7	12.6	13.0	13.0	12.1	11.4	11.6	11.2
0.6	0.6	0.6	0.7	0.8	0.8	0.8	0.8	0.9	1.0	1.1	1.2	0.9
11.3	12.5	12.0	12.3	12.9	13.0	13.5	13.8	13.4	13.1	12.6	12.4	12.7
4.1	4.2	4.2	4.1	4.2	4.2	4.1	4.2	4.4	4.2	3.8	3.9	3.9
4.4	4.7	4.8	4.9	4.7	4.6	4.8	4.9	4.5	4.4	4.2	4.4	4.0
5.0	5.4	4.6	4.6	5.1	5.2	4.6	4.7	4.9	4.5	4.4	3.8	4.0
2.7	2.9	2.7	2.7	2.7	2.5	2.5	2.6	2.4	2.1	1.7	2.0	1.8
3.3	3.2	3.0	3.2	3.0	2.8	2.8	2.9	3.0	2.6	2.2	2.6	2.5
5.9	5.8	5.0	5.2	5.6	5.1	4.7	4.9	5.3	4.7	4.1	4.2	4.4
22.6	24.6	23.4	24.0	24.7	24.7	24.9	25.4	25.0	23.5	22.2	21.9	21.5
2.9	3.1	3.2	3.1	2.9	3.0	3.1	3.2	2.9	3.3	3.4	3.9	3.5
0.1	0.1	0.2	0.2	0.2	0.2	0.3	0.3	0.4	0.3	0.4	0.4	0.4
29.2	31.1	29.3	30.1	31.1	30.8	30.7	31.5	31.5	29.5	27.7	28.1	27.5
2.2	2.5	2.5	2.4	2.2	2.2	2.3	2.4	2.1	2.3	2.4	2.2	2.2
22.6	24.6	23.8	24.2	24.2	24.6	25.0	25.4	24.0	23.2	21.9	22.1	21.0
8.8	9.0	7.9	8.3	9.2	8.5	8.1	8.5	9.6	8.6	8.0	8.3	8.8
31.4	33.6	31.7	32.5	33.4	33.1	33.0	33.9	33.6	31.8	30.1	30.4	29.8

Table 13 In-training in top 20 training packages by state/territory, as at 31 December 2009 ('000)

Training package	NSW	Vic	Qld	SA	WA	Tas	NT	ACT	Australia
Business Services (BSB, BSA)	20.1	7.8	11.0	5.0	1.4	1.3	0.3	0.5	47.5
Construction, Plumbing and Services Integrated Framework (CPC, BCG, BCF, BCP)	12.7	16.4	11.3	3.1	1.8	0.8	0.4	0.9	47.3
Retail Services (SIR, WRR, WRP, WRW)	13.0	12.3	6.8	3.9	1.9	1.0	0.2	0.5	39.7
Tourism, Hospitality and Events (SIT, THH, THT)	13.2	9.0	6.0	1.4	2.0	0.9	0.3	1.0	33.7
Electrotechnology Training (UEE, UTE, UTL)	8.2	6.8	6.7	2.3	3.2	0.7	0.5	0.6	28.9
Automotive Industry Retail, Service and Repair (AUR)	8.8	6.3	5.6	2.2	3.3	0.7	0.4	0.4	27.8
Metal and Engineering (MEM)	5.8	5.7	7.8	1.6	4.7	0.7	0.2	0.1	26.6
Transport and Logistics (TLI, TDT)	10.1	5.9	4.7	1.8	2.8	0.3	0.1	0.2	26.1
Community Services (CHC)	8.1	5.4	3.6	1.0	2.1	0.6	0.3	0.7	21.7
Hairdressing (WRH)	3.8	2.4	3.1	0.9	1.5	0.3	0.1	0.3	12.3
Manufacturing (MSA, MCM)	5.1	2.5	1.6	0.5	0.7	0.0		0.0	10.3
Food Processing Industry (FDF)	2.3	2.3	1.2	1.0	0.5	0.3	0.0	0.0	7.8
Australian Meat Industry (MTM)	2.1	1.5	2.0	0.9	0.7	0.2	0.0	0.0	7.4
Health (HLT)	2.2	2.7	0.4	0.2	0.2	0.2	0.0	0.2	6.2
Furnishing (LMF)	1.1	1.8	1.5	0.4	0.9	0.2	0.1	0.1	6.2
Amenity Horticulture (RTF, RUH)	1.9	2.2	1.0	0.4	0.3	0.1	0.0	0.1	6.1
Financial Services (FNS, FNB, FNA)	2.2	1.0	1.4	0.4	0.3	0.2	0.0	0.1	5.6
Asset Maintenance (PRM)	2.7	1.0	0.8	0.3	0.1	0.2	0.0	0.2	5.4
Civil Construction (BCC)	0.6	0.4	1.3	0.4	0.3	0.1	0.1	0.0	3.2
Rural Production (RTE, RUA)	0.8	1.1	0.4	0.4	0.2	0.1	0.0		3.0
Top 20 training packages sub-total	124.8	94.3	78.3	28.1	29.0	9.0	3.2	6.2	372.8
Other training packages	12.5	7.6	6.9	2.4	4.1	1.3	0.5	0.7	36.0
All training packages	137.3	101.9	85.2	30.6	33.1	10.2	3.7	6.9	408.8
Non-training packages	1.1	1.0	0.6	0.0	2.6	0.7	0.1	0.0	6.1
Total number	138.5	102.9	85.7	30.6	35.7	10.9	3.8	6.9	414.9
Training packages as proportion of total (%)	99.2	99.0	99.4	99.9	92.7	93.3	98.5	99.9	98.5

Blanks represent a true zero figure, with no contracts reported in these categories.

For notes on figures and tables, see page 20.

Table 14 Commencements in top 20 training packages by state/territory, December quarter 2009 ('000)

Training package	NSW	Vic	Qld	SA	WA	Tas	NT	ACT	Australia
Business Services (BSB, BSA)	4.3	2.4	2.4	0.7	0.3	0.3	0.1	0.1	10.5
Retail Services (SIR, WRR, WRP, WRW)	2.0	3.2	1.7	0.8	0.5	0.2	0.1	0.1	8.6
Tourism, Hospitality and Events (SIT, THH, THT)	2.3	2.1	1.3	0.2	0.5	0.2	0.0	0.1	6.9
Transport and Logistics (TLI, TDT)	1.7	1.3	0.9	0.3	0.6	0.1	0.0	0.0	4.9
Construction, Plumbing and Services Integrated Framework (CPC, BCG, BCF, BCP)	1.2	1.4	0.8	0.3	0.3	0.1	0.0	0.1	4.1
Community Services (CHC)	1.1	1.1	0.5	0.1	0.4	0.1	0.0	0.1	3.4
Automotive Industry Retail, Service and Repair (AUR)	0.8	0.5	0.5	0.2	0.2	0.0	0.0	0.0	2.3
Electrotechnology Training (UEE, UTE, UTL)	0.5	0.5	0.3	0.2	0.2	0.0	0.0	0.0	1.8
Australian Meat Industry (MTM)	0.3	0.4	0.5	0.2	0.2	0.0	0.0	0.0	1.8
Manufacturing (MSA, MCM)	0.8	0.5	0.2	0.1	0.1				1.7
Hairdressing (WRH)	0.5	0.3	0.4	0.2	0.2	0.0	0.0	0.0	1.6
Metal and Engineering (MEM)	0.3	0.3	0.4	0.1	0.3	0.0	0.0	0.0	1.5
Health (HLT)	0.5	0.4	0.0	0.0	0.0	0.0	0.0	0.0	1.1
Food Processing Industry (FDF)	0.3	0.3	0.2	0.1	0.1	0.0	0.0	0.0	1.1
Financial Services (FNS, FNB, FNA)	0.4	0.2	0.3	0.1	0.1	0.0	0.0	0.0	1.1
Asset Maintenance (PRM)	0.4	0.2	0.2	0.1	0.0	0.0	0.0	0.0	1.0
Amenity Horticulture (RTF, RUH)	0.2	0.2	0.2	0.1	0.1	0.0	0.0	0.0	0.8
Civil Construction (BCC)	0.0	0.0	0.4	0.0	0.0	0.0	0.0	0.0	0.6
Furnishing (LMF)	0.1	0.2	0.1	0.0	0.1	0.0	0.0	0.0	0.6
Rural Production (RTE, RUA)	0.2	0.1	0.1	0.0	0.1	0.0	0.0		0.6
Top 20 training packages sub-total	18.1	15.8	11.4	3.9	4.3	1.3	0.4	0.8	55.8
Other training packages	1.6	1.1	1.2	0.3	1.0	0.2	0.0	0.1	5.5
All training packages	19.7	16.8	12.5	4.2	5.4	1.5	0.4	0.9	61.4
Non-training packages	0.0	0.0	0.0	0.0	0.0	0.0			0.2
Total number	19.7	16.9	12.6	4.2	5.4	1.5	0.4	0.9	61.5
Training packages as proportion of total (%)	99.8	99.8	99.7	99.9	99.2	98.9	100.0	100.0	99.7

Blanks represent a true zero figure, with no contracts reported in these categories.

For notes on figures and tables, see page 20.

Training activity: 12-month ending series

Table 15 Commencements in 12 months ending 31 December, Australia, 2004–2009 ('000)

		12 months ending 31 December					
		2004	2005	2006	2007	2008	2009
Age	19 years and under	106.4	108.3	109.6	114.6	117.4	100.9
	20 to 24 years	45.0	45.7	46.3	48.2	48.6	45.5
	25 to 44 years	76.3	77.1	78.1	80.4	86.1	85.7
	45 years and over	29.5	31.0	32.4	32.7	36.6	39.3
Sex	Males	152.3	154.5	156.5	162.0	166.4	152.4
	Females	104.9	107.5	109.9	113.8	122.3	119.1
Occupation (ANZSCO) group	Managers and professionals	3.5	4.1	7.3	9.8	11.0	13.9
	Technicians and trade workers	70.8	73.7	76.7	84.1	86.3	71.5
	Community and personal service workers	38.1	38.5	38.7	41.1	43.0	43.3
	Clerical and administrative workers	45.2	47.0	48.6	49.2	54.4	56.4
	Sales workers	39.7	39.9	40.2	38.8	43.4	40.2
	Machinery operators and drivers	31.2	30.0	28.1	27.4	26.2	24.9
	Labourers	28.7	28.8	26.9	25.5	24.4	21.1
AQF qualification level	Certificate I or II	51.4	48.1	44.5	42.2	42.5	36.2
	Certificate III	178.0	185.1	187.4	196.0	199.3	176.8
	Certificate IV	27.1	27.9	33.4	35.1	43.2	54.2
	Diploma/advanced diploma	0.7	0.9	1.1	2.6	3.8	4.2
Full-time status	Full-time	190.9	193.8	197.2	203.5	206.5	187.4
	Part-time	66.4	68.2	69.3	72.3	82.2	84.0
Total⁵		257.2	262.1	266.4	275.8	288.7	271.4

For notes on figures and tables, see page 20.

Table 16 Completions in 12 months ending 31 December, Australia, 2004–2009 ('000)

		12 months ending 31 December					
		2004	2005	2006	2007	2008	2009
Age	19 years and under	25.0	25.2	26.7	27.3	30.7	32.8
	20 to 24 years	42.6	41.4	44.4	46.6	49.8	50.1
	25 to 44 years	47.2	46.6	46.6	48.2	48.7	50.9
	45 years and over	22.8	23.8	24.4	24.7	24.8	25.7
Sex	Males	76.8	76.1	80.2	83.7	87.7	90.4
	Females	60.8	60.9	61.9	63.1	66.2	69.0
Occupation (ANZSCO) group	Managers and professionals	1.7	1.9	2.3	3.1	5.0	6.0
	Technicians and trade workers	30.9	30.5	35.1	39.4	43.7	46.8
	Community and personal service workers	20.4	21.4	23.0	23.1	24.9	24.7
	Clerical and administrative workers	29.2	29.0	28.7	28.3	29.5	30.6
	Sales workers	20.1	19.6	18.6	19.1	20.7	22.2
	Machinery operators and drivers	19.6	19.1	19.3	19.1	16.4	15.8
	Labourers	15.7	15.5	15.2	14.7	13.7	13.3
AQF qualification level	Certificate I or II	28.9	25.3	22.8	22.0	21.6	22.2
	Certificate III	96.9	97.6	102.4	106.1	111.2	113.0
	Certificate IV	11.3	13.8	16.4	18.1	20.2	22.8
	Diploma/advanced diploma	0.4	0.4	0.5	0.6	1.0	1.4
Actual duration of training	Two years or less	103.6	102.1	106.1	108.5	113.7	118.2
	More than two years	34.0	34.9	36.0	38.3	40.3	41.3
Full-time status	Full-time	104.9	104.1	107.7	113.3	117.4	119.4
	Part-time	32.6	32.9	34.4	33.6	36.6	40.1
Total⁵		137.6	137.0	142.1	146.8	154.0	159.4

For notes on figures and tables, see page 20.

Table 17 Commencements by occupation and state/territory, 12 months ending 31 December 2009 ('000)

Occupation (ANZSCO) group	NSW	Vic	Qld	SA	WA	Tas	NT	ACT	Australia
Managers	1.3	1.3	1.3	0.3	1.4	0.2	0.1	0.3	6.3
11 Chief executives, general managers and legislators									
12 Farmers and farm managers	0.3	0.2	0.2	0.2	0.1	0.0	0.0		1.1
13 Specialist managers	0.9	1.0	1.0	0.1	1.1	0.1	0.1	0.2	4.6
14 Hospitality, retail and service managers	0.1	0.1	0.2	0.0	0.1	0.0	0.0	0.1	0.7
Professionals	3.5	1.2	1.9	0.7	0.1	0.0	0.0	0.1	7.6
21 Arts and media professionals	0.0	0.0	0.0						0.0
22 Business, human resource and marketing professionals	3.4	1.0	1.8	0.5	0.1	0.0		0.0	6.8
23 Design, engineering, science and transport professionals	0.1	0.0	0.1	0.0	0.1	0.0	0.0	0.0	0.4
24 Education professionals		0.1	0.0	0.2				0.1	0.4
25 Health professionals	0.0	0.0	0.0						0.0
26 ICT professionals	0.0								0.0
27 Legal, social and welfare professionals	0.0	0.0	0.0	0.0	0.0				0.0
Technicians and trades workers	19.4	18.9	15.7	5.3	7.8	2.2	0.8	1.4	71.5
31 Engineering, ICT and science technicians	0.9	0.5	1.0	0.2	0.8	0.2	0.1	0.1	3.7
32 Automotive and engineering	5.0	3.4	4.2	1.2	2.2	0.4	0.2	0.2	16.8
33 Construction trades workers	4.2	6.1	3.1	1.3	1.5	0.6	0.1	0.3	17.2
34 Electrotechnology and telecommunications trades workers	2.8	2.5	1.8	0.8	1.0	0.2	0.1	0.2	9.5
35 Food trades workers	2.5	2.8	2.3	0.7	0.8	0.4	0.1	0.2	9.8
36 Skilled animal and horticultural workers	1.0	1.4	0.7	0.3	0.3	0.1	0.0	0.1	3.9
39 Other technicians and trades workers	3.0	2.2	2.5	0.9	1.2	0.2	0.2	0.3	10.6
391 Hairdressers	1.6	1.1	1.3	0.5	0.6	0.1	0.0	0.2	5.4
392 Printing trades workers	0.1	0.2	0.1	0.2	0.0	0.0	0.0	0.0	0.6
393 Textile, clothing and footwear trades workers	0.0	0.0	0.1	0.0	0.0	0.0			0.1
394 Wood trades workers	0.3	0.5	0.3	0.1	0.2	0.0	0.0	0.0	1.5
399 Miscellaneous	1.0	0.5	0.7	0.1	0.3	0.1	0.1	0.1	3.0
Community and personal service workers	14.0	14.1	7.2	1.6	3.7	1.0	0.5	1.4	43.3
41 Health and welfare support workers	1.8	1.2	1.0	0.1	0.4	0.1	0.0	0.1	4.6
42 Carers and aides	3.9	3.3	2.0	0.7	1.3	0.3	0.2	0.5	12.2
43 Hospitality workers	6.9	6.8	3.0	0.5	1.3	0.5	0.1	0.6	19.7
44 Protective service workers	0.1	0.4	0.1	0.1	0.2	0.0	0.0	0.1	1.0
45 Sports and personal service workers	1.3	2.4	1.1	0.3	0.5	0.1	0.0	0.1	5.8
Clerical and administrative workers	20.8	13.6	11.7	5.0	2.8	1.4	0.4	0.7	56.4
51 Office managers and program administrators	10.8	4.8	5.7	2.4	0.3	0.4	0.1	0.3	24.9
52 Personal assistants and secretaries									
53 General clerical workers	3.6	2.2	2.7	1.1	1.1	0.5	0.2	0.3	11.7
54 Inquiry clerks and receptionists	3.2	3.8	1.1	0.8	0.4	0.3	0.0	0.0	9.6
55 Numerical clerks	2.0	0.9	1.3	0.4	0.4	0.2	0.0	0.1	5.3
56 Clerical and office support workers									
59 Other clerical and administrative workers	1.2	1.9	0.8	0.3	0.7	0.1	0.0	0.0	4.9
Sales workers	10.7	13.5	7.8	3.8	2.3	1.2	0.3	0.6	40.2
61 Sales representatives and agents	1.6	0.3	0.8	0.1	0.1	0.1	0.0	0.1	3.2
62 Sales assistants and salespersons	9.1	13.2	7.0	3.7	2.2	1.2	0.3	0.5	37.1
63 Sales support workers							0.0		0.0
Machinery operators and drivers	8.4	5.9	5.5	1.7	2.8	0.4	0.2	0.2	24.9
71 Machine and stationary plant operators	2.0	2.1	0.8	0.4	1.0	0.1	0.0	0.0	6.5
72 Mobile plant operators	0.4	0.2	0.9	0.1	0.2	0.1	0.1	0.0	2.0
73 Road and rail drivers	2.9	1.3	2.3	0.7	0.7	0.1	0.0	0.1	8.0
74 Storepersons	3.1	2.2	1.6	0.5	0.9	0.1	0.0	0.0	8.5
Labourers	6.8	4.1	5.0	1.8	2.2	0.7	0.2	0.3	21.1
81 Cleaners and laundry workers	2.0	0.9	1.2	0.3	0.4	0.1	0.0	0.2	5.1
82 Construction and mining labourers	0.7	0.1	0.3	0.0	0.2	0.0	0.0	0.1	1.5
83 Factory process workers	2.2	2.1	2.5	1.0	0.7	0.2	0.0	0.0	8.8
84 Farm, forestry and garden workers	1.0	0.4	0.6	0.2	0.5	0.2	0.1	0.0	3.0
85 Food preparation assistants	0.1	0.1	0.0	0.1	0.1	0.0	0.0	0.0	0.4
89 Other labourers	0.7	0.5	0.5	0.1	0.3	0.1	0.0	0.0	2.4
Total⁵	84.9	72.6	56.2	20.2	23.1	7.1	2.5	5.0	271.4

Blanks represent a true zero figure, with no contracts reported in these categories.

For notes on figures and tables, see page 20.

Table 18 Commencements by industry skills councils, 12 months ending 31 December 2009, Australia ('000)

Industry skills councils	Trades ³	Non-trades ³	Total
Agri-Food	7.8	12.6	20.4
Community Services and Health	1.8	20.9	22.7
Construction and Property Services	15.8	7.2	23.0
Electrocomms and Energy Utilities	9.2	0.1	9.4
ForestWorks	0.0	0.6	0.6
Government		2.1	2.1
Innovation and Business	2.8	52.8	55.6
Manufacturing	21.0	13.7	34.8
Services	11.6	63.9	75.4
SkillsDMC	0.5	5.0	5.5
Transport and Logistics		19.8	19.8
Training packages not assigned to industry skills councils			
Training package qualifications total	70.5	198.7	269.2
Non-training package qualifications total	1.1	1.2	2.3
Total	71.5	199.9	271.4

Blanks represent a true zero figure, with no contracts reported in these categories.
For notes on figures and tables, see page 20.

Seasonally adjusted commencements

Table 19 Seasonally adjusted commencements in each quarter, by state/territory, 2004–2009 ('000)

Quarter	NSW	Vic	Qld	SA	WA	Tas	NT	ACT	Australia
December 2004	18.2	20.2	13.0	5.4	5.0	2.0	0.7	1.2	65.4
March 2005	18.3	20.1	13.1	5.4	5.0	2.0	0.7	1.2	65.9
June 2005	18.2	20.1	13.1	5.4	5.1	2.0	0.6	1.2	65.7
September 2005	18.3	20.4	13.3	5.3	5.2	1.9	0.6	1.2	66.2
December 2005	18.5	20.6	13.6	5.3	5.3	1.9	0.6	1.3	67.0
March 2006	18.6	19.7	13.8	5.0	5.4	1.8	0.6	1.3	66.3
June 2006	18.7	18.7	14.1	4.9	5.4	1.8	0.6	1.3	65.5
September 2006	19.0	18.3	14.5	5.0	5.5	1.9	0.6	1.4	66.0
December 2006	19.6	18.3	15.0	5.1	5.6	2.0	0.5	1.4	67.4
March 2007	20.1	18.4	15.5	5.3	5.7	2.0	0.5	1.3	68.9
June 2007	20.3	18.0	15.9	5.3	5.7	2.0	0.6	1.2	68.9
September 2007	20.4	17.6	15.9	5.2	5.8	2.0	0.6	1.2	68.6
December 2007	21.3	17.8	16.0	5.3	5.9	2.1	0.7	1.2	70.3
March 2008	22.8	18.5	16.2	5.4	6.1	2.2	0.7	1.2	73.0
June 2008	23.4	18.9	15.9	5.5	6.3	2.1	0.7	1.2	73.9
September 2008	22.8	18.7	15.0	5.4	6.3	2.0	0.6	1.1	71.8
December 2008	21.3	18.1	13.6	5.2	6.0	1.9	0.6	1.2	68.0
March 2009	20.4	17.8	12.9	5.2	5.7	1.8	0.6	1.2	65.8
June 2009	20.8	17.9	13.6	5.1	5.7	1.8	0.6	1.3	66.7
September 2009	21.4	18.3	14.5	5.1	5.8	1.8	0.6	1.3	68.7
December 2009	21.8	18.6	15.2	5.0	6.0	1.7	0.6	1.3	70.2

For notes on figures and tables, see page 20.

Terms

Australian Qualifications Framework (AQF) is a national framework of credentials that covers qualifications from certificate I through to a doctoral degree. For more details on the AQF, go to <http://www.aqf.edu.au>.

Australian and New Zealand Standard Classification of Occupations (ANZSCO) is a classification of the occupation of individuals. The classification is based on the Australian Bureau of Statistics publication, Australian and New Zealand Standard Classification of Occupations (1st edition, ABS cat.no.1220.0).

Cancellations and withdrawals refers to apprentices and trainees whose contract of training has been terminated prior to a successful completion. Cancellation and withdrawal figures also include contracts which have been transferred, due to a change in employer. 'Transferred' is a new contract status which was historically reported as a cancellation or withdrawal.

Commencements refers to apprentices and trainees starting a program of training. The date of commencement is the date that an apprentice or trainee's contract of training is registered or approved under the provisions of the relevant state/territory legislation.

Completions refers to apprenticeship or traineeship contracts of training in which all of the prescribed requirements have been met.

Contract status indicates the status of apprentice and trainee contracts of training, including the commencement, completion, and cancellation/withdrawal of contracts, and apprentices and trainees 'in-training'.

Existing workers refers to those apprentices and trainees who were employed by their current employer for more than three months full-time (or 12 months part-time/casual) prior to commencing their training contract.

Full-time apprentices or trainees are those whose ordinary hours of employment, including the training component, are at least the usual hours of employment for a full-time employee in that occupation.

Industry skills councils are organisations representing particular industries. For more information on industry skills councils, go to <http://www.isc.org.au>. For more information on training packages developed by industry skills councils, go to <http://www.ntis.gov.au>.

In-training refers to apprentices and trainees who are actively training, at the end of each quarter, under the terms of their training contract, and who have not completed, cancelled, withdrawn or suspended their training, nor had their training contract expire without meeting all of the prescribed requirements of their program.

Non-trades refers to those apprentices and trainees employed in occupations outside the trades. 'Non-trades' includes all occupations listed under ANZSCO 1st edition, with the exception of major group 3 (Technicians and trades workers).

Part-time apprentices or trainees are defined as those whose ordinary hours of employment, including the training component, are less than full-time. Part-time provisions vary across Australia and across occupations, with 'part-time' defined by each state and territory.

Seasonal adjustment refers to a mathematical model used in time series data to smooth out fluctuations attributable to seasonal influences.

Trades refers to those apprentices and trainees employed in trades occupations under major group 3 (Technicians and trades workers) of ANZSCO 1st edition.

Training duration indicates the amount of time that an apprentice or trainee takes to complete their contract of training from the time of commencement.

Training packages are a set of nationally endorsed standards, guidelines and qualifications for training and for recognising and assessing skills. For more details on training packages, go to <http://www.ntis.gov.au>.

12-month ending series refers to the total number of commencements, completions and cancellations/withdrawals within a 12-month period (i.e. summing the current quarter with the previous three quarters).

Technical notes

Data source

Information included in this publication is, unless stated otherwise, derived from the National Apprentice and Trainee Collection, no.63, March 2010 estimates, which is compiled under the Australian Vocational Education and Training Management Information Statistical Standard (AVETMISS) for Apprentice and Trainee Collection Specifications, Release 6.0, March 2008.

Estimation procedure

This publication contains figures on apprentice and trainee activity (such as commencements, completions and in-training) based on the date of effect rather than the date of processing. Due to lags in processing, the most recent figures in this publication are estimated (for training activity from June quarter 2008 to December quarter 2009). The estimation method involves weighting recently processed numbers based on average reporting lags. Because estimates are revised for up to seven quarters, figures for the last two years may differ from those published in earlier or in subsequent reports. Further details on the methodology can be found at <http://www.ncver.edu.au/publications/2257.html>.

Seasonal adjustments

Seasonally adjusted data in this publication are derived from table 2 for in-training, table 4 for commencements, table 6 for completions and table 8 for cancellations and withdrawals. These data are adjusted using X-11-ARIMA methodology and then are 7-point Henderson smoothed. The seasonally adjusted data used in figures 1–3 are available at <http://www.ncver.edu.au/publications/2257.html>.

Notes on figures and tables

Due to lags in processing numbers, recent quarter activity is estimated. Proportions (percentages) may be subject to error as they are based on a sample, not the total population. Figures in bold are actual numbers.

See <<http://www.ncver.edu.au/publications/2257.html>> for the standard errors on these estimates.

- 1 The data have been seasonally adjusted and smoothed. For further information please refer to the technical notes on page 19.
- 2 The cancellation and withdrawal figures are inclusive of the new contract status 'transferred', as contract transfers were historically reported as cancellations or withdrawals.
- 3 Non-trades are defined as all major occupations groups 1–2 and 4–8 (ANZSCO 1st edition). Trades are defined as all major group 3 (Technicians and trades workers) (ANZSCO 1st edition).
- 4 The data presented in figure 3 uses ANZSCO, a change from ASCO (Australian Standard Classification of Occupations) in earlier publications, as ANZSCO has now been back-cast by NCVET to 1994 for reporting purposes. For further information on the methodology, see <<http://www.ncver.edu.au/publications/2257.html>>.
- 5 Unknown data have not been reported, whereas the total includes all contracts, including those with unknown status. Hence, some figures may not sum to the total.



National Centre for Vocational Education Research Ltd
Level 11, 33 King William Street, Adelaide, South Australia
PO Box 8288, Station Arcade, SA 5000 Australia
Telephone +61 8 8230 8400 Facsimile +61 8 8212 3436
Website www.ncveredu.au Email ncver@ncveredu.au