


## SUMMARY OF INTERNET TERMS AND RESOURCES




**WHAT IS THE INTERNET?** THE INTERNET IS A WORLDWIDE NETWORK OF COMPUTERS COMMUNICATING WITH EACH OTHER.


Here are some basic, easy-to-understand meanings of words about the Internet that you may have questions about:

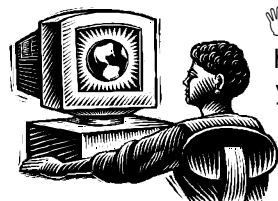
 **INTERNET SERVICE PROVIDERS (ISPs):** An Internet Service Provider (ISP) is a company or organization which provides access to the Internet for a fee (usually around \$20 a month). Examples of some of the best known ISPs include America On-Line (AOL) and CompuServe. There are quite a few smaller ISPs depending on where you live. Many people cannot afford a fee for an ISP, and find other ways to access the Internet. Many public libraries have computers with Internet access, and there are even restaurants and cafés that are specifically for people to use computers and access the Internet without paying to be connected! This is a web site that has many links to help you find the right ISP for you:


[http://www.herbison.com/herbison/iap\\_meta\\_list.html](http://www.herbison.com/herbison/iap_meta_list.html)


 **ELECTRONIC MAIL (E-MAIL):** This is basically a way to send written messages to other people using your computer and the Internet. Your ISP should provide you with an e-mail account and can provide software to read your email with. Another way to get e-mail is to use an email provider (the best examples are HotMail and Juno) where you can look at your e-mail no matter what computer you are using. For example, to email us, you would use this address: thechp@sued.syr.edu



 **ELECTRONIC MAILING LISTS AND LISTSERVS:** Electronic mailing lists and listservs are discussion and information-sharing groups that concentrate on a specific topic area. To subscribe to a particular list, you send an email to the list owner or manager. Becoming subscribed to a list means that when you send an email message to the list's email address (different from the list owner's address), you reach all the other individuals who are subscribed to the list at one time. You also receive any other mail sent to that e-mail address by other subscribers. On a busy mailing list or listserv, you can get up to 50 messages a day, and this can be hard to keep up with. Most of these messages consist of friendly, chatty, personal messages between list members.



 **NEWSGROUPS:** Newsgroups are like public listservs or mailing lists that you don't have to subscribe to. Newsgroups are accessed through your ISP in a way that allows you to send and read messages without having to use e-mail. Obviously, this has some real advantages. How you actually access and use newsgroups will depend on your ISP. The main problem with newsgroups is that they are very public, you often get "junk mail" messages, and you may get hundreds of messages a day.

 **WORLD WIDE WEB PAGES:** World Wide Web pages (or web pages) are multimedia sources of information on the Internet. Web pages can provide information in the forms of text, pictures, video and sound (usually only the newest computers are able to access video and sound). Each web page has its own address, known as a Uniform Resource Locator (URL), which tells your ISP where to go to find that page. Perhaps the largest parts of any web page are "links" to other web pages, which when you click on a "link" with your mouse, it takes you to that new page.

National Resource Center on Supported Living and Choice, Center on Human Policy  
Syracuse University, 805 South Crouse Avenue, Syracuse, NY 13244-2280  
1-800-894-0826 • 315-443-3851 (voice) • 315-443-4355 (tty) • 315-443-4338 (fax)  
<http://soeweb.syr.edu/thechp> • [thechp@sued.syr.edu](mailto:thechp@sued.syr.edu)

## INTERNET CHAT TOOLS

Another large part of the Internet involves chatting and chat rooms. We would like to recommend several Internet chat tools that can be downloaded ("downloading" is a way of making or moving a copy of files from another computer to your own computer) for free so you can talk to people you want to talk to, without the problems of going to or using a public chat room. Some of these tools and what web page address you need to go to download the program are:

- **ICQ:** ICQ stands for "I seek you." It is an Internet chat program that lets you know when your friends and colleagues that you put on your ICQ list are on the Internet and lets you send them short notes very quickly. You can also chat live to one or more people. Web page: <http://www.icq.com/>
- **Q-Talk:** Q-Talk is a speech program that works with ICQ. This means you can talk to the people on your ICQ list instead of typing your messages to them. Web page: <http://www.qtalka.com/>
- **Magic Spell:** Magic Spell is another program that works with ICQ and its read your ICQ messages out loud to you. Web page: <http://www.2bsys.com/magicspell/>
- **NetMeeting:** This program allows you to type, talk, and see live another person all at the same time. Web page: <http://www.microsoft.com/windows/netmeeting/>
- **buddyPhone:** buddyPhone is a fantastic program that lets you place phone calls over the Internet at no additional charges, and can also be used with ICQ. Web page: <http://www.buddyphone.com>
- **RocketTalk:** "Free Internet voice message system, allows a user to send a voice message to RocketTalk users and anyone with an email account, any email account." Web page: <http://www.rockettalk.com>
- **HoneyQ -** HoneyQ is a voice and/or video program that works with ICQ web page: <http://www.honeyq.com>

## FOR MORE INFORMATION...

A Straightforward Guide to the Internet - <http://indie.ca/roehel>

This guide provides a basic introduction to the Internet. It is written in plain language, with lots of images. Produced in an easy-to-read, larger than usual format, A Straightforward Guide to the Internet is divided into short manageable chapters. It explains what the Internet is, how you get connected, what e-mail is, and how to "surf the net."

Learning the Web - <http://www.libertynet.org/speaking/web.html>

This is a page to help users learn the web developed by Speaking for Ourselves.

Northamptonshire People First - <http://www.peoplefirst.org.uk/>

Since 1997, Northamptonshire People First, a leading self-advocacy group in England, has run two Internet mailing lists. The first is called Speak-Up. It is a private place where people with disabilities can speak to each other. The second is called Usupport. It is a place where only people with disabilities and the people who support them can speak to each other. If you want to join either or both of these Internet mailing lists, you can fill out a form at the web address listed above. Plus they have great links to all the information on the free Internet chat tools and on how to connect with other people through the world interested in talking about self-advocacy.

The Center on Human Policy - <http://soeweb.syr.edu/thechp/disres.htm>

The Center has a large list of other resources on the Internet concerning disability issues.

Community Advocacy Press

A newsletter published by and for people with disabilities, one of the recent issues is on the topic of communication, with the majority of information on e-mail, computers, etc. This newsletter is free to self-advocates. To subscribe, contact: Capabilities Unlimited, 2495 Erie Avenue, Cincinnati, OH 45208, 1-800-871-2181, e-mail: [countusin@aol.com](mailto:countusin@aol.com)

We hope that this fact sheet was helpful to you in learning more about the Internet. Please let us know if you have any questions on anything we talked about here, or if you need any other information.

This fact sheet is available in alternate formats upon request.



Thanks to Pam Walker at the Center on Human Policy and Karen Spencer, Chairperson of Northamptonshire People First for their comments.

Prepared by Rachael Zubal, Information Coordinator, and Mair Hall, Graduate Assistant  
Center on Human Policy, 805 South Crouse Ave, Syracuse, NY 13244-2280  
Phone: 315-443-3851 or 1-800-894-0826 • Fax: 315-443-4338 • TTY: 315-443-4355  
E-mail: [thechp@sued.syr.edu](mailto:thechp@sued.syr.edu) • <http://soeweb.syr.edu/thechp/>

The preparation of this fact sheet was supported in part by the National Resource Center on Supported Living and Choice, Center on Human Policy, School of Education, Syracuse University, through the U.S. Department of Education, Office of Special Education and Rehabilitative Services, National Institute on Disability and Rehabilitation Research (NIDRR), through Contract No. H133A990001. Members of the Center are encouraged to express their opinions; however, these do not necessarily represent the official position of NIDRR and no endorsement should be inferred.

