
Profile of BC College Transfer Students Admitted to the University of Victoria 2003/04 to 2007/08

*Prepared by: Jim Martell & Alan Wilson
Office of Institutional Planning and Analysis, University of Victoria*



**Profile of BC College Transfer Students Admitted to the
University of Victoria, 2003/04 to 2007/08**

© Copyright 2009 by the British Columbia Council on Admissions and Transfer.
BCCAT is the official mark of the BC Council on Admissions
and Transfer, as published by the Registrar of Trade-marks of the
Canadian Intellectual Property Office.

This Report is also available in Adobe Acrobat Portable Document
Format (pdf), from BCCAT Online, the Internet service of the BC Council on
Admissions and Transfer: www.bccat.ca. Photocopying and further distribution
of this document is permitted. Please credit source.

Prepared by: Jim Martell & Alan Wilson
Office of Institutional Planning and Analysis
University of Victoria

709 - 555 Seymour Street
Vancouver BC Canada V6B 3H6
bccat.ca | admin@bccat.ca
t 604 412 7700 | f 604 683 0576

TABLE OF CONTENTS

INTRODUCTION.....	5
ANALYSIS.....	6
TABLES & FIGURES.....	12
A. PROFILE OF B.C. COLLEGE TRANSFER STUDENTS	12
Table 1 - B.C. College Transfers Admitted to UVic by Year of Admission	13
Figure 1 - B.C. College Transfers Admitted to UVic by College.....	14
Table 2 - B.C. College Transfers Admitted to UVic by Total Transfer Credit Units	15
Table 3 - B.C. College Transfers Admitted to UVic by Session Type and Full-Time/Part-Time Status	16
Table 4 - B.C. College Transfers Admitted to UVic by Faculty	17
Table 5 - B.C. College Transfers Admitted to UVic by Degree Expected	18
Table 6 - B.C. College Transfers Admitted to UVic by Program Area.....	19
Table 7 - B.C. College Transfers Admitted to UVic by Age Interval	21
Table 8 - B.C. College Transfers Admitted to UVic by Gender.....	22
Table 9 - B.C. College Transfers Admitted to UVic by Admission Average.....	23
B. ACADEMIC PERFORMANCE OF B.C. COLLEGE TRANSFER STUDENTS.....	24
Table 10 - Academic Performance of B.C. College Transfers Admitted to UVic.....	25
Table 11 - Course Performance of B.C. College Transfers Admitted to UVic	26
Figure 2 - Academic Performance Comparison of B.C. High School Entrants and B.C. College Transfers Admitted to UVic.....	37
Table 12 - Graduation Rates of B.C. College Transfers Admitted to UVic by Total Transfer Credit Units	39
Table 13 - Cumulative UVic GPA of B.C. College Transfers Admitted to UVic at time of Graduation	41
Figure 3 - Cumulative UVic GPA Comparison of B.C. High School Entrants and B.C. College Transfers Admitted to UVic.....	43
C. PROFILE OF B.C. COLLEGE TRANSFER STUDENTS WHO GRADUATED.....	44
Table 14 - Academic Performance of B.C. College Transfers Admitted to UVic Who Graduated	45
Table 15 - Graduation Area of B.C. College Transfers Admitted to UVic	46
Table 16 - Credentials Awarded to B.C. College Transfers Admitted to UVic.....	48
Table 17 - Average Years to Credential for B.C. College Transfers Who Have Graduated	49
D. PROFILE OF STUDENTS WITH COLLEGE EXPERIENCE	50
Table 18 - Students With College Experience Admitted to UVic by Year of Admission.....	51
Table 19 - Students With College Experience Admitted to UVic by Age Interval	52
Table 20 - Students With College Experience Admitted to UVic by Gender	53
APPENDIX.....	54
Definitions and Technical Notes	54

INTRODUCTION

The *Profile of B.C. College Transfer Students Admitted to the University of Victoria 2003/04 to 2007/08* examines the population of college transfer students who entered the university during the last five years. Essentially an updated version of the June, 2004 report (which covered the academic years 1998/99 to 2002/03), this report differs from similar reports produced by other BC universities due to the different academic structure at UVic. In contrast to Simon Fraser University and the University of Northern B.C., which have three equal semesters, the UVic academic year is divided into a four-month summer session and an eight-month winter session. Data presented in this report cover a full academic year.

Students by Admission Category (Undergraduate)

Category	2003/04	%	2004/05	%	2005/06	%	2006/07	%	2007/08	%	Total	%
B.C. High School	1,679	32.3	1,678	33.6	1,866	32.3	2,047	37.0	1,798	34.8	9,068	34.0
B.C. College Transfer	1,411	27.2	1,267	25.4	1,682	29.1	1,337	24.2	1,220	23.6	6,917	26.0
Degree Holder	440	8.5	386	7.7	490	8.5	475	8.6	457	8.8	2,248	8.4
Out-of-Province Secondary	284	5.5	288	5.8	321	5.6	348	6.3	410	7.9	1,651	6.2
Out-of-Province University	148	2.9	137	2.7	236	4.1	208	3.8	193	3.7	922	3.5
Out-of-Province College	221	4.3	220	4.4	246	4.3	259	4.7	217	4.2	1,163	4.4
Special Access (Mature, Disabled)	101	1.9	55	1.1	44	0.8	63	1.1	40	0.8	303	1.1
B.C. University Transfer	85	1.6	86	1.7	127	2.2	129	2.3	159	3.1	586	2.2
Other	822	15.8	870	17.4	759	13.2	663	12.0	673	13.0	3,787	14.2
Total	5,191	100.0	4,987	100.0	5,771	100.0	5,529	100.0	5,167	100.0	26,645	100.0

Students with Some B.C. College Transfer Credit by Admission Category (Undergraduate)

Category	2003/04	%	2004/05	%	2005/06	%	2006/07	%	2007/08	%	Total	%
B.C. College Transfer	1,411	78.8	1,267	80.9	1,682	83.5	1,337	83.1	1,220	83.4	6,917	81.9
B.C. High School	21	1.2	21	1.3	28	1.4	22	1.4	13	0.9	105	1.2
Degree Holder	96	5.4	62	4.0	85	4.2	79	4.9	72	4.9	394	4.7
Special Access (Mature, Disabled)	50	2.8	21	1.3	14	0.7	20	1.2	14	1.0	119	1.4
B.C. University Transfer	35	2.0	39	2.5	45	2.2	32	2.0	38	2.6	189	2.2
Out-of-Province Secondary	0	0.0	0	0.0	0	0.0	1	0.1	1	0.1	2	0.0
Out-of-Province University	13	0.7	18	1.1	27	1.3	6	0.4	12	0.8	76	0.9
Out-of-Province College	19	1.1	15	1.0	15	0.7	20	1.2	19	1.3	88	1.0
Other	146	8.2	123	7.9	118	5.9	91	5.7	73	5.0	551	6.5
Total	1,791	100.0	1,566	100.0	2,014	100.0	1,608	100.0	1,462	100.0	8,441	100.0

In addition to B.C. college transfers and B.C. high school entrants, students may be admitted to UVic in a number of other categories, as tabulated above. Predictably, B.C. high school and B.C. college transfers form the bulk (60%) of new admissions. Also tabulated above are students by admission category with some B.C. college credit. Most of these students are, of course, B.C. college transfer students. Nevertheless, an average of 305 students were admitted annually in other categories who also transferred B.C. college credits to UVic.

The focus of this report is on those students admitted to the University of Victoria as B.C. college transfers. In most cases, students in this category have at least twelve units of transfer credit. Sixty units (fifteen units in each of four years) are usually required for a bachelor's degree, where a 1.5 unit UVic course is comparable to a 3 credit course at most other B.C. universities and colleges. The tabulations in this report are generally by the B.C. college the student attended. These colleges are grouped into two regions particularly appropriate for mainland B.C. universities: Lower Mainland, and Non Lower Mainland. Lower Mainland is divided into two categories: Public and Private. Non Lower Mainland is divided into three regions: Northern B.C., Interior/Kootenays, and Vancouver Island. When the student attended and earned transfer credits from more than one college, the one shown is where the majority of such credits were earned. In cases where the number of credits earned from each college is the same, the most recently attended college is shown.

Note that in September 2008, five BC institutions were designated as teaching universities: Capilano College, Emily Carr Institute of Art & Design, Kwantlen University College, Malaspina University-College and University College of the Fraser Valley became Capilano University, Emily Carr University of Art & Design, Kwantlen Polytechnic University, Vancouver Island University, and University of the Fraser Valley, respectively. In academic year 2005/06, University College of the Cariboo became Thompson Rivers University; data in this report do not include transfers from TRU.

ANALYSIS¹

A. Profile of B.C. College Transfer Students

The report is divided into four sections. **Section A**, composed of Tables 1-9 and Figure 1, provides a general profile of the 6,917 B.C. college transfer students who first registered and commenced studies at UVic in any session between summer 2003 and winter 2007/08. This group includes students who withdrew sometime during their first session. For someone who began in September in a winter session, this withdrawal could have been as late as February, after the completion of fall courses.

Table 1, *B.C. College Transfers Admitted to UVic by Year of Admission*, tabulates B.C. College transfers by region, college, and year of admission. Counts of students admitted from B.C. high schools are included for comparison. An average of 1,383 B.C. college transfer students were admitted to UVic each year between 2003/04 and 2007/08. Of all college transfers to UVic, 57% are from Vancouver Island colleges. Camosun College in Victoria continues to lead all other B.C. Colleges by a wide margin as a source of transfers to UVic, at 47%. Langara College, in the Lower Mainland, is a distant second at 11%, and Malaspina University-College on Vancouver Island is third at 8%. The number of transfer students coming from Camosun remained relatively stable, except

¹ Note: In the tables, blank cells indicate between 1 and 5 students (used to calculate totals), whereas those with no students are identified with a zero (0). This is in accordance with the Data Access Policy of the Student Transitions Project so that individuals cannot be reasonably identified.

for 2005/06 with 792 students. The proportion of transfer students from Camosun also remained stable, except for 2007/08 in which the proportion climbed to 53%.

Table 2, *B.C. College Transfers Admitted to UVic by Total Transfer Credit Units*, tabulates B.C. college transfers by college and transfer credits. Half of all transfer students entered with at least 27.5 units, while only 24% entered with 17 or fewer units. Students coming from colleges in the Lower Mainland were more likely to transfer at least 27.5 units (57%) than were students from non-Lower Mainland colleges (47%).

Table 3, *B.C. College Transfers Admitted to UVic by Session Type & Full-Time/Part-Time Status*, breaks down entrants by session type. For winter session entrants, the full-time/part-time status is also displayed. Full-time requires enrolment in at least twelve units of course work for students not enrolled in a coop program. All coop students are defined as full-time. Approximately 12% of B.C. college transfer students began in the summer, compared to only 1% of B.C. high school entrants. B.C. high school winter session entrants are much more likely to enroll as full-time students (78%) than B.C. college transfers (43%), though a majority (75%) of transfers from the College of the Rockies enrolled as full-time students. Students from the Lower Mainland, especially BCIT (73%) and Langara (68%), are more likely to enroll as part-time students than are students from the non-Lower Mainland.

Table 4, *B.C. College Transfers Admitted to UVic by Faculty*, which tabulates students by the faculty entered, indicates that the vast majority of B.C. high school entrants (80%) started in Humanities, Science or Social Sciences, while B.C. college transfers were most likely to enter Human and Social Development, Social Sciences or Humanities (75%). Usually, first year students cannot enter the Faculties of Business, Education, Human and Social Development, or Law. Because most college transfer students enter UVic at a second year level or higher, they can directly enter these faculties; as a result, transfer students were more likely than high school entrants to start in Business, Education or Human and Social Development. Thus this Table is more a reflection of year level than degree intention.

Table 5, *B.C. College Transfers Admitted to UVic by Degree Expected*, shows that the most frequent choice (by 33%) is one of the many BA degree programs. The second degree expected (by 18%) is a Bachelor of Nursing degree, followed by Bachelor of Science (12.5%) and Social Science Undeclared (11%).

Table 6, *B.C. College Transfers Admitted to UVic by Program Area*, is complicated by the fact that most B.C. college transfer students do not specify an area of study during their first session at UVic; the program areas displayed are therefore combinations of faculty and degree-expected data. For B.C. college transfers, the most popular initial program area is Arts (33%) followed by Nursing (18%); for High School entrants the most popular initial program area is Arts (30%) followed by Social Science Undeclared (17%).

Table 7, *B.C. College Transfers Admitted to UVic by Age Interval*, displays the age distribution of college transfer students. On average, college entrants are more than six years older (24.5) than high school entrants (18.0). Entrants from BCIT and Douglas College are older (33.3 & 27.0) than entrants from other colleges.

Table 8, *B.C. College Transfers Admitted to UVic by Gender*, shows that females comprise the majority of both B.C. college transfers (63%) and B.C. high school entrants (56%). Sixty-two percent of non-Lower Mainland college transfers were women, compared to 67% of transfers from Lower Mainland colleges. Possibly because of the high number of Nursing transfers, the highest proportion of female transfer students came from Douglas College (76%)

Table 9, *B.C. College Transfers Admitted to UVic by Admission Average*, indicates an overall mean of 74.7 (down from 74.8 between 1998-99 and 2002-03) and an overall median of 74.0 (unchanged). More than half (60.1%) of transfers admitted had an admission average of 75 or better.

B. Academic Performance of B.C. College Transfer Students

Section B examines the UVic performance of B.C. college entrants, and is composed of Tables 10-13 and Figures 2 and 3. As in section A, Tables 10 and 11 provide a profile of all 6,917 B.C. college transfer students who first registered and commenced studies at UVic in any session between summer 2003 and winter 2007/08. Tables 12 and 13 focus on those who entered between summer 2003 and winter 2004/05, and hence have had sufficient time to earn a credential.

In addition to the admission average, **Table 10**, *Academic Performance of B.C. College Transfers Admitted to UVic*, gives the first session grade point average, graduating grade point average, and cumulative grade point average of B.C. college entrants. A grade point is a numerical value given to a letter grade, with 9 equivalent to A⁺, 8 to A, 7 to A⁻, 6 to B⁺, 5 to B, 4 to B⁻, 3 to C⁺, 2 to C, 1 to D, and 0 to failure. The graduating GPA of a student in a bachelor's degree program is based on grades in 300 and 400 level (and in Education, 700 level) courses acceptable within the degree program being taken. The cumulative GPA is based on all courses taken while at the university. Students from the University College of the Fraser Valley had the highest average graduating and cumulative GPAs, at 6.84 and 6.80 respectively. Coquitlam College (the only college to supply more men than women) and Columbia College had the lowest cumulative GPAs (See also Appendix “Comparing Grading Systems”). Although admission GPA was slightly higher for college transfer students (5.79) than for high school entrants (5.54), both groups had the same average cumulative GPA (6.09). Graduating GPA was higher for high school transfer entrants (6.38) than for college transfer students (6.14).

Table 11, *Course Performance of B.C. College Transfers Admitted To UVic*, spans eleven pages and compares the performance of B.C. college and B.C. high school entrants in a selection of high-enrollment courses. For college categories with fewer than five students in a given course, the mean admission average and average course grade are not given. **Figure 2a and Figure 2b** summarize the average grades of B.C. college transfers and B.C. high school entrants for these thirty-two courses. In 69% of the courses, the high school entrants scored higher than the college entrants. A partial explanation may be “transfer shock”, given that many of the college students were attending university for the first time, while most, if not all, of the high school entrants had attended UVic in a previous session.

Table 12, *Graduation Rates of B.C. College Transfers Admitted to UVic by Total Transfer Credit Units*, tabulates the graduation rates of B.C. college transfers by college and total transfer credit units at the time of admission, for those who entered in 2003/04 or 2004/05. As one would expect, these rates tend to be higher for those who entered with more transfer credits, and hence were further along in their programs. Also, differences among colleges in the average number of transfer credits among its students would lead to differences in graduation rates. Note that those who withdrew during their first session are included. Of students who entered in 03/04 or 04/05, 68.8% have graduated, but some are still at UVic and will graduate in the future.

Table 13, *Cumulative UVic GPA of B.C. College Transfers Admitted to UVic at Time of Graduation*, shows that the 2,601 graduating B.C. college transfer students who entered between 2003/04 and 2007/08 (and for whom a cumulative GPA was available) had a mean cumulative GPA (CGPA) of 6.09. As noted above, the cumulative GPA is based on all courses taken while at UVic. Students transferring from the University College of the Fraser Valley and Selkirk College had the highest CGPA among the colleges at 6.80 and 6.62 respectively. **Figure 3** compares the cumulative GPA of B.C. college transfers with B.C. high school entrants, both of which are 6.09. Since high school entrants usually begin at UVic at the first year level, rather than at the second or third year level like college transfers, only 836 have graduated. Note that Cumulative GPA was not available for 177 cases, so it is based on 2,601 cases rather than the 2,778 transfer students.

C. Profile of B.C. College Transfer Students who Graduated

Section C, composed of **Tables 14-17**, focuses on the 2,778 B.C. college transfer students admitted to UVic during the last five years who have graduated.

Table 14, *Academic Performance of B.C. College Transfers Admitted to UVic Who Graduated*, summarizes the grade performance of this group. While students from Lower Mainland colleges had, on average, lower admission GPA than did non-Lower Mainland transfer students (5.7 and 6.3 respectively), cumulative GPA were higher for transfers from Lower Mainland colleges (6.15) than for transfers from non-Lower Mainland colleges (6.06). Half of colleges (9/18) had, on average, lower graduating GPA than admission GPA; this is a dramatic change from the previous report, in which only three colleges had lower average graduating GPA than admission GPA.

Table 15, *Graduation Area of B.C. College Transfers Admitted to UVic*, shows that the most popular areas are Nursing (chosen by 29%), Economics (7%), and Psychology (6%).

Table 16, *Credentials Awarded to B.C. College Transfers Admitted to UVic*, shows the distribution by degree awarded. For both B.C. college transfer students and B.C. high school entrants, BAs predominated at 37.1% and 49.6% respectively. BScs comprised 12.3% and 30.6% of credentials awarded respectively. For college transfer students, BSc in Nursing comprised 28.9% of credentials.

Table 17, *Average Years to Credential for B.C. College Transfers who have Graduated*, shows the average number of years to graduation by credential awarded, the overall average being 2.4. This period of time is measured from when the student first entered UVic, whether enrolment was continuous from the time of entry to the time of graduation or not. These figures are largely dependent on the number of transfer credits the entering student would have had. Figures will change as more students graduate.

D. Profile of Students with B.C. College Experience

Section D, comprised of Tables 18-20, profiles the 1,524 students who were not admitted to UVic on the basis of work at a B.C. college, but who attended a B.C. college sometime in the past. This group includes those admitted on the basis of a B.C. high school, out-of-province secondary, mature students, students from another university, etc. In cases where more than one college was attended, the most recent is chosen.

Table 18, *Students with B.C. College Experience Admitted to UVic by Year of Admission*, shows that the top three sources of students with college experience admitted to UVic are Camosun College (31%), Malaspina University-College (10%), and Langara College (9%).

Table 19, *Students with B.C. College Experience Admitted to UVic by Age Interval*, which gives the age distribution of students with college experience, shows that, with a mean age of 29.0, they are considerably older than B.C. college transfer students, whose mean age from **Table 7** is 24.5. Over half (56%) are between 20 and 29 years old, and a significant proportion (16%) are more than 39 years old.

Table 20, *Students with B.C. College Experience Admitted to UVic by Gender*, shows that over two-thirds (68.0%) are women, which is higher than the B.C. College Transfer group (63.2%). While Lower Mainland institutions have a higher proportion of women with B.C. college experience than do those from the non-Lower Mainland (70.9% vs. 66.5%), a significant exception are the students from Northwest Community College who were 82.1% female.

Section A

PROFILE OF B.C. COLLEGE TRANSFER STUDENTS

Table 1
B.C. College Transfers Admitted to UVic by Year of Admission

Region/College	2003/04	2004/05	2005/06	2006/07	2007/08	Total
Non Lower Mainland						
Northern B.C.						
College of New Caledonia	16	17	14	7	12	66
Northern Lights College			16		6	33
Northwest Community College	9	6	9	10	12	46
	<u>30</u>	<u>25</u>	<u>39</u>	<u>21</u>	<u>30</u>	<u>145</u>
Interior/Kootenays						
College of the Rockies	28	27	24	28	40	147
Okanagan University College	63	53	47	22	30	215
Selkirk College	62	48	55	53	43	261
UC of the Cariboo *	22	34	17	8	10	91
	<u>175</u>	<u>162</u>	<u>143</u>	<u>111</u>	<u>123</u>	<u>714</u>
Vancouver Island						
Camosun College	625	590	792	614	644	3,265
Malaspina University-College	92	112	143	120	84	551
North Island College	33	26	38	29	26	152
	<u>750</u>	<u>728</u>	<u>973</u>	<u>763</u>	<u>754</u>	<u>3,968</u>
Total Non Lower Mainland	<u>955</u>	<u>915</u>	<u>1,155</u>	<u>895</u>	<u>907</u>	<u>4,827</u>
Lower Mainland						
Public						
BCIT	64	39	34	32	29	198
Capilano College	52	39	77	55	56	279
Douglas College	69	45	76	62	45	297
Kwantlen University College	52	43	61	51	56	263
UC of the Fraser Valley	16	15	26	32	25	114
Langara College	145	136	226	160	75	742
	<u>398</u>	<u>317</u>	<u>500</u>	<u>392</u>	<u>286</u>	<u>1,893</u>
Private						
Columbia College	29	22	21	39	12	123
Coquitlam College	30	19	11	7	7	74
	<u>59</u>	<u>41</u>	<u>32</u>	<u>46</u>	<u>19</u>	<u>197</u>
Total Lower Mainland	<u>457</u>	<u>358</u>	<u>532</u>	<u>438</u>	<u>305</u>	<u>2,090</u>
Total B.C. College Transfers	1,412	1,273	1,687	1,333	1,212	6,917
Total B.C. High School Entrants	1,679	1,678	1,866	2,047	1,798	9,068

Percentage Distribution

Non Lower Mainland						
Northern B.C.	2.1	2.0	2.3	1.6	2.5	2.1
Interior/Kootenays	12.4	12.7	8.5	8.3	10.1	10.3
Vancouver Island	53.1	57.2	57.7	57.2	62.2	57.4
Total Non Lower Mainland	<u>67.6</u>	<u>71.9</u>	<u>68.5</u>	<u>67.1</u>	<u>74.8</u>	<u>69.8</u>
Lower Mainland						
Public	28.2	24.9	29.6	29.4	23.6	27.4
Private	4.2	3.2	1.9	3.5	1.6	2.8
Total Lower Mainland	<u>32.4</u>	<u>28.1</u>	<u>31.5</u>	<u>32.9</u>	<u>25.2</u>	<u>30.2</u>
Grand Total	100.0	100.0	100.0	100.0	100.0	100.0

* In 2005, the University College of the Cariboo (UCC) became Thompson Rivers University (TRU). Transfer agreements between UCC and research universities were maintained by TRU and the research universities. The number of TRU transfer students admitted to UVic were 28 in 2006/07 and 30 in 2007/08.

Figure 1

BC College Transfers Admitted to UVic by College 2003/04 to 2007/08

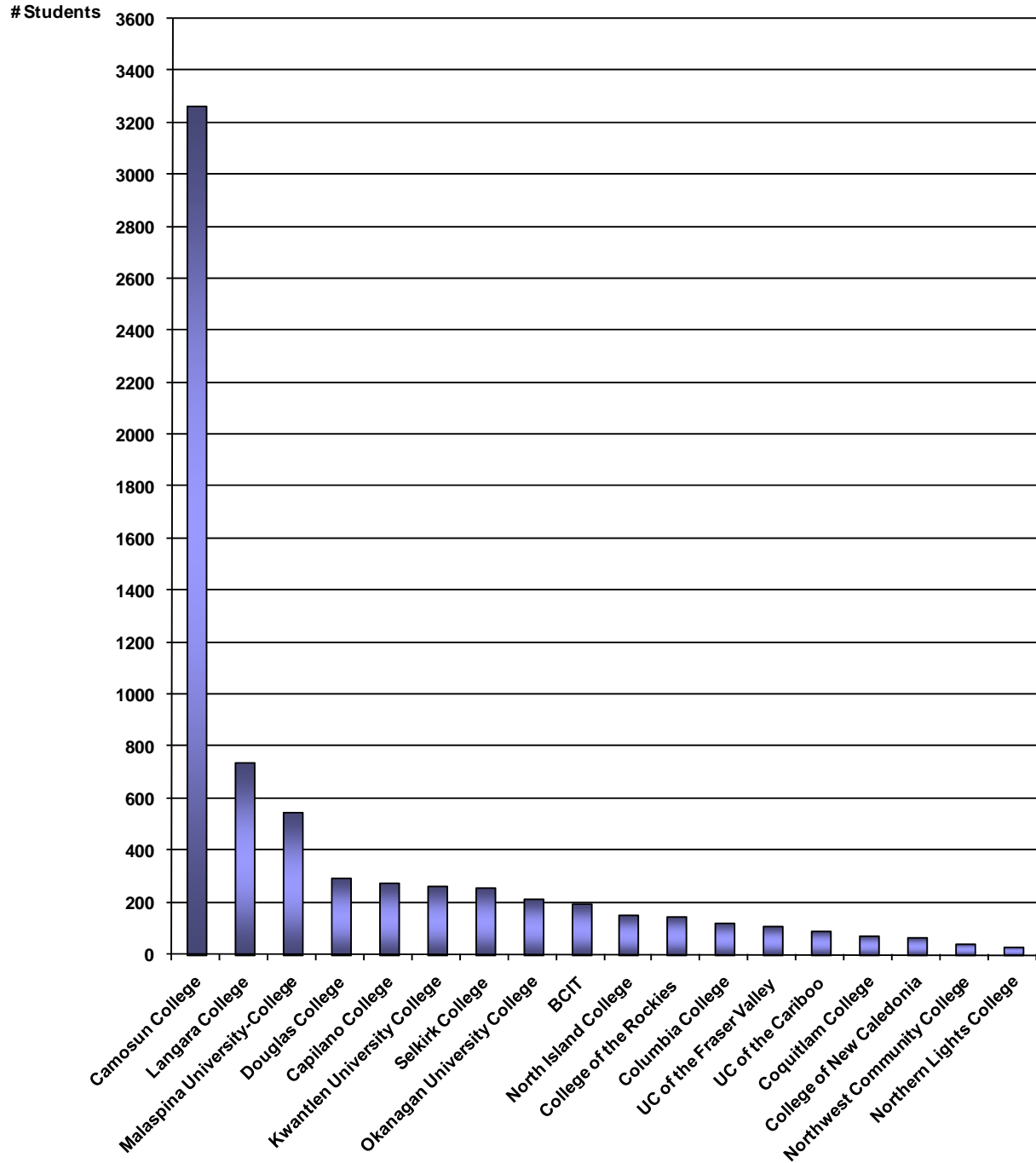


Table 2
B.C. College Transfers Admitted to UVic by Total Transfer Credit Units
(2003/04 to 2007/08)

Region/College	<15	15-17	17.5-19.5	20-22	22.5-24.5	25-27	≥27.5	Total
Non Lower Mainland								
Northern B.C.								
College of New Caledonia	12	9	6		7		29	66
Northern Lights College	13	6			5		8	33
Northwest Community College	11	12					15	46
	<u>36</u>	<u>27</u>	<u>9</u>	<u>2</u>	<u>15</u>	<u>4</u>	<u>52</u>	<u>145</u>
Interior/Kootenays								
College of the Rockies	13	12	5				108	147
Okanagan University College	42	37	11	9	26	19	71	215
Selkirk College	20	23	9	6	13	19	171	261
UC of the Cariboo	12	15			5	11	42	91
	<u>87</u>	<u>87</u>	<u>29</u>	<u>20</u>	<u>47</u>	<u>52</u>	<u>392</u>	<u>714</u>
Vancouver Island								
Camosun College	445	275	242	133	267	275	1,628	3,265
Malaspina University-College	109	80	55	26	60	55	166	551
North Island College	33	17	16	8	18	13	47	152
	<u>587</u>	<u>372</u>	<u>313</u>	<u>167</u>	<u>345</u>	<u>343</u>	<u>1,841</u>	<u>3,968</u>
Total Non Lower Mainland	710	486	351	189	407	399	2,285	4,827
Lower Mainland								
Public								
BCIT	12						177	198
Capilano College	47	27	19	14	24	31	117	279
Douglas College	30	13	16	6	11	17	204	297
Kwantlen University College	64	23	21	13	21	21	100	263
UC of the Fraser Valley	19	20	14		15	12	30	114
Langara College	51	32	25	17	45	35	537	742
	<u>223</u>	<u>119</u>	<u>96</u>	<u>57</u>	<u>116</u>	<u>117</u>	<u>1,165</u>	<u>1,893</u>
Private								
Columbia College	23	37	27	8	13	6	9	123
Coquitlam College	11	19	11	8	12	5	8	74
	<u>34</u>	<u>56</u>	<u>38</u>	<u>16</u>	<u>25</u>	<u>11</u>	<u>17</u>	<u>197</u>
Total Lower Mainland	257	175	134	73	141	128	1,182	2,090
Total B.C. College Transfers	967	661	485	262	548	527	3,467	6,917

Percentage Distribution

Non Lower Mainland								
Northern B.C.	24.8	18.6	6.2	1.4	10.3	2.8	35.9	100.0
Interior/Kootenays	12.2	12.2	4.1	2.8	6.6	7.3	54.9	100.0
Vancouver Island	14.8	9.4	7.9	4.2	8.7	8.6	46.4	100.0
Total Non Lower Mainland	<u>14.7</u>	<u>10.1</u>	<u>7.3</u>	<u>3.9</u>	<u>8.4</u>	<u>8.3</u>	<u>47.3</u>	<u>100.0</u>
Lower Mainland								
Public	11.8	6.3	5.1	3.0	6.1	6.2	61.5	100.0
Private	17.3	28.4	19.3	8.1	12.7	5.6	8.6	100.0
Total Lower Mainland	<u>12.3</u>	<u>8.4</u>	<u>6.4</u>	<u>3.5</u>	<u>6.7</u>	<u>6.1</u>	<u>56.6</u>	<u>100.0</u>
Grand Total	14.0	9.6	7.0	3.8	7.9	7.6	50.1	100.0

Table 3
B.C. College Transfers Admitted to UVic by Session Type & Full-Time/Part-Time Status*
(2003/04 to 2007/08)

Region/College	Summer	Winter FT	Winter PT	Total	Percentage	
					Winter FT	Winter PT
Non Lower Mainland						
Northern B.C.						
College of New Caledonia		28	36	66	43.8	56.3
Northern Lights College		16	15	33	51.6	48.4
Northwest Community College	0	29	17	46	63.0	37.0
	4	73	68	145	51.8	48.2
Interior/Kootenays						
College of the Rockies		108	36	147	75.0	25.0
Okanagan University College	14	119	82	215	59.2	40.8
Selkirk College	8	83	170	261	32.8	67.2
UC of the Cariboo	6	46	39	91	54.1	45.9
	31	356	327	714	52.1	47.9
Vancouver Island						
Camosun College	472	1,089	1,704	3,265	39.0	61.0
Malaspina University-College	39	281	231	551	54.9	45.1
North Island College	11	75	66	152	53.2	46.8
	522	1,445	2,001	3,968	41.9	58.1
Total Non Lower Mainland	557	1,874	2,396	4,827	43.9	56.1
Lower Mainland						
Public						
BCIT		52	143	198	26.7	73.3
Capilano College	8	140	131	279	51.7	48.3
Douglas College	19	97	181	297	34.9	65.1
Kwantlen University College	12	143	108	263	57.0	43.0
UC of the Fraser Valley		60	50	114	54.5	45.5
Langara College	209	172	361	742	32.3	67.7
	255	664	974	1,893	40.5	59.5
Private						
Columbia College	22	35	66	123	34.7	65.3
Coquitlam College	18	24	32	74	42.9	57.1
	40	59	98	197	37.6	62.4
Total Lower Mainland	295	723	1,072	2,090	40.3	59.7
Total B.C. College Transfers	852	2,597	3,468	6,917	42.8	57.2
Total B.C. High School Entrants	53	7,020	1,995	9,068	77.9	22.1

* Note:

Table shows distribution of credit hours in first session at UVic

Table 4
B.C. College Transfers Admitted to UVic by Faculty
(2003/04 to 2007/08)

Region/College	Busi- ness	Edu- cation	Engi- neering	Fine Arts	Human & Social		Science	Social Science	Law	Total
					Develop- ment	Human- ities				
Non Lower Mainland										
Northern B.C.										
College of New Caledonia			9		15	8	5	19	0	66
Northern Lights College					12			10	0	33
Northwest Community College					10	7	12	14	0	46
			14	7	37	19	18	43	0	145
Interior/Kootenays										
College of the Rockies	0	73			21	13	13	21	0	147
Okanagan University College		14	13	10	24	61	17	74	0	215
Selkirk College			15	7	159	15	25	34	0	261
UC of the Cariboo			5		18	17	15	24	0	91
	8	95	36	24	222	106	70	153	0	714
Vancouver Island										
Camosun College	76	121	222	88	601	691	317	1,149	0	3,265
Malaspina University-College	18	19	53	41	83	90	77	170	0	551
North Island College			8	5	27	40	25	44	0	152
	95	142	283	134	711	821	419	1,363	0	3,968
Total Non Lower Mainland	107	240	333	165	970	946	507	1,559	0	4,827
Lower Mainland										
Public										
BCIT	0	0	47		138				0	198
Capilano College	6			35	33	62	21	115	0	279
Douglas College	25		5	17	143	30	13	61	0	297
Kwantlen University College		0	23	27	40	54	14	104	0	263
UC of the Fraser Valley			6	5	19	22	15	40	0	114
Langara College	34		8	15	435	82	18	148		742
	70	10	93	100	808	252	86	473		1,893
Private										
Columbia College	6	0	5	0	0	11	7	94	0	123
Coquitlam College	8	0	9	0	0	6	4	47	0	74
	14	0	14	0	0	17	11	141	0	197
Total Lower Mainland	84	10	107	100	808	269	97	614		2,090
Total B.C. College Transfers	191	250	440	265	1,778	1,215	604	2,173		6,917
Total B.C. High School Entrants	0	0	958	812	60	2,017	2,258	2,962		9,068

Percentage Distribution

Non Lower Mainland										
Northern B.C.	2.8	2.1	9.7	4.8	25.5	13.1	12.4	29.7	0.0	100.0
Interior/Kootenays	1.1	13.3	5.0	3.4	31.1	14.8	9.8	21.4	0.0	100.0
Vancouver Island	2.4	3.6	7.1	3.4	17.9	20.7	10.6	34.3	0.0	100.0
Total Non Lower Mainland	2.2	5.0	6.9	3.4	20.1	19.6	10.5	32.3	0.0	100.0
Lower Mainland										
Public	3.7	0.5	4.9	5.3	42.7	13.3	4.5	25.0	0.1	100.0
Private	7.1	0.0	7.1	0.0	0.0	8.6	5.6	71.6	0.0	100.0
Total Lower Mainland	4.0	0.5	5.1	4.8	38.7	12.9	4.6	29.4	0.0	100.0
Grand Total College Transfers	2.8	3.6	6.4	3.8	25.7	17.6	8.7	31.4	0.0	100.0
High School Entrants	0.0	0.0	10.6	9.0	0.7	22.2	24.9	32.7	0.0	100.0

Table 5
B.C. College Transfers Admitted to UVic by Degree Expected
(2003/04 to 2007/08)

Degree Expected	<u># of Students</u>	<u>% of Students</u>	<u>Admission Average</u>
Bachelor of Arts	2,307	33.4	5.8
Bachelor of Commerce	191	2.8	6.6
Bachelor of Education	231	3.3	6.5
Bachelor of Engineering	289	4.2	6.5
Bachelor of Fine Arts	131	1.9	6.3
Bachelor of Music	57	0.8	5.9
Bachelor of Science	863	12.5	5.8
Bachelor of Nursing	1,238	17.9	3.1
Bachelor of Social Work	191	2.8	6.0
Non-Degree	87	1.3	4.7
Humanities Undeclared	299	4.3	5.5
Science Undeclared	72	1.0	5.6
Social Science Undeclared	764	11.0	5.5
Human & Social Development Undeclared	166	2.4	5.4
Other	31	0.4	5.5
Total	6,917	100.0	5.8

Note: Excluded from the admission average column are college transfer students with no recorded post-secondary average. They may have no recorded average because of data entry omissions or errors, because they are Nursing or Law students whose averages aren't entered, or because of errors or omissions.

Students are not required to declare a degree program until third year.

Table 6
B.C. College Transfers Admitted to UVic by Program Area*
(2003/04 to 2007/08)

Region/College	Arts	Com- merce	Edu- cation	Engi- neering	Fine Arts	Music	Science
Non Lower Mainland							
Northern B.C.							
College of New Caledonia	21					0	9
Northern Lights College	7					0	
Northwest Community College	16			0	0	0	15
	44			6		0	26
Interior/Kootenays							
College of the Rockies	21	0	73			0	17
Okanagan University College	94		12	9	5		31
Selkirk College	46			10			31
UC of the Cariboo	31					0	17
	192	8	92	22	15		96
Vancouver Island							
Camosun College	1205	76	114	148	51	10	448
Malaspina University-College	176	18	14	34	22	9	107
North Island College	56			5		0	31
	1,437	95	130	187	77	19	586
Total Non Lower Mainland	1,673	107	225	215	96	21	708
Lower Mainland							
Public							
BCIT		0	0	45	0	0	7
Capilano College	138	6		0	14	11	28
Douglas College	83	25			5	11	20
Kwantlen University College	104		0	16	10	13	26
UC of the Fraser Valley	50			6		0	18
Langara College	183	34	0				26
	561	70	7	71	36	36	125
Private							
Columbia College	41	6	0		0	0	14
Coquitlam College	32	8	0		0	0	16
	73	14	0		0	0	30
Total Lower Mainland	634	84	7	74	36	36	155
Total B.C. College Transfers	2,307	191	232	289	132	57	863
Percentage Distribution	33.4	2.8	3.4	4.2	1.9	0.8	12
Total B.C. High School Entrants	2,754	0	0	524	493	164	2,343
Percentage Distribution	30.4	0.0	0.0	5.8	5.4	1.8	26

*Note: Estimated based on Faculty and degree expected data.

Table 6 (Cont'd)
B.C. College Transfers Admitted to UVic by Program Area
(2003/04 to 2007/08)

Region/College	Nursing	Social Work	Humanities Unspecified	Science Unspecified	Social Science Unspecified	Human & Social Development	Other	Total
Non Lower Mainland								
Northern B.C.								
College of New Caledonia	10		0	0	7			66
Northern Lights College	0	6		0	7	5		33
Northwest Community College	0		0	0	5			46
	10	11		0	19	10	7	145
Interior/Kootenays								
College of the Rockies	18	0		0	8		0	147
Okanagan University College	5	5	12		20	7	10	215
Selkirk College	115	21			12	9		261
UC of the Cariboo	11				9			91
	149	29	20	7	49	20	13	714
Vancouver Island								
Camosun College	455	56	175	45	411	30	41	3,265
Malaspina University-College	6	32	23	5	68	29	8	551
North Island College		10	6		17	13	5	152
	462	98	204	51	496	72	54	3,968
Total Non Lower Mainland	621	138	225	58	564	102	74	4,827
Lower Mainland								
Public								
BCIT	134		0			0	5	198
Capilano College	2		14		31	10	19	279
Douglas College	75	8	13		20	27		297
Kwantlen University College	22	8	20		34	7		263
UC of the Fraser Valley	5				13	5	0	114
Langara College	379	31	15		38	16	10	742
	617	53	66	11	137	65	38	1,893
Private								
Columbia College	0	0			54	0	0	123
Coquitlam College	0	0		0	12	0	0	74
	0	0	8		66	0	0	197
Total Lower Mainland	617	53	74	14	203	65	38	2,090
Total B.C. College Transfers	1,238	191	299	72	767	167	112	6,917
Percentage Distribution	17.9	2.8	4.3	1.0	11.1	2.4	1.6	100.0
Total B.C. High School Entrants	0	0	662	493	1,558	5	72	9,068
Percentage Distribution	0.0	0.0	7.3	5.4	17.2	0.1	0.8	100.0

Table 7
B.C. College Transfers Admitted to UVic by Age Interval
(2003/04 to 2007/08)

Region/College	<20	20-24	25-29	30-34	35-39	>39	Total	Average
Non Lower Mainland								
Northern B.C.								
College of New Caledonia	12	32	7			8	66	25.7
Northern Lights College		17					33	25.6
Northwest Community College	20	12	5	5			46	24.0
	36	61	16	11	6	15	145	25.1
Interior/Kootenays								
College of the Rockies	25	91	19	8			147	22.6
Okanagan University College	52	120	18	6	8	11	215	23.3
Selkirk College	30	108	48	34	24	17	261	26.5
UC of the Cariboo	17	47	13			6	91	24.3
	124	366	98	52	39	35	714	24.5
Vancouver Island								
Camosun College	244	2,117	540	175	83	106	3,265	23.9
Malaspina University-College	113	320	52	17	11	38	551	23.7
North Island College	33	62	22	13	6	16	152	25.6
	390	2,499	614	205	100	160	3,968	23.9
Total Non Lower Mainland	550	2,926	728	268	145	210	4,827	24.0
Lower Mainland								
Public								
BCIT	0	45	30	40	35	48	198	33.3
Capilano College	45	172	27	15	8	12	279	23.5
Douglas College	22	141	49	30	21	34	297	27.0
Kwantlen University College	58	150	31	7	6	11	263	23.0
UC of the Fraser Valley	30	67	5			10	114	23.2
Langara College	51	389	146	72	36	48	742	25.8
	206	964	288	165	107	163	1,893	25.9
Private								
Columbia College		114	5		0	0	123	21.8
Coquitlam College		67	7	0	0	0	74	22.1
		181	12		0	0	197	21.9
Total Lower Mainland	209	1,145	300	166	107	163	2,090	25.5
Total B.C. College Transfers	759	4,071	1,028	434	252	373	6,917	24.5
Total B.C. High School Entrants	8,713	300	27	6		18	9,068	18.0

Percentage Distribution

Non Lower Mainland								
Nothern B.C.	24.8	42.1	11.0	7.6	4.1	10.3	100.0	
Interior/Kootenays	17.4	51.3	13.7	7.3	5.5	4.9	100.0	
Vancouver Island	9.8	63.0	15.5	5.2	2.5	4.0	100.0	
Total Non Lower Mainland	11.4	60.6	15.1	5.6	3.0	4.4	100.0	
Lower Mainland								
Public	10.9	50.9	15.2	8.7	5.7	8.6	100.0	
Private	1.5	91.9	6.1	0.5	0.0	0.0	100.0	
Total Lower Mainland	10.0	54.8	14.4	7.9	5.1	7.8	100.0	
Grand Total College Transfers	11.0	58.9	14.9	6.3	3.6	5.4	100.0	
Grand Total High School Entrants	96.1	3.3	0.3	0.1	0.0	0.2	100.0	

Table 8
B.C. College Transfers Admitted to UVic by Gender
(2003/04 to 2007/08)

Region/College	Male	Female	Total	Percentage	
				Male	Female
Non Lower Mainland					
Northern B.C.					
College of New Caledonia	26	40	66	39.4	60.6
Northern Lights College	10	23	33	30.3	69.7
Northwest Community College	22	24	46	47.8	52.2
	58	87	145	40.0	60.0
Interior/Kootenays					
College of the Rockies	36	111	147	24.5	75.5
Okanagan University College	79	136	215	36.7	63.3
Selkirk College	67	194	261	25.7	74.3
UC of the Cariboo	39	52	91	42.9	57.1
	221	493	714	31.0	69.0
Vancouver Island					
Camosun College	1,302	1,963	3,265	39.9	60.1
Malaspina University-College	232	319	551	42.1	57.9
North Island College	41	111	152	27.0	73.0
	1,575	2,393	3,968	39.7	60.3
Total Non Lower Mainland	1,854	2,973	4,827	38.4	61.6
Lower Mainland					
Public					
BCIT	61	137	198	30.8	69.2
Capilano College	127	152	279	45.5	54.5
Douglas College	70	227	297	23.6	76.4
Kwantlen University College	112	151	263	42.6	57.4
UC of the Fraser Valley	46	68	114	40.4	59.6
Langara College	182	560	742	24.5	75.5
	598	1,295	1,893	31.6	68.4
Private					
Columbia College	52	71	123	42.3	57.7
Coquitlam College	43	31	74	58.1	41.9
	95	102	197	48.2	51.8
Total Lower Mainland	693	1,397	2,090	33.2	66.8
Total B.C. College Transfers	2,547	4,370	6,917	36.8	63.2
Total B.C. High School Entrants	3,970	5,098	9,068	43.8	56.2

Table 9
B.C. College Transfers Admitted to UVic by Admission Average
(2003/04 to 2007/08)

Average	# of Students	Cumulative %
<60	6	0.1
60	12	0.3
61	28	0.7
62	22	1.0
63	28	1.4
64	24	1.7
65	87	3.0
66	168	5.4
67	219	8.6
68	312	13.1
69	335	17.9
70	285	22.1
71	276	26.1
72	322	30.7
73	329	35.5
74	374	40.9
75	333	45.7
76	328	50.4
77	275	54.4
78	287	58.6
79	260	62.3
80	222	65.5
81	216	68.6
82	190	71.4
83	149	73.5
84	136	75.5
85	106	77.0
>85	221	80.2
Not Available	1367	100.0
Total	6,917	100
Median	74.0	
Mean	74.7	

Section B

ACADEMIC PERFORMANCE OF B.C. COLLEGE TRANSFER STUDENTS

Table 10
Academic Performance of B.C. College Transfers Admitted to UVic
(2003/04 to 2007/08)

Region/College	# of Admitted Students	Admission GPA	1st Session GPA	# of Graduating Students	Graduating GPA	Cumulative GPA
Non Lower Mainland						
Northern B.C.						
College of New Caledonia	66	6.44	5.15	22	6.13	6.04
Northern Lights College	33	6.25	5.75	6	6.01	6.10
Northwest Community College	46	5.84	4.85	10	5.52	5.52
	145	6.21	5.19	38	5.95	5.91
Interior/Kootenays						
College of the Rockies	147	6.36	6.32	61	6.50	6.53
Okanagan University College	215	6.23	5.52	89	6.48	6.37
Selkirk College	261	6.19	6.34	136	6.71	6.62
UC of the Cariboo	91	6.09	5.65	44	6.46	6.40
	714	6.22	6.00	330	6.58	6.51
Vancouver Island						
Camosun College	3,265	5.86	5.26	1,268	6.01	5.95
Malaspina University-College	551	6.03	5.21	168	6.03	6.03
North Island College	152	5.90	5.55	52	6.40	6.25
	3,968	5.89	5.26	1,488	6.03	5.97
Total Non Lower Mainland	4,827	5.94	5.37	1,856	6.12	6.06
Lower Mainland						
Public						
BCIT	198	6.46	6.17	67	6.54	6.46
Capilano College	279	5.34	5.30	84	6.11	5.97
Douglas College	297	5.51	5.59	104	6.13	6.01
Kwantlen University College	263	5.53	5.34	88	6.08	5.95
UC of the Fraser Valley	114	5.63	5.67	30	6.84	6.80
Langara College	742	5.17	5.85	449	6.43	6.44
	1,893	5.46	5.68	822	6.35	6.30
Private						
Columbia College	123	5.01	4.80	53	4.74	4.93
Coquitlam College	74	5.53	4.86	47	4.81	4.91
	197	5.21	4.82	100	4.77	4.92
Total Lower Mainland	2,090	5.44	5.60	922	6.18	6.15
Total B.C. College Transfers	6,917	5.79	5.44	2,778	6.14	6.09
Total B.C. High School Entrants	9,068	5.54	4.71	839	6.38	6.09

Notes:

Graduating GPA = based on 300 and 400 level (and in Education, 700 level) courses acceptable within the degree program.

Cumulative GPA = based on all courses taken at UVic.

Table 11
Course Performance of B.C. College Transfers Admitted to UVic
(2003/04 to 2007/08)
For Selected Courses

ANTH=Anthropology
 BIOC=Biochemistry
 BIOL=Biology

Region/College	ANTH100			BIOC200			BIOL150a		
	Admis- sion N	Avg. Crs Average	Avg. Crs Grade	Admis- sion N	Avg. Crs Average	Avg. Crs Grade	Admis- sion N	Avg. Crs Average	Avg. Crs Grade
Non Lower Mainland									
Northern B.C.									
College of New Caledonia				0					
Northern Lights College				7	6.0	2.71			
Northwest Community College									
	8	6.2	5.87	11	6.0	2.72	7	6.7	5.14
Interior/Kootenays									
College of the Rockies	6	6.0	5.00	11	6.7	4.09			
Okanagan University College	20	5.8	5.70	14	6.6	3.92	9	5.7	4.66
Selkirk College	12	5.7	6.08	9	6.0	4.22	8	6.5	4.62
UC of the Cariboo	8	6.2	6.12	8	5.3	3.25			
	46	5.9	5.78	42	6.3	3.90	20	6.3	4.90
Vancouver Island									
Camosun College	129	5.7	5.48	106	5.7	3.11	126	5.6	3.38
Malaspina University-College	44	5.7	5.77	20	5.9	4.25	21	5.9	4.04
North Island College	6	5.8	4.83	16	5.5	4.06	13	5.6	3.92
	179	5.7	5.53	142	5.7	3.38	160	5.6	3.51
Total Non Lower Mainland	233	5.8	5.59	195	5.8	3.45	187	5.7	3.72
Lower Mainland									
Public									
BCIT	0								
Capilano College	27	5.6	5.44	9	4.4	3.33	22	5.6	3.90
Douglas College	5	5.0	4.20	8	5.0	1.87	10	5.7	4.70
Kwantlen University College	25	5.4	4.92	8	5.0	4.00	14	5.0	3.07
UC of the Fraser Valley	11	5.1	5.54	8	6.2	4.75			
Langara College	15	4.8	5.26	11	4.9	2.27	21	5.1	3.80
	83	5.3	5.19	45	5.1	3.13	71	5.3	3.97
Private									
Columbia College				0			5	5.0	1.60
Coquitlam College	0								
							7	4.7	2.00
Total Lower Mainland	86	5.3	5.15	46	5.1	3.13	78	5.2	3.79
Total B.C. College Transfers	319	5.6	5.47	241	5.7	3.39	265	5.6	3.74
Total B.C. High School Entrants	2069	5.5	5.43	937	5.6	4.09	744	5.8	4.23

Table 11 (Cont'd)
Course Performance of B.C. College Transfers Admitted to UVic
(2003/04 to 2007/08)
For Selected Courses

BIOL=Biology

Region/College	BIOL150b			BIOL190a			BIOL190b		
	Admis- sion N	Avg. Crs Average	Avg. Crs Grade	Admis- sion N	Avg. Crs Average	Avg. Crs Grade	Admis- sion N	Avg. Crs Average	Avg. Crs Grade
Non Lower Mainland									
Northern B.C.									
College of New Caledonia				0			0		
Northern Lights College									
Northwest Community College				0			0		
	7	6.3	4.43						
Interior/Kootenays									
College of the Rockies									
Okanagan University College	8	5.7	5.00	7	6.2	3.57	7	6.2	5.00
Selkirk College									
UC of the Cariboo	7	6.8	6.85						
	19	6.1	5.58	14	6.4	4.28	12	6.5	5.75
Vancouver Island									
Camosun College	113	5.6	3.07	87	5.7	3.67	62	5.9	4.82
Malaspina University-College	24	6.0	3.95	16	6.0	3.56	11	6.2	4.45
North Island College	10	5.7	3.20	7	6.8	4.42			
	147	5.7	3.22	110	5.8	3.70	76	6.0	4.83
Total Non Lower Mainland	173	5.7	3.53	125	5.9	3.80	89	6.0	4.98
Lower Mainland									
Public									
BCIT									
Capilano College	23	5.6	3.30	6	6.0	3.00			
Douglas College	6	6.0	5.00	6	3.8	2.00	6	3.8	2.66
Kwantlen University College	14	6.1	4.78	10	5.4	3.20	6	5.0	5.33
UC of the Fraser Valley				5	5.4	3.80			
Langara College	27	4.7	3.29	6	5.0	3.50	7	5.3	5.42
	75	5.5	3.92	34	5.2	3.06	28	5.1	4.67
Private									
Columbia College	5	5.6	1.40	0			0		
Coquitlam College				0			0		
	7	5.1	1.71	0			0		
Total Lower Mainland	82	5.5	3.73	34	5.2	3.06	28	5.1	4.67
Total B.C. College Transfers	255	5.7	3.59	159	5.7	3.64	117	5.8	4.90
Total B.C. High School Entrants	717	6.0	4.26	2529	6.0	3.87	1895	6.3	5.13

Table 11 (Cont'd)
Course Performance of B.C. College Transfers Admitted to UVic
(2003/04 to 2007/08)
For Selected Courses

BIOL=Biology
 CS=Computer Science

Region/College	BIOL225			CS100			CS105		
	Admis- sion N	Avg. Crs Average	Grade	Admis- sion N	Avg. Crs Average	Grade	Admis- sion N	Avg. Crs Average	Grade
	Non Lower Mainland								
Northern B.C.									
College of New Caledonia							6	6.0	4.33
Northern Lights College							5	6.4	6.80
Northwest Community College	6	6.1	2.83	7	5.1	3.42			
	8	6.2	3.50	12	5.3	4.74	12	6.3	5.50
Interior/Kootenays									
College of the Rockies	8	6.7	5.00	5	6.3	7.20	5	5.6	4.80
Okanagan University College	9	6.8	4.00	24	6.2	6.66	7	7.2	5.71
Selkirk College	5	6.2	6.00	11	6.2	7.54	8	5.8	6.50
UC of the Cariboo	6	5.5	4.50	6	7.0	8.00			
	28	6.4	4.75	46	6.3	7.10	23	6.3	5.82
Vancouver Island									
Camosun College	83	5.8	3.60	176	5.8	5.77	157	5.2	5.19
Malaspina University-College	19	5.1	3.73	31	5.9	6.32	43	6.1	6.72
North Island College	13	5.6	4.84	27	5.8	6.14			
	115	5.7	3.76	234	5.8	5.89	203	5.4	5.54
Total Non Lower Mainland	151	5.8	3.93	292	5.9	6.03	238	5.5	5.57
Lower Mainland									
Public									
BCIT				0					
Capilano College	11	5.5	4.63	30	5.6	6.23	14	5.2	6.35
Douglas College	5	5.2	3.60	13	4.9	5.53			
Kwantlen University College	11	5.2	4.27	23	5.8	6.60	12	5.5	6.58
UC of the Fraser Valley	7	6.4	5.00	18	5.6	6.94	8	5.5	7.37
Langara College	10	5.2	3.70	27	5.0	6.22	25	4.7	6.32
	45	5.5	4.24	111	5.4	6.34	63	5.1	6.47
Private									
Columbia College				0			71	4.6	6.11
Coquitlam College				0			28	5.5	5.57
	6	3.8	1.67	0	0.0	0.00	99	4.9	5.96
Total Lower Mainland	51	5.3	3.94	111	5.4	6.34	162	5.0	6.16
Total B.C. College Transfers	202	5.7	3.93	403	5.7	6.12	400	5.3	5.81
Total B.C. High School Entrants	932	6.2	4.67	1687	5.1	6.19	925	6.0	6.00

Table 11 (Cont'd)
Course Performance of B.C. College Transfers Admitted to UVic
(2003/04 to 2007/08)
For Selected Courses

CHEM=Chemistry

Region/College	CHEM101			CHEM102			CHEM231		
	Admis- sion N	Avg. Crs Average	Avg. Crs Grade	Admis- sion N	Avg. Crs Average	Avg. Crs Grade	Admis- sion N	Avg. Crs Average	Avg. Crs Grade
Non Lower Mainland									
Northern B.C.									
College of New Caledonia									
Northern Lights College									
Northwest Community College							13	6.6	2.38
							17	6.5	2.29
Interior/Kootenays									
College of the Rockies							10	6.7	5.50
Okanagan University College	7	6.8	4.71	6	7.3	5.16	17	5.5	2.94
Selkirk College	0			0			10	6.4	6.40
UC of the Cariboo				5	6.8	4.40			
	11	6.0	4.72	12	6.5	4.75	41	6.0	4.44
Vancouver Island									
Camosun College	54	5.4	4.07	77	5.3	3.57	136	5.5	2.76
Malaspina University-College	10	5.5	2.20				24	5.9	4.66
North Island College	5	5.8	4.00				16	5.6	4.06
	69	5.4	3.79	85	5.4	3.68	176	5.6	3.14
Total Non Lower Mainland	82	5.6	3.96	100	5.5	3.85	234	5.7	3.30
Lower Mainland									
Public									
BCIT									
Capilano College	8	6.2	5.12				10	5.2	4.40
Douglas College	5	5.2	4.20	6	5.0	3.33	5	5.2	3.40
Kwantlen University College	9	4.5	5.22	11	5.0	4.90	14	5.0	3.57
UC of the Fraser Valley							8	5.8	5.37
Langara College	8	5.5	4.37	7	6.0	5.00	19	4.5	3.15
	34	5.4	4.56	33	5.7	4.63	59	5.1	3.67
Private									
Columbia College									
Coquitlam College	0			0					
Total Lower Mainland	35	5.4	4.57	34	5.7	4.58	63	5.1	3.63
Total B.C. College Transfers	117	5.5	4.14	134	5.6	4.04	297	5.6	3.37
Total B.C. High School Entrants	2538	6.0	4.92	2090	6.6	5.22	1470	6.0	3.79

Table 11 (Cont'd)
Course Performance of B.C. College Transfers Admitted to UVic
(2003/04 to 2007/08)
For Selected Courses

E S =Environmental Studies
ECON=Economics

Region/College	E S 200			ECON103			ECON104		
	Admis- sion N	Avg. Crs Average	Avg. Crs Grade	Admis- sion N	Avg. Crs Average	Avg. Crs Grade	Admis- sion N	Avg. Crs Average	Avg. Crs Grade
Non Lower Mainland									
Northern B.C.									
College of New Caledonia									
Northern Lights College	0								
Northwest Community College	6	5.6	5.16						
	7	5.9	5.28	6	6.5	4.50	6	6.3	4.33
Interior/Kootenays									
College of the Rockies									
Okanagan University College	11	6.1	6.36	12	6.0	6.58	12	5.7	5.41
Selkirk College	7	6.7	7.42	7	6.1	4.00	6	6.1	5.33
UC of the Cariboo	8	7.0	7.50						
	30	6.4	6.80	25	6.1	5.16	22	5.8	5.31
Vancouver Island									
Camosun College	114	6.0	6.13	105	5.5	4.20	119	5.4	4.14
Malaspina University-College	28	6.2	5.89	24	5.9	4.58	20	5.5	4.80
North Island College	9	5.6	5.66	7	5.8	4.14			
	151	6.0	6.06	136	5.6	4.26	141	5.4	4.26
Total Non Lower Mainland	188	6.1	6.15	167	5.7	4.41	169	5.5	4.40
Lower Mainland									
Public									
BCIT	0								
Capilano College	25	5.8	6.28	13	5.3	4.61	13	5.6	4.53
Douglas College	5	6.0	4.60	7	4.8	4.00	6	5.8	4.50
Kwantlen University College	16	5.7	6.06	19	5.7	4.84	12	5.9	4.50
UC of the Fraser Valley	6	4.8	7.16	9	5.6	4.66	7	5.8	6.57
Langara College	25	5.3	6.08	18	4.7	4.11	24	5.2	4.12
	77	5.6	6.13	70	5.3	4.53	66	5.6	4.66
Private									
Columbia College				5	5.0	5.20			
Coquitlam College	0								
				8	5.1	4.87	6	5.3	4.00
Total Lower Mainland	80	5.5	5.94	78	5.3	4.56	72	5.6	4.61
Total B.C. College Transfers	268	5.9	6.08	245	5.6	4.46	241	5.5	4.46
Total B.C. High School Entrants	719	6.6	5.54	2008	6.0	4.27	1404	6.1	4.41

Table 11 (Cont'd)
Course Performance of B.C. College Transfers Admitted to UVic
(2003/04 to 2007/08)
For Selected Courses

ENGL=English	ENGL115		ENGL125			ENGL135			
	Admis- sion N	Avg. Crs Average	Avg. Crs Grade	Admis- sion N	Avg. Crs Average	Avg. Crs Grade	Admis- sion N	Avg. Crs Average	Avg. Crs Grade
Region/College									
Non Lower Mainland									
Northern B.C.									
College of New Caledonia				0					
Northern Lights College	0								
Northwest Community College	0								
							7	6.6	5.71
Interior/Kootenays									
College of the Rockies									
Okanagan University College							15	5.6	5.13
Selkirk College									
UC of the Cariboo							8	4.7	5.37
	9	2.7	3.78	9	6.3	6.22	29	5.5	5.55
Vancouver Island									
Camosun College	12	5.5	4.41	60	5.6	4.71	121	5.6	5.28
Malaspina University-College				11	5.2	3.45	22	5.9	4.22
North Island College	0			6	5.6	5.66			
	16	5.4	4.31	77	5.5	4.60	146	5.6	5.16
Total Non Lower Mainland	29	3.8	4.34	88	5.6	4.77	182	5.7	5.24
Lower Mainland									
Public									
BCIT	33	6.8	4.57	0					
Capilano College				6	5.6	4.33	14	5.9	4.85
Douglas College	17	2.6	4.11	9	4.6	4.55	8	6.0	5.50
Kwantlen University College	7	4.2	3.71	18	5.2	4.27	19	5.7	5.73
UC of the Fraser Valley	5	5.5	5.40	6	5.8	5.33	6	5.3	6.16
Langara College	12	4.6	3.75	16	5.3	4.06	21	5.1	5.38
	76	5.1	4.25	55	5.2	4.38	70	5.6	5.47
Private									
Columbia College	0								
Coquitlam College									
							5	5.2	2.60
Total Lower Mainland	78	5.2	4.23	58	5.3	4.29	75	5.5	5.28
Total B.C. College Transfers	107	4.8	4.26	146	5.5	4.58	257	5.6	5.25
Total B.C. High School Entrants	1105	6.2	3.89	2889	6.0	4.72	4647	5.0	4.89

Table 11 (Cont'd)
Course Performance of B.C. College Transfers Admitted to UVic
(2003/04 to 2007/08)
For Selected Courses

ENGL=English
 GRS=Greek and Roman Studies
 GEOG=Geography

Region/College	ENGL145			GRS 200			GEOG101a		
	Admis- sion N	Avg. Crs Average	Avg. Crs Grade	Admis- sion N	Avg. Crs Average	Avg. Crs Grade	Admis- sion N	Avg. Crs Average	Avg. Crs Grade
Non Lower Mainland									
Northern B.C.									
College of New Caledonia	0			6	6.8	4.33			
Northern Lights College	0								
Northwest Community College	0								
	0			10	7.1	5.20	10	5.9	5.10
Interior/Kootenays									
College of the Rockies							7	7.0	6.71
Okanagan University College				10	6.4	6.80	17	6.0	5.17
Selkirk College							10	6.1	5.20
UC of the Cariboo				6	7.1	6.50	5	6.0	6.00
	11	6.5	5.09	21	6.5	6.48	39	6.2	5.56
Vancouver Island									
Camosun College	56	5.6	4.75	132	5.8	5.72	61	5.7	5.22
Malaspina University-College	12	6.0	4.75	23	6.1	5.65	25	5.7	4.88
North Island College	9	5.2	4.77	9	5.8	5.55	10	5.6	5.70
	77	5.6	4.75	164	5.8	5.70	96	5.7	5.18
Total Non Lower Mainland	88	5.7	4.79	195	6.0	5.76	145	5.8	5.28
Lower Mainland									
Public									
BCIT									
Capilano College	10	4.6	4.40	16	5.2	5.06	24	5.3	5.37
Douglas College	10	5.3	3.30	8	5.7	5.12	7	5.1	4.00
Kwantlen University College	13	5.8	5.53	8	5.5	5.12	18	5.7	5.88
UC of the Fraser Valley	6	5.6	5.00	9	5.5	6.33			
Langara College	10	5.6	5.00	12	4.7	4.50	18	5.1	4.88
	51	4.8	4.36	55	5.4	5.27	71	5.4	5.22
Private									
Columbia College	0			0			0		
Coquitlam College	0			0			0		
	0			0			0		
Total Lower Mainland	51	5.2	4.70	55	5.4	5.27	71	5.4	5.22
Total B.C. College Transfers	139	5.5	4.76	250	5.8	5.65	216	5.7	5.26
Total B.C. High School Entrants	2385	5.0	4.79	999	4.0	5.79	766	5.1	4.91

Table 11 (Cont'd)
Course Performance of B.C. College Transfers Admitted to UVic
(2003/04 to 2007/08)
For Selected Courses

GEOG=Geography
MATH=Mathematics

<u>Region/College</u>	<u>GEOG101b</u>			<u>MATH100</u>			<u>MATH101</u>		
	<u>Admis- sion N</u>	<u>Avg. Cr Average</u>	<u>Cr Grade</u>	<u>Admis- sion N</u>	<u>Avg. Cr Average</u>	<u>Cr Grade</u>	<u>Admis- sion N</u>	<u>Avg. Cr Average</u>	<u>Cr Grade</u>
Non Lower Mainland									
<u>Northern B.C.</u>									
College of New Caledonia									
Northern Lights College									
Northwest Community College	5	5.6	5.40						
	8	5.6	5.63	5	6.6	1.80			
<u>Interior/Kootenays</u>									
College of the Rockies	6	7.4	6.50						
Okanagan University College	16	6.0	6.37						
Selkirk College	6	6.5	6.66						
UC of the Cariboo									
	30	6.3	6.40	10	6.7	2.70	12	6.2	1.83
<u>Vancouver Island</u>									
Camosun College	59	5.6	5.84	60	5.3	2.65	60	5.4	2.76
Malaspina University-College	23	5.7	5.78	7	7.3	5.00	11	6.9	3.63
North Island College	11	5.4	6.45				5	6.2	2.60
	93	5.6	5.90	70	5.6	2.89	76	5.7	2.88
Total Non Lower Mainland	131	5.8	5.99	85	5.7	2.80	92	5.8	2.76
Lower Mainland									
<u>Public</u>									
BCIT	0			6	6.0	3.50	7	5.8	3.42
Capilano College	13	5.1	5.38	4			12	4.6	4.25
Douglas College	6	4.8	6.00	0					
Kwantlen University College	10	6.3	6.60	7	5.0	4.42	8	5.2	5.37
UC of the Fraser Valley									
Langara College	21	5.1	5.80	7	5.6	2.85	9	4.6	3.77
	52	5.3	5.86	25	5.8	4.04	42	5.1	4.12
<u>Private</u>									
Columbia College	0						6	5.6	6.83
Coquitlam College	0						12	5.7	4.83
	0			6	5.8	4.00	18	5.7	5.50
Total Lower Mainland	52	5.3	5.86	31	5.8	4.03	60	5.3	4.53
Total B.C. College Transfers	183	5.6	5.96	116	5.8	3.13	152	5.6	3.46
Total B.C. High School Entrants	661	5.0	5.79	2776	4.8	3.85	2012	4.5	3.88

Table 11 (Cont'd)
Course Performance of B.C. College Transfers Admitted to UVic
(2003/04 to 2007/08)
For Selected Courses

MATH=Mathematics

<u>Region/College</u>	<u>MATH102</u>			<u>MATH151</u>			<u>MATH201</u>		
	<u>Admis- sion N</u>	<u>Avg. Crs Average</u>	<u>Avg. Crs Grade</u>	<u>Admis- sion N</u>	<u>Avg. Crs Average</u>	<u>Avg. Crs Grade</u>	<u>Admis- sion N</u>	<u>Avg. Crs Average</u>	<u>Avg. Crs Grade</u>
Non Lower Mainland									
<u>Northern B.C.</u>									
College of New Caledonia				5	7.8	7.20	5	7.2	4.80
Northern Lights College	5	6.8	7.80	5	7.0	7.40			
Northwest Community College									
	10	6.7	5.80	14	7.3	5.57	9	7.5	4.66
<u>Interior/Kootenays</u>									
College of the Rockies									
Okanagan University College	23	6.3	3.60	21	6.1	4.04	9	5.5	2.33
Selkirk College				7	6.1	5.57	9	6.2	6.66
UC of the Cariboo				5	5.8	4.80	7	5.8	3.28
	32	6.3	3.81	37	6.1	4.48	29	6.0	4.62
<u>Vancouver Island</u>									
Camosun College	173	5.4	2.78	227	5.5	2.84	118	5.6	3.17
Malaspina University-College	30	5.3	2.50	73	5.9	3.97	48	6.2	4.41
North Island College	7	6.2	2.42	15	5.8	4.73	13	5.8	3.84
	210	5.4	2.73	315	5.6	3.19	179	5.8	3.55
Total Non Lower Mainland	252	5.6	2.99	366	5.7	3.41	217	5.9	3.74
Lower Mainland									
<u>Public</u>									
BCIT							7	6.7	3.42
Capilano College	13	5.6	4.46	35	4.9	3.31	8	5.5	5.75
Douglas College	11	5.8	3.18	19	5.9	4.63	7	5.2	4.85
Kwantlen University College	21	5.7	3.90	30	5.2	4.56	11	5.2	5.63
UC of the Fraser Valley	6	4.6	3.66	17	5.4	5.47	9	5.1	4.33
Langara College	19	4.7	2.15	37	5.3	3.18	5	5.6	4.60
	74	5.4	3.29	140	5.3	3.96	47	5.5	4.85
<u>Private</u>									
Columbia College				37	5.3	4.10	10	5.5	3.70
Coquitlam College				14	5.6	4.71	10	5.7	4.60
				51	5.4	4.27	20	5.6	4.15
Total Lower Mainland	78	5.4	3.34	191	5.3	4.04	67	5.5	4.64
Total B.C. College Transfers	330	5.5	3.07	557	5.6	3.63	284	5.8	3.95
Total B.C. High School Entrants	2103	6.4	3.40	2446	6.1	3.73	614	5.3	4.33

Table 11 (Cont'd)
Course Performance of B.C. College Transfers Admitted to UVic
(2003/04 to 2007/08)
For Selected Courses

P E=Physical Education
 PHIL=Philosophy
 PHYS=Physics

<u>Region/College</u>	<u>P E 143</u>		<u>PHIL100</u>		<u>PHYS102</u>	
	<u>Admis- sion N</u>	<u>Avg. Crs Average</u>	<u>Admis- sion N</u>	<u>Avg. Crs Average</u>	<u>Admis- sion N</u>	<u>Avg. Crs Average</u>
Non Lower Mainland						
<u>Northern B.C.</u>						
College of New Caledonia	0		0			
Northern Lights College	0					
Northwest Community College						
					6	6.0
						2.17
<u>Interior/Kootenays</u>						
College of the Rockies	0		0			
Okanagan University College	7	6.8	16	6.5	8	7.7
Selkirk College			0			
UC of the Cariboo	5	5.4				
	13	6.2	19	6.5	18	6.9
		6.77		5.62		5.94
<u>Vancouver Island</u>						
Camosun College	89	5.7	45	6.0	62	5.9
Malaspina University-College	9	6.3	7	5.7	13	5.6
North Island College	11	5.5	7	6.8	6	4.5
	109	5.7	59	6.1	81	5.7
		6.45		4.65		4.18
Total Non Lower Mainland	126	5.7	82	6.2	105	6.0
		6.44		5.01		4.37
Lower Mainland						
<u>Public</u>						
BCIT			0			
Capilano College			9	4.8	10	5.7
Douglas College			6	4.6		5.80
Kwantlen University College	5	5.8	9	5.2	10	5.7
UC of the Fraser Valley			6	6.1		5.30
Langara College					6	5.2
	18	5.5	34	5.1	33	5.7
		6.56		5.41		5.36
<u>Private</u>						
Columbia College	0					
Coquitlam College	0		0			
	0					
Total Lower Mainland	18	5.5	37	5.2	36	5.6
		6.56		5.10		5.36
Total B.C. College Transfers	144	5.7	119	5.9	141	5.9
Total B.C. High School Entrants	704	4.7	1197	6.6	1168	6.4
		6.39		4.62		4.75

Table 11 (Cont'd)
Course Performance of B.C. College Transfers Admitted to UVic
(2003/04 to 2007/08)
For Selected Courses

PSYCH=Psychology

	PSYC100a			PSYC100b		
	Admis- sion N	Avg. Crs Average	Avg. Crs Grade	Admis- sion N	Avg. Crs Average	Avg. Crs Grade
<u>Region/College</u>						
Non Lower Mainland						
<u>Northern B.C.</u>						
College of New Caledonia						
Northern Lights College						
Northwest Community College				5	4.6	3.60
	8	5.9	4.37	8	5.1	3.63
<u>Interior/Kootenavs</u>						
College of the Rockies	5	7.2	4.60	7	7.0	5.42
Okanagan University College	17	6.2	5.70	15	5.8	6.26
Selkirk College	11	6.6	7.27	16	6.5	6.12
UC of the Cariboo						
	36	6.4	6.00	39	6.2	5.97
<u>Vancouver Island</u>						
Camosun College	125	5.4	3.95	163	5.6	4.36
Malaspina University-College	34	5.4	4.85	39	5.7	5.25
North Island College	10	5.9	4.80	6	5.6	6.66
	169	5.4	4.18	208	5.6	4.59
Total Non Lower Mainland	213	5.6	4.50	255	5.7	4.77
Lower Mainland						
<u>Public</u>						
BCIT	0			7	6.5	4.71
Capilano College	18	5.4	4.77	18	5.2	3.38
Douglas College	5	5.2	5.00	6	4.3	4.83
Kwantlen University College	11	5.1	4.36	16	5.4	4.50
UC of the Fraser Valley	7	6.7	5.14	9	6.2	6.33
Langara College	15	4.9	4.60	24	4.9	4.70
	56	5.4	4.71	80	5.3	4.56
<u>Private</u>						
Columbia College	5	4.6	1.20	18	4.5	3.66
Coquitlam College	5	5.4	2.40	6	5.5	3.33
	10	5.0	1.80	24	4.8	3.58
Total Lower Mainland	66	5.3	4.27	104	5.2	4.33
Total B.C. College Transfers	279	5.5	4.44	359	5.5	4.65
Total B.C. High School Entrants	3455	5.5	4.36	3567	6.3	4.74

Figure 2a

Academic Performance Comparisons of B.C. High School Entrants and B.C. College Transfers Admitted to UVic

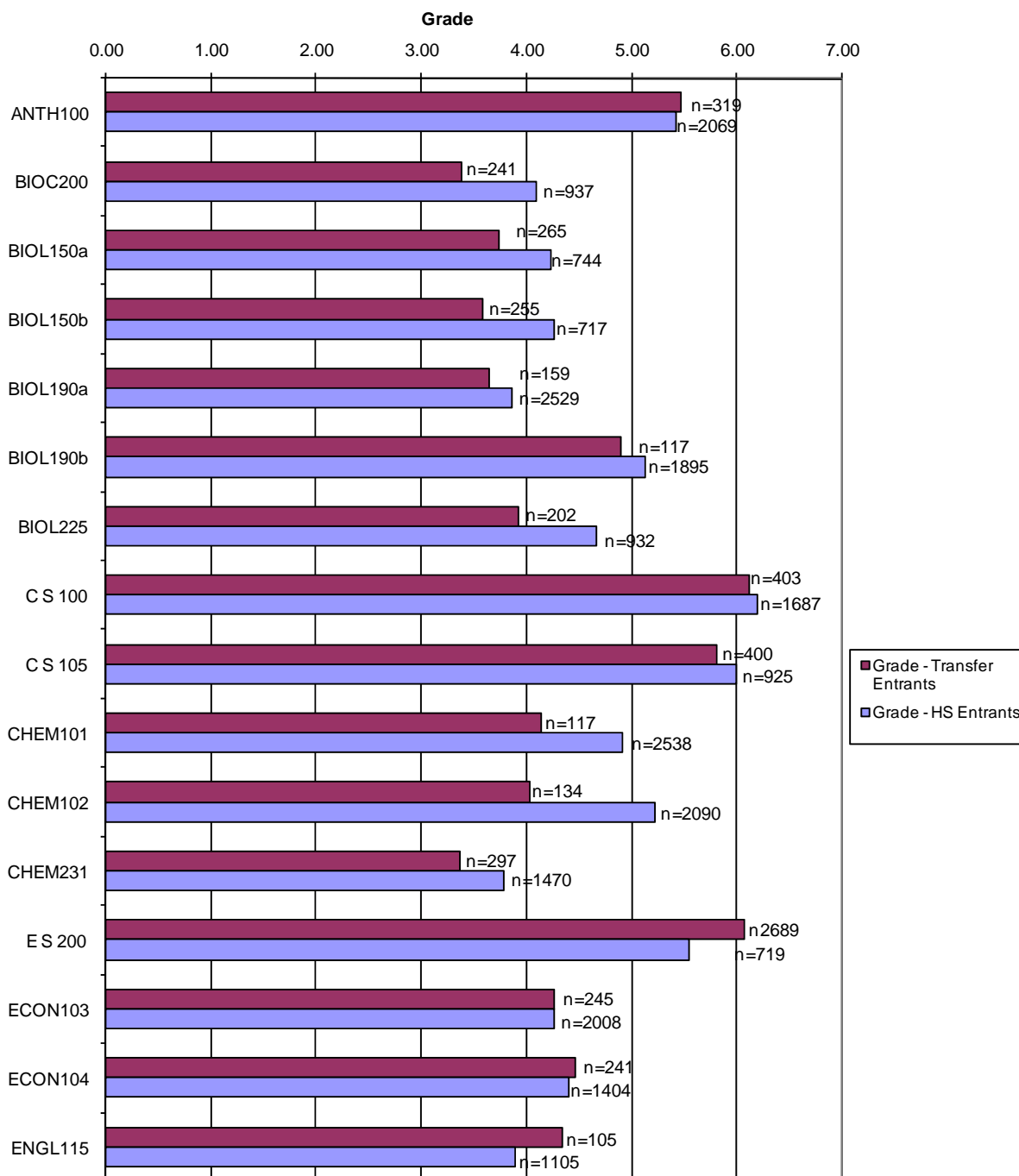


Figure 2b

Academic Performance Comparisons of B.C. High School Entrants and B.C. College Transfers Admitted to UVic

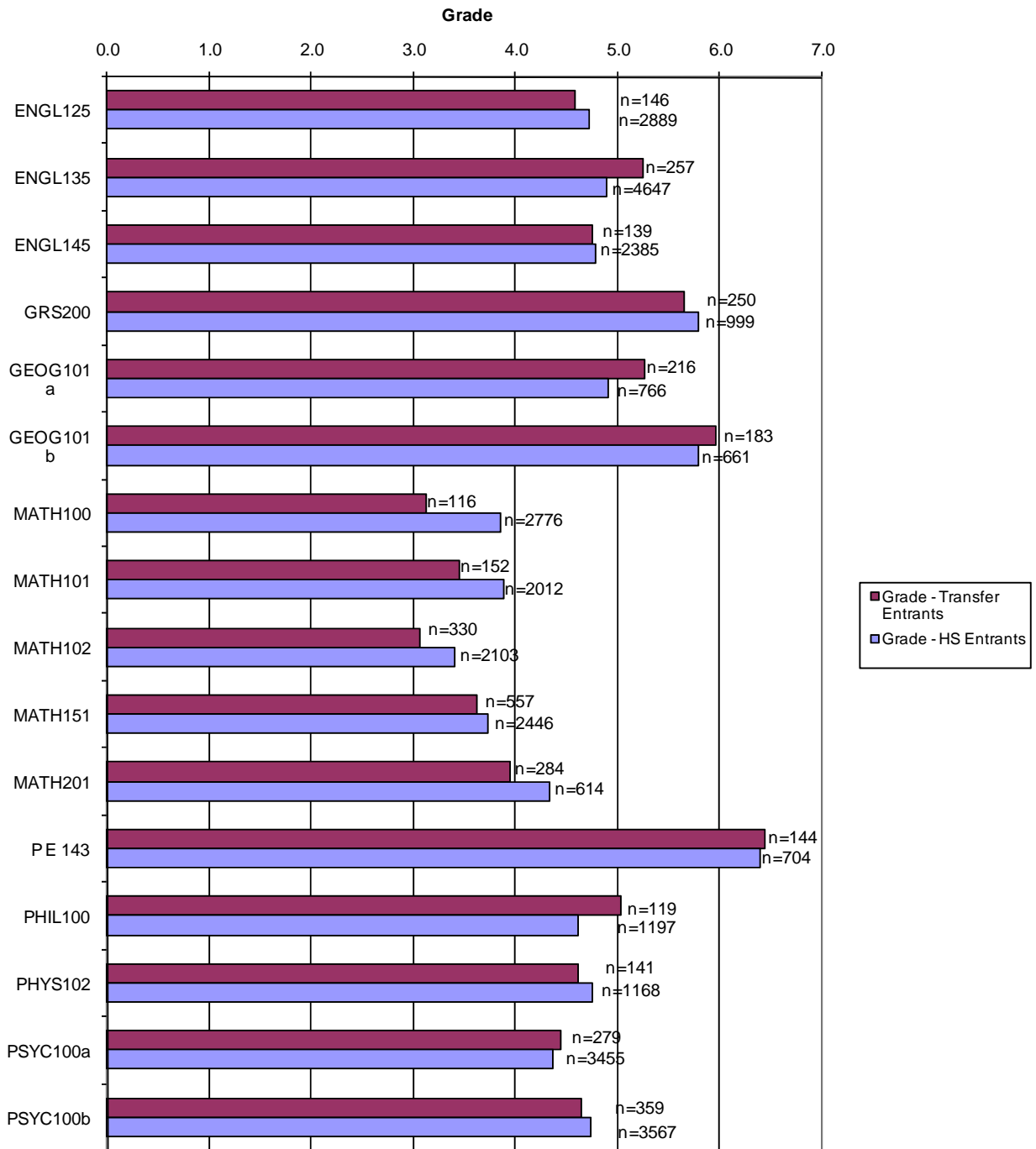


Table 12
Graduation Rates of B.C. College Transfers Admitted to UVic by Total Transfer Credit Units
(Admitted in 2003/04 and 2004/05)

Region/College	Total Transfer Credit Units:							
	<15		15-17		17.5-19.5		20-22	
	# of Students	% Grad	# of Students	% Grad	# of Students	% Grad	# of Students	% Grad
Non Lower Mainland								
Northern B.C.								
College of New Caledonia	5	80.0	5	40.0			0	
Northern Lights College					0		0	
Northwest Community College	5	40.0	4	25.0			0	
	12	58.3	10	40.0	6	83.3		
Interior/Kootenays								
College of the Rockies	6	16.7					0	
Okanagan University College	20	45.0	19	47.4	5	80.0	7	42.9
Selkirk College	13	61.5	9	77.8				
UC of the Cariboo	7	57.1	7	85.7	0			
	46	47.8	38	63.2	12	83.3	10	60.0
Vancouver Island								
Camosun College	156	53.8	99	49.5	103	58.3	58	56.9
Malaspina University-College	32	46.9	33	63.6	16	62.5	9	88.9
North Island College	9	44.4	6	66.7	7	85.7		
	197	52.3	138	53.6	126	60.3	69	59.4
Total Non Lower Mainland	255	51.8	186	54.8	144	63.2	80	58.8
Lower Mainland								
Public								
BCIT	8	75.0						
Capilano College	14	42.9	9	44.4	5	40.0		
Douglas College	10	40.0			7	57.1		
Kwantlen University College	16	50.0	8	37.5	8	50.0	6	66.7
UC of the Fraser Valley			9	66.7	7	71.4	0	
Langara College	7	42.9	7	28.6	9	44.4	7	71.4
	59	47.5	40	55.0	37	51.4	22	63.6
Private								
Columbia College			18	94.4	10	60.0	5	80.0
Coquitlam College	5	40.0	13	100.0	7	100.0	7	71.4
	9	44.4	31	96.8	17	76.5	12	75.0
Total Lower Mainland	68	47.1	71	73.2	54	59.3	34	67.6
Total B.C. College Transfers	323	50.8	257	59.9	198	62.1	114	61.4

Table 12 (Cont'd)
Graduation Rates of B.C. College Transfers Admitted to UVic by Total Transfer Credit Units
(Admitted in 2003/04 and 2004/05)

Region/College	22.5-24.5		25-27		≥27.5		Total	
	# of	%	# of	%	# of	%	# of	%
	Students	Grad	Students	Grad	Students	Grad	Students	Grad
Non Lower Mainland								
Northern B.C.								
College of New Caledonia			0		14	57.1	33	60.6
Northern Lights College			0					
Northwest Community College			0				15	46.7
	6	66.7	0	0.0	20	50.0	55	56.4
Interior/Kootenays								
College of the Rockies					38	84.2	55	78.2
Okanagan University College	12	50.0	11	81.8	42	78.6	116	62.9
Selkirk College	8	87.5	6	83.3	69	78.3	110	77.3
UC of the Cariboo	5	80.0	7	57.1	29	62.1	56	66.1
	26	69.2	27	77.8	178	77.0	337	70.6
Vancouver Island								
Camosun College	102	77.5	112	70.5	585	78.8	1215	69.5
Malaspina University-College	21	52.4	25	80.0	68	63.2	204	62.7
North Island College	9	100.0	5	80.0	21	57.1	59	66.1
	132	75.0	142	72.5	674	76.6	1,478	68.5
Total Non Lower Mainland	164	73.8	169	73.4	872	76.0	1,870	68.5
Lower Mainland								
Public								
BCIT	0		0		88	53.4	103	57.3
Capilano College	6	66.7	8	62.5	46	56.5	91	52.7
Douglas College	5	60.0	6	66.7	79	65.8	114	64.9
Kwantlen University College	7	57.1	8	87.5	42	69.0	95	62.1
UC of the Fraser Valley					6	50.0	31	64.5
Langara College	17	70.6	11	54.5	223	87.4	281	80.8
	38	68.4	35	68.6	484	72.7	715	68.1
Private								
Columbia College	5	60.0			5	80.0	51	72.5
Coquitlam College	8	87.5			6	83.3	49	85.7
	13	76.9	7	57.1	11	81.8	100	79.0
Total Lower Mainland	51	70.6	42	66.7	495	72.9	815	69.4
Total B.C. College Transfers	215	73.0	211	72.0	1,367	74.9	2,685	68.8

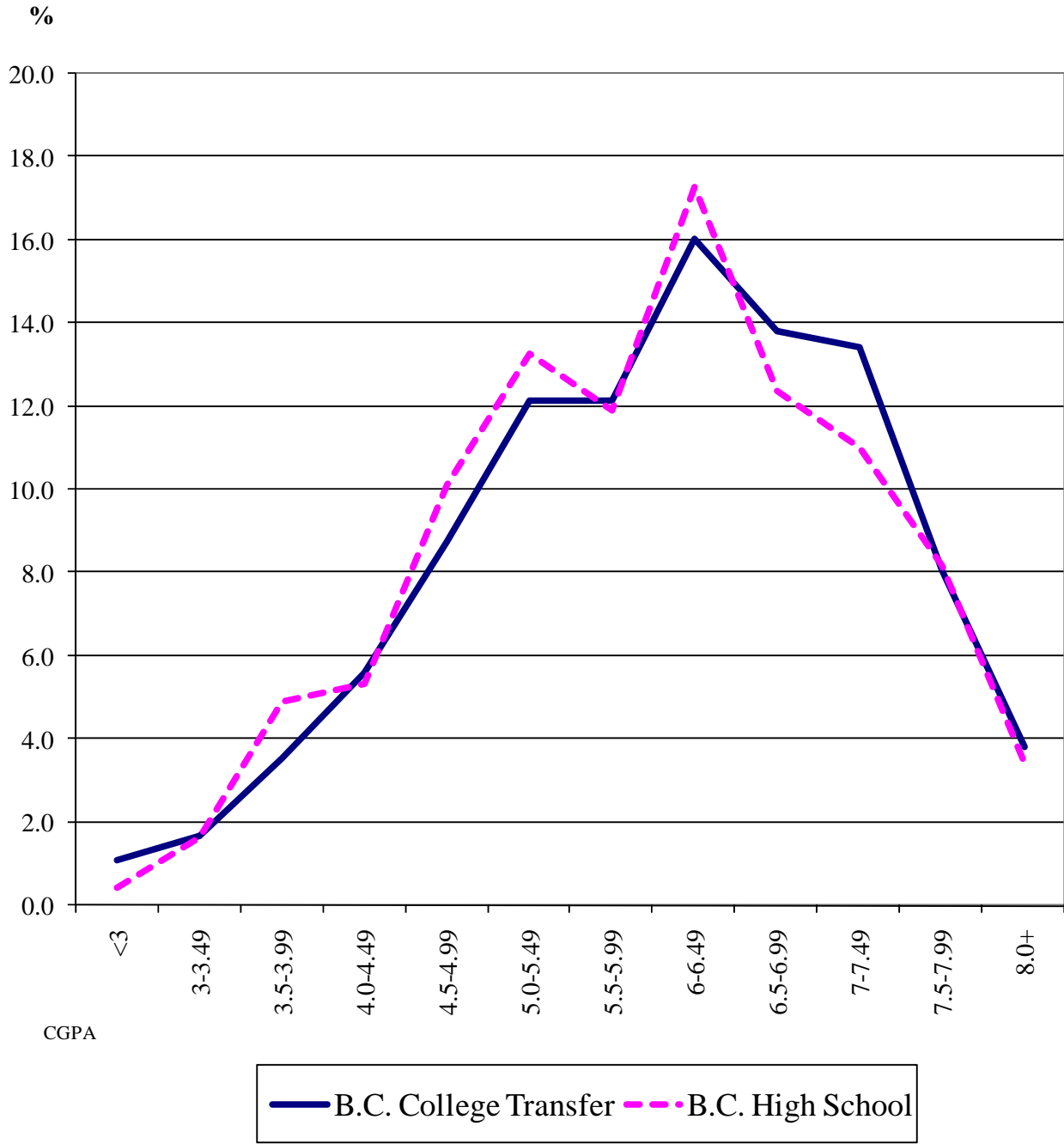
Table 13
Cumulative UVic GPA of B.C. College Transfers Admitted to UVic at time of Graduation
(2003/04 to 2007/08)

Region/College	<u><3</u>	<u>3-3.49</u>	<u>3.5-3.99</u>	<u>4.0-4.49</u>	<u>4.5-4.99</u>	<u>5.0-5.49</u>	<u>5.5-5.99</u>
Non Lower Mainland							
Northern B.C.							
College of New Caledonia	0	0		0			
Northern Lights College	0	0	0	0			
Northwest Community College	0	0	0				
	<u>0</u>	<u>0</u>	<u>0</u>		<u>5</u>	<u>5</u>	
Interior/Kootenays							
College of the Rockies	0		0				6
Okanagan University College						7	18
Selkirk College	0		0		7	10	9
UC of the Cariboo	0	0	0				6
	<u>0</u>	<u>0</u>	<u>0</u>	<u>7</u>	<u>16</u>	<u>25</u>	<u>39</u>
Vancouver Island							
Camosun College	14	25	55	66	95	125	179
Malaspina University-College				11	13	19	24
North Island College	0	0	0		7		6
	<u>15</u>	<u>26</u>	<u>59</u>	<u>78</u>	<u>115</u>	<u>148</u>	<u>209</u>
Total Non Lower Mainland	<u><u>16</u></u>	<u><u>30</u></u>	<u><u>62</u></u>	<u><u>88</u></u>	<u><u>136</u></u>	<u><u>178</u></u>	<u><u>252</u></u>
Lower Mainland							
Public							
BCIT	0	0					8
Capilano College	0			6	6	12	13
Douglas College	0	0	6		10	12	10
Kwantlen University College		0	2		13	11	8
UC of the Fraser Valley	0	0	0	0			
Langara College	0			11	14	31	41
	<u>0</u>		<u>15</u>	<u>25</u>	<u>48</u>	<u>71</u>	<u>84</u>
Private							
Columbia College				8	7	7	8
Coquitlam College	0	5	5		6	7	
	<u>0</u>	<u>8</u>	<u>9</u>	<u>10</u>	<u>13</u>	<u>14</u>	<u>11</u>
Total Lower Mainland	<u><u>5</u></u>	<u><u>11</u></u>	<u><u>24</u></u>	<u><u>35</u></u>	<u><u>61</u></u>	<u><u>85</u></u>	<u><u>95</u></u>
Total B.C. College Transfers	21	41	86	123	197	263	347
Total B.C. High School Entrants		7	24	46	77	103	132

Table 13 (Cont'd)
Cumulative UVic GPA of B.C. College Transfers Admitted to UVic at Time of Graduation
(2003/04 to 2007/08)

Region/College	6-6.49	6.5-6.99	7-7.49	7.5-7.99	8.0+	# of Students	Cumulative GPA
Non Lower Mainland							
Northern B.C.							
College of New Caledonia						21	6.04
Northern Lights College			0	0	0	6	6.10
Northwest Community College				0		9	5.52
		7				36	5.92
Interior/Kootenays							
College of the Rockies	10	14	7	10		59	6.53
Okanagan University College	12	19	13	7	5	88	6.37
Selkirk College	17	22	14	19	15	117	6.62
UC of the Cariboo	7	8	5	7		44	6.40
	46	63	39	43	24	308	6.50
Vancouver Island							
Camosun College	213	222	156	65	25	1,240	5.95
Malaspina University-College	30	22	21	8	6	160	6.03
North Island College	8	7	8			47	6.25
	251	251	185	77	33	1,447	5.97
Total Non Lower Mainland	299	321	228	121	60	1,791	6.06
Lower Mainland							
Public							
BCIT	15	11	10	7	5	67	6.46
Capilano College	12	11	7	5		78	5.97
Douglas College	19	18	13			97	6.01
Kwantlen University College	14	12	9	5		82	5.95
UC of the Fraser Valley			8		5	30	6.80
Langara College	57	80	84	31	16	370	6.44
	121	136	131	53	35	724	6.29
Private							
Columbia College	10	0		0	0	51	4.93
Coquitlam College			0	0		35	4.91
	14			0		86	4.92
Total Lower Mainland	135	138	132	53	36	810	6.15
Total B.C. College Transfers	434	459	360	174	96	2,601	6.09
Total B.C. High School Entrants	125	128	90	56	45	836	6.09

Figure 3
Cumulative UVic GPA Comparison
of B.C. High School Entrants and B.C. College Transfers Admitted to UVic
Who Graduated (2003/04-2007/08)



Source: Table 13

Section C

PROFILE OF B.C. COLLEGE TRANSFER STUDENTS WHO GRADUATED

Table 14
Academic Performance of B.C. College Transfers Admitted to UVic Who Graduated
(admitted and graduated between 2003/04 and 2007/08)

Region/College	# of Students	Admission GPA	1st Session GPA	Graduating GPA	Cumulative GPA
Non Lower Mainland					
Northern B.C.					
College of New Caledonia	22	7.1	5.78	6.13	6.04
Northern Lights College	6	6.6	5.72	6.01	6.10
Northwest Community College	10	6.2	5.46	5.52	5.52
	38	6.8	5.69	5.95	5.91
Interior/Kootenays					
College of the Rockies	61	6.3	6.54	6.50	6.53
Okanagan University College	89	6.6	6.10	6.48	6.37
Selkirk College	136	6.4	6.56	6.71	6.62
UC of the Cariboo	44	6.4	6.11	6.46	6.40
	330	6.5	6.37	6.58	6.51
Vancouver Island					
Camosun College	1268	6.2	5.79	6.01	5.95
Malaspina University-College	168	6.4	5.87	6.03	6.03
North Island College	52	6.3	6.05	6.40	6.25
	1,488	6.2	5.81	6.03	5.97
Total Non Lower Mainland	1,856	6.3	5.91	6.12	6.06
Lower Mainland					
Public					
BCIT	67	6.8	6.34	6.54	6.46
Capilano College	84	5.7	5.53	6.11	5.97
Douglas College	104	5.7	5.90	6.13	6.01
Kwantlen University College	88	5.8	5.74	6.08	5.95
UC of the Fraser Valley	30	6.4	6.59	6.84	6.80
Langara College	449	5.5	6.34	6.43	6.44
	822	5.7	6.15	6.35	6.30
Private					
Columbia College	53	5.4	5.36	4.74	4.93
Coquitlam College	47	5.8	5.20	4.81	4.91
	100	5.6	5.28	4.77	4.92
Total Lower Mainland	922	5.7	6.05	6.18	6.15
Total B.C. College Transfers	2,778	6.1	5.95	6.14	6.09

Note:

Cumulative GPA was not available for 177 cases.

Average cumulative GPA is therefore based on 2,601 cases overall.

Table 15
Graduation Area of B.C. College Transfers Admitted to UVic
(2003/04 to 2007/08)

Region/College	PACI	EDUC	ANTH	LING	COM	BIOL	NURS	S W	ENGN	CSC	CYC
Non Lower Mainland											
Northern B.C.											
College of New Caledonia	0	0	0	0				0			0
Northern Lights College	0	0	0	0	0	0	0		0	0	0
Northwest Community College	0	0		0	0	0	0		0	0	0
	0	0		0				6			0
Interior/Kootenays											
College of the Rockies	0	0					0		0	0	0
Okanagan University College	0	0				6			5		
Selkirk College	0	0			5		80	12		0	
UC of the Cariboo	0	0							0		
	0	0	6	6	12	15	85	18	9		8
Vancouver Island											
Camosun College	27	0	46	23	48	49	318	44	32	23	29
Malaspina University-College		0			13	8		22		7	9
North Island College		0					0	11		0	
	29	0	52	26	62	61	321	77	37	30	40
Total Non Lower Mainland	29	0	59	32	76	77	408	101	47	36	48
Lower Mainland											
Public											
BCIT	0	0	0	0	0	0	30	0	35	0	0
Capilano College	0	0	0	0		5			0	0	
Douglas College		0	0	0	17		27	7			8
Kwantlen University College	0	0					6	5			
UC of the Fraser Valley	0	0		0					0	0	
Langara College		0	6	0	22		328	20	0		
		0	8		46	12	394	37	40	5	14
Private											
Columbia College	0	0	0			0	0	0	0		0
Coquitlam College		0	0		5	0	0	0	0		0
		0	0		9	0	0	0	0	6	0
Total Lower Mainland	3	0	8	4	55	12	394	37	40	11	14
Total B.C. College Transfers	32	0	67	36	131	89	802	138	87	47	62
Total B.C. High School Entrants	7	0	19	18	49	78			12	11	6

PACI - Pacific & Asian Studies, EDUC - Education, ANTH - Anthropology, LING - Linguistics, COM - Commerce, BIOL - Biology, NURS - Nursing, S W - Social Work, ENGN - Engineering, CSC - Computer Science, CYC - Child & Youth Care

Table 15 (Cont'd)
Graduation Area of B.C. College Transfers Admitted to UVic
(2003/04 to 2007/08)

Region/College	VART	ECON	ENGL	GEOG	H A	HIST	P E	POLI	PSYC	SOCI	OTH	# of Students
Non Lower Mainland												
Northern B.C.												
College of New Caledonia	0			0	0	0				0	5	22
Northern Lights College	0	0			0		0	0	0	0		6
Northwest Community College	0	0		0			0	0		0		10
	0									0	7	38
Interior/Kootenays												
College of the Rockies	0		0			0	0			0	44	61
Okanagan University College			9			8		5	10		18	89
Selkirk College					0	5	0	0			8	136
UC of the Cariboo	0			0	0						6	44
		9	13	6		17	7	11	19	5	76	330
Vancouver Island												
Camosun College	13	64	62	60	12	66		35	105	32	177	1268
Malaspina University-College	9	21			0	6	6	9	10		26	168
North Island College	0	0			0	6					8	52
	22	85	70	64	12	78	10	45	119	37	211	1,488
Total Non Lower Mainland	24	97	86	71	15	97	19	57	141	42	294	1,856
Lower Mainland												
Public												
BCIT	0		0	0	0		0	0	0	0	0	67
Capilano College	5		8	13	5	5	0	8	12		10	84
Douglas College		7		0						4	14	104
Kwantlen University College		11	5	6		6	0	6	10		13	88
UC of the Fraser Valley			0	0	0				2		5	30
Langara College		9	9	10		6	0	11	6		5	449
	12	34	23	29	12	22	2	33	34	14	47	822
Private												
Columbia College	0	38	0	0	0	0	0	0				53
Coquitlam College	0	33	0	0	0	0	0	0		0		47
	0	71	0	0	0	0	0	0			6	100
Total Lower Mainland	12	105	23	29	12	22	2	33	37	16	53	922
Total B.C. College Transfers	36	202	109	100	27	119	21	90	178	58	347	2,778
Total B.C. High School Entrants	14	51	50	29	17	50		52	86	11	271	839

VART - Visual Arts, ECON - Economics, ENGL - English, GEOG - Geography, H A - History in Art, HIST - History
P E - Physical Education, POLI - Political Science, PSYC - Psychology, SOCI - Sociology, OTH - Other

Table 16
Credentials Awarded to B.C. College Transfers Admitted to UVic
(2003/04 to 2007/08)

Region/College	# of												
	Students	BA	BCOM	BED	BENG	BFA	BMUS	BSC	BSN	BSW	CERT	DIPL	LLB
Non Lower Mainland													
Northern B.C.													
College of New Caledonia	22	9				0	0	5		0	0	0	0
Northern Lights College	6		0	0	0		0	0	0		0	0	0
Northwest Community College	10	6	0	0	0	0	0	0	0		0	0	0
	38	18					0	5		6	0	0	0
Interior/Kootenays													
College of the Rockies	61	10		41	0	0	0	7	0		0	0	0
Okanagan University College	89	44		12	5		0	16					0
Selkirk College	136	20	5	0			0	12	80	12	0	0	0
UC of the Cariboo	44	23			0		0	10			0	0	0
	330	97	12	56	9	6	0	45	85	18			0
Vancouver Island													
Camosun College	1268	542	48	79	32	18	8	173	318	44	0	5	0
Malaspina University-College	168	60	13	8	4	11		44		22	0	0	0
North Island College	52	28				0	0	7	0	11		0	0
	1,488	630	62	88	37	29	11	224	321	77		5	0
Total Non Lower Mainland	1,856	745	76	146	47	36	11	274	408	101		6	0
Lower Mainland													
Public													
BCIT	67		0	0	35	0	0	0	30	0	0	0	0
Capilano College	84	56			0	6		11			0		0
Douglas College	104	30	17				9	9	27	7	0	0	0
Kwantlen University College	88	50		0			8	10	6	5	0	0	0
UC of the Fraser Valley	30	13			0		0	7			0	0	0
Langara College	449	67	22	0	0			9	328	20	0	0	0
	822	218	46	5	40	14	20	46	394	37	0		0
Private													
Columbia College	53	37		0	0	0	0	12	0	0	0	0	0
Coquitlam College	47	31	5	0	0	0	0	11	0	0	0	0	0
	100	68	9	0	0	0	0	23	0	0	0	0	0
Total Lower Mainland	922	286	55	5	40	14	20	69	394	37	0		0
Total B.C. College Transfers	2,778	1,031	131	151	87	50	31	343	802	138		8	0
Total B.C. High School Entrants	839	416	49	19	12	39	37	257					0

Percentage Distribution													
Non Lower Mainland													
Nothern B.C.	97.4	47.4	5.3	5.3	2.6	2.6	0.0	13.2	5.3	15.8	0.0	0.0	0.0
Interior/Kootenays	100.0	29.4	3.6	17.0	2.7	1.8	0.0	13.6	25.8	5.5	0.3	0.3	0.0
Vancouver Island	99.8	42.3	4.2	5.9	2.5	1.9	0.7	15.1	21.6	5.2	0.1	0.3	0.0
Total Non Lower Mainland	99.8	40.1	4.1	7.9	2.5	1.9	0.6	14.8	22.0	5.4	0.1	0.3	0.0
Lower Mainland													
Public	100.0	26.5	5.6	0.6	4.9	1.7	2.4	5.6	47.9	4.5	0.0	0.2	0.0
Private	100.0	68.0	9.0	0.0	0.0	0.0	0.0	23.0	0.0	0.0	0.0	0.0	0.0
Total Lower Mainland	100.0	31.0	6.0	0.5	4.3	1.5	2.2	7.5	42.7	4.0	0.0	0.2	0.0
Grand Total	99.9	37.1	4.7	5.4	3.1	1.8	1.1	12.3	28.9	5.0	0.1	0.3	0.0

BA - Bachelor of Arts, BCOM - Bachelor of Commerce, BED - Bachelor of Education, BENG - Bachelor of Engineering, BFA - Bachelor of Fine Arts, BMUS - Bachelor of Music, BSC - Bachelor of Science, BSN - Bachelor of Science in Nursing, BSW - Bachelor of Social Work
 CERT - Certificate Programs , DIPL - Diploma Programs , LLB - Law

Table 17
Average Years to Credential for B.C. College Transfers Who Have Graduated
(2003/04 to 2007/08)

	<u># of</u>													
	<u>Students</u>	<u>BA</u>	<u>BCOM</u>	<u>BED</u>	<u>BENG</u>	<u>BFA</u>	<u>BMUS</u>	<u>BSC</u>	<u>BSN</u>	<u>BSW</u>	<u>CERT</u>	<u>DIPL</u>	<u>LLB</u>	<u>Total</u>
Northern B.C.														
College of New Caledonia	22	2.6	3.7	3.7	2.4			3.1	2.7					2.9
Northern Lights College	6	3.3				4.7				1.7				3.0
Northwest Community College	10	3.1								2.7				2.9
	38	2.9	3.7	3.7	2.4	4.7		3.1	2.7	2.4				2.9
Interior/Kootenays														
College of the Rockies	61	2.8	3.4	2.7				2.9		3.7				2.8
Okanagan University College	89	2.9	3.3	3.0	2.9	2.7		2.6	2.5	2.7	2.9	4.2		2.9
Selkirk College	136	2.6	3.1		3.6	3.7		2.8	1.5	2.5				2.0
UC of the Cariboo	44	2.6	3.4	3.7		3.2		3.4	2.4	1.8				2.8
	330	2.8	3.2	2.8	3.2	3.3		2.9	1.6	2.5	2.9	4.2		2.5
Vancouver Island														
Camosun College	1268	2.6	2.9	2.9	2.9	2.7	2.4	2.9	1.4	2.1		3.7		2.4
Malaspina University-College	168	2.5	3.2	3.2	3.7	2.5	3.2	2.6	1.8	2.1				2.6
North Island College	52	3.0	3.7	4.4	3.7			3.1		2.3	4.2			2.9
	1,488	2.6	3.0	2.9	3.0	2.6	2.6	2.8	1.4	2.1	4.2	3.7		2.4
Total Non Lower Mainland	1,856	2.6	3.0	2.9	3.0	2.8	2.6	2.9	1.4	2.2	3.6	3.8		2.5
Public														
BCIT	67	2.5			2.8				2.8					2.8
Capilano College	84	2.4	3.3	2.7		2.5	2.7	3.0	1.4	2.2		3.8		2.6
Douglas College	104	2.6	2.5	3.7	3.3	2.7	2.4	2.8	2.3	1.9				2.5
Kwantlen University College	88	2.5	3.4		3.0	3.2	2.8	2.9	1.8	2.2				2.6
UC of the Fraser Valley	30	2.9	3.4	3.2		2.7		3.0	2.4	2.3				2.8
Langara College	449	2.5	2.3			1.9	2.7	2.3	1.5	2.4				1.7
	822	2.5	2.5	3.3	2.8	2.6	2.6	2.8	1.7	2.3		3.8		2.1
Private														
Columbia College	53	2.4	3.6					3.2						2.7
Coquitlam College	47	2.2	3.5					3.0						2.5
	100	2.3	3.5					3.1						2.6
Total Lower Mainland	922	2.5	2.7	3.3	2.8	2.6	2.6	2.9	1.7	2.3				2.2
Total B.C. College Transfers	2,778	2.6	2.9	2.9	2.9	2.8	2.6	2.9	1.6	2.2	3.6	3.8		2.4

BA - Bachelor of Arts, BCOM - Bachelor of Commerce, BED - Bachelor of Education, BENG - Bachelor of Engineering, BFA - Bachelor of Fine Arts, BMUS - Bachelor of Music, BSC - Bachelor of Science, BSN - Bachelor Science in Nursing, BSW - Bachelor of Social Work, CERT - Certificate Programs, DIPL - Diploma Programs, LLB - Law.

Section D

PROFILE OF STUDENTS WITH COLLEGE EXPERIENCE

Table 18
Students with B.C. College Experience Admitted to UVic by Year of Admission
(Excludes College Transfer Students)
(2003/04 to 2007/08)

Region/College	2003/04	2004/05	2005/06	2006/07	2007/08	Total
Non Lower Mainland						
Northern B.C.						
College of New Caledonia	9	6	5	8	5	33
Northern Lights College						7
Northwest Community College		7			13	28
	<u>12</u>	<u>14</u>	<u>10</u>	<u>11</u>	<u>21</u>	<u>68</u>
Interior/Kootenays						
College of the Rockies	5	7				21
Okanagan University College	30	22	34	19	20	125
Selkirk College	10	11		5		31
UC of the Cariboo	19	10	6	8		47
	<u>64</u>	<u>50</u>	<u>46</u>	<u>34</u>	<u>30</u>	<u>224</u>
Vancouver Island						
Camosun College	102	105	118	83	70	478
Malaspina University-College	46	23	30	24	29	152
North Island College	13	11	7	17	14	62
	<u>161</u>	<u>139</u>	<u>155</u>	<u>124</u>	<u>113</u>	<u>692</u>
Total Non Lower Mainland	<u>237</u>	<u>203</u>	<u>211</u>	<u>169</u>	<u>164</u>	<u>984</u>
Lower Mainland						
Public						
BCIT	21	5	10	9	6	51
Capilano College	26	20	14	15	12	87
Douglas College	24	18	17	17	15	91
Kwantlen University College	22	13	29	20	17	101
UC of the Fraser Valley	9	13	10	13	5	50
Langara College	40	25	36	23	18	142
	<u>142</u>	<u>94</u>	<u>116</u>	<u>97</u>	<u>73</u>	<u>522</u>
Private						
Columbia College	0					9
Coquitlam College						9
			5	5	5	18
Total Lower Mainland	<u>143</u>	<u>96</u>	<u>121</u>	<u>102</u>	<u>78</u>	<u>540</u>
Total Students with College Experience	380	299	332	271	242	1,524

Percentage Distribution

Non Lower Mainland						
Nothern B.C.	3.2	4.7	3.0	4.1	8.7	4.5
Interior/Kootenays	16.8	16.7	13.9	12.5	12.4	14.7
Vancouver Island	42.4	46.5	46.7	45.8	46.7	45.4
Total Non Lower Mainland	<u>62.4</u>	<u>67.9</u>	<u>63.6</u>	<u>62.4</u>	<u>67.8</u>	<u>64.6</u>
Lower Mainland						
Public	37.4	31.4	34.9	35.8	30.2	34.3
Private	0.3	0.7	1.5	1.8	2.1	1.2
Total Lower Mainland	<u>37.6</u>	<u>32.1</u>	<u>36.4</u>	<u>37.6</u>	<u>32.2</u>	<u>35.4</u>
Grand Total	100.0	100.0	100.0	100.0	100.0	100.0

Table 19
Students with B.C. College Experience Admitted to UVic by Age Interval
(Excludes College Transfer Students)
(2003/04 to 2007/08)

Region/College	<20	20-24	25-29	30-34	35-39	>39	Total	Average
Non Lower Mainland								
Northern B.C.								
College of New Caledonia		13	9		5		33	26.6
Northern Lights College				0	0	0	7	21.8
Northwest Community College				9	8		28	33.1
	<u>6</u>	<u>18</u>	<u>14</u>	<u>11</u>	<u>13</u>	<u>6</u>	<u>68</u>	<u>28.8</u>
Interior/Kootenays								
College of the Rockies		9	7	0			21	27.9
Okanagan University College	5	42	26	14	11	27	125	30.2
Selkirk College	9	8				6	31	27.6
UC of the Cariboo		11	9	5	7	14	47	33.2
	<u>16</u>	<u>70</u>	<u>45</u>	<u>22</u>	<u>21</u>	<u>50</u>	<u>224</u>	<u>30.3</u>
Vancouver Island								
Camosun College	46	214	107	38	28	45	478	26.5
Malaspina University-College	20	49	29	14	14	26	152	29.0
North Island College	5	18	15	7	5	12	62	30.5
	<u>71</u>	<u>281</u>	<u>151</u>	<u>59</u>	<u>47</u>	<u>83</u>	<u>692</u>	<u>27.4</u>
Total Non Lower Mainland	<u>93</u>	<u>369</u>	<u>210</u>	<u>92</u>	<u>81</u>	<u>139</u>	<u>984</u>	<u>28.2</u>
Lower Mainland								
Public								
BCIT			9	8	13	19	51	37.1
Capilano College		31	20	7	5	20	87	30.3
Douglas College		11	32	14	15	15	91	31.5
Kwantlen University College	6	50	19	13	5	8	101	26.3
UC of the Fraser Valley		19	8	6	6	10	50	30.1
Langara College	6	32	31	24	17	32	142	31.7
	<u>22</u>	<u>144</u>	<u>119</u>	<u>72</u>	<u>61</u>	<u>104</u>	<u>522</u>	<u>30.8</u>
Private								
Columbia College				0	0		9	27.7
Coquitlam College	0	7	0			0	9	24.3
	<u>0</u>	<u>11</u>	<u>0</u>	<u>0</u>	<u>0</u>	<u>0</u>	<u>18</u>	<u>26.0</u>
Total Lower Mainland	<u>23</u>	<u>155</u>	<u>121</u>	<u>73</u>	<u>62</u>	<u>106</u>	<u>540</u>	<u>30.6</u>
Total Students with College Experience	116	524	331	165	143	245	1,524	29.0

	Percentage Distribution						
Non Lower Mainland							
Nothern B.C.	8.8	26.5	20.6	16.2	19.1	8.8	100.0
Interior/Kootenays	7.1	31.3	20.1	9.8	9.4	22.3	100.0
Vancouver Island	10.3	40.6	21.8	8.5	6.8	12.0	100.0
Total Non Lower Mainland	<u>9.5</u>	<u>37.5</u>	<u>21.3</u>	<u>9.3</u>	<u>8.2</u>	<u>14.1</u>	<u>100.0</u>
Lower Mainland							
Public	4.2	27.6	22.8	13.8	11.7	19.9	100.0
Private	5.6	61.1	11.1	5.6	5.6	11.1	100.0
Total Lower Mainland	<u>4.3</u>	<u>28.7</u>	<u>22.4</u>	<u>13.5</u>	<u>11.5</u>	<u>19.6</u>	<u>100.0</u>
Grand Total	7.6	34.4	21.7	10.8	9.4	16.1	100.0

Table 20
Students with B.C. College Experience Admitted to UVic by Gender
(Excludes College Transfer Students)
(2003/04 to 2007/08)

Region/College	Male	Female	Total	Percentage	
				Male	Female
Non Lower Mainland					
Northern B.C.					
College of New Caledonia	9	24	33	27.3	72.7
Northern Lights College	5		7	71.4	28.6
Northwest Community College	5	23	28	17.9	82.1
	19	49	68	27.9	72.1
Interior/Kootenays					
College of the Rockies	6	15	21	28.6	71.4
Okanagan University College	30	95	125	24.0	76.0
Selkirk College	11	20	31	35.5	64.5
UC of the Cariboo	13	34	47	27.7	72.3
	60	164	224	26.8	73.2
Vancouver Island					
Camosun College	182	296	478	38.1	61.9
Malaspina University-College	55	97	152	36.2	63.8
North Island College	14	48	62	22.6	77.4
	251	441	692	36.3	63.7
Total Non Lower Mainland	330	654	984	33.5	66.5
Lower Mainland					
Public					
BCIT	18	33	51	35.3	64.7
Capilano College	30	57	87	34.5	65.5
Douglas College	21	70	91	23.1	76.9
Kwantlen University College	29	72	101	28.7	71.3
UC of the Fraser Valley	17	33	50	34.0	66.0
Langara College	34	108	142	23.9	76.1
	149	373	522	28.5	71.5
Private					
Columbia College		7	9	22.2	77.8
Coquitlam College	6		9	66.7	33.3
	8	10	18	44.4	55.6
Total Lower Mainland	157	383	540	29.1	70.9
Total Students with College Experience	487	1,037	1,524	32.0	68.0

Appendix

Definitions and Technical Notes

Session: The academic year at The University of Victoria is divided into two sessions: a four-month summer session (May to August), and an eight-month winter session (September to April). This contrasts with the semester or trimester system containing two or three four-month periods of study.

B.C. College Transfers: These are students admitted to the University of Victoria, primarily on the basis of their performance at a B.C. college or colleges, and who register and begin work in at least one UVic session. Those who withdraw, either in the first or a subsequent session, are included. For the purposes of this report, students who have earned transfer credits from more than one B.C. college are grouped with the college where the majority of these credits were earned. With few exceptions, B.C. college transfer students have earned a minimum of 12 units of transferable academic credit, at least half of which has been acquired at one or more B.C. colleges. In most instances, B.C. college transfers have earned 12 or more units of transfer at the one college they have attended.

B.C. High/Secondary School Students: These are students admitted to the University of Victoria, on the basis of their performance at a B.C. high school, who register and begin work in at least one UVic session. Those who withdraw, either in the first or a subsequent session, are included. Both students who enter UVic immediately after secondary school, and those who enter after some delay, are included.

Grading Systems: The University of Victoria uses a grade point system to evaluate course performance. A grade point is a numerical value given to a letter grade, with 9 equivalent to A⁺, 8 to A, 7 to A⁻, 6 to B⁺, 5 to B, 4 to B⁻, 3 to C⁺, 2 to C, 1 to D, and 0 to failure. The weighted average of such grades is called a grade point average. This compares with the four point (0-4) and percentage (0-100) systems used at other institutions. However, B.C. college transfers and B.C. high school students are admitted to UVic based on a percentage average. These admission averages are derived from a variety of incoming grading systems, and are not recalculated by UVic to a Grade Point system.

Grade Point Average (GPA): The university recognizes three types of grade point averages for its students. The sessional GPA is based on all grades earned during a given winter or summer session. The graduating GPA of a student in a bachelor's degree program is based on grades in 300 and 400 level (and in Education 700 level) courses acceptable within the degree program being taken. The cumulative GPA is based on all courses taken while at the university. While other GPA measures and concepts might have resulted in easier comparisons with other institutions, these are the measures accepted at UVic (and calculated/recorded on its student records system).

The Effect of Differing Academic Regulations: Universities adopt numerous academic policies/regulations that differ from institution to institution, and often use different terminology to refer to essentially similar concepts. Inter-institutional comparisons are therefore sometimes difficult. Caution should be exercised when comparing this report's findings to those in corresponding university reports.

Graduation Rates: Graduation rates in this report are based on those students admitted in 2003/04 or 2004/05 who had graduated by May 2008. Because B.C. College Transfers have begun their work at UVic at a higher year level than B.C. High School Students, a higher percentage of the former will have graduated. The high school students who have graduated will include many who are highly motivated and have proceeded through UVic at a full-time rate. As such, cohort comparisons of graduation rates should be made with caution.

Full-Time/Part-Time Status: All non-coop undergraduate students registered in at least twelve units of course work during a given winter session and all coop undergraduate students are classified as full-time.

All non-coop undergraduate students registered in less than twelve units of course work during a given winter session are classified as part-time. Full-time and part-time status is not defined for summer sessions.



709 - 555 Seymour Street
Vancouver BC Canada V6B 3H6
bccat.ca | admin@bccat.ca
t 604 412 7700 | f 604 683 0576