

Home Education

in Pennsylvania

2006-07



Home Education

in Pennsylvania

2006-07

*Compiled
by
John S. Creason
Statistician*

August 2008

Commonwealth of Pennsylvania
Edward G. Rendell, Governor

Department of Education
Gerald L. Zahorchak, D.Ed., Secretary

Office of Administration
Michael Walsh, Deputy Secretary

Division of Data Services
Ronald W. Hoerner, Acting Division Chief

The Pennsylvania Department of Education (PDE) does not discriminate in its educational programs, activities or employment practices based on race, color, national origin, sex, sexual orientation, disability, age, religion, ancestry, union membership, or any other legally protected category. This policy is in accordance with state law, including the Pennsylvania Human Relations Act, and with federal law, including Title VI and Title VII of the Civil Rights Act of 1964, Title IX of the Education Amendments of 1972, Section 504 of the Rehabilitation Act of 1973, the Age Discrimination in Employment Act of 1967 and the Americans with Disabilities Act of 1990.

The following persons have been designated to handle inquiries regarding the Pennsylvania Department of Education's non-discrimination policies:

For Inquiries Concerning Non-Discrimination In Employment:

Pennsylvania Department of Education
Equal Employment Opportunity Representative
Bureau of Human Resources
333 Market Street, 11th Floor
Harrisburg, PA 17126-0333
Voice Telephone: (717) 787-4417
Text Telephone: (717) 783-8445
Fax: (717) 783-9348

For Inquiries Concerning Non-Discrimination in All Other Pennsylvania Department of Education Programs and Activities:

Pennsylvania Department of Education
School Services Unit Director
333 Market Street, 5th Floor
Harrisburg, PA 17126-0333
Voice Telephone: (717) 783-3750
Text Telephone: (717) 783-8445
Fax: (717) 783-6802

Division of Data Services publications are available on the PDE Home Page (www.pde.state.pa.us). If you have any questions about this publication, contact:

Cheryl Wenger

ra-espdata@state.pa.us

Pennsylvania Department of Education
Division of Data Services
333 Market Street
Harrisburg, PA 17126-0333

Voice Telephone: (717) 787-2644
Fax: (717) 787-3148
Text Telephone TTY: (717) 783-8445

CONTENTS

	Page
Overview	1
Statistical Highlights, 2006-07	2
Figure 1. Home Education Students, 1997-98 through 2006-07	3
Figure 2. Home Education Students by County, 2006-07	4
Table 1. Home Education Students by Age, 1997-98 through 2006-07	5
Figure 3. Home Education Students by Age, 2006-07	6
Figure 4. Home Education Students by Selected Counties by Selected Years	7
Figure 5. Home Education Students as a Percentage of Total Enrollments by Selected Years ...	8
Table 2. Home Education Additional Statistics, 2006-07	9
Appendix A. Home Education Students by School District and Age Group, 2006-07	A-1
Appendix B. Glossary	B-1
Appendix C. Sources	C-1

OVERVIEW

The 2006-07 total for home education students in Pennsylvania was 22,136. The total was comprised of 11,422 males and 10,714 females. There was a decrease of 276 students, or 1.2%, from the 2005-06 total of 22,412. It was the fourth year in a row that home education enrollments decreased and only the fifth year overall since the passage of Act 169 of 1988, which authorized parents, guardians and legal custodians to teach their children at home.

Data was collected from all of Pennsylvania's 501 school districts for home education students aged five through 21. Austin Area, Blacklick Valley, Bristol Borough and Midland Borough were the only school districts that reported no home education students in 2006-07.

The number of home education students decreased in 40 of Pennsylvania's 67 counties. Once again, Lancaster County led the state with 2,513 students, followed by York County with 1,590 (see figure 2, page 4). Students educated at home comprised an additional 1.1% of the state's public, private and nonpublic enrollments in 2006-07 (see figure 5, page 8). There were 366 school districts (73.1%), up from 345, that allowed home education students to participate in curricular programs (see table 2, page 9).

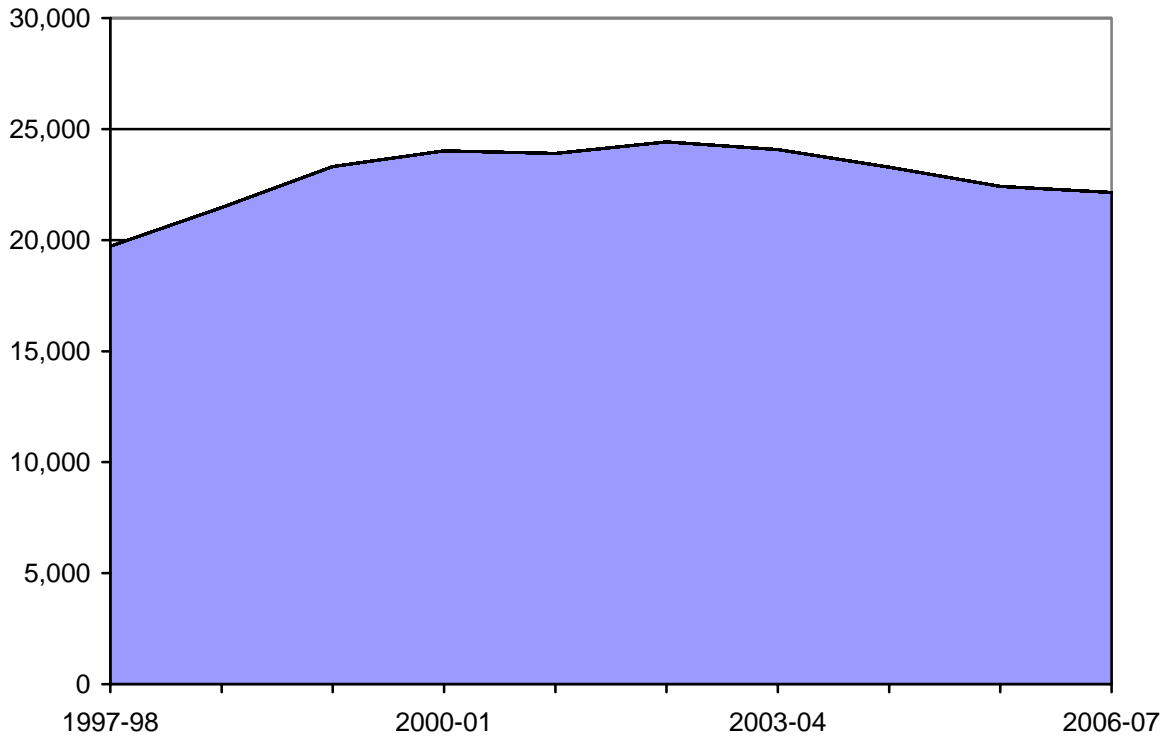
Act 67 of 2005, amended the home education law of Pennsylvania. This law allowed home-educated students to participate in the school district activities that are subject to the provisions of Sec. 511 of the School Code. These activities included clubs, musical ensembles, athletics (such as varsity sports), and theatrical productions and may include other activities related to the school program. The school board may develop or amend current policies on these activities, but local policies may not conflict with Act 67 of 2005. The law allowed participation in activities beginning January 1, 2006.

STATISTICAL HIGHLIGHTS
2006-07

	HOME EDUCATION STUDENTS	
	TOTAL	%
TOTAL	22,136	100.0
Ages 5 through 11	9,935	44.9
Ages 12 through 18+	12,201	55.1
COUNTIES WITH THE MOST STUDENTS		
Lancaster	2,513	11.4
York	1,590	7.2
Berks	1,204	5.4
Chester	1,032	4.7
Montgomery	994	4.5
COUNTIES WITH THE FEWEST STUDENTS		
Cameron	6	0.1
Forest	12	0.1
Elk	20	0.1
Sullivan	21	0.1
Montour	45	0.2

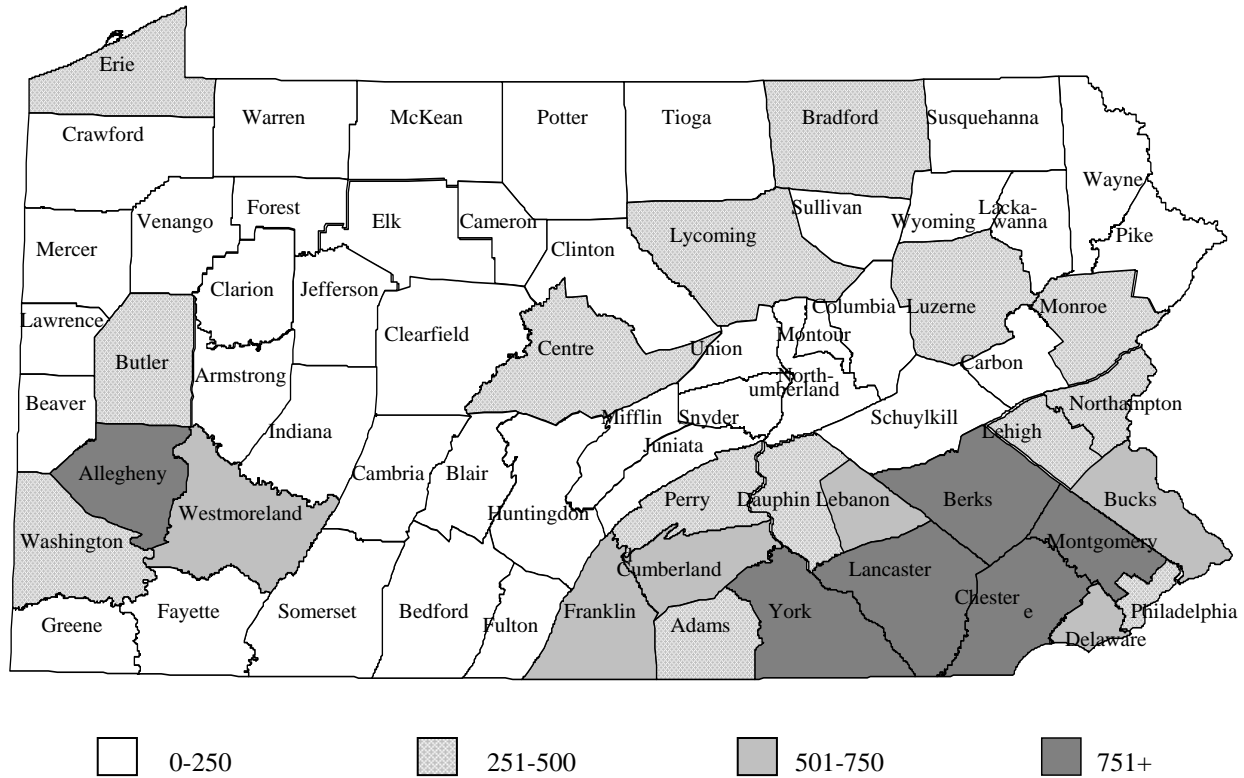
	SCHOOL DISTRICTS	
	TOTAL	%
SCHOOL DISTRICTS ALLOWING OUTSIDE ACTIVITY PARTICIPATION		
Curricular Activities	366	73.1

FIGURE 1
HOME EDUCATION STUDENTS
1997-98 THROUGH 2006-07



Since the passage of Act 169 of 1988, the total number of home education students increased every year until 2001-02. In 2002-03, the number of home educated children reached its all-time high of 24,415. The 2006-07 total of 22,136 was a one-year decrease of 276 from the 2005-06 total of 22,412.

FIGURE 2
HOME EDUCATION STUDENTS BY COUNTY
2006-07



The distribution of home education students throughout the state corresponded closely to the population density centers. The highest concentration appeared in the south central and southeastern regions of Pennsylvania. Lancaster County led the state with a total of 2,513 students.

There were 41 counties with 250 or fewer students. Counties with between 251 and 500 students numbered 14. There were six counties with between 501 and 750 students, and six with more than 751 students.

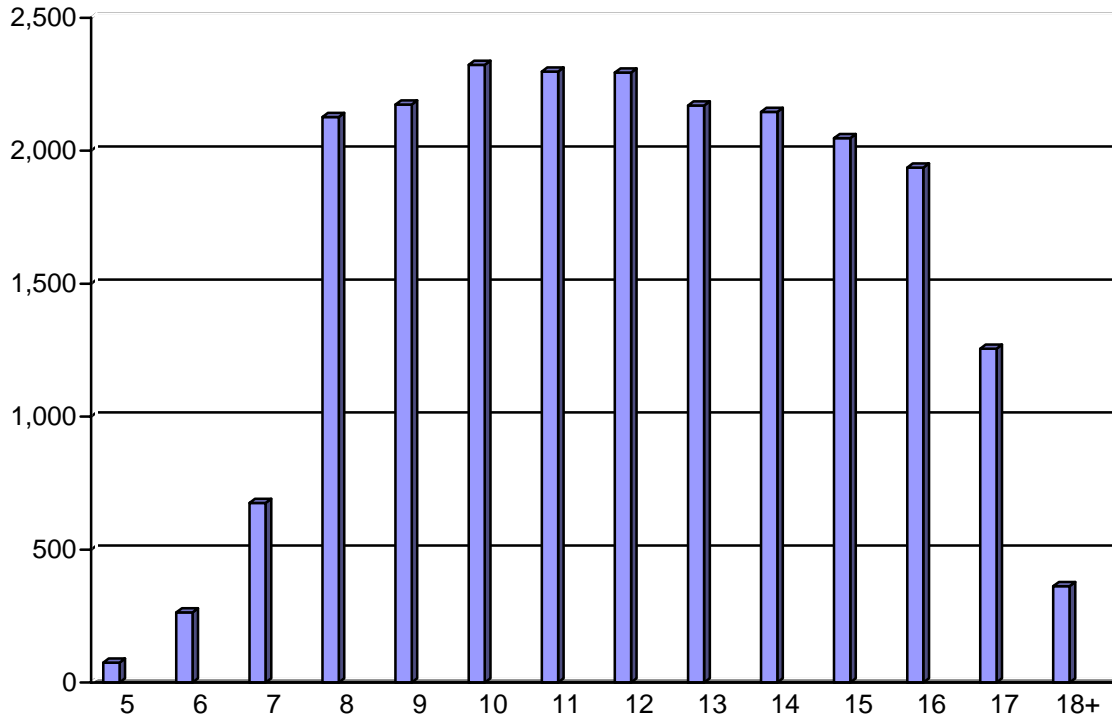
TABLE 1

HOME EDUCATION STUDENTS BY AGE
1997-98 THROUGH 2006-07

	1997-98	1998-99	1999-00	2000-01	2001-02	2002-03	2003-04	2004-05	2005-06	2006-07
TOTAL	19,717	21,459	23,313	24,019	23,903	24,415	24,076	23,287	22,412	22,136
AGE										
5	115	146	121	110	107	93	88	101	82	75
6	354	352	380	365	392	326	285	270	203	264
7	1,135	1,072	1,159	1,058	996	966	838	721	704	676
8	2,114	2,332	2,417	2,475	2,423	2,308	2,346	2,101	2,054	2,127
9	2,159	2,311	2,645	2,551	2,536	2,567	2,395	2,415	2,266	2,173
10	2,186	2,297	2,386	2,651	2,530	2,563	2,495	2,353	2,356	2,323
11	2,078	2,196	2,419	2,398	2,622	2,573	2,472	2,391	2,285	2,297
12	1,980	2,131	2,380	2,492	2,368	2,707	2,515	2,361	2,289	2,294
13	1,813	2,022	2,162	2,314	2,381	2,397	2,572	2,363	2,319	2,170
14	1,686	1,899	2,072	2,193	2,107	2,229	2,240	2,350	2,163	2,146
15	1,708	1,826	2,007	2,064	2,062	2,128	2,227	2,168	2,124	2,047
16	1,427	1,673	1,734	1,839	1,820	1,982	1,975	1,990	1,904	1,926
17	782	941	1,110	1,202	1,208	1,236	1,302	1,320	1,311	1,255
18+	180	261	321	307	351	340	326	383	352	363

In 2006-07, the number of home education students remained fairly stable with slight increases in six age categories and small decreases in the remaining categories. When home education statistics were first collected for the 1988-89 school year, nearly 70% of the students were age 11 and under. Collectively, the percentage of students in the older age groups (12 and over) showed a slight decrease from 55.6 % to 55.1% of the 2006-07 home education enrollment.

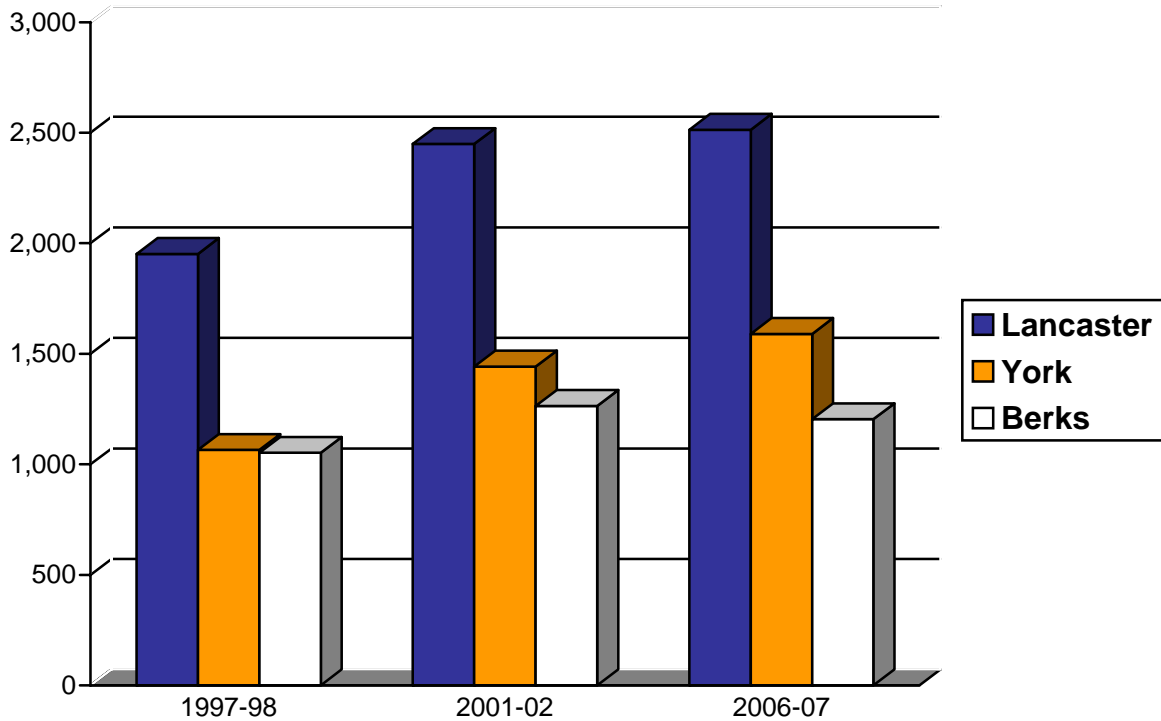
FIGURE 3
HOME EDUCATION STUDENTS BY AGE
2006-07



The distribution of home education students showed that ages eight through 16 had the largest numbers, with age 10 having the most students. These ages accounted for 88.1% of the home education students. The Pennsylvania Public School Code of 1949, as amended, does not require a child to be registered for school until age eight. This accounted for the relatively low number of students registered in ages five, six and seven.

FIGURE 4

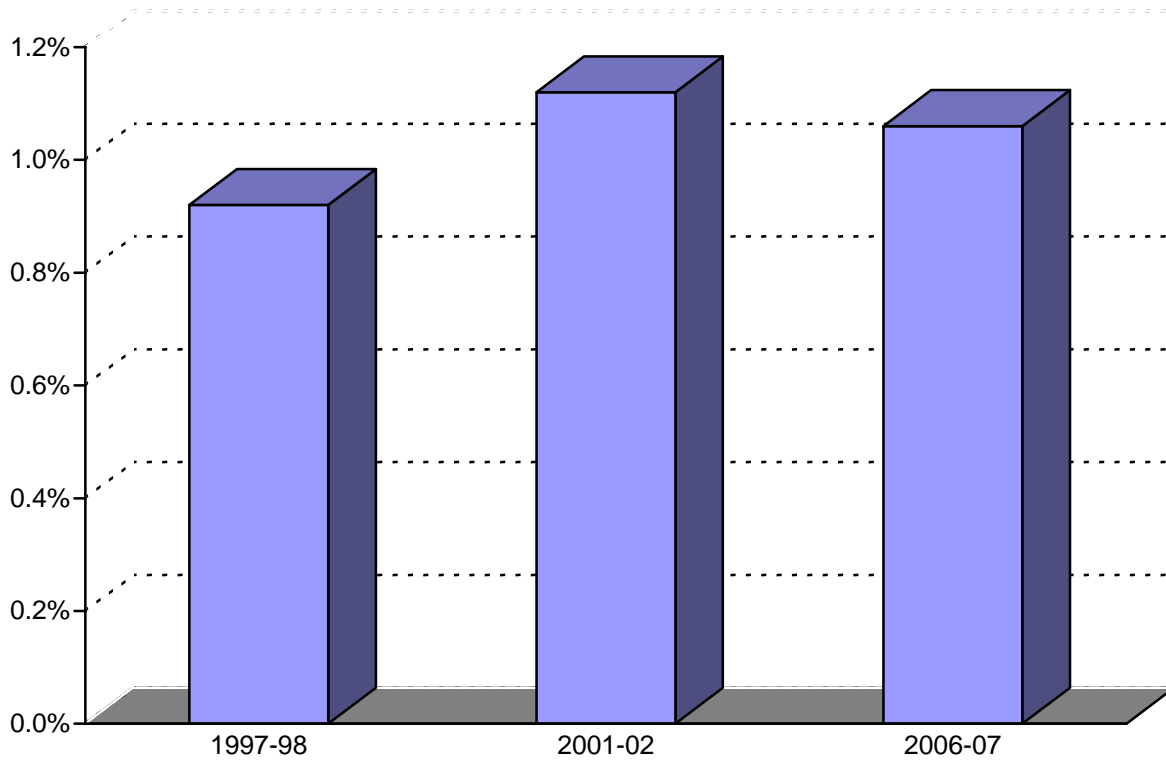
HOME EDUCATION STUDENTS BY SELECTED COUNTIES
BY SELECTED YEARS



Lancaster, York and Berks counties contained the largest concentration of home education students in 2006-07. These three counties represented 24.0% of the 22,136 home education students. Trends for these three counties closely paralleled the sharp overall rises in the number of home education students for the entire state after the passage of Act 169 of 1988. The figures have leveled off the last few years and are now showing slight declines. Lancaster County has had the largest number every year since figures were collected. More than 11% of Pennsylvania's home-educated students reside in Lancaster County.

FIGURE 5

HOME EDUCATION STUDENTS AS A PERCENTAGE OF TOTAL ENROLLMENTS
BY SELECTED YEARS



There were 2,147,776 children enrolled in grades K-12 in Pennsylvania in 1997-98. In that year, home education enrollments numbered 19,717, or 0.9% of the total enrollment. By 2006-07, the number of home education students had risen to 22,136, which equaled 1.1% of the public, private and nonpublic enrollment of 2,095,535.

TABLE 2
HOME EDUCATION ADDITIONAL STATISTICS
2006-07

Affidavits Returned by Superintendent	14
Programs Deemed Inappropriate by Evaluator	108
Programs Deemed Inappropriate by Superintendent	228
Hearings Held Regarding Inappropriate Programs	12
Supervisors Requesting Curricular Materials	1,890
Special Education Students	526
Students Receiving Services for Special Education	97
School Districts Allowing Home Education Students to Participate in Curricular Programs	366

Note: Pennsylvania has 501 school districts.

Act 67 of 2005, amended the home education law of Pennsylvania. This law allows home-educated students to participate in the school district activities that are subject to the provisions of Sec. 511 of the School Code. These activities include clubs, musical ensembles, athletics (such as varsity sports), and theatrical productions and may include other activities related to the school program. The school board may develop or amend current policies on these activities, but local policies may not conflict with Act 67 of 2005. The law has allowed participation in activities since January 1, 2006.

APPENDIX A

HOME EDUCATION STUDENTS BY SCHOOL DISTRICT AND AGE GROUP
2006-07

	TOTAL	AGES 5-11	AGES 12-18+
TOTAL	22,136	9,935	12,201
Adams County	386	159	227
Bermudian Springs SD	92	33	59
Conewago Valley SD	86	41	45
Fairfield Area SD	46	21	25
Gettysburg Area SD	73	32	41
Littlestown Area SD	43	22	21
Upper Adams SD	46	10	36
Allegheny County	970	456	514
Allegheny Valley SD	15	7	8
Avonworth SD	19	10	9
Baldwin-Whitehall SD	11	5	6
Bethel Park SD	52	16	36
Brentwood Borough SD	3	3	0
Carlynton SD	13	5	8
Chartiers Valley SD	13	6	7
Clairton City SD	1	1	0
Cornell SD	10	4	6
Deer Lakes SD	14	6	8
Duquesne City SD	4	2	2
East Allegheny SD	8	4	4
Elizabeth Forward SD	19	9	10
Fox Chapel Area SD	27	11	16
Gateway SD	28	18	10
Hampton Township SD	20	10	10
Highlands SD	9	3	6
Keystone Oaks SD	16	8	8
McKeesport Area SD	37	17	20
Montour SD	17	7	10
Moon Area SD	16	5	11
Mt Lebanon SD	20	7	13
North Allegheny SD	82	39	43
North Hills SD	53	33	20
Northgate SD	22	10	12
Penn Hills SD	24	10	14
Pine-Richland SD	32	21	11
Pittsburgh SD	188	84	104
Plum Borough SD	16	9	7
Quaker Valley SD	10	6	4
Riverview SD	2	1	1
Shaler Area SD	21	8	13
South Allegheny SD	4	2	2
South Fayette Township SD	17	10	7
South Park SD	16	6	10
Steel Valley SD	7	5	2
Sto-Rox SD	3	1	2
Upper Saint Clair SD	7	3	4
West Allegheny SD	11	5	6
West Jefferson Hills SD	13	7	6
West Mifflin Area SD	15	10	5
Wilkinsburg Borough SD	8	2	6
Woodland Hills SD	47	20	27

APPENDIX A

HOME EDUCATION STUDENTS BY SCHOOL DISTRICT AND AGE GROUP
2006-07

	TOTAL	AGES 5-11	AGES 12-18+
Armstrong County	136	51	85
Apollo Ridge SD	17	6	11
Armstrong SD	79	32	47
Freeport Area SD	31	11	20
Leechburg Area SD	9	2	7
Beaver County	242	104	138
Aliquippa SD	7	4	3
Ambridge Area SD	30	18	12
Beaver Area SD	37	20	17
Big Beaver Falls Area SD	23	12	11
Blackhawk SD	30	8	22
Center Area SD	7	0	7
Freedom Area SD	13	2	11
Hopewell Area SD	23	13	10
Midland Borough SD	0	0	0
Monaca SD	1	0	1
New Brighton Area SD	6	3	3
Riverside Beaver County SD	22	6	16
Rochester Area SD	6	1	5
South Side Area SD	19	8	11
Western Beaver County SD	18	9	9
Bedford County	155	71	84
Bedford Area SD	48	22	26
Chestnut Ridge SD	38	18	20
Everett Area SD	31	12	19
Northern Bedford County SD	22	15	7
Tussey Mountain SD	16	4	12
Berks County	1,204	480	724
Antietam SD	4	2	2
Boyertown Area SD	139	48	91
Brandywine Heights Area SD	57	29	28
Conrad Weiser Area SD	65	31	34
Daniel Boone Area SD	40	17	23
Exeter Township SD	53	21	32
Fleetwood Area SD	48	18	30
Governor Mifflin SD	103	48	55
Hamburg Area SD	80	29	51
Kutztown Area SD	47	18	29
Muhlenberg SD	14	5	9
Oley Valley SD	36	17	19
Reading SD	46	17	29
Schuylkill Valley SD	44	21	23
Tulpehocken Area SD	143	65	78
Twin Valley SD	206	58	148
Wilson SD	61	28	33
Wyomissing Area SD	18	8	10
Blair County	213	113	100
Altoona Area SD	45	29	16
Bellwood-Antis SD	22	10	12
Claysburg-Kimmel SD	14	6	8
Hollidaysburg Area SD	51	27	24

APPENDIX A

HOME EDUCATION STUDENTS BY SCHOOL DISTRICT AND AGE GROUP
2006-07

	TOTAL	AGES 5-11	AGES 12-18+
Spring Cove SD	48	26	22
Tyrone Area SD	20	8	12
Williamsburg Community SD	13	7	6
Bradford County	253	104	149
Athens Area SD	44	17	27
Canton Area SD	29	10	19
Northeast Bradford SD	38	22	16
Sayre Area SD	19	7	12
Towanda Area SD	15	7	8
Troy Area SD	58	14	44
Wyalusing Area SD	50	27	23
Bucks County	740	340	400
Bensalem Township SD	40	15	25
Bristol Borough SD	0	0	0
Bristol Township SD	26	14	12
Centennial SD	38	24	14
Central Bucks SD	116	51	65
Council Rock SD	56	34	22
Morrisville Borough SD	16	6	10
Neshaminy SD	72	32	40
New Hope-Solebury SD	5	4	1
Palisades SD	47	24	23
Pennridge SD	162	73	89
Pennsbury SD	51	22	29
Quakertown Community SD	111	41	70
Butler County	331	160	171
Butler Area SD	73	34	39
Karns City Area SD	16	6	10
Mars Area SD	44	17	27
Moniteau SD	14	7	7
Seneca Valley SD	127	66	61
Slippery Rock Area SD	35	20	15
South Butler County SD	22	10	12
Cambria County	141	64	77
Blacklick Valley SD	0	0	0
Cambria Heights SD	5	3	2
Central Cambria SD	8	2	6
Conemaugh Valley SD	11	8	3
Ferndale Area SD	2	0	2
Forest Hills SD	16	8	8
Greater Johnstown SD	24	10	14
Northern Cambria SD	13	6	7
Penn Cambria SD	15	7	8
Portage Area SD	1	1	0
Richland SD	34	15	19
Westmont Hilltop SD	12	4	8
Cameron County	6	4	2
Cameron County SD	6	4	2

APPENDIX A

HOME EDUCATION STUDENTS BY SCHOOL DISTRICT AND AGE GROUP
2006-07

	TOTAL	AGES 5-11	AGES 12-18+
Carbon County	89	50	39
Jim Thorpe Area SD	30	13	17
Lehighton Area SD	12	8	4
Palmerston Area SD	31	18	13
Panther Valley SD	7	5	2
Weatherly Area SD	9	6	3
Centre County	339	166	173
Bald Eagle Area SD	24	14	10
Bellefonte Area SD	65	30	35
Penns Valley Area SD	68	34	34
State College Area SD	182	88	94
Chester County	1,032	441	591
Avon Grove SD	58	27	31
Coatesville Area SD	197	98	99
Downingtown Area SD	141	72	69
Great Valley SD	16	11	5
Kennett Consolidated SD	18	9	9
Octorara Area SD	91	38	53
Owen J Roberts SD	110	33	77
Oxford Area SD	75	31	44
Phoenixville Area SD	79	32	47
Tredyffrin-Easttown SD	26	11	15
Unionville Chadds-Ford SD	31	13	18
West Chester Area SD	190	66	124
Clarion County	93	44	49
Allegheny-Clarion Valley SD	27	8	19
Clarion Area SD	10	4	6
Clarion-Limestone Area SD	14	7	7
Keystone SD	11	6	5
North Clarion County SD	7	4	3
Redbank Valley SD	22	13	9
Union SD	2	2	0
Clearfield County	151	77	74
Clearfield Area SD	44	20	24
Curwensville Area SD	18	13	5
DuBois Area SD	41	22	19
Glendale SD	12	2	10
Harmony Area SD	7	4	3
Moshannon Valley SD	6	2	4
Philipsburg-Osceola Area SD	16	7	9
West Branch Area SD	7	7	0
Clinton County	72	30	42
Keystone Central SD	72	30	42
Columbia County	145	66	79
Benton Area SD	17	9	8
Berwick Area SD	35	12	23
Bloomsburg Area SD	27	12	15

APPENDIX A

HOME EDUCATION STUDENTS BY SCHOOL DISTRICT AND AGE GROUP
2006-07

	TOTAL	AGES 5-11	AGES 12-18+
Central Columbia SD	35	20	15
Millville Area SD	15	8	7
Southern Columbia Area SD	16	5	11
Crawford County	207	92	115
Conneaut SD	32	13	19
Crawford Central SD	80	29	51
Penncrest SD	95	50	45
Cumberland County	596	287	309
Big Spring SD	82	32	50
Camp Hill SD	11	5	6
Carlisle Area SD	102	53	49
Cumberland Valley SD	134	62	72
East Pennsboro Area SD	27	12	15
Mechanicsburg Area SD	62	36	26
Shippensburg Area SD	146	73	73
South Middleton SD	32	14	18
Dauphin County	442	212	230
Central Dauphin SD	178	85	93
Derry Township SD	42	24	18
Halifax Area SD	18	8	10
Harrisburg City SD	28	11	17
Lower Dauphin SD	72	34	38
Middletown Area SD	28	18	10
Millersburg Area SD	13	7	6
Steelton-Highspire SD	17	8	9
Susquehanna Township SD	35	13	22
Upper Dauphin Area SD	11	4	7
Delaware County	544	259	285
Chester-Upland SD	92	25	67
Chichester SD	25	14	11
Garnet Valley SD	31	23	8
Haverford Township SD	43	24	19
Interboro SD	21	8	13
Marple Newtown SD	41	18	23
Penn-Delco SD	22	16	6
Radnor Township SD	20	9	11
Ridley SD	23	16	7
Rose Tree Media SD	27	12	15
Southeast Delco SD	30	14	16
Springfield SD	24	15	9
Upper Darby SD	56	25	31
Wallingford-Swarthmore SD	20	10	10
William Penn SD	69	30	39
Elk County	20	10	10
Johnsonburg Area SD	1	0	1
Ridgway Area SD	3	2	1
Saint Marys Area SD	16	8	8

APPENDIX A

HOME EDUCATION STUDENTS BY SCHOOL DISTRICT AND AGE GROUP
2006-07

	TOTAL	AGES 5-11	AGES 12-18+
Erie County	390	182	208
Corry Area SD	67	30	37
Erie City SD	61	33	28
Fairview SD	18	8	10
Fort LeBoeuf SD	42	18	24
General McLane SD	23	13	10
Girard SD	14	3	11
Harbor Creek SD	16	9	7
Iroquois SD	1	1	0
Millcreek Township SD	33	15	18
North East SD	18	4	14
Northwestern SD	43	19	24
Union City Area SD	18	9	9
Wattsburg Area SD	36	20	16
Fayette County	149	51	98
Albert Gallatin Area SD	28	7	21
Brownsville Area SD	14	6	8
Connellsville Area SD	35	12	23
Frazier SD	17	9	8
Laurel Highlands SD	11	2	9
Uniontown Area SD	44	15	29
Forest County	12	6	6
Forest Area SD	12	6	6
Franklin County	659	289	370
Chambersburg Area SD	192	79	113
Fannett-Metal SD	24	10	14
Greencastle-Antrim SD	154	70	84
Tuscarora SD	131	58	73
Waynesboro Area SD	158	72	86
Fulton County	53	30	23
Central Fulton SD	19	9	10
Forbes Road SD	4	1	3
Southern Fulton SD	30	20	10
Greene County	67	30	37
Carmichaels Area SD	10	5	5
Central Greene SD	16	7	9
Jefferson-Morgan SD	18	9	9
Southeastern Greene SD	2	0	2
West Greene SD	21	9	12
Huntingdon County	113	49	64
Huntingdon Area SD	34	15	19
Juniata Valley SD	33	12	21
Mount Union Area SD	17	7	10
Southern Huntingdon Co SD	29	15	14

APPENDIX A

HOME EDUCATION STUDENTS BY SCHOOL DISTRICT AND AGE GROUP
2006-07

	TOTAL	AGES 5-11	AGES 12-18+
Indiana County	122	57	65
Blairsville-Saltsburg SD	28	14	14
Homer-Center SD	11	3	8
Indiana Area SD	28	13	15
Marion Center Area SD	20	11	9
Penns Manor Area SD	11	2	9
Purchase Line SD	7	4	3
United SD	17	10	7
Jefferson County	74	36	38
Brockway Area SD	19	9	10
Brookville Area SD	20	10	10
Punxsutawney Area SD	35	17	18
Juniata County	129	61	68
Juniata County SD	129	61	68
Lackawanna County	187	89	98
Abington Heights SD	32	21	11
Carbondale Area SD	12	6	6
Dunmore SD	6	2	4
Lakeland SD	14	7	7
Mid Valley SD	10	1	9
North Pocono SD	58	27	31
Old Forge SD	4	0	4
Riverside SD	4	1	3
Scranton SD	44	23	21
Valley View SD	3	1	2
Lancaster County	2,513	1,163	1,350
Cocalico SD	189	87	102
Columbia Borough SD	11	5	6
Conestoga Valley SD	157	78	79
Donegal SD	79	38	41
Eastern Lancaster Co SD	313	147	166
Elizabethtown Area SD	180	78	102
Ephrata Area SD	219	98	121
Hempfield SD	153	92	61
Lampeter-Strasburg SD	108	53	55
Lancaster SD	87	50	37
Manheim Central SD	227	99	128
Manheim Township SD	76	36	40
Penn Manor SD	238	91	147
Pequea Valley SD	125	53	72
Solanco SD	172	76	96
Warwick SD	179	82	97
Lawrence County	114	54	60
Ellwood City Area SD	20	6	14
Laurel SD	18	14	4
Mohawk Area SD	12	4	8
Neshannock Township SD	6	1	5
New Castle Area SD	27	12	15
Shenango Area SD	7	5	2

APPENDIX A

HOME EDUCATION STUDENTS BY SCHOOL DISTRICT AND AGE GROUP
2006-07

	TOTAL	AGES 5-11	AGES 12-18+
Union Area SD	4	3	1
Wilmington Area SD	20	9	11
Lebanon County	561	267	294
Annville-Cleona SD	56	26	30
Cornwall-Lebanon SD	133	63	70
Eastern Lebanon County SD	147	67	80
Lebanon SD	30	14	16
Northern Lebanon SD	99	49	50
Palmyra Area SD	96	48	48
Lehigh County	393	185	208
Allentown City SD	75	33	42
Catasauqua Area SD	2	1	1
East Penn SD	99	56	43
Northern Lehigh SD	17	8	9
Northwestern Lehigh SD	58	26	32
Parkland SD	63	26	37
Salisbury Township SD	12	5	7
Southern Lehigh SD	55	25	30
Whitehall-Coplay SD	12	5	7
Luzerne County	378	152	226
Crestwood SD	36	17	19
Dallas SD	35	9	26
Greater Nanticoke Area SD	54	29	25
Hanover Area SD	9	4	5
Hazleton Area SD	103	37	66
Lake-Lehman SD	24	13	11
Northwest Area SD	32	9	23
Pittston Area SD	13	5	8
Wilkes-Barre Area SD	24	12	12
Wyoming Area SD	25	5	20
Wyoming Valley West SD	23	12	11
Lycoming County	303	139	164
East Lycoming SD	10	5	5
Jersey Shore Area SD	70	31	39
Loyalsock Township SD	22	9	13
Montgomery Area SD	22	7	15
Montoursville Area SD	59	29	30
Muncy SD	20	7	13
South Williamsport Area SD	15	6	9
Williamsport Area SD	85	45	40
McKean County	98	50	48
Bradford Area SD	39	23	16
Kane Area SD	7	3	4
Otto-Eldred SD	8	3	5
Port Allegany SD	7	4	3
Smethport Area SD	37	17	20

APPENDIX A

HOME EDUCATION STUDENTS BY SCHOOL DISTRICT AND AGE GROUP
2006-07

	TOTAL	AGES 5-11	AGES 12-18+
Mercer County	203	79	124
Commodore Perry SD	11	4	7
Farrell Area SD	3	0	3
Greenville Area SD	15	2	13
Grove City Area SD	63	35	28
Hermitage SD	13	2	11
Jamestown Area SD	8	4	4
Lakeview SD	26	12	14
Mercer Area SD	33	9	24
Reynolds SD	10	3	7
Sharon City SD	4	1	3
Sharpsville Area SD	7	4	3
West Middlesex Area SD	10	3	7
Mifflin County	132	39	93
Mifflin County SD	132	39	93
Monroe County	353	144	209
East Stroudsburg Area SD	82	35	47
Pleasant Valley SD	92	35	57
Pocono Mountain SD	127	49	78
Stroudsburg Area SD	52	25	27
Montgomery County	994	451	543
Abington SD	62	30	32
Bryn Athyn SD	4	3	1
Cheltenham Township SD	39	20	19
Colonial SD	22	10	12
Hatboro-Horsham SD	31	6	25
Jenkintown SD	6	1	5
Lower Merion SD	35	12	23
Lower Moreland Twp SD	13	5	8
Methacton SD	29	12	17
Norristown Area SD	31	16	15
North Penn SD	105	51	54
Perkiomen Valley SD	35	15	20
Pottsgrove SD	51	21	30
Pottstown SD	43	22	21
Souderton Area SD	199	85	114
Spring-Ford Area SD	74	37	37
Springfield Township SD	12	8	4
Upper Dublin SD	23	11	12
Upper Merion Area SD	22	8	14
Upper Moreland Twp SD	36	13	23
Upper Perkiomen SD	100	49	51
Wisahickon SD	22	16	6
Montour County	45	19	26
Danville Area SD	45	19	26
Northampton County	404	194	210
Bangor Area SD	40	14	26
Bethlehem Area SD	136	67	69
Easton Area SD	65	24	41

APPENDIX A

HOME EDUCATION STUDENTS BY SCHOOL DISTRICT AND AGE GROUP
2006-07

	TOTAL	AGES 5-11	AGES 12-18+
Nazareth Area SD	55	31	24
Northampton Area SD	56	30	26
Pen Arqyl Area SD	10	5	5
Saucon Valley SD	28	13	15
Wilson Area SD	14	10	4
Northumberland County	205	68	137
Line Mountain SD	40	15	25
Milton Area SD	25	12	13
Mount Carmel Area SD	22	9	13
Shamokin Area SD	48	16	32
Shikellamy SD	24	6	18
Warrior Run SD	46	10	36
Perry County	284	126	158
Greenwood SD	23	6	17
Newport SD	64	29	35
Susquenita SD	98	44	54
West Perry SD	99	47	52
Philadelphia County	363	158	205
Philadelphia City SD	363	158	205
Pike County	84	39	45
Delaware Valley SD	84	39	45
Potter County	81	36	45
Austin Area SD	0	0	0
Coudersport Area SD	26	15	11
Galeton Area SD	14	5	9
Northern Potter SD	30	10	20
Oswayo Valley SD	11	6	5
Schuylkill County	194	74	120
Blue Mountain SD	35	17	18
Mahanoy Area SD	6	0	6
Minersville Area SD	9	3	6
North Schuylkill SD	10	2	8
Pine Grove Area SD	31	10	21
Pottsville Area SD	18	8	10
Saint Clair Area SD	4	2	2
Schuylkill Haven Area SD	10	6	4
Shenandoah Valley SD	11	2	9
Tamaqua Area SD	31	14	17
Tri-Valley SD	5	4	1
Williams Valley SD	24	6	18
Snyder County	164	77	87
Midd-West SD	99	39	60
Selinsgrove Area SD	65	38	27

APPENDIX A

HOME EDUCATION STUDENTS BY SCHOOL DISTRICT AND AGE GROUP
2006-07

	TOTAL	AGES 5-11	AGES 12-18+
Somerset County	209	106	103
Berlin Brothersvalley SD	7	2	5
Conemaugh Township Area SD	18	8	10
Meyersdale Area SD	16	9	7
North Star SD	37	20	17
Rockwood Area SD	28	10	18
Salisbury-Elk Lick SD	26	16	10
Shade-Central City SD	3	1	2
Shanksville-Stonycreek SD	12	7	5
Somerset Area SD	41	21	20
Turkeyfoot Valley Area SD	13	7	6
Windber Area SD	8	5	3
Sullivan County	21	10	11
Sullivan County SD	21	10	11
Susquehanna County	199	95	104
Blue Ridge SD	14	6	8
Elk Lake SD	34	12	22
Forest City Regional SD	14	4	10
Montrose Area SD	91	48	43
Mountain View SD	40	23	17
Susquehanna Community SD	6	2	4
Tioqa County	179	86	93
Northern Tioqa SD	49	22	27
Southern Tioqa SD	69	41	28
Wellsboro Area SD	61	23	38
Union County	129	59	70
Lewisburg Area SD	47	22	25
Mifflinburg Area SD	82	37	45
Venango County	208	82	126
Cranberry Area SD	42	20	22
Franklin Area SD	39	16	23
Oil City Area SD	47	12	35
Titusville Area SD	58	17	41
Valley Grove SD	22	17	5
Warren County	166	38	128
Warren County SD	166	38	128
Washington County	301	140	161
Avella Area SD	4	2	2
Bentworth SD	13	6	7
Bethlehem-Center SD	10	6	4
Burgettstown Area SD	26	14	12
California Area SD	6	5	1
Canon-McMillan SD	33	18	15
Charleroi SD	12	3	9
Chartiers-Houston SD	3	1	2

APPENDIX A

HOME EDUCATION STUDENTS BY SCHOOL DISTRICT AND AGE GROUP
2006-07

	TOTAL	AGES 5-11	AGES 12-18+
Fort Cherry SD	23	9	14
McGuffey SD	40	17	23
Peters Township SD	33	17	16
Ringgold SD	44	17	27
Trinity Area SD	32	15	17
Washington SD	22	10	12
Wayne County	129	57	72
Wallenpaupack Area SD	35	12	23
Wayne Highlands SD	34	11	23
Western Wayne SD	60	34	26
Westmoreland County	565	262	303
Belle Vernon Area SD	10	4	6
Burrell SD	22	8	14
Derry Area SD	25	10	15
Franklin Regional SD	40	12	28
Greater Latrobe SD	49	27	22
Greensburg Salem SD	37	21	16
Hempfield Area SD	70	39	31
Jeanette City SD	6	1	5
Kiski Area SD	59	35	24
Ligonier Valley SD	54	21	33
Monessen City SD	6	3	3
Mount Pleasant Area SD	18	7	11
New Kensington-Arnold SD	29	11	18
Norwin SD	45	20	25
Penn-Trafford SD	44	20	24
Southmoreland SD	26	10	16
Yough SD	25	13	12
Wyoming County	112	38	74
Lackawanna Trail SD	26	10	16
Tunkhannock Area SD	86	28	58
York County	1,590	728	862
Central York SD	78	35	43
Dallastown Area SD	104	55	49
Dover Area SD	144	52	92
Eastern York SD	99	50	49
Hanover Public SD	29	14	15
Northeastern York SD	74	36	38
Northern York County SD	139	65	74
Red Lion Area SD	190	111	79
South Eastern SD	103	47	56
South Western SD	54	22	32
Southern York County SD	84	35	49
Spring Grove Area SD	146	55	91
West Shore SD	180	80	100
West York Area SD	61	22	39
York City SD	64	29	35
York Suburban SD	41	20	21

APPENDIX B

GLOSSARY

ACT 169 OF 1988 - Created a home education category designed to permit parents, guardians and legal custodians to conduct a home education program for their children.

CURRICULAR MATERIALS - Copies of the planned courses, textbooks and other materials appropriate to the student's age and grade level that are available to be borrowed from the school district.

CURRICULAR PROGRAMS - A series of planned instruction that is coordinated and articulated and implemented in a manner designed to result in the achievement by all students of specific knowledge and skills and the application of this knowledge.

HOME EDUCATION AFFIDAVIT - A notarized document filed by a child's parent, guardian or legal custodian. It contains the name of the home education supervisor, each child by name and age, as well as the address and phone number of the program site. The affidavit must contain an outline of proposed educational objectives, by subject area, for the subjects required by law. These subjects are to be offered in the English language. It will show evidence of the child's immunization and that the child has received health services. The supervisor must provide assurance that the education program meets the requirements of Act 169 of 1988, as well as certify that all adults living in the home and other custodial adults have not been convicted of a criminal offense listed in Section III(E) of Act 34 of 1985 within the last five years preceding the date of submission.

HOME EDUCATION SUPERVISOR - The parent, guardian or legal custodian who has broad responsibility for the education of the child. This person must hold a high school diploma or its equivalent.

HOME EDUCATION EVALUATOR - A teacher or administrator who has at least two years of experience in grading subjects. This includes evaluating classwork, homework, quizzes, classwork-based tests and prepared tests related to classwork subject matter.

APPENDIX C

SOURCES

1. Home Education Report (PDE-4097)
2. *Public, Private and Nonpublic Schools: Enrollments, 2006-07*, Pennsylvania Department of Education, Division of Data Services, 2007.