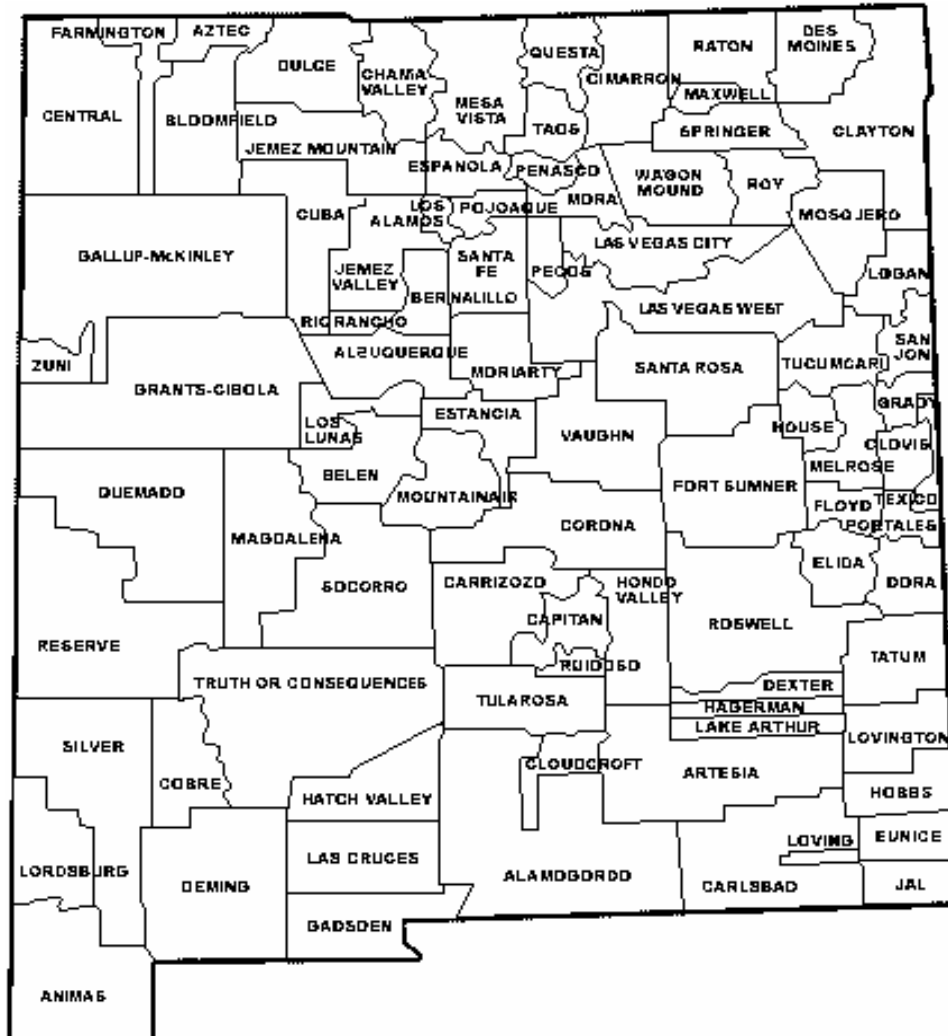


2004-2005 NEW MEXICO DROPOUT REPORT



Dr. Veronica C. García
Secretary of Education
New Mexico Public Education Department

Bill Richardson

Governor

Diane D. Denish

Lieutenant Governor

Dr. Veronica C. García

Cabinet Secretary of Education

Dr. Catherine Cross-Maple

Deputy Secretary, Learning and Accountability

Don Moya

Deputy Secretary, Finance and Operations

Dr. Don E. Watson

Assistant Secretary, Assessment and Accountability Division

James Ball

Assistant Secretary, Educator Quality Division

Carlotta Penny Bird

Assistant Secretary, Indian Education Division

Robert Piro

Chief Information Officer, Information Technology Division

Dr. Patricia Parkinson

Assistant Secretary, Instructional Support and Vocational Education Division

Gilbert Perea

Assistant Secretary, Program Support and Student Transportation Division

Dr. Mary Rose CdeBaca

Assistant Secretary, Quality Assurance and Systems Integration Division

Dr. Jim Holloway

Assistant Secretary, Rural Education Division

Gary Beene

Assistant Secretary, Division of Vocational Rehabilitation

Cynthia Marietta

Administrative Services Division

Willie Brown

General Counsel

Jennifer Chavez and Beverly Friedman

Public Information Officers

New Mexico Public Education Commission

| | | | |
|-----------------------|-------------------------|--------------------|--------------------------|
| John A. Darden | Chair-District 7 | Aileen Garcia | Commissioner-District 4 |
| Catherine M. Smith | Vice-Chair-District 6 | Johnny R. Thompson | Commissioner-District 5 |
| Millie Pogna | Secretary -District 2 | Karen Haughness | Commissioner-District 8 |
| M. Andrew Garrison | Commissioner-District 1 | Dennis James Roach | Commissioner-District 9 |
| Christine V. Trujillo | Commissioner-District 3 | Rose Martinez | Commissioner-District 10 |

The information presented in this document is an analysis/summary of data provided to the Data Collection and Reporting Bureau of the New Mexico Public Education Department by other organizations. While the Data Collection and Reporting Bureau monitors incoming data for completeness, the extent to which conclusions and generalizations can be drawn is dependent on the accuracy of the information provided by the responsible organization. The New Mexico Public Education Department does not discriminate with regard to race, culture, ancestry, color, national origin, sex, age, religion, or handicap in their programs or hiring practices.

New Mexico Public Education Department

DROPOUT REPORT

For
2004-2005

Prepared By

Marlene Medrano
Henry Borgrink
Tom Gage

Data Collection and Reporting Bureau
New Mexico Public Education Department
300 Don Gaspar
Santa Fe, New Mexico 87501-2786
505.827.6526

We would like to express our appreciation to everyone whose contributions made the compilation and publication of this document possible. Special recognition goes to the 89 public school superintendents and their staffs for their efforts in maintaining dropout data and completing the dropout report.

Table of Contents

| | |
|---|-------|
| Executive Summary..... | 2 |
| Introduction..... | 3 |
| Methodology..... | 3 |
| Definitions | 4 |
| School Leaver Status | 5 |
| Summary of Data Collection Methods | 6 |
| History of Dropout Collection Methods | 6 |
| New Mexico Dropout Information | 7 |
| Overview..... | 7 |
| Annual Dropout Rate by Year | 7 |
| Dropout Rate by District..... | 8 |
| Dropout Rate by District -Grade 9-12 (Table 2) | 9-10 |
| Dropout Rate by District –Grade 7-8 (Table 3)..... | 11-12 |
| Dropout Rates by Ethnicity | 13-14 |
| Dropout Rates by Gender | 15 |
| Dropout Rates by Gender and Ethnicity by District (Table 4) | 16-17 |
| Student’s Reason for Dropping Out | 18-20 |
| Dropout Rates by School (Table 5) | 21-33 |
| Bibliography | 34 |

Executive Summary

The New Mexico Dropout study is an annual report published to provide information to educators, parents, legislators, and others interested in the status of education in New Mexico. This report describes the extent and nature of the school dropout dilemma in the state, providing information on the numbers and percentages of dropouts by grade, gender, and ethnicity, as well as the reason given for dropping out. For the past nine years the PED has worked cooperatively with the NCES (National Center for Education Statistics) to establish national definitions and formulas that make dropout data collection comparable across states. The laborious task of establishing national standards requires the continuous assessment and updating of procedures to ensure the most reliable data.

The information provided in this report is generated using the methodology prescribed by NCES. An explanation of the methodology can be found on page 3.

A Summary of the 2004-2005 report follows:

The overall dropout rate for grades nine through twelve was 5.0% (4,955 students).

Among grades nine through twelve, the dropout rate for grade ten was the highest at 5.5%.

| Grade | Membership | Dropouts | Percent |
|-------|------------|----------|---------|
| 9 | 30101 | 1475 | 4.9% |
| 10 | 26379 | 1441 | 5.5% |
| 11 | 22156 | 1188 | 5.4% |
| 12 | 19516 | 851 | 4.4% |

The overall dropout rate for grades seven and eight was 1.0% (533 students).

Among grades seven and eighth, dropout rate for eighth grade students was higher than that for seventh grade students.

| Grade | Membership | Dropouts | Percent |
|-------|------------|----------|---------|
| 7 | 25657 | 218 | 0.8% |
| 8 | 26211 | 315 | 1.2% |

Historically, the rates for grades seven and eighth have always been lower than those for grades nine and twelve.

INTRODUCTION

The *New Mexico Dropout Report* is published yearly to provide educators, parents, legislators, and others interested in the status of education in New Mexico with information concerning who drops out of school and why. The data used in this study are collected and analyzed using a nationally standardized method as prescribed by the National Center for Educational Statistics (NCES) of the United States Department of Education.

Schools in New Mexico are actively pursuing programs and strategies to meet the needs of at-risk students. Several school districts have also established agreements with outside agencies to jointly provide for the educational and social needs of students who are at risk of dropping out; however, New Mexico schools continue to be challenged in obtaining the resources required to meet the needs of at-risk students. The 1997 legislature revised the Equalization Guaranteed Funding Formula to include an at-risk factor as part of the formula calculation to assist in addressing the needs of these students.

METHODOLOGY

Computing Rates Using the Common Core of Data Dropout Statistical Procedure

The Common Core of Data (CCD) dropout statistic will report the number of students dropping out in a given school year; the detail will include the number of male and female dropouts in each of five racial/ethnic categories for grades seven through twelve. Upgraded dropouts will be reported with grade most appropriate to their age. Dropouts will be reported at the agency (school district) level.

Student membership is reported in the following detail:

- a) School Level: number of pupils in each of grades pre-kindergarten through twelve and ungraded.
- b) District Level: number of pupils ungraded: aggregate number of pupils prekindergarten through grade twelve;
- c) State Level: number of pupils in each of five racial/ethnic categories by grade prekindergarten through twelve and ungraded.

For purposes of computing dropout rates, state will indicate the proportion of ungraded pupils to be assigned to each of grades seven through twelve. In state not reporting this information, ungraded pupils will be distributed equally across the fourteen grades, prekindergarten through twelve.

A student is a dropout if he or she was enrolled at any time during the previous year, is not enrolled at the beginning of the school year, and does not meet certain exclusionary conditions. This means that:

- Students dropping out during the regular school term in year one, who are not in membership on October 1 of year two, are reported as year one dropouts on the CCD report in year two. A student dropping out of tenth grade in March 2004 who is not in membership on October 1, 2005 is a 2004-2005 tenth grade dropout.
- Students completing the regular term in year one, who do not return at any time during year two and who are not in membership on October 1 of year three, are reported as year two dropouts on the CCD report in year three. A tenth grade student who attended the entire 2003-2004 school term, was promoted to the eleventh grade, but did not enroll in the 2004-2005 school year, and was not in membership on October 1, 2005, is a 2004-2005 eleventh grade dropout.

DEFINITIONS:

Membership:

The membership count defines the pool of students from which dropouts can occur. For the National Center for Education Statistics (NCES) Common Core of Data (CCD) purposes, membership is defined as “the count of students on current roll on October 1 or the school day closest to October 1.” In the case of New Mexico, the official 40th day enrollment count for each district, which usually occurs sometime during the month of October, is used. CCD directions stat that the current roll can be arrived at by:

- Taking the sum of original student entries and reentries, and subtracting total students withdrawals;
- or
- Taking the sum of total students present and total students absent.

The following racial/ethnic categories are used to describe membership groups to which individuals belong. The reader is cautioned that ethnicity is a self reported or observed classification and not an exact description. The category, “other” is used to describe students who elect not to report or who don’t consider themselves a member of the five major categories.

- American Indian /Alaskan Native
- Asian /Pacific Islander
- Hispanic
- Black, Not Hispanic
- White, Not Hispanic
- Other

Dropout:

For the purpose of maintain consistency, NCES defines a dropout as an individual who:

- Was enrolled in school at some time during the previous school year;
- Was not enrolled at the beginning of the current year;
- Has not graduated from high school or completed a state-or district-approved educational program, and
- Does not meet any of the exclusionary conditions:
 - Transfer to another public school, private school, or state- or district approved education program.
 - Temporary absence due to suspension or illness, or death.

School Leaver Status

A Student whois a Dropout?

1. Graduated or received some other credential, such as certificate of attendance or GED NO
2. Completed an education program formally recognized by school authorities for
Students not addressing graduation or school completion requirements..... NO
3. Only attended summer school in this school district (was not enrolled during
the regular school year)..... NO
4. Left school without a diploma or other certification after passing age up to which the district
must provide free public education..... YES
5. Died NO
6. Has not graduated, completed an approved program, or died and
educational status subsequent to leaving school is unknown YES
7. Moved to another district in this or some other state, not known to be in school YES
8. Moved out of the United States, enrollment status not known..... NO
9. Transferred to and is in membership in:
 - a) Another public school, private school, or charter school NO
 - b) Home schooling NO
 - c) Early college (Baccalaureate or associate's program)..... NO
 - d) Adult education program not administered by a regular school district..... YES
10. In an institution that is not primarily educational (Army, corrections, possibly Job Corps, etc.)
 - a) Offers a secondary education program NO
 - b) Does not offer a secondary education program..... YES
11. Is not in school, but known to be:
 - a) Planning to enroll late (e.g., extended family vacation, seasonal work) NO
 - b) Temporarily absent because of illness:
 - i) Verified as legitimate..... NO
 - ii) Not verified as legitimate..... YES
 - c) Long-term because of illness and not receiving educational services
(e.g., residential drug treatment center, severe physical or emotional illness) NO
 - d) Absent because of disciplinary action:
 - i) Suspended or expelled, term of suspension or expulsion not over NO
 - ii) Suspended or expelled, term of suspension or expulsion over & did not return YES
 - iii) Expelled, no option to return..... YES
 - iv) Expelled, enrolled in another school and/or district..... NO
12. In an alternative educational setting (e.g., hospital/homebound instruction; special
education residential; correctional institution; community or technical college):
 - a) Program administered by agency considered a special school district or
extension of a regular school district NO
 - b) Program is off-campus offering of regular school district NO
 - c) Program not approved or administered by district; program classified
as adult education YES
13. Gone; status unknown as adult education YES

Summary of Data Collection Method:

In order to collect the data used to prepare the 2004-2005 Dropout Report, district's downloaded the report with instructions to enter the data from our website, and was sent back in a text file. Schools that had students enrolled in grade seven and higher provided dropout information for district compilation. In November 2005, local administrators reported the data for their respective schools. The information presented in this report also includes data from prior years' surveys. Statewide summary data by ethnicity, gender and grade can be found in various graphs and tables within the report.

Although the data collection through the NCES Common Core of Data is designed to provide consistency, the information in this study is based on school district records. Readers and users of this report are reminded that the numbers gathered by the survey from the schools are self-reported data. The accuracy of the data is dependent upon the precision of local record-keeping and reporting practices.

History of Dropout Calculation Methods:

Pre – 1991-92 Method

Prior to the 1991-92 school year, the dropout rates for New Mexico were calculated by dividing the number of students who dropped out during a single academic year by the 180th day enrollment for that year plus the number of dropouts. For example, on the 180th day of the 1990-91 there were 72,976 students remaining in grades nine through twelve; 7,844 had dropped out during the course of the year, resulting in a dropout rate of 9.7 percent. That rate was calculated by dividing the number of dropouts (7,844) by 80,820, which is the sum of the 180th day membership (72,976) and the number of dropouts (7,844).

$$\frac{\text{Number of Dropouts}}{(\text{1990-91 180}^{\text{th}} \text{ day Membership}) + \text{Dropouts}} = \text{1990-91 Dropout Rate}$$

1991-92 Method (NCES)

For the 1991-92 school year, the then new NCES formula was used. To calculate the 199-92 event dropout rate (7.4%), the number of dropouts (6,233) in grades nine through twelve was divided by 84,681, i.e., by the computed membership of 78,448 (the average of the 1991-92 and 1992-93 40th day enrollments) plus the number of dropouts (6,233).

$$\frac{\text{Number of Dropouts}}{(\text{1991-92 40}^{\text{th}} \text{ day Membership} + \text{1992-93 40}^{\text{th}} \text{ day Membership})/2 + \text{Dropouts}} = \text{1991-92 Dropout Rate}$$

Post 1991-92 Method (NCES)

The event dropout rates for 1992-93 and subsequent years are based on the newest NCES formula. To calculate the 2004-2005 event rate (3.7%) the number of dropouts (5,488) in grades seven through twelve, was divided by the 40th day enrollment (150,125).

$$\frac{\text{Number of 2004-2005 Dropouts}}{\text{2004-2005 40}^{\text{th}} \text{ day Membership}} = \text{2004-2005 Dropout Rate}$$

NEW MEXICO DROPOUT INFORMATION

Overview:

The overall 2004-2005 New Mexico event dropout rates were 5.0 percent for grades nine through twelve and 1.0 percent for grades seven and eight. Figure 1 compares the dropout rates from 2000-2001 to 2004-2005 (Except for school year 2001-2002 – no data was available) for grades nine through twelve. Dropout rates in New Mexico have remained well below the 10.4 percent high recorded in 1988-89.

Figure 1-The dropout rate for grades nine through twelve is down .02 percent.

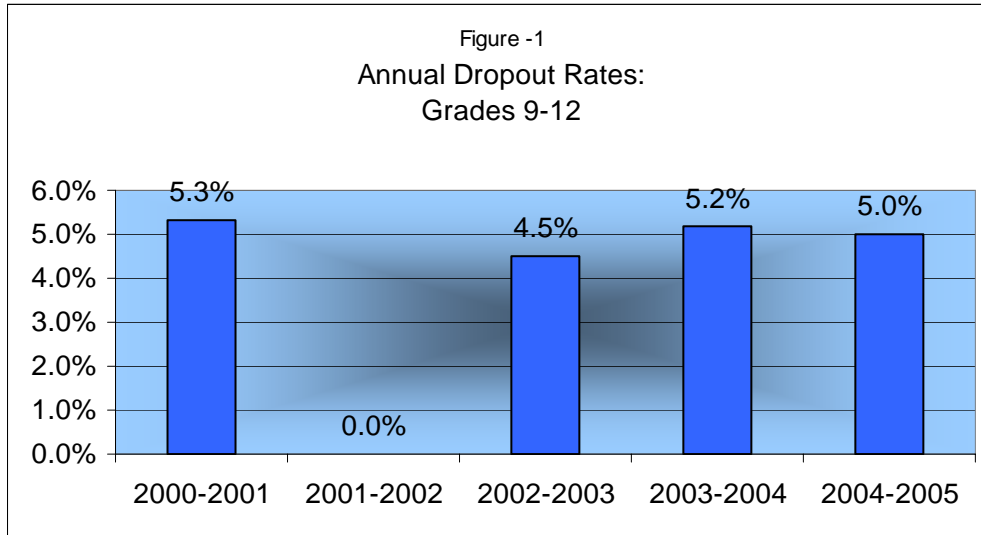
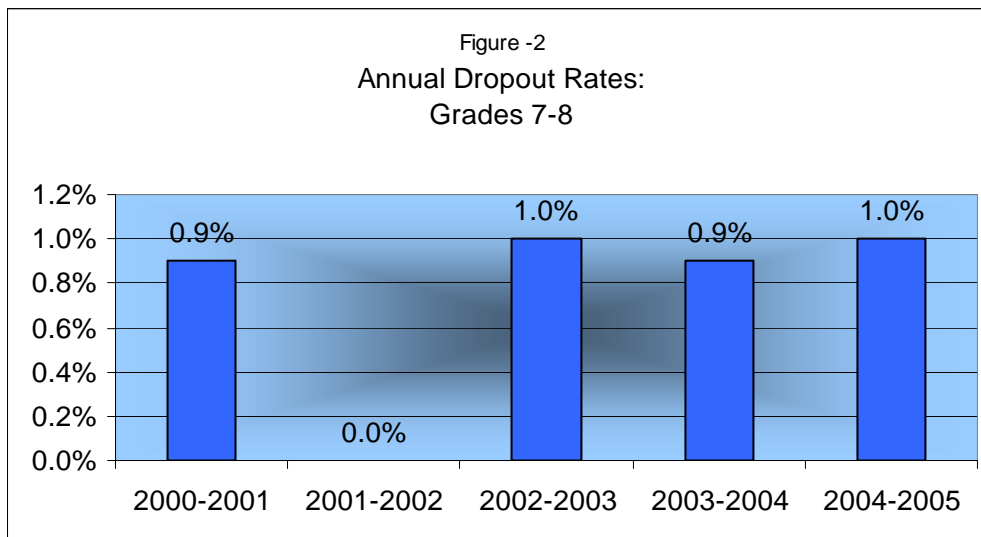


Figure 2-The 2004-2005 dropout rates for grades seven and eight has increased to 1.0 percent.



DROPOUT RATE BY DISTRICT

Table 1- Dropout Rate by District – Grades 7 thru 12

| DISTRICT | Membership Combined | Number Of Dropouts | District Dropout Rate | DISTRICT | Membership Combined | Number Of Dropouts | District Dropout Rate |
|----------------|---------------------|--------------------|-----------------------|--------------------------|---------------------|--------------------|-----------------------|
| ALAMOGORDO | 3,116 | 59 | 1.9% | LAS CRUCES | 10,786 | 850 | 7.9% |
| ALBUQUERQUE | 41,810 | 1,897 | 4.5% | LAS VEGAS CITY | 1,040 | 24 | 2.3% |
| ANIMAS | 154 | 2 | 1.3% | LOGAN | 125 | 0 | 0.0% |
| ARTESIA | 1,588 | 14 | 0.9% | LORDSBURG | 335 | 11 | 3.3% |
| AZTEC | 1,509 | 36 | 2.4% | LOS ALAMOS | 1,783 | 23 | 1.3% |
| BELEN | 2,240 | 98 | 4.4% | LOS LUNAS | 3,957 | 103 | 2.6% |
| BERNALILLO | 1,469 | 62 | 4.2% | LOVING | 274 | 4 | 1.5% |
| BLOOMFIELD | 1,510 | 22 | 1.5% | LOVINGTON | 1,229 | 40 | 3.3% |
| CAPITAN | 309 | 8 | 2.6% | MAGDALENA | 191 | 2 | 1.0% |
| CARLSBAD | 2,729 | 150 | 5.5% | MAXWELL | 56 | 0 | 0.0% |
| CARRIZOZO | 93 | 0 | 0.0% | MELROSE | 119 | 0 | 0.0% |
| CENTRAL | 3,623 | 108 | 3.0% | MESA VISTA | 266 | 4 | 1.5% |
| CHAMA VALLEY | 247 | 3 | 1.2% | MORA | 321 | 0 | 0.0% |
| CIMARRON | 303 | 0 | 0.0% | MORIARTY | 2,012 | 1 | 0.0% |
| CLAYTON | 254 | 10 | 3.9% | MOSQUERO | 32 | 0 | 0.0% |
| CLOUDCROFT | 273 | 4 | 1.5% | MOUNTAINAIR | 183 | 0 | 0.0% |
| CLOVIS | 3,569 | 137 | 3.8% | PECOS | 362 | 1 | 0.3% |
| COBRE | 714 | 25 | 3.5% | PENASCO | 304 | 6 | 2.0% |
| CORONA | 43 | 2 | 4.7% | POJOAQUE | 1,024 | 23 | 2.2% |
| CUBA | 498 | 59 | 11.8% | PORTALES | 1,193 | 23 | 1.9% |
| DEMING | 2,520 | 8 | 0.3% | QUEMADO | 86 | 0 | 0.0% |
| DES MOINES | 63 | 0 | 0.0% | QUESTA | 255 | 2 | 0.8% |
| DEXTER | 561 | 9 | 1.6% | RATON | 661 | 8 | 1.2% |
| DORA | 110 | 1 | 0.9% | RESERVE | 87 | 0 | 0.0% |
| DULCE | 333 | 9 | 2.7% | RIO RANCHO | 5,962 | 30 | 0.5% |
| ELIDA | 61 | 1 | 1.6% | ROSWELL | 4,353 | 99 | 2.3% |
| ESPANOLA | 1,833 | 130 | 7.1% | ROY | 52 | 0 | 0.0% |
| ESTANCIA | 430 | 4 | 0.9% | RUIDOSO | 1,140 | 39 | 3.4% |
| EUNICE | 287 | 11 | 3.8% | SAN JON | 104 | 0 | 0.0% |
| FARMINGTON | 4,706 | 134 | 2.8% | SANTA FE | 5,747 | 455 | 7.9% |
| FLOYD | 126 | 0 | 0.0% | SANTA ROSA | 325 | 3 | 0.9% |
| FORT SUMNER | 161 | 0 | 0.0% | SILVER CITY | 1,495 | 37 | 2.5% |
| GADSDEN | 6,265 | 139 | 2.2% | SOCORRO | 951 | 17 | 1.8% |
| GALLUP | 6,951 | 207 | 3.0% | SPRINGER | 101 | 1 | 1.0% |
| GRADY | 57 | 0 | 0.0% | TAOS | 1,535 | 97 | 6.3% |
| GRANTS/CIBOLA | 1,853 | 3 | 0.2% | TATUM | 145 | 1 | 0.7% |
| HAGERMAN | 206 | 1 | 0.5% | TEXICO | 268 | 4 | 1.5% |
| HATCH | 748 | 22 | 2.9% | TRUTH OR CONSEQ. | 741 | 8 | 1.1% |
| HOBBS | 3,379 | 103 | 3.0% | TUCUMCARI | 511 | 25 | 4.9% |
| HONDO VALLEY | 58 | 1 | 1.7% | TULAROSA | 490 | 8 | 1.6% |
| HOUSE | 119 | 9 | 7.6% | VAUGHN | 47 | 0 | 0.0% |
| JAL | 227 | 1 | 0.4% | WAGON MOUND | 112 | 0 | 0.0% |
| JEMEZ MOUNTAIN | 181 | 4 | 2.2% | WEST LAS VEGAS | 930 | 4 | 0.4% |
| JEMEZ VALLEY | 256 | 1 | 0.4% | ZUNI | 817 | 35 | 4.3% |
| LAKE ARTHUR | 76 | 6 | 7.9% | STATEWIDE TOTALS: | 150,125 | 5,488 | 3.7% |

TABLE 2- Dropout Rate by District – Grades 9 thru 12

| DISTRICT | Membership Grade | | | | Membership Grade 9-12 Combined | Dropouts Grade | | | | Dropouts Grade 9-12 Combined | Grade 9-12 Dropout Rate |
|----------------|------------------|------|------|------|--------------------------------|----------------|-----|-----|-----|------------------------------|-------------------------|
| | 9 | 10 | 11 | 12 | | 9 | 10 | 11 | 12 | | |
| ALAMOGORDO | 537 | 533 | 531 | 473 | 2,074 | 7 | 22 | 20 | 10 | 59 | 2.8% |
| ALBUQUERQUE | 8913 | 7414 | 6297 | 5130 | 27,754 | 605 | 454 | 396 | 266 | 1,721 | 6.2% |
| ANIMAS | 31 | 24 | 30 | 22 | 107 | 0 | 1 | 1 | 0 | 2 | 1.9% |
| ARTESIA | 254 | 291 | 230 | 215 | 990 | 1 | 6 | 1 | 1 | 9 | 0.9% |
| AZTEC | 305 | 251 | 230 | 245 | 1,031 | 4 | 8 | 7 | 17 | 36 | 3.5% |
| BELEN | 500 | 369 | 296 | 278 | 1,443 | 35 | 19 | 15 | 20 | 89 | 6.2% |
| BERNALILLO | 294 | 269 | 197 | 161 | 921 | 16 | 17 | 12 | 1 | 46 | 5.0% |
| BLOOMFIELD | 297 | 248 | 216 | 210 | 971 | 7 | 4 | 6 | 2 | 19 | 2.0% |
| CAPITAN | 55 | 56 | 37 | 49 | 197 | 1 | 2 | 2 | 2 | 7 | 3.6% |
| CARLSBAD | 520 | 475 | 409 | 366 | 1,770 | 38 | 53 | 28 | 23 | 142 | 8.0% |
| CARRIZOZO | 15 | 18 | 8 | 15 | 56 | 0 | 0 | 0 | 0 | 0 | 0.0% |
| CENTRAL | 787 | 646 | 548 | 432 | 2,413 | 32 | 31 | 21 | 15 | 99 | 4.1% |
| CHAMA VALLEY | 41 | 48 | 30 | 43 | 162 | 0 | 1 | 2 | 0 | 3 | 1.9% |
| CIMARRON | 66 | 48 | 54 | 36 | 204 | 0 | 0 | 0 | 0 | 0 | 0.0% |
| CLAYTON | 33 | 45 | 42 | 45 | 165 | 0 | 3 | 1 | 6 | 10 | 6.1% |
| CLOUDCROFT | 54 | 53 | 50 | 37 | 194 | 0 | 4 | 0 | 0 | 4 | 2.1% |
| CLOVIS | 626 | 641 | 552 | 447 | 2,266 | 0 | 45 | 61 | 30 | 136 | 6.0% |
| COBRE | 127 | 117 | 113 | 133 | 490 | 6 | 9 | 3 | 6 | 24 | 4.9% |
| CORONA | 7 | 10 | 8 | 6 | 31 | 0 | 1 | 0 | 1 | 2 | 6.5% |
| CUBA | 131 | 107 | 86 | 84 | 408 | 21 | 20 | 9 | 8 | 58 | 14.2% |
| DEMING | 419 | 583 | 264 | 322 | 1,588 | 1 | 0 | 6 | 1 | 8 | 0.5% |
| DES MOINES | 11 | 12 | 11 | 7 | 41 | 0 | 0 | 0 | 0 | 0 | 0.0% |
| DEXTER | 120 | 96 | 74 | 66 | 356 | 1 | 3 | 2 | 3 | 9 | 2.5% |
| DORA | 24 | 16 | 17 | 16 | 73 | 0 | 1 | 0 | 0 | 1 | 1.4% |
| DULCE | 66 | 46 | 47 | 63 | 222 | 1 | 1 | 4 | 3 | 9 | 4.1% |
| ELIDA | 15 | 8 | 7 | 10 | 40 | 0 | 0 | 1 | 0 | 1 | 2.5% |
| ESPANOLA | 336 | 316 | 242 | 217 | 1,111 | 16 | 33 | 18 | 9 | 76 | 6.8% |
| ESTANCIA | 84 | 71 | 73 | 57 | 285 | 1 | 1 | 2 | 0 | 4 | 1.4% |
| EUNICE | 55 | 54 | 42 | 48 | 199 | 0 | 5 | 3 | 3 | 11 | 5.5% |
| FARMINGTON | 912 | 782 | 668 | 603 | 2,965 | 33 | 42 | 28 | 29 | 132 | 4.5% |
| FLOYD | 24 | 19 | 14 | 17 | 74 | 0 | 0 | 0 | 0 | 0 | 0.0% |
| FORT SUMNER | 20 | 27 | 23 | 33 | 103 | 0 | 0 | 0 | 0 | 0 | 0.0% |
| GADSDEN | 1317 | 1026 | 899 | 697 | 3,939 | 54 | 30 | 37 | 18 | 139 | 3.5% |
| GALLUP | 1554 | 1278 | 946 | 910 | 4,688 | 67 | 36 | 42 | 0 | 145 | 3.1% |
| GRADY | 11 | 10 | 10 | 9 | 40 | 0 | 0 | 0 | 0 | 0 | 0.0% |
| GRANTS/CIBOLA | 441 | 357 | 282 | 245 | 1,325 | 0 | 0 | 0 | 0 | 0 | 0.0% |
| HAGERMAN | 37 | 39 | 20 | 26 | 122 | 0 | 0 | 0 | 1 | 1 | 0.8% |
| HATCH | 148 | 119 | 113 | 103 | 483 | 0 | 11 | 4 | 4 | 19 | 3.9% |
| HOBBS | 588 | 590 | 506 | 500 | 2,184 | 11 | 25 | 29 | 25 | 90 | 4.1% |
| HONDO VALLEY | 10 | 12 | 9 | 7 | 38 | 0 | 1 | 0 | 0 | 1 | 2.6% |
| HOUSE | 16 | 30 | 28 | 27 | 101 | 0 | 3 | 2 | 4 | 9 | 8.9% |
| JAL | 43 | 38 | 29 | 48 | 158 | 0 | 0 | 0 | 1 | 1 | 0.6% |
| JEMEZ MOUNTAIN | 23 | 31 | 23 | 21 | 98 | 0 | 1 | 1 | 2 | 4 | 4.1% |
| JEMEZ VALLEY | 53 | 48 | 25 | 35 | 161 | 1 | 0 | 0 | 0 | 1 | 0.6% |
| LAKE ARTHUR | 15 | 12 | 8 | 11 | 46 | 1 | 1 | 3 | 0 | 5 | 10.9% |

| DISTRICT | Membership Grade | | | | Membership Grade 9-12 Combined | Dropouts Grade | | | | Dropouts Grade 9-12 Combined | Grade 9-12 Dropout Rate |
|-------------------|------------------|--------|--------|--------|--------------------------------|----------------|-------|-------|-----|------------------------------|-------------------------|
| | 9 | 10 | 11 | 12 | | 9 | 10 | 11 | 12 | | |
| LAS CRUCES | 2368 | 1833 | 1501 | 1393 | 7,095 | 269 | 219 | 174 | 125 | 787 | 11.1% |
| LAS VEGAS CITY | 194 | 195 | 173 | 166 | 728 | 3 | 5 | 1 | 15 | 24 | 3.3% |
| LOGAN | 16 | 25 | 25 | 23 | 89 | 0 | 0 | 0 | 0 | 0 | 0.0% |
| LORDSBURG | 66 | 58 | 55 | 31 | 210 | 4 | 4 | 3 | 0 | 11 | 5.2% |
| LOS ALAMOS | 296 | 311 | 307 | 281 | 1,195 | 2 | 3 | 9 | 9 | 23 | 1.9% |
| LOS LUNAS | 829 | 702 | 547 | 421 | 2,499 | 29 | 28 | 21 | 17 | 95 | 3.8% |
| LOVING | 37 | 35 | 52 | 42 | 166 | 1 | 0 | 3 | 0 | 4 | 2.4% |
| LOVINGTON | 228 | 218 | 195 | 168 | 809 | 9 | 18 | 9 | 4 | 40 | 4.9% |
| MAGDALENA | 29 | 31 | 32 | 29 | 121 | 0 | 1 | 1 | 0 | 2 | 1.7% |
| MAXWELL | 9 | 9 | 6 | 9 | 33 | 0 | 0 | 0 | 0 | 0 | 0.0% |
| MELROSE | 17 | 24 | 21 | 15 | 77 | 0 | 0 | 0 | 0 | 0 | 0.0% |
| MESA VISTA | 47 | 36 | 42 | 43 | 168 | 1 | 1 | 1 | 1 | 4 | 2.4% |
| MORA | 55 | 64 | 44 | 40 | 203 | 0 | 0 | 0 | 0 | 0 | 0.0% |
| MORIARTY | 375 | 394 | 272 | 279 | 1,320 | 0 | 0 | 0 | 0 | 0 | 0.0% |
| MOSQUERO | 6 | 4 | 5 | 8 | 23 | 0 | 0 | 0 | 0 | 0 | 0.0% |
| MOUNTAINAIR | 34 | 29 | 32 | 18 | 113 | 0 | 0 | 0 | 0 | 0 | 0.0% |
| PECOS | 74 | 66 | 40 | 55 | 235 | 0 | 1 | 0 | 0 | 1 | 0.4% |
| PENASCO | 55 | 50 | 45 | 42 | 192 | 1 | 2 | 2 | 1 | 6 | 3.1% |
| POJOAQUE | 185 | 178 | 158 | 149 | 670 | 4 | 4 | 9 | 5 | 22 | 3.3% |
| PORTALES | 214 | 207 | 211 | 172 | 804 | 2 | 8 | 5 | 8 | 23 | 2.9% |
| QUEMADO | 13 | 16 | 16 | 14 | 59 | 0 | 0 | 0 | 0 | 0 | 0.0% |
| QUESTA | 32 | 47 | 44 | 39 | 162 | 0 | 0 | 1 | 0 | 1 | 0.6% |
| RATON | 140 | 113 | 93 | 73 | 419 | 7 | 1 | 0 | 0 | 8 | 1.9% |
| RESERVE | 22 | 11 | 20 | 11 | 64 | 0 | 0 | 0 | 0 | 0 | 0.0% |
| RIO RANCHO | 1051 | 1028 | 982 | 847 | 3,908 | 0 | 8 | 15 | 7 | 30 | 0.8% |
| ROSWELL | 890 | 755 | 529 | 649 | 2,823 | 21 | 31 | 24 | 23 | 99 | 3.5% |
| ROY | 10 | 9 | 7 | 11 | 37 | 0 | 0 | 0 | 0 | 0 | 0.0% |
| RUIDOSO | 268 | 187 | 159 | 141 | 755 | 15 | 9 | 5 | 8 | 37 | 4.9% |
| SAN JON | 15 | 17 | 17 | 13 | 62 | 0 | 0 | 0 | 0 | 0 | 0.0% |
| SANTA FE | 1077 | 984 | 864 | 713 | 3,638 | 96 | 123 | 88 | 75 | 382 | 10.5% |
| SANTA ROSA | 50 | 66 | 54 | 47 | 217 | 0 | 0 | 1 | 2 | 3 | 1.4% |
| SILVER CITY | 259 | 242 | 252 | 228 | 981 | 6 | 12 | 6 | 13 | 37 | 3.8% |
| SOCORRO | 165 | 158 | 167 | 126 | 616 | 0 | 5 | 2 | 9 | 16 | 2.6% |
| SPRINGER | 15 | 23 | 12 | 21 | 71 | 0 | 0 | 0 | 0 | 0 | 0.0% |
| TAOS | 273 | 297 | 243 | 184 | 997 | 22 | 35 | 24 | 12 | 93 | 9.3% |
| TATUM | 22 | 22 | 26 | 21 | 91 | 0 | 0 | 0 | 0 | 0 | 0.0% |
| TEXICO | 35 | 43 | 54 | 44 | 176 | 0 | 3 | 1 | 0 | 4 | 2.3% |
| TRUTH OR CONSEQ. | 157 | 122 | 119 | 89 | 487 | 1 | 0 | 2 | 1 | 4 | 0.8% |
| TUCUMCARI | 97 | 88 | 72 | 53 | 310 | 6 | 9 | 6 | 0 | 21 | 6.8% |
| TULAROSA | 103 | 81 | 67 | 53 | 304 | 3 | 2 | 1 | 2 | 8 | 2.6% |
| VAUGHN | 6 | 5 | 6 | 7 | 24 | 0 | 0 | 0 | 0 | 0 | 0.0% |
| WAGON MOUND | 28 | 30 | 18 | 12 | 88 | 0 | 0 | 0 | 0 | 0 | 0.0% |
| WEST LAS VEGAS | 169 | 161 | 124 | 110 | 564 | 0 | 2 | 1 | 1 | 4 | 0.7% |
| ZUNI | 165 | 122 | 104 | 101 | 492 | 13 | 13 | 6 | 2 | 34 | 6.9% |
| STATEWIDE TOTALS: | 30,131 | 26,379 | 22,156 | 19,516 | 98,182 | 1,475 | 1,441 | 1,188 | 851 | 4,955 | 5.0% |

Table 3- Dropout Rate by District – Grades 7 and 8

| DISTRICT | Membership | | Membership Grade 7 & 8 | Dropouts | | Dropouts Grade 7 & 8 | Grade 7 & 8 |
|----------------|------------|------|------------------------------|----------|-----|----------------------------|-----------------|
| | Grade | | | Grade | | | Dropout Rate |
| | 7 | 8 | Combined | 7 | 8 | Combined | |
| ALAMOGORDO | 536 | 506 | 1,042 | 0 | 0 | 0 | 0.0% |
| ALBUQUERQUE | 7100 | 6956 | 14,056 | 76 | 100 | 176 | 1.3% |
| ANIMAS | 20 | 27 | 47 | 0 | 0 | 0 | 0.0% |
| ARTESIA | 274 | 324 | 598 | 5 | 0 | 5 | 0.8% |
| AZTEC | 235 | 243 | 478 | 0 | 0 | 0 | 0.0% |
| BELEN | 404 | 393 | 797 | 4 | 5 | 9 | 1.1% |
| BERNALILLO | 275 | 273 | 548 | 7 | 9 | 16 | 2.9% |
| BLOOMFIELD | 275 | 264 | 539 | 0 | 3 | 3 | 0.6% |
| CAPITAN | 51 | 61 | 112 | 0 | 1 | 1 | 0.9% |
| CARLSBAD | 452 | 507 | 959 | 2 | 6 | 8 | 0.8% |
| CARRIZOZO | 21 | 16 | 37 | 0 | 0 | 0 | 0.0% |
| CENTRAL | 606 | 604 | 1,210 | 4 | 5 | 9 | 0.7% |
| CHAMA VALLEY | 42 | 43 | 85 | 0 | 0 | 0 | 0.0% |
| CIMARRON | 43 | 56 | 99 | 0 | 0 | 0 | 0.0% |
| CLAYTON | 43 | 46 | 89 | 0 | 0 | 0 | 0.0% |
| CLOUDCROFT | 36 | 43 | 79 | 0 | 0 | 0 | 0.0% |
| CLOVIS | 645 | 658 | 1,303 | 1 | 0 | 1 | 0.1% |
| COBRE | 106 | 118 | 224 | 0 | 1 | 1 | 0.4% |
| CORONA | 9 | 3 | 12 | 0 | 0 | 0 | 0.0% |
| CUBA | 45 | 45 | 90 | 0 | 1 | 1 | 1.1% |
| DEMING | 452 | 480 | 932 | 0 | 0 | 0 | 0.0% |
| DES MOINES | 14 | 8 | 22 | 0 | 0 | 0 | 0.0% |
| DEXTER | 90 | 115 | 205 | 0 | 0 | 0 | 0.0% |
| DORA | 19 | 18 | 37 | 0 | 0 | 0 | 0.0% |
| DULCE | 52 | 59 | 111 | 0 | 0 | 0 | 0.0% |
| ELIDA | 6 | 15 | 21 | 0 | 0 | 0 | 0.0% |
| ESPANOLA | 364 | 358 | 722 | 14 | 40 | 54 | 7.5% |
| ESTANCIA | 68 | 77 | 145 | 0 | 0 | 0 | 0.0% |
| EUNICE | 41 | 47 | 88 | 0 | 0 | 0 | 0.0% |
| FARMINGTON | 806 | 935 | 1,741 | 2 | 0 | 2 | 0.1% |
| FLOYD | 27 | 25 | 52 | 0 | 0 | 0 | 0.0% |
| FORT SUMNER | 23 | 35 | 58 | 0 | 0 | 0 | 0.0% |
| GADSDEN | 1152 | 1174 | 2,326 | 0 | 0 | 0 | 0.0% |
| GALLUP | 1069 | 1194 | 2,263 | 17 | 45 | 62 | 2.7% |
| GRADY | 8 | 9 | 17 | 0 | 0 | 0 | 0.0% |
| GRANTS/CIBOLA | 267 | 261 | 528 | 0 | 3 | 3 | 0.6% |
| HAGERMAN | 42 | 42 | 84 | 0 | 0 | 0 | 0.0% |
| HATCH | 114 | 151 | 265 | 1 | 2 | 3 | 1.1% |
| HOBBS | 611 | 584 | 1,195 | 6 | 7 | 13 | 1.1% |
| HONDO VALLEY | 9 | 11 | 20 | 0 | 0 | 0 | 0.0% |
| HOUSE | 9 | 9 | 18 | 0 | 0 | 0 | 0.0% |
| JAL | 40 | 29 | 69 | 0 | 0 | 0 | 0.0% |
| JEMEZ MOUNTAIN | 49 | 34 | 83 | 0 | 0 | 0 | 0.0% |
| JEMEZ VALLEY | 43 | 52 | 95 | 0 | 0 | 0 | 0.0% |
| LAKE ARTHUR | 12 | 18 | 30 | 0 | 1 | 1 | 3.3% |
| LAS CRUCES | 1819 | 1872 | 3,691 | 26 | 37 | 63 | 1.7% |
| LAS VEGAS CITY | 167 | 145 | 312 | 0 | 0 | 0 | 0.0% |
| LOGAN | 12 | 24 | 36 | 0 | 0 | 0 | 0.0% |
| LORDSBURG | 64 | 61 | 125 | 0 | 0 | 0 | 0.0% |
| LOS ALAMOS | 281 | 307 | 588 | 0 | 0 | 0 | 0.0% |
| LOS LUNAS | 737 | 721 | 1,458 | 6 | 2 | 8 | 0.5% |
| LOVING | 51 | 57 | 108 | 0 | 0 | 0 | 0.0% |
| LOVINGTON | 217 | 203 | 420 | 0 | 0 | 0 | 0.0% |

| DISTRICT | Membership | | Membership Grade 7 & 8 | Dropouts | | Dropouts Grade 7 & 8 | Grade 7 & 8 Dropout Rate |
|-------------------|------------|--------|------------------------------|----------|-----|----------------------------|-----------------------------------|
| | Grade | | | Grade | | | |
| | 7 | 8 | Combined | 7 | 8 | Combined | |
| MAGDALENA | 40 | 30 | 70 | 0 | 0 | 0 | 0.0% |
| MAXWELL | 11 | 12 | 23 | 0 | 0 | 0 | 0.0% |
| MELROSE | 23 | 19 | 42 | 0 | 0 | 0 | 0.0% |
| MESA VISTA | 52 | 46 | 98 | 0 | 0 | 0 | 0.0% |
| MORA | 63 | 55 | 118 | 0 | 0 | 0 | 0.0% |
| MORIARTY | 348 | 344 | 692 | 0 | 1 | 1 | 0.1% |
| MOSQUERO | 5 | 4 | 9 | 0 | 0 | 0 | 0.0% |
| MOUNTAINAIR | 27 | 43 | 70 | 0 | 0 | 0 | 0.0% |
| PECOS | 61 | 66 | 127 | 0 | 0 | 0 | 0.0% |
| PENASCO | 47 | 65 | 112 | 0 | 0 | 0 | 0.0% |
| POJOAQUE | 177 | 177 | 354 | 1 | 0 | 1 | 0.3% |
| PORTALES | 206 | 183 | 389 | 0 | 0 | 0 | 0.0% |
| QUEMADO | 11 | 16 | 27 | 0 | 0 | 0 | 0.0% |
| QUESTA | 39 | 54 | 93 | 1 | 0 | 1 | 1.1% |
| RATON | 124 | 118 | 242 | 0 | 0 | 0 | 0.0% |
| RESERVE | 11 | 12 | 23 | 0 | 0 | 0 | 0.0% |
| RIO RANCHO | 954 | 1100 | 2,054 | 0 | 0 | 0 | 0.0% |
| ROSWELL | 764 | 766 | 1,530 | 0 | 0 | 0 | 0.0% |
| ROY | 12 | 3 | 15 | 0 | 0 | 0 | 0.0% |
| RUIDOSO | 196 | 189 | 385 | 1 | 1 | 2 | 0.5% |
| SAN JON | 24 | 18 | 42 | 0 | 0 | 0 | 0.0% |
| SANTA FE | 1016 | 1019 | 2,035 | 40 | 33 | 73 | 3.6% |
| SANTA ROSA | 53 | 55 | 108 | 0 | 0 | 0 | 0.0% |
| SILVER CITY | 249 | 265 | 514 | 0 | 0 | 0 | 0.0% |
| SOCORRO | 166 | 169 | 335 | 0 | 1 | 1 | 0.3% |
| SPRINGER | 15 | 15 | 30 | 0 | 1 | 1 | 3.3% |
| TAOS | 267 | 271 | 538 | 2 | 2 | 4 | 0.7% |
| TATUM | 31 | 23 | 54 | 0 | 1 | 1 | 1.9% |
| TEXICO | 50 | 42 | 92 | 0 | 0 | 0 | 0.0% |
| TRUTH OR CONSEQ. | 126 | 128 | 254 | 2 | 2 | 4 | 1.6% |
| TUCUMCARI | 96 | 105 | 201 | 0 | 4 | 4 | 2.0% |
| TULAROSA | 94 | 92 | 186 | 0 | 0 | 0 | 0.0% |
| VAUGHN | 11 | 12 | 23 | 0 | 0 | 0 | 0.0% |
| WAGON MOUND | 10 | 14 | 24 | 0 | 0 | 0 | 0.0% |
| WEST LAS VEGAS | 187 | 178 | 365 | 0 | 0 | 0 | 0.0% |
| ZUNI | 138 | 187 | 325 | 0 | 1 | 1 | 0.3% |
| Statewide Totals: | 25,657 | 26,211 | 51,868 | 218 | 315 | 533 | 1.0% |

Dropout by Ethnicity:

Student dropout rates by ethnicity allow comparison between and among groups at the various levels. In 2004-2005 Blacks (6.8%) had the highest dropout rate of all the ethnic groups in grades nine through twelve. This group was followed by Hispanic (6.6%), Native American (5.8%), Asian (4.1%) and Anglo (3.7%).

Figure -3 -Ethnicity –Male –Grade 9-12

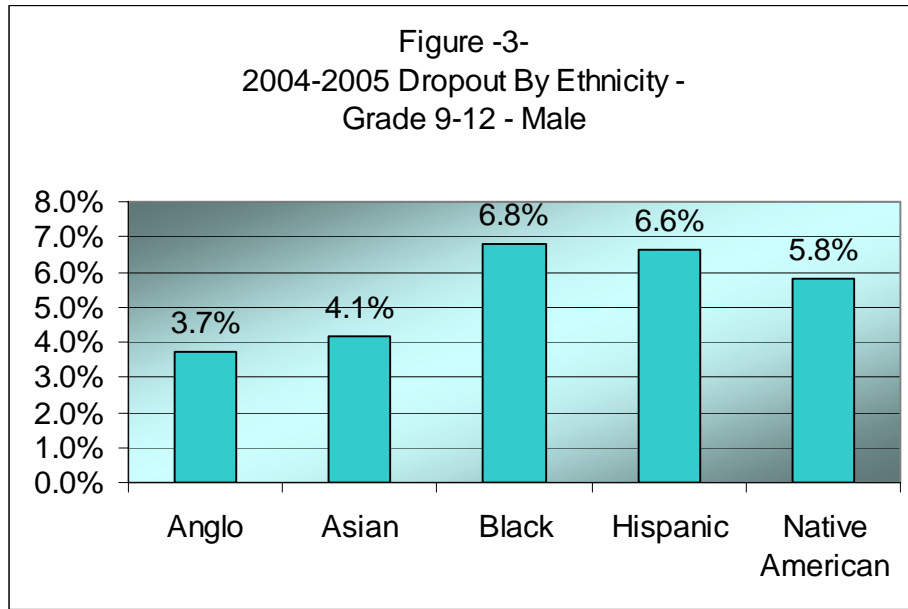


Figure -4 -Ethnicity –Female –Grade 9-12

Hispanic (5.6%) had the highest dropout rate of all the ethnic groups in grades nine through twelve. This group was followed by, Blacks (4.6%), Native American (4.5%), Anglo (3.1%) and Asian (2.3%).

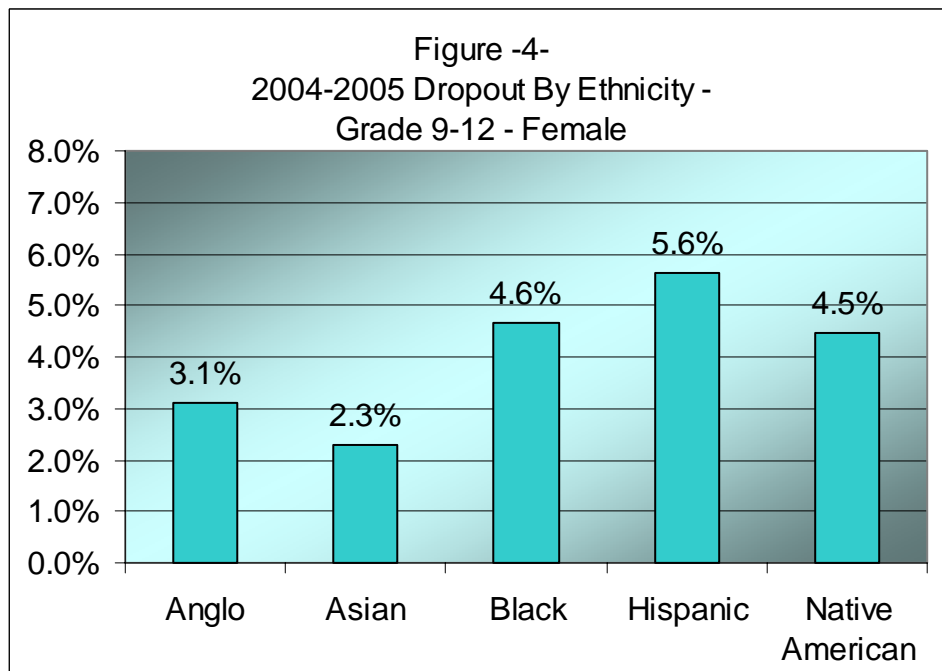


Figure -5- Ethnicity –Male –Grade 7-8

Native American (1.7%) had the highest dropout rate of all the ethnic groups in grades seven and eighth. This group was followed by Hispanic (1.3%), Black (1.0%), Asian (0.6%) and Anglo (0.6%).

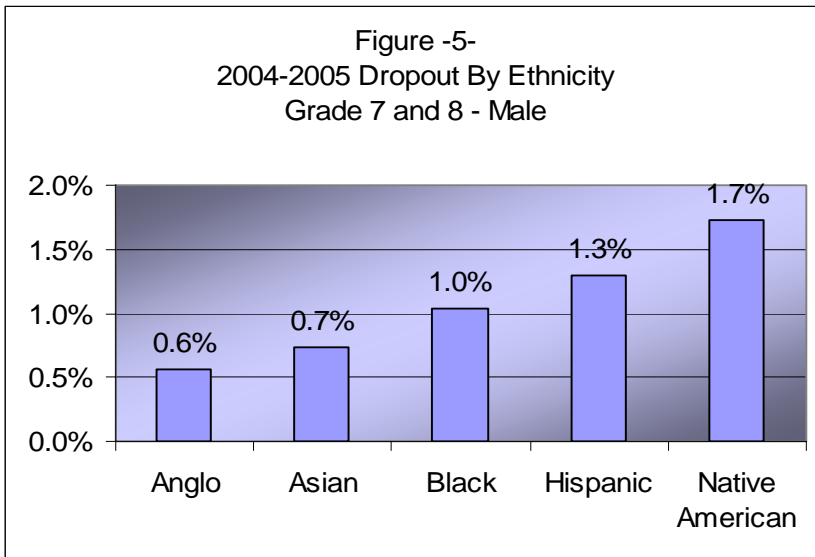
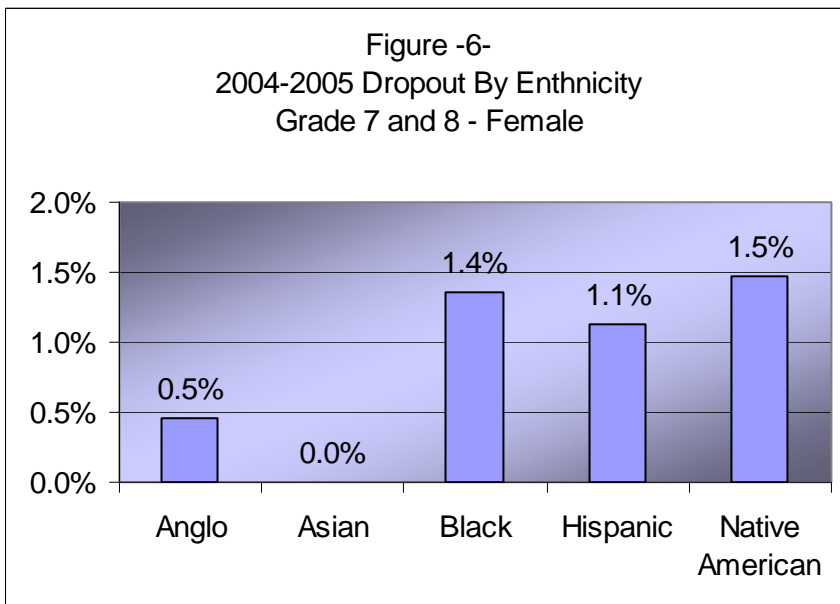


Figure -6- Ethnicity –Female –Grade 7-8

Native American (1.5%) had the highest dropout rate of all the ethnic groups in grades seven and eighth. This group was followed by Black (1.4%), Hispanic (1.1%), Anglo (0.5%) and Asian (0.0%).



Dropout by Gender:

Figure -7- In grades nine through twelve, males dropped out at a higher rate (54 %) than did females (46%).

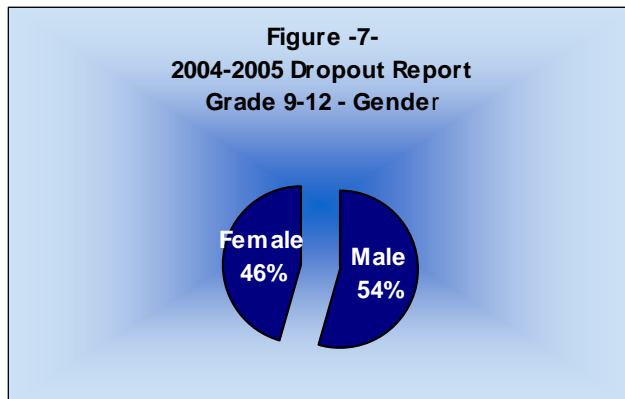


Figure 8 - In grades seven and eight, males also dropped out at a higher rate (53 %) than females (47%).

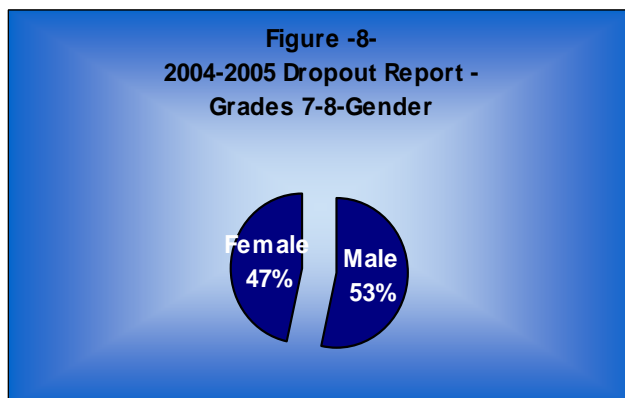


Table 4 - Dropout Rates by Gender and Ethnicity

| DISTRICT | GENDER and ETHNICITY DISTRICT DROPOUTS | | | | | | | | | | | | GENDER | | Total | GENDER DISTRICT RATES | |
|----------------|--|-----|-------|---|-------|----|----------|-----|----------|----|-----|---|----------|--------|-------|-----------------------|--------|
| | Anglo | | Asian | | Black | | Hispanic | | Nat Amer | | N/A | | DROPOUTS | | | Male | Female |
| | M | F | M | F | M | F | M | F | M | F | M | F | Male | Female | | | |
| ALAMOGORDO | 13 | 11 | 1 | 0 | 2 | 0 | 16 | 15 | 0 | 0 | 0 | 1 | 32 | 27 | 59 | 2.0% | 1.8% |
| ALBUQUERQUE | 262 | 192 | 21 | 8 | 41 | 33 | 599 | 546 | 113 | 78 | 3 | 1 | 1,039 | 858 | 1,897 | 4.9% | 4.2% |
| ANIMAS | 0 | 0 | 0 | 0 | 0 | 0 | 1 | 1 | 0 | 0 | 0 | 0 | 1 | 1 | 2 | 1.4% | 1.2% |
| ARTESIA | 1 | 2 | 0 | 0 | 0 | 0 | 7 | 4 | 0 | 0 | 0 | 0 | 8 | 6 | 14 | 1.0% | 0.8% |
| AZTEC | 11 | 9 | 0 | 0 | 0 | 0 | 5 | 2 | 6 | 3 | 0 | 0 | 22 | 14 | 36 | 2.4% | 2.0% |
| BELEN | 11 | 11 | 0 | 0 | 0 | 0 | 43 | 31 | 0 | 2 | 0 | 0 | 54 | 44 | 98 | 4.7% | 4.0% |
| BERNALILLO | 2 | 0 | 0 | 0 | 1 | 0 | 15 | 14 | 14 | 16 | 0 | 0 | 32 | 30 | 62 | 4.2% | 4.2% |
| BLOOMFIELD | 5 | 3 | 0 | 0 | 0 | 0 | 6 | 1 | 3 | 4 | 0 | 0 | 14 | 8 | 22 | 1.8% | 1.1% |
| CAPITAN | 1 | 1 | 0 | 0 | 0 | 0 | 1 | 5 | 0 | 0 | 0 | 0 | 2 | 6 | 8 | 1.3% | 3.9% |
| CARLSBAD | 37 | 23 | 0 | 1 | 1 | 0 | 51 | 33 | 3 | 1 | 0 | 0 | 92 | 58 | 150 | 6.5% | 4.4% |
| CARRIZOZO | 0 | 0 | 0 | 0 | 0 | 0 | 0 | 0 | 0 | 0 | 0 | 0 | 0 | 0 | 0 | 0.0% | 0.0% |
| CENTRAL | 2 | 1 | 0 | 0 | 0 | 0 | 1 | 0 | 56 | 48 | 0 | 0 | 59 | 49 | 108 | 3.2% | 2.8% |
| CHAMA VALLEY | 0 | 1 | 0 | 0 | 0 | 0 | 2 | 0 | 0 | 0 | 0 | 0 | 2 | 1 | 3 | 1.6% | 0.8% |
| CIMARRON | 0 | 0 | 0 | 0 | 0 | 0 | 0 | 0 | 0 | 0 | 0 | 0 | 0 | 0 | 0 | 0.0% | 0.0% |
| CLAYTON | 2 | 2 | 0 | 0 | 0 | 0 | 3 | 3 | 0 | 0 | 0 | 0 | 5 | 5 | 10 | 3.8% | 4.1% |
| CLOUDCROFT | 2 | 1 | 0 | 0 | 0 | 0 | 0 | 0 | 1 | 0 | 0 | 0 | 3 | 1 | 4 | 1.9% | 0.8% |
| CLOVIS | 19 | 20 | 1 | 0 | 18 | 6 | 41 | 30 | 1 | 1 | 0 | 0 | 80 | 57 | 137 | 4.3% | 3.3% |
| COBRE | 0 | 4 | 0 | 0 | 0 | 0 | 14 | 7 | 0 | 0 | 0 | 0 | 14 | 11 | 25 | 3.9% | 3.1% |
| CORONA | 1 | 1 | 0 | 0 | 0 | 0 | 0 | 0 | 0 | 0 | 0 | 0 | 1 | 1 | 2 | 3.8% | 5.9% |
| CUBA | 0 | 0 | 0 | 0 | 0 | 0 | 3 | 1 | 33 | 21 | 0 | 1 | 36 | 23 | 59 | 13.6% | 9.9% |
| DEMING | 2 | 0 | 0 | 0 | 0 | 0 | 1 | 5 | 0 | 0 | 0 | 0 | 3 | 5 | 8 | 0.2% | 0.4% |
| DES MOINES | 0 | 0 | 0 | 0 | 0 | 0 | 0 | 0 | 0 | 0 | 0 | 0 | 0 | 0 | 0 | 0.0% | 0.0% |
| DEXTER | 2 | 0 | 0 | 0 | 0 | 0 | 3 | 4 | 0 | 0 | 0 | 0 | 5 | 4 | 9 | 1.7% | 1.5% |
| DORA | 0 | 0 | 0 | 0 | 0 | 0 | 0 | 1 | 0 | 0 | 0 | 0 | 0 | 1 | 1 | 0.0% | 1.9% |
| DULCE | 0 | 0 | 0 | 0 | 0 | 0 | 0 | 0 | 2 | 7 | 0 | 0 | 2 | 7 | 9 | 1.2% | 4.3% |
| ELIDA | 0 | 0 | 0 | 0 | 0 | 0 | 1 | 0 | 0 | 0 | 0 | 0 | 1 | 0 | 1 | 3.6% | 0.0% |
| ESPANOLA | 0 | 1 | 0 | 1 | 2 | 1 | 65 | 53 | 2 | 5 | 0 | 0 | 69 | 61 | 130 | 7.7% | 6.5% |
| ESTANCIA | 1 | 2 | 0 | 0 | 0 | 0 | 1 | 0 | 0 | 0 | 0 | 0 | 2 | 2 | 4 | 0.9% | 1.0% |
| EUNICE | 4 | 2 | 0 | 0 | 0 | 0 | 5 | 0 | 0 | 0 | 0 | 0 | 9 | 2 | 11 | 5.9% | 1.5% |
| FARMINGTON | 35 | 27 | 0 | 0 | 0 | 1 | 14 | 22 | 19 | 16 | 0 | 0 | 68 | 66 | 134 | 2.8% | 2.9% |
| FLOYD | 0 | 0 | 0 | 0 | 0 | 0 | 0 | 0 | 0 | 0 | 0 | 0 | 0 | 0 | 0 | 0.0% | 0.0% |
| FORT SUMNER | 0 | 0 | 0 | 0 | 0 | 0 | 0 | 0 | 0 | 0 | 0 | 0 | 0 | 0 | 0 | 0.0% | 0.0% |
| GADSDEN | 4 | 4 | 0 | 0 | 1 | 0 | 78 | 52 | 0 | 0 | 0 | 0 | 83 | 56 | 139 | 2.6% | 1.8% |
| GALLUP | 4 | 5 | 0 | 0 | 0 | 0 | 8 | 12 | 102 | 76 | 0 | 0 | 114 | 93 | 207 | 3.3% | 2.6% |
| GRADY | 0 | 0 | 0 | 0 | 0 | 0 | 0 | 0 | 0 | 0 | 0 | 0 | 0 | 0 | 0 | 0.0% | 0.0% |
| GRANTS/CIBOLA | 0 | 0 | 0 | 0 | 0 | 0 | 2 | 1 | 0 | 0 | 0 | 0 | 2 | 1 | 3 | 0.2% | 0.1% |
| HAGERMAN | 0 | 0 | 0 | 0 | 0 | 0 | 1 | 0 | 0 | 0 | 0 | 0 | 1 | 0 | 1 | 1.0% | 0.0% |
| HATCH | 1 | 2 | 0 | 0 | 0 | 0 | 8 | 10 | 0 | 1 | 0 | 0 | 9 | 13 | 22 | 2.4% | 3.5% |
| HOBBS | 11 | 17 | 0 | 0 | 5 | 5 | 32 | 33 | 0 | 0 | 0 | 0 | 48 | 55 | 103 | 2.8% | 3.3% |
| HONDO VALLEY | 0 | 0 | 0 | 0 | 0 | 0 | 1 | 0 | 0 | 0 | 0 | 0 | 1 | 0 | 1 | 3.4% | 0.0% |
| HOUSE | 1 | 3 | 0 | 0 | 0 | 0 | 2 | 3 | 0 | 0 | 0 | 0 | 3 | 6 | 9 | 6.3% | 8.5% |
| JAL | 0 | 1 | 0 | 0 | 0 | 0 | 0 | 0 | 0 | 0 | 0 | 0 | 0 | 1 | 1 | 0.0% | 0.8% |
| JEMEZ MOUNTAIN | 0 | 0 | 0 | 0 | 0 | 0 | 2 | 2 | 0 | 0 | 0 | 0 | 2 | 2 | 4 | 2.1% | 2.4% |
| JEMEZ VALLEY | 0 | 0 | 0 | 0 | 0 | 0 | 0 | 0 | 1 | 0 | 0 | 0 | 1 | 0 | 1 | 0.7% | 0.0% |

| DISTRICT | GENDER and ETHNICITY DISTRICT DROPOUTS | | | | | | | | | | | | GENDER | | Total | GENDER | |
|--------------------------|--|-----|-------|----|-------|----|----------|------|----------|-----|-----|---|----------|--------|-------|----------------|--------|
| | Anglo | | Asian | | Black | | Hispanic | | Nat Amer | | N/A | | DROPOUTS | | | DISTRICT RATES | |
| | M | F | M | F | M | F | M | F | M | F | M | F | Male | Female | | Male | Female |
| LAKE ARTHUR | 0 | 1 | 0 | 0 | 0 | 0 | 2 | 3 | 0 | 0 | 0 | 0 | 2 | 4 | 6 | 5.0% | 11.1% |
| LAS CRUCES | 99 | 85 | 0 | 3 | 10 | 10 | 364 | 270 | 3 | 6 | 0 | 0 | 476 | 374 | 850 | 8.6% | 7.1% |
| LAS VEGAS CITY | 0 | 1 | 0 | 0 | 0 | 0 | 13 | 10 | 0 | 0 | 0 | 0 | 13 | 11 | 24 | 2.6% | 2.0% |
| LOGAN | 0 | 0 | 0 | 0 | 0 | 0 | 0 | 0 | 0 | 0 | 0 | 0 | 0 | 0 | 0 | 0.0% | 0.0% |
| LORDSBURG | 2 | 1 | 0 | 0 | 0 | 0 | 4 | 4 | 0 | 0 | 0 | 0 | 6 | 5 | 11 | 3.3% | 3.2% |
| LOS ALAMOS | 12 | 6 | 0 | 0 | 0 | 0 | 0 | 1 | 4 | 0 | 0 | 0 | 16 | 7 | 23 | 1.8% | 0.8% |
| LOS LUNAS | 17 | 5 | 0 | 0 | 2 | 0 | 41 | 28 | 4 | 6 | 0 | 0 | 64 | 39 | 103 | 3.1% | 2.1% |
| LOVING | 0 | 0 | 0 | 0 | 0 | 0 | 4 | 0 | 0 | 0 | 0 | 0 | 4 | 0 | 4 | 2.7% | 0.0% |
| LOVINGTON | 3 | 5 | 0 | 0 | 0 | 3 | 11 | 18 | 0 | 0 | 0 | 0 | 14 | 26 | 40 | 2.4% | 4.1% |
| MAGDALENA | 0 | 0 | 0 | 0 | 0 | 0 | 0 | 1 | 1 | 0 | 0 | 0 | 1 | 1 | 2 | 1.0% | 1.1% |
| MAXWELL | 0 | 0 | 0 | 0 | 0 | 0 | 0 | 0 | 0 | 0 | 0 | 0 | 0 | 0 | 0 | 0.0% | 0.0% |
| MELROSE | 0 | 0 | 0 | 0 | 0 | 0 | 0 | 0 | 0 | 0 | 0 | 0 | 0 | 0 | 0 | 0.0% | 0.0% |
| MESA VISTA | 0 | 0 | 0 | 0 | 0 | 0 | 1 | 2 | 0 | 1 | 0 | 0 | 1 | 3 | 4 | 0.8% | 2.3% |
| MORA | 0 | 0 | 0 | 0 | 0 | 0 | 0 | 0 | 0 | 0 | 0 | 0 | 0 | 0 | 0 | 0.0% | 0.0% |
| MORIARTY | 1 | 0 | 0 | 0 | 0 | 0 | 0 | 0 | 0 | 0 | 0 | 0 | 1 | 0 | 1 | 0.1% | 0.0% |
| MOSQUERO | 0 | 0 | 0 | 0 | 0 | 0 | 0 | 0 | 0 | 0 | 0 | 0 | 0 | 0 | 0 | 0.0% | 0.0% |
| MOUNTAINAIR | 0 | 0 | 0 | 0 | 0 | 0 | 0 | 0 | 0 | 0 | 0 | 0 | 0 | 0 | 0 | 0.0% | 0.0% |
| PECOS | 0 | 0 | 0 | 0 | 0 | 0 | 1 | 0 | 0 | 0 | 0 | 0 | 1 | 0 | 1 | 0.5% | 0.0% |
| PENASCO | 1 | 0 | 0 | 0 | 0 | 0 | 3 | 2 | 0 | 0 | 0 | 0 | 4 | 2 | 6 | 2.5% | 1.4% |
| POJOAQUE | 0 | 2 | 0 | 0 | 0 | 0 | 11 | 6 | 1 | 3 | 0 | 0 | 12 | 11 | 23 | 2.5% | 2.0% |
| PORTALES | 4 | 0 | 0 | 0 | 1 | 0 | 8 | 9 | 0 | 1 | 0 | 0 | 13 | 10 | 23 | 2.1% | 1.7% |
| QUEMADO | 0 | 0 | 0 | 0 | 0 | 0 | 0 | 0 | 0 | 0 | 0 | 0 | 0 | 0 | 0 | 0.0% | 0.0% |
| QUESTA | 1 | 0 | 0 | 0 | 0 | 0 | 1 | 0 | 0 | 0 | 0 | 0 | 2 | 0 | 2 | 1.5% | 0.0% |
| RATON | 2 | 1 | 0 | 0 | 0 | 0 | 1 | 4 | 0 | 0 | 0 | 0 | 3 | 5 | 8 | 0.9% | 1.5% |
| RESERVE | 0 | 0 | 0 | 0 | 0 | 0 | 0 | 0 | 0 | 0 | 0 | 0 | 0 | 0 | 0 | 0.0% | 0.0% |
| RIO RANCHO | 12 | 4 | 0 | 0 | 0 | 0 | 8 | 5 | 0 | 1 | 0 | 0 | 20 | 10 | 30 | 0.6% | 0.3% |
| ROSWELL | 26 | 15 | 0 | 0 | 2 | 1 | 29 | 25 | 1 | 0 | 0 | 0 | 58 | 41 | 99 | 2.7% | 1.9% |
| ROY | 0 | 0 | 0 | 0 | 0 | 0 | 0 | 0 | 0 | 0 | 0 | 0 | 0 | 0 | 0 | 0.0% | 0.0% |
| RUIDOSO | 10 | 6 | 0 | 0 | 0 | 0 | 7 | 9 | 5 | 2 | 0 | 0 | 22 | 17 | 39 | 3.8% | 3.0% |
| SAN JON | 0 | 0 | 0 | 0 | 0 | 0 | 0 | 0 | 0 | 0 | 0 | 0 | 0 | 0 | 0 | 0.0% | 0.0% |
| SANTA FE | 44 | 44 | 5 | 1 | 3 | 0 | 181 | 161 | 8 | 2 | 5 | 1 | 246 | 209 | 455 | 8.4% | 7.6% |
| SANTA ROSA | 0 | 0 | 0 | 0 | 0 | 0 | 3 | 0 | 0 | 0 | 0 | 0 | 3 | 0 | 3 | 1.8% | 0.0% |
| SILVER CITY | 6 | 4 | 0 | 0 | 0 | 0 | 17 | 10 | 0 | 0 | 0 | 0 | 23 | 14 | 37 | 2.9% | 2.0% |
| SOCORRO | 3 | 1 | 0 | 0 | 0 | 0 | 6 | 6 | 0 | 1 | 0 | 0 | 9 | 8 | 17 | 1.9% | 1.7% |
| SPRINGER | 0 | 1 | 0 | 0 | 0 | 0 | 0 | 0 | 0 | 0 | 0 | 0 | 0 | 1 | 1 | 0.0% | 2.3% |
| TAOS | 10 | 5 | 0 | 0 | 0 | 0 | 39 | 24 | 9 | 10 | 0 | 0 | 58 | 39 | 97 | 7.6% | 5.0% |
| TATUM | 0 | 0 | 0 | 0 | 0 | 0 | 1 | 0 | 0 | 0 | 0 | 0 | 1 | 0 | 1 | 1.3% | 0.0% |
| TEXICO | 3 | 1 | 0 | 0 | 0 | 0 | 0 | 0 | 0 | 0 | 0 | 0 | 3 | 1 | 4 | 2.3% | 0.7% |
| TRUTH OR CONSEQ. | 2 | 1 | 0 | 0 | 0 | 0 | 3 | 1 | 0 | 1 | 0 | 0 | 5 | 3 | 8 | 1.3% | 0.8% |
| TUCUMCARI | 5 | 2 | 0 | 0 | 1 | 0 | 12 | 5 | 0 | 0 | 0 | 0 | 18 | 7 | 25 | 6.5% | 3.0% |
| TULAROSA | 1 | 1 | 0 | 0 | 0 | 0 | 4 | 1 | 0 | 1 | 0 | 0 | 5 | 3 | 8 | 2.1% | 1.2% |
| VAUGHN | 0 | 0 | 0 | 0 | 0 | 0 | 0 | 0 | 0 | 0 | 0 | 0 | 0 | 0 | 0 | 0.0% | 0.0% |
| WAGON MOUND | 0 | 0 | 0 | 0 | 0 | 0 | 0 | 0 | 0 | 0 | 0 | 0 | 0 | 0 | 0 | 0.0% | 0.0% |
| WEST LAS VEGAS | 0 | 0 | 0 | 0 | 0 | 0 | 3 | 1 | 0 | 0 | 0 | 0 | 3 | 1 | 4 | 0.6% | 0.2% |
| ZUNI | 0 | 0 | 0 | 0 | 0 | 0 | 0 | 0 | 23 | 12 | 0 | 0 | 23 | 12 | 35 | 5.5% | 3.0% |
| STATEWIDE TOTALS: | 698 | 540 | 28 | 14 | 90 | 60 | 1810 | 1497 | 415 | 326 | 7 | 3 | 3,048 | 2,440 | 5,488 | 4.0% | 3.7% |

Dropout Student Reasons:

Dropout rates are considered by many as an indicator of educational success for individual schools or school districts. States are ranked nationally on the basis of status dropout information compiled for local data. This section addresses the issue of why students leave school.

In New Mexico, dropout information is self reported. When students are preparing to leave school, they are usually questioned by school authorities about their reasons for doing so. This information is recorded on transfer sheets, stored and later compiled for district use as well as for state and federal level reporting. When students leave school without official permission, records are completed by school personnel. In many of these cases, accurate information about leaving school is not available. Although attempts are made to locate students, neither the time nor the resources are available to follow in every case.

Figure 10 through 15 provide information concerning the reasons various groups of students give for dropping out of school. Listed below (Figure 9) are the abbreviations used in those charts along with the specific reason each represents.

Figure -9- Dropout Reason Code and Description

| Code | Dropout-Reason Description | Code | Dropout-Reason Description |
|------|--|------|----------------------------------|
| 01 | Invalid transfer, no transcript requested | 09 | Left school to work |
| 02 | Lack of interest | 10 | Failing, unable to complete work |
| 03 | Did not reenroll, no transcripts requested | 11 | Parental request |
| 04 | Intends to take GED | 12 | Child care problems |
| 05 | Suspended, did not return | 13 | Runaway, unable to locate |
| 06 | Expelled, did not return | 14 | Married and left school |
| 07 | Pregnancy, unable to return | 15 | Illness |
| 08 | Unable to adjust | 16 | Other (unknown) |

The two leading reasons given for ninth through twelfth grade students dropping out were (1) “Other” (Student left school for no identifiable reason) and (2) “Intends to take GED”.

Figure -10- Grade 9 – Reason 16 (Other) was the leading reason then by Reason 3 (Did not reenroll, no transcript requested).

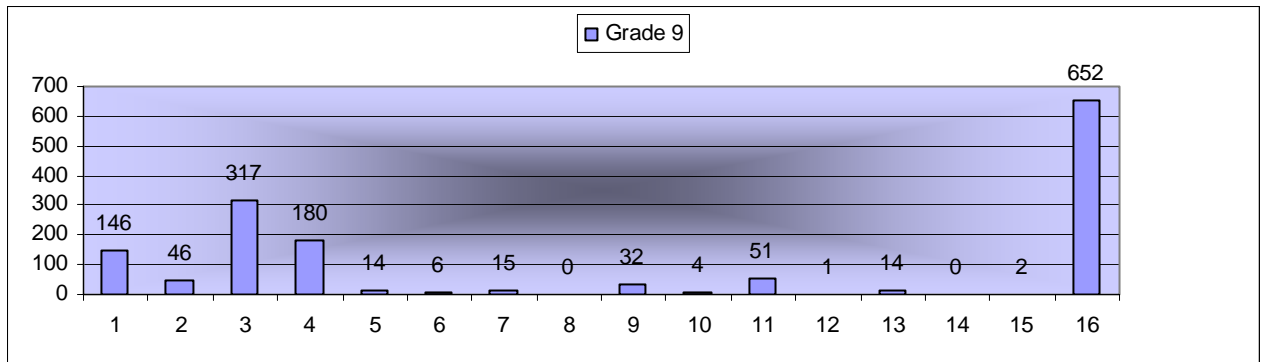


Figure -11 – Grade 10 – Reason 16 (Other) was the leading reason then by Reason 4 (Intends to take GED).

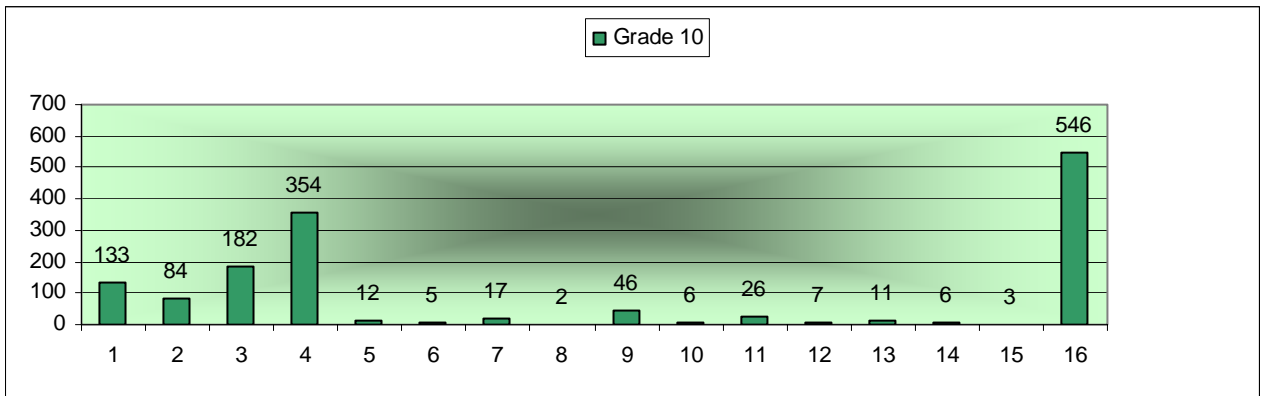


Figure -12 – Grade 11 – Reason 16 (Other) was the leading reason then Reason 4 (Intends to take GED).

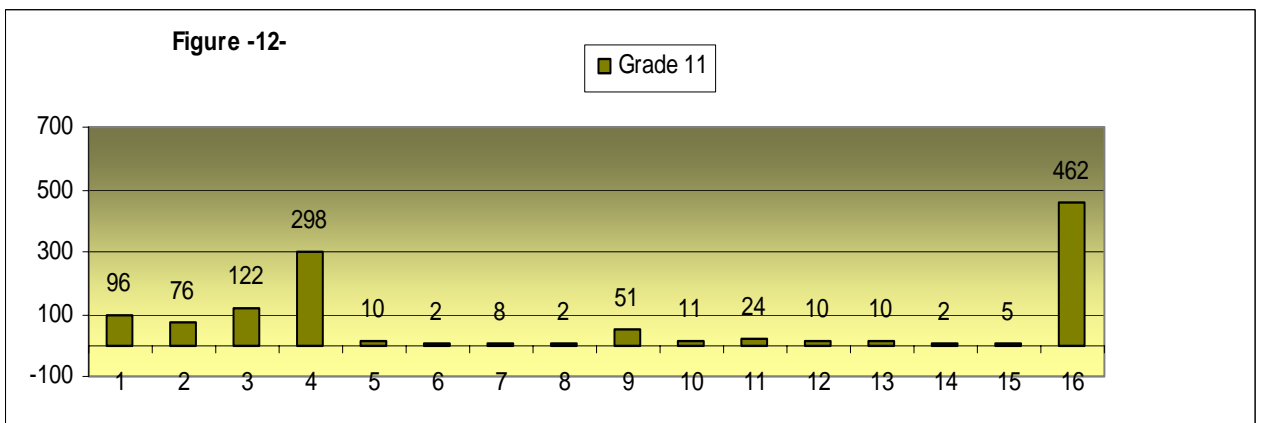


Figure -13 – Grade 12 – Reason 16 (Other) was the leading reason then Reason 4 (Intends to take GED).

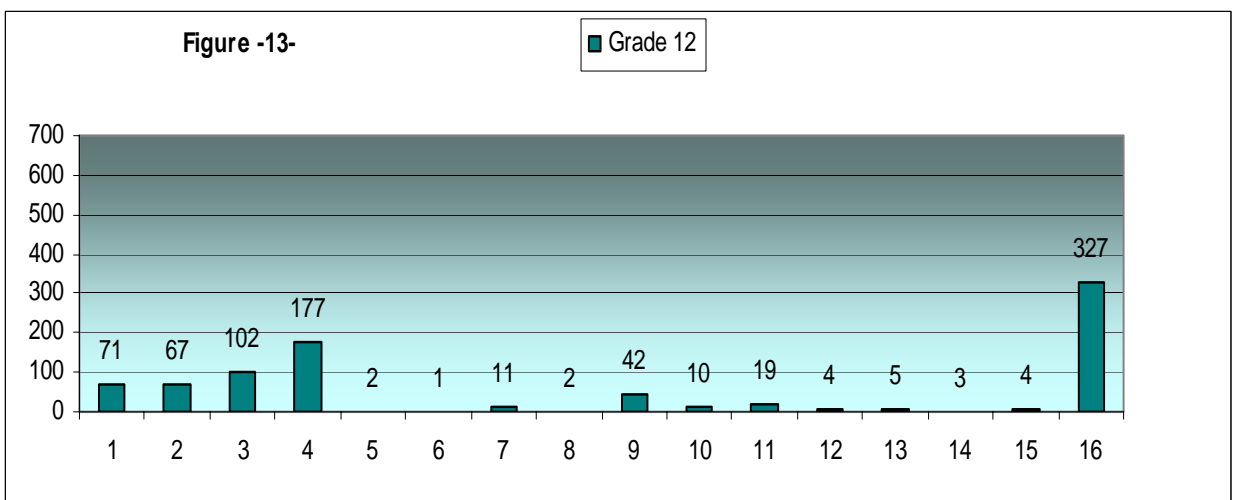


Figure 14 – Grade 7 –Reasons: For seventh and eighth grade students, the two top reasons were (16) “Other” (Student left school for no identifiable reason) and (3) “Did Not Re-enroll- No Transcript Request”. (Student left school at the end of spring term and never returned in the fall).

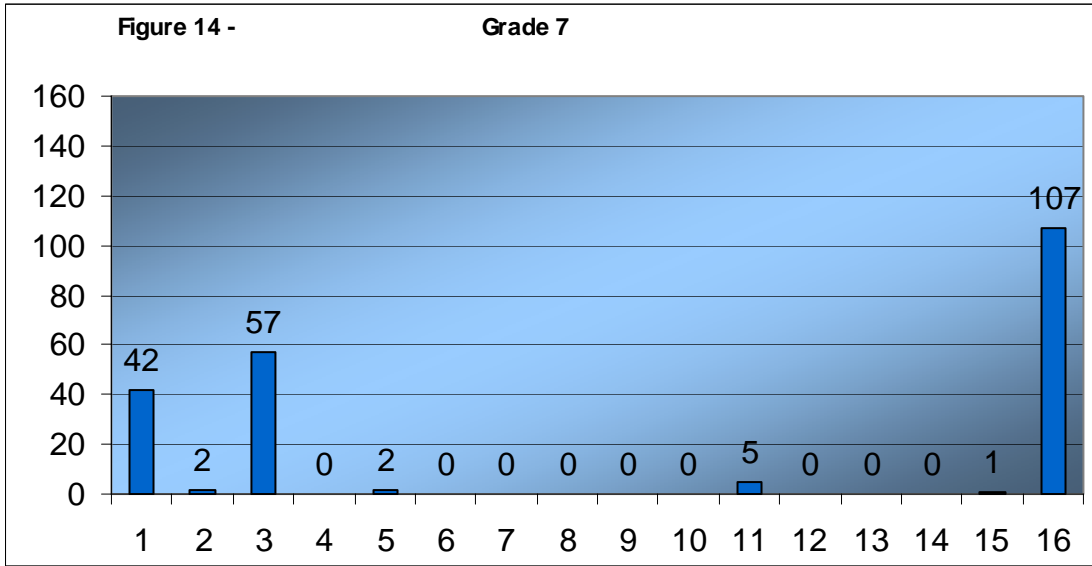


Figure 15 – Grade 8 –Reasons:

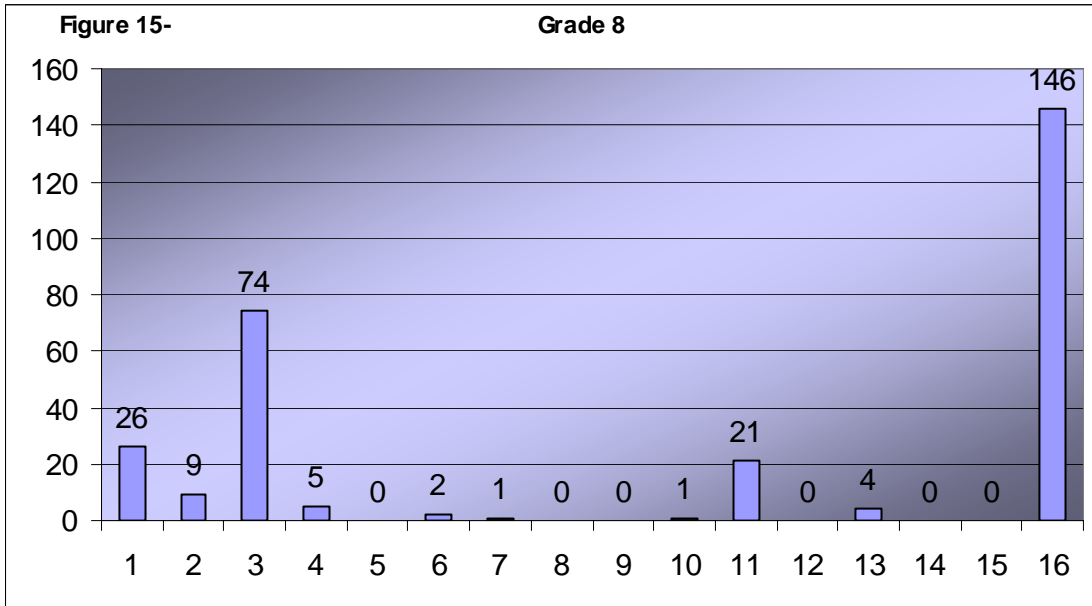


Table 5 – Dropout Rates by School:

This table presents Dropout data by school. It shows transition year* dropouts in which transition year dropouts are students who leave school during the summer between mid high and high school. This table will provide dropouts and dropout rates by each school.

2004-2005 Dropout Rates by School

| District Code | District and School Name | School Membership | Trans Yr.* Dropouts | Dropouts | Total Dropouts | Dropout Rate |
|---------------|---|-------------------|---------------------|-----------|----------------|--------------|
| 46 | Alamogordo: | | | | | |
| | Academy Del Sol Alternative | 165 | 0 | 28 | 28 | 17.0% |
| | Alamogordo High | 1909 | 0 | 31 | 31 | 1.6% |
| | Chaparral Middle | 468 | 0 | 0 | 0 | 0.0% |
| | Holloman Middle | 145 | 0 | 0 | 0 | 0.0% |
| | Lacy Simms Middle | 54 | 0 | 0 | 0 | 0.0% |
| | Mountain View Middle | 375 | 0 | 0 | 0 | 0.0% |
| | District: | 3,116 | 0 | 59 | 59 | 1.9% |
| 1 | Albuquerque: | | | | | |
| | Academia De Lengua Y | 8 | 0 | 0 | 0 | 0.0% |
| | Albuquerque Evening | 146 | 0 | 39 | 39 | 26.7% |
| | Albuquerque High | 1835 | 12 | 100 | 112 | 5.4% |
| | Amy Biehl Charter HS | 208 | 0 | 2 | 2 | 1.0% |
| | Barcelona Elementary | 27 | 0 | 0 | 0 | 0.0% |
| | Bernalillo Cty JDC | 80 | 5 | 36 | 41 | 45.0% |
| | Career Enrichment | 33 | 0 | 0 | 0 | 0.0% |
| | Cesar Chavez Comm Ctr | 95 | 0 | 72 | 72 | 75.8% |
| | CESS | 263 | 0 | 0 | 0 | 0.0% |
| | Charter Voc High Sch | 330 | 5 | 127 | 132 | 38.5% |
| | Charter Vo-Tech Ctr | 175 | 0 | 39 | 39 | 22.3% |
| | Cibola High | 2879 | 4 | 47 | 51 | 1.6% |
| | Cleveland Middle | 517 | 0 | 1 | 1 | 0.2% |
| | County Detention Cnt | 24 | 0 | 0 | 0 | 0.0% |
| | Creative Ed Prep #1 | 162 | 0 | 17 | 17 | 10.5% |
| | Creative Ed Prep #2 | 170 | 0 | 11 | 11 | 6.5% |
| | Del Norte High | 1668 | 7 | 63 | 70 | 3.8% |
| | Desert Ridge Middle | 689 | 0 | 12 | 12 | 1.7% |
| | District Service Ctr (Stronghurst Alt.) | 44 | 0 | 35 | 35 | 79.5% |
| | East Mtn High School | 305 | 0 | 13 | 13 | 4.3% |
| | Eisenhower Middle | 699 | 0 | 0 | 0 | 0.0% |
| | Eldorado High | 2180 | 5 | 41 | 46 | 1.9% |
| | Ernie Pyle Middle | 436 | 0 | 4 | 4 | 0.9% |
| | Freedom High | 193 | 0 | 73 | 73 | 37.8% |
| | Garfield Middle | 304 | 0 | 7 | 7 | 2.3% |
| | Grant Middle | 534 | 0 | 0 | 0 | 0.0% |
| | Harrison Middle | 432 | 0 | 4 | 4 | 0.9% |
| | Hayes Middle | 370 | 0 | 5 | 5 | 1.4% |
| | Highland High | 1952 | 28 | 100 | 128 | 5.1% |
| | Home Hospital | 57 | 0 | 11 | 11 | 19.3% |
| | Hoover Middle | 519 | 0 | 7 | 7 | 1.3% |
| | Horizon Academy NW | 164 | 0 | 2 | 2 | 1.2% |
| | Horizon Academy South | 198 | 0 | 0 | 0 | 0.0% |
| | Horizon Academy West | 89 | 0 | 0 | 0 | 0.0% |
| | Jackson Middle | 471 | 0 | 0 | 0 | 0.0% |
| | James Monroe Middle | 804 | 0 | 8 | 8 | 1.0% |
| | Jefferson Middle | 587 | 0 | 3 | 3 | 0.5% |
| | Jimmy Carter Middle | 683 | 0 | 16 | 16 | 2.3% |

| 2004-2005 Dropout Rates by School -Continued | | | | | | |
|---|---------------------------------|--------------------------|----------------------------|-----------------|-----------------------|---------------------|
| District Code | District and School Name | School Membership | Trans Yr.* Dropouts | Dropouts | Total Dropouts | Dropout Rate |
| 01 | John Adams Middle | 599 | 0 | 21 | 21 | 3.5% |
| | Kennedy Middle | 328 | 0 | 13 | 13 | 4.0% |
| | Kit Carson Elementary | 48 | 0 | 1 | 1 | 2.1% |
| | L.B. Johnson Middle | 691 | 0 | 0 | 0 | 0.0% |
| | La Academia De Esper | 164 | 0 | 2 | 2 | 1.2% |
| | La Cueva High | 2182 | 1 | 26 | 27 | 1.2% |
| | Los Puentes Charter | 113 | 0 | 21 | 21 | 18.6% |
| | Madison Middle | 584 | 0 | 1 | 1 | 0.2% |
| | Manzano High | 1993 | 3 | 11 | 14 | 0.6% |
| | Mc Kinley Middle | 514 | 0 | 2 | 2 | 0.4% |
| | New Futures School | 276 | 1 | 124 | 125 | 44.9% |
| | Nuestros Valores Charter | 148 | 0 | 19 | 19 | 12.8% |
| | Pajarito Elementary | 45 | 0 | 1 | 1 | 2.2% |
| | Paseo Del Monte Middle | 55 | 0 | 0 | 0 | 0.0% |
| | Polk Middle | 268 | 1 | 4 | 5 | 1.5% |
| | Public Academy For P | 277 | 0 | 3 | 3 | 1.1% |
| | Rio Grande High | 1798 | 0 | 48 | 48 | 2.7% |
| | Robert F. Kennedy Charter | 242 | 27 | 1 | 28 | 0.4% |
| | Roosevelt Middle | 337 | 0 | 1 | 1 | 0.3% |
| | Sandia High | 2170 | 11 | 58 | 69 | 2.7% |
| | School For Integrate | 262 | 0 | 130 | 130 | 49.6% |
| | School On Wheels | 207 | 0 | 59 | 59 | 28.5% |
| | Sierra Alternative | 136 | 1 | 52 | 53 | 38.2% |
| | South Valley Academy | 224 | 0 | 1 | 1 | 0.4% |
| | Southwest Second | 234 | 0 | 0 | 0 | 0.0% |
| | Taft Middle | 437 | 0 | 1 | 1 | 0.2% |
| | Taylor Middle | 423 | 0 | 3 | 3 | 0.7% |
| | The Family School | 36 | 0 | 0 | 0 | 0.0% |
| | The Learning Community | 148 | 0 | 1 | 1 | 0.7% |
| | Truman Middle | 638 | 0 | 18 | 18 | 2.8% |
| | Twenty-First Century | 136 | 0 | 0 | 0 | 0.0% |
| | Valley High | 1969 | 19 | 52 | 71 | 2.6% |
| | Van Buren Middle | 414 | 0 | 2 | 2 | 0.5% |
| | Vision Quest Alt Mid | 10 | 0 | 0 | 0 | 0.0% |
| Washington Middle | 348 | 0 | 10 | 10 | 2.9% | |
| West Mesa High | 2600 | 30 | 144 | 174 | 5.5% | |
| Wilson Middle | 426 | 0 | 12 | 12 | 2.8% | |
| | District: | 41,810 | 160 | 1,737 | 1,897 | 4.5% |
| 30 | Animas: | | | | | |
| | Animas Middle | 47 | 0 | 0 | 0 | 0.0% |
| | Animas High | 107 | 0 | 2 | 2 | 1.9% |
| | District: | 154 | 0 | 2 | 2 | 1.3% |
| 22 | Artesia: | | | | | |
| | Artesia High | 736 | 2 | 6 | 8 | 0.8% |
| | Artesia Zia Intermediate | 272 | 0 | 5 | 5 | 1.8% |
| | Artesia Junior High | 577 | 0 | 1 | 1 | 0.2% |
| | Peñasco Elementary | 3 | 0 | 0 | 0 | 0.0% |
| | District: | 1,588 | 2 | 12 | 14 | 0.9% |

| 2004-2005 Dropout Rates by School -Continued | | | | | | |
|---|---------------------------------|--------------------------|----------------------------|-----------------|-----------------------|---------------------|
| District Code | District and School Name | School Membership | Trans Yr.* Dropouts | Dropouts | Total Dropouts | Dropout Rate |
| 64 | Aztec: | | | | | |
| | Aztec High | 971 | 1 | 23 | 24 | 7.5% |
| | CV Koogler Jr High | 478 | 0 | 0 | 0 | 1.0% |
| | Vista Nueva Alt. High | 60 | 0 | 12 | 12 | 17.0% |
| | District: | 1,509 | 1 | 35 | 36 | 5.6% |
| 87 | Belen: | | | | | |
| | Belen Alternative | 52 | 0 | 0 | 0 | 0.0% |
| | Belen High | 1,391 | 7 | 83 | 90 | 6.0% |
| | Belen Middle | 775 | 0 | 8 | 8 | 1.0% |
| | The Family School | 22 | 0 | 0 | 0 | 0.0% |
| | District: | 2,240 | 7 | 91 | 98 | 4.1% |
| 61 | Bernalillo: | | | | | |
| | Bernalillo High | 921 | 0 | 47 | 47 | 5.1% |
| | Bernalillo Middle | 403 | 0 | 15 | 15 | 3.7% |
| | Cochiti Middle | 56 | 0 | 0 | 0 | 0.0% |
| | Santo Domingo Middle | 89 | 0 | 0 | 0 | 0.0% |
| | District: | 1,469 | 0 | 62 | 62 | 4.2% |
| 66 | Bloomfield: | | | | | |
| | Bloomfield High | 881 | 6 | 13 | 19 | 1.5% |
| | Charlie Y. Brown | 90 | 0 | 0 | 0 | 0.0% |
| | Mesa Alta Junior High | 539 | 0 | 3 | 3 | 0.6% |
| | District: | 1,510 | 6 | 16 | 22 | 1.5% |
| 40 | Capitan: | | | | | |
| | Capitan Middle | 197 | 0 | 1 | 1 | 0.5% |
| | Capitan High | 112 | 0 | 7 | 7 | 6.3% |
| | District: | 309 | 0 | 8 | 8 | 2.6% |
| 20 | Carlsbad: | | | | | |
| | Alta Vista Middle | 417 | 0 | 2 | 2 | 0.5% |
| | Carlsbad High | 1723 | 0 | 141 | 141 | 8.2% |
| | Grace House Program RTC | 12 | 0 | 1 | 1 | 8.3% |
| | Jefferson Monessori | 57 | 0 | 0 | 0 | 0.0% |
| | P.R. Leyva Middle | 520 | 1 | 5 | 6 | 1.0% |
| | District: | 2,729 | 1 | 149 | 150 | 5.5% |
| 37 | Carrizozo: | | | | | |
| | Carrizozo High | 56 | 0 | 0 | 0 | 0.0% |
| | Carrizozo Middle | 37 | 0 | 0 | 0 | 0.0% |
| | District: | 93 | 0 | 0 | 0 | 0.0% |

| 2004-2005 Dropout Rates by School -Continued | | | | | | |
|---|---------------------------------|--------------------------|----------------------------|-----------------|-----------------------|---------------------|
| District Code | District and School Name | School Membership | Trans Yr.* Dropouts | Dropouts | Total Dropouts | Dropout Rate |
| 67 | Central Consolidated: | | | | | |
| | Career Prep HS | 137 | 0 | 40 | 40 | 29.2% |
| | Central High | 973 | 1 | 35 | 36 | 3.6% |
| | Eva B. Stokely Elementary | 3 | 0 | 0 | 0 | 0.0% |
| | Homebound/Hospital | 10 | 0 | 0 | 0 | 0.0% |
| | Kirtland Middle School | 558 | 0 | 1 | 1 | 0.2% |
| | Newcomb High | 345 | 1 | 15 | 16 | 4.3% |
| | Newcomb Middle | 184 | 0 | 0 | 0 | 0.0% |
| | Shiprock High | 947 | 0 | 7 | 7 | 0.7% |
| | Tse'Bit'Ai Middle | 466 | 0 | 8 | 8 | 1.7% |
| | District: | 3,623 | 2 | 106 | 108 | 3.0% |
| 53 | Chama: | | | | | |
| | Chama Middle | 47 | 0 | 0 | 0 | 0.0% |
| | Escalante High | 162 | 2 | 1 | 3 | 0.6% |
| | Tierra Amarilla Middle | 38 | 0 | 0 | 0 | 0.0% |
| | District: | 247 | 2 | 1 | 3 | 0.4% |
| 8 | Cimarron: | | | | | |
| | Cimarron High | 111 | 0 | 0 | 0 | 0.0% |
| | Cimarron Middle | 41 | 0 | 0 | 0 | 0.0% |
| | Eagle Nest Middle | 58 | 0 | 0 | 0 | 0.0% |
| | Moreno Valley High | 93 | 0 | 0 | 0 | 0.0% |
| | District: | 303 | 0 | 0 | 0 | 0.0% |
| 84 | Clayton: | | | | | |
| | Clayton Jr High | 89 | 0 | 0 | 0 | 0.0% |
| | Clayton High | 165 | 0 | 10 | 10 | 6.1% |
| | District: | 254 | 0 | 10 | 10 | 3.9% |
| 48 | Cloudcroft: | | | | | |
| | Cloudcroft Middle | 79 | 0 | 0 | 0 | 0.0% |
| | Cloudcroft High | 194 | 0 | 4 | 4 | 2.1% |
| | District: | 273 | 0 | 4 | 4 | 1.5% |
| 12 | Clovis: | | | | | |
| | Clovis High | 1,640 | 5 | 131 | 136 | 8.0% |
| | Marshall Jr High | 594 | 0 | 0 | 0 | 0.0% |
| | W.D. Gattis Jr High | 542 | 0 | 0 | 0 | 0.0% |
| | Yucca Jr High | 793 | 1 | 0 | 1 | 0.0% |
| | District: | 3,569 | 6 | 131 | 137 | 3.8% |
| 24 | Cobre: | | | | | |
| | Cobre High | 490 | 0 | 24 | 24 | 4.9% |
| | Snell Middle | 224 | 1 | 0 | 1 | 0.0% |
| | District: | 714 | 1 | 24 | 25 | 3.5% |
| 38 | Corona: | | | | | |
| | Corona High | 43 | 1 | 1 | 2 | 2.3% |
| | District: | 43 | 1 | 1 | 2 | 4.7% |

| 2004-2005 Dropout Rates by School -Continued | | | | | | |
|---|---------------------------------|--------------------------|----------------------------|-----------------|-----------------------|---------------------|
| District Code | District and School Name | School Membership | Trans Yr.* Dropouts | Dropouts | Total Dropouts | Dropout Rate |
| 62 | Cuba: | | | | | |
| | Cuba Middle School | 90 | 0 | 1 | 1 | 1.1% |
| | Cuba High | 408 | 0 | 58 | 58 | 14.2% |
| | District: | 498 | 0 | 59 | 59 | 11.8% |
| 42 | Deming: | | | | | |
| | Deming High | 1160 | 7 | 0 | 7 | 0.0% |
| | Deming Middle | 451 | 1 | 0 | 1 | 0.0% |
| | Deming Secure School | 6 | 0 | 0 | 0 | 0.0% |
| | Hofacket Mid High | 899 | 0 | 0 | 0 | 0.0% |
| | Homebound/Hospital | 4 | 0 | 0 | 0 | 0.0% |
| District: | 2,520 | 8 | 0 | 8 | 0.3% | |
| 85 | Des Moines: | | | | | |
| | Des Moines High | 63 | 0 | 0 | 0 | 0.0% |
| District: | 63 | 0 | 0 | 0 | 0.0% | |
| 6 | Dexter: | | | | | |
| | Dexter Middle | 205 | 0 | 0 | 0 | 0.0% |
| | Dexter High | 356 | 9 | 0 | 9 | 0.0% |
| District: | 561 | 9 | 0 | 9 | 1.6% | |
| 60 | Dora: | | | | | |
| | Dora High | 110 | 0 | 1 | 1 | 0.9% |
| District: | 110 | 0 | 1 | 1 | 0.9% | |
| 54 | Dulce: | | | | | |
| | Dulce High | 222 | 1 | 8 | 9 | 3.6% |
| | Dulce Middle | 111 | 0 | 0 | 0 | 0.0% |
| District: | 333 | 1 | 8 | 9 | 2.7% | |
| 58 | Elida: | | | | | |
| | Elida High | 61 | 0 | 1 | 1 | 1.6% |
| District: | 61 | 0 | 1 | 1 | 1.6% | |
| 55 | Espanola: | | | | | |
| | Carlos Vigil Middle | 641 | 0 | 56 | 56 | 8.7% |
| | Dixon Elementary | 1 | 0 | 0 | 0 | 0.0% |
| | Espanola Middle | 286 | 0 | 14 | 14 | 4.9% |
| | Espanola Military Academy | 126 | 0 | 0 | 0 | 0.0% |
| | Espanola Valley High | 771 | 0 | 60 | 60 | 7.8% |
| Homebound/Hospital | 8 | 0 | 0 | 0 | 0.0% | |
| District: | 1,833 | 0 | 130 | 130 | 7.1% | |
| 80 | Estancia: | | | | | |
| | Estancia Middle | 145 | 0 | 0 | 0 | 0.0% |
| | Estancia High | 285 | 0 | 4 | 4 | 1.4% |
| District: | 430 | 0 | 4 | 4 | 0.9% | |
| 32 | Eunice: | | | | | |
| | Caton Middle | 88 | 0 | 0 | 0 | 0.0% |
| | Eunice High | 199 | 0 | 11 | 11 | 5.5% |
| District: | 287 | 0 | 11 | 11 | 3.8% | |

| 2004-2005 Dropout Rates by School -Continued | | | | | | |
|---|----------------------------------|--------------------------|----------------------------|-----------------|-----------------------|---------------------|
| District Code | District and School Name | School Membership | Trans Yr.* Dropouts | Dropouts | Total Dropouts | Dropout Rate |
| 65 | Farmington: | | | | | |
| | Farm.Day Reporting | 13 | 0 | 4 | 4 | 30.8% |
| | Farmington High | 1613 | 5 | 73 | 78 | 4.5% |
| | Heights Jr High | 464 | 0 | 0 | 0 | 0.0% |
| | Hermosa Jr High | 423 | 0 | 1 | 1 | 0.2% |
| | Homebound/Hospital | 3 | 0 | 0 | 0 | 0.0% |
| | Mesa View Jr. High | 401 | 0 | 0 | 0 | 0.0% |
| | Piedra Vista High School | 1141 | 2 | 49 | 51 | 4.3% |
| | Rocinante High School | 252 | 0 | 0 | 0 | 0.0% |
| | San Juan City JDC | 14 | 0 | 0 | 0 | 0.0% |
| | Tibbetts Jr High | 382 | 0 | 0 | 0 | 0.0% |
| | District: | 4,706 | 7 | 127 | 134 | 2.8% |
| 59 | Floyd: | | | | | |
| | Floyd High | 74 | 0 | 0 | 0 | 0.0% |
| | Floyd Middle School | 52 | 0 | 0 | 0 | 0.0% |
| | District: | 126 | 0 | 0 | 0 | 0.0% |
| 16 | Fort Sumner: | | | | | |
| | Fort Sumner High | 103 | 0 | 0 | 0 | 0.0% |
| | Fort Sumner Middle | 58 | 0 | 0 | 0 | 0.0% |
| | District: | 161 | 0 | 0 | 0 | 0.0% |
| 19 | Gadsden: | | | | | |
| | Chaparral Middle | 521 | 0 | 0 | 0 | 0.0% |
| | Desert Pride Academy | 315 | 0 | 82 | 82 | 26.0% |
| | Gadsden High | 2406 | 17 | 0 | 17 | 0.0% |
| | Gadsden Middle | 1036 | 0 | 0 | 0 | 0.0% |
| | Homebound/Hospital | 7 | 0 | 0 | 0 | 0.0% |
| | RTC-Residential Treatment Center | 62 | 0 | 0 | 0 | 0.0% |
| | Santa Teresa High | 1175 | 2 | 38 | 40 | 3.2% |
| | Santa Teresa Middle | 743 | 0 | 0 | 0 | 0.0% |
| | District: | 6,265 | 19 | 120 | 139 | 2.2% |
| 43 | Gallup: | | | | | |
| | Crownpoint High | 436 | 0 | 9 | 9 | 2.1% |
| | Crownpoint Middle | 163 | 3 | 2 | 5 | 1.2% |
| | Gallup Central High | 331 | 0 | 12 | 12 | 3.6% |
| | Gallup High | 1560 | 0 | 30 | 30 | 1.9% |
| | Gallup Junior High | 1492 | 39 | 29 | 68 | 1.9% |
| | Gallup Middle | 386 | 0 | 3 | 3 | 0.8% |
| | Home Hospital | 2 | 0 | 0 | 0 | 0.0% |
| | John F. Kennedy Middle | 289 | 0 | 5 | 5 | 1.7% |
| | Juvenile Detention Center | 8 | 0 | 0 | 0 | 0.0% |
| | Middle College HS | 45 | 0 | 6 | 6 | 13.3% |
| | Navajo Middle School | 115 | 6 | 3 | 9 | 2.6% |
| | Navajo Pine High | 212 | 0 | 9 | 9 | 4.2% |
| | Ramah High School | 226 | 0 | 0 | 0 | 0.0% |
| | Thoreau High | 580 | 0 | 21 | 21 | 3.6% |
| | Thoreau Middle | 295 | 1 | 1 | 2 | 0.3% |
| | Tohatchi High | 487 | 0 | 20 | 20 | 4.1% |
| | Tohatchi Middle | 195 | 4 | 4 | 8 | 2.1% |

| 2004-2005 Dropout Rates by School -Continued | | | | | | |
|---|---------------------------------|--------------------------|----------------------------|-----------------|-----------------------|---------------------|
| District Code | District and School Name | School Membership | Trans Yr.* Dropouts | Dropouts | Total Dropouts | Dropout Rate |
| 43 | Tse'Yi'Gai High | 129 | 0 | 0 | 0 | 0.0% |
| | District: | 6,951 | 53 | 154 | 207 | 3.0% |
| 15 | Grady: | | | | | |
| | Grady Middle | 17 | 0 | 0 | 0 | 0.0% |
| | Grady High | 40 | 0 | 0 | 0 | 0.0% |
| | District: | 57 | 0 | 0 | 0 | 0.0% |
| 88 | Grants-Cibola: | | | | | |
| | Grants High | 980 | 0 | 0 | 0 | 0.0% |
| | Homebound/Hospital | 3 | 0 | 0 | 0 | 0.0% |
| | Laguna Acoma High | 343 | 0 | 0 | 0 | 0.0% |
| | Laguna-Acoma Middle | 71 | 0 | 0 | 0 | 0.0% |
| | Los Alamos Middle | 456 | 2 | 1 | 3 | 0.2% |
| | District: | 1,853 | 2 | 1 | 3 | 0.1% |
| 5 | Hagerman: | | | | | |
| | Hagerman High | 122 | 1 | 0 | 1 | 0.0% |
| | Hagerman Middle | 84 | 0 | 0 | 0 | 0.0% |
| | District: | 206 | 1 | 0 | 1 | 0.5% |
| 18 | Hatch: | | | | | |
| | Ace Alt Complex Ed | 52 | 0 | 6 | 6 | 11.5% |
| | Hatch Valley High | 265 | 0 | 13 | 13 | 4.9% |
| | Hatch Valley Middle | 431 | 0 | 3 | 3 | 0.7% |
| | District: | 748 | 0 | 22 | 22 | 2.9% |
| 33 | Hobbs: | | | | | |
| | Hobbs Freshman | 572 | 0 | 11 | 11 | 1.9% |
| | Highland Jr High | 653 | 3 | 3 | 6 | 0.5% |
| | Hobbs Alternative High | 89 | 0 | 0 | 0 | 0.0% |
| | Hobbs High | 1,518 | 0 | 79 | 79 | 5.2% |
| | Houston Jr High | 547 | 0 | 7 | 7 | 1.3% |
| | District: | 3,379 | 3 | 100 | 103 | 3.0% |
| 39 | Hondo: | | | | | |
| | Hondo High | 58 | 0 | 1 | 1 | 1.7% |
| | District: | 58 | 0 | 1 | 1 | 1.7% |
| 50 | House: | | | | | |
| | House Jr High | 34 | 0 | 0 | 0 | 0.0% |
| | House High | 85 | 0 | 0 | 0 | 0.0% |
| | The Learning Center | N/A | 0 | 9 | 9 | 0.0% |
| | District: | 119 | 0 | 9 | 9 | 7.6% |
| 34 | Jal: | | | | | |
| | Jal High | 158 | 0 | 1 | 1 | 0.6% |
| | Jal Jr High | 69 | 0 | 0 | 0 | 0.0% |
| | District: | 227 | 0 | 1 | 1 | 0.4% |

| 2004-2005 Dropout Rates by School -Continued | | | | | | |
|---|---------------------------------|--------------------------|----------------------------|-----------------|-----------------------|---------------------|
| District Code | District and School Name | School Membership | Trans Yr.* Dropouts | Dropouts | Total Dropouts | Dropout Rate |
| 56 | Jemez Mountain: | | | | | |
| | Coronado High | 98 | 0 | 4 | 4 | 4.1% |
| | Coronado Middle | 67 | 0 | 0 | 0 | 0.0% |
| | Lybrook Elementary | 16 | 0 | 0 | 0 | 0.0% |
| | District: | 181 | 0 | 4 | 4 | 2.2% |
| 63 | Jemez Valley: | | | | | |
| | Jemez Valley High | 141 | 0 | 0 | 0 | 0.0% |
| | Jemez Valley Middle | 70 | 0 | 0 | 0 | 0.0% |
| | San Diego Riverside | 25 | 0 | 0 | 0 | 0.0% |
| | Walatowa Charter High | 20 | 0 | 1 | 1 | 5.0% |
| | District: | 256 | 0 | 1 | 1 | 0.4% |
| 7 | Lake Arthur: | | | | | |
| | Lake Arthur High | 46 | 0 | 5 | 5 | 10.9% |
| | Lake Arthur Middle | 30 | 0 | 1 | 1 | 3.3% |
| | District: | 76 | 0 | 6 | 6 | 7.9% |
| 17 | Las Cruces: | | | | | |
| | Alma D'arte Charter | 123 | 0 | 0 | 0 | 0.0% |
| | Camino Real Middle | 624 | 0 | 10 | 10 | 1.6% |
| | Dona Ana Jdc | 22 | 0 | 0 | 0 | 0.0% |
| | Homebound/Hospital | 53 | 0 | 0 | 0 | 0.0% |
| | La Academia De Idiom | 77 | 0 | 0 | 0 | 0.0% |
| | Las Cruces High | 2331 | 19 | 216 | 235 | 9.3% |
| | Lynn Middle | 554 | 0 | 7 | 7 | 1.3% |
| | Mayfield High | 2429 | 18 | 160 | 178 | 6.6% |
| | Mesilla Alt Program | 31 | 0 | 0 | 0 | 0.0% |
| | Mesilla Valley Rtc | 55 | 0 | 0 | 0 | 0.0% |
| | Onate High | 1899 | 26 | 181 | 207 | 9.5% |
| | Picacho Middle | 469 | 1 | 18 | 19 | 3.8% |
| | San Andres High | 200 | 15 | 155 | 170 | 77.5% |
| | Sierra Middle | 658 | 1 | 11 | 12 | 1.7% |
| | Vista Middle | 612 | 0 | 5 | 5 | 0.8% |
| | White Sands Middle | 56 | 0 | 0 | 0 | 0.0% |
| | Zia Middle | 593 | 2 | 5 | 7 | 0.8% |
| | District: | 10,786 | 82 | 768 | 850 | 7.1% |
| 69 | Las Vegas City: | | | | | |
| | Memorial Middle | 312 | 0 | 0 | 0 | 0.0% |
| | Robertson High | 697 | 1 | 23 | 24 | 3.3% |
| | The Bridge Academy Charter | 31 | 0 | 0 | 0 | 0.0% |
| | District: | 1,040 | 1 | 23 | 24 | 2.3% |
| 51 | Logan: | | | | | |
| | Logan High | 89 | 0 | 0 | 0 | 0.0% |
| | Logan Middle | 36 | 0 | 0 | 0 | 0.0% |
| | District: | 125 | 0 | 0 | 0 | 0.0% |
| 29 | Lordsburg: | | | | | |
| | Lordsburg High | 210 | 0 | 11 | 11 | 5.2% |
| | Dugan-Tarango Middle | 125 | 0 | 0 | 0 | 0.0% |
| | District: | 335 | 0 | 11 | 11 | 3.3% |

| 2004-2005 Dropout Rates by School -Continued | | | | | | |
|---|---------------------------------|--------------------------|----------------------------|-----------------|-----------------------|---------------------|
| District Code | District and School Name | School Membership | Trans Yr.* Dropouts | Dropouts | Total Dropouts | Dropout Rate |
| 41 | Los Alamos: | | | | | |
| | Los Alamos High | 1,195 | 0 | 23 | 23 | 1.9% |
| | Los Alamos Middle | 588 | 0 | 0 | 0 | 0.0% |
| | District: | 1,783 | 0 | 23 | 23 | 1.3% |
| 86 | Los Lunas: | | | | | |
| | Century Alternative High | 61 | 0 | 38 | 38 | 62.3% |
| | Homebound/Hospital | 8 | 0 | 0 | 0 | 0.0% |
| | Los Lunas Family School | 8 | 0 | 0 | 0 | 0.0% |
| | Los Lunas High | 2419 | 0 | 57 | 57 | 2.4% |
| | Los Lunas JDC | 14 | 0 | 0 | 0 | 0.0% |
| | Los Lunas Middle | 789 | 0 | 4 | 4 | 0.5% |
| | Manzano Vista Middle | 658 | 0 | 4 | 4 | 0.6% |
| District: | 3,957 | 0 | 103 | 103 | 2.6% | |
| 21 | Loving: | | | | | |
| | Loving High | 166 | 0 | 4 | 4 | 2.4% |
| | Loving Middle | 108 | 0 | 0 | 0 | 0.0% |
| District: | 274 | 0 | 4 | 4 | 1.5% | |
| 31 | Lovington: | | | | | |
| | Lea Cty Detention Center | 10 | 0 | 0 | 0 | 0.0% |
| | Lovington High | 515 | 0 | 6 | 6 | 1.2% |
| | Lovington Jr High | 414 | 0 | 1 | 1 | 0.2% |
| | New Hope Alter. High | 73 | 0 | 33 | 33 | 45.2% |
| | Taylor Middle | 217 | 0 | 0 | 0 | 0.0% |
| District: | 1,229 | 0 | 40 | 40 | 3.3% | |
| 75 | Magdalena: | | | | | |
| | Magdalena High | 121 | 0 | 2 | 2 | 1.7% |
| | Magdalena Middle | 70 | 0 | 0 | 0 | 0.0% |
| District: | 191 | 0 | 2 | 2 | 1.0% | |
| 11 | Maxwell: | | | | | |
| | Maxwell High | 23 | 0 | 0 | 0 | 0.0% |
| | Maxwell Middle | 33 | 0 | 0 | 0 | 0.0% |
| District: | 56 | 0 | 0 | 0 | 0.0% | |
| 14 | Melrose: | | | | | |
| | Melrose High | 77 | 0 | 0 | 0 | 0.0% |
| | Melrose Junior High | 42 | 0 | 0 | 0 | 0.0% |
| District: | 119 | 0 | 0 | 0 | 0.0% | |
| 78 | Mesa Vista: | | | | | |
| | Mesa Vista High | 168 | 1 | 3 | 4 | 1.8% |
| | Mesa Vista Middle | 98 | 0 | 0 | 0 | 0.0% |
| District: | 266 | 1 | 3 | 4 | 1.5% | |
| 44 | Mora: | | | | | |
| | Mora High | 203 | 0 | 0 | 0 | 0.0% |
| | Mora Middle | 118 | 0 | 0 | 0 | 0.0% |
| District: | 321 | 0 | 0 | 0 | 0.0% | |

| 2004-2005 Dropout Rates by School -Continued | | | | | | |
|---|---------------------------------|--------------------------|----------------------------|-----------------|-----------------------|---------------------|
| District Code | District and School Name | School Membership | Trans Yr.* Dropouts | Dropouts | Total Dropouts | Dropout Rate |
| 81 | Moriarty: | | | | | |
| | Edgewood Middle | 386 | 0 | 1 | 1 | 0.3% |
| | Moriarty High | 1320 | 0 | 0 | 0 | 0.0% |
| | Moriarty Middle | 306 | 0 | 0 | 0 | 0.0% |
| | District: | 2,012 | 0 | 1 | 1 | 0.0% |
| 28 | Mosquero: | | | | | |
| | Mosquero High | 32 | 0 | 0 | 0 | 0.0% |
| | District: | 32 | 0 | 0 | 0 | 0.0% |
| 82 | Mountainair: | | | | | |
| | Mountainair High | 113 | 0 | 0 | 0 | 0.0% |
| | Mountainair Junior High | 70 | 0 | 0 | 0 | 0.0% |
| | District: | 183 | 0 | 0 | 0 | 0.0% |
| 70 | Pecos: | | | | | |
| | Pecos High | 235 | 1 | 0 | 1 | 0.0% |
| | Pecos Middle | 127 | 0 | 0 | 0 | 0.0% |
| | District: | 362 | 1 | 0 | 1 | 0.3% |
| 77 | Peñasco: | | | | | |
| | Peñasco High | 192 | 1 | 5 | 6 | 2.6% |
| | Peñasco Middle | 112 | 0 | 0 | 0 | 0.0% |
| | District: | 304 | 1 | 5 | 6 | 2.0% |
| 72 | Pojoaque: | | | | | |
| | Pojoaque High | 670 | 2 | 20 | 22 | 3.0% |
| | Pojoaque Middle | 354 | 0 | 1 | 1 | 0.3% |
| | District: | 1,024 | 2 | 21 | 23 | 2.2% |
| 57 | Portales: | | | | | |
| | Broad Horizons Alt. | 68 | 1 | 22 | 23 | 32.4% |
| | Portales High | 736 | 0 | 0 | 0 | 0.0% |
| | Portales Junior High | 389 | 0 | 0 | 0 | 0.0% |
| | District: | 1,193 | 1 | 22 | 23 | 1.9% |
| 3 | Quemado: | | | | | |
| | Quemado High | 86 | 0 | 0 | 0 | 0.0% |
| | District: | 86 | 0 | 0 | 0 | 0.0% |
| 79 | Questa: | | | | | |
| | Questa High | 162 | 1 | 0 | 1 | 0.0% |
| | Questa Junior High | 68 | 0 | 1 | 1 | 1.5% |
| | Red River Valley Charter | 12 | 0 | 0 | 0 | 0.0% |
| | Roots & Wings Comm. | 13 | 0 | 0 | 0 | 0.0% |
| | District: | 255 | 1 | 1 | 2 | 0.8% |
| 9 | Raton: | | | | | |
| | Raton High | 419 | 0 | 8 | 8 | 1.9% |
| | Raton Middle | 242 | 0 | 0 | 0 | 0.0% |
| | District: | 661 | 0 | 8 | 8 | 1.2% |

| 2004-2005 Dropout Rates by School -Continued | | | | | | |
|--|--------------------------|-------------------|---------------------|----------|----------------|--------------|
| District Code | District and School Name | School Membership | Trans Yr.* Dropouts | Dropouts | Total Dropouts | Dropout Rate |
| 2 | Reserve: | | | | | |
| | Reserve High | 87 | 0 | 0 | 0 | 0.0% |
| | District: | 87 | 0 | 0 | 0 | 0.0% |
| 83 | Rio Rancho: | | | | | |
| | Eagle Ridge Middle | 307 | 0 | 0 | 0 | 0.0% |
| | Lincoln Middle | 277 | 0 | 0 | 0 | 0.0% |
| | Mountain View Middle | 370 | 0 | 0 | 0 | 0.0% |
| | Rio Rancho Alternative | 341 | 0 | 0 | 0 | 0.0% |
| | Rio Rancho High School | 2570 | 0 | 30 | 30 | 1.2% |
| | Rio Rancho Mid High | 2097 | 0 | 0 | 0 | 0.0% |
| | District: | 5,962 | 0 | 30 | 30 | 0.5% |
| 4 | Roswell: | | | | | |
| | Berrendo Middle | 413 | 0 | 0 | 0 | 0.0% |
| | Chaves County JDC | 12 | 0 | 0 | 0 | 0.0% |
| | Goddard High | 1271 | 8 | 26 | 34 | 2.0% |
| | Mesa Middle | 280 | 0 | 0 | 0 | 0.0% |
| | Mountain View Middle | 354 | 0 | 0 | 0 | 0.0% |
| | Roswell High | 1351 | 0 | 0 | 0 | 0.0% |
| | Sidney Gutierrez Mid | 39 | 0 | 0 | 0 | 0.0% |
| | Sierra Middle | 441 | 0 | 0 | 0 | 0.0% |
| | University High | 192 | 0 | 65 | 65 | 33.9% |
| | District: | 4,353 | 8 | 91 | 99 | 2.3% |
| 27 | Roy: | | | | | |
| | Roy High | 52 | 0 | 0 | 0 | 0.0% |
| | District: | 52 | 0 | 0 | 0 | 0.0% |
| 36 | Ruidoso: | | | | | |
| | Gavilan Canyon | 17 | 0 | 6 | 6 | 35.3% |
| | Ruidoso High | 740 | 0 | 33 | 33 | 4.5% |
| | Ruidoso Middle | 383 | 0 | 0 | 0 | 0.0% |
| | District: | 1,140 | 0 | 39 | 39 | 3.4% |
| 52 | San Jon: | | | | | |
| | San Jon High | 62 | 0 | 0 | 0 | 0.0% |
| | San Jon Middle | 42 | 0 | 0 | 0 | 0.0% |
| | District: | 104 | 0 | 0 | 0 | 0.0% |
| 71 | Santa Fe: | | | | | |
| | Academy Tech. & Classic | 220 | 0 | 0 | 0 | 0.0% |
| | Alameda Middle | 344 | 2 | 1 | 3 | 0.3% |
| | Calvin Capshaw Middle | 410 | 10 | 11 | 21 | 2.7% |
| | Capital High | 1291 | 54 | 135 | 189 | 10.5% |
| | Career Academy | 109 | 0 | 0 | 0 | 0.0% |
| | De Vargas Middle | 569 | 9 | 4 | 13 | 0.7% |
| | Edward Ortiz Middle | 470 | 1 | 29 | 30 | 6.2% |
| | EJ Martinez Elementary | 74 | 0 | 1 | 1 | 1.4% |
| | Homebound/Hospital | 2 | 2 | 8 | 10 | 400.0% |
| | La Nueva Vida | 40 | 0 | 0 | 0 | 0.0% |
| | Monte Del Sol Charter | 360 | 1 | 8 | 9 | 2.2% |
| | Santa Fe High | 1733 | 31 | 106 | 137 | 6.1% |

| 2004-2005 Dropout Rates by School -Continued | | | | | | |
|---|---------------------------------|--------------------------|----------------------------|-----------------|-----------------------|---------------------|
| District Code | District and School Name | School Membership | Trans Yr.* Dropouts | Dropouts | Total Dropouts | Dropout Rate |
| 71 | SER Program | 64 | 12 | 30 | 42 | 46.9% |
| | Santa Fe County JDC | 61 | 0 | 0 | 0 | 0.0% |
| | District: | 5,747 | 122 | 333 | 455 | 7.9% |
| 25 | Santa Rosa: | | | | | |
| | Anton Chico Middle | 27 | 0 | 0 | 0 | 0.0% |
| | Santa Rosa High | 217 | 1 | 2 | 3 | 0.9% |
| | Santa Rosa Middle | 81 | 0 | 0 | 0 | 0.0% |
| District: | 325 | 1 | 2 | 3 | 0.9% | |
| 23 | Silver City: | | | | | |
| | Cliff High | 155 | 0 | 0 | 0 | 0.0% |
| | Homebound/Hospital | 10 | 0 | 0 | 0 | 0.0% |
| | La Plata Middle | 467 | 0 | 0 | 0 | 0.0% |
| | Silver High | 863 | 0 | 37 | 37 | 4.3% |
| District: | 1,495 | 0 | 37 | 37 | 2.5% | |
| 74 | Socorro: | | | | | |
| | Cottonwood Valley Charter | 37 | 0 | 0 | 0 | 0.0% |
| | R. S. Sarracino Middle | 298 | 1 | 0 | 1 | 0.0% |
| | Socorro High | 616 | 0 | 16 | 16 | 2.6% |
| District: | 951 | 1 | 16 | 17 | 1.8% | |
| 10 | Springer: | | | | | |
| | Miranda Middle | 30 | 0 | 1 | 1 | 3.3% |
| | Springer High | 71 | 0 | 0 | 0 | 0.0% |
| District: | 101 | 0 | 1 | 1 | 1.0% | |
| 76 | Taos: | | | | | |
| | Casa Corazon | 14 | 0 | 0 | 0 | 0.0% |
| | Chryalis Alternative | 28 | 0 | 0 | 0 | 0.0% |
| | Taos Charter School | 40 | 0 | 0 | 0 | 0.0% |
| | Taos High | 959 | 7 | 86 | 93 | 9.0% |
| | Taos Middle | 494 | 0 | 4 | 4 | 0.8% |
| District: | 1,535 | 7 | 90 | 97 | 6.3% | |
| 35 | Tatum: | | | | | |
| | Tatum High | 91 | 0 | 1 | 1 | 1.1% |
| | Tatum Junior High | 54 | 0 | 0 | 0 | 0.0% |
| District: | 145 | 0 | 1 | 1 | 0.7% | |
| 13 | Texico: | | | | | |
| | Texico High | 176 | 0 | 4 | 4 | 2.3% |
| | Texico Middle | 92 | 0 | 0 | 0 | 0.0% |
| District: | 268 | 0 | 4 | 4 | 1.5% | |
| 73 | Truth or Consequences: | | | | | |
| | Geronimo Trails Alt. | 54 | 0 | 0 | 0 | 0.0% |
| | Hot Springs High | 436 | 0 | 4 | 4 | 0.9% |
| | T or C Middle | 251 | 1 | 3 | 4 | 1.2% |
| District: | 741 | 1 | 7 | 8 | 1.1% | |

| 2004-2005 Dropout Rates by School -Continued | | | | | | |
|---|---------------------------------|--------------------------|----------------------------|-----------------|-----------------------|---------------------|
| District Code | District and School Name | School Membership | Trans Yr.* Dropouts | Dropouts | Total Dropouts | Dropout Rate |
| 49 | Tucumcari: | | | | | |
| | Tucumcari JDC | 5 | 0 | 0 | 0 | 0.0% |
| | Tucumcari High | 307 | 0 | 21 | 21 | 6.8% |
| | Tucumcari Middle | 199 | 0 | 4 | 4 | 2.0% |
| | District: | 511 | 0 | 25 | 25 | 4.9% |
| 47 | Tularosa: | | | | | |
| | Tularosa High | 304 | 2 | 6 | 8 | 2.0% |
| | Tularosa Middle | 186 | 0 | 0 | 0 | 0.0% |
| | District: | 490 | 2 | 6 | 8 | 1.6% |
| 26 | Vaughn: | | | | | |
| | Vaughn High | 47 | 0 | 0 | 0 | 0.0% |
| | District: | 47 | 0 | 0 | 0 | 0.0% |
| 45 | Wagon Mound: | | | | | |
| | Valmora High | 58 | 0 | 0 | 0 | 0.0% |
| | Wagon Mound High | 54 | 0 | 0 | 0 | 0.0% |
| | District: | 112 | 0 | 0 | 0 | 0.0% |
| 68 | West Las Vegas: | | | | | |
| | Homebound/Hospital | 1 | 0 | 0 | 0 | 0.0% |
| | Rio Gallinas School | 15 | 0 | 0 | 0 | 0.0% |
| | Valley Middle | 55 | 0 | 0 | 0 | 0.0% |
| | West Las Vegas High | 511 | 1 | 3 | 4 | 0.6% |
| | West Las Vegas Middle | 262 | 0 | 0 | 0 | 0.0% |
| | WLV Family Partnership | 86 | 0 | 0 | 0 | 0.0% |
| | District: | 930 | 1 | 3 | 4 | 0.4% |
| 89 | Zuni: | | | | | |
| | Twin Buttes High | 85 | 1 | 14 | 15 | 16.5% |
| | Zuni High | 428 | 1 | 19 | 20 | 4.4% |
| | Zuni Middle | 304 | 0 | 0 | 0 | 0.0% |
| | District: | 817 | 2 | 33 | 35 | 4.3% |
| | Statewide Total | 150,125 | 527 | 4,961 | 5,488 | 3.7% |