

Skill acquisition and use across the life course: Current trends, future prospects—Support document

BILL MARTIN

NATIONAL INSTITUTE OF LABOUR STUDIES

This document was produced by the author based on research for the report *Skill acquisition and use across the life course: Current trends, future prospects*, and is an added resource for further information. The report is available on NCVER's website: <<http://www.ncver.edu.au>>

The views and opinions expressed in this document are those of the author and do not necessarily reflect the views of the Australian Government, state and territory governments or NCVER. Any errors and omissions are the responsibility of the author.

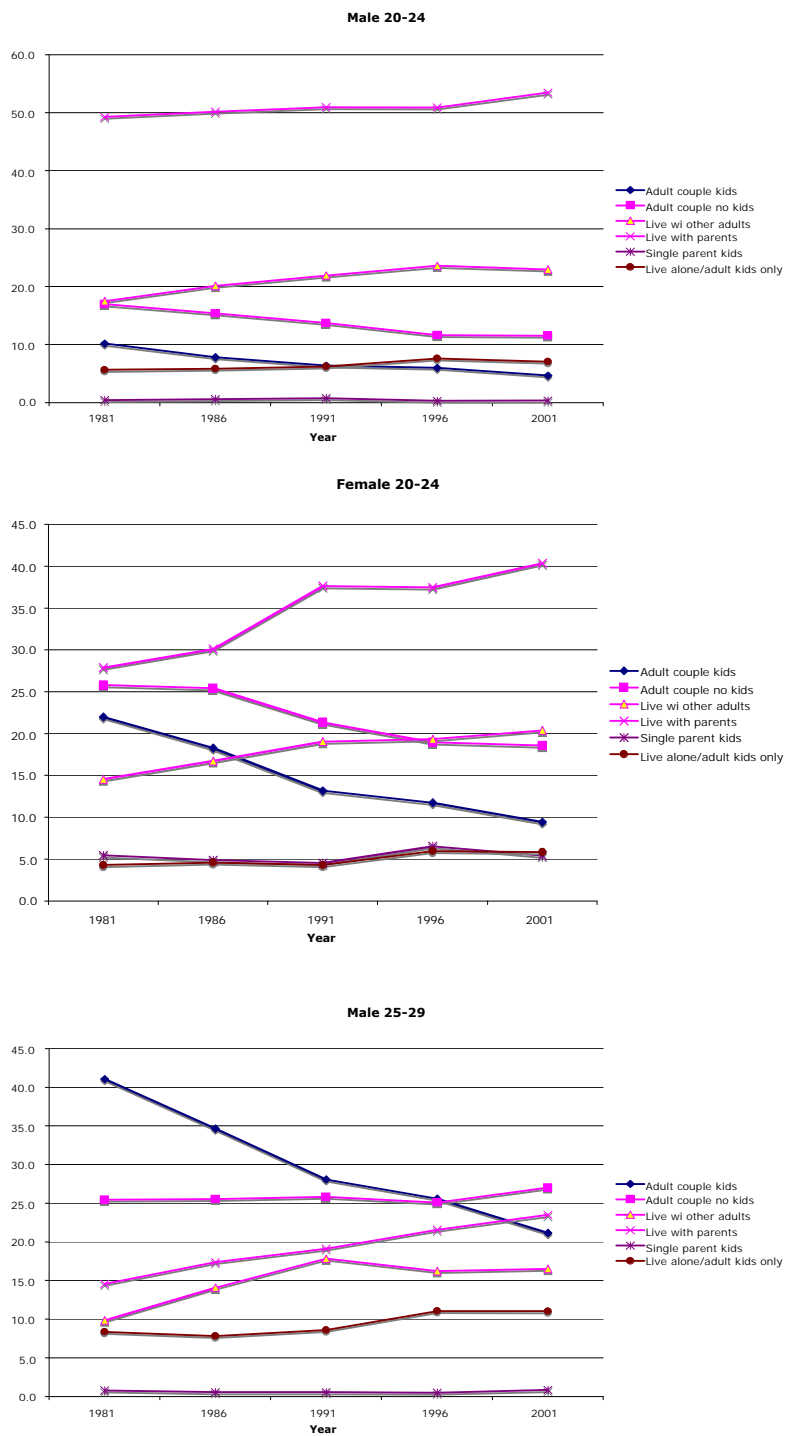
© Australian Government, 2007

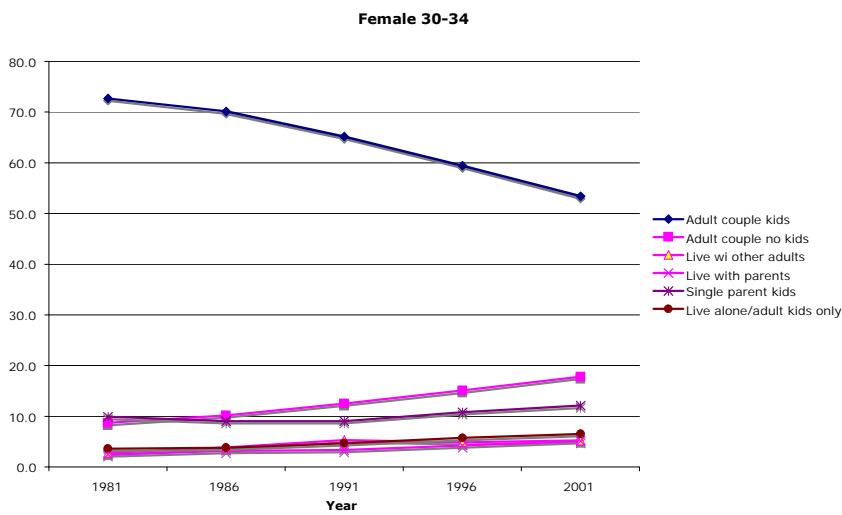
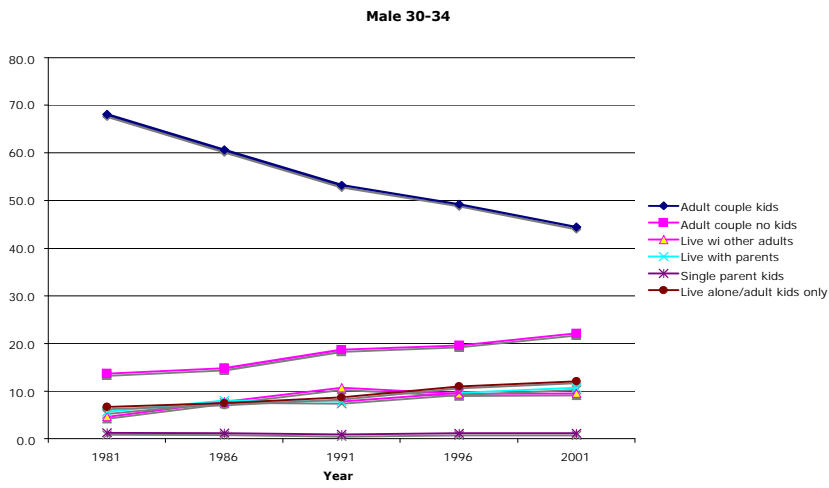
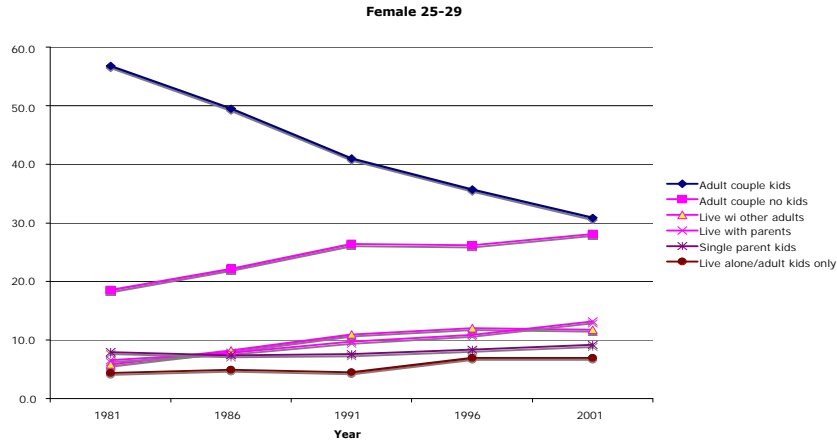
This work has been produced by the National Centre for Vocational Education Research (NCVER) on behalf of the Australian Government and state and territory governments with funding provided through the Australian Department of Education, Science and Training. Apart from any use permitted under the *Copyright Act 1968*, no part of this publication may be reproduced by any process without written permission. Requests should be made to NCVER.

Tables and figures

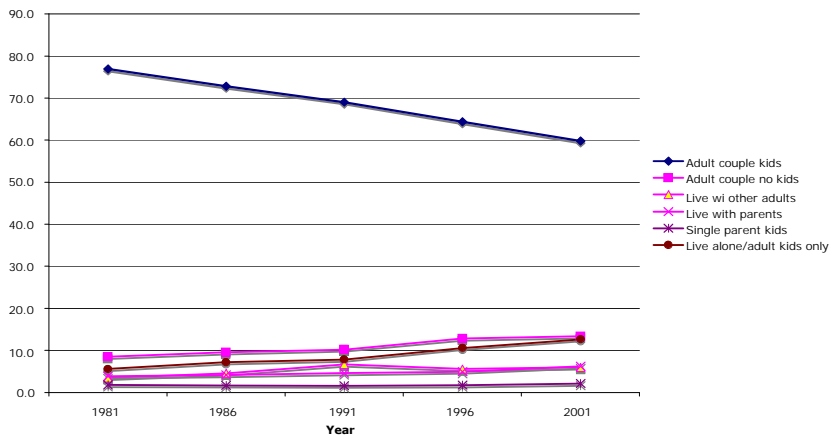
Figure 1:	Living Arrangements by sex and age, Australia, 1981-2001	3
Figure 2:	Participation in paid work by sex and age, Australia, 1981-2001	8
Figure 3:	Participation in part-time and full-time post-secondary study by sex and age, Australia, 1981-2001	12

Figure 1: Living Arrangements by sex and age, Australia, 1981-2001

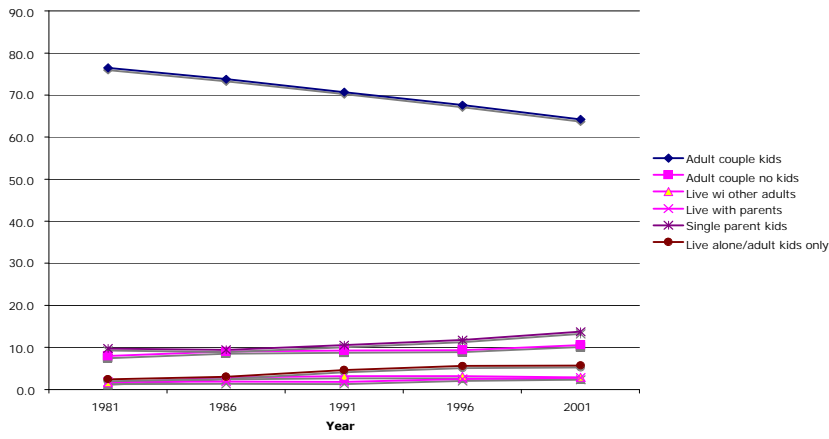




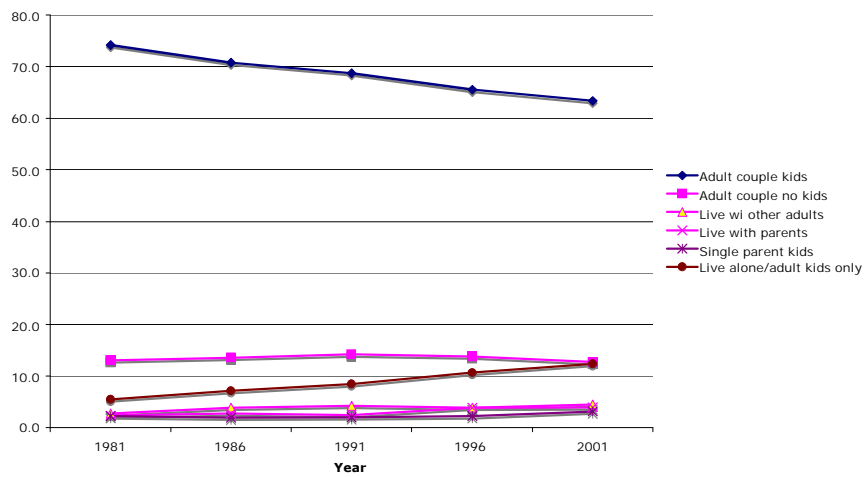
Male 35-39



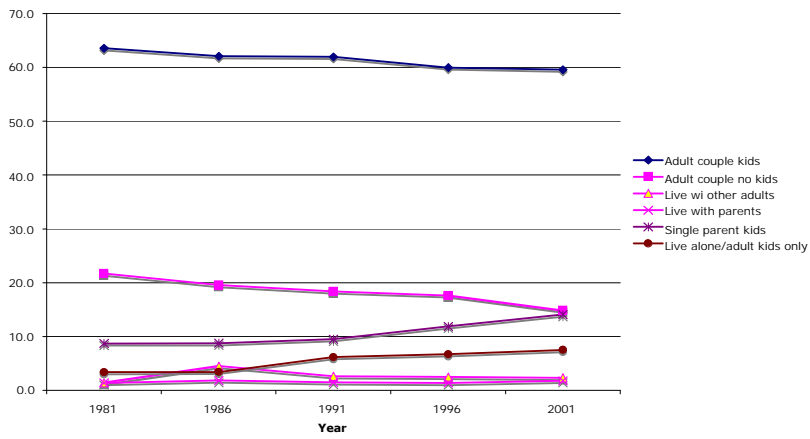
Female 35-39



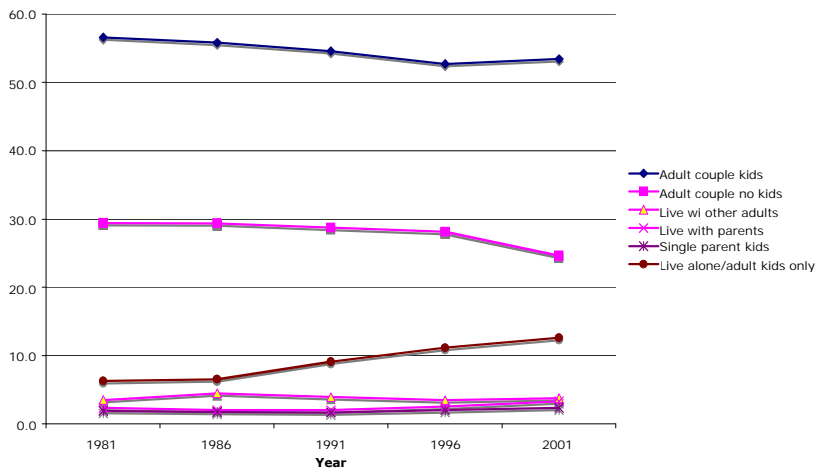
Male 40-44



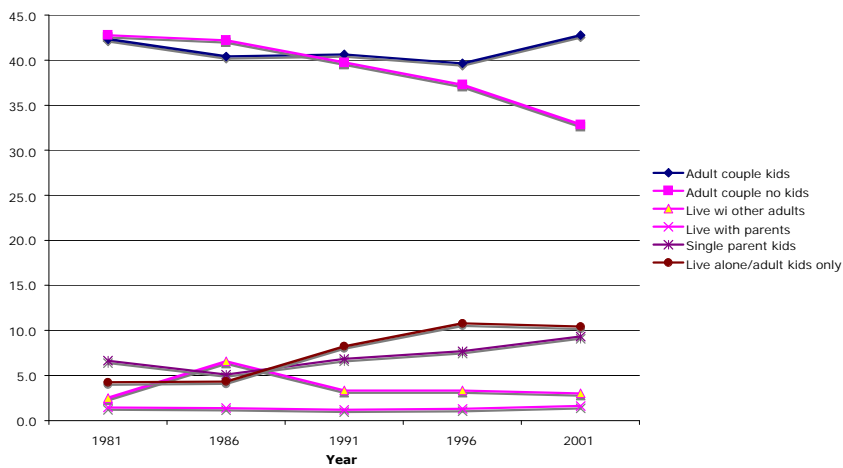
Female 40-44



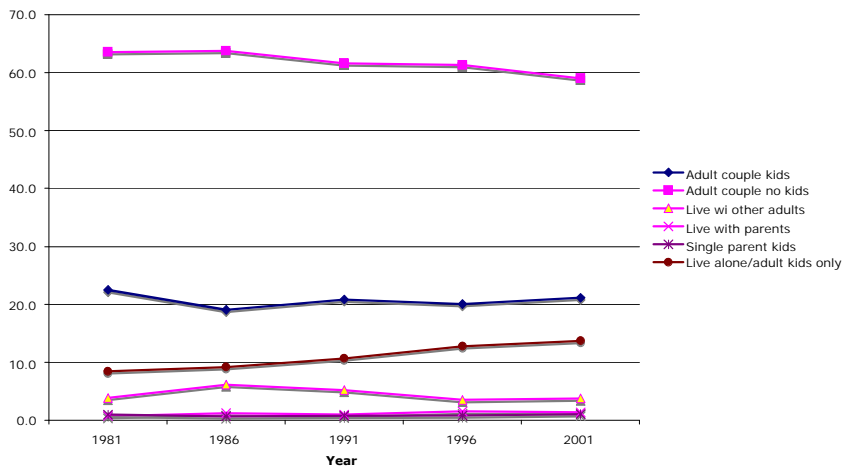
Male 45-49



Female 45-49



Male 50+



Female 50+

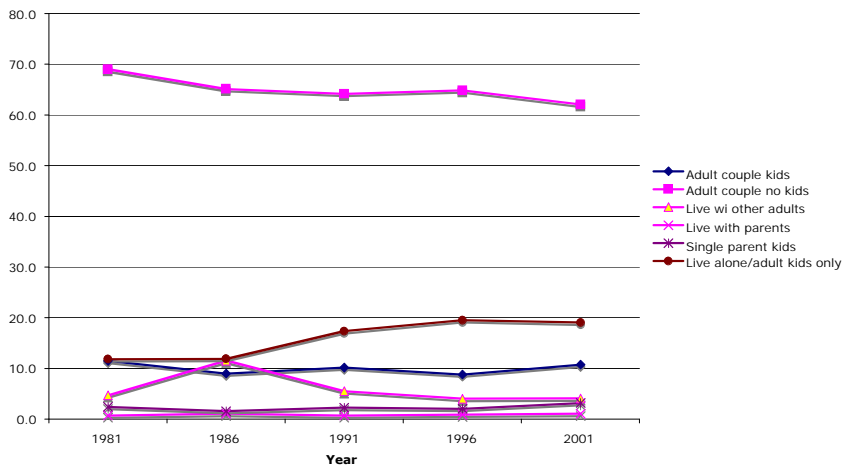
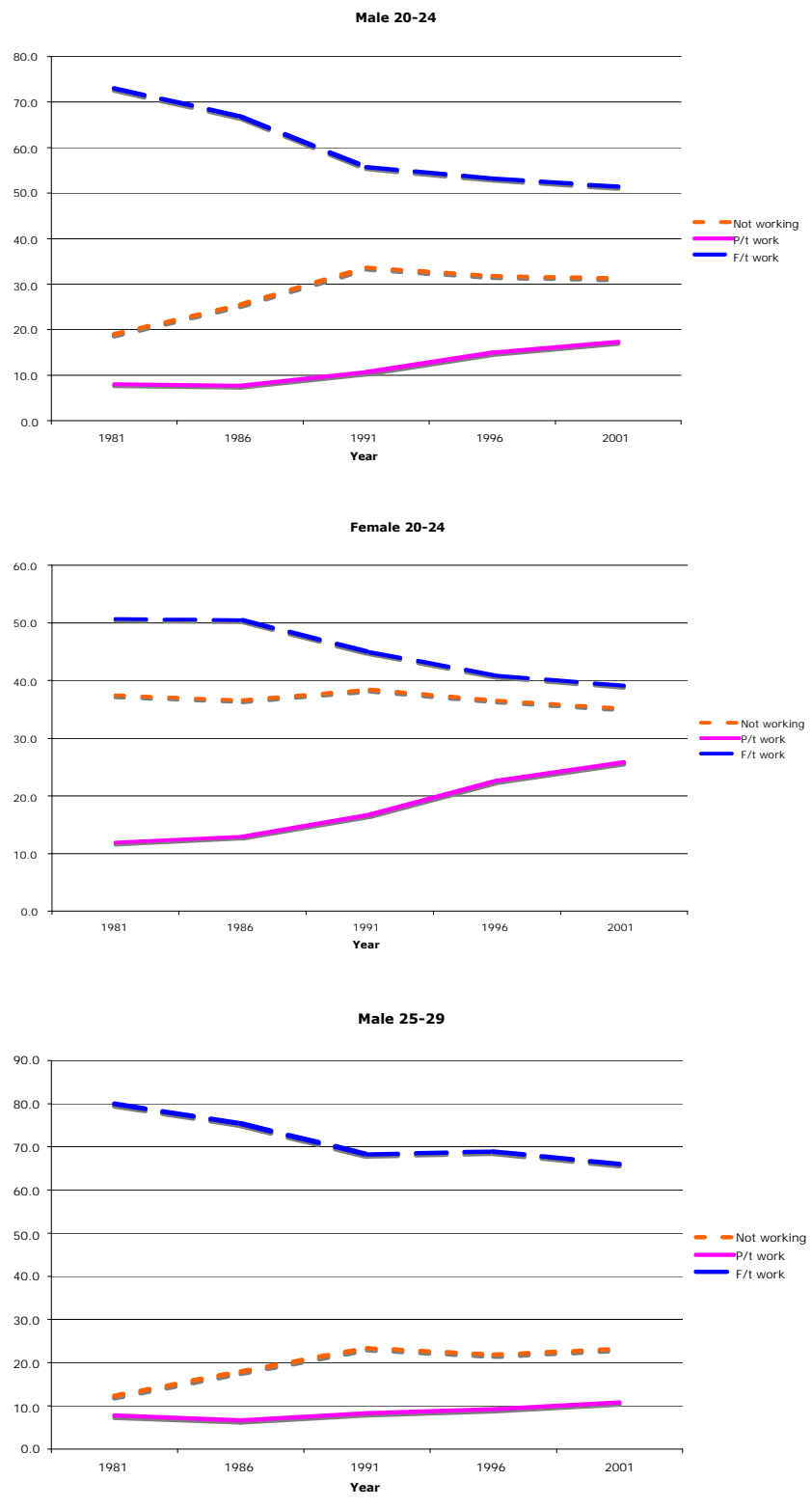
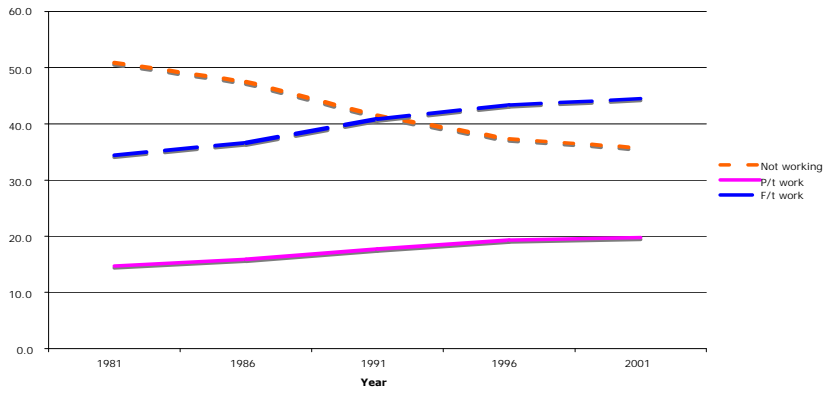


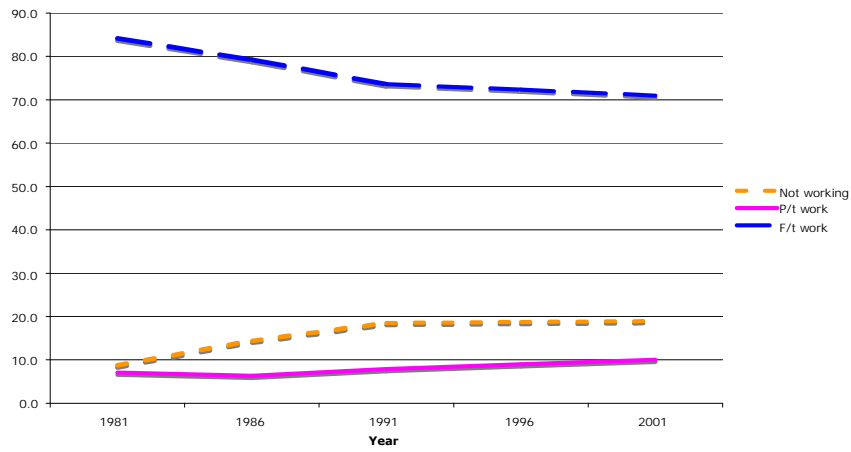
Figure 2: Participation in paid work by sex and age, Australia, 1981-2001



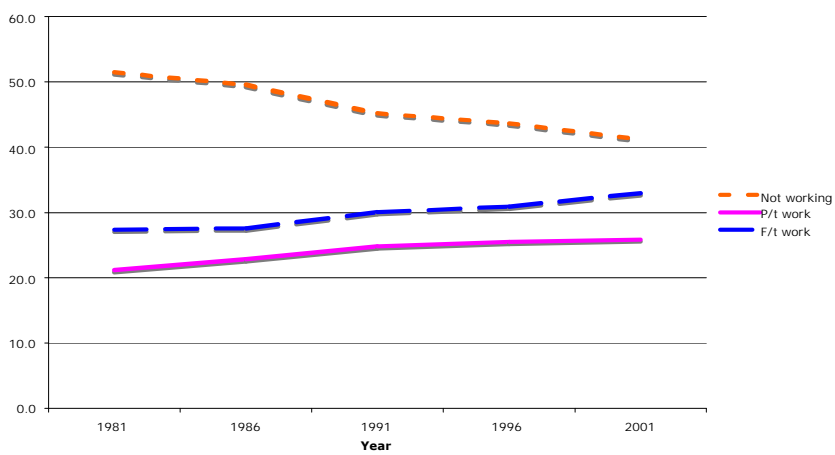
Female 25-29



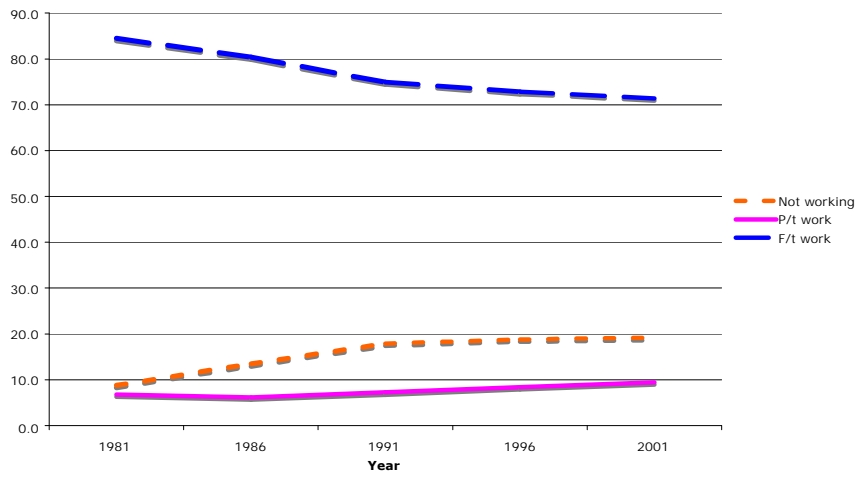
Male 30-34



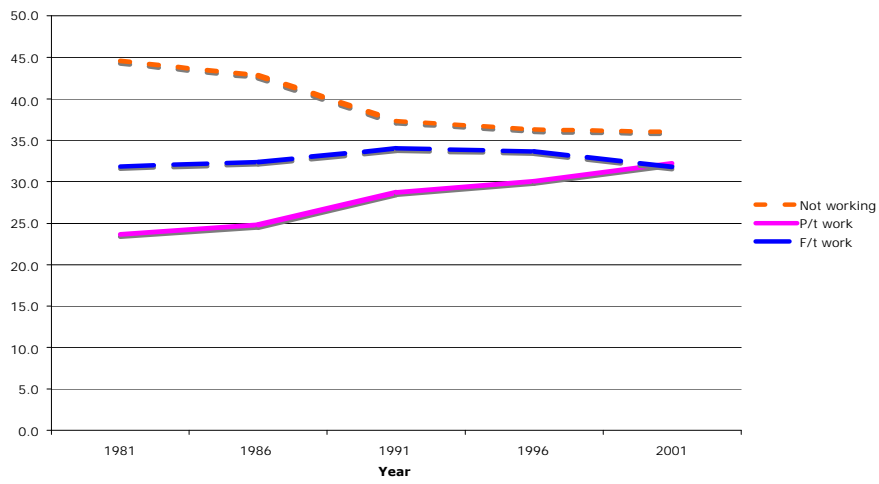
Female 30-34



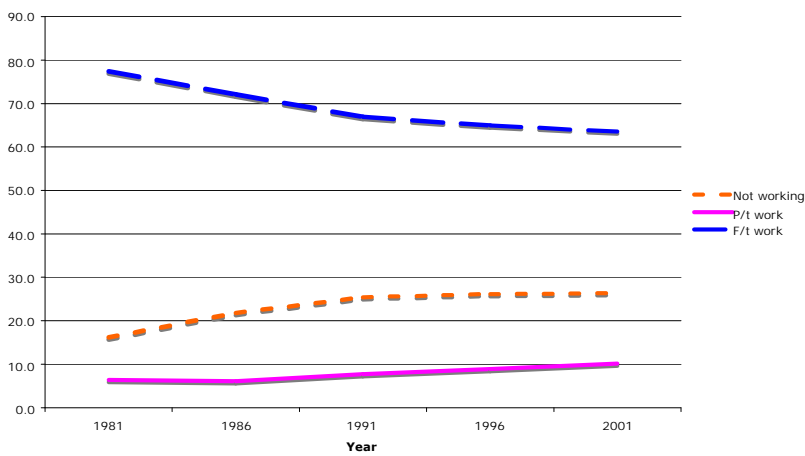
Male 35-44



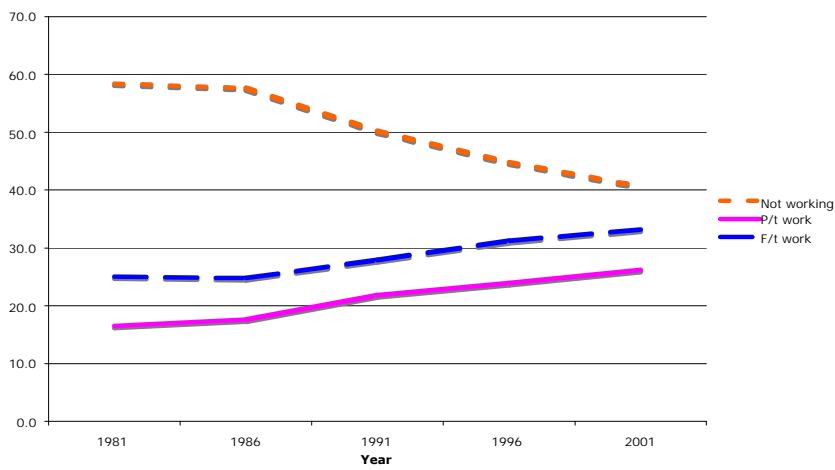
Female 35-44



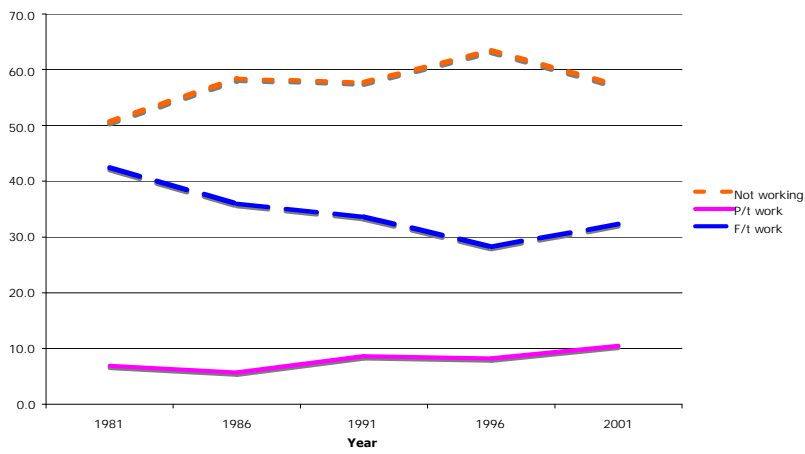
Male 45-59



Female 45-59



Male 60+



Female 60-64

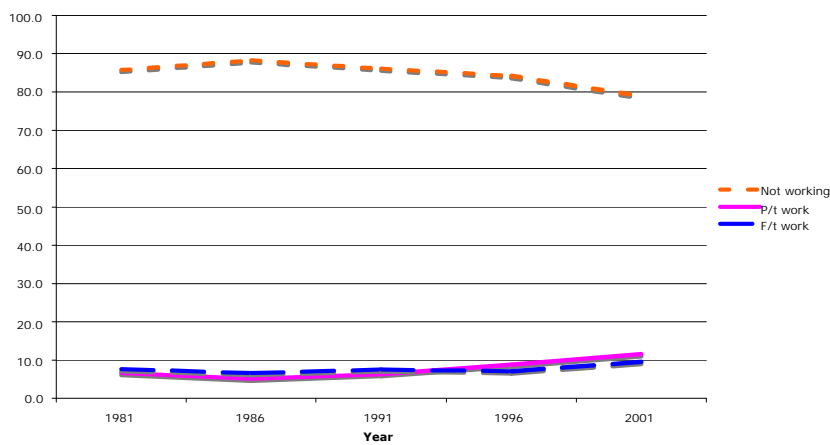
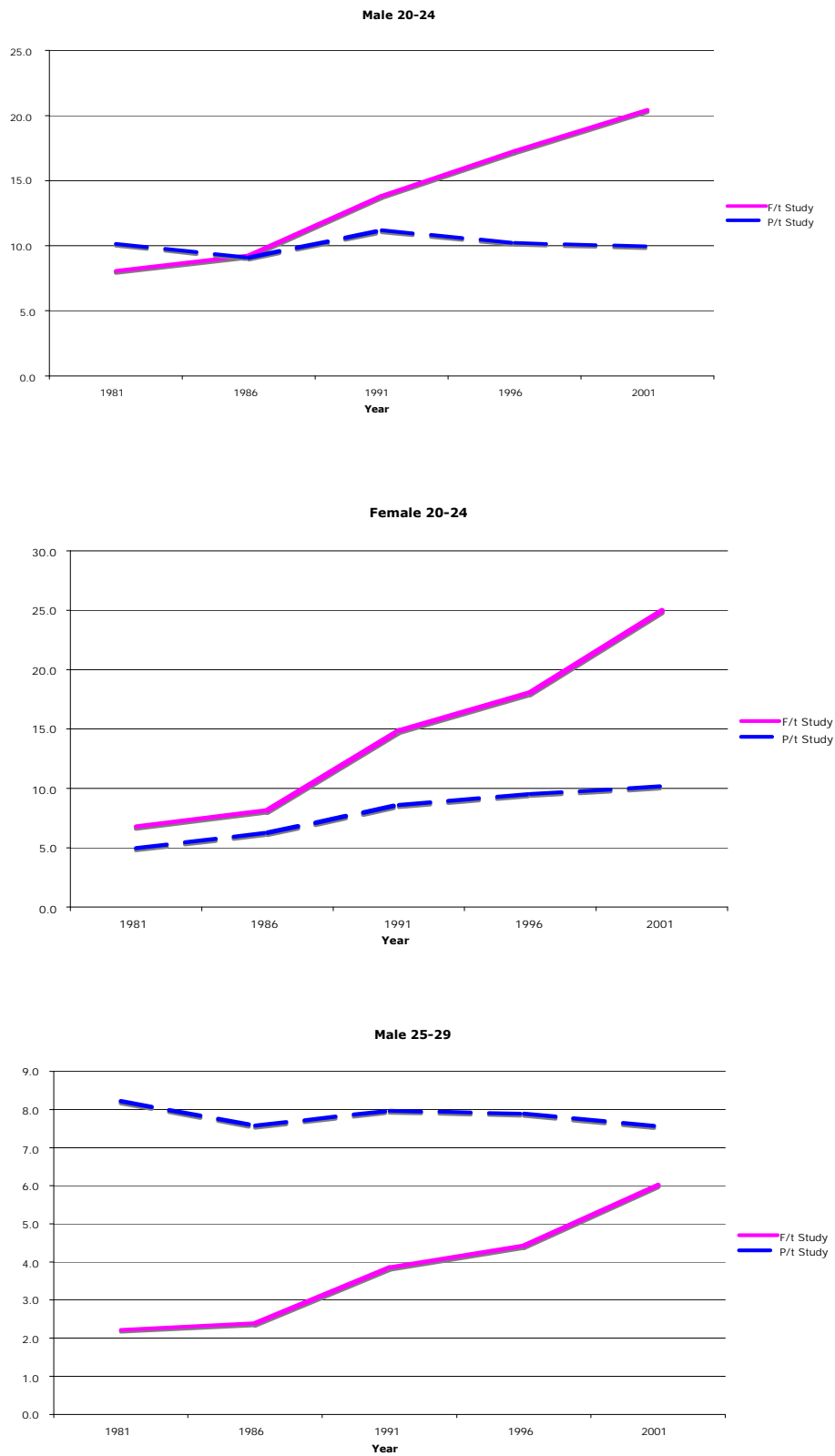
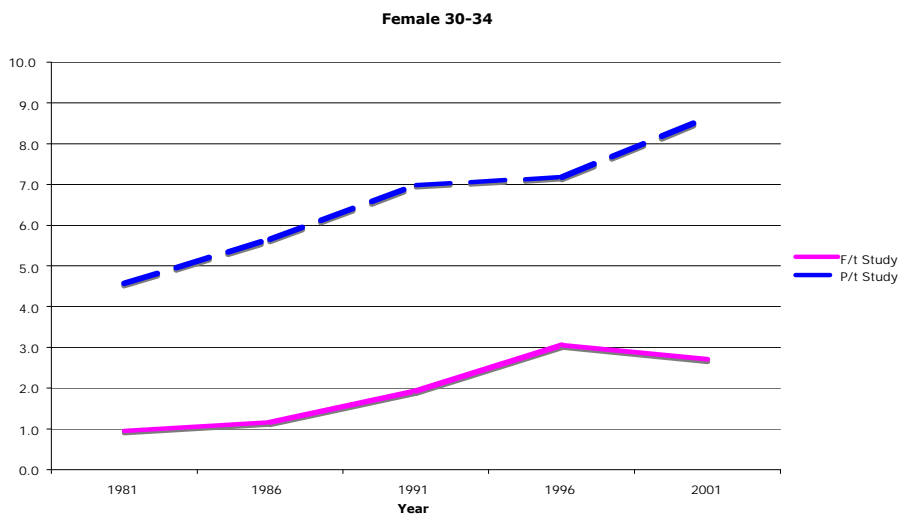
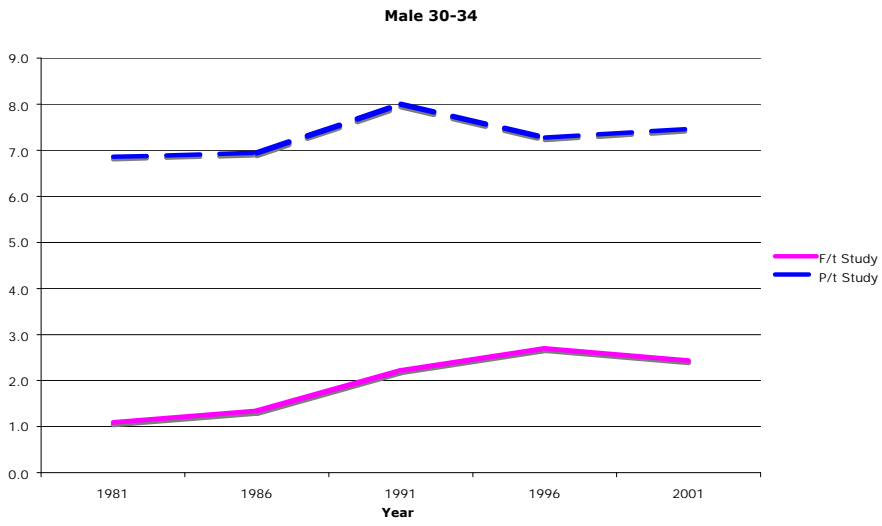
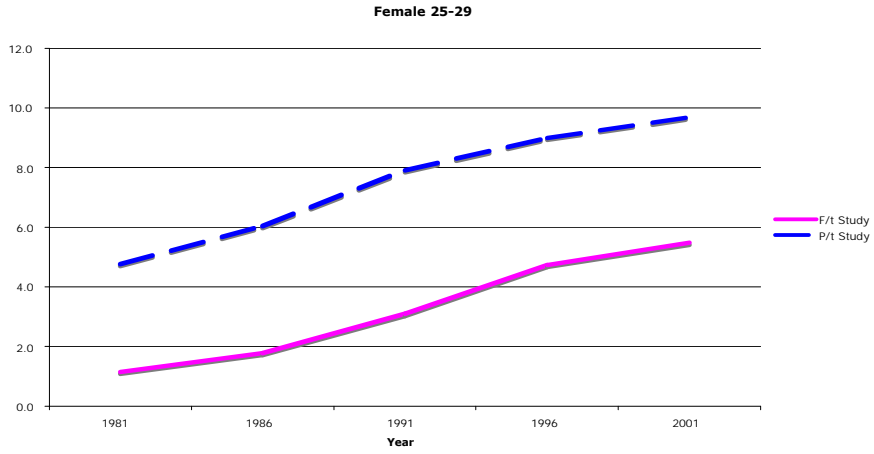
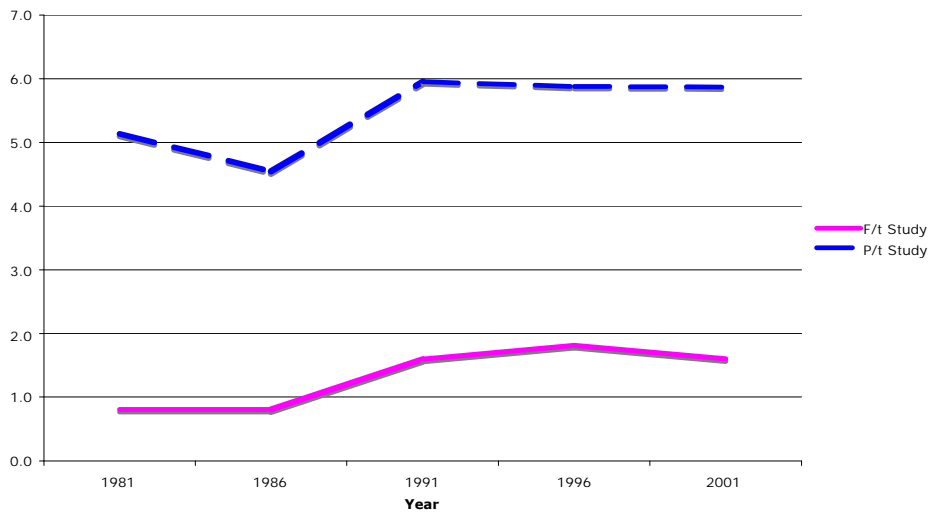


Figure 3: Participation in part-time and full-time post-secondary study by sex and age, Australia, 1981-2001

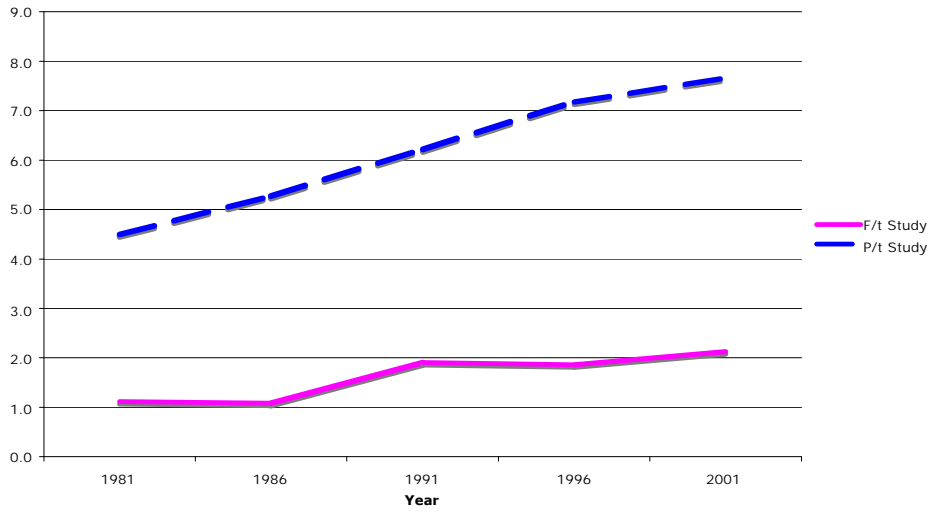




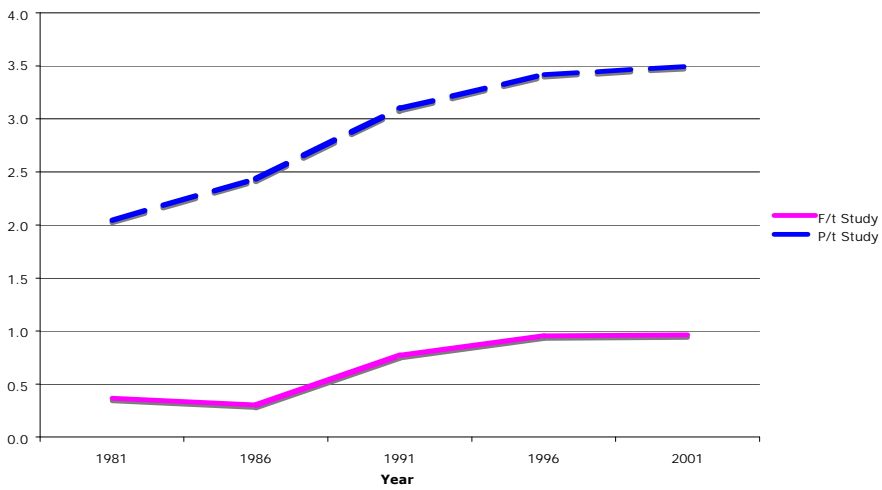
Male 35-39



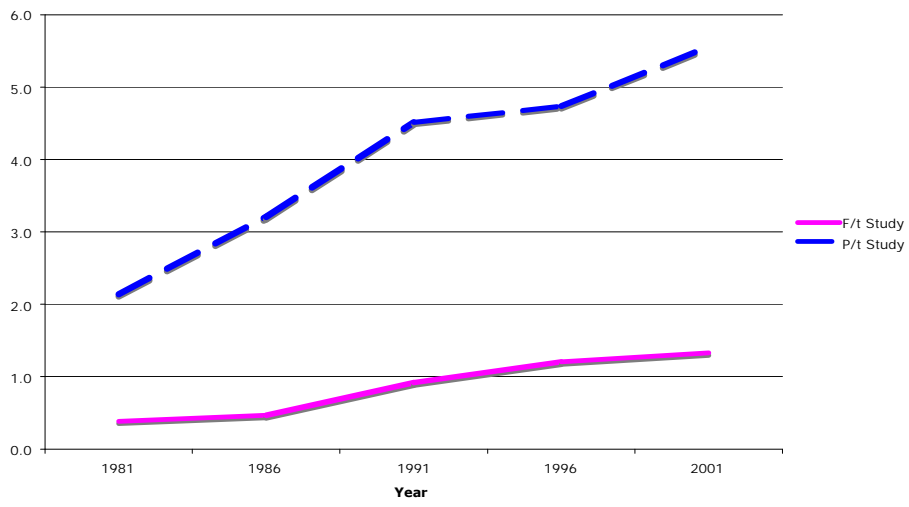
Female 35-39



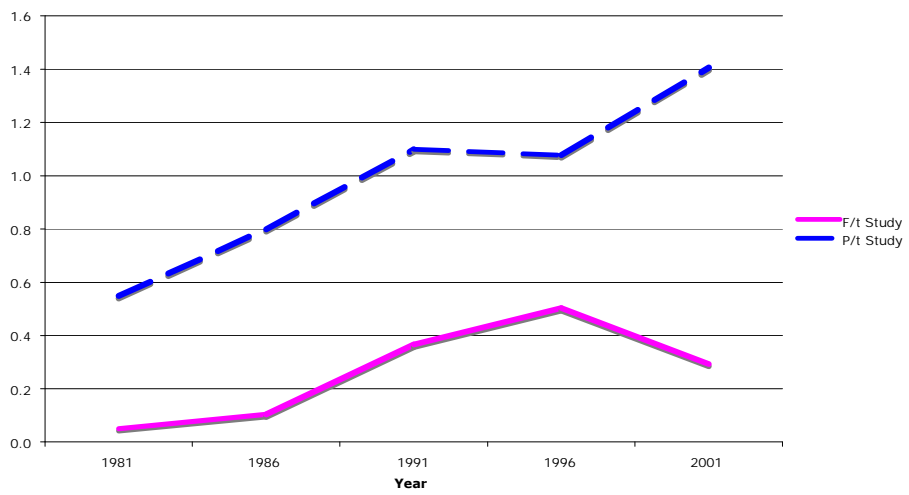
Male 40-54



Female 40-54



Male 55+



Female 55+

