

Public, Private and Nonpublic Schools

*Enrollments
2004-05*



Pennsylvania Department of Education 2005

Public, Private and Nonpublic Schools

Enrollments
2004-05

Compiled
by
Joanne R. Bobek and Richard A. Hruska
Educational Statistics Associates

July 2005

Commonwealth of Pennsylvania
Edward G. Rendell, Governor

Department of Education
Francis V. Barnes, Secretary

Bureau of Educational Technology
Kathleen M. Brautigam, Director

Division of Data Services
Gerald W. Hottinger, Chief

The Pennsylvania Department of Education (PDE) does not discriminate in its educational programs, activities or employment practices based on race, color, national origin, sex, sexual orientation, disability, age, religion, ancestry, union membership, or any other legally protected category. This policy is in accordance with state law, including the Pennsylvania Human Relations Act, and with federal law, including Title VI and Title VII of the Civil Rights Act of 1964, Title IX of the Education Amendments of 1972, Section 504 of the Rehabilitation Act of 1973, the Age Discrimination in Employment Act of 1967 and the Americans with Disabilities Act of 1990.

The following persons have been designated to handle inquiries regarding the Pennsylvania Department of Education's non-discrimination policies:

For Inquiries Concerning Non-Discrimination In Employment:

Pennsylvania Department of Education
Equal Employment Opportunity Representative
Bureau of Human Resources
333 Market Street, 11th Floor
Harrisburg, PA 17126-0333
Voice Telephone: (717) 787-4417
Text Telephone: (717) 783-8445
Fax: (717) 783-9348

For Inquiries Concerning Non-Discrimination in All Other Pennsylvania Department of Education Programs and Activities:

Pennsylvania Department of Education
School Services Unit Director
333 Market Street, 5th Floor
Harrisburg, PA 17126-0333
Voice Telephone: (717) 783-3750
Text Telephone: (717) 783-8445
Fax: (717) 783-6802

Division of Data Services publications are available on the PDE Home Page (www.pde.state.pa.us). If you have any questions about this publication, contact:

Joanne Bobek (private and nonpublic enrollment)
Richard Hruska (public enrollment)

ra-pnpdata@state.pa.us
ra-espdata@state.pa.us

Pennsylvania Department of Education
Division of Data Services
333 Market Street
Harrisburg, PA 17126-0333

Voice Telephone: (717) (717) 787-2644
Fax: (717) 787-3148
Text Telephone TTY: (717) 783-8445

CONTENTS

		Page
Overview.....		1
Statistical Highlights, 2004-05.....		2
Table	1. Distribution of Public School Districts by Enrollment Size, 2004-05.....	3
Figure	1. Percent Change in Public, Private and Nonpublic Enrollments, 1995-96 through 2004-05.....	4
Table	2. Public, Private and Nonpublic Enrollments, 1995-96 through 2004-05.....	5
Table	3. Public, Private and Nonpublic Schools by Selected Years.....	6
Table	4. Public Enrollments by Local Education Agencies, 2004-05.....	7
Table	5. Public Elementary and Secondary Enrollments by Race, 1995-96 and 2004-05.....	8
Table	6. Charter School Enrollments by Race and Level, 2004-05.....	9
Table	7. Private and Nonpublic School Enrollments by Religious Affiliation and Level, 2004-05.....	10
Appendix	A. Public, Private and Nonpublic Enrollments by County, 2004-05.....	A-1
Appendix	B. Public Elementary School Enrollments by Grade and County, 2004-05.....	B-1
Appendix	C. Public Secondary School Enrollments by Grade and County, 2004-05.....	C-1
Appendix	D. Private and Nonpublic Elementary School Enrollments by Grade and County, 2004-05.....	D-1
Appendix	E. Private and Nonpublic Secondary School Enrollments by Grade and County, 2004-05.....	E-1
Appendix	F. Glossary.....	F-1
Appendix	G. Sources.....	G-1

OVERVIEW

This publication provides a compilation of statistical information covering enrollments in Pennsylvania public, private and nonpublic schools. Public schools totaled 3,253 which included: 16 comprehensive area vocational-technical schools (AVTSs), 66 occupational AVTSs, 109 charter schools, four consortium-operated alternative high schools, 11 juvenile correctional institutions, two state-owned schools and 3,045 schools in school districts. There were 2,428 private and nonpublic schools. This publication contains a variety of information including total enrollments by grade and county, the religious affiliation of private and nonpublic schools and the number of elementary and secondary schools.

Pre-Kindergarten (PreK) enrollments for the public schools were collected for the first time. In 2004-05 a total of 7,154 students were reported.

The source of this data is an annual survey of all Pennsylvania public, private and nonpublic schools. National data was drawn from the results of surveys conducted by the U.S. Department of Education, National Center for Education Statistics (NCES).

STATISTICAL HIGHLIGHTS
2004-05

	ENROLLMENTS	%	% CHANGE FROM 1995-96
TOTAL	2,119,481	100.0	-0.1
Public	1,828,089	86.3	2.3
Private and Nonpublic	291,392	13.7	-13.0
ELEMENTARY	1,144,937	54.0	-7.4
Public	934,544	44.1	-5.0
Private and Nonpublic	210,393	9.9	-17.0
SECONDARY	974,544	46.0	10.0
Public	893,545	42.2	11.1
Private and Nonpublic	80,999	3.8	-0.8
RACE/ETHNICITY (Public only)			
American Indian/Alaskan Native	2,602	0.1	46.2
Asian/Pacific Islander	42,870	2.4	35.1
Black (Non-Hispanic)	292,045	16.0	16.3
Hispanic	110,003	6.0	74.7
White (Non-Hispanic)	1,380,569	75.5	-4.2

TABLE 1
 DISTRIBUTION OF PUBLIC SCHOOL DISTRICTS BY ENROLLMENT SIZE
 2004-05

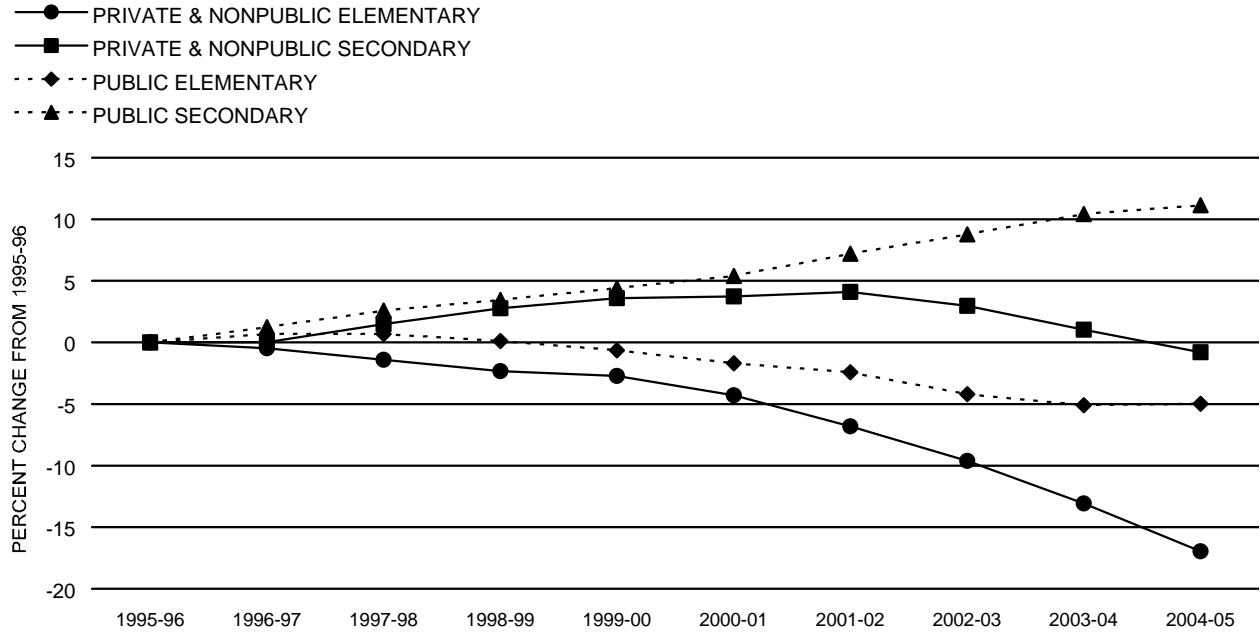
	NUMBER OF DISTRICTS	% OF DISTRICTS	% OF ENROLLMENTS
TOTAL	500	100.0	100.0
13,000 or more	7	1.4	17.2
12,000 to 12,999	3	0.6	2.1
11,000 to 11,999	6	1.2	3.9
10,000 to 10,999	0	0.0	0.0
9,000 to 9,999	3	0.6	1.6
8,000 to 8,999	8	1.6	3.8
7,000 to 7,999	12	2.4	5.0
6,000 to 6,999	11	2.2	4.2
5,000 to 5,999	28	5.6	8.8
4,000 to 4,999	37	7.4	9.3
3,000 to 3,999	75	15.0	14.8
2,000 to 2,999	98	19.6	13.7
1,000 to 1,999	151	30.2	12.9
Under 1,000	61	12.2	2.7

Note: Of the 501 school districts, Bryn Athyn SD did not have enrollments.

There were seven school districts (1.4%) with enrollments of 13,000 or more that comprised 17.2% of the total enrollments. At the other end of the spectrum, 61 school districts (12.2%) had less than 1,000 enrollments and comprised 2.7% of the total enrollments. Almost half of the school districts had enrollments between 1,000 and 2,999. The most frequently reported enrollment was between 1,000 and 1,999.

FIGURE 1

PERCENT CHANGE IN PUBLIC, PRIVATE AND NONPUBLIC ENROLLMENTS
1995-96 THROUGH 2004-05



Note: PreK enrollments were included for the first time in 2004-05.

In the short term, public secondary enrollments will continue to increase, while public elementary enrollments will continue to decline. Projected through 2013, Pennsylvania public enrollments will decrease by 1.9 percent. Nationally, public enrollments are projected to increase to an all-time high in 2013.

Pennsylvania's proportion of students in private and nonpublic schools declined from 15.8% in 1995-96 to 13.7% in 2004-05. Enrollment in private and nonpublic schools in the state is projected to continue to decrease through 2009-10. Nationally, projections to 2013 show small increases in private and nonpublic enrollments.

TABLE 2
PUBLIC, PRIVATE AND NONPUBLIC ENROLLMENTS
1995-96 THROUGH 2004-05

	TOTAL			ELEMENTARY			SECONDARY		
	Total	Public	Private and Nonpublic	Total	Public	Private and Nonpublic	Total	Public	Private and Nonpublic
1995-96	2,122,523	1,787,533	334,990	1,236,943	983,602	253,341	885,580	803,931	81,649
1996-97	2,138,037	1,804,256	333,781	1,242,461	990,353	252,108	895,576	813,903	81,673
1997-98	2,147,776	1,815,151	332,625	1,240,104	990,351	249,753	907,672	824,800	82,872
1998-99	2,147,792	1,816,414	331,378	1,232,144	984,678	247,466	915,648	831,736	83,912
1999-00	2,147,736	1,816,716	331,020	1,223,695	977,253	246,442	924,041	839,463	84,578
2000-01	2,141,464	1,814,311	327,153	1,209,342	966,889	242,453	932,122	847,422	84,700
2001-02	2,142,718	1,821,627	321,091	1,195,901	959,797	236,104	946,817	861,830	84,987
2002-03	2,129,792	1,816,747	313,045	1,171,217	942,253	228,964	958,575	874,494	84,081
2003-04	2,123,868	1,821,146	302,722	1,153,679	933,445	220,234	970,189	887,701	82,488
2004-05	2,119,481	1,828,089	291,392	1,144,937	934,544	210,393	974,544	893,545	80,999

Note: PreK enrollments were included for the first time in 2004-05.

Total enrollments in 2004-05 decreased for the third consecutive year, while elementary enrollments decreased for the eighth consecutive year. Since 1995-96, secondary enrollments have increased yearly.

Public secondary enrollments increased 11.1% since 1995-96. Over the same period, public elementary enrollments peaked in 1996-97 but had an overall 5.0% decrease from 1995-96 to 2004-05.

Private and nonpublic enrollments continued an overall decline during this period. Elementary enrollments declined every year, with a 17.0% decrease from 1995-96 to 2004-05. Secondary enrollments increased every year through 2001-02 and then decreased.

TABLE 3
PUBLIC, PRIVATE AND NONPUBLIC SCHOOLS
BY SELECTED YEARS

	TOTAL	ELEMENTARY	SECONDARY	ELEMENTARY/ SECONDARY
1995-96 TOTAL	5,622	3,697	939	986
Public	3,180	1,919	796	465
Private and Nonpublic	2,442	1,778	143	521
1999-00 TOTAL	5,705	3,654	941	1,110
Public	3,228	1,898	802	528
Private and Nonpublic	2,477	1,756	139	582
2004-05 TOTAL	5,681	3,505	942	1,234
Public	3,253	1,775	797	681
Private and Nonpublic	2,428	1,730	145	553

Since 1995-96, the number of public schools showed an overall increase of 2.3%. During the same period, the number of public elementary schools decreased 7.5%, while public secondary and combined elementary/secondary schools showed an increase of 0.1% and 46.5%, respectively.

Over the past decade, the number of private and nonpublic schools decreased by 0.6%. This change reflected a 2.7% decrease in elementary schools. The number of private and nonpublic schools with strictly secondary enrollments increased 1.4%. The number of elementary/secondary schools increased 6.1% since 1995-96.

Overall, the total number of schools increased 1.0% between 1995-96 and 2004-05. Elementary/Secondary schools increased 25.2%, secondary schools increased 0.3% and elementary schools decreased 5.2%.

TABLE 4
PUBLIC ENROLLMENTS BY LOCAL EDUCATION AGENCIES
2004-05

	NUMBER OF LEA'S	ENROLLMENTS
TOTAL	697	1,828,089
School Districts	500	1,755,600
Full-time Out-of-district Special Education	-	15,980
Comprehensive AVTSS	10	6,952
Occupational AVTSS	60	44,208
Charter Schools	109	48,212
State-owned Schools	2	413
Consortium-operated Alternative High Schools	4	284
Juvenile Correctional Institutions	11	648

- Note: 1. Of the 501 school districts, Bryn Athyn SD did not have enrollments.
 2. Data for the six comprehensive AVTSS in the Philadelphia City School District are listed with school district data.
 3. A dash (-) indicates "not applicable."
 4. Full-time Out-of-district Special Education enrollments include students in IU and other programs.
 5. Students at occupational AVTSS are not included in the state total because they are also counted at their sending school district.
 6. PreK enrollments were included for the first time in 2004-05.

A local educational agency (LEA) can contain multiple schools. Several types of LEAs made up Pennsylvania's total public enrollment. School districts and charter schools comprised 96.0% and 2.6%, respectively, of that total. Charter school enrollments continued to grow as the number of charter schools increased.

TABLE 5
PUBLIC ELEMENTARY AND SECONDARY ENROLLMENTS BY RACE
1995-96 AND 2004-05

	ENROLLMENTS							
	1995-96				2004-05			
	Elementary	%	Secondary	%	Elementary	%	Secondary	%
TOTAL	983,602	100.0	803,931	100.0	934,544	100.0	893,545	100.0
American Indian/ Alaskan Native	899	0.1	880	0.1	1,392	0.1	1,210	0.1
Asian/Pacific Islander	16,799	1.7	14,923	1.9	23,052	2.5	19,818	2.2
Black (Non- Hispanic)	147,094	15.0	104,009	12.9	157,885	16.9	134,160	15.0
Hispanic	37,901	3.8	25,071	3.1	63,431	6.8	46,572	5.2
White (Non- Hispanic)	780,909	79.4	659,048	82.0	688,784	73.7	691,785	77.5

Note: PreK enrollments were included for the first time in 2004-05.

The number and percentage of enrollments for all minority categories increased since 1995-96. Black and Hispanic showed the largest increases. The largest percentage point increases were in the Hispanic category, with elementary enrollments rising 3.0 and secondary enrollments 2.1. Minorities comprised 26.3% of the 934,544 elementary and 22.5% of the 893,545 secondary enrollments in 2004-05, compared to 20.6% and 18.0% in 1995-96.

TABLE 6
 CHARTER SCHOOL ENROLLMENTS
 BY RACE AND LEVEL
 2004-05

	%	ENROLLMENTS		
		Total	Elementary	Secondary
TOTAL	100.0	48,212	26,866	21,346
American Indian/Alaskan Native	0.3	124	73	51
Asian/Pacific Islander	1.4	695	414	281
Black (Non-Hispanic)	49.4	23,841	14,597	9,244
Hispanic	10.0	4,798	2,122	2,676
White (Non-Hispanic)	38.9	18,754	9,660	9,094

Note: PreK enrollments were included for the first time in 2004-05.

Compared to total public enrollments, which consisted of 24.5% minorities, enrollments for the 109 charter schools were 61.1% minorities. Most charter schools are located in urban areas with high concentrations of minorities. Overall, 55.7% of charter school students were enrolled at the elementary level.

TABLE 7

PRIVATE AND NONPUBLIC SCHOOL ENROLLMENTS BY RELIGIOUS AFFILIATION AND LEVEL
2004-05

RELIGIOUS AFFILIATION	TOTAL SCHOOLS	ENROLLMENTS		
		Total	Elementary	Secondary
TOTAL	2,428	291,392	210,393	80,999
RELIGIOUS TOTAL (CATHOLIC)	650	180,951	133,872	47,079
Archdiocese of Philadelphia	262	96,881	70,521	26,360
Diocese of Allentown	67	15,823	11,700	4,123
Diocese of Altoona-Johnstown	30	4,947	3,782	1,165
Diocese of Erie	44	10,637	7,889	2,748
Diocese of Greensburg	24	4,206	3,384	822
Diocese of Harrisburg	49	13,045	9,222	3,823
Diocese of Pittsburgh	114	22,687	18,823	3,864
Diocese of Scranton	52	11,302	8,292	3,010
Independent	8	1,423	259	1,164
RELIGIOUS TOTAL (NON-CATHOLIC)	1,201	80,471	55,475	24,996
Amish	486	13,353	12,592	761
Assembly of God	20	1,670	1,513	157
Baptist	90	6,398	4,203	2,195
Brethren	6	262	186	76
Church of God	4	143	135	8
Episcopal	17	2,105	1,313	792
God's Missionary Church	2	168	75	93
Islamic	17	931	831	100
Jewish	37	2,874	2,032	842
Lutheran	22	1,177	1,143	34
Mennonite	100	9,076	6,279	2,797
Methodist	17	1,510	814	696
Missionary Alliance	1	114	114	0
Pentecostal	9	340	303	37
Presbyterian	12	1,009	699	310
Seventh-Day Adventist	21	1,026	589	437
Society of Friends	25	6,718	4,508	2,210
Other Christian Denominations	313	31,566	18,132	13,434
Other Religions	2	31	14	17
SECULAR TOTAL	577	29,970	21,046	8,924

Of the private and nonpublic schools, 76.2% had a religious affiliation, and 23.8% were secular. Non-Catholic religious schools comprised 49.5% of the private and nonpublic schools, and Catholic schools accounted for 26.8%.

Of the students in private and nonpublic schools, 62.1% were enrolled in Catholic schools. The Catholic schools comprised 63.6% of the elementary enrollments and 58.1% of the secondary enrollments.

APPENDIX A

PUBLIC, PRIVATE AND NONPUBLIC ENROLLMENTS BY COUNTY
2004-05

	TOTAL			ELEMENTARY			SECONDARY		
	Total	Public	Private & Nonpublic	Total	Public	Private & Nonpublic	Total	Public	Private & Nonpublic
TOTAL	2,119,481	1,828,089	291,392	1,144,937	934,544	210,393	974,544	893,545	80,999
Adams	17,119	15,038	2,081	8,800	7,559	1,241	8,319	7,479	840
Allegheny	197,015	168,185	28,830	106,500	84,082	22,418	90,515	84,103	6,412
Armstrong	11,769	11,232	537	6,236	5,749	487	5,533	5,483	50
Beaver	31,247	29,464	1,783	15,425	14,047	1,378	15,822	15,417	405
Bedford	8,517	8,208	309	4,420	4,162	258	4,097	4,046	51
Berks	75,516	69,477	6,039	41,083	36,865	4,218	34,433	32,612	1,821
Blair	21,046	19,033	2,013	11,029	9,546	1,483	10,017	9,487	530
Bradford	11,389	10,893	496	5,833	5,413	420	5,556	5,480	76
Bucks	111,522	93,307	18,215	60,930	47,196	13,734	50,592	46,111	4,481
Butler	29,840	27,958	1,882	16,157	14,579	1,578	13,683	13,379	304
Cambria	22,261	19,242	3,019	11,893	9,724	2,169	10,368	9,518	850
Cameron	939	939	0	436	436	0	503	503	0
Carbon	9,761	9,268	493	5,115	4,633	482	4,646	4,635	11
Centre	15,434	14,166	1,268	7,960	6,768	1,192	7,474	7,398	76
Chester	85,940	71,309	14,631	47,750	37,250	10,500	38,190	34,059	4,131
Clarion	7,560	7,130	430	4,023	3,600	423	3,537	3,530	7
Clearfield	15,461	14,461	1,000	7,925	7,341	584	7,536	7,120	416
Clinton	5,650	4,968	682	3,066	2,543	523	2,584	2,425	159
Columbia	11,465	10,949	516	5,805	5,380	425	5,660	5,569	91
Crawford	12,214	11,008	1,206	6,474	5,458	1,016	5,740	5,550	190
Cumberland	33,689	29,421	4,268	18,115	14,995	3,120	15,574	14,426	1,148
Dauphin	45,528	39,490	6,038	24,846	20,424	4,422	20,682	19,066	1,616
Delaware	96,030	74,131	21,899	52,963	37,961	15,002	43,067	36,170	6,897
Elk	5,542	4,364	1,178	2,953	2,122	831	2,589	2,242	347
Erie	49,457	42,076	7,381	27,086	21,669	5,417	22,371	20,407	1,964
Fayette	21,952	20,314	1,638	11,601	10,378	1,223	10,351	9,936	415
Forest	729	729	0	332	332	0	397	397	0
Franklin	21,510	19,009	2,501	11,286	9,763	1,523	10,224	9,246	978
Fulton	2,503	2,421	82	1,370	1,317	53	1,133	1,104	29
Greene	6,150	6,076	74	3,144	3,086	58	3,006	2,990	16
Huntingdon	6,498	6,143	355	3,217	3,124	93	3,281	3,019	262
Indiana	12,023	11,518	505	6,173	5,737	436	5,850	5,781	69
Jefferson	6,786	6,107	679	3,455	2,864	591	3,331	3,243	88
Juniata	3,659	3,217	442	2,021	1,606	415	1,638	1,611	27
Lackawanna	33,378	28,154	5,224	17,863	14,470	3,393	15,515	13,684	1,831
Lancaster	86,471	70,567	15,904	47,931	35,913	12,018	38,540	34,654	3,886
Lawrence	15,931	15,178	753	8,449	7,702	747	7,482	7,476	6
Lebanon	20,535	18,990	1,545	11,126	9,986	1,140	9,409	9,004	405
Lehigh	56,540	49,628	6,912	30,751	25,133	5,618	25,789	24,495	1,294
Luzerne	49,247	41,947	7,300	25,842	20,936	4,906	23,405	21,011	2,394
Lycoming	18,651	17,683	968	9,399	8,667	732	9,252	9,016	236
McKean	7,549	7,257	292	3,836	3,564	272	3,713	3,693	20
Mercer	20,465	18,718	1,747	10,464	9,139	1,325	10,001	9,579	422
Mifflin	7,387	6,209	1,178	3,973	3,015	958	3,414	3,194	220
Monroe	34,313	32,873	1,440	17,121	16,118	1,003	17,192	16,755	437
Montgomery	141,967	107,978	33,989	79,033	56,362	22,671	62,934	51,616	11,318
Montour	2,996	2,716	280	1,553	1,293	260	1,443	1,423	20
Northampton	51,520	45,485	6,035	26,718	22,766	3,952	24,802	22,719	2,083
Northumberland	15,093	13,251	1,842	7,797	6,548	1,249	7,296	6,703	593
Perry	7,871	7,345	526	3,971	3,643	328	3,900	3,702	198
Philadelphia	270,614	213,520	57,094	156,348	116,189	40,159	114,266	97,331	16,935
Pike	5,685	5,616	69	2,973	2,904	69	2,712	2,712	0
Potter	3,151	2,984	167	1,676	1,526	150	1,475	1,458	17
Schuylkill	21,815	19,524	2,291	11,326	9,794	1,532	10,489	9,730	759
Snyder	5,915	5,291	624	3,070	2,574	496	2,845	2,717	128
Somerset	12,270	11,482	788	6,315	5,711	604	5,955	5,771	184
Sullivan	801	798	3	398	398	0	403	400	3
Susquehanna	8,074	8,050	24	3,998	3,975	23	4,076	4,075	1
Tioga	6,779	6,412	367	3,389	3,145	244	3,390	3,267	123
Union	4,806	4,336	470	2,553	2,134	419	2,253	2,202	51
Venango	10,380	9,710	670	5,332	4,841	491	5,048	4,869	179
Warren	6,238	5,889	349	3,053	2,780	273	3,185	3,109	76
Washington	32,140	30,653	1,487	17,024	15,606	1,418	15,116	15,047	69
Wayne	10,292	9,886	406	5,346	5,018	328	4,946	4,868	78
Westmoreland	59,605	55,489	4,116	30,853	27,692	3,161	28,752	27,797	955
Wyoming	4,537	4,500	37	2,317	2,294	23	2,220	2,206	14
York	72,744	68,719	4,025	37,717	34,999	2,718	35,027	33,720	1,307

APPENDIX B

PUBLIC ELEMENTARY SCHOOL ENROLLMENTS BY GRADE AND COUNTY
2004-05

	TOTAL	GRADE									
		PreK	K4	K5	1	2	3	4	5	6	Ungraded
TOTAL	934,544	7,154	3,117	121,318	129,233	126,492	129,400	133,418	138,064	143,275	3,073
Adams	7,559	0	0	938	1,033	1,075	1,046	1,108	1,164	1,195	0
Allegheny	84,082	1,504	60	10,909	11,626	11,315	11,691	12,009	12,364	12,598	6
Armstrong	5,749	0	0	793	776	808	818	794	837	923	0
Beaver	14,047	0	21	1,820	1,901	1,839	1,968	2,068	2,132	2,298	0
Bedford	4,162	33	62	549	603	554	573	578	590	590	30
Berks	36,865	412	518	4,742	5,171	4,955	4,936	5,181	5,341	5,573	36
Blair	9,546	0	0	1,360	1,274	1,299	1,355	1,330	1,407	1,516	5
Bradford	5,413	0	96	719	722	746	750	759	782	815	24
Bucks	47,196	0	104	5,550	6,699	6,601	6,732	6,962	6,846	7,314	388
Butler	14,579	0	0	2,000	2,024	1,989	1,993	2,148	2,091	2,285	49
Cambria	9,724	57	252	1,248	1,229	1,219	1,361	1,381	1,420	1,557	0
Cameron	436	0	0	50	60	54	54	76	62	80	0
Carbon	4,633	33	0	633	658	611	626	640	697	697	38
Centre	6,768	0	0	888	891	921	957	1,013	979	1,113	6
Chester	37,250	0	102	4,874	5,204	5,262	5,404	5,271	5,445	5,688	0
Clarion	3,600	0	0	488	515	454	530	515	546	535	17
Clearfield	7,341	0	12	976	1,019	956	1,048	1,073	1,119	1,120	18
Clinton	2,543	0	0	357	359	318	383	386	377	363	0
Columbia	5,380	0	0	707	735	734	762	795	810	837	0
Crawford	5,458	0	0	777	708	759	755	770	820	869	0
Cumberland	14,995	0	0	2,000	2,139	2,040	2,168	2,089	2,271	2,276	12
Dauphin	20,424	167	315	2,554	2,809	2,762	2,740	2,824	3,054	3,199	0
Delaware	37,961	78	0	4,888	5,158	5,180	5,200	5,521	5,707	5,832	397
Elk	2,122	0	0	271	318	265	272	324	359	313	0
Erie	21,669	60	0	3,080	2,937	2,973	2,937	3,106	3,235	3,269	72
Fayette	10,378	0	0	1,447	1,359	1,447	1,418	1,459	1,483	1,602	163
Forest	332	0	0	51	32	49	44	43	59	54	0
Franklin	9,763	0	0	1,380	1,437	1,362	1,352	1,378	1,382	1,455	17
Fulton	1,317	0	85	191	151	190	166	178	186	170	0
Greene	3,086	0	0	420	430	388	425	457	464	500	2
Huntingdon	3,124	0	0	448	420	444	422	459	450	475	6
Indiana	5,737	0	158	752	763	762	789	814	796	889	14
Jefferson	2,864	0	0	374	363	403	385	410	455	474	0
Juniata	1,606	0	0	239	204	207	211	235	248	252	10
Lackawanna	14,470	9	3	1,927	2,046	1,931	2,012	2,029	2,194	2,234	85
Lancaster	35,913	19	0	4,724	5,023	4,931	5,083	5,128	5,463	5,542	0
Lawrence	7,702	0	168	1,008	1,037	1,003	1,061	1,100	1,126	1,195	4
Lebanon	9,986	0	276	1,243	1,457	1,307	1,338	1,440	1,387	1,522	16
Lehigh	25,133	249	0	3,200	3,562	3,258	3,486	3,639	3,670	3,970	99
Luzerne	20,936	0	0	2,787	2,897	2,802	2,828	3,023	3,185	3,264	150
Lycamina	8,667	22	0	1,163	1,123	1,198	1,200	1,223	1,329	1,392	17
McKean	3,564	66	0	471	461	486	491	493	522	574	0
Mercer	9,139	91	21	1,224	1,257	1,203	1,299	1,321	1,322	1,389	12
Mifflin	3,015	0	0	428	407	405	428	417	440	474	16
Monroe	16,118	0	0	1,937	2,141	2,226	2,306	2,426	2,502	2,576	4
Montgomery	56,362	0	130	7,073	7,995	7,893	8,028	8,277	8,376	8,417	173
Montour	1,293	0	0	178	154	171	171	185	215	205	14
Northampton	22,766	0	0	3,054	3,176	3,051	3,218	3,218	3,417	3,529	103
Northumberland	6,548	0	235	891	875	846	870	910	965	956	0
Perry	3,643	0	0	480	523	465	490	531	549	605	0
Philadelphia	116,189	3,979	62	14,753	16,113	15,466	15,303	15,867	16,790	17,011	845
Pike	2,904	97	0	379	374	364	410	428	419	433	0
Potter	1,526	36	31	198	192	190	198	197	218	249	17
Schuylkill	9,794	48	55	1,287	1,375	1,317	1,331	1,381	1,460	1,540	0
Snyder	2,574	0	0	340	322	344	382	375	377	434	0
Somerset	5,711	79	40	758	779	723	793	782	828	901	28
Sullivan	398	0	0	58	38	52	56	66	63	65	0
Susquehanna	3,975	51	0	528	521	528	543	559	579	662	4
Tioga	3,145	0	0	426	425	421	430	506	456	481	0
Union	2,134	0	0	297	273	300	309	287	321	347	0
Venango	4,841	0	147	697	661	656	644	632	679	725	0
Warren	2,780	0	0	367	404	373	400	373	383	456	24
Washington	15,606	0	0	2,023	2,201	2,156	2,171	2,317	2,282	2,454	2
Wayne	5,018	0	164	591	646	656	694	720	735	780	32
Westmoreland	27,692	38	0	3,620	3,769	3,710	3,926	4,000	4,181	4,398	50
Wyoming	2,294	0	0	305	301	293	320	330	351	394	0
York	34,999	26	0	4,430	4,978	4,826	4,910	5,084	5,302	5,375	68

APPENDIX C

PUBLIC SECONDARY SCHOOL ENROLLMENTS BY GRADE AND COUNTY
2004-05

	TOTAL	GRADE						
		7	8	9	10	11	12	Ungraded
TOTAL	893,545	149,056	151,250	163,848	153,315	140,618	132,551	2,907
Adams	7,479	1,280	1,335	1,336	1,265	1,170	1,093	0
Allegheny	84,103	13,625	13,799	15,569	14,689	13,444	12,933	44
Armstrong	5,483	874	970	965	904	925	845	0
Beaver	15,417	2,343	2,561	2,827	2,746	2,525	2,415	0
Bedford	4,046	642	662	703	699	661	634	45
Berks	32,612	5,757	5,647	5,841	5,795	5,051	4,501	20
Blair	9,487	1,581	1,582	1,578	1,689	1,587	1,463	7
Bradford	5,480	921	928	1,023	896	839	841	32
Bucks	46,111	7,533	7,847	8,042	7,847	7,442	7,328	72
Butler	13,379	2,203	2,204	2,455	2,263	2,118	2,093	43
Cambria	9,518	1,505	1,542	1,637	1,640	1,594	1,596	4
Cameron	503	77	84	86	80	83	93	0
Carbon	4,635	740	753	833	855	760	683	11
Centre	7,398	1,219	1,199	1,293	1,287	1,212	1,162	26
Chester	34,059	5,869	5,727	6,237	5,740	5,437	5,040	9
Clarion	3,530	672	593	620	614	516	515	0
Clearfield	7,120	1,182	1,236	1,221	1,197	1,175	1,102	7
Clinton	2,425	406	420	443	407	387	362	0
Columbia	5,569	902	903	1,011	975	970	808	0
Crawford	5,550	950	964	977	893	899	832	35
Cumberland	14,426	2,440	2,557	2,430	2,388	2,317	2,275	19
Dauphin	19,066	3,154	3,397	3,438	3,321	3,006	2,750	0
Delaware	36,170	6,078	6,080	6,726	6,196	5,579	5,424	87
Elk	2,242	326	375	383	396	404	354	4
Erie	20,407	3,396	3,342	3,794	3,559	3,172	3,042	102
Fayette	9,936	1,622	1,660	1,795	1,715	1,498	1,496	150
Forest	397	59	54	80	72	74	58	0
Franklin	9,246	1,588	1,614	1,684	1,503	1,474	1,330	53
Fulton	1,104	193	182	192	211	160	166	0
Greene	2,990	533	501	537	513	467	434	5
Huntingdon	3,019	502	513	546	507	455	442	54
Indiana	5,781	1,020	915	1,013	993	889	936	15
Jefferson	3,243	485	523	534	619	553	529	0
Juniata	1,611	265	282	265	240	262	240	57
Lackawanna	13,684	2,206	2,347	2,359	2,402	2,214	2,110	46
Lancaster	34,654	5,699	6,037	6,395	5,937	5,508	4,983	95
Lawrence	7,476	1,252	1,254	1,258	1,247	1,174	1,140	151
Lebanon	9,004	1,487	1,531	1,630	1,555	1,452	1,349	0
Lehigh	24,495	4,020	4,169	4,743	4,248	3,701	3,592	22
Luzerne	21,011	3,490	3,553	3,624	3,580	3,538	3,213	13
Lvcomina	9,016	1,531	1,562	1,753	1,484	1,380	1,306	0
McKean	3,693	609	676	659	619	558	572	0
Mercer	9,579	1,467	1,643	1,752	1,755	1,493	1,419	50
Mifflin	3,194	493	513	636	562	533	438	19
Monroe	16,755	2,751	2,841	3,102	2,790	2,823	2,446	2
Montgomery	51,616	8,614	9,005	8,912	8,694	8,301	7,957	133
Montour	1,423	232	247	220	211	191	200	122
Northampton	22,719	3,780	3,784	4,226	3,942	3,600	3,368	19
Northumberland	6,703	1,094	1,141	1,183	1,177	1,071	1,037	0
Perry	3,702	625	639	712	641	592	493	0
Philadelphia	97,331	16,884	16,348	20,381	16,725	13,937	12,091	965
Pike	2,712	460	480	459	489	428	396	0
Potter	1,458	219	250	232	239	244	255	19
Schuylkill	9,730	1,593	1,680	1,786	1,662	1,495	1,514	0
Snyder	2,717	433	471	501	448	403	461	0
Somerset	5,771	939	960	1,018	963	951	910	30
Sullivan	400	57	73	66	77	59	68	0
Susquehanna	4,075	654	717	695	749	634	626	0
Tioga	3,267	565	518	612	570	509	493	0
Union	2,202	382	331	410	363	340	376	0
Venango	4,869	821	781	835	818	839	775	0
Warren	3,109	536	507	591	535	454	462	24
Washington	15,047	2,500	2,495	2,693	2,633	2,400	2,313	13
Wayne	4,868	855	835	898	832	727	718	3
Westmoreland	27,797	4,652	4,711	4,803	4,696	4,503	4,370	62
Wyomina	2,206	397	346	400	351	350	362	0
York	33,720	5,817	5,854	6,190	5,607	5,111	4,923	218

APPENDIX D

PRIVATE AND NONPUBLIC ELEMENTARY SCHOOL ENROLLMENTS BY GRADE AND COUNTY
2004-05

	TOTAL	GRADE										
		K4	K5	1	2	3	4	5	6	7	8	Ungraded
TOTAL	210,393	39	29,045	24,195	23,774	23,847	23,725	23,514	23,381	19,122	18,724	1,027
Adams	1,241	0	149	126	144	153	127	149	153	122	115	3
Allegheny	22,418	0	3,388	2,552	2,513	2,460	2,505	2,443	2,410	2,119	2,011	17
Armstrong	487	0	56	67	55	66	70	64	61	26	22	0
Beaver	1,378	0	161	146	152	172	172	143	167	121	144	0
Bedford	258	0	25	46	38	35	42	28	25	8	10	1
Berks	4,218	7	743	506	486	481	441	475	433	320	305	21
Blair	1,483	0	229	154	170	196	182	166	163	111	111	1
Bradford	420	0	40	47	61	51	58	49	45	39	30	0
Bucks	13,734	0	2,571	1,446	1,441	1,467	1,438	1,396	1,415	1,306	1,238	16
Butler	1,578	0	277	201	185	185	166	187	168	108	92	9
Cambria	2,169	0	249	232	237	234	217	251	251	227	252	19
Cameron	0	0	0	0	0	0	0	0	0	0	0	0
Carbon	482	0	45	41	50	49	59	55	59	57	66	1
Centre	1,192	0	178	160	156	154	145	147	104	87	61	0
Chester	10,500	0	1,675	1,148	1,217	1,115	1,103	1,098	1,035	944	957	208
Clarion	423	0	29	54	56	66	49	57	52	26	34	0
Clearfield	584	0	79	79	70	85	82	76	70	18	24	1
Clinton	523	0	54	91	81	71	75	67	69	0	0	15
Columbia	425	0	56	58	62	60	68	64	41	12	4	0
Crawford	1,016	0	69	138	121	135	121	144	132	72	56	28
Cumberland	3,120	0	430	373	354	349	390	326	377	250	251	20
Dauphin	4,422	0	613	423	468	482	494	529	488	452	439	34
Delaware	15,002	0	2,049	1,608	1,544	1,643	1,617	1,647	1,699	1,459	1,656	80
Elk	831	0	96	74	94	92	99	95	102	78	101	0
Erie	5,417	0	536	575	587	602	641	634	632	574	636	0
Fayette	1,223	0	172	167	182	150	147	130	119	75	81	0
Forest	0	0	0	0	0	0	0	0	0	0	0	0
Franklin	1,523	0	174	224	200	212	204	201	172	67	67	2
Fulton	53	0	4	7	9	11	8	10	4	0	0	0
Greene	58	0	4	8	15	9	4	6	9	2	1	0
Huntingdon	93	0	16	14	11	13	23	2	14	0	0	0
Indiana	436	0	41	56	76	60	54	47	31	19	19	5
Jefferson	591	0	40	85	85	81	79	73	57	33	47	11
Juniata	415	0	16	57	59	54	46	59	44	46	34	0
Lackawanna	3,393	0	482	345	377	368	371	347	398	332	353	20
Lancaster	12,018	0	887	1,549	1,515	1,454	1,570	1,437	1,444	1,071	1,057	34
Lawrence	747	0	71	105	93	91	89	72	79	80	59	8
Lebanon	1,140	0	87	165	140	145	149	123	164	85	80	2
Lehigh	5,618	0	935	634	629	622	588	604	588	486	490	42
Luzerne	4,906	0	702	576	578	552	563	557	570	390	390	28
Lvcomina	732	0	123	85	100	121	101	100	77	16	9	0
McKean	272	0	52	33	41	34	29	34	20	15	14	0
Mercer	1,325	0	117	163	173	169	162	158	150	118	115	0
Mifflin	958	0	32	133	155	134	122	119	104	82	76	1
Monroe	1,003	0	204	135	123	114	107	99	123	37	60	1
Montgomery	22,671	17	3,965	2,553	2,392	2,462	2,421	2,400	2,444	1,922	1,802	293
Montour	260	0	16	35	38	35	34	32	31	15	22	2
Northampton	3,952	0	585	479	468	425	446	463	418	347	321	0
Northumberland	1,249	8	126	159	165	178	142	166	157	82	66	0
Perry	328	0	16	45	36	37	48	26	32	37	51	0
Philadelphia	40,159	0	4,598	4,549	4,309	4,452	4,484	4,569	4,681	4,364	4,135	18
Pike	69	0	14	6	10	4	10	3	12	6	4	0
Potter	150	0	0	17	19	23	16	21	15	17	22	0
Schuylkill	1,532	0	185	192	175	196	177	181	185	113	117	11
Snyder	496	0	18	71	59	70	67	64	65	47	35	0
Somerset	604	0	36	85	92	89	59	79	79	32	34	19
Sullivan	0	0	0	0	0	0	0	0	0	0	0	0
Susquehanna	23	0	4	4	3	5	2	3	2	0	0	0
Tioga	244	0	33	25	36	32	33	31	28	21	5	0
Union	419	0	5	58	45	61	47	60	56	48	39	0
Venango	491	0	51	65	60	69	45	58	43	47	53	0
Warren	273	0	46	38	45	31	35	40	31	4	3	0
Washington	1,418	0	266	172	170	173	155	154	124	105	99	0
Wayne	328	7	44	38	47	40	41	47	32	15	17	0
Westmoreland	3,161	0	565	372	373	359	363	338	286	270	235	0
Wyoming	23	0	4	2	0	0	4	0	6	3	4	0
York	2,718	0	512	344	329	309	319	311	320	125	93	56

APPENDIX E

PRIVATE AND NONPUBLIC SECONDARY SCHOOL ENROLLMENTS BY GRADE AND COUNTY
2004-05

	TOTAL	GRADE							Ungraded
		7	8	9	10	11	12		
TOTAL	80,999	3,554	3,557	19,010	18,302	17,863	17,895	818	
Adams	840	30	40	208	194	205	163	0	
Allegheny	6,412	289	271	1,549	1,474	1,438	1,391	0	
Armstrong	50	7	4	13	9	8	9	0	
Beaver	405	15	14	97	96	89	94	0	
Bedford	51	15	18	9	3	0	2	4	
Berks	1,821	100	92	406	368	400	434	21	
Blair	530	41	28	109	117	114	119	2	
Bradford	76	16	16	17	2	13	10	2	
Bucks	4,481	101	102	1,057	1,076	1,052	1,081	12	
Butler	304	41	40	63	65	52	39	4	
Cambria	850	1	2	213	218	231	184	1	
Cameron	0	0	0	0	0	0	0	0	
Carbon	11	0	1	1	1	4	4	0	
Centre	76	8	3	24	13	16	8	4	
Chester	4,131	123	125	1,048	952	947	900	36	
Clarion	7	0	1	4	2	0	0	0	
Clearfield	416	72	69	65	71	58	79	2	
Clinton	159	39	48	33	9	10	10	10	
Columbia	91	20	15	16	17	10	13	0	
Crawford	190	39	27	41	27	28	27	1	
Cumberland	1,148	82	75	294	202	258	237	0	
Dauphin	1,616	66	51	420	377	341	345	16	
Delaware	6,897	125	154	1,625	1,675	1,548	1,698	72	
Elk	347	0	0	83	84	90	90	0	
Erie	1,964	45	53	463	431	462	510	0	
Fayette	415	21	22	115	91	89	67	10	
Forest	0	0	0	0	0	0	0	0	
Franklin	978	95	94	206	204	177	202	0	
Fulton	29	6	6	6	6	4	1	0	
Greene	16	5	1	5	3	1	1	0	
Huntingdon	262	19	29	43	65	53	52	1	
Indiana	69	18	7	11	8	6	10	9	
Jefferson	88	24	16	13	15	9	11	0	
Juniata	27	0	0	12	12	0	0	3	
Lackawanna	1,831	37	35	451	434	471	403	0	
Lancaster	3,886	339	348	785	726	687	654	347	
Lawrence	6	3	0	0	0	0	0	3	
Lebanon	405	42	45	99	91	63	62	3	
Lehigh	1,294	21	24	303	316	298	295	37	
Luzerne	2,394	144	137	521	489	534	519	50	
Lycoming	236	56	46	36	26	36	33	3	
McKean	20	2	5	4	0	7	2	0	
Mercer	422	23	20	88	92	101	76	22	
Mifflin	220	31	26	42	29	31	25	36	
Monroe	437	63	67	89	77	63	78	0	
Montgomery	11,318	489	493	2,650	2,615	2,593	2,467	11	
Montour	20	5	3	5	3	0	0	4	
Northampton	2,083	114	120	495	485	420	449	0	
Northumberland	593	64	59	112	132	110	113	3	
Perry	198	6	6	40	51	53	36	6	
Philadelphia	16,935	300	329	4,148	4,072	3,949	4,090	47	
Pike	0	0	0	0	0	0	0	0	
Potter	17	0	0	2	6	3	6	0	
Schuylkill	759	39	41	187	165	143	180	4	
Snyder	128	9	11	54	17	19	18	0	
Somerset	184	20	20	31	38	30	39	6	
Sullivan	3	0	0	0	0	2	1	0	
Susquehanna	1	0	0	0	0	1	0	0	
Tioga	123	8	21	18	29	20	27	0	
Union	51	0	6	20	4	1	4	16	
Venango	179	10	11	46	41	34	37	0	
Warren	76	15	13	14	9	16	9	0	
Washington	69	1	7	19	15	13	14	0	
Wayne	78	20	12	12	11	14	9	0	
Westmoreland	955	17	17	221	221	221	258	0	
Wyoming	14	0	0	5	4	1	2	2	
York	1,307	213	211	244	217	216	198	8	

APPENDIX F

GLOSSARY

CHARTER SCHOOL - An independent public school, established and operated under a charter from the local board of school directors, in which students are enrolled or attend. A charter school must be organized as a public nonprofit corporation. Charter schools are exempt from most state mandates except those insuring the health, safety and civil rights of students.

COMPREHENSIVE AVTS - A school that enrolls secondary students and provides a total educational program and services for both specialized career and technical education and academic education.

CONSORTIUM-OPERATED ALTERNATIVE HIGH SCHOOL - A school formed as a result of a special program jointure that enrolls high-risk students or students who previously dropped out. A special program jointure is an entity established by the boards of school directors in two or more school districts, with the approval of the Pennsylvania Department of Education, under Sections 1701-1709 of the Public School Code of 1949, as amended.

ELEMENTARY - A school which includes only elementary-level students (normally grades PreK-6 for public schools and grades K-8 for private and nonpublic schools).

ELEMENTARY/SECONDARY - A school that includes both elementary- and secondary-level students.

LOCAL EDUCATION AGENCY (LEA) - A board of education or other legally constituted local school authority having administrative control and direction of public elementary or secondary schools in a city, county, township, school district or political subdivision in a state, or any other public educational institution or agency having administrative control and direction of a career and technical education program.

NONPUBLIC SCHOOL - A school that is privately controlled by a nonpublic entity and is financed from sources other than public taxation.

OCCUPATIONAL AVTS - A school that enrolls secondary students and provides an educational program and services for only specialized career and technical education.

PRE-KINDERGARTEN (PREK) - A program enrolling students who are up to two years younger than the entrance age for the local education agency's kindergarten program.

PRIVATE SCHOOL - A nonpublic school defined by the licensing regulations as one that maintains or conducts classes for the purpose of offering instruction for consideration, profit or tuition, to five or more students at one time, or to 25 or more students during the school year.

RACIAL/ETHNIC CATEGORIES - Categories used to describe groups to which individuals belong, identify with or belong in the eyes of the community. These categories do not denote scientific definitions of anthropological origins. However, no person may be counted in more than one racial/ethnic category.

AMERICAN INDIAN/ALASKAN NATIVE - A person having origins in any of the original peoples of North America and who maintains cultural identification through tribal affiliation or community recognition.

ASIAN/PACIFIC ISLANDER - A person having origins in any of the original peoples of the Far East, Southeast Asia, the Indian subcontinent or Pacific Islands. This includes people from China, Japan, Korea, the Philippine Islands, Samoa, India and Vietnam.

BLACK (NON-HISPANIC) - A person having origins in any of the black racial groups of Africa (except those of Hispanic origin).

HISPANIC - A person of Mexican, Puerto Rican, Cuban, Central or South American or other Spanish culture or origin, regardless of race.

WHITE (NON-HISPANIC) - A person having origins in any of the original peoples of Europe, North Africa or the Middle East (except those of Hispanic origin).

SCHOOL - A division of a school system comprised of one or more grade groups, organized as one unit usually under the direction of a principal or a head teacher. Thus, one building may house more than one school or one school may occupy all or part of one or more buildings.

SECONDARY - A school that includes only secondary-level students (normally grades 7-12 for public schools and grades 9-12 for private and nonpublic schools).

APPENDIX G

SOURCES

1. Private and Nonpublic School Enrollment Report (PDE-4036)
2. Public School Enrollment Report (ESPE)
3. *The Condition of Education, 2005*, U.S. Department of Education, National Center for Education Statistics, 2005.
4. *Projections of Education Statistics to 2013*, U.S. Department of Education, National Center for Education Statistics, 2003.
5. *Public, Private and Nonpublic Enrollments by Grade and Total Enrollment, Actual 1994-95 through 2003-04 and Projected through 2009-10*, Pennsylvania Dept. of Education, Division of Data Services: <http://www.pde.state.pa.us/k12statistics/lib/k12statistics/PublicPrivate&NonpublicEnrollmentsActual&Projectedthru2009-10.xls> (2004).
6. *Public, Private and Nonpublic Schools: Enrollments, 1995-96*, Pennsylvania Department of Education, Division of Data Services, 1996.
7. *Public, Private and Nonpublic Schools: Enrollments, 1999-00*, Pennsylvania Department of Education, Division of Data Services, 2000.
8. *Public, Private and Nonpublic Schools: Enrollments, 2003-04*, Pennsylvania Department of Education, Division of Data Services, 2004.
9. *Public Schools: Summary of Enrollments, 1995-96*, Pennsylvania Department of Education, Division of Data Services, 1996.