

Home Education

in Pennsylvania

2003-04



Home Education

in Pennsylvania

2003-04

*Compiled
by
John Creason
Statistician*

March 2005

Commonwealth of Pennsylvania
Edward G. Rendell, Governor

Department of Education
Francis V. Barnes, Secretary

Bureau of Educational Technology
Kathleen M. Brautigam, Director

Division of Data Services
Gerald W. Hottinger, Chief

The Pennsylvania Department of Education (PDE) does not discriminate in its educational programs, activities or employment practices based on race, color, national origin, sex, sexual orientation, disability, age, religion, ancestry, union membership, or any other legally protected category. This policy is in accordance with state law, including the Pennsylvania Human Relations Act, and with federal law, including Title VI and Title VII of the Civil Rights Act of 1964, Title IX of the Education Amendments of 1972, Section 504 of the Rehabilitation Act of 1973, the Age Discrimination in Employment Act of 1967 and the Americans with Disabilities Act of 1990.

The following persons have been designated to handle inquiries regarding the Pennsylvania Department of Education's non-discrimination policies:

**For Inquiries Concerning Non-Discrimination
In Employment:**

Pennsylvania Department of Education
Equal Employment Opportunity Representative
Bureau of Human Resources
333 Market Street, 11th Floor
Harrisburg, PA 17126-0333
Voice Telephone: (717) 787-4417
Text Telephone: (717) 783-8445
Fax: (717) 783-9348

**For Inquiries Concerning Non-Discrimination in
All Other Pennsylvania Department of Education
Programs and Activities:**

Pennsylvania Department of Education
School Services Unit Director
333 Market Street, 5th Floor
Harrisburg, PA 17126-0333
Voice Telephone: (717) 783-3750
Text Telephone: (717) 783-8445
Fax: (717) 783-6802

Division of Data Services publications are available on the PDE Home Page (www.pde.state.pa.us). If you have any questions about this publication, contact:

John Creason

ra-espdata@state.pa.us

Pennsylvania Department of Education
Division of Data Services
333 Market Street
Harrisburg, PA 17126-0333

Voice Telephone: (717) 783-6754
Fax: (717) 787-3148
Text Telephone TTY: (717) 783-8445

CONTENTS

	Page
Overview	1
Statistical Highlights, 2003-04	2
Figure 1. Home Education Students, 1994-95 through 2003-04	3
Figure 2. Home Education Students by County, 2003-04	4
Table 1. Home Education Students by Age, 1994-95 through 2003-04	5
Figure 3. Home Education Students by Age, 2003-04	6
Figure 4. Home Education Students by Selected Counties by Selected Years	7
Figure 5. Home Education Students as a Percentage of Total Enrollments by Selected Years ...	8
Table 2. Home Education Additional Statistics, 2003-04	9
Appendix A. Home Education Students by School District and Age Group, 2003-04	A-1
Appendix B. Glossary	B-1
Appendix C. Sources	C-1

OVERVIEW

The 2003-04 total for home education students in Pennsylvania was 24,076. The total was comprised of 12,285 males and 11,791 females. This was a decrease of 339 students, or 1.4%, from the 2002-03 total of 24,415. This was the second year (along with 2001-02) that home education enrollments decreased since the passage of Act 169 of 1988, which authorized parents, guardians and legal custodians to teach their children at home.

Data was collected from all of Pennsylvania's 501 school districts for home education students aged five through 21. Austin Area and Clairton City were the only two school districts that reported no home education students in 2003-04.

The number of home education students decreased in 38 of Pennsylvania's 67 counties. Once again, Lancaster County led the state with 2,653 students, followed by York County with 1,569 (see figure 2, page 4). Students educated at home comprised an additional 1.1% of the state's public, private and nonpublic enrollments in 2003-04 (see figure 5, page 8).

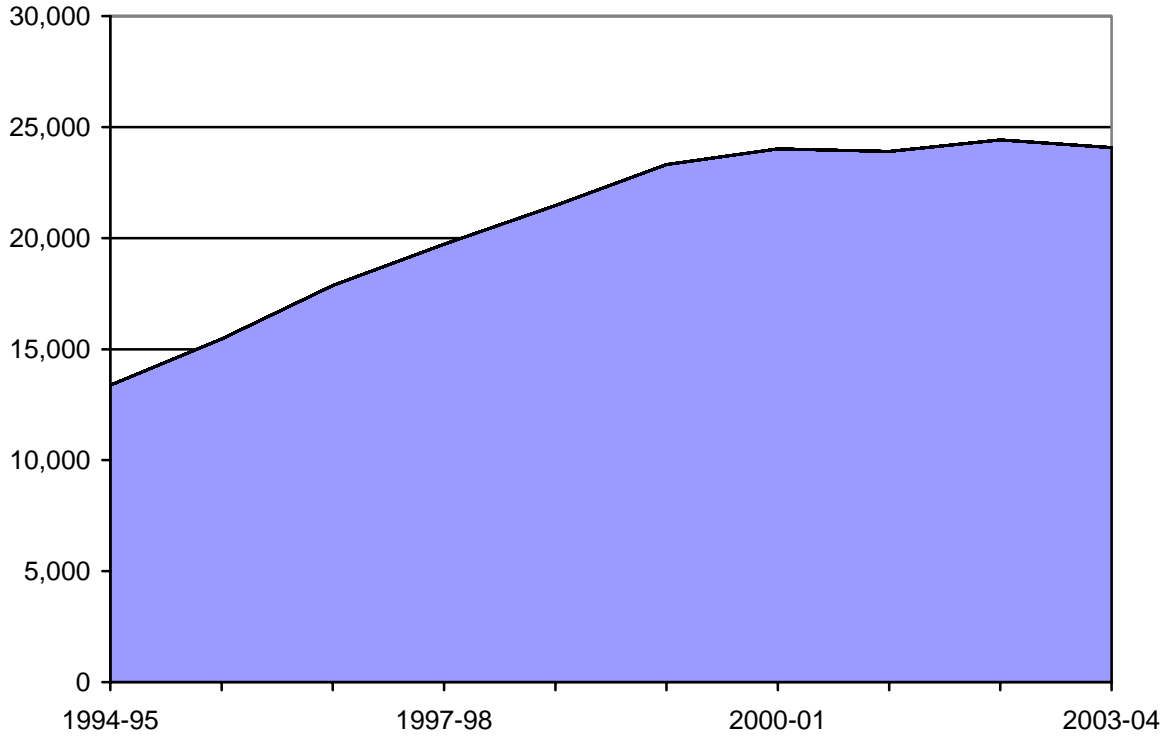
There were 237 school districts (47.3%), down from 241, that allowed home education students to participate in curricular programs, while 270 (53.9%), up from 265, allowed them to participate in extracurricular activities (see table 2, page 9). Some districts that allowed participation had restrictions.

STATISTICAL HIGHLIGHTS
2003-04

	HOME EDUCATION STUDENTS	
	TOTAL	%
TOTAL	24,076	100.0
Ages 5 through 11	10,919	45.4
Ages 12 through 18+	13,157	54.6
COUNTIES WITH THE MOST STUDENTS		
Lancaster	2,653	11.0
York	1,569	6.5
Berks	1,256	5.2
Allegheny	1,133	4.7
Chester	1,118	4.6
COUNTIES WITH THE FEWEST STUDENTS		
Forest	9	0.0
Cameron	13	0.1
Elk	25	0.1
Sullivan	29	0.1
Fulton	35	0.2

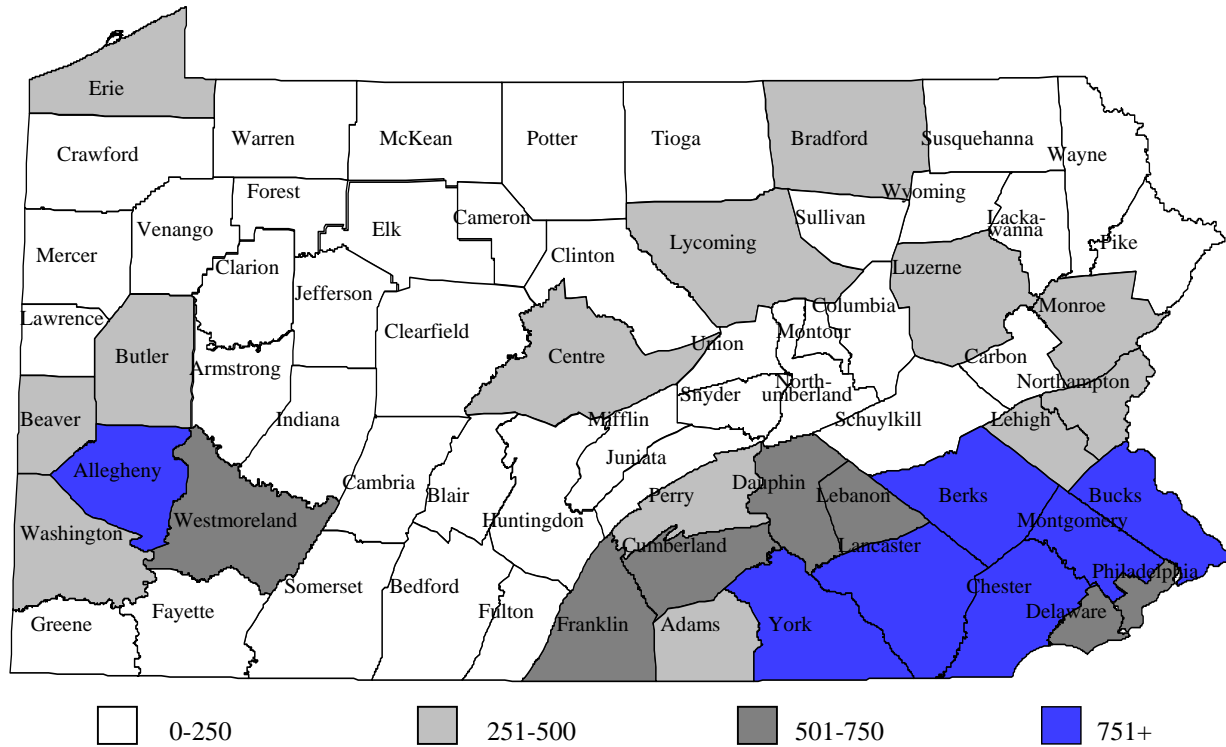
	SCHOOL DISTRICTS	
	TOTAL	%
SCHOOL DISTRICTS ALLOWING OUTSIDE ACTIVITY PARTICIPATION		
Curricular Activities	237	47.3
Extracurricular Activities	270	53.9

FIGURE 1
HOME EDUCATION STUDENTS
1994-95 THROUGH 2003-04



The total number of home education students increased every year since the passage of Act 169 of 1988 except for 2001-02 and 2003-04. In 1994-95, there were 13,385 children who were educated at home. The 2003-04 total of 24,076 was a one-year decrease of 339 from the 2002-03 all-time high total of 24,415.

FIGURE 2
HOME EDUCATION STUDENTS BY COUNTY
2003-04



The distribution of home education students throughout the state corresponded closely to the population density centers. The highest concentration appeared in the south central and southeastern regions of Pennsylvania. Lancaster County led the state with a total of 2,653 students.

There were 40 counties with 250 or fewer students. Counties with between 251 and 500 students numbered 13. There were seven counties with between 501 and 750 students, and seven with more than 751 students.

TABLE 1

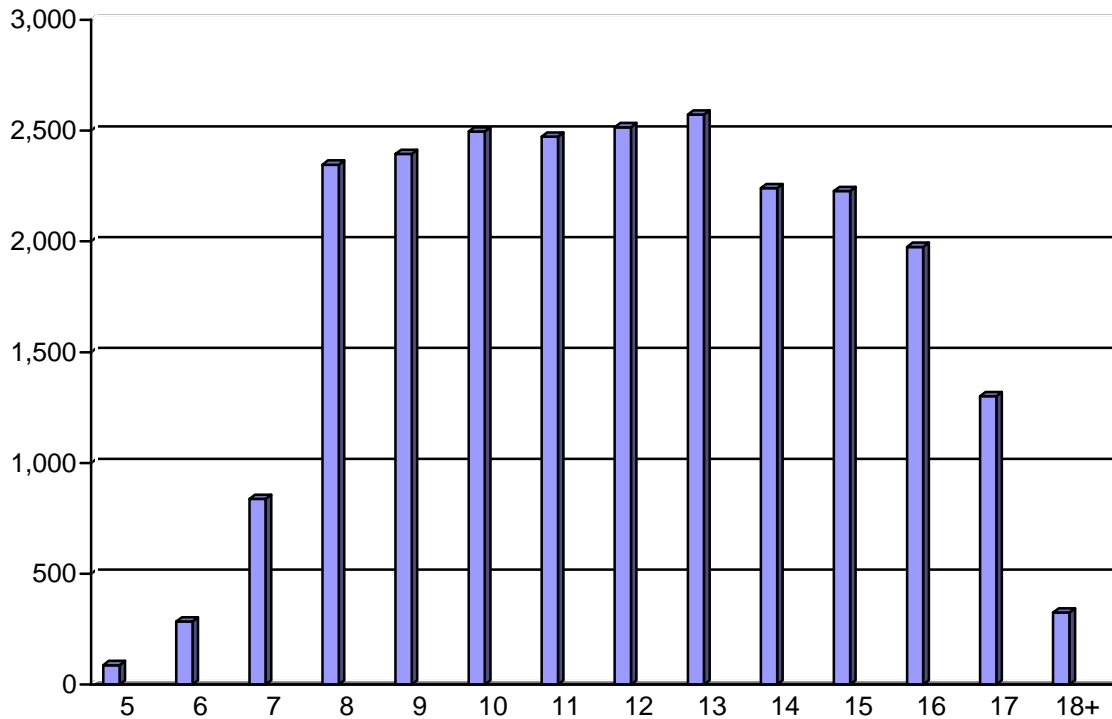
HOME EDUCATION STUDENTS BY AGE
1994-95 THROUGH 2003-04

	1994-95	1995-96	1996-97	1997-98	1998-99	1999-00	2000-01	2001-02	2002-03	2003-04
TOTAL	13,385	15,457	17,861	19,717	21,459	23,313	24,019	23,903	24,415	24,076
AGE										
5	91	104	105	115	146	121	110	107	93	88
6	315	339	359	354	352	380	365	392	326	285
7	899	981	1,086	1,135	1,072	1,159	1,058	996	966	838
8	1,649	1,768	1,981	2,114	2,332	2,417	2,475	2,423	2,308	2,346
9	1,560	1,852	2,015	2,159	2,311	2,645	2,551	2,536	2,567	2,395
10	1,520	1,676	1,981	2,186	2,297	2,386	2,651	2,530	2,563	2,495
11	1,443	1,616	1,799	2,078	2,196	2,419	2,398	2,622	2,573	2,472
12	1,372	1,594	1,740	1,980	2,131	2,380	2,492	2,368	2,707	2,515
13	1,218	1,444	1,703	1,813	2,022	2,162	2,314	2,381	2,397	2,572
14	1,080	1,271	1,603	1,686	1,899	2,072	2,193	2,107	2,229	2,240
15	969	1,188	1,425	1,708	1,826	2,007	2,064	2,062	2,128	2,227
16	775	974	1,230	1,427	1,673	1,734	1,839	1,820	1,982	1,975
17	402	521	674	782	941	1,110	1,202	1,208	1,236	1,302
18+	92	129	160	180	261	321	307	351	340	326

The number of home education students decreased in nine of the 14 age categories from 2002-03 to 2003-04. The younger age categories reflected declines in enrollments while some of the older categories showed increased enrollments.

When home education statistics were first collected for the 1988-89 school year, nearly 70% of the students were age 11 and under. Collectively, the percentage of students in the older age groups (12 and over) has consistently grown and now make up 54.6 % of the 2003-04 home education enrollment.

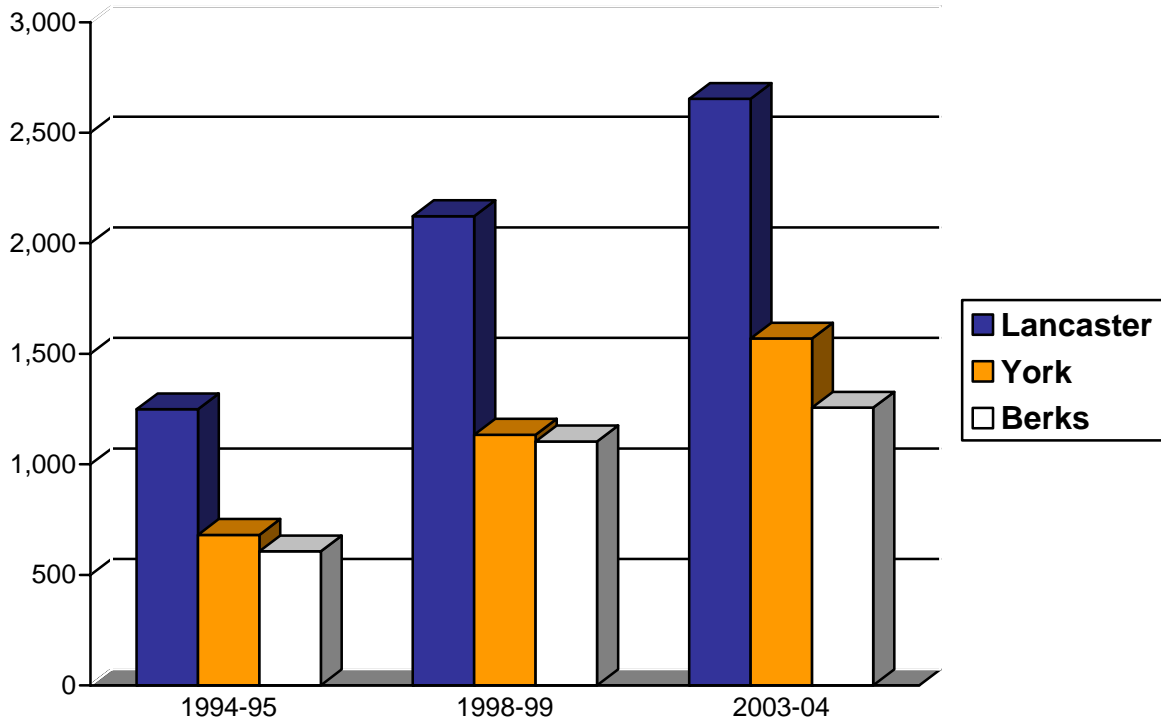
FIGURE 3
HOME EDUCATION STUDENTS BY AGE
2003-04



The distribution of home education students showed that ages eight through 13 had the largest numbers, with age 13 having the most students. These ages accounted for 61.5% of the home education students. The Pennsylvania Public School Code of 1949, as amended, does not require a child to be registered for school until age eight. This accounted for the relatively low number of students registered in ages five, six and seven.

FIGURE 4

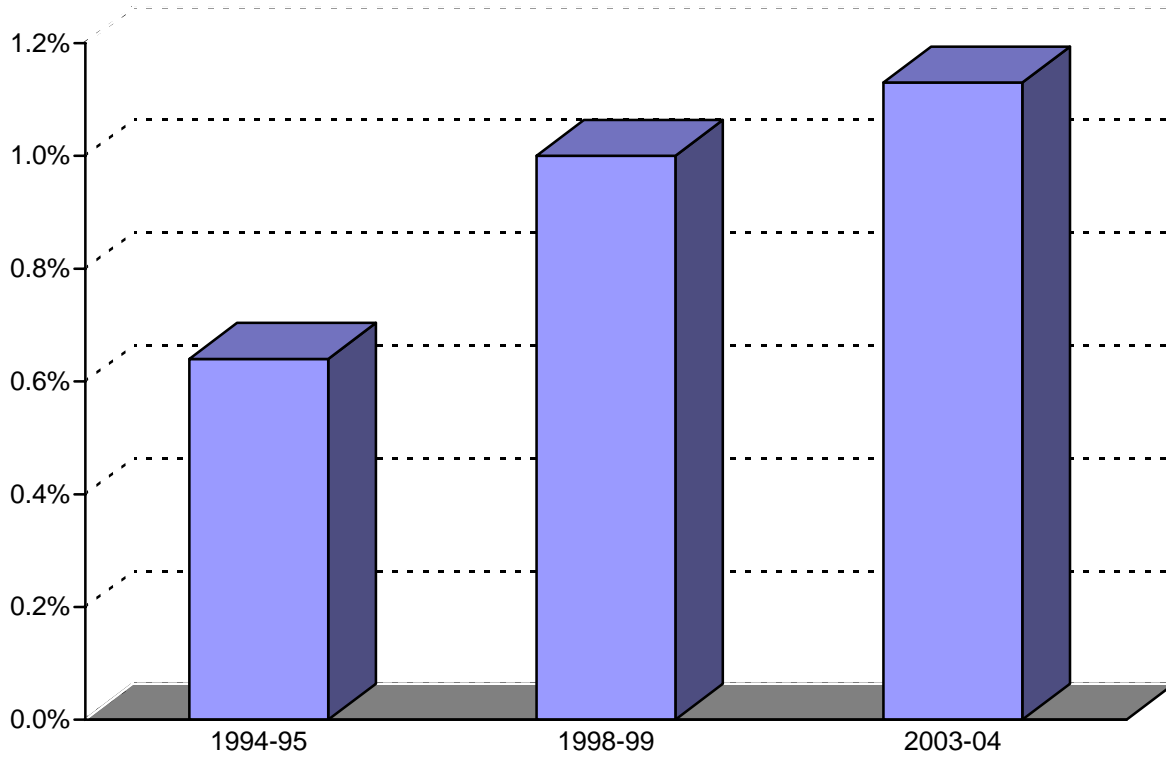
HOME EDUCATION STUDENTS BY SELECTED COUNTIES
BY SELECTED YEARS



Lancaster, York and Berks counties contained the largest concentration of home education students in 2003-04. These three counties represented 22.8% of the 24,076 home education students. Trends for these three counties closely paralleled the overall rise in the number of home education students for the entire state. Lancaster County has had the largest number every year since the passage of Act 169 of 1988. More than 11% of Pennsylvania's home educated students reside in Lancaster County.

FIGURE 5

HOME EDUCATION STUDENTS AS A PERCENTAGE OF TOTAL ENROLLMENTS
BY SELECTED YEARS



There were 2,101,039 children enrolled in grades K-12 in Pennsylvania in 1994-95. In that year, home education enrollments numbered 13,385, or 0.6% of the total enrollment. By 2003-04, the number of home education students had risen to 24,076, which equaled 1.1% of the public, private and nonpublic enrollment of 2,123,868. The percentage of home education students had been increasing by nearly 0.1 percentage point each year, but has leveled off the last three years.

TABLE 2
HOME EDUCATION ADDITIONAL STATISTICS
2003-04

Affidavits Returned by Superintendent	22
Programs Deemed Inappropriate by Evaluator	88
Programs Deemed Inappropriate by Superintendent	247
Hearings Held Regarding Inappropriate Programs	17
Supervisors Requesting Curricular Materials	3,357
Special Education Students	596
Students Receiving Services for Special Education	117
School Districts Allowing Home Education Students to Participate in Curricular Programs	237
School Districts Allowing Home Education Students to Participate in Extracurricular Activities	270

Note: Pennsylvania has 501 school districts.

APPENDIX A

HOME EDUCATION STUDENTS BY SCHOOL DISTRICT AND AGE GROUP
2003-04

	TOTAL	AGES 5-11	AGES 12-18+
TOTAL	24,076	10,919	13,157
Adams County	379	170	209
Bermudian Springs SD	92	33	59
Conewago Valley SD	77	35	42
Fairfield Area SD	50	25	25
Gettysburg Area SD	55	29	26
Littlestown Area SD	51	25	26
Upper Adams SD	54	23	31
Allegheny County	1,133	552	581
Allegheny Valley SD	15	6	9
Avonworth SD	12	8	4
Baldwin-Whitehall SD	8	2	6
Bethel Park SD	64	28	36
Brentwood Borough SD	2	2	0
Carlynton SD	22	8	14
Chartiers Valley SD	17	9	8
Clairton City SD	0	0	0
Cornell SD	11	7	4
Deer Lakes SD	23	14	9
Duquesne City SD	2	0	2
East Allegheny SD	11	6	5
Elizabeth Forward SD	18	11	7
Fox Chapel Area SD	26	12	14
Gateway SD	32	14	18
Hampton Township SD	22	13	9
Highlands SD	20	8	12
Keystone Oaks SD	18	6	12
McKeesport Area SD	27	14	13
Montour SD	22	10	12
Moon Area SD	30	11	19
Mt Lebanon SD	25	14	11
North Allegheny SD	76	43	33
North Hills SD	46	21	25
Northgate SD	23	17	6
Penn Hills SD	46	23	23
Pine-Richland SD	40	17	23
Pittsburgh SD	190	85	105
Plum Borough SD	11	6	5
Quaker Valley SD	13	6	7
Riverview SD	2	0	2
Shaler Area SD	32	21	11
South Allegheny SD	10	1	9
South Fayette Twp SD	22	13	9
South Park SD	22	9	13
Steel Valley SD	10	4	6
Sto-Rox SD	7	3	4
Upper Saint Clair SD	15	6	9
West Allegheny SD	22	11	11
West Jefferson Hills SD	14	7	7
West Mifflin Area SD	14	8	6
Wilkinsburg Borough SD	18	11	7
Woodland Hills SD	73	37	36

APPENDIX A

HOME EDUCATION STUDENTS BY SCHOOL DISTRICT AND AGE GROUP
2003-04

	TOTAL	AGES 5-11	AGES 12-18+
Armstrong County	168	65	103
Apollo Ridge SD	16	9	7
Armstrong SD	112	41	71
Freeport Area SD	29	11	18
Leechburg Area SD	11	4	7
Beaver County	286	131	155
Aliquippa SD	3	0	3
Ambridge Area SD	40	26	14
Beaver Area SD	38	20	18
Big Beaver Falls Area SD	38	17	21
Blackhawk SD	34	16	18
Center Area SD	19	10	9
Freedom Area SD	15	9	6
Hopewell Area SD	23	8	15
Midland Borough SD	3	1	2
Monaca SD	3	0	3
New Brighton Area SD	11	2	9
Riverside Beaver County SD	30	10	20
Rochester Area SD	3	1	2
South Side Area SD	14	4	10
Western Beaver County SD	12	7	5
Bedford County	161	62	99
Bedford Area SD	74	33	41
Chestnut Ridge SD	40	15	25
Everett Area SD	23	8	15
Northern Bedford County SD	15	5	10
Tussey Mountain SD	9	1	8
Berks County	1,256	557	699
Antietam SD	11	6	5
Boyertown Area SD	144	59	85
Brandywine Heights Area SD	56	24	32
Conrad Weiser Area SD	74	34	40
Daniel Boone Area SD	46	14	32
Exeter Township SD	70	31	39
Fleetwood Area SD	60	30	30
Governor Mifflin SD	87	40	47
Hamburg Area SD	77	32	45
Kutztown Area SD	53	16	37
Muhlenberg SD	17	9	8
Oley Valley SD	56	21	35
Reading SD	53	22	31
Schuylkill Valley SD	44	18	26
Tulpehocken Area SD	105	56	49
Twin Valley SD	220	99	121
Wilson SD	67	37	30
Wyomissing Area SD	16	9	7

APPENDIX A

HOME EDUCATION STUDENTS BY SCHOOL DISTRICT AND AGE GROUP
2003-04

	TOTAL	AGES 5-11	AGES 12-18+
Blair County	204	90	114
Altoona Area SD	43	22	21
Bellwood-Antis SD	18	6	12
Claysburg-Kimmel SD	14	2	12
Hollidaysburg SD	40	23	17
Spring Cove SD	51	21	30
Tyrone Area SD	23	10	13
Williamsburg Community SD	15	6	9
Bradford County	285	123	162
Athens Area SD	46	17	29
Canton Area SD	41	21	20
Northeast Bradford SD	40	18	22
Sayre Area SD	30	10	20
Towanda Area SD	33	14	19
Troy Area SD	63	27	36
Wyalusing Area SD	32	16	16
Bucks County	852	385	467
Bensalem Township SD	40	20	20
Bristol Borough SD	1	0	1
Bristol Township SD	32	17	15
Centennial SD	51	28	23
Central Bucks SD	109	50	59
Council Rock SD	46	26	20
Morrisville Borough SD	19	10	9
Neshaminy SD	85	32	53
New Hope-Solebury SD	10	6	4
Palisades SD	46	17	29
Pennridge SD	213	97	116
Pennsbury SD	57	30	27
Quakertown Community SD	143	52	91
Butler County	393	176	217
Butler Area SD	81	36	45
Karns City Area SD	29	11	18
Mars Area SD	44	19	25
Moniteau SD	29	14	15
Seneca Valley SD	114	53	61
Slippery Rock Area SD	54	22	32
South Butler County SD	42	21	21
Cambria County	148	64	84
Blacklick Valley SD	4	0	4
Cambria Heights SD	1	0	1
Central Cambria SD	9	2	7
Conemaugh Valley SD	8	3	5
Ferndale Area SD	4	3	1
Forest Hills SD	19	7	12
Greater Johnstown SD	31	12	19
Northern Cambria SD	10	4	6

APPENDIX A

HOME EDUCATION STUDENTS BY SCHOOL DISTRICT AND AGE GROUP
2003-04

	TOTAL	AGES 5-11	AGES 12-18+
Penn Cambria SD	15	12	3
Portage Area SD	5	2	3
Richland SD	29	14	15
Westmont Hilltop SD	13	5	8
Cameron County	13	5	8
Cameron County SD	13	5	8
Carbon County	81	45	36
Jim Thorpe Area SD	18	10	8
Lehighon Area SD	15	9	6
Palmerton Area SD	27	14	13
Panther Valley SD	12	8	4
Weatherly Area SD	9	4	5
Centre County	343	175	168
Bald Eagle Area SD	27	12	15
Bellefonte Area SD	85	50	35
Penns Valley Area SD	51	24	27
State College Area SD	180	89	91
Chester County	1,118	525	593
Avon Grove SD	75	33	42
Coatesville Area SD	204	102	102
Downingtown Area SD	171	91	80
Great Valley SD	27	8	19
Kennett Consolidated SD	26	10	16
Octorara Area SD	122	60	62
Owen J Roberts SD	86	39	47
Oxford Area SD	74	33	41
Phoenixville Area SD	93	32	61
Tredyffrin-Easttown SD	33	18	15
Unionville Chadds-Ford SD	24	9	15
West Chester Area SD	183	90	93
Clarion County	110	50	60
Allegheny-Clarion Valley SD	26	13	13
Clarion Area SD	18	7	11
Clarion-Limestone Area SD	20	6	14
Keystone SD	18	6	12
North Clarion County SD	4	2	2
Redbank Valley SD	18	12	6
Union SD	6	4	2
Clearfield County	145	73	72
Clearfield Area SD	44	18	26
Curwensville Area SD	7	5	2
DuBois Area SD	46	22	24
Glendale SD	10	7	3
Harmony Area SD	9	4	5
Moshannon Valley SD	5	2	3
Philipsburg-Osceola Area SD	13	12	1
West Branch Area SD	11	3	8

APPENDIX A

HOME EDUCATION STUDENTS BY SCHOOL DISTRICT AND AGE GROUP
2003-04

	TOTAL	AGES 5-11	AGES 12-18+
Clinton County	73	22	51
Keystone Central SD	73	22	51
Columbia County	128	50	78
Benton Area SD	17	6	11
Berwick Area SD	39	14	25
Bloomsburg Area SD	18	7	11
Central Columbia SD	24	12	12
Millville Area SD	11	5	6
Southern Columbia Area SD	19	6	13
Crawford County	239	103	136
Conneaut SD	49	23	26
Crawford Central SD	80	32	48
Penncrest SD	110	48	62
Cumberland County	601	297	304
Big Spring SD	75	37	38
Camp Hill SD	8	4	4
Carlisle Area SD	112	59	53
Cumberland Valley SD	135	65	70
East Pennsboro SD	36	19	17
Mechanicsburg Area SD	72	33	39
Shippensburg Area SD	132	65	67
South Middleton SD	31	15	16
Dauphin County	552	255	297
Central Dauphin SD	204	100	104
Derry Township SD	99	55	44
Halifax Area SD	15	7	8
Harrisburg City SD	61	23	38
Lower Dauphin SD	57	32	25
Middletown Area SD	17	5	12
Millersburg Area SD	14	6	8
Steelton-Highspire SD	12	5	7
Susquehanna Township SD	49	17	32
Upper Dauphin SD	24	5	19
Delaware County	738	315	423
Chester-Upland SD	95	33	62
Chichester SD	36	20	16
Garnet Valley SD	29	13	16
Haverford Township SD	49	18	31
Interboro SD	42	15	27
Marple Newtown SD	50	24	26
Penn-Delco SD	52	26	26
Radnor Township SD	21	11	10
Ridley SD	36	15	21
Rose Tree Media SD	45	17	28
Southeast Delco SD	44	14	30

APPENDIX A

HOME EDUCATION STUDENTS BY SCHOOL DISTRICT AND AGE GROUP
2003-04

	TOTAL	AGES 5-11	AGES 12-18+
Springfield SD	23	14	9
Upper Darby SD	100	46	54
Wallingford-Swarthmore SD	37	13	24
William Penn SD	79	36	43
Elk County	25	8	17
Johnsonburg Area SD	1	0	1
Ridgway Area SD	4	3	1
Saint Marys Area SD	20	5	15
Erie County	461	219	242
Corry Area SD	58	37	21
Erie City SD	87	46	41
Fairview SD	20	3	17
Fort LeBoeuf SD	31	17	15
General McLane SD	38	16	22
Girard SD	29	10	19
Harbor Creek SD	15	7	8
Irouois SD	9	4	5
Millcreek Township SD	56	26	30
North East SD	23	14	9
Northwestern SD	43	18	25
Union City Area SD	12	7	5
Wattsburg Area SD	40	14	26
Fayette County	201	77	124
Albert Gallatin Area SD	28	13	15
Brownsville Area SD	28	8	20
Connellsville Area SD	48	16	32
Frazier SD	10	3	7
Laurel Highlands SD	23	9	14
Uniontown Area SD	64	28	36
Forest County	9	6	3
Forest Area SD	9	6	3
Franklin County	612	282	330
Chambersburg Area SD	207	88	119
Fannett-Metal SD	8	4	4
Greencastle-Antrim SD	139	68	71
Tuscarora SD	101	52	49
Waynesboro Area SD	157	70	87
Fulton County	35	15	20
Central Fulton SD	14	9	5
Forbes Road SD	4	0	4
Southern Fulton SD	17	6	11

APPENDIX A

HOME EDUCATION STUDENTS BY SCHOOL DISTRICT AND AGE GROUP
2003-04

	TOTAL	AGES 5-11	AGES 12-18+
Greene County	88	41	47
Carmichaels Area SD	12	5	7
Central Greene SD	18	8	10
Jefferson-Morgan SD	25	10	15
Southeastern Greene SD	11	4	7
West Greene SD	22	14	8
Huntingdon County	119	66	53
Huntingdon Area SD	36	21	15
Juniata Valley SD	28	12	16
Mount Union Area SD	23	10	13
Southern Huntingdon Co SD	32	23	9
Indiana County	158	76	82
Blairsville-Saltsburg SD	39	17	22
Homer-Center SD	18	9	9
Indiana Area SD	32	17	15
Marion Center Area SD	23	10	13
Penns Manor Area SD	13	6	7
Purchase Line SD	13	7	6
United SD	20	10	10
Jefferson County	93	40	53
Brockway Area SD	19	4	15
Brookville Area SD	22	8	14
Punxsutawney Area SD	52	28	24
Juniata County	140	55	85
Juniata County SD	140	55	85
Lackawanna County	191	91	100
Abington Heights SD	25	11	14
Carbondale Area SD	6	3	3
Dunmore SD	6	3	3
Lakeland SD	18	10	8
Mid Valley SD	14	0	14
North Pocono SD	45	26	19
Old Forge SD	5	4	1
Riverside SD	6	3	3
Scranton City SD	52	26	26
Valley View SD	14	5	9
Lancaster County	2,653	1,306	1,347
Cocalico SD	193	69	97
Columbia Borough SD	9	6	3
Conestoga Valley SD	155	79	76
Donegal SD	109	50	59
Eastern Lancaster Co SD	287	159	128
Elizabethtown Area SD	216	103	113
Ephrata Area SD	191	98	93
Hempfield SD	143	47	96
Lampeter-Strasburg SD	138	77	61

APPENDIX A

HOME EDUCATION STUDENTS BY SCHOOL DISTRICT AND AGE GROUP
2003-04

	TOTAL	AGES 5-11	AGES 12-18+
Lancaster SD	97	46	51
Manheim Central SD	234	113	121
Manheim Township SD	85	44	41
Penn Manor SD	261	122	139
Pequea Valley SD	142	67	75
Solanco SD	189	88	101
Warwick SD	204	111	93
Lawrence County	136	51	85
Ellwood City Area SD	26	11	15
Laurel Area SD	11	2	9
Mohawk Area SD	17	3	14
Neshannock Township SD	7	2	5
New Castle Area SD	39	15	24
Shenango Area SD	10	2	8
Union Area SD	5	3	2
Wilmington Area SD	21	13	8
Lebanon County	528	235	293
Annville-Cleona SD	50	19	31
Cornwall-Lebanon SD	113	55	58
Eastern Lebanon County SD	141	66	75
Lebanon SD	30	11	19
Northern Lebanon SD	103	47	56
Palmyra Area SD	91	37	54
Lehigh County	484	232	252
Allentown City SD	84	43	41
Catasauqua Area SD	9	4	5
East Penn SD	131	63	68
Northern Lehigh SD	22	7	15
Northwestern Lehigh SD	58	31	27
Parkland SD	77	41	36
Salisbury Township SD	22	11	11
Southern Lehigh SD	64	26	38
Whitehall-Coplay SD	17	6	11
Luzerne County	440	183	257
Crestwood SD	34	17	17
Dallas SD	31	15	16
Greater Nanticoke Area SD	44	15	29
Hanover Area SD	6	1	5
Hazleton Area SD	119	53	66
Lake Lehman SD	32	15	17
Northwest Area SD	36	17	19
Pittston Area SD	12	7	5
Wilkes-Barre Area SD	70	26	44
Wyoming Area SD	27	11	16
Wyoming Valley West SD	29	6	23
Lycoming County	333	141	192
East Lycoming SD	14	11	3
Jersey Shore Area SD	75	37	38
Loyalsock Township SD	16	6	10

APPENDIX A

HOME EDUCATION STUDENTS BY SCHOOL DISTRICT AND AGE GROUP
2003-04

	TOTAL	AGES 5-11	AGES 12-18+
Montgomery Area SD	17	6	11
Montoursville Area SD	72	29	43
Muncy SD	18	8	10
South Williamsport SD	17	6	11
Williamsport Area SD	104	38	66
McKean County	85	27	58
Bradford Area SD	38	13	25
Kane Area SD	7	3	4
Otto-Eldred SD	8	1	7
Port Allegany SD	9	3	6
Smethport Area SD	23	7	16
Mercer County	239	113	126
Commodore Perry SD	11	8	3
Farrell Area SD	9	6	3
Greenville Area SD	30	11	19
Grove City Area SD	53	29	24
Hermitage SD	20	7	13
Jamestown Area SD	10	3	7
Lakeview SD	28	14	14
Mercer Area SD	32	14	18
Reynolds SD	7	5	2
Sharon City SD	9	3	6
Sharpsville Area SD	8	3	5
West Middlesex Area SD	22	10	12
Mifflin County	135	47	88
Mifflin County SD	135	47	88
Monroe County	480	206	274
East Stroudsburg Area SD	97	37	60
Pleasant Valley SD	118	55	63
Pocono Mountain SD	202	90	112
Stroudsburg Area SD	63	24	39
Montgomery County	1,037	488	549
Abington SD	60	33	27
Bryn Athyn SD	6	6	0
Cheltenham Township SD	35	13	22
Colonial SD	17	8	9
Hatboro-Horsham SD	38	15	23
Jenkintown SD	6	3	3
Lower Merion SD	26	11	15
Lower Moreland Twp SD	19	8	11
Methacton SD	48	21	27
Norristown Area SD	55	22	33
North Penn SD	120	62	58
Perkiomen Valley SD	44	18	26
Pottsgrove SD	41	24	17
Pottstown SD	39	23	16
Souderton Area SD	210	80	130
Spring-Ford Area SD	47	21	26
Springfield Township SD	15	11	4

APPENDIX A

HOME EDUCATION STUDENTS BY SCHOOL DISTRICT AND AGE GROUP
2003-04

	TOTAL	AGES 5-11	AGES 12-18+
Upper Dublin SD	23	13	10
Upper Merion Area SD	27	11	16
Upper Moreland Twp SD	29	18	11
Upper Perkiomen SD	93	47	46
Wissahickon SD	39	20	19
Montour County	37	18	19
Danville Area SD	37	18	19
Northampton County	426	168	258
Bangor Area SD	48	14	34
Bethlehem Area SD	135	58	77
Easton Area SD	92	25	67
Nazareth Area SD	39	18	21
Northampton Area SD	45	22	23
Pen Arqyl Area SD	29	12	17
Saucon Valley SD	24	11	13
Wilson Area SD	14	8	6
Northumberland County	185	74	111
Line Mountain SD	38	17	21
Milton Area SD	28	14	14
Mount Carmel Area SD	21	7	14
Shamokin Area SD	27	10	17
Shikellamy SD	26	8	18
Warrior Run SD	45	18	27
Perry County	301	127	174
Greenwood SD	42	24	18
Newport SD	49	15	34
Susquenita SD	100	42	58
West Perry SD	110	46	64
Philadelphia County	615	247	368
Philadelphia City SD	615	247	368
Pike County	103	46	57
Delaware Valley SD	103	46	57
Potter County	89	42	47
Austin Area SD	0	0	0
Coudersport Area SD	29	12	17
Galeton Area SD	14	6	8
Northern Potter SD	30	14	16
Oswayo Valley SD	16	10	6
Schuylkill County	218	98	120
Blue Mountain SD	39	22	17
Mahanoy Area SD	6	3	3
Minersville Area SD	11	6	5
North Schuylkill SD	16	5	11

APPENDIX A

HOME EDUCATION STUDENTS BY SCHOOL DISTRICT AND AGE GROUP
2003-04

	TOTAL	AGES 5-11	AGES 12-18+
Pine Grove SD	44	19	25
Pottsville Area SD	16	10	6
Saint Clair Area SD	3	1	2
Schuylkill Haven Area SD	9	3	6
Shenandoah Valley SD	2	0	2
Tamaqua Area SD	37	18	19
Tri-Valley SD	5	1	4
Williams Valley SD	30	10	20
Snyder County	139	53	86
Midd-West SD	104	37	67
Selinsgrove Area SD	35	16	19
Somerset County	222	93	129
Berlin Brothersvalley SD	8	3	5
Conemaugh Township Area SD	20	9	11
Meyersdale Area SD	17	10	7
North Star SD	36	12	24
Rockwood Area SD	32	16	16
Salisbury-Elk Lick SD	17	10	7
Shade-Central City SD	7	0	7
Shanksville-Stony Creek SD	14	5	9
Somerset Area SD	42	17	25
Turkeyfoot Valley Area SD	17	7	10
Windber Area SD	12	4	8
Sullivan County	29	12	17
Sullivan County SD	29	12	17
Susquehanna County	197	118	79
Blue Ridge SD	13	5	8
Elk Lake SD	37	20	17
Forest City Regional SD	14	7	7
Montrose Area SD	88	56	32
Mountain View SD	33	24	9
Susquehanna Community SD	12	6	6
Tioga County	195	79	116
Northern Tioga SD	53	23	30
Southern Tioga SD	84	34	50
Wellsboro Area SD	58	22	36
Union County	134	73	61
Lewisburg Area SD	38	22	16
Mifflinburg Area SD	96	51	45
Venango County	237	91	146
Cranberry Area SD	32	13	19
Franklin Area SD	58	21	37
Oil City Area SD	40	16	24
Titusville Area SD	91	33	58
Valley Grove SD	16	8	8

APPENDIX A

HOME EDUCATION STUDENTS BY SCHOOL DISTRICT AND AGE GROUP
2003-04

	TOTAL	AGES 5-11	AGES 12-18+
Warren County	131	49	82
Warren County SD	131	49	82
Washington County	318	128	190
Avella Area SD	6	1	5
Bentworth SD	11	7	4
Bethlehem-Center SD	9	2	7
Burgettstown Area SD	19	10	9
California Area SD	7	5	2
Canon-McMillan SD	37	17	20
Charleroi SD	14	4	10
Chartiers-Houston SD	4	1	3
Fort Cherry SD	32	12	20
McGuffey SD	36	9	27
Peters Township SD	35	22	13
Ringgold SD	42	14	28
Trinity Area SD	37	13	24
Washington SD	29	11	18
Wayne County	128	47	81
Wallenpaupack Area SD	39	16	23
Wayne Highlands SD	53	15	38
Western Wayne SD	36	16	20
Westmoreland County	605	271	334
Belle Vernon Area SD	16	4	12
Burrell SD	26	11	15
Derry Area SD	29	10	19
Franklin Regional SD	58	30	28
Greater Latrobe SD	39	8	31
Greensburg Salem SD	27	16	11
Hempfield Area SD	58	25	33
Jeanette City SD	11	1	10
Kiski Area SD	50	20	30
Ligonier Valley SD	61	30	31
Monessen City SD	8	0	8
Mount Pleasant Area SD	19	8	11
New Kensington-Arnold SD	37	20	17
Norwin SD	53	27	26
Penn-Trafford SD	55	36	19
Southmoreland SD	30	15	15
Yough SD	28	10	18
Wyoming County	110	59	51
Lackawanna Trail SD	28	17	11
Tunkhannock Area SD	82	42	40

APPENDIX A

HOME EDUCATION STUDENTS BY SCHOOL DISTRICT AND AGE GROUP
2003-04

	TOTAL	AGES 5-11	AGES 12-18+
York County	1,569	731	838
Central York SD	74	32	42
Dallastown Area SD	90	46	44
Dover Area SD	130	69	61
Eastern York SD	79	38	41
Hanover Public SD	36	16	20
Northeastern York SD	74	43	31
Northern York County SD	125	58	67
Red Lion Area SD	166	75	91
South Eastern SD	126	42	84
South Western SD	65	30	35
Southern York County SD	84	32	52
Spring Grove Area SD	161	64	97
West Shore SD	177	95	82
West York Area SD	62	36	26
York City SD	84	35	49
York Suburban SD	36	20	16

APPENDIX B

GLOSSARY

ACT 169 OF 1988 - Created a home education category designed to permit parents, guardians and legal custodians to conduct a home education program for their children.

CURRICULAR MATERIALS - Copies of the planned courses, textbooks and other materials appropriate to the student's age and grade level that are available to be borrowed from the school district.

CURRICULAR PROGRAMS - A series of planned instruction that is coordinated and articulated and implemented in a manner designed to result in the achievement by all students of specific knowledge and skills and the application of this knowledge.

EXTRACURRICULAR ACTIVITIES - Officially approved organized student activities connected with the school and usually carrying no academic credit.

HOME EDUCATION AFFIDAVIT - A notarized document filed by a child's parent, guardian or legal custodian. It contains the name of the home education supervisor, each child by name and age, as well as the address and phone number of the program site. The affidavit must contain an outline of proposed educational objectives, by subject area, for the subjects required by law. These subjects are to be offered in the English language. It will show evidence of the child's immunization and that the child has received health services. The supervisor must provide assurance that the education program meets the requirements of Act 169 of 1988, as well as certify that all adults living in the home and other custodial adults have not been convicted of a criminal offense listed in Section III(E) of Act 34 of 1985 within the last five years preceding the date of submission.

HOME EDUCATION SUPERVISOR - The parent, guardian or legal custodian who has broad responsibility for the education of the child. This person must hold a high school diploma or its equivalent.

HOME EDUCATION EVALUATOR - A teacher or administrator who has at least two years of experience in grading subjects. This includes evaluating classwork, homework, quizzes, classwork-based tests and prepared tests related to classwork subject matter.

APPENDIX C

SOURCES

1. Home Education Report (PDE-4097)
2. *Public, Private and Nonpublic Schools: Enrollments, 2003-04*, Pennsylvania Department of Education, Division of Data Services, 2004.