

# Educational and Demographic Profile

## Riverside County



*This profile uniquely presents a variety of educational and socioeconomic information for Riverside County, nearby counties, and the state.*

*The profile highlights the relationship between various factors that affect the economic well-being of individuals and communities. This presentation of information provides a framework for enhanced communication and collaboration between the myriad agencies, at both the state and local level, that have responsibility for education, economic development, workforce training, or social services.*

*The relationship between educational attainment and income is clearly depicted by the maps on pages 4 and 10. These maps, along with the other data presented in the profile, unmistakably show how socioeconomic conditions vary from place to place in California.*

*This geographic variation must be taken into consideration in the development, implementation, and evaluation of policies to give Californians better opportunities to succeed in school and in life.*

### Highlights for the county

- 31% of recent high school graduates completed college preparatory courses, compared to 35% statewide. See **Preparation for College**, page 2.
- 14% of recent high school graduates entered CSU or UC, compared to 18% statewide. See **College-Going**, page 3.
- 17% of the county population has a Bachelor's or higher-level degree, compared to 27% statewide. See **Educational Attainment**, page 6.
- 4.8% of children in the county are not proficient in English, compared to 5.8% statewide. See **Immigration and Language Skills**, page 12.
- Median household income in the county is \$42,900, compared to \$47,500 for the state as a whole. See **Income and Poverty**, page 11.
- Riverside County has 14 degree-granting institutions. See **Local Colleges and Universities**, page 14.



**California Postsecondary  
Education Commission**

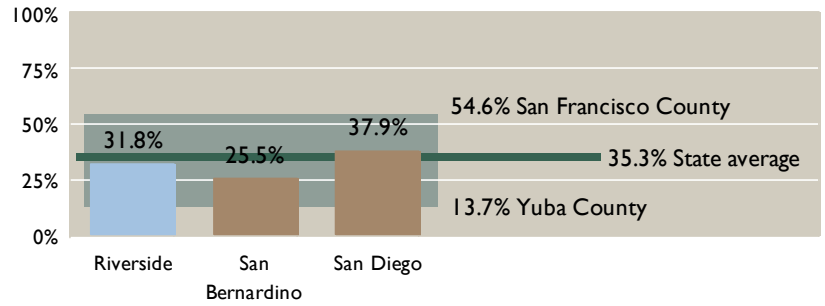
# Preparation for College

## Percent of recent public high school graduates completing college preparatory courses

Three-year average 1999–2002

Values are based on course completions reported by schools to the California Department of Education

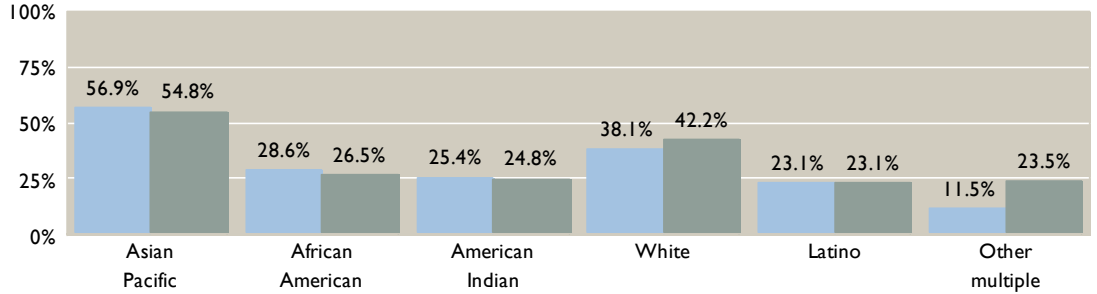
Teal band shows the range for California counties



## Completion rates by race and ethnicity

Rates are shown only for ethnic groups having more than 50 graduates in the three-year period

■ Riverside County  
■ California



## Trends 1985-2002

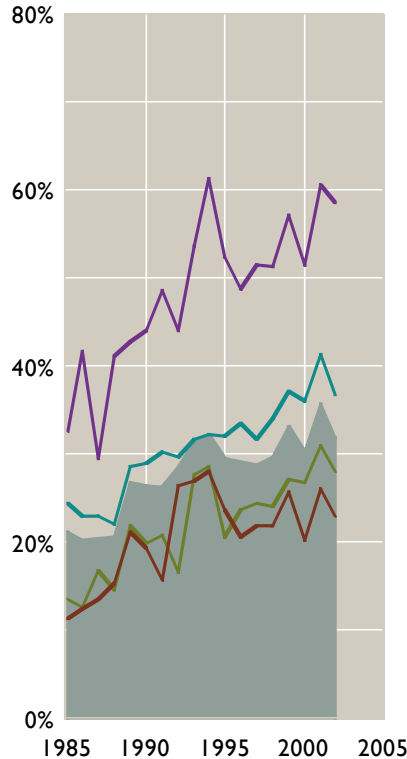
College preparation rates are shown only for ethnic groups having more than 50 graduates each year

— American Indian  
— Asian, Pacific Islander  
— Black, African-American  
— White  
— Latino

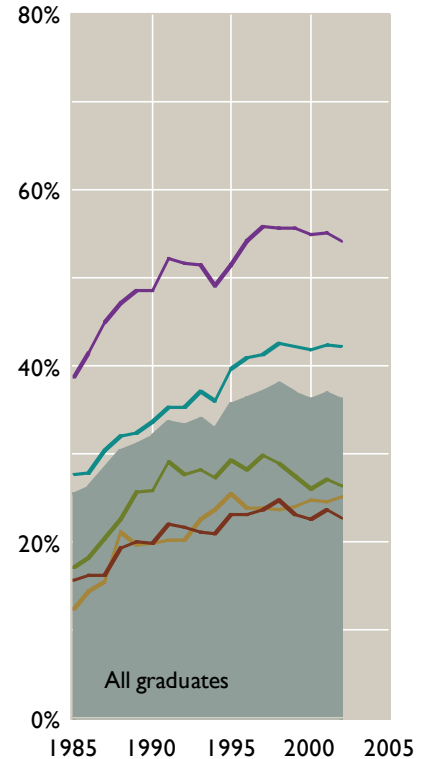
Green shaded area shows rates for all graduates

All data on this page from CPEC

### Riverside County



### California



*Statewide, the proportion of high school students taking college preparatory courses increased steadily until the late 1990s.*

*The general increase in college preparation rates has not closed the gap between ethnic groups. Rates of Latinos, American Indians and African-Americans are significantly lower than the rates for Whites and Asians. The college preparation rate for African-American students has fallen in recent years.*

# College-Going

## College entry rates

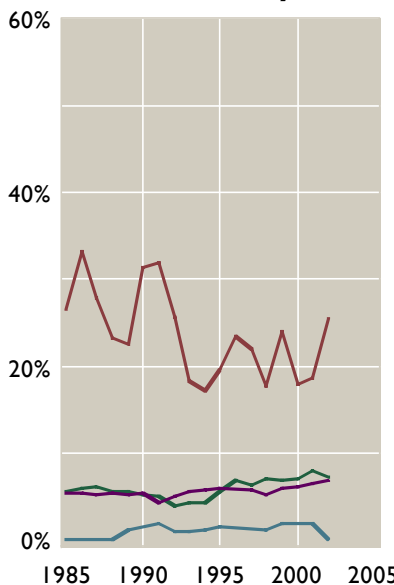
Percent of recent public high school graduates entering colleges and universities  
Three-year average, 1999–2002

	Riverside County	California
Community colleges	21%	32%
CSU	7%	10%
UC	7%	8%
Independents	1%	1%
<b>Total</b>	<b>36%</b>	<b>50%</b>

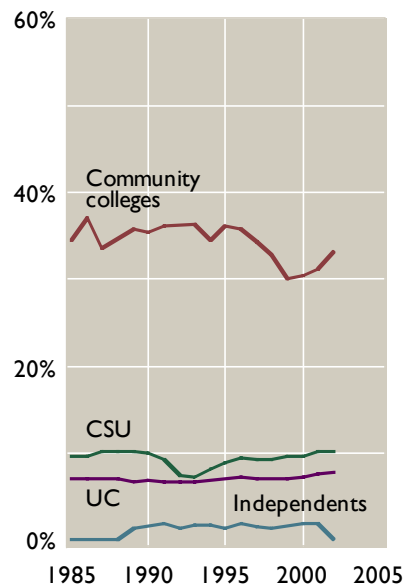
Data for independent colleges and universities is incomplete. Total excludes graduates entering other degree-granting institutions. See back page for a description of the postsecondary education systems.

Data from CPEC

### Riverside County



### California



## College choices

Total entrants from Riverside County high schools, 1999–2002

Top 6 community colleges and top 6 universities shown. A college in the top 6 is not shown if it takes less than 1% of the college entrants from the county.

The total college entrants for the county does not include out-of-state colleges and colleges in California that have not reported enrollments to CPEC.

**Total entrants, all colleges** 17,160 100%

### Community colleges

Riverside City College	4,988	29%
Mt. San Jacinto College	1,960	11%
College of the Desert	1,557	9%
Palo Verde College	178	1%
Other community colleges	1,254	7%

### Universities

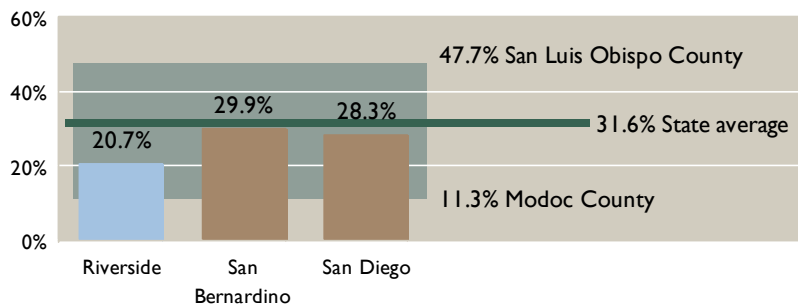
UC Riverside	1,625	9%
CSU San Bernardino	930	5%
CSU Fullerton	655	4%
Cal Poly, Pomona	435	3%
San Diego State University	421	2%
Other universities	3,157	18%

## Community college entry rates

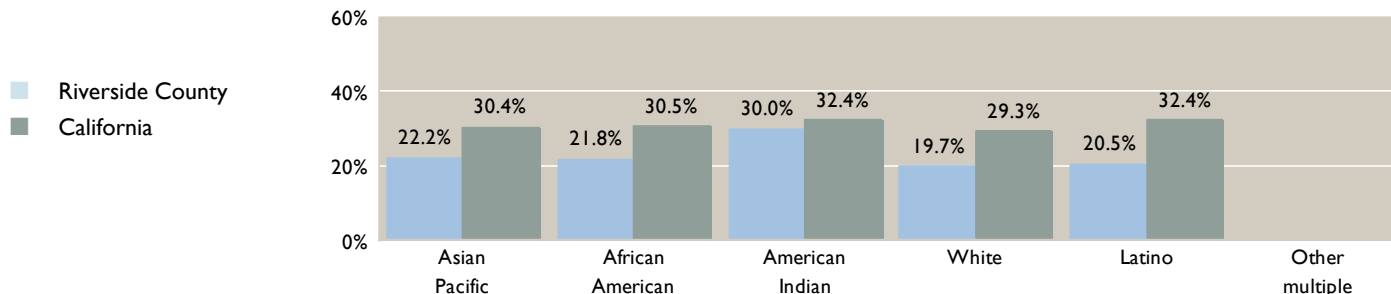
Percent of recent high school graduates entering community colleges

Three-year average, 1999–2002

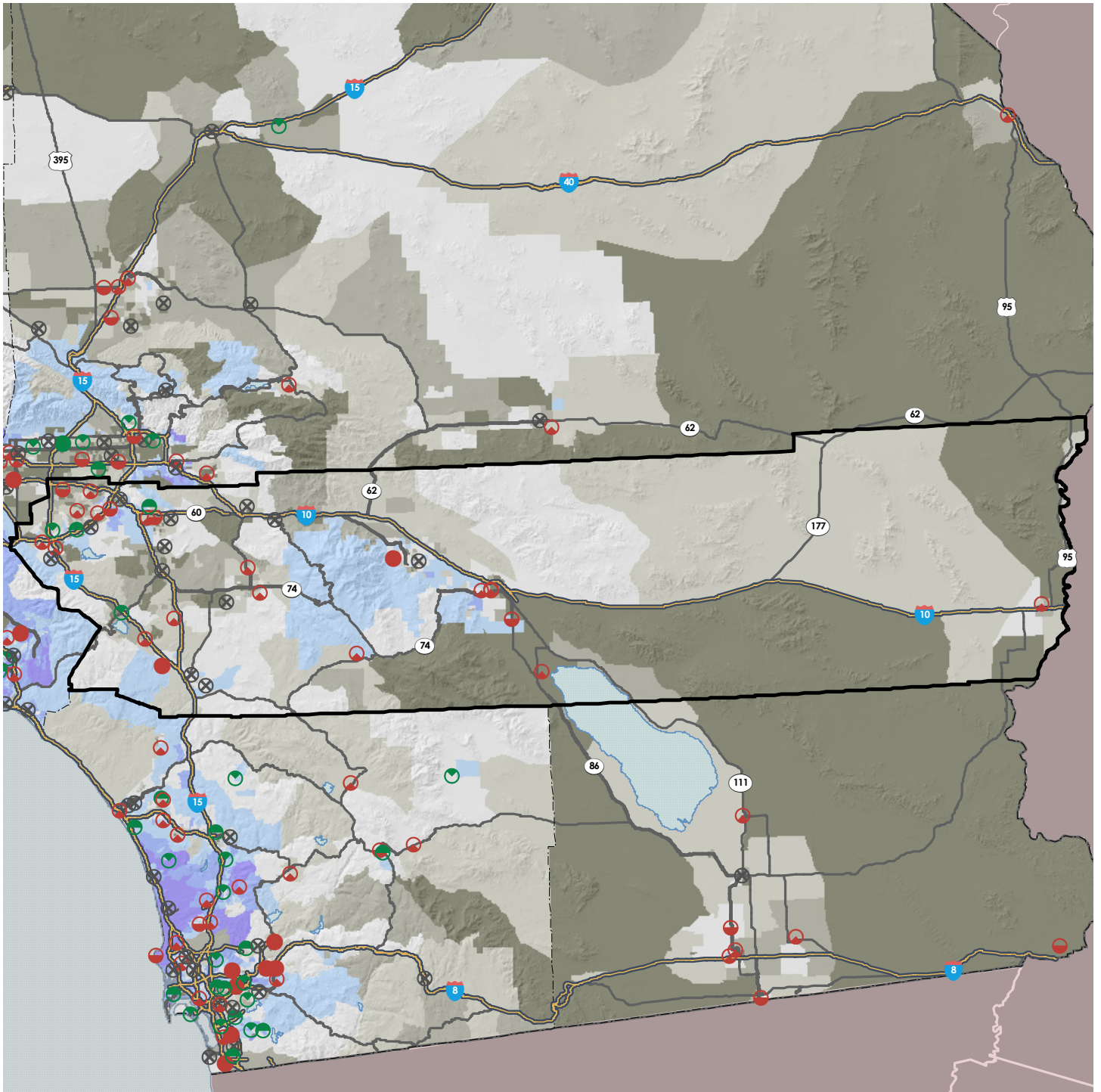
Teal band shows the range for California counties



### Rates by race and ethnicity



# University-Going Rates for Public High Schools



## University-Going Rates

Percent of graduates entering CSU and UC, 1999–2002

- 35% and over
- 25 to 35%
- 20 to 25%
- ⊗ 15 to 20%
- ⊕ 10 to 15%
- ⊖ 5 to 10%
- 0 to 5%

Data from CPEC

Symbols are shown for public high schools with 50 or more graduates, 1999–2002.

## University Education

Percent of population aged 25 or older with a baccalaureate, graduate, or professional degree

- over 60%
- 45 to 60%
- 30 to 45%
- 18 to 30%
- 10 to 18%
- 5 to 10%
- 0 to 5%

Data from 2000 U.S. Census

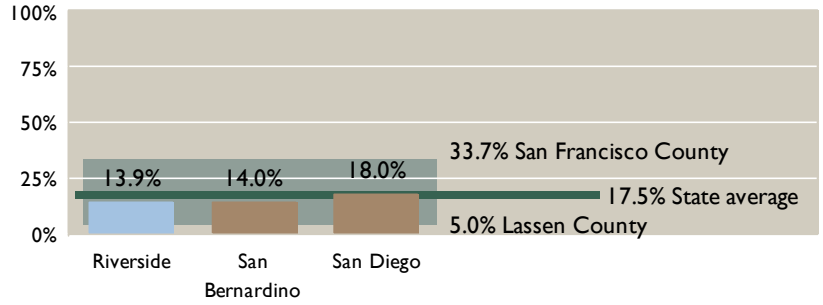
*As in all parts of the state, university-going rates are low at high schools in areas where the adult population tends not to be university educated.*

# College-Going

## University entry rates

Percent of recent public high schools graduates entering CSU and UC. Three-year average, 1999–2002

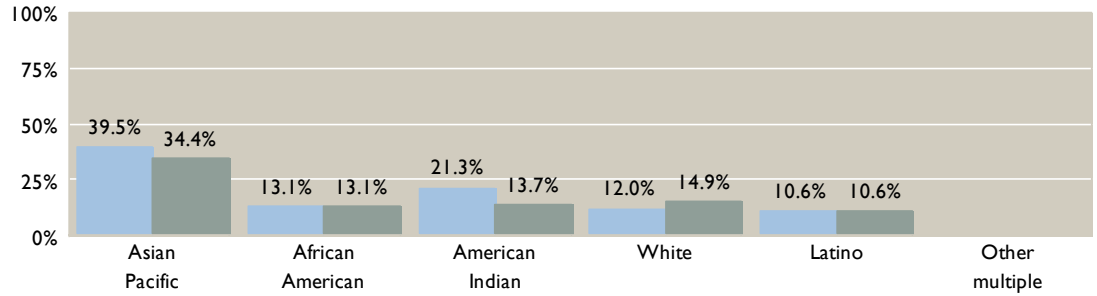
Teal band shows the range for California counties



## Entry rates by race and ethnicity

Rates are shown only for ethnic groups having more than 50 graduates in the three-year period

■ Riverside County  
■ California



## Trends 1985-2002

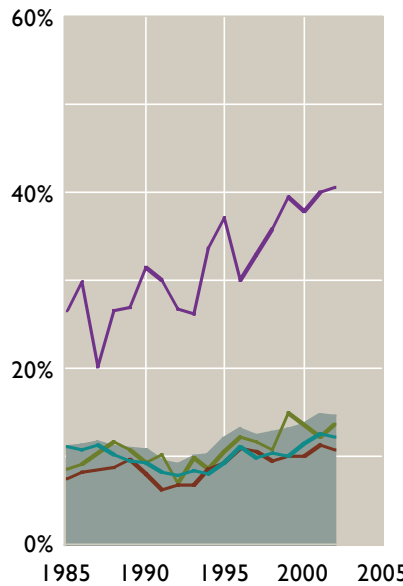
Rates are shown only for ethnic groups having more than 50 graduates each year

— American Indian  
— Asian, Pacific Islander  
— Black, African-American  
— White  
— Latino

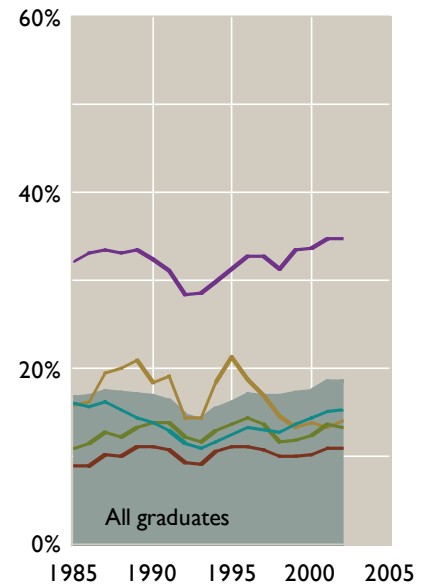
Figures for American Indians include Alaska Natives

Green shaded area shows rates for all graduates

### Riverside County



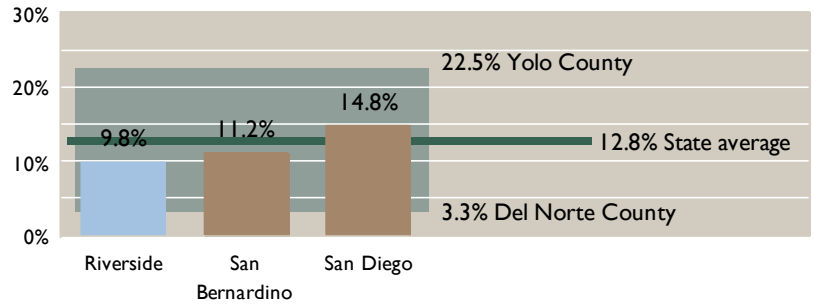
### California



# Older students

## Percent of population aged 25 to 34 attending a college or university

Teal band shows the range for California counties

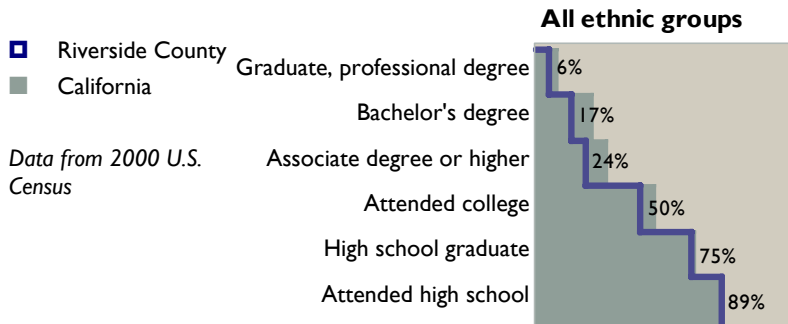


*A significant number of California students are older than the traditional college age range. Many of these students attend college while working and supporting a family. Statewide, 1,384,000 students aged 25 and over are enrolled at universities and colleges reporting enrollment by age to CPEC. Of these, 85% attend community colleges and 11% attend the California State University.*

## Educational Attainment

### Education pyramid for persons 25 years and older

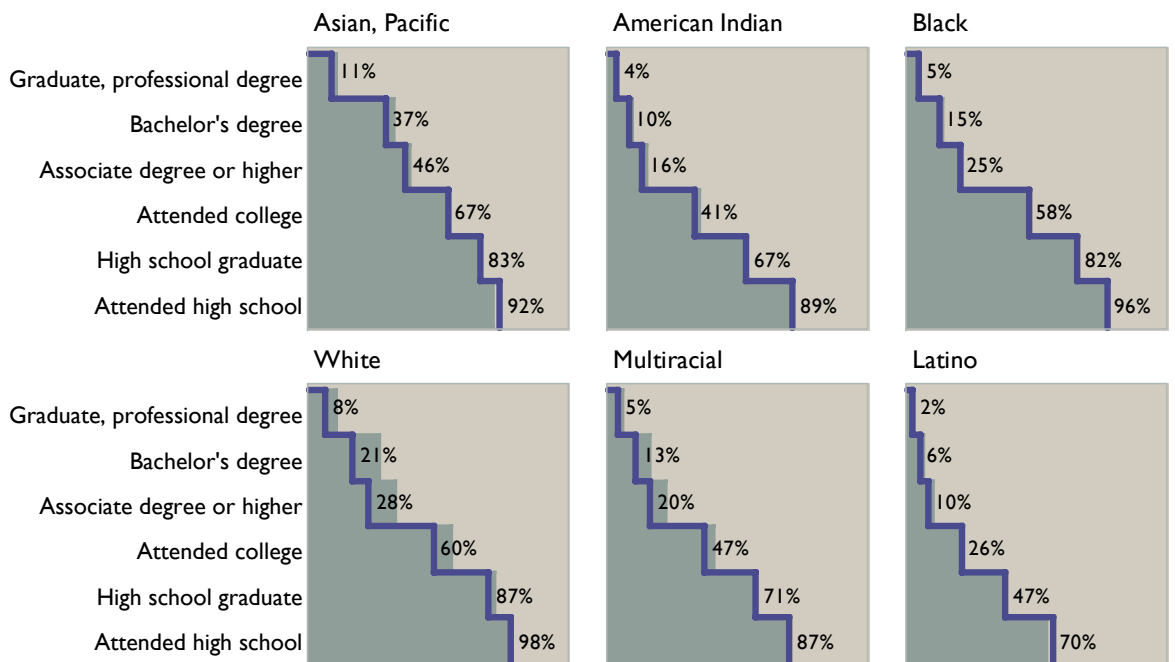
Each step on the pyramid shows the percentage of people 25 years and older who have attained or exceeded the specified level of education



A thinner pyramid indicates a less-well educated population. If the blue line for a given ethnic group is inside the shaded background, the district's population is less well educated than the state as a whole.

If the blue line for a given ethnic group is outside the shaded background, the district's population is better educated than the state as a whole.

The numbers on the pyramids are for Riverside County.

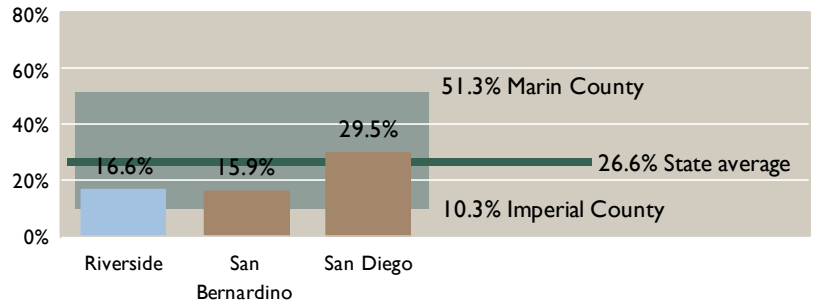




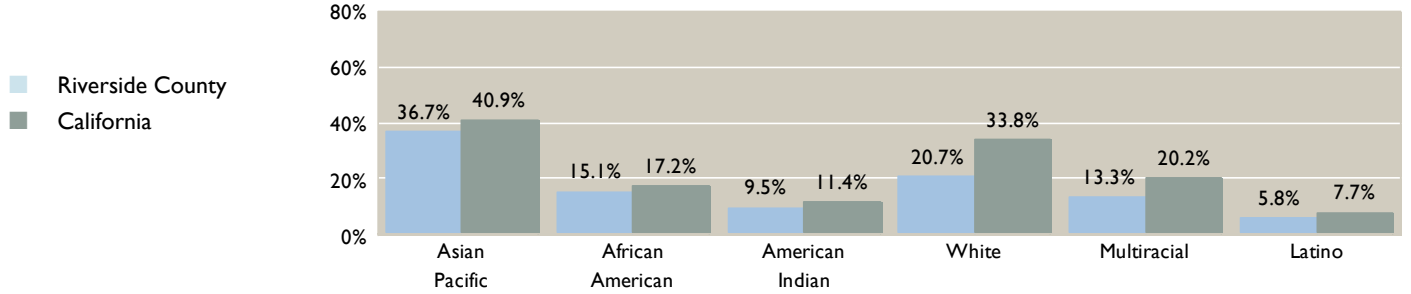
# Educational Attainment

## Percent of population with a bachelor's or higher degree

Percentage of people 25 and older with a graduate or professional degree, or a bachelor's degree  
Teal band shows the range for California counties

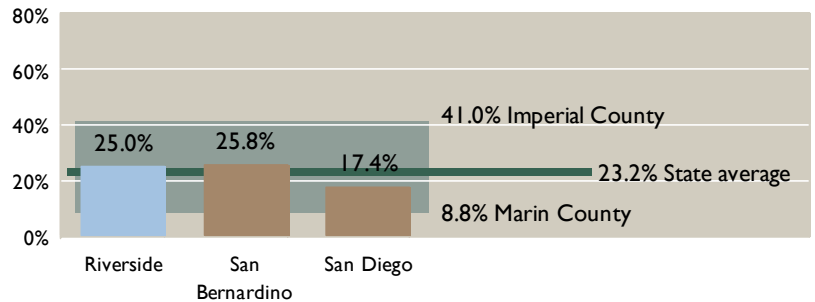


### Percent by race and ethnicity

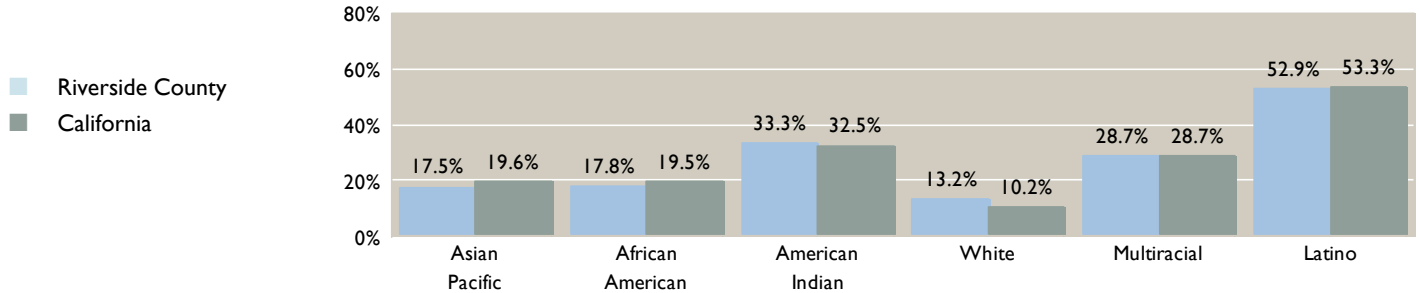


## Percent of population with no college

Percentage of people 25 and older with no education above the high school level  
Teal band shows the range for California counties

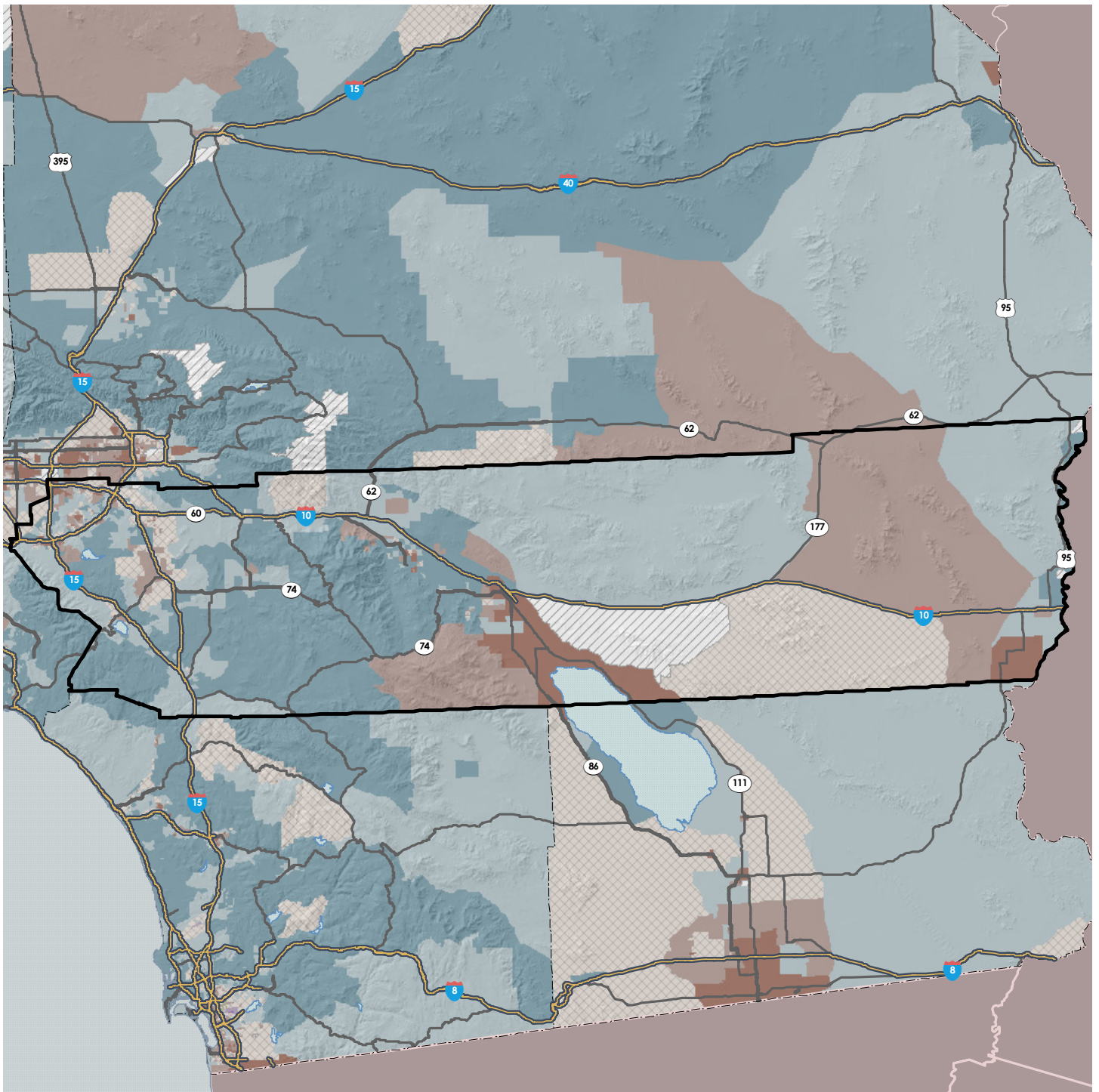


### Percent by race and ethnicity



*Education attainment varies significantly from place to place in California. Areas where the educational attainment of the adult population is low tend to have low college-going rates. As a result, existing inequities in income and opportunities for advancement tend to persist.*

# Racial and Ethnic Composition



## Racial and Ethnic Composition

Population of Census Block group

- More than 70% Latino
- More than 50% Latino
- More than 70% African American
- More than 50% African American
- More than 70% White
- More than 50% White
- More than 70% Asian & Pacific
- More than 50% Asian & Pacific
- No race or ethnicity predominates
- Area with no residents

## County population

<b>Total</b>	<b>1,545,390</b>
Asian	53,230
Pacific Islander	2,990
African American	92,190
American Indian	10,950
White	787,320
Other race	2,230
Multiracial	37,160
Latino	559,330

All data from 2000 Census



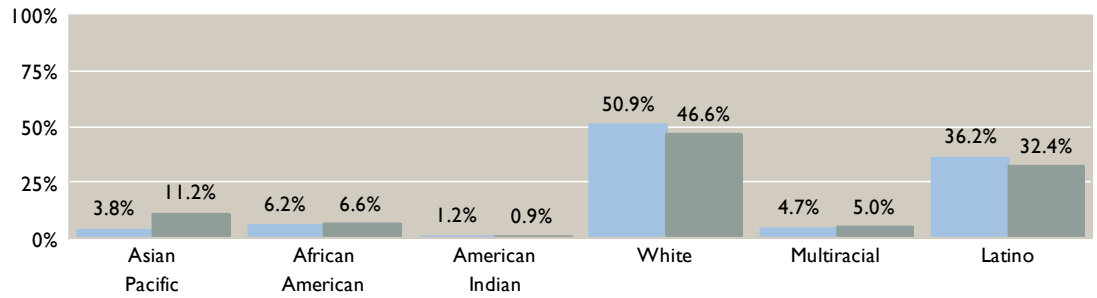
# Demographics

## Racial and Ethnic Composition

Percent of the population in each racial and ethnic group

Riverside County  
California

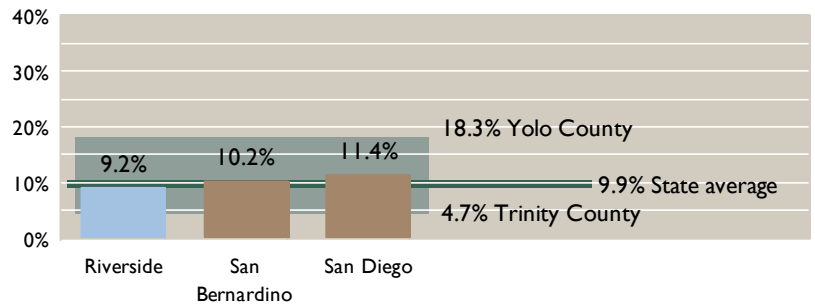
Data from 2000 U.S. Census



## Traditional college age population

Percent of total population aged 18–24

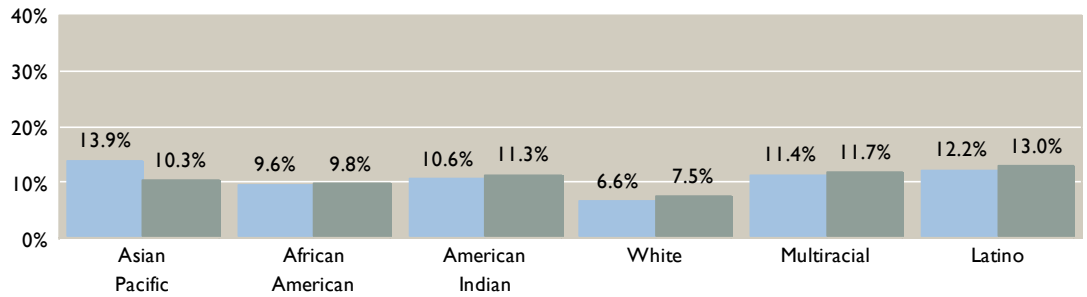
Teal band shows the range for California counties



## Percent of the population in each racial and ethnic group who are aged 18–24

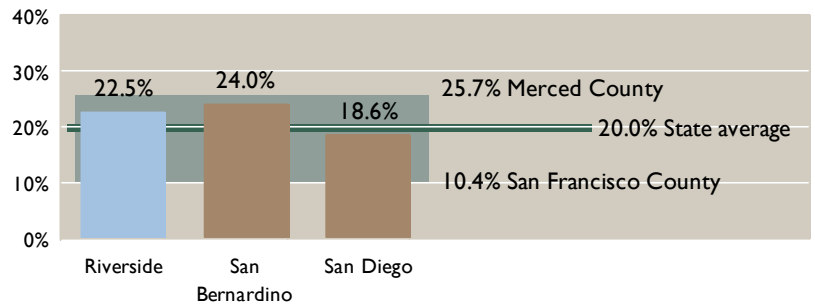
Riverside County  
California

Data from 2000 U.S. Census



## School age population

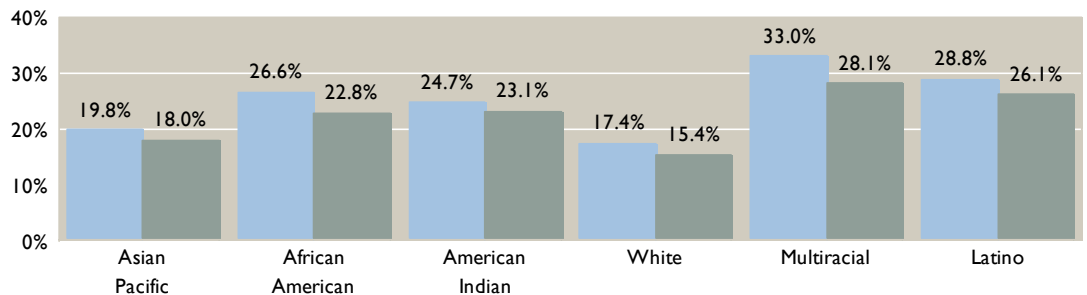
Percent of the total population aged 5–17



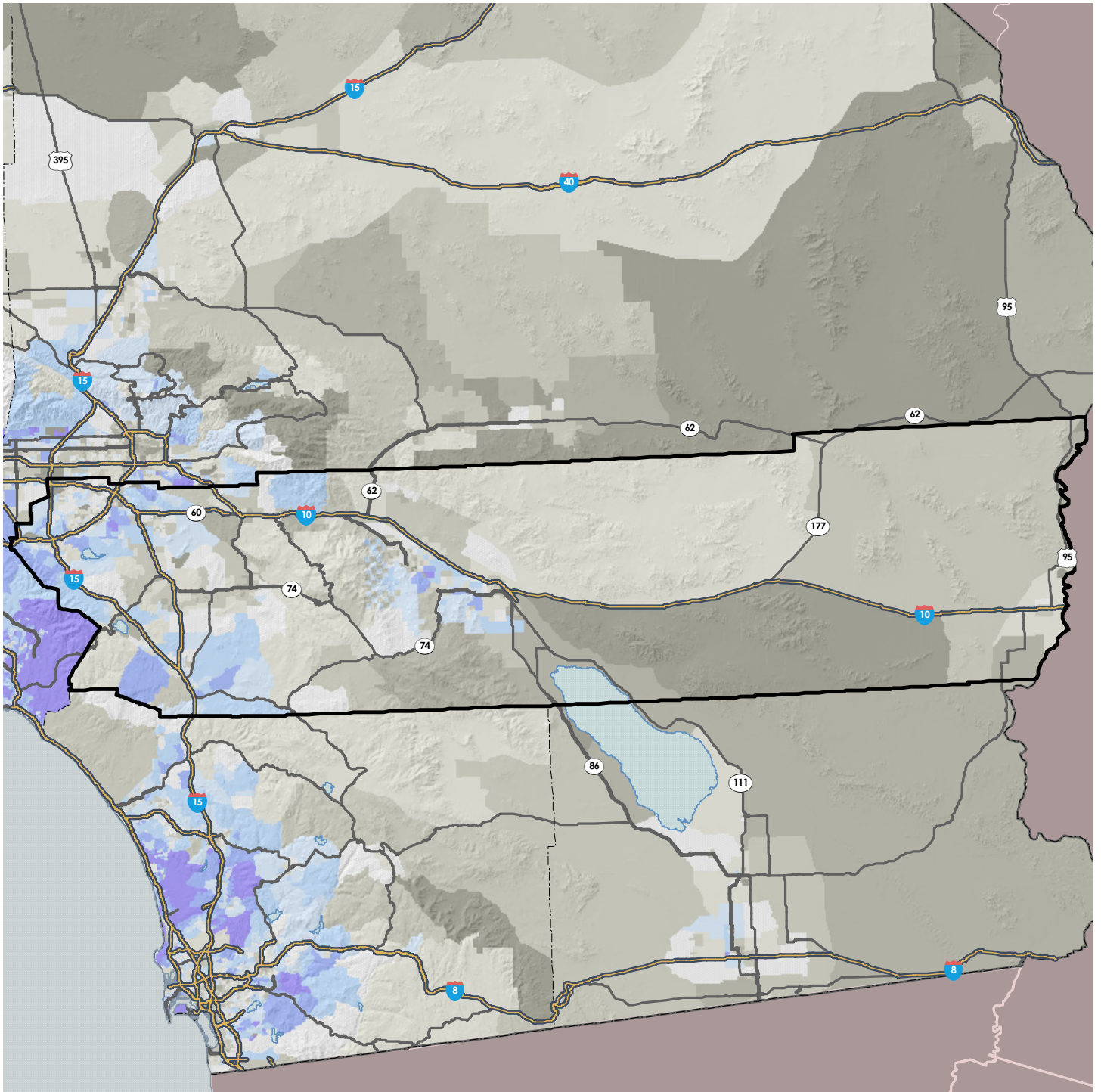
## Percent of the population in each racial and ethnic group who are aged 5–17

Riverside County  
California

Data from 2000 U.S. Census

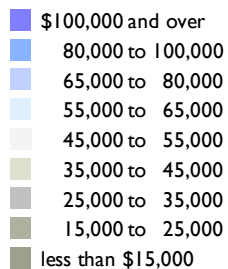


# Median Household Income



## Median Household Income

Data from 2000 U.S. Census



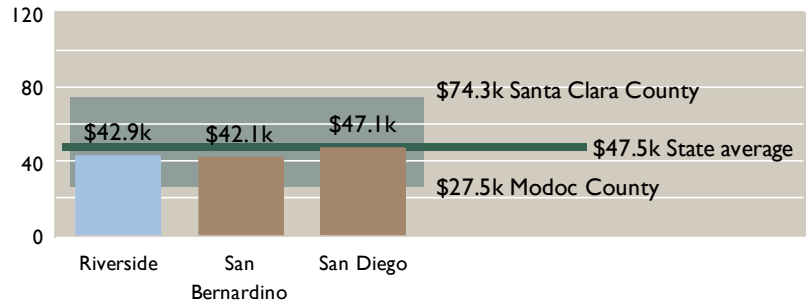
*Compare with the map on page 4. The pattern of income distribution is strongly related to the pattern of educational attainment.*

# Income and Poverty

## Median Household Income

Thousand dollars

Teal band shows the range for California counties

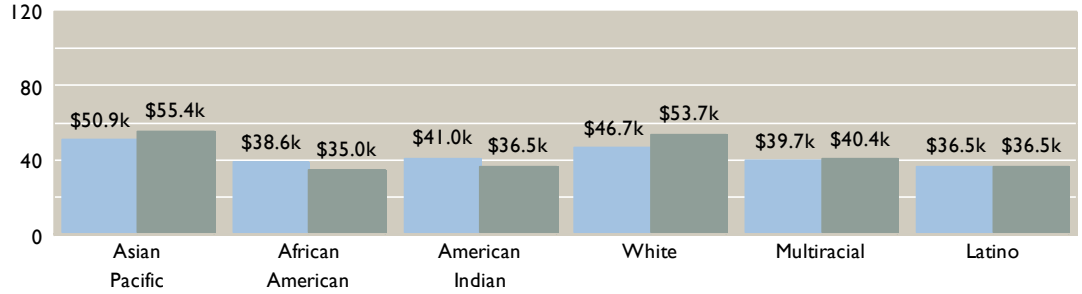


## Median household income by race and ethnicity

Thousand dollars

■ Riverside County  
■ California

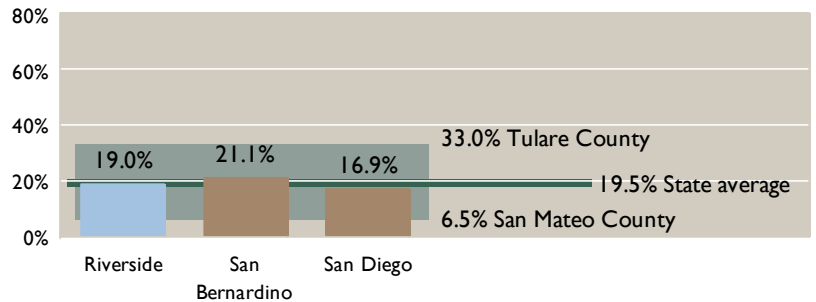
Data from 2000 U.S. Census



## Percent of children living in poverty

Percent of children living in families whose income is below the federal poverty threshold

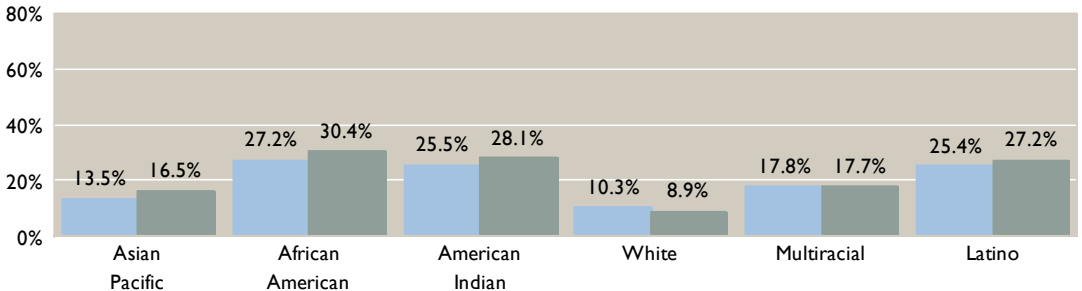
The poverty threshold depends on the total number of people in the family and the number of children under 18. For example, the poverty threshold for a five-person family with three children under 18 is \$19,992.



## Percent by race and ethnicity

■ Riverside County  
■ California

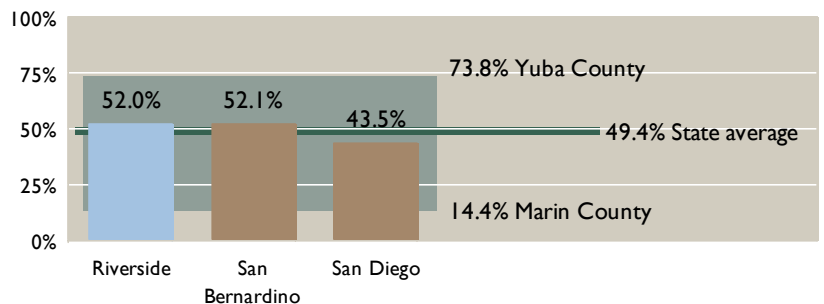
Data from 2000 U.S. Census



## Percent of children eligible for school lunch program

Teal band shows the range for California counties

Data from CPEC



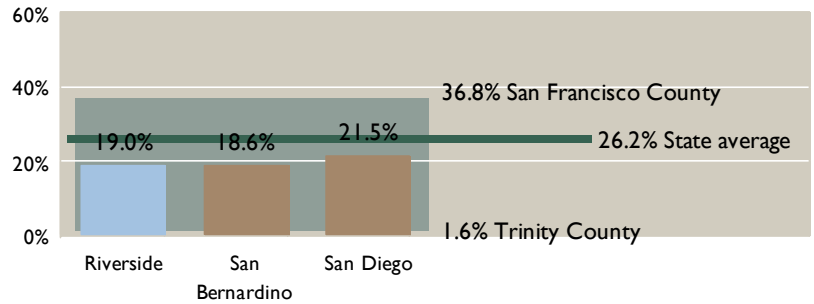
Data are not available for racial and ethnic groups

# Immigration and Language Skills

## Foreign-born population

Percent of the county population who are foreign-born  
Teal band shows the range for California counties

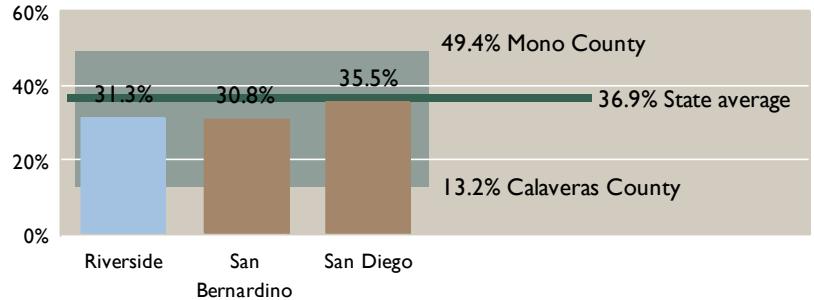
Data from 2000 U.S. Census



## Recent Immigrants

Percent of the foreign-born-population who entered the United States in 1990 and later

Data from 2000 U.S. Census



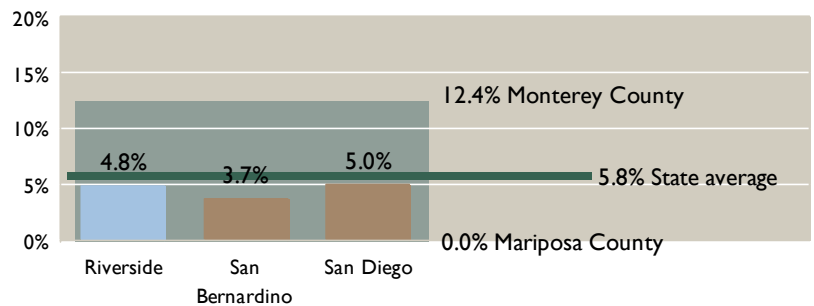
## Lack of English Proficiency

Percent of children aged 5–17 who speak another language at home and speak English “not well” or “not at all”

Riverside County has a total of 347,600 children aged 5–17. Of these, 16,800 are not proficient in English. The language spoken at home by these children is as follows:

	Riverside County	California
Spanish	95%	84%
Asian & Pacific languages	3%	12%
Other languages	2%	4%

Data from 2000 U.S. Census



Data are not available for racial and ethnic groups

## Prison-going

### Prison population

	Riverside County		California	
	Number	Pct	Number	Pct
African American	2,140	2.4%	47,800	2.0%
Latino	3,840	0.7%	56,600	0.5%
White	3,230	0.3%	46,500	0.3%
Other ethnicity	320	0.3%	8,800	0.2%
Total	9,530	0.6%	159,700	0.4%

The prison population is the number of prisoners committed from locations in Riverside County, regardless of where they are incarcerated.

The percentages are the prison population as a percentage of the county population.

2003 Prison population from California Department of Corrections.

Rates calculated by CPEC using 2003 county population estimates from the Department of Finance

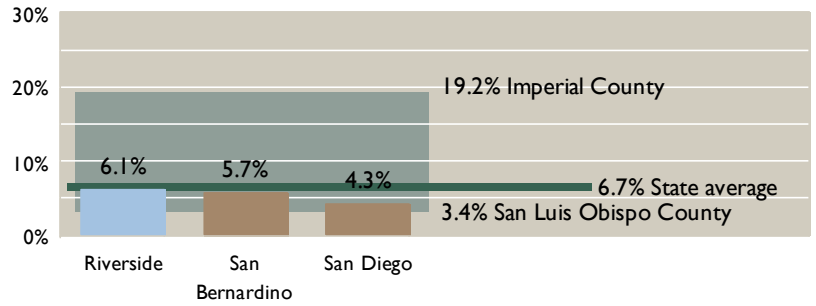
# Employment

## Unemployment rate

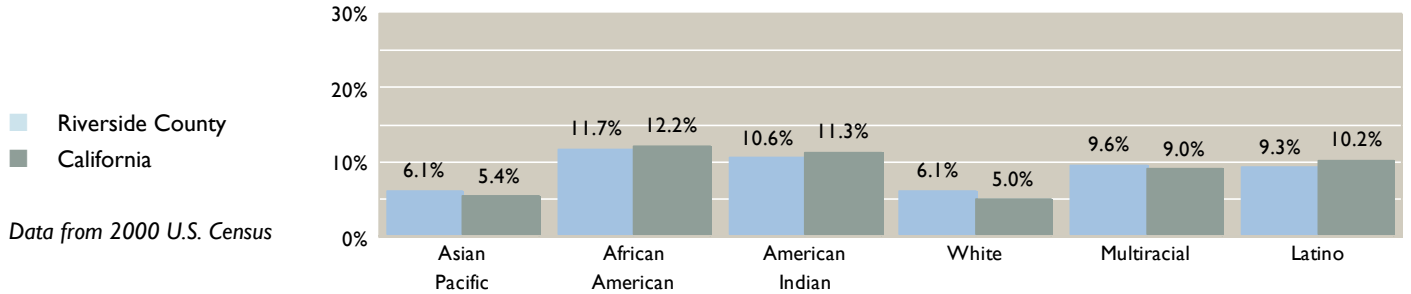
Number of unemployed workers as a percentage of the labor force, 2002

Estimates by California Employment Development Department

Teal band shows the range for California counties



## Unemployment rates by race and ethnicity, 2000 Census

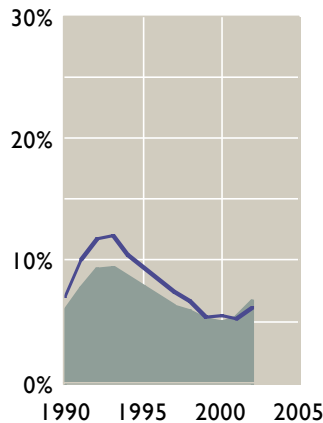


## Unemployment Trends, 1990–2002

### Unemployment rate

Estimates by California Employment Development Department

■ Riverside County  
■ California

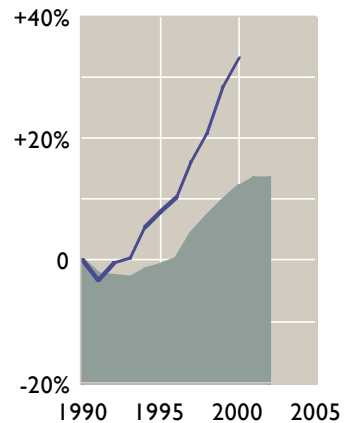


### Job growth

Change in county labor force employment from 1990

Estimates by California Employment Development Department

■ Riverside County  
■ California

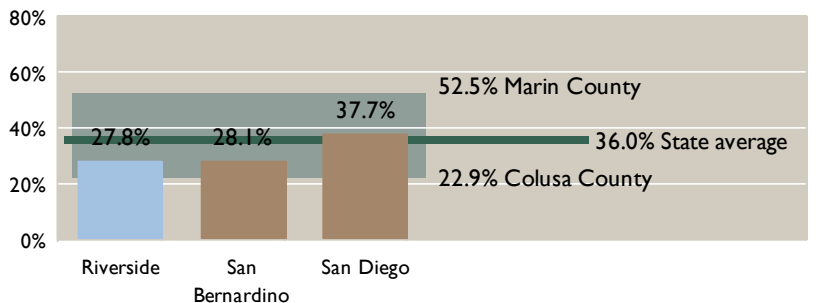


## Professional and managerial workers

Percent of employed labor force in professional and managerial occupations

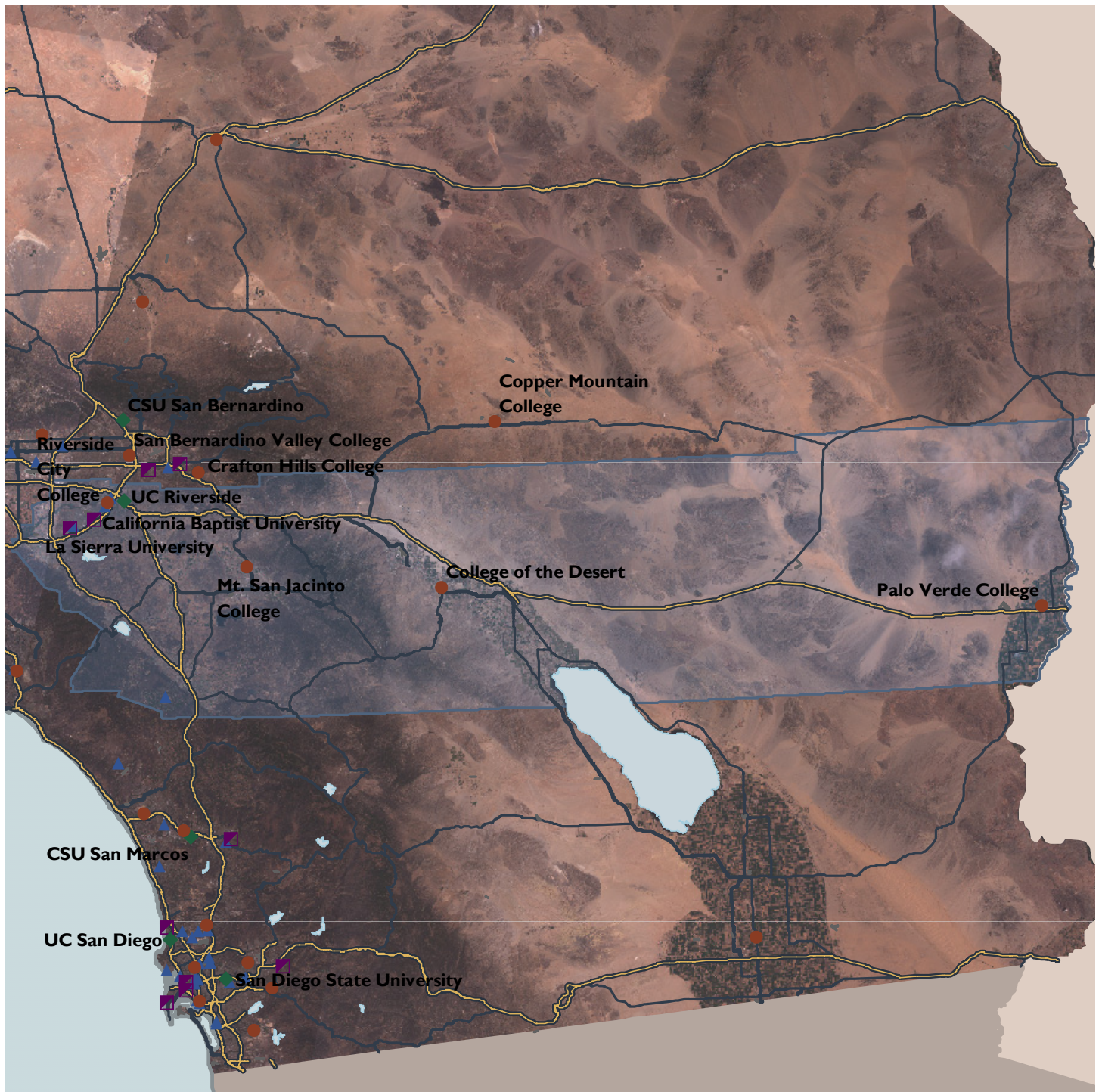
Data is not available by race and ethnicity

Data from 2000 U.S. Census





# Local Colleges and Universities



- Community College campus
- ◆ California State University campus or University of California campus
- Independent college or university, or other institution accredited by the Western Association of Schools and Colleges (WASC)
- ▲ Other degree-granting institution

*Riverside County has four community college campuses, one UC campus, two WASC-accredited private institutions, and seven other degree-granting institutions.*

## Local Colleges and Universities

Institution	Web site	Enrollment 2002	Part time	Growth from 1997
<b>Public Universities</b>				
San Diego State University	www.sdsu.edu	34,300	30%	12%
CSU Fullerton	www.fullerton.edu	32,140	38%	29%
Cal Poly, Pomona	www.csupomona.edu	19,820	26%	15%
CSU San Bernardino	www.csusb.edu	16,340	33%	23%
UC Riverside	www.ucr.edu	15,930	8%	61%
<b>Community Colleges</b>				
Riverside City College	www.rccd.cc.ca.us	34,530	61%	60%
Mt. San Jacinto College	www.msjc.cc.ca.us	12,740	67%	69%
College of the Desert, Palm Desert	desertonline.net/	9,920	57%	( 1%)
Palo Verde College, Blythe	www.paloverde.cc.ca.us	4,510	25%	452%
<b>WASC-Accredited Private &amp; Independent Institutions</b>				
California Baptist University, Riverside	www.calbaptist.edu	2,170	34%	8%
La Sierra University, Riverside	www.lasierra.edu	1,760	21%	20%
<b>Other Degree-Granting Institutions</b>				
Sage College, Moreno Valley	sagecollege.edu/main.htm	n	—	
California Paramedical & Technical College, Riverside	www.cptc-riverside.com/	n	—	
Calvary Chapel Bible College, Murrieta	www.calvarychapel.com/ccbc	n	—	
Central State University, Riverside	www.university.edu	n	—	
California Southern Law School, Riverside	www.cslawschool.com	n	—	
Professional Golfers Career College, Temecula	www.progolfed.com	n	—	
Park University, Blythe	www.park.edu	n	—	

n—Enrollment data not available

The table lists degree-granting institutions in Riverside County, plus the top choices for Riverside County high school graduates as shown on page 3.

## Recent CPEC Publications

A Regional Study of Undergraduate Enrollment Demand and Capacity for the University of California. April 2003.

A Review of California's Cross-Enrollment Program. February 2003.

Commission Review of a Proposal by California State University Bakersfield to Establish the CSUB Antelope Valley Educational Center. April 2003.

Commission Review of a Proposal by the State Center Community College District to Establish the Willow-International Community College Center. April 2003.

Faculty Salaries at California's Public Universities, 2003–04—*Higher Education Update*. April 2003.

Fiscal Profiles, 2002. April 2003.

Frequently Asked Questions Concerning Future Enrollment Growth at California's Public Universities. September 2003.

Frequently Asked Questions Concerning Student Fees and Financial Aid at California's Public Colleges and Universities. August 2003.

Resident Undergraduate Charges at California's Public Colleges and Universities—*Factsheet*. January 2004.

Student Profiles, 2003. November 2003.

# Postsecondary Education in California

---

## The California Community Colleges

The community college system consists of 72 locally governed districts operating 109 campuses. A Board of Governors appointed by the Governor serves as a regulatory agency for the local districts.

Community colleges offer academic and technical programs leading to associate degrees and technical certificates. Many community college programs give course credits that can be transferred to 4-year institutions. In addition, community colleges provide instruction in basic skills, English as a second language, and citizenship classes.

## The California State University

The 23-campus CSU system has programs leading to the bachelor's and master's degree and awards doctorates jointly with UC or an independent university. In 2002, CSU had 407,000 students enrolled, one third of whom were part-time.

## The University of California

UC has 9 general campuses, one health science campus, and numerous special research facilities. The UC has constitutional status as a public trust. UC awards bachelor's, master's and professional degrees and has sole authority among public institutions to award doctoral degrees.

## Independent Colleges and Universities

The Association of Independent Colleges and Universities (AICCU) consists of 75 institutions accredited by the Western Association of Schools and Colleges (WASC). These institutions range from large, world-renowned universities to smaller liberal arts institutions and professional schools. AICCU institutions enrolled over 217,000 students in 2001.

## Other WASC-Accredited Private Institutions

Forty-eight additional California institutions are accredited by WASC, but are not members of AICCU. These institutions enroll some 30,000 students, and also range from universities to smaller institutions and professional schools.

## Other Degree-Granting Institutions

California has about 300 other institutions that are authorized under state law to award degrees. These include religious seminaries, schools of alternative medicine, law schools, and universities accredited by organizations other than WASC.

In addition, California has an estimated 3,000 schools that offer programs not leading to a degree. This category includes schools providing training for careers in computer technology, health care, and other business and technical occupations. All of these schools and colleges are regulated by the Department of Consumer Affairs, Bureau for Private Postsecondary and Vocational Education (BPPVE).

# The California Postsecondary Education Commission

---

*The California Postsecondary Education Commission is a citizen board established in 1974 to coordinate the efforts of California's colleges and universities and to provide independent, non-partisan policy analysis and recommendations to the Governor and Legislature.*

## Contact the Commission

Information about the Commission and its publications is available at [www.cpec.ca.gov](http://www.cpec.ca.gov) or call (916) 445-7933.

In addition, see *California Colleges and Universities*, available at [www.cacollegeguide.com](http://www.cacollegeguide.com).

## Profiles for other Counties

Profiles for all 58 counties are available at [www.cpec.ca.gov/profiles/profiles.asp](http://www.cpec.ca.gov/profiles/profiles.asp).

## Members of the Commission

Howard Welinsky, Culver City—*Chair*  
Olivia K. Singh, San Francisco—*Vice Chair*  
Alan S. Arkatov, Los Angeles  
George T. Caplan, Los Angeles  
Carol Chandler, Selma  
Irwin S. Field, Beverly Hills  
Reed Hastings, Los Gatos  
Odessa P. Johnson, Modesto  
Hugo Morales, Fresno  
Ralph Pesqueira, San Diego  
Guillermo Rodriguez Jr., San Francisco  
Evonne Seron Schulze, San Diego  
Rachel E. Shetka, Napa  
Faye Washington, Los Angeles  
Dezie Woods-Jones, Oakland

One commissioner position is vacant.

Robert L. Moore, *Executive Director*  
February 2004

---