

DOCUMENT RESUME

ED 482 742

FL 801 630

AUTHOR Kenyon, Dorry; Van Duzer, Carol
TITLE Valid, Reliable, and Appropriate Assessments for Adult English Language Learners. ERIC Q & A.
INSTITUTION National Center for ESL Literacy Education, Washington, DC.
SPONS AGENCY Office of Vocational and Adult Education (ED), Washington, DC.
PUB DATE 2003-11-00
NOTE 7p.
CONTRACT ED-99-CO-0008
AVAILABLE FROM National Center for ESL Literacy Education, Center for Applied Linguistics, 4646 40th Street, N.W., Washington, DC 20016-1859. Tel: 202-362-0700; Web site: <http://www.cal.org/nclle>.
PUB TYPE ERIC Publications (071) -- Reports - Descriptive (141)
EDRS PRICE EDRS Price MF01/PC01 Plus Postage.
DESCRIPTORS Academic Achievement; Adult Education; *English (Second Language); Evaluation Methods; Language Proficiency; Performance Based Assessment; Second Language Instruction; *Student Evaluation; *Test Reliability; *Test Validity

ABSTRACT

This document examines the concepts of validity, reliability, and appropriateness from a language testing perspective as they apply to the following four assessment issues raised by the National Reporting System (NRS): (1) What type of language assessment seems to be required by the NRS: proficiency or achievement?; (2) Knowing that the NRS focuses on what the learner can do in the real world, and knowing the challenges to classroom teaching, what type of assessment would be most appropriate for the NRS?; (3) Knowing that all these variables need to be attended to, what does validity entail for appropriate NRS assessment?; and (4) What does reliability mean for performance measures meeting the rigorous requirements of the NRS? The document concludes that ensuring that language tests for adult English language learners are appropriate, valid, and reliable is challenging. Performance based assessments are inherently complex to develop and implement. Yet, because the focus of assessment--both in the NRS descriptors and in the Department of Education's definition of content standards--is on what learners can do with the language, performance assessments are worth developing and validating. (Adjunct ERIC Clearinghouse for ESL Literacy Education.) (Contains 16 references.) (SM)

Reproductions supplied by EDRS are the best that can be made
from the original document.

Valid, Reliable, and Appropriate Assessments for Adult English Language Learners

Dorry Kenyon, Center for Applied Linguistics

Carol Van Duzer, National Center for ESL Literacy Education

ED 482 742

U.S. DEPARTMENT OF EDUCATION
Office of Educational Research and Improvement
EDUCATIONAL RESOURCES INFORMATION
CENTER (ERIC)

- This document has been reproduced as received from the person or organization originating it.
- Minor changes have been made to improve reproduction quality.

- Points of view or opinions stated in this document do not necessarily represent official OERI position or policy.

FL 89/636

BEST COPY AVAILABLE

Valid, Reliable, and Appropriate Assessments for Adult English Language Learners

Dorry Kenyon, Center for Applied Linguistics

Carol Van Duzer, National Center for ESL Literacy Education

Since 1998, federal guidelines have stated that assessment procedures to fulfill the accountability requirements of the Workforce Investment Act (WIA) must be valid, reliable, and appropriate (U.S. Department of Education, 2001). This provision is likely to remain in the reauthorization of the WIA in the coming year. The U.S. Department of Education's blueprint for this legislation continues to call for local programs to demonstrate learner gains in reading, math, language arts, and English language acquisition. It also requires states to implement content standards—defined as clear statements of what learners should know and be able to do—and to align assessments with these standards (U.S. Department of Education, 2003). The educational functioning levels, which form the basic framework and structure of the National Reporting System (NRS), remain. These levels may be refined (e.g., test benchmarks may be linked to real-life outcomes) (Keenan, 2003).

As the field of adult English as a second language (ESL) instruction moves towards content standards, program staff and state and national policy makers need to be able to make informed choices about appropriate assessments for adult English language learners. This Q&A examines the concepts of validity, reliability, and appropriateness from a language testing perspective as they apply to the following four assessment issues raised by the National Reporting System:

1. What type of language assessment seems to be required by the NRS: proficiency or achievement?
2. What type of assessment would be most appropriate for the NRS?
3. What does validity entail for appropriate NRS assessment?
4. What does reliability mean for performance measures meeting the rigorous requirements of the NRS?

What type of language assessment seems to be required by the NRS: proficiency or achievement?

For adult English language learners in the United States, the basic reason for learning English is to use it. It is not to know about grammar or sophisticated details of English syntax or cultural aspects of the land where the language

is spoken. All of these have their place, but knowing a language involves being able to put all of these pieces together in order to read for work or enjoyment, participate in conversations with others who speak English, or accomplish other tasks using the language.

Traditionally, achievement testing has been defined as assessing whether students have learned what they have been taught. Today, as the field of education institutes standards, assessment frameworks look not only at what students know about the language, but at what they can do with it. For adult language learners, that means using the language in everyday life. The goal of learning then, is to develop proficiency. The American Council on the Teaching of Foreign Languages (ACTFL) defines language proficiency as "language performance in terms of the ability to use the language effectively and appropriately in real-life situations" (Buck, Byrnes, & Thompson, 1989, p. 11).

Proficiency distinguishes itself from achievement in that, when measuring language skills especially, proficiency is not necessarily confined to what is taught in the classroom. Language acquisition – learning of new vocabulary and structures—also occurs outside the classroom as learners live, work, and interact with others in an English-speaking environment (Gass, 1997).

The NRS defines six educational functioning levels for English language learners. These levels describe what learners can actually do. For example, learners at the Beginning ESL listening and speaking level

- ◆ can understand frequently used words in context and very simple phrases spoken slowly with repetition,
- ◆ can communicate basic survival needs with some help, and
- ◆ can understand and participate effectively in face-to-face conversations on everyday subjects spoken at normal speed.

These aims are focused on what happens in real life outside the classroom. In language testing terms, the focus of the NRS is on proficiency.

The challenge, both for teaching and assessment, is determining the relationship among content standards, curriculum, instruction, and proficiency (versus achievement) outcomes. The field of foreign language education

FL801630

has been struggling for several decades to align these. Currently, only a few states have standards for adult ESL instruction. Among these are Arizona, California, Florida, Massachusetts, New York, and Washington (Florez, 2002). If content standards define what learners can do in the real world (proficiency), then how do these standards influence what happens in the classroom, particularly how proficiency is assessed?

Adult learners come to the classroom with a variety of prior educational and life experiences. In acquiring English literacy, learners require different curricula and instructional strategies depending on whether they have ever acquired literacy in any language, have a high level of literacy in their own language, or are literate in a language that uses a Roman or a non-Roman alphabet (Burt, Peyton, & Adams, 2003). Learners also differ in their opportunities for language acquisition outside the classroom. For example, they may work in jobs where contact with native English speakers or speakers of other languages require them to use English, or they may work in jobs with very little contact with other workers—particularly English speakers. Some learners are able to attend class several times a week and others only once. A couple hours of instruction a week is a very limited amount of time for developing English language proficiency. What goes on inside the classroom needs to help learners take advantage of what goes on outside the classroom, so that learners can maximize opportunities to increase their language acquisition (Van Duzer, et al., 2003).

Classroom assessments (e.g., reading, writing or speaking logs; checklists of communication tasks; and oral or written reports; See Van Duzer & Berdan [2000] for list and discussion) can show how learners have mastered curricular content or met their goals. The assessments may reflect what the learners can do in the real world. However, without specific valid and reliable links to the NRS functioning levels, these tools and processes may not meet the current requirements to show level gain.

Knowing that the NRS focuses on what the learner can do in the real world and knowing the challenges to classroom teaching, what type of assessment would be most appropriate?

A good language proficiency test is made up of language tasks that replicate what goes on in the real world (Bachman & Palmer, 1996). Performance assessments—which require test takers to demonstrate their skills and knowledge in a manner that closely resembles a real-life situation or setting (National Research Council, 2002)—seem appropriate. A performance assessment generally has more potential than a selected response test (e.g., true-false or

multiple choice) to replicate language use in the real world. That potential is realized, however, only if the assessment itself is of high technical quality, not just because it is a performance assessment.

Performance assessments are not easy to develop, administer, score, and validate because there are many variables involved. The Performance-Based Assessment Variables model (see insert) illustrates the many variables that apply to the development of performance-based assessments (adapted from Kenyon, 1992; McNamara, 1996, and Skehan, 1998).

At the bottom, there is the student (or examinee) whose underlying competencies (knowledge, skills, and abilities [K/S/A]) are to be assessed. To do this, the student is given tasks to perform.

Several variables surround these tasks. What is the quality of the task? Is it a good task or a poor task? Are conditions provided so that it can be successfully completed? Will the learners be given enough time to do it?

Next there is a test administrator who may interact with the examinee. The administrator may bring his or her own underlying competencies (knowledge, skills, and abilities) into the student's performance. Does the administrator know what to ask the student to do and how to ask it?

These three elements interact (student, task, and administrator) to produce a performance. However, that performance needs to be assessed by a rater. Sometimes the rater and the administrator are the same (e.g., in an oral interview) and other times the rater can be somebody different (e.g., in a writing assessment). Raters also bring additional variables. Are they well trained? Do they have the knowledge base needed to rate the performance?

In order to assess the student's performance, raters need criteria, often contained in a scale or a rubric. The rubric needs to be useful and easy to interpret, and it must address the aspects of the performance related to the examinee's underlying competencies that are to be assessed. For example, if writing is being assessed, do the rating criteria relate to characteristics of a good writer (e.g., ability to organize the writing, ability to use appropriate mechanics); if speaking is being assessed, do the criteria relate to competencies of a good speaker (e.g., ability to make oneself understood)?

Finally, raters use the rubric or scale to assign a score to the performance. This score has meaning only in so far as it is a valid and reliable measure of what the learner can do. In other words, do the many variables depicted in the diagram work together to produce a score that is a valid indicator of an examinee's ability? Does the performance assessment allow the examinee to give a performance that reflects proficiency in the real world, can be adequately

described and measured by the rubric, and can be scored reliably? Can the assessment be repeated, both in terms of the performance being elicited and the score applied?

Knowing that all these variables need to be attended to, what does validity entail for an appropriate NRS assessment?

Messick (1989) offers the following technical definition of validity:

Validity is an integrated evaluative judgment of the degree to which empirical evidence and theoretical rationale support the *adequacy* and the *appropriateness of inferences and actions* based on test scores or other modes of assessments" (p.11). (emphasis from the original)

This view adjusts the focus of validity from the test itself to include the use of the test scores. One has to ask if the test is valid for this use, in this context, for this purpose. With regards to the NRS, the main questions that need to be answered seem to be the following: How well is the performance elicited by the test aligned with the NRS descriptors? How well can the test assess yearly progress? How indicative of program quality are the performances on the assessment?

Any assessment used for NRS purposes will be valid only if evidence can be provided that the inferences about the learners made on the basis of the test scores can be related to the NRS descriptors—i.e., what the learners can do (proficiency). The assessment must also be sensitive enough to learner gains to be able to show progress, if that is the use to which it is put. In addition, if the quality of programs is to be judged by performances on the assessment, then it must be demonstrated that there is a relationship between the two.

Establishing validity for a particular use of a test is not a one-activity task or study. It is an accumulation of evidences that support the use of that test. It includes such things as examining the relationship between performance on the test and performance on similar assessments, examining test performances vis-à-vis criteria inherent in the NRS descriptors, and examining the reasonableness and consequences of decisions made on the basis of test scores. Each of these examinations requires the collection and analysis of evidence (data).

What does reliability mean for performance assessments meeting the rigorous requirements of the NRS?

In the field of assessment, the concept of reliability is related to the consistency of the measurement when the testing procedure is repeated on a population of individu-

als or groups (American Educational Research Association, American Psychological Association, and National Council on Measurement in Education, 1999). For example, if a learner takes a test once, then takes it again one hour later, and maybe another hour after that, the learner should get about the same score each time, provided nothing else has changed.

As the diagram indicates, a performance assessment has a number of potential sources for inconsistency. These include the assessment task itself, the administrator, the rater, the procedure, the conditions under which it is administered, or even the examinee. For example, an examinee might be feeling great the day of the pre-test but facing a family crisis on the day of the post-test.

The job of assessment developers is to demonstrate that reliability can be achieved even for a complex performance assessment. Accordingly, program staff using the test have a responsibility as well. They have an obligation to administer the assessment in the ways they have been trained to administer it, thus replicating the conditions under which reliability can be attained (American Educational Research Association, American Psychological Association, and National Council on Measurement in Education, 1999). Programs need to plan for time to train individuals to administer the test, time to administer it, and time to monitor its administration. This may mean an additional expenditure of resources and time for staff training so that the test will be administered appropriately each time it is used. Finally, before post-testing, programs must ensure that enough time (or hours of instruction) has passed for learners to show gains.

Conclusion

Ensuring that language tests for adult English language learners are appropriate, valid, and reliable is a challenge. Performance-based assessments are inherently complex to develop and implement. Yet, because the focus of assessment—both in the NRS descriptors and in the Department of Education's definition of content standards—is on what learners can do with the language, performance assessments are worth developing and validating.

Meanwhile, as program staff choose assessments that meet current accountability requirements, they can take the following steps to ensure that valid, reliable, and appropriate assessments are chosen for their learners:

- ◆ Review the assessment and technical information provided by the test developer to determine that what the assessment purports to measure reflects real life tasks.
- ◆ Review the technical manual to ascertain that the test developers have demonstrated that reliability can be achieved.

- ◆ Provide adequate resources to train test administrators and raters to maintain reliability of test administration and scoring.
- ◆ Post-test only after an adequate amount of instructional time has taken place to demonstrate level gain.

Presently, assessment of learner gains is based on the NRS descriptors. Over the next few years, content standards will be implemented as well. If we cannot assess learners' performances in light of those standards in valid, reliable, and appropriate ways, the standards will have no practical value.

References

- American Educational Research Association, American Psychological Association, and National Council on Measurement in Education. (1999). *Standards for educational and psychological testing*. Washington, DC: Author.
- Bachman, L.F. & Palmer, A.S. (1996). *Language testing in practice*. Oxford: Oxford University Press.
- Buck, K., Byrnes, H., & Thompson, I. (Eds.) (1989). *The ACTFL oral proficiency interview tester training manual*. Yonkers, NY: ACTFL.
- Burt, M., Peyton, J.K., & Adams, R. (2003). *Reading and adult English language learners: A review of the research*. Washington DC: Center for Applied Linguistics.
- Florez, M. (2002). *An annotated bibliography of content standards for adult ESL*. Washington, DC: National Center for ESL Literacy Education. (Retrieved 11/20/03 from www.cal.org/nclce/constanbib.htm)
- Gass, S. M. (1997). *Input, interaction, and the second language learner*. Mahwah, NJ: Lawrence Erlbaum.
- Keenan, C. (2003). Presentation at the symposium on Assessment and Accountability. Washington, DC: National Center for ESL Literacy Education. (Symposium transcript, pages 73-74).
- Kenyon, D.M. (1992). Introductory remarks at symposium on *Development and use of rating scales in language testing*, 14th Language Testing Research Colloquium, Vancouver, February 27-March 1.
- McNamara, T. (1996). *Measuring second language performance*. London: Longman.
- Messick, S. (1989). Validity. In R. Linn, (Ed), *Educational Measurement*, 3rd Ed. New York: Macmillan Publishing Company, pp. 11-103.
- National Research Council. (2002). *Performance assessments for adult education: Exploring the measurement issues, Report of a workshop*. Committee for the Workshop on Alternatives for Assessing Adult Education and Literacy Programs. Robert J. Mislevy and Kaeli T. Knowles, Editors. Board on Testing and Assessment, Center for Education, Division of Behavioral and Social Sciences and Education. Washington, DC: National Academy Press.
- Skehan, P. (1998). *A cognitive approach to language learning*. Oxford: Oxford University Press.
- U.S. Department of Education, Office of Vocational and Adult Education, Division of Adult Education and Literacy. (2001, March). *Measures and methods for the National Reporting System for Adult Education: Implementation guidelines*. Washington, DC: Author. Available from www.nrsweb.org/reports/implement.pdf
- U.S. Department of Education, Office of Vocational and Adult Education, Division of Adult Education and Literacy. (2003, July). *A blueprint for preparing America's future: The adult basic and literacy education act of 2003: Summary of major provisions*. Washington, DC: Author. Available from www.ed.gov/policy/adulted/leg/aebblueprint2.doc
- Van Duzer, C. H., & Berdan, R. (1999). Perspectives on assessment in adult ESL instruction. *The Annual Review of Adult Learning and Literacy, 1*. Available from http://gseweb.harvard.edu/~ncsall/ann_rev/index.html
- Van Duzer, C., Moss, D., Burt, M., Peyton, J.K., & Ross-Feldman, L. (2003). *OECD review of adult ESL education in the United States: Background report*. Washington, DC: National Center for ESL Literacy Education.

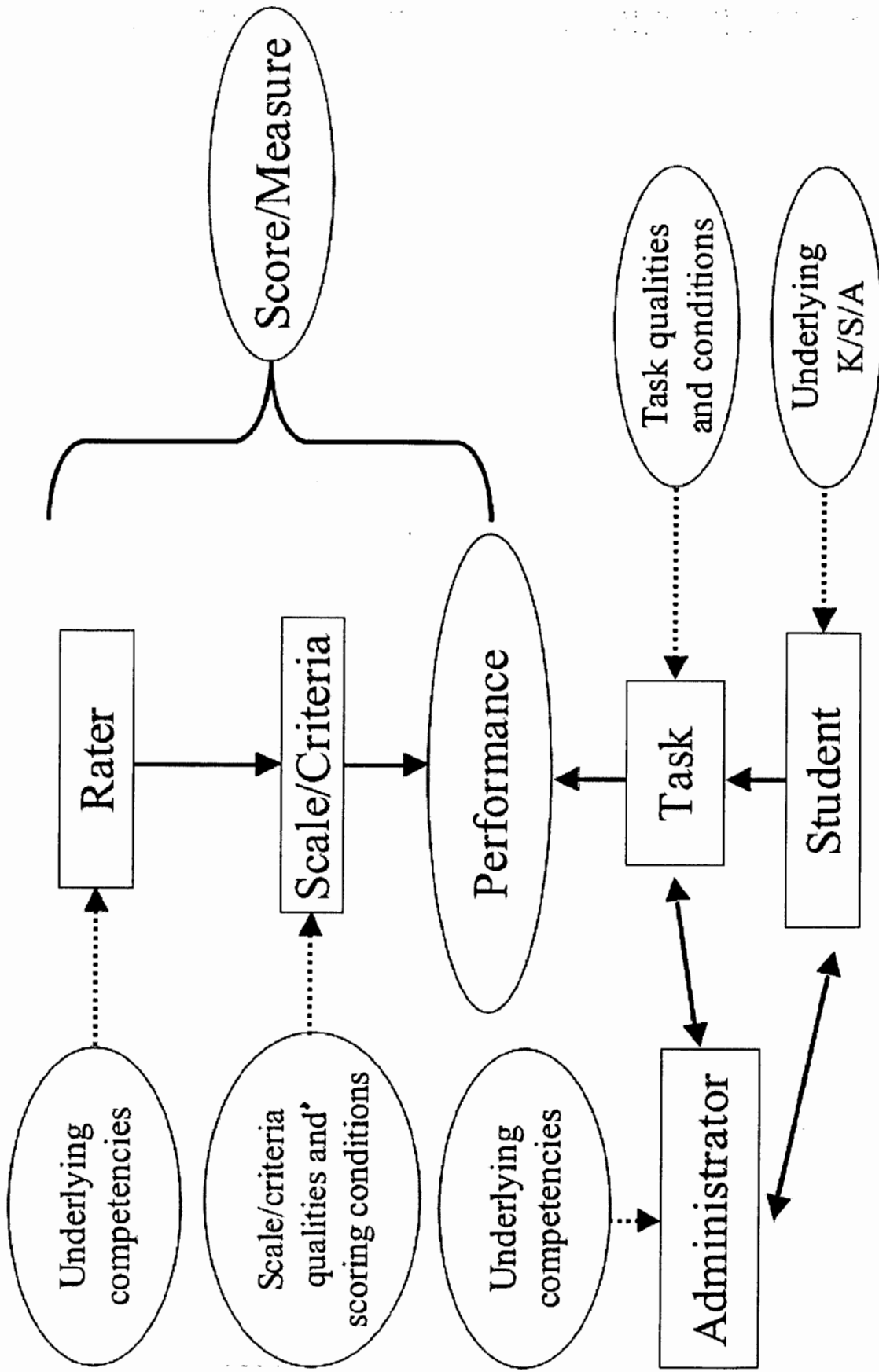
ERIC/NCLE Digests and Q&As are available free from NCLE, 4646 40th Street NW, Washington, DC 20016-1859; 202-362-0700 x200; email: nclce@cal.org; Web: www.cal.org/nclce/DIGESTS.

Documents with ED numbers can be ordered from ERIC Document Reproduction Service (EDRS) at 800-443-ERIC (3742) or 703-440-1400; fax: 703-440-1408; email: service@edrs.com; Web: <http://edrs.com>.

The National Center for ESL Literacy Education (NCLE) is operated by the Center for Applied Linguistics (CAL) with funding from the U.S. Department of Education (ED), Office of Vocational and Adult Education (OVAE), under Contract No. ED-99-CO-0008. The opinions expressed in this paper are not necessarily the positions or policies of ED. This document is in the public domain and may be reproduced without permission.



Performance-Based Assessment Variables





*U.S. Department of Education
Office of Educational Research and Improvement (OERI)
National Library of Education (NLE)
Educational Resources Information Center (ERIC)*



NOTICE

Reproduction Basis

- This document is covered by a signed "Reproduction Release (Blanket)" form (on file within the ERIC system), encompassing all or classes of documents from its source organization and, therefore, does not require a "Specific Document" Release form.
- This document is Federally-funded, or carries its own permission to reproduce, or is otherwise in the public domain and, therefore, may be reproduced by ERIC without a signed Reproduction Release form (either "Specific Document" or "Blanket").