

DOCUMENT RESUME

ED 482 505

JC 030 671

TITLE Contra Costa Community College District Enrollment Report, October 2000.

INSTITUTION Contra Costa Community Coll. District, Martinez, CA.

PUB DATE 2000-10-00

NOTE 18p.; Prepared by the Office of District Research, Planning and Resource Development.

PUB TYPE Reports - Research (143)

EDRS PRICE EDRS Price MF01/PC01 Plus Postage.

DESCRIPTORS *College Attendance; College Transfer Students; *Community Colleges; Educational Trends; Enrollment; Enrollment Rate; Enrollment Trends; School Registration; Two Year Colleges

IDENTIFIERS *Contra Costa Community College District CA

ABSTRACT

This report analyzes enrollment figures for Contra Costa Community College District in 2000-2001. The data for 2002 is compared with the data from 1997-1998, 1998-1999, and 1999-2000. The following are some of the major findings of the report: (1) both resident and non-resident FTES totals have increased over 1995/1996 levels; (2) the growth observed for the District's Resident FTES is attributed to mostly Diablo Valley's increase; (3) the number of units per student is increasing for the district; (4) the increase observed for the District's fall semester reflects mostly Diablo Valley's headcount growth; (5) over the last five semesters, 57% of first-census students were female and 42% were male; (6) over the last five fall semesters, on average 51% of students reported themselves as "White" and 42% identified themselves as member of various ethnic minority groups; (7) the most common goal for students was transfer to a four year institution, which was a significant increase in comparison with the previous years; and (8) the majority of students are 24 years or younger although the 30-49 age group has a significantly large segment of the student population. (Contains 11 tables and 8 graphs.) (MZ)

Reproductions supplied by EDRS are the best that can be made
from the original document.

The Colleges of Contra Costa

pathways to success

Contra Costa Community College District

ED 482 505

ENROLLMENT REPORT

U.S. DEPARTMENT OF EDUCATION
Office of Educational Research and Improvement
EDUCATIONAL RESOURCES INFORMATION
CENTER (ERIC)

- This document has been reproduced as received from the person or organization originating it.
- Minor changes have been made to improve reproduction quality.
- Points of view or opinions stated in this document do not necessarily represent official OERI position or policy.

October 2000

PERMISSION TO REPRODUCE AND
DISSEMINATE THIS MATERIAL HAS
BEEN GRANTED BY

S. Foy

TO THE EDUCATIONAL RESOURCES
INFORMATION CENTER (ERIC)

1

Office of District Research
Planning and Resource Development
Contra Costa Community College District
500 Court Street
Martinez, California 94553

JL030671

TABLE OF CONTENTS

| | |
|--|----|
| CCCCD Annual FTES Actual (Estimate) and Goal – 1997/98 to 2000/01 | 1 |
| CCCCD Full-Time Equivalent Students (Annual FTES) | 2 |
| College Full-Time Equivalent Students (Annual FTES) | 3 |
| CCCCD Enrollment Trends -- Fall Semester, First-Census Headcount | 4 |
| College Enrollment Trends -- Fall Semester, First-Census Headcount | 5 |
| First-Census Enrollment Totals by Gender | 6 |
| CCCCD Enrollment Totals by Ethnicity | 7 |
| College Enrollment Totals by Ethnicity | 8 |
| CCCCD First-Census Enrollment by Student-Declared Goal | 9 |
| College First-Census Enrollment by Student-Declared Goal | 10 |
| CCCCD First-Census Enrollment by Age Group | 11 |
| College First-Census Enrollment by Age Group | 12 |
| CCCCD First-Census Enrollment by Student Status | 13 |
| College First-Census Enrollment by Student Status | 14 |
| First-Census Enrollment by Day/Evening Status..... | 15 |

CCCCD Annual FTES Actual (Estimate) and Goal – 1997/98 to 2000/01 Academic Year*

| | 97/98 Actual (Per CCFS-320) | 98/99 Actual (Per CCFS-320) | 99/00 FTES Goal "by term Avg." Breakdown | 99/00 Actual (Per CCFS-320) | 00/01 FTES Goal "by term Avg." Breakdown | 00/01 Actual [Estimate]* (Per CCFS-320) |
|----------------------|-----------------------------------|-----------------------------------|---|-----------------------------------|---|--|
| CCCCD Totals | FTES | FTES | FTES | FTES | FTES | FTES |
| Summer | 2,817 | 2,851 | 2,915 | 2,952 | 2,982 | 3,292* |
| Fall | 12,687 | 12,580 | 13,000 | 12,685 | 12,983 | [13,263]* |
| Spring | 11,943 | 12,255 | 12,452 | 12,817 | 12,881 | |
| Early Spring | 165 | 136 | 154 | 146 | 145 | |
| Total | 27,612 | 27,822 | 28,521 | 28,600 | 28,991 | |
| Contra Costa | | | | | | |
| Summer | 602 | 491 | 540 | 486 | 494 | 578* |
| Fall | 2,614 | 2,643 | 2,599 | 2,565 | 2,632 | [2,857]* |
| Spring | 2,436 | 2,481 | 2,431 | 2,591 | 2,563 | |
| Early Spring | 54 | 7 | 30 | 14 | 11 | |
| Total | 5,706 | 5,622 | 5,600 | 5,656 | 5,700 | |
| Diablo Valley | | | | | | |
| Summer | 1,553 | 1,653 | 1,690 | 1,760 | 1,779 | 1,930* |
| Fall | 7,223 | 7,264 | 7,637 | 7,409 | 7,650 | [7,562]* |
| Spring | 6,782 | 7,095 | 7,316 | 7,379 | 7,545 | |
| Early Spring | 55 | 83 | 73 | 79 | 84 | |
| Total | 15,613 | 16,095 | 16,716 | 16,627 | 17,058 | |
| Los Medanos | | | | | | |
| Summer | 662 | 707 | 685 | 706 | 709 | 784* |
| Fall | 2,850 | 2,673 | 2,764 | 2,711 | 2,701 | [2,844]* |
| Spring | 2,724 | 2,679 | 2,705 | 2,847 | 2,773 | |
| Early Spring | 56 | 47 | 51 | 453 | 50 | |
| Total | 6,292 | 6,106 | 6,205 | 6,317 | 6,233 | |

* Actual based on Budget Office 10/2/00 Year-End Enrollment Report. Estimates based on IT XWFR Productivity Report run date 9/12/00. FTES figures for Summer 2000 do not reflect all of positive attendance hours, and those for Fall 2000 do not reflect cooperative education hours.

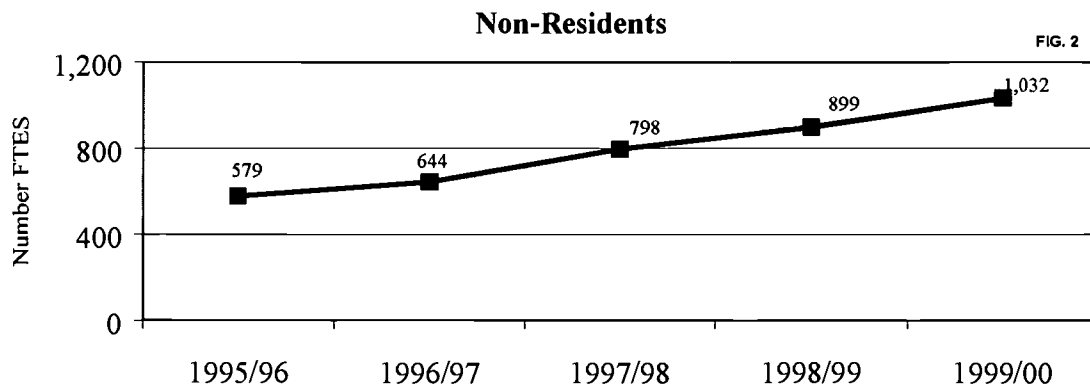
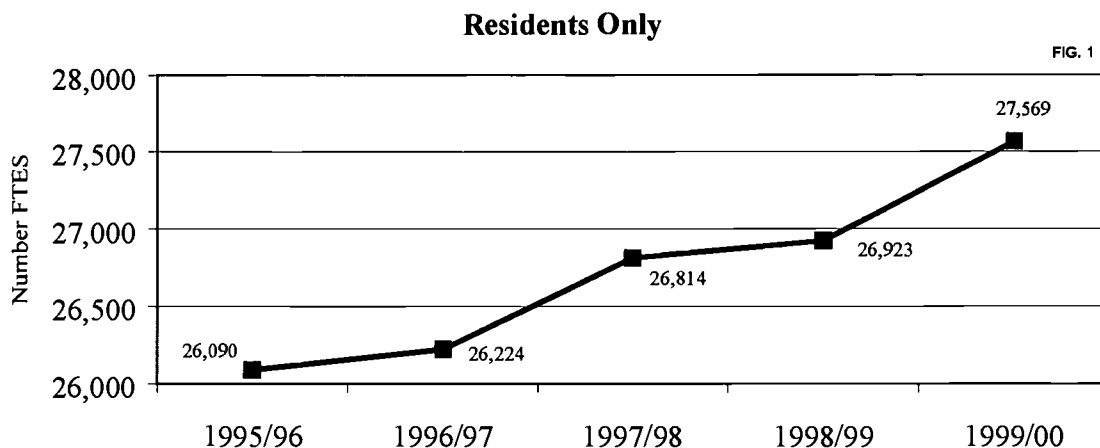
Comments/Analysis:

The District has increased its annual FTES each year since 1997/98. Contra Costa and Los Medanos achieved their 99/00 FTES goals, and Diablo Valley, which had the most challenging 99/00 FTES goal, achieved 99% of its goal -- an increase of 532 FTES over 98/99. The colleges have all achieved their summer FTES goals for 00/01. Estimates from course enrollments indicate that if they grow as they did last year, they will meet 00/01 FTES goals as well.

BEST COPY AVAILABLE



CCCCD Full-Time Equivalent Students¹ (Annual FTES)



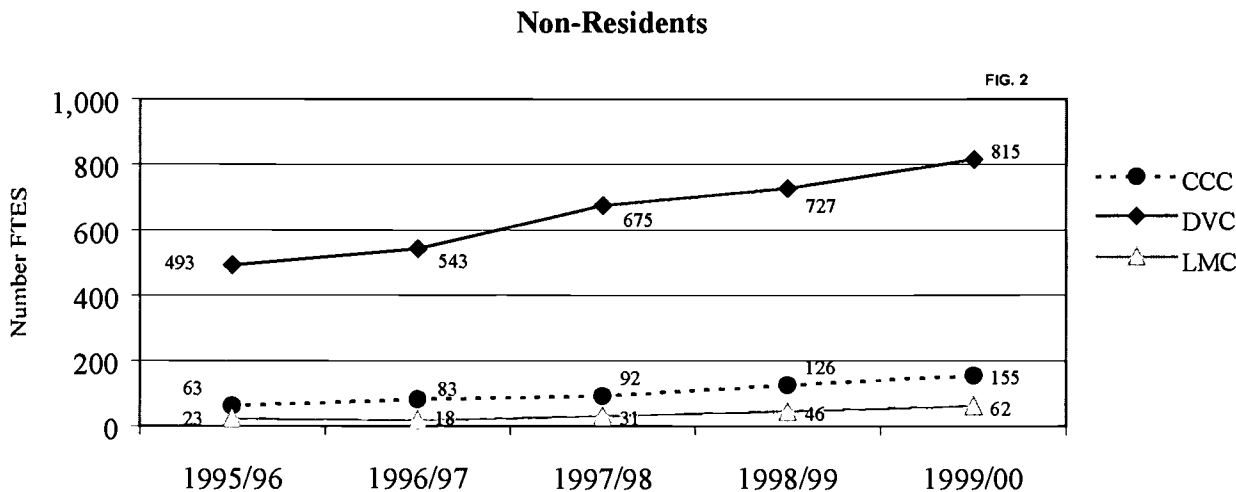
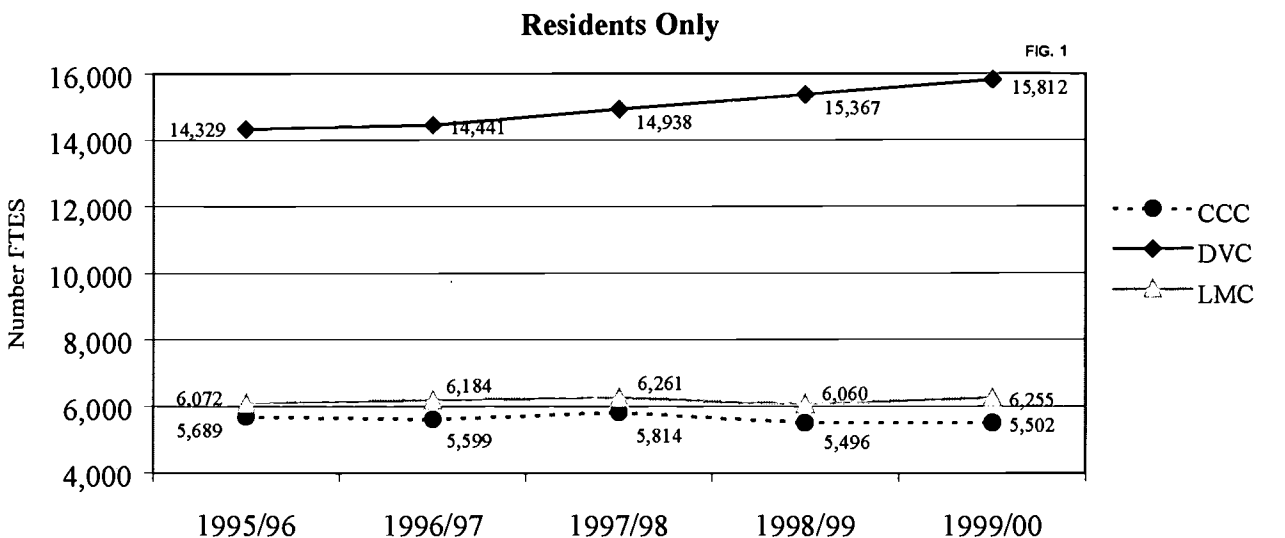
Comments/Analysis:

Both resident and non-resident FTES totals have increased over 1995/96 levels. Resident totals increased 5.7% between 1995/96 and 1999/00, whereas Non-Residents increased 78% or by a factor of 1.8 for this same period of time. (This large percentage increase, of course, reflects the relatively small numbers involved.)

¹ FTE figures based on District Budget Office records.



College Full-Time Equivalent Students¹ (Annual FTES)



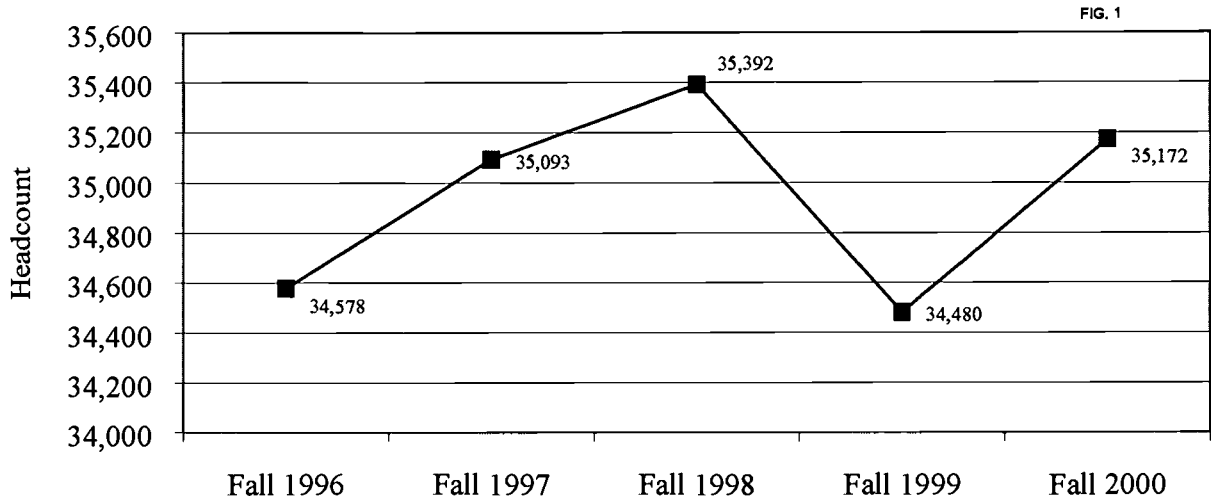
Comments/Analysis:

The growth observed for the District's Resident FTES is attributable mostly to Diablo Valley's 10.4% increase between 1995/96 and 1999/00. For this same interval and measure, Los Medanos grew by 3.8% and Contra Costa decreased by 3.3%.

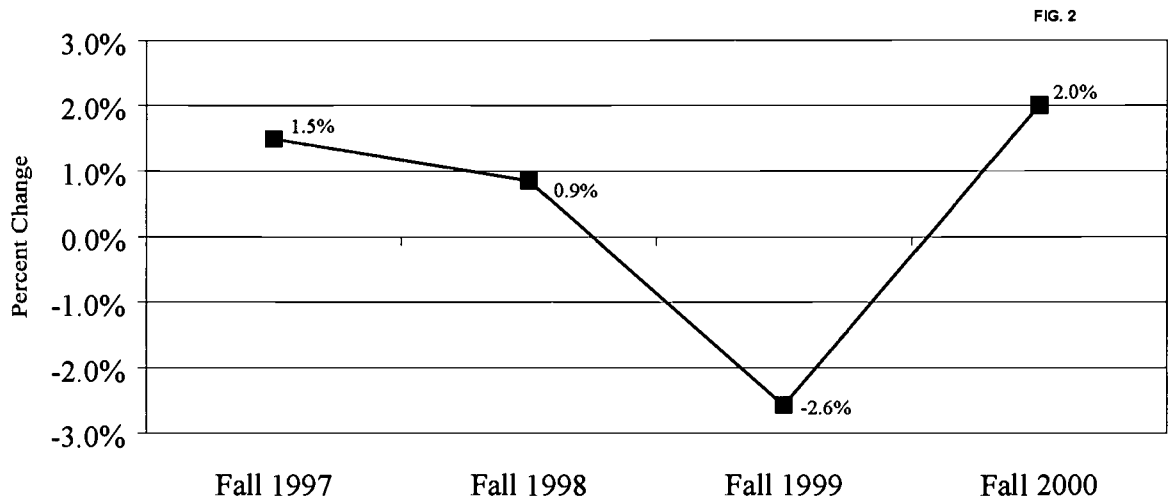
Similar contributions hold for Non-Resident FTES. For said time period, Diablo Valley increased its total from 493 to 815 or by a factor of 1.6; Contra Costa from 63 to 155 or by a factor of 2.5; and Los Medanos from 23 to 62 or by a factor of 2.7. Tuition for out-of-state and international students is \$150.00 per unit. In comparison, residents pay \$11.00 per unit. Continued growth of non-resident students will bring additional revenues to the District.

¹ FTE figures based on District Budget Office records.

CCCCD Enrollment Trends -- Fall Semester, First-Census¹ Headcount



Percent Change Over the Previous Fall Semester

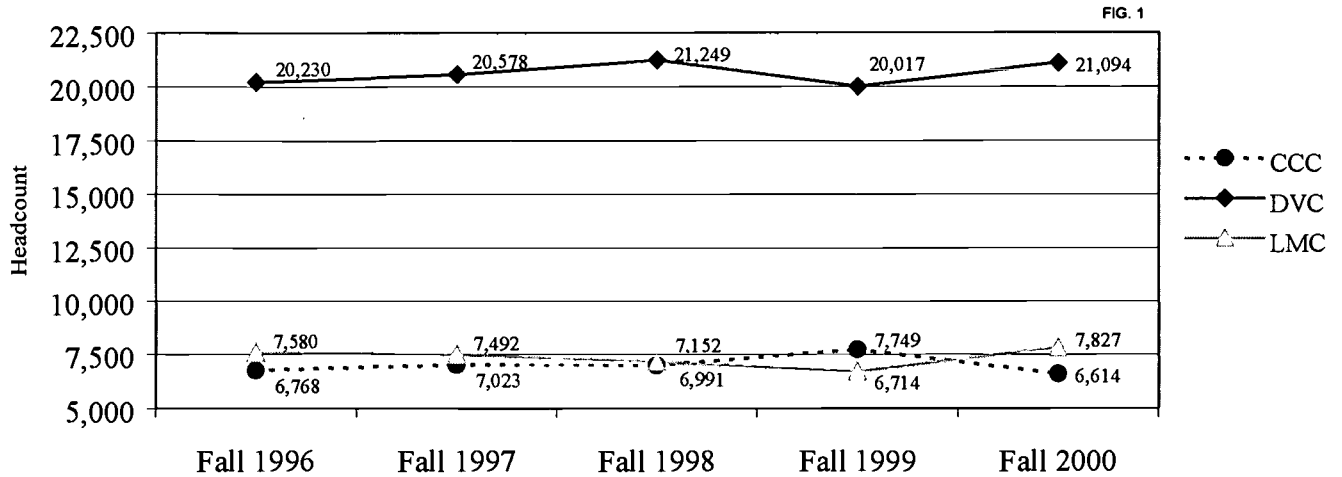


Comments/Analysis:

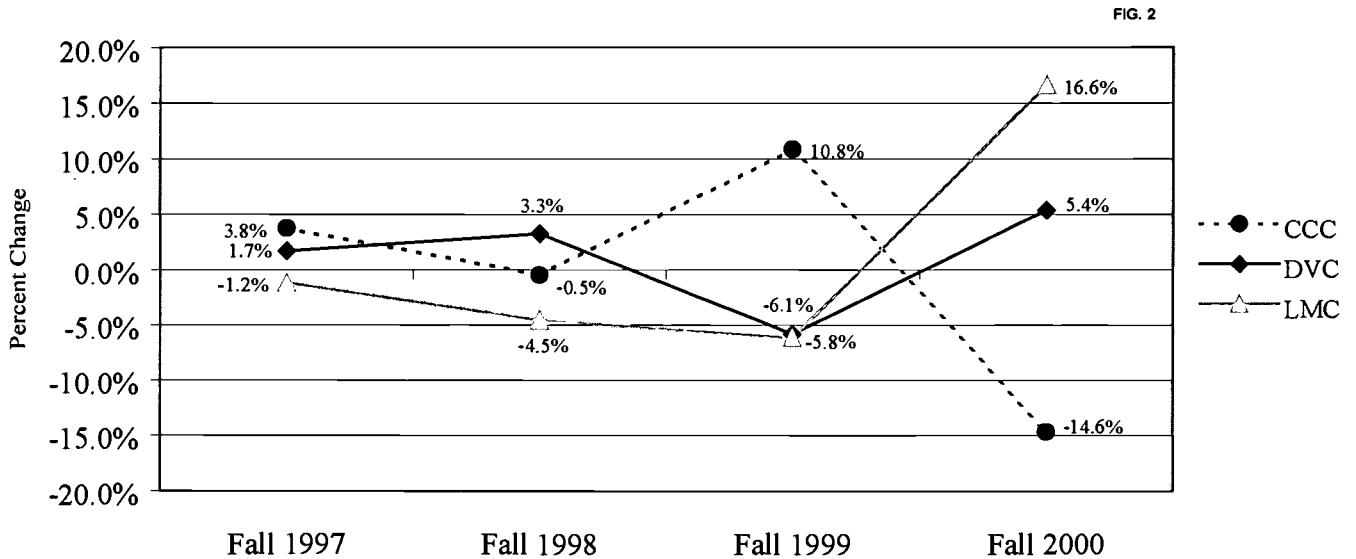
From Fall 1996 to Fall 1998, the District's fall semester, first-census headcount grew by 2.4%. Fall 1999 showed a 2.6% decrease in this total from the prior fall semester, and Fall 2000 shows a 2.0% increase over Fall 1999. Headcount increases are relatively smaller than the increases observed for Annual FTES in Display 2a. This would suggest that the number of units per student is increasing.

¹ 1996-1998 data based on IT CR89 Reports. Totals for 1999 are based on State Chancellor's Office, MIS Selected Statistics Report—Student Data, run date 8/9/00. Totals for 2000 are based on IT Enrollment Report, run date 9/14/00. To be counted as enrolled, a student must complete a class of at least eight hours duration (0.5 credit unit equivalent) and remain actively enrolled as of the first-census.

College Enrollment Trends -- Fall Semester, First-Census Headcount¹



Percent Change Over the Previous Fall Semester



Comments/Analysis:

The increase observed for the District's fall semester, first-census headcount reflects mostly Diablo Valley's headcount growth. Diablo Valley's headcount totals tend to show less variability and more positive growth than those for Contra Costa and Los Medanos.

¹ 1996-1998 data based on IT CR89 Reports. Totals for 1999 are based on State Chancellor's Office, MIS Selected Statistics Report—Student Data, run date 8/9/00. Totals for 2000 are based on IT Enrollment Report, run date 9/14/00. To be counted as enrolled, a student must complete a class of at least eight hours duration (0.5 credit unit equivalent) and remain actively enrolled as of the first-census.

First-Census Enrollment Totals by Gender¹

| | Fall 1996 | | Fall 1997 | | Fall 1998 | | Fall 1999 | | Fall 2000 | |
|--------------|---------------|------|---------------|------|---------------|------|---------------|------|---------------|------|
| CCCCD | # | % | # | % | # | % | # | % | # | % |
| Male | 14,982 | 42.2 | 14,728 | 42.0 | 14,961 | 42.3 | 14,497 | 42.0 | 14,495 | 41.2 |
| Female | 19,982 | 57.8 | 20,365 | 58.0 | 20,431 | 57.7 | 19,679 | 57.1 | 19,740 | 56.1 |
| Unknown | 0 | 0.0 | 0 | 0.0 | 0 | 0.0 | 304 | 0.9 | 937 | 2.7 |
| Total | 34,578 | | 35,093 | | 35,392 | | 34,480 | | 35,172 | |
| CCC | | | | | | | | | | |
| Male | 2,616 | 38.7 | 2,518 | 35.9 | 2,600 | 37.2 | 2,782 | 35.9 | 2,405 | 36.4 |
| Female | 4,152 | 61.3 | 4,505 | 64.1 | 4,391 | 62.8 | 4,873 | 62.9 | 4,058 | 61.4 |
| Unknown | 0 | 0.0 | 0 | 0.0 | 0 | 0.0 | 94 | 1.2 | 151 | 2.3 |
| Total | 6,768 | | 7,023 | | 6,991 | | 7,749 | | 6,614 | |
| DVC | | | | | | | | | | |
| Male | 9,013 | 44.6 | 9,310 | 45.2 | 9,576 | 45.1 | 9,098 | 45.5 | 9,277 | 44.0 |
| Female | 11,217 | 55.4 | 11,268 | 54.8 | 11,673 | 54.9 | 10,768 | 53.8 | 11,357 | 53.8 |
| Unknown | 0 | 0.0 | 0 | 0.0 | 0 | 0.0 | 151 | 0.8 | 460 | 2.2 |
| Total | 20,230 | | 20,578 | | 21,249 | | 20,017 | | 21,094 | |
| LMC | | | | | | | | | | |
| Male | 2,967 | 39.1 | 2,900 | 38.7 | 2,785 | 38.9 | 2,617 | 39.0 | 2,989 | 38.2 |
| Female | 4,613 | 60.9 | 4,592 | 61.3 | 4,367 | 61.1 | 4,038 | 60.1 | 4,507 | 57.6 |
| Unknown | 0 | 0.0 | 0 | 0.0 | 0 | 0.0 | 59 | 0.9 | 331 | 4.2 |
| Total | 7,580 | | 7,492 | | 7,152 | | 6,714 | | 7,827 | |

Comments/Analysis:

Over the last five fall semesters, on average, 57% of first-census students were female, 42% were male, and 1% did not report their gender. Proportions of females and males for Diablo Valley and Los Medanos for this same period of time varied closely to those of the District, whereas Contra Costa showed a noteworthy variance of 62.5% for females.

BEST COPY AVAILABLE

¹ 1996-1998 data based on IT CR89 Reports. Totals for 1999 are based on State Chancellor's Office, MIS Selected Statistics Report—Student Data, run date 8/9/00. Totals for 2000 are based on IT Enrollment Report, run date 9/14/00.

CCCCD Enrollment Totals by Ethnicity¹

| CCCCD | Fall 1996 | | Fall 1997 | | Fall 1998 | | Fall 1999 | | Fall 2000 | |
|----------------|---------------|------|---------------|------|---------------|------|---------------|------|---------------|------|
| | # | % | # | % | # | % | # | % | # | % |
| Amer. Indian | 290 | 0.8 | 320 | 0.9 | 275 | 0.8 | 281 | 0.8 | 260 | 0.7 |
| Asian/Pac. Is. | 3,778 | 10.9 | 3,998 | 11.4 | 4,261 | 12.0 | 4,291 | 12.4 | 4,091 | 11.6 |
| Black | 3,487 | 10.1 | 3,624 | 10.3 | 3,683 | 10.4 | 3,791 | 11.0 | 3,614 | 10.3 |
| White | 18,831 | 54.5 | 18,441 | 52.5 | 18,049 | 51.0 | 16,453 | 47.7 | 16,854 | 47.9 |
| Hispanic | 4,449 | 12.9 | 4,719 | 13.4 | 4,787 | 13.5 | 4,774 | 13.8 | 4,995 | 14.2 |
| Filipino | 1,909 | 5.5 | 1,914 | 5.5 | 2,001 | 5.7 | 1,895 | 5.5 | 2,008 | 5.7 |
| Other/Unkwn. | 1,834 | 5.3 | 2,077 | 5.9 | 2,336 | 6.6 | 2,995 | 8.7 | 3,350 | 9.5 |
| Total | 34,578 | | 35,093 | | 35,392 | | 34,480 | | 35,172 | |

Comments/Analysis:

Over the last five fall semesters, on average, 50.7% of first-census students reported their ethnicity as “White” and 42% identified themselves as members of various ethnic minority groups. Similar findings were observed for Los Medanos. Contra Costa serves a significantly higher percentage of minority populations.

¹ 1996-1998 data based on IT CR89 Reports. Totals for 1999 are based on State Chancellor’s Office, MIS Selected Statistics Report—Student Data, run date 8/9/00. Totals for 2000 are based on IT Enrollment Report, run date 9/14/00.

College Enrollment Totals by Ethnicity¹

| | Fall 1996 | | Fall 1997 | | Fall 1998 | | Fall 1999 | | Fall 2000 | |
|----------------|---------------|------|---------------|------|---------------|------|---------------|------|---------------|------|
| CCC | # | % | # | % | # | % | # | % | # | % |
| Amer. Indian | 44 | 0.7 | 43 | 0.6 | 37 | 0.5 | 48 | 0.6 | 41 | 0.6 |
| Asian/Pac. Is. | 996 | 14.7 | 1,018 | 14.5 | 1,047 | 15.0 | 1,200 | 15.5 | 1,029 | 15.6 |
| Black | 1,849 | 27.3 | 1,883 | 26.8 | 1,928 | 27.6 | 2,033 | 26.2 | 1,702 | 25.7 |
| White | 1,707 | 25.2 | 1,725 | 24.6 | 1,604 | 22.9 | 1,928 | 24.9 | 1,501 | 22.7 |
| Hispanic | 1,111 | 16.4 | 1,211 | 17.2 | 1,248 | 17.9 | 1,418 | 18.3 | 1,367 | 20.7 |
| Filipino | 412 | 6.1 | 428 | 6.1 | 409 | 5.9 | 435 | 5.6 | 425 | 6.4 |
| Other/Unkwn. | 649 | 9.6 | 715 | 10.2 | 718 | 10.3 | 687 | 8.9 | 549 | 8.3 |
| Total | 6,768 | | 7,023 | | 6,991 | | 7,749 | | 6,614 | |
| DVC | | | | | | | | | | |
| Amer. Indian | 172 | 0.9 | 180 | 0.9 | 164 | 0.8 | 159 | 0.8 | 150 | 0.7 |
| Asian/Pac. Is. | 2,405 | 11.9 | 2,597 | 12.6 | 2,825 | 13.3 | 2,714 | 13.6 | 2,657 | 12.6 |
| Black | 848 | 4.2 | 924 | 4.5 | 942 | 4.4 | 958 | 4.8 | 971 | 4.6 |
| White | 12,975 | 64.1 | 12,774 | 62.1 | 12,778 | 60.1 | 11,221 | 56.1 | 11,691 | 55.4 |
| Hispanic | 1,939 | 9.6 | 2,084 | 10.1 | 2,215 | 10.4 | 2,175 | 10.9 | 2,222 | 10.5 |
| Filipino | 1,141 | 5.6 | 1,132 | 5.5 | 1,206 | 5.7 | 1,079 | 5.4 | 1,178 | 5.6 |
| Other/Unkwn. | 750 | 3.7 | 887 | 4.3 | 1,119 | 5.3 | 1,711 | 8.5 | 2,225 | 10.5 |
| Total | 20,230 | | 20,578 | | 21,249 | | 20,017 | | 21,094 | |
| LMC | | | | | | | | | | |
| Amer. Indian | 74 | 1.0 | 97 | 1.3 | 74 | 1.0 | 74 | 1.1 | 71 | 0.9 |
| Asian/Pac. Is. | 377 | 5.0 | 383 | 5.1 | 389 | 5.4 | 377 | 5.6 | 464 | 5.9 |
| Black | 790 | 10.4 | 817 | 10.9 | 813 | 11.4 | 800 | 11.9 | 971 | 12.4 |
| White | 4,149 | 54.7 | 3,942 | 52.6 | 3,667 | 51.3 | 3,304 | 49.2 | 3,809 | 48.7 |
| Hispanic | 1,399 | 18.5 | 1,424 | 19.0 | 1,324 | 18.5 | 1,181 | 17.6 | 1,468 | 18.8 |
| Filipino | 356 | 4.7 | 354 | 4.7 | 386 | 5.4 | 381 | 5.7 | 436 | 5.6 |
| Other/Unkwn. | 435 | 5.7 | 475 | 6.3 | 499 | 7.0 | 597 | 8.9 | 608 | 7.8 |
| Total | 7,580 | | 7,492 | | 7,152 | | 6,714 | | 7,827 | |

Comments/Analysis: (See comments in Display 6a.)

BEST COPY AVAILABLE

¹ 1996-1998 data based on IT CR89 Reports. Totals for 1999 are based on State Chancellor's Office, MIS Selected Statistics Report—Student Data, run date 8/9/00. Totals for 2000 are based on IT Enrollment Report, run date 9/14/00.

**CCCCD First-Census Enrollment by Student-Declared Goal¹
Grouped to Reflect Mission of California Community Colleges**

| CCCCD | Fall 1999 | | Fall 2000 | | Change | |
|--------------------------------|---------------|--------------|---------------|--------------|--------------|------------|
| | # | % | # | % | # | % |
| Transfer to 4-Year Institution | 5,969 | 47.3 | 9,486 | 50.9 | 3,517 | 58.9 |
| General Education | 1,801 | 14.3 | 2,715 | 14.6 | 914 | 50.8 |
| Occupational Preparation | 4,028 | 31.9 | 5,508 | 29.6 | 1,480 | 36.8 |
| Improve Basic Skills | 819 | 6.5 | 920 | 4.9 | 101 | 12.3 |
| Unknown* | 21,864 | ---- | 16,996 | ---- | -4,868 | -22.3 |
| Total | 34,480 | 100.0 | 35,625 | 100.0 | 1,145 | 3.3 |

* Percent excludes unknown.

Comments/Analysis:

Student-declared educational goals are provided by students after undergoing matriculation services or are taken from admission applications for those not receiving matriculation screening. Various specific educational goal categories declared by students were grouped as follows to reflect CCC mission:

Mission Educational Goal Categories Combined

Transfer: Obtain AA and transfer, transfer without AA.

General Ed: Obtain AA without transfer, educational development.

Occupational: Obtain Voc Ed degree without transfer, earn Voc Ed certificate without transfer, formulate career goals, prepare for new career, advance in current career, and maintain license or certificate.

Basic Skills: Improve basic skills and complete credits for high school diploma.

A student's initially expressed educational goal will frequently change as his or her college experiences bring awareness of new career choices or talents. The fall data displayed here registers initial educational goals.

The data suggest that the relative proportion of students with specific educational goals at first-census tends to be stable over time districtwide and for the colleges. One exception noted is the increase in the proportion of students at Contra Costa indicating intent to transfer.

¹ Totals for Fall 1999 are estimates. Fall 2000 figures are based on IT Educational Goals Report, run date 9/14/00. Data retrieved shortly after first-census date.

College First-Census Enrollment by Student-Declared Goal¹ (continued)

| | Fall 1999 | | Fall 2000 | | Change | |
|--------------------------------|---------------|--------------|---------------|--------------|---------------|--------------|
| | # | % | # | % | # | % |
| Contra Costa | | | | | | |
| Transfer to 4-Year Institution | 993 | 37.0 | 1,418 | 46.2 | 425 | 42.8 |
| General Education | 479 | 17.8 | 489 | 15.9 | 10 | 2.1 |
| Occupational Preparation | 881 | 32.8 | 922 | 30.1 | 41 | 4.7 |
| Improve Basic Skills | 332 | 12.4 | 239 | 7.8 | -93 | -27.9 |
| Unknown* | 5,066 | ---- | 3,639 | ---- | -1,427 | -28.2 |
| Total | 7,749 | 100.0 | 6,707 | 100.0 | -1,042 | -13.4 |
| Diablo Valley | | | | | | |
| Transfer to 4-Year Institution | 4,158 | 56.2 | 6,513 | 57.3 | 2,355 | 56.6 |
| General Education | 970 | 13.1 | 1,612 | 14.2 | 642 | 66.2 |
| Occupational Preparation | 1,863 | 25.2 | 2,708 | 23.8 | 845 | 45.3 |
| Improve Basic Skills | 403 | 5.4 | 530 | 4.7 | 127 | 31.6 |
| Unknown* | 12,623 | ---- | 10,034 | ---- | -2,589 | -20.5 |
| Total | 20,017 | 100.0 | 21,397 | 100.0 | 1,380 | 6.9 |
| Los Medanos | | | | | | |
| Transfer to 4-Year Institution | 912 | 35.6 | 1,664 | 37.7 | 752 | 82.4 |
| General Education | 348 | 13.6 | 637 | 14.4 | 289 | 83.0 |
| Occupational Preparation | 1,211 | 47.3 | 1,955 | 44.3 | 744 | 61.4 |
| Improve Basic Skills | 90 | 3.5 | 153 | 3.5 | 63 | 69.7 |
| Unknown* | 4,152 | ---- | 3,483 | ---- | -669 | -16.1 |
| Total | 6,714 | 100.0 | 7,892 | 100.0 | 1,178 | 17.5 |

* Percent excludes unknown.

Comments/Analysis: (See comments in Display 7a.)

¹ Totals for Fall 1999 are estimates. Fall 2000 figures are based on IT Educational Goals Report, run date 9/14/00. Data retrieved shortly after first-census date.

CCCCD First-Census Enrollment by Age Group¹

| CCCCD | Fall 1996 | | Fall 1997 | | Fall 1998 | | Fall 1999 | | Fall 2000 | |
|--------------|---------------|------|---------------|------|---------------|------|---------------|------|---------------|------|
| | # | % | # | % | # | % | # | % | # | % |
| ≤19 | 8,556 | 24.7 | 8,897 | 25.4 | 9,513 | 26.9 | 10,025 | 29.1 | 10,474 | 29.8 |
| 20-24 | 8,755 | 25.3 | 8,923 | 25.4 | 8,895 | 25.1 | 8,781 | 25.5 | 8,695 | 24.7 |
| 25-29 | 4,279 | 12.4 | 4,148 | 11.8 | 4,016 | 11.3 | 3,606 | 10.5 | 3,314 | 9.4 |
| 30-49 | 10,120 | 29.3 | 10,020 | 28.6 | 9,745 | 27.5 | 8,972 | 26.0 | 9,388 | 26.7 |
| 50+ | 2,823 | 8.2 | 3,010 | 8.6 | 3,136 | 8.9 | 2,974 | 8.6 | 3,130 | 8.9 |
| Unknown | 45 | 0.1 | 95 | 0.3 | 87 | 0.2 | 122 | 0.4 | 171 | 0.5 |
| Total | 35,578 | | 35,093 | | 35,392 | | 34,480 | | 35,172 | |

Comments/Analysis:

The majority of students is 24 years of age or younger, and the 30-49 age group has been a significantly large segment of the student body. The proportion of Fall 2000 students 19 and under is an increase of 20% over Fall 1996. The proportion of students in the 25-29 age group has decreased by 24% over the last five fall semesters, and there has been a slight increase in the 50+ age group. Similar findings held for the colleges.

¹ 1996-1998 data based on IT CR89 Reports. Totals for 1999 are based on State Chancellor's Office, MIS Selected Statistics Report—Student Data, run date 8/9/00. Totals for 2000 are based on IT Enrollment Report, run date 9/14/00.

First-Census Enrollment by Age Group¹

| | Fall 1996 | | Fall 1997 | | Fall 1998 | | Fall 1999 | | Fall 2000 | |
|----------------------|---------------|------|---------------|------|---------------|------|---------------|------|---------------|------|
| | # | % | # | % | # | % | # | % | # | % |
| Contra Costa | | | | | | | | | | |
| Ξ19 | 1,566 | 23.1 | 1,630 | 23.2 | 1,566 | 22.4 | 2,023 | 26.1 | 1,651 | 25.0 |
| 20-24 | 1,590 | 23.5 | 1,558 | 22.2 | 1,570 | 22.5 | 1,557 | 20.1 | 1,476 | 22.3 |
| 25-29 | 888 | 13.1 | 875 | 12.5 | 885 | 12.7 | 835 | 10.8 | 702 | 10.6 |
| 30-49 | 2,021 | 29.9 | 2,086 | 29.7 | 2,093 | 29.9 | 2,153 | 27.8 | 1,953 | 29.5 |
| 50+ | 673 | 9.9 | 801 | 11.4 | 819 | 11.7 | 1,135 | 14.6 | 784 | 11.9 |
| Unknown | 30 | 0.4 | 73 | 1.0 | 58 | 0.8 | 41 | 0.5 | 48 | 0.7 |
| Total | 6,768 | | 7,023 | | 6,991 | | 7,749 | | 6,614 | |
| Diablo Valley | | | | | | | | | | |
| Ξ19 | 5,430 | 26.8 | 5,686 | 27.6 | 6,179 | 29.1 | 6,317 | 31.6 | 6,754 | 32.0 |
| 20-24 | 5,541 | 27.4 | 5,770 | 28.0 | 5,792 | 27.3 | 5,754 | 28.7 | 5,738 | 27.2 |
| 25-29 | 2,454 | 12.1 | 2,355 | 11.4 | 2,305 | 10.8 | 2,039 | 10.2 | 1,900 | 9.0 |
| 30-49 | 5,236 | 25.9 | 5,130 | 24.9 | 5,174 | 24.3 | 4,534 | 22.7 | 4,843 | 23.0 |
| 50+ | 1,564 | 7.7 | 1,633 | 7.9 | 1,787 | 8.4 | 1,317 | 6.6 | 1,775 | 8.4 |
| Unknown | 5 | 0.0 | 4 | 0.0 | 12 | 0.1 | 56 | 0.3 | 84 | 0.4 |
| Total | 20,230 | | 20,578 | | 21,249 | | 20,017 | | 21,094 | |
| Los Medanos | | | | | | | | | | |
| Ξ19 | 1,560 | 20.6 | 1,581 | 21.1 | 1,768 | 24.7 | 1,685 | 25.1 | 2,157 | 27.6 |
| 20-24 | 1,624 | 21.4 | 1,595 | 21.3 | 1,533 | 21.4 | 1,470 | 21.9 | 1,590 | 20.3 |
| 25-29 | 937 | 12.4 | 918 | 12.3 | 826 | 11.5 | 732 | 10.9 | 755 | 9.6 |
| 30-49 | 2,863 | 37.8 | 2,804 | 37.4 | 2,478 | 34.6 | 2,280 | 34.0 | 2,690 | 34.4 |
| 50+ | 586 | 7.7 | 576 | 7.7 | 530 | 7.4 | 522 | 7.8 | 595 | 7.6 |
| Unknown | 10 | 0.1 | 18 | 0.2 | 17 | 0.2 | 25 | 0.4 | 40 | 0.5 |
| Total | 7,580 | | 7,492 | | 7,152 | | 6,714 | | 7,827 | |

Comments/Analysis: (See comments in Display 8a.)

¹ 1996-1998 data based on IT CR89 Reports. Totals for 1999 are based on State Chancellor's Office, MIS Selected Statistics Report—Student Data, run date 8/9/00. Totals for 2000 are based on IT Enrollment Report, run date 9/14/00.

CCCCD First-Census Enrollment by Student Status¹

| CCCCD | Fall 1996 | | Fall 1997 | | Fall 1998 | | Fall 1999* | | Fall 2000* | |
|--------------------|---------------|------|---------------|------|---------------|------|---------------|------|---------------|------|
| | # | % | # | % | # | % | # | % | # | % |
| First-Time | 8,025 | 23.2 | 8,218 | 23.4 | 8,684 | 24.5 | 8,179 | 23.7 | 8,401 | 23.9 |
| Transfers | 3,815 | 11.0 | 3,733 | 10.6 | 3,689 | 10.4 | 3,689 | 10.7 | 3,724 | 10.6 |
| Returning Transfer | 1,220 | 3.5 | 1,224 | 3.5 | 1,302 | 3.7 | 1,229 | 3.6 | 1,262 | 3.6 |
| Returning | 3,735 | 10.8 | 3,684 | 10.5 | 3,239 | 9.2 | 3,500 | 10.2 | 3,500 | 9.9 |
| Continuing | 17,783 | 51.4 | 18,234 | 52.0 | 18,478 | 52.2 | 17,883 | 51.9 | 18,297 | 52.0 |
| Unknown | 0 | 0.0 | 0 | 0.0 | 0 | 0.0 | 0 | 0.0 | 0 | 0.0 |
| Total | 34,578 | | 35,093 | | 35,392 | | 34,480 | | 35,172 | |

* Figures for Fall 1999 and Fall 2000 are estimates.

Comments/Analysis:

The definitions of the enrollment status categories are:

- *First-time*: A student enrolled at the reporting college for the first time who is not a concurrent high school attendee and has no prior college attendance.
- *Transfer*: A student enrolled at the reporting college who transferred from another higher education institution.
- *Returning Transfer*: A student who previously attended the reporting college, transferred out, and has returned to the reporting college.
- *Returning*: A student enrolled at the reporting college after an absence of one or more terms without interim attendance at another college.
- *Continuing*: A student who is enrolled in the current session and who was enrolled in the previous session at the same reporting college.

The distribution of enrollment totals by student status has been relatively stable. The majority of students tend to be those continuing their studies from the previous semester. First-Time students are a significantly large proportion of the District's student body. A substantial proportion of students tend to be transfers from another institution or students returning after an absence of a semester or more. Similar findings hold for the colleges.

¹ 1996-1998 data based on IT CR89 Reports. Totals for 1999 are based on State Chancellor's Office, MIS Selected Statistics Report—Student Data, run date 8/9/00. Totals for 2000 are based on IT Enrollment Report, run date 9/14/00.

First-Census Enrollment by Student Status¹

| | Fall 1996 | | Fall 1997 | | Fall 1998 | | Fall 1999* | | Fall 2000* | |
|----------------------|---------------|------|---------------|------|---------------|------|---------------|------|---------------|------|
| | # | % | # | % | # | % | # | % | # | % |
| Contra Costa | | | | | | | | | | |
| First-Time | 1,848 | 27.3 | 1,935 | 27.6 | 1,885 | 27.0 | 2,113 | 27.3 | 1,803 | 27.3 |
| Transfers | 581 | 8.6 | 516 | 7.3 | 612 | 8.8 | 638 | 8.2 | 536 | 8.1 |
| Returning Transfer | 194 | 2.9 | 197 | 2.8 | 235 | 3.4 | 233 | 3.0 | 202 | 3.1 |
| Returning | 907 | 13.4 | 989 | 14.1 | 997 | 14.3 | 1,078 | 13.9 | 932 | 14.1 |
| Continuing | 3,238 | 47.8 | 3,386 | 48.2 | 3,262 | 46.7 | 3,686 | 47.6 | 3,140 | 47.5 |
| Unknown | 0 | 0.0 | 0 | 0.0 | 0 | 0.0 | 0 | 0.0 | 0 | 0.0 |
| Total | 6,768 | | 7,023 | | 6,991 | | 7,749 | | 6,614 | |
| Diablo Valley | | | | | | | | | | |
| First-Time | 4,372 | 21.6 | 4,537 | 22.0 | 4,734 | 22.3 | 4,400 | 22.0 | 4,662 | 22.1 |
| Transfers | 2,355 | 11.6 | 2,371 | 11.5 | 2,392 | 11.3 | 2,297 | 11.5 | 2,408 | 11.4 |
| Returning Transfer | 809 | 4.0 | 831 | 4.0 | 877 | 4.1 | 812 | 4.1 | 859 | 4.1 |
| Returning | 1,655 | 8.2 | 1,558 | 7.6 | 1,578 | 7.4 | 1,547 | 7.7 | 1,598 | 7.6 |
| Continuing | 11,039 | 54.6 | 11,281 | 54.8 | 11,668 | 54.9 | 10,963 | 54.8 | 11,566 | 54.8 |
| Unknown | 0 | 0.0 | 0 | 0.0 | 0 | 0.0 | 0 | 0.0 | 0 | 0.0 |
| Total | 11,039 | | 20,578 | | 21,249 | | 20,017 | | 21,094 | |
| Los Medanos | | | | | | | | | | |
| First-Time | 1,805 | 23.8 | 1,746 | 23.3 | 2,065 | 28.9 | 1,701 | 25.3 | 2,022 | 25.8 |
| Transfers | 879 | 11.6 | 846 | 11.3 | 685 | 9.6 | 727 | 10.8 | 827 | 10.6 |
| Returning Transfer | 217 | 2.9 | 196 | 2.6 | 190 | 2.7 | 182 | 2.7 | 208 | 2.7 |
| Returning | 1,173 | 15.5 | 1,137 | 15.2 | 664 | 9.3 | 894 | 13.3 | 985 | 12.6 |
| Continuing | 3,506 | 46.3 | 3,567 | 47.6 | 3,548 | 49.6 | 3,211 | 47.8 | 3,784 | 48.3 |
| Unknown | 0 | 0.0 | 0 | 0.0 | 0 | 0.0 | 0 | 0.0 | 0 | 0.0 |
| Total | 7,580 | | 7,492 | | 7,152 | | 6,714 | | 7,827 | |

* Figures for Fall 1999 and Fall 2000 are estimates.

Comments/Analysis: (See comments in Display 9a.)

¹ 1996-1998 data based on IT CR89 Reports. Totals for 1999 are based on State Chancellor's Office, MIS Selected Statistics Report—Student Data, run date 8/9/00. Totals for 2000 are based on IT Enrollment Report, run date 9/14/00.

First-Census Enrollment by Day/Evening Status¹

| | Fall 1996 | | Fall 1997 | | Fall 1998 | | Fall 1999* | | Fall 2000* | |
|----------------------|---------------|------|---------------|------|---------------|------|---------------|------|---------------|------|
| | # | % | # | % | # | % | # | % | # | % |
| CCCCD | | | | | | | | | | |
| Day | 13,306 | 38.5 | 13,450 | 38.3 | 13,327 | 37.7 | 13,156 | 38.2 | 13,387 | 38.1 |
| Day/Evening | 9,599 | 27.8 | 10,064 | 28.7 | 10,294 | 29.1 | 9,930 | 28.5 | 10,114 | 28.8 |
| Evening/Saturday | 11,673 | 33.8 | 11,579 | 33.0 | 11,771 | 33.3 | 11,495 | 33.3 | 11,672 | 33.2 |
| Total | 34,578 | | 35,093 | | 35,392 | | 34,480 | | 35,172 | |
| Contra Costa | | | | | | | | | | |
| Day | 3,585 | 53.0 | 3,725 | 53.0 | 3,717 | 53.2 | 4,112 | 53.1 | 3,512 | 53.1 |
| Day/Evening | 1,671 | 24.7 | 1,703 | 24.2 | 1,705 | 24.4 | 1,894 | 24.4 | 1,610 | 24.3 |
| Evening/Saturday | 1,512 | 22.3 | 1,595 | 22.7 | 1,569 | 22.4 | 1,743 | 22.5 | 1,492 | 22.6 |
| Total | 6,768 | | 7,023 | | 6,991 | | 7,749 | | 6,614 | |
| Diablo Valley | | | | | | | | | | |
| Day | 6,672 | 33.0 | 6,542 | 31.8 | 6,477 | 30.5 | 6,356 | 31.8 | 6,615 | 31.4 |
| Day/Evening | 5,960 | 29.5 | 6,360 | 30.9 | 6,757 | 31.8 | 6,150 | 30.7 | 6,568 | 31.1 |
| Evening/Saturday | 7,598 | 37.6 | 7,676 | 37.3 | 8,015 | 37.7 | 7,512 | 37.5 | 7,912 | 37.5 |
| Total | 20,230 | | 20,578 | | 21,249 | | 20,017 | | 21,094 | |
| Los Medanos | | | | | | | | | | |
| Day | 3,049 | 40.2 | 3,183 | 42.5 | 3,133 | 43.8 | 2,831 | 42.2 | 3,352 | 42.8 |
| Day/Evening | 1,968 | 26.0 | 2,001 | 26.7 | 1,832 | 25.6 | 1,752 | 26.1 | 2,046 | 26.1 |
| Evening/Saturday | 2,563 | 33.8 | 2,308 | 30.8 | 2,187 | 30.6 | 2,131 | 31.7 | 2,429 | 31.0 |
| Total | 7,580 | | 7,492 | | 7,152 | | 6,714 | | 7,827 | |

* Figures for Fall 1999 and Fall 2000 are estimates.

Comments/Analysis:

Districtwide, over the last five fall terms, 62% of students have tended to enroll in evening/Saturday courses on average. Similar findings hold for Diablo Valley and Los Medanos, but not for Contra Costa where 53% of students have tended to enroll in day courses on average.

¹ 1996-1998 data based on IT CR89 Reports. Totals for 1999 are based on State Chancellor's Office, MIS Selected Statistics Report—Student Data, run date 8/9/00. Totals for 2000 are based on IT Enrollment Report, run date 9/14/00.



U.S. Department of Education
Office of Educational Research and Improvement (OERI)
National Library of Education (NLE)
Educational Resources Information Center (ERIC)



NOTICE

Reproduction Basis

This document is covered by a signed "Reproduction Release (Blanket)" form (on file within the ERIC system), encompassing all or classes of documents from its source organization and, therefore, does not require a "Specific Document" Release form.

This document is Federally-funded, or carries its own permission to reproduce, or is otherwise in the public domain and, therefore, may be reproduced by ERIC without a signed Reproduction Release form (either "Specific Document" or "Blanket").