

DOCUMENT RESUME

ED 479 970

TM 035 160

AUTHOR Glycer-Culver, Betty.
TITLE Fall 2002 Student Profile. Based upon First Census Data.
INSTITUTION Los Rios Community Coll. District, Sacramento, CA. Office of Institutional Research.
PUB DATE 2003-03-00
NOTE 10p.; For the fall 2001 student profile, see ED 464 665.
AVAILABLE FROM For full text: <http://irweb.losrios.edu>.
PUB TYPE Reports - Descriptive (141)
EDRS PRICE EDRS Price MF01/PC01 Plus Postage.
DESCRIPTORS *College Students; *Community Colleges; *Enrollment; Enrollment Trends; Higher Education; *Profiles; School Demography; *Student Characteristics
IDENTIFIERS *Los Rios Community College District CA

ABSTRACT

This is the 13th in a series of student profiles for the Los Rios Community College District (LRCCD), California. These annual summaries provide the district and its colleges (American River College, Cosumnes River College, and Sacramento City College) with data on student demographics and enrollment trends. The fall 2002 student profile contains a brief analysis of the separate demographic data for the soon-to-be Folsom Lake College, which will include the El Dorado Center. The report contains student enrollment data and weekly student contact hours based on official fall First Census reports issued at the beginning of the fourth week of classes. Analysis of student demographic data is based on all students enrolled at that point. Data illustrate the overall growth of the LRCCD enrollment and some changing demographic trends. Enrollment has increased substantially each year from fall 1996 through fall 2001. Enrollment growth increased at 3.4% in fall 2002. Long-term demographic trends remained relatively constant in fall 2002, with the proportions by ethnicity and gender remaining relatively stable. The average age of LRCCD students in fall 2002 was 28.8 years, and there was a slight decline in the proportion of older students to 35.5%. High proportions of students enroll with the goal of transferring to a 4-year college. A higher proportion of students takes courses only during the day, while 29.3% take courses during day and night. (SLD)

Reproductions supplied by EDRS are the best that can be made
from the original document.

Fall 2002 Student Profile Based upon First Census Data

March 2003

Office of Institutional Research

Los Rios Community College District

U.S. DEPARTMENT OF EDUCATION
Office of Educational Research and Improvement
EDUCATIONAL RESOURCES INFORMATION
CENTER (ERIC)

- This document has been reproduced as received from the person or organization originating it.
- Minor changes have been made to improve reproduction quality.

- Points of view or opinions stated in this document do not necessarily represent official OERI position or policy.

PERMISSION TO REPRODUCE AND
DISSEMINATE THIS MATERIAL HAS
BEEN GRANTED BY

J A BEACHLER

TO THE EDUCATIONAL RESOURCES
INFORMATION CENTER (ERIC)

BEST COPY AVAILABLE

**Los Rios Community College District
Office of Institutional Research**

Fall 2002 Student Profile

Based upon First Census Data

March 2003

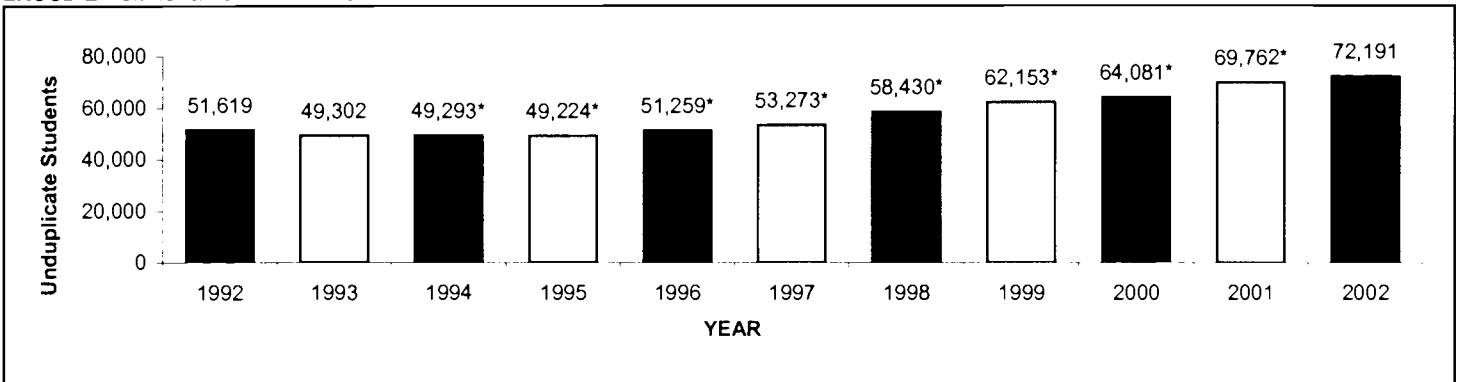
This is the thirteenth in a series of Los Rios Community College District (LRCCD) Fall Student Profiles. These annual summaries provide the District and its colleges -- American River College (ARC), Cosumnes River College (CRC) and Sacramento City College (SCC) -- with data on student demographics and enrollment trends, important information for successful planning to meet the needs of our changing student clientele. The Fall 2002 Student Profile includes a brief analysis of the separate demographic data for the soon to be Folsom Lake College (FLC), which includes the El Dorado Center. This report presents student enrollment data and Weekly Student Contact Hours (WSCH) based on official Fall First Census reports that are issued at the beginning of the fourth week of classes. The report is also based upon demographic data generated from the official Fall Fourth Week Census research database. Analysis of demographic data includes all students enrolled as of the fourth week of classes, including those enrolled in sessions that begin later in the semester. Analysis of student demography is based upon data that *excludes* those students who have dropped their courses by first census.

Note that the data generated in Fall 2002 was extracted from the newly implemented PeopleSoft Student Administration System (SA). Because the timing of data processing differs on the PeopleSoft SA, compared to the previously used Eden SA, comparison of several data elements to the past is inappropriate and has been noted as such throughout this report.

District Enrollment

Chart 1 presents fall district enrollment data for the Los Rios Community College District. The enrollment pattern tends to reflect variations in state funding and population trends. Fee increases that took effect in 1993 probably contributed to the enrollment drop for that year, a drop that followed two years of more subtle decline. Enrollment was stabilized the following year, declining by less than 0.02% (9 fewer students) in Fall 1994 and in Fall 1995 by only 0.1% (69 fewer students).

**Chart 1
LRCCD Enrollment: Fall 1992 to Fall 2002**



Technical Note:

* Data revisions occur in July, following the end of each academic year.

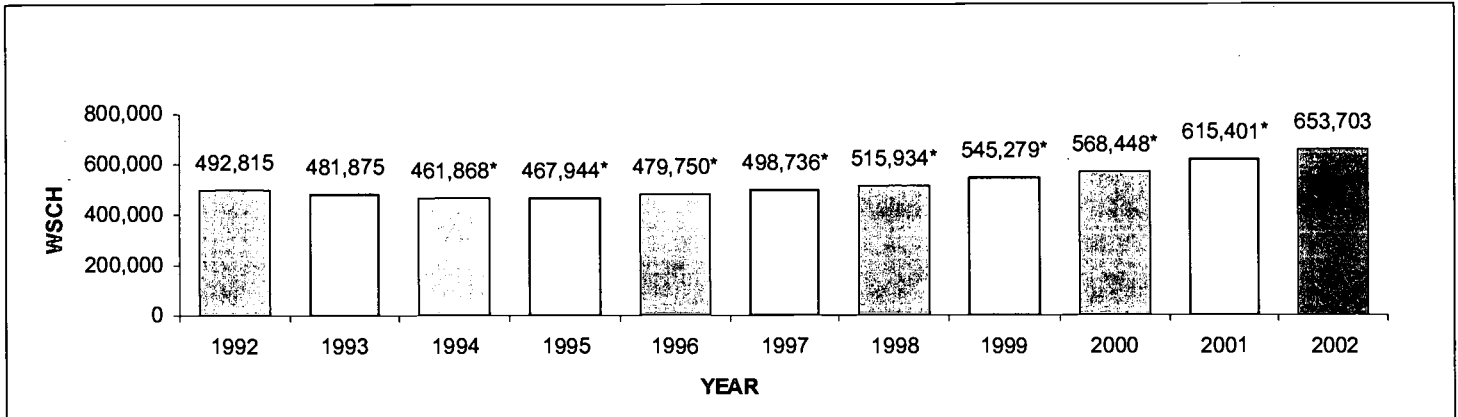
Since then, enrollment has increased annually beginning with a 4.1% increase in Fall 1996, followed by a 3.9% increase in Fall 1997 and a 9.7% enrollment increase in Fall 1998. Los Rios enrollment increases continued in Fall 1999, with a 6.4% increase and a 3.1% enrollment increase in Fall 2000. District-wide enrollment increased by 8.9% in Fall 2001 and by 3.4% in Fall 2002 to an enrollment of 72,191 students.

Enrollment increased at each of the Los Rios colleges in Fall 2002: by 1.7% at ARC (to 30,632), by 7.5% at CRC (to 11,462, noting that Folsom Lake and El Dorado enrollment figures are now reported separately), by 0.5% at SCC (to 22,275) and by 14.4% (to 7,822) at the Folsom Lake and El Dorado centers.

District Weekly Student Contact Hours

Weekly Student Contact Hours (WSCH) for Fall 2002 are based on data extracted from the PeopleSoft SA system were 653,703 across the district. The fourth week WSCH to enrollment ratio was 9.1 for Fall 2002.

Chart 2
LRCCD WSCH: Fall 1992 to Fall 2002



Technical Notes:

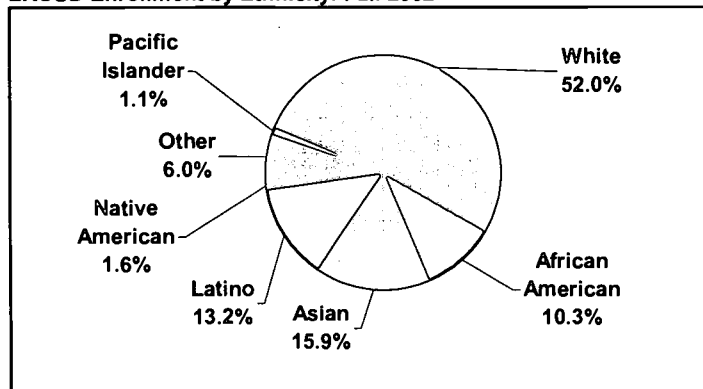
* Data revisions occur during July, following the end of each academic year.

Because the timing of data processing differs on the new PeopleSoft SA System than the previously used Eden SA System, comparison of Fall 2002 data to past Fall semesters is inappropriate.

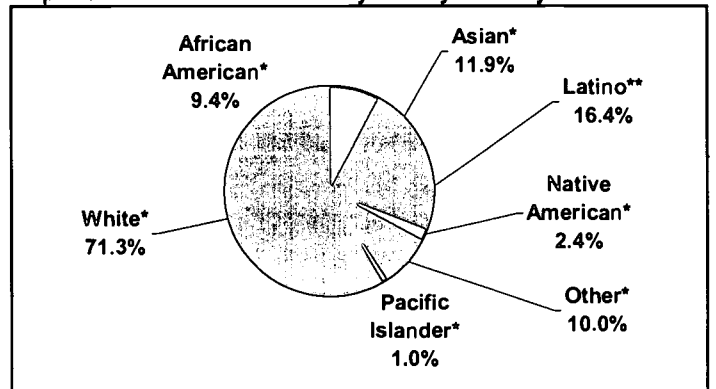
District Enrollment by Ethnicity

Chart 3 depicts the District's ethnic composition in Fall 2002, compared to the population of its three-county service area. This comparison shows that Los Rios enrolls higher proportions of Asian students, slightly higher proportions of African American students and lower proportions of Latino and white students than each group's proportion of the population.

Chart 3
LRCCD Enrollment by Ethnicity: Fall 2002



Population in the LRCCD 3-County Area by Ethnicity: 2000



Technical Notes:

"Other" includes students of all other and unknown ethnic categories.

* This race and mixed races thereof.

** Latino data from the U.S. Census overlaps other ethnic categories; hence percentages do not total 100.0%.

Source for Service Area Population:

U.S. Bureau of the Census, *Profile of General Demographic Characteristics of the 2000 Population*, issued by SACOG (the local repository for the U.S. Bureau of the Census).

The 15.9% of Asian students in Fall 2002 continue to be the largest minority group enrolled in Los Rios colleges. The remaining ethnic composition of the District's Fall 2002 enrollment is as follows: Latinos, 13.2%; African Americans, 10.3%; Native Americans, 1.6%; and the remaining 6.0% include students from various other ethnic minority groups and those students who declined to state their ethnicity. There continues to be a decline in the proportion of white student enrollment at Los Rios colleges, decreasing from 54.5% of all students in Fall 2001 to 52.0% in Fall 2002.

There are some interesting differences in Fall 2002 enrollment based on ethnicity at the college level. Overall, the CRC ethnic composition looks more like that of SCC than like the district as a whole. CRC enrolls the highest proportion of Asian students (24.9%) and also enrolls higher proportions of African Americans (15.0%) and Latinos (14.0%) than comparable District enrollment proportions. SCC also enrolls a higher proportion of Asians (22.5%), Latinos (16.3%) and African Americans (12.8%) when compared to District enrollment proportions. ARC enrollment based on ethnicity shows a lower proportion in each of the ethnic categories except Native Americans (noting the small numbers) and a higher proportion of white student (60.3%) enrollment, although the proportion of white students at ARC has decreased from 63.4% in Fall 2001.

Analysis of the Folsom Lake College Center's Fall 2002 ethnicity profile (which includes the El Dorado Center) results in a much different enrollment pattern. There is a substantially higher proportion of white students, 76.6%, enrolled at the Folsom Lake College Center in Fall 2002 and lower proportions in each of the other ethnic categories.

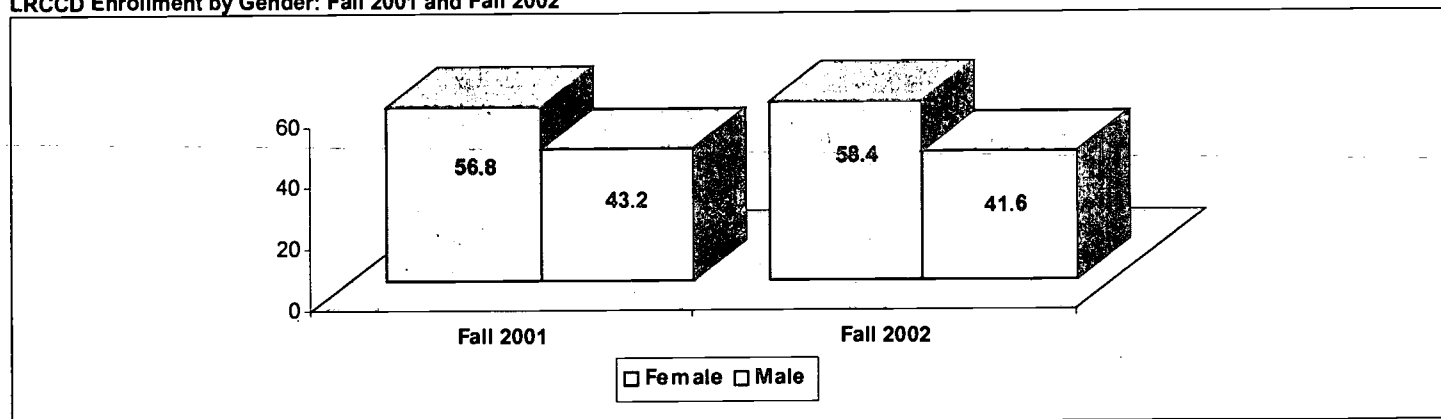
Enrollment by Primary Language Spoken

With the new PeopleSoft SA system that was implemented for Fall 2002, new students enrolling now indicate the primary language which they speak. English is the primary language of 85.8% of new students district-wide in Fall 2002, however new students attending our colleges indicate a diverse number of primary languages spoken other than English. District-wide, 2.4% of new students indicated Spanish as their primary language, however a higher 3.3% of new SCC students and 3.0% of new CRC students speak Spanish as their primary language. Likewise, 3.1% of new students across the district speak one of the former Eastern Block languages but a higher proportion of new ARC students, 5.5%, indicated their primary language was of former Eastern Block origin (new students indicated they speak Romanian, Russian, Serbo-Croatian, Czechoslovakian, Hungarian, Polish or Ukrainian). Smaller proportions of new students (1.6%) indicated one of the Chinese languages was their primary language in Fall 2002, however 3.0% of new students at SCC and 2.6% of new CRC students speak primarily Chinese. Of additional interest is the 1.3% of new students who speak Vietnamese district-wide and the higher 3.4% of new CRC students who indicated their primary language was Vietnamese in Fall 2002.

District Enrollment by Gender

Historically, there has been very little change in the proportions of men and women enrolled at Los Rios colleges, fluctuating only slightly between fall semesters. Chart 4 illustrates this fact; there was a slight increase (by 1.6%) in the proportion of women enrolled in Los Rios colleges from Fall 2001 to Fall 2002.

Chart 4
LRCCD Enrollment by Gender: Fall 2001 and Fall 2002



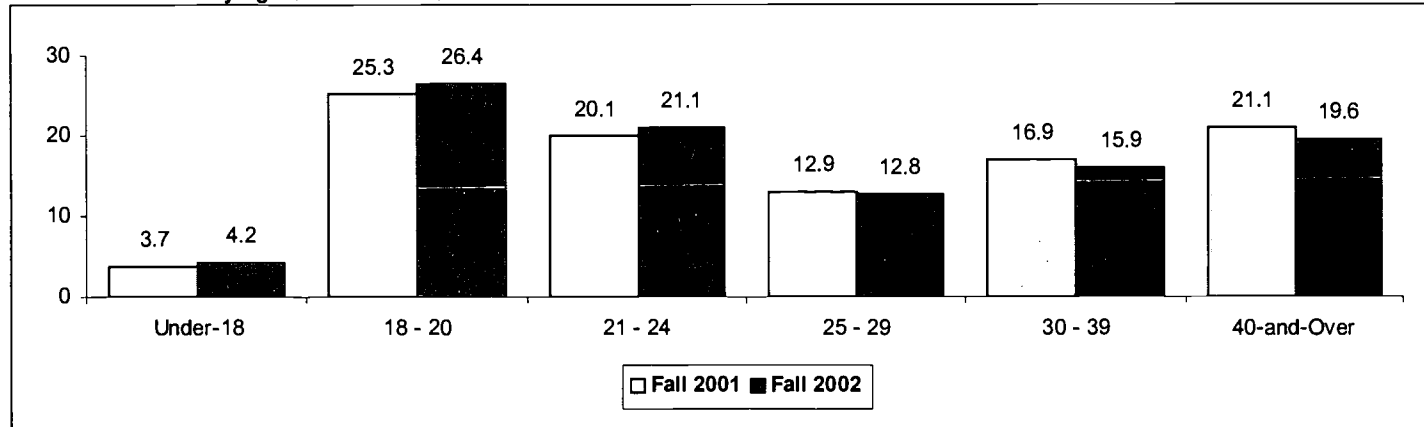
The enrollment pattern by gender among the Los Rios colleges generally mirrors that of the District. ARC has a slightly higher proportion of male students (42.8%) and a lower proportion of female students (57.2%), than the District for Fall 2002. CRC enrollment by gender is also similar to that of the District, with 42.9% male and 57.1% female enrollment. SCC's enrollment proportions of women to men varies only slightly from the District, with 59.0% female and 41.0% male enrollment. The proportion of females enrolled at Folsom Lake College Center (63.1%) for Fall 2002 is much higher than the comparable District enrollment proportions.

Fall 2002 District ethnic enrollment by gender illustrates differing enrollment patterns within several ethnic categories. African American enrollment by gender has a much higher proportion of female students (62.2%) than males (37.8%) than comparable district proportions. The proportion of female African American students is an even higher 64.3% at CRC and 63.6% at SCC, while the 60.1% proportion of female African American students at ARC is slightly lower than the district overall. Asian students enroll slightly lower proportions of females (54.4%), while the district-wide proportion of female Latino students (56.0%) generally reflects district proportions. District-wide, the proportion of female Latino enrollment is 56.0%; however, Latino enrollment reflects a lower proportion of females (49.4%) than males (50.6%) at American River College.

District Enrollment by Age Group

Chart 5 illustrates that the proportions of LRCCD students under-18 and who are 18-20 increased from Fall 2001 to Fall 2002. The largest proportion of LRCCD enrollment continues to be the 26.4% of students ages 18-20. While enrollment proportions for students 21-24 remained relatively unchanged, the chart illustrates slight decreases in each of the two age categories of students 25 through 39. The proportion of students ages 25-29 remained a relatively unchanged 12.8% while the proportion of students ages 30-39 decreased slightly from 16.9% in Fall 2001 to 15.9% in Fall 2002. Of interest is the decrease in enrollment of students ages 40-and-over, from 21.1% in Fall 2001 to the current 19.6% in Fall 2002.

Chart 5
LRCCD Enrollment by Age: Fall 2001 and Fall 2002



Overall, college enrollment patterns by age generally reflect the district enrollment pattern. The average age of a Los Rios student is 28.8, however the average age of a FLC student is a slightly older 31.1, reflecting a higher proportion of older students who enroll at the center.

District Enrollment by Day and Evening Attendance

Chart 6 compares the District proportions of day and evening attendance for Fall 2002. Figures illustrate that higher proportions of students, 48.1%, take courses offered only during the day, while 29.3% take courses offered during both the day and evening. The proportion of students who take courses offered only during the evening was 22.7% in Fall 2002.

Chart 6
LRCCD Enrollment by Day and Evening: Fall 2002

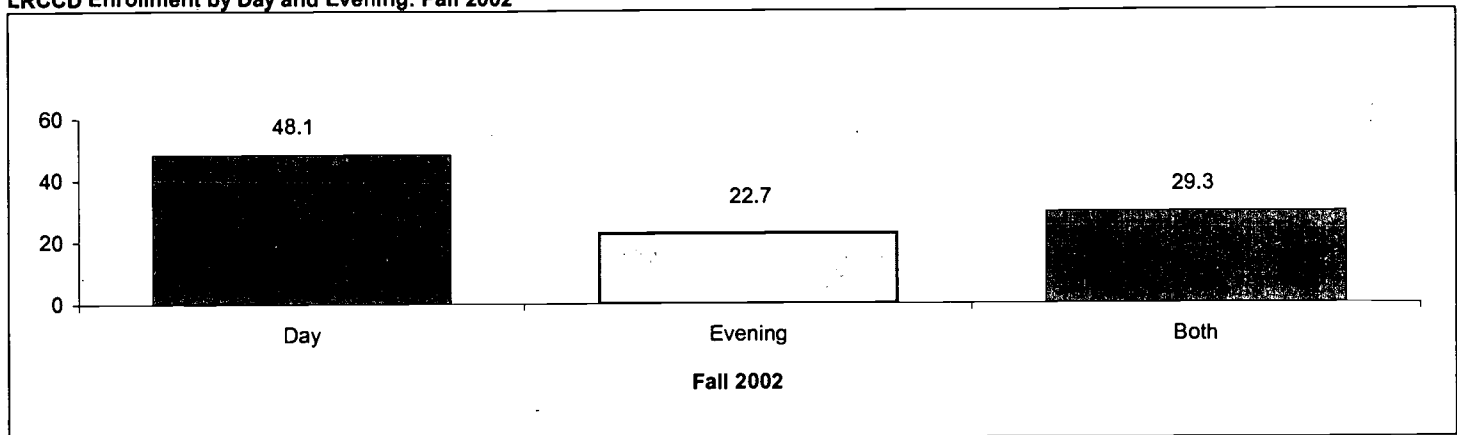


Table 1 summarizes day and evening attendance patterns by college for Fall 2002. The proportion of students attending classes only during the day is slightly higher at each of the colleges than that of the district overall, except at Folsom Lake College Center, where a much lower 40.8% of students are enrolled in courses offered during the day only. Slightly higher proportions of ARC students attend courses offered only during the evening, however slightly lower proportions attend courses offered *both* during the day and evening than comparable students district-wide. CRC students enrolled in day only courses in proportions that were slightly higher than students district-wide, while CRC students enrolled in courses offered in *both* day and evening in slightly lower proportions than those district-wide. SCC's proportional enrollment of students taking evening only courses and *both* day and evening courses is lower than the district-wide proportions for Fall 2002.

Table 1
Day and Evening Attendance: Fall 2002

	<u>Day</u>	<u>Evening</u>	<u>Both Day and Evening</u>
ARC	49.0%	24.6%	26.4%
CRC	49.7%	22.2%	28.1%
FLC	40.8%	31.0%	28.2%
SCC	52.2%	19.8%	28.0%
LRCCD	48.1%	22.7%	29.3%

Technical Note:

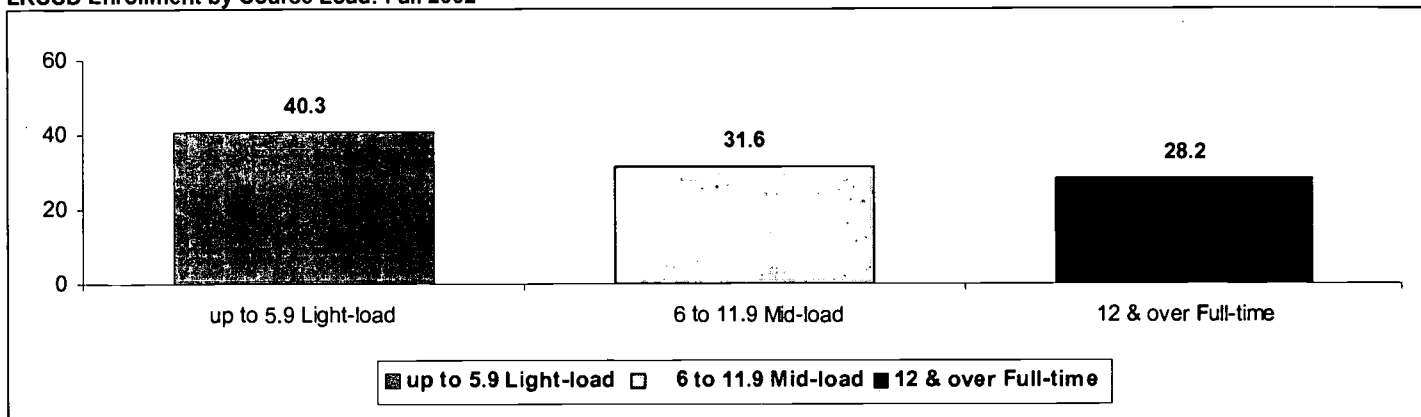
* LRCCD proportions vary because they reflect unduplicate students across the district, which account for the higher proportions of day/evening students compared to the colleges.

Enrollment patterns by day and evening attendance at the Folsom Lake College Center varies somewhat from the district overall. The proportion of Folsom Lake students enrolled in courses offered during the day is a lower 40.8% while the proportion of Folsom Lake students enrolled in courses offered in the evening only is a higher 31.0% than evening only enrollment district-wide. Slightly lower proportions, 28.2%, of Folsom Lake College Center students enroll in courses offered during *both* day and evening compared to the 29.3% enrollment district-wide in Fall 2002. High evening enrollment reflects the fact that there are limited facilities available during the day; however, there are several off-campus locations throughout the Folsom area that become available for evening classes only.

Unit Load by District Students

Three categories of unit load are illustrated in Chart 7 to demonstrate trends in students' course loads in Fall 2002. "Light-load" students are those taking fewer than six units; "mid-load" students are those taking six to 11.9 units; and "full-time" students are those with 12 or more units. It remains clear that all of the colleges are still predominantly part-time institutions, with 71.9% of students taking 11.9 units or less in Fall 2002.

Chart 7
LRCCD Enrollment by Course Load: Fall 2002



Cosumnes River College had the greatest proportion (31.4%) of full-time students, while 30.9% of SCC students were full-time and 28.7% of ARC Fall 2002 students were. ARC, CRC and SCC students enrolled similar proportions of students taking six to 11.9 units in Fall 2002, and generally the enrollment pattern by course load of each of these three colleges mirrors the 31.6% of mid-load student enrollment district-wide. Likewise, ARC, CRC and SCC each enrolled lower proportions of students taking light-loads as compared to the 40.3% district-wide light-load enrollment in Fall 2002.

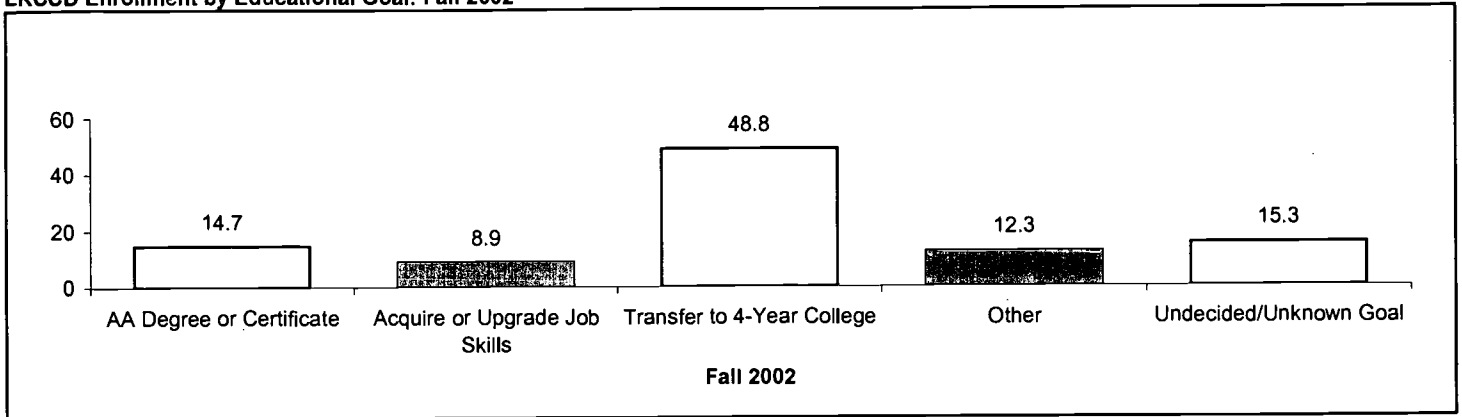
As would be expected, due to facilities limitations, proportions of students who take light course loads are higher at the Folsom Lake College Center, at 57.6% of student enrollment in Fall 2002. The proportion of mid-load students enrolled at the center is lower than that of the district overall. The 19.0% proportion of full-time students enrolled in Folsom Lake is much different than district proportions.

Of additional interest is the 7.62 average unit load for students throughout the district in Fall 2002. There are some differences at the college level, with CRC students taking the highest average unit load of 8.14 in Fall 2002. SCC students took an average of 8.11 units, while ARC students took an average unit load of 7.72 in Fall 2002. Folsom Lake College Center students enrolled in the lowest number of units on average, at 6.13 in Fall 2002.

District Enrollment by Educational Goal

In an effort to better understand why students attend Los Rios colleges, Chart 8 depicts the educational goals of Los Rios students for Fall 2002. High proportions (48.8%) of students enroll in a Los Rios College with the goal to transfer to a 4-year college. It is important to note, however, that those selecting transfer as a goal include many students who, already admitted to the CSU and UC, come to Los Rios colleges to take one or two courses. Although 15.3% of students enrolled in Fall 2002 are undecided on their goal or their goal is unknown, there were 14.7% of students with a goal to obtain an Associate's Degree or Certificate.

Chart 8
LRCCD Enrollment by Educational Goal: Fall 2002



The proportion of students enrolled at a Los Rios college for other reasons (GED Completion, Education Development, Basic Skills Improvement, Discover Career Interests and Maintain Certificate or License) was 12.3%, while students acquiring or upgrading jobs skills was a slightly lower 8.9% in Fall 2002.

Considering the profile of students at the Folsom Lake College Center, as well as current facilities limitations, it is interesting to note that the goals of these students are not that much different than those of Los Rios students district-wide. Although the proportions are slightly lower (37.6% at Folsom) than the District (48.8%), the highest proportion of students at these two centers have the same goals as students throughout the district -- to transfer to a 4-year institution with or without an Associate's Degree. However, there are also higher proportions of students enrolled who are interested in other types of educational goals, 16.9% at the Folsom Lake College Center in Fall 2002. The 11.5% of Folsom Lake Center students who enroll with a goal of acquiring or upgrading their job skills is somewhat higher than the 8.9% district-wide in Fall 2002. Enrollment proportions by educational goal for the other colleges generally mirror those of the district. The one notable exception is the high 54.1% of Sacramento City College students enrolled with a goal to transfer to a 4-year institution.

Summary Remarks

The data presented in the Fall 2002 Student Profile illustrate the overall growth of Los Rios Community College District's enrollment as well as some changing demographic trends. Enrollment has increased substantially each year from Fall 1996 and continued through Fall 2001. Annual enrollment growth was a high 8.9% in Fall 2001 and has continued, albeit at a slower pace of 3.4% in Fall 2002.

Long-term demographic trends remained relatively constant in Fall 2002. The proportions by ethnicity remained stable, as did enrollment by gender. Los Rios colleges continue to enroll higher proportions of Asian, African American, Latino and White students than each groups' population proportion in the LRCCD 3-county area which it serves. Students who are ages 18 through 20 remain the largest proportion of the district's enrollment, at 30.6% this Fall. It is worth noting that the proportion of older students ages 30-and-over decreased from 38.0% in Fall 2001 to 35.5% in Fall 2002. The average age of the Los Rios student is 28.8 this Fall.

Figures illustrate that higher proportions, 48.1%, take courses offered only during the day, while 29.3% of students take courses offered during *both* the day and the evening. Los Rios remains a predominantly part-time institution, with 40.3% of Fall 2002 students taking light course loads. Cosumnes River College has the highest proportion (31.4%) of full-time students in Fall 2002.

High proportions, 48.8%, of Los Rios students enroll with the educational goal to transfer to a 4-year college and there were 14.7% of students with the goal to obtain an Associate's Degree or Certificate, while 8.9% attend our colleges in an effort to acquire or upgrade job skills.

A look at the Folsom Lake College Center, which includes the El Dorado Center, shows that although there are similarities with the district, there are some noteworthy differences in the student profiles of these centers. FLC differs in the following way: a higher proportion of students are female; a substantially higher proportion are white; a higher proportion are under 20 and a higher proportion are 40-and-over, compared to students district-wide. The average age of the Folsom Lake College Center student is 31.1, which is slightly older than the district average of 28.8. Higher proportions, 31.0%, of FLC students take courses offered during the evening only, while a lower 40.8% take courses offered during the day only, compared to district proportions. Likewise, Folsom Lake Center students take a lower number of average units, 6.13 compared to the 7.62 district-wide. Even though the student profile of the Folsom Lake College Center is somewhat different than the district overall, there is a high proportion of students, 37.6%, at FLC with the goal to transfer to a 4-year college or university.

The Fall 2002 Profile is based on unduplicate student demography generated from the Fall First Census reports that are issued at the beginning of the fourth week of classes. Also of interest to enrollment growth and shifting demographic trends is the number of duplicate students -- those students attending more than one Los Rios college. The number of duplicate enrollees increased from approximately 1,118 in Fall 2001 to 2,335 students in Fall 2002, a 108.9% increase. This suggests that the mobility of our students and their willingness to travel to take the courses they need continues.

This report was written by Betty Glycer-Culver, Research Analyst, and is based on data generated from the LRCCD Research Database, developed and managed by Minh La, IT Analyst II for Research.

For further information please call: 916-568-3131 or email: loc@losrios.edu, LRCCD Office of Institutional Research (IR).

All district reports are available on the IR Web Site at: <http://irweb.losrios.edu>.

March 2003

Fall2002Profile.doc



U.S. Department of Education
Office of Educational Research and Improvement (OERI)
National Library of Education (NLE)
Educational Resources Information Center (ERIC)



REPRODUCTION RELEASE

(Specific Document)

TM035160

I. DOCUMENT IDENTIFICATION:

Title: Fall 2002 Student Profile: Based upon First Census Data - March 2003	
Author(s): Judith Beachler	
Corporate Source: Office of Institutional Research Los Rios Community College District 1919 Spanos Ct., Sacramento, CA 95825	Publication Date: March 2003

II. REPRODUCTION RELEASE:

In order to disseminate as widely as possible timely and significant materials of interest to the educational community, documents announced in the monthly abstract journal of the ERIC system, *Resources in Education* (RIE), are usually made available to users in microfiche, reproduced paper copy, and electronic media, and sold through the ERIC Document Reproduction Service (EDRS). Credit is given to the source of each document, and, if reproduction release is granted, one of the following notices is affixed to the document.

If permission is granted to reproduce and disseminate the identified document, please CHECK ONE of the following three options and sign at the bottom of the page.

The sample sticker shown below will be affixed to all Level 1 documents

The sample sticker shown below will be affixed to all Level 2A documents

The sample sticker shown below will be affixed to all Level 2B documents

PERMISSION TO REPRODUCE AND DISSEMINATE THIS MATERIAL HAS BEEN GRANTED BY

Sample

TO THE EDUCATIONAL RESOURCES INFORMATION CENTER (ERIC)

1

Level 1

Check here for Level 1 release, permitting reproduction and dissemination in microfiche or other ERIC archival media (e.g., electronic) and paper copy.

PERMISSION TO REPRODUCE AND DISSEMINATE THIS MATERIAL IN MICROFICHE, AND IN ELECTRONIC MEDIA FOR ERIC COLLECTION SUBSCRIBERS ONLY, HAS BEEN GRANTED BY

Sample

TO THE EDUCATIONAL RESOURCES INFORMATION CENTER (ERIC)

2A

Level 2A

Check here for Level 2A release, permitting reproduction and dissemination in microfiche and in electronic media for ERIC archival collection subscribers only

PERMISSION TO REPRODUCE AND DISSEMINATE THIS MATERIAL IN MICROFICHE ONLY HAS BEEN GRANTED BY

Sample

TO THE EDUCATIONAL RESOURCES INFORMATION CENTER (ERIC)

2B

Level 2B

Check here for Level 2B release, permitting reproduction and dissemination in microfiche only

Documents will be processed as indicated provided reproduction quality permits.
If permission to reproduce is granted, but no box is checked, documents will be processed at Level 1.

I hereby grant to the Educational Resources Information Center (ERIC) nonexclusive permission to reproduce and disseminate this document as indicated above. Reproduction from the ERIC microfiche or electronic media by persons other than ERIC employees and its system contractors requires permission from the copyright holder. Exception is made for non-profit reproduction by libraries and other service agencies to satisfy information needs of educators in response to discrete inquiries.

Signature: <i>Judith A. Beachler</i>	Printed Name/Position/Title: Dr. Judith A. Beachler, Director	
Organization/Address: Office of Institutional Research, Los Rios CCD 1919 Spanos Ct., Sacramento, CA 95825	Telephone: (916) 568-3132	FAX: (916) 568-3094
	E-Mail Address: beachj@losrios.edu	06/23/03

III. DOCUMENT AVAILABILITY INFORMATION (FROM NON-ERIC SOURCE):

If permission to reproduce is not granted to ERIC, or, if you wish ERIC to cite the availability of the document from another source, please provide the following information regarding the availability of the document. (ERIC will not announce a document unless it is publicly available, and a dependable source can be specified. Contributors should also be aware that ERIC selection criteria are significantly more stringent for documents that cannot be made available through EDRS.)

Publisher/Distributor:
Address:
Price:

IV. REFERRAL OF ERIC TO COPYRIGHT/REPRODUCTION RIGHTS HOLDER:

If the right to grant this reproduction release is held by someone other than the addressee, please provide the appropriate name and address:

Name:
Address:

V. WHERE TO SEND THIS FORM:

Send this form to the following ERIC Clearinghouse:

However, if solicited by the ERIC Facility, or if making an unsolicited contribution to ERIC, return this form (and the document being contributed) to:

ERIC Processing and Reference Facility
4483-A Forbes Boulevard
Lanham, Maryland 20706

Telephone: 301-552-4200
Toll Free: 800-799-3742
FAX: 301-552-4700
e-mail: ericfac@inet.ed.gov
WWW: <http://ericfacility.org>

EFF-088 (Rev. 2/2001)