

## DOCUMENT RESUME

ED 477 364

TM 034 981

TITLE The North Carolina 2002 SAT Report (Scholastic Assessment Test Report). Reporting on the Nation, the State, the 117 Public School Systems, Charter Schools, North Carolina School of the Arts, and North Carolina School of Science and Mathematics.

INSTITUTION North Carolina State Dept. of Public Instruction, Raleigh. Div. of Accountability.

PUB DATE 2002-08-00

NOTE 50p.; For the 2001 report, see ED 462 431.

PUB TYPE Numerical/Quantitative Data (110) -- Reports - Descriptive (141)

EDRS PRICE EDRS Price MF01/PC03 Plus Postage.

DESCRIPTORS Achievement Gains; Charter Schools; College Bound Students; \*College Entrance Examinations; Disadvantaged Youth; Ethnic Groups; \*High School Students; High Schools; \*Private Schools; \*Public Schools; Racial Differences; Sex Differences; \*Test Results

IDENTIFIERS \*North Carolina; \*Scholastic Assessment Tests

## ABSTRACT

This report presents Scholastic Assessment Test (SAT) results for North Carolina students scheduled to graduate in 2002. These results represent the students' most recent scores, regardless of when they last took the tests. The scores in this report reflect public and nonpublic school students in North Carolina and, for comparison, the United States, except if otherwise noted. The 46,180 SAT takers in North Carolina in 2002 represented the 5 major racial/ethnic groups, but were less heterogeneous than those in the United States as a whole, with 8% fewer nonwhite test takers. Five percent more females than males took the SAT in North Carolina this year. College-bound seniors in North Carolina continued to close the SAT score gap, gaining on their national counterparts in 2002. With nearly a 5% increase in SAT takers from the previous year, North Carolina's mean total SAT score (998) increased 6 points, while the U.S. score (1020) did not change. North Carolina has improved its position each year since 1990, except for 1994, when there was no change. From 1990 to 2002, North Carolina gained more points (50) than any other state with more than 12% SAT takers, and North Carolina also had the largest gain among states in which more than 50% of students take the SAT. White and Asian students in North Carolina continued to score higher than other racial/ethnic groups, and their scores exceeded the national average. Hispanics have been the only racial/ethnic group in North Carolina to score higher than their national counterparts, and this trend continued in 2002. Additional information is provided about student and family characteristics and SAT scores. (Contains 10 tables and 12 figures.) (SLD)

Reproductions supplied by EDRS are the best that can be made  
from the original document.

# The North Carolina 2002 SAT Report

(Scholastic Assessment Test Report)

PERMISSION TO REPRODUCE AND  
DISSEMINATE THIS MATERIAL HAS  
BEEN GRANTED BY

F. Bradburn

TO THE EDUCATIONAL RESOURCES  
INFORMATION CENTER (ERIC)

1

U.S. DEPARTMENT OF EDUCATION  
Office of Educational Research and Improvement  
EDUCATIONAL RESOURCES INFORMATION  
CENTER (ERIC)

- This document has been reproduced as received from the person or organization originating it.
- Minor changes have been made to improve reproduction quality.
- Points of view or opinions stated in this document do not necessarily represent official OERI position or policy.

TM034981

# The North Carolina 2002 SAT Report

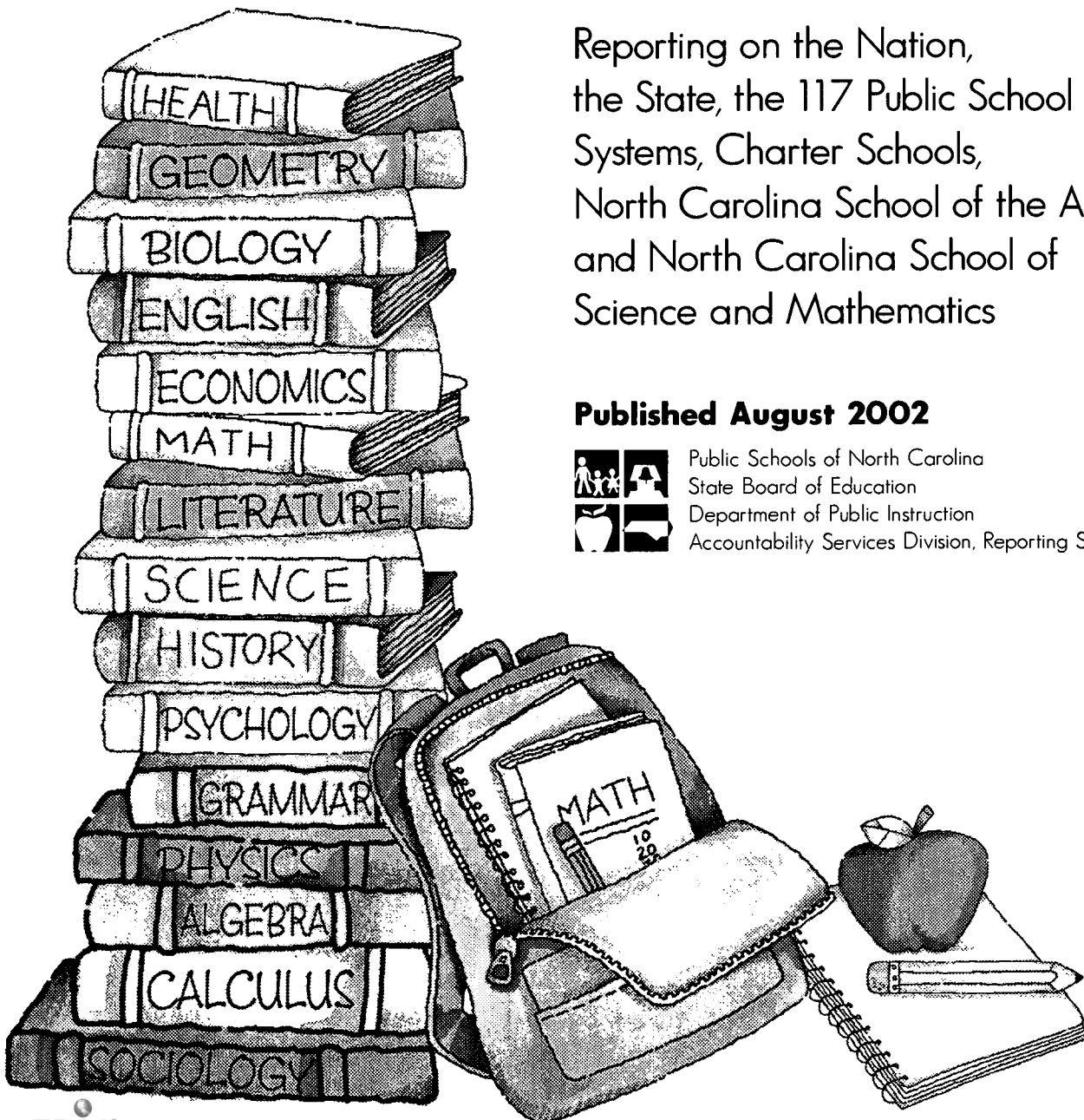
(Scholastic Assessment Test Report)

Reporting on the Nation,  
the State, the 117 Public School  
Systems, Charter Schools,  
North Carolina School of the Arts,  
and North Carolina School of  
Science and Mathematics

**Published August 2002**



Public Schools of North Carolina  
State Board of Education  
Department of Public Instruction  
Accountability Services Division, Reporting Section



# State Board of Education

Phillip J. Kirk, Jr.  
Chairman  
Raleigh

Jane P. Norwood  
Vice Chair  
Charlotte

Kathy A. Taft  
Greenville

Michelle Howard-Vital  
Wilmington

Edgar D. Murphy  
Durham

Evelyn B. Monroe  
West End

Maria T. Palmer  
Chapel Hill

Ronald E. Deal  
Hickory

Wayne McDevitt  
Asheville

Patricia Nickens Willoughby  
Raleigh

Beverly Perdue  
Lieutenant Governor  
New Bern

Richard Moore  
State Treasurer  
Kittrell

## NC Department of Public Instruction

Michael E. Ward, State Superintendent

301 North Wilmington Street • Raleigh, North Carolina 27601-2825 • Website: [www.ncpublicschools.org](http://www.ncpublicschools.org)

# Table of Contents

	<u>Page</u>
List of Tables .....	ii
List of Figures .....	iii
A Note on the Use of Aggregate SAT Data .....	iv
Background .....	1
Results	
Overall Performance.....	2
Gender .....	4
Race/Ethnicity .....	5
Family Income .....	6
Academic Preparation .....	8
North Carolina and the University of North Carolina System .....	9
North Carolina's School Systems and Schools .....	11
Background on Recentering the SAT I Scores .....	13
References .....	14
Appendices	
North Carolina and the Nation .....	17
Performance of the 117 Public School Systems, Charter Schools, North Carolina School of the Arts, North Carolina School of Science and Mathematics, and the Greensboro Math and Science Center .....	25
Performance of the Fifty States .....	45

## List of Tables

<u>Table</u>		<u>Page</u>
1	Mean Total SAT Scores for Public School Students in North Carolina and the Nation, 1995-2002 .....	3
2	Mean Verbal and Math SAT Scores for North Carolina and the Nation by Gender, 1996-2002 .....	5
3	Mean SAT Scores for North Carolina and the United States, 1972-2002 .....	19
4	Frequency Distribution of Verbal and Mathematics SAT Scores for North Carolina's Public School Students, 2002 .....	20
5	Mean Total SAT Score by Student Profile Characteristics, 2001-2002 .....	22
6	United States and North Carolina Mean Total SAT Scores by Student Profile Characteristics, 1998-2002 .....	23
7	Mean Total SAT Scores for North Carolina's Public School Systems and Schools, 2000-2002 .....	27
8	Distribution of North Carolina Public School Systems by Mean SAT Scores, 2002 .....	43
9	Mean Verbal, Mathematics, and Total SAT Scores by State, 2002 .....	47
10	Change in Mean Total SAT Score by State, 1990-2002 .....	48

## List of Figures

<u>Figure</u>	<u>Page</u>
1 Mean Total SAT Scores for the United States, Southeast Region, and North Carolina, 1990-2002 .....	2
2 Mean Total SAT Scores for the United States and North Carolina by Gender, 1992-2002 .....	4
3 Mean Total SAT Scores for North Carolina by Ethnicity, 1994-2002 .....	6
4 Mean Total SAT Scores for North Carolina by Family Income, 1994-2002 .....	7
5 Mean Total SAT Scores for Students in North Carolina by Family Income and Racial/Ethnic Group, 2002 .....	7
6 Mean Total SAT Scores for North Carolina by High School GPA, 1994-2002 .....	8
7 The 25th, 50th, and 75th Percentile of SAT Mean Total Scores for National College-Bound Seniors, North Carolina’s College-Bound Seniors, Entering Freshmen at Institutions of the University of North Carolina System and Selected Private Universities, Fall 2001 .....	10
8 Mean Total SAT Score by Percent of Students Tested for all States, 2002 .....	11
9 Mean Total SAT Score by Percent of Students Tested for all North Carolina Public School Systems, 2002 .....	12
10 Mean Total SAT Score by Percent of Students Tested for all North Carolina Public High Schools, 2002 .....	12
11 Distribution of Mathematics SAT Scores for North Carolina’s Public Schools, 2002 .....	21
12 Distribution of Verbal SAT Scores for North Carolina’s Public Schools, 2002 .....	21

## A Note on the Use of Aggregate SAT Data\*

As measures of developed verbal and mathematical abilities important for success in college, SAT scores are useful in making decisions about individual students and assessing their academic preparation. Because of the increasing public interest in educational accountability, aggregate test data continue to be widely publicized and analyzed. Aggregate scores can be considered one indicator of educational quality when used in conjunction with a careful examination of other conditions that affect the educational enterprise.

However, it is important to note that many College Board tests are taken only by particular groups of self-selected students. Therefore, aggregate results of their performance on these tests usually do not reflect the educational attainment of all students in a school, district, or state.

Useful comparisons of students' performance are possible only if all students take the same test. Average SAT scores are not appropriate for state comparisons because the percentage of SAT test-takers varies widely among states. In some states, a very small percentage of the college-bound seniors take the SAT. Typically, these students have strong academic backgrounds and are applicants to the nation's most selective colleges and scholarship programs. Therefore, it is expected that the SAT verbal and mathematical averages reported for these states will be higher than the national average. In states where a greater proportion of students with a wide range of academic backgrounds take the SAT, and where most colleges in the state require the test for admission, the scores are closer to the national average.

In looking at average SAT scores, the user must understand the context in which the particular test scores were earned. Other factors variously related to performance on the SAT include academic courses studied in high school, family background, and education of parents. These factors and others of a less tangible nature could very well have a significant influence on average scores.

---

\* Excerpted from *Guidelines on the Uses of College Board Test Scores and Related Data*. Copyright 2002 by the College Entrance Examination Board. All rights reserved.



## Background

The Scholastic Assessment Test (SAT), considered by many colleges and universities to be a reliable indicator of student preparation for college, was designed to assess developed verbal and mathematical abilities in students. According to the College Board (2002), an estimated 80 percent of four-year colleges and universities without open admission policies use SAT scores in admissions decisions. Due to the weight that many colleges and universities place on SAT scores in admissions decisions, it has become the best known college admissions test. In 2002, nearly half of approximately three million high school graduates took the SAT. Typically, colleges that consider SAT scores in admissions decisions use the scores as part of an analysis that includes other information from the student's high school record, including other predictors and results from other tests.

The SAT has been administered to college-bound students in the United States for nearly 75 years, dating back to 1926 when 8,040 students took the test. The initial group of test takers was homogeneous, consisting primarily of white males. In contrast, the 1.3 million test takers in 2002 was the largest and most diverse group in history, with 35 percent minority student SAT takers. The percentages of SAT takers by gender were similar, with about four percent more females than males.

The 46,180 SAT takers in North Carolina in 2002 represented the five major racial/ethnic groups, but were less heterogeneous than those in the nation, with eight percent fewer non-white test takers. In regard to gender, five percent more females than males took the SAT.

In addition to being reliable indicators of students' preparation for college, aggregate SAT scores for a series of years can reveal trends in the academic preparation of students who take the SAT. Thus, this report includes the 2002 SAT performance of North Carolina's students and historical scores for recent years. However, rankings or residual rankings are not used in this report in compliance with the College Board's *Guidelines on the Uses of College Board Test Scores and Related Data* and with professional standards for educational and psychological testing. The guidelines caution against the use of SAT scores in aggregate form as a single measure to rank or rate states, educational institutions, school systems, schools, or teachers. *A Note on the Use of Aggregate SAT Data* on the previous page provides details for why such uses are inappropriate.

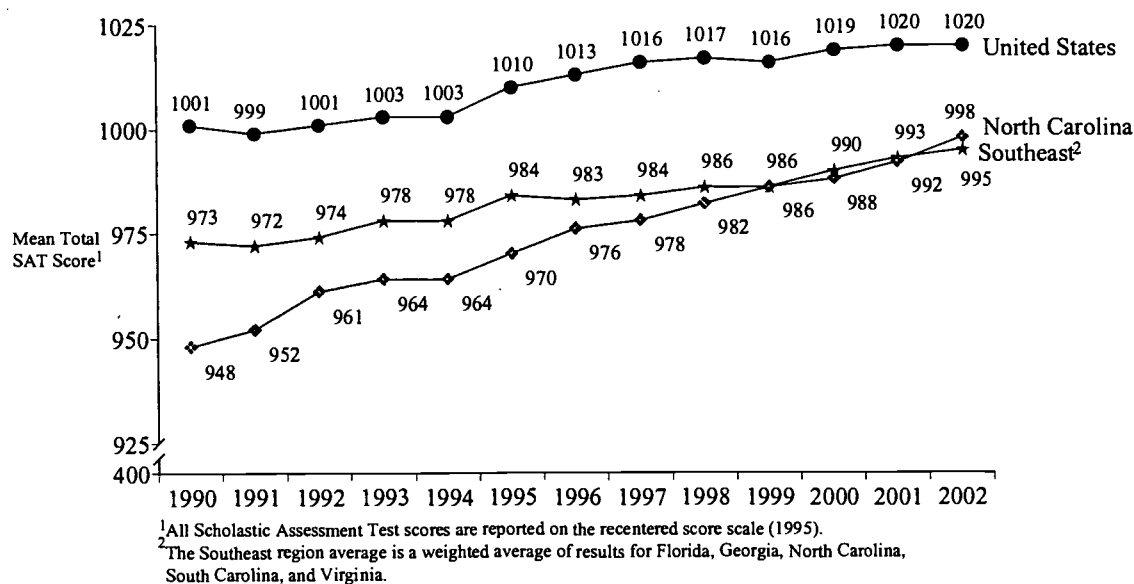
This report presents SAT results for students scheduled to graduate in 2002 and represents students' most recent scores, regardless of when they last took the test. The scores in this report reflect *public and non-public school students* in North Carolina and the United States, except where otherwise noted.

# Results

## Overall Performance

North Carolina's college-bound seniors continued to close the SAT score gap on their national counterparts in 2002 (see Figure 1). With nearly a five percent increase in SAT takers from the previous year, North Carolina's mean total SAT score (998) increased six points, while the nation's score (1020) did not change. North Carolina has improved its score each year since 1990, except in 1994 when there was no change. From 1990 to 2002, North Carolina gained more points (50) than any other state with more than 12 percent SAT takers (see Table 10). Among the "SAT States," (those states with more than 50 percent SAT takers) North Carolina's 50 point gain since 1990 was also the largest. The 22 point gap between North Carolina's mean and the nation's mean in 2002 was less than one-half the gap in 1990 (when the gap was 53 points) and has reduced more than 70 percent since 1972 when the gap was 83 points (see Table 3 in the Appendices).

The gap between SAT scores in North Carolina and in the Southeast has closed dramatically since 1990 (see Figure 1). The Southeast mean (995) in 2002 increased three points from the previous year but was three points lower than North Carolina's mean. North Carolina's SAT score surpassed the Southeast score for the first time in 2002.



**Figure 1.** Mean Total SAT Scores for the United States, Southeast Region, and North Carolina, 1990-2002.

## Public Schools

Historically, SAT scores of North Carolina's public schools have lagged those of public schools in the nation (see Table 1). However, in recent years, North Carolina's public schools have been progressing at a faster rate than those in the nation. The SAT score gap between North Carolina's *public* schools and those in the nation continued to narrow in 2002. The mean total SAT score for the nation's *public* schools (1012) did not change from the previous year, while the score for North Carolina's public schools (994) increased by four points. The difference between SAT scores for the nation's public schools and North Carolina's public schools has decreased by 22 points since 1995.

Table 1. Mean Total SAT Scores for Public School Students in North Carolina and the Nation, 1995-2002

Year	North Carolina <sup>1</sup>	Nation <sup>1</sup>	Gap <sup>2</sup>
1995	863	903	40
1996	974	1008	34
1997	977	1010	33
1998	981	1011	30
1999	983	1010	27
2000	986	1011	25
2001	990	1012	22
2002	994	1012	18

<sup>1</sup>All Scholastic Assessment Test scores are reported on the recentered score scale (1995).

<sup>2</sup>Gap refers to the difference between scores of North Carolina's public school students and public school students in the nation.

### Verbal and Mathematics Scores

In past years, North Carolina's students have scored closer to the nation on the verbal portion of the SAT than on the mathematics portion (see Table 3 in the Appendices). In 2002, the nation's verbal score (504) decreased by two points from the previous year. North Carolina's score (493) did not change, which reduced the 13 point verbal score gap of the previous year by two points. In contrast, North Carolina's verbal score in 1991 trailed the nation's score by 21 points.

In mathematics, North Carolina gained four points on the nation in 2002, with the nation's score (516) increasing two points and North Carolina's score (505) increasing six points. The gap between North Carolina's mathematics score and the nation's score narrowed from 15 points in 2001 to 11 points in 2002. In 1991, North Carolina's score had lagged the nation's score by 26 points.

## Gender

In North Carolina and the nation, the 2002 SAT results showed females scoring closer to their male counterparts (see Figure 2). Historically, males have scored higher on the SAT than females in North Carolina and in the nation. However, in recent years, females have been improving at a faster rate than males. North Carolina's females scored 984 in 2002, while males scored 1014, leaving a 30-point gap. In 1992, the male-female gap was 38 points. Nationally, the gap between male and female scores was 39 points in 2002, compared with 42 points in 2001 and 47 points in 1992.

The nation's males and females attain higher SAT scores than North Carolina's males and females each year. However, the gap between students in North Carolina and students in the United States has narrowed since 1992. The SAT score gap between North Carolina's males and males in the United States decreased from 48 points in 1992 to 27 points in 2002. For females, the gap decreased from 39 points to 18 points.

The primary difference between the mean SAT scores for males and females in North Carolina and in the nation has consistently been in mathematics (see Table 2). For example, the average gap between the scores of males and females in North Carolina from 1996 to 2002 on the mathematics portion of the SAT has been about 30 points but only about four points on the verbal portion. Nationally, the gender gap has followed a similar trend, with males scoring on average about 35 points higher in mathematics, but only about five points higher on the verbal portion of the SAT from 1996 to 2002.

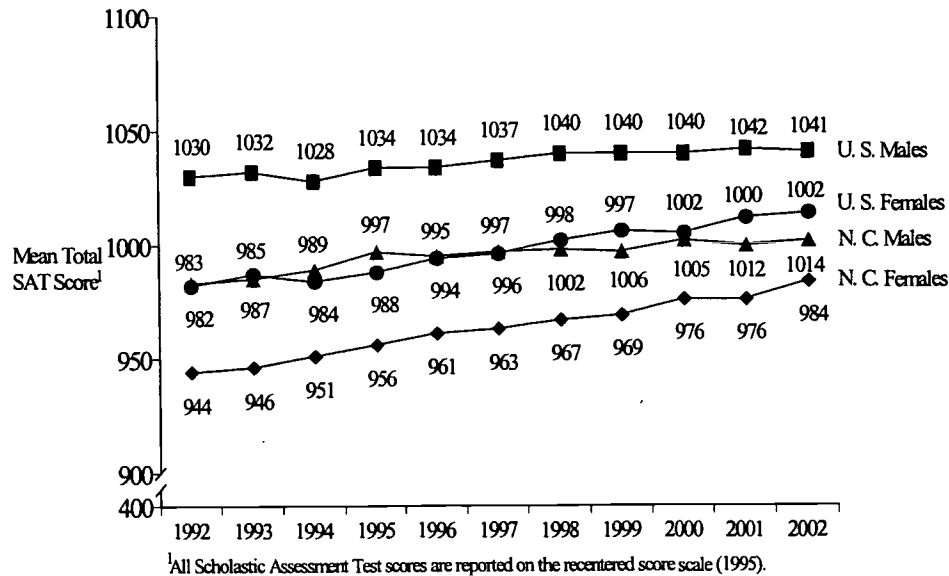


Figure 2. Mean Total SAT Scores for the United States and North Carolina by Gender, 1990-2002.

Table 2. Mean Verbal and Math SAT Scores for North Carolina and the Nation by Gender, 1996-2002

Year	SAT Verbal <sup>1</sup>						SAT Math <sup>1</sup>					
	North Carolina			Nation			North Carolina			Nation		
	M	F	Gap <sup>2</sup>	M	F	Gap <sup>2</sup>	M	F	Gap <sup>2</sup>	M	F	Gap <sup>2</sup>
1996	492	489	3	507	503	4	502	472	30	527	492	35
1997	491	489	2	507	503	4	505	474	31	530	494	36
1998	493	488	5	509	502	7	509	479	30	531	496	35
1999	496	490	6	509	502	7	510	479	31	531	495	36
2000	493	492	1	507	504	3	512	484	28	533	498	35
2001	497	490	7	509	502	7	515	486	29	533	498	35
2002	494	492	2	507	502	5	520	492	28	534	500	34

<sup>1</sup>All Scholastic Assessment Test scores are reported on the recentered score scale (1995)

<sup>2</sup>Gap refers to the mean score for males minus the mean score for females.

### Race/Ethnicity

White and Asian students typically score higher than other racial/ethnic groups in North Carolina and their scores exceed the national average (see Figure 3). This trend continued in 2002 with North Carolina's White students attaining the highest mean total SAT score (1046), five points higher than their previous year's score. Asian students attained the second highest score (1025), six points below their previous year's score. North Carolina's White and Asian students were the only groups to exceed the United States average (1020) in 2002, by 26 points and five points, respectively. North Carolina's White students scored higher than the national average for the ninth consecutive year, while Asians have scored higher each year since 1994, except 1998.

Table 6 shows mean total SAT scores for racial/ethnic groups in North Carolina and the nation from 1998 to 2002. North Carolina's racial/ethnic groups scoring lower in 2002 than in the previous year were Asian Americans (1025), scoring six points lower; Hispanics (961), scoring 14 points lower; and *Other* (1004), scoring five points lower. American Indian (914), Black (839), and White students (1046) improved their previous years' scores in 2002 by 23 points, 4 points, and 5 points, respectively.

Historically, Hispanic students have been the only racial/ethnic group in North Carolina to score higher than their national counterparts. In 2002, Hispanics continued this trend scoring 961. This score was 14 points lower than their previous year's score, but 50 points higher than the score of their national counterparts. It should be noted however that Hispanics comprised a very small proportion of the total SAT test takers in North Carolina in 2002 (about two percent compared to nine percent nationally) as shown in Table 5.

North Carolina's Black students scored 839 in 2002. This score, a four-point improvement over the previous year's score, was the lowest score among racial/ethnic groups. North Carolina's Black-White SAT score gap was 207 points in 2002, one point more than the previous year. Nationally, the Black-White gap increased to 203 points in 2002 compared to 201 points the previous year.

Nationally, all racial/ethnic groups improved or maintained their previous year's score except Black and Hispanic students (see Table 6). American Indians scored two points higher than the previous year and 48 points higher than their North Carolina counterparts. Of all racial/ethnic groups, North Carolina's American Indian students had the largest scoring difference from a national counterpart in 2002, which has been the trend over the past five years.

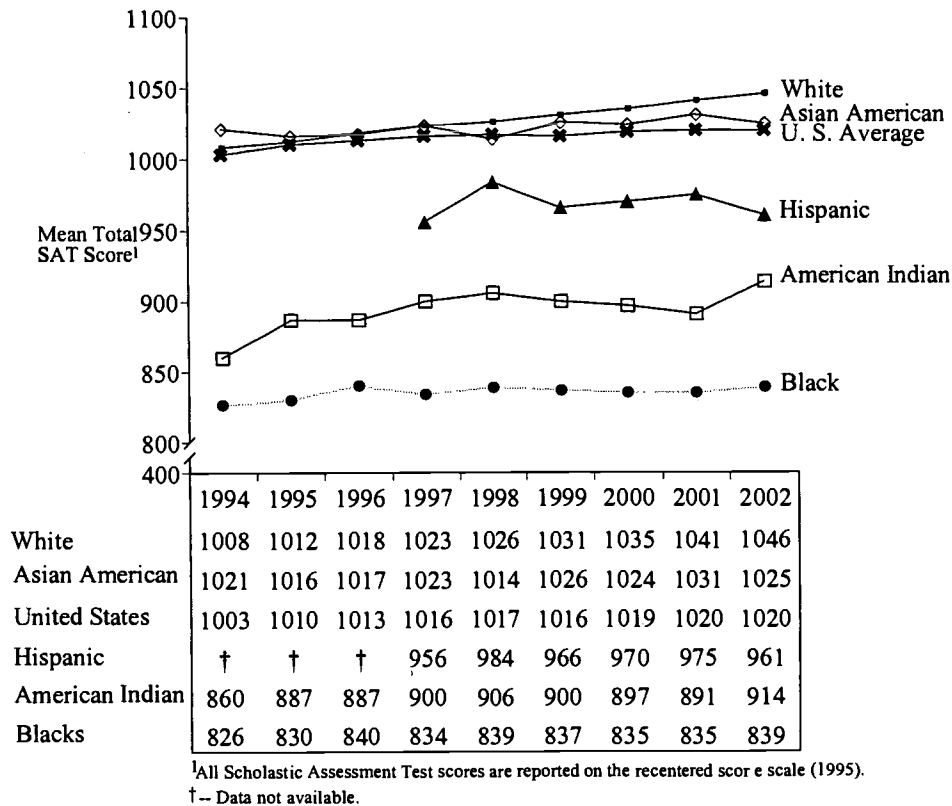


Figure 3. Mean Total SAT Scores for North Carolina by Ethnicity, 1994-2002.

## Family Income

In North Carolina and in the nation, the higher the family income the higher the student's mean total SAT score (see Table 5 and Figure 4). Historically, there has been very little change from year to year in the mean total SAT score *within* each family income category. Although a downward trend in scores was shown at the lower two income categories in 2001, this trend reversed slightly in 2002.

The relative difference in mean total SAT score *between* family income categories is also fairly stable from year to year. However, SAT scores between the family income categories \$20,000-\$29,000 dollars and \$30,000-\$39,000 moved closer together in 2002.

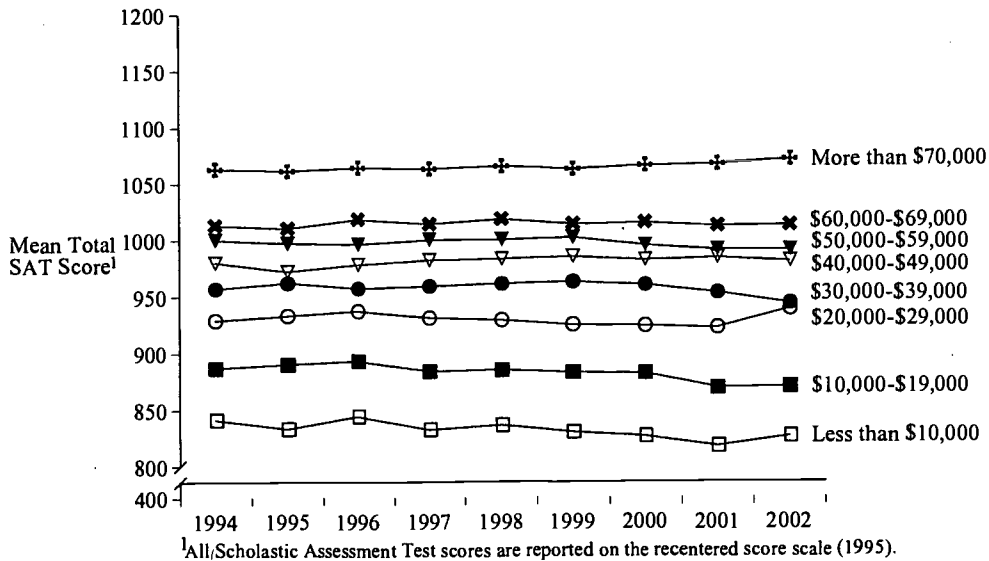
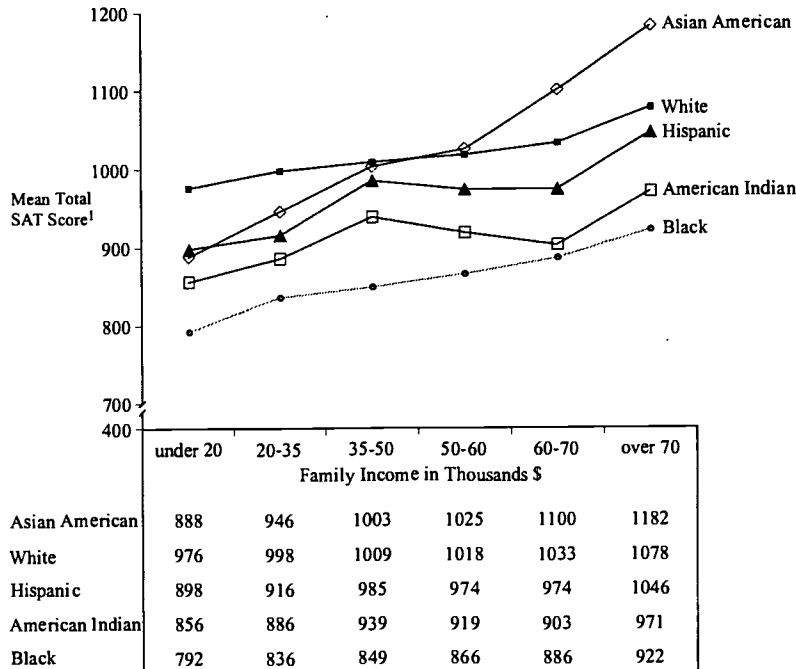


Figure 4. Mean Total SAT Scores for North Carolina by Family Income, 1994-2002.

Mean total SAT scores tend to increase for all racial/ethnic groups with increasing family income. This relationship was observed in 2002 (see Figure 5). White students however whose families were below the poverty line (earned less than \$20,000 per annum) scored higher than Black and American Indian students whose families earned over \$70,000 per annum.



All Scholastic Assessment Test scores are reported on the recentered score scale (1995).

Figure 5. Mean Total SAT Scores for Students in North Carolina by Family Income and Racial/Ethnic Group, 2002.



## Academic Preparation

Typically, the higher a student's high school grade point average (GPA), the higher the student's mean total SAT score. Figure 6 shows this trend in North Carolina from 1994 to 2002. SAT scores were up in 2002 from the previous year for all GPAs of A and lower except C. However, North Carolina's students with high school GPAs of A+, A, or A- were further behind their national counterparts than North Carolina's students with B or C averages (see Table 5 in Appendices). This also held true the previous year. North Carolina's students with high school GPAs of A+, A, or A- trail their peers nationally by 34, 61, and 45 points, respectively. However, North Carolina's students with GPAs of A+, A, or A- represented a higher percentage of test takers (45 percent) than that of the nation (41 percent).

North Carolina's students with GPAs of B were 29 points behind their peers nationally and represented 43 percent of North Carolina SAT takers, compared to 47 percent nationally. Students in North Carolina with GPAs of C were 22 points behind their peers nationally and represented 12 percent of SAT takers in North Carolina and 11 percent in the nation. When interpreting such data, one should consider that: (1) SAT test takers might misjudge or wrongly report their grade point averages on the SAT questionnaire, (2) SAT test takers might be receiving inflated grades, or (3) a combination of the two might be operative.

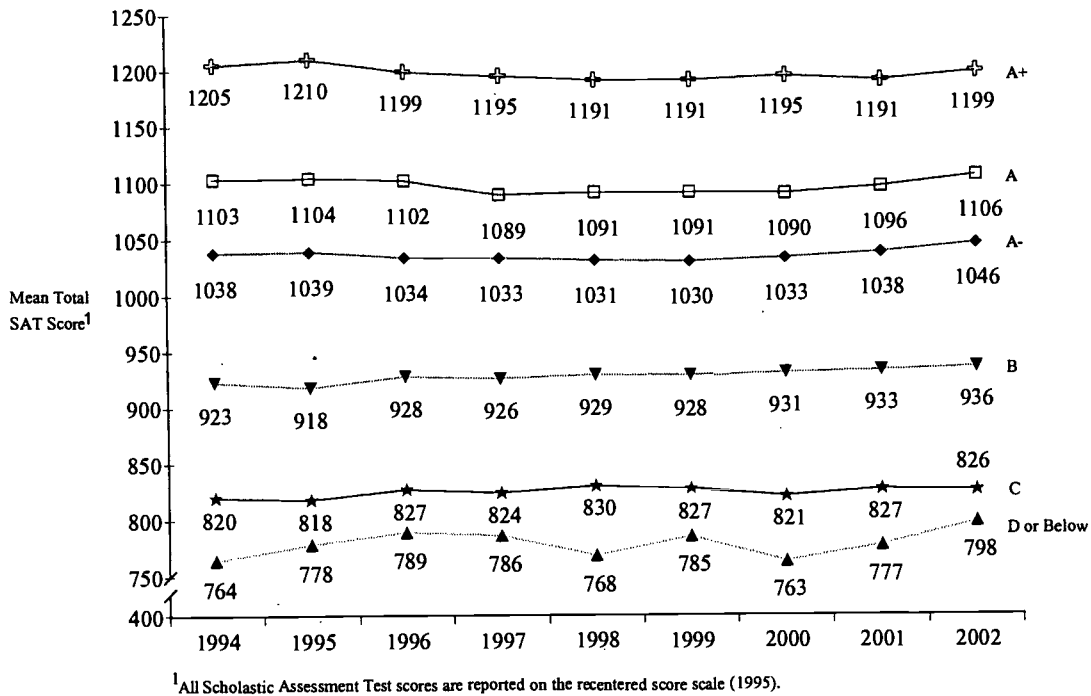


Figure 6. Mean Total SAT Scores for North Carolina by High School GPA, 1994-2002.



## North Carolina and the University of North Carolina System

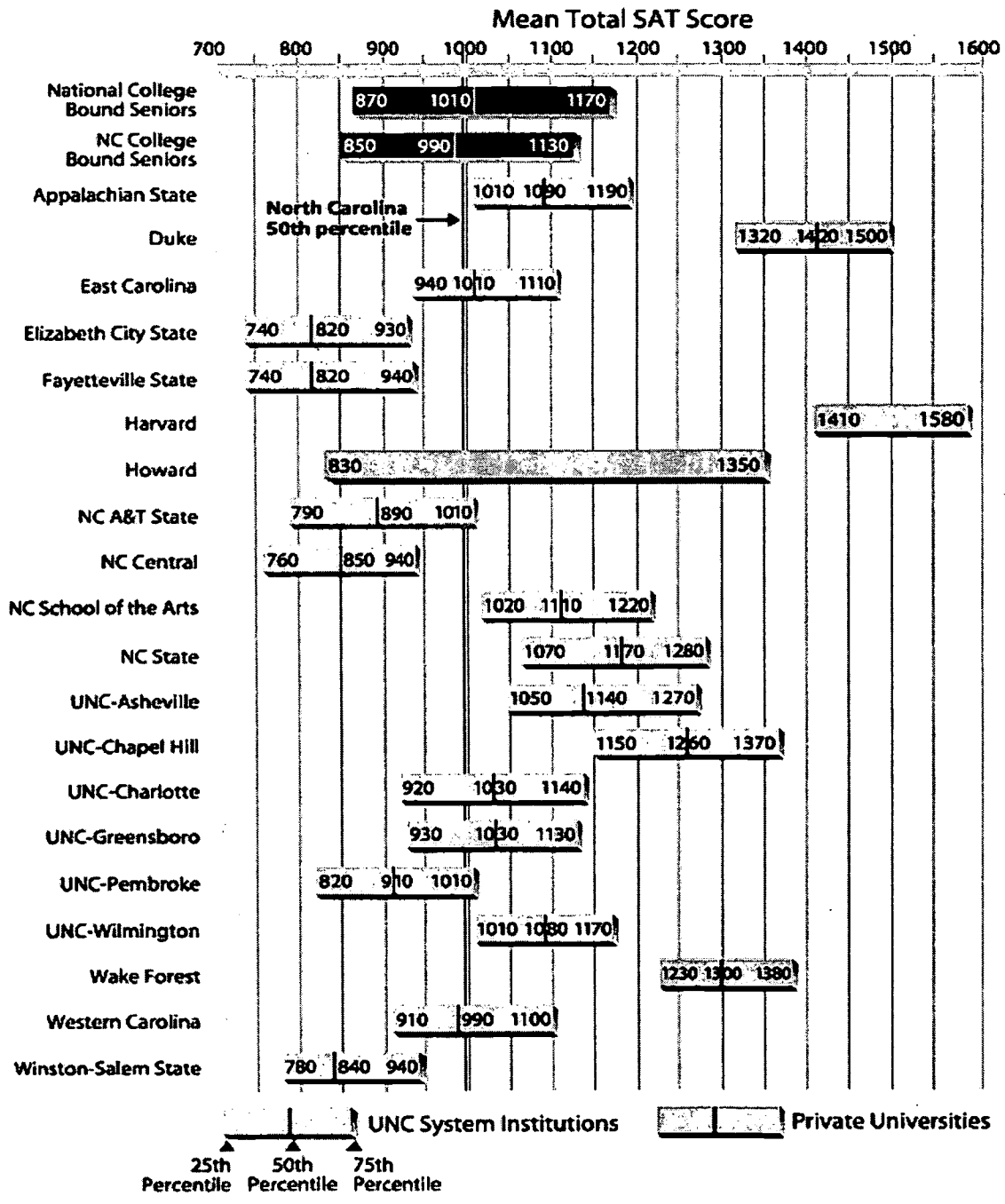
Historically, mean total SAT scores for freshmen entering the University of North Carolina System each year have been higher than those for North Carolina's graduating seniors (The University of North Carolina, 2001). The average total score for freshmen entering the University of North Carolina System from 1991 to 2001 was 1065, while the average for North Carolina's graduating seniors was 975 during the same period, an average difference of 90 points. This trend suggests that many of North Carolina's students who do not perform well on the SAT do not represent a substantial portion of the students who enter the University of North Carolina System. Presumably, these students elect other post-secondary options, which might include community college, military service, or full-time employment.

In 2002, the mean total SAT score (998) for North Carolina's college-bound seniors was 73 points lower than the score (1071) for freshmen entering the University of North Carolina system in 2001. [SAT scores for the University of North Carolina System in 2002 were not available for inclusion in this report.]

Schools within the University of North Carolina System serve a wide variety of student abilities as reflected in the mean total SAT scores of their entering freshmen. In 2001, scores ranged from 837 at Elizabeth City State University to 1257 at the University of North Carolina at Chapel Hill (The University of North Carolina, 2001).

Figure 7 shows graphically the range of total SAT scores between the 25th and 75th percentiles of North Carolina's college-bound seniors, the nation's college-bound seniors, and entering freshmen at the University of North Carolina system institutions and selected other institutions in 2001. The bands in the figure show the range in which the middle half of the students scored -- 25 percent of students scored below the lower end of the band and 25 percent scored at or above the upper end of the band.

The figure shows that each of the University of North Carolina system institutions serves some students who score like the middle 50 percent of college-bound seniors in North Carolina and the nation. Duke, Wake Forest, and Harvard Universities are more likely to serve students who score like the top 25 percent of 2002 college-bound seniors in North Carolina and the nation and less likely to serve students who score like the lower 50 percent. On the other hand, Howard University, recognized as one of the elite Historically Black Colleges and Universities, is unique in that it serves a diverse range of student abilities and might serve students from the upper 75 percent of 2002 college-bound seniors in North Carolina and the nation.



All Scholastic Assessment Test scores are reported on the recentered score scale (1995). Information on the 50th percentile for Howard University's entering freshmen was not available; quartiles for Harvard, Howard, and Wake Forest Universities are based on 2000 data. Source: The University of North Carolina (2002). Averages and Quartiles of SAT Scores of Entering Freshmen in the University of North Carolina, Fall 2000. Statistical Abstract of Higher Education in North Carolina, 2001-2002. Chapel Hill, NC.; Graham, A. E. & Morse, R. J. (August 1999). How U. S. News ranks colleges. U. S. News & World Report. 84-105.

Figure 7. The 25th, 50th, and 75th Percentile of SAT Mean Total Scores for National College-Bound Seniors, North Carolina's College-Bound Seniors, Entering Freshmen at Institutions of the University of North Carolina System and Selected Private Universities, Fall 2001.

## North Carolina's School Systems and Schools

The higher the percentage of students taking the SAT (participation rate), the lower the average SAT scores (The College Board, 1988). While this is true for states (see Figure 8), the opposite association is observed for public school systems and public schools in North Carolina (see Figures 9 and 10). In 2002, the Pearson correlation between the percent of students taking the SAT and the mean total SAT score for *public school systems* in North Carolina was 0.43. For *public schools*, the correlation was 0.51. These correlations suggest that participation rate is a lesser factor in predicting SAT scores for public school systems and public schools than for states.

Also, in view of these correlations, schools and school systems in North Carolina should exercise caution when attributing decreases or increases in mean SAT scores to changes in participation rate. Interpretations of fluctuations in SAT scores at a particular school or system or between schools and systems should take into account that SAT scores are influenced by multiple factors. Among such factors are course-taking patterns, curriculum content, course standards, parental education, and family income. One should also be mindful that about 50% of all schools and school systems in the nation have changes in their mean verbal or math SAT scores of plus or minus 10 points from year to year (The College Board, 2002).

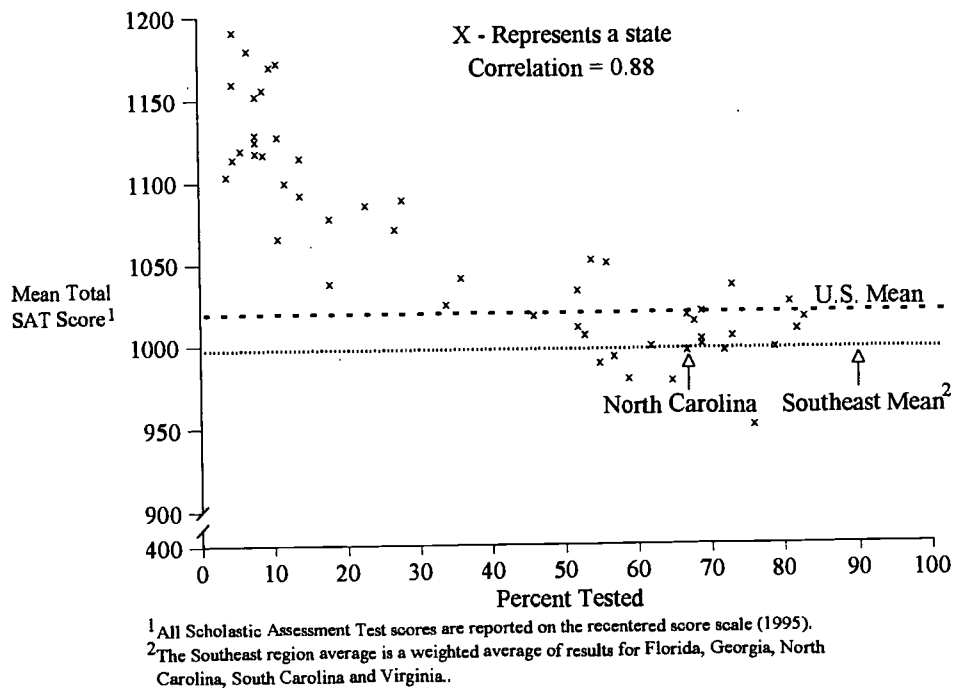
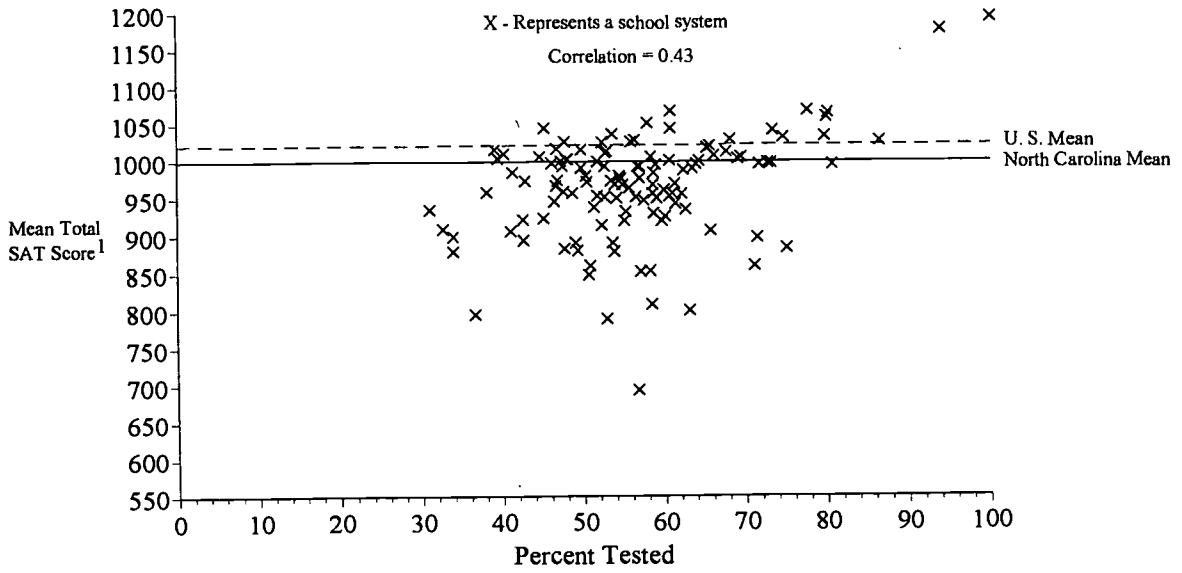
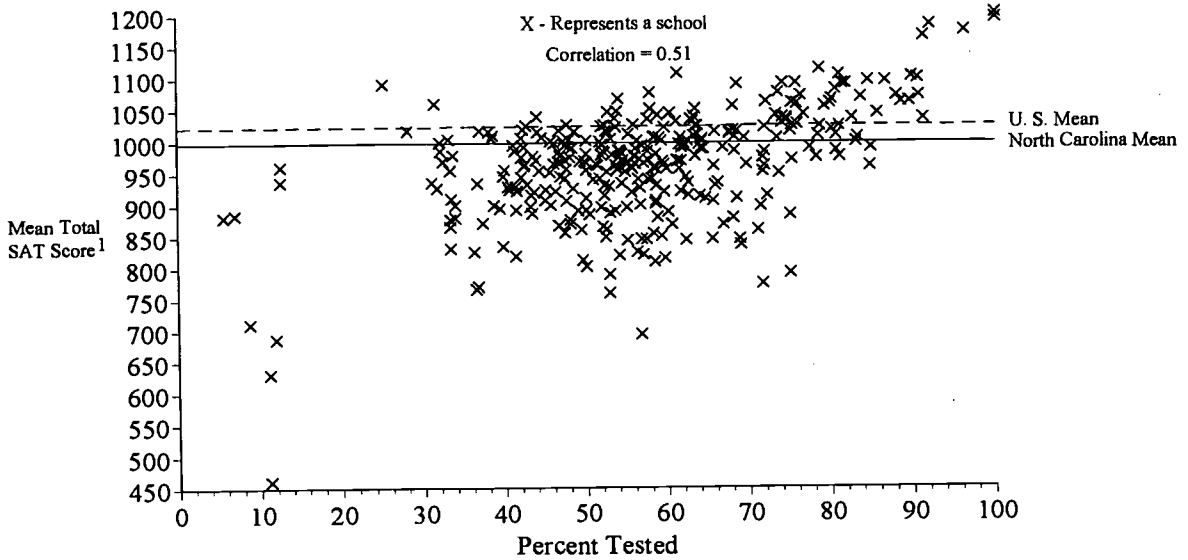


Figure 8. Mean Total SAT Score by Percent of Students Tested for all States, 2002.

Table 7 provides a three-year trend of mean SAT scores for each public school system and school in North Carolina from 2000 to 2002. The three-year trend is reported only for those school systems and schools with SAT scores in 2002. Those school systems and schools without SAT scores in 2002 are not included.



**Figure 9.** Mean Total SAT Score by Percent of Students Tested for all North Carolina Public School Systems, 2002.



**Figure 10.** Mean Total SAT Score by Percent of Students Tested for all North Carolina Public High Schools, 2002.

## Background on Recentering the SAT I Scores

The College Board recentered the score scale of the SAT I in 1995, re-establishing the original mean score of 500 on the 200-800 scale in order to maintain the SAT's statistical integrity and predictive validity. The scale had not been recalibrated since 1941 when it reflected the norm of some 10,000 students from predominantly private secondary schools who applied to the nation's most selective private colleges and universities. As mean scores shifted below 500, the score distribution became stretched in the upper half and compressed in the lower half.

Now that scores are recentered on the renormed SAT I, they reflect the more than two million students who take the test today. They also reflect a more diverse college-bound population than the group who took the SAT in 1941.

Although a student's score may change after recentering, the rank order of individual scores, expressed as percentiles, remains the same. What is more, a specific score on the verbal test now has the same relative position and meaning as the same score on the math test. For example, a 450 on verbal and math signifies comparable performance in both areas. Before recentering, a score of 450 represented above-average performance on verbal and below-average performance on math. While recentering permits legitimate comparisons of verbal and math scores and reduces earlier confusion, it has no effect on historical score trends, or on the difficulty level of the test and the relative standing of students to each other.

## References

Doran, N. J. (2002, Spring). Recentering and realigning the SAT score distributions: how and why. *Journal of Educational Measurement*, 39, 59-84.

The University of North Carolina. (2002, April). *Statistical abstract of higher education in North Carolina, 2001-2002* (Research Report 1-00). Chapel Hill, NC: Author.

The College Board. (2002, August). *Background on the 1,327,831 SAT Takers in the Class of 2002*. New York: Author.

The College Board. (2002). *North Carolina State Summary Report 2001-2002*. Atlanta: Southern Regional Office.

The College Board. (2002). *Electronic File for the 2002 North Carolina State Data*. Princeton, N. J.

## Appendices

---

## North Carolina and the Nation

---



Table 3. Mean SAT Scores for North Carolina and the United States, 1972-2002

Year	United States (US) <sup>1</sup>			North Carolina (NC) <sup>1</sup>			US-NC Gap <sup>2</sup>
	Verbal	Math	Total	Verbal	Math	Total	
2002	504	516	1020	493	505	998	22
2001	506	514	1020	493	499	992	28
2000	505	514	1019	492	496	988	31
1999	505	511	1016	493	493	986	30
1998	505	512	1017	490	492	982	35
1997	505	511	1016	490	488	978	38
1996	505	508	1013	490	486	976	37
1995	504	506	1010	488	482	970	40
1994	499	504	1003	482	482	964	39
1993	500	503	1003	483	481	964	39
1992	500	501	1001	482	479	961	40
1991	499	500	999	478	474	952	47
1990	500	501	1001	478	470	948	53
1989	504	502	1006	474	469	943	63
1988	505	501	1006	478	470	948	58
1987	507	501	1008	477	468	945	63
1986	509	500	1009	477	465	942	67
1985	509	500	1009	476	464	940	69
1984	504	497	1001	473	461	934	67
1983	503	494	997	472	460	932	65
1982	504	493	997	474	460	934	63
1981	502	492	994	469	456	925	69
1980	502	492	994	471	458	929	65
1979	505	493	998	471	455	926	72
1978	507	494	1001	468	453	921	80
1977	507	496	1003	472	454	926	77
1976	509	497	1006	474	452	926	80
1975	512	498	1010	477	457	934	76
1974	521	505	1026	488	466	954	72
1973	523	506	1029	487	468	955	74
1972	530	509	1039	489	467	956	83

<sup>1</sup>All Scholastic Assessment Test scores are reported on the recentered score scale (1995); all scores refer to both public and non-public school students.

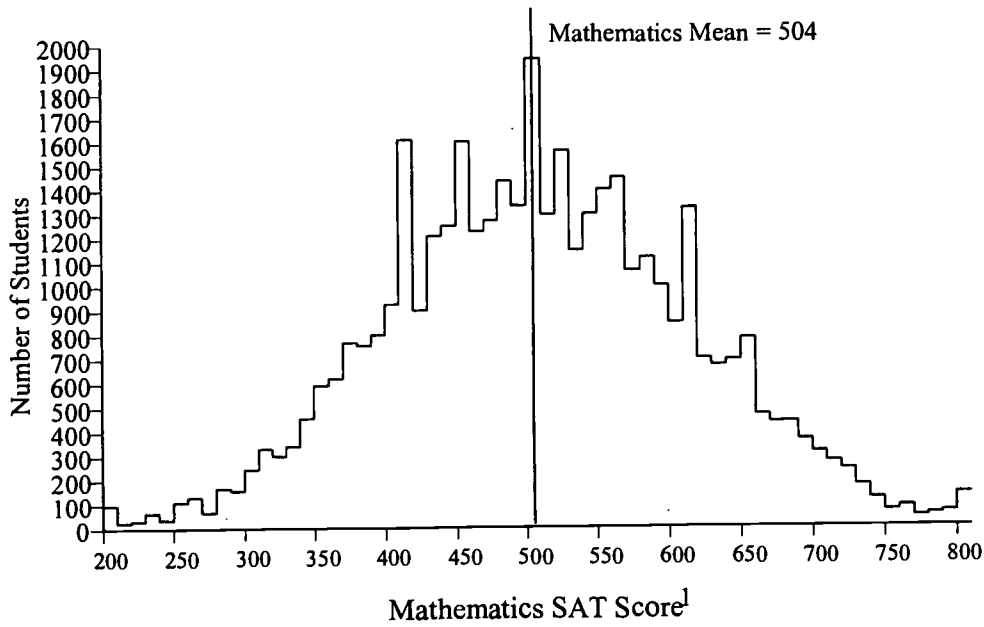
<sup>2</sup>Gap is the United States mean total SAT score minus North Carolina's mean total SAT score.

Table 4. Frequency Distribution of Verbal and Mathematics SAT Scores for North Carolina's Public School Students, 2002

Verbal (Mean = 490)			Score <sup>1</sup>	Mathematics (Mean = 504)		
Number	Percent	Percentile Rank		Number	Percent	Percentile Rank
100	0.3	99	800	138	0.3	99
23	0.1	99	790	62	0.2	99
38	0.1	99	780	52	0.1	99
69	0.2	99	770	43	0.1	99
90	0.2	99	760	84	0.2	99
68	0.2	99	750	67	0.2	99
108	0.3	99	740	117	0.3	99
153	0.4	99	730	174	0.4	98
108	0.3	98	720	241	0.6	98
213	0.5	98	710	273	0.7	97
245	0.6	97	700	313	0.8	97
272	0.7	97	690	364	0.9	96
294	0.7	96	680	438	1.1	95
367	0.9	95	670	435	1.1	94
387	1.0	94	660	468	1.2	92
455	1.1	93	650	781	1.9	91
654	1.6	92	640	693	1.7	89
477	1.2	90	630	671	1.7	87
961	2.4	89	620	699	1.7	86
622	1.5	87	610	1324	3.3	83
1000	2.5	85	600	847	2.1	81
763	1.9	82	590	1001	2.5	78
1189	2.9	80	580	1117	2.8	76
1112	2.8	77	570	1062	2.6	73
905	2.2	75	560	1450	3.6	70
1421	3.5	72	550	1400	3.5	66
1316	3.3	68	540	1299	3.2	63
1372	3.4	65	530	1148	2.8	60
1449	3.6	62	520	1564	3.9	57
1463	3.6	58	510	1298	3.2	53
1419	3.5	54	500	1944	4.8	49
1620	4.0	51	490	1334	3.3	45
1571	3.9	47	480	1438	3.6	42
1494	3.7	43	470	1273	3.2	38
1192	3.0	40	460	1228	3.0	35
1603	4.0	36	450	1603	4.0	32
1484	3.7	32	440	1251	3.1	28
1406	3.5	29	430	1209	3.0	25
1356	3.4	25	420	901	2.2	22
1073	2.7	22	410	1611	4.0	19
1171	2.9	20	400	925	2.3	16
1062	2.6	17	390	799	2.0	14
898	2.2	14	380	756	1.9	12
805	2.0	12	370	767	1.9	10
815	2.0	10	360	621	1.5	9
545	1.4	9	350	592	1.5	7
402	1.0	7	340	458	1.1	6
555	1.4	6	330	341	0.8	5
546	1.4	5	320	300	0.7	4
336	0.8	4	310	331	0.8	3
237	0.6	3	300	245	0.6	3
128	0.3	3	290	157	0.4	2
171	0.4	2	280	167	0.4	2
174	0.4	2	270	69	0.2	1
163	0.4	1	260	131	0.3	1
124	0.3	1	250	110	0.3	1
47	0.1	1	240	37	0.1	1
66	0.2	1	230	65	0.2	1
63	0.2	1	220	33	0.1	1
44	0.1	1	210	26	0.1	1
178	0.4	1	200	97	0.2	1
<b>40,442</b>	<b>100.0</b>			<b>40,442</b>	<b>100.6</b>	

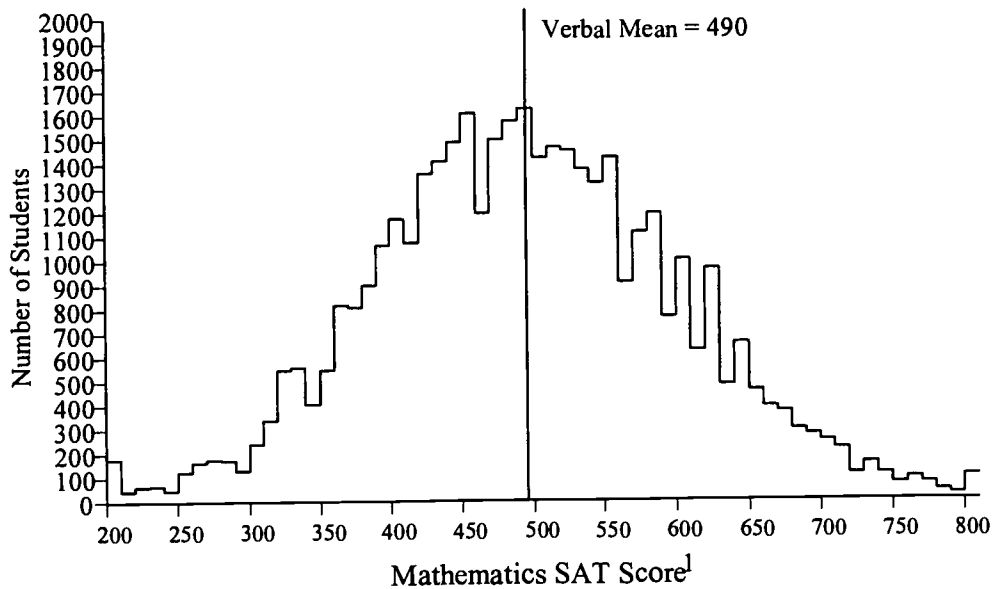
<sup>1</sup>Scholastic Assessment Test scores are reported on the recentered score scale (1995).

Note: Due to rounding, the percentages may not add up to exactly 100.



<sup>1</sup>All Scholastic Assessment Test scores are reported on the recentered score scale (1995).

Figure 11. Distribution of Mathematics SAT Scores for North Carolina's Public Schools, 2002.



<sup>1</sup>All Scholastic Assessment Test scores are reported on the recentered score scale (1995).

Figure 12. Distribution of Verbal SAT Scores for North Carolina's Public Schools, 2002.

Table 5. Mean Total SAT Score by Student Profile Characteristics, 2001-2002

	United States		North Carolina			Difference from U. S.
	Mean <sup>1</sup>	%	N	Mean <sup>1</sup>	%	
<b>All Students</b>	1020	100	46,180	998	100	-22
<b>Gender</b>						
Male	1041	46	21,039	1014	46	-27
Female	1002	54	25,141	984	54	-18
<b>Race/Ethnicity</b>						
American Indian	962	1	518	914	1	-48
Asian American	1069	10	1,286	1025	3	-44
Black	857	11	8,488	839	21	-18
Hispanic	911	10	799	961	2	50
White	1060	65	28,200	1046	70	-14
Other	1016	4	786	1004	2	-12
<b>Parent Education Level</b>						
No high school diploma	850	5	858	843	2	-7
High school diploma	945	32	13,302	926	35	-19
Associate's degree	978	9	4,614	951	12	-27
Bachelor's degree	1056	28	11,521	1031	30	-25
Graduate degree	1126	26	7,944	1109	21	-17
<b>Family Income (in U.S. dollars)</b>						
Less than 10,000	859	4	1,191	826	4	-33
10,000 - 20,000	888	8	2,593	870	8	-18
20,000 - 30,000	931	10	3,438	919	11	-12
30,000 - 40,000	965	11	4,136	944	13	-21
40,000 - 50,000	997	10	3,409	981	11	-16
50,000 - 60,000	1014	10	3,483	991	11	-23
60,000 - 70,000	1027	9	2,875	1013	9	-14
70,000 - 80,000	1041	8	2,561	1024	8	-17
80,000 - 100,000	1068	11	3,324	1055	11	-13
More than 100,000	1123	19	4,566	1108	14	-15
<b>Total Credits in Six Academic Subjects</b>						
20 or more	1096	52	15,106	1076	46	-20
19 to 19.5	1003	11	3,753	990	11	-13
18 to 18.5	973	10	3,576	964	11	-9
17 to 17.5	948	8	3,085	938	9	-10
16 to 16.5	935	6	2,297	922	7	-13
15 to 15.5	946	5	1,737	914	5	-32
Fewer than 15	890	8	3,602	913	11	23
<b>High School Grade Point Average</b>						
A+ (97-100)	1233	7	3,934	1199	10	-34
A (93-96)	1167	17	7,626	1106	19	-61
A- (90-92)	1091	17	6,320	1046	16	-45
B (80-89)	965	47	17,293	936	43	-29
C (70-79)	848	11	4,458	826	11	-22
D or below (<70)	813	0	141	798	0	-15
<b>High School Class Rank</b>						
Top Tenth	1192	26	7,552	1182	24	-10
Second Tenth	1061	23	6,904	1048	22	-13
Second Fifth	980	25	8,276	961	26	-19
Third Fifth	897	22	7,610	874	24	-23
Fourth Fifth	835	4	1,437	803	4	-32
Fifth Fifth	809	1	290	776	1	-33

<sup>1</sup>All Scholastic Assessment Test scores are reported on the recentered score scale (1995); scores include both public and non-public school students.

Note: Due to rounding numbers might not sum to 100%



---

Performance of the 117 Public School Systems, Charter Schools, North Carolina  
School of the Arts, North Carolina School of Science and Mathematics, and the  
Greensboro Math and Science Center

Table 7. Mean SAT Scores for North Carolina's Public School Systems and Schools, 2000-2002

Revised August 27, 2002

School System/School	2000			2001			2002		
	Number Tested	Percent Tested	Verbal Total Score	Number Tested	Percent Tested	Verbal Total Score	Number Tested	Percent Tested	Verbal Total Score
<b>United States Total</b>	<b>1,260,278</b>	<b>44.0</b>	<b>505</b>	<b>1,276,320</b>	<b>45.0</b>	<b>514</b>	<b>1,327,831</b>	<b>46.0</b>	<b>516</b>
<b>North Carolina Total</b>	<b>43,077</b>	<b>64.0</b>	<b>492</b>	<b>44,183</b>	<b>65.0</b>	<b>499</b>	<b>46,180</b>	<b>67.0</b>	<b>505</b>
<b>010 Alamance Burlington</b>	<b>671</b>	<b>67.1</b>	<b>489</b>	<b>584</b>	<b>60.8</b>	<b>490</b>	<b>700</b>	<b>62.1</b>	<b>489</b>
324 Eastern Alamance High	81	59.1	480	77	52.0	511	86	54.4	470
348 Graham High	73	57.0	455	63	48.8	440	76	48.1	453
360 Hugh M Cummings High	66	52.4	464	44	37.9	470	74	47.4	437
388 Southern High	118	63.1	484	96	54.2	489	115	59.9	494
396 Walter M Williams High	209	85.3	512	179	86.5	508	204	81.0	521
400 Western Alamance High	124	70.5	493	125	71.0	482	145	69.7	494
<b>01B River Mill Charter</b>	<b>7</b>	<b>100.0</b>	<b>466</b>	<b>9</b>	<b>100.0</b>	<b>519</b>	<b>10</b>	<b>62.5</b>	<b>470</b>
<b>020 Alexander County</b>	<b>127</b>	<b>44.1</b>	<b>472</b>	<b>134</b>	<b>50.0</b>	<b>480</b>	<b>154</b>	<b>46.1</b>	<b>512</b>
302 Alexander Central High	127	44.1	472	134	50.0	480	154	46.1	512
<b>030 Alleghany County</b>	<b>48</b>	<b>55.8</b>	<b>479</b>	<b>32</b>	<b>38.6</b>	<b>487</b>	<b>37</b>	<b>47.4</b>	<b>511</b>
304 Alleghany High	48	55.8	479	32	38.6	487	37	47.4	511
<b>040 Anson County</b>	<b>95</b>	<b>40.9</b>	<b>448</b>	<b>119</b>	<b>53.1</b>	<b>443</b>	<b>118</b>	<b>50.6</b>	<b>432</b>
306 Anson High	95	42.0	448	119	53.1	443	118	52.4	432
<b>050 Ashe County</b>	<b>*</b>	<b>*</b>	<b>*</b>	<b>*</b>	<b>*</b>	<b>*</b>	<b>103</b>	<b>58.5</b>	<b>486</b>
302 Ashe County High	*	*	*	*	*	*	103	58.5	486
<b>060 Avery County</b>	<b>81</b>	<b>58.7</b>	<b>519</b>	<b>62</b>	<b>48.4</b>	<b>499</b>	<b>62</b>	<b>46.6</b>	<b>480</b>
302 Avery County High	81	58.7	519	62	48.4	499	62	46.6	480
<b>070 Beaufort County</b>	<b>206</b>	<b>56.3</b>	<b>479</b>	<b>165</b>	<b>52.2</b>	<b>481</b>	<b>176</b>	<b>54.8</b>	<b>494</b>
330 Northside High	59	51.3	486	51	49.0	472	58	54.2	507
339 Southside High	113	64.6	487	22	35.5	495	26	40.0	496
342 Washington High	137	57.8	411	92	65.2	482	92	65.7	485
<b>080 Bertie County</b>	<b>137</b>	<b>57.8</b>	<b>411</b>	<b>137</b>	<b>62.3</b>	<b>394</b>	<b>109</b>	<b>52.9</b>	<b>402</b>
312 Bertie High	137	57.8	411	137	62.3	394	109	52.9	402
<b>090 Bladen County</b>	<b>165</b>	<b>56.7</b>	<b>442</b>	<b>161</b>	<b>52.4</b>	<b>429</b>	<b>156</b>	<b>58.2</b>	<b>434</b>
316 Bladenboro High	51	53.7	486	50	50.5	451	46	60.5	442
330 East Bladen High	85	66.9	417	74	56.9	421	75	56.8	429
364 Tar Heel Middle-High	28	43.1	442	37	49.3	416	35	59.3	436

Notes: All Scholastic Assessment Test scores are reported on the recentered score scale (1995).

Percent tested is calculated as the number of students taking SAT in the LEA divided by the eighth month, twelfth grade membership in the LEA.

\* Less than 5. Blank means the school did not participate in the SAT that year.

School totals might not equal county totals in past and current years due to schools not participating in the SAT in 2002 or counts lower than 5 not being reported.

Table 7 (Continued). Mean SAT Scores for North Carolina's Public School Systems and Schools, 2000-2002  
Revised August 27, 2002

School System/School	2000				2001				2002			
	Number Tested	Percent Tested	Math Score	Verbal Total Score	Number Tested	Percent Tested	Math Score	Verbal Total Score	Number Tested	Percent Tested	Math Score	Verbal Total Score
<b>United States Total</b>	<b>1,260,278</b>	<b>44.0</b>	<b>514</b>	<b>505</b>	<b>1,276,320</b>	<b>45.0</b>	<b>514</b>	<b>506</b>	<b>1,327,831</b>	<b>46.0</b>	<b>516</b>	<b>504</b>
<b>North Carolina Total</b>	<b>43,077</b>	<b>64.0</b>	<b>496</b>	<b>492</b>	<b>44,183</b>	<b>65.0</b>	<b>499</b>	<b>493</b>	<b>46,180</b>	<b>67.0</b>	<b>505</b>	<b>493</b>
<b>100 Brunswick County</b>	<b>215</b>	<b>48.0</b>	<b>482</b>	<b>483</b>	<b>228</b>	<b>47.2</b>	<b>469</b>	<b>470</b>	<b>230</b>	<b>48.6</b>	<b>486</b>	<b>470</b>
308 Brunswick Learn Center									*	*	*	*
326 North Brunswick High	42	37.2	455	442	50	38.5	450	458	44	41.5	478	443
334 South Brunswick High	76	59.4	496	501	93	53.4	472	473	96	57.1	489	476
348 West Brunswick High	97	48.7	482	487	85	49.1	477	475	89	46.8	488	478
<b>110 Buncombe County</b>	<b>825</b>	<b>60.5</b>	<b>532</b>	<b>527</b>	<b>803</b>	<b>60.2</b>	<b>539</b>	<b>521</b>	<b>845</b>	<b>60.7</b>	<b>541</b>	<b>525</b>
304 A C Reynolds High	192	65.3	539	547	181	66.5	534	524	180	61.2	548	558
336 Charles D Owen High	89	51.7	525	511	100	55.9	548	535	107	58.8	531	509
340 Clyde A Erwin High	96	47.3	526	516	87	43.3	526	499	93	44.1	515	498
352 Enka High	124	61.7	531	520	95	51.9	525	509	121	54.0	544	522
380 North Buncombe High	127	62.6	527	528	127	60.5	532	503	150	72.1	540	521
416 T C Roberson High	197	70.1	537	526	211	77.9	554	535	194	73.5	551	524
<b>111 Asheville City</b>	<b>174</b>	<b>74.4</b>	<b>517</b>	<b>521</b>	<b>192</b>	<b>82.8</b>	<b>509</b>	<b>518</b>	<b>199</b>	<b>79.9</b>	<b>529</b>	<b>529</b>
302 Asheville High	174	74.4	517	521	192	82.8	509	518	199	79.9	529	529
<b>120 Burke County</b>	<b>313</b>	<b>51.3</b>	<b>495</b>	<b>488</b>	<b>296</b>	<b>44.4</b>	<b>515</b>	<b>503</b>	<b>292</b>	<b>40.2</b>	<b>513</b>	<b>496</b>
314 East Burke High	144	52.0	482	482	119	39.5	494	492	97	32.0	504	493
318 Freedom High	169	51.2	506	493	177	49.0	530	510	195	48.6	517	497
<b>130 Cabarrus County</b>	<b>668</b>	<b>65.0</b>	<b>512</b>	<b>501</b>	<b>644</b>	<b>66.1</b>	<b>508</b>	<b>498</b>	<b>705</b>	<b>65.5</b>	<b>521</b>	<b>498</b>
310 Central Cabarrus High	197	63.5	519	502	209	67.2	516	504	231	68.1	525	491
314 Concord High	137	68.8	495	500	143	63.3	500	502	135	68.2	507	499
324 Mt Pleasant High	95	54.0	504	492	79	48.2	491	490	96	45.7	514	485
326 N W Cabarrus High	239	70.9	520	504	213	78.0	512	494	243	74.1	527	509
<b>132 Kannapolis City</b>	<b>82</b>	<b>50.9</b>	<b>454</b>	<b>456</b>	<b>70</b>	<b>36.5</b>	<b>495</b>	<b>493</b>	<b>86</b>	<b>41.3</b>	<b>497</b>	<b>487</b>
304 A L Brown High	82	50.9	454	456	70	36.5	495	493	86	41.3	497	487
<b>140 Caldwell County</b>	<b>236</b>	<b>38.3</b>	<b>503</b>	<b>498</b>	<b>275</b>	<b>46.5</b>	<b>513</b>	<b>493</b>	<b>258</b>	<b>39.0</b>	<b>513</b>	<b>502</b>
348 Hibriten High	65	39.2	497	513	85	50.0	497	508	85	42.7	510	513
386 South Caldwell High	131	50.4	508	495	131	51.0	513	490	106	36.9	516	500
390 West Caldwell High	40	23.7	494	484	59	37.6	535	477	67	38.5	515	493
<b>150 Camden County</b>	<b>46</b>	<b>59.0</b>	<b>499</b>	<b>478</b>	<b>47</b>	<b>67.1</b>	<b>467</b>	<b>459</b>	<b>61</b>	<b>65.6</b>	<b>457</b>	<b>448</b>
304 Camden County High	46	59.0	499	478	47	67.1	467	459	61	65.6	457	448

Notes: All Scholastic Assessment Test scores are reported on the recentered score scale (1995).

Percent tested is calculated as the number of students taking SAT I in the LEA divided by the eighth month, twelfth grade membership in the LEA.

\* Less than 5. Blank means the school did not participate in the SAT that year.

School totals might not equal county totals in past and current years due to schools not participating in the SAT in 2002 or counts lower than 5 not being reported.



Table 7 (Continued). Mean SAT Scores for North Carolina's Public School Systems and Schools, 2000-2002

Revised August 27, 2002

School System/School	2000				2001				2002			
	Number	Percent	Math	Verbal	Number	Percent	Math	Verbal	Number	Percent	Math	Verbal
	Tested	Tested	Score	Score	Tested	Tested	Score	Score	Tested	Tested	Score	Score
<b>United States Total</b>	<b>1,260,278</b>	<b>44.0</b>	<b>514</b>	<b>505</b>	<b>1,276,320</b>	<b>45.0</b>	<b>514</b>	<b>506</b>	<b>1,327,831</b>	<b>46.0</b>	<b>516</b>	<b>504</b>
<b>North Carolina Total</b>	<b>43,077</b>	<b>64.0</b>	<b>496</b>	<b>492</b>	<b>44,183</b>	<b>65.0</b>	<b>499</b>	<b>493</b>	<b>46,180</b>	<b>67.0</b>	<b>505</b>	<b>493</b>
<b>160 Carteret County</b>	<b>296</b>	<b>67.6</b>	<b>495</b>	<b>499</b>	<b>324</b>	<b>65.5</b>	<b>503</b>	<b>502</b>	<b>335</b>	<b>66.1</b>	<b>513</b>	<b>493</b>
313 East Carteret High	93	62.8	482	484	91	59.5	502	501	66	53.7	494	467
314 Croatan High School	50	64.9	488	504	88	77.9	494	495	130	83.3	511	493
344 West Carteret High	148	69.5	509	507	145	63.3	508	506	139	61.0	524	506
<b>16A Cape Lookout High Charter</b>					*	*	*	*	*	*	*	*
<b>170 Caswell County</b>	<b>86</b>	<b>50.6</b>	<b>430</b>	<b>438</b>	<b>84</b>	<b>48.3</b>	<b>447</b>	<b>454</b>	<b>92</b>	<b>52.3</b>	<b>455</b>	<b>458</b>
316 Bartlett Yancey High	86	50.6	430	438	84	48.3	447	454	92	52.3	455	458
<b>180 Catawba County</b>	<b>423</b>	<b>51.5</b>	<b>518</b>	<b>492</b>	<b>443</b>	<b>54.2</b>	<b>525</b>	<b>500</b>	<b>415</b>	<b>52.6</b>	<b>512</b>	<b>480</b>
308 Bandys High	67	43.8	510	485	81	49.4	532	496	70	50.0	499	466
320 Bunker Hill High	61	50.4	524	503	58	41.4	491	467	64	50.0	481	472
340 Fred T Foard High	129	60.6	521	498	117	52.5	535	512	100	48.5	518	495
348 Maiden High	42	41.6	498	469	52	49.5	497	461	33	33.3	507	446
376 St Stephens High	123	59.4	526	492	135	72.6	539	520	148	68.5	528	487
<b>181 Hickory City</b>	<b>148</b>	<b>81.8</b>	<b>534</b>	<b>524</b>	<b>150</b>	<b>76.1</b>	<b>522</b>	<b>506</b>	<b>172</b>	<b>79.6</b>	<b>524</b>	<b>508</b>
318 Catawba Valley High	*	*	*	*	*	*	*	*	*	*	*	*
322 Hickory High	147	84.0	534	525	150	76.5	522	506	171	82.6	526	509
<b>182 Newton-Conover City</b>	<b>81</b>	<b>55.9</b>	<b>525</b>	<b>511</b>	<b>90</b>	<b>46.2</b>	<b>525</b>	<b>484</b>	<b>84</b>	<b>57.9</b>	<b>547</b>	<b>503</b>
316 Newton-Conover High	81	55.9	525	511	90	46.2	525	484	84	57.9	547	503
<b>190 Chatham County</b>	<b>205</b>	<b>64.7</b>	<b>494</b>	<b>489</b>	<b>215</b>	<b>64.6</b>	<b>491</b>	<b>481</b>	<b>181</b>	<b>59.9</b>	<b>484</b>	<b>476</b>
316 Chatham Central High	39	47.0	479	477	49	57.6	477	468	36	51.4	494	467
336 Jordan Mathewes High	59	62.8	503	481	54	52.4	506	480	45	50.0	463	446
342 Northwood High	107	78.1	494	497	112	79.4	490	486	100	71.9	490	492
<b>19B Woods Charter</b>	<b>*</b>	<b>*</b>	<b>*</b>	<b>*</b>	<b>7</b>	<b>100.0</b>	<b>527</b>	<b>587</b>	<b>5</b>	<b>100.0</b>	<b>580</b>	<b>612</b>
<b>200 Cherokee County</b>	<b>118</b>	<b>57.0</b>	<b>501</b>	<b>515</b>	<b>115</b>	<b>59.6</b>	<b>495</b>	<b>497</b>	<b>125</b>	<b>56.6</b>	<b>500</b>	<b>492</b>
308 Andrews High	38	60.3	485	509	39	76.5	489	480	35	56.5	483	488
312 Hiwassee Dam Union	21	58.3	472	508	16	38.1	454	471	23	57.5	500	483
328 Murphy High	59	56.2	522	522	60	65.2	511	514	67	61.5	508	497
<b>210 Edenton/Chowan County</b>	<b>62</b>	<b>41.1</b>	<b>478</b>	<b>493</b>	<b>67</b>	<b>55.4</b>	<b>471</b>	<b>455</b>	<b>68</b>	<b>47.9</b>	<b>495</b>	<b>506</b>
312 John A Holmes High	62	41.1	478	493	67	55.4	471	455	68	47.9	495	506

Notes: All Scholastic Assessment Test scores are reported on the recentered score scale (1995).

Percent tested is calculated as the number of students taking SAT I in the LEA divided by the eighth month, twelfth grade membership in the LEA.

\* Less than 5. Blank means the school did not participate in the SAT that year.

School totals might not equal county totals in past and current years due to schools not participating in the SAT in 2002 or counts lower than 5 not being reported.

**Table 7 (Continued). Mean SAT Scores for North Carolina's Public School Systems and Schools, 2000-2002**  
Revised August 27, 2002

School System/School	2000			2001			2002		
	Number Tested	Percent Tested	Verbal Total Score	Number Tested	Percent Tested	Verbal Total Score	Number Tested	Percent Tested	Verbal Total Score
<b>United States Total</b>	<b>1,260,278</b>	<b>44.0</b>	<b>514</b>	<b>1,276,320</b>	<b>45.0</b>	<b>514</b>	<b>1,327,831</b>	<b>46.0</b>	<b>516</b>
<b>North Carolina Total</b>	<b>43,077</b>	<b>64.0</b>	<b>496</b>	<b>44,183</b>	<b>65.0</b>	<b>499</b>	<b>46,180</b>	<b>67.0</b>	<b>505</b>
<b>220 Clay County</b>	<b>42</b>	<b>62.7</b>	<b>519</b>	<b>49</b>	<b>65.3</b>	<b>513</b>	<b>70</b>	<b>74.5</b>	<b>523</b>
310 Hayesville High	42	62.7	519	49	65.3	513	70	74.5	523
<b>230 Cleveland County</b>	<b>218</b>	<b>52.7</b>	<b>479</b>	<b>229</b>	<b>49.6</b>	<b>487</b>	<b>226</b>	<b>56.4</b>	<b>480</b>
312 Burns High	78	46.4	450	88	42.9	477	93	56.7	452
324 Crest Senior High	140	56.9	495	141	54.9	494	133	56.1	499
<b>231 Kings Mountain City</b>	<b>111</b>	<b>52.9</b>	<b>469</b>	<b>102</b>	<b>57.6</b>	<b>453</b>	<b>95</b>	<b>54.0</b>	<b>502</b>
324 Kings Mountain High	111	52.9	469	102	58.0	453	95	54.0	502
<b>232 Shelby City</b>	<b>103</b>	<b>68.7</b>	<b>505</b>	<b>113</b>	<b>71.1</b>	<b>497</b>	<b>86</b>	<b>55.8</b>	<b>513</b>
332 Shelby High	103	68.7	505	113	71.1	497	86	55.8	513
<b>240 Columbus County</b>	<b>165</b>	<b>39.7</b>	<b>437</b>	<b>176</b>	<b>45.5</b>	<b>453</b>	<b>184</b>	<b>47.7</b>	<b>447</b>
334 East Columbus High	57	43.5	414	66	50.0	404	65	48.1	426
371 South Columbus High	44	29.1	495	56	42.1	517	58	43.3	477
380 West Columbus High	64	47.8	417	54	44.6	446	61	52.1	440
<b>241 Whiteville City</b>	<b>96</b>	<b>71.1</b>	<b>441</b>	<b>100</b>	<b>68.5</b>	<b>438</b>	<b>81</b>	<b>61.4</b>	<b>483</b>
316 Whiteville High	96	71.1	441	100	68.5	438	81	61.4	483
<b>250 Craven County</b>	<b>425</b>	<b>65.8</b>	<b>484</b>	<b>395</b>	<b>59.5</b>	<b>493</b>	<b>463</b>	<b>63.4</b>	<b>499</b>
340 Havelock High	148	67.3	490	138	61.9	492	148	56.3	504
356 New Bern High	208	72.5	481	205	68.1	497	223	73.4	505
372 West Craven High	69	49.6	482	52	37.1	479	92	56.4	480
<b>260 Cumberland County</b>	<b>1322</b>	<b>50.9</b>	<b>475</b>	<b>1358</b>	<b>52.3</b>	<b>467</b>	<b>1413</b>	<b>51.7</b>	<b>471</b>
318 Jack Britt High	145	48.7	454	69	41.1	468	134	53.2	481
322 Douglas Byrd High	76	29.2	519	78	29.2	498	111	38.4	497
325 Cape Fear High	139	59.4	437	140	59.6	431	157	62.3	418
359 E E Smith High	185	56.7	482	159	46.5	474	180	53.9	472
408 Pine Forest High							*	*	*
409 Ramsey St HS Alt Program									
424 Seventy-First High	192	44.3	469	183	53.2	471	179	52.3	458
427 South View High	247	56.8	475	238	60.4	464	222	56.6	460
446 Terry Sanford High	202	70.1	514	188	66.2	515	215	74.1	541
455 Westover High	134	50.8	451	174	69.0	429	115	53.0	437
Verbal Total									
Score									
Score									
Score									
Total									

Notes: All Scholastic Assessment Test scores are reported on the recentered score scale (1995).  
Percent tested is calculated as the number of students taking SAT I in the LEA divided by the eighth month, twelfth grade membership in the LEA.  
\* Less than 5. Blank means the school did not participate in the SAT that year.  
School totals might not equal county totals in past and current years due to schools not participating in the SAT in 2002 or counts lower than 5 not being reported.

Table 7 (Continued). Mean SAT Scores for North Carolina's Public School Systems and Schools, 2000-2002  
Revised August 27, 2002

School System/School	2000			2001			2002		
	Number Tested	Percent Tested	Verbal Total Score	Number Tested	Percent Tested	Verbal Total Score	Number Tested	Percent Tested	Verbal Total Score
<b>United States Total</b>	<b>1,260,278</b>	<b>44.0</b>	<b>514</b>	<b>1,276,320</b>	<b>45.0</b>	<b>514</b>	<b>1,327,831</b>	<b>46.0</b>	<b>516</b>
<b>North Carolina Total</b>	<b>43,077</b>	<b>64.0</b>	<b>496</b>	<b>44,183</b>	<b>65.0</b>	<b>499</b>	<b>46,180</b>	<b>67.0</b>	<b>505</b>
<b>270 Currituck County</b>	<b>66</b>	<b>44.0</b>	<b>490</b>	<b>102</b>	<b>60.7</b>	<b>505</b>	<b>91</b>	<b>52.3</b>	<b>526</b>
306 Currituck County High	66	44.0	490	102	60.7	505	91	52.3	526
<b>280 Dare County</b>	<b>178</b>	<b>76.7</b>	<b>497</b>	<b>196</b>	<b>83.4</b>	<b>512</b>	<b>185</b>	<b>86.4</b>	<b>524</b>
304 Cape Hatteras Secondary	25	78.1	441	32	94.1	471	30	68.2	497
316 Manteo High	153	79.7	506	164	81.6	520	155	91.2	529
<b>290 Davidson County</b>	<b>540</b>	<b>58.4</b>	<b>489</b>	<b>559</b>	<b>56.6</b>	<b>496</b>	<b>599</b>	<b>60.5</b>	<b>510</b>
308 Central Davidson High	104	60.8	468	89	49.4	480	91	55.5	488
324 East Davidson High	72	52.9	502	86	54.4	495	95	57.6	509
336 Ledford Senior High	114	68.7	500	102	59.6	502	110	63.2	525
348 North Davidson Sr Hi	153	65.4	497	184	71.0	505	205	71.9	521
365 South Davidson High	44	55.7	478	42	50.6	479	49	58.3	487
388 West Davidson High	53	44.2	476	56	51.9	494	49	47.6	489
<b>291 Lexington City</b>	<b>65</b>	<b>45.8</b>	<b>470</b>	<b>72</b>	<b>55.4</b>	<b>472</b>	<b>64</b>	<b>45.1</b>	<b>461</b>
336 Lexington Sr High	65	45.8	470	72	55.4	472	64	45.1	461
<b>290 Thomasville City</b>	<b>37</b>	<b>43.0</b>	<b>438</b>	<b>51</b>	<b>56.0</b>	<b>465</b>	<b>52</b>	<b>53.6</b>	<b>461</b>
324 Thomasville High	37	43.0	438	51	56.0	465	52	53.6	461
<b>300 Davie County</b>	<b>172</b>	<b>61.6</b>	<b>503</b>	<b>175</b>	<b>65.5</b>	<b>508</b>	<b>197</b>	<b>64.2</b>	<b>508</b>
312 Davie High	172	61.6	503	175	65.5	508	197	64.2	508
<b>310 Duplin County</b>	<b>246</b>	<b>60.3</b>	<b>439</b>	<b>243</b>	<b>59.9</b>	<b>437</b>	<b>248</b>	<b>55.2</b>	<b>471</b>
344 East Duplin High	66	50.4	441	61	50.4	451	84	54.5	489
352 James Kenan High	84	84.8	419	77	86.5	413	63	58.3	439
364 North Duplin Jr Sr	40	75.5	474	36	67.9	421	38	55.9	494
392 Wallace-Rose Hill High	56	44.8	441	69	48.3	461	63	52.9	463
<b>320 Durham County</b>	<b>956</b>	<b>75.5</b>	<b>500</b>	<b>1090</b>	<b>76.8</b>	<b>498</b>	<b>1129</b>	<b>81.0</b>	<b>505</b>
312 C E Jordan High	249	91.9	539	283	87.1	532	291	90.7	543
323 Durham Sch of Arts	65	73.0	538	102	76.7	520	103	80.5	542
325 Hillside High	133	70.4	444	119	73.9	438	109	66.9	437
356 Northern High	205	79.5	506	204	78.2	504	245	84.8	494
365 Riverside High	200	75.2	502	228	73.3	511	246	85.7	528
368 Southern High	102	61.4	444	154	69.4	440	135	65.5	427

Notes: All Scholastic Assessment Test scores are reported on the recentered score scale (1995).

Percent tested is calculated as the number of students taking SAT I in the LEA divided by the eighth month, twelfth grade membership in the LEA

\* Less than 5. Blank means the school did not participate in the SAT that year.

School totals might not equal county totals in past and current years due to schools not participating in the SAT in 2002 or counts lower than 5 not being reported.

Table 7 (Continued). Mean SAT Scores for North Carolina's Public School Systems and Schools, 2000-2002  
Revised August 27, 2002

School System/School	2000			2001			2002		
	Number Tested	Percent Tested	Verbal Total Score	Number Tested	Percent Tested	Math Verbal Total Score	Number Tested	Percent Tested	Math Verbal Total Score
<b>United States Total</b>	<b>1,260,278</b>	<b>44.0</b>	<b>505</b>	<b>1,276,320</b>	<b>45.0</b>	<b>514</b>	<b>1,327,831</b>	<b>46.0</b>	<b>516</b>
<b>North Carolina Total</b>	<b>43,077</b>	<b>64.0</b>	<b>492</b>	<b>44,183</b>	<b>65.0</b>	<b>499</b>	<b>46,180</b>	<b>67.0</b>	<b>505</b>
<b>330 Edgecombe County</b>	<b>167</b>	<b>45.3</b>	<b>448</b>	<b>188</b>	<b>49.1</b>	<b>464</b>	<b>168</b>	<b>41.0</b>	<b>463</b>
328 North Edgecombe Magnet	21	25.9	420	19	29.2	433	30	33.3	457
350 Southwest Edgecombe	71	42.5	444	83	48.8	490	63	40.4	470
358 Tarboro High	75	62.0	460	86	58.1	447	75	45.7	459
<b>340 Winston-Salem/Forsyth County</b>	<b>1508</b>	<b>68.9</b>	<b>502</b>	<b>1604</b>	<b>69.3</b>	<b>502</b>	<b>1646</b>	<b>69.0</b>	<b>506</b>
330 Carver High	120	60.9	407	131	64.9	420	117	59.7	402
364 East Forsyth High	194	68.1	504	217	67.0	507	250	74.0	514
382 R B Glenn High	116	62.7	483	120	58.8	481	133	50.4	455
454 Mount Tabor High	294	78.8	534	238	75.3	521	293	79.2	527
460 North Forsyth High	190	73.6	490	196	69.0	482	189	63.4	495
478 Independence High	*	*	*	*	*	*	*	*	*
486 Parkland High	105	54.7	453	125	61.3	430	141	68.1	450
496 Reynolds High	195	67.5	527	273	77.3	540	227	75.2	535
556 West Forsyth High	290	82.2	524	302	82.3	536	294	81.4	554
<b>350 Franklin County</b>	<b>167</b>	<b>45.0</b>	<b>477</b>	<b>152</b>	<b>46.9</b>	<b>469</b>	<b>202</b>	<b>57.4</b>	<b>477</b>
308 Bunn High	71	51.4	484	67	55.4	468	74	55.2	480
321 Franklinton High	54	47.4	475	50	51.5	454	69	61.6	467
336 Louisburg High	42	35.3	467	35	33.0	491	59	55.7	487
<b>360 Gaston County</b>	<b>840</b>	<b>55.6</b>	<b>475</b>	<b>850</b>	<b>58.0</b>	<b>483</b>	<b>852</b>	<b>55.6</b>	<b>482</b>
310 Ashbrook High	173	71.8	499	161	70.9	497	141	61.8	493
336 Bessemer City High	46	52.9	435	49	46.7	461	37	36.6	472
360 Cherryville Sr High	58	56.9	435	44	53.0	506	64	62.1	488
390 East Gaston High	138	55.6	462	139	69.8	461	145	52.5	477
396 Forestview High	152	74.9	498	163	68.2	504	198	71.7	491
428 Hunter Huss High	71	44.1	457	77	43.5	449	75	41.4	453
470 North Gaston High	102	49.5	454	95	49.5	455	84	50.0	454
494 South Point High	100	48.3	494	122	62.9	503	108	58.4	504
<b>370 Gates County</b>	<b>71</b>	<b>68.9</b>	<b>440</b>	<b>53</b>	<b>51.5</b>	<b>445</b>	<b>69</b>	<b>75.0</b>	<b>448</b>
312 Gates County Sr High	71	68.9	440	53	51.5	445	69	75.0	448

Notes: All Scholastic Assessment Test scores are reported on the recentered score scale (1995).

Percent tested is calculated as the number of students taking SAT I in the LEA divided by the eighth month, twelfth grade membership in the LEA

\* Less than 5. Blank means the school did not participate in the SAT that year.

School totals might not equal county totals in past and current years due to schools not participating in the SAT in 2002 or counts lower than 5 not being reported.

Table 7 (Continued). Mean SAT Scores for North Carolina's Public School Systems and Schools, 2000-2002

Revised August 27, 2002

School System/School	2000			2001			2002		
	Number Tested	Percent Tested	Verbal Total Score	Number Tested	Percent Tested	Verbal Total Score	Number Tested	Percent Tested	Verbal Total Score
<b>United States Total</b>	<b>1,260,278</b>	<b>44.0</b>	<b>514</b>	<b>1,276,320</b>	<b>45.0</b>	<b>514</b>	<b>1,327,831</b>	<b>46.0</b>	<b>516</b>
<b>North Carolina Total</b>	<b>43,077</b>	<b>64.0</b>	<b>496</b>	<b>44,183</b>	<b>65.0</b>	<b>499</b>	<b>46,180</b>	<b>67.0</b>	<b>505</b>
<b>380 Graham County</b>	<b>43</b>	<b>59.7</b>	<b>519</b>	<b>41</b>	<b>65.1</b>	<b>532</b>	<b>31</b>	<b>54.4</b>	<b>519</b>
308 Robbinsville High	43	59.7	519	41	65.1	532	31	54.4	519
<b>390 Granville County</b>	<b>144</b>	<b>45.1</b>	<b>487</b>	<b>155</b>	<b>42.7</b>	<b>481</b>	<b>151</b>	<b>42.8</b>	<b>494</b>
324 J F Webb High	93	49.5	497	78	38.2	488	90	42.1	502
352 South Granville High	51	38.9	470	77	48.4	474	61	43.9	482
<b>400 Greene County</b>	<b>71</b>	<b>45.5</b>	<b>454</b>	<b>72</b>	<b>44.4</b>	<b>437</b>	<b>42</b>	<b>33.9</b>	<b>461</b>
308 Greene Central High	71	45.5	454	72	44.4	437	42	33.9	461
<b>Greensboro Math &amp; Science Cnt)</b>	<b>7</b>	<b>NA</b>	<b>414</b>	<b>7</b>	<b>NA</b>	<b>345</b>	<b>6</b>	<b>NA</b>	<b>428</b>
<b>410 Guilford County</b>	<b>2309</b>	<b>73.8</b>	<b>504</b>	<b>2377</b>	<b>73.8</b>	<b>503</b>	<b>2464</b>	<b>71.6</b>	<b>503</b>
319 T Wingate Andrews High	106	71.1	439	119	73.0	445	135	72.2	461
355 Dudley High	135	70.3	443	176	71.0	428	173	68.9	426
358 Eastern Guilford High	74	61.2	489	87	62.1	478	75	46.9	474
394 Grimsley High	278	91.1	548	286	83.4	548	299	89.8	547
406 High Pt Central High	161	71.6	479	127	68.3	507	147	71.7	490
484 Northeast High	131	57.2	480	142	66.7	485	139	66.2	471
490 Northwest High	282	79.0	540	310	82.4	542	312	81.0	556
508 Page High	222	77.9	530	240	81.1	527	264	76.7	527
529 Lucy Ragsdale High	159	77.6	533	184	85.2	516	169	84.9	508
544 Ben L Smith High	125	58.7	446	102	55.1	439	127	57.0	414
547 Southeast High	185	70.3	505	179	72.5	489	182	77.4	495
556 Southern High	73	62.9	458	108	68.4	471	76	57.6	476
562 Southwest High	221	92.1	496	187	82.7	514	216	80.6	513
595 Western High	157	83.5	516	129	77.2	511	149	80.1	522
<b>420 Halifax County</b>	<b>146</b>	<b>49.2</b>	<b>383</b>	<b>117</b>	<b>40.2</b>	<b>390</b>	<b>109</b>	<b>36.5</b>	<b>402</b>
346 Northwest High	80	49.7	382	63	39.4	397	58	36.7	388
358 Southeast Halifax High	66	48.5	385	54	41.5	381	51	36.2	418
<b>421 Roanoke Rapids City</b>	<b>94</b>	<b>54.7</b>	<b>495</b>	<b>98</b>	<b>58.0</b>	<b>499</b>	<b>109</b>	<b>61.2</b>	<b>494</b>
316 Roanoke Rapids High	94	54.7	495	98	58.0	499	109	61.2	494
<b>422 Weldon City</b>	<b>37</b>	<b>53.6</b>	<b>356</b>	<b>31</b>	<b>59.6</b>	<b>381</b>	<b>34</b>	<b>56.7</b>	<b>361</b>
324 Weldon High	37	53.6	356	31	59.6	381	34	56.7	361

Notes: All Scholastic Assessment Test scores are reported on the recentered score scale (1995).

Percent tested is calculated as the number of students taking SAT I in the LEA divided by the eighth month, twelfth grade membership in the LEA

\* Less than 5. Blank means the school did not participate in the SAT that year.

School totals might not equal county totals in past and current years due to schools not participating in the SAT in 2002 or counts lower than 5 not being reported.



Table 7 (Continued). Mean SAT Scores for North Carolina's Public School Systems and Schools, 2000-2002

Revised August 27, 2002

School System/School	2000				2001				2002			
	Number	Percent	Verbal Total	Number	Percent	Verbal Total	Number	Percent	Verbal Total	Number	Percent	Verbal Total
	Tested	Tested	Score	Tested	Tested	Score	Tested	Tested	Score	Tested	Tested	Score
<b>United States Total</b>	<b>1,260,278</b>	<b>44.0</b>	<b>514</b>	<b>1,276,320</b>	<b>45.0</b>	<b>514</b>	<b>1,327,831</b>	<b>46.0</b>	<b>516</b>	<b>1,327,831</b>	<b>46.0</b>	<b>516</b>
<b>North Carolina Total</b>	<b>43,077</b>	<b>64.0</b>	<b>496</b>	<b>44,183</b>	<b>65.0</b>	<b>499</b>	<b>46,180</b>	<b>67.0</b>	<b>505</b>	<b>46,180</b>	<b>67.0</b>	<b>505</b>
<b>430 Harnett County</b>	<b>314</b>	<b>47.4</b>	<b>479</b>	<b>310</b>	<b>42.9</b>	<b>491</b>	<b>367</b>	<b>49.7</b>	<b>503</b>	<b>367</b>	<b>49.7</b>	<b>503</b>
346 Harnett Central High	100	50.5	478	105	53.6	499	107	51.9	519	107	51.9	519
378 Triton High	135	55.6	471	97	38.2	477	116	48.3	506	116	48.3	506
384 Western Harnett High	79	35.7	492	108	39.6	497	144	49.3	489	144	49.3	489
<b>440 Haywood County</b>	<b>207</b>	<b>52.3</b>	<b>510</b>	<b>251</b>	<b>61.5</b>	<b>512</b>	<b>221</b>	<b>49.7</b>	<b>510</b>	<b>221</b>	<b>49.7</b>	<b>510</b>
326 Central Haywood High	83	56.8	494	113	68.5	490	91	47.4	489	91	47.4	489
378 Pisgah High	124	51.5	521	138	59.0	530	129	52.7	525	129	52.7	525
390 Tuscola High	404	63.8	520	414	66.5	520	376	60.7	530	376	60.7	530
<b>450 Henderson County</b>	<b>103</b>	<b>57.9</b>	<b>493</b>	<b>111</b>	<b>66.9</b>	<b>525</b>	<b>98</b>	<b>59.0</b>	<b>504</b>	<b>98</b>	<b>59.0</b>	<b>504</b>
316 East Henderson High	100	71.9	535	74	67.3	510	76	68.5	549	76	68.5	549
334 Hendersonville High	81	60.0	513	77	60.2	510	91	63.2	517	91	63.2	517
341 North Henderson High	120	66.3	534	152	70.0	527	111	57.8	551	111	57.8	551
352 West Henderson High	116	49.4	378	122	57.5	398	115	58.4	409	115	58.4	409
<b>460 Hertford County</b>	<b>116</b>	<b>49.4</b>	<b>378</b>	<b>122</b>	<b>57.5</b>	<b>398</b>	<b>115</b>	<b>58.4</b>	<b>409</b>	<b>115</b>	<b>58.4</b>	<b>409</b>
320 Hertford County High	116	49.4	378	122	57.5	398	115	58.4	409	115	58.4	409
<b>470 Hoke County</b>	<b>100</b>	<b>42.2</b>	<b>427</b>	<b>101</b>	<b>39.3</b>	<b>430</b>	<b>146</b>	<b>52.5</b>	<b>440</b>	<b>146</b>	<b>52.5</b>	<b>440</b>
312 Hoke County High	100	42.2	427	101	40.2	430	146	52.5	440	146	52.5	440
<b>480 Hyde County</b>	<b>22</b>	<b>51.2</b>	<b>438</b>	<b>23</b>	<b>52.3</b>	<b>423</b>	<b>20</b>	<b>42.6</b>	<b>454</b>	<b>20</b>	<b>42.6</b>	<b>454</b>
307 Mattamuskeet High	10	30.3	400	21	50.0	426	19	43.2	455	19	43.2	455
316 Ocracoke	12	100.0	469	*	*	*	*	*	*	*	*	*
<b>490 Iredell-Statesville</b>	<b>385</b>	<b>48.5</b>	<b>502</b>	<b>424</b>	<b>50.8</b>	<b>524</b>	<b>413</b>	<b>52.9</b>	<b>520</b>	<b>413</b>	<b>52.9</b>	<b>520</b>
346 North Iredell High	74	40.0	516	93	41.9	521	82	42.3	530	82	42.3	530
354 Statesville High	126	57.5	501	125	62.2	530	109	59.6	527	109	59.6	527
362 South Iredell High	136	56.0	499	162	64.0	520	160	63.7	515	160	63.7	515
380 West Iredell High	49	33.3	494	44	28.2	523	62	41.1	506	62	41.1	506
<b>491 Mooresville City</b>	<b>135</b>	<b>61.1</b>	<b>528</b>	<b>117</b>	<b>57.1</b>	<b>501</b>	<b>168</b>	<b>63.9</b>	<b>507</b>	<b>168</b>	<b>63.9</b>	<b>507</b>
312 Mooresville Sr High	135	61.1	528	117	57.1	501	168	63.9	507	168	63.9	507
<b>500 Jackson County</b>	<b>128</b>	<b>66.7</b>	<b>498</b>	<b>137</b>	<b>67.8</b>	<b>501</b>	<b>141</b>	<b>73.1</b>	<b>507</b>	<b>141</b>	<b>73.1</b>	<b>507</b>
316 Blue Ridge School	18	66.7	454	8	72.7	448	12	75.0	388	12	75.0	388
340 Smoky Mountain High	110	67.1	506	129	70.5	504	129	75.0	518	129	75.0	518

Notes: All Scholastic Assessment Test scores are reported on the recentered score scale (1995).

Percent tested is calculated as the number of students taking SAT I in the LEA divided by the eighth month, twelfth grade membership in the LEA. \* Less than 5. Blank means the school did not participate in the SAT that year.

School totals might not equal county totals in past and current years due to schools not participating in the SAT in 2002 or counts lower than 5 not being reported.



Table 7 (Continued). Mean SAT Scores for North Carolina's Public School Systems and Schools, 2000-2002

Revised August 27, 2002

School System/School	2000			2001			2002		
	Number Tested	Percent Tested	Verbal Total Score	Number Tested	Percent Tested	Verbal Total Score	Number Tested	Percent Tested	Verbal Total Score
<b>United States Total</b>	<b>1,260,278</b>	<b>44.0</b>	<b>514</b>	<b>1,276,320</b>	<b>45.0</b>	<b>514</b>	<b>1,327,831</b>	<b>46.0</b>	<b>516</b>
<b>North Carolina Total</b>	<b>43,077</b>	<b>64.0</b>	<b>496</b>	<b>44,183</b>	<b>65.0</b>	<b>499</b>	<b>46,180</b>	<b>67.0</b>	<b>505</b>
<b>510 Johnston County</b>	472	53.0	492	444	47.8	501	482	48.0	510
324 Clayton High	149	60.3	484	136	57.9	512	173	63.1	520
368 North Johnston High	50	41.7	487	60	45.5	512	42	33.1	507
376 Princeton High	17	38.6	531	22	40.7	496	37	55.2	521
399 Smithfield-Selma High	130	61.0	484	122	56.7	477	115	50.9	476
402 South Johnston High	126	49.2	507	104	38.0	511	115	38.0	524
<b>520 Jones County</b>	49	54.4	404	35	41.2	405	19	33.9	429
320 Jones Senior High	49	54.4	404	35	41.2	405	19	33.9	429
<b>530 Lee County</b>	232	53.7	495	236	54.1	484	252	59.4	489
336 Lee County Sr High	232	53.7	495	236	55.9	484	252	59.4	489
<b>540 Lenoir County</b>	264	60.0	479	280	56.8	483	262	54.1	486
315 Kingston High	136	76.0	472	147	66.8	476	110	62.5	462
324 North Lenoir High	72	53.3	485	91	54.2	488	80	54.8	495
336 South Lenoir High	56	45.2	491	42	42.4	495	72	50.0	513
<b>550 Lincoln County</b>	315	52.8	472	310	52.5	483	348	54.5	492
320 East Lincoln High	136	59.9	469	146	56.4	482	174	61.7	500
332 Lenoir High	100	53.2	478	100	57.5	487	97	56.1	493
368 West Lincoln High	79	43.9	469	64	40.5	478	77	42.5	474
<b>560 Macon County</b>	149	66.8	505	141	62.7	506	146	58.9	507
320 Franklin High	123	68.3	505	119	63.0	503	127	61.4	511
324 Highlands School	23	65.7	519	18	66.7	544	14	53.8	499
332 Nantahala School	*	*	*	*	*	*	5	33.3	436
<b>570 Madison County</b>	65	52.4	472	52	46.4	540	57	46.7	513
318 Madison High	65	52.4	472	52	46.4	540	57	46.7	513
<b>580 Martin County</b>	173	59.9	444	164	63.1	447	165	60.0	471
304 Bear Grass High	21	55.3	475	29	64.4	465	25	59.5	496
328 Jamesville High	22	71.0	445	25	64.1	444	18	47.4	466
344 Roanoke High	54	54.5	424	40	58.8	418	44	49.4	435
368 Williamston High	76	62.8	450	70	64.8	457	78	73.6	486
<b>590 McDowell County</b>	165	45.7	507	155	43.8	501	155	51.7	514
330 McDowell High	165	45.7	507	155	43.8	501	155	51.7	514

Notes: All Scholastic Assessment Test scores are reported on the recentered score scale (1995).

Percent tested is calculated as the number of students taking SAT I in the LEA divided by the eighth month, twelfth grade membership in the LEA.

\* Less than 5. Blank means the school did not participate in the SAT that year.

School totals might not equal county totals in past and current years due to schools not participating in the SAT in 2002 or counts lower than 5 not being reported.

Table 7 (Continued). Mean SAT Scores for North Carolina's Public School Systems and Schools, 2000-2002  
Revised August 27, 2002

School System/School	2000			2001			2002								
	Number Tested	Percent Tested	Verbal Total Score	Number Tested	Percent Tested	Math Score	Verbal Total Score	Number Tested	Percent Tested	Math Score	Verbal Total Score				
<b>United States Total</b>	1,260,278	44.0	514	505	1019	1276320	45.0	514	506	1020	1,327,831	46.0	516	504	1020
<b>North Carolina Total</b>	43,077	64.0	496	492	988	44183	65.0	499	493	992	46,180	67.0	505	493	998
<b>600 Charlotte-Mecklenburg County</b>	3569	71.9	497	492	989	3535	72.3	500	497	997	3893	72.7	502	494	996
361 David W Butler High	252	71.0	478	474	952	256	77.6	489	478	967	254	78.2	493	480	973
376 E E Waddell High	271	75.1	511	504	1015	267	77.2	520	511	1031	321	75.9	516	509	1025
377 East Mecklenburg High	14	26.4	485	494	979	16	NA	480	499	979	26	50.0	397	403	800
386 Midwood High	162	71.1	415	433	848	135	61.4	423	438	861	167	55.1	418	424	842
396 Garinger High	230	82.7	516	492	1008	228	85.1	502	495	997	245	80.6	504	480	984
405 Harding Univ High											*	*	*	*	*
415 Hopewell High	271	66.6	501	487	988	280	66.8	505	495	1000	274	62.4	504	496	1000
426 Independence High	*	*	*	*	*	*	*	*	*	*	*	*	*	*	*
456 Dolly Tate Taps	367	75.7	531	529	1060	374	80.3	554	557	1111	400	78.6	560	553	1113
466 Myers Park High	293	63.8	518	507	1025	296	63.7	508	504	1012	417	74.5	523	512	1035
480 North Mecklenburg High	105	74.5	491	522	1013	101	69.2	479	506	985	95	64.2	466	524	990
482 Northwest High	157	59.5	442	438	880	132	52.2	429	429	853	173	58.8	443	436	879
490 Olympic High	409	90.5	536	531	1067	454	89.7	540	533	1073	437	86.7	554	539	1093
508 Providence High	376	83.0	509	508	1017	342	81.6	513	506	1019	393	83.1	500	497	997
535 South Mecklenburg High	243	65.9	453	434	887	207	58.1	423	420	843	227	69.0	423	412	835
576 West Charlotte High	130	62.5	421	417	838	125	61.9	454	443	897	121	58.5	457	444	901
579 West Mecklenburg High	287	78.2	498	495	993	317	74.1	485	488	973	335	81.1	491	483	974
592 Zebulon B Vance High	61	45.2	504	513	1017	61	43.3	486	478	964	87	56.9	485	507	992
<b>610 Mitchell County</b>															
334 Mitchell High	61	45.2	504	513	1017	61	43.3	486	478	964	87	56.9	485	507	992
<b>620 Montgomery County</b>															
316 East Montgomery High	85	36.8	467	464	931	108	44.3	471	449	920	86	38.1	487	470	957
340 West Montgomery High	34	37.0	452	446	898	42	40.4	448	422	870	32	31.7	459	466	925
340 West Montgomery High	51	36.7	477	476	953	66	47.5	486	465	951	54	43.5	504	472	976
<b>630 Moore County</b>															
332 North Moore High	332	54.6	495	495	990	303	53.0	505	505	1010	284	45.2	525	519	1044
336 Pinecrest High	42	41.6	490	480	970	31	39.2	484	478	962	30	28.0	510	506	1016
360 Union Pines High	201	62.2	504	499	1003	180	58.8	505	500	1005	193	60.3	525	518	1043
<b>640 Nash-Rocky Mount</b>															
340 Tar River Learning	89	53.3	479	492	971	92	53.5	512	524	1036	61	31.4	530	528	1058
350 Northern Nash High	442	51.6	482	475	957	490	53.3	485	474	959	495	53.9	491	476	967
361 Rocky Mount High	*	*	*	*	*	*	*	*	*	*	*	*	*	*	*
364 Southern Nash Sr High	170	55.2	489	470	959	174	51.0	495	492	987	191	52.0	501	493	994
	172	56.4	474	483	957	185	59.9	481	469	950	199	65.9	473	456	929
	98	41.7	486	473	959	128	48.3	479	458	937	104	42.4	508	482	990

Notes: All Scholastic Assessment Test scores are reported on the recentered score scale (1995).

Percent tested is calculated as the number of students taking SAT I in the LEA divided by the eighth month, twelfth grade membership in the LEA

\* Less than 5. Blank means the school did not participate in the SAT that year.

School totals might not equal county totals in past and current years due to schools not participating in the SAT in 2002 or counts lower than 5 not being reported.



Table 7 (Continued). Mean SAT Scores for North Carolina's Public School Systems and Schools, 2000-2002  
Revised August 27, 2002

School System/School	2000			2001			2002		
	Number Tested	Percent Tested	Verbal Total Score	Number Tested	Percent Tested	Verbal Total Score	Number Tested	Percent Tested	Verbal Total Score
<b>United States Total</b>	<b>1,260,278</b>	<b>44.0</b>	<b>505</b>	<b>1,276,320</b>	<b>45.0</b>	<b>514</b>	<b>1,327,831</b>	<b>46.0</b>	<b>516</b>
<b>North Carolina Total</b>	<b>43,077</b>	<b>64.0</b>	<b>492</b>	<b>44,183</b>	<b>65.0</b>	<b>499</b>	<b>46,180</b>	<b>67.0</b>	<b>505</b>
<b>650 New Hanover County</b>	<b>809</b>	<b>66.4</b>	<b>504</b>	<b>841</b>	<b>68.3</b>	<b>515</b>	<b>881</b>	<b>68.1</b>	<b>521</b>
326 Emsley A Laney High	232	59.8	499	269	66.4	508	270	64.3	507
342 John T Hoggard High	376	77.2	521	366	77.5	528	410	75.8	537
352 New Hanover High	192	63.4	485	199	62.0	507	192	65.8	514
354 Lakeside	9	22.0	326	7	50.0	346	9	52.9	380
<b>NC School of Science and Math</b>	<b>245</b>	<b>NA</b>	<b>649</b>	<b>259</b>	<b>NA</b>	<b>672</b>	<b>268</b>	<b>NA</b>	<b>684</b>
<b>NC School of the Arts</b>	<b>88</b>	<b>NA</b>	<b>581</b>	<b>103</b>	<b>NA</b>	<b>546</b>	<b>88</b>	<b>NA</b>	<b>544</b>
<b>660 Northampton County</b>	<b>102</b>	<b>51.5</b>	<b>396</b>	<b>121</b>	<b>63.0</b>	<b>419</b>	<b>126</b>	<b>63.0</b>	<b>402</b>
324 Northampton High West	56	59.6	376	56	71.8	391	63	71.6	395
336 Northampton High East	46	44.2	419	65	57.0	444	63	56.3	409
<b>670 Onslow County</b>	<b>594</b>	<b>53.5</b>	<b>492</b>	<b>652</b>	<b>57.7</b>	<b>506</b>	<b>594</b>	<b>50.3</b>	<b>496</b>
320 Dixon High	28	37.8	490	48	58.5	507	44	51.2	491
324 Jacksonville High	161	48.5	493	176	55.0	507	165	49.8	495
340 Richlands High	66	44.0	496	95	55.6	512	72	48.0	497
344 Southwest High	64	50.0	491	77	53.1	498	66	46.8	497
352 Swansboro High	111	68.5	495	106	63.1	510	88	52.4	512
364 White Oak High	164	62.1	490	150	61.5	501	159	52.1	491
<b>680 Orange County</b>	<b>218</b>	<b>71.2</b>	<b>501</b>	<b>201</b>	<b>68.1</b>	<b>524</b>	<b>220</b>	<b>69.4</b>	<b>507</b>
332 Orange Senior High	218	71.2	501	201	68.1	524	220	69.4	507
<b>681 Chapel Hill-Carrboro</b>	<b>460</b>	<b>90.6</b>	<b>592</b>	<b>529</b>	<b>92.5</b>	<b>601</b>	<b>561</b>	<b>93.8</b>	<b>597</b>
308 Chapel Hill High	258	88.4	596	305	93.0	598	298	92.0	604
314 East Chapel Hill High	202	94.0	588	224	92.2	606	263	96.3	589
<b>68B New Century Charter High</b>	<b>8</b>	<b>53.3</b>	<b>575</b>	<b>12</b>	<b>46.2</b>	<b>502</b>	<b>9</b>	<b>31.0</b>	<b>444</b>
<b>690 Pamlico County</b>	<b>54</b>	<b>39.4</b>	<b>489</b>	<b>41</b>	<b>33.9</b>	<b>479</b>	<b>54</b>	<b>44.6</b>	<b>511</b>
320 Pamlico County High	54	39.4	489	41	33.9	479	54	44.6	511
<b>700 Elizabeth City/Pasquotank Coun</b>	<b>164</b>	<b>62.6</b>	<b>443</b>	<b>161</b>	<b>72.5</b>	<b>455</b>	<b>142</b>	<b>55.0</b>	<b>458</b>
317 Northeastern High	164	62.8	443	160	72.1	456	75	58.1	469
319 Pasquotank County High				*	*	*	67	51.9	445
<b>710 Pender County</b>	<b>180</b>	<b>54.2</b>	<b>462</b>	<b>168</b>	<b>51.7</b>	<b>466</b>	<b>194</b>	<b>59.0</b>	<b>480</b>
326 Pender High	119	50.9	453	96	46.2	447	107	51.7	476
342 Topsail High	61	62.9	480	72	61.5	491	87	71.9	484

Notes: All Scholastic Assessment Test scores are reported on the recentered score scale (1995).

Percent tested is calculated as the number of students taking SAT in the LEA divided by the eighth month, twelfth grade membership in the LEA.

\* Less than 5. Blank means the school did not participate in the SAT that year.

School totals might not equal county totals in past and current years due to schools not participating in the SAT in 2002 or counts lower than 5 not being reported.

Table 7 (Continued). Mean SAT Scores for North Carolina's Public School Systems and Schools, 2000-2002  
Revised August 27, 2002

School System/School	2000			2001			2002		
	Number Tested	Percent Tested	Verbal Total Score	Number Tested	Percent Tested	Verbal Total Score	Number Tested	Percent Tested	Verbal Total Score
<b>United States Total</b>	<b>1,260,278</b>	<b>44.0</b>	<b>505</b>	<b>1,276,320</b>	<b>45.0</b>	<b>514</b>	<b>1,327,831</b>	<b>46.0</b>	<b>516</b>
<b>North Carolina Total</b>	<b>43,077</b>	<b>64.0</b>	<b>492</b>	<b>44,183</b>	<b>65.0</b>	<b>499</b>	<b>46,180</b>	<b>67.0</b>	<b>505</b>
720 Perquimans County	54	50.5	443	50	54.9	475	65	59.6	467
316 Perquimans Co High	54	50.5	443	50	54.9	475	65	59.6	467
730 Person County	155	57.4	470	165	57.7	460	173	58.6	471
352 Person High	155	57.4	470	165	57.7	460	173	58.6	471
740 Pitt County	656	63.6	508	644	62.6	498	669	62.3	501
309 Ayden-Grifton High	51	49.5	458	48	40.7	456	44	47.8	497
333 D H Conley High	188	68.4	506	174	65.4	500	188	64.2	504
344 Farmville Central High	64	50.0	520	68	56.7	465	62	48.4	469
366 J H Rose High	300	77.1	522	290	77.7	516	316	78.6	518
374 North Pitt High	53	38.7	469	64	42.4	475	59	37.3	445
750 Polk County	59	50.4	479	67	66.3	499	68	53.5	523
318 Polk County High	59	50.4	479	67	66.3	499	68	53.5	523
760 Randolph County	304	41.8	493	403	50.1	490	385	46.8	495
318 Eastern Randolph High	86	45.0	487	101	50.8	481	117	56.0	497
348 Randleman High	48	34.5	476	68	45.9	472	69	40.6	460
358 Southwestern High	70	40.0	503	98	46.2	512	91	44.0	531
380 Trinity High	100	45.0	500	136	55.5	491	108	45.6	485
761 Asheboro City	132	70.2	517	120	75.5	513	125	67.6	511
304 Asheboro High	132	70.2	517	120	75.5	513	125	67.6	511
770 Richmond County	196	52.3	448	182	41.7	452	131	33.4	468
348 Richmond Senior High	196	52.3	448	182	42.9	452	131	33.4	468
780 Robeson County	469	44.3	431	461	44.2	429	525	49.3	450
325 Fairmont High	48	39.0	431	35	28.9	439	47	39.8	427
342 Lumberton Senior High	202	58.2	437	211	62.1	432	222	64.7	464
391 Red Springs High	51	41.1	401	37	31.1	422	46	41.4	422
401 Saint Pauls High	48	41.4	417	46	39.0	430	50	39.4	454
402 South Robeson High	16	21.1	414	26	25.5	398	54	49.5	409
420 Purnell Swett High	104	39.8	445	106	43.8	428	106	41.4	460

Notes: All Scholastic Assessment Test scores are reported on the recentered score scale (1995).

Percent tested is calculated as the number of students taking SAT I in the LEA divided by the eighth month, twelfth grade membership in the LEA

\* Less than 5. Blank means the school did not participate in the SAT that year.

School totals might not equal county totals in past and current years due to schools not participating in the SAT in 2002 or counts lower than 5 not being reported.

Table 7 (Continued). Mean SAT Scores for North Carolina's Public School Systems and Schools, 2000-2002  
Revised August 27, 2002

School System/School	2000			2001			2002		
	Number Tested	Percent Tested	Verbal Total Score	Number Tested	Percent Tested	Verbal Total Score	Number Tested	Percent Tested	Verbal Total Score
United States Total	1,260,278	44.0	514	1276320	45.0	514	1,327,831	46.0	516
North Carolina Total	43,077	64.0	496	44183	65.0	499	46,180	67.0	505
790 Rockingham County	386	56.0	487	389	59.8	482	410	60.5	480
314 Dalton McMichael High	104	66.7	472	94	61.0	475	113	68.5	462
354 John M Morehead High	127	66.8	502	129	72.1	488	112	58.6	498
366 Reidsville High	67	43.8	476	81	51.3	458	84	55.6	461
378 Rockingham Co High	88	46.8	492	85	54.5	505	101	62.0	495
800 Rowan-Salisbury	509	47.6	494	532	50.4	491	539	50.4	494
340 East Rowan High	147	59.8	506	144	59.0	503	147	51.9	506
376 North Rowan High	44	36.1	500	57	43.8	442	62	42.8	477
396 Salisbury High	85	52.1	497	88	58.7	509	94	64.4	502
400 South Rowan High	127	44.9	486	115	41.4	489	112	42.4	490
408 West Rowan High	106	51.0	484	128	57.4	488	124	54.9	486
810 Rutherford County	275	52.2	476	274	53.6	467	249	51.3	474
324 Chase High	55	38.5	483	55	40.7	462	46	32.4	484
340 East Rutherford High	100	56.2	459	101	58.4	444	114	64.0	469
384 R S Central	120	58.3	488	118	58.1	489	89	53.9	475
820 Sampson County	192	50.4	432	208	48.4	446	159	42.5	471
348 Hobbiton High	51	50.0	472	51	51.0	462	32	42.1	481
349 Lakewood High	51	53.1	381	55	52.4	419	49	45.0	455
352 Midway High	53	53.5	448	55	44.7	487	45	39.8	493
388 Union High	37	44.0	422	47	46.1	414	33	43.4	453
821 Clinton City	123	71.9	454	92	60.5	461	105	71.4	453
308 Clinton High	123	71.9	454	92	60.5	461	105	71.4	453
830 Scotland County	201	64.8	463	213	67.8	463	212	62.2	485
346 Scotland High	201	64.8	463	213	67.8	463	212	62.2	485
83A Laurinburg Charter	*	*	*	5	21.7	280	*	*	*
840 Stanly County	380	63.0	486	316	55.3	501	341	58.6	509
302 Albemarle High	103	76.3	486	89	60.1	480	82	75.2	489
332 North Stanly High	107	66.5	464	81	56.3	493	84	50.0	498
356 South Stanly High	50	54.3	462	55	53.9	507	60	54.1	507
368 West Stanly High	120	55.8	516	91	51.4	523	115	59.3	532

Notes: All Scholastic Assessment Test scores are reported on the recentered score scale (1995).

Percent tested is calculated as the number of students taking SAT I in the LEA divided by the eighth month, twelfth grade membership in the LEA

\* Less than 5. Blank means the school did not participate in the SAT that year.

School totals might not equal county totals in past and current years due to schools not participating in the SAT in 2002 or counts lower than 5 not being reported.

Table 7 (Continued). Mean SAT Scores for North Carolina's Public School Systems and Schools, 2000-2002  
Revised August 27, 2002

School System/School	2000			2001			2002		
	Number Tested	Percent Tested	Verbal Total Score	Number Tested	Percent Tested	Verbal Total Score	Number Tested	Percent Tested	Verbal Total Score
<b>United States Total</b>	<b>1,260,278</b>	<b>44.0</b>	<b>505</b>	<b>1,276,320</b>	<b>45.0</b>	<b>514</b>	<b>1,327,831</b>	<b>46.0</b>	<b>516</b>
<b>North Carolina Total</b>	<b>43,077</b>	<b>64.0</b>	<b>492</b>	<b>44,183</b>	<b>65.0</b>	<b>499</b>	<b>46,180</b>	<b>67.0</b>	<b>505</b>
<b>850 Stokes County</b>	<b>125</b>	<b>37.3</b>	<b>483</b>	<b>173</b>	<b>44.5</b>	<b>480</b>	<b>193</b>	<b>46.4</b>	<b>486</b>
332 North Stokes High	27	38.0	469	40	64.5	463	40	47.6	468
352 South Stokes High	98	72.6	487	46	40.4	475	56	46.3	475
358 West Stokes High				87	43.3	491	97	51.9	500
<b>860 Surry County</b>	<b>157</b>	<b>43.7</b>	<b>492</b>	<b>163</b>	<b>41.7</b>	<b>504</b>	<b>158</b>	<b>39.4</b>	<b>519</b>
316 East Surry High	61	67.8	478	63	57.3	501	65	57.5	530
336 North Surry High	37	25.2	525	44	27.7	513	52	32.1	517
352 Surry Central High	59	48.4	485	56	47.9	500	41	33.6	505
<b>861 Elkin City</b>	<b>43</b>	<b>59.7</b>	<b>506</b>	<b>51</b>	<b>68.9</b>	<b>496</b>	<b>44</b>	<b>73.3</b>	<b>518</b>
308 Elkin High	43	59.7	506	51	68.9	496	44	73.3	518
<b>862 Mount Airy City</b>	<b>58</b>	<b>52.3</b>	<b>522</b>	<b>48</b>	<b>52.7</b>	<b>523</b>	<b>49</b>	<b>58.3</b>	<b>523</b>
312 Mount Airy High	58	52.3	522	48	52.7	523	49	58.3	523
<b>870 Swain County</b>	<b>54</b>	<b>56.3</b>	<b>486</b>	<b>59</b>	<b>55.1</b>	<b>510</b>	<b>51</b>	<b>47.7</b>	<b>517</b>
314 Swain County High	54	56.3	486	59	55.1	510	51	47.7	517
<b>880 Transylvania County</b>	<b>154</b>	<b>64.2</b>	<b>496</b>	<b>154</b>	<b>59.2</b>	<b>529</b>	<b>142</b>	<b>56.3</b>	<b>524</b>
308 Brevard High	121	72.9	504	121	71.2	523	103	62.8	529
328 Rosman Middle/High	33	52.4	467	33	53.2	550	39	52.7	511
<b>890 Tyrrell County</b>	<b>27</b>	<b>50.9</b>	<b>457</b>	<b>34</b>	<b>79.1</b>	<b>443</b>	<b>24</b>	<b>49.0</b>	<b>452</b>
304 Columbia High	27	50.9	457	34	79.1	443	24	49.0	452
<b>900 Union County</b>	<b>663</b>	<b>65.5</b>	<b>492</b>	<b>666</b>	<b>63.3</b>	<b>506</b>	<b>708</b>	<b>65.2</b>	<b>511</b>
316 Forest Hills High	102	56.7	467	86	57.3	468	80	52.3	492
336 Monroe High	68	53.5	476	78	52.7	472	85	58.6	460
344 Parkwood High	128	70.3	508	108	60.0	521	141	68.1	529
348 Piedmont High	130	61.0	490	139	67.1	529	123	63.4	532
360 Sun Valley High	235	79.1	500	255	74.3	511	125	66.8	494
377 Weddington High							154	88.5	530
<b>910 Vance County</b>	<b>164</b>	<b>57.1</b>	<b>427</b>	<b>181</b>	<b>52.3</b>	<b>440</b>	<b>192</b>	<b>53.8</b>	<b>444</b>
364 Southern Vance High	68	52.7	401	89	53.3	441	79	46.7	437
370 Northern Vance High	96	60.8	444	92	51.4	440	113	60.1	449

Notes: All Scholastic Assessment Test scores are reported on the recentered score scale (1995).

Percent tested is calculated as the number of students taking SAT I in the LEA divided by the eighth month, twelfth grade membership in the LEA

\* Less than 5. Blank means the school did not participate in the SAT that year.

School totals might not equal county totals in past and current years due to schools not participating in the SAT in 2002 or counts lower than 5 not being reported.

Table 7 (Continued). Mean SAT Scores for North Carolina's Public School Systems and Schools, 2000-2002  
Revised August 27, 2002

School System/School	2000			2001			2002		
	Number Tested	Percent Tested	Verbal Total Score	Number Tested	Percent Tested	Verbal Total Score	Number Tested	Percent Tested	Verbal Total Score
<b>United States Total</b>	<b>1,260,278</b>	<b>44.0</b>	<b>514</b>	<b>1,276,320</b>	<b>45.0</b>	<b>514</b>	<b>1,327,831</b>	<b>46.0</b>	<b>516</b>
<b>North Carolina Total</b>	<b>43,077</b>	<b>64.0</b>	<b>496</b>	<b>44,183</b>	<b>65.0</b>	<b>499</b>	<b>46,180</b>	<b>67.0</b>	<b>505</b>
<b>920 Wake County</b>	<b>3,860</b>	<b>77.9</b>	<b>539</b>	<b>4,042</b>	<b>76.7</b>	<b>534</b>	<b>4,278</b>	<b>77.5</b>	<b>543</b>
316 Apex High	445	85.9	551	417	82.9	558	339	75.7	554
318 Athens Drive High	323	82.8	550	264	76.1	556	314	81.8	559
348 Needham Broughton High	293	78.6	551	284	82.8	545	322	84.5	561
368 Cary High	358	79.4	544	382	80.1	539	255	76.3	552
411 East Wake High	195	67.2	487	213	68.3	485	178	57.6	493
412 William G Enloe High	428	88.1	577	452	88.5	575	458	91.2	587
428 Fuquay-Varina High	209	71.1	505	204	71.8	499	186	64.1	504
436 Garner High	234	64.5	500	194	47.0	494	198	53.1	513
441 Green Hope High	393	86.9	557	398	85.2	541	293	88.0	546
473 Leesville Road High	298	76.2	530	279	74.8	506	417	90.5	559
500 Millbrook High	7	9.5	409	*	*	*	321	75.2	517
528 Phillips High	282	82.5	552	264	82.8	535	*	*	*
552 Sanderson High	155	73.8	509	434	82.2	523	273	83.7	546
562 Southeast Raleigh High	240	76.4	517	249	74.6	517	394	89.5	538
588 Wake F-Rolesville High	240	76.4	517	249	74.6	517	174	67.7	511
595 Wakefield High	79	61.7	440	*	*	*	152	78.4	513
<b>930 Warren County</b>	<b>79</b>	<b>61.7</b>	<b>440</b>	<b>96</b>	<b>69.6</b>	<b>442</b>	<b>81</b>	<b>71.1</b>	<b>425</b>
352 Warren County High	79	61.7	440	96	69.6	442	81	71.1	425
<b>940 Washington County</b>	<b>103</b>	<b>59.9</b>	<b>415</b>	<b>83</b>	<b>56.8</b>	<b>439</b>	<b>81</b>	<b>57.0</b>	<b>429</b>
308 Creswell High	21	65.6	422	14	56.0	446	11	55.0	440
316 Plymouth High	82	58.6	413	69	57.0	438	70	57.4	427
<b>950 Watauga County</b>	<b>224</b>	<b>71.3</b>	<b>530</b>	<b>209</b>	<b>70.8</b>	<b>534</b>	<b>269</b>	<b>80.1</b>	<b>540</b>
336 Watauga High	224	71.3	530	209	70.8	534	269	80.1	540
<b>960 Wayne County</b>	<b>539</b>	<b>51.0</b>	<b>467</b>	<b>539</b>	<b>49.4</b>	<b>477</b>	<b>559</b>	<b>52.6</b>	<b>480</b>
324 Charles B Aycock High	105	55.0	483	118	53.4	502	123	61.2	487
330 Eastern Wayne High	184	63.2	506	183	60.0	513	189	63.4	524
335 Goldsboro High	85	47.0	399	81	49.4	405	99	54.1	410
372 Rosewood High	35	46.1	453	53	55.8	477	43	44.3	477
380 Southern Wayne High	130	44.2	448	104	35.9	441	105	40.9	458

Notes: All Scholastic Assessment Test scores are reported on the recentered score scale (1995).

Percent tested is calculated as the number of students taking SAT I in the LEA divided by the eighth month, twelfth grade membership in the LEA

\* Less than 5. Blank means the school did not participate in the SAT that year.

School totals might not equal county totals in past and current years due to schools not participating in the SAT in 2002 or counts lower than 5 not being reported.



Table 7 (Continued). Mean SAT Scores for North Carolina's Public School Systems and Schools, 2000-2002  
Revised August 27, 2002

School System/School	2000			2001			2002		
	Number Tested	Percent Tested	Verbal Total Score	Number Tested	Percent Tested	Verbal Total Score	Number Tested	Percent Tested	Verbal Total Score
<b>United States Total</b>	<b>1,260,278</b>	<b>44.0</b>	<b>505</b>	<b>1,276,320</b>	<b>45.0</b>	<b>514</b>	<b>1,327,831</b>	<b>46.0</b>	<b>516</b>
<b>North Carolina Total</b>	<b>43,077</b>	<b>64.0</b>	<b>496</b>	<b>44,183</b>	<b>65.0</b>	<b>499</b>	<b>46,180</b>	<b>67.0</b>	<b>505</b>
<b>970 Wilkes County</b>	<b>236</b>	<b>50.3</b>	<b>489</b>	<b>241</b>	<b>47.6</b>	<b>510</b>	<b>252</b>	<b>52.7</b>	<b>514</b>
320 East Wilkes High	35	42.7	525	44	43.6	523	44	53.7	521
356 North Wilkes High	44	38.9	488	50	36.5	512	51	42.1	510
388 West Wilkes High	55	54.5	490	55	55.0	495	50	46.7	500
390 Wilkes Central High	102	59.0	504	92	54.8	512	107	63.7	520
<b>980 Wilson County</b>	<b>310</b>	<b>51.0</b>	<b>474</b>	<b>338</b>	<b>53.7</b>	<b>485</b>	<b>298</b>	<b>47.5</b>	<b>493</b>
318 Beddingsfield High	67	38.1	444	72	39.1	464	87	43.7	471
336 Fike High	132	60.6	466	136	62.4	487	95	46.1	494
342 James Hunt High	111	52.1	502	130	58.6	494	116	54.0	509
<b>990 Yadkin County</b>	<b>156</b>	<b>48.6</b>	<b>469</b>	<b>161</b>	<b>58.5</b>	<b>488</b>	<b>153</b>	<b>56.9</b>	<b>492</b>
322 Forbush High	91	50.0	456	100	62.5	497	95	54.3	499
326 Starmount High	65	46.8	469	61	53.0	472	58	61.7	481
<b>995 Yancey County</b>	<b>64</b>	<b>44.4</b>	<b>508</b>	<b>56</b>	<b>41.5</b>	<b>493</b>	<b>68</b>	<b>47.2</b>	<b>504</b>
330 Mountain Heritage High	64	44.4	508	56	41.5	493	68	47.2	504

Notes: All Scholastic Assessment Test scores are reported on the recentered score scale (1995).

Percent tested is calculated as the number of students taking SAT I in the LEA divided by the eighth month, twelfth grade membership in the LEA

\* Less than 5. Blank means the school did not participate in the SAT that year.

School totals might not equal county totals in past and current years due to schools not participating in the SAT in 2002 or counts lower than 5 not being reported.



Table 8. Distribution of North Carolina's Public School Systems by Mean Total SAT Scores, 2002

	Score <sup>1</sup>	School System
	1200	Woods Charter**
	...	
	1180	Chapel Hill-Carrboro City
	1070	Buncombe, Wake, Watauga
	1060	Asheville City
	1050	Henderson, Moore, Newton-Conover City
	1040	Clay, Elkin City, Hickory City, Polk
	1030	Currituck, Dare, New Hanover, Shelby City, Swain, Transylvania
2002 United States (1020)	1020	Asheboro City, Cabarrus, Caldwell, Haywood, Iredell-Statesville, Madison, Union
	1010	Burke, Carteret, Edenton/Chowan, Johnston, Mount Airy City, Orange, Pamlico, Surry, Wilkes, Winston-Salem/Forsyth
2002 North Carolina (998)	1000	Alexander, Alleghany, Catawba, Charlotte/Mecklenburg, Cherokee, Davidson, Davie, Durham, Guilford, Jackson, Macon, McDowell, Mitchell, Mooresville City, Yancey
	990	Craven, Harnett, Kannapolis City, Pitt, Stanly
	980	Graham, Granville, Kings Mountain City, Lincoln, Onslow, Randolph, Rowan-Salisbury, Yadkin
	970	Avery, Beaufort, Gaston, Lee, Nash-Rocky Mount, Roanoke Rapids City
	960	Alamance-Burlington, Ashe, Brunswick, Chatham, Cleveland, Cumberland, Montgomery, Rockingham, Wayne, Whiteville City, Wilson
	950	Franklin, Lenoir, Pender, Scotland, Stokes
	940	Duplin, New Century School**, River Mill Academy**, Rutherford
	930	Lexington City, Martin, Person
	920	Caswell, Elizabeth City/Pasquotank, Perquimans, Sampson
	910	Camden, Edgecombe, Richmond
	900	Clinton City, Greene, Hyde
	890	Columbus, Gates, Thomasville City, Tyrrell
	880	Jones, Robeson, Vance
	...	
	860	Bladen, Hoke, Warren, Washington
	850	Anson
	...	
	810	Hertford
	800	Halifax, Northampton
	790	Bertie
	...	
	700	Weldon City

<sup>1</sup>All Scholastic Assessment Test scores are reported on the recentered score scale (1995).

\*\*Denotes a charter school.

Notes: Data were not reported for Cape Lookout Marine, Laurinburg Charter, and Thomas Jefferson because the number tested was less than five. Data were not reported for Cape Lookout Marine, Laurinburg Charter, and Thomas Jefferson because the number tested was less than five.

## Performance of the Fifty States



Table 9. Mean Verbal, Mathematics, and Total SAT Scores by State, 2002

State	Percent Tested <sup>1</sup>	Mean		
		Verbal <sup>2</sup>	Mathematics <sup>2</sup>	Total
Alabama	9	560	559	1119
Alaska	52	516	519	1035
Arizona	36	520	523	1043
Arkansas	5	560	556	1116
California	52	496	517	1013
Colorado	28	543	548	1091
Connecticut	83	509	509	1018
Delaware	69	502	500	1002
District of Columbia <sup>3</sup>	76	480	473	953
Florida	57	496	499	995
Georgia	65	489	491	980
Hawaii	53	488	520	1008
Idaho	18	539	541	1080
Illinois	11	578	596	1174
Indiana	62	498	503	1001
Iowa	5	591	602	1193
Kansas	9	578	580	1158
Kentucky	12	550	552	1102
Louisiana	8	561	559	1120
Maine	69	503	502	1005
Maryland	67	507	513	1020
Massachusetts	81	512	516	1028
Michigan	11	558	572	1130
Minnesota	10	581	591	1172
Mississippi	4	559	547	1106
Missouri	8	574	580	1154
Montana	23	541	547	1088
Nebraska	8	561	570	1131
Nevada	34	509	518	1027
New Hampshire	73	519	519	1038
New Jersey	82	498	513	1011
New Mexico	14	551	543	1094
New York	79	494	506	1000
<b>North Carolina</b>	<b>67</b>	<b>493</b>	<b>505</b>	<b>998</b>
North Dakota	4	597	610	1207
Ohio	27	533	540	1073
Oklahoma	8	565	562	1127
Oregon	56	524	528	1052
Pennsylvania	72	498	500	998
Rhode Island	73	504	503	1007
South Carolina	59	488	493	981
South Dakota	5	576	586	1162
Tennessee	14	562	555	1117
Texas	55	491	500	991
Utah	6	563	559	1122
Vermont	69	512	510	1022
Virginia	68	510	506	1016
Washington	54	525	529	1054
West Virginia	18	525	515	1040
Wisconsin	7	583	599	1182
Wyoming	11	531	537	1068
<b>United States</b>	<b>46</b>	<b>504</b>	<b>516</b>	<b>1020</b>

<sup>1</sup>Percent tested is from The College Board reports. The College Board based percent tested on the projection of high school graduates in 2002 by the Western Interstate Commission on Higher Education, and number of students in the Class of 2002 who took the SAT I: Reasoning Test. Updated projections make it inappropriate to compare percentages for this year with those of previous years.

<sup>2</sup>Scholastic Assessment Test scores are reported on the recentered score scale (1995).

<sup>3</sup>Twelfth grade enrollment from QED® was used to calculate the participation rate to control for D.C.'s smaller size and greater variability.

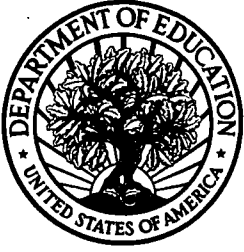
Table 10. Change in Mean Total SAT Score by State, 1990-2002

State	Percent Tested <sup>1</sup> 2002	Mean Total SAT Score <sup>2</sup> 1990	Mean Total SAT Score <sup>2</sup> 2002	Change from 1990 to 2002
Alabama	9	1079	1119	40
Alaska	52	1015	1035	20
Arizona	36	1041	1043	2
Arkansas	5	1077	1116	39
California	52	1002	1013	11
Colorado	28	1067	1091	24
Connecticut	83	1002	1018	16
Delaware	69	1006	1002	-4
District of Columbia <sup>3</sup>	76	950	953	3
Florida	57	988	995	7
Georgia	65	951	980	29
Hawaii	53	985	1008	23
Idaho	18	1066	1080	14
Illinois	11	1089	1174	85
Indiana	62	972	1001	29
Iowa	5	1172	1193	21
Kansas	9	1129	1158	29
Kentucky	12	1089	1102	13
Louisiana	8	1088	1120	32
Maine	69	991	1005	14
Maryland	67	1008	1020	12
Massachusetts	81	1001	1028	27
Michigan	11	1063	1130	67
Minnesota	10	1110	1172	62
Mississippi	4	1090	1106	16
Missouri	8	1089	1154	65
Montana	23	1082	1088	6
Nebraska	8	1121	1131	10
Nevada	34	1022	1023	1
New Hampshire	73	1028	1038	10
New Jersey	82	993	1011	18
New Mexico	14	1100	1094	-6
New York	79	985	1000	15
<b>North Carolina</b>	<b>67</b>	<b>948</b>	<b>998</b>	<b>50</b>
North Dakota	4	1157	1207	50
Ohio	27	1048	1073	25
Oklahoma	8	1095	1127	32
Oregon	56	1024	1052	28
Pennsylvania	72	987	998	11
Rhode Island	73	986	1007	21
South Carolina	59	942	981	39
South Dakota	5	1150	1162	12
Tennessee	14	1102	1117	15
Texas	55	979	991	12
Utah	6	1121	1122	1
Vermont	69	1000	1022	22
Virginia	68	997	1016	19
Washington	54	1024	1054	30
West Virginia	18	1034	1040	6
Wisconsin	7	1111	1182	71
Wyoming	11	1072	1068	-4
<b>United States</b>	<b>45</b>	<b>1001</b>	<b>1020</b>	<b>19</b>

<sup>1</sup>Percent tested is from The College Board reports. The College Board based percent tested on the projection of high school graduates in 2002 by the Western Interstate Commission on Higher Education, and the number of students in the Class of 2002 who took the SAT I: Reasoning Test. Updated projections make it inappropriate to compare percentages for this year with those of previous years.

<sup>2</sup>Scholastic Assessment Test scores are reported on the recentered score scale (1995); all scores include both public and private school students.

<sup>3</sup>Twelfth grade enrollment from QED® was used to calculate the participation rate to control for D.C.'s smaller size and greater variability.



*U.S. Department of Education  
Office of Educational Research and Improvement (OERI)  
National Library of Education (NLE)  
Educational Resources Information Center (ERIC)*



## **NOTICE**

### **Reproduction Basis**

- This document is covered by a signed "Reproduction Release (Blanket)" form (on file within the ERIC system), encompassing all or classes of documents from its source organization and, therefore, does not require a "Specific Document" Release form.
- This document is Federally-funded, or carries its own permission to reproduce, or is otherwise in the public domain and, therefore, may be reproduced by ERIC without a signed Reproduction Release form (either "Specific Document" or "Blanket").