

DOCUMENT RESUME

ED 465 431

PS 030 390

TITLE Momentum. Ounce of Prevention Fund Annual Report, 2001.
INSTITUTION Ounce of Prevention Fund.
PUB DATE 2001-00-00
NOTE 29p.
AVAILABLE FROM Ounce of Prevention Fund, 122 S. Michigan Avenue, Suite 2050, Chicago, IL 60603-6107. Tel: 312-922-3863; Fax: 312-922-3337. For full text: <http://www.ounceofprevention.org/publications/pdf/annual-report.pdf>. Some pictures may not reproduce adequately.
PUB TYPE Reports - Descriptive (141)
EDRS PRICE MF01/PC02 Plus Postage.
DESCRIPTORS Adolescents; Annual Reports; *Child Health; *Early Childhood Education; *Family Programs; *Prevention; Program Descriptions; Young Children
IDENTIFIERS *Ounce of Prevention Program IL; Public Private Partnership Programs

ABSTRACT

Since its inception as a public-private partnership in 1982, the Ounce of Prevention Fund (OPF) has cultivated promising ideas in early childhood development, has used private funding to test the ideas in real life settings, and has leveraged public funding to support and expand innovative programs that advance the health and well-being of children and families. This annual report examines the OPF's integrated approach to serving children and families, and highlights the progress during 2001 of ideas at work in: (1) programs (including the Educare Center in Chicago, the Doula Perinatal Component, and the Early Diagnostic Assessment Clinic); (2) advocacy (including the Birth to Three Project and work with the Governor's Task Force on Universal Access to Preschool); (3) research and dissemination (including examination of the impact of the Doula Project, development of the Ounce Scale for obtaining functional information about infant and toddler development, and assembling briefs detailing birth to three best practice); and (4) training (including training to enhance skills and relationships through reflective supervision, Educare replication training, and building the strength of early childhood organizations through a national peer consultation network). The report continues with a statement of operating revenues and expenses and a list of donors to the organization. The report concludes with an announcement of the launch of the Campaign for Early Childhood Innovations, an initiative to create and pursue more cutting edge programs and projects to maximize the healthy social, intellectual, and physical development of children, and with a list of OPF sites and delegate agencies. (KB)

ED 465 431

momentum



U.S. DEPARTMENT OF EDUCATION
Office of Educational Research and Improvement
EDUCATIONAL RESOURCES INFORMATION
CENTER (ERIC)

This document has been reproduced as received from the person or organization originating it.

Minor changes have been made to improve reproduction quality.

• Points of view or opinions stated in this document do not necessarily represent official OERI position or policy.

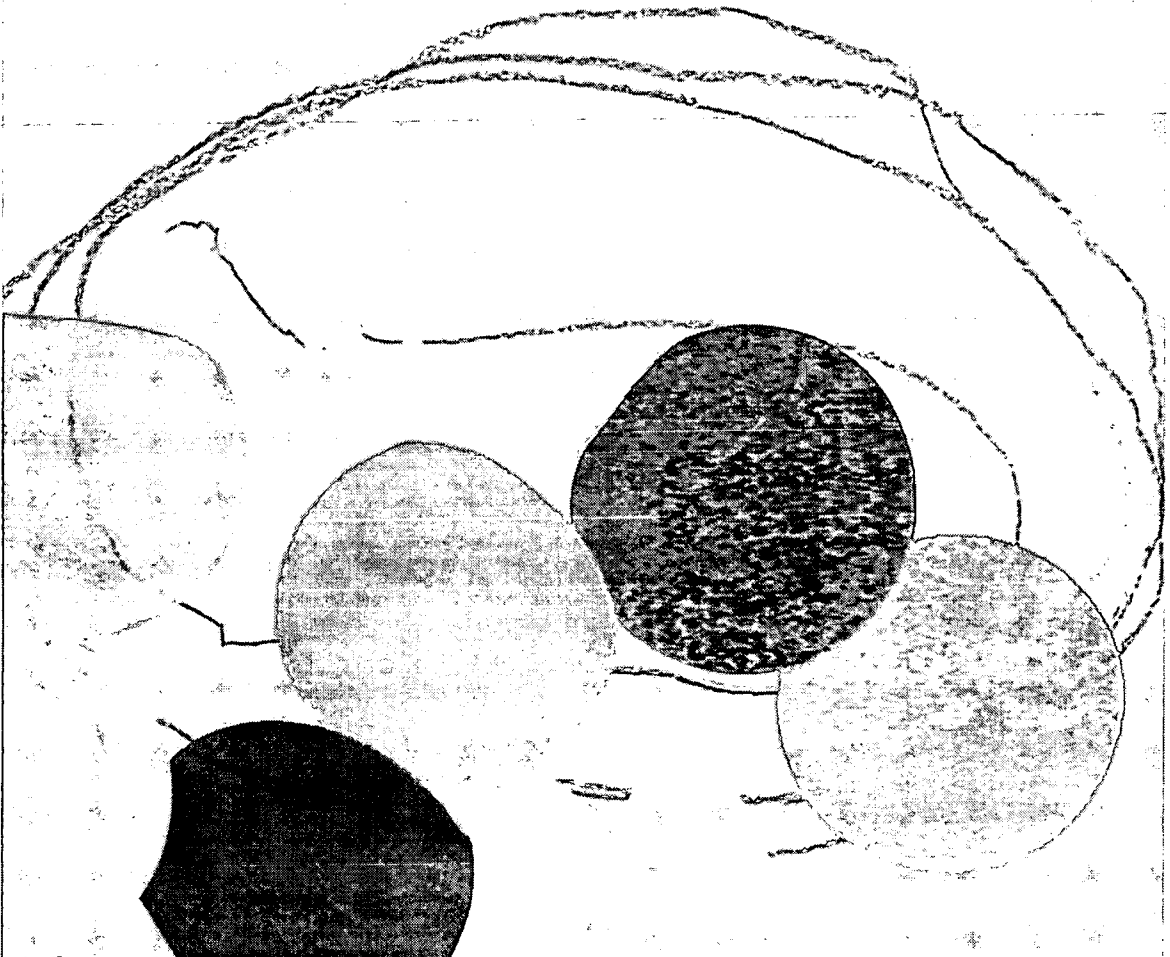
PERMISSION TO REPRODUCE AND DISSEMINATE THIS MATERIAL HAS BEEN GRANTED BY

Karen Freel

TO THE EDUCATIONAL RESOURCES INFORMATION CENTER (ERIC)

1

030390



Momentum

When a baby smiles and receives a warm and positive response, she is learning a valuable lesson about the world around her. This simple interaction is a vital part of the momentum of the first years of life, the time when children experience the most rapid and amazing growth—and when it is so extraordinarily important that they receive the loving care and nurturing experiences that will promote their social, emotional and intellectual growth, and lay the foundation for later success in school and in life.

In the field of early childhood development, we also need momentum to advance the innovative ideas in care and education that can address the exceptional importance of every child's earliest years and help to realize the unique potential of this most significant time of life.

If the simplest test of a good idea is the ability to apply it effectively, then perhaps the most basic question is—how well does it work? Since its founding as a public-private partnership in 1982, the Ounce of Prevention Fund has cultivated some of the most promising ideas in early childhood development, used indispensable private funding to test these ideas in real life settings, and then leveraged public funding to support and expand innovative programs that demonstrate success.

At the Ounce, we gain our momentum from our comprehensive and integrated cycle of model programs, strong public policy and advocacy efforts, research and dissemination, and multi-level training and support services. These all come together to help us explore new ideas and develop innovative projects designed to advance the health and well-being of children and families.

As each area of our work contributes its own particular knowledge and expertise, new initiatives often evolve from the successes of earlier innovations. It is this ongoing momentum that allows us to build on diverse lessons learned and to best translate them into practical approaches to complex issues.

In Momentum 2001, we take a look at the Ounce's integrated and dynamic approach to serving children and families and highlight the progress of some exceptional new ideas at work in:

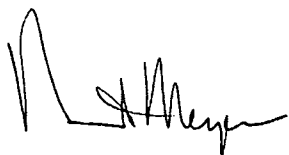
Ounce Programs—Growing at the Educare Center:
The Doula Perinatal Component, the Arts, and the Early Diagnostic Assessment Clinic

Ounce Advocacy—Moving Forward with the Birth to Three Project and All Our Kids: Birth to Three Networks; Promoting Universal Access to Preschool

Ounce Research and Dissemination—Following the Doula Project; Introducing Ounce Scale; Assembling Birth to Three Best Practice Briefs

Ounce Training—Enhancing Skills and Relationships with Reflective Supervision; Replicating Educare; Building the Strength of Early Childhood Organizations through a New Peer Consultation Network

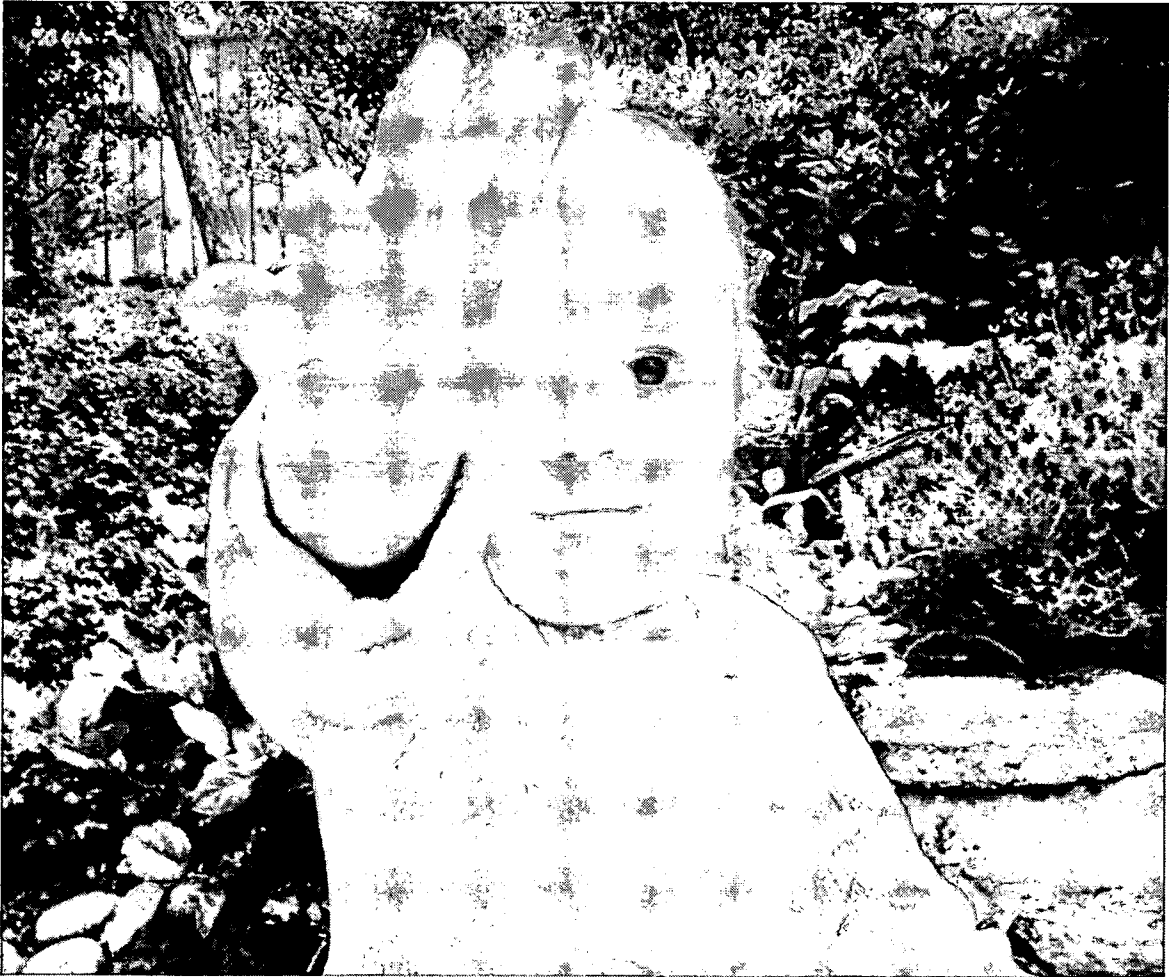
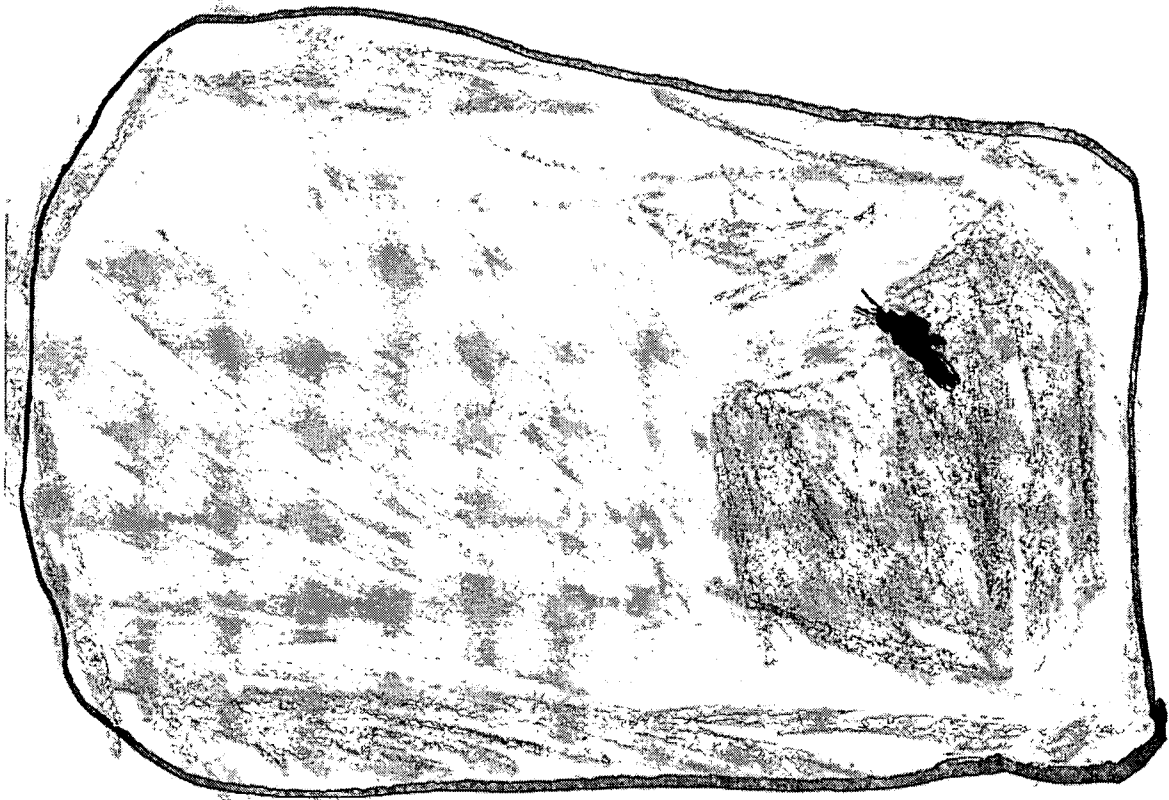
At the Ounce, we believe that the future is determined by the opportunities that we give infants, toddlers and families today. As we approach our twentieth year of service, we are gratified by the achievements that we have been able to make with the generous support of all our public and private partners. While we remain deeply aware of how much remains to be done, we find strength and encouragement—and momentum—in our vision of a healthy and safe future for all children.



Harriet Meyer
President



Norm Katz
Chairman of the Board



Ounce Programs: Making Real Differences

Working directly with young children and families in our programs provides both a foundation and a strong impetus for the Ounce of Prevention Fund's advocacy, research and training efforts. Through our extensive program network, the Ounce offers an exceptional blend of services to a diverse population in Chicago and across the state of Illinois. At the same time, we gain the crucial, first-hand knowledge of what are the most pressing needs facing children, families, and early childhood providers in the most challenging communities.

At our state-of-the-art Educare Center on Chicago's south side, we provide a comprehensive array of early childhood care, education, and family support services that have been enhanced by the addition of our Doula Perinatal Component, enriched by the expanding activities of our exciting Arts Program, and extended by the well-received introduction of our on-site Early Diagnostic Assessment Clinic. Since opening last year, the Educare Center has been hailed as a national model for the delivery of early childhood services, and efforts toward replication in other communities are already underway.

The Doula Perinatal Component

Doulas are specially trained women from the community who carry out prenatal home visits, accompany young mothers through labor and delivery, and provide extensive and practical postpartum advice and guidance. With the introduction of doula perinatal services into the Educare program, we are already seeing very positive and impressive results.

At the Ounce, we believe in the critical importance of investing earlier in the healthy development of babies and children, and the doula component has provided a heightened and welcome prenatal focus to our Educare program. In working with their doulas to promote their babies' prenatal health, expecting parents in the program have also developed warm and beneficial relationships with their doulas through the strong support and encouragement they provide.

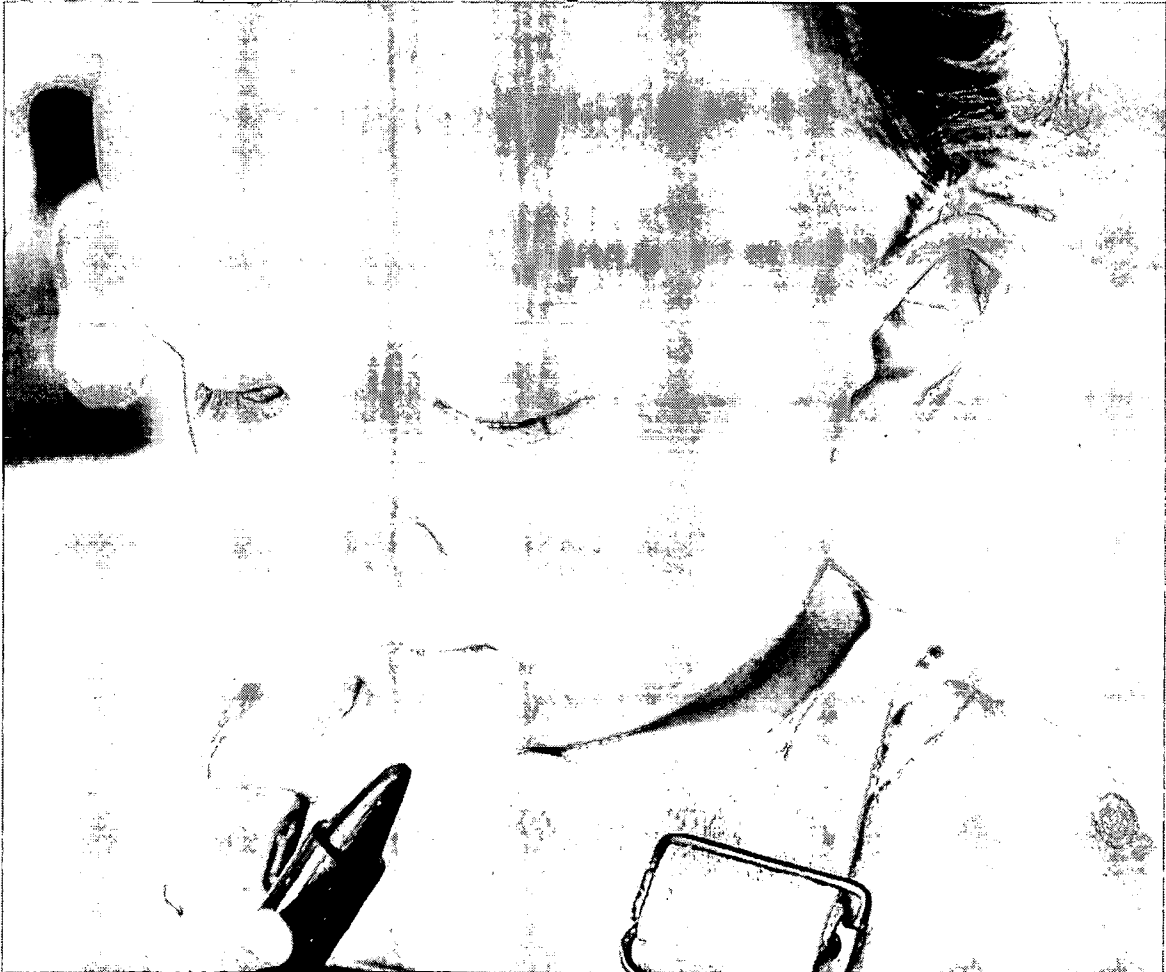
Breastfeeding is a highly significant factor in the healthy development of babies and of doula-assisted births in our Educare program, most mothers begin breastfeeding their babies at birth.

I saw a pig. He

big and fat. I saw

I saw a horse, he

sneezing he was





The Arts

Engaging in the arts offers young children a positive and enriched environment for learning and growing. Over the past year, our wide-ranging Arts Program has merged the arts into all elements of our early childhood programs and we continue to expand the creative avenues open to the children and families we serve. We are delighted to be able to share some of the children's wonderful artwork in this annual report, and to highlight other new activities.

Music is a growing part of the initiative, serving as a vibrant way to advance language development and promote school readiness, while providing the opportunity to foster the children's musical appreciation and individual talents. With generous private funding, we have presented an ongoing series of live performances by professional musicians to extremely receptive audiences of children and their families. While our talented artists-in-residence lead classroom activities that include singing, dancing, and exploring many kinds of music, small groups of the children have enthusiastically begun piano lessons as well.

Besides greatly enlivening the overall atmosphere of our programs, the arts are helping the children to develop critical language skills and social skills essential for school success, while contributing to a warm environment of self-expression and creativity.

Early Diagnostic Assessment Clinic

Young children and their parents can often feel apprehensive about going through developmental assessments, and for families in disadvantaged communities, finding access to such important services can be equally difficult. To address this issue, the Ounce is working with our public sector partner, the Cook County Bureau of Health Services, to offer children and families regular access to assessments in familiar, on-site surroundings at the Hayes Center in Grand Boulevard. With more readily available assessments and earlier detection of problems or developmental delays, we have the opportunity to refer more families to the appropriate agencies for needed follow-up and services.

Ounce Advocacy: Forging Greater Gains

Through our Kids PEPP (Kids Public Education and Policy Project) division, the Ounce of Prevention Fund is a leading voice in advocacy and public policy for low-income young children and their families in Illinois. In particular, for more than a decade, Kids PEPP has been the leading voice for the immeasurable importance of the first years of a child's life.

With the real community experiences provided by our direct service programs, Kids PEPP is especially well-positioned to learn first-hand how public policies are actually affecting children and families. We then use this practical knowledge to move forward policies to meet families' needs—vital momentum sustained by the private support that funds all of our advocacy efforts.

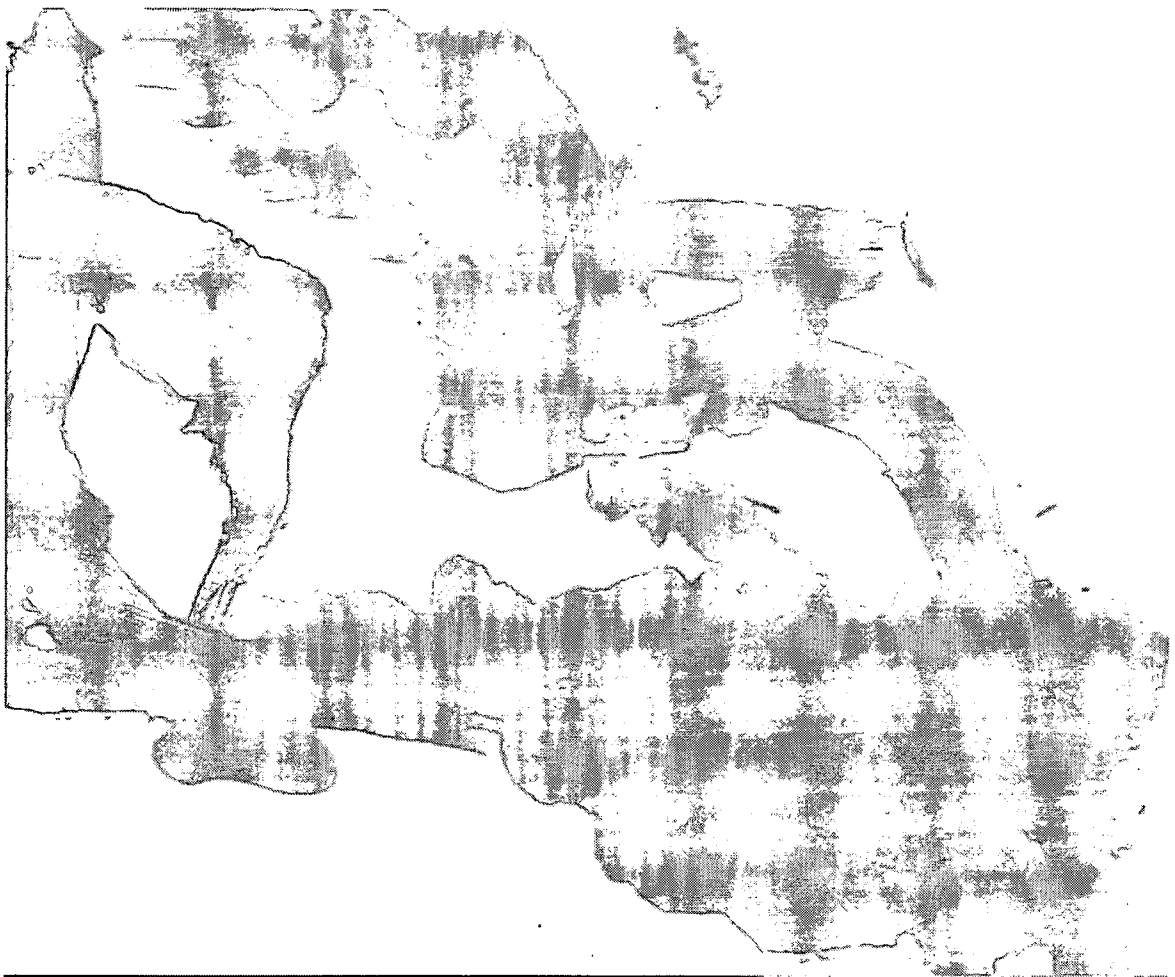
The Birth to Three Project

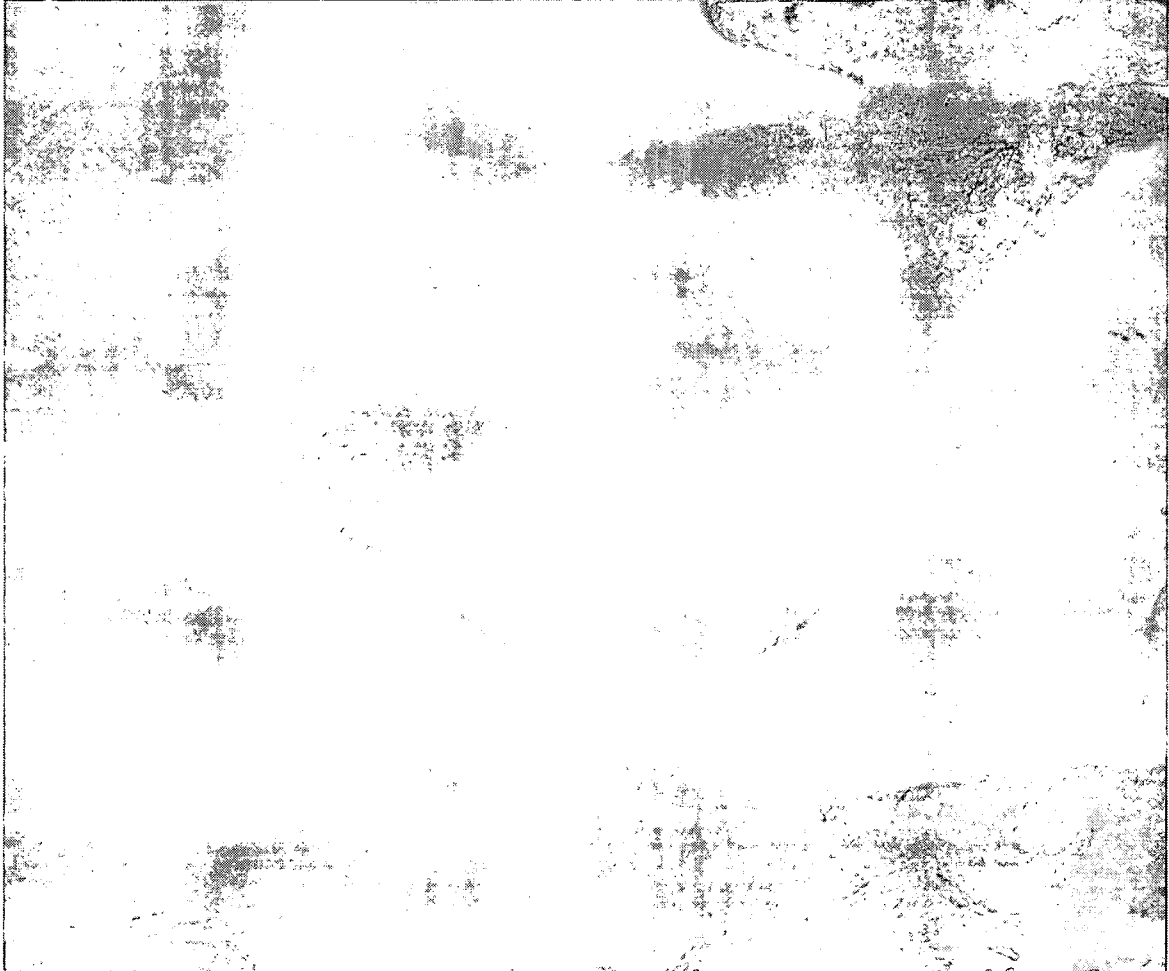
Kids PEPP is leading the Birth to Three Project, a multi-year, ground-breaking initiative to improve the ways in which expecting parents and families with young children throughout Illinois learn about and access the health and prevention services that are critical to the healthy physical and emotional development of their children.

Unique in its design, scope and longevity, the Birth to Three Project seeks to develop a statewide birth to three prevention system that will best meet the needs of the children and families it serves. At the same time, the project aims to create a replicable model for other states seeking to improve the quality and coordination of their programs.

Working with state and federal officials, and with generous funding from the Robert Wood Johnson Foundation, the Birth to Three Project is concentrating on five broad challenges facing the birth to three field:

- Coordinating services and improving awareness of prevention programs
- Meeting the social and emotional needs of very young children
- Addressing child health and development needs
- Promoting “best practices” in birth-to-three programs
- Building a skilled birth-to-three workforce and improving training opportunities





An important step in this model initiative has been the formation of All Our Kids: Birth to Three Networks to carry forward the project in ten communities across Illinois. Funded by the Illinois Department of Human Services, the networks, which include parents and community agencies, are working to ensure that all expecting parents and families with young children have the opportunity to receive the essential services they need—from prenatal care to well-baby checkups to parenting education. Traveling across the state, Ounce staff are providing the intensive training and technical assistance vital to the success of the networks.

Universal Access to Preschool

Learning begins at birth—and young children’s earliest learning takes place through the relationships that they have with caring adults in their families and early childhood providers, in the social play they enjoy with other children, and by taking part in activities that promote good developmental outcomes.

Scientific evidence confirms that quality early education experiences help children build the language, math, and social and emotional skills that prepare them to enter school better able to get along with others and ready to learn. To ensure that quality options are present for all families, the Ounce has long advocated that preschool services be available for all young children in Illinois.

With our work on the Governor’s Task Force on Universal Access to Preschool, we have continued to promote services that will address the vital needs of all Illinois children from birth to five.

Ounce Research: Determining What Works

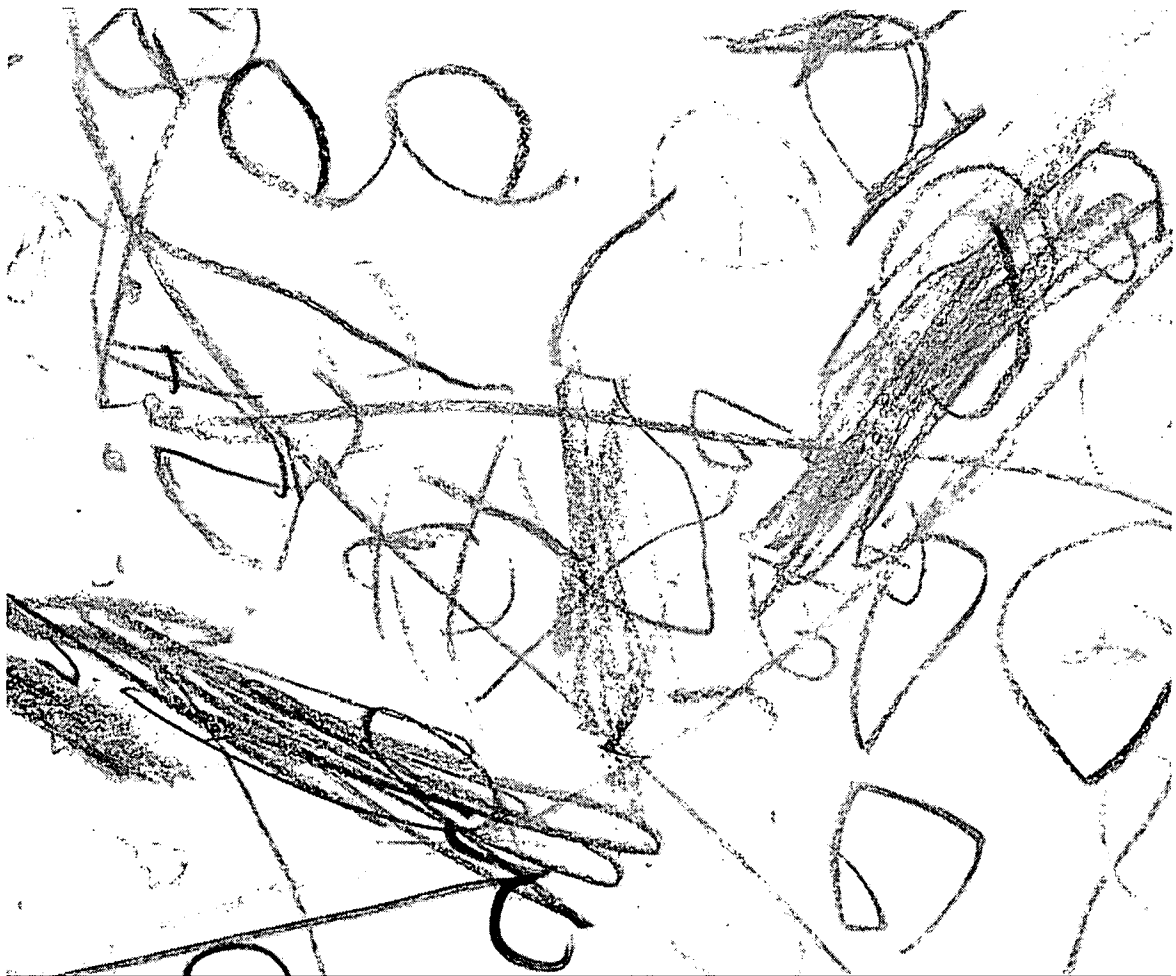
Research—our own and that of dedicated colleagues throughout the early childhood field—provides the promising ideas and the momentum to carry forward new and innovative projects at the Ounce of Prevention Fund. Here are three timely initiatives in various stages of development and implementation:

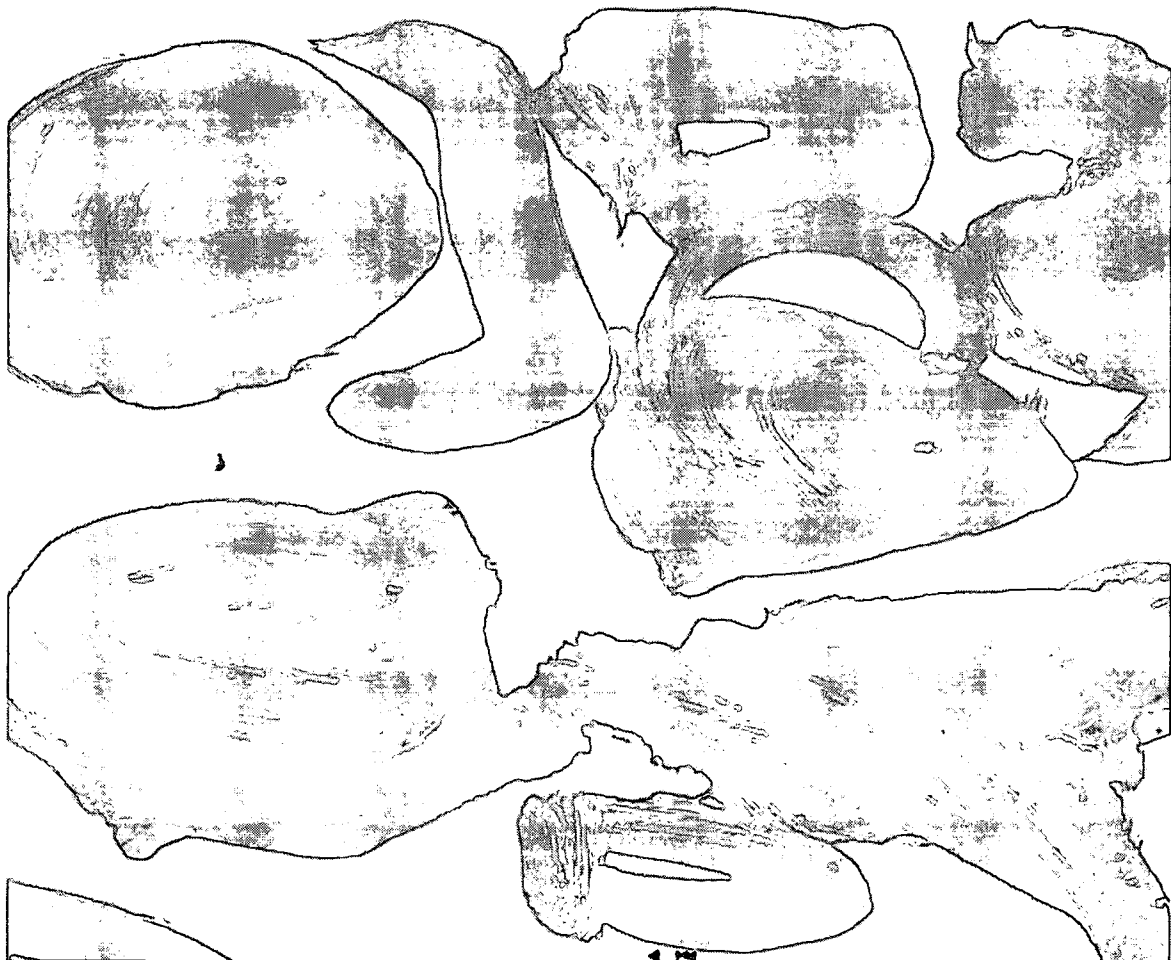
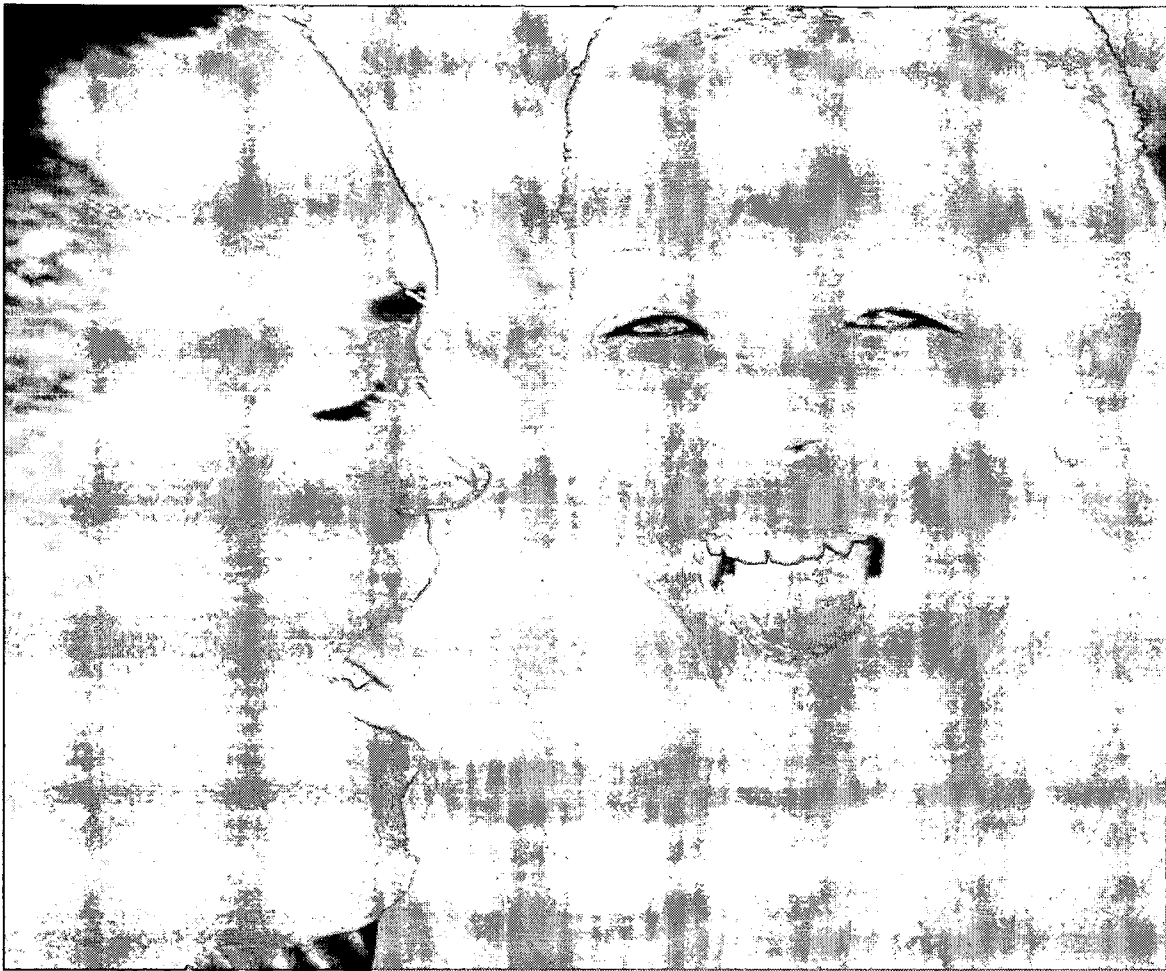
The Doula Project

A truly “early” childhood innovation, the work of the Doula Project begins even before birth. Named for a Greek word for “birthing assistant,” doulas are specially trained women from the community who provide vital information and emotional support to teen mothers with home visits during pregnancy, with support through labor and delivery, and with much-needed postpartum advice and guidance.

Through a partnership with Chicago Health Connection, Alivio Medical Center, Christopher House and Marillac Social Center, the Doula Project was originally implemented at four sites across Chicago. Gratifying results from this pilot program included decreases in Caesarian deliveries and the use of epidural anesthesia, dramatic and heartening increases in the rates of breastfeeding, and highly positive gains in the bonding relationship between mothers and babies.

Fostering the birth of healthy babies and promoting strong mother-child attachment is what the Doula Project is all about. Now, the Ounce is exploring ways to further replicate this innovative approach in home visiting programs across the state.





Ounce Scale™

Whether we like it or not, testing is the way our society measures much of our individual potential, recognizes our achievements, and assesses our needs. However, what kind of test can provide meaningful or useful assessments when the “taker” is an infant or toddler?

At the Ounce, we wanted a way to assess infants and toddlers that would provide functional information about their development, while offering a framework for parents and providers to use this information to plan programs and activities that would help each individual child reach his full potential.

Created by Dr. Sam Meisels, one of the nation’s leading researchers in the area of developmental assessments, Ounce Scale™ is distinctive in its functional or performance oriented approach, in its comprehensive attention to social and emotional development, and in its broad engagement of the family in a continuous process of supporting their baby’s development. A pioneering and highly anticipated new way to assess the growth and development of very young children, Ounce Scale™ represents the first authentic performance assessment ever developed for the first three years of life.

Birth to Three Best Practice Briefs

Ensuring “best practices” in early childhood programs is an integral part of providing high quality services to children and families. Informed by research from throughout the field and lessons learned from the real-life experience of our own statewide network of programs, the Ounce is introducing a new and accessible series of Birth to Three Best Practice Briefs for use in Illinois.

Aimed at a diverse audience of early childhood program directors, administrators, and funders, the Birth to Three Best Practice Briefs will allow us to share the vital information we have assembled on key best practice issues—such as developmental screenings—with those responsible for the development, implementation and funding of birth to three prevention programs in Illinois.

Ounce Training: Building Strength and Effectiveness

People, and their talents, knowledge, expertise and dedication, are what fuel success in all endeavors. In the field of early childhood development, there is an urgent need for high quality providers to best serve children and families in challenging communities—and quality comes from ongoing training and support that advances the professional development of individual staff while also building the strength and effectiveness of their organizations.

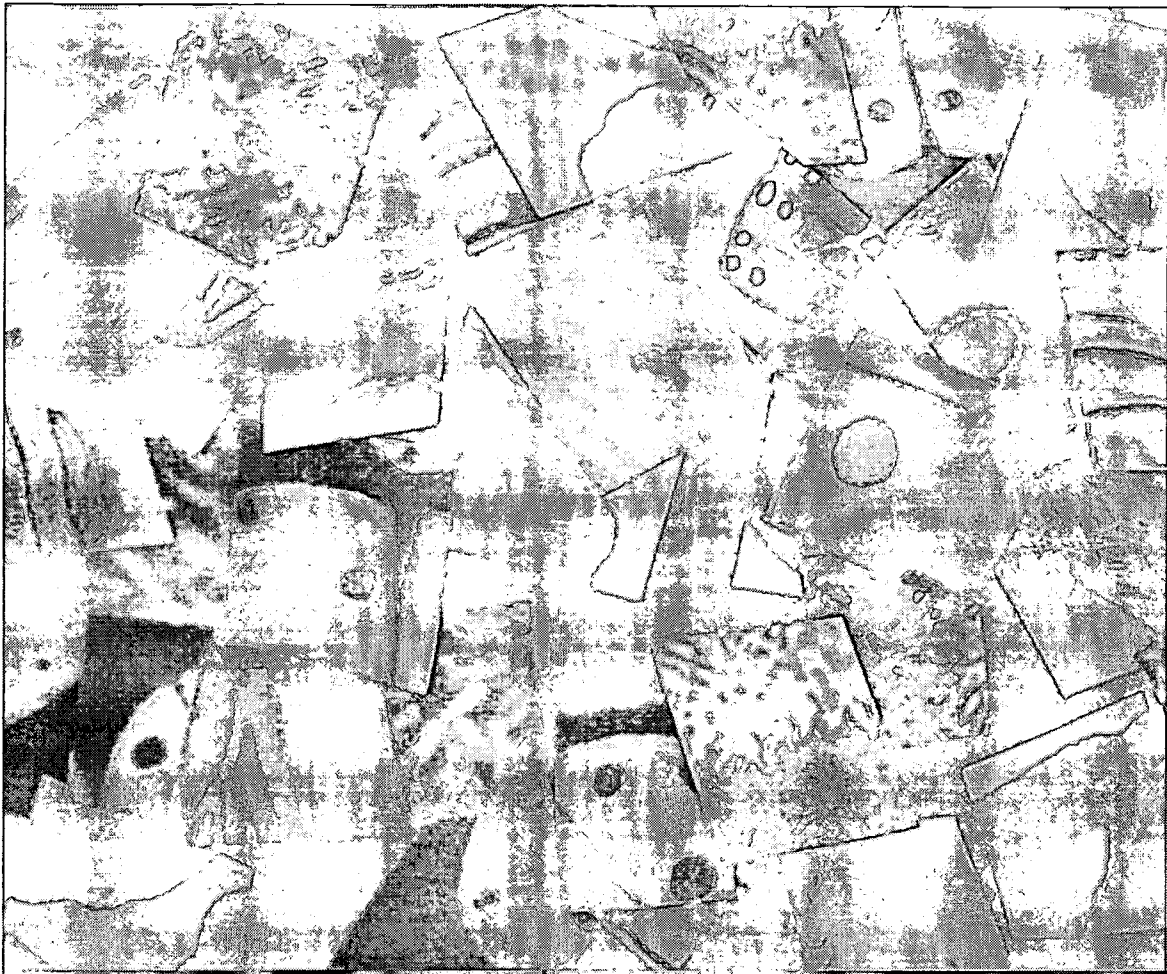
Reflective Supervision

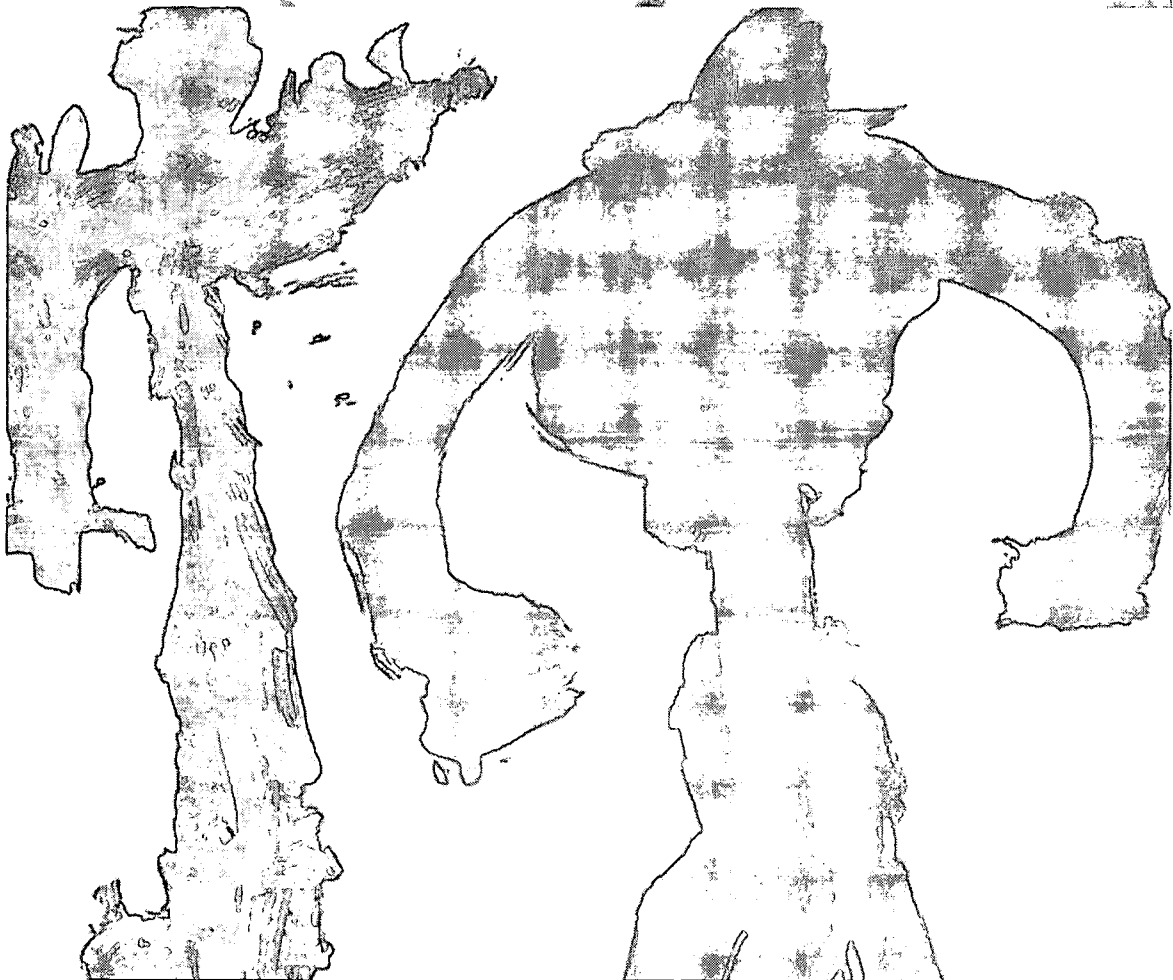
At the Ounce of Prevention Fund, we believe that our staff is our most valuable asset, and we view reflective supervision as the key to most fully developing their knowledge and effectiveness. Through reflective supervision, our early childhood staff are given the needed time to reflect upon the demanding aspects of their daily work with at-risk children and families, while learning how to best address the particular needs of individual families. With reflective supervision, staff also have the opportunity to share thoughts, ideas and plans with supportive colleagues who understand both the challenges and rewards of their work.

While reflective supervision is commonly used in clinical practice, the Ounce has become a leader in using this beneficial approach in early childhood settings. In addition to our own early childhood staff, reflective supervision is also an important component of an intensive training curriculum that we offer every year with comprehensive sessions covering such informative areas as our Developmental Training and Support Program and the Community-Based Family Administered Neonatal Activities. Recent participants have included staff from community-based agencies across the state of Illinois, such as Latino Youth and the Harris YMCA in Chicago, Children's Home in Peoria, and Easter Seals Child Development Center in Rockford.

Educare Replication

Babies and children who are given quality early childhood care and education in secure and stimulating surroundings will be better prepared for later success in school and in life. Launched with private funds and built through an exceptional partnership with the federal government, the state of Illinois, Chicago Public Schools, private supporters and





community residents, the Educare Center provides children from six weeks to five years with a setting and a program designed to help them learn and thrive.

In the Ounce tradition of promoting promising models, there are already steps being taken to replicate our Educare Center in three new areas—Omaha, Atlanta, and Milwaukee. We look forward to the opportunity to share our knowledge and experience with our colleagues in these communities to help them create the public-private partnerships and multiple funding streams needed to build a center and develop Educare's comprehensive early childhood program.

Peer Consultation Network

We are also embarking upon an ambitious new initiative to build the strength and effectiveness of early childhood organizations with a nationally focused Peer Consultation Network. Two decades of diverse experience have laid the groundwork for the Ounce to develop and implement a peer-to-peer consultation service. This service will allow us to share our "intellectual" capital with an increasing number of early childhood organizations that provide vital services to vulnerable children, families and communities across our country.

Children and families in disadvantaged communities need strong and effective early childhood organizations to help improve the quality of their lives, but many good organizations find their effectiveness hampered by certain limitations. For instance, an organization that is making valuable contributions through its programs may find its overall effectiveness hindered by a lack of experience or expertise in other areas—such as pursuing fruitful advocacy strategies or successfully combining multiple funding streams to enhance their existing programs or create new ones.

Because of the impact of Ounce efforts over the last twenty years, colleagues in the field increasingly ask us for advice on building their organizational capacities. During the past year, we have provided intensive consultation sessions on the diverse aspects of our work to a number of organizations from various parts of the country.

With the development and implementation of a nationally focused Peer Consultation Network, the Ounce will be able to contribute to the effectiveness of participating early childhood organizations, allowing them to be more innovative and flexible, and more productive in meeting the needs of more children, families, and communities.

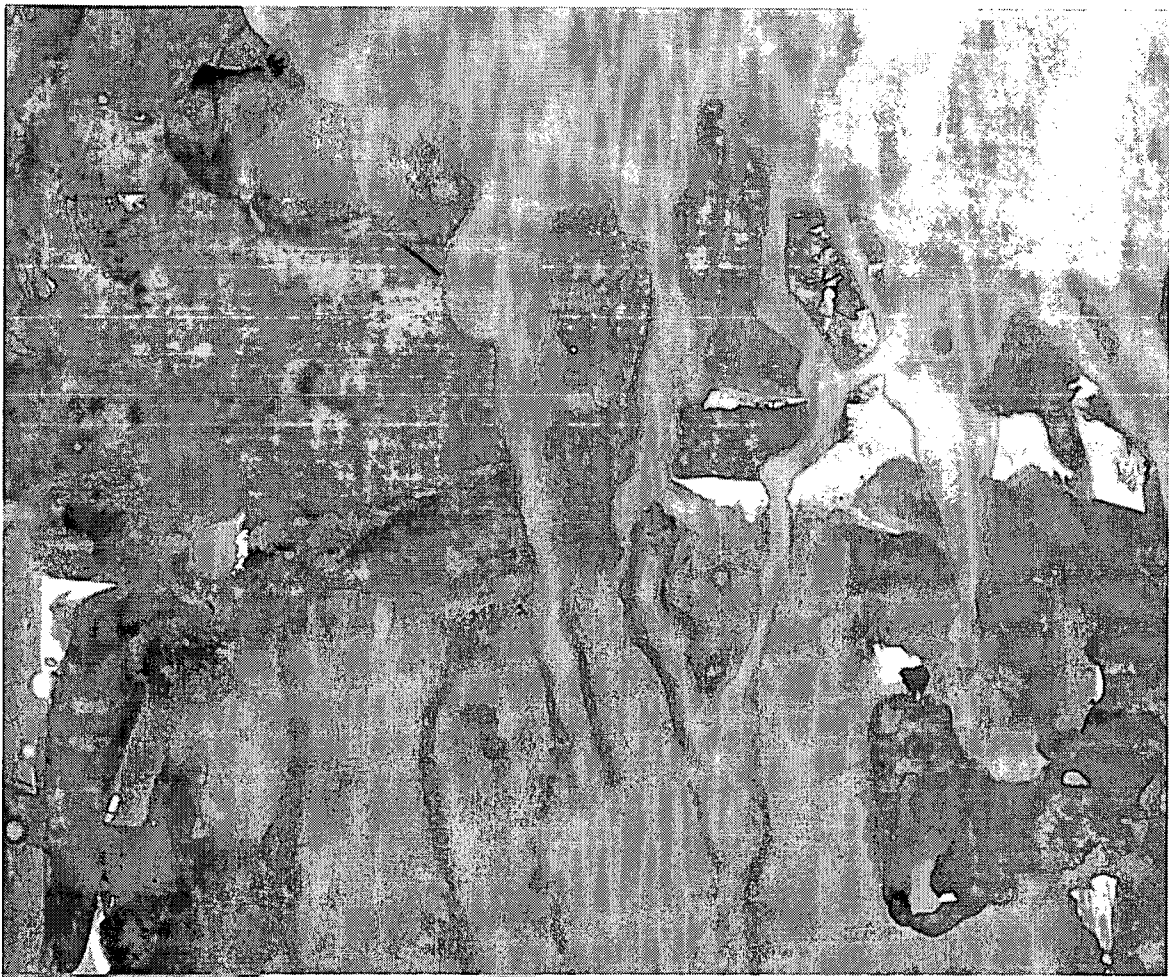
Financial Report
Ounce of Prevention Fund

Illinois Department of Human Services	\$11,028,494
Illinois Department of Children and Family Services	67,611
Illinois Department of Commerce and Community Affairs	53,033
U.S. Department of Health and Human Services	9,038,347
U.S. Department of Agriculture	153,925
Chicago Public Schools	392,225
Corporations, Foundations, Trusts and Individuals	2,517,937
Interest, Investment Income and Other Revenue	351,129
Total	\$23,602,701

Child and Family Support Services	\$11,003,946
Parents Too Soon	8,855,787
Kids PEPP	1,163,698
Research	824,321
Toward Teen Health	539,517
Other Programs/Special Projects	670,198
Total	\$23,057,467

An audited statement is available upon request.

*Includes multi-year awards recognized in fiscal year 2001.
Does not include \$7,415,898 in permanently restricted contributions
and pledges to the endowment fund.





Young Donors 2001

At the age of eight, Georgia Makely already knows the importance of reaching out to help others, and this year she joined the Ounce of Prevention Fund's family of donors with an extremely generous gift to our annual fund. The Ounce has been a part of Georgia's family for a long time since her grandmother, noted developmental psychologist Judith Musick, Ph.D., served as our founding Executive Director and continues to share her wisdom and expertise with us. Welcome Georgia—it is truly wonderful to have support reaching across the generations.

Children who learn the value of sharing at an early age can make a genuine difference, both in their own lives and in the lives of other children. During the past year, we have been fortunate to have a number of young donors share their generosity with very special contributions to the work of the Ounce.

Members of the fourth grade Sunday school class at Saints Faith, Hope and Charity Catholic Church in Winnetka, Illinois wanted to do something to make a difference. With the help of their parents and teachers, they organized a drive to collect winter clothing for children in Ounce programs on Chicago's south side.

Brownie Troop 967 of Aurora, Illinois also wanted to do something to help other children. After they sponsored a book drive, we received 700 children's books that they collected for young children in our birth to five programs.

To all our young donors, thank you for your truly generous efforts – you really are making a difference.

Judith Musick, Ph.D., and granddaughter Georgia Makely



**Fiscal Year 2001 Donors
July 1, 2000-June 30, 2001**

**Major Donors
(\$25,000 and above)**

Anonymous Foundation
The Buffett Foundation
D & R Fund
Joan and Irving Harris
The Harris Foundation
Robert Wood Johnson Foundation
Anne and Burt Kaplan
Oscar G. and Elsa S. Mayer Foundation
Robert R. McCormick Tribune Foundation
Harriet and Ulrich Meyer
Charles Stewart Mott Foundation
Pittway Corporation Charitable
Foundation
Polk Bros. Foundation
Lois and Harrison I. Steans

**Sustaining Members
(\$10,000 - \$24,999)**

John and Jacolyn Bucksbaum
Richard H. Driehaus Foundation
Julle and Parker Hall
Robert Heaton
Ashley and Matthew McCall
Colonel Stanley R. McNeil Foundation
The Northern Trust Company*
Albert J. Pick, Jr. Fund
Prince Charitable Trusts
Pritzker Foundation*
Dr. Scholl Foundation
W. Clement & Jessie V. Stone Foundation
Anne and John Tuohy
Helen and Sam Zell

**Sponsors
(\$5,000 - \$9,999)**

Anonymous
AptarGroup, Inc. Charitable
Foundation
Arie & Ida Crown Memorial
Carol Emig and Michael Durst
Family Focus, Inc.
Linda and Bill Friend
Mr. and Mrs. Richard A. Mayer
Relations Foundation
Tom and Patty Rosbrow
Catherine and Howard Siegel
Heather Steans and Leo Smith
Robin Steans and Lenny Gail
WPWR-TV Channel 50 Foundation

**Patrons
(\$2,500 - \$4,999)**

Lois and Steve Eisen
Alyce and Jack Fuller
Suzanne Gombrich
HAF Foundation
Lucinda Lee Katz and Norman A. Katz
Elaine and Donald Levinson
McMaster-Carr Supply Company
Paul Metzger
Barbara and Walter Scott
St. Andrews Women's
Philoptochos Society
Sherwin and Sheri Zuckerman

**Advocates
(\$1,000 - \$2,499)**

Anonymous
Billie Wright Adams, M.D.
Mrs. Edwin A. Bergman
John, Vicki & Holly Bitner
Barbara Bluhm

Blum-Kovler Foundation
Elaine and Jim Costakis
Kelly King Dibble
Richard and Gail Elden
Deborah and David Epstein
Jamee and Marshall Field Foundation
Mr. and Mrs. John S. Gates, Jr.
Kelly and Diana Grodzins
Mrs. Paul W. Guenzel
Shirley and Burt Harris
Rusty and Samuel Hellman
Dana and Andrew Hirt
The Hunckler Family
Fruman and Marian S. Jacobson
George B. Javaras and
Barbara B. Javaras
Sandy and Thomas Kully
Amy and Don Lubin
Jim and Kay Mable
Judd, Randi, Stephen and
Barry Malkin Families
Bernard and Jean Meltzer
Joseph and Michelle Moravceck
New Prospect Foundation
Edmond and Alice Opler Foundation
Richard and Frances Penn
Carol Prins and John Hart
Gigi Pritzker Pucker and
Michael A. Pucker
Jill and Ron Rohde
Judy and Tom Scorza
Adele Simmons
Joyce and Roy Skoog
Jennifer Steans and Jim Kastenholz
Thomas and Donna Stone
Sugar, Friedberg & Felsenthal
Bernice Weissbourd

**Friends
(\$500 - \$999)**

Dr. Carl and Julia Ford Backer
June Barrows
Gregory L. Coler
Eloise H. Cornelius
Deborah Daro and Coleman Tuggle
The David and Lisette Eisendrath
Foundation
Eileen and Richard Epstein
Phylis and Jay L. Frankel
Richard F. and Christine F. Karger
Mary and Donald Kirwan
Doris Lewy
Robert B. Lifton and Carol Rosofsky
Caroline Loeb
Georgia Makely
Mary and Melvin Marks
Marc W. and Laura Appleton Mengel
Jo and Arthur Moore
Mr. and Mrs. Manfred Steinfeld
Natalie and Jacques S. Theriot
Ms. Patricia M. Varga
Mary Ann Wark
Bonnie M. Wheaton

**Associates
(\$1 - \$499)**

Anonymous (2)
Susan and William Abrams
Martin and Brenda Becker
Mr. and Mrs. Donald A. Belgrad
Ruth and Leroy E. Belzer
JoAnne and Chris Bloom
Paula Jorde Bloom, Ph.D.
Ted and Gieriet Bowen
Mike and Betsy Carothers
Susan Loeb Chaplik
William A. Clark and Elizabeth Warren
Cain Clark
Lynn Donaldson and Cameron Avery
Juliette G. Duara

Ara and Edma Dumanian
Edwin Eisendrath and Jennifer Schulze
Tom and Lisa Finke
James M. Florsheim
Roger R. Fross and Madelon R. Fross
Jerome and Carol Ginsburg
Carol O. Glazier
Kathleen Grady and Victor Grimm
Richard and Mary L. Gray
Stanley I. Greenspan, M.D. and
Nancy T. Greenspan
Gail Guggenheim
Mardelle Hansen and
James March Goldberg
Teri Turner Hartman
Lisa Henry-Reid, M.D.
Judy and Bob Herbert
Bette Cerf Hill and Bruce Sagan
Marshall and Doris Holleb
Frances and Phillip Huscher
Larry and Donna James
Mr. and Mrs. Edgar D. Jannotta, Sr.
Mr. and Mrs. Huette Kaplan
Ayana and Sokoni Karanja
Francine and Michael Knowles
Gail Epstein Kovler
Katherine Laing
Wende and Jim Lawson
Henry and Elsie Loeb
Denise Lyons
Janina Marks
Mr. and Mrs. Theodore B. Martin, Jr.
June Matayoshi
Sam and Alice Meisels
Mel-Cor Sheet Metal, Inc.
Geraldine Mercola
Abner and Zoe Mikva
Jonathan L. Mills and Susan R. Sneider
Dorothy H. Missner
J. Clifford Moos
Mr. and Mrs. David F. Myers, Jr.
Elizabeth and Andrew Parkinson
Aviva Miriam Patt
Martin J. Perry and Barbara J. Williams
Rosaland and Melvin Pollock
Derke J. Price and Suzyn M. Price
Raul Raymundo and Maria Luisa Keane
Pearl and Mitchell Rieger
James O. Rogers and
Lorraine K. Rogers
Harvey E. Rosenthal and
Beverly A. Rosenthal
Matt and Cathy Ross
Barbara and Donald Ruhman
Mr. and Mrs. Neal L. Seltzer
Al and Martha Solnit
Gregg M. Steinberg and
Stacy A. Steinberg
Carrie Strauch
Elliot J. Sussman and Jody Carr
Mr. and Mrs. Glenn Torgerson
Eve Van Cauter
Ruth and Sol Weiner
Robert B. Wilcox
Lawrence Zimmer and
Ted Perzanowski

In-Kind Contributions

Robert Anderson
Nanette Banks
Nana Owusu Bempah
Erlinga Bingham
John Booth
Patricia Brown
Brownie Troop 967 of Aurora, Illinois
Robin Byster
Chicago Children's Museum
Chicago Department of Public Health
Chuck E. Cheese
Phil Cohen
Colgate Company

John Collins
Cook County Children's Hospital
Dard Electric, Inc.
Elnora Davis
Herman Louise Dillon
Mildred Ebiotomlye
Deborah Epstein
Erikson Institute
Maggie Faulkenberry
Deborah A. Fears
First Nonprofit Mutual Insurance
Company
Akira Fox
John Frank
Charles Frazer
Eleanor Gardner
Gibsons Steakhouse
Max Graves
Pat Guy
Harding and Associates
Robie H. Harris
Theresa Hawley
Illinois Nutrition Education and Training
Kate Ingold
Institute for Psychodiagnostic
Interventions and Services, Ltd.
Jeffries, Inc.
James Jones
Joe Ketter
Cynthia Lashley
Janice L. Layne
Madelein Lebedow
Cheryl Martin
John Marshall Law School
Fair Housing Legal Clinic
Ashley and Matthew McCall
Members of the Ounce of Prevention
Fund Policy Council and Residents
of the Community
Moore's Burgular Bars
MRP Construction
Nick Jr. Magazine—
Preschool Educators Council
James Oberholzer
Parents in Ounce of Prevention Fund
Programs
Scott Peterson & Co./SMG
Vanessa Rich
Jean Robbins
The Children of Saints Faith, Hope
and Charity Catholic Church
St. Paul CME Church
Rochelle Scavella
Marcy Schlessinger
Sears Home Central
Charlene K. Smith
Nytalya Smith
Robin Steans and Lenny Gail
Irene Stewart
Lois Stone
Alyne Taylor
Virdajean Towns-Collins
Rose M.R. Troupe
Walgreen Co.
Ernestine Brown Wells
Marilyn White
Terry Williams
Ron Yahly
Cynthia and Jeffrey Yingling
Lisa Young
Deborah A. Zapalik

Public Partners

Chicago Public Schools
Illinois Department of Children and
Family Services
Illinois Department of Commerce and
Community Affairs
Illinois Department of Human Services
United States Department of Health
and Human Services

*Payment on Educare capital pledge

**Campaign for
Early Childhood Innovations**

Innovation is a hallmark of the Ounce of Prevention Fund—and private dollars fuel innovation. This year, we launched the Campaign for Early Childhood Innovations to enable the Ounce to create and pursue more cutting edge programs and projects that will maximize the healthy social, intellectual and physical development of our most precious resource, our children.

The Campaign for Early Childhood Innovations will raise \$12 million in endowment funding and seed money to cultivate and nurture new ideas that might otherwise never take root. Investments in the campaign will enable the Ounce of Prevention Fund to reach even

more children and families in some of the nation's most challenging communities through:

- Innovative Programs
- Research and Program Development
- Advocacy and Public Policy
- Early Childhood Mental Health
- Communications Technology

Since launching the campaign in May 2001, the following individuals, private foundations and corporations have pledged to support the Campaign for Early Childhood Innovations:

Pledges of support received as of November 30, 2001 are listed.

Anonymous Foundation
Billie Wright Adams, M.D.
Dr. Bill and Donna Barrows
John, Vicki and Holly Bitner
Mr. and Mrs. James Bramsen
Jacolyn and John Bucksbaum
Susan Buffett
Gregory L. Coler
Eloise H. Cornelius
D & R Fund
Kelly King Dibble
Murrell J. Duster
Edwin Eisendrath and Jennifer Schulze
Mr. and Mrs. Richard Elden
Jane Fonda
Linda and Bill Friend
Mr. and Mrs. Rodney L. Goldstein
Barbara Goodbody
Mr. and Mrs. Richard Gray
Joan Hall and George Cotsirilos
Joan and Irving Harris
Robert Heaton
Rusty and Samuel Hellman
Anne and Burt Kaplan
Ayana and Sokoni Karanja
Norman and Lucinda Lee Katz

LaSalle National Bank
Mr. and Mrs. Gary Lauder
Fay and Dan Levin
Marcena and Michael Love
Martha and Albert H. MacLeod
Pastor B. Herbert Martin/
Progressive Community Center-
The People's Church
Daniel McCaffery
Ashley and Matthew McCall
Paul Metzger
Harriet and Ulrich Meyer
Michael Reese Health Trust
Pittway Corporation Charitable
Foundation
Prince Charitable Trusts
Gwendolyn Laroche Rogers
Catherine and Howard Siegel
Joyce and Roy Skoog
Spirit Foundation
Steans Family Foundation
Donald Suter and Pam Neal
Anne and John Tuohy
Bernice Weissbourd
Helen and Sam Zell
Mr. and Mrs. Sherwin Zuckerman

“The best evidence supports the policy prescription: invest in the very young.”

James J. Heckman, Ph.D.
Recipient of the 2000 Nobel Prize
in Economic Sciences



Administrative Offices

Ounce of Prevention Fund
122 South Michigan Avenue
Suite 2050
Chicago, Illinois 60603-6198
(312) 922-3863

Ounce of Prevention Fund—
Springfield Office
1 West Old State Capitol Plaza
Myers Building Suite 716
Springfield, Illinois 62701
(217) 522-5510

Directly Operated Sites:

The Ounce of Prevention Fund—
Garfield Head Start
30 West Garfield Boulevard
Chicago, Illinois 60609
(773) 373-0234

Ounce of Prevention Fund—
Educare Center
5044 South Wabash
Chicago, Illinois 60615
(773) 924-2334

Ounce of Prevention Fund—
Hayes Center
4859 South Wabash
Chicago, Illinois 60609
(773) 373-8670

Ounce of Prevention Fund—
St. Paul Head Start
4644 South Dearborn Street
Chicago, Illinois 60609
(773) 268-2827

Delegate Agencies:

Aunt Martha's Head Start
23485 Western Avenue
Park Forest, Illinois 60466
(708) 747-5450

Aunt Martha's
Head Start—Riverdale
14424 Wentworth Avenue
Riverdale, Illinois 60627
(708) 849-6363

Casa Central Head Start
1343 North California
Chicago, Illinois 60622
(773) 645-2300

Casa Central—Casa Infantil
2222 North Kedzie
Chicago, Illinois 60647
(773) 772-1170

Casa Central—LaPosada
2222 North Kedzie
Chicago, Illinois 60647
(773) 278-0079

CHASI—Englewood Family Center
5958 South Marshfield Avenue
Chicago, Illinois 60636
(773) 479-6998

CHASI—Viva Family Center
2516 West Division Street
Chicago, Illinois 60622
(773) 252-6277

Coretta Scott King YWCA
Child Development Center
Head Start
5244 North Lakewood Street
Chicago, Illinois 60640
(773) 538-0212

Harris YWCA
Child Development Center
Head Start
6200 South Drexel Avenue
Chicago, Illinois 60637
(773) 667-0014

Northside YWCA
Child Development Center
Head Start
5244 North Lakewood Street
Chicago, Illinois 60640
(773) 271-6120

Morgan Park Day Care Center
11024 South Bell Avenue
Chicago, Illinois 60643
(773) 779-8186

Central Baptist Family Services
Bridgeport Child Development Center
3053 South Normal Avenue
Chicago, Illinois 60616
(312) 842-5566

Parents Too Soon Sites:

**provides Pregnant and Parenting
Services*

***provides Primary Prevention
Services*

****provides Primary Prevention
Services as well as Pregnant and
Parenting Services*

*(D) provides Doula services
(HF) provides Healthy Family
Illinois services*

Alivio Medical Center*(D)
2415 South Western Avenue
Chicago, Illinois 60608
(773) 847-9243

Aunt Martha's Youth Services
Center*(HF)
23485 Western Avenue
Park Forest, Illinois 60466
(708) 747-2780

Bethany for Children and Families**
1150 12th Avenue
Moline, Illinois 61265
(309) 797-9715

Catholic Charities of Chicago*
11255 S. Michigan Avenue
Chicago, Illinois 60628
(773) 995-1737

Center for Children's Services*
702 North Logan Avenue
Danville, Illinois 61832
(217) 446-1300

Chicago Commons Association**
2312 West Warren Blvd.
Chicago, Illinois 60612
(312) 226-8606

Children's Home Association
of Illinois*** (HF) (D)
416 St. Mark's Court, Suite 200
Peoria, Illinois 61603
(309) 685-1047

Christopher House*(D)
2507 North Greenview
Chicago, Illinois 60614-2084
(773) 472-1083

Community Health and
Emergency Services*
Route 1, Box 11
P.O. Box 233
Cairo, Illinois 62914-0233
(618) 734-4534

Comprehensive Mental Health Center
of St. Clair County*
3911 State Street
East St. Louis, Illinois 62205
(618) 482-7610

Easter Seals Children's Development
Center*(HF)(D)
650 North Main Street
Rockford, Illinois 61103
(815) 965-6745

Family Focus—Aurora*** (HF)
49 East Downer Place
Suite 601
Aurora, Illinois 60505
(630) 844-2550

Family Focus—Lawndale***
3333 West Arthington
Chicago, Illinois 60623
(773) 722-5057

Family Focus—Our Place**
2010 Dewey
Evanston, Illinois 60201
(847) 475-7570

Family Service Center of
Sangamon County*(HF)
1308 South Seventh Street
Springfield, Illinois 62703
(217) 528-8402

Fulton County Health Department**
700 East Oak Street
Canton, Illinois 61520
(309) 647-1134

Harris YWCA*(HF)
6200 South Drexel Avenue
Chicago, Illinois 60637
(773) 363-7903

Hull House /LeClaire Hearst
Community Center**
4439 South LaCrosse
Chicago, Illinois 60638
(773) 767-1709

Kankakee Community
College*(HF)(D)
Dr. King Education Center
1065 South Washington
Kankakee, Illinois 60901
(815) 937-493

La Voz Latina*(HF) (D)
814 North Court Street
Rockford, Illinois 61102
(815) 965-1245

Latino Youth*(HF)
2200 South Marshall Boulevard
Chicago, Illinois 60623
(773) 277-0401

Lutheran Social Services of Illinois**
1901 First Avenue
Sterling, Illinois 61081
(815) 288-6655

Marillac Social Center*(D)
212 South Francisco
Chicago, Illinois 60612
(773) 722-7400

McHenry County Youth
Service Bureau**
101 South Jefferson Street
Woodstock, Illinois 60098
(815) 338-7360

New Moms, Inc.*
2825 West McLean
Chicago, Illinois 60647
(773) 252-3253

Nia Comprehensive Center
for Developmental Disabilities**
1808 South State Street
Chicago, Illinois 60616
(312) 949-1808

Planned Parenthood
of Decatur, Inc.**
3021 North Oakland Avenue
Decatur, Illinois 62526
(217) 877-6731

Planned Parenthood
of East Central Illinois**
318 West Washington
3rd Floor
Bloomington, Illinois 61701
(309) 827-4368

Provena Behavioral
Health at Centerpoint***
1801 Fox Drive
Champaign, Illinois 61820
(217) 398-8080

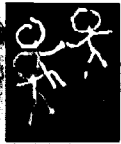
Scholarship and Guidance
Association*(HF)
1012 North Noble
Chicago, Illinois 60622
(773) 395-9320

Shawnee Adolescent Health
Center***
101 South Wall Street
Carbondale, Illinois 62901-3220
(618) 529-2621

Tri-County (Peoria)
Urban League, Inc.**
317 South MacArthur Highway
Peoria, Illinois 61605-3875
(309) 673-7474

United Front, Inc.**
601 West Washington
P.O. Box 544
Cairo, Illinois 62914
(618) 734-3900

United Methodist Children's
Home*(HF)
1300 Salem Road
Mt. Vernon, Illinois 62864
(618) 242-6949



Ounce of Prevention Fund
 122 South Michigan Avenue
 Suite 2050
 Chicago, Illinois 60609-6198
 Telephone: 312.922.8868
 Fax: 312.922.8887
www.ounceofprevention.org

Norm Katz
Chairman

Irving B. Harris
Chairman Emeritus

Board of Directors
 Blake Wright Adams, M.D.
 Jocelyn Buckshbaum
 Susan Buffett
 Gregory L. Coler
 Elsie H. Cornelius
 Deborah Doro, Ph.D.
 Kelly King Dibble
 Murrell J. Duster, Ph.D.
 Edwin Esendath
 Bill Friend
 Keith Goldstein
 Irving B. Harris
 Robert Heaton

Marcia (Rusty) Helman
 Lisa Henry-Reid, M.D.
 Burt Kaplan
 Sokon Karanja, Ph.D.
 Norm Katz
 Pastor B. Herbert Martin
 Ashley McCall
 Paul Metzger
 Harriet Meyer
 Frances (Happie) Penn
 Paul Raymond
 Gwendolyn Laroche
 Rogers, Ph.D.
 Catherine M. Siegel
 Joyce Skoog
 Hankon I. Stearns
 Robin M. Stearns
 Anne L. Tushy
 Bernice Weissbourd
 Helen Zell

Executive Staff
 Harriet Meyer
President

Judy Bertecchi
*Vice President for
 Direct Services*

Sarah Bradley
*Vice President for Finance
 and Administration*

Karen Freed
*Vice President for
 Public Affairs*

Portia Kennel
*Vice President for
 Program Development
 and Training*



Artwork: Courtesy of the ASD Program, Ounce of Prevention Fund; Writer: Rosemary Timker; Design: Sam Skivo Design Inc; Printing: IPR Lithocolor



U.S. Department of Education
Office of Educational Research and Improvement (OERI)
National Library of Education (NLE)
Educational Resources Information Center (ERIC)



NOTICE

Reproduction Basis



This document is covered by a signed "Reproduction Release (Blanket)" form (on file within the ERIC system), encompassing all or classes of documents from its source organization and, therefore, does not require a "Specific Document" Release form.



This document is Federally-funded, or carries its own permission to reproduce, or is otherwise in the public domain and, therefore, may be reproduced by ERIC without a signed Reproduction Release form (either "Specific Document" or "Blanket").

EFF-089 (3/2000)