

DOCUMENT RESUME

ED 465 317

HE 034 953

TITLE Enrollment Forecasts, 2000-2015: Texas Institutions of Higher Education. Study Paper 27. Revised.

INSTITUTION Texas State Higher Education Coordinating Board, Austin.

PUB DATE 2001-01-00

NOTE 77p.; For projections for 1997 through 2010, see ED 408 910.

AVAILABLE FROM For full text: <http://www.thecb.state.tx.us>.

PUB TYPE Numerical/Quantitative Data (110) -- Reports - Descriptive (141)

EDRS PRICE MF01/PC04 Plus Postage.

DESCRIPTORS Community Colleges; Educational Planning; *Educational Trends; *Enrollment Projections; *Higher Education; Public Colleges; Trend Analysis

IDENTIFIERS *Texas

ABSTRACT

This report contains enrollment projections for public higher education in Texas from 2000 through 2015. Based on current population projections and recent patterns in college and university attendance, enrollment in Texas institutions of higher education is expected to reach well over 1 million students by 2005. This figure represents an increase of more than 72,000 students over 2000 enrollment, producing an annual growth rate of approximately 1.5% during the 5-year period. During the ensuing 5-year period, from 2005 to 2010, enrollments are expected to increase at a rate of 1.3% to provide an additional 66,000 students. For the following 5 years, 2010 to 2015, the growth rate is expected to remain steady, providing an additional 72,000 students. Enrollment projections are made for public universities, public community colleges, and the Texas State Technical College System. An addendum to this report discusses Closing the Gaps in Participation, a description of the magnitude of increases that can be expected in the public sectors of higher education if the strategies outlined in the Texas higher education plan developed by the Coordinating Board are successful. An appendix describes continuing education enrollment in public community and technical colleges. (Contains 3 figures and 21 tables.) (SLD)

Enrollment Forecasts 2000-2015

Texas Institutions of Higher Education

Study Paper 27

Revised January 2001

PERMISSION TO REPRODUCE AND
DISSEMINATE THIS MATERIAL HAS
BEEN GRANTED BY

J. B. Rester

TO THE EDUCATIONAL RESOURCES
INFORMATION CENTER (ERIC)

1

U.S. DEPARTMENT OF EDUCATION
Office of Educational Research and Improvement
EDUCATIONAL RESOURCES INFORMATION
CENTER (ERIC)

This document has been reproduced as
received from the person or organization
originating it.

Minor changes have been made to
improve reproduction quality.

- Points of view or opinions stated in this
document do not necessarily represent
official OERI position or policy.

Texas Higher Education Coordinating Board
<http://www.thecb.state.tx.us>

BEST COPY AVAILABLE

Texas Higher Education Coordinating Board

Pamela P. Willeford, Chair	Austin
Martin Basaldua, M.D., Vice Chair	Kingwood
Jodie L. Jiles, Secretary of the Board	Houston
William C. Atkinson	Bryan
Dolores Hutto Carruth, M.D.	Dallas
Ricardo G. Cigarroa, M.D.	Laredo
Kevin Eltife	Tyler
Raul B. Fernandez	San Antonio
Robert I. Fernandez	Fort Worth
Cathy Obriotti Green	San Antonio
Gerry Griffin	Hunt
Carey Hobbs	Waco
Steve Late	Odessa
Adair Margo	El Paso
Wendy Marsh	Amarillo
Leonard Rauch	Houston
Hector de J. Ruiz, Ph.D.	Austin
Robert W. Shepard	Harlingen
Terdema L. Ussery II	Dallas

Coordinating Board Mission

The mission of the Texas Higher Education Coordinating Board is to provide the Legislature advice and comprehensive planning capability for higher education, to coordinate the effective delivery of higher education, to efficiently administer assigned statewide programs, and to advance higher education for the people of Texas.

Coordinating Board Philosophy

The Texas Higher Education Coordinating Board will promote access to quality higher education across the state with the conviction that access without quality is mediocrity and that quality without access is unacceptable. The Board will be open, ethical, responsive, and committed to public service. The Board will approach its work with a sense of purpose and responsibility to the people of Texas and is committed to the best use of public monies.

Foreword

Enrollments in Texas public universities and public community and technical colleges have increased over the past five years. Between 1995 and 1999, public university fall headcount enrollment increased by 6,441 students (1.6 percent) and public community and technical college enrollment increased by 26,716 students (6.5 percent).

At public universities, the number of Black and Hispanic students increased by 7,784 (7.1 percent) while the number of White students declined by 10,430 (4.1 percent). At community and technical colleges, enrollment of Black and Hispanic students increased by 25,608 (17.5 percent) while enrollment of White students declined by 5,409 (2.3 percent).

Past enrollment forecasts have been reasonably accurate for public universities overall, but have failed to adequately anticipate the rapid enrollment growth and shifts at some individual universities and at the community colleges. Several procedural modifications have been made in the forecast to better reflect these enrollment trends.

Information about enrollment trends and expectations, always fundamental to higher education planning, is even more critical in times of limited resources and growing numbers of students. Many institutions have adopted or are considering enrollment management policies. Consequently, a forecasting procedure that employs a variety of variables that influence enrollment can provide valuable information to those who must manage, plan for, and finance higher education.

The procedures employed in this enrollment forecast revision are based on past enrollment and population trends as related to geographic location, age, and race/ethnicity. But the enrollment outcomes are also influenced by other factors, such as the number of high school graduates, increased participation by racial/ethnic groups, and local policies.

As in the last revision, the same forecast model was used for public universities, community colleges, and technical colleges.

Table of Contents

	<u>Page</u>
Foreword	i
Enrollment in Texas Colleges and Universities to 2015.....	1
Texas Public College and University Forecasts.....	22
Enrollment Forecast – Texas Independent Colleges and Universities.....	44
Addendum	
Closing the Gaps in Participation.....	45
Appendix A: Fall Continuing Education Enrollment Public Community and Technical Colleges.....	A-1

List of Tables

1A. Fall Headcount Enrollment Forecasts – Texas Institutions of Higher Education	3
1B. Forecasted Changes in Fall Headcount Enrollment	3
2. Enrollment Projections By Region – Texas Public Institutions of Higher Education – with San Antonio separate	5
3. Fall Headcount Enrollment Forecasts – Texas Public Universities	11
4. Forecasted Changes in Fall Headcount Enrollment – Public Universities	13
5. Total Enrollment Forecast – Community and Technical Colleges.....	15
6. Forecasted Changes in Fall Headcount Enrollment – Public Community and Technical Colleges	18
7A. Fall In-State Enrollment by Age and Race/Ethnicity – Public Universities	24
7B. In-State and Nonresident Enrollment for Public Universities	24
8A. Fall In-State Enrollment by Age and Race/Ethnicity – Public Community Colleges	25
8B. In-State and Nonresident Enrollment for Public Community Colleges	25
9A. Fall In-State Enrollment by Age and Race/Ethnicity – Public Technical Colleges	26
9B. In-State and Nonresident Enrollment for Public Technical Colleges	26
10. Texas Statewide Population by Race/Ethnicity.....	29
11. In-State Enrollment Alternative Forecasts – Public Universities	31

12.	In-State Enrollment Alternative Forecasts – Public Community and Technical Colleges.....	32
13.	In-State Enrollment – Public Universities Comparison of Preliminary to Forecast In-State Enrollment for 2000	35
14.	In-State Enrollment – Public Community and Technical Colleges Comparison of Preliminary to Forecast In-State Enrollment for 2000	36
15.	Nonresident Enrollment Ratios – Public Universities	39
16.	Nonresident Enrollment Ratios – Community and Technical Colleges	40
17.	Adjustments to Draft Enrollment Forecasts Based on Local Conditions	43

List of Graphs

Figure 1.	Comptroller's Ten Service Regions.....	4
Figure 2.	Enrollment Forecast Development Process	21
Figure 3.	To Reach 5.7 Percent Participation.....	45

Enrollment in Texas Colleges and Universities to 2015

Based on current population projections and recent patterns in college and university attendance, enrollment in Texas institutions of higher education is expected to reach well over 1 million students by 2005. This figure represents an increase of more than 72,000 students over 2000 enrollment, producing an annual growth rate of approximately 1.5 percent during the five-year period. During the ensuing five-year period – from 2005 to 2010 – enrollments are expected to increase at a rate of 1.3 percent to provide an additional 66,000 students. For the following five-year period – from 2010 to 2015 – the growth rate is expected to remain steady, providing an additional 72,000 students. As a result of these increases, Texas higher education institutions are expected to enroll nearly 1.2 million students by 2015.

For public universities, enrollments are expected to increase to approximately 446,000 students by 2005. This increase of 30,000 students over 2000 enrollment is expected from a projected growth rate of 1.5 percent annually. During the ensuing five-year period – from 2005 to 2010 – enrollments are expected to increase at about 1.1 percent annually to provide nearly 26,000 additional students. For the following five-year period – from 2010 to 2015 – the growth is expected to continue at 1.1 percent annually to give these institutions 27,000 additional students. As a result of these increases, Texas public universities are expected to enroll more than 498,000 students by 2015.

For public community colleges, enrollments are expected to increase to approximately 480,000 students by 2005. This increase of more than 37,000 students over 2000 enrollment is expected from a projected growth rate of 1.7 percent annually. During the ensuing five-year period – from 2005 to 2010 – enrollments are expected to increase at about 1.6 percent annually to provide nearly 37,500 additional students. For the following five-year period – from 2010 to 2015 – growth is expected to continue at 1.6 percent annually to give these institutions more than 41,000 additional students. As a result of these increases, Texas public community college are expected to enroll approximately 559,000 students by 2015.

Enrollment in the Texas State Technical College System is projected to steadily increase as well – to 9,889 student by 2005, 10,505 students by 2010, and 11,330 students by 2015.

The following points should be considered when reviewing the forecasts:

- The forecast model is influenced strongly by historical in-state enrollment patterns at each institution and projected population changes by county. Therefore, these forecasts may not accurately reflect future enrollments because institutions may recruit students from different areas, the demographic of geographic recruitment bases, change or institutions impose enrollment limitations.

- Enrollments may be affected by the Texas economy. Enrollments have usually expanded in times of increasing unemployment, in part because students want to prepare for better jobs. The availability of financial aid also influences students' decisions to enter or return to college.

Table 1A
Fall Headcount Enrollment Forecasts – Texas Institutions of Higher Education

INSTITUTIONS	Actual					Forecast	
	1999	2000 ¹	2001	2002	2003	2005	2015
Public Universities	407,074	415,417	425,256	430,789	436,387	445,866	498,855
Public Community Colleges	426,519	443,770	455,961	462,422	468,779	480,990	559,489
Independent Colleges and Universities	104,778	108,034	109,134	109,759	110,859	112,109	117,409
Texas State Technical Colleges	8,804	9,333	9,533	9,645	9,748	9,889	11,330
Total, All Institutions	947,175	976,554	999,884	1,012,615	1,025,773	1,048,854	1,187,083

3

Table 1B
Forecasted Changes in Fall Headcount Enrollment

INSTITUTIONS	2000 ¹ -2005		2005-2010		2010-2015	
	Number	Percent	Number	Percent	Number	Percent
Public Universities	30,449	7.3%	25,744	5.8%	27,245	5.8%
Public Community Colleges	37,220	8.4%	37,462	7.8%	41,037	7.9%
Independent Colleges and Universities	4,075	3.6%	2,175	1.9%	3,125	2.7%
Texas State Technical Colleges	556	6.0%	616	6.2%	825	7.9%
Total, All Institutions	72,300	7.4%	65,997	6.3%	72,232	6.5%

¹Preliminary headcount enrollment data.

Figure 1

Comptroller's Ten Service Regions

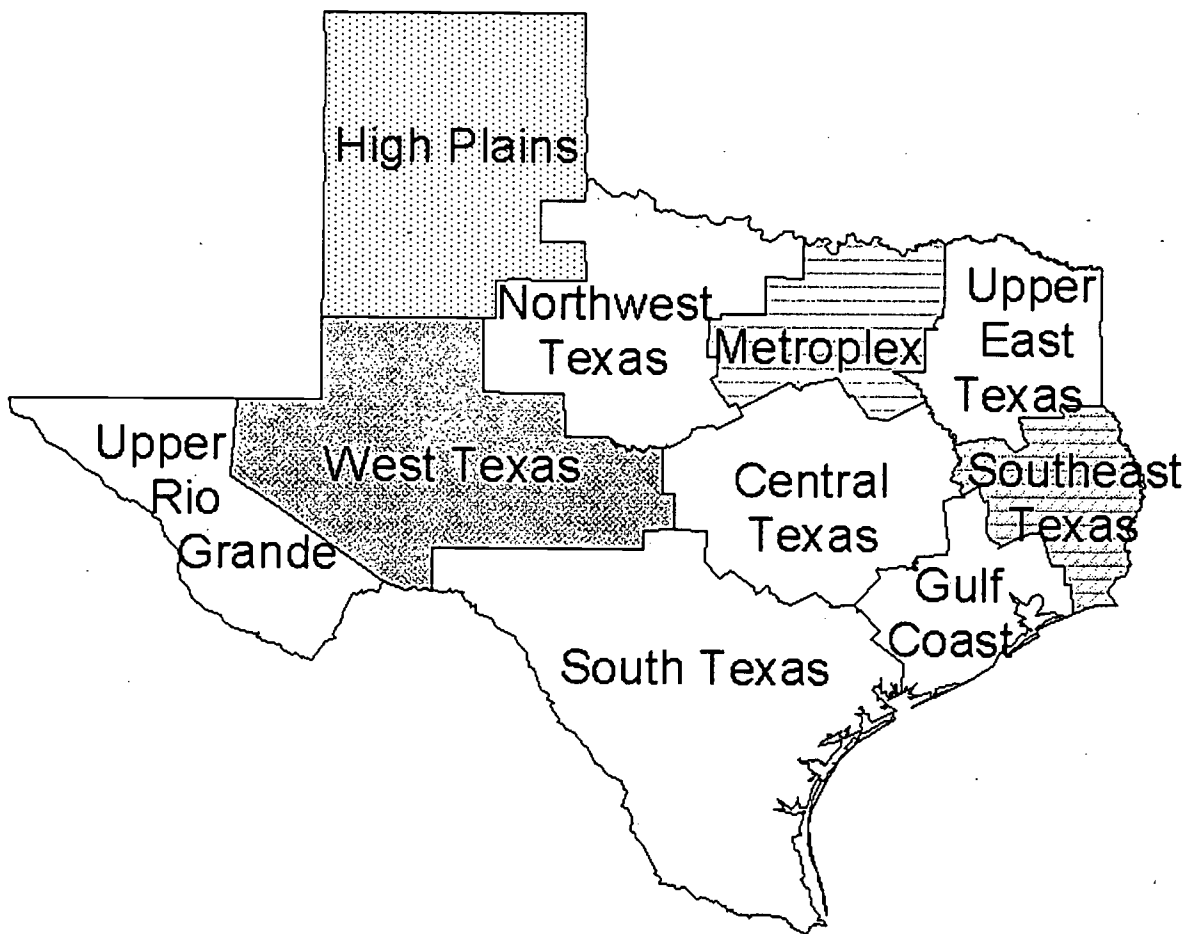


Table 2
Enrollment Projections By Region With San Antonio Separate
Texas Public Institutions of Higher Education

	Actual 1999	2000 ¹	2001	2002	2003	2005	2010	2015
Central Texas Region								
Southwest Texas State University	21,765	22,460	22,719	23,236	23,875	25,135	27,072	28,900
Texas A&M University	43,442	44,081	45,000	45,000	45,000	45,000	45,000	45,000
The University of Texas at Austin	49,009	50,010	50,000	50,000	50,000	50,000	50,000	50,000
	114,216	116,551	117,719	118,236	118,875	120,135	122,072	123,900
Austin Community College	25,914	25,697	26,318	26,876	27,565	28,890	32,540	36,496
Blinn College	11,297	12,038	12,169	12,261	12,331	12,412	12,608	12,788
Central Texas College District	7,356	6,506	6,976	7,094	7,222	7,493	8,201	8,918
Hill College	2,447	2,508	2,499	2,525	2,532	2,556	2,625	2,775
McLennan Community College	5,584	5,726	5,793	5,824	5,832	5,848	5,922	5,945
Temple Junior College	3,254	3,405	3,441	3,507	3,562	3,689	4,041	4,302
Texas State T. C. - Waco	3,814	3,967	4,085	4,133	4,174	4,244	4,333	4,433
	59,666	59,847	61,281	62,219	63,218	65,134	70,271	75,657
Central Texas Regional Totals	173,882	176,398	179,000	180,455	182,093	185,269	192,343	199,557
Gulf Coast Region								
Prairie View A&M University	6,273	6,607	6,854	6,955	7,042	7,197	7,787	8,394
Sam Houston State University	12,214	12,355	12,631	12,826	13,037	13,331	13,880	14,556
Texas A&M University at Galveston	1,288	1,363	1,453	1,468	1,484	1,504	1,547	1,567
Texas Southern University	6,522	6,886	7,144	7,227	7,311	7,478	8,075	8,724
University of Houston	32,651	32,125	33,368	33,896	34,495	35,513	37,881	40,302
University of Houston-Clear Lake	7,114	7,580	7,810	7,899	8,011	8,213	8,677	9,200
University of Houston-Downtown	8,712	8,952	9,154	9,312	9,486	9,833	10,870	12,088
	74,774	75,868	78,415	79,583	80,865	83,070	88,715	94,831

	Actual 1999	2000 ¹	2001	2002	2003	2005	2010	2015
Alvin Community College	3,680	3,530	3,600	3,640	3,683	3,757	3,992	4,202
Brazosport College	3,683	3,851	3,908	3,943	3,975	4,033	4,257	4,419
College Of The Mainland	3,200	3,168	3,269	3,295	3,325	3,375	3,536	3,718
Galveston College	2,217	2,275	2,302	2,327	2,353	2,399	2,543	2,710
Houston Community College	32,134	35,044	37,673	38,297	38,956	40,203	43,655	47,824
Lee College	5,887	6,264	6,380	6,436	6,491	6,608	6,987	7,404
NHMCC Kingwood	3,911	4,406	4,930	5,000	5,068	5,206	5,604	5,997
NHMCC Montgomery	5,170	5,328	5,632	5,831	6,020	6,366	7,390	8,708
NHMCC North Harris	9,380	9,140	9,195	9,335	9,484	9,759	10,618	11,529
NHMCC Tomball	4,664	5,927	6,349	6,418	6,186	6,315	6,667	6,979
San Jacinto College Central Campus	10,351	10,860	11,231	11,369	11,516	11,781	12,564	13,407
San Jacinto College North Campus	4,546	4,946	5,559	5,628	5,702	5,847	6,344	6,852
San Jacinto College South Campus	5,706	6,263	7,481	7,565	7,655	7,813	8,279	8,783
Wharton County Junior College	4,457	4,572	4,675	4,777	4,857	5,009	5,186	5,456
	98,986	105,574	112,184	113,861	115,272	118,471	127,621	137,986
Gulf Coast Regional Totals	173,760	181,442	190,599	193,444	196,137	201,542	216,336	232,817
High Plains Region								
Texas Tech University	24,249	24,558	25,062	25,277	25,547	25,865	26,103	26,254
West Texas A&M University	6,651	6,778	6,753	6,772	6,801	6,813	6,742	6,698
	30,900	31,336	31,815	32,049	32,348	32,678	32,845	32,952
Amarillo College	8,142	8,288	8,291	8,336	8,369	8,456	8,638	8,829
Clarendon College	837	1,000	1,032	1,012	1,017	1,024	1,001	971
Frank Phillips College	1,222	1,156	1,138	1,118	1,094	1,066	1,010	980
South Plains College	7,116	7,490	7,610	7,547	7,520	7,346	7,107	7,115
	17,317	17,934	18,071	18,013	18,000	17,893	17,756	17,896
High Plains Regional Totals	48,217	49,270	49,886	50,062	50,348	50,571	50,602	50,848

	Actual 1999	2000 ¹	2001	2002	2003	2005	2010	2015
Metroplex Region								
Tarleton State University	7,433	7,542	7,641	7,732	7,834	7,983	8,217	8,429
Texas A&M University—Commerce	7,762	7,504	7,570	7,660	7,769	7,968	8,479	8,955
Texas Woman's University	8,624	8,380	8,703	8,860	9,046	9,440	10,555	11,689
The University of Texas at Arlington	19,149	20,424	21,185	21,786	22,156	23,018	24,566	26,174
The University of Texas at Dallas	10,101	10,954	12,171	12,406	12,685	13,262	15,176	16,893
University of North Texas	26,493	27,118	27,918	28,618	29,363	30,500	34,667	37,635
	79,562	81,922	85,188	87,063	88,853	92,171	101,660	109,775
Collin County Community College	11,867	12,996	13,346	13,976	14,628	15,946	19,346	22,831
DCCCD Brookhaven College	7,388	7,733	7,632	7,777	7,940	8,260	9,186	10,048
DCCCD Cedar Valley College	2,645	2,800	2,834	2,874	2,914	2,993	3,240	3,409
DCCCD Eastfield College	7,547	7,642	7,779	7,915	8,056	8,326	9,137	9,859
DCCCD El Centro College	4,301	4,147	4,258	4,323	4,401	4,551	5,050	5,583
DCCCD Mountain View College	4,869	5,016	5,140	5,268	5,406	5,665	6,447	7,223
DCCCD North Lake College	6,624	6,771	6,443	6,543	6,657	6,885	7,582	8,204
DCCCD Richland College	11,776	12,070	11,912	12,074	12,260	12,636	13,804	14,822
Grayson County College	3,320	3,330	3,347	3,342	3,333	3,304	3,358	3,367
Navarro College	3,539	4,040	4,190	4,223	4,244	4,299	4,436	4,536
North Central Texas College	4,282	4,842	4,961	5,118	5,272	5,588	6,296	6,822
Tarrant County Northeast Campus	9,208	9,395	9,447	9,594	9,749	10,051	10,763	11,126
Tarrant County Northwest Campus	4,120	4,263	4,332	4,416	4,503	4,674	5,100	5,399
Tarrant County South Campus	6,982	7,096	7,181	7,302	7,426	7,662	8,259	8,693
Tarrant County Southeast Campus	6,792	7,316	7,772	8,097	8,425	8,970	9,554	9,819
Weatherford College	2,686	2,790	2,844	2,885	2,913	2,958	3,083	3,246
	97,946	102,247	103,419	105,728	108,126	112,766	124,640	134,987
Metroplex Regional Totals	177,508	184,169	188,607	192,791	196,978	204,937	226,300	244,762
Northwest Texas Region								
Midwestern State University	5,688	5,852	5,803	5,806	5,820	5,836	5,820	5,729

	Actual 1999	2000 ¹	2001	2002	2003	2005	2010	2015
Cisco Junior College	2,636	2,659	2,677	2,675	2,672	2,659	2,656	2,627
Ranger Junior College	827	856	849	851	848	844	845	837
Texas State T. C. – Sweetwater	1,224	1,570	1,468	1,463	1,459	1,444	1,425	1,412
Vernon Regional Junior College	2,095	2,096	2,104	2,097	2,087	2,069	2,039	2,001
Western Texas College	1,197	1,233	1,236	1,211	1,197	1,158	1,107	1,072
	7,979	8,414	8,333	8,297	8,262	8,174	8,074	7,949
Northwest Texas Regional Totals	13,667	14,266	14,136	14,103	14,082	14,010	13,894	13,678
San Antonio (Separate from South Texas)								
The University of Texas at San Antonio	18,608	18,830	19,091	19,323	19,553	20,076	21,751	23,428
Alamo Northwest Vista	2,361	4,182	4,392	4,434	4,662	4,886	5,250	5,280
Alamo Palo Alto College	6,466	6,317	6,597	6,680	6,762	6,885	7,417	7,942
Alamo San Antonio College	20,614	20,317	20,507	20,708	20,927	21,317	22,711	24,018
Alamo St. Philip's College	8,072	8,290	8,512	8,614	8,716	8,895	9,555	10,139
	37,513	39,106	40,009	40,436	41,068	41,983	44,932	47,379
San Antonio Totals	56,121	57,936	59,100	59,759	60,621	62,059	66,683	70,807
South Texas Region								
Sul Ross Rio Grande College	871	830	865	879	892	916	964	1,030
Texas A&M International University	3,207	3,060	3,290	3,406	3,522	3,754	4,565	5,818
Texas A&M University-Corpus Christi	6,621	6,919	7,197	7,498	7,799	8,100	8,401	8,702
Texas A&M University-Kingsville	5,832	5,949	6,181	6,252	6,344	6,592	7,458	7,894
The University of Texas at Brownsville	2,822	3,163	3,413	3,487	3,552	3,649	4,060	4,531
The University of Texas- Pan American	12,570	12,751	13,166	13,421	13,645	14,014	15,627	18,648
University of Houston-Victoria	1,526	1,700	1,748	1,778	1,813	1,878	2,014	2,129
	33,449	34,372	35,860	36,720	37,566	38,902	43,089	48,752

	Actual 1999	2000 ¹	2001	2002	2003	2005	2010	2015
Coastal Bend College	2,876	3,014	3,020	3,021	3,000	2,993	3,025	3,072
Del Mar College	9,688	9,941	10,321	10,362	10,406	10,428	10,676	10,902
Laredo Community College	7,443	7,286	7,230	7,450	7,677	8,141	10,268	13,460
South Texas Community College	10,364	11,268	11,979	12,410	12,821	13,384	15,314	18,563
Southwest Texas Junior College	3,427	3,715	3,625	3,630	3,638	3,666	3,948	4,280
Texas Southmost College	7,611	7,321	7,526	7,672	7,758	7,923	8,741	10,151
Texas State T. C. – Harlingen	3,342	3,283	3,398	3,409	3,422	3,439	3,871	4,512
The Victoria College	3,800	4,021	4,119	4,126	4,106	4,098	4,073	4,107
	48,551	49,849	51,219	52,079	52,828	54,073	59,915	69,048
South Texas Regional Totals	82,000	84,221	87,079	88,799	90,394	92,975	103,004	117,800
Southeast Texas Region								
Lamar University	8,149	8,570	8,548	8,516	8,468	8,334	8,055	7,830
Stephen F. Austin State University	11,938	11,484	11,731	11,871	12,011	12,186	12,505	12,727
	20,087	20,054	20,279	20,387	20,479	20,520	20,560	20,557
Upper East Texas Region								
Angelina College	4,138	4,372	4,358	4,373	4,379	4,382	4,469	4,502
Lamar University-Orange	1,764	1,941	2,043	2,035	2,023	1,987	1,940	1,858
Lamar University-Port Arthur	2,381	2,511	2,570	2,560	2,545	2,511	2,457	2,386
Lamar University Inst of Technology	2,300	2,351	2,403	2,395	2,385	2,356	2,293	2,249
	10,583	11,175	11,375	11,363	11,332	11,236	11,158	10,995
Southeast Texas Regional Totals	30,670	31,229	31,654	31,750	31,811	31,756	31,718	31,552
Upper East Texas Region								
Texas A&M University–Texarkana	1,152	1,197	1,197	1,191	1,185	1,174	1,150	1,132
The University of Texas at Tyler	3,390	3,594	3,743	4,025	4,166	4,308	5,013	5,719
	4,542	4,791	4,940	5,216	5,351	5,482	6,163	6,851
Lower East Texas Region								
Kilgore College	3,942	4,016	3,963	3,959	3,950	3,939	3,930	3,852
Northeast Texas Community College	1,956	1,991	1,979	1,972	1,956	1,957	1,942	1,907
Panola Junior College	1,520	1,422	1,466	1,465	1,460	1,455	1,404	1,361

	Actual 1999	2000 ¹	2001	2002	2003	2005	2010	2015
Paris Junior College	2,894	2,967	3,057	3,074	3,077	3,088	3,144	3,098
Texarkana College	3,446	3,734	3,808	3,770	3,730	3,668	3,678	3,584
Texas State T. C. Marshall	424	513	583	641	692	763	876	973
Trinity Valley Community College	4,102	4,592	4,550	4,594	4,627	4,685	4,911	5,161
Tyler Junior College	8,339	8,233	8,151	8,181	8,187	8,168	8,199	8,105
	26,623	27,468	27,557	27,656	27,678	27,722	28,084	28,040
Upper East Regional Totals	31,165	32,259	32,497	32,872	33,029	33,204	34,247	34,891
Upper Rio Grande Region								
Sul Ross State University	2,110	2,033	2,067	2,092	2,118	2,162	2,254	2,379
The University of Texas at El Paso	14,695	15,224	15,418	15,618	15,822	16,068	17,921	20,868
	16,805	17,257	17,485	17,710	17,940	18,230	20,175	23,247
El Paso Community College Dist.	18,655	19,604	19,952	20,239	20,558	21,173	24,124	28,331
Upper Rio Grande Regional Totals	35,460	36,861	37,437	37,949	38,498	39,403	44,299	51,578
West Texas Region								
Angelo State University	6,219	6,310	6,375	6,397	6,415	6,417	6,377	6,420
The University of Texas of the Permian Basin	2,224	2,274	2,287	2,299	2,320	2,348	2,383	2,412
	8,443	8,584	8,662	8,696	8,735	8,765	8,760	8,832
Howard College at Big Spring	1,883	2,269	2,227	2,231	2,226	2,210	2,180	2,166
Midland College	4,726	4,855	4,979	5,070	5,118	5,219	5,330	5,426
Odessa College	4,778	4,622	4,744	4,733	4,693	4,676	4,719	4,797
Southwest Collegiate Institute	117	139	145	146	148	151	155	161
	11,504	11,885	12,094	12,180	12,185	12,256	12,384	12,551
West Texas Regional Totals	19,947	20,469	20,757	20,876	20,920	21,021	21,144	21,383

¹ Preliminary headcount enrollment data.

Table 3
Fall Headcount Enrollment Forecasts – Texas Public Universities

	Actual		Projected Enrollments						
	1999	2000 ¹	2001	2002	2003	2005	2010	2015	
Angelo State University	6,219	6,310	6,375	6,397	6,415	6,417	6,377	6,420	
Lamar University	8,149	8,570	8,548	8,516	8,468	8,334	8,055	7,830	
Midwestern State University	5,688	5,852	5,803	5,806	5,820	5,836	5,820	5,729	
Prairie View A&M University	6,273	6,607	6,854	6,955	7,042	7,197	7,787	8,394	
Sam Houston State University	12,214	12,355	12,631	12,826	13,037	13,331	13,880	14,556	
Southwest Texas State University	21,765	22,460	22,719	23,236	23,875	25,135	27,072	28,900	
Stephen F. Austin State University	11,938	11,484	11,731	11,871	12,011	12,186	12,505	12,727	
Sul Ross Rio Grande College	871	830	865	879	892	916	964	1,030	
Sul Ross State University	2,110	2,033	2,067	2,092	2,118	2,162	2,254	2,379	
Tarleton State University	7,433	7,542	7,641	7,732	7,834	7,983	8,217	8,429	
Texas A&M International University	3,207	3,060	3,290	3,406	3,522	3,754	4,565	5,818	
Texas A&M University at Galveston	1,288	1,363	1,453	1,468	1,484	1,504	1,547	1,567	
Texas A&M University-Commerce	7,762	7,504	7,570	7,660	7,769	7,968	8,479	8,955	
Texas A&M University-Corpus Christi	6,621	6,919	7,197	7,498	7,799	8,100	8,401	8,702	
Texas A&M University-Kingsville	5,832	5,949	6,181	6,252	6,344	6,592	7,458	7,894	
Texas A&M University-Texarkana	1,152	1,197	1,197	1,191	1,185	1,174	1,150	1,132	
Texas A&M University	43,442	44,081	45,000	45,000	45,000	45,000	45,000	45,000	
Texas Southern University	6,522	6,886	7,144	7,227	7,311	7,478	8,075	8,724	
Texas Tech University	24,249	24,558	25,062	25,277	25,547	25,865	26,103	26,254	
Texas Woman's University	8,624	8,380	8,703	8,860	9,046	9,440	10,555	11,689	
The University of Texas at Arlington	19,149	20,424	21,185	21,786	22,156	23,018	24,566	26,174	
The University of Texas at Austin	49,009	50,010	50,000	50,000	50,000	50,000	50,000	50,000	
The University of Texas at Brownsville	2,822	3,163	3,413	3,487	3,552	3,649	4,060	4,531	
The University of Texas at Dallas	10,101	10,954	12,171	12,406	12,685	13,262	15,176	16,893	
The University of Texas at El Paso	14,695	15,224	15,418	15,618	15,822	16,068	17,921	20,868	
The University of Texas at San Antonio	18,608	18,830	19,091	19,323	19,553	20,076	21,751	23,428	

	Actual		Projected Enrollments						
	1999	2000 ¹	2001	2002	2003	2005	2010	2015	
The University of Texas at Tyler	3,390	3,594	3,743	4,025	4,166	4,308	5,013	5,719	
The University of Texas of the Permian Basin	2,224	2,274	2,287	2,299	2,320	2,348	2,383	2,412	
The University of Texas-Pan American	12,570	12,751	13,166	13,421	13,645	14,014	15,627	18,648	
University of Houston	32,651	32,125	33,368	33,896	34,495	35,513	37,881	40,302	
University of Houston-Clear Lake	7,114	7,580	7,810	7,899	8,011	8,213	8,677	9,200	
University of Houston-Downtown	8,712	8,952	9,154	9,312	9,486	9,833	10,870	12,088	
University of Houston-Victoria	1,526	1,700	1,748	1,778	1,813	1,878	2,014	2,129	
University of North Texas	26,493	27,118	27,918	28,618	29,363	30,500	34,667	37,635	
West Texas A&M University	6,651	6,778	6,753	6,772	6,801	6,813	6,742	6,698	
University Statewide Totals	407,074	415,417	425,257	430,789	436,386	445,866	471,610	498,855	

¹ Preliminary Enrollment

Table 4
Forecasted Changes in Fall Headcount Enrollment – Public Universities

	2000 ¹ – 2005		2005-2010		2010-2015	
	Number	Percent	Number	Percent	Number	Percent
Angelo State University	107	1.7%	(40)	-0.6%	43	0.7%
Lamar University	(236)	-2.8%	(278)	-3.3%	(226)	-2.8%
Midwestern State University	(16)	-0.3%	(16)	-0.3%	(91)	-1.6%
Prairie View A&M University	590	8.9%	590	8.2%	607	7.8%
Sam Houston State University	976	7.9%	549	4.1%	677	4.9%
Southwest Texas State University	2,675	11.9%	1,937	7.7%	1,828	6.8%
Stephen F. Austin State University	702	6.1%	318	2.6%	222	1.8%
Sul Ross Rio Grande College	86	10.3%	48	5.3%	66	6.8%
Sul Ross State University	129	6.3%	92	4.2%	125	5.5%
Tarleton State University	441	5.8%	234	2.9%	212	2.6%
Texas A&M University at Galveston	141	10.4%	42	2.8%	20	1.3%
Texas A&M University-Commerce	464	6.2%	511	6.4%	476	5.6%
Texas A&M University-Corpus Christi	1,181	17.1%	301	3.7%	301	3.6%
Texas A&M University-Kingsville	643	10.8%	866	13.1%	436	5.8%
Texas A&M University-Texarkana	(23)	-2.0%	(24)	-2.0%	(18)	-1.5%
Texas A&M International University	694	22.7%	812	21.6%	1,253	27.4%
Texas A&M University	919	2.1%	0	0.0%	0	0.0%
Texas Southern University	592	8.6%	596	8.0%	649	8.0%
Texas Tech University	1,307	5.3%	238	0.9%	151	0.6%
Texas Woman's University	1,060	12.7%	1,114	11.8%	1,134	10.7%
The University of Texas at Arlington	2,594	12.7%	1,548	6.7%	1,607	6.5%
The University of Texas at Austin	(10)	-0.0%	0	0.0%	0	0.0%
The University of Texas at Brownsville	1,263	9.9%	1,613	11.5%	3,021	19.3%
The University of Texas at Dallas	2,308	21.1%	1,914	14.4%	1,717	11.3%
The University of Texas at El Paso	844	5.5%	1,853	11.5%	2,947	16.4%
The University of Texas at San Antonio	1,246	6.6%	1,675	8.3%	1,677	7.7%
The University of Texas at Tyler	714	19.9%	705	16.4%	706	14.1%
The University of Texas of the Permian Basin	74	3.2%	35	1.5%	30	1.2%

	2000 ¹ - 2005		2005-2010		2010-2015	
	Number	Percent	Number	Percent	Number	Percent
The University of Texas-Pan American	1,263	9.9%	1,613	11.5%	3,021	19.3%
University of Houston-Clear Lake	633	8.4%	464	5.6%	523	6.0%
University of Houston-Downtown	881	9.8%	1,037	10.5%	1,218	11.2%
University of Houston-Victoria	178	10.5%	136	7.2%	115	5.7%
University of Houston	3,388	10.5%	2,368	6.7%	2,421	6.4%
University of North Texas	3,382	12.5%	4,167	13.7%	2,968	8.6%
West Texas A&M University	35	0.5%	(71)	-1.0%	(44)	-0.7%
University Statewide Totals	30,449	7.3%	25,745	5.8%	27,244	5.8%

¹ Preliminary headcount enrollment data.

Table 5
Total Enrollment Forecast – Community and Technical Colleges

	Actual		Projected Enrollment					
	1999	2000 ¹	2001	2002	2003	2005	2010	2015
Alamo Northwest Vista	2,361	4,182	4,392	4,434	4,662	4,886	5,250	5,280
Alamo Palo Alto College	6,466	6,317	6,597	6,680	6,762	6,885	7,417	7,942
Alamo San Antonio College	20,614	20,317	20,507	20,708	20,927	21,317	22,711	24,018
Alamo St. Philip's College	8,072	8,290	8,512	8,614	8,716	8,895	9,555	10,139
Alvin Community College	3,680	3,530	3,600	3,640	3,683	3,757	3,992	4,202
Amarillo College	8,142	8,288	8,291	8,336	8,369	8,456	8,638	8,829
Angelina College	4,138	4,372	4,358	4,373	4,379	4,382	4,469	4,502
Austin Community College	25,914	25,697	26,318	26,876	27,565	28,890	32,540	36,496
Blinn College	11,297	12,038	12,169	12,261	12,331	12,412	12,608	12,788
Brazosport College	3,683	3,851	3,908	3,943	3,975	4,033	4,257	4,419
Central Texas College District	7,356	6,506	6,976	7,094	7,222	7,493	8,201	8,918
Cisco Junior College	2,636	2,659	2,677	2,675	2,672	2,659	2,656	2,627
Clarendon College	837	1,000	1,032	1,012	1,017	1,024	1,001	971
Coastal Bend College	2,876	3,014	3,020	3,021	3,000	2,993	3,025	3,072
College of the Mainland	3,200	3,168	3,269	3,295	3,325	3,375	3,536	3,718
Collin County Community College	11,867	12,996	13,346	13,976	14,628	15,946	19,346	22,831
DCCCD Brookhaven College	7,388	7,733	7,632	7,777	7,940	8,260	9,186	10,048
DCCCD Cedar Valley College	2,645	2,800	2,834	2,874	2,914	2,993	3,240	3,409
DCCCD Eastfield College	7,547	7,642	7,779	7,915	8,056	8,326	9,137	9,859
DCCCD El Centro College	4,301	4,147	4,258	4,323	4,401	4,551	5,050	5,583
DCCCD Mountain View College	4,869	5,016	5,140	5,268	5,406	5,665	6,447	7,223
DCCCD North Lake College	6,624	6,771	6,443	6,543	6,657	6,885	7,582	8,204
DCCCD Richland College	11,776	12,070	11,912	12,074	12,260	12,636	13,804	14,822
Del Mar College	9,688	9,941	10,321	10,362	10,406	10,428	10,676	10,902
El Paso Community College District	18,655	19,604	19,952	20,239	20,558	21,173	24,124	28,331
Frank Phillips College	1,222	1,156	1,138	1,118	1,094	1,066	1,010	980
Galveston College	2,217	2,275	2,302	2,327	2,353	2,399	2,543	2,710

	Actual		Projected Enrollment							
	1999	2000 ¹	2001	2002	2003	2005	2010	2015		
Grayson County College	3,320	3,330	3,347	3,342	3,333	3,304	3,358	3,367		
Hill College	2,447	2,508	2,499	2,525	2,532	2,556	2,625	2,775		
Houston Community College	32,134	35,044	37,673	38,297	38,956	40,203	43,655	47,824		
Howard College at Big Spring	1,883	2,269	2,227	2,231	2,226	2,210	2,180	2,166		
Kilgore College	3,942	4,016	3,963	3,959	3,950	3,939	3,930	3,852		
Lamar-Orange	1,764	1,941	2,043	2,035	2,023	1,987	1,940	1,858		
Lamar-Port Arthur	2,381	2,511	2,570	2,560	2,545	2,511	2,457	2,386		
Lamar Technical Institute	2,300	2,351	2,403	2,395	2,385	2,356	2,293	2,249		
Laredo Community College	7,443	7,286	7,230	7,450	7,677	8,141	10,268	13,460		
Lee College	5,887	6,264	6,380	6,436	6,491	6,608	6,987	7,404		
McLennan Community College	5,584	5,726	5,793	5,824	5,832	5,848	5,922	5,945		
Midland College	4,726	4,855	4,979	5,070	5,118	5,219	5,330	5,426		
Navarro College	3,539	4,040	4,190	4,223	4,244	4,299	4,436	4,536		
NHMCC Kingwood	3,911	4,406	4,930	5,000	5,068	5,206	5,604	5,997		
NHMCC Montgomery	5,170	5,328	5,632	5,831	6,020	6,366	7,390	8,708		
NHMCC North Harris	9,380	9,140	9,195	9,335	9,484	9,759	10,618	11,529		
NHMCC Tomball ²	4,664	5,927	6,349	6,418	6,186	6,315	6,667	6,979		
North Central Texas College	4,282	4,842	4,961	5,118	5,272	5,588	6,296	6,822		
Northeast Texas Community College	1,956	1,991	1,979	1,972	1,956	1,957	1,942	1,907		
Odessa College	4,778	4,622	4,744	4,733	4,693	4,676	4,719	4,797		
Panola Junior College	1,520	1,422	1,466	1,465	1,460	1,455	1,404	1,361		
Paris Junior College	2,892	2,967	3,057	3,074	3,077	3,088	3,144	3,098		
Ranger Junior College	827	856	849	851	848	844	845	837		
San Jacinto College Central Campus	10,351	10,860	11,231	11,369	11,516	11,781	12,564	13,407		
San Jacinto College North Campus	4,546	4,946	5,559	5,628	5,702	5,847	6,344	6,852		
San Jacinto College South Campus	5,706	6,263	7,481	7,565	7,655	7,813	8,279	8,783		
South Plains College	7,116	7,490	7,610	7,547	7,520	7,346	7,107	7,115		
South Texas Community College	10,364	11,268	11,979	12,410	12,821	13,384	15,314	18,563		
Southwest Collegiate Institute	117	139	145	146	148	151	155	161		



	Actual	Projected Enrollment							
	1999	2000 ¹	2001	2002	2003	2005	2010	2015	
Southwest Texas Junior College	3,427	3,715	3,625	3,630	3,638	3,666	3,948	4,280	
Tarrant County Northeast Campus	9,208	9,395	9,447	9,594	9,749	10,051	10,763	11,126	
Tarrant County Northwest Campus	4,120	4,263	4,332	4,416	4,503	4,674	5,100	5,399	
Tarrant County South Campus	6,982	7,096	7,181	7,302	7,426	7,662	8,259	8,693	
Tarrant County Southeast Campus	6,792	7,316	7,772	8,097	8,425	8,970	9,554	9,819	
Temple Junior College	3,254	3,405	3,441	3,507	3,562	3,689	4,041	4,302	
Texarkana College	3,446	3,734	3,808	3,770	3,730	3,668	3,678	3,584	
Texas Southmost College	7,611	7,321	7,526	7,672	7,758	7,923	8,741	10,151	
Trinity Valley Community College	4,102	4,592	4,550	4,594	4,627	4,685	4,911	5,161	
Tyler Junior College	8,339	8,233	8,151	8,181	8,187	8,168	8,199	8,105	
Vernon Regional Junior College	2,095	2,096	2,104	2,097	2,087	2,069	2,039	2,001	
Victoria College	3,800	4,021	4,119	4,126	4,106	4,098	4,073	4,107	
Weatherford College	2,686	2,790	2,844	2,885	2,913	2,958	3,083	3,246	
Western Texas College	1,197	1,233	1,236	1,211	1,197	1,158	1,107	1,072	
Wharton County Junior College	4,457	4,572	4,675	4,777	4,857	5,009	5,186	5,456	
Community College Statewide Total	426,519	443,770	455,961	462,422	468,779	480,990	518,452	559,489	
Texas State Technical College-Harlingen	3,342	3,283	3,398	3,409	3,422	3,439	3,871	4,512	
Texas State Technical College-Marshall	424	513	583	641	692	763	876	973	
Texas State Technical College-Sweetwater	1,224	1,570	1,468	1,463	1,459	1,444	1,425	1,412	
Texas State Technical College-Waco	3,814	3,967	4,085	4,133	4,174	4,244	4,333	4,433	
Texas State Technical College Total	8,804	9,333	9,533	9,645	9,748	9,889	10,505	11,330	

¹Preliminary Enrollment

²NHMCC District is scheduled to open a campus in the Cypress Fairbanks area in 2003. It will likely have the largest affect on the NHMCC Tomball campus.

Table 6
Forecasted Changes in Fall Headcount Enrollment – Public Community and Technical Colleges

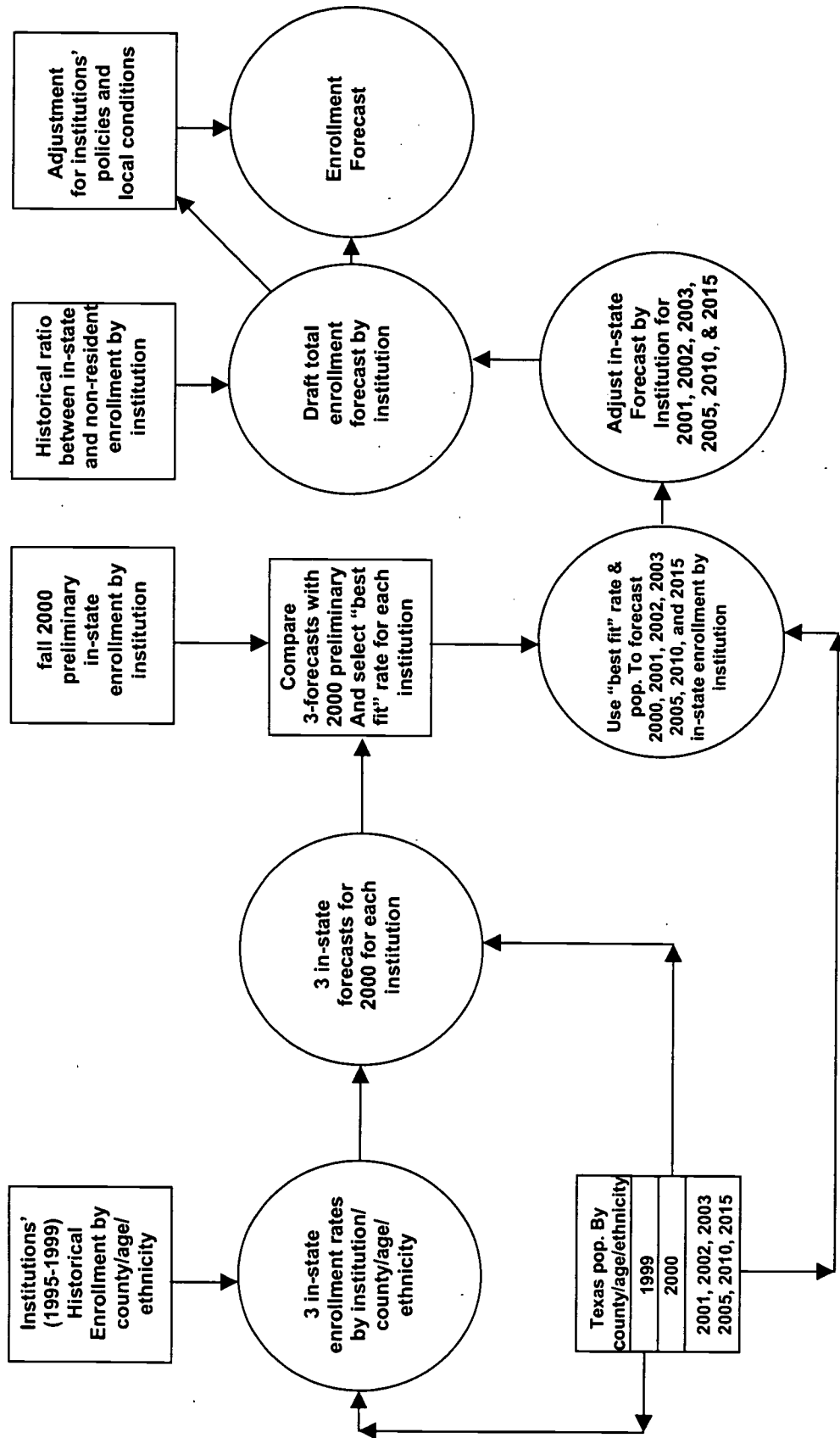
	2000 ¹ -2005		2005-2010		2010-2015	
	Number	Percent	Number	Percent	Number	Percent
Alamo CCD - Northwest Vista	704	16.8%	364	7.4%	31	0.6%
Alamo CCD - Palo Alto College	568	9.0%	532	7.7%	526	7.1%
Alamo CCD - San Antonio College	1,000	4.9%	1,394	6.5%	1,306	5.8%
Alamo CCD - St. Philip's College	605	7.3%	660	7.4%	584	6.1%
Alvin Community College	227	6.4%	235	6.3%	210	5.3%
Amarillo College	168	2.0%	182	2.2%	191	2.2%
Angelina College	10	0.2%	87	2.0%	33	0.7%
Austin Community College	3,193	12.4%	3,650	12.6%	3,955	12.2%
Blinn College	374	3.1%	195	1.6%	181	1.4%
Brazosport College	182	4.7%	224	5.6%	162	3.8%
Central Texas College District	987	15.2%	708	9.4%	716	8.7%
Cisco Junior College	0	0.0%	(3)	-0.1%	(30)	-1.1%
Clarendon College	24	2.4%	(22)	-2.2%	(30)	-3.0%
Coastal Bend College	(21)	-0.7%	32	1.1%	47	1.6%
College of the Mainland	207	6.5%	161	4.8%	182	5.1%
Collin County Community College	2,950	22.7%	3,400	21.3%	3,485	18.0%
DCCCD Brookhaven College	527	6.8%	926	11.2%	863	9.4%
DCCCD Cedar Valley College	193	6.9%	248	8.3%	168	5.2%
DCCCD Eastfield College	684	8.9%	811	9.7%	722	7.9%
DCCCD El Centro College	404	9.7%	499	11.0%	533	10.6%
DCCCD Mountain View College	649	12.9%	782	13.8%	777	12.0%
DCCCD North Lake College	114	1.7%	696	10.1%	622	8.2%
DCCCD Richland College	566	4.7%	1,167	9.2%	1,019	7.4%
Del Mar College	487	4.9%	248	2.4%	226	2.1%
El Paso Community College District	1,569	8.0%	2,952	13.9%	4,207	17.4%
Frank Phillips College	(90)	-7.7%	(57)	-5.3%	(30)	-3.0%
Galveston College	124	5.4%	144	6.0%	167	6.6%

	2000 ¹ -2005		2005-2010		2010-2015	
	Number	Percent	Number	Percent	Number	Percent
Grayson County College	(26)	-0.8%	54	1.6%	9	0.3%
Hill College	48	1.9%	69	2.7%	150	5.7%
Houston Community College	5,159	14.7%	3,452	8.6%	4,169	9.5%
Howard College at Big Spring	(59)	-2.6%	(30)	-1.4%	(13)	-0.6%
Kilgore College	(77)	-1.9%	(8)	-0.2%	(79)	-2.0%
Lamar-Orange	46	2.4%	(48)	-2.4%	(82)	-4.2%
Lamar-Port Arthur	0	0.0%	(54)	-2.2%	(71)	-2.9%
Lamar Technical Institute	5	0.2%	(63)	-2.7%	(43)	-1.9%
Laredo Community College	855	11.7%	2,127	26.1%	3,192	31.1%
Lee College	344	5.5%	379	5.7%	417	6.0%
McLennan Community College	122	2.1%	74	1.3%	23	0.4%
Midland College	364	7.5%	111	2.1%	97	1.8%
Navarro College	259	6.4%	138	3.2%	100	2.3%
NHMCC Kingwood	800	18.2%	398	7.7%	393	7.0%
NHMCC Montgomery	1,038	19.5%	1,024	16.1%	1,318	17.8%
NHMCC North Harris	619	6.8%	859	8.8%	911	8.6%
NHMCC Tomball	388	6.5%	353	5.6%	311	4.7%
North Central Texas College	746	15.4%	709	12.7%	525	8.3%
Northeast Texas Community College	(34)	-1.7%	(14)	-0.7%	(36)	-1.8%
Odessa College	54	1.2%	43	0.9%	79	1.7%
Panola Junior College	33	2.3%	(51)	-3.5%	(43)	-3.1%
Paris Junior College	121	4.1%	55	1.8%	(46)	-1.5%
Ranger Junior College	(12)	-1.4%	1	0.1%	(8)	-1.0%
San Jacinto College Central Campus	921	8.5%	782	6.6%	843	6.7%
San Jacinto College North Campus	901	18.2%	498	8.5%	508	8.0%
San Jacinto College South Campus	1,550	24.8%	465	6.0%	504	6.1%
South Plains College	(144)	-1.9%	(240)	-3.3%	9	0.1%
South Texas Community College	2,116	18.8%	1,930	14.4%	3,249	21.2%
Southwest Collegiate Institute	12	8.6%	4	2.5%	6	4.1%

	2000 ¹ -2005		2005-2010		2010-2015	
	Number	Percent	Number	Percent	Number	Percent
Southwest Texas Junior College	(49)	-1.3%	281	7.7%	332	8.4%
Tarrant County Northeast Campus	656	7.0%	712	7.1%	363	3.4%
Tarrant County Northwest Campus	411	9.6%	427	9.1%	299	5.9%
Tarrant County South Campus	566	8.0%	598	7.8%	433	5.2%
Tarrant County Southeast Campus	1,654	22.6%	584	6.5%	266	2.8%
Temple Junior College	284	8.4%	352	9.5%	261	6.5%
Texarkana College	(66)	-1.8%	10	0.3%	(94)	-2.6%
Texas Southmost College	602	8.2%	818	10.3%	1,410	16.1%
Trinity Valley Community College	93	2.0%	226	4.8%	251	5.1%
Tyler Junior College	(65)	-0.8%	31	0.4%	(94)	-1.1%
Vernon Regional Junior College	(27)	-1.3%	(30)	-1.4%	(38)	-1.9%
Victoria College	77	1.9%	(26)	-0.6%	34	0.8%
Weatherford College	168	6.0%	125	4.2%	164	5.3%
Western Texas College	(75)	-6.1%	(50)	-4.4%	(35)	-3.2%
Wharton County Junior College	437	9.6%	176	3.5%	270	5.2%
Statewide Community College Totals	37,220	8.4%	37,462	7.8%	41,036	7.9%
Texas State Technical College-Harlingen	156	4.7%	432	12.6%	641	16.6%
Texas State Technical College-Marshall	250	48.7%	113	14.8%	97	11.1%
Texas State Technical College-Sweetwater	(126)	-8.1%	(18)	-1.3%	(13)	-0.9%
Texas State Technical College-Waco	277	7.0%	89	2.1%	100	2.3%
TSTC Statewide Totals	556	6.0%	616	6.2%	825	7.9%

¹ Preliminary headcount enrollment data

Figure 2
Enrollment Forecast Development Process
Texas Higher Education Coordinating Board



Texas Public College and University Forecasts

Concept

Enrollment forecasts were made for each of the public colleges and universities. Aggregate enrollment forecasts for the 35 public universities, the 50 public community college districts, and the four public technical colleges were determined by summing institutional fall headcount enrollments. The forecast methodology employed five years of age- and racial/ethnic-specific historical enrollments by Texas counties. These enrollment data were combined with age- and racial/ethnic- specific demographic data. The forecast model used multiple regression analysis techniques modified by expected enrollment policies and other conditions affecting enrollments at individual institutions. A general description follows:

- In-state enrollment, which reflects in-state students, is based on population estimates. Five-year (1995-1999) historical enrollments by county, age groups, and racial/ethnic groups (Hispanic, Black and White/Other) for each institution were combined with compatible population data to develop three alternative, age-specific enrollment rates for each of the three racial/ethnic groups in each of the 254 counties for 2000. These rates, combined with 2000 population estimates, were used to compute three alternative in-state enrollments for each institution for 2000.
- The population projections for each year were modified to reflect recent changes in the population growth rates between counties.
- The three alternative forecasts were compared with the institutions' preliminary in-state enrollment for fall 2000 and with past enrollment trends. Also taken into consideration was the accuracy of the past forecasts. A "best fit" enrollment was selected for each institution and adjusted as necessary by applying a multiplier.
- Enrollment rates and multipliers which produced the "best fit" were applied to projected population by county/age/ethnic data for the years 2001, 2002, 2003, 2005, 2010, and 2015 to obtain a forecast of in-state enrollment for each institution. The resulting forecast was based on a fixed rate for the entire forecast period. However, enrollment rates for some racial/ethnic groups over the past five years are increasing at a greater rate than the population growth, thereby increasing the college-going rate for these groups. Forecasts were adjusted, where appropriate, in anticipation of a continued improvement in enrollment rates.

- Nonresident enrollment, which includes both out-of-state and foreign students, was determined by examining the five-year historical record (1995-1999) and computing a ratio of nonresident to in-state students for each institution. These historical data were compared with the preliminary fall 2000 enrollment of nonresident students for each institution. The "best fit" ratio was selected for each institution and used to compute nonresident enrollment.
- The adjusted in-state enrollment and the computed nonresident enrollment for each institution were combined to obtain a draft total enrollment forecast for the years 2001, 2002, 2003, 2005, 2010, and 2015.
- An additional adjustment was made to the draft total enrollment based on known enrollment management policies at some institutions. Also, the draft forecast was sent to each institution for review and response. Based on conditions unique to specific institutions and which could not be accounted for in the methodology, some adjustments were made.

Historical Enrollment

Tables 7A, B; 8A, B; and 9A, B provide a sample of enrollment data. Data in these tables are for all public universities, public community colleges, and public technical colleges statewide by age and racial/ethnic group. This same enrollment information is available for each of the 35 public universities, the 50 public community college districts, and four public technical colleges at the county level. Between 1995 and 1999, enrollments increased at public universities by 6,441 students (1.6 percent). At public community and technical colleges, enrollments increases totaled 26,716 students, or 6.5 percent.

At both types of institutions, increases have been greater for Hispanics and Blacks than for White/Other students. Nevertheless, in 1999, White/Other students made up 71 percent of enrollment at public universities and 61 percent at public community and technical colleges. Approximately 89 percent of all public university students and 84 percent of community and technical college students were under 35 years of age. Texas residents comprised 90 percent of all students at public universities and 94 percent at public community and technical colleges.

Table 7A
Fall In-State Enrollment by Age and Race/Ethnicity – Public Universities

Year	Age 15-19	Age 20-24	Age 25-29	Age 30-34	Age 35-39	Age 40-up	All Ages
1995							
White/Other	51,886	109,081	36,069	19,012	14,560	24,636	255,244
Hispanic	15,940	30,999	10,942	5,126	3,318	4,059	70,384
Black	7,891	13,561	4,390	2,633	2,266	2,790	33,531
Total	75,717	153,641	51,401	26,771	20,144	31,485	359,159
1996							
White/Other	53,484	106,848	36,286	17,532	13,369	24,010	251,529
Hispanic	15,973	30,982	11,757	5,118	3,281	4,381	71,492
Black	8,120	12,713	4,702	2,601	2,236	3,122	33,494
Total	77,577	150,543	52,745	25,251	18,886	31,513	356,515
1997							
White/Other	55,217	106,879	35,727	16,539	12,541	23,045	249,948
Hispanic	15,872	31,472	12,199	5,172	3,346	4,357	72,418
Black	8,584	12,365	4,668	2,485	2,062	2,995	33,159
Total	79,673	150,716	52,594	24,196	17,949	30,397	355,525
1998							
White/Other	57,785	108,462	33,897	15,681	11,818	22,086	249,729
Hispanic	16,897	31,456	12,397	5,293	3,352	4,717	74,112
Black	9,016	12,704	4,567	2,452	1,930	3,019	33,688
Total	83,698	152,622	50,861	23,426	17,100	29,822	357,529
1999							
White/Other	60,631	111,421	32,484	15,342	11,153	21,657	252,688
Hispanic	17,906	32,043	12,746	5,528	3,487	4,755	76,465
Black	9,646	13,807	4,854	2,576	1,977	3,296	36,156
Total	88,183	157,271	50,084	23,446	16,617	29,708	365,309

Table 7B
In-State and Nonresident Enrollment for Public Universities

Year	In-State Enrollment	Nonresident Enrollment	Total Enrollment
1995	359,159	41,474	400,633
1996	356,515	40,778	397,293
1997	355,525	40,740	396,265
1998	357,529	40,729	398,258
1999	365,309	41,765	407,074

Table 8A
Fall In-State Enrollment by Age and Race/Ethnicity – Public Community Colleges

	Ages 15-19	Ages 20-24	Ages 25-29	Ages 30-34	Ages 35-39	Ages 40-Up	All Ages
1995							
White/Other	64,122	69,763	32,305	24,600	20,737	32,279	243,806
Hispanic	24,309	36,198	14,121	8,754	6,344	7,781	97,507
Black	8,024	10,814	6,059	5,238	4,082	4,832	39,049
Total	96,455	116,775	52,485	38,592	31,163	44,892	380,362
1996							
White/Other	68,475	68,341	32,447	22,217	19,188	32,005	242,673
Hispanic	26,481	38,114	15,226	9,084	6,453	8,203	103,601
Black	8,525	10,725	6,370	5,070	4,006	4,997	39,693
Total	103,481	117,180	54,083	36,371	29,647	45,205	385,967
1997							
White/Other	73,993	68,256	31,483	20,333	17,754	30,941	242,760
Hispanic	28,470	39,284	16,041	8,997	6,461	8,629	107,882
Black	9,153	10,794	6,522	4,993	4,084	5,276	40,822
Total	111,616	118,334	54,046	34,323	28,299	44,846	391,464
1998							
White/Other	75,063	67,838	29,940	18,826	16,727	30,914	239,308
Hispanic	29,827	39,550	16,319	9,086	6,408	8,822	110,012
Black	9,626	11,009	6,616	4,998	4,022	5,719	41,990
Total	114,516	118,397	52,875	32,910	27,157	45,455	391,310
1999							
White/Other	82,047	69,083	28,276	17,600	15,464	29,910	242,380
Hispanic	33,342	40,372	16,833	9,249	6,482	9,159	115,437
Black	10,673	11,686	6,884	5,049	4,213	6,093	44,598
Total	126,062	121,141	51,993	31,898	26,159	45,162	402,415

Table 8B
In-State and Nonresident Enrollment for Public Community Colleges

Year	In-State Enrollment	Nonresident Enrollment	Total Enrollment
1995	380,362	20,687	401,049
1996	385,967	21,589	407,556
1997	391,464	22,167	413,631
1998	391,310	21,374	412,684
1999	402,415	24,104	426,519

Table 9A
Fall In-State Enrollment by Age and Ethnicity - Public Technical Colleges

	Age 15-19	Age 20-24	Age 25-29	Age 30-34	Age 35-39	Age 40-Up	All Ages
1995							
White/Other	982	1,218	514	331	291	455	3,791
Hispanic	991	1,326	391	186	112	148	3,154
Black	137	136	61	53	31	65	480
Total	2,110	2,680	966	570	434	665	7,425
1996							
White/Other	1,166	1,299	529	330	271	466	4,061
Hispanic	987	1,345	424	213	126	161	3,256
Black	169	178	59	51	50	56	563
Total	2,322	2,822	1,012	594	447	683	7,880
1997							
White/Other	1,325	1,426	575	351	259	430	4,366
Hispanic	981	1,388	446	238	126	164	3,343
Black	195	201	75	56	48	44	619
Total	2,501	3,015	1,096	645	433	638	8,328
1998							
White/Other	1,416	1,386	559	355	272	426	4,414
Hispanic	1,213	1,334	481	223	143	149	3,543
Black	197	186	87	62	42	67	641
Total	2,826	2,906	1,127	640	457	642	8,598
1999							
White/Other	1,417	1,466	556	323	243	476	4,481
Hispanic	1,293	1,244	471	227	137	203	3,575
Black	191	186	84	59	49	66	635
Total	2,901	2,896	1,111	609	429	745	8,691

Table 9B
In-State and Nonresident Enrollment for Public Technical Colleges

Year	In-State Enrollment	Nonresident Enrollment	Total Enrollment
1995	7,425	132	7,557
1996	7,880	128	8,008
1997	8,328	140	8,468
1998	8,598	126	8,724
1999	8,691	113	8,804

Texas Population Projections

This revised enrollment forecast used the Texas State Data Center population projections, completed in spring 2000, which used a cohort-component technique. Projections from a base population – from the 1990 federal census – were made individually for persons with a common characteristic (in this case age, gender, and race/ethnicity) for fertility, mortality, and migration.

Age, gender and race/ethnicity-specific fertility rates were computed using recorded births and place of residence of the mother. This information was obtained from the Texas Department of Health. Data on women by age (10-49) and race/ethnicity were obtained from the 1990 federal census of the population.

Life survival rates for Whites, Hispanics, Blacks and Others were computed using Texas Department of Health mortality data. Migration rates were derived using net migration estimates by age, gender and race/ethnicity in Texas for 1980-1990. Using this as a base, migration rates were computed for White/Other, Hispanic and Black populations for the 1980-1990 period. To deal with the migration component, which is the most difficult to project, alternative scenarios of growth were developed. All scenarios used the same set of mortality and fertility rates but differed in the assumptions relative to net migration. Population projections used in this revised enrollment forecast assumed that migration rates will be 100 percent of the average 1980-1990 rates. For counties where the projected 1998 population was above or below the 1998 estimated population by 10 percent or 1,000 people, the more recent 1990-98 migration rate was used.

Statewide population projections show several significant features of the future Texas population (See Table 10):

- Between 2000 and 2015, the total population will grow at an average annual rate of about 2 percent.
- Hispanics will continue to be the fastest growing racial/ethnic group. In 2000, Hispanics comprised about 31 percent of the population; by 2015, this share will reach 39 percent. The Black share will drop from 11.4 percent to 10.6 percent while the White share will decline from 54.6 percent in 2000 to approximately 45.3 percent in 2015.
- The 40-year-old-and-above age group will grow at a faster rate than the younger age groups.

- The 15-to-34-year-old population, which made up about 30 percent of the total in 2000, will drop to 29 percent in 2015. Overall, the 15-to-34 age group will increase at about 1.3 percent per year until 2005 and is then expected to increase slightly faster to 1.7 percent per year between 2005 and 2015.

Although Table 10 indicates the populations at the statewide level only, similar data are available for each of the 254 Texas counties.

Table 10
Texas Statewide Population by Race/Ethnicity

Year	Age	Age	Age	Age	Age	Age	Age	All
Ethnicity	0-14	15-19	20-24	25-29	30-34	35-39	40-Up	Ages
2001								
White	2,099,187	738,892	717,750	708,849	798,806	884,285	5,215,864	11,163,633
Hispanic	1,928,151	570,344	564,552	562,848	551,009	528,020	1,820,641	6,525,565
Black	624,429	194,817	191,046	177,338	177,182	187,693	794,812	2,347,317
Other	123,224	47,606	49,080	50,053	54,921	59,871	277,177	661,932
Total	4,774,991	1,551,659	1,522,428	1,499,088	1,581,918	1,659,869	8,108,494	20,698,447
2002								
White	2,085,078	743,231	730,515	696,885	804,096	855,481	5,309,713	11,224,999
Hispanic	1,986,984	578,461	584,879	573,724	569,242	544,465	1,916,073	6,753,828
Black	629,718	197,039	194,939	175,163	179,974	185,513	817,302	2,379,648
Other	127,478	47,871	52,012	51,486	57,412	61,405	300,598	698,262
Total	4,829,258	1,566,602	1,562,345	1,497,258	1,610,724	1,646,864	8,343,686	21,056,737
2003								
White	2,070,269	739,623	748,084	697,872	802,428	819,712	5,406,842	11,284,830
Hispanic	2,047,711	584,011	607,693	583,891	590,501	555,252	2,018,296	6,987,355
Black	634,172	198,506	199,147	175,365	182,797	180,837	841,045	2,411,869
Other	132,001	47,926	55,105	53,281	59,700	62,797	325,521	736,331
Total	4,884,153	1,570,066	1,610,029	1,510,409	1,635,426	1,618,598	8,591,704	21,420,385
2005								
White	2,035,739	739,085	763,411	726,690	765,240	789,033	5,580,936	11,400,134
Hispanic	2,171,469	602,318	639,087	617,523	624,214	580,196	2,234,544	7,469,351
Black	640,988	204,515	200,909	184,838	181,659	175,899	887,025	2,475,833
Other	141,979	48,155	60,021	58,627	62,848	66,696	379,712	818,038
Total	4,990,175	1,594,073	1,663,428	1,587,678	1,633,961	1,611,824	9,082,217	22,163,356
2010								
White	1,938,399	743,979	763,284	800,618	750,842	769,515	5,903,714	11,670,351
Hispanic	2,392,250	771,217	681,864	731,717	694,760	680,686	2,812,889	8,765,383
Black	642,873	228,995	209,989	202,258	184,467	183,431	982,717	2,634,730
Other	165,578	60,010	62,111	76,435	74,427	80,161	539,676	1,058,398
Total	5,139,100	1,804,201	1,717,248	1,811,028	1,704,496	1,713,793	10,238,996	24,128,862
2015								
White	1,901,156	691,010	768,648	800,938	827,887	754,884	6,181,529	11,926,052
Hispanic	2,630,898	871,349	869,131	781,117	824,497	757,244	3,491,270	10,225,506
Black	655,597	226,675	235,127	211,392	201,946	186,099	1,077,242	2,794,078
Other	193,835	69,996	76,280	79,809	97,311	94,368	746,062	1,357,661
Total	5,381,486	1,859,030	1,949,186	1,873,256	1,951,641	1,792,595	11,496,103	26,303,297

Enrollment Rate Alternatives

The five-year (1995-99) in-state enrollment data base and the population data base were used to obtain enrollment rates for each of the three racial/ethnic groups (White/Other, Hispanic and Black) by county and age groups for each institution. Three alternative rates were calculated as follows:

1999 Racial/Ethnic Rate: The total number of students in a specific age/racial/ethnic group from each county attending each institution in 1999 divided by the total number of people of the specific age/racial/ethnic group living in the county.

Trend Racial/Ethnic Rates: Using five years of observed enrollment data, two straight-line arithmetic trend enrollments were developed by age/racial/ethnic groups and county for each institution. These were: (1) the 1995-99 five-year trend and (2) the five-year trend extended to 2001. The equation $Y_c = a + bx$ was used, where:

a is the mean enrollment over the five-year period;

b is the deviation from the center year multiplied by the observed enrollment, summed and divided by the sum of the squares of the deviations; and

$x = +2$ for the five-year trend, $+3$ for the five-year trend extended to 1999.

The predicted trend enrollment (Y_c) for each age/racial/ethnic group was divided by the total number of people of the specific age/racial/ethnic group living in the county for the corresponding year.

Each of these three alternative enrollment rates contained attendance rates for each of the 254 counties at each institution by six age groups (15-19, 20-24, 25-29, 30-34, 35-39, and 40 and above) for three racial/ethnic groups (White/Other, Hispanic and Black).

In-State Enrollment Forecast Alternatives for 2000

Previous computed enrollment rates for each county were multiplied by the corresponding age/racial/ethnic/county population estimates for 2000. This produced three alternative forecasts of students by age/racial/ethnic from each county expected to attend each institution in 2000. Age groups were then summed to obtain statewide forecasts of White/Other, Hispanic, and Black students at each institution in 2000. Total in-state enrollment for each of the three alternatives was obtained by summing the racial/ethnic enrollment. The three alternative in-state enrollments for each institution are shown in Tables 11 and 12.

Table 11
In-State Enrollment Alternative Forecasts - Public Universities

	1999 Rate	2000 (Trend) Rate	2001 (Trend) Rate
Angelo State University	6,052	6,132	6,238
Lamar University	7,709	7,777	7,756
Midwestern State University	5,031	5,053	5,061
Prairie View A&M University	5,820	5,658	5,769
Sam Houston State University	12,202	12,114	11,900
Southwest Texas State University	21,549	21,033	20,971
Stephen F. Austin State University	11,859	11,875	11,892
Sul Ross State University	2,093	2,241	2,233
Sul Ross Rio Grande College	876	893	909
Tarleton State University	7,121	6,714	6,789
Texas A&M University at Galveston	1,018	1,006	1,052
Texas A&M University-Commerce	7,434	7,376	7,366
Texas A&M University-Corpus Christi	6,483	6,464	6,671
Texas A&M University-Kingsville	5,464	5,558	5,512
Texas A&M University-Texarkana	805	813	815
Texas A&M International University	3,125	3,039	3,103
Texas A&M University	38,005	36,119	36,610
Texas Southern University	5,600	5,185	4,489
Texas Tech University	21,813	21,640	21,460
Texas Woman's University	7,985	8,080	7,781
The University of Texas at Arlington	17,455	16,722	15,842
The University of Texas at Austin	40,592	40,088	39,893
The University of Texas at Brownsville	2,822	2,738	2,743
The University of Texas at Dallas	7,647	7,410	7,272
The University of Texas at El Paso	12,674	12,391	11,858
The University of Texas of the Permian Basin	2,190	2,209	2,222
The University of Texas at San Antonio	17,988	17,873	18,136
The University of Texas at Tyler	3,294	3,258	3,200
The University of Texas-Pan American	12,515	12,034	11,626
University of Houston	29,638	29,290	29,423
University of Houston-Clear Lake	6,229	6,064	5,923
University of Houston-Downtown	8,492	8,282	8,633
University of Houston-Victoria	1,519	1,525	1,491
University of North Texas	23,876	23,140	23,034
West Texas A&M University	6,058	5,973	5,958

Table 12
In-State Enrollment Alternative Forecasts
Public Community and Technical Colleges

	1999 Rate	2000 (Trend) Rate	2001 (Trend) Rate
Alamo CCD Northwest Vista	2,315	1,877	2,292
Alamo CCD Palo Alto College	6,323	6,281	5,977
Alamo CCD San Antonio College	19,920	19,606	19,193
Alamo CCD St. Philip's College	7,690	7,932	8,121
Alvin Community College	3,708	3,581	3,500
Amarillo College	8,184	8,119	8,500
Angelina College	4,090	4,092	4,231
Austin Community College	25,318	24,895	24,660
Blinn College	11,136	10,961	11,454
Brazosport College	3,691	3,675	3,760
Central Texas College District	6,233	5,760	5,893
Cisco Junior College	2,610	2,700	2,741
Clarendon College	783	850	895
Coastal Bend College	2,854	2,890	3,001
College of the Mainland	3,222	3,240	3,108
Collin County Community College District	11,486	10,898	10,704
DCCCD Brookhaven College	7,048	6,894	6,720
DCCCD Cedar Valley College	2,643	2,609	2,544
DCCCD Eastfield College	7,418	7,308	6,969
DCCCD El Centro College	4,136	3,991	3,707
DCCCD Mountain View College	4,886	4,732	4,361
DCCCD North Lake College	6,190	5,757	5,775
DCCCD Richland College	11,146	11,106	10,928
Del Mar College	9,201	9,189	8,936
El Paso Community College District	17,646	17,290	16,545
Frank Phillips College	1,147	1,179	1,253
Galveston College	2,160	2,153	2,129
Grayson County College	3,093	3,105	3,207
Hill College	2,367	2,482	2,473
Houston Community College District	24,452	24,882	24,148
Howard College at Big Spring	1,832	1,858	1,809
Kilgore College	3,822	3,933	3,889
Lamar University-Orange	1,600	1,516	1,577
Lamar University-Port Arthur	2,352	2,400	2,434
Lamar University Institute of Technology	2,263	2,284	2,533
Laredo Community College	7,368	7,257	7,142

	1999 Rate	2000 (Trend) Rate	2001 (Trend) Rate
Lee College	5,818	5,858	5,839
McLennan Community College	5,471	5,503	5,532
Midland College	4,628	4,680	4,888
Navarro College	3,249	3,254	3,336
NHMCC Kingwood	3,943	5,331	6,044
NHMCC Montgomery	5,289	6,663	7,491
NHMCC North Harris	9,255	12,788	14,388
NHMCC Tomball	4,651	6,184	7,080
North Central Texas College	4,203	4,099	4,046
Northeast Texas Community College	1,919	1,970	1,957
Odessa College	4,670	4,775	4,832
Panola Junior College	1,440	1,500	1,474
Paris Junior College	2,782	2,922	2,983
Ranger Junior College	800	887	914
San Jacinto College-Central Campus	9,729	9,338	9,357
San Jacinto College-North Campus	4,248	4,023	4,042
San Jacinto College-South Campus	5,143	4,911	4,869
South Plains College	7,090	8,457	8,998
South Texas Community College	10,622	10,732	12,297
Southwest Collegiate Institute	101	134	146
Southwest Texas Junior College	3,417	3,535	3,598
Tarrant County-Northeast Campus	9,312	8,699	8,022
Tarrant County-Northwest Campus	4,180	4,006	3,906
Tarrant County-South Campus	7,065	6,452	5,587
Tarrant County-Southeast Campus	6,874	8,981	10,453
Temple Junior College	3,249	3,317	3,473
Texarkana College	2,534	2,642	2,694
Texas Southmost College	7,278	7,085	7,141
Trinity Valley Community College	4,079	4,103	3,986
Tyler Junior College	8,266	8,221	8,460
Vernon Regional Junior College	2,040	2,018	2,145
Victoria College	3,747	3,786	3,859
Weatherford College	2,681	2,699	2,756
Western Texas College	1,153	1,225	1,324
Wharton County Junior College	4,496	4,385	4,479
Texas State Technical College-Harlingen	3,348	3,366	3,438
Texas State Technical College-Marshall	417	581	663
Texas State Technical College-Sweetwater	1,219	1,292	1,401
Texas State Technical College-Waco	3,769	4,119	4,253

In-State Enrollment "Best Fit" Rate Selection

The next step was to select, for each institution, one of the three in-state enrollment rate alternatives. The following criteria were used:

1. The enrollment forecast produced for 2000, when compared with the preliminary 2000 enrollment and five-year trend, must be the one closest to the enrollment which follows the general trend of the historical enrollment pattern. If the historical enrollment pattern is increasing, the selected alternative should be greater than the preliminary 2000 enrollment. If the pattern is decreasing, the selected alternative should be less than the preliminary 2000 enrollment. If the pattern is stable, the nearest alternative should be selected without regard to its relationship to the preliminary 2000 enrollment.
2. If the historical pattern is increasing or decreasing, the 2000 enrollment produced by the selected alternative must fall within 3 percent of the preliminary 2000 enrollment. If the historical pattern is stable, the 2000 enrollment produced by the selected alternative must fall within plus or minus 1 percent of the preliminary 2000 enrollment. If necessary, a multiplier can be computed to satisfy this condition.

The selected "best fit" alternative (see Tables 13 and 14) determined which rate to use for each institution in forecasting 2001, 2002, 2003, 2005, 2010, and 2015 enrollment. The multiplier, if needed, was used to augment the forecast for each year.

Table 13
 In-State Enrollment – Public Universities
 Comparison of Preliminary to Forecast In-State Enrollment for 2000

	2000 Preliminary In-State Enrollment	"Best Fit" In-State Enrollment	Selected Rate
Angelo State University	6,114	6,132	2000
Lamar University	8,099	7,777	2000
Midwestern State University	5,102	5,061	2001
Prairie View A&M University	6,073	5,820	1999
Sam Houston State University	12,061	12,114	2000
Southwest Texas State University	21,842	21,549	1999
Stephen F. Austin State University	11,220	11,859	1999
Sul Ross Rio Grande College	796	876	1999
Sul Ross State University	1,947	2,093	1999
Tarleton State University	7,146	7,121	1999
Texas A&M University at Galveston	1,031	1,052	2001
Texas A&M University-Commerce	6,961	7,366	2001
Texas A&M University-Corpus Christi	6,695	6,671	2001
Texas A&M University-Kingsville	5,534	5,512	2001
Texas A&M University-Texarkana	831	815	2001
Texas A&M International University	2,880	3,103	2001
Texas A&M University	37,923	38,005	1999
Texas Southern University	5,852	5,600	1999
Texas Tech University	21,624	21,640	2000
Texas Woman's University	7,736	7,781	2001
The University of Texas at Arlington	18,156	17,455	1999
The University of Texas at Austin	40,590	40,592	1999
The University of Texas at Dallas	7,943	7,647	1999
The University of Texas at El Paso	12,889	12,674	1999
The University of Texas of the Permian Basin	2,241	2,222	2001
The University of Texas at San Antonio	17,923	17,988	1999
The University of Texas at Tyler	3,492	3,294	1999
The University of Texas at Brownsville	3,090	2,822	1999
The University of Texas-Pan American	12,365	12,515	1999
University of Houston-Clear Lake	6,897	6,229	1999
University of Houston-Downtown	8,622	8,633	2001
University of Houston-Victoria	1,661	1,525	2000
University of Houston	28,663	29,290	2000
University of North Texas	23,751	23,876	1999
West Texas A&M University	6,097	6,058	1999

Table 14
 In-State Enrollment – Public Community and Technical Colleges
 Comparison of Preliminary to Forecast In-State Enrollment for 2000

	2000 Preliminary In-State Enrollment	"Best Fit" In-State Enrollment	Selected Rate
Alamo Northwest Vista	4,064	2,315	1999
Alamo Palo Alto College	6,120	6,281	2000
Alamo San Antonio College	19,369	19,193	2001
Alamo St. Philip's College	7,854	7,932	2000
Alvin Community College	3,501	3,500	2001
Amarillo College	8,121	8,184	1999
Angelina College	4,314	4,231	2001
Austin Community College	24,731	24,895	2000
Blinn College	11,747	11,454	2001
Brazosport College	3,806	3,760	2001
Central Texas College District	5,592	5,760	2000
Cisco Junior College	2,414	2,610	1999
Clarendon College	925	895	2001
Coastal Bend College	2,975	3,001	2001
College of the Mainland	3,155	3,222	1999
Collin County Community College District	11,774	11,486	1999
DCCCD Brookhaven College	6,989	7,048	1999
DCCCD Cedar Valley College	2,756	2,643	1999
DCCCD Eastfield College	7,481	7,418	1999
DCCCD El Centro College	3,872	3,991	2000
DCCCD Mountain View College	4,921	4,886	1999
DCCCD North Lake College	5,852	5,775	2001
DCCCD Richland College	10,883	10,928	2001
Del Mar College	9,652	9,201	1999
El Paso Community College District	15,124	16,545	2001
Frank Phillips College	1,098	1,147	1999
Galveston College	2,161	2,160	1999
Grayson County College	3,068	3,093	1999
Hill College	2,396	2,367	1999
Houston Community College District	30,431	24,882	2000
Howard College at Big Spring	2,159	1,832	1999
Kilgore College	3,848	3,822	1999
Lamar University-Orange	1,770	1,600	1999
Lamar University-Port Arthur	2,439	2,434	2001
Lamar University Institute of Technology	2,304	2,284	2000
Laredo Community College	6,664	7,142	2001

	2000 Preliminary In-State Enrollment	"Best Fit" In-State Enrollment	Selected Rate
Lee College	6,179	5,858	2000
McLennan Community College	5,596	5,532	2001
Midland College	4,707	4,680	2000
Navarro College	3,635	3,336	2001
NHMCC Kingwood	4,347	5,331	2000
NHMCC Montgomery	5,241	5,289	1999
NHMCC North Harris	8,815	9,255	1999
NHMCC Tomball	5,780	6,184	2000
North Central Texas College	4,583	4,203	1999
Northeast Texas Community College	1,943	1,957	2001
Odessa College	4,532	4,670	1999
Panola Junior College	1,340	1,440	1999
Paris Junior College	2,875	2,922	2000
Ranger Junior College	829	800	1999
San Jacinto College-Central Campus	10,511	9,729	1999
San Jacinto College-North Campus	4,825	4,248	1999
San Jacinto College-South Campus	5,901	5,143	1999
South Plains College	7,358	7,090	1999
South Texas Community College	11,198	10,732	2000
Southwest Collegiate Institute	109	101	1999
Southwest Texas Junior College	3,165	3,417	1999
Tarrant County-Northeast Campus	9,243	9,312	1999
Tarrant County-Northwest Campus	4,185	4,180	1999
Tarrant County-South Campus	6,994	7,065	1999
Tarrant County-Southeast Campus	7,150	6,874	1999
Temple Junior College	3,334	3,317	2000
Texarkana College	3,714	2,694	2001
Texas Southmost College	7,184	7,141	2001
Trinity Valley Community College	4,508	4,103	2000
Tyler Junior College	7,968	8,221	2000
Vernon Regional Junior College	2,054	2,040	1999
Victoria College	4,000	3,859	2001
Weatherford College	2,759	2,756	2001
Western Texas College	1,199	1,225	2000
Wharton County Junior College	4,481	4,479	2001
Texas State Technical College-Harlingen	3,270	3,348	1999
Texas State Technical College-Marshall	500	581	2000
Texas State Technical College-Sweetwater	1,542	1,219	1999
Texas State Technical College-Waco	3,860	3,769	1999

In-State Enrollment Forecast

The selected "best fit" enrollment rate alternative and multiplier for each institution and for each racial/ethnic group were applied to the corresponding age/racial/ethnic group projected population for 2001, 2002, 2003, 2005, 2010, and 2015 by county. Age groups were summed for each year, by racial/ethnic group, to provide county total enrollment for White/Other, Hispanic and Black students at each institution for each of the forecast years. County enrollments were summed by institution and year to provide total White/Other, Hispanic, and Black student forecasts for each institution. Finally, the racial/ethnic enrollments for each institution were summed to produce total in-state enrollment.

Nonresident Enrollment Ratios

The percent of in-state students varies from 98 percent to 58 percent at public universities and from 100 percent to 61 percent at public community and technical colleges. Therefore, it was necessary to determine a means of accounting for expected nonresident students in each university. This was done by selecting a representative "nonresident factor" for each institution, based on historical data from 1995 to 1999. The ratios of nonresident to in-state enrollment were compared with the preliminary 2000 nonresident to in-state ratios for each institution. By observing the historical trend, a forecast ratio which was compatible with the trend and the preliminary 2000 ratio was selected for each institution. The selected ratio became a factor used later in the forecast process to determine nonresident enrollment forecasts for each institution. See Tables 15 and 16 for the 1995-1999 average, 1999, preliminary 2000, and selected ratios.

Table 15
Nonresident Enrollment Ratios – Public Universities

	Average	1999	Prelim 2000	Selected
Angelo State University	0.043	0.034	0.0321	0.034
Lamar University	0.053	0.058	0.0582	0.058
Midwestern State University	0.133	0.141	0.147	0.147
Prairie View A&M University	0.143	0.093	0.0879	0.093
Sam Houston State University	0.022	0.021	0.0244	0.022
Southwest Texas State University	0.03	0.03	0.0283	0.03
Stephen F. Austin State University	0.025	0.022	0.0235	0.025
Sul Ross Rio Grande College	0.019	0.009	0.0427	0.019
Sul-Ross State University	0.027	0.022	0.0442	0.027
Tarleton State University	0.025	0.059	0.0554	0.055
Texas A&M University at Galveston	0.364	0.284	0.322	0.364
Texas A&M University-Commerce	0.054	0.057	0.078	0.057
Texas A&M University-Corpus Christi	0.025	0.032	0.0335	0.034
Texas A&M University-Kingsville	0.077	0.078	0.075	0.077
Texas A&M University-Texarkana	0.416	0.429	0.4404	0.44
Texas A&M International University	0.066	0.065	0.0625	0.066
Texas A&M University	0.173	0.166	0.1624	0.173
Texas Southern University	0.156	0.178	0.1767	0.178
Texas Tech University	0.132	0.126	0.1357	0.132
Texas Woman's University	0.106	0.099	0.0832	0.099
The University of Texas at Arlington	0.096	0.108	0.1249	0.125
The University of Texas at Austin	0.235	0.23	0.2321	0.235
The University of Texas at Dallas	0.27	0.341	0.3791	0.379
The University of Texas at El Paso	0.159	0.175	0.1812	0.181
The University of Texas of the Permian Basin	0.032	0.023	0.0147	0.023
The University of Texas at San Antonio	0.045	0.045	0.0506	0.045
The University of Texas at Tyler	0.038	0.035	0.0292	0.035
The University of Texas at Brownsville	0.018	0.025	0.0236	0.025
The University of Texas-Pan American	0.025	0.028	0.0312	0.028
University of Houston	0.124	0.12	0.1208	0.12
University of Houston-Clear Lake	0.127	0.153	0.099	0.127
University of Houston-Downtown	0.13	0.043	0.0383	0.043
University of Houston-Victoria	0.022	0.023	0.0235	0.023
University of North Texas	0.132	0.133	0.1418	0.132
West Texas A&M University	0.093	0.106	0.1117	0.106

Table 16
Nonresident Enrollment Ratios -
Community and Technical Colleges

	Average	1999	Prelim 2000	Selected
Alamo CCD St. Philip's College	0.073	0.062	0.0555	0.062
Alamo CCD Northwest Vista	0.013	0.029	0.029	0.029
Alamo CCD Palo Alto College	0.053	0.037	0.0322	0.037
Alamo CCD San Antonio College	0.041	0.046	0.0489	0.049
Alvin Community College	0.014	0.006	0.0083	0.014
Amarillo College	0.007	0.002	0.0206	0.007
Angelina College	0.021	0.013	0.0134	0.013
Austin Community College	0.036	0.044	0.0391	0.039
Blinn College	0.032	0.025	0.0248	0.025
Brazosport College	0.01	0.012	0.0118	0.012
Central Texas College District	0.19	0.197	0.1634	0.19
Cisco Junior College	0.004	0.008	0.1015	0.1
Clarendon College	0.082	0.064	0.0811	0.082
Coastal Bend College	0.01	0.007	0.0131	0.01
College of the Mainland	0.009	0.004	0.0041	0.004
Collin County Community College District	0.064	0.082	0.1038	0.082
DCCCD Brookhaven College	0.052	0.064	0.1065	0.064
DCCCD Cedar Valley	0.011	0.013	0.016	0.013
DCCCD Eastfield College	0.018	0.032	0.0215	0.0215
DCCCD El Centro College	0.041	0.052	0.071	0.052
DCCCD Mountain View College	0.016	0.017	0.0193	0.017
DCCCD North Lake College	0.077	0.084	0.157	0.084
DCCCD Richland College	0.057	0.068	0.1091	0.068
Del Mar College	0.062	0.06	0.0299	0.062
El Paso Community College District	0.049	0.074	0.2962	0.29
Frank Phillips College	0.064	0.052	0.0528	0.052
Galveston College	0.052	0.042	0.0528	0.052
Grayson County College	0.079	0.071	0.0854	0.085
Hill College	0.038	0.045	0.0467	0.046
Houston Community College District	0.284	0.336	0.1516	0.22
Howard College at Big Spring	0.029	0.029	0.0509	0.029
Kilgore College	0.03	0.034	0.0437	0.034
Lamar University-Orange	0.124	0.099	0.0966	0.099
Lamar University-Port Arthur	0.009	0.011	0.0295	0.02
Lamar University Institute of Technology	0.02	0.019	0.0204	0.02
Laredo Community College	0.04	0.044	0.0933	0.044

	Average	1999	Prelim 2000	Selected
Lee College	0.018	0.023	0.0138	0.018
McLennan Community College	0.022	0.024	0.0232	0.023
Midland College	0.03	0.032	0.0314	0.032
Navarro College	0.108	0.101	0.1114	0.108
NHMCC Kingwood	0.007	0.007	0.0136	0.0128
NHMCC Montgomery	0.015	0.015	0.0166	0.017
NHMCC North Harris	0.028	0.028	0.0369	0.028
NHMCC Tomball	0.016	0.016	0.0254	0.019
North Central Texas College	0.052	0.047	0.0565	0.052
Northeast Texas Community College	0.018	0.015	0.0247	0.018
Odessa College	0.015	0.021	0.0199	0.02
Panola Junior College	0.062	0.049	0.0612	0.062
Paris Junior College	0.056	0.043	0.032	0.043
Ranger Junior College	0.043	0.04	0.0326	0.04
San Jacinto College-Central Campus	0.089	0.077	0.0332	0.077
San Jacinto College-North Campus	0.075	0.083	0.0251	0.075
San Jacinto College-South Campus	0.105	0.123	0.0613	0.105
South Plains College	0.028	0	0.0179	0.028
South Texas Community College	0.004	0	0.0063	0.004
Southwest Collegiate Institute	0.189	0.17	0.2752	0.21
Southwest Texas Junior College	0.007	0.004	0.1738	0.05
Tarrant County-Northeast Campus	0.001	0	0.0164	0.001
Tarrant County-Northwest Campus	0	0	0.0186	0.018
Tarrant County-South Campus	0	0.001	0.0146	0.001
Tarrant County-Southeast Campus	0	0	0.0232	0.001
Temple College	0.023	0.017	0.0213	0.02
Texarkana College	0.39	0.35	0.0054	0.39
Texas Southmost College	0.014	0.057	0.0191	0.019
Trinity Valley Community College	0.019	0.016	0.0186	0.019
Tyler Junior College	0.016	0.013	0.0333	0.033
Vernon Regional Junior College	0.082	0.032	0.0204	0.032
Victoria College	0.023	0.022	0.0053	0.023
Weatherford College	0.018	0.016	0.0112	0.016
Western Texas College	0.041	0.03	0.0284	0.03
Wharton County Junior College	0.024	0.019	0.0203	0.02
Texas State Technical College-Harlingen	0.007	0.005	0.004	0.007
Texas State Technical College-Marshall	0	0	0.026	0.026
Texas State Technical College-Sweetwater	0.003	0.005	0.0182	0.005
Texas State Technical College-Waco	0.026	0.022	0.0277	0.026

Draft Total Enrollment Forecast and Adjustments

At this point in the forecast process, total in-state enrollment forecasts for 2001, 2002, 2003, 2005, 2010, and 2015, plus a nonresident factor, were available for each institution. Multiplying the selected nonresident factor by the in-state enrollment produced nonresident enrollment by institution and year. Adding the nonresident and in-state enrollments resulted in a base total enrollment forecast for each institution for 2001, 2002, 2003, 2005, 2010 and 2015. The selected alternative used to forecast in-state enrollment and the factor which produced nonresident enrollment were controlled by quantifiable historical enrollment patterns and expected demographic changes. Consequently, the enrollment forecasts which they produced did not take into account future changes in the status of institutions or internal, nonquantifiable conditions which could influence enrollment at a specific college or university. These were addressed, to some degree, by making adjustments to institutional draft forecasts as appropriate:

- Some public universities have, or intend to, establish policies that will cap enrollment at specific levels. For these institutions, the model might possibly forecast an excess number of students. In cases where this occurred, the excess was subtracted and redistributed to other institutions. Excess in-state students, by racial/ethnicity, were determined for each year (2001, 2002, 2003, 2005, 2010 and 2015).
- The Texas Legislature authorized The University of Texas at Tyler and The University of Texas at Brownsville to allow lower-level students in the fall of 1998. Historical enrollment trends could not accurately predict changes in these institutions. The institutions provided estimates of future enrollments and these estimates were integrated into the overall forecasts.
- The University of North Texas and Southwest Texas State University opened university system centers in fall 1999 and Texas A&M University-Kingsville opened a university system center in fall 2000.

Table 17
Adjustments to Draft Enrollment Forecasts
Based on Local Conditions

	2001	2002	2003	2005	2010	2015
Southwest Texas State	29	100	225	675	1,000	1,050
Texas A&M-Corpus Christi	231	476	719	940	1,032	1,123
Texas A&M-Kingsville	125	150	200	400	1,000	1,000
University of North Texas	237	306	328	140	1,000	1,000
UT at Brownsville	148	151	154	159	400	400
UT at Dallas	902	919	940	982	1,380	1,536
UT at El Paso	100	132	151	56		
UT at San Antonio	100	150	175	350	900	1,000
UT at Tyler	140	403	519	634	1,316	2,004
Midland College		50	100	200	300	400
Texas Southmost College	100	200	250	350	200	

Enrollment Forecast –
Texas Independent Colleges and Universities

Forecasts of total enrollment for the independent colleges and universities were obtained by taking the Independent Colleges and Universities of Texas (ICUT) organization estimated that private institutions could enroll approximately 7,500 full-time equivalent (FTE) students if state sponsored need-based grants were made available to students.

The other assumptions included:

- 80 percent of the students are full-time, and
- State sponsored need-based grants will be incrementally increased.

The number of FTE was divided by .80 to obtain a headcount enrollment number of 9,375 based on the 7,500 FTE number provided. The headcount enrollment was then distributed between 2001 and 2015, with the larger increases coming before 2005.

Year	Forecast
2001	109,134
2002	109,759
2003	110,859
2005	112,109
2010	114,284
2015	117,409

Addendum

Closing the Gaps in Participation

Only 5 percent of the Texas population was enrolled in higher education in recent years, compared to a national average of 5.4 percent. In Texas, that difference represents 80,000 students.

Within Texas, different racial and ethnic groups participate in higher education at different rates. Over the past 18 months, the Coordinating Board has developed a higher education plan that includes a goal to close the gaps in college participation rates between Texas and other states, and within Texas while adding 500,000 more students.

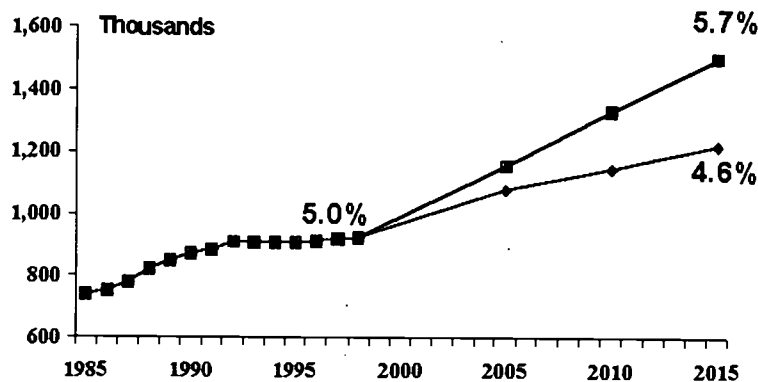
This addendum describes the magnitude of increases that can be expected in the public sectors of higher education if the strategies outlined in the plan are effective.

Assumptions

- Sector growth rates: 60 percent of the growth will be at the community and technical colleges, 30 percent at the public universities, 7 percent at independent colleges and universities, 2 percent at private career colleges, and 1 percent at health-related institutions.
- By 2015, the racial/ethnic enrollment statewide will mirror the projected percent of the population.

Figure 3

To Reach 5.7% Participation
Enrollment Must Increase an Additional
290,000



Appendix A

Fall Continuing Education Enrollment Public Community and Technical Colleges

In fall 1996, the Texas Legislature began funding continuing education courses at the same rate as equivalent semester length courses at public community and technical colleges. At that time, the Coordinating Board began collecting more specific data on the continuing education courses.

Because the state provides funding for these courses, a summary of the number of students enrolled in these classes is included here. Table A-1 contains the fall quarter continuing education enrollments unduplicated with the semester length enrollments for fall 1996 thru fall 1999 for each of the community and technical colleges.

Table A-1

	First Quarter 1996	First Quarter 1997	First Quarter 1998	First Quarter 1999
Alamo CCD Northwest Vista	0	0	5	14
Alamo CCD Palo Alto College	549	507	455	453
Alamo CCD San Antonio College	1,440	1,858	2,101	1,798
Alamo CCD St. Philip's College	338	398	343	418
Alvin Community College	340	485	610	767
Amarillo College	4,991	5,280	7,213	7,496
Angelina College	1,968	1,996	1,729	1,455
Austin Community College	1,593	1,582	1,837	1,558
Blinn College	674	677	893	942
Brazosport College	431	363	261	220
Central Texas College District	3,226	2,557	2,309	1,452
Cisco Junior College	68	53	77	71
Clarendon College	126	135	179	141
Coastal Bend College	385	257	518	548
College of the Mainland	1,476	1,350	1,124	1,124
Collin County Community College District	3,441	3,854	3,921	4,603
DCCCD Brookhaven College	3,400	3,161	3,528	2,520
DCCCD Cedar Valley College	1,192	949	950	735
DCCCD Eastfield College	1,292	1,882	1,637	1,309
DCCCD El Centro College	3,451	2,217	3,233	2,728
DCCCD Mountain View College	1,690	1,645	1,860	1,593
DCCCD North Lake College	1,992	2,273	2,384	1,948
DCCCD Richland College	3,825	4,400	3,744	4,117
Del Mar College	2,518	2,174	2,359	2,161
El Paso Community College District	2,584	3,469	3,584	4,125
Frank Phillips College	434	519	1,461	1,121

	First Quarter 1996	First Quarter 1997	First Quarter 1998	First Quarter 1999
Galveston College	609	622	773	763
Grayson County College	1,151	981	849	749
Hill College	60	116	226	189
Houston Community College District	3,654	5,357	3,822	3,945
Howard College at Big Spring	1,264	1,618	2,032	2,305
Kilgore College	2,140	1,837	2,399	1,820
Lamar University Institute of Technology	215	300	196	271
Lamar University-Orange	8	103	44	11
Lamar University-Port Arthur	15	177	297	163
Laredo Community College	891	945	1,180	1,160
Lee College	734	436	439	447
McLennan Community College	567	824	1,081	1,146
Midland College	914	804	1,404	1,013
Navarro College	954	898	1,057	997
North Central Texas College	399	495	219	231
NHMCC Kingwood	746	722	669	620
NHMCC Montgomery	784	808	724	844
NHMCC North Harris	1,440	1,207	1,299	1,509
NHMCC Tomball	462	2,252	365	439
Northeast Texas Community College	305	474	381	309
Odessa College	1,356	1,053	1,570	1,104
Panola College	126	201	219	196
Paris Junior College	820	1,113	837	911
Ranger Junior College	95	53	56	85
San Jacinto College-Central Campus	1,298	1,401	1,776	1,680

	First Quarter 1996	First Quarter 1997	First Quarter 1998	First Quarter 1999
San Jacinto College-North Campus	590	671	745	655
South Plains College	382	850	636	374
South Texas Community College	342	626	340	361
Southwest Collegiate Institute of the Deaf	1	5	7	0
Southwest Texas Junior College	218	168	314	383
Tarrant County-Northeast Campus	1,027	1,091	1,116	981
Tarrant County-Northwest Campus	662	895	2,232	1,393
Tarrant County-South Campus	1,089	1,524	1,660	1,436
Tarrant County-Southeast Campus	81	361	552	527
Temple Junior College	432	126	286	230
Texarkana College	1,630	1,412	1,670	1,527
Texas Southmost College	316	339	730	703
Trinity Valley Community College	487	327	238	282
Tyler Junior College	1,407	1,461	1,555	1,531
Vernon Regional Junior College	667	872	876	1,408
Victoria College; The	1,085	1,142	962	1,113
Weatherford College	544	549	523	498
Western Texas College	243	334	615	443
Wharton County Junior College	915	966	911	721
Statewide Community Colleges Total	76,961	83,153	88,570	83,317
Texas State Technical College-Harlingen	614	523	486	424
Texas State Technical College-Marshall	0	0	0	0
Texas State Technical College-Sweetwater	759	520	312	131
Texas State Technical College-Waco	720	32	69	22
Statewide TSTC Total	2,093	1,075	867	577

Related reports available from the Texas Higher Education Coordinating Board, Office of Planning.

Baccalaureate Graduation Rates, October 1999

Closing the Gaps, Texas Higher Education Plan, 2001

For more information contact:

Dr. David W. Gardner
Texas Higher Education Coordinating Board
Office of Planning
P.O. Box 12788
Austin, TX 78711-2788

(512) 427-6146
(512) 427-6127 (Fax)
Internet: gardnerdd@thehb.state.tx.us

The Texas Higher Education Coordinating Board does not discriminate on the basis of race, color, national origin, gender, religion, age or disability in employment or the provision of services.



U.S. Department of Education
Office of Educational Research and Improvement (OERI)
National Library of Education (NLE)
Educational Resources Information Center (ERIC)



NOTICE

Reproduction Basis



This document is covered by a signed "Reproduction Release (Blanket)" form (on file within the ERIC system), encompassing all or classes of documents from its source organization and, therefore, does not require a "Specific Document" Release form.



This document is Federally-funded, or carries its own permission to reproduce, or is otherwise in the public domain and, therefore, may be reproduced by ERIC without a signed Reproduction Release form (either "Specific Document" or "Blanket").

EFF-089 (3/2000)