

## DOCUMENT RESUME

ED 462 168

PS 030 101

TITLE Pedalcyclists. Traffic Safety Facts, 2000.  
INSTITUTION National Highway Traffic Safety Administration (DOT),  
Washington, DC.  
REPORT NO DOT-HS-809-330  
PUB DATE 2000-00-00  
NOTE 6p.  
AVAILABLE FROM National Center for Statistics and Analysis, NRD-31, 400  
Seventh Street, S.W., Washington, DC 20590. Tel:  
800-934-8517 (Toll Free); Fax: 202-366-7078; Web site:  
<http://www.nhtsa.dot.gov/people/ncsa>.  
PUB TYPE Numerical/Quantitative Data (110) -- Reports - Descriptive  
(141)  
EDRS PRICE MF01/PC01 Plus Postage.  
DESCRIPTORS Age Differences; \*Bicycling; Death; \*Incidence; Injuries;  
Mortality Rate; Motor Vehicles; Sex Differences; Tables  
(Data); \*Traffic Accidents; Traffic Safety; Vehicular  
Traffic  
IDENTIFIERS United States

## ABSTRACT

This document provides statistical information on traffic accidents involving U.S. bicyclists. Data include: (1) trends in pedalcyclist and total traffic fatalities, 1990-2000; (2) non-occupant traffic fatalities, 1990-2000; (3) pedalcyclists killed and injured, and fatality and injury rates, by age and sex, 2000; and (4) pedalcyclist traffic fatalities and fatality rates by state, 2000. According to the data, 690 bicyclist deaths in 2000 accounted for 2 percent of all traffic fatalities that year. (EV)

# Pedalcyclists. Traffic Safety Facts 2000.

## U.S. Department of Transportation National Highway Traffic Safety Administration

U.S. DEPARTMENT OF EDUCATION  
Office of Educational Research and Improvement  
EDUCATIONAL RESOURCES INFORMATION  
CENTER (ERIC)

This document has been reproduced as  
received from the person or organization  
originating it.

Minor changes have been made to  
improve reproduction quality.

• Points of view or opinions stated in this  
document do not necessarily represent  
official OERI position or policy.

BEST COPY AVAILABLE

030101



## Pedalcyclists

The first automobile crash in the United States occurred in New York City in 1896, when a motor vehicle collided with a pedalcycle rider (*Famous First Facts*, by Joseph Kane).

More than 47,000 pedalcyclists have died in traffic crashes in the United States since 1932 — the first year in which estimates of pedalcyclist fatalities were recorded. The 350 pedalcyclists killed in 1932 accounted for 1.3 percent of the 27,979 persons who died in traffic crashes that year.

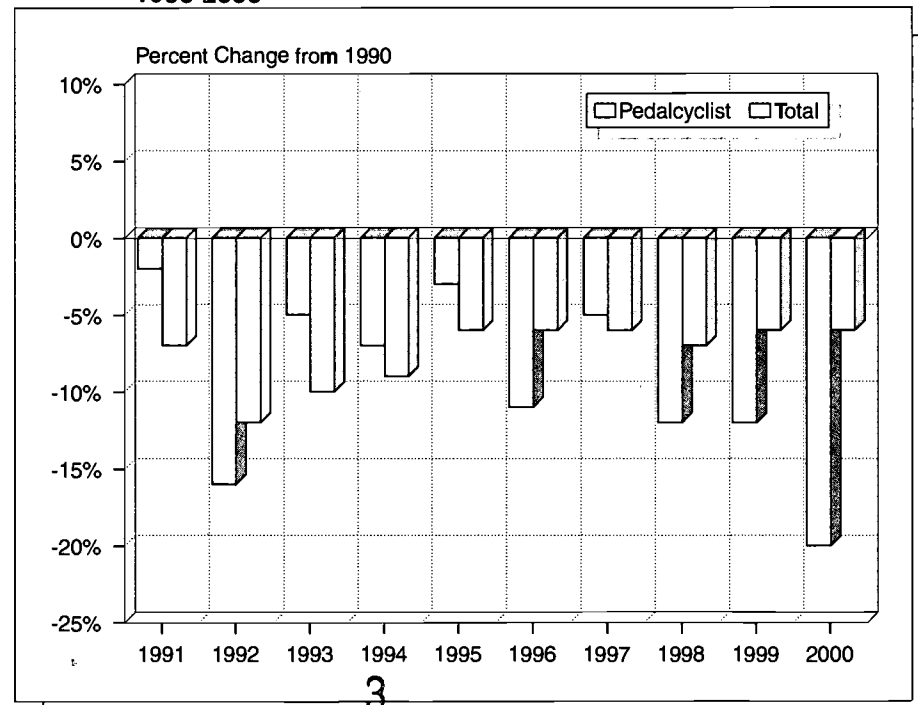
In 2000, 690 pedalcyclists were killed and an additional 51,000 were injured in traffic crashes. Pedalcyclist deaths accounted for 2 percent of all traffic fatalities, and pedalcyclists made up 2 percent of all the people injured in traffic crashes during the year.

The number of pedalcyclist fatalities in 2000 was 20 percent lower than the 859 fatalities reported in 1990. The highest number of pedalcyclist fatalities ever recorded in the Fatality Analysis Reporting System (FARS) was 1,003 in 1975.

In 1990, the average age of pedalcyclists killed in traffic crashes was 28.1 years; in 2000 the average age of those killed was 34.8 years, and the average age of those injured was 24.7 years.

Pedalcyclists accounted for 12 percent of all nonmotorist traffic fatalities in 2000. Pedestrians accounted for 85 percent, and the remaining 3 percent were skateboard riders, roller skaters, etc.

**Figure 1. Trends in Pedalcyclist and Total Traffic Fatalities, 1990-2000**



*“The 690 pedalcyclist deaths in 2000 accounted for 2 percent of all traffic fatalities during the year.”*

1030101  
030101  
030101  
030101

Table 1. Nonoccupant Traffic Fatalities, 1990-2000

Year	Pedestrian	Pedalcyclist	Other	Total
1990	6,482	859	124	7,465
1991	5,801	843	124	6,768
1992	5,549	723	98	6,370
1993	5,649	816	111	6,576
1994	5,489	802	107	6,398
1995	5,584	833	109	6,526
1996	5,449	765	154	6,368
1997	5,321	814	153	6,288
1998	5,228	760	131	6,119
1999	4,939	754	149	5,842
2000	4,739	690	143	5,572

*“More than one-fourth of the pedalcyclists killed in traffic crashes in 2000 were between 5 and 15 years old.”*

Pedalcyclist fatalities occurred more frequently in urban areas (63 percent), at nonintersection locations (66 percent), between the hours of 4:00 PM and 8:00 PM (31 percent), and during the months of July, August, and September (36 percent).

Most of the pedalcyclists killed or injured in 2000 were males (89 percent and 78 percent, respectively), and most were between the ages of 5 and 44 years (65 percent and 87 percent, respectively).

The pedalcyclist fatality rate per capita was more than 8 times as high for males as for females, and the injury rate per capita was nearly 4 times as high for males as for females.

Pedalcyclists under age 16 accounted for 28 percent of all pedalcyclists killed and 40 percent of those injured in traffic crashes in 2000.

In comparison, pedalcyclists under age 16 accounted for 35 percent of all those killed in 1990.

Pedalcyclists 25 years of age and older have made up an increasing proportion of all pedalcyclist deaths since 1990. The proportion of pedalcyclist fatalities age 25 to 64 was 1.3 times as high in 2000 as in 1990 (52 percent and 40 percent, respectively).

More than one-fourth (27 percent) of the pedalcyclists killed in traffic crashes in 2000 were between 5 and 15 years old. The pedalcyclist fatality rate for this age group was 4.1 per million population — nearly double the rate for all pedalcyclists (2.5 per million population). The injury rate for this age group was 465 per million population, compared with 186 per million population for pedalcyclists of all ages.

Alcohol involvement — either for the driver or the pedalcyclist — was reported in more than one-third of the traffic crashes that resulted in pedalcyclist fatalities in 2000. In 29 percent of the crashes, either the driver or the cyclist was intoxicated, with blood alcohol concentrations (BAC) of 0.10 grams per deciliter (g/dl) or greater. Lower alcohol levels (BAC 0.01 to 0.09 g/dl) were reported in an additional 8 percent. More than one-fourth (26 percent) of the pedalcyclists killed had a BAC of 0.01 g/dl or greater, and more than one-fifth (21 percent) were intoxicated.

*“Alcohol Involvement was reported in more than one-third of the pedalcyclist fatalities in 2000.”*

**Table 2. Pedalcyclists Killed and Injured and Fatality and Injury Rates by Age and Sex, 2000**

Age (years)	Male			Female			Total		
	Killed	Population (thousands)	Fatality Rate*	Killed	Population (thousands)	Fatality Rate*	Killed	Population (thousands)	Fatality Rate*
0-4	7	9,712	0.72	2	9,274	0.22	9	18,986	0.47
5-9	50	10,198	4.90	12	9,722	1.23	62	19,920	3.11
10-15	105	12,299	8.54	14	11,710	1.20	119	24,009	4.96
16-20	42	10,185	4.12	5	9,720	0.51	47	19,905	2.36
21-24	25	7,200	3.47	3	7,019	0.43	28	14,220	1.97
25-34	53	18,535	2.86	12	18,699	0.64	65	37,233	1.75
35-44	117	22,181	5.27	7	22,478	0.31	124	44,659	2.78
45-54	94	18,092	5.20	10	18,938	0.53	104	37,030	2.81
55-64	54	11,433	4.72	5	12,529	0.40	59	23,961	2.46
65-69	19	4,321	4.40	1	5,089	0.20	20	9,410	2.13
70-79	27	6,951	3.88	3	9,189	0.33	30	16,140	1.86
80+	14	3,074	4.55	2	6,086	0.33	16	9,160	1.75
Unknown	1	—	—	—	—	—	**7	—	—
<b>Total</b>	<b>608</b>	<b>134,181</b>	<b>4.53</b>	<b>76</b>	<b>140,453</b>	<b>0.54</b>	<b>690</b>	<b>274,634</b>	<b>2.51</b>

Age (years)	Male			Female			Total		
	Injured	Population (thousands)	Injury Rate*	Injured	Population (thousands)	Injury Rate*	Injured	Population (thousands)	Injury Rate*
0-4	***	9,712	18	***	9,274	3	***	18,986	10
5-9	5,000	10,198	523	3,000	9,722	265	8,000	19,920	397
10-15	10,000	12,299	791	3,000	11,710	236	12,000	24,009	520
16-20	4,000	10,185	377	2,000	9,720	175	6,000	19,905	278
21-24	3,000	7,200	454	***	7,019	41	4,000	14,220	250
25-34	6,000	18,535	311	2,000	18,699	94	8,000	37,233	202
35-44	6,000	22,181	275	1,000	22,478	52	7,000	44,659	163
45-54	3,000	18,092	162	1,000	18,938	33	4,000	37,030	96
55-64	2,000	11,433	175	***	12,529	11	2,000	23,961	89
65-69	***	4,321	85	***	5,089	***	***	9,410	39
70-79	***	6,951	59	***	9,189	8	***	16,140	30
80+	***	3,074	31	***	6,086	***	***	9,160	10
<b>Total</b>	<b>40,000</b>	<b>134,181</b>	<b>298</b>	<b>11,000</b>	<b>140,453</b>	<b>79</b>	<b>51,000</b>	<b>274,634</b>	<b>186</b>

\* Rate per million population.

\*\* Includes 6 fatalities of unknown sex.

\*\*\* Less than 500 injured.

Source: Population — Bureau of the Census projections.

**For more information:**

Information on pedalcyclist traffic fatalities is available from the National Center for Statistics and Analysis, NRD-31, 400 Seventh Street, S.W., Washington, D.C. 20590. NCSA information can also be obtained by telephone or by fax-on-demand at 1-800-934-8517. FAX messages should be sent to (202) 366-7078. General information on highway traffic safety can be accessed by internet users at <http://www.nhtsa.dot.gov/people/ncsa>. To report a safety-related problem or to inquire about motor vehicle safety information, contact the Auto Safety Hotline at 1-800-424-9393.

Table 3. Pedalcyclist Traffic Fatalities and Fatality Rates by State, 2000

State	Total Traffic Fatalities	Resident Population (thousands)	Pedalcyclist Fatalities	Percent of Total	Pedalcyclist Fatalities per Million Population
Alabama	995	4,451	8	0.8	1.80
Alaska	103	653	4	3.9	6.12
Arizona	1,036	4,798	26	2.5	5.42
Arkansas	652	2,631	5	0.8	1.90
California	3,753	32,521	110	2.9	3.38
Colorado	681	4,168	8	1.2	1.92
Connecticut	342	3,284	3	0.9	0.91
Delaware	123	768	3	2.4	3.91
District of Columbia	49	523	1	2.0	1.91
Florida	2,999	15,233	90	3.0	5.91
Georgia	1,541	7,875	15	1.0	1.90
Hawaii	131	1,257	1	0.8	0.80
Idaho	276	1,347	3	1.1	2.23
Illinois	1,418	12,051	18	1.3	1.49
Indiana	875	6,045	11	1.3	1.82
Iowa	445	2,900	3	0.7	1.03
Kansas	461	2,668	3	0.7	1.12
Kentucky	820	3,995	4	0.5	1.00
Louisiana	937	4,425	23	2.5	5.20
Maine	169	1,259	2	1.2	1.59
Maryland	588	5,275	6	1.0	1.14
Massachusetts	433	6,199	13	3.0	2.10
Michigan	1,382	9,679	29	2.1	3.00
Minnesota	625	4,830	14	2.2	2.90
Mississippi	949	2,816	7	0.7	2.49
Missouri	1,157	5,540	9	0.8	1.62
Montana	237	950	8	3.4	8.42
Nebraska	276	1,705	2	0.7	1.17
Nevada	323	1,871	5	1.5	2.67
New Hampshire	126	1,224	1	0.8	0.82
New Jersey	731	8,178	13	1.8	1.59
New Mexico	430	1,860	5	1.2	2.69
New York	1,458	18,146	37	2.5	2.04
North Carolina	1,472	7,777	25	1.7	3.21
North Dakota	86	662	2	2.3	3.02
Ohio	1,351	11,319	23	1.7	2.03
Oklahoma	652	3,373	5	0.8	1.48
Oregon	451	3,397	7	1.6	2.06
Pennsylvania	1,520	12,202	15	1.0	1.23
Rhode Island	80	998	4	5.0	4.01
South Carolina	1,065	3,858	23	2.2	5.96
South Dakota	173	777	1	0.6	1.29
Tennessee	1,306	5,657	7	0.5	1.24
Texas	3,769	20,119	37	1.0	1.84
Utah	373	2,207	9	2.4	4.08
Vermont	79	617	0	0.0	0.00
Virginia	930	6,997	16	1.7	2.29
Washington	632	5,858	12	1.9	2.05
West Virginia	410	1,841	2	0.5	1.09
Wisconsin	799	5,326	10	1.3	1.88
Wyoming	152	525	2	1.3	3.81
<b>U.S. Total</b>	<b>41,821</b>	<b>274,634</b>	<b>690</b>	<b>1.6</b>	<b>2.51</b>
Puerto Rico	566	3,809	11	1.9	2.89

Note: Totals may not equal sum of components due to independent rounding.

Sources: Fatalities — Fatality Analysis Reporting System, NHTSA. Population — Bureau of the Census.



**U.S. Department of Education**  
*Office of Educational Research and Improvement (OERI)*  
*National Library of Education (NLE)*  
*Educational Resources Information Center (ERIC)*



## **NOTICE**

### **Reproduction Basis**



This document is covered by a signed "Reproduction Release (Blanket)" form (on file within the ERIC system), encompassing all or classes of documents from its source organization and, therefore, does not require a "Specific Document" Release form.



This document is Federally-funded, or carries its own permission to reproduce, or is otherwise in the public domain and, therefore, may be reproduced by ERIC without a signed Reproduction Release form (either "Specific Document" or "Blanket").

EFF-089 (3/2000)