

## DOCUMENT RESUME

ED 459 638

HE 034 526

AUTHOR Schepp, Julie; Padilla, Gina  
TITLE Fall 2001 Enrollments: North Dakota Institutions of Higher Education.  
INSTITUTION North Dakota Univ. System, Bismarck.  
PUB DATE 2001-11-00  
NOTE 67p.; "With assistance from institutional officials." Cover page varies. For the prior year's report, see ED 447 754.  
AVAILABLE FROM North Dakota University System, 600 East Boulevard, Department 215, Bismarck, ND 58505-0230.  
PUB TYPE Numerical/Quantitative Data (110)  
EDRS PRICE MF01/PC03 Plus Postage.  
DESCRIPTORS \*College Students; \*Enrollment Trends; Full Time Equivalency; \*Higher Education; Part Time Students; Place of Residence; Private Colleges; Tables (Data)  
IDENTIFIERS \*North Dakota

## ABSTRACT

The tables in this report present data on fall 2001 enrollment in North Dakota institutions of higher education. The tables are: (1) headcount enrollment; (2) full-time enrollment; (3) total student credit hours of part-time students; (4) full-time equivalent enrollments of part-time students; (5) total of full-time and full-time equivalents of part-time students; (6) full-time equivalent enrollments based on total student credit hours by level of students; (7) total student credit hours by course level; (8) degree credit fall enrollment report, 1992 through 2001; (9) degree credit headcount by all delivery methods and by e-learning; (10) headcount enrollment by tuition residency status; (11) nonresident headcount, undergraduates; (12) nonresident headcount, graduate and professional; (13) headcount by county of residence in North Dakota; (14) headcount enrollment by age; (15) headcount enrollment by race; (16) headcount enrollment by citizenship, veteran status, sex, marital status, transfer status, and for beginning freshmen; and (17) private and tribal colleges, headcount enrollments by race/ethnicity and sex. (SLD)

# NORTH DAKOTA UNIVERSITY SYSTEM

## The Vital Link to a Brighter Future

### 2001 Fall Enrollment

## North Dakota Institutions of Higher Education

PERMISSION TO REPRODUCE AND  
DISSEMINATE THIS MATERIAL HAS  
BEEN GRANTED BY

L. Isaak

TO THE EDUCATIONAL RESOURCES  
INFORMATION CENTER (ERIC)

1

U.S. DEPARTMENT OF EDUCATION  
Office of Educational Research and Improvement  
EDUCATIONAL RESOURCES INFORMATION  
CENTER (ERIC)

This document has been reproduced as  
received from the person or organization  
originating it.

Minor changes have been made to  
improve reproduction quality.

• Points of view or opinions stated in this  
document do not necessarily represent  
official OERI position or policy.

Published by the North Dakota University System

**BEST COPY AVAILABLE**

16034526

# **FALL 2001 ENROLLMENTS**

**PUBLISHED BY:**

**NORTH DAKOTA UNIVERSITY SYSTEM**

State Capitol  
Bismarck, ND 58505

**PREPARED BY:**

**Julie Schepp**  
Academic Affairs Associate  
and Director of Research

**Gina Padilla**  
Administrative Secretary/  
Academic Affairs Assistant

With Assistance From Institutional Officials

November 2001

## TABLE OF CONTENTS

North Dakota State Board of Higher Education .....	i
Acknowledgments .....	ii
Definitions .....	iii
Notes .....	vii
Institutional Abbreviations .....	viii

<b><u>TABLES</u></b>	<b><u>PAGE</u></b>
1 Headcount Enrollment .....	1
2 Full-Time Enrollments .....	2
3 Total Student Credit Hours of Part-Time Students .....	3
4 Full-Time Equivalent Enrollments of Part-Time Students .....	4
5 Total of Full-Time & Full-Time Equivalent of Part-Time Students .....	5
6 Full-Time Equivalent Enrollments Based on Total Student Credit Hours by Level of Students .....	6
7 Total Student Credit Hours by Course Level .....	7
8 Degree Credit Fall Enrollment Report: 1992 through 2001 .....	10
9 Degree Credit Headcount by All Delivery Methods .....	12
9A Degree Credit Headcount by E-Learning Delivery Method.....	13
10 Headcount Enrollments by Tuition Residency Status .....	14
11 Nonresident Headcount: Undergraduate Enrollments by State Using Students' Reported Home Address .....	15

TABLE OF CONTENTS (continued)

<b><u>TABLES</u></b>	<b><u>PAGE</u></b>
12 Nonresident Headcount: Graduate and Professional Enrollments by State Using Students' Reported Home Address .....	17
13 Headcount Enrollments by County of Residence for North Dakota Students .....	19
13A In-State Enrollment by County of Origin .....	21
13B In-State Enrollment by County of Origin by Institution .....	23
14 Headcount Enrollment by Age .....	36
15 Headcount Enrollments by Race .....	37
16 Headcount Enrollments by Citizenship, Veteran Status, Sex, Marital Status, Transfer Status and Beginning Freshmen .....	38
17 Private and Tribal Colleges in North Dakota - Headcount Enrollments by Race/Ethnicity and Sex .....	39

**FIGURES**

One In-State Enrollment by County of Origin .....	22
Two Headcount Enrollment: 1960 to 2000 .....	40

# NORTH DAKOTA STATE BOARD OF HIGHER EDUCATION

2001-2002

Craig Caspers, Vice-President  
Wahpeton

Richard Kunkel  
Devils Lake

Bruce Christianson  
Minot

Chuck Stroup, President  
Hazen

Beverly Clayburgh  
Grand Forks

Heather Lee\*  
Fargo

William Isaacson  
Stanley

James Grijalva\*\*  
Grand Forks

Ralph Kingsbury  
Grafton

Larry A. Isaak  
Chancellor

\*Student Member  
\*\*Faculty Advisor

## **ACKNOWLEDGMENTS**

Included in this publication are the enrollment data supplied to the North Dakota University System by North Dakota institutions of postsecondary education. The staff of each institution responsible for supplying this data deserve special thanks from the System office and every consumer of this report.

## DEFINITIONS

### **AUDIO:**

**ONE-WAY AUDIO** – An audio communication from the instructor to the student where the student cannot provide an audio response (e.g. radio, audiotape).

**TWO-WAY AUDIO** – A conference, most frequently used over the telephone between two or more remote locations with live, audio transmission.

**CD ROM** – Communications using a compact disc with read-only-memory.

**COMBO** – A combination of any of the delivery methods with no one method providing 50% or more of instruction.

**CORRESPONDENCE** – An independent study course in which all communications between the instructor and student is accomplished through the mail or fax. Instruction is given by means of a course syllabus, textbooks, video and audio cassette, and additional reference and instructional materials.

**CREDIT HOUR** - The unit by which an institution measures its course work for application towards a degree. Historically, each credit hour involves 15 or 16 fifty minute periods of instruction, or the equivalent.

**DEGREE CREDIT** – All instructional activities that can be applied toward college degree or credit based remedial courses taken by degree seeking students as reported to IPEDS.

**DUPLICATED COUNT** – An enrollment count in which an individual student may be counted more than once because they are enrolled in more than one medium (e.g. face to face, correspondence, IVN) or more than one campus.

**E-LEARNING** – Courses delivered through a technological medium. This category includes audio, video, cd rom and internet delivery of courses and excludes correspondence and face to face off campus.

**FACE TO FACE** – This term is used to describe the traditional classroom environment where the instructor and students are physically located in the same place.

**FACE TO FACE OFF CAMPUS** – Describes the traditional classroom setting where the instructor and students are physically located in the same place in an off campus location.



**HEADCOUNT ENROLLMENT** - Number of students enrolled at the institution following the fifteenth day of classes of the term. Each student equals one headcount, regardless of credit hours taken.

**FULL-TIME ENROLLMENTS** - Number of headcount students enrolled at the institution following the fifteenth day of classes of the term who are taking twelve or more credit hours.

**FULL-TIME EQUIVALENT ENROLLMENT BASED ON STUDENT CREDIT HOURS** - The total accumulative student credit hours by campus divided by the following:

Undergraduate	16 credit hours (100-400 number courses)
Graduate	12 credit hours (500 and above number courses)
Professional	Same as headcount — Law and Medicine
Occupational	16 credit hours – Selected Programs

**FULL-TIME EQUIVALENT ENROLLMENT OF PART-TIME STUDENTS**

The student credit hours accumulated at the undergraduate level divided by 16 plus the student credit hours accumulated at the graduate level divided by 12.

**PART-TIME STUDENTS** - The Headcount Enrollment of students enrolled for fewer than 12 credit hours.

**INTERACTIVE VIDEO NETWORK (IVN)** - A video conferencing network that provides two-way audio and two-way video allowing the teacher and students to be in different locations yet see and hear each other.

**INTERNET:**

**ONLINE:** Courses, discussions, or other communications occurring in an electronic format via the Internet.

**ASYNCHRONOUS INTERNET** – Online discussions occurring independent of time or location, e.g. email.

**SYNCHRONOUS INTERNET** – Online discussions occurring independent of location, but at the same time (real time), e.g. internet chat.

**PRERECORDED VIDEO OR AUDIO** – A video or audio communications that has been prerecorded on videotape or cassette. Recordings often complement other teaching methods, and content may be ongoing class sessions or specially produced for independent study.

**STUDENT** - All students taking degree credit courses, irrespective of the time of day or workload of the student.

**BEGINNING FRESHMAN STUDENTS** - A student attending any institution for the first time at the level (undergraduate, graduate, or first-professional) enrolled. Includes students enrolled in the fall term who attended a postsecondary institution for the first time at the same level in the prior summer term. Also includes students who entered with advanced standing (college credit earned before graduation from high school, e.g. dual credit.)

**GRADUATE STUDENTS** - Students who hold the bachelor's or first professional degree, or equivalent, and are enrolled in a graduate degree.

**NON-RESIDENT STUDENTS** - Nonresident students, for the purposes of this report, are students from any state other than North Dakota.

**PROFESSIONAL STUDENTS** - Students who have completed the baccalaureate degree and are enrolled in a post-baccalaureate program leading to a professional degree in law or medicine.

**RESIDENT STUDENTS** - Resident students, for the purposes of this are students having legal domicile in North Dakota.

**SPECIAL/UNCLASSIFIED STUDENTS** - Students taking undergraduate or post-baccalaureate level credit courses without declaring an intention to earn a degree, diploma, or certificate although taking courses in regular classes with other students. This category also includes students who cannot be classified by academic level. High school students enrolled in college classes are considered special/unclassified students.

**TRANSFER STUDENTS** - A student entering the reporting institution for the first time but known to have previously attended a postsecondary institution at the same level, e.g. undergraduate, graduate). The student may transfer with or without credit.

**TRI-COLLEGE STUDENTS** - Students enrolled at Moorhead State University or Concordia College but also registered for one or more courses at NDSU.

**UNDERGRADUATE STUDENTS** - Students who are enrolled in an undergraduate program. The year-level designation of undergraduate students is determined by institutional policy.

**STUDENTS' REPORTED HOME ADDRESS** - The official home address as reported by the student. If no address is reported, the parents' address and then the local campus address is used.

**TUITION RESIDENCY STATUS** - Official institutionally determined residence for tuition purposes.

**TV BROADCAST:** Communication using the capabilities of educational television broadcasting over established cable networks or otherwise. Programs can be viewed live or prerecorded for a later pre-determined time for viewing.

**LIVE** - Faculty and students are in different locations at the same time. Only faculty member will be seen by the student, e.g. educational television network.

**PRERECORDED**

- Faculty and students are in separate locations at different times. A course on the Educational Television Network may be prerecorded for later pre-determined times of viewing.

**VIDEO:**

**ONE-WAY VIDEO** – A conference between different locations where the communication links are made between orbiting satellites and various points on Earth. The video connection only allows for the faculty member to be seen and heard by the students.

**TWO-WAY VIDEO** – A video and audio communications session between two or more remote sites with live, animated image transmission and display. This connection allows for both the faculty and students to be seen and heard by each other.

**UNDUPLICATED COUNTS** – Students taking courses at more than one campus or through more than one instructional medium in the same semester are counted once.

## NOTES

Under Enrollment Policy 440 adopted by the State Board of Higher Education in April of 2001, all degree credit enrollments are included in this report. The new policy is consistent with National IPEDS enrollment reporting. Last year BSC, MiSU, NDSU, UND and, to a lesser extent MaSU, WSC, VCSU and LRSC had degree credit continuing education enrollments which were not included in the semester enrollment report. It is estimated that no more than 1,300 additional headcount enrollments were added to the Fall 2001 Enrollment Report as a result of the policy change. Since most of these students were only enrolled in one course the policy change does not have a major impact on full time equivalent enrollments on these campuses.

## INSTITUTIONAL ABBREVIATIONS

BSC	Bismarck State College Bismarck, ND 58501
DSU	Dickinson State University Dickinson, ND 58601
LRSC	Lake Region State College Devils Lake, ND 58301 (prior to 1999, LRSC was aligned under UND and thus referred to as UND-LR)
MaSU	Mayville State University Mayville, ND 58257
MiSU	Minot State University Minot, ND 58701
MiSU-B	Minot State University - Bottineau Bottineau, ND 58318 (prior to 1996, MiSU-B was aligned under NDSU and thus referred to as NDSU-Bottineau)
NDESCS	North Dakota State College of Science Wahpeton, ND 58075
NDSU	North Dakota State University Fargo, ND 58105
UND	University of North Dakota Grand Forks, ND 58202
VCSU	Valley City State University Valley City, ND 58072
WSC	Williston State College Williston, ND 58801 (prior to 1999, WSC was aligned under UND and thus referred to as UND-W)
JC	Jamestown College Jamestown, ND 58405
UM	University of Mary Bismarck, ND 58504

**Table 1**  
**HEADCOUNT ENROLLMENT**  
**Fall 2001**

Institution	Fresh	Soph	Junior	Senior	Graduate	Special	Unclass- ified	Pro- fessional	Total
DSU	554	459	335	405		348			2,101
MaSU	191	167	102	188		107			755
MiSU	926	807	592	921	182	87			3,515
NDSU	2,646	2,184	1,763	2,795	1,086	64			10,538
UND	2,659	2,536	1,865	2,725	1,336	221		422	11,764
VCSU	213	196	189	279		128			1,005
<b>Subtotal</b>	<b>7,189</b>	<b>6,349</b>	<b>4,846</b>	<b>7,313</b>	<b>2,604</b>	<b>955</b>	<b>0</b>	<b>422</b>	<b>29,678</b>
BSC	1,408	1,222				414			3,044
LRSC	412	262				634			1,308
MiSU-B	220	160				146			526
NDSCS	1,537	752				3			2,292
WSC	343	305				100			748
<b>Subtotal</b>	<b>3,920</b>	<b>2,701</b>	<b>0</b>	<b>0</b>	<b>0</b>	<b>1,297</b>	<b>0</b>	<b>0</b>	<b>7,918</b>
<b>NDUS Total</b>	<b>11,109</b>	<b>9,050</b>	<b>4,846</b>	<b>7,313</b>	<b>2,604</b>	<b>2,252</b>	<b>0</b>	<b>422</b>	<b>37,596</b>
JC	445	249	222	207		13			1,136
UM	551	365	628	504	393	1	2		2,444
<b>Total</b>	<b>996</b>	<b>614</b>	<b>850</b>	<b>711</b>	<b>393</b>	<b>14</b>	<b>2</b>	<b>0</b>	<b>3,580</b>
<b>ALL TOTAL</b>	<b>12,105</b>	<b>9,664</b>	<b>5,696</b>	<b>8,024</b>	<b>2,997</b>	<b>2,266</b>	<b>2</b>	<b>422</b>	<b>41,176</b>

**Table 2**  
**FULL-TIME ENROLLMENTS**  
**Fall 2001**

Institution	Fresh	Soph	Junior	Senior	Graduate	Special	Unclass- ified	Pro- fessional	Total
DSU	480	419	270	326		17			1,512
MaSU	152	159	93	168		7			579
MiSU	663	626	471	705	57	31			2,553
NDSU	2,489	2,046	1,634	2,404	100	4			8,677
UND	2,415	2,411	1,742	2,268	297	4		419	9,556
VCSU	197	167	154	217		6			741
<b>Subtotal</b>	<b>6,396</b>	<b>5,828</b>	<b>4,364</b>	<b>6,088</b>	<b>454</b>	<b>69</b>	<b>0</b>	<b>419</b>	<b>23,618</b>
BSC	1,165	930				17			2,112
LRSC	234	124				6			364
MiSU-B	192	149				8			349
NDSUS	1,196	676				1			1,873
WSC	284	237				4			525
<b>Subtotal</b>	<b>3,071</b>	<b>2,116</b>	<b>0</b>	<b>0</b>	<b>0</b>	<b>36</b>	<b>0</b>	<b>0</b>	<b>5,223</b>
<b>NDUS Total</b>	<b>9,467</b>	<b>7,944</b>	<b>4,364</b>	<b>6,088</b>	<b>454</b>	<b>105</b>	<b>0</b>	<b>419</b>	<b>28,841</b>
JC	410	242	213	193					1,058
UM	530	357	611	469	281	1			2,249
<b>Total</b>	<b>940</b>	<b>599</b>	<b>824</b>	<b>662</b>	<b>281</b>	<b>1</b>	<b>0</b>	<b>0</b>	<b>3,307</b>
<b>ALL TOTAL</b>	<b>10,407</b>	<b>8,543</b>	<b>5,188</b>	<b>6,750</b>	<b>735</b>	<b>106</b>	<b>0</b>	<b>419</b>	<b>32,148</b>

**Table 3**  
**TOTAL STUDENT CREDIT HOURS OF**  
**PART-TIME STUDENTS**  
**Fall 2001**

Institution	Fresh	Soph	Junior	Senior	Graduate	Special	Unclass- ified	Pro- fessional	Total
DSU	431	257	361	484		1,374			2,907
MaSU	141	37	63	104		273			618
MiSU	1,417	1,144	730	1,447	693	288			5,719
NDSU	1,109	981	846	2,404	5,370	214			10,924
UND	1,232	833	790	2,675	6,036	748		8	12,322
VCSU	88	150	275	398		380			1,291
<b>Subtotal</b>	<b>4,418</b>	<b>3,402</b>	<b>3,065</b>	<b>7,512</b>	<b>12,099</b>	<b>3,277</b>	<b>0</b>	<b>8</b>	<b>33,781</b>
BSC	1,686	1,753				1,375			4,814
LRSC	924	674				2,597			4,195
MiSU-B	173	79				434			686
NDSCS	1,241	503				6			1,750
WSC	360	455				406			1,221
<b>Subtotal</b>	<b>4,384</b>	<b>3,464</b>	<b>0</b>	<b>0</b>	<b>0</b>	<b>4,818</b>	<b>0</b>	<b>0</b>	<b>12,666</b>
<b>NDUS Total</b>	<b>8,802</b>	<b>6,866</b>	<b>3,065</b>	<b>7,512</b>	<b>12,099</b>	<b>8,095</b>	<b>0</b>	<b>8</b>	<b>46,447</b>
JC	210	45	23	84		52			414
UM	143	53	105	226	432		8		967
<b>Total</b>	<b>353</b>	<b>98</b>	<b>128</b>	<b>310</b>	<b>432</b>	<b>52</b>	<b>8</b>	<b>0</b>	<b>1,381</b>
<b>ALL TOTAL</b>	<b>9,155</b>	<b>6,964</b>	<b>3,193</b>	<b>7,822</b>	<b>12,531</b>	<b>8,147</b>	<b>8</b>	<b>8</b>	<b>47,828</b>

\*Numbers have been recorded to the nearest whole number.



**Table 4**  
**FULL-TIME EQUIVALENT ENROLLMENTS OF**  
**PART-TIME STUDENTS**  
**Fall 2001**

Institution	Fresh	Soph	Junior	Senior	Graduate	Special	Unclass- ified	Pro- fessional	Total
DSU	27	16	23	30		86			183
MaSU	9	2	4	7		17			39
MiSU	89	72	46	90	58	19			371
NDSU	69	61	53	150	447	15			795
UND	77	52	49	167	505	62		1	915
VCSU	5	10	18	25		24			82
<b>Subtotal</b>	<b>276</b>	<b>213</b>	<b>193</b>	<b>469</b>	<b>1,010</b>	<b>223</b>	<b>0</b>	<b>1</b>	<b>2,385</b>
BSC	105	110				86			301
LRSC	58	42				162			263
MiSU-B	11	5				27			43
NDSCS	78	31							108
WSC	23	28				25			76
<b>Subtotal</b>	<b>275</b>	<b>216</b>	<b>0</b>	<b>0</b>	<b>0</b>	<b>300</b>	<b>0</b>	<b>0</b>	<b>791</b>
<b>NDUS Total</b>	<b>551</b>	<b>429</b>	<b>193</b>	<b>469</b>	<b>1,010</b>	<b>523</b>	<b>0</b>	<b>1</b>	<b>3,176</b>
JC	13	3	1	5		3			25
UM	9	3	7	14	36		1		70
<b>Total</b>	<b>22</b>	<b>6</b>	<b>8</b>	<b>19</b>	<b>36</b>	<b>3</b>	<b>1</b>	<b>0</b>	<b>95</b>
<b>ALL TOTAL</b>	<b>573</b>	<b>435</b>	<b>201</b>	<b>488</b>	<b>1,046</b>	<b>526</b>	<b>1</b>	<b>1</b>	<b>3,271</b>

\*Numbers have been recorded to the nearest whole number.

**Table 5**  
**TOTAL OF FULL-TIME AND**  
**FULL-TIME EQUIVALENT OF PART-TIME STUDENTS**  
**Fall 2001**

Institution	Fresh	Soph	Junior	Senior	Graduate	Special	Unclass- ified	Pro- fessional	Total
DSU	507	435	293	356		103			1,695
MaSU	161	161	97	175		24			618
MiSU	752	698	517	795	115	50			2,924
NDSU	2,558	2,107	1,687	2,554	547	19			9,472
UND	2,492	2,463	1,791	2,435	802	66		420	10,471
VCSU	202	177	172	242		30			823
<b>Subtotal</b>	<b>6,672</b>	<b>6,041</b>	<b>4,557</b>	<b>6,557</b>	<b>1,464</b>	<b>292</b>	<b>0</b>	<b>420</b>	<b>26,003</b>
BSC	1,270	1,040				103			2,413
LRSC	292	166				168			627
MiSU-B	203	154				35			392
NDSCS	1,274	707				1			1,981
WSC	307	265				29			601
<b>Subtotal</b>	<b>3,346</b>	<b>2,332</b>	<b>0</b>	<b>0</b>	<b>0</b>	<b>336</b>	<b>0</b>	<b>0</b>	<b>6,014</b>
<b>NDUS Total</b>	<b>10,018</b>	<b>8,373</b>	<b>4,557</b>	<b>6,557</b>	<b>1,464</b>	<b>628</b>	<b>0</b>	<b>420</b>	<b>32,017</b>
JC	423	245	214	198		3			1,083
UM	539	360	618	483	317	1	1		2,319
<b>Total</b>	<b>962</b>	<b>605</b>	<b>832</b>	<b>681</b>	<b>317</b>	<b>4</b>	<b>1</b>	<b>0</b>	<b>3,402</b>
<b>ALL TOTAL</b>	<b>10,980</b>	<b>8,978</b>	<b>5,389</b>	<b>7,238</b>	<b>1,781</b>	<b>632</b>	<b>1</b>	<b>420</b>	<b>35,419</b>

\*Numbers have been recorded to the nearest whole number.

Table 6

**FULL-TIME EQUIVALENT ENROLLMENTS BASED ON TOTAL STUDENT CREDIT HOURS  
BY LEVEL OF STUDENT<sup>1</sup>**

**Fall 2001**

INSTITUTION	Freshman		Sophomore		Junior		Senior		Special		Unclassified		Graduate		Common Market		Professional		Total	
	SCH	FTE	SCH	FTE	SCH	FTE	SCH	FTE	SCH	FTE	SCH	FTE	SCH	FTE	SCH	FTE	SCH	FTE	SCH	FTE
BSC	19,378	1,211	16,082	1,005					1,642	103									37,102	2,320
DSU	7,792	487	6,722	420	4,597	287	5,471	342	1,607	100									26,168	1,637
LRSC	4,621	289	2,664	167					2,681	168									9,966	624
MASU	2,554	160	2,593	162	1,598	100	2,790	174	395	25									9,930	620
MISU	11,025	689	10,419	651	7,663	479	11,942	746	777	49		123							43,299	2,739
MISU-B	3,214	201	2,486	155					535	33									6,235	389
NDSCS	22,032	1,377	11,650	728					20	1									33,702	2,106
NDSU	37,919	2,370	32,251	2,016	25,757	1,610	38,962	2,435	255	17			548		957	59			142,666	9,056
UND	36,441	2,278	37,108	2,319	27,372	1,711	36,438	2,277	797	66			834				7,297	422	155,442	9,906
VCSU	3,277	205	2,924	183	2,816	177	3,927	245	492	31									13,436	841
WSC	4,731	296	4,061	254					464	29									9,256	579
NDUS Total	152,984	9,563	128,960	8,060	69,803	4,364	99,530	6,219	9,665	622	0	0	16,027	1,505	957	59	7,297	422	487,222	30,817
JC	6,584	412	4,105	257	3,622	226	3,202	200	52	3									17,565	1,098
UM	9,394	587	6,231	389	11,470	717	7,689	481	17	1	10	1	4,774	398					39,585	2,574
Grand Total	168,962	10,562	139,296	8,706	84,895	5,307	110,421	6,900	9,794	626	10	1	22,801	1,903	957	59	7,297	422	544,372	34,489

FTE - Full Time Equivalent

Undergraduate student credit hours divided by 16 = FTE

Graduate student credit hours divided by 12 = FTE

Vocational student credit hours divided by 16 = FTE

Professional students in law and medicine counted as one per enrollment

<sup>1</sup>Numbers have been recorded to the nearest whole number

**Table 7**

**TOTAL STUDENT CREDIT HOURS BY COURSE LEVEL**

**Fall 2001**

Numbers have been recorded to the nearest whole number.

<b>BISMARCK STATE COLLEGE</b>							
CLASS LEVEL	Under 100	100-199	200-299	300-399	400-499	Other	TOTAL
Freshman	1096	15,494	2,788				19,378
Sophomore	125	8,903	7,054				16,082
Special	1	1,062	579				1,642
<b>TOTALS</b>	<b>1,222</b>	<b>25,459</b>	<b>10,421</b>				<b>37,102</b>

<b>DICKINSON STATE UNIVERSITY</b>							
CLASS LEVEL	Under 100	100-199	200-299	300-399	400-499	500-599	TOTAL
Freshman	87	6,150	1,291	217	47		7,792
Sophomore	24	3,170	2,570	846	112		6,722
Junior	0	1,116	1,606	1,575	300		4,597
Senior	3	941	1,425	1,844	1,258		5,471
Special	0	1,239	205	98	65		1,607
<b>TOTALS</b>	<b>114</b>	<b>12,616</b>	<b>7,096</b>	<b>4,580</b>	<b>1,782</b>		<b>26,188</b>

<b>LAKE REGION STATE COLLEGE</b>							
CLASS LEVEL	Under 100	100-199	200-299	300-399	400-499	500-599	TOTAL
Freshman	153	3,205	1,263				4,621
Sophomore	4	1,299	1,361				2,664
Special	21	2,245	415				2,681
<b>TOTALS</b>	<b>178</b>	<b>6,749</b>	<b>3,039</b>				<b>9,966</b>

<b>MAYVILLE STATE UNIVERSITY</b>							
CLASS LEVEL	Under 100	100-199	200-299	300-399	400-499	500-599	TOTAL
Freshman		2,284	196	62	12		2,554
Sophomore		1,197	777	556	63		2,593
Junior		343	368	752	135		1,598
Senior		226	367	1,457	740		2,790
Special		10	57	116	212		395
<b>TOTALS</b>		<b>4,060</b>	<b>1,765</b>	<b>2,943</b>	<b>1,162</b>		<b>9,930</b>

TABLE 7 (Cont.)

MINOT STATE UNIVERSITY							
CLASS LEVEL	Under 100	100-199	200-299	300-399	400-499	500-599	TOTAL
Freshman	72	9,033	1,673	167	77	3	11,025
Sophomore	36	5,529	3,256	1,347	251		10,419
Junior	6	1,992	2,220	2,603	842		7,663
Senior	13	1,820	2,194	3,549	4,366		11,942
Graduate		8	8	26	9	1422	1,473
Special		103	192	235	223		753
<b>TOTALS</b>	<b>127</b>	<b>18,485</b>	<b>9,543</b>	<b>7,927</b>	<b>5,768</b>	<b>1,425</b>	<b>43,275</b>

MINOT STATE UNIVERSITY-BOTTINEAU							
CLASS LEVEL	UNDER 100	100-199	200-299	300-399	400-499	500-599	TOTAL
Freshman	89	2,520	605				3,214
Sophomore	6	1,232	1,248				2,486
Special	12	327	196				535
<b>TOTALS</b>	<b>107</b>	<b>4,079</b>	<b>2,049</b>				<b>6,235</b>

NORTH DAKOTA STATE COLLEGE OF SCIENCE							
CLASS LEVEL	Under 100	100-199	200-299	300-399	400-499	500-599	TOTAL
Freshman	977	17,352	3,703				22,032
Sophomore	12	3,672	7,966				11,650
Special		13	7				20
<b>TOTALS</b>	<b>989</b>	<b>21,037</b>	<b>11,676</b>				<b>33,702</b>

NORTH DAKOTA STATE UNIVERSITY								
CLASS LEVEL	UNDER 100	100-199	200-299	300-399	400-499	500-599	600 & above	TOTAL
Freshman	459	32,126	4,074	1,032	225		3	37,919
Sophomore	57	14,667	11,290	4,802	1,387	48		32,251
Junior	3	5,576	6,464	9,902	3,689	123		25,757
Senior	6	4,530	4,256	10,605	16,325	3,098	142	38,962
Tri-College*								0
Graduate		46	31	106	57		6,325	6,565
Special		60	37	66	30		62	255
<b>TOTALS</b>	<b>525</b>	<b>57,005</b>	<b>26,152</b>	<b>26,513</b>	<b>21,713</b>	<b>3,269</b>	<b>6,532</b>	<b>141,709</b>

\*Tri-college total not broken down by levels

TABLE 7 (Cont.)

UNIVERSITY OF NORTH DAKOTA							
CLASS LEVEL	100-199	200-299	300-399	400-499	500-599	600 & above	TOTAL
Freshman	29,984	5,598	679	168	9	3	36,441
Sophomore	17,835	13,447	5,238	583	5	0	37,108
Junior	5,866	7,274	10,876	3,348	8	0	27,372
Senior	4,078	4,496	11,729	15,783	349	3	36,438
Graduate	122	176	429	888	8,053	1,118	10,786
Professional							
Law Totals	1,117	1,567	43	159	163	0	3,049
Medicine Total:	0	0	3	0		4,245	4,248
<b>TOTALS</b>	<b>59,002</b>	<b>32,558</b>	<b>28,997</b>	<b>20,929</b>	<b>8,587</b>	<b>5,369</b>	<b>155,442</b>

VALLEY CITY STATE UNIVERSITY							
CLASS LEVEL	Under 100	100-199	200-299	300-399	400-499	500-599	TOTAL
Freshman	9	2,749	425	88	6		3,277
Sophomore		1,237	1,061	573	53		2,924
Junior	6	586	502	1,371	351		2,816
Senior		496	413	1,391	1,627		3,927
Special		131	120	138	103		492
<b>TOTALS</b>	<b>15</b>	<b>5,199</b>	<b>2,521</b>	<b>3,561</b>	<b>2,140</b>		<b>13,436</b>

WILLISTON STATE COLLEGE							
CLASS LEVEL	Under 100	100-199	200-299	300-399	400-499	500-599	TOTAL
Freshman	75	3,666	990				4,731
Sophomore	23	2,110	1,928				4,061
Special	2	348	114				464
<b>TOTALS</b>	<b>100</b>	<b>6,124</b>	<b>3,032</b>				<b>9,256</b>

JAMESTOWN COLLEGE						
CLASS LEVEL	UNDER 100	100-199	200-299	300-399	400-499	TOTAL
Freshman		4,641	1,735	196	12	6,584
Sophomore		1,190	2,027	836	52	4,105
Junior		520	1,071	1,699	332	3,622
Senior		256	555	1,204	1,187	3,202
Special		26	11	15		
<b>TOTALS</b>		<b>6,633</b>	<b>5,399</b>	<b>3,950</b>	<b>1,583</b>	<b>17,565</b>

UNIVERSITY OF MARY							
CLASS LEVEL	UNDER 100	100-199	200-299	300-399	400-499	500-599	TOTAL
			<b>DATA UNAVAILABLE*</b>				
Freshman	N/A	N/A	N/A	N/A	N/A	N/A	N/A
Sophomore	N/A	N/A	N/A	N/A	N/A	N/A	N/A
Junior	N/A	N/A	N/A	N/A	N/A	N/A	N/A
Senior	N/A	N/A	N/A	N/A	N/A	N/A	N/A
Graduate	N/A	N/A	N/A	N/A	N/A	N/A	N/A
Special	N/A	N/A	N/A	N/A	N/A	N/A	N/A
<b>TOTALS</b>	<b>N/A</b>	<b>N/A</b>	<b>N/A</b>	<b>N/A</b>	<b>N/A</b>	<b>N/A</b>	<b>N/A</b>

\*Data for University of Mary was unavailable at the time of publication.

**Table 8**  
**NORTH DAKOTA UNIVERSITY SYSTEM**  
**DEGREE CREDIT FALL ENROLLMENT REPORT**  
**1992 through 2001**

INSTITUTION	1992			1993			1994			1995			1996		
	HC	FT	FTE	HC	FT	FTE	HC	FT	FTE	HC	FT	FTE	HC	FT	FTE
Bismarck State College	2,472	1,715	1,954	2,462	1,786	1,965	2,349	1,667	1,842	2,313	1,598	1,795	2,406	1,764	1,932
Dickinson State University	1,605	1,389	1,388	1,613	1,376	1,383	1,591	1,331	1,342	1,578	1,364	1,373	1,701	1,445	1,459
Lake Region State College	633	369	433	634	381	442	705	375	455	723	395	479	703	358	437
Mayville State University	749	687	693	718	658	676	778	675	708	777	699	739	756	697	723
Minot State University	3,805	3,293	3,278	4,056	3,351	3,417	3,793	3,150	3,216	3,761	3,058	3,134	3,602	2,873	2,964
MISU-Bottineau	410	374	489	370	347	359	339	324	338	356	325	337	399	333	369
ND State College of Science	2,147	1,960	2,091	2,192	1,977	2,014	2,429	2,149	2,170	2,492	2,276	2,259	2,581	2,347	2,340
North Dakota State University	9,269	6,882	7,504	9,507	7,533	7,917	9,665	7,620	8,092	9,676	7,715	8,196	9,598	7,703	8,190
University of North Dakota	12,418	9,535	10,059	11,998	9,224	9,742	11,499	8,977	9,463	11,486	8,958	9,390	11,274	8,799	9,221
Valley City State University	1,003	831	845	1,052	863	902	986	792	853	1,118	840	929	1,121	847	932
Williston State College	878	642	717	851	700	738	814	650	702	919	662	714	847	665	702
<b>TOTAL</b>	<b>35,389</b>	<b>27,677</b>	<b>29,451</b>	<b>35,389</b>	<b>27,677</b>	<b>29,451</b>	<b>35,453</b>	<b>28,196</b>	<b>29,555</b>	<b>35,199</b>	<b>27,890</b>	<b>29,345</b>	<b>34,988</b>	<b>27,831</b>	<b>29,269</b>

**HC-Headcount**

All students enrolled regardless of number of credit hours

**FT-Full Time**

Students enrolled in 12 credit hours or more

**FTE - Full Time Equivalent**

Undergraduate student credit hours divided by 16 = FTE  
 Graduate student credit hours divided by 12 = FTE  
 Vocational student credit hours divided by 16 = FTE  
 Professional students in law and medicine counted as one per enrollment

Note: Information includes students in extended degree programs and students jointly enrolled through collaborative program arrangements. Prior to 2001 BSC, MISU, NDSU, UND and to a lesser extent MaSU, WSC, VCSU, and LRSC had degree credit continuing education enrollments which were not included in the semester enrollment report.

**NORTH DAKOTA UNIVERSITY SYSTEM  
DEGREE CREDIT FALL ENROLLMENT REPORT  
1992 through 2001**

INSTITUTION	1997			1998			1999			2000			2001		
	HC	FT	FTE	HC	FT	FTE	HC	FT	FTE	HC	FT	FTE	HC	FT	FTE
Bismarck State College	2,481	1,832	2,001	2,594	1,877	2,082	2,743	1,975	2,181	2,744	1,933	2,126	3,044	2,112	2,320
Dickinson State University	1,736	1,444	1,470	1,800	1,417	1,484	1,867	1,485	1,535	2,012	1,494	1,592	2,101	1,512	1,637
Lake Region State College	738	339	439	826	383	492	805	355	474	902	348	491	1,308	364	624
Mayville State University	705	606	635	740	606	643	851	592	651	776	593	644	755	579	620
Minot State University	3,294	2,690	2,727	3,156	2,493	2,597	3,155	2,466	2,588	3,081	2,360	2,491	3,515	2,553	2,739
MISU-Bottineau	421	376	389	447	396	410	508	441	467	451	369	394	526	349	389
ND State College of Science	2,542	2,322	2,271	2,469	2,248	2,219	2,345	2,162	2,139	2,425	2,050	2,276	2,292	1,873	2,106
North Dakota State University	9,408	7,548	8,079	9,536	7,664	8,142	9,638	7,813	8,253	9,894	8,032	8,469	10,538	8,677	9,056
University of North Dakota	10,363	8,384	8,725	10,369	8,282	8,684	10,590	8,544	8,911	11,031	9,004	9,302	11,764	9,556	9,906
Valley City State University	1,054	793	879	1,081	821	903	1,077	796	896	1,090	805	910	1,005	741	841
Williston State College	788	626	663	674	577	592	714	582	615	687	506	550	748	525	579
<b>TOTAL</b>	<b>33,530</b>	<b>26,960</b>	<b>28,278</b>	<b>33,692</b>	<b>26,764</b>	<b>28,248</b>	<b>34,293</b>	<b>27,211</b>	<b>28,710</b>	<b>35,093</b>	<b>27,494</b>	<b>29,245</b>	<b>37,596</b>	<b>28,841</b>	<b>30,817</b>

HC-Headcount

All students enrolled regardless of number of credit hours

FT-Full Time

Students enrolled in 12 credit hours or more

FTE - Full Time Equivalent

Undergraduate student credit hours divided by 16 = FTE

Graduate student credit hours divided by 12 = FTE

Vocational student credit hours divided by 16 = FTE

Professional students in law and medicine counted as one per enrollment

Note: Information includes students in extended degree programs and students jointly enrolled through collaborative program arrangements. Prior to 2001 BSC, MISU, NDSU, UND and to a lesser extent MaSU, WSC, VCSU, and LRSC had degree credit continuing education enrollments which were not included in the semester enrollment report.



**Table 9**  
**DEGREE CREDIT HEADCOUNT BY ALL DELIVERY METHODS**  
**Fall 2001**

INSTITUTION	DISTANCE EDUCATION						FACE TO FACE ON CAMPUS	FACE TO FACE ON CAMPUS	DE & ON-CAMPUS DUPLICATED TOTALS <sup>1</sup>	UNDUPLICATED DE & ON CAMPUS TOTAL <sup>4</sup>	INSUFFICIENT ID INFO <sup>5</sup>	CAMPUS TOTAL <sup>6</sup>
	A	B	C	D	E	F						
	FACE TO FACE OFF CAMPUS	CORESPONDENCE	E-LEARNING <sup>1</sup>	DUPLICATED DE TOTAL <sup>2</sup>	UNDUPLICATED DE TOTAL <sup>3</sup>							=H+I
				=A+B+C				=E+F				
BSC	41	0	562	603	602	2,629	3,231	3,041	3 <sup>6</sup>	3,044		
DSU	82	0	339	421	386	1,739	2,125	2,090	11 <sup>6</sup>	2,101		
LRSC	424	2	104	530	499	876	1,375	1,303	5 <sup>6</sup>	1,308		
MASU	8	0	134	142	142	643	785	755	0	755		
MISU	488	89	392	969	844	2,958	3,802	3,446	69 <sup>5</sup>	3,515		
MISU-B	160	49	87	296	286	329	615	525	1 <sup>6</sup>	526		
NDSCS	45	0	84	129	123	2,179	2,302	2,292	0	2,292		
NDSU	0	11	80	91	91	10,463 <sup>7</sup>	10,554	10,493 <sup>7</sup>	45 <sup>6</sup>	10,538		
UND	74	199	715	968	981	11,143	12,124	11,764	0	11,764		
VCSU	70	1	83	154	152	808	960	1,005 <sup>8</sup>	0	1,005		
WSC	18	0	43	61	61	703	764	748	0	748		
<b>NDSU Total</b>	<b>1,410</b>	<b>351</b>	<b>2,623</b>	<b>4,384</b>	<b>4,187</b>	<b>34,470</b>	<b>38,637</b>	<b>37,462</b>	<b>134</b>	<b>37,596</b>		
<b>NDSU Unduplicated Total</b>											<b>37,332</b>	

<sup>1</sup>E-learning categories are listed in more detail on Table 9A

<sup>2</sup> Reflects enrollments in each distance education delivery method. If for example a student is taking both a correspondence course and an e-learning course, this same student would be reported twice in the duplicated enrollment total.

<sup>3</sup> Reflects unduplicated headcount enrollment for total distance education. If for example a student is taking both a correspondence and e-learning course, this student would be counted only once in the unduplicated distance education total.

<sup>4</sup> This is a conservative count of students known to be counted only once by a campus or the system for the system total. The actual unduplicated counts are probably higher for campuses with students with insufficient identification information. If for example, a student that is taking a correspondence course and a face to face on campus course, they would be counted only once when sufficient identification information is provided.

<sup>5</sup> Students provided insufficient identification information to determine if they were duplicated enrollments.

<sup>6</sup> Enrollments are unduplicated at campus level but are duplicated at system level. Thus, a student who is taking courses simultaneously at two different campuses would be included in the NDSU total twice but only once in the NDSU unduplicated total.

<sup>7</sup> In accordance with the Tri-College agreement this number does not include 202 Tri-College enrollments.

<sup>8</sup> Includes 110 Elementary Education students on the NDSU campus that are also included in the NDSU enrollments.

**Table 9A**  
**DEGREE CREDIT HEADCOUNT BY E-LEARNING DELIVERY METHOD**  
**Fall 2001**

INSTITUTION	VIDEO		TV BROADCAST		PRERECORDED		AUDIO		INTERNET		CD ROM	COMBO < 50%	E-LEARNING DUPLICATED TOTAL	E-LEARNING UNDUPLICATED CAMPUS TOTAL
	1-WAY	2-WAY	LIVE	PRE-RECORDED	VIDEO	AUDIO	1-WAY	2-WAY	SYNCH	A-SYNCH				
BSC	0	78	0	0	0	0	0	0	0	484	0	0	562	562
DSU	0	56	0	0	0	0	0	0	0	16	0	274	346	339
LRSC	0	68	0	0	0	0	0	0	0	36	0	2	106	104
MASU	0	64	0	0	0	0	0	0	0	28	0	66	158	134
MISU	0	33	0	0	0	0	0	0	0	379	0	89	501	392
MISU-B	0	60	0	0	16	0	0	0	0	11	0	49	136	87
NDSCS	0	56	0	0	0	0	0	0	28	0	0	0	84	84
NDSU	0	0	0	0	1	0	0	0	0	79	0	11	91	80
UND	0	394	0	0	65	0	0	0	176	51	0	252	938	715
VCSU	0	70	0	0	0	0	0	0	13	0	0	1	84	83
WSC	0	40	0	0	0	0	0	0	4	0	0	0	44	43
<b>NDUS Total</b>	<b>0</b>	<b>919</b>	<b>0</b>	<b>0</b>	<b>82</b>	<b>0</b>	<b>0</b>	<b>0</b>	<b>217</b>	<b>1088</b>	<b>0</b>	<b>744</b>	<b>3050</b>	<b>2,623 *</b>

\* Reflects unduplicated headcount enrollment for e-learning delivery methods. For example, if a student taking a video course and an internet course the student is counted once in the unduplicated e-learning total.

**Table 10**  
**HEADCOUNT ENROLLMENTS BY TUITION RESIDENCY STATUS**  
**Fall 2001**

	BSC	DSU	LRSC	MASU	MISU	MISU-B	NDSCS	NDSU	UND	VCSU	WSC	TOTALS
<b>RESIDENT</b>												
NORTH DAKOTA	2,774	1,577	1,108	537	2,544	428	1,631	6,054	6,868	762	649	24,932
ND-MILITARY	2	0	181	11	438	31	3	3	55	0	0	724
<b>SUBTOTAL</b>	<b>2,776</b>	<b>1,577</b>	<b>1,289</b>	<b>548</b>	<b>2,982</b>	<b>459</b>	<b>1,634</b>	<b>6,057</b>	<b>6,923</b>	<b>762</b>	<b>649</b>	<b>25,656</b>
<b>NON-RESIDENT</b>												
MANITOBA	1	5	4	11	44	25	0	16	119	21	0	246
MINNESOTA	9	9	6	122	18	2	363	3,322	2,776	102	1	6,730
OTHER MHEC STATES	3	7	0	1	3	0	1	0	48	2	0	65
MONTANA	35	283	0	11	166	4	63	57	199	23	79	920
SASKATCHEWAN	1	12	0	7	130	7	1	4	21	5	3	191
SOUTH DAKOTA	41	65	0	1	6	5	117	312	204	11	2	764
OTHER WICHE STATES	39	94	2	30	94	8	15	56	480	42	4	864
OTHER	139	49	7	24	72	16	98	714	994	37	10	2,160
<b>SUBTOTAL</b>	<b>268</b>	<b>524</b>	<b>19</b>	<b>207</b>	<b>533</b>	<b>67</b>	<b>658</b>	<b>4,481</b>	<b>4,841</b>	<b>243</b>	<b>99</b>	<b>11,940</b>
<b>TOTALS</b>	<b>3,044</b>	<b>2,101</b>	<b>1,308</b>	<b>755</b>	<b>3,515</b>	<b>526</b>	<b>2,292</b>	<b>10,538</b>	<b>11,764</b>	<b>1,005</b>	<b>748</b>	<b>37,596</b>

Note: Information includes students in extended degree programs and students jointly enrolled through collaborative program arrangements. Prior to 2001 BSC, MISU, NDSU, UND and to a lesser extent MaSU, WSC, VCSU, and LRSC had degree credit continuing education enrollments which were not included in the semester enrollment report.

**Table 11**  
**NONRESIDENT HEADCOUNT**  
**UNDERGRADUATE ENROLLMENTS BY STATE**  
**(Using Students' Reported Home Address)**

**Fall 2001**

State	BSC	DSU	LRSC	MaSU	MISU	MISU-B	NDSUS	UND	VCSU	WSC	JC	UM	TOTAL
ALABAMA					1							1	2
ALASKA		1		5	1		8	30	20			5	70
ARIZONA	2	3		1	7		3	15				6	41
ARKANSAS	1				2	1		3			1		8
CALIFORNIA	13	8	1	7	36	2	1	84	2		6	40	206
COLORADO	8	5	1	5	9	1	4	104	1		2	1	154
CONNECTICUT					1		1	7			1	6	16
DELAWARE					1		1						2
DIST OF COLUMBIA	2										1	1	4
FLORIDA	14	5	1	1	7		5	20	4		4	1	68
GEORGIA	1	1			1		2	8				1	14
HAWAII		1					1	4	1		1	1	36
IDAHO	3	2		5	4	1	1	2	31	2	1	11	5
ILLINOIS	3	1	1		4	1	1	10	75	1	1	1	99
INDIANA	1		1		1		1	11		1	2	1	19
IOWA	3				3	1	3	45	2		1	1	79
KANSAS		2			3	2	4	10			3		24
KENTUCKY		1						2					3
LOUISIANA	5				3			9			1		18
MAINE							1	4					5
MARYLAND	18				3			8					29
MASSACHUSETTS	1				5			7			1		14
MICHIGAN	6			1	8			45	3		1	2	66
MINNESOTA	40	11	18	123	27	3	433	3,016	104	2	128	124	6,709
MISSISSIPPI								1	2				3
MISSOURI					5	3	1	25			1	1	38
MONTANA	32	253	2	10	158	7	60	197	22	71	81	163	1,110

TABLE 11 (Cont.)

State	BSC	DSU	LRSC	MaSU	MISU	MISU-B	NDSCS	NDSU	UND	VCSU	WSC	JC	UM	TOTAL
NEBRASKA	3	5			1			8	16	1	1		3	38
NEVADA	2	10		2	13	1		2	15	8		3	2	58
NEW HAMPSHIRE					1			2	9					12
NEW JERSEY	2							1	14	1				18
NEW MEXICO		1		1	2				6					10
NEW YORK	2	1			10		1	1	37					52
NORTH CAROLINA		1			4				10		1	2		18
OHIO	1			2	6	1	3	1	22	2		1	2	41
OKLAHOMA	10	1			1			1	6			1		20
OREGON	1	6		1	9		1	1	51			5	2	77
PENNSYLVANIA	7				6	1	1	3	19	1				38
RHODE ISLAND									2					2
SOUTH CAROLINA					3	1			3					7
SOUTH DAKOTA	39	78	1	2	6	7	122	281	208	14	1	53	109	921
TENNESSEE					1		1		8				1	11
TEXAS	3	3	1	2	10	3		4	70			6	9	111
UTAH					1	1		1	11				3	17
VERMONT					1									1
VIRGINIA	3				2			4	15				1	25
WASHINGTON	4	8		3	19	1	1	10	113	1		30	6	196
WEST VIRGINIA					3				4					7
WISCONSIN	6	1		5	7	1	5	32	109	1		4	4	175
WYOMING	4	43	1	1	12		2	4	49	1	2	8	39	166
PUERTO RICO													11	11
CANADA		1	4	20	138	34		6	88	28	4	20	22	365
OTHER FOREIGN	18	53	5	2	19		21	77	190	16	5	20		426
TOTALS	258	506	37	199	565	73	671	3,595	4,524	236	89	400	575	11,728



**Table 12**

**NONRESIDENT HEADCOUNT  
GRADUATE AND PROFESSIONAL ENROLLMENTS BY STATE  
(Using Students' Reported Home Address)**

**Fall 2001**

State	NDSU	UND	MiSU	UM
ALABAMA		2		
ALASKA	1	4		
ARIZONA		10		1
ARKANSAS				
CALIFORNIA	2	25	1	
COLORADO	3	17		
CONNECTICUT		2		
DELAWARE				
DIST OF COLUMBIA				
FLORIDA		16		
GEORGIA		3		
HAWAII		4		
IDAHO		2		
ILLINOIS	2	14		
INDIANA		5		
IOWA	7	8	2	
KANSAS	4			
KENTUCKY		3		
LOUISIANA		7		
MAINE				
MARYLAND		5		
MASSACHUSETTS		2	1	
MICHIGAN		7		
MINNESOTA	163	289	4	23
MISSISSIPPI		5		
MISSOURI	3	4		
MONTANA	5	45	5	11

TABLE 12 (Cont.)

State	NDSU	UND	MiSU	UM
NEBRASKA	1			1
NEVADA	1	3		
NEW HAMPSHIRE		1		
NEW JERSEY		3		
NEW MEXICO		3		
NEW YORK	2	7		
NORTH CAROLINA	2	3		
OHIO		3	1	
OKLAHOMA		3		
OREGON	2	4	1	
PENNSYLVANIA		5		
RHODE ISLAND				
SOUTH CAROLINA		1		
SOUTH DAKOTA	7	35		9
TENNESSEE		2		
TEXAS	2	19		
UTAH	2	1		
VERMONT		2		
VIRGINIA	4	9		
WASHINGTON	2	14	1	
WEST VIRGINIA	1	2		
WISCONSIN	6	15	1	
WYOMING	2	16		2
PUERTO RICO				
CANADA	9	60	39	1
FOREIGN	259	78	7	2
<b>TOTALS</b>	<b>492</b>	<b>768</b>	<b>63</b>	<b>50</b>

Table 13

**HEADCOUNT ENROLLMENTS BY COUNTY OF RESIDENCE  
FOR NORTH DAKOTA STUDENTS  
(Using Students' Reported Home Address)**

Fall 2001

COUNTIES	BSC	DSU	LRSC	MaSU	MISU	MISU-B	NDSUS	UND	VCSU	WSC	JC	UM	TOTAL
UNSPECIFIED												1,013	1,013
ADAMS	7	47	1	7	4	1	7	16	11	1	3	2	108
BARNES	8	3	9	6	6	2	46	84	80	273	15		526
BENSON	6		103	5	12	2	4	33	51	5	9		232
BILLINGS	3	12			1		2	5	2	1	1		27
BOTTINEAU	18	11	4	2	95	121	20	58	55	3	11	2	402
BOWMAN	13	41	1		4	2	6	32	25	3	3		133
BURKE	15	4		2	24	3	6	20	22	1	15	5	118
BURLEIGH	1,290	82	5	22	132	7	41	477	569	37	2	27	448
CASS	23	3	5	71	7	5	148	3,290	567	83	2	29	56
CAVALIER	2		81	5	16	1	16	35	63	11		2	234
DICKEY	7			3		1	23	54	28	6	12	5	139
DIVIDE	4	3	1		8		12	18	21	2	14	1	91
DUNN	11	67		1	7		8	28	22	3	2	5	157
EDDY	4	1	30	5		3	11	22	17	2	1	8	107
EMMONS	68	2		2	7		9	26	13	7	9	8	151
FOSTER	8	1	62	1	1		3	38	35	7	14	1	171
GOLDEN VALLEY	6	19	1		3		5	14	9	2	2	3	66
GRAND FORKS	8	4	313	87	11	2	36	145	2,439	11	1	8	3,072
GRANT	32	15			3		6	14	22	1	1	3	97
GRIGGS	1		26	3			4	38	18	11	12	1	114
HETTINGER	3	67			2	1	6	34	20	6	1	4	145
KIDDER	33	1		1		1	7	27	10	8	5	9	102
LAMOURE	13	2		1	1	2	24	65	22	15	26	5	176
LOGAN	22	2		1			5	16	4	9	11	2	72
MCHENRY	30	1	13	4	122	18	14	43	40	2	5	1	296



TABLE 13 (Cont.)

COUNTIES	BSC	DSU	LRSC	MaSU	MiSU	MiSU-B	NDSCS	NDSU	UND	VCSU	WSC	JC	UM	TOTAL
McINTOSH	27	1		1	2	3	16	31	13	10		7	6	117
McKENZIE	16	47	1	1	20	2	13	27	42	5	35	5	10	224
McLEAN	138	17		4	86	10	38	69	81	7	3	11	11	475
MERCER	137	73			36	5	58	65	50	11	1	8	11	455
MORTON	487	69	2	4	32	1	34	158	163	11	1	9	72	1,043
MOUNTRAIL	20	18	1	1	64	7	12	58	65	2	15	3	9	275
NELSON	5	1	62	13	1		17	32	42	7	1	3	1	185
OLIVER	42	5			3	1	5	16	6	1		10	3	92
PEMBINA	3	1	37	28	4	2	21	49	161	2		5	1	314
PIERCE	12		10	2	33	17	15	41	43	9	7	2	5	196
RAMSEY	7	1	312	27	21	2	20	41	159	7		3	4	604
RANSOM		1	4			3	32	71	29	23		3		166
RENVILLE	9	5	2	1	74	7	11	24	22			4	4	163
RICHLAND	6	2	1	5	2		488	175	114	26		16	1	836
ROLETTE	13	4	14	4	118	46	22	34	140	13	7	3	4	422
SARGENT	4			1	3		55	38	13	10		5	1	130
SHERIDAN	28	1		1	9	2	6	15	6	2	1	1		72
SIoux	11	2			4	1	1	5	7				5	36
SLOPE	2	8					6	4	3	1			1	25
STARK	45	886	2	1	16		34	144	131	2	5	15	5	1,286
STEELE	2		1	13			5	25	18	4		3	2	73
STUTSMAN	25	5	29	5	5	3	47	138	135	65	1	342	18	818
TOWNER	2		28	3	7	1	9	16	40	7	2	9	2	126
TRAIL	3		23	158			23	90	100	8		16	3	424
WALSH	5		49	37	9	2	31	75	204	5		3	3	423
WARD	49	11	8	8	1,752	160	87	244	330	11	16	6	34	2,716
WELLS	19	1	25	8	21	3	9	46	29	9	5	16	4	195
WILLIAMS	34	48	5	8	98	3	37	88	161	2	496	16	9	1,005
<b>TOTALS</b>	<b>2,786</b>	<b>1,595</b>	<b>1,271</b>	<b>556</b>	<b>2,887</b>	<b>453</b>	<b>1,621</b>	<b>6,451</b>	<b>6,472</b>	<b>769</b>	<b>659</b>	<b>736</b>	<b>1,817</b>	<b>28,073</b>

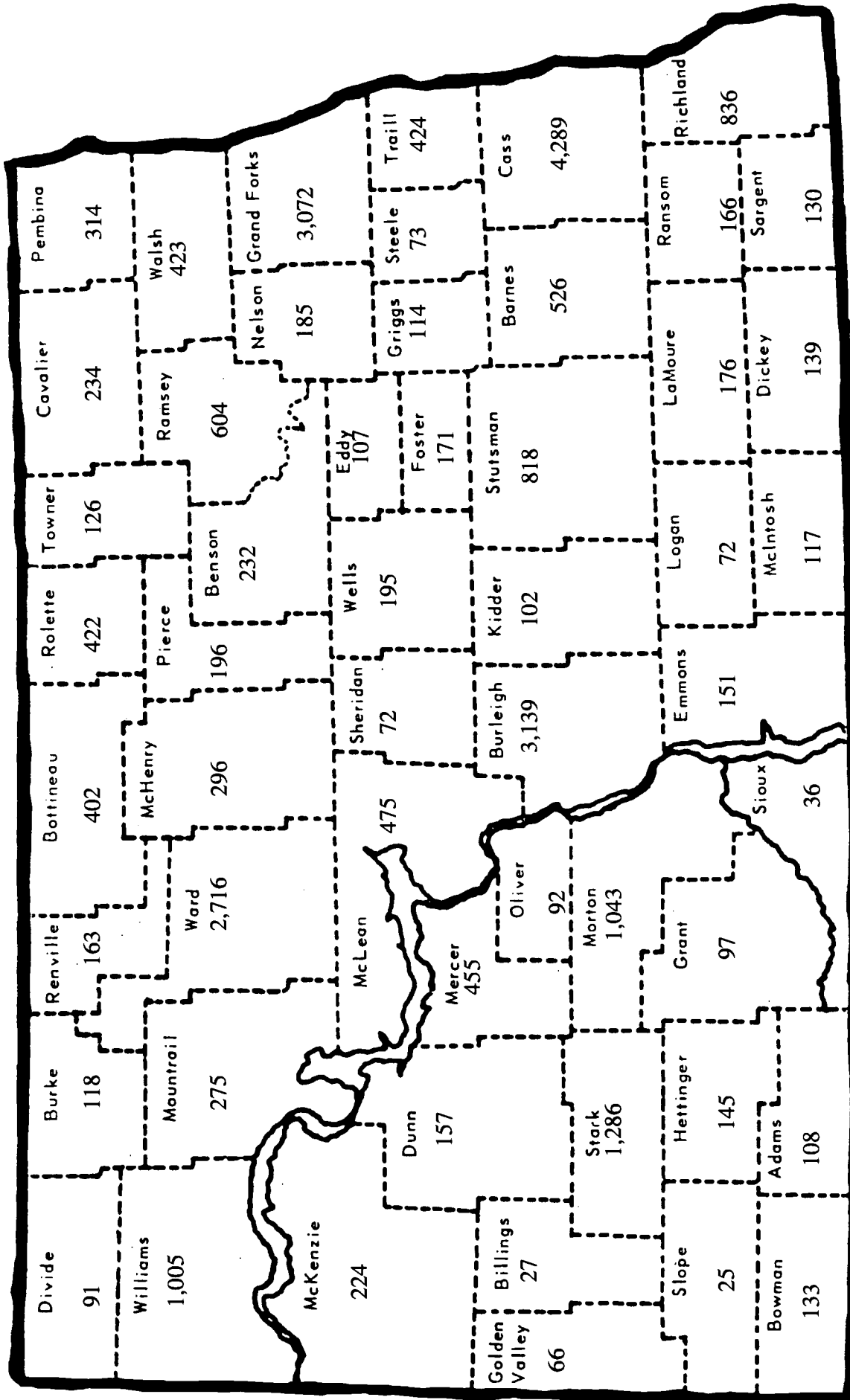
Note: Information includes students in extended degree programs and students jointly enrolled through collaborative program arrangements. Prior to 2001 BSC, MiSU, NDSU, UND and to a lesser extent MaSU, WSC, VCSU, and LRSC had degree credit continuing education enrollments which were not included in the semester enrollment report.

**Table 13A**  
**IN-STATE ENROLLMENT BY COUNTY OF ORIGIN**  
 Fall 1997 through Fall 2001

Counties	1997	1998	1999	2000	2001	Counties
Unspecified	0	0	0	0	1,013	Unspecified
Adams	103	98	104	96	108	Adams
Barnes	536	527	549	547	526	Barnes
Benson	178	208	209	216	232	Benson
Billings	36	33	31	36	27	Billings
Bottineau	391	398	388	363	402	Bottineau
Bowman	117	137	158	149	133	Bowman
Burke	121	130	112	116	118	Burke
Burleigh	3,010	2,951	3,234	2,508	3,139	Burleigh
Cass	3,780	3,941	4,150	4,016	4,289	Cass
Cavalier	220	242	222	215	234	Cavalier
Dickey	159	151	142	142	139	Dickey
Divide	100	109	106	95	91	Divide
Dunn	131	167	153	153	157	Dunn
Eddy	104	114	118	105	107	Eddy
Emmons	143	147	172	115	151	Emmons
Foster	141	176	171	161	171	Foster
Golden Valley	78	89	76	63	66	Golden Valley
Grand Forks	2,813	2,679	2,722	2,731	3,072	Grand Forks
Grant	90	102	103	94	97	Grant
Griggs	108	104	117	123	114	Griggs
Hettinger	125	127	132	128	145	Hettinger
Kidder	107	112	120	84	102	Kidder
LaMoure	169	167	168	159	176	LaMoure
Logan	69	79	82	73	72	Logan
McHenry	251	279	279	272	296	McHenry
McIntosh	101	102	107	104	117	McIntosh
McKenzie	202	190	199	203	224	McKenzie
McLean	405	443	459	451	475	McLean
Mercer	392	440	444	421	455	Mercer
Morton	949	943	1078	924	1,043	Morton
Mountrail	234	250	261	237	275	Mountrail
Nelson	167	189	165	176	185	Nelson
Oliver	112	121	102	93	92	Oliver
Pembina	267	269	266	313	314	Pembina
Pierce	164	194	205	210	196	Pierce
Ramsey	569	551	557	523	604	Ramsey
Ransom	166	173	184	174	166	Ransom
Renville	113	146	144	134	163	Renville
Richland	683	706	739	814	836	Richland
Rolette	314	404	377	416	422	Rolette
Sargent	125	128	129	136	130	Sargent
Sheridan	71	66	69	66	72	Sheridan
Sioux	51	51	60	49	36	Sioux
Slope	29	25	29	27	25	Slope
Stark	1,174	1,173	1,181	1,252	1,286	Stark
Steele	77	89	91	78	73	Steele
Stutsman	709	752	764	709	818	Stutsman
Towner	141	147	157	122	126	Towner
Traill	433	464	455	394	424	Traill
Walsh	451	420	387	387	423	Walsh
Ward	2,783	2,392	2,369	2,235	2,716	Ward
Wells	176	173	178	177	195	Wells
Williams	930	952	994	985	1,005	Williams
<b>Total</b>	<b>25,068</b>	<b>25,220</b>	<b>25,968</b>	<b>24,570</b>	<b>28,073</b>	<b>Total</b>
Percent change from one year to next		0.6%	3.0%	-5.4%	12.5%	

County of Origin: Students' home address

**Figure 1**  
**IN-STATE ENROLLMENT BY COUNTY OF ORIGIN**  
**Fall 2001**



Total Headcount = 28,073

44 Total includes Jamestown College and University of Mary.

Data for University of Mary contained 1,013 unspecified in-state student enrollments.

**Table 13B-1  
RESIDENT ENROLLMENT BY COUNTY OF ORIGIN: Bismarck State College  
Fall 1997 through Fall 2001**

Counties	1997	1998	1999	2000	2001	Counties
Adams	7	5	7	11	7	Adams
Barnes	7	8	4	7	8	Barnes
Benson	7	7	2	4	6	Benson
Billings	0	0	0	1	3	Billings
Bottineau	13	15	27	32	18	Bottineau
Bowman	9	7	14	14	13	Bowman
Burke	7	9	14	20	15	Burke
Burleigh	1,344	1,276	1,282	1,263	1,290	Burleigh
Cass	7	6	13	13	23	Cass
Cavalier	1	3	3	0	2	Cavalier
Dickey	3	4	2	2	7	Dickey
Divide	3	6	4	0	4	Divide
Dunn	6	3	8	8	11	Dunn
Eddy	6	4	1	4	4	Eddy
Emmons	44	43	63	47	68	Emmons
Foster	11	12	9	13	8	Foster
Golden Valley	7	5	7	4	6	Golden Valley
Grand Forks	3	5	7	3	8	Grand Forks
Grant	17	15	27	31	32	Grant
Griggs	1	1	2	3	1	Griggs
Hettinger	2	4	4	8	3	Hettinger
Kidder	27	24	25	30	33	Kidder
LaMoure	9	8	12	10	13	LaMoure
Logan	12	17	18	25	22	Logan
McHenry	17	24	16	25	30	McHenry
McIntosh	17	10	18	22	27	McIntosh
McKenzie	16	19	17	15	16	McKenzie
McLean	106	120	115	138	138	McLean
Mercer	72	97	128	125	137	Mercer
Morton	415	428	475	467	487	Morton
Mountrail	19	18	21	16	20	Mountrail
Nelson	0	0	0	1	5	Nelson
Oliver	36	51	44	35	42	Oliver
Pembina	0	0	1	2	3	Pembina
Pierce	2	16	11	14	12	Pierce
Ramsey	1	11	6	4	7	Ramsey
Ransom	3	0	0	2	0	Ransom
Renville	5	7	3	10	9	Renville
Richland	0	3	6	4	6	Richland
Rolette	9	13	18	17	13	Rolette
Sargent	2	1	0	1	4	Sargent
Sheridan	13	12	17	21	28	Sheridan
Sioux	12	15	17	24	11	Sioux
Slope	1	3	4	4	2	Slope
Stark	15	28	45	41	45	Stark
Steele	0	4	1	0	2	Steele
Stutsman	18	28	24	20	25	Stutsman
Towner	2	2	1	1	2	Towner
Trails	1	1	1	1	3	Trails
Walsh	3	2	0	0	5	Walsh
Ward	40	54	55	34	49	Ward
Wells	8	17	19	16	19	Wells
Williams	5	27	40	44	34	Williams
<b>Total</b>	<b>2,391</b>	<b>2,498</b>	<b>2,658</b>	<b>2,657</b>	<b>2,786</b>	<b>Total</b>

Percent change from one year to next

4.5%	6.4%	0.0%	4.9%
------	------	------	------

County of Origin: Students' home address

**Table 13B-2**  
**RESIDENT ENROLLMENT BY COUNTY OF ORIGIN: Dickinson State University**  
**Fall 1997 through Fall 2001**

Counties	1997	1998	1999	2000	2001	Counties
Adams	37	25	28	37	47	Adams
Barnes	2	1	2	2	3	Barnes
Benson	1	1	2	1	0	Benson
Billings	21	17	12	16	12	Billings
Bottineau	3	2	1	3	11	Bottineau
Bowman	43	48	59	55	41	Bowman
Burke	5	6	5	6	4	Burke
Burleigh	25	25	44	73	82	Burleigh
Cass	2	4	3	4	3	Cass
Cavalier	2	0	0	1	0	Cavalier
Dickey	2	2	1	1	0	Dickey
Divide	4	9	4	4	3	Divide
Dunn	61	87	73	86	67	Dunn
Eddy	3	4	5	3	1	Eddy
Emmons	3	2	3	1	2	Emmons
Foster	0	0	0	1	1	Foster
Golden Valley	27	44	29	28	19	Golden Valley
Grand Forks	3	3	3	5	4	Grand Forks
Grant	8	9	13	14	15	Grant
Griggs	0	0	1	0	0	Griggs
Hettinger	48	50	46	48	67	Hettinger
Kidder	0	0	1	0	1	Kidder
LaMoure	3	2	2	4	2	LaMoure
Logan	0	2	3	3	2	Logan
McHenry	1	0	1	2	1	McHenry
McIntosh	1	1	2	2	1	McIntosh
McKenzie	20	30	44	50	47	McKenzie
McLean	13	23	15	12	17	McLean
Mercer	31	56	66	56	73	Mercer
Morton	37	30	43	52	69	Morton
Mountrail	17	18	24	17	18	Mountrail
Nelson	2	2	3	3	1	Nelson
Oliver	4	5	7	7	5	Oliver
Pembina	1	2	2	1	1	Pembina
Pierce	1	0	0	0	0	Pierce
Ramsey	0	1	0	1	1	Ramsey
Ransom	0	0	0	0	1	Ransom
Renville	2	5	5	5	5	Renville
Richland	0	1	1	1	2	Richland
Rolette	3	2	4	4	4	Rolette
Sargent	0	1	1	0	0	Sargent
Sheridan	0	0	0	2	1	Sheridan
Sioux	4	3	2	1	2	Sioux
Slope	13	9	7	8	8	Slope
Stark	812	794	769	868	886	Stark
Steele	1	1	1	0	0	Steele
Stutsman	4	7	4	3	5	Stutsman
Towner	1	1	0	0	0	Towner
Trails	1	1	1	0	0	Trails
Walsh	1	0	0	1	0	Walsh
Ward	14	18	14	18	11	Ward
Wells	0	0	3	2	1	Wells
Williams	32	32	40	41	48	Williams
<b>Total</b>	<b>1,319</b>	<b>1,386</b>	<b>1,399</b>	<b>1,553</b>	<b>1,595</b>	<b>Total</b>

Percent change from one year to next

5.1%

0.9%

11.0%

2.7%

County of Origin: Students' home address

**Table 13B-3**  
**RESIDENT ENROLLMENT BY COUNTY OF ORIGIN: Lake Region State College**  
**Fall 1997 through Fall 2001**

Counties	1997	1998	1999	2000	2001	Counties
Adams	0	0	0	0	1	Adams
Barnes	4	5	6	4	9	Barnes
Benson	60	79	68	77	103	Benson
Billings	0	0	0	0	0	Billings
Bottineau	5	2	1	2	4	Bottineau
Bowman	0	0	0	1	1	Bowman
Burke	3	0	0	0	0	Burke
Burleigh	7	7	7	8	5	Burleigh
Cass	9	11	2	1	5	Cass
Cavalier	40	52	56	59	81	Cavalier
Dickey	1	1	0	0	0	Dickey
Divide	0	1	0	2	1	Divide
Dunn	1	0	0	0	0	Dunn
Eddy	23	30	41	35	30	Eddy
Emmons	0	0	1	1	0	Emmons
Foster	26	48	49	45	62	Foster
Golden Valley	0	0	0	1	1	Golden Valley
Grand Forks	28	30	34	47	313	Grand Forks
Grant	0	0	0	0	0	Grant
Griggs	13	10	24	29	26	Griggs
Hettinger	0	1	0	0	0	Hettinger
Kidder	0	0	0	0	0	Kidder
LaMoure	0	0	0	0	0	LaMoure
Logan	0	0	1	0	0	Logan
McHenry	5	0	3	10	13	McHenry
McIntosh	1	0	0	0	0	McIntosh
McKenzie	1	2	1	2	1	McKenzie
McLean	1	2	3	0	0	McLean
Mercer	0	1	1	0	0	Mercer
Morton	7	3	3	3	2	Morton
Mountrail	0	2	1	1	1	Mountrail
Nelson	43	60	51	74	62	Nelson
Oliver	0	0	0	0	0	Oliver
Pembina	14	15	10	35	37	Pembina
Pierce	7	13	14	18	10	Pierce
Ramsey	299	276	262	262	312	Ramsey
Ransom	0	0	0	1	4	Ransom
Renville	3	2	1	3	2	Renville
Richland	0	0	2	2	1	Richland
Rolette	5	13	1	14	14	Rolette
Sargent	1	0	0	0	0	Sargent
Sheridan	1	3	1	1	0	Sheridan
Sioux	0	0	0	0	0	Sioux
Slope	0	0	0	0	0	Slope
Stark	0	1	4	9	2	Stark
Steele	1	1	0	2	1	Steele
Stutsman	4	25	22	17	29	Stutsman
Towner	29	40	43	32	28	Towner
Trails	1	1	1	3	23	Trails
Walsh	41	41	28	54	49	Walsh
Ward	14	5	17	12	8	Ward
Wells	9	11	18	14	25	Wells
Williams	15	8	6	6	5	Williams
<b>Total</b>	<b>722</b>	<b>802</b>	<b>783</b>	<b>887</b>	<b>1,271</b>	<b>Total</b>
Percent change from one year to next		<b>11.1%</b>	<b>-2.4%</b>	<b>13.3%</b>	<b>43.3%</b>	

County of Origin: Students' home address

**Table 13B-4**  
**RESIDENT ENROLLMENT BY COUNTY OF ORIGIN: Mayville State University**  
**Fall 1997 through Fall 2001**

Counties	1997	1998	1999	2000	2001	Counties
Adams	3	8	8	7	7	Adams
Barnes	2	2	2	2	0	Barnes
Benson	9	4	4	9	5	Benson
Billings	0	0	0	0	0	Billings
Bottineau	2	4	1	0	2	Bottineau
Bowman	0	0	0	0	0	Bowman
Burke	0	2	2	1	2	Burke
Burleigh	1	3	90	22	22	Burleigh
Cass	33	40	32	66	71	Cass
Cavalier	8	5	3	1	5	Cavalier
Dickey	1	3	3	4	3	Dickey
Divide	1	1	0	0	0	Divide
Dunn	0	0	0	1	1	Dunn
Eddy	0	0	0	4	5	Eddy
Emmons	0	1	2	2	2	Emmons
Foster	2	3	2	1	1	Foster
Golden Valley	1	0	0	1	0	Golden Valley
Grand Forks	102	79	111	75	87	Grand Forks
Grant	0	0	2	2	0	Grant
Griggs	3	0	2	2	3	Griggs
Hettinger	1	1	1	1	0	Hettinger
Kidder	0	0	1	1	1	Kidder
LaMoure	1	0	0	1	1	LaMoure
Logan	0	0	0	0	0	Logan
McHenry	5	2	1	4	4	McHenry
McIntosh	1	0	0	0	1	McIntosh
McKenzie	0	0	2	1	1	McKenzie
McLean	2	2	3	2	4	McLean
Mercer	4	4	3	1	0	Mercer
Morton	0	1	9	2	4	Morton
Mountrail	1	0	2	1	1	Mountrail
Nelson	13	15	9	10	13	Nelson
Oliver	0	0	0	0	0	Oliver
Pembina	29	24	27	29	28	Pembina
Pierce	2	2	1	3	2	Pierce
Ramsey	17	19	30	27	27	Ramsey
Ransom	0	0	0	0	0	Ransom
Renville	1	3	3	1	1	Renville
Richland	5	6	5	7	5	Richland
Rolette	5	3	2	4	4	Rolette
Sargent	1	2	0	1	1	Sargent
Sheridan	2	0	2	1	1	Sheridan
Sioux	0	0	0	0	0	Sioux
Slope	0	0	0	0	0	Slope
Stark	1	1	1	0	1	Stark
Steele	15	14	14	22	13	Steele
Stutsman	1	2	3	6	5	Stutsman
Towner	7	4	2	2	3	Towner
Trail	215	241	239	179	158	Trail
Walsh	20	22	23	29	37	Walsh
Ward	5	4	5	7	8	Ward
Wells	4	5	6	8	8	Wells
Williams	0	1	4	4	8	Williams
<b>Total</b>	<b>526</b>	<b>533</b>	<b>662</b>	<b>554</b>	<b>556</b>	<b>Total</b>

Percent change from one year to next

1.3%

24.2%

-16.3%

0.4%

County of Origin: Students' home address

**Table 13B-5**  
**RESIDENT ENROLLMENT BY COUNTY OF ORIGIN: Minot State University**  
**Fall 1997 through Fall 2001**

Counties	1997	1998	1999	2000	2001	Counties
Adams	4	4	4	2	4	Adams
Barnes	2	2	1	1	6	Barnes
Benson	6	9	13	11	12	Benson
Billings	0	0	0	0	1	Billings
Bottineau	96	112	102	95	95	Bottineau
Bowman	2	3	6	7	4	Bowman
Burke	23	28	24	19	24	Burke
Burleigh	52	74	140	126	132	Burleigh
Cass	7	5	6	5	7	Cass
Cavalier	6	11	14	18	16	Cavalier
Dickey	2	3	1	0	0	Dickey
Divide	15	18	15	18	8	Divide
Dunn	2	4	2	6	7	Dunn
Eddy	0	2	0	1	0	Eddy
Emmons	1	1	4	3	7	Emmons
Foster	3	4	5	3	1	Foster
Golden Valley	1	5	3	1	3	Golden Valley
Grand Forks	7	12	15	17	11	Grand Forks
Grant	0	4	4	3	3	Grant
Griggs	1	2	2	1	0	Griggs
Hettinger	1	2	4	5	2	Hettinger
Kidder	1	2	2	1	0	Kidder
LaMoure	0	2	3	4	1	LaMoure
Logan	0	0	1	1	1	Logan
McHenry	75	109	100	105	122	McHenry
McIntosh	0	2	3	4	2	McIntosh
McKenzie	20	23	13	21	20	McKenzie
McLean	55	70	81	77	86	McLean
Mercer	29	30	30	39	36	Mercer
Morton	13	24	50	42	32	Morton
Mountrail	55	58	56	48	64	Mountrail
Nelson	0	1	2	3	1	Nelson
Oliver	1	1	2	2	3	Oliver
Pembina	3	4	8	8	4	Pembina
Pierce	41	39	42	44	33	Pierce
Ramsey	10	20	18	17	21	Ramsey
Ransom	1	1	1	1	0	Ransom
Renville	38	50	57	52	74	Renville
Richland	2	1	0	2	2	Richland
Rolette	69	99	101	112	118	Rolette
Sargent	0	1	3	1	3	Sargent
Sheridan	5	5	6	8	9	Sheridan
Sioux	1	0	0	2	4	Sioux
Slope	0	0	0	0	0	Slope
Stark	18	10	20	19	16	Stark
Steele	1	0	0	0	0	Steele
Stutsman	11	7	5	7	5	Stutsman
Towner	7	9	10	5	7	Towner
Trails	2	1	1	2	0	Trails
Walsh	2	3	6	5	9	Walsh
Ward	1,960	1,516	1,446	1,404	1,752	Ward
Wells	20	22	21	19	21	Wells
Williams	78	96	81	77	98	Williams
<b>Total</b>	<b>2,749</b>	<b>2,511</b>	<b>2,534</b>	<b>2,474</b>	<b>2,887</b>	<b>Total</b>
Percent change from one year to next		<b>-8.7%</b>	<b>0.9%</b>	<b>-2.4%</b>	<b>16.7%</b>	

County of Origin: Students' home address



**Table 13B-6**  
**RESIDENT ENROLLMENT BY COUNTY OF ORIGIN: MISU-Bottineau**  
**Fall 1997 through Fall 2001**

Counties	1997	1998	1999	2000	2001	Counties
Adams	2	1	1	1	1	Adams
Barnes	1	0	1	3	2	Barnes
Benson	4	5	3	2	2	Benson
Billings	0	0	0	0	0	Billings
Bottineau	110	108	117	110	121	Bottineau
Bowman	0	1	1	1	2	Bowman
Burke	1	5	4	1	3	Burke
Burleigh	4	6	5	5	7	Burleigh
Cass	3	6	4	4	5	Cass
Cavalier	0	0	0	1	1	Cavalier
Dickey	1	0	0	0	1	Dickey
Divide	0	0	2	4	0	Divide
Dunn	0	0	1	0	0	Dunn
Eddy	1	0	2	7	3	Eddy
Emmons	1	0	0	0	0	Emmons
Foster	1	2	1	0	0	Foster
Golden Valley	4	2	0	0	0	Golden Valley
Grand Forks	8	7	8	5	2	Grand Forks
Grant	2	0	1	1	0	Grant
Griggs	0	0	0	0	0	Griggs
Hettinger	0	0	1	1	1	Hettinger
Kidder	0	0	1	0	1	Kidder
LaMoure	1	3	2	2	2	LaMoure
Logan	0	1	1	0	0	Logan
McHenry	20	24	25	20	18	McHenry
McIntosh	0	0	0	2	3	McIntosh
McKenzie	4	5	4	1	2	McKenzie
McLean	2	1	5	6	10	McLean
Mercer	2	4	3	5	5	Mercer
Morton	4	4	6	4	1	Morton
Mountrail	6	3	9	3	7	Mountrail
Nelson	0	0	0	0	0	Nelson
Oliver	0	0	0	0	1	Oliver
Pembina	0	1	4	4	2	Pembina
Pierce	8	6	12	9	17	Pierce
Ramsey	5	2	2	4	2	Ramsey
Ransom	0	0	0	0	3	Ransom
Renville	7	12	10	9	7	Renville
Richland	1	2	2	0	0	Richland
Rolette	22	38	42	52	46	Rolette
Sargent	3	2	2	2	0	Sargent
Sheridan	2	2	1	0	2	Sheridan
Sioux	0	0	0	0	1	Sioux
Slope	0	0	0	0	0	Slope
Stark	4	6	1	0	0	Stark
Steele	0	1	2	0	0	Steele
Stutsman	0	3	6	4	3	Stutsman
Towner	3	3	3	0	1	Towner
Traill	0	0	0	0	0	Traill
Walsh	3	0	0	1	2	Walsh
Ward	92	99	119	111	160	Ward
Wells	3	0	0	0	3	Wells
Williams	2	9	7	4	3	Williams
<b>Total</b>	<b>337</b>	<b>374</b>	<b>421</b>	<b>389</b>	<b>453</b>	<b>Total</b>

Percent change from one year to next

**11.0%**

**12.6%**

**-7.6%**

**16.5%**

County of Origin: Students' home address

**Table 13B-7**  
**RESIDENT ENROLLMENT BY COUNTY OF ORIGIN: ND State College of Science**  
**Fall 1997 through Fall 2001**

Counties	1997	1998	1999	2000	2001	Counties
Adams	8	11	9	8	7	Adams
Barnes	43	37	40	45	46	Barnes
Benson	17	16	13	11	4	Benson
Billings	0	0	5	7	2	Billings
Bottineau	28	26	22	12	20	Bottineau
Bowman	8	18	13	12	6	Bowman
Burke	9	11	4	2	6	Burke
Burleigh	50	53	53	44	41	Burleigh
Cass	147	140	137	151	148	Cass
Cavalier	14	22	15	14	16	Cavalier
Dickey	46	42	31	35	23	Dickey
Divide	12	12	15	10	12	Divide
Dunn	8	12	10	7	8	Dunn
Eddy	17	15	12	7	11	Eddy
Emmons	6	11	12	10	9	Emmons
Foster	10	14	10	8	3	Foster
Golden Valley	3	5	6	3	5	Golden Valley
Grand Forks	50	41	21	33	36	Grand Forks
Grant	7	13	10	6	6	Grant
Griggs	9	12	6	4	4	Griggs
Hettinger	8	9	9	9	6	Hettinger
Kidder	18	26	27	14	7	Kidder
LaMoure	23	31	35	28	24	LaMoure
Logan	7	1	6	8	5	Logan
McHenry	32	27	21	14	14	McHenry
McIntosh	11	13	13	21	16	McIntosh
McKenzie	14	9	16	13	13	McKenzie
McLean	32	32	35	40	38	McLean
Mercer	57	66	47	55	58	Mercer
Morton	32	24	31	31	34	Morton
Mountrail	17	16	16	17	12	Mountrail
Nelson	4	9	9	10	17	Nelson
Oliver	11	14	11	5	5	Oliver
Pembina	28	16	11	25	21	Pembina
Pierce	20	22	17	22	15	Pierce
Ramsey	34	24	15	17	20	Ramsey
Ransom	37	45	48	50	32	Ransom
Renville	9	9	8	14	11	Renville
Richland	419	410	415	490	488	Richland
Rolette	27	28	16	23	22	Rolette
Sargent	45	43	48	59	55	Sargent
Sheridan	8	8	7	9	6	Sheridan
Sioux	3	0	0	1	1	Sioux
Slope	6	5	9	9	6	Slope
Stark	53	51	49	34	34	Stark
Steele	12	16	17	7	5	Steele
Stutsman	55	49	41	41	47	Stutsman
Towner	7	8	9	10	9	Towner
Traill	40	31	23	19	23	Traill
Walsh	39	39	44	36	31	Walsh
Ward	90	96	92	96	87	Ward
Wells	26	20	14	20	9	Wells
Williams	41	39	52	43	37	Williams
<b>Total</b>	<b>1,757</b>	<b>1,747</b>	<b>1,655</b>	<b>1,719</b>	<b>1,621</b>	<b>Total</b>
Percent change from one year to next		<b>-0.6%</b>	<b>-5.3%</b>	<b>3.9%</b>	<b>-5.7%</b>	

County of Origin: Students' home address

**Table 13B-8**  
**RESIDENT ENROLLMENT BY COUNTY OF ORIGIN: North Dakota State University**  
**Fall 1997 through Fall 2001**

Counties	1997	1998	1999	2000	2001	Counties
Adams	18	19	23	16	16	Adams
Barnes	71	75	88	87	84	Barnes
Benson	26	35	36	34	33	Benson
Billings	10	11	9	8	5	Billings
Bottineau	49	50	51	53	58	Bottineau
Bowman	29	31	30	35	32	Bowman
Burke	24	24	17	23	20	Burke
Burleigh	343	347	361	398	477	Burleigh
Cass	2,914	2,952	3,169	3,072	3,290	Cass
Cavalier	28	33	33	30	35	Cavalier
Dickey	37	35	38	43	54	Dickey
Divide	15	18	14	13	18	Divide
Dunn	25	27	30	25	28	Dunn
Eddy	16	21	20	13	22	Eddy
Emmons	29	27	23	17	26	Emmons
Foster	31	34	34	34	38	Foster
Golden Valley	4	6	9	10	14	Golden Valley
Grand Forks	144	126	120	124	145	Grand Forks
Grant	13	16	10	13	14	Grant
Griggs	28	29	38	44	38	Griggs
Hettinger	33	24	33	34	34	Hettinger
Kidder	21	24	18	18	27	Kidder
LaMoure	42	43	50	53	65	LaMoure
Logan	13	14	14	13	16	Logan
McHenry	48	43	48	42	43	McHenry
McIntosh	20	21	17	19	31	McIntosh
McKenzie	34	23	19	27	27	McKenzie
McLean	69	58	68	75	69	McLean
Mercer	61	63	56	66	65	Mercer
Morton	96	91	102	131	158	Morton
Mountrail	30	34	39	50	58	Mountrail
Nelson	28	27	27	28	32	Nelson
Oliver	28	21	9	20	16	Oliver
Pembina	45	54	51	61	49	Pembina
Pierce	32	28	34	42	41	Pierce
Ramsey	41	36	40	27	41	Ramsey
Ransom	55	49	53	63	71	Ransom
Renville	20	27	19	20	24	Renville
Richland	138	161	160	164	175	Richland
Rolette	49	52	34	31	34	Rolette
Sargent	45	41	37	38	38	Sargent
Sheridan	20	18	15	16	15	Sheridan
Sioux	5	3	7	7	5	Sioux
Slope	4	3	3	2	4	Slope
Stark	117	124	120	142	144	Stark
Steele	22	20	21	22	25	Steele
Stutsman	99	108	99	106	138	Stutsman
Towner	23	23	22	15	16	Towner
Trails	82	79	77	82	90	Trails
Walsh	84	79	81	67	75	Walsh
Ward	194	217	228	225	244	Ward
Wells	33	33	41	44	46	Wells
Williams	76	103	96	103	88	Williams
<b>Total</b>	<b>5,561</b>	<b>5,660</b>	<b>5,891</b>	<b>5,945</b>	<b>6,451</b>	<b>Total</b>

Percent change from one year to next      1.8%      4.1%      0.9%      8.5%

County of Origin: Students' home address

**Table 13B-9**  
**RESIDENT ENROLLMENT BY COUNTY OF ORIGIN: University of North Dakota**  
**Fall 1997 through Fall 2001**

Counties	1997	1998	1999	2000	2001	Counties
Adams	11	10	11	11	11	Adams
Barnes	49	47	58	59	80	Barnes
Benson	30	33	50	49	51	Benson
Billings	3	1	0	1	2	Billings
Bottineau	66	60	44	42	55	Bottineau
Bowman	11	13	22	21	25	Bowman
Burke	30	25	27	30	22	Burke
Burleigh	426	444	465	504	569	Burleigh
Cass	430	446	474	547	567	Cass
Cavalier	101	100	78	74	63	Cavalier
Dickey	38	41	30	31	28	Dickey
Divide	23	26	28	27	21	Divide
Dunn	16	15	17	15	22	Dunn
Eddy	18	16	17	19	17	Eddy
Emmons	15	8	12	14	13	Emmons
Foster	26	24	21	28	35	Foster
Golden Valley	6	3	5	9	9	Golden Valley
Grand Forks	2,421	2,326	2,362	2,402	2,439	Grand Forks
Grant	27	29	20	22	22	Grant
Griggs	30	22	16	17	18	Griggs
Hettinger	11	16	15	15	20	Hettinger
Kidder	8	7	7	10	10	Kidder
LaMoure	25	23	16	15	22	LaMoure
Logan	16	12	6	7	4	Logan
McHenry	21	29	38	39	40	McHenry
McIntosh	19	18	13	13	13	McIntosh
McKenzie	24	33	33	39	42	McKenzie
McLean	63	74	79	78	81	McLean
Mercer	71	55	54	49	50	Mercer
Morton	145	157	160	169	163	Morton
Mountrail	52	63	68	73	65	Mountrail
Nelson	49	48	48	42	42	Nelson
Oliver	17	16	12	11	6	Oliver
Pembina	132	138	138	141	161	Pembina
Pierce	31	40	48	47	43	Pierce
Ramsey	141	137	154	150	159	Ramsey
Ransom	24	22	22	18	29	Ransom
Renville	15	15	23	17	22	Renville
Richland	61	65	81	97	114	Richland
Rolette	93	128	130	135	140	Rolette
Sargent	18	20	19	17	13	Sargent
Sheridan	3	4	5	5	6	Sheridan
Sioux	14	12	16	14	7	Sioux
Slope	2	2	2	3	3	Slope
Stark	113	109	123	124	131	Stark
Steele	13	16	19	16	18	Steele
Stutsman	119	103	107	113	135	Stutsman
Towner	37	40	45	41	40	Towner
Traill	71	86	85	91	100	Traill
Walsh	227	210	184	184	204	Walsh
Ward	299	291	292	290	330	Ward
Wells	39	26	20	30	29	Wells
Williams	159	168	153	170	161	Williams
<b>Total</b>	<b>5,909</b>	<b>5,872</b>	<b>5,972</b>	<b>6,185</b>	<b>6,472</b>	<b>Total</b>

Percent change from one year to next	-0.6%	1.7%	3.6%	4.6%
--------------------------------------	-------	------	------	------

County of Origin: Students' home address

**Table 13B-10**  
**RESIDENT ENROLLMENT BY COUNTY OF ORIGIN: Valley City State University**  
**Fall 1997 through Fall 2001**

Counties	1997	1998	1999	2000	2001	Counties
Adams	0	2	0	1	1	Adams
Barnes	312	316	313	323	273	Barnes
Benson	2	3	1	8	5	Benson
Billings	0	0	0	0	0	Billings
Bottineau	3	5	4	2	3	Bottineau
Bowman	0	1	1	1	3	Bowman
Burke	3	4	2	1	1	Burke
Burleigh	24	27	24	33	37	Burleigh
Cass	90	115	94	115	83	Cass
Cavalier	3	3	6	12	11	Cavalier
Dickey	14	8	7	11	6	Dickey
Divide	3	3	2	2	2	Divide
Dunn	0	0	0	0	3	Dunn
Eddy	11	9	6	4	2	Eddy
Emmons	8	10	10	7	7	Emmons
Foster	15	11	10	10	7	Foster
Golden Valley	0	0	1	0	2	Golden Valley
Grand Forks	8	11	10	11	11	Grand Forks
Grant	2	1	0	0	1	Grant
Griggs	11	13	13	16	11	Griggs
Hettinger	3	3	5	5	6	Hettinger
Kidder	3	2	6	7	8	Kidder
LaMoure	32	21	18	18	15	LaMoure
Logan	3	7	7	6	9	Logan
McHenry	4	4	6	5	2	McHenry
McIntosh	6	7	7	12	10	McIntosh
McKenzie	2	1	3	4	5	McKenzie
McLean	4	4	5	6	7	McLean
Mercer	9	8	8	10	11	Mercer
Morton	7	11	10	9	11	Morton
Mountrail	1	0	0	1	2	Mountrail
Nelson	20	18	9	3	7	Nelson
Oliver	2	2	4	1	1	Oliver
Pembina	3	3	3	1	2	Pembina
Pierce	4	4	9	10	9	Pierce
Ramsey	7	8	11	9	7	Ramsey
Ransom	35	40	46	33	23	Ransom
Renville	2	1	2	0	0	Renville
Richland	41	40	39	34	26	Richland
Rolette	13	8	5	12	13	Rolette
Sargent	6	10	9	12	10	Sargent
Sheridan	5	3	4	3	2	Sheridan
Sioux	1	0	0	0	0	Sioux
Slope	0	0	1	1	1	Slope
Stark	0	1	0	1	2	Stark
Steele	2	4	5	5	4	Steele
Stutsman	88	76	86	65	65	Stutsman
Towner	11	6	9	6	7	Towner
Trails	5	6	5	7	8	Trails
Walsh	11	6	4	8	5	Walsh
Ward	4	11	12	8	11	Ward
Wells	5	9	11	9	9	Wells
Williams	1	1	4	4	2	Williams
<b>Total</b>	<b>849</b>	<b>867</b>	<b>857</b>	<b>872</b>	<b>769</b>	<b>Total</b>
Percent change from one year to next		<b>2.1%</b>	<b>-1.2%</b>	<b>1.8%</b>	<b>-11.8%</b>	

County of Origin: Students' home address

**Table 13B-11**  
**RESIDENT ENROLLMENT BY COUNTY OF ORIGIN: Williston State College**  
**Fall 1997 through Fall 2001**

Counties	1997	1998	1999	2000	2001	Counties
Adams	0	0	1	0	1	Adams
Barnes	1	0	0	0	0	Barnes
Benson	2	1	0	0	2	Benson
Billings	0	0	1	1	1	Billings
Bottineau	3	1	0	9	11	Bottineau
Bowman	1	2	1	1	3	Bowman
Burke	5	4	5	11	15	Burke
Burleigh	2	0	1	1	2	Burleigh
Cass	0	0	0	0	2	Cass
Cavalier	1	0	1	0	0	Cavalier
Dickey	0	0	0	0	0	Dickey
Divide	20	10	12	13	14	Divide
Dunn	5	4	2	1	2	Dunn
Eddy	0	0	0	0	1	Eddy
Emmons	0	0	0	0	0	Emmons
Foster	0	0	0	0	0	Foster
Golden Valley	7	2	3	4	2	Golden Valley
Grand Forks	0	0	0	0	1	Grand Forks
Grant	1	0	0	1	0	Grant
Griggs	0	0	0	0	0	Griggs
Hettinger	0	0	0	1	1	Hettinger
Kidder	0	0	0	0	0	Kidder
LaMoure	0	0	0	0	0	LaMoure
Logan	0	0	0	0	0	Logan
McHenry	3	3	3	1	5	McHenry
McIntosh	0	0	0	1	0	McIntosh
McKenzie	58	33	35	27	35	McKenzie
McLean	5	4	3	2	3	McLean
Mercer	4	3	5	4	1	Mercer
Morton	1	0	0	1	1	Morton
Mountrail	19	17	9	9	15	Mountrail
Nelson	0	0	0	0	1	Nelson
Oliver	0	0	0	1	0	Oliver
Pembina	0	0	0	0	0	Pembina
Pierce	1	1	0	0	7	Pierce
Ramsey	1	0	0	0	0	Ramsey
Ransom	0	0	0	0	0	Ransom
Renville	0	3	3	1	0	Renville
Richland	0	0	1	0	0	Richland
Rolette	1	1	0	6	7	Rolette
Sargent	0	0	1	0	0	Sargent
Sheridan	0	0	0	0	1	Sheridan
Sioux	0	0	0	0	0	Sioux
Slope	0	0	0	0	0	Slope
Stark	6	8	5	3	5	Stark
Steele	0	0	0	0	0	Steele
Stutsman	0	0	0	0	1	Stutsman
Towner	2	1	0	1	2	Towner
Trails	0	0	0	0	0	Trails
Walsh	0	0	0	0	0	Walsh
Ward	24	21	17	21	16	Ward
Wells	0	0	0	1	5	Wells
Williams	486	431	481	476	496	Williams
<b>Total</b>	<b>659</b>	<b>550</b>	<b>590</b>	<b>598</b>	<b>659</b>	<b>Total</b>

Percent change from one year to next

**-16.5%**

**7.3%**

**1.4%**

**10.2%**

County of Origin: Students' home address

**Table 13B-12**  
**RESIDENT ENROLLMENT BY COUNTY OF ORIGIN: Jamestown College**  
**Fall 1997 through Fall 2001**

Counties	1997	1998	1999	2000	2001	Counties
Adams	4	5	2	2	3	Adams
Barnes	22	18	18	14	15	Barnes
Benson	8	10	8	10	9	Benson
Billings	1	2	2	2	1	Billings
Bottineau	2	3	4	3	2	Bottineau
Bowman	2	1	1	1	3	Bowman
Burke	2	4	2	2	5	Burke
Burleigh	21	29	39	31	27	Burleigh
Cass	47	48	40	38	29	Cass
Cavalier	5	3	3	5	2	Cavalier
Dickey	11	7	17	15	12	Dickey
Divide	0	0	1	2	1	Divide
Dunn	1	1	0	4	5	Dunn
Eddy	6	6	6	8	8	Eddy
Emmons	19	20	18	13	9	Emmons
Foster	12	17	20	18	14	Foster
Golden Valley	5	3	2	2	2	Golden Valley
Grand Forks	24	19	12	9	8	Grand Forks
Grant	3	2	2	1	1	Grant
Griggs	8	12	10	7	12	Griggs
Hettinger	0	0	0	1	1	Hettinger
Kidder	6	5	3	3	5	Kidder
LaMoure	19	20	17	24	26	LaMoure
Logan	9	13	9	10	11	Logan
McHenry	9	6	5	5	1	McHenry
McIntosh	8	15	13	8	7	McIntosh
McKenzie	4	5	5	3	5	McKenzie
McLean	12	15	16	15	11	McLean
Mercer	5	6	7	11	8	Mercer
Morton	15	12	10	13	9	Morton
Mountrail	1	2	1	1	3	Mountrail
Nelson	5	3	1	2	3	Nelson
Oliver	2	3	8	11	10	Oliver
Pembina	9	8	7	6	5	Pembina
Pierce	3	3	2	1	2	Pierce
Ramsey	6	5	5	5	3	Ramsey
Ransom	7	14	8	6	3	Ransom
Renville	0	1	1	2	4	Renville
Richland	8	6	13	13	16	Richland
Rolette	9	6	9	6	3	Rolette
Sargent	3	7	6	5	5	Sargent
Sheridan	3	2	1	0	1	Sheridan
Sioux	0	0	0	0	0	Sioux
Slope	1	1	1	0	0	Slope
Stark	3	9	14	11	15	Stark
Steele	6	6	5	4	3	Steele
Stutsman	282	317	331	327	342	Stutsman
Towner	7	7	8	9	9	Towner
Trail	7	8	9	10	16	Trail
Walsh	12	4	2	2	3	Walsh
Ward	7	10	7	9	6	Ward
Wells	9	9	10	14	16	Wells
Williams	8	12	12	13	16	Williams
<b>Total</b>	<b>688</b>	<b>750</b>	<b>753</b>	<b>737</b>	<b>736</b>	<b>Total</b>

Percent change from one year to next

**9.0%**

**0.4%**

**-2.1%**

**-0.1%**

County of Origin: Students' home address

**Table 13B-13**  
**RESIDENT ENROLLMENT BY COUNTY OF ORIGIN: University of Mary**  
**Fall 1997 through Fall 2001**

Counties	1997	1998	1999	2000	2001	Counties
Unspecified	0	0	0	N/A	1,013	Unspecified
Adams	9	8	10	N/A	2	Adams
Barnes	20	16	16	N/A	0	Barnes
Benson	6	5	9	N/A	0	Benson
Billings	1	2	2	N/A	0	Billings
Bottineau	11	10	14	N/A	2	Bottineau
Bowman	12	12	10	N/A	0	Bowman
Burke	9	8	6	N/A	1	Burke
Burleigh	711	660	723	N/A	448	Burleigh
Cass	91	168	176	N/A	56	Cass
Cavalier	11	10	10	N/A	2	Cavalier
Dickey	3	5	12	N/A	5	Dickey
Divide	4	5	9	N/A	7	Divide
Dunn	6	14	10	N/A	3	Dunn
Eddy	3	7	8	N/A	3	Eddy
Emmons	17	24	24	N/A	8	Emmons
Foster	4	7	10	N/A	1	Foster
Golden Valley	13	14	11	N/A	3	Golden Valley
Grand Forks	15	20	19	N/A	7	Grand Forks
Grant	10	13	14	N/A	3	Grant
Griggs	4	3	3	N/A	1	Griggs
Hettinger	18	17	14	N/A	4	Hettinger
Kidder	23	22	29	N/A	9	Kidder
LaMoure	14	14	13	N/A	5	LaMoure
Logan	9	12	16	N/A	2	Logan
McHenry	11	8	12	N/A	3	McHenry
McIntosh	17	15	21	N/A	6	McIntosh
McKenzie	5	7	7	N/A	10	McKenzie
McLean	41	38	31	N/A	11	McLean
Mercer	47	47	36	N/A	11	Mercer
Morton	177	158	179	N/A	72	Morton
Mountrail	16	19	15	N/A	9	Mountrail
Nelson	3	6	6	N/A	1	Nelson
Oliver	11	8	5	N/A	3	Oliver
Pembina	3	4	4	N/A	1	Pembina
Pierce	12	20	15	N/A	5	Pierce
Ramsey	7	12	14	N/A	4	Ramsey
Ransom	4	2	6	N/A	0	Ransom
Renville	11	11	9	N/A	4	Renville
Richland	8	11	14	N/A	1	Richland
Rolette	9	13	15	N/A	4	Rolette
Sargent	1	0	3	N/A	1	Sargent
Sheridan	9	9	10	N/A	0	Sheridan
Sioux	11	18	18	N/A	5	Sioux
Slope	2	2	2	N/A	1	Slope
Stark	32	31	30	N/A	5	Stark
Steele	4	6	6	N/A	2	Steele
Stutsman	28	27	36	N/A	18	Stutsman
Towner	5	3	5	N/A	2	Towner
Traill	8	9	13	N/A	3	Traill
Walsh	8	14	15	N/A	3	Walsh
Ward	40	50	65	N/A	34	Ward
Wells	20	21	15	N/A	4	Wells
Williams	27	25	18	N/A	9	Williams
<b>Total</b>	<b>1,601</b>	<b>1,670</b>	<b>1,793</b>	<b>N/A</b>	<b>1,817</b>	<b>Total</b>
		<b>4.3%</b>	<b>7.4%</b>	<b>N/A</b>	<b>1.3%</b>	

Percent change from one year to next  
County of Origin: Students' home address



**Table 14**  
**HEADCOUNT ENROLLMENT BY AGE**  
**Fall 2001**

AGE	BSC	DSU	LRSC	MASU	MISU	MISU-B	NDSCS	NDSU	UND	VCSU	WSC	TOTAL
Under 18	127	246	377	7	34	16	102	20	42	22	79	1,072
18-19	1,101	637	275	208	738	199	1,075	3,199	3,278	258	263	11,231
20-21	598	471	145	189	811	92	529	3,140	3,127	311	120	9,533
22-24	333	334	103	133	774	43	184	2,360	2,453	193	75	6,985
<b>Subtotal</b>	<b>2,159</b>	<b>1,688</b>	<b>900</b>	<b>537</b>	<b>2,357</b>	<b>350</b>	<b>1,890</b>	<b>8,719</b>	<b>8,900</b>	<b>784</b>	<b>537</b>	<b>28,821</b>
25-29	279	122	114	59	466	41	131	949	1,192	62	59	3,474
30-34	153	71	77	45	238	28	69	362	552	32	44	1,671
35-39	141	59	85	34	185	35	59	186	365	33	29	1,211
40-49	235	116	94	58	209	49	106	232	560	61	56	1,776
50-64	69	30	26	22	60	13	37	80	182	28	22	569
65+	3	0	2	0	0	0	0	2	3	0	1	11
<b>Subtotal</b>	<b>880</b>	<b>398</b>	<b>398</b>	<b>218</b>	<b>1,158</b>	<b>166</b>	<b>402</b>	<b>1,811</b>	<b>2,854</b>	<b>216</b>	<b>211</b>	<b>8,712</b>
Unknown	5	15	10	0	0	10	0	8	10	5	0	63
<b>TOTALS</b>	<b>3,044</b>	<b>2,101</b>	<b>1,308</b>	<b>755</b>	<b>3,515</b>	<b>526</b>	<b>2,292</b>	<b>10,538</b>	<b>11,764</b>	<b>1,005</b>	<b>748</b>	<b>37,596</b>

Note: Information includes students in extended degree programs and students jointly enrolled through collaborative program arrangements. Prior to 2001 BSC, MISU, NDSU, UND and to a lesser extent MaSU, WSC, VCSU, and LRSC had degree credit continuing education enrollments which were not included in the semester enrollment report.

Table 15

HEADCOUNT ENROLLMENTS BY RACE\*

Fall 2001

INSTITUTION	AMERICAN INDIAN	AFRICAN AMERICAN	ASIAN/PACIFIC ISLANDER	HISPANIC	WHITE	OTHER	NO RESPONSE	TOTAL
BSC	90	22	14	12	2,853	7	46	3,044
DSU	41	10	3	15	1,724	48	260	2,101
LRSC	53	44	13	29	1,139	13	17	1,308
MASU	10	13	2	7	698	23	2	755
MISU	148	101	35	47	2,970	214	0	3,515
MISU-B	29	9	3	4	379	34	68	526
NDSCS	43	38	8	18	2,163	22	0	2,292
NDSU	107	104	133	46	9,583	373	192	10,538
UND	367	93	131	81	10,362	440	290	11,764
VCSU	19	15	3	9	906	46	7	1,005
WSC	52	2	0	3	676	9	6	748
<b>NDUS Total</b>	<b>959</b>	<b>451</b>	<b>345</b>	<b>271</b>	<b>33,453</b>	<b>1,229</b>	<b>888</b>	<b>37,596</b>
JC	12	15	7	10	1,067	5	20	1,136
UM	114	33	12	21	2,189	8	67	2,444
<b>GRAND TOTAL</b>	<b>1,085</b>	<b>499</b>	<b>364</b>	<b>302</b>	<b>36,709</b>	<b>1,242</b>	<b>975</b>	<b>41,176</b>

\*All institutions' data are voluntarily self-reported.

Note: Information includes students in extended degree programs and students jointly enrolled through collaborative program arrangements. Prior to 2001 BSC, MISU, NDSU, UND and to a lesser extent MaSU, WSC, VCSU, and LRSC had degree credit continuing education enrollments which were not included in the semester enrollment report.

Table 16

**HEADCOUNT ENROLLMENTS BY CITIZENSHIP, VETERAN STATUS, SEX, MARITAL STATUS, TRANSFER STATUS, AND BEGINNING FRESHMEN**

Fall 2001

INSTITUTION	CITIZENSHIP		VET STATUS		SEX		MARITAL STATUS <sup>1</sup>		TRANSFER STUDENTS	BEGINNING FRESHMEN
	U.S.	OTHER	VET	NONVET	MALE	FEMALE	SINGLE	MARRIED		
BSC	3,025	19	147	2,897	1,505	1,539	2,898	146	357	972
DSU	2,053	48	28	2,073	903	1,198	2,042	59	184	417
LRSC	1,293	15	127	1,181	625	683	1,256	52	147	520
MASU	729	26	32	723	346	409	637	118	112	144
MISU	3,280	235	44	3,471	1,305	2,210	3,399	116	419	506
MISU-B	490	38	3	523	253	273	510	16	53	212
NDSCS	2,264	26	1	2,291	1,511	781	2,238	54	212	747
NDSU	10,032	506	70	10,468	6,046	4,492	10,401	137	750	1,935
UND	11,244	520	152	11,502	6,089	5,675	11,183	581	839	1,947
VCSU	956	49	22	1,093	430	575	953	52	104	158
WSC	738	10	4	744	264	484	734	14	66	267
<b>NDUS Total</b>	<b>36,104</b>	<b>1,492</b>	<b>630</b>	<b>36,966</b>	<b>19,277</b>	<b>18,319</b>	<b>36,251</b>	<b>1,345</b>	<b>3,243</b>	<b>7,825</b>
JC	1,095	41	13	1,123	493	643	1,058	78	51	294
UM	2,408	38	58	2,386	942	1,502	1,947	497	212	370
<b>GRAND TOTAL</b>	<b>39,607</b>	<b>1,569</b>	<b>701</b>	<b>40,475</b>	<b>20,712</b>	<b>20,464</b>	<b>39,256</b>	<b>1,920</b>	<b>3,506</b>	<b>8,489</b>

Note: Information includes students in extended degree programs and students jointly enrolled through collaborative program arrangements. Prior to 2001 BSC, MISU, NDSU, UND and to a lesser extent MaSU, WSC, VCSU, and LRSC had degree credit continuing education enrollments which were not included in the semester enrollment report.

<sup>1</sup> Information is collected on a voluntary basis at time of admission

**Table 17**  
**Private and Tribal Colleges in North Dakota <sup>1</sup>**  
**Headcount Enrollments by Race/Ethnicity and Sex**  
**Fall 2001**

Institutional Detail	White	American Indian	Other	TOTAL	Grand Total
-------------------------	-------	--------------------	-------	-------	----------------

Private Institutions	Male	Female	Male	Female	Male	Female	Male	Female	Both
Trinity Bible College	119	118	3	2	10	3	132	123	255
MedCenter One College of Nursing	8	80	0	1	0	2	8	83	91

Tribal Colleges	Male	Female	Male	Female	Male	Female	Male	Female	Both
Fort Berthold Community College	1	7	67	135	0	2	68	144	212
Little Hoop Community College	3	8	52	106	0	0	55	114	169
Sitting Bull Community College	1	20	47	125	0	1	48	146	194
Turtle Mountain Community College	9	26	244	422	2	1	255	449	704
United Tribes Technical College	6	21	116	156	2	1	124	178	302

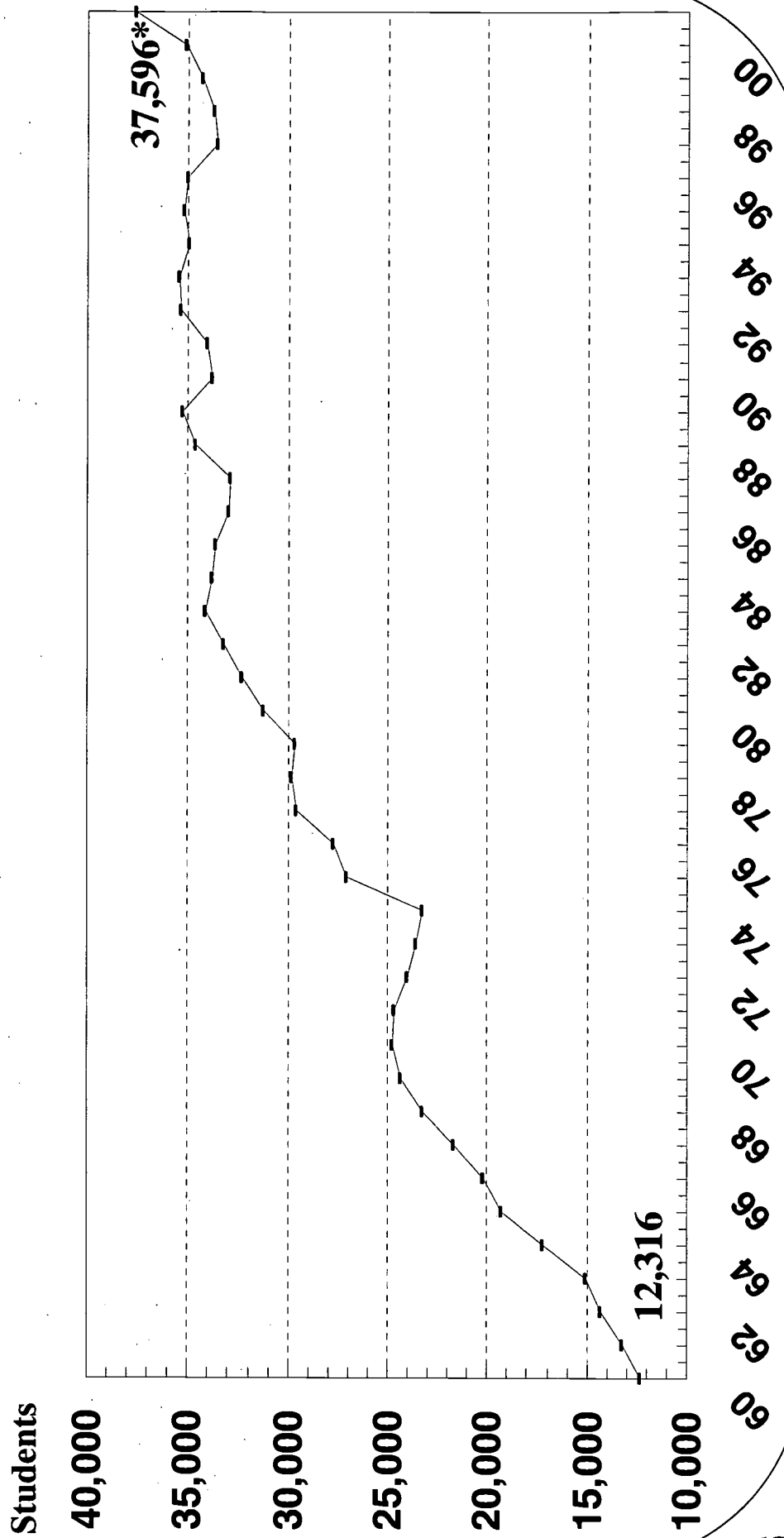
Overall Summary	White	American Indian	Other	TOTAL	Grand Total
--------------------	-------	--------------------	-------	-------	----------------

Private Institutions	127	198	3	3	10	5	140	206	346
Tribal Colleges	20	82	526	944	4	5	550	1031	1581
Grand Total	147	280	529	947	14	10	690	1237	1927

Source: IPEDS Fall Enrollment data. IPEDS stands for "Integrated Postsecondary Education Data System" which is a survey data collection method employed by the U.S. Dept of Education

# Figure 2

## North Dakota University System Headcount Enrollment 1960 through 2001



\* Revised Enrollment Reporting Policy – See Explanation in Cover Memorandum

Year



**U.S. Department of Education**  
*Office of Educational Research and Improvement (OERI)*  
*National Library of Education (NLE)*  
*Educational Resources Information Center (ERIC)*



## **NOTICE**

### **Reproduction Basis**



This document is covered by a signed "Reproduction Release (Blanket)" form (on file within the ERIC system), encompassing all or classes of documents from its source organization and, therefore, does not require a "Specific Document" Release form.



This document is Federally-funded, or carries its own permission to reproduce, or is otherwise in the public domain and, therefore, may be reproduced by ERIC without a signed Reproduction Release form (either "Specific Document" or "Blanket").

EFF-089 (3/2000)