

DOCUMENT RESUME

ED 459 201

TM 033 498

AUTHOR Anderson, Patrick L.; Cotton, Christopher S.
TITLE Failing Schools in Michigan: The Surprising Scale.
PUB DATE 2001-02-27
NOTE 40p.; Prepared by Anderson Economic Group, part of BBK Ltd.,
for Choices for Children.
AVAILABLE FROM For full text:
<http://www.aeg1.com/Projects/policy/schools/MichiganSchools.htm>.
PUB TYPE Numerical/Quantitative Data (110) -- Reports - Evaluative
(142)
EDRS PRICE MF01/PC02 Plus Postage.
DESCRIPTORS *Academic Failure; Elementary Secondary Education; *Low
Achievement; Poverty; Rating Scales; Rural Schools; *School
Districts; Suburban Schools; Urban Schools
IDENTIFIERS *Michigan

ABSTRACT

This analysis identified school districts in Michigan that, using a definition most parents would find quite reasonable, have failed to meet their fundamental mission. Using data reported by the school districts themselves and the state Department of Education, the report details the number of such districts, the number of students in those districts, and the amount of taxpayer expenditures for the districts. The analysis shows that the problem of failing schools is of much larger scale than has commonly been portrayed and much larger than the list of "failing schools" under the 2000 tuition voucher amendment. It encompasses both urban, suburban, and rural schools including schools that receive and spend relatively low amounts of taxpayer dollars. It also includes school districts that spend considerably more than the statewide average, even after that statewide average spending level has increased over the years since the passage of Michigan's "Proposal A" in 1994. A "Data and Methodology" appendix provides details about the conduct of the study. Lists of successful and unsuccessful Michigan school districts are attached. (SLD)

February 27, 2001

ED 459 201

*Failing Schools in Michigan:
The Surprising Scale*

**Patrick L. Anderson
Christopher S. Cotton**

**Anderson Economic Group
615 W. Ionia,
Lansing Michigan 48933
<http://www.AndersonEconomicGroup.com>**

U.S. DEPARTMENT OF EDUCATION
Office of Educational Research and Improvement
EDUCATIONAL RESOURCES INFORMATION
CENTER (ERIC)

- This document has been reproduced as received from the person or organization originating it.
- Minor changes have been made to improve reproduction quality.
- Points of view or opinions stated in this document do not necessarily represent official OERI position or policy.

PERMISSION TO REPRODUCE AND
DISSEMINATE THIS MATERIAL HAS
BEEN GRANTED BY

P. L. Anderson

TO THE EDUCATIONAL RESOURCES
INFORMATION CENTER (ERIC)

1

TM033498

**Prepared for Choices for Children
201 Monroe, NW, Grand Rapids MI 48903
(616) 458 3775; fax (616) 458 3965**



The Problem of “Failing Schools”

Michigan taxpayers pay \$14 billion each year in state and local taxes to support the state’s system of public schools from Kindergarten through High School. More importantly, the system is responsible for the education of over 1.6 million students. The parents of those students, and the taxpayers that support the system, increasingly demand that the school districts and state agencies that administer the system be held accountable for actual results.

The demand for results was heightened in the years 1999 and 2000 by the debate over a Constitutional amendment that would have instituted a tuition voucher system in school districts deemed to be “failing districts.” The idea behind the proposal was to offer parents of kids trapped in failing schools an opportunity to send their children to other schools, including nonpublic schools. While the voters rejected the amendment, even many of those that opposed the initiative agreed with the effort to identify those districts that fail to fulfill their mission, and take some corrective action.

This analysis identifies those school districts that, using a definition most parents would find quite reasonable, have failed to meet their fundamental mission. Using data reported by the school districts themselves, and the state Department of Education, we detail the number of such districts, the number of students in those districts, and the amount of taxpayer expenditures for these districts.

The analysis shows that the problem of failing schools is of much larger scale than has been commonly portrayed, and much larger than the list of “failing schools” under the 2000 tuition voucher amendment. It encompasses both urban schools, and suburban schools, as well as rural schools. It includes schools that receive and spend relatively low amounts of taxpayer dollars. It also includes school districts that spend considerably more than the statewide average, even after that statewide average spending level has increased over the years since the passage of “Proposal A” in 1994.

A Parent's Definition of "Failing Schools"

We choose in this analysis to rely on what a reasonable parent would agree is an unacceptable level of performance for a school district in which his or her child was enrolled.

We reject, in this analysis, any definition that relies on "inputs," such as teacher salaries, student/teacher ratios, training time, computer expenditures; or per-pupil expenditures. Such statistics, while interesting, are a diversion from the much more important issue at hand. No parent, when his or her child reaches 18 years of age, wonders about the student/teacher ratio in the school system, or the per-pupil expenditure level. Every parent wonders whether their child has learned the basic skills they need to enter college, get technical training, or enter the workforce. For our inspiration, we rely on this wisdom of the parent, rather than the statistics of the bureaucrat.

THE FOUR BASIC SKILLS

What are those basic skills? They certainly include the ability to read, to write, to perform mathematics, and to understand rudimentary science. They also include other factors that we rely on families and churches to impart, but we can't measure those. We can measure, and have measured for schools across the state, the proficiency of students in the basic four subjects of reading, writing, math, and science.

One uniform measurement of those skills, the MEAP tests, have been administered throughout the state for the past several years. While not perfect—no tests are perfect—they are good, uniform, objective measurements of what every parent expects young adults to learn before they graduate from High School.

A HUMBLE CRITERIA: THREE-QUARTERS ABLE TO MEET STATE STANDARDS

We use in this analysis a very humble criteria for defining success: a school district in which three-quarters or more of the high school juniors can demonstrate they met state standards in reading, writing, math, and science.

This is not requiring all "A" students, or even "B" students. "Met state standards" means achieving a level 2 score on a test that has 4 levels.¹ Many parents would find such a standard below their expectations.

To be defined as a "success" under this criteria, a district need not have 3/4 of its students pass every single test; just that 3/4 of their students as a group achieved a level 2 result in all four tests. Many students—even most students—could miss state standards on one test, and still have the district be an overall "success."²

1. The top level is called "Exceeded state standards." Level 2 is just "met Michigan standards." The standards were determined by the State Board of Education in May 1998. See "Michigan Education Assessment Program High School Tests, Statewide Results, Spring 1999," dated September 1999, Michigan Department of Education.
2. It is easy to show, with an example, how most students can miss meeting state standards in at least one subject, and still have the school overall meet the 75% group-meeting-standards criteria.

Results: The Majority of School Districts are “Failing”

Results: The Majority of School Districts are “Failing”

When we apply this humble criteria—that just 3/4 of the students can demonstrate proficiency in four basic subjects—we discovered a result that should be shocking to every parent, taxpayer, and educator: *Most school districts fail to meet even this humble definition of “success.”*

The following table shows the number of districts, and the students within them, which fail to meet this criteria.

TABLE 1. Failing and Succeeding School Districts, 75% Proficiency Standard

	Number of Districts	Number of Students
Succeeding in meeting 75% Proficiency Standard in Four Basic Subjects	43	148,397
Failing to meet 75% Proficiency Standard	480	1,508,575

Looking at a map of the districts that fail, we see the unhappy pattern: there is no pattern. All across the state, in every county, in rural and urban and suburban districts, in the Upper Peninsula, and the Lower Peninsula, school districts are failing to achieve the level of performance a reasonable parent would expect.

Figure 1 shows the results.

ARE WE SETTING THE BAR TOO HIGH?

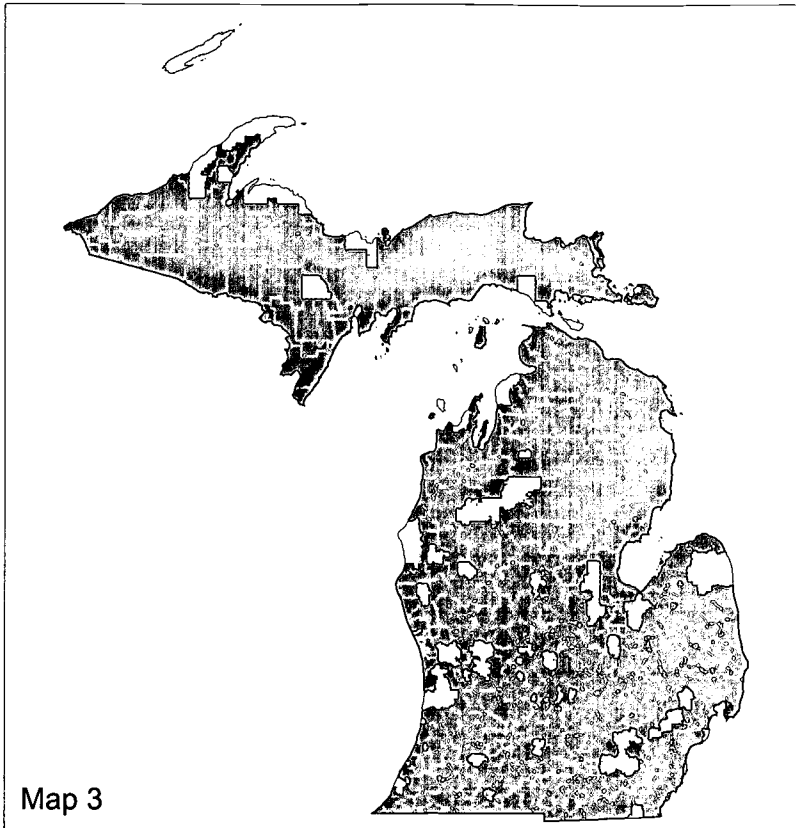
One might reflect on these results, and ask whether we are setting the bar too high. Could it be that we are demanding too much, when we ask that at least three-quarters of our high school students can read, write, perform basic math, and understand basic science?

Ask yourself the question again, this time thinking of your son, your daughter, your niece, grandchild, or neighbor. Is that really too much to ask? Do we want to live in a state where more than a quarter of our high school graduates cannot read, write, or perform math or science? What are the implications for our government when a growing portion of the electorate starts adulthood unable to read and write about issues? What are the implications for our economy when over a quarter of our young adults cannot understand basic math and science, the fundamentals of technology?

We believe that the 75% proficiency standard is, if anything, too low a bar. Few parents would accept that for their own children. As a society, we should not accept that for anybody's children.

Failing/Passing School Districts

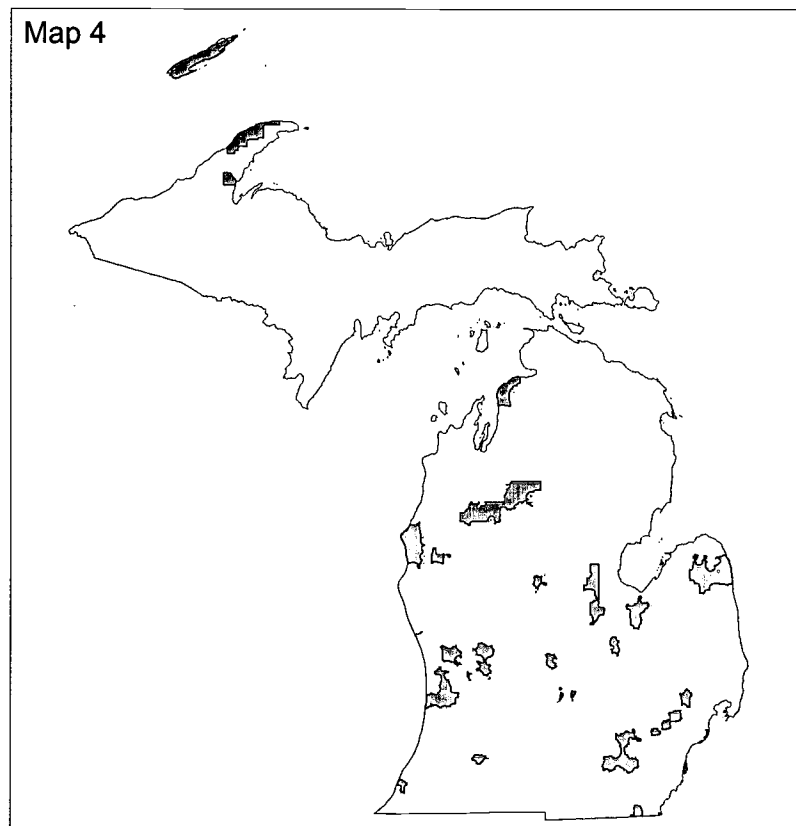
Passing Criteria: 75% of juniors met state standards on every section of the MEAP



Failing School Districts

Districts where less than 75 percent of juniors met state standards in at least one section of the MEAP test

Districts:	480
Students:	1,508,575



Passing School Districts

Districts where more than 75 percent of students met state standards in every section of the MEAP test

Districts:	43
Students:	148,397

Is Funding the Issue?

We started with the principle that actual student performance, not inputs, were important. Now that we have identified failing school districts as well as successful school districts, we can test the notion that more spending results in a higher chance of successfully educating children.

The following table shows the result of a taking the highest 25% of school districts in per-pupil spending, and the lowest 25%, and seeing how many of each show up in the “failing schools” category. As the table indicates, almost a half-million students are in *high-spending* school districts *that fail*. A little more than half that many are in low-spending school districts that fail.

Indeed, if you are a student in a district that fails to have at least 75% of your high school students meet basic standards, you are much more likely to be in a high-spending district than a low-spending district. There are 78% more students in failing, high-spending schools than in failing, low-spending schools.

TABLE 2. Expenditures in Failing School Districts

	Number of Districts	Number of Students
High Spenders: Failing School Districts with Per-Pupil Expenditures in the top 25%	60	467,645
Low Spenders: Failing School Districts with Per-Pupil Expenditures in the bottom 25%	141	262,877

This question has been extensively tested before, and the results of that research corroborate those displayed here.¹ Funding is not a determining cause of educational performance.

1. For a summary of some of the research, see Patrick L. Anderson, et. al., *The Universal Tuition Tax Credit*, The Mackinac Center, 1997.

How Did We Conduct This Analysis?

SOURCES

The basic sources for the data were the 1999 Michigan School Report, and the 1999 Spring Grade 11 High School Test Results. Both are available from the Michigan Department of Education. We did not review the results that were reported by individual school districts, some of which are probably in error, nor the compilation by the Department of Education.

METHODS

The basic method of analysis was to establish a criteria, which is described in the text, and then perform database selections to identify the districts involved, as well as student population and expenditure data. For the 75% proficiency criteria, our database selection criteria was “% met state standards in Math > 75% AND...” for the remaining three subjects.

To map the districts, we joined the results of the query to tables of school district boundaries in our geographic information system (GIS) facility. Many examples of similar GIS analyses are available on our web site, at <http://www.AndersonEconomicGroup.com>, and market, school district, and demographic reports on locations throughout Michigan are available to the general public for a fee on our site <http://www.MichiganMapper.com>.

LIMITATIONS OF THIS METHOD

The main limitation of this method is the designation of a “success” criteria; the second limitation is the creation and administration of a set of tests. Both involve some arbitrary judgements, and neither is perfect. We acknowledge that the success criteria used here is based on our opinion of a reasonable parent’s expectation.

We also acknowledge that the data supplied by the schools rely on testing protocols, administration of the tests, compilation of the results, and other steps that are performed by fallible humans, some of which have a self-interest in the results.

Finally, this report was also written by fallible humans. We make every effort to ensure that the analysis was performed properly, and that the data and methods are documented for others to review and reproduce. If the reader believes he or she has discovered an error, please write to us. We post corrections to errors, even errors in data that was supplied to us, when they are confirmed, on our web site where the report is offered.

ABOUT THE AUTHORS

Patrick L. Anderson is the managing director of BBK Ltd. Anderson Economic Group, a consulting firm that specializes in policy issues facing businesses and governments. Mr. Anderson is a former deputy director of two state departments, as well as an economist for two of the state’s largest financial firms. He is an adjunct fellow for the Hudson Institute, and the author of over 75 published articles and monographs. He was the principal author of the 1992 Term Limit amendment to the Michigan Constitution, and a co-author of the school choice amendment presented to voters in 2000.

Christopher S. Cotton is an economic analyst with Anderson Economic Group, and has experience with education policy analysis, including school policy reform, funding and disparity issues, and student performance.

Failing Schools in Michigan: The Surprising Scale

**Patrick L. Anderson
Christopher S. Cotton**

**Anderson Economic Group
615 W. Ionia,
Lansing Michigan 48933
<http://www.AndersonEconomicGroup.com>**

February 27, 2001

Data and Methodology Appendix

Detailed Methodology Description

We used Class of 2000 MEAP scores information from the Michigan Department of Education, Michigan Merit Award, "1999 Spring Grade 11 High School Test (HST) Results." This data can be found at <http://www.meritaward.state.mi.us/merit/meap/results/data/index.htm>.

In our analysis we calculated the percent of students that achieved each of the four attainment levels of the MEAP test (Levels 1 through 4). This was done for each of the primary subjects tested (Math, Science, Reading and Writing).

In accordance with the definition established by the Michigan State Board of Education's "Spring 1999 MEAP High School Tests, Summary of Statewide Public School Results" we defined "Met Michigan Standards" as achieving a Level 2 rating on the test or better. A summary of the State Board standards can be found at <http://www.meritaward.state.mi.us/merit/meap/results/springsummary.pdf>. To determine the percentage of students that "Met Michigan Standards" on the MEAP, we took the sum of the percentage of the students that achieved a Level 2 and Level 1 rating for each testing subject.

If 75 percent or more of the juniors in the school district who took the test achieved Level 2 or above on all four primary subjects, the school district achieved a successful rating. If less than 75 percent of juniors met the standards established by the Michigan State Board of Education in the four primary subjects, the school district was rated as failing.

In our analysis, we also refer to per student expenditure, and superintendent information that was found in the Michigan Department of Education, 1999 Michigan School Report: Downloadable data files. These can be found at Michigan Department of Education web site, <http://www.state.mi.us/mde/reports/msr99/db.htm>.

Data Tables

The attached tables list, in alphabetical order, the school districts that met the successful criteria, and those that did not. The Department of Education had data on about 520 districts; some districts did not report properly or were not reported by the Department of Education. Charter public schools and nonpublic schools are not included in the list, although data is available for many of these schools as well. (A good portion of these schools do not have High Schools, and would not be eligible for the MEAP tests given to High School juniors.)

Data and Methodology Integrity

Our firm takes considerable pains to ensure that our public policy research is conducted fairly, and that the results are communicated in a manner that allows reasonable individuals to understand the data, methods, and conclusions. Consistent with that philosophy, we have prepared this data and methodology appendix in addition to the report, to ensure that interested individuals can track down the data for every school district included in the report.

Please note that the base data for this research was created entirely by the school districts themselves, along with the Department of Education. Our experience in the past with school district data is that the vast majority of questions about the research are resolved by simply confirming that the school districts reported their own data properly. Many individuals are unaware of the performance data for their school districts, and first learn about it from our reports. We ask these individuals to check with the base data sources listed above before contacting us, to confirm the numbers that were reported.

However, if a school district did not report the correct data, or if the Department of Education did not aggregate the data accurately, or if we made an error in analyzing the data that was reported, we will assist the district in properly informing the public about the error. Simply confirm, in writing, the correct information, and note the source of the error, and we will post a notice on the same web site on which the report is made available.

Successful School Districts (where 75 % or more of Juniors met Michigan MEAP test standards in four basic subjects)

Percent of Juniors that met Michigan standards in 1999
(Class of 2000)

DISTRICT NAME	Math	Reading	Science	Writing	Name	Superintendent	Phone
BAD AXE PUBLIC SCHOOLS	78.07%	85.09%	81.58%	78.07%	John Males	(517) 269-9938	(517) 269-9938
BEAL CITY SCHOOL	96.43%	100.00%	92.86%	85.71%	Fred Cunningham	(517) 644-3901	(517) 644-3901
BIRMINGHAM PUBLIC SCHOOLS	97.04%	96.08%	94.61%	93.17%	John Hoeffler	(248) 203-3004	(248) 203-3004
BLOOMFIELD HILLS SCHOOL DISTRICT	92.31%	94.34%	84.94%	86.11%	Gary M. Doyle	(248) 645-4500	(248) 645-4500
CADILLAC AREA PUBLIC SCHOOLS	83.82%	82.39%	75.69%	85.11%	Fred Carroll	(231) 876-5002	(231) 876-5002
CHARLEVOIX PUBLIC SCHOOLS	90.28%	91.67%	90.28%	91.55%	John Sturrock	(231) 547-3200	(231) 547-3200
CHASSELL TWP SCHOOL DISTRICT	94.74%	94.74%	94.74%	89.47%	James Frantti	(906) 523-4691	(906) 523-4691
COOPERSVILLE PUBLIC SCH DIST	85.04%	89.47%	76.00%	80.62%	Kevin R. O'Neill	(616) 837-8131	(616) 837-8131
DEXTER COMMUNITY SCHOOL DIST	87.18%	89.47%	78.85%	79.22%	Bill Spargur	(734) 426-4623	(734) 426-4623
EAST GRAND RAPIDS PUBLIC SCHOOLS	90.75%	91.18%	80.81%	78.74%	James E. Morse	(616) 235-3535	(616) 235-3535
EAST LANSING SCHOOL DISTRICT	94.20%	91.74%	86.34%	82.21%	Thomas R. Giblin	(517) 333-7424	(517) 333-7424
ELLSWORTH COMMUNITY SCHOOL	100.00%	100.00%	100.00%	100.00%	Patrick Bootz	(231) 588-2544	(231) 588-2544
FARMINGTON PUBLIC SCHOOL DISTRICT	87.34%	90.00%	85.95%	80.46%	C. Robert Maxfield	(248) 489-3300	(248) 489-3300
FOREST HILLS PUBLIC SCHOOLS	88.68%	89.29%	82.01%	76.97%	J. Michael Washburn	(616) 493-8800	(616) 493-8800
FOWLER PUBLIC SCHOOLS	92.86%	92.86%	80.95%	97.62%	Kirk D. Sulzman	(517) 593-2296	(517) 593-2296
FRANKENMUTH SCHOOL DISTRICT	88.43%	88.33%	84.87%	88.24%	Michael Murphy	(517) 652-9958	(517) 652-9958
GROSSE ILE TOWNSHIP SCHOOLS	88.89%	86.11%	85.98%	79.46%	Peter J. Dion	(734) 362-2555	(734) 362-2555
GROSSE POINTE PUBLIC SCHS	92.59%	94.69%	85.96%	90.55%	C. Suzanne Klein	(313) 343-2000	(313) 343-2000
HAMILTON COMMUNITY SCHOOLS	85.56%	84.44%	83.33%	84.52%	James Kos	(616) 751-5148	(616) 751-5148
HARBOR BEACH COMMUNITY SCHOOL	84.55%	82.73%	75.45%	88.29%	Ronald Kraft	(517) 479-3261	(517) 479-3261
HEMLOCK PUBLIC SCHOOLS	77.50%	81.15%	77.31%	83.76%	Cliff Crossett	(517) 642-5282	(517) 642-5282
LAKE CITY AREA SCHOOL DIST	91.67%	91.67%	91.67%	88.89%	Lewis E. Burchard	(231) 839-4333	(231) 839-4333
LAKESHORE PUBLIC SCHOOLS	82.41%	87.94%	79.60%	76.65%	Gary R. Campbell	(616) 428-1400	(616) 428-1400
LUDINGTON AREA SCHOOL DISTRICT	88.76%	87.95%	82.63%	75.45%	Michael C. Oakes	(231) 845-7303	(231) 845-7303
MANCHESTER COMMUNITY SCHOOLS	83.33%	93.94%	90.91%	86.11%	Robert Smith	(734) 428-9711	(734) 428-9711
MASON COUNTY CENTRAL SD	83.93%	87.50%	79.63%	88.68%	Charles Sandro	(231) 757-3713	(231) 757-3713
MIDLAND PUBLIC SCHOOLS	85.37%	85.67%	79.87%	82.79%	Arthur C. Frock	(517) 923-5001	(517) 923-5001
NEW LOTHROP AREA PUBLIC SCHOOLS	94.12%	80.39%	76.47%	84.31%	Bruce Evans	(810) 638-5091	(810) 638-5091
NORTH MUSKEGON PUBLIC SCHS	91.11%	93.33%	90.91%	90.70%	Barbara Gowell	(231) 719-4100	(231) 719-4100
NORTHVILLE PUBLIC SCHOOLS	95.48%	98.17%	90.87%	91.11%	Dr. Leonard Rezmierski	(248) 349-3400	(248) 349-3400
PORTAGE PUBLIC SCHOOLS	82.28%	87.39%	79.46%	76.21%	James H. Ridders	(616) 323-5182	(616) 323-5182

PUBLIC SCHOOLS OF CALUMET	91.18%	91.35%	87.38%	90.20%	Raymond Tiberg	(906) 337-0311
REESE PUBLIC SCHOOLS	95.92%	97.96%	95.92%	95.92%	Larry J. Lethorn	(517) 868-9864
ROCHESTER COMMUNITY SCHOOL DIST	89.15%	88.46%	79.02%	82.49%	John M. Schultz	(248) 651-6210
ROCKFORD PUBLIC SCHOOLS	84.73%	84.27%	77.51%	78.23%	Michael Shibler, Ph.D.	(616) 866-1597
SALINE AREA SCHOOLS	89.62%	90.76%	84.54%	79.37%	Ellen A. Ewing	(734) 429-8000
SAUGATUCK PUBLIC SCHOOLS	94.74%	76.19%	90.48%	80.00%	Thomas Nowak	(616) 857-1444
UBLY COMMUNITY SCHOOLS	77.78%	84.13%	80.65%	84.13%	David Landeryou	(517) 658-8202
WAVERLY COMMUNITY SCHOOLS	81.32%	85.06%	76.61%	76.61%	James C. Ryan	(517) 321-7265
WHITEFORD AGR SCHOOL DIST	100.00%	97.30%	97.22%	100.00%	John Gasidlo	(734) 856-2656
WHITMORE LAKE PUBLIC SCHOOLS	89.66%	79.31%	77.59%	79.31%	Glenn Bachman	(734) 449-4464
WYOMING PUBLIC SCHOOLS	77.68%	82.78%	75.28%	75.21%	Lee W. Pierce	(616) 530-7555
ZEELAND PUBLIC SCHOOLS	92.44%	88.33%	89.92%	85.84%	Gary Feenstra	(616) 748-3000

School Districts where less than 75 % of Juniors met Michigan MEAP test standards in four subjects

Percent of Juniors that met Michigan standards in 1999 (Class of 2000)

DISTRICT NAME	Percent of Juniors that met Michigan standards in 1999 (Class of 2000)			Writing	Name	Superintendent	Phone
	Math	Reading	Science				
ADAMS TWP SCHOOL DISTRICT	92.11%	84.62%	73.68%	65.79%	Dan Sternhagen		(906) 482-0599
ADDISON COMMUNITY SCHOOLS	68.29%	75.90%	60.49%	61.54%	Jeffrey M. Kerish		(517) 547-6123
ADRIAN PUBLIC SCHOOLS	66.54%	69.26%	54.85%	55.39%	Lenore Janman, Ph.D.		(517) 263-2115
AIRPORT COMMUNITY SCH DIST	51.48%	65.09%	54.66%	53.50%	Michael Krigeleski		(734) 654-2414
AKRON FAIRGROVE SCHOOLS	71.43%	80.49%	66.67%	62.50%	Dana McGrew		(517) 693-6163
ALBA PUBLIC SCHOOLS	83.33%	71.43%	71.43%	66.67%	Ronald Militello		(231) 584-2000
ALBION PUBLIC SCHOOLS	51.25%	72.15%	42.17%	58.62%	Judith L. Dobbert		(517) 629-9166
ALCONA COMMUNITY SCHOOLS	78.57%	76.39%	71.43%	56.34%	Paul L. Mancine		(517) 736-6212
ALGONAC COMMUNITY SCH DIST	57.89%	66.00%	46.21%	53.64%	Dennis Guiser		(810) 794-9364
ALLEGAN PUBLIC SCHOOLS	69.39%	70.00%	54.42%	50.68%	John Van Nieuwenhuyzen		(616) 673-5431
ALLEN PARK PUBLIC SCHOOLS	79.23%	84.18%	73.89%	76.22%	Dr. William Kiefer		(313) 928-4667
ALLENDALE PUBLIC SCHOOL DISTRICT	71.43%	74.70%	54.76%	64.29%	Catherine Ceglarek		(616) 895-4350
ALMA PUBLIC SCHOOLS	77.36%	75.46%	67.27%	55.70%	Donald Pavlik		(517) 463-3111
ALMONT COMMUNITY SCHOOLS	72.00%	69.31%	59.00%	67.00%	Steven A. Zott		(810) 798-8561
ALPENA PUBLIC SCHOOLS	63.93%	73.58%	59.78%	62.75%	Thomas W. Harmon		(517) 356-4863
ANCHOR BAY SCHOOL DISTRICT	63.67%	63.90%	54.84%	49.31%	Juliana Texley		(810) 725-2861
ANN ARBOR PUBLIC SCHOOLS	83.60%	86.68%	78.00%	73.58%	Dr. Rossi Ray-Taylor		(734) 994-2230
ARENAC EASTERN SCHOOL DIST	39.47%	68.42%	44.74%	35.14%	Dr. Linda Olson		(517) 867-4234
ARMADA AREA SCHOOLS	70.75%	71.30%	61.90%	71.03%	Arnold A. Kummerow		(810) 784-4511
ASHLEY COMMUNITY SCHOOLS	45.83%	52.00%	28.00%	50.00%	Cheryl Grueneberg		(517) 847-4000
ATHENS AREA SCHOOLS	69.35%	73.02%	69.84%	65.08%	David E. Watson		(616) 729-5427
ATHERTON COMM SCHOOL DIST	58.82%	62.00%	46.15%	49.02%	Thomas Gorang		(810) 591-9182
ATLANTA COMMUNITY SCHOOLS	50.00%	63.16%	45.71%	15.79%	Tarry M. Deo		(517) 785-4877
AU GRES-SIMS SCHOOL DISTRICT	67.44%	79.07%	51.16%	62.79%	Robert E. Colbyn		(517) 876-7150
AVONDALE SCHOOL DISTRICT	70.97%	80.34%	60.16%	70.00%	James J. Bird, Ph.D.		(248) 852-4411
BALDWIN COMMUNITY SCHOOLS	34.21%	45.00%	37.50%	25.71%	B. Jack Vanderwall		(231) 745-4791
BANGOR PUBLIC SCHOOLS	58.33%	60.82%	50.00%	53.19%	Jack O. Loudin		(616) 427-6800
BANGOR TOWNSHIP SCHOOLS	79.14%	77.84%	70.05%	70.81%	Peter L. Lazaroff		(517) 684-8121
BARAGA AREA SCHOOL DISTRICT	73.08%	66.67%	55.77%	60.78%	David Morehouse		(906) 353-6664
BARK RIVER HARRIS SCH DIST	86.27%	78.85%	73.08%	65.38%	William W. Lake, Jr.		(906) 466-9981
BATH COMMUNITY SCHOOLS	65.67%	66.13%	59.02%	46.43%	Susan Bolton		(517) 641-6721

BATTLE CREEK PUBLIC SCHOOLS	52.01%	64.47%	38.20%	45.62%	Robert A. Harberts	(616) 965-9500
BAY CITY SCHOOL DISTRICT	67.11%	76.58%	64.30%	67.22%	Dr. David Hutton	(517) 686-9700
BEAR LAKE SCHOOL DISTRICT	73.68%	73.68%	57.89%	68.42%	Greg Webster	(231) 864-3133
BEAVER ISLAND COMM SCHOOL	83.33%	83.33%	66.67%	100.00%	Kathleen McNamara	(231) 448-2744
BEAVERTON RURAL SCHOOLS	58.77%	61.61%	50.00%	52.68%	Thomas Randle	(517) 246-3000
BEDFORD PUBLIC SCHOOLS	64.41%	63.27%	53.83%	46.53%	Dr. William Hall	(734) 850-6000
BEECHER COMMUNITY SCHOOL DISTRICT	27.27%	48.94%	19.35%	41.86%	Ira A. Rutherford, III	(810) 591-4731
BELDING AREA SCHOOL DISTRICT	60.00%	69.40%	49.26%	52.24%	Bert Emerson	(616) 794-4444
BELLAIRE PUBLIC SCHOOLS	76.92%	84.31%	70.59%	64.71%	Barbara A. Atkins	(231) 533-8141
BELLEVEUE COMMUNITY SCHOOL DISTRICT	68.18%	74.58%	68.25%	66.67%	Ann Bird	(616) 763-9432
BENDLE PUBLIC SCHOOLS	47.92%	55.43%	34.74%	42.55%	John J. Angle	(810) 591-2501
BENTLEY COMMUNITY SCHOOL DISTRICT	67.33%	58.82%	44.12%	44.00%	Bruce C. Kefgen	(810) 591-9100
BENTON HARBOR AREA SCHOOLS	20.47%	32.64%	15.24%	31.53%	Renee Williams	(616) 927-0600
BENZIE COUNTY CENTRAL SCHOOLS	58.24%	58.70%	50.00%	51.09%	David Micinski	(231) 882-9654
BERKLEY SCHOOL DISTRICT	80.54%	78.73%	71.43%	76.56%	Dr. E. Kathl Booher	(248) 837-8004
BERRIEN SPRINGS PUBLIC SCHOOLS	73.33%	85.71%	71.15%	76.47%	Howard Napp	(616) 471-2891
BESSEMER AREA SCHOOL DISTRICT	70.45%	76.74%	67.44%	65.12%	Al Gaiss	(906) 667-0802
BIG BAY DE NOC SCHOOL DIST	60.00%	88.46%	40.74%	61.54%	William J. Pistulka	(906) 644-2773
BIG RAPIDS PUBLIC SCHOOLS	74.12%	75.31%	62.87%	59.09%	John L. Cook	(231) 796-2627
BIRCH RUN AREA SCHOOL DISTRICT	50.79%	53.54%	52.38%	45.53%	Richard Ramsey	(517) 624-9307
BLISSFIELD COMMUNITY SCHOOLS	65.05%	73.27%	59.22%	57.28%	Paul Palka	(517) 486-2205
BLOOMINGDALE PUBLIC SCH DIST	55.10%	78.72%	44.68%	41.30%	Dale P. Schreuder	(616) 521-3900
BOYNE CITY PUBLIC SCHOOL DISTRICT	57.34%	65.10%	47.92%	46.56%	Dana Compton	(231) 582-6503
BOYNE FALLS PUBLIC SCHOOL	72.22%	88.89%	61.11%	83.33%	Patrick Smith	(231) 549-2211
BRANDON SCHOOL DISTRICT	71.88%	78.42%	70.05%	58.95%	Bart Jenniches	(248) 627-1802
BRANDYWINE PUBLIC SCH DIST	63.64%	65.35%	44.55%	45.92%	Sherman Thurkow	(616) 684-7150
BRECKENRIDGE COMMUNITY SCHOOLS	64.10%	66.23%	58.44%	63.51%	Dennis Hagey	(517) 842-3182
BREITUNG TWP SCHOOL DISTRICT	77.21%	80.99%	72.59%	62.41%	L. Peter Johnson	(906) 779-2650
BRIDGEPORT-SPAULDING C S D	40.16%	61.83%	40.83%	48.82%	Jane A. Bowns	(517) 777-1770
BRIDGMAN PUBLIC SCHOOLS	76.71%	82.19%	68.49%	76.06%	Carl Hilling	(616) 465-5432
BRIGHTON AREA SCHOOLS	73.88%	80.37%	70.09%	63.75%	Gary J. Hughes	(810) 229-1450
BRIMLEY AREA SCHOOLS	74.07%	75.86%	71.43%	56.00%	Dr. Scott Dunsmore	(906) 248-3219
BRITTON MACON AREA SCHOOL	58.62%	72.41%	53.33%	53.57%	Robert Tebo	(517) 451-4581
BRONSON COMMUNITY SCHOOLS	59.57%	60.64%	44.68%	44.68%	Robert C. Walter	(517) 369-3257
BROWN CITY COMMUNITY SCHOOL	82.35%	72.09%	56.98%	73.81%	Richard M. Gaubatz	(810) 346-2781
BUCHANAN COMMUNITY SCHOOL DISTRICT	71.43%	79.46%	66.07%	63.96%	David Casey	(616) 695-8401
BUCKLEY COMM SCHOOL DISTRICT	68.97%	77.42%	66.67%	74.07%	Ted Rauhen (interim)	(231) 269-3325
BUENA VISTA SCHOOL DISTRICT	22.50%	42.68%	12.35%	42.86%	Vivian Keys Brown	(517) 755-2184

BULLOCK CREEK SCHOOL DISTRICT	58.91%	74.02%	60.16%	54.55%	Thomas Gilstad	(517) 631-9022
BURR OAK COMM SCHOOL DIST	38.46%	53.33%	6.67%	8.33%	Terry Conklin	(616) 489-2213
BURT TOWNSHIP SCHOOL DISTRICT	50.00%	83.33%	50.00%	66.67%	George Hronkin	(906) 494-2543
BYRON AREA SCHOOLS	69.05%	79.31%	57.83%	73.81%	Dr. Mark Miller	(810) 266-4881
BYRON CENTER PUBLIC SCHOOLS	71.54%	83.08%	70.45%	68.46%	Philip Swainston	(616) 878-6100
CALEDONIA COMMUNITY SCHOOLS	83.67%	79.58%	67.39%	61.43%	Douglas W. Busman	(616) 891-8185
CAMDEN FRONTIER SCHOOLS	56.00%	76.00%	41.67%	55.56%	Wilfred Schantl	(517) 368-5991
CAPAC COMMUNITY SCH DISTRICT	56.90%	72.41%	49.14%	44.64%	Mark Gualdoni	(810) 395-4321
CARMAN-AINSWORTH SCHOOLS	62.18%	75.08%	53.05%	68.08%	Dr. Thomas Hicks	(810) 591-3205
CARNEY NADEAU PUBLIC SCHOOLS	81.25%	73.33%	62.50%	42.86%	Rodney Goehmann	(906) 639-2000
CARO COMMUNITY SCHOOLS	72.00%	83.92%	62.07%	58.96%	Dennis Anderson	(517) 673-3166
CARROLLTON SCHOOL DISTRICT	39.76%	61.90%	30.95%	37.04%	Craig C. Douglas	(517) 754-1475
CARSON CITY-CRYSTAL AREA SCHOOLS	77.57%	68.22%	60.19%	67.92%	Robert Nelson	(517) 584-3138
CARSONVILLE-PORT SANILAC SID	68.09%	70.45%	54.35%	61.90%	Alan D. Piwinski	(810) 657-9393
CASEVILLE PUBLIC SCHOOL	66.67%	66.67%	86.67%	60.00%	Gary Albring	(517) 856-2940
CASS CITY PUBLIC SCHOOLS	70.53%	66.67%	61.29%	63.83%	Kenneth Micklash	(517) 872-2200
CASSOPOLIS PUBLIC SCHOOLS	50.00%	72.41%	55.17%	56.90%	John Ostrowski	(616) 445-0503
CEDAR SPRINGS PUBLIC SCHOOLS	59.72%	67.14%	56.85%	52.11%	Andrew G. Booth	(616) 696-1204
CENTER LINE PUBLIC SCHOOLS	69.50%	65.94%	48.18%	45.32%	Terry D. Follbaum	(810) 757-7000
CENTRAL LAKE PUBLIC SCHOOLS	87.50%	94.87%	67.50%	64.86%	Augusta L. Bishop	(231) 544-3141
CENTRAL MONTCALM PUBLIC SCHOOL	70.51%	69.74%	68.49%	79.37%	Roger Thelen	(517) 831-5243
CENTREVILLE PUBLIC SCHOOLS	61.54%	63.46%	54.90%	50.00%	William Miller	(616) 467-5220
CHARLOTTE PUBLIC SCHOOLS	73.76%	76.47%	58.37%	57.92%	Max E. Baxter	(517) 543-2810
CHEBOYGAN AREA SCHOOLS	63.28%	65.17%	54.86%	48.54%	John Palmer	(906) 523-4691
CHELSEA SCHOOL DISTRICT	79.17%	82.54%	76.72%	73.77%	Edward Richardson	(734) 433-2208
CHESANING UNION SCHOOLS	75.35%	76.06%	65.25%	69.01%	Michael Dewey	(517) 845-7020
CHIPPEWA HILLS SCHOOL DIST	50.43%	63.33%	42.24%	47.32%	Thomas Pillar	(517) 967-8356
CHIPPEWA VALLEY SCHOOLS	78.62%	73.15%	61.12%	65.03%	James J. Rivard	(810) 228-5500
CITY OF HARPER WOODS SCHOOLS	68.66%	57.35%	48.57%	56.06%	Daniel E. Danosky	(313) 839-1296
CLARE PUBLIC SCHOOLS	66.67%	70.09%	62.61%	62.28%	Dr. William Courliss	(517) 386-9945
CLARENCEVILLE SCHOOL DIST	75.00%	73.44%	67.24%	76.67%	Thomas J. Tattan	(248) 473-8900
CLARKSTON COMM SCH DIST	74.50%	81.52%	66.18%	67.23%	Albert Roberts	(248) 623-5408
CLAWSON CITY SCHOOL DISTRICT	68.85%	78.33%	57.63%	76.79%	James Pinsonneault	(248) 435-7500
CLIMAX-SCOTTS SCHOOL DISTRICT	62.16%	80.56%	72.97%	87.50%	Dr. Geoffrey Balkam	(616) 746-2400
CLINTON COMMUNITY SCHOOLS	70.67%	78.67%	66.22%	41.89%	David Pray	(517) 456-6501
CLINTONDALE COMMUNITY SCHOOLS	62.96%	69.32%	55.70%	61.73%	Raymond M. Contesti	(810) 791-6300
CLIO AREA SCHOOL DISTRICT	73.87%	77.73%	67.87%	56.60%	Dr. Fay Latture	(810) 591-0502
COLDWATER COMMUNITY SCHOOLS	59.34%	59.53%	46.67%	46.75%	William F. Chinery	(517) 279-5910
COLEMAN COMMUNITY SCH DIST	75.00%	78.43%	70.59%	54.72%	James K. Archer	(517) 465-6060

COLOMA COMMUNITY SCHOOLS	64.00%	61.98%	43.09%	38.79%	David Defields	(616) 468-2424
COLON COMMUNITY SCHOOLS	80.00%	70.91%	70.91%	67.86%	Lloyd Kirby	(616) 432-3442
COLUMBIA SCHOOL DISTRICT	71.88%	75.78%	65.61%	52.53%	Brent Beamish	(517) 592-6641
COMSTOCK PARK PUBLIC SCHOOLS	75.66%	74.32%	64.43%	69.39%	James Y. Van Dyk	(616) 254-5001
COMSTOCK PUBLIC SCHOOLS	57.40%	64.91%	46.59%	49.69%	Robert Hamet	(616) 388-9461
CONCORD COMMUNITY SCHOOLS	66.20%	70.42%	58.57%	64.79%	Tom Bartol	(517) 524-8850
CONSTANTINE PUBLIC SCH DIST	67.33%	71.57%	57.84%	60.40%	Ben Smith	(616) 435-2015
CORUNNA PUBLIC SCHOOL DIST	69.07%	74.23%	69.00%	56.38%	John M. Smith	(517) 743-6338
COVERT PUBLIC SCHOOLS	58.33%	47.83%	41.67%	50.00%	Alfred Hawkins	(616) 764-0201
CRAWFORD AUSABLE SCHOOLS	72.79%	77.55%	62.59%	70.55%	Kent S. Reynolds	(517) 348-7641
CRESTWOOD SCHOOL DISTRICT	75.96%	74.63%	65.02%	60.31%	Oscar Brown	(313) 278-0903
CROSWELL-LEXINGTON SCHOOL DISTRICT	89.31%	78.79%	70.99%	65.15%	Charles C. Smith	(810) 679-1000
DANSVILLE AGRICULTURAL SCHOOLS	71.93%	81.36%	58.62%	69.09%	C. Dean Atkins	(517) 623-6120
DAVISON COMMUNITY SCHOOLS	77.00%	80.83%	70.29%	75.64%	Robert C. Hahn	(810) 658-5001
DEARBORN CITY SCHOOL DISTRICT	65.43%	59.43%	43.38%	58.48%	Dr. Jeremy Hughes	(313) 730-0224
DEARBORN HEIGHTS SCHOOL DIST #7	52.63%	59.21%	37.18%	47.62%	Susan Kenyon	(313) 278-1900
DECATUR PUBLIC SCHOOLS	80.00%	87.88%	70.77%	66.15%	Roy Pearson	(616) 423-6111
DECKERVILLE COMM SCHOOL DIST	69.64%	73.21%	64.29%	62.50%	Alan J. Broughton	(810) 376-3615
DEERFIELD PUBLIC SCHOOLS	73.33%	90.00%	70.00%	73.33%	Bradley Hamilton	(517) 447-3215
DELTON KELLOGG SCHOOLS	64.17%	70.54%	54.96%	68.29%	Marsha Wells	(616) 623-9246
DETOUR AREA SCHOOLS	61.90%	76.19%	85.71%	52.38%	Jan Amsterburg	(906) 297-2421
DETROIT PUBLIC SCHOOLS	28.13%	38.61%	14.80%	30.33%	David Adamany	(313) 494-1075
DEWITT PUBLIC SCHOOLS	79.11%	83.12%	73.21%	69.03%	Andrew Booth	(517) 669-2260
DOLLAR BAY-TAMARACK CITY AREA SCHLS	86.96%	83.33%	83.33%	66.67%	Dennis G. Barrette	(906) 482-5800
DOWAGIAC UNION SCHOOLS	76.47%	72.73%	54.24%	65.81%	Lawrence A. Crandall	(616) 782-4402
DRYDEN COMMUNITY SCHOOLS	66.67%	86.67%	60.00%	68.89%	Joseph H. Keena	(810) 796-9534
DUNDEE COMMUNITY SCHOOLS	73.63%	79.38%	64.58%	64.29%	Robert Black	(734) 529-2350
DURAND AREA SCHOOLS	64.22%	70.64%	54.13%	62.04%	John Mcewan	(517) 288-2681
EAST CHINA SCHOOLS	77.32%	73.66%	63.24%	65.36%	Thomas B. Shorkey	(810) 765-1753
EAST DETROIT PUBLIC SCHOOLS	70.83%	75.67%	58.41%	66.37%	Allan J. Torp	(810) 445-4400
EAST JACKSON COMMUNITY SCHOOLS	51.06%	51.61%	42.39%	34.83%	Bruce Van Eyck	(517) 764-2090
EAST JORDAN PUBLIC SCHOOLS	60.00%	67.09%	54.43%	50.63%	Robert A. Hansen, Jr.	(231) 536-3131
EATON RAPIDS PUBLIC SCHOOLS	67.49%	79.60%	69.95%	71.05%	Dr. Beulah Mitchell	(517) 663-8155
EAU CLAIRE PUBLIC SCHOOLS	49.06%	67.92%	33.96%	37.74%	David Gray	(616) 461-6947
ECORSE PUBLIC SCHOOL DIST	27.27%	40.91%	13.64%	36.36%	Dr. Emma L. Epps	(313) 382-6320
EDWARDSBURG PUBLIC SCHOOLS	54.23%	65.73%	55.32%	58.16%	Sherman Ostrander	(616) 663-1053
ELK RAPIDS SCHOOLS	66.91%	69.85%	58.65%	52.10%	Elmer Peterman	(231) 264-8692
ELKTON PIGEON BAYPORT SID	70.91%	75.45%	60.00%	71.56%	Robert J. Drury	(517) 453-2097

ENGADINE CONSOLIDATED SCHOOLS	70.59%	82.35%	58.82%	64.71%	Alan Kantola	(906) 477-6313
ESCANABA AREA PUBLIC SCHOOLS	74.12%	72.91%	64.31%	62.89%	Thomas C. Smith	(906) 786-5411
ESSEXVILLE-HAMPTON PUBLIC SCHOOLS	75.00%	77.36%	73.83%	73.58%	Mark Gaubatz	(517) 894-9700
EVART PUBLIC SCHOOLS	64.84%	76.92%	56.67%	63.95%	Howard B. Hyde	(231) 734-5594
EWEN TROUTCREEK CONS SD	63.41%	65.00%	51.28%	30.77%	Ray Rigoni, Jr.	(906) 988-2364
FAIRVIEW AREA SCHOOL DIST	68.75%	77.42%	67.74%	51.61%	Genevieve Troyer, Ph.D.	(517) 848-2480
FARWELL AREA SCHOOLS	73.12%	80.22%	65.17%	61.80%	Ken Richardson	(517) 588-9917
FENNVILLE PUBLIC SCHOOLS	56.30%	53.28%	28.57%	38.66%	Tedd R. Morris	(616) 561-7331
FENTON AREA PUBLIC SCHOOLS	69.11%	71.43%	53.57%	59.26%	Robert Burek	(810) 591-2268
FERNDALE CITY SCHOOL DISTRICT	60.25%	65.02%	47.97%	55.41%	Marcee E. Martin	(248) 586-8691
FITZGERALD PUBLIC SCHOOLS	62.24%	62.77%	65.63%	60.87%	James Edoff	(810) 757-1750
FLAT ROCK COMMUNITY SCHOOLS	53.78%	72.32%	49.55%	51.28%	Gerald Peregord	(734) 782-2451
FLINT COMMUNITY SCHOOL DISTRICT	30.31%	46.52%	18.64%	33.51%	James E. Ray, Ph.D.	(810) 760-1249
FLUSHING COMMUNITY SCHOOLS	77.09%	79.26%	69.34%	77.44%	William H. Tunncliff	(810) 591-0600
FOREST AREA COMMUNITY SCHOOLS	55.32%	76.60%	47.83%	62.86%	Fred Joles	(231) 369-4191
FOREST PARK SCHOOL DISTRICT	68.75%	86.00%	59.18%	69.39%	Eugene Dziubinski	(906) 875-6761
FOWLERVILLE COMMUNITY SCHS	76.06%	68.25%	68.28%	60.85%	David Peden	(517) 223-8459
FRANKFORT-ELBERTA AREA SCHOOLS	80.65%	83.87%	83.33%	67.74%	Jerry Jennex	(231) 352-4641
FRASER PUBLIC SCHOOLS	62.39%	71.47%	50.99%	55.59%	Gary Matsche	(810) 293-5100
FREELAND COMMUNITY SCHOOL DISTRICT	83.15%	80.90%	67.42%	78.41%	Linda L. Sanborn	(517) 695-5527
FREESOIL COMMUNITY SCH DIST	41.67%	30.77%	36.36%	0.00%	Daniel M. Boals	(231) 464-5651
FREMONT PUBLIC SCHOOLS	71.19%	74.44%	66.67%	62.80%	Robert Devries	(231) 924-2350
FRUITPORT COMMUNITY SCHOOLS	65.38%	73.04%	60.87%	61.46%	Daniel J. Bird	(231) 865-3154
FULTON SCHOOLS	54.90%	67.92%	48.00%	45.65%	Charles Seguna	(517) 236-7300
GALESBURG AUGUSTA COMM SCHS	70.42%	71.01%	42.25%	57.53%	James Rayner	(616) 665-7088
GALIEN TOWNSHIP SCHOOL DIST	72.97%	82.86%	68.42%	70.59%	Jerome R. Skarbek	(616) 545-3364
GARDEN CITY SCHOOL DISTRICT	67.99%	66.44%	52.20%	51.19%	Dr. Michael Wilmot	(734) 762-8300
GAYLORD COMMUNITY SCHOOLS	69.66%	75.11%	67.66%	63.47%	Dr. Diane Scheerhorn	(517) 732-6402
GENESEE SCHOOL DISTRICT	91.43%	94.29%	74.29%	61.76%	Mark Hillt	(810) 591-1650
GERRISH HIGGINS SCHOOL DISTRICT	48.84%	68.94%	50.76%	47.75%	Donald E. Mick	(517) 275-6600
GIBRALTAR SCHOOL DISTRICT	54.87%	66.23%	45.73%	51.75%	James R. Vollmar	(734) 692-4002
GLADSTONE AREA SCHOOLS	74.40%	77.17%	56.67%	57.48%	Thomas Watson	(906) 428-2417
GLADWIN COMMUNITY SCHOOLS	64.35%	70.43%	54.78%	46.02%	Mr. Robin B. Flessner	(517) 426-9255
GLEN LAKE COMMUNITY SCHOOL DIST	82.86%	88.57%	80.00%	72.86%	John P. Scholten	(231) 334-3061
GOBLES PUBLIC SCHOOL DISTRICT	56.76%	72.86%	49.33%	42.47%	Tommye Saylor	(616) 628-5618
GODFREY LEE PUBLIC SCH DIST	52.78%	70.59%	30.00%	41.94%	Jon Mccarthy	(616) 241-4722
GODWIN HEIGHTS PUBLIC SCHOOLS	65.69%	60.58%	45.11%	47.73%	Patrick Murphy	(616) 245-0091
GOODRICH AREA SCHOOL DIST	75.21%	83.47%	75.83%	67.77%	Raymond C. Green	(810) 591-2250

GRAND BLANC COMM SCHOOLS	84.93%	89.83%	74.46%	79.27%	Gary P. Lipe	(810) 591-6000
GRAND HAVEN AREA PUBLIC SCHOOLS	77.13%	77.14%	67.86%	71.59%	Rick Kent	(616) 850-5015
GRAND LEDGE PUBLIC SCHOOLS	82.79%	79.45%	78.71%	59.72%	David H. Layle	(517) 627-3241
GRAND RAPIDS PUBLIC SCHOOLS	50.97%	57.14%	37.40%	50.57%	Patricia Newby	(616) 771-2000
GRANDVILLE PUBLIC SCHOOLS	73.74%	75.49%	62.46%	66.76%	Duane Sheldon	(616) 254-6550
GRANT PUBLIC SCHOOL DISTRICT	71.00%	67.65%	61.00%	58.59%	Dr. Rodney Green	(231) 834-5621
GRASS LAKE COMMUNITY SCHOOLS	76.67%	78.69%	68.85%	69.35%	Larry Ostrander	(517) 522-8491
GREENVILLE PUBLIC SCHOOLS	75.59%	70.53%	63.55%	56.25%	Donald W. Haist	(616) 754-3686
GULL LAKE COMMUNITY SCHOOLS	69.10%	76.50%	67.03%	79.62%	Michael J. Manor	(616) 629-5880
GWINN AREA COMMUNITY SCHOOLS	66.36%	75.24%	62.96%	60.91%	Michael R. Maino	(906) 346-9283
HALE AREA SCHOOLS	60.00%	61.67%	50.00%	54.10%	J. Timothy Carter	(517) 728-7661
HAMTRAMCK PUBLIC SCHOOLS	44.35%	46.15%	27.13%	37.40%	Dr. Marlene Kukuzke	(313) 872-9270
HANCOCK PUBLIC SCHOOLS	80.72%	87.95%	73.17%	75.90%	John D. Vaara	(906) 487-9205
HANOVER HORTON SCHOOLS	69.74%	68.49%	58.44%	76.62%	Linda Brian	(517) 563-0100
HARBOR SPRINGS SCHOOL DIST	73.13%	83.33%	65.15%	78.79%	Dr. David Larson	(231) 526-2801
HARPER CREEK COMMUNITY SCHOOLS	64.95%	74.11%	56.35%	58.67%	Dennis Wilson	(616) 979-1136
HARRISON COMMUNITY SCHOOLS	60.53%	69.30%	56.52%	52.78%	Joseph J. Ashcroft	(517) 539-7871
HART PUBLIC SCHOOLS	74.39%	86.08%	69.62%	71.23%	Michael Koster	(231) 873-4080
HARTFORD PUBLIC SCHOOL DIST	50.59%	61.63%	44.19%	58.33%	Paul Ellinger	(616) 621-2441
HARTLAND CONSOLIDATED SCHOOLS	77.46%	82.86%	69.14%	68.46%	Peter Caroselli	(810) 632-7481
HASLETT PUBLIC SCHOOLS	84.62%	87.50%	76.02%	74.21%	Robert Regan	(517) 339-8242
HASTINGS AREA SCHOOL SYSTEM	68.94%	75.00%	66.07%	53.42%	Carl Schoessel	(616) 948-4400
HAZEL PARK SCHOOL DISTRICT	70.90%	74.47%	44.70%	50.38%	James E. Anker	(248) 542-3910
HESPERIA COMMUNITY SCHOOL DISTRICT	64.71%	67.61%	55.07%	57.89%	David Outwin	(231) 854-6185
HIGHLAND PARK CITY SCHOOLS	19.66%	42.11%	7.21%	25.27%	Mr. John Stindt	(313) 252-0440
HILLMAN COMMUNITY SCHOOLS	68.09%	70.73%	51.11%	52.50%	Carl Cratsenburg	(517) 742-2908
HILLSDALE COMM PUBLIC SCHS	54.48%	60.00%	47.41%	61.54%	Margo L. Hubbell	(517) 437-4401
HOLLAND CITY SCHOOL DISTRICT	78.80%	78.63%	69.48%	68.91%	Marcia Bishop	(616) 494-2000
HOLLY AREA SCHOOL DISTRICT	58.56%	64.06%	52.47%	48.61%	R. Kent Barnes	(248) 328-3100
HOLT PUBLIC SCHOOLS	76.59%	77.43%	72.08%	68.17%	Mr. Thomas Davis	(517) 694-5715
HOLTON PUBLIC SCHOOLS	56.52%	83.72%	45.83%	56.25%	Mike Estes	(231) 821-2178
HOMER COMMUNITY SCHOOLS	63.95%	72.29%	51.16%	67.44%	Brent Holcomb	(517) 568-4461
HOPKINS PUBLIC SCHOOLS	53.23%	70.97%	50.00%	51.61%	George P. Stamas	(616) 793-7261
HOUGHTON LAKE COMMUNITY SCHOOLS	51.09%	42.11%	38.71%	37.04%	James French	(517) 366-2000
HOUGHTON PORTAGE TOWNSHIP SCHOOLS	78.33%	79.83%	72.50%	61.21%	Dennis Harbour	(906) 482-0451
HOWELL PUBLIC SCHOOLS	71.82%	63.59%	58.23%	55.70%	W. Charles Breiner	(517) 548-6234
HUDSON AREA SCHOOLS	70.79%	72.22%	54.55%	59.77%	Kathryn A. Mainar	(517) 448-8912
HUDSONVILLE PUBLIC SCHOOLS	80.28%	68.00%	66.67%	59.29%	Don Vandoeselaar	(616) 669-1740

HURON SCHOOL DISTRICT	51.81%	58.02%	40.51%	47.50%	Andrew Desaeager	(734) 782-2441
HURON VALLEY SCHOOLS	67.96%	68.13%	59.62%	57.14%	Robert O'Brien	(248) 684-8000
IDA PUBLIC SCHOOL DISTRICT	74.31%	80.37%	75.70%	61.54%	Herbert Gabehart	(734) 269-3110
IMLAY CITY COMMUNITY SCHOOLS	69.29%	73.44%	65.08%	61.79%	Timothy Edwards	(810) 724-9861
INKSTER CITY SCHOOL DISTRICT	50.00%	36.84%	26.19%	27.03%	Terry Ann Boguth	(734) 722-5310
INLAND LAKES SCHOOLS	73.44%	70.77%	60.00%	82.81%	Dale E. Rieger	(231) 238-8868
IONIA PUBLIC SCHOOLS	64.65%	65.80%	54.50%	55.15%	Robert Jones	(616) 527-9280
IRON MOUNTAIN CITY SCHOOL DISTRICT	67.44%	73.10%	63.53%	54.22%	Dennis Chartier	(906) 779-2600
IRONWOOD AREA SCHOOLS	67.57%	80.36%	66.96%	58.93%	Percy Smith	(906) 932-0200
ISHPEMING PUBLIC SCHOOL DIST	81.71%	82.72%	65.43%	81.71%	Stephen Piereson	(906) 485-5501
ITHACA PUBLIC SCHOOLS	67.31%	79.61%	67.31%	64.71%	Michael Swartz	(517) 875-3700
JACKSON PUBLIC SCHOOLS	55.14%	62.30%	40.48%	51.67%	Daniel M. Evans	(517) 789-8144
JEFFERSON SCHOOLS MONROE COUNTY	68.21%	74.66%	60.81%	64.10%	Dr. Donna D. Schmidt	(734) 289-5599
JENISON PUBLIC SCHOOLS	83.33%	84.44%	75.40%	68.53%	David Dresslar	(616) 457-8890
JOHANNESBURG-LEWISTON AREA SCHOOLS	77.14%	82.35%	68.42%	70.59%	James Hilgendorf	(517) 732-1773
JONESVILLE COMMUNITY SCHOOLS	66.67%	75.00%	66.67%	60.34%	Daniel Woodward	(517) 849-9075
KALAMAZOO CITY SCHOOL DIST	50.85%	57.35%	43.42%	45.07%	Kay E. Royster	(616) 337-0123
KALEVA NORMAN DICKSON SCHOOLS	72.41%	82.76%	65.52%	74.14%	Gregory R. Webster	(231) 477-5353
KALKASKA PUBLIC SCHOOLS	71.43%	76.69%	66.67%	58.97%	Doyle Disbrow	(231) 258-9109
KEARSLEY COMMUNITY SCHOOLS	80.66%	75.54%	61.45%	68.68%	Jeffrey Morgan	(810) 591-9830
KELLOGGSVILLE PUBLIC SCHOOLS	57.48%	63.78%	49.59%	48.67%	William R. Zoller	(616) 538-7460
KENOWA HILLS PUBLIC SCHOOLS	68.72%	75.28%	63.84%	65.56%	James Gillette	(616) 784-2511
KENT CITY COMMUNITY SCHOOLS	79.31%	76.40%	62.07%	59.09%	Russ Ainslie	(616) 678-7714
KENTWOOD PUBLIC SCHOOLS	75.91%	79.37%	67.05%	62.61%	Mary Leiker	(616) 455-4400
KINGSLEY AREA SCHOOL	62.67%	70.67%	52.63%	57.89%	Michael P. Jurgensen	(231) 263-5262
KINGSTON COMMUNITY SCHOOLS	64.71%	69.81%	52.00%	69.39%	George Goodchild	(517) 683-2294
LAINGSBURG COMM SCHOOL DIST	74.71%	77.11%	62.35%	58.23%	Halsted R. Beatty	(517) 651-2705
LAKE FENTON SCHOOLS	73.68%	78.72%	58.33%	71.43%	Gerald Laskey	(810) 591-1004
LAKE LINDEN HUBBELL SCH DIST	75.56%	84.44%	77.78%	68.89%	Randall Roberts	(906) 296-6211
LAKE ORION COMMUNITY SCHOOLS	71.35%	73.59%	61.63%	55.56%	Craig Younkman	(248) 693-5413
LAKE SHORE PUBLIC SCHOOLS	66.67%	66.36%	54.25%	43.26%	John R. Brackett	(810) 285-8480
LAKEVIEW COMMUNITY SCHOOLS	69.16%	71.82%	60.36%	61.76%	Ronald Parker	(517) 352-6226
LAKEVIEW PUBLIC SCHOOLS	67.83%	74.65%	53.24%	60.43%	David L. Myers	(810) 445-4015
LAKEVIEW SCHOOL DISTRICT	73.99%	78.60%	63.72%	72.81%	Robert D. Spencer	(616) 965-3080
LAKEVILLE COMM SCHOOL DIST	69.70%	62.12%	50.38%	55.73%	James Richardson	(810) 591-6525
LAKESWOOD PUBLIC SCHOOLS	57.35%	71.56%	52.83%	51.20%	Gunnard Johnson	(616) 374-8043
L'ANSE AREA SCHOOLS	54.39%	53.57%	44.64%	27.45%	Ray Pasquali	(906) 524-6121
L'ANSE CREUSE PUBLIC SCHOOLS	68.65%	72.66%	59.41%	57.76%	John R. Armstrong	(810) 763-6300

LANSING SCHOOL DISTRICT	49.45%	58.63%	39.64%	40.84%	Richard J. Halik	(517) 325-6007
LAPEER COMMUNITY SCHOOLS	72.05%	77.27%	62.29%	68.58%	Barry Schoenholz	(810) 667-2401
LAWRENCE PUBLIC SCHOOL DIST	82.22%	91.30%	72.73%	66.67%	Richard N. Stoll	(616) 674-8233
LAWTON COMMUNITY SCHOOL DISTRICT	60.61%	60.94%	53.85%	68.85%	Daniel C. Pratlley	(616) 624-4931
LES CHENEAX COMMUNITY SCHOOLS	70.97%	71.88%	63.33%	70.00%	Kenneth Drenth	(906) 484-2256
LESLIE PUBLIC SCHOOLS	77.03%	87.67%	68.49%	82.19%	Gerald A. Jennings	(517) 589-8200
LINCOLN CONSOLIDATED SCHOOLS	61.54%	65.19%	65.38%	50.85%	Albert A. Widner	(734) 484-7001
LINCOLN PARK PUBLIC SCHOOLS	37.63%	56.60%	35.97%	41.67%	Randall H. Kite	(313) 389-0200
LINDEN COMMUNITY SCHOOLS	79.10%	79.66%	75.14%	73.45%	Thomas Riutta	(810) 591-7821
LITCHFIELD COMMUNITY SCHOOLS	48.00%	56.00%	46.00%	54.00%	Dale Dittmer	(517) 542-2388
LITTLEFIELD PUBLIC SCH DIST	73.91%	83.33%	65.22%	81.82%	Jon Hoover	(231) 548-2261
LIVONIA PUBLIC SCHOOLS	74.53%	75.63%	63.91%	59.09%	Dr. Kenneth Watson Jr.	(734) 523-8800
LOWELL AREA SCHOOLS	82.46%	84.29%	75.71%	73.02%	Bert Bleke	(616) 897-8415
MACKINAC ISLAND PUBLIC SCHOOLS	100.00%	100.00%	100.00%	60.00%	Gary Urman	(906) 847-3377
MACKINAW CITY SCHOOLS	76.47%	72.22%	44.44%	76.47%	Michael Bootz	(231) 436-8211
MADISON PUBLIC SCHOOLS	36.44%	42.61%	28.32%	28.10%	Steve I. Johnson	(248) 399-7800
MADISON SCHOOL DISTRICT	52.17%	72.73%	48.89%	47.73%	James Hartley	(517) 263-0741
MANCELONA PUBLIC SCHOOLS	52.31%	66.67%	45.45%	54.69%	Thomas Ross	(231) 587-9764
MANISTEE PUBLIC SCHOOLS	82.19%	87.59%	71.72%	81.25%	Joel Raddatz	(231) 723-3521
MANISTIQUE AREA SCHOOLS	66.36%	74.04%	65.38%	52.88%	Kenneth H. Groh	(906) 341-4300
MANTON CONSOLIDATED SCHOOLS	75.76%	72.73%	55.88%	69.70%	Robert Henthorne	(231) 824-6411
MAPLE VALLEY PUBLIC SCHOOLS	71.11%	74.73%	59.30%	62.92%	Clark E. Volz	(517) 852-9699
MARCELLUS COMMUNITY SCHOOLS	62.69%	70.15%	44.12%	48.48%	Dennis McCrumb	(616) 646-7655
MARENISCO SCHOOL DISTRICT	81.82%	45.45%	63.64%	72.73%	Henry Aapala	(906) 787-2288
MARION PUBLIC SCHOOLS	64.15%	60.38%	52.83%	35.85%	Jerome Schwartz	(231) 743-2486
MARLETTE COMMUNITY SCHOOLS	58.70%	67.39%	75.56%	50.00%	Duane Lange	(517) 635-4900
MARQUETTE AREA PUBLIC SCHOOLS	71.53%	72.70%	61.38%	55.45%	Anne Pecotte, Ph.D.	(906) 225-4200
MARSHALL PUBLIC SCHOOLS	80.30%	80.15%	63.85%	67.69%	Louis Giannunzio	(616) 781-1256
MARTIN PUBLIC SCHOOLS	60.78%	76.47%	58.82%	64.71%	Thomas Cutler	(616) 672-7194
MARYSVILLE PUBLIC SCHOOL DISTRICT	69.88%	73.78%	65.85%	66.87%	Charles S. Andrews	(810) 364-7731
MASON CONSOLIDATED	62.02%	66.67%	50.39%	53.23%	Luis B. Gonzalez	(734) 848-4849
MASON COUNTY EASTERN SCHOOLS	59.18%	70.59%	40.00%	60.00%	Ronald Nurnberger	(231) 757-3733
MASON PUBLIC SCHOOLS	81.25%	79.17%	72.52%	71.49%	Larry J. Corbett	(517) 676-2484
MATTAWAN CONSOLIDATED SCHOOL DIST	79.08%	86.48%	71.67%	76.05%	James A. Weeldreyer	(616) 668-3361
MAYVILLE COMMUNITY SCH DIST	70.00%	71.43%	61.76%	49.21%	Herbert L. Harroun	(517) 843-6115
MCBAIN RURAL AGRIL SCHOOL	66.67%	81.82%	72.73%	74.03%	Daniel H. Bachman	(616) 825-2165
MELVINDALE-NORTHERN ALLEN PARK	45.76%	64.66%	47.06%	44.44%	James W. Goebel	(313) 389-3300
MEMPHIS COMMUNITY SCHOOLS	63.27%	75.51%	59.57%	56.52%	Kenneth Helinski	(810) 392-2151

MENDON COMMUNITY SCHOOL DIST	44.44%	60.78%	50.00%	56.60%	Robert Duke	(616) 496-8491
MENOMINEE AREA PUBLIC SCHOOLS	75.63%	77.78%	60.63%	61.39%	Randy Neells	(906) 863-9951
MERIDIAN PUBLIC SCHOOLS	69.41%	78.05%	67.07%	65.43%	William Newkirk	(517) 687-3200
MERRILL COMM SCHOOL DISTRICT	71.64%	75.00%	58.82%	67.65%	Ken Tesaro	(517) 643-7261
MESICK CONSOLIDATED SCH DIST	61.54%	68.75%	57.81%	67.21%	Andrew B. Cook	(231) 885-2727
MICHIGAN CENTER SCHOOL DIST	60.22%	74.19%	58.43%	75.27%	John J. Jimenez	(517) 764-5778
MID PENINSULA SCHOOL DISTRICT	65.22%	69.57%	45.45%	77.27%	David Gadomski	(906) 359-4387
MILAN AREA SCHOOLS	52.31%	63.85%	44.27%	28.68%	Dennis M. McComb	(734) 439-5050
MILLINGTON COMM SCHOOLS	67.50%	76.72%	57.26%	73.39%	Denise Seiler	(517) 871-5201
MIO AUSABLE SCHOOL	72.31%	70.59%	74.24%	64.06%	R. Bruce Rank	(517) 826-3225
MONA SHORES SCHOOL DISTRICT	65.51%	78.45%	54.87%	65.15%	Terry L. Babbitt	(231) 780-4751
MONROE PUBLIC SCHOOLS	62.09%	67.04%	52.07%	48.65%	David J. Taylor	(734) 241-0330
MONTABELLA COMMUNITY SCHOOLS	61.29%	77.42%	56.45%	54.10%	David Marston	(517) 427-5148
MONTAGUE AREA PUBLIC SCHOOLS CENTRAL	65.35%	71.43%	51.59%	62.50%	James A. Booth	(231) 893-1515
MONTROSE COMMUNITY SCHOOLS	85.71%	80.00%	84.91%	64.15%	W. Daniel Cypher	(810) 591-7267
MORENCI AREA SCHOOLS	46.88%	59.70%	47.62%	62.50%	Dana Compton	(517) 458-7501
MORLEY STANWOOD COMMUNITY SCHOOLS	59.30%	74.42%	64.37%	51.76%	Michael C. Colby	(231) 856-4392
MORRICE AREA SCHOOLS	68.63%	70.83%	58.33%	52.38%	Larry J. Ford	(517) 625-3142
MOUNT CLEMENS COMMUNITY SCHOOLS	42.57%	51.38%	35.78%	41.44%	Dr. T. C. Wallace, Jr.	(810) 469-6100
MT MORRIS CONSOLIDATED SCHS	60.59%	66.67%	44.85%	63.64%	Larry Allen	(810) 591-8760
MT PLEASANT PUBLIC SCHOOLS	71.30%	77.13%	65.47%	64.29%	Dr. Gary Allen	(517) 775-2301
MUNISING PUBLIC SCHOOLS	68.54%	69.66%	60.67%	54.55%	Steve Cromell	(906) 387-2251
MUSKEGON CITY SCHOOL DIST	62.08%	59.09%	39.62%	50.83%	Joseph R. Schulze	(231) 720-2000
MUSKEGON HEIGHTS PUBLIC SCHOOLS	12.50%	26.06%	19.29%	19.57%	Edmond E. Beverly	(231) 739-9302
NAPOLEON COMMUNITY SCHOOLS	69.00%	72.00%	56.44%	64.00%	Karen A. Budan, Ed.D.	(517) 536-8667
NEGAUNEE PUBLIC SCHOOLS	79.53%	70.16%	69.84%	72.22%	James Derocher	(906) 475-4157
NEW BUFFALO AREA SCHOOL DIST	69.57%	73.91%	57.45%	61.36%	Michael Lindley	(616) 469-2211
NEW HAVEN COMMUNITY SCHOOLS	59.57%	57.45%	69.57%	65.12%	James W. Avery	(810) 749-5123
NEWAYGO PUBLIC SCHOOL DIST	72.90%	83.49%	71.03%	69.00%	Larry Lethorn	(231) 652-6984
NICE COMMUNITY SCHOOL DISTRICT	86.78%	80.00%	71.54%	70.59%	Ronald Kulle	
NILES COMMUNITY SCHOOLS	57.74%	57.20%	48.13%	47.74%	John Huffman	(616) 683-0732
NORTH ADAMS-JEROME PUBLIC SCHOOLS	72.22%	54.55%	55.88%	12.50%	Roger Syswerda	(517) 287-4214
NORTH BRANCH AREA SCHOOLS	68.79%	72.44%	60.76%	60.93%	Richard VanHaafteen	(810) 688-3570
NORTH CENTRAL AREA SCHOOLS	70.00%	66.00%	60.78%	66.00%	Norman D. Mckindles III	(906) 497-5821
NORTH DICKINSON COUNTY SCHOOL DIST	62.86%	79.41%	57.14%	64.71%	J. Eric Farfsing	(906) 542-9281
NORTH HURON SCHOOL DISTRICT	87.76%	77.55%	69.39%	63.27%	Richard Fawcett	(517) 874-4100
NORTHPORT PUBLIC SCHOOL DIST	76.19%	85.71%	85.71%	66.67%	Dr. Bonnie Piller	(231) 386-5153
NORTHVIEW PUBLIC SCHOOL DIST	72.99%	83.21%	71.33%	75.19%	Patricia Oldt	(616) 363-6861

NORTHWEST SCHOOL DISTRICT	55.31%	73.71%	55.37%	52.33%	Joseph Koziol	(517) 569-2247
NORWAY VULCAN AREA SCHOOLS	77.65%	86.90%	63.53%	67.06%	Michael Tomasko	(906) 563-9552
NOVI COMMUNITY SCHOOLS	87.28%	90.25%	79.93%	68.31%	Emmett W. Lippe	(248) 449-1200
OAK PARK SCHOOLS	33.95%	49.69%	23.93%	45.03%	Alexander E. Bailey	(248) 691-8400
OAKRIDGE PUBLIC SCHOOLS	56.88%	70.37%	51.89%	55.77%	Stan Fortuna Jr.	(231) 788-2361
OKEMOS PUBLIC SCHOOLS	93.36%	93.03%	87.80%	74.57%	Dan C. Wertz	(517) 349-9460
OLIVET COMMUNITY SCHOOLS	68.06%	73.61%	58.33%	81.16%	Christopher Wigent	(616) 749-9129
ONAWAY AREA COMM SCHOOL DIST	67.69%	69.70%	55.38%	63.08%	Dan Root	(517) 733-8423
ONEKAMA CONSOLIDATED SCHOOLS	89.47%	81.58%	76.32%	73.68%	Beth McCarthy	(231) 889-4251
ONSTED COMMUNITY SCHOOLS	67.26%	74.31%	56.36%	70.87%	Lee Robinson	(517) 467-2174
ONTONAGON AREA SCHOOLS	59.46%	59.46%	40.54%	37.84%	John Peterson	(906) 884-4422
ORCHARD VIEW SCHOOLS	59.05%	74.51%	53.77%	58.82%	Dr. Shari A. Peters-Kitch	(231) 760-1309
OSCODA AREA SCHOOLS	68.07%	78.45%	64.66%	70.54%	William Martin	(517) 739-2033
OTSEGO PUBLIC SCHOOLS	67.76%	75.66%	71.71%	56.58%	James Leyndyke	(616) 694-5131
OVID-ELSIE AREA SCHOOLS	67.46%	67.46%	59.68%	67.46%	Wayne S. Petroelje	(517) 834-2271
OWEN-GAGE COMMUNITY SCHOOLS	58.33%	73.08%	45.83%	54.55%	Manuel Thies	(517) 678-4261
OWOSSO PUBLIC SCHOOLS	66.14%	70.26%	58.63%	51.39%	Larry Audet	(517) 723-8131
OXFORD AREA COMMUNITY SCHOOL DIST	70.56%	76.42%	55.51%	69.37%	Marion Ginopolis	(248) 969-5000
PARCHMENT SCHOOL DISTRICT	70.97%	73.12%	47.83%	51.61%	W. Craig Misner	(616) 342-7405
PAW PAW PUBLIC SCHOOL DIST	58.00%	71.43%	49.03%	54.97%	Mark Bielang	(616) 657-8800
PECK COMMUNITY SCHOOLS	84.44%	84.78%	87.23%	73.91%	Michael H. Tubbs	(810) 378-5171
PELLSTON PUBLIC SCHOOLS	61.76%	73.53%	65.71%	61.29%	William Tebbe	(231) 539-8682
PENNFIELD SCHOOL DISTRICT	82.61%	79.35%	74.47%	82.80%	Robert Grimes	(616) 961-9781
PENTWATER PUBLIC SCHOOL DIST	68.18%	68.18%	52.17%	56.52%	Ron Gooding	(231) 869-4100
PERRY PUBLIC SCHOOL DISTRICT	72.31%	75.19%	60.16%	62.70%	Jacklyn Hurd	(517) 625-3108
PEWAMO WESTPHALIA SCHOOLS	77.27%	80.88%	65.67%	70.31%	Steven Barnum	(517) 587-5110
PICKFORD PUBLIC SCHOOLS	100.00%	100.00%	83.33%	71.43%	Keith Krahnke	(906) 647-6285
PINCKNEY COMMUNITY SCHOOLS	69.23%	76.95%	70.41%	67.64%	Michael Couchman	(810) 225-3900
PINCONNING AREA SCHOOLS	71.72%	73.79%	71.53%	64.58%	Charles E. Bibbee	(517) 879-4556
PINE RIVER AREA SCHOOLS	65.79%	56.79%	47.50%	46.25%	Lon Schneider	(231) 829-3141
PITTSFORD AREA SCHOOLS	74.63%	71.64%	62.69%	57.81%	Bruce Caswell	(517) 523-3481
PLAINWELL COMMUNITY SCHOOLS	65.22%	64.48%	62.22%	57.87%	Daniel A. Heckman	(616) 685-5823
PLYMOUTH CANTON COMMUNITY SCHOOLS	84.23%	81.27%	66.00%	73.63%	Kenneth J. Walcott	(734) 416-3045
PONTIAC CITY SCHOOL DISTRICT	27.98%	43.72%	18.78%	38.41%	Walter L. Burt	(248) 857-8123
PORT HOPE COMMUNITY SCHOOLS	57.14%	57.14%	57.14%	71.43%	Scott Belt	(517) 428-4151
PORT HURON AREA SCHOOL DIST	69.08%	76.69%	60.84%	64.42%	William D. Kimball	(810) 984-3101
PORTLAND PUBLIC SCHOOLS	79.73%	79.19%	70.55%	72.92%	Charles V. Dumas	(517) 647-4161
POSEN CONS SCHOOL DISTRICT	100.00%	100.00%	100.00%	40.00%	Michael Murch	(517) 766-2573

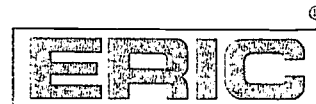
POTTERVILLE PUBLIC SCHOOLS	54.72%	70.37%	50.00%	48.15%	Fred J. Williams	(517) 645-2662
PUBLIC SCHOOLS OF PETOSKEY	72.99%	78.30%	67.31%	62.50%	Dr. John Jeffrey	(231) 348-0160
QUINCY COMMUNITY SCHOOLS	59.14%	71.74%	61.29%	53.33%	Joseph Lopez	(517) 639-7141
RAPID RIVER PUBLIC SCHOOLS	90.48%	90.48%	95.00%	66.67%	Kent R. Swinson	(906) 474-6424
RAVENNA PUBLIC SCHOOLS	59.26%	61.73%	48.75%	46.25%	Michael Matlosz	(231) 853-2231
READING COMMUNITY SCHOOLS	75.47%	83.02%	62.96%	79.63%	Robert Luchenbill	(517) 283-2166
REDFORD UNION SCHOOL DISTRICT #1	52.44%	57.47%	45.19%	42.71%	Thomas Dean Gay	(313) 592-3304
REED CITY AREA PUBLIC SCHOOLS	64.34%	80.31%	59.84%	69.05%	David Killips	(231) 832-2201
REETHS PUFFER SCHOOLS	66.17%	71.48%	55.76%	61.65%	Gloria Lewis	(231) 744-4736
REPUBLIC MICHIGAMME SCHOOLS	63.16%	47.37%	50.00%	52.63%	Richard H. Allen (Interim)	(906) 376-2277
RICHMOND COMMUNITY SCHOOLS	77.97%	76.27%	66.39%	44.54%	Dr. Patrick Bird	(810) 727-3565
RIVER ROUGE SCHOOL DISTRICT	31.47%	42.97%	18.11%	32.31%	Benjamin J. Benford II	(313) 297-9600
RIVER VALLEY SCHOOL DISTRICT	55.17%	69.32%	51.76%	52.50%	Dr. Donald Larson	(616) 756-9541
RIVERVIEW COMMUNITY SCH DIST	70.18%	78.45%	53.85%	82.14%	Roger K. Allen	(734) 285-9660
ROGERS CITY AREA SCHOOLS	62.82%	71.43%	54.55%	63.51%	Dr. Jesse James	(517) 734-4013
ROMEO COMMUNITY SCHOOLS	80.76%	77.93%	65.29%	58.47%	John Kingsnorth	(810) 752-0200
ROMULUS COMMUNITY SCHOOLS	46.04%	54.77%	31.00%	38.05%	Dr. William Bedell	(313) 941-1600
ROSEVILLE COMMUNITY SCHOOLS	53.66%	61.05%	46.98%	43.31%	John Kment	(810) 445-5505
ROYAL OAK SCHOOL DISTRICT	71.43%	78.38%	60.15%	65.75%	Steven A. Gaynor	
RUDYARD AREA SCHOOLS	63.29%	60.76%	47.50%	51.25%	Timothy J. Murphy	(906) 478-3771
SAGINAW CITY SCHOOL DISTRICT	48.81%	57.45%	35.91%	47.86%	Foster B. Gibbs	(517) 759-2200
SAGINAW TOWNSHIP COMMUNITY SCHOOLS	70.59%	78.71%	61.80%	59.05%	Jerry L. Seese, Ed.D.	(517) 797-1800
SAND CREEK COMMUNITY SCHOOLS	58.21%	64.62%	62.12%	57.58%	Donald A. Barnes	(517) 436-3121
SANDUSKY COMMUNITY SCHOOLS	64.44%	73.28%	59.40%	58.96%	James R. Nolan	(810) 648-3400
SARANAC COMMUNITY SCHOOLS	88.89%	82.93%	71.60%	66.67%	Bruce Chadwick	(616) 642-9102
SAULT STE MARIE AREA PUBLIC SCH	66.06%	74.56%	62.58%	57.76%	Tony McClain	(906) 635-6609
SCHOOL DISTRICT OF YPSILANTI	70.00%	75.00%	73.40%	81.93%	David Zuhike	(734) 482-9388
SCHOOLCRAFT COMMUNITY SCHOOLS	76.39%	84.72%	79.17%	73.61%	William Haug	(616) 679-4331
SHELBY PUBLIC SCHOOLS	61.61%	52.17%	63.16%	46.23%	James Peters	(231) 861-5211
SHEPHERD PUBLIC SCHOOL DISTRICT	68.97%	68.64%	58.12%	59.48%	Douglas Dodge	(517) 828-5520
SOUTH HAVEN PUBLIC SCHOOLS	64.38%	73.47%	65.52%	52.08%	J. David Myers	(616) 637-0520
SOUTH LAKE SCHOOLS	81.01%	77.50%	69.43%	69.57%	Ronald E. Cook	(810) 445-4209
SOUTH LYON COMMUNITY SCHOOLS	70.03%	79.50%	66.78%	64.65%	Dr. William Pearson	(248) 573-8127
SOUTH REDFORD SCHOOL DIST	65.67%	68.39%	57.21%	62.37%	John M. Graves, Ph.D.	(313) 535-4000
SOUTHFIELD PUBLIC SCHOOLS	49.59%	57.76%	31.96%	51.34%	Marlene Davis	(248) 746-8500
SOUTHGATE COMMUNITY SCHOOL DIST	61.54%	70.15%	53.09%	50.16%	Stanley J. Mazur	(734) 246-4600
SPARTA AREA SCHOOLS	74.19%	77.24%	68.29%	62.20%	Michael Weiler	(616) 887-8253
SPRING LAKE PUBLIC SCH DIST	79.63%	77.78%	74.70%	70.73%	Larry Mason	(616) 847-7919

SPRINGPORT PUBLIC SCHOOLS	68.75%	70.49%	52.38%	61.90%	Richard Ames	(517) 857-3495
ST CHARLES COMMUNITY SCHOOLS	65.48%	71.43%	61.45%	65.38%	Joseph G. Rousseau	(517) 865-9961
ST IGNACE AREA SCHOOL DISTRICT	80.34%	69.49%	52.63%	53.57%	Pete Everson	(906) 643-8145
ST JOHNS PUBLIC SCHOOLS	80.40%	74.42%	71.62%	70.21%	Richard Tait	(517) 227-4050
ST JOSEPH PUBLIC SCHOOLS	75.23%	80.09%	61.71%	68.47%	Jack Mansfield	(616) 982-4621
ST LOUIS PUBLIC SCHOOLS	62.92%	73.63%	57.30%	41.77%	Robert P. Lange	(517) 681-2545
STANDISH STERLING COMMUNITY S. D.	70.99%	80.92%	63.36%	58.73%	Claude Inch	(517) 846-4526
STEPHENSON AREA PUBLIC SCHS	84.21%	80.82%	73.61%	50.00%	Charles E. Kaihoefer	(906) 753-2221
STOCKBRIDGE COMMUNITY SCHOOLS	63.57%	67.18%	62.02%	52.94%	Bruce W. Brown	(517) 851-7188
STURGIS SCHOOL DISTRICT	71.04%	62.50%	58.97%	52.07%	Robert Olsen	(616) 659-1500
SUMMERFIELD SCHOOL DISTRICT	76.19%	77.42%	63.93%	70.97%	John S. Hewitt	(734) 279-1035
SUPERIOR CENTRAL SCHOOL DISTRICT	66.67%	67.50%	66.67%	50.00%	William H. Lammi	(906) 439-5531
SUTTONS BAY PUBLIC SCH DIST	73.02%	72.58%	64.52%	75.41%	Robert MacEachran	(231) 271-3846
SWAN VALLEY SCHOOL DISTRICT	70.34%	80.28%	67.14%	73.24%	Richard Syrek	(517) 921-3701
SWARTZ CREEK COMMUNITY SCHOOLS	70.46%	75.19%	63.43%	49.01%	Charles E. Townsend	(810) 591-2300
TAHQAMENON AREA SCHOOLS	56.63%	56.63%	49.41%	39.76%	James Showers	(906) 293-3226
TAWAS AREA SCHOOLS	81.36%	74.58%	75.21%	74.58%	David W. Conzelmann	(517) 362-4481
TAYLOR SCHOOL DISTRICT	50.22%	64.68%	39.50%	39.86%	Bethany Iverson	(734) 374-1200
TECUMSEH PUBLIC SCHOOLS	56.19%	72.22%	57.92%	56.94%	Richard D. Faubie	(517) 423-2167
TEKONSHA COMMUNITY SCHOOLS	58.33%	62.50%	54.17%	70.83%	John Deline	(517) 767-4121
THE LAMPHERE SCHOOLS	72.92%	72.52%	50.36%	53.59%	James S. McCann	(616) 795-3313
THORNAPPLE KELLOGG SCHOOL DISTRICT	63.16%	67.37%	61.05%	58.60%	Jay Cason	(616) 279-1100
THREE RIVERS COMMUNITY SCHS	78.26%	83.69%	66.67%	57.45%	James Bermingham	(616) 279-1100
TRAVERSE CITY AREA PUBLIC SCHOOLS	81.57%	83.56%	72.75%	73.04%	James Rossi	(231) 933-1727
TRENTON PUBLIC SCHOOLS	82.95%	86.05%	70.22%	69.19%	Donald N. Koicheck	(734) 676-8600
TRI COUNTY AREA SCHOOLS	58.96%	59.70%	47.37%	33.60%	Dr. William Pritchard	(231) 937-5611
TROY SCHOOL DISTRICT	90.63%	89.23%	81.78%	72.87%	Janet Jopke	(248) 689-0600
UNION CITY COMMUNITY SCHOOLS	69.70%	78.57%	67.74%	68.75%	Martin Chard	(517) 741-8091
UNIONVILLE SEBEWAING AREA SD	60.98%	82.72%	57.50%	73.75%	John Walker	(517) 883-2360
UTICA COMMUNITY SCHOOLS	79.95%	74.51%	65.79%	69.92%	Joan C. Sergeant, Ed. D.	(810) 795-2300
VAN BUREN PUBLIC SCHOOLS	50.33%	53.62%	41.36%	46.73%	James F. Richendollar	(734) 697-9123
VAN DYKE PUBLIC SCHOOLS	66.67%	66.67%	53.27%	59.62%	Roger W. Markham	(810) 758-8333
VANDEBILT AREA SCHOOL	42.86%	64.29%	28.57%	30.77%	Ellen Bonter	(517) 983-4121
VANDERCOOK LAKE PUBLIC SCHOOLS	77.19%	70.91%	66.67%	67.86%	Burdette W. Andrews	(517) 782-9044
VASSAR PUBLIC SCHOOLS	48.41%	59.86%	49.66%	49.64%	Larry Essenmacher	(517) 823-8535
VESTABURG COMMUNITY SCHOOLS	52.17%	65.22%	47.83%	56.52%	Ronald Milks	(517) 268-5353
VICKSBURG COMMUNITY SCHOOLS	68.26%	69.51%	62.42%	56.10%	Patricia Reeves	(616) 321-1000
WAKEFIELD SCHOOL DIST	62.50%	75.00%	45.83%	33.33%	Lawrence Kapugia	(906) 224-9421

WALDRON AREA SCHOOLS	28.57%	21.43%	26.67%	46.43%	David Anspaugh	(517) 286-6251
WALKERVILLE RURAL COMM SD	59.09%	58.33%	54.55%	54.17%	Stephen G. Lites	(231) 873-4850
WALLED LAKE CONSOLIDATED SCHOOLS	79.89%	80.68%	63.61%	68.51%	James R. Geisler	(248) 956-2000
WARREN CONSOLIDATED SCHOOLS	67.41%	69.11%	52.88%	51.39%	Dr. James L. Clor	(810) 825-2400
WARREN WOODS PUBLIC SCHOOLS	55.31%	58.59%	45.61%	47.09%	Thomas J. Dobbs	(810) 439-4401
WATERFORD SCHOOL DISTRICT	75.14%	77.80%	57.65%	61.58%	Howard T. Heitzeg	(248) 666-2222
WATERSMEET TWP SCHOOL DIST	55.56%	82.35%	57.89%	55.56%	Dr. Frank Sesko	(906) 358-4504
WATERVLIET PUBLIC SCHOOLS	67.65%	72.22%	54.41%	59.70%	Robert J. Gabel	(616) 463-5566
WAYLAND UNION SCHOOLS	67.65%	78.43%	57.56%	58.05%	Robert Brenner	(616) 792-2181
WAYNE WESTLAND COMMUNITY SCHOOLS	42.27%	50.60%	33.80%	40.15%	Dr. Gregory Baracy	(734) 595-2000
WEBBERVILLE COMMUNITY SCHS	62.22%	68.89%	50.00%	47.50%	Therese M. Peterson, Ph.D	(517) 521-3422
WEST BLOOMFIELD SCHOOL DISTRICT	85.66%	79.32%	77.61%	73.15%	Seymour Gretchko	(248) 738-3562
WEST BRANCH-ROSE CITY AREA SCHOOLS	59.13%	64.45%	51.17%	37.93%	Lee H. Ward	(517) 345-5959
WEST IRON COUNTY SCHOOL DISTRICT	70.83%	67.82%	63.41%	57.14%	Sharon Stockero	(906) 265-9218
WEST OTTAWA PUBLIC SCH DIST	76.18%	76.04%	65.72%	70.26%	Rosemary Ervine	(616) 395-2300
WESTERN SCHOOL DISTRICT	59.18%	63.51%	53.42%	53.38%	John Dardzinski	(517) 841-8100
WESTWOOD COMMUNITY SCHOOLS	43.48%	44.29%	30.56%	26.23%	Dr. Equilla Bradford	(313) 565-1900
WESTWOOD HEIGHTS SCH DIST	53.45%	62.71%	38.33%	36.21%	Steven Overweg	(810) 591-0870
WHITE CLOUD PUBLIC SCHOOLS	55.71%	68.57%	50.72%	44.29%	Gary L. Pardike	(231) 689-6591
WHITE PIGEON COMM SCH DIST	59.09%	66.67%	53.03%	51.52%	Dr. Michael Jazzar	(616) 483-7676
WHITE PINE SCHOOL DISTRICT	76.92%	93.33%	69.23%	73.33%	John Valesano	(906) 885-5351
WHITEFISH TOWNSHIP SCHOOL	33.33%	33.33%	33.33%	33.33%	James Rayner	(906) 492-3353
WHITEHALL SCHOOL DISTRICT	72.50%	66.67%	67.77%	58.47%	Larry Curtis	(231) 893-7335
WHITTEMORE PRESCOTT AREA S/D	50.00%	48.05%	46.15%	23.46%	Charles Schnetzler	(517) 756-2500
WILLIAMSTON COMM SCHOOLS	80.26%	81.58%	69.28%	76.51%	Dr. Gerald Sinnamon	(517) 655-4361
WILLOW RUN COMMUNITY SCHOOLS	50.00%	64.58%	38.71%	53.68%	Dr. Gayle Green	(734) 481-8200
WOLVERINE COMM SCHOOL DIST	57.14%	69.23%	64.29%	72.73%	Susan Denise	(231) 525-8201
WOODHAVEN-BROWNSTOWN SCHOOL DISTRICT	81.48%	75.72%	64.32%	66.52%	Bill C. Meadows	(734) 783-3300
WYANDOTTE PUBLIC SCHOOLS	65.88%	68.54%	51.10%	55.68%	Dr. Patricia Cole	(734) 246-1000
YALE PUBLIC SCHOOLS	65.54%	74.15%	60.27%	56.58%	Ralph Darin	(810) 387-4274



U.S. Department of Education
Office of Educational Research and Improvement (OERI)
National Library of Education (NLE)
Educational Resources Information Center (ERIC)



TM033498

REPRODUCTION RELEASE

(Specific Document)

I. DOCUMENT IDENTIFICATION:

Title: <i>Failing Schools in Michigan: The Surprising Scale</i>	
Author(s): <i>PATRICK L. ANDERSON, Christopher S. Cotton</i>	
Corporate Source: <i>BBk, Ltd. and Choice for Children</i>	Publication Date: <i>02/27/01</i>

II. REPRODUCTION RELEASE:

In order to disseminate as widely as possible timely and significant materials of interest to the educational community, documents announced in the monthly abstract journal of the ERIC system, *Resources in Education* (RIE), are usually made available to users in microfiche, reproduced paper copy, and electronic media, and sold through the ERIC Document Reproduction Service (EDRS). Credit is given to the source of each document, and, if reproduction release is granted, one of the following notices is affixed to the document.

If permission is granted to reproduce and disseminate the identified document, please CHECK ONE of the following three options and sign at the bottom of the page.

The sample sticker shown below will be affixed to all Level 1 documents

The sample sticker shown below will be affixed to all Level 2A documents

The sample sticker shown below will be affixed to all Level 2B documents

PERMISSION TO REPRODUCE AND DISSEMINATE THIS MATERIAL HAS BEEN GRANTED BY

Sample

TO THE EDUCATIONAL RESOURCES INFORMATION CENTER (ERIC)

PERMISSION TO REPRODUCE AND DISSEMINATE THIS MATERIAL IN MICROFICHE, AND IN ELECTRONIC MEDIA FOR ERIC COLLECTION SUBSCRIBERS ONLY, HAS BEEN GRANTED BY

Sample

TO THE EDUCATIONAL RESOURCES INFORMATION CENTER (ERIC)

2A

PERMISSION TO REPRODUCE AND DISSEMINATE THIS MATERIAL IN MICROFICHE ONLY HAS BEEN GRANTED BY

Sample

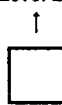
TO THE EDUCATIONAL RESOURCES INFORMATION CENTER (ERIC)

2B

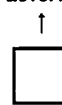
Level 1



Level 2A



Level 2B



Check here for Level 1 release, permitting reproduction and dissemination in microfiche or other ERIC archival media (e.g., electronic) and paper copy.

Check here for Level 2A release, permitting reproduction and dissemination in microfiche and in electronic media for ERIC archival collection subscribers only

Check here for Level 2B release, permitting reproduction and dissemination in microfiche only

Documents will be processed as indicated provided reproduction quality permits.
If permission to reproduce is granted, but no box is checked, documents will be processed at Level 1.

I hereby grant to the Educational Resources Information Center (ERIC) nonexclusive permission to reproduce and disseminate this document as indicated above. Reproduction from the ERIC microfiche or electronic media by persons other than ERIC employees and its system contractors requires permission from the copyright holder. Exception is made for non-profit reproduction by libraries and other service agencies to satisfy information needs of educators in response to discrete inquiries.

Sign here, → please

Signature: <i>Patrick L. Anderson</i>	Printed Name/Position/Title: <i>PATRICK L. Anderson / Principal</i>	
Organization/Address: <i>BBk, Ltd. / 615 West Ionia, Lansing MI 48933</i>	Telephone: <i>(617) 374-2596</i>	FAX: <i>(517) 487-9097</i>
	E-Mail Address: <i>panderson@e-bbk.com</i>	Date: <i>11/26/01</i>



(over)

III. DOCUMENT AVAILABILITY INFORMATION (FROM NON-ERIC SOURCE):

If permission to reproduce is not granted to ERIC, or, if you wish ERIC to cite the availability of the document from another source, please provide the following information regarding the availability of the document. (ERIC will not announce a document unless it is publicly available, and a dependable source can be specified. Contributors should also be aware that ERIC selection criteria are significantly more stringent for documents that cannot be made available through EDRS.)

Publisher/Distributor:
Address:
Price:

IV. REFERRAL OF ERIC TO COPYRIGHT/REPRODUCTION RIGHTS HOLDER:

If the right to grant this reproduction release is held by someone other than the addressee, please provide the appropriate name and address:

Name:
Address:

V. WHERE TO SEND THIS FORM:

ERIC Clearinghouse on Urban Education
Box 40, Teachers College
Columbia University
525 W. 120th Street, Main Hall 303
New York, NY 10027

Send this form to the following ERIC Clearinghouse:

Tel: 212-678-3433 / 800-601-4868
Fax: 212-678-4012

<http://eric-web.tc.columbia.edu>

However, if solicited by the ERIC Facility, or if making an unsolicited contribution to ERIC, return this form (and the document being contributed) to:

ERIC Processing and Reference Facility
4483-A Forbes Boulevard
Lanham, Maryland 20706

Telephone: 301-552-4200

Toll Free: 800-799-3742

FAX: 301-552-4700

e-mail: ericfac@inet.ed.gov

WWW: <http://ericfac.piccard.csc.com>