

## DOCUMENT RESUME

ED 457 070

SO 031 572

AUTHOR Mac Donald, David R.; Karayan, Michael S.  
TITLE El Nino Election. Grade 12 Lesson. Schools of California Online Resources for Education (SCORE): Connecting California's Classrooms to the World.  
INSTITUTION San Bernardino County Superintendent of Schools, CA.  
PUB DATE 1999-00-00  
NOTE 9p.  
AVAILABLE FROM Schools of California Online Resources for Education, San Bernardino County Superintendent of Schools, 601 North East Street, San Bernardino, CA 92410-3093. E-mail: webmaster@score.rims.k12.ca.us; Web site: <http://score.rims.k12.ca.us>.  
PUB TYPE Guides - Classroom - Teacher (052)  
EDRS PRICE MF01/PC01 Plus Postage.  
DESCRIPTORS Academic Standards; \*City Government; \*Elections; Emergency Programs; Grade 12; High Schools; Interdisciplinary Approach; \*Local Issues; \*Political Campaigns; Political Issues; Political Science; Role Playing; \*Simulation; Social Studies  
IDENTIFIERS \*El Nino (Ocean Current); Press Secretaries

## ABSTRACT

In this lesson plan, the city of Malibu (CA) is at the mercy of the weather phenomenon El Nino. The press secretary for the Mayor of Malibu recognizes an opportunity to turn this potential natural disaster into a re-election campaign. A task force will be assembled to protect the lives and property of the community. Students role play members of the task force, including City Manager, President of the Chamber of Commerce, leader of the Citizens Patrol team, and the Mayor's press secretary. Students research El Nino, forecast possible disaster scenarios, and provide recommendations for effectively responding to these scenarios. Students are provided with background information, detailed instructions, online resources, and reflection questions. The teacher's notes describe the unit's purpose, explain the application of history/social science standards, and suggest teaching strategies. (BT)



**Schools of California  
Online Resources for  
Education (SCORE):  
Connecting California's  
Classrooms to the  
World**

**EL NINO ELECTION**

12th Grade Lesson by David R. Mac Donald and Michael  
S. Karayan

**SCORE  
San Bernardino County Superintendent of Schools  
601 North E. Street  
San Bernardino, CA 92410-3093**

[http://score.rims.k12.ca.us/activity/El\\_Nino/](http://score.rims.k12.ca.us/activity/El_Nino/)

PERMISSION TO REPRODUCE AND  
DISSEMINATE THIS MATERIAL HAS  
BEEN GRANTED BY

*Margaret Hill*

TO THE EDUCATIONAL RESOURCES  
INFORMATION CENTER (ERIC)

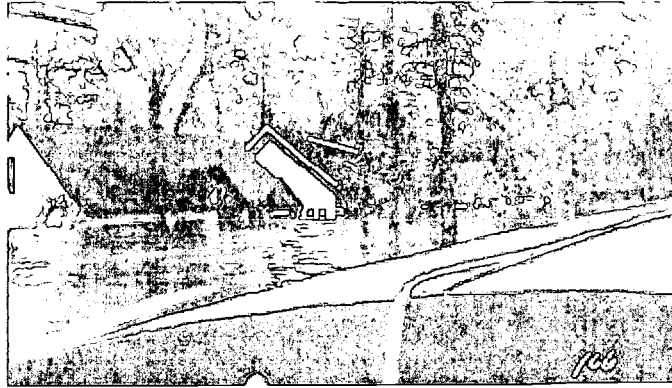
1999

U.S. DEPARTMENT OF EDUCATION  
Office of Educational Research and Improvement  
EDUCATIONAL RESOURCES INFORMATION  
CENTER (ERIC)

- This document has been reproduced as received from the person or organization originating it.
- Minor changes have been made to improve reproduction quality.

• Points of view or opinions stated in this document do not necessarily represent official OERI position or policy.

SO 031 572



# The El Nino Election

You just received the latest polling data for the your boss, the Mayor of Malibu. Unfortunately for you and the Mayor, it looks like you may both need to find a new source of income after the upcoming election. It seems the people of Malibu feel as though their Mayor has lost touch with the people and their most basic needs. As the Mayor's press secretary, it is your duty to make the Mayor look good and provide for him/her every opportunity to shine in the eyes of his/her constituents. As you search for anything positive to raise ratings, you come across an article in the newspaper related to the weather phenomenon, El Nino. According to the report your city is again going to be at the mercy of Mother Nature. For many this news is awful, for you it means an answer to prayer.

After getting the Mayor's ear, you outline your plan to boost his ratings and secure another victory in the upcoming election. You explain the concept of an El Nino Election, an idea that if worked properly will allow the Mayor to take an active role in saving the lives and property in this majestic community. Through the auspices of the Mayor's office, you are going to arrange a task force made up of prominent city leaders and officers. The task force will include the City Manager, the President of the Chamber of Commerce, the leader of the Citizens Patrol team and, of course, you.

After contacting everyone individually and securing agreements, you arrange a press conference for the Mayor to announce his intentions. Through proper planning and the Mayor's guidance, a plan is going to be formulated by the aforementioned people that will guide the citizens of Malibu through the upcoming El Nino winter. Before you get too excited it would be important to remember that you haven't done anything yet, and the important questions do not yet have answers.

Your job begins this way,

Dear Members of the El Nino Task Force,

As I am sure you are all aware, the predicted El Nino figures to be the strongest ever recorded. As citizens of Malibu, you and I know of the destruction that has faced us in the past. Your job is to plan and strategize ways to overcome the potential for disaster and in the event disaster does strike, a way to minimize the pain. In order to accomplish this I have prepared a series of questions for you to answer and, when completed, I expect a written report detailing an approach I can take to guide our citizens through this trying time. I know you can do it and remember, I'm just like time, I wait for no one.

1. What is an El Nino? How and when do they occur?
2. What are some of the problems we can expect here in Malibu as a result of El Nino?
3. In the event disaster does strike, how do we get FEMA here? What is the most amount of help we can expect from FEMA?
4. Do we have a part of town in need of a special evacuation procedure if flood or mudslides occur?
5. What steps do we take to get the Red Cross involved?
6. What are the available shelters here in town?
7. What are the economic costs associated with El Nino here in Malibu?
8. What businesses here in town stand to be affected the most?
9. Do we have a FAQ(Frequently Asked Questions) regarding El Nino that we can make available to our citizens to help them?
10. Where can citizens get sandbags? Do we have anyone available to help the elderly sandbag their homes?
11. What would be the best ways to disseminate this information once we've collected all of it?
12. Last, but not least, what's the best thing the Mayor's office can do for the citizens of this town?

Thank you for all your hard work and dedication to the wonderful citizens of this town.

Sincerely,

James Needsyourhelp

## **The Task**

Your team is assigned the task of researching and generating as much useful information as possible on El Nino for both the Mayor and the citizens of Malibu. You should do this in a professional manner keeping in mind that your actions can and will have a lasting effect on the city and its people. Your research should address the questions raised by the Mayor and when you are done, you need to prepare written recommendations so that the mayor can effectively lead his citizens through this potentially catastrophic event.

---

## **The Process**

Try to stay within this framework:

- A. Determine which of you is going to assume each identity.(Chamber President, Press Secretary, Citizens Patrol and City Manager)
  - B. Divide the research questions among you based on their applicability to your job. Don't be afraid to allow questions to overlap as each of you may be able to answer the same question but in a different way.
  - C. When finished with your findings, share them with each other and put together a package of information that best answers the Mayor's questions and provides an effective level of preparedness for the citizens of Malibu.
  - D. Lastly, be prepared to present your information in a variety of ways to the Mayor. It is important that you do this because the citizens of Malibu are a diverse group and all have different levels of access to information. What may work for some may not work for all but all need to get the information.
- 

## **Resources**

### **World Wide Web Sites**

National Weather Service Los Angeles/Oxnard  
[www.wsla.noaa.gov/](http://www.wsla.noaa.gov/)

Malibu Chamber of Commerce  
[www.malibu.org](http://www.malibu.org)

NOAA El Nino Site  
[www.ogp.noaa.gov/enso](http://www.ogp.noaa.gov/enso)

USA TODAY El Nino Site  
[www.usatoday.com/weather/nino/wnino0.html](http://www.usatoday.com/weather/nino/wnino0.html)

Federal Emergency Management Association  
[www.fema.gov/nwz97/elnino.html](http://www.fema.gov/nwz97/elnino.html)

City of Malibu(Government)  
[www.ci.malibu.ca.us](http://www.ci.malibu.ca.us)

Electronic Mail  
[info@malibu.org](mailto:info@malibu.org)

**Other resources:**

Relevant Newspaper Articles

---

**Learning Advice**

It is important for you to remember that your job is to support the Mayor as well as provide needed information to the town's people. Your failure to do so could result in the loss of life, property and the Mayor's job. While the phenomenon known as El Nino cannot be accurately predicted, you would be wise to prepare the citizens of Malibu for the worst and hope for the best. You are looking for solutions regarding a general lack of information. Knowledge is power and your job is to make people powerful.

---

**Evaluation**

You and your team will be evaluated on the thoroughness of your research, the quality of your recommendations, and the organization of your presentation to the Mayor.

---

**Conclusion**

This activity is designed to raise awareness about the decision making process that goes on every day in our local city governments. In light of what you have learned about the city of Malibu, how might El Nino effect your community. What steps have been taken in your town in preparation for severe weather or other natural disasters. On a more personal level it would be wise to consider just what you and your family have planned as a response to mother nature. We often fall into the trap of 20/20 hindsight where we plan to succeed only after we failed to plan. Don't be in a position waiting for your city to help you, first be ready to help yourself.

---

## Reflection

Spend a moment considering the work you have just completed. Then pick one of the following questions to answer and write a short response as part of your evaluation.

1. If you were the Mayor of your city, what would you do to make your town safer in the event of a natural disaster?
2. Consider your surrounding environment. In what way might you harness the power of an El Nino for the betterment of your community?

# Teacher Notes

## Grade Level/Unit

Grade 12 City Government

### Length of Lesson

2-3 weeks depending on how involved you want students to become. If you assign email as a component you will have to allow extra time, since the students can't control the outcome.

### Lesson Purpose

Students become involved in the decision-making dynamics of city government where decisions can cost money, lives and votes.

### Standards

Draft H/SS Standards Grade 12: Students describe and evaluate the means that citizens use to monitor and influence the public agenda and decision making of government institutes through such means as voting, campaigning, lobbying, filing a legal challenge, etc.

Students evaluate issues regarding campaigns for national, state, and local elective office.

Language Arts Grade 12: Listening and Speaking: Students formulate adroit judgments about oral communication. They deliver focused and coherent presentations of their own that convey clear and distinct perspectives and solid reasoning. They incorporate gestures, tone, and vocabulary tailored to audience and purpose.

### Lesson Setup

This lesson is designed for the students to take an active role in their learning and to make decisions within their groups. It is designed for groups of four and for the groups to decide amongst themselves the duties and tasks. If for some reason the students express a difficulty in doing this you can assign the duties in this way:

1. Citizens Group- Devise a FAQ, provide local storm watch information
2. City Manager- Identify potential storm problems, outline solutions
3. Chamber President- Examine economic impact disseminating information
4. Press Secretary- Determine emergency procedures, liaison for Mayor

With the help of your class, you should devise a rubric to help shape the lesson and its completion. This will help to guide the students and keep them on task.



## **Materials Needed**

Internet access is a must, and access to email for students is recommended but not required.

## **Interdisciplinary Connections**

The lesson intertwines with Language Arts and Science as the students are asked to research a variety of materials.

## **Adaptations for Special Needs Students**

1. Expand the size of your groups to allow for more cooperation amongst team members.
2. Allow for more time so that all students have sufficient use of the resources.
3. Modify sections of the lesson as necessary to fit the needs of the students.

Submitted By:

David R. Mac Donald  
Michael S. Karayan  
Fillmore Middle School Fillmore USD

[dmac@mail.fillmore.k12.ca.us](mailto:dmac@mail.fillmore.k12.ca.us)  
[mkarayan@mail.fillmore.k12.ca.us](mailto:mkarayan@mail.fillmore.k12.ca.us)



U.S. Department of Education  
Office of Educational Research and Improvement (OERI)  
National Library of Education (NLE)  
Educational Resources Information Center (ERIC)



# REPRODUCTION RELEASE

(Blanket)

## I. DOCUMENT IDENTIFICATION (Class of Documents):

All Publications: Schools of California Online Resources for Education (SCORE) History/Social Studies Lesson Plans	
Series (Identify Series):	
Division/Department Publications (Specify):	Publication Date:

## II. REPRODUCTION RELEASE:

In order to disseminate as widely as possible timely and significant materials of interest to the educational community, documents announced in the monthly abstract journal of the ERIC system, *Resources in Education* (RIE), are usually made available to users in microfiche, reproduced paper copy, and electronic media, and sold through the ERIC Document Reproduction Service (EDRS). Credit is given to the source of each document, and, if reproduction release is granted, one of the following notices is affixed to each document.

If permission is granted to reproduce and disseminate the identified documents, please CHECK ONE of the following three options and sign at the bottom of the page.

The sample sticker shown below will be affixed to all Level 1 documents

The sample sticker shown below will be affixed to all Level 2A documents

The sample sticker shown below will be affixed to all Level 2B documents

PERMISSION TO REPRODUCE AND DISSEMINATE THIS MATERIAL HAS BEEN GRANTED BY

\_\_\_\_\_

\_\_\_\_\_

Sample

TO THE EDUCATIONAL RESOURCES INFORMATION CENTER (ERIC)

1

PERMISSION TO REPRODUCE AND DISSEMINATE THIS MATERIAL IN MICROFICHE, AND IN ELECTRONIC MEDIA FOR ERIC COLLECTION SUBSCRIBERS ONLY, HAS BEEN GRANTED BY

\_\_\_\_\_

\_\_\_\_\_

Sample

TO THE EDUCATIONAL RESOURCES INFORMATION CENTER (ERIC)

2A

PERMISSION TO REPRODUCE AND DISSEMINATE THIS MATERIAL IN MICROFICHE ONLY HAS BEEN GRANTED BY

\_\_\_\_\_

\_\_\_\_\_

Sample

TO THE EDUCATIONAL RESOURCES INFORMATION CENTER (ERIC)

2B

Level 1

Level 2A

Level 2B



Check here for Level 1 release, permitting reproduction and dissemination in microfiche or other ERIC archival media (e.g., electronic) and paper copy.

Check here for Level 2A release, permitting reproduction and dissemination in microfiche and in electronic media for ERIC archival collection subscribers only

Check here for Level 2B release, permitting reproduction and dissemination in microfiche only

Documents will be processed as indicated provided reproduction quality permits. If permission to reproduce is granted, but no box is checked, documents will be processed at Level 1.

I hereby grant to the Educational Resources Information Center (ERIC) nonexclusive permission to reproduce and disseminate these documents as indicated above. Reproduction from the ERIC microfiche or electronic media by persons other than ERIC employees and its system contractors requires permission from the copyright holder. Exception is made for non-profit reproduction by libraries and other service agencies to satisfy information needs of educators in response to discrete inquiries.

Sign here, → please

Signature: Margaret A Hill	Printed Name/Position/Title: Margaret Hill, Ph.D.
Organization/Address: Director, SCORE H/SS San Bernardino County Superintendent of Schools 601 North E. Street, San Bernardino, CA 92410	Telephone: 909-387-4604 FAX: Date: peg.hill@sbcss.k12.ca.us



(over)

### III. DOCUMENT AVAILABILITY INFORMATION (FROM NON-ERIC SOURCE):

If permission to reproduce is not granted to ERIC, or, if you wish ERIC to cite the availability of the document from another source, please provide the following information regarding the availability of the document. (ERIC will not announce a document unless it is publicly available, and a dependable source can be specified. Contributors should also be aware that ERIC selection criteria are significantly more stringent for documents that cannot be made available through EDRS.)

Publisher/Distributor:
Address:
Price:

### IV. REFERRAL OF ERIC TO COPYRIGHT/REPRODUCTION RIGHTS HOLDER:

If the right to grant this reproduction release is held by someone other than the addressee, please provide the appropriate name and address:

Name:
Address:

### V. WHERE TO SEND THIS FORM:

Send this form to the following ERIC Clearinghouse:  <p style="text-align: center;"><b>ERIC/CHESS</b> 2805 E. Tenth Street, #120 Bloomington, IN 47408 Attn: Lisa Barnes</p>
--

However, if solicited by the ERIC Facility, or if making an unsolicited contribution to ERIC, return this form (and the document being contributed) to:

**ERIC Processing and Reference Facility**  
1100 West Street, 2<sup>nd</sup> Floor  
Laurel, Maryland 20707-3598

Telephone: 301-497-4080

Toll Free: 800-799-3742

FAX: 301-953-0263

e-mail: [ericfac@inet.ed.gov](mailto:ericfac@inet.ed.gov)

WWW: <http://ericfac.piccard.csc.com>

