

DOCUMENT RESUME

ED 455 270

TM 033 073

TITLE Delaware Student Testing Program: State Report for 2000 DSTP Writing Assessment.

INSTITUTION Delaware State Dept. of Education, Dover. Assessment and Accountability Branch.

PUB DATE 2000-10-00

NOTE 38p.; For a report on the special writing study, see TM 033 074.

PUB TYPE Numerical/Quantitative Data (110) -- Reports - Evaluative (142)

EDRS PRICE MF01/PC02 Plus Postage.

DESCRIPTORS *Academic Achievement; Elementary Secondary Education; *Scores; *State Programs; *Test Results; *Testing Programs; Writing Achievement; *Writing Tests

IDENTIFIERS *Delaware Student Testing Program

ABSTRACT

This report compares students' scores on the 2000 Delaware Student Testing Program (DSTP) writing assessment with the writing scores of their counterparts in 1998 and 1999. In addition, the results of a writing study are discussed briefly. Delaware students in grades 3, 5, 8, and 10 took the 2000 DSTP writing assessment, responding to a text-based writing task and a stand-alone writing prompt. Each student's response to the text-based task was scored by one trained reader, and responses to the stand-alone task were scored by two readers. A look at the 3 years' writing data shows that stand-alone writing scores dropped slightly across grades in 1999 from 1998, but increased somewhat in 2000 from 1999. The majority of the changes were less than one third of a standard deviation, with the exception of grade 10, where increases were larger. The text-based scores showed a trend toward decline across the grades, especially from 1999 to 2000, except in grade 2000. A research study was designed and conducted to study the possible reasons for low performance on the text-based writing in 2000. This study relied on review by a panel of teachers who rescored anchor papers for each grade and review of student writings by a second panel of teachers. Results of this study are reported separately. (Contains 4 figures and 10 tables.) (SLD)

ED 455 270

Delaware Student Testing Program

TM033073

State Report for 2000 DSTP Writing Assessment

Prepared by the Assessment and Analysis Group
Assessment and Accountability Branch
Delaware Department of Education

October 2000

BEST COPY AVAILABLE

U.S. DEPARTMENT OF EDUCATION
Office of Educational Research and Improvement
EDUCATIONAL RESOURCES INFORMATION
CENTER (ERIC)

- This document has been reproduced as received from the person or organization originating it.
- Minor changes have been made to improve reproduction quality.
- Points of view or opinions stated in this document do not necessarily represent official OERI position or policy.

PERMISSION TO REPRODUCE AND
DISSEMINATE THIS MATERIAL HAS
BEEN GRANTED BY

D. Blowman

TO THE EDUCATIONAL RESOURCES
INFORMATION CENTER (ERIC)

1

Officers of the Delaware Department of Education

State Board of Education

James L. Spartz, Ed. D., President
Jean W. Allen, Vice President
Mary B. Graham, Esquire
John W. Jardine, Jr.
Joseph A. Pika, Ph. D.
Dennis J. Savage
Claiboune D. Smith, Ph. D.

Valerie A. Woodruff
Secretary of Education
Jennifer W. Davis
Deputy Secretary of Education
David Blowman
Executive Assistant

Robin R. Taylor, M. Ed
Acting Associate Secretary, Assessment and Accountability Branch
Nancy J. Wilson, Ph. D.
Associate Secretary, Curriculum and Instructional Improvement Branch

Wendy B. Roberts, Ph. D.
Acting Director, Assessment and Analysis Group
Darlene J. Bolig, Ed. D.
Jeffery Fleming, M. S.
James F. Hertzog, M. Ed.
Nancy Maihoff, Ph. D.
Jon Manon, Ph. D., University of Delaware
Joann F. Prewitt, M. A.
Julie A. Schmidt, Ph. D., University of Delaware
Carole D. White, M. B. A.
Liru Zhang, Ph. D.

Qi Tao, Ph. D.
Technology Management and Design
Policy and Administrative Service Branch

Support Staff:
Krista D. Holloway Erin L. Pieshala
Barbara F. O'Neal Kimberly K. Rodriguez

State Report for 2000 DSTP Writing Assessment

I. Introduction:

To help teachers, administrators, and parents understand student performance in writing, the Assessment and Analysis Group prepares a report at the state level each year to compare students' writing scores with previous years' writing scores. The content of the report is based on the results of statistical analyses and sometimes, a research study as well. In this report, students' scores on the 2000 DSTP writing assessment are compared with the writing scores of their counterparts in 1998 and 1999. In addition, the results of a writing study are briefly discussed.

II. DSTP Writing Assessment

Delaware students in grades 3, 5, 8, and 10 took the 2000 DSTP writing assessment. Each student responded to a text-based writing task and a stand-alone writing prompt. The text-based writing task links to a passage in the DSTP reading assessment. During the session of the stand-alone prompt, students' used the pre-writing skills to develop, organize, and draft their writings, but only the final draft was scored.

Each student's response to the text-based task was scored by one trained reader using a 5-point scoring rubric; responses to the stand-alone writing prompt were scored by two trained readers using the same scoring rubric (See Attachment A) and the sum of the two scores was reported as the stand-alone writing score. The lowest score for the text-based writing is 1 and the highest possible score is 5; the lowest score for the stand-alone writing prompt is 2 and the highest possible score is 10. The total writing raw score is a combination of the text-based writing score and the stand-alone writing score with the lowest score of 3 and the highest possible score of 15. If a student missed or received an invalid score on either part of the writing assessment, an invalid writing score would be assigned to this student.

III. Results of Three-Year's Comparisons

Overall Performance in Writing Tables 1a-1d present the means, standard deviations, and frequency distributions of students' writing scores on the text-based writing task, stand-alone writing prompt, and the total writing raw scores in 1998, 1999, and 2000. The purpose of each writing task/prompt is also specified, i.e., expressive, persuasive, or informative.

For the 2000 DSTP, the average writing raw score is 6.06 with a standard deviation of 1.63 in grade 3; 6.78 with a standard deviation of 1.74 in grade 5; 7.39 with a standard deviation of 1.46 in grade 8; and 7.34 with a standard deviation of 1.77 in grade 10. Comparing the three years' writing scores, it is found that the mean score drops by .38 from 1999 to 2000 and drops by .79 from 1998 to 2000 in grade 3; the mean score drops by .74 from 1999 to 2000 and drops by .63 from 1998 to 2000 in grade 5. In grade 8, the

mean score remains the same in 2000 as in 1999, but drops by .33 from 1998 to 2000. In grade 10, the mean score increases by .52 from 1999 to 2000 and increases by .42 from 1998 to 2000.

In reviewing the three years' frequency distributions of the total writing scores, there seems to be a grade pattern, where more students received writing scores of 5 and 6, in grades 3 and 5, but fewer students received a score of 7 and 8 in grade 3 in 2000 than the previous years. In grades 8 and 10, fewer students received writing scores of 4, 5 and 6, but more students received scores of 7 and 8 in 2000 than in 1998 and 1999. Figures 1-4 provide you with a visual illustration of the grade pattern across years.

Performance on Stand-Alone Writing Prompt The means of the stand-alone writing prompt are 4.54 (standard deviation = 1.27), 5.02 (standard deviation = 1.27), 5.57 (standard deviation = 1.05), and 5.38 (standard deviation = 1.21) for grades 3, 5, 8, and 10 respectively in 2000. When comparing the stand-alone writing scores with previous years' scores, it is found that student performance remains similar with minor fluctuations in grades 3 and 5, where the mean score increases by .28 from 1999 to 2000, but decreases by .16 from 1998 to 2000 for grade 3 and the mean score decreases slightly by .15 from 1999 to 2000, but increases by .13 from 1998 to 2000 for grade 5. The data appear to show that the performance of the eighth graders has slightly, but consistently improved in stand-alone writing since 1998, where the mean score increases by .28 from 1999 to 2000 and by .12 from 1998 to 2000. In grade 10, the mean score on the stand-alone writing consistently increases by .51 and .53 from 1999 and 1998 to 2000, respectively.

Performance on Text-Based Writing Task The mean of the text-based writing scores on the 2000 DSTP is 1.52 for grade 3, 1.76 for grade 5, 1.82 for grade 8, and 1.96 for grade 10. Looking at the text-based writing performance over three years, the mean score in 2000 is the lowest for all grades except grade 10. The mean score decreases by .66 and .63, almost one standard deviation, from 1999 and 1998 to 2000 in grade 3. A similar trend is observed in grades 5 and 8, where the mean score drops by .59 and .76 from the previous years in grade 5 and drops by .28 and .45 in grade 8. In grade 10, however, the mean score on the text-based writing remains almost the same across years.

IV. Writing Study

About the Study A research study was designed and conducted to investigate the possible reasons for low performance on the text-based writing in 2000. In the first part of the study, a panel of teachers reviewed, ranked, and re-scored anchor papers independently for a given grade. Then, teachers worked in small groups to discuss their ratings and modified their ranks and scores, if necessary. Anchor papers are a sample of students' writings that are used as benchmarks in scoring. Each anchor paper represents a score point on the rubric. In the second part of the study, a second panel of teachers reviewed a sample of 100 text-based writings that had been randomly selected from the population per grade. Each essay was re-scored holistically using the 5-point scoring rubric and was also evaluated analytically. A group discussion focused on test administration, scoring,

test development and classroom instruction in writing. A separate report is available which describes the results of this study in detail.

V. Discussion

Looking at the three years' writing data, it appears that the stand-alone writing scores dropped slightly across grades in 1999 from 1998, but increased somewhat in 2000 from 1999. The majority of the changes in the stand-alone writing scores are less than one third of a standard deviation with an exception in grade 10, where the mean score increased by .51 and .53 in 2000 from 1999 and 1998, respectively. The text-based scores, however, show a trend of declining across grades, particularly from 1999 to 2000, except in grade 10. The low performance in the text-based writing seems to be the primary reason for the decrease of the total writing raw scores for 2000 in grades 3 and 5.

Previous studies evidenced that the generalization of writing performance is low across the purpose (or discourse) of writing tasks, writing topics, and occasions, especially when there are only a couple of items in the writing assessment. In 2000, a new type of text-based writing task was introduced to each grade level, which may be one of the reasons for the fluctuation of the test scores. For example, the third graders responded to an informative writing task in 2000 instead of a persuasive writing task as in 1999 and 1998. Similarly, the fifth graders responded to an informative writing task in 1998 and 1999, but an expressive writing task in 2000.

Table 2 presents the correlations among the text-based writing, stand-alone writing, total writing scores, and reading scores by grade. The correlation coefficients between the stand-alone writing and the total writing scores range from .91 to .93; while the correlations between the text-based writing and the total writing scores are moderate to moderately high, ranging from .69 to .80. Moreover, the correlation coefficients between the text-based writing and the stand-alone writing are generally low ranging from .37 to .48, which suggest that only 14% to 23% of the changes (or variance) in one writing score are accounted for by the other writing score. The low correlations may be explained by one or more of the following reasons: (1) low generalization of writing performance across purpose and topic of writing tasks; (2) the two writing samples may measure somewhat different types of writing skills or even different constructs; (3) students had less time and opportunity to organize their text-based writing than they did for the stand-alone writing; (4) the text-based scores may be less reliable than the stand-alone scores because only one reader is used for scoring; and (5) low motivation on the text-based writing.

In examining the relationship between reading and writing, it is found that the correlation coefficients range from .50 to .59 between stand-alone writing and reading scores and range from .37 to .54 between text-based writing and reading scores. Similar correlations between stand-alone writing and reading scores were observed for the 1998 ($r=.52$ to $.63$) and 1999 DSTP ($r=.55$ to $.59$). The correlations between text-based writing and reading scores, however, are much lower in grade 3 ($r=.37$) and grade 5 ($r=.41$) in 2000 than in

the previous years ($r=.56$ and $.60$ for grade 3 in 1998 and 1999, respectively; $r=.60$ and $.56$ for grade 5 in 1998 and 1999, respectively).

VI. Summary of 2000 DSTP Writing Assessment by District and School

The remaining tables in this report present the means and standard deviations of writing scores for the stand-alone writing, text-based writing, and the total writing raw scores by grade, district, and school (See Attachment).

Table 1a
Comparisons of Writing Scores for 1998, 1999 and 2000 DSTP for Grade 3

Writing Score	2000						1999						1998							
	Text-Based		Stand-Alone		Writing Total		Text-Based		Stand-Alone		Writing Total		Text-Based		Stand-Alone		Writing Total			
	N	%	N	%	N	%	N	%	N	%	N	%	N	%	N	%	N	%		
15																				
14			2	0.0																
13			3	0.0																
12			12	0.1																
11			31	0.4																
10			4	0.0	116	1.5			5	0.1	269	3.5			6	0.1	463	6.2		
9			5	0.0	359	4.7			17	0.2	719	9.4			36	0.5	928	12.4		
8			88	1.1	911	12.1			61	0.8	1137	14.8			138	1.8	1190	15.8		
7			261	3.4	1337	17.7			262	3.4	1477	19.2			438	5.8	1373	18.3		
6			1447	19.2	1735	23.0			1149	14.9	1494	19.4			1740	23.2	1398	18.6		
5			2	0.02	1729	23.0	1938	25.7	49	0.6	1801	23.4	1094	14.2	7	0.1	1523	20.3	1053	14.0
4			47	0.6	2737	36.4	643	8.5	387	5.0	2199	28.6	779	10.1	500	6.7	2353	31.3	520	6.9
3			550	7.31	762	10.1	430	5.7	2147	27.9	1170	15.2	576	7.5	2132	28.4	739	9.8	367	4.9
2			2641	35.1	4.84	6.4			3391	44.1	1024	13.3			2847	37.9	541	7.2		
1			4277	56.9					1714	22.3					2028	27.0				
Total			7517	100.0	7517	100.0	7517	100.0	7688	100.0	7688	100.0	7688	100.0	7514	100.0	7514	100.0	7514	100.0
Mean			1.52		4.54		6.06		2.18		4.26		6.44		2.15		4.70		6.85	
SD			0.66		1.27		1.63		0.85		1.40		1.94		0.90		1.41		1.98	
Purpose of Writing Task			Informative		Expressive				Persuasive		Informative				Persuasive		Expressive			

Table 1b
Comparisons of Writing Scores for 1998, 1999 and 2000 DSTP for Grade 5

GRADE 5 Writing Score	2000						1999						1998						
	Text-Based		Stand-Alone		Writing Total		Text-Based		Stand-Alone		Writing Total		Text-Based		Stand-Alone		Writing Total		
	N	%	N	%	N	%	N	%	N	%	N	%	N	%	N	%	N	%	
15			1	0.0													2	0	
14			3	0.0						4	0.1						7	0.1	
13			5	0.0						9	0.1						25	0.3	
12			22	0.3						108	1.4						133	1.8	
11			88	1.2						281	3.7						282	3.8	
10			250	3.5					9	0.1					14	0.2	678	9.2	
9			718	10.1				5	0.1					32	0.4	1065	14.4		
8			1405	19.8				349	4.6					247	3.3	1208	16.3		
7			1477	20.8				498	6.5					518	7.0	1473	19.9		
6			2424	34.2				2573	33.8					1682	22.7	1325	17.9		
5		8	1528	21.5			4	0.1		1384	18.2			1462	19.8	769	10.4		
4		155	1898	26.7			624	8.2		2350	30.9			2756	37.3	249	3.4		
3		974	13.7	446	6.2		2761	36.3		278	3.7			396	5.4	178	2.4		
2		2958	41.8	252	3.5		2850	37.5		162	2.1			287	3.9				
1		2988	42.2				1369	18						1220	16.5				
Total		7084	100.0	7084	100.0	7084	100.0	7608	100.0	7608	100.0	7608	100.0	7394	100.0	7394	100.0	7394	100.0
Mean		1.76		5.02		6.78	2.35		5.17		7.52		2.52		4.89		7.41		7.41
SD		0.78		1.27		1.74	0.87		1.29		1.86		0.96		1.36		1.98		1.98
Purpose of Writing Task		Expressive		Persuasive			Informative		Informative				Informative		Persuasive				Persuasive

Table 1c
Comparisons of Writing Scores for 1998, 1999 and 2000 DSTP for Grade 8

Writing Score	2000						1999						1998							
	Text-Based		Stand-Alone		Writing Total		Text-Based		Stand-Alone		Writing Total		Text-Based		Stand-Alone		Writing Total			
	N	%	N	%	N	%	N	%	N	%	N	%	N	%	N	%	N	%		
15					1	0.0														
14					1	0.0					5	0.1						10	0.1	
13					6	0.0					10	0.1						33	0.4	
12					22	0.2					78	1.0						205	2.6	
11					102	1.3					184	2.4						497	6.3	
10			7	0.0	353	4.5			8	0.1	572	7.3			208	0.2	763	9.9		
9			5	0.0	948	12.3			25	0.3	1230	15.8			353	0.9	1309	16.5		
8			220	2.8	2483	32.2			183	2.3	1757	22.5			1710	7.6	1514	19.1		
7			761	9.8	1795	23.3			764	9.8	1531	19.6			1566	12.7	1266	16.0		
6			3691	47.9	1070	13.9			2755	35.3	1228	15.8			2393	30.2	1152	14.5		
5	1	0.01	1633	21.2	770	10.0		5	0.1	2006	25.7	825	10.6	2	0.0	1011	19.7	757	9.5	
4	76	0.9	1204	15.6	108	1.4		360	4.6	1589	20.4	243	3.1	593	7.5	606	21.6	239	3.0	
3	902	11.7	135	1.7	26	0.3		2069	26.5	303	3.9	130	1.7	2519	31.7	71	4.4	169	2.1	
2	4254	55.3	34	0.4				3297	42.3	161	2.1			3255	41.0	16	2.6			
1	2457	31.9						2063	26.5					1565	19.7					
Total	7685	100.0	7685	100.0	7685	100.0	7794	100.0	7794	100.0	7794	100.0	7794	100.0	7934	100.0	7934	100.0	7934	100.0
Mean	1.82		5.57		7.39		2.10		5.29		7.39		2.27		5.45		7.72		7.72	
SD	0.67		1.05		1.46		0.84		1.22		1.79		0.86		1.46		2.06		2.06	
Purpose of Writing Task	Expressive		Informative				Persuasive		Informative				Persuasive		Informative		Persuasive		Informative	

Table 1d
Comparisons of Writing Scores for 1998, 1999 and 2000 DSIP for Grade 10

Writing Score	2000						1999						1998							
	Text-Based		Stand-Alone		Writing Total		Text-Based		Stand-Alone		Writing Total		Text-Based		Stand-Alone		Writing Total			
	N	%	N	%	N	%	N	%	N	%	N	%	N	%	N	%	N	%		
15					1	0.0														
14					2	0.0														
13					9	0.1					11	0.2					1	0.0		
12					76	1.1					29	0.4					16	0.2		
11					189	2.7					170	2.5					113	1.7		
10			6	0.0	427	6.1	422	0.1	362	5.4	362	5.4					321	4.8		
9			10	0.1	970	14.0	568	0.2	780	11.6	780	11.6					848	12.6		
8			267	3.8	1644	23.8	1948	3.1	1092	16.3	1092	16.3					1185	17.6		
7			628	9.1	1312	19.0	1314	8.6	1239	18.5	1239	18.5					392	5.8		
6			2703	39.2	1126	16.3	1646	24.6	1265	18.9	1265	18.9					1703	25.3		
5	10	0.1	1447	20.9	892	12.9	575	19.6	989	14.8	989	14.8					1426	21.2		
4	305	4.4	1548	22.4	156	2.2	207	29.1	453	6.8	453	6.8	295	4.4	2724	40.5	208	3.1		
3	1268	18.3	183	2.6	90	1.3	16	8.5	312	4.7	312	4.7	1687	25.1	271	4.0	120	1.8		
2	3132	45.4	102	1.4			2903	43.3	6	6.3			2910	43.3	139	2.1				
1	2179	31.6					2148	32.1					1823	27.2						
Total	6894	100.0	6894	100.0	6894	100.0	6702	100.0	6702	100.0	6702	100.0	6724	100.0	6724	100.0	6724	100.0	6724	100.0
Mean	1.96		5.38		7.34		1.94		4.87		6.82		2.07		4.85		6.92		6.92	
SD	0.83		1.21		1.77		0.78		1.45		1.95		0.83		1.15		1.71		1.71	
Purpose of Writing Task	Persuasive		Informative				Persuasive		Informative				Persuasive		Informative		Persuasive		Informative	

Figure 1
Comparisons of Writing Scores from 1998 to 2000 for Grade 3

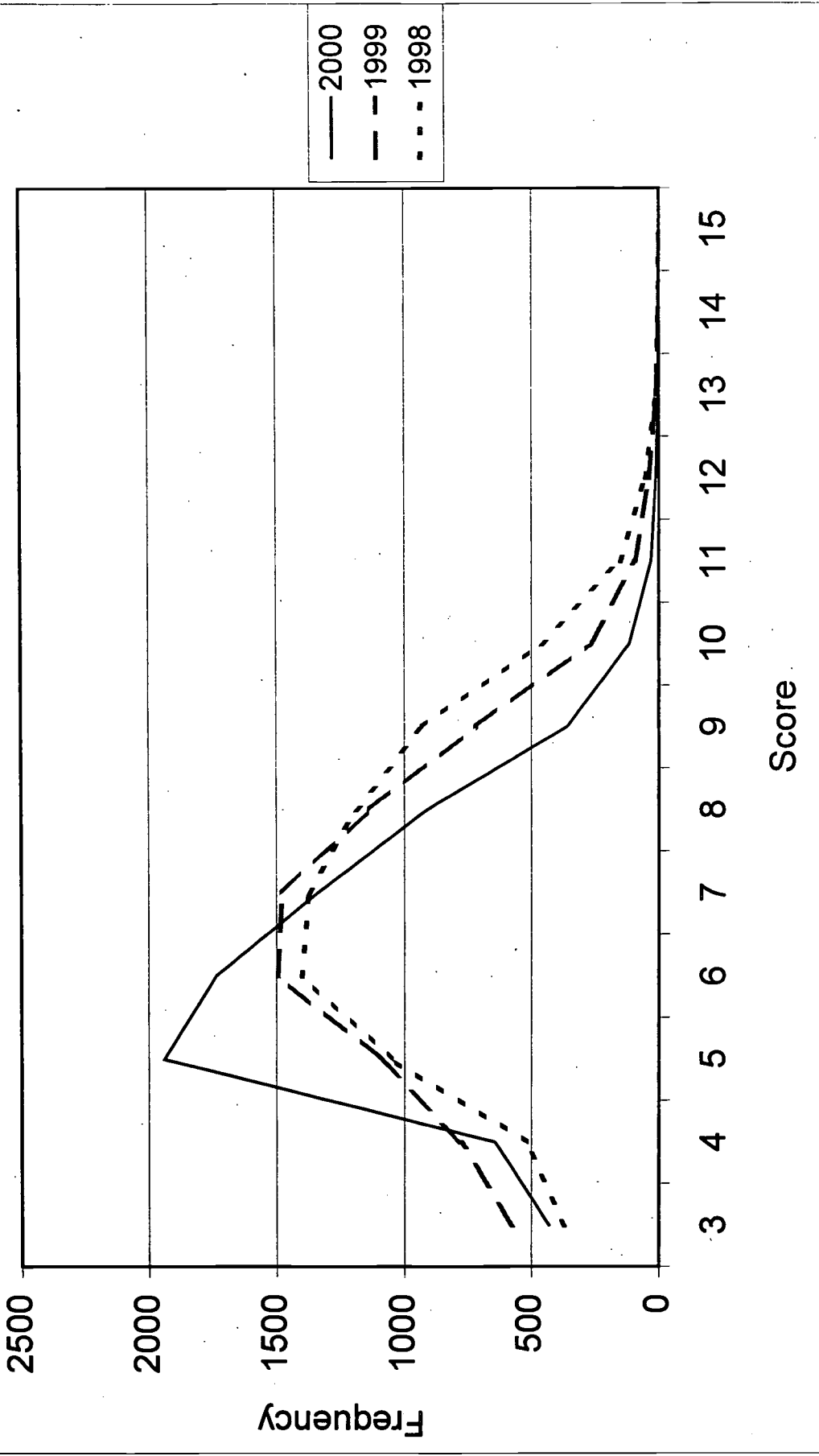


Figure 2
Comparisons of Writing Scores from 1998 to 2000 for Grade 5

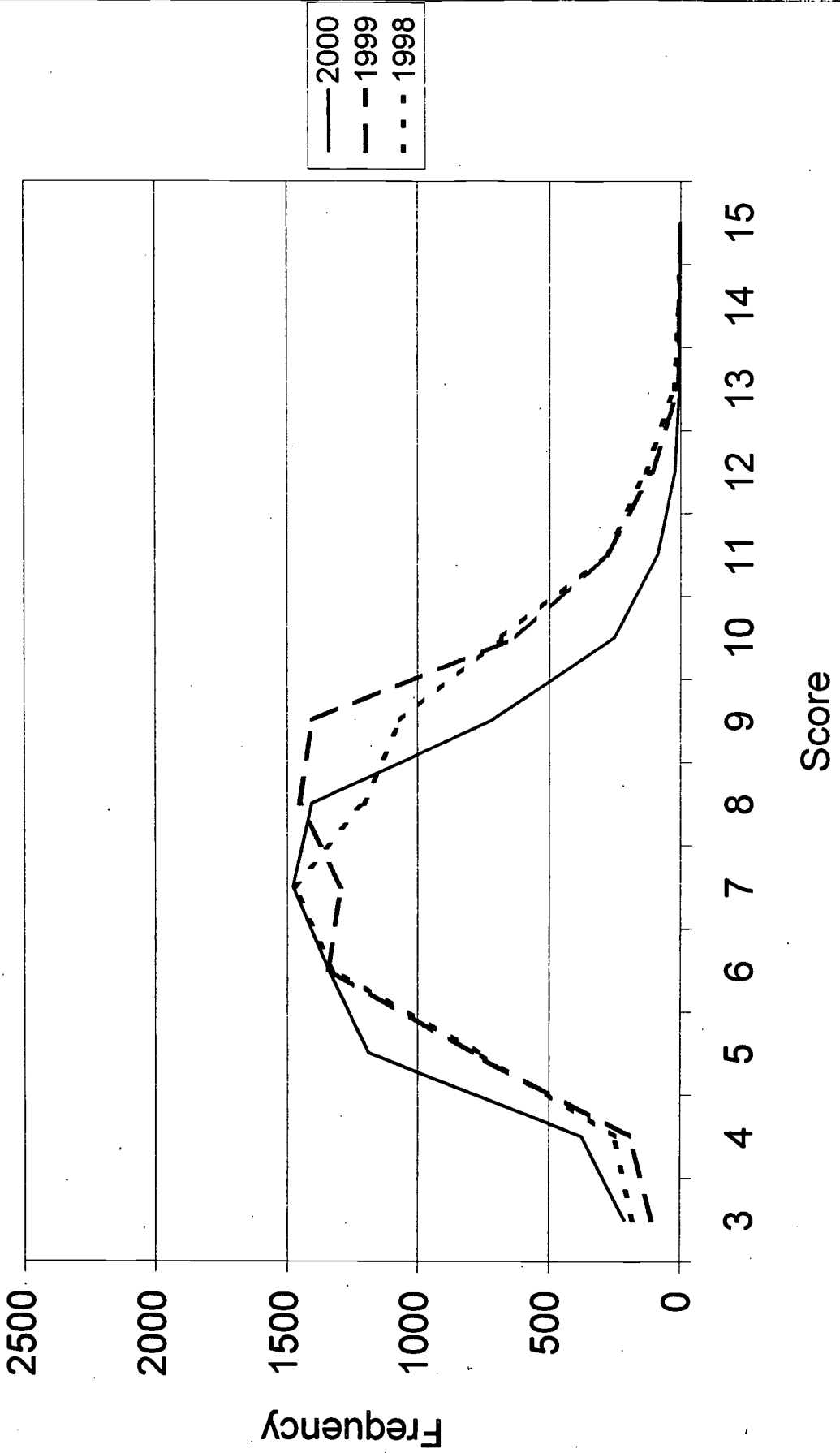


Figure 3
Comparisons of Writing Scores from 1998 to 2000 for Grade 8

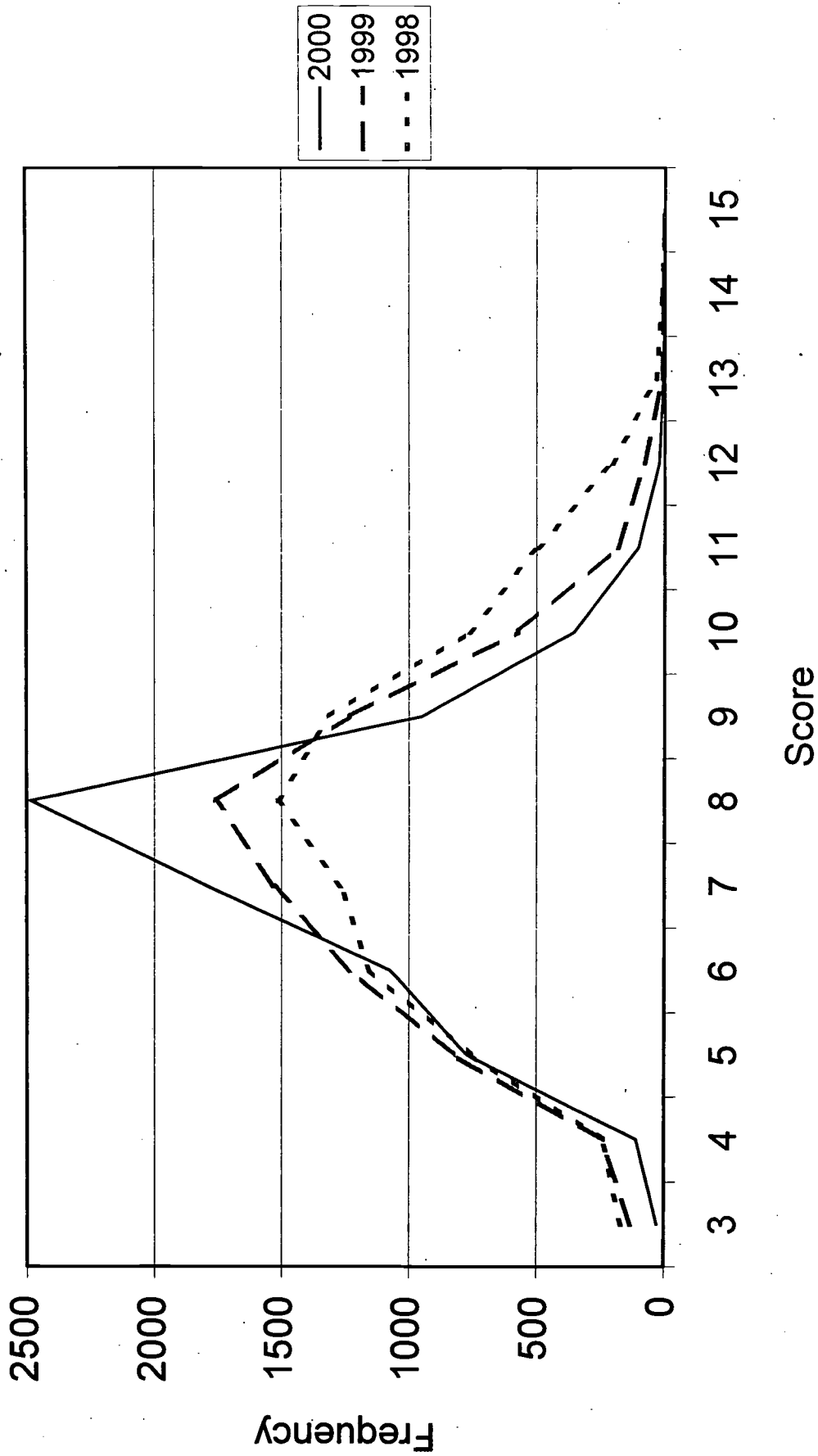


Figure 4
Comparisons of Writing Scores from 1998 to 2000 for Grade 10

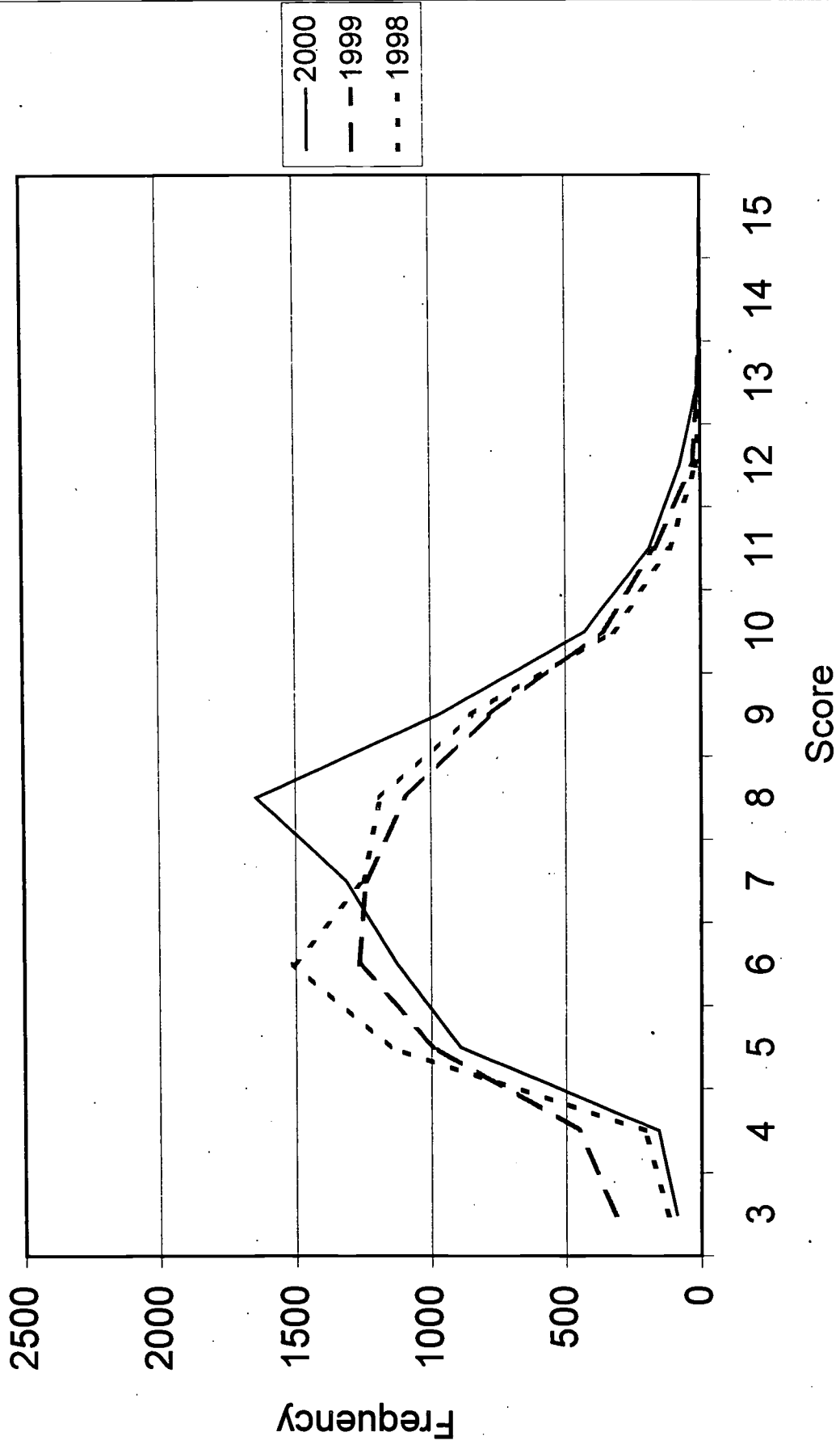


TABLE 2
Correlation Coefficients by Test and Grade

GRADE 3				
	STAND-ALONE	TEXT-BASED	WRITING TOTAL	READING
STAND-ALONE	<i>1.00</i>			
TEXT-BASED	<i>0.37</i>	<i>1.00</i>		
WRITING TOTAL	<i>0.93</i>	<i>0.69</i>	<i>1.00</i>	
READING	<i>0.50</i>	<i>0.37</i>	<i>0.53</i>	<i>1.00</i>
GRADE 5				
STAND-ALONE	<i>1.00</i>			
TEXT-BASED	<i>0.41</i>	<i>1.00</i>		
WRITING TOTAL	<i>0.91</i>	<i>0.75</i>	<i>1.00</i>	
READING	<i>0.50</i>	<i>0.44</i>	<i>0.56</i>	<i>1.00</i>
GRADE 8				
STAND-ALONE	<i>1.00</i>			
TEXT-BASED	<i>0.41</i>	<i>1.00</i>		
WRITING TOTAL	<i>0.91</i>	<i>0.75</i>	<i>1.00</i>	
READING	<i>0.55</i>	<i>0.52</i>	<i>0.63</i>	<i>1.00</i>
GRADE 10				
STAND-ALONE	<i>1.00</i>			
TEXT-BASED	<i>0.48</i>	<i>1.00</i>		
WRITING TOTAL	<i>0.91</i>	<i>0.80</i>	<i>1.00</i>	
READING	<i>0.59</i>	<i>0.54</i>	<i>0.66</i>	<i>1.00</i>

Attachment

**Means and Standard Deviations of Writing Scores
By Grade, District, and School**

**Means and Standard Deviations of Writing Scores
by Grade, District and School
for Stand-Alone, Text-Based, and Total Writing Scores
(Grade 3)**

District & School	N	Stand -Alone		Text-Based		Writing Total	
		Mean	S.D.	Mean	S.D.	Mean	S.D.
<i>Appoquinimink</i>							
Cedar Lane Elementary	138	4.70	1.34	1.44	0.54	6.14	1.59
Silver Lake Elementary	131	4.17	1.36	1.34	0.56	5.50	1.68
Townsend Elementary	95	4.26	1.28	1.47	0.58	5.74	1.52
<i>Brandywine</i>							
Brandywood Elementary	86	5.76	1.26	2.13	0.76	7.88	1.71
Carrcroft Elementary	97	5.30	1.21	1.52	0.68	6.81	1.54
Darley Road Elementary	84	4.54	1.34	1.56	0.61	6.10	1.64
Forwood Elementary	95	4.80	1.22	1.40	0.55	6.20	1.48
Lancashire Elementary	90	4.99	1.29	1.80	0.75	6.79	1.77
Lombardy Elementary	112	5.06	1.42	1.79	0.71	6.86	1.79
Maple Lane Elementary	68	4.87	1.28	1.75	0.80	6.62	1.76
Mount Pleasant Elementary	93	4.37	1.21	1.57	0.61	5.94	1.62
<i>Caesar Rodney</i>							
General Henry H. Arnold Elementary	30	4.90	1.03	1.67	0.66	6.57	1.28
W. Reily Brown Elementary	60	4.13	1.21	1.52	0.60	5.65	1.56
Allen Frear Elementary	88	4.27	1.19	1.27	0.62	5.55	1.58
W.B. Simpson Elementary	71	3.97	1.36	1.24	0.49	5.21	1.66
Star Hill Elementary	78	4.42	1.29	1.46	0.62	5.88	1.60
Nellie H Stokes Elementary	55	4.29	1.10	1.36	0.49	5.65	1.27
Major George S. Welch Elementary	46	4.20	1.44	1.54	0.66	5.74	1.68

*Means and Standard Deviations of Writing Scores
by Grade, District and School
for Stand-Alone, Text-Based, and Total Writing Scores
(Grade 3)*

District & School	N	<i>Stand -Alone</i>		<i>Text-Based</i>		<i>Writing Total</i>	
		Mean	S.D.	Mean	S.D.	Mean	S.D.
<i>Cape Henlopen</i>							
H.O. Brittingham Elementary	78	4.28	1.07	1.24	0.49	5.53	1.25
Rehoboth Elementary	76	4.43	1.34	1.41	0.59	5.84	1.70
R.A. Shields Elementary	113	5.09	1.15	1.73	0.67	6.82	1.38
<i>Capital</i>							
East Dover Elementary	65	4.14	1.10	1.34	0.57	5.48	1.42
Fairview Elementary	55	4.35	1.34	1.38	0.71	5.73	1.83
Hartly Elementary	59	5.49	0.95	1.83	0.87	7.32	1.40
North Dover Elementary	81	4.52	0.94	1.67	0.63	6.19	1.27
South Dover Elementary	83	4.67	1.38	1.58	0.63	6.25	1.72
Towne Point Elementary	56	4.07	1.13	1.34	0.61	5.41	1.36
Booker T. Washington Elementary	61	4.48	1.21	1.57	0.62	6.05	1.59
<i>Christina</i>							
Brader Elementary	210	4.21	1.17	1.35	0.57	5.57	1.49
Brookside Elementary	118	4.42	1.05	1.54	0.62	5.97	1.28
Downes Elementary	143	5.24	1.41	1.73	0.71	6.97	1.75
Robert Gallgher Elementary	104	5.05	1.04	1.83	0.82	6.88	1.56
Albert H. Jones Elementary	118	4.66	1.22	1.68	0.71	6.34	1.54
Leasure Elementary	151	4.36	1.13	1.53	0.61	5.89	1.45
MacClary Elementary	105	4.71	1.28	1.57	0.71	6.29	1.71
Marshall Elementary	167	4.73	1.11	1.58	0.68	6.31	1.48
McVey Elementary	141	4.83	1.22	1.61	0.71	6.44	1.65
Jennie Smith Elementary	138	4.99	1.10	1.85	0.78	6.83	1.49

**Means and Standard Deviations of Writing Scores
by Grade, District and School
for Stand-Alone, Text-Based, and Total Writing Scores
(Grade 3)**

District & School	N	Stand -Alone		Text-Based		Writing Total	
		Mean	S.D.	Mean	S.D.	Mean	S.D.
West Park Place Elementary	117	4.80	1.18	1.58	0.67	6.38	1.52
Etta Wilson Elementary	120	4.57	1.11	1.74	0.68	6.31	1.52
Colonial							
Colwyck Elementary	160	4.92	1.17	1.88	0.76	6.80	1.62
H.O. Eisenberg Elementary	171	4.01	1.35	1.44	0.61	5.46	1.67
Martin Luther King Elementary	101	3.91	1.35	1.28	0.55	5.19	1.68
McCullough Elementary	314	4.15	1.20	1.27	0.50	5.42	1.40
Indian River							
Lord Baltimore Elementary	89	4.64	1.11	1.61	0.70	6.25	1.41
East Millsboro Elementary	93	4.45	1.10	1.59	0.56	6.04	1.42
Frankford Elementary	62	4.19	1.16	1.40	0.61	5.60	1.43
Long Neck Elementary	80	4.49	1.20	1.76	0.73	6.25	1.69
North Georgetown Elementary	143	4.11	1.14	1.29	0.53	5.40	1.35
Phillip Showell Elementary	43	4.40	0.85	1.65	0.61	6.05	1.19
Southern Delaware Arts School	32	4.66	1.33	1.50	0.62	6.16	1.74
Lake Forest							
Lake Forest East Elementary	55	4.65	1.00	1.82	0.75	6.47	1.44
Lake Forest North Elementary	82	4.44	1.18	1.26	0.47	5.70	1.39
Lake Forest South Elementary	89	4.37	1.39	1.36	0.66	5.73	1.77
Laurel							
North Laurel Elementary	161	4.39	1.15	1.30	0.50	5.70	1.33
Milford							
Benjamin Bannecker Elementary	112	4.90	1.17	1.57	0.71	6.47	1.59
Lulu Ross Elementary	118	4.09	1.07	1.24	0.47	5.33	1.30

**Means and Standard Deviations of Writing Scores
by Grade, District and School
for Stand-Alone, Text-Based, and Total Writing Scores
(Grade 3)**

District & School	N	Stand -Alone		Text-Based		Writing Total	
		Mean	S.D.	Mean	S.D.	Mean	S.D.
Red Clay							
Baltz Elementary	132	4.01	1.22	1.45	0.62	5.45	1.58
Forest Oak Elementary	136	4.40	1.19	1.33	0.52	5.74	1.39
Highlands Elementary	91	4.75	1.24	1.30	0.53	6.04	1.50
Lewis Elementary	66	4.24	1.12	1.23	0.46	5.47	1.29
Marbrook Elementary	66	4.41	1.35	1.35	0.54	5.76	1.66
Mote Elementary	94	4.82	1.24	1.67	0.69	6.49	1.58
Richardson Park Elementary	161	4.36	1.14	1.29	0.51	5.65	1.40
Shortlidge Elementary	94	4.13	1.15	1.38	0.59	5.51	1.39
Warner Elementary	233	4.40	1.31	1.41	0.61	5.81	1.60
Seaford							
Seaford Central Elementary	120	4.67	1.16	1.41	0.65	6.08	1.48
West Seaford Elementary	145	5.01	1.44	1.70	0.76	6.71	1.91
Smyrna							
Clayton Elementary	124	4.79	1.22	1.73	0.68	6.52	1.59
Smyrna Elementary	104	4.57	1.18	1.79	0.71	6.36	1.58
Woodbridge							
Woodbridge Elementary	128	4.77	1.17	1.71	0.69	6.48	1.58
Campus Community							
Campus Community	36	4.25	1.46	1.28	0.51	5.53	1.63
East Side Charter							
East Side Charter	6	4.17	0.75	1.00	0.00	5.17	0.75

**Means and Standard Deviations of Writing Scores
by Grade, District and School
for Stand-Alone, Text-Based, and Total Writing Scores
(Grade 5)**

District & School	N	Stand-Alone		Text-Based		Writing Total	
		Mean	S.D.	Mean	S.D.	Mean	S.D.
<i>Appoquinimink</i>							
Redding Intermediate	394	5.02	1.29	1.76	0.83	6.78	1.68
<i>Brandywine</i>							
Claymont Elementary	246	5.36	1.29	1.88	0.89	7.24	1.79
P.S. duPont Elementary	305	5.11	1.26	1.83	0.84	6.94	1.79
David Harlan Elementary	146	5.10	1.14	1.92	0.92	7.02	1.73
<i>Caesar Rodney</i>							
W. Reiley Brown Elementary	65	5.55	1.25	1.92	0.80	7.48	1.69
Allen Frear Elementary	78	5.59	1.17	2.06	0.93	7.65	1.72
W.B. Simpson Elementary	81	5.35	1.21	1.68	0.77	7.02	1.75
Star Hill Elementary	75	4.57	1.43	1.72	0.76	6.29	1.99
Nellie Stokes Elementary	72	5.04	1.22	1.79	0.75	6.83	1.58
Major George S. Welch Elementary	74	5.51	1.31	1.96	0.83	7.47	1.69
<i>Cape Henlopen</i>							
Lewes Middle	88	5.31	1.17	1.91	0.56	7.22	1.54
Milton Middle	95	4.83	1.21	1.75	0.67	6.58	1.65
Rehoboth Elementary	86	4.87	1.15	1.71	0.63	6.58	1.54
<i>Capital</i>							
William Henry Middle	440	5.12	1.30	1.67	0.72	6.79	1.72

*Means and Standard Deviations of Writing Scores
by Grade, District and School
for Stand-Alone, Text-Based, and Total Writing Scores
(Grade 5)*

District & School	N	Stand -Alone		Text-Based		Writing Total	
		Mean	S.D.	Mean	S.D.	Mean	S.D.
<i>Christina</i>							
Bancroft Elementary	386	5.01	1.23	1.78	0.80	6.78	1.71
Bayard Elementary	314	5.25	1.50	1.91	0.90	7.17	2.12
Drew Pyle Elementary	271	4.79	1.25	1.61	0.68	6.40	1.65
Elbert Palmer Elementary	118	5.12	1.35	2.01	0.92	7.13	1.94
Pulaski Elementary	181	4.69	1.15	1.69	0.74	6.38	1.57
Stubbs Elementary	131	4.51	1.10	1.59	0.75	6.10	1.52
<i>Colonial</i>							
Colwyck Elementary	133	5.09	1.31	2.07	0.85	7.16	1.84
H.O. Eisenberg Elementary	161	4.90	1.13	1.72	0.64	6.62	1.53
Martin Luther King Elementary	113	4.44	1.03	1.79	0.76	6.23	1.56
McCullough Elementary	357	4.85	1.30	1.83	0.78	6.69	1.79
<i>Indian River</i>							
Lord Baltimore Elementary	89	5.47	1.07	2.08	0.73	7.55	1.48
East Millsboro Elementary	63	5.32	0.86	2.08	0.60	7.40	1.24
Frankford Elementary	52	4.90	1.27	1.85	0.72	6.75	1.77
Long Neck Elementary	76	5.71	1.00	2.13	0.66	7.84	1.39
North Georgetown Elementary	112	4.84	1.31	1.89	0.68	6.73	1.73
PC Showell Elementary	34	5.18	0.94	2.21	0.69	7.38	1.37
Southern DE School of the Arts	43	5.28	1.22	1.77	0.65	7.05	1.57

**Means and Standard Deviations of Writing Scores
by Grade, District and School
for Stand-Alone, Text-Based, and Total Writing Scores
(Grade 5)**

District & School	N	Stand -Alone		Text-Based		Writing Total	
		Mean	S.D.	Mean	S.D.	Mean	S.D.
Lake Forest							
Lake Forest East Elementary	70	5.64	0.99	1.97	0.70	7.61	1.47
Lake Forest North Elementary	89	4.88	1.23	1.79	0.67	6.66	1.64
Lake Forest South Elementary	86	5.20	1.02	1.79	0.77	6.99	1.51
Laurel							
Laurel Intermediate	157	4.94	1.28	1.97	0.75	6.91	1.79
Milford							
Milford Middle	231	5.14	1.17	1.81	0.78	6.95	1.64
Red Clay							
Baltz Elementary	132	4.19	1.13	1.23	0.48	5.42	1.34
Forest Oak Elementary	109	5.16	1.26	1.41	0.58	6.57	1.59
Marbrook Elementary	145	4.81	1.24	1.38	0.54	6.19	1.48
AP Mote Elementary	140	5.11	1.19	1.60	0.73	6.71	1.59
Richardson Park Elementary	120	4.96	1.21	1.51	0.62	6.47	1.53
Warner Elementary	278	4.68	1.37	1.55	0.77	6.24	1.82
Seaford							
Fred Douglas Intermediate	238	5.21	1.26	1.73	0.75	6.93	1.69
Smyrna							
North Smyrna Elementary	238	4.87	1.22	1.68	0.74	6.55	1.68
Woodbridge							
Woodbridge Elementary	143	4.99	1.14	1.62	0.57	6.62	1.39
Campus Community							
Campus Community	28	4.71	1.54	1.96	0.84	6.68	2.09

**Means and Standard Deviations of Writing Scores
by Grade, District and School
for Stand-Alone, Text-Based, and Total Writing Scores
(Grade 8)**

District & School	N	Stand -Alone		Text-Based		Writing Total	
		Mean	S.D.	Mean	S.D.	Mean	S.D.
<i>Appoquinimink</i>							
Middletown Middle	350	5.72	0.93	1.78	0.62	7.50	1.30
<i>Brandywine</i>							
Hanby Middle	279	5.91	1.17	2.56	0.79	8.47	1.69
Springer Middle	262	5.94	1.12	1.87	0.64	7.81	1.49
Talley Middle	260	5.30	1.02	1.75	0.66	7.05	1.43
<i>Caesar Rodney</i>							
Dover Airforce Base Middle	64	5.78	0.97	1.97	0.69	7.75	1.37
Fifer Middle	221	5.57	0.96	1.68	0.60	7.25	1.28
Postlethwait Middle	202	5.73	1.05	1.76	0.61	7.50	1.35
<i>Cape Henlopen</i>							
Lewes Middle	185	5.80	0.93	2.11	0.65	7.91	1.29
Milton Middle	128	5.45	1.20	1.93	0.68	7.38	1.64
<i>Capital</i>							
Central Middle	426	5.44	1.20	1.73	0.69	7.17	1.65
<i>Christina</i>							
Gauger Cobbs Middle	423	5.41	0.99	1.78	0.65	7.20	1.36
Kirk Middle	412	5.38	0.97	1.67	0.55	7.05	1.29
Shue Medill Middle	482	5.72	1.03	1.87	0.65	7.59	1.43
<i>Colonial</i>							
Gunning Bedford Middle	331	5.48	1.05	1.76	0.56	7.24	1.35
New Castle Middle	142	5.44	1.00	1.80	0.66	7.23	1.41
George Read Middle	298	5.38	0.92	1.87	0.61	7.25	1.27

**Means and Standard Deviations of Writing Scores
by Grade, District and School
for Stand-Alone, Text-Based, and Total Writing Scores
(Grade 8)**

District & School	N	Stand -Alone		Text-Based		Writing Total	
		Mean	S.D.	Mean	S.D.	Mean	S.D.
<i>Delmar</i>							
Delmar Jr High	131	5.90	0.92	2.17	0.57	8.07	1.24
<i>Indian River</i>							
Selbyville Middle	198	5.37	1.11	1.75	0.62	7.13	1.51
Southern DE Arts School	21	5.33	1.02	2.00	0.71	7.33	1.46
Sussex Central Middle	315	5.56	0.97	1.88	0.70	7.43	1.42
<i>Lake Forest</i>							
W.T. Chipman Middle	255	5.64	0.95	1.93	0.69	7.56	1.35
<i>Laurel</i>							
Laurel Central Middle	161	5.19	1.08	1.77	0.57	6.96	1.42
<i>Milford</i>							
Milford Middle	321	5.73	0.92	1.85	0.65	7.58	1.29
<i>Red Clay</i>							
Calloway School of the Arts	123	5.76	0.93	1.76	0.60	7.52	1.22
Conrad Middle	189	5.39	1.07	1.56	0.54	6.94	1.40
AI duPont Middle	142	5.08	1.02	1.59	0.59	6.68	1.40
HB duPont Middle	264	6.19	1.19	1.97	0.71	8.16	1.63
Skyline Middle	211	5.77	0.98	1.81	0.64	7.58	1.41
Stanton Middle	181	5.65	0.96	1.75	0.67	7.40	1.35
<i>Seaford</i>							
Seaford Middle	291	5.46	1.03	1.76	0.63	7.22	1.40
<i>Smyrna</i>							
John Bassett Moore	230	5.49	0.88	1.46	0.53	6.94	1.13
<i>Woodbridge</i>							
Woodbridge Middle	151	4.79	1.02	1.46	0.55	6.25	1.31

*Means and Standard Deviations of Writing Scores
by Grade, District and School
for Stand-Alone, Text-Based, and Total Writing Scores
(Grade 8)*

District & School	N	<i>Stand - Alone</i>		<i>Text-Based</i>		<i>Writing Total</i>		
		Mean	S.D.	Mean	S.D.	Mean	S.D.	
<i>Campus Community</i>								
Campus Community	29	5.55	1.30	2.10	0.82	7.66	1.86	
<i>Positive Outcomes Charter</i>								
Positive Outcomes Charter	6	4.00	0.63	1.50	0.55	5.50	1.05	

*Means and Standard Deviations of Writing Scores
by Grade, District and School
for Stand-Alone, Text-Based, and Total Writing Scores
(Grade 10)*

District & School	N	Stand -Alone		Text-Based		Writing Total	
		Mean	S.D.	Mean	S.D.	Mean	S.D.
<i>Appoquinimink</i>							
Middletown High	282	5.30	1.20	2.06	0.91	7.37	1.85
<i>Brandywine</i>							
Brandywine High	274	5.91	1.16	2.35	0.90	8.26	1.75
Concord High	231	5.84	1.37	2.48	0.95	8.33	2.09
Mt Pleasant High	204	5.50	1.32	2.18	0.95	7.68	2.01
<i>Caesar Rodney</i>							
Caesar Rodney High	366	5.74	1.15	1.98	0.88	7.73	1.71
<i>Cape Henlopen</i>							
Cape Henlopen High	218	5.28	1.15	1.99	0.72	7.27	1.66
<i>Capital</i>							
Dover High	277	5.62	1.11	2.13	0.86	7.75	1.69
<i>Christina</i>							
Christiana High	334	4.88	1.14	1.71	0.74	6.59	1.59
Glasgow High	304	5.03	1.28	1.62	0.65	6.65	1.68
Newark High	320	5.18	1.31	1.93	0.80	7.10	1.85
<i>Colonial</i>							
William Penn High	466	5.20	1.12	1.95	0.73	7.16	1.58
<i>Delmar</i>							
Delmar High	101	5.80	1.13	2.26	0.86	8.06	1.66
<i>Indian River</i>							
Indian River High	170	5.06	1.23	1.62	0.73	6.68	1.70
Sussex Central High	224	5.32	1.18	2.05	0.82	7.37	1.69

*Means and Standard Deviations of Writing Scores
by Grade, District and School
for Stand-Alone, Text-Based, and Total Writing Scores
(Grade 10)*

District & School	N	Stand -Alone		Text-Based		Writing Total	
		Mean	S.D.	Mean	S.D.	Mean	S.D.
<i>Lake Forest</i>							
Lake Forest High	188	5.05	1.07	1.53	0.64	6.59	1.42
<i>Laurel</i>							
Laurel High	102	4.77	1.17	1.81	0.79	6.59	1.64
<i>Milford</i>							
Milford High	196	5.91	1.13	2.36	0.82	8.28	1.67
<i>New Castle County Vo Tech</i>							
Delcastle High	307	5.58	0.98	1.96	0.80	7.54	1.41
Hodgson High	228	5.63	1.04	1.86	0.78	7.49	1.54
Howard High	167	5.19	1.01	1.68	0.68	6.87	1.34
<i>Polytech</i>							
Polytech	245	5.52	0.98	1.96	0.74	7.47	1.34
<i>Red Clay</i>							
Calloway School for Arts	52	6.12	1.08	2.37	0.77	8.48	1.63
Dickinson High	177	5.12	1.30	1.79	0.78	6.92	1.79
AI duPont High	213	5.58	1.31	2.04	0.85	7.62	1.89
Thomas McKean High	273	5.17	1.28	1.78	0.79	6.95	1.82
<i>Seaford</i>							
Seaford High	207	4.99	1.15	1.84	0.80	6.82	1.72
<i>Smyrna</i>							
Smyrna High	199	4.90	1.11	1.78	0.77	6.68	1.61
<i>Sussex Technical</i>							
Sussex Technical High	267	5.66	0.94	1.99	0.82	7.65	1.47
<i>Woodbridge</i>							
Woodbridge Sr. High	102	4.40	1.17	1.61	0.60	6.01	1.56

*Means and Standard Deviations of Writing Scores
by Grade, District and School
for Stand-Alone, Text-Based, and Total Writing Scores
(Grade 10)*

District & School	N	Stand -Alone		Text-Based		Writing Total	
		Mean	S.D.	Mean	S.D.	Mean	S.D.
<i>Richard Milburn Academy</i>							
Richard Milburn Academy	10	4.20	0.79	1.50	0.53	5.70	1.06
<i>Positive Outcomes Charter</i>							
Positive Outcomes Charter	10	4.00	0.47	1.30	0.48	5.30	0.67
<i>Charter School of Wilmington</i>							
Charter School of Wilmington	180	6.23	0.95	2.38	0.77	8.61	1.41



U.S. Department of Education
Office of Educational Research and Improvement (OERI)
National Library of Education (NLE)
Educational Resources Information Center (ERIC)



NOTICE

Reproduction Basis



This document is covered by a signed "Reproduction Release (Blanket)" form (on file within the ERIC system), encompassing all or classes of documents from its source organization and, therefore, does not require a "Specific Document" Release form.



This document is Federally-funded, or carries its own permission to reproduce, or is otherwise in the public domain and, therefore, may be reproduced by ERIC without a signed Reproduction Release form (either "Specific Document" or "Blanket").