

DOCUMENT RESUME

ED 454 288

TM 033 032

TITLE Annual Progress Report on Students Who Drop Out, 1999-2000.
INSTITUTION Wake County Public School System, Raleigh, NC. Dept. of
Evaluation and Research.
REPORT NO WCPSS-E&R-01.23
PUB DATE 2001-02-00
NOTE 52p.
PUB TYPE Numerical/Quantitative Data (110) -- Reports - Descriptive
(141)
EDRS PRICE MF01/PC03 Plus Postage.
DESCRIPTORS Annual Reports; *Dropout Rate; Dropouts; *High School
Students; High Schools; *Racial Differences; Sex
Differences; Tables (Data)
IDENTIFIERS *Wake County Public School System NC

ABSTRACT

This report provides information on the high school dropout rate and the number of students who drop out of the Wake County Public School System (WCPSS), North Carolina. The high school dropout rate during 1999-2000 in the WCPSS was 4.1% (2.7% for grades 7 through 12), the lowest since the start of annual reporting by the WCPSS. The WCPSS dropout rate has declined steadily from 1994 to 2000, a decline interrupted in the 1998-1999 school year, the year that students going directly to junior or community college general equivalency diploma (GED) programs began to be included as dropouts. The decrease in dropouts in the Wake County schools corresponded to a decrease across the state. The sharpest decline was for African American students, a drop from 5.4% to 4.4%. Since 1994-1995, the dropout rate for African American students has fallen nearly three full percentage points, and a decline in dropout rate was evident for all minority groups. Each year since 1991-1992, the largest proportion of dropouts had been in the ninth grade. Nearly 40% of all dropouts (1,098 students in 1999-2000) are ninth grade students. The 438 dropouts from the ninth grade represented 5.2% of the WCPSS ninth grade population. Data suggest that the dropout pattern among ninth graders may be more persistent and harder to change than that of other grades. Of the ninth grade dropouts, 66% were age 16 or older, and the most common reason students are older than their grade level is retention in a prior grade. Poor attendance was cited as the reason for 72% of all dropouts, but poor attendance is likely to be a symptom of more specific issues as well as the reason given in cases in which school officials do not know why the student dropped out. Academic problems were reported as the reason for 7% of the dropouts, down six percentage points from the previous year. Attachments include an overall high school dropout summary and summaries for the system's individual high schools. (Contains 10 figures.) (SLD)

1999 – 2000

ED 454 288

U.S. DEPARTMENT OF EDUCATION
Office of Educational Research and Improvement
EDUCATIONAL RESOURCES INFORMATION
CENTER (ERIC)

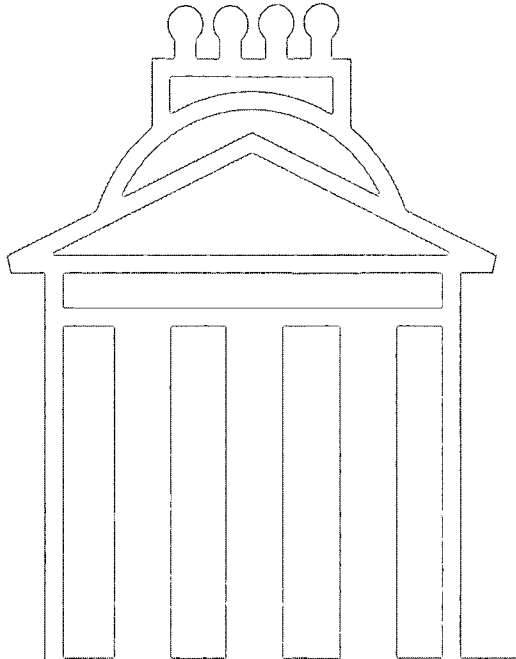
- This document has been reproduced as received from the person or organization originating it.
- Minor changes have been made to improve reproduction quality.
- Points of view or opinions stated in this document do not necessarily represent official OERI position or policy.

PERMISSION TO REPRODUCE AND
DISSEMINATE THIS MATERIAL HAS
BEEN GRANTED BY

C. Dulaney

TO THE EDUCATIONAL RESOURCES
INFORMATION CENTER (ERIC)

1



ANNUAL PROGRESS REPORT ON STUDENTS WHO DROP OUT

TM033032

Report No. 01.23
Department of Evaluation and Research
February, 2001

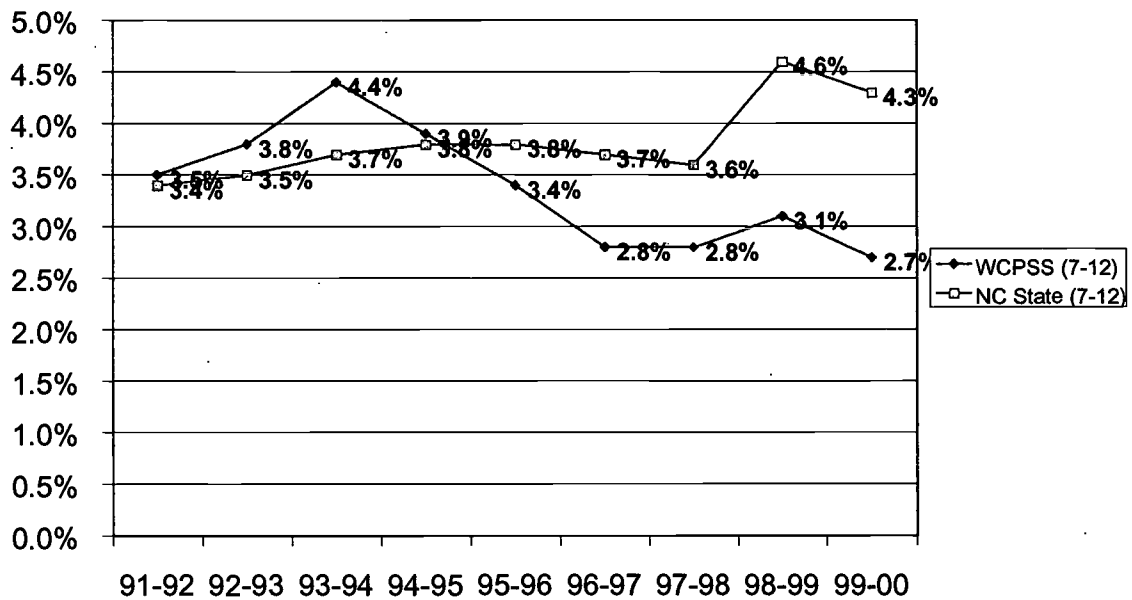
TABLE OF CONTENTS

EXECUTIVE SUMMARY	i
INTRODUCTION	1
Determining Who is a Dropout	1
The Dropout Rate Calculation	2
DROPOUT RATES IN WAKE COUNTY	5
The Overall Dropout Rate	5
Dropout Rate by Grade Level	5
Dropout Rate by Race	6
Dropout Rate by High School	7
A CLOSER LOOK AT DROPOUT PERCENTAGES	9
Dropouts by Grade Level	9
Dropouts by Grade Over Time	9
Dropouts by Age	10
Dropout Reasons	11
Dropout Rates Among Comparable School Systems	12
ATTACHMENTS	13
1. Overall High School Summary	13
2. Individual High School Summaries	17

EXECUTIVE SUMMARY

The high school dropout rate during 1999-2000 in the Wake County Public School System (WCPSS) was 4.1 percent (2.7% for grades 7-12), the lowest since the start of annual reporting by WCPSS. The WCPSS dropout rate has steadily declined from 1994 to 2000, as displayed in Figure 1. The decline was interrupted in the 1998-1999 school year, the year that students going directly to junior or community college GED programs began to be included as dropouts. The decline resumed during the 1999-2000 school year. The decrease in the WCPSS dropout rate corresponded to a similar decrease in dropouts reported across the state.

Figure 1. State and WCPSS Dropout Rate for Grades 7-12 between 1991 and 2000



African American students saw the sharpest decline during the 1999-2000 school year, from 5.4 to 4.4 percent. The decline in the dropout rate for all minority students was the greatest since the 1996-1997 school year. Since 1994-1995 the dropout rate for African American students has fallen nearly three full percentage points, from 7.1 percent to 4.4 percent. This decline is sharper than the steady decline for the county as a whole during these years.

Each year since 1991-1992 the largest proportion of dropouts has been in the ninth grade. Nearly 40 percent of all high school dropouts are ninth grade students (39.9% of the total 1,098 high school dropouts in 1999-2000). The 438 dropouts from the ninth grade in 1999-2000 represented 5.2 percent of the WCPSS ninth grade student population.

Since the 1993-1994 school year, the dropout rate for ninth grade students has fallen 2.1 percentage points from 7.3 to 5.2 percent, while the dropout rate has fallen 3.7 percentage points for grade 10 and 2.6 percentage points for grade 11. This pattern suggests that the dropout rate among ninth grade students may be more persistent and less subject to change than other grade levels.

Seventy-six percent of the ninth grade dropouts were age 16 or older. The typical age for a ninth grade student is 14 or 15 years old. The percentage of dropouts who are older than the typical age for their grade declines for higher grade levels (57% for grade 10, 40% for grade 11, and 20% for grade 12). The most common reason students are older than their grade level is retention in a prior grade. National research indicates students older than the average age for their grade are more likely to drop out of school.

Students who were 16 years old represented the largest proportion of total dropouts in both grades 9 and 10, and their proportion of the total dropouts increased over last year in grades 8-10, while the overall dropout rate for WCPSS declined. This suggests that dropping out among 16 yearolds, like ninth grade students, is more persistent and resistant to fluctuation than other age levels. Moreover, ninth grade students who were 16 years old (203 students) represented the largest single proportion of the total dropouts this year based on age and grade (18.5 percent of the total 1,098 high school dropouts).

Poor attendance was cited as the reason for 72 percent of the dropouts this year, up 8 percentage points from last year. Poor attendance has been the major reported reason that students dropped out. Poor attendance is likely a symptom of more specific issues. If students with poor attendance leave school without reporting these specific reasons, and school officials cannot reach the students, poor attendance is listed as the dropout reason. Academic problems were reported as the reason for seven percent of the dropouts, down six percentage points from last year. Other reported reasons remained relatively stable.

INTRODUCTION

Determining Who is a Dropout

One of our most important educational goals is to keep young people in school and ensure that they graduate from high school. One of the most confusing issues is: "Who should be counted as a dropout?" Some conventions for counting make the dropout rate look larger, while others make it appear smaller. The state of North Carolina has adopted standards for counting dropouts that, with only minor differences, follow the National Center for Educational Statistics Common Core of Data definition for reporting dropouts throughout the United States. Consistency is important in order to make reports comparable across districts and states in any given year as well as across time. Although this is the goal, it is not always possible. Changes or differences in counting conventions are explained in this report to avoid confusion.

For 1999-2000, WCPSS defined a dropout as a student who:

1. was enrolled in school at some time during the reporting year;
2. was not enrolled on the 20th day of the subsequent year;
3. did not graduate from high school or complete a state or district-approved educational program; and
4. did not meet any of the following exclusions:
 - transferred to another public school district, private school, home school, or state/district-approved educational program (transfer to a community college to obtain a GED is no longer excluded);
 - temporarily absent due to suspension or school-approved illness; or
 - death.

It has been the convention to report the dropout rate for all students who drop out from the seventh grade through the twelfth grade. Yet for some purposes, it is only the high-school dropout rates (grades 9-12) that are of interest. WCPSS reports both the grade 7-12 and the grade 9-12 dropout rates, but the tables that show trends over time include grade 7-12 rates.

Beginning with the 1997-1998 school year, state law required that the North Carolina Department of Public Instruction not include students who were expelled from school in the reported dropout rates. This convention differs from the convention used by the National Center for Educational Statistics. WCPSS has historically provided rates calculated according to both state and national standards but has not been aware of this convention. The different counting convention does not usually complicate the comparison of the rates reported by WCPSS with the rates reported by the state for Wake County because so few students are expelled that it does not make a noticeable change in the reported rate. There were no expelled students in 1999-2000, two in 1998-1999. For 1996-1997 when WCPSS reported 11 expelled students, the state reported the dropout rate for Wake County as 2.76 percent, while the rate including the expelled students would have been 2.77 percent. The state report does not include expelled students

among the list of dropout reasons.¹ This difference was not detectable because WCPSS rounded the number to one decimal place and reported the rate as 2.8 percent.

During the mid 1990s, the North Carolina, Department of Public Instruction counted dropouts using another counting convention that was different from that used by the National Center for Educational Statistics.² In North Carolina, a student who dropped out of school during a school year was not counted as a dropout for that year if the student had dropped out in a previous school year and then returned to school. The national standard is to count such students as dropouts. WCPSS has historically provided rates calculated according to both state and national standards. All agencies reporting North Carolina and WCPSS dropout rates now report as dropouts all students who dropped out in the previous year regardless of whether they dropped out in previous years. The inclusion of students who had dropped out in previous years was called the “duplicated” dropout rate, while rates based on first time dropouts only were called “unduplicated” dropout rates.

Beginning with the 1998-1999 school year and continuing this reporting year, the North Carolina, Department of Public Instruction began to require that students who left school before high-school graduation in order to go directly to a junior college GED program would also be counted as dropouts. Previously, such students had been counted as transfer students since it appeared that they were still in school. The reported rates for WCPSS for 1998-1999 showed a noticeable increase that broke a trend of several years. The WCPSS report observed that these increases might be due to the rule change.³

Beginning with the 1999-2000 school year, another change in state policy affects reported dropout rates. The reported dropout rate will be included in the statewide accountability program for schools and districts. This change is a little different than those just described. It does not affect who is counted as a dropout. Instead, the stakes have been raised. It is hoped that this will affect how hard people work to ensure that young people stay in school; it may also affect how hard people work to track down what happened to former students and to determine precisely whether or not they should be counted as dropouts.

There may be still further changes in the conventions in store for the 1999-2000 school year for counting school dropouts. It is possible that the North Carolina, Department of Public Instruction will modify the procedure for counting dropouts for accountability purposes. These policies are not yet finalized and they have not affected the overall dropout rates already reported by the state for the 1999-2000 year.

This use of high school dropout rates for accountability purposes shifts the salience from the grade 7-12 rate to the grade 9-12 rate. In contrast to past reports, the high school (grade 9-12) dropout rate will be more prominently featured in this and future reports. However, to ensure continuity with the past, tables showing trends will continue to display the grade 7-12 dropout rates. Obviously, the dropout rate for grades 7-12 is lower than that for grades 9-12 because few

¹ “Dropout Data Report.” Public Schools of North Carolina. May 1999. Pp. 8, 19.

² “NC Dropout Rates Released for 1998-99 year.” Public Schools of North Carolina. January 2000. www.dpi.state.nc/news/99-00/020100.html

³ “1998-1999 Dropout Report.” Department of Evaluation and Research. P. i. 2000. Report Number 00.13.

students drop out before the ninth grade. It should also be remembered that these rates do not include the few students who are reported as dropouts in earlier grades.

The Dropout Rate Calculation

The number of students who are counted as dropouts must be compared to total enrollment in order to calculate a dropout rate. Some method must be established to account for changing enrollment during the year due to population change. The method used in North Carolina is based on the total enrollment on the twentieth day of the each school year, because that is the time when enrollment tends to stabilize for that year, although it does continue to change throughout the rest of the year. In Wake County, which has experienced continuous growth for several years, enrollment tends to be higher each year. In other counties, enrollment may tend to be decrease. In order to compensate for changing enrollment due to demographic trends, the state specifies the use of *a rolling average* across two years. For example, total enrollment on the twentieth day of 1999 is added to the total enrollment on the twentieth day of 2000, and is then divided by two. Finally, the number of dropouts during the year is added to complete the calculation. The rolling average adjusts for demographic change during the 1999-2000 school year. Accordingly, the formula for the 1999-2000 dropout rate is:

$$\frac{\text{\#Dropouts}_{1999-2000}}{(\text{enrolled } 1999-00_{20\text{th-Day}} + \text{enrolled } 2000-01_{20\text{th-Day}})/2 + \text{\# Dropouts}_{1999-00}}$$

For example, the WCPSS rate calculation for grades 9-12 for 1999-00 was:

$$\frac{1,098}{(24,959 + 25,963)/2 + 1,098} = .0413 \text{ or } 4.1\%$$

DROPOUTS IN WAKE COUNTY

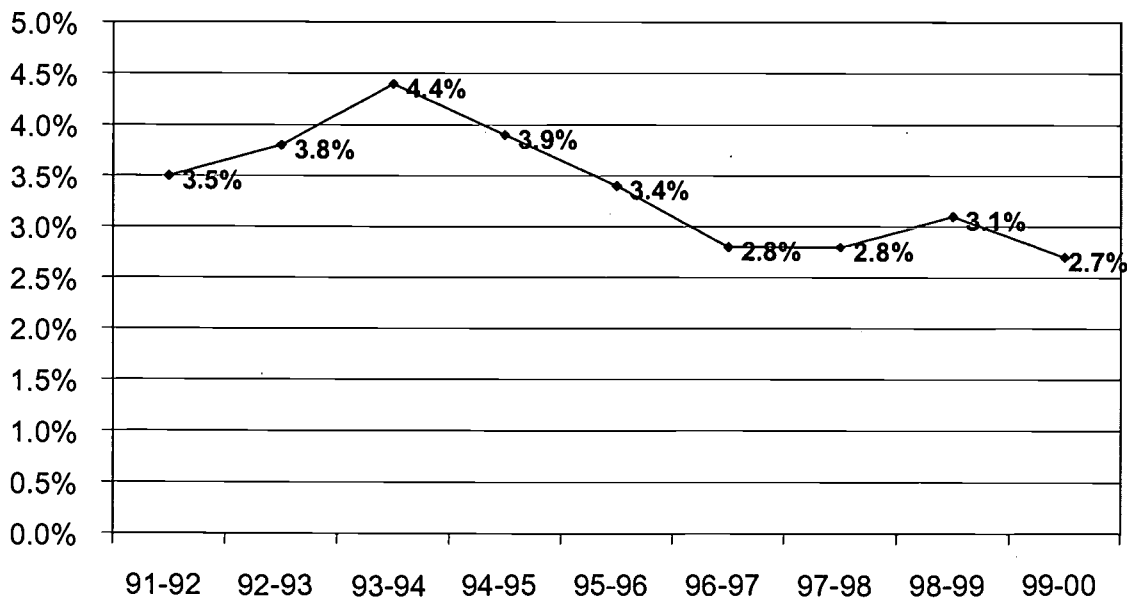
The Overall Dropout Rate

The high school dropout rate during 1999-2000 in the Wake County Public School System (WCPSS) was 4.1 percent (2.7% for grades 7-12), the lowest since the start of annual reporting by WCPSS. In WCPSS during 1999-2000 (including summer school), there were 1,118 students listed as dropouts: down 112 from the 1,230 during the 1998-1999 school year. Of these 1,118 students:

- 3 students were in grades K-6,
- 17 students were in grades 7-8,
- 1,098 students were in grades 9-12.

The WCPSS dropout rate has steadily declined from 1994 to 2000, as displayed in Figure 2. The decline was interrupted in the 1998-1999 school year, the year that students going directly to junior college GED programs began to be counted as dropouts. The decline resumed during the 1999-2000 school year. The uniform decline this year may be influenced by the adoption of the dropout rate as a component of the state accountability program this year.

Figure 2. WCPSS Dropout Rates for Grades 7-12 Between 1991 and 2000



Dropout Rate by Grade Level

As shown in Figure 3, the greatest percentage and number of students dropping out, except by a very narrow percentage in 1993-94, was in grade 9. This consistent pattern from year to year may occur because at the ninth grade level many students approach 16 years old and school

attendance is not legally required after reaching this age. In addition, the first year of high school brings many changes in requirements and structures, which to many students represents a significant adjustment challenge.

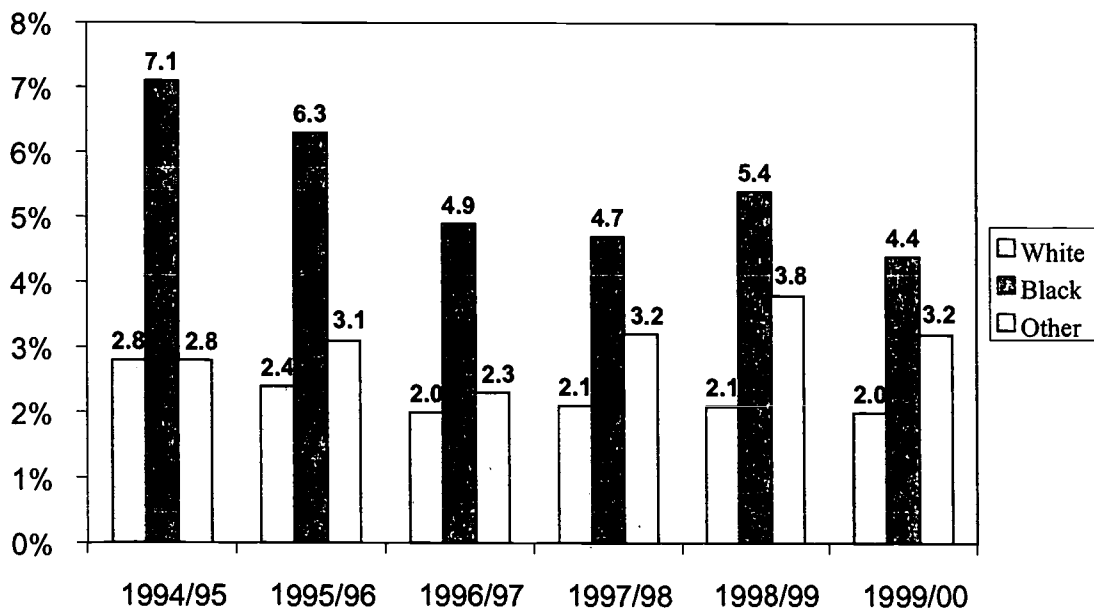
Figure 3. Dropouts by Grade Level from 1991 to 2000

Grade	Number of Dropouts								Dropout Rate							
	92-93	93-94	94-95	95-96	96-97	97-98	98-99	99-00	92-93	93-94	94-95	95-96	96-97	97-98	98-99	99-00
7	17	11	14	6	7	12	9	4	0.3%	0.2%	0.2%	0.1%	0.1%	0.2%	0.1%	0.1%
8	18	18	20	21	11	24	12	13	0.3%	0.3%	0.3%	0.3%	0.2%	0.4%	0.2%	0.2%
9	402	469	445	461	407	418	463	438	6.7%	7.3%	6.5%	6.4%	5.3%	5.2%	5.6%	5.2%
10	264	386	332	272	262	269	318	249	5.3%	7.4%	6.1%	4.8%	4.4%	4.2%	4.8%	3.7%
11	197	224	217	186	117	216	256	241	5.7%	6.6%	5.8%	5.0%	4.0%	3.9%	4.4%	4.0%
12	197	224	217	186	117	140	169	170	4.7%	5.3%	5.0%	4.2%	2.6%	2.9%	3.4%	3.2%
7-12	1158	1417	1304	1197	1015	1079	1226	1115	3.8%	4.4%	3.9%	3.4%	2.8%	2.8%	3.1%	2.7%
9-12	1123	1388	1270	1170	997	1043	1205	1098	5.7%	6.7%	6.0%	5.3%	4.3%	4.2%	4.7%	4.1%

Dropout Rate by Race

The dropout rates for grades 7-12 for all ethnic groups reflect the overall steady decline, as displayed in Figure 4. African American students saw the sharpest decline during the 1999-2000

Figure 4. WCPSS Dropout Rates for Grades 7-12 by Race from 1995 to 2000



school year, from 5.4 to 4.4 %. The decline in the dropout rate for all minority students was the

greatest since the 1996-1997 school year. Since 1994-1995 the dropout rate for African American students has fallen nearly three full percentage points, from 7.1 percent to 4.4 percent. This decline is sharper than the steady decline for the county as a whole during these years.

Dropout Rate by High School

Eight of the fourteen regular WCPSS high schools, as displayed in Figure 5, showed a decrease in the dropout rate between 1999-2000 and the previous year, compared to only five schools whose rates showed declines between 1998-1999 and the previous year. Green Hope High School did not exist in 1997-98 and thus had no dropout rate last year. On the other hand, both of the alternative schools, Longview High School and Phillips High School had increased dropout rates this year.

Figure 5. Dropout Rate by High School

High School	96-97		97-98		98-99		99-00	
	No.	Rate	No.	Rate	No.	Rate	No.	Rate
Apex	72	3.32%	90	3.96%	93	4.13%	48	2.46%
Athens Drive	98	5.23%	87	4.75%	50	2.76%	79	4.23%
Broughton	43	2.64%	80	4.76%	86	5.05%	63	3.68%
Cary	77	3.72%	38	1.81%	95	4.64%	64	3.47%
East Wake	122	6.83%	115	6.52%	106	6.01%	129	7.14%
Enloe	41	1.79%	53	2.20%	74	3.02%	35	1.45%
Fuquay-Varina	60	4.36%	82	5.45%	83	5.20%	87	5.30%
Garner	108	5.47%	90	4.77%	92	4.80%	88	4.32%
Green Hope	NA*	NA*	NA*	NA*	NA*	NA*	16	1.46%
Leesville Rd.	40	2.07%	38	1.83%	52	2.48%	56	2.73%
Millbrook	74	3.75%	109	5.76%	105	5.49%	106	5.41%
Sanderson	60	3.17%	76	4.05%	67	3.40%	80	3.94%
S.E. Raleigh	NA*	NA*	31	2.16%	42	2.37%	42	2.16%
Wake Forest-R	66	4.18%	48	2.96%	115	7.15%	87	6.40%
Longview**	10	17.39%	19	29.23%	10	21.05%	10	23.81%
Phillips**	124	36.20%	87	27.88%	135	35.67%	108	45.09%
Total	995	4.3%	1043	4.2%	1205	4.7%	1098	4.14%

* NA = not applicable. Southeast Raleigh High School and Green Hope High School had not been built at this time.

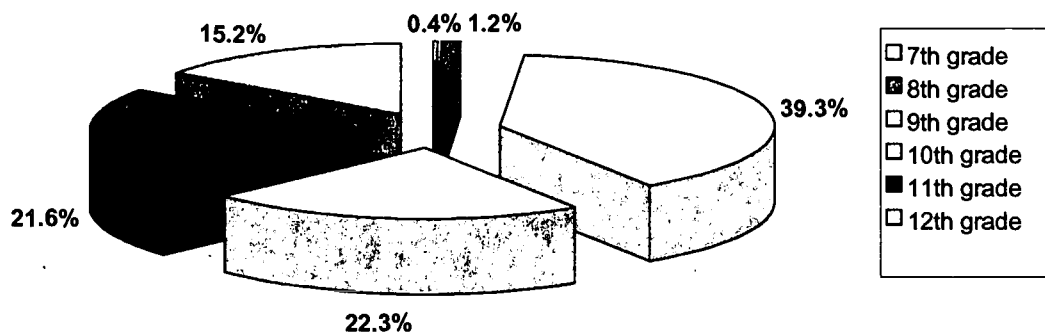
** Longview and Phillips are alternative schools serving special populations.

A CLOSER LOOK AT DROPOUT PERCENTAGES

Dropouts by Grade Level

The largest proportion of dropouts in WCPSS during 1999-2000 was in the ninth grade, as displayed in Figure 6. Grades 7 and 8 accounted for less than 2% of all dropouts. Dropouts who

Figure 6. Dropouts by Grade: 1999-00



are high school seniors (grade 12) made up the next smallest percentage (15.2%).

Dropouts by Grade over Time

Of the total number of dropouts, Figure 6 indicates that the largest proportion occurred in the ninth grade. In 1999-2000, 39.3 percent of all grade 7-12 dropouts occurred in grade 9, up from 37 percent the year before. However, as displayed earlier in Figure 3, the dropout rate among ninth grade students is down this year by four tenths of a percentage point from 5.6 to 5.2 percent. Ninth grade dropouts represent a larger proportion of the total number of dropouts this year because the dropout rate fell by an equal or even larger amount among tenth and eleventh grade students this year. Among tenth grade students the dropout rate fell 1.1 percentage points from 4.8 to 3.7 percent. Last year, the ninth grade dropouts as a proportion of the total fell from the year before that, while the overall dropout rate for WCPSS increased.

For every year in which data are available, when the overall dropout rate declined, the ninth grade dropouts increased as a proportion of the total, while with increased overall dropout rates, ninth grade dropouts decreased as a proportion of the total. This pattern suggests that the

dropout rate among ninth grade students is more persistent and less subject to change than in other grade levels. Since the 1993-1994 school year the dropout rate for ninth grade students has fallen 2.1 percentage points from 7.3 to 5.2 percent. Yet the dropout rate has fallen 3.7 percentage points for grade 10 and 2.6 percentage points for grade 11.

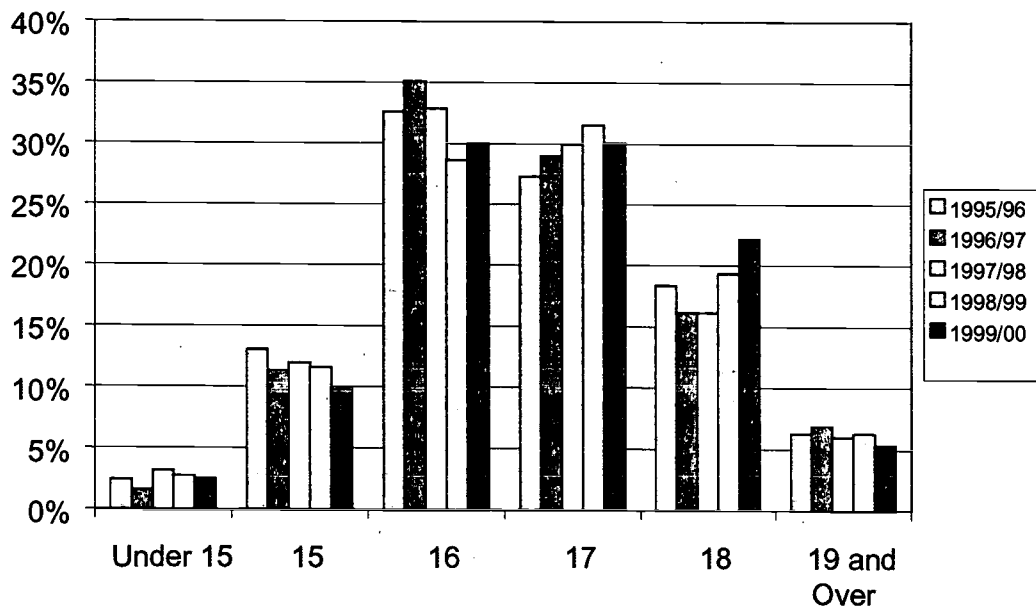
Figure 6. Dropouts by Grade and Proportion of Total for 1992-2000

Grade	92-93		93-94		94-95		95-96		96-97		97-98		98-99		99-00	
	(n=1,158)		(n=1,417)		(n=1,304)		(n=1,197)		(n=1,015)		(n=1,079)		(n=1,226)		(n=1115)	
	No.	%	No.	%	No.	%	No.	%	No.	%	No.	%	No.	%	No.	%
7-8	35	2.2	29	2.0	34	2.6	27	2.3	18	1.8	36	3.3	21	2%	17	1.5
9	402	34.7	469	33.1	445	34.1	461	38.5	407	40.1	418	38.7	463	37.0	438	39.3
10	264	22.8	386	27.2	332	25.5	272	22.7	262	25.8	269	24.9	318	26.0	249	22.3
11	260	22.5	309	21.8	276	21.2	251	21.0	211	20.8	216	20.0	256	21.0	241	21.6
12	197	17.0	224	15.8	217	16.6	186	15.5	117	11.5	140	13.0	169	14.0	170	15.3

Dropouts by Age

Sixteen year-old students have tended to represent a larger proportion of the total dropouts than other age levels, as depicted in Figure 7. The 16 year-old students increased as a proportion of

Figure 7. Dropouts by Age: 1995-2000



the total in years when the overall dropout rate for WCPSS declined, and it decreased in years when the overall dropout rate increased or remained constant. This is the same pattern that was observed for ninth grade students. It suggests that dropping out among 16 year olds is a persistent pattern that is resistant to change.

Beginning with the ninth grade, dropouts tended to be older than other students in their grade, as depicted in Figure 8. For instance, students in grade 9 are typically 14 or 15 years old; however, 76 percent of dropouts in grade 9 were age 16 years old and over. Fifty-seven percent of dropouts in grade 10 are 17 years old or older. Forty percent of dropouts in grade 11 are 18 years old or older. Twenty percent of grade 12 dropouts are over 18 years old. The most common reason for students being older than their appropriate grade is retention in a prior grade. National research indicates students older than average age for their grade are more likely to drop out of school.

Figure 8. Dropouts by Age and Grade as Proportion of the Total for 1999-00

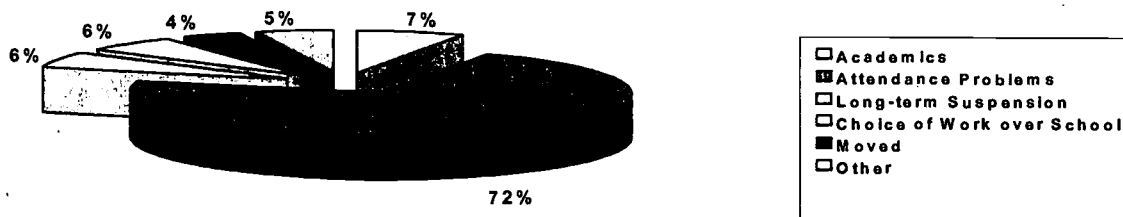
Age	7 th		8 th		9 th		10 th		11 th		12 th	
	(n=4)		(n=13)		(n=438)		(n=249)		(n=241)		(n=170)	
	No.	%	No.	%	No.	%	No.	%	No.	%	No.	%
<16	4	100%	9	69%	106	24%	19	8%	0	0%	0	0%
16	0	0%	4	31%	203	46%	87	35%	40	16%	1	1%
17	0	0%	0	0%	101	23%	85	34%	105	44%	44	26%
18	0	0%	0	0%	27	6%	53	21%	77	32%	90	53%
>18	0	0%	0	0%	1	1%	5	2%	19	8%	35	20%

Figure 8 is also consistent with the inference from Figure 7 that age 16 is a particularly vulnerable year. Students who were 16 years old represented the largest proportion of total dropouts in both grades 9 and 10, and their proportion of total dropouts increased over last year in grades 8-10 when the overall dropout rate for WCPSS declined. This suggests that dropping out among 16 year-olds, like ninth grade students, is more persistent and resistant to fluctuation than other age levels. Moreover, ninth grade students who were 16 years old (203 students) represent the largest single proportion of total dropouts (18.5 percent of the total 1,098 high school dropouts).

Dropout Reasons

Reasons for withdrawing from school are determined by the school guidance counselor. When possible they are based on exit interviews with students. As depicted in Figure 9, the primary reported reason for dropping out in 1999-2000, as in the past, was poor attendance (72%), up 8 percent from last year. Poor attendance is likely a symptom of more specific issues. If students with poor attendance leaves school without reporting these specific reasons, and school officials cannot reach the students, poor attendance is listed as the dropout reason. Academic problems were reported as the reason for dropping out 7 percent of the time, down 6 percent from last year, whereas other reasons remained relatively constant.

Figure 9. Dropouts by Withdrawal Reasons: 1999-00



Dropout Rates Among Comparable School Systems

Dropout rates between 1998-1999 and 1999-2000, the first year in which the dropout rate will be included in the state accountability program, decreased uniformly among comparable large, urban school systems in North Carolina, as depicted in Figure 10. Similarly, the rates between 1997-98 and 1998-99, the year in which students transferring to junior colleges without graduating began to be counted as dropouts, increased uniformly among these communities.

Dropout rates for WCPSS have been lower than those for comparable urban systems during these years.

Figure 10. 7-12 Grade Dropout Rates Among School Systems: 1997 – 2000

School System	Number of Dropouts	Percent of Dropouts
Durham County		
1997-98	645	5.1%
1998-99	722	5.7%
1999-00	543	4.3%
Forsyth County		
1997-98	683	3.8%
1998-99	929	5.0%
1999-00	843	4.4%
Guilford County		
1997-98	852	3.3%
1998-99	1152	4.3%
1999-00	1106	4.0%
Mecklenburg County		
1997-98	2279	5.4%
1998-99	2401	5.5%
1999-00	2133	4.8%
Wake County		
1997-98	1079	2.8%
1998-99	1226	3.1%
1999-00	1115	2.7%

ATTACHMENT 1

Overall High School Summary

Dropouts: 1995-2000

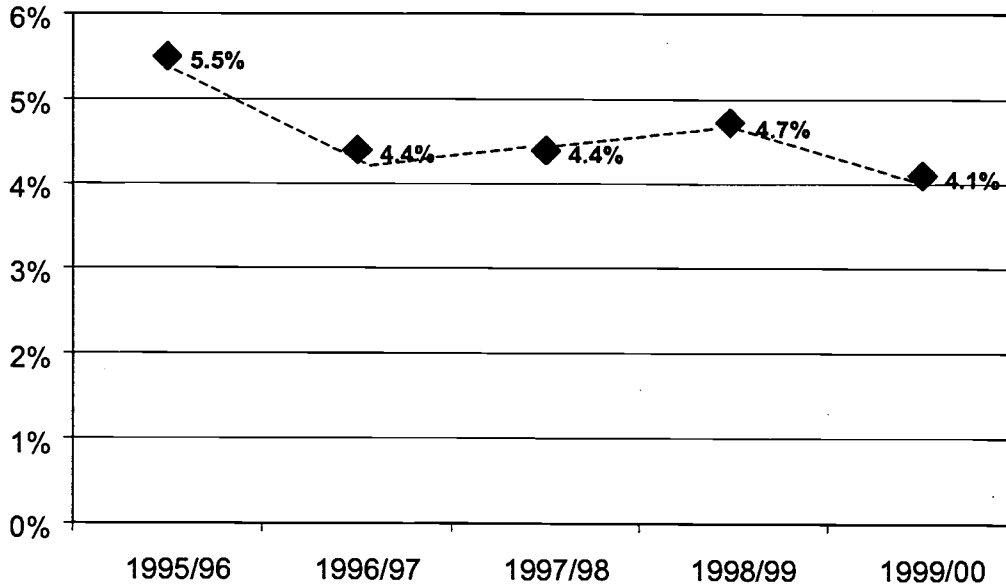
Dropouts by Race: 1999-2000

Dropouts by Gender, Age, Grade, and Withdrawal Reason: 1999-2000

WAKE COUNTY PUBLIC HIGH SCHOOLS

Total Dropouts (grades 9-12): 1097
High School Dropout Rate: 4.1%

WCPSS High School Dropout Rate: 1995-2000



WCPSS High School Dropouts by Race: 1999 - 2000

RACE	TOTAL	(n=1098)
White	532	48.5%
Female	206	38.7%
Male	326	61.3%
Black	457	41.6%
Female	196	42.9%
Male	261	57.1%
Hispanic	66	6.0%
Female	29	43.9%
Male	37	56.1%
Asian	24	2.2%
Female	13	54.2%
Male	11	45.8%
Other	18	1.6%
Female	11	61.1%
Male	7	38.9%

WAKE COUNTY PUBLIC HIGH SCHOOLS
Dropouts by Gender, Age, Grade,
And Withdrawal Reason
1999-00

GENDER	Total	Percent
Female	456	41.5%
Male	642	58.5%
AGE		
Under 15	23	2.1%
15 years old	102	9.3%
16 years old	331	30.1%
17 years old	335	30.5%
18 years old	247	22.5%
19 years old	53	4.8%
Over 19	7	0.6%
GRADE		
Grade 9	438	39.9%
Grade 10	249	22.7%
Grade 11	241	21.9%
Grade 12	170	15.5%
REASON		
Health Reasons	7	0.6%
Pregnancy	10	0.9%
Marriage	1	0.1%
Choice of Work over School	68	6.2%
Substance Abuse	0	0.0%
Incarcerated, Not Enrolled	7	0.6%
Employment Necessary	2	0.2%
Unstable Home Environment	5	0.5%
Need to Care for Children	1	0.1%
Runaway	2	0.2%
Moved, No Records Requested	41	3.7%
Academic Problems	77	7.0%
Discipline Problems	2	0.2%
Long-term Suspension	64	5.8%
Attendance Problems	545	49.6%
Attendance/School	122	11.1%
Attendance/Personal	110	10.0%
Attendance/Family	10	0.9%
Attendance/Work	11	1.0%
Expulsion	1	0.1%
School Not Meeting Needs	0	0.0%
Other	12	1.1%

ATTACHMENT 2

Individual High School Summaries

Dropouts: 1995 – 2000

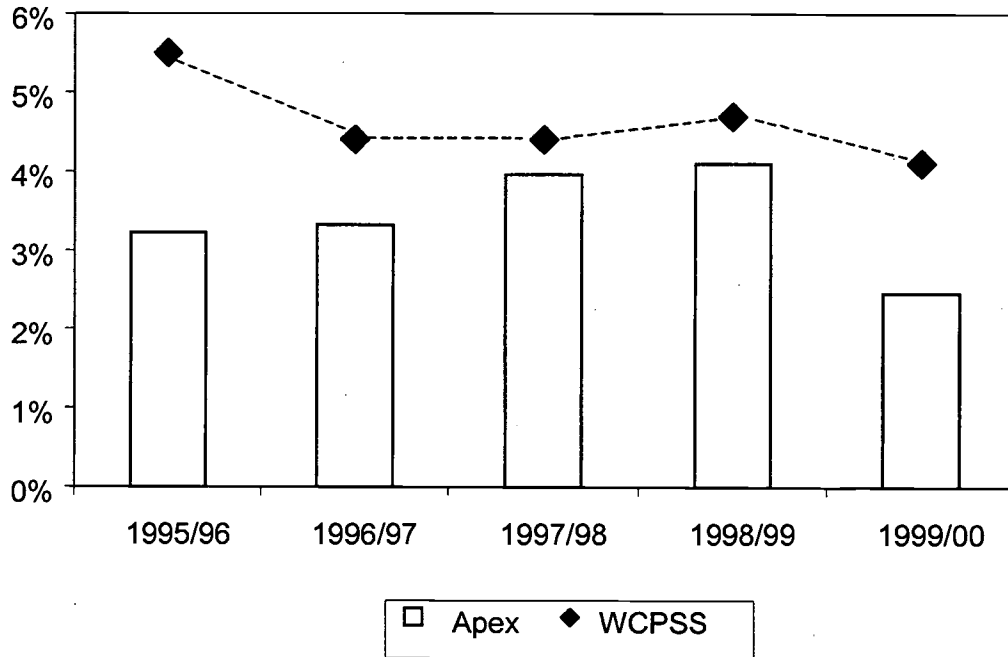
Dropouts by Race: 1999 - 2000

Dropouts by Gender, Age, Grade, and Withdrawal Reason: 1999 - 2000

APEX HIGH SCHOOL

Total Dropouts: 48
Dropout Rate: 2.46%

Apex H.S. and WCPSS Dropout Rates: 1995-2000



Apex High School Dropouts by Race: 1999-2000

RACE	TOTAL	(n=48)
White	26	54.2%
Female	9	34.6%
Male	17	65.4%
Black	20	41.7%
Female	10	50.0%
Male	10	50.0%
Hispanic	1	2.1%
Female	1	100.0%
Male	0	0.0%
Asian	1	2.1%
Female	0	0.0%
Male	1	100.0%
Other	0	0.0%
Female	0	0.0%
Male	0	0.0%

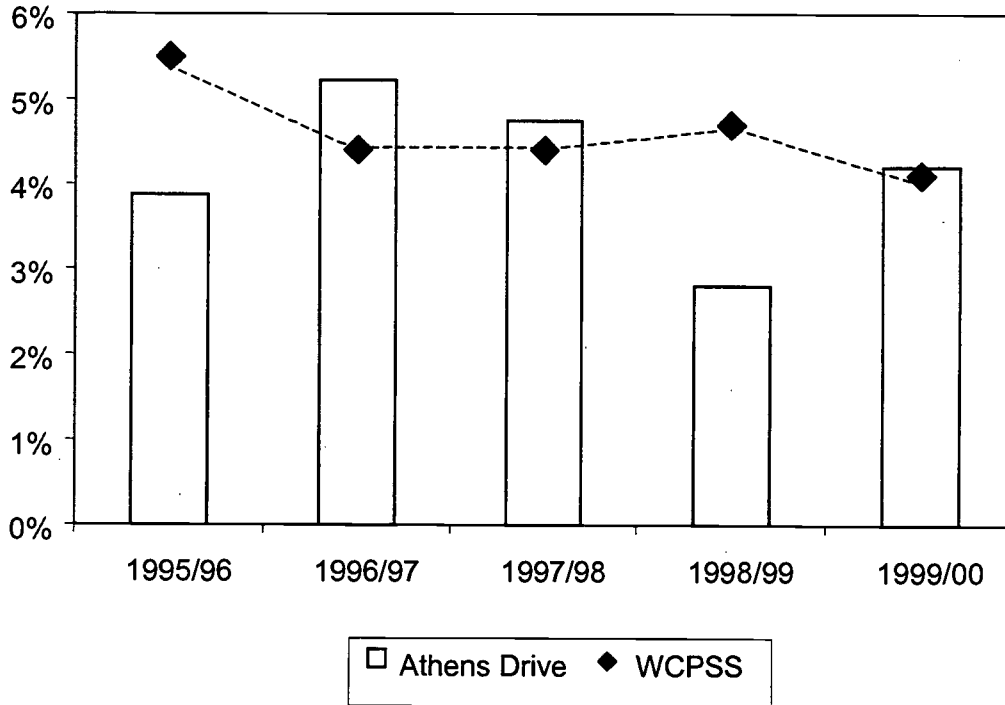
APEX HIGH SCHOOL
Dropouts by Gender, Age, Grade,
and Withdrawal Reason
1999-00

GENDER	Total	Percent
Female	20	41.7%
Male	28	58.3%
AGE		
Under 15	0	0.0%
15 years old	3	6.3%
16 years old	12	25.0%
17 years old	15	31.3%
18 years old	16	33.3%
19 years old	2	4.2%
Over 19	0	0.0%
GRADE		
Grade 9	12	25.0%
Grade 10	14	29.2%
Grade 11	12	25.0%
Grade 12	10	20.8%
REASON		
Health Reasons	1	2.1%
Pregnancy	2	4.2%
Marriage	0	0.0%
Choice of Work over School	9	18.8%
Substance Abuse	0	0.0%
Incarcerated, Not Enrolled	0	0.0%
Employment Necessary	0	0.0%
Unstable Home Environment	0	0.0%
Need to Care for Children	0	0.0%
Runaway	0	0.0%
Moved, No Records Requested	0	0.0%
Academic Problems	5	10.4%
Discipline Problems	0	0.0%
Long-term Suspension	3	6.3%
Attendance Problems	22	45.8%
Expulsion	0	0.0%
School Not Meeting Needs	0	0.0%
Other	0	0.0%

ATHENS DRIVE HIGH SCHOOL

Total Dropouts: 79
Dropout Rate: 4.23%

**Athens Drive H.S. and WCPSS Dropout Rates:
1995 - 2000**



Athens Drive High School Dropouts by Race: 1998 - 1999

RACE	TOTAL	(n=79)
White	26	32.9%
Female	14	53.8%
Male	12	46.2%
Black	41	51.9%
Female	27	65.9%
Male	14	34.1%
Hispanic	10	12.7%
Female	5	50.0%
Male	5	50.0%
Asian	2	2.5%
Female	1	50.0%
Male	1	50.0%
Other	0	0.0%
Female	0	0.0%
Male	0	0.0%

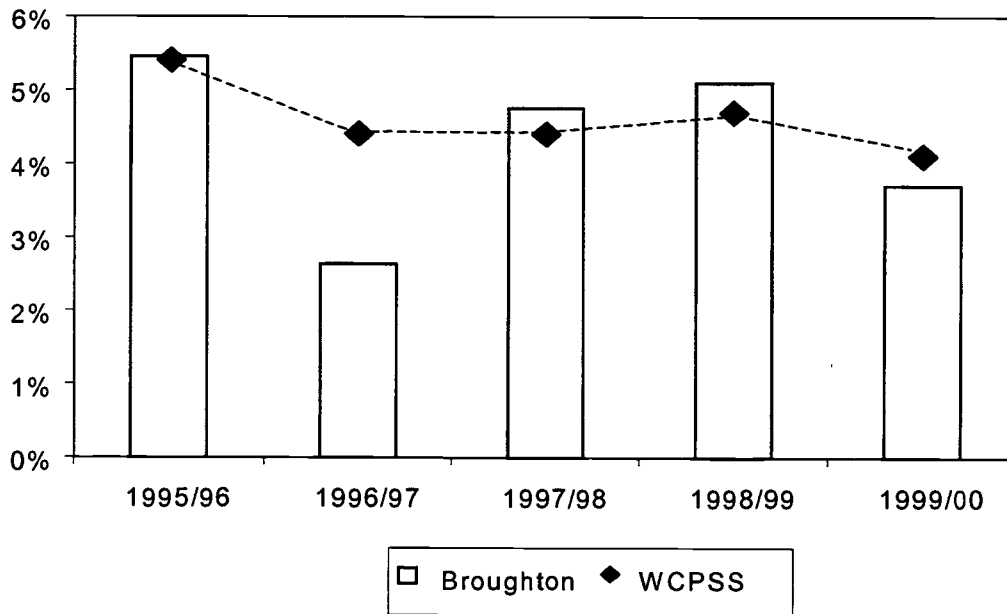
ATHENS DRIVE HIGH SCHOOL
Dropouts by Gender, Age, Grade,
And Withdrawal Reason
1999-00

GENDER	Total	Percent
Female	32	40.5%
Male	47	59.5%
AGE		
Under 15	6	7.6%
15 years old	4	5.1%
16 years old	18	22.8%
17 years old	30	38.0%
18 years old	17	21.5%
19 years old	4	5.1%
Over 19	0	0.0%
GRADE		
Grade 9	30	38.0%
Grade 10	13	16.5%
Grade 11	18	22.8%
Grade 12	18	22.8%
REASON		
Health Reasons	3	3.8%
Pregnancy	1	1.3%
Marriage	0	0.0%
Choice of Work over School	1	1.3%
Substance Abuse	0	0.0%
Incarcerated, Not Enrolled	0	0.0%
Employment Necessary	1	1.3%
Unstable Home Environment	0	0.0%
Need to Care for Children	0	0.0%
Runaway	0	0.0%
Moved, No Records Requested	28	35.4%
Academic Problems	4	5.1%
Discipline Problems	0	0.0%
Long-term Suspension	5	6.3%
Attendance Problems	34	43.0%
Attendance/School	2	2.5%
Expulsion	0	0.0%
School Not Meeting Needs	0	0.0%
Other	0	0.0%

BROUGHTON HIGH SCHOOL

Total Dropouts: 63
Dropout Rate: 3.68%

**Broughton H.S. and WCPSS Dropout Rates:
1995-2000**



Broughton High School Dropouts by Race: 1999 - 2000

RACE	TOTAL	(n=63)
White	27	42.9%
Female	8	29.6%
Male	19	70.4%
Black	32	50.8%
Female	12	37.5%
Male	20	62.5%
Hispanic	3	4.8%
Female	2	66.7%
Male	1	33.3%
Asian	1	1.6%
Female	0	0.0%
Male	1	100.0%
Other	0	0.0%
Female	0	0.0%
Male	0	0.0%

BROUGHTON HIGH SCHOOL
Dropouts by Gender, Age, Grade,
And Withdrawal Reason
1999-00

GENDER	Total	Percent
Female	41	65.1%
Male	22	34.9%
AGE		
Under 15	0	0.0%
15 years old	10	15.9%
16 years old	19	30.2%
17 years old	18	28.6%
18 years old	12	19.0%
19 years old	4	6.3%
Over 19	0	0.0%
GRADE		
Grade 9	27	42.9%
Grade 10	17	27.0%
Grade 11	8	12.7%
Grade 12	11	17.5%
REASON		
Health Reasons	1	1.6%
Pregnancy	0	0.0%
Marriage	0	0.0%
Choice of Work over School	2	3.2%
Substance Abuse	0	0.0%
Incarcerated, Not Enrolled	3	4.8%
Employment Necessary	0	0.0%
Unstable Home Environment	0	0.0%
Need to Care for Children	0	0.0%
Runaway	0	0.0%
Moved, No Records Requested	2	3.2%
Academic Problems	1	1.6%
Discipline Problems	0	0.0%
Long-term Suspension	1	1.6%
Attendance Problems	52	82.5%
Attendance/School	1	1.6%
Expulsion	0	0.0%
School Not Meeting Needs	0	0.0%
Other	0	0.0%

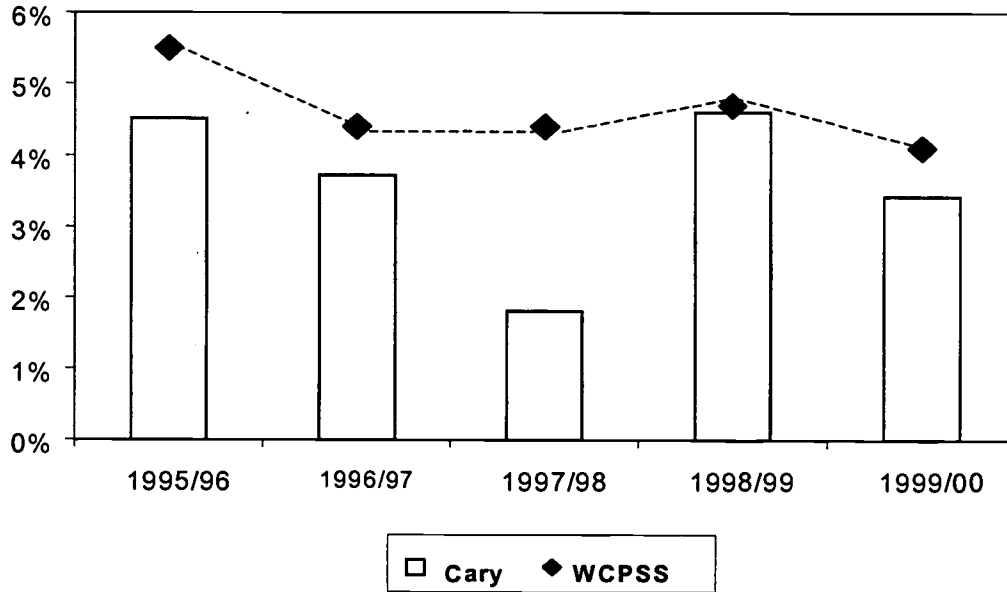
CARY HIGH SCHOOL

Total Dropouts: 63

Dropout Rate: 3.42%

Cary High School Dropouts by Race: 1999 – 2000

Cary H.S. and WCPSS Dropout Rates: 1995-



RACE	TOTAL	(n=64)
White	40	62.5%
Female	13	32.5%
Male	27	67.5%
Black	18	28.1%
Female	9	50.0%
Male	9	50.0%
Hispanic	3	4.7%
Female	3	100.0%
Male	0	0.0%
Asian	1	1.6%
Female	0	0.0%
Male	1	100.0%
Other	1	1.6%
Female	1	100.0%
Male	0	0.0%

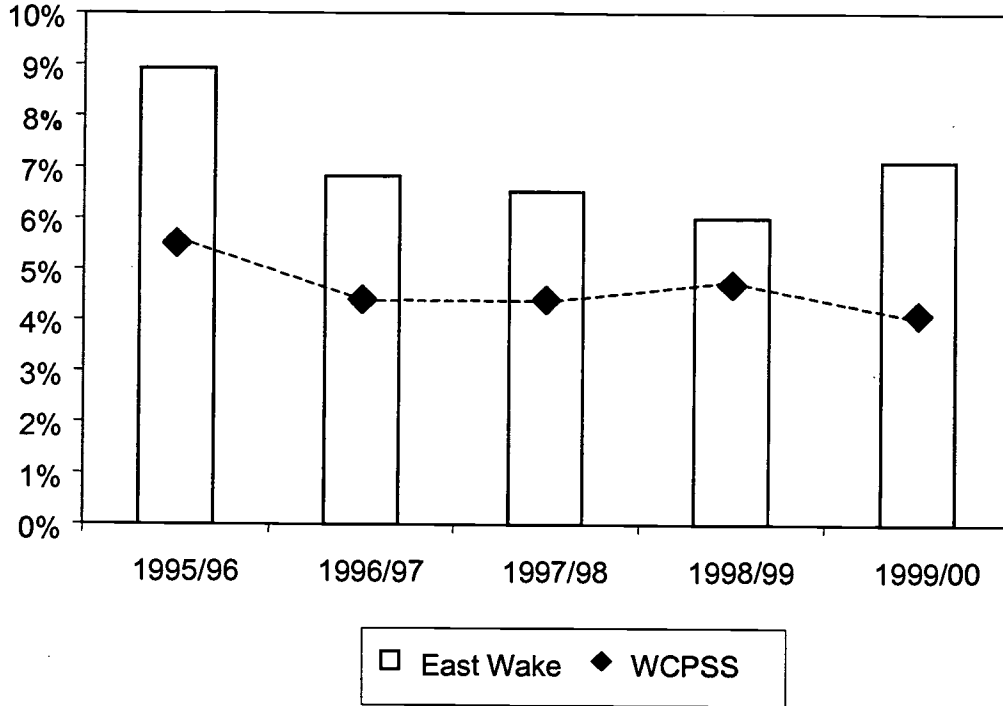
CARY HIGH SCHOOL
Dropouts by Gender, Age, Grade,
And Withdrawal Reason
1999-00

GENDER	Total	Percent
Female	27	42.2%
Male	37	57.8%
AGE		
Under 15	1	1.6%
15 years old	6	9.4%
16 years old	24	37.5%
17 years old	19	29.7%
18 years old	13	20.3%
19 years old	1	1.6%
Over 19	0	0.0%
GRADE		
Grade 9	18	28.1%
Grade 10	20	31.3%
Grade 11	19	29.7%
Grade 12	7	10.9%
REASON		
Health Reasons	0	0.0%
Pregnancy	0	0.0%
Marriage	0	0.0%
Choice of Work over School	5	7.8%
Substance Abuse	0	0.0%
Incarcerated, Not Enrolled	0	0.0%
Employment Necessary	0	0.0%
Unstable Home Environment	1	1.6%
Need to Care for Children	0	0.0%
Runaway	0	0.0%
Moved, No Records Requested	0	0.0%
Academic Problems	3	4.7%
Discipline Problems	0	0.0%
Long-term Suspension	9	14.1%
Attendance Problems	46	71.9%
Attendance/School	0	0.0%
Expulsion	0	0.0%
School Not Meeting Needs	0	0.0%
Other	0	0.0%

EAST WAKE HIGH SCHOOL

Total Dropouts: 129
Dropout Rate: 7.14%

**East Wake H.S. and WCPSS Dropout Rates:
1995-2000**



East Wake High School Dropouts by Race: 1999 - 2000

RACE	TOTAL	(n=129)
White	74	57.4%
Female	22	29.7%
Male	52	70.3%
Black	48	37.2%
Female	21	43.8%
Male	27	56.3%
Hispanic	5	3.9%
Female	1	20.0%
Male	4	80.0%
Asian	1	0.8%
Female	0	0.0%
Male	1	100.0%
Other	0	0.0%
Female	0	0.0%
Male	0	0.0%

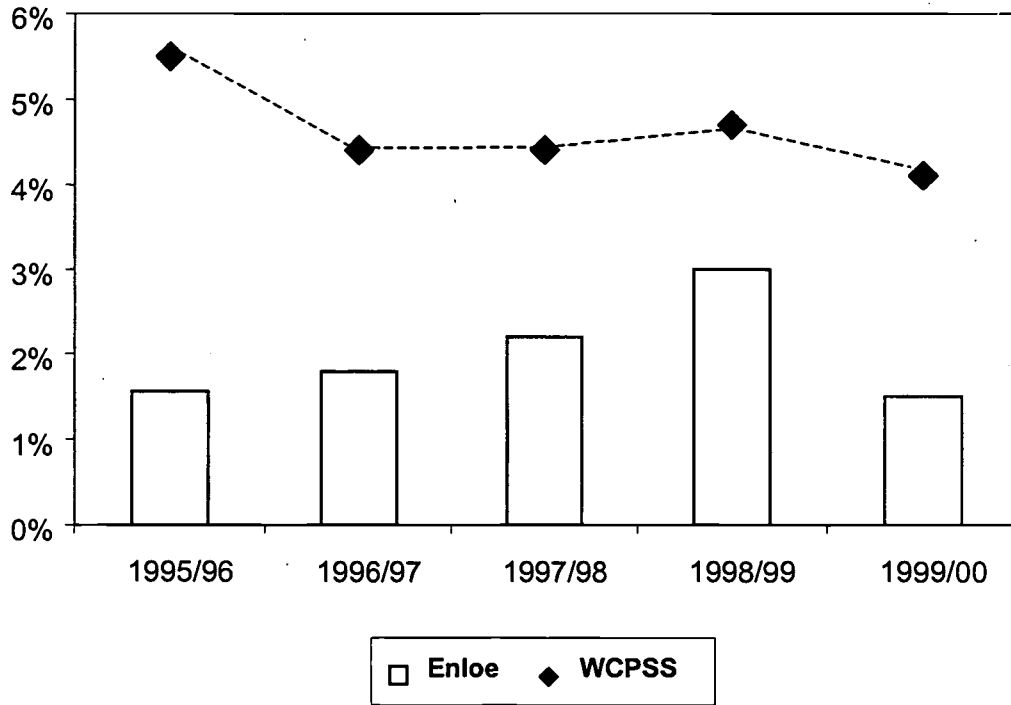
EAST WAKE HIGH SCHOOL
Dropouts by Gender, Age, Grade,
And Withdrawal Reason
1999-00

GENDER	Total	Percent
Female	84	65.1%
Male	45	34.9%
AGE		
Under 15	1	0.8%
15 years old	12	9.3%
16 years old	44	34.1%
17 years old	38	29.5%
18 years old	28	21.7%
19 years old	5	3.9%
Over 19	1	0.8%
GRADE		
Grade 9	61	47.3%
Grade 10	24	18.6%
Grade 11	28	21.7%
Grade 12	16	12.4%
REASON		
Health Reasons	0	0.0%
Pregnancy	0	0.0%
Marriage	0	0.0%
Choice of Work over School	0	0.0%
Substance Abuse	0	0.0%
Incarcerated, Not Enrolled	0	0.0%
Employment Necessary	0	0.0%
Unstable Home Environment	0	0.0%
Need to Care for Children	0	0.0%
Runaway	0	0.0%
Moved, No Records Requested	1	0.8%
Academic Problems	1	0.8%
Discipline Problems	0	0.0%
Long-term Suspension	14	10.9%
Attendance Problems	113	87.6%
Attendance/School	0	0.0%
Expulsion	0	0.0%
School Not Meeting Needs	0	0.0%
Other	0	0.0%

ENLOE HIGH SCHOOL

Total Dropouts: 35
Dropout Rate: 1.45%

**Enloe H.S. and WCPSS Dropout Rates:
1995-2000**



Enloe High School Dropouts by Race: 1999-00

RACE	TOTAL	(n=35)
White	13	37.1%
Female	6	46.2%
Male	7	53.8%
Black	19	54.3%
Female	2	10.5%
Male	17	89.5%
Hispanic	0	0.0%
Female	0	0.0%
Male	0	0.0%
Asian	2	5.7%
Female	1	50.0%
Male	1	50.0%
Other	1	2.9%
Female	0	0.0%
Male	1	100.0%

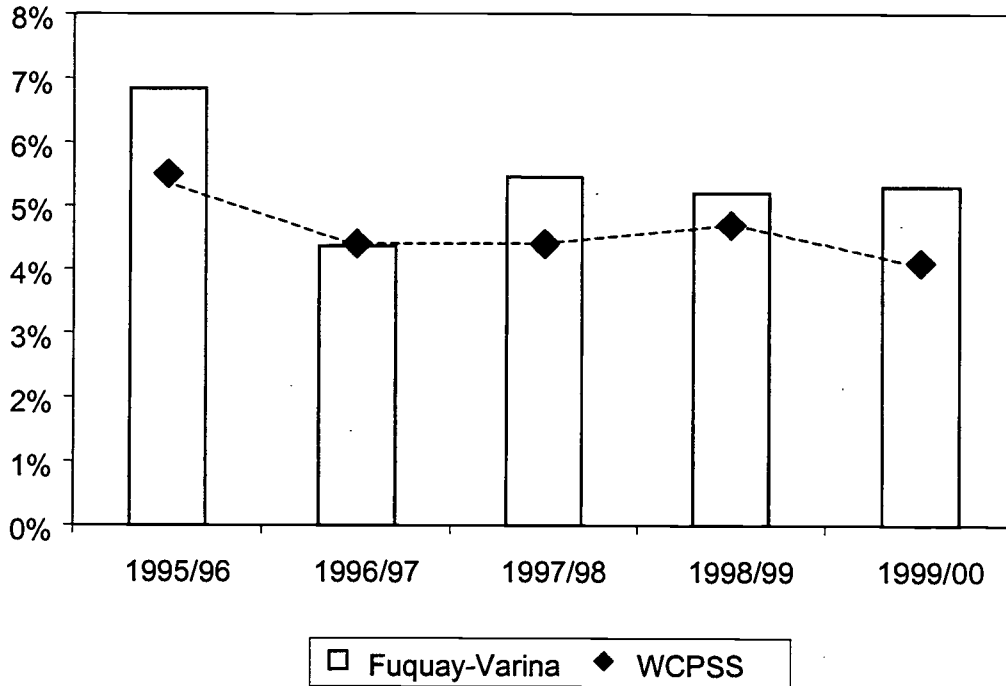
ENLOE HIGH SCHOOL
Dropouts by Gender, Age, Grade,
And Withdrawal Reason
1999-00

GENDER	Total	Percent
Female	9	25.7%
Male	26	74.3%
AGE		
Under 15	0	0.0%
15 years old	1	2.9%
16 years old	15	42.9%
17 years old	9	25.7%
18 years old	10	28.6%
19 years old	0	0.0%
Over 19	0	0.0%
GRADE		
Grade 9	13	37.1%
Grade 10	7	20.0%
Grade 11	8	22.9%
Grade 12	7	20.0%
REASON		
Health Reasons	0	0.0%
Pregnancy	0	0.0%
Marriage	0	0.0%
Choice of Work over School	0	0.0%
Substance Abuse	0	0.0%
Incarcerated, Not Enrolled	0	0.0%
Employment Necessary	1	2.9%
Unstable Home Environment	1	2.9%
Need to Care for Children	0	0.0%
Runaway	0	0.0%
Moved, No Records Requested	1	2.9%
Academic Problems	0	0.0%
Discipline Problems	0	0.0%
Long-term Suspension	4	11.4%
Attendance Problems	12	34.3%
Attendance/School	0	0.0%
Attendance/Personal	15	42.9%
Expulsion	0	0.0%
School Not Meeting Needs	0	0.0%
Other	1	2.9%

FUQUAY-VARINA HIGH SCHOOL

Total Dropouts: 87
Dropout Rate: 5.30%

**Fuquay-Varina H.S. and WCPSS Dropout
1995-2000**



Fuquay-Varina High School Dropouts by Race: 1999 - 2000

RACE	TOTAL	(n=87)
White	57	65.5%
Female	24	42.1%
Male	33	57.9%
Black	26	29.9%
Female	10	38.5%
Male	16	61.5%
Hispanic	3	3.4%
Female	0	0.0%
Male	3	100.0%
Asian	0	0.0%
Female	0	0.0%
Male	0	0.0%
Other	1	1.1%
Female	0	0.0%
Male	1	100.0%

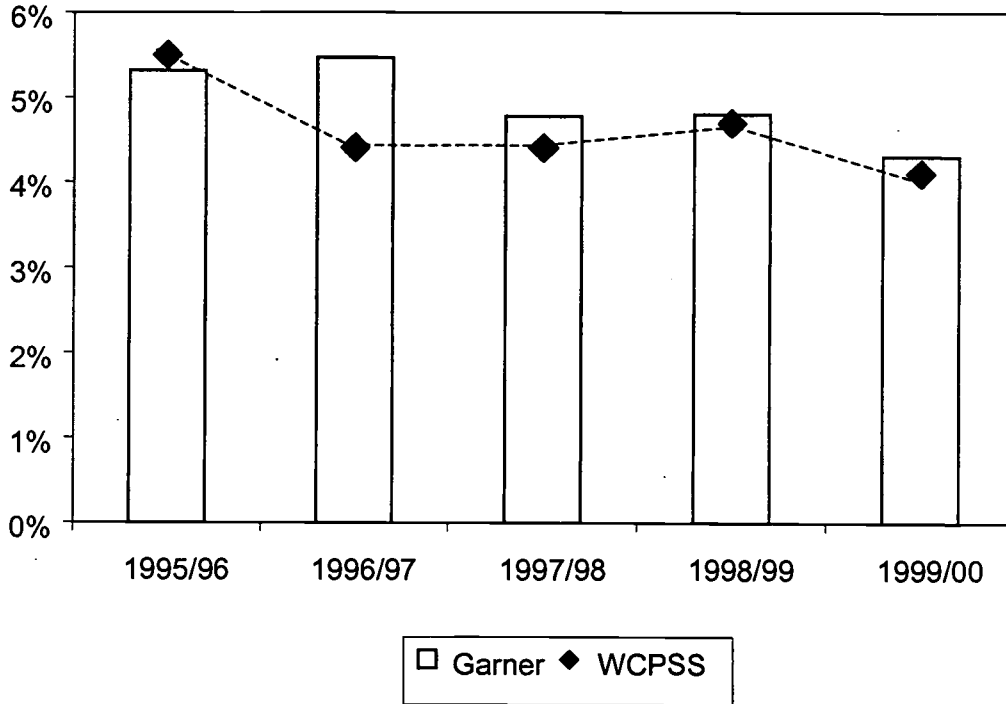
FUQUAY-VARINA HIGH SCHOOL
Dropouts by Gender, Age, Grade,
And Withdrawal Reason
1999-00

GENDER	Total	Percent
Female	35	40.2%
Male	52	59.8%
AGE		
Under 15	3	3.4%
15 years old	12	13.8%
16 years old	29	33.3%
17 years old	22	25.3%
18 years old	20	23.0%
19 years old	1	1.1%
Over 19	0	0.0%
GRADE		
Grade 9	45	51.7%
Grade 10	16	18.4%
Grade 11	15	17.2%
Grade 12	11	12.6%
REASON		
Health Reasons	0	0.0%
Pregnancy	0	0.0%
Marriage	0	0.0%
Choice of Work over School	0	0.0%
Substance Abuse	2	2.3%
Incarcerated, Not Enrolled	0	0.0%
Employment Necessary	0	0.0%
Unstable Home Environment	0	0.0%
Need to Care for Children	0	0.0%
Runaway	0	0.0%
Moved, No Records Requested	0	0.0%
Academic Problems	2	2.3%
Discipline Problems	0	0.0%
Long-term Suspension	4	4.6%
Attendance Problems	74	85.1%
Attendance/School	0	0.0%
Attendance/Work	5	5.7%
Expulsion	0	0.0%
School Not Meeting Needs	0	0.0%
Other	0	0.0%

GARNER HIGH SCHOOL

Total Dropouts: 88
Dropout Rate: 4.32%

**Garner H.S. and WCPSS Dropout
1995-2000**



Garner High School Dropouts by Race: 1999 - 2000

RACE	TOTAL	(n=88)
White	51	58.0%
Female	21	41.2%
Male	30	58.8%
Black	31	35.2%
Female	10	32.3%
Male	21	67.7%
Hispanic	4	4.5%
Female	3	75.0%
Male	1	25.0%
Asian	0	0.0%
Female	0	0.0%
Male	0	0.0%
Other	2	2.3%
Female	1	50.0%
Male	1	50.0%

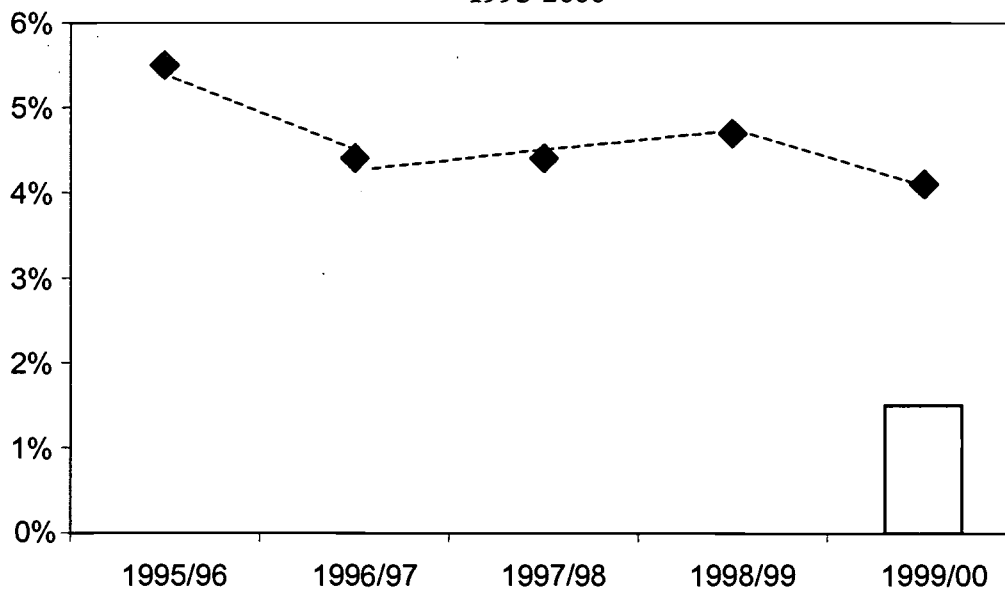
GARNER HIGH SCHOOL
Dropouts by Gender, Age, Grade,
And Withdrawal Reason
1999-00

GENDER	Total	Percent
Female	35	39.8%
Male	53	60.2%
AGE		
Under 15	0	0.0%
15 years old	11	12.5%
16 years old	33	37.5%
17 years old	23	26.1%
18 years old	15	17.0%
19 years old	4	4.5%
Over 19	2	2.3%
GRADE		
Grade 9	40	45.5%
Grade 10	19	21.6%
Grade 11	17	19.3%
Grade 12	12	13.6%
REASON		
Health Reasons	0	0.0%
Pregnancy	3	3.4%
Marriage	0	0.0%
Choice of Work over School	6	6.8%
Substance Abuse	0	0.0%
Incarcerated, Not Enrolled	0	0.0%
Employment Necessary	0	0.0%
Unstable Home Environment	0	0.0%
Need to Care for Children	0	0.0%
Runaway	0	0.0%
Moved, No Records Requested	0	0.0%
Academic Problems	1	1.1%
Discipline Problems	1	1.1%
Long-term Suspension	7	8.0%
Attendance Problems	45	51.1%
Attendance/School	11	12.5%
Attendance/Personal	9	10.2%
Attendance/Work	1	1.1%
Attendance/Family	2	2.3%
Expulsion	1	1.1%
School Not Meeting Needs	0	0.0%
Other	1	1.1%

GREEN HOPE HIGH SCHOOL

Total Dropouts: 16
Dropout Rate: 1.46%

**Green Hope H.S. and WCPSS Dropout
1995-2000**



Green Hope WCPSS
 Green Hope H. S. opened 1999-2000

Green Hope High School Dropouts by Race: 1999 - 2000

RACE	TOTAL	(n=16)
White	6	37.5%
Female	0	0.0%
Male	6	100.0%
Black	6	37.5%
Female	1	16.7%
Male	6	100.0%
Hispanic	2	12.5%
Female	1	0.0%
Male	1	0.0%
Asian	1	6.3%
Female	1	100.0%
Male	0	0.0%
Other	1	6.3%
Female	1	100.0%
Male	0	0.0%

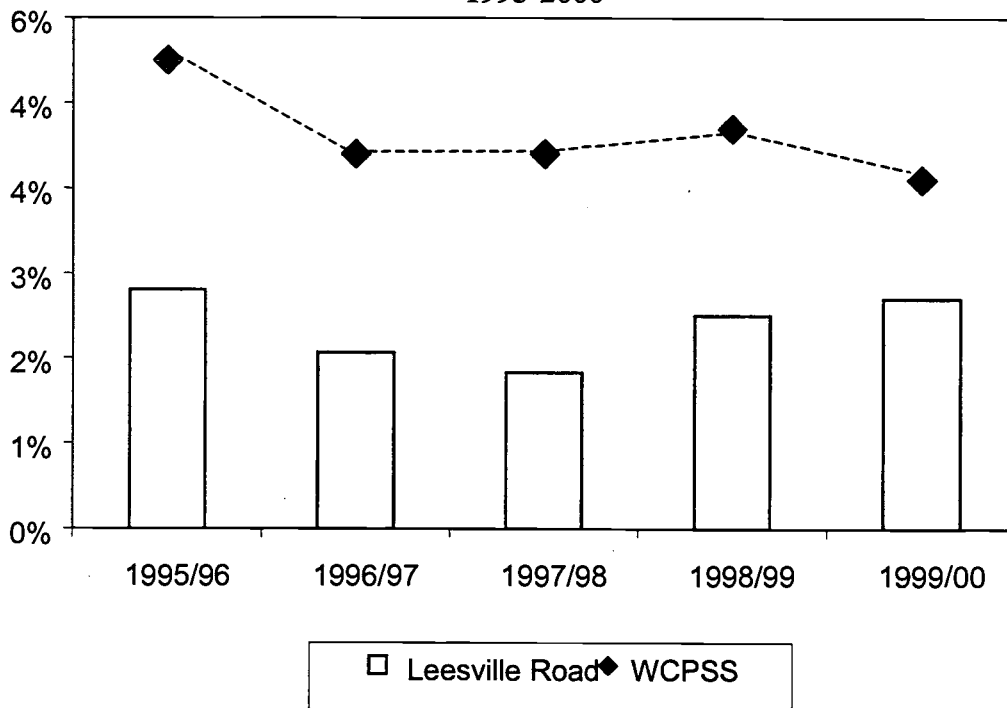
GREEN HOPE HIGH SCHOOL
Dropouts by Gender, Age, Grade,
And Withdrawal Reason
1999-00

GENDER	Total	Percent
Female	4	25.0%
Male	12	75.0%
AGE		
Under 15	1	6.3%
15 years old	4	25.0%
16 years old	7	43.8%
17 years old	4	25.0%
18 years old	0	0.0%
19 years old	0	0.0%
Over 19	0	0.0%
GRADE		
Grade 9	10	62.5%
Grade 10	6	37.5%
Grade 11	0	0.0%
Grade 12	0	0.0%
REASON		
Health Reasons	0	0.0%
Pregnancy	0	0.0%
Marriage	0	0.0%
Choice of Work over School	0	0.0%
Substance Abuse	0	0.0%
Incarcerated, Not Enrolled	0	0.0%
Employment Necessary	0	0.0%
Unstable Home Environment	0	0.0%
Need to Care for Children	0	0.0%
Runaway	0	0.0%
Moved, No Records Requested	0	0.0%
Academic Problems	0	0.0%
Discipline Problems	0	0.0%
Long-term Suspension	1	6.3%
Attendance Problems	15	93.8%
Attendance/School	0	0.0%
Attendance/Personal	0	0.0%
Expulsion	0	0.0%
School Not Meeting Needs	0	0.0%
Other	0	0.0%

LEESVILLE ROAD HIGH SCHOOL

Total Dropouts: 56
Dropout Rate: 2.73%

**Leesville Road H.S. and WCPSS Dropout
1995-2000**



Leesville Road High School Dropouts by Race: 1999 - 2000

RACE	TOTAL	(n=56)
White	30	53.6%
Female	11	36.7%
Male	19	63.3%
Black	19	33.9%
Female	7	36.8%
Male	12	63.2%
Hispanic	4	7.1%
Female	2	50.0%
Male	2	50.0%
Asian	2	3.6%
Female	0	0.0%
Male	2	100.0%
Other	1	1.8%
Female	1	100.0%
Male	0	0.0%

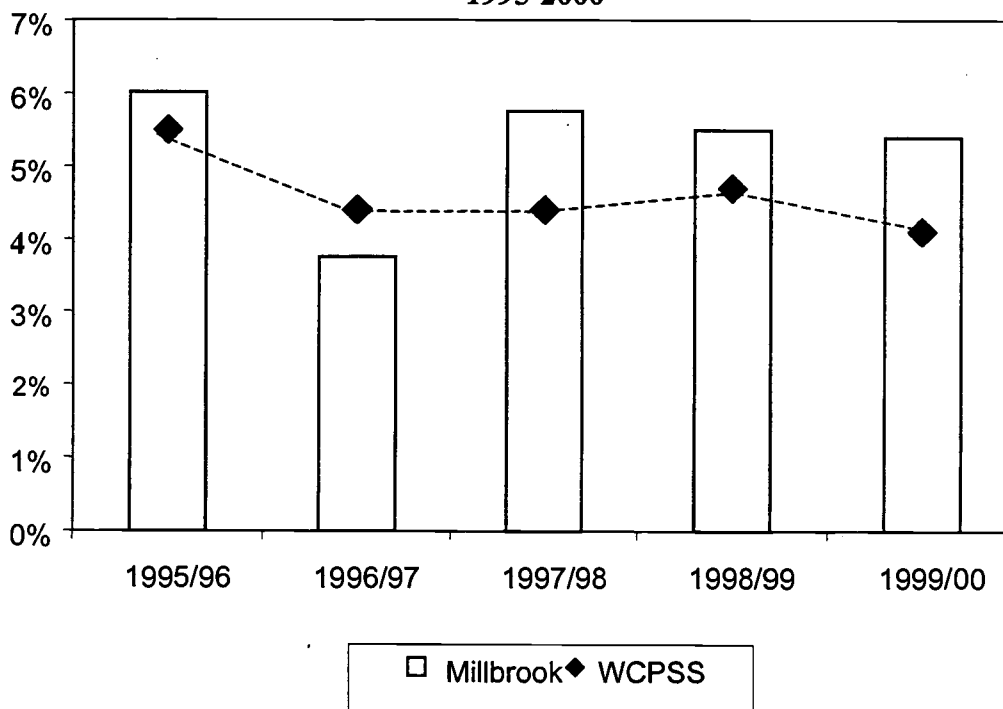
LEESVILLE ROAD HIGH SCHOOL
Dropouts by Gender, Age, Grade,
And Withdrawal Reason
1999-00

GENDER	Total	Percent
Female	23	41.1%
Male	33	58.9%
AGE		
Under 15	5	8.9%
15 years old	9	16.1%
16 years old	17	30.4%
17 years old	14	25.0%
18 years old	10	17.9%
19 years old	1	1.8%
Over 19	0	0.0%
GRADE		
Grade 9	26	46.4%
Grade 10	15	26.8%
Grade 11	9	16.1%
Grade 12	6	10.7%
REASON		
Health Reasons	0	0.0%
Pregnancy	0	0.0%
Marriage	0	0.0%
Choice of Work over School	0	0.0%
Substance Abuse	0	0.0%
Incarcerated, Not Enrolled	0	0.0%
Employment Necessary	1	1.8%
Unstable Home Environment	1	1.8%
Need to Care for Children	0	0.0%
Runaway	0	0.0%
Moved, No Records Requested	0	0.0%
Academic Problems	1	1.8%
Discipline Problems	0	0.0%
Long-term Suspension	1	1.8%
Attendance Problems	52	92.9%
Attendance/School	0	0.0%
Attendance/Personal	0	0.0%
Expulsion	0	0.0%
School Not Meeting Needs	0	0.0%
Other	0	0.0%

MILLBROOK HIGH SCHOOL

Total Dropouts: 106
Dropout Rate: 5.41%

**Millbrook H.S. and WCPSS Dropout
1995-2000**



Millbrook High School Dropouts by Race: 1999 - 2000

RACE	TOTAL	(n=106)
White	40	37.7%
Female	11	27.5%
Male	29	72.5%
Black	34	32.1%
Female	15	44.1%
Male	19	55.9%
Hispanic	21	19.8%
Female	9	42.9%
Male	12	57.1%
Asian	7	6.6%
Female	3	42.9%
Male	4	57.1%
Other	4	3.8%
Female	3	75.0%
Male	1	25.0%

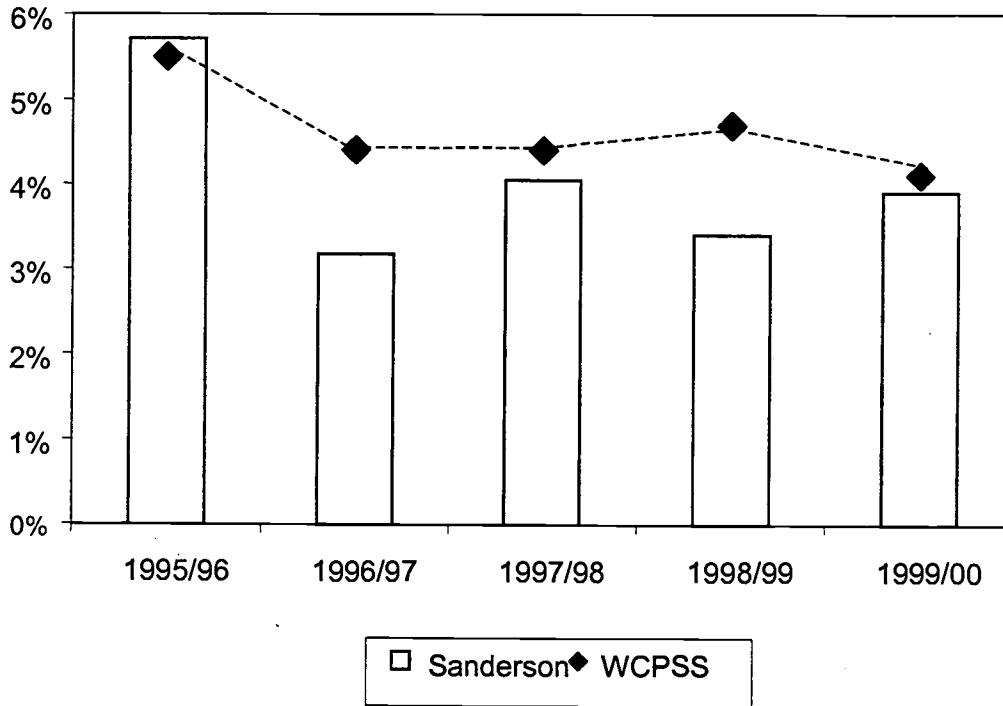
MILLBROOK HIGH SCHOOL
Dropouts by Gender, Age, Grade,
And Withdrawal Reason
1999-00

GENDER	Total	Percent
Female	41	38.7%
Male	65	61.3%
AGE		
Under 15	2	1.9%
15 years old	12	11.3%
16 years old	28	26.4%
17 years old	38	35.8%
18 years old	21	19.8%
19 years old	5	4.7%
Over 19	0	0.0%
GRADE		
Grade 9	45	42.5%
Grade 10	27	25.5%
Grade 11	18	17.0%
Grade 12	16	15.1%
REASON		
Health Reasons	0	0.0%
Pregnancy	0	0.0%
Marriage	1	0.9%
Choice of Work over School	9	8.5%
Substance Abuse	0	0.0%
Incarcerated, Not Enrolled	0	0.0%
Employment Necessary	0	0.0%
Unstable Home Environment	0	0.0%
Need to Care for Children	0	0.0%
Runaway	0	0.0%
Moved, No Records Requested	1	0.9%
Academic Problems	19	17.9%
Discipline Problems	0	0.0%
Long-term Suspension	5	4.7%
Attendance Problems	2	1.9%
Attendance/School	45	42.5%
Attendance/Personal	19	17.9%
Expulsion	0	0.0%
School Not Meeting Needs	0	0.0%
Other	5	4.7%

SANDERSON HIGH SCHOOL

Total Dropouts: 80
Dropout Rate: 3.94%

**Sanderson H.S. and WCPSS Dropout
1995-2000**



Sanderson High School Dropouts by Race: 1999 - 2000

RACE	TOTAL	(n=80)
White	33	41.3%
Female	18	54.5%
Male	15	45.5%
Black	35	43.8%
Female	17	48.6%
Male	18	51.4%
Hispanic	11	13.8%
Female	1	9.1%
Male	10	90.9%
Asian	1	1.3%
Female	1	100.0%
Male	0	0.0%
Other	0	0.0%
Female	0	0.0%
Male	0	0.0%

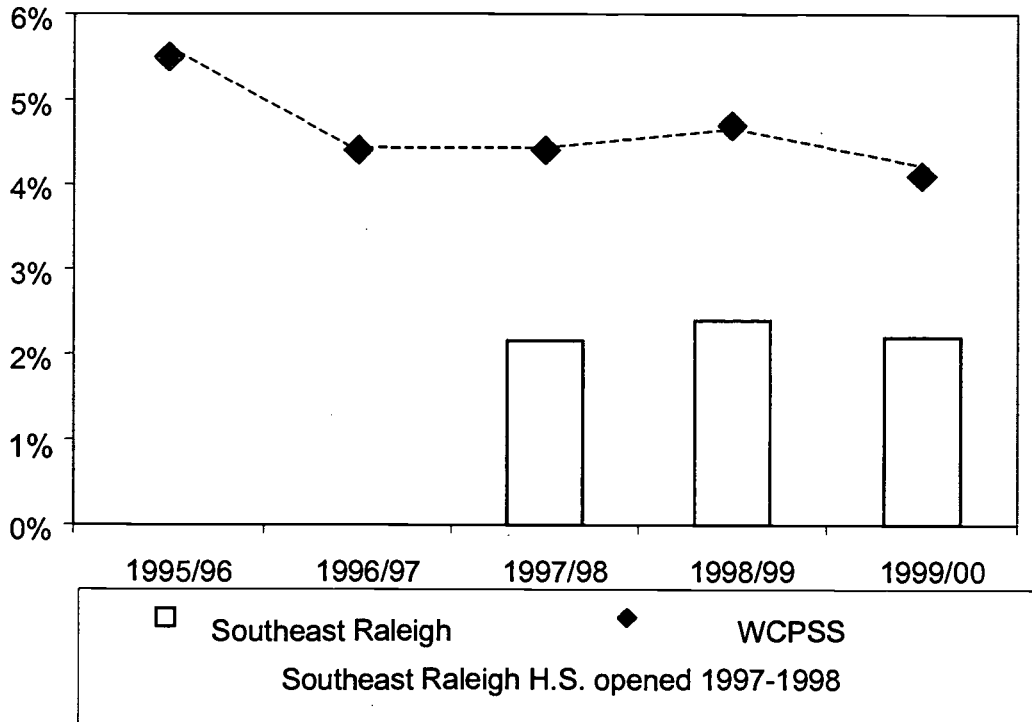
SANDERSON HIGH SCHOOL
Dropouts by Gender, Age, Grade,
And Withdrawal Reason
1999-00

GENDER	Total	Percent
Female	37	46.3%
Male	43	53.8%
AGE		
Under 15	0	0.0%
15 years old	5	6.3%
16 years old	28	35.0%
17 years old	20	25.0%
18 years old	17	21.3%
19 years old	9	11.3%
Over 19	1	1.3%
GRADE		
Grade 9	29	36.3%
Grade 10	20	25.0%
Grade 11	19	23.8%
Grade 12	12	15.0%
REASON		
Health Reasons	1	1.3%
Pregnancy	0	0.0%
Marriage	0	0.0%
Choice of Work over School	2	2.5%
Substance Abuse	0	0.0%
Incarcerated, Not Enrolled	0	0.0%
Employment Necessary	0	0.0%
Unstable Home Environment	0	0.0%
Need to Care for Children	0	0.0%
Runaway	1	1.3%
Moved, No Records Requested	1	1.3%
Academic Problems	0	0.0%
Discipline Problems	0	0.0%
Long-term Suspension	5	6.3%
Attendance Problems	6	7.5%
Attendance/School	59	73.8%
Attendance/Personal	1	1.3%
Expulsion	0	0.0%
School Not Meeting Needs	0	0.0%
Other	4	5.0%

SOUTHEAST RALEIGH HIGH SCHOOL

Total Dropouts: 42
Dropout Rate: 2.16%

**Southeast Raleigh H.S. and WCPSS Dropout
1995-2000**



Southeast Raleigh High School Dropouts by Race: 1999 - 2000

RACE	TOTAL	(n=42)
White	21	50.0%
Female	11	52.4%
Male	10	47.6%
Black	21	50.0%
Female	5	23.8%
Male	16	76.2%
Hispanic	0	0.0%
Female	0	0.0%
Male	0	0.0%
Asian	0	0.0%
Female	0	0.0%
Male	0	0.0%
Other	0	0.0%
Female	0	0.0%
Male	0	0.0%

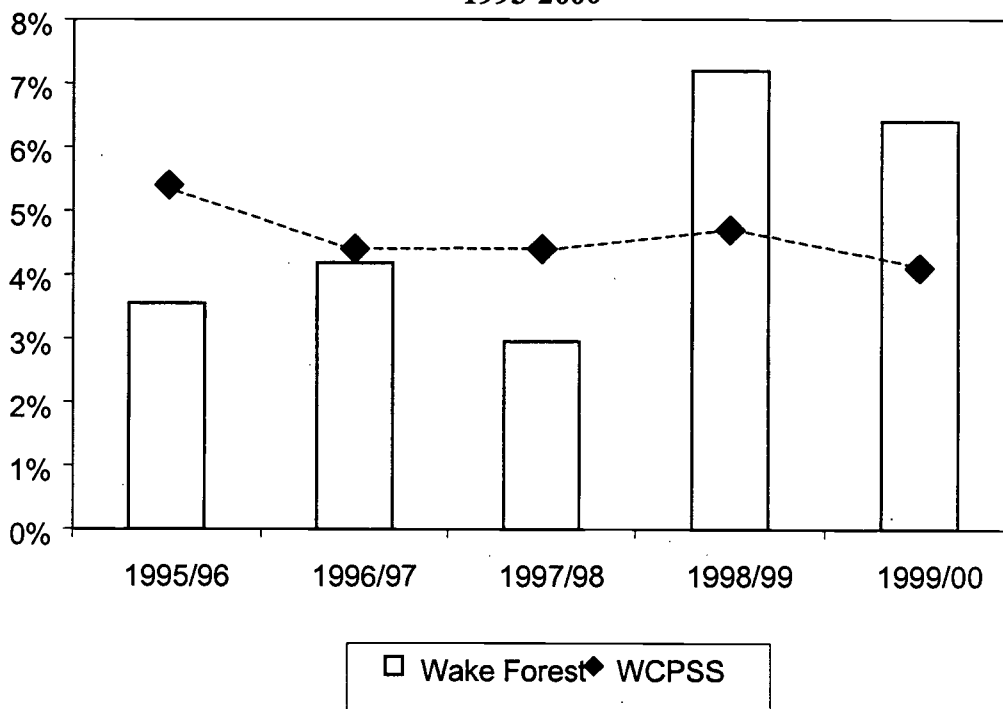
SOUTHEAST RALEIGH HIGH SCHOOL
Dropouts by Gender, Age, Grade,
And Withdrawal Reason
1999-00

GENDER	Total	Percent
Female	16	38.1%
Male	26	61.9%
AGE		
Under 15	1	2.4%
15 years old	1	2.4%
16 years old	7	16.7%
17 years old	18	42.9%
18 years old	13	31.0%
19 years old	2	4.8%
Over 19	0	0.0%
GRADE		
Grade 9	10	23.8%
Grade 10	8	19.0%
Grade 11	16	38.1%
Grade 12	8	19.0%
REASON		
Health Reasons	0	0.0%
Pregnancy	0	0.0%
Marriage	0	0.0%
Choice of Work over School	0	0.0%
Substance Abuse	0	0.0%
Incarcerated, Not Enrolled	0	0.0%
Employment Necessary	0	0.0%
Unstable Home Environment	0	0.0%
Need to Care for Children	0	0.0%
Runaway	0	0.0%
Moved, No Records Requested	0	0.0%
Academic Problems	9	21.4%
Discipline Problems	0	0.0%
Long-term Suspension	2	4.8%
Attendance Problems	31	73.8%
Attendance/School	0	0.0%
Attendance/Personal	0	0.0%
Expulsion	0	0.0%
School Not Meeting Needs	0	0.0%
Other	0	0.0%

WAKE FOREST-ROLESVILLE HIGH SCHOOL

Total Dropouts: 87
Dropout Rate: 6.40%

**Wake Forest H.S. and WCPSS Dropout
1995-2000**



Wake Forest-Rolesville High School Dropouts by Race: 1999 - 2000

RACE	TOTAL	(n=87)
White	60	69.0%
Female	30	50.0%
Male	30	50.0%
Black	23	26.4%
Female	10	43.5%
Male	13	56.5%
Hispanic	1	1.1%
Female	1	100.0%
Male	0	0.0%
Asian	1	1.1%
Female	1	100.0%
Male	0	0.0%
Other	2	2.3%
Female	0	0.0%
Male	2	100.0%

WAKE FOREST-ROLESVILLE HIGH SCHOOL
Dropouts by Gender, Age, Grade,
And Withdrawal Reason
1999-00

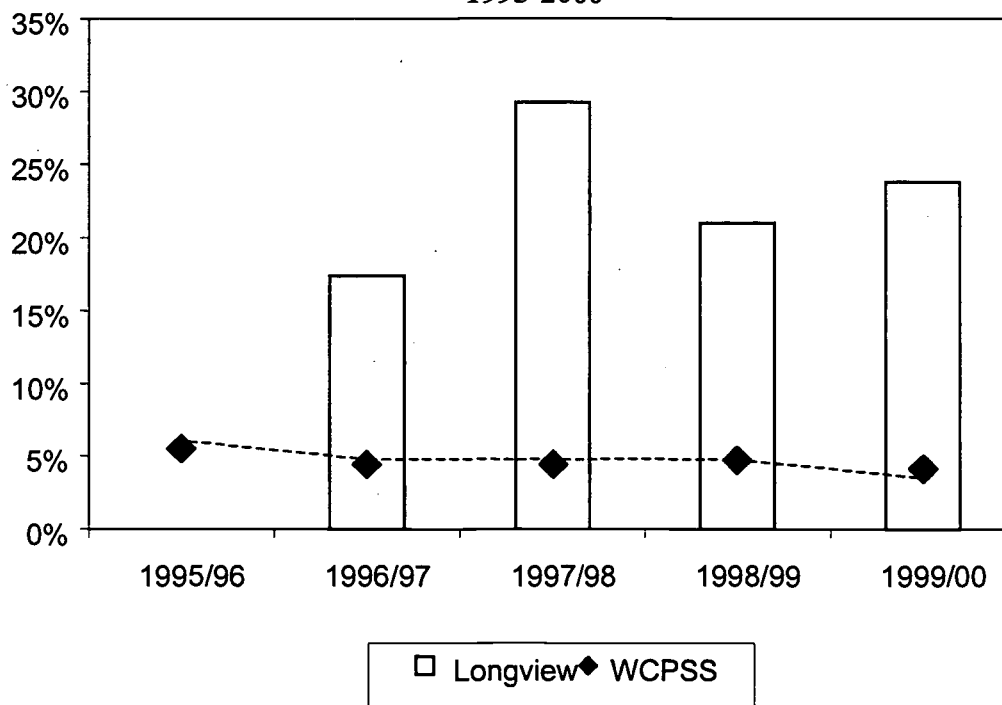
GENDER	Total	Percent
Female	42	48.3%
Male	45	51.7%
AGE		
Under 15	2	2.3%
15 years old	4	4.6%
16 years old	26	29.9%
17 years old	27	31.0%
18 years old	23	26.4%
19 years old	5	5.7%
Over 19	0	0.0%
GRADE		
Grade 9	32	36.8%
Grade 10	13	14.9%
Grade 11	22	25.3%
Grade 12	20	23.0%
REASON		
Health Reasons	0	0.0%
Pregnancy	0	0.0%
Marriage	0	0.0%
Choice of Work over School	0	0.0%
Substance Abuse	0	0.0%
Incarcerated, Not Enrolled	1	1.1%
Employment Necessary	0	0.0%
Unstable Home Environment	1	1.1%
Need to Care for Children	0	0.0%
Runaway	0	0.0%
Moved, No Records Requested	1	1.1%
Academic Problems	18	20.7%
Discipline Problems	0	0.0%
Long-term Suspension	2	2.3%
Attendance Problems	47	54.0%
Attendance/School	1	1.1%
Attendance/Personal	16	18.4%
Expulsion	0	0.0%
School Not Meeting Needs	0	0.0%
Other	0	0.0%

LONGVIEW HIGH SCHOOL

Total Dropouts: 10

Dropout Rate: 23.8%

**Longview School and WCPSS Dropout
1995-2000**



Longview High School Dropouts by Race: 1999 - 2000

RACE	TOTAL	(n=10)
White	2	20.0%
Female	0	0.0%
Male	2	100.0%
Black	8	80.0%
Female	0	0.0%
Male	8	100.0%
Hispanic	0	0.0%
Female	0	0.0%
Male	0	0.0%
Asian	0	0.0%
Female	0	0.0%
Male	0	0.0%
Other	0	0.0%
Female	0	0.0%
Male	0	0.0%

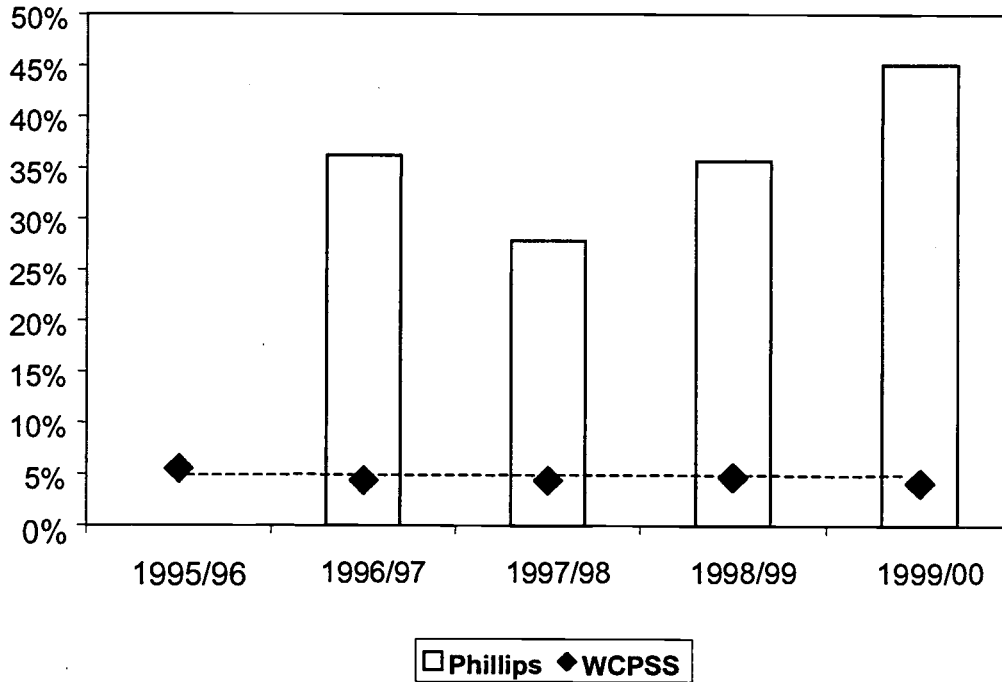
LONGVIEW HIGH SCHOOL
Dropouts by Gender, Age, Grade,
And Withdrawal Reason
1999-00

GENDER	Total	Percent
Female	0	0.0%
Male	10	100.0%
AGE		
Under 15	0	0.0%
15 years old	2	20.0%
16 years old	3	30.0%
17 years old	5	50.0%
18 years old	0	0.0%
19 years old	0	0.0%
Over 19	0	0.0%
GRADE		
Grade 9	5	50.0%
Grade 10	4	40.0%
Grade 11	1	10.0%
Grade 12	0	0.0%
REASON		
Health Reasons	0	0.0%
Pregnancy	0	0.0%
Marriage	0	0.0%
Choice of Work over School	0	0.0%
Substance Abuse	0	0.0%
Incarcerated, Not Enrolled	0	0.0%
Employment Necessary	0	0.0%
Unstable Home Environment	0	0.0%
Need to Care for Children	0	0.0%
Runaway	0	0.0%
Moved, No Records Requested	1	10.0%
Academic Problems	0	0.0%
Discipline Problems	0	0.0%
Long-term Suspension	0	0.0%
Attendance Problems	5	50.0%
Attendance/School	2	20.0%
Attendance/Work	1	10.0%
Expulsion	0	0.0%
School Not Meeting Needs	0	0.0%
Other	1	10.0%

MARY PHILLIPS HIGH SCHOOL

Total Dropouts: 108
Dropout Rate: 45.09%

**Phillips H.S. and WCPSS Dropout
1995-2000**



Phillips High School Dropouts by Race: 1999 - 2000

RACE	TOTAL	(n=108)
White	26	24.1%
Female	10	38.5%
Male	16	61.5%
Black	77	71.3%
Female	54	70.1%
Male	23	29.9%
Hispanic	0	0.0%
Female	0	0.0%
Male	0	0.0%
Asian	2	1.9%
Female	2	100.0%
Male	0	0.0%
Other	0	0.0%
Female	0	0.0%
Male	0	0.0%

MARY PHILLIPS HIGH SCHOOL
Dropouts by Gender, Age, Grade,
And Withdrawal Reason
1999-00

GENDER	Total	Percent
Female	68	63.0%
Male	40	37.0%
AGE		
Under 15	1	0.9%
15 years old	6	5.6%
16 years old	21	19.4%
17 years old	35	32.4%
18 years old	32	29.6%
19 years old	10	9.3%
Over 19	3	2.8%
GRADE		
Grade 9	35	32.4%
Grade 10	26	24.1%
Grade 11	31	28.7%
Grade 12	16	14.8%
REASON		
Health Reasons	1	0.9%
Pregnancy	4	3.7%
Marriage	0	0.0%
Choice of Work over School	31	28.7%
Substance Abuse	0	0.0%
Incarcerated, Not Enrolled	3	2.8%
Employment Necessary	0	0.0%
Unstable Home Environment	1	0.9%
Need to Care for Children	0	0.0%
Runaway	1	0.9%
Moved, No Records Requested	5	4.6%
Academic Problems	1	0.9%
Discipline Problems	0	0.0%
Long-term Suspension	1	0.9%
Attendance Problems	1	0.9%
Attendance/School	1	0.9%
Attendance/Personal	50	46.3%
Attendance/Family	8	7.4%
Expulsion	0	0.0%
School Not Meeting Needs	0	0.0%
Other	0	0.0%

1999 - 2000 Dropout Report

Contributing Staff

Nancy Baenen
Director of Accountability

David F. Scudder
Senior Administrator

Stephanie D. Carwile
Evaluation Specialist

Donna Knott
Information Systems Technician

February 2000
E&R Report No. 01.23

**Department of Evaluation and Research
Wake County Public School System**



U.S. Department of Education
Office of Educational Research and Improvement (OERI)
National Library of Education (NLE)
Educational Resources Information Center (ERIC)



NOTICE

Reproduction Basis



This document is covered by a signed "Reproduction Release (Blanket)" form (on file within the ERIC system), encompassing all or classes of documents from its source organization and, therefore, does not require a "Specific Document" Release form.



This document is Federally-funded, or carries its own permission to reproduce, or is otherwise in the public domain and, therefore, may be reproduced by ERIC without a signed Reproduction Release form (either "Specific Document" or "Blanket").

EFF-089 (3/2000)