

DOCUMENT RESUME

ED 449 829

JC 010 140

TITLE Western Iowa Tech Community College Fact Book, 1999-2000.
INSTITUTION Western Iowa Tech, Sioux City.
PUB DATE 2000-00-00
NOTE 125p.
PUB TYPE Reports - Descriptive (141)
EDRS PRICE MF01/PC05 Plus Postage.
DESCRIPTORS Academic Achievement; Community Colleges; *Educational Assessment; *Educational Finance; *Enrollment; *Institutional Characteristics; *Outcomes of Education; Two Year Colleges

ABSTRACT

This is Western Iowa Technical Community College's Fact Book for the academic year 1999-2000. It provides general information, enrollment trends, a student profile, financial information, and a section on student success. Data presented in this document are drawn from a variety of sources, including the 10-day enrollment reports, IPEDS, College Student Aid Commission, the Common Data Set, and the Iowa Department of Education. Highlights include: (1) Western Iowa Tech's mission is to provide quality education and to economically enhance the communities it serves; (2) the college was organized in 1966; (3) fall headcount for 1999 totaled 4,171 (1,763 full-time and 2,408 part-time students); (4) total minority enrollment was 351 (95 Asian, 70 black, 135 Hispanic, and 51 Native American); (5) females composed 54% of total headcount; (6) total revenue was \$18,789,777, 41% of which came from state general aid and 37% of which was from tuition and fees; (7) total expenditures was \$18,444,806, 30% of which was toward vocational education; and (8) the number of graduates from 1998-99 was 612, with a placement rate of 96%. (EMH)

1999-2000 Fact Book

Western Iowa Tech Community College
4647 Stone Avenue
Sioux City, Iowa 51102-5199

U.S. DEPARTMENT OF EDUCATION
Office of Educational Research and Improvement
EDUCATIONAL RESOURCES INFORMATION
CENTER (ERIC)

This document has been reproduced as
received from the person or organization
originating it.

Minor changes have been made to
improve reproduction quality.

Points of view or opinions stated in this
document do not necessarily represent
official OERI position or policy.

PERMISSION TO REPRODUCE AND
DISSEMINATE THIS MATERIAL HAS
BEEN GRANTED BY

P. E. DUNKER

TO THE EDUCATIONAL RESOURCES
INFORMATION CENTER (ERIC)

1

IC 01970

Fact Book: 1999-2000

Western Iowa Tech Community College
P.O. Box 5199
Sioux City, Iowa 51102-5199
<http://www.witcc.com>

This is the second edition of the Fact Book for Western Iowa Tech Community College. It provides general information about the college along with background information about the history and structure of the institution. The intent is to provide information that is up-to-date for the 1999-2000 academic year, presented within an historical context.

Data presented in this document are drawn from a variety of sources, the most common including the 10-day enrollment reports, IPEDS, College Student Aid Commission, the Common Data Set, and the Iowa Department of Education. This edition also incorporates results from the WITCC Employer Survey, the WITCC Community Survey, the Student Satisfaction Inventory (Noel-Levitz), and the Faces of the Future (American Association of Community Colleges/ACT). In several instances, numbers reported appear to be in conflict, which is the result of different data definitions. On each page, every attempt has been made to use comparable data, and for this reason, sources are cited for each table.

*This publication was developed in the
Office of Institutional Effectiveness
Joseph Nitzke, Director
June 14, 2000*

*For additional information, contact
Mary Ellen Wacker
Director of Institutional Research
712-274-6400 ext. 1422
wackerm@witcc.com*

Fact Book: 1999-2000
is available online at
<http://www.witcc.com/facts/index.htm>

Western Iowa Tech Community College does not discriminate among students or applicants on the basis of race, creed, color, religion, national origin, sex, or disability. The college makes no distinction in any way among job applicants or employees on the basis of race, creed, color, religion, national origin, sex, or disability.

General Information
Western Iowa Tech Community College

Fact Book 1999-2000

ii

Table of Contents

<i>General Information</i>	<i>1</i>
<i>Enrollment Trends</i>	<i>12</i>
<i>Student Profile</i>	<i>29</i>
<i>Financial Information</i>	<i>46</i>
<i>Student Success</i>	<i>56</i>

General Information

Contents

- 2 Mission Statement
- 3 College History
- 5 Organizational Chart
- 6 Governance & Administration
- 7 Organizations
- 8 Programs of Study
- 9 Accreditation
- 10 College District & Campus Locations
- 11 Important Facts: Iowa Community Colleges

Mission

Mission Statement

As a comprehensive community college, our mission is to provide quality education and to economically enhance the communities we serve. To accomplish the mission, the College will:

- Provide post-secondary occupational education leading to diplomas, certificates, and the Associate of Applied Science degree.
- Provide post-secondary general and transfer education leading to the Associate of Arts or Associate of Science degree.
- Provide basic education for the improvement of academic skills and/or leading to a General Educational Development (GED) diploma.
- Provide economic development programs and assistance.
- Provide lifelong community and continuing education.
- Develop partnerships with educational institutions, businesses, governmental agencies, and communities.
- Develop programs for participation in the global economy.
- Provide student development services to improve the academic success of our diverse student population.
- Provide opportunities for our students to participate in leadership development and in community, social, and recreational activities.
- Maintain a learning and working environment that is safe, clean, and comfortable.
- Provide student and employee support services to operate the College.

Values and Guiding Principles

- Student Learning. We value the personal, intellectual, and occupational growth of our students.
- Quality. We are committed to quality instruction and services to maximize student success and employer satisfaction.
- Access. We provide access to the College by addressing student needs related to time, location, and cost.
- Diversity. We respect individual differences and strive to meet the needs in our diverse communities.
- Lifelong Learning. We promote lifelong learning for personal and professional development.
- Academic Freedom. We are dedicated to the free exchange of ideas and information which promotes our growth as an educational institution.
- Shared Governance. We believe in shared governance and encourage our employees and students to contribute to the development of the College.
- Efficiency and Effectiveness. We are committed to continuous improvement and fiscal responsibility within our educational programs and College services.
- Dedication. We value a workplace which promotes mutual respect and cooperation between the College and the employees.
- Professional Integrity. We are committed to high standards of ethics and integrity in our relationships, our professional activities, and the performance of our duties.

College History

Western Iowa Tech Community College is a publicly supported comprehensive community college serving the Iowa counties of Cherokee, Crawford, Ida, Monona, Plymouth, and Woodbury, which have a combined population of about 180,000.

A nine-member Board of Directors provides governance for Western Iowa Tech Community College. The board members are elected from the nine districts in the six-county service area. The College is accredited by the North Central Association of Colleges and Schools and is regulated by the Iowa State Department of Education.

Western Iowa Tech Community College was organized in August 1966, when the Iowa State Board of Public Instruction accepted a plan submitted by the counties of Ida, Monona, Plymouth and Woodbury to merge for the creation of an Area Vocational-Technical School as provided in Chapter 280A of the Iowa Code. This newly created district was named Merged Area XII.

A special school election was held on November 3, 1966, to determine the members of the Board of Directors. The Board of Directors selected Dr. Robert H. Kiser to serve as Chief Administrator and named the school Western Iowa Tech.

The first classes began on January 27, 1967, when Western Iowa Tech accepted responsibility for one vocational and two technical postsecondary programs then operated by the Sioux City Community Schools. Western Iowa Tech's growth for the remainder of the year was quite rapid and when the fall term began on August 28, 1967, seventeen full-time programs were in operation.

At the same time, the College assumed direction of all adult basic, high school completion, high school equivalency certificate and occupationally oriented adult education programs.

Western Iowa Tech's boundaries expanded on July 1, 1969, when Crawford County joined Merged Area XII. The boundaries were extended again in April 1971 when Willow Community School District, Aurelia Community School District, and Cherokee Community School District were added.

In 1973, Western Iowa Tech received approval to offer liberal arts courses in Denison, and thus was designated as a community college. When the College received permission to offer a two-year Associate of Arts degree at the Sioux City campus, the curriculum became fully comprehensive, serving both full- and part-time day and evening students throughout the six-county service area. The College has continued to expand program offerings in all divisions, with the arts and sciences division continuing to represent one of the fastest growing areas of the College. The vocational-technical area of the College continues steady growth as well, reflecting the needs of business and industry for a well trained and skilled workforce. The College has forged new partnerships with public schools in the area to provide access to postsecondary education to students in their local community. Services to business and industry have been expanded to meet the need for a well trained workforce.

In 1991, Dr. Robert H. Kiser retired from the presidency of the College after 25 years of service. Dr. Robert E. Dunker, a graduate of the College's first Mechanical Design and Drafting class, was selected by the Board of Directors as the second president to lead Western Iowa Tech Community College.

Facilities

During the first years of operation, the College offered programs at various temporary locations throughout Sioux City.

The College's first administrative home in 1966 was the former Hobson School building located at 222 South Floyd Boulevard. In 1968, the administrative offices were moved to the former Trinity Prep campus at 3075 Floyd Boulevard. As the number of programs and services continued to grow, the need for larger, permanent facilities became increasingly evident.

In 1970, a permanent college campus was established on a 143-acre site at 4647 Stone Avenue in Sioux City.

The first permanent building, the Trades and Industries Building, was completed and occupied during the 1970-71 school year. In November 1972, ground was broken for the Technical and Paraprofessional Building on land adjacent to the Trades and Industries Building. Construction was completed in 1974.

The facility for radio station KWIT was completed in 1978. KWIT provides public radio service, alternative programming to what is available on commercial radio, for northwest Iowa and the adjacent states within an 80-mile radius.

In the fall of 1980, construction was completed on the Student Center and the Gaylord Smith vocational building. The Student Center provides a gymnasium and exercise room for student and staff use. The building houses Community and Continuing Education, Economic Development, and Business Services. Following remodeling in 1995, it is also the location for a second interactive television Iowa Communications Network (ICN) classroom and the Iowa State University Extension Service offices. The Smith Building houses numerous vocational classrooms.

On-campus housing for students, Sun Ridge Court Apartments, was constructed in 1982.

Remodeling of the Trades and Industries Building in 1992 added two lecture halls and an interactive television classroom, part

of the Iowa Communications Network (ICN) statewide fiber optic network, in the Trades and Industries Building.

Continued expansion of enrollment and services led to a need for additional facilities. This need was met by an extensive addition, completed in 1994, joining the two original campus buildings, Trades and Industries and Technical and Paraprofessional. This addition has resulted in an instructional, student service, and administrative facility known as the Dr. Robert H. Kiser Building, named in honor of the College's founding president. Incorporated in this addition are administrative offices, four new science labs, tiered lecture halls, a new bookstore and cafeteria, open seating for students, and an art gallery area.

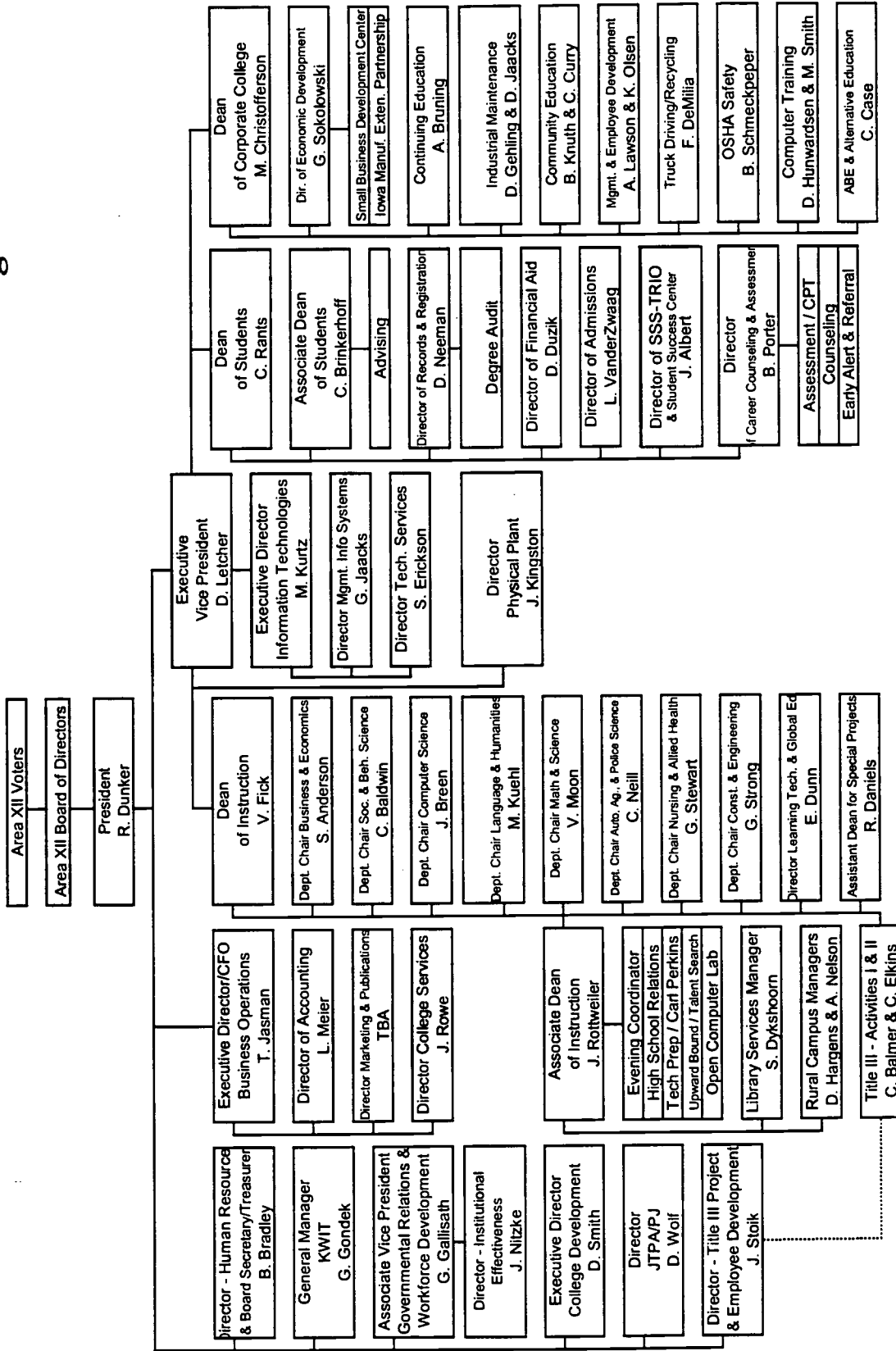
The Transportation Center, located adjacent to the main Sioux City campus at 5001 East Gordon Drive, is the location for Automotive and Diesel Technology and Welding instruction.

Throughout the College's history, a conscious effort to provide educational services to the entire Merged Area XII has seen educational programs offered at satellite locations throughout the area.

WITCC has attendance centers in Mapleton, Ida Grove and LeMars. Through community partnerships, the College constructed and opened the Denison Campus in 1993 and the Cherokee Campus and Conference Center in 1996. These outreach efforts fulfill a growing educational need for the members of rural communities.

The College has a partnership with the Southern Hills Mall in Sioux City and since 1992 has offered access to educational information and programming via this center.

Organizational Chart



Governance and Administration

Board of Directors

Derrick R. Franck
 Board President, Denison
 John Ribando, LeMars
 Wanda Schwier, Cherokee
 Dr. Robert Rasmus, Sioux City
 William Lyle, Sioux City
 Deborah Cook, Sioux City
 Eldon Schroder, Sioux City
 Larry Hansen, Lawton
 Russell Wray, Mapleton

District IX

District I
 District II
 District III
 District IV
 District V
 District VI
 District VII
 District VIII

President

Dr. Robert Dunker
 Executive Vice President
 Associate Vice President

Dr. Robert Dunker
 Dr. Duane Letcher
 Dr. Glenda Gallisath

Executive Council

Brenda Bradley
 Dr. Marc Christofferson
 Dr. Robert Dunker
 Dr. Verlyn Fick
 Troy Jasman
 Michael Kurtz
 Dr. Duane Letcher
 Dr. Carolyn Rants
 Julie Stoik

Governmental Relations and Workforce Development

Director of Human Resources & Board Secretary/Treasurer
 Dean of Corporate College
 President
 Dean of Instruction
 Executive Director & CFO Business Operations
 Executive Director of Information Technologies
 Executive Vice President
 Dean of Students
 Director of Title III Project & Employee Development

Department Chairs

Curt Neill
 Sharon Anderson
 Greg Strong
 Dr. Jack Breen
 Marcia Kuehl
 Voya Moon
 Dr. Gloria Stewart
 Dr. Carryl Baldwin

Automotive Technology, Agriculture, & Police Science
 Business Occupations & Economics
 Construction Trades & Engineering Technology
 Computer Science & Desktop Publishing
 Language and Humanities
 Mathematics & Science
 Nursing & Allied Health
 Social and Behavioral Science

Organizations

Academic Council

Sharon Anderson
 Charlene Balmer
 Dr. Carryl Baldwin
 Dr. Jack Breen
 Dr. Marc Christofferson
 Dr. Rudy Daniels
 Eddie Dunn
 Sharon French
 Diane Hargens
 Marcia Kuehl
 Voya Moon
 Curt Neill
 Annette Nelsen
 Dr. Carolyn Rants
 J. D. Rottweiler
 Dr. Gloria Stewart
 Greg Strong
 Cindy Zortman

Dept. Chair, Business Occupations & Economics
 Title III Activity II Director & Director of Curriculum
 Dept. Chair, Social & Behavioral Sciences
 Dept. Chair, Computer Science & Desktop Publishing
 Dean of Corporate College
 Assistant Dean for Special Projects
 Director of Learning Technologies & Global Education
 Asst. Dept. Chair, Nursing & Allied Health
 Denison Campus Manager
 Dept. Chair, Language & Humanities
 Dept. Chair, Mathematics & Science
 Dept. Chair, Automotive Tech., Agriculture, & Police Science
 Cherokee Campus Manager
 Dean of Students
 Associate Dean of Instruction
 Dept. Chair, Nursing & Allied Health
 Dept. Chair, Construction Trades & Engineering Technology
 Director of High School Relations

Employee Senate

Dave Nitzschke
 Sharon Messerschmidt
 Lori Clark
 Linda Cox

President
 Vice President
 Secretary
 Treasurer

Programs of Study

Associate of Arts Degree (Liberal Arts & Sciences Transfer)

Art and Design
Business Administration
Education
English
Foreign Language
General Studies
History
Physical Education
Political Science
Psychology
Social Work Cooperative Program
Sociology

Associate of Science Degree (Liberal Arts & Sciences Transfer)

Biology
Chemistry
Computer Science
Engineering (Pre)
Fire Science
Mathematics
Physics

Associate of Applied Science Degree

Accounting Specialist
Admin. Assistant—Legal
Admin. Assistant—Medical
Admin. Office Management
Agribusiness Technology

Architectural Construction Engineering Technology
Auto Collision Repair Technology
Automotive Technology
Band Instrument Repair Technology
Biomedical Electronic Engineering Technology
Child Care Supervision and Management
Computer Programmer
Desktop Publishing
Diesel Technology
Electronic Engineering Technology
Emergency Medical Services/Paramedic
Horticulture and Landscaping Technology
Management Specialist
Marketing Management
Mechanical Engineering Technology
Medical Laboratory Technician
Microcomputer Specialist
Nursing—Associate Degree Completion
Occupational Therapy Assistant
Physical Therapist Assistant
Police Science Technology
Telecommunication Electronics Technology

Diploma

Accounting
Accounting and Office Support
Air Conditioning, Heating and Refrigeration
Animal Science
Auto Body Repair
Automotive Mechanic
Band Instrument Repair Specialist
Business Computer Operator
Carpentry
Child Care & Development

Dental Assisting
Electrician
Electronic Communications
Legal Secretary
Medical Secretary
Nursing—Practical
Park and Golf Course Management
Retail/Marketing
Secretary
Software Technician
Surgical Technology
Welding

Certificate

Child Development Assistant
Cost Accounting
EMT-B
EMT-I
Entrepreneurship
First Aid/CPR/First Responder
Medical Billing and Insurance
Medical Transcription
Medication Aide
Microsoft Office
Network Administrator
Nurse Aide
Nursing Assistant I
Nursing Assistant II
Patient Care Technician
Patient Care Assistant
Payroll Clerk
Retail Sales
Software Specialist
Welding

Accreditation

	Date of First Accreditation	Date of Next Review
Institutional Accreditation		
North Central Association of Colleges and Schools	1977	2002
Specialized Accreditation of Academic Programs		
Dental Assisting: American Dental Association Commission on Dental Accreditation	1976	2002
Occupational Therapy Assistant: American Association of Occupational Therapy	1995	2000*
Physical Therapist Assistant: Commission on Accreditation for Physical Therapy Education	1995	2000*
Surgical Technology: Commission on Accreditation of Allied Health Education Programs	1980	2002
Nursing: Iowa State Board of Nursing	1974 1978	2004, PN 2004, ADN
National League for Nursing	1992 1994	2005, PN 2002, ADN

*Accreditation visits completed in the Spring of 2000. Dates for the next visit have not been set.

College District & Campus Locations

Sioux City Campus
 4647 Stone Avenue
 P.O. Box 5199
 Sioux City, IA 51102-5199
 712-274-6400

Southern Hills Mall Center
 4400 Sergeant Road
 Sioux City, IA 51106
 712-274-6415

Individualized Learning Center
 1121 Jackson Street
 Sioux City, IA 51105-1434
 712-255-7632

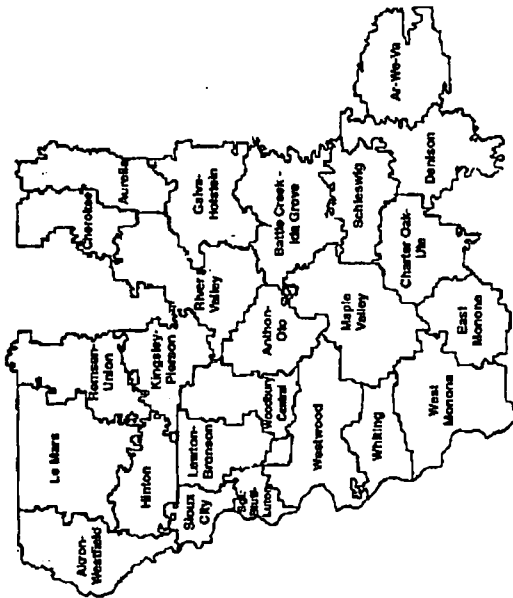
Cherokee Campus & Conference Center
 200 Victory Drive
 P.O. Box 845
 Cherokee, IA 51012-0845
 712-225-0238

Le Mars Center
 306 12th Street SE
 Le Mars, IA 51031
 712-546-7338

Ida Grove Center
 800 East 2nd Street
 P.O. Box 193
 Ida Grove, IA 51445-0193
 712-364-2107

Mapleton Center
 38491 Highway 175 N.
 Mapleton, IA 51034-7006
 712-882-2401

Denison Campus
 11 North 35th Street
 Denison, IA 51442-7564
 712-263-3419



Important Facts Community Colleges Of Iowa

- Fall 1999 Credit Enrollments hit an all-time high of 63,809 (Iowa Dept. of Ed.).
- Ninety-three percent (93%) of the 1999 fall enrollees are Iowa residents (Iowa Dept. of Ed.).
- 346,068 (unduplicated count) Iowans attended non-credit classes. The great majority were involved in short-term vocational/technical, adult basic education and high school equivalency programs (Iowa Dept. of Ed.).
- Community Colleges enrolled more new Freshmen than the other two higher education entities combined (Iowa College and University Enrollment Report, Fall 1999, by Dr. Jerald W. Dallam, University of Iowa).
- Eighty-six percent (86%) of community college graduates with known addresses reside in Iowa (Iowa College Aid Commission).
- The State General Aid Increase for the community colleges of Iowa totaled \$4,784,105 for the 1999 fiscal year while salaries and benefits increase totaled \$11,441,888. The State General Aid Increase equaled forty-one percent (41%) of the salaries and benefits increase (Iowa Dept. of Ed.).
- During the decade of the 1990s, state funding per community college student increased by 20.8% while state funding on a per student basis at the Private Colleges increased by 49.6 and by 41.6% at the Private Colleges (Legislative Fiscal Bureau report dated October 14, 1999).
- Property tax dollars received in the unrestricted general fund per community college student totaled \$360.00 at the beginning of the 1990s as compared to \$324.00 per student for the end of the decade in the 1999 fiscal year. This amount has not been adjusted to reflect the inflation index for the decade (Legislative Fiscal Bureau report dated October 14, 1999).

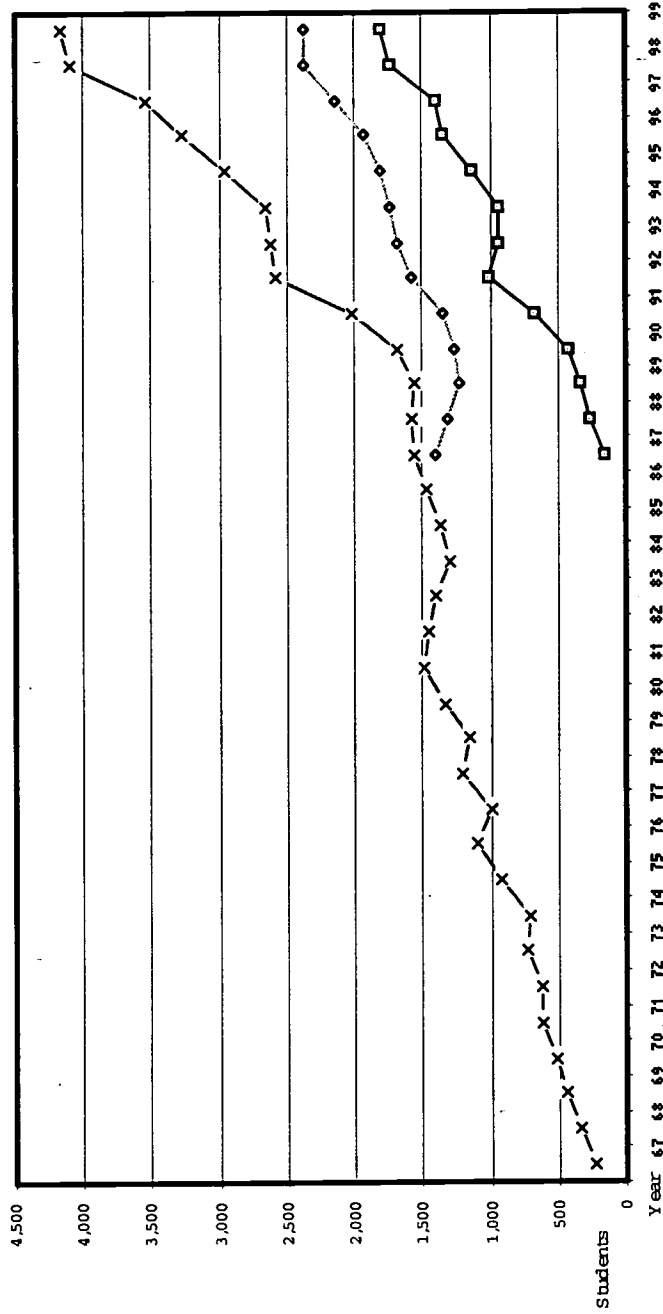
Source: Iowa Association of Community Colleges

Enrollment Trends

Contents

- 13 Fall Student Headcount 1967-Present
& Summary of FY99 Enrollments
- 14 Fall Student Headcount: Full-time & Part-time
- 15 Fall Enrollment: Total Student Headcount & Credit
Hours
- 16 Student Headcount by Term
- 17 Student Headcount by Semester
- 18 Fall Student Headcount by Academic Areas
- 19 Fall Student Headcount by Race/Ethnicity
- 20 Fall Student Headcount by Gender & Residency
- 21 FTE FY95 – FY99
- 22 Fall Undergraduate Enrollment in Iowa 1988-99
- 23 Race/Ethnicity Comparative Data
- 24 Percentage of Total Enrollment by Comm. College
- 25 Credit Hours in Academic Areas FY94-99
- 26 FTE Per 1,000 Population FY99

Fall Student Headcount: 1967-Present & Summary of FY99 Enrollments



Legend:
 ◆ Vo-Tech □ A & S × Total

Summary of FY99 Enrollment	
Credit (unduplicated headcount)	5,792
Noncredit	30,724
Vocational Technical	26,827
Supplementary	
Community Education	3,987
ABE/GED/HS Diploma	5,269
Total	41,965

Source: 10-day enrollment reports

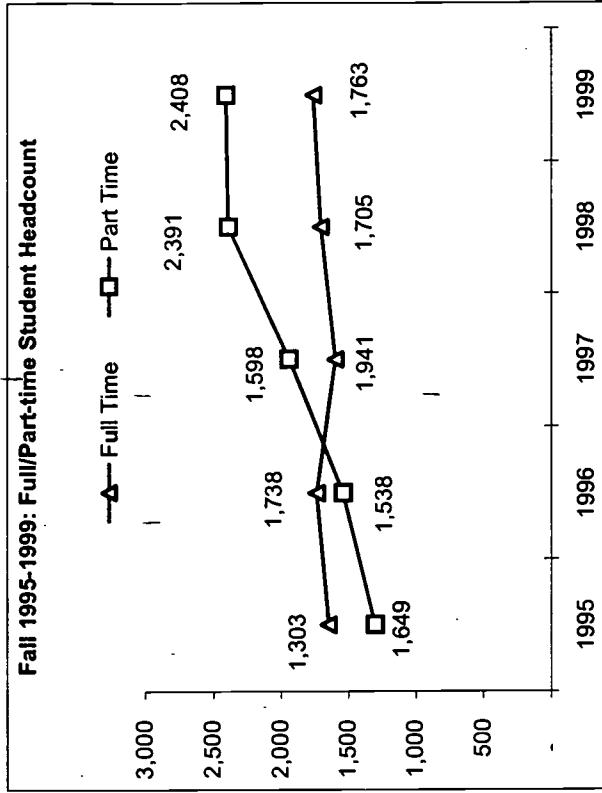
Source: WITCC CE4B



Fall Student Headcount: Full-time & Part-time

Headcount

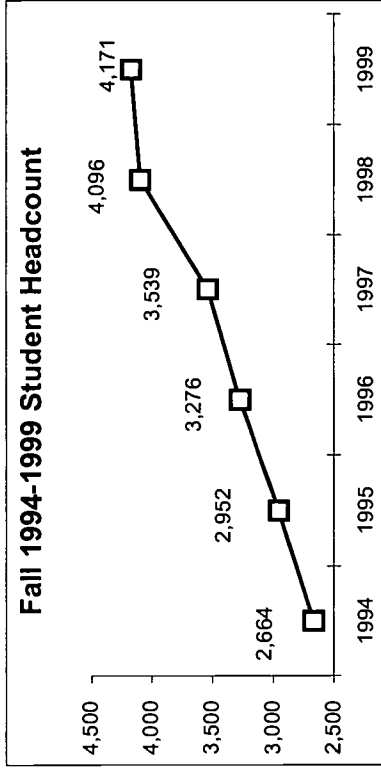
	Full Time	% of Total	Part Time	% of Total	Total
1995	1,649	56%	1,303	44%	2,952
1996	1,738	53%	1,538	47%	3,276
1997	1,598	45%	1,941	55%	3,539
1998	1,705	42%	2,391	58%	4,096
1999	1,763	42%	2,408	58%	4,171
% Increase from 1995	7%		85%		41%



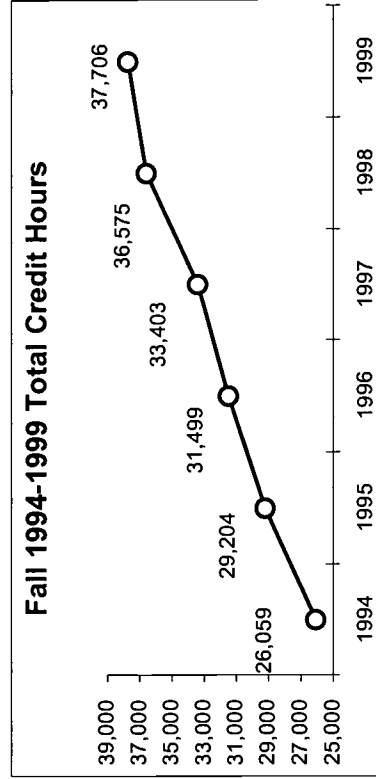
Source: 10-day enrollment reports

Fall Enrollment: Total Student Headcount & Total Credit Hours

Year	Headcount	% increase from the previous year	% increase from 1994
1994	2,664	---	---
1995	2,952	11%	11%
1996	3,276	11%	23%
1997	3,539	8%	33%
1998	4,096	16%	54%
1999	4,171	2%	57%



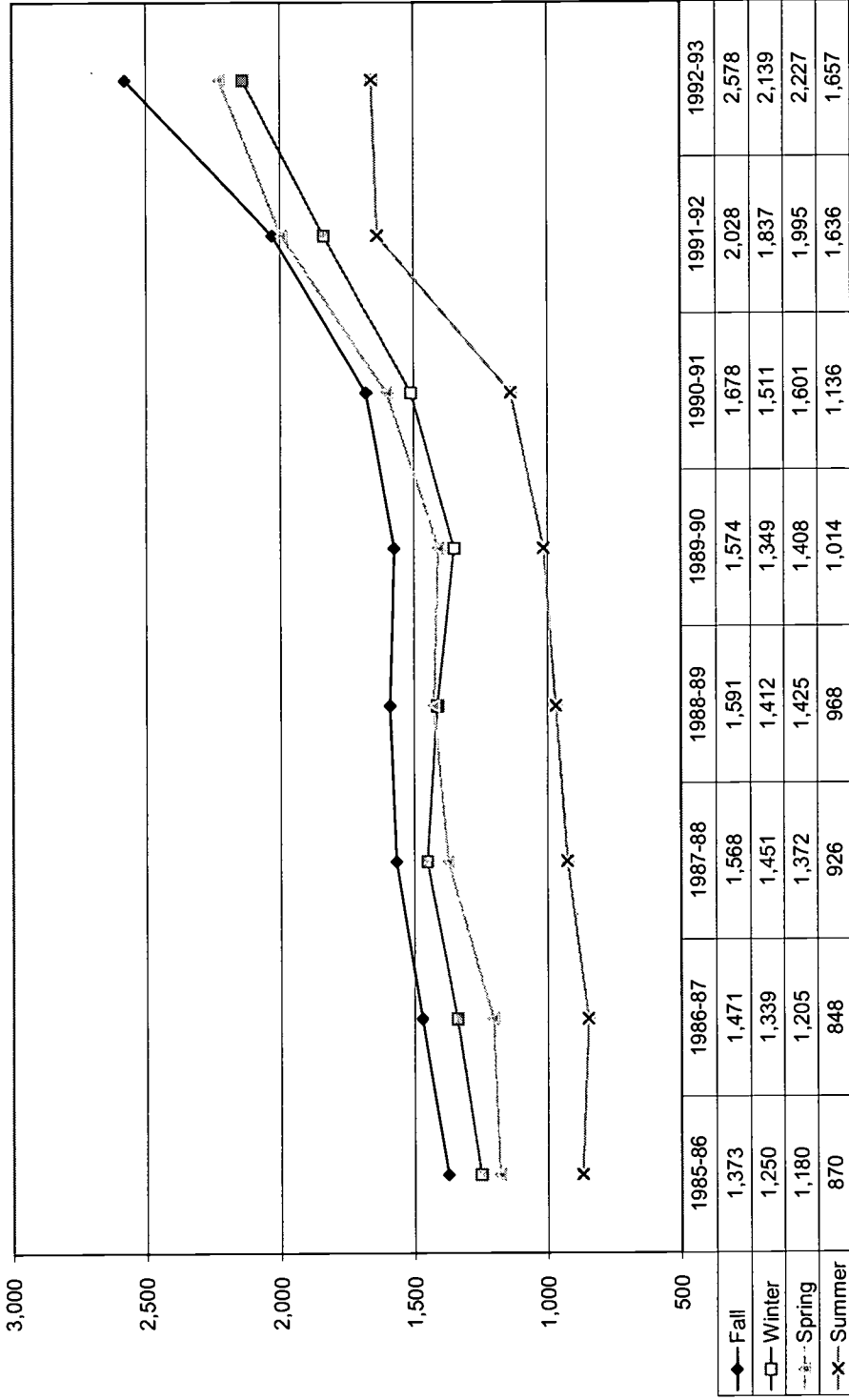
Year	Credit Hours	% increase from the previous year	% increase from 1994
1994	26,059	---	---
1995	29,204	12%	12%
1996	31,499	8%	21%
1997	33,403	6%	28%
1998	36,575	9%	40%
1999	37,706	3%	45%



Source: 10-day enrollment reports

Credit Student Headcount: By Term

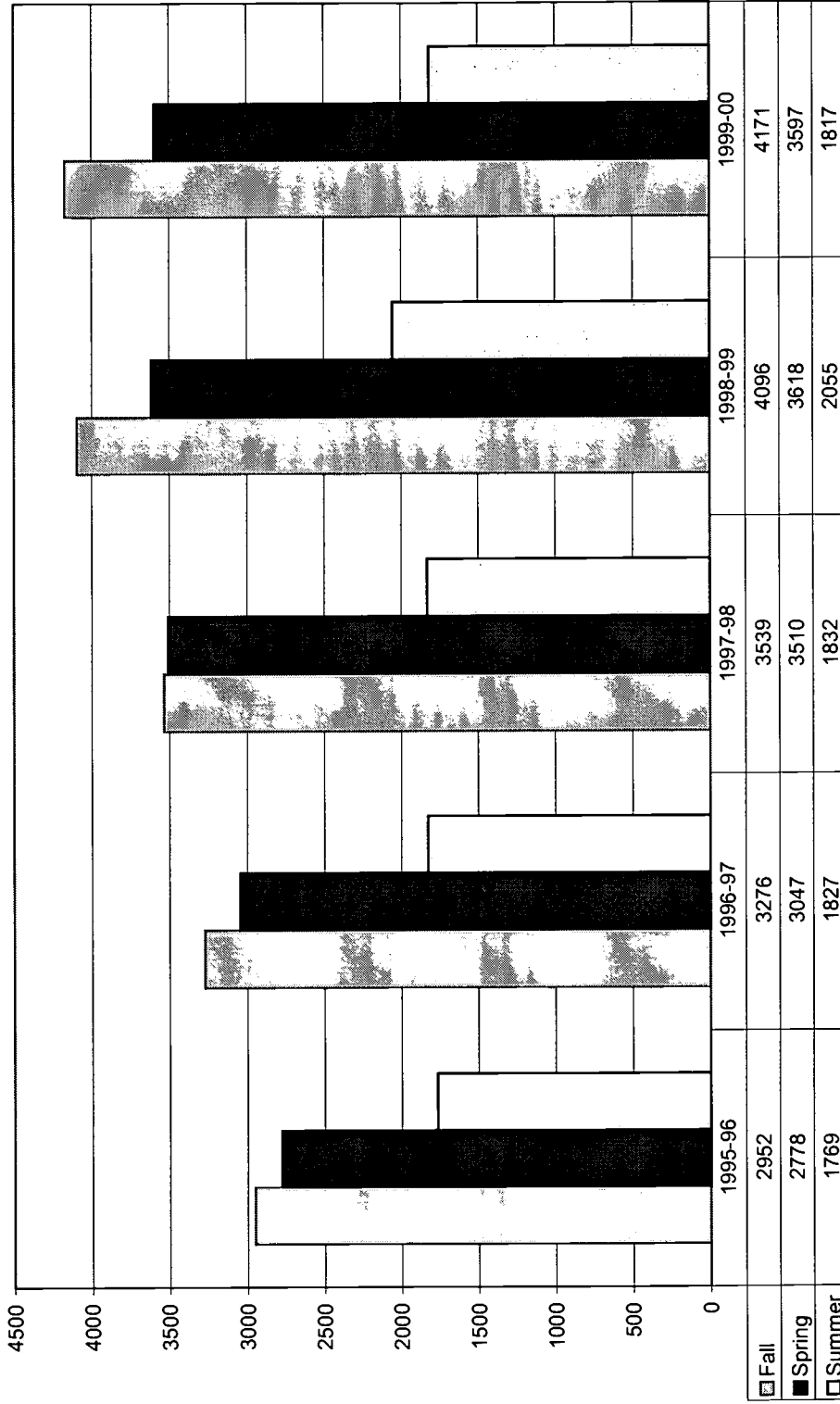
Total Student Headcount by Term: FY86 - FY93



Source: 10-day enrollment reports

Credit Student Headcount: By Semester

Total by Semester: FY96 - FY00



Source: 10-day enrollment reports

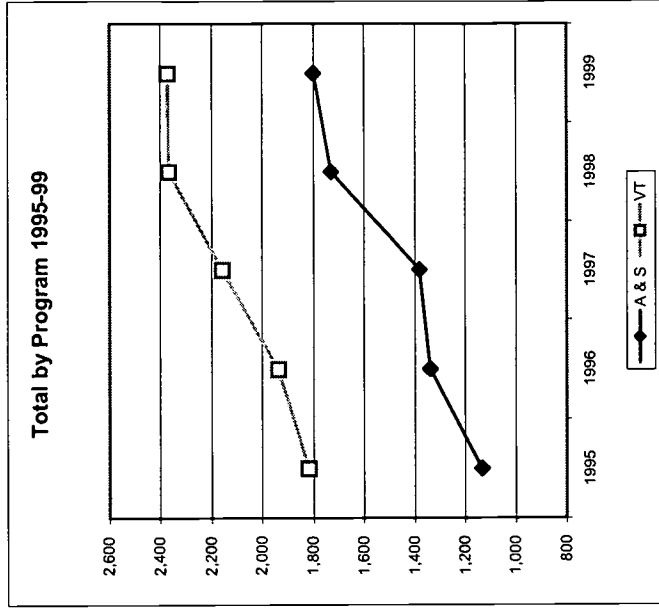
Fall Student Headcount: By Academic Areas

Arts & Sciences

	Full Time	% of Total Enrollment	Part Time	% of Total Enrollment	Total Arts & Sciences	% of Total Enrollment
1995	461	16%	673	23%	1,134	38%
1996	531	16%	808	25%	1,339	41%
1997	479	14%	902	25%	1,381	39%
1998	600	15%	1,130	28%	1,730	42%
1999	657	16%	1,143	27%	1,800	43%
% Change from 1995	43%		70%		59%	

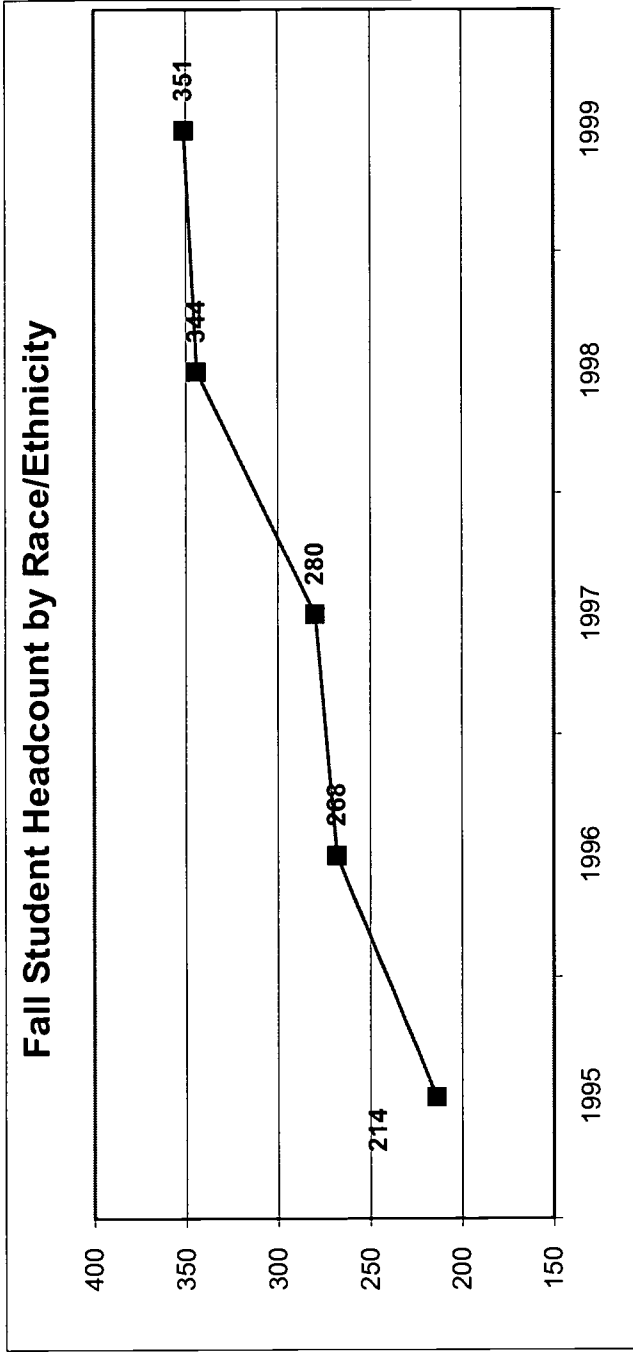
Voc-Tech

	Full Time	% of Total Enrollment	Part Time	% of Total Enrollment	Total Voc-Tech	% of Total Enrollment
1995	1,188	40%	630	21%	1,818	62%
1996	1,207	37%	730	22%	1,937	59%
1997	1,119	32%	1,039	29%	2,158	61%
1998	1,105	27%	1,261	31%	2,366	58%
1999	1,106	27%	1,265	30%	2,371	57%
% Change from 1995	-7%		101%		30%	



Source: 10-day enrollment reports

Fall Student Headcount: By Race/Ethnicity



	Asian	Black	Hispanic	Native American	Total Minority Enrollment
1995	79	44	64	27	214
1996	109	48	77	34	268
1997	107	47	89	37	280
1998	92	73	114	65	344
1999	95	70	135	51	351
% increase from 1995	20%	59%	111%	89%	64%

Source: 10-day enrollment reports

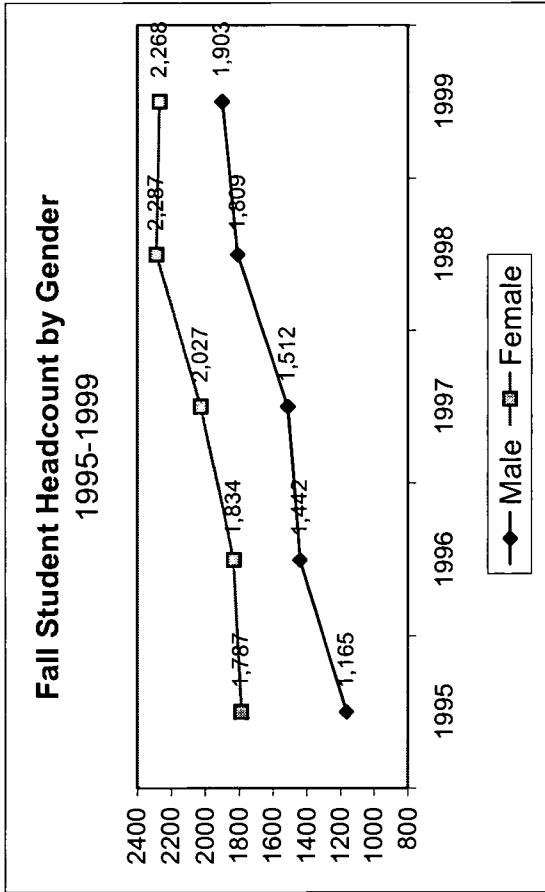
Fact Book 1999-2000



Fall Student Headcount: By Gender & Residency

Fall Student Headcount by Residency

Total Student Headcount			
Resident	% of total	Non-Resident	% of total
2,653	90%	299	10%
2,908	89%	368	11%
3,174	90%	365	10%
3,700	90%	396	10%
3,736	90%	435	10%
41%		45%	
1995		2,952	
1996		3,276	
1997		3,539	
1998		4,096	
1999		4,171	
% Change from 1995		41%	



	Male	% of total	Female	% of total	Total
1995	1,165	39%	1,787	61%	2,952
1996	1,442	44%	1,834	56%	3,276
1997	1,512	43%	2,027	57%	3,539
1998	1,809	44%	2,287	56%	4,096
1999	1,903	46%	2,268	54%	4,171
% Change from 1995	63%		27%		41%

Source: 10-day enrollment reports

Full-time Enrollment (FTE): FY95 – FY99

	A&S Headcount	A&S CrHr	A&S FTE*	V-T Headcount	V-T CrHr	V-T FTE*	Non-Credit Headcount	Non-Cr ConHr	Non-Cr FTE**	Total FTE
FY95	NA	18,035	751	NA	43,352	1806		622,209	1037	3595
FY96	2,286	21,783	908	2,581	42,703	1779	49,382	636,410	1061	3748
FY97	2,626	24,966	1040	2,998	47,241	1968	34,982	579,349	966	3974
FY98	2,668	25,441	1060	3,030	48,104	2004	38,928	702,320	1171	4235
FY99	2,952	31,379	1307	3,020	47,739	1989	35,993	765,935	1277	4573

% Change
FY95-99 74%

10% 23% 27%

* FTE = Credit Hrs/12

Source: CE4B

** FTE = Contact Hrs/600

Note: Headcount was not included in the CE4B in FY95.

Fall Credit Enrollment Comparison with Service Area Population

1990 Service Area Population = 167,683

	Total Enrollment	Percent of Population that were Students	Rank among all 15 Iowa Community Colleges
1990	1,678	1.00%	12
1993	2,611	1.56%	13
1995	2,952	1.76%	12
1997	3,539	2.11%	11
1998	4,096	2.44%	5
1999	4,171	2.49%	5

Source: Information Package to Iowa CC Presidents, 2000.4

Fall Undergraduate Enrollment in Iowa: 1988-1999

	All Colleges in Iowa			All Community Colleges in Iowa			WITCC		
	Total	Full-Time	Part-Time	Total	Full-Time	Part-Time	Total	Full-Time	Part-Time
	1988	137,233	105,287	31,946	44,938	27,305	17,633	1,591	1,356
1989	141,861	107,779	34,082	47,374	28,672	18,702	1,574	1,289	285
1990	144,921	108,563	36,358	49,726	29,304	20,422	1,678	1,275	403
1991	147,421	109,022	38,399	52,259	30,118	22,141	2,028	1,384	644
1992	150,781	110,895	39,886	55,589	32,134	23,455	2,578	1,599	979
1993	150,710	109,657	41,053	56,088	31,648	24,440	2,623	1,258	1,365
1994	150,451	108,255	42,196	56,226	31,283	24,943	2,664	1,179	1,485
1995	152,163	109,039	43,124	56,464	31,389	25,075	2,952	1,303	1,649
1996	154,999	109,614	45,385	59,276	32,291	26,985	3,276	1,738	1,538
1997	157,263	111,937	45,326	60,620	32,889	27,731	3,539	1,941	1,598
1998	159,446	113,451	45,995	61,479	33,048	28,431	4,096	1,705	2,391
1999	162,449	115,648	46,801	63,791	33,263	30,500	4,171	1,763	2,408
% change from 1988	18%	10%	47%	42%	22%	73%	162%	30%	925%

Source: Iowa College Student Aid Commission

Race/Ethnicity: Comparative Data for Credit Students

State-wide Comparisons of Ethnicity General Population to Fall Credit Enrollees

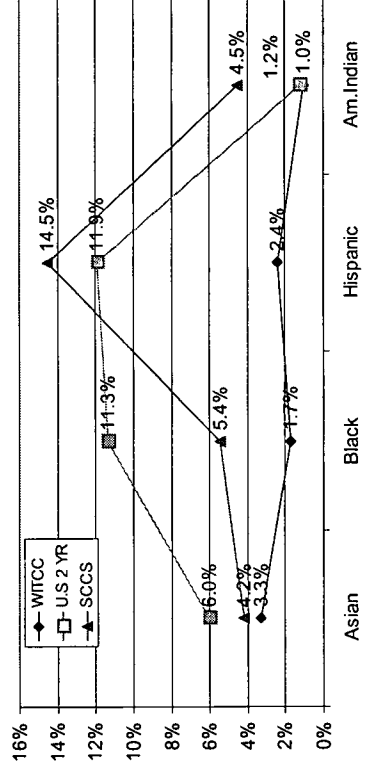
1990 and 1999, to 1990 Census Figures

	State Population 1990 Census		Fall 1990 State-wide Enrollments		Fall 1999 State-wide Enrollments	
	Number	%	Number	%	Number	%
Indian/Alaskan	7,811	0.28%	197	0.41%	435	0.72%
Asian/Pacific	24,325	0.88%	494	1.04%	1,192	1.97%
Black	47,259	1.71%	1,066	2.24%	1,631	2.69%
Hispanic	30,642	1.11%	381	0.80%	1,117	1.85%
White	2,685,099	97.13%	45,354	95.50%	56,160	92.77%
Total Reporting	2,795,136		47,492		60,535	
No Response	12,261	0.44%	3,614	7.03%	2,843	4.46%
Other			321	0.62%	431	0.68%
Total Students	2,776,755		51,427		63,809	

Source: 1990 U.S. Census, Dept. of Labor, & the 1990 Fall Department of Ed. Ethnicity Report

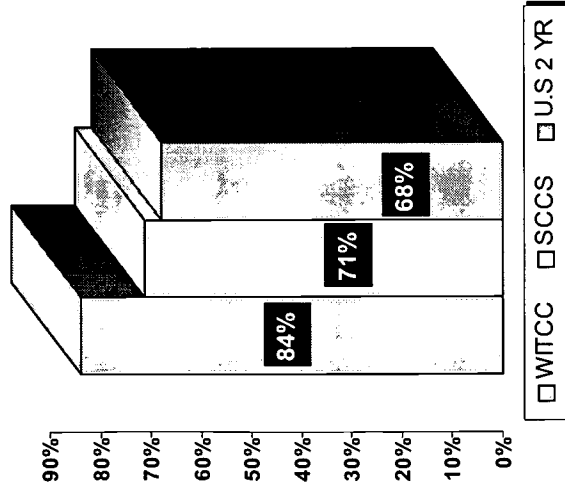
Percentage of Minority Enrollments:

WITCC, Sioux City Community Schools, U.S. 2-year public colleges



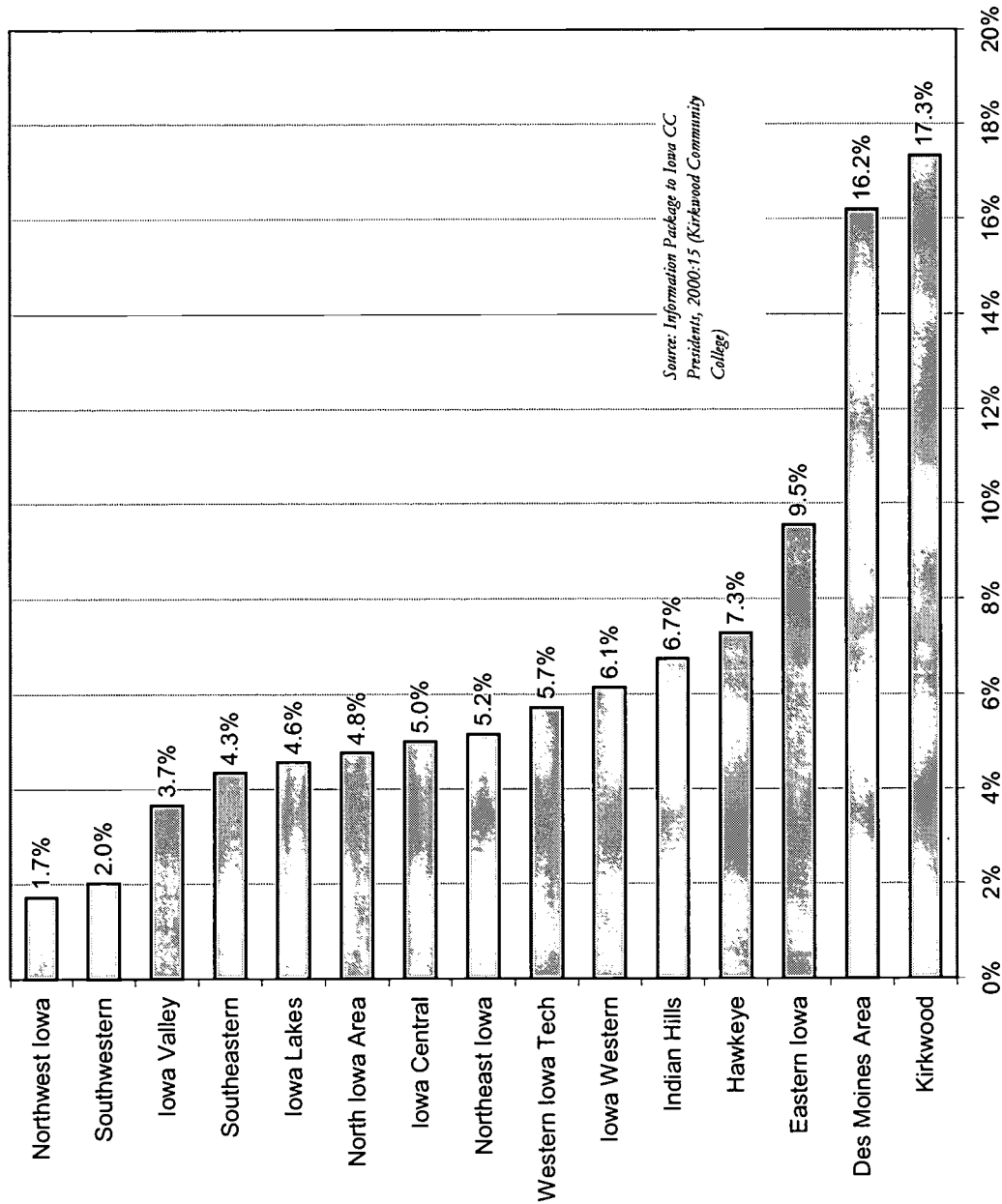
Percentage of White Enrollments:

WITCC, Sioux City Community Schools,
U.S. 2-year public colleges



Sources: Condition of Education 1999 (for 1996); 1999-2000 Sioux City Community Schools Ethnic Groups; 1996 WTICC official enrollment reports. 1996 data used for comparability.

Percentage of Total FTE Enrollment by Community College: FY99



Credit Hours in Academic Areas: FY94-FY99

	All Community Colleges in Iowa			WITCC		
	Total	Voc-Tec	Arts & Sciences	Total	Voc-Tec	Arts & Sciences
1993-94	1,326,230	579,856	746,374	52,941	38,686	14,255
1994-95	1,057,115	477,946	579,168	59,784	43,353	16,431
1995-96	1,315,281	545,479	769,803	66,056	44,273	21,783
1996-97	1,371,142	562,381	808,761	72,207	47,241	24,966
1997-98	1,374,579	564,320	808,658	73,545	48,104	25,441
1998-99	1,383,233	565,904	817,312	79,118	47,739	31,379
% change from 1993-94	4%	-2%	10%	49%	23%	120%

Source: Iowa Department of Education

FTE Credit Enrollment per 1,000 Service Area Population: FY99

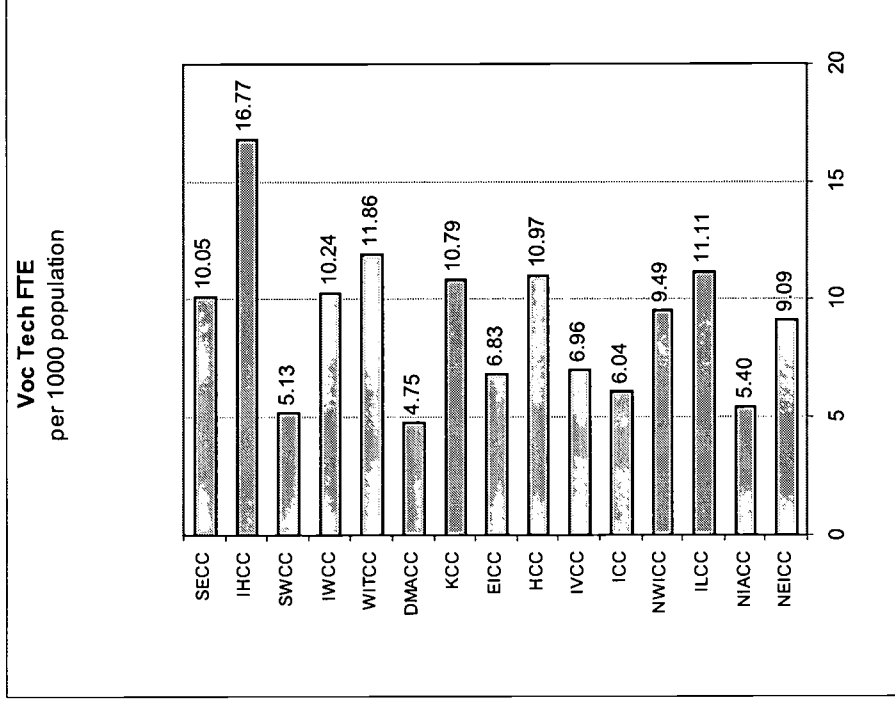
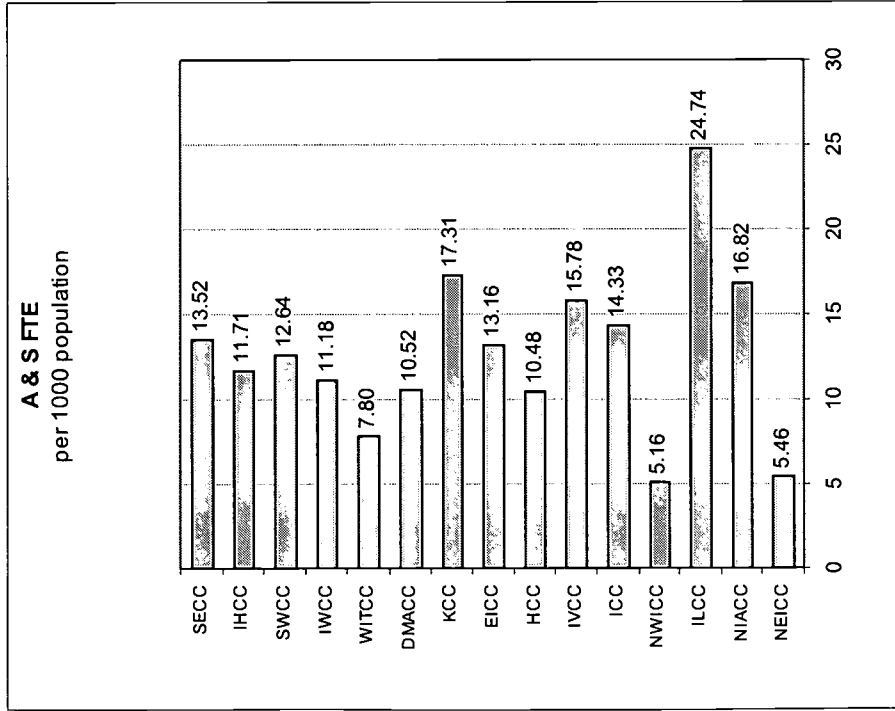
See charts on following two pages

Service Area Population	A&S CrHr/24	A&S FTE per 1,000 Population	A&S FTE per Pop Rank	V-T CrHr/24	V-T FTE per 1,000 Population	V-T FTE per Pop Rank	Non-Cr ConHr/600	Non-Cr FTE per 1,000 Population	Non-Cr FTE per Pop Rank	Total FTE	TOT FTE per 1,000 Population	TOTAL FTE/Pop Rank
Northeast Iowa	1,116	5.46	14	1,858	9.09	9	821	4.02	14	3,795	18.56	15
North Iowa Area	2,076	16.82	3	666	5.40	13	1,551	12.57	2	4,293	34.79	4
Iowa Lakes	1,816	24.74	1	816	11.11	3	421	5.74	12	3,053	41.58	1
Northwest Iowa	348	5.16	15	640	9.49	8	608	9.02	3	1,596	23.67	12
Iowa Central	2,027	14.33	5	854	6.04	12	834	5.90	10	3,715	26.27	11
Iowa Valley	1,463	15.78	4	645	6.96	10	797	8.60	4	2,905	31.34	5
Hawkeye	2,048	10.48	12	2,144	10.97	4	1,155	5.91	9	5,346	27.35	7
Eastern Iowa	3,652	13.16	7	1,848	6.83	11	1,733	6.40	8	7,143	26.38	10
Kirkwood	6,150	17.31	2	3,833	10.79	5	2,528	7.12	7	12,511	35.21	3
Des Moines Area	6,430	10.52	11	2,900	4.75	15	2,865	4.69	13	12,195	19.96	14
Western Iowa Tech	1,307	7.80	13	1,989	11.86	2	1,252	7.47	6	4,548	27.12	9
Iowa Western	1,849	11.18	10	1,693	10.24	6	1,361	8.23	5	4,904	29.66	6
Southwestern	827	12.64	8	336	5.13	14	380	5.81	11	1,543	23.56	13
Indian Hills	1,598	11.71	9	2,290	16.77	1	1,744	12.78	1	5,632	41.25	2
Southeastern	1,437	13.52	6	1,068	10.05	7	389	3.66	15	2,893	27.23	8
Total or Avg	34,055	12.71		23,579	9.03		18,441	7.19		76,075	28.93	

**1990 Total Population = 2,776,586

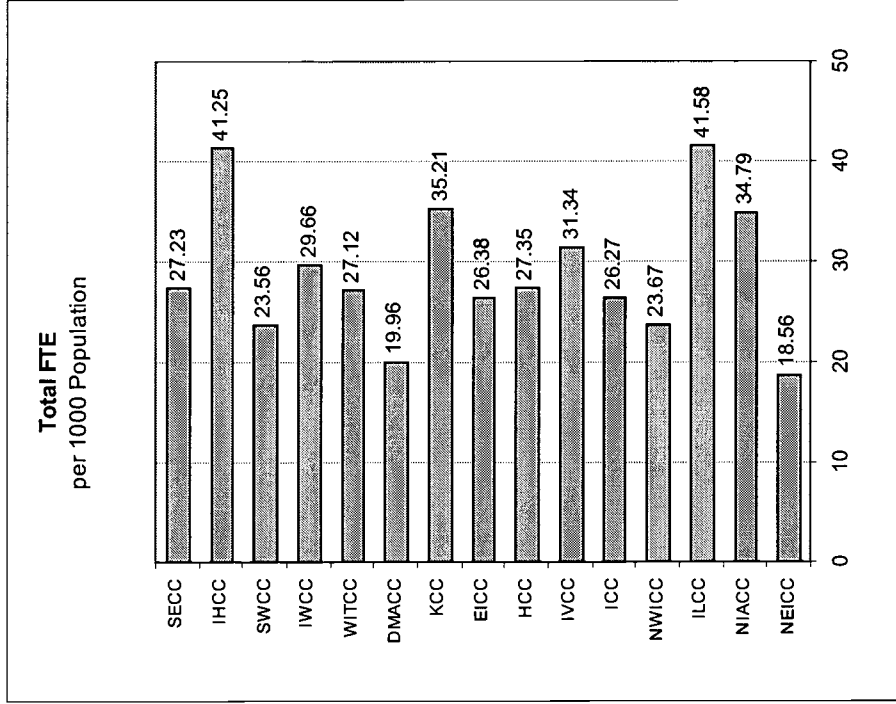
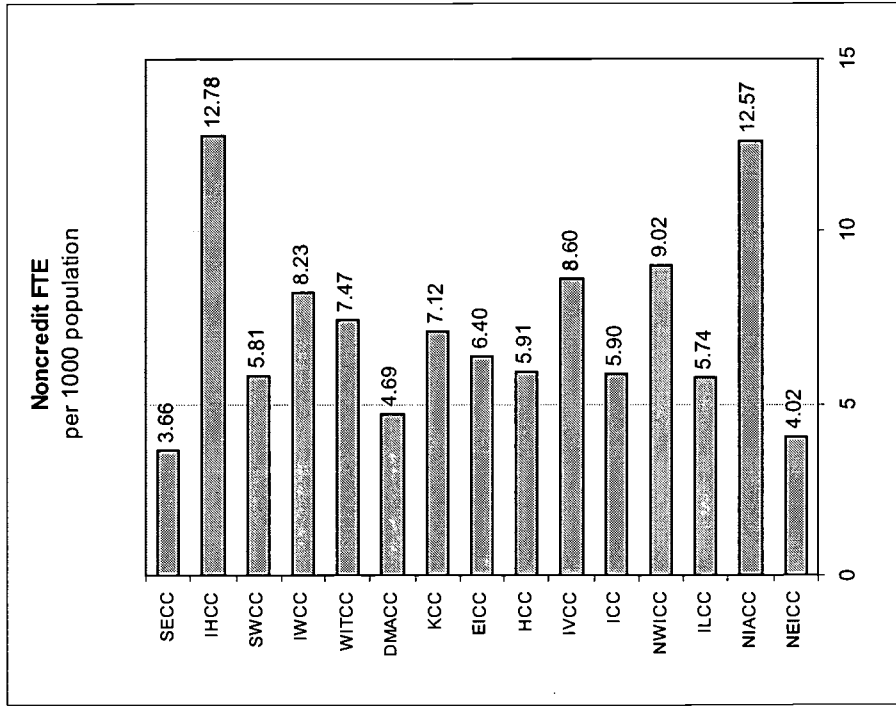
Source: Information Package to Iowa CC Presidents, 2000:11 (Kirkwood Community College)

Charts: Arts and Sciences FTE & Vocational-Technical FTE FTE Credit Enrollment per 1,000 Service Area Population: FY99



Charts: Noncredit FTE & Total FTE

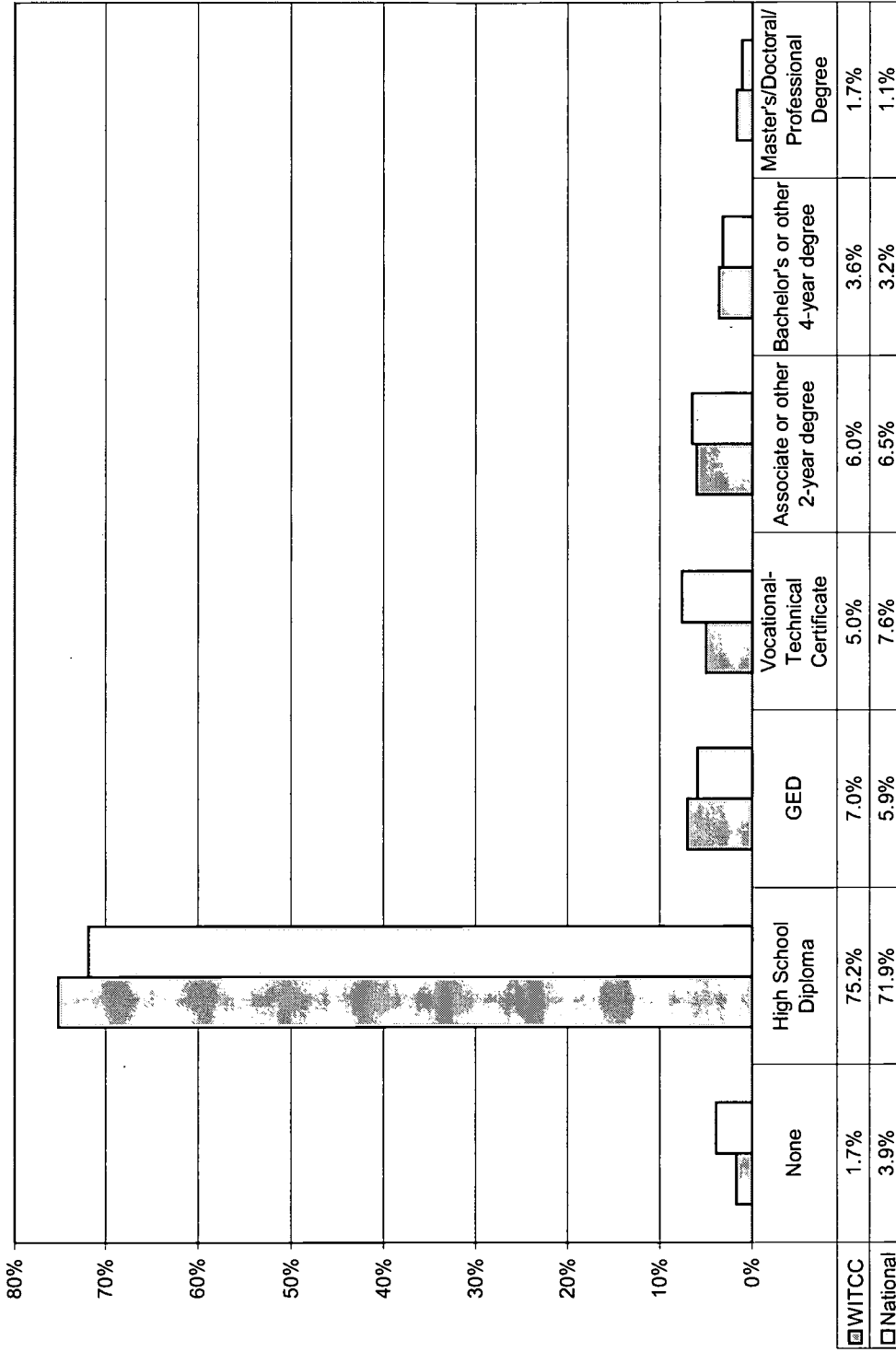
FTE Credit Enrollment per 1,000 Service Area Population: FY99



Student Profile

	Contents
30	Credit Students: Educational Background
31	Credit Students: Gender & Age
32	Credit Students: Trends in Age Categories
33	Credit Students: Race/Ethnicity
34	Credit Students: Employment Status
35	Credit Students: Employment Hours per Week
36	Credit Students: Income
37	Credit Students: Status
38	Credit Students: Evening & Saturday Demographics
39	Credit Students: Perceptions About WITCC
40	Student Satisfaction: Credit & Noncredit
41	Noncredit Students: Educational Background
42	Noncredit Students: Gender & Age
43	Noncredit Students: Employment Status
44	Noncredit Students: Employment Hours per Week
45	Noncredit Students: Income

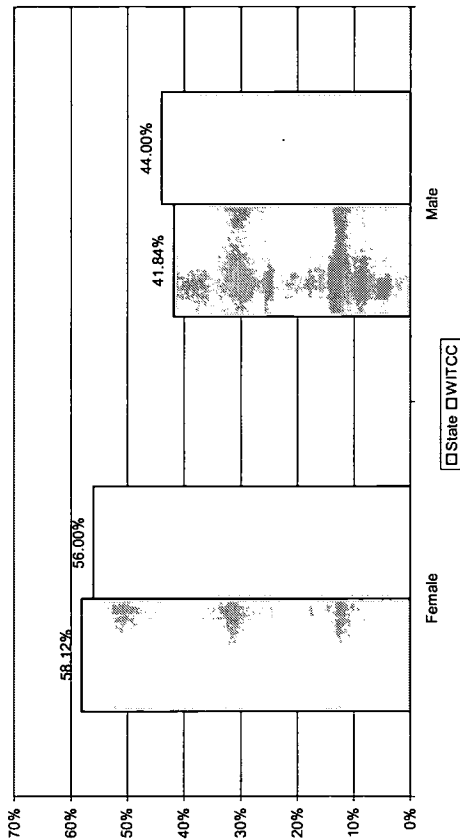
Credit Students: Educational Background



Source: *Faces of the Future 1999-2000 (ALACC/ACT)*

Credit Students: Gender & Age

Gender
WITCC Comparison to State: FY 98



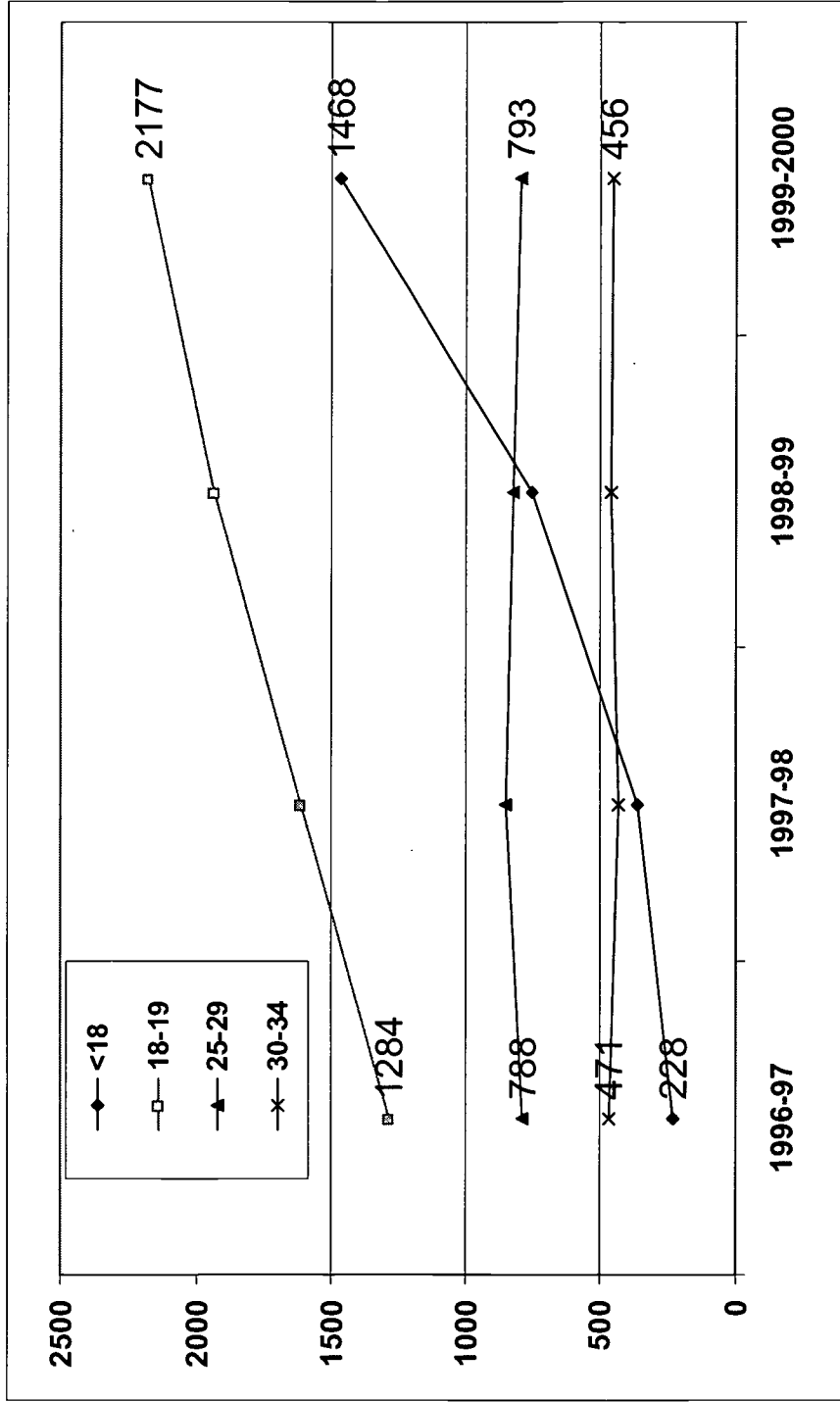
Source: Iowa Dept. of Education,
Credit Student Data Summary Report (August 1999)

Fall Enrollment: Age Demographics

	Under 18	18-19	20-21	22-24	25-29	30-34	35-39	40-49	50-64	65 over	Unknown	Total	Average Age
1997	304	893	553	429	420	218	200	312	71	5	134	3539	24.4
%	9%	25%	16%	12%	12%	6%	6%	9%	2%	0%	4%	100%	
1998	649	1100	673	403	401	217	200	298	82	1	72	4096	24.0
%	16%	27%	16%	10%	10%	5%	5%	7%	2%	0%	2%	100%	
1999	667	1129	623	465	403	250	182	298	86	2	66	4171	23.5
%	16%	27%	15%	11%	10%	6%	4%	7%	2%	0%	2%	100%	

Source: IPEDS Fall Enrollment Reports

Credit Students: Trends in Selected Age Categories

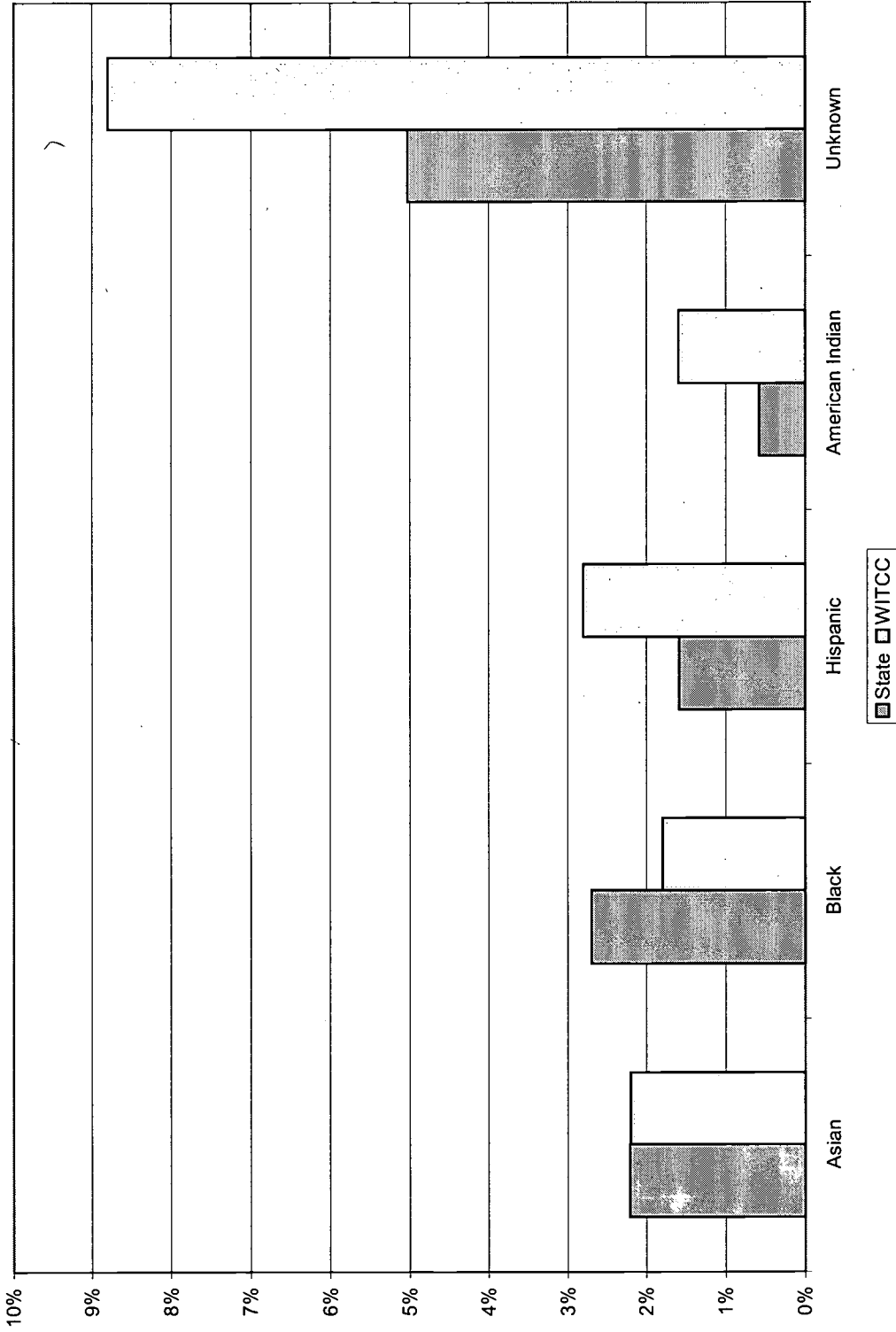


Source: 10-day enrollment reports



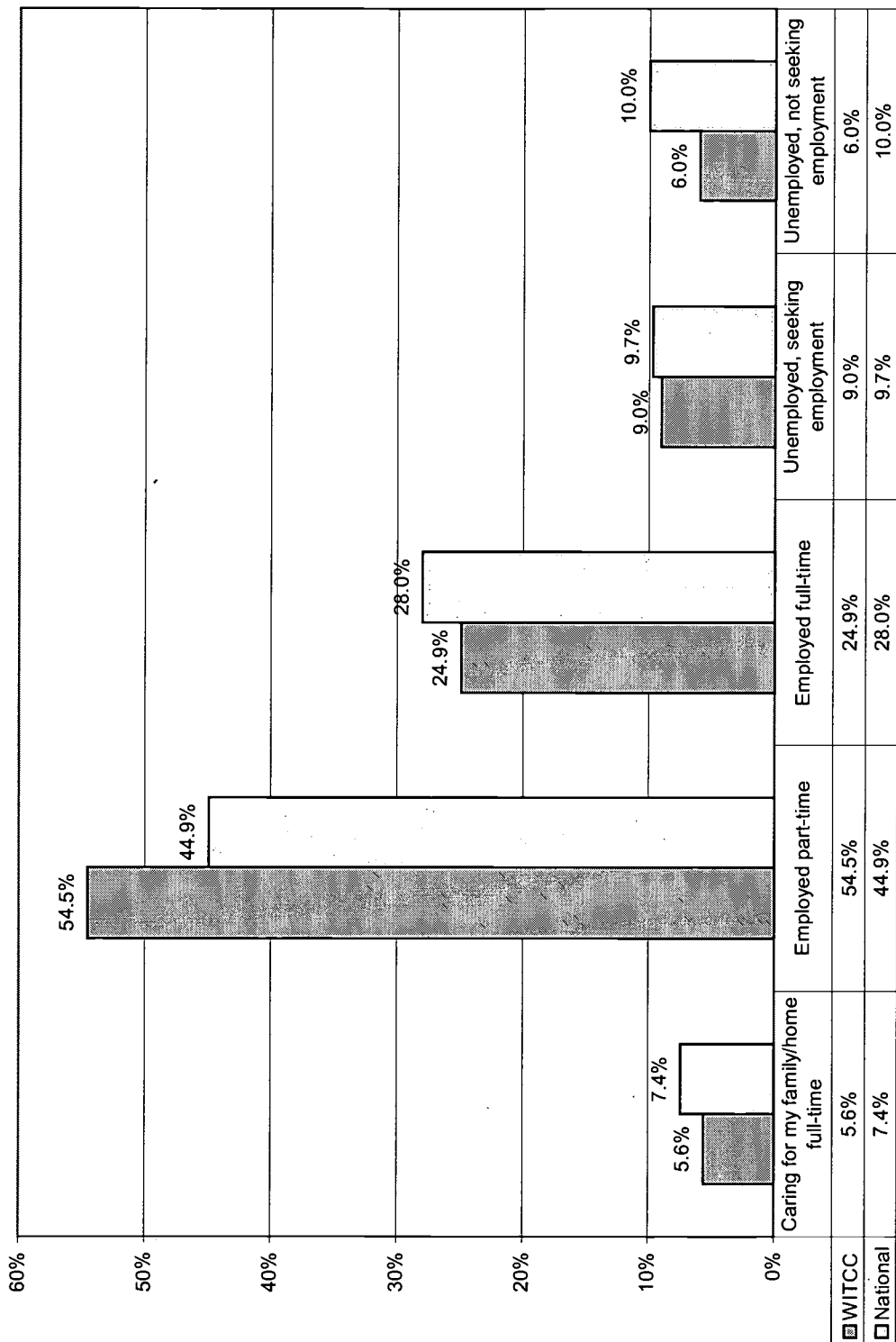
Credit Students Race/Ethnicity

WITCC Comparison with State (FY 98)



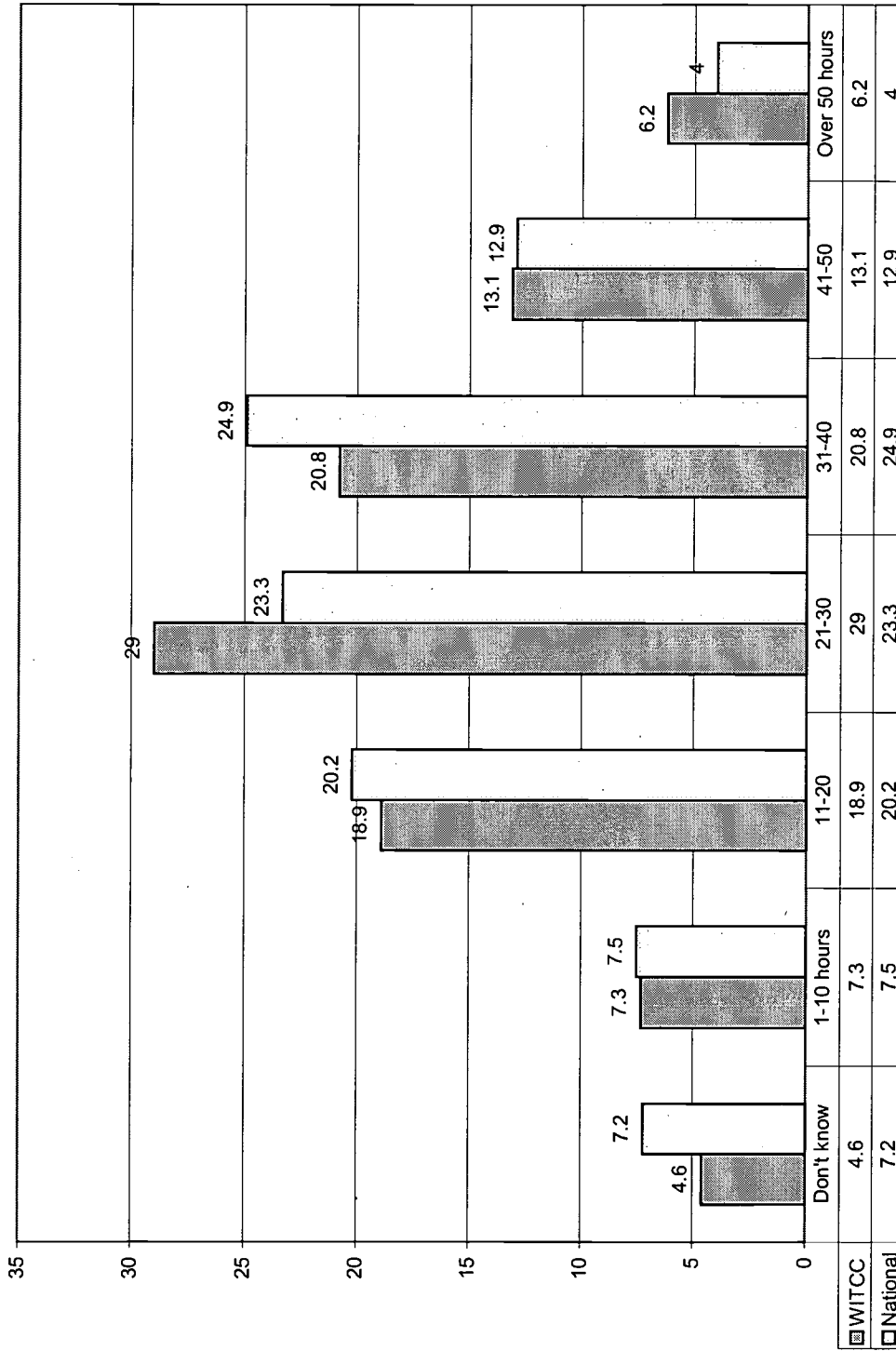
Source: 10-day enrollment reports, Credit Student Data
 Summary Report, Iowa Department of Education

Credit Students: Employment Status



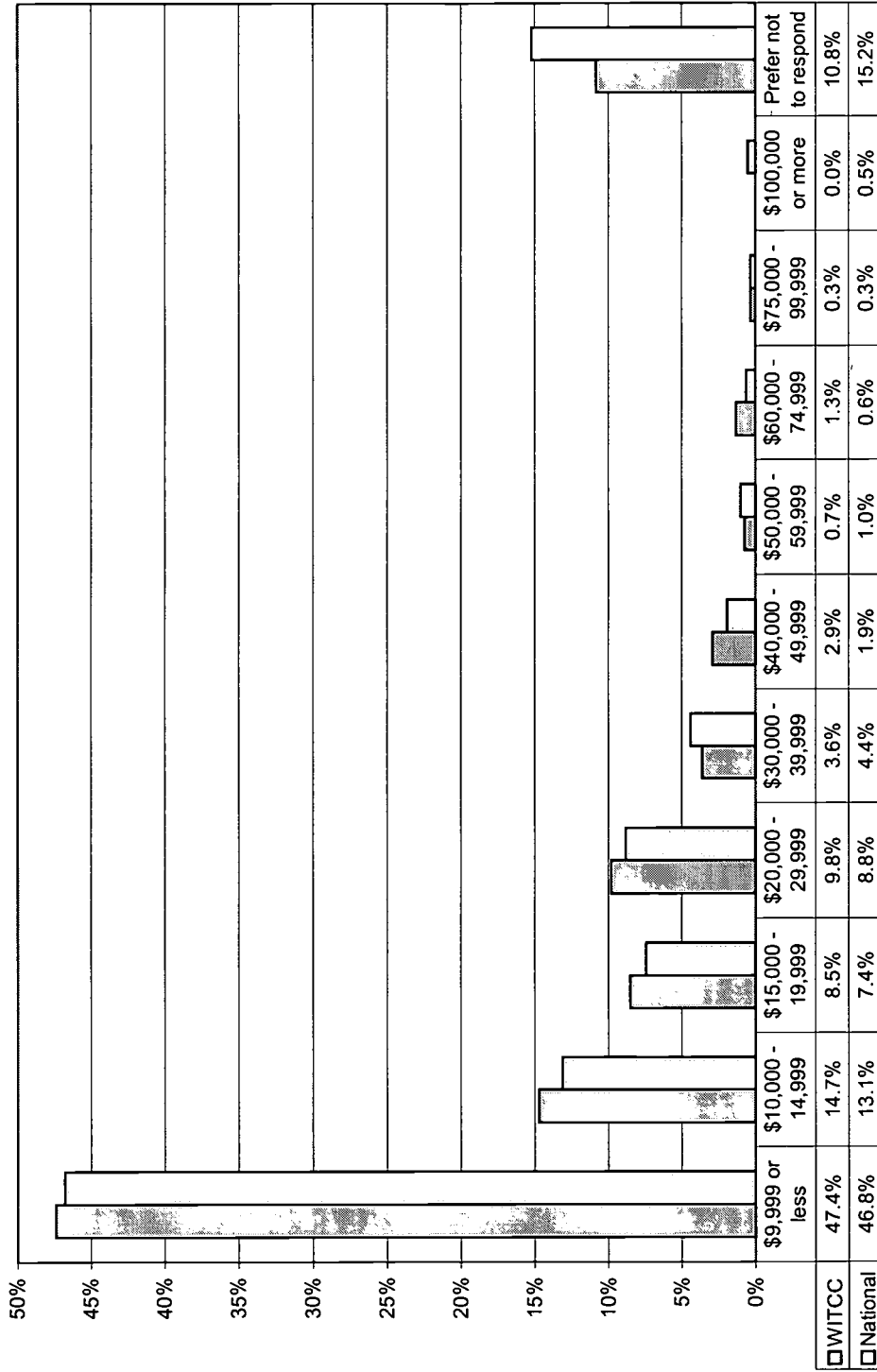
Source: Faces of the Future 1999-2000 (AACCC/ACT)

Credit Students: Employment Hours per Week



Source: *Faces of the Future 1999-2000 (AACCC/ACT)*

Credit Students: Income



WITCC National

Source: *Faces of the Future 1999-2000 (AACCC/ACT)*

Credit Students: Status

Student Status

- 69% of those registered for credit courses consider themselves 'students.'
- 31% consider themselves employers, workers, or self-employed.
- 27% of credit students hold one full-time job. 46% hold one part-time job.
- 52% work second shift.

Living Arrangements

- 40% live with parents.
- 27% live with spouse or significant other.
- 18% live with friend or roommate.

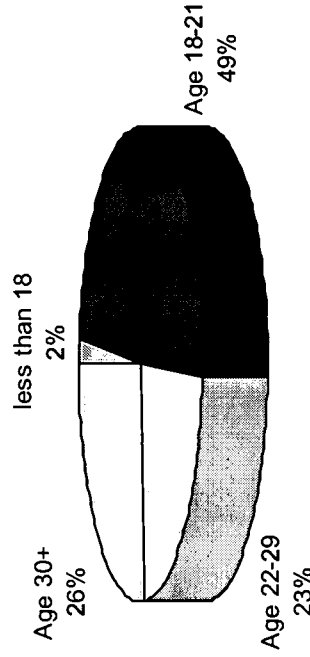
Life Changes

- 54% have experienced loss or change of job in last two years.

Attitudes Toward Diversity

- 74% Generation Y have friends of different ethnic origin or race.
- 74% of WITCC students have friends of different ethnic origins or race. Note that the mean age of 25.24 of the sample in the Faces of the Future survey includes Generations X, Y, and Baby Boomers.*

* Baby Boomers, 1943-1960; Generation X, 1961-1981, Generation Y, 1981 to present (aka Millennials).



Life Changes: Loss or Change of Job by Age

Source: *Faces of the Future 1999-2000 (AACCC/ACT)*

Credit Students: Evening and Saturday Demographics (Fall 1999)

	Evening Students n = 1,269		Saturday Students n = 194		Total Students (N) at 10-day-count: 4,171
	Evening N	% night	Saturday N	% Sat.	
Sex					
F	845	66.59	140	72.16	
M	421	33.17	54	27.84	
Unknown	3	.24	0	0.00	
Age					
<18	41	3.23	0	0.00	Evening 26.50
18-19	259	20.41	38	19.59	Saturday 28.61
20-21	197	15.52	25	12.89	26.84
22-24	191	15.05	28	14.43	25.88
25-29	175	13.79	28	14.43	
30-34	114	8.98	19	9.79	
35-39	73	5.75	13	6.77	
40-49	148	11.66	37	19.07	
50-64	40	3.15	4	2.08	
> 65	0	0.00	0	0.00	
Unknown	31	2.44	2	1.03	
Race					
Asian	13	1.02	6	3.09	
Black	15	1.18	6	3.09	
Hispanic	33	2.60	6	3.09	
Indian	18	1.42	0	0.00	
White	1096	86.37	163	84.02	
Unknown	94	7.40	13	6.70	
Major					
A&S	736	58.00	94	48.45	
VT	533	42.00	100	51.55	

Source: 9/2/99 file used for Fall Enrollment Report

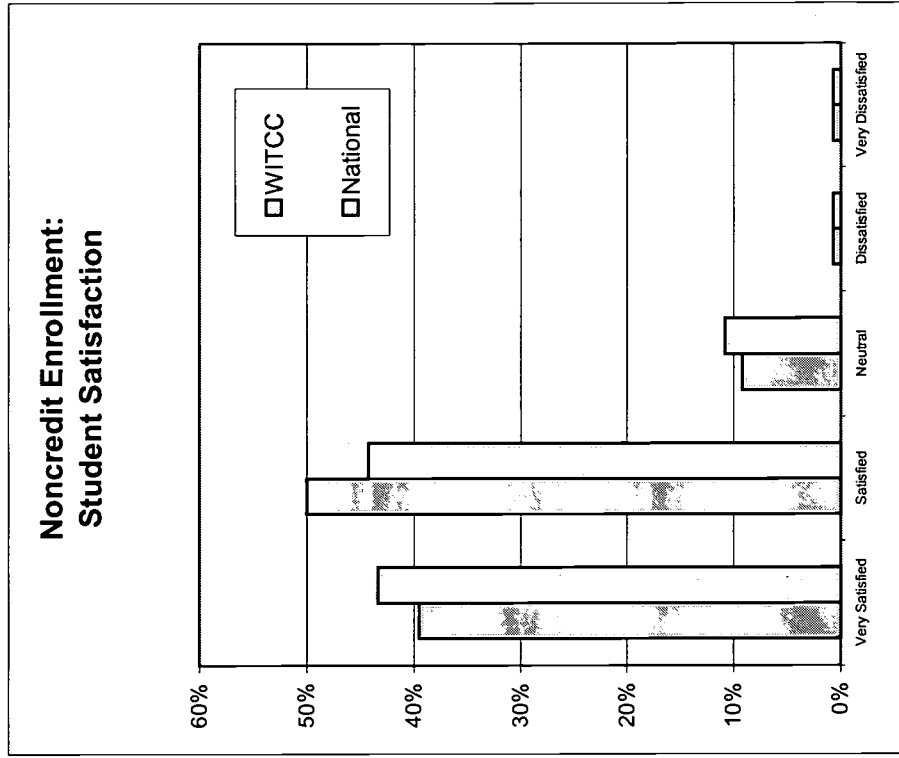
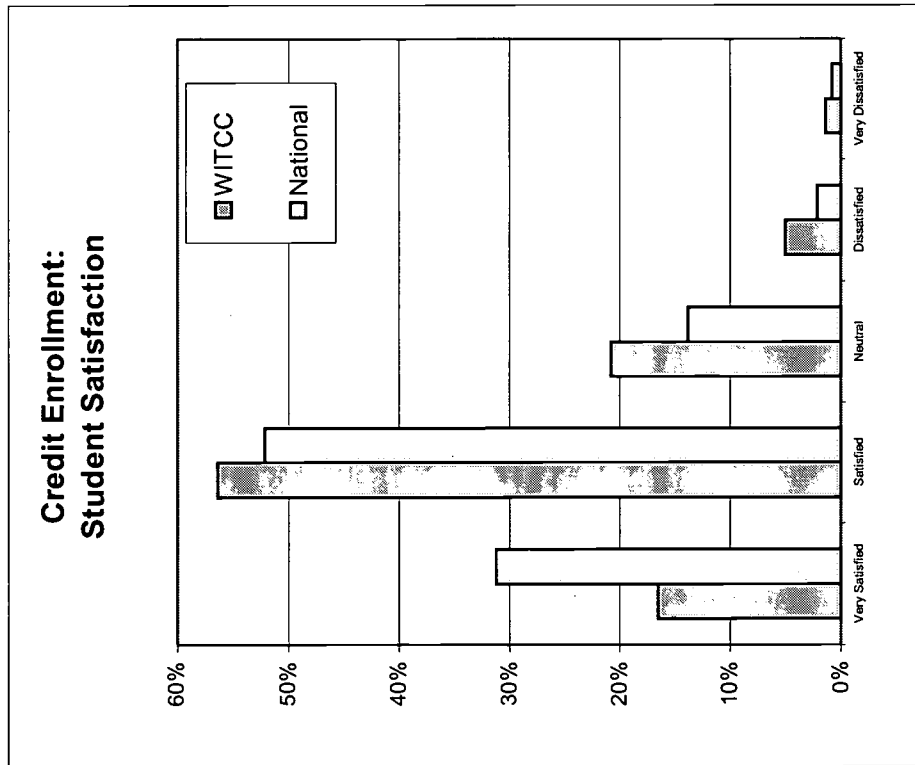
Credit Students: WITCC Student Statements College Choice and College Experience

Top 5 Factors Affecting College Choice	Reasons for Choosing A Specific Course/Program	Highest Rated Goals/Expectations
Cost of attending the college	To meet requirements of chosen occupation	To have a steady, secure job
A particular program of study	To increase my earning power	To have time for personal/family interests
Distance from permanent resident	To develop my mind and intellectual abilities	To be self-reliant
Availability of financial aid or scholarship	To study new and different subjects	To be a parent
Variety of courses offered	To make a career change	To make a lot of money

Problems Cited Most Often While Enrolled	Perceptions of College Experience: Highest Rated Statements
Personal financial problems	I feel a sense of safety and security while on campus and attending classes.
Cost of books and materials	Instructors/administrators treat students of my gender with respect.
Cost of computer	Instructors treat students of my racial ethnic group with respect.
Job-related responsibilities	Administrators/non-teaching staff treat my students in my racial/ethnic group with respect.
Cost of transportation	Students in my racial/ethnic group are treated with respect in other racial/ethnic groups.

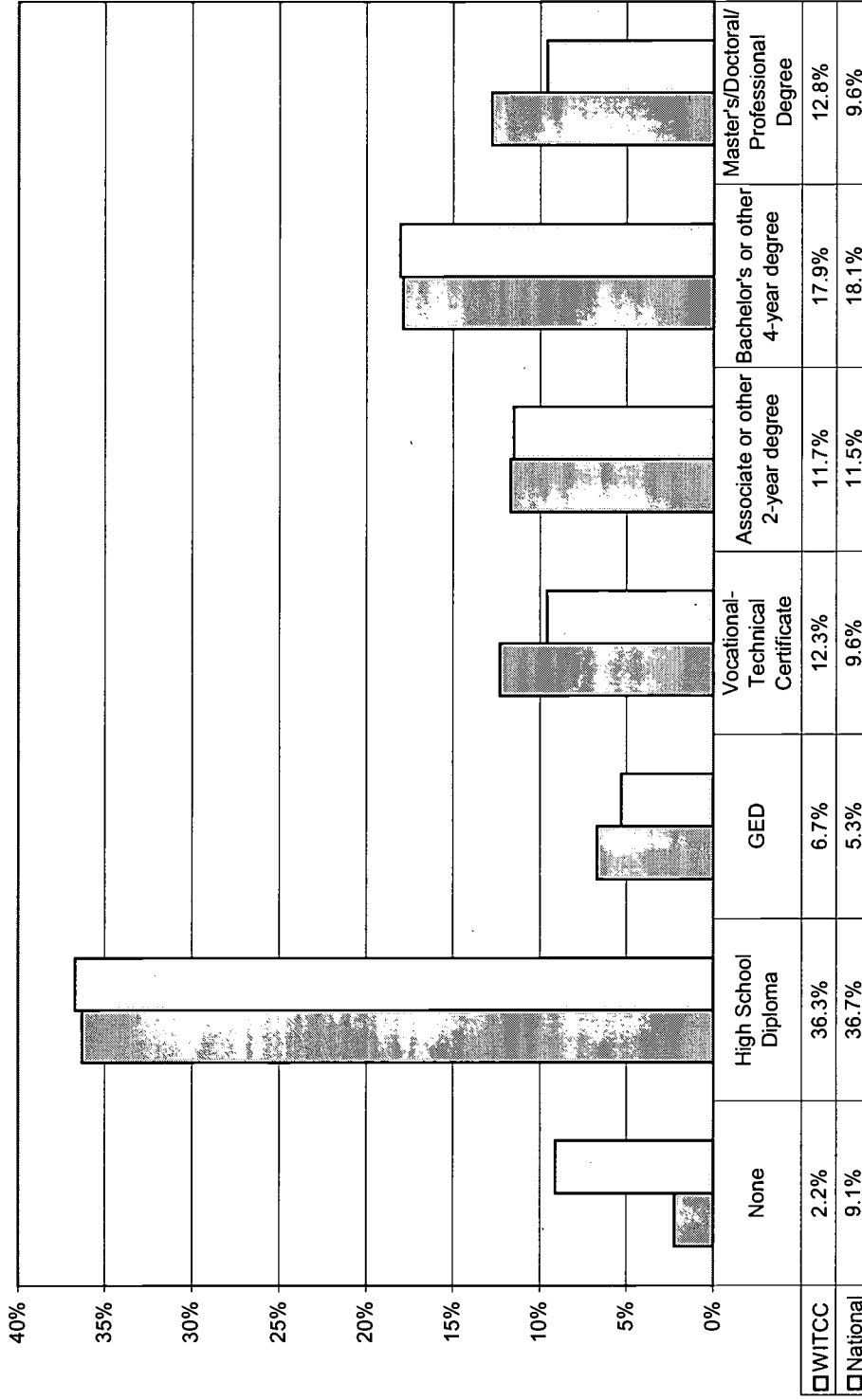
Source: Faces of the Future 1999-2000 (AACC/ACT)

Student Satisfaction: Credit and Noncredit Students



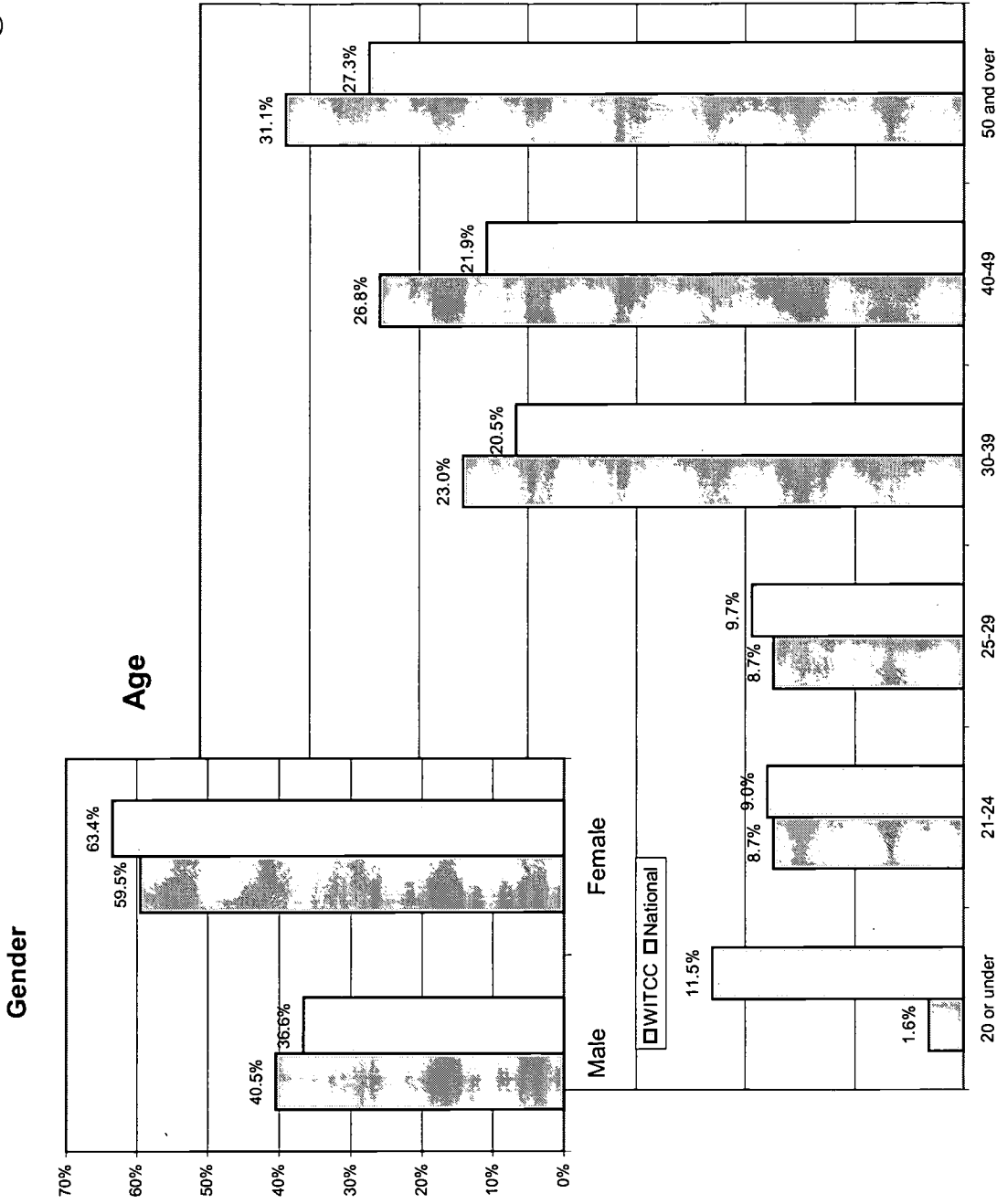
Source: *Faces of the Future 1999-2000 (AACCC/ACT)*

Noncredit Students: Educational Background



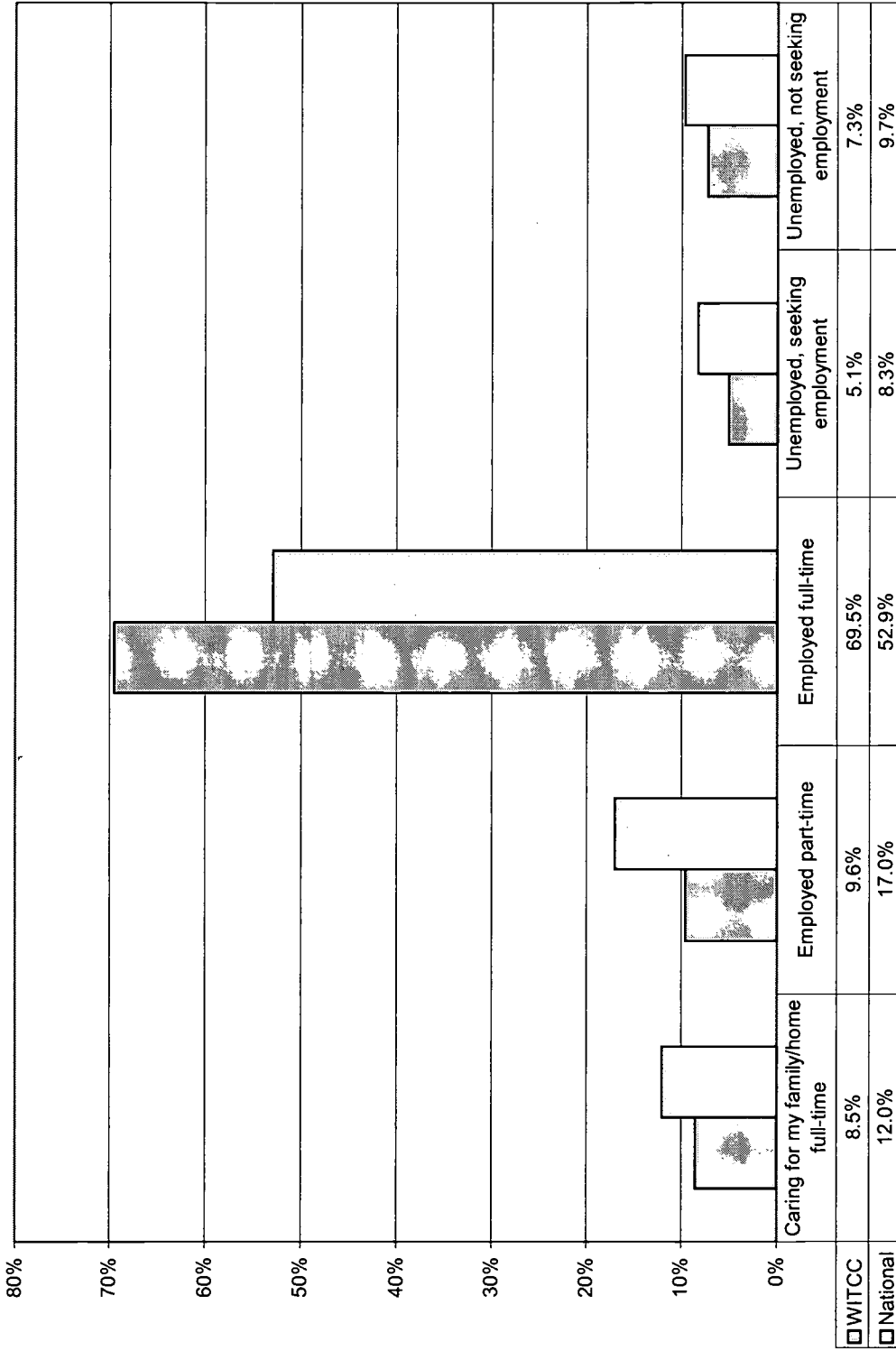
Source: *Faces of the Future 1999-2000 (AACCC/ACT)*

Noncredit Students: Gender and Age



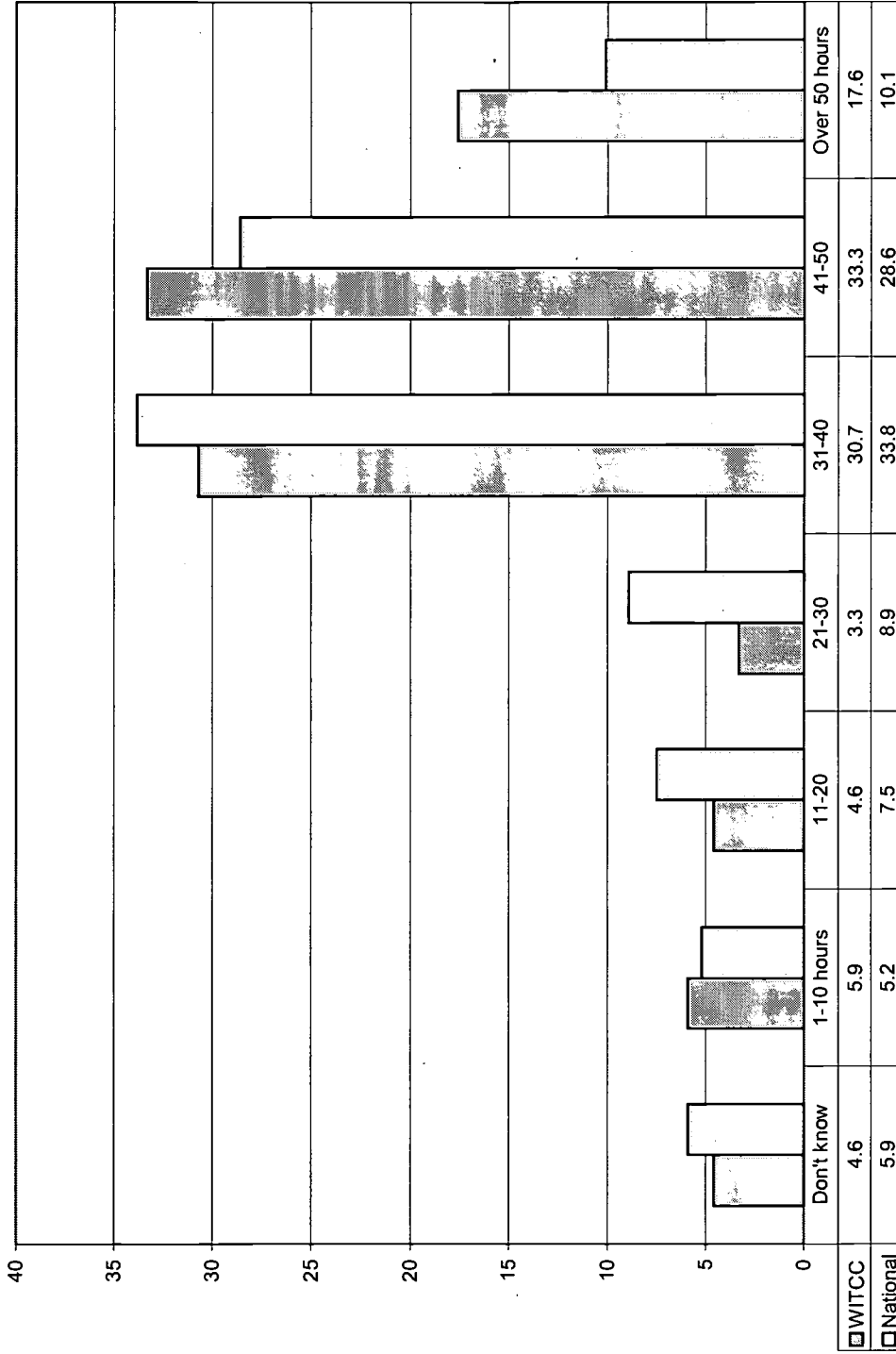
Source: Faces of the Future 1999-2000 (AACC/ACT)

Noncredit Students: Employment Status



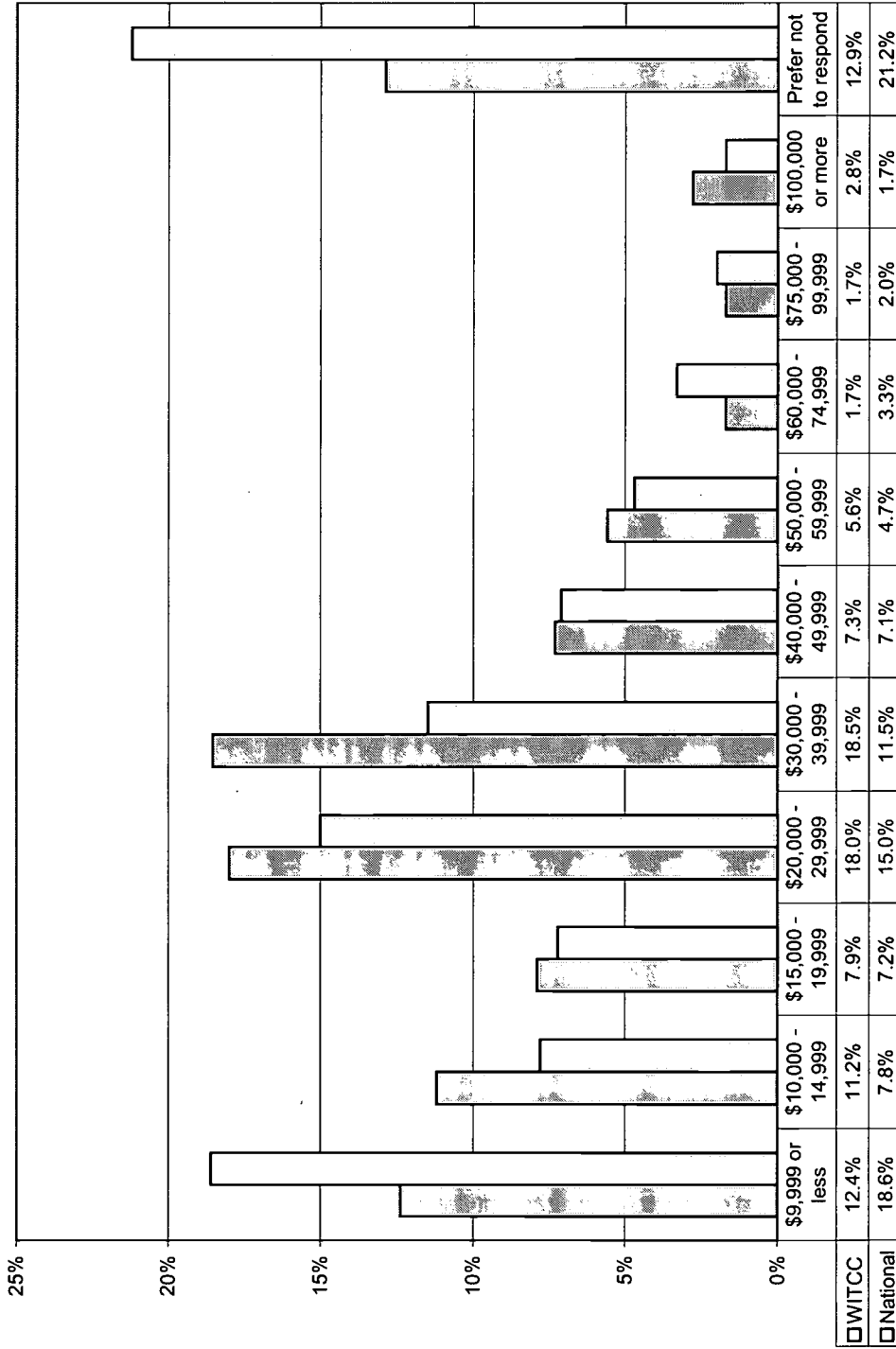
Source: *Faces of the Future 1999-2000 (AACCC/ACT)*

Noncredit Students: Employment Hours per Week



Source: *Faces of the Future 1999-2000 (ALACC/ACT)*

Noncredit Students: Income



Source: Faces of the Future 1999-2000 (AACCC/ACT)

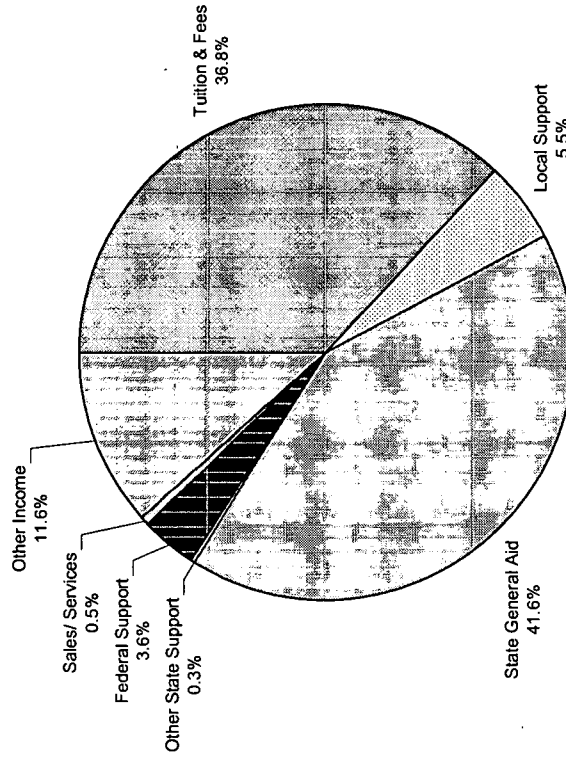
Financial Information

47	WITCC Revenues Sources FY95-FY99
48	WITCC Expenditures by Function: FY95-FY99
49	FY99 Revenues & Expenditures
50	FY99 Revenues per FTE
51	Higher Education Funding for Iowa Students
52	Student Expenses
53	Student Financial Aid
54	Foundation

WITCC Revenue Sources FY95-FY99

REVENUE SOURCES	1994-1995		1995-1996		1996-1997		1997-1998		1998-1999	
	Dollars	%	Dollars	%	Dollars	%	Dollars	%	Dollars	%
Tuition & Fees	4,373,407	32.3%	5,094,398	33.9%	5,837,827	36.4%	6,164,790	35.7%	6,917,769	36.8%
Local Support	913,103	6.8%	932,131	6.2%	933,667	5.8%	967,715	5.6%	1,030,155	5.5%
State General Aid	6,631,127	49.0%	6,992,399	46.5%	7,281,649	45.4%	7,554,167	43.7%	7,821,349	41.6%
Other State Support	125,634	0.9%	48,744	0.3%	48,726	0.3%	52,305	0.3%	59,163	0.3%
Federal Support	652,740	4.8%	755,264	5.0%	636,718	4.0%	660,585	3.8%	683,205	3.6%
Sales/ Services	52,661	0.4%	48,604	0.3%	57,353	0.4%	130,162	0.8%	101,662	0.5%
Other Income	776,243	5.7%	1,151,119	7.7%	1,244,290	7.8%	1,739,577	10.1%	2,176,474	11.6%
TOTAL REVENUE	13,524,915		15,022,659		16,040,230		17,269,301		18,789,777	

FY99 Revenues by Percent

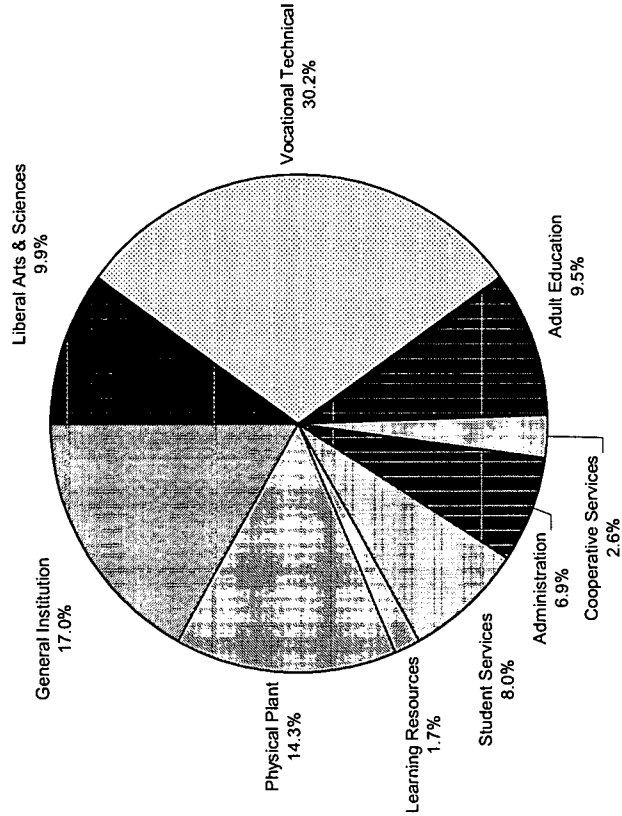


Source: WITCC Business Office

WITCC Expenditures by Function: FY95-FY99

EXPENDITURES BY FUNCTION	1994-1995		1995-1996		1996-1997		1997-1998		1998-1999	
	Dollars	%	Dollars	%	Dollars	%	Dollars	%	Dollars	%
Liberal Arts & Sciences	1,318,513	9.8%	1,580,807	10.6%	1,757,517	11.0%	1,728,596	10.1%	1,820,377	9.9%
Vocational Technical	5,456,937	40.4%	5,480,410	36.7%	5,791,511	36.3%	5,670,247	33.1%	5,563,067	30.2%
Adult Education	1,270,073	9.4%	1,256,769	8.4%	1,319,346	8.3%	1,520,807	8.9%	1,758,417	9.5%
Cooperative Services	13,652	0.1%	16,453	0.1%	13,660	0.1%	348,113	2.0%	472,520	2.6%
Administration	802,055	5.9%	1,098,783	7.4%	979,870	6.1%	1,130,631	6.6%	1,276,030	6.9%
Student Services	1,123,642	8.3%	1,243,595	8.3%	1,366,128	8.6%	1,441,891	8.4%	1,467,465	8.0%
Learning Resources	346,835	2.6%	301,598	2.0%	323,889	2.0%	329,895	1.9%	319,947	1.7%
Physical Plant	1,417,845	10.5%	1,714,899	11.5%	1,903,384	11.9%	2,196,176	12.8%	2,635,988	14.3%
General Institution	1,741,236	12.9%	2,232,289	15.0%	2,504,365	15.7%	2,763,183	16.1%	3,130,995	17.0%
TOTAL DISBURSEMENTS	13,490,788		14,925,603		15,959,670		17,129,539		18,444,806	

FY99 Expenditures by Function



Source: WITCC Business Office

FY99 Revenues and Expenditures As a Percent of Total College Expenses

Selected Expenses*

	Aver. for all IA Comm Coll	WITCC	WITCC's Rank among all 15 CCs
Salaries			
Instruction	34.07%	29.83%	14
Administration	3.46%	3.03%	6
Total Salaries	73.14%	71.92%	9
Telephone & Postage			
Telephone & Postage	0.79%	0.75%	8
Travel In State	0.74%	0.55%	10
Travel Out of State	0.57%	0.52%	11
Capital Outlay	2.77%	0.54%	14

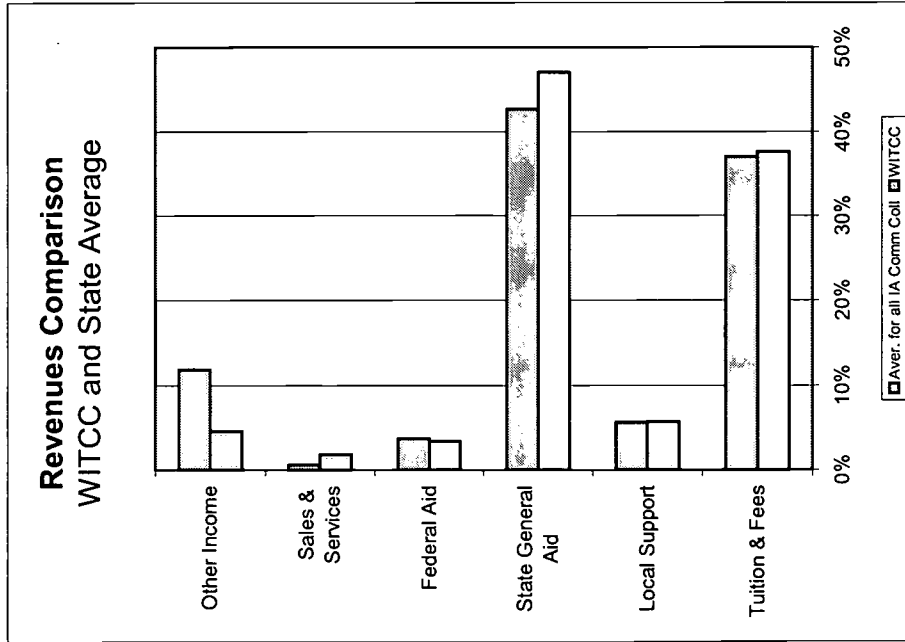
All Revenues

	Aver. for all IA Comm Coll	WITCC	WITCC's Rank among all 15 CCs
Tuition & Fees			
Tuition & Fees	37.58%	37.01%	10
Local Support	5.69%	5.62%	6
State General Aid	47.01%	42.66%	12
Federal Aid	3.37%	3.69%	5
Local + State General & Federal Subtotal			
Local + State General & Federal Subtotal	56.07%	51.97%	12
Sales & Services			
Sales & Services	1.84%	0.55%	9
Other Income	4.57%	11.84%	1

Source: Information Package to Iowa CC Presidents, 2000:21 (Kirkwood Community College)

Source: Information Package to Iowa CC Presidents, 2000:14 (Kirkwood Community College)

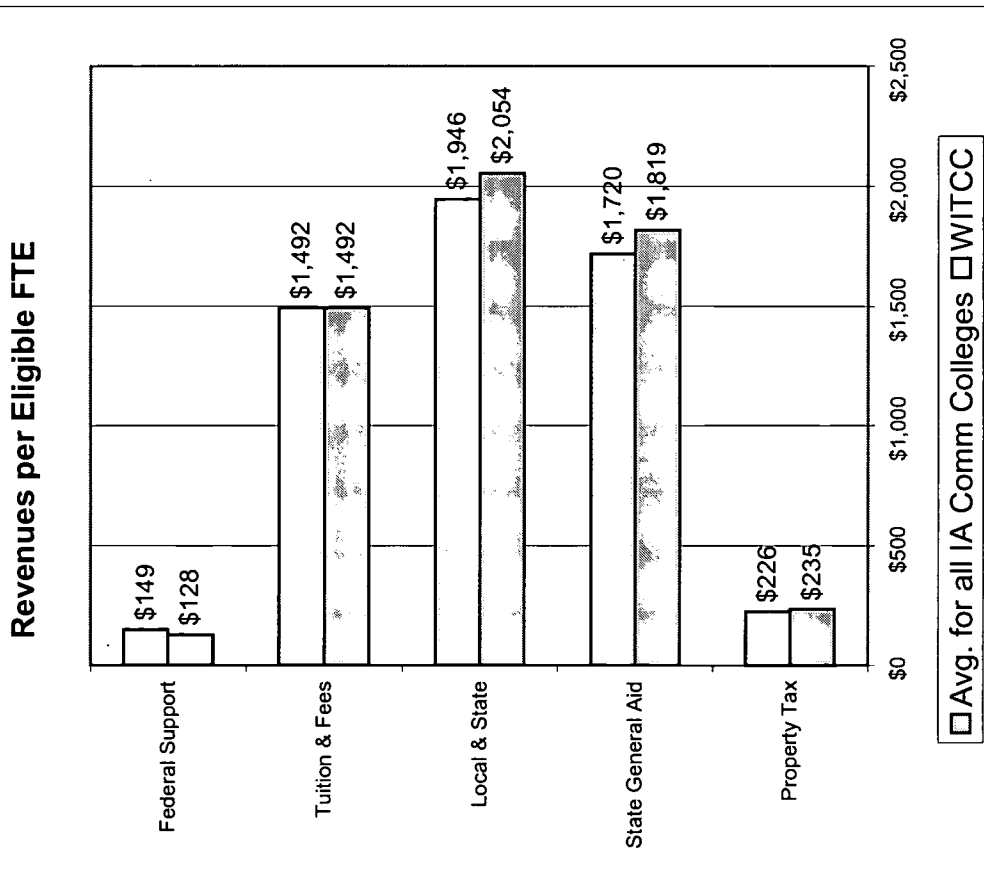
*Columns do not sum to 100 percent.



FY99 Revenues Per Eligible FTE

WITCC and State Average

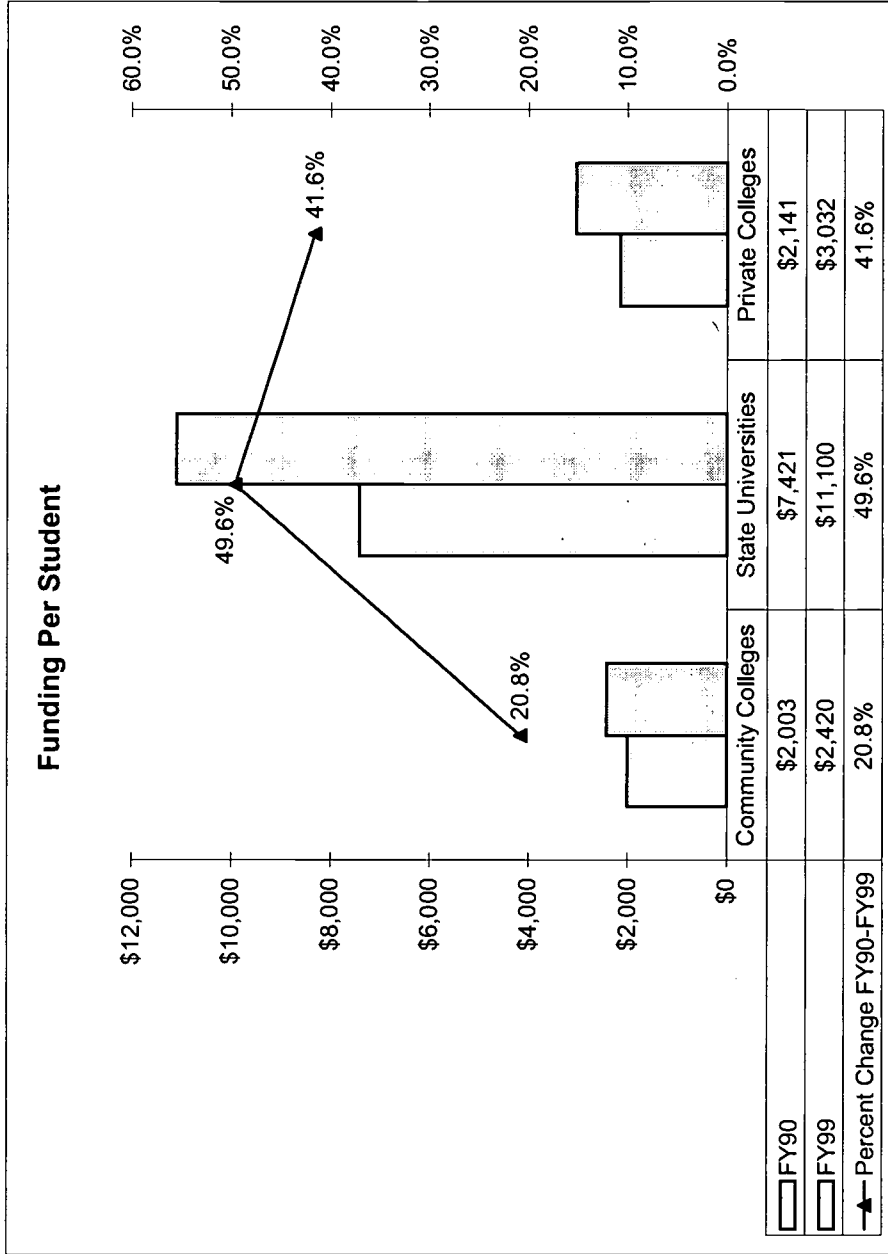
WITCC FTE = 4,548



Property Tax	Avg. for all IA Comm Colleges	WITCC	WITCC's Rank among all 15 CCs
State General Aid	\$235	\$226	7
Local & State Combined	\$1,819	\$1,720	10
Tuition & Fees	\$2,054	\$1,946	11
Federal Support	\$1,492	\$1,492	9
Total Support	\$128	\$149	5
	\$3,735	\$3,587	10

Source: Information Package to Iowa CC Presidents, 2000-15
(Kirkwood Community College)

Higher Education Funding for Iowa Students Percent Increase from FY90 To FY99



Source: Legislative Fiscal Bureau

WITCC Student Expenses: FY95-FY99

	Resident			Non-Resident		
	Tuition & Fees	Room & Board	Other Expenses Total	Tuition & Fees	Room & Board	Other Expenses Total
1994-1995	\$ 1,680	\$ 3,220	\$ 2,000 \$6,900	\$ 3,210	\$ 3,220	\$ 2,000 \$ 8,430
1995-1996	\$ 1,770	\$ 3,100	\$ 2,150 \$7,020	\$ 3,420	\$ 3,100	\$ 2,150 \$ 8,670
1996-1997	\$ 1,950	\$ 3,500	\$ 2,350 \$7,800	\$ 3,660	\$ 3,500	\$ 2,350 \$ 9,510
1997-1998*	\$ 2,040	\$ 3,350	\$ 2,370 \$8,360	\$ 3,810	\$ 3,350	\$ 2,970 \$ 10,130
1998-1999* % Change from 1994	\$ 2,130	\$ 3,438	\$ 2,970 \$8,538	\$ 3,945	\$ 3,438	\$ 2,970 \$ 10,353
	27%	7%	49%	23%	7%	49%

*Tuition and fees are based on 30 semester hour per year.

Sources: Iowa College Student Aid Commission; WITCC Financial Aid Office.

WITCC Student Financial Aid: FY95-FY99

	1994-1995		1995-1996		1996-1997		1997-1998		1998-1999	
	Number of Awards	Total Amount	Number of Awards	Total Amount	Number of Awards	Total Amount	Number of Awards	Total Amount	Number of Awards	Total Amount
Scholarships and Grants										
Federal	1,706	\$ 1,962,090	1,574	\$ 2,048,921	1,673	\$ 2,195,646	1,661	\$ 2,283,630	1,428	\$ 2,650,031
State	464	\$ 349,671	428	\$ 306,876	469	\$ 348,750	507	\$ 238,596	544	\$ 288,091
Institutional	330	\$ 224,580	384	\$ 282,987	410	\$ 352,433	546	\$ 434,303	549	\$ 483,303
Others	103	\$ 50,302	197	\$ 96,924	211	\$ 99,883	245	\$ 189,916	497	\$ 250,195
Loans										
Federal	1,056	\$ 2,234,511	931	\$ 2,574,215	1,096	\$ 3,131,938	1,188	\$ 3,453,945	1,221	\$ 3,573,435
Work Study & Other Employment										
Federal	102	\$ 69,156	94	\$ 40,138	74	\$ 32,856	141	\$ 75,585	110	\$ 74,465
State	55	\$ 42,898	70	\$ 56,280	65	\$ 51,271	75	\$ 62,500	62	\$ 62,500

Source: Financial Aid Office

WITCC Foundation

The Western Iowa Tech Community College Foundation is a non-profit, philanthropic organization operated exclusively for charitable, scientific, and educational purposes. It was established in 1989 to raise funds to provide broader educational opportunities and service to its students, alumni, faculty, staff, and communities.

Western Iowa Tech Community College Foundation Board members, as of May 31, 2000:

E. B. Baker, C. W. Suter, Inc.	Donald Kelsey, Prudential Insurance Co.
Joan Ballantyne, Miller-Mac Real Estate Co.	Dr. Robert H. Kiser, WITCC President Emeritus
Deborah Cook, Great West Casualty Co.	E. Joe Lundsgaard, Community Volunteer
Harlan Crouch, Williams & Co. Consulting, Inc.	Steven Martens, Wells Fargo Bank
Dr. Robert E. Dunker, WITCC	Richard A. Pecaut, Pecaut & Co.
Kent Godbersen, GOMACO	Dr. Donald Poppen, Community Volunteer
Richard Grenko, Nichols Rise & Company	Robert A. Simonsen, R. J. Thomas Mfg. Co. Inc.
Lois Gurdin, US WEST Communications	Robert Townsend, SOSINC Communications
Marilyn Hagberg, Security National Bank	Patricia Townsend, SOSINC Communications
Gretchen Hirschbach, Community Volunteer	Fay Wells, Wells Dairy Company
Kim Ingerslev, Professional Computer Services	Charlie Zook, Zook Motors, Inc.
Roland Junck, Community Volunteer	

Foundation Staff: Deb Smith, Executive Director
Amy Chace, Director of Gift Planning

The WITCC Foundation's Annual Campaign for Student Scholarships was established in 1997.

Annual Campaign I	Goal: \$ 75,000	Actual: \$ 76,843
Annual Campaign II	Goal: \$ 85,000	Actual: \$ 88,520
Annual Campaign III	Goal: \$ 95,000	Actual: \$105,371
Annual Campaign IV	Goal: \$110,000	Actual: \$118,559 (as of June 1, 2000)

Western Iowa Tech Community College Foundation Scholarship Endowments:

Dr. Robert. H. Kiser	Principal Total: \$55,000
George Lee	Principal Total: \$50,000
Albert and Dortha Hansen	Principal Total: \$42,839
Dr. Fred Stark	Principal Total: \$25,964
Joan and Keith Ballantyne	Principal Total: \$16,208
Fred Fowler	Principal Total: \$11,945
Martha and Fred Davenport	Principal Total: \$10,500
William Menzel	Principal Total: \$10,000
Isadore Rocklin Family	Principal Total: \$10,000
Stocktonian	Principal Total: \$10,000
Thomas S. Miller	Principal Total: \$ 7,000

WITCC Foundation Total Assets:

June 30, 1992	\$ 191,123
June 30, 1993	\$ 225,362
June 30, 1994	\$ 706,335
June 30, 1995	\$ 1,129,315
June 30, 1996	\$ 708,664
June 30, 1997	\$ 475,327
June 30, 1998	\$ 509,098
June 30, 1999	\$ 722,183

The Foundation's first Capital Campaign was a cooperative effort with the community of Cherokee for the Cherokee Campus and Conference Center, which opened on August 2, 1996. Total dollars raised were \$3,337,995.



Student Success

Contents	
57	Employment: Placement & Employer Survey
58	Degrees Awarded
59	Measures of Success

Employment: Placement & Employer Survey

Placement Rate

	1994-95	1995-96	1996-97	1997-98	1998-99
Number of Graduates	523	484	568	593	612
Placement Rate	99.6%*	97% *	97.5%*	99.3%*	96%
Graduates Residing in Iowa, Nebraska or South Dakota	95.2%	94.6%	94%	93.4%	96%
Number of Companies Hiring Graduates	238	222	269	284	287

Information is based upon a survey of graduates. Response rate for each year was over 90%.

*Placement rate is calculated on graduates responding to a graduate survey. Successful placement is defined as a graduate who is employed, continuing his/her education, or enlisted in the military.

Employer Ratings of WITCC FY 99 Graduates Top 5 Categories

Program	Salaries Reported by Graduates: FY 99 Selected Programs Ranked By High Salary			The employee...	Mean	Std. Dev.
	High	Average	Salary			
Police Science	\$45,032.00	\$24,814.40	\$24,814.40	observes rules and regulations related to the job.	3.34	0.58
Arts & Sciences	\$45,011.20	\$21,611.20	\$21,611.20	uses tools and equipment properly.	3.33	0.52
Telecommunications	\$45,011.20	\$31,782.40	\$31,782.40	works effectively with others in the workplace.	3.33	0.65
Band Instrument Repair Programs	\$43,326.40	\$27,081.60	\$27,081.60	shows initiative on the job.	3.31	0.68
Computer Programmer	\$39,977.60	\$29,411.20	\$29,411.20	demonstrates professional work ethic.	3.30	0.64
Electronics Programs	\$37,980.80	\$24,236.16	\$24,236.16			
Associate Degree Nursing	\$34,507.20	\$25,334.40	\$25,334.40			
Agribusiness Technology	\$33,592.00	\$23,774.40	\$23,774.40			
Administrative Assistant Programs	\$30,326.40	\$17,326.40	\$17,326.40			
Occupational Therapy Assistant	\$27,872.00	\$21,340.80	\$21,340.80			

Scale: 4=Strongly Agree; 1=Strongly Disagree

Source: 1999 Survey of Employers; WITCC

Degrees, Diplomas, & Certificates Awarded

YEAR	TOTAL	ASSOCIATE OF APPLIED SCIENCE DEGREE	ASSOCIATE OF ARTS DEGREE	ASSOCIATE OF SCIENCE DEGREE	DIPLOMA	CERTIFICATE
1967-1990	5,758					
1990-1991	716	249	21		411	35
1991-1992	734	279	32		381	42
1992-1993	703	270	44		380	9
1993-1994	721	305	28		383	5
1994-1995	523	246	39		235	3
1995-1996	482	241	33	1	207	
1996-1997	568	304	51		211	2
1997-1998	594	326	67	3	197	1
1998-1999	593	303	66	0	220	4
All years	11,392					

Source: WITCC Institutional Research Office

Institutional Performance Measures

As part of a process to measure institutional effectiveness, Western Iowa Tech Community College has adopted performance measures in several categories, including Student Progress, Student Learning, Developmental Education, Client Satisfaction (Student, Employer, Community), and Educational Outcomes. Measures currently available are represented here; in all cases, WITCC has exceeded the standard.

CATEGORY	INDICATOR	MEASURE
Student Learning	Course Completion	Seventy-one percent (71 %) of the students who enrolled in the Fall 1999 Semester completed the semester with a "C" or better. The mean GPA for those students (completing with a "C" or better) was 3.167.
	Successful Performance on General Education Core	Employer Ratings. WITCC students exceeded the benchmark for defined general education competencies, according to the most recent Employer Survey (Fall, 1999). Ninety-five percent of the Employers of 1998 graduates rated their general skills as 'adequate' or 'more than adequate.' (The target was 85%.)
Client Satisfaction	Employers: Job Skills	Ninety-two percent of the employers of 1998 graduates agreed or strongly agreed that our students demonstrated job related skills. Ninety-five percent Agree or Strongly Agree that our graduates do quality work. Eighty-five percent of employers rated WITCC's preparation of workers Adequate or More than Adequate. An additional six percent rated the preparation Outstanding.
	Students	The overall mean rating of instructional effectiveness by students exceeded the target on the 1999 Student Satisfaction Inventory (Target = 5.0; Importance mean = 5.96; Satisfaction mean = 5.16).
	Community	The overall mean rating of registration effectiveness by students exceeded the target mean on the Student Satisfaction Inventory (Target = 5.0; Importance mean = 5.90; Satisfaction mean = 5.22). Eighty-three percent of district residents rate the quality of instruction received at WITCC as "good" or "very good" in the WITCC Community Survey. The same percent believe that the community is "getting its money's worth" from the college.



U.S. Department of Education
Office of Educational Research and Improvement (OERI)
National Library of Education (NLE)
Educational Resources Information Center (ERIC)



REPRODUCTION RELEASE

(Specific Document)

I. DOCUMENT IDENTIFICATION:

Title: Western Iowa Tech Community College, Fact Book 1999-2000	
Author(s): —	
Corporate Source:	Publication Date:

II. REPRODUCTION RELEASE:

In order to disseminate as widely as possible timely and significant materials of interest to the educational community, documents announced in the monthly abstract journal of the ERIC system, *Resources in Education* (RIE), are usually made available to users in microfiche, reproduced paper copy, and electronic media, and sold through the ERIC Document Reproduction Service (EDRS). Credit is given to the source of each document, and, if reproduction release is granted, one of the following notices is affixed to the document.

If permission is granted to reproduce and disseminate the identified document, please CHECK ONE of the following three options and sign at the bottom of the page.

The sample sticker shown below will be affixed to all Level 1 documents

PERMISSION TO REPRODUCE AND DISSEMINATE THIS MATERIAL HAS BEEN GRANTED BY

Sample

TO THE EDUCATIONAL RESOURCES INFORMATION CENTER (ERIC)

1

Level 1



Check here for Level 1 release, permitting reproduction and dissemination in microfiche or other ERIC archival media (e.g., electronic) and paper copy.

The sample sticker shown below will be affixed to all Level 2A documents

PERMISSION TO REPRODUCE AND DISSEMINATE THIS MATERIAL IN MICROFICHE, AND IN ELECTRONIC MEDIA FOR ERIC COLLECTION SUBSCRIBERS ONLY, HAS BEEN GRANTED BY

Sample

TO THE EDUCATIONAL RESOURCES INFORMATION CENTER (ERIC)

2A

Level 2A



Check here for Level 2A release, permitting reproduction and dissemination in microfiche and in electronic media for ERIC archival collection subscribers only

The sample sticker shown below will be affixed to all Level 2B documents

PERMISSION TO REPRODUCE AND DISSEMINATE THIS MATERIAL IN MICROFICHE ONLY HAS BEEN GRANTED BY

Sample

TO THE EDUCATIONAL RESOURCES INFORMATION CENTER (ERIC)

2B

Level 2B



Check here for Level 2B release, permitting reproduction and dissemination in microfiche only

Documents will be processed as indicated provided reproduction quality permits.
If permission to reproduce is granted, but no box is checked, documents will be processed at Level 1.

I hereby grant to the Educational Resources Information Center (ERIC) nonexclusive permission to reproduce and disseminate this document as indicated above. Reproduction from the ERIC microfiche or electronic media by persons other than ERIC employees and its system contractors requires permission from the copyright holder. Exception is made for non-profit reproduction by libraries and other service agencies to satisfy information needs of educators in response to discrete inquiries.

Signature:	Printed Name/Position/Title: Robert E. Dunker Western Iowa Tech President	
Organization/Address: PO Box 5199 Sioux City, IA 51102-5199	Telephone: 712-274-6400	FAX: 712-274-6412
	E-Mail Address: dunkerr@witcc.com	Date: 3-14-01

Sign here, → please



III. DOCUMENT AVAILABILITY INFORMATION (FROM NON-ERIC SOURCE):

If permission to reproduce is not granted to ERIC, or, if you wish ERIC to cite the availability of the document from another source, please provide the following information regarding the availability of the document. (ERIC will not announce a document unless it is publicly available, and a dependable source can be specified. Contributors should also be aware that ERIC selection criteria are significantly more stringent for documents that cannot be made available through EDRS.)

Publisher/Distributor:
Address:
Price:

IV. REFERRAL OF ERIC TO COPYRIGHT/REPRODUCTION RIGHTS HOLDER:

If the right to grant this reproduction release is held by someone other than the addressee, please provide the appropriate name and address:

Name:
Address:

V. WHERE TO SEND THIS FORM:

Send this form to the following ERIC Clearinghouse:	University of California Los Angeles ERIC Clearinghouse for Community Colleges 3051 Moore Hall Box 951521 Los Angeles, CA 90095-1521
---	--

However, if solicited by the ERIC Facility, or if making an unsolicited contribution to ERIC, return this form (and the document being contributed) to:

ERIC Processing and Reference Facility
4133-A Forbes Boulevard
Lanham, Maryland 20706

Telephone: 301-552-4200
Toll Free: 800-799-3742
FAX: 301-552-4700
e-mail: ericfac@inet.edu gov
WWW: <http://ericfac.piccard.cac.com>