

DOCUMENT RESUME

ED 447 218

TM 032 126

TITLE Dropout Rates in Oregon High Schools: 1998-99 State Summary Report.

INSTITUTION Oregon State Dept. of Education, Salem.

PUB DATE 2000-04-00

NOTE 115p.

AVAILABLE FROM Oregon Department of Education, 255 Capitol Street NE, Salem, OR 97310-0203., Tel: 378-3310, ext. 485. For full text: <http://www.ode.state.or.us/stats>.

PUB TYPE Numerical/Quantitative Data (110) -- Reports - Descriptive (141)

EDRS PRICE MF01/PC05 Plus Postage.

DESCRIPTORS Dropout Rate; *Dropouts; High Schools; *Minority Groups; *Racial Differences; School Districts; Student Characteristics

IDENTIFIERS *Oregon

ABSTRACT

Oregon school districts are required to report to the state Department of Education students who are identified as dropouts. Information is reported on each such student that makes it possible to describe dropouts with respect to several characteristics. The Department of Education summarizes these reports for grades 9 through 12 at school, district, county, and state levels. The state dropout rate for 1998-1999 was 6.59%, and the synthetic 4-year dropout rate for 1998-1999 was 21.70%. This is the third year of reporting under the state's new dropout definition. The dropout rate for Hispanic students was more than double the overall statewide rate, and Asian/Pacific Islander students continued to have the lowest dropout rate. A primary reason students drop out is a deficiency in credits toward a high school diploma. About one quarter of the dropouts had been enrolled in the school district for 1 year or less. The reasons most often cited for leaving were being too far behind in credits to catch up, working more than 15 hours a week, having a dysfunctional home life, lack of parental support, frequent discipline referrals, substance abuse, and pregnancy or early parenthood. The historic relationship between the statewide unemployment rate and the percent of juniors and seniors who withdraw from school suggests that the availability of jobs has a strong influence on the dropout rate. (Author/SLD)

Dropout Rates in Oregon High Schools

1998-99

State Summary Report

April 2000

PERMISSION TO REPRODUCE AND
DISSEMINATE THIS MATERIAL HAS
BEEN GRANTED BY

S. C. Lesh

TO THE EDUCATIONAL RESOURCES
INFORMATION CENTER (ERIC)

1

U.S. DEPARTMENT OF EDUCATION
Office of Educational Research and Improvement
EDUCATIONAL RESOURCES INFORMATION
CENTER (ERIC)

- This document has been reproduced as received from the person or organization originating it.
- Minor changes have been made to improve reproduction quality.

- Points of view or opinions stated in this document do not necessarily represent official OERI position or policy.

Stan Bunn
State Superintendent of Public Instruction

Oregon Department of Education
255 Capitol Street NE
Salem, Or 97310-0203

TM032126

BEST COPY AVAILABLE

The officially codified and compiled Oregon Administrative Rules are published by the Secretary of State and portions of that published compilation have copyright status. Any Oregon Administrative Rules presented on these pages are not the official version of the rules published by the Secretary of State.

It is the policy of the State Board of Education and a priority of the Oregon Department of Education that there will be no discrimination or harassment on the grounds of race, color, sex, marital status, religion, national origin, age or disability in any educational programs, activities or employment. Persons having questions about equal opportunity and nondiscrimination should contact the State Superintendent of Public Instruction at the Oregon Department of Education.

Complimentary copies have been distributed.
Additional copies are available for downloading at
www.ode.state.or.us/stats

Place orders with the Publications Sales Clerk at 378-3310, ext. 485

Please share this document with your colleagues!
All or any part of this document may be photocopied for educational purposes
without permission from the Oregon Department of Education.

Table of Contents

	Page
Executive Summary	i
Table of Contents	ii
List of Tables	iii
List of Figures	iii
Introduction	1
Who is a Dropout?	2
Oregon's Dropout Rate	2
Findings for the 1998-99 School Year	
Race/ethnicity	5
Age and Sex	7
Region	7
Mobility	8
Timing	8
Credit Deficiency	9
Employment	10
Why Students Dropped Out	11
GED	12
Alternative High School	13
How Dropout Rates Are Calculated	14
Appendix	16

List of Tables

Text Tables

1 – Dropouts and dropout rates, grades 9-12, by background characteristics: 1998-99	4
2 – Factors Influencing the Decision To Drop Out From Grades 9-12: 1998-99	12
3 – Number of students earning a school-sponsored GED: 1993-94 to 1998-99	15

Appendix Tables

A1 — Number of non-dropouts and dropouts; dropout rates	15
A2 — Dropouts by sex, race, and grade, grades 9-12	26
A3 — Time enrolled in district, circumstances upon withdrawal, rescinded students	36
A4 — Factors influencing the decision to drop out	46
A5 — Factors influencing the decision to drop out, by race, sex, and grade	54
A6 — Number of non-dropouts and dropouts; dropout rates, grades 7-8	55
A7 — Dropout Rates By Race/Ethnicity, 1991-92 to 1998-99	62

List of Figures

1 – Annual Dropout rates From Grades 9-12 In Oregon Public Schools: 1991-92 to 1998-99	5
2 – Dropout rates by race/ethnicity in grades 9-12: 1998-99	6
3 – Dropouts From Grades 9-12, by age and sex: 1998-99	7
4 – Dropouts From Grades 9-12, by length of time enrolled in the district: 1998-99	8
5 – Dropouts From Grades 9-12, by month: 1998-99	9
6 – Number of Dropouts by Age and Credits Earned, Grades 9-12: 1998-99	9
7 – Relationship Between the Unemployment Rate and Withdrawal During the Junior and Senior Years in Oregon: 1980 to 1999	10

Executive Summary

Oregon school districts are required to report to the Department of Education students who are identified as dropouts, as defined in statute (ORS 339.505). Briefly, a dropout is a student who withdraws from school without receiving a high school diploma, GED Certificate, or modified diploma, or transferring to another school. A variety of information is provided on each student. This makes it possible to describe dropouts with respect to several characteristics.

The Department of Education summarizes these reports on dropouts in grades 9 through 12 at the school, district, county and state levels. In summary, the statewide annual dropout rate was 6.59 percent in the 1998-99 academic year. The synthetic four-year dropout rate for 1998-99 was 21.70 percent. This is the third year of reporting under the new dropout definition enacted by the 1997 Legislative Assembly. Previously, dropouts included students who had obtained a GED certificate.

Additional findings include the following:

- The dropout rate for Hispanic students is more than double the overall statewide rate.
- Asian/Pacific Islanders continued to have the lowest dropout rate.
- A primary reason students report for dropping out is significant deficiency in credits toward a high school diploma.
- About one quarter of dropouts were enrolled in the school district one year or less.
- Eight percent of the dropouts attended four years of high school but did not meet graduation requirements and did not return in the fall.
- Reasons for leaving most often cited include: too far behind in credits to catch up, working more than 15 hours a week, dysfunctional home life, lack of parental support for education, frequent discipline referrals, substance abuse, and pregnant or student parent.
- The historic relationship between the statewide unemployment rate and the percent of juniors and seniors who withdraw from school suggests that the availability of jobs has a strong influence on the dropout rate.

INTRODUCTION

This is the eighth annual report on dropouts in Oregon schools published by the Oregon Department of Education since a law (ORS 339.505 to 339.520) establishing the report was passed by the 1991 Legislature. This report presents dropout rates for students who left school from grades 7-12 between July 1, 1998, and June 30, 1999, by school, district, and county, along with a statistical profile for students who dropped out of grades 9-12.

The dropout report was established to provide the state with a uniform and accurate system of accounting for students who leave school before graduating. The report presents dropout rates for each regular or alternative high school that awards a diploma, and rates for regular elementary, middle, and junior high schools offering grades 7 and 8. Demographic data on the dropout population, circumstances surrounding their withdrawal, and factors influencing the decision to drop out are also presented.

In earlier decades a high school diploma was an important credential, but not a necessary one for individuals who wished to have a career and a family and to participate fully in American life. That has changed. A high school diploma is now a minimum credential, and the Certificate of Initial Mastery and Certificate of Advanced Mastery, along with schooling or other training beyond high school, are a necessary part of becoming an effective participant in the world today. It is therefore of great importance that students complete their secondary education. For those that do not, we need to know who they are and their reasons for leaving so we may develop effective strategies for keeping all our children in school.

This report is part of that effort, presenting the facts so that an informed dialogue can be had in every community. It is not meant to stamp the label of "dropout" on any individual, or measure what happens to students in future years. The report does provide a profile of students at the school, district, county, and state level so that trends can be identified and strategies implemented to help students be more successful in school.

Students do not drop out at one particular time, but throughout the school year. An annual report cannot assess an ongoing problem in such a way that action can be taken when it is needed in every case. For this reason, the Department encourages districts, schools, and interested parties to use the information gathered in this report as a starting point for building their own dropout information system, and to use that system to make periodic reports to administrators, school board members, and the community throughout the school year.

Who is a dropout?

A dropout is a student who withdrew from school and did not graduate or transfer to another school that leads to graduation. Dropouts do not include students who:

- are deceased,
- are being home schooled,
- are enrolled in an alternative school or hospital education program,
- are enrolled in a juvenile detention facility,
- are enrolled in a foreign exchange program,
- are temporarily absent because of suspension, a family emergency, or severe health problems that prevent attendance at school,
- received a GED certificate,
- received an adult high school diploma from a community college, or
- received a modified diploma.

Rules developed by the Department ensure a complete accounting of students who drop out during the school year, as well as students who drop out between school years. Oregon's dropout reporting procedures are in full agreement with the procedures developed by the National Center for Education Statistics for uniform and comparable reporting of dropout rates by the states. For more information on which students become dropouts, see the Oregon Dropout Reporting Manual 1999 at <http://www.ode.state.or.us/stats/index.htm>.

Oregon's Dropout Rate

Three types of dropout rates can be calculated: event, status, and cohort rates. Each rate tells us something different about who dropped out. Oregon law prescribes an event rate, which measures the proportion of students who drop out in a single year without completing high school. Event rates show how many students leave high school each year and how each year's rates compare with previous ones.

A status rate measures a group of people in a given age range to see how many are dropouts, regardless of when they dropped out. Federal census surveys use an age range of 16 to 24. This rate shows how many people in that age range might need further training or education. Status rates are published at the national level by the National Center for Education Statistics.

A cohort rate starts with a defined set of students, and measures how many drop out within a specified time. It would show, for example, if we started with ninth-graders, how many of them dropped out over a four-year period. Status rates and cohort rates are not calculated in Oregon.

The data used to compute Oregon's event rate is also used to compute a synthetic four-year rate. To calculate this rate, one year of data for four classes is treated as if it were four years of data for one class. This rate is close to being a cohort rate, but since it is not actually based on four years of data, it is referred to as a synthetic rate. The four-year synthetic dropout rate is calculated at the school level only for regular high schools. At the district, county, and state levels, only data from regular high schools is used. Because students in alternative high schools are not enrolling for a four-year program, data from those schools is not used in any four-year synthetic dropout rate computation.

Event rates and synthetic four-year rates by school, district, and county for grades 9-12 in 1998-99 are displayed in table A1. A description of how these rates are calculated is found on page 14.

Table 1 – Dropouts and dropout rates, grades 9-12, by background characteristics: 1998-99

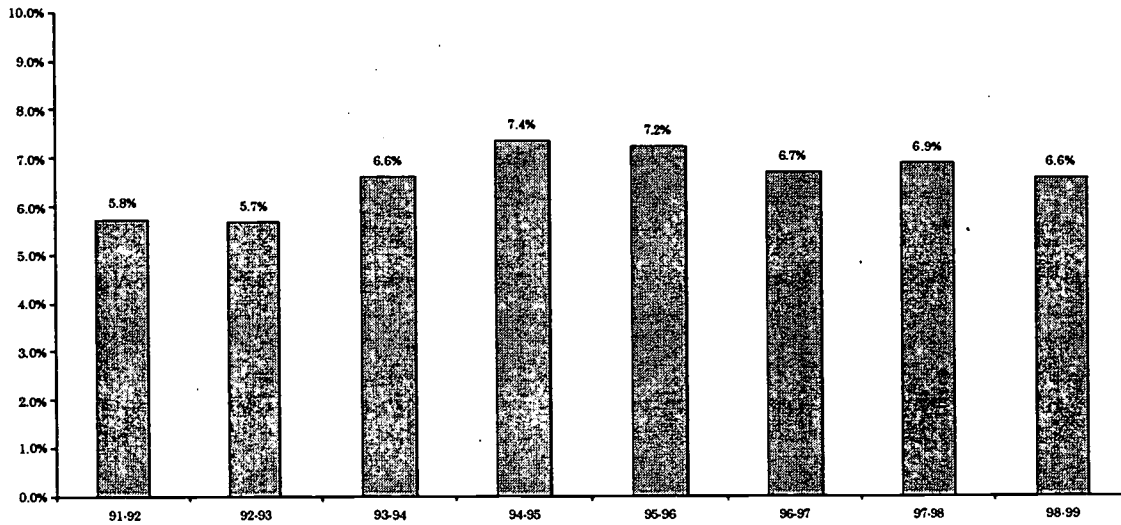
Characteristic	Dropout Rate (percent)	Number of dropouts	Percent of all dropouts
Total	6.59	10,622	100.0
Age			
13	N/A	18	0.2
14	N/A	483	4.6
15	N/A	1,180	11.1
16	N/A	2,209	20.8
17	N/A	2,704	25.4
18	N/A	2,600	24.5
19	N/A	954	9.0
20+	N/A	465	4.4
Unknown	N/A	9	0.1
Race/Ethnicity			
White	5.74	7,875	74.1
Black	11.14	432	4.1
Hispanic	14.88	1,604	15.1
Asian/PI	5.57	346	3.3
AI/AN	11.23	345	3.3
Unknown	-	20	0.2
Sex			
Male	N/A	5,969	56.2
Female	N/A	4,653	43.8
Region¹			
Northwest	5.21	420	3.9
Metro	7.28	4,539	42.7
W Valley	6.34	2,832	26.7
South	6.59	1,460	13.7
North Central	6.00	622	5.8
Southeast	5.03	292	2.7
Northeast	5.91	457	4.3

N/A – Population totals for these categories are not available for calculating percentages.

¹ Northwest – Clatsop, Columbia, Lincoln, Tillamook; Metro – Clackamas, Multnomah, Washington; WValley – Benton, Lane, Linn, Marion, Polk, Yamhill; South – Coos, Curry, Douglas, Jackson, Josephine; North Central – Crook, Deschutes, Gilliam, Hood River, Jefferson, Sherman, Wasco, Wheeler; Southeast – Hamey, Klamath, Lake, Malheur; Northeast – Baker, Grant, Morrow, Umatilla, Union, Wallowa

Source: Oregon Department of Education, School Finance and Data Analysis, Individual Early Leaver Reports

Figure 1 – Annual dropout rates From Grades 9-12 In Oregon Public Schools: 1991-92 to 1998-99



Note: Beginning with 1996-97, GED recipients were not counted as dropouts.

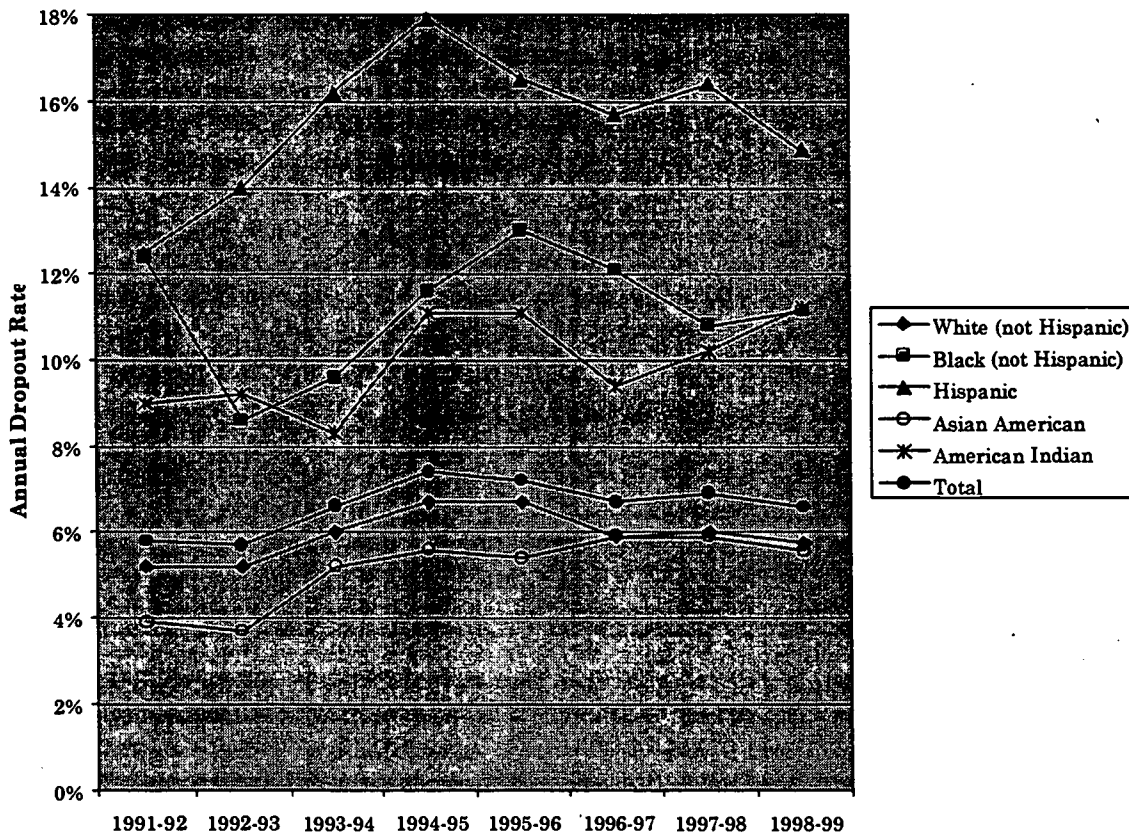
The 1998-99 dropout rate for grades K-12 was 6.59%. This is a decrease from the rate of 6.91% reported a year earlier. Since students who received a GED certificate were no longer counted as dropouts beginning in 1996-97, it is suggested that that year be used as a new baseline for making comparisons of dropout rates over time. The four-year synthetic dropout rate based on 1998-99 data is 21.70 percent, down from 23.38 percent in 1997-98.

Race/Ethnicity

Dropout rates by race/ethnicity show persistent differences among groups (figure 2). Hispanic students have the highest dropout rate of any of the five federal racial/ethnic groups. Their 1998-99 dropout rate of 14.88 percent is over two times the state rate. This difference has held steady since dropout rates were first published in Oregon seven years ago.

Dropout rates for Black (11.14% in 1998-99) and American Indian/Alaskan Native (11.23%) students are also consistently higher than the state average, but not to the extent of the Hispanic rate. Dropout rates for White (5.74%) and Asian/Pacific Islander (5.57%) students are consistently below the state average. The detailed rates by year are shown in table A7.

Figure 2 – Dropout rates by race/ethnicity in grades 9-12: 1998-99



Oregon only calculates dropout rates by race/ethnicity at the state level, because small numbers that appear at the district and school level could result in misleading percentages being obtained.

The largest numbers of dropouts by count in the four non-White racial/ethnic groups are in the Portland 1J school district, mainly because that district is so much larger than any other district in the state. The one group for which Portland's size is not a factor is Black students. Almost 65 percent of Black high-school age students attend school in Portland 1J, and 75.0% (324 dropouts) of all Black dropouts in Oregon dropped out of Portland 1J schools or programs (table A1). The 324 Black dropouts represented 15.9% of all dropouts from Portland 1J. The districts with the next highest number of Black dropouts were Salem-Keizer 24J, Eugene 4J, and Beaverton 48J with 15 each.

High concentrations of Hispanic dropouts were found in Hood River 1, Ontario 8, Woodburn 103, McLoughlin 7, Hermiston 8, and Hillsboro 1J, where over 35% of those district's dropouts were Hispanic. The highest concentrations of American Indian/Alaskan Native dropouts were found in Madras 509J, where 63.9% of the district's dropouts were from this group, and in Lincoln County Unit, at 12.2%.

BEST COPY AVAILABLE

Asian/Pacific Islander students generally have a dropout rate that is slightly lower than the state rate. The highest concentrations of Asian/Pacific Islander dropouts were in Parkrose 3, at 15.2% of the district's dropouts, and David Douglas 40, at 12.9% of the district's dropouts.

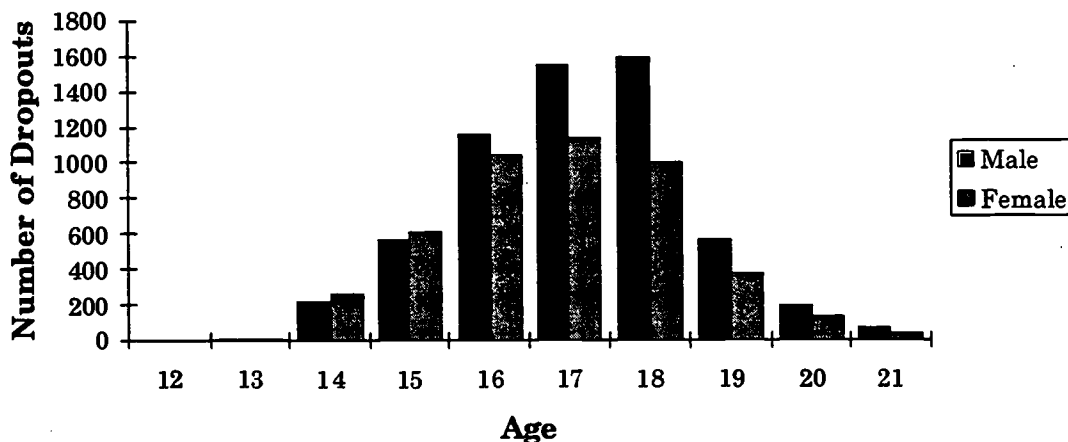
Age and Sex

As shown in figure 3, the incidence of dropping out in the secondary grade age groups is greatest at ages – 16, 17, and 18. Over 70 percent of all dropouts from grades 9-12 were in that age range. The number of dropouts at ages 15 and 19, though smaller, is still substantial.

There were fewer girls (4,653; 43.8%) than boys (5,969; 56.2%) who dropped out, which is consistent with findings of each year in the study prior to 1998-99. Even when Census data show there are more boys than girls in this age group in the general population, it appears that boys drop out higher rates than girls do, though the difference is probably less than ten percentage points.

When age and sex are combined, other consistent patterns emerge. Boys and girls drop out in about the same numbers at ages 14 and 15, but in the next three ages, boys drop out in greater numbers than girls do. The peak ages for boys to drop out are, from highest to lowest, at age 18, 17, and 16. For girls, the peak ages are arranged differently – 17, 16, and 18. The number of dropouts declines at age 19 for both boys and girls.

Figure 3 – Dropouts From Grades 9-12, by age and sex: 1998-99



Region

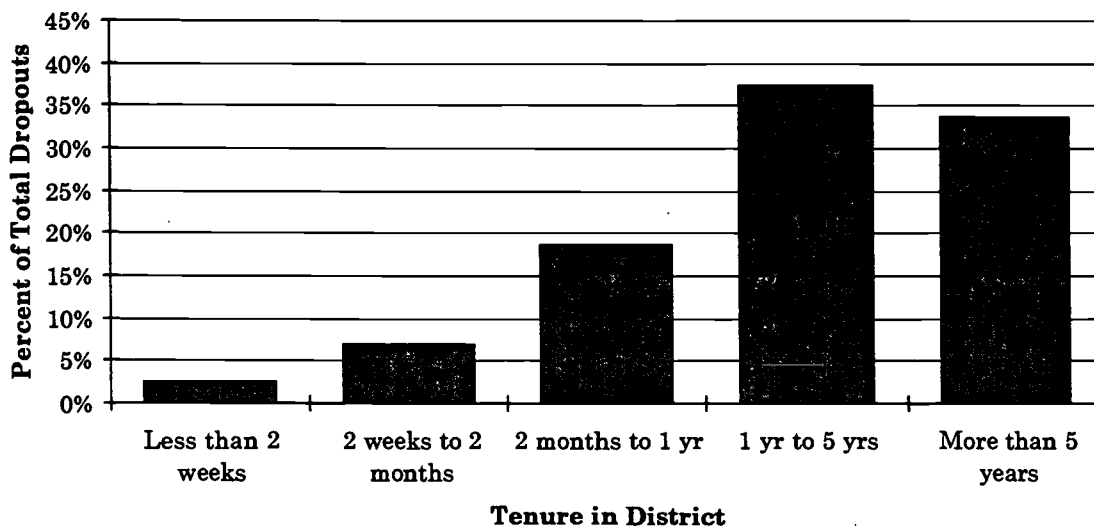
Oregon can be divided into seven regions that are linked by geography and economy. The range of dropout rates by region varies over a narrow band, from 7.28 percent in the Metro region to 5.03 percent in the Southeast region (table 1).

Mobility

Students who dropped out of high school tended to be a mobile group. Of those who dropped out, 28.5 percent were enrolled in the reporting school district for a year or less. Also, 33.8 percent of the dropouts had been in the same district for more than five years, and about 37.4 percent had been in the same district one to five years. Tenure was not reported for 0.2 percent of dropouts. In addition, 267 dropouts (2.5%) were reported as having attended three or more high schools.

High mobility may contribute to the lower than normal accumulation of credits needed for graduation by reducing the opportunity to complete classes on a regular schedule. Social integration and involvement in extracurricular activities may also be more difficult for students who move from school to school.

Figure 4 – Dropouts From Grades 9-12, by length of time enrolled in the district: 1998-99

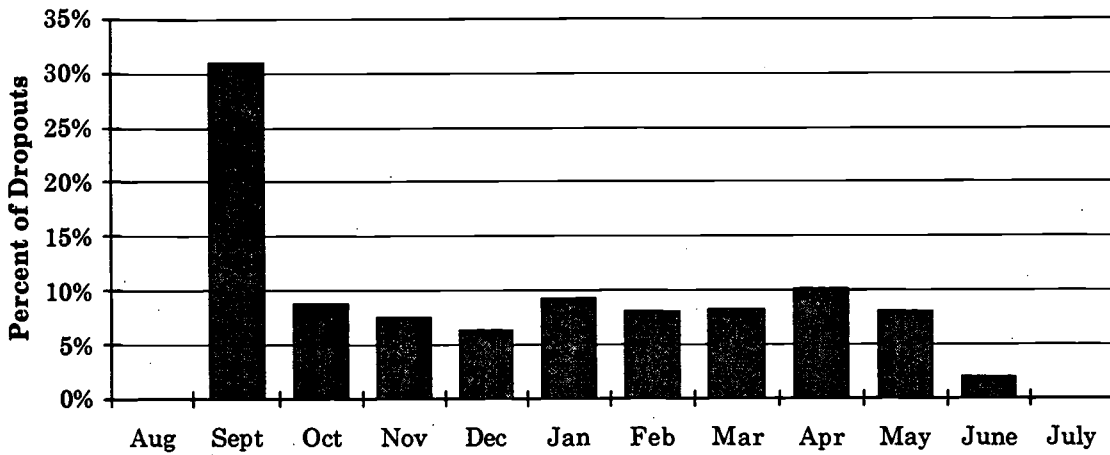


Timing

The time when the greatest number of students drop out is not during the school year, but over the summer. Almost 26 percent of students counted as dropouts for the 1998-99 school year completed the 1997-98 school year, but did not return the following fall, and never attended school in 1998-99. An additional 5 percent dropped out in the first month of school. In figure 5, the September dropout count includes summer dropouts.

The incidence of dropping out declined steadily in October, November, and December, but rose again in January, apparently after the holiday recess. Dropping out declined again in February and March, to rise once more in April, following Spring recess and the onset of good weather.

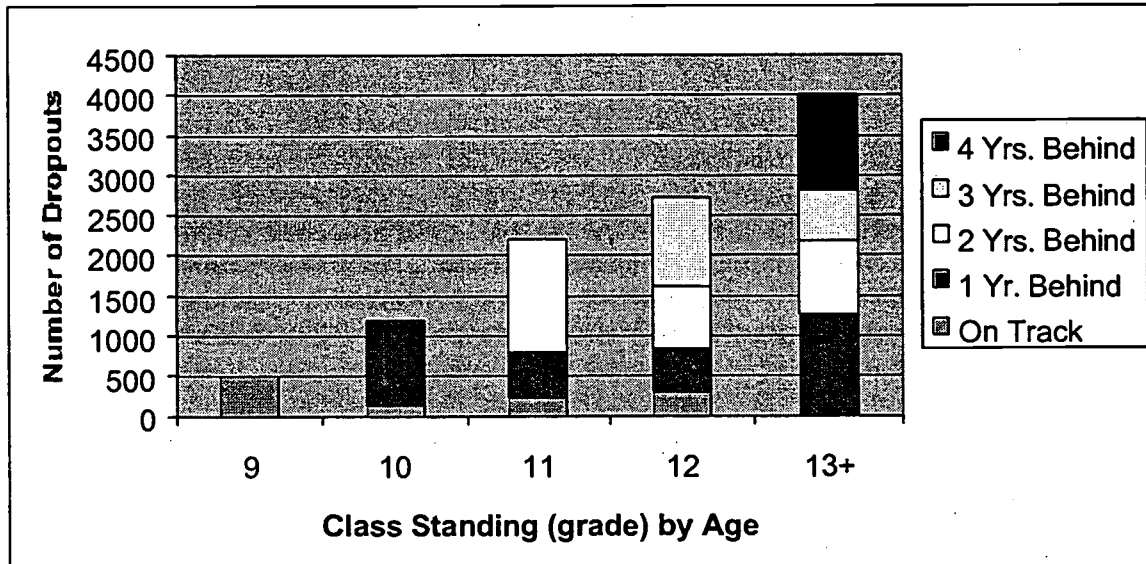
Figure 5 – Dropouts From Grades 9-12, by month: 1998-99



Credit deficiency

Class standing was assigned to dropouts in two ways: (1) the grade attained by the student according to his or her age, assuming a normal school entry age and annual grade promotions, and (2) grade placement as a percent of the required credits earned at the time the student withdrew from school (e.g., dropouts with less than 25 percent of the required credits would be classified as 9th graders, those with more than 25 percent but less than 50 percent would be classified as 10th graders, and so on).

Figure 6 – Number of Dropouts by Age and Credits Earned, Grades 9-12: 1998-99



Students were classified according to whether their class standing by credits earned was consistent with their class standing by age. If so, they are termed "on track." Students could also be classified as one to four years behind in credits required for graduation.

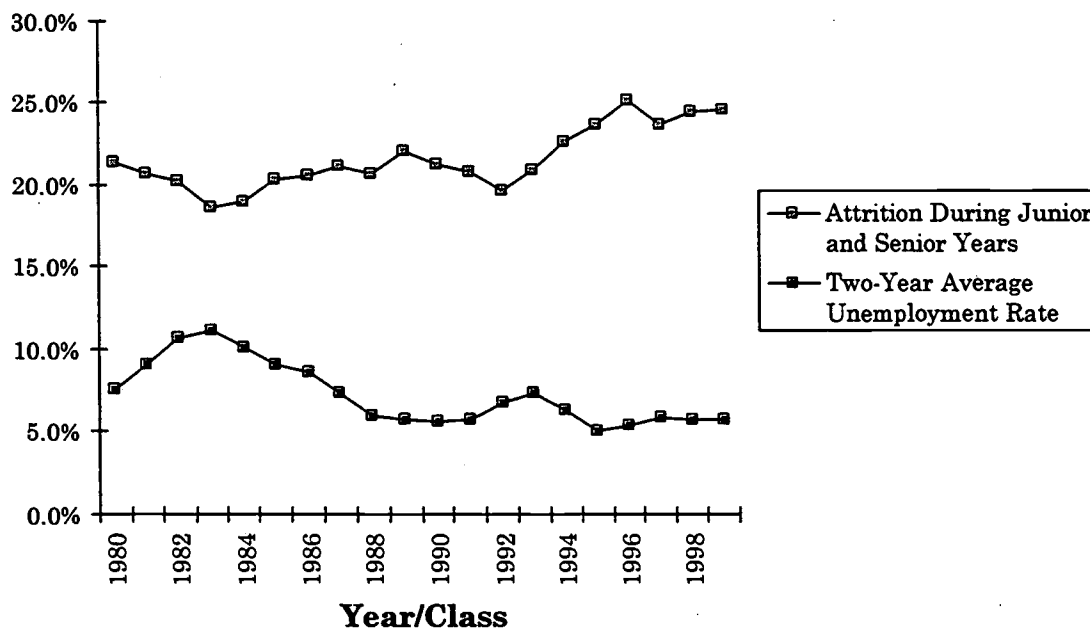
Fifty-nine percent of those who dropped out were at least old enough to be seniors, but only five percent of this group had enough credits to be regarded as seniors. Thirty-four percent of the dropouts in this age group had only enough credits for 9th grade standing. Among all dropouts, only 13 percent were classified "on track." Thirty-four percent were one year behind, 29 percent were two years behind, 15 percent were three years behind, and nine percent were four years behind

Employment

Working more than 15 hours a week was the third most frequently cited reason for leaving (table 2, page 12). This suggests that availability of jobs might be a contributing factor in Oregon's dropout rate. The chart below displays the relationship between Oregon's unemployment rate and the percentage of students who withdraw during their junior or senior years.

The withdrawal percentage is the difference between the number of 11th graders on October 1 and the number of graduates of that class two years later, divided by the October 1 count. Oregon unemployment rates are averaged over the corresponding two years.

Figure 7 – Relationship Between the Unemployment Rate and Withdrawal During the Junior and Senior Years in Oregon: 1980 to 1999



The chart suggests that in years when the statewide unemployment rate declines, the junior/senior year withdrawal rate increases, and conversely, when unemployment increases, a smaller percentage leave school without graduating. The high percentage of students who are September "no shows" might indicate a connection between employment opportunities and dropping out.

In November 1991 the Oregon Bureau of Labor and Industries issued a Report of the Child Labor Task Force. The report studied the impact of work on students. Students who worked 15 hours or more per week in jobs not connected to their course of study had lower school performance, attendance and completion rates.

Why Students Dropped Out

Students drop out for a variety of reasons, and when surveyed, cite such things as, "Didn't like school," "Was failing school," "Could not keep up with schoolwork," and "Felt I didn't belong." Oregon's dropout data collection took reasons like these and expanded them to try to find factors that influence a student to dropout of school which can be counteracted by a school offering dropout prevention programs or by changing the way it presents itself to its students.

The factors are divided into four categories: personal, school, family, and work. Responses show that the most frequently cited factors were being too far behind in credits to catch up, the lack of parental support for education, followed by students working more than 15 hours a week, having a dysfunctional home life, and not being able to "fit in" to the school setting (table 3).

The results by school are shown in table A4. Many students had no factor cited, and some students had more than one. Data for some schools was suppressed to preserve student confidentiality. Data in table A5 show statewide totals by factor by race, sex, and grade.

The comparison of factors by race (table A5) shows that among White dropouts, the most prevalent factors were, too far behind in credits to catch up, lack of parental support for education, working more than 15 hours a week, and dysfunctional home life.

Among Hispanic dropouts, the most prevalent factors were, working more than 15 hours a week, lack of parental support for education, too far behind in credits to catch up, and does not speak English well or at all.

There were significant differences between boys and girls in the reasons indicated. Girls were more frequently reported as having frequent health problems, being needed at home to take care of family members, and as pregnant or being a student parent. The responses for boys were significantly higher in other categories, most notably frequent discipline referrals, substance abuse, conflicts with school personnel, not adjusting to the school setting, and working more than 15 hours a week.

Factors that affected 9th graders disproportionately were not being able fit to into the school setting, and frequent discipline referrals. In the higher grades, working more than 15 hours a week and credit deficiency begin to have stronger effects.

Table 2 – Factors Influencing the Decision To Drop Out From Grades 9-12: 1998-99

Factor	Dropouts
Personal	
Substance abuse	700
Student felt peer pressure to not achieve, or to leave school	440
Health problems caused frequent absences	253
Does not speak English well or at all	218
Family	
Lack of parental support for education	1,304
Dysfunctional home life (parental substance abuse, parents absent, domestic violence, etc.)	1,039
Pregnant or student parent	628
Homeless	252
Needed at home to take care of family members	138
Work	
Working more than 15 hours a week	1,303
Obligations to support family	292
School	
Too far behind in credits to catch up	1,584
Could not adjust to the school setting – did not “fit in”	975
Frequent discipline referrals	761
Attended three or more high schools	267
Did not get along with one or more staff members	242
Lack of appropriate alternative education opportunities	130
Student felt unsafe at school	52

Source: Oregon Department of Education, Individual Early Leaver Report

GED

In 1997, the Oregon Legislature amended the dropout reporting statute to remove students who earn a GED certificate from dropout status. Beginning with the 1996-97 Dropout Report, GED recipients were not counted as dropouts. In the reports from 1991-92 through 1995-96, students who earned a GED certificate were counted as dropouts. For this reason, the 1996-97 report established a new baseline for comparing dropout rates from year to year.

It is not possible to add back in GED recipients to the years prior to 1996-97, or to convert GED recipients to dropouts in 1996-97 and after to determine a comparable dropout rate sequence. This is because some students might now be encouraged by their school to earn a GED certificate, where they would not have earlier lest the student be counted as a dropout in this report.

The number of students earning a GED certificate from a school-sponsored setting has been reported for early leavers since 1993-94 (table 3). In the reporting years before 1996-97, receipt

of a GED was supplementary data about a dropout and was probably not reported for every dropout who earned one. The higher counts starting in 1996-97 reflect the incentive for districts to report the number of GED recipients more accurately.

Table 3. Number of students earning a school-sponsored GED: 1993-94 to 1998-99

Year	Number
1993-94	298
1994-95	320
1995-96	431
1996-97	1,181
1997-98	1,459
1998-99	1,170

Alternative High Schools

Several alternative high schools make dropout reports on their own. Only the alternative high schools who grant their own diploma are able to do this. These high schools serve students who are at high risk of dropping out, and because of this, dropout rates must be interpreted differently for alternative high schools than for regular high schools.

Students enrolled in regular high schools tend to stay in school, and drop out at expected rates, around 7 percent. Students enrolled in alternative high schools are at high risk of dropping out, or have already dropped out once. Without having the option of an alternative high school, this group of students could have a dropout rate approaching 100 percent. An alternative high school with a dropout rate of 25 percent, for example, is really changing the dropout rate for its students from nearly 100 percent to 25 percent. Seen this way, what looks like a high dropout rate is really a low one, and a sign of the program's success.

For these reasons, making comparisons of the dropout rates regular high schools with the dropout rates of alternative high schools is not recommended. Making comparisons of dropout rates between alternative high schools is also not recommended because of the different focus each school might have. The best way to evaluate the dropout rate of alternative high schools is to monitor the change in an individual school's dropout rate over time.

Alternative high schools normally have a much higher turnover than regular high schools do. To make the dropout rate reflect this condition, the denominator in the rate for alternative high schools is net enrollment over the year, rather than October 1 membership.

How Dropout Rates are Calculated

One-Year Dropout Rate

The event dropout rate for regular schools, district, counties, and the state is:

$$\frac{\text{Dropouts (July 1 – June 30)}}{\text{Membership (October 1)}} = \text{Dropout rate}$$

For alternative schools and programs, net enrollment is used for the denominator of the dropout rate formula. Net enrollment is taken over the entire school year and is:

$$E1 + E2 + R2 + R3 + R5,$$

which enrollment codes are taken from OAR 581-23-006(3)(f).

The Synthetic Four-Year Rate

The dropout reporting system collects data on students dropping out in one school year. The data for one year can be displayed as a four-year rate using the following formula.

$$R = 1 - (1 - R_9)(1 - R_{10})(1 - R_{11})(1 - R_{12}), \text{ where}$$

- R = overall dropout rate
- R_9 = dropout rate for 9th grade
- R_{10} = dropout rate for 10th grade
- R_{11} = dropout rate for 11th grade
- R_{12} = dropout rate for 12th grade

The rate represents the proportion of the ninth-grade class that would drop out prior to graduation if that year's data on four grades in one year was really four years of data for one class.

Table 1. -- Number of non-dropouts and dropouts; dropout rates: 1998-99

School or other area	October 1, 1998 Membership	Non-dropout leavers						Dropouts				Dropout rates				
		Total	Sent to child-caring facility ¹	Deceased	Registered home schooler	Received adult high school diploma	Received GED certificate	Total	Withdrawn during school year	Finished 12th grade without graduating	Did not return from summer break	1-year		4-year ²		
												1998-99	1997-98	1998-99	1997-98	
1	2	3	4	5	6	7	8	9	10	11	12	13	14	15	16	
Oregon Statewide Totals.....	161,263	1,958	263	66	227	133	1,169	10,622	7,866	899	1,857	6.59	6.91	21.70	23.38	
I. Schools																
Adrian High School.....	92	2	0	0	0	1	1	11	8	2	1	11.96	9.35	(3)	(3)	
Aloha High School.....	2,209	19	1	0	0	0	18	86	57	14	15	3.89	6.67	(3)	26.64	
Aisea School.....	100	0	0	0	0	0	0	5	3	1	1	5.00	3.33	(3)	(3)	
Amity High School.....	304	2	0	0	0	0	2	19	14	2	3	6.25	10.49	(3)	35.11	
Arlington High School.....	47	2	1	0	0	1	0	3	3	0	0	6.38	0.00	(3)	(3)	
Ashland High School.....	1,199	40	2	0	3	0	35	65	53	4	8	5.42	5.96	(3)	20.84	
Astoria High School.....	764	10	3	0	0	0	7	20	16	4	0	2.62	2.11	(3)	8.18	
Baker High School.....	731	6	4	0	0	0	2	45	40	1	4	6.16	5.22	(3)	18.97	
Bandon High School.....	288	2	0	0	0	0	2	4	4	0	0	1.39	3.38	(3)	13.29	
Banks High School.....	344	4	1	0	0	0	3	16	16	0	0	4.65	7.38	(3)	26.82	
Beaverton High School.....	2,165	35	7	1	0	1	26	110	68	17	25	5.08	7.23	(3)	19.63	
Bend High School.....	1,612	23	2	0	7	4	10	128	41	10	77	7.94	10.80	(3)	38.29	
Benson High School.....	1,457	3	1	0	1	0	1	38	26	12	0	2.61	2.41	(3)	9.08	
Bonanza School.....	202	0	0	0	0	0	0	6	6	0	0	2.97	7.98	(3)	31.52	
Brookings Harbor High School.....	603	14	3	1	6	0	4	17	9	3	5	2.82	3.39	(3)	13.35	
Burns High School.....	355	7	0	1	2	0	4	19	17	1	1	5.35	4.71	(3)	19.00	
Burnt River School.....	40	3	0	0	1	0	2	0	0	0	0	0.00	0.00	(3)	(3)	
Butte Falls High School.....	71	0	0	0	0	0	0	4	4	0	0	5.63	4.05	(3)	(3)	
Camas Valley School.....	58	1	0	0	0	0	1	1	1	0	0	1.72	1.59	(3)	(3)	
Canby High School.....	1,537	5	0	1	0	1	3	69	44	6	19	4.49	6.83	(3)	24.66	
Cascade High School.....	735	2	0	0	0	0	2	23	14	9	0	3.13	4.63	(3)	17.60	
Cascade Locks School.....	65	0	0	0	0	0	0	3	2	0	1	4.62	9.59	(3)	(3)	
Centennial High School.....	1,696	7	0	1	5	0	1	116	88	11	17	6.84	7.67	(3)	28.21	
Centennial Learning Center.....	48*	5	0	0	0	0	5	20	20	0	0	41.67	(7)	(6)	(7)	
Central High School.....	814	8	1	0	0	0	7	57	42	10	5	7.00	7.58	(3)	27.07	
Central Linn High School.....	217	2	0	0	0	0	2	8	5	3	0	3.69	2.26	(3)	9.75	



Table 1. -- Number of non-dropouts and dropouts; dropout rates: 1998-99

School or other area	October 1, 1998 Membership	Non-dropout leavers						Dropouts					Dropout rates			
		Total	Sent to child-caring facility ¹	Deceased	Registered home schooler	Received adult high school diploma	Received GED certificate	Total	Withdrawn during school year	Finished 12th grade without graduating	Did not return from summer break	1-year		4-year ²		
												1998-99	1997-98	1998-99	1997-98	1998-99
1	2	3	4	5	6	7	8	9	10	11	12	13	14	15	16	
Century High School.....	1,780	6	0	0	1	0	5	66	51	0	15	3.71	4.04	13.76	(4)	
Chiloquin High School.....	193	1	1	0	0	0	0	18	18	0	0	9.33	6.32	33.22	24.84	
Churchill Alt. Ed.	151*	2	0	0	0	1	1	9	9	0	0	5.96	(7)	(6)	(7)	
Clackamas High School.....	1,507	14	2	0	0	3	9	84	61	11	12	5.57	4.36	21.38	16.32	
Clatskanie High School.....	301	0	0	0	0	0	0	9	9	0	0	2.99	1.29	11.96	4.35	
Cleveland High School.....	1,255	6	3	1	1	0	1	72	45	12	15	5.74	6.25	21.40	24.31	
Colton High School.....	250	1	0	1	0	0	0	21	14	0	7	8.40	6.51	31.08	20.73	
Community School.....	445*	12	1	0	1	1	9	98	78	3	17	22.02	32.14	(6)	(6)	
Condon High School.....	76	0	0	0	0	0	0	0	0	0	0	0.00	2.35	(3)	(3)	
Coquille High School.....	379	5	0	1	1	1	2	21	19	2	0	5.54	2.52	21.12	9.49	
Corbett High School.....	219	4	2	0	1	0	1	5	5	0	0	2.28	3.91	9.08	14.95	
Corvallis High School.....	1,204	27	3	0	0	0	24	71	45	17	9	5.90	5.77	23.27	21.91	
Collage Grove High School.....	783	10	1	1	4	1	3	27	22	3	2	3.45	10.49	13.76	36.99	
Cove School.....	85	2	0	0	1	0	1	2	1	0	1	2.35	4.44	(3)	(3)	
Crane Union High School.....	89	1	0	1	0	0	0	2	1	0	1	2.25	0.00	(3)	(3)	
Crater High School.....	1,459	16	3	2	5	0	6	77	61	0	16	5.28	6.25	20.33	23.70	
Crescent Valley High School.....	1,255	4	0	1	0	0	3	34	16	12	6	2.71	1.08	10.20	4.41	
Creswell High School.....	362	2	0	0	1	0	1	23	17	1	5	6.35	10.53	24.55	35.42	
Crook County High School.....	945	18	2	0	8	8	0	18	18	0	0	1.90	2.57	7.46	11.25	
Crow High School.....	142	0	0	0	0	0	0	0	0	0	0	0.00	5.16	(3)	(3)	
Culver High School.....	140	1	1	0	0	0	0	10	9	0	1	7.14	5.15	(3)	(3)	
Dallas High School.....	956	26	9	0	5	0	12	45	36	2	7	4.71	4.52	19.09	17.85	
David Douglas High School.....	2,103	6	0	0	2	1	3	101	80	6	15	4.80	5.25	18.52	21.26	
Days Creek School.....	93	1	0	0	0	0	1	7	3	1	3	7.53	4.85	(3)	(3)	
Dayton High School.....	306	0	0	0	0	0	0	18	15	0	3	5.88	4.98	21.47	18.63	
Dayville School.....	26	0	0	0	0	0	0	0	0	0	0	0.00	0.00	(3)	(3)	
Douglas High School.....	522	15	0	0	1	0	14	55	44	1	10	10.54	7.17	35.65	25.88	
Dufur School.....	75	1	1	0	0	0	0	0	0	0	0	0.00	3.80	(3)	(3)	

Table 1. -- Number of non-dropouts and dropouts; dropout rates: 1998-99

School or other area	October 1, 1998 Membership	Non-dropout leavers						Dropouts					Dropout rates							
		Total	Sent to child-caring facility ¹	Deceased	Registered home schooler	Received adult high school diploma	Received GED certificate	Total	Withdrawn during school year	Finished 12th grade without graduating	Did not return from summer break	1-year		4-year ²						
												13	14		15	16				
1	2	3	9	4	1	0	0	6	2	0	8	9	10	11	12	18	9.72	10.94	36.08	40.23
Eagle Point High School.....	1,183											115	86	11	11					
Echo School.....	69	2	0	0	0	1	0	0	1	0	1	2	2	0	0	0	2.90	3.39	(3)	(3)
Eddyville School.....	56	0	0	0	0	0	0	0	0	0	0	3	2	0	1	1	5.36	1.61	(3)	(3)
Elgin High School.....	168	1	0	0	1	0	0	0	1	0	0	1	0	1	0	0	0.60	3.66	2.33	13.92
Elkton High School.....	100	1	0	0	0	0	0	1	0	0	1	5	2	0	3	3	5.00	5.10	(3)	(3)
Elmira High School.....	668	5	1	0	1	0	0	3	1	0	3	40	22	0	18	18	5.99	2.80	23.40	10.23
Enterprise High School.....	193	0	0	0	0	0	0	0	0	0	0	1	0	1	0	0	0.52	0.51	1.89	1.89
Estacada High School.....	749	1	0	0	0	0	0	1	0	0	1	32	26	1	5	5	4.27	2.68	16.35	10.87
Falls City High School.....	64	0	0	0	0	0	0	0	0	0	0	6	6	0	0	0	9.38	8.22	(3)	(3)
Forest Grove High School.....	1,445	11	3	0	0	0	0	8	0	0	8	93	73	0	20	20	6.44	7.15	23.33	26.41
Franklin High School.....	1,547	9	5	0	0	0	1	3	0	0	3	96	78	8	10	10	6.21	6.46	24.46	24.99
Gaston High School.....	180	0	0	0	0	0	0	0	0	0	0	7	6	0	1	1	3.89	2.04	13.84	7.73
Gervais High School.....	304	1	0	0	0	0	0	1	0	0	1	21	21	0	0	0	6.91	7.96	25.18	27.27
Gilchrist School.....	138	1	1	0	0	0	0	0	0	0	0	7	5	2	0	0	5.07	2.90	20.60	(3)
Gladstone High School.....	885	2	0	0	0	0	0	2	0	0	2	9	9	0	0	0	1.02	1.76	3.99	6.58
Glencoe High School.....	1,570	7	1	0	0	0	0	6	0	0	6	62	57	5	0	0	3.95	5.11	15.17	18.94
Glendale High School.....	175	3	0	0	0	0	0	3	0	0	3	10	10	0	0	0	5.71	6.59	20.71	23.80
Glide High School.....	340	3	0	0	0	0	0	3	0	0	3	13	10	0	3	3	3.82	4.23	14.12	15.98
Gold Beach High School.....	263	0	0	0	0	0	0	0	0	0	0	16	11	5	0	0	6.08	1.52	22.97	6.45
Grant High School (Grant).....	318	1	0	0	1	0	0	0	1	0	0	2	1	1	0	0	0.63	0.30	2.82	1.35
Grant High School (Multnomah).....	1,907	1	0	0	0	0	0	1	0	0	1	83	58	4	21	21	4.35	3.45	16.27	13.73
Grants Pass High School.....	1,466	8	1	0	0	0	0	7	0	0	7	98	84	3	11	11	6.68	7.23	24.56	27.23
Gresham High School.....	1,670	18	5	1	2	0	0	10	2	0	10	100	96	0	4	4	5.99	6.43	23.28	23.78
Harper School.....	23	1	0	0	0	0	0	1	0	0	1	0	0	0	0	0	0.00	2.63	(3)	(3)
Harrisburg High School.....	219	1	0	0	0	0	0	1	0	0	1	18	9	4	5	5	8.22	6.12	33.71	25.78
Helensview High School.....	95*	2	0	0	0	0	0	2	0	0	2	16	14	0	2	2	16.84	19.81	(3)	(3)
Helix School.....	58	0	0	0	0	0	0	0	0	0	0	0	0	0	0	0	0.00	0.00	(3)	(3)

Table 1. -- Number of non-dropouts and dropouts; dropout rates: 1998-99

School or other area	October 1, 1998 Membership	Non-dropout leavers						Dropouts					Dropout rates			
		Total	Sent to child-caring facility ¹	Deceased	Registered home schooler	Received adult high school diploma	Received GED certificate	Total	Withdrawn during school year	Finished 12th grade without graduating	Did not return from summer break	1-year		4-year ²		
												1998-99	1997-98	1998-99	1997-98	1998-99
1	2	3	4	5	6	7	8	9	10	11	12	13	14	15	16	
Henley High School.....	676	4	1	3	0	0	0	43	41	2	0	6.36	2.03	24.49	7.91	
Henry D Sheldon High School.....	1,625	5	0	0	2	0	3	24	24	0	0	1.48	4.76	5.94	17.91	
Heppner High School.....	149	1	0	0	0	0	1	4	3	1	0	2.68	3.85	10.11	13.82	
Hermiston High School.....	1,117	5	0	0	0	2	3	105	75	5	25	9.40	11.37	31.77	35.32	
Hidden Valley High School.....	847	3	0	0	0	0	3	39	35	0	4	4.60	5.43	17.49	20.41	
Hillsboro High School.....	1,364	8	1	0	1	0	6	87	64	13	10	6.38	7.77	24.09	27.33	
Hood River Valley High School.....	1,069	15	1	1	4	0	9	60	58	2	0	5.61	4.16	20.71	15.51	
Huntington School.....	27	0	0	0	0	0	0	1	1	0	0	3.70	8.00	(3)	(3)	
Illinois Valley High School.....	519	2	0	0	0	0	2	41	29	0	12	7.90	10.06	28.72	35.18	
Imbler High School.....	136	2	0	0	2	0	0	2	2	0	0	1.47	1.94	(3)	(3)	
Ione School.....	57	0	0	0	0	0	0	0	0	0	0	0.00	0.00	(3)	(3)	
Jefferson High School (Marion)....	261	1	0	0	0	0	1	14	14	0	0	5.36	4.83	21.45	17.06	
Jefferson High School (Multnomah)..	916	2	2	0	0	0	0	48	33	4	11	5.24	7.31	20.99	26.29	
Jewell School.....	41	1	0	0	1	0	0	3	3	0	0	7.32	7.50	(3)	(3)	
John C. Fremont Jr High School.....	281	1	0	0	1	0	0	1	1	0	0	0.36	0.00	(4)	(4)	
John F Kennedy High School.....	223	2	0	0	1	0	1	12	12	0	0	5.38	5.34	19.72	21.93	
Jordan Valley High School.....	59	1	0	0	0	0	1	3	0	2	1	5.08	3.45	(3)	(3)	
Joseph Lane Jr High School.....	282	0	0	0	0	0	0	3	3	0	0	1.06	1.00	(4)	(4)	
Joseph Middle/High School.....	138	0	0	0	0	0	0	0	0	0	0	0.00	0.00	(3)	(3)	
Junction City High School.....	684	7	2	3	0	2	0	24	24	0	0	3.51	2.58	12.71	10.05	
Klamath High School.....	1,060	4	1	0	2	0	1	59	52	6	1	5.57	1.87	21.46	7.50	
Knappa High School.....	198	1	0	0	0	0	1	5	5	0	0	2.53	4.64	9.68	16.28	
La Grande High School.....	836	17	2	2	6	0	7	25	16	4	5	2.99	2.48	11.65	9.62	
Lake Oswego High School.....	1,088	9	1	0	0	3	5	20	5	10	5	1.84	2.60	7.71	10.31	
Lakeridge High School.....	1,084	8	0	0	0	0	8	20	15	5	0	1.85	1.86	8.08	7.35	
Lakeview High School.....	355	4	0	0	3	0	1	4	4	0	0	1.13	3.68	4.51	14.22	
Lapine High School.....	431	6	0	0	1	0	5	36	35	0	1	8.35	7.82	27.22	28.20	
Lebanon High School.....	1,269	26	4	4	2	0	16	85	61	4	20	6.70	11.27	26.68	40.11	

Table 1. -- Number of non-dropouts and dropouts; dropout rates: 1998-99

School or other area	October 1, 1998 Member-ship	Non-dropout leavers						Dropouts				Dropout rates			
		Total	Sent to child-caring facility ¹	Deceased	Registered home schooler	Received adult high school diploma	Received GED certificate	Total	Withdrawn during school year	Finished 12th grade without graduating	Did not return from summer break	1-year		4-year ²	
												13	14	15	16
1	2	3	4	5	6	7	8	9	10	11	12	13	14	15	16
Lincoln High School.....	1,357	6	3	0	0	1	2	47	24	8	15	3.46	2.24	13.17	8.85
Long Creek School.....	38	0	0	0	0	0	0	1	1	0	0	2.63	2.70	(3)	(3)
Lost River High School.....	177	2	1	0	0	0	1	15	7	3	5	8.47	6.57	29.50	23.88
Lowell High School.....	148	1	0	0	0	0	1	9	9	0	0	6.08	6.58	22.47	24.76
Madison High School.....	1,239	9	2	0	0	5	2	60	40	3	17	4.84	8.45	18.12	29.53
Madras High School.....	717	3	0	1	0	0	2	72	52	4	16	10.04	14.50	36.23	47.55
Mapleton High School.....	107	6	0	0	0	0	6	12	11	0	1	11.21	10.92	(3)	(3)
Marshall High School (Deschutes)...	135*	5	1	0	0	0	4	60	45	0	15	44.44	50.75	(5)	(5)
Marshall High School (Multnomah)...	1,348	11	4	0	1	0	6	147	108	11	28	10.91	13.94	40.46	45.82
Marshfield High School.....	1,251	16	6	2	2	0	6	50	34	10	6	4.00	6.02	15.83	23.88
Mazama High School.....	769	1	0	0	0	0	1	18	18	0	0	2.34	5.04	8.99	19.24
Mc Kay High School.....	1,848	8	1	0	6	0	1	151	103	24	24	8.17	9.81	31.34	36.11
Mc Nary High School.....	1,697	4	0	3	0	0	1	116	82	16	18	6.84	8.02	25.67	29.60
McKenzie River High School.....	114	2	1	0	0	1	0	9	5	2	2	7.89	3.60	(3)	(3)
McLoughlin High School.....	512	4	0	0	0	0	4	74	49	0	25	14.45	20.19	47.08	60.59
McMinnville High School.....	1,606	22	0	2	2	0	18	162	133	16	13	10.09	12.95	36.27	45.10
Metropolitan Learning Center.....	122	1	0	0	1	0	0	12	4	1	7	9.84	9.70	(3)	(3)
Milwaukie High School.....	1,300	33	0	0	0	1	32	120	110	10	0	9.23	8.07	34.28	29.14
Mitchell School.....	33	0	0	0	0	0	0	2	2	0	0	6.06	0.00	(3)	(3)
Mohawk High School.....	81	1	0	0	0	0	1	5	5	0	0	6.17	0.00	(3)	(3)
Molalla Alternative Options.....	86*	9	0	0	3	0	6	19	19	0	0	22.09	20.45	(5)	(5)
Molalla High School.....	725	10	0	0	6	0	4	25	20	3	2	3.45	4.67	13.95	18.00
Monroe High School.....	168	2	0	1	0	0	1	10	4	5	1	5.95	8.43	24.43	34.46
Monument School.....	27	0	0	0	0	0	0	0	0	0	0	0.00	0.00	(3)	(3)
Mt View High School.....	1,772	9	2	1	0	0	6	47	39	8	0	2.65	6.25	10.45	23.27
Myrtle Point High School.....	318	5	0	1	3	0	1	10	8	0	2	3.14	7.27	12.40	27.23
Neah-Kah-Nie Jr-Sr High School.....	255	6	0	0	1	0	5	9	8	0	1	3.53	3.53	11.64	13.40

Table 1. -- Number of non-dropouts and dropouts; dropout rates: 1998-99

School or other area	Non-dropout leavers						Dropouts					Dropout rates			
	October 1, 1998 Membership	Total	Sent to child-caring facility ¹	Deceased	Registered home schooler	Received adult high school diploma	Received GED certificate	Total	Withdrawn during school year	Finished 12th grade without graduating	Did not return from summer break	1-year		4-year ²	
												3	4	5	6
1	2	3	4	5	6	7	8	9	10	11	12	13	14	15	16
Nestucca High School.....	256	1	1	0	0	0	0	7	6	1	0	2.73	1.95	10.56	7.57
Newberg High School.....	1,532	36	12	2	6	0	16	91	74	7	10	5.94	6.68	21.59	24.54
Newport High School.....	692	8	0	0	2	0	6	54	38	4	12	7.80	8.35	28.36	30.04
North Bend High School.....	944	7	1	0	3	0	3	51	31	0	20	5.40	3.63	20.97	14.26
North Douglas High School.....	156	2	1	1	0	0	0	4	2	2	0	2.56	3.77	9.73	(3)
North Eugene High School.....	1,105	42	0	0	2	24	16	46	38	2	6	4.16	3.58	16.42	14.06
North Lake School.....	83	0	0	0	0	0	0	0	0	0	0	0.00	0.00	(4)	(3)
North Marion High School.....	475	2	0	0	0	0	2	28	26	1	1	5.89	13.67	21.94	46.74
North Medford High School.....	1,950	31	2	0	1	0	28	156	77	24	55	8.00	6.48	28.94	14.90
North Powder School.....	88	0	0	0	0	0	0	0	0	0	0	0.00	1.15	(3)	(3)
North Salem High School.....	1,891	11	1	0	6	1	3	170	132	31	7	8.99	10.21	33.97	39.90
North Valley High School.....	717	8	0	0	2	0	6	34	25	3	6	4.74	6.07	17.52	22.36
Nyssa High School.....	324	5	3	0	0	0	2	18	14	0	4	5.56	12.80	20.59	42.29
Oakland High School.....	226	1	0	0	0	0	1	7	6	1	0	3.10	3.21	13.56	11.84
Oakridge High School.....	278	5	2	2	1	0	0	17	11	0	6	6.12	6.07	23.52	24.65
Ontario High School.....	820	10	0	0	0	0	10	51	47	4	0	6.22	6.78	22.63	24.69
Opportunity Center.....	293*	8	0	0	0	0	8	73	70	0	3	24.91	20.91	(6)	(6)
Oregon City HS - Freshmen.....	544	2	0	0	2	0	0	14	12	0	2	2.57	1.95	(4)	(4)
Oregon City HS - Jackson (8).....	1,397	11	1	1	0	0	9	98	74	21	3	7.02	7.57	(4)	(4)
Pacific High School.....	152	0	0	0	0	0	0	7	5	1	1	4.61	3.95	16.67	14.39
Paisley School.....	48	0	0	0	0	0	0	1	1	0	0	2.08	13.64	(3)	(3)
Parkrose High School.....	1,106	6	0	0	1	0	5	79	58	20	1	7.14	6.59	25.72	25.29
Pendleton High School.....	1,073	24	15	0	2	1	6	72	68	4	0	6.71	5.16	23.20	19.75
Perrydale School.....	100	0	0	0	0	0	0	0	0	0	0	0.00	2.08	(3)	(3)
Philomath High School.....	622	4	0	0	0	0	4	27	18	9	0	4.34	5.96	19.70	24.37
Phoenix High School.....	837	5	2	2	0	0	1	73	62	10	1	8.72	4.82	32.62	19.28
Pilot Rock High School.....	170	0	0	0	0	0	0	9	6	3	0	5.29	2.11	23.71	(3)
Pine Eagle High School.....	140	0	0	0	0	0	0	2	2	0	0	1.43	11.64	5.72	39.76

Table 1. -- Number of non-dropouts and dropouts; dropout rates: 1998-99

School or other area	October 1, 1998 Membership	Non-dropout leavers						Dropouts					Dropout rates							
		Total	Sent to child-caring facility ¹	Deceased	Registered home schooler	Received adult high school diploma	Received GED certificate	Total	Withdrawn during school year	Finished 12th grade without graduating	Did not return from summer break	1-year		4-year ²						
												3	4	5	6	7	8	9	10	11
1 Pleasant Hill High School.....	2	6	0	0	1	2	3	9	7	2	0	9	7	11	2	0	1.99	4.47	7.62	19.26
Powers High School.....	64	0	0	0	0	0	0	2	2	0	0	2	2	0	0	0	3.13	9.23	(3)	(3)
PPS Alternative Programs.....	3,635*	136	40	2	1	4	89	1,288	851	99	338	0	0	0	0	0	35.43	24.76	(5)	(5)
Prairie City School.....	86	0	0	0	0	0	0	0	0	0	0	0	0	0	0	0	0.00	0.00	(3)	(3)
Prospect High School.....	63	1	0	0	0	0	1	6	6	0	0	0	0	0	0	0	9.52	8.00	(3)	(3)
Rainier High School.....	457	4	0	0	3	0	1	7	6	0	1	0	0	0	0	0	1.53	2.36	6.02	9.26
Redmond High School.....	1,548	21	2	2	10	0	7	75	58	9	8	0	0	0	0	0	4.84	3.53	19.55	14.90
Reedsport High School.....	286	5	1	0	1	1	2	7	6	1	0	0	0	0	0	0	2.45	3.67	9.82	13.89
Rex Putnam High School.....	1,195	11	0	0	0	0	11	52	44	5	3	0	0	0	0	0	4.35	4.34	17.67	17.32
Reynolds High School.....	2,240	17	0	2	1	0	14	128	78	0	50	0	0	0	0	0	5.71	7.01	20.58	28.45
Riddle High School.....	151	3	2	0	0	0	1	15	14	0	1	0	0	0	0	0	9.93	3.45	(3)	(3)
Riverdale High School.....	92	0	0	0	0	0	0	1	0	0	1	0	0	0	0	0	1.09	0.00	(3)	(3)
Riverside High School.....	454	5	2	0	0	0	3	34	34	0	0	0	0	0	0	0	7.49	14.32	25.82	46.82
Rogue River High School.....	459	3	1	1	1	0	0	21	19	0	2	0	0	0	0	0	4.58	2.06	17.44	8.45
Roosevelt High School.....	1,118	1	0	0	0	0	1	81	65	0	16	0	0	0	0	0	7.25	8.30	26.37	30.64
Roseburg High School ⁽⁶⁾	1,541	56	2	0	1	11	42	170	129	0	41	0	0	0	0	0	11.03	11.61	(4)	(4)
Salem-Keizer Alternative Programs..	593*	17	1	0	0	0	16	90	81	6	3	0	0	0	0	0	15.18	16.86	(5)	(5)
Sam Barlow High School.....	1,871	33	4	0	1	0	28	117	84	10	23	0	0	0	0	0	6.25	3.01	23.29	11.63
Sandy High School.....	1,410	17	0	2	6	1	8	83	71	0	12	0	0	0	0	0	5.89	4.55	21.55	17.28
Santiam High School.....	246	4	0	0	1	0	3	17	13	0	4	0	0	0	0	0	6.91	8.28	24.12	29.31
Scappoose High School.....	635	0	0	0	0	0	0	11	11	0	0	0	0	0	0	0	1.73	1.65	6.91	6.54
School Of Arts & Communication.....	223	5	0	0	1	0	4	21	17	2	2	0	0	0	0	0	9.42	5.58	32.09	19.56
School Of Science & Technology.....	128	4	0	0	0	0	4	5	5	0	0	0	0	0	0	0	3.91	2.02	(3)	(3)
Scio High School.....	225	4	3	0	0	0	1	12	8	3	1	0	0	0	0	0	5.33	16.91	20.96	54.24
Seaside High School.....	570	12	0	0	2	0	10	29	29	0	0	0	0	0	0	0	5.09	6.65	18.94	24.68
Sheridan High School.....	243	7	1	1	1	0	4	10	5	0	5	0	0	0	0	0	4.12	1.49	15.13	8.13
Sherman High School.....	128	0	0	0	0	0	0	1	0	1	0	0	0	0	0	0	0.78	2.27	(3)	(3)

Table 1. -- Number of non-dropouts and dropouts; dropout rates: 1998-99

School or other area	October 1, 1998 Membership	Non-dropout leavers							Dropouts					Dropout rates			
		Total	Sent to child-caring facility ¹	Deceased	Registered home schooler	Received adult high school diploma	Received GED certificate	Total	Withdrawn during school year	Finished 12th grade without graduating	Did not return from summer break	1-year		4-year ²			
												1998-99	1997-98	1998-99	1997-98		
1	2	3	4	5	6	7	8	9	10	11	12	13	14	15	16		
Sherwood High School.....	655	3	3	0	0	0	0	12	12	0	0	1.83	4.93	7.60	19.06		
Silverton High School.....	1,140	11	0	0	0	0	11	106	76	10	20	9.30	7.50	33.26	27.81		
Sisters High School.....	433	7	0	0	3	1	3	10	7	0	3	2.31	6.63	9.25	24.64		
Siuslaw High School.....	523	15	1	3	3	0	8	29	29	0	0	5.54	7.37	20.43	26.93		
South Albany High School.....	1,173	28	0	0	2	0	26	95	82	3	10	8.10	8.34	29.03	30.07		
South Eugene High School.....	1,863	38	4	0	0	29	5	28	24	2	2	1.50	2.55	5.82	9.59		
South Lane Academy.....	82*	5	2	0	0	3	0	17	17	0	0	20.73	(b)	(b)	(b)		
South Medford High School.....	1,732	47	4	1	7	0	35	176	95	2	79	10.16	8.66	36.22	32.53		
South Salem High School.....	1,856	4	0	0	1	0	3	101	71	23	7	5.44	7.57	22.20	28.43		
South Umpqua High School.....	645	17	2	0	0	0	15	48	48	0	0	7.44	8.70	27.01	30.14		
Sprague High School.....	2,128	8	1	0	2	0	5	158	105	41	12	7.42	4.94	28.97	20.00		
Spray School.....	37	0	0	0	0	0	0	0	0	0	0	0.00	3.03	(b)	(b)		
Springfield High School.....	1,521	2	1	0	0	0	1	92	71	0	21	6.05	7.11	22.76	26.62		
St Helens High School.....	940	4	1	0	0	0	3	56	56	0	0	5.96	4.42	22.55	18.93		
St Paul High School.....	89	0	0	0	0	0	0	1	1	0	0	1.12	1.27	(b)	(b)		
Stanfield Secondary School.....	165	0	0	0	0	0	0	7	5	2	0	4.24	8.38	15.75	32.88		
Stayton High School.....	742	13	0	0	3	1	9	45	36	3	6	6.06	6.22	22.70	23.25		
Sunset High School.....	1,671	20	1	0	0	0	19	102	69	11	22	6.10	7.38	22.77	27.61		
Sutherlin High School.....	411	2	0	0	0	0	2	26	26	0	0	6.33	8.18	23.29	29.34		
Sweet Home High School.....	803	15	0	0	0	0	15	79	58	3	18	9.84	11.49	35.89	41.05		
Taft High School.....	686	15	2	0	0	0	13	84	73	1	10	12.24	12.14	41.62	43.21		
The Dalles High School.....	716	14	4	0	2	0	8	71	44	0	27	9.92	9.06	34.80	32.47		
Thurston High School.....	1,443	9	1	0	6	0	2	84	36	18	30	5.82	4.62	22.99	17.91		
Tigard High School.....	1,848	24	6	1	5	0	12	81	69	0	12	4.38	4.35	16.39	16.60		
Tillamook High School.....	784	15	2	0	2	0	11	47	30	1	16	5.99	5.57	23.07	21.83		
Toledo High School.....	510	5	2	0	0	1	2	24	18	1	5	4.71	0.42	19.22	1.85		
Triangle Lake School.....	53	0	0	0	0	0	0	0	0	0	0	0.00	1.79	(b)	(b)		
Tualatin High School.....	1,582	20	0	0	1	1	18	94	54	28	12	5.94	6.02	22.40	22.80		

Table 1. -- Number of non-dropouts and dropouts; dropout rates: 1998-99

School or other area	October 1, 1998 Membership	Non-dropout leavers						Dropouts				Dropout rates			
		Total	Sent to child-caring facility ¹	Deceased	Registered home schooler	Received adult high school diploma	Received GED certificate	Total	Withdrawn during school year	Finished 12th grade without graduating	Did not return from summer break	1-year		4-year ²	
												13	14	15	16
1	2	3	4	5	6	7	8	9	10	11	12	13	14	15	16
Ukiah High School.....	36	0	0	0	0	0	0	1	0	0	1	2.78	3.13	(3)	(3)
Umatilla High School.....	303	1	0	0	0	0	0	33	29	4	0	10.89	5.28	44.50	20.41
Union High School.....	163	1	0	0	0	0	1	4	4	0	0	2.45	0.00	9.64	0.00
Vale High School.....	346	2	2	0	0	0	0	17	13	1	3	4.91	6.69	19.44	24.16
Vernonia High School.....	265	8	0	0	1	1	6	9	7	2	0	3.40	7.05	13.61	25.70
Wahtonka High School.....	336	1	0	0	1	0	0	23	21	0	2	6.85	7.64	25.42	29.88
Waldport High School.....	351	6	0	0	0	1	5	23	17	4	2	6.55	4.79	24.53	17.55
Wallowa High School.....	132	1	0	0	1	0	0	0	0	0	0	0.00	0.00	(3)	(3)
Warrenton High School.....	307	0	0	0	0	0	0	20	18	0	2	6.51	7.21	25.00	25.88
Wasco County High School.....	90	5	0	0	1	0	4	3	3	0	0	3.33	7.53	(3)	(3)
West Albany High School.....	1,213	26	5	0	1	0	20	70	55	2	13	5.77	5.87	21.94	22.29
West Linn High School.....	1,408	6	0	1	0	0	5	51	44	7	0	3.62	4.82	14.05	19.00
Weston - McEwen High School.....	199	2	0	1	0	0	1	30	11	0	19	15.08	6.70	47.49	24.19
Westview High School.....	2,288	35	6	1	3	0	25	136	102	9	25	5.94	7.32	22.80	27.21
Wheeler High School.....	36	0	0	0	0	0	0	0	0	0	0	0.00	2.70	(3)	(3)
Willamette High School.....	1,304	10	1	1	1	2	5	69	61	0	8	5.29	5.78	18.29	19.34
Willamina High School.....	274	3	1	1	0	0	1	12	9	2	1	4.38	8.42	16.21	29.96
Wilson High School.....	1,514	2	0	0	1	0	1	64	22	11	31	4.23	9.25	16.52	31.50
Wilsonville High School.....	753	9	0	0	3	0	6	27	20	3	4	3.59	6.31	13.79	27.24
Winston Churchill High School.....	1,230	13	1	0	0	8	4	27	24	3	0	2.20	2.13	9.36	8.46
Woodburn High School.....	947	0	0	0	0	0	0	116	84	6	26	12.25	12.50	40.71	39.60
Yamhill-Carlton High School.....	484	3	1	0	2	0	0	32	29	0	3	6.61	5.15	23.78	19.20
Yoncalla High School.....	135	0	0	0	0	0	0	5	5	0	0	3.70	5.08	(3)	(3)
II. Districts															
Beaverton SD 48J.....	8,992	130	16	2	5	2	105	558	396	56	106	6.21	7.83	20.68	26.99
Bend SD1.....	3,867	43	5	1	8	4	25	271	160	18	93	7.01	9.11	20.64	30.27
Corvallis SD 509J.....	2,459	31	3	1	0	0	27	105	61	29	15	4.27	3.30	16.50	12.98

Table 1. -- Number of non-dropouts and dropouts; dropout rates: 1998-99

School or other area	October 1, 1998 Membership	Non-dropout leavers						Dropouts					Dropout rates			
		Total	Sent to child-caring facility ¹	Deceased	Registered home schooler	Received adult high school diploma	Received GED certificate	Total	Withdrawn during school year	Finished 12th grade without graduating	Did not return from summer break	1-year		4-year ²		
												1998-99	1997-98		1998-99	1997-98
1	2	3	4	5	0	6	7	8	9	10	11	12	13	14	15	16
Eugene SD 4J.....	6,112	108	4	5	0	4	62	37	207	189	7	11	3.39	4.55	8.59	15.72
Greater Albany SD 8J.....	2,386	54	0	5	0	3	0	46	165	137	5	23	6.92	7.09	25.54	26.18
Gresham-Barlow SD 10J.....	3,541	51	1	9	0	3	0	38	217	180	10	27	6.13	4.65	23.26	17.61
Hillsboro SD 1J.....	4,714	21	0	2	0	2	0	17	215	172	18	25	4.56	5.65	17.47	21.45
Hood River SD 1.....	1,134	15	1	1	0	4	0	9	63	60	2	1	5.56	4.52	20.56	16.94
Klamath County SD.....	1,386	8	4	3	0	0	0	1	89	77	7	5	6.42	4.24	23.58	16.28
Klamath Falls City Schools.....	1,829	5	1	0	0	2	0	2	77	70	6	1	4.21	3.25	16.21	12.76
Lake Oswego SD 7J.....	2,172	17	1	0	0	0	3	13	40	20	15	5	1.84	2.25	7.88	8.91
Lincoln County SD.....	2,295	34	4	0	0	2	2	26	188	148	10	30	8.19	7.04	29.76	26.06
Medford SD 549.....	3,682	78	6	1	8	8	0	63	332	172	26	134	9.02	6.09	32.37	23.53
Molalla SD 35.....	811	19	0	0	0	9	0	10	44	39	3	2	5.43	6.56	13.95	18.00
Morrow SD 1.....	660	6	2	0	0	0	0	4	38	37	1	0	5.76	10.43	21.00	35.95
North Clackamas SD 12.....	4,002	58	2	0	0	0	4	52	256	215	26	15	6.40	5.60	24.64	20.89
Oregon City SD 62.....	1,941	13	1	1	0	2	0	9	112	86	21	5	5.77	6.06	22.41	23.61
Portland SD 1J.....	15,584	187	60	3	6	6	11	107	2,036	1,354	173	509	13.06	11.76	20.62	24.36
Roseburg SD 4.....	2,105	57	2	0	0	2	11	42	174	133	0	41	8.27	8.78	30.34	30.84
Salem/Keizer SD 24J.....	9,593	52	4	3	15	15	1	29	786	574	141	71	8.19	8.97	28.42	30.41
Sheridan SD 48J.....	349	7	1	1	1	1	0	4	34	14	1	19	9.74	(7)	(7)	(7)
Springfield SD 19.....	2,964	11	2	0	6	6	0	3	176	107	18	51	5.94	5.89	22.71	22.36
Three Rivers SD.....	2,083	13	0	0	2	2	0	11	114	89	3	22	5.47	6.79	20.28	25.00
Tigard SD 23J.....	3,430	44	6	1	6	6	1	30	175	123	28	24	5.10	5.16	19.62	19.76
West Linn SD 3J.....	2,161	15	0	1	3	3	0	11	78	64	10	4	3.61	5.33	13.99	21.56
Ill. Counties																
Baker County.....	938	9	4	0	1	1	0	4	48	43	1	4	5.12	6.10	19.37	22.56
Benton County.....	3,349	37	3	2	0	0	0	32	147	86	44	17	4.39	4.04	17.41	16.03
Clackamas County.....	15,918	148	4	6	20	9	9	109	744	588	82	74	4.67	4.90	17.86	18.42
Clatsop County.....	1,880	24	3	0	3	0	0	18	77	71	4	2	4.10	4.72	15.48	17.74

Table 1. -- Number of non-dropouts and dropouts; dropout rates: 1998-99

School or other area	October 1, 1998 Membership	Non-dropout leavers							Dropouts				Dropout rates			
		Total	Sent to child-caring facility ¹	Deceased	Registered home schooler	Received adult high school diploma	Received GED certificate	Total	Withdrew during school year	Finished 12th grade without graduating	Did not return from summer break	1-year		4-year ²		
												13	14	15	16	
1	3	4	1	0	4	7	8	9	10	11	12	13	14	15	16	
Columbia County.....	2,598	16	1	0	4	1	10	92	89	2	1	3.54	3.31	13.85	13.22	
Coos County.....	3,244	35	7	4	9	1	14	138	98	12	28	4.25	4.87	16.74	18.88	
Crook County.....	945	18	2	0	8	8	0	18	18	0	0	1.90	2.57	7.46	11.25	
Curry County.....	1,018	14	3	1	6	0	4	40	25	9	6	3.93	3.00	15.68	11.82	
Deschutes County.....	5,848	71	7	3	21	5	35	356	225	27	104	6.09	7.49	19.53	26.05	
Douglas County.....	5,402	111	8	1	4	12	86	377	310	6	61	6.98	7.15	25.61	25.76	
Gilliam County.....	123	2	1	0	0	1	0	3	3	0	0	2.44	1.69	(a)	(a)	
Grant County.....	495	1	0	0	1	0	0	3	2	1	0	0.61	0.39	2.52	1.60	
Harney County.....	444	8	0	2	2	0	4	21	18	1	2	4.73	3.86	18.37	15.80	
Hood River County.....	1,134	15	1	1	4	0	9	63	60	2	1	5.56	4.52	20.56	16.94	
Jackson County.....	8,953	152	15	6	19	0	112	693	463	51	179	7.74	6.44	28.81	24.60	
Jefferson County.....	857	4	1	1	0	0	2	82	61	4	17	9.57	13.02	34.87	43.69	
Josephine County.....	3,549	21	1	0	2	0	18	212	173	6	33	5.97	6.97	22.20	25.83	
Klamath County.....	3,215	13	5	3	2	0	3	166	147	13	6	5.16	3.68	19.37	14.31	
Lake County.....	486	4	0	0	3	0	1	5	5	0	0	1.03	3.88	3.99	14.80	
Lane County.....	15,062	194	18	10	22	73	71	673	536	33	104	4.47	5.42	15.24	18.66	
Lincoln County.....	2,295	34	4	0	2	2	26	188	148	10	30	8.19	7.04	29.76	26.06	
Linn County.....	5,365	106	12	4	6	0	84	384	291	22	71	7.16	8.94	26.97	32.41	
Maiheur County.....	1,664	21	5	0	0	1	15	100	82	9	9	6.01	7.78	22.32	27.67	
Marion County.....	14,509	84	4	3	19	2	56	1,152	858	170	124	7.94	8.67	28.07	29.84	
Morrow County.....	660	6	2	0	0	0	4	38	37	1	0	5.76	10.43	21.00	35.95	
Multnomah County.....	26,687	285	71	7	19	12	176	2,719	1,877	220	622	10.19	9.38	21.50	23.54	
Polk County.....	1,934	34	10	0	5	0	19	108	84	12	12	5.58	5.75	21.59	21.45	
Sherman County.....	128	0	0	0	0	0	0	1	0	1	0	0.78	2.27	(a)	(a)	
Tillamook County.....	1,295	22	3	0	3	0	16	63	44	2	17	4.86	4.40	18.67	17.55	
Umatilla County.....	3,702	38	15	1	3	3	16	333	245	18	70	9.00	9.24	31.35	32.11	
Union County.....	1,476	23	2	2	10	0	9	34	23	5	6	2.30	2.33	8.98	9.00	

Table 1. -- Number of non-dropouts and dropouts; dropout rates: 1998-99

School or other area	October 1, 1998 Membership	Non-dropout leavers						Dropouts				Dropout rates			
		Total	Sent to child-caring facility ¹	Deceased	Registered home schooler	Received adult high school diploma	Received GED certificate	Total	Withdrawn during school year	Finished 12th grade without graduating	Did not return from summer break	1-year		4-year ²	
												1998-99	1997-98	1998-99	1997-98
1	2	3	4	5	6	7	8	9	10	11	12	13	14	15	16
Wallowa County.....	463	1	0	0	1	0	0	1	0	0	0	0.22	0.20	0.93	0.81
Wasco County.....	1,217	21	5	0	4	0	12	97	68	0	29	7.97	8.32	28.93	30.71
Washington County.....	19,760	213	31	3	13	3	163	1,076	798	102	176	5.45	6.63	19.44	23.94
Wheeler County.....	106	0	0	0	0	0	0	2	2	0	0	1.89	1.80	(8)	(3)
Yamhill County.....	4,749	73	15	6	11	0	41	368	288	28	52	7.75	8.58	28.70	31.52

Note: Alternative schools and programs are listed in italics.

* Net enrollment

- (1) Mental health program, juvenile detention facility, substance abuse program, or certified shelter care program.
- (2) Synthetic rate based on one year of data. Four-year rates for districts, counties, and the state uses data from regular high schools only.
- (3) School had too few students to calculate a four-year rate.
- (4) School does not offer four grades.
- (5) School is not designed for four years of attendance
- (6) School did not operate.
- (7) First year of reporting as a district was in 1998-99.
- (8) Grades 10-12.

SOURCE: Oregon Department of Education, Data Information Services, Individual Early Leaver Report, Student Personnel Accounting Report.

Table 2. -- Dropouts by sex, race/ethnicity, and grade: 1998-99

School or other area	Sex		Race/ethnicity						Grade						No response	No Respons e	
	Dropouts	Male	Female	White ¹	Black ¹	Hispanic	Asian / Pacific Islander	American / Indian / Alaskan Native	9	10	11	12	13	15			16
Grant High School (Multinomial)	83	54	29	44	25	6	3	5	28	19	21	15	0	0	0		
Grants Pass High School.....	98	44	54	91	0	3	0	3	19	22	34	23	0	0			
Gresham High School.....	100	66	34	77	2	19	0	2	6	23	25	26	3	17			
Harper School.....	0	0	0	0	0	0	0	0	0	0	0	0	0	0			
Harrisburg High School.....	18	10	8	16	1	1	0	0	0	2	6	10	0	0			
Helensview High School.....	16	0	16	8	3	4	0	1	9	5	1	1	0	0			
Helix School.....	0	0	0	0	0	0	0	0	0	0	0	0	0	0			
Henley High School.....	43	28	17	40	0	1	1	1	4	15	13	10	1	0			
Henry D Sheldon High School	24	13	11	17	2	3	0	2	3	5	7	9	0	0			
Hepner High School.....	4	*	*	*	*	*	*	*	*	*	*	*	*	*			
Hermiston High School.....	105	56	49	54	1	48	0	0	46	22	20	17	0	0			
Hidden Valley High School.....	39	30	9	38	0	1	0	0	4	8	9	18	0	0			
Hillsboro High School.....	87	52	35	50	0	32	3	2	18	14	21	29	4	1			
Hood River Valley High School	60	43	17	27	0	33	0	0	17	12	17	14	0	0			
Huntington School.....	1	*	*	*	*	*	*	*	*	*	*	*	*	*			
Illinois Valley High School.....	41	23	18	40	0	1	0	0	9	9	8	14	1	0			
Imbler High School.....	2	*	*	*	*	*	*	*	*	*	*	*	*	*			
Ione School.....	0	0	0	0	0	0	0	0	0	0	0	0	0	0			
Jefferson High School (Marion)	14	8	6	*	*	*	*	*	2	1	5	6	0	0			
Jefferson High School (Multinomial)	48	32	16	13	23	6	4	2	16	8	11	13	0	0			
Jewell School.....	3	*	*	*	*	*	*	*	*	*	*	*	*	*			
John C. Fremont Jr High School	1	*	*	*	*	*	*	*	*	*	*	*	*	*			
John F Kennedy High School	12	3	9	2	0	10	0	0	3	4	3	2	0	0			
Jordan Valley High School.....	3	*	*	*	*	*	*	*	*	*	*	*	*	*			
Joseph Lane Jr High School.....	3	*	*	*	*	*	*	*	*	*	*	*	*	*			
Joseph Middle/High School.....	0	0	0	0	0	0	0	0	0	0	0	0	0	0			
Junction City High School.....	24	10	14	23	0	1	0	0	12	1	4	7	0	0			
Klamath High School.....	59	30	29	42	4	7	2	4	11	10	13	25	0	0			
Knappa High School.....	5	*	*	*	*	*	*	*	*	*	*	*	*	*			
La Grande High School.....	25	16	9	23	0	2	0	0	7	5	5	8	0	0			
Lake Oswego High School.....	20	16	4	18	0	1	1	0	2	3	2	13	0	0			
Lakeridge High School.....	20	9	11	20	0	0	0	0	0	2	6	12	0	0			
Lakeview High School.....	4	*	*	*	*	*	*	*	*	*	*	*	*	*			
Lapine High School.....	36	17	19	36	0	0	0	0	21	7	8	0	0	0			
Lebanon High School.....	85	49	36	80	0	4	1	0	10	22	15	37	1	0			
Lincoln High School.....	47	23	24	40	3	0	0	3	10	6	12	19	0	0			
Long Creek School.....	1	*	*	*	*	*	*	*	*	*	*	*	*	*			

Table 2. -- Dropouts by sex, race/ethnicity, and grade: 1998-99

School or other area	Sex		Race/Ethnicity							Grade					No Response
	Dropouts	Male	Female	White ¹	Black ¹	Hispanic	Asian / Pacific Islander	American Indian / Alaskan Native	No response	9	10	11	12	13	
Lost River High School.....	15	10	5	9	0	5	0	1	0	2	2	5	5	1	0
Lowell High School.....	9	6	3	8	0	1	0	0	0	3	2	3	1	0	0
Madison High School.....	60	38	22	35	10	9	3	3	0	15	17	13	15	0	0
Madras High School.....	72	41	31	5	0	21	0	46	0	14	29	12	17	0	0
Mapleton High School.....	12	10	2	12	0	0	0	0	0	3	5	4	0	0	0
Marshall High School (Deschutes)	60	30	30	59	0	1	0	0	0	0	0	0	0	0	0
Marshall High School (Multnomah)	147	81	66	96	1	18	25	7	0	30	38	26	53	0	0
Marshfield High School.....	50	26	24	41	0	1	1	7	0	14	13	6	17	0	0
Mazama High School.....	18	12	6	11	0	7	0	0	0	2	7	6	3	0	0
Mc Kay High School.....	151	89	62	100	3	39	7	2	0	19	27	39	66	0	0
Mc Nary High School.....	116	63	53	82	2	17	0	5	0	12	31	31	42	0	0
McKenzie River High School.....	9	8	1	9	0	0	0	0	0	0	0	3	6	0	0
McLoughlin High School.....	74	35	39	0	0	0	0	0	0	26	11	29	8	0	0
McMinnville High School.....	162	98	64	122	0	39	0	1	0	16	18	43	71	13	1
Metropolitan Learning Center.....	12	6	6	9	1	0	1	1	0	1	1	4	6	0	0
Milwaukie High School.....	120	66	54	104	2	8	6	0	0	11	24	42	43	0	0
Mitchell School.....	2	0	0	0	0	0	0	0	0	0	0	0	0	0	0
Mohawk High School.....	5	0	0	0	0	0	0	0	0	0	0	0	0	0	0
Molalla Alternative Options.....	19	13	6	0	0	0	0	0	0	2	4	6	6	1	0
Molalla High School.....	25	21	4	23	0	2	0	0	0	4	6	7	8	0	0
Monroe High School.....	10	5	5	9	0	1	0	0	0	1	1	1	7	0	0
Monument School.....	0	0	0	0	0	0	0	0	0	0	0	0	0	0	0
Mt View High School.....	47	31	16	44	0	2	1	0	0	8	14	7	17	1	0
Myrtle Point High School.....	10	5	5	8	0	2	0	0	0	1	3	2	3	1	0
Neah-Kah-Nie Jr-Sr High School.....	9	7	2	9	0	0	0	0	0	2	6	0	1	0	0
Nestucca High School.....	7	3	4	7	0	0	0	0	0	1	2	2	2	0	0
Newberg High School.....	91	48	43	76	0	13	2	0	0	14	38	19	17	3	0
Newport High School.....	54	33	21	40	0	10	1	3	0	13	13	13	15	0	0
North Bend High School.....	51	35	16	49	1	1	0	0	0	4	10	15	22	0	0
North Douglas High School.....	4	0	0	0	0	0	0	0	0	0	0	0	0	0	0
North Eugene High School.....	46	27	19	37	1	3	2	2	1	5	17	11	13	0	0
North Lake School.....	0	0	0	0	0	0	0	0	0	0	0	0	0	0	0
North Marion High School.....	28	14	14	13	0	14	1	0	0	9	7	5	7	0	0
North Medford High School.....	156	81	75	0	0	0	0	0	0	5	16	35	96	4	0
North Powder School.....	0	0	0	0	0	0	0	0	0	0	0	0	0	0	0
North Salem High School.....	170	93	77	123	3	42	1	1	0	16	39	39	76	0	0
North Valley High School.....	34	19	15	31	1	2	0	0	0	7	8	5	12	2	0
Nyssa High School.....	18	5	13	4	0	14	0	0	0	6	3	5	5	1	3

Table 2. -- Dropouts by sex, race/ethnicity, and grade: 1998-99

School or other area	Sex		Race/Ethnicity							Grade					No Response			
	Dropouts	Male	Female	White ¹	Black ¹	Hispanic	Asian / Pacific Islander	American Indian / Alaskan Native	No response	9	10	11	12	13				
																6	7	8
Oakland High School.....	7	6	1	6	0	0	1	0	0	0	0	0	0	0	0	0	0	0
Oakridge High School.....	17	11	6	16	0	0	0	0	1	0	0	0	0	0	0	0	0	0
Ontario High School.....	51	28	23	26	0	24	0	1	0	0	0	0	0	0	0	0	0	0
Opportunity Center.....	73	31	42	*	*	*	*	*	*	*	*	*	*	*	*	*	*	*
Oregon City HS - Freshmen.....	14	6	8	12	1	0	0	1	0	0	0	0	0	0	0	0	0	0
Oregon City HS - Jackson.....	98	56	42	84	2	10	1	1	0	0	0	0	0	0	0	0	0	0
Pacific High School.....	7	3	4	6	0	0	1	0	0	0	0	0	0	0	0	0	0	0
Palsley School.....	1	*	*	*	*	*	*	*	*	*	*	*	*	*	*	*	*	*
Parkrose High School.....	79	37	42	55	1	8	12	3	0	0	0	0	0	0	0	0	0	0
Pendleton High School.....	72	37	35	54	1	8	1	7	1	1	1	1	1	1	1	1	1	1
Parrydale School.....	0	0	0	0	0	0	0	0	0	0	0	0	0	0	0	0	0	0
Philomath High School.....	27	16	11	22	0	1	0	0	3	1	0	0	0	0	0	0	0	0
Phoenix High School.....	73	44	29	*	*	*	*	*	*	*	*	*	*	*	*	*	*	*
Pilot Rock High School.....	9	6	3	9	0	0	0	0	0	0	0	0	0	0	0	0	0	0
Pine Eagle High School.....	2	*	*	*	*	*	*	*	*	*	*	*	*	*	*	*	*	*
Pleasant Hill High School.....	9	4	5	9	0	0	0	0	0	0	0	0	0	0	0	0	0	0
Powers High School.....	2	*	*	*	*	*	*	*	*	*	*	*	*	*	*	*	*	*
PPS Alternative Programs.....	1,288	685	603	618	230	293	74	75	0	0	0	0	0	0	0	0	0	0
Prairie City School.....	0	0	0	0	0	0	0	0	0	0	0	0	0	0	0	0	0	0
Prospect High School.....	6	4	2	6	0	0	0	0	0	0	0	0	0	0	0	0	0	0
Rainier High School.....	7	5	2	5	0	1	0	1	0	0	0	0	0	0	0	0	0	0
Redmond High School.....	75	41	34	69	0	6	0	0	0	0	0	0	0	0	0	0	0	0
Reedsport High School.....	7	4	3	7	0	0	0	0	0	0	0	0	0	0	0	0	0	0
Rex Putnam High School.....	52	30	22	46	0	6	0	0	0	0	0	0	0	0	0	0	0	0
Reynolds High School.....	128	79	49	102	3	18	5	0	0	0	0	0	0	0	0	0	0	0
Riddle High School.....	15	8	7	15	0	0	0	0	0	0	0	0	0	0	0	0	0	0
Riverdale High School.....	1	*	*	*	*	*	*	*	*	*	*	*	*	*	*	*	*	*
Riverside High School.....	34	19	15	33	0	1	0	0	0	0	0	0	0	0	0	0	0	0
Rogue River High School.....	21	13	8	20	0	1	0	0	0	0	0	0	0	0	0	0	0	0
Roosevelt High School.....	81	50	31	45	12	9	4	11	0	0	0	0	0	0	0	0	0	0
Roseburg High School.....	170	101	69	155	1	10	2	2	0	0	0	0	0	0	0	0	0	0
Salem-Keizer Alternative Prog	90	30	60	62	1	19	2	6	0	0	0	0	0	0	0	0	0	0
Sam Barlow High School.....	117	72	45	103	1	7	3	3	0	0	0	0	0	0	0	0	0	0
Sandy High School.....	83	55	28	77	0	6	0	0	0	0	0	0	0	0	0	0	0	0
Santiam High School.....	17	14	3	17	0	0	0	0	0	0	0	0	0	0	0	0	0	0
Scappoose High School.....	11	8	3	10	0	0	0	1	0	0	0	0	0	0	0	0	0	0
School Of Arts & Communica	21	9	12	21	0	0	0	0	0	0	0	0	0	0	0	0	0	0



Table 2. -- Dropouts by sex, race/ethnicity, and grade: 1998-99

School or other area	Sex		Race/ethnicity							Grade					No Response
	Dropouts	Male	Female	White ¹	Black ¹	Hispanic	Asian / Pacific Islander	American Indian / Alaskan Native	No response	9	10	11	12	13	
School Of Science & Technol	5														
Scio High School.....	12	11	1	7	0	0	0	0	0	0	2	4	6	0	0
Seaside High School.....	29	17	12	29	0	0	0	0	0	0	3	9	6	7	4
Sheridan High School.....	10	7	3	6	0	0	4	0	0	0	2	2	5	1	0
Sherman High School.....	1	*	*	*	*	*	*	*	*	*	*	*	*	*	*
Sherwood High School.....	12	7	5	10	0	2	0	0	0	0	3	3	1	5	0
Silverton High School.....	108	62	44	90	0	14	2	0	0	0	9	33	27	37	0
Sisters High School.....	10	3	7	9	0	1	0	0	0	0	2	1	1	2	0
Stuslaw High School.....	29	15	14	*	*	*	*	*	*	*	7	10	7	5	0
South Albany High School.....	95	53	42	80	1	11	0	3	0	0	19	24	30	18	4
South Eugene High School.....	28	13	15	24	0	2	0	0	2	0	9	8	5	6	0
South Lane Academy.....	17	15	2	15	0	2	0	0	0	0	1	2	4	3	7
South Medford High School.....	176	93	83	133	6	28	3	6	0	0	17	16	37	108	0
South Salem High School.....	101	50	51	78	3	17	2	1	0	0	4	13	27	57	0
South Umpqua High School.....	48	30	18	43	0	1	0	3	1	0	11	10	14	9	4
Sprague High School.....	158	95	63	142	3	9	2	2	0	0	14	17	43	84	0
Spray School.....	0	0	0	0	0	0	0	0	0	0	0	0	0	0	0
Springfield High School.....	92	47	45	73	1	13	2	3	0	0	18	22	24	27	1
St Helens High School.....	56	34	22	51	0	3	2	0	0	0	20	8	15	13	0
St Paul High School.....	1	*	*	*	*	*	*	*	*	*	*	*	*	*	*
Stanfield Secondary School.....	7	6	1	4	0	3	0	0	0	0	2	2	1	2	0
Stayton High School.....	45	27	18	39	0	2	1	3	0	0	3	12	17	12	1
Sunset High School.....	102	62	40	55	3	35	6	3	0	0	3	21	48	28	2
Sutherlin High School.....	26	16	10	24	0	1	0	1	0	0	3	8	9	6	0
Sweet Home High School.....	79	48	31	74	0	1	2	2	0	0	5	17	32	25	0
Taft High School.....	84	51	33	69	1	6	0	8	0	0	28	17	20	19	0
The Dalles High School.....	71	36	35	60	0	8	0	3	0	0	10	16	20	16	9
Thurston High School.....	84	46	38	76	0	4	3	1	0	0	18	17	16	29	4
Tigard High School.....	81	45	36	60	1	14	5	1	0	0	13	22	34	12	0
Tillamook High School.....	47	26	21	42	0	5	0	0	0	0	5	8	12	15	7
Toledo High School.....	24	16	8	17	0	0	0	7	0	0	2	4	7	11	0
Triangle Lake School.....	0	0	0	0	0	0	0	0	0	0	0	0	0	0	0
Tualatin High School.....	94	47	47	79	0	8	6	0	1	0	2	19	26	47	0
Ukiah High School.....	1	*	*	*	*	*	*	*	*	*	*	*	*	*	*
Umatilla High School.....	33	15	18	25	0	8	0	0	0	0	6	5	10	10	1
Union High School.....	4	*	*	*	*	*	*	*	*	*	*	*	*	*	*
Vale High School.....	17	10	7	14	0	3	0	0	0	0	2	5	2	5	3
Vernonia High School.....	9	6	3	9	0	0	0	0	0	0	2	2	0	3	2

Table 2. -- Dropouts by sex, race/ethnicity, and grade: 1998-99

School or other area	Sex		Race/ethnicity					Grade					No Respon- se		
	Dropouts	Male	Female	White ¹	Black ¹	Hispanic	Asian/ Pacific Islander	American Indian/ Alaskan Native	No response	9	10	11		12	13
Wahkonka High School.....	23	7	16	15	0	4	0	4	0	4	7	7	4	1	0
Waldport High School.....	23	14	9	18	0	0	0	5	0	2	7	8	6	0	0
Wallowa High School.....	0	0	0	0	0	0	0	0	0	0	0	0	0	0	0
Warrenton High School.....	20	9	11	19	0	0	1	0	0	5	8	3	4	0	0
Wasco County High School.....	3	*	*	*	*	*	*	*	*	*	*	*	*	*	*
West Albany High School.....	70	42	28	61	0	8	1	0	0	6	16	21	20	7	0
West Linn High School.....	51	30	21	47	1	3	0	0	0	10	5	13	23	0	0
Weston - McEwen High School.....	30	19	11	21	0	5	0	4	0	5	11	4	7	3	0
Westview High School.....	136	77	59	94	8	12	18	4	0	23	34	40	29	10	0
Wheeler High School.....	0	0	0	0	0	0	0	0	0	0	0	0	0	0	0
Willamette High School.....	69	31	38	53	2	5	1	8	0	34	15	12	7	1	0
Willamina High School.....	12	4	8	8	0	1	0	3	0	5	3	1	3	0	0
Wilson High School.....	64	37	27	55	0	4	5	0	0	20	11	12	21	0	0
Wilsonville High School.....	27	13	14	21	0	6	0	0	0	5	9	7	6	0	0
Winston Churchill High School.....	27	14	13	16	11	0	0	0	0	5	6	7	9	0	0
Woodburn High School.....	116	63	53	*	*	*	*	*	*	33	39	25	11	8	0
Yamhill-Carlton High School.....	32	24	8	28	0	4	0	0	0	8	10	9	5	0	0
Yoncalla High School.....	5	*	*	*	*	*	*	*	*	*	*	*	*	*	*
II. Districts															
Beaverton SD 48J.....	558	307	251	382	15	101	50	10	0	52	101	232	147	26	0
Bend SD 1.....	271	144	127	261	0	8	2	0	0	63	61	72	73	2	0
Corbett SD 39.....	5	*	*	*	*	*	*	*	*	*	*	*	*	*	*
Corvallis SD 509J.....	105	56	49	89	3	12	1	0	0	3	14	21	59	8	0
Eugene SD 4J.....	207	103	104	167	15	12	3	7	3	49	55	56	47	0	0
Greater Albany SD 8J.....	165	95	70	141	1	19	1	3	0	25	40	51	38	11	0
Gresham-Barlow SD 10J.....	217	138	79	180	3	28	3	5	0	32	41	47	63	8	28
Hillsboro SD 1J.....	215	136	79	116	5	82	10	2	0	34	56	64	56	4	1
Hood River SD 1.....	63	45	18	30	0	33	0	0	0	17	13	18	15	0	0
Klamath County SD.....	89	57	32	70	0	10	1	8	0	12	25	28	24	2	0
Klamath Falls City Schools.....	77	42	35	53	4	14	2	4	0	13	17	19	28	0	0
Lake Oswego SD 7J.....	40	25	15	38	0	1	1	0	0	2	5	8	25	0	0
Lincoln County SD.....	188	116	72	147	1	16	1	23	0	46	42	48	52	0	0
Medford SD 549.....	332	174	158	258	10	48	5	11	0	22	32	72	202	4	0
Molalla SD 35.....	44	34	10	40	0	4	0	0	0	6	10	13	14	1	0
Morrow SD 1.....	38	21	17	37	0	1	0	0	0	15	10	7	6	0	0
North Clackamas SD 12.....	258	146	110	221	2	18	15	0	0	21	43	99	93	0	0
Oregon City SD 62.....	112	62	50	96	3	10	1	2	0	14	30	28	37	3	0

Table 2. -- Dropouts by sex, race/ethnicity, and grade: 1998-99

School or other area	Dropouts	Sex		Race/ethnicity							Grade					No Response
		Male	Female	White ¹	Black ¹	Hispanic	Asian / Pacific Islander	American Indian / Alaskan Native	No response	9	10	11	12	13		
															1,086	
Portland SD 1J.....	2,036	1,134	902	1,086	324	360	153	113	0	423	499	498	618	0	0	
Roseburg SD 4.....	174	103	71	159	1	10	2	2	0	4	70	44	37	13	6	
Salem/Keizer SD 24J.....	786	420	366	597	15	143	14	17	0	74	137	197	378	0	0	
Sheridan SD 48J.....	34	21	13	29	0	5	0	0	0	8	7	9	10	0	0	
Springfield SD 19.....	176	93	83	149	1	17	5	4	0	36	39	40	56	5	0	
Three Rivers SD.....	114	72	42	109	1	4	0	0	0	20	25	22	44	3	0	
Tigard SD 23J.....	175	92	83	139	1	22	11	1	1	15	41	60	59	0	0	
West Linn SD 3J.....	78	43	35	68	1	9	0	0	0	15	14	20	29	0	0	
Ill. Counties																
Baker County.....	48	33	15	45	0	2	1	0	0	8	10	15	15	0	0	
Benton County.....	147	80	67	125	3	14	1	3	1	4	18	29	88	8	0	
Clackamas County.....	744	436	308	650	6	67	18	3	0	92	154	218	276	4	0	
Clatsop County.....	77	45	32	69	0	6	0	2	0	16	22	12	21	6	0	
Columbia County.....	92	56	36	83	0	5	3	1	0	27	16	22	24	3	0	
Coos County.....	138	77	61	121	1	5	1	10	0	22	36	27	51	2	0	
Crook County.....	18	11	7	16	0	2	0	0	0	5	6	3	4	0	0	
Curry County.....	40	27	13	33	0	4	0	2	1	5	7	8	17	3	0	
Deschutes County.....	356	188	168	339	0	15	2	0	0	74	79	88	104	9	4	
Douglas County.....	377	221	156	351	2	14	3	6	1	51	118	94	83	19	12	
Gilliam County.....	3	*	*	*	*	*	*	*	*	*	*	*	*	*	*	
Grant County.....	3	*	*	*	*	*	*	*	*	*	*	*	*	*	*	
Harney County.....	21	16	5	15	0	0	0	6	0	1	7	2	11	0	0	
Hood River County.....	63	45	18	30	0	33	0	0	0	17	13	18	15	0	0	
Jackson County.....	693	392	301	585	12	72	7	17	0	68	105	160	341	19	0	
Jefferson County.....	82	46	36	11	0	25	0	46	0	16	32	15	19	0	0	
Josephine County.....	212	116	96	200	1	7	0	3	1	39	47	56	67	3	0	
Klamath County.....	166	99	87	123	4	24	3	12	0	25	42	45	52	2	0	
Lake County.....	5	*	*	*	*	*	*	*	*	*	*	*	*	*	*	
Lane County.....	673	364	309	575	18	44	10	23	3	161	171	172	153	18	0	
Lincoln County.....	188	116	72	147	1	16	1	23	0	46	42	48	52	0	0	
Linn County.....	364	232	152	343	2	25	4	5	5	47	87	114	124	12	0	
Malheur County.....	100	53	47	53	0	46	0	1	0	24	21	21	27	7	0	
Marion County.....	1,152	625	527	822	18	274	18	22	0	138	246	284	475	9	0	
Morrow County.....	38	21	17	37	0	1	0	0	0	15	10	7	6	0	0	
Multnomah County	2,719	1,518	1,201	1,627	338	433	186	125	0	559	659	634	813	27	27	
Polk County.....	108	44	64	79	3	24	0	2	0	14	19	24	47	3	1	
Sherman County.....	1	*	*	*	*	*	*	*	*	*	*	*	*	*	*	
Tillamook County.....	63	36	27	58	0	5	0	0	0	8	16	14	18	7	0	

Table 2. -- Dropouts by sex, race/ethnicity, and grade: 1998-99

School or other area	Dropouts	Sex		Race/ethnicity							Grade					No Response
		Male	Female	White ¹	Black ¹	Hispanic	Asian / Pacific Islander	American Indian / Alaskan Native	No response	9	10	11	12	13		
Umatilla County.....	333	177	156	201	3	112	2	8	7	113	78	75	60	5	1	
Union County.....	34	21	13	31	0	2	1	0	0	8	7	9	10	0	0	
Wallowa County.....	1	*	*	*	*	*	*	*	*	*	*	*	*	*	*	
Wasco County.....	97	44	53	78	0	12	0	7	0	15	25	27	20	10	0	
Washington County.....	1,078	608	468	726	21	241	73	14	1	144	231	379	290	31	1	
Wheeler County.....	2	*	*	*	*	*	*	*	*	*	*	*	*	*	*	
Yamhill County.....	368	214	154	289	1	72	2	4	0	59	87	89	116	16	1	

Note: Detailed data is suppressed in schools with small numbers of dropouts to protect student confidentiality.
¹ Not of Hispanic origin.

SOURCE: Oregon Department of Education, Scholl Finance and Data Analysis, Individual Early Leaver Reports

Table 3. -- Time enrolled in district, circumstance upon withdrawal, rescinded students: 1998-99 -- Continued

School or other area	Dropouts	Time enrolled in district					Circumstance upon withdrawal										Former dropouts returning to school
		Less than 2 weeks	2 weeks to 2 months	2 months to 1 year	1 year to 5 years	More than 5 years	No response	Left school without notice	Unregistered home schooled	Joined the Job Corps	Joined the military service	Withdrew from district-sponsored alt. ed.	Moved with a migrant family	Expelled or suspended and did not return	No response		
																3	
1	2	271	755	1,995	3,978	3,597	26	2,819	118	90	26	1,817	101	214	5,437	17	
Oregon Statewide Totals.....	10,622															610	
I. Schools																	
Adrian High School.....	11	5	3	1	1	0	0	1	0	0	0	0	4	0	6	0	
Aloha High School.....	86	4	8	32	42	0	0	11	0	0	0	4	0	0	71	21	
Alesea School.....	5	1	4	0	
Amity High School.....	19	1	3	5	9	0	0	4	1	0	0	7	0	0	7	0	
Arlington High School.....	3	0	0	2	0	
Ashland High School.....	65	1	4	8	27	25	0	8	2	0	0	29	0	1	25	0	
Astoria High School.....	20	0	0	3	12	5	0	1	0	0	0	4	0	1	14	0	
Baker High School.....	45	0	10	25	1	0	9	0	0	2	0	6	0	0	37	0	
Bandon High School.....	4	0	0	0	7	
Banks High School.....	16	0	3	2	7	4	0	8	1	0	0	1	0	0	6	0	
Beaverton High School.....	110	1	1	10	39	59	0	59	1	0	0	5	0	0	45	23	
Bend High School.....	128	0	4	29	41	54	0	37	0	0	0	0	0	0	91	0	
Benson High School.....	38	0	0	3	6	29	0	0	0	
Bonanza School.....	6	0	0	0	0	
Brookings Harbor High School.....	17	0	0	0	11	5	1	1	2	0	1	2	0	0	11	0	
Burns High School.....	19	0	2	5	0	12	0	5	0	0	0	0	0	3	11	0	
Burnt River School.....	0	0	0	0	0	0	0	0	0	0	0	0	0	0	0	0	
Butte Falls High School.....	4	0	0	0	0	
Camas Valley School.....	1	0	0	1	0	
Canby High School.....	69	0	4	10	55	0	0	3	0	1	0	0	0	0	65	0	
Cascade High School.....	23	1	8	2	11	0	1	11	0	0	0	0	0	0	12	0	
Cascade Locks School.....	3	0	0	1	0	
Centennial High School.....	116	1	14	30	38	33	0	70	0	0	0	0	0	2	44	0	
Centennial Learning Center.....	20	0	0	3	3	14	0	1	0	
Central High School.....	57	1	12	6	15	22	1	32	0	0	0	14	2	0	9	0	
Central Linn High School.....	8	1	1	2	4	0	0	0	0	0	0	0	0	0	8	3	
Century High School.....	66	0	9	14	38	5	0	30	0	0	0	0	0	4	32	10	
Chiloquin High School.....	18	1	9	7	1	0	0	14	0	0	1	2	0	0	1	0	
Churchill Alt. Ed.	9	0	0	2	3	4	0	8	0	0	0	0	0	1	0	0	
Clackamas High School.....	84	0	7	8	38	31	0	5	0	1	0	8	0	0	70	25	
Clatskanie High School.....	9	0	4	3	2	0	0	0	1	0	0	0	0	0	8	0	

Table 3. -- Time enrolled in district, circumstance upon withdrawal, rescinded students: 1998-99 -- Continued

School or other area	Dropouts	Time enrolled in district						Circumstance upon withdrawal							Former dropouts returning to school							
		Less than 2 weeks	2 weeks to 2 months	2 months to 1 year	1 year to 5 years	More than 5 years	No response	Left school without notice	Unregistered home schooled	Joined the Job Corps	Joined the military service	Withdrawn from district-sponsored alt. ed.	Moved with a migrant family	Expelled or suspended and did not return		No response						
																	3	4	5	6	7	8
1	2																					
Cleveland High School.....	72	0	2	14	22	34	0	36	0	1	0	0	0	0	0	0	0	0	1	34	0	
Colton High School.....	21	2	2	7	8	0	2	12	0	0	0	0	8	0	0	0	0	0	1	0	0	
Community School.....	98	0	2	17	30	49	0	78	0	0	0	0	16	0	0	0	0	1	3	10	0	
Condon High School.....	0	0	0	0	0	0	0	0	0	0	0	0	0	0	0	0	0	0	0	0	0	
Coquille High School.....	21	1	2	3	9	6	0	5	0	0	0	0	0	0	0	0	0	4	12	0	0	
Corbett High School.....	5	*	*	*	*	*	0	*	*	*	*	*	*	*	*	*	*	*	*	4	0	0
Corvallis High School.....	71	3	6	9	18	35	0	0	0	1	0	0	23	3	0	0	0	0	44	8	0	
Collage Grove High School.....	27	1	3	2	7	14	0	8	2	0	0	0	2	0	0	0	0	2	13	12	0	
Cove School.....	2	*	*	*	*	*	0	*	*	*	*	*	*	*	*	*	*	*	*	2	0	0
Crane Union High School.....	2	*	*	*	*	*	0	*	*	*	*	*	*	*	*	*	*	*	*	2	0	0
Crater High School.....	77	4	6	18	32	17	0	7	3	1	0	0	30	0	0	0	0	0	36	0	0	
Crescent Valley High School.....	34	0	1	5	12	16	0	3	0	0	2	2	0	0	0	0	0	0	27	10	0	
Creswell High School.....	23	0	0	3	11	9	0	1	0	1	0	0	1	0	0	0	0	1	19	4	0	
Crook County High School.....	18	7	0	3	6	2	0	0	0	0	8	0	0	0	0	0	0	0	10	5	0	
Crow High School.....	0	0	0	0	0	0	0	0	0	0	0	0	0	0	0	0	0	0	0	0	0	
Culver High School.....	10	0	3	3	2	2	0	4	2	0	0	0	0	3	0	0	0	0	1	0	0	
Dallas High School.....	45	3	3	7	18	13	1	7	5	0	0	0	12	0	0	1	0	1	20	10	0	
David Douglas High School.....	101	10	10	23	58	0	0	18	4	2	0	2	2	1	2	72	4	2	72	4	0	
Days Creek School.....	7	0	0	1	2	4	0	2	0	0	0	0	1	0	0	2	2	0	2	0	0	
Dayton High School.....	18	1	0	3	6	8	0	6	0	0	0	0	8	0	0	0	0	0	4	0	0	
Dayville School.....	0	0	0	0	0	0	0	0	0	0	0	0	0	0	0	0	0	0	0	0	0	
Douglas High School.....	55	1	7	9	28	10	0	21	0	0	0	0	25	0	0	9	2	0	9	2	0	
Dufur School.....	0	0	0	0	0	0	0	0	0	0	0	0	0	0	0	0	0	0	0	0	0	
Eagle Point High School.....	115	4	2	20	67	20	2	48	1	1	0	0	0	0	0	5	60	0	60	0	0	
Echo School.....	2	*	*	*	*	*	0	*	*	*	*	*	*	*	*	*	*	*	*	1	0	0
Eddyville School.....	3	*	*	*	*	*	0	*	*	*	*	*	*	*	*	*	*	*	3	0	0	
Elgin High School.....	1	*	*	*	*	*	0	*	*	*	*	*	*	*	*	*	*	*	0	0	0	
Elkton High School.....	5	*	*	*	*	*	0	*	*	*	*	*	*	*	*	*	*	*	5	0	0	
Elmira High School.....	40	2	4	8	10	16	0	11	1	0	0	4	0	0	2	22	2	2	22	2	0	
Enterprise High School.....	1	*	*	*	*	*	0	*	*	*	*	*	*	*	*	*	*	*	*	1	0	0
Estacada High School.....	32	0	0	7	13	12	0	15	0	0	0	1	1	1	0	15	1	1	15	1	0	
Falls City High School.....	6	*	*	*	*	*	0	2	1	0	0	0	0	0	0	3	1	0	3	1	0	
Forest Grove High School.....	93	0	7	25	52	9	0	1	3	1	0	0	24	1	0	63	0	1	63	0	0	

65

Table 3. -- Time enrolled in district, circumstance upon withdrawal, rescinded students: 1998-99 -- Continued

School or other area	Dropouts	Time enrolled in district					Circumstance upon withdrawal										Former dropouts returning to school
		Less than 2 weeks	2 weeks to 2 months	2 months to 1 year	1 year to 5 years	More than 5 years	No response	Left school without notice	Unregistered home schooled	Joined the Job Corps	Joined the military service	Withdrawn from district-sponsored alt. ed.	Moved with a migrant family	Expelled or suspended and did not return	No response		
																3	
1	2	3	4	5	6	7	8	9	10	11	12	13	14	15	16	17	0
Franklin High School.....	98	0	4	12	14	66	0	2	1	2	0	0	0	0	91	0	
Gaston High School.....	7	0	2	1	1	3	0	0	0	0	0	0	0	0	0	0	
Gervais High School.....	21	0	1	5	15	0	0	12	1	0	0	1	3	4	0	0	
Gilchrist School.....	7	0	0	2	2	3	0	2	0	0	0	0	0	1	4	0	
Gladstone High School.....	9	0	0	3	8	0	0	1	1	0	0	0	0	0	7	4	
Glencoe High School.....	62	0	1	4	29	28	0	2	0	0	0	0	3	2	55	0	
Glendale High School.....	10	0	1	6	2	1	0	2	0	0	0	0	0	0	8	0	
Glide High School.....	13	1	4	3	3	2	0	8	1	0	0	3	0	0	1	2	
Gold Beach High School.....	16	0	0	0	0	0	0	6	0	2	0	1	0	0	7	0	
Grant High School (Grant).....	2	0	0	0	0	0	0	0	0	0	0	0	0	0	2	0	
Grant High School (Multnomah).....	83	0	3	15	24	41	0	0	1	2	1	0	0	1	78	0	
Grants Pass High School.....	98	0	8	23	39	28	0	49	3	0	0	8	0	8	30	0	
Gresham High School.....	100	4	1	16	41	38	0	1	0	5	0	0	0	1	93	0	
Harper School.....	0	0	0	0	0	0	0	0	0	0	0	0	0	0	0	0	
Harrisburg High School.....	18	0	2	5	11	0	0	0	1	0	2	1	0	0	14	1	
Helensview High School.....	16	0	2	9	5	0	0	1	0	0	0	0	0	0	15	0	
Helix School.....	0	0	0	0	0	0	0	0	0	0	0	0	0	0	0	0	
Henley High School.....	43	3	1	11	28	2	0	35	0	1	0	0	0	0	7	1	
Henry D Sheldon High School.....	24	3	2	3	2	14	0	0	0	0	0	0	0	0	0	0	
Hepner High School.....	4	0	0	0	0	0	0	0	0	0	0	0	0	0	2	0	
Hermiston High School.....	105	1	14	11	69	10	0	30	0	0	0	5	2	1	67	0	
Hidden Valley High School.....	39	1	6	16	16	0	0	26	0	0	0	1	0	2	10	0	
Hillisboro High School.....	87	0	5	18	29	35	0	24	0	0	0	0	19	2	42	9	
Hood River Valley High School.....	60	1	10	12	36	1	0	12	1	0	0	0	16	6	25	0	
Huntington School.....	1	0	0	0	0	0	0	0	0	0	0	0	0	0	0	0	
Illinois Valley High School.....	41	7	0	7	28	1	0	34	0	1	0	5	1	0	0	0	
Imbler High School.....	2	0	0	0	0	0	0	0	0	0	0	0	0	0	2	4	
Ione School.....	0	0	0	0	0	0	0	0	0	0	0	0	0	0	0	0	
Jefferson High School (Marion).....	14	0	1	2	9	2	0	1	0	0	0	0	1	0	12	4	
Jefferson High School (Multnomah).....	48	0	0	11	12	25	0	0	0	0	0	0	0	1	47	0	
Jewell School.....	3	0	0	0	0	0	0	0	0	0	0	0	0	0	2	0	
John C. Fremont Jr High School.....	1	0	0	0	0	0	0	0	0	0	0	0	0	0	1	0	

Table 3. -- Time enrolled in district, circumstance upon withdrawal, rescinded students: 1998-99 -- Continued

School or other area	Dropouts	Time enrolled in district					Circumstance upon withdrawal										Former dropouts returning to school
		Less than 2 weeks	2 weeks to 2 months	2 months to 1 year	1 year to 5 years	More than 5 years	No response	Left school without notice	Unregistered home schooler	Joined the Job Corps	Joined the military service	Withdrew from district-sponsored alt. ed.	Moved with a migrant family	Expelled or suspended and did not return	No response		
																3	
1	2	3	4	5	6	7	8	9	10	11	12	13	14	15	16	17	
John F Kennedy High School.....	12	2	0	3	3	4	0	3	0	0	0	0	0	0	9	0	
Jordan Valley High School.....	3	0	0	0	0	0	0	0	0	0	0	0	0	0	2	0	
Joseph Lane Jr High School.....	3	0	0	0	0	0	0	0	0	0	0	0	0	0	0	0	
Joseph Middle/High School.....	0	0	0	0	0	0	0	0	0	0	0	0	0	0	0	0	
Junction City High School.....	24	0	4	6	8	6	0	10	1	0	0	2	0	1	10	0	
Klamath High School.....	59	3	9	11	34	2	0	42	0	0	0	0	0	0	17	0	
Knappa High School.....	5	0	0	0	0	0	0	0	0	0	0	0	0	0	1	0	
La Grande High School.....	25	4	3	3	7	8	0	4	2	0	0	2	0	1	16	0	
Lake Oswego High School.....	20	1	3	2	7	7	0	6	0	0	0	1	0	0	13	1	
Lakeridge High School.....	20	0	0	3	17	0	0	9	0	0	0	5	0	0	6	0	
Lakeview High School.....	4	0	0	0	0	0	0	0	0	0	0	0	0	0	1	0	
Lapine High School.....	36	2	4	13	8	9	0	26	2	0	0	1	0	0	7	0	
Lebanon High School.....	85	3	2	3	62	15	0	13	1	0	0	29	0	1	41	14	
Lincoln High School.....	47	0	2	12	9	24	0	0	1	0	0	0	0	0	46	0	
Long Creek School.....	1	0	0	0	0	0	0	0	0	0	0	0	0	0	1	0	
Lost River High School.....	15	0	0	0	0	0	0	1	0	2	0	0	3	1	8	0	
Lowell High School.....	9	2	1	3	1	2	0	0	0	0	0	0	0	0	1	2	
Madison High School.....	60	1	1	7	17	34	0	13	0	2	0	6	1	5	33	0	
Madras High School.....	72	0	1	14	14	43	0	48	0	1	0	0	0	0	23	0	
Mapleton High School.....	12	1	1	2	6	2	0	3	1	1	0	1	0	0	8	0	
Marshall High School (Deschutes).....	60	0	8	5	27	19	1	22	0	0	0	21	0	0	17	0	
Marshall High School (Multnomah).....	147	3	7	29	33	75	0	0	0	2	0	0	0	0	145	0	
Marshfield High School.....	50	1	3	2	11	33	0	4	2	2	0	9	0	1	32	7	
Mazama High School.....	18	2	5	4	7	0	0	2	1	1	0	5	0	1	8	0	
Mc Kay High School.....	151	1	1	12	50	87	0	0	0	0	0	15	0	0	136	29	
Mc Nary High School.....	116	0	2	4	34	76	0	0	0	0	0	13	0	0	103	19	
McKenzie River High School.....	9	0	0	2	4	3	0	1	0	0	0	5	0	0	3	0	
McLoughlin High School.....	74	0	15	11	22	26	0	12	0	0	0	2	1	0	59	0	
McMinnville High School.....	162	3	3	9	75	72	0	17	2	1	0	12	0	0	130	18	
Metropolitan Learning Center.....	12	0	0	1	5	6	0	7	0	0	0	0	0	0	5	0	
Milwaukie High School.....	120	0	14	19	53	34	0	0	0	3	0	25	0	0	92	44	
Mitchell School.....	2	0	0	0	0	0	0	0	0	0	0	0	0	0	0	0	
Mohawk High School.....	5	0	0	0	0	0	0	0	0	0	0	0	0	0	0	0	

Table 3. -- Time enrolled in district, circumstance upon withdrawal, resuspended students: 1998-99 -- Continued

School or other area	Time enrolled in district					Circumstance upon withdrawal										Former dropouts returning to school
	Dropouts	Less than 2 weeks	2 weeks to 2 months	2 months to 1 year	1 year to 5 years	More than 5 years	No response	Left school without notice	Unregistered home schooler	Joined the Job Corps	Joined the military service	Withdrawn from district-sponsored alt. ed.	Moved with a migrant family	Expelled or suspended and did not return	No response	
1	2	3	4	5	6	7	8	9	10	11	12	13	14	15	16	17
Molalla Alternative Options.....	19						0	3	0	0	1	10	0	0	5	1
Molalla High School.....	25	1	0	8	16	0	0	6	0	0	0	0	0	1	18	2
Monroe High School.....	10	0	1	0	2	7	0	0	0	0	0	0	0	0	10	1
Monument School.....	0	0	0	0	0	0	0	0	0	0	0	0	0	0	0	0
Mt View High School.....	47	1	3	4	21	18	0	22	3	0	1	3	0	0	18	0
Myrtle Point High School.....	10	0	0	0	6	4	0	0	3	0	0	4	0	0	3	4
Neah-Kah-Nie Jr-Sr High School.....	9	0	0	3	5	1	0	5	0	0	0	4	0	0	0	3
Nestucca High School.....	7	0	2	2	3	0	0	0	0	0	0	0	0	0	7	0
Newberg High School.....	91	1	7	8	31	44	0	11	3	0	0	32	0	0	45	13
Newport High School.....	54	2	2	9	11	30	0	2	0	1	0	0	0	1	50	13
North Bend High School.....	51	0	3	16	32	0	0	46	1	1	0	0	0	1	2	0
North Douglas High School.....	4						0								2	0
North Eugene High School.....	46	8	5	20	11	2	0	25	0	1	0	0	0	0	20	0
North Lake School.....	0	0	0	0	0	0	0	0	0	0	0	0	0	0	0	0
North Marion High School.....	28	4	7	14	1	2	0	21	0	0	0	0	0	4	3	1
North Medford High School.....	156	0	6	21	55	74	0	52	5	0	3	24	1	1	70	5
North Powder School.....	0	0	0	0	0	0	0	0	0	0	0	0	0	0	0	0
North Salem High School.....	170	0	3	10	63	94	0	0	0	0	0	30	0	0	140	28
North Valley High School.....	34	0	1	12	14	7	0	14	1	1	0	2	1	2	13	0
Nysa High School.....	18	0	1	2	8	7	0	5	0	0	0	8	0	0	5	0
Oakland High School.....	7	0	3	1	1	2	0	0	1	0	0	4	0	0	2	0
Oakridge High School.....	17	0	4	2	7	4	0	7	0	1	0	5	0	0	4	0
Ontario High School.....	51	1	9	8	16	17	0	4	0	1	0	9	0	0	37	0
Opportunity Center.....	73	0	0	10	26	37	0	61	0	0	0	4	0	4	4	0
Oregon City HS - Freshmen.....	14	0	2	8	3	1	0	4	0	0	0	5	0	1	4	0
Oregon City HS - Jackson.....	98	0	4	8	25	61	0	12	1	0	0	22	0	2	61	0
Pacific High School.....	7	0	1	1	3	2	0	3	0	0	0	1	0	0	3	0
Paisley School.....	1						0								1	0
Parkrose High School.....	79	1	5	19	28	26	0	0	0	1	0	0	0	0	78	0
Pendleton High School.....	72	0	1	11	31	29	0	48	1	2	0	16	0	0	5	0
Perrydale School.....	0	0	0	0	0	0	0	0	0	0	0	0	0	0	0	0
Philmath High School.....	27	2	1	2	16	5	1								1	8

Table 3. -- Time enrolled in district, circumstance upon withdrawal, rescinded students: 1998-99 -- Continued

School or other area	Dropouts	Time enrolled in district						Circumstance upon withdrawal						Former dropouts returning to school		
		Less than 2 weeks	2 weeks to 2 months	2 months to 1 year	1 year to 5 years	More than 5 years	No response	Left school without notice	Unregistered home schooled	Joined the Job Corps	Joined the military service	Withdrawn from district-sponsored alt. ed.	Moved with a migrant family		Expelled or suspended and did not return	No response
1	2	3	4	5	6	7	8	9	10	11	12	13	14	15	16	17
Phoenix High School.....	73	0	6	19	47	1	0	9	1	0	0	13	1	0	49	0
Pilot Rock High School.....	9	1	0	3	1	4	0	5	0	0	0	0	0	0	4	0
Pine Eagle High School.....	2	0	0	0	0	0	0	0	0	0	0	0	0	0	0	0
Pleasant Hill High School.....	9	0	0	3	4	2	0	5	1	0	0	0	0	0	3	0
Powers High School.....	2	0	0	0	0	0	0	0	0	0	0	0	0	0	0	0
PPS Alternative Programs.....	1,288	39	111	358	274	506	0	450	2	5	1	613	0	37	180	0
Prairie City School.....	0	0	0	0	0	0	0	0	0	0	0	0	0	0	0	0
Prospect High School.....	6	0	0	0	0	0	0	0	0	0	0	0	0	0	6	0
Rainier High School.....	7	1	3	1	2	0	0	1	0	0	0	2	0	1	3	0
Redmond High School.....	75	1	5	12	19	38	0	14	0	2	0	35	2	4	18	0
Reedsport High School.....	7	0	3	3	0	1	0	2	0	0	0	0	0	1	4	0
Rex Putnam High School.....	52	0	1	4	27	20	0	0	0	0	0	1	0	1	50	0
Reynolds High School.....	128	0	2	45	81	0	0	73	1	1	0	4	1	1	47	7
Riddle High School.....	15	0	2	7	5	1	0	7	0	0	0	7	0	1	0	0
Riverdale High School.....	1	0	0	0	0	0	0	0	0	0	0	0	0	0	0	0
Riverside High School.....	34	1	6	15	6	6	0	18	1	0	0	14	0	0	1	6
Rogue River High School.....	21	2	2	4	7	6	0	17	1	2	0	0	0	0	1	0
Roosevelt High School.....	81	0	5	9	24	43	0	41	1	0	0	0	0	1	38	0
Roseburg High School.....	170	1	7	27	74	61	0	18	0	0	1	117	0	2	32	7
Salem-Keizer Alternative Progr.....	90	0	2	4	28	56	0	0	0	0	0	10	0	0	80	19
Sam Barlow High School.....	117	25	6	24	81	1	0	3	3	1	0	2	0	4	104	0
Sandy High School.....	83	2	7	25	49	0	0	11	0	0	0	0	0	1	71	4
Santiam High School.....	17	6	8	3	0	0	0	9	1	1	0	5	1	0	0	6
Scappoose High School.....	11	2	1	5	3	0	0	6	1	0	0	0	0	4	0	0
School Of Arts & Communicati.....	21	0	1	1	6	13	0	6	0	0	0	1	0	0	14	0
School Of Science & Technolo.....	5	0	0	0	0	0	0	0	0	0	0	0	0	0	0	0
Scio High School.....	12	1	0	4	5	0	2	5	0	0	1	0	1	0	5	3
Seaside High School.....	29	1	3	7	17	1	0	8	0	0	0	9	0	0	12	0
Sheridan High School.....	10	0	0	1	6	2	1	3	0	0	0	3	0	1	3	0
Sherman High School.....	1	0	0	0	0	0	0	0	0	0	0	0	0	0	0	0
Shenwood High School.....	12	1	1	6	4	0	0	1	0	0	0	0	0	0	11	1
Silverton High School.....	106	3	10	14	79	0	0	4	4	1	0	4	0	1	92	2
Sisters High School.....	10	0	2	2	3	3	0	0	0	0	0	4	0	0	6	0

Table 3. -- Time enrolled in district, circumstance upon withdrawal, rescheduled students: 1988-89 -- Continued

School or other area	Dropouts	Time enrolled in district										Circumstance upon withdrawal										Former dropouts returning to school															
		Less than 2 weeks		2 weeks to 2 months		2 months to 1 year		1 year to 5 years		More than 5 years		No response		Left school without notice		Unregistered home schooled		Joined the Job Corps		Joined the military service			Withdrew from district-sponsored alt. ed.		Moved with a migrant family		Expelled or suspended and did not return		No response								
		3	4	5	6	7	8	9	10	11	12	13	14	15	16	17	0	1	2	3	4		5	6	7	8	9	10	11	12	13	14	15	16	17		
1	2	3	4	5	6	7	8	9	10	11	12	13	14	15	16	17	0	1	2	3	4	5	6	7	8	9	10	11	12	13	14	15	16	17	0		
Sluslaw High School.....	29	0	0	0	0	0	0	0	0	0	0	0	0	0	0	0	0	0	0	0	0	0	0	0	0	0	0	0	0	0	0	0	0	0	0	0	
South Albany High School.....	95	0	3	13	24	55	0	3	0	1	0	0	40	2	3	46	0	0	3	0	0	0	0	0	0	0	0	0	0	0	0	0	0	0	0	0	10
South Eugene High School.....	28	0	3	3	9	13	0	3	0	1	0	0	0	0	1	23	0	0	0	0	0	0	0	0	0	0	0	0	0	0	0	0	0	0	0	0	0
South Lane Academy.....	17	1	5	1	7	7	2	2	0	0	0	0	8	0	0	7	0	0	0	0	0	0	0	0	0	0	0	0	0	0	0	0	0	0	0	0	1
South Medford High School.....	176	0	6	32	64	74	0	11	1	2	4	2	8	0	4	144	0	0	0	0	0	0	0	0	0	0	0	0	0	0	0	0	0	0	0	0	13
South Salem High School.....	101	0	3	6	35	57	0	0	0	0	0	0	18	0	0	83	0	0	0	0	0	0	0	0	0	0	0	0	0	0	0	0	0	0	0	0	20
South Umpqua High School.....	48	0	1	12	23	11	1	36	1	0	0	0	0	0	0	6	0	0	0	0	0	0	0	0	0	0	0	0	0	0	0	0	0	0	0	2	
Sprague High School.....	158	0	5	8	58	87	0	0	0	0	0	0	32	0	3	123	0	0	0	0	0	0	0	0	0	0	0	0	0	0	0	0	0	0	0	0	19
Spray School.....	0	0	0	0	0	0	0	43	0	0	0	0	0	0	0	0	0	0	0	0	0	0	0	0	0	0	0	0	0	0	0	0	0	0	0	0	
Springfield High School.....	92	0	7	23	36	26	0	43	0	0	0	0	10	2	2	35	0	0	0	0	0	0	0	0	0	0	0	0	0	0	0	0	0	0	0	0	0
St Helens High School.....	56	0	1	14	15	28	0	12	2	0	0	0	34	0	1	7	0	0	0	0	0	0	0	0	0	0	0	0	0	0	0	0	0	0	0	0	0
St Paul High School.....	1	0	0	0	0	0	0	0	0	0	0	0	0	0	0	0	0	0	0	0	0	0	0	0	0	0	0	0	0	0	0	0	0	0	0	1	
Stanfield Secondary School.....	7	0	0	0	0	0	0	0	0	0	0	0	0	0	0	0	0	0	0	0	0	0	0	0	0	0	0	0	0	0	0	0	0	0	0	1	
Stayton High School.....	45	2	4	12	27	0	0	1	0	0	0	11	0	0	0	32	0	0	0	0	0	0	0	0	0	0	0	0	0	0	0	0	0	0	0	0	0
Sunset High School.....	102	0	2	27	39	34	0	37	1	0	0	7	4	1	51	0	0	0	0	0	0	0	0	0	0	0	0	0	0	0	0	0	0	0	0	0	12
Sutherland High School.....	26	0	1	5	13	7	0	2	0	1	0	12	0	0	1	10	0	0	0	0	0	0	0	0	0	0	0	0	0	0	0	0	0	0	0	0	1
Sweet Home High School.....	78	1	10	7	23	38	0	4	0	0	0	5	0	0	0	70	0	0	0	0	0	0	0	0	0	0	0	0	0	0	0	0	0	0	0	0	8
Taft High School.....	84	9	9	15	24	27	0	0	1	0	0	0	0	0	0	83	0	0	0	0	0	0	0	0	0	0	0	0	0	0	0	0	0	0	0	0	10
The Dalles High School.....	71	9	1	12	33	16	0	39	2	0	0	10	1	0	0	19	0	0	0	0	0	0	0	0	0	0	0	0	0	0	0	0	0	0	0	0	0
Thurston High School.....	84	4	6	12	28	34	0	10	0	0	0	1	1	0	0	69	0	0	0	0	0	0	0	0	0	0	0	0	0	0	0	0	0	0	0	0	0
Tigard High School.....	81	1	5	23	39	13	0	39	0	0	0	5	0	0	0	35	0	0	0	0	0	0	0	0	0	0	0	0	0	0	0	0	0	0	0	0	0
Tillamook High School.....	47	6	1	5	34	1	0	25	0	1	0	17	2	0	0	2	0	0	0	0	0	0	0	0	0	0	0	0	0	0	0	0	0	0	0	0	0
Toledo High School.....	24	2	2	5	2	13	0	3	0	2	1	6	0	0	0	12	0	0	0	0	0	0	0	0	0	0	0	0	0	0	0	0	0	0	0	0	6
Triangle Lake School.....	0	0	0	0	0	0	0	0	0	0	0	0	0	0	0	0	0	0	0	0	0	0	0	0	0	0	0	0	0	0	0	0	0	0	0	0	
Tualatin High School.....	94	0	5	10	27	52	0	14	0	2	1	15	0	0	0	60	0	0	0	0	0	0	0	0	0	0	0	0	0	0	0	0	0	0	0	0	3
Ukiah High School.....	1	0	0	0	0	0	0	0	0	0	0	0	0	0	0	0	0	0	0	0	0	0	0	0	0	0	0	0	0	0	0	0	0	0	0	0	
Umatilla High School.....	33	0	2	11	7	13	0	14	1	0	0	0	0	0	0	16	0	0	0	0	0	0	0	0	0	0	0	0	0	0	0	0	0	0	0	0	1
Union High School.....	4	0	0	0	0	0	0	0	0	0	0	0	0	0	0	3	0	0	0	0	0	0	0	0	0	0	0	0	0	0	0	0	0	0	0	3	
Vale High School.....	17	1	1	6	9	0	0	5	0	0	0	0	0	0	0	7	0	0	0	0	0	0	0	0	0	0	0	0	0	0	0	0	0	0	0	0	0
Vernonia High School.....	9	0	1	6	0	2	0	0	0	0	0	0	0	0	0	9	0	0	0	0	0	0	0	0	0	0	0	0	0	0	0	0	0	0	0	0	0
Wahntonka High School.....	23	0	3	6	3	11	0	3	2	0	0	8	1	0	0	4	0	0	0	0	0	0	0	0	0	0	0	0	0	0	0	0	0	0	0	0	5
Waldport High School.....	23	2	3	7	3	8	0	0	0	3	0	1	0	0	0	8	0	0	0	0	0	0	0	0	0	0	0	0	0	0	0	0	0	0	0	0	1

Table 3. -- Time enrolled in district, circumstance upon withdrawal, rescinded students: 1998-99 -- Continued

School or other area	Time enrolled in district					Circumstance upon withdrawal										Former dropouts returning to school							
	Dropouts	Less than 2 weeks	2 weeks to 2 months	2 months to 1 year	1 year to 5 years	More than 5 years	No response	Left school without notice	Unregistered home schooled	Joined the Job Corps	Joined the military service	Withdrawn from district-sponsored alt. ed.	Moved with a migrant family	Expelled or suspended and did not return	No response								
																	3	4	5	6	7	8	9
1	2																						
Waitowa High School.....	0	0	0	0	0	0	0	0	0	0	0	0	0	0	0	0	0	0	0	0	0	1	
Warrenton High School.....	20	0	0	0	0	0	0	0	0	0	0	0	0	0	0	0	0	0	0	0	0	0	
Wasco County High School.....	3	*	*	*	*	*	*	*	*	*	*	*	*	*	*	*	*	*	*	*	*	2	
West Albany High School.....	70	2	6	3	56	3	0	15	1	0	0	38	2	0	14	15							
West Linn High School.....	51	6	2	11	32	0	0	6	0	0	0	7	0	0	36	0							
Weston - McEwen High School.....	30	0	4	10	7	9	0	0	0	0	0	1	0	0	29	0							
Westview High School.....	136	1	11	19	51	54	0	80	0	0	0	5	2	0	49	24							
Wheeler High School.....	0	0	0	0	0	0	0	0	0	0	0	0	0	0	0	0							
Williamette High School.....	69	1	8	20	24	16	0	27	3	1	0	3	0	1	34	0							
Williamina High School.....	12	1	0	3	7	1	0	0	0	0	0	0	0	0	12	1							
Wilson High School.....	64	0	0	12	16	38	0	16	0	0	0	0	0	2	48	0							
Wilsonville High School.....	27	2	7	5	8	5	0	4	1	1	0	0	0	0	21	0							
Winston Churchill High School.....	27	2	1	2	9	13	0	9	1	0	0	0	0	0	17	0							
Woodburn High School.....	116	4	5	18	46	43	0	49	2	2	0	14	0	1	48	0							
Yamhill-Carlton High School.....	32	0	6	5	21	0	0	8	2	3	0	0	0	0	17	0							
Yoncalla High School.....	5	*	*	*	*	*	0	*	*	*	*	*	*	*	0	0							
II. Districts																							
Beaverton SD 48J.....	558	2	21	82	198	255	0	274	2	0	1	40	6	2	233	90							
Bend SD1.....	271	3	19	51	97	100	1	107	5	0	1	25	0	0	133	0							
Corbett SD 38.....	5	*	*	*	*	*	0	*	*	*	*	*	*	*	4	0							
Corvallis SD 509J.....	105	3	7	14	30	51	0	3	0	1	2	25	3	0	71	19							
Eugene SD 4J.....	207	13	11	40	60	83	0	129	2	2	0	4	0	6	64	0							
Greater Albany SD 8J.....	165	2	9	16	80	58	0	18	1	1	0	78	4	3	60	25							
Gresham-Barlow SD 10J.....	217	29	7	40	102	39	0	4	3	6	0	2	0	5	197	0							
Hillsboro SD 1J.....	215	0	15	38	98	68	0	58	0	0	0	0	22	8	129	19							
Hood River SD 1.....	63	2	11	13	36	1	0	13	1	0	0	0	16	7	28	0							
Klamath County SD.....	89	4	10	23	43	8	0	57	1	3	1	2	3	2	20	1							
Klamath Falls City Schools.....	77	5	14	15	41	2	0	44	1	1	0	5	0	1	25	0							
Lake Oswego SD 7J.....	40	1	3	5	24	7	0	15	0	0	0	6	0	0	19	1							
Lincoln County SD.....	188	15	16	37	180	80	0	5	4	3	1	7	0	12	158	30							
Medford SD 549.....	332	0	12	53	119	148	0	63	6	2	7	28	9	5	214	18							
Molalla SD 35.....	44	1	0	9	33	1	0	9	0	0	1	10	0	1	23	3							



Table 3. -- Time enrolled in district, circumstance upon withdrawal, resuspended students: 1998-99 -- Continued

School or other area	Dropouts	Time enrolled in district					Circumstance upon withdrawal										Former dropouts returning to school
		Less than 2 weeks	2 weeks to 2 months	2 months to 1 year	1 year to 5 years	More than 5 years	No response	Left school without notice	Unregistered home schooled	Joined the Job Corps	Joined the military service	Withdrawn from district-sponsored alt. ed.	Moved with a migrant family	Expelled and did not return	No response		
Morrow SD 1	2	3	4	5	6	7	8	9	10	11	12	13	14	15	16	17	
North Clackamas SD 12	38	1	6	16	6	9	0	20	1	0	0	14	0	0	3	6	
Oregon City SD 62	256	0	22	31	118	85	0	5	0	4	0	34	0	1	212	69	
Portland SD 1J	112	0	6	16	28	82	0	16	1	0	0	27	0	3	65	0	
Roseburg SD 4	2,036	43	135	483	456	919	0	602	7	14	2	619	1	48	743	0	
Salem/Keizer SD 24J	174	1	8	28	75	62	0	21	0	0	1	117	0	2	33	7	
Sheridan SD 48J	786	1	16	44	268	457	0	0	0	0	0	118	0	3	665	132	
Springfield SD 19	34	1	3	10	16	3	1	3	0	1	0	25	0	1	4	0	
Three Rivers SD	176	4	13	35	64	60	0	53	0	0	0	11	3	5	104	0	
Tigard SD 23J	114	8	7	35	58	8	0	74	1	2	0	8	2	4	23	0	
West Linn SD 3J	175	1	10	33	66	65	0	53	0	2	1	20	0	4	95	3	
Ill. Counties	78	8	9	16	40	5	0	12	1	1	0	7	0	0	57	0	
Baker County	48	0	11	25	2	1	9	1	0	2	0	6	0	2	37	0	
Benton County	147	5	10	17	48	65	2	29	0	1	3	25	3	0	86	28	
Clackamas County	744	14	53	129	374	172	2	99	3	6	1	93	1	7	534	82	
Clatsop County	77	2	4	19	39	13	0	12	0	0	1	17	1	5	41	0	
Columbia County	92	3	10	29	22	28	0	19	4	0	0	36	0	6	27	0	
Coos County	138	2	8	24	60	44	0	57	7	3	0	15	0	6	50	18	
Crook County	18	7	0	3	6	2	0	0	0	8	0	0	0	0	10	5	
Curry County	40	0	2	2	28	7	1	10	2	2	1	4	0	0	21	0	
Deschutes County	356	4	26	65	119	141	1	121	5	2	1	64	2	4	157	0	
Douglas County	377	3	32	80	159	102	1	105	4	2	1	170	0	12	83	14	
Gilliam County	3	*	*	*	*	*	0	*	*	*	*	*	*	*	2	0	
Grant County	3	*	*	*	*	*	0	*	*	*	*	*	*	*	3	0	
Harney County	21	0	2	5	2	12	0	5	0	0	0	0	0	3	13	0	
Hood River County	63	2	11	13	36	1	0	13	1	0	0	0	16	7	26	0	
Jackson County	693	11	34	122	308	218	2	156	14	6	7	98	10	11	391	18	
Jefferson County	82	0	4	17	16	45	0	52	2	1	0	0	3	0	24	0	
Josephine County	212	8	15	58	95	36	0	123	4	2	0	16	2	12	53	0	
Klamath County	166	9	24	38	84	10	0	101	2	4	1	7	3	3	45	1	
Lake County	5	*	*	*	*	*	0	*	*	*	*	*	*	*	2	0	
Lane County	673	25	60	136	223	227	2	270	11	7	0	57	3	18	307	21	
Lincoln County	188	15	16	37	40	80	0	5	4	3	1	7	0	12	156	30	

Table 3. -- Time enrolled in district, circumstance upon withdrawal, rescinded students: 1998-99 -- Continued

School or other area	Dropouts	Time enrolled in district										Circumstance upon withdrawal										Former dropouts returning to school								
		Less than 2 weeks		2 weeks to 2 months		2 months to 1 year		1 year to 5 years		More than 5 years		No response		Left school without notice		Unregistered home schooler		Joined the Job Corps		Joined the military service			Withdrew from district-sponsored alt. ed.		Moved with a migrant family		Expelled or suspended and did not return		No response	
		3	4	5	6	7	8	9	10	11	12	13	14	15	16	17	18	19	20	21	22		23	24	25	26	27	28	29	30
1	2	3	4	5	6	7	8	9	10	11	12	13	14	15	16	17											17			
Linn County.....	384	14	32	40	185	111	2	49	4	2	3	118	6	4	198											60				
Malheur County.....	100	3	17	19	36	25	0	16	0	1	0	17	5	4	57											0				
Marion County.....	1,152	17	52	114	460	508	1	102	7	3	0	148	4	14	874											140				
Morrow County.....	38	1	6	16	6	9	0	20	1	0	0	14	0	0	3											6				
Multnomah County.....	2,719	64	177	652	773	1,033	0	770	15	24	3	645	3	58	1,201											11				
Polk County.....	108	5	16	14	36	35	2	41	6	0	0	26	2	1	32											11				
Sherman County.....	1	*	*	*	*	*	0	*	*	*	*	*	*	*	1											0				
Tillamook County.....	63	6	3	10	42	2	0	30	0	1	0	21	2	0	9											3				
Umatilla County.....	333	3	36	59	144	91	0	110	2	2	0	24	3	2	190											2				
Union County.....	34	4	5	6	10	9	0	5	2	0	1	2	0	1	23											7				
Wallowa County.....	1	*	*	*	*	*	0	*	*	*	*	*	*	*	1											1				
Wasco County.....	97	10	5	19	36	27	0	44	4	0	0	18	2	5	24											7				
Washington County.....	1,076	4	59	185	424	404	0	400	6	3	2	85	29	14	537											113				
Wheeler County.....	2	*	*	*	*	*	0	*	*	*	*	*	*	*	0											0				
Yamhill County.....	368	8	20	41	161	137	1	49	8	5	0	84	0	3	219											32				

NOTE: Data for some schools was suppressed to maintain student confidentiality.
SOURCE: Oregon Department of Education, School Finance and Data Analysis, Individual Early Leaver Reports.

Table 4. -- Factors influencing the decision to drop out: 1998-99

School or other area	Student				Family				School					Work						
	Dropouts	Frequent health problems	Does not speak English well or at all	Substance abuse	Felt peer pressure to not achieve	Pregnant or student parent	Homeless	Needed care for family members	Lack of parental support for education	Dysfunctional home life	Attended 3 or more high schools	Frequent discipline referrals	Too far behind in credits to catch up	Conflicts with school personnel	Lack of appropriate alternative education opportunities	Fell unsafe at school	Could not adjust to the school setting	Working more than 15 hours a week	Obligations to support family	
1	2	3	4	5	6	7	8	9	10	11	12	13	14	15	16	17	18	19	20	
Oregon Statewide Totals.....	10,622	253	218	700	440	628	252	138	1,304	1,039	267	761	1,584	242	130	82	979	1,303	292	
I. Schools																				
Adrian High School.....	11	0	0	0	0	0	0	0	1	0	0	0	0	0	0	0	0	0	0	0
Aloha High School.....	86	3	0	3	0	5	0	1	2	3	1	4	19	4	2	0	5	12	1	1
Alsea School.....	5	0	0	0	0	0	0	0	0	0	0	0	0	0	0	0	0	0	0	0
Anity High School.....	19	0	0	0	2	1	0	0	9	0	0	0	4	0	0	0	6	2	0	0
Arlington High School.....	3	0	0	0	0	0	0	0	0	0	0	0	0	0	0	0	0	0	0	0
Ashland High School.....	65	5	0	5	8	0	4	1	9	8	2	1	19	0	0	1	13	4	0	0
Astoria High School.....	20	2	0	0	0	2	0	0	0	0	0	1	0	1	0	0	0	11	0	0
Baker High School.....	45	0	0	0	0	0	0	0	4	0	0	2	0	1	0	0	0	0	0	0
Bandon High School.....	4	0	0	0	0	0	0	0	0	0	0	0	0	0	0	0	0	0	0	0
Banks High School.....	16	0	1	1	0	2	0	0	7	2	1	0	8	0	0	0	2	5	2	2
Beverton High School.....	110	2	5	7	11	4	1	2	5	11	0	5	65	3	4	0	20	14	10	10
Bend High School.....	128	0	0	0	0	0	0	0	0	0	0	0	0	0	0	0	0	0	0	0
Benson High School.....	38	0	0	0	0	0	0	0	0	0	0	0	0	0	0	0	0	0	0	0
Bonanza School.....	6	0	0	0	0	0	0	0	0	0	0	0	0	0	0	0	0	0	0	0
Brookings Harbor High School.....	17	3	0	0	0	0	1	0	0	0	0	0	3	0	0	0	0	1	0	0
Burns High School.....	19	1	0	1	0	2	0	0	2	2	0	1	1	0	0	0	0	2	1	1
Burnt River School.....	0	0	0	0	0	0	0	0	0	0	0	0	0	0	0	0	0	0	0	0
Butte Falls High School.....	4	0	0	0	0	0	0	0	0	0	0	0	0	0	0	0	0	0	0	0
Canas Valley School.....	1	0	0	0	0	0	0	0	0	0	0	0	0	0	0	0	0	0	0	0
Canby High School.....	69	2	6	11	3	4	2	0	22	24	4	6	24	0	0	0	6	10	4	4
Cascade High School.....	23	0	1	6	2	5	1	0	11	12	0	2	1	2	0	0	6	0	0	0
Cascade Locks School.....	3	0	0	0	0	0	0	0	0	0	0	0	0	0	0	0	0	0	0	0
Centennial High School.....	116	0	1	0	0	1	0	0	1	0	0	0	2	0	0	0	0	1	0	0
Centennial Learning Center.....	20	1	0	7	4	1	0	0	3	6	1	1	4	2	1	0	2	3	0	0
Central High School.....	57	3	8	5	0	9	0	0	4	5	8	3	9	1	0	0	0	3	1	1
Central Linn High School.....	8	0	0	0	0	0	0	0	0	0	0	0	0	0	0	0	0	0	0	0
Century High School.....	66	0	0	7	14	3	0	1	1	8	0	7	5	10	1	6	12	12	1	1
Chiloquin High School.....	18	0	0	12	4	1	0	0	13	12	4	12	3	9	0	0	0	0	1	1
Churchill Alt. Ed.	9	0	0	0	0	0	0	0	0	0	0	0	0	0	0	0	0	1	0	0
Clackamas High School.....	84	3	0	7	18	4	7	2	2	23	0	12	5	4	1	1	3	22	0	0
Clatskanie High School.....	9	0	0	0	0	2	1	0	2	1	0	1	2	0	0	0	0	0	0	0
Cleveland High School.....	72	2	0	0	0	1	0	0	0	0	0	0	0	0	0	0	0	19	0	0
Colton High School.....	21	2	0	0	0	2	0	1	0	0	1	1	7	0	0	0	1	2	0	0
Community School.....	98	8	5	5	0	31	6	2	10	3	13	0	13	1	0	0	0	38	18	18
Condon High School.....	0	0	0	0	0	0	0	0	0	0	0	0	0	0	0	0	0	0	0	0
Coquille High School.....	21	1	0	7	0	5	1	2	6	7	0	7	4	2	0	0	2	2	2	2
Corbett High School.....	5	0	0	0	0	0	0	0	0	0	0	0	0	0	0	0	0	0	0	0
Corvallis High School.....	71	2	1	22	10	4	3	1	17	21	2	3	25	3	5	2	17	10	3	3

Table 4. -- Factors influencing the decision to drop out: 1998-99

School or other area	Dropouts	Student				Family				School						Work			
		Frequent health problems	Does not speak English well or at all	Substance abuse	Felt peer pressure to not achieve	Pregnant or student/parent	Homeless	Needed care for family members	Lack of parental support for education	Dysfunctional home life	Attended 3 or more high schools	Frequent discipline referrals	Too far behind in credits to catch up	Conflicts with school personnel	Lack of appropriate alternative education opportunities	Felt unsafe at school	Could not adjust to the school setting	Working more than 15 hours a week	Obligations to support family
1	2	3	4	5	6	7	8	9	10	11	12	13	14	15	16	17	18	19	20
Cottage Grove High School.....	27	0	0	0	0	3	4	1	7	6	3	7	10	2	0	0	0	3	2
Cove School.....	2	0	0	0	0	0	0	0	0	0	0	0	0	0	0	0	0	0	0
Crane Union High School.....	2	0	0	0	0	0	0	0	0	0	0	0	0	0	0	0	0	0	0
Crater High School.....	77	2	0	7	0	9	1	2	9	9	0	14	18	1	0	0	8	8	0
Crescent Valley High School.....	34	0	0	11	0	1	1	1	8	9	1	3	6	2	1	0	1	2	1
Creswell High School.....	23	1	0	0	0	6	1	1	1	4	2	4	12	3	0	0	4	6	0
Crook County High School.....	18	0	2	4	0	3	0	0	7	5	2	6	11	0	0	0	0	0	1
Crow High School.....	0	0	0	0	0	0	0	0	0	0	0	0	0	0	0	0	0	0	0
Culver High School.....	10	1	3	0	0	0	0	0	1	1	1	2	3	2	0	0	0	0	0
Dallas High School.....	45	3	0	2	4	13	0	1	24	18	1	5	12	2	0	0	9	2	2
David Douglas High School.....	101	3	11	3	15	1	0	0	11	6	1	10	53	1	0	0	20	2	0
Days Creek School.....	7	2	0	0	0	0	0	0	4	3	0	0	4	0	0	0	1	0	0
Dayton High School.....	18	2	2	0	0	6	0	0	0	5	0	0	5	0	0	1	3	4	0
Dayville School.....	0	0	0	0	0	0	0	0	0	0	0	0	0	0	0	0	0	0	0
Douglas High School.....	55	1	0	3	22	6	0	1	15	8	0	9	10	6	0	0	11	1	2
Dufur School.....	0	0	0	0	0	0	0	0	0	0	0	0	0	0	0	0	0	0	0
Eagle Point High School.....	115	3	1	3	5	4	0	1	39	0	1	4	20	0	0	1	0	9	0
Echo School.....	2	0	0	0	0	0	0	0	0	0	0	0	0	0	0	0	0	0	0
Eddyville School.....	3	0	0	0	0	0	0	0	0	0	0	0	0	0	0	0	0	0	0
Elgin High School.....	1	0	0	0	0	0	0	0	0	0	0	0	0	0	0	0	0	0	0
Elkton High School.....	5	0	0	0	0	0	0	0	0	0	0	0	0	0	0	0	0	0	0
Elmira High School.....	40	1	1	2	0	1	1	0	13	2	1	15	9	6	0	0	2	3	1
Enterprise High School.....	1	0	0	0	0	0	0	0	0	0	0	0	0	0	0	0	0	0	0
Estacada High School.....	32	0	3	3	3	5	0	0	6	8	3	2	12	1	0	0	1	3	0
Falls City High School.....	6	0	0	0	0	0	0	0	0	0	0	0	0	0	0	0	0	0	0
Forest Grove High School.....	93	2	2	6	0	7	0	0	11	10	0	12	1	1	0	0	2	9	1
Franklin High School.....	86	1	0	0	0	1	0	0	0	0	0	0	0	0	0	0	0	0	0
Gaston High School.....	7	0	0	0	0	0	0	0	0	0	0	0	0	0	0	0	0	0	0
Genavix High School.....	21	0	1	0	0	2	0	4	1	0	0	0	4	0	0	0	3	8	0
Gilchrist School.....	7	1	0	1	0	1	0	1	3	0	0	0	2	0	1	0	0	0	0
Gladstone High School.....	9	0	1	4	0	1	0	0	3	2	0	2	1	1	0	0	3	1	0
Glencoe High School.....	62	3	0	0	0	2	0	2	40	1	0	1	33	0	0	0	6	2	3
Glendale High School.....	10	0	0	0	0	0	0	0	0	0	0	0	0	0	0	0	0	0	0
Glide High School.....	13	1	0	2	0	1	0	0	4	5	1	0	2	0	0	0	2	2	0
Gold Beach High School.....	16	0	0	1	0	2	0	5	1	1	0	0	5	0	0	0	1	0	0
Grant High School (Grant).....	2	0	0	0	0	0	0	0	0	0	0	0	0	0	0	0	0	0	0
Grant High School (Multnomah)	83	1	0	0	0	0	0	0	0	0	0	0	0	0	0	0	0	2	0
Grants Pass High School.....	98	3	0	15	21	4	3	0	33	21	4	15	33	18	1	3	52	2	1
Gresham High School.....	100	5	8	12	7	2	1	1	9	24	5	15	24	2	25	0	17	8	5

Table 4. -- Factors influencing the decision to drop out: 1998-99

School or other area	Student					Family					School					Work			
	Dropouts	Frequent health problems	Does not speak English well or at all	Substance abuse	Felt peer pressure to not achieve	Pregnant or student parent	Homeless	Needed at home care for family members	Lack of parental support for education	Dysfunctional home life	Attended 3 or more high schools	Frequent discipline referrals	Too far behind in credits to catch up	Conflicts with school personnel	Lack of appropriate alternative education opportunities	Felt unsafe at school	Could not adjust to the school setting	Working more than 15 hours a week	Obligations to support family
1	2	3	4	5	6	7	8	9	10	11	12	13	14	15	16	17	18	19	0
Herper School.....	0	0	0	0	0	0	0	0	0	0	0	0	0	0	0	0	0	0	0
Harrisburg High School.....	18	0	0	1	0	1	0	0	6	6	0	2	5	0	0	0	1	1	0
Helensview High School.....	16	2	1	4	0	0	1	0	3	3	0	1	0	0	0	0	0	0	0
Helix School.....	0	0	0	0	0	0	0	0	0	0	1	6	16	4	0	0	0	0	0
Henley High School.....	43	2	0	0	0	1	0	0	5	4	0	0	0	0	0	0	0	0	0
Henry D Sheldon High School.....	24	0	0	0	1	1	0	0	0	0	0	0	0	0	0	0	0	0	0
Heppner High School.....	4	0	0	0	0	0	0	0	0	0	0	0	0	0	0	0	0	0	0
Harrison High School.....	105	0	2	11	12	7	0	3	20	9	4	7	25	2	2	0	13	22	3
Hidden Valley High School.....	39	0	0	4	0	1	1	1	11	8	1	3	8	2	6	0	0	2	1
Hillsboro High School.....	87	4	7	0	0	1	1	0	19	2	0	8	21	1	0	1	13	7	0
Hood River Valley High School.....	60	1	22	0	3	4	0	1	2	7	1	8	2	0	0	1	7	8	1
Huntington School.....	1	0	0	0	0	0	0	0	0	0	0	0	0	0	0	0	0	0	0
Illinois Valley High School.....	41	1	0	0	0	7	0	1	1	1	2	4	19	0	0	0	4	3	0
Imbler High School.....	2	0	0	0	0	0	0	0	0	0	0	0	0	0	0	0	0	0	0
Ione School.....	0	0	0	0	0	0	0	0	0	0	0	0	0	0	0	0	0	0	0
Jefferson High School (Marion).....	14	0	1	4	0	2	0	0	0	0	1	7	0	0	0	0	0	0	0
Jefferson High School (Mullins).....	48	0	0	0	0	0	0	0	0	0	0	0	0	0	0	0	0	0	0
Jewell School.....	3	0	0	0	0	0	0	0	0	0	0	0	0	0	0	0	0	0	0
John C. Fremont Jr High School.....	1	0	0	0	0	0	0	0	0	0	0	0	0	0	0	0	0	0	0
John F Kennedy High School.....	12	2	0	0	0	2	0	0	3	4	0	1	4	1	0	1	0	2	0
Jordan Valley High School.....	3	0	0	0	0	0	0	0	0	0	0	0	0	0	0	0	0	0	0
Joseph Lane Jr High School.....	3	0	0	0	0	0	0	0	0	0	0	0	0	0	0	0	0	0	0
Joseph Middle/High School.....	0	0	0	0	0	0	0	0	0	0	0	0	0	0	0	0	0	0	0
Junction City High School.....	24	2	0	1	0	7	0	0	7	0	3	5	0	0	0	1	1	8	3
Klamath High School.....	59	2	2	1	0	0	1	0	7	5	1	1	13	1	0	0	8	2	1
Knappa High School.....	5	0	0	0	0	0	0	0	0	0	0	0	0	0	0	0	0	0	0
La Grande High School.....	25	1	0	3	4	0	0	0	0	3	0	1	1	0	0	0	3	2	1
Lake Oswego High School.....	20	1	2	0	0	0	0	0	0	0	2	1	0	0	0	0	0	0	0
Lakeridge High School.....	20	2	0	3	0	0	0	1	0	0	0	1	12	0	0	0	0	2	0
Lakeview High School.....	4	0	0	0	0	0	0	0	0	0	0	0	0	0	0	0	0	0	0
Lapine High School.....	38	2	0	3	13	7	1	0	12	7	0	4	3	0	3	0	0	1	1
Lebanon High School.....	85	0	2	7	4	8	0	2	20	12	0	6	38	6	0	1	35	4	7
Lincoln High School.....	47	0	0	0	0	0	1	0	3	2	0	0	0	0	0	0	0	0	0
Long Creek School.....	1	0	0	0	0	0	0	0	0	0	0	0	0	0	0	0	0	0	0
Lost River High School.....	15	0	0	0	0	1	0	0	2	0	0	3	2	0	0	0	0	3	3
Lowell High School.....	9	0	1	0	0	0	0	0	0	0	0	1	0	0	0	0	0	1	1
Madison High School.....	60	0	0	0	0	5	3	0	1	6	0	0	0	0	0	0	0	5	0
Madras High School.....	72	0	0	0	0	0	0	0	0	0	1	1	0	0	0	0	0	0	0
Mapleton High School.....	12	1	0	3	2	1	1	0	5	4	2	2	2	1	3	0	1	3	1

Table 4. -- Factors influencing the decision to drop out: 1998-99

School or other area	Student										Family							School							Work	
	Frequent health problems	Does not speak English well or at all	Substance abuse	Fell peer pressure to not achieve	Pregnant or student/parent	Homeless	Needs at home care for family members	Lack of parental support for education	Dysfunctional home life	Attended 3 or more high schools	Frequent discipline referrals	Too far behind in credits to catch up	Conflicts with school personnel	Lack of appropriate alternative education opportunities	Fell unsafe at school	Could not adjust to the school setting	Working more than 15 hours a week	Obligation to support family								
1	2	3	4	5	6	7	8	9	10	11	12	13	14	15	16	17	18	19	20							
Marshall High School (Deschutes)	60	2	0	0	2	0	0	0	12	10	0	0	0	0	0	0	4	19	0							
Marshall High School (Multnomah)	147	0	0	0	0	1	0	0	0	0	0	0	0	0	0	0	0	0	0							
Mersfield High School	50	1	0	15	9	2	2	0	31	12	0	6	1	0	0	0	0	1	6							
Mazama High School	16	2	1	2	1	1	2	0	11	2	0	3	3	3	1	0	0	0	0							
Mc Kay High School	137	2	3	2	3	1	0	0	6	6	2	9	18	1	0	0	4	2	4							
Mc Nary High School	104	1	2	1	1	2	0	0	9	2	4	0	2	0	2	0	4	7	0							
McKenzie River High School	9	0	0	3	0	0	1	0	0	1	0	2	1	0	0	0	3	2	0							
McLoughlin High School	74	1	6	2	0	3	1	0	8	13	0	2	8	2	0	0	1	14	3							
McMinnville High School	162	2	2	13	2	7	2	0	32	23	6	18	35	5	13	1	21	7	2							
Metropolitan Learning Center	12	0	0	1	0	0	0	0	0	0	0	0	6	0	0	0	0	2	0							
Milwaukie High School	120	3	4	4	5	13	3	1	15	10	13	19	22	6	0	14	38	19	4							
Mitchell School	2	*	*	*	*	*	*	*	*	*	*	*	*	*	*	*	*	*	*	*						
Mohawk High School	5	*	*	*	*	*	*	*	*	*	*	*	*	*	*	*	*	*	*	*						
Mokala Alternative Options	19	0	2	1	0	1	0	1	1	0	0	1	3	1	0	0	14	4	0							
Molalla High School	25	1	0	1	3	0	0	3	4	5	2	10	12	3	1	0	7	8	0							
Monroe High School	10	2	0	0	1	0	0	1	0	0	0	1	0	2	2	0	0	0	0							
Monument School	0	0	0	0	0	0	0	0	0	0	0	0	0	0	0	0	0	0	0							
Mt View High School	47	0	0	4	0	1	0	0	1	5	0	3	2	2	0	0	5	2	1							
Myrtle Point High School	10	0	0	1	0	3	0	0	1	1	0	2	4	0	0	0	2	0	1							
Neah-Kah-Nie Jr-Sr High School	9	0	0	4	0	2	0	0	4	2	0	1	1	0	0	1	0	2	0							
Nestucca High School	7	0	0	0	0	0	1	0	2	0	1	2	2	0	0	0	2	0	0							
Newberg High School	91	8	1	7	4	7	2	1	19	31	2	8	5	4	2	1	11	21	0							
Newport High School	54	0	1	3	8	1	1	3	0	0	0	1	3	4	1	0	2	5	2							
North Bend High School	51	0	0	0	0	0	0	0	0	0	0	0	0	0	0	0	0	0	0							
North Douglas High School	4	*	*	*	*	*	*	*	*	*	*	*	*	*	*	*	*	*	*	*						
North Eugene High School	46	0	0	5	1	0	1	0	7	12	0	1	0	0	0	0	3	1	0							
North Lake School	0	0	0	0	0	0	0	0	0	0	0	0	0	0	0	0	0	0	0							
North Marion High School	28	0	3	2	5	2	0	2	11	0	0	7	1	0	0	0	3	4	4							
North Medford High School	158	1	3	1	1	20	2	3	2	3	10	10	13	1	0	0	31	18	0							
North Powder School	0	0	0	0	0	0	0	0	0	0	0	0	0	0	0	0	0	0	0							
North Salem High School	142	4	2	4	2	5	0	0	5	15	10	6	22	0	2	0	12	1	2							
North Valley High School	34	4	0	4	2	1	0	0	10	8	1	1	8	3	0	0	0	7	4							
Nysse High School	18	0	3	1	4	2	0	1	2	0	2	1	3	0	0	0	0	0	2							
Oakland High School	7	0	0	1	1	0	0	0	2	3	0	0	0	0	0	0	2	0	0							
Oakridge High School	17	0	0	4	7	0	4	1	5	7	3	4	5	4	0	1	5	0	1							
Ontario High School	51	0	1	0	0	4	0	0	9	6	0	0	4	0	0	0	22	15	0							
Opportunity Center	73	1	0	1	0	2	2	1	2	1	0	4	0	2	0	0	2	1	3							
Oregon City HS - Freshmen	14	0	0	1	0	0	0	0	0	0	0	1	0	0	0	0	2	0	0							
Oregon City HS - Jackson	98	3	2	2	0	1	2	0	6	5	0	9	12	0	0	0	21	15	0							

Table 4. -- Factors influencing the decision to drop out: 1998-99

School or other area	Student										Family							School							Work		
	Dropouts	Frequent health problems	Does not speak English well or at all	Substance abuse	Felt peer pressure to not achieve	Pregnant or student parent	Homeless	Needed care for family members	Lack of support for education	Dysfunctional home life	Attended 3 or more high schools	Frequent discipline referrals	Too far behind in credits to catch up	Conflicts with school personnel	Lack of appropriate alternative education opportunities	Felt unsafe at school	Could not adjust to the school setting	Working more than 15 hours a week	Obligations to support family								
1	2	3	4	5	6	7	8	9	10	11	12	13	14	15	16	17	18	19	0								
Pacific High School.....	7	0	1	0	0	1	0	0	1	0	0	1	0	0	0	0	1	1	0								
Paisley School.....	1	0	0	0	0	0	0	0	0	0	0	0	0	0	0	0	0	0	0								
Parke High School.....	78	1	1	8	0	7	0	0	13	10	1	0	10	0	0	0	1	2	0								
Pendleton High School.....	72	2	0	4	6	8	0	2	4	5	0	19	17	3	0	1	18	7	2								
Perrydale School.....	0	0	0	0	0	0	0	0	0	0	0	0	0	0	0	0	0	0	0								
Philomath High School.....	27	0	0	0	0	0	0	0	0	0	0	0	0	0	0	0	0	0	0								
Phoenix High School.....	73	2	3	10	4	7	4	16	13	32	0	10	38	10	0	1	24	2	14								
Pilot Rock High School.....	9	0	0	4	0	1	2	3	0	4	2	2	2	0	0	0	0	1	0								
Pine Eagle High School.....	2	0	0	0	0	0	0	0	0	0	0	0	0	0	0	0	0	0	0								
Pleasant Hill High School.....	9	0	0	0	0	0	1	0	4	0	0	1	0	0	0	0	0	0	0								
Powers High School.....	2	0	0	0	0	0	0	0	0	0	0	0	0	0	0	0	0	0	0								
PPS Alternative Programs.....	1298	24	2	50	21	66	66	20	132	60	24	31	70	6	15	3	64	249	76								
Prairie City School.....	0	0	0	0	0	0	0	0	0	0	0	0	0	0	0	0	0	0	0								
Prospect High School.....	6	0	0	2	0	1	1	0	0	0	1	0	0	0	0	0	0	0	0								
Rainier High School.....	7	0	0	0	0	0	0	0	0	0	0	0	1	0	0	0	0	0	0								
Redmond High School.....	75	1	0	4	1	7	1	0	2	5	1	5	13	3	0	0	4	16	0								
Reedsport High School.....	7	0	0	1	0	0	0	0	1	0	1	0	1	0	0	0	0	0	0								
Rogue River High School.....	21	1	0	2	0	0	0	0	4	3	1	4	2	0	0	0	4	0	0								
Roosevelt High School.....	81	0	0	2	0	1	0	0	1	1	3	0	17	0	0	0	0	4	0								
Roseburg High School.....	170	7	1	60	1	19	37	0	15	47	8	40	25	4	0	2	12	39	11								
Salem-Keizer Alternative Program.....	196	0	0	0	0	1	0	0	0	0	16	0	2	0	0	0	0	148	0								
Sam Barlow High School.....	117	0	0	3	3	1	0	0	3	2	0	6	6	0	0	0	5	5	1								
Sandy High School.....	83	3	1	2	3	1	1	1	8	0	0	4	22	1	4	0	7	10	2								
Saniam High School.....	17	0	0	4	0	0	1	0	6	2	0	0	1	1	0	0	0	0	0								
Scappoose High School.....	11	0	0	0	0	0	0	0	0	0	0	0	0	0	0	0	0	0	0								
School Of Arts & Communication.....	21	0	0	0	0	0	0	0	5	0	0	5	4	2	0	0	3	0	0								
School Of Science & Technology.....	5	0	0	0	0	0	0	0	0	0	0	0	0	0	0	0	0	0	0								
Solo High School.....	12	0	0	0	0	0	0	0	0	0	0	0	0	0	0	0	0	0	0								
Seaside High School.....	29	0	0	0	0	0	0	0	6	0	0	5	0	0	0	0	0	4	0								
Seaside High School.....	10	0	0	0	0	0	0	0	0	0	0	0	0	0	0	0	0	0	0								
Sherman High School.....	1	0	0	0	0	0	0	0	0	0	0	0	0	0	0	0	0	0	0								
Sherwood High School.....	12	0	0	0	0	0	0	0	0	0	0	0	0	0	0	0	0	0	0								
Silverton High School.....	106	1	4	6	12	5	0	0	23	10	1	3	29	1	0	0	14	6	3								
Sisters High School.....	10	0	0	1	0	3	0	0	0	1	0	0	0	0	0	0	0	0	1								
Sluaw High School.....	29	0	1	0	0	0	0	0	17	4	1	0	0	0	0	0	1	0	0								

Table 4. -- Factors influencing the decision to drop out: 1998-99

School or other area	Student										Family					School					Work	
	Dropouts	Frequent health problems	Does not speak English well or at all	Substance abuse	Felt peer pressure to not achieve	Pregnant or student parent	Homeless	Needed at Home care for family members	Lack of parental support for education	Dysfunctional home life	Attended 3 or more high schools	Frequent discipline referrals	Too far behind in credits to catch up	Conflicts with school personnel	Lack of appropriate alternative education opportunities	Felt unsafe at school	Could not adjust to the school setting	Working more than 15 hours a week	Obligations to support family			
1	2	3	4	5	6	7	8	9	10	11	12	13	14	15	16	17	18	19				
South Albany High School.....	95	5	2	9	3	10	1	3	6	5	2	11	11	4	0	0	5	13	4			
South Eugene High School.....	28	0	0	0	0	0	0	0	0	0	0	0	0	0	0	0	0	0	0			
South Lane Academy.....	17	1	2	2	7	1	1	2	8	9	0	5	7	0	0	0	0	7	3			
South Medford High School.....	176	1	1	0	0	8	1	6	1	0	3	3	1	0	1	0	0	6	0			
South Salem High School.....	82	0	0	0	0	0	0	0	0	0	0	0	0	0	0	0	0	1	0			
South Umpqua High School.....	48	7	0	4	4	2	1	1	22	8	1	9	19	4	0	0	2	3	2			
Sprague High School.....	125	0	0	1	3	1	1	0	5	6	0	2	2	0	1	1	4	13	0			
Sprey School.....	0	0	0	0	0	0	0	0	0	0	0	0	0	0	0	0	0	0	0			
Springfield High School.....	92	1	6	6	1	10	1	0	9	4	5	13	23	3	0	0	4	11	4			
St Helens High School.....	56	0	0	10	1	5	7	0	13	9	3	7	11	0	0	2	3	9	2			
St Paul High School.....	1	0	0	0	0	0	0	0	0	0	0	0	0	0	0	0	0	0	0			
Stanfield Secondary School.....	7	0	0	0	0	0	0	0	0	0	1	1	2	0	0	0	0	0	0			
Stayton High School.....	45	1	0	0	9	5	1	1	4	3	0	2	13	4	0	0	21	7	1			
Sunset High School.....	102	2	19	28	5	5	1	1	15	18	1	13	21	5	2	0	6	14	7			
Sutherlin High School.....	26	0	0	1	5	4	1	0	6	11	1	2	11	0	0	0	4	0	1			
Sweet Home High School.....	79	3	0	8	0	13	9	0	24	23	6	17	29	0	1	0	15	2	1			
Taft High School.....	84	0	1	12	4	9	1	0	10	12	0	0	35	3	0	0	17	31	0			
The Dalles High School.....	71	2	0	20	7	7	0	0	2	3	0	2	3	0	0	1	4	2	4			
Thurston High School.....	84	1	0	4	2	4	0	1	6	2	2	3	47	0	9	0	4	5	3			
Tigard High School.....	81	2	0	1	0	0	0	1	2	0	1	3	0	0	0	0	7	4	1			
Tillamook High School.....	47	1	3	3	0	9	11	0	5	3	0	5	7	0	0	0	4	4	1			
Toledo High School.....	24	0	0	3	0	1	0	0	3	5	1	6	15	3	0	0	4	1	0			
Triangle Lake School.....	0	0	0	0	0	0	0	0	0	0	0	0	0	0	0	0	0	0	0			
Tualatin High School.....	94	3	1	10	0	0	1	0	5	17	11	6	5	1	0	0	5	17	0			
Ukiah High School.....	1	0	0	0	0	0	0	0	0	0	0	0	0	0	0	0	0	0	0			
Umatilla High School.....	33	2	2	4	1	10	1	3	4	0	1	4	5	1	0	1	2	11	1			
Union High School.....	4	0	0	0	0	0	0	0	0	0	0	0	0	0	0	0	0	0	0			
Vale High School.....	17	2	1	1	7	0	2	1	5	2	1	4	3	0	0	0	2	0	0			
Vernonia High School.....	9	0	0	2	0	0	1	0	5	5	2	0	1	1	0	0	1	0	0			
Wahatka High School.....	23	1	0	12	15	3	2	0	10	13	0	3	9	5	7	0	6	2	1			
Waldport High School.....	23	1	0	0	0	3	0	1	6	0	0	2	0	1	0	0	1	0	0			
Walla Walla High School.....	0	0	0	0	0	0	0	0	0	0	0	0	0	0	0	0	0	0	0			
Warrenton High School.....	20	0	0	0	2	1	0	0	2	3	1	4	3	2	0	0	3	1	0			
Wasco County High School.....	3	0	0	0	0	0	0	0	0	0	0	0	0	0	0	0	0	0	0			
West Albany High School.....	70	4	0	9	2	7	2	2	6	7	1	2	10	1	0	0	4	11	1			
West Lin High School.....	51	1	2	10	3	1	0	0	0	4	0	4	12	1	0	0	6	2	0			
Weston - McEwen High School.....	30	2	1	4	1	5	0	1	10	2	1	3	2	2	1	0	0	1	0			
WestView High School.....	136	1	4	3	0	5	1	3	7	7	5	2	11	0	1	0	56	11	5			
Wheeler High School.....	0	0	0	0	0	0	0	0	0	0	0	0	0	0	0	0	0	0	0			

Table 4. -- Factors influencing the decision to drop out: 1998-99

School or other area	Dropouts	Student					Family					School					Work		
		Frequent health problems	Does not speak English well or at all	Substance abuse	Felt peer pressure to not achieve	Pregnant or student parent	Homeless	Needed care for family members	Lack of parental support for education	Dysfunctional home life	Attended 3 or more high schools	Frequent discipline referrals	Too far behind in credits to catch up	Conflicts with school personnel	Lack of appropriate alternative education opportunities	Fail unsafe at school	Could not adjust to the school setting	Working more than 15 hours a week	Obligation to support family
1	2	3	4	5	6	7	8	9	10	11	12	13	14	15	16	17	18	19	20
Williamette High School.....	89	3	3	0	9	14	5	1	5	9	3	19	6	0	2	0	7	8	2
Williamina High School.....	12	1	0	1	0	1	1	0	0	0	0	3	3	0	0	0	0	0	1
Wilson High School.....	64	0	0	0	0	1	0	0	0	0	0	0	0	0	0	0	0	1	0
Wilsonville High School.....	27	0	1	0	4	1	0	0	3	0	0	0	2	1	0	0	0	5	1
Winston Churchill High School.....	27	0	0	0	0	4	0	2	4	2	1	0	2	0	1	0	0	0	0
Woodburn High School.....	116	0	12	13	2	6	5	3	18	12	0	11	14	6	0	0	5	35	8
Yamhill-Carlton High School.....	32	18	0	0	0	3	1	0	0	1	1	12	1	0	0	0	0	5	0
Yoncalla High School.....	5	0	0	0	0	0	0	0	0	0	0	0	0	0	0	0	0	0	0
II. Districts																			
Beaverton SD 48J.....	558	18	33	44	18	50	9	9	44	42	20	29	133	15	9	0	90	89	41
Bend SD 1.....	271	4	0	7	15	10	1	0	25	22	0	8	5	2	3	0	9	22	4
Corbett SD 39.....	5	0	0	0	0	0	0	0	1	0	0	0	0	0	0	0	0	0	0
Corvallis SD 509J.....	105	2	1	33	10	5	4	2	25	30	3	6	31	5	6	2	18	12	4
Eugene SD 4J.....	207	2	0	6	2	7	3	3	13	15	1	5	2	2	1	0	5	8	3
Greater Albany SD 8J.....	165	9	2	18	5	17	3	5	12	12	3	13	21	5	0	0	9	24	5
Gresham-Barlow SD 10J.....	217	5	8	15	10	3	1	1	12	28	5	21	30	2	25	0	22	13	6
Hillsboro SD 1J.....	215	7	7	7	15	6	1	3	60	11	0	18	59	11	1	7	31	21	4
Hood River SD 1.....	63	1	22	0	4	4	1	1	4	8	1	9	4	1	0	1	8	8	1
Klamath County SD.....	89	3	0	13	5	4	0	1	28	16	5	22	24	13	1	0	4	3	4
Klamath Falls City Schools.....	77	4	3	3	1	1	3	0	16	7	1	4	18	4	1	0	9	2	1
Lake Oswego SD 7J.....	40	3	2	3	3	0	0	1	0	0	2	2	12	0	0	0	0	2	0
Lincoln County SD.....	188	1	2	18	12	14	2	4	19	21	1	9	53	11	1	0	24	37	2
Medford SD 549.....	332	2	4	1	1	28	3	9	3	3	13	13	14	1	1	0	31	24	0
Medias SD 35.....	44	1	2	2	3	1	0	4	5	5	2	11	15	4	1	0	21	12	0
Morrow SD 1.....	38	0	0	3	0	1	0	1	4	2	0	8	20	1	0	0	13	2	1
North Clackamas SD 12.....	256	7	4	12	24	17	10	3	17	33	13	32	27	10	1	15	41	78	4
Oregon City SD 62.....	112	3	2	3	0	1	2	0	10	5	0	10	12	0	0	0	23	15	0
Portland SD 1J.....	2036	28	2	53	26	94	67	21	142	96	27	31	93	6	15	3	68	280	78
Roseburg SD 4.....	174	7	1	60	1	19	37	0	18	48	8	40	25	4	0	2	12	39	11
Salem/Keizer SD 24J.....	768	7	7	8	9	10	1	0	25	31	30	17	48	1	5	1	24	170	6
Sheridan SD 48J.....	34	1	3	1	0	4	0	1	4	2	2	6	29	0	0	0	8	3	3
Springfield SD 18.....	176	2	6	10	3	14	1	1	15	6	7	18	70	3	9	0	8	18	7
Three Rivers SD.....	114	5	0	8	2	9	1	2	22	17	4	8	35	5	6	0	13	8	2
Tigard SD 23J.....	175	5	1	11	0	0	1	1	7	17	12	9	5	1	0	0	12	21	1
West Linn SD 3J.....	76	1	3	10	7	2	0	0	3	4	0	4	14	2	0	0	6	7	1
III. Counties																			
Baker County.....	48	0	0	0	1	0	0	0	6	0	0	3	1	1	0	0	0	0	0
Benton County.....	147	4	1	33	11	5	4	3	25	30	3	7	31	7	8	2	18	12	4
Clackamas County.....	744	22	24	50	43	34	15	10	74	81	28	74	148	19	6	15	109	140	11

Table 4. -- Factors influencing the decision to drop out: 1998-99

School or other area	Student				Family				School						Work				
	Dropouts	Frequent health problems	Does not speak English well or at all	Substance abuse	Felt peer pressure to not achieve	Pregnant or student parent	Homeless	Needed care for family members	Lack of parental support for education	Dysfunctional home life	Attended 3 or more high schools	Frequent discipline referrals	Too far behind in credits to catch up	Conflicts with school personnel	Lack of appropriate alternative education opportunities	Felt unsafe at school	Could not adjust to the school setting	Working more than 15 hours a week	Obligations to support family
1	2	3	4	5	6	7	8	9	10	11	12	13	14	15	16	17	18	19	
Clatsop County.....	77	2	0	0	0	4	1	0	9	5	1	7	10	4	0	0	6	15	0
Columbia County.....	92	1	0	18	1	7	9	0	24	24	8	12	19	3	0	2	8	10	2
Coos County.....	138	4	0	24	12	0	3	2	42	21	0	16	12	2	0	0	6	8	3
Crook County.....	18	0	2	4	0	3	0	0	7	5	2	6	11	0	0	0	0	0	1
Curry County.....	40	3	1	1	0	3	3	0	8	1	0	1	8	0	0	0	0	2	0
Deschutes County.....	356	5	0	12	18	20	2	0	27	28	1	13	18	5	3	0	13	39	4
Douglas County.....	377	18	1	80	34	34	39	2	85	102	21	64	78	17	0	2	39	49	17
Gilliam County.....	3
Grant County.....	3
Hamity County.....	21	1	0	1	0	2	0	0	3	2	0	1	1	0	0	0	0	2	1
Hood River County.....	63	1	22	0	4	4	1	1	4	8	1	9	4	1	0	1	8	8	1
Jackson County.....	693	15	8	30	36	49	13	29	77	55	18	46	111	12	1	3	80	47	14
Jefferson County.....	82	1	3	0	1	0	0	0	1	1	2	3	3	2	0	0	0	0	0
Josephine County.....	212	8	0	23	23	13	4	2	55	38	8	23	68	21	7	3	65	10	3
Klamath County.....	166	7	3	18	6	5	3	1	46	23	8	26	40	17	2	0	13	5	5
Lake County.....	5
Lane County.....	673	12	11	40	27	54	24	10	100	67	25	88	128	21	15	2	45	59	25
Lincoln County.....	188	1	2	16	12	14	2	4	19	21	1	9	53	11	1	0	24	37	2
Linn County.....	394	12	4	38	9	39	13	7	69	55	9	38	92	12	1	1	61	31	13
Malheur County.....	100	2	5	2	11	8	2	2	17	9	3	5	10	0	0	0	24	19	2
Marion County.....	1152	11	29	39	39	39	8	10	94	72	32	50	112	15	5	2	78	230	22
Morrow County.....	38	0	0	3	0	1	0	1	4	2	0	8	20	1	0	0	13	2	1
Multnomah County.....	2719	43	27	93	55	109	70	24	194	154	36	70	208	12	46	4	115	312	84
Polk County.....	108	6	8	8	9	22	1	1	33	26	7	11	22	3	0	0	10	5	4
Sherman County.....	1
Tillamook County.....	63	1	3	7	0	11	12	0	11	5	1	8	10	0	0	1	2	6	1
Umatilla County.....	333	8	11	31	21	34	4	12	46	33	9	38	62	11	3	2	35	56	9
Union County.....	34	2	0	3	4	1	0	0	1	4	3	2	4	2	0	0	3	2	2
Wallowa County.....	1
Wasco County.....	97	3	0	32	22	10	2	0	13	17	1	5	12	5	7	1	10	4	5
Washington County.....	1076	30	44	71	32	66	11	14	134	86	33	69	208	28	10	7	137	146	50
Wheeler County.....	2
Yamhill County.....	368	30	8	22	8	29	8	2	64	62	11	49	82	9	15	3	49	42	6

Note: Not every dropout had factors reported, and more than factor could be reported for any dropout. Detailed data is suppressed in schools with small numbers of dropouts to protect student confidentiality.

SOURCE: Oregon Department of Education, Data Information Services, Individual Early Leaver Report.

Table 5. -- Factors Influencing the decision to drop out, by sex, race/ethnicity, and grade: 1998-91

School or other area	Student				Family				School						Work				
	Dropouts	Frequent health problems	Does not speak English well or at all	Substance abuse	Felt peer pressure to not achieve	Pregnant or student parent	Homeless	Needed care for family members	Lack of parental support for education	Dysfunctional home life	Attended 3 or more high schools	Frequent discipline referrals	Too far behind in credits to catch up	Conflicts with school personnel	Lack of appropriate alternative education opportunities	Felt unsafe at school	Could not adjust to the school setting	Working more than 15 hours a week	Obligations to support family
1	2	3	4	5	6	7	8	9	10	11	12	13	14	15	16	17	18	19	20
Oregon Statewide Totals.....	10,622	253	218	700	440	628	252	138	1,304	1,039	267	761	1,584	242	130	52	975	1,303	292
Male	5,969	84	138	458	250	95	145	58	712	532	146	592	978	178	84	32	590	783	165
Female	4,653	169	80	242	190	533	107	82	592	507	121	169	606	66	46	20	385	520	127
White	7,875	217	20	551	331	456	200	87	1,010	828	210	590	1,267	189	89	39	767	904	146
Black	432	6	0	23	13	38	1	7	25	25	11	20	48	4	12	0	36	35	8
Hispanic	1,604	19	185	67	59	294	42	36	204	132	30	118	192	37	16	10	109	294	127
Asian/Pacific Islander	346	3	12	12	19	39	3	3	16	17	8	10	40	3	4	1	30	39	10
American Indian/Alaskan Native	345	7	1	23	18	30	6	4	46	37	8	22	35	9	9	2	32	30	3
Race unknown	20	1	0	4	0	1	0	1	3	0	0	1	2	0	0	0	1	1	0
Grade 9	1,823	50	57	98	94	73	33	23	263	182	27	175	153	42	20	8	180	117	48
Grade 10	2,413	61	76	184	130	135	68	24	392	317	49	223	359	84	31	19	249	244	79
Grade 11	2,712	67	59	196	117	184	76	27	343	279	84	194	481	82	43	16	252	408	82
Grade 12	3,405	67	26	188	67	195	65	61	282	227	100	152	534	48	30	8	272	475	70
Grade 13	222	8	0	30	8	38	11	3	20	18	6	14	49	8	1	0	18	56	11
Unclassified	47	2	0	4	4	3	1	0	4	6	1	3	8	0	5	1	4	5	2

Note: Not every dropout had factors reported, and more than factor could be reported for any dropout.

SOURCE: Oregon Department of Education, Data Information Services, Individual Early Leaver Report.

Table 6. -- Number of no-dropouts and dropouts, dropout rates, grades 7-8: 1998-1999

School or other area	October 1, 1998 Membership	Non-dropout leavers				Dropouts				Dropout rate (%)	Former dropouts returning to school
		Total	Sent to child-caring facility ¹	Deceased	Registered home schooler	Total	Withdrawn during school year	Did not return from summer break			
1	2	3	4	5	6	7	8	9	10	11	
Oregon Statewide Totals.....	85,229	179	36	15	128	900	644	256	1.06	111	
Agnes Stewart Middle School.....	453	2	0	0	2	4	0	4	0.88	0	
Alice Ott Middle School.....	576	0	0	0	0	5	5	0	0.87	0	
Arlington Elem School.....	24	1	0	1	0	3	3	0	12.50	0	
Armand Larive Middle School.....	292	0	0	0	0	2	2	0	0.68	0	
Ashland Middle School.....	568	0	0	0	0	7	4	3	1.23	0	
Astoria Middle School.....	393	0	0	0	0	5	1	4	1.27	0	
Athens-Weston Middle School.....	117	0	0	0	0	2	2	0	1.71	0	
Athey Creek Middle School.....	508	0	0	0	0	2	2	0	0.39	0	
Azalea Middle School.....	311	6	2	0	4	2	2	0	0.64	0	
Baker Middle School.....	376	0	0	0	0	3	2	1	0.80	0	
Beaumont Middle School.....	437	0	0	0	0	1	1	0	0.23	0	
Binnmead Middle School.....	441	3	1	0	2	7	5	2	1.59	0	
Blue Mountain Jr High School.....	150	0	0	0	0	1	1	0	0.67	0	
Bolton Middle School.....	324	0	0	0	0	1	1	0	0.31	0	
Boring Middle School.....	274	0	0	0	0	5	5	0	1.82	0	
Briggs Middle School.....	343	1	1	0	0	2	1	1	0.58	0	
Brixner Jr High School.....	492	0	0	0	0	11	8	3	2.24	0	
Broadway Middle School.....	292	0	0	0	0	9	5	4	3.08	0	
Cal Young Middle School.....	379	0	0	0	0	3	3	0	0.79	0	
Calapoota Middle School.....	504	0	0	0	0	1	0	1	0.20	10	
Canyonville Elem School.....	63	0	0	0	0	1	1	0	1.59	0	
Carlton Elementary School.....	79	0	0	0	0	1	0	1	1.27	0	
Cascade Jr High School.....	365	0	0	0	0	2	2	0	0.55	0	
Cascade Middle School.....	352	2	2	0	0	1	0	1	0.28	0	
Cascade Middle School.....	521	3	1	1	1	3	3	0	0.58	0	
Cedar Park Middle School.....	682	1	0	0	0	2	1	1	0.29	0	
Cedar Ridge Middle School.....	282	0	0	0	0	2	2	0	0.71	0	

Table 6. -- Number of no-dropouts and dropouts, dropout rates, grades 7-8: 1998-1999

School or other area	October 1, 1998 Membership	Non-dropout leavers				Dropouts				Dropout rate (%)	Former dropouts returning to school
		Total	Sent to child-caring facility ¹	Deceased	Registered home schooler	Total	Withdraw during school year	Did not return from summer break			
1	2	3	4	5	6	7	8	9	10	11	
Centennial Middle School.....	888	2	0	1	1	10	7	3	1.13	0	
Central Middle School.....	294	2	1	0	1	2	2	0	0.68	2	
Chapman Elem School.....	135	1	1	0	0	2	2	0	1.48	0	
Chehalam Valley Middle School.....	396	0	0	0	0	3	0	3	0.76	0	
Chenoweth Middle School.....	169	0	0	0	0	1	1	0	0.59	0	
Chiloquin High School.....	106	0	0	0	0	2	2	0	1.89	0	
Clara Brownell Middle School.....	175	0	0	0	0	18	13	5	10.29	0	
Colton Middle School.....	149	0	0	0	0	1	1	0	0.67	0	
Columbia Middle School.....	254	1	0	0	1	5	4	1	1.97	0	
Conestoga Middle School.....	731	1	0	0	1	5	5	0	0.68	0	
Corbett High School.....	102	2	2	0	0	2	2	0	1.96	0	
Creswell Middle School.....	234	0	0	0	0	2	2	0	0.85	0	
Crook County Middle School.....	493	2	0	0	2	1	0	1	0.20	1	
Crossler Middle School.....	516	0	0	0	0	1	1	0	0.19	2	
Culver Middle School.....	87	0	0	0	0	1	1	0	1.15	0	
Daly Middle School.....	164	0	0	0	0	2	2	0	1.22	0	
Days Creek School.....	52	1	0	0	1	1	1	0	1.92	0	
Dayton Jr High School.....	162	0	0	0	0	1	1	0	0.62	0	
Detroit Elem School.....	16	0	0	0	0	1	1	0	6.25	0	
Dexter D McCarty Middle School.....	402	0	0	0	0	2	2	0	0.50	0	
Duniway Middle School.....	366	0	0	0	0	3	2	1	0.82	0	
Estacada Jr High School.....	299	2	0	0	2	4	4	0	1.34	0	
Evergreen Jr High School.....	763	5	0	1	4	1	1	0	0.13	0	
F Patton Middle School.....	491	3	0	0	3	3	3	0	0.61	0	
Falls City High School.....	21	0	0	0	0	1	1	0	4.76	0	
Fern Ridge Middle School.....	344	8	0	0	8	14	8	6	4.07	0	
Fernwood Middle School.....	358	1	0	0	1	3	1	2	0.84	0	
Five Oaks Middle School.....	734	2	0	0	2	19	9	10	2.59	1	

Table 6. -- Number of no-dropouts and dropouts, dropout rates, grades 7-8: 1998-1999

School or other area	October 1, 1998 Membership	Non-dropout leavers					Dropouts				Dropout rate (%)	Former dropouts returning to school
		Total	Sent to child-caring facility ¹	Deceased	Registered home schooler	Total	Withdrawn during school year	Did not return from summer break				
1	2	3	4	5	6	7	8	9	10	11		
Fleming Middle School.....	370	0	0	0	0	4	4	0	1.08	0		
Floyd Light Middle School.....	658	0	0	0	0	17	14	3	2.58	0		
French Prairie Middle School.....	290	0	0	0	0	2	2	0	0.69	0		
George Middle School.....	377	0	0	0	0	19	16	3	5.04	0		
Glendale High School.....	89	0	0	0	0	1	1	0	1.12	0		
Glide Middle School.....	187	0	0	0	0	1	1	0	0.53	0		
Gordon Russell Middle School.....	587	3	0	1	2	5	3	2	0.85	0		
Gregory Heights Middle School.....	524	1	1	0	0	1	1	0	0.19	0		
Hamlin Middle School.....	352	0	0	0	0	9	9	0	2.56	0		
Harriet Tubman Middle School.....	337	0	0	0	0	6	5	1	1.78	0		
Harrisburg Elem School.....	112	0	0	0	0	2	2	0	1.79	0		
Hauton B Lee Middle School.....	474	0	0	0	0	12	5	7	2.53	0		
Hedrick Middle School.....	915	5	1	0	4	13	4	9	1.42	2		
Henley Middle School.....	424	2	1	0	1	5	5	0	1.18	0		
Highland Park Middle School.....	721	1	0	0	1	2	2	0	0.28	0		
Highland View Middle.....	340	0	0	0	0	3	2	1	0.88	2		
Houck Middle School.....	575	1	0	0	1	6	1	5	1.04	5		
Hugh Hartman Middle School.....	389	1	0	0	1	3	1	2	0.77	0		
Inza R. Wood Middle School.....	412	0	0	0	0	4	4	0	0.97	0		
J B Thomas Jr High School.....	527	0	0	0	0	6	5	1	1.14	0		
J W Poynter Jr High School.....	620	0	0	0	0	4	4	0	0.65	0		
Jackson Middle School.....	565	1	0	0	1	7	1	6	1.24	0		
James Monroe Middle School.....	440	0	0	0	0	1	1	0	0.23	0		
Jefferson County Middle School.....	460	3	0	0	3	29	9	20	6.30	0		
Jefferson Middle School.....	165	0	0	0	0	1	1	0	0.61	1		
John C. Fremont Jr High School.....	571	0	0	0	0	1	1	0	0.18	0		
John F Kennedy Middle School.....	368	1	0	0	1	3	2	1	0.82	0		

Table 6. -- Number of no-dropouts and dropouts, dropout rates, grades 7-8: 1998-1999

School or other area	October 1, 1998 Membership	Non-dropout leavers			Dropouts			Dropout rate (%)	Former dropouts returning to school	
		Total	Sent to child-caring facility ¹	Deceased	Registered home schooler	Total	Withdrawn during school year			Did not return from summer break
1	2	3	4	5	6	7	8	9	10	11
Joseph Lane Jr High School.....	524	0	0	0	0	2	2	0	0.38	0
Judson Middle School.....	542	2	0	1	1	1	1	0	0.18	3
Kellogg Middle School.....	458	1	1	0	0	3	2	1	0.66	0
La Pine Middle School.....	235	4	0	0	4	6	5	1	2.55	0
Lake Oswego Jr High School.....	615	0	0	0	0	3	1	2	0.49	1
Lane Middle School.....	432	1	1	0	0	15	14	1	3.47	0
Lebanon Middle School.....	287	1	0	1	0	2	2	0	0.70	1
Leslie Middle School.....	557	1	0	0	1	3	3	0	0.54	3
Lincoln Jr High School.....	190	0	0	0	0	1	1	0	0.53	0
Lincoln Middle School.....	434	0	0	0	0	1	1	0	0.23	0
Lincoln Savage Middle School.....	347	1	0	1	0	5	5	0	1.44	0
Lorna Byrne Middle School.....	243	0	0	0	0	7	4	3	2.88	0
Lost River High School.....	108	0	0	0	0	3	2	1	2.78	0
Lowell High School.....	32	0	0	0	0	1	1	0	3.13	0
Mapleton High School.....	58	1	1	0	0	1	1	0	1.72	0
Mark Twain Elem School.....	321	0	0	0	0	7	2	5	2.18	0
McLoughlin Jr High School.....	486	0	0	0	0	4	2	2	0.82	1
McLoughlin Jr High School.....	974	1	0	0	1	14	8	6	1.44	4
Meadow Park Middle School.....	771	3	0	0	3	1	0	1	0.13	2
Memorial Middle School.....	345	1	0	0	1	4	4	0	1.16	3
Mohawk High School.....	46	0	0	0	0	2	2	0	4.35	0
Molalla Grade School.....	431	0	0	0	0	4	4	0	0.93	0
Mountain View Intermediate.....	603	5	2	0	3	5	5	0	0.83	1
Mt Tabor Middle School.....	454	0	0	0	0	10	8	2	2.20	0
Neil Armstrong Middle School.....	733	2	1	0	1	29	27	2	3.96	0
Newport Middle School.....	331	0	0	0	0	2	2	0	0.60	5
Ninety-One Elem School.....	124	0	0	0	0	1	1	0	0.81	0
North Albany Middle School.....	381	0	0	0	0	1	0	1	0.26	4

Table 6. -- Number of no-dropouts and dropouts, dropout rates, grades 7-8: 1998-1999

School or other area	October 1, 1998 Membership		Non-dropout leavers				Dropouts				Dropout rate (%)	Former dropouts returning to school	
	2	3	4	5	6	7	8	9	10	11			
													Total
1													
North Douglas Elem School.....	82	0	0	0	0	1	1	0	1.22	0	0	0	
North Marion Middle School.....	274	0	0	0	0	4	4	0	1.46	0	0	0	
North Middle School.....	487	2	0	0	2	7	5	2	1.44	0	0	0	
Nyssa Middle School.....	190	1	1	0	0	2	2	0	1.05	0	0	0	
Oaklea Middle School.....	345	3	0	0	3	1	1	0	0.29	0	0	0	
Oakridge High School.....	166	3	2	0	1	1	1	0	0.60	0	0	0	
Obsidian Middle School.....	469	2	0	0	2	6	4	2	1.28	0	0	0	
Ockley Green Middle School.....	358	0	0	0	0	6	6	0	1.68	0	0	0	
Ogden Middle School.....	556	0	0	0	0	2	1	1	0.36	0	0	0	
Ontario Middle School.....	441	0	0	0	0	1	1	0	0.23	0	0	0	
Parkrose Middle School.....	552	2	1	0	1	16	6	10	2.90	0	0	0	
Parrish Middle School.....	455	0	0	0	0	3	3	0	0.66	10	10	0	
Paul R Ackerman Middle School.....	736	0	0	0	0	1	1	0	0.14	0	0	0	
Pilot Butte Middle School.....	646	1	1	0	0	24	9	15	3.72	0	0	0	
Pleasant Hill Jr High School.....	225	1	0	0	1	2	0	2	0.89	0	0	0	
Ponderosa Middle School.....	471	0	0	0	0	10	9	1	2.12	0	0	0	
Portsmouth Middle School.....	293	2	2	0	0	6	2	4	2.05	0	0	0	
PPS Alternative Programs.....	753*	3	3	0	0	78	62	16	10.36	0	0	0	
Prospect High School.....	22	0	0	0	0	1	1	0	4.55	0	0	0	
Raymond A Brown Jr High.....	699	0	0	0	0	8	3	5	1.14	0	0	0	
Renne Middle School.....	388	1	1	0	0	3	2	1	0.77	0	0	0	
Reynolds Middle School.....	453	2	0	1	1	13	13	0	2.87	0	0	0	
Riddle High School.....	77	0	0	0	0	1	1	0	1.30	0	0	0	
Salem-Keizer Alternative Programs..	15*	0	0	0	0	3	2	1	20.00	0	0	0	
Sandstone Middle School.....	362	0	0	0	0	2	1	1	0.55	1	1	0	
Scenic Middle School.....	531	0	0	0	0	7	4	3	1.32	0	0	0	
Sellwood Middle School.....	354	0	0	0	0	3	3	0	0.85	0	0	0	

Table 6. -- Number of no-dropouts and dropouts, dropout rates, grades 7-8: 1998-1999

School or other area	October 1, 1998 Membership	Non-dropout leavers						Dropouts				Dropout rate (%)	Former dropouts returning to school
		Total	Sent to child-caring facility ¹	Deceased	Registered home schooler	Total	Withdraw during school year	Did not return from summer break					
1	2	3	4	5	6	7	8	9	10	11			
Shasta Middle School.....	422	1	1	0	0	4	4	0	0.95	0			
Sherwood Intermediate.....	374	1	0	0	1	1	1	0	0.27	0			
Sisters Middle School.....	169	0	0	0	0	2	1	1	1.18	0			
Siuslaw Middle School.....	303	1	0	0	1	1	1	0	0.33	0			
South Lane Academy.....	19*	0	0	0	0	1	1	0	5.26	0			
South Middle School.....	400	6	0	0	6	5	4	1	1.25	0			
Spencer Butte Middle School.....	317	1	0	1	0	2	2	0	0.63	0			
Springfield Middle School.....	186	0	0	0	0	1	0	1	0.54	0			
St Helens Jr High School.....	489	0	0	0	0	3	2	1	0.61	0			
Stayton Middle School.....	253	0	0	0	0	2	1	1	0.79	0			
Stephens Middle School.....	708	1	0	0	1	10	8	2	1.41	1			
Sunridge Middle School.....	613	3	0	0	3	10	5	5	1.63	0			
Sunrise Jr High School.....	704	0	0	0	0	2	2	0	0.28	0			
Sunset Middle School.....	357	0	0	0	0	6	6	0	1.68	0			
Sutherlin Middle School.....	233	0	0	0	0	1	1	0	0.43	0			
Sweet Home Jr High School.....	462	0	0	0	0	1	1	0	0.22	6			
Talent Middle School.....	429	2	0	0	2	10	10	0	2.33	0			
Talmadge Middle School.....	414	1	0	0	1	5	1	4	1.21	0			
The Dalles Middle School.....	318	1	0	0	1	5	5	0	1.57	0			
Theodore Roosevelt Middle.....	518	0	0	0	0	14	9	5	2.70	0			
Thomas Fowler Middle School.....	609	1	0	0	1	1	1	0	0.16	0			
Thomas Jefferson Middle School.....	303	0	0	0	0	1	1	0	0.33	0			
Thora B. Gardiner Middle School.....	514	0	0	0	0	7	2	5	1.36	0			
Thurston Middle School.....	345	0	0	0	0	2	1	1	0.58	0			
Tillamook Jr High School.....	364	1	0	1	0	7	5	2	1.92	0			
Union High School.....	76	0	0	0	0	3	3	0	3.95	0			
Vale Middle School.....	163	0	0	0	0	2	2	0	1.23	0			
Valor Middle School.....	231	1	0	0	1	1	1	0	0.43	0			

Table 6. -- Number of no-dropouts and dropouts, dropout rates, grades 7-8: 1998-1999

School or other area	October 1, 1998 Membership	Non-dropout leavers				Dropouts				Dropout rate (%)	Former dropouts returning to school
		Total	Sent to child-caring facility ¹	Deceased	Registered home schooler	Total	Withdrawn during school year	Did not return from summer break			
1	2	3	4	5	6	7	8	9	10	11	
W L Kraxberger Middle School.....	409	1	1	0	0	6	6	0	1.47	0	
Waldo Middle School.....	489	0	0	0	0	13	8	5	2.66	5	
Walker Middle School.....	546	1	0	0	1	4	3	1	0.73	4	
Wait Morey Middle School.....	390	0	0	0	0	2	2	0	0.51	0	
Warrenton Grade School.....	154	1	0	0	1	2	2	0	1.30	0	
Washington Grade School.....	134	0	0	0	0	1	1	0	0.75	0	
Welches Middle School.....	133	0	0	0	0	1	1	0	0.75	0	
Western View Middle.....	356	0	0	0	0	6	2	4	1.69	1	
Whitaker Middle.....	490	0	0	0	0	10	7	3	2.04	0	
Whiteaker Middle School.....	848	1	0	0	1	17	14	3	2.00	5	
Whitford Middle School.....	578	4	0	0	4	3	3	0	0.52	0	
Williamina Middle.....	192	0	0	0	0	1	1	0	0.52	0	
Winston Middle School.....	291	0	0	0	0	4	4	0	1.37	0	
Wy'east Middle School.....	249	0	0	0	0	3	3	0	1.20	0	
Yarnhill Elementary School.....	146	0	0	0	0	1	1	0	0.68	0	
No dropouts (162 schools)	17,893	32	3	4	25	0	0	0	0.00	24	

* Net enrollment

(1) Mental health program, juvenile detention facility, substance abuse program, or certified shelter care program.

SOURCE: Oregon Department of Education, Data Information Services, Individual Early Leaver Report, Student Personnel Accounting Report.

Table A7 - Dropout rates (%) by race/ethnicity, grades 9-12: 1991-92 to 1998-99

Race	1991-92	1992-93	1993-94	1994-95	1995-96	1996-97	1997-98	1998-99
1	2	3	4	5	6	7	8	9
Oregon	5.8	5.7	6.6	7.4	7.2	6.7	6.9	6.6
White	5.2	5.2	6.0	6.7	6.7	5.9	6.0	5.7
Black	12.4	8.6	9.6	11.6	13.0	12.1	10.8	11.1
Hispanic	12.5	14.0	16.2	17.9	16.5	15.7	16.4	14.9
Asian/Pacific Islander	3.9	3.7	5.2	5.6	5.4	5.9	5.9	5.6
American Indian/Alaskan Native	9.0	9.2	8.3	11.1	11.1	9.4	10.2	11.2

SOURCE: Oregon Department of Education, School Finance and Data Analysis, Individual Early Leaver Reports



*U.S. Department of Education
Office of Educational Research and Improvement (OERI)
National Library of Education (NLE)
Educational Resources Information Center (ERIC)*



NOTICE

Reproduction Basis



This document is covered by a signed "Reproduction Release (Blanket)" form (on file within the ERIC system), encompassing all or classes of documents from its source organization and, therefore, does not require a "Specific Document" Release form.



This document is Federally-funded, or carries its own permission to reproduce, or is otherwise in the public domain and, therefore, may be reproduced by ERIC without a signed Reproduction Release form (either "Specific Document" or "Blanket").