

DOCUMENT RESUME

ED 444 630

JC 000 581

AUTHOR Heslop, Joanne
TITLE Profile of B.C. College Transfer Students Admitted to Simon Fraser University, 1993/94 to 1997/98.
INSTITUTION Simon Fraser Univ., Burnaby (British Columbia).
SPONS AGENCY British Columbia Council on Admissions and Transfer, Vancouver.
PUB DATE 1998-12-00
NOTE 80p.; Prepared by Simon Fraser University, Office of Analytical Studies.
AVAILABLE FROM For full text: <http://www.bccat.bc.ca>.
PUB TYPE Numerical/Quantitative Data (110) -- Reports - Descriptive (141)
EDRS PRICE MF01/PC04 Plus Postage.
DESCRIPTORS Academic Achievement; *Academic Persistence; Access to Education; *Articulation (Education); *College Credits; *College Transfer Students; *Educational Mobility; Foreign Countries; Higher Education; *Transfer Programs; Universities
IDENTIFIERS *British Columbia; *Simon Fraser University (Canada)

ABSTRACT

This report presents a profile of transfer students admitted to Simon Fraser University (SFU) from British Columbia (BC), Canada, colleges from 1993/94 to 1997/98. Section A provides a general profile of transfer students by: college from which students transferred to SFU, number of transfer credits students were admitted with, number of credit hours students registered for in their first semester, faculty in which students intended to major, degree goal or credential students pursued, program(s) students pursued, age upon admission to SFU, and gender. Section B presents academic performance indicators for transfer students by: grade point average (GPA) upon admission through to graduation, grade performance in selected courses at SFU compared to direct entry students, and degree completion rate. In Section C, trends in GPA performance, from admission through to graduation, distribution of programs from which they graduated, distribution of credentials awarded, and average number of semesters required to graduate are examined for those transfer students who have graduated. Section D explores a group of students who had some college experience, but were admitted to SFU as "non-BC College Transfers." This section shows distributions by: college from which students had some transfer credits, year and Basis of Admission, admission GPA by basis of admission, age upon admission to SFU, and gender. (Contains one appendix.) (VWC)

Reproductions supplied by EDRS are the best that can be made
from the original document.

Profile of BC College Transfer Students Admitted to Simon Fraser University 1993/94 to 1997/98

December 1998

Prepared by:

Joanne Heslop

Office of Analytical Studies
Simon Fraser University

U.S. DEPARTMENT OF EDUCATION
Office of Educational Research and Improvement
EDUCATIONAL RESOURCES INFORMATION
CENTER (ERIC)

This document has been reproduced as
received from the person or organization
originating it.

Minor changes have been made to
improve reproduction quality.

• Points of view or opinions stated in this
document do not necessarily represent
official OERI position or policy.

PERMISSION TO REPRODUCE AND
DISSEMINATE THIS MATERIAL HAS
BEEN GRANTED BY

J. KARLINSKI

TO THE EDUCATIONAL RESOURCES
INFORMATION CENTER (ERIC)

1

555 SEYMOUR STREET
SUITE 709
VANCOUVER, BC
V6B 3H6
CANADA

TEL: 604-412-7700
FAX: 604-683-0576

EMAIL: admin@bccat.bc.ca
WEB: www.bccat.bc.ca

Prepared for and Funded by the

BRITISH COLUMBIA COUNCIL ON
ADMISSIONS & TRANSFER

SUPPORTING BC'S
EDUCATION SYSTEM

TC000581

***Profile of B.C. College Transfer Students
Admitted to Simon Fraser University
1993/94 to 1997/98***

by Joanne Heslop
Office of Analytical Studies
Simon Fraser University
8888 University Drive
Burnaby, BC V5A 1S6
Telephone: 604-291-4525
Electronic Mail: joanne@sfu.ca

© Copyright 1998 by the
British Columbia Council on Admissions and Transfer
709 - 555 Seymour Street, Vancouver, BC V6B 3H6 Canada
Telephone: 604-412-7700 / Facsimile: 604-683-0576
Electronic Mail: admin@bccat.bc.ca
World Wide Web: www.bccat.bc.ca

Photocopying and further distribution of this document is permitted.
Please credit source.

TABLE OF CONTENTS

I. INTRODUCTION	5
II. DEFINITIONS	6
III. ANALYSIS	8
A. Profile of B.C. College Transfer Students.....	8
B. Quality/Academic Performance of B.C. College Transfer Students.....	11
C. Profile of B.C. College Transfer Students who have Graduated.....	13
D. Profile of Students with College Experience.....	14
IV. TABLES AND GRAPHS	17
A. Profile of B.C. College Transfer Students	17
Table 1 - by College and Year of Admission.....	19
Table 2 - by Transfer Credits.....	23
Table 3 - by First Semester Credit Hours.....	24
Table 4 - by Faculty of Intended Major.....	26
Table 5 - by Degree Goal.....	27
Table 6 - by Program of Study.....	28
Table 7 - Age Distribution.....	30
Table 8 - Gender Distribution.....	31
Figure 1 - Number Admitted by College.....	20
Figure 2 - Number Admitted by Region.....	21
Figure 3 - Number Admitted by Public Lower Mainland Colleges.....	22
B. Quality/Academic Performance of B.C. College Transfer Students	33
Table 9 - by Admission GPA.....	35
Table 10 - by GPA after First Semester, after 30 Credit Hours, at Graduation.....	36
Table 11A - by Grades in Selected Courses.....	37
Table 11B - by Grades in 200- and 300-Level Courses (BCCol vs BC12).....	52
Table 12 - by Degree Completion Rate.....	55
Table 13 - by Cumulative Grade Point Average at Graduation (BCCol vs BC12).....	57
Figure 4 - Distribution of CGPA at Graduation (BCCol vs BC12).....	58
C. Profile of B.C. College Transfer Students who have Graduated	59
Table 14 - by GPA after First Semester, after 30 Credit Hours, at Graduation.....	61
Table 15 - by Program of Study.....	62
Table 16 - by Credential Awarded.....	64
Table 17 - by Average Number of Semesters to Complete Credential.....	65

D. Profile of Students with College Experience	67
Table 18 - by College and Year of Admission.....	69
Table 19A - by Admission Year and Basis of Admission.....	70
Table 19B - Admission GPA by Admission Year and Basis of Admission.....	70
Table 20 - Transfer Credit Distribution.....	71
Table 21 - Age Distribution.....	72
Table 22 - Gender Distribution.....	73

APPENDIX – Supplementary Tables and Figures & File Structure Descriptions	75
Table A - Credit Hour and Credential Completion Status (BC12).....	77
Table B - Credit Hour and Credential Completion Status (Post-Secondary).....	78
Table C - Distribution of New Students Admitted to SFU by Basis of Admission.....	79
Figure A - Distribution of New Students Admitted to SFU by Basis of Admission.....	80
BCCOL.DAT File Structure.....	81
BC12.DAT File Structure.....	83
COLEXP.DAT File Structure.....	85
BCGoal.DAT File Structure.....	87
BCCrs.DAT File Structure.....	87

INTRODUCTION

Presented in this report is a profile of transfer students admitted to Simon Fraser University from B.C. Colleges over the past five years, from 1993/94 to 1997/98. The report provides a general overview of transfer students, followed by an analysis of their academic performance at SFU and a review of those who have graduated. In addition, the last section of this report profiles students with some college experience who were admitted to SFU as non-'B.C. College Transfers'. Throughout the report, inter-college comparisons are displayed and where appropriate, comparisons with students admitted directly from B.C. secondary schools are provided. Note that many of the students admitted to college who subsequently transfer to university would not have been eligible for admission to university directly from high school.

Section A provides a general profile of transfer students by:

- College from which students transfer to SFU,
- Number of transfer credits students are admitted with,
- Number of credit hours students register for in their first semester,
- Faculty in which students intend to major,
- Degree goal or credential students pursue,
- Program(s) students pursue,
- Age upon admission to SFU, and
- Gender.

Section B presents academic performance indicators for transfer students:

- Grade point average (GPA) upon admission through to graduation,
- Grade performance in selected courses at SFU compared to direct entry students, and
- Degree completion rate.

In Section C, we examine transfer students who have graduated, including:

- Trends in GPA performance, from admission through to graduation,
- Distribution of programs from which they graduated,
- Distribution of credentials awarded, and
- Average number of semesters required to graduate.

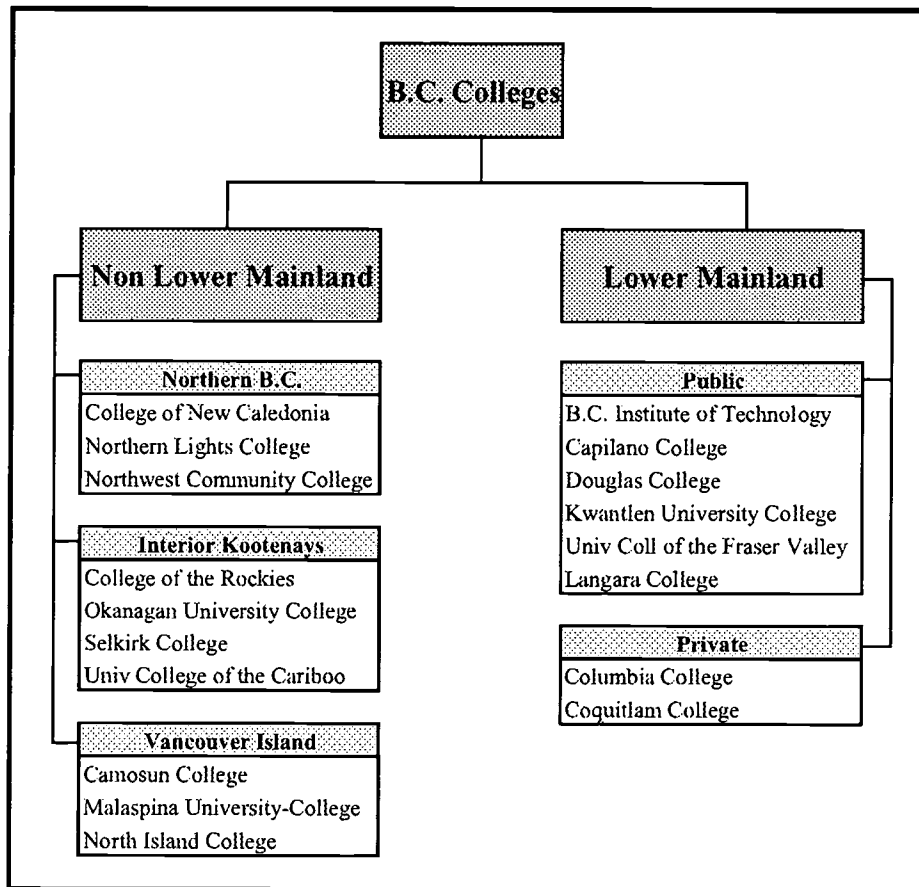
In Section D, we briefly explore the group of students who had some college experience, but were admitted to SFU as non-'B.C. College Transfers'. This final section shows distributions by:

- College from which students have some transfer credits,
- Year and Basis of Admission,
- Admission Grade Point Average by Basis of Admission,
- Age upon admission to SFU, and
- Gender.

DEFINITIONS

B.C. College transfer students in this report include 8,987 students admitted to Simon Fraser University from 1993/94 to 1997/98 with a minimum of a full year of transferable work (30 transfer credits) or students admitted to SFU from BCIT with any number of transfer credits. In exceptional circumstances, B.C. College transfer students may be admitted to SFU with fewer than 30 transfer credits. Transfer students represent approximately one third of Simon Fraser's new student admissions. These students had a minimum 2.00 GPA admission average and did not withdraw during their first semester at SFU.

The student's B.C. College of transfer is deemed to be the institution from which the most credits were transferred. The seventeen colleges and one technical institute represented in this report are organized by region:



B.C. Direct Entry Grade 12's include the 7,958 students admitted to SFU over the past five years on the basis of B.C. secondary school completion and who entered SFU within one year of high school graduation.

Students with College Experience are profiled in Section D of this report. These 1,331 students had some transfer credits from a B.C. College and were admitted to SFU under other bases of admission, such as B.C. Grade 12, Mature Student,

Special Entry, University Transfer, etc. (see Table 19A and basis of admission definitions below).

Basis of Admission - Apart from B.C. College Transfers and B.C. Direct Entry Grade 12's defined above, applicants may be admitted to undergraduate studies at SFU based on other qualifications as defined below:

Canadian Grade 12 or 13 - completion of grade 12 or 13 at a non-B.C. high school in Canada.

United States Grade 12 - completion of grade 12 at a high school in the United States.

Foreign Equivalent of B.C. Grade 12 or 13 - the equivalent of grade 12 or 13 completion at a high school outside of Canada.

University Transfer - applicants in good standing at other recognized universities may be admitted on completion of at least one full year (30 credits) of transferable work with a minimum 2.00 GPA admission average.

University Degree - applicants with baccalaureate degrees from recognized universities may be admitted with a minimum GPA average of 2.00 based on the last two years of degree work attempted.

Transfer from College outside of B.C. - applicants who have completed at a college outside of British Columbia, a minimum of one year of transferable work (30 credits) with a minimum 2.00 GPA admission average.

Transfer from a Technical Program - students who have completed two-year diplomas from institutes of technology. BCIT is normally included here; but for the purposes of this report, BCIT is included with B.C. College Transfers.

B.C. Adult Education Provincial Diploma - applicants, aged 19 years and older, who have completed the Adult Basic Education Provincial Diploma.

Visiting Student - students from other accredited institutions who take specified courses for subsequent transfer back to their 'home' institution towards a degree, certificate or diploma at their home institution.

Mature Student - applicants 23 years or older who have attempted less than one year of post-secondary transferable course work, and who do not meet regular admission requirements.

Special Entry - applicants already holding a first degree may register in undergraduate courses as a 'special student'. Credit for these courses

may not be applied toward completion of any certificate, diploma, graduate or undergraduate credential at SFU.

A limit to the number of students admitted from each category is set each year. A five year history of these quotas is shown in the following table which groups the above admission categories into three broad admission groups:

Admission Category	1993/94	1994/95	1995/96	1996/97	1997/98
B.C. Grade 12	1,575 31%	1,740 33%	1,625 35%	1,690 37%	1,878 39%
B.C. College Transfer	1,800 35%	1,930 37%	1,675 37%	1,525 33%	1,560 32%
Other	1,725 34%	1,605 30%	1,288 28%	1,410 30%	1,425 29%
Total	5,100 100%	5,275 100%	4,588 100%	4,625 100%	4,863 100%

Several data files were extracted from the SFU Student Information System for the analysis presented in this report. The data definitions for these files are included in the Appendix.

ANALYSIS

A. Profile of B.C. College Transfer Students

Over the five year period ending in the spring semester, 1998, a total of 8,987 students were admitted to SFU from B.C. Colleges (35% of all new students admitted to SFU during that time¹). Tables 1 to 8 provide a general overview of these students.

Table 1: Distribution by Admission Year.

- Currently, about 1,600 students transfer to SFU from B.C. colleges each year, but prior to 1995/96, the number of transfers was approximately 2,000 per year. As shown in [Figures 2 and 3](#), a sharp decline in 1995/96 occurred in the number of students admitted from B.C. colleges (30% decrease over 1994/95). This was due to a reduction in admission quotas for all categories of students as SFU attempted to reduce enrollments to conform with funded FTE targets.
- The majority of transfer students (87%) came to SFU from lower mainland colleges, with 78% coming from just four colleges (Kwantlen, Douglas, Langara and Capilano) (see [Figure 1](#)).

¹ The distribution of new students admitted to SFU from 1993/94 to 1997/98 by basis of admission is shown in the Appendix.

- 13% of transfer students came to SFU from colleges outside of the lower mainland (Interior/Kootenays (4.7%), Vancouver Island (4.2%) and Northern B.C. (3.9%)).
- The largest source of transfers from outside the Vancouver area is College of New Caledonia, representing 2% of all transfers and 18% of all non-lower mainland colleges.
- Students admitted to SFU with B.C. Associate Degrees from College are also included in this table (178 were admitted over the five year period).

Table 2: Distribution of Credits Transferred to SFU.

- 24% of students transferred the maximum 60 credits to SFU.
- Over the past five years, on average, 47 credits were transferred to SFU (equivalent to approximately 1.5 years of SFU work).
- On average, students from Northern B.C. colleges transferred the most credits (50), while students from lower mainland private colleges transferred the least (40 credits).
- 58% of students transferred more than 44 credits to SFU, but at lower mainland private colleges, only 28% of students transferred as many credits.
- On average, students from BCIT transferred the fewest credits to SFU (34), while students from the College of New Caledonia transferred the most (55).

Table 3: Distribution of First Semester Credit Hours Taken at SFU.

- College transfer students were more likely to register for less than four credits or exactly nine credit hours in their first semester at SFU than any other number of credits. Students entering SFU directly from high school were more inclined to register for more than twelve credits.
- In their first semester at SFU, B.C. College transfers typically register part-time. Only 30% of B.C. College transfer students were full-time in their first semester, compared to 77% of B.C. Grade 12 Direct Entry students. (A full-time student is one who registers for 12 or more credits in a semester).
- Full-time university participation in their first semester at SFU is much lower among lower mainland transfers (26%) than non-lower mainland transfers (57%). One non-lower mainland college has a low full-time participation rate in the first semester at SFU (Northern Lights College, 26%).

Table 4: Distribution by Faculty of Initial Degree Goal.

- The Faculty of Arts is the largest of SFU's faculties and the faculty where many students end up when their degree goal is initially uncertain, thus the most popular degree goal of choice was in Arts (56% of transfers selected a credential in Arts). Other faculties of choice were Business Administration (21%), Applied Science (9%), Science (8%) and Education (6%).

- By comparison, only 37% of grade 12 students selected their initial degree goal in Arts, with more students selecting Science (22%) and Applied Science (21%).

Table 5: Distribution by Initial Degree Goal.

- From 1993/94 to 1997/98, 8,987 transfer students sought 9,138 credentials (students may pursue more than one credential). The top three most popular degree goals of choice were: Bachelor of Arts (52%), Bachelor of Business Administration (21%) and Bachelor of Science (11%).
- Based on transferable college work, the mean admission grade point average was 3.00 among college transfer students. Those intending to pursue a Bachelor of Applied Science had the highest admission GPA at 3.45 and those intending to pursue a Bachelor of Science or Bachelor of General Studies had the lowest admission GPA (2.96).

Table 6: Distribution by Approved Program of Study.

- As students proceed through their education at SFU, they will declare one or more major programs of study. The top four most popular majors of choice were: Business (13%), General Studies (12%), Psychology (11%) and Education (9%).
- These program preferences are not consistent in all college regions. For example, students from Northern B.C. primarily declared a General Studies program (22%) and students from Vancouver Island were more inclined to take SFU's Criminology program (23%) and much less inclined to take Education (2%).

Table 7: Age Distribution.

- College transfer students had an average age of 22.7; 64% were aged 20 to 24.
- Students who entered SFU directly from high school had an average age of 17.8; 98% were younger than age 20.
- By college region, the oldest transfers came from Northern B.C. with an average age of 24.9 and the youngest came from private lower mainland colleges with an average age of 21.6.

Table 8: Gender Distribution.

- Of all new undergraduate students admitted to SFU in the past five years, approximately 57% were female. During this same time period 57% of B.C. college transfers were female and 53% of high school students were female.
- The gender breakdown in each college region is roughly consistent across colleges, with the exception of Northern B.C. colleges, in which 71% of the transfers were female.

B. Academic Performance

Table 9: Admission GPA Distribution.

- The average admission grade point average of college transfers was 3.00; the median (50th percentile) GPA upon admission was 2.94.
- 93% of all transfers were admitted with a GPA of 2.50 or higher, 45% at 3.00 or higher, 13% at 3.50 or higher and 1% at 4.00 or higher.

Table 10: Academic Performance From First Semester to Graduation.

This table shows the academic performance of all 8,987 B.C. College transfer students at four junctures in their education at SFU: (1) Admission, (2) completion of the first SFU semester, (3) completion of 30 SFU credits, and (4) graduation from SFU.

- The overall GPA's at each of these four time periods were 3.00, 2.50, 2.76 and 2.91 respectively. The drop of almost half a grade point from admission to the end of the first semester is an indication of "university transfer shock". A similar entry shock of almost one full grade point (3.36 to 2.47) also occurred among students admitted directly from high school. Of those transfer students and direct entry students who persist through to graduation, the GPA's do gradually recover.
- By college region, the highest admission GPA was attained by Vancouver Island Colleges (3.09) while the highest GPA's after the first semester (2.65), after 30 credits (2.96) and upon graduation (3.09) was attained by Northern BC transfers.
- By college (excluding colleges with fewer than 50 students represented), the highest grade point averages were attained by: (1) British Columbia Institute of Technology, 3.39 upon admission; (2) Northern Lights, 2.96 after the first semester; (3) College of New Caledonia, 2.99 after 30 credit hours; (4) College of New Caledonia, 3.11 upon graduation.

Table 11A: Comparison of Course Grades in Selected Courses.

This table shows the average course grades for selected courses in the following programs:

Biochemistry (Bich)	French (Fren)
Biological Science (Bisc)	Geography (Geog)
Business/Economics (Buec)	History (Hist)
Business (Bus)	Linguistics (Ling)
Chemistry (Chem)	Mathematical Computing (Macm)
Communication (Cmns)	Mathematics (Math)
Computing Science (Cmpt)	Philosophy (Phil)
Criminology (Crim)	Political Science (Pol)
Economics (Econ)	Psychology (Psyc)
Education (Educ)	Statistics (Stat)
English (Engl)	

- In all courses reported, the average grade received by all B.C. College transfers was consistently lower than the grade received by B.C. Grade 12's, except in the following three Education courses: Educ 220 (Introduction to

Educational Psychology), Educ 230 (Introduction to Philosophy of Education), and Educ 240 (Social Issues in Education).

Table 11B: Comparison of 200- and 300-Level Course Grades.

This table compares the admission GPA, course grade and proportion of grades awarded below a 'C' in 200- and 300-level courses at SFU. This analysis includes only those courses in which at least 100 B.C. College transfer students were registered over the past five years.

- In total over the 91 courses listed, the average course grade was lower among transfer students (2.44) than among B.C. Grade 12's (2.71).
- The percentage of grades awarded below a 'C' was higher among transfer students (5.3%) than among B.C. Grade 12's (3.9%). This difference of 1.4% is statistically significant and means that approximately 430 more "unsatisfactory" grades were awarded to college transfer students than expected when using direct entry grade 12's as a control.

Table 12: Degree Completion Rate.

By following the academic performance of 4,199 B.C. College transfer students admitted to SFU in 1993/94 and 1994/95 from admission through to graduation we can make the following observations:

- 53% graduated from SFU between June 1994 and June 1998 with at least one degree.
- Generally, there is a positive relationship between the number of credits a student transferred to SFU and the degree completion rate. The graduation rate (43%) was lowest among students entering SFU with fewer than 35 credits and highest among students who transferred between 50 to 54 credits (61%).
- Transfers from several colleges had a degree completion rate exceeding 53% (the average completion rate for all colleges combined), including:

Columbia College	(64.2%, N=123)
Langara College	(59.6%, N=797)
Selkirk College	(59.0%, N=39)
University College of the Cariboo	(58.0%, N=69)
Coquitlam College	(57.6%, N=85)
Capilano College	(55.7%, N=668)
University College of the Fraser Valley	(54.6%, N=152)
Kwantlen University College	(53.3%, N=902)
Malaspina University-College	(53.2%, N=79).

Table 13: Graduation Grade Point Average Distribution.

- Of those graduated students admitted to SFU from 1993/94 to 1997/98, the graduation grade point average was lower among the 2,957 transfer students than the 656 Direct Entry Grade 12's (2.91 versus 3.02). Note that the graduation CGPA of college transfer students only includes two or three years of university work, whereas the graduation CGPA of students admitted from high school includes their full four years at SFU (see Figure 4A).

- A more equitable comparison of the academic performance of these two groups includes only the last 60 hours at SFU. As shown in Figure 4B, transfer students achieved a lower grade point average on their last 60 hours at SFU than Direct Entry B.C. Grade 12's (2.93 versus 3.11).

C. Profile of Graduates:

Table 14: Academic Performance of Transfers who have Graduated.

This table shows the academic performance of only those 2,957 transfer students who have graduated. (Graduation occurred between June 1994 and June 1998).

- In looking at each of the four junctures in their SFU education, the average GPA's were: (1) 3.02 upon admission to SFU, (2) 2.73 after one semester at SFU, (3) 2.81 after completing 30 credit hours at SFU, and (4) 2.91 upon graduation from SFU.

Table 15: Graduation Degree Program.

- The top three programs from which transfer students graduate are Business Administration, Psychology and Economics.
- The distribution of students who declared these four programs is similar to the distribution of students who graduated from these programs: Business Administration (13% declared, 17% graduated), Psychology (11% declared, 11% graduated), Economics (5% declared, 8% graduated).

Table 16: Credential Awarded.

- Of those college transfer students admitted to SFU from 1993/94 to 1997/98, a total of 3,118 students graduated with 3,666 credentials, of which 81% were degrees, 12% were certificates and 7% were Professional Development Program Certificates. (Second degrees/certificates obtained subsequent to the first one were excluded).
- The most common degrees awarded by SFU to college transfer students include: Bachelor of Arts (52%), Bachelor of Business Administration (14%), Bachelor of General Studies (5%) and Bachelor of Science (5%).

Table 17: Average Number of Semesters to Complete Credential.

- On average, B.C. College transfer students take 8.7 semesters to complete a degree, as measured from time of admission to SFU until the semester of graduation from a first degree.
- The shortest time to completion, 8.6 semesters, was achieved by Bachelor of Arts, Bachelor of Business Administration and Bachelor of General Studies graduates.
- The longest time to completion was experienced by two Bachelor of Applied Science graduates (12.0 semesters) and twenty Bachelor of Fine Arts Graduates (10.5 semesters on average).

D. Profile of Students with College Experience:

Over the five year period ending in the 1998 spring semester, 1,331 students with some transfer credit from a B.C. College were admitted to SFU as non-'B.C. College Transfers'. As previously defined, these students had some transfer credits from a B.C. College, but were admitted to SFU under other bases of admission, such as B.C. Grade 12, Mature Student, Special Entry, University Transfer, etc. (See Tables 19A and 19B). These students represent 5% of all new students admitted to SFU and 13% of new students admitted with some B.C. College transfer credit. In terms of credit volume, college experience students transfer 9% of the total credits and about 6% of the total B.C. college credits transferred to SFU. Tables 18 to 22 provide a general overview of these students.

Table 18: Distribution by Admission Year.

- Similar to college transfer students, the majority of students with college experience came to SFU from lower mainland colleges (80%), with 65% coming from four just lower mainland colleges (Langara, Kwantlen, Douglas and Capilano).
- Camosun College provides the largest source of students with college experience from outside the lower mainland (3%).
- In each of the past five years, the proportion of students admitted to SFU with some college experience has remained constant at around 5% of all new students.

Table 19A: Distribution by Admission Year and Basis of Admission.

- The majority of students admitted to SFU with some college experience were admitted to SFU under the 'B.C. Grade 12' basis of admission (34%).
- Other students admitted to SFU with some college experience were mature students (17%), special entry students (14%), university transfer students (14% from B.C. and 10% from outside B.C.), and other admission categories (11%). (For more information, refer to the basis of admission definitions earlier in this report).

Table 19B: Admission GPA Distribution by Year and Basis of Admission.

- Students admitted to SFU with some college experience had a slightly higher admission GPA (3.08) than those admitted as B.C. College Transfers (3.00).
- Of those with college experience, the highest admission GPA was found among students who transferred from a technical program (3.49) and students admitted with a foreign equivalent of Canadian Grade 12/13 (3.42).

Table 20: Transfer Credit Distribution.

- Including BC College credits and credits from other institutions, 60% of college experience students transferred less than one year of credits (1 to

30 credits); 34% transferred between one and two years of credit (31 to 60 credits); 6% transferred more than two years of credit to SFU.

- The 1,331 students with college experience brought in approximately 40,000 credits to SFU, while the 8,987 B.C. College transfer students brought in about 424,000 credits. However, not all credits transferred to SFU by these groups come from B.C. Colleges. In fact, about 63% of the credits brought in by college experience students were from B.C. Colleges versus about 94% for B.C. College transfer students.

Table 21: Age Distribution.

- With 18% admitted as mature students, it is not surprising to find that students admitted to SFU with college experience are older, on average, than B.C. College transfers (24.4 versus 22.7).
- Students with college experience who transfer to SFU from outside the lower mainland are significantly older than students from within the lower mainland (27.5 versus 23.7).

Table 22: Gender Distribution.

- Similar to B.C. College transfers, 58% of students transferring with college experience are female.
- Of those students with college experience, a higher proportion from outside the lower mainland are female than from within the lower mainland (71% versus 55%).
- Similar to the group of B.C. College transfer students, females who transfer to SFU with some college experience from Northern B.C. significantly outnumber the males from the same region (84% female, 16% male).

TABLES AND GRAPHS

SECTION A

PROFILE OF B.C. COLLEGE TRANSFER STUDENTS

**TABLE 1
DISTRIBUTION OF B.C. COLLEGE TRANSFERS ADMITTED TO SFU BY YEAR OF ADMISSION**

Region/College	1993/94	1994/95	1995/96	1996/97	1997/98	5 Year Total
Non Lower Mainland						
Northern B.C.	82	93	58	57	64	354
College of New Caledonia	49	52	30	38	34	203
Northern Lights College	18	13	15	4	12	62
Northwest Community College	15	28	13	15	18	89
Interior/Kootenays	118	97	71	75	61	422
College of the Rockies	5	8	3	3	3	22
Okanagan University College	52	42	28	33	32	187
Selkirk College	26	13	12	10	5	66
Univ College of the Cariboo	35	34	28	29	21	147
Vancouver Island	64	109	66	89	52	380
Camosun College	31	51	25	53	22	182
Malaspina University-College	29	50	37	34	26	176
North Island College	4	8	4	2	4	22
Total Non Lower Mainland	264	299	195	221	177	1,156
Lower Mainland						
Public	1,553	1,875	1,336	1,354	1,328	7,445
B.C. Institute of Technology	30	14	10	10		64
Capilano College	303	365	237	243	252	1,400
Douglas College	356	509	390	360	381	1,996
Kwantlen University College	385	517	382	415	417	2,116
Univ Coll of the Fraser Valley	74	78	50	64	55	321
Langara College	405	392	267	262	223	1,549
Private	95	113	66	62	50	386
Columbia College	58	65	38	41	28	230
Coquitlam College	37	48	28	21	22	156
Total Lower Mainland	1,648	1,988	1,402	1,416	1,378	7,831
Total B.C. College Transfers	1,912	2,287	1,597	1,637	1,555	8,987
Total Direct Entry B.C. Grade 12s	1,356	1,601	1,559	1,649	1,793	7,958

Percent Distribution of B.C. College Transfers Admitted by Region						
Non Lower Mainland						
Northern B.C.	4.3%	4.1%	3.6%	3.5%	4.1%	3.9%
Interior/Kootenays	6.2%	4.2%	4.4%	4.6%	3.9%	4.7%
Vancouver Island	3.3%	4.8%	4.1%	5.4%	3.3%	4.2%
Total Non Lower Mainland	13.8%	13.1%	12.2%	13.5%	11.4%	12.9%
Lower Mainland						
Public	81.2%	82.0%	83.7%	82.7%	85.4%	82.8%
Private	5.0%	4.9%	4.1%	3.8%	3.2%	4.3%
Total Lower Mainland	86.2%	86.9%	87.8%	86.5%	88.6%	87.1%
Grand Total	100.0%	100.0%	100.0%	100.0%	100.0%	100.0%

Note:

A Direct Entry B.C. Grade 12 student graduated from high school within one year of admission to SFU. Previous editions of this report approximated the high school graduation date and thus some students were included who graduated from high school more than one year ago. This report now uses the precise graduation date for determining direct entry status, thus the number of B.C. Grade 12 Direct Entry students reported here will be lower than in previous reports.

FIGURE 1
B.C. COLLEGE TRANSFERS ADMITTED TO SIMON FRASER UNIVERSITY BY COLLEGE
1993/94 TO 1997/98

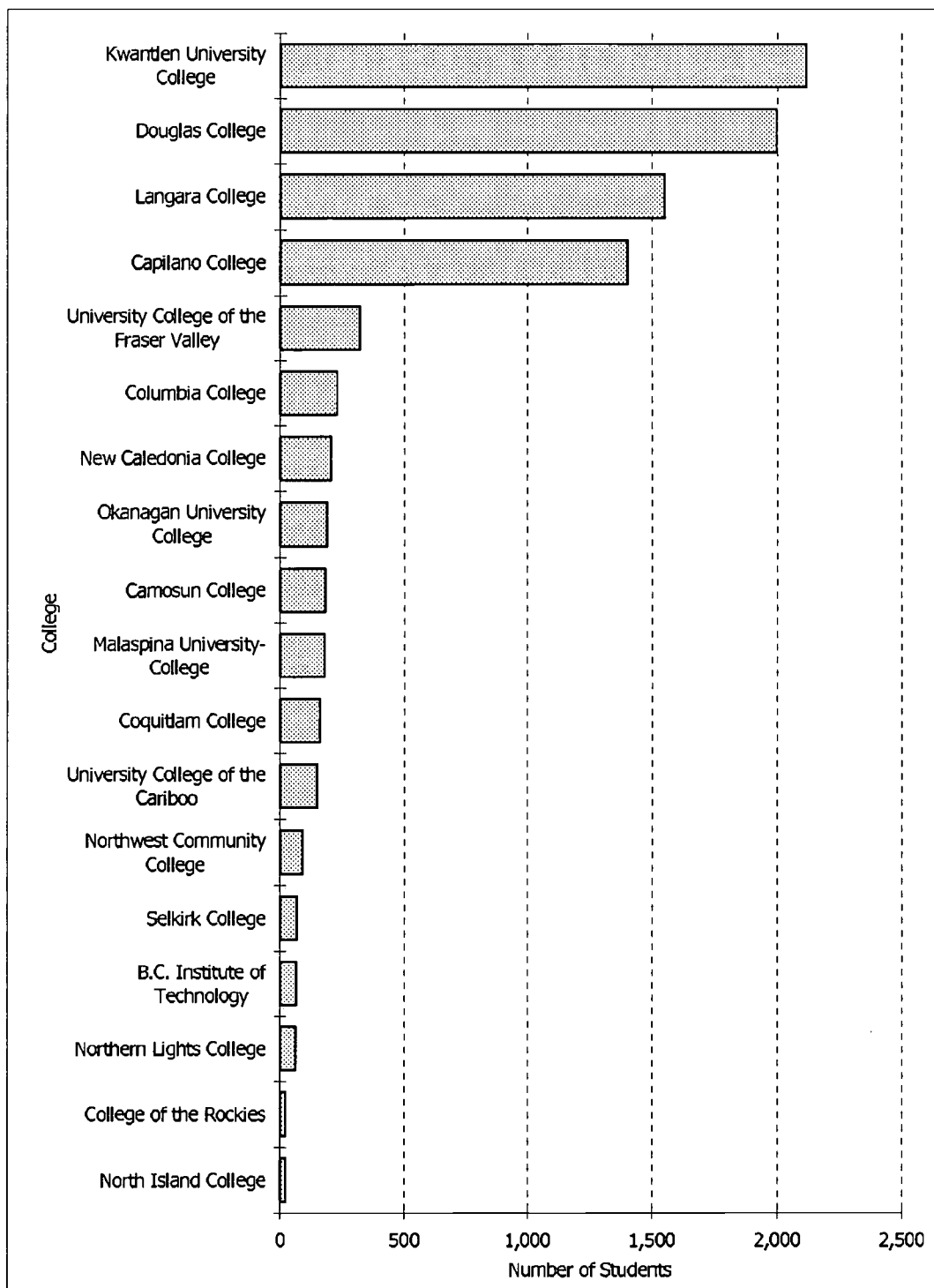
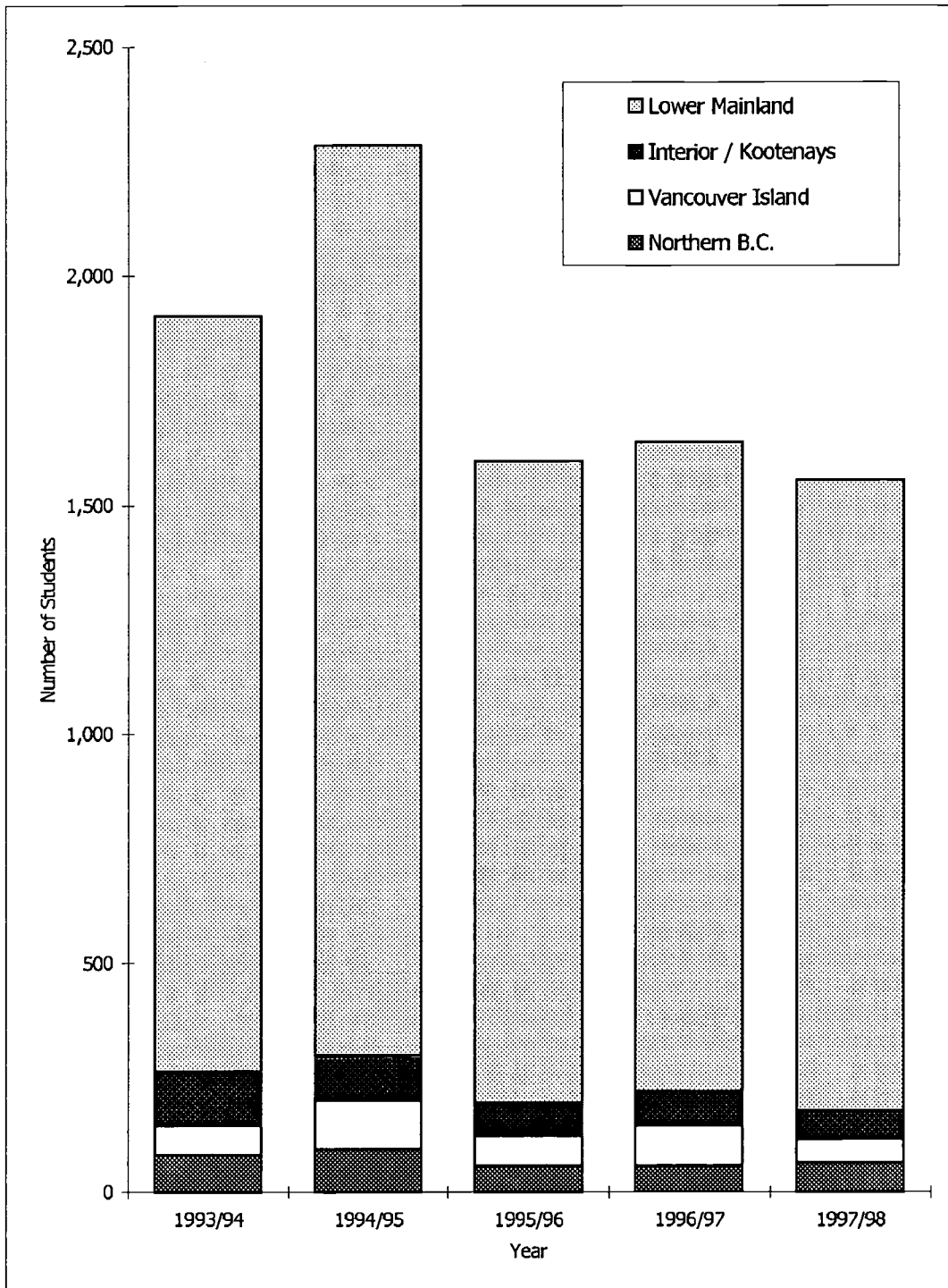


FIGURE 2
B.C. COLLEGE TRANSFERS ADMITTED TO SIMON FRASER UNIVERSITY BY REGION
1993/94 TO 1997/98



BEST COPY AVAILABLE

FIGURE 3
B.C. COLLEGE TRANSFERS ADMITTED TO SIMON FRASER UNIVERSITY
FROM LOWER MAINLAND PUBLIC COLLEGES, 1993/94 TO 1997/98

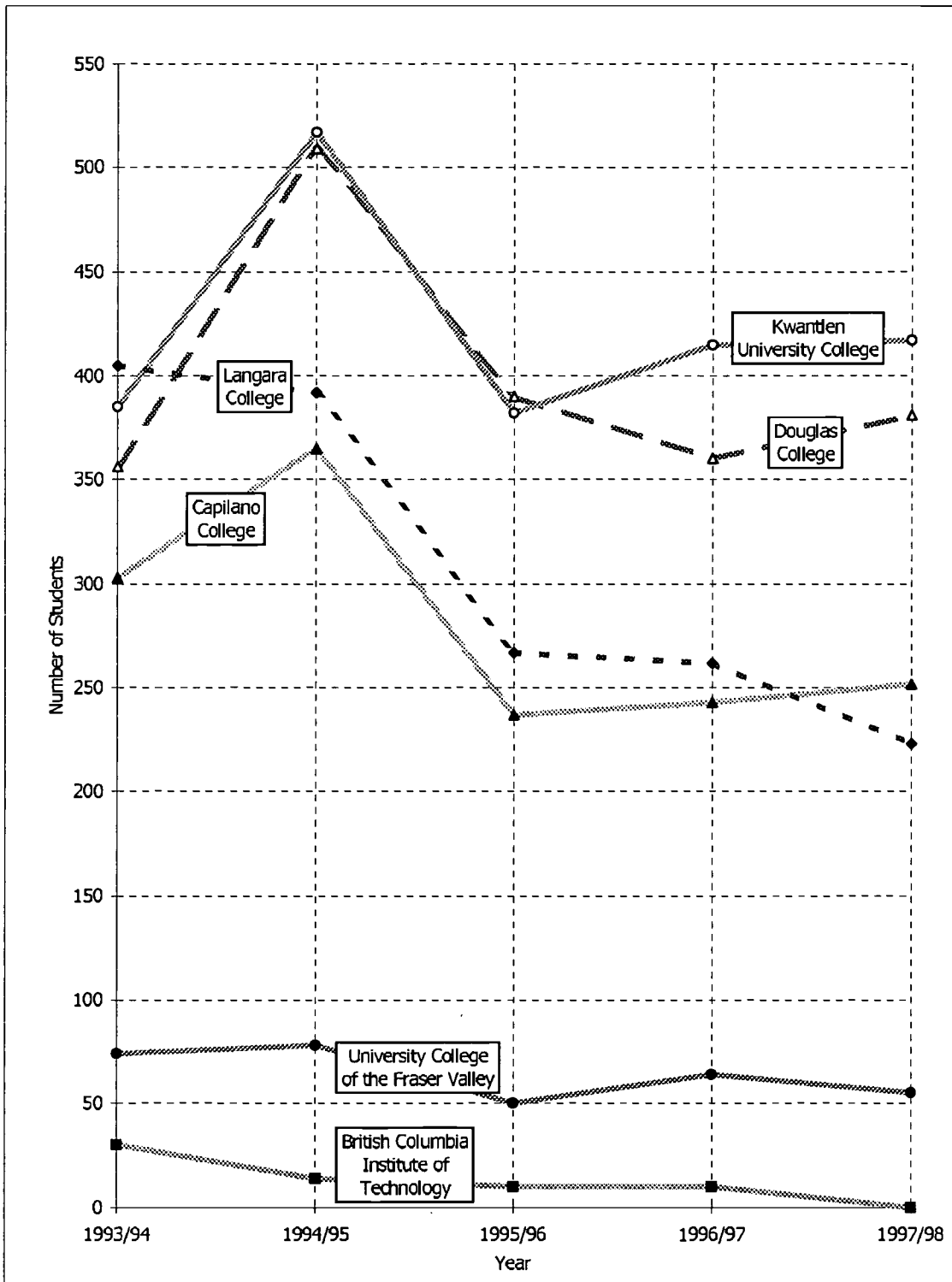


TABLE 2
DISTRIBUTION OF STUDENT TRANSFER CREDITS AT TIME OF ADMISSION TO SFU
(FOR B.C. COLLEGE TRANSFERS ADMITTED FROM 1993/94 to 1997/98)

Region/College	Transfer Credits at time of Admission to SFU							Total
	< 30	30-34	35-39	40-44	45-49	50-54	≥55	
Non Lower Mainland								
Northern B.C.	8	69	23	23	27	34	170	354
College of New Caledonia	3	20	11	8	12	23	126	203
Northern Lights College	2	16	6	13	11	4	10	62
Northwest Community College	3	33	6	2	4	7	34	89
Interior/Kootenays	14	103	42	24	45	47	147	422
College of the Rockies	2	8	3		2	3	4	22
Okanagan University College	4	45	17	10	19	13	79	187
Selkirk College	3	18	10	5	8	6	16	66
Univ College of the Cariboo	5	32	12	9	16	25	48	147
Vancouver Island	5	55	41	23	44	35	177	380
Camosun College	2	30	20	12	23	11	84	182
Malaspina University-College	3	18	16	11	21	21	86	176
North Island College		7	5			3	7	22
Total Non Lower Mainland	27	227	106	70	116	116	494	1,156
Lower Mainland								
Public	135	1,185	1,062	631	930	1,006	2,497	7,445
B.C. Institute of Technology	24	14	3	2	6	4	11	64
Capilano College	21	318	238	114	175	186	348	1,400
Douglas College	25	248	268	172	244	283	756	1,996
Kwantlen University College	25	277	264	160	260	284	846	2,116
Univ Coll of the Fraser Valley	8	35	35	30	29	39	145	321
Langara College	32	293	254	153	216	210	391	1,549
Private	12	131	95	39	42	28	39	386
Columbia College	3	95	57	25	22	10	18	230
Coquitlam College	9	36	38	14	20	18	21	156
Total Lower Mainland	147	1,316	1,157	670	972	1,034	2,536	7,831
Grand Total	174	1,543	1,263	740	1,088	1,150	3,030	8,987

Percent Distribution by Region								
Non Lower Mainland								
Northern B.C.	2.3%	19.5%	6.5%	6.5%	7.6%	9.6%	48.0%	100.0%
Interior/Kootenays	3.3%	24.4%	10.0%	5.7%	10.7%	11.1%	34.8%	100.0%
Vancouver Island	1.3%	14.5%	10.8%	6.1%	11.6%	9.2%	46.6%	100.0%
Total Non Lower Mainland	2.3%	19.6%	9.2%	6.1%	10.0%	10.0%	42.7%	100.0%
Lower Mainland								
Public	1.8%	15.9%	14.3%	8.5%	12.5%	13.5%	33.5%	100.0%
Private	3.1%	33.9%	24.6%	10.1%	10.9%	7.3%	10.1%	100.0%
Total Lower Mainland	1.9%	16.8%	14.8%	8.6%	12.4%	13.2%	32.4%	100.0%
Grand Total	1.9%	17.2%	14.1%	8.2%	12.1%	12.8%	33.7%	100.0%

Note:

Although transfer students should have a minimum of 30 transfer credits, some students are admitted at the discretion of the university with fewer than 30 credits. Of the 174 transfer students admitted to SFU with less than 30 credits, 150 transferred from a B.C. College with an average of 28 credits. The other 24 students came from BCIT with an average of 20 credits. (BCIT transfers are normally admitted to SFU upon completion of a two-year technical program, but not all of their course credits are transferrable to SFU).

TABLE 3
DISTRIBUTION OF FIRST SEMESTER CREDIT HOURS TAKEN AT SFU
(FOR B.C. COLLEGE TRANSFERS ADMITTED FROM 1993/94 TO 1997/98)

Region/College	First Semester Credit Hours Taken at SFU										
	≤3	4	5	6	7	8	9	10	11	12	≥12
Non Lower Mainland											
Northern B.C.	66	23	16	21	13	9	20	7	6	57	116
College of New Caledonia	48	12		14	3	6	12	6	4	39	59
Northern Lights College	9	3	16	5	6	2	4		1	4	12
Northwest Community College	9	8		2	4	1	4	1	1	14	45
Interior/Kootenays	44	2	2	23	2	1	54	12	5	100	177
College of the Rockies	2			1			4	1		7	7
Okanagan University College	19		2	6	1		25	5	2	48	79
Selkirk College	4	1		6			9	2	2	16	26
Univ College of the Cariboo	19	1		10	1	1	16	4	1	29	65
Vancouver Island	40	2		9	3	2	80	24	11	104	105
Camosun College	27	1		4	2	1	35	14	6	48	44
Malaspina University-College	13	1		5	1	1	40	9	3	49	54
North Island College							5	1	2	7	7
Total Non Lower Mainland	150	27	18	53	18	12	154	43	22	261	398
Lower Mainland											
Public	1,693	212	27	1,052	140	97	1,616	393	235	1,082	899
B.C. Institute of Technology	33	3		4		1	2	1	2	10	8
Capilano College	257	43	5	179	37	19	282	89	44	259	186
Douglas College	562	56	12	315	35	19	465	86	61	219	166
Kwantlen University College	477	48	6	312	40	38	411	115	70	319	280
Univ Coll of the Fraser Valley	67	9		29	1	9	45	20	13	61	67
Langara College	297	53	4	213	27	11	411	82	45	214	192
Private	55	3	2	85	6	7	121	12	9	60	26
Columbia College	29		1	46	5	6	76	7	6	37	17
Coquitlam College	26	3	1	39	1	1	45	5	3	23	9
Total Lower Mainland	1,748	215	29	1,137	146	104	1,737	405	244	1,142	925
Total B.C. College Transfers	1,898	242	47	1,190	164	116	1,891	448	266	1,403	1,323
Total Direct Entry B.C. Grade 12s	102	13	8	165	31	45	778	307	350	2,254	3,905

Percent Distribution First Semester Credit Hours Taken at SFU by Region											
Non Lower Mainland											
Northern B.C.	18.6%	6.5%	4.5%	5.9%	3.7%	2.5%	5.7%	2.0%	1.7%	16.1%	32.8%
Interior/Kootenays	10.4%	0.5%	0.5%	5.5%	0.5%	0.2%	12.8%	2.8%	1.2%	23.7%	41.9%
Vancouver Island	10.5%	0.5%		2.4%	0.8%	0.5%	21.1%	6.3%	2.9%	27.4%	27.6%
Total Lower Mainland	13.0%	2.3%	1.6%	4.6%	1.6%	1.0%	13.3%	3.7%	1.9%	22.6%	34.4%
Lower Mainland											
Public	22.7%	2.8%	0.4%	14.1%	1.9%	1.3%	21.7%	5.3%	3.2%	14.5%	12.1%
Private	14.2%	0.8%	0.5%	22.0%	1.6%	1.8%	31.3%	3.1%	2.3%	15.5%	6.7%
Total Lower Mainland	22.3%	2.7%	0.4%	14.5%	1.9%	1.3%	22.2%	5.2%	3.1%	14.6%	11.8%
Total B.C. College Transfers	21.1%	2.7%	0.5%	13.2%	1.8%	1.3%	21.0%	5.0%	3.0%	15.6%	14.7%
Total Direct Entry B.C. Grade 12s	1.3%	0.2%	0.1%	2.1%	0.4%	0.6%	9.8%	3.9%	4.4%	28.3%	49.1%

TABLE 3 (cont)
DISTRIBUTION OF FIRST SEMESTER CREDIT HOURS TAKEN AT SFU
(FOR B.C. COLLEGE TRANSFERS ADMITTED FROM 1993/94 TO 1997/98)

Full-time	Part-time	Percent		Total	Region/College
		Full-time	Part-time		
Non Lower Mainland					
173	181	48.9%	51.1%	354	Northern B.C.
98	105	48.3%	51.7%	203	College of New Caledonia
16	46	25.8%	74.2%	62	Northern Lights College
59	30	66.3%	33.7%	89	Northwest Community College
277	145	65.6%	34.4%	422	Interior/Kootenays
14	8	63.6%	36.4%	22	College of the Rockies
127	60	67.9%	32.1%	187	Okanagan University College
42	24	63.6%	36.4%	66	Selkirk College
94	53	63.9%	36.1%	147	Univ College of the Cariboo
209	171	55.0%	45.0%	380	Vancouver Island
92	90	50.5%	49.5%	182	Camosun College
103	73	58.5%	41.5%	176	Malaspina University-College
14	8	63.6%	36.4%	22	North Island College
659	497	57.0%	43.0%	1,156	Total Non Lower Mainland
Lower Mainland					
1,981	5,465	26.6%	73.4%	7,445	Public
18	46	28.1%	71.9%	64	B.C. Institute of Technology
445	955	31.8%	68.2%	1,400	Capilano College
385	1,611	19.3%	80.7%	1,996	Douglas College
599	1,517	28.3%	71.7%	2,116	Kwantlen University College
128	193	39.9%	60.1%	321	Univ Coll of the Fraser Valley
406	1,143	26.2%	73.8%	1,549	Langara College
86	300	22.3%	77.7%	386	Private
54	176	23.5%	76.5%	230	Columbia College
32	124	20.5%	79.5%	156	Coquitlam College
2,067	5,765	26.4%	73.6%	7,831	Total Lower Mainland
2,726	6,261	30.3%	69.7%	8,987	Total B.C. College Transfers
6,159	1,799	77.4%	22.6%	7,958	Total Direct Entry B.C. Grade 12s

Note: A full-time student is defined as a student who takes 12 or more credit hours in a semester.

TABLE 4
DISTRIBUTION OF B.C. COLLEGE TRANSFERS ADMITTED TO SFU BY FACULTY
(FOR B.C. COLLEGE TRANSFERS ADMITTED FROM 1993/94 TO 1997/98)

Region/College	Applied Science	Arts	Business Admin.	Education	Science	Total
Non Lower Mainland						
Northern B.C.	5.4%	63.0%	9.0%	19.8%	2.5%	354
College of New Caledonia	4.9%	72.4%	9.4%	10.3%	3.0%	203
Northern Lights College	4.8%	32.3%	3.2%	56.5%	3.2%	62
Northwest Community College	6.7%	62.9%	12.4%	15.7%	1.1%	89
Interior/Kootenays	13.0%	44.1%	25.6%	6.2%	10.7%	422
College of the Rockies	4.5%	50.0%	31.8%		13.6%	22
Okanagan University College	18.2%	42.3%	20.9%	8.6%	9.1%	187
Selkirk College	9.1%	47.0%	22.7%	4.5%	16.7%	66
Univ College of the Cariboo	9.5%	44.2%	32.0%	4.8%	9.5%	147
Vancouver Island	9.2%	60.3%	22.0%	1.7%	6.6%	380
Camosun College	9.9%	65.7%	16.5%	1.9%	6.0%	182
Malaspina University-College	7.4%	54.3%	29.8%	0.6%	7.4%	176
North Island College	18.2%	63.6%	4.5%	9.1%	4.5%	22
Total Non Lower Mainland	9.4%	55.2%	19.3%	8.9%	6.8%	1,156
Lower Mainland						
Public	8.4%	56.6%	20.9%	5.6%	7.7%	7,445
B.C. Institute of Technology	6.3%	15.6%	40.6%	7.8%	28.1%	64
Capilano College	9.9%	62.1%	14.9%	5.3%	6.9%	1,400
Douglas College	8.0%	57.0%	20.3%	6.9%	7.1%	1,996
Kwantlen University College	6.1%	55.4%	24.3%	6.2%	7.1%	2,116
Univ Coll of the Fraser Valley	15.6%	61.1%	6.2%	5.3%	11.2%	321
Langara College	9.5%	53.5%	24.4%	3.4%	8.5%	1,549
Private	14.5%	36.1%	38.5%	0.5%	9.3%	386
Columbia College	17.4%	33.7%	38.5%	0.4%	8.7%	230
Coquitlam College	10.3%	39.7%	38.5%	0.6%	10.3%	156
Total Lower Mainland	8.7%	55.6%	21.7%	5.3%	7.8%	7,831
Total B.C. College Transfers	8.8%	55.5%	21.4%	5.8%	7.7%	8,987
Total Direct Entry B.C. Grade 12s	20.9%	36.9%	17.8%	2.6%	21.7%	7,958

Note:

a) Students are classified according to the Faculty of their initial degree goal upon admission to SFU.

TABLE 5
DISTRIBUTION OF B.C. COLLEGE TRANSFERS BY INITIAL DEGREE GOAL
(ADMITTED TO SFU FROM 1993/94 TO 1997/98)

<u>Credential</u>	<u>Number Pursuing Credential</u>	<u>Percent Distribution</u>	<u>Average Admission GPA</u>
Bachelor of Arts	4,776	52.3%	2.98
Bachelor of Business Administration	1,936	21.2%	3.04
Bachelor of Science	1,007	11.0%	2.96
Bachelor of Education	513	5.6%	3.01
Bachelor of General Studies	369	4.0%	2.96
Bachelor of Science (Kinesiology)	165	1.8%	2.97
Bachelor of Fine Arts	126	1.4%	3.00
Bachelor of Applied Science	24	0.3%	3.45
Professional Development Program in Educa	25	0.3%	2.99
Certificate in Liberal Arts	53	0.6%	3.07
Certificate in Teaching ESL Linguistics	17	0.2%	3.11
Other Certificate Programs	53	0.6%	3.03
Special Students	5	0.05%	3.05
Unspecified	69	0.76%	3.09
Total B.C. College Transfers	9,138	100.0%	3.00

Notes:

- a) Students are classified according to their initial degree goal upon admission to SFU.
- b) A student initially pursuing more than one credential is reported once under each credential.
- c) Additions/changes to degree goal(s) subsequent to the first semester at SFU are excluded.
- d) Average admission GPA is based on college work.

**TABLE 6
DISTRIBUTION OF B.C. COLLEGE TRANSFERS BY APPROVED PROGRAM OF STUDY
(FOR B.C. COLLEGE TRANSFERS ADMITTED FROM 1993/94 TO 1997/98)**

Region/College	Busi- ness	General Studies	Psych- ology	Edu- cation	Crimi- nology	English	Geo- graphy	History	Econo- mics
Non Lower Mainland									
Northern B.C.	2.5%	34.6%	2.3%	32.6%	8.1%	4.5%	2.0%	4.3%	0.8%
College of New Caledonia	2.6%	35.5%	2.6%	28.6%	13.0%	3.0%	2.6%	3.5%	0.4%
Northern Lights College	1.4%	27.1%	1.4%	45.7%		8.6%		2.9%	1.4%
Northwest Community College	3.2%	37.9%	2.1%	32.6%	2.1%	5.3%	2.1%	7.4%	1.1%
Interior/Kootenays	15.1%	9.7%	9.1%	9.4%	4.7%	5.3%	7.5%	4.1%	4.4%
College of the Rockies	7.7%	7.7%	7.7%		15.4%	23.1%			7.7%
Okanagan University College	12.4%	9.0%	10.3%	11.7%	4.8%	3.4%	8.3%	3.4%	2.8%
Selkirk College	6.4%	8.5%	10.6%	6.4%	2.1%	8.5%	12.8%	6.4%	8.5%
Univ College of the Cariboo	23.0%	11.5%	7.1%	8.8%	4.4%	4.4%	5.3%	4.4%	4.4%
Vancouver Island	12.4%	11.4%	5.9%	1.7%	22.4%	2.8%	3.8%	1.7%	2.8%
Camosun College	9.6%	10.4%	4.4%	3.0%	29.6%	3.0%	3.0%	0.7%	3.0%
Malaspina University-College	16.2%	12.5%	7.4%	0.7%	18.4%	2.2%	5.1%	2.2%	2.9%
North Island College	5.3%	10.5%	5.3%			5.3%		5.3%	
Total Non Lower Mainland	8.1%	17.4%	4.8%	14.2%	9.7%	3.7%	3.7%	3.0%	2.2%
Lower Mainland									
Public	12.8%	10.7%	11.5%	7.5%	7.4%	6.8%	6.3%	6.1%	4.8%
B.C. Institute of Technology	23.5%	11.8%		14.7%			2.9%	2.9%	
Capilano College	12.1%	12.0%	13.7%	8.3%	11.1%	5.5%	5.5%	6.1%	4.1%
Douglas College	12.1%	12.0%	13.7%	8.3%	11.1%	5.5%	5.5%	6.1%	4.1%
Kwantlen University College	14.1%	10.9%	13.4%	8.5%	10.9%	7.5%	5.1%	6.0%	4.2%
Univ Coll of the Fraser Valley	5.8%	8.8%	9.1%	10.9%	4.7%	6.6%	8.8%	6.6%	2.6%
Langara College	16.4%	11.1%	8.3%	4.0%	3.2%	4.9%	5.4%	7.1%	8.0%
Private	35.5%	7.0%	12.9%	0.8%	0.4%	1.2%			18.8%
Columbia College	37.8%	6.4%	11.5%	0.6%	0.6%	1.3%			17.9%
Coquitlam College	32.0%	8.0%	15.0%	1.0%		1.0%			20.0%
Total Lower Mainland	13.7%	10.6%	11.5%	7.2%	7.1%	6.5%	6.1%	5.9%	5.4%
Total B.C. College Transfers	13.1%	11.9%	10.7%	8.5%	7.7%	6.2%	5.8%	5.5%	5.0%

Notes:

- a) For students who have graduated, all completed honors and majors in their first degree are reported.
- b) For students who have not yet graduated, all approved honors or majors in progress are reported.
- c) An Education student is defined as a student who has completed or is pursuing a Bachelor of Education (B.Ed) or Professional Development Program (PDP) diploma as a degree goal.
- d) A General Studies student is defined as a student who has completed or is pursuing a Bachelor of General Studies (BGS).
- e) A student with more than one completed/approved program is counted once under each program.

TABLE 6 (cont)
DISTRIBUTION OF B.C. COLLEGE TRANSFERS BY APPROVED PROGRAM OF STUDY
(FOR B.C. COLLEGE TRANSFERS ADMITTED FROM 1993/94 TO 1997/98)

Communi- cation	Politi- cal Sci	Biologi- cal Sci	Kinesi- ology	Compu- ting Sci	Archae- ology	Soci- ology	Other Pams	Total	Region/College
Non Lower Mainland									
2.0%	0.8%	1.0%	1.8%	0.5%	0.5%	0.5%	1.3%	396	Northern B.C.
2.2%	1.3%	1.3%	1.7%	0.4%		0.4%	0.9%	231	College of New Caledonia
1.4%			2.9%	1.4%	1.4%	1.4%	2.9%	70	Northern Lights College
2.1%		1.1%	1.1%		1.1%		1.1%	95	Northwest Community College
4.7%	1.6%	4.4%	4.7%	0.9%	2.8%	1.3%	10.1%	318	Interior/Kootenays
					7.7%		23.1%	13	College of the Rockies
7.6%	1.4%	4.1%	5.5%	0.7%	4.1%	0.7%	9.7%	145	Okanagan University College
8.5%		8.5%	4.3%				8.5%	47	Selkirk College
	2.7%	3.5%	4.4%	1.8%	1.8%	2.7%	9.7%	113	Univ College of the Cariboo
7.6%	3.4%	2.1%	3.8%		4.5%	1.0%	12.8%	290	Vancouver Island
8.1%	3.0%	3.0%	3.7%		5.2%	0.7%	9.6%	135	Camosun College
7.4%	3.7%	1.5%	2.9%		3.7%	0.7%	12.5%	136	Malaspina University-College
5.3%	5.3%		10.5%		5.3%	5.3%	36.8%	19	North Island College
3.9%	1.6%	2.1%	2.9%	0.4%	2.1%	0.8%	6.4%	1,156	Total Lower Mainland
Lower Mainland									
4.2%	3.3%	2.2%	1.6%	1.8%	1.5%	1.6%	9.9%	5,796	Public
2.9%		11.8%	2.9%	2.9%		2.9%	20.6%	34	B.C. Institute of Technology
2.9%	3.9%	2.3%	1.3%	1.2%	1.6%	1.1%	7.3%	1,499	Capilano College
2.9%	3.9%	2.3%	1.3%	1.2%	1.6%	1.1%	7.3%	1,499	Douglas College
2.2%	1.6%	1.8%	1.5%	1.5%	1.0%	2.0%	7.9%	1,637	Kwantlen University College
10.9%	4.4%	2.9%	3.6%	1.1%	0.7%	0.7%	11.7%	274	Univ Coll of the Fraser Valley
5.8%	3.9%	1.9%	0.8%	2.7%	2.4%	1.5%	12.7%	1,234	Langara College
7.8%	0.4%	2.3%		3.9%			9.0%	256	Private
7.1%		2.6%		5.8%			8.3%	156	Columbia College
9.0%	1.0%	2.0%		1.0%			10.0%	100	Coquitlam College
4.3%	3.2%	2.2%	1.5%	1.9%	1.4%	1.5%	9.9%	6,052	Total Lower Mainland
4.4%	3.0%	2.2%	1.7%	1.7%	1.6%	1.4%	9.5%	7,056	Total B.C. College Transfers

**TABLE 7
AGE DISTRIBUTION OF B.C. COLLEGE TRANSFERS ADMITTED TO SFU FROM 1993/94 TO 1997/98**

Region/College	< 20	20-24	25-29	30-34	35-39	>39	Total	Average Age
Non Lower Mainland								
Northern B.C.	76	169	37	23	22	27	354	24.9
College of New Caledonia	30	117	18	14	9	15	203	24.8
Northern Lights College	10	28	10	6	4	4	62	25.6
Northwest Community College	36	24	9	3	9	8	89	24.8
Interior/Kootenays	103	245	32	15	9	18	422	22.7
College of the Rockies	4	13	4			1	22	22.8
Okanagan University College	40	120	15	5	2	5	187	22.2
Selkirk College	23	33	2	3	3	2	66	22.7
Univ College of the Cariboo	36	79	11	7	4	10	147	23.5
Vancouver Island	44	262	50	11	8	5	380	22.9
Camosun College	11	136	26	5	4		182	23.0
Malaspina University-College	29	115	21	4	4	3	176	22.5
North Island College	4	11	3	2		2	22	25.0
Total Non Lower Mainland	223	676	119	49	39	50	1,156	23.4
Lower Mainland								
Public	1,242	4,826	788	296	159	134	7,445	22.6
B.C. Institute of Technology	2	27	18	12	2	2.5	64	26.6
Capilano College	304	851	128	66	24	26.5	1,400	22.5
Douglas College	259	1323	254	73	52	35	1,996	23.0
Kwantlen University College	404	1466	138	50	30	28	2,116	21.8
Univ Coll of the Fraser Valley	48	212	23	13	13	12	321	23.3
Langara College	225	947	227	82	38	30	1,549	23.2
Private	86	259	33	5	3		386	21.6
Columbia College	56	150	19	3	2		230	21.4
Coquitlam College	30	109	14	2	1		156	21.9
Total Lower Mainland	1,328	5,085	821	301	162	134	7,831	22.6
Total B.C. College Transfers	1,551	5,761	940	350	201	184	8,987	22.7
Total Direct Entry B.C. Grade 12s	7,787	166	3	1	1		7,958	17.8

Percent Age Distribution by Region								
Non Lower Mainland								
Northern B.C.	21.5%	47.7%	10.5%	6.5%	6.2%	7.6%	100.0%	24.9
Interior/Kootenays	24.4%	58.1%	7.6%	3.6%	2.1%	4.3%	100.0%	22.7
Vancouver Island	11.6%	68.9%	13.2%	2.9%	2.1%	1.3%	100.0%	22.9
Total NonLower Mainland	19.3%	58.5%	10.3%	4.2%	3.4%	4.3%	100.0%	23.4
Lower Mainland								
Public	16.7%	64.8%	10.6%	4.0%	2.1%	1.8%	100.0%	22.6
Private	22.3%	67.1%	8.5%	1.3%	0.8%		100.0%	21.6
Total Lower Mainland	17.0%	64.9%	10.5%	3.8%	2.1%	1.7%	100.0%	22.6
Total B.C. College Transfers	17.3%	64.1%	10.5%	3.9%	2.2%	2.0%	100.0%	22.7
Total Direct Entry B.C. Grade 12s	97.9%	2.1%	0.04%	0.01%	0.01%		100.0%	17.8

**TABLE 8
GENDER DISTRIBUTION OF B.C. COLLEGE TRANSFERS ADMITTED TO SFU
1993/94 TO 1997/98**

Region/College	Number			Percent	
	Male	Female	Total	Male	Female
Non Lower Mainland					
Northern B.C.	104	249	353	29.5%	70.5%
College of New Caledonia	55	148	203	27.1%	72.9%
Northern Lights College	20	42	62	32.3%	67.7%
Northwest Community College	29	59	88	33.0%	67.0%
Interior/Kootenays	181	241	422	42.9%	57.1%
College of the Rockies	9	13	22	40.9%	59.1%
Okanagan University College	81	106	187	43.3%	56.7%
Selkirk College	32	34	66	48.5%	51.5%
Univ College of the Cariboo	59	88	147	40.1%	59.9%
Vancouver Island	167	213	380	43.9%	56.1%
Camosun College	74	108	182	40.7%	59.3%
Malaspina University-College	83	93	176	47.2%	52.8%
North Island College	10	12	22	45.5%	54.5%
Total Non Lower Mainland	452	703	1,155	39.1%	60.9%
Lower Mainland					
Public	3,212	4,223	7,435	43.2%	56.8%
B.C. Institute of Technology	25	39	64	39.1%	60.9%
Capilano College	577	823	1,400	41.2%	58.8%
Douglas College	891	1,097	1,988	44.8%	55.2%
Kwantlen University College	920	1,194	2,114	43.5%	56.5%
Univ Coll of the Fraser Valley	136	185	321	42.4%	57.6%
Langara College	663	885	1,548	42.8%	57.2%
Private	172	214	386	44.6%	55.4%
Columbia College	102	128	230	44.3%	55.7%
Coquitlam College	70	86	156	44.9%	55.1%
Total Lower Mainland	3,384	4,437	7,821	43.3%	56.7%
Total B.C. College Transfers	3,836	5,140	8,976	42.7%	57.3%
Total Direct Entry B.C. Grade 12s	3,776	4,181	7,957	47.5%	52.5%

Note: Gender information is not available for 11 college transfers and one B.C. Grade 12.

SECTION B

**QUALITY/ACADEMIC PERFORMANCE OF
B.C. COLLEGE TRANSFER STUDENTS**

**TABLE 9
DISTRIBUTION OF ADMISSION GPA FOR B.C. COLLEGE TRANSFERS
ADMITTED TO SFU FROM 1993/94 TO 1997/98**

Admission GPA	Number of Students	Cumulative	Cumulative Percent
		Number of Students	
< 2.00	4	4	0.0%
2.00-2.09	9	13	0.1%
2.10-2.19	27	40	0.4%
2.20-2.29	53	93	1.0%
2.30-2.39	111	204	2.3%
2.40-2.49	425	629	7.0%
2.50-2.59	699	1,328	14.8%
2.60-2.69	865	2,193	24.4%
2.70-2.79	1,001	3,194	35.5%
2.80-2.89	922	4,116	45.8%
2.90-2.99	786	4,902	54.5%
3.00-3.09	836	5,738	63.8%
3.10-3.19	676	6,414	71.4%
3.20-3.29	562	6,975	77.6%
3.30-3.39	479	7,454	82.9%
3.40-3.49	380	7,834	87.2%
3.50-3.59	331	8,165	90.9%
3.60-3.69	272	8,437	93.9%
3.70-3.79	214	8,651	96.3%
3.80-3.89	128	8,779	97.7%
3.90-3.99	97	8,876	98.8%
≥ 4.00	108	8,984	100.0%
Not Available	3	8,987	100.0%
Median GPA	2.94		
Average GPA	3.00		

Notes:

- a) Admission GPA is the grade point average on courses transferrable to SFU from college.
- b) Minimum admission GPA requirement for B.C. college transfers:

Semester	Non-Science	Science
1993-2	2.70	2.50
1993-3	2.55	2.20
1994-1	2.40	2.40
1994-2	2.40	2.30
1994-3	2.50	2.40
1995-1	2.40	2.30
1995-2	2.70	2.50
1995-3	2.50	2.30
1996-1	2.60	2.50
1996-2	2.50	2.50
1996-3	2.40	2.30
1997-1	3.00	2.50
1997-2	2.70	2.40
1997-3	2.70	2.40
1998-1	2.70	2.40

- c) Starting in 1993-3, a minimum admission GPA of 2.00 was required for holders of associate degrees in arts or science.
- d) SFU operates on a tri-semester system. Semesters are suffixed with "-1" for Spring, "-2" for Summer and "-3" for Fall.

TABLE 10
ACADEMIC PERFORMANCE OF B.C. COLLEGE TRANSFERS ADMITTED TO SFU
FROM 1993/94 TO 1997/98

Region/College	Admission GPA		SFU CGPA after 1st Sem at SFU		SFU CGPA after 30 credits passed at SFU		SFU CGPA at Graduation from SFU	
	N	GPA	N	GPA	N	GPA	N	GPA
Non Lower Mainland								
Northern B.C.	354	3.05	354	2.65	251	2.96	108	3.12
College of New Caledonia	203	3.02	203	2.65	149	2.99	83	3.11
Northern Lights College	62	3.03	62	2.96	36	3.18	10	3.25
Northwest Community College	89	3.13	89	2.42	66	2.74	15	3.04
Interior/Kootenays	421	3.03	422	2.50	280	2.79	155	2.93
College of the Rockies	22	3.17	22	2.26	11	2.80	7	2.91
Okanagan University College	187	2.96	187	2.54	124	2.82	65	2.96
Selkirk College	66	3.08	66	2.44	47	2.78	30	2.94
Univ College of the Cariboo	146	3.07	147	2.50	98	2.74	53	2.87
Vancouver Island	380	3.09	380	2.55	252	2.86	127	3.04
Camosun College	182	3.04	182	2.45	112	2.84	58	3.04
Malaspina University-College	176	3.15	176	2.64	124	2.88	63	3.03
North Island College	22	3.10	22	2.64	16	2.81	6	3.15
Total Non Lower Mainland	1,155	3.06	1,156	2.56	783	2.86	390	3.01
Lower Mainland								
Public	7,444	2.99	7,446	2.50	4,817	2.75	2,407	2.90
B.C. Institute of Technology	64	3.39	64	2.78	29	2.85	10	3.19
Capilano College	1,400	2.97	1,400	2.57	950	2.76	451	2.89
Douglas College	1,996	2.99	1,996	2.38	1,175	2.68	557	2.86
Kwantlen University College	2,116	3.05	2,116	2.46	1,344	2.75	666	2.92
Univ Coll of the Fraser Valley	321	3.03	321	2.66	212	2.92	113	3.07
Langara College	1,547	2.88	1,549	2.57	1,107	2.76	610	2.89
Private	386	3.03	386	2.35	272	2.71	160	2.79
Columbia College	230	3.01	230	2.45	172	2.73	94	2.79
Coquitlam College	156	3.07	156	2.19	100	2.67	66	2.80
Total Lower Mainland	7,830	2.99	7,832	2.49	5,089	2.74	2,567	2.89
Total B.C. College Transfers	8,985	3.00	8,988	2.50	5,872	2.76	2,957	2.91
Total Direct Entry B.C. Grade 12s	7,955	3.36	7,958	2.47	5,666	2.75	656	3.02

Notes:

- a) Admission GPA's for two college transfers and three BC12's were not available.
- b) SFU CGPA after first semester at SFU is calculated on courses completed in the first semester at SFU.
See Table 3 for the distribution of first semester credit hours taken at SFU.
- c) SFU CGPA at graduation from SFU is shown for degree completers only. PDP and certificates are excluded.
- d) Students who completed multiple credentials simultaneously are included in the graduation statistics for each degree completed.
- e) Students who completed multiple credentials sequentially are included in the graduation statistics for the first degree completed.
- f) 33% of all college transfers admitted from 1993/94 to 1997/98 have graduated (between June 1993 and June 1997).
- g) The proportion of students with a strong academic background (as evidenced by secondary school grades) varies among transfer and direct entry students. This table describes differences between the two groups but does not explain the cause of the differences.

**TABLE 11A
COMPARISON OF COURSE GRADES IN SELECTED COURSES
B.C. COLLEGE TRANSFERS vs DIRECT ENTRY B.C. GRADE 12s
(FOR STUDENTS ADMITTED TO SFU FROM 1993/94 TO 1997/98)**

Region/College	Bich 222			Bisc 202			Bisc 316		
	Admis- sion GPA	Avg Crs Grade	N	Admis- sion GPA	Avg Crs Grade	N	Admis- sion GPA	Avg Crs Grade	N
Non Lower Mainland									
Northern B.C.	3.17	2.00	6	3.16	1.70	10	3.12	2.56	6
College of New Caledonia	3.01	2.17	4	3.02	1.47	5	2.94	3.08	4
Northern Lights College				2.98	1.84	2			
Northwest Community College	3.49	1.67	2	3.50	2.00	3	3.49	1.50	2
Interior/Kootenays	3.05	2.81	16	3.11	2.65	23	3.07	1.94	6
College of the Rockies	3.42	2.83	2						
Okanagan University College	2.92	2.79	8	2.89	2.85	9	2.76	0.50	2
Selkirk College	3.68	3.22	3	3.52	3.09	7	3.81	3.17	2
Univ College of the Cariboo	2.55	2.44	3	2.99	1.95	7	2.65	2.17	2
Vancouver Island	3.02	2.33	11	2.98	1.88	11	2.66	2.00	1
Camosun College	3.08	1.73	5	3.00	0.83	6	2.66	2.00	1
Malaspina University-College	2.92	2.53	5	2.95	3.13	5			
North Island College	3.23	4.33	1						
Total Non Lower Mainland	3.06	2.50	33	3.09	2.24	44	3.06	2.23	13
Lower Mainland									
Public	2.87	2.47	169	2.87	2.12	229	2.87	2.44	111
B.C. Institute of Technology	2.98	2.17	4	3.07	2.76	7	2.92	2.44	3
Capilano College	2.81	2.71	30	2.84	2.38	38	2.86	2.68	20
Douglas College	2.89	2.33	47	2.87	1.81	66	2.81	2.20	36
Kwantlen University College	2.89	2.49	45	2.88	2.27	55	2.92	2.73	22
Univ Coll of the Fraser Valley	3.16	2.96	16	3.22	2.75	12	3.09	2.42	11
Langara College	2.67	2.19	27	2.77	1.95	51	2.78	2.28	19
Private	3.05	2.33	12	2.99	1.95	14	3.05	2.22	3
Columbia College	2.89	1.76	7	2.89	1.78	9	2.94	2.00	1
Coquitlam College	3.27	3.13	5	3.19	2.27	5	3.10	2.34	2
Total Lower Mainland	2.88	2.46	181	2.88	2.11	243	2.87	2.43	114
Total B.C. College Transfers	2.91	2.47	214	2.91	2.13	287	2.89	2.41	127
Total Direct Entry B.C. Grade 12s	3.46	2.96	420	3.45	2.64	564	3.41	2.89	173

Note:

- a) Please note that in many cases above, the number of students from a particular institution who have received a grade in a particular SFU course is small and the corresponding course grade averages, although accurate, are not statistically reliable as an indicator for the college.
- b) Course Titles:
 Bich 222 - Molecular Biology and Biochemistry.
 Bisc 202 - Genetics.
 Bisc 316 - Vertebrate Biology.
- c) The proportion of students with a strong academic background (as evidenced by secondary school grades) varies among transfer and direct entry students. This table describes differences between the two groups but does not explain the cause of the differences.

**TABLE 11A (cont.)
COMPARISON OF COURSE GRADES IN SELECTED COURSES
B.C. COLLEGE TRANSFERS vs DIRECT ENTRY B.C. GRADE 12s
(FOR STUDENTS ADMITTED TO SFU FROM 1993/94 TO 1997/98)**

Region/College	Buec 232			Buec 333			Bus 207		
	Admis- sion GPA	Avg Crs Grade	N	Admis- sion GPA	Avg Crs Grade	N	Admis- sion GPA	Avg Crs Grade	N
Non Lower Mainland									
Northern B.C.	3.06	2.39	22	3.07	2.56	15	3.20	1.72	13
College of New Caledonia	2.91	2.13	10	2.90	2.71	8	3.11	1.81	7
Northern Lights College	2.71	3.00	2	2.71	2.50	2	2.87	1.67	1
Northwest Community College	3.29	2.53	10	3.48	2.33	5	3.39	1.60	5
Interior/Kootenays	3.12	2.33	65	3.17	2.62	74	3.18	2.11	56
College of the Rockies	3.18	2.38	7	3.15	2.17	2	2.99	2.34	2
Okanagan University College	3.00	2.12	29	3.14	2.83	27	3.11	2.00	24
Selkirk College	3.17	2.54	11	3.10	2.61	11	3.12	2.07	5
Univ College of the Cariboo	3.27	2.52	18	3.23	2.49	34	3.28	2.21	25
Vancouver Island	3.00	1.79	28	3.09	2.52	62	3.11	2.14	52
Camosun College	2.98	1.43	7	3.08	2.44	22	3.13	2.20	17
Malaspina University-College	3.00	1.90	21	3.11	2.54	39	3.10	2.10	34
North Island College				2.70	3.67	1	2.70	2.67	1
Total Non Lower Mainland	3.08	2.21	115	3.13	2.57	151	3.15	2.08	121
Lower Mainland									
Public	2.98	2.51	1,136	3.06	2.64	1,323	3.10	2.43	916
B.C. Institute of Technology	3.50	3.48	11	3.47	3.14	12	3.47	2.82	13
Capilano College	2.92	2.43	256	2.97	2.62	189	3.02	2.28	147
Douglas College	3.00	2.32	175	3.14	2.51	323	3.19	2.36	208
Kwantlen University College	3.06	2.42	333	3.13	2.60	384	3.19	2.31	251
Univ Coll of the Fraser Valley	3.08	2.78	30	3.16	2.78	23	3.08	2.58	19
Langara College	2.89	2.71	331	2.96	2.77	392	2.98	2.64	278
Private	3.09	2.81	105	3.14	2.75	173	3.21	2.79	112
Columbia College	3.03	2.87	71	3.07	2.79	110	3.10	2.84	62
Coquitlam College	3.22	2.68	34	3.27	2.68	63	3.34	2.73	50
Total Lower Mainland	2.99	2.53	1,241	3.07	2.65	1,496	3.11	2.47	1,028
Total B.C. College Transfers	2.99	2.51	1,356	3.08	2.64	1,647	3.12	2.43	1,149
Total Direct Entry B.C. Grade 12s	3.34	2.75	1,294	3.36	2.92	852	3.41	2.74	662

Note:

- a) Please note that in many cases above, the number of students from a particular institution who have received a grade in a particular SFU course is small and the corresponding course grade averages, although accurate, are not statistically reliable as an indicator for the college.
- b) Course Titles:
 Buec 232 - Elementary Economic/Business Statistics I
 Buec 333 - Elementary Economic/Business Statistics II
 Bus 207 (formerly Bus 307) - Managerial Economics (includes students who took Bus 307 prior to 1994-3)
- c) The proportion of students with a strong academic background (as evidenced by secondary school grades) varies among transfer and direct entry students. This table describes differences between the two groups but does not explain the cause of the differences.

**TABLE 11A (cont.)
COMPARISON OF COURSE GRADES IN SELECTED COURSES
B.C. COLLEGE TRANSFERS vs DIRECT ENTRY B.C. GRADE 12s
(FOR STUDENTS ADMITTED TO SFU FROM 1993/94 TO 1997/98)**

Region/College	Bus 237			Bus 251			Bus 312		
	Admis- sion	Avg Crs	N	Admis- sion	Avg Crs	N	Admis- sion	Avg Crs	N
	GPA	Grade		GPA	Grade		GPA	Grade	
Non Lower Mainland									
Northern B.C.	2.98	2.29	32	3.09	2.67	21	3.11	2.30	9
College of New Caledonia	2.85	2.22	21	2.89	2.37	9	2.94	2.07	5
Northern Lights College	3.24	2.34	2	3.24	2.50	2	2.87	2.00	1
Northwest Community College	3.24	2.44	9	3.25	2.97	10	3.47	2.78	3
Interior/Kootenays	3.07	2.30	76	3.09	2.41	55	3.28	2.62	45
College of the Rockies	3.18	1.53	7	3.17	2.00	3	3.73	1.67	1
Okanagan University College	3.03	2.33	40	3.03	2.29	23	3.17	2.53	17
Selkirk College	3.12	2.48	16	3.19	2.75	12	3.38	3.22	3
Univ College of the Cariboo	3.06	2.44	13	3.10	2.41	17	3.33	2.65	24
Vancouver Island	3.03	2.36	43	2.97	2.10	34	3.28	2.82	36
Camosun College	3.00	2.56	16	2.84	1.96	9	3.18	2.87	13
Malaspina University-College	3.06	2.20	26	3.02	2.10	24	3.36	2.74	22
North Island College	2.70	3.00	1	2.70	3.33	1	2.70	3.67	1
Total Non Lower Mainland	3.04	2.32	151	3.05	2.36	110	3.26	2.67	90
Lower Mainland									
Public	2.94	2.46	1,123	2.93	2.39	807	3.22	2.67	693
B.C. Institute of Technology	3.50	3.36	11	3.15	3.50	2	3.55	3.29	8
Capilano College	2.91	2.49	318	2.91	2.41	246	3.08	2.53	97
Douglas College	2.97	2.32	118	2.99	2.25	139	3.32	2.68	173
Kwantlen University College	3.05	2.33	145	3.00	2.14	127	3.31	2.67	204
Univ Coll of the Fraser Valley	3.01	2.50	33	3.01	2.32	24	3.12	2.98	14
Langara College	2.91	2.49	498	2.87	2.56	269	3.09	2.67	197
Private	3.06	2.44	105	3.06	2.55	121	3.31	2.68	93
Columbia College	3.07	2.51	87	3.05	2.58	93	3.19	2.72	60
Coquitlam College	3.03	2.11	18	3.11	2.44	28	3.52	2.62	33
Total Lower Mainland	2.95	2.46	1,228	2.95	2.41	928	3.23	2.67	786
Total B.C. College Transfers	2.96	2.44	1,379	2.96	2.41	1,038	3.23	2.67	876
Total Direct Entry B.C. Grade 12s	3.35	2.59	1,861	3.35	2.64	1,875	3.45	2.98	489

Note:

- a) Please note that in many cases above, the number of students from a particular institution who have received a grade in a particular SFU course is small and the corresponding course grade averages, although accurate, are not statistically reliable as an indicator for the college.
- b) Course Titles:
 Bus 237 - Introduction to Computers and Information Systems in Business
 Bus 251 - Financial Accounting I
 Bus 312 - Business Finance
- c) The proportion of students with a strong academic background (as evidenced by secondary school grades) varies among transfer and direct entry students. This table describes differences between the two groups but does not explain the cause of the differences.

**TABLE 11A (cont.)
COMPARISON OF COURSE GRADES IN SELECTED COURSES
B.C. COLLEGE TRANSFERS vs DIRECT ENTRY B.C. GRADE 12s
(FOR STUDENTS ADMITTED TO SFU FROM 1993/94 TO 1997/98)**

Region/College	Bus 343			Bus 374			Chem 150		
	Admis- sion	Avg Crs Grade	N	Admis- sion	Avg Crs Grade	N	Admis- sion	Avg Crs Grade	N
	GPA	Grade		GPA	Grade		GPA	Grade	
Non Lower Mainland									
Northern B.C.	3.14	2.50	8	3.12	3.17	6	3.12	2.81	16
College of New Caledonia	2.97	2.00	4	2.97	3.22	3	2.91	2.57	10
Northern Lights College	2.87	2.33	1	2.87	4.00	1	3.52	3.67	3
Northwest Community College	3.47	3.22	3	3.46	2.67	2	3.41	2.78	3
Interior/Kootenays	3.28	2.59	55	3.28	3.12	25	3.15	2.60	28
College of the Rockies	3.73	3.00	1	3.73	3.67	1	3.42	2.33	2
Okanagan University College	3.19	2.62	22	3.27	3.11	9	3.06	2.91	11
Selkirk College	3.30	2.13	5	3.40	3.33	1	3.43	2.50	6
Univ College of the Cariboo	3.33	2.63	27	3.24	3.07	14	3.02	2.33	9
Vancouver Island	3.23	2.89	39	3.29	2.91	19	3.10	2.38	15
Camosun College	3.13	2.98	15	3.17	2.40	5	3.27	2.17	6
Malaspina University-College	3.32	2.84	23	3.33	3.10	14	2.98	2.61	6
North Island College	2.70	2.67	1				3.00	2.33	3
Total Non Lower Mainland	3.25	2.70	102	3.26	3.05	50	3.13	2.60	59
Lower Mainland									
Public	3.19	2.62	748	3.17	2.85	344	2.89	2.42	327
B.C. Institute of Technology	3.47	3.38	7	3.28	3.00	3	3.17	3.00	7
Capilano College	3.06	2.73	110	3.07	2.91	59	2.85	2.59	49
Douglas College	3.27	2.55	178	3.18	2.79	70	2.90	2.21	102
Kwantlen University College	3.28	2.66	231	3.27	2.89	112	2.89	2.58	88
Univ Coll of the Fraser Valley	3.11	2.86	14	2.95	2.95	7	3.02	2.60	19
Langara College	3.08	2.56	208	3.11	2.78	93	2.83	2.29	62
Private	3.30	2.49	101	3.26	2.68	34	3.03	2.49	15
Columbia College	3.19	2.55	64	3.15	2.65	23	2.95	2.59	9
Coquitlam College	3.50	2.41	37	3.49	2.73	11	3.14	2.33	6
Total Lower Mainland	3.20	2.61	849	3.18	2.83	378	2.89	2.42	342
Total B.C. College Transfers	3.21	2.62	951	3.19	2.86	428	2.93	2.45	401
Total Direct Entry B.C. Grade 12s	3.45	2.94	534	3.46	3.08	246	3.43	2.68	1,173

Note:

- a) Please note that in many cases above, the number of students from a particular institution who have received a grade in a particular SFU course is small and the corresponding course grade averages, although accurate, are not statistically reliable as an indicator for the college.
- b) Course Titles:
 Bus 343 - Introduction to Marketing.
 Bus 374 - Organization Theory.
 Chem 150 (changed to CHEM 281 in 1998-3) - Organic Chemistry I (includes students who took Chem 281 after 1998-2).
- c) The proportion of students with a strong academic background (as evidenced by secondary school grades) varies among transfer and direct entry students. This table describes differences between the two groups but does not explain the cause of the differences.

**TABLE 11A (cont.)
COMPARISON OF COURSE GRADES IN SELECTED COURSES
B.C. COLLEGE TRANSFERS vs DIRECT ENTRY B.C. GRADE 12s
(FOR STUDENTS ADMITTED TO SFU FROM 1993/94 TO 1997/98)**

Region/College	Cmns 221			Cmns 223			Cmpt 205		
	Admis- GPA	Avg Crs Grade	N	Admis- GPA	Avg Crs Grade	N	Admis- GPA	Avg Crs Grade	N
Non Lower Mainland									
Northern B.C.	3.05	3.17	6	3.13	2.71	7	3.03	2.33	3
College of New Caledonia	2.84	3.33	3	3.11	3.17	4	3.03	2.33	3
Northern Lights College				3.05	1.67	2			
Northwest Community College	3.25	3.00	3	3.33	3.00	1			
Interior/Kootenays	2.85	2.25	8	2.95	2.33	13	3.13	1.87	5
College of the Rockies									
Okanagan University College	2.88	2.33	5	2.98	2.62	8	2.98	1.67	2
Selkirk College	2.93	2.17	2	2.80	1.33	3	3.10	2.00	1
Univ College of the Cariboo	2.50	2.00	1	3.08	2.67	2	3.30	2.00	2
Vancouver Island	3.03	2.81	9	3.02	2.80	18	3.24	2.67	2
Camosun College	3.05	2.94	6	2.99	2.92	8	3.24	2.67	2
Malaspina University-College	3.02	2.17	2	3.04	2.70	10			
North Island College	2.96	3.33	1						
Total Non Lower Mainland	2.97	2.71	23	3.02	2.62	38	3.12	2.17	10
Lower Mainland									
Public	2.89	2.74	177	2.92	2.75	210	3.08	2.26	100
B.C. Institute of Technology	3.18	2.33	1	3.18	2.67	1	3.40	2.50	2
Capilano College	2.91	2.68	57	2.91	2.88	52	2.79	1.98	19
Douglas College	2.94	2.79	30	2.91	2.54	47	3.43	2.61	19
Kwantlen University College	3.00	2.67	26	3.06	2.75	38	3.18	2.19	26
Univ Coll of the Fraser Valley	2.99	3.00	6	2.97	2.90	7	3.12	2.13	5
Langara College	2.78	2.77	57	2.84	2.77	65	2.90	2.28	29
Private	2.92	2.22	12	2.96	2.41	25	2.98	2.39	12
Columbia College	2.93	2.08	8	3.03	2.44	16	2.99	2.33	9
Coquitlam College	2.90	2.50	4	2.84	2.37	9	2.97	2.56	3
Total Lower Mainland	2.89	2.70	189	2.93	2.71	235	3.07	2.27	112
Total B.C. College Transfers	2.90	2.70	212	2.94	2.70	273	3.07	2.27	122
Total Direct Entry B.C. Grade 12s	3.31	2.76	125	3.29	2.77	159	3.52	2.59	152

Note:

- a) Please note that in many cases above, the number of students from a particular institution who have received a grade in a particular SFU course is small and the corresponding course grade averages, although accurate, are not statistically reliable as an indicator for the college.
- b) Course Titles:
 Cmns 221 - Media and Audiences
 Cmns 223 (formerly Cmns 215) - Advertising as Social Communic. (includes students who took Cmns 215 prior to 1994-3).
 Cmpt 205 - Introduction to Formal Topics in Computing Science.
- c) The proportion of students with a strong academic background (as evidenced by secondary school grades) varies among transfer and direct entry students. This table describes differences between the two groups but does not explain the cause of the differences.

**TABLE 11A (cont.)
COMPARISON OF COURSE GRADES IN SELECTED COURSES
B.C. COLLEGE TRANSFERS vs DIRECT ENTRY B.C. GRADE 12s
(FOR STUDENTS ADMITTED TO SFU FROM 1993/94 TO 1997/98)**

Region/College	Crim 230			Crim 320			Crim 330		
	Admis- sion GPA	Avg Crs Grade	N	Admis- sion GPA	Avg Crs Grade	N	Admis- sion GPA	Avg Crs Grade	N
Non Lower Mainland									
Northern B.C.	2.99	2.67	16	3.16	2.87	29	3.18	2.66	32
College of New Caledonia	2.96	2.71	8	3.17	2.82	26	3.20	2.62	29
Northern Lights College	3.26	2.00	1						
Northwest Community College	2.99	2.71	7	3.07	3.33	3	3.02	3.00	3
Interior/Kootenays									
College of the Rockies	3.01	3.34	2	2.78	2.33	1	2.78	2.00	1
Okanagan University College	3.15	3.04	9	2.99	3.24	7	2.99	2.76	7
Selkirk College	3.05	3.33	3	3.01	2.34	2	3.01	2.84	2
Univ College of the Cariboo	3.06	2.81	7	3.20	3.42	4	3.08	2.78	6
Vancouver Island									
Camosun College	3.07	2.50	4	3.19	2.79	35	3.20	2.60	41
Malaspina University-College	3.15	2.73	10	3.29	3.19	21	3.29	2.87	25
North Island College	3.07	2.00	1						
Total Non Lower Mainland	3.07	2.80	52	3.18	2.94	99	3.19	2.69	114
Lower Mainland									
Public	2.93	2.60	241	3.10	2.85	356	3.08	2.65	417
B.C. Institute of Technology	4.00	4.00	1						
Capilano College	3.02	2.60	82	3.12	3.09	27	3.11	2.72	35
Douglas College	2.94	2.45	70	3.11	2.82	128	3.07	2.62	147
Kwantlen University College	2.92	2.72	30	3.16	2.81	156	3.16	2.66	183
Univ Coll of the Fraser Valley	2.86	2.43	7	3.21	2.77	10	3.17	2.82	13
Langara College	2.74	2.72	51	2.73	2.94	35	2.71	2.56	39
Private	2.68	2.67	4				2.76	3.00	1
Columbia College	2.71	2.78	3				2.76	3.00	1
Coquitlam College	2.61	2.33	1						
Total Lower Mainland	2.92	2.60	245	3.10	2.85	356	3.08	2.65	418
Total B.C. College Transfers	2.95	2.63	297	3.12	2.87	455	3.11	2.66	532
Total Direct Entry B.C. Grade 12s	3.28	2.74	260	3.27	3.19	69	3.30	2.91	89

Note:

- a) Please note that in many cases above, the number of students from a particular institution who have received a grade in a particular SFU course is small and the corresponding course grade averages, although accurate, are not statistically reliable as an indicator for the college.
- b) Course Titles:
 Crim 230 - Criminal Law.
 Crim 320 - Advanced Research Issues in Criminology.
 Crim 330 - Criminal Procedure and Evidence.
- c) The proportion of students with a strong academic background (as evidenced by secondary school grades) varies among transfer and direct entry students. This table describes differences between the two groups but does not explain the cause of the differences.

**TABLE 11A (cont.)
COMPARISON OF COURSE GRADES IN SELECTED COURSES
B.C. COLLEGE TRANSFERS vs DIRECT ENTRY B.C. GRADE 12s
(FOR STUDENTS ADMITTED TO SFU FROM 1993/94 TO 1997/98)**

Region/College	Econ 103			Econ 301			Econ 305		
	Admis- sion GPA	Avg Crs Grade	N	Admis- sion GPA	Avg Crs Grade	N	Admis- sion GPA	Avg Crs Grade	N
Non Lower Mainland									
Northern B.C.	2.86	1.89	6	2.97	2.78	3	2.55	2.84	2
College of New Caledonia	2.87	1.93	5	2.56	2.33	1	2.56	3.67	1
Northern Lights College				2.54	3.00	1	2.54	2.00	1
Northwest Community College	2.79	1.67	1	3.80	3.00	1			
Interior/Kootenays									
College of the Rockies	3.10	2.37	16	3.02	2.67	26	2.97	2.79	22
Okanagan University College	3.15	2.83	2	3.15	2.84	2	3.15	3.17	2
Selkirk College	3.44	2.89	6	2.81	3.07	5	2.84	2.89	6
Univ College of the Cariboo	2.71	1.67	4	3.03	2.62	8	2.98	2.58	8
	2.97	2.08	4	3.08	2.48	11	3.03	2.84	6
Vancouver Island									
Camosun College	3.03	1.78	6	3.14	2.45	15	2.86	2.56	9
Malaspina University-College	3.03	1.73	5	3.23	2.62	7	2.92	2.67	3
North Island College	3.03	2.00	1	3.06	2.29	8	2.83	2.50	6
Total Non Lower Mainland	3.03	2.14	28	3.06	2.60	44	2.91	2.73	33
Lower Mainland									
Public	2.94	2.15	315	2.95	2.62	554	2.92	2.65	477
B.C. Institute of Technology	3.48	2.40	5	3.25	4.00	1			
Capilano College	2.92	2.25	43	2.86	2.67	76	2.82	2.79	65
Douglas College	2.97	2.04	76	3.03	2.60	133	3.01	2.64	115
Kwantlen University College	3.01	2.17	95	3.02	2.61	150	2.99	2.63	133
Univ Coll of the Fraser Valley	2.93	2.08	8	3.11	2.60	10	3.22	2.42	8
Langara College	2.80	2.17	88	2.87	2.61	184	2.81	2.61	156
Private	3.10	2.44	32	3.02	2.79	95	3.00	2.61	86
Columbia College	3.10	2.47	25	2.91	2.85	54	2.91	2.53	51
Coquitlam College	3.12	2.33	7	3.16	2.71	41	3.13	2.71	35
Total Lower Mainland	2.95	2.18	347	2.96	2.64	649	2.93	2.64	563
Total B.C. College Transfers	2.96	2.17	375	2.97	2.64	693	2.93	2.65	596
Total Direct Entry B.C. Grade 12s	3.37	2.49	2,410	3.28	2.74	308	3.26	2.89	266

Note:

- Please note that in many cases above, the number of students from a particular institution who have received a grade in a particular SFU course is small and the corresponding course grade averages, although accurate, are not statistically reliable as an indicator for the college.
- Course Titles:
Econ 103 (formerly Econ 200) - Principles of Microeconomics (includes students who took Econ 200 prior to 1993-3).
Econ 301 - Intermediate Microeconomic Theory.
Econ 305 - Intermediate Macroeconomic Theory.
- The proportion of students with a strong academic background (as evidenced by secondary school grades) varies among transfer and direct entry students. This table describes differences between the two groups but does not explain the cause of the differences.

BEST COPY AVAILABLE

**TABLE 11A (cont.)
COMPARISON OF COURSE GRADES IN SELECTED COURSES
B.C. COLLEGE TRANSFERS vs DIRECT ENTRY B.C. GRADE 12s
(FOR STUDENTS ADMITTED TO SFU FROM 1993/94 TO 1997/98)**

Region/College	Educ 220			Educ 230			Educ 240		
	Admis- sion GPA	Avg Crs Grade	N	Admis- sion GPA	Avg Crs Grade	N	Admis- sion GPA	Avg Crs Grade	N
Non Lower Mainland									
Northern B.C.	3.09	2.69	98	2.96	3.34	49	2.99	3.21	43
College of New Caledonia	3.11	2.96	50	2.80	3.30	9	3.03	3.06	16
Northern Lights College	3.01	2.38	26	2.93	3.32	32	2.92	3.31	16
Northwest Community College	3.15	2.43	22	3.24	3.46	8	3.02	3.27	11
Interior/Kootenays	2.91	2.76	38	2.84	3.06	16	2.91	3.44	10
College of the Rockies	2.64	1.84	2						
Okanagan University College	2.88	2.87	18	2.69	3.33	9	2.51	3.33	2
Selkirk College	2.91	2.57	7	2.63	2.33	3	2.80	3.34	2
Univ College of the Cariboo	3.02	2.88	11	3.33	3.00	4	3.08	3.50	6
Vancouver Island	2.89	2.81	16	2.88	3.00	7	3.32	3.50	4
Camosun College	2.83	2.72	6	2.74	2.89	3	2.62	3.67	1
Malaspina University-College	2.95	2.96	9	3.04	3.00	2	3.55	3.44	3
North Island College	2.67	2.00	1	2.94	3.17	2			
Total Non Lower Mainland	3.03	2.72	152	2.92	3.25	72	3.00	3.27	57
Lower Mainland									
Public	2.97	2.66	905	2.93	3.11	205	2.94	3.28	263
B.C. Institute of Technology	3.33	2.67	5	3.15	4.00	1	3.03	3.50	2
Capilano College	2.92	2.52	167	2.85	3.01	42	2.97	3.35	51
Douglas College	2.98	2.59	252	2.92	3.12	64	2.90	3.12	65
Kwantlen University College	3.06	2.71	286	3.02	3.06	62	2.97	3.26	90
Univ Coll of the Fraser Valley	3.03	2.96	45	3.06	2.97	10	3.05	3.57	14
Langara College	2.80	2.76	150	2.81	3.39	26	2.86	3.40	41
Private	3.04	2.91	34	2.89	3.29	7	2.91	2.89	6
Columbia College	3.03	3.13	23	2.97	3.40	5	2.96	3.00	5
Coquitlam College	3.05	2.45	11	2.70	3.00	2	2.67	2.33	1
Total Lower Mainland	2.97	2.67	939	2.93	3.11	212	2.94	3.27	269
Total B.C. College Transfers	2.98	2.68	1,091	2.93	3.15	284	2.95	3.27	326
Total Direct Entry B.C. Grade 12s	3.33	2.62	805	3.31	3.02	233	3.31	3.23	201

Note:

- a) Please note that in many cases above, the number of students from a particular institution who have received a grade in a particular SFU course is small and the corresponding course grade averages, although accurate, are not statistically reliable as an indicator for the college.
- b) Course Titles:
 Educ 220 - Introduction to Educational Psychology
 Educ 230 - Introduction to Philosophy of Education
 Educ 240 - Social Issues in Education
- c) The proportion of students with a strong academic background (as evidenced by secondary school grades) varies among transfer and direct entry students. This table describes differences between the two groups but does not explain the cause of the differences.

**TABLE 11A (cont.)
COMPARISON OF COURSE GRADES IN SELECTED COURSES
B.C. COLLEGE TRANSFERS vs DIRECT ENTRY B.C. GRADE 12s
(FOR STUDENTS ADMITTED TO SFU FROM 1993/94 TO 1997/98)**

Region/College	Engl 206			Engl 312			Fren 201		
	Admission GPA	Avg Crs Grade	N	Admission GPA	Avg Crs Grade	N	Admission GPA	Avg Crs Grade	N
Non Lower Mainland									
Northern B.C.	3.15	2.78	18	3.11	2.63	43	3.33	2.33	1
College of New Caledonia	2.96	2.43	7	3.16	2.83	23			
Northern Lights College	3.35	3.13	5	2.85	2.13	8			
Northwest Community College	3.20	2.89	6	3.18	2.58	12	3.33	2.33	1
Interior/Kootenays	3.04	2.67	22	2.89	2.81	26	3.05	2.75	4
College of the Rockies	2.95	2.50	2	3.24	2.78	3	2.56	2.33	1
Okanagan University College	3.06	2.42	11	2.70	2.73	10	2.70	2.00	1
Selkirk College	3.06	3.06	5	3.02	2.90	7			
Univ College of the Cariboo	3.01	2.92	4	2.86	2.83	6	3.46	3.33	2
Vancouver Island	2.95	2.63	9	2.96	3.00	17	2.81	3.33	1
Camosun College	2.46	2.67	1	2.79	2.86	7	2.81	3.33	1
Malaspina University-College	3.01	2.67	6	3.16	3.13	8			
North Island College	3.01	2.50	2	2.76	3.00	2			
Total Non Lower Mainland	3.06	2.70	49	3.01	2.76	86	3.05	2.78	6
Lower Mainland									
Public	2.97	2.83	216	3.04	2.86	439	2.86	2.36	79
B.C. Institute of Technology				3.75	2.67	1	3.15	3.00	1
Capilano College	2.94	2.90	63	3.01	2.87	108	2.79	2.13	23
Douglas College	2.91	2.83	49	3.00	2.73	89	2.93	2.47	15
Kwantlen University College	3.06	2.77	67	3.11	2.79	138	2.94	2.43	17
Univ Coll of the Fraser Valley	3.17	2.81	12	3.22	3.04	26	2.98	2.67	5
Langara College	2.83	2.85	25	2.97	3.03	77	2.79	2.39	18
Private	2.97	3.00	3	3.22	2.92	4	3.92	3.00	1
Columbia College	3.09	2.84	2	3.37	2.78	3	3.92	3.00	1
Coquitlam College	2.75	3.33	1	2.75	3.33	1			
Total Lower Mainland	2.97	2.84	219	3.05	2.86	443	2.88	2.37	80
Total B.C. College Transfers	2.99	2.81	268	3.04	2.84	529	2.89	2.40	86
Total Direct Entry B.C. Grade 12s	3.46	2.91	415	3.45	2.90	223	3.44	2.67	333

Note:

- a) Please note that in many cases above, the number of students from a particular institution who have received a grade in a particular SFU course is small and the corresponding course grade averages, although accurate, are not statistically reliable as an indicator for the college.
- b) Course Titles:
 Engl 206 - Nineteenth Century Literatures in English.
 Engl 312 - Shakespeare.
 Fren 201 - Intermediate French I (includes students who took Fren 199 after 19923).
- c) The proportion of students with a strong academic background (as evidenced by secondary school grades) varies among transfer and direct entry students. This table describes differences between the two groups but does not explain the cause of the differences.

**TABLE 11A (cont.)
COMPARISON OF COURSE GRADES IN SELECTED COURSES
B.C. COLLEGE TRANSFERS vs DIRECT ENTRY B.C. GRADE 12s
(FOR STUDENTS ADMITTED TO SFU FROM 1993/94 TO 1997/98)**

Region/College	Fren 301			Geog 221			Hist 225		
	Admis- sion GPA	Avg Crs Grade	N	Admis- sion GPA	Avg Crs Grade	N	Admis- sion GPA	Avg Crs Grade	N
Non Lower Mainland									
Northern B.C.	2.80	2.33	1	2.76	2.37	10	3.08	2.50	6
College of New Caledonia				2.53	2.09	7	3.00	2.22	3
Northern Lights College	2.80	2.33	1	3.44	3.00	1			
Northwest Community College				3.19	3.00	2	3.15	2.78	3
Interior/Kootenays	3.47	2.83	2	2.88	2.64	24	2.88	2.61	12
College of the Rockies				3.40	2.67	1	2.56	2.67	1
Okanagan University College				2.78	2.81	9	2.99	2.00	2
Selkirk College				2.81	2.33	6	2.84	2.93	5
Univ College of the Cariboo	3.47	2.83	2	2.97	2.67	8	2.95	2.50	4
Vancouver Island	3.07	2.89	3	2.97	2.76	7	3.24	3.17	4
Camosun College				2.94	2.00	1	3.03	3.50	2
Malaspina University-College	3.00	3.00	1	2.97	2.89	6	3.45	2.84	2
North Island College	3.10	2.83	2						
Total Non Lower Mainland	3.16	2.78	6	2.86	2.59	41	3.00	2.68	22
Lower Mainland									
Public	3.06	2.65	83	2.88	2.58	298	3.01	2.59	178
B.C. Institute of Technology	3.15	3.33	1	3.53	3.84	2			
Capilano College	2.86	2.46	21	2.92	2.72	75	3.08	2.70	47
Douglas College	3.19	2.61	12	2.88	2.35	70	2.96	2.24	34
Kwantlen University College	3.18	2.67	26	2.95	2.66	82	3.01	2.58	64
Univ Coll of the Fraser Valley	3.28	2.73	10	2.72	2.44	19	3.04	3.14	12
Langara College	2.85	2.82	13	2.76	2.57	50	2.88	2.62	21
Private	2.47	2.00	1				2.94	2.67	2
Columbia College	2.47	2.00	1				3.10	2.00	1
Coquitlam College							2.78	3.33	1
Total Lower Mainland	3.05	2.64	84	2.88	2.58	298	3.01	2.59	180
Total B.C. College Transfers	3.06	2.65	90	2.88	2.58	339	3.00	2.60	202
Total Direct Entry B.C. Grade 12s	3.53	2.84	73	3.34	2.75	191	3.46	2.74	358

Note:

- a) Please note that in many cases above, the number of students from a particular institution who have received a grade in a particular SFU course is small and the corresponding course grade averages, although accurate, are not statistically reliable as an indicator for the college.
- b) Course Titles:
 Fren 301 - Advanced French — Composition I.
 Geog 221 - Economic Geography.
 Hist 225 - 20th Century Europe.
- c) The proportion of students with a strong academic background (as evidenced by secondary school grades) varies among transfer and direct entry students. This table describes differences between the two groups but does not explain the cause of the differences.

**TABLE 11A (cont.)
COMPARISON OF COURSE GRADES IN SELECTED COURSES
B.C. COLLEGE TRANSFERS vs DIRECT ENTRY B.C. GRADE 12s
(FOR STUDENTS ADMITTED TO SFU FROM 1993/94 TO 1997/98)**

Region/College	Ling 220			Macm 316			Math 232		
	Admis- sion GPA	Avg Crs Grade	N	Admis- sion GPA	Avg Crs Grade	N	Admis- sion GPA	Avg Crs Grade	N
Non Lower Mainland									
Northern B.C.	3.01	2.48	9	3.21	3.00	2	3.05	1.93	5
College of New Caledonia	2.88	2.42	4	2.80	3.00	1	2.93	2.22	3
Northern Lights College	3.02	2.89	3	3.61	3.00	1	3.24	1.50	2
Northwest Community College	3.28	2.00	2						
Interior/Kootenays	2.96	2.81	12	3.38	2.71	7	3.10	2.44	15
College of the Rockies									
Okanagan University College	2.81	2.33	5	3.38	2.78	6	2.91	2.13	5
Selkirk College	3.02	3.67	2				3.10	2.27	5
Univ College of the Cariboo	3.08	2.93	5	3.37	2.33	1	3.29	2.93	5
Vancouver Island	3.02	2.23	13	3.43	1.50	4	2.94	2.00	10
Camosun College	3.17	2.47	5	3.37	1.00	3	2.82	2.33	5
Malaspina University-College	2.92	2.33	6	3.62	3.00	1	3.06	1.67	5
North Island College	2.93	1.34	2						
Total Non Lower Mainland	3.00	2.50	34	3.37	2.38	13	3.04	2.21	30
Lower Mainland									
Public	2.96	2.64	463	3.19	2.38	185	2.97	2.40	298
B.C. Institute of Technology	3.35	2.22	3	3.47	2.89	3	3.39	2.43	7
Capilano College	2.94	2.71	91	3.00	2.38	35	2.84	2.33	65
Douglas College	3.06	2.47	121	3.42	2.23	37	3.07	2.29	67
Kwantlen University College	3.02	2.61	102	3.32	2.29	48	3.16	2.49	55
Univ Coll of the Fraser Valley	3.03	2.55	11	3.30	3.44	3	2.98	2.80	10
Langara College	2.82	2.80	135	3.02	2.48	59	2.86	2.43	94
Private	3.15	2.96	31	3.16	2.26	17	2.93	2.46	27
Columbia College	3.06	2.94	18	3.14	2.14	12	2.90	2.37	20
Coquitlam College	3.27	2.97	13	3.21	2.54	5	3.02	2.71	7
Total Lower Mainland	2.97	2.66	494	3.18	2.37	202	2.97	2.41	325
Total B.C. College Transfers	2.97	2.65	528	3.19	2.37	215	2.98	2.39	355
Total Direct Entry B.C. Grade 12s	3.30	2.76	576	3.60	2.75	274	3.53	2.74	1,263

Note:

- a) Please note that in many cases above, the number of students from a particular institution who have received a grade in a particular SFU course is small and the corresponding course grade averages, although accurate, are not statistically reliable as an indicator for the college.
- b) Course Titles:
Ling 220 - Introduction to Linguistics.
Macm 316 - Numerical Analysis I.
Math 232 - Elementary Linear Algebra.
- c) The proportion of students with a strong academic background (as evidenced by secondary school grades) varies among transfer and direct entry students. This table describes differences between the two groups but does not explain the cause of the differences.

**TABLE 11A (cont.)
COMPARISON OF COURSE GRADES IN SELECTED COURSES
B.C. COLLEGE TRANSFERS vs DIRECT ENTRY B.C. GRADE 12s
(FOR STUDENTS ADMITTED TO SFU FROM 1993/94 TO 1997/98)**

Region/College	Math 251			Math 310			Phil 210		
	Admis- sion GPA	Avg Crs Grade	N	Admis- sion GPA	Avg Crs Grade	N	Admis- sion GPA	Avg Crs Grade	N
Non Lower Mainland									
Northern B.C.	2.80	2.33	1	3.50	3.33	1	2.59	2.33	1
College of New Caledonia	2.80	2.33	1				2.59	2.33	1
Northern Lights College				3.50	3.33	1			
Northwest Community College									
Interior/Kootenays	3.33	2.24	7	3.32	2.21	8	3.29	1.17	4
College of the Rockies				3.13	2.67	1	3.22		1
Okanagan University College	3.27	2.00	5	3.44	2.50	4			
Selkirk College				2.47	1.00	1	3.27	1.50	2
Univ College of the Cariboo	3.49	2.84	2	3.59	2.00	2	3.40	1.67	1
Vancouver Island	3.10	2.14	5	3.41	2.84	2	2.94	0.56	3
Camosun College	3.15	2.17	2	3.63	3.00	1	2.89		1
Malaspina University-College	3.06	2.11	3	3.19	2.67	1	2.97	0.84	2
North Island College									
Total Non Lower Mainland	3.20	2.21	13	3.35	2.42	11	3.07	1.08	8
Lower Mainland									
Public	3.07	2.37	122	3.12	2.42	128	3.11	2.36	73
B.C. Institute of Technology	3.53	2.80	5	3.64	2.33	4			
Capilano College	2.82	2.08	17	2.98	2.26	24	3.07	2.69	16
Douglas College	3.19	2.47	30	3.24	2.35	25	3.18	1.98	17
Kwantlen University College	3.09	2.33	29	3.25	2.31	36	3.10	2.23	22
Univ Coll of the Fraser Valley	3.26	2.73	5	3.01	2.22	3	3.10	3.00	3
Langara College	2.98	2.33	36	2.97	2.71	36	3.08	2.51	15
Private	2.94	2.50	28	3.07	2.39	24	3.22	2.89	3
Columbia College	2.93	2.63	21	3.02	2.50	16	3.00	2.00	1
Coquitlam College	2.95	2.10	7	3.16	2.17	8	3.33	3.33	2
Total Lower Mainland	3.04	2.39	150	3.11	2.41	152	3.11	2.38	76
Total B.C. College Transfers	3.06	2.38	163	3.13	2.42	163	3.11	2.26	84
Total Direct Entry B.C. Grade 12s	3.65	3.00	500	3.69	3.06	374	3.46	2.78	49

Note:

- a) Please note that in many cases above, the number of students from a particular institution who have received a grade in a particular SFU course is small and the corresponding course grade averages, although accurate, are not statistically reliable as an indicator for the college.
- b) Course Titles:
 Math 251 - Calculus III.
 Math 310 - Introduction to Ordinary Differential Equations.
 Phil 210 - Natural Deductive Logic.
- c) The proportion of students with a strong academic background (as evidenced by secondary school grades) varies among transfer and direct entry students. This table describes differences between the two groups but does not explain the cause of the differences.

BEST COPY AVAILABLE

**TABLE 11A (cont.)
COMPARISON OF COURSE GRADES IN SELECTED COURSES
B.C. COLLEGE TRANSFERS vs DIRECT ENTRY B.C. GRADE 12s
(FOR STUDENTS ADMITTED TO SFU FROM 1993/94 TO 1997/98)**

Region/College	Pol 231			Pol 241			Psyc 201		
	Admis- sion	Avg Crs Grade	N	Admis- sion	Avg Crs Grade	N	Admis- sion	Avg Crs Grade	N
	GPA	Grade		GPA	Grade		GPA	Grade	
Non Lower Mainland									
Northern B.C.	2.70	3.33	3	2.91	2.46	8	3.15	2.38	48
College of New Caledonia	2.70	3.33	3	2.78	2.20	5	3.02	2.65	23
Northern Lights College				2.99	2.67	2	3.44	2.67	8
Northwest Community College				3.40	3.33	1	3.20	1.88	17
Interior/Kootenays	2.80	3.33	4	2.95	2.28	6	3.09	2.65	58
College of the Rockies							3.27	2.92	4
Okanagan University College	2.77	3.34	2	3.05	2.84	2	3.06	2.72	27
Selkirk College				2.83		1	3.09	2.39	12
Univ College of the Cariboo	2.83	3.33	2	2.92	2.67	3	3.11	2.67	15
Vancouver Island	3.18	3.27	5	3.01	2.31	16	3.05	2.39	66
Camosun College	3.15	2.89	3	2.87	2.42	8	3.00	2.09	44
Malaspina University-College	3.48	3.67	1	3.12	2.27	5	3.22	3.11	18
North Island College	2.96	4.00	1	3.20	2.11	3	2.95	2.42	4
Total Non Lower Mainland	2.93	3.31	12	2.97	2.34	30	3.10	2.48	172
Lower Mainland									
Public	2.93	2.66	130	2.93	2.62	149	2.94	2.40	1,171
B.C. Institute of Technology							3.19	3.25	4
Capilano College	2.96	2.65	34	2.91	2.83	26	2.96	2.43	203
Douglas College	2.89	2.66	36	2.94	2.36	49	2.93	2.31	309
Kwantlen University College	2.97	2.40	22	2.92	2.75	46	3.01	2.42	398
Univ Coll of the Fraser Valley	3.21	3.17	6	3.15	2.76	7	3.00	2.72	46
Langara College	2.87	2.76	32	2.86	2.63	21	2.81	2.39	211
Private	2.70	3.00	1	2.77	3.00	8	2.98	2.55	55
Columbia College				2.70	3.13	5	2.95	2.64	40
Coquitlam College	2.70	3.00	1	2.89	2.78	3	3.06	2.29	15
Total Lower Mainland	2.93	2.66	131	2.92	2.64	157	2.95	2.41	1,226
Total B.C. College Transfers	2.93	2.72	143	2.93	2.59	187	2.96	2.42	1,398
Total Direct Entry B.C. Grade 12s	3.44	2.88	117	3.41	2.87	222	3.35	2.85	600

Note:

- Please note that in many cases above, the number of students from a particular institution who have received a grade in a particular SFU course is small and the corresponding course grade averages, although accurate, are not statistically reliable as an indicator for the college.
- Course Titles:
 Pol 231 - Introduction to Comparative Government and Politics.
 Pol 241 - Introduction to Intermediate Politics.
 Psyc 201 - Research Methods in Psychology.
- The proportion of students with a strong academic background (as evidenced by secondary school grades) varies among transfer and direct entry students. This table describes differences between the two groups but does not explain the cause of the differences.

**TABLE 11A (cont.)
COMPARISON OF COURSE GRADES IN SELECTED COURSES
B.C. COLLEGE TRANSFERS vs DIRECT ENTRY B.C. GRADE 12s
(FOR STUDENTS ADMITTED TO SFU FROM 1993/94 TO 1997/98)**

Region/College	Psyc 210			Psyc 250			Psyc 260		
	Admis- sion	Avg Crs Grade	N	Admis- sion	Avg Crs Grade	N	Admis- sion	Avg Crs Grade	N
	GPA	Grade		GPA	Grade		GPA	Grade	
Non Lower Mainland									
Northern B.C.	3.28	2.70	11	3.15	2.64	45	3.21	2.53	10
College of New Caledonia	2.83	2.34	2	3.08	2.59	23	3.03	2.56	6
Northern Lights College	3.39	3.34	2	3.52	2.72	6	3.51	4.00	1
Northwest Community College	3.38	2.62	7	3.11	2.69	16	3.48	2.00	3
Interior/Kootenays									
College of the Rockies	3.23	3.33	1	2.98	3.34	2	2.72	2.67	1
Okanagan University College	3.36	2.79	11	3.07	2.67	17	3.34	2.78	3
Selkirk College	3.38	3.06	6	3.36	3.06	5	3.40	3.50	2
Univ College of the Cariboo	2.77	2.33	3	3.02	2.74	13	2.61	2.17	2
Vancouver Island									
Camosun College	3.09	2.50	16	3.05	2.62	26	2.93	2.08	8
Malaspina University-College	3.31	3.19	9	3.20	3.01	24	3.00	2.78	3
North Island College	3.02	1.89	3	2.95	2.17	4			
Total Non Lower Mainland	3.22	2.72	60	3.12	2.73	136	3.08	2.51	29
Lower Mainland									
Public	2.95	2.41	391	2.98	2.62	968	2.99	2.51	254
B.C. Institute of Technology	3.35	3.00	1	3.75	2.67	1			
Capilano College	2.98	2.39	93	2.99	2.64	175	3.06	2.67	40
Douglas College	3.03	2.22	79	2.99	2.54	276	2.98	2.44	69
Kwantien University College	3.01	2.47	62	3.04	2.63	326	3.02	2.43	92
Univ Coll of the Fraser Valley	3.04	3.12	11	3.03	2.86	36	3.01	2.74	9
Langara College	2.84	2.43	145	2.83	2.66	154	2.89	2.62	44
Private	2.98	2.59	37	3.04	2.57	35	3.03	2.80	15
Columbia College	2.97	2.65	23	3.06	2.59	18	3.14	2.83	10
Coquitlam College	3.00	2.48	14	3.03	2.55	17	2.80	2.73	5
Total Lower Mainland	2.95	2.42	428	2.98	2.62	1,003	2.99	2.53	269
Total B.C. College Transfers	2.98	2.46	488	3.00	2.63	1,139	3.00	2.53	298
Total Direct Entry B.C. Grade 12s	3.36	2.78	268	3.34	2.93	452	3.36	3.02	211

Note:

- a) Please note that in many cases above, the number of students from a particular institution who have received a grade in a particular SFU course is small and the corresponding course grade averages, although accurate, are not statistically reliable as an indicator for the college.
- b) Course Titles:
 Psyc 210 - Data Analysis in Psychology.
 Psyc 250 (Formerly Psyc 351) - Child Psychology (includes students who took Psyc 351 prior to 1993-3).
 Psyc 260 (Formerly Psyc 360) - Introduction to Social Psychology (includes students who took Psyc 360 prior to 19963).
- c) The proportion of students with a strong academic background (as evidenced by secondary school grades) varies among transfer and direct entry students. This table describes differences between the two groups but does not explain the cause of the differences.

**TABLE 11A (cont.)
COMPARISON OF COURSE GRADES IN SELECTED COURSES
B.C. COLLEGE TRANSFERS vs DIRECT ENTRY B.C. GRADE 12s
(FOR STUDENTS ADMITTED TO SFU FROM 1993/94 TO 1997/98)**

Region/College	Psyc 308			Psyc 355			Stat 270		
	Admission GPA	Avg Crs Grade	N	Admission GPA	Avg Crs Grade	N	Admission GPA	Avg Crs Grade	N
Non Lower Mainland									
Northern B.C.	2.87	2.08	4	3.20	2.80	13	3.19	2.22	6
College of New Caledonia	2.91	1.50	2	3.17	2.78	6	2.77	1.45	3
Northern Lights College				3.26	3.67	1	3.60	3.00	3
Northwest Community College	2.83	2.67	2	3.23	2.67	6			
Interior/Kootenays	3.20	2.80	13	3.12	3.23	27	3.24	2.15	22
College of the Rockies	3.23	4.00	1						
Okanagan University College	3.08	2.67	5	3.10	3.22	12	3.28	2.21	13
Selkirk College	3.34	2.50	4	3.29	3.13	5	3.00	2.00	3
Univ College of the Cariboo	3.20	3.00	3	3.05	3.30	10	3.28	2.11	6
Vancouver Island	3.06	2.73	15	3.18	2.68	38	3.28	2.73	5
Camosun College	2.98	2.25	8	3.11	2.18	15	3.37	2.78	3
Malaspina University-College	3.15	3.28	6	3.25	3.02	20	3.62	3.33	1
North Island College	3.16	3.33	1	3.02	3.00	3	2.70	2.00	1
Total Non Lower Mainland	3.09	2.68	32	3.16	2.89	78	3.24	2.25	33
Lower Mainland									
Public	2.98	2.64	337	3.00	2.77	611	3.04	2.29	327
B.C. Institute of Technology							3.38	2.42	4
Capilano College	3.07	2.69	61	3.03	2.92	97	2.80	2.27	44
Douglas College	2.96	2.49	89	3.02	2.71	174	3.23	2.05	80
Kwantlen University College	3.09	2.78	93	3.07	2.74	197	3.16	2.34	89
Univ Coll of the Fraser Valley	2.95	2.92	12	3.11	2.89	22	3.07	2.36	13
Langara College	2.82	2.58	82	2.81	2.74	121	2.86	2.44	97
Private	3.00	2.73	20	2.98	2.64	40	3.07	2.24	36
Columbia College	2.88	2.96	9	2.92	2.65	23	3.10	2.57	23
Coquitlam College	3.09	2.54	11	3.06	2.63	17	3.03	1.67	13
Total Lower Mainland	2.98	2.65	357	3.00	2.76	651	3.04	2.29	363
Total B.C. College Transfers	2.99	2.65	389	3.02	2.77	729	3.06	2.28	396
Total Direct Entry B.C. Grade 12s	3.40	3.04	101	3.34	3.13	180	3.55	2.50	812

Note:

- a) Please note that in many cases above, the number of students from a particular institution who have received a grade in a particular SFU course is small and the corresponding course grade averages, although accurate, are not statistically reliable as an indicator for the college.
- b) Course Titles:
 Psyc 308 - History and Systems of Modern Psychology.
 Psyc 355 - The Psychology of Adolescence and Youth.
 Stat 270 - Introduction to Probability and Statistics.
- c) The proportion of students with a strong academic background (as evidenced by secondary school grades) varies among transfer and direct entry students. This table describes differences between the two groups but does not explain the cause of the differences.

TABLE 11B
COMPARISON OF GRADES IN 200- AND 300-LEVEL COURSES
COMPLETED BY B.C. COLLEGE TRANSFERS and DIRECT ENTRY B.C. GRADE 12s
(FOR STUDENTS ADMITTED TO SFU FROM 1993/94 TO 1997/98)

Course	B.C. College Transfer Students				Direct Entry B.C. Grade 12's			
	Number of Grades	Admis- sion GPA	Avg Crs Grade	% of Grades Below C	Number of Grades	Admis- sion GPA	Avg Crs Grade	% of Grades Below C
ARCH 272	134	2.99	2.59	3.7%	76	3.41	2.63	3.9%
ARCH 273	105	3.01	2.94	4.8%	71	3.34	3.06	1.4%
BICH 221	366	2.91	2.38	5.7%	860	3.44	2.96	0.8%
BICH 222	213	2.90	2.36	5.6%	420	3.45	2.94	
BISC 202	287	2.88	1.95	13.2%	563	3.44	2.52	5.3%
BISC 204	266	2.87	2.44	5.3%	487	3.42	2.93	1.4%
BUEC 232	1,356	2.97	2.23	7.7%	1,294	3.33	2.64	
BUEC 280	120	2.88	2.31	7.5%	79	3.22	2.75	3.8%
BUEC 333	135	3.02	2.59	3.0%	2	3.04	2.17	
BUS 207	1,091	3.08	2.20	8.2%	660	3.40	2.63	3.6%
BUS 225	150	3.34		100.0%	209	3.49		
BUS 237	1,376	2.95	2.35	3.5%	1,861	3.34	2.53	1.8%
BUS 251	1,035	2.93	2.19	8.7%	1,873	3.34	2.53	5.1%
BUS 254	1,383	3.05	2.21	6.2%	977	3.38	2.65	
BUS 272	1,330	2.99	2.39	1.0%	1,305	3.35	2.66	0.9%
CHEM 250	188	2.90	2.17	9.0%	500	3.46	2.80	3.8%
CHEM 255	163	2.91	2.54	1.8%	450	3.46	3.06	0.4%
CMNS 205	113	2.88	2.80		86	3.28	2.71	1.2%
CMNS 210	113	2.91	2.60	7.1%	95	3.38	2.64	5.3%
CMNS 220	105	2.91	2.56	4.8%	80	3.33	2.79	1.3%
CMNS 221	211	2.90	2.69	1.9%	125	3.31	2.76	0.8%
CMNS 223	214	2.92	2.67	3.3%	154	3.28	2.74	1.9%
CMNS 230	158	2.87	2.77	3.8%	149	3.32	2.91	1.3%
CMNS 253	139	2.91	2.96	0.7%	76	3.32	3.23	
CMNS 260	100	2.89	2.42	4.0%	99	3.31	2.71	7.1%
CMNS 261	238	2.92	2.55	3.8%	118	3.36	2.88	1.7%
CMPT 201	200	3.06	2.05	12.0%	607	3.58	2.63	7.6%
CMPT 205	122	3.04	1.96	13.1%	152	3.51	2.40	
CMPT 212	112	3.05	2.58	5.4%	223	3.52	2.93	4.5%
CMPT 275	225	3.11	2.53	2.7%	302	3.53	2.93	1.0%
CMPT 290	207	3.15	2.34	6.3%	475	3.63	2.75	
CMPT 300	122	3.18	2.27	7.4%	170	3.55	2.63	2.9%
CNS 210	188	3.00	2.74	6.4%	99	3.42	2.83	8.1%
CRIM 210	118	2.99	2.46	5.1%	38	3.22	2.75	7.9%
CRIM 213	203	2.97	2.87	4.9%	43	3.34	3.09	2.3%
CRIM 230	298	2.94	2.57	3.4%	260	3.28	2.69	2.3%
CRIM 241	196	2.96	2.91	2.0%	124	3.31	3.03	5.6%
ECON 210	801	2.96	2.30	5.2%	519	3.30	2.81	2.1%
ECON 260	156	2.90	2.59	1.9%	73	3.18	3.07	
ECON 290	242	2.92	2.46	3.3%	113	3.30	2.69	0.9%
ECON 291	138	2.94	2.52	2.2%	73	3.22	2.91	

TABLE 11B
COMPARISON OF GRADES IN 200- AND 300-LEVEL COURSES
COMPLETED BY B.C. COLLEGE TRANSFERS and DIRECT ENTRY B.C. GRADE 12s
(FOR STUDENTS ADMITTED TO SFU FROM 1993/94 TO 1997/98)

Course	B.C. College Transfer Students				Direct Entry B.C. Grade 12's			
	Number of Grades	Admis- sion GPA	Avg Crs Grade	% of Grades Below C	Number of Grades	Admis- sion GPA	Avg Crs Grade	% of Grades Below C
EDUC 220	1,076	2.97	2.62	2.7%	800	3.33	2.59	
EDUC 230	277	2.92	3.09	3.2%	231	3.31	2.99	2.6%
EDUC 240	322	2.95	3.26	0.9%	197	3.31	3.22	1.0%
ENGL 204	271	2.96	2.72	5.5%	460	3.43	2.86	3.7%
ENGL 205	365	3.00	2.84	3.0%	360	3.43	2.84	3.1%
ENGL 206	267	2.99	2.79	3.4%	413	3.45	2.89	
GEOG 213	242	2.92	2.48	1.7%	160	3.36	2.70	0.6%
GEOG 214	109	2.87	2.55	3.7%	98	3.37	2.91	
GEOG 221	338	2.88	2.54	1.8%	189	3.35	2.71	1.6%
GEOG 241	460	2.93	2.75	1.7%	195	3.33	2.72	1.5%
GEOG 250	174	2.95	2.57	1.1%	56	3.28	3.12	
GEOG 251	225	2.87	2.62	2.2%	72	3.33	2.94	1.4%
GEOG 253	168	2.91	2.35	2.4%	97	3.39	2.80	
HIST 201	116	2.96	2.53	3.4%	51	3.41	2.66	
HIST 204	135	2.94	2.73	2.2%	82	3.36	2.63	6.1%
HIST 225	199	3.00	2.54	2.5%	358	3.46	2.74	2.2%
HIST 231	111	2.92	2.46	6.3%	86	3.44	2.74	7.0%
HUM 230	174	3.03	3.15	1.1%	190	3.43	3.08	3.2%
KIN 201	119	3.00	2.47	1.7%	241	3.40	2.77	1.2%
KIN 203	104	3.00	2.82	3.8%	205	3.38	3.14	1.0%
KIN 205	153	3.00	2.32	2.6%	293	3.41	2.77	2.0%
KIN 207	145	2.94	2.64	5.5%	256	3.37	2.87	1.6%
KIN 241	121	2.94	3.03	1.7%	176	3.41	3.37	
LING 220	522	2.97	2.60	4.8%	575	3.30	2.72	4.0%
LING 222	141	2.96	2.70	3.5%	121	3.33	2.92	0.8%
MACM 201	174	3.08	2.30	7.5%	333	3.50	2.56	5.1%
MATH 232	354	2.96	2.17	9.3%	1,262	3.52	2.59	
MATH 251	164	3.04	2.20	10.4%	500	3.64	2.91	4.0%
MATH 252	104	3.17	2.38	8.7%	183	3.62	3.00	0.5%
PHIL 214	152	3.06	2.02	14.5%	209	3.51	2.39	8.6%
PHIL 300	186	3.00	2.56	5.4%	29	3.34	2.87	
POL 221	160	3.01	2.51	3.1%	148	3.39	2.66	
POL 222	240	2.93	2.50	2.1%	119	3.41	2.76	3.4%
POL 231	143	2.92	2.63	4.9%	117	3.44	2.88	2.6%
POL 241	185	2.91	2.49	7.6%	221	3.41	2.85	
POL 251	112	2.90	2.58	1.8%	48	3.37	2.80	2.1%

BEST COPY AVAILABLE

**TABLE 11B
COMPARISON OF GRADES IN 200- AND 300-LEVEL COURSES
COMPLETED BY B.C. COLLEGE TRANSFERS and DIRECT ENTRY B.C. GRADE 12s
(FOR STUDENTS ADMITTED TO SFU FROM 1993/94 TO 1997/98)**

Course	B.C. College Transfer Students				Direct Entry B.C. Grade 12's			
	Number of Grades	Admission GPA	Avg Crs Grade	% of Grades Below C	Number of Grades	Admission GPA	Avg Crs Grade	% of Grades Below C
PSYC 201	1,399	2.95	2.27	5.3%	600	3.35	2.77	2.8%
PSYC 210	486	2.96	2.25	7.0%	267	3.36	2.60	4.5%
PSYC 221	1,017	3.01	2.45	3.4%	331	3.34	2.90	2.1%
PSYC 241	938	2.98	2.39	5.5%	417	3.35	2.82	0.7%
PSYC 250	1,128	3.00	2.59	2.7%	444	3.33	2.90	2.5%
PSYC 260	861	2.97	2.48	4.3%	392	3.37	3.06	1.0%
PSYC 270	757	3.01	2.52	3.8%	231	3.36	2.77	1.3%
PSYC 280	292	3.04	2.39	3.8%	88	3.42	2.95	
SA 201	132	2.93	2.53	7.6%	42	3.28	2.46	4.8%
SA 250	194	2.97	2.82	2.6%	52	3.38	3.13	1.9%
SA 255	257	2.97	2.69	4.3%	62	3.40	2.78	1.6%
SA 293	111	2.95	2.89	1.8%	41	3.39	3.03	2.4%
STAT 203	106	2.93	2.17	7.5%	114	3.32	2.89	
STAT 270	395	3.04	2.00	12.4%	811	3.54	2.28	9.0%
Total	30,798	2.98	2.44	5.3%	28,887	3.41	2.71	3.9%

Notes:

- a) Excludes courses with fewer than 100 B.C. College Transfer students.
- b) The proportion of students with a strong academic background (as evidenced by secondary school grades) varies among transfer and direct entry students. This table describes differences between the two groups but does not explain the cause of the differences.

Course Names:

ARCH - Archaeology
 BICH - Biochemistry
 BISC - Biological Sciences
 BUEC - Business Economics
 BUS - Business
 CHEM - Chemistry
 CMNS - Communication
 CMPT - Computing Science
 CNS - Canadian Studies

CRIM - Criminology
 ECON - Economics
 EDUC - Education
 ENGL - English
 FREN - French
 GEOG - Geography
 HIST - History
 HUM - Humanities
 KIN - Kinesiology

LING - Linguistics
 MACM - Mathematical Computing
 MATH - Mathematics
 PHIL - Philosophy
 POL - Political Science
 PSYC - Psychology
 SA - Sociology/Anthropology
 STAT - Statistics

TABLE 12
DEGREE COMPLETION RATE OF B.C. COLLEGE TRANSFERS
ADMITTED TO SFU FROM 1993/94 TO 1994/95

Region/College	Transfer credits at time of admission to SFU							
	Less than 30		30-34		35-39		40-44	
	N	%Grad	N	%Grad	N	%Grad	N	%Grad
Non Lower Mainland								
Northern B.C.	5		34	35.3%	14	14.3%	15	40.0%
College of New Caledonia	1		9	55.6%	7	14.3%	3	100.0%
Northern Lights College	2		8	25.0%	1		10	20.0%
Northwest Community College	2		17	29.4%	6	16.7%	2	50.0%
Interior/Kootenays	4	25.0%	52	42.3%	27	40.7%	12	66.7%
College of the Rockies			5	20.0%	3	66.7%		
Okanagan University College	1		20	50.0%	9	22.2%	4	50.0%
Selkirk College	1	100.0%	12	50.0%	6	50.0%	4	75.0%
Univ College of the Cariboo	2		15	33.3%	9	44.4%	4	75.0%
Vancouver Island	2		28	53.6%	21	47.6%	15	33.3%
Camosun College	1		13	53.8%	8	50.0%	7	28.6%
Malaspina University-College	1		10	60.0%	10	50.0%	8	37.5%
North Island College			5	40.0%	3	33.3%		
Total Non Lower Mainland	11	9.1%	114	43.0%	62	37.1%	42	45.2%
Lower Mainland								
Public	75	30.7%	578	43.3%	526	45.2%	303	50.5%
B.C. Institute of Technology	18	5.6%	7	28.6%	3		1	
Capilano College	13	53.8%	154	45.5%	136	48.5%	57	59.6%
Douglas College	10	30.0%	103	32.0%	123	34.1%	78	46.2%
Kwantlen University College	12	25.0%	127	38.6%	102	41.2%	78	46.2%
Univ Coll of the Fraser Valley	5		17	58.8%	20	45.0%	13	53.8%
Langara College	17	52.9%	170	50.6%	142	55.6%	76	52.6%
Private	5	40.0%	83	56.6%	44	65.9%	21	71.4%
Columbia College	1		60	60.0%	27	70.4%	13	76.9%
Coquitlam College	4	50.0%	23	47.8%	17	58.8%	8	62.5%
Total Lower Mainland	80	31.3%	661	44.9%	570	46.8%	324	51.9%
Total B.C. College Transfers	91	28.6%	775	44.6%	632	45.9%	366	51.1%

Notes:

- N is the total number of students admitted to SFU from 1993-2 to 1995-1.
- % Grad is the proportion of N who were awarded a degree (PDP and certificates excluded).
- Students who completed multiple degrees simultaneously are included in the graduation statistics for each degree completed.
- Students who completed multiple degrees sequentially are included in the graduation statistics for the first degree completed only.
- Of the 2,956 B.C. Grade 12 direct entry students admitted to SFU in the same time period (1993/94 to 1994/95), 22% have completed their degree. Note that B.C. Grade 12 direct-entry students come to SFU without transfer credits.
- The number of students who have graduated in each of the two groups are not comparable. College transfers will typically complete their degree within two or three years of transferring to SFU, while B.C. Grade 12's will typically complete their degree within four or five years of admission to SFU. Refer to Appendix for degree completion rates.

**TABLE 12 (cont.)
DEGREE COMPLETION RATE OF B.C. COLLEGE TRANSFERS
ADMITTED TO SFU FROM 1993/94 TO 1994/95**

Transfer credits at time of admission to SFU							Region/College	
45-49		50-54		≥ 55		Grand Total		
N	%Grad	N	%Grad	N	%Grad	N	%Grad	
							Non Lower Mainland	
14	28.6%	17	47.1%	76	44.7%	175	37.7%	Northern B.C.
6	16.7%	14	57.1%	61	52.5%	101	49.5%	College of New Caledonia
6	33.3%	1		3		31	19.4%	Northern Lights College
2	50.0%	2		12	16.7%	43	23.3%	Northwest Community College
23	47.8%	22	54.5%	75	69.3%	215	54.4%	Interior/Kootenays
1	100.0%	2	50.0%	2	50.0%	13	46.2%	College of the Rockies
10	40.0%	9	33.3%	41	65.9%	94	51.1%	Okanagan University College
5	40.0%	1	100.0%	10	70.0%	39	59.0%	Selkirk College
7	57.1%	10	70.0%	22	77.3%	69	58.0%	Univ College of the Cariboo
25	48.0%	16	56.3%	66	60.6%	173	52.6%	Vancouver Island
14	57.1%	6	66.7%	33	54.5%	82	52.4%	Camosun College
11	36.4%	9	44.4%	30	66.7%	79	53.2%	Malaspina University-College
		1	100.0%	3	66.7%	12	50.0%	North Island College
62	43.5%	55	52.7%	217	58.1%	563	48.7%	Total Lower Mainland
							Lower Mainland	
423	55.1%	438	61.2%	1,085	61.0%	3,428	53.3%	Public
3	66.7%	4	50.0%	8		44	15.9%	B.C. Institute of Technology
80	56.3%	80	57.5%	148	70.3%	668	55.7%	Capilano College
114	48.2%	127	54.3%	310	55.2%	865	47.3%	Douglas College
104	53.8%	107	63.6%	372	61.0%	902	53.3%	Kwantlen University College
11	54.5%	20	75.0%	66	54.5%	152	54.6%	Univ Coll of the Fraser Valley
111	62.2%	100	68.0%	181	68.5%	797	59.6%	Langara College
23	69.6%	16	50.0%	16	68.8%	208	61.5%	Private
12	66.7%	4	50.0%	6	66.7%	123	64.2%	Columbia College
11	72.7%	12	50.0%	10	70.0%	85	57.6%	Coquitlam College
446	55.8%	454	60.8%	1,101	61.1%	3,636	53.8%	Total Lower Mainland
508	54.3%	509	59.9%	1,318	60.6%	4,199	53.1%	Total B.C. College Transfers

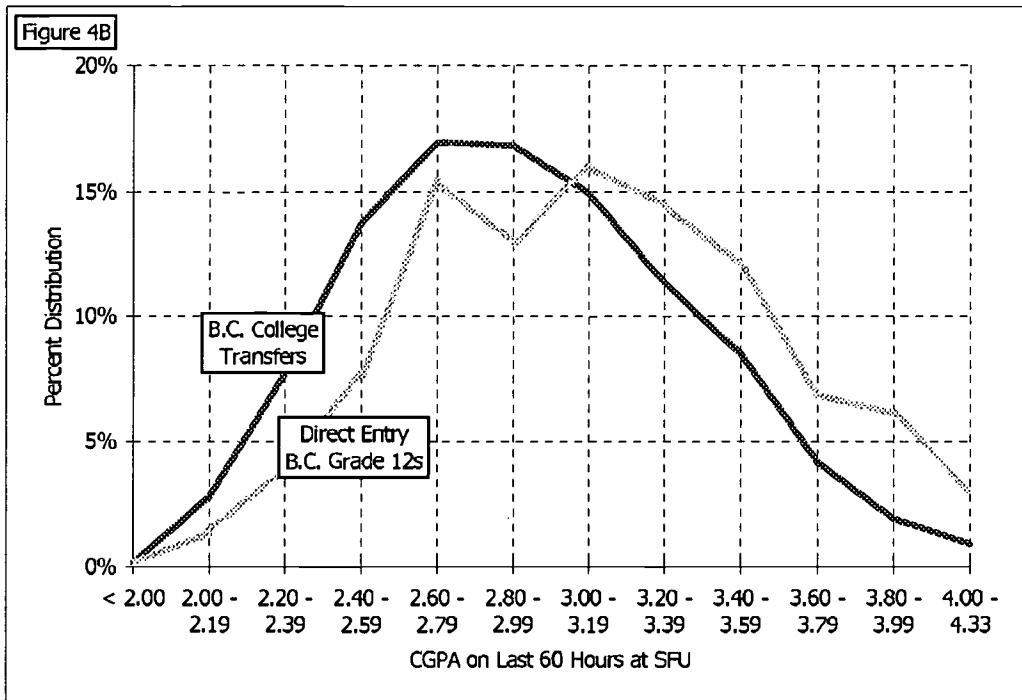
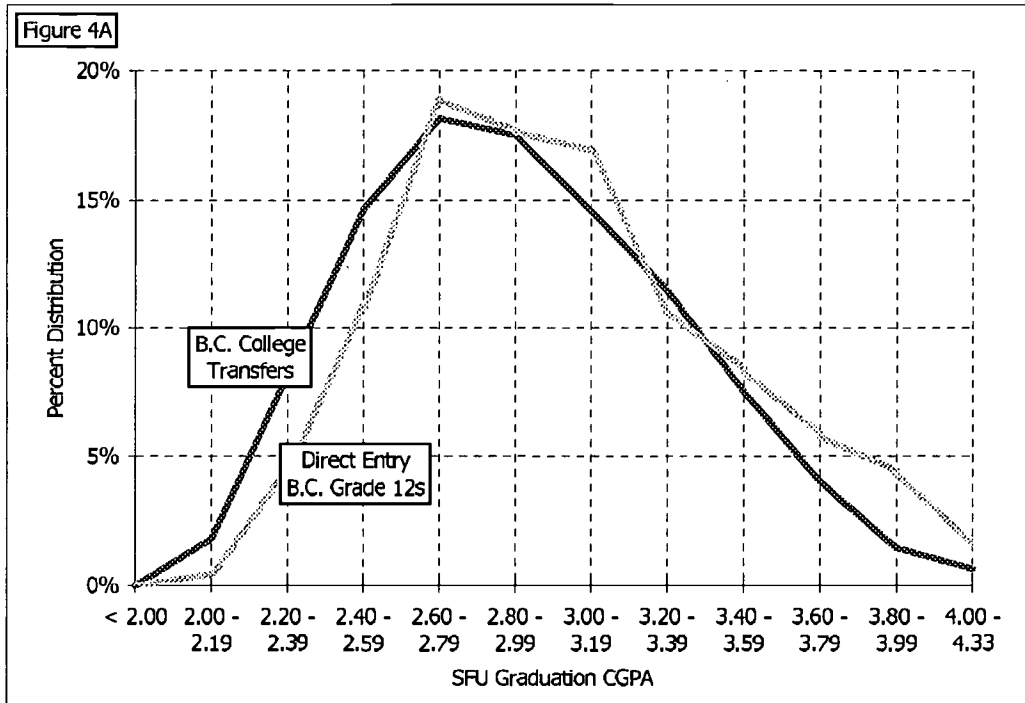
TABLE 13
DISTRIBUTION OF CGPA AT TIME OF GRADUATION FROM SFU
B.C. COLLEGE TRANSFERS vs DIRECT ENTRY B.C. GRADE 12s
(FOR STUDENTS ADMITTED TO SFU FROM 1993/94 TO 1997/98)

SFU CGPA	B.C. College Transfers				Direct Entry B.C. Grade 12's			
	Upon SFU Graduation		On Last 60 SFU Hours		Upon SFU Graduation		On Last 60 SFU Hours	
	Freq	%	Freq	%	Freq	%	Freq	%
< 2.00			5	0.2%			1	0.2%
2.00 - 2.19	54	1.8%	83	2.8%	3	0.5%	9	1.4%
2.20 - 2.39	242	8.2%	228	7.7%	29	4.4%	26	4.0%
2.40 - 2.59	433	14.6%	407	13.8%	71	10.8%	50	7.6%
2.60 - 2.79	537	18.2%	501	16.9%	124	18.9%	101	15.4%
2.80 - 2.99	518	17.5%	498	16.8%	116	17.7%	85	13.0%
3.00 - 3.19	431	14.6%	442	14.9%	111	16.9%	105	16.0%
3.20 - 3.39	339	11.5%	335	11.3%	70	10.7%	95	14.5%
3.40 - 3.59	222	7.5%	251	8.5%	55	8.4%	79	12.0%
3.60 - 3.79	119	4.0%	123	4.2%	38	5.8%	45	6.9%
3.80 - 3.99	43	1.5%	57	1.9%	29	4.4%	40	6.1%
≥ 4.00	19	0.6%	27	0.9%	10	1.5%	20	3.0%
Total Graduates	2,957	100.0%	2,957	100.0%	656	100.0%	656	100.0%
Average SFU CGPA	2.91		2.93		3.02		3.11	

Note:

- a) Cumulative grade point average is based on courses completed for a degree.
- b) Students completing a degree are included in the graduation statistics (certificates and PDP excluded).
- c) Students who completed multiple degrees simultaneously are included in the graduation statistics for each degree completed.
- d) Students who completed multiple degrees sequentially are included in the graduation statistics for the first degree completed only.

FIGURE 4: DISTRIBUTION OF CGPA
(A) AT GRADUATION FROM SFU; (B) ON LAST 60 HOURS AT SFU
B.C. COLLEGE TRANSFERS vs DIRECT ENTRY B.C. GRADE 12s
(FOR STUDENTS ADMITTED TO SFU FROM 1993/94 TO 1997/98)



BEST COPY AVAILABLE

SECTION C

**PROFILE OF B.C. COLLEGE TRANSFER STUDENTS
WHO HAVE GRADUATED**

TABLE 14
ACADEMIC PERFORMANCE OF B.C. COLLEGE TRANSFERS WHO HAVE GRADUATED FROM SFU
(FOR B.C. COLLEGE TRANSFERS ADMITTED FROM 1993/94 TO 1997/98)

Region/College	Admission GPA		First Semester CGPA at SFU		CGPA after 30 credit hours passed at SFU		CGPA at Graduation from SFU	
	N	GPA	N	GPA	N	GPA	N	GPA
Non Lower Mainland								
Northern B.C.	108	3.09	108	2.81	108	3.02	108	3.12
College of New Caledonia	83	3.06	83	2.85	83	3.04	83	3.11
Northern Lights College	10	3.19	10	2.94	10	3.10	10	3.25
Northwest Community College	15	3.23	15	2.51	15	2.89	15	3.04
Interior/Kootenays	155	3.01	155	2.65	154	2.78	155	2.79
College of the Rockies	7	3.02	7	2.68	7	2.79	7	2.91
Okanagan University College	65	2.95	65	2.69	64	2.83	65	2.96
Selkirk College	30	3.15	30	2.64	30	2.79	30	2.94
Univ College of the Cariboo	53	3.01	53	2.62	53	2.74	53	2.87
Vancouver Island	127	3.12	127	2.76	127	2.90	127	3.04
Camosun College	58	3.06	58	2.71	58	2.90	58	3.04
Malaspina University-College	63	3.18	63	2.78	63	2.90	63	3.03
North Island College	6	3.14	6	2.91	6	2.90	6	3.15
Total Non Lower Mainland	390	3.07	390	2.73	389	2.89	390	3.01
Lower Mainland								
Public	2,406	3.00	2,407	2.73	2,403	2.80	2,407	2.90
B.C. Institute of Technology	10	3.51	10	3.06	10	3.09	10	3.19
Capilano College	451	2.95	451	2.71	450	2.78	451	2.89
Douglas College	557	3.03	557	2.67	554	2.74	557	2.86
Kwantlen University College	666	3.11	666	2.72	666	2.80	666	2.92
Univ Coll of the Fraser Valley	113	3.10	113	2.96	113	2.99	113	3.07
Langara College	609	2.88	610	2.77	610	2.82	610	2.89
Private	160	3.09	160	2.56	160	2.76	160	2.79
Columbia College	94	3.00	94	2.54	94	2.77	94	2.79
Coquitlam College	66	3.22	66	2.61	66	2.74	66	2.80
Total Lower Mainland	2,566	3.01	2,567	2.72	2,563	2.80	2,567	2.89
Total B.C. College Transfers	2,956	3.02	2,957	2.73	2,952	2.81	2,957	2.91

Notes:

- a) Includes degree completers only. PDP and certificates are excluded.
- b) Students who completed multiple credentials simultaneously are included in the graduation statistics for each degree completed.
- c) Students who completed multiple credentials sequentially are included in the graduation statistics for the first degree completed only.
- d) Not all students who have graduated have a CGPA after 30 hours at SFU (eg. students in PDP program are not given a letter grade after 30 credits for taking Educ 401/402/405).

TABLE 15
B.C. COLLEGE TRANSFERS BY GRADUATION DEGREE-PROGRAM
(FOR STUDENTS ADMITTED TO SFU FROM 1993/94 TO 1997/98)

Region/College	Busi- ness	Psych- ology	Econo- mics	Edu- cation	Crimi- nology	Geo- graphy	English	General Studies	History
Non Lower Mainland									
Northern B.C.	2.2%	1.6%		41.5%	9.8%	3.3%	5.5%	23.5%	4.4%
College of New Caledonia	1.5%	1.5%		36.2%	12.3%	3.8%	4.6%	27.7%	3.8%
Northern Lights College		3.8%		61.5%			11.5%	11.5%	
Northwest Community College	7.4%			48.1%	7.4%	3.7%	3.7%	14.8%	11.1%
Interior/Kootenays	16.3%	10.2%	7.2%	8.4%	5.4%	10.2%	5.4%	6.6%	4.8%
College of the Rockies	14.3%		14.3%		14.3%		14.3%		
Okanagan University College	18.6%	11.4%	4.3%	11.4%	5.7%	12.9%	2.9%	8.6%	4.3%
Selkirk College	3.4%	13.8%	10.3%	6.9%	3.4%	17.2%	6.9%	3.4%	6.9%
Univ College of the Cariboo	20.0%	8.3%	8.3%	6.7%	5.0%	5.0%	6.7%	6.7%	5.0%
Vancouver Island	14.1%	8.6%	2.3%	0.8%	18.0%	5.5%	6.3%	5.5%	3.1%
Camosun College	8.5%	8.5%	3.4%		22.0%	3.4%	6.8%	6.8%	1.7%
Malaspina University-College	20.6%	7.9%	1.6%	1.6%	15.9%	7.9%	4.8%	4.8%	4.8%
North Island College		16.7%					16.7%		
Total Lower Mainland	10.3%	6.5%	3.1%	19.1%	10.5%	6.3%	5.7%	12.8%	4.2%
Lower Mainland									
Public	16.0%	11.9%	7.7%	6.1%	7.4%	7.7%	6.7%	5.1%	6.7%
B.C. Institute of Technology	33.3%			8.3%		8.3%		8.3%	
Capilano College	11.8%	10.5%	7.2%	5.2%	3.5%	12.2%	9.7%	3.9%	4.3%
Douglas College	17.1%	13.9%	7.0%	7.9%	11.2%	5.4%	5.0%	6.2%	6.7%
Kwantlen University College	15.2%	13.4%	6.8%	7.0%	12.0%	7.3%	6.6%	3.9%	7.8%
Univ Coll of the Fraser Valley	7.8%	10.9%	4.7%	11.6%	3.9%	10.9%	7.0%	7.0%	4.7%
Langara College	20.2%	9.9%	10.4%	2.9%	2.6%	6.5%	6.2%	5.7%	7.7%
Private	38.4%	10.4%	27.4%	0.6%			1.2%	2.4%	
Columbia College	37.5%	11.5%	27.1%	1.0%			1.0%	3.1%	
Coquitlam College	39.7%	8.8%	27.9%				1.5%	1.5%	
Total Lower Mainland	17.3%	11.8%	8.9%	5.7%	7.0%	7.3%	6.4%	4.9%	6.3%
Total B.C. College Transfers	16.3%	11.0%	8.0%	7.7%	7.5%	7.1%	6.3%	6.1%	6.0%

Notes:

- a) An Education graduate is defined as a student who has graduated with a Bachelor of Education or a PDP diploma.
- b) A General Studies graduate is defined as a student who has graduated with a Bachelor of General Studies.
- c) A student simultaneously graduating in more than one program is counted once under each program.
- d) A student graduating in more than one program in subsequent degrees is counted in the program(s) of the first degree only.
- e) "Other" program graduates includes all other degree-programs (certificate programs are excluded).

TABLE 15 (cont)
B.C. COLLEGE TRANSFERS BY GRADUATION DEGREE-PROGRAM
(FOR STUDENTS ADMITTED TO SFU FROM 1993/94 TO 1997/98)

Communi- cation	Politi- cal Sci	Biologi- cal Sci	Kinesi- ology	Soci- ology	Compu- ting Sci	Archae- ology	Other Pgms	Total	Region/College
Non Lower Mainland									
2.7%	0.5%	1.1%	1.6%			0.5%	2.2%	183	Northern B.C.
3.1%	0.8%	1.5%	1.5%				1.5%	130	College of New Caledonia
			3.8%			3.8%	7.7%	26	Northern Lights College
3.7%								27	Northwest Community College
6.6%	1.8%	3.0%	3.6%	0.6%		1.2%	9.6%	166	Interior/Kootenays
						14.3%	42.9%	7	College of the Rockies
10.0%	1.4%	1.4%	2.9%				4.3%	70	Okanagan University College
13.8%		6.9%	3.4%				3.4%	29	Selkirk College
	3.3%	3.3%	5.0%	1.7%		1.7%	15.0%	60	Univ College of the Cariboo
8.6%	3.9%	1.6%	4.7%	0.8%		2.3%	16.4%	128	Vancouver Island
8.5%	6.8%	1.7%	3.4%			3.4%	18.6%	59	Camosun College
9.5%	1.6%	1.6%	3.2%	1.6%		1.6%	12.7%	63	Malaspina University-College
			33.3%				33.3%	6	North Island College
5.7%	1.9%	1.9%	3.1%	0.4%		1.3%	8.6%	477	Total Lower Mainland
Lower Mainland									
5.2%	3.4%	1.7%	1.5%	1.5%	1.3%	1.0%	10.2%	2,586	Public
8.3%		8.3%	8.3%				16.7%	12	B.C. Institute of Technology
6.2%	5.2%	2.3%	1.9%	1.4%	1.2%	0.8%	13.6%	485	Capilano College
4.2%	3.2%	1.7%	1.8%	1.5%	1.0%	0.8%	6.2%	597	Douglas College
2.9%	1.7%	2.0%	1.4%	2.0%	1.5%	1.1%	8.5%	716	Kwantlen University College
9.3%	3.9%	1.6%	2.3%		0.8%	0.8%	14.0%	129	Univ Coll of the Fraser Valley
7.0%	4.2%	0.9%	0.6%	1.4%	1.5%	1.2%	12.2%	647	Langara College
7.9%	0.6%	2.4%			1.8%		6.7%	164	Private
7.3%		2.1%			2.1%		7.3%	96	Columbia College
8.8%	1.5%	2.9%			1.5%		5.9%	68	Coquitlam College
5.3%	3.2%	1.7%	1.4%	1.4%	1.3%	0.9%	10.0%	2,750	Total Lower Mainland
5.4%	3.0%	1.8%	1.6%	1.3%	1.1%	1.0%	9.8%	3,227	Total B.C. College Transfers

TABLE 16
B.C. COLLEGE TRANSFERS BY CREDENTIAL AWARDED
(FOR STUDENTS ADMITTED TO SFU FROM 1993/94 TO 1997/98)

College	BA	BBA	BGS	BSC	BED	BSK	BFA	BASC	PDP	Cert (Lbrl Arts)	Othr Cert Pgms	Total
Non Lower Mainland												
Northern B.C.	52	4	43	2	4	3			76	10	3	197
College of New Caledonia	40	2	36	2	1	2			47	5	2	137
Northern Lights College	5		3		1	1			16	1	1	28
NW Community College	7	2	4		2				13	4		32
Interior/Kootenays	92	29	11	12	5	6			14	13	12	194
College of the Rockies	5	1		1								7
Okanagan Univ College	35	13	6	5	4	2			8	9	3	85
Selkirk College	21	2	1	4	1	1			2	1	4	37
Univ Coll of the Cariboo	31	13	4	2		3			4	3	5	65
Vancouver Island	86	18	7	6		6	3	1	1	7	4	139
Camosun College	40	5	4	3		2	3	1		2		60
Malaspina Univ-College	42	13	3	3		2			1	3	2	69
North Island College	4					2				2	2	10
Total Non Lower Mainland	230	51	61	20	9	15	3	1	91	30	19	530
Lower Mainland												
Public	1,616	413	131	129	63	40	16	1	157	253	145	2,964
B.C. Inst. of Technology	2	4	1	2		1			1	2	1	14
Capilano College	325	57	19	31	6	9	4		25	59	39	574
Douglas College	364	102	37	20	21	11	3		47	62	30	697
Kwantlen Univ College	453	108	28	38	25	11	4		50	76	30	823
UC of the Fraser Valley	81	10	9	7	2	4			15	10	5	143
Langara College	391	132	37	31	9	4	5	1	19	44	40	713
Private	76	63	4	16			1		1	7	4	172
Columbia College	45	36	3	9			1		1	5	2	102
Coquitlam College	31	27	1	7						2	2	70
Total Lower Mainland	1,692	476	135	145	63	40	17	1	158	260	149	3,136
Total B.C. College Transfers	1,922	527	196	165	72	55	20	2	249	290	168	3,666

Percent Distribution of Credential Awarded by Region												
Non Lower Mainland												
Northern B.C.	26.4%	2.0%	21.8%	1.0%	2.0%	1.5%			38.6%	5.1%	1.5%	100.0%
Interior/Kootenays	47.4%	14.9%	5.7%	6.2%	2.6%	3.1%			7.2%	6.7%	6.2%	100.0%
Vancouver Island	61.9%	12.9%	5.0%	4.3%		4.3%	2.2%	0.7%	0.7%	5.0%	2.9%	100.0%
Total	43.4%	9.6%	11.5%	3.8%	1.7%	2.8%	0.6%	0.2%	17.2%	5.7%	3.6%	100.0%
Lower Mainland												
Public	54.5%	13.9%	4.4%	4.4%	2.1%	1.3%	0.5%	0.0%	5.3%	8.5%	4.9%	100.0%
Private	44.2%	36.6%	2.3%	9.3%			0.6%		0.6%	4.1%	2.3%	100.0%
Total	54.0%	15.2%	4.3%	4.6%	2.0%	1.3%	0.5%	0.0%	5.0%	8.3%	4.8%	100.0%
Grand Total	52.4%	14.4%	5.3%	4.5%	2.0%	1.5%	0.5%	0.1%	6.8%	7.9%	4.6%	100.0%

Note:

Students simultaneously graduating with more than one credential are counted once under each credential. Second degrees are excluded. There were 3,118 unique graduates in total, of which 2,959 received degrees.

TABLE 17
B.C. COLLEGE TRANSFERS BY CREDENTIAL AWARDED AND AVERAGE
NUMBER OF SEMESTERS TO COMPLETE CREDENTIAL
(FOR STUDENTS ADMITTED TO SFU FROM 1993/94 TO 1997/98)

Region/College	BA	BBA	BGS	BSC	BED	BSK	BFA	BASC	All Degrees
Non Lower Mainland									
Northern B.C.	8.1	10.5	8.3	10.0	9.0	8.3			8.3
College of New Caledonia	7.8	11.0	8.2	10.0	9.0	7.5			8.1
Northern Lights College	8.2		9.0		11.0	10.0			8.9
Northwest Community College	9.7	10.0	8.8		8.0				9.3
Interior/Kootenays	8.0	9.1	7.7	8.1	10.6	9.7			8.3
College of the Rockies	9.8	9.0		7.0					
Okanagan University College	7.6	9.2	6.5	7.6	10.3	12.5			8.1
Selkirk College	8.1	12.0	12.0	9.3	12.0	8.0			8.8
Univ College of the Cariboo	8.1	8.5	8.5	7.5		8.3			8.2
Vancouver Island	7.6	8.0	7.6	8.3		10.0	8.7	13.0	7.9
Camosun College	7.7	10.2	6.8	9.3		9.0	8.7	13.0	
Malaspina University-College	7.4	7.2	8.7	7.3		10.0			7.5
North Island College	9.5					11.0			
Total Lower Mainland	7.9	8.8	8.1	8.4	9.9	9.5	8.7	13.0	8.2
Lower Mainland									
Public	8.7	8.7	8.8	9.6	9.8	9.8	10.7	11.0	8.8
B.C. Institute of Technology	11.5	8.5	15.0	9.5		10.0			10.1
Capilano College	9.0	9.8	8.9	9.7	9.2	11.1	9.5		9.2
Douglas College	8.8	7.9	8.4	10.3	9.9	10.0	12.7		8.7
Kwantlen University College	8.5	8.8	8.9	9.5	10.2	9.2	11.0		8.7
Univ Coll of the Fraser Valley	8.0	9.2	7.7	8.3	10.0	8.3			8.2
Langara College	8.7	8.7	9.2	9.6	9.1	9.8	10.2	11.0	8.8
Private	8.0	7.9	11.0	10.7			12.0		8.3
Columbia College	8.1	8.2	12.0	10.4			12.0		8.5
Coquitlam College	7.9	7.6	8.0	11.0					
Total Lower Mainland	8.7	8.6	8.9	9.7	9.8	9.8	10.8	11.0	8.8
Total B.C. College Transfers	8.6	8.6	8.6	9.6	9.8	9.7	10.5	12.0	8.7

Notes:

- a) Credential completion time is estimated from semester admitted and semester of graduation from first degree.
- b) Credentials which may be completed before, during or after a degree program (PDP or certificates) are excluded from this table.

Credentials:

BA - Bachelor of Arts
 BBA - Bachelor of Business Administration
 BGS - Bachelor of General Studies
 BSC - Bachelor of Science
 BED - Bachelor of Education

BSK - Bachelor of Science (Kinesiology)
 BFA - Bachelor of Fine Arts
 BASC - Bachelor of Applied Science
 PDP - Professional Development Program

SECTION D

**PROFILE OF STUDENTS WITH COLLEGE EXPERIENCE
ADMITTED TO SFU AS NON-'B.C. COLLEGE TRANSFERS'**

TABLE 18
STUDENTS WITH COLLEGE EXPERIENCE ADMITTED TO SFU BY YEAR OF ADMISSION

Region/College	1993/94	1994/95	1995/96	1996/97	1997/98	5 Year Total
Non Lower Mainland						
Northern B.C.	31	15	17	17	16	96
New Caledonia College	7	6	3	10	9	35
Northern Lights College	19	6	3	5	4	37
Northwest Community College	5	3	11	2	3	24
Interior/Kootenays	14	21	18	21	14	88
College of the Rockies		2	3		1	6
Okanagan University College	6	11	4	12	6	39
Selkirk College	3	2	4	2	1	12
Univ College of the Cariboo	5	6	7	7	6	31
Vancouver Island	21	22	12	17	12	84
Camosun College	13	11	6	10	4	44
Malaspina University-College	6	7	3	4	6	26
North Island College	2	4	3	3	2	14
Total Non Lower Mainland	66	58	47	55	42	268
Lower Mainland						
Public	213	205	153	179	210	960
B.C. Institute of Technology	10	9	10	3	13	45
Capilano College	52	39	23	24	35	173
Douglas College	52	44	35	39	45	215
Kwantlen University College	45	39	43	53	52	232
Univ Coll of the Fraser Valley	8	11	7	13	13	52
Langara College	46	63	35	47	52	243
Private	29	21	24	11	18	103
Columbia College	18	11	13	8	9	59
Coquitlam College	11	10	11	3	9	44
Total Lower Mainland	242	226	177	190	228	1,063
Total with College Experience	308	284	224	245	270	1,331

Percent Distribution of B.C. College Transfers Admitted by Region						
Non Lower Mainland						
Northern B.C.	10.1%	5.3%	7.6%	6.9%	5.9%	7.2%
Interior/Kootenays	4.5%	7.4%	8.0%	8.6%	5.2%	6.6%
Vancouver Island	6.8%	7.7%	5.4%	6.9%	4.4%	6.3%
Total Non Lower Mainland	21.4%	20.4%	21.0%	22.4%	15.6%	20.1%
Lower Mainland						
Public	69.2%	72.2%	68.3%	73.1%	77.8%	72.1%
Private	9.4%	7.4%	10.7%	4.5%	6.7%	7.7%
Total Lower Mainland	78.6%	79.6%	79.0%	77.6%	84.4%	79.9%
Grand Total	100.0%	100.0%	100.0%	100.0%	100.0%	100.0%

Note: Excludes students admitted to SFU on the basis of 'B.C. College Transfer'.

**TABLE 19A
DISTRIBUTION OF STUDENTS ADMITTED TO SFU WITH COLLEGE EXPERIENCE
BY ADMISSION YEAR AND BASIS OF ADMISSION**

Basis of Admission	1993/94	1994/95	1995/96	1996/97	1997/98	5 Year	
						Total	%
B.C. Grade 12	101	86	78	91	101	457	34.3%
Mature Student with Transfer Credit	57	59	40	28	41	225	16.9%
University Transfer	37	33	24	27	61	182	13.7%
Special Entry	34	47	37	29	33	180	13.5%
B.C. University Transfer	36	31	29	38		134	10.1%
Transfer from College outside B.C.	13	13	2	11	9	48	3.6%
Foreign Equivalent of Cdn. Grade 12/13	9	4	2	11	7	33	2.5%
Transfer from a Technical Program	3	4	3	2	11	23	1.7%
Mature Student	5	2	4	1	2	14	1.1%
Canadian Grade 12	2	2	1	1	3	9	0.7%
Visiting Student from a B.C. Institute	3		2	1		6	0.5%
B.C. Adult Educ. Provincial Diploma	1	1	1	1		4	0.3%
Unspecified		1	1	1		3	0.2%
B.C. University Degree	1			2		3	0.2%
University Degree	1	1		1		3	0.2%
Special Entry: Senate Appeal	3					3	0.2%
Canadian Grade 13	2					2	0.2%
United States Grade 12					1	1	0.1%
Visiting Student					1	1	0.1%
Total with College Experience	308	284	224	245	270	1,331	100.0%

**TABLE 19B
ADMISSION GRADE POINT AVERAGE BY ADMISSION YEAR AND BASIS OF ADMISSION
FOR STUDENTS ADMITTED TO SFU WITH COLLEGE EXPERIENCE**

Basis of Admission	1993/94	1994/95	1995/96	1996/97	1997/98	5 Year
						Average
B.C. Grade 12	3.16	3.24	3.25	3.30	3.29	3.25
Mature Student with Transfer Credit	3.35	3.31	3.34	3.16	3.01	3.25
University Transfer	3.02	2.87	3.08	2.98	3.01	2.99
Special Entry	2.73	2.39	2.85	2.57	2.49	2.56
B.C. University Transfer	2.83	2.96	2.88	3.01		2.92
Transfer from College outside B.C.	3.30	3.21	3.00	3.03	3.23	3.19
Foreign Equivalent of Cdn. Grade 12/13	3.06	3.41	3.75	3.63	3.46	3.42
Transfer from a Technical Program	3.26	3.10	3.24	3.61	3.74	3.49
Mature Student	2.25	2.67	3.10			2.37
Canadian Grade 12	3.08	3.17	3.25	3.38	3.28	3.22
Visiting Student from a B.C. Institute	2.74		2.61	2.28		2.62
B.C. Adult Educ. Provincial Diploma	3.67	2.71	2.63	3.33		3.09
Unspecified						
B.C. University Degree				2.76		2.76
University Degree				3.29		3.29
Special Entry: Senate Appeal	2.07					2.07
Canadian Grade 13	3.17					3.17
United States Grade 12					3.63	3.63
Visiting Student					2.85	2.85
Total with College Experience	3.08	3.03	3.13	3.11	3.11	3.08

Notes:

- a) Admission grade point averages were not available for 28 students admitted to SFU with college experience.
- b) Excludes students admitted to SFU on the basis of 'B.C. College Transfer'.

**TABLE 20
DISTRIBUTION OF STUDENT TRANSFER CREDITS AT TIME OF ADMISSION TO SFU
(FOR STUDENTS WITH COLLEGE EXPERIENCE ADMITTED FROM 1993/94 TO 1997/98)**

Region/College	Transfer Credits at time of Admission to SFU							Total
	< 9	9-15	16-21	22-30	31-45	46-60	> 60	
Non Lower Mainland								
Northern B.C.	13	16	8	13	15	13	18	96
New Caledonia College	2	6		3	6	7	11	35
Northern Lights College	7	6	3	6	7	6	2	37
Northwest Community College	4	4	5	4	2		5	24
Interior/Kootenays	6	16	12	27	6	17	4	88
College of the Rockies	2	1		1		1	1	6
Okanagan University College	2	6	6	15	3	6	1	39
Selkirk College		2	1	3	2	3	1	12
Univ College of the Cariboo	2	7	5	8	1	7	1	31
Vancouver Island	6	14	7	13	12	24	8	84
Camosun College	4	6	2	5	12	11	4	44
Malaspina University-College	1	4	5	3		10	3	26
North Island College	1	4		5		3	1	14
Total Non Lower Mainland	25	46	27	53	33	54	30	268
Lower Mainland								
Public	140	206	99	146	133	194	42	960
B.C. Institute of Technology	11	12	2	4	9	6	1	45
Capilano College	20	53	18	28	22	28	4	173
Douglas College	30	38	22	41	31	46	7	215
Kwantlen University College	40	50	26	37	23	44	12	232
Univ Coll of the Fraser Valley	8	8	7	5	7	12	5	52
Langara College	31	45	24	31	41	58	13	243
Private	14	23	9	11	21	22	3	103
Columbia College	10	13	8	6	10	10	2	59
Coquitlam College	4	10	1	5	11	12	1	44
Total Lower Mainland	154	229	108	157	154	216	45	1,063
Grand Total	179	275	135	210	187	270	75	1,331

Percent Distribution by Region								
Non Lower Mainland								
Northern B.C.	13.5%	16.7%	8.3%	13.5%	15.6%	13.5%	18.8%	100.0%
Interior/Kootenays	6.8%	18.2%	13.6%	30.7%	6.8%	19.3%	4.5%	100.0%
Vancouver Island	7.1%	16.7%	8.3%	15.5%	14.3%	28.6%	9.5%	100.0%
Total Non Lower Mainland	9.3%	17.2%	10.1%	19.8%	12.3%	20.1%	11.2%	100.0%
Lower Mainland								
Public	14.6%	21.5%	10.3%	15.2%	13.9%	20.2%	4.4%	100.0%
Private	13.6%	22.3%	8.7%	10.7%	20.4%	21.4%	2.9%	100.0%
Total Lower Mainland	14.5%	21.5%	10.2%	14.8%	14.5%	20.3%	4.2%	100.0%
Grand Total	13.4%	20.7%	10.1%	15.8%	14.0%	20.3%	5.6%	100.0%

Note:

Not all credits transferred by 'college experience' students come from B.C. Colleges. Of all credits transferred, about 38% of the credits were transferred from institutions other than BCIT or B.C. Colleges.

BEST COPY AVAILABLE

**TABLE 21
AGE DISTRIBUTION OF STUDENTS WITH COLLEGE EXPERIENCE
ADMITTED TO SFU FROM 1993/94 TO 1997/98**

Region/College	< 20	20-24	25-29	30-34	35-39	>39	Total	Average Age
Non Lower Mainland								
Northern B.C.	13	31	15	8	16	13	96	28.8
New Caledonia College	4	15	5	2	3	6	35	28.1
Northern Lights College	4	9	7	4	8	5	37	30.3
Northwest Community College	5	7	3	2	5	2	24	27.7
Interior/Kootenays	22	31	15	8	8	4	88	25.5
College of the Rockies	2	2			2		6	25.2
Okanagan University College	14	13	7	3		2	39	23.7
Selkirk College	2	4	3	1	1	1	12	27.8
Univ College of the Cariboo	4	12	5	4	5	1	31	26.9
Vancouver Island	14	29	15	7	8	11	84	28.2
Camosun College	4	21	8	3	4	4	44	27.8
Malaspina University-College	5	6	6	2	3	4	26	28.8
North Island College	5	2	1	2	1	3	14	28.4
Total Non Lower Mainland	49	91	45	23	32	28	268	27.5
Lower Mainland								
Public	279	410	119	60	37	55	960	24.0
B.C. Institute of Technology	2	12	5	12	6	8	45	30.8
Capilano College	55	69	21	12	5	11	173	23.9
Douglas College	59	98	28	11	9	10	215	23.8
Kwantlen University College	89	102	20	9	7	5	232	22.0
Univ Coll of the Fraser Valley	12	25	9	1	1	4	52	24.4
Langara College	62	104	36	15	9	17	243	24.6
Private	43	46	11	1	2		103	20.9
Columbia College	28	23	6	1	1		59	20.7
Coquitlam College	15	23	5		1		44	21.2
Total Lower Mainland	322	456	130	61	39	55	1,063	23.7
Total with College Experience	371	547	175	84	71	83	1,331	24.4

Percent Age Distribution by Region								
Non Lower Mainland								
Northern B.C.	13.5%	32.3%	15.6%	8.3%	16.7%	13.5%	100.0%	28.8
Interior/Kootenays	25.0%	35.2%	17.0%	9.1%	9.1%	4.5%	100.0%	25.5
Vancouver Island	16.7%	34.5%	17.9%	8.3%	9.5%	13.1%	100.0%	28.2
Total NonLower Mainland	18.3%	34.0%	16.8%	8.6%	11.9%	10.4%	100.0%	27.5
Lower Mainland								
Public	29.1%	42.7%	12.4%	6.3%	3.9%	5.7%	100.0%	24.0
Private	41.7%	44.7%	10.7%	1.0%	1.9%		100.0%	20.9
Total Lower Mainland	30.3%	42.9%	12.2%	5.7%	3.7%	5.2%	100.0%	23.7
Total with College Experience	27.9%	41.1%	13.1%	6.3%	5.3%	6.2%	100.0%	24.4

Note:

a) Excludes students admitted to SFU on the basis of 'B.C. College Transfer'.

TABLE 22
GENDER DISTRIBUTION OF STUDENTS WITH COLLEGE EXPERIENCE
ADMITTED TO SFU FROM 1993/94 TO 1997/98

Region/College	Number			Percent	
	Male	Female	Total	Male	Female
Non Lower Mainland					
Northern B.C.	15	81	96	15.6%	84.4%
New Caledonia College	3	32	35	8.6%	91.4%
Northern Lights College	5	32	37	13.5%	86.5%
Northwest Community College	7	17	24	29.2%	70.8%
Interior/Kootenays	37	51	88	42.0%	58.0%
College of the Rockies	2	4	6	33.3%	66.7%
Okanagan University College	20	19	39	51.3%	48.7%
Selkirk College	6	6	12	50.0%	50.0%
Univ College of the Cariboo	9	22	31	29.0%	71.0%
Vancouver Island	26	58	84	31.0%	69.0%
Camosun College	14	30	44	31.8%	68.2%
Malaspina University-College	7	19	26	26.9%	73.1%
North Island College	5	9	14	35.7%	64.3%
Total Non Lower Mainland	78	190	268	29.1%	70.9%
Lower Mainland					
Public	427	533	960	44.5%	55.5%
B.C. Institute of Technology	18	27	45	40.0%	60.0%
Capilano College	86	87	173	49.7%	50.3%
Douglas College	98	117	215	45.6%	54.4%
Kwantlen University College	102	130	232	44.0%	56.0%
Univ Coll of the Fraser Valley	19	33	52	36.5%	63.5%
Langara College	104	139	243	42.8%	57.2%
Private	53	50	103	51.5%	48.5%
Columbia College	34	25	59	57.6%	42.4%
Coquitlam College	19	25	44	43.2%	56.8%
Total Lower Mainland	480	583	1,063	45.2%	54.8%
Total with College Experience	558	773	1,331	41.9%	58.1%

Note:

a) Excludes students admitted to SFU on the basis of 'B.C. College Transfer'.

APPENDIX
SUPPORTING TABLES AND FIGURES
&
FILE STRUCTURE DESCRIPTIONS

**TABLE A
CREDIT HOUR AND CREDENTIAL COMPLETION STATUS
FOR UNDERGRADUATE STUDENTS ADMITTED TO SFU ON THE BASIS
OF B.C. GRADE 12 - DIRECT AND NON-DIRECT (as at July 18, 1998)**

Year Admitted	Number Admitted	Credit Hours Successfully Completed						Graduands	
		0	1 - 29	30-59	60-89	90-120	>120	Cert/Dipl	Degree
1988/89	1,334	22 1.6%	213 16.0%	145 10.9%	77 5.8%	38 2.8%	13 1.0%	12 0.9%	814 61.0%
1989/90	1,423	12 0.8%	246 17.3%	170 11.9%	75 5.3%	47 3.3%	35 2.5%	11 0.8%	827 58.1%
1990/91	1,354	15 1.1%	232 17.1%	126 9.3%	73 5.4%	42 3.1%	32 2.4%	13 1.0%	821 60.6%
1991/92	1,445	17 1.2%	212 14.7%	166 11.5%	87 6.0%	72 5.0%	45 3.1%	27 1.9%	819 56.7%
1992/93	1,399	14 1.0%	176 12.6%	165 11.8%	95 6.8%	135 9.6%	97 6.9%	35 2.5%	682 48.7%
1993/94	1,508	20 1.3%	209 13.9%	171 11.3%	166 11.0%	335 22.2%	149 9.9%	46 3.1%	412 27.3%
1994/95	1,780	21 1.2%	260 14.6%	242 13.6%	395 22.2%	640 36.0%	44 2.5%	55 3.1%	123 6.9%
1995/96	1,695	15 0.9%	241 14.2%	360 21.2%	899 53.0%	141 8.3%	2 0.1%	33 1.9%	4 0.2%
1996/97	1,848	29 1.6%	368 19.9%	1,184 64.1%	254 13.7%	6 0.3%	-	7 0.4%	-
1997/98	2,015	29 1.4%	1,630 80.9%	355 17.6%	1 0.0%	-	-	-	-

Note:

- a) Excludes students who withdraw from the university during their first semester at SFU.
- b) Includes ALL students admitted to SFU from high school (direct and non-direct entry).

Source: SFU Factbook, Table D-32c

**TABLE B
CREDIT HOUR AND CREDENTIAL COMPLETION STATUS
FOR UNDERGRADUATE STUDENTS ADMITTED TO SFU FROM ANOTHER
POST-SECONDARY INSTITUTION (as at July 18, 1998)**

Year Admitted	Number Admitted	Credit Hours Successfully Completed						Graduands	
		0	1 - 29	30 - 59	60 - 89	90 - 120	>120	Cert/Dipl	Degree
1988/89	1,803	5 0.3%	33 1.8%	263 14.6%	267 14.8%	75 4.2%	30 1.7%	47 2.6%	1083 60.1%
1989/90	2,327	14 0.6%	51 2.2%	321 13.8%	377 16.2%	134 5.8%	30 1.3%	48 2.1%	1,352 58.1%
1990/91	2,192	1 0.0%	39 1.8%	275 12.5%	302 13.8%	119 5.4%	44 2.0%	39 1.8%	1,373 62.6%
1991/92	1,855	4 0.2%	27 1.5%	236 12.7%	229 12.3%	86 4.6%	36 1.9%	26 1.4%	1,211 65.3%
1992/93	1,732	1 0.1%	15 0.9%	162 9.4%	233 13.5%	118 6.8%	47 2.7%	23 1.3%	1,133 65.4%
1993/94	2,233	2 0.1%	24 1.1%	246 11.0%	337 15.1%	174 7.8%	132 5.9%	39 1.7%	1,279 57.3%
1994/95	2,705	4 0.1%	29 1.1%	375 13.9%	483 17.9%	428 15.8%	204 7.5%	56 2.1%	1,126 41.6%
1995/96	1,906	1 0.1%	14 0.7%	240 12.6%	414 21.7%	614 32.2%	131 6.9%	49 2.6%	443 23.2%
1996/97	1,960	1 0.1%	9 0.5%	270 13.8%	828 42.2%	674 34.4%	28 1.4%	52 2.7%	98 5.0%
1997/98	1,812	- -	16 0.9%	632 34.9%	1,057 58.3%	98 5.4%	- -	9 0.5%	- -

Notes:

- a) Excludes students who withdraw from the university during their first semester at SFU.
- b) Includes students admitted to SFU from another post-secondary institution (universities and colleges).
Students admitted from a technical school are excluded.

Source: SFU Factbook, Table D-32c

**TABLE C
DISTRIBUTION OF NEW STUDENTS ADMITTED TO SFU
BY BASIS OF ADMISSION (1993/94 TO 1997/98)**

Basis of Admission	New Students Admitted		Credits Transferred	Mean Credits Transferred
	WITHOUT Transfer Credit	WITH Transfer Credit		
B.C. College/Assoc. Deg./Tech.	20	9,036	426,382	47
B.C. Grade 12	7,782	1,059	11,972	11
Degree (Non-B.C.)	1,797	35	459	13
University (Non-B.C.)	40	984	39,959	41
Grade 12/13 (Non-B.C.)	721	198	3,358	17
B.C. Degree	702	13	135	10
College/Technical (Non-B.C.)	71	345	11,908	35
B.C. University	2	366	18,431	50
Visiting	222	10	348	35
Other	1,582	578	16,816	29
Total New Students	12,939	12,624	529,768	42

Basis of Admission	New Students Admitted		Credits Transferred
	WITHOUT Transfer Credit	WITH Transfer Credit	
B.C. College/Assoc. Deg./Tech.	0.2%	71.6%	80.5%
B.C. Grade 12	60.1%	8.4%	2.3%
Degree (Non-B.C.)	13.9%	0.3%	0.1%
University (Non-B.C.)	0.3%	7.8%	7.5%
Grade 12/13 (Non-B.C.)	5.6%	1.6%	0.6%
B.C. Degree	5.4%	0.1%	0.0%
College/Technical (Non-B.C.)	0.5%	2.7%	2.2%
B.C. University	0.0%	2.9%	3.5%
Visiting	1.7%	0.1%	0.1%
Other	12.2%	4.6%	3.2%
Total New Students	100.0%	100.0%	100.0%

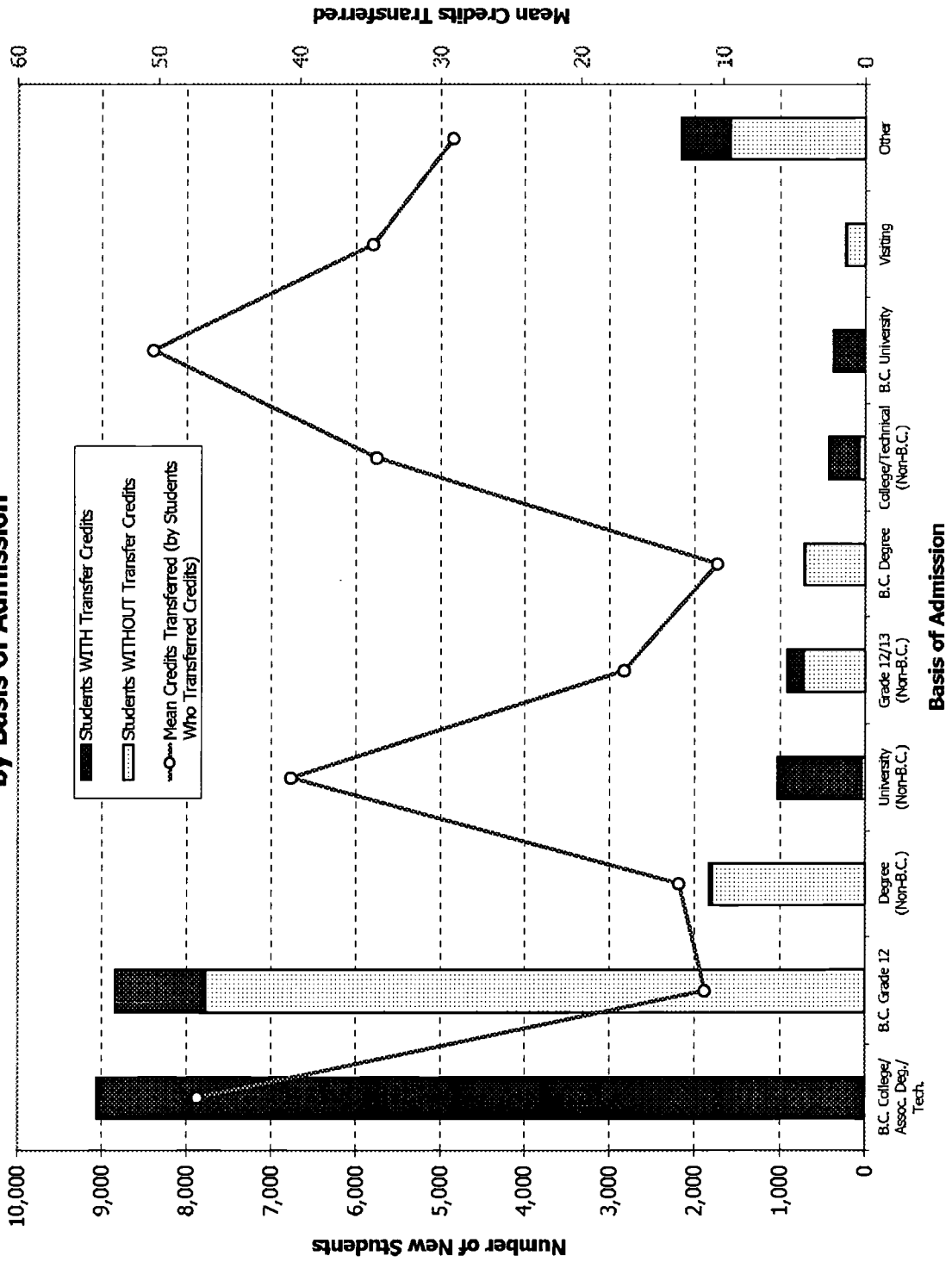
Note:

- a) The total number of students admitted to SFU with a basis of admission of "B.C. College" or "B.C. Associate Degree" or "B.C. Technical" was 9,056 from 1993/94 to 1997/98. This report on 8,987 B.C. College Transfer Students Admitted to SFU from 1993/94 to 1997/98 excludes 69 students admitted to SFU with a B.C. College basis of admission, but from a non-B.C. college.
- b) The mean credits transferred excludes students without transfer credits.

Source: SFU, Office of Analytical Studies Retention Database.

BEST COPY AVAILABLE

FIGURE A
Distribution of New Students Admitted to SFU (1993/94 to 1997/98)
by Basis of Admission



FILE STRUCTURE FOR BCCOL.DAT

Description: Students admitted to SFU from a B.C. College from 1993/94 to 1997/98. One record per student/credential combination (10,075 records for 8,987 StuIDs). For students who have not yet been awarded a degree, all active credentials were selected. For students who have been awarded one or more degrees, only the first degree awarded and any other previously awarded certificates were selected.

<u>Field</u>	<u>Field Name</u>	<u>Type</u>	<u>Width</u>	<u>Description</u>
1	STUID	Numeric	9	Student ID number.
2	SEM1	Numeric	5	Admission semester/first SFU semester.
3	ADMGPA	Numeric	3	GPA upon admission to SFU (ie. College GPA).
4	TFRURED	Numeric	5	Total transfer credits on admission to SFU.
5	CGPA1	Numeric	3	CGPA after first semester at SFU.
6	SEM1CRHRS	Numeric	2	Number credits enrolled in during SEM1.
7	MAXCOLLEGE	Character	5	College attended with maximum transfer credits.
8	MAXTFRURED	Numeric	5	Transfer credits from MAXCOLLEGE.
9	CGPA30	Numeric	3	CGPA after 30 credit hours at SFU.
10	BICH222	Character	2	Course grade in BICH222.
11	BISC202	Character	2	etc.
12	BISC316	Character	2	
13	BUEC232	Character	2	
14	BUEC333	Character	2	
15	BUS207	Character	2	
16	BUS237	Character	2	
17	BUS251	Character	2	
18	BUS312	Character	2	
19	BUS343	Character	2	
20	BUS374	Character	2	
21	CHEM150	Character	2	
22	CMNS221	Character	2	
23	CMNS223	Character	2	
24	CMPT205	Character	2	
25	CRIM230	Character	2	
26	CRIM320	Character	2	
27	CRIM330	Character	2	
28	ECON103	Character	2	
29	ECON301	Character	2	
30	ECON305	Character	2	
31	EDUC220	Character	2	
32	EDUC230	Character	2	
33	EDUC240	Character	2	
34	ENGL206	Character	2	
35	ENGL312	Character	2	
36	FREN201	Character	2	
37	FREN301	Character	2	
38	GEOG221	Character	2	
39	HIST225	Character	2	
40	LING220	Character	2	
41	MACM316	Character	2	
42	MATH232	Character	2	
43	MATH251	Character	2	

FILE STRUCTURE FOR BCCOL.DAT (cont)

<u>Field</u>	<u>Field Name</u>	<u>Type</u>	<u>Width</u>	<u>Description</u>
44	MATH310	Character	2	Course grade in MATH 310.
45	PHIL210	Character	2	etc.
46	POL231	Character	2	
47	POL241	Character	2	
48	PSYC201	Character	2	
49	PSYC210	Character	2	
50	PSYC250	Character	2	
51	PSYC260	Character	2	
52	PSYC308	Character	2	
53	PSYC355	Character	2	
54	STAT270	Character	2	
55	BIRTHDATE	Numeric	8	Date of birth of student (YYYYMMDD).
56	GENDER	Character	1	Gender of student.
57	VISA	Character	1	Visa abbreviation of student.
58	DEGAWRDCNT	Numeric	3	Number of degrees awarded since SEM1.
59	DEGAWRDSEM	Numeric	5	Semester of first degree awarded.
60	FIRSTINTRO	Numeric	5	Semester first degree introduced.
61	CREDCOUNT	Numeric	3	Number of credentials sought.
62	CREDENTIAL	Character	15	Credential(s) student is pursuing.
63	FACULTY	Character	4	Current faculty.
64	GRADSEM	Numeric	5	Semester of graduation from SFU.
65	CREDNUM	Numeric	2	Credential reference number.
66	HONORS	Character	12	Approved honors and joint honors.
67	MAJORS	Character	12	Approved majors, joint majors and programs.
68	MINORS	Character	12	Approved minors and extended minors.
69	FRACTION	Numeric	5	Fractional count for multiple credentials.
70	GRADGPA	Numeric	3	CGPA upon graduating from SFU.
71	LAST60HRS	Numeric	2	Last 60 credit hours up to SFU graduation.
72	LAST60PTS	Numeric	5	Grade points in last 60 hours at SFU.
73	LAST60GPA	Numeric	3	CGPA on last 60 hours up to SFU graduation.
** Total **			258	

FILE STRUCTURE FOR BC12.DAT

Description: Students admitted to SFU directly from B.C. Grade 12 graduation, from 1993/94 to 1997/98. One record per student/credential combination (8,538 records for 7,958 StuIDs). For students who have not yet been awarded a degree, all active credentials were selected. For students who have been awarded one or more degrees, only the first degree awarded and any other previously awarded certificates were selected.

<u>Field</u>	<u>Field Name</u>	<u>Type</u>	<u>Width</u>	<u>Description</u>
1	STUID	Numeric	9	Student ID number.
2	ADMGPA	Numeric	3	GPA upon SFU admission (ie. High School GPA).
3	SEM1	Numeric	5	Admission semester/first SFU semester.
4	SEM1CRHRS	Numeric	2	Number credits enrolled in during SEM1.
5	CGPA1	Numeric	3	CGPA after first semester at SFU.
6	SECSCHNAME	Character	5	Secondary school attended.
7	CGPA30	Numeric	3	CGPA after 30 credit hours at SFU.
8	BICH222	Character	2	Course grade in BICH222.
9	BISC202	Character	2	etc.
10	BISC316	Character	2	
11	BUEC232	Character	2	
12	BUEC333	Character	2	
13	BUS207	Character	2	
14	BUS237	Character	2	
15	BUS251	Character	2	
16	BUS312	Character	2	
17	BUS343	Character	2	
18	BUS374	Character	2	
19	CHEM150	Character	2	
20	CMNS221	Character	2	
21	CMNS223	Character	2	
22	CMPT205	Character	2	
23	CRIM230	Character	2	
24	CRIM320	Character	2	
25	CRIM330	Character	2	
26	ECON103	Character	2	
27	ECON301	Character	2	
28	ECON305	Character	2	
29	EDUC220	Character	2	
30	EDUC230	Character	2	
31	EDUC240	Character	2	
32	ENGL206	Character	2	
33	ENGL312	Character	2	
34	FREN201	Character	2	
35	FREN301	Character	2	
36	GEOG221	Character	2	
37	HIST225	Character	2	
38	LING220	Character	2	
39	MACM316	Character	2	
40	MATH232	Character	2	
41	MATH251	Character	2	

FILE STRUCTURE FOR BC12.DAT (cont)

<u>Field</u>	<u>Field Name</u>	<u>Type</u>	<u>Width</u>	<u>Description</u>
42	MATH310	Character	2	Course grade in MATH 310.
43	PHIL210	Character	2	etc.
44	POL231	Character	2	
45	POL241	Character	2	
46	PSYC201	Character	2	
47	PSYC210	Character	2	
48	PSYC250	Character	2	
49	PSYC260	Character	2	
50	PSYC308	Character	2	
51	PSYC355	Character	2	
52	STAT270	Character	2	
53	BIRTHDATE	Numeric	8	Date of birth of student (YYYYMMDD).
54	GENDER	Character	1	Gender of student.
55	VISA	Character	1	Visa abbreviation of student.
56	DEGAWRDCNT	Numeric	3	Number of degrees awarded since SEM1.
57	DEGAWRDSEM	Numeric	5	Semester of first degree awarded.
58	FIRSTINTRO	Numeric	5	Semester first degree introduced.
59	CREDCOUNT	Numeric	3	Number of credentials sought.
60	CREDENTIAL	Character	15	Credential(s) student is pursuing.
61	FACULTY	Character	4	Current faculty.
62	GRADSEM	Numeric	5	Semester of graduation from SFU.
63	CREDNUM	Numeric	2	Credential reference number.
64	HONORS	Character	12	Approved honors and joint honors.
65	MAJORS	Character	12	Approved majors, joint majors and programs.
66	MINORS	Character	12	Approved minors and extended minors.
67	FRACTION	Numeric	5	Fractional count for multiple credentials.
68	GRADGPA	Numeric	3	CGPA upon graduating from SFU.
69	LAST60HRS	Numeric	2	Last 60 credit hours up to SFU graduation.
70	LAST60PTS	Numeric	5	Grade points in last 60 hours at SFU.
71	LAST60GPA	Numeric	3	CGPA on last 60 hours up to SFU graduation.
** Total **			224	

FILE STRUCTURE FOR COLEXP.DAT

Description: Students admitted to SFU from with college experience from a B.C. College from 1993/94 to 1997/98 (excluding students whose basis of admission was 'B.C. College Transfer'). One record per student/credential combination (1,470 records for 1,331 StuIDs). For students who have not yet been awarded a degree, all active credentials were selected. For students who have been awarded one or more degrees, only the first degree awarded and any other previously awarded certificates were selected.

<u>Field</u>	<u>Field Name</u>	<u>Type</u>	<u>Width</u>	<u>Description</u>
1	STUID	Numeric	9	Student ID number.
2	BOA	Character	5	Basis of Admission.
3	SEM1	Numeric	5	Admission semester/first SFU semester.
4	ADMGPA	Numeric	3	GPA upon admission to SFU (ie. College GPA).
5	TFRCREDED	Numeric	5	Total transfer credits on admission to SFU.
6	CGPA1	Numeric	3	CGPA after first semester at SFU.
7	SEM1CRHRS	Numeric	2	Number credits enrolled in during SEM1.
8	MAXCOLLEGE	Character	5	College attended with maximum transfer credits.
9	MAXTFRCREDED	Numeric	5	Transfer credits from MAXCOLLEGE.
10	CGPA30	Numeric	3	CGPA after 30 credit hours at SFU.
11	BICH222	Character	2	Course grade in BICH222.
12	BISC202	Character	2	etc.
13	BISC316	Character	2	
14	BUEC232	Character	2	
15	BUEC333	Character	2	
16	BUS207	Character	2	
17	BUS237	Character	2	
18	BUS251	Character	2	
19	BUS312	Character	2	
20	BUS343	Character	2	
21	BUS374	Character	2	
22	CHEM150	Character	2	
23	CMNS221	Character	2	
24	CMNS223	Character	2	
25	CMPT205	Character	2	
26	CRIM230	Character	2	
27	CRIM320	Character	2	
28	CRIM330	Character	2	
29	ECON103	Character	2	
30	ECON301	Character	2	
31	ECON305	Character	2	
32	EDUC220	Character	2	
33	EDUC230	Character	2	
34	EDUC240	Character	2	
35	ENGL206	Character	2	
36	ENGL312	Character	2	
37	FREN201	Character	2	
38	FREN301	Character	2	
39	GEOG221	Character	2	
40	HIST225	Character	2	
41	LING220	Character	2	

BEST COPY AVAILABLE

FILE STRUCTURE FOR COLEXP.DAT (cont)

<u>Field</u>	<u>Field Name</u>	<u>Type</u>	<u>Width</u>	<u>Description</u>
42	MACM316	Character	2	
43	MATH232	Character	2	
44	MATH251	Character	2	
45	MATH310	Character	2	Course grade in MATH 310.
46	PHIL210	Character	2	etc.
47	POL231	Character	2	
48	POL241	Character	2	
49	PSYC201	Character	2	
50	PSYC210	Character	2	
51	PSYC250	Character	2	
52	PSYC260	Character	2	
53	PSYC308	Character	2	
54	PSYC355	Character	2	
55	STAT270	Character	2	
56	BIRTHDATE	Numeric	8	Date of birth of student (YYYYMMDD).
57	GENDER	Character	1	Gender of student.
58	VISA	Character	1	Visa abbreviation of student.
59	DEGAWRDCNT	Numeric	3	Number of degrees awarded since SEM1.
60	DEGAWRDSEM	Numeric	5	Semester of first degree awarded.
61	FIRSTINTRO	Numeric	5	Semester first degree introduced.
62	CREDCOUNT	Numeric	3	Number of credentials sought.
63	CREDENTIAL	Character	15	Credential(s) student is pursuing.
64	FACULTY	Character	4	Current faculty.
65	GRADSEM	Numeric	5	Semester of graduation from SFU.
66	CREDNUM	Numeric	2	Credential reference number.
67	HONORS	Character	12	Approved honors and joint honors.
68	MAJORS	Character	12	Approved majors, joint majors and programs.
69	MINORS	Character	12	Approved minors and extended minors.
70	FRACTION	Numeric	5	Fractional count for multiple credentials.
71	GRADGPA	Numeric	3	CGPA upon graduating from SFU.
72	LAST60HRS	Numeric	2	Last 60 credit hours up to SFU graduation.
73	LAST60PTS	Numeric	5	Grade points in last 60 hours at SFU.
74	LAST60GPA	Numeric	3	CGPA on last 60 hours up to SFU graduation.
**	Total	**	263	

FILE STRUCTURE FOR BCCOLGOAL.DAT

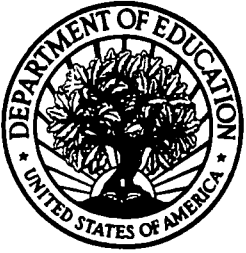
Description: This file includes only those credentials which were active upon admission to SFU for all B.C. College transfer students admitted from 1993/94 to 1997/98. This file was used to identify the degree goal upon admission. The credentials in this file may be different from those in BCCOL.DAT. (9,136 records for 9,138 StuID's).

<u>Field</u>	<u>Field Name</u>	<u>Type</u>	<u>Width</u>	<u>Description</u>
1	STUID	Numeric	9	Student ID Number.
2	MAXCOLLEGE	Character	5	College attended with maximum transfer credits.
3	SEM1	Numeric	5	Admission semester/first SFU semester.
4	CREDENTIAL	Character	15	Credential(s) student is pursuing.
5	FACULTY	Character	4	Current faculty.
6	FRACTION	Numeric	15	Fractional count for multiple credentials.
7	ADMGPA	Numeric	3	GPA upon admission to SFU (ie. College GPA).
** Total **			78	

FILE STRUCTURE FOR BCCRS GPA.DAT

Description: All 200- and 300-level courses taken by B.C. College transfer students and/or Direct Entry B.C. Grade 12 students from 1993/94 to 1997/98.

<u>Field</u>	<u>Field Name</u>	<u>Type</u>	<u>Width</u>	<u>Description</u>
1	CRSNAME	Character	7	Course name.
2	CRSNUM	Numeric	7	Course number.
3	N	Numeric	5	# BCCOL transfers who completed course.
4	ADMGPA	Numeric	7	Admission GPA of BCCOL transfers in course.
5	CRSGPA	Numeric	7	Avg grade of BCCOL tfirs who completed course.
6	N12	Numeric	5	# BC12 direct entries who completed course.
7	ADMGPA12	Numeric	9	Admission GPA of BC12 direct entries in course.
8	CRSGPA12	Numeric	9	Avg grade of BC12 direct entries who completed course.
** Total **			57	



*U.S. Department of Education
Office of Educational Research and Improvement (OERI)
National Library of Education (NLE)
Educational Resources Information Center (ERIC)*



NOTICE

Reproduction Basis



This document is covered by a signed "Reproduction Release (Blanket)" form (on file within the ERIC system), encompassing all or classes of documents from its source organization and, therefore, does not require a "Specific Document" Release form.



This document is Federally-funded, or carries its own permission to reproduce, or is otherwise in the public domain and, therefore, may be reproduced by ERIC without a signed Reproduction Release form (either "Specific Document" or "Blanket").

EFF-089 (3/2000)