

DOCUMENT RESUME

ED 444 629

JC 000 580

AUTHOR Heslop, Joanne
 TITLE Profile of B.C. College Transfer Students Admitted to Simon Fraser University, 1994/95 to 1998/99.
 INSTITUTION Simon Fraser Univ., Burnaby (British Columbia).
 SPONS AGENCY British Columbia Council on Admissions and Transfer, Vancouver.
 PUB DATE 1999-12-00
 NOTE 85p.; Prepared by Simon Fraser University, Office of Analytical Studies.
 AVAILABLE FROM For full text: <http://www.bccat.bc.ca>.
 PUB TYPE Numerical/Quantitative Data (110) -- Reports - Descriptive (141)
 EDRS PRICE MF01/PC04 Plus Postage.
 DESCRIPTORS Academic Achievement; *Academic Persistence; Access to Education; *Articulation (Education); *College Credits; *College Transfer Students; *Educational Mobility; Foreign Countries; Higher Education; *Transfer Programs; Universities
 IDENTIFIERS *British Columbia; *Simon Fraser University (Canada)

ABSTRACT

The report presents a profile of transfer students admitted to Simon Fraser University (SFU) from colleges in British Columbia (BC), Canada, over the five-year period, 1994/95 to 1998/99. In the five year period ending in the 1999 spring semester, a total of 8,323 students were admitted to SFU from BC colleges (33% of all new students admitted to SFU during that time). Included in these transfers were 237 students who transferred to SFU with a BC associate degree. In all courses reported, the average grade received by all BC college transfers was consistently lower than the grade received by BC grade 12s, except in some education courses. When looking only at those who transferred 55 or more credits to SFU, the BC college transfer students had a higher graduation rate (60%) than the BC associate degree transfers (54%). The top three programs from which transfer students graduate are business administration, psychology, and economics. Over the five-year period, 1,251 students were admitted to SFU under other bases of admission, such as BC grade 12, mature student, special entry, university transfer, etc. The majority of students with college experience came to SFU from lower mainland colleges (80%). Contains 22 tables. (Contains one appendix.) (JA)

Reproductions supplied by EDRS are the best that can be made
 from the original document.

Profile of BC College Transfer Students Admitted to Simon Fraser University 1994/95 to 1998/99

December 1999

Prepared by:

Joanne Heslop

Office of Analytical Studies
Simon Fraser University

U.S. DEPARTMENT OF EDUCATION
Office of Educational Research and Improvement
EDUCATIONAL RESOURCES INFORMATION
CENTER (ERIC)

This document has been reproduced as received from the person or organization originating it.

Minor changes have been made to improve reproduction quality.

• Points of view or opinions stated in this document do not necessarily represent official OERI position or policy.

PERMISSION TO REPRODUCE AND DISSEMINATE THIS MATERIAL HAS BEEN GRANTED BY

J. Karliński

TO THE EDUCATIONAL RESOURCES INFORMATION CENTER (ERIC)

1

555 SEYMOUR STREET
SUITE 709
VANCOUVER, BC
V6B 3H6
CANADA

TEL: 604-412-7700
FAX: 604-683-0576

EMAIL: admin@bccat.bc.ca
WEB: www.bccat.bc.ca

Prepared for and Funded by the

**BRITISH COLUMBIA COUNCIL ON
ADMISSIONS & TRANSFER**

SUPPORTING BC
EDUCATION SYSTEMS

085000590

THIS PAGE INTENTIONALLY LEFT BLANK

***Profile of B.C. College Transfer Students
Admitted to Simon Fraser University
1994/95 to 1998/99***

by Joanne Heslop
Office of Analytical Studies
Simon Fraser University
8888 University Drive
Burnaby, BC V5A 1S6
Telephone: (604) 291-4525
E-Mail: joanne@sfu.ca

© Copyright 1999 by the
British Columbia Council on Admissions and Transfer
709 - 555 Seymour Street, Vancouver, BC V6B 3H6 Canada
Phone: (604) 412-7700 Fax: (604) 683-0576
E-Mail: admin@bccat.bc.ca

BCCAT is the official mark of the
B.C. Council on Admissions and Transfer,
As published by the Registrar of Trade-marks
of the Canadian Intellectual Property Office

This Report is also available
in Adobe Acrobat Portable Document Format (pdf),
from BCCAT Online, the Internet service of the
B.C. Council on Admissions and Transfer:
www.bccat.bc.ca

Photocopying and further distribution of this document is permitted.
Please credit source.

TABLE OF CONTENTS

I. INTRODUCTION	5
II. DEFINITIONS	6
III. ANALYSIS	8
A. Profile of B.C. College Transfer Students.....	8
B. Quality/Academic Performance of B.C. College Transfer Students.....	11
C. Profile of B.C. College Transfer Students who have Graduated.....	14
D. Profile of Students with College Experience.....	15
IV. TABLES AND GRAPHS	17
A. Profile of B.C. College Transfer Students	17
Table 1A - by College and Year of Admission.....	19
Table 1B - by College and Year of Admission (B.C. Associate Degree transfers).....	20
Table 2 - by Transfer Credits.....	24
Table 3 - by First Semester Credit Hours.....	25
Table 4 - by Faculty of Intended Major.....	27
Table 5 - by Degree Goal.....	28
Table 6 - by Program of Study.....	29
Table 7 - Age Distribution.....	31
Table 8 - Gender Distribution.....	32
Figure 1 - Number Admitted by College.....	21
Figure 2 - Number Admitted by Region.....	22
Figure 3 - Number Admitted by Public Lower Mainland Colleges.....	23
B. Quality/Academic Performance of B.C. College Transfer Students	33
Table 9 - by Admission GPA.....	35
Table 10 - by GPA after First Semester, after 30 Credit Hours, at Graduation.....	36
Table 11A - by Grades in Selected Courses.....	37
Table 11B - by Grades in 200- and 300-Level Courses (BCCoI vs BC12).....	52
Table 12 - by Degree Completion Rate.....	55
Table 13 - by Cumulative Grade Point Average at Graduation (BCCoI vs BC12).....	57
Figure 4 - Distribution of CGPA at Graduation (BCCoI vs BC12).....	58
C. Profile of B.C. College Transfer Students who have Graduated	59
Table 14 - by GPA after First Semester, after 30 Credit Hours, at Graduation.....	61
Table 15 - by Program of Study.....	62
Table 16 - by Credential Awarded.....	64
Table 17 - by Average Number of Semesters to Complete Credential.....	65

D. Profile of Students with College Experience	67
Table 18 - by College and Year of Admission.....	69
Table 19A - by Admission Year and Basis of Admission.....	70
Table 19B - Admission GPA by Admission Year and Basis of Admission.....	70
Table 20 - Transfer Credit Distribution.....	71
Table 21 - Age Distribution.....	72
Table 22 - Gender Distribution.....	73

APPENDIX – Supplementary Tables and Figures & File Structure Descriptions **75**

Table A - Credit Hour and Credential Completion Status (BC12).....	77
Table B - Credit Hour and Credential Completion Status (Post-Secondary).....	78
Table C - Distribution of New Students Admitted to SFU by Basis of Admission.....	79
Figure A - Distribution of New Students Admitted to SFU by Basis of Admission.....	80
Figure B – Annual Admission Intake at SFU - Trends.....	81
BCCOL.DAT File Structure.....	82
BC12.DAT File Structure.....	84
COLEXP.DAT File Structure.....	86
BCGoal.DAT File Structure.....	88
BCCrs.DAT File Structure.....	88

INTRODUCTION

Presented in this report is a profile of transfer students admitted to Simon Fraser University from B.C. Colleges over the five-year period, 1994/95 to 1998/99. The report provides a general overview of transfer students, followed by an analysis of their academic performance at SFU and a review of those who have graduated. In addition, the last section of this report profiles students with some college experience who were admitted to SFU as non-'B.C. College Transfers'. Throughout the report, inter-college comparisons are displayed and where appropriate, comparisons with students admitted with a B.C. Associate degree or admitted directly from B.C. secondary schools are provided. Note that many of the students admitted to college who subsequently transfer to university would not have been eligible for admission to university directly from high school.

Section A provides a general profile of transfer students by:

- College from which students transfer to SFU,
- Number of transfer credits students are admitted with,
- Number of credit hours students register for in their first semester,
- Faculty in which students intend to major,
- Degree goal or credential students pursue,
- Program(s) students pursue,
- Age upon admission to SFU, and
- Gender.

Section B presents academic performance indicators for transfer students:

- Grade point average (GPA) upon admission through to graduation,
- Grade performance in selected courses at SFU compared to direct entry students, and
- Degree completion rate.

In Section C, we examine transfer students who have graduated, including:

- Trends in GPA performance, from admission through to graduation,
- Distribution of programs from which they graduated,
- Distribution of credentials awarded, and
- Average number of semesters required to graduate.

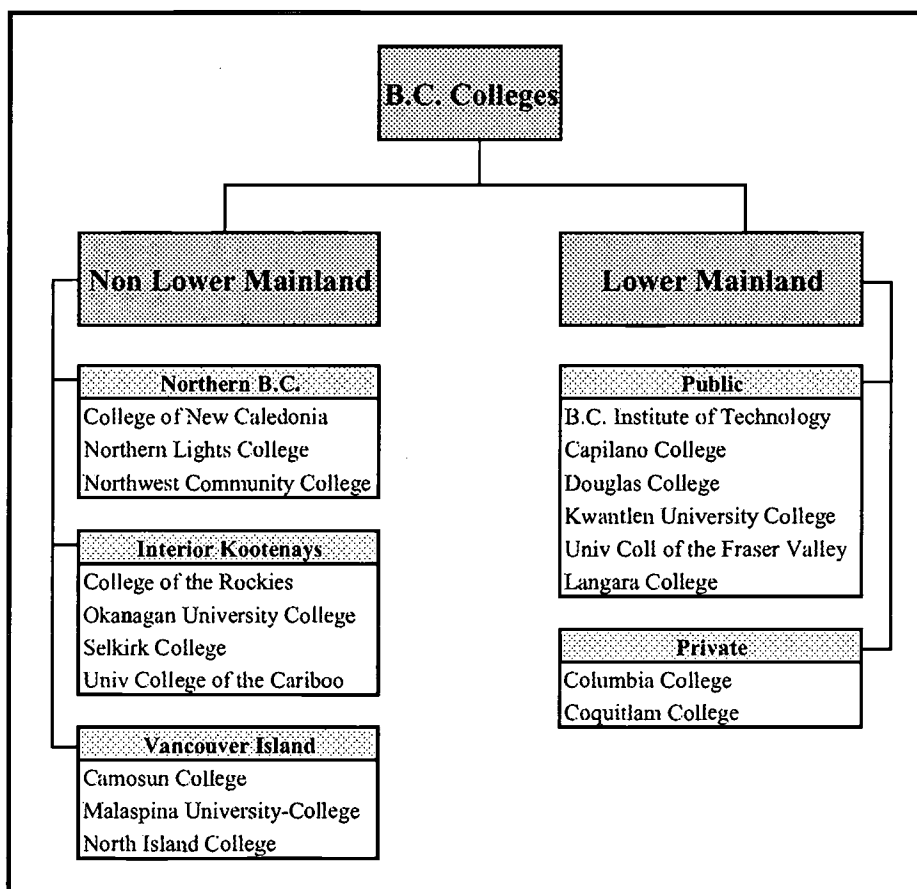
In Section D, we briefly explore the group of students who had some college experience, but were admitted to SFU as non-'B.C. College Transfers'. This final section shows distributions by:

- College from which students have some transfer credits,
- Year and Basis of Admission,
- Admission Grade Point Average by Basis of Admission,
- Age upon admission to SFU, and
- Gender.

DEFINITIONS

B.C. College transfer students in this report include 8,323 students admitted to Simon Fraser University from 1994/95 to 1998/99 with a minimum of a full year of transferable work (30 transfer credits) or BCIT transfers¹ with any number of credits. In exceptional circumstances, B.C. College transfer students may be admitted to SFU with fewer than 30 transfer credits. Transfer students represent approximately one third of Simon Fraser's new student admissions. These students had a minimum 2.00 GPA admission average and did not withdraw during their first semester at SFU. B.C. Associate Degree transfers (defined below) are also included with the B.C. College transfers students throughout this report and for simplicity, the 8,323 "B.C. College transfers" collectively refer to the 8,086 students admitted with a basis of admission of B.C. College (BCCOL) and the 237 students admitted with a B.C. Associate Degree (BCASD).

The student's B.C. College of transfer is deemed to be the institution from which the most credits were transferred. The seventeen colleges and one technical institute represented in this report are organized by region:



¹ The University of Victoria produces a similar report on their B.C. College transfer students. Since UVic includes BCIT transfers in their report, SFU chose to do the same for compatibility.

B.C. Associate Degree transfers include 237 students admitted to SFU over the past five years on the basis of their Associate Degree from a B.C. community college. These students normally have successfully completed a minimum of 54 credit hours and have a minimum 2.00 admission GPA based on transferable courses. Where appropriate throughout the report, a separate total for BCASD's is provided.

B.C. Direct Entry Grade 12's include the 8,369 students admitted to SFU over the past five years on the basis of B.C. secondary school completion and who entered SFU within one year of high school graduation.

Students with College Experience are profiled in Section D of this report. These 1,251 students had some transfer credits from a B.C. College and were admitted to SFU under other bases of admission, such as B.C. Grade 12, Mature Student, Special Entry, University Transfer, etc. (see Table 19A and basis of admission definitions below).

Basis of Admission - Apart from B.C. College Transfers, B.C. Associate Degree transfers and B.C. Direct Entry Grade 12's defined above, applicants may be admitted to undergraduate studies at SFU based on these other qualifications:

Canadian Grade 12 or 13 - completion of grade 12 or 13 at a non-B.C. high school in Canada.

United States Grade 12 - completion of grade 12 at a high school in the United States.

Foreign Equivalent of B.C. Grade 12 or 13 - the equivalent of grade 12 or grade 13 completion at a high school outside of Canada.

University Transfer - applicants in good standing at other recognized universities may be admitted on completion of at least one full year (30 credits) of transferable work with a minimum 2.00 GPA admission average.

University Degree - applicants with baccalaureate degrees from recognized universities may be admitted with a minimum GPA average of 2.00 based on the last two years of degree work attempted.

Transfer from College outside of B.C. - applicants who have completed a minimum of one year of transferable work (30 credits) with a minimum 2.00 GPA admission average at a college outside of British Columbia

Transfer from a Technical Program - students who have completed two-year diplomas from institutes of technology. BCIT is normally included here, but for the purposes of this report, BCIT is included with B.C. College Transfers.

B.C. Adult Education Provincial Diploma - applicants, aged 19 years and older, who have completed the Adult Basic Education Provincial Diploma.

Visiting Student - students from other accredited institutions who take specified courses for subsequent transfer back to their 'home' institution towards a degree, certificate or diploma at their home institution.

Mature Student - applicants 23 years or older who have attempted less than one year of post-secondary transferable course work, and who do not meet regular admission requirements.

Special Entry - applicants already holding a first degree may register in undergraduate courses as a 'special student'. Credit for these courses may not be applied toward completion of any certificate, diploma, graduate or undergraduate credential at SFU.

A limit to the number of students admitted from each category is set each year. A five year history of these quotas, regrouped into three broad admission categories is shown in the table below. As the B.C. College transfer student quota declined, a corresponding increase in the B.C. Grade 12 quota occurred.

SFU Admission Quotas by Admission Category and Year

Admission Category	1994/95		1995/96		1996/97		1997/98		1998/99	
B.C. College Transfer	1,930	37%	1,675	37%	1,525	33%	1,560	32%	1,372	31%
B.C. Grade 12	1,740	33%	1,625	35%	1,690	37%	1,878	39%	1,750	40%
Other	1,605	30%	1,288	28%	1,410	30%	1,425	29%	1,265	29%
Total	5,275	100%	4,588	100%	4,625	100%	4,863	100%	4,387	100%

As shown in the table below, the above admission quotas have a direct effect on the actual student intake each year. Refer to Figure B in the Appendix for additional historical information and a discussion of the change in distribution of new undergraduate students admitted to SFU from 1981/82 to present.

New Undergraduate Students Admitted to SFU by Admission Category and Year

Admission Category	1994/95		1995/96		1996/97		1997/98		1998/99	
B.C. College Transfer	2,355	41%	1,631	34%	1,685	34%	1,611	32%	1,281	27%
B.C. Grade 12	1,835	32%	1,745	37%	1,881	38%	2,061	41%	1,981	42%
Other	1,619	28%	1,367	29%	1,448	29%	1,400	28%	1,503	32%
Total	5,809	100%	4,743	100%	5,014	100%	5,072	100%	4,765	100%

Several data files were extracted from the SFU Student Information System for the analysis presented in this report. The data definitions for these files are included in the Appendix.

ANALYSIS

A. Profile of B.C. College Transfer Students

Over the five year period ending in the 1999 spring semester, a total of 8,323 students were admitted to SFU from B.C. Colleges (33% of all new students admitted to SFU during that time²). Included in these transfers were 237 students who transferred to SFU with a B.C. Associate Degree. Tables 1 to 8 provide a general overview of these students.

² The distribution of new students admitted to SFU in the five year period, from 1994/95 to 1998/99, by basis of admission and transfer credit volume is shown in the Appendix (Table C).

Table 1A: Distribution by Admission Year.

- Almost 2,300 students were admitted to SFU from B.C. colleges in 1994/95. In 1995/96, SFU reduced its admission quotas for all categories of students to reduce enrollments to conform with funded FTE targets. This resulted in a 30% decline in the number of students admitted from B.C. colleges. A further reduction in admission quotas occurred in 1998/99, as the number of transfers from B.C. colleges declined to 1,260. See [Figures 2 and 3](#).
- Currently, about 1,800 students are admitted to SFU direct from B.C. grade 12 each year. This is up from 1,600 in each of the three years from 1994/95 to 1996/97 and is a direct effect of an increase in admission quotas for B.C. high school students.
- The majority of transfer students (87%) came to SFU from lower mainland colleges, with 79% coming from just four colleges (Kwantlen, Douglas, Langara and Capilano) (see [Figure 1](#)).
- 13% of transfer students came to SFU from colleges outside of the lower mainland (Interior/Kootenays (4.5%), Vancouver Island (4.5%) and Northern B.C. (3.8%)).
- The largest sources of transfers from outside the Vancouver area are College of New Caledonia, Malaspina University-College and Camosun College, each representing 2% of all transfers.

Table 1B: Distribution by Admission Year (B.C. Associate Degree transfers).

- The number of B.C. Associate Degree transfers has been increasing steadily over the past five years, from eight in 1994/95 to 94 in 1998/99, for a total of 237 students over the period (see [Figure 2](#)).
- The largest sources of B.C. Associate Degree transfers are Capilano College (27%) and Douglas College (24%). See [Figure 1](#).

Table 2: Distribution of Credits Transferred to SFU.

- 25% of students transferred the maximum 60 credits to SFU.
- Over the past five years, on average, 48 credits were transferred to SFU from B.C. colleges (equivalent to just over one and a half years of SFU work).
- On average, students from Northern B.C. colleges transferred the most credits (51), while students from lower mainland private colleges transferred the least (41 credits).
- 60% of students transferred 45 or more credits to SFU, but at lower mainland private colleges, only 31% of students transferred as many credits.
- On average, students from BCIT transferred the fewest credits to SFU (35), while students from the College of New Caledonia transferred the most (55).
- Students who transferred to SFU with a B.C. Associate Degree mainly transferred 55 or more credits. Students admitted to SFU in this category will normally transfer a minimum of 54 credits.

Table 3: Distribution of First Semester Credit Hours Taken at SFU.

- Approximately 22% of college transfer students take one course in their first semester, 16% take two courses, 30% take three courses and 31% take four or more courses. (Courses are normally three credits each). Students entering SFU directly from high school were more inclined to register for more than four courses (more than 12 credits) in their first semester.
- A full-time student is one who registers for 12 or more credits in a semester. In their first semester at SFU, B.C. College transfers typically register part-time. Only 31% of B.C. College transfer students were full-time in their first semester, compared to 39% of B.C. Associate Degree transfers and 79% of B.C. Grade 12 Direct Entry students.
- Full-time university participation in their first semester at SFU is much higher among non-lower mainland transfers (58%) than transfers from the lower mainland (28%). One exception is Northern Lights College with a full-time participation rate of 25%.

Table 4: Distribution by Faculty of Initial Degree Goal.

- The Faculty of Arts is where many students end up when their degree goal is uncertain, thus the most popular Faculty of choice was Arts with 56% of college transfers and 80% of B.C. Associate Degree transfers selecting a credential in Arts. Other faculties of choice were Business Administration (20%), Applied Science (9%), Science (8%) and Education (5%)³.
- By comparison, only 37% of grade 12 students selected their initial degree goal in Arts, with more students selecting Science (23%) and Applied Science (21%).

Table 5: Distribution by Initial Degree Goal.

- From 1994/95 to 1998/99, 8,323 transfer students sought 8,826 credentials (students may pursue more than one credential). The top three most popular degree goals of choice were: Bachelor of Arts (52%), Bachelor of Business Administration (20%) and Bachelor of Science (12%).
- Based on transferable college work, the mean admission grade point average was 3.03 among college transfer students. Those intending to pursue a Bachelor of Applied Science had the highest admission GPA at 3.46 and those intending to pursue a Bachelor of Science or Bachelor of Science (Kinesiology) had the lowest admission GPA (2.97).

³ To be admitted to SFU's Professional Development Program in Education, students must complete at least 76 credits (for elementary education), or complete a teachable major (for secondary education). Therefore, many students destined to complete the PDP program choose a degree program in some other area and complete a year or two at SFU before transferring to the Faculty of Education.

Table 6: Distribution by Approved Program of Study.

- As students proceed through their education at SFU, they will declare one or more major programs of study. The top four most popular majors of choice were: Business (13%), General Studies (13%), Psychology (11%) and Criminology (8%).
- These program preferences are not consistent across college regions. For example, students from Northern B.C. primarily declared General Studies (36%) or Education (34%), but these were likely the most accessible programs, rather than the most preferred programs due to the consortium or partnership teacher education programs run in these locations. Students from Vancouver Island were more inclined to take SFU's Criminology program (26%) and much less inclined to take Education (2%); students from lower mainland private colleges were more inclined to take Business and Economics.

Table 7: Age Distribution.

- College transfer students had an average age of 22.7; 64% were aged 20 to 24.
- B.C. Associate Degree transfers were 24.3 years old, on average; 70% were aged 20 to 24.
- Students who entered SFU directly from high school had an average age of 17.9; 98% were younger than age 20.
- By college region, the oldest transfers came from Northern B.C. with an average age of 24.6 and the youngest came from private lower mainland colleges with an average age of 21.5.

Table 8: Gender Distribution.

- Of all new undergraduate students admitted to SFU in the past five years, approximately 58% were female. During this same time period 59% of B.C. college transfers were female, 62% of B.C. Associate Degree transfers were female and 52% of high school students were female.
- By college region, the proportion of female transfers ranges from a low of 54% (private lower mainland colleges) to a high of 71% (Northern B.C.)

B. Academic Performance

Table 9: Admission GPA Distribution.

- The average admission grade point average of college transfers was 3.02; the median (50th percentile) GPA upon admission was 2.98.
- The average admission grade point average of B.C. Associate Degree transfers was 2.63; the median was 2.53.
- 93% of all transfers were admitted with a GPA of 2.50 or higher, 49% at 3.00 or higher, 14% at 3.50 or higher and 1% at 4.00 or higher.

Table 10: Academic Performance From First Semester to Graduation.

This table shows the academic performance of all 8,323 B.C. College transfer students at four junctures in their education at SFU: (1) Admission, (2) completion of the first SFU semester, (3) completion of 30 SFU credits, and (4) graduation from SFU.

- The average GPA's at each of these four time periods were 3.02, 2.52, 2.77 and 2.91 respectively. The drop of half a grade point from admission to the end of the first semester is an indication of "university entrance shock". A similar entry shock of almost one full grade point (3.35 to 2.47) also occurred among students admitted directly from high school. Of those transfer students and direct entry students who persist through to graduation, the GPA's do gradually recover.
- The entry shock experienced by B.C. Associate Degree transfers was much smaller. They experienced a decline of just one-quarter of a grade point from 2.63 to 2.38 and unlike the B.C. College transfers and high school students, their GPA upon graduation exceeded their admission GPA by almost one-quarter of a grade point.
- By college region, the highest admission GPA was attained by Vancouver Island Colleges (3.13) while the highest GPA's after the first semester (2.64), after 30 credits (2.94) and upon graduation (3.08) was attained by Northern BC transfers.
- By college (excluding colleges with fewer than 50 students represented), the highest grade point averages were attained by: (1) Malaspina University-College, 3.17 upon admission; (2) Northern Lights, 3.11 after the first semester; (3) College of New Caledonia, 2.99 after 30 credit hours; (4) College of New Caledonia and University College of the Fraser Valley, 3.09 upon graduation.

Table 11A: Comparison of Course Grades in Selected Courses.

This table shows the average course grades for selected courses in the following programs:

Biochemistry (Bich)	French (Fren)
Biological Science (Bisc)	Geography (Geog)
Business/Economics (Buec)	History (Hist)
Business (Bus)	Linguistics (Ling)
Chemistry (Chem)	Mathematical Computing (Macm)
Communication (Cmns)	Mathematics (Math)
Computing Science (Cmpt)	Philosophy (Phil)
Criminology (Crim)	Political Science (Pol)
Economics (Econ)	Psychology (Psyc)
Education (Educ)	Statistics (Stat)
English (Engl)	

- In all courses reported, the average grade received by all B.C. College transfers was consistently lower than the grade received by B.C. Grade 12's, except in the following three Education courses: Educ 220 (Introduction to Educational Psychology), Educ 230 (Introduction to Philosophy of Education), and Educ 240 (Social Issues in Education).

Table 11B: Comparison of 200- and 300-Level Course Grades.

This table compares the admission GPA, course grade and proportion of grades awarded below a 'C' in 200- and 300-level courses at SFU. This analysis includes only those courses in which at least 100 B.C. College transfer students were registered over the past five years.

- In total over the 85 courses listed, the average course grade was lower among transfer students (2.44) than among B.C. Grade 12's (2.69).
- More grades below a 'C' were awarded to transfer students (4.9%) than B.C. Grade 12's (3.2%). This difference of 1.7% is statistically significant and means that almost 500 more "unsatisfactory" grades were awarded to college transfer students than expected when using direct entry grade 12's as a control. This observation is consistent with the fact that college transfer students get slightly lower grades than B.C. Grade 12's overall.

Table 12: Degree Completion Rate.

By following the academic performance of 3,883 B.C. College transfer students admitted to SFU in 1994/95 and 1995/96⁴ from admission through to graduation we can make the following observations:

- 52% graduated from SFU between June 1995 and April 1999 with at least one degree.
- Generally, there is a positive relationship between the number of credits a student transferred to SFU and the degree completion rate. The graduation rate (40%) was lowest among students entering SFU with fewer than 35 credits and highest among students who transferred 55 or more credits (60%).
- When looking only at those who transferred 55 or more credits to SFU, the B.C. College transfer students had a higher graduation rate (60%) than the B.C. Associate Degree transfers (54%).
- Transfers from several colleges had a degree completion rate exceeding 52% (the average completion rate for all colleges combined), including:

Coquitlam College	(61.8%, N=76)
Malaspina University-College	(58.6%, N=87)
Columbia College	(57.3%, N=103)
Langara College	(56.4%, N=658)
Selkirk College	(56.0%, N=25)
Kwantlen University College	(55.0%, N=901)
College of New Caledonia	(53.7%, N=82)
University College of the Cariboo	(53.2%, N=62)
Camosun College	(52.6%, N=76)
University College of the Fraser Valley	(52.3%, N=128)

⁴ By looking only at the entry cohorts admitted in 1994/95 and 1995/96, we have allowed enough time for transfer students to complete their SFU program. If the most recent entry cohorts had been included, they would not have had enough time to graduate.

Table 13: Graduation Grade Point Average Distribution.

- Of those graduated students admitted to SFU from 1994/95 to 1998/99, the graduation grade point average was lower among the 2,606 transfer students than the 583 Direct Entry Grade 12's (2.91 versus 3.00). Note that the graduation CGPA of college transfer students only includes two or three years of university work, whereas the graduation CGPA of students admitted from high school includes their full four years at SFU (see Figure 4A).
- A more equitable comparison of the academic performance of these two groups includes only the last 60 hours at SFU. As shown in Figure 4B, transfer students achieved a lower grade point average on their last 60 hours at SFU than Direct Entry B.C. Grade 12's (2.94 versus 3.08).
- The average GPA's of B.C. Associate Degree transfers was 2.84 upon graduation and 2.85 on the last 60 SFU hours.

C. Profile of Graduates:

Table 14: Academic Performance of Transfers who have Graduated.

This table shows the academic performance of only the 2,606 transfer students who have graduated with a degree. (Graduation occurred between June 1995 and April 1999).

- Here are the average GPA's at each of the four junctures in their SFU education:
 - (1) 3.03 upon admission to SFU,
 - (2) 2.71 after one semester at SFU,
 - (3) 2.81 after completing 30 credit hours at SFU, and
 - (4) 2.91 upon graduation from SFU.
- While the transfer shock experienced by all B.C. College transfers combined was 0.50 grade points (see Table 10), the transfer shock of these degree completers was only 0.32 grade points. In addition, there was no shock experienced by B.C. Associate Degree transfers who have graduated.

Table 15: Graduation Degree Program.

- The top three programs from which transfer students graduate are Business Administration, Psychology and Economics.
- The distribution of students who declared these three programs is similar to the distribution of students who graduated from these programs: Business Administration (13% declared, 16% graduated), Psychology (11% declared, 12% graduated), Economics (6% declared, 9% graduated).
- The top three programs from which B.C. Associate Degree transfers graduate are Education (16%), History (12%) and English (10%).

Table 16: Credential Awarded.

- Of those college transfer students admitted to SFU from 1994/95 to 1998/99, a total of 2,770 students graduated with 3,199 credentials, of which 2,608 (82%) were degrees, 396 (12%) were certificates and 195

- (6%) were Professional Development Program Certificates. (Second degrees/certificates obtained subsequent to the first one were excluded).
- The most common SFU degrees awarded to college transfer students include: Bachelor of Arts (53%), Bachelor of Business Administration (14%), Bachelor of General Studies (5%) and Bachelor of Science (5%).
 - The majority of B.C. Associate Degree transfers receive a Bachelor of Arts degree (57%).

Table 17: Average Number of Semesters to Complete Credential.

- On average, B.C. College transfer students take 8.8 semesters to complete a degree, as measured from time of admission to SFU until the semester of graduation from a first degree⁵. The shortest time to completion, 8.6 semesters, was achieved by Bachelor of Arts graduates.
- The time to degree completion is faster for B.C. Associate Degree transfers (7.0 semesters) since they come to SFU with more transfer credits, on average.

D. Profile of Students with College Experience:

Over the five-year period ending in the 1999 spring semester, 1,251 students with some transfer credit from a B.C. College were admitted to SFU as non-'B.C. College Transfers'. As previously defined, these students had some transfer credits from a B.C. College, but were admitted to SFU under other bases of admission, such as B.C. Grade 12, Mature Student, Special Entry, University Transfer, etc. (See Tables 19A and 19B). These students represent 5% of all new students admitted to SFU and 11% of new students admitted with some B.C. College transfer credit. In terms of credit volume, college experience students transfer 7% of the total credits and about 9% of the total B.C. college credits transferred to SFU. Tables 18 to 22 provide a general overview of these students.

Table 18: Distribution by Admission Year.

- Similar to college transfer students, the majority of students with college experience came to SFU from lower mainland colleges (80%), with 63% coming from four just lower mainland colleges (Langara, Kwantlen, Douglas and Capilano).
- Camosun College and Okanagan University College provide the largest source of students with college experience from outside the lower mainland (about 3% each).
- In each of the past five years, the proportion of students admitted to SFU with some college experience has remained constant at around 5% of all new students.

⁵ Note that many students do not maintain a continuous enrollment in each semester from admission to graduation, but this measure provides a reasonable indicator of degree completion time.

Table 19A: Distribution by Admission Year and Basis of Admission.

- The majority of students admitted to SFU with some college experience were admitted to SFU under the 'B.C. Grade 12' basis of admission (34%).
- Other students admitted to SFU with some college experience were university transfer students (15% from outside B.C. and 8% from B.C.), mature students (17%), special entry students (13%), and other admission categories (13%). (For more information, refer to the basis of admission definitions earlier in this report).

Table 19B: Admission GPA Distribution by Year and Basis of Admission.

- Students admitted to SFU with some college experience had a slightly higher admission GPA (3.10) than those admitted as B.C. College Transfers (3.03).
- Of those with college experience, the highest admission GPA was found among students admitted with a foreign equivalent of Canadian Grade 12/13 (3.57) and students who transferred from a technical program (3.48).

Table 20: Transfer Credit Distribution.

- Including BC College credits and credits from other institutions, 60% of college experience students transferred less than one year of credits (1 to 30 credits); 34% transferred between one and two years of credit (31 to 60 credits); 6% transferred more than two years of credit to SFU.
- The 1,251 students with college experience brought in approximately 39,000 credits to SFU, while the 8,323 B.C. College transfer students brought in about 396,000 credits. However, not all credits transferred to SFU by these groups come from B.C. Colleges. In fact, about 64% of the credits brought in by college experience students were from B.C. Colleges versus about 94% for B.C. College transfer students.

Table 21: Age Distribution.

- Students admitted to SFU with college experience are older, on average, than B.C. College transfers (24.4 versus 22.7). This is primarily explained by the fact that 17% of college experience students are admitted in the 'mature students' admission category.
- Students with college experience who transfer to SFU from outside the lower mainland are three years older on average than students from within the lower mainland (26.8 versus 23.8).

Table 22: Gender Distribution.

- Similar to B.C. College transfers, 59% of students transferring with college experience are female.
- Of those students with college experience, a higher proportion from outside the lower mainland are female than from within the lower mainland (70% versus 56%).
- Similar to the group of B.C. College transfer students, females who transfer to SFU with some college experience from Northern B.C. significantly outnumber the males from the same region (85% female, 15% male).

TABLES AND GRAPHS

SECTION A

PROFILE OF B.C. COLLEGE TRANSFER STUDENTS

**TABLE 1A
DISTRIBUTION OF B.C. COLLEGE TRANSFERS ADMITTED TO SFU BY YEAR OF ADMISSION**

Region/College	1994/95	1995/96	1996/97	1997/98	1998/99	5 Year Total
Non Lower Mainland						
Northern B.C.	93	58	57	64	45	317
College of New Caledonia	52	30	38	34	20	174
Northern Lights College	13	15	4	12	11	55
Northwest Community College	28	13	15	18	14	88
Interior/Kootenays	97	71	75	62	67	372
College of the Rockies	8	3	3	3	1	18
Okanagan University College	42	28	33	32	25	160
Selkirk College	13	12	10	5	10	50
Univ College of the Cariboo	34	28	29	22	31	144
Vancouver Island	109	66	89	52	56	372
Camosun College	51	25	53	22	20	171
Malaspina University-College	50	37	34	26	27	174
North Island College	8	4	2	4	9	27
Total Non Lower Mainland	299	195	221	178	168	1,061
Lower Mainland						
Public	1,873	1,337	1,350	1,319	1,035	6,914
B.C. Institute of Technology	13	10	10			33
Capilano College	363	236	242	248	172	1,261
Douglas College	510	391	356	381	310	1,948
Kwantlen University College	518	383	414	413	327	2,055
Univ Coll of the Fraser Valley	78	50	64	55	40	287
Langara College	391	267	264	222	186	1,330
Private	113	66	62	50	57	348
Columbia College	65	38	41	28	38	210
Coquitlam College	48	28	21	22	19	138
Total Lower Mainland	1,986	1,403	1,412	1,369	1,092	7,262
Grand Total (BCCOL + BCASD)	2,285	1,598	1,633	1,547	1,260	8,323
Total B.C. Assoc. Degree Transfers	8	33	45	57	94	237
Total Direct Entry B.C. Grade 12s	1,601	1,555	1,652	1,787	1,774	8,369

Percent Distribution of B.C. College Transfers Admitted by Region						
Non Lower Mainland						
Northern B.C.	4.1%	3.6%	3.5%	4.1%	3.6%	3.8%
Interior/Kootenays	4.2%	4.4%	4.6%	4.0%	5.3%	4.5%
Vancouver Island	4.8%	4.1%	5.5%	3.4%	4.4%	4.5%
Total Non Lower Mainland	13.1%	12.2%	13.5%	11.5%	13.3%	12.7%
Lower Mainland						
Public	82.0%	83.7%	82.7%	85.3%	82.1%	83.1%
Private	4.9%	4.1%	3.8%	3.2%	4.5%	4.2%
Total Lower Mainland	86.9%	87.8%	86.5%	88.5%	86.7%	87.3%
Grand Total	100.0%	100.0%	100.0%	100.0%	100.0%	100.0%

Note:

- A Direct Entry B.C. Grade 12 student graduated from high school within one year of admission to SFU. Reports prior to 1998 approximated the high school graduation date and thus some students were included who graduated from high school more than one year ago. Reports from 1998 and onward now use the precise graduation date for determining direct entry status, thus the number of B.C. Grade 12 Direct Entry students reported here will be lower than in previous reports.
- See Table 1B for a distribution of B.C. Associate Degree transfers by college and year of admission.
- "Grand Total (BCCOL + BCASD)" includes all BC College transfers and BC Associate Degree holders. Note that BC Associate Degrees are also shown separately.

**TABLE 1B
DISTRIBUTION OF B.C. ASSOCIATE DEGREE TRANSFERS ADMITTED TO SFU BY YEAR OF ADMISSION**

Region/College	1994/95	1995/96	1996/97	1997/98	1998/99	5 Year Total
Non Lower Mainland						
Northern B.C.	1	3	2	6	3	15
College of New Caledonia	1	3	2	3	1	10
Northern Lights College				1		1
Northwest Community College				2	2	4
Interior/Kootenays		2	1	1	7	11
College of the Rockies						
Okanagan University College		1		1	2	4
Selkirk College			1		1	2
Univ College of the Cariboo		1			4	5
Vancouver Island	1		2	4	3	10
Camosun College	1		1	3	3	8
Malaspina University-College			1			1
North Island College				1		1
Total Non Lower Mainland	2	5	5	11	13	36
Lower Mainland						
Public	6	28	40	46	80	200
B.C. Institute of Technology						
Capilano College	3	7	10	18	26	64
Douglas College		4	13	15	25	57
Kwantlen University College	1	4	10	4	16	35
Univ Coll of the Fraser Valley			2	2	7	11
Langara College	2	13	5	7	6	33
Private					1	1
Columbia College						
Coquitlam College					1	1
Total Lower Mainland	6	28	40	46	81	201
Total B.C. Associate Degree Transfers	8	33	45	57	94	237

Percent Distribution of B.C. Associate Degree Transfers Admitted by Region						
Non Lower Mainland						
Northern B.C.	12.5%	9.1%	4.4%	10.5%	3.2%	6.3%
Interior/Kootenays		6.1%	2.2%	1.8%	7.4%	4.6%
Vancouver Island	12.5%		4.4%	7.0%	3.2%	4.2%
Total Non Lower Mainland	25.0%	15.2%	11.1%	19.3%	13.8%	15.2%
Lower Mainland						
Public	75.0%	84.8%	88.9%	80.7%	85.1%	84.4%
Private					1.1%	0.4%
Total Lower Mainland	75.0%	84.8%	88.9%	80.7%	86.2%	84.8%
Grand Total	100.0%	100.0%	100.0%	100.0%	100.0%	100.0%

Note:

A B.C. Associate Degree Transfer is a student with an Associate Degree from a BC community college who has successfully completed at least 54 credit hours and has a minimum 2.0 admission GPA based on the transferable courses.

BEST COPY AVAILABLE

FIGURE 1
B.C. COLLEGE TRANSFERS ADMITTED TO SIMON FRASER UNIVERSITY BY COLLEGE
1994/95 TO 1998/99

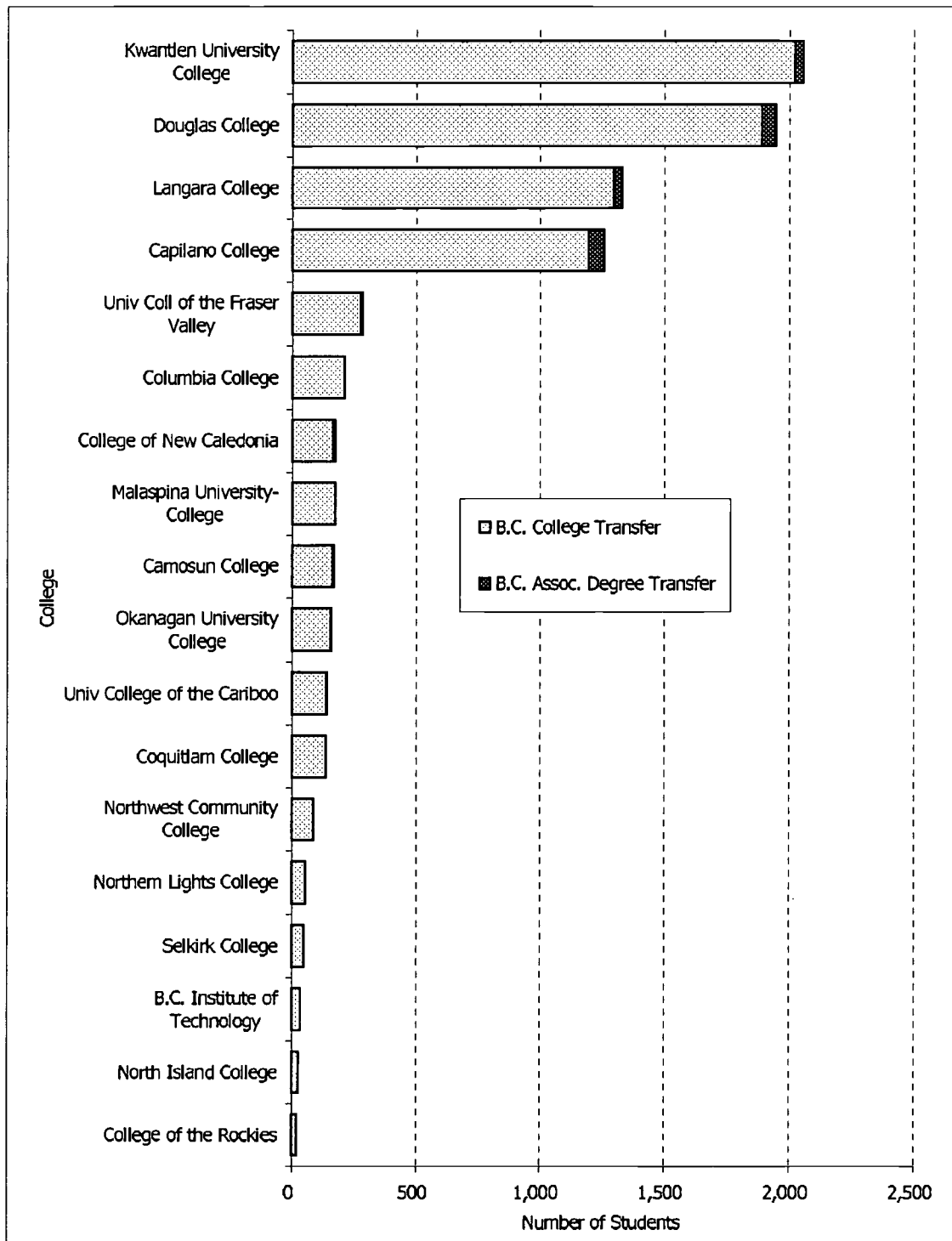
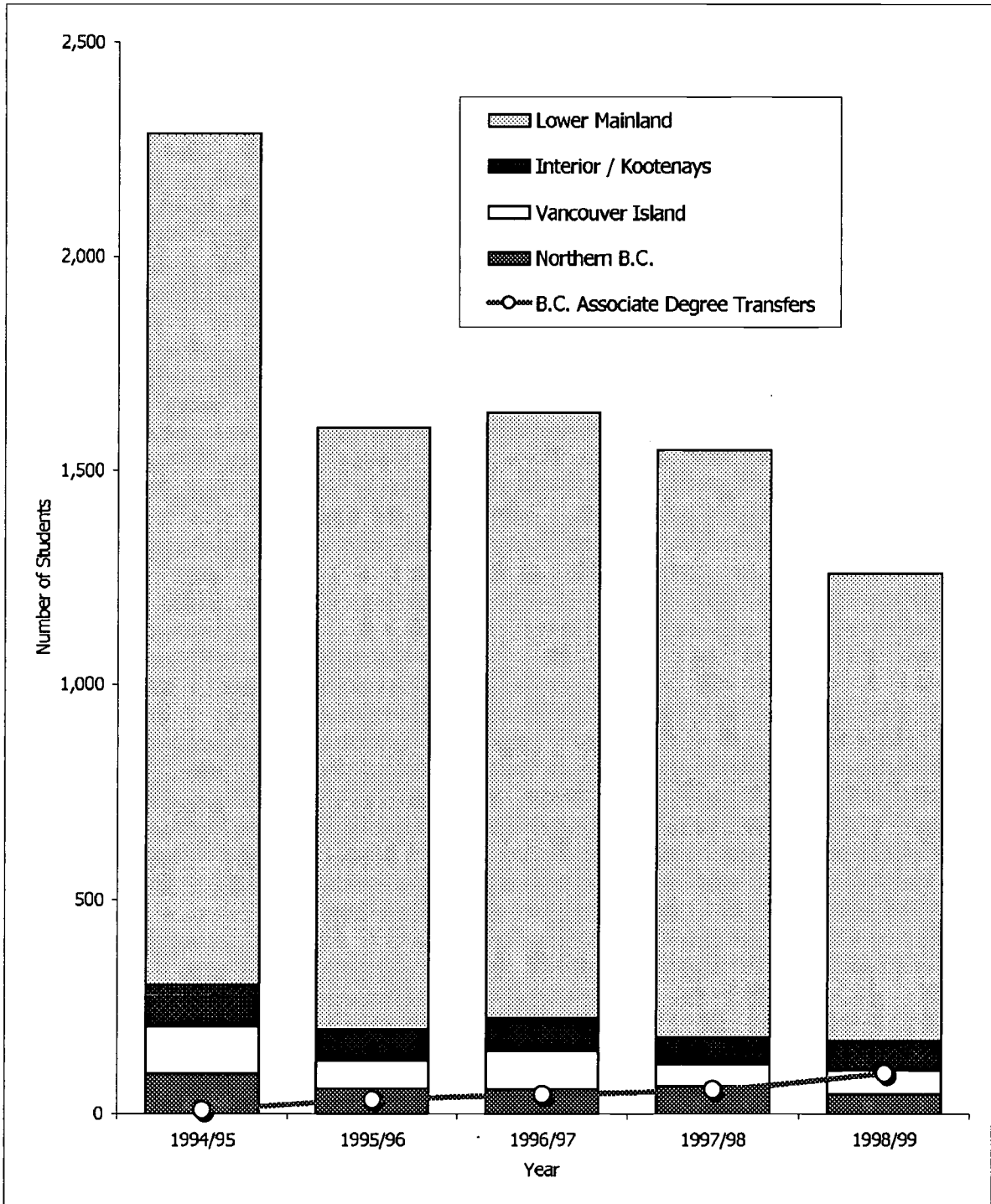
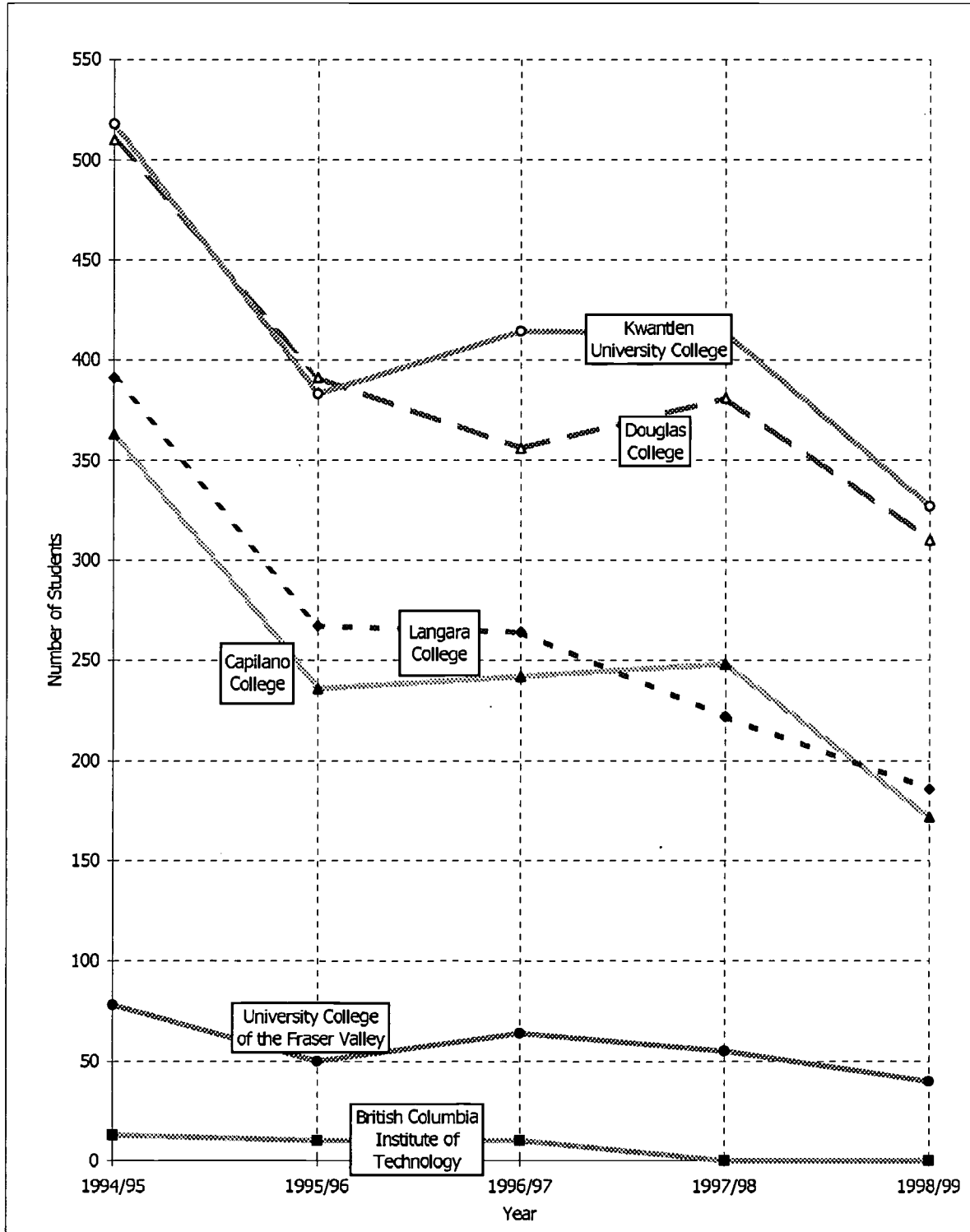


FIGURE 2
B.C. COLLEGE TRANSFERS ADMITTED TO SIMON FRASER UNIVERSITY BY REGION
1994/95 TO 1998/99



Note: B.C. Associate Degree transfers are included in the total B.C. College transfers by region.

FIGURE 3
B.C. COLLEGE TRANSFERS ADMITTED TO SIMON FRASER UNIVERSITY
FROM LOWER MAINLAND PUBLIC COLLEGES, 1994/95 TO 1998/99



**TABLE 2
DISTRIBUTION OF STUDENT TRANSFER CREDITS AT TIME OF ADMISSION TO SFU
(FOR B.C. COLLEGE TRANSFERS ADMITTED FROM 1994/95 to 1998/99)**

Region/College	Transfer Credits at time of Admission to SFU							Total
	< 30	30-34	35-39	40-44	45-49	50-54	≥ 55	
Non Lower Mainland								
Northern B.C.	8	65	17	19	23	28	157	317
College of New Caledonia	5	21	7	6	10	14	111	174
Northern Lights College		13	5	11	10	6	10	55
Northwest Community College	3	31	5	2	3	8	36	88
Interior/Kootenays	14	95	33	19	36	42	133	372
College of the Rockies	2	8	3		1	2	2	18
Okanagan University College	4	42	14	11	16	12	61	160
Selkirk College	3	12	8	1	5	6	15	50
Univ College of the Cariboo	5	33	8	7	14	22	55	144
Vancouver Island	6	52	41	20	35	37	181	372
Camosun College	2	25	18	8	19	13	86	171
Malaspina University-College	3	18	17	11	16	20	89	174
North Island College	1	9	6	1		4	6	27
Total Non Lower Mainland	28	212	91	58	94	107	471	1,061
Lower Mainland								
Public	120	1,080	937	570	864	927	2,416	6,914
B.C. Institute of Technology	10	11		2	4	1	5	33
Capilano College	20	274	204	99	154	169	341	1,261
Douglas College	30	242	258	164	237	256	761	1,948
Kwantlen University College	25	280	247	141	259	278	825	2,055
Univ Coll of the Fraser Valley	5	32	27	29	30	29	135	287
Langara College	30	241	201	135	180	194	349	1,330
Private	8	109	81	41	40	27	42	348
Columbia College	2	81	50	24	20	14	19	210
Coquitlam College	6	28	31	17	20	13	23	138
Total Lower Mainland	128	1,189	1,018	611	904	954	2,458	7,262
Grand Total (BCCOL + BCASD)	156	1,401	1,109	669	998	1,061	2,929	8,323
Total B.C. Assoc. Degree Transfers	-	-	-	-	1	2	234	237

Percent Distribution by Region								
Non Lower Mainland								
Northern B.C.	2.5%	20.5%	5.4%	6.0%	7.3%	8.8%	49.5%	100.0%
Interior/Kootenays	3.8%	25.5%	8.9%	5.1%	9.7%	11.3%	35.8%	100.0%
Vancouver Island	1.6%	14.0%	11.0%	5.4%	9.4%	9.9%	48.7%	100.0%
Total Non Lower Mainland	2.6%	20.0%	8.6%	5.5%	8.9%	10.1%	44.4%	100.0%
Lower Mainland								
Public	1.7%	15.6%	13.6%	8.2%	12.5%	13.4%	34.9%	100.0%
Private	2.3%	31.3%	23.3%	11.8%	11.5%	7.8%	12.1%	100.0%
Total Lower Mainland	1.8%	16.4%	14.0%	8.4%	12.4%	13.1%	33.8%	100.0%
Grand Total	1.9%	16.8%	13.3%	8.0%	12.0%	12.7%	35.2%	100.0%

Note:

Although transfer students should have a minimum of 30 transfer credits, some students are admitted at the discretion of the university with fewer than 30 credits. Of the 156 transfer students admitted to SFU with less than 30 credits, 146 transferred from a B.C. College with an average of 29 credits. The other 10 students came from BCIT with an average of 19 credits. (BCIT transfers are normally admitted to SFU upon completion of a two-year technical program, but not all of their course credits are transferrable to SFU).

**TABLE 3
DISTRIBUTION OF FIRST SEMESTER CREDIT HOURS TAKEN AT SFU
(FOR B.C. COLLEGE TRANSFERS ADMITTED FROM 1994/95 TO 1998/99)**

Region/College	First Semester Credit Hours Taken at SFU										
	≤3	4	5	6	7	8	9	10	11	12	>12
Non Lower Mainland											
Northern B.C.	57	24	9	17	19	9	12	6	8	50	106
College of New Caledonia	41	11		12	2	6	8	4	5	35	50
Northern Lights College	7	3	9	4	13	1	1	1	2	3	11
Northwest Community College	9	10		1	4	2	3	1	1	12	45
Interior/Kootenays	40	3		19	2		42	13	5	81	167
College of the Rockies	2			1			2	1		5	7
Okanagan University College	16			6	1		19	6	1	37	74
Selkirk College	3	1		3			3	2	1	14	23
Univ College of the Cariboo	19	2		9	1		18	4	3	25	63
Vancouver Island	40	2		8	4	2	72	27	9	103	105
Camosun College	26	1		4	3	1	28	14	3	50	41
Malaspina University-College	14	1		4	1	1	38	11	5	47	52
North Island College							6	2	1	6	12
Total Non Lower Mainland	137	29	9	44	25	11	126	46	22	234	378
Lower Mainland											
Public	1,447	164	24	984	136	91	1,521	397	231	1,026	893
B.C. Institute of Technology	21			1		1		1	1	5	3
Capilano College	204	29		152	29	16	258	97	48	233	192
Douglas College	497	45	11	310	42	21	470	98	65	216	173
Kwantlen University College	432	40	6	294	39	38	408	113	70	338	277
Univ Coll of the Fraser Valley	54	9	1	28	2	8	37	18	9	54	67
Langara College	239	41	3	199	24	7	348	70	38	180	181
Private	50	2	2	68	6	6	111	11	7	58	27
Columbia College	26	1	1	37	4	5	72	6	5	38	15
Coquitlam College	24	1	1	31	2	1	39	5	2	20	12
Total Lower Mainland	1,497	166	26	1,052	142	97	1,632	408	238	1,084	920
Grand Total (BCCOL + BCASD)	1,634	195	35	1,096	167	108	1,758	454	260	1,318	1,298
Total B.C. Assoc. Degree Transfers	35	5		18	6	6	41	19	15	32	60
Total Direct Entry B.C. Grade 12s	112	9	7	153	28	36	803	338	292	2,378	4,213

Percent Distribution First Semester Credit Hours Taken at SFU by Region											
Non Lower Mainland											
Northern B.C.	18.0%	7.6%	2.8%	5.4%	6.0%	2.8%	3.8%	1.9%	2.5%	15.8%	33.4%
Interior/Kootenays	10.8%	0.8%		5.1%	0.5%		11.3%	3.5%	1.3%	21.8%	44.9%
Vancouver Island	10.8%	0.5%		2.2%	1.1%	0.5%	19.4%	7.3%	2.4%	27.7%	28.2%
Total Lower Mainland	12.9%	2.7%	0.8%	4.1%	2.4%	1.0%	11.9%	4.3%	2.1%	22.1%	35.6%
Lower Mainland											
Public	20.9%	2.4%	0.3%	14.2%	2.0%	1.3%	22.0%	5.7%	3.3%	14.8%	12.9%
Private	14.4%	0.6%	0.6%	19.5%	1.7%	1.7%	31.9%	3.2%	2.0%	16.7%	7.8%
Total Lower Mainland	20.6%	2.3%	0.4%	14.5%	2.0%	1.3%	22.5%	5.6%	3.3%	14.9%	12.7%
Total B.C. College Transfers	19.6%	2.3%	0.4%	13.2%	2.0%	1.3%	21.1%	5.5%	3.1%	15.8%	15.6%
Total Direct Entry B.C. Grade 12s	1.3%	0.1%	0.1%	1.8%	0.3%	0.4%	9.6%	4.0%	3.5%	28.4%	50.3%

TABLE 3 (cont)
DISTRIBUTION OF FIRST SEMESTER CREDIT HOURS TAKEN AT SFU
(FOR B.C. COLLEGE TRANSFERS ADMITTED FROM 1994/95 TO 1998/99)

Full-time	Part-time	Percent Full-time	Percent Part-time	Total	Region/College
Non Lower Mainland					
156	161	49.2%	50.8%	317	Northern B.C.
85	89	48.8%	51.2%	174	College of New Caledonia
14	41	25.4%	74.6%	55	Northern Lights College
57	31	64.8%	35.2%	88	Northwest Community College
248	124	66.7%	33.3%	372	Interior/Kootenays
12	6	66.7%	33.3%	18	College of the Rockies
111	49	69.4%	30.6%	160	Okanagan University College
37	13	74.0%	26.0%	50	Selkirk College
88	56	61.1%	38.9%	144	Univ College of the Cariboo
208	164	55.9%	44.1%	372	Vancouver Island
91	80	53.2%	46.8%	171	Camosun College
99	75	56.9%	43.1%	174	Malaspina University-College
18	9	66.7%	33.3%	27	North Island College
612	449	57.7%	42.3%	1,061	Total Non Lower Mainland
Lower Mainland					
1,919	4,995	27.8%	72.2%	6,914	Public
8	25	24.2%	75.8%	33	B.C. Institute of Technology
425	836	33.7%	66.3%	1,261	Capilano College
389	1,559	20.0%	80.0%	1,948	Douglas College
615	1,440	29.9%	70.1%	2,055	Kwantlen University College
121	166	42.2%	57.8%	287	Univ Coll of the Fraser Valley
361	969	27.1%	72.9%	1,330	Langara College
85	263	24.4%	75.6%	348	Private
53	157	25.2%	74.8%	210	Columbia College
32	106	23.2%	76.8%	138	Coquitlam College
2,004	5,258	27.6%	72.4%	7,262	Total Lower Mainland
2,616	5,707	31.4%	68.6%	8,323	Grand Total (BCCOL + BCASD)
92	145	38.8%	61.2%	237	Total B.C. Assoc. Degree Transfers
6,591	1,778	78.8%	21.2%	8,369	Total Direct Entry B.C. Grade 12s

Note: A full-time student is defined as a student who takes 12 or more credit hours in a semester.

BEST COPY AVAILABLE

TABLE 4
DISTRIBUTION OF B.C. COLLEGE TRANSFERS ADMITTED TO SFU BY FACULTY
(FOR B.C. COLLEGE TRANSFERS ADMITTED FROM 1994/95 TO 1998/99)

Region/College	Applied Science	Arts	Business Admin.	Education	Science	Total
Non Lower Mainland						
Northern B.C.	6.0%	64.8%	7.4%	17.8%	3.6%	317
College of New Caledonia	5.7%	72.4%	8.0%	8.9%	4.9%	174
Northern Lights College	5.5%	41.8%	1.8%	49.1%	1.8%	55
Northwest Community College	6.8%	64.2%	9.7%	15.9%	2.3%	88
Interior/Kootenays	12.6%	48.3%	19.8%	4.8%	14.2%	372
College of the Rockies	5.6%	50.0%	27.8%		16.7%	18
Okanagan University College	18.8%	48.8%	14.7%	5.9%	11.3%	160
Selkirk College	4.0%	54.0%	12.0%	4.0%	26.0%	50
Univ College of the Cariboo	9.7%	45.6%	27.1%	4.4%	13.2%	144
Vancouver Island	9.7%	61.2%	19.6%	1.1%	8.2%	372
Camosun College	9.1%	67.8%	14.9%	1.2%	7.0%	171
Malaspina University-College	8.9%	53.5%	26.4%	0.6%	10.1%	174
North Island College	18.5%	68.5%	5.6%	3.7%	3.7%	27
Total Non Lower Mainland						1,061
Lower Mainland						
Public	8.5%	57.2%	20.2%	5.0%	8.3%	6,914
B.C. Institute of Technology	6.1%	15.2%	36.4%	6.1%	33.3%	33
Capilano College	10.0%	62.5%	13.4%	5.2%	8.0%	1,261
Douglas College	8.0%	58.2%	19.6%	5.9%	7.8%	1,948
Kwantlen University College	6.0%	56.1%	24.4%	5.3%	7.3%	2,055
Univ Coll of the Fraser Valley	15.2%	61.3%	6.1%	5.4%	11.3%	287
Langara College	10.5%	52.4%	23.8%	3.0%	9.6%	1,330
Private	17.4%	37.3%	35.0%	0.7%	8.7%	348
Columbia College	21.7%	35.2%	33.0%	0.5%	8.7%	210
Coquitlam College	10.9%	40.6%	38.0%	1.1%	8.7%	138
Total Lower Mainland	9.0%	56.2%	21.0%	4.8%	8.3%	7,262
Grand Total (BCCOL + BCASD)	9%	56%	20%	5%	8%	8,323
Total B.C. Assoc. Degree Transfers	7%	80%	-	8%	5%	237
Total Direct Entry B.C. Grade 12s	21%	37%	17%	2%	23%	8,369

Note:

a) Students are classified according to the Faculty of their initial degree goal upon admission to SFU.

TABLE 5
DISTRIBUTION OF B.C. COLLEGE TRANSFERS BY INITIAL DEGREE GOAL
(ADMITTED TO SFU FROM 1994/95 TO 1998/99)

<u>Credential</u>	<u>Number Pursuing Credential</u>	<u>Percent Distribution</u>	<u>Average Admission GPA</u>
Bachelor of Arts	4,627	52.4%	3.03
Bachelor of Business Administration	1,792	20.3%	3.08
Bachelor of Science	1,046	11.9%	2.97
Bachelor of Education	441	5.0%	3.01
Bachelor of General Studies	361	4.1%	2.98
Bachelor of Science (Kinesiology)	162	1.8%	2.97
Bachelor of Fine Arts	138	1.6%	3.03
Bachelor of Applied Science	23	0.3%	3.46
Professional Development Program in Education	29	0.3%	3.02
Certificate in Liberal Arts	67	0.8%	3.08
Certificate in Teaching ESL Linguistics	21	0.2%	3.23
Other Certificate Programs	56	0.6%	3.04
Post Baccalaureate Diploma	1	0.01%	3.46
Special Students	4	0.05%	3.11
Unspecified	58	0.66%	3.07
Grand Total (BCCOL + BCASD)	8,826	100.0%	3.03

Notes:

- a) Students are classified according to their initial degree goal upon admission to SFU.
- b) A student initially pursuing more than one credential is reported once under each credential.
- c) Additions/changes to degree goal(s) subsequent to the first semester at SFU are excluded.
- d) Average admission GPA is based on college work.

**TABLE 6
DISTRIBUTION OF B.C. COLLEGE TRANSFERS BY APPROVED PROGRAM OF STUDY
(FOR B.C. COLLEGE TRANSFERS ADMITTED FROM 1994/95 TO 1998/99)**

Region/College	Business	General Studies	Psychology	Criminology	Education	Geography	English	Economics	History
Non Lower Mainland									
Northern B.C.	1.3%	36.2%	2.4%	8.5%	33.5%	2.7%	3.5%	0.8%	3.5%
College of New Caledonia	1.4%	36.7%	2.4%	14.3%	30.0%	3.3%	2.9%	0.5%	2.4%
Northern Lights College	1.4%	34.3%	1.4%		41.4%		5.7%		4.3%
Northwest Community College	1.0%	36.5%	3.1%	2.1%	35.4%	3.1%	3.1%	2.1%	5.2%
Interior/Kootenays	12.9%	9.6%	6.8%	6.1%	8.6%	6.8%	4.6%	3.2%	5.7%
College of the Rockies	9.1%	9.1%	9.1%	9.1%			18.2%		
Okanagan University College	8.7%	9.5%	6.3%	8.7%	7.9%	6.3%	2.4%	3.2%	6.3%
Selkirk College		12.5%	12.5%	3.1%	12.5%	9.4%	9.4%	6.3%	9.4%
Univ College of the Cariboo	21.6%	9.0%	5.4%	3.6%	9.0%	7.2%	4.5%	2.7%	4.5%
Vancouver Island	10.7%	10.0%	6.6%	25.6%	1.7%	2.8%	2.1%	1.7%	1.7%
Camosun College	8.1%	9.6%	6.6%	32.4%	2.9%	2.2%	2.9%	0.7%	2.2%
Malaspina University-College	14.2%	11.2%	6.0%	22.4%	0.7%	3.7%	0.7%	3.0%	0.7%
North Island College	5.3%	5.3%	10.5%				5.3%		5.3%
Total Non Lower Mainland	7.6%	20.3%	5.0%	13.0%	16.4%	3.9%	3.4%	1.8%	3.6%
Lower Mainland									
Public	12.7%	11.5%	11.8%	7.4%	6.4%	6.2%	6.2%	5.7%	5.9%
B.C. Institute of Technology	37.5%				12.5%	6.3%			
Capilano College	8.1%	10.2%	10.8%	3.0%	6.7%	9.7%	9.5%	4.1%	5.2%
Douglas College	12.6%	12.4%	13.5%	11.0%	7.3%	4.9%	4.8%	4.2%	6.3%
Kwantlen University College	14.3%	11.4%	14.1%	10.0%	6.6%	5.4%	6.4%	6.0%	6.1%
Univ Coll of the Fraser Valley	5.5%	11.3%	8.4%	5.5%	10.1%	8.0%	6.3%	1.7%	7.1%
Langara College	16.1%	12.0%	7.5%	3.0%	3.6%	5.2%	4.6%	10.0%	5.7%
Private	33.5%	10.0%	10.9%	0.4%	1.3%	0.4%	0.8%	17.2%	0.4%
Columbia College	36.1%	8.8%	6.8%	0.7%	0.7%		1.4%	15.6%	
Coquitlam College	29.3%	12.0%	17.4%		2.2%	1.1%		19.6%	1.1%
Total Lower Mainland	13.6%	11.5%	11.7%	7.1%	6.2%	5.9%	5.9%	6.2%	5.7%
Grand Total (BCCOL + BCASD)	12.7%	12.7%	10.8%	7.9%	7.6%	5.6%	5.6%	5.6%	5.4%
Total B.C. Assoc. Degree Transfers	-	14.6%	12.3%	2.7%	13.2%	13.7%	8.2%	1.8%	11.4%

Notes:

- For students who have graduated, all completed honors and majors in their first degree are reported.
- For students who have not yet graduated, all approved honors or majors in progress are reported.
- An Education student is defined as a student who has completed or is pursuing a Bachelor of Education (B.Ed) or Professional Development Program (PDP) diploma as a degree goal.
- A General Studies student is defined as a student who has completed or is pursuing a Bachelor of General Studies (BGS).
- A student with more than one completed/approved program is counted once under each program.

TABLE 6 (cont)
DISTRIBUTION OF B.C. COLLEGE TRANSFERS BY APPROVED PROGRAM OF STUDY
(FOR B.C. COLLEGE TRANSFERS ADMITTED FROM 1994/95 TO 1998/99)

Communi- cation	Politi- cal Sci	Biologi- cal Sci	Compu- ting Sci	Kinesi- ology	Archae- ology	Soci- ology	Other Pgms	Total	Region/College
Non Lower Mainland									
2.1%	0.3%	0.8%	0.5%	2.1%	0.5%	0.5%	1.3%	376	Northern B.C.
1.9%	0.5%	1.0%	0.5%	1.9%		0.5%	0.5%	210	College of New Caledonia
1.4%			1.4%	2.9%	1.4%	1.4%	4.3%	70	Northern Lights College
3.1%		1.0%		2.1%	1.0%		1.0%	96	Northwest Community College
2.9%	1.8%	3.9%	1.4%	6.1%	4.3%	2.1%	15.4%	280	Interior/Kootenays
	9.1%				9.1%		27.3%	11	College of the Rockies
6.3%		4.8%	1.6%	6.3%	5.6%	2.4%	15.9%	126	Okanagan University College
		6.3%		6.3%			12.5%	32	Selkirk College
	3.6%	2.7%	1.8%	6.3%	3.6%	2.7%	14.4%	111	Univ College of the Cariboo
8.7%	2.4%	2.4%		3.1%	5.2%	1.7%	15.2%	289	Vancouver Island
8.8%	0.7%	3.7%		2.2%	5.1%	1.5%	11.8%	136	Camosun College
7.5%	3.7%	1.5%		3.7%	4.5%	1.5%	16.4%	134	Malaspina University-College
15.8%	5.3%			5.3%	10.5%	5.3%	31.6%	19	North Island College
4.3%	1.4%	2.2%	0.6%	3.6%	3.1%	1.4%	9.7%	945	Total Lower Mainland
Lower Mainland									
4.1%	3.4%	2.3%	2.0%	1.3%	1.4%	1.5%	11.8%	5,543	Public
		18.8%	6.3%				18.8%	16	B.C. Institute of Technology
4.7%	4.6%	2.9%	2.5%	1.6%	1.3%	1.9%	15.2%	1,032	Capilano College
3.1%	4.1%	2.4%	1.4%	1.2%	1.5%	1.0%	9.4%	1,526	Douglas College
2.5%	1.5%	1.7%	1.6%	1.3%	1.0%	1.9%	10.2%	1,662	Kwantlen University College
10.1%	5.0%	3.4%	0.8%	4.2%	0.4%	0.4%	12.2%	238	Univ Coll of the Fraser Valley
6.1%	4.0%	2.0%	3.0%	0.7%	2.2%	1.3%	14.4%	1,069	Langara College
9.6%	0.4%	1.7%	6.3%	0.4%		0.4%	6.7%	239	Private
10.9%		2.7%	8.2%	0.7%		0.7%	7.5%	147	Columbia College
7.6%	1.1%		3.3%				5.4%	92	Coquitlam College
4.3%	3.3%	2.3%	2.1%	1.3%	1.3%	1.4%	11.6%	5,782	Total Lower Mainland
4.3%	3.0%	2.3%	1.9%	1.6%	1.6%	1.4%	11.3%	6,727	Grand Total (BCCOL + BCASD)
4.6%	5.5%	1.8%	0.5%	0.9%	1.8%	1.8%	6.8%	219	Total B.C. Assoc. Degree Transfers

BEST COPY AVAILABLE

**TABLE 7
AGE DISTRIBUTION OF B.C. COLLEGE TRANSFERS ADMITTED TO SFU FROM 1994/95 TO 1998/99**

Region/College	< 20	20-24	25-29	30-34	35-39	>39	Total	Average Age
Non Lower Mainland								
Northern B.C.	71	153	33	19	18	23	317	24.6
College of New Caledonia	30	100	16	11	6	11	174	24.1
Northern Lights College	9	25	8	5	3	5	55	25.7
Northwest Community College	32	28	9	3	9	7	88	24.8
Interior/Kootenays	100	209	26	12	7	18	372	22.8
College of the Rockies	4	10	3			1	18	23.1
Okanagan University College	36	102	11	5	2	4	160	22.2
Selkirk College	20	21	4	2	1	2	50	22.4
Univ College of the Cariboo	40	76	8	5	4	11	144	23.5
Vancouver Island	43	251	49	13	10	6	372	23.1
Camosun College	10	124	26	6	5		171	23.3
Malaspina University-College	28	112	21	5	4	4	174	22.6
North Island College	5	15	2	2	1	2	27	24.6
Total Non Lower Mainland	214	613	108	44	35	47	1,061	23.4
Lower Mainland								
Public	1,131	4,456	768	279	146	134	6,914	22.7
B.C. Institute of Technology	1	17	6	5	2	2	33	26.3
Capilano College	274	761	122	54	21	29	1,261	22.5
Douglas College	254	1267	265	78	47	37	1,948	23.0
Kwantlen University College	386	1414	145	54	30	26	2,055	21.9
Univ Coll of the Fraser Valley	40	191	26	11	10	9	287	23.2
Langara College	176	806	204	77	36	31	1,330	23.4
Private	77	234	30	5	2		348	21.5
Columbia College	53	136	17	3	1		210	21.3
Coquitlam College	24	98	13	2	1		138	21.9
Total Lower Mainland	1,208	4,690	798	284	148	134	7,262	22.6
Grand Total (BCCOL + BCASD)	1,422	5,303	906	328	183	181	8,323	22.7
Total B.C. Assoc. Degree Transfers	3	165	42	13	7	7	237	24.3
Total Direct Entry B.C. Grade 12s	8,171	190	6	1	1	-	8,369	17.9

Percent Age Distribution by Region								
Non Lower Mainland								
Northern B.C.	22.4%	48.3%	10.4%	6.0%	5.7%	7.3%	100.0%	24.6
Interior/Kootenays	26.9%	56.2%	7.0%	3.2%	1.9%	4.8%	100.0%	22.8
Vancouver Island	11.6%	67.5%	13.2%	3.5%	2.7%	1.6%	100.0%	23.1
Total NonLower Mainland	20.2%	57.8%	10.2%	4.1%	3.3%	4.4%	100.0%	23.4
Lower Mainland								
Public	16.4%	64.4%	11.1%	4.0%	2.1%	1.9%	100.0%	22.7
Private	22.1%	67.2%	8.6%	1.4%	0.6%		100.0%	21.5
Total Lower Mainland	16.6%	64.6%	11.0%	3.9%	2.0%	1.8%	100.0%	22.6
Total B.C. College Transfers	17.1%	63.7%	10.9%	3.9%	2.2%	2.2%	100.0%	22.7
Total Direct Entry B.C. Grade 12s	97.6%	2.3%	0.07%	0.01%	0.01%		100.0%	17.9

**TABLE 8
GENDER DISTRIBUTION OF B.C. COLLEGE TRANSFERS ADMITTED TO SFU
1994/95 TO 1998/99**

Region/College	Number			Percent	
	Male	Female	Total	Male	Female
Non Lower Mainland					
Northern B.C.	92	225	317	29.0%	71.0%
College of New Caledonia	49	125	174	28.2%	71.8%
Northern Lights College	17	38	55	30.9%	69.1%
Northwest Community College	26	62	88	29.5%	70.5%
Interior/Kootenays	152	220	372	40.9%	59.1%
College of the Rockies	7	11	18	38.9%	61.1%
Okanagan University College	72	88	160	45.0%	55.0%
Selkirk College	20	30	50	40.0%	60.0%
Univ College of the Cariboo	53	91	144	36.8%	63.2%
Vancouver Island	150	222	372	40.3%	59.7%
Camosun College	67	104	171	39.2%	60.8%
Malaspina University-College	74	100	174	42.5%	57.5%
North Island College	9	18	27	33.3%	66.7%
Total Non Lower Mainland	394	667	1,061	37.1%	62.9%
Lower Mainland					
Public	2,881	3,998	6,879	41.9%	58.1%
B.C. Institute of Technology	11	22	33	33.3%	66.7%
Capilano College	494	766	1,260	39.2%	60.8%
Douglas College	827	1,101	1,928	42.9%	57.1%
Kwantlen University College	862	1,181	2,043	42.2%	57.8%
Univ Coll of the Fraser Valley	113	174	287	39.4%	60.6%
Langara College	574	754	1,328	43.2%	56.8%
Private	159	188	347	45.8%	54.2%
Columbia College	100	110	210	47.6%	52.4%
Coquitlam College	59	78	137	43.1%	56.9%
Total Lower Mainland	3,040	4,186	7,226	42.1%	57.9%
Grand Total (BCCOL + BCASD)	3,434	4,853	8,287	41.4%	58.6%
Total B.C. Assoc. Degree Transfers	89	148	237	37.6%	62.4%
Total Direct Entry B.C. Grade 12s	3,998	4,367	8,365	47.8%	52.2%

Note: Gender information is not available for 36 college transfers and 4 B.C. Grade 12 students.

SECTION B

**QUALITY/ACADEMIC PERFORMANCE OF
B.C. COLLEGE TRANSFER STUDENTS**

**TABLE 9
DISTRIBUTION OF ADMISSION GPA FOR B.C. COLLEGE TRANSFERS
ADMITTED TO SFU FROM 1994/95 TO 1998/99**

Admission GPA	Grand Total (BCCOL + BCASD)			B.C. Assoc. Degree Transfers		
	Number of Students	Cumulative Number of Students	Cumulative Percent	Number of Students	Cumulative Number of Students	Cumulative Percent
< 2.00	4	4	0.0%		-	
2.00-2.09	13	17	0.2%	9	9	3.8%
2.10-2.19	27	44	0.5%	12	21	8.9%
2.20-2.29	48	92	1.1%	25	46	19.4%
2.30-2.39	105	197	2.4%	33	79	33.3%
2.40-2.49	364	561	6.7%	29	108	45.6%
2.50-2.59	552	1,113	13.4%	30	138	58.2%
2.60-2.69	681	1,794	21.6%	22	160	67.5%
2.70-2.79	840	2,634	31.6%	19	179	75.5%
2.80-2.89	853	3,487	41.9%	9	188	79.3%
2.90-2.99	765	4,252	51.1%	10	198	83.5%
3.00-3.09	827	5,079	61.0%	7	205	86.5%
3.10-3.19	652	5,731	68.9%	6	211	89.0%
3.20-3.29	567	6,298	75.7%	4	215	90.7%
3.30-3.39	491	6,789	81.6%	4	219	92.4%
3.40-3.49	385	7,174	86.2%	3	222	93.7%
3.50-3.59	325	7,499	90.1%	4	226	95.4%
3.60-3.69	275	7,774	93.4%	4	230	97.0%
3.70-3.79	205	7,979	95.9%	2	232	97.9%
3.80-3.89	132	8,111	97.5%	1	233	98.3%
3.90-3.99	95	8,206	98.6%	1	234	98.7%
≥ 4.00	117	8,323	100.0%	3	237	100.0%
Median GPA	2.98			2.53		
Average GPA	3.02			2.63		

Notes:

- a) Admission GPA is the grade point average on courses transferrable to SFU from college.
- b) Minimum admission GPA requirement for B.C. college transfers:

Semester	Non-Science	Science
1994-2	2.40	2.30
1994-3	2.50	2.40
1995-1	2.40	2.30
1995-2	2.70	2.50
1995-3	2.50	2.30
1996-1	2.60	2.50
1996-2	2.50	2.50
1996-3	2.40	2.30
1997-1	3.00	2.50
1997-2	2.70	2.40
1997-3	2.70	2.40
1998-1	2.70	2.40
1998-2	2.80	2.40
1998-3	2.80	2.50
1999-1	3.00	2.75

- c) Starting in 1993-3, a minimum admission GPA of 2.00 was required for holders of associate degrees in arts or science.
- d) SFU operates on a tri-semester system. Semesters are suffixed with "-1" for Spring, "-2" for Summer and "-3" for Fall.

BEST COPY AVAILABLE

**TABLE 10
ACADEMIC PERFORMANCE OF B.C. COLLEGE TRANSFERS ADMITTED TO SFU
FROM 1994/95 TO 1998/99**

Region/College	Admission GPA		SFU CGPA after 1st Sem at SFU		SFU CGPA after 30 credits passed at SFU		SFU CGPA at Graduation from SFU	
	N	GPA	N	GPA	N	GPA	N	GPA
Non Lower Mainland								
Northern B.C.	317	3.07	317	2.64	221	2.94	95	3.08
College of New Caledonia	174	3.06	174	2.63	127	2.99	69	3.09
Northern Lights College	55	3.09	55	3.11	32	3.15	8	3.24
Northwest Community College	88	3.09	88	2.36	62	2.74	18	2.95
Interior/Kootenays	372	3.04	372	2.52	230	2.83	108	2.97
College of the Rockies	18	3.26	18	2.34	9	2.79	5	2.95
Okanagan University College	160	2.98	160	2.60	104	2.86	46	3.02
Selkirk College	50	3.06	50	2.36	31	2.84	17	3.04
Univ College of the Cariboo	144	3.06	144	2.50	86	2.78	40	2.90
Vancouver Island	372	3.13	372	2.58	235	2.87	138	3.02
Camosun College	171	3.07	171	2.48	105	2.85	65	3.03
Malaspina University-College	174	3.17	174	2.66	115	2.89	68	3.02
North Island College	27	3.22	27	2.77	15	2.89	5	2.74
Total Non Lower Mainland	1,061	3.08	1,061	2.58	686	2.88	341	3.02
Lower Mainland								
Public	6,914	3.01	6,914	2.52	4,446	2.76	2,135	2.91
B.C. Institute of Technology	33	3.51	33	2.84	17	2.96	9	2.87
Capilano College	1,261	2.99	1,261	2.60	868	2.79	392	2.92
Douglas College	1,948	3.02	1,948	2.42	1,149	2.70	522	2.86
Kwantlen University College	2,055	3.07	2,055	2.47	1,310	2.74	653	2.92
Univ Coll of the Fraser Valley	287	3.01	287	2.61	196	2.94	91	3.09
Langara College	1,330	2.92	1,330	2.61	906	2.77	468	2.90
Private	348	3.08	348	2.40	231	2.68	130	2.78
Columbia College	210	3.05	210	2.50	144	2.73	74	2.79
Coquitlam College	138	3.12	138	2.24	87	2.61	56	2.77
Total Lower Mainland	7,262	3.02	7,262	2.51	4,677	2.75	2,265	2.90
Grand Total (BCCOL + BCASD)	8,323	3.02	8,323	2.52	5,363	2.77	2,606	2.91
Total B.C. Assoc. Degree Transfers	237	2.63	237	2.38	115	2.70	46	2.84
Total Direct Entry B.C. Grade 12s	8,364	3.35	8,370	2.47	5,561	2.74	583	3.00

Notes:

- Admission GPA's for five BC12's were not available.
- SFU CGPA after first semester at SFU is calculated on courses completed in the first semester at SFU. See Table 3 for the distribution of first semester credit hours taken at SFU.
- SFU CGPA at graduation from SFU is shown for degree completers only. PDP and certificates are excluded.
- Students who completed multiple credentials simultaneously are included in the graduation statistics for each degree completed.
- Students who completed multiple credentials sequentially are included in the graduation statistics for the first degree completed.
- 31% of all college transfers admitted from 1994/95 to 1998/99 have graduated (between June 1994 and April 1999).
- The proportion of students with a strong academic background (as evidenced by secondary school grades) varies among transfer and direct entry students. This table describes differences between the two groups but does not explain the cause of the differences.

TABLE 11A
COMPARISON OF COURSE GRADES IN SELECTED COURSES
B.C. COLLEGE TRANSFERS vs DIRECT ENTRY B.C. GRADE 12s
(FOR STUDENTS ADMITTED TO SFU FROM 1994/95 TO 1998/99)

Region/College	Bich 222			Bisc 202			Bisc 316		
	Admis- sion GPA	Avg Crs Grade	N	Admis- sion GPA	Avg Crs Grade	N	Admis- sion GPA	Avg Crs Grade	N
Non Lower Mainland									
Northern B.C.	3.32	2.34	8	3.20	1.92	12	3.15	2.27	5
College of New Caledonia	3.16	2.33	5	3.25	2.19	7	3.02	3.17	2
Northern Lights College	3.78	3.67	1	2.46	1.67	1			
Northwest Community College	3.49	1.67	2	3.31	1.50	4	3.23	1.67	3
Interior/Kootenays	2.95	2.64	16	3.09	2.67	23	3.05	1.67	6
College of the Rockies	3.42	2.83	2						
Okanagan University College	2.81	2.83	6	2.89	3.13	8	2.57		1
Selkirk College	3.37	2.78	3	3.25	2.52	7	3.48	1.89	3
Univ College of the Cariboo	2.68	2.27	5	3.16	2.33	8	2.65	2.17	2
Vancouver Island	3.11	2.33	12	2.98	1.88	11	2.66	2.00	1
Camosun College	3.08	1.73	5	3.00	0.83	6	2.66	2.00	1
Malaspina University-College	3.15	2.78	6	2.95	3.13	5			
North Island College	3.03	2.67	1						
Total Non Lower Mainland	3.09	2.47	36	3.09	2.28	46	3.06	1.94	12
Lower Mainland									
Public	2.90	2.48	176	2.86	2.10	214	2.85	2.42	105
B.C. Institute of Technology	3.05	2.83	2	3.07	2.56	3	2.93	2.33	2
Capilano College	2.83	2.72	33	2.80	2.40	44	2.86	2.74	19
Douglas College	2.95	2.40	52	2.85	1.73	62	2.81	2.27	36
Kwantlen University College	2.89	2.41	45	2.89	2.33	50	2.87	2.68	19
Univ Coll of the Fraser Valley	3.20	2.85	16	3.27	2.33	9	3.05	2.31	12
Langara College	2.70	2.22	28	2.79	2.00	46	2.75	2.16	17
Private	3.12	2.59	8	3.02	2.00	10	2.94	2.00	1
Columbia College	2.95	2.27	5	2.92	2.00	7	2.94	2.00	1
Coquitlam College	3.39	3.11	3	3.25	2.00	3			
Total Lower Mainland	2.91	2.48	184	2.86	2.10	224	2.85	2.41	106
Grand Total (BCCOL + BCASD)	2.94	2.48	220	2.90	2.13	270	2.87	2.36	118
Total Direct Entry B.C. Grade 12s	3.45	2.95	432	3.44	2.71	562	3.39	2.82	160

Note:

- a) Please note that in many cases above, the number of students from a particular institution who have received a grade in a particular SFU course is small and the corresponding course grade averages, although accurate, are not statistically reliable as an indicator for the college.
- b) Course Titles:
 Bich 222 - Molecular Biology and Biochemistry.
 Bisc 202 - Genetics.
 Bisc 316 - Vertebrate Biology.
- c) The proportion of students with a strong academic background (as evidenced by secondary school grades) varies among transfer and direct entry students. This table describes differences between the two groups but does not explain the cause of the differences.

**TABLE 11A (cont.)
COMPARISON OF COURSE GRADES IN SELECTED COURSES
B.C. COLLEGE TRANSFERS vs DIRECT ENTRY B.C. GRADE 12s
(FOR STUDENTS ADMITTED TO SFU FROM 1994/95 TO 1998/99)**

Region/College	Buec 232			Buec 333			Bus 207		
	Admis- sion GPA	Avg Crs Grade	N	Admis- sion GPA	Avg Crs Grade	N	Admis- sion GPA	Avg Crs Grade	N
Non Lower Mainland									
Northern B.C.	3.08	2.35	19	3.12	2.45	11	3.17	1.26	9
College of New Caledonia	3.00	2.33	9	3.02	2.47	5	3.16	1.60	5
Northern Lights College	2.87	3.00	1	2.87	3.00	1	2.87	1.67	1
Northwest Community College	3.18	2.29	9	3.27	2.33	5	3.28	0.56	3
Interior/Kootenays	3.14	2.32	43	3.24	2.59	49	3.25	2.15	37
College of the Rockies	3.30	2.33	5	3.73	2.67	1	3.40	2.00	1
Okanagan University College	2.97	2.39	18	3.13	2.81	16	3.08	2.00	14
Selkirk College	2.93	2.11	3	2.93	2.11	3	2.83	1.67	1
Univ College of the Cariboo	3.31	2.27	17	3.31	2.51	29	3.38	2.27	21
Vancouver Island	2.99	1.75	29	3.13	2.52	52	3.13	2.05	46
Camosun College	2.85	1.50	8	3.15	2.51	17	3.12	2.07	15
Malaspina University-College	3.05	1.84	21	3.13	2.49	34	3.14	2.02	30
North Island College				2.70	3.67	1	2.70	2.67	1
Total Non Lower Mainland	3.08	2.14	91	3.18	2.54	112	3.18	2.01	92
Lower Mainland									
Public	3.01	2.54	1,004	3.10	2.64	1,255	3.13	2.43	794
B.C. Institute of Technology	3.63	3.67	7	3.63	3.29	7	3.63	3.52	7
Capilano College	2.94	2.51	212	2.99	2.67	155	3.05	2.26	116
Douglas College	3.03	2.42	166	3.17	2.55	316	3.22	2.41	194
Kwantlen University College	3.10	2.46	337	3.16	2.55	425	3.20	2.28	234
Univ Coll of the Fraser Valley	3.05	2.62	22	3.27	3.13	15	3.20	2.76	14
Langara College	2.91	2.70	260	2.98	2.78	337	3.01	2.65	229
Private	3.12	2.82	101	3.16	2.68	152	3.22	2.82	103
Columbia College	3.07	2.86	65	3.11	2.78	93	3.14	2.85	62
Coquitlam College	3.22	2.75	36	3.24	2.52	59	3.35	2.77	41
Total Lower Mainland	3.02	2.57	1,105	3.11	2.64	1,407	3.14	2.48	897
Grand Total (BCCOL + BCASD)	3.02	2.53	1,196	3.11	2.64	1,519	3.15	2.44	989
Total Direct Entry B.C. Grade 12s	3.33	2.74	1,415	3.37	2.85	911	3.43	2.72	674

Note:

- a) Please note that in many cases above, the number of students from a particular institution who have received a grade in a particular SFU course is small and the corresponding course grade averages, although accurate, are not statistically reliable as an indicator for the college.
- b) Course Titles:
 Buec 232 - Elementary Economic/Business Statistics I
 Buec 333 - Elementary Economic/Business Statistics II
 Bus 207 (formerly Bus 307) - Managerial Economics (includes students who took Bus 307 prior to 1994-3)
- c) The proportion of students with a strong academic background (as evidenced by secondary school grades) varies among transfer and direct entry students. This table describes differences between the two groups but does not explain the cause of the differences.

**TABLE 1.1A (cont.)
COMPARISON OF COURSE GRADES IN SELECTED COURSES
B.C. COLLEGE TRANSFERS vs DIRECT ENTRY B.C. GRADE 12s
(FOR STUDENTS ADMITTED TO SFU FROM 1994/95 TO 1998/99)**

Region/College	Bus 237			Bus 251			Bus 312		
	Admission GPA	Avg Crse Grade	N	Admission GPA	Avg Crse Grade	N	Admission GPA	Avg Crse Grade	N
Non Lower Mainland									
Northern B.C.	2.99	2.25	25	3.03	2.52	18	3.05	2.20	5
College of New Caledonia	2.90	2.29	15	2.90	2.37	8	3.03	2.44	3
Northern Lights College	3.24	2.34	2	3.24	2.50	2	2.87	2.00	1
Northwest Community College	3.10	2.17	8	3.10	2.67	8	3.30	1.67	1
Interior/Kootenays	3.05	2.36	43	3.05	2.27	36	3.39	2.70	30
College of the Rockies	3.30	1.47	5	3.73	3.33	1	3.73	1.67	1
Okanagan University College	3.01	2.52	23	2.93	2.22	17	3.21	2.44	13
Selkirk College	2.81	2.33	4	2.95	2.22	3			
Univ College of the Cariboo	3.09	2.42	11	3.16	2.27	15	3.51	2.98	16
Vancouver Island	3.04	2.30	36	2.97	2.20	34	3.28	2.70	31
Camosun College	2.99	2.49	13	2.85	2.07	10	3.15	2.67	10
Malaspina University-College	3.09	2.15	22	3.03	2.20	23	3.37	2.67	20
North Island College	2.70	3.00	1	2.70	3.33	1	2.70	3.67	1
Total Non Lower Mainland	3.03	2.31	104	3.01	2.29	88	3.31	2.66	66
Lower Mainland									
Public	2.97	2.45	998	2.94	2.40	680	3.26	2.70	625
B.C. Institute of Technology	3.72	3.33	6				3.62	3.24	7
Capilano College	2.93	2.53	269	2.94	2.48	217	3.10	2.63	78
Douglas College	2.98	2.27	112	3.01	2.26	131	3.35	2.69	166
Kwantlen University College	3.04	2.26	159	2.99	2.11	123	3.32	2.65	206
Univ Coll of the Fraser Valley	3.01	2.52	23	2.98	2.31	17	3.17	2.93	9
Langara College	2.95	2.50	429	2.86	2.60	192	3.16	2.76	159
Private	3.12	2.51	82	3.14	2.63	83	3.35	2.72	75
Columbia College	3.11	2.58	68	3.14	2.71	62	3.24	2.71	49
Coquitlam College	3.13	2.14	14	3.16	2.41	21	3.54	2.73	26
Total Lower Mainland	2.98	2.45	1,080	2.96	2.42	763	3.27	2.70	700
Grand Total (BCCOL + BCASD)	2.99	2.44	1,184	2.97	2.41	851	3.27	2.70	765
Total Direct Entry B.C. Grade 12s	3.35	2.58	1,875	3.35	2.63	1,909	3.47	2.99	483

Note:

- Please note that in many cases above, the number of students from a particular institution who have received a grade in a particular SFU course is small and the corresponding course grade averages, although accurate, are not statistically reliable as an indicator for the college.
- Course Titles:
 Bus 237 - Introduction to Computers and Information Systems in Business
 Bus 251 - Financial Accounting I
 Bus 312 - Business Finance
- The proportion of students with a strong academic background (as evidenced by secondary school grades) varies among transfer and direct entry students. This table describes differences between the two groups but does not explain the cause of the differences.

**TABLE 11A (cont.)
COMPARISON OF COURSE GRADES IN SELECTED COURSES
B.C. COLLEGE TRANSFERS vs DIRECT ENTRY B.C. GRADE 12s
(FOR STUDENTS ADMITTED TO SFU FROM 1994/95 TO 1998/99)**

Region/College	Bus 343			Bus 374			Chem 281		
	Admis- sion GPA	Avg Crs Grade	N	Admis- sion GPA	Avg Crs Grade	N	Admis- sion GPA	Avg Crs Grade	N
	Non Lower Mainland								
Northern B.C.	3.09	2.53	5	3.06	3.25	4	3.24	2.86	12
College of New Caledonia	3.14	1.84	2	3.08	3.33	1	3.01	2.50	6
Northern Lights College	2.87	2.33	1	2.87	4.00	1	3.52	3.67	3
Northwest Community College	3.15	3.34	2	3.15	2.83	2	3.41	2.78	3
Interior/Kootenays	3.34	2.67	38	3.35	3.11	18	3.07	2.59	30
College of the Rockies	3.73	3.00	1	3.73	3.67	1	3.42	2.33	2
Okanagan University College	3.16	2.59	13	3.21	3.22	6	2.89	2.88	11
Selkirk College							3.39	2.67	6
Univ College of the Cariboo	3.43	2.70	24	3.39	3.00	11	3.01	2.30	11
Vancouver Island	3.26	2.87	34	3.29	3.17	16	3.06	2.25	12
Camosun College	3.11	3.00	13	3.17	3.00	5	3.19	2.00	5
Malaspina University-College	3.39	2.80	20	3.35	3.24	11	3.00	2.80	5
North Island College	2.70	2.67	1				2.88	1.50	2
Total Non Lower Mainland	3.29	2.75	77	3.29	3.15	38	3.10	2.57	54
Lower Mainland									
Public	3.23	2.64	665	3.19	2.78	301	2.88	2.40	274
B.C. Institute of Technology	3.63	3.40	5	3.15	2.50	2	3.07	2.56	3
Capilano College	3.09	2.81	88	3.06	2.95	48	2.89	2.52	40
Douglas College	3.30	2.60	160	3.21	2.78	69	2.88	2.22	89
Kwantlen University College	3.31	2.62	235	3.28	2.77	105	2.86	2.53	71
Univ Coll of the Fraser Valley	3.13	2.97	11	3.11	3.17	6	3.04	2.43	17
Langara College	3.13	2.56	166	3.13	2.67	71	2.86	2.43	54
Private	3.33	2.49	81	3.29	2.70	32	3.02	2.25	12
Columbia College	3.22	2.57	51	3.20	2.80	22	3.01	2.62	7
Coquitlam College	3.52	2.37	30	3.48	2.47	10	3.03	1.73	5
Total Lower Mainland	3.24	2.62	746	3.20	2.77	333	2.89	2.39	286
Grand Total (BCCOL + BCA5D)	3.25	2.63	823	3.21	2.81	371	2.92	2.42	340
Total Direct Entry B.C. Grade 12s	3.44	2.95	526	3.47	3.07	246	3.42	2.67	1,012

Note:

- a) Please note that in many cases above, the number of students from a particular institution who have received a grade in a particular SFU course is small and the corresponding course grade averages, although accurate, are not statistically reliable as an indicator for the college.
- b) Course Titles:
 Bus 343 - Introduction to Marketing.
 Bus 374 - Organization Theory.
 Chem 281 (formerly CHEM 150) - Organic Chemistry I (includes students who took Chem 150 before 1998-3).
- c) The proportion of students with a strong academic background (as evidenced by secondary school grades) varies among transfer and direct entry students. This table describes differences between the two groups but does not explain the cause of the differences.

BEST COPY AVAILABLE

TABLE 11A (cont.)
COMPARISON OF COURSE GRADES IN SELECTED COURSES
B.C. COLLEGE TRANSFERS vs DIRECT ENTRY B.C. GRADE 12s
(FOR STUDENTS ADMITTED TO SFU FROM 1994/95 TO 1998/99)

Region/College	Cmns 221			Cmns 223			Cmpt 205		
	Admis- sion GPA	Avg Crs Grade	N	Admis- sion GPA	Avg Crs Grade	N	Admis- sion GPA	Avg Crs Grade	N
Non Lower Mainland									
Northern B.C.	3.20	3.22	6	3.18	2.78	6	3.25	3.00	2
College of New Caledonia	3.14	3.45	3	3.22	3.45	3	3.25	3.00	2
Northern Lights College				3.05	1.67	2			
Northwest Community College	3.25	3.00	3	3.33	3.00	1			
Interior/Kootenays	2.93	2.39	6	2.81	3.00	4	2.98	1.67	2
College of the Rockies				2.81	3.00	4	2.98	1.67	2
Okanagan University College	3.01	2.47	5						
Selkirk College									
Univ College of the Cariboo	2.50	2.00	1						
Vancouver Island	3.12	2.81	9	3.07	2.85	13	2.50	2.33	1
Camosun College	3.18	2.94	6	3.02	2.91	7	2.50	2.33	1
Malaspina University-College	3.02	2.17	2	3.13	2.78	6			
North Island College	2.96	3.33	1						
Total Non Lower Mainland	3.09	2.81	21	3.05	2.86	23	2.99	2.33	5
Lower Mainland									
Public	2.91	2.73	141	2.91	2.80	137	3.04	2.20	56
B.C. Institute of Technology							3.20	2.33	1
Capilano College	2.92	2.62	37	2.89	2.97	34	2.72	1.67	13
Douglas College	2.97	2.82	28	2.95	2.57	28	3.35	2.48	14
Kwantlen University College	3.03	2.69	29	3.04	2.85	26	3.10	2.03	11
Univ Coll of the Fraser Valley	2.96	2.87	5	3.00	3.00	5	3.24	2.78	3
Langara College	2.76	2.79	42	2.81	2.77	44	2.93	2.41	14
Private	2.89	2.24	11	2.96	2.39	19	2.88	2.56	6
Columbia College	2.89	2.10	7	3.01	2.31	13	3.04	2.42	4
Coquitlam College	2.90	2.50	4	2.86	2.56	6	2.55	2.84	2
Total Lower Mainland	2.90	2.70	152	2.92	2.75	156	3.02	2.23	62
Grand Total: (BCCOL + BCASD)	2.93	2.71	173	2.93	2.77	179	3.02	2.24	67
Total Direct Entry B.C. Grade 12s	3.31	2.86	123	3.27	2.86	110	3.52	2.57	68

Note:

- a) Please note that in many cases above, the number of students from a particular institution who have received a grade in a particular SFU course is small and the corresponding course grade averages, although accurate, are not statistically reliable as an indicator for the college.
- b) Course Titles:
 Cmns 221 - Media and Audiences
 Cmns 223 (formerly Cmns 215) - Advertising as Social Communic. (includes students who took Cmns 215 prior to 1994-3).
 Cmpt 205 - Introduction to Formal Topics in Computing Science.
- c) The proportion of students with a strong academic background (as evidenced by secondary school grades) varies among transfer and direct entry students. This table describes differences between the two groups but does not explain the cause of the differences.

TABLE 11A (cont.)
COMPARISON OF COURSE GRADES IN SELECTED COURSES
B.C. COLLEGE TRANSFERS vs DIRECT ENTRY B.C. GRADE 12s
(FOR STUDENTS ADMITTED TO SFU FROM 1994/95 TO 1998/99)

Region/College	Crim 230			Crim 320			Crim 330		
	Admis- sion GPA	Avg Crs Grade	N	Admis- sion GPA	Avg Crs Grade	N	Admis- sion GPA	Avg Crs Grade	N
Non Lower Mainland									
Northern B.C.	2.90	2.63	9	3.15	2.89	29	3.20	2.68	32
College of New Caledonia	2.96	3.33	3	3.15	2.86	26	3.21	2.68	30
Northern Lights College									
Northwest Community College	2.87	2.28	6	3.19	3.11	3	3.01	2.67	2
Interior/Kootenays									
	3.10	2.96	24	3.06	3.08	17	3.02	2.80	20
College of the Rockies	3.23	3.67	1	3.23	3.33	1	3.23	3.67	1
Okanagan University College	3.10	2.89	12	2.99	3.03	10	2.96	2.82	11
Selkirk College	3.01	3.17	4	3.01	2.34	2	3.01	2.84	2
Univ College of the Cariboo	3.12	2.86	7	3.24	3.50	4	3.10	2.61	6
Vancouver Island									
	3.07	2.67	14	3.23	2.93	68	3.23	2.72	76
Camosun College	2.97	2.53	5	3.25	2.83	40	3.22	2.65	46
Malaspina University-College	3.13	2.74	9	3.21	3.06	28	3.24	2.83	30
North Island College									
Total Non Lower Mainland	3.05	2.81	47	3.19	2.94	114	3.19	2.72	128
Lower Mainland									
Public	2.97	2.64	213	3.10	2.79	348	3.10	2.62	381
B.C. Institute of Technology	4.00	4.00	1						
Capilano College	3.05	2.67	74	3.09	2.99	26	3.14	2.74	30
Douglas College	2.96	2.48	64	3.12	2.70	140	3.10	2.66	150
Kwantlen University College	2.98	2.71	33	3.16	2.78	144	3.17	2.61	161
Univ Coll of the Fraser Valley	2.85	2.38	7	3.19	2.97	10	3.10	2.63	10
Langara College	2.77	2.80	34	2.71	2.95	28	2.71	2.41	30
Private	2.68	2.67	4				2.76	3.00	1
Columbia College	2.71	2.78	3				2.76	3.00	1
Coquitlam College	2.61	2.33	1						
Total Lower Mainland	2.96	2.64	217	3.10	2.79	348	3.10	2.63	382
Grand Total (BCCOL + BCASD)	2.98	2.67	264	3.12	2.82	462	3.12	2.65	510
Total Direct Entry B.C. Grade 12s	3.29	2.69	241	3.33	3.23	69	3.32	2.94	86

Note:

- a) Please note that in many cases above, the number of students from a particular institution who have received a grade in a particular SFU course is small and the corresponding course grade averages, although accurate, are not statistically reliable as an indicator for the college.
- b) Course Titles:
 Crim 230 - Criminal Law.
 Crim 320 - Advanced Research Issues in Criminology.
 Crim 330 - Criminal Procedure and Evidence.
- c) The proportion of students with a strong academic background (as evidenced by secondary school grades) varies among transfer and direct entry students. This table describes differences between the two groups but does not explain the cause of the differences.

**TABLE 11A (cont.)
COMPARISON OF COURSE GRADES IN SELECTED COURSES
B.C. COLLEGE TRANSFERS vs DIRECT ENTRY B.C. GRADE 12s
(FOR STUDENTS ADMITTED TO SFU FROM 1994/95 TO 1998/99)**

Region/College	Econ 103			Econ 301			Econ 305		
	Admis- sion GPA	Avg Crse Grade	N	Admis- sion GPA	Avg Crse Grade	N	Admis- sion GPA	Avg Crse Grade	N
Non Lower Mainland									
Northern B.C.	2.86	1.93	5	3.14	3.11	3	3.14	3.56	3
College of New Caledonia	2.87	2.00	4	2.56	2.33	1	2.56	3.67	1
Northern Lights College									
Northwest Community College	2.79	1.67	1	3.44	3.50	2	3.44	3.50	2
Interior/Kootenays	3.33	2.88	11	3.00	2.60	15	3.02	2.72	14
College of the Rockies	3.95	3.33	2	3.73	3.00	1	3.73	3.67	1
Okanagan University College	3.51	3.07	5	2.92	2.80	5	2.92	2.53	5
Selkirk College	2.63	2.34	2	2.98	3.33	2	2.98	3.50	2
Univ College of the Cariboo	2.98	2.50	2	2.96	2.19	7	2.99	2.45	6
Vancouver Island	2.99	1.78	6	3.16	2.33	12	2.89	2.89	6
Camosun College	2.76	1.22	3	3.40	2.42	4	3.11	3.00	1
Malaspina University-College	3.23	2.33	3	3.04	2.29	8	2.85	2.87	5
North Island College									
Total Non Lower Mainland	3.13	2.36	22	3.08	2.54	30	3.00	2.87	23
Lower Mainland									
Public	2.93	2.09	282	2.97	2.63	537	2.93	2.61	463
B.C. Institute of Technology	3.60	1.84	2	3.25	4.00	1	3.25	3.00	1
Capilano College	2.90	2.14	37	2.87	2.66	63	2.86	2.67	52
Douglas College	2.99	2.04	69	3.03	2.53	124	3.00	2.61	110
Kwantlen University College	2.97	2.02	94	3.06	2.63	176	3.02	2.58	150
Univ Coll of the Fraser Valley	3.14	2.53	5	3.16	2.81	7	3.12	1.83	4
Langara College	2.82	2.17	75	2.87	2.68	166	2.81	2.63	146
Private	3.14	2.61	23	3.01	2.59	79	3.00	2.52	74
Columbia College	3.12	2.59	18	2.88	2.67	43	2.91	2.47	41
Coquitlam College	3.24	2.67	5	3.17	2.49	36	3.11	2.59	33
Total Lower Mainland	2.95	2.13	305	2.98	2.63	616	2.94	2.59	537
Grand Total (BCCOL + BCASD)	2.96	2.14	327	2.98	2.62	646	2.94	2.61	560
Total Direct Entry B.C. Grade 12s	3.37	2.48	2,546	3.27	2.77	340	3.25	2.83	270

Note:

- a) Please note that in many cases above, the number of students from a particular institution who have received a grade in a particular SFU course is small and the corresponding course grade averages, although accurate, are not statistically reliable as an indicator for the college.
- b) Course Titles:
Econ 103 (formerly Econ 200) - Principles of Microeconomics (Includes students who took Econ 200 prior to 1993-3).
Econ 301 - Intermediate Microeconomic Theory.
Econ 305 - Intermediate Macroeconomic Theory.
- c) The proportion of students with a strong academic background (as evidenced by secondary school grades) varies among transfer and direct entry students. This table describes differences between the two groups but does not explain the cause of the differences.

**TABLE 11A (cont.)
COMPARISON OF COURSE GRADES IN SELECTED COURSES
B.C. COLLEGE TRANSFERS vs DIRECT ENTRY B.C. GRADE 12s
(FOR STUDENTS ADMITTED TO SFU FROM 1994/95 TO 1998/99)**

Region/College	Educ 220			Educ 230			Educ 240		
	Admission GPA	Avg Crs Grade	N	Admission GPA	Avg Crs Grade	N	Admission GPA	Avg Crs Grade	N
Non Lower Mainland									
Northern B.C.	3.06	2.60	93	2.94	3.46	37	2.96	3.26	35
College of New Caledonia	3.08	2.92	47	2.77	3.18	9	2.97	3.13	8
Northern Lights College	2.99	2.21	29	2.93	3.62	22	2.96	3.38	20
Northwest Community College	3.12	2.39	17	3.21	3.28	6	2.95	3.05	7
Interior/Kootenays	3.02	2.77	35	3.00	3.20	10	2.79	3.20	5
College of the Rockies	2.64	1.84	2						
Okanagan University College	3.01	2.91	15	2.94	3.45	6	2.80	3.33	1
Selkirk College	3.18	2.63	8	2.63	2.00	1	3.01	2.67	2
Univ College of the Cariboo	2.98	2.87	10	3.23	3.11	3	2.58	3.67	2
Vancouver Island	2.87	2.62	14	2.91	2.87	5	3.37	3.33	3
Camosun College	2.85	2.57	7	2.74	2.89	3	2.94	3.00	1
Malaspina University-College	2.93	2.78	6	3.12	3.00	1	3.59	3.50	2
North Island College	2.67	2.00	1	3.18	2.67	1			
Total Non Lower Mainland	3.03	2.64	142	2.95	3.35	52	2.97	3.26	43
Lower Mainland									
Public	2.98	2.67	835	2.95	3.21	192	2.94	3.32	220
B.C. Institute of Technology	3.53	2.45	3						
Capilano College	2.95	2.67	166	2.88	3.24	38	2.94	3.41	51
Douglas College	2.99	2.61	247	2.96	3.25	59	2.93	3.26	60
Kwantlen University College	3.06	2.71	269	3.00	3.12	64	3.03	3.30	67
Univ Coll of the Fraser Valley	2.97	2.88	42	3.00	3.00	10	2.98	3.57	10
Langara College	2.82	2.62	108	2.84	3.40	21	2.78	3.26	32
Private	3.06	2.83	29	2.84	3.40	5	2.85	2.95	6
Columbia College	3.03	3.12	17	2.88	3.58	4	2.88	3.07	5
Coquitlam College	3.10	2.42	12	2.67	2.67	1	2.67	2.33	1
Total Lower Mainland	2.99	2.68	864	2.94	3.21	197	2.94	3.31	226
Grand Total (BCCOL + BCASD)	2.99	2.67	1,006	2.94	3.24	249	2.94	3.30	269
Total Direct Entry B.C. Grade 12s	3.30	2.56	812	3.31	3.15	185	3.32	3.22	170

Note:

- a) Please note that in many cases above, the number of students from a particular institution who have received a grade in a particular SFU course is small and the corresponding course grade averages, although accurate, are not statistically reliable as an indicator for the college.
- b) Course Titles:
 Educ 220 - Introduction to Educational Psychology
 Educ 230 - Introduction to Philosophy of Education
 Educ 240 - Social Issues in Education
- c) The proportion of students with a strong academic background (as evidenced by secondary school grades) varies among transfer and direct entry students. This table describes differences between the two groups but does not explain the cause of the differences.

**TABLE 11A (cont.)
COMPARISON OF COURSE GRADES IN SELECTED COURSES
B.C. COLLEGE TRANSFERS vs DIRECT ENTRY B.C. GRADE 12s
(FOR STUDENTS ADMITTED TO SFU FROM 1994/95 TO 1998/99)**

Region/College	Engl 206			Engl 312			Fren 201		
	Admis- sion GPA	Avg Crs Grade	N	Admis- sion GPA	Avg Crs Grade	N	Admis- sion GPA	Avg Crs Grade	N
Non Lower Mainland									
Northern B.C.	3.31	3.00	12	3.14	2.66	39			
College of New Caledonia	3.18	3.00	5	3.17	2.85	23			
Northern Lights College	3.44	3.17	4	2.98	2.00	5			
Northwest Community College	3.33	2.78	3	3.17	2.55	11			
Interior/Kootenays	3.07	2.54	18	2.94	2.77	22	3.11	2.55	3
College of the Rockies	2.56	2.33	1	3.19	2.84	2	2.56	2.33	1
Okanagan University College	3.11	2.43	10	2.92	2.67	10	2.70	2.00	1
Selkirk College	3.12	2.75	4	3.01	3.00	6			
Univ College of the Cariboo	3.05	2.67	3	2.76	2.67	4	4.08	3.33	1
Vancouver Island	2.92	2.62	7	2.88	2.70	10			
Camosun College	2.46	2.67	1	2.75	2.80	5			
Malaspina University-College	2.99	2.67	4	3.06	2.67	4			
North Island College	3.01	2.50	2	2.83	2.33	1			
Total Non Lower Mainland	3.12	2.70	37	3.04	2.70	71	3.11	2.55	3
Lower Mainland									
Public	3.00	2.84	182	3.04	2.94	370	2.93	2.53	66
B.C. Institute of Technology				3.75	2.67	1			
Capilano College	2.96	2.83	53	3.02	2.89	102	2.85	2.28	20
Douglas College	2.93	2.83	37	3.02	2.92	69	2.99	2.58	18
Kwantlen University College	3.05	2.76	62	3.07	2.84	121	2.99	2.67	15
Univ Coll of the Fraser Valley	3.18	3.15	13	3.19	3.25	20	2.95	2.78	6
Langara College	2.93	2.98	17	2.98	3.12	57	2.86	2.62	7
Private	3.09	2.84	2	3.69	3.11	3	3.92	3.00	1
Columbia College	3.09	2.84	2	3.52	2.84	2	3.92	3.00	1
Coquitlam College				4.04	3.67	1			
Total Lower Mainland	3.00	2.84	184	3.05	2.94	373	2.95	2.54	67
Grand Total (BCCOL + BCASD)	3.02	2.82	221	3.05	2.90	444	2.95	2.54	70
Total Direct Entry B.C. Grade 12s	3.46	2.85	373	3.45	2.95	199	3.41	2.70	339

Note:

- Please note that in many cases above, the number of students from a particular institution who have received a grade in a particular SFU course is small and the corresponding course grade averages, although accurate, are not statistically reliable as an indicator for the college.
- Course Titles:
Engl 206 - Nineteenth Century Literatures in English.
Engl 312 - Shakespeare.
Fren 201 - Intermediate French I (includes students who took Fren 199 after 19923).
- The proportion of students with a strong academic background (as evidenced by secondary school grades) varies among transfer and direct entry students. This table describes differences between the two groups but does not explain the cause of the differences.

TABLE 11A (cont.)
COMPARISON OF COURSE GRADES IN SELECTED COURSES
B.C. COLLEGE TRANSFERS vs DIRECT ENTRY B.C. GRADE 12s
(FOR STUDENTS ADMITTED TO SFU FROM 1994/95 TO 1998/99)

Region/College	Fren 301			Geog 221			Hist 225		
	Admis- sion GPA	Avg Crs Grade	N	Admis- sion GPA	Avg Crs Grade	N	Admis- sion GPA	Avg Crs Grade	N
Non Lower Mainland									
Northern B.C.	2.80	2.33	1	2.74	2.33	10	3.23	2.60	10
College of New Caledonia				2.52	2.05	7	3.31	2.40	5
Northern Lights College	2.80	2.33	1	3.44	3.00	1			
Northwest Community College				3.19	3.00	2	3.16	2.80	5
Interior/Kootenays	3.00	2.33	1	2.86	2.48	18	2.89	2.48	11
College of the Rockies				3.40	2.67	1	2.56	2.67	1
Okanagan University College				2.82	2.57	7	3.18	2.42	4
Selkirk College				2.46	1.84	2	2.73	2.89	3
Univ College of the Cariboo	3.00	2.33	1	2.94	2.54	8	2.76	2.11	3
Vancouver Island	2.84	2.67	2	2.95	2.67	4	3.24	3.17	4
Camosun College				2.94	2.00	1	3.03	3.50	2
Malaspina University-College	3.00	3.00	1	2.95	2.89	3	3.45	2.84	2
North Island College	2.67	2.33	1						
Total Non Lower Mainland	2.87	2.50	4	2.84	2.46	32	3.08	2.64	25
Lower Mainland									
Public	3.10	2.75	73	2.91	2.54	261	2.99	2.49	180
B.C. Institute of Technology				3.55	3.67	1			
Capilano College	2.88	2.67	21	2.91	2.67	66	3.06	2.56	51
Douglas College	3.21	2.67	11	2.90	2.25	56	2.95	2.20	37
Kwantlen University College	3.23	2.80	25	2.99	2.65	80	3.01	2.56	61
Univ Coll of the Fraser Valley	3.27	2.89	9	2.80	2.35	18	2.99	2.85	9
Langara College	2.92	2.76	7	2.79	2.57	40	2.88	2.49	22
Private							3.41	3.17	2
Columbia College									
Coquitlam College							3.41	3.17	2
Total Lower Mainland	3.10	2.75	73	2.91	2.54	261	3.00	2.50	182
Grand Total (BCCOL + BCASD)	3.09	2.74	77	2.90	2.53	293	3.01	2.52	207
Total Direct Entry B.C. Grade 12s	3.50	2.85	71	3.31	2.77	188	3.43	2.68	411

Note:

- a) Please note that in many cases above, the number of students from a particular institution who have received a grade in a particular SFU course is small and the corresponding course grade averages, although accurate, are not statistically reliable as an indicator for the college.
- b) Course Titles:
 Fren 301 - Advanced French — Composition I.
 Geog 221 - Economic Geography.
 Hist 225 - 20th Century Europe.
- c) The proportion of students with a strong academic background (as evidenced by secondary school grades) varies among transfer and direct entry students. This table describes differences between the two groups but does not explain the cause of the differences.

BEST COPY AVAILABLE

**TABLE 11A (cont.)
COMPARISON OF COURSE GRADES IN SELECTED COURSES
B.C. COLLEGE TRANSFERS vs DIRECT ENTRY B.C. GRADE 12s
(FOR STUDENTS ADMITTED TO SFU FROM 1994/95 TO 1998/99)**

Region/College	Ling 220			Macm 316			Math 232		
	Admis- sion GPA	Avg Crs Grade	N	Admis- sion GPA	Avg Crs Grade	N	Admis- sion GPA	Avg Crs Grade	N
Non Lower Mainland									
Northern B.C.	3.22	2.44	9	3.21	3.00	2	3.17	2.00	4
College of New Caledonia	3.27	2.60	5	2.80	3.00	1	3.10	2.50	2
Northern Lights College	3.05	2.50	2	3.61	3.00	1	3.24	1.50	2
Northwest Community College	3.28	2.00	2						
Interior/Kootenays	2.89	2.74	14	3.45	3.00	7	3.20	2.38	15
College of the Rockies	3.40	2.00	1						
Okanagan University College	2.98	2.67	5	3.47	3.00	5	2.96	2.00	6
Selkirk College	3.25	3.33	1				3.21	2.00	4
Univ College of the Cariboo	2.69	2.81	7	3.42	3.00	2	3.49	3.13	5
Vancouver Island	3.00	2.02	15	3.22	1.87	5	2.97	1.93	9
Camosun College	3.13	2.14	7	3.20	1.45	3	2.85	2.25	4
Malaspina University-College	2.87	2.11	6	3.26	2.50	2	3.06	1.67	5
North Island College	2.93	1.34	2						
Total Non Lower Mainland	3.01	2.39	38	3.34	2.60	14	3.12	2.18	28
Lower Mainland									
Public	3.01	2.63	460	3.18	2.43	172	3.00	2.42	287
B.C. Institute of Technology	3.35	1.67	2	3.40	2.84	2	3.54	2.50	4
Capilano College	2.96	2.70	82	2.96	2.21	35	2.87	2.40	60
Douglas College	3.10	2.58	126	3.40	2.37	38	3.06	2.33	69
Kwantlen University College	3.04	2.51	120	3.27	2.33	43	3.14	2.39	64
Univ Coll of the Fraser Valley	3.05	2.64	11	3.48	3.55	3	2.99	2.81	9
Langara College	2.89	2.78	119	3.07	2.62	51	2.89	2.48	81
Private	3.12	2.83	30	3.24	2.31	16	2.97	2.56	24
Columbia College	3.05	2.82	17	3.21	2.26	13	2.95	2.52	16
Coquitlam College	3.21	2.85	13	3.39	2.56	3	3.02	2.63	8
Total Lower Mainland	3.01	2.65	490	3.19	2.42	188	2.99	2.43	311
Grand Total (BCCOL + BCASD)	3.01	2.63	528	3.20	2.43	202	3.00	2.41	339
Total Direct Entry B.C. Grade 12s	3.30	2.77	639	3.63	2.76	253	3.53	2.72	1,321

Note:

- a) Please note that in many cases above, the number of students from a particular institution who have received a grade in a particular SFU course is small and the corresponding course grade averages, although accurate, are not statistically reliable as an indicator for the college.
- b) Course Titles:
Ling 220 - Introduction to Linguistics.
Macm 316 - Numerical Analysis I.
Math 232 - Elementary Linear Algebra.
- c) The proportion of students with a strong academic background (as evidenced by secondary school grades) varies among transfer and direct entry students. This table describes differences between the two groups but does not explain the cause of the differences.

**TABLE 11A (cont.)
COMPARISON OF COURSE GRADES IN SELECTED COURSES
B.C. COLLEGE TRANSFERS vs DIRECT ENTRY B.C. GRADE 12s
(FOR STUDENTS ADMITTED TO SFU FROM 1994/95 TO 1998/99)**

Region/College	Math 251			Math 310			Phil 210		
	Admis- sion GPA	Avg Crs Grade	N	Admis- sion GPA	Avg Crs Grade	N	Admis- sion GPA	Avg Crs Grade	N
Non Lower Mainland									
Northern B.C.	3.25	3.17	2	3.70	3.67	1			
College of New Caledonia	2.80	2.33	1						
Northern Lights College	3.70	4.00	1	3.70	3.67	1			
Northwest Community College									
Interior/Kootenays	3.33	1.89	6	3.26	2.20	5	3.22		1
College of the Rockies				3.13	2.67	1	3.22		1
Okanagan University College	3.22	1.80	5	3.56	2.44	3			
Selkirk College				2.47	1.00	1			
Univ College of the Cariboo	3.87	2.33	1						
Vancouver Island	3.07	2.24	7	3.41	2.84	2	2.95	0.84	2
Camosun College	2.96	1.78	3	3.63	3.00	1	2.89		1
Malaspina University-College	3.15	2.59	4	3.19	2.67	1	3.00	1.67	1
North Island College									
Total Non Lower Mainland	3.20	2.22	15	3.35	2.54	8	3.04	0.56	3
Lower Mainland									
Public	3.08	2.36	116	3.13	2.42	114	3.14	2.26	58
B.C. Institute of Technology	3.65	2.89	3	3.65	2.55	3			
Capilano College	2.95	2.39	18	3.10	2.33	17	3.19	2.04	15
Douglas College	3.16	2.47	40	3.16	2.36	27	3.14	1.95	14
Kwantlen University College	3.05	2.44	26	3.22	2.34	31	3.14	2.60	16
Univ Coll of the Fraser Valley	3.13	2.56	3	3.21	2.38	7	3.10	3.00	3
Langara College	3.00	2.03	26	2.96	2.60	29	3.10	2.23	10
Private	2.92	2.30	23	3.07	2.39	17	3.22	2.89	3
Columbia College	2.91	2.61	17	3.00	2.45	12	3.00	2.00	1
Coquitlam College	2.96	1.45	6	3.24	2.27	5	3.33	3.33	2
Total Lower Mainland	3.05	2.35	139	3.12	2.41	131	3.15	2.29	61
Grand Total (BCCOL + BCASD)	3.07	2.34	154	3.14	2.42	139	3.14	2.21	64
Total Direct Entry B.C. Grade 12s	3.65	3.01	525	3.72	3.04	377	3.49	2.96	27

Note:

- a) Please note that in many cases above, the number of students from a particular institution who have received a grade in a particular SFU course is small and the corresponding course grade averages, although accurate, are not statistically reliable as an indicator for the college.
- b) Course Titles:
Math 251 - Calculus III.
Math 310 - Introduction to Ordinary Differential Equations.
Phil 210 - Natural Deductive Logic.
- c) The proportion of students with a strong academic background (as evidenced by secondary school grades) varies among transfer and direct entry students. This table describes differences between the two groups but does not explain the cause of the differences.

**TABLE 1.1A (cont.)
COMPARISON OF COURSE GRADES IN SELECTED COURSES
B.C. COLLEGE TRANSFERS vs DIRECT ENTRY B.C. GRADE 12s
(FOR STUDENTS ADMITTED TO SFU FROM 1994/95 TO 1998/99)**

Region/College	Pol 231			Pol 241			Psyc 201		
	Admis- sion GPA	Avg Crs Grade	N	Admis- sion GPA	Avg Crs Grade	N	Admis- sion GPA	Avg Crs Grade	N
Non Lower Mainland									
Northern B.C.	3.05	4.00	1	3.12	3.19	7	3.24	2.44	46
College of New Caledonia	3.05	4.00	1	2.83	2.84	2	3.17	2.58	24
Northern Lights College				2.99	2.67	2	3.55	3.17	6
Northwest Community College				3.40	3.78	3	3.23	1.96	16
Interior/Kootenays	2.74	3.55	3	3.20	2.72	6	3.14	2.67	49
College of the Rockies				4.17	4.00	1	3.27	2.92	4
Okanagan University College	2.57	4.00	1	3.17	3.50	2	3.13	2.85	26
Selkirk College				2.83		1	3.17	2.29	8
Univ College of the Cariboo	2.83	3.33	2	2.93	2.67	2	3.07	2.46	11
Vancouver Island	3.23	3.84	2	2.96	2.45	14	3.04	2.32	66
Camosun College				2.78	2.76	7	3.00	2.10	46
Malaspina University-College	3.49	3.67	1	3.09	2.17	4	3.16	2.98	15
North Island College	2.96	4.00	1	3.20	2.11	3	3.12	2.40	5
Total Non Lower Mainland	2.95	3.72	6	3.05	2.70	27	3.13	2.46	161
Lower Mainland									
Public	2.97	2.72	95	2.97	2.62	136	2.96	2.42	1,016
B.C. Institute of Technology							3.14	3.00	3
Capilano College	3.05	2.69	26	2.91	2.93	23	2.98	2.46	176
Douglas College	2.88	2.80	27	2.97	2.35	43	2.95	2.34	282
Kwantlen University College	3.02	2.23	16	2.96	2.70	48	3.01	2.46	356
Univ Coll of the Fraser Valley	3.09	3.11	6	3.08	2.72	6	2.99	2.70	37
Langara College	2.92	2.92	20	3.00	2.65	16	2.83	2.38	162
Private	2.70	3.00	1	2.84	2.85	9	3.03	2.47	45
Columbia College				2.83	3.00	5	2.98	2.54	34
Coquitlam College	2.70	3.00	1	2.85	2.67	4	3.20	2.27	11
Total Lower Mainland	2.97	2.72	96	2.96	2.64	145	2.96	2.43	1,061
Grand Total (BCCOL + BCASD)	2.97	2.78	102	2.97	2.65	172	2.98	2.43	1,222
Total Direct Entry B.C. Grade 12s	3.38	2.95	99	3.39	2.97	219	3.34	2.81	522

Note:

- a) Please note that in many cases above, the number of students from a particular institution who have received a grade in a particular SFU course is small and the corresponding course grade averages, although accurate, are not statistically reliable as an indicator for the college.
- b) Course Titles:
 Pol 231 - Introduction to Comparative Government and Politics.
 Pol 241 - Introduction to Intermediate Politics.
 Psyc 201 - Research Methods in Psychology.
- c) The proportion of students with a strong academic background (as evidenced by secondary school grades) varies among transfer and direct entry students. This table describes differences between the two groups but does not explain the cause of the differences.

BEST COPY AVAILABLE

TABLE 11A (cont.)
COMPARISON OF COURSE GRADES IN SELECTED COURSES
B.C. COLLEGE TRANSFERS vs DIRECT ENTRY B.C. GRADE 12s
(FOR STUDENTS ADMITTED TO SFU FROM 1994/95 TO 1998/99)

Region/College	Psyc 210			Psyc 250			Psyc 260		
	Admis- sion GPA	Avg Crs Grade	N	Admis- sion GPA	Avg Crs Grade	N	Admis- sion GPA	Avg Crs Grade	N
Non Lower Mainland									
Northern B.C.	3.29	2.26	13	3.17	2.64	40	3.21	2.80	10
College of New Caledonia	2.83	2.34	2	3.11	2.52	20	3.03	2.56	6
Northern Lights College	3.48	1.84	2	3.88	3.33	3	3.51	4.00	1
Northwest Community College	3.35	2.33	9	3.11	2.67	17	3.48	2.89	3
Interior/Kootenays	3.30	3.03	19	3.04	2.84	35	3.17	2.97	12
College of the Rockies	3.23	3.33	1	2.98	3.34	2	2.72	2.67	1
Okanagan University College	3.38	3.03	10	3.12	3.00	15	3.46	3.27	5
Selkirk College	3.55	3.27	5	3.04	2.60	5	3.40	3.50	2
Univ College of the Cariboo	2.69	2.56	3	2.95	2.67	13	2.81	2.42	4
Vancouver Island	3.17	2.31	32	3.13	2.60	53	3.02	2.69	15
Camosun College	3.15	2.42	19	3.08	2.51	29	3.00	2.57	10
Malaspina University-College	3.23	2.67	8	3.19	2.82	19	3.00	2.78	3
North Island College	3.12	1.33	5	3.12	2.27	5	3.17	3.17	2
Total Non Lower Mainland	3.23	2.52	64	3.11	2.68	128	3.12	2.81	37
Lower Mainland									
Public	2.95	2.42	320	3.01	2.65	840	3.01	2.49	305
B.C. Institute of Technology				3.75	2.67	1			
Capilano College	2.98	2.48	76	3.01	2.70	154	3.08	2.47	50
Douglas College	2.99	2.18	71	3.02	2.58	260	3.00	2.46	91
Kwantlen University College	2.97	2.44	57	3.05	2.67	282	3.02	2.43	105
Univ Coll of the Fraser Valley	2.99	3.08	8	3.02	2.88	34	3.01	2.74	9
Langara College	2.88	2.48	108	2.89	2.65	109	2.91	2.66	50
Private	3.03	2.58	28	3.15	2.73	31	3.04	2.73	20
Columbia College	2.98	2.67	14	3.17	2.75	17	3.14	2.79	13
Coquitlam College	3.09	2.50	14	3.14	2.71	14	2.86	2.62	7
Total Lower Mainland	2.96	2.44	348	3.02	2.66	871	3.01	2.51	325
Grand Total (BCCOL + BCASD)	3.00	2.45	412	3.03	2.66	999	3.02	2.54	362
Total Direct Entry B.C. Grade 12s	3.37	2.82	251	3.31	2.86	402	3.35	2.98	233

Note:

- a) Please note that in many cases above, the number of students from a particular institution who have received a grade in a particular SFU course is small and the corresponding course grade averages, although accurate, are not statistically reliable as an indicator for the college.
- b) Course Titles:
 Psyc 210 - Data Analysis in Psychology.
 Psyc 250 (Formerly Psyc 351) - Child Psychology (includes students who took Psyc 351 prior to 1993-3).
 Psyc 260 (Formerly Psyc 360) - Introduction to Social Psychology (includes students who took Psyc 360 prior to 19963).
- c) The proportion of students with a strong academic background (as evidenced by secondary school grades) varies among transfer and direct entry students. This table describes differences between the two groups but does not explain the cause of the differences.

**TABLE 11A (cont.)
COMPARISON OF COURSE GRADES IN SELECTED COURSES
B.C. COLLEGE TRANSFERS vs DIRECT ENTRY B.C. GRADE 12s
(FOR STUDENTS ADMITTED TO SFU FROM 1994/95 TO 1998/99)**

Region/College	Psyc 308			Psyc 355			Stat 270		
	Admis- sion GPA	Avg Crs Grade	N	Admis- sion GPA	Avg Crs Grade	N	Admis- sion GPA	Avg Crs Grade	N
Non Lower Mainland									
Northern B.C.	2.87	2.08	4	3.18	2.67	8	3.37	2.11	3
College of New Caledonia	2.91	1.50	2	3.02	3.00	4	2.80	1.67	1
Northern Lights College				3.23	2.00	1	3.66	2.34	2
Northwest Community College	2.83	2.67	2	3.37	2.44	3			
Interior/Kootenays	3.35	3.13	8	3.20	3.51	19	3.17	2.08	17
College of the Rockies	3.23	4.00	1						
Okanagan University College	3.08	3.11	3	3.25	3.58	8	3.27	2.22	12
Selkirk College	3.60	3.00	3	3.48	3.50	4	2.47	1.00	1
Univ College of the Cariboo	3.51	2.67	1	2.99	3.43	7	3.07	1.92	4
Vancouver Island	3.04	2.57	14	3.16	2.64	30	3.29	2.24	7
Camosun College	3.09	2.37	9	3.14	2.33	15	3.20	2.22	3
Malaspina University-College	2.98	3.11	3	3.26	3.00	12	3.57	2.33	3
North Island College	2.95	2.67	2	2.91	2.78	3	2.70	2.00	1
Total Non Lower Mainland	3.11	2.67	26	3.18	2.94	57	3.23	2.12	27
Lower Mainland									
Public	2.99	2.62	275	3.02	2.78	475	3.04	2.25	331
B.C. Institute of Technology							3.40	2.00	2
Capilano College	3.12	2.84	55	3.07	3.00	84	2.85	2.24	52
Douglas College	2.97	2.41	70	3.03	2.67	149	3.15	2.05	97
Kwantlen University College	3.03	2.64	82	3.07	2.78	155	3.12	2.22	85
Univ Coll of the Fraser Valley	2.84	3.13	8	3.14	3.14	17	3.09	2.61	11
Langara College	2.85	2.58	60	2.81	2.69	70	2.93	2.46	84
Private	3.07	2.78	18	3.03	2.66	32	3.13	2.01	32
Columbia College	2.91	2.89	6	2.98	2.71	17	3.20	2.32	22
Coquitlam College	3.16	2.72	12	3.10	2.60	15	2.99	1.33	10
Total Lower Mainland	2.99	2.63	293	3.02	2.77	507	3.05	2.23	363
Grand Total (BCCOL + BCASD)	3.00	2.64	319	3.04	2.79	564	3.06	2.22	390
Total Direct Entry B.C. Grade 12s	3.35	3.04	82	3.31	3.01	142	3.55	2.45	849

Note:

- a) Please note that in many cases above, the number of students from a particular institution who have received a grade in a particular SFU course is small and the corresponding course grade averages, although accurate, are not statistically reliable as an indicator for the college.
- b) Course Titles:
 Psyc 308 - History and Systems of Modern Psychology.
 Psyc 355 - The Psychology of Adolescence and Youth.
 Stat 270 - Introduction to Probability and Statistics.
- c) The proportion of students with a strong academic background (as evidenced by secondary school grades) varies among transfer and direct entry students. This table describes differences between the two groups but does not explain the cause of the differences.

TABLE 11B
COMPARISON OF GRADES IN 200- AND 300-LEVEL COURSES
COMPLETED BY B.C. COLLEGE TRANSFERS and DIRECT ENTRY B.C. GRADE 12s
(FOR STUDENTS ADMITTED TO SFU FROM 1994/95 TO 1998/99)

Course	B.C. College Transfer Students				Direct Entry B.C. Grade 12's			
	Number of Grades	Admission GPA	Avg Crs Grade	% of Grades Below C	Number of Grades	Admission GPA	Avg Crs Grade	% of Grades Below C
ARCH 272	115	3.03	2.54	5.2%	57	3.35	2.67	1.8%
BICH 221	374	2.93	2.27	7.8%	865	3.43	2.83	1.6%
BICH 222	218	2.93	2.39	4.6%	430	3.45	2.89	1.9%
BISC 202	270	2.88	1.94	14.1%	561	3.43	2.56	
BISC 204	251	2.89	2.52	4.8%	461	3.41	2.90	1.5%
BUEC 232	1,195	3.00	2.24	8.2%	1,413	3.32	2.61	4.0%
BUEC 280	145	2.93	2.43	6.9%	94	3.22	2.78	
BUS 207	986	3.11	2.23	9.0%	673	3.42	2.60	4.0%
BUS 237	1,182	2.97	2.36	3.3%	1,873	3.34	2.53	2.1%
BUS 251	846	2.95	2.20	8.5%	1,909	3.34	2.50	
BUS 254	1,276	3.09	2.23	5.9%	963	3.40	2.62	1.9%
BUS 272	1,043	3.01	2.40	1.2%	1,358	3.35	2.66	0.9%
CHEM 250	180	2.93	2.19	10.6%	525	3.48	2.83	
CHEM 255	156	2.94	2.54	1.3%	455	3.49	3.02	0.7%
CMNS 210	111	2.93	2.69	7.2%	139	3.34	2.66	7.2%
CMNS 220	100	2.92	2.61	4.0%	80	3.32	2.66	5.0%
CMNS 221	173	2.93	2.70	2.3%	121	3.32	2.86	0.8%
CMNS 223	172	2.92	2.73	2.9%	109	3.27	2.80	0.9%
CMNS 230	134	2.89	2.75	3.0%	140	3.35	2.86	2.1%
CMNS 253	134	2.88	2.97	0.7%	76	3.34	3.26	
CMNS 260	103	2.92	2.36	4.9%	115	3.29	2.60	7.8%
CMNS 261	215	2.96	2.58	3.7%	134	3.35	2.87	1.5%
CMPT 201	184	3.08	2.07	12.5%	686	3.58	2.67	7.6%
CMPT 212	125	3.03	2.66	4.8%	256	3.54	3.08	4.3%
CMPT 275	221	3.10	2.56	1.4%	321	3.54	3.01	0.3%
CMPT 290	161	3.14	2.36	6.8%	367	3.64	2.77	4.1%
CMPT 300	114	3.20	2.40	4.4%	160	3.62	2.84	
CNS 210	155	3.01	2.89	3.9%	91	3.39	3.03	5.5%
CRIM 210	104	3.01	2.63	4.8%	46	3.22	2.78	2.2%
CRIM 213	163	2.94	2.83	4.9%	50	3.30	3.01	
CRIM 230	264	2.97	2.62	3.8%	241	3.28	2.65	2.5%
CRIM 241	157	2.98	2.86	2.5%	90	3.31	3.07	2.2%
CRIM 300	241	3.08	2.68	3.7%	61	3.33	2.99	1.6%
ECON 210	793	2.98	2.33	4.5%	574	3.31	2.81	1.7%
ECON 260	153	2.94	2.53	2.0%	81	3.20	2.80	1.2%
ECON 290	266	2.95	2.46	3.0%	125	3.29	2.65	0.8%
ECON 291	138	2.97	2.56	2.2%	84	3.23	2.86	
EDUC 220	991	2.98	2.59	2.6%	810	3.30	2.52	4.0%
EDUC 230	242	2.94	3.20	2.1%	183	3.31	3.12	2.2%
EDUC 240	263	2.95	3.30	0.4%	168	3.32	3.21	1.8%

**TABLE 11B
COMPARISON OF GRADES IN 200- AND 300-LEVEL COURSES
COMPLETED BY B.C. COLLEGE TRANSFERS and DIRECT ENTRY B.C. GRADE 12s
(FOR STUDENTS ADMITTED TO SFU FROM 1994/95 TO 1998/99)**

Course	B.C. College Transfer Students				Direct Entry B.C. Grade 12's			
	Number of Grades	Admission GPA	Avg Crs Grade	% of Grades Below C	Number of Grades	Admission GPA	Avg Crs Grade	% of Grades Below C
ENGL 204	257	3.02	2.70	5.4%	462	3.43	2.86	
ENGL 205	325	3.03	2.90	3.4%	355	3.44	2.91	2.3%
ENGL 206	220	3.02	2.78	2.3%	374	3.46	2.84	2.9%
GEOG 213	217	2.96	2.49	2.3%	162	3.31	2.66	
GEOG 214	109	2.95	2.55	3.7%	94	3.33	2.96	
GEOG 221	293	2.89	2.48	2.4%	187	3.31	2.77	
GEOG 241	398	2.95	2.73	1.8%	191	3.31	2.71	1.0%
GEOG 250	164	2.97	2.52	0.6%	73	3.27	3.03	
GEOG 251	174	2.89	2.61	1.7%	57	3.28	2.88	
GEOG 253	145	2.94	2.43	1.4%	80	3.33	2.70	
HIST 204	115	2.93	2.75	2.6%	77	3.35	2.61	5.2%
HIST 225	207	3.01	2.47	3.9%	411	3.43	2.68	2.2%
HUM 230	185	3.06	3.12	2.2%	218	3.41	3.09	3.2%
KIN 201	124	3.01	2.50	0.8%	277	3.44	2.78	
KIN 205	146	2.99	2.34	5.5%	324	3.43	2.77	1.9%
KIN 207	161	2.97	2.64	4.3%	315	3.42	2.81	1.3%
KIN 241	114	2.96	3.02	1.8%	203	3.39	3.23	0.5%
LING 220	523	3.00	2.57	5.0%	638	3.30	2.75	3.9%
LING 222	125	3.00	2.82	2.4%	121	3.31	2.84	1.7%
MACM 201	214	3.10	2.32	5.1%	463	3.52	2.47	6.7%
MATH 232	339	2.99	2.20	8.3%	1,320	3.51	2.58	6.1%
MATH 251	154	3.05	2.18	11.0%	523	3.65	2.91	4.4%
MATH 252	100	3.16	2.31	9.0%	190	3.63	2.89	
PHIL 214	134	3.07	2.00	15.7%	139	3.51	2.38	10.1%
PHIL 300	171	2.99	2.48	5.8%	22	3.42	2.68	
POL 201	120	2.98	2.44	8.3%	86	3.47	2.99	1.2%
POL 221	149	3.03	2.47	4.7%	142	3.41	2.79	
POL 222	189	2.96	2.49	2.6%	94	3.40	2.94	1.1%
POL 231	102	2.96	2.72	3.9%	99	3.38	2.95	2.0%
POL 241	170	2.96	2.54	8.2%	218	3.39	2.94	2.3%
PSYC 201	1,222	2.96	2.28	5.6%	522	3.34	2.71	2.7%
PSYC 210	412	2.98	2.24	7.8%	249	3.36	2.63	
PSYC 221	949	3.03	2.42	3.1%	319	3.33	2.89	0.9%
PSYC 241	860	3.01	2.40	5.7%	362	3.34	2.80	0.8%
PSYC 250	994	3.03	2.61	2.7%	397	3.31	2.84	
PSYC 260	722	2.98	2.47	4.6%	331	3.36	3.00	1.2%
PSYC 270	655	3.03	2.52	4.1%	193	3.37	2.86	1.0%
PSYC 280	317	3.07	2.38	5.4%	88	3.41	2.77	2.3%

TABLE 11B
COMPARISON OF GRADES IN 200- AND 300-LEVEL COURSES
COMPLETED BY B.C. COLLEGE TRANSFERS and DIRECT ENTRY B.C. GRADE 12s
(FOR STUDENTS ADMITTED TO SFU FROM 1994/95 TO 1998/99)

Course	B.C. College Transfer Students				Direct Entry B.C. Grade 12's				
	Number of Grades	Admission GPA	Avg Crs Grade	% of Grades Below C	Number of Grades	Admission GPA	Avg Crs Grade	% of Grades Below C	
SA 201	143	2.99	2.55	7.7%	48	3.31	2.44	6.3%	
SA 250	174	3.01	2.84	2.3%	51	3.37	3.14		
SA 255	227	3.01	2.81	2.2%	58	3.36	2.98	1.7%	
SA 293	107	2.97	2.90	1.9%	27	3.42	2.97	3.7%	
STAT 203	132	2.97	2.10	9.1%	147	3.31	2.85	2.0%	
STAT 270	390	3.04	1.95	12.6%	848	3.53	2.22		
Total	27,262	3.00	2.45	4.9%	Total	28,443	3.41	2.71	3.2%

Notes:

- a) Excludes courses with fewer than 100 B.C. College Transfer students.
- b) The proportion of students with a strong academic background (as evidenced by secondary school grades) varies among transfer and direct entry students. This table describes differences between the two groups but does not explain the cause of the differences.

Course Names:

ARCH - Archaeology
 BICH - Biochemistry
 BISC - Biological Sciences
 BUEC - Business Economics
 BUS - Business
 CHEM - Chemistry
 CMNS - Communication
 CMPT - Computing Science
 CNS - Canadian Studies

CRIM - Criminology
 ECON - Economics
 EDUC - Education
 ENGL - English
 GEOG - Geography
 HIST - History
 HUM - Humanities
 KIN - Kinesiology
 LING - Linguistics

MACM - Mathematical Computing
 MATH - Mathematics
 PHIL - Philosophy
 POL - Political Science
 PSYC - Psychology
 SA - Sociology/Anthropology
 STAT - Statistics

TABLE 12
DEGREE COMPLETION RATE OF B.C. COLLEGE TRANSFERS
ADMITTED TO SFU FROM 1994/95 TO 1995/96

Region/College	Transfer credits at time of admission to SFU							
	Less than 30		30-34		35-39		40-44	
	N	%Grad	N	%Grad	N	%Grad	N	%Grad
Non Lower Mainland								
Northern B.C.	4	25.0%	31	35.5%	9	55.6%	9	22.2%
College of New Caledonia	1	100.0%	8	25.0%	3	66.7%		
Northern Lights College			6	33.3%	1		8	12.5%
Northwest Community College	3		17	41.2%	5	60.0%	1	100.0%
Interior/Kootenays	5	20.0%	41	43.9%	19	42.1%	8	50.0%
College of the Rockies			5	20.0%	3	66.7%		
Okanagan University College	2		17	47.1%	6	16.7%	4	25.0%
Selkirk College	2	50.0%	6	33.3%	3	33.3%	1	100.0%
Univ College of the Cariboo	1		13	53.8%	7	57.1%	3	66.7%
Vancouver Island	3		30	50.0%	23	60.9%	9	33.3%
Camosun College	2		14	50.0%	9	66.7%	2	50.0%
Malaspina University-College	1		11	54.5%	10	70.0%	7	28.6%
North Island College			5	40.0%	4	25.0%		
Total Non Lower Mainland	12	16.7%	102	43.1%	51	52.9%	26	34.6%
Lower Mainland								
Public	62	30.6%	579	40.9%	487	46.6%	300	52.3%
B.C. Institute of Technology	7	28.6%	8	37.5%			1	
Capilano College	11	54.5%	156	42.3%	118	53.4%	46	52.2%
Douglas College	15	13.3%	117	29.1%	126	34.9%	86	48.8%
Kwantlen University College	14	21.4%	148	43.2%	121	44.6%	79	51.9%
Univ Coll of the Fraser Valley	2		14	42.9%	14	42.9%	17	52.9%
Langara College	13	46.2%	136	47.1%	108	55.6%	71	57.7%
Private	4	25.0%	63	46.0%	42	66.7%	19	63.2%
Columbia College	1		48	47.9%	25	64.0%	11	72.7%
Coquitlam College	3	33.3%	15	40.0%	17	70.6%	8	50.0%
Total Lower Mainland	66	30.3%	642	41.4%	529	48.2%	319	53.0%
Grand Total (BCCOL + BCASD)	78	28.2%	744	41.7%	580	48.6%	345	51.6%
Total B.C. Assoc. Degree Transfers	-	-	-	-	-	-	-	-

Notes:

- N is the total number of students admitted to SFU from 1994-2 to 1996-1.
- % Grad is the proportion of N who were awarded a degree (PDP and certificates excluded).
- Students who completed multiple degrees simultaneously are included in the graduation statistics for each degree completed.
- Students who completed multiple degrees sequentially are included in the graduation statistics for the first degree completed only.
- Of the 3,156 B.C. Grade 12 direct entry students admitted to SFU in the same time period (1994/95 to 1995/96), 18% have completed their degree. Note that B.C. Grade 12 direct-entry students come to SFU without transfer credits.
- The number of students who have graduated in each of the two groups are not comparable. College transfers will typically complete their degree within two or three years of transferring to SFU, while B.C. Grade 12's will typically complete their degree within four or five years of admission to SFU. Refer to Appendix for degree completion rates.

**TABLE 12 (cont.)
DEGREE COMPLETION RATE OF B.C. COLLEGE TRANSFERS
ADMITTED TO SFU FROM 1994/95 TO 1995/96**

Transfer credits at time of admission to SFU								Region/College
45-49		50-54		≥ 55		Grand Total		
N	%Grad	N	%Grad	N	%Grad	N	%Grad	
Non Lower Mainland								
11	18.2%	14	28.6%	73	50.7%	151	41.1%	Northern B.C.
4	25.0%	7	57.1%	59	57.6%	82	53.7%	College of New Caledonia
7	14.3%	3		3	33.3%	28	17.9%	Northern Lights College
		4		11	18.2%	41	31.7%	Northwest Community College
14	35.7%	21	47.6%	60	56.7%	168	47.6%	Interior/Kootenays
		1	100.0%	2	50.0%	11	45.5%	College of the Rockies
7	28.6%	7	28.6%	27	51.9%	70	40.0%	Okanagan University College
1		2	100.0%	10	70.0%	25	56.0%	Selkirk College
6	50.0%	11	45.5%	21	57.1%	62	53.2%	Univ College of the Cariboo
23	52.2%	20	55.0%	67	61.2%	175	54.9%	Vancouver Island
12	66.7%	7	57.1%	30	46.7%	76	52.6%	Camosun College
11	36.4%	11	45.5%	36	75.0%	87	58.6%	Malaspina University-College
		2	100.0%	1		12	41.7%	North Island College
48	39.6%	55	45.5%	200	56.0%	494	48.2%	Total Non Lower Mainland
Lower Mainland								
381	48.6%	405	60.0%	996	60.1%	3,210	51.9%	Public
3	66.7%	1	100.0%	3		23	34.8%	B.C. Institute of Technology
65	47.7%	76	56.6%	127	60.6%	599	51.8%	Capilano College
111	45.9%	122	57.4%	324	53.1%	901	46.1%	Douglas College
103	44.7%	106	69.8%	330	64.8%	901	55.0%	Kwantlen University College
11	36.4%	13	46.2%	57	63.2%	128	52.3%	Univ Coll of the Fraser Valley
88	58.0%	87	56.3%	155	64.5%	658	56.4%	Langara College
20	70.0%	14	64.3%	17	76.5%	179	59.2%	Private
8	50.0%	3	66.7%	7	85.7%	103	57.3%	Columbia College
12	83.3%	11	63.6%	10	70.0%	76	61.8%	Coquitlam College
401	49.6%	419	60.1%	1,013	60.4%	3,389	52.3%	Total Lower Mainland
449	48.6%	474	58.4%	1,213	59.7%	3,883	51.8%	Grand Total (BCCOL + BCASD)
-	-	-	-	41	53.7%	41	53.7%	Total B.C. Assoc. Degree Transfers

TABLE 13
DISTRIBUTION OF CGPA AT TIME OF GRADUATION FROM SFU
B.C. COLLEGE TRANSFERS vs DIRECT ENTRY B.C. GRADE 12s
(FOR STUDENTS ADMITTED TO SFU FROM 1994/95 TO 1998/99)

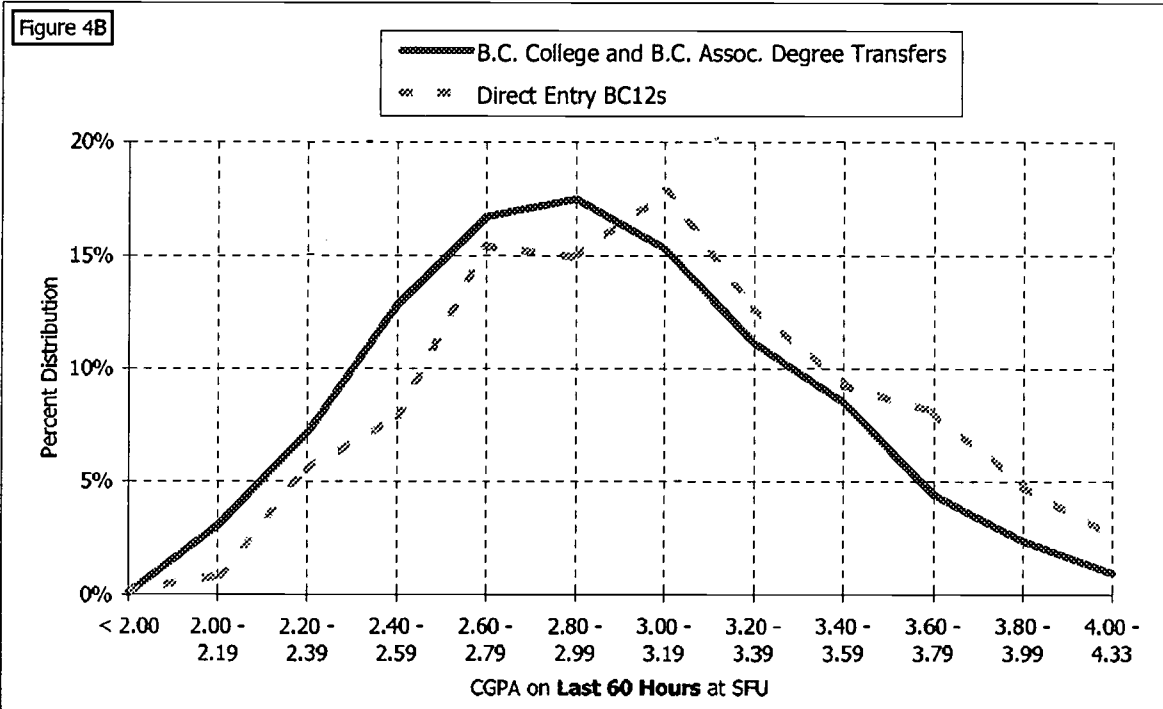
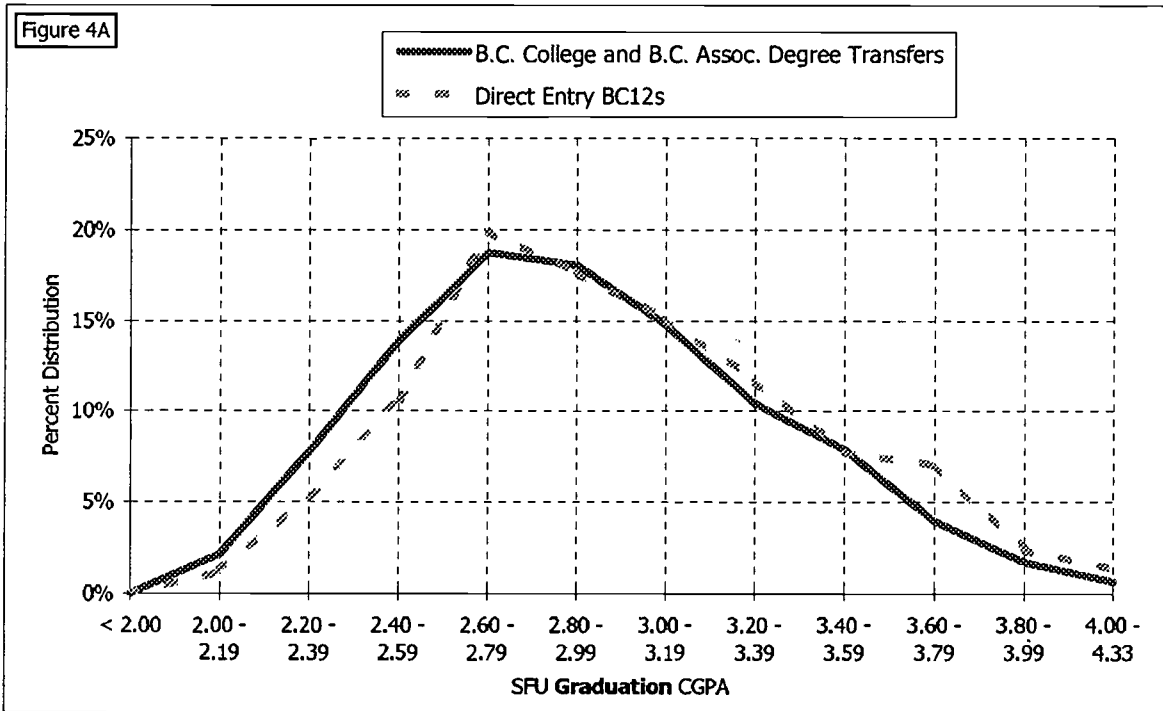
SFU CGPA	Grand Total (BCCOL + BCASD)				B.C. Assoc. Degree Transfers				Direct Entry B.C. Grade 12's			
	At SFU Graduation		On Last 60 SFU Hrs.		At SFU Graduation		On Last 60 SFU Hrs.		At SFU Graduation		On Last 60 SFU Hrs.	
	Freq	%	Freq	%	Freq	%	Freq	%	Freq	%	Freq	%
< 2.00	-	-	2	0.1%	-	-	-	-	-	-	1	0.2%
2.00 - 2.19	56	2.1%	80	3.1%	-	-	1	2.2%	7	1.2%	5	0.9%
2.20 - 2.39	202	7.8%	186	7.1%	6	13.0%	4	8.7%	31	5.3%	32	5.5%
2.40 - 2.59	362	13.9%	334	12.8%	9	19.6%	10	21.7%	62	10.6%	46	7.9%
2.60 - 2.79	489	18.8%	436	16.7%	10	21.7%	10	21.7%	116	19.9%	90	15.4%
2.80 - 2.99	471	18.1%	456	17.5%	10	21.7%	9	19.6%	103	17.7%	87	14.9%
3.00 - 3.19	385	14.8%	399	15.3%	2	4.3%	3	6.5%	88	15.1%	104	17.8%
3.20 - 3.39	271	10.4%	290	11.1%	1	2.2%	1	2.2%	68	11.7%	74	12.7%
3.40 - 3.59	205	7.9%	221	8.5%	4	8.7%	4	8.7%	45	7.7%	54	9.3%
3.60 - 3.79	103	4.0%	115	4.4%	3	6.5%	3	6.5%	41	7.0%	47	8.1%
3.80 - 3.99	45	1.7%	62	2.4%	-	-	-	-	14	2.4%	28	4.8%
≥ 4.00	17	0.7%	25	1.0%	1	2.2%	1	2.2%	8	1.4%	15	2.6%
Total Graduates	2,606	100.0%	2,606	100.0%	46	100.0%	46	100.0%	583	100.0%	583	100.0%
Average SFU CGPA	2.91		2.94		2.84		2.85		3.00		3.08	

Note:

- a) Cumulative grade point average is based on courses completed for a degree.
- b) Students completing a degree are included in the graduation statistics (certificates and PDP excluded).
- c) Students who completed multiple degrees simultaneously are included in the graduation statistics for each degree completed.
- d) Students who completed multiple degrees sequentially are included in the graduation statistics for the first degree completed only.

BEST COPY AVAILABLE

FIGURE 4: DISTRIBUTION OF CGPA
(A) AT GRADUATION FROM SFU; (B) ON LAST 60 HOURS AT SFU
B.C. COLLEGE TRANSFERS vs DIRECT ENTRY B.C. GRADE 12s
(FOR STUDENTS ADMITTED TO SFU FROM 1994/95 TO 1998/99)



SECTION C

**PROFILE OF B.C. COLLEGE TRANSFER STUDENTS
WHO HAVE GRADUATED**

TABLE 14
ACADEMIC PERFORMANCE OF B.C. COLLEGE TRANSFERS WHO HAVE GRADUATED FROM SFU
(FOR B.C. COLLEGE TRANSFERS ADMITTED FROM 1994/95 TO 1998/99)

Region/College	Admission GPA		First Semester CGPA at SFU		CGPA after 30 credit hours passed at SFU		CGPA at Graduation from SFU	
	N	GPA	N	GPA	N	GPA	N	GPA
Non Lower Mainland								
Northern B.C.	95	3.08	95	2.72	95	2.97	95	3.08
College of New Caledonia	69	3.04	69	2.72	69	3.01	69	3.09
Northern Lights College	8	3.38	8	3.18	8	3.16	8	3.24
Northwest Community College	18	3.13	18	2.54	18	2.77	18	2.95
Interior/Kootenays	108	3.00	108	2.65	107	2.84	108	2.97
College of the Rockies	5	3.16	5	2.73	5	2.92	5	2.95
Okanagan University College	46	2.90	46	2.74	45	2.90	46	3.02
Selkirk College	17	3.12	17	2.72	17	2.89	17	3.04
Univ College of the Cariboo	40	3.04	40	2.52	40	2.73	40	2.90
Vancouver Island	138	3.12	138	2.73	138	2.89	138	3.02
Camosun College	65	3.08	65	2.72	65	2.90	65	3.03
Malaspina University-College	68	3.18	68	2.75	68	2.91	68	3.02
North Island College	5	2.97	5	2.58	5	2.53	5	2.74
Total Non Lower Mainland	341	3.07	341	2.70	340	2.90	341	3.02
Lower Mainland								
Public	2,135	3.02	2,135	2.72	2,132	2.81	2,135	2.91
B.C. Institute of Technology	9	3.49	9	2.93	9	2.78	9	2.87
Capilano College	392	2.96	392	2.68	391	2.79	392	2.92
Douglas College	522	3.06	522	2.68	520	2.75	522	2.86
Kwantlen University College	653	3.10	653	2.71	653	2.81	653	2.92
Univ Coll of the Fraser Valley	91	3.08	91	2.91	91	3.02	91	3.09
Langara College	468	2.90	468	2.78	468	2.84	468	2.90
Private	130	3.11	130	2.60	130	2.73	130	2.78
Columbia College	74	3.04	74	2.59	74	2.76	74	2.79
Coquitlam College	56	3.22	56	2.61	56	2.68	56	2.77
Total Lower Mainland	2,265	3.02	2,265	2.72	2,262	2.80	2,265	2.90
Grand Total (BCCOL + BCASD)	2,606	3.03	2,606	2.71	2,602	2.81	2,606	2.91
Total B.C. Assoc. Degree Transfers	46	2.62	46	2.65	46	2.76	46	2.84

Notes:

- Includes degree completers only. PDP and certificates are excluded.
- Students who completed multiple credentials simultaneously are included in the graduation statistics for each degree completed.
- Students who completed multiple credentials sequentially are included in the graduation statistics for the first degree completed only.
- Not all students who have graduated have a CGPA after 30 hours at SFU (eg. students in PDP program are not given a letter grade after 30 credits for taking Educ 401/402/405).

TABLE 15
B.C. COLLEGE TRANSFERS BY GRADUATION DEGREE-PROGRAM
(FOR STUDENTS ADMITTED TO SFU FROM 1994/95 TO 1998/99)

Region/College	Busi- ness	Psych- ology	Econo- mics	Crimi- nology	Edu- cation	Geo- graphy	History	English	General Studies
Non Lower Mainland									
Northern B.C.	1.2%	1.8%		9.6%	44.6%	3.0%	3.6%	3.6%	24.7%
College of New Caledonia	0.9%	0.9%		13.3%	39.8%	3.5%	2.7%	3.5%	30.1%
Northern Lights College					60.0%		5.0%	10.0%	10.0%
Northwest Community College	3.0%	6.1%		3.0%	51.5%	3.0%	6.1%		15.2%
Interior/Kootenays	15.3%	8.5%	6.8%	6.8%	6.8%	7.6%	7.6%	5.9%	6.8%
College of the Rockies	20.0%							20.0%	
Okanagan University College	16.0%	6.0%	6.0%	8.0%	8.0%	10.0%	8.0%		12.0%
Selkirk College		25.0%	12.5%	6.3%	6.3%	6.3%	12.5%	18.8%	
Univ College of the Cariboo	19.1%	6.4%	6.4%	6.4%	6.4%	6.4%	6.4%	6.4%	4.3%
Vancouver Island	16.2%	8.5%	2.8%	19.0%	1.4%	4.9%	0.7%	3.5%	4.2%
Camosun College	13.4%	7.5%	1.5%	23.9%	1.5%	4.5%	1.5%	4.5%	3.0%
Malaspina University-College	20.0%	8.6%	4.3%	15.7%	1.4%	5.7%		1.4%	5.7%
North Island College		20.0%						20.0%	
Total Lower Mainland	10.1%	5.9%	2.8%	12.0%	19.7%	4.9%	3.8%	4.2%	12.9%
Lower Mainland									
Public	15.4%	12.8%	9.1%	7.5%	4.9%	6.9%	6.9%	6.7%	4.7%
B.C. Institute of Technology	33.3%					11.1%			
Capilano College	10.4%	11.8%	6.5%	2.7%	3.6%	11.6%	6.5%	8.9%	5.3%
Douglas College	17.5%	13.7%	8.7%	11.0%	6.5%	4.3%	6.9%	4.9%	5.2%
Kwantlen University College	15.0%	15.7%	9.5%	10.4%	5.0%	6.9%	8.1%	7.2%	3.3%
Univ Coll of the Fraser Valley	5.9%	9.8%	2.0%	4.9%	10.8%	9.8%	6.9%	7.8%	7.8%
Langara College	19.4%	9.5%	12.9%	4.0%	2.6%	5.1%	5.9%	5.9%	4.8%
Private	36.6%	13.0%	26.7%		0.8%			0.8%	3.1%
Columbia College	39.2%	10.8%	24.3%		1.4%			1.4%	2.7%
Coquitlam College	33.3%	15.8%	29.8%						3.5%
Total Lower Mainland	16.5%	12.8%	10.1%	7.0%	4.6%	6.5%	6.5%	6.3%	4.6%
Grand Total (BCCOL + BCASD)	15.6%	11.8%	9.0%	7.8%	6.9%	6.3%	6.1%	6.0%	5.8%
Total B.C. Assoc. Degree Transfers	-	7.8%	5.9%	3.9%	15.7%	9.8%	11.8%	9.8%	5.9%

Notes:

- a) An Education graduate is defined as a student who has graduated with a Bachelor of Education or a PDP diploma.
- b) A General Studies graduate is defined as a student who has graduated with a Bachelor of General Studies.
- c) A student simultaneously graduating in more than one program is counted once under each program.
- d) A student graduating in more than one program in subsequent degrees is counted in the program(s) of the first degree only.
- e) "Other" program graduates includes all other degree-programs (certificate programs are excluded).

BEST COPY AVAILABLE

TABLE 15 (cont)
B.C. COLLEGE TRANSFERS BY GRADUATION DEGREE-PROGRAM
(FOR STUDENTS ADMITTED TO SFU FROM 1994/95 TO 1998/99)

Communi- cation	Politi- cal Sci	Biologi- cal Sci	Kinesi- ology	Archae- ology	Compu- ting Sci	Soci- ology	Other Pgms	Total	Region/College
Non Lower Mainland									
1.8%		1.2%	1.8%	1.2%	1.2%	0.6%		166	Northern B.C.
0.9%		0.9%	1.8%		0.9%	0.9%	0.9%	113	College of New Caledonia
			5.0%	5.0%				20	Northern Lights College
6.1%		3.0%		3.0%				33	Northwest Community College
Interior/Kootenays									
3.4%	2.5%	2.5%	5.9%	3.4%	0.8%	0.8%	8.5%	118	College of the Rockies
				20.0%			40.0%	5	Okanagan University College
8.0%		4.0%	4.0%	6.0%			4.0%	50	Selkirk College
			6.3%				6.3%	16	Univ College of the Cariboo
	6.4%	2.1%	8.5%		2.1%	2.1%	12.8%	47	
Vancouver Island									
10.6%	2.1%	1.4%	3.5%	5.6%		1.4%	14.1%	142	Camosun College
10.4%	1.5%	1.5%	4.5%	7.5%		1.5%	13.4%	67	Malaspina University-College
11.4%	2.9%	1.4%	1.4%	2.9%		1.4%	17.1%	70	North Island College
			20.0%	20.0%			20.0%	5	
5.2%	1.4%	1.6%	3.5%	3.3%	0.7%	0.9%	8.0%	426	Total Lower Mainland
Lower Mainland									
Public									
4.7%	3.5%	1.9%	1.5%	1.1%	1.5%	1.3%	9.7%	2,268	B.C. Institute of Technology
		22.2%			11.1%		22.2%	9	Capilano College
5.8%	6.0%	2.9%	1.7%	1.0%	1.0%	1.0%	14.3%	414	Douglas College
3.3%	4.0%	2.2%	1.6%	1.3%	1.3%	1.4%	7.6%	553	Kwantlen University College
2.4%	1.2%	1.6%	1.3%	0.9%	1.2%	2.0%	10.5%	695	Univ Coll of the Fraser Valley
8.8%	4.9%	1.0%	4.9%	1.0%			13.7%	102	Langara College
7.7%	4.0%	1.2%	0.6%	1.4%	2.8%	0.8%	12.1%	495	
Private									
9.2%	0.8%	1.5%					7.6%	131	Columbia College
9.5%		2.7%					8.1%	74	Coquitlam College
8.8%	1.8%						7.0%	57	
4.9%	3.4%	1.9%	1.4%	1.0%	1.4%	1.3%	9.6%	2,399	Total Lower Mainland
5.0%	3.1%	1.9%	1.7%	1.4%	1.3%	1.2%	9.2%	2,825	Grand Total (BCGOL + BCASD)
5.9%	3.9%	2.0%	3.9%	2.0%	-	3.9%	7.8%	51	Total B.C. Assoc. Degree Transfers

**TABLE 16
B.C. COLLEGE TRANSFERS BY CREDENTIAL AWARDED
(FOR STUDENTS ADMITTED TO SFU FROM 1994/95 TO 1998/99)**

College	BA	BBA	BSC	BGS	BED	BSK	BFA	BASC	PDP	Cert (Lbrl Arts)	Othr Cert Poms	Total
Non Lower Mainland												
Northern B.C.	40	2	4	41	5	3			74	11	2	182
College of New Caledonia	29	1	2	34	1	2			45	5	1	120
Northern Lights College	3		1	2	1	1			12	1		21
NW Community College	8	1	1	5	3				17	5	1	41
Interior/Kootenays	68	17	6	8	1	7	1		8	7	9	132
College of the Rockies	3	1	1									5
Okanagan Univ College	27	8	2	6	1	2			4	4	5	59
Selkirk College	14		1			1	1		1	1	1	20
Univ Coll of the Cariboo	24	8	2	2		4			3	2	3	48
Vancouver Island	90	23	9	6	1	5	4		2	8	3	151
Carosun College	44	9	4	2		3	3		1	2	1	69
Malaspina Univ-College	42	14	5	4	1	1	1		1	4	1	74
North Island College	4					1				2	1	8
Total Non Lower Mainland	198	42	19	55	7	15	5		84	26	14	465
Lower Mainland												
Public	1,441	348	145	106	50	35	11	1	110	227	122	2,596
B.C. Inst. of Technology	1	3	5							1		10
Capilano College	278	43	32	22	6	7	4		15	57	31	495
Douglas College	342	96	28	29	17	9	2		36	55	33	647
Kwantlen Univ College	453	104	40	23	21	10	3		35	71	28	788
UC of the Fraser Valley	64	6	6	8	1	6			11	7	5	114
Langara College	303	96	34	24	5	3	2	1	13	36	25	542
Private	67	49	10	4					1	6	1	138
Columbia College	35	30	7	2					1	4	1	80
Coquitlam College	32	19	3	2						2		58
Total Lower Mainland	1,508	397	155	110	50	35	11	1	111	233	123	2,734
Grand Total (BCCOL + BCASD)	1,706	439	174	165	57	50	16	1	195	259	137	3,199
Total B.C. Assoc. Degree Tfrs.	37	-	2	3	2	2	-	-	8	7	4	65

Percent Distribution of Credential Awarded by Region												
Non Lower Mainland												
Northern B.C.	22.0%	1.1%	2.2%	22.5%	2.7%	1.6%			40.7%	6.0%	1.1%	100.0%
Interior/Kootenays	51.5%	12.9%	4.5%	6.1%	0.8%	5.3%	0.8%		6.1%	5.3%	6.8%	100.0%
Vancouver Island	59.6%	15.2%	6.0%	4.0%	0.7%	3.3%	2.6%		1.3%	5.3%	2.0%	100.0%
Total	42.6%	9.0%	4.1%	11.8%	1.5%	3.2%	1.1%		18.1%	5.6%	3.0%	100.0%
Lower Mainland												
Public	55.5%	13.4%	5.6%	4.1%	1.9%	1.3%	0.4%	0.0%	4.2%	8.7%	4.7%	100.0%
Private	48.6%	35.5%	7.2%	2.9%					0.7%	4.3%	0.7%	100.0%
Total	55.2%	14.5%	5.7%	4.0%	1.8%	1.3%	0.4%	0.0%	4.1%	8.5%	4.5%	100.0%
Grand Total	53.3%	13.7%	5.4%	5.2%	1.8%	1.6%	0.5%	0.0%	6.1%	8.1%	4.3%	100.0%

Note:

Students simultaneously graduating with more than one credential are counted once under each credential. Second degrees are excluded. There were 2,770 unique graduates in total, of which 2,608 received degrees.

TABLE 17
B.C. COLLEGE TRANSFERS BY CREDENTIAL AWARDED AND AVERAGE
NUMBER OF SEMESTERS TO COMPLETE CREDENTIAL
(FOR STUDENTS ADMITTED TO SFU FROM 1994/95 TO 1998/99)

Region/College	BA	BBA	BSC	BGS	BED	BSK	BFA	BASC	All Degrees
Non Lower Mainland									
Northern B.C.	8.2	12.5	12.0	8.3	10.2	8.3			8.6
College of New Caledonia	7.3	11.0	13.5	7.9	9.0	7.5			7.9
Northern Lights College	8.0		11.0	9.0	12.0	10.0			9.4
Northwest Community College	11.3	14.0	10.0	10.8	10.0				11.0
Interior/Kootenays	7.5	8.9	9.2	8.3	8.0	9.0	11.0		8.0
College of the Rockies	10.0	9.0							
Okanagan University College	7.1	9.9	10.5	8.5	8.0	7.5			7.9
Selkirk College	7.4					8.0	11.0		7.6
Univ College of the Cariboo	7.8	8.0	9.5	7.5		10.0			8.1
Vancouver Island	8.0	8.2	8.2	8.5	7.0	9.0	9.3		8.1
Carosun College	7.5	9.4	8.3	6.0		8.3	9.7		7.9
Malaspina University-College	8.5	7.4	8.2	9.8	7.0	9.0	8.0		8.3
North Island College	8.8					11.0			
Total Lower Mainland	7.9	8.7	9.3	8.3	9.4	8.9	9.6		8.2
Lower Mainland									
Public	8.7	8.8	9.8	9.0	9.7	9.8	10.6	11.0	8.9
B.C. Institute of Technology	10.0	9.0							
Capilano College	8.9	10.2	9.5	9.4	9.3	11.0	11.3		9.1
Douglas College	8.9	8.0	10.8	8.9	9.2	10.7	12.0		8.9
Kwantlen University College	8.6	9.0	9.5	9.5	10.1	9.6	10.0		8.8
Univ Coll of the Fraser Valley	7.8	11.3	7.2	7.3	11.0	8.0			8.0
Langara College	8.7	8.6	9.7	9.0	9.4	9.0	9.0	11.0	8.8
Private	8.2	8.0	9.6	10.5					8.3
Columbia College	8.3	8.3	9.0	12.0					8.5
Coquitlam College	8.1	7.6	11.0	9.0					
Total Lower Mainland	8.7	8.7	9.7	9.1	9.7	9.8	10.6	11.0	8.8
Grand Total (BCCOL + BCASD)	8.6	8.7	9.7	8.8	9.6	9.5	10.3	11.0	8.8
Total B.C. Assoc. Degree Transfers	6.8	-	7.0	11.0	7.5	6.5	-	-	7.0

Notes:

- a) Credential completion time is estimated from semester admitted and semester of graduation from first degree.
- b) Credentials which may be completed before, during or after a degree program (PDP or certificates) are excluded from this table.

Credentials:

BA - Bachelor of Arts
 BBA - Bachelor of Business Administration
 BGS - Bachelor of General Studies
 BSC - Bachelor of Science
 BED - Bachelor of Education

BSK - Bachelor of Science (Kinesiology)
 BFA - Bachelor of Fine Arts
 BASC - Bachelor of Applied Science
 PDP - Professional Development Program

BEST COPY AVAILABLE

SECTION D

**PROFILE OF STUDENTS WITH COLLEGE EXPERIENCE
ADMITTED TO SFU AS NON-'B.C. COLLEGE TRANSFERS'**

**TABLE 18
STUDENTS WITH COLLEGE EXPERIENCE ADMITTED TO SFU BY YEAR OF ADMISSTON**

Region/College	1994/95	1995/96	1996/97	1997/98	1998/99	5 Year Total
Non Lower Mainland						
Northern B.C.	15	17	18	17	17	84
New Caledonia College	6	3	11	9	5	34
Northern Lights College	6	3	5	5	10	29
Northwest Community College	3	11	2	3	2	21
Interior/Kootenays	21	18	20	14	14	87
College of the Rockies	2	3		1	3	9
Okanagan University College	11	4	11	6	5	37
Selkirk College	2	4	2	1	1	10
Univ College of the Cariboo	6	7	7	6	5	31
Vancouver Island	22	13	16	12	15	78
Camosun College	11	7	9	4	7	38
Malaspina University-College	7	3	4	6	5	25
North Island College	4	3	3	2	3	15
Total Non Lower Mainland	58	48	54	43	46	249
Lower Mainland						
Public	205	151	177	209	167	909
B.C. Institute of Technology	9	10	3	13	22	57
Capilano College	39	23	24	34	33	153
Douglas College	44	32	38	47	38	199
Kwantien University College	39	44	52	51	29	215
Univ Coll of the Fraser Valley	11	7	13	13	13	57
Langara College	63	35	47	51	32	228
Private	21	24	12	18	18	93
Columbia College	11	13	8	9	8	49
Coquitlam College	10	11	4	9	10	44
Total Lower Mainland	226	175	189	227	185	1,002
Total with College Experience	284	223	243	270	231	1,251

Percent Distribution of B.C. College Transfers Admitted by Region						
Non Lower Mainland						
Northern B.C.	5.3%	7.6%	7.4%	6.3%	7.4%	6.7%
Interior/Kootenays	7.4%	8.1%	8.2%	5.2%	6.1%	7.0%
Vancouver Island	7.7%	5.8%	6.6%	4.4%	6.5%	6.2%
Total Non Lower Mainland	20.4%	21.5%	22.2%	15.9%	19.9%	19.9%
Lower Mainland						
Public	72.2%	67.7%	72.8%	77.4%	72.3%	72.7%
Private	7.4%	10.8%	4.9%	6.7%	7.8%	7.4%
Total Lower Mainland	79.6%	78.5%	77.8%	84.1%	80.1%	80.1%
Grand Total	100.0%	100.0%	100.0%	100.0%	100.0%	100.0%

Note: Excludes students admitted to SFU on the basis of 'B.C. College Transfer'.

**TABLE 19A
DISTRIBUTION OF STUDENTS ADMITTED TO SFU WITH COLLEGE EXPERIENCE
BY ADMISSION YEAR AND BASIS OF ADMISSION**

Basis of Admission	1994/95	1995/96	1996/97	1997/98	1998/99	5 Year	
						Total	%
B.C. Grade 12	86	77	91	101	74	429	34.3%
Mature Student with Transfer Credit	59	41	28	40	48	216	17.3%
University Transfer	33	24	27	62	46	192	15.3%
Special Entry	47	37	28	34	17	163	13.0%
B.C. University Transfer	31	29	38			98	7.8%
Transfer from a Technical Program	4	3	2	11	25	45	3.6%
Transfer from College outside B.C.	13	2	11	9	6	41	3.3%
Foreign Equivalent of Cdn. Grade 12/13	4	2	11	7	2	26	2.1%
Mature Student	2	4	1	2	1	10	0.8%
University Degree	1		1		8	10	0.8%
Canadian Grade 12	2	1	1	3	1	8	0.6%
B.C. Adult Educ. Provincial Diploma	1	1	1		1	4	0.3%
Unspecified	1	1	1			3	0.2%
B.C. University Degree			2			2	0.2%
Transfer from a College Program					2	2	0.2%
Visiting Student		1				1	0.1%
United States Grade 12				1		1	0.1%
Total with College Experience	284	223	243	270	231	1,251	100.0%

**TABLE 19B
ADMISSION GRADE POINT AVERAGE BY ADMISSION YEAR AND BASIS OF ADMISSION
FOR STUDENTS ADMITTED TO SFU WITH COLLEGE EXPERIENCE**

Basis of Admission	1994/95	1995/96	1996/97	1997/98	1998/99	5 Year
						Average
B.C. Grade 12	3.24	3.25	3.30	3.29	3.28	3.27
Mature Student with Transfer Credit	3.30	3.32	3.16	3.01	3.16	3.20
University Transfer	2.87	3.08	2.98	3.01	3.07	3.00
Special Entry	2.39	2.89	2.59	2.48	2.83	2.55
B.C. University Transfer	2.96	2.88	3.01			2.96
Transfer from a Technical Program	3.10	3.24	3.61	3.74	3.45	3.48
Transfer from College outside B.C.	3.21	3.00	3.03	3.23	3.39	3.18
Foreign Equivalent of Cdn. Grade 12/13	3.41	3.75	3.63	3.46	3.78	3.57
Mature Student	2.67	3.10			2.00	2.33
University Degree			3.29		2.64	2.72
Canadian Grade 12	3.17	3.25	3.38	3.28	3.17	3.25
B.C. Adult Educ. Provincial Diploma	2.71	2.63	3.33		4.28	3.24
Unspecified						
B.C. University Degree			2.76			2.76
Transfer from a College Program					3.21	3.21
Visiting Student		2.85				2.85
United States Grade 12				3.63		3.63
Total with College Experience	3.03	3.13	3.12	3.11	3.19	3.10

Notes:

- a) Admission grade point averages were not available for 16 students admitted to SFU with college experience.
- b) Excludes students admitted to SFU on the basis of 'B.C. College Transfer'.

**TABLE 20
DISTRIBUTION OF STUDENT TRANSFER CREDITS AT TIME OF ADMISSION TO SFU
(FOR STUDENTS WITH COLLEGE EXPERIENCE ADMITTED FROM 1994/95 TO 1998/99)**

Region/College	Transfer Credits at time of Admission to SFU							Total
	< 9	9-15	16-21	22-30	31-45	46-60	> 60	
Non Lower Mainland								
Northern B.C.	12	11	7	11	16	13	14	84
New Caledonia College	3	6		4	7	6	8	34
Northern Lights College	7	2	3	2	7	7	1	29
Northwest Community College	2	3	4	5	2		5	21
Interior/Kootenays	8	18	12	27	3	15	4	87
College of the Rockies	2	2		2		2	1	9
Okanagan University College	2	4	6	16	2	6	1	37
Selkirk College		2	2	2		2	2	10
Univ College of the Cariboo	4	10	4	7	1	5		31
Vancouver Island	8	16	5	12	8	22	7	78
Camosun College	4	6	2	3	7	11	5	38
Malaspina University-College	4	4	3	4	1	8	1	25
North Island College		6		5		3	1	15
Total Non Lower Mainland	28	45	24	50	27	50	25	249
Lower Mainland								
Public	138	171	102	147	126	182	43	909
B.C. Institute of Technology	12	8	2	5	13	15	2	57
Capilano College	16	35	23	31	19	26	3	153
Douglas College	29	35	20	41	25	40	9	199
Kwantlen University College	39	44	26	32	18	41	15	215
Univ Coll of the Fraser Valley	9	9	8	7	8	11	5	57
Langara College	33	40	23	31	43	49	9	228
Private	17	20	6	12	22	13	3	93
Columbia College	12	10	4	5	10	6	2	49
Coquitlam College	5	10	2	7	12	7	1	44
Total Lower Mainland	155	191	108	159	148	195	46	1,002
Grand Total	183	236	132	209	175	245	71	1,251

Percent Distribution by Region								
Non Lower Mainland								
Northern B.C.	14.3%	13.1%	8.3%	13.1%	19.0%	15.5%	16.7%	100.0%
Interior/Kootenays	9.2%	20.7%	13.8%	31.0%	3.4%	17.2%	4.6%	100.0%
Vancouver Island	10.3%	20.5%	6.4%	15.4%	10.3%	28.2%	9.0%	100.0%
Total Non Lower Mainland	11.2%	18.1%	9.6%	20.1%	10.8%	20.1%	10.0%	100.0%
Lower Mainland								
Public	15.2%	18.8%	11.2%	16.2%	13.9%	20.0%	4.7%	100.0%
Private	18.3%	21.5%	6.5%	12.9%	23.7%	14.0%	3.2%	100.0%
Total Lower Mainland	15.5%	19.1%	10.8%	15.9%	14.8%	19.5%	4.6%	100.0%
Grand Total	14.6%	18.9%	10.6%	16.7%	14.0%	19.6%	5.7%	100.0%

Note:

Not all credits transferred by 'college experience' students come from B.C. Colleges. Of all credits transferred, about 36% of the credits were transferred from institutions other than BCIT or B.C. Colleges.

**TABLE 21
AGE DISTRIBUTION OF STUDENTS WITH COLLEGE EXPERIENCE
ADMITTED TO SFU FROM 1994/95 TO 1998/99**

Region/College	< 20	20-24	25-29	30-34	35-39	>39	Total	Average Age
Non Lower Mainland								
Northern B.C.	12	29	13	10	10	10	84	27.8
New Caledonia College	6	14	4	2	2	6	34	27.1
Northern Lights College	3	9	6	5	4	2	29	27.9
Northwest Community College	3	6	3	3	4	2	21	28.6
Interior/Kootenays	26	31	11	5	10	4	87	25.2
College of the Rockies	2	3	1		3		9	26.4
Okanagan University College	16	14	5	1		1	37	22.0
Selkirk College	2	3	4		1		10	24.9
Univ College of the Cariboo	6	11	1	4	6	3	31	28.8
Vancouver Island	16	23	16	6	7	10	78	27.7
Camosun College	6	14	9	3	4	2	38	26.6
Malaspina University-College	7	6	5	1	2	4	25	27.6
North Island College	3	3	2	2	1	4	15	30.5
Total Non Lower Mainland	54	83	40	21	27	24	249	26.8
Lower Mainland								
Public	240	405	121	51	38	54	909	24.2
B.C. Institute of Technology	3	19	11	11	4	9	57	29.3
Capilano College	37	69	25	7	7	8	153	24.2
Douglas College	51	95	25	11	7	10	199	23.9
Kwantlen University College	78	106	17	7	4	3	215	21.6
Univ Coll of the Fraser Valley	14	26	9	2	2	4	57	24.3
Langara College	57	90	34	13	14	20	228	25.4
Private	42	39	10	1	1		93	20.8
Columbia College	25	17	6	1			49	20.5
Coquitlam College	17	22	4		1		44	21.0
Total Lower Mainland	282	444	131	52	39	54	1,002	23.8
Total with College Experience	336	527	171	73	66	78	1,251	24.4

Percent Age Distribution by Region								
Non Lower Mainland								
Northern B.C.	14.3%	34.5%	15.5%	11.9%	11.9%	11.9%	100.0%	27.8
Interior/Kootenays	29.9%	35.6%	12.6%	5.7%	11.5%	4.6%	100.0%	25.2
Vancouver Island	20.5%	29.5%	20.5%	7.7%	9.0%	12.8%	100.0%	27.7
Total NonLower Mainland	21.7%	33.3%	16.1%	8.4%	10.8%	9.6%	100.0%	26.8
Lower Mainland								
Public	26.4%	44.6%	13.3%	5.6%	4.2%	5.9%	100.0%	24.2
Private	45.2%	41.9%	10.8%	1.1%	1.1%		100.0%	20.8
Total Lower Mainland	28.1%	44.3%	13.1%	5.2%	3.9%	5.4%	100.0%	23.8
Total with College Experience	26.9%	42.1%	13.7%	5.8%	5.3%	6.2%	100.0%	24.4

Note:

a) Excludes students admitted to SFU on the basis of 'B.C. College Transfer'.

BEST COPY AVAILABLE

TABLE 22
GENDER DISTRIBUTION OF STUDENTS WITH COLLEGE EXPERIENCE
ADMITTED TO SFU FROM 1994/95 TO 1998/99

Region/College	Number			Percent	
	Male	Female	Total	Male	Female
Non Lower Mainland					
Northern B.C.	13	71	84	15.5%	84.5%
New Caledonia College	3	31	34	8.8%	91.2%
Northern Lights College	5	24	29	17.2%	82.8%
Northwest Community College	5	16	21	23.8%	76.2%
Interior/Kootenays	35	52	87	40.2%	59.8%
College of the Rockies	2	7	9	22.2%	77.8%
Okanagan University College	18	19	37	48.6%	51.4%
Selkirk College	6	4	10	60.0%	40.0%
Univ College of the Cariboo	9	22	31	29.0%	71.0%
Vancouver Island	26	52	78	33.3%	66.7%
Camosun College	14	24	38	36.8%	63.2%
Malaspina University-College	8	17	25	32.0%	68.0%
North Island College	4	11	15	26.7%	73.3%
Total Non Lower Mainland	74	175	249	29.7%	70.3%
Lower Mainland					
Public	399	509	908	43.9%	56.1%
B.C. Institute of Technology	27	30	57	47.4%	52.6%
Capilano College	70	83	153	45.8%	54.2%
Douglas College	91	108	199	45.7%	54.3%
Kwantlen University College	94	121	215	43.7%	56.3%
Univ Coll of the Fraser Valley	18	38	56	32.1%	67.9%
Langara College	99	129	228	43.4%	56.6%
Private	46	47	93	49.5%	50.5%
Columbia College	27	22	49	55.1%	44.9%
Coquitlam College	19	25	44	43.2%	56.8%
Total Lower Mainland	445	556	1,001	44.5%	55.5%
Total with College Experience	519	731	1,250	41.5%	58.5%

Note:

a) Excludes students admitted to SFU on the basis of 'B.C. College Transfer'.

APPENDIX
SUPPORTING TABLES AND FIGURES
&
FILE STRUCTURE DESCRIPTIONS

**TABLE A
CREDIT HOUR AND CREDENTIAL COMPLETION STATUS
FOR UNDERGRADUATE STUDENTS ADMITTED TO SFU ON THE BASIS
OF B.C. GRADE 12 - DIRECT AND NON-DIRECT (as at July 10, 1999)**

Year Admitted	Number Admitted	Credit Hours Successfully Completed						Graduands	
		1 - 29	30-59	60-89	90-120	>120	Cert/Dipl	Degree	
1989/90	1,423	12 0.8%	243 17.1%	172 12.1%	72 5.1%	42 3.0%	24 1.7%	11 0.8%	847 59.5%
1990/91	1,353	15 1.1%	230 17.0%	126 9.3%	67 5.0%	36 2.7%	21 1.6%	12 0.9%	846 62.5%
1991/92	1,445	18 1.2%	210 14.5%	166 11.5%	76 5.3%	58 4.0%	29 2.0%	23 1.6%	865 59.9%
1992/93	1,399	16 1.1%	174 12.4%	159 11.4%	83 5.9%	73 5.2%	47 3.4%	23 1.6%	824 58.9%
1993/94	1,508	19 1.3%	206 13.7%	158 10.5%	122 8.1%	125 8.3%	101 6.7%	23 1.5%	754 50.0%
1994/95	1,779	20 1.1%	251 14.1%	215 12.1%	149 8.4%	390 21.9%	171 9.6%	47 2.6%	536 30.1%
1995/96	1,695	14 0.8%	225 13.3%	204 12.0%	412 24.3%	602 35.5%	75 4.4%	54 3.2%	109 6.4%
1996/97	1,848	27 1.5%	310 16.8%	359 19.4%	928 50.2%	193 10.4%	4 0.2%	20 1.1%	7 0.4%
1997/98	2,008	21 1.0%	412 20.5%	1,329 66.2%	237 11.8%	8 0.4%	- -	1 0.0%	- -
1998/99	1,933	24 1.2%	1,616 83.6%	289 15.0%	3 0.2%	1 0.1%	- -	- -	- -

Note:

- a) Excludes students who withdraw from the university during their first semester at SFU.
- b) Includes ALL students admitted to SFU from high school (direct and non-direct entry).
- c) Direct entry high school students were admitted to SFU within one year of high school graduation.
- d) Non-direct entry high school students completed high school more than one year prior to admission to SFU.

Source: SFU Factbook, Table D-32b

**TABLE B
CREDIT HOUR AND CREDENTIAL COMPLETION STATUS
FOR UNDERGRADUATE STUDENTS ADMITTED TO SFU FROM ANOTHER
POST-SECONDARY INSTITUTION (as at July 10, 1999)**

Year Admitted	Number Admitted	Credit Hours Successfully Completed						Graduands	
		1 - 29	30 - 59	60 - 89	90 - 120	>120	Cert/Dipl	Degree	
1989/90	2,326	14 0.6%	50 2.1%	320 13.8%	373 16.0%	126 5.4%	28 1.2%	44 1.9%	1371 58.9%
1990/91	2,193	1 0.0%	39 1.8%	275 12.5%	295 13.5%	113 5.2%	48 2.2%	37 1.7%	1,385 63.2%
1991/92	1,854	4 0.2%	26 1.4%	235 12.7%	222 12.0%	88 4.7%	28 1.5%	23 1.2%	1,228 66.2%
1992/93	1,731	2 0.1%	15 0.9%	158 9.1%	227 13.1%	99 5.7%	37 2.1%	23 1.3%	1,170 67.6%
1993/94	2,229	3 0.1%	24 1.1%	238 10.7%	327 14.7%	138 6.2%	78 3.5%	31 1.4%	1,390 62.4%
1994/95	2,697	5 0.2%	28 1.0%	364 13.5%	446 16.5%	215 8.0%	130 4.8%	38 1.4%	1,471 54.5%
1995/96	1,897	2 0.1%	13 0.7%	225 11.9%	295 15.6%	265 14.0%	159 8.4%	41 2.2%	897 47.3%
1996/97	1,954	1 0.1%	11 0.6%	220 11.3%	411 21.0%	556 28.5%	175 9.0%	62 3.2%	518 26.5%
1997/98	1,808	2 0.1%	10 0.6%	251 13.9%	761 42.1%	617 34.1%	29 1.6%	45 2.5%	93 5.1%
1998/99	1,399	- -	21 1.5%	439 31.4%	856 61.2%	76 5.4%	- -	7 0.5%	- -

Notes:

- a) Excludes students who withdraw from the university during their first semester at SFU.
- b) Includes students admitted to SFU from another post-secondary institution (universities and colleges).
Students admitted from a technical school are excluded.

Source: SFU Factbook, Table D-32c

**TABLE C
DISTRIBUTION OF NEW STUDENTS ADMITTED TO SFU
BY BASIS OF ADMISSION (1994/95 TO 1998/99)**

Basis of Admission	New Students Admitted		Credits Transferred	Mean Credits Transferred
	WITHOUT Transfer Credit	WITH Transfer Credit		
B.C. College/Assoc. Deg./Tech.	12	8,369	398,560	48
B.C. Degree	519	7	36	5
B.C. Grade 12	8,149	1,097	12,457	11
B.C. University	2	285	14,070	49
College/Technical (Non-B.C.)	92	358	12,718	36
Degree (Non-B.C.)	2,092	40	359	9
Grade 12/13 (Non-B.C.)	756	179	2,831	16
University (Non-B.C.)	36	971	40,058	41
Visiting	737	6	159	27
Other	1,209	555	15,998	29
Total New Students	13,604	11,867	497,246	42

Basis of Admission	New Students Admitted		Credits Transferred
	WITHOUT Transfer Credit	WITH Transfer Credit	
B.C. College/Assoc. Deg./Tech.	0.1%	70.5%	80.2%
B.C. Degree	3.8%	0.1%	0.0%
B.C. Grade 12	59.9%	9.2%	2.5%
B.C. University	0.0%	2.4%	2.8%
College/Technical (Non-B.C.)	0.7%	3.0%	2.6%
Degree (Non-B.C.)	15.4%	0.3%	0.1%
Grade 12/13 (Non-B.C.)	5.6%	1.5%	0.6%
University (Non-B.C.)	0.3%	8.2%	8.1%
Visiting	5.4%	0.1%	0.0%
Other	8.9%	4.7%	3.2%
Total New Students	100.0%	100.0%	100.0%

Note:

- a) The total number of students admitted to SFU with a basis of admission of "B.C. College" or "B.C. Associate Degree" or "B.C. Technical" was 8,381 from 1994/95 to 1998/99. This report on 8,323 B.C. College Transfer Students Admitted to SFU from 1994/95 to 1998/99 excludes 58 students admitted to SFU with a B.C. College basis of admission, but from a non-B.C. college.
- b) The mean credits transferred excludes students without transfer credits.

Source: SFU, Office of Analytical Studies Retention Database.

FIGURE A
Distribution of New Students Admitted to SFU (1994/95 to 1998/99)
by Basis of Admission

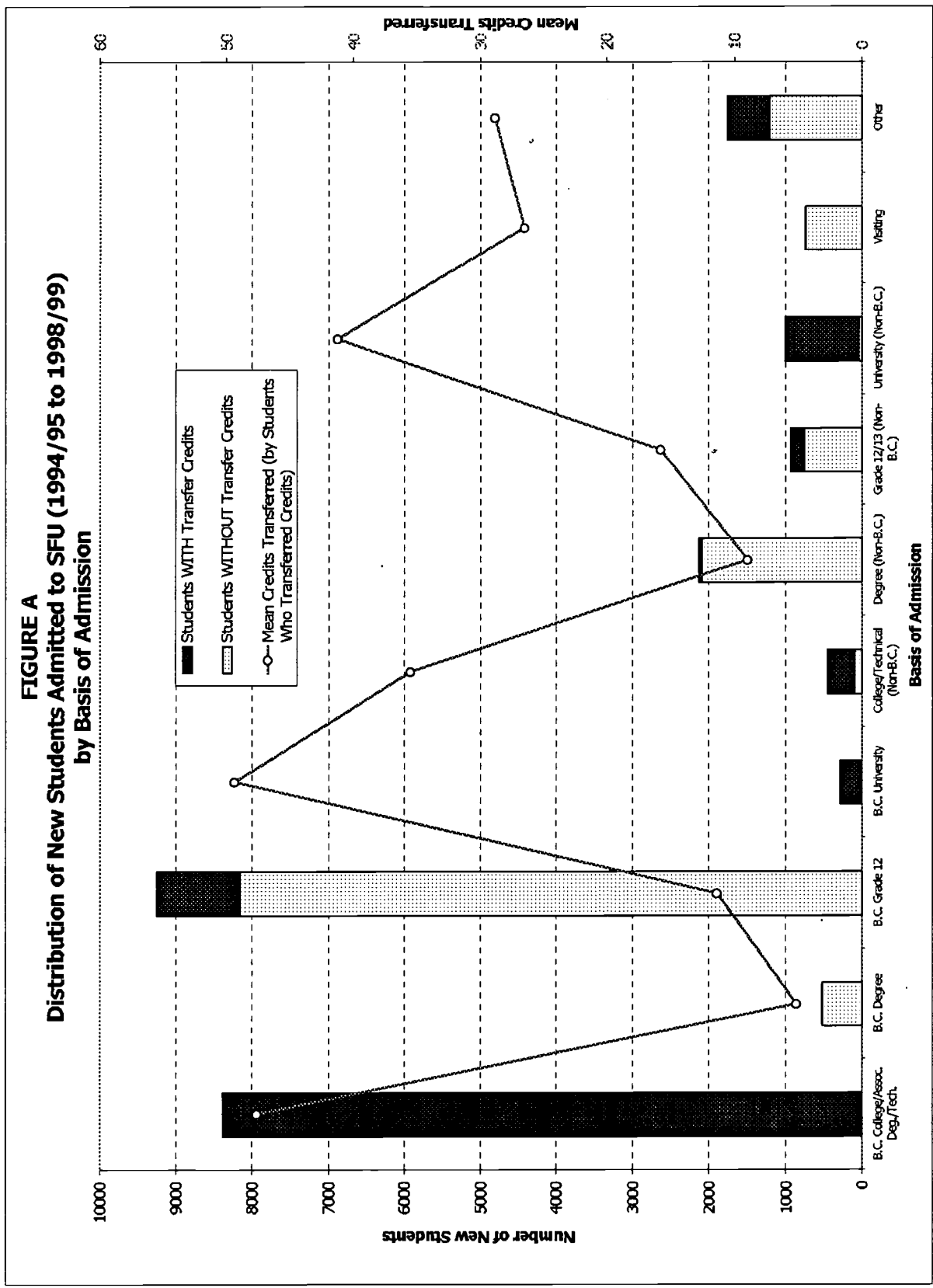
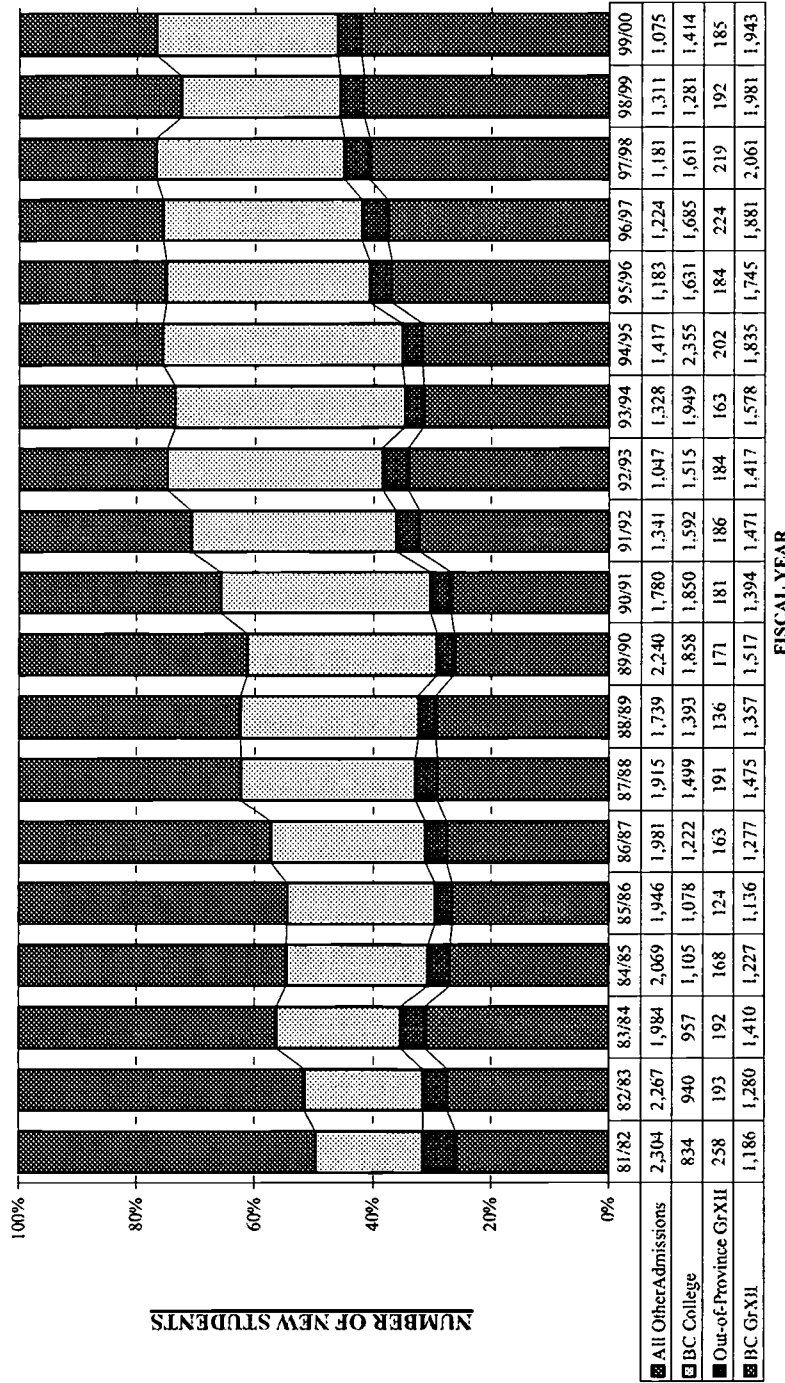


FIGURE B: ANNUAL ADMISSION INTAKE AT SFU -- TRENDS



BACKGROUND

In the early eighties, BC College transfer students made up about 20% of SFU's yearly intake of new students. There were no admission quotas and general admission was open to anyone from a BC Secondary School with a C+ average (or a 2.50 GPA) or from a BC College with a C average (or a 2.00 GPA). Secondary school students made up about 30% of the intake. The rest was made up of mature students, students with degrees, students transferring from other universities, etc.

By the late eighties, with the increase in secondary school student populations in BC and rapid growth in the BC Colleges, demand for general admission exceeded SFU's capacity. Enrollment quotas were instituted and with these came the Senate responsibility for determining each year the mix of new students by admission category. In 1989/90, the Province initiated the Access Program with a set of FTE targets for each University. By the mid nineties the combination of FTE targets and increasing demand for entry resulted in the minimum GPA requirements increasing to 3.00 from BCXII and 2.55 from BC College. In 1994/95 the proportion of students coming from the College sector had grown to 40% of the total intake while 35% of students came from secondary schools.

The unprecedented demand from secondary school students for degree programs in the late eighties and early nineties also caused the BC Government to expand the number of public institutions with degree completion programs. The University of Northern British Columbia opened in Prince George, Cariboo, Okanagan, Fraser Valley, Kwantlen, and Malaspina, formerly two-year colleges, became University Colleges with four-year degree completion programs. Four -year degree programs were also instituted at Emily Carr and BCTI. Finally, Royal Roads and the Technical University of BC came into being.

With the expansion of degree completion opportunities in other institutions, demand for entry to SFU from College transfer students has abated somewhat and has allowed Senate to begin to change the entry mix more in favour of students entering directly from BC secondary schools. In 1999/2000 the proportion of entering students from BC Colleges will have declined to about 31% of the total while the proportion of freshman students entering from secondary schools will have increased to 46%.

FILE STRUCTURE FOR BCCOL.DAT

Description: Students admitted to SFU from a B.C. College from 1994/95 to 1998/99. One record per student/credential combination (9,648 records for 8,329 StuIDs). For students who have not yet been awarded a degree, all active credentials were selected. For students who have been awarded one or more degrees, only the first degree awarded and any other previously awarded certificates were selected.

<u>Field</u>	<u>Field Name</u>	<u>Type</u>	<u>Width</u>	<u>Description</u>
1	STUID	Numeric	9	Student ID number.
2	SEM1	Numeric	5	Admission semester/first SFU semester.
3	ADMGPA	Numeric	3	GPA upon admission to SFU (ie. College GPA).
4	TFCRED	Numeric	5	Total transfer credits on admission to SFU.
5	CGPA1	Numeric	3	CGPA after first semester at SFU.
6	SEM1CRHRS	Numeric	2	Number credits enrolled in during SEM1.
7	MAXCOLLEGE	Character	5	College attended with maximum transfer credits.
8	MAXTFCRED	Numeric	5	Transfer credits from MAXCOLLEGE.
9	CGPA30	Numeric	3	CGPA after 30 credit hours at SFU.
10	BICH222	Character	2	Course grade in BICH222.
11	BISC202	Character	2	etc.
12	BISC316	Character	2	
13	BUEC232	Character	2	
14	BUEC333	Character	2	
15	BUS207	Character	2	
16	BUS237	Character	2	
17	BUS251	Character	2	
18	BUS312	Character	2	
19	BUS343	Character	2	
20	BUS374	Character	2	
21	CHEM281	Character	2	
22	CMNS221	Character	2	
23	CMNS223	Character	2	
24	CMPT205	Character	2	
25	CRIM230	Character	2	
26	CRIM320	Character	2	
27	CRIM330	Character	2	
28	ECON103	Character	2	
29	ECON301	Character	2	
30	ECON305	Character	2	
31	EDUC220	Character	2	
32	EDUC230	Character	2	
33	EDUC240	Character	2	
34	ENGL206	Character	2	
35	ENGL312	Character	2	
36	FREN201	Character	2	
37	FREN301	Character	2	
38	GEOG221	Character	2	
39	HIST225	Character	2	
40	LING220	Character	2	
41	MACM316	Character	2	
42	MATH232	Character	2	
43	MATH251	Character	2	

FILE STRUCTURE FOR BCCOL.DAT (cont)

<u>Field</u>	<u>Field Name</u>	<u>Type</u>	<u>Width</u>	<u>Description</u>
44	MATH310	Character	2	Course grade in MATH 310.
45	PHIL210	Character	2	etc.
46	POL231	Character	2	
47	POL241	Character	2	
48	PSYC201	Character	2	
49	PSYC210	Character	2	
50	PSYC250	Character	2	
51	PSYC260	Character	2	
52	PSYC308	Character	2	
53	PSYC355	Character	2	
54	STAT270	Character	2	
55	BIRTHDATE	Numeric	8	Date of birth of student (YYYYMMDD).
56	GENDER	Character	1	Gender of student.
57	VISA	Character	1	Visa abbreviation of student.
58	DEGAWRDCNT	Numeric	3	Number of degrees awarded since SEM1.
59	DEGAWRDSEM	Numeric	5	Semester of first degree awarded.
60	FIRSTINTRO	Numeric	5	Semester first degree introduced.
61	CREDCOUNT	Numeric	3	Number of credentials sought.
62	CREDENTIAL	Character	15	Credential(s) student is pursuing.
63	FACULTY	Character	4	Current faculty.
64	GRADSEM	Numeric	5	Semester of graduation from SFU.
65	CREDNUM	Numeric	2	Credential reference number.
66	HONORS	Character	12	Approved honors and joint honors.
67	MAJORS	Character	12	Approved majors, joint majors and programs.
68	MINORS	Character	12	Approved minors and extended minors.
69	FRACTION	Numeric	5	Fractional count for multiple credentials.
70	GRADGPA	Numeric	3	CGPA upon graduating from SFU.
71	LAST60HRS	Numeric	2	Last 60 credit hours up to SFU graduation.
72	LAST60PTS	Numeric	5	Grade points in last 60 hours at SFU.
73	LAST60GPA	Numeric	3	CGPA on last 60 hours up to SFU graduation.
**	Total	**	258	

FILE STRUCTURE FOR BC12.DAT

Description: Students admitted to SFU directly from B.C. Grade 12 graduation, from 1994/95 to 1998/99. One record per student/credential combination (9,633 records for 8,369 StuIDs). For students who have not yet been awarded a degree, all active credentials were selected. For students who have been awarded one or more degrees, only the first degree awarded and any other previously awarded certificates were selected.

<u>Field</u>	<u>Field Name</u>	<u>Type</u>	<u>Width</u>	<u>Description</u>
1	STUID	Numeric	9	Student ID number.
2	ADMGPA	Numeric	3	GPA upon SFU admission (ie. High School GPA).
3	SEM1	Numeric	5	Admission semester/first SFU semester.
4	SEM1CRHRS	Numeric	2	Number credits enrolled in during SEM1.
5	CGPA1	Numeric	3	CGPA after first semester at SFU.
6	SECSCHNAME	Character	5	Secondary school attended.
7	CGPA30	Numeric	3	CGPA after 30 credit hours at SFU.
8	BICH222	Character	2	Course grade in BICH222.
9	BISC202	Character	2	etc.
10	BISC316	Character	2	
11	BUEC232	Character	2	
12	BUEC333	Character	2	
13	BUS207	Character	2	
14	BUS237	Character	2	
15	BUS251	Character	2	
16	BUS312	Character	2	
17	BUS343	Character	2	
18	BUS374	Character	2	
19	CHEM281	Character	2	
20	CMNS221	Character	2	
21	CMNS223	Character	2	
22	CMPT205	Character	2	
23	CRIM230	Character	2	
24	CRIM320	Character	2	
25	CRIM330	Character	2	
26	ECON103	Character	2	
27	ECON301	Character	2	
28	ECON305	Character	2	
29	EDUC220	Character	2	
30	EDUC230	Character	2	
31	EDUC240	Character	2	
32	ENGL206	Character	2	
33	ENGL312	Character	2	
34	FREN201	Character	2	
35	FREN301	Character	2	
36	GEOG221	Character	2	
37	HIST225	Character	2	
38	LING220	Character	2	
39	MACM316	Character	2	
40	MATH232	Character	2	
41	MATH251	Character	2	

FILE STRUCTURE FOR BC12.DAT (cont)

<u>Field</u>	<u>Field Name</u>	<u>Type</u>	<u>Width</u>	<u>Description</u>
42	MATH310	Character	2	Course grade in MATH 310.
43	PHIL210	Character	2	etc.
44	POL231	Character	2	
45	POL241	Character	2	
46	PSYC201	Character	2	
47	PSYC210	Character	2	
48	PSYC250	Character	2	
49	PSYC260	Character	2	
50	PSYC308	Character	2	
51	PSYC355	Character	2	
52	STAT270	Character	2	
53	BIRTHDATE	Numeric	8	Date of birth of student (YYYYMMDD).
54	GENDER	Character	1	Gender of student.
55	VISA	Character	1	Visa abbreviation of student.
56	DEGAWRDCNT	Numeric	3	Number of degrees awarded since SEM1.
57	DEGAWRDSEM	Numeric	5	Semester of first degree awarded.
58	FIRSTINTRO	Numeric	5	Semester first degree introduced.
59	CREDCOUNT	Numeric	3	Number of credentials sought.
60	CREDENTIAL	Character	15	Credential(s) student is pursuing.
61	FACULTY	Character	4	Current faculty.
62	GRADSEM	Numeric	5	Semester of graduation from SFU.
63	CREDNUM	Numeric	2	Credential reference number.
64	HONORS	Character	12	Approved honors and joint honors.
65	MAJORS	Character	12	Approved majors, joint majors and programs.
66	MINORS	Character	12	Approved minors and extended minors.
67	FRACTION	Numeric	5	Fractional count for multiple credentials.
68	GRADGPA	Numeric	3	CGPA upon graduating from SFU.
69	LAST60HRS	Numeric	2	Last 60 credit hours up to SFU graduation.
70	LAST60PTS	Numeric	5	Grade points in last 60 hours at SFU.
71	LAST60GPA	Numeric	3	CGPA on last 60 hours up to SFU graduation.
**	Total	**	224	

FILE STRUCTURE FOR COLEXP.DAT

Description: Students admitted to SFU from with college experience from a B.C. College from 1994/95 to 1998/99 (excluding students whose basis of admission was 'B.C. College Transfer'). One record per student/credential combination (1,450 records for 1,251 StuIDs). For students who have not yet been awarded a degree, all active credentials were selected. For students who have been awarded one or more degrees, only the first degree awarded and any other previously awarded certificates were selected.

<u>Field</u>	<u>Field Name</u>	<u>Type</u>	<u>Width</u>	<u>Description</u>
1	STUID	Numeric	9	Student ID number.
2	BOA	Character	5	Basis of Admission.
3	SEM1	Numeric	5	Admission semester/first SFU semester.
4	ADMGPA	Numeric	3	GPA upon admission to SFU (ie. College GPA).
5	TFCRED	Numeric	5	Total transfer credits on admission to SFU.
6	CGPA1	Numeric	3	CGPA after first semester at SFU.
7	SEM1CRHRS	Numeric	2	Number credits enrolled in during SEM1.
8	MAXCOLLEGE	Character	5	College attended with maximum transfer credits.
9	MAXTFCRED	Numeric	5	Transfer credits from MAXCOLLEGE.
10	CGPA30	Numeric	3	CGPA after 30 credit hours at SFU.
11	BICH222	Character	2	Course grade in BICH222.
12	BISC202	Character	2	etc.
13	BISC316	Character	2	
14	BUEC232	Character	2	
15	BUEC333	Character	2	
16	BUS207	Character	2	
17	BUS237	Character	2	
18	BUS251	Character	2	
19	BUS312	Character	2	
20	BUS343	Character	2	
21	BUS374	Character	2	
22	CHEM281	Character	2	
23	CMNS221	Character	2	
24	CMNS223	Character	2	
25	CMPT205	Character	2	
26	CRIM230	Character	2	
27	CRIM320	Character	2	
28	CRIM330	Character	2	
29	ECON103	Character	2	
30	ECON301	Character	2	
31	ECON305	Character	2	
32	EDUC220	Character	2	
33	EDUC230	Character	2	
34	EDUC240	Character	2	
35	ENGL206	Character	2	
36	ENGL312	Character	2	
37	FREN201	Character	2	
38	FREN301	Character	2	
39	GEOG221	Character	2	
40	HIST225	Character	2	
41	LING220	Character	2	

FILE STRUCTURE FOR COLEXP.DAT (cont)

<u>Field</u>	<u>Field Name</u>	<u>Type</u>	<u>Width</u>	<u>Description</u>
42	MACM316	Character	2	
43	MATH232	Character	2	
44	MATH251	Character	2	
45	MATH310	Character	2	Course grade in MATH 310.
46	PHIL210	Character	2	etc.
47	POL231	Character	2	
48	POL241	Character	2	
49	PSYC201	Character	2	
50	PSYC210	Character	2	
51	PSYC250	Character	2	
52	PSYC260	Character	2	
53	PSYC308	Character	2	
54	PSYC355	Character	2	
55	STAT270	Character	2	
56	BIRTHDATE	Numeric	8	Date of birth of student (YYYYMMDD).
57	GENDER	Character	1	Gender of student.
58	VISA	Character	1	Visa abbreviation of student.
59	DEGAWRDCNT	Numeric	3	Number of degrees awarded since SEM1.
60	DEGAWRDSEM	Numeric	5	Semester of first degree awarded.
61	FIRSTINTRO	Numeric	5	Semester first degree introduced.
62	CREDCOUNT	Numeric	3	Number of credentials sought.
63	CREDENTIAL	Character	15	Credential(s) student is pursuing.
64	FACULTY	Character	4	Current faculty.
65	GRADSEM	Numeric	5	Semester of graduation from SFU.
66	CREDNUM	Numeric	2	Credential reference number.
67	HONORS	Character	12	Approved honors and joint honors.
68	MAJORS	Character	12	Approved majors, joint majors and programs.
69	MINORS	Character	12	Approved minors and extended minors.
70	FRACTION	Numeric	5	Fractional count for multiple credentials.
71	GRADGPA	Numeric	3	CGPA upon graduating from SFU.
72	LAST60HRS	Numeric	2	Last 60 credit hours up to SFU graduation.
73	LAST60PTS	Numeric	5	Grade points in last 60 hours at SFU.
74	LAST60GPA	Numeric	3	CGPA on last 60 hours up to SFU graduation.
**	Total	**	263	

FILE STRUCTURE FOR BCCOLGOAL.DAT

Description: This file includes only those credentials which were active upon admission to SFU for all B.C. College transfer students admitted from 1994/95 to 1998/99. This file was used to identify the degree goal upon admission. The credentials in this file may be different from those in BCCOL.DAT. (8,824 records for 8,322 StuID's).

<u>Field</u>	<u>Field Name</u>	<u>Type</u>	<u>Width</u>	<u>Description</u>
1	STUID	Numeric	9	Student ID Number.
2	MAXCOLLEGE	Character	5	College attended with maximum transfer credits.
3	SEM1	Numeric	5	Admission semester/first SFU semester.
4	CREDENTIAL	Character	15	Credential(s) student is pursuing.
5	FACULTY	Character	4	Current faculty.
6	FRACTION	Numeric	15	Fractional count for multiple credentials.
7	ADMGPA	Numeric	3	GPA upon admission to SFU (ie. College GPA).
** Total **			78	

FILE STRUCTURE FOR BCCRSGPA.DAT

Description: All 200- and 300-level courses taken by B.C. College transfer students and/or Direct Entry B.C. Grade 12 students from 1994/95 to 1998/99.

<u>Field</u>	<u>Field Name</u>	<u>Type</u>	<u>Width</u>	<u>Description</u>
1	CRSNAME	Character	7	Course name.
2	CRSNUM	Numeric	7	Course number.
3	N	Numeric	5	# BCCOL transfers who completed course.
4	ADMGPA	Numeric	7	Admission GPA of BCCOL transfers in course.
5	CRSGPA	Numeric	7	Avg grade of BCCOL tfirs who completed course.
6	N12	Numeric	5	# BC12 direct entries who completed course.
7	ADMGPA12	Numeric	9	Admission GPA of BC12 direct entries in course.
8	CRSGPA12	Numeric	9	Avg grade of BC12 direct entries who completed course.
** Total **			57	