

DOCUMENT RESUME

ED 442 787

SP 039 318

TITLE Review of Gender Equity in Interscholastic Athletic Opportunities in Minnesota's Secondary Schools.

INSTITUTION Minnesota State Office of the Attorney General, St. Paul.

PUB DATE 1998-00-00

NOTE 78p.

AVAILABLE FROM Minnesota State Office of the Attorney General, 445 Minnesota Street, Suite 1050, St. Paul, MN 55101-2109.

PUB TYPE Numerical/Quantitative Data (110) -- Reports - Research (143)

EDRS PRICE MF01/PC04 Plus Postage.

DESCRIPTORS Athletes; *Athletics; Educational Legislation; *Equal Education; *Females; High School Students; High Schools; *Sex Discrimination; *Sex Fairness

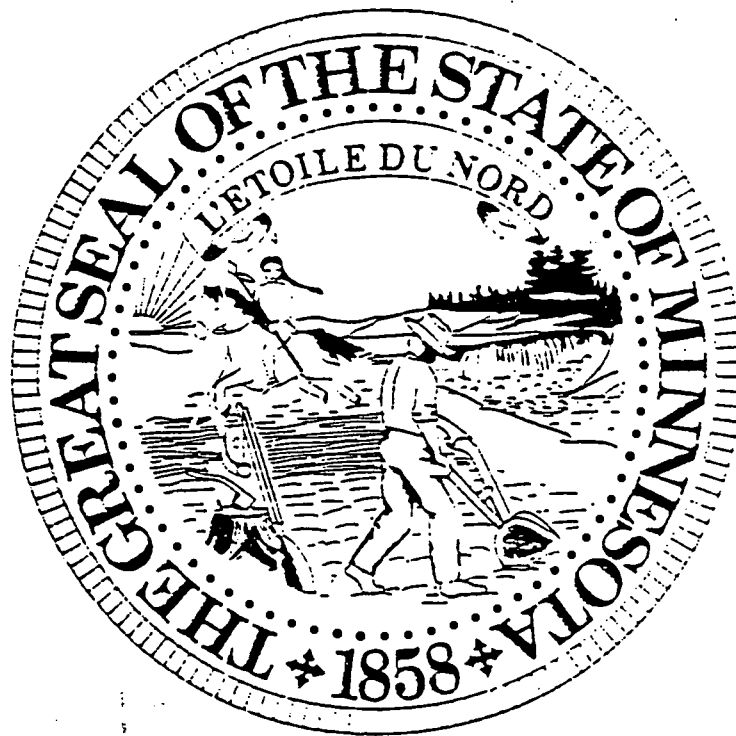
IDENTIFIERS *Minnesota; Title IX Education Amendments 1972

ABSTRACT

This report presents data on gender equity in Minnesota secondary schools' interscholastic athletics, noting changes following the Education Amendments of 1972 (Title IX). Previous studies found that most schools did not survey their students' athletic interests, and girls' participation in athletics varied by school. This report used data collected through requests to Minnesota schools under the Minnesota Government Data Practices Act. Data were collected on girls' participation and the use of student interest surveys. Results indicated that many schools had made significant progress toward gender equity in athletics. Where opportunities existed, girls were participating in athletics, and their participation was growing. However, participation of boys and girls was not substantially proportionate in all schools. State-level participation data were incomplete, incorrect, and underutilized. Most schools were not regularly surveying students' sports interests, and many athletic directors viewed interest surveys as a burden. The six appendixes, which comprise the bulk of this document, are: "Alphabetical Listing of Schools (Cross Reference)"; "Raw Participation Data, 1995-1996"; "Participation Data 1995-1996 Proportionality Analysis"; "Letter to Title IX Coordinators from Office of the Attorney General (Data Practices Request)"; "Interest Survey Data"; and "Analysis of Interest Survey Data." (SM)

Reproductions supplied by EDRS are the best that can be made
from the original document.

REVIEW OF GENDER EQUITY IN INTERSCHOLASTIC ATHLETIC OPPORTUNITIES IN MINNESOTA'S SECONDARY SCHOOLS



OFFICE OF THE ATTORNEY GENERAL

1998

PERMISSION TO REPRODUCE AND
DISSEMINATE THIS MATERIAL HAS
BEEN GRANTED BY

A. M. Anderson

TO THE EDUCATIONAL RESOURCES
INFORMATION CENTER (ERIC)

U.S. DEPARTMENT OF EDUCATION
Office of Educational Research and Improvement
EDUCATIONAL RESOURCES INFORMATION
CENTER (ERIC)

- This document has been reproduced as received from the person or organization originating it.
- Minor changes have been made to improve reproduction quality.

- Points of view or opinions stated in this document do not necessarily represent official OERI position or policy.

This report complies with Minnesota Laws 1997, chapter 202, article 1, section 6.

Every effort has been taken to ensure the accuracy of the data included in this report. We apologize for any errors which may have occurred.

TABLE OF CONTENTS

I.	Introduction.....	2
II.	Accommodation of Known Interests of Girls.....	6
III.	Accommodation of Emerging Interests of Girls.....	11
IV.	Participation Data.....	15
V.	Interest Survey Data.....	20
VI.	Conclusions and Recommendations.....	25

APPENDICES

- A. Alphabetical Listing of Schools (Cross Reference)
- B. Raw Participation Data 1995-1996
- C. Participation Data 1995-1996 Proportionality Analysis
- D. Letter to Title IX Coordinators from Office of the Attorney General
(Data Practices Request)
- E. Interest Survey Data
- F. Analysis of Interest Survey Data

No person in the United States shall, on the basis of sex, be excluded from participation in, be denied the benefits of, or be subjected to discrimination under any education program or activity receiving federal financial assistance.

Title IX of the Education Amendments of 1972,
United States Congress, June 12, 1972

I. Introduction

Title IX became law more than twenty-five years ago. Recently, many articles have been published and celebrations held lauding the growth of opportunities for women in high school athletics. The growth is undeniable: prior to Title IX, fewer than 300,000 high school girls throughout the United States played interscholastic sports. Today, the number of girls involved in high school athletics has risen to 2.4 million.

In observance of Title IX's twenty-fifth anniversary, the Minnesota Legislature asked the Office of the Attorney General to examine the progress of Minnesota high schools with respect to gender equity in interscholastic athletics. This legislative request was not the first of its kind. In 1992, Title IX's twentieth anniversary, the Legislature also asked the Attorney General to examine progress on gender equity in high school sports. The Attorney General worked with an independent consultant to examine participation in athletics by gender and athletic expenditures by gender, ranking all of the districts in the state. Overall, the 1992 report concluded that the state was making progress toward sports equity but that it was a goal which had not yet been attained.

The current study concludes that although the growth of athletic opportunities for high school girls has been steady, the opportunities for girls still lag behind those afforded their male classmates in many parts of the state. Title IX's mandate for equity was not aspirational; it was absolute. Under the law, schools should have provided equal opportunities in 1972. Twenty-five years later, some opportunities are not comparable for girls.

Following the Attorney General's 1992 report, an ad hoc committee launched a massive education effort designed to heighten the awareness of gender equity -- and the law that relates to it -- in every school district in the state. The committee, a joint venture of the Minnesota Department of Education ("Department")¹ and the Minnesota State High School League

¹ The Minnesota Department of Education is now called the Minnesota Department of Children, Families & Learning.

("League"), developed a comprehensive self-study guide for schools. The guide detailed specific steps schools could take to increase the participation of girls in athletics and thereby secure for girls the benefits of athletic activity that boys have known for years. The self-study guide was designed to lead schools through the U.S. Department of Education's equity factors.²

Measuring even a single school's compliance with Title IX is a complex task. The U.S. Department of Education has given schools detailed guidance through publication of regulations and policy interpretations, which list factors to consider when determining the relative equity of programs for girls and boys. The factors immediately applicable to secondary schools include:

1. Accommodation of Interest and Abilities
2. Equipment and Supplies
3. Scheduling of Games and Practice Time
4. Travel and Per Diem Allowance
5. Opportunity to Receive Coaching and Academic Tutoring;
Assignment and Compensation of Coaches
6. Locker Rooms, Practice and Competitive Facilities
7. Medical and Training Facilities and Services
8. Publicity
9. Support Services
10. Final Factors, including athletic fees and awards.

The first equity factor that schools were encouraged to assess was Accommodation of Interests and Abilities. A key component of the analysis to determine whether students' sports interests are being accommodated is student surveys. Federal Title IX policy interpretation outlines three criteria which may be considered consecutively to assess the opportunity for individuals of both sexes to compete in athletics programs.

A. Whether interscholastic level participation opportunities for male and female students are provided in numbers **substantially proportionate** to their respective enrollments.

² Copies of the guide, "Gender Equity in Athletics, A Manual to Assist Minnesota High Schools to Conduct a Self-Review of Their Athletic Programs," are available from the Minnesota High School League.

B. Where the members of one sex have been and are underrepresented among interscholastic athletes, whether the institution can show **a history and continuing practice of program expansion which is demonstrably responsive to the developing interests** and abilities of that sex.

C. Where the members of one sex are underrepresented among interscholastic athletes, and the institution cannot show a continuing practice of program expansion such as that cited above, whether it can be demonstrated that the **interests and abilities of the members of that sex have been fully and effectively accommodated by the present program.**

School interest surveys are important because they provide evidence of school compliance with second and third criteria.

The Minnesota guide suggested the schools survey the sports interests of girls and boys at each school. This was consistent with an existing state law requirement that schools conduct a biennial determination of students' interests. To facilitate this process, the committee developed a model interest survey. In the 1992-93 school year, the committee distributed the model survey to all schools in the state and instructed the schools on how to conduct the survey. The League instructed every district in the state to submit summary results to the League by April 1993. That was the only time survey results were centrally collected. Unfortunately, it was also the only time many schools conducted an interest survey.

In 1997, in its appropriation to the Office of the Attorney General, the Legislature specifically asked: Have schools implemented the committee's suggestions contained in the 1993 Guide? As the Guide contained a comprehensive and lengthy list of suggestions, the Attorney General decided to focus on one specific suggestion that lays the foundation for equal athletic opportunity: Do schools conduct interest surveys of their students? As a by-product, our study yielded some information on accommodation of specific student sports interests as well.

As a result of our study, we found the following:

(1) Do schools survey the athletic interests of their students?

Most do not. Only ten percent of secondary schools regularly survey the sports interests of their students.

(2) Are schools accommodating girls' known interests?

Traditionally, girls have been interested in volleyball, basketball and softball, among other sports. Volleyball and basketball are available at all secondary schools in Minnesota. Softball is available at most secondary schools in Minnesota.

(3) Are schools accommodating girls' emerging interests?

Without interest survey data, emerging interests are difficult to track. Based on league participation, however, ice hockey is the fastest emerging athletic interest among girls. The Minnesota State High School League officially recognized girls' hockey in 1994. In 1998, 83 girls' teams competed in league play. Through cooperative arrangements, 129 different schools offered girls the opportunity to play hockey on the 83 teams.

(4) Do girls participate in interscholastic athletics in numbers substantially proportionate to their enrollments?

Girls' participation in athletics varies from school to school. Data tables included in this report will allow each school to review its status relative to other schools.

In this study of athletic opportunities for girls, the Attorney General analyzed data created in response to the two principal gender equity data creation mandates: (1) annual reports by schools/school districts on males and female student sports participation to the Department of Children, Families & Learning, which maintains the data on a computer database (Minn. Rules 3535.6000) and (2) the schools' biennial determination of the sports interests of their male and female students (Minn. Rules 3535.3000). Schools use information gathered at the school building level in their efforts to provide equal opportunity for members of each sex. State law

does not require that any state agency collect the interest data, and it is not collected by the Department or the League. The Attorney General obtained the interest survey data presented in this report through requests to each school under the Minnesota Government Data Practices Act.

While limitations on the data available prevent detailed statewide analysis, the data the Attorney General was able to collect are presented here to provide a benchmark for measuring future growth.

II. Accommodation of Known Interests of Girls

The "Big Three" Sports

The interests of school age children in particular sports can be generalized to a certain extent. Girls traditionally have been highly interested in playing volleyball, basketball, and softball (hereinafter the "Big Three"), among other sports. Similarly, football, basketball, and baseball are identified as the "Big Three" of boys' sports. Historically, boys and girls have participated in large numbers in the Big Three sports when they are available. With the exception of football, these sports are relatively inexpensive to offer. In other words, offering the "Big Three" for girls is an easy, cheap, obvious, basically guaranteed way to offer opportunity for girls to participate in athletics.

Q: Are districts offering the most basic athletic choices for girls?

A. Generally, yes. 1995-96 data from the Department's MINCRIS database show that all districts in the state offer girls' volleyball and girls' basketball. Most districts, but not all, also offer girls' softball. Overall, the number of schools offering girls' softball has slowly but steadily risen since the League began sponsoring a state tournament in 1976-77. The greatest increase has been within the past two years when the number of teams increased by 60.

**NUMBER OF GIRLS' SOFTBALL TEAMS
PARTICIPATING IN THE MINNESOTA HIGH SCHOOL LEAGUE
1980-1998**

YEAR	AA	A	TOTAL
1976-77	*	*	117
1977-78	*	*	161
1978-79	*	*	182
1979-80	101	107	208
1980-81	103	141	244
1981-82	101	142	243
1982-83	111	131	242
1983-84	99	141	240
1984-85	104	151	255
1985-86	102	162	264
1986-87	101	186	269
1987-88	104	173	277
1988-89	101	187	288
1989-90	96	191	287
1990-91	99	194	293
1991-92	100	199	299
1992-93	102	201	303
1993-94	105	202	307
1994-95	108	210	318
1995-96	110	210	320
1996-97	111	217	338
1997-98	121	259	380

* Not conducted in two classes

(Data provided by the Minnesota State High School League)

Q: How does girls' access to softball compare with boys' access to baseball?

A: There is still room for improvement. A survey by the Department using data from 1989-90 listed 74 schools which offered boys' baseball but did not offer girls' softball. Our study of 1995-96 data found that 24 schools offered boys' baseball but not girls' softball. While this appears to be a significant improvement, at closer look we found that, of the 24 schools, 15 were not part of the 1989-90 group of 74 schools identified in 1989-90 as offering baseball but not softball. It is curious that these schools appeared to move away from the trend towards equity. More information is need to explain this anomaly. We examined the 1995-96 data available on the 74 schools identified by the 1989-90 study.

**1995-96 Sports Offerings of
Schools Identified in 1989-90
as Offering Baseball But Not Softball**

74	Identified in 1989-90 as offering baseball but not softball
24	Offered both baseball and softball by 1995-96
9	Offer only baseball in 1995-96
1	Offered neither baseball or softball in 1995-96
31	Ceased to operate under the same district number (school closed or consolidated with another school by 1995-96)
9	Provided incomplete reports in 1995-96 so all sports offered could not be ascertained

Given that over half of the schools had a change in status or provided incomplete reports, no statistical conclusions can be drawn from these data. Finally, using information from the League, we discovered that of the 24 schools that offered

baseball and lacked softball in 1995-1996, nine added softball by the 1997-1998 season. Using League data to follow-up, we found twelve schools which were identified as having baseball but not softball in 1989-90, 1995-96 and 1997-98: Bagley (#162), Ashby (#261), Caledonia (#299), International Falls (#361), Balaton (#411), Marshall (#413), Tracy (#417), Adrian (#511), Ada (#521), Medford (#763), Lakeview (#2167), Win-e-Mac (#2609).

Q: Are schools responsive to girls' interest?

A: The data are inconclusive. Seeking to determine whether the failure to offer softball was the result of the girls' lack of interest, we attempted to examine the interest surveys from the schools which offered baseball but not softball. We found that of the 24 schools which offered baseball but lacked softball, only 11 were able to provide evidence to us of having done one or more interest surveys since 1993. Another 10 did interest surveys only after the Attorney General's 1997 request for information; and three schools provided no evidence of having done any interest survey at all. Overall, the interest survey data was collected too close in time to the available participation data to make a determination of school responsiveness. (Once an interest is identified, it can easily take one to two years preparation to set up a new program, i.e. budgeting process, hiring coaches, obtaining equipment, locating practice facilities, etc.)

Q: Does the lack of softball opportunities affect participation in these districts?

A: Yes, we found that girls' participation in Spring sports drops more sharply than boys' when boys have access to baseball and girls do not have access to softball. We examined participation data to determine whether the schools that lacked softball showed a corresponding drop in girls' participation in Spring sports. We sought to determine whether it could be proven statistically that any drop in participation found would be attributable to the lack of a girls' softball team.

While generally participation for both boys and girls drops in the Spring when compared to Fall and Winter numbers, on average, girls' participation in Spring sports dropped much more sharply than boys' when boys had access to baseball and girls did not have access to softball.

**Participation Change Rates at
Schools Offering Baseball But Not Softball
1995-96**

	Boys	Girls
Fall to Spring	-18%	-49%
Winter to Spring	-14%	-34%

Q: How does quality of the 1995-96 data compare to the quality of the 1989-90 data?

A: In both studies, the data required many hours of cross-checking and correcting. To study this question, we requested a report from the Department's MINCRIS database on districts lacking any of the Big Three for girls for 1995-96, the most recent year for which the most complete data were available. The original report generated a list of 85 schools. Seven of these were charter schools and outside the scope of our study. Of the remaining 78, we were able to identify 24 that in fact offered Big Three sports but were included in the report either because they failed to report or due to data entry errors. Ultimately, we were able to determine that in 1995-96, there were 54 schools involved in interscholastic sports did not offer girls' softball. Of the 54 schools which lacked softball in 1995-96, 24 offered baseball for boys; the other schools offered neither baseball nor softball. The high percentage of errors in these data make them unsuitable for drawing firm conclusions, raising concerns about the quality of the data.

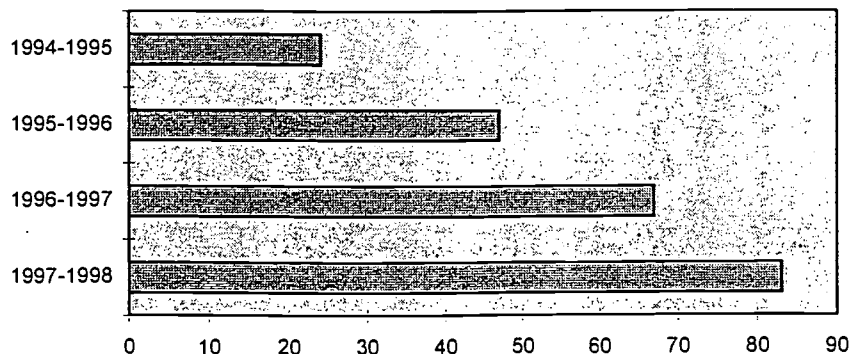
III. Accommodation of Emerging Interests of Girls

Ice Hockey

When compared to girls in the rest of the nation, girls in Minnesota have the most opportunities to play league-sponsored ice hockey. In fact, Minnesota is the only state in the country with league-sponsored girls' ice hockey. However, when compared to boys in Minnesota, girls in Minnesota still lag far behind.

It is only within the past four years that the Minnesota State High School League has sponsored interscholastic hockey for girls. League sanctioned girls' hockey is, in part, an outgrowth of the resolution of complaints filed with the Department of Children, Families and Learning, the Minnesota Department of Human Rights, and the U.S Department of Education Office of Civil Rights. In the past four years, the number of girls' teams participating has steadily risen to a total of 83.

Number of Girls' Teams Participating in League-Sponsored Ice Hockey

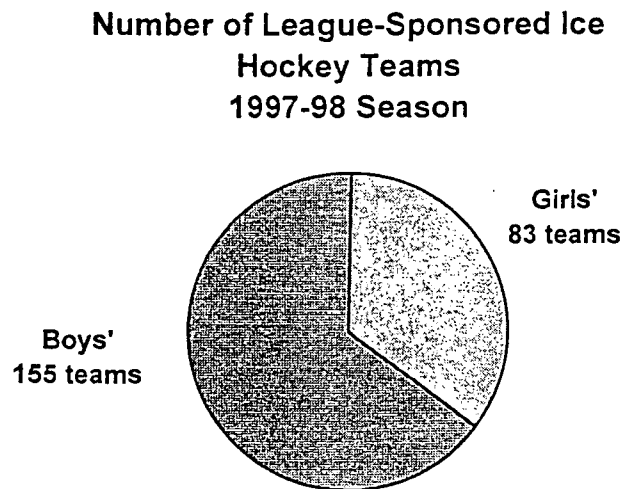


The number of teams does not, however, begin to demonstrate the broad base of opportunity for high school girls today. While building a girls' ice hockey program, many schools have opted to enter into cooperative arrangements with a neighboring school or schools. In the 1997-1998

season, 62 schools were involved in cooperative arrangements, expanding the number of public schools where girls had access to ice hockey through their schools to 115. Counting private school and public school teams and private/public school cooperatives, girls at 129 Minnesota schools had access to league-sponsored ice hockey.

While the growth in the number of girls involved in league-sponsored ice hockey teams is impressive, equity has not yet been achieved. To evaluate equity, we analyzed whether girls and boys have proportional access to hockey, a proportional level of play, and the progress of efforts to accommodate this major sports interest of girls.

Access is not yet proportional. There are 155 boy's teams, compared with 83 teams for girls.



Cooperative sponsorship arrangements have increased the access to league-sponsored ice hockey for boys as well. Although there are 155 boys' teams in the league, boys at 187 public schools have access to hockey through their schools through the use of cooperative arrangements. When private school teams and cooperatives involving private schools are included in the count, the number of schools offering access to league-sponsored boys' ice hockey teams jumps to 211 (1997-98 season). Of the 211 public and private schools offering league-recognized ice hockey

for boys, 98 were involved in cooperatives. In comparison, only 129 public and private schools offer ice hockey opportunities to girls, 62 of these cooperatively.

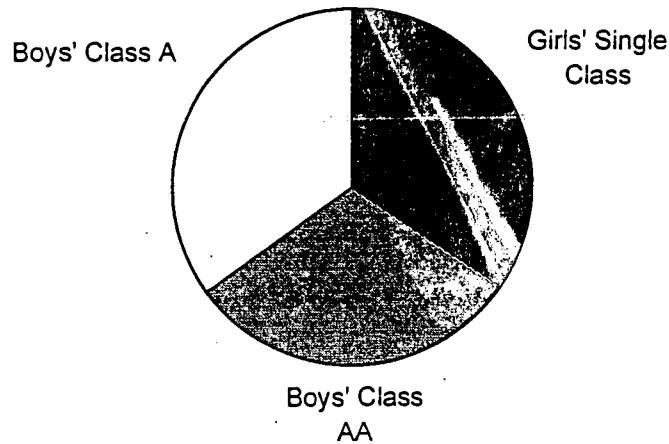
**Number of Schools Offering Access
to League-Sponsored Ice Hockey**

	<u>GIRLS</u>	<u>BOYS</u>
Public schools offering access	115	187
Private schools offering access	14	24
Total schools offering access	129	211
Schools involved in cooperatives	62	98
Schools with own team	67	113
Total schools offering access	129	211

Although forming a cooperative team is an excellent way to begin a program, a cooperative team for girls must not be viewed as achievement of equitable access by schools which have a single-school boys' program. There is some concern that the cooperative programs may limit the actual opportunities for girls, especially for girls who are not necessarily star athletes. A cooperative team involving multiple schools attracts the strongest players from each school; many would-be players do not have a place on the team under this arrangement because there are fewer total places on fewer teams. Therefore, girls with emerging skills do not have the same access to the sport as boys with equivalent skills in districts that offer single-school opportunities for boys and cooperative teams for girls.

Finally, level of play opportunities for girls' ice hockey are also not yet on par with boys'. While boys have Class A and AA sections, girls are still in a single, undesignated class. The single girls' class has 83 teams. Boys' Class A has 82 teams; boy's class AA has 73.

Level of Play Opportunities By Gender 1997-98 Season



It is noteworthy that none of the twelve boys' teams that competed in the championship games of the 1997-98 boys' ice hockey tournament was a cooperative itself. It is also noteworthy that of the 12 schools that participated in the championship games of the 1997-98 boys' tournament, seven have girls' teams (Red Wing, St. Louis Park, Mahtomedi, Anoka, Bloomington Jefferson, Hastings, Edina); two offer girls' hockey through a cooperative (Eveleth-Gilbert, Duluth East) and three do not offer girls' hockey at all (Hermantown, East Grand Forks, Roseau).

Pressure on districts is key. The Department ordered Duluth and Hermantown districts to establish girls' hockey teams as a result of formal complaints of inequitable opportunities. Historically, as many as ten other districts were ordered by the Department to provide girls' hockey or other winter sport to increase equity.

While the recent surge in girls' ice hockey has been impressive, continued pressure needs to be applied to schools to offer and expand opportunities for girls. This is especially true at schools where boys' hockey is firmly entrenched, but girls have no program. Where boys are playing, girls are familiar with the sport and may need only encouragement to play.

A recent experience at a metro area elementary school demonstrates the benefits of encouragement. Various playground opportunities are available to children at the school,

including a field hockey court and equipment. Competition for the hockey equipment is intense; many boys eat quickly in order to lay claim to a stick during the noon recess. Traditionally, no girls have played field hockey at lunch and no girls have complained about availability of equipment. The administration came to the PTA asking for funds for picnic tables, so the girls would have a place to sit and talk. This seemed to be what the girls "wanted to do" at recess. Instead, as an experiment, the PTA purchased a second field hockey set and directed that it be labeled for girls' use only. Within a week, girls were fielding full teams daily. While establishing a high school team for interscholastic league play is more complex than setting up a recess program, the reasons for pushing forward are the same. Girls will play when given opportunity and encouragement.

IV. Participation Data

Schools are mandated by state law to compile participation data for boys and girls on an annual basis. The reports must be submitted to the Department by October 15 of each year for the preceding school year. The Attorney General obtained compliance reports from the 1995-96 school year, the most recent year for which data were available.

Raw Participation Data: Appendix B

Raw athletic participation data by gender for all of the secondary schools in Minnesota are contained in Appendix B, "Raw Participation Data."³ The data are shown in four sets of columns:

- (1) Total boys' and girls' enrollment for the 1995-96 school year.
- (2) Total number of boys' and girls' activities (sports).

³ Data in this report for each school is presented in numerical order by school district number. A list of schools in alphabetical order by school name is included as Appendix A for easy cross-reference.

“Activities” in this context are limited to “sports”.⁴ Danceline and cheerleading are not activities within the definition of sports and, therefore, not included in these totals.

(3) Total number of boys’ and girls’ opportunities (teams).

These columns indicate how many teams the school offered for each gender. For example, when a school offers volleyball, it counts as one activity. If there are five different volleyball teams at the school, then there are five opportunities counted for volleyball.

(4) Total number of boy and girl participants in athletics.

These columns show how many actual spots are filled on each team. This number is sometimes referred to as a “duplicated” count, because a student who participates in two different sports will be counted twice (once for each sport).

Analysis: Is participation proportionate?

Participation data is used to determine whether interscholastic opportunities for male and female students are provided in numbers substantially proportionate to their respective enrollments. This determination can be made from the data contained in Appendices C and D.

Participation Data: Appendix C.

The data contained in Appendix C include the following percentages for girls:

- (1) Percentage of the school’s **students** who are female.
- (2) Percentage of the school’s **athletes** who are female.

This is sometimes called the “unduplicated participation rate” because a student who participates in two different sports is only counted once.

⁴ A "sport" is a competitive physical activity that is offered within a school, the purpose of which is to provide opportunities for students to compete with other students on like teams in other schools within an organized conference under the auspices of the Minnesota State High School League or with other teams operating under separate jurisdictions (Minn. Rules 3535.3000). A sport has a primary purpose of competition, not support.

(3) Percentage of the spots on teams filled by females.

This is sometimes called the “duplicated participation rate” because an individual athletic who participated in multiple sports will be counted once for each sport.

Thus, if a school has the same percentage in all three columns, or if the percentage in the second or third columns is substantially proportionate to the enrollment percentage in the first column, then that school has met a very important component of the gender equity test.

If the percentage in either the second or third column is substantially lower than the first column, it means the girls are underrepresented in the athletic program. (Any blanks in the data mean the school submitted insufficient data to make the calculation.)

While statistics are helpful to establish whether a school has substantially proportionate participation, meeting that one factor does not establish overall equity.

Relative Opportunities for Girls.

Some additional factors to consider in whether a school's offerings are equitable include: the number of different activities for each gender; the relative opportunities athletes have to play team vs. individual sports and contact vs. non-contact sports; seasonal balance; and the indoor or outdoor nature of the activity. While analysis of all of these factors is outside the scope of this report, analysis of the difference in number of sports and teams for each gender can provide a benchmark for a state-wide measurement of progress. Data from 1989-90 showed that 65 percent of districts offered fewer sports for girls than for boys.⁵ By comparison, 1995-96 data shows that 53 percent of schools for which we have data offered fewer sports for girls than they do for boys; 35 percent offered the same number of sports for girls and boys; and 12 percent offer more sports for girls than boys. The difference in number of teams is more skewed towards boys: 63 percent of schools offered fewer teams for girls, 17 percent offered the same number of teams for boys and girls and 20 percent offered more teams for girls than boys.

⁵ Note that the 1990-91 report counted districts, the 1995-96 report counted school buildings.

**Difference in Total Number of Sports
Offered to Each Gender
1995-1996**

+6	0	
+5	0	
+4	0	Number of schools offering
+3	1	<u>more sports for girls</u> than boys
+2	9	
+1	32	
0	123	Number of schools offering
		<u>equal numbers</u> of sports
-1	155	
-2	30	
-3	2	Number of schools offering
-4	2	<u>fewer sports for girls</u> than boys
-5	0	
-6	0	

**Difference in Total Number of Teams
By Gender
1995-1996**

+15	1	
+8	2	
+7	1	
+6	0	
+5	3	
+4	5	Number of schools offering
+3	9	<u>more teams for girls</u> than boys
+2	17	
+1	32	
0	59	Number of schools offering
		<u>equal numbers</u> of teams
-1	65	
-2	69	
-3	36	
-4	22	
-5	18	Number of schools offering
-6	6	<u>fewer teams for girls</u> than boys
-7	2	
-8	1	
-9	0	
-10	1	
-11	2	
-13	1	
-17	1	

Comment: Reporting Concerns

The Attorney General obtained computer reports (MINCRIS system) and photocopies of the raw data submitted by the schools for the 1995-96 school year. Both the computer data and raw data were incomplete. Subsequent investigation established: 1) some schools did not meet the data submission requirements, despite reminders; 2) some schools submitted inaccurate data; and 3) some data submitted by schools was never entered into the mainframe database by the Department. Accuracy of actual data entry had improved greatly from a similar study in 1992.

The data problems that were discovered were apparent because we asked for statewide reports and attempted to cross-reference the data with other information. Too often, the data from these sources simply did not match. This problem is heightened by the limited use of the MINCRIS data. Generally, the athletic information in the MINCRIS database is pulled and studied only for a single school or district at a time, for example, in response to a complaint or as part of a sample. Individual records are then corrected as needed. Under the current practices of the Department, there is a six year monitoring cycle which includes a desk review of athletic data each year for a sample of school districts. This cycle generates eight to ten on-site monitoring visits annually. The visits include examination of gender equity in athletics, as well as other areas. Because the use of the database is so limited, patterns of errors are not routinely found and corrected. The high incidence of errors makes statewide statistics drawn from the data unreliable.

The low usage of the data was cited in the 1992 Attorney General report as a cause for concern. The same seems true today. No state wide reports on athletics are run from the participation data which schools are obligated to submit annually. Examining comprehensive reports is necessary to monitor compliance. On the chart on page 19 (Difference in Total Number of Teams by Gender), for example, we learn that one school reports fielding 15 more teams for girls than boys; another reports fielding 17 fewer teams for girls than boys. Both of these schools merit a closer examination. Under the current practices at the Department, there is only minimal monitoring of a small number of districts or buildings annually. The Department also reviews files when it receives a complaint. Specific recommendations for more monitoring are contained in Section VI.

V. Interest Survey Data

Methodology

In mid-October 1997, the Office of the Attorney General made a request under the Minnesota Government Data Practices Act (Minnesota Statutes Chapter 13) for summary results of any student interest survey of interscholastic athletic activities conducted by the school in the 1993-1994 school year or thereafter. We specifically asked for the compilation of the results of the survey(s) by gender and sport. (A copy of the letter is attached as Appendix D.)

The letter was sent to 460 school buildings, using the current mailing list obtained from the Department. No letters were returned for incorrect addresses. The letters were printed on letterhead from the Office of the Attorney General and addressed to the Title IX Coordinator at each school.

By mid-November 1997, we received responses from approximately one third of the schools on the original list. We reviewed the list, eliminating junior high schools and charter schools.⁶ We then telephoned and sent follow-up facsimiles to the remaining non-responsive schools. Responses trickled in. On February 28, 1998, more than four months after our first request was sent, we cut off data collection to analyze the data we had obtained and to finalize the report.⁷

⁶ Although the initial data practice request was directed at senior and junior high schools, the follow-up request did not include junior high schools because they are not uniformly involved in interscholastic athletics. Thus, their data has limited usefulness for analysis. For the same reason, no follow-up was done to charter schools.

⁷ Several schools submitted data too late for inclusion in the tables or computations in this report. These include: Minneapolis, Sibley East (Gaylord), and Jackson County Central, Floodwood, Parkers Prairie, Duluth East, Blackduck, and Atwater-Cosmos-Grove City. Each of these districts/schools did a survey after the Attorney General's request. None of them provided evidence of a prior survey. All of the schools collected information by gender, with the exception of Sibley East.

The data were compiled into tables to demonstrate the extent of compliance with the interest survey requirement. The complete tabulated results of the survey are attached as Appendices E and F.

Interest Survey Data: Appendix E

Appendix E is a listing entitled "Years in Which Schools Conducted Interest Surveys." Every interest survey received by the Attorney General was logged on this chart with an "X".

Analysis of Interest Survey Data: Appendix F

Appendix F demonstrates whether the interest surveys were regularly and correctly conducted. The chart has six data columns. The first data column shows schools which were able to provide evidence of having done more than one survey since 1993. This data is important because schools are required to make a biennial determination of student interest. Assuming a survey was done in 1993, additional surveys should have been conducted in 1995 and 1997. Only 39 schools did more than one survey since 1993.

The second and third data columns address the issue of whether schools are conducting the surveys on their own, or whether they needed to be prompted by an outside entity to conduct them. In 1993, the League prompted schools by collecting the surveys; in 1997, the Attorney General prompted schools by a data practices request. The second data column on Appendix F shows schools which provided evidence of conducting one interest survey without being prompted by an outside entity; the third data column shows schools which did a survey only in response to outside prompting.

The fourth and fifth columns address the usefulness of the surveys. Since the primary purpose of the survey is to determine the sports interests of students by gender, it is important that data be collected by gender. These columns indicate which schools submitted results by gender and which submitted pooled results.

The final column shows which schools provided no evidence of having conducted any survey at all. The overall results of the schools' response to the Attorney General's Data Practices Request are summarized in the following table.

**School Response to Data Practices Request
for Interest Survey Information
1997-1998**

Of 459 schools contacted, the following number provided evidence of having done:

39	More than one interest survey since 1993 and prior to our October 1997 request
152	One interest survey since 1993 and <u>prior to our</u> October 1997 request
95	One interest survey since 1993 and <u>only in response to</u> our October 1997 request
83	Provided NO evidence of any survey
66	Junior high schools (eliminated)
17	Charter schools (eliminated)
7	Duplicate addresses (eliminated)
459	Total

Of 286 schools which provided interest surveys in response to the request, 74 schools submitted pooled results so that the separate interests of boys and girls could not be ascertained.

In our telephone follow-up to athletic directors at non-reporting schools, we heard a variety of rationales for not responding to our letter and for not complying with the law requiring surveys. The most often heard remarks were:

- many athletic directors claimed not to have received the letter, chiding us for addressing the letter to the Title IX coordinator;
- many athletic directors claimed to be new in their jobs and without knowledge of the law;
- many athletic directors claimed to be new in their jobs and without knowledge or files on any surveys previously taken;

- some reported not having time to take the survey;
- some reported the survey was too much trouble;
- some reported the survey was too much trouble and useless, since there was not money to implement any additional activities.

Findings: Are Interest Surveys Useful?

Q: Do schools conduct interest surveys as mandated by law?

A: Generally, no. Only about ten percent provided evidence of having conducted more than one interest survey since 1993, despite a requirement that surveys be conducted every two years. Forty-one percent conducted one survey without being prompted. Twenty-six percent conducted surveys only in response to the Attorney General's data request. Twenty-two percent did not provide any evidence of having conducted a survey.

Q: Is the data useful for the purposes for which they are intended: can the separate interests of boys and girls be ascertained from the data collected?

A: In far too many cases, it is impossible to determine emerging interests of students by reading the data received from the schools. Often surveys do not make it clear to students that they may indicate interest in sports not traditionally offered for their gender. In 20 percent of the responses, the data received from the schools was not categorized by gender. In addition, many schools did not use the model (standard) form when surveying their students, so state-wide compilation and comparison of the data is not feasible. One school conducted a survey in response to our request and immediately sent the entire set of student responses to us without any local tallying.

Q: In those instances where good data was obtained from a good data instrument, were schools responsive to the surveyed interests of girls?

A: We had hoped to compare interest data with participation data to determine school responsiveness to girls. To accomplish this analysis, we needed interest surveys that were at least two years older than the participation data. In most cases, however, the interest survey data received were more recent than the participation data we have available to us, so the planned analysis was not possible.

Q: In those instances where good data was obtained from a good data instrument, was it possible to determine any emerging interest areas of girls?

A: Girls and boys surveyed generally report interest in soccer.

Q: Comparing the Attorney General's 1997-98 collection of interest survey data and the Minnesota High School League's 1993 collection of interest survey data, did the athletic interests of high school students change between 1993 and 1997?

A: The League data, which used a standard survey instrument, are no longer maintained in a computerized format. The recent data was not submitted in a standardized format. Therefore, comparison of the results of the two collection efforts was not feasible within the constraints of this study.

VI. Conclusions and Recommendations

Overall, the Attorney General found that many schools have made commendable progress towards gender equity in athletics. Where opportunities exist, girls are participating in athletics and their participation is growing. However, the participation of girls and boys is not yet substantially proportionate in all schools. We found two areas at the state level which give rise to concern. First, participation data collected by the Department are incomplete, incorrect and under-utilized. The under-utilization -- lack of monitoring -- is especially problematic, because

schools need to be pushed to comply with the law. Second, most schools are not regularly surveying the sports interests of their students. In fact, many athletic directors seem to view interest surveys as a burden rather than a valuable tool to identify interests.

The Department and State High School League's ad hoc committee produced a helpful guidebook, but we fear that it has been left on the shelf. Gender equity is the law; while progress has been made in the past twenty-five years, it has been slow. The low level of compliance with the interest survey requirement in most schools is cause for concern. The ad hoc committee detailed ten steps in its guide. Conducting an interest survey is only the first step to achieving gender equity. Our study has shown that most districts are not even completing the first step. We can only speculate whether they are following through with the other steps. Schools whose athletic participation numbers are not substantially proportionate have an affirmative obligation to accommodate the interests of their students. Inquiring about the sports interests of their girls and boys is only a small part of that obligation.

As some schools need state-level encouragement to take the necessary steps, we make the following recommendations:

- On-going education of athletic directors and superintendents is necessary. "I'm new" is not an acceptable answer to an inquiry about the status of equity. Every athletic director and superintendent in the state should be familiar with the mandates of state and federal law as it relates to athletics. The ad hoc committee's "Guide to Gender Equity" should be required reading for every new athletic director; but even existing athletic directors and superintendents need regular encouragement to lead their schools to compliance with gender equity laws. On-going education of athletic directors may be possible through the League's established newsletters.
- Effective monitoring of gender equity in schools requires data collection, processing, and analysis. Collection of participation data is already required by law. Massive

amounts of athletic data are maintained on the system, but reports are rarely run and there is no analysis of the data. The Department needs the resources to collect, process and analyze the data.

- The Department should follow-up with non-compliant schools. Currently, however, there is no system in place to identify the schools that are not making adequate progress. The Department's collective staffing allocation of .80 FTE (spread over three people) (cost = \$50,523) allows it only to respond to questions and complaints, and conduct a minimal level of monitoring and corrective action. Staff is needed to:
 1. Collect participation data and ensure that it is entered into the database.
 2. Compute participation and expense ratios for all schools/districts.
 3. Annually identify the least compliant schools and conduct compliance audits.
 4. Publicize the results of the audits to educate other schools.
- The Department should standardize, collect, and regularly analyze interest survey data in conjunction with participation data. Interest surveys are an important tool for schools to use to track the sports interests of their students and are especially crucial at the schools where the participation rates are disproportionate.

If gender equity is to be achieved in Minnesota schools, monitoring is needed. The Attorney General's study found that monitoring of equity in athletics has slipped through the cracks.

Finally, in its response to this report, the Department stressed the need for legislation that explicitly requires district compliance with substantive gender equity laws and gives the Department authority to monitor and order corrective action. The Department pointed out that it has met with limited cooperation from local districts in its monitoring activities, and that, without explicit legislative authority, it would have difficulty overcoming this resistance. The

Department agreed that data collection needs to be improved to insure greater accuracy in reporting, acknowledging that, with improved data collection, the Department can follow through with more meaningful analyses and guidance for school districts. The Department points out, however, legislation is need to clarify district reporting responsibilities and the Department's authority to insure compliance.

Alphabetical Listing of Schools
Appendix A

District Number	School Name	School Number	City
2396	A.C.G.C. Sec.	400	Grove City
521	ADA-Borup Sec.	20	Ada
511	Adrian Sec.	20	Adrian
1	Aitkin Sec.	1	Aitkin
745	Albany Sr.	60	Albany
2142	Albrook Sec.	17	Saginaw
242	Alden-Conger Sec.	1	Alden
876	Annandale Sr.	3	Annandale
11	Anoka Sr.	1	Anoka-Hennepin
742	Apollo Sr.	57	St. Cloud
196	Apple Valley Sr.	97	Apple Valley
437	Argyle Sec (see Stephen)	20	Argyle
625	Arlington Sr. **	240	St. Paul
261	Ashby Sec.	20	Ashby
492	Austin Sr.	200	Austin
654	B.D.R.S.H. Sr.	20	Renville
2142	Babbitt Sec.	35	Babbitt
676	Badger Sec. *	20	Badger
162	Bagley Sec.	20	Bagley
411	Balaton Sec.	20	Balaton
146	Barnesville Sec.	40	Barnesville
91	Barnum Sec.	2	Barnum
542	Battle Lake Sec.	20	Battle Lake
726	Becker Sr.	20	Becker
2364	Belgrade-Brooten-Elrosa Sec.	2	Belgrade
716	Belle Plaine Sr.	20	Belle Plaine
31	Bemidji Sr.	20	Bemidji
777	Benson Sec.	101	Benson
786	Bertha Sec.	20	Bertha
727	Big Lake Sr.	20	Big Lake
318	Bigfork Sec.	350	Bigfork
32	Blackduck Sec.	20	Blackduck
11	Blaine Sr.	91	Blaine
756	Blooming Prairie Sec.	20	Blooming Prairie
6059	Blue Earth Area Sr.	20	Blue Earth
2534	Bold Sr. *	20	Olivia
314	Braham Area Sec.	1	Braham
181	Brainerd Sr.	14	Brainerd
207	Brandon Sec.	2	Brandon
846	Breckenridge Sr.	30	Breckenridge
286	Brooklyn Center Sec.	12	Brooklyn Center
787	Browerville Sec.	20	Browerville
2159	Buffalo Lake-Hector Sec.	20	Hector
877	Buffalo Sr.	40	Buffalo
191	Burnsville Sr.	14	Burnsville
836	Butterfield Sec.	30	Butterfield

KEY

*	Non-compliance with DCFL reporting rule
**	New school
+	No sports
Blank	Data missing

BEST COPY AVAILABLE

Alphabetical Listing of Schools
Appendix A

District Number	School Name	School Number	City
531	Byron Sec.	20	Byron
299	Caledonia Sec.	20	Caledonia
911	Cambridge-Isanti	350	Cambridge
852	Campbell-Tintah Sec.	20	Campbell
891	Canby Sec.	10	Canby
252	Cannon Falls Sec.	2	Cannon Falls
93	Carlton Sec.	1	Carlton
115	Cass Lake Sec.	30	Cass Lake
2754	Cedar Mountain Sec.	2	Morgan
12	Centennial Sr.	164	Circle Pines
441	Central Sec.	20	Newfolden
709	Central Sec.	210	Duluth
593	Central Sr.	90	Crookston
108	Central Sr.	20	Norwood
241	Central Sr.	310	Albert Lea
625	Central Sr.	210	St. Paul
535	Century Sr. **	305	Rochester
11	Champlin Park Sr.	192	Champlin
112	Chaska Sr.	60	Chaska
2142	Cherry Sec.	95	Iron
2144	Chisago Lakes Sr.	4	Lindstrom
695	Chisholm Sr.	302	Chisholm
771	Chokio-Alberta Sec.	2	Alberta
227	Chosen Valley Sec.	1	Chatfield
2311	Clearbrook Sr.	20	Clearbrook
391	Cleveland Sec.	20	Cleveland
592	Climax Sec.	20	Climax
55	Clinton-Graceville Sec.	2	Graceville
94	Cloquet Sr.	202	Cloquet
13	Columbia Heights Sr.	16	Columbia Heights
81	Comfrey Sec.	20	Comfrey
22	Community Sr.	3	Detroit Lakes
625	Como Park Sr.	212	St. Paul
166	Cook County Sec.	50	Grand Marais
2142	Cook Sec.	115	Cook
11	Coon Rapids Sr.	2	Coon Rapids
2142	Cotton Sec.	101	Cotton
95	Cromwell-Wright Sec.	20	Cromwell
182	Crosby-Ironton Sr.	2	Crosby
466	Dassel-Cokato Sr.	2	Cokato
378	Dawson-Boyd Sec.	20	Dawson
317	Deer River Sec.	1	Deer River
879	Delano Sr.	20	Delano
709	Denfeld Sr.	215	Duluth
2164	Dilworth-Glyndon-Felton Sr.	4	Glyndon
533	Dover-Eyota Sec.	30	Eyota
196	Eagan Sr.	41	Eagan

BEST COPY AVAILABLE

Alphabetical Listing of Schools
Appendix A

District Number	School Name	School Number	City
2759	Eagle Valley Sec.	20	Eagle Bend
2580	East Central Sr.	30	Sandstone
595	East Grand Forks Sr.	320	E. Grand Forks
709	East Sr.	220	Duluth
196	Eastview Sr. **	88	Apple Valley
272	Eden Prairie Sr.	64	Eden Prairie
463	Eden Valley-Watkins	20	Eden Valley
581	Edgerton Sec.	10	Edgerton
273	Edina Sr.	21	Edina
1	Edison Sr.	352	Minneapolis
806	Elgin Sec. *	20	Elgin
728	Elk River Sr.	500	Elk River
514	Ellsworth Sec.	20	Ellsworth
696	Ely Memorial	3	Ely
208	Evansville Sec.	2	Evansville
2154	Eveleth-Gilbert Sr.	40	Eveleth
454	Fairmont Sr.	60	Fairmont
361	Falls Sec.	1	Inter'l Falls
656	Faribault Sr.	80	Faribault
192	Farmington Sr.	20	Farmington
544	Fergus Falls Sr.	390	Fergus Falls
599	Fertile-Beltrami Sec.	20	Fertile
2198	Fillmore Central Sr.	456	Harmony
600	Fisher Sec.	2	Fisher
698	Floodwood Sec.	20	Floodwood
51	Foley Sr.	20	Foley
831	Forest Lake Sr.	114	Forest Lake
601	Fosston Sec.	20	Fosston
23	Frazee Sec.	20	Frazee
16	Fridley Sr.	22	Fridley
505	Fulda Sec.	20	Fulda
2365	G.F.W. Sr.	20	Winthrop
422	Glencoe-Silver Lake Sr.	60	Glencoe
245	Glenville Sr.	1	Glenville
253	Goodhue Sec.	2	Goodhue
561	Goodridge Sec.	20	Goodridge
2536	Granada-Huntley Sec.	20	Granada
495	Grand Meadow Sec.	20	Grand Meadow
318	Grand Rapids Sr.	360	Grand Rapids
2190	Granite Falls Sr.	20	Granite Falls
2683	Greenbush-Middle River Sr.	20	Greenbush
316	Greenway Sr.	100	Coleraine
447	Grygla Sec.	3	Grygla
768	Hancock Sec.	20	Hancock
625	Harding Sr.	215	St. Paul
200	Hastings Sr.	129	Hastings
150	Hawley Sec.	20	Hawley

Alphabetical Listing of Schools
Appendix A

District Number	School Name	School Number	City
203	Hayfield Sec.	1	Hayfield
484	Healy Sec.	30	Pierz
545	Henning Sec.	20	Henning
197	Henry Sibley Sr.	53	West St. Paul
1	Henry Sr.	354	Minneapolis
264	Herman Sec.	2	Herman
700	Hermantown Sr.	20	Hermantown
701	Hibbing Sr.	350	Hibbing
625	Highland Park Sr.	220	St. Paul
2	Hill City Sec.	3	Hill City
671	Hills-Beaver Creek Sec.	20	Hills
2165	Hinckley-Finlayson Sec.	20	Hinckley
738	Holdingsford Sec.	2	Holdingsford
270	Hopkins Sr.	282	Minnetonka
294	Houston Sec.	20	Houston
2687	Howard Lake-Waverly-Winstad Sec.	2	Howard Lake
625	Humboldt Sr.	225	St. Paul
423	Hutchinson Sr.	30	Hutchinson
363	Indus Sec.	60	Birchdale
621	Irondale Sr.	65	New Brighton
473	Isle Sec.	20	Isle
324	Jackson County Central Sr.	113	Jackson
2835	Janesville-Waldorf-Pemberton Sr.	20	Janesville
206	Jefferson Sr.	320	Alexandria
271	Jefferson Sr.	9	Bloomington
535	John Marshall Sr.	310	Rochester
625	Johnson Sr.	230	St. Paul
717	Jordan Sr.	127	Jordan
204	Kasson-Mantorville Sr.	30	Kasson
381	Kelley Sec.	90	Silver Bay
36	Kelliher Sec.	20	Kelliher
271	Kennedy Sr.	7	Bloomington
2172	Kenyon-Wanamingo Sr.	20	Kenyon
775	Kerkhoven Sec.	50	Kerkhoven
739	Kimball Sec.	20	Kimball
2137	Kingsland Sr.	25	Spring Valley
2171	Kittson Central Sr.	30	Hallock
6011	Lac Qui Parle Valley Sec.	10	Madison
300	LaCrescent Sec.	20	LaCrescent
630	Lafayette Sec.	20	Red Lake Falls
404	Lake Benton Sec.	20	Lake Benton
2071	Lake Crystal-Wellcome Memorial Sr.	30	Lake Crystal
390	Lake of the Woods Sec.	222	Baudette
24	Lake Park-Audubon Sec.	20	Lake Park
325	Lakefield Sr.	20	Lakefield
2167	Lakeview Sr.	20	Cottonwood

BEST COPY AVAILABLE

Alphabetical Listing of Schools
Appendix A

District Number	School Name	School Number	City
194	Lakeville Sr.	25	Lakeville
356	Lancaster Sec.	20	Lancaster
229	Lanesboro Sec.	20	Lanesboro
306	Laporte Sec.	20	Laporte
392	LeCenter Sec.	20	LeCenter
499	Leroy Sec.	30	Leroy
424	Lester Prairie Sec.	20	Lester Prairie
2397	LeSueur-Henderson Sec.	20	LeSueur
857	Lewiston Sec.	30	Lewiston
99	Lincoln Sec.	1	Esko
403	Lincoln Sec.	20	Ivanhoe
813	Lincoln Sec.	40	Lake City
564	Lincoln Sr.	70	Thief River Falls
465	Litchfield Sr.	40	Litchfield
482	Little Falls Sr.	300	Little Falls
362	Littlefork-Big Falls Sec.	30	Littlefork
2753	Long Prairie-Grey Eagle Sec.	20	Long Prairie
2184	Luverne Sr.	4	Luverne
497	Lyle Sec.	20	Lyle
2180	M.A.C.C.R.A.Y. Sr.	20	Clara City
238	Mabel-Canton Sec.	2	Mabel
837	Madelia Sec.	20	Madelia
432	Mahnomen Sec.	20	Mahnomen
832	Mahtomedi Sr.	40	Mahtomedi
77	Mankato East Sr.	160	Mankato
77	Mankato West Sr.	130	Mankato
279	Maple Grove Sr. **	90	Maple Grove
881	Maple Lake Sec.	20	Maple Lake
2135	Maple River Sr.	20	Mapleton
413	Marshall Sr.	1	Marshall
2448	Martin Co. West Sr.	20	Sherburn
535	Mayo Sr.	315	Rochester
4	McGregor Sec.	40	McGregor
421	McLeod West Sr.	300	Brownton
763	Medford Sec.	20	Medford
740	Melrose Sec.	30	Melrose
821	Menahga Sec.	30	Menahga
2711	Mesabi East Sec. *	40	Aurora
912	Milaca Sr.	30	Milaca
414	Minneota Sec.	2	Minneota
276	Minnetonka Sr.	74	Minnetonka
2149	Minnewaska Sec.	50	Glenwood
129	Montevideo Sr.	40	Montevideo
394	Montgomery-Lonsdale Sec.	20	Montgomery
882	Monticello Sr.	20	Monticello
152	Moorhead Sr.	382	Moorhead
97	Moose Lake Sec	10	Moose Lake

Alphabetical Listing of Schools
Appendix A

District Number	School Name	School Number	City
332	Mora Sec.	40	Mora
769	Morris Area Sec.	10	Morris
277	Mound-Westonka Sr.	62	Mound
621	Mounds View Sr.	64	Arden Hills
712	Mountain Iron-Buhl Sec.	3	Mountain Iron
173	Mountain Lake Sec.	20	Mountain Lake
2169	Murray County Central Sec.	20	Slayton
2168	N.R.H.E.G. Sr.	3	New Richland
319	Nashwauk Sec.	50	Nashwauk
308	Nevis Sec.	20	Nevis
345	New London-Spicer Sr.	30	New London
721	New Prague Sr.	29	New Prague
88	New Ulm Sr.	50	New Ulm
553	New York Mills Sec.	20	New York Mills
507	Nicollet Sec.	20	Nicollet
2527	Norman County West Sec.	20	Haistad
138	North Branch Sr.	30	North Branch
1	North Sr.	358	Minneapolis
622	North Sr.	57	North St. Paul
659	Northfield Sr.	1	Northfield
118	Northland Sec.	20	Remer
363	Northome Sec.	70	Northome
333	Ogilvie Sec.	20	Ogilvie
627	Oklee Sec.	20	Oklee
480	Onamia Sec.	20	Onamia
278	Orono Sr.	30	Long Lake
2142	Orr Sec.	210	Orr
62	Ortonville Sec.	20	Ortonville
213	Osakis Sec.	20	Osakis
279	Osseo Sr.	32	Osseo
761	Owatonna Sr.	30	Owatonna
279	Park Center Sr.	88	Brooklyn Park
309	Park Rapids Sr.	60	Park Rapids
833	Park Sr.	24	Cottage Grove
547	Parkers Prairie Sec.	20	Parkers Prairie
741	Paynesville Sr.	20	Paynesville
548	Pelican Rapids Sec.	20	Pelican Rapids
186	Pequot Lakes Sec.	20	Pequot Lakes
549	Perham Sr.	30	Perham
628	Pershing Sec.	20	Plummer
116	Pillager Sec.	20	Pillager
578	Pine City Sec. *	20	Pine City
255	Pine Island Sec.	20	Pine Island
2174	Pine River Sec. *	20	Pine River
2689	Pipestone Sr.	8	Pipestone
810	Plainview Sec.	20	Plainview
477	Princeton Sr.	30	Princeton

Alphabetical Listing of Schools
Appendix A

District Number	School Name	School Number	City
719	Prior Lake Sr.	30	Prior Lake
704	Proctor Sr.	1	Proctor
409	R.T.R. Sr.	20	Tyler
195	Randolph Sec.	20	Randolph
38	Red Lake Sr.	30	Red Lake
633	Red Rock Central Sec.	20	Lamberton
256	Red Wing Sr.	108	Red Wing
2758	Redwood Valley Sr.	1	Redwood Falls
280	Richfield Sr.	35	Richfield
281	Robbinsdale Armstrong Sr.	53	Plymouth
281	Robbinsdale Cooper Sr.	50	New Hope
883	Rockford Sec.	1	Rockford
750	Rocori Sr.	50	Cold Spring
1	Roosevelt Sr.	360	Minneapolis
682	Roseau Sec.	20	Roseau
196	Rosemount Sr.	38	Rosemount
623	Roseville Area Sr.	69	Roseville
850	Rothsay Sec.	20	Rothsay
485	Royalton Sec.	20	Royalton
139	Rush City Sec.	20	Rush City
239	Rushford-Peterson Sr.	2	Rushford
748	Sartell Sr.	20	Sartell
743	Sauk Centre Sec.	30	Sauk Centre
47	Sauk Rapids-Rice Sr. High	1	Sauk Rapids
1000	School for the Arts +*	10	Golden Valley
820	Sebeka Sec.	2	Sebeka
720	Shakopee Sr.	83	Shakopee
2310	Sibley East-Arlington Sr.	3	Arlington
199	Simley Sr.	26	Inver Grove Hts
516	Sioux Valley-Round Lake-Brewster	20	Round Lake
84	Sleepy Eye Sec.	20	Sleepy Eye
1	South Sr.	362	Minneapolis
6	South St. Paul Sec.	120	South St. Paul
500	Southland Sr.	40	Adams
1	Southwest Sr.	364	Minneapolis
330	Southwest Star Concept Sec.	30	Okabena
297	Spring Grove Sec.	20	Spring Grove
16	Spring Lake Park Sr.	45	Spring Lake Park
85	Springfield Sec.	1	Springfield
282	St. Anthony Village Sr.	20	St. Anthony
858	St. Charles Sec.	3	St. Charles
75	St. Clair Sec.	20	St. Clair
15	St. Francis Sr.	122	St. Francis
840	St. James Sec.	111	St. James
283	St. Louis Park Sr.	40	St. Louis Park
885	St. Michael-Albertville Sr.	20	Albertville
508	St. Peter Sr.	40	St. Peter

BEST COPY AVAILABLE

Alphabetical Listing of Schools
Appendix A

District Number	School Name	School Number	City
2170	Staples-Motley Sr.	40	Staples
443	Stephen Sec.	20	Stephen
534	Stewartville Sec.	30	Stewartville
834	Stillwater Sr.	47	Stillwater
486	Swanville Sec.	20	Swanville
622	Tartan Sr. (see North Sr.)	58	Oakdale
742	Technical Sr.	59	St. Cloud
2142	Tower-Soudan Sec.	30	Tower
417	Tracy Sec.	1	Tracy
2358	Tri-County Sec.	20	Karistad
2125	Triton	20	Dodge Center
458	Truman Sec. *	20	Truman
2215	Twin Valley Sec.	2	Twin Valley
381	Two Harbors Sec.	200	Two Harbors
914	Ulen-Hitterdal Sec.	2	Ulen
550	Underwood Sec.	20	Underwood
2134	United South Central Sr.	20	Wells
487	Upsala Sec.	20	Upsala
818	Verndale Sec.	20	Verndale
706	Virginia Sec.	90	Virginia
811	Wabasha-Kellogg Sec.	40	Wabasha
640	Wabasso Sec.	20	Wabasso
110	Waconia Sr.	96	Waconia
2155	Wadena-Deer Creek Sec.	1	Wadena
113	Walker-Hackensack-Akeley Sec.	20	Walker
2176	Warren-Alvarado-Oslo Sec.	20	Warren
690	Warroad Sr.	30	Warroad
829	Waseca Sr.	50	Waseca
1	Washburn Sr.	368	Minneapolis
111	Watertown Sr.	842	Watertown
2143	Waterville-Elysian-Morristown Sr.	40	Waterville
435	Waubun Sec.	30	Waubun
284	Wayzata Sr.	50	Plymouth
2342	West Central Area Sec.	3	Barrett
175	Westbrook-Walnut Grove Sr.	200	Westbrook
803	Wheaton Sec.	2	Wheaton
624	White Bear North Campus Sr.	55	White Bear Lk.
624	White Bear South Campus Sr.	95	White Bear Lk.
347	Willmar Sr.	300	Willmar
577	Willow River Sec. *	40	Willow River
2609	Win-E-Mac Sec.	20	McIntosh
177	Windom Sec.	50	Windom
861	Winona Sr.	7	Winona
833	Woodbury Sr.	29	Woodbury
518	Worthington Sr.	5	Worthington
100	Wrenshall Sec.	2	Wrenshall
2805	Zumbrota-Mazeppa Sr.	2	Zumbrota

BEST COPY AVAILABLE

Raw Participation Data 1995-1996

Appendix B

District Number	School Name	Total Enrollment [^]		Total Sports Activities		Total Teams (Opportunity)		Total Participants	
		Boys	Girls	Boys	Girls	Boys	Girls	Boys	Girls
1	Aitkin Sec.	351	321	6	5	19	18	378	305
1	Edison Sr.	740	817	11	11	19	19	234	201
1	Henry Sr.	519	474	10	8	18	13	198	159
1	North Sr.	512	529	10	11	18	20	198	163
1	Roosevelt Sr.	755	710	11	10	20	18	211	140
1	South Sr.	897	1083	12	12	22	21	416	400
1	Southwest Sr.	690	714	12	12	22	21	303	332
1	Washburn Sr.	682	515	12	12	22	21	362	322
2	Hill City Sec.	99	82	3	3	3	3	81	50
4	McGregor Sec.	157	132	4	3	7	5	96	51
6	South St. Paul Sec.	812	807	11	11	43	41	653	534
11	Anoka Sr.	1447	1395	13	12	29	25	811	486
11	Blaine Sr.	1420	1366	13	13	39	36	697	478
11	Champlin Park Sr.	1265	1185	13	12	40	35	652	476
11	Coon Rapids Sr.	1308	1279	13	13	33	31	695	562
12	Centennial Sr.	523	508	11	12	21	21	496	397
13	Columbia Heights Sr.	434	416	12	11	25	24	325	248
15	St. Francis Sr.	744	693	9	9	25	24	465	320
16	Fridley Sr.	417	410	13	9	26	22	384	272
16	Spring Lake Park Sr.	579	632	11	12	23	21	431	394
22	Community Sr.	323	295	10	9	17	14	211	140
23	Frazer Sec.	315	328	7	7	24	21	344	299
24	Lake Park-Audubon Sec.	204	183	6	5	18	15	245	118
31	Bemidji Sr.	864	823	12	11	23	20	610	395
32	Blackduck Sec.	253	207	5	5	15	14	192	147
36	Kelliher Sec.	72	82						
38	Red Lake Sr.	128	116	4	3	5	5	80	47
47	Sauk Rapids-Rice Sr. High	486	487	9	9	17	16	349	299
51	Foley Sr.	302	322	8	6	31	24	476	357
55	Clinton-Graceville Sec.	147	141	6	6	13	13	128	91
62	Ortonville Sec.	248	201	7	7	18	17	295	203
75	St. Clair Sec.	145	133	5	5	10	10	98	61
77	Mankato East Sr.	514	494	10	9	25	23	398	235
77	Mankato West Sr.	585	583	11	10	26	25	433	350
81	Comfrey Sec.	65	75	4	4	7	7	46	53
84	Sleepy Eye Sec.	194	150	6	5	20	17	198	138
85	Springfield Sec.	201	197	6	6	19	20	294	234
88	New Ulm Sr.	348	322	9	8	16	15	268	158
91	Barnum Sec.	177	204	5	5	13	17	155	164
93	Carlton Sec.	202	182	9	8	20	20	198	192
94	Cloquet Sr.	381	367	7	6	14	12	248	160
95	Cromwell-Wright Sec.	86	74	5	4	12	12	152	115
97	Moose Lake Sec	198	195	7	6	17	17	207	204
99	Lincoln Sec.	242	235	9	9	19	19	287	205
100	Wrenshall Sec.	118	81	6	7	10	12	137	63
108	Central Sr.	195	174	6	5	12	11	188	131

KEY

- * Non-compliance with DCFL reporting rule
- ** New school
- + No sports
- Blank Data missing

^

Student enrollment from the MINCRIS database 1995-1996 report printed 10-9-97

Raw Participation Data 1995-1996

Appendix B

District Number	School Name	Total Enrollment [^]		Total Sports Activities		Total Teams (Opportunity)		Total Participants	
		Boys	Girls	Boys	Girls	Boys	Girls	Boys	Girls
110	Waconia Sr.	276	215	7	8	16	15	227	147
111	Watertown Sr.	228	209	8	7	17	14	234	177
112	Chaska Sr.	700	744	11	5	28	17	578	394
113	Walker-Hackensack-Akeley Sec.	153	132	8	7	22	17	284	156
115	Cass Lake Sec.	167	189	6	5	16	13	179	134
116	Pillager Sec.	140	142	4	4	6	6	81	80
118	Northland Sec.	131	161	4	5	9	10	125	129
129	Montevideo Sr.	261	278	9	8	17	14	294	206
138	North Branch Sr.	354	319	9	9	17	19	302	243
139	Rush City Sec.	210	187	7	7	19	20	240	198
146	Barnesville Sec.	212	194	6	5	18	17	248	194
150	Hawley Sec.	215	205	5	5	17	16	238	205
152	Moorhead Sr.	855	860	11	11	24	22	590	400
162	Bagley Sec.	282	290	8	5	21	15	334	175
166	Cook County Sec.	176	160	5	5	13	28	172	322
173	Mountain Lake Sec.	165	125	6	5	30	17	272	136
175	Westbrook-Walnut Grove Sr.	88	87	6	5	14	12	138	88
177	Windom Sec.	299	291	7	7	25	25	376	270
181	Brainerd Sr.	730	696	12	12	20	18	491	403
182	Crosby-Ironton Sr.	399	361	8	7	23	21	328	248
186	Pequot Lakes Sec.	288	286	8	7	20	18	295	324
191	Burnsville Sr.	1053	1034	12	12	28	27	551	379
192	Farmington Sr.	420	419	9	9	24	22	357	269
194	Lakeville Sr.	610	558	12	12	31	29	407	257
195	Randolph Sec.	110	88	5	3	11	9	159	131
196	Apple Valley Sr.	1148	1050	11	13	33	36	716	550
196	Eagan Sr.	1031	990	11	13	30	29	637	563
196	Eastview Sr. **								
196	Rosemount Sr.	1726	1690	11	13	33	34	656	526
197	Henry Sibley Sr.	743	676	12	11	32	26	531	329
199	Simley Sr.	528	515	12	13	24	26	383	396
200	Hastings Sr.	870	835	13	13	36	34	668	465
203	Hayfield Sec.	260	265	6	5	22	20	332	291
204	Kasson-Mantorville Sr.	220	244	8	7	15	14	227	170
206	Jefferson Sr.	536	537	10	11	19	19	349	264
207	Brandon Sec.	86	125	6	5	13	15	93	163
208	Evansville Sec.	82	74	5	4	16	17	82	94
213	Osakis Sec.	185	166	6	5	19	15	248	159
227	Chosen Valley Sec.	246	191	6	4	6	14	353	236
229	Lanesboro Sec.	115	105	7	6	16	15	170	128
238	Mabel-Canton Sec.	95	91	4	4	10	10	158	134
239	Rushford-Peterson Sr.	112	134	7	6	11	10	124	101
241	Central Sr.	428	459	11	10	29	26	476	318
242	Alden-Conger Sec.	111	103	5	3	9	8	117	86
245	Glenville Sr.	105	87						
252	Cannon Falls Sec.	381	363						
253	Goodhue Sec.	143	135	4	3	17	15	262	227

BEST COPY AVAILABLE

Raw Participation Data 1995-1996

Appendix B

District Number	School Name	Total Enrollment^		Total Sports Activities		Total Teams (Opportunity)		Total Participants	
		Boys	Girls	Boys	Girls	Boys	Girls	Boys	Girls
255	Pine Island Sec.	266	271	7	7	14	13	234	168
256	Red Wing Sr.	557	560	9	9	20	20	494	381
261	Ashby Sec.	85	84	5	3	8	5	82	53
264	Herman Sec.	70	48	3	1	3	1	50	27
270	Hopkins Sr.	837	811	13	15	32	32	642	668
271	Jefferson Sr.	910	881	13	13	35	36	638	499
271	Kennedy Sr.	846	839	13	14	36	35	509	433
272	Eden Prairie Sr.	1202	1118	13	14	38	36	776	676
273	Edina Sr.	645	647	16	17	39	34	517	503
276	Minnetonka Sr.	979	946	13	13	33	33	621	583
277	Mound-Westonka Sr.	469	443	10	10	23	23	371	308
278	Orono Sr.	367	400	11	11	25	25	381	310
279	Maple Grove Sr. **								
279	Osseo Sr.	1241	1254	11	13	23	26	557	504
279	Park Center Sr.	866	881	11	10	22	20	431	318
280	Richfield Sr.	662	595	13	14	32	31	434	363
281	Robbinsdale Armstrong Sr.	1031	1021						
281	Robbinsdale Cooper Sr.	804	790	13	13	33	27	485	342
282	St. Anthony Village Sr.	169	184	11	11	21	21	151	176
283	St. Louis Park Sr.	651	563	11	13	28	29	414	380
284	Wayzata Sr.	832	790	13	14	28	29	605	564
286	Brooklyn Center Sec.	411	413	8	7	24	22	454	250
294	Houston Sec.	128	131	6	5	10	9	115	100
297	Spring Grove Sec.	114	130	3	3	8	12	127	151
299	Caledonia Sec.	279	270	6	5	20	15	304	201
300	LaCrescent Sec.	425	334	10	8	29	24	534	289
306	Laporte Sec.	86	102	6	5	21	15	325	202
308	Nevis Sec.	120	113	5	5	10	10	109	111
309	Park Rapids Sr.	307	302	10	8	18	15	275	190
314	Braham Area Sec.	389	327	6	5			330	272
316	Greenway Sr.	275	231		6		13		159
317	Deer River Sec.	313	260	8	7	21	20	335	223
318	Bigfork Sec.	106	117	3	3	7	7	88	78
318	Grand Rapids Sr.	598	505	12	11	17	11	317	166
319	Nashwauk Sec.	152	187	5	6	12	15	149	165
324	Jackson County Central Sr.	185	155	7	7	17	14	257	125
325	Lakefield Sr.	132	141	5	7	16	23	174	276
330	Southwest Star Concept Sec.	64	71						
332	Mora Sec.	489	446	10	8	30	26	585	468
333	Ogilvie Sec.	190	211	5	5	18	19	257	254
345	New London-Spicer Sr.	303	281	8	8	17	17	261	183
347	Willmar Sr.	662	683	10	9	25	20	439	301
356	Lancaster Sec.	57	47	4	2	10	6	75	62
361	Falls Sec.	472	399	8	7	23	19	405	248
362	Littlefork-Big Falls Sec.	97	75	3	3	7	8	109	109
363	Indus Sec.	46	67	2	4	2	7	24	67
363	Northome Sec.	73	58	5	4	9	8	68	50

Raw Participation Data 1995-1996

Appendix B

District Number	School Name	Total Enrollment [^]		Total Sports Activities		Total Teams (Opportunity)		Total Participants	
		Boys	Girls	Boys	Girls	Boys	Girls	Boys	Girls
378	Dawson-Boyd Sec.	181	178	7	6	11	11	260	143
381	Kelley Sec.	150	128	5	3	10	6	121	75
381	Two Harbors Sec.	378	347	6	5	12	11	190	132
390	Lake of the Woods Sec.	199	195	8	6	17	16	202	200
391	Cleveland Sec.	114	136	6	6	20	22	139	144
392	LeCenter Sec.	189	209	7	6	17	21	261	230
394	Montgomery-Londsdale Sec.	278	302	7	6	24	19	355	266
403	Lincoln Sec.	135	134	5	5	14	15	190	169
404	Lake Benton Sec.	79	76	3	3	8	8	113	87
409	R.T.R. Sr.	129	136	4	4	7	8	132	89
411	Balaton Sec.	74	81	5	5	10	9	52	56
413	Marshall Sr.	446	406	8	8	23	23	314	262
414	Minneota Sec.	169	165	5	4	15	16	213	168
417	Tracy Sec.	243	239	6	5	21	15	325	202
421	McLeod West Sr.	75	67	6	5	9	8	90	72
422	Glencoe-Silver Lake Sr.	292	342	7	8	17	19	285	250
423	Hutchinson Sr.	487	463	10	8	20	16	449	330
424	Lester Prairie Sec.	157	144	7	6	19	17	235	155
432	Mahnomen Sec.	209	216	6	5	18	17	250	201
435	Waubun Sec.	161	158	5	4	15	12	164	115
437	Argyle Sec (see Stephen)	72	52	4	4	10	10	113	68
441	Central Sec.	117	105	5	4	12	11	142	134
443	Stephen Sec.	79	57	4	4	11	10	153	97
447	Grygla Sec.	72	58	2	2	2	2	64	45
454	Fairmont Sr.	499	443	9	9	21	22	363	290
458	Truman Sec. *	147	133	6		16		180	
463	Eden Valley-Watkins	233	225	7	7	46	42	460	358
465	Litchfield Sr.	324	362	10	9	21	18	300	265
466	Dassel-Cokato Sr.	335	312	9	8	15	13	322	179
473	Isle Sec.	136	137	6	5	21	16	191	163
477	Princeton Sr.	491	477	10	9	22	20	363	229
480	Onamia Sec.	180	168	6	5	21	16	181	164
482	Little Falls Sr.	643	591	10	10	20	21	378	304
484	Healy Sec.	307	269	7	7	15	12	148	131
485	Royalton Sec.	219	187	5	4	20	17	255	172
486	Swanville Sec.	90	85	6	5	10	8	95	91
487	Upsala Sec.	91	86	4	5	10	13	120	131
492	Austin Sr.	691	629	10	9	21	19	561	307
495	Grand Meadow Sec.	98	102	5	4	13	14	123	109
497	Lyle Sec.	85	65	3	3	6	6	63	55
499	Leroy Sec.	127	94	6	4	14	9	150	127
500	Southland Sr.	127	104	6	5	14	9	156	115
505	Fulda Sec.	156	167	4	4	14	14	216	188
507	Nicollet Sec.	132	129	6	4	18	16	194	127
508	St. Peter Sr.	327	312	9	8	31	24	516	392
511	Adrian Sec.	158	144	6	5	20	16	241	181
514	Ellsworth Sec.	37	55	4	3	7	5	74	101

BEST COPY AVAILABLE

Raw Participation Data 1995-1996

Appendix B

District Number	School Name	Total Enrollment^		Total Sports Activities		Total Teams (Opportunity)		Total Participants	
		Boys	Girls	Boys	Girls	Boys	Girls	Boys	Girls
516	Sioux Valley-Round Lake-Brewster	112	120	4	4	10	13	177	193
518	Worthington Sr.	332	288	8	8	16	16	235	140
521	ADA-Borup Sec.	154	150	5	4	14	13	191	179
531	Byron Sec.	324	314	6	6	24	24	372	302
533	Dover-Eyota Sec.	203	209	7	6	17	14	312	237
534	Stewartville Sec.	412	385	7	8	24	25	422	285
535	Century Sr. **								
535	John Marshall Sr.	976	977	11	12	26	26	484	391
535	Mayo Sr.	1110	1038	12	12	28	26	548	436
542	Battle Lake Sec.	122	116	6	5	19	18	152	125
544	Fergus Falls Sr.	541	545	10	10	18	18	400	367
545	Henning Sec.	118	112	6	6	13	17	127	125
547	Parkers Prairie Sec.	170	175	5	5	12	12	218	221
548	Pelican Rapids Sec.	324	318	6	6	20	18	350	278
549	Perham Sr.	260	270	8	7	17	15	214	216
550	Underwood Sec.	114	98	6	5	13	10	160	133
553	New York Mills Sec.	197	174	6	4	21	16	268	183
561	Goodridge Sec.	52	71	2	2	6	6	56	47
564	Lincoln Sr.	370	359	10	8	20	18	341	232
577	Willow River Sec. *	132	124						
578	Pine City Sec. *	428	401						
581	Edgerton Sec.	77	72	4	3	10	10	105	103
592	Climax Sec.	60	64	2	2	6	9	56	61
593	Central Sr.	516	484	10	8	31	26	499	378
595	East Grand Forks Sr.	348	304	8	6	19	15	249	174
599	Fertile-Beltrami Sec.	193	184	6	5	18	15	276	207
600	Fisher Sec.	65	55	3	3	10	12	70	57
601	Fosston Sec.	181	193	5	5	11	11	121	123
621	Irondale Sr.	810	837	12	11	26	26	579	499
621	Mounds View Sr.	961	912	13	13	37	35	732	588
622	North Sr.	618	588	12	12	26	24	425	379
622	Tartan Sr. (see North Sr.)	876	891	12	11	26	22	527	472
623	Roseville Area Sr.	714	772	13	13	47	46	1134	1057
624	White Bear North Campus Sr.	785	710						
624	White Bear South Campus Sr.	626	580	12	13	35	34	673	516
625	Arlington Sr. **								
625	Central Sr.	1079	857	12	13	19	20	454	457
625	Como Park Sr.	811	614	9	12	16	20	293	257
625	Harding Sr.	929	943	12	13	19	21	384	343
625	Highland Park Sr.	620	575	11	12	18	20	233	180
625	Humboldt Sr.	476	411	10	11	17	18	217	149
625	Johnson Sr.	823	756	8	9	15	17	286	164
627	Oklee Sec.	87	75	5	4	16	13	122	90
628	Pershing Sec.	62	52	5	4	15	13	69	77
630	Lafayette Sec.	140	157	6	5	15	23	181	178
633	Red Rock Central Sec.	119	130	5	5	12	10	114	86

BEST COPY AVAILABLE

Raw Participation Data 1995-1996

Appendix B

District Number	School Name	Total Enrollment [^]		Total Sports Activities		Total Teams (Opportunity)		Total Participants	
		Boys	Girls	Boys	Girls	Boys	Girls	Boys	Girls
640	Wabasso Sec.	137	137	5	4	9	7	135	102
654	B.D.R.S.H. Sr.	189	161	6	4	11	9	221	117
656	Faribault Sr.	435	469	10	9	19	19	288	242
659	Northfield Sr.	531	576	13	12	36	34	554	464
671	Hills-Beaver Creek Sec.	96	101	7	6	10	9	121	68
676	Badger Sec. *	68	47						
682	Roseau Sec.	357	314	8	7	20	15	432	228
690	Warroad Sr.	206	202	7	6	15	13	213	113
695	Chisholm Sr.	156	174	10	9	20	15	263	237
696	Ely Memorial	249	220	7	7	14	13	197	119
698	Floodwood Sec.	73	69	3	3	6	6	76	60
700	Hermantown Sr.	321	281	8	7	15	9	300	206
701	Hibbing Sr.	624	565	11	11	22	12	394	283
704	Proctor Sr.	368	334	9	8	16	14	281	203
706	Virginia Sec.	617	566	7	6	21	18	330	262
709	Central Sec.	795	747	11	11	19	19	309	286
709	Denfeld Sr.	628	619	11	11	19	16	356	252
709	East Sr.	810	860	12	11		18	372	288
712	Mountain Iron-Buhl Sec.	163	172	7	8	17	20	165	128
716	Belle Plaine Sr.	195	179	6	5	10	11	136	115
717	Jordan Sr.	139	136	5	4	11	11	178	143
719	Prior Lake Sr.	589	526	11	11	27	25	444	384
720	Shakopee Sr.	292	354	8	10	22	22	374	372
721	New Prague Sr.	347	361	8	9	19	20	217	188
726	Becker Sr.	232	209	8	9	27	28	476	365
727	Big Lake Sr.	223	230	6	7	13	18	202	155
728	Elk River Sr.	800	783	12	12	26	27	483	404
738	Holdingsford Sec.	309	273	6	6	22	21	324	276
739	Kimball Sec.	256	246	6	6	20	21	332	244
740	Melrose Sec.	459	412	8	8	25	27	462	375
741	Paynesville Sr.	239	219	7	7	16	15	194	130
742	Apollo Sr.	813	849	12	11	27	25	525	392
742	Technical Sr.	834	762	12	11	23	21	586	362
743	Sauk Centre Sec.	421	348	10	8	26	23	419	319
745	Albany Sr.	275	238	7	7	28	24	520	334
748	Sartell Sr.	378	326	10	9	23	21	388	258
750	Rocori Sr.	400	396	8	8	16	15	332	231
756	Blooming Prairie Sec.	262	236	7	6	22	19	334	297
761	Owatonna Sr.	683	764	10	9	18	15	431	302
763	Medford Sec.	121	155	4	3	11	9	178	190
768	Hancock Sec.	77	72	6	4	11	10	117	97
769	Morris Area Sec.	338	345	10	9	27	25	444	363
771	Chokio-Alberta Sec.	77	60	5	4	11	11	108	78
775	Kerkhoven Sec.	164	159	6	5	18	14	206	172
777	Benson Sec.	285	309	8	7	24	22	352	284
786	Bertha Sec.	154	141	5	4	17	16	202	170
787	Browerville Sec.	163	155	6	5	16	14	256	208

Raw Participation Data 1995-1996

Appendix B

District Number	School Name	Total Enrollment [^]		Total Sports Activities		Total Teams (Opportunity)		Total Participants	
		Boys	Girls	Boys	Girls	Boys	Girls	Boys	Girls
		803	Wheaton Sec.	133	125	6	5	19	16
806	Elgin Sec. *	144	138						
810	Plainview Sec.	322	247	7	6	26	22	344	270
811	Wabasha-Kellogg Sec.	267	209	6	6	22	20	314	220
813	Lincoln Sec.	336	317	8	7	28	25	438	329
818	Verndale Sec.	116	118	5	4	12	11	152	109
820	Sebeka Sec.	164	146	7	6	22	21	177	163
821	Menahga Sec.	170	187	7	6	20	19	189	175
829	Waseca Sr.	406	359	8	9	18	19	306	215
831	Forest Lake Sr.	855	792	13	14	28	29	407	304
832	Mahtomedi Sr.	406	348	11	11	18	18	322	285
833	Park Sr.	721	773	14	14	36	35	553	557
833	Woodbury Sr.	581	552	14	14	36	35	635	568
834	Stillwater Sr.	967	996	13	14	35	37	754	606
836	Butterfield Sec.	57	68	4	3	14	13	60	62
837	Madelia Sec.	192	153	7	6	16	16	207	129
840	St. James Sec.	291	337	8	8	28	27	376	307
846	Breckenridge Sr.	184	192	6	7	14	12	219	189
850	Rothsay Sec.	67	68	4	4	9	9	75	77
852	Campbell-Tintah Sec.	54	54	4	4	12	13	77	75
857	Lewiston Sec.	238	221	7	5	17	15	281	179
858	St. Charles Sec.	244	233	7	7	21	23	310	237
861	Winona Sr.	735	673	12	11	29	28	487	334
876	Annandale Sr.	308	276	8	7	17	15	233	161
877	Buffalo Sr.	689	698	11	11	30	28	559	389
879	Delano Sr.	286	262	9	8	18	13	333	197
881	Maple Lake Sec.	231	229	6	6	21	21	248	223
882	Monticello Sr.	471	509	10	10	18	18	274	267
883	Rockford Sec.	353	307	7	6	23	21	372	335
885	St. Michael-Albertville Sr.			7	7	15	15	256	169
891	Canby Sec.	250	204	7	6	19	15	358	222
911	Cambridge-Isanti	704	665	11	10	22	20	458	340
912	Milaca Sr.	272	247	7	7	24	22	432	376
914	Ulen-Hitterdal Sec.	79	99	3	4	12	14	91	119
1000	School for the Arts +*								
2071	Lake Crystal-Wellcome Memorial Sr.	227	190	7	4	15	7	178	92
2125	Triton	188	167	6	5	13	10	204	119
2134	United South Central Sr.	202	212	8	7	18	16	241	223
2135	Maple River Sr.	197	209	7	6	16	15	186	144
2137	Kingsland Sr.	173	154	7	6	21	18	308	254
2142	Albrook Sec.	155	107	4	4	5	6	119	94
2142	Babbitt Sec.	132	133	6	7	7	10	73	117
2142	Cherry Sec.	140	140	4	4	4	4	86	73
2142	Cook Sec.	170	168	6	4	11	8	158	97
2142	Cotton Sec.	89	69	4	3	6	5	92	70
2142	Orr Sec.	85	67	3	3	6	6	88	63
2142	Tower-Soudan Sec.	75	83	4	3	6	6	53	57

BEST COPY AVAILABLE

Raw Participation Data 1995-1996

Appendix B

District Number	School Name	Total Enrollment [^]		Total Sports Activities		Total Teams (Opportunity)		Total Participants	
		Boys	Girls	Boys	Girls	Boys	Girls	Boys	Girls
2143	Waterville-Elysian-Morristown Sr.	194	167	6	6	14	12	221	130
2144	Chisago Lakes Sr.	478	437	11	10	21	17	342	256
2149	Minnewaska Sec.	466	450	7	7	29	30	516	437
2154	Eveleth-Gilbert Sr.	160	197	9	8	13	14	146	99
2155	Wadena-Deer Creek Sec.	366	332	9	8	24	23	378	288
2159	Buffalo Lake-Hector Sec.	165	156	7	6	12	11	127	107
2164	Dilworth-Glyndon-Felton Sr.	188	168	6	5	12	11	153	99
2165	Hinckley-Finlayson Sec.	263	308	7	5	22	18	255	238
2167	Lakeview Sr.	132	141	4	3	7	7	97	66
2168	N.R.H.E.G. Sr.	208	166	7	6	13	10	216	130
2169	Murray County Central Sec.	239	217	6	6	22	21	276	265
2170	Staples-Motley Sr.	298	296	9	9	22	19	222	184
2171	Kittson Central Sr.	94	64	6	5	12	10	104	80
2172	Kenyon-Wanamingo Sr.	150	154	7	5	13	9	154	100
2174	Pine River Sec. *	295	308						
2176	Warren-Alvarado-Oslo Sec.	200	187	6	5	16	17	203	217
2180	M.A.C.C.R.A.Y. Sr.	132	101	8	7	13	12	173	133
2184	Luverne Sr.	472	465	8	8	16	15	212	150
2190	Granite Falls Sr.	224	225	8	7	15	12	285	165
2198	Fillmore Central Sr.	151	138	7	5	13	8	128	78
2215	Twin Valley Sec.	119	108	5	4	14	12	146	111
2310	Sibley East-Arlington Sr.	155	167	7	6	12	8	160	101
2311	Clearbrook Sr.	95	105	3	3	6	6	82	64
2342	West Central Area Sec.	275	260	6	6	22	24	265	267
2358	Tri-County Sec.	113	105	6	6	15	13	134	92
2364	Belgrade-Brooten-Elrosa Sec.	228	241	6	6	20	20	291	271
2365	G.F.W. Sr.	165	213	5	4	10	8	190	117
2396	A.C.G.C. Sec.	115	127	7	6	12	10	134	83
2397	LeSueur-Henderson Sec.	361	304	8	6	26	21	403	320
2448	Martin Co. West Sr.	167	167	12	8	32	15	349	152
2527	Norman County West Sec.	118	111	4	4	7	8	61	64
2534	Bold Sr. *	211	186						
2536	Granada-Huntley Sec.	108	120	4	4	11	10	158	148
2580	East Central Sr.	180	133	5	5	7	10	139	135
2609	Win-E-Mac Sec.	122	130	5	5	15	15	167	129
2683	Greenbush-Middle River Sr.	123	82	6	6	9	8	123	69
2687	Howard Lake-Waverly-Winstad Sec.	191	219	7	7	21	23	250	257
2689	Pipestone Sr.	207	191	8	7	12	9	156	91
2711	Mesabi East Sec. *	396	342						
2753	Long Prairie-Grey Eagle Sec.	357	361	9	8	26	24	372	329
2754	Cedar Mountain Sec.	124	130	6	5	17	15	180	101
2758	Redwood Valley Sr.	217	224	8	7	14	12	229	132
2759	Eagle Valley Sec.	149	158	6	5	13	12	201	204
2805	Zumbrota-Mazeppa Sr.	224	186	7	6	15	11	241	129
2835	Janesville-Waldorf-Pemberton Sr.	171	175	8	6	16	13	212	156

BEST COPY AVAILABLE

Raw Participation Data 1995-1996
Appendix B

District Number	School Name	Total Enrollment^		Total Sports Activities		Total Teams (Opportunity)		Total Participants	
		Boys	Girls	Boys	Girls	Boys	Girls	Boys	Girls
6011	Lac Qui Parle Valley Sec.	369	345	8	7	27	25	448	345
6059	Blue Earth Area Sr.	286	285	8	8	43	32	527	415

Participation Data Proportionality Analysis 1995-1996
Appendix C

District Number	School Name	Percentage Of School's Students Who Are Female	Percentage Of School's Athletes Who Are Female	Percentage Of The Spots On Teams Filled By Females
1	Aitkin Sec.	25	47	46
1	Edison Sr.	52	46	49
1	Henry Sr.	48	45	51
1	North Sr.	51	45	42
1	Roosevelt Sr.	48	40	48
1	South Sr.	55	49	50
1	Southwest Sr.	51	52	49
1	Washburn Sr.	43	47	49
2	Hill City Sec.	45	38	44
4	McGregor Sec.	46	35	41
6	South St. Paul Sec.	50	45	45
11	Anoka Sr.	49	37	37
11	Blaine Sr.	49	41	46
11	Champlin Park Sr.	48	42	43
11	Coon Rapids Sr.	49	45	45
12	Centennial Sr.	49	44	46
13	Columbia Heights Sr.	49	43	46
15	St. Francis Sr.	48	41	44
16	Fridley Sr.	50	41	41
16	Spring Lake Park Sr.	52	48	49
22	Community Sr.	48	40	36
23	Frazee Sec.	51	47	48
24	Lake Park-Audubon Sec.	47	33	46
31	Bemidji Sr.	49	39	30
32	Blackduck Sec.	45	43	45
36	Kelliher Sec.	53		
38	Red Lake Sr.	48	37	38
47	Sauk Rapids-Rice Sr. High	50	46	46
51	Foley Sr.	52	43	54
55	Clinton-Graceville Sec.	49	42	43
62	Ortonville Sec.	45	41	46
75	St. Clair Sec.	49	38	43
77	Mankato East Sr.	49	37	41
77	Mankato West Sr.	50	45	47
81	Comfrey Sec.	54	54	51
84	Sleepy Eye Sec.	44	41	44
85	Springfield Sec.	49	44	48
88	New Ulm Sr.	48	37	38
91	Barnum Sec.	54	51	49
93	Carlton Sec.	47	49	47
94	Cloquet Sr.	49	39	42
95	Cromwell-Wright Sec.	46	43	43
97	Moose Lake Sec	50	50	48
99	Lincoln Sec.	49	42	45
100	Wrenshall Sec.	41	32	31
108	Central Sr.	47	41	39

KEY

- * Non-compliance with DCFL reporting rule
- ** New school
- + No sports
- Blank Data missing

Participation Data Proportionality Analysis 1995-1996
Appendix C

District Number	School Name	Percentage Of School's Students Who Are Female	Percentage Of School's Athletes Who Are Female	Percentage Of The Spots On Teams Filled By Females
110	Waconia Sr.	44	39	42
111	Watertown Sr.	48	43	48
112	Chaska Sr.	52	41	39
113	Walker-Hackensack-Akeley Sec.	46	35	33
115	Cass Lake Sec.	53	43	52
116	Pillager Sec.	50	50	44
118	Northland Sec.	55	51	54
129	Montevideo Sr.	52	41	45
138	North Branch Sr.	47	45	42
139	Rush City Sec.	47	45	47
146	Barnesville Sec.	48	44	45
150	Hawley Sec.	49	46	50
152	Moorhead Sr.	50	40	46
162	Bagley Sec.	51	34	40
166	Cook County Sec.	48	65	65
173	Mountain Lake Sec.	43	33	42
175	Westbrook-Walnut Grove Sr.	50	39	43
177	Windom Sec.	49	42	47
181	Brainerd Sr.	49	45	49
182	Crosby-Ironton Sr.	48	43	31
186	Pequot Lakes Sec.	49	52	44
191	Burnsville Sr.	50	41	41
192	Farmington Sr.	50	43	42
194	Lakeville Sr.	48	39	41
195	Randolph Sec.	44	45	48
196	Apple Valley Sr.	48	43	46
196	Eagan Sr.	49	47	47
196	Eastview Sr. **			
196	Rosemount Sr.	49	44	44
197	Henry Sibley Sr.	48	38	42
199	Simley Sr.	49	51	48
200	Hastings Sr.	49	41	49
203	Hayfield Sec.	50	47	49
204	Kasson-Mantorville Sr.	53	43	37
206	Jefferson Sr.	50	43	44
207	Brandon Sec.	59	64	59
208	Evansville Sec.	47	53	51
213	Osakis Sec.	47	39	46
227	Chosen Valley Sec.	44	40	41
229	Lanesboro Sec.	48	43	42
238	Mabel-Canton Sec.	49	46	47
239	Rushford-Peterson Sr.	54	45	45
241	Central Sr.	52	40	41
242	Alden-Conger Sec.	48	42	47
245	Glenville Sr.	45		
252	Cannon Falls Sec.	49		
253	Goodhue Sec.	49	46	46

BEST COPY AVAILABLE

Participation Data Proportionality Analysis 1995-1996
Appendix C

District Number	School Name	Percentage Of School's Students Who Are Female	Percentage Of School's Athletes Who Are Female	Percentage Of The Spots On Teams Filled By Females
255	Pine Island Sec.	50	42	38
256	Red Wing Sr.	50	44	48
261	Ashby Sec.	50	39	44
264	Herman Sec.	41	35	47
270	Hopkins Sr.	49	51	57
271	Jefferson Sr.	49	44	48
271	Kennedy Sr.	50	46	51
272	Eden Prairie Sr.	48	47	45
273	Edina Sr.	50	49	49
276	Minnetonka Sr.	49	48	50
277	Mound-Westonka Sr.	49	45	47
278	Orono Sr.	52	45	45
279	Maple Grove Sr. **			
279	Osseo Sr.	50	48	47
279	Park Center Sr.	50	42	45
280	Richfield Sr.	47	46	53
281	Robbinsdale Armstrong Sr.	50		
281	Robbinsdale Cooper Sr.	50	41	43
282	St. Anthony Village Sr.	52	54	56
283	St. Louis Park Sr.	46	48	47
284	Wayzata Sr.	49	48	48
286	Brooklyn Center Sec.	50	36	37
294	Houston Sec.	51	47	51
297	Spring Grove Sec.	53	54	50
299	Caledonia Sec.	49	40	44
300	LaCrescent Sec.	44	35	38
306	Laporte Sec.	54	38	39
308	Nevis Sec.	48	50	46
309	Park Rapids Sr.	50	41	47
314	Braham Area Sec.	46	45	55
316	Greenway Sr.	46		
317	Deer River Sec.	45	40	44
318	Bigfork Sec.	52	47	45
318	Grand Rapids Sr.	46	34	36
319	Nashwauk Sec.	55	53	50
324	Jackson County Central Sr.	46	33	34
325	Lakefield Sr.	52	61	51
330	Southwest Star Concept Sec.	53		
332	Mora Sec.	48	44	45
333	Ogilvie Sec.	53	50	
345	New London-Spicer Sr.	48	41	44
347	Willmar Sr.	51	41	43
356	Lancaster Sec.	45	45	49
361	Falls Sec.	46	38	43
362	Littlefork-Big Falls Sec.	44	50	43
363	Indus Sec.	59	74	67
363	Northome Sec.	44	42	42

BEST COPY AVAILABLE

Participation Data Proportionality Analysis 1995-1996

Appendix C

District Number	School Name	Percentage Of School's Students Who Are Female	Percentage Of School's Athletes Who Are Female	Percentage Of The Spots On Teams Filled By Females
378	Dawson-Boyd Sec.	50	35	34
381	Kelley Sec.	46	38	41
381	Two Harbors Sec.	48	41	59
390	Lake of the Woods Sec.	49	50	53
391	Cleveland Sec.	54	51	52
392	LeCenter Sec.	53	47	51
394	Montgomery-Londsdale Sec.	52	43	39
403	Lincoln Sec.	50	47	47
404	Lake Benton Sec.	49	44	44
409	R.T.R. Sr.	51	40	44
411	Balaton Sec.	52	52	52
413	Marshall Sr.	48	45	45
414	Minneota Sec.	49	44	45
417	Tracy Sec.	50	38	39
421	McLeod West Sr.	47	44	48
422	Glencoe-Silver Lake Sr.	54	47	47
423	Hutchinson Sr.	49	42	51
424	Lester Prairie Sec.	48	40	32
432	Mahnomen Sec.	51	45	46
435	Waubun Sec.	50	41	45
437	Argyle Sec (see Stephen)	42	38	59
441	Central Sec.	47	49	47
443	Stephen Sec.	42	39	39
447	Grygla Sec.	45	41	41
454	Fairmont Sr.	47	44	46
458	Truman Sec. *	48		
463	Eden Valley-Watkins	49	44	44
465	Litchfield Sr.	53	47	49
466	Dassel-Cokato Sr.	48	36	38
473	Isle Sec.	50	46	48
477	Princeton Sr.	49	39	40
480	Onamia Sec.	48	48	45
482	Little Falls Sr.	48	45	47
484	Healy Sec.	47	47	46
485	Royalton Sec.	46	40	42
486	Swanville Sec.	49	49	55
487	Upsala Sec.	49	52	53
492	Austin Sr.	48	35	41
495	Grand Meadow Sec.	51	47	50
497	Lyle Sec.	43	47	49
499	Leroy Sec.	43	46	45
500	Southland Sr.	45	42	45
505	Fulda Sec.	52	47	38
507	Nicollet Sec.	49	40	8
508	St. Peter Sr.	49	43	49
511	Adrian Sec.	24	50	38
514	Ellsworth Sec.	60	58	59

BEST COPY AVAILABLE

Participation Data Proportionality Analysis 1995-1996

Appendix C

District Number	School Name	Percentage Of School's Students Who Are Female	Percentage Of School's Athletes Who Are Female	Percentage Of The Spots On Teams Filled By Females
516	Sioux Valley-Round Lake-Brewster	52	52	51
518	Worthington Sr.	46	37	37
521	ADA-Borup Sec.	49	48	49
531	Byron Sec.	49	45	48
533	Dover-Eyota Sec.	51	43	40
534	Stewartville Sec.	48	40	36
535	Century Sr. **			
535	John Marshall Sr.	50	45	43
535	Mayo Sr.	48	44	43
542	Battle Lake Sec.	49	45	45
544	Fergus Falls Sr.	50	48	44
545	Henning Sec.	49	50	49
547	Parkers Prairie Sec.	51	50	52
548	Pelican Rapids Sec.	50	44	47
549	Perham Sr.	51	50	52
550	Underwood Sec.	46	45	44
553	New York Mills Sec.	47	41	41
561	Goodridge Sec.	58	46	48
564	Lincoln Sr.	49	40	50
577	Willow River Sec. *	48		
578	Pine City Sec. *	48		
581	Edgerton Sec.	48	50	48
592	Climax Sec.	52	52	49
593	Central Sr.	48	43	45
595	East Grand Forks Sr.	47	41	41
599	Fertile-Beltrami Sec.	49	43	48
600	Fisher Sec.	46	45	43
601	Fosston Sec.	52	50	48
621	Irondale Sr.	51	46	45
621	Mounds View Sr.	49	45	43
622	North Sr.	49	47	51
622	Tartan Sr. (see North Sr.)	50	47	47
623	Roseville Area Sr.	52	48	49
624	White Bear North Campus Sr.	47		
624	White Bear South Campus Sr.	48	43	43
625	Arlington Sr. **			
625	Central Sr.	44	50	50
625	Como Park Sr.	43	47	47
625	Harding Sr.	50	47	47
625	Highland Park Sr.	48	44	41
625	Humboldt Sr.	46	41	44
625	Johnson Sr.	48	36	37
627	Oklee Sec.	46	42	41
628	Pershing Sec.	46	53	51
630	Lafayette Sec.	53	50	50
633	Red Rock Central Sec.	52	43	43

BEST COPY AVAILABLE

Participation Data Proportionality Analysis 1995-1996

Appendix C

District Number	School Name	Percentage Of School's Students Who Are Female	Percentage Of School's Athletes Who Are Female	Percentage Of The Spots On Teams Filled By Females
640	Wabasso Sec.	50	43	43
654	B.D.R.S.H. Sr.	46	37	37
656	Faribault Sr.	52	46	49
659	Northfield Sr.	52	46	47
671	Hills-Beaver Creek Sec.	51	36	42
676	Badger Sec. *	41		
682	Roseau Sec.	47	35	37
690	Warroad Sr.	50	35	36
695	Chisholm Sr.	53	47	47
696	Ely Memorial	47	38	43
698	Floodwood Sec.	49	44	45
700	Hermantown Sr.	47	41	48
701	Hibbing Sr.	48	42	44
704	Proctor Sr.	48	42	39
706	Virginia Sec.	48	44	44
709	Central Sec.	48	48	49
709	Denfeld Sr.	50	41	45
709	East Sr.	51	44	31
712	Mountain Iron-Buhl Sec.	51	44	38
716	Belle Plaine Sr.	48	46	49
717	Jordan Sr.	49	45	52
719	Prior Lake Sr.	47	46	45
720	Shakopee Sr.	55	50	51
721	New Prague Sr.	51	46	38
726	Becker Sr.	47	43	43
727	Big Lake Sr.	51	43	46
728	Elk River Sr.	49	46	44
738	Holdingsford Sec.	47	46	49
739	Kimball Sec.	49	42	45
740	Melrose Sec.	47	45	47
741	Paynesville Sr.	48	40	42
742	Apollo Sr.	51	43	50
742	Technical Sr.	48	38	38
743	Sauk Centre Sec.	45	43	42
745	Albany Sr.	46	39	41
748	Sartell Sr.	46	40	58
750	Rocori Sr.	50	41	42
756	Blooming Prairie Sec.	47	47	49
761	Owatonna Sr.	53	41	44
763	Medford Sec.	56	52	51
768	Hancock Sec.	48	45	46
769	Morris Area Sec.	51	45	50
771	Chokio-Alberta Sec.	44	42	35
775	Kerkhoven Sec.	49	46	46
777	Benson Sec.	52	45	47
786	Bertha Sec.	48	46	44
787	Browerville Sec.	49	45	48

BEST COPY AVAILABLE

Participation Data Proportionality Analysis 1995-1996
Appendix C

District Number	School Name	Percentage Of School's Students Who Are Female	Percentage Of School's Athletes Who Are Female	Percentage Of The Spots On Teams Filled By Females
803	Wheaton Sec.	48	41	43
806	Elgin Sec. *	49		
810	Plainview Sec.	43	44	45
811	Wabasha-Kellogg Sec.	44	41	40
813	Lincoln Sec.	49	43	43
818	Verndale Sec.	50	42	42
820	Sebeka Sec.	47	48	46
821	Menahga Sec.	52	48	51
829	Waseca Sr.	47	41	44
831	Forest Lake Sr.	48	43	48
832	Mahtomedi Sr.	46	47	48
833	Park Sr.	52	50	50
833	Woodbury Sr.	48	47	42
834	Stillwater Sr.	51	45	41
836	Butterfield Sec.	54	51	56
837	Madelia Sec.	44	38	39
840	St. James Sec.	54	45	47
846	Breckenridge Sr.	51	46	47
850	Rothsay Sec.	50	51	50
852	Campbell-Tintah Sec.	50	49	50
857	Lewiston Sec.	48	39	44
858	St. Charles Sec.	49	43	44
861	Winona Sr.	48	41	45
876	Annandale Sr.	47	41	42
877	Buffalo Sr.	50	41	45
879	Delano Sr.	49	37	47
881	Maple Lake Sec.	50	47	44
882	Monticello Sr.	52	49	50
883	Rockford Sec.	47	47	47
885	St. Michael-Albertville Sr.		40	44
891	Canby Sec.	45	38	42
911	Cambridge-Isanti	49	43	43
912	Milaca Sr.	48	47	48
914	Ulen-Hitterdal Sec.	56	57	51
1000	School for the Arts +*			
2071	Lake Crystal-Wellcome Memorial Sr.	46	34	45
2125	Triton	47	37	39
2134	United South Central Sr.	51	48	41
2135	Maple River Sr.	51	44	32
2137	Kingsland Sr.	47	45	45
2142	Albrook Sec.	41	44	43
2142	Babbitt Sec.	50	62	62
2142	Cherry Sec.	50	46	37
2142	Cook Sec.	50	38	48
2142	Cotton Sec.	44	43	52
2142	Orr Sec.	44	42	44
2142	Tower-Soudan Sec.	53	52	50

BEST COPY AVAILABLE

Participation Data Proportionality Analysis 1995-1996
Appendix C

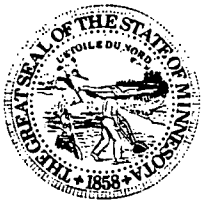
District Number	School Name	Percentage Of School's Students Who Are Female	Percentage Of School's Athletes Who Are Female	Percentage Of The Spots On Teams Filled By Females
2143	Waterville-Elysian-Morristown Sr.	46	37	43
2144	Chisago Lakes Sr.	48	43	44
2149	Minnewaska Sec.	49	46	49
2154	Eveleth-Gilbert Sr.	55	40	41
2155	Wadena-Deer Creek Sec.	48	43	47
2159	Buffalo Lake-Hector Sec.	49	46	51
2164	Dilworth-Glyndon-Felton Sr.	47	39	37
2165	Hinckley-Finlayson Sec.	54	48	47
2167	Lakeview Sr.	52	40	35
2168	N.R.H.E.G. Sr.	44	38	41
2169	Murray County Central Sec.	48	49	51
2170	Staples-Motley Sr.	50	45	45
2171	Kittson Central Sr.	41	43	41
2172	Kenyon-Wanamingo Sr.	51	39	48
2174	Pine River Sec. *	51		
2176	Warren-Alvarado-Oslo Sec.	48	52	50
2180	M.A.C.C.R.A.Y. Sr.	43	44	43
2184	Luverne Sr.	50	41	45
2190	Granite Falls Sr.	50	36	41
2198	Fillmore Central Sr.	48	38	41
2215	Twin Valley Sec.	48	43	43
2310	Sibley East-Arlington Sr.	52	39	43
2311	Clearbrook Sr.	53	44	36
2342	West Central Area Sec.	49	50	38
2358	Tri-County Sec.	48	41	46
2364	Belgrade-Brooten-Elrosa Sec.	51	48	48
2365	G.F.W. Sr.	56	38	48
2396	A.C.G.C. Sec.	53	38	44
2397	LeSueur-Henderson Sec.	46	44	43
2448	Martin Co. West Sr.	50	30	32
2527	Norman County West Sec.	48	51	48
2534	Bold Sr. *	47		
2536	Granada-Huntley Sec.	53	48	57
2580	East Central Sr.	42	49	51
2609	Win-E-Mac Sec.	52	44	48
2683	Greenbush-Middle River Sr.	40	36	38
2687	Howard Lake-Waverly-Winstad Sec.	53	51	53
2689	Pipestone Sr.	48	37	38
2711	Mesabi East Sec. *	46		
2753	Long Prairie-Grey Eagle Sec.	50	47	49
2754	Cedar Mountain Sec.	51	40	40
2758	Redwood Valley Sr.	51	37	37
2759	Eagle Valley Sec.	51	50	51
2805	Zumbrota-Mazeppa Sr.	45	35	39
2835	Janesville-Waldorf-Pemberton Sr.	51	42	43

BEST COPY AVAILABLE

Participation Data Proportionality Analysis 1995-1996

Appendix C

District Number	School Name	Percentage Of School's Students Who Are Female	Percentage Of School's Athletes Who Are Female	Percentage Of The Spots On Teams Filled By Females
6011	Lac Qui Parle Valley Sec.	48	44	44
6059	Blue Earth Area Sr.	50	44	48



STATE OF MINNESOTA

OFFICE OF THE ATTORNEY GENERAL

BUSINESS REGULATION SECTION
SUITE 1200
445 MINNESOTA STREET
ST. PAUL, MN 55101-2130
TELEPHONE: (612) 296-9412

HUBERT H. HUMPHREY III
ATTORNEY GENERAL

October 9, 1997

Re: Data Practices Request Regarding Student Athletic Interest Surveys

Dear Title IX Coordinator:

State and federal laws require schools to conduct a survey of student interest in interscholastic activities every two years. In 1993, the Minnesota State High School League distributed a manual to Minnesota high schools which included a sample "Student Interest Survey of Interscholastic Athletic Activities." (Sample enclosed.) The Office of the Attorney General, at the request of the Legislature, is conducting a study of gender equity in athletics in Minnesota. **In furtherance of the study, we are making the following request for public information under the Minnesota Government Data Practices Act, Minnesota Statutes Chapter 13:**

1. A sample copy of survey forms used by your school to conduct its most recent "Student Interest Survey of Interscholastic Athletic Activities." If you used the enclosed form, please indicate that.
2. A summary of the results of any student interest survey of interscholastic athletic activities conducted by your school in the 1993-1994 school year or thereafter. Specifically, we are seeking the compilation, by gender and sport, of the results of your survey or surveys. Please note, no private data on individual students is requested.
3. The name, title, address, and telephone number of your school's contact for information in this area.

Please send the requested data to: Nancy Joyer, Office of the Attorney General, 1200 NCL Tower, 445 Minnesota Street, St. Paul, MN 55101-2130. In the alternative, data may faxed to me at (612) 296-7438. **The data is needed by October 24, 1997 so that it may be included in the report.**

If you have any questions about this request, please contact me at (612) 297-4611.

Sincerely,

NANCY J. JOYER
Assistant Attorney General
Education Division

BEST COPY AVAILABLE

T9.aa0



**1992-93
Student Interest Survey of
Interscholastic Athletic Activities**

Name: _____ Male: _____ Female: _____

School: _____ Current Grade: _____ Date: _____

STUDENTS: This survey is being conducted by Minnesota schools. We are seeking information about your participation in athletics and your interest in athletics not currently sponsored by the school district. The district is evaluating its athletic program because of its commitment to providing equal opportunity for girls and boys under the regulation of Title IX and Minnesota Statute 126.21.

SECTION A: Place an X in the appropriate columns:

OUR SCHOOL OFFERS	SPORTS SPONSORED BY THE MINNESOTA STATE HIGH SCHOOL LEAGUE	(1)		(2)	(3)
		I have or will try out in 1992-93	I will try out in 1993-94	SPORTS OFFERED BY YOUR SCHOOL	SPORTS NOT OFFERED BY YOUR SCHOOL I would try out for a team, if offered:
FALL SEASON					
	Cross Country (Running) - b & g				
	Football - b				
	Soccer - b & g				
	Swimming & Diving - g				
	Tennis - g				
	Volleyball - g				
WINTER SEASON					
	Basketball - b & g				
	Gymnastics - g				
	Ice Hockey - b				
	Skiing-Cross Country - b & g				
	Skiing-Slalom - b & g				
	Swimming & Diving - b				
	Wrestling - b				
SPRING SEASON					
	Baseball - b				
	Golf - b & g				
	Softball (Fast Pitch) - g				
	Synchronized Swimming - g				
	Tennis - b				
	Track and Field - b & g				

g = girls sport, b = boys sport (Note: girls may participate on boys teams)

BEST COPY AVAILABLE



SECTION B: Other sports offered:

Other Sports:	I have or will try out in 1992-93	I will try out in 1993-94

SECTION C: Indicate any other sports in which you have an interest such as, but not limited to:

- | | | | |
|-----------|----------------|---------------|---------------|
| Archery | Fencing | Indoor Soccer | Table Tennis |
| Badminton | Field Hockey | Judo | Team Handball |
| Bowling | Figure Skating | Karate | Waterpolo |
| Curling | Ice Ringette | Racquetball | Weightlifting |

Other Sports:	I would try out for a team, if offered:

SECTION D: Indicate other athletic activities in which you have an interest, such as cheerleading, danceline, pompons, etc.

Our School Offers	Other Athletic Activities:	(1)	(2)	(3)
		I have or will try out in 1992-93	I will try out in 1993-94	I would try out, if offered:
	Cheerleading			
	Danceline			

SECTION E: Please answer the following questions.

- Please list any sport(s) which you would try out for if it were offered for your gender; i.e., boys volleyball, girls ice hockey, etc.

- Is there a sport you would try out for if it were conducted in a *different season* by your school? Yes _____ No _____
If yes, please name the sport(s) and preferred season(s): _____
- Please name any sports in which you compete outside of school, such as community-sponsored teams, recreational leagues or club teams: _____
- Do you play on an interscholastic *adapted* sports team, such as floor hockey? Yes _____ No _____
If yes, what sport(s): _____
- If you are not participating in school athletics, please state your reasons:

_____ not interested	_____ not "good" enough to make the team
_____ too busy with other school activities	_____ none of my friends are involved
_____ working	_____ my activity is not offered by my school
_____ other: _____	

Years in Which Schools Conducted Interest Surveys
Appendix E

District Number	School Name	City	Prior 93	93-94	94-95	95-96	96-97	97-98
1	Henry Sr.	Minneapolis						
1	Aitkin Sec.	Aitkin				X		
1	Roosevelt Sr.	Minneapolis						
1	Edison Sr.	Minneapolis						
1	South Sr.	Minneapolis						
1	Southwest Sr.	Minneapolis						
1	Washburn Sr.	Minneapolis						
1	North Sr.	Minneapolis						
2	Hill City Sec.	Hill City				X		
4	McGregor Sec.	McGregor						X
6	South St. Paul Sec.	South St. Paul					X	
11	Anoka Sr.	Anoka-Hennepin			X			
11	Champlin Park Sr.	Champlin			X			
11	Blaine Sr.	Blaine			X			
11	Coon Rapids Sr.	Coon Rapids				X		
12	Centennial Sr.	Circle Pines						X
13	Columbia Heights Sr.	Columbia Heights					X	
15	St. Francis Sr.	St. Francis				X	X	
16	Fridley Sr.	Fridley	X					
16	Spring Lake Park Sr.	Spring Lake Park	X		X			X
22	Community Sr.	Detroit Lakes				X		
23	Frazee Sec.	Frazee						X
24	Lake Park-Audubon Sec.	Lake Park						X
31	Bemidji Sr.	Bemidji			X			X
32	Blackduck Sec.	Blackduck						
36	Kelliher Sec.	Kelliher					X	
38	Red Lake Sr.	Red Lake						X
47	Sauk Rapids-Rice Sr. High	Sauk Rapids					X	
51	Foley Sr.	Foley		X				
55	Clinton-Graceville Sec.	Graceville						
62	Ortonville Sec.	Ortonville						X
75	St. Clair Sec.	St. Clair	X					X
77	Mankato East Sr.	Mankato					X	
77	Mankato West Sr.	Mankato			X			
81	Comfrey Sec.	Comfrey						X
84	Sleepy Eye Sec.	Sleepy Eye			X			
85	Springfield Sec.	Springfield						
88	New Ulm Sr.	New Ulm			X			
91	Barnum Sec.	Barnum						
93	Carlton Sec.	Carlton						
94	Cloquet Sr.	Cloquet					X	
95	Cromwell-Wright Sec.	Cromwell						X
97	Moose Lake Sec	Moose Lake						
99	Lincoln Sec.	Esko						
100	Wrenshall Sec.	Wrenshall						
108	Central Sr.	Norwood					X	
110	Waconia Sr.	Waconia				X		

KEY
 * Non-compliance with DCFL reporting rule
 ** New school
 + No sports
 Blank Data missing

Years in Which Schools Conducted Interest Surveys

Appendix E

District Number	School Name	City	Prior 93	93-94	94-95	95-96	96-97	97-98
111	Watertown Sr.	Watertown					X	
112	Chaska Sr.	Chaska			X		X	
113	Walker-Hackensack-Akeley Sec.	Walker						X
115	Cass Lake Sec.	Cass Lake	X					X
116	Pillager Sec.	Pillager	X					
118	Northland Sec.	Remer						
129	Montevideo Sr.	Montevideo	X					
138	North Branch Sr.	North Branch					X	
139	Rush City Sec.	Rush City						X
146	Barnesville Sec.	Barnesville						
150	Hawley Sec.	Hawley						
152	Moorhead Sr.	Moorhead	X					
162	Bagley Sec.	Bagley				X		
166	Cook County Sec.	Grand Marais		X				
173	Mountain Lake Sec.	Mountain Lake						X
175	Westbrook-Walnut Grove Sr.	Westbrook			X			
177	Windom Sec.	Windom	X					
131	Brainerd Sr.	Brainerd						
182	Crosby-Ironton Sr.	Crosby						
186	Pequot Lakes Sec.	Pequot Lakes		X				
191	Burnsville Sr.	Burnsville						X
192	Farmington Sr.	Farmington		X		X		
194	Lakeville Sr.	Lakeville				X		
195	Randolph Sec.	Randolph						X
196	Apple Valley Sr.	Apple Valley					X	
196	Eagan Sr.	Eagan			X			
196	Rosemount Sr.	Rosemount					X	
196	Eastview Sr. **	Apple Valley						
197	Henry Sibley Sr.	West St. Paul			X		X	
199	Simley Sr.	Inver Grove Hts			X		X	
200	Hastings Sr.	Hastings			X		X	
203	Hayfield Sec.	Hayfield					X	
204	Kasson-Mantorville Sr.	Kasson						X
206	Jefferson Sr.	Alexandria					X	
207	Brandon Sec.	Brandon	X					
208	Evansville Sec.	Evansville						
213	Osakis Sec.	Osakis						X
227	Chosen Valley Sec.	Chatfield						
229	Lanesboro Sec.	Lanesboro	X					
238	Mabel-Canton Sec.	Mabel						X
239	Rushford-Peterson Sr.	Rushford						
241	Central Sr.	Albert Lea					X	
242	Alden-Conger Sec.	Alden						X
245	Glenville Sr.	Glenville						
252	Cannon Falls Sec.	Cannon Falls						
253	Goodhue Sec.	Goodhue						X
255	Pine Island Sec.	Pine Island	X					

Years in Which Schools Conducted Interest Surveys

Appendix E

District Number	School Name	City	Prior 93	93-94	94-95	95-96	96-97	97-98
256	Red Wing Sr.	Red Wing			X			
261	Ashby Sec.	Ashby				X		
264	Herman Sec.	Herman						X
270	Hopkins Sr.	Minnetonka					X	
271	Jefferson Sr.	Bloomington			X			
271	Kennedy Sr.	Bloomington			X			
272	Eden Prairie Sr.	Eden Prairie						
273	Edina Sr.	Edina						X
276	Minnetonka Sr.	Minnetonka					X	
277	Mound-Westonka Sr.	Mound		X				
278	Orono Sr.	Long Lake				X		
279	Park Center Sr.	Brooklyn Park	X			X		
279	Osseo Sr.	Osseo	X			X		
279	Maple Grove Sr. **	Maple Grove						
280	Richfield Sr.	Richfield		X	X	X		
281	Robbinsdale Cooper Sr.	New Hope						X
281	Robbinsdale Armstrong Sr.	Plymouth					X	
282	St. Anthony Village Sr.	St. Anthony		X				
283	St. Louis Park Sr.	St. Louis Park			X			
284	Wayzata Sr.	Plymouth						X
286	Brooklyn Center Sec.	Brooklyn Center					X	
294	Houston Sec.	Houston						X
297	Spring Grove Sec.	Spring Grove						X
299	Caledonia Sec.	Caledonia			X			
300	LaCrescent Sec.	LaCrescent			X			
306	Laporte Sec.	Laporte						X
308	Nevis Sec.	Nevis						X
309	Park Rapids Sr.	Park Rapids			X			
314	Braham Area Sec.	Braham			X			
316	Greenway Sr.	Coleraine	X					X
317	Deer River Sec.	Deer River	X					
318	Grand Rapids Sr.	Grand Rapids					X	X
318	Bigfork Sec.	Bigfork						X
319	Nashwauk Sec.	Nashwauk						
324	Jackson County Central Sr.	Jackson						
325	Lakefield Sr.	Lakefield						
330	Southwest Star Concept Sec.	Okabena						X
332	Mora Sec.	Mora					X	
333	Ogilvie Sec.	Ogilvie						
345	New London-Spicer Sr.	New London					X	
347	Willmar Sr.	Willmar			X		X	
356	Lancaster Sec.	Lancaster						X
361	Falls Sec.	Inter'l Falls				X		X
362	Littlefork-Big Falls Sec.	Littlefork						
363	Northome Sec.	Northome				X		
363	Indus Sec.	Birchdale						
378	Dawson-Boyd Sec.	Dawson						X

BEST COPY AVAILABLE

Years in Which Schools Conducted Interest Surveys
Appendix E

District Number	School Name	City	Prior 93	93-94	94-95	95-96	96-97	97-98
381	Kelley Sec.	Silver Bay					X	
381	Two Harbors Sec.	Two Harbors						X
390	Lake of the Woods Sec.	Baudette						X
391	Cleveland Sec.	Cleveland	X	X	X	X	X	
392	LeCenter Sec.	LeCenter						X
394	Montgomery-Londsdale Sec.	Montgomery						
403	Lincoln Sec.	Ivanhoe						X
404	Lake Benton Sec.	Lake Benton						X
409	R.T.R. Sr.	Tyler						X
411	Balaton Sec.	Balaton						X
413	Marshall Sr.	Marshall			X			
414	Minneota Sec.	Minneota					X	
417	Tracy Sec.	Tracy	X					
421	McLeod West Sr.	Brownston						X
422	Glencoe-Silver Lake Sr.	Glencoe			X		X	
423	Hutchinson Sr.	Hutchinson						
424	Lester Prairie Sec.	Lester Prairie						
432	Mahnomen Sec.	Mahnomen						
435	Waubun Sec.	Waubun	X			X		X
437	Argyle Sec. (see Stephen)	Argyle						
441	Central Sec.	Newfolden					X	
443	Stephen Sec.	Stephen	X	X				
447	Grygla Sec.	Grygla						X
454	Fairmont Sr.	Fairmont					X	
458	Truman Sec. *	Truman						
463	Eden Valley-Watkins	Eden Valley				X		
465	Litchfield Sr.	Litchfield			X			
466	Dassel-Cokato Sr.	Cokato					X	
473	Isle Sec.	Isle				1		
477	Princeton Sr.	Princeton						X
480	Onamia Sec.	Onamia						
482	Little Falls Sr.	Little Falls			X		X	
484	Healy Sec.	Pierz						
485	Royalton Sec.	Royalton	X			X		
486	Swanville Sec.	Swanville						
487	Upsala Sec.	Upsala	X					
492	Austin Sr.	Austin		X				
495	Grand Meadow Sec.	Grand Meadow	X					
497	Lyle Sec.	Lyle						X
499	Leroy Sec.	Leroy						
500	Southland Sr.	Adams						X
505	Fulda Sec.	Fulda		X				
507	Nicollet Sec.	Nicollet						
508	St. Peter Sr.	St. Peter						X
511	Adrian Sec.	Adrian				X		X
514	Ellsworth Sec.	Ellsworth	X					
516	Sioux Valley-Round Lake-Brewster	Round Lake					X	

BEST COPY AVAILABLE

Years in Which Schools Conducted Interest Surveys

Appendix E

District Number	School Name	City	Prior 93	93-94	94-95	95-96	96-97	97-98
518	Worthington Sr.	Worthington						
521	ADA-Borup Sec.	Ada						
531	Byron Sec.	Byron				X		
533	Dover-Eyota Sec.	Eyota			X			
534	Stewartville Sec.	Stewartville						X
535	Mayo Sr.	Rochester						
535	John Marshall Sr.	Rochester						
535	Century Sr. **	Rochester						
542	Battle Lake Sec.	Battle Lake					X	
544	Fergus Falls Sr.	Fergus Falls					X	
545	Henning Sec.	Henning						X
547	Parkers Prairie Sec.	Parkers Prairie				X		
548	Pelican Rapids Sec.	Pelican Rapids				X		
549	Perham Sr.	Perham					X	
550	Underwood Sec.	Underwood			X			
553	New York Mills Sec.	New York Mills		X				
561	Goodridge Sec.	Goodridge						
564	Lincoln Sr.	Thief River Falls						
577	Willow River Sec. *	Willow River						
578	Pine City Sec. *	Pine City	X					
581	Edgerton Sec.	Edgerton						X
592	Climax Sec.	Climax						X
593	Central Sr.	Crookston						
595	East Grand Forks Sr.	E. Grand Forks				X		
599	Fertile-Beltrami Sec.	Fertile	X					
600	Fisher Sec.	Fisher				X		
601	Fosston Sec.	Fosston					X	X
621	Irondale Sr.	New Brighton				X	X	
621	Mounds View Sr.	Arden Hills					X	
622	Tartan Sr. (see North Sr.)	Oakdale						
622	North Sr.	North St. Paul						X
623	Roseville Area Sr.	Roseville					X	
624	White Bear South Campus Sr.	White Bear Lk.						
624	White Bear North Campus Sr.	White Bear Lk.						
625	Central Sr.	St. Paul				X		
625	Harding Sr.	St. Paul						X
625	Highland Park Sr.	St. Paul					X	
625	Humboldt Sr.	St. Paul						X
625	Johnson Sr.	St. Paul						X
625	Como Park Sr.	St. Paul						
625	Arlington Sr. **	St. Paul						
627	Oklee Sec.	Oklee					X	
628	Pershing Sec.	Plummer						
630	Lafayette Sec.	Red Lake Falls						X
633	Red Rock Central Sec.	Lamberton						
640	Wabasso Sec.	Wabasso						X
654	B.D.R.S.H. Sr.	Renville						

BEST COPY AVAILABLE

Years in Which Schools Conducted Interest Surveys

Appendix E

District Number	School Name	City	Prior 93	93-94	94-95	95-96	96-97	97-98
656	Faribault Sr.	Faribault					X	
659	Northfield Sr.	Northfield				X		
671	Hills-Beaver Creek Sec.	Hills						X
676	Badger Sec. *	Badger						
682	Roseau Sec.	Roseau		X				
690	Warroad Sr.	Warroad						
695	Chisholm Sr.	Chisholm						X
696	Ely Memorial	Ely		X				
698	Floodwood Sec.	Floodwood						
700	Hermantown Sr.	Hermantown				X		
701	Hibbing Sr.	Hibbing				X		
704	Proctor Sr.	Proctor					X	
706	Virginia Sec.	Virginia					X	
709	East Sr.	Duluth						
709	Central Sec.	Duluth			X			
709	Denfeld Sr.	Duluth		X				
712	Mountain Iron-Buhl Sec.	Mountain Iron				X		
716	Belle Plaine Sr.	Belle Plaine						X
717	Jordan Sr.	Jordan	X					
719	Prior Lake Sr.	Prior Lake				X		
720	Shakopee Sr.	Shakopee					X	
721	New Prague Sr.	New Prague					X	
726	Becker Sr.	Becker					X	
727	Big Lake Sr.	Big Lake				X		
728	Elk River Sr.	Elk River						
738	Holdingsford Sec.	Holdingsford						X
739	Kimball Sec.	Kimball			X			
740	Melrose Sec.	Melrose					X	
741	Paynesville Sr.	Paynesville					X	
742	Apollo Sr.	St. Cloud		X	X	X	X	
742	Technical Sr.	St. Cloud						
743	Sauk Centre Sec.	Sauk Centre	X					
745	Albany Sr.	Albany			X			
748	Sartell Sr.	Sartell					X	
750	Rocori Sr.	Cold Spring					X	
756	Blooming Prairie Sec.	Blooming Prairie						X
761	Owatonna Sr.	Owatonna					X	
763	Medford Sec.	Medford						X
768	Hancock Sec.	Hancock		X				
769	Morris Area Sec.	Morris						X
771	Chokio-Alberta Sec.	Alberta						X
775	Kerkhoven Sec.	Kerkhoven						X
777	Benson Sec.	Benson					X	
786	Bertha Sec.	Bertha			X			
787	Browerville Sec.	Browerville						X
803	Wheaton Sec.	Wheaton	X		X			
806	Elgin Sec. *	Elgin						X

Years in Which Schools Conducted Interest Surveys

Appendix E

District Number	School Name	City	Prior 93	93-94	94-95	95-96	96-97	97-98
810	Plainview Sec.	Plainview				X		
811	Wabasha-Kellogg Sec.	Wabasha			X			
813	Lincoln Sec.	Lake City						
818	Verndale Sec.	Verndale						X
820	Sebeka Sec.	Sebeka				X		
821	Menahga Sec.	Menahga						X
829	Waseca Sr.	Waseca						X
831	Forest Lake Sr.	Forest Lake		X		X		
832	Mahtomedi Sr.	Mahtomedi						
833	Park Sr.	Cottage Grove					X	
833	Woodbury Sr.	Woodbury					X	
834	Stillwater Sr.	Stillwater			X			
836	Butterfield Sec.	Butterfield						X
837	Madelia Sec.	Madelia						X
840	St. James Sec.	St. James						X
846	Breckenridge Sr.	Breckenridge	X		X		X	
850	Rothsay Sec.	Rothsay				X	X	
852	Campbell-Tintah Sec.	Campbell						X
857	Lewiston Sec.	Lewiston						X
858	St. Charles Sec.	St. Charles						
861	Winona Sr.	Winona			X	X		
876	Annandale Sr.	Annandale					X	
877	Buffalo Sr.	Buffalo		X	X			
879	Delano Sr.	Delano					X	
881	Maple Lake Sec.	Maple Lake						X
882	Monticello Sr.	Monticello		X				
883	Rockford Sec.	Rockford	X		X		X	
885	St. Michael-Albertville Sr.	Albertville					X	
891	Canby Sec.	Canby			X			
911	Cambridge-Isanti	Cambridge					X	
912	Milaca Sr.	Milaca						X
914	Ulen-Hitterdal Sec.	Ulen						X
1000	School for the Arts +*	Golden Valley						
2071	Lake Crystal-Wellcome Memorial Sr.	Lake Crystal						
2125	Triton	Dodge Center						
2134	United South Central Sr.	Wells					X	X
2135	Maple River Sr.	Mapleton						X
2137	Kingsland Sr.	Spring Valley	X				X	
2142	Cook Sec.	Cook		X				
2142	Cotton Sec.	Cotton						
2142	Tower-Soudan Sec.	Tower		X				
2142	Albrook Sec.	Saginaw						X
2142	Cherry Sec.	Iron		X				
2142	Orr Sec.	Orr		X				
2142	Babbitt Sec.	Babbitt						
2143	Waterville-Elysian-Morristown Sr.	Waterville						X
2144	Chisago Lakes Sr.	Lindstrom				X		

Years in Which Schools Conducted Interest Surveys

Appendix E

District Number	School Name	City	Prior 93	93-94	94-95	95-96	96-97	97-98
2149	Minnewaska Sec.	Glenwood						
2154	Eveleth-Gilbert Sr.	Eveleth						X
2155	Wadena-Deer Creek Sec.	Wadena			X			
2159	Buffalo Lake-Hector Sec.	Hector						X
2164	Dilworth-Glyndon-Felton Sr.	Glyndon				X		
2165	Hinckley-Finlayson Sec.	Hinckley						
2167	Lakeview Sr.	Cottonwood				X		
2168	N.R.H.E.G. Sr.	New Richland			X		X	
2169	Murray County Central Sec.	Slayton						X
2170	Staples-Motley Sr.	Staples		X				
2171	Kittson Central Sr.	Hallock						
2172	Kenyon-Wanamingo Sr.	Kenyon						X
2174	Pine River Sec. *	Pine River						X
2176	Warren-Alvarado-Oslo Sec.	Warren						X
2180	M.A.C.C.R.A.Y. Sr.	Clara City			X			
2184	Luverne Sr.	Luverne			X			
2190	Granite Falls Sr.	Granite Falls						X
2198	Fillmore Central Sr.	Harmony	X					
2215	Twin Valley Sec.	Twin Valley						
2310	Sibley East-Arlington Sr.	Arlington						
2311	Clearbrook Sr.	Clearbrook						X
2342	West Central Area Sec.	Barrett					X	
2358	Tri-County Sec.	Karlstad						X
2364	Belgrade-Brooten-Elrosa Sec.	Belgrade					X	
2365	G.F.W. Sr.	Winthrop						X
2396	A.C.G.C. Sec.	Grove City					Plan to	
2397	LeSueur-Henderson Sec.	LeSueur					X	
2448	Martin Co. West Sr.	Sherburn						X
2527	Norman County West Sec.	Halstad						X
2534	Bold Sr. *	Olivia					X	
2536	Granada-Huntley Sec.	Granada						X
2580	East Central Sr.	Sandstone						X
2609	Win-E-Mac Sec.	McIntosh						
2683	Greenbush-Middle River Sr.	Greenbush		X				
2687	Howard Lake-Waverly-Winstad Sec.	Howard Lake						X
2689	Pipestone Sr.	Pipestone			X			X
2711	Mesabi East Sec. *	Aurora						
2753	Long Prairie-Grey Eagle Sec.	Long Prairie						
2754	Cedar Mountain Sec.	Morgan						X
2758	Redwood Valley Sr.	Redwood Falls		X				X
2759	Eagle Valley Sec.	Eagle Bend					X	
2805	Zumbrota-Mazeppa Sr.	Zumbrota						
2835	Janesville-Waldorf-Pemberton Sr.	Janesville						X
6011	Lac Qui Parle Valley Sec.	Madison						
6059	Blue Earth Area Sr.	Blue Earth						X

Analysis of Interest Surveys

Appendix F

Dist No	School Name	City	More than one interest survey since 1993	One interest survey since 1993 and prior to our October 1997	One interest survey in response to our request	Broken down by gender	NOT broken down by gender	Provided NO evidence of any survey
1	Aitkin Sec.	Aitkin		X			X	
1	Henry Sr.	Minneapolis						X
1	Roosevelt Sr.	Minneapolis						X
1	Edison Sr.	Minneapolis						X
1	South Sr.	Minneapolis						X
1	Southwest Sr.	Minneapolis						X
1	Washburn Sr.	Minneapolis						X
1	North Sr.	Minneapolis						X
2	Hill City Sec.	Hill City		X		X		
4	McGregor Sec.	McGregor			X	X		
6	South St. Paul Sec.	South St. Paul		X		X		
11	Anoka Sr.	Anoka-Hennepin		X		X		
11	Champlin Park Sr.	Champlin		X		X		
11	Blaine Sr.	Blaine		X		X		
11	Coon Rapids Sr.	Coon Rapids		X		X		
12	Centennial Sr.	Circle Pines			X	X		
13	Columbia Heights Sr.	Columbia Heights		X		X		
15	St. Francis Sr.	St. Francis	X			X		
16	Fridley Sr.	Fridley		X		X		
16	Spring Lake Park Sr.	Spring Lake Park	X				X	
22	Community Sr.	Detroit Lakes		X		X		
23	Frazee Sec.	Frazee			X	X		
24	Lake Park-Audubon Sec.	Lake Park			X	X		
31	Bemidji Sr.	Bemidji	X				X	
32	Blackduck Sec.	Blackduck						X
36	Kelliher Sec.	Kelliher		X		X		
38	Red Lake Sr.	Red Lake			X	X		
47	Sauk Rapids-Rice Sr. High	Sauk Rapids		X		X		
51	Foley Sr.	Foley		X			X	
55	Clinton-Graceville Sec.	Graceville						X
62	Ortonville Sec.	Ortonville			X		X	
75	St. Clair Sec.	St. Clair	X			X		
77	Mankato East Sr.	Mankato		X		X		
77	Mankato West Sr.	Mankato		X		X		
81	Comfrey Sec.	Comfrey			X	X		
84	Sleepy Eye Sec.	Sleepy Eye		X		X		
85	Springfield Sec.	Springfield						X
88	New Ulm Sr.	New Ulm		X		X		
91	Barnum Sec.	Barnum						X
93	Carlton Sec.	Carlton						X
94	Cloquet Sr.	Cloquet		X		X		
95	Cromwell-Wright Sec.	Cromwell			X	X		
97	Moose Lake Sec	Moose Lake						X
99	Lincoln Sec.	Esko			X		X	
100	Wrenshall Sec.	Wrenshall						
108	Central Sr.	Norwood		X			X	
110	Waconia Sr.	Waconia		X		X		

* Non-compliance with DCFL reporting rule
 ** New school
 + No sports
 Blank Data missing

KEY

Analysis of Interest Surveys

Appendix F

Dist No	School Name	City	More than one interest survey since 1993	One interest survey since 1993 and prior to our October 1997	One interest survey in response to our request	Broken down by gender	NOT broken down by gender	Provided NO evidence of any survey
111	Watertown Sr.	Watertown		X		X		
112	Chaska Sr.	Chaska	X			X		
113	Walker-Hackensack-Akeley Sec.	Walker			X		X	
115	Cass Lake Sec.	Cass Lake	X			X		
116	Pillager Sec.	Pillager		X		X		
118	Northland Sec.	Remer						X
129	Montevideo Sr.	Montevideo		X		X		
138	North Branch Sr.	North Branch		X		X		
139	Rush City Sec.	Rush City			X	X		
146	Barnesville Sec.	Barnesville						X
150	Hawley Sec.	Hawley						X
152	Moorhead Sr.	Moorhead		X			X	
162	Bagley Sec.	Bagley		X			X	
166	Cook County Sec.	Grand Marais		X		X		
173	Mountain Lake Sec.	Mountain Lake			X	X		
175	Westbrook-Walnut Grove Sr.	Westbrook		X			X	
177	Windom Sec.	Windom		X		X		
181	Brainerd Sr.	Brainerd						X
182	Crosby-Ironton Sr.	Crosby						X
186	Pequot Lakes Sec.	Pequot Lakes		X		X		
191	Burnsville Sr.	Burnsville			X		X	
192	Farmington Sr.	Farmington	X			X		
194	Lakeville Sr.	Lakeville		X		X		
195	Randolph Sec.	Randolph			X		X	
196	Apple Valley Sr.	Apple Valley		X			X	
196	Eagan Sr.	Eagan		X		X		
196	Rosemount Sr.	Rosemount		X		X		
196	Eastview Sr. **	Apple Valley						X
197	Henry Sibley Sr.	West St. Paul	X			X		
199	Simley Sr.	Inver Grove Hts	X			X		
200	Hastings Sr.	Hastings	X			X		
203	Hayfield Sec.	Hayfield		X			X	
204	Kasson-Mantorville Sr.	Kasson			X		X	
206	Jefferson Sr.	Alexandria		X		X		
207	Brandon Sec.	Brandon		X		X		
208	Evansville Sec.	Evansville						X
213	Osakis Sec.	Osakis			X		X	
227	Chosen Valley Sec.	Chatfield						X
229	Lanesboro Sec.	Lanesboro		X		X		
238	Mabel-Canton Sec.	Mabel			X		X	
239	Rushford-Peterson Sr.	Rushford						X
241	Central Sr.	Albert Lea		X			X	
242	Alden-Conger Sec.	Alden			X		X	
245	Glenville Sr.	Glenville						X
252	Cannon Falls Sec.	Cannon Falls						X
253	Goodhue Sec.	Goodhue			X	X		
255	Pine Island Sec.	Pine Island		X			X	

Analysis of Interest Surveys
Appendix F

Dist No	School Name	City	More than one interest survey since 1993	One interest survey since 1993 and prior to our October 1997	One interest survey in response to our request	Broken down by gender	NOT broken down by gender	Provided NO evidence of any survey
256	Red Wing Sr.	Red Wing		X		X		
261	Ashby Sec.	Ashby		X			X	
264	Herman Sec.	Herman			X		X	
270	Hopkins Sr.	Minnetonka		X		X		
271	Jefferson Sr.	Bloomington		X		X		
271	Kennedy Sr.	Bloomington		X		X		
272	Eden Prairie Sr.	Eden Prairie						X
273	Edina Sr.	Edina			X	X		
276	Minnetonka Sr.	Minnetonka		X		X		
277	Mound-Westonka Sr.	Mound		X			X	
278	Orono Sr.	Long Lake		X		X		
279	Park Center Sr.	Brooklyn Park	X			X		
279	Osseo Sr.	Osseo	X			X		
279	Maple Grove Sr. **	Maple Grove						X
280	Richfield Sr.	Richfield	X			X		
281	Robbinsdale Cooper Sr.	New Hope			X	X		
281	Robbinsdale Armstrong Sr.	Plymouth		X		X		
282	St. Anthony Village Sr.	St. Anthony		X			X	
283	St. Louis Park Sr.	St. Louis Park		X		X		
284	Wayzata Sr.	Plymouth			X	X		
286	Brooklyn Center Sec.	Brooklyn Center		X		X		
294	Houston Sec.	Houston			X	X		
297	Spring Grove Sec.	Spring Grove			X	X		
299	Caledonia Sec.	Caledonia		X		X		
300	LaCrescent Sec.	LaCrescent		X		X		
306	Laporte Sec.	Laporte			X		X	
308	Nevis Sec.	Nevis			X	X		
309	Park Rapids Sr.	Park Rapids		X			X	
314	Braham Area Sec.	Braham		X		X		
316	Greenway Sr.	Coleraine	X			X		
317	Deer River Sec.	Deer River		X		X		
318	Grand Rapids Sr.	Grand Rapids	X			X		
318	Bigfork Sec.	Bigfork			X	X		
319	Nashwauk Sec.	Nashwauk						X
324	Jackson County Central Sr.	Jackson						X
325	Lakefield Sr.	Lakefield						X
330	Southwest Star Concept Sec.	Okabena			X	X		
332	Mora Sec.	Mora		X				1
333	Ogilvie Sec.	Ogilvie						X
345	New London-Spicer Sr.	New London		X		X		
347	Willmar Sr.	Willmar	X				X	
356	Lancaster Sec.	Lancaster			X	X		
361	Falls Sec.	Inter'l Falls	X			X		
362	Littlefork-Big Falls Sec.	Littlefork						X
363	Northome Sec.	Northome		X		X		
363	Indus Sec.	Birchdale						X
378	Dawson-Boyd Sec.	Dawson			X		X	

Analysis of Interest Surveys

Appendix F

Dist No	School Name	City	More than one interest survey since 1993	One interest survey since 1993 and prior to our October 1997	One interest survey in response to our request	Broken down by gender	NOT broken down by gender	Provided NO evidence of any survey
381	Kelley Sec.	Silver Bay		X		X		
381	Two Harbors Sec.	Two Harbors			X	X		
390	Lake of the Woods Sec.	Baudette			X		X	
391	Cleveland Sec.	Cleveland	X			X		
392	LeCenter Sec.	LeCenter			X	X		
394	Montgomery-Londsdale Sec.	Montgomery						X
403	Lincoln Sec.	Ivanhoe						X
404	Lake Benton Sec.	Lake Benton			X		X	
409	R.T.R. Sr.	Tyler			X		X	
411	Balaton Sec.	Balaton			X	X		
413	Marshall Sr.	Marshall		X			X	
414	Minneota Sec.	Minneota		X			X	
417	Tracy Sec.	Tracy		X		X		
421	McLeod West Sr.	Brownton			X	X		
422	Glencoe-Silver Lake Sr.	Glencoe	X			X		
423	Hutchinson Sr.	Hutchinson						X
424	Lester Prairie Sec.	Lester Prairie						X
432	Mahnomen Sec.	Mahnomen						X
435	Waubun Sec.	Waubun	X			X		
437	Argyle Sec. (see Stephen)	Argyle						
441	Central Sec.	Newfolden		X		X		
443	Stephen Sec.	Stephen	X				X	
447	Grygla Sec.	Grygla			X		X	
454	Fairmont Sr.	Fairmont		X		X		
458	Truman Sec. *	Truman						X
463	Eden Valley-Watkins	Eden Valley		X		X		
465	Litchfield Sr.	Litchfield		X		X		
466	Dassel-Cokato Sr.	Cokato		X		X		
473	Isle Sec.	Isle		X		X		
477	Princeton Sr.	Princeton		X		X		
480	Onamia Sec.	Onamia						X
482	Little Falls Sr.	Little Falls	X			X		
484	Healy Sec.	Pierz						X
485	Royalton Sec.	Royalton	X			X		
486	Swanville Sec.	Swanville						X
487	Upsala Sec.	Upsala		X		X		
492	Austin Sr.	Austin		X		X		
495	Grand Meadow Sec.	Grand Meadow		X		X		
497	Lyle Sec.	Lyle			X		X	
499	Leroy Sec.	Leroy						X
500	Southland Sr.	Adams			X	X		
505	Fulda Sec.	Fulda		X		X		
507	Nicollet Sec.	Nicollet						X
508	St. Peter Sr.	St. Peter			X	X		
511	Adrian Sec.	Adrian	X			X		
514	Ellsworth Sec.	Ellsworth		X			X	

Analysis of Interest Surveys
Appendix F

Dist No	School Name	City	More than one interest survey since 1993	One interest survey since 1993 and prior to our October 1997	One interest survey in response to our request	Broken down by gender	NOT broken down by gender	Provided NO evidence of any survey
	Sioux Valley-Round Lake-							
516	Brewster	Round Lake		X		X		
518	Worthington Sr.	Worthington						X
521	ADA-Borup Sec.	Ada						X
531	Byron Sec.	Byron		X			X	
533	Dover-Eyota Sec.	Eyota		X		X		
534	Stewartville Sec.	Stewartville			X	X		
535	Mayo Sr.	Rochester		X		X		
535	John Marshall Sr.	Rochester		X		X		X
535	Century Sr. **	Rochester						
542	Battle Lake Sec.	Battle Lake		X		X		
544	Fergus Falls Sr.	Fergus Falls		X		X		
545	Henning Sec.	Henning			X	X		
547	Parkers Prairie Sec.	Parkers Prairie						X
548	Pelican Rapids Sec.	Pelican Rapids		X		X		
549	Perham Sr.	Perham		X		X		
550	Underwood Sec.	Underwood		X		X		
553	New York Mills Sec.	New York Mills		X			X	
561	Goodridge Sec.	Goodridge						X
564	Lincoln Sr.	Thief River Falls						X
577	Willow River Sec. *	Willow River						X
578	Pine City Sec. *	Pine City		X		X		
581	Edgerton Sec.	Edgerton			X	X		
592	Climax Sec.	Climax			X	X		
593	Central Sr.	Crookston						X
595	East Grand Forks Sr.	E. Grand Forks		X		X		
599	Fertile-Beltrami Sec.	Fertile		X		X		
600	Fisher Sec.	Fisher		X		X		
601	Fosston Sec.	Fosston	X				X	
621	Irondale Sr.	New Brighton	X			X		
621	Mounds View Sr.	Arden Hills		X			X	
622	Tartan Sr. (see North Sr.)	Oakdale						
622	North Sr.	North St. Paul			X		X	
623	Roseville Area Sr.	Roseville		X		X		
624	White Bear South Campus Sr.	White Bear Lk.						X
624	White Bear North Campus Sr.	White Bear Lk.						X
625	Central Sr.	St. Paul		X		X		
625	Harding Sr.	St. Paul			X	X		
625	Highland Park Sr.	St. Paul		X		X		
625	Humboldt Sr.	St. Paul			X	X		
625	Johnson Sr.	St. Paul			X		X	
625	Como Park Sr.	St. Paul						X
625	Arlington Sr. **	St. Paul						
627	Oklee Sec.	Oklee		X		X		
628	Pershing Sec.	Plummer						X
630	Lafayette Sec.	Red Lake Falls			X	X		
633	Red Rock Central Sec.	Lamberton						X

Analysis of Interest Surveys

Appendix F

Dist No	School Name	City	More than one Interest survey since 1993	One interest survey since 1993 and prior to our October 1997	One interest survey in response to our request	Broken down by gender	NOT broken down by gender	Provided NO evidence of any survey
640	Wabasso Sec.	Wabasso			X	X		
654	B.D.R.S.H. Sr.	Renville						X
656	Faribault Sr.	Faribault		X			X	X
659	Northfield Sr.	Northfield		X		X		
671	Hills-Beaver Creek Sec.	Hills			X	X		
676	Badger Sec. *	Badger						
682	Roseau Sec.	Roseau		X		X		
690	Warroad Sr.	Warroad						X
695	Chisholm Sr.	Chisholm			X	X		
696	Ely Memorial	Ely		X		X		
698	Floodwood Sec.	Floodwood						X
700	Hermantown Sr.	Hermantown		X			X	
701	Hibbing Sr.	Hibbing		X		X		
704	Proctor Sr.	Proctor		X		X		
706	Virginia Sec.	Virginia		X		X		
709	East Sr.	Duluth						X
709	Central Sec.	Duluth		X		X		
709	Denfeld Sr.	Duluth		X		X		
712	Mountain Iron-Buhl Sec.	Mountain Iron		X		X		
716	Belle Plaine Sr.	Belle Plaine			X	X		
717	Jordan Sr.	Jordan		X			X	
719	Prior Lake Sr.	Prior Lake		X		X		
720	Shakopee Sr.	Shakopee		X		X		
721	New Prague Sr.	New Prague		X			X	
726	Becker Sr.	Becker		X		X		
727	Big Lake Sr.	Big Lake		X			X	
728	Elk River Sr.	Elk River						X
738	Holdingsford Sec.	Holdingsford			X	X		
739	Kimball Sec.	Kimball		X		X		
740	Melrose Sec.	Melrose		X		X		
741	Paynesville Sr.	Paynesville		X			X	
742	Apollo Sr.	St. Cloud	X			X		
742	Technical Sr.	St. Cloud						X
743	Sauk Centre Sec.	Sauk Centre		X		X		
745	Albany Sr.	Albany		X		X		
748	Sartell Sr.	Sartell		X		X		
750	Rocori Sr.	Cold Spring		X		X		
756	Blooming Prairie Sec.	Blooming Prairie			X	X		
761	Owatonna Sr.	Owatonna		X		X		
763	Medford Sec.	Medford			X	X		
768	Hancock Sec.	Hancock		X		X		
769	Morris Area Sec.	Morris			X		X	
771	Chokio-Alberta Sec.	Alberta			X		X	
775	Kerkhoven Sec.	Kerkhoven			X	X		
777	Benson Sec.	Benson		X			X	
786	Bertha Sec.	Bertha		X		X		
787	Browerville Sec.	Browerville			X	X		

Analysis of Interest Surveys
Appendix F

Dist No	School Name	City	More than one interest survey since 1993	One interest survey since 1993 and prior to our October 1997	One interest survey in response to our request	Broken down by gender	NOT broken down by gender	Provided NO evidence of any survey
803	Wheaton Sec.	Wheaton	X			X		
806	Elgin Sec. *	Elgin			X	X		
810	Plainview Sec.	Plainview		X		X		
811	Wabasha-Kellogg Sec.	Wabasha		X		X		
813	Lincoln Sec.	Lake City						X
818	Verndale Sec.	Verndale			X	X		
820	Sebeka Sec.	Sebeka		X			X	
821	Menahga Sec.	Menahga			X	X		
829	Waseca Sr.	Waseca			X	X		
831	Forest Lake Sr.	Forest Lake	X				X	
832	Mahtomedi Sr.	Mahtomedi						X
833	Park Sr.	Cottage Grove		X		X		
833	Woodbury Sr.	Woodbury		X		X		
834	Stillwater Sr.	Stillwater		X		X		
836	Butterfield Sec.	Butterfield			X	X		
837	Madelia Sec.	Madelia			X	X		
840	St. James Sec.	St. James			X	X		
846	Breckenridge Sr.	Breckenridge	X			X		
850	Rothsay Sec.	Rothsay	X			X		
852	Campbell-Tintah Sec.	Campbell			X	X		
857	Lewiston Sec.	Lewiston			X	X		
858	St. Charles Sec.	St. Charles						X
861	Winona Sr.	Winona	X			X		
876	Annandale Sr.	Annandale		X		X		
877	Buffalo Sr.	Buffalo	X				X	
879	Delano Sr.	Delano		X		X		
881	Maple Lake Sec.	Maple Lake			X		X	
882	Monticello Sr.	Monticello		X			X	
883	Rockford Sec.	Rockford	X				X	
885	St. Michael-Albertville Sr.	Albertville		X			X	
891	Canby Sec.	Canby		X		X		
911	Cambridge-Isanti	Cambridge		X		X		
912	Milaca Sr.	Milaca			X	X		
914	Ulen-Hitterdal Sec.	Ulen			X	X		
1000	School for the Arts +*	Golden Valley						
	Lake Crystal-Wellcome Memorial							
2071	Sr.	Lake Crystal						X
2125	Triton	Dodge Center						X
2134	United South Central Sr.	Wells	X			X		
2135	Maple River Sr.	Mapleton			X		X	
2137	Kingsland Sr.	Spring Valley	X			X		
2142	Cook Sec.	Cook		X		X		
2142	Cotton Sec.	Cotton						X
2142	Tower-Soudan Sec.	Tower						X
2142	Albrook Sec.	Saginaw			X		X	
2142	Cherry Sec.	Iron						X
2142	Orr Sec.	Orr						X

Analysis of Interest Surveys
Appendix F

Dist No	School Name	City	More than one interest survey since 1993	One interest survey since 1993 and prior to our October 1997	One interest survey in response to our request	Broken down by gender	NOT broken down by gender	Provided NO evidence of any survey
2142	Babbitt Sec.	Babbitt						X
2143	Waterville-Elysian-Morristown Sr.	Waterville			X		X	
2144	Chisago Lakes Sr.	Lindstrom		X		X		
2149	Minnewaska Sec.	Glenwood						X
2154	Eveleth-Gilbert Sr.	Eveleth			X	X		
2155	Wadena-Deer Creek Sec.	Wadena		X		X		
2159	Buffalo Lake-Hector Sec.	Hector			X	X		
2164	Dilworth-Glyndon-Felton Sr.	Glyndon		X		X		
2165	Hinckley-Finlayson Sec.	Hinckley						X
2167	Lakeview Sr.	Cottonwood		X			X	
2168	N.R.H.E.G. Sr.	New Richland	X			X		
2169	Murray County Central Sec.	Slayton			X		X	
2170	Staples-Motley Sr.	Staples		X			X	
2171	Kittson Central Sr.	Hallock						X
2172	Kenyon-Wanamingo Sr.	Kenyon			X		X	
2174	Pine River Sec. *	Pine River			X	X		
2176	Warren-Alvarado-Oslo Sec.	Warren			X	X		
2180	M.A.C.C.R.A.Y. Sr.	Clara City		X		X		
2184	Luverne Sr.	Luverne		X		X		
2190	Granite Falls Sr.	Granite Falls			X	X		
2198	Fillmore Central Sr.	Harmony		X			X	
2215	Twin Valley Sec.	Twin Valley						X
2310	Sibley East-Arlington Sr.	Arlington						X
2311	Clearbrook Sr.	Clearbrook			X	X		
2342	West Central Area Sec.	Barrett		X			X	
2358	Tri-County Sec.	Karlstad			X	X		
2364	Belgrade-Brooten-Elrosa Sec.	Belgrade		X			X	
2365	G.F.W. Sr.	Winthrop			X	X		
2396	A.C.G.C. Sec.	Grove City						X
2397	LeSueur-Henderson Sec.	LeSueur		X		X		
2448	Martin Co. West Sr.	Sherburn			X	X		
2527	Norman County West Sec.	Halstad			X		X	
2534	Bold Sr. *	Olivia		X			X	
2536	Granada-Huntley Sec.	Granada			X	X		
2580	East Central Sr.	Sandstone			X		X	
2609	Win-E-Mac Sec.	McIntosh						X
2683	Greenbush-Middle River Sr.	Greenbush		X		X		
2687	Howard Lake-Waverly-Winstad Sec.	Howard Lake			X	X		
2689	Pipestone Sr.	Pipestone	X			X		
2711	Mesabi East Sec. *	Aurora						X
2753	Long Prairie-Grey Eagle Sec.	Long Prairie						X
2754	Cedar Mountain Sec.	Morgan			X	X		
2758	Redwood Valley Sr.	Redwood Falls	X			X		
2759	Eagle Valley Sec.	Eagle Bend		X			X	
2805	Zumbrota-Mazeppa Sr.	Zumbrota						X

Analysis of Interest Surveys
Appendix F

Dist No	School Name	City	More than one interest survey since 1993	One interest survey since 1993 and prior to our October 1997	One interest survey in response to our request	Broken down by gender	NOT broken down by gender	Provided NO evidence of any survey
	Janesville-Waldorf-Pemberton 2835 Sr.	Janesville			X	X		
6011	Lac Qui Parle Valley Sec.	Madison						X
6059	Blue Earth Area Sr.	Blue Earth			X	X		
	108575.02							



U.S. Department of Education
Office of Educational Research and Improvement (OERI)
National Library of Education (NLE)
Educational Resources Information Center (ERIC)



REPRODUCTION RELEASE

(Specific Document)

I. DOCUMENT IDENTIFICATION:

Title: <i>Review of Gender Equity in Interscholastic Athletic Opportunities in Minnesota's Secondary Schools</i>	
Author(s): <i>Minnesota. Office of the Attorney General</i>	
Corporate Source: <i>↓</i>	Publication Date: <i>1998</i>

II. REPRODUCTION RELEASE:

In order to disseminate as widely as possible timely and significant materials of interest to the educational community, documents announced in the monthly abstract journal of the ERIC system, *Resources in Education* (RIE), are usually made available to users in microfiche, reproduced paper copy, and electronic media, and sold through the ERIC Document Reproduction Service (EDRS). Credit is given to the source of each document, and, if reproduction release is granted, one of the following notices is affixed to the document.

If permission is granted to reproduce and disseminate the identified document, please CHECK ONE of the following three options and sign at the bottom of the page.

The sample sticker shown below will be affixed to all Level 1 documents

PERMISSION TO REPRODUCE AND DISSEMINATE THIS MATERIAL HAS BEEN GRANTED BY

Sample

TO THE EDUCATIONAL RESOURCES INFORMATION CENTER (ERIC)

1

Level 1



Check here for Level 1 release, permitting reproduction and dissemination in microfiche or other ERIC archival media (e.g., electronic) and paper copy.

The sample sticker shown below will be affixed to all Level 2A documents

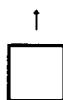
PERMISSION TO REPRODUCE AND DISSEMINATE THIS MATERIAL IN MICROFICHE, AND IN ELECTRONIC MEDIA FOR ERIC COLLECTION SUBSCRIBERS ONLY, HAS BEEN GRANTED BY

Sample

TO THE EDUCATIONAL RESOURCES INFORMATION CENTER (ERIC)

2A

Level 2A



Check here for Level 2A release, permitting reproduction and dissemination in microfiche and in electronic media for ERIC archival collection subscribers only

The sample sticker shown below will be affixed to all Level 2B documents

PERMISSION TO REPRODUCE AND DISSEMINATE THIS MATERIAL IN MICROFICHE ONLY HAS BEEN GRANTED BY

Sample

TO THE EDUCATIONAL RESOURCES INFORMATION CENTER (ERIC)

2B

Level 2B



Check here for Level 2B release, permitting reproduction and dissemination in microfiche only

Documents will be processed as indicated provided reproduction quality permits.
If permission to reproduce is granted, but no box is checked, documents will be processed at Level 1.

I hereby grant to the Educational Resources Information Center (ERIC) nonexclusive permission to reproduce and disseminate this document as indicated above. Reproduction from the ERIC microfiche or electronic media by persons other than ERIC employees and its system contractors requires permission from the copyright holder. Exception is made for non-profit reproduction by libraries and other service agencies to satisfy information needs of educators in response to discrete inquiries.

Sign here, → please

Signature: <i>Anita M. Anderson</i>	Printed Name/Position/Title: <i>Anita M. Anderson / Law Librarian</i>	
Organization/Address: <i>Office of the Attorney General</i>	Telephone: <i>651-296-8152</i>	FAX: <i>651-297-4139</i>
<i>445 Minnesota St. #1050</i>	E-Mail Address: <i>anita.anderson@state.mn.us</i>	Date: <i>5/16/00</i>
<i>ST. PAUL MN 55101-2109</i>		

III. DOCUMENT AVAILABILITY INFORMATION (FROM NON-ERIC SOURCE):

If permission to reproduce is not granted to ERIC, or, if you wish ERIC to cite the availability of the document from another source, please provide the following information regarding the availability of the document. (ERIC will not announce a document unless it is publicly available, and a dependable source can be specified. Contributors should also be aware that ERIC selection criteria are significantly more stringent for documents that cannot be made available through EDRS.)

Publisher/Distributor:
Address:
Price:

IV. REFERRAL OF ERIC TO COPYRIGHT/REPRODUCTION RIGHTS HOLDER:

If the right to grant this reproduction release is held by someone other than the addressee, please provide the appropriate name and address:

Name:
Address:

V. WHERE TO SEND THIS FORM:

Send this form to the following ERIC Clearinghouse:

However, if solicited by the ERIC Facility, or if making an unsolicited contribution to ERIC, return this form (and the document being contributed) to:

ERIC Processing and Reference Facility
4483-A Forbes Boulevard
Lanham, Maryland 20706

Telephone: 301-552-4200

Toll Free: 800-799-3742

FAX: 301-552-4700

e-mail: ericfac@inet.ed.gov

WWW: <http://ericfac.piccard.csc.com>