

DOCUMENT RESUME

ED 437 812

EF 005 612

TITLE Good Enough for Congress? A Pictorial Representation of Why Americans Deserve Better School Buildings.

INSTITUTION American Inst. of Architects, Washington, DC.

PUB DATE 1999-00-00

NOTE 66p.

AVAILABLE FROM AIA Public Affairs, 1735 New York Ave., NW, Washington, DC 20006-5292. Tel: 202-626-7300; Fax: 202-626-7421; Web site: <http://www.aiaonline.com>.

PUB TYPE Reports - Descriptive (141)

EDRS PRICE MF01/PC03 Plus Postage.

DESCRIPTORS \*Educational Facilities Improvement; Enrollment; Financial Support; \*High Schools; \*Public Schools; School Construction; \*State Aid

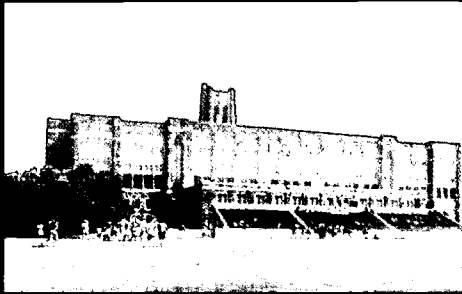
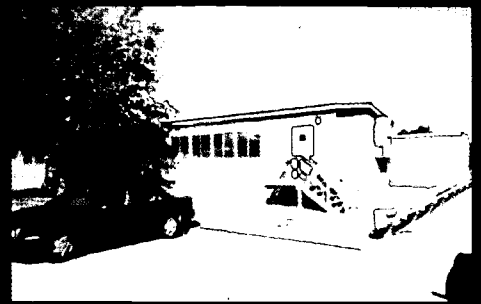
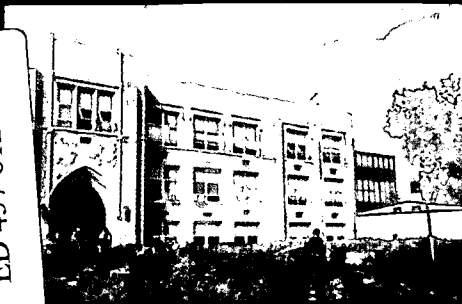
IDENTIFIERS Building Evaluation; Political Framing

ABSTRACT

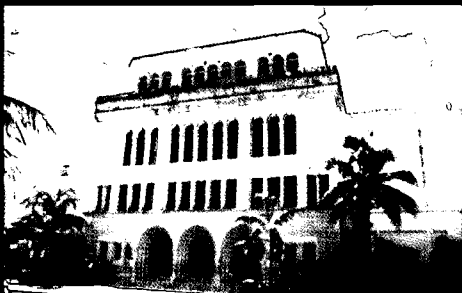
This booklet visually depicts the current condition of public high schools attended by various members of the House Ways and Means and Senate Finance Committees, including photos, statistics, and facts about each school and other public education facilities in each member's respective state. Additionally provided are state statistics that list the number of schools in the state, total enrollment, state funding for public schools for 1993-94, and the total state and local district school construction spending for 1995-96. Each high school summary contains data on current building conditions and projected needs by state. The report concludes with data on the dollar amount of estimated tax credit bond allocations under legislation introduced in the 106th Congress. (GR)

Reproductions supplied by EDRS are the best that can be made  
from the original document.

ED 437 812



# Good Enough for Congress?



## A Pictorial Representation of Why Americans Deserve Better School Buildings



THE AMERICAN INSTITUTE OF ARCHITECTS



U.S. DEPARTMENT OF EDUCATION  
Office of Educational Research and Improvement  
EDUCATIONAL RESOURCES INFORMATION CENTER (ERIC)

- This document has been reproduced as received from the person or organization originating it.
- Minor changes have been made to improve reproduction quality.

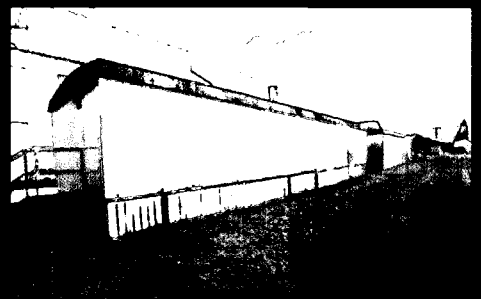
- Points of view or opinions stated in this document do not necessarily represent official OERI position or policy.

PERMISSION TO REPRODUCE AND DISSEMINATE THIS MATERIAL HAS BEEN GRANTED BY

Cassandra Brown

TO THE EDUCATIONAL RESOURCES INFORMATION CENTER (ERIC)

1



BEST COPY AVAILABLE

F 005 612

ERIC  
Full Text Provided by ERIC

## ADDENDUM

Please note the following:

While Rep. J.D. Hayworth attended school in North Carolina, he currently represents the 6<sup>th</sup> District of Arizona.

While Rep. Jim Ramstad attended school in North Dakota, he currently represents the 3<sup>rd</sup> District of Minnesota.



**The American Institute of Architects captures President Clinton's attention on school modernization needs with a review of "Good Enough for Congress?" presented by AIA Executive Vice President/CEO, Norman L. Koonce, FAIA.**

# **GOOD ENOUGH FOR CONGRESS?**

## **A Pictorial Representation Of Why Americans Deserve Better School Buildings**

The American Institute of Architects (AIA) supports federal assistance to aid communities involved in school construction, renovation, and expansion. We urge Congress to pass legislation that will provide tax credit bonds for school modernization and renovation. Tax credit bonds emphasize federal *support* rather than federal *control* over local school districts requesting assistance.

### **Aging Facilities and Record Enrollments Require Action**

All across America, nearly 25,000 public schools – almost one-third of all public school buildings – are in a serious state of disrepair. This means that every day parents send over 15 million school-age children to facilities that have substandard heating, ventilation, plumbing, and roofing systems. Unfortunately, demographic trends have far outrun our aging public school infrastructure. Record enrollments at public schools are now approaching 53.2 million children this year and are expected to climb further. Moreover, the average public school in America is 42 years old. For our nation, we urge you to take immediate action.

### **School Modernization is a \$200 Billion Problem**

The General Accounting Office (GAO) reliably estimates that over \$112 billion is needed today to repair existing schools that are in poor condition. In order to accommodate rising enrollments in high-growth areas of the country, 2,400 new schools will need to be built by 2003. And this does not take into account the vast number of antiquated schools that are not connected to the Internet, the lifeline to our nation's future prosperity. In short, making America's public school infrastructure ready for the 21<sup>st</sup> century is a \$200 billion problem. The magnitude of the problem means that local jurisdictions are ill equipped to handle it alone.

Modernization and renovation of our nation's public schools affects every community in every state. It is a non-partisan national issue that deserves immediate congressional action. The schools highlighted in this pictorial – the public schools of you and your colleagues on the congressional tax writing committees – are merely a representative sample of public school buildings in America, both good and bad. To check how your state would benefit under proposed tax credit bonds legislation, turn to the back of this book. Schools should be the centers of strong, vibrant communities. They should provide the quality learning environment our children need and deserve. But in order to achieve this goal, Congress must take immediate action.

### **Tax Credit Bonds Provide the Best Solution**

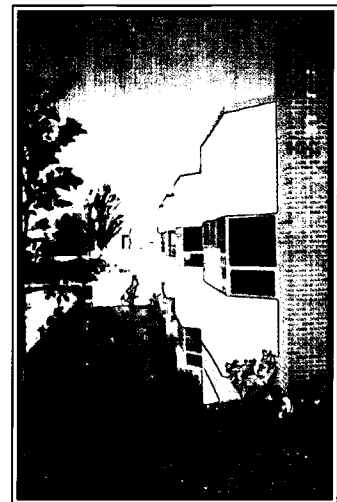
Public schools in your state need help. Despite the fact that public school districts spent more than \$15.45 billion last year for construction, expansion, and renovation, it does not come close to satisfying demand. H.R. 1660 "Public School Modernization Act of 1999" introduced by Rep. Charles Rangel (D-N.Y.), H.R. 1760 "America's Better Classroom Act of 1999" introduced by Rep. Nancy Johnson (R-Conn.), and S. 1454 "Public School Modernization and Overcrowding Relief Act of 1999" introduced by Sen. Charles Robb (D-Va.) would increase school construction and renovation through use of tax credit bonds. These proposals would cost \$3.2 billion but generate \$25 billion in school construction and renovation activity.

# SEN. MAX BAUCUS

## Helena High School\*

*This building's hallways are crowded and inaccessible during high traffic times. While state statistics show a decline, the population for this school is expected to increase. In addition, the schools in this state need to catch-up for a 10.4 % increase from the past decade. Major renovations at this school in 1998 have helped.*

|                       |                           |
|-----------------------|---------------------------|
| Location:             | Helena, Montana           |
| Built in:             | 1956                      |
| Past Renovations:     | Major renovations in 1998 |
| Student Population:   | 1,800                     |
| School Designed for:  | 2,000                     |
| Auxiliary Structures: |                           |
| Annexes:              | 1                         |
| Trailers:             | 2                         |



### FACTS ABOUT MONTANA SCHOOLS:

Total Number of Schools: 892  
Total Enrollment: 168,000

#### Current Conditions:

- 70 % of schools report a need to upgrade or repair building to good overall condition
- 45 % of schools report at least one inadequate building feature (e.g. roof, electrical, etc.)
- 8 students per computer

#### Projected Needs:

- Range of amounts needed to upgrade or repair a school to good overall condition:  
\$250 to \$12,000,000
- Enrollment in Montana over the last decade increased 10.4 %. From 1998 to 2008 projected state enrollment in elementary and secondary schools is expected to decrease by 3,000 students.



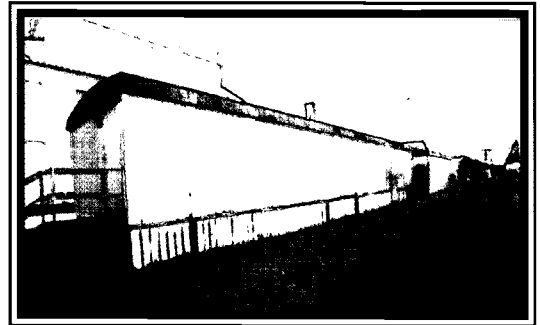
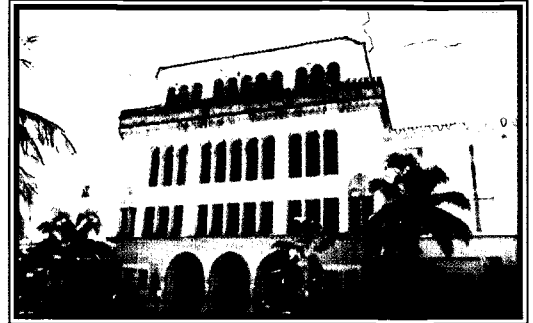
\* Sen. Roth also attended Helena High School.

# SEN. BOB GRAHAM, HON. AIA

## Miami Senior High School

*On this school's wish list is a second story to help with current crowded space. There is structural damage in multiple areas of the building, along with mildew on the walls and an insufficient electrical capacity for current needs. A historic building, this school needs help.*

|                       |                           |
|-----------------------|---------------------------|
| Location:             | Miami, Florida            |
| Built in:             | 1928                      |
| Past Renovations:     | 1993 – science wing added |
| Student Population:   | 3,100                     |
| School Designed for:  | 2,992                     |
| Auxiliary Structures: |                           |
| Annexes:              | None                      |
| Trailers:             | 5                         |



### FACTS ABOUT FLORIDA SCHOOLS:

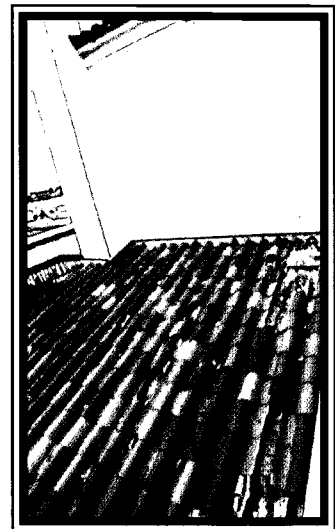
Total Number of Schools: 2,801  
Total Enrollment: 2,343,000

#### Current Conditions:

- 85 % of schools report a need to upgrade or repair building to good overall condition
- 57 % of schools report at least one inadequate building feature (e.g. roof, electrical, etc.)
- 12 students per computer

#### Projected Needs:

- Range of amounts needed to upgrade or repair a school to good overall condition:  
**\$354 to \$28,970,500**
- Enrollment in Florida over the last decade **increased 36.1 %**. From 1998 to 2008 projected state enrollment in elementary and secondary schools is expected to **increase by 21,000 students**, necessitating **840 additional classrooms**.

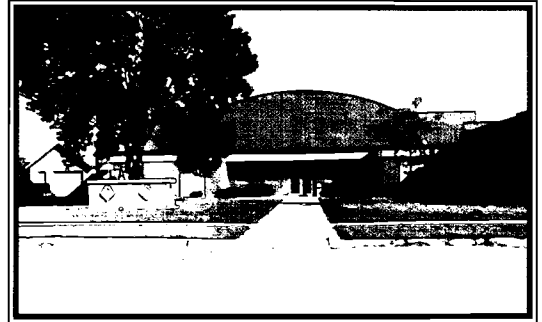


# SEN. CHARLES GRASSLEY

## New Hartford/Dike Middle School

*This school's 1949 gym is in need of replacement, but the rest of the additions – classrooms, kitchen, multi-purpose and music rooms – are in good shape.*

|                              |                    |
|------------------------------|--------------------|
| <b>Location:</b>             | New Hartford, Iowa |
| <b>Built in:</b>             | Originally in 1917 |
| <b>Past Renovations:</b>     | Many               |
| <b>Student Population:</b>   | 250                |
| <b>School Designed for:</b>  | N/A                |
| <b>Auxiliary Structures:</b> |                    |
| Annexes:                     | None               |
| Trailers:                    | None               |



### FACTS ABOUT IOWA SCHOOLS:

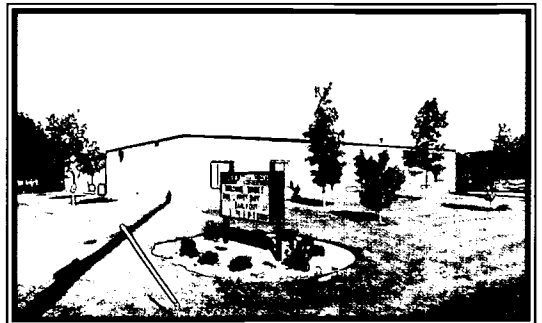
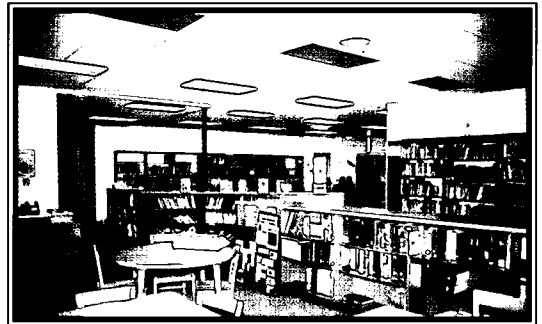
**Total Number of Schools:** 1,552  
**Total Enrollment:** 500,000

#### Current Conditions:

- 79 % of schools report a need to upgrade or repair building to good overall condition
- 50 % of schools report at least one inadequate building feature (e.g. roof, electrical, etc.)
- 11 students per computer

#### Projected Needs:

- Range of amounts needed to upgrade or repair a school to good overall condition:  
**\$800 to \$8,500,000**
- Enrollment in Iowa over the last decade **increased 4.6%**. From 1998 to 2008 projected state enrollment in elementary and secondary schools is expected to **decrease by 34,000 students**.





# SEN. ORRIN HATCH

## Baldwin High School\*

*Though originally designed for 2,200 students, this school is now quite crowded due to specialized classrooms, including computer labs. It is in excellent structural condition.*

|                              |   |
|------------------------------|---|
| <b>Location:</b>             | <b>Pittsburgh, Pennsylvania</b>                                 |
| <b>Built in:</b>             | <b>1939</b>   |
| <b>Past Renovations:</b>     | <b>Cafeteria, library, entrance, auditorium, and music wing</b> |
| <b>Student Population:</b>   | <b>1,824</b>  |
| <b>School Designed for:</b>  | <b>2,200</b>  |
| <b>Auxiliary Structures:</b> |   |
| Annexes:                     | None  |
| Trailers:                    | None  |



### FACTS ABOUT UTAH SCHOOLS:

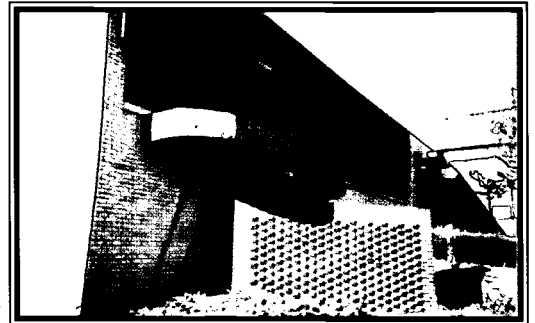
**Total Number of Schools:** 742  
**Total Enrollment:** 489,000

#### Current Conditions:

- 91 % of schools report a need to upgrade or repair building to good overall condition
- 62 % of schools report at least one inadequate building feature (e.g. roof, electrical, etc.)
- 12 students per computer

#### Projected Needs:

- Range of amounts needed to upgrade or repair a school to good overall condition:  
**\$500 to \$20,779,818**
- Enrollment in Utah over the last decade **increased 13.4 %**. From 1998 to 2008 projected state enrollment in elementary and secondary schools is expected to **increase by 55,000 students**, necessitating **2,200 additional classrooms**.



\* While Sen. Hatch attended school in Pennsylvania, he currently represents the state of Utah.

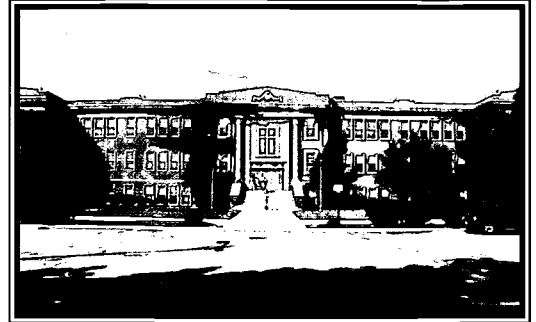


# SEN. JIM JEFFORDS

## Rutland High School

*The original building is now an "intermediate school" that needs constant repairs and high maintenance.*

|                              |                         |
|------------------------------|-------------------------|
| <b>Location:</b>             | <b>Rutland, Vermont</b> |
| <b>Built in:</b>             | <b>N/A</b>              |
| <b>Past Renovations:</b>     | <b>Many</b>             |
| <b>Student Population:</b>   | <b>1,100</b>            |
| <b>School Designed for:</b>  | <b>N/A</b>              |
| <b>Auxiliary Structures:</b> |                         |
| Annexes:                     | 3 or more               |
| Trailers:                    | None                    |



### FACTS ABOUT VERMONT SCHOOLS:

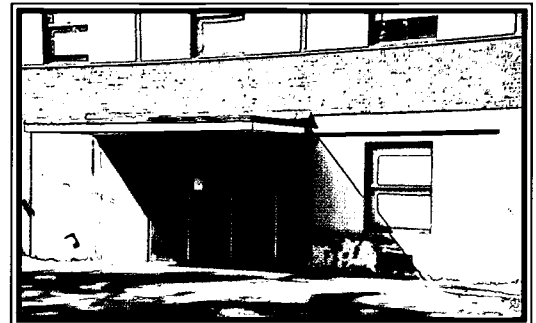
**Total Number of Schools:** 395  
**Total Enrollment:** 107,000

#### Current Conditions:

- **82 %** of schools report a need to upgrade or repair building to good overall condition
- **53 %** of schools report at least one inadequate building feature (e.g. roof, electrical, etc.)
- **17 students** per computer

#### Projected Needs:

- Range of amounts needed to upgrade or repair a school to good overall condition:  
**\$100 to \$7,573,032**
- Enrollment in Vermont over the last decade **increased 14.6 %**. From 1998 to 2008 projected state enrollment in elementary and secondary schools is expected to **decrease by 3,000 students**.

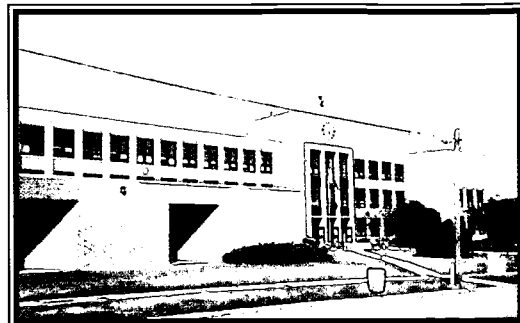


# SEN. ROBERT KERREY

## Northeast High School

*This school must resort to using trailers to house 16 classrooms for an overcrowded facility.*

|                       |                   |
|-----------------------|-------------------|
| Location:             | Lincoln, Nebraska |
| Built in:             | 1940s             |
| Past Renovations:     | N/A               |
| Student Population:   | 2,200             |
| School Designed for:  | 1,500             |
| Auxiliary Structures: |                   |
| Annexes:              | N/A               |
| Trailers:             | 16 classrooms     |



### FACTS ABOUT NEBRASKA SCHOOLS:

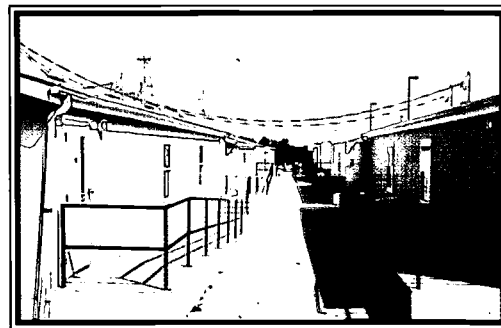
Total Number of Schools: 1,396  
Total Enrollment: 290,000

#### Current Conditions:

- 75 % of schools report a need to upgrade or repair building to good overall condition
- 44 % of schools report at least one inadequate building feature (e.g. roof, electrical, etc.)
- 10 students per computer

#### Projected Needs:

- Range of amounts needed to upgrade or repair a school to good overall condition:  
**\$900 to \$19,000,000**
- Enrollment in Nebraska over the last decade **increased 7.6%**. From 1998 to 2008 projected state enrollment in elementary and secondary schools is expected to **decrease by 5,000 students**.



# SEN. TRENT LOTT

## Pascagoula High School

*This school was recently shut down. The roof was leaking and there was extensive deterioration due in part to housing 2,000 students in 1998 as opposed to the 1,200 intended. The new school has state-of-the-art facilities.*

|                              |  |
|------------------------------|--|
| <b>Location:</b>             | <b>Pascagoula, Mississippi</b>             |
| <b>Built in:</b>             | <b>1942</b>                                |
| <b>Past Renovations:</b>     | <b>Several</b>                             |
| <b>Student Population:</b>   | <b>School is now closed, but had 2,000</b> |
| <b>School Designed for:</b>  | <b>1,200</b>                               |
| <b>Auxiliary Structures:</b> |  |
| Annexes:                     | Yes  |
| Trailers:                    | None                                       |



### FACTS ABOUT MISSISSIPPI SCHOOLS:

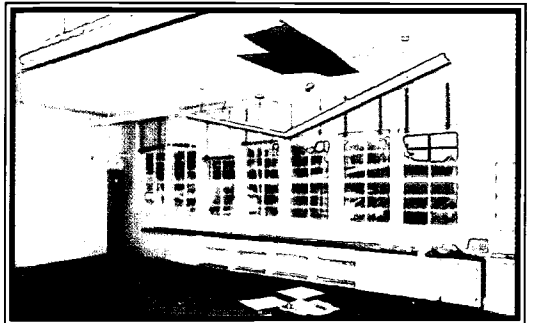
**Total Number of Schools:** 1,007  
**Total Enrollment:** 513,000

#### Current Conditions:

- 82 % of schools report a need to upgrade or repair building to good overall condition
- 50 % of schools report at least one inadequate building feature (e.g. roof, electrical, etc.)
- 14 students per computer

#### Projected Needs:

- Range of amounts needed to upgrade or repair a school to good overall condition:  
**\$200 to \$4,000,000**
- Enrollment in Mississippi over the last decade **increased 1.9 %**. From 1998 to 2008 projected state enrollment in elementary and secondary schools is expected to **increase by 10,000 students**, necessitating **400 additional classrooms**.



# SEN. CONNIE MACK

## Fort Myers High School

*This school underwent massive renovations in 1996.*

|                              |                     |
|------------------------------|---------------------|
| <b>Location:</b>             | Fort Myers, Florida |
| <b>Built in:</b>             | N/A                 |
| <b>Past Renovations:</b>     | Many                |
| <b>Student Population:</b>   | 1,980               |
| <b>School Designed for:</b>  | N/A                 |
| <b>Auxiliary Structures:</b> |                     |
| Annexes:                     | N/A                 |
| Trailers:                    | N/A                 |



### FACTS ABOUT FLORIDA SCHOOLS:

**Total Number of Schools:** 2,801  
**Total Enrollment:** 2,343,000

#### Current Conditions:

- 85 % of schools report a need to upgrade or repair building to good overall condition
- 57 % of schools report at least one inadequate building feature (e.g. roof, electrical, etc.)
- 12 students per computer



#### Projected Needs:

- Range of amounts needed to upgrade or repair a school to good overall condition:  
**\$354 to \$28,970,500**
- Enrollment in Florida over the last decade **increased 36.1 %**. From 1998 to 2008 projected state enrollment in elementary and secondary schools is expected to **increase by 21,000 students**, necessitating **840** additional classrooms.

# SEN. DANIEL PATRICK MOYNIHAN, HON. AIA

## Ben Franklin High School\*

*This four-story brick building is a classic example of how a well designed building can be kept in great shape. According to historic preservation officials, this school retains a high degree of integrity of location, design, setting, and community.*

|                       |                       |
|-----------------------|-----------------------|
| Location:             | East Harlem, New York |
| Built in:             | 1941                  |
| Past Renovations:     | N/A                   |
| Student Population:   | 1,691                 |
| School Designed for:  | N/A                   |
| Auxiliary Structures: |                       |
| Annexes:              | None                  |
| Trailers:             | None                  |



### FACTS ABOUT NEW YORK SCHOOLS:

Total Number of Schools: 4,172  
Total Enrollment: 2,937,000

#### Current Conditions:

- 90 % of schools report a need to upgrade or repair building to good overall condition
- 67 % of schools report at least one inadequate building feature (e.g. roof, electrical, etc.)
- 16 students per computer

#### Projected Needs:

- Range of amounts needed to upgrade or repair a school to good overall condition:  
**\$11,000 to \$51,728,000**
- Enrollment in New York over the last decade **increased 14.1 %**. From 1998 to 2008 projected state enrollment in elementary and secondary schools is expected to **increase by 20,000 students**, necessitating **800 additional classrooms**.



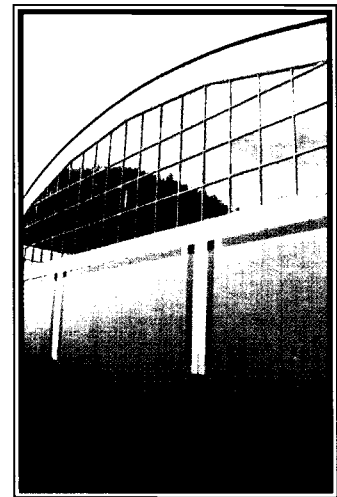
\* Currently named Manhattan Center for Science and Mathematics.

# SEN. FRANK MURKOWSKI

## Ketchikan High School

*This school received an AIA Honor Award for design in 1995. Complete redesign and remodeling transformed this school into a modern facility, of great pride to residents and students alike. However, it is important to note that 80% of schools in Alaska report a need to upgrade or repair their facilities.*

|                              |                          |
|------------------------------|--------------------------|
| <b>Location:</b>             | <b>Ketchikan, Alaska</b> |
| <b>Built in:</b>             | <b>1950s</b>             |
| <b>Past Renovations:</b>     | <b>1994</b>              |
| <b>Student Population:</b>   | <b>675</b>               |
| <b>School Designed for</b>   | <b>N/A</b>               |
| <b>Auxiliary Structures:</b> |                          |
| Annexes:                     | None                     |
| Trailers:                    | None                     |



### FACTS ABOUT ALASKA SCHOOLS:

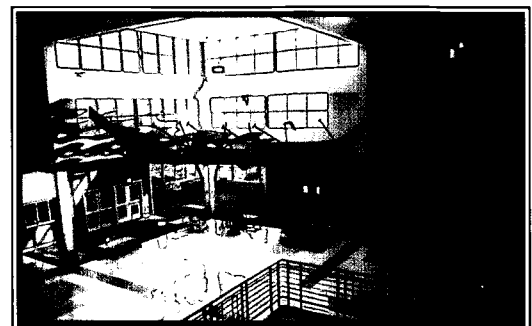
**Total Number of Schools:** 497  
**Total Enrollment:** 132,000

#### Current Conditions:

- 80 % of schools report a need to upgrade or repair building to good overall condition
- 69 % of schools report at least one inadequate building feature (e.g. roof, electrical, etc.)
- 8 students per computer

#### Projected Needs:

- Range of amounts needed to upgrade or repair a school to good overall condition:  
**\$4,000 to \$46,824,300**
- Enrollment in Alaska over the last decade **increased 24 %**. From 1998 to 2008 projected state enrollment in elementary and secondary schools is expected to **increase by 14,000 students**, necessitating **560 additional classrooms**.



114

# SEN. DON NICKLES

## Ponca City High School

*The original school building was built during the Depression. Monumental materials used in the construction made a strong statement about the value of education.*

|                              |  |
|------------------------------|--|
| <b>Location:</b>             | <b>Ponca City, Oklahoma</b>                              |
| <b>Built in:</b>             | <b>1920s</b>   |
| <b>Past Renovations:</b>     | <b>Additions in every decade starting with the 1950s</b> |
| <b>Student Population:</b>   | <b>2,000</b>   |
| <b>School Designed for:</b>  | <b>1,800</b>   |
| <b>Auxiliary Structures:</b> |  |
| Annexes:                     | None   |
| Trailers:                    | None   |



### FACTS ABOUT OKLAHOMA SCHOOLS:

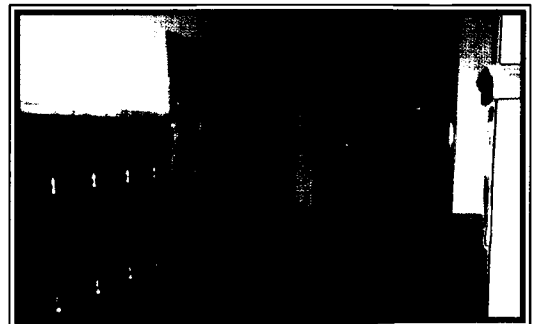
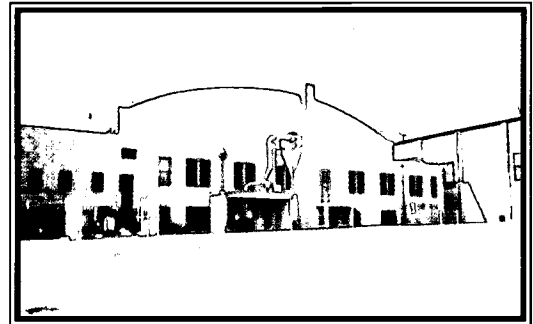
**Total Number of Schools:** 1,828  
**Total Enrollment:** 622,000

#### Current Conditions:

- 83 % of schools report a need to upgrade or repair building to good overall condition
- 54 % of schools report at least one inadequate building feature (e.g. roof, electrical, etc.)
- 13 students per computer

#### Projected Needs:

- Range of amounts needed to upgrade or repair a school to good overall condition:  
**\$1,000 to \$6,260,000**
- Enrollment in Oklahoma over the last decade **increased 7.2 %**. From 1998 to 2008 projected state enrollment in elementary and secondary schools is expected to **decrease by 29,000 students**.



PA 15

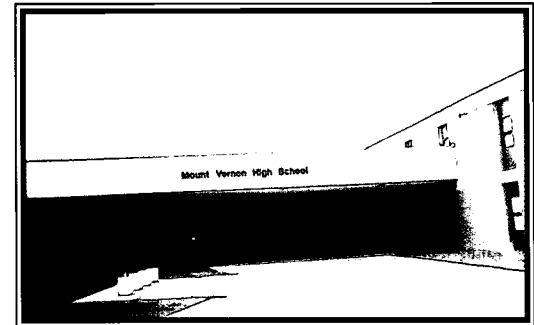
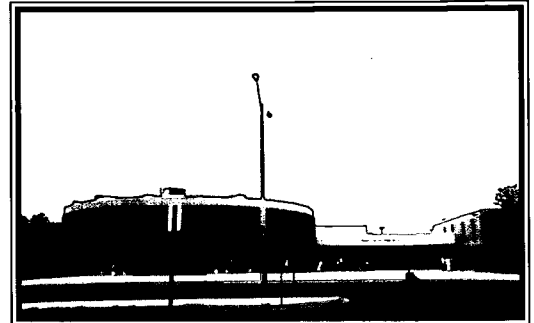


# SEN. CHARLES ROBB

## Mount Vernon High School

*Though Sen. Robb attended the original school down the road, this school still embodies the spirit of that original structure. The bottom picture is of the original school.*

|                              |                                  |
|------------------------------|----------------------------------|
| <b>Location:</b>             | <b>Alexandria, Virginia</b>      |
| <b>Built in:</b>             | <b>1939, moved in 1974</b>       |
| <b>Past Renovations:</b>     | <b>Currently being renovated</b> |
| <b>Student Population:</b>   | <b>1,700</b>                     |
| <b>School Designed for:</b>  | <b>2,400</b>                     |
| <b>Auxiliary Structures:</b> |                                  |
| Annexes:                     | None                             |
| Trailers:                    | None                             |



### FACTS ABOUT VIRGINIA SCHOOLS:

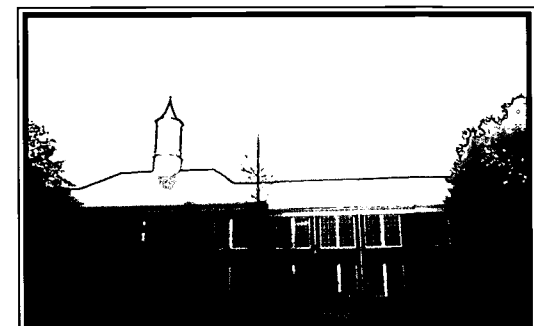
**Total Number of Schools:** 1,895  
**Total Enrollment:** 1,128,000

#### Current Conditions:

- **81 %** of schools report a need to upgrade or repair building to good overall condition
- **60 %** of schools report at least one inadequate building feature (e.g. roof, electrical, etc.)
- **13 students** per computer

#### Projected Needs:

- Range of amounts needed to upgrade or repair a school to good overall condition:  
**\$1,000 to \$26,128,000**
- Enrollment in Virginia over the last decade **increased 14.8 %**. From 1998 to 2008 projected state enrollment in elementary and secondary schools is expected to **increase by 62,000 students**, necessitating **2,480** additional classrooms.



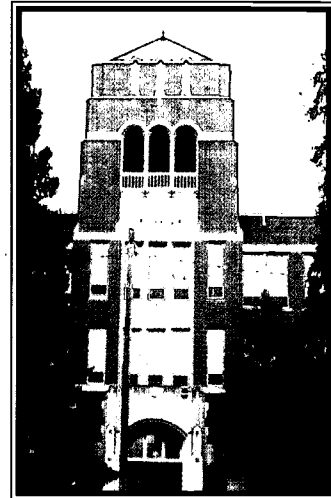
# SEN. WILLIAM ROTH

---

## Great Falls High School\*

*This school is in good condition, considering it was originally built in 1930. Massive additions have helped to keep up with the population explosion in the area.*

|                              |   |
|------------------------------|---|
| <b>Location:</b>             | Great Falls, Montana  |
| <b>Built in:</b>             | 1930  |
| <b>Past Renovations:</b>     | Many additions, including a 1949 stadium and a 1998 cafeteria |
| <b>Student Population:</b>   | 1,817   |
| <b>School Designed for:</b>  | N/A   |
| <b>Auxiliary Structures:</b> |   |
| Annexes:                     | 2   |
| Trailers:                    | None  |



### FACTS ABOUT DELAWARE SCHOOLS:

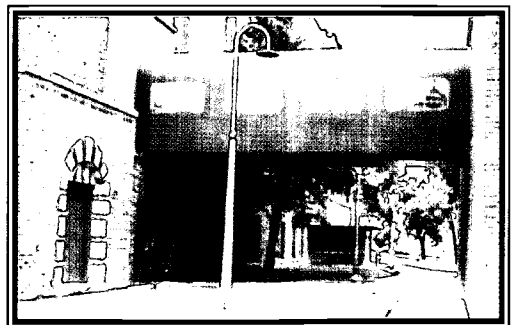
**Total Number of Schools:** 183  
**Total Enrollment:** 114,000

#### Current Conditions:

- 97 % of schools report a need to upgrade or repair building to good overall condition
- 70 % of schools report at least one inadequate building feature (e.g. roof, electrical, etc.)
- 18 students per computer

#### Projected Needs:

- Range of amounts needed to upgrade or repair a school to good overall condition:  
**\$26,000 to \$15,000,000**
- Enrollment in Delaware over the last decade **increased 10.4 %**. From 1998 to 2008 projected state enrollment in elementary and secondary schools is expected to **increase by 5,000 students**, necessitating **200** additional classrooms.



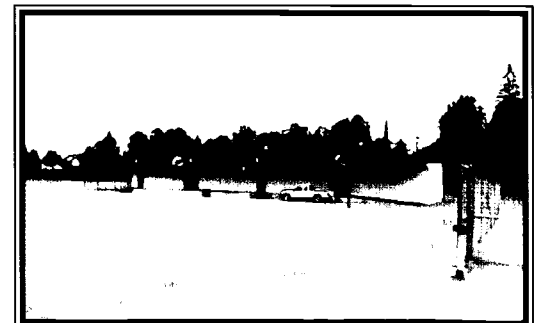
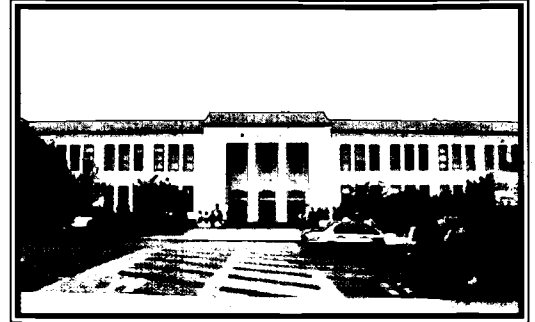
\* While Sen. Roth attended school in Montana, he currently represents the state of Delaware. Sen. Roth also attended Helena High School, the same school attended by Sen. Baucus.

# REPS. XAVIER BECERRA & ROBERT MATSUI

## McClatchy High School

*This school was home to two members of Congress – Reps. Xavier Becerra and Robert Matsui. In good structural condition, this school is experiencing typical aging problems with windows and doors.*

|                       |                        |
|-----------------------|------------------------|
| Location:             | Sacramento, California |
| Built in:             | 1937                   |
| Past Renovations:     | Renovated in 1977-78   |
| Student Population:   | 2,500                  |
| School Designed for:  | 2,000                  |
| Auxiliary Structures: |                        |
| Annexes:              | None                   |
| Trailers:             | 7                      |



### FACTS ABOUT CALIFORNIA SCHOOLS:

Total Number of Schools: 7,984  
Total Enrollment: 5,961,000

#### Current Conditions:

- 87 % of schools report a need to upgrade or repair building to good overall condition
- 71 % of schools report at least one inadequate building feature (e.g. roof, electrical, etc.)
- 21 students per computer

#### Projected Needs:

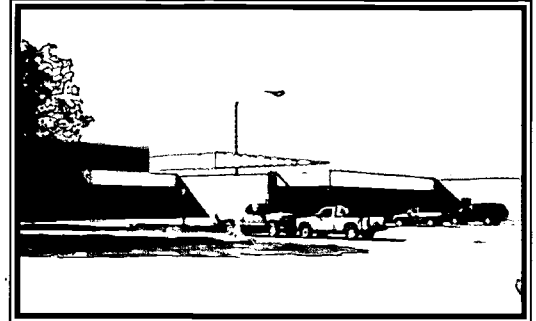
- Range of amounts needed to upgrade or repair a school to good overall condition:  
**\$600 to \$30,000,000**
- Enrollment in California over the last decade **increased 29.1 %**. From 1998 to 2008 projected state enrollment in elementary and secondary schools is expected to **increase by 893,000 students**, necessitating **35,720 additional classrooms**.

# REP. DAVE CAMP

## Midland Dow High School

*This 30-year-old building is in good shape with private funding playing a significant role in the maintenance and overall upkeep of this school.*

|                              |                          |
|------------------------------|--------------------------|
| <b>Location:</b>             | <b>Midland, Michigan</b> |
| <b>Built in:</b>             | <b>1968-69</b>           |
| <b>Past Renovations:</b>     | <b>1997, 1999</b>        |
| <b>Student Population:</b>   | <b>1,414</b>             |
| <b>School Designed for</b>   | <b>N/A</b>               |
| <b>Auxiliary Structures:</b> |                          |
| Annexes:                     | None                     |
| Trailers:                    | 2 for math               |



### FACTS ABOUT MICHIGAN SCHOOLS:

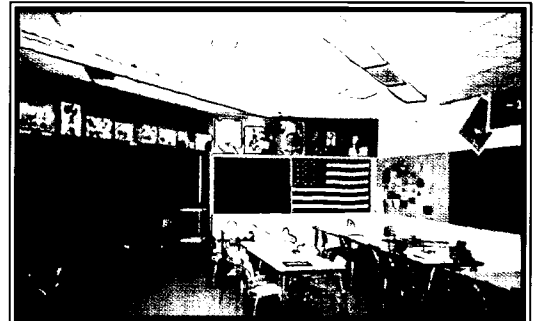
**Total Number of Schools:** 3,853  
**Total Enrollment:** 1,660,000

#### Current Conditions:

- 80 % of schools report a need to upgrade or repair building to good overall condition
- 52 % of schools report at least one inadequate building feature (e.g. roof, electrical, etc.)
- 20 students per computer

#### Projected Needs:

- Range of amounts needed to upgrade or repair a school to good overall condition:  
**\$500 to \$18,000,000**
- Enrollment in Michigan over the last decade **increased 4.9 %**. From 1998 to 2008 projected state enrollment in elementary and secondary schools is expected to **decrease by 81,000 students**.

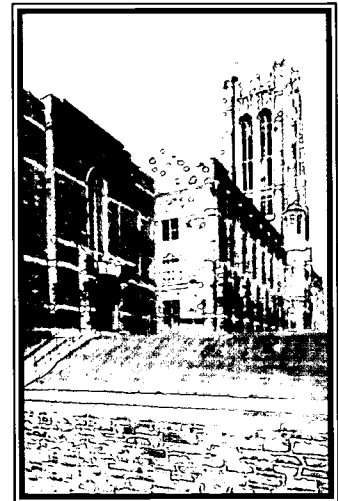
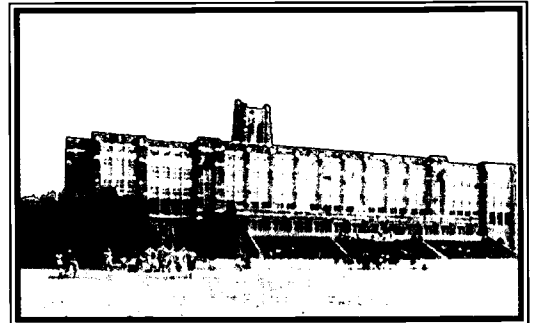


# REP. BENJAMIN CARDIN

## Baltimore City College High School

*This school is kept clean and in good shape. This school offers students a positive environment, even though the building is more than 80 years old.*

|                              |                            |
|------------------------------|----------------------------|
| <b>Location:</b>             | <b>Baltimore, Maryland</b> |
| <b>Built in:</b>             | <b>1928</b>                |
| <b>Past Renovations:</b>     | <b>1978</b>                |
| <b>Student Population:</b>   | <b>1,300</b>               |
| <b>School Designed for:</b>  | <b>1,500</b>               |
| <b>Auxiliary Structures:</b> |                            |
| Annexes:                     | None                       |
| Trailers:                    | None                       |



### FACTS ABOUT MARYLAND SCHOOLS:

**Total Number of Schools:** 1,286  
**Total Enrollment:** 846,000

#### Current Conditions:

- 78 % of schools report a need to upgrade or repair building to good overall condition
- 67 % of schools report at least one inadequate building feature (e.g. roof, electrical, etc.)
- 15 students per computer

#### Projected Needs:

- Range of amounts needed to upgrade or repair a school to good overall condition:  
**up to \$30,497,150**
- Enrollment in Maryland over the last decade **increased 22.8 %**. From 1998 to 2008 projected state enrollment in elementary and secondary schools is expected to **increase by 16,000 students**, necessitating **640 additional classrooms**.



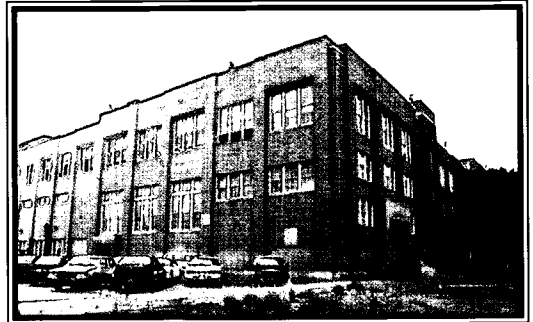
# REP. PHILIP CRANE

---

## South Shore High School

*This school is in need of a new ceiling, roof, windows, floor tiles, and air conditioning.*

|                              |                   |
|------------------------------|-------------------|
| <b>Location:</b>             | Chicago, Illinois |
| <b>Built in:</b>             | 1930s             |
| <b>Past Renovations:</b>     | N/A               |
| <b>Student Population:</b>   | 900               |
| <b>School Designed for:</b>  | N/A               |
| <b>Auxiliary Structures:</b> |                   |
| Annexes:                     | 1                 |
| Trailers:                    | None              |



### FACTS ABOUT ILLINOIS SCHOOLS:

**Total Number of Schools:** 4,185  
**Total Enrollment:** 2,010,000

#### Current Conditions:

- 89 % of schools report a need to upgrade or repair building to good overall condition
- 62 % of schools report at least one inadequate building feature (e.g. roof, electrical, etc.)
- 19 students per computer

#### Projected Needs:

- Range of amounts needed to upgrade or repair a school to good overall condition:  
**\$500 to \$20,000,000**
- Enrollment in Illinois over the last decade **increased 12 %**. From 1998 to 2008 projected state enrollment in elementary and secondary schools is expected to **decrease by 5,000 students**.

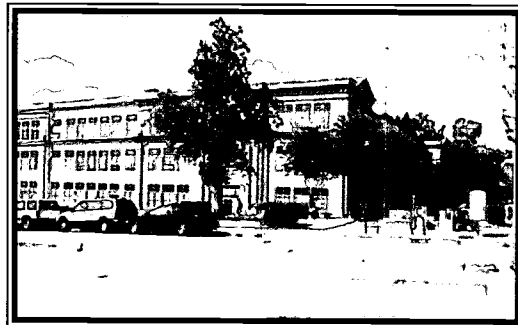


# REP. LLOYD DOGGETT

## Stephen F. Austin High School

*This Texas school is of great pride to local residents, and would benefit from financial investment.*

|                              |               |
|------------------------------|---------------|
| <b>Location:</b>             | Austin, Texas |
| <b>Built in:</b>             | N/A           |
| <b>Past Renovations:</b>     | N/A           |
| <b>Student Population:</b>   | 2,300         |
| <b>School Designed for:</b>  | N/A           |
| <b>Auxiliary Structures:</b> |               |
| Annexes:                     | N/A           |
| Trailers:                    | 3             |



### FACTS ABOUT TEXAS SCHOOLS:

**Total Number of Schools:** 6,875  
**Total Enrollment:** 3,967,000

#### Current Conditions:

- 76 % of schools report a need to upgrade or repair building to good overall condition
- 46 % of schools report at least one inadequate building feature (e.g. roof, electrical, etc.)
- 11 students per computer

#### Projected Needs:

- Range of amounts needed to upgrade or repair a school to good overall condition:  
**\$375 to \$18,000,000**
- Enrollment in Texas over the last decade **increased 20.8 %**. From 1998 to 2008 projected state enrollment in elementary and secondary schools is expected to **increase by 376,000 students**, necessitating **15,040** additional classrooms.



# REP. JENNIFER DUNN

## Bellevue High School

*The renovation of this 1940s school is a year behind schedule.*

|                              |                                |
|------------------------------|--------------------------------|
| <b>Location:</b>             | <b>Bellevue, Washington</b>    |
| <b>Built in:</b>             | <b>1940s</b>                   |
| <b>Past Renovations:</b>     | <b>Three major renovations</b> |
| <b>Student Population:</b>   | <b>1,200</b>                   |
| <b>School Designed for:</b>  | <b>N/A</b>                     |
| <b>Auxiliary Structures:</b> |                                |
| Annexes:                     | 2                              |
| Trailers:                    | 8                              |



### FACTS ABOUT WASHINGTON SCHOOLS:

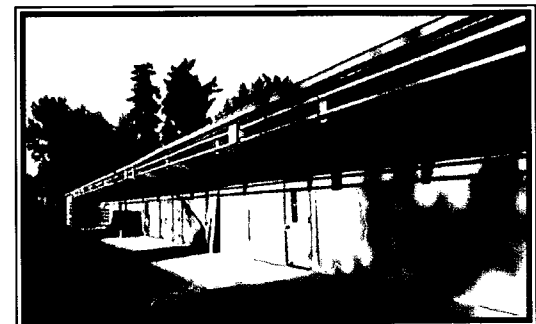
**Total Number of Schools:** 2,180  
**Total Enrollment:** 998,000

#### Current Conditions:

- **89 %** of schools report a need to upgrade or repair building to good overall condition
- **60 %** of schools report at least one inadequate building feature (e.g. roof, electrical, etc.)
- **14 students** per computer

#### Projected Needs:

- Range of amounts needed to upgrade or repair a school to good overall condition:  
**\$300 to \$60,000,000**
- Enrollment in Washington over the last decade **increased 26.2 %**. From 1998 to 2008 projected state enrollment in elementary and secondary schools is expected to **increase by 23,000 students**, necessitating **920 additional classrooms**.



# REP. MARK FOLEY

## Lake Worth High School

*This school, built in 1922, now has 32 trailers to house its ever-increasing population. Designed to hold 1,800 students, the school now must contend with more than 3,000.*

|                              |                     |
|------------------------------|---------------------|
| <b>Location:</b>             | Lake Worth, Florida |
| <b>Built in:</b>             | 1922                |
| <b>Past Renovations:</b>     | N/A                 |
| <b>Student Population:</b>   | 3,143               |
| <b>School Designed for:</b>  | 1,807               |
| <b>Auxiliary Structures:</b> |                     |
| Annexes:                     | 6                   |
| Trailers:                    | 32                  |



### FACTS ABOUT FLORIDA SCHOOLS:

**Total Number of Schools:** 2,801  
**Total Enrollment:** 2,343,000

#### Current Conditions:

- 85 % of schools report a need to upgrade or repair building to good overall condition
- 57 % of schools report at least one inadequate building feature (e.g. roof, electrical, etc.)
- 12 students per computer

#### Projected Needs:

- Range of amounts needed to upgrade or repair a school to good overall condition:  
\$354 to \$28,970,500
- Enrollment in Florida over the last decade increased 36.1 %. From 1998 to 2008 projected state enrollment in elementary and secondary schools is expected to increase by 21,000 students, necessitating 840 additional classrooms.



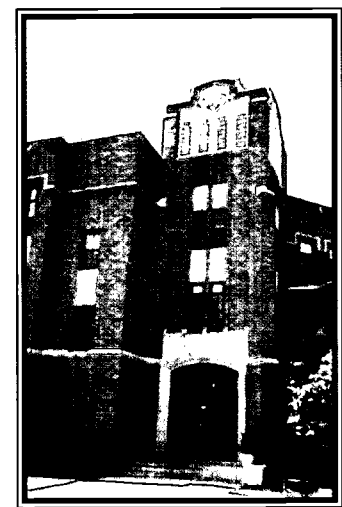
24

# REP. J.D. HAYWORTH

## High Point Central High School

*This school, significant both architecturally and historically to the city of High Point, is in good condition. However, many detached structures are now being used to house classes.*

|                              |  |
|------------------------------|--|
| <b>Location:</b>             | <b>High Point, North Carolina</b>        |
| <b>Built in:</b>             | <b>1927</b>                              |
| <b>Past Renovations:</b>     | <b>Several additions and renovations</b> |
| <b>Student Population:</b>   | <b>1,070</b>                             |
| <b>School Designed for:</b>  | <b>1,200</b>                             |
| <b>Auxiliary Structures:</b> |  |
| Annexes:                     | Yes                                      |
| Trailers:                    | None                                     |



### FACTS ABOUT NORTH CAROLINA SCHOOLS:

**Total Number of Schools:** 2,005  
**Total Enrollment:** 1,268,000

#### Current Conditions:

- 90 % of schools report a need to upgrade or repair building to good overall condition
- 55 % of schools report at least one inadequate building feature (e.g. roof, electrical, etc.)
- 13 students per computer

#### Projected Needs:

- Range of amounts needed to upgrade or repair a school to good overall condition:  
**\$3,500 to \$10,020,000**
- Enrollment in North Carolina over the last decade **increased 17.1 %**. From 1998 to 2008 projected state enrollment in elementary and secondary schools is expected to **increase by 42,000 students**, necessitating **1,680 additional classrooms**.



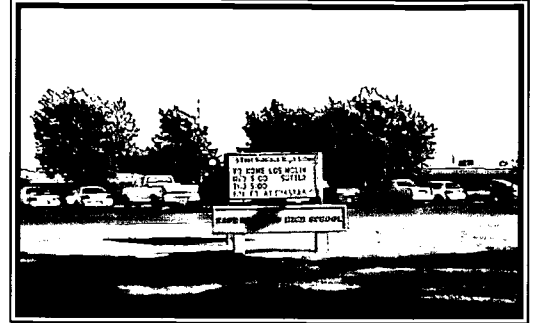
Ag 25

# REP. WALLY HERGER

## East Nicolaus High School

*With four trailers, this school suffers from the common problem of having to resort to trailers to accommodate a growing population of students.*

|                       |                      |
|-----------------------|----------------------|
| Location:             | Nicolaus, California |
| Built in:             | 1974                 |
| Past Renovations:     | None                 |
| Student Population:   | 258                  |
| School Designed for:  | N/A                  |
| Auxiliary Structures: |                      |
| Annexes:              | 1                    |
| Trailers:             | 4                    |



### FACTS ABOUT CALIFORNIA SCHOOLS:

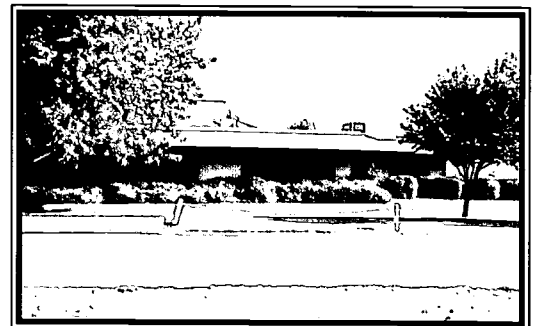
Total Number of Schools: 7,984  
Total Enrollment: 5,961,000

#### Current Conditions:

- 87 % of schools report a need to upgrade or repair building to good overall condition
- 71 % of schools report at least one inadequate building feature (e.g. roof, electrical, etc.)
- 21 students per computer

#### Projected Needs:

- Range of amounts needed to upgrade or repair a school to good overall condition:  
**\$600 to \$30,000,000**
- Enrollment in California over the last decade **increased 29.1 %**. From 1998 to 2008 projected state enrollment in elementary and secondary schools is expected to **increase by 893,000 students**, necessitating **35,720 additional classrooms**.



# REP. WILLIAM JEFFERSON

## D.W. Griffith High School

*This typical 1950s school needs maintenance and installation of air conditioning units. A low tax base in depressed areas inhibits efforts to replace antiquated schools such as this one.*

|                              |  |
|------------------------------|--|
| <b>Location:</b>             | Lake Providence, Louisiana               |
| <b>Built in:</b>             | 1949-50                                  |
| <b>Past Renovations:</b>     | Maintenance renovations only             |
| <b>Student Population:</b>   | 373 (School is now a junior high school) |
| <b>School Designed for:</b>  | N/A                                      |
| <b>Auxiliary Structures:</b> |  |
| Annexes:                     | 2  |
| Trailers:                    | None                                     |



### FACTS ABOUT LOUISIANA SCHOOLS:

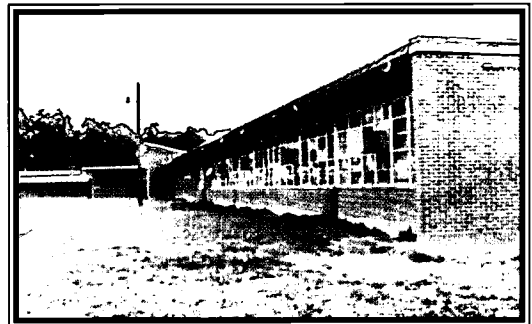
**Total Number of Schools:** 1,477  
**Total Enrollment:** 800,000

#### Current Conditions:

- 88 % of schools report a need to upgrade or repair building to good overall condition
- 50 % of schools report at least one inadequate building feature (e.g. roof, electrical, etc.)
- 21 students per computer

#### Projected Needs:

- Range of amounts needed to upgrade or repair a school to good overall condition:  
**\$1,000 to \$10,000,000**
- Enrollment in Louisiana over the last decade **increased 1.7 %**. From 1998 to 2008 projected state enrollment in elementary and secondary schools is expected to **decrease by 19,000 students**.

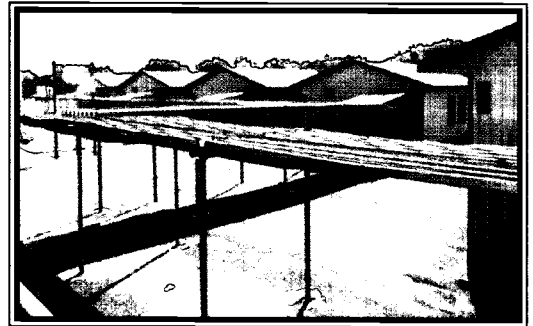


# REP. SAM JOHNSON

## Woodrow Wilson High School

*This school, built in the 1920s, is now facing serious overcrowding as the student population rises. Designed for 1,000, the school now must house 1,345 students in an aging facility.*

|                              |               |
|------------------------------|---------------|
| <b>Location:</b>             | Dallas, Texas |
| <b>Built in:</b>             | 1928          |
| <b>Past Renovations:</b>     | N/A           |
| <b>Student Population:</b>   | 1,345         |
| <b>School Designed for:</b>  | 1,000         |
| <b>Auxiliary Structures:</b> |               |
| Annexes:                     | 10            |
| Trailers:                    | 2 for storage |



### FACTS ABOUT TEXAS SCHOOLS:

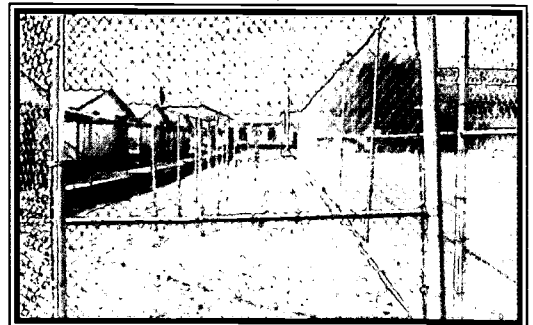
**Total Number of Schools:** 6,875  
**Total Enrollment:** 3,967,000

#### Current Conditions:

- 76 % of schools report a need to upgrade or repair building to good overall condition
- 46 % of schools report at least one inadequate building feature (e.g. roof, electrical, etc.)
- 11 students per computer

#### Projected Needs:

- Range of amounts needed to upgrade or repair a school to good overall condition:  
**\$375 to \$18,000,000**
- Enrollment in Texas over the last decade **increased 20.8%**. From 1998 to 2008 projected state enrollment in elementary and secondary schools is expected to **increase by 376,000 students**, necessitating **15,040 additional classrooms**.



# REP. SANDER LEVIN

## Central High School

*Though this school is in relatively good condition, summer touch-ups did little to address its renovation wish list – new floor tiles, greenhouse, gymnasium bleachers, new lockers, and electrical outlet upgrades for computers.*

|                              |                          |
|------------------------------|--------------------------|
| <b>Location:</b>             | <b>Detroit, Michigan</b> |
| <b>Built in:</b>             | <b>1924</b>              |
| <b>Past Renovations:</b>     | <b>Yes</b>               |
| <b>Student Population:</b>   | <b>1,300</b>             |
| <b>School Designed for:</b>  | <b>N/A</b>               |
| <b>Auxiliary Structures:</b> |                          |
| Annexes:                     | Yes                      |
| Trailers:                    | None                     |



### FACTS ABOUT MICHIGAN SCHOOLS:

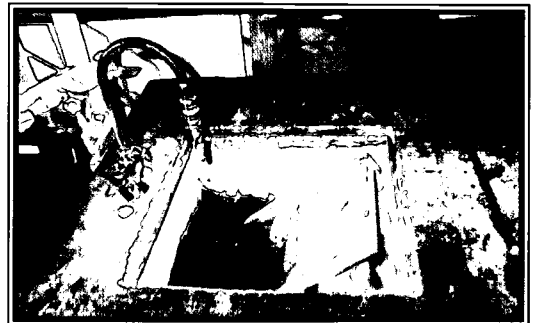
**Total Number of Schools:** 3,853  
**Total Enrollment:** 1,660,000

#### Current Conditions:

- 80 % of schools report a need to upgrade or repair building to good overall condition
- 52 % of schools report at least one inadequate building feature (e.g. roof, electrical, etc.)
- 20 students per computer

#### Projected Needs:

- Range of amounts needed to upgrade or repair a school to good overall condition:  
**\$500 to \$18,000,000**
- Enrollment in Michigan over the last decade **increased 4.9 %**. From 1998 to 2008 projected state enrollment in elementary and secondary schools is expected to **decrease by 81,000 students**.



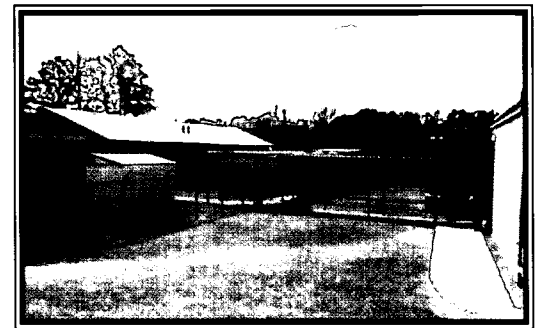
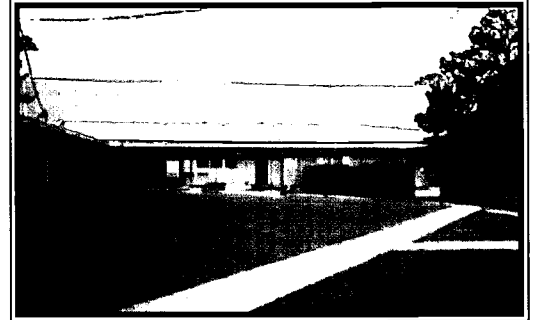


# REP. JIM McCRERY

## Leesville High School

*This late 1950s school has had many major renovations and additions over the years – the “patchwork” method of school expansion.*

|                              |  |
|------------------------------|--|
| <b>Location:</b>             | Leesville, Louisiana   |
| <b>Built in:</b>             | 1959   |
| <b>Past Renovations:</b>     | Library, Music building,<br>lower classroom building,<br>and administration office |
| <b>Student Population:</b>   | 943  |
| <b>School Designed for:</b>  | N/A  |
| <b>Auxiliary Structures:</b> |  |
| Annexes:                     | 4  |
| Trailers:                    | 3  |



### FACTS ABOUT LOUISIANA SCHOOLS:

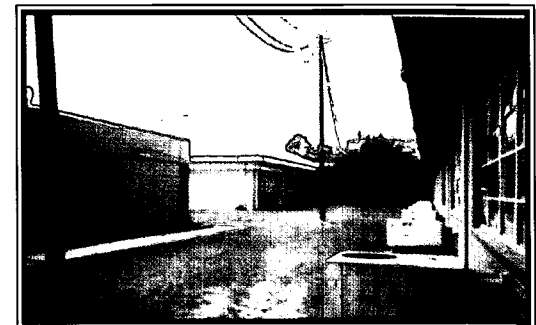
**Total Number of Schools:** 1,477  
**Total Enrollment:** 800,000

#### Current Conditions:

- **88 %** of schools report a need to upgrade or repair building to good overall condition
- **50 %** of schools report at least one inadequate building feature (e.g. roof, electrical, etc.)
- **21 students** per computer

#### Projected Needs:

- Range of amounts needed to upgrade or repair a school to good overall condition:  
**\$1,000 to \$10,000,000**
- Enrollment in Louisiana over the last decade **increased 1.7 %**. From 1998 to 2008 projected state enrollment in elementary and secondary schools is expected to **decrease by 19,000 students**.

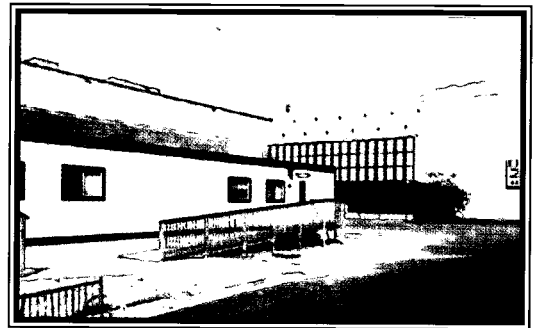


# REP. JIM McDERMOTT

## Downers Grove North High School\*

*This 1928 school has received much attention over the years. The overall condition is excellent, and a 200,000 square foot addition will begin in 1999. The addition incorporates a façade that will reflect the original 1928 architecture.*

|                              |   |
|------------------------------|---|
| <b>Location:</b>             | Downers Grove, Illinois   |
| <b>Built in:</b>             | 1928  |
| <b>Past Renovations:</b>     | Several additions for 70 years, major renovations started in 1996 |
| <b>Student Population:</b>   | 2,155   |
| <b>School Designed for:</b>  | 1,550   |
| <b>Auxiliary Structures:</b> |   |
| Annexes:                     | None  |
| Trailers:                    | 6   |



### FACTS ABOUT WASHINGTON SCHOOLS:

**Total Number of Schools:** 2,180  
**Total Enrollment:** 998,000

#### Current Conditions:

- 89 % of schools report a need to upgrade or repair building to good overall condition
- 60 % of schools report at least one inadequate building feature (e.g. roof, electrical, etc.)
- 14 students per computer

#### Projected Needs:

- Range of amounts needed to upgrade or repair a school to good overall condition: **\$300 to \$60,000,000**
- Enrollment in Washington over the last decade **increased 26.2 %**. From 1998 to 2008 projected state enrollment in elementary and secondary schools is expected to **increase by 23,000 students**, necessitating **920 additional classrooms**.

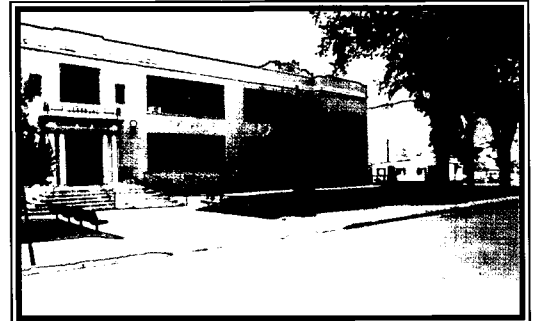
\* While Rep. McDermott attended school in Illinois, he currently represents the 7<sup>th</sup> District of Washington.

# REP. SCOTT McINNIS

## Glenwood Springs High School

*This school was recently combined with the middle school, and they are already outgrowing the space.*

|                              |                            |
|------------------------------|----------------------------|
| <b>Location:</b>             | Glenwood Springs, Colorado |
| <b>Built in:</b>             | 1950s                      |
| <b>Past Renovations:</b>     | Several additions          |
| <b>Student Population:</b>   | 661                        |
| <b>School Designed for:</b>  | N/A                        |
| <b>Auxiliary Structures:</b> |                            |
| Annexes:                     | N/A                        |
| Trailers:                    | N/A                        |



### FACTS ABOUT COLORADO SCHOOLS:

**Total Number of Schools:** 1,531  
**Total Enrollment:** 696,000

#### Current Conditions:

- 89 % of schools report a need to upgrade or repair building to good overall condition
- 58 % of schools report at least one inadequate building feature (e.g. roof, electrical, etc.)
- 13 students per computer

#### Projected Needs:

- Range of amounts needed to upgrade or repair a school to good overall condition:  
**\$2,000 to \$15,000,000**
- Enrollment in Colorado over the last decade **increased 24.3 %**. From 1998 to 2008 projected state enrollment in elementary and secondary schools is expected to **increase by 28,000 students**, necessitating **1,120 additional classrooms**.



# REP. JIM RAMSTAD

## Jamestown High School

*This school has chips and cracks in the walls everywhere, and there is open wiring in the hallways.*

|                              |                         |
|------------------------------|-------------------------|
| <b>Location:</b>             | Jamestown, North Dakota |
| <b>Built in:</b>             | N/A                     |
| <b>Student Population:</b>   | 997                     |
| <b>School Designed for:</b>  | N/A                     |
| <b>Auxiliary Structures:</b> |                         |
| Annexes:                     | N/A                     |
| Trailers:                    | N/A                     |



### FACTS ABOUT NORTH DAKOTA SCHOOLS:

**Total Number of Schools:** 609  
**Total Enrollment:** 116,000

#### Current Conditions:

- 88 % of schools report a need to upgrade or repair building to good overall condition
- 49 % of schools report at least one inadequate building feature (e.g. roof, electrical, etc.)
- 9 students per computer

#### Projected Needs:

- Range of amounts needed to upgrade or repair a school to good overall condition:  
**\$200 to \$10,000,000**
- Enrollment in North Dakota over the last decade **decreased 2.4 %**. From 1998 to 2008 projected state enrollment in elementary and secondary schools is expected to **decrease by 6,000 students**.

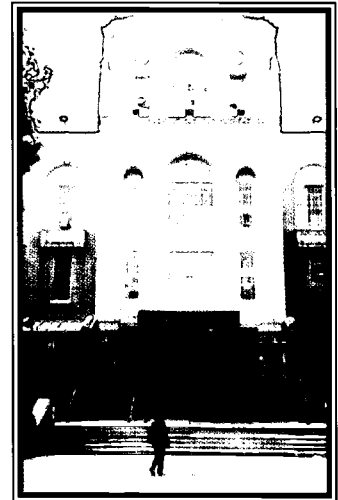
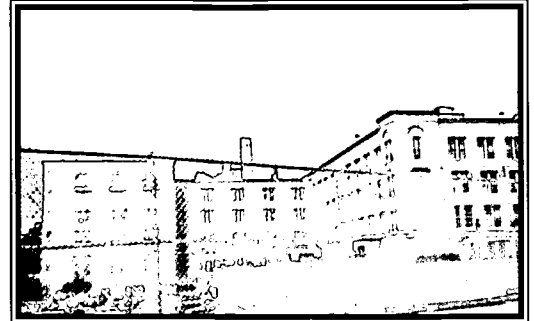


# REP. CHARLES RANGEL

## DeWitt Clinton High School

*This historic high school once had a peak enrollment of 12,000, qualifying it for the Guinness Book of World Records in 1934 as the largest high school facility in the world.*

|                              |                        |
|------------------------------|------------------------|
| <b>Location:</b>             | <b>Bronx, New York</b> |
| <b>Built in</b>              | <b>1929</b>            |
| <b>Past Renovations:</b>     | <b>N/A</b>             |
| <b>Student Population:</b>   | <b>4,000</b>           |
| <b>School Designed for:</b>  | <b>N/A</b>             |
| <b>Auxiliary Structures:</b> |                        |
| Annexes:                     | 1                      |
| Trailers:                    | None                   |



### FACTS ABOUT NEW YORK SCHOOLS:

**Total Number of Schools:** 4,172  
**Total Enrollment:** 2,937,000

#### Current Conditions:

- **90 %** of schools report a need to upgrade or repair building to good overall condition
- **67 %** of schools report at least one inadequate building feature (e.g. roof, electrical, etc.)
- **16 students** per computer

#### Projected Needs:

- Range of amounts needed to upgrade or repair a school to good overall condition:  
**\$11,000 to \$51,728,000**
- Enrollment in New York over the last decade **increased 14.1 %**. From 1998 to 2008 projected state enrollment in elementary and secondary schools is expected to **increase by 20,000 students**, necessitating **800** additional classrooms.

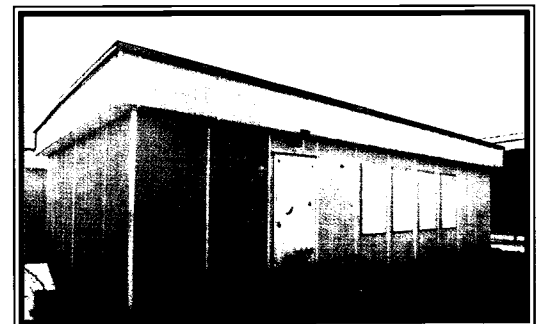
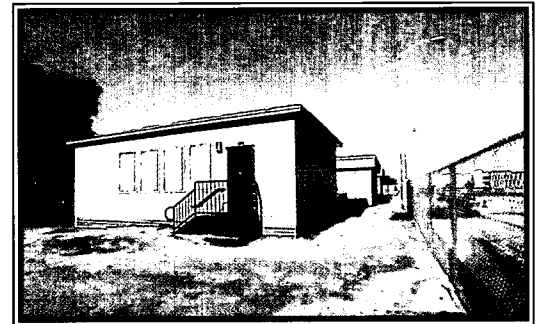
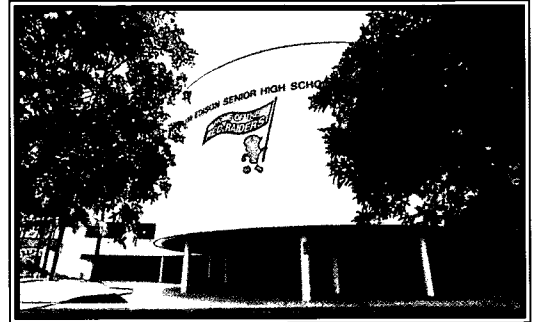
pg 34

# REP. E. CLAY SHAW

## Miami Edison High School

*Despite the fine location of this school, the population explosion has made it cramped and overcrowded. The 13 trailers being used are in poor condition and date back to World War I. On the school's wish list – building 16 new classrooms.*

|                              |   |
|------------------------------|---|
| <b>Location:</b>             | Miami, Florida                                  |
| <b>Built in:</b>             | 1977  |
| <b>Past Renovations:</b>     | Two wings added in 1992,<br>including a library |
| <b>Student Population:</b>   | 1,800   |
| <b>School Designed for:</b>  | 1,600   |
| <b>Auxiliary Structures:</b> |   |
| Annexes:                     | One football field house                        |
| Trailers:                    | 13  |



### FACTS ABOUT FLORIDA SCHOOLS:

**Total Number of Schools:** 2,801  
**Total Enrollment:** 2,343,000

#### Current Conditions:

- 85 % of schools report a need to upgrade or repair building to good overall condition
- 57 % of schools report at least one inadequate building feature (e.g. roof, electrical, etc.)
- 12 students per computer

#### Projected Needs:

- Range of amounts needed to upgrade or repair a school to good overall condition:  
**\$354 to \$28,970,500**
- Enrollment in Florida over the last decade **increased 36.1 %**. From 1998 to 2008 projected state enrollment in elementary and secondary schools is expected to **increase by 21,000 students**, necessitating **840 additional classrooms**.

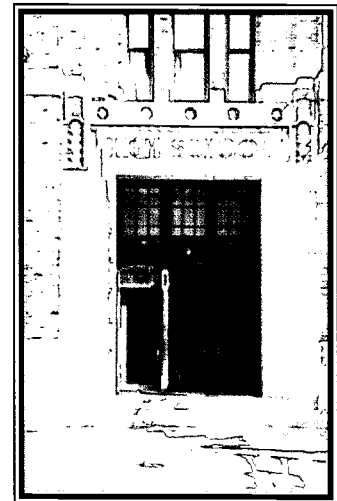
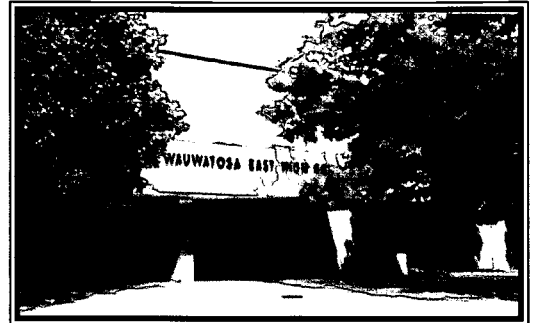
135

# REP. FORTNEY "PETE" STARK

## Wauwatosa East High School\*

*This area represents over 100 years of schools on one site, with a program of modernization well under way in 1972. The high school enrollment in 1900 was 34 freshmen and 16 seniors.*

|                              |  |
|------------------------------|--|
| <b>Location:</b>             | Milwaukee, Wisconsin                   |
| <b>Built in:</b>             | 1928                                   |
| <b>Past Renovations:</b>     | Several, with a major addition in 1972 |
| <b>Student Population:</b>   | 1,280                                  |
| <b>School Designed for:</b>  | 1,400                                  |
| <b>Auxiliary Structures:</b> |  |
| Annexes:                     | None                                   |
| Trailers:                    | None                                   |



### FACTS ABOUT CALIFORNIA SCHOOLS:

**Total Number of Schools:** 7,984  
**Total Enrollment:** 5,961,000

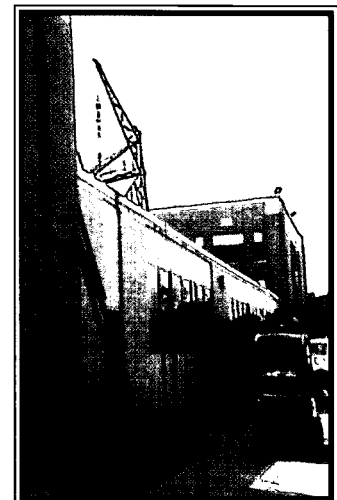
#### Current Conditions:

- 87 % of schools report a need to upgrade or repair building to good overall condition
- 71 % of schools report at least one inadequate building feature (e.g. roof, electrical, etc.)
- 21 students per computer

#### Projected Needs:

- Range of amounts needed to upgrade or repair a school to good overall condition:  
\$600 to \$30,000,000
- Enrollment in California over the last decade increased 29.1 %. From 1998 to 2008 projected state enrollment in elementary and secondary schools is expected to increase by 893,000 students, necessitating 35,720 additional classrooms.

\* While Rep. Stark attended school in Wisconsin, he currently represents the 13<sup>th</sup> District of California.



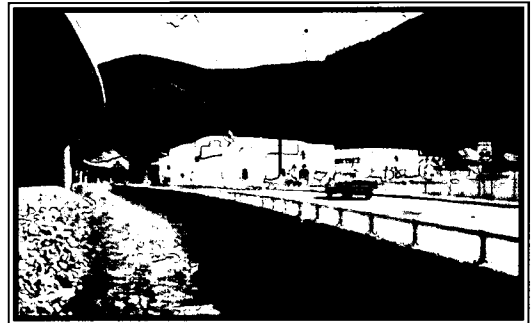


# REP. WILLIAM THOMAS

## Wallace High School\*

*This facility requires maintenance and funds for improvement.*

|                              |                     |
|------------------------------|---------------------|
| <b>Location:</b>             | Wallace, Idaho      |
| <b>Built in:</b>             | 1940s               |
| <b>Past Renovations:</b>     | Minor window infill |
| <b>Student Population:</b>   | 231                 |
| <b>School Designed for:</b>  | N/A                 |
| <b>Auxiliary Structures:</b> |                     |
| Annexes:                     | None                |
| Trailers:                    | None                |



### FACTS ABOUT CALIFORNIA SCHOOLS:

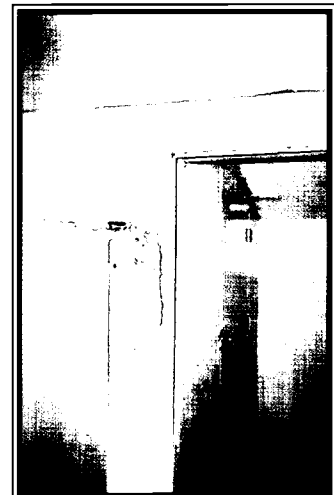
**Total Number of Schools:** 7,984  
**Total Enrollment:** 5,961,000

#### Current Conditions:

- 87 % of schools report a need to upgrade or repair building to good overall condition
- 71 % of schools report at least one inadequate building feature (e.g. roof, electrical, etc.)
- 21 students per computer

#### Projected Needs:

- Range of amounts needed to upgrade or repair a school to good overall condition:  
**\$600 to \$30,000,000**
- Enrollment in California over the last decade **increased 29.1 %**. From 1998 to 2008 projected state enrollment in elementary and secondary schools is expected to **increase by 893,000 students**, necessitating **35,720 additional classrooms**.



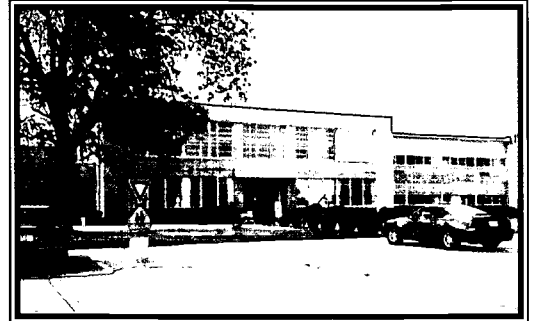
\* While Rep. Thomas attended school in Idaho, he currently represents the 21<sup>st</sup> District of California.

# REP. JERRY WELLER

## Dwight High School

*This school has received only minor renovations during its 50-year history.*

|                              |                                       |
|------------------------------|---------------------------------------|
| <b>Location:</b>             | Dwight, Illinois                      |
| <b>Built in:</b>             | 1956                                  |
| <b>Past Renovations:</b>     | Administrative and classrooms in 1967 |
| <b>Student Population:</b>   | 321                                   |
| <b>School Designed for:</b>  | 425                                   |
| <b>Auxiliary Structures:</b> |                                       |
| Annexes:                     | 1                                     |
| Trailers:                    | None                                  |



### FACTS ABOUT ILLINOIS SCHOOLS:

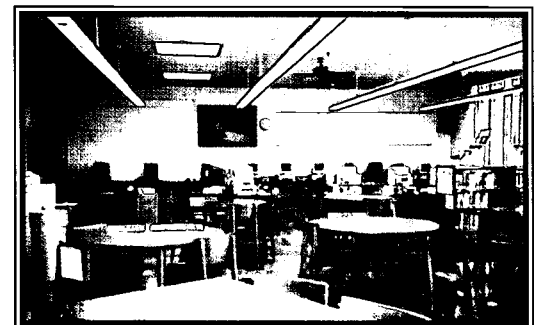
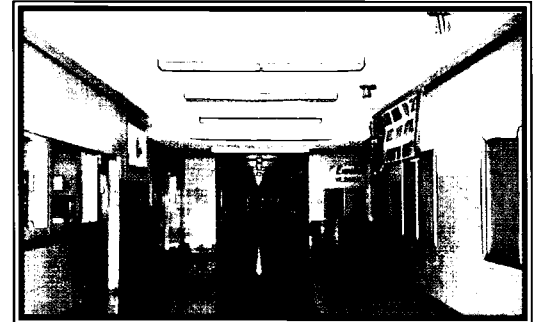
**Total Number of Schools:** 4,185  
**Total Enrollment:** 2,010,000

#### Current Conditions:

- 89 % of schools report a need to upgrade or repair building to good overall condition
- 62 % of schools report at least one inadequate building feature (e.g. roof, electrical, etc.)
- 19 students per computer

#### Projected Needs:

- Range of amounts needed to upgrade or repair a school to good overall condition:  
**\$500 to \$20,000,000**
- Enrollment in Illinois over the last decade **increased 12 %**. From 1998 to 2008 projected state enrollment in elementary and secondary schools is expected to **decrease by 5,000 students**.



**STATISTICS OF SCHOOL CONDITIONS BY STATE  
AND  
ESTIMATED TAX CREDIT BOND ALLOCATIONS  
UNDER LEGISLATION INTRODUCED  
IN THE 106<sup>TH</sup> CONGRESS**

# Good Enough for Congress?

*A Pictorial Representation of Why Americans Deserve Better School Buildings*

## ALABAMA

|   |  |
|---|--|
| Total Number of Schools:  | <b>1,345</b>                           |
| Total Enrollment:   | <b>761,000</b>                         |
| State funding for K-12, 1993-94:                                    | <b>\$9,790,992 or \$14 per student</b> |
| Total State & Local District School Construction Spending, 1995-96: | <b>\$173,344,000</b>                   |

### CURRENT CONDITIONS:

- **84 percent** of schools report a need to upgrade or repair building to good overall condition
- **59 percent** of schools report at least one inadequate building feature
- **63 percent** of schools report at least one unsatisfactory environmental factor
- **17 students** per computer
- In 1997-98, Alabama paid **\$84,505,000** in interest on school debt

### PROJECTED NEEDS:

- Range of amounts needed to upgrade or repair a school to good overall condition: **\$1,200 to \$10,000,000**
- Enrollment in Alabama over the last decade **increased 5 percent**. From 1998 to 2008 projected state enrollment in elementary and secondary schools is expected to **increase by 28,000 students (+3.7 percent)** necessitating **1,120** additional classrooms
- ALABAMA CURRENTLY ESTIMATES A **\$1.5 BILLION** COST FOR SCHOOL MODERNIZATION (SOURCE: ALABAMA CENTER FOR FACILITIES PLANNING)

| ESTIMATED TAX CREDIT BOND ALLOCATIONS UNDER LEGISLATION INTRODUCED IN THE 106 <sup>TH</sup> CONGRESS |                                     |                                       |                                  |
|--|-------------------------------------|---------------------------------------|----------------------------------|
| AMOUNT<br>IN THOUSANDS OF DOLLARS  | HR 1660 - RANGEL<br>(50% TO STATES) | HR 1760 - JOHNSON<br>(100% TO STATES) | S 1454 - ROBB<br>(65% TO STATES) |
|  |                                     | <b>373,179</b>                        | <b>404,167</b>                   |

## ALASKA

|   |   |
|---|---|
| Total Number of Schools:  | <b>497</b>                                  |
| Total Enrollment:   | <b>132,000</b>                              |
| State funding for K-12, 1993-94:                                    | <b>\$273,956,043 or \$2,254 per student</b> |
| Total State & Local District School Construction Spending, 1995-96: | <b>\$154,414,000</b>                        |

### CURRENT CONDITIONS:

- **80 percent** of schools report a need to upgrade or repair building to good overall condition
- **69 percent** of schools report at least one inadequate building feature
- **80 percent** of schools report at least one unsatisfactory environmental factor
- **8 students** per computer
- In 1997-98, Alaska paid **\$63,206,000** in interest on school debt

### PROJECTED NEEDS:

- Range of amounts needed to upgrade or repair a school to good overall condition: **\$4,000 to \$46,824,300**
- Enrollment in Alaska over the last decade **increased 24 percent**. From 1998 to 2008 projected state enrollment in elementary and secondary schools is expected to **increase by 14,000 students (+10.6 percent)** necessitating **560** additional classrooms

| ESTIMATED TAX CREDIT BOND ALLOCATIONS UNDER LEGISLATION INTRODUCED IN THE 106TH CONGRESS |                                     |                                       |                                  |
|--|-------------------------------------|---------------------------------------|----------------------------------|
| AMOUNT<br>IN THOUSANDS OF DOLLARS  | HR 1660 - RANGEL<br>(50% TO STATES) | HR 1760 - JOHNSON<br>(100% TO STATES) | S 1454 - ROBB<br>(65% TO STATES) |
|  |                                     | <b>45,552</b>                         | <b>65,032</b>                    |

# Good Enough for Congress?

*A Pictorial Representation of Why Americans Deserve Better School Buildings*

## ARIZONA

|   |                      |
|---|----------------------|
| Total Number of Schools:  | <b>1,340</b>         |
| Total Enrollment:   | <b>828,000</b>       |
| State funding for K-12, 1993-94:                                    | <b>N/A</b>           |
| Total State & Local District School Construction Spending, 1995-96: | <b>\$557,822,000</b> |

### CURRENT CONDITIONS:

- **85 percent** of schools report a need to upgrade or repair building to good overall condition
- **64 percent** of schools report at least one inadequate building feature
- **69 percent** of schools report at least one unsatisfactory environmental factor
- **12** students per computer
- In 1997-98, Arizona paid **\$260,875,000** in interest on school debt

### PROJECTED NEEDS:

- Range of amounts needed to upgrade or repair a school to good overall condition: **\$400 to \$30,000,000**
- Enrollment in Arizona over the last decade **increased 44 percent**. From 1998 to 2008 projected state enrollment in elementary and secondary schools is expected to **increase by 100,000 students (+12.1 percent)** necessitating **4,000** additional classrooms

| ESTIMATED TAX CREDIT BOND ALLOCATIONS UNDER LEGISLATION INTRODUCED IN THE 106TH CONGRESS |                  |                   |                 |
|--|------------------|-------------------|-----------------|
| AMOUNT<br>IN THOUSANDS OF DOLLARS  | HR 1660 - RANGEL | HR 1760 - JOHNSON | S 1454 - ROBB   |
|  | (50% TO STATES)  | (100% TO STATES)  | (65% TO STATES) |
|  | <b>321,189</b>   | <b>411,796</b>    | <b>363,217</b>  |

## ARKANSAS

|   |  |
|---|--|
| Total Number of Schools:  | <b>1,104</b>                           |
| Total Enrollment:   | <b>462,000</b>                         |
| State funding for K-12, 1993-94:                                    | <b>\$4,764,506 or \$11 per student</b> |
| Total State & Local District School Construction Spending, 1995-96: | <b>\$124,232,000</b>                   |

### CURRENT CONDITIONS:

- **78 percent** of schools report a need to upgrade or repair building to good overall condition
- **42 percent** of schools report at least one inadequate building feature
- **62 percent** of schools report at least one unsatisfactory environmental factor
- **12** students per computer
- In 1997-98, Arkansas paid **\$48,536,000** in interest on school debt

### PROJECTED NEEDS:

- Range of amounts needed to upgrade or repair a school to good overall condition: **\$200 to \$10,650,000**
- Enrollment in Arkansas over the last decade **increased 5.9 percent**. From 1998 to 2008 projected state enrollment in elementary and secondary schools is expected to **decrease by 9,000 students (-1.9 percent)**

| ESTIMATED TAX CREDIT BOND ALLOCATIONS UNDER LEGISLATION INTRODUCED IN THE 106TH CONGRESS |                  |                   |                 |
|--|------------------|-------------------|-----------------|
| AMOUNT<br>IN THOUSANDS OF DOLLARS  | HR 1660 - RANGEL | HR 1760 - JOHNSON | S 1454 - ROBB   |
|  | (50% TO STATES)  | (100% TO STATES)  | (65% TO STATES) |
|  | <b>191,361</b>   | <b>247,618</b>    | <b>240,892</b>  |

# Good Enough for Congress?

*A Pictorial Representation of Why Americans Deserve Better School Buildings*

## CALIFORNIA

|   |  |
|---|--|
| Total Number of Schools:  | <b>7,984</b>                                   |
| Total Enrollment:   | <b>5,961,000</b>                               |
| State funding for K-12, 1993-94:                                    | <b>\$52,000,000</b> or <b>\$10</b> per student |
| Total State & Local District School Construction Spending, 1995-96: | <b>\$1,157,262,000</b>                         |

### CURRENT CONDITIONS:

- **87 percent** of schools report a need to upgrade or repair building to good overall condition
- **71 percent** of schools report at least one inadequate building feature
- **87 percent** of schools report at least one unsatisfactory environmental factor
- **21** students per computer
- In 1997-98, California paid **\$583,760,000** in interest on school debt

### PROJECTED NEEDS:

- Range of amounts needed to upgrade or repair a school to good overall condition: **\$600 to \$30,000,000**
- Enrollment in California over the last decade **increased 29.1 percent**. From 1998 to 2008 projected state enrollment in elementary and secondary schools is expected to **increase by 893,000 students (+15 percent)** necessitating **35,720 additional classrooms**
- CALIFORNIA PROJECTS A **\$20.1 BILLION** FIVE-YEAR COST FOR SCHOOL MODERNIZATION, INCLUDING **\$11 BILLION** FOR MODERNIZATION AND TECHNOLOGY UPGRADES OF OLD FACILITIES. CALIFORNIA WILL NEED **\$4 BILLION** JUST TO BUILD NEW FACILITIES TO ACCOMMODATE DRAMATIC ENROLLMENT INCREASES. (SOURCE: SCHOOL FACILITIES PLANNING DIVISION, CALIFORNIA DEPARTMENT OF EDUCATION)

| ESTIMATED TAX CREDIT BOND ALLOCATIONS UNDER LEGISLATION INTRODUCED IN THE 106 <sup>TH</sup> CONGRESS |                                     |                                       |                                  |
|--|-------------------------------------|---------------------------------------|----------------------------------|
| AMOUNT<br>IN THOUSANDS OF DOLLARS  | HR 1660 - RANGEL<br>(50% TO STATES) | HR 1760 - JOHNSON<br>(100% TO STATES) | S 1454 - ROBB<br>(65% TO STATES) |
|  | <b>3,029,203</b>                    | <b>2,927,044</b>                      | <b>2,903,783</b>                 |

## COLORADO

|   |   |
|---|---|
| Total Number of Schools:  | <b>1,531</b>                                    |
| Total Enrollment:   | <b>696,000</b>                                  |
| State funding for K-12, 1993-94:                                    | <b>\$65,656,512</b> or <b>\$105</b> per student |
| Total State & Local District School Construction Spending, 1995-96: | <b>\$350,793,000</b>                            |

### CURRENT CONDITIONS:

- **89 percent** of schools report a need to upgrade or repair building to good overall condition
- **58 percent** of schools report at least one inadequate building feature
- **63 percent** of schools report at least one unsatisfactory environmental factor
- **13** students per computer
- In 1997-98, Colorado paid **\$222,020,000** in interest on school debt

### PROJECTED NEEDS:

- Range of amounts needed to upgrade or repair a school to good overall condition: **\$2,000 to \$15,000,000**
- Enrollment in Colorado over the last decade **increased 24.3 percent**. From 1998 to 2008 projected state enrollment in elementary and secondary schools is expected to **increase by 28,000 students (+4 percent)** necessitating **1,120 additional classrooms**

| ESTIMATED TAX CREDIT BOND ALLOCATIONS UNDER LEGISLATION INTRODUCED IN THE 106 <sup>TH</sup> CONGRESS |                                     |                                       |                                  |
|--|-------------------------------------|---------------------------------------|----------------------------------|
| AMOUNT<br>IN THOUSANDS OF DOLLARS  | HR 1660 - RANGEL<br>(50% TO STATES) | HR 1760 - JOHNSON<br>(100% TO STATES) | S 1454 - ROBB<br>(65% TO STATES) |
|  | <b>203,299</b>                      | <b>302,629</b>                        | <b>220,910</b>                   |

# Good Enough for Congress?

*A Pictorial Representation of Why Americans Deserve Better School Buildings*

## CONNECTICUT

|   |  |
|---|--|
| Total Number of Schools:  | <b>1,027</b>                                     |
| Total Enrollment:   | <b>542,000</b>                                   |
| State funding for K-12, 1993-94:                                    | <b>\$137,541,140</b> or <b>\$281</b> per student |
| Total State & Local District School Construction Spending, 1995-96: | <b>\$75,829,000</b>                              |

### CURRENT CONDITIONS:

- **77 percent** of schools report a need to upgrade or repair building to good overall condition
- **58 percent** of schools report at least one inadequate building feature
- **68 percent** of schools report at least one unsatisfactory environmental factor
- **14** students per computer
- In 1997-98, Connecticut paid **\$105,000,000** in interest on school debt

### PROJECTED NEEDS:

- Range of amounts needed to upgrade or repair a school to good overall condition: **\$600 to \$35,000,000**
- Enrollment in Connecticut over the last decade **increased 17.7 percent**. From 1998 to 2008 projected state enrollment in elementary and secondary schools is expected to **decrease by 33,000 students (-6.1 percent)**

### ESTIMATED TAX CREDIT BOND ALLOCATIONS UNDER LEGISLATION INTRODUCED IN THE 106<sup>TH</sup> CONGRESS

| AMOUNT<br>IN THOUSANDS OF DOLLARS | HR 1660 - RANGEL | HR 1760 - JOHNSON | S 1454 - ROBB   |
|-----------------------------------|------------------|-------------------|-----------------|
|                                   | (50% TO STATES)  | (100% TO STATES)  | (65% TO STATES) |
|                                   | <b>195,615</b>   | <b>256,933</b>    | <b>212,693</b>  |

## DELAWARE

|   |   |
|---|---|
| Total Number of Schools:  | <b>183</b>                                      |
| Total Enrollment:   | <b>114,000</b>                                  |
| State funding for K-12, 1993-94:                                    | <b>\$29,373,300</b> or <b>\$275</b> per student |
| Total State & Local District School Construction Spending, 1995-96: | <b>\$51,817,000</b>                             |

### CURRENT CONDITIONS:

- **97 percent** of schools report a need to upgrade or repair building to good overall condition
- **70 percent** of schools report at least one inadequate building feature
- **65 percent** of schools report at least one unsatisfactory environmental factor
- **18** students per computer
- In 1997-98, Delaware paid **\$28,741,000** in interest on school debt

### PROJECTED NEEDS:

- Range of amounts needed to upgrade or repair a school to good overall condition: **\$26,000 to \$15,000,000**
- Enrollment in Delaware over the last decade **increased 17.9 percent**. From 1998 to 2008 projected state enrollment in elementary and secondary schools is expected to **increase by 5,000 students (+4.4 percent)** necessitating **200** additional classrooms

### ESTIMATED TAX CREDIT BOND ALLOCATIONS UNDER LEGISLATION INTRODUCED IN THE 106<sup>TH</sup> CONGRESS

| AMOUNT<br>IN THOUSANDS OF DOLLARS | HR 1660 - RANGEL | HR 1760 - JOHNSON | S 1454 - ROBB   |
|-----------------------------------|------------------|-------------------|-----------------|
|                                   | (50% TO STATES)  | (100% TO STATES)  | (65% TO STATES) |
|                                   | <b>46,746</b>    | <b>62,420</b>     | <b>58,842</b>   |

BEST COPY AVAILABLE



# Good Enough for Congress?

*A Pictorial Representation of Why Americans Deserve Better School Buildings*

## DISTRICT OF COLUMBIA

|   |                     |
|---|---------------------|
| Total Number of Schools:  | <b>184</b>          |
| Total Enrollment:   | <b>80,000</b>       |
| State funding for K-12, 1993-94:                                    | <b>N/A</b>          |
| Total State & Local District School Construction Spending, 1995-96: | <b>\$12,346,000</b> |

### CURRENT CONDITIONS:

- **97 percent** of schools report a need to upgrade or repair building to good overall condition
- **91 percent** of schools report at least one inadequate building feature
- **73 percent** of schools report at least one unsatisfactory environmental factor
- **17** students per computer

### PROJECTED NEEDS:

- Range of amounts needed to upgrade or repair a school to good overall condition: **\$240,000 to \$25,700,000**
- Enrollment in District of Columbia over the last decade **decreased 5.7 percent**. From 1998 to 2008 projected state enrollment in elementary and secondary schools is expected to **decrease by 6,000 students (-7.5 percent)**

### ESTIMATED TAX CREDIT BOND ALLOCATIONS UNDER LEGISLATION INTRODUCED IN THE 106<sup>TH</sup> CONGRESS

| AMOUNT<br>IN THOUSANDS OF DOLLARS | HR 1660 - RANGEL<br>(50% TO STATES) | HR 1760 - JOHNSON<br>(100% TO STATES) | S 1454 - ROBB<br>(65% TO STATES) |
|-----------------------------------|-------------------------------------|---------------------------------------|----------------------------------|
|                                   | <b>113,625</b>                      | <b>54,388</b>                         | <b>82,009</b>                    |

## FLORIDA

|   |   |
|---|---|
| Total Number of Schools:  | <b>2,801</b>                              |
| Total Enrollment:   | <b>2,343,000</b>                          |
| State funding for K-12, 1993-94:                                    | <b>\$579,182,541 or \$290 per student</b> |
| Total State & Local District School Construction Spending, 1995-96: | <b>\$1,550,291,000</b>                    |

### CURRENT CONDITIONS:

- **85 percent** of schools report a need to upgrade or repair building to good overall condition
- **57 percent** of schools report at least one inadequate building feature
- **80 percent** of schools report at least one unsatisfactory environmental factor
- **12** students per computer
- In 1997-98, Florida paid **\$331,804,000** in interest on school debt

### PROJECTED NEEDS:

- Range of amounts needed to upgrade or repair a school to good overall condition: **\$354 to \$28,970,500**
- Enrollment in Florida over the last decade **increased 36.1 percent**. From 1998 to 2008 projected state enrollment in elementary and secondary schools is expected to **increase by 21,000 students (+.9 percent)** necessitating **840** additional classrooms
- FLORIDA ESTIMATES AN **\$11 BILLION** FIVE-YEAR COST FOR GROWTH, MAJOR REPAIR, AND MAINTENANCE NEEDS, INCLUDING **\$6.8 BILLION** FOR EXPANSION TO ACCOMMODATE ENROLLMENT GROWTH. (SOURCE: REPORT TO THE FUNDING COMMITTEE OF THE GOVERNOR'S COMMISSION ON EDUCATION)

### ESTIMATED TAX CREDIT BOND ALLOCATIONS UNOER LEGISLATION INTRODUCED IN THE 106<sup>TH</sup> CONGRESS

| AMOUNT<br>IN THOUSANDS OF DOLLARS | HR 1660 - RANGEL<br>(50% TO STATES) | HR 1760 - JOHNSON<br>(100% TO STATES) | S 1454 - ROBB<br>(65% TO STATES) |
|-----------------------------------|-------------------------------------|---------------------------------------|----------------------------------|
|                                   | <b>1,337,671</b>                    | <b>1,176,935</b>                      | <b>1,112,815</b>                 |

# Good Enough for Congress?

*A Pictorial Representation of Why Americans Deserve Better School Buildings*

## GEORGIA

|   |   |
|---|---|
| Total Number of Schools:  | <b>1,798</b>                                    |
| Total Enrollment:   | <b>1,395,000</b>                                |
| State funding for K-12, 1993-94:                                    | <b>\$151,170,000</b> or <b>\$12</b> per student |
| Total State & Local District School Construction Spending, 1995-96: | <b>\$764,117,000</b>                            |

### CURRENT CONDITIONS:

- **62 percent** of schools report a need to upgrade or repair building to good overall condition
- **37 percent** of schools report at least one inadequate building feature
- **48 percent** of schools report at least one unsatisfactory environmental factor
- **13** students per computer
- In 1997-98, Georgia paid **\$150,635,000** in interest on school debt

### PROJECTED NEEDS:

- Range of amounts needed to upgrade or repair a school to good overall condition: **\$375 to \$14,000,000**
- Enrollment in Georgia over the last decade **increased 25.9 percent**. From 1998 to 2008 projected state enrollment in elementary and secondary schools is expected to **increase by 110,000 students (+7.9 percent)** necessitating **4,400** additional classrooms

### ESTIMATED TAX CREDIT BOND ALLOCATIONS UNDER LEGISLATION INTRODUCED IN THE 106<sup>TH</sup> CONGRESS

| AMOUNT<br>IN THOUSANDS OF DOLLARS | HR 1660 - RANGEL | HR 1760 - JOHNSON | S 1454 - ROBB   |
|-----------------------------------|------------------|-------------------|-----------------|
|                                   | (50% TO STATES)  | (100% TO STATES)  | (65% TO STATES) |
|                                   | <b>606,081</b>   | <b>679,333</b>    | <b>642,501</b>  |

## HAWAII

|   |  |
|---|--|
| Total Number of Schools:  | <b>249</b>                                       |
| Total Enrollment:   | <b>204,000</b>                                   |
| State funding for K-12, 1993-94:                                    | <b>\$133,088,000</b> or <b>\$740</b> per student |
| Total State & Local District School Construction Spending, 1995-96: | <b>\$114,925,000</b>                             |

### CURRENT CONDITIONS:

- **73 percent** of schools report a need to upgrade or repair building to good overall condition
- **57 percent** of schools report at least one inadequate building feature
- **78 percent** of schools report at least one unsatisfactory environmental factor
- **16** students per computer
- In 1997-98, Hawaii paid **\$33,583,000** in interest on school debt

### PROJECTED NEEDS:

- Range of amounts needed to upgrade or repair a school to good overall condition: **\$10,000 to \$40,000,000**
- Enrollment in Hawaii over the last decade **increased 21.8 percent**. From 1998 to 2008 projected state enrollment in elementary and secondary schools is expected to **increase by 27,000 students (+13.2 percent)** necessitating **1,080** additional classrooms

### ESTIMATED TAX CREDIT BOND ALLOCATIONS UNDER LEGISLATION INTRODUCED IN THE 106<sup>TH</sup> CONGRESS

| AMOUNT<br>IN THOUSANDS OF DOLLARS | HR 1660 - RANGEL | HR 1760 - JOHNSON | S 1454 - ROBB   |
|-----------------------------------|------------------|-------------------|-----------------|
|                                   | (50% TO STATES)  | (100% TO STATES)  | (65% TO STATES) |
|                                   | <b>49,685</b>    | <b>86,904</b>     | <b>62,545</b>   |

# Good Enough for Congress?

*A Pictorial Representation of Why Americans Deserve Better School Buildings*

## IDAHO

|   |   |
|---|---|
| Total Number of Schools:  | <b>629</b>                                    |
| Total Enrollment:   | <b>256,000</b>                                |
| State funding for K-12, 1993-94:                                    | <b>\$7,015,342</b> or <b>\$30</b> per student |
| Total State & Local District School Construction Spending, 1995-96: | <b>\$128,068,000</b>                          |

### CURRENT CONDITIONS:

- **87 percent** of schools report a need to upgrade or repair building to good overall condition
- **56 percent** of schools report at least one inadequate building feature
- **64 percent** of schools report at least one unsatisfactory environmental factor
- **13** students per computer
- In 1997-98, Idaho paid **\$31,713,000** in interest on school debt

### PROJECTED NEEDS:

- Range of amounts needed to upgrade or repair a school to good overall condition: **\$500 to \$20,000,000**
- Enrollment in Idaho over the last decade **increased 19.3 percent**. From 1998 to 2008 projected state enrollment in elementary and secondary schools is expected to **increase by 26,000 students (+10.2 percent)** necessitating **1,040** additional classrooms

| ESTIMATED TAX CREDIT BOND ALLOCATIONS UNDER LEGISLATION INTRODUCED IN THE 106 <sup>TH</sup> CONGRESS |                  |                   |                 |
|--|------------------|-------------------|-----------------|
| AMOUNT<br>IN THOUSANDS OF DOLLARS  | HR 1660 - RANGEL | HR 1760 - JOHNSON | S 1454 - ROBB   |
|  | (50% TO STATES)  | (100% TO STATES)  | (65% TO STATES) |
|  | <b>55,825</b>    | <b>101,692</b>    | <b>70,274</b>   |

## ILLINOIS

|   |                               |
|---|-------------------------------|
| Total Number of Schools:  | <b>4,185</b>                  |
| Total Enrollment:   | <b>2,010,000</b>              |
| State funding for K-12, 1993-94:                                    | <b>No Assistance Provided</b> |
| Total State & Local District School Construction Spending, 1995-96: | <b>\$611,361,000</b>          |

### CURRENT CONDITIONS:

- **89 percent** of schools report a need to upgrade or repair building to good overall condition
- **62 percent** of schools report at least one inadequate building feature
- **70 percent** of schools report at least one unsatisfactory environmental factor
- **19** students per computer
- In 1997-98, Illinois paid **\$932,737,000** in interest on school debt

### PROJECTED NEEDS:

- Range of amounts needed to upgrade or repair a school to good overall condition: **\$500 to \$20,000,000**
- Enrollment in Illinois over the last decade **increased 12 percent**. From 1998 to 2008 projected state enrollment in elementary and secondary schools is expected to **decrease by 5,000 students (-.2 percent)**
- **ILLINOIS CURRENTLY HAS APPROXIMATELY 60 FACILITIES THAT ARE OVER 100 YEARS OLD.** JUST TO REPLACE THESE FACILITIES WOULD COST **\$1 BILLION**. (SOURCE: MEMORANDUM FROM ILLINOIS STATE BOARD OF EDUCATION TO ILLINOIS HOUSE REPUBLICAN STAFF, DECEMBER 1998)

| ESTIMATED TAX CREDIT BOND ALLOCATIONS UNDER LEGISLATION INTRODUCED IN THE 106 <sup>TH</sup> CONGRESS |                  |                   |                  |
|--|------------------|-------------------|------------------|
| AMOUNT<br>IN THOUSANDS OF DOLLARS  | HR 1660 - RANGEL | HR 1760 - JOHNSON | S 1454 - ROBB    |
|  | (50% TO STATES)  | (100% TO STATES)  | (65% TO STATES)  |
|  | <b>1,125,357</b> | <b>1,113,380</b>  | <b>1,025,362</b> |

# Good Enough for Congress?

*A Pictorial Representation of Why Americans Deserve Better School Buildings*

## INDIANA

|   |  |
|---|--|
| Total Number of Schools:  | <b>1,929</b>                                     |
| Total Enrollment:   | <b>999,000</b>                                   |
| State funding for K-12, 1993-94:                                    | <b>\$149,863,628</b> or <b>\$155</b> per student |
| Total State & Local District School Construction Spending, 1995-96: | <b>\$345,944,000</b>                             |

### CURRENT CONDITIDNS:

- **85 percent** of schools report a need to upgrade or repair building to good overall condition
- **56 percent** of schools report at least one inadequate building feature
- **67 percent** of schools report at least one unsatisfactory environmental factor
- **11** students per computer
- In 1997-98, Indiana paid **\$496,090,000** in interest on school debt

### PROJECTED NEEDS:

- Range of amounts needed to upgrade or repair a school to good overall condition: **\$1,800 to \$75,155,500**
- Enrollment in Indiana over the last decade **increased 4 percent**. From 1998 to 2008 projected state enrollment in elementary and secondary schools is expected to **increase by 16,000 students (+1.6 percent)** necessitating **640** additional classrooms

### ESTIMATED TAX CREDIT BOND ALLOCATIDNS UNDER LEGISLATION INTRODUCED IN THE 106<sup>TH</sup> CONGRESS

| AMOUNT<br>IN THOUSANDS OF DOLLARS | HR 1660 - RANGEL<br>(50% TO STATES) | HR 1760 - JOHNSON<br>(100% TO STATES) | S 1454 - ROBB<br>(65% TO STATES) |
|-----------------------------------|-------------------------------------|---------------------------------------|----------------------------------|
|                                   |                                     | <b>326,773</b>                        | <b>467,242</b>                   |

## IOWA

|   |                               |
|---|-------------------------------|
| Total Number of Schools:  | <b>1,552</b>                  |
| Total Enrollment:   | <b>500,000</b>                |
| State funding for K-12, 1993-94:                                    | <b>No Assistance Provided</b> |
| Total State & Local District School Construction Spending, 1995-96: | <b>\$123,955,000</b>          |

### CURRENT CONDITIDNS:

- **79 percent** of schools report a need to upgrade or repair building to good overall condition
- **50 percent** of schools report at least one inadequate building feature
- **67 percent** of schools report at least one unsatisfactory environmental factor
- **11** students per computer
- In 1997-98, Iowa paid **\$40,109,000** in interest on school debt

### PROJECTED NEEDS:

- Range of amounts needed to upgrade or repair a school to good overall condition: **\$800 to \$8,500,000**
- Enrollment in Iowa over the last decade **increased 4.6 percent**. From 1998 to 2008 projected state enrollment in elementary and secondary schools is expected to **decrease by 34,000 students (-6.8 percent)**

### ESTIMATED TAX CREDIT BOND ALLDCATIONS UNDER LEGISLATION INTRODUCED IN THE 106<sup>TH</sup> CONGRESS

| AMOUNT<br>IN THOUSANDS OF DOLLARS | HR 1660 - RANGEL<br>(50% TO STATES) | HR 1760 - JOHNSON<br>(100% TO STATES) | S 1454 - ROBB<br>(65% TO STATES) |
|-----------------------------------|-------------------------------------|---------------------------------------|----------------------------------|
|                                   |                                     | <b>135,205</b>                        | <b>226,474</b>                   |

47

# Good Enough for Congress?

*A Pictorial Representation of Why Americans Deserve Better School Buildings*

## KANSAS

|   |   |
|---|---|
| Total Number of Schools:  | <b>1,464</b>                                  |
| Total Enrollment:   | <b>471,000</b>                                |
| State funding for K-12, 1993-94:                                    | <b>\$7,000,000</b> or <b>\$16</b> per student |
| Total State & Local District School Construction Spending, 1995-96: | <b>\$201,787,000</b>                          |

### CURRENT CONDITIONS:

- **88 percent** of schools report a need to upgrade or repair building to good overall condition
- **55 percent** of schools report at least one inadequate building feature
- **74 percent** of schools report at least one unsatisfactory environmental factor
- **10** students per computer
- In 1997-98, Kansas paid **\$71,681,000** in interest on school debt

### PROJECTED NEEDS:

- Range of amounts needed to upgrade or repair a school to good overall condition: **\$500 to \$15,000,000**
- Enrollment in Kansas over the last decade **increased 10.4 percent**. From 1998 to 2008 projected state enrollment in elementary and secondary schools is expected to **decrease by 2,000 students (-.4 percent)**

### ESTIMATED TAX CREDIT BOND ALLOCATIONS UNDER LEGISLATION INTRODUCED IN THE 106<sup>TH</sup> CONGRESS

| AMOUNT<br>IN THOUSANDS OF DOLLARS | HR 1660 - RANGEL | HR 1760 - JOHNSON | S 1454 - ROBB   |
|-----------------------------------|------------------|-------------------|-----------------|
|                                   | (50% TO STATES)  | (100% TO STATES)  | (65% TO STATES) |
|                                   | <b>154,208</b>   | <b>220,277</b>    | <b>174,330</b>  |

## KENTUCKY

|   |   |
|---|---|
| Total Number of Schools:  | <b>1,407</b>                                    |
| Total Enrollment:   | <b>663,000</b>                                  |
| State funding for K-12, 1993-94:                                    | <b>\$66,380,260</b> or <b>\$104</b> per student |
| Total State & Local District School Construction Spending, 1995-96: | <b>\$269,021,000</b>                            |

### CURRENT CONDITIONS:

- **81 percent** of schools report a need to upgrade or repair building to good overall condition
- **59 percent** of schools report at least one inadequate building feature
- **63 percent** of schools report at least one unsatisfactory environmental factor
- **10** students per computer
- In 1997-98, Kentucky paid **\$73,052,000** in interest on school debt

### PROJECTED NEEDS:

- Range of amounts needed to upgrade or repair a school to good overall condition: **\$500 to \$20,000,000**
- Enrollment in Kentucky over the last decade **increased 4 percent**. From 1998 to 2008 projected state enrollment in elementary and secondary schools is expected to **decrease by 19,000 students (-2.9 percent)**

### ESTIMATED TAX CREDIT BOND ALLOCATIONS UNDER LEGISLATION INTRODUCED IN THE 106<sup>TH</sup> CONGRESS

| AMOUNT<br>IN THOUSANDS OF DOLLARS | HR 1660 - RANGEL | HR 1760 - JOHNSON | S 1454 - ROBB   |
|-----------------------------------|------------------|-------------------|-----------------|
|                                   | (50% TO STATES)  | (100% TO STATES)  | (65% TO STATES) |
|                                   | <b>344,582</b>   | <b>388,562</b>    | <b>392,352</b>  |

# Good Enough for Congress?

*A Pictorial Representation of Why Americans Deserve Better School Buildings*

## LOUISIANA

|   |                               |
|---|-------------------------------|
| Total Number of Schools:  | <b>1,477</b>                  |
| Total Enrollment:   | <b>800,000</b>                |
| State funding for K-12, 1993-94:                                    | <b>No Assistance Provided</b> |
| Total State & Local District School Construction Spending, 1995-96: | <b>\$119,049,000</b>          |

### CURRENT CONDITIONS:

- **88 percent** of schools report a need to upgrade or repair building to good overall condition
- **50 percent** of schools report at least one inadequate building feature
- **66 percent** of schools report at least one unsatisfactory environmental factor
- **21 students** per computer
- In 1997-98, Louisiana paid **\$78,671,000** in interest on school debt

### PROJECTED NEEDS:

- Range of amounts needed to upgrade or repair a school to good overall condition: **\$1,000 to \$10,000,000**
- Enrollment in Louisiana over the last decade **increased 1.7 percent**. From 1998 to 2008 projected state enrollment in elementary and secondary schools is expected to **decrease by 19,000 students (-2.4 percent)**

| ESTIMATED TAX CREDIT BOND ALLOCATIONS UNDER LEGISLATION INTRODUCED IN THE 106 <sup>TH</sup> CONGRESS |                  |                   |                 |
|--|------------------|-------------------|-----------------|
| AMOUNT<br>IN THOUSANDS OF DOLLARS  | HR 1660 - RANGEL | HR 1760 - JOHNSON | S 1454 - ROBB   |
|  | (50% TO STATES)  | (100% TO STATES)  | (65% TO STATES) |
|  | <b>596,956</b>   | <b>538,762</b>    | <b>592,068</b>  |

## MAINE

|   |  |
|---|--|
| Total Number of Schools:  | <b>721</b>                               |
| Total Enrollment:   | <b>212,000</b>                           |
| State funding for K-12, 1993-94:                                    | <b>\$43,500,000 or \$203 per student</b> |
| Total State & Local District School Construction Spending, 1995-96: | <b>\$27,366,000</b>                      |

### CURRENT CONDITIONS:

- **85 percent** of schools report a need to upgrade or repair building to good overall condition
- **60 percent** of schools report at least one inadequate building feature
- **71 percent** of schools report at least one unsatisfactory environmental factor
- **17 students** per computer
- In 1997-98, Maine paid **\$27,522,000** in interest on school debt

### PROJECTED NEEDS:

- Range of amounts needed to upgrade or repair a school to good overall condition: **\$200 to \$16,000,000**
- Enrollment in Maine over the last decade **decreased 0.4 percent**. From 1998 to 2008 projected state enrollment in elementary and secondary schools is expected to **decrease by 17,000 students (-8 percent)**
- MAINE PROJECTS A **\$637 MILLION** COST FOR SCHOOL CONSTRUCTION AND RENOVATION. (SOURCE: REPORT TO THE JOINT STANDING COMMITTEE ON EDUCATION AND CULTURAL AFFAIRS, APRIL 1997)

| ESTIMATED TAX CREDIT BOND ALLOCATIONS UNDER LEGISLATION INTRODUCED IN THE 106 <sup>TH</sup> CONGRESS |                  |                   |                 |
|--|------------------|-------------------|-----------------|
| AMOUNT<br>IN THOUSANDS OF DOLLARS  | HR 1660 - RANGEL | HR 1760 - JOHNSON | S 1454 - ROBB   |
|  | (50% TO STATES)  | (100% TO STATES)  | (65% TO STATES) |
|  | <b>76,808</b>    | <b>106,285</b>    | <b>96,688</b>   |

# Good Enough for Congress?

*A Pictorial Representation of Why Americans Deserve Better School Buildings*

## MARYLAND

|   |   |
|---|---|
| Total Number of Schools:  | <b>1,286</b>                                    |
| Total Enrollment:   | <b>846,000</b>                                  |
| State funding for K-12, 1993-94:                                    | <b>\$87,000,000</b> or <b>\$113</b> per student |
| Total State & Local District School Construction Spending, 1995-96: | <b>\$321,850,000</b>                            |

### CURRENT CONDITIONS:

- **78 percent** of schools report a need to upgrade or repair building to good overall condition
- **67 percent** of schools report at least one inadequate building feature
- **65 percent** of schools report at least one unsatisfactory environmental factor
- **15** students per computer
- In 1997-98, Maryland paid **\$64,715,000** in interest on school debt

### PROJECTED NEEDS:

- Range of amounts needed to upgrade or repair a school to good overall condition: **\$4 to \$30,497,150**
- Enrollment in Maryland over the last decade **increased 22.8 percent**. From 1998 to 2008 projected state enrollment in elementary and secondary schools is expected to **increase by 16,000 students (+1.9 percent)** necessitating **640** additional classrooms

### ESTIMATED TAX CREDIT BOND ALLOCATIONS UNDER LEGISLATION INTRODUCED IN THE 106<sup>TH</sup> CONGRESS

| AMOUNT<br>IN THOUSANDS OF DOLLARS | HR 1660 - RANGEL<br>(50% TO STATES) | HR 1760 - JOHNSON<br>(100% TO STATES) | S 1454 - ROBB<br>(65% TO STATES) |
|-----------------------------------|-------------------------------------|---------------------------------------|----------------------------------|
|                                   |                                     | <b>351,517</b>                        | <b>395,586</b>                   |

## MASSACHUSETTS

|   |  |
|---|--|
| Total Number of Schools:  | <b>1,856</b>                                     |
| Total Enrollment:   | <b>959,000</b>                                   |
| State funding for K-12, 1993-94:                                    | <b>\$170,000,000</b> or <b>\$193</b> per student |
| Total State & Local District School Construction Spending, 1995-96: | <b>\$303,987,000</b>                             |

### CURRENT CONDITIONS:

- **92 percent** of schools report a need to upgrade or repair building to good overall condition
- **75 percent** of schools report at least one inadequate building feature
- **80 percent** of schools report at least one unsatisfactory environmental factor
- **16** students per computer
- In 1997-98, Massachusetts paid **\$141,679,000** in interest on school debt

### PROJECTED NEEDS:

- Range of amounts needed to upgrade or repair a school to good overall condition: **\$300 to \$23,490,000**
- Enrollment in Massachusetts over the last decade **increased 16.5 percent**. From 1998 to 2008 projected state enrollment in elementary and secondary schools is expected to **increase by 8,000 students (+.8 percent)** necessitating **320** additional classrooms

### ESTIMATED TAX CREDIT BOND ALLOCATIONS UNDER LEGISLATION INTRODUCED IN THE 106<sup>TH</sup> CONGRESS

| AMOUNT<br>IN THOUSANDS OF DOLLARS | HR 1660 - RANGEL<br>(50% TO STATES) | HR 1760 - JOHNSON<br>(100% TO STATES) | S 1454 - ROBB<br>(65% TO STATES) |
|-----------------------------------|-------------------------------------|---------------------------------------|----------------------------------|
|                                   |                                     | <b>402,027</b>                        | <b>501,362</b>                   |



# Good Enough for Congress?

*A Pictorial Representation of Why Americans Deserve Better School Buildings*

## MICHIGAN

|   |  |
|---|--|
| Total Number of Schools:  | <b>3,853</b>                                   |
| Total Enrollment:   | <b>1,660,000</b>                               |
| State funding for K-12, 1993-94:                                    | <b>\$20,227,052</b> or <b>\$13</b> per student |
| Total State & Local District School Construction Spending, 1995-96: | <b>\$463,698,000</b>                           |

### CURRENT CONDITIONS:

- **80 percent** of schools report a need to upgrade or repair building to good overall condition
- **52 percent** of schools report at least one inadequate building feature
- **61 percent** of schools report at least one unsatisfactory environmental factor
- **20** students per computer
- In 1997-98, Michigan paid **\$318,912,000** in interest on school debt

### PROJECTED NEEDS:

- Range of amounts needed to upgrade or repair a school to good overall condition: **\$500 to \$18,000,000**
- Enrollment in Michigan over the last decade **increased 4.9 percent**. From 1998 to 2008 projected state enrollment in elementary and secondary schools is expected to **decrease by 81,000 students (-4.9 percent)** necessitating additional classrooms

### ESTIMATED TAX CREDIT BOND ALLOCATIONS UNDER LEGISLATION INTRODUCED IN THE 106<sup>TH</sup> CONGRESS

| AMOUNT<br>IN THOUSANDS OF DOLLARS | HR 1660 - RANGEL | HR 1760 - JOHNSON | S 1454 - ROBB    |
|-----------------------------------|------------------|-------------------|------------------|
|                                   | (50% TO STATES)  | (100% TO STATES)  | (65% TO STATES)  |
|                                   | <b>1,001,250</b> | <b>1,007,172</b>  | <b>1,011,645</b> |

## MINNESOTA

|   |  |
|---|--|
| Total Number of Schools:  | <b>2,116</b>                                     |
| Total Enrollment:   | <b>848,000</b>                                   |
| State funding for K-12, 1993-94:                                    | <b>\$122,900,000</b> or <b>\$153</b> per student |
| Total State & Local District School Construction Spending, 1995-96: | <b>\$571,839,000</b>                             |

### CURRENT CONDITIONS:

- **85 percent** of schools report a need to upgrade or repair building to good overall condition
- **57 percent** of schools report at least one inadequate building feature
- **66 percent** of schools report at least one unsatisfactory environmental factor
- **10** students per computer
- In 1997-98, Minnesota paid **\$428,257,000** in interest on school debt

### PROJECTED NEEDS:

- Range of amounts needed to upgrade or repair a school to good overall condition: **\$2,000 to \$24,000,000**
- Enrollment in Minnesota over the last decade **increased 16.7 percent**. From 1998 to 2008 projected state enrollment in elementary and secondary schools is expected to **decrease by 54,000 students (-6.4 percent)** necessitating additional classrooms

### ESTIMATED TAX CREDIT BOND ALLOCATIONS UNDER LEGISLATION INTRODUCED IN THE 106<sup>TH</sup> CONGRESS

| AMOUNT<br>IN THOUSANDS OF DOLLARS | HR 1660 - RANGEL | HR 1760 - JOHNSON | S 1454 - ROBB   |
|-----------------------------------|------------------|-------------------|-----------------|
|                                   | (50% TO STATES)  | (100% TO STATES)  | (65% TO STATES) |
|                                   | <b>266,123</b>   | <b>382,103</b>    | <b>280,206</b>  |

# Good Enough for Congress?

*A Pictorial Representation of Why Americans Deserve Better School Buildings*

## MISSISSIPPI

|   |  |
|---|--|
| Total Number of Schools:  | <b>1,007</b>                                   |
| Total Enrollment:   | <b>513,000</b>                                 |
| State funding for K-12, 1993-94:                                    | <b>\$36,000,000</b> or <b>\$72</b> per student |
| Total State & Local District School Construction Spending, 1995-96: | <b>\$160,164,000</b>                           |

### CURRENT CONDITIONS:

- **82 percent** of schools report a need to upgrade or repair building to good overall condition
- **50 percent** of schools report at least one inadequate building feature
- **54 percent** of schools report at least one unsatisfactory environmental factor
- **14** students per computer
- In 1997-98, Mississippi paid **\$43,719,000** in interest on school debt

### PROJECTED NEEDS:

- Range of amounts needed to upgrade or repair a school to good overall condition: **\$200 to \$4,000,000**
- Enrollment in Mississippi over the last decade **increased 1.9 percent**. From 1998 to 2008 projected state enrollment in elementary and secondary schools is expected to **increase by 10,000 students (+1.9 percent)** necessitating **400** additional classrooms

| ESTIMATED TAX CREDIT BOND ALLOCATIONS UNDER LEGISLATION INTRODUCED IN THE 106 <sup>TH</sup> CONGRESS |                                     |                                       |                                  |
|--|-------------------------------------|---------------------------------------|----------------------------------|
| AMOUNT<br>IN THOUSANDS OF DOLLARS  | HR 1660 - RANGEL<br>(50% TO STATES) | HR 1760 - JOHNSON<br>(100% TO STATES) | S 1454 - ROBB<br>(65% TO STATES) |
|  |                                     | <b>327,445</b>                        | <b>347,589</b>                   |

## MISSOURI

|   |                               |
|---|-------------------------------|
| Total Number of Schools:  | <b>2,291</b>                  |
| Total Enrollment:   | <b>909,000</b>                |
| State funding for K-12, 1993-94:                                    | <b>No Assistance Provided</b> |
| Total State & Local District School Construction Spending, 1995-96: | <b>\$366,262,000</b>          |

### CURRENT CONDITIONS:

- **90 percent** of schools report a need to upgrade or repair building to good overall condition
- **48 percent** of schools report at least one inadequate building feature
- **58 percent** of schools report at least one unsatisfactory environmental factor
- **15** students per computer
- In 1997-98, Missouri paid **\$141,152,000** in interest on school debt

### PROJECTED NEEDS:

- Range of amounts needed to upgrade or repair a school to good overall condition: **\$300 to \$10,000,000**
- Enrollment in Missouri over the last decade **increased 12.7 percent**. From 1998 to 2008 projected state enrollment in elementary and secondary schools is expected to **decrease by 21,000 students (-2.3 percent)**

| ESTIMATED TAX CREDIT BOND ALLOCATIONS UNDER LEGISLATION INTRODUCED IN THE 106 <sup>TH</sup> CONGRESS |                                     |                                       |                                  |
|--|-------------------------------------|---------------------------------------|----------------------------------|
| AMOUNT<br>IN THOUSANDS OF DOLLARS  | HR 1660 - RANGEL<br>(50% TO STATES) | HR 1760 - JOHNSON<br>(100% TO STATES) | S 1454 - ROBB<br>(65% TO STATES) |
|  |                                     | <b>386,832</b>                        | <b>469,682</b>                   |

# Good Enough for Congress?

*A Pictorial Representation of Why Americans Deserve Better School Buildings*

## MONTANA

|   |  |
|---|--|
| Total Number of Schools:  | <b>892</b>                                   |
| Total Enrollment:   | <b>168,000</b>                               |
| State funding for K-12, 1993-94:                                    | <b>\$1,000,000</b> or <b>\$6</b> per student |
| Total State & Local District School Construction Spending, 1995-96: | <b>\$21,013,000</b>                          |

### CURRENT CONDITIONS:

- **70 percent** of schools report a need to upgrade or repair building to good overall condition
- **45 percent** of schools report at least one inadequate building feature
- **69 percent** of schools report at least one unsatisfactory environmental factor
- **8** students per computer
- In 1997-98, Montana paid **\$11,101,000** in interest on school debt

### PROJECTED NEEDS:

- Range of amounts needed to upgrade or repair a school to good overall condition: **\$250 to \$12,000,000**
- Enrollment in Montana over the last decade **increased 10.4 percent**. From 1998 to 2008 projected state enrollment in elementary and secondary schools is expected to **decrease by 3,000 students (-1.8 percent)**

| ESTIMATED TAX CREDIT BOND ALLOCATIONS UNDER LEGISLATION INTRODUCED IN THE 106 <sup>TH</sup> CONGRESS |                                     |                                       |                                  |
|--|-------------------------------------|---------------------------------------|----------------------------------|
| AMOUNT<br>IN THOUSANDS OF DOLLARS  | HR 1660 - RANGEL<br>(50% TO STATES) | HR 1760 - JOHNSON<br>(100% TO STATES) | S 1454 - ROBB<br>(65% TO STATES) |
|  | <b>62,924</b>                       | <b>86,322</b>                         | <b>79,212</b>                    |

## NEBRASKA

|   |                               |
|---|-------------------------------|
| Total Number of Schools:  | <b>1,396</b>                  |
| Total Enrollment:   | <b>290,000</b>                |
| State funding for K-12, 1993-94:                                    | <b>No Assistance Provided</b> |
| Total State & Local District School Construction Spending, 1995-96: | <b>\$127,506,000</b>          |

### CURRENT CONDITIONS:

- **75 percent** of schools report a need to upgrade or repair building to good overall condition
- **44 percent** of schools report at least one inadequate building feature
- **61 percent** of schools report at least one unsatisfactory environmental factor
- **10** students per computer
- In 1997-98, Nebraska paid **\$28,874,000** in interest on school debt

### PROJECTED NEEDS:

- Range of amounts needed to upgrade or repair a school to good overall condition: **\$900 to \$19,000,000**
- Enrollment in Nebraska over the last decade **increased 7.6 percent**. From 1998 to 2008 projected state enrollment in elementary and secondary schools is expected to **decrease by 5,000 students (-1.7 percent)**

| ESTIMATED TAX CREDIT BOND ALLOCATIONS UNDER LEGISLATION INTRODUCED IN THE 106 <sup>TH</sup> CONGRESS |                                     |                                       |                                  |
|--|-------------------------------------|---------------------------------------|----------------------------------|
| AMOUNT<br>IN THOUSANDS OF DOLLARS  | HR 1660 - RANGEL<br>(50% TO STATES) | HR 1760 - JOHNSON<br>(100% TO STATES) | S 1454 - ROBB<br>(65% TO STATES) |
|  | <b>82,857</b>                       | <b>138,451</b>                        | <b>104,303</b>                   |

# Good Enough for Congress?

*A Pictorial Representation of Why Americans Deserve Better School Buildings*

## NEVADA

|   |                               |
|---|-------------------------------|
| Total Number of Schools:  | <b>442</b>                    |
| Total Enrollment:   | <b>307,000</b>                |
| State funding for K-12, 1993-94:                                    | <b>No Assistance Provided</b> |
| Total State & Local District School Construction Spending, 1995-96: | <b>\$162,425,000</b>          |

### CURRENT CONDITIONS:

- **83 percent** of schools report a need to upgrade or repair building to good overall condition
- **42 percent** of schools report at least one inadequate building feature
- **57 percent** of schools report at least one unsatisfactory environmental factor
- **21** students per computer
- In 1997-98, Nevada paid **\$99,365,000** in interest on school debt

### PROJECTED NEEDS:

- Range of amounts needed to upgrade or repair a school to good overall condition: **\$500 to \$16,000,000**
- Enrollment in Nevada over the last decade **increased 74 percent**. From 1998 to 2008 projected state enrollment in elementary and secondary schools is expected to **increase by 10,000 students (+3.3 percent)** necessitating **400** additional classrooms

| ESTIMATED TAX CREDIT BOND ALLOCATIONS UNDER LEGISLATION INTRODUCED IN THE 106 <sup>TH</sup> CONGRESS |                                     |                                       |                                  |
|--|-------------------------------------|---------------------------------------|----------------------------------|
| AMOUNT<br>IN THOUSANDS OF DOLLARS  | HR 1660 - RANGEL<br>(50% TO STATES) | HR 1760 - JOHNSON<br>(100% TO STATES) | S 1454 - ROBB<br>(65% TO STATES) |
|  |                                     | <b>90,274</b>                         | <b>115,143</b>                   |

## NEW HAMPSHIRE

|   |   |
|---|---|
| Total Number of Schools:  | <b>512</b>                              |
| Total Enrollment:   | <b>202,000</b>                          |
| State funding for K-12, 1993-94:                                    | <b>\$15,327,295 or \$84 per student</b> |
| Total State & Local District School Construction Spending, 1995-96: | <b>\$53,122,000</b>                     |

### CURRENT CONDITIONS:

- **87 percent** of schools report a need to upgrade or repair building to good overall condition
- **59 percent** of schools report at least one inadequate building feature
- **78 percent** of schools report at least one unsatisfactory environmental factor
- **21** students per computer
- In 1997-98, New Hampshire paid **\$66,102,000** in interest on school debt

### PROJECTED NEEDS:

- Range of amounts needed to upgrade or repair a school to good overall condition: **\$250 to \$8,500,000**
- Enrollment in New Hampshire over the last decade **increased 19.2 percent**. From 1998 to 2008 projected state enrollment in elementary and secondary schools is expected to **decrease by 5,000 students (-2.5 percent)**

| ESTIMATED TAX CREDIT BOND ALLOCATIONS UNDER LEGISLATION INTRODUCED IN THE 106 <sup>TH</sup> CONGRESS |                                     |                                       |                                  |
|--|-------------------------------------|---------------------------------------|----------------------------------|
| AMOUNT<br>IN THOUSANDS OF DOLLARS  | HR 1660 - RANGEL<br>(50% TO STATES) | HR 1760 - JOHNSON<br>(100% TO STATES) | S 1454 - ROBB<br>(65% TO STATES) |
|  |                                     | <b>44,910</b>                         | <b>85,362</b>                    |

BEST COPY AVAILABLE

# Good Enough for Congress?

*A Pictorial Representation of Why Americans Deserve Better School Buildings*

## NEW JERSEY

|   |  |
|---|--|
| Total Number of Schools:  | <b>2,279</b>                                   |
| Total Enrollment:   | <b>1,260,000</b>                               |
| State funding for K-12, 1993-94:                                    | <b>\$69,945,000</b> or <b>\$61</b> per student |
| Total State & Local District School Construction Spending, 1995-96: | <b>\$534,673,000</b>                           |

### CURRENT CONDITIONS:

- **87 percent** of schools report a need to upgrade or repair building to good overall condition
- **53 percent** of schools report at least one inadequate building feature
- **69 percent** of schools report at least one unsatisfactory environmental factor
- **14** students per computer
- In 1997-98, New Jersey paid **\$188,388,000** in interest on school debt

### PROJECTED NEEDS:

- Range of amounts needed to upgrade or repair a school to good overall condition: **\$400 to \$30,000,000**
- Enrollment in New Jersey over the last decade **increased 16.6 percent**. From 1998 to 2008 projected state enrollment in elementary and secondary schools is expected to **increase by 13,000 students (+1 percent)** necessitating **520** additional classrooms

| ESTIMATED TAX CREDIT BOND ALLOCATIONS UNDER LEGISLATION INTRODUCED IN THE 106 <sup>TH</sup> CONGRESS |                                     |                                       |                                  |
|--|-------------------------------------|---------------------------------------|----------------------------------|
| AMOUNT<br>IN THOUSANDS OF DOLLARS  | HR 1660 - RANGEL<br>(50% TO STATES) | HR 1760 - JOHNSON<br>(100% TO STATES) | S 1454 - ROBB<br>(65% TO STATES) |
|  |                                     | <b>526,789</b>                        | <b>623,119</b>                   |

## NEW MEXICO

|   |  |
|---|--|
| Total Number of Schools:  | <b>732</b>                                     |
| Total Enrollment:   | <b>351,000</b>                                 |
| State funding for K-12, 1993-94:                                    | <b>\$28,763,442</b> or <b>\$93</b> per student |
| Total State & Local District School Construction Spending, 1995-96: | <b>\$133,245,000</b>                           |

### CURRENT CONDITIONS:

- **94 percent** of schools report a need to upgrade or repair building to good overall condition
- **69 percent** of schools report at least one inadequate building feature
- **75 percent** of schools report at least one unsatisfactory environmental factor
- **11** students per computer
- In 1997-98, New Mexico paid **\$91,678,000** in interest on school debt

### PROJECTED NEEDS:

- Range of amounts needed to upgrade or repair a school to good overall condition: **\$1,000 to \$19,000,000**
- Enrollment in New Mexico over the last decade **increased 20 percent**. From 1998 to 2008 projected state enrollment in elementary and secondary schools is expected to **increase by 42,000 students (+12 percent)** necessitating **1,680** additional classrooms

| ESTIMATED TAX CREDIT BOND ALLOCATIONS UNDER LEGISLATION INTRODUCED IN THE 106 <sup>TH</sup> CONGRESS |                                     |                                       |                                  |
|--|-------------------------------------|---------------------------------------|----------------------------------|
| AMOUNT<br>IN THOUSANDS OF DOLLARS  | HR 1660 - RANGEL<br>(50% TO STATES) | HR 1760 - JOHNSON<br>(100% TO STATES) | S 1454 - ROBB<br>(65% TO STATES) |
|  |                                     | <b>185,062</b>                        | <b>194,854</b>                   |

# Good Enough for Congress?

*A Pictorial Representation of Why Americans Deserve Better School Buildings*

## NEW YORK

|   |  |
|---|--|
| Total Number of Schools:  | <b>4,172</b>                                     |
| Total Enrollment:   | <b>2,937,000</b>                                 |
| State funding for K-12, 1993-94:                                    | <b>\$451,000,000</b> or <b>\$167</b> per student |
| Total State & Local District School Construction Spending, 1995-96: | <b>\$1,609,883,000</b>                           |

### CURRENT CONDITIONS:

- **90 percent** of schools report a need to upgrade or repair building to good overall condition
- **67 percent** of schools report at least one inadequate building feature
- **76 percent** of schools report at least one unsatisfactory environmental factor
- **16** students per computer
- In 1997-98, New York paid **\$616,131,000** in interest on school debt

### PROJECTED NEEDS:

- Range of amounts needed to upgrade or repair a school to good overall condition: **\$11,000 to \$51,728,000**
- Enrollment in New York over the last decade **increased 14.1 percent**. From 1998 to 2008 projected state enrollment in elementary and secondary schools is expected to **increase by 20,000 students (+.7 percent)** necessitating **800** additional classrooms
- **SCHOOL MODERNIZATION NEEDS IN NEW YORK CITY ALONE TOTAL \$10.9 BILLION, INCLUDING \$2.2 BILLION IN NEW CONSTRUCTION NEEDS.** (SOURCE: NEW YORK CITY BOARD OF EDUCATION, PROPOSED FIVE-YEAR CAPITAL PLAN FOR FISCAL YEARS 2000-2004)

| ESTIMATED TAX CREDIT BOND ALLOCATIONS UNDER LEGISLATION INTRODUCED IN THE 106 <sup>TH</sup> CONGRESS |                                     |                                       |                                  |
|--|-------------------------------------|---------------------------------------|----------------------------------|
| AMOUNT<br>IN THOUSANDS OF DOLLARS  | HR 1660 - RANGEL<br>(50% TO STATES) | HR 1760 - JOHNSON<br>(100% TO STATES) | S 1454 - ROBB<br>(65% TO STATES) |
|  |                                     | <b>2,750,541</b>                      | <b>1,934,134</b>                 |

## NORTH CAROLINA

|   |  |
|---|--|
| Total Number of Schools:  | <b>2,005</b>                                     |
| Total Enrollment:   | <b>1,268,000</b>                                 |
| State funding for K-12, 1993-94:                                    | <b>\$219,506,574</b> or <b>\$195</b> per student |
| Total State & Local District School Construction Spending, 1995-96: | <b>\$482,483,000</b>                             |

### CURRENT CONDITIONS:

- **90 percent** of schools report a need to upgrade or repair building to good overall condition
- **55 percent** of schools report at least one inadequate building feature
- **68 percent** of schools report at least one unsatisfactory environmental factor
- **13** students per computer

### PROJECTED NEEDS:

- Range of amounts needed to upgrade or repair a school to good overall condition: **\$3,500 to \$10,020,000**
- Enrollment in North Carolina over the last decade **increased 17.1 percent**. From 1998 to 2008 projected state enrollment in elementary and secondary schools is expected to **increase by 42,000 students (+3.3 percent)** necessitating **1,680** additional classrooms
- **NORTH CAROLINA WILL NEED \$6.2 BILLION OVER FIVE YEARS FOR NEW SCHOOL CONSTRUCTION, EXPANSION AND RENOVATION OF EXISTING FACILITIES, AND PURCHASE OF NEW EQUIPMENT.** (SOURCE: PUBLIC SCHOOLS FACILITY NEEDS SURVEY, SCHOOL CAPITAL CONSTRUCTION STUDY COMMISSION, APRIL 1996)

| ESTIMATED TAX CREDIT BOND ALLOCATIONS UNDER LEGISLATION INTRODUCED IN THE 106 <sup>TH</sup> CONGRESS |                                     |                                       |                                  |
|--|-------------------------------------|---------------------------------------|----------------------------------|
| AMOUNT<br>IN THOUSANDS OF DOLLARS  | HR 1660 - RANGEL<br>(50% TO STATES) | HR 1760 - JOHNSON<br>(100% TO STATES) | S 1454 - ROBB<br>(65% TO STATES) |
|  |                                     | <b>390,043</b>                        | <b>571,070</b>                   |

# Good Enough for Congress?

*A Pictorial Representation of Why Americans Deserve Better School Buildings*

## NORTH DAKOTA

|   |   |
|---|---|
| Total Number of Schools:  | <b>609</b>                                    |
| Total Enrollment:   | <b>116,000</b>                                |
| State funding for K-12, 1993-94:                                    | <b>\$5,660,000</b> or <b>\$48</b> per student |
| Total State & Local District School Construction Spending, 1995-96: | <b>\$27,426,000</b>                           |

### CURRENT CONDITIONS:

- **88 percent** of schools report a need to upgrade or repair building to good overall condition
- **49 percent** of schools report at least one inadequate building feature
- **62 percent** of schools report at least one unsatisfactory environmental factor
- **9** students per computer
- In 1997-98, North Dakota paid **\$7,633,000** in interest on school debt

### PROJECTED NEEDS:

- Range of amounts needed to upgrade or repair a school to good overall condition: **\$200 to \$10,000,000**
- Enrollment in North Dakota over the last decade **decreased 2.4 percent**. From 1998 to 2008 projected state enrollment in elementary and secondary schools is expected to **decrease by 6,000 students (-5.2 percent)**

| ESTIMATED TAX CREDIT BOND ALLOCATIONS UNDER LEGISLATION INTRODUCED IN THE 106 <sup>TH</sup> CONGRESS |                  |                   |                 |
|--|------------------|-------------------|-----------------|
| AMOUNT<br>IN THOUSANDS OF DOLLARS  | HR 1660 - RANGEL | HR 1760 - JOHNSON | S 1454 - ROBB   |
|  | (50% TO STATES)  | (100% TO STATES)  | (65% TO STATES) |
|  | <b>46,746</b>    | <b>61,519</b>     | <b>58,842</b>   |

## OHIO

|   |  |
|---|--|
| Total Number of Schools:  | <b>3,876</b>                                   |
| Total Enrollment:   | <b>1,844,000</b>                               |
| State funding for K-12, 1993-94:                                    | <b>\$68,600,000</b> or <b>\$38</b> per student |
| Total State & Local District School Construction Spending, 1995-96: | <b>\$492,625,000</b>                           |

### CURRENT CONDITIONS:

- **95 percent** of schools report a need to upgrade or repair building to good overall condition
- **76 percent** of schools report at least one inadequate building feature
- **83 percent** of schools report at least one unsatisfactory environmental factor
- **25** students per computer
- In 1997-98, Ohio paid **\$214,869,000** in interest on school debt

### PROJECTED NEEDS:

- Range of amounts needed to upgrade or repair a school to good overall condition: **\$800 to \$30,000,000**
- Enrollment in Ohio over the last decade **increased 3.7 percent**. From 1998 to 2008 projected state enrollment in elementary and secondary schools is expected to **decrease by 83,000 students (-4.5 percent)**

| ESTIMATED TAX CREDIT BOND ALLOCATIONS UNDER LEGISLATION INTRODUCED IN THE 106 <sup>TH</sup> CONGRESS |                  |                   |                 |
|--|------------------|-------------------|-----------------|
| AMOUNT<br>IN THOUSANDS OF DOLLARS  | HR 1660 - RANGEL | HR 1760 - JOHNSON | S 1454 - ROBB   |
|  | (50% TO STATES)  | (100% TO STATES)  | (65% TO STATES) |
|  | <b>949,239</b>   | <b>1,026,840</b>  | <b>942,827</b>  |



# Good Enough for Congress?

*A Pictorial Representation of Why Americans Deserve Better School Buildings*

## OKLAHOMA

|   |                               |
|---|-------------------------------|
| Total Number of Schools:  | <b>1,828</b>                  |
| Total Enrollment:   | <b>622,000</b>                |
| State funding for K-12, 1993-94:                                    | <b>No Assistance Provided</b> |
| Total State & Local District School Construction Spending, 1995-96: | <b>\$124,588,000</b>          |

### CURRENT CONDITIONS:

- **83 percent** of schools report a need to upgrade or repair building to good overall condition
- **54 percent** of schools report at least one inadequate building feature
- **64 percent** of schools report at least one unsatisfactory environmental factor
- **13** students per computer
- In 1997-98, Oklahoma paid **\$46,717,000** in interest on school debt

### PROJECTED NEEDS:

- Range of amounts needed to upgrade or repair a school to good overall condition: **\$1,000 to \$6,260,000**
- Enrollment in Oklahoma over the last decade **increased 7.2 percent**. From 1998 to 2008 projected state enrollment in elementary and secondary schools is expected to **decrease by 29,000 students (-4.7 percent)**

### ESTIMATED TAX CREDIT BOND ALLOCATIONS UNDER LEGISLATION INTRODUCED IN THE 106<sup>TH</sup> CONGRESS

| AMOUNT<br>IN THOUSANDS OF DOLLARS | HR 1660 - RANGEL | HR 1760 - JOHNSON | S 1454 - ROBB   |
|-----------------------------------|------------------|-------------------|-----------------|
|                                   | (50% TO STATES)  | (100% TO STATES)  | (65% TO STATES) |
|                                   | <b>270,233</b>   | <b>307,267</b>    | <b>292,688</b>  |

## OREGON

|   |                               |
|---|-------------------------------|
| Total Number of Schools:  | <b>1,222</b>                  |
| Total Enrollment:   | <b>545,000</b>                |
| State funding for K-12, 1993-94:                                    | <b>No Assistance Provided</b> |
| Total State & Local District School Construction Spending, 1995-96: | <b>\$222,849,000</b>          |

### CURRENT CONDITIONS:

- **96 percent** of schools report a need to upgrade or repair building to good overall condition
- **63 percent** of schools report at least one inadequate building feature
- **84 percent** of schools report at least one unsatisfactory environmental factor
- **16** students per computer
- In 1997-98, Oregon paid **\$124,300,000** in interest on school debt

### PROJECTED NEEDS:

- Range of amounts needed to upgrade or repair a school to good overall condition: **\$2,600 to \$31,475,000**
- Enrollment in Oregon over the last decade **increased 18 percent**. From 1998 to 2008 projected state enrollment in elementary and secondary schools is expected to **remain constant 545,000 students**

### ESTIMATED TAX CREDIT BOND ALLOCATIONS UNDER LEGISLATION INTRODUCED IN THE 106<sup>TH</sup> CONGRESS

| AMOUNT<br>IN THOUSANDS OF DOLLARS | HR 1660 - RANGEL | HR 1760 - JOHNSON | S 1454 - ROBB   |
|-----------------------------------|------------------|-------------------|-----------------|
|                                   | (50% TO STATES)  | (100% TO STATES)  | (65% TO STATES) |
|                                   | <b>191,113</b>   | <b>265,199</b>    | <b>216,213</b>  |

# Good Enough for Congress?

*A Pictorial Representation of Why Americans Deserve Better School Buildings*

## PENNSYLVANIA

|   |   |
|---|---|
| Total Number of Schools:  | <b>3,178</b>                              |
| Total Enrollment:   | <b>1,838,000</b>                          |
| State funding for K-12, 1993-94:                                    | <b>\$184,000,000 or \$105 per student</b> |
| Total State & Local District School Construction Spending, 1995-96: | <b>\$1,005,020,000</b>                    |

### CURRENT CONDITIONS:

- **70 percent** of schools report a need to upgrade or repair building to good overall condition
- **42 percent** of schools report at least one inadequate building feature
- **57 percent** of schools report at least one unsatisfactory environmental factor
- **15** students per computer
- In 1997-98, Pennsylvania paid **\$246,130,000** in interest on school debt

### PROJECTED NEEDS:

- Range of amounts needed to upgrade or repair a school to good overall condition: **\$400 to \$23,000,000**
- Enrollment in Pennsylvania over the last decade **increased 10.7 percent**. From 1998 to 2008 projected state enrollment in elementary and secondary schools is expected to **decrease by 98,000 students (-5.3 percent)**

| ESTIMATED TAX CREDIT BOND ALLOCATIONS UNDER LEGISLATION INTRODUCED IN THE 106 <sup>TH</sup> CONGRESS |                  |                   |                  |
|--|------------------|-------------------|------------------|
| AMOUNT<br>IN THOUSANDS OF DOLLARS  | HR 1660 - RANGEL | HR 1760 - JOHNSON | S 1454 - ROBB    |
|  | (50% TO STATES)  | (100% TO STATES)  | (65% TO STATES)  |
|  | <b>1,007,919</b> | <b>1,082,114</b>  | <b>1,026,208</b> |

## RHODE ISLAND

|   |  |
|---|--|
| Total Number of Schools:  | <b>316</b>                               |
| Total Enrollment:   | <b>157,000</b>                           |
| State funding for K-12, 1993-94:                                    | <b>\$17,008,435 or \$117 per student</b> |
| Total State & Local District School Construction Spending, 1995-96: | <b>\$7,029,000</b>                       |

### CURRENT CONDITIONS:

- **81 percent** of schools report a need to upgrade or repair building to good overall condition
- **61 percent** of schools report at least one inadequate building feature
- **75 percent** of schools report at least one unsatisfactory environmental factor
- **22** students per computer
- In 1997-98, Rhode Island paid **\$17,410,000** in interest on school debt

### PROJECTED NEEDS:

- Range of amounts needed to upgrade or repair a school to good overall condition: **\$50 to \$8,000,000**
- Enrollment in Rhode Island over the last decade **increased 17.5 percent**. From 1998 to 2008 projected state enrollment in elementary and secondary schools is expected to **remain constant at 157,000 students**

| ESTIMATED TAX CREDIT BOND ALLOCATIONS UNDER LEGISLATION INTRODUCED IN THE 106 <sup>TH</sup> CONGRESS |                  |                   |                 |
|--|------------------|-------------------|-----------------|
| AMOUNT<br>IN THOUSANDS OF DOLLARS  | HR 1660 - RANGEL | HR 1760 - JOHNSON | S 1454 - ROBB   |
|  | (50% TO STATES)  | (100% TO STATES)  | (65% TO STATES) |
|  | <b>81,320</b>    | <b>84,150</b>     | <b>77,378</b>   |

# Good Enough for Congress?

*A Pictorial Representation of Why Americans Deserve Better School Buildings*

## SOUTH CAROLINA

|  |  |
|--|--|
| Total Number of Schools:   | <b>1,088</b>                                   |
| Total Enrollment:  | <b>664,000</b>                                 |
| State funding for K-12, 1993-94:                                   | <b>\$25,807,048</b> or <b>\$41</b> per student |
| Total State & Local District School Construction Spending, 1995-96 | <b>\$248,363,000</b>                           |

### CURRENT CONDITIONS:

- **78 percent** of schools report a need to upgrade or repair building to good overall condition
- **52 percent** of schools report at least one inadequate building feature
- **66 percent** of schools report at least one unsatisfactory environmental factor
- **12** students per computer
- In 1997-98, South Carolina paid **\$70,400,000** in interest on school debt

### PROJECTED NEEDS:

- Range of amounts needed to upgrade or repair a school to good overall condition: **\$500 to \$12,800,000**
- Enrollment in South Carolina over the last decade **increased 7.8 percent**. From 1998 to 2008 projected state enrollment in elementary and secondary schools is expected to **increase by 24,000 students (+3.6 percent)** necessitating **960** additional classrooms
- SOUTH CAROLINA ESTIMATES A TOTAL SCHOOL MODERNIZATION NEED OF **\$4 BILLION**, INCLUDING **\$1.8 BILLION** FOR NEW SCHOOL CONSTRUCTION (SOURCE: STATEWIDE SCHOOL DISTRICT FACILITIES CAPITAL NEED ANALYSIS, 1998)

| ESTIMATED TAX CREDIT BOND ALLOCATIONS UNDER LEGISLATION INTRODUCED IN THE 106 <sup>TH</sup> CONGRESS |                                     |                                       |                                  |
|--|-------------------------------------|---------------------------------------|----------------------------------|
| AMOUNT<br>IN THOUSANDS OF DOLLARS  | HR 1660 - RANGEL<br>(50% TO STATES) | HR 1760 - JOHNSON<br>(100% TO STATES) | S 1454 - ROBB<br>(65% TO STATES) |
|  |                                     | <b>261,777</b>                        | <b>331,551</b>                   |

## SOUTH DAKOTA

|  |                               |
|--|-------------------------------|
| Total Number of Schools:   | <b>832</b>                    |
| Total Enrollment:  | <b>146,000</b>                |
| State funding for K-12, 1993-94:                                   | <b>No Assistance Provided</b> |
| Total State & Local District School Construction Spending, 1995-96 | <b>\$4,531,000</b>            |

### CURRENT CONDITIONS:

- **78 percent** of schools report a need to upgrade or repair building to good overall condition
- **45 percent** of schools report at least one inadequate building feature
- **50 percent** of schools report at least one unsatisfactory environmental factor
- **9** students per computer
- In 1997-98, South Dakota paid **\$12,634,000** in interest on school debt

### PROJECTED NEEDS:

- Range of amounts needed to upgrade or repair a school to good overall condition: **\$200 to \$10,100,000**
- Enrollment in South Dakota over the last decade **increased 15 percent**. From 1998 to 2008 projected state enrollment in elementary and secondary schools is expected to **decrease by 5,000 students (-3.4 percent)**

| ESTIMATED TAX CREDIT BOND ALLOCATIONS UNDER LEGISLATION INTRODUCED IN THE 106 <sup>TH</sup> CONGRESS |                                     |                                       |                                  |
|--|-------------------------------------|---------------------------------------|----------------------------------|
| AMOUNT<br>IN THOUSANDS OF DOLLARS  | HR 1660 - RANGEL<br>(50% TO STATES) | HR 1760 - JOHNSON<br>(100% TO STATES) | S 1454 - ROBB<br>(65% TO STATES) |
|  |                                     | <b>47,922</b>                         | <b>69,538</b>                    |

# Good Enough for Congress?

*A Pictorial Representation of Why Americans Deserve Better School Buildings*

## TENNESSEE

|  |                      |
|--|----------------------|
| Total Number of Schools:   | <b>1,565</b>         |
| Total Enrollment:  | <b>938,000</b>       |
| State funding for K-12, 1993-94:                                   | <b>N/A</b>           |
| Total State & Local District School Construction Spending, 1995-96 | <b>\$323,179,000</b> |

### CURRENT CONDITIONS:

- **75 percent** of schools report a need to upgrade or repair building to good overall condition
- **56 percent** of schools report at least one inadequate building feature
- **64 percent** of schools report at least one unsatisfactory environmental factor
- **19** students per computer
- In 1997-98, Tennessee paid **\$36,963,000** in interest on school debt

### PROJECTED NEEDS:

- Range of amounts needed to upgrade or repair a school to good overall condition: **\$500 to \$10,500,000**
- Enrollment in Tennessee over the last decade **increased 14.2 percent**. From 1998 to 2008 projected state enrollment in elementary and secondary schools is expected to **increase by 40,000 students (+4.3 percent)** necessitating **1,600** additional classrooms
- TENNESSEE CURRENTLY REPORTS A **\$2.5 BILLION** SCHOOL MODERNIZATION NEED. (SOURCE: TENNESSEE PUBLIC INFRASTRUCTURE NEEDS INVENTORY ASSESSMENT FOR FY 1998, JANUARY 1999)

| ESTIMATED TAX CREDIT BOND ALLOCATIONS UNDER LEGISLATION INTRODUCED IN THE 106 <sup>TH</sup> CONGRESS |                                     |                                       |                                  |
|--|-------------------------------------|---------------------------------------|----------------------------------|
| AMOUNT<br>IN THOUSANDS OF DOLLARS  | HR 1660 - RANGEL<br>(50% TO STATES) | HR 1760 - JOHNSON<br>(100% TO STATES) | S 1454 - ROBB<br>(65% TO STATES) |
|  |                                     | <b>396,843</b>                        | <b>453,517</b>                   |

## TEXAS

|  |                               |
|--|-------------------------------|
| Total Number of Schools:   | <b>6,875</b>                  |
| Total Enrollment:  | <b>3,967,000</b>              |
| State funding for K-12, 1993-94:                                   | <b>No Assistance Provided</b> |
| Total State & Local District School Construction Spending, 1995-96 | <b>\$1,995,268,000</b>        |

### CURRENT CONDITIONS:

- **76 percent** of schools report a need to upgrade or repair building to good overall condition
- **46 percent** of schools report at least one inadequate building feature
- **60 percent** of schools report at least one unsatisfactory environmental factor
- **11** students per computer
- In 1997-98, Texas paid **\$618,780,000** in interest on school debt

### PROJECTED NEEDS:

- Range of amounts needed to upgrade or repair a school to good overall condition: **\$375 to \$18,000,000**
- Enrollment in Texas over the last decade **increased 20.8 percent**. From 1998 to 2008 projected state enrollment in elementary and secondary schools is expected to **increase by 376,000 students (+9.5 percent)** necessitating **15,040** additional classrooms
- TEXAS REPORTS A **\$9.1 BILLION** COST FOR IMMEDIATE NEW CONSTRUCTION AND REPAIR NEEDS AND AN ESTIMATED **\$6.4 BILLION** NEED BY THE YEAR 2003. (SOURCE: TEXAS COMPTROLLER OF PUBLIC ACCOUNTS, TEXAS SCHOOL PERFORMANCE REVIEW: FACILITIES, MAY 1999)

| ESTIMATED TAX CREDIT BOND ALLOCATIONS UNDER LEGISLATION INTRODUCED IN THE 106 <sup>TH</sup> CONGRESS |                                     |                                       |                                  |
|--|-------------------------------------|---------------------------------------|----------------------------------|
| AMOUNT<br>IN THOUSANDS OF DOLLARS  | HR 1660 - RANGEL<br>(50% TO STATES) | HR 1760 - JOHNSON<br>(100% TO STATES) | S 1454 - ROBB<br>(65% TO STATES) |
|  |                                     | <b>2,149,680</b>                      | <b>2,037,230</b>                 |

BEST COPY AVAILABLE

# Good Enough for Congress?

*A Pictorial Representation of Why Americans Deserve Better School Buildings*

## UTAH

|  |   |
|--|---|
| Total Number of Schools:   | <b>742</b>                                    |
| Total Enrollment:  | <b>489,000</b>                                |
| State funding for K-12, 1993-94:                                   | <b>\$9,612,055</b> or <b>\$21</b> per student |
| Total State & Local District School Construction Spending, 1995-96 | <b>\$252,317,000</b>                          |

### CURRENT CONDITIONS:

- **91 percent** of schools report a need to upgrade or repair building to good overall condition
- **62 percent** of schools report at least one inadequate building feature
- **72 percent** of schools report at least one unsatisfactory environmental factor
- **12** students per computer
- In 1997-98, Utah paid **\$53,602,000** in interest on school debt

### PROJECTED NEEDS:

- Range of amounts needed to upgrade or repair a school to good overall condition: **\$500 to \$20,779,818**
- Enrollment in Utah over the last decade **increased 13.4 percent**. From 1998 to 2008 projected state enrollment in elementary and secondary schools is expected to **increase by 55,000 students (+11.2 percent)** necessitating **2,200** additional classrooms

| ESTIMATED TAX CREDIT BOND ALLOCATIONS UNDER LEGISLATION INTRODUCED IN THE 106 <sup>TH</sup> CONGRESS |                                     |                                       |                                  |
|--|-------------------------------------|---------------------------------------|----------------------------------|
| AMOUNT<br>IN THOUSANDS OF DOLLARS  | HR 1660 - RANGEL<br>(50% TO STATES) | HR 1760 - JOHNSON<br>(100% TO STATES) | S 1454 - ROBB<br>(65% TO STATES) |
|  | <b>84,796</b>                       | <b>179,227</b>                        | <b>106,743</b>                   |

## VERMONT

|  |   |
|--|---|
| Total Number of Schools:   | <b>395</b>                                      |
| Total Enrollment:  | <b>107,000</b>                                  |
| State funding for K-12, 1993-94:                                   | <b>\$16,400,000</b> or <b>\$163</b> per student |
| Total State & Local District School Construction Spending, 1995-96 | <b>\$39,899,000</b>                             |

### CURRENT CONDITIONS:

- **82 percent** of schools report a need to upgrade or repair building to good overall condition
- **53 percent** of schools report at least one inadequate building feature
- **58 percent** of schools report at least one unsatisfactory environmental factor
- **17** students per computer
- In 1997-98, Vermont paid **\$12,904,000** in interest on school debt

### PROJECTED NEEDS:

- Range of amounts needed to upgrade or repair a school to good overall condition: **\$100 to \$7,573,032**
- Enrollment in Vermont over the last decade **increased 14.6 percent**. From 1998 to 2008 projected state enrollment in elementary and secondary schools is expected to **decrease by 3,000 students (-2.8 percent)**

| ESTIMATED TAX CREDIT BOND ALLOCATIONS UNDER LEGISLATION INTRODUCED IN THE 106 <sup>TH</sup> CONGRESS |                                     |                                       |                                  |
|--|-------------------------------------|---------------------------------------|----------------------------------|
| AMOUNT<br>IN THOUSANDS OF DOLLARS  | HR 1660 - RANGEL<br>(50% TO STATES) | HR 1760 - JOHNSON<br>(100% TO STATES) | S 1454 - ROBB<br>(65% TO STATES) |
|  | <b>43,847</b>                       | <b>57,405</b>                         | <b>54,800</b>                    |

# Good Enough for Congress?

*A Pictorial Representation of Why Americans Deserve Better School Buildings*

## VIRGINIA

|  |  |
|--|--|
| Total Number of Schools:   | <b>1,895</b>                                     |
| Total Enrollment:  | <b>1,128,000</b>                                 |
| State funding for K-12, 1993-94:                                   | <b>\$108,800,000</b> or <b>\$104</b> per student |
| Total State & Local District School Construction Spending, 1995-96 | <b>\$531,648,000</b>                             |

### CURRENT CONDITIONS:

- **81 percent** of schools report a need to upgrade or repair building to good overall condition
- **60 percent** of schools report at least one inadequate building feature
- **58 percent** of schools report at least one unsatisfactory environmental factor
- **13** students per computer
- In 1997-98, Virginia paid **\$170,918,000** in interest on school debt

### PROJECTED NEEDS:

- Range of amounts needed to upgrade or repair a school to good overall condition: **\$1,000 to \$26,128,000**
- Enrollment in Virginia over the last decade **increased 14.8 percent**. From 1998 to 2008 projected state enrollment in elementary and secondary schools is expected to **increase by 62,000 students (+5.5 percent)** necessitating **2,480** additional classrooms
- VIRGINIA REPORTS A **\$6.3 BILLION** UNMET SCHOOL MODERNIZATION NEED (SOURCE: COMMONWEALTH OF VIRGINIA DEPARTMENT OF EDUCATION 1995-96 SCHOOL FACILITY STATUS SURVEY, JULY 1996)

### ESTIMATED TAX CREDIT BOND ALLOCATIONS UNDER LEGISLATION INTRODUCED IN THE 106<sup>TH</sup> CONGRESS

| AMOUNT<br>IN THOUSANDS OF DOLLARS | HR 1660 - RANGEL | HR 1760 - JOHNSON | S 1454 - ROBB   |
|-----------------------------------|------------------|-------------------|-----------------|
|                                   | (50% TO STATES)  | (100% TO STATES)  | (65% TO STATES) |
|                                   | <b>317,458</b>   | <b>482,229</b>    | <b>362,017</b>  |

## WASHINGTON

|  |  |
|--|--|
| Total Number of Schools:   | <b>2,180</b>                                     |
| Total Enrollment:  | <b>998,000</b>                                   |
| State funding for K-12, 1993-94:                                   | <b>\$137,600,000</b> or <b>\$150</b> per student |
| Total State & Local District School Construction Spending, 1995-96 | <b>\$648,637,000</b>                             |

### CURRENT CONDITIONS:

- **89 percent** of schools report a need to upgrade or repair building to good overall condition
- **60 percent** of schools report at least one inadequate building feature
- **74 percent** of schools report at least one unsatisfactory environmental factor
- **14** students per computer
- In 1997-98, Washington paid **\$261,734,000** in interest on school debt

### PROJECTED NEEDS:

- Range of amounts needed to upgrade or repair a school to good overall condition: **\$300 to \$60,000,000**
- Enrollment in Washington over the last decade **increased 26.2 percent**. From 1998 to 2008 projected state enrollment in elementary and secondary schools is expected to **increase by 23,000 students (+2.3 percent)** necessitating **920** additional classrooms

### ESTIMATED TAX CREDIT BOND ALLOCATIONS UNDER LEGISLATION INTRODUCED IN THE 106<sup>TH</sup> CONGRESS

| AMOUNT<br>IN THOUSANDS OF DOLLARS | HR 1660 - RANGEL | HR 1760 - JOHNSON | S 1454 - ROBB   |
|-----------------------------------|------------------|-------------------|-----------------|
|                                   | (50% TO STATES)  | (100% TO STATES)  | (65% TO STATES) |
|                                   | <b>285,098</b>   | <b>447,535</b>    | <b>337,982</b>  |

# Good Enough for Congress?

*A Pictorial Representation of Why Americans Deserve Better School Buildings*

## WEST VIRGINIA

|  |                               |
|--|-------------------------------|
| Total Number of Schools:   | <b>869</b>                    |
| Total Enrollment:  | <b>300,000</b>                |
| State funding for K-12, 1993-94:                                   | <b>No Assistance Provided</b> |
| Total State & Local District School Construction Spending, 1995-96 | <b>\$15,778,000</b>           |

### CURRENT CONDITIONS:

- **88 percent** of schools report a need to upgrade or repair building to good overall condition
- **67 percent** of schools report at least one inadequate building feature
- **82 percent** of schools report at least one unsatisfactory environmental factor
- **13** students per computer
- In 1997-98, West Virginia paid **\$97,033,000** in interest on school debt

### PROJECTED NEEDS:

- Range of amounts needed to upgrade or repair a school to good overall condition: **\$10,000 to \$14,000,000**
- Enrollment in West Virginia over the last decade **decreased 10.7 percent**. From 1998 to 2008 projected state enrollment in elementary and secondary schools is expected to **decrease by 18,000 students (-6 percent)**

### ESTIMATED TAX CREDIT BOND ALLOCATIONS UNDER LEGISLATION INTRODUCED IN THE 106<sup>TH</sup> CONGRESS

| AMOUNT<br>IN THOUSANDS OF DOLLARS | HR 1660 - RANGEL | HR 1760 - JOHNSON | S 1454 - ROBB   |
|-----------------------------------|------------------|-------------------|-----------------|
|                                   | (50% TO STATES)  | (100% TO STATES)  | (65% TO STATES) |
|                                   | <b>177,753</b>   | <b>199,382</b>    | <b>223,761</b>  |

## WISCONSIN

|  |                      |
|--|----------------------|
| Total Number of Schools:   | <b>2,096</b>         |
| Total Enrollment:  | <b>886,000</b>       |
| State funding for K-12, 1993-94:                                   | <b>N/A</b>           |
| Total State & Local District School Construction Spending, 1995-96 | <b>\$458,767,000</b> |

### CURRENT CONDITIONS:

- **79 percent** of schools report a need to upgrade or repair building to good overall condition
- **49 percent** of schools report at least one inadequate building feature
- **60 percent** of schools report at least one unsatisfactory environmental factor
- **11** students per computer
- In 1997-98, Wisconsin paid **\$195,943,000** in interest on school debt

### PROJECTED NEEDS:

- Range of amounts needed to upgrade or repair a school to good overall condition: **\$200 to \$7,567,000**
- Enrollment in Wisconsin over the last decade **increased 14.3 percent**. From 1998 to 2008 projected state enrollment in elementary and secondary schools is expected to **decrease by 56,000 students (-6.3 percent)**

### ESTIMATED TAX CREDIT BOND ALLOCATIONS UNDER LEGISLATION INTRODUCED IN THE 106<sup>TH</sup> CONGRESS

| AMOUNT<br>IN THOUSANDS OF DOLLARS | HR 1660 - RANGEL | HR 1760 - JOHNSON | S 1454 - ROBB   |
|-----------------------------------|------------------|-------------------|-----------------|
|                                   | (50% TO STATES)  | (100% TO STATES)  | (65% TO STATES) |
|                                   | <b>418,781</b>   | <b>475,091</b>    | <b>416,592</b>  |



# Good Enough for Congress?

*A Pictorial Representation of Why Americans Deserve Better School Buildings*

## WYOMING

|  |   |
|--|---|
| Total Number of Schools:   | <b>411</b>                                    |
| Total Enrollment:  | <b>98,000</b>                                 |
| State funding for K-12, 1993-94:                                   | <b>\$8,000,000</b> or <b>\$80</b> per student |
| Total State & Local District School Construction Spending, 1995-96 | <b>\$47,053,000</b>                           |

### CURRENT CONDITIONS:

- **82 percent** of schools report a need to upgrade or repair building to good overall condition
- **49 percent** of schools report at least one inadequate building feature
- **68 percent** of schools report at least one unsatisfactory environmental factor
- **7 students** per computer
- In 1997-98, Wyoming paid **\$12,000,000** in interest on school debt

### PROJECTED NEEDS:

- Range of amounts needed to upgrade or repair a school to good overall condition: **\$500 to \$16,900,000**
- Enrollment in Wyoming over the last decade **increased 0.2 percent**. From 1998 to 2008 projected state enrollment in elementary and secondary schools is expected to **increase by 8,000 students (+8.2 percent)** necessitating **320** additional classrooms
- WYOMING CURRENTLY ESTIMATES A **\$563 MILLION** SCHOOL MODERNIZATION COST. (SOURCE: MGT OF AMERICA, INC.)

| ESTIMATED TAX CREDIT BOND ALLOCATIONS UNDER LEGISLATION INTRODUCED IN THE 106 <sup>TH</sup> CONGRESS |                  |                   |                 |
|--|------------------|-------------------|-----------------|
| AMOUNT<br>IN THOUSANDS OF DOLLARS  | HR 1660 - RANGEL | HR 1760 - JOHNSON | S 1454 - ROBB   |
|  | (50% TO STATES)  | (100% TO STATES)  | (65% TO STATES) |
|  | <b>43,236</b>    | <b>53,296</b>     | <b>53,947</b>   |

### Statistical Sources:

"Modern Schools, Better Learning - The Campaign to Rebuild America's Schools," National Education Association  
 "School Facilities, Profiles of School Condition by State," published by the U.S. General Accounting Office  
 "Estimated State Allocations Under Rangel, Johnson, and Robb School Modernization Proposals," National Education Association

*To the best of our ability, we have accurately researched and portrayed the schools of the members of the congressional tax writing committees who attended public schools.*

The American Institute of Architects  
 1735 New York Avenue, NW, Washington, DC 20006-5292  
 (202) 626-7406/(202) 626-7583 fax  
 govaffs@aiaemail.aia.org  
 www.aiaonline.com

**The American Institute of Architects**

1735 New York Avenue, NW

Washington, DC 20006-5292

Telephone: 202-626-7300

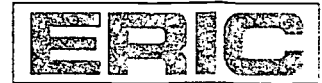
Fax: 202-626-7583

Web site: [www.aiaonline.com](http://www.aiaonline.com)





**U.S. Department of Education**  
Office of Educational Research and Improvement (OERI)  
National Library of Education (NLE)  
Educational Resources Information Center (ERIC)



# REPRODUCTION RELEASE

(Specific Document)

## I. DOCUMENT IDENTIFICATION:

|  |                           |
|--|---------------------------|
| Title: Good Enough for Congress? A Pictorial Representation of Why Americans Deserve Better School Buildings |                           |
| Author(s): AIA Committee on Architecture for Justice   |                           |
| Corporate Source:<br>American Institute of Architects  | Publication Date:<br>1999 |

## II. REPRODUCTION RELEASE:

In order to disseminate as widely as possible timely and significant materials of interest to the educational community, documents announced in the monthly abstract journal of the ERIC system, *Resources in Education* (RIE), are usually made available to users in microfiche, reproduced paper copy, and electronic media, and sold through the ERIC Document Reproduction Service (EDRS). Credit is given to the source of each document, and, if reproduction release is granted, one of the following notices is affixed to the document.

If permission is granted to reproduce and disseminate the identified document, please CHECK ONE of the following three options and sign at the bottom of the page.

The sample sticker shown below will be affixed to all Level 1 documents

The sample sticker shown below will be affixed to all Level 2A documents

The sample sticker shown below will be affixed to all Level 2B documents

PERMISSION TO REPRODUCE AND DISSEMINATE THIS MATERIAL HAS BEEN GRANTED BY

*Sample*

\_\_\_\_\_

\_\_\_\_\_

TO THE EDUCATIONAL RESOURCES INFORMATION CENTER (ERIC)

1

PERMISSION TO REPRODUCE AND DISSEMINATE THIS MATERIAL IN MICROFICHE, AND IN ELECTRONIC MEDIA FOR ERIC COLLECTION SUBSCRIBERS ONLY, HAS BEEN GRANTED BY

*Sample*

\_\_\_\_\_

\_\_\_\_\_

TO THE EDUCATIONAL RESOURCES INFORMATION CENTER (ERIC)

2A

PERMISSION TO REPRODUCE AND DISSEMINATE THIS MATERIAL IN MICROFICHE ONLY HAS BEEN GRANTED BY

*Sample*

\_\_\_\_\_

\_\_\_\_\_

TO THE EDUCATIONAL RESOURCES INFORMATION CENTER (ERIC)

2B

Level 1

Level 2A

Level 2B

Check here for Level 1 release, permitting reproduction and dissemination in microfiche or other ERIC archival media (e.g., electronic) and paper copy.

Check here for Level 2A release, permitting reproduction and dissemination in microfiche and in electronic media for ERIC archival collection subscribers only

Check here for Level 2B release, permitting reproduction and dissemination in microfiche only

Documents will be processed as indicated provided reproduction quality permits.  
If permission to reproduce is granted, but no box is checked, documents will be processed at Level 1.

I hereby grant to the Educational Resources Information Center (ERIC) nonexclusive permission to reproduce and disseminate this document as indicated above. Reproduction from the ERIC microfiche or electronic media by persons other than ERIC employees and its system contractors requires permission from the copyright holder. Exception is made for non-profit reproduction by libraries and other service agencies to satisfy information needs of educators in response to discrete inquiries.

Sign here, → please

|   |   |                      |
|---|---|----------------------|
| Signature: <i>Cassandra M. Brown</i>                              | Printed Name/Position/Title: <i>Intellectual Property Coordinator</i> |                      |
| Organization/Address: <i>AIA 1735 N.Y. Ave. NW WASH. DC 20006</i> | Telephone: <i>202-7348</i>  | FAX: <i>202-7426</i> |
|   | E-Mail Address: <i>BROWN C</i>  | Date: <i>1-11-00</i> |

*AIA MAIL AIA-OTG*

