

DOCUMENT RESUME

ED 435 278

HE 032 496

TITLE The New Freshman Class: Fall 1998. The University of Wisconsin System Informational Memorandum.

INSTITUTION Wisconsin Univ. System, Madison.

PUB DATE 1998-00-00

NOTE 14p.

AVAILABLE FROM University of Wisconsin System, Office of Policy Analysis and Research, 1534 Van Hise Hall, 1200 Linden Drive, Madison, WI 53706. Tel: 608-262-6441; Web site: <<http://www.uwsa.edu/opar/>>.

PUB TYPE Numerical/Quantitative Data (110)

EDRS PRICE MF01/PC01 Plus Postage.

DESCRIPTORS *College Freshmen; *Enrollment Trends; Higher Education; *State Universities; Statistical Data; Tables (Data); Trend Analysis

IDENTIFIERS *University of Wisconsin System

ABSTRACT

This study highlights the percentage of all new 1998 University of Wisconsin (UW) freshmen who were Wisconsin residents (82 percent); the percentage who were women (56 percent); the percentage of students of color (8 percent); the percentage who were "conventional" admits (95 percent); the percentage who scored above the national American College Testing (ACT) composite score of 21 (63 percent); and the percentage who were in the top quartile of their high school classes (47 percent). Fourteen tables present current and trend data by institution and systemwide for new freshman headcount, resident status, gender, race/ethnicity, age group, admission category, ACT composite score, and high school rank. Two appended tables offer systemwide 1972-1998 data on new freshmen headcount enrollment by institution and new freshmen average high school percentile rank by institution. (CH)



The University of Wisconsin System

Informational Memorandum

The New Freshman Class: Fall 1998

BEST COPY AVAILABLE

PERMISSION TO REPRODUCE AND
DISSEMINATE THIS MATERIAL HAS
BEEN GRANTED BY

S. Wilhelm

TO THE EDUCATIONAL RESOURCES
INFORMATION CENTER (ERIC)

U.S. DEPARTMENT OF EDUCATION
Office of Educational Research and Improvement
EDUCATIONAL RESOURCES INFORMATION
CENTER (ERIC)

This document has been reproduced as
received from the person or organization
originating it.

Minor changes have been made to
improve reproduction quality.

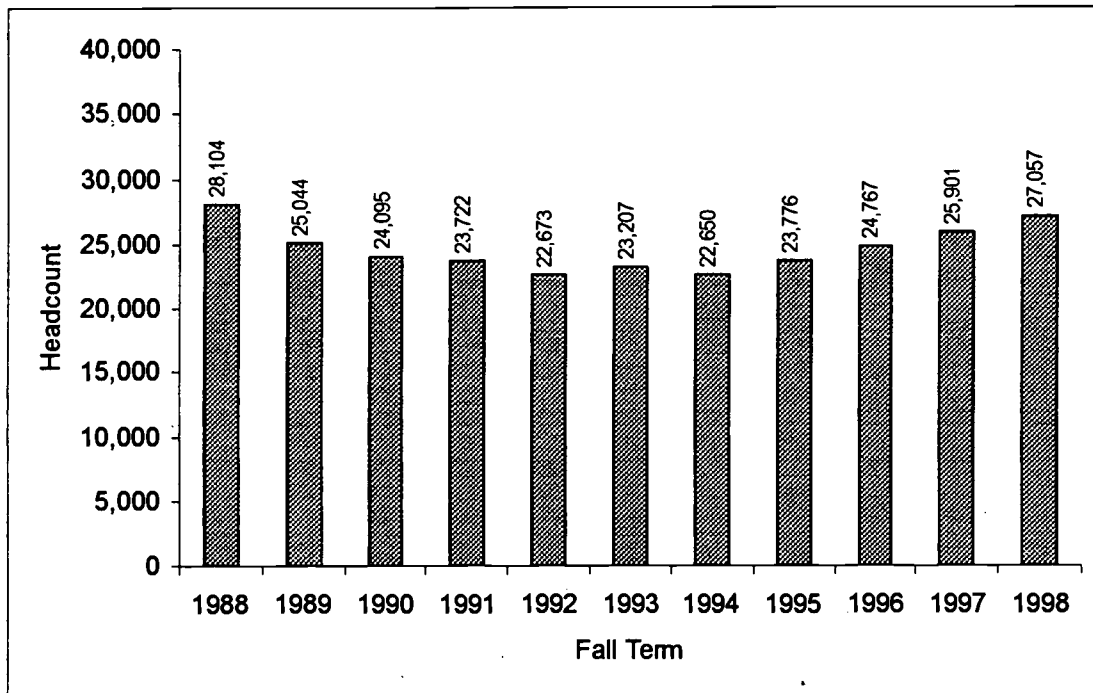
• Points of view or opinions stated in this
document do not necessarily represent
official OERI position or policy.



Informational Memorandum

The New Freshman Class: Fall 1998

**UW System New Freshman Headcount
Fall 1988 to Fall 1998**



Highlights

Percentage of Fall 1998 UW System new freshmen who:

- are Wisconsin residents.....82%
- are women56%
- are students of color8%
- were conventional admits95%
- scored above the national ACT average of 21.....63%
- were in the top quartile of their high school classes.....47%

The University of Wisconsin System
Office of Policy Analysis and Research

<http://www.uwsa.edu/opar/>

1534 Van Hise Hall
1220 Linden Drive
Madison, WI 53706
(608) 262-6441

ENROLLMENT HEADCOUNT

In Fall 1998, 27,057 new freshmen enrolled in the UW System (Table 1). This is the largest new freshman class since 1988 (see cover) when new freshman enrollments peaked at 28,104. New freshmen make up 12% of total institutional enrollment at UW-Milwaukee to 36% of total institutional enrollment at UW Colleges.

Table 1
UW System New Freshman Headcount by Institution
Fall 1998

	#	% UWS New Freshman	% Institutional Enrollment
Madison	5,596	20.7%	14.2%
Milwaukee	2,699	10.0%	11.9%
Eau Claire	2,156	8.0%	20.2%
Green Bay	1,035	3.8%	18.5%
La Crosse	1,744	6.4%	18.8%
Oshkosh	1,923	7.1%	17.9%
Parkside	883	3.3%	19.0%
Platteville	1,122	4.1%	22.4%
River Falls	1,207	4.5%	21.7%
Stevens Point	1,517	5.6%	17.8%
Stout	1,345	5.0%	17.7%
Superior	396	1.5%	15.0%
Whitewater	1,931	7.1%	18.2%
UW Colleges	3,503	12.9%	35.6%
Total	27,057	100.0%	17.7%

At 18% of UW System enrollment, new freshmen make up almost the same percentage of enrollment that they did 10 years ago and 2.7% percentage points more than they did 5 years ago (Table 2).

Table 2
UW System New Freshman Headcount by Institution
Fall 1998, Fall 1993, and Fall 1988

	1988			1993			1998		
	#	% of UWS NF Enroll	% of Inst. Enroll.	#	% of UWS NF Enroll	% of Inst. Enroll.	#	% of UWS NF Enroll	% of Inst. Enroll.
MSN	5,934	21.1%	13.7%	4,631	20.0%	11.5%	5,596	20.7%	14.2%
MIL	2,647	9.4%	10.5%	1,930	8.3%	8.1%	2,699	10.0%	11.9%
EAU	2,277	8.1%	20.6%	1,956	8.4%	18.9%	2,156	8.0%	20.2%
GBY	862	3.1%	16.5%	770	3.3%	13.9%	1,035	3.8%	18.5%
LAC	1,890	6.7%	20.5%	1,702	7.3%	19.7%	1,744	6.4%	18.8%
OSH	1,837	6.5%	16.4%	1,514	6.5%	14.1%	1,923	7.1%	17.9%
PKS	942	3.4%	18.2%	783	3.4%	15.6%	883	3.3%	19.0%
PLT	1,059	3.8%	19.9%	950	4.1%	18.5%	1,122	4.1%	22.4%
RVF	1,048	3.7%	18.9%	846	3.6%	16.1%	1,207	4.5%	21.7%
STP	1,700	6.0%	18.2%	1,375	5.9%	16.0%	1,517	5.6%	17.8%
STO	1,361	4.8%	17.9%	1,030	4.4%	14.4%	1,345	5.0%	17.7%
SUP	411	1.5%	16.9%	344	1.5%	13.3%	396	1.5%	15.0%
WTW	1,898	6.8%	18.1%	1,845	8.0%	17.5%	1,931	7.1%	18.2%
UWC	4,238	15.1%	37.9%	3,531	15.2%	32.6%	3,503	12.9%	35.6%
Total	28,104	100.0%	17.3%	23,207	100.0%	15.0%	27,057	100.0%	17.7%

**DEMOGRAPHICS
RESIDENT STATUS**

In Fall 1998, 82% of new freshmen were Wisconsin residents, 10% were students enrolled under the Minnesota/Michigan reciprocity agreements, and 8% were other non-resident new freshmen (Table 3).

**Table 3
UW System New Freshmen by Resident Status and Institution
Fall 1998**

	WI Resident		Non-Resident		Compact*		Total
	#	%	#	%	#	%	#
MSN	3,652	65.3%	1,417	25.3%	527	9.4%	5,596
MIL	2,602	96.4%	75	2.8%	22	0.8%	2,699
EAU	1,606	74.5%	39	1.8%	511	23.7%	2,156
GBY	975	94.2%	48	4.6%	12	1.2%	1,035
LAC	1,425	81.7%	70	4.0%	249	14.3%	1,744
OSH	1,866	97.0%	48	2.5%	9	0.5%	1,923
PKS	813	92.1%	65	7.4%	5	0.6%	883
PLT	1,007	89.8%	105	9.4%	10	0.9%	1,122
RVF	611	50.6%	17	1.4%	579	48.0%	1,207
STP	1,398	92.2%	73	4.8%	46	3.0%	1,517
STO	934	69.4%	19	1.4%	392	29.1%	1,345
SUP	224	56.6%	34	8.6%	138	34.8%	396
WTW	1,808	93.6%	112	5.8%	11	0.6%	1,931
UWC	3,358	95.9%	77	2.2%	68	1.9%	3,503
Total	22,279	82.3%	2,199	8.1%	2,579	9.5%	27,057

The proportion of new freshmen who enrolled under either the Minnesota or Michigan reciprocity agreements has been relatively consistent over the past five years (Table 4). The proportion of other non-resident new freshmen has remained relatively steady since Fall 1993. The proportion of Wisconsin resident new freshmen has ranged from 82% to 85% in the past ten years.

**Table 4
UW System New Freshmen by Resident Status
Fall 1988 to Fall 1998**

	WI Resident	Non-Resident	Compact*	Total
1988	82.4%	10.5%	7.1%	28,104
1989	83.8%	8.1%	8.1%	25,044
1990	84.5%	7.5%	8.1%	24,095
1991	83.6%	7.4%	9.0%	23,722
1992	84.0%	7.7%	8.3%	22,673
1993	83.9%	8.2%	7.9%	23,207
1994	82.5%	8.3%	9.1%	22,650
1995	82.7%	8.1%	9.1%	23,776
1996	82.2%	8.0%	9.6%	24,767
1997	82.0%	8.1%	9.7%	25,901
1998	82.3%	8.1%	9.5%	27,057

* Compact includes Minnesota and Michigan compacts.

GENDER

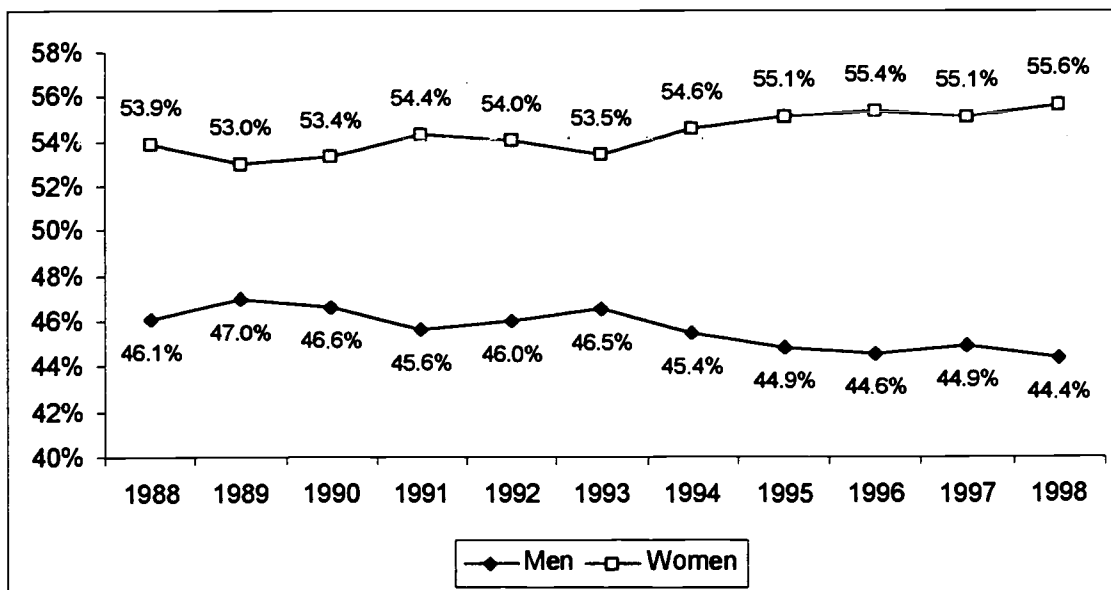
Female students comprised 56% of the new freshmen class in Fall 1998 while male students comprised 44% (Table 5). The percentage of female students by institution ranged from 33% at UW-Platteville to 65% at UW-Green Bay, UW-La Crosse, and UW-River Falls.

**Table 5
UW System New Freshmen by Gender and Institution
Fall 1998**

	Female		Male		Total #
	#	%	#	%	
MSN	3,057	54.6%	2,539	45.4%	5,596
MIL	1,455	53.9%	1,244	46.1%	2,699
EAU	1,355	62.8%	801	37.2%	2,156
GBY	674	65.1%	361	34.9%	1,035
LAC	1,125	64.5%	619	35.5%	1,744
OSH	1,115	58.0%	808	42.0%	1,923
PKS	506	57.3%	377	42.7%	883
PLT	371	33.1%	751	66.9%	1,122
RVF	778	64.5%	429	35.5%	1,207
STP	873	57.5%	644	42.5%	1,517
STO	620	46.1%	725	53.9%	1,345
SUP	229	57.8%	167	42.2%	396
WTW	974	50.4%	957	49.6%	1,931
UWC	1,920	54.8%	1,583	45.2%	3,503
Total	15,052	55.6%	12,005	44.4%	27,057

Figure 1 shows the trend in new freshmen enrollment by gender from Fall 1988 to Fall 1998. While female students have made up the majority of the UW System new freshman class for at least 13 years, the gap between percentages in female and male students, currently 11 percentage points, is the largest in the past decade.

**Figure 1
UW System New Freshmen by Gender
Fall 1988 to Fall 1998**



RACE

In Fall 1998, students of color made up 8% of the new freshman class while white students made up 91% and international students 1% (Table 6). The percentage of students of color by institution ranged from 1% at UW-Superior to 20% at UW-Milwaukee.

**Table 6
UW System New Freshmen by Race/Ethnicity and Institution
Fall 1998**

	African American		Hispanic/Latino		American Indian		Asian American		All Students of Color		International		White/Unknown		Total
	#	%	#	%	#	%	#	%	#	%	#	%	#	%	
MSN	113	2.0%	156	2.8%	39	0.7%	259	4.6%	567	10.1%	139	2.5%	4,890	87.4%	5,596
MIL	265	9.8%	123	4.6%	29	1.1%	133	4.9%	550	20.4%	16	0.6%	2,133	79.0%	2,699
EAU	23	1.1%	16	0.7%	12	0.6%	49	2.3%	100	4.6%	15	0.7%	2,041	94.7%	2,156
GBY	13	1.3%	8	0.8%	17	1.6%	17	1.6%	55	5.3%	3	0.3%	977	94.4%	1,035
LAC	11	0.6%	18	1.0%	8	0.5%	48	2.8%	85	4.9%	7	0.4%	1,652	94.7%	1,744
OSH	20	1.0%	20	1.0%	7	0.4%	24	1.2%	71	3.7%	6	0.3%	1,846	96.0%	1,923
PKS	87	9.9%	47	5.3%	3	0.3%	20	2.3%	157	17.8%	5	0.6%	721	81.7%	883
PLT	18	1.6%	10	0.9%	7	0.6%	9	0.8%	44	3.9%	4	0.4%	1,074	95.7%	1,122
RVF	8	0.7%	8	0.7%	5	0.4%	23	1.9%	44	3.6%	6	0.5%	1,157	95.9%	1,207
STP	12	0.8%	7	0.5%	6	0.4%	17	1.1%	42	2.8%	31	2.0%	1,444	95.2%	1,517
STO	6	0.4%	5	0.4%	3	0.2%	25	1.9%	39	2.9%	7	0.5%	1,299	96.6%	1,345
SUP	0	0.0%	1	0.3%	3	0.8%	1	0.3%	5	1.3%	17	4.3%	374	94.4%	396
WTW	78	4.0%	29	1.5%	6	0.3%	26	1.3%	139	7.2%	13	0.7%	1,779	92.1%	1,931
UWC	47	1.3%	44	1.3%	15	0.4%	49	1.4%	155	4.4%	29	0.8%	3,319	94.7%	3,503
Total	701	2.6%	492	1.8%	160	0.6%	700	2.6%	2,053	7.6%	298	1.1%	24,706	91.3%	27,057

Although there were some year to year fluctuations within categories, the Fall 1998 proportion of white new freshmen was the lowest since 1988 and the proportion of students of color, at 7.6%, is the highest since 1988 (Table 7).

**Table 7
UW System New Freshmen by Race/Ethnicity
Fall 1988 to Fall 1998**

	African American		Hispanic/Latino		American Indian		Asian American		All Students of Color		International		White/Unknown		Total
	#	%	#	%	#	%	#	%	#	%	#	%	#	%	
1988	612	2.2%	339	1.2%	163	0.6%	498	1.8%	1,612	5.7%	234	0.8%	26,258	93.4%	28,104
1989	530	2.1%	271	1.1%	164	0.7%	459	1.8%	1,424	5.7%	272	1.1%	23,348	93.2%	25,044
1990	560	2.3%	316	1.3%	161	0.7%	480	2.0%	1,517	6.3%	303	1.3%	22,275	92.4%	24,095
1991	526	2.2%	342	1.4%	165	0.7%	534	2.3%	1,567	6.6%	249	1.0%	21,906	92.3%	23,722
1992	566	2.5%	387	1.7%	144	0.6%	557	2.5%	1,654	7.3%	287	1.3%	20,732	91.4%	22,673
1993	603	2.6%	400	1.7%	164	0.7%	563	2.4%	1,730	7.5%	241	1.0%	21,236	91.5%	23,207
1994	498	2.2%	401	1.8%	159	0.7%	547	2.4%	1,605	7.1%	257	1.1%	20,788	91.8%	22,650
1995	548	2.3%	389	1.6%	158	0.7%	564	2.4%	1,659	7.0%	274	1.2%	21,843	91.9%	23,776
1996	536	2.2%	371	1.5%	158	0.6%	596	2.4%	1,661	6.7%	275	1.1%	22,831	92.2%	24,767
1997	683	2.6%	468	1.8%	161	0.6%	608	2.3%	1,920	7.4%	309	1.2%	23,672	91.4%	25,901
1998	701	2.6%	492	1.8%	160	0.6%	700	2.6%	2,053	7.6%	298	1.1%	24,706	91.3%	27,057

AGE

UW System new freshmen age 19 and under make up the vast majority of new freshmen at 95%. The percentage of new freshmen age 20 and over is 5% for the UW System as a whole and ranges from less than 1% at UW-Madison to 16% at UW Colleges (Table 8).

**Table 8
UW System New Freshmen by Age Group
Fall 1998.**

	19 and Under		20 to 24		25 to 34		35 and Over		Total
	#	%	#	%	#	%	#	%	
MSN	5,549	99.2%	44	0.8%	2	0.0%	1	0.0%	5,596
MIL	2,526	93.6%	127	4.7%	38	1.4%	8	0.3%	2,699
EAU	2,125	98.6%	27	1.3%	2	0.1%	2	0.1%	2,156
GBY	983	95.0%	35	3.4%	11	1.1%	6	0.6%	1,035
LAC	1,722	98.7%	18	1.0%	2	0.1%	2	0.1%	1,744
OSH	1,855	96.5%	40	2.1%	14	0.7%	14	0.7%	1,923
PKS	791	89.6%	63	7.1%	22	2.5%	7	0.8%	883
PLT	1,099	98.0%	20	1.8%	2	0.2%	1	0.1%	1,122
RVF	1,176	97.4%	24	2.0%	2	0.2%	5	0.4%	1,207
STP	1,469	96.8%	37	2.4%	8	0.5%	3	0.2%	1,517
STO	1,262	93.8%	66	4.9%	14	1.0%	3	0.2%	1,345
SUP	343	86.6%	36	9.1%	11	2.8%	6	1.5%	396
WTW	1,865	96.6%	47	2.4%	16	0.8%	3	0.2%	1,931
UWC	2,935	83.8%	347	9.9%	149	4.3%	72	2.1%	3,503
Total	25,700	95.0%	931	3.4%	293	1.1%	133	0.5%	27,057

Overall, the proportion of UW System new freshmen age 19 and under has been growing. The proportion of UW System new freshmen ages 20-24, 25-34 and 35 and over have all declined since 1991 and all are lower than the proportions in 1988 (Table 9).

**Table 9
UW System New Freshmen by Age Group
Fall 1988 to Fall 1998**

	19 and Under		20 to 24		25 to 34		35 and Over		Total
	#	%	#	%	#	%	#	%	
1988	25,956	92.4%	1,250	4.4%	673	2.4%	225	0.8%	28,104
1989	23,203	92.6%	1,054	4.2%	561	2.2%	226	0.9%	25,044
1990	21,797	90.5%	1,353	5.6%	674	2.8%	271	1.1%	24,095
1991	21,442	90.4%	1,309	5.5%	672	2.8%	299	1.3%	23,722
1992	20,797	91.7%	1,100	4.9%	530	2.3%	246	1.1%	22,673
1993	21,366	92.1%	1,056	4.6%	543	2.3%	242	1.0%	23,207
1994	20,881	92.2%	1,094	4.8%	464	2.0%	211	0.9%	22,650
1995	22,187	93.3%	983	4.1%	415	1.7%	191	0.8%	23,776
1996	23,312	94.1%	913	3.7%	351	1.4%	191	0.8%	24,767
1997	24,479	94.5%	921	3.6%	341	1.3%	160	0.6%	25,901
1998	25,700	95.0%	931	3.4%	293	1.1%	133	0.5%	27,057

**EDUCATIONAL PREPARATION
ADMISSION CATEGORY**

In Fall 1998, 95% of all UW System new freshmen admitted were conventional admits (Table 10). Older new freshmen, those 21 years of age and older as of September 1 of the fall they first enroll, comprised 2% of UW System new freshmen admits. New freshmen admitted as exceptions made up 3% of UW System new freshmen.

**Table 10
UW System New Freshmen by Admission Category and Institution
Fall 1998**

	Conventional		Non-Conventional			
	Standard & Discretionary	%	Older	%	Exception	%
MSN	5,564	99.4%	3	0.1%	29	0.5%
MIL	2,609	96.7%	35	1.3%	55	2.0%
EAU	2,055	95.3%	6	0.3%	95	4.4%
GBY	1,015	98.1%	5	0.5%	15	1.4%
LAC	1,723	98.8%	11	0.6%	10	0.6%
OSH	1,821	94.7%	45	2.3%	57	3.0%
PKS	775	87.8%	61	6.9%	47	5.3%
PLT	1,076	95.9%	7	0.6%	39	3.5%
RVF	1,190	98.6%	7	0.6%	10	0.8%
STP	1,468	96.8%	23	1.5%	26	1.7%
STO	1,209	89.9%	31	2.3%	105	7.8%
SUP	356	89.9%	21	5.3%	19	4.8%
WTW	1,778	92.1%	21	1.1%	132	6.8%
UWC	3,058	87.3%	314	9.0%	131	3.7%
Total	25,697	95.0%	590	2.2%	770	2.8%

The proportion of new freshmen admitted as conventional admits has ranged from 93% to 95% in the last decade (Table 11). The percentage of older new freshmen admits has declined from 4% in Fall 1990, the first year these data were reported, to its current low of 2%. The percentage of new freshmen admitted as exceptions has ranged between 2% to 3% since Fall 1990.

**Table 11
UW System New Freshmen by Admission Category
Fall 1990 to Fall 1998**

	Conventional		Non-Conventional			
	Standard & Discretionary	%	Older	%	Exception	%
1990	22,582	93.7%	949	3.9%	564	2.3%
1991	22,099	93.2%	1,031	4.3%	592	2.5%
1992	21,362	94.2%	821	3.6%	490	2.2%
1993	21,815	94.0%	940	4.1%	453	2.0%
1994	21,298	94.0%	822	3.6%	530	2.3%
1995	22,515	94.7%	759	3.2%	502	2.1%
1996	23,493	94.9%	634	2.6%	640	2.6%
1997	24,461	95.1%	580	2.3%	678	2.6%
1998	25,697	95.0%	590	2.2%	770	2.8%

ACT SCORES

Table 12 shows the average ACT composite scores of Fall 1998 new freshmen by institution. The average ACT composite score of new freshmen ranged from 26.8 at UW-Madison to 20.2 at UW-Parkside.

**Table 12
UW System New Freshmen by ACT Composite Score and Institution
Fall 1998**

	Average
MSN	26.8
MIL	21.8
EAU	23.4
GBY	22.5
LAC	23.6
OSH	22.0
PKS	20.2
PLT	22.8
RVF	22.6
STP	22.8
STO	21.5
SUP	21.1
WTW	22.0
UWC	20.6

The average ACT composite score of both UW System new freshmen and national test takers has remained unchanged from 1997 (Table 13). The UW System new freshman's average ACT composite score of 23 is two full test points higher than the national average of 21. Since 1989, when scores from a revised ACT test became available, the ACT composite score of UW System new freshmen has ranged from 1.5 to 2.0 points above the national average.

**Table 13
UW System New Freshmen by ACT Composite Score
Fall 1989 to Fall 1998**

	1989	1990	1991	1992	1993	1994	1995	1996	1997	1998
UW System New Freshmen	22.4	22.2	22.1	22.1	22.4	22.6	22.8	22.8	23.0	23.0
National Average	20.6	20.6	20.6	20.6	20.7	20.8	20.8	20.9	21.0	21.0

HIGH SCHOOL RANK

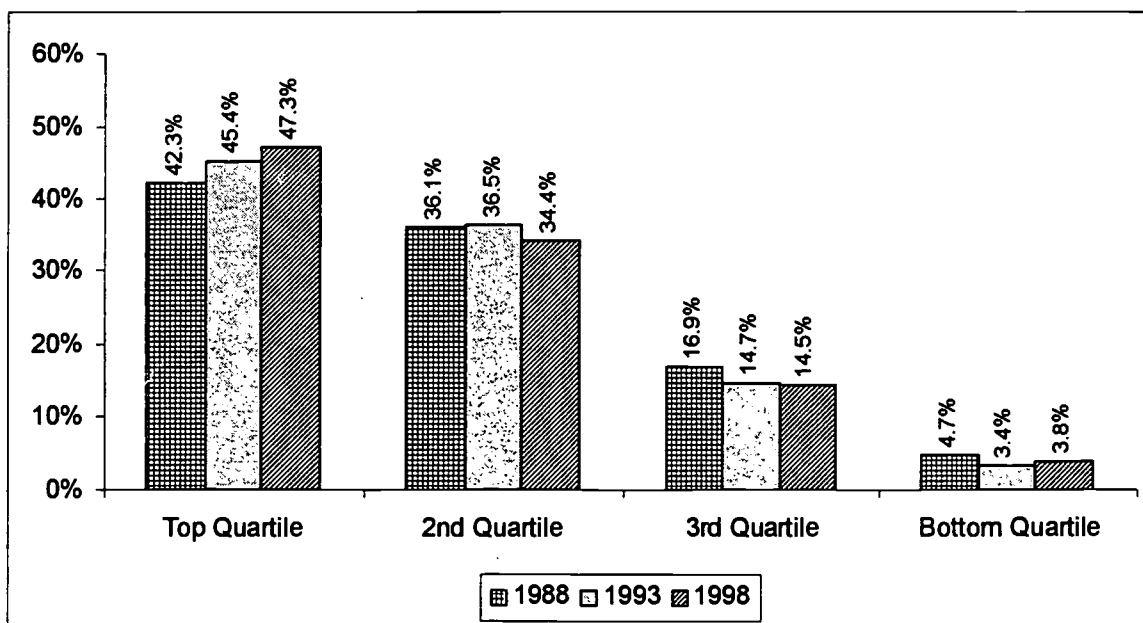
In Fall 1998, 47% of UW System new freshmen graduated from high school in the top 25% of their high school classes (Table 14). More than four of every five Fall 1998 new freshmen graduated in the top half of their high school classes.

Table 14
UW System New Freshmen by High School Rank and Institution
Fall 1998

	Top Quartile		2nd Quartile		Top Half		3rd Quartile		4th Quartile	
	#	%	#	%	#	%	#	%	#	%
MSN	4,255	87.8%	534	11.0%	4,789	98.8%	53	1.1%	5	0.1%
MIL	678	27.0%	986	39.3%	1,664	66.3%	616	24.6%	229	9.1%
EAU	1,072	50.9%	814	38.6%	1,886	89.5%	218	10.3%	4	0.2%
GBY	463	47.0%	418	42.4%	881	89.4%	97	9.8%	7	0.7%
LAC	1,057	62.1%	602	35.4%	1,659	97.5%	39	2.3%	3	0.2%
OSH	619	38.1%	802	49.4%	1,421	87.4%	204	12.6%	0	0.0%
PKS	220	27.7%	255	32.2%	475	59.9%	241	30.4%	77	9.7%
PLT	454	41.7%	427	39.2%	881	80.8%	181	16.6%	28	2.6%
RVF	558	47.3%	479	40.6%	1,037	88.0%	118	10.0%	24	2.0%
STP	689	47.7%	689	47.7%	1,378	95.4%	65	4.5%	1	0.1%
STO	358	30.2%	572	48.3%	930	78.5%	222	18.8%	32	2.7%
SUP	100	28.2%	159	44.9%	259	73.2%	79	22.3%	16	4.5%
WTW	621	33.7%	826	44.9%	1,447	78.6%	345	18.7%	49	2.7%
UWC	575	18.4%	956	30.6%	1,531	49.0%	1,119	35.8%	474	15.2%
Total	11,719	47.3%	8,519	34.4%	20,238	81.7%	3,597	14.5%	949	3.8%

The percentage of UW System new freshmen graduating in the top 25% of their high school classes is higher than the percentages both five and ten years ago (Figure 2).

Figure 2
UW System New Freshmen by High School Rank
Fall 1988, Fall 1993 and Fall 1998



Appendix A
UW System New Freshmen Headcount Enrollment by Institution
Fall 1972 to Fall 1998

	MSN	MIL	EAU	GBY	LAC	OSH	PKS	PLT	RVF	STP	STO	SUP	WTW	UWC	Total
1972	4,219	3,042	2,308	668	1,605	2,226	1,183	1,020	804	1,876	994	591	1,660	2,438	24,634
1973	4,263	3,575	2,207	549	1,640	1,941	1,065	877	787	1,614	1,001	558	1,559	2,932	24,568
1974	4,394	3,358	2,419	646	1,862	1,730	1,052	897	973	1,647	1,227	511	1,443	2,930	25,089
1975	4,654	3,171	2,483	575	1,942	1,889	1,026	1,081	1,117	1,879	1,111	508	1,757	3,453	26,646
1976	3,918	2,994	2,245	560	1,884	1,709	784	1,150	1,264	1,913	1,279	485	1,915	3,158	25,258
1977	4,217	2,741	2,623	563	2,140	1,666	783	1,154	1,154	2,053	1,291	553	1,826	3,293	26,057
1978	4,683	3,165	2,555	597	2,057	1,752	909	1,040	1,199	1,960	1,414	465	1,773	2,991	26,560
1979	4,836	2,833	2,695	677	2,176	1,851	1,009	1,107	1,245	1,970	1,407	425	2,026	3,104	27,361
1980	5,021	2,845	2,737	789	2,053	1,807	1,056	1,227	1,317	2,021	1,507	446	2,165	3,461	28,452
1981	4,683	2,808	2,441	773	2,040	2,004	1,045	1,297	1,294	1,988	1,375	404	2,195	3,505	27,830
1982	4,797	2,684	2,494	714	1,928	1,797	954	1,246	1,116	1,712	1,380	382	2,082	3,606	26,892
1983	5,110	2,847	2,475	693	2,028	1,771	1,075	1,201	1,082	1,727	1,374	347	2,135	3,872	27,737
1984	5,490	2,864	2,355	708	2,072	1,869	871	1,062	1,103	1,794	1,388	321	2,189	3,658	27,744
1985	5,687	2,747	2,387	811	2,131	1,804	817	1,176	1,001	1,887	1,436	333	2,253	3,481	27,951
1986	5,383	2,677	2,470	696	2,114	1,947	886	1,127	1,145	1,821	1,419	368	2,136	3,736	27,925
EM I															
1987	5,181	2,390	2,320	817	1,977	1,857	753	1,156	1,053	1,687	1,404	375	2,152	3,775	26,897
1988	5,934	2,647	2,277	862	1,890	1,837	942	1,059	1,048	1,700	1,361	411	1,898	4,238	28,104
1989	4,993	2,461	1,934	782	1,689	1,730	757	995	957	1,690	1,143	414	1,836	3,663	25,044
1990	4,699	2,446	1,736	746	1,622	1,608	782	943	939	1,580	1,130	346	1,953	3,565	24,095
EM II															
1991	4,642	2,153	1,796	829	1,655	1,455	760	1,027	1,054	1,505	1,177	478	1,819	3,372	23,722
1992	4,416	1,880	1,869	816	1,495	1,492	769	910	1,026	1,398	1,000	363	1,785	3,454	22,673
1993	4,631	1,930	1,956	770	1,702	1,514	783	950	846	1,375	1,030	344	1,845	3,531	23,207
1994	4,681	1,806	2,088	883	1,504	1,393	770	958	1,004	1,378	1,075	285	1,704	3,121	22,650
EM III															
1995	5,164	1,988	2,038	848	1,747	1,523	744	948	968	1,504	1,144	306	1,900	2,954	23,776
1996	5,455	2,253	2,048	1,027	1,735	1,559	686	965	1,161	1,586	1,287	324	1,842	2,839	24,767
1997	5,880	2,481	2,171	953	1,706	1,758	819	998	1,152	1,551	1,250	352	1,914	2,916	25,901
1998	5,596	2,699	2,156	1,035	1,744	1,923	883	1,122	1,207	1,517	1,345	396	1,931	3,503	27,057

Appendix B
UW System New Freshmen by Average High School Percentile Rank and Institution
Fall 1976 to Fall 1998

	MSN	MIL	EAU	GBY	LAC	OSH	PKS	PLT	RVF	STP	STO	SUP	WTW	UWC	Overall
1976	81.2	66.9	70.9	67.8	65.8	58.8	63.3	66.8	60.4	61.1	61.8	65.3	63.3	60.9	66.8
1977	80.2	68.6	70.6	68.1	64.7	67.6	62.9	66.9	62.5	63.6	61.4	59.4	65.2	61.6	67.2
1978	79.5	65.8	70.4	65.1	66.9	58.2	62.4	67.2	62.6	64.5	60.4	62.2	63.6	61.8	67.1
1979	79.3	66.2	70.7	64.5	65.5	59.1	62.9	64.5	62.1	62.8	60.9	63.2	64.4	61.7	66.9
1980	79.8	64.8	69.9	64.8	65.7	60.2	60.9	64.9	62.2	62.2	60.4	59.0	64.6	58.9	66.3
1981	80.7	64.0	73.8	64.1	66.2	60.0	60.7	65.9	61.6	62.5	59.1	61.4	64.9	59.1	66.5
1982	80.0	67.1	72.0	62.8	64.4	60.3	62.0	63.3	63.4	61.2	57.0	64.1	63.5	58.7	66.3
1983	80.2	66.0	70.5	66.2	63.2	62.0	59.2	61.9	61.2	62.0	55.6	58.6	63.1	56.9	65.6
1984	78.9	67.0	68.6	65.7	63.0	62.6	59.6	63.3	60.0	61.7	53.2	59.1	60.7	57.3	65.3
1985	79.1	66.6	67.9	64.8	63.2	61.3	59.6	63.3	59.7	60.2	53.6	59.2	60.8	55.0	65.0
1986	78.6	66.5	69.2	63.4	61.6	62.0	60.2	63.2	58.6	61.6	54.9	58.7	62.8	53.8	64.7
EM I															
1987	80.6	65.7	68.4	63.6	68.0	63.0	60.7	65.3	60.3	65.8	56.4	60.6	64.3	51.4	65.4
1988	79.9	64.2	72.6	67.5	67.0	66.2	57.8	64.5	64.1	67.1	58.0	62.8	68.0	51.2	66.5
1989	81.4	62.9	67.4	68.8	70.0	66.4	62.9	68.4	63.9	67.6	60.7	62.6	69.8	53.7	68.2
1990	81.7	62.6	67.1	68.7	70.0	68.6	60.5	67.4	64.9	65.7	57.8	60.2	68.6	51.2	67.4
EM II															
1991	81.2	62.8	74.8	69.2	69.4	69.5	59.2	68.5	64.1	69.3	54.9	61.9	66.6	51.7	67.3
1992	82.2	62.7	75.1	71.5	70.7	71.6	58.5	71.0	66.7	70.4	63.7	65.9	65.1	51.1	68.4
1993	82.9	61.3	72.9	72.9	72.5	71.7	58.1	71.2	70.8	70.9	64.4	65.7	65.2	50.5	68.5
1994	84.6	60.7	72.8	70.9	74.9	71.3	59.0	70.3	69.1	72.7	61.2	63.9	64.9	50.3	69.1
EM III															
1995	85.6	59.7	72.4	73.2	74.8	68.9	58.3	68.2	67.6	71.7	60.1	63.9	64.7	49.6	69.1
1996	84.6	58.3	71.2	70.1	75.3	66.9	59.6	68.9	70.7	69.1	60.6	64.0	65.7	50.9	68.9
1997	85.0	58.9	71.7	71.4	76.3	67.8	59.0	67.3	70.5	71.1	61.9	62.5	64.3	50.1	69.1
1998	86.2	58.5	73.1	71.4	77.6	68.2	56.8	67.6	70.6	73.0	63.4	60.9	64.5	50.1	69.0

OCCASIONAL RESEARCH BRIEFS/INFORMATIONAL MEMORANDA

Vol. 99, No. 1: April 1999 Informational Memorandum Informational Memorandum Informational Memorandum	The Graying of the Faculty in the UW System Trends in Enrollment: Fall 1998 Update Student Financial Aid: 1997-98 Update The New Freshman Class: Fall 1998
Vol. 98, No. 1: February 1998 Vol. 98, No. 2: February 1998 Vol. 98, No. 3: May 1998 Informational Memorandum	Student Financial Aid in the UW System: 1996-97 Update Trends in Degrees Conferred: 1996-97 Update Transfer Students Trends in Enrollment: Fall 1997 Update
Vol. 97, No. 1: March 1997	Access Update: The Class Of Fall 1996
Vol. 96, No. 1: May 1996 Vol. 96, No. 2: September 1996	New Freshman Outcomes: Retention and Graduation 1994-95 Faculty Age Distributions In The UW System
Vol. 95, No. 1: February 1995 Vol. 95, No. 2: March 1995 Vol. 95, No. 3: March 1995 Vol. 95, No. 4: May 1995 Vol. 95, No. 5: May 1995 Vol. 95, No. 6: December 1995	Trends In Enrollment: Fall 1994. Trends In Degrees Conferred: 1993-94 Update. Student Financial Aid Update: 1993-94. Access Update: The Class Of Fall 1994 New Undergraduate Class: Fall 1994 New Freshman Outcomes: Retention And Graduation
Vol. 94, No. 1: February 1994 Vol. 94, No. 2: February 1994 Vol. 94, No. 3: April 1994 Vol. 94, No. 4: April 1994 Vol. 94, No. 5: May 1994 Vol. 94, No. 6: May 1994	Trends In Degrees Conferred, 1982-83 To 1992-93. Trends In Enrollment: Fall 1993 Update. Student Financial Aid In The UW System, 1992-93 Update. Meeting The Financial Aid Needs Of UW Resident Undergraduates. Access Update: The Class Of Fall 1993. The New Undergraduate Class: Fall 1993.
Vol. 93, No. 1: February 1993 Vol. 93, No. 2: March 1993 Vol. 93, No. 3: March 1993 Vol. 93, No. 4: March 1993 Vol. 93, No. 5: March 1993 Vol. 93, No. 6: March 1993	Trends In Enrollment: Fall 1992 Update. APPENDIX Access Update: The Class Of Fall 1992 Freshman Admission Requirements at the University of Wisconsin. Access Update: The Class Of Fall 1992. The New Undergraduate Class: Fall 1992. New Freshman Outcomes: Retention, Graduation And Time To Degree. Trends In Degrees Conferred, 1981-82 To 1991-92.
Vol. 92, No. 1: February 1992 Vol. 92, No. 2: March 1992 Vol. 92, No. 3: April 1992 Vol. 92, No. 4: May 1992 Vol. 92, No. 5: June 1992 Vol. 92, No. 6: June 1992 Vol. 92, No. 7: October 1992	Access To The UW System; Patterns Of Application, Admission And Enrollment Of New Freshmen. Trends In Degrees Conferred, 1980-81 To 1990-91. Trends In Enrollment: Fall 1991 Update. Minority Student Trends. Annual Status Report On Student Financial Aid In The UW System: 1990-91. Characteristics Of New Undergraduates: Fall 1991 Update. Trends In Faculty Teaching Assignments.
Vol. 91, No. 1: January 1991 Vol. 91, No. 2: March 1991 Vol. 91, No. 3: May 1991 Vol. 91, No. 4: May 1991 Vol. 91, No. 5: August 1991	Trends In Staffing. Outcomes Of New Freshman Students: Retention, Graduation And Time To Degree. Characteristics Of New Freshmen. Annual Status Report On Student Financial Aid In The UW System, 1989-90. Trends In Enrollment.

Copies are available from the University of Wisconsin System, Office of Policy Analysis and Research, 1534 Van Hise Hall, 1200 Linden Drive, Madison, Wisconsin 53706 Phone: (608) 262-6441.
URL: <http://www.uwsa.edu/opar/>

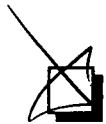


U.S. Department of Education
Office of Educational Research and Improvement (OERI)
National Library of Education (NLE)
Educational Resources Information Center (ERIC)



NOTICE

REPRODUCTION BASIS



This document is covered by a signed "Reproduction Release (Blanket) form (on file within the ERIC system), encompassing all or classes of documents from its source organization and, therefore, does not require a "Specific Document" Release form.



This document is Federally-funded, or carries its own permission to reproduce, or is otherwise in the public domain and, therefore, may be reproduced by ERIC without a signed Reproduction Release form (either "Specific Document" or "Blanket").