

DOCUMENT RESUME

ED 433 074

JC 990 568

TITLE Enrollment Projections, University of Hawai'i Community Colleges, Fall 1999 to Fall 2005.

INSTITUTION Hawaii Univ., Honolulu.

PUB DATE 1999-05-00

NOTE 51p.

AVAILABLE FROM Web site: <http://www.hawaii.edu/iro/>

PUB TYPE Numerical/Quantitative Data (110) -- Reports - Research (143)

EDRS PRICE MF01/PC03 Plus Postage.

DESCRIPTORS Admission (School); *College Attendance; *Community Colleges; Educational Demand; *Enrollment; *Enrollment Projections; Enrollment Rate; Enrollment Trends; High School Seniors; Participation; Tables (Data); Two Year College Students; Two Year Colleges

IDENTIFIERS *University of Hawaii Community College System

ABSTRACT

This report presents information on actual and projected headcount enrollment for the University of Hawaii Community Colleges (UHCC). Highlights include: (1) total headcount for the UHCC measured 24,909 in Fall 1998, virtually unchanged from the previous fall; (2) enrollment peaked at 27,905 in Fall 1994, and then declined 10.8% over the next three years; (3) enrollment of first-time students may improve over the next few years due to increases in the number of high school seniors; (4) enrollment of continuing/returning students has declined steadily since Fall 1994; (5) transfer enrollment has been forecast to follow the same trend as first-time students; and (6) headcount enrollment at the UHCC is expected to increase modestly through the projection period, at an average annual rate of 1%. The enrollment projections are based on unduplicated headcounts of full-time and part-time students enrolled in credit courses. Included are classified students enrolled in liberal arts or vocational programs as well as unclassified students. Unlike previous reports, these projections also include projected headcounts in continuing education credit courses offered by Honolulu Community College, beginning Fall 1999. Historical data are included to facilitate comparison and analysis. Appended are historical and projected enrollment of Hawaii public high school seniors by school district. (JL)

* Reproductions supplied by EDRS are the best that can be made *
* from the original document. *

ENROLLMENT PROJECTIONS UNIVERSITY OF HAWAI'I COMMUNITY COLLEGES FALL 1999 TO FALL 2005

PERMISSION TO REPRODUCE AND
DISSEMINATE THIS MATERIAL HAS
BEEN GRANTED BY

S. Nakamoto

TO THE EDUCATIONAL RESOURCES
INFORMATION CENTER (ERIC)

U.S. DEPARTMENT OF EDUCATION
Office of Educational Research and Improvement
EDUCATIONAL RESOURCES INFORMATION
CENTER (ERIC)

This document has been reproduced as
received from the person or organization
originating it.

Minor changes have been made to
improve reproduction quality.

Points of view or opinions stated in this
document do not necessarily represent
official OERI position or policy.

Institutional Research Office

University of Hawai'i

May 1999

File Reference: Management and Planning Support Folder, Projections

Reports now available online at: <http://www.hawaii.edu/iro/maps.htm>

IC990368

ENROLLMENT PROJECTIONS UNIVERSITY OF HAWAII COMMUNITY COLLEGES FALL 1999 TO FALL 2005

This report presents information on actual and projected headcount enrollment for the University of Hawai'i Community Colleges: Hawai'i, Honolulu, Kapi'olani, Kaua'i, Leeward, Maui, and Windward. The projections are statistical extrapolations of current trends in enrollment by program. They do not reflect planned changes in University or campus policies or procedures, nor external socio-economic trends. Furthermore, they should not be interpreted as establishing enrollment targets or goals. Rather, they should be considered only an indication of what might occur given current trends.

The enrollment projections are based on unduplicated headcounts of full-time and part-time students enrolled in credit courses. Included are classified students enrolled in liberal arts or vocational programs as well as unclassified students. **For the first time, these projections also include projected headcounts in continuing education credit courses offered by Honolulu CC, beginning Fall 1999. In addition, special students (concurrent students and early admits) have been added to both the historical and projected counts for all campuses for all years.**

Historical data are included in the tables to facilitate comparison and analysis. They were extracted from the Student Enrollment Reports, the Academic Crossover Studies and the Course Registration Reports. The appendix contains historical and projected enrollment of Hawai'i public high school seniors by school district. Projected data for public high school seniors are from the Department of Education for the State of Hawai'i.

METHODOLOGY AND ASSUMPTIONS

The projections of credit headcount enrollment are organized by registration status: first-time, transfer and continuing / returning students. Within each registration status category, enrollments are projected by program area (liberal arts, vocational education and unclassified).

First-time student enrollment is divided into three categories, as follows:

- (a) Hawai'i public high school graduates entering the UH Community Colleges in the fall semester immediately following their graduation from high school are called direct entrants. Projections are made by school district, with the number of direct entrants for a given fall semester equaling the total senior enrollment projected by the Department of Education for the academic year (ending in June) multiplied by the historical ratio of actual direct entrants to total high school senior enrollment. For all campuses except Maui CC, the current-year ratio of actual direct entrants to total high school senior enrollment was used; for Maui CC the four-year average ratio was used.

- (b) Hawai'i private high school graduates entering the UH Community Colleges in the fall semester immediately following their graduation from high school, together with those students entering within one year of graduation from either Hawai'i public or private high schools, are called recent entrants. Recent entrants are projected using the current-year (Fall 1998) ratio of recent to direct entrants for all campuses except Maui CC (for which the four-year average ratio was used). This ratio is multiplied by the projected number of direct entrants for a given year to yield the projected number of recent entrants.
- (c) All other first-time entrants, such as out-of-State graduates, those with General Education Development (GED) high school equivalency records and non-high school graduates, are called other entrants. The number of other first-time entrants is projected using the current-year (Fall 1998) ratio of other to direct entrants for all campuses except Maui CC (for which the four-year average ratio was used).

The projections of **continuing / returning** students by program area are based upon continuation rates. A continuation rate is the ratio of continuing / returning enrollment by program area to the previous fall semester's total enrollment by program area. These ratios are applied to the total enrollment to forecast the following year's continuing / returning enrollment. Three-year average continuation rates were selected for Windward CC; four-year average continuation rates were chosen for Maui CC; five-year average continuation rates were used for Leeward CC. All other campuses use continuation rates based upon the current-year (Fall 1998) enrollment data.

Classified **transfer** students have been projected for each campus based upon the historical ratio of transfer to first-time students. Transfer students were projected for each year by applying this ratio to the projected number of first-time students. Ratios were chosen conservatively. All campuses except Maui CC use a ratio based upon the current year (Fall 1998) enrollment data. For Maui CC the four-year average ratio was selected.

In addition to the overall enrollment projections for each campus, detailed tables are included which project headcount enrollment, student semester hours (SSH) offered, and full-time equivalent (FTE) course enrollment by program. These tables utilize Fall 1998 data plus the projected total enrollments for 1999 - 2005 as input, then project the counts by program, based upon the assumption that the proportional distribution across programs will be the same as in Fall 1998. FTE course enrollment has been calculated by dividing the student semester hours by 15. Headcount enrollment of regular students by **attendance status** for each campus is shown in Table 4. The distribution of headcounts by attendance status is based upon the Fall 1998 proportions for all campuses.

SUMMARY AND HIGHLIGHTS

Total headcount enrollment for the University of Hawai'i Community Colleges measured 24,909 in Fall 1998, virtually unchanged from Fall 1997 (see Table 1). Figure 1 illustrates the historical headcount enrollment at the UH Community Colleges from 1988 to 1998 and the projected enrollment from 1999 to 2005. An index scale is provided along the right-hand margin to facilitate comparison with other UH campuses (Fall 1998 = 100). **Total enrollment is projected to increase (2.8%) in Fall 1999 to just under 25,600. However, a good portion of this increase is due to the addition of Continuing Education credit (SOCAD) enrollment at Honolulu Community College to the general enrollment counts, beginning in Fall 1999. Without this addition, enrollment would be forecast to increase by just under 1%.**

Historical headcount enrollment for the University of Hawai'i Community College system, along with projected enrollment through 2005, is illustrated in Figure 2. Enrollment grew rapidly from 1965 through 1975, as new campuses were added to the system and as the "baby boom" generation entered college. Between 1975 and 1988 enrollment remained flat, except for a slight surge in 1981-82. Beginning in Fall 1989, enrollment grew again, reaching a historical peak of 27,905 students in 1994. From Fall 1994 to Fall 1997 enrollment declined 10.8%, before increasing very slightly in Fall 1998.

Enrollment of **first-time** students may improve over the next few years due to increases in the number of high school seniors, as forecast by the Department of Education (Appendix A). However, the projections for the UH Community Colleges forecast a larger increase in first-time students than would otherwise be expected due to the addition of SOCAD students at Honolulu CC, about half of whom were first-time in Fall 1998.

Enrollment of **continuing / returning** students has declined steadily since Fall 1994, perhaps as students have increased their course loads and completed their programs of study more quickly in response to increasing college costs. Continuing / Returning enrollment has been forecast to increase slightly in Fall 1999, although the addition of SOCAD students at Honolulu CC makes the projected increase larger.

Transfer enrollment has been forecast to follow the same trend as first-time students. However, none of the SOCAD enrollment in Fall 1998 was transfer. The result is that transfer enrollment has been forecast to remain at or near current levels through the projection period.

In **conclusion**, headcount enrollment at the UH Community Colleges is expected to increase modestly through the projection period, at an average annual rate of about 1%. The addition of continuing education credit counts (SOCAD) at Honolulu CC results in a one-time increase of about 2.8% in Fall 1998. However, the forecasts vary considerably from campus to campus, as discussed below.

Hawai'i Community College: After declining for three years, headcount enrollment at Hawai'i Community College increased 3.9% in Fall 1998 (Figure A1). Entering students (first-time and transfer) increased while continuing/returning students continued to decline (Table A1). Liberal Arts and unclassified enrollment increased, while vocational ed enrollment declined. Headcount enrollment is forecast to increase slightly in Fall 1999 (1.6%) and to maintain a slow rate of growth through the projection period.

Honolulu Community College: Headcount enrollment at Honolulu Community College also increased 3.9% in Fall 1998 after several years of decline (Figure B1). Vocational Ed and unclassified enrollment increased, while Liberal Arts enrollment continued to decline (Table B1). *The projected headcounts for Honolulu CC include continuing education (SOCAD) programs, which boosts the Fall 1999 count by about 475 students.* Subsequently, enrollment is forecast to increase modestly through 2005.

Kapi'olani Community College: Headcount enrollment at Kapi'olani Community College grew very slightly in Fall 1998 (0.7%). Liberal Arts and Unclassified enrollment continued to decline while Vocational Ed increased (Table C1). Overall, enrollment has been flat since Fall 1995 (Figure C1). Enrollment is forecast to grow very slightly in Fall 1999, then more rapidly due in part to DOE forecast increases in Honolulu high school enrollment.

Kaua'i Community College: Headcount enrollment at Kaua'i Community College declined 11.5% in Fall 1998 and has declined over 28% since Fall 1992 (Figure D1). Notable is the rather dramatic decline in the number of unclassified students (Table D1). This strong downward trend results in forecast decline in Fall 1999 of about 2.5%, and a continued decline through 2003. Enrollment may rebound earlier than predicted.

Leeward Community College: Headcount enrollment at Leeward Community College declined 2.9% in Fall 1998, and has declined over 11% since Fall 1994 (Figure E1). Much of the decline has occurred in the continuing/returning enrollment (Table E2). High school senior enrollment in the Central and Leeward districts of O'ahu has been forecast by the DOE to remain flat or even decline over the projection period, resulting in flat projections for first-time and transfer enrollment at Leeward CC. Therefore, the strong downward trend in continuing/returning enrollment produces an overall downward enrollment forecast.

Maui Community College: Headcount enrollment at Maui Community College increased 2.2% in Fall 1998, and has been fairly stable since Fall 1994 (Figure F1). The DOE has forecast increases in high school seniors in Maui for the next two years which may translate into higher first-time enrollment at the college. The long-term trend at Maui CC has been consistently upward (Figure F2). Enrollment has been forecast to increase moderately through 2005.

Windward Community College: Headcount enrollment at Windward Community College declined 1.5% in Fall 1998 (Figure G1), but has been stable over the last three years at around 1,500 students. The Vocational Ed program has declined 50% since Fall 1992 (Table G1). Enrollment has been forecast to drop slightly in Fall 1999, but to remain near current levels through the projection period.

University of Hawai'i Community Colleges
Credit Students

Figure 1
Actual & Projected Headcount Enrollment

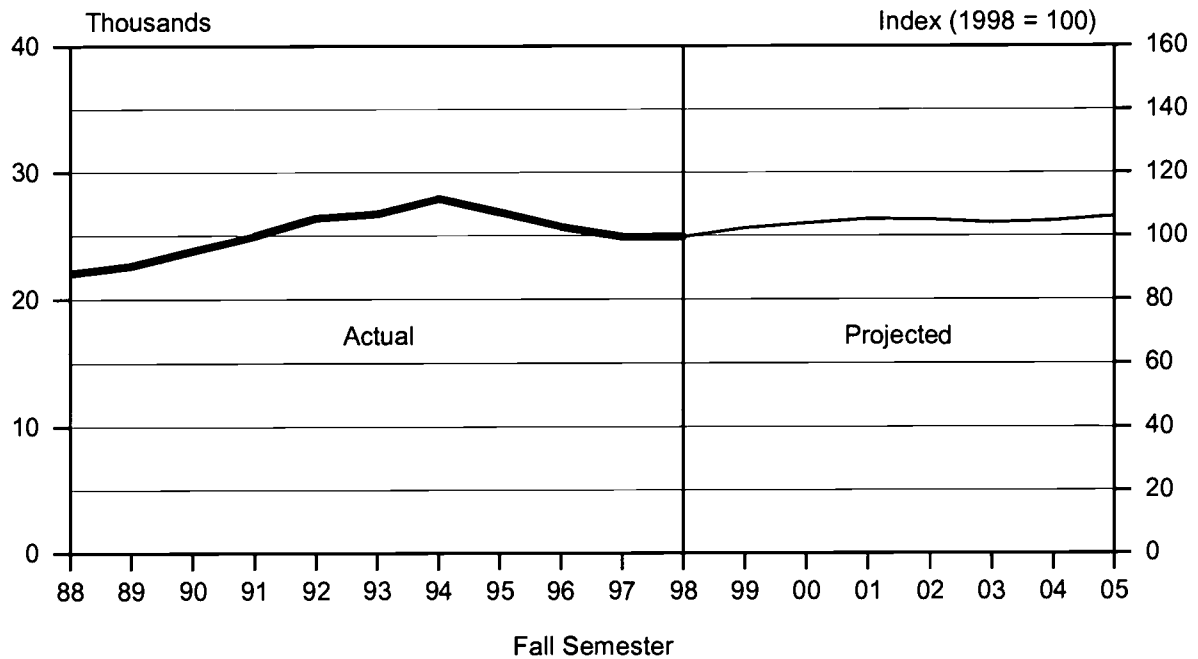


Figure 2
Historical and Projected Headcount Enrollment

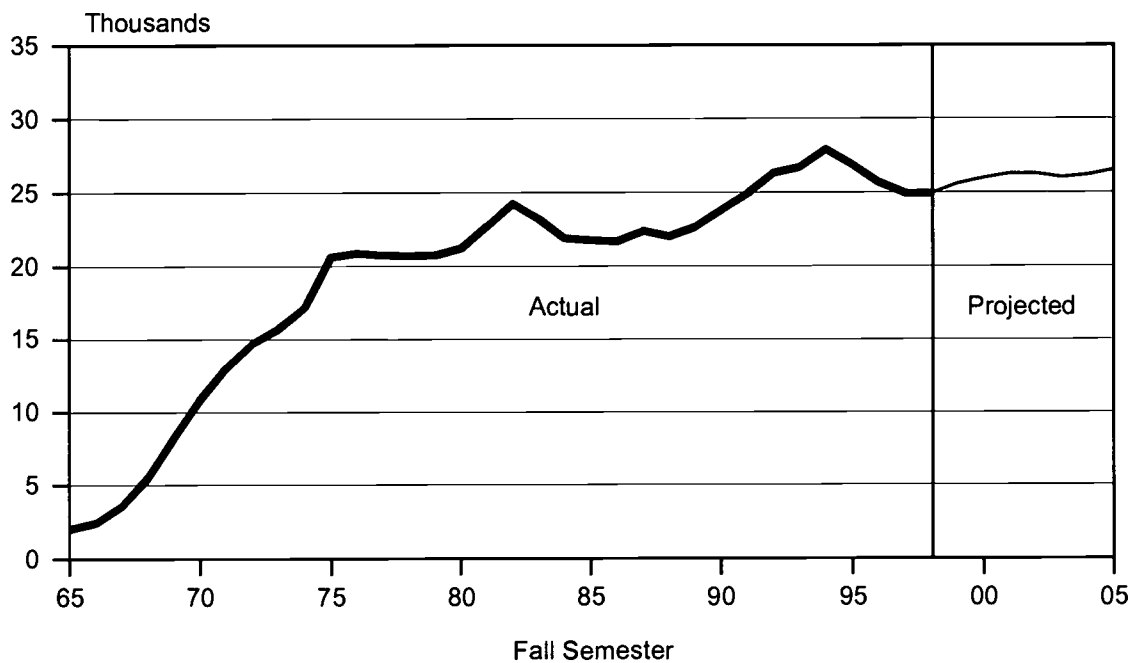


TABLE 1
 HEADCOUNT ENROLLMENT OF CREDIT STUDENTS, BY REGISTRATION STATUS
 UNIVERSITY OF HAWAII, COMMUNITY COLLEGES
 FALL 1992 TO FALL 2005

REGISTRATION STATUS AND PROGRAM AREA	ACTUAL										PROJECTED				
	1992	1993	1994	1995	1996	1997	1998	1999	2000	2001	2002	2003	2004	2005	
UH Community College Total	26,328	26,707	27,905	26,853	25,679	24,899	24,909	25,596	25,972	26,279	26,270	25,994	26,172	26,501	
Liberal Arts	14,258	14,518	15,725	15,151	14,745	13,916	13,713	13,659	13,755	13,827	13,758	13,565	13,596	13,748	
Vocational Education	8,199	8,973	9,468	9,331	8,812	8,736	8,945	9,191	9,432	9,633	9,712	9,690	9,785	9,923	
Unclassified	3,871	3,216	2,712	2,371	2,122	2,247	2,251	2,746	2,785	2,819	2,800	2,739	2,791	2,830	
First-Time By HS Background	6,686	6,547	6,491	6,217	5,840	5,885	6,178	6,451	6,590	6,646	6,506	6,305	6,531	6,699	
Direct From Hawai'i Public HS	2,506	2,429	2,645	2,623	2,496	2,491	2,665	2,658	2,713	2,730	2,670	2,581	2,674	2,755	
Recent Hawai'i HS	760	722	756	704	720	733	716	724	743	747	731	710	734	752	
Other	3,420	3,396	3,090	2,890	2,624	2,661	2,797	3,069	3,134	3,169	3,105	3,014	3,123	3,192	
First-Time, By Program	6,686	6,547	6,491	6,217	5,840	5,885	6,178	6,451	6,590	6,646	6,506	6,305	6,531	6,699	
Liberal Arts	3,512	3,430	3,673	3,573	3,332	3,263	3,353	3,369	3,449	3,467	3,390	3,278	3,394	3,489	
Vocational Education	1,910	2,134	2,098	2,033	1,874	1,904	2,101	2,117	2,162	2,185	2,138	2,074	2,153	2,209	
Unclassified	1,264	983	720	611	634	718	724	965	979	994	978	953	984	1,001	
Transfer	3,288	2,965	3,221	2,942	3,038	2,806	2,955	2,949	3,035	3,032	2,966	2,884	2,981	3,053	
Liberal Arts	1,787	1,669	1,968	1,723	1,726	1,583	1,642	1,643	1,690	1,683	1,648	1,609	1,648	1,688	
Vocational Education	788	823	812	747	830	742	832	834	855	854	837	822	840	861	
Unclassified	713	473	441	472	482	481	481	472	490	495	481	453	493	504	
Continuing/Returning	16,354	17,195	18,193	17,694	16,801	16,208	15,776	16,196	16,347	16,601	16,798	16,805	16,660	16,749	
Liberal Arts	8,959	9,419	10,084	9,855	9,687	9,070	8,718	8,647	8,616	8,677	8,720	8,678	8,554	8,571	
Vocational Education	5,501	6,016	6,558	6,551	6,108	6,090	6,012	6,240	6,415	6,594	6,737	6,794	6,792	6,853	
Unclassified	1,894	1,760	1,551	1,288	1,006	1,048	1,046	1,309	1,316	1,330	1,341	1,333	1,314	1,325	

TABLE 2
 HEADCOUNT ENROLLMENT OF CREDIT STUDENTS, BY CAMPUS AND PROGRAM AREA
 UNIVERSITY OF HAWAII, COMMUNITY COLLEGES
 FALL 1992 TO FALL 2005

CAMPUS AND PROGRAM AREA	ACTUAL										PROJECTED				
	1992	1993	1994	1995	1996	1997	1998	1999	2000	2001	2002	2003	2004	2005	
UHCC TOTAL	26,328	26,707	27,905	26,853	25,679	24,899	24,909	25,596	25,972	26,279	26,270	25,994	26,172	26,501	
Liberal Arts	14,258	14,518	15,725	15,151	14,745	13,916	13,711	13,659	13,755	13,827	13,758	13,565	13,596	13,748	
Vocational Education	8,199	8,973	9,468	9,331	8,812	8,736	8,945	9,191	9,432	9,633	9,712	9,690	9,785	9,923	
Unclassified	3,871	3,216	2,712	2,371	2,122	2,247	2,253	2,746	2,785	2,819	2,800	2,739	2,791	2,830	
HAWAII CC	2,207	2,415	2,815	2,811	2,463	2,221	2,308	2,345	2,391	2,424	2,439	2,417	2,420	2,441	
Liberal Arts	655	757	976	1,030	932	830	931	998	1,052	1,090	1,112	1,113	1,120	1,133	
Vocational Education	1,108	1,430	1,709	1,704	1,445	1,293	1,226	1,184	1,168	1,162	1,154	1,136	1,131	1,136	
Unclassified	444	228	130	77	86	98	151	163	171	172	173	168	169	172	
HONOLULU CC	4,774	4,741	4,824	4,445	4,090	3,970	4,124	4,693	4,805	4,878	4,882	4,862	4,896	4,946	
Liberal Arts	1,974	1,896	1,989	1,797	1,620	1,341	1,306	1,282	1,284	1,285	1,271	1,256	1,259	1,269	
Vocational Education	2,564	2,564	2,592	2,426	2,300	2,283	2,439	2,542	2,640	2,707	2,729	2,730	2,756	2,789	
Unclassified	236	281	243	222	170	346	379	869	881	886	882	876	881	888	
KAPIOLANI CC	7,132	7,375	7,648	7,329	7,373	7,189	7,236	7,294	7,460	7,568	7,605	7,601	7,702	7,784	
Liberal Arts	4,690	4,770	5,035	4,782	4,875	4,527	4,419	4,356	4,390	4,405	4,386	4,352	4,395	4,429	
Vocational Education	1,905	1,943	1,991	2,004	1,970	2,171	2,340	2,469	2,596	2,687	2,745	2,779	2,831	2,875	
Unclassified	537	662	622	543	528	491	477	469	474	476	474	470	476	480	
KAUAI CC	1,580	1,464	1,518	1,461	1,367	1,283	1,136	1,108	1,074	1,067	1,058	1,006	1,037	1,069	
Liberal Arts	498	521	616	585	598	563	511	486	458	442	435	414	409	425	
Vocational Education	525	486	529	558	580	560	480	484	476	478	479	464	474	489	
Unclassified	557	457	373	318	189	160	145	138	140	147	144	128	154	155	
LEEWARD CC	6,135	6,473	6,507	6,368	6,014	5,936	5,765	5,752	5,734	5,735	5,665	5,559	5,507	5,594	
Liberal Arts	4,221	4,437	4,558	4,509	4,235	4,191	4,112	4,090	4,070	4,063	4,009	3,932	3,893	3,951	
Vocational Education	1,117	1,345	1,369	1,310	1,310	1,279	1,264	1,280	1,288	1,297	1,288	1,270	1,260	1,278	
Unclassified	797	691	580	549	469	466	389	382	376	375	368	357	354	365	
MAUI CC	2,713	2,597	2,826	2,765	2,854	2,787	2,849	2,927	2,987	3,081	3,103	3,076	3,135	3,193	
Liberal Arts	875	871	1,153	1,094	1,247	1,212	1,186	1,207	1,223	1,256	1,263	1,251	1,272	1,295	
Vocational Education	830	1,035	1,133	1,208	1,096	1,052	1,121	1,161	1,193	1,233	1,250	1,246	1,268	1,291	
Unclassified	1,008	691	540	463	511	523	542	559	571	592	590	579	595	607	
WINDWARD CC	1,787	1,642	1,767	1,674	1,518	1,513	1,491	1,477	1,521	1,526	1,518	1,473	1,475	1,474	
Liberal Arts	1,345	1,266	1,398	1,354	1,238	1,252	1,246	1,240	1,278	1,286	1,282	1,247	1,248	1,246	
Vocational Education	150	170	145	121	111	98	75	71	71	69	67	65	65	65	
Unclassified	292	206	224	199	169	163	170	166	172	171	169	161	162	163	



TABLE 3
 ENROLLMENT INDEX: HEADCOUNT ENROLLMENT OF CREDIT STUDENTS
 UNIVERSITY OF HAWAII, COMMUNITY COLLEGES
 FALL 1992 TO FALL 2005
 (FALL 1998 = 100)

CAMPUS	ACTUAL										PROJECTED				
	1992	1993	1994	1995	1996	1997	1998	1999	2000	2001	2002	2003	2004	2005	
UH COMMUNITY COLLEGES	106	107	112	108	103	100	100	103	104	106	105	104	105	106	
HAWAII CC	96	105	122	122	107	96	100	102	104	105	106	105	105	106	
HONOLULU CC	116	115	117	108	99	96	100	114	117	118	118	118	119	120	
KAPI'OLANI CC	99	102	106	101	102	99	100	101	103	105	105	105	106	108	
KAUA'I CC	139	129	134	129	120	113	100	98	95	94	93	89	91	94	
LEEWARD CC	106	112	113	110	104	103	100	100	99	99	98	96	96	97	
MAUI CC	95	91	99	97	100	98	100	103	105	108	109	108	110	112	
WINDWARD CC	120	110	119	112	102	101	100	99	102	102	102	99	99	99	

TABLE 4
 HEADCOUNT ENROLLMENT OF CREDIT STUDENTS, BY ATTENDANCE STATUS
 UNIVERSITY OF HAWAI'I, COMMUNITY COLLEGES
 FALL 1998 TO FALL 2005

ATTENDANCE STATUS	ACTUAL	PROJECTED						
	1998	1999	2000	2001	2002	2003	2004	2005
UHCC TOTAL	24,909	25,596	25,972	26,279	26,270	25,994	26,172	26,501
Full-time	10,964	11,265	11,422	11,549	11,541	11,415	11,482	11,626
Part-time	13,945	14,331	14,550	14,730	14,729	14,579	14,690	14,875
HAWAI'I CC	2,308	2,345	2,391	2,424	2,439	2,417	2,420	2,441
Full-time	1,307	1,328	1,354	1,373	1,381	1,369	1,370	1,382
Part-time	1,001	1,017	1,037	1,051	1,058	1,048	1,050	1,059
HONOLULU CC	4,124	4,693	4,805	4,878	4,882	4,862	4,896	4,946
Full-time	1,827	2,079	2,129	2,161	2,163	2,154	2,169	2,191
Part-time	2,297	2,614	2,676	2,717	2,719	2,708	2,727	2,755
KAPI'OLANI CC	7,236	7,294	7,460	7,568	7,605	7,601	7,702	7,784
Full-time	2,813	2,836	2,900	2,942	2,956	2,955	2,994	3,026
Part-time	4,423	4,458	4,560	4,626	4,649	4,646	4,708	4,758
KAUA'I CC	1,136	1,108	1,074	1,067	1,058	1,006	1,037	1,069
Full-time	505	493	477	474	470	447	461	475
Part-time	631	615	597	593	588	559	576	594
LEEWARD CC	5,765	5,752	5,734	5,735	5,665	5,559	5,507	5,594
Full-time	2,800	2,794	2,785	2,785	2,751	2,700	2,675	2,717
Part-time	2,965	2,958	2,949	2,950	2,914	2,859	2,832	2,877
MAUI CC	2,849	2,927	2,987	3,081	3,103	3,076	3,135	3,193
Full-time	1,074	1,103	1,126	1,161	1,170	1,160	1,182	1,204
Part-time	1,775	1,824	1,861	1,920	1,933	1,916	1,953	1,989
WINDWARD CC	1,491	1,477	1,521	1,526	1,518	1,473	1,475	1,474
Full-time	638	632	651	653	650	630	631	631
Part-time	853	845	870	873	868	843	844	843

Hawai'i Community College
Credit Students

Figure A1
Actual & Projected Headcount Enrollment

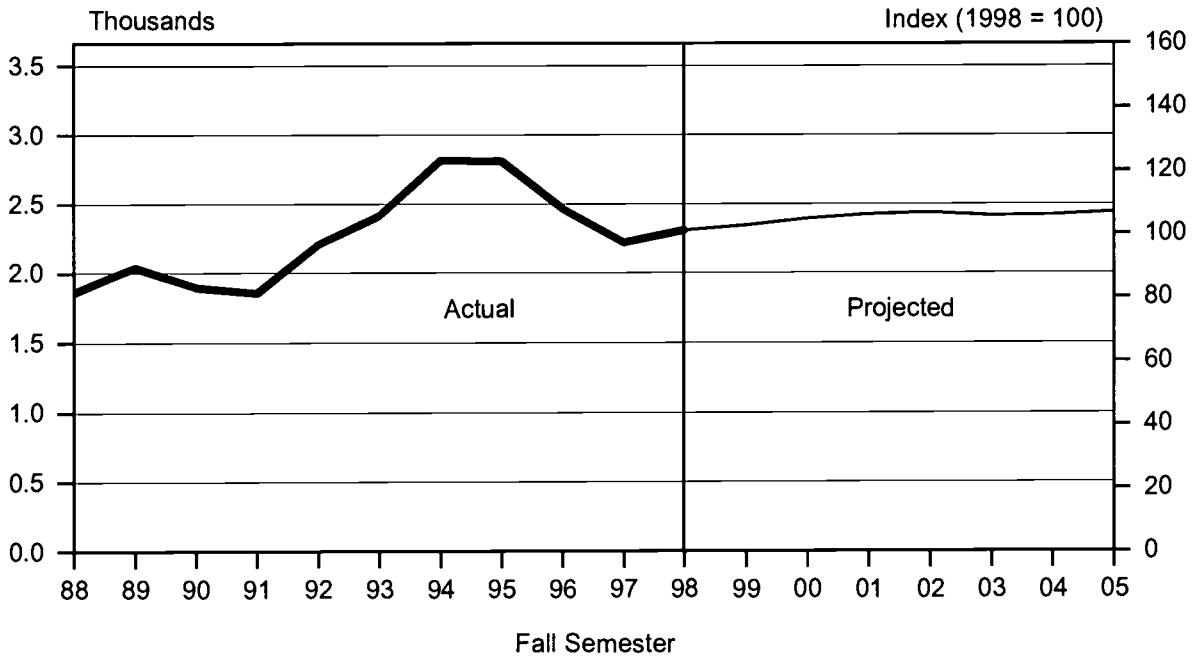


Figure A2
Historical Headcount Enrollment

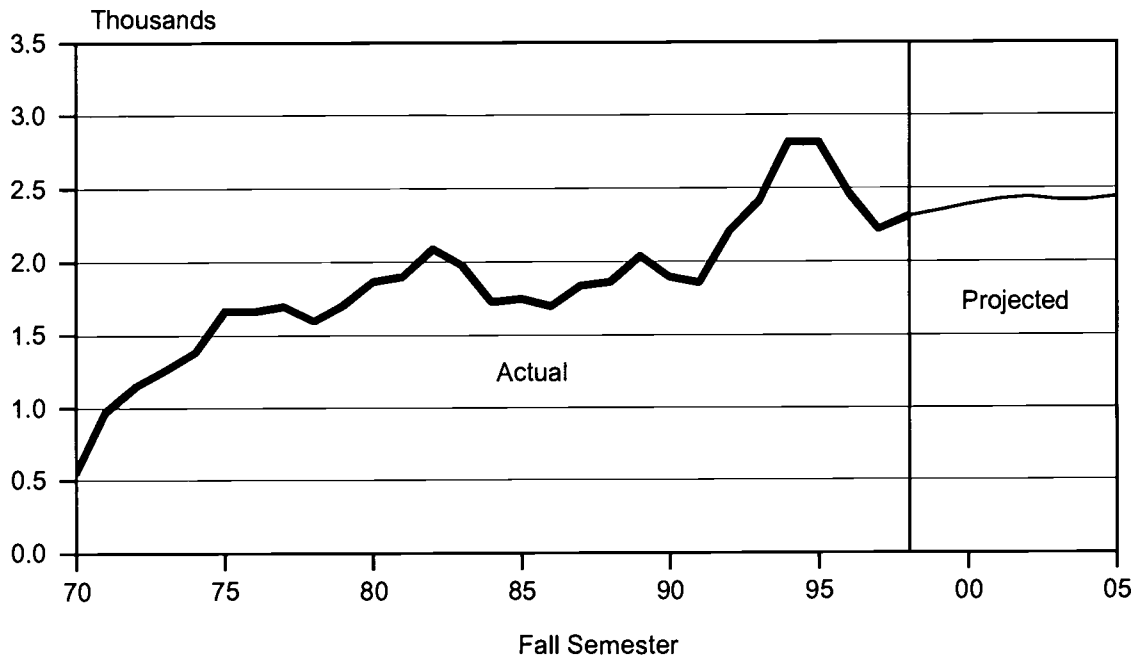


TABLE A1
 HEADCOUNT ENROLLMENT OF CREDIT STUDENTS, BY REGISTRATION STATUS
 HAWAII COMMUNITY COLLEGE
 FALL 1992 TO FALL 2005

REGISTRATION STATUS	ACTUAL										PROJECTED				
	1992	1993	1994	1995	1996	1997	1998	1999	2000	2001	2002	2003	2004	2005	
TOTAL	2,207	2,415	2,815	2,811	2,463	2,221	2,308	2,345	2,391	2,424	2,439	2,417	2,420	2,441	
Liberal Arts	655	757	976	1,030	932	830	931	998	1,052	1,090	1,112	1,113	1,120	1,133	
Vocational Education	1,108	1,430	1,709	1,704	1,445	1,293	1,226	1,184	1,168	1,162	1,154	1,136	1,131	1,136	
Unclassified	444	228	130	77	86	98	151	163	171	172	173	168	169	172	
First-Time By HS Background	661	832	903	832	596	646	764	766	788	794	788	762	775	791	
Direct From Hawaii Public HS	282	306	352	364	253	259	285	286	294	296	294	284	289	295	
Recent Hawaii HS	46	72	69	66	57	52	67	67	69	70	69	67	68	69	
Other	333	454	482	402	286	335	412	413	425	428	425	411	418	427	
First-Time, By Program	661	832	903	832	596	646	764	766	788	794	788	762	775	791	
Liberal Arts	195	272	335	334	200	251	316	317	326	328	326	315	320	327	
Vocational Educ	342	450	507	455	335	323	330	331	340	343	340	329	335	342	
Unclassified	124	110	61	43	61	72	118	118	122	123	122	118	120	122	
Transfer	381	235	269	208	175	125	154	154	159	160	159	154	156	159	
Liberal Arts	79	79	143	85	86	66	75	75	77	78	77	75	76	77	
Vocational Educ	115	129	107	108	82	51	68	68	70	71	70	68	69	70	
Unclassified	187	27	19	15	7	8	11	11	12	11	12	11	11	12	
Continuing/Returning	1,165	1,348	1,643	1,771	1,692	1,450	1,390	1,425	1,444	1,470	1,492	1,501	1,489	1,491	
Liberal Arts	381	406	498	611	646	513	540	606	649	684	709	723	724	729	
Vocational Educ	651	851	1,095	1,141	1,028	919	828	785	758	748	744	739	727	724	
Unclassified	133	91	50	19	18	18	22	34	37	38	39	39	38	38	

TABLE A2
 HEADCOUNT ENROLLMENT, BY PROGRAM
 HAWAI'I COMMUNITY COLLEGE
 FALL 1998 TO FALL 2005

PROGRAM	ACTUAL	PROJECTED						
	1998	1999	2000	2001	2002	2003	2004	2005
Total Students	2,308	2,345	2,391	2,424	2,439	2,417	2,420	2,441
General & Pre Prof Ed	931	998	1,052	1,090	1,112	1,113	1,120	1,133
Liberal Arts	931	998	1,052	1,090	1,112	1,113	1,120	1,133
Vocational Education	1,226	1,184	1,168	1,162	1,154	1,136	1,131	1,136
Business	317	306	302	300	298	294	293	294
Food Services	121	117	115	115	114	112	112	112
Health Services	227	219	216	215	214	210	209	210
Public Services	255	246	243	242	240	236	235	236
Technology	306	296	292	290	288	284	282	284
Unclassified	151	163	171	172	173	168	169	172
Regular Unclassified ...	78	89	95	95	97	94	94	96
Special Students	73	74	76	77	76	74	75	76
Early Admit	2	2	2	2	2	2	2	2
Concurrent	71	72	74	75	74	72	73	74

TABLE A3
STUDENT SEMESTER HOURS OFFERED, BY PROGRAM
HAWAI'I COMMUNITY COLLEGE
FALL 1998 TO FALL 2005

	ACTUAL 1998	PROJECTED						
		1999	2000	2001	2002	2003	2004	2005
Total	23,893	24,158	24,559	24,881	25,018	24,807	24,826	25,030
General Education	14,092	14,543	14,982	15,297	15,460	15,374	15,419	15,567
Humanities	8,235	8,510	8,773	8,962	9,059	9,012	9,039	9,126
Natural Sciences	3,808	3,905	4,006	4,080	4,117	4,088	4,097	4,135
Social Sciences	1,965	2,039	2,109	2,159	2,186	2,176	2,184	2,206
Other General Education.....	84	89	94	96	98	98	99	100
Vocational Education.....	9,801	9,615	9,577	9,584	9,558	9,433	9,407	9,463
Business	3,571	3,537	3,549	3,565	3,566	3,528	3,524	3,545
Food Services	1,040	1,007	991	991	982	965	965	966
Health Services	868	842	832	830	828	813	809	814
Public Services	1,359	1,350	1,358	1,368	1,367	1,352	1,352	1,361
Technology	2,963	2,879	2,847	2,830	2,815	2,775	2,757	2,777

TABLE A4
FULL-TIME EQUIVALENT COURSE ENROLLMENT SERVED, BY PROGRAM
HAWAI'I COMMUNITY COLLEGE
FALL 1998 TO FALL 2005

	ACTUAL 1998	PROJECTED						
		1999	2000	2001	2002	2003	2004	2005
Total	1,596	1,610	1,638	1,658	1,668	1,654	1,656	1,668
General Education	942	969	999	1,019	1,031	1,026	1,029	1,038
Humanities	550	567	585	597	604	601	603	608
Natural Sciences	255	260	267	272	274	273	273	276
Social Sciences	131	136	141	144	146	145	146	147
Other General Education.....	6	6	6	6	7	7	7	7
Vocational Education	654	641	639	639	637	628	627	630
Business	238	236	237	238	238	235	235	236
Food Services	69	67	66	66	65	64	64	64
Health Services	58	56	55	55	55	54	54	54
Public Services	91	90	91	91	91	90	90	91
Technology	198	192	190	189	188	185	184	185
Other Vocational	0	0	0	0	0	0	0	0

Honolulu Community College
Credit Students

Figure B1
Actual & Projected Headcount Enrollment

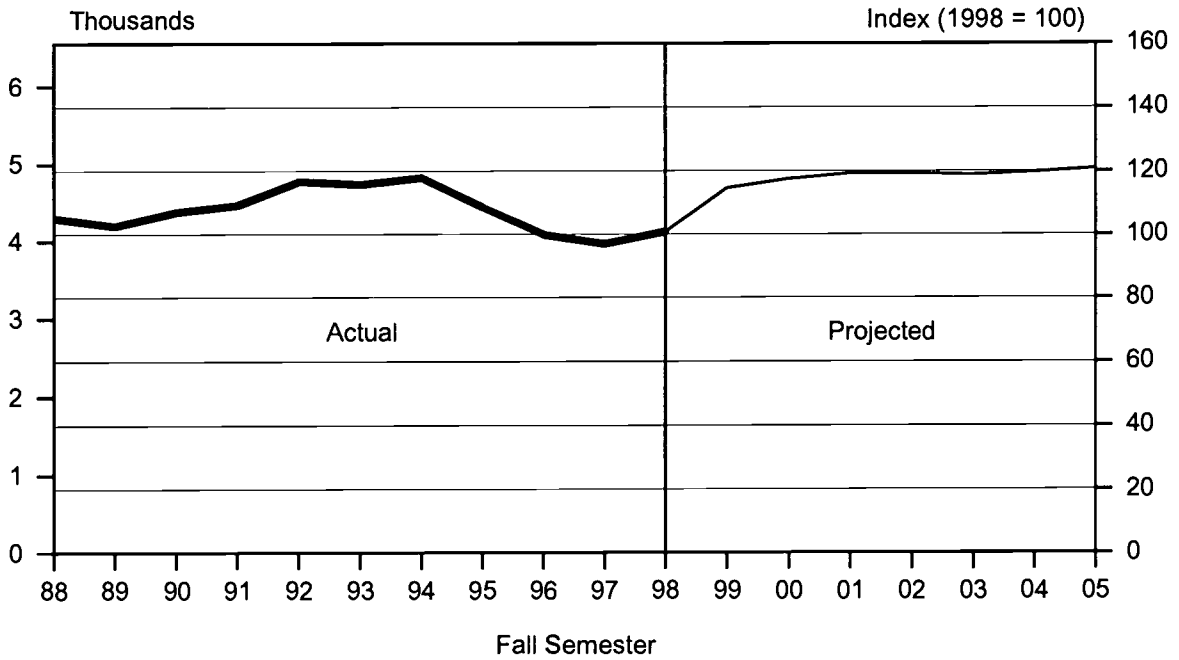


Figure B2
Historical Headcount Enrollment

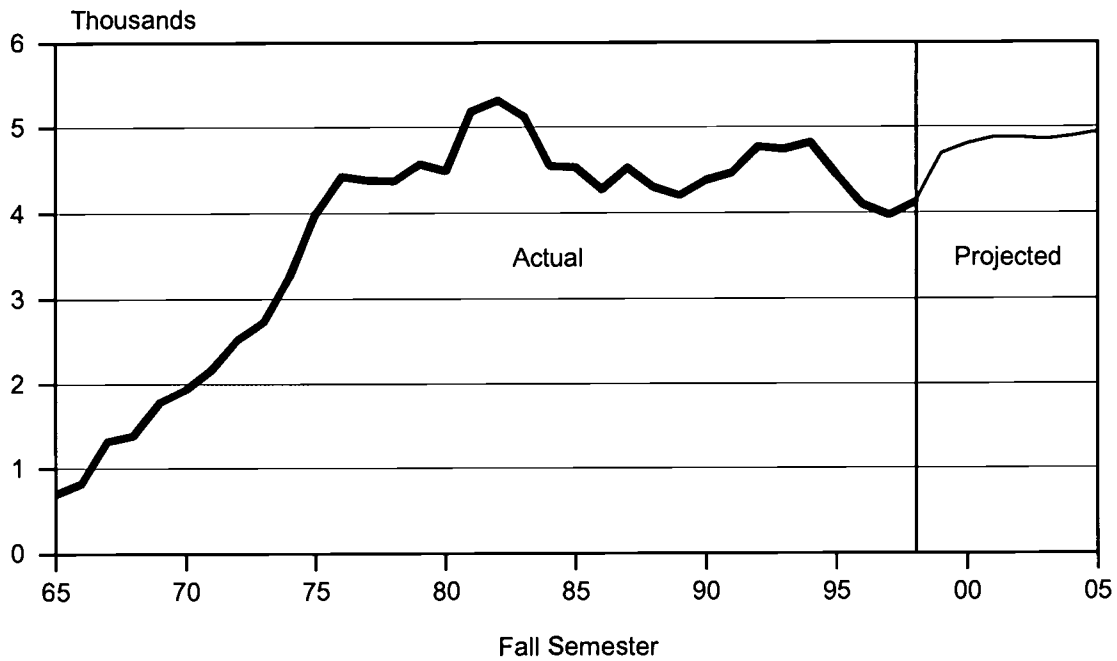


TABLE B1
 HEADCOUNT ENROLLMENT OF REGULAR STUDENTS, BY REGISTRATION STATUS
 HONOLULU COMMUNITY COLLEGE
 FALL 1992 TO FALL 2005

REGISTRATION STATUS	ACTUAL										PROJECTED				
	1992	1993	1994	1995	1996	1997	1998	1999	2000	2001	2002	2003	2004	2005	
TOTAL 1/	4,774	4,741	4,824	4,445	4,090	3,970	4,124	4,693	4,805	4,878	4,882	4,862	4,896	4,946	
Liberal Arts	1,974	1,896	1,989	1,797	1,620	1,341	1,306	1,282	1,284	1,285	1,271	1,256	1,259	1,269	
Vocational Education	2,564	2,564	2,592	2,426	2,300	2,283	2,439	2,542	2,640	2,707	2,729	2,730	2,756	2,789	
Unclassified 1/	236	281	243	222	170	346	379	869	881	886	882	876	881	888	
First-Time By HS Background	1,168	1,131	1,037	956	894	953	1,014	1,238	1,270	1,270	1,242	1,226	1,254	1,273	
Direct From Hawai'i Public HS	426	383	440	367	375	360	428	426	440	440	428	421	433	441	
Recent Hawai'i HS	104	96	94	99	87	94	89	89	91	91	89	88	90	92	
Other 1/	638	652	503	490	432	499	497	723	739	739	725	717	731	740	
First-Time, By Program	1,168	1,131	1,037	956	894	953	1,014	1,238	1,270	1,270	1,242	1,226	1,254	1,273	
Liberal Arts	458	391	408	351	306	267	273	272	281	281	273	269	276	281	
Vocational Educ	624	620	578	540	538	552	623	620	640	640	623	613	631	642	
Unclassified 1/	86	120	51	65	50	134	118	346	349	349	346	344	347	350	
Transfer	611	585	624	511	515	515	575	573	591	591	575	566	582	593	
Liberal Arts	300	299	325	246	241	187	205	204	211	211	205	202	207	211	
Vocational Educ	255	229	248	204	226	222	255	254	262	262	255	251	258	263	
Unclassified 1/	56	57	51	61	48	106	115	115	118	118	115	113	117	119	
Continuing/Returning	2,995	3,025	3,163	2,978	2,681	2,502	2,535	2,882	2,944	3,017	3,065	3,070	3,060	3,080	
Liberal Arts	1,216	1,206	1,256	1,200	1,073	887	828	806	792	793	793	785	776	777	
Vocational Educ	1,685	1,715	1,766	1,682	1,536	1,509	1,561	1,668	1,738	1,805	1,851	1,866	1,867	1,884	
Unclassified 1/	94	104	141	96	72	106	146	408	414	419	421	419	417	419	

1/ SOCAD (military continuing education) students added to general enrollment counts, beginning Fall 1999. Proportion by registration status estimated from Fall 1998 counts (not shown). Counts added to Unclassified for simplicity.

TABLE B2
 HEADCOUNT ENROLLMENT, BY PROGRAM
 HONOLULU COMMUNITY COLLEGE
 FALL 1998 TO FALL 2005

PROGRAM	ACTUAL	PROJECTED						
	1998	1999	2000	2001	2002	2003	2004	2005
Total Students	4,124	4,693	4,805	4,878	4,882	4,862	4,896	4,946
General & Pre-Prof Ed	1,306	1,282	1,284	1,285	1,271	1,256	1,259	1,269
Liberal Arts	1,306	1,282	1,284	1,285	1,271	1,256	1,259	1,269
Vocational Education	2,439	2,542	2,640	2,707	2,729	2,730	2,756	2,789
Public Services	914	953	989	1014	1023	1023	1033	1045
Technology	1,525	1,589	1,651	1,693	1,706	1,707	1,723	1,744
Unclassified	379	869	881	886	882	876	881	888
Regular Unclassified ...	340	353	364	368	364	358	364	369
Special Students	39	40	41	42	42	42	41	43
Early Admit	2	2	2	2	2	2	2	2
Concurrent	37	38	39	40	40	40	39	41
SOCAD 1/		476	476	476	476	476	476	476

1/ SOCAD (military continuing education) students added to general enrollment counts, beginning Fall 1999. Counts added to Unclassified for simplicity.

TABLE B3
STUDENT SEMESTER HOURS OFFERED, BY PROGRAM
HONOLULU COMMUNITY COLLEGE
FALL 1998 TO FALL 2005

	ACTUAL	PROJECTED						
	1998	1999	2000	2001	2002	2003	2004	2005
Total 1/	38,361	41,309	42,375	43,076	43,135	42,972	43,295	43,750
General Education	23,285	25,035	25,537	25,858	25,813	25,662	25,830	26,086
Humanities	11,112	11,872	12,099	12,243	12,215	12,139	12,218	12,337
Natural Sciences	8,161	8,840	9,028	9,148	9,137	9,087	9,149	9,241
Social Sciences	3,586	3,886	3,963	4,012	4,006	3,983	4,008	4,047
Other General Education...	426	437	447	455	455	453	455	461
Vocational Education.....	15,076	16,274	16,838	17,218	17,322	17,310	17,465	17,664
Business	1,536	1,563	1,600	1,625	1,623	1,614	1,626	1,643
Health Services	351	354	361	364	363	360	363	366
Public Services	4,028	4,696	4,849	4,955	4,989	4,986	5,030	5,082
Technology	9,128	9,627	9,993	10,238	10,310	10,313	10,409	10,536
Other Vocational	33	34	35	36	37	37	37	37

1/ SOCAD (military continuing education) students added to SSH counts, beginning Fall 1999.

TABLE B4
FULL-TIME EQUIVALENT COURSE ENROLLMENT SERVED, BY PROGRAM
HONOLULU COMMUNITY COLLEGE
FALL 1998 TO FALL 2005

	ACTUAL	PROJECTED						
	1998	1999	2000	2001	2002	2003	2004	2005
Total 1/	2,554	2,753	2,825	2,870	2,874	2,865	2,885	2,916
General Education.....	1,548	1,668	1,703	1,723	1,720	1,711	1,722	1,739
Humanities.....	737	791	807	816	814	809	815	822
Natural Sciences.....	543	589	602	610	609	606	610	616
Social Sciences.....	240	259	264	267	267	266	267	270
Other General Education..	28	29	30	30	30	30	30	31
Vocational Education.....	1,006	1,085	1,122	1,147	1,154	1,154	1,163	1,177
Business.....	102	104	107	108	108	108	108	110
Food Services.....	0	0	0	0	0	0	0	0
Health Services.....	23	24	24	24	24	24	24	24
Public Services.....	269	313	323	330	333	332	335	339
Technology.....	610	642	666	683	687	688	694	702
Other Vocational.....	2	2	2	2	2	2	2	2

1/ SOCAD (military continuing education) students added to SSH counts, beginning Fall 1999.

Kapi'olani Community College
Credit Students

Figure C1
Actual & Projected Headcount Enrollment

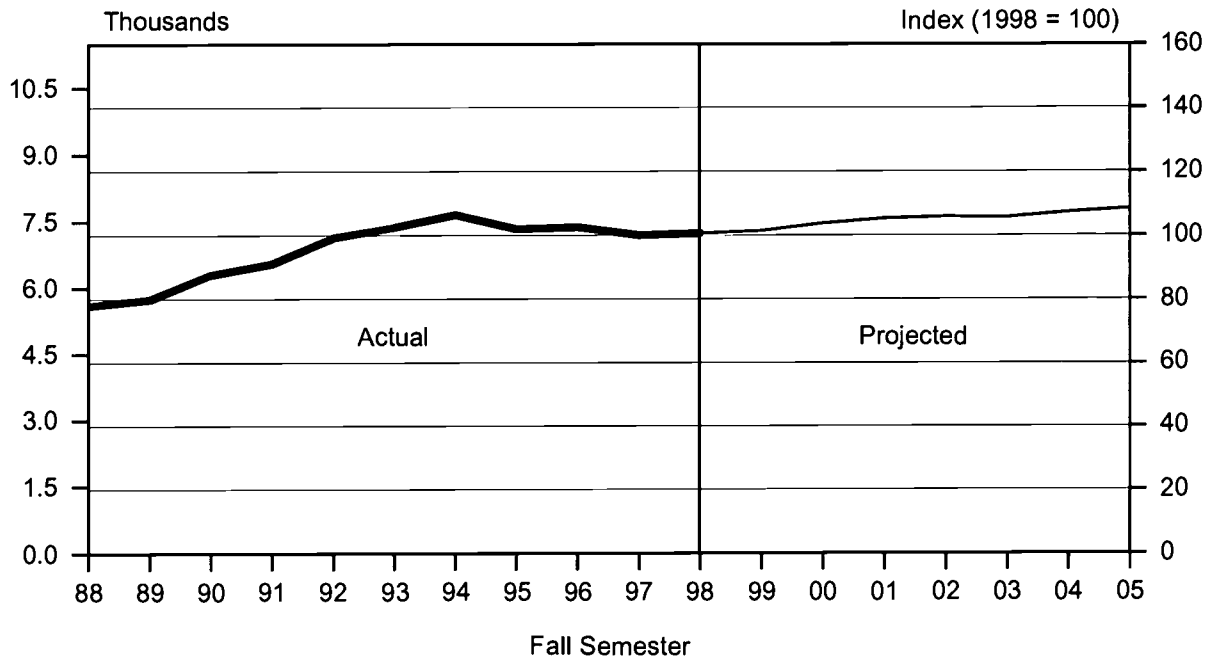


Figure C2
Historical Headcount Enrollment

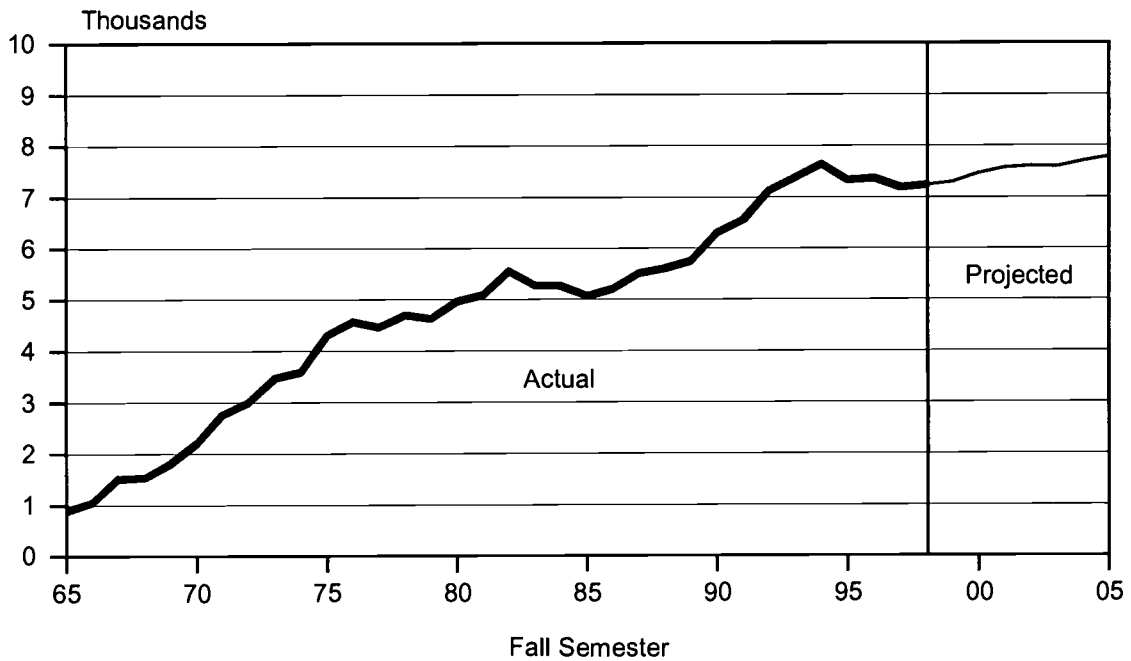


TABLE C1
 HEADCOUNT ENROLLMENT OF REGULAR STUDENTS, BY REGISTRATION STATUS
 KAPI'OLANI COMMUNITY COLLEGE
 FALL 1992 TO FALL 2005

REGISTRATION STATUS	ACTUAL										PROJECTED				
	1992	1993	1994	1995	1996	1997	1998	1999	2000	2001	2002	2003	2004	2005	
TOTAL	7,132	7,375	7,648	7,329	7,373	7,189	7,236	7,294	7,460	7,568	7,605	7,601	7,702	7,784	
Liberal Arts	4,690	4,770	5,035	4,782	4,875	4,527	4,419	4,356	4,390	4,405	4,386	4,352	4,395	4,429	
Vocational Education	1,905	1,943	1,991	2,004	1,970	2,171	2,340	2,469	2,596	2,687	2,745	2,779	2,831	2,875	
Unclassified	537	662	622	543	528	491	477	469	474	476	474	470	476	480	
First-Time By HS Background	1,396	1,303	1,350	1,320	1,307	1,303	1,408	1,410	1,470	1,465	1,442	1,423	1,476	1,484	
Direct From Hawai'i Public HS	652	588	631	642	605	611	662	663	691	689	678	669	694	698	
Recent Hawai'i HS	255	215	230	209	222	261	242	242	253	252	248	245	254	255	
Other	489	500	489	469	480	431	504	505	526	524	516	509	528	531	
First-Time, By Program	1,396	1,303	1,350	1,320	1,307	1,303	1,408	1,410	1,470	1,465	1,442	1,423	1,476	1,484	
Liberal Arts	1,053	942	985	994	968	913	968	969	1,010	1,008	992	978	1,015	1,020	
Vocational Educ	259	253	275	268	271	321	381	382	398	396	390	385	399	402	
Unclassified	84	108	90	58	68	69	59	59	62	61	60	60	62	62	
Transfer	914	991	1,169	1,179	1,281	1,148	1,193	1,195	1,246	1,241	1,222	1,206	1,251	1,257	
Liberal Arts	557	580	741	715	754	679	716	717	748	745	733	724	751	754	
Vocational Educ	249	277	287	273	318	310	327	328	342	340	335	331	343	345	
Unclassified	108	134	141	191	209	159	150	150	156	156	154	151	157	158	
Continuing/Returning	4,822	5,081	5,129	4,830	4,785	4,738	4,635	4,689	4,744	4,862	4,941	4,972	4,975	5,043	
Liberal Arts	3,080	3,248	3,309	3,073	3,153	2,935	2,735	2,670	2,632	2,652	2,661	2,650	2,629	2,655	
Vocational Educ	1,397	1,413	1,429	1,463	1,381	1,540	1,632	1,759	1,856	1,951	2,020	2,063	2,089	2,128	
Unclassified	345	420	391	294	251	263	268	260	256	259	260	259	257	260	

TABLE C2
 HEADCOUNT ENROLLMENT, BY PROGRAM
 KAPI'OLANI COMMUNITY COLLEGE
 FALL 1998 TO FALL 2005

PROGRAM	ACTUAL 1998	PROJECTED						
		1999	2000	2001	2002	2003	2004	2005
Total Students	7,236	7,294	7,460	7,568	7,605	7,601	7,702	7,784
General & Pre-Prof Ed ...	4,419	4,356	4,390	4,405	4,386	4,352	4,395	4,429
Liberal Arts	4,419	4,356	4,390	4,405	4,386	4,352	4,395	4,429
Vocational Education	2,340	2,469	2,596	2,687	2,745	2,779	2,831	2,875
Business	940	992	1,042	1,079	1,102	1,117	1,137	1,154
Food Services	692	730	768	795	812	822	837	850
Health Services	546	576	606	627	641	648	661	671
Public Services	151	159	168	173	177	179	183	186
Vocational Other	11	12	12	13	13	13	13	14
Unclassified	477	469	474	476	474	470	476	480
Regular Unclassified ...	437	429	434	436	433	431	436	439
Special Students	40	40	40	40	41	39	40	41
Early Admit	2	2	2	2	2	2	2	2
Concurrent	38	38	38	38	39	37	38	39

TABLE C3
STUDENT SEMESTER HOURS OFFERED, BY PROGRAM
KAPI'OLANI COMMUNITY COLLEGE
FALL 1998 TO FALL 2005

	ACTUAL	PROJECTED						
	1998	1999	2000	2001	2002	2003	2004	2005
Total	63,606	64,208	65,610	66,726	67,089	67,085	67,982	68,709
General Education	45,639	45,494	46,085	46,611	46,623	46,437	46,971	47,407
Humanities	25,248	25,179	25,478	25,808	25,819	25,717	26,014	26,259
Natural Sciences	14,371	14,326	14,537	14,680	14,684	14,627	14,796	14,933
Social Sciences	5,844	5,814	5,893	5,944	5,942	5,916	5,982	6,035
Other General Educ	176	175	177	179	178	177	179	180
Vocational Education	17,967	18,714	19,525	20,115	20,466	20,648	21,011	21,302
Business	6,126	6,299	6,509	6,675	6,757	6,798	6,902	6,987
Food Serv & Hospitality Ed...	5,051	5,315	5,578	5,773	5,893	5,962	6,069	6,160
Health Services	5,779	6,051	6,339	6,540	6,670	6,732	6,860	6,959
Public Services	1,011	1,049	1,099	1,127	1,146	1,156	1,180	1,196

TABLE C4
FULL-TIME EQUIVALENT COURSE ENROLLMENT SERVED, BY PROGRAM
KAPI'OLANI COMMUNITY COLLEGE
FALL 1998 TO FALL 2005

	ACTUAL	PROJECTED						
	1998	1999	2000	2001	2002	2003	2004	2005
Total	4,239	4,281	4,375	4,449	4,472	4,471	4,532	4,582
General Education	3,042	3,034	3,073	3,108	3,108	3,095	3,131	3,161
Humanities	1,682	1,679	1,699	1,721	1,721	1,714	1,734	1,751
Natural Sciences	958	955	969	979	979	975	986	996
Social Sciences	391	388	393	396	396	394	399	402
Other General Educ	11	12	12	12	12	12	12	12
Vocational Education	1,197	1,247	1,302	1,341	1,364	1,376	1,401	1,421
Business	408	420	434	445	450	453	460	466
Food Serv & Hospitality Ed...	337	354	372	385	393	397	405	411
Health Services	385	403	423	436	445	449	457	464
Public Services	67	70	73	75	76	77	79	80

Kaua'i Community College
Credit Students

Figure D1
Actual & Projected Headcount Enrollment

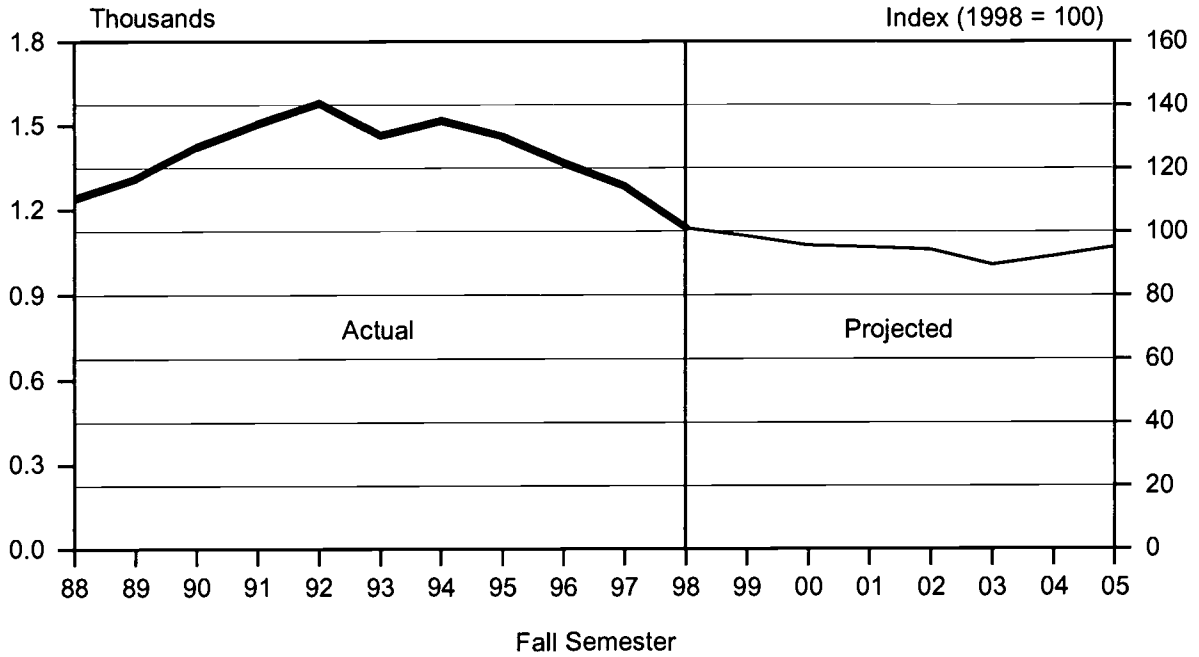


Figure D2
Historical Headcount Enrollment

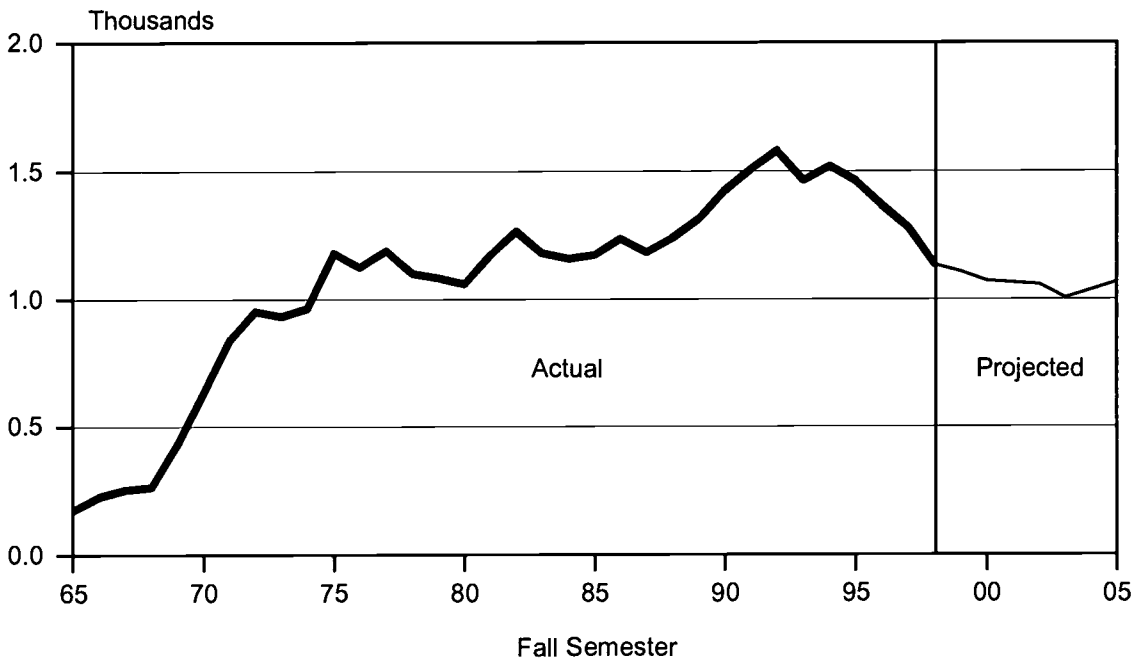


TABLE D1
 HEADCOUNT ENROLLMENT OF REGULAR STUDENTS, BY REGISTRATION STATUS
 KAUA'I COMMUNITY COLLEGE
 FALL 1992 TO FALL 2005

REGISTRATION STATUS	ACTUAL										PROJECTED				
	1992	1993	1994	1995	1996	1997	1998	1999	2000	2001	2002	2003	2004	2005	
TOTAL	1,580	1,464	1,518	1,461	1,367	1,283	1,136	1,108	1,074	1,067	1,058	1,006	1,037	1,069	
Liberal Arts	498	521	616	585	598	563	511	486	458	442	435	414	409	425	
Vocational Education	525	486	529	558	580	560	480	484	476	478	479	464	474	489	
Unclassified	557	457	373	318	189	160	145	138	140	147	144	128	154	155	
First-Time By HS Background	406	444	398	316	287	269	233	236	223	230	231	197	228	253	
Direct From Hawai'i Public HS	163	142	209	189	178	169	135	137	129	133	134	114	132	147	
Recent Hawai'i HS	21	38	31	19	23	23	21	21	20	21	21	18	21	23	
Other	222	264	158	108	86	77	77	78	74	76	76	65	75	83	
First-Time, By Program	406	444	398	316	287	269	233	236	223	230	231	197	228	253	
Liberal Arts	141	175	190	165	153	145	116	118	111	114	115	98	113	126	
Vocational Educ	125	127	144	112	109	107	102	103	98	101	101	86	100	111	
Unclassified	140	142	64	39	25	17	15	15	14	15	15	13	15	16	
Transfer	156	88	107	142	129	110	99	100	95	98	98	84	97	107	
Liberal Arts	49	34	47	59	56	54	47	52	47	45	47	47	40	46	
Vocational Educ	22	11	12	25	24	18	24	27	24	23	24	24	20	24	
Unclassified	85	43	48	58	49	38	28	21	24	30	27	13	37	37	
Continuing/Returning	1,018	932	1,013	1,003	951	904	804	772	756	739	729	725	712	709	
Liberal Arts	308	312	379	361	389	364	348	316	300	283	273	269	256	253	
Vocational Educ	378	348	373	421	447	435	354	354	354	354	354	354	354	354	
Unclassified	332	272	261	221	115	105	102	102	102	102	102	102	102	102	

TABLE D2
 HEADCOUNT ENROLLMENT, BY PROGRAM
 KAUA'I COMMUNITY COLLEGE
 FALL 1998 TO FALL 2005

PROGRAM	ACTUAL	PROJECTED						
	1998	1999	2000	2001	2002	2003	2004	2005
Total Students	1,136	1,108	1,074	1,067	1,058	1,006	1,037	1,069
General & Pre-Prof Ed	511	486	458	442	435	414	409	425
Liberal Arts	511	486	458	442	435	414	409	425
Vocational Education	480	484	476	478	479	464	474	489
Business	283	286	280	281	282	273	279	288
Health Services	54	54	54	54	54	52	53	55
Public Services	39	39	39	39	39	38	39	40
Technology	104	105	103	104	104	101	103	106
Unclassified	145	138	140	147	144	128	154	155
Regular Unclassified	138	131	133	140	137	122	147	148
Special Students	7	7	7	7	7	6	7	7
Early Admit	7	7	7	7	7	6	7	7

TABLE D3
STUDENT SEMESTER HOURS OFFERED, BY PROGRAM
KAUA'I COMMUNITY COLLEGE
FALL 1998 TO FALL 2005

	ACTUAL	PROJECTED						
	1998	1999	2000	2001	2002	2003	2004	2005
Total	10,505	10,283	9,928	9,813	9,745	9,336	9,465	9,780
General Education	6,199	5,973	5,711	5,592	5,525	5,262	5,307	5,492
Humanities	3,419	3,295	3,155	3,096	3,058	2,908	2,947	3,048
Natural Sciences	1,408	1,358	1,296	1,264	1,250	1,195	1,192	1,237
Social Sciences	1,206	1,161	1,106	1,079	1,066	1,018	1,019	1,055
Other General Educ	166	159	154	153	151	141	149	152
Vocational Education.....	4,306	4,310	4,217	4,221	4,220	4,074	4,158	4,288
Business	2,161	2,160	2,104	2,100	2,101	2,027	2,066	2,133
Food Services	485	490	480	482	483	468	478	493
Health Services	482	478	473	470	469	450	457	474
Public Services	104	104	103	103	103	101	103	105
Technology	1,074	1,078	1,057	1,066	1,064	1,028	1,054	1,083

TABLE D4
FULL-TIME EQUIVALENT COURSE ENROLLMENT SERVED, BY PROGRAM
KAUA'I COMMUNITY COLLEGE
FALL 1998 TO FALL 2005

	ACTUAL	PROJECTED						
	1998	1999	2000	2001	2002	2003	2004	2005
Total	699	687	661	653	649	623	630	651
General Education	414	399	380	372	368	351	353	365
Humanities	230	220	210	206	204	194	196	203
Natural Sciences	93	91	86	84	83	80	79	82
Social Sciences	80	77	74	72	71	68	68	70
Other General Educ	11	11	10	10	10	9	10	10
Vocational Education.....	285	288	281	281	281	272	277	286
Business	143	144	140	140	140	135	138	142
Food Services	32	33	32	32	32	31	32	33
Health Services	32	32	32	31	31	30	30	32
Public Services	7	7	7	7	7	7	7	7
Technology	71	72	70	71	71	69	70	72

Leeward Community College
Credit Students

Figure E1
Actual & Projected Headcount Enrollment

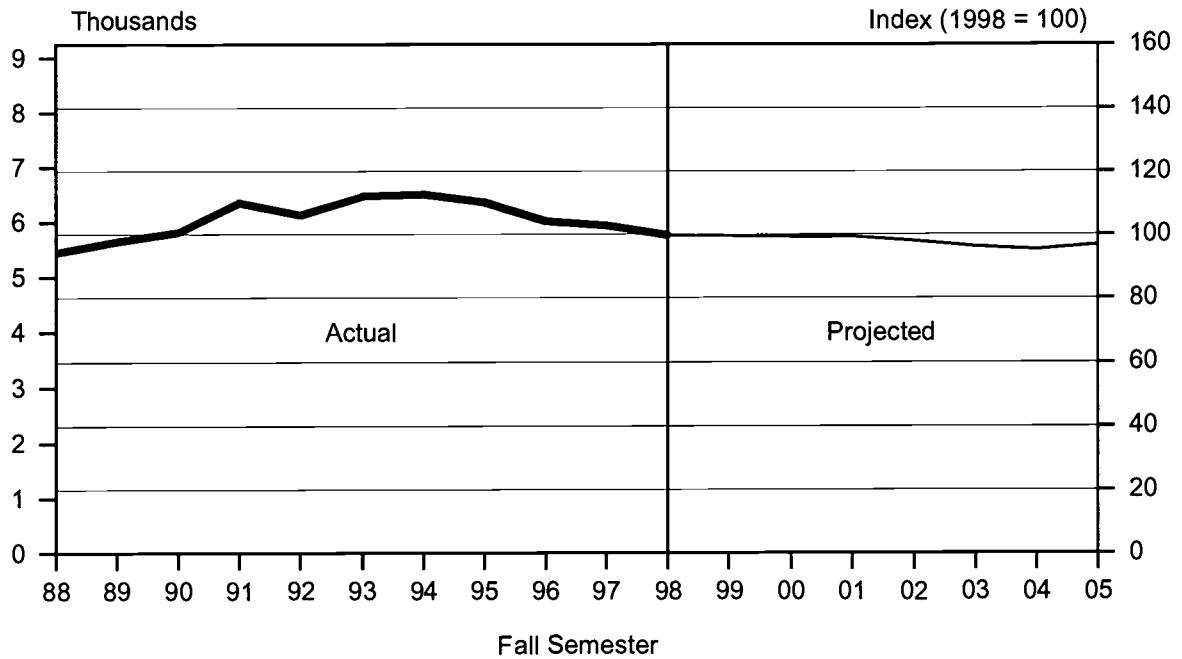


Figure E2
Historical Headcount Enrollment

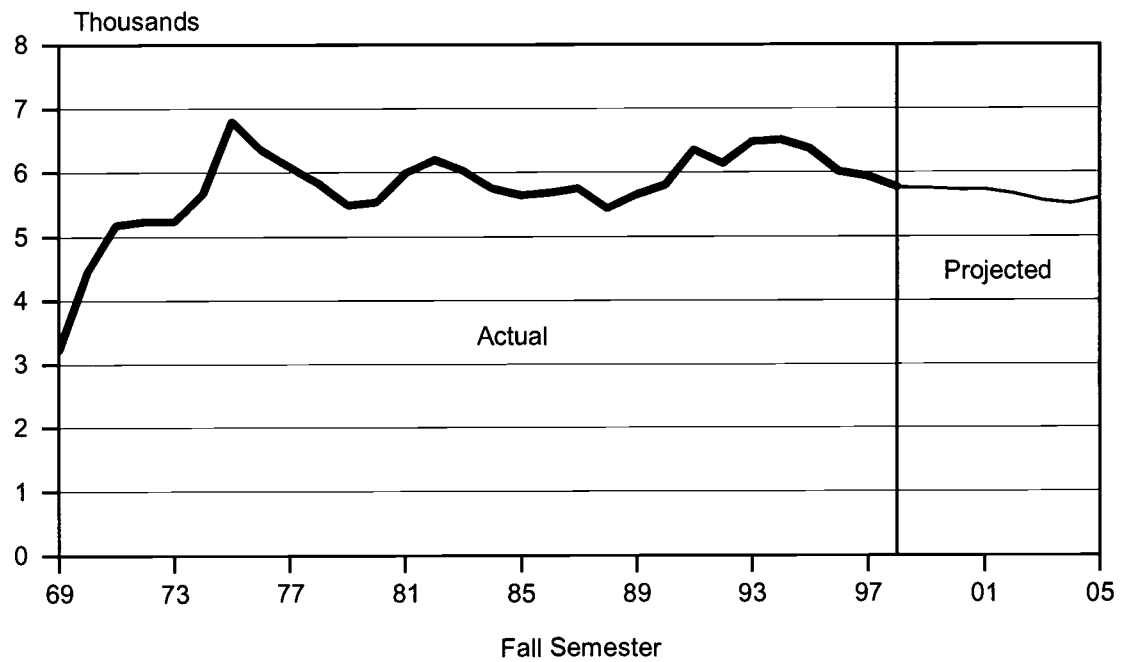


TABLE E1
 HEADCOUNT ENROLLMENT OF REGULAR STUDENTS, BY REGISTRATION STATUS
 LEEWARD COMMUNITY COLLEGE
 FALL 1992 TO FALL 2005

REGISTRATION STATUS	ACTUAL										PROJECTED				
	1992	1993	1994	1995	1996	1997	1998	1999	2000	2001	2002	2003	2004	2005	
TOTAL	6,135	6,473	6,507	6,368	6,014	5,936	5,765	5,752	5,734	5,735	5,665	5,559	5,507	5,594	
Liberal Arts	4,221	4,437	4,558	4,509	4,235	4,191	4,112	4,090	4,070	4,063	4,009	3,932	3,893	3,951	
Vocational Education	1,117	1,345	1,369	1,310	1,310	1,279	1,264	1,280	1,288	1,297	1,288	1,270	1,260	1,278	
Unclassified	797	691	580	549	469	466	389	382	376	375	368	357	354	365	
First-Time By HS Background	1,363	1,459	1,351	1,329	1,332	1,338	1,288	1,286	1,279	1,286	1,239	1,200	1,211	1,291	
Direct From Hawai'i Public HS	620	678	653	649	685	662	687	686	682	686	661	640	646	689	
Recent Hawai'i HS	171	188	182	160	181	160	161	161	160	161	155	150	151	161	
Other	572	593	516	520	466	516	440	439	437	439	423	410	414	441	
First-Time, By Program	1,363	1,459	1,351	1,329	1,332	1,338	1,288	1,286	1,279	1,286	1,239	1,200	1,211	1,291	
Liberal Arts	928	1,032	1,000	965	972	965	943	941	937	941	907	879	887	945	
Vocational Educ	237	272	232	239	252	275	264	264	262	264	254	246	248	265	
Unclassified	198	155	119	125	108	98	81	81	80	81	78	75	76	81	
Transfer	902	803	780	650	679	658	668	667	663	667	643	622	628	670	
Liberal Arts	595	495	516	440	427	415	425	424	422	424	409	396	400	426	
Vocational Educ	116	149	136	114	152	121	135	135	134	135	130	126	127	135	
Unclassified	191	159	128	96	100	122	108	108	107	108	104	100	101	109	
Continuing/Returning	3,870	4,211	4,376	4,389	4,003	3,940	3,809	3,799	3,792	3,782	3,783	3,737	3,668	3,633	
Liberal Arts	2,698	2,910	3,042	3,104	2,836	2,811	2,744	2,725	2,711	2,698	2,693	2,657	2,606	2,580	
Vocational Educ	764	924	1,001	957	906	883	865	881	892	898	904	898	885	878	
Unclassified	408	377	333	328	261	246	200	193	189	186	186	182	177	175	

TABLE E2
HEADCOUNT ENROLLMENT, BY PROGRAM
LEEWARD COMMUNITY COLLEGE
FALL 1998 TO FALL 2005

PROGRAM	ACTUAL	PROJECTED						
	1998	1999	2000	2001	2002	2003	2004	2005
Total Students	5,765	5,752	5,734	5,735	5,665	5,559	5,507	5,594
General & Pre-Prof Ed	4,112	4,090	4,070	4,063	4,009	3,932	3,893	3,951
Liberal Arts	4,112	4,090	4,070	4,063	4,009	3,932	3,893	3,951
Vocational Education	1,264	1,280	1,288	1,297	1,288	1,270	1,260	1,278
Business	822	832	838	844	838	826	820	830
Food Services	159	161	162	163	162	160	158	161
Public Services	47	48	48	48	48	47	47	48
Technology	236	239	240	242	240	237	235	239
Unclassified	389	382	376	375	368	357	354	365
Regular Unclassified	355	348	342	341	335	326	322	332
Special Students	34	34	34	34	33	31	32	33
Early Admit	23	23	23	23	22	21	22	22
Concurrent	11	11	11	11	11	10	10	11

TABLE E3
STUDENT SEMESTER HOURS OFFERED, BY PROGRAM
LEEWARD COMMUNITY COLLEGE
FALL 1998 TO FALL 2005

	ACTUAL 1998	PROJECTED						
		1999	2000	2001	2002	2003	2004	2005
Total	54,163	54,051	53,890	53,901	53,250	52,271	51,773	52,575
General Education	44,994	44,837	44,664	44,640	44,079	43,246	42,829	43,494
Humanities	23,666	23,589	23,500	23,491	23,197	22,759	22,541	22,893
Natural Sciences	12,342	12,294	12,245	12,237	12,081	11,853	11,738	11,920
Social Sciences	8,686	8,655	8,621	8,614	8,507	8,346	8,264	8,392
Other General Educ.....	300	299	298	298	294	288	286	289
Vocational Education.....	9,169	9,214	9,226	9,261	9,171	9,025	8,944	9,081
Business	5,627	5,646	5,652	5,669	5,611	5,517	5,470	5,546
Food Services	886	896	900	906	900	889	878	894
Health Services	447	446	443	443	438	429	425	433
Public Services	585	586	586	586	580	570	565	575
Technology	1,624	1,640	1,645	1,657	1,642	1,620	1,606	1,633

TABLE E4
FULL-TIME EQUIVALENT COURSE ENROLLMENT SERVED, BY PROGRAM
LEEWARD COMMUNITY COLLEGE
FALL 1998 TO FALL 2005

	ACTUAL 1998	PROJECTED						
		1999	2000	2001	2002	2003	2004	2005
Total	3,613	3,604	3,594	3,593	3,549	3,484	3,453	3,505
General Education	3,003	2,990	2,978	2,976	2,938	2,882	2,856	2,899
Humanities	1,579	1,573	1,567	1,566	1,546	1,517	1,503	1,526
Natural Sciences	825	820	816	816	805	790	783	795
Social Sciences	579	577	575	574	567	556	551	559
Other General Educ.....	20	20	20	20	20	19	19	19
Vocational Education.....	610	614	616	617	611	602	597	606
Business	375	376	377	378	374	368	365	370
Food Services	59	60	60	60	60	59	59	60
Health Services	29	30	30	30	29	29	28	29
Public Services	39	39	39	39	39	38	38	38
Technology	108	109	110	110	109	108	107	109

Maui Community College
Credit Students

Figure F1
Actual & Projected Headcount Enrollment

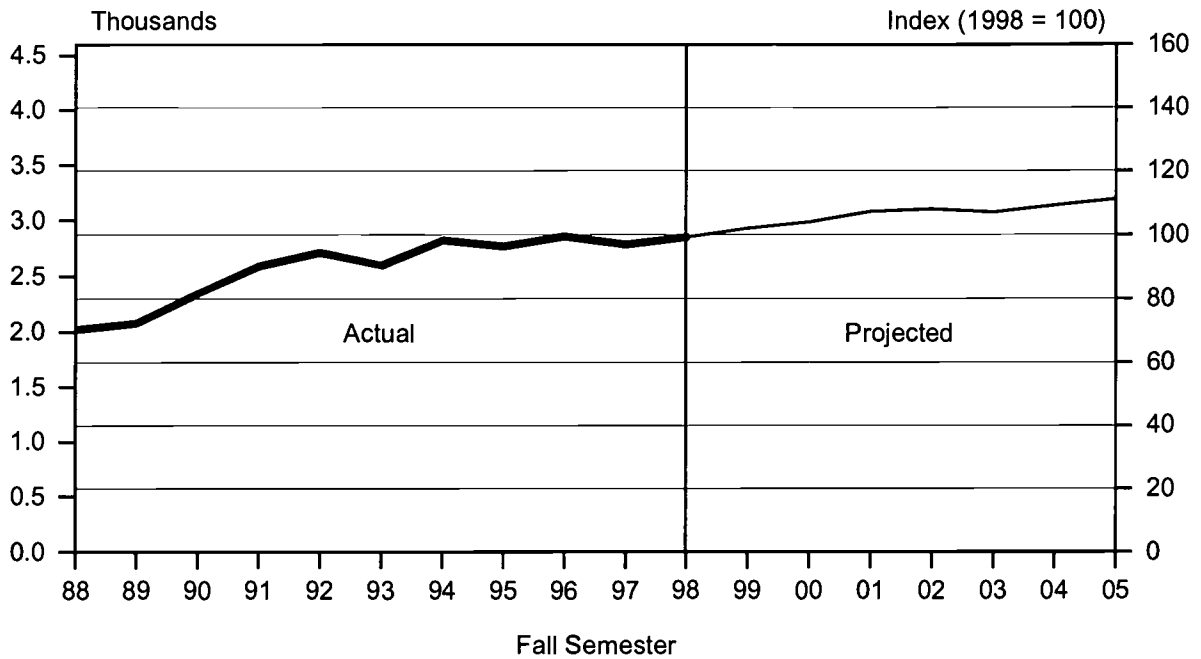


Figure F2
Historical Headcount Enrollment

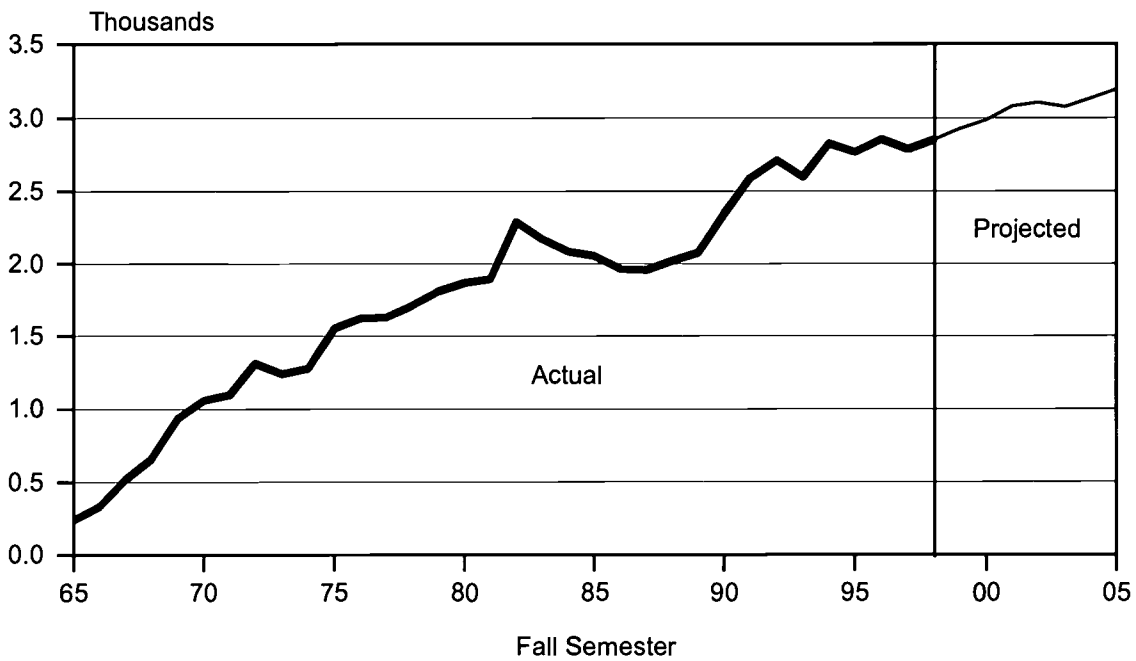


TABLE F1
 HEADCOUNT ENROLLMENT OF REGULAR STUDENTS, BY REGISTRATION STATUS
 MAUI COMMUNITY COLLEGE
 FALL 1992 TO FALL 2005

REGISTRATION STATUS	ACTUAL										PROJECTED				
	1992	1993	1994	1995	1996	1997	1998	1999	2000	2001	2002	2003	2004	2005	
TOTAL	2,713	2,597	2,826	2,765	2,854	2,787	2,849	2,927	2,987	3,081	3,103	3,076	3,135	3,193	
Liberal Arts	875	871	1,153	1,094	1,247	1,212	1,186	1,207	1,223	1,256	1,263	1,251	1,272	1,295	
Vocational Education	830	1,035	1,133	1,208	1,096	1,052	1,121	1,161	1,193	1,233	1,250	1,246	1,268	1,291	
Unclassified	1,008	691	540	463	511	523	542	559	571	592	590	579	595	607	
First-Time By HS Background	1,279	1,041	1,084	1,086	1,103	1,061	1,133	1,182	1,194	1,249	1,219	1,178	1,249	1,271	
Direct From Hawai'i Public HS	244	221	249	276	278	309	325	319	322	337	329	318	337	343	
Recent Hawai'i HS	82	71	80	85	95	83	85	94	95	99	97	94	99	101	
Other	953	749	755	725	730	669	723	769	777	813	793	766	813	827	
First-Time, By Program	1,279	1,041	1,084	1,086	1,103	1,061	1,133	1,182	1,194	1,249	1,219	1,178	1,249	1,271	
Liberal Arts	407	359	448	439	473	468	452	472	476	498	486	470	498	507	
Vocational Educ	289	363	337	397	349	304	381	397	402	420	410	396	420	427	
Unclassified	583	319	299	250	281	289	300	313	316	331	323	312	331	337	
Transfer	24	13	9	28	81	54	64	61	62	65	63	61	65	66	
Liberal Arts	5	3	7	9	36	28	26	25	25	26	26	25	26	27	
Vocational Educ	7	3	2	11	19	11	17	16	16	17	17	16	17	18	
Unclassified	12	7	0	8	26	15	21	20	21	22	20	20	22	21	
Continuing/Returning	1,410	1,543	1,733	1,651	1,670	1,672	1,652	1,684	1,731	1,767	1,821	1,837	1,821	1,856	
Liberal Arts	463	509	698	646	738	716	708	710	722	732	751	756	748	761	
Vocational Educ	534	669	794	800	728	737	723	748	775	796	823	834	831	846	
Unclassified	413	365	241	205	204	219	221	226	234	239	247	247	242	249	

TABLE F2
 HEADCOUNT ENROLLMENT, BY PROGRAM
 MAUI COMMUNITY COLLEGE
 FALL 1998 TO FALL 2005

PROGRAM	ACTUAL	PROJECTED						
	1998	1999	2000	2001	2002	2003	2004	2005
Total Students	2,849	2,927	2,987	3,081	3,103	3,076	3,135	3,193
General & Pre-Prof Ed ...	1,188	1,207	1,223	1,256	1,263	1,251	1,272	1,295
Liberal Arts	1,188	1,207	1,223	1,256	1,263	1,251	1,272	1,295
Vocational Education	1,121	1,161	1,193	1,233	1,250	1,246	1,268	1,291
Business	403	418	429	443	450	447	456	464
Food Services	150	155	160	165	167	167	170	173
Health Services	77	80	82	85	86	86	87	89
Public Services	238	246	253	262	265	265	269	274
Technology	253	262	269	278	282	281	286	291
Unclassified	540	559	571	592	590	579	595	607
Regular Unclassified ...	488	506	516	535	534	524	538	548
Special Students	52	53	55	57	56	55	57	59
Early Admit	52	53	55	57	56	55	57	59

TABLE F3
STUDENT SEMESTER HOURS OFFERED, BY PROGRAM
MAUI COMMUNITY COLLEGE
FALL 1998 TO FALL 2005

	ACTUAL	PROJECTED						
	1998	1999	2000	2001	2002	2003	2004	2005
Total	23,909	24,547	25,045	25,828	26,031	25,825	26,304	26,784
General Education	14,238	14,651	14,919	15,368	15,465	15,324	15,606	15,893
Humanities	7,790	8,056	8,206	8,452	8,507	8,428	8,584	8,742
Natural Sciences	3,688	3,771	3,837	3,952	3,976	3,939	4,011	4,084
Social Sciences	2,496	2,554	2,601	2,680	2,697	2,674	2,722	2,773
Other General Ed	264	270	275	284	285	283	289	294
Vocational Education.....	9,671	9,896	10,126	10,460	10,566	10,501	10,698	10,891
Business	4,710	4,773	4,880	5,035	5,085	5,042	5,142	5,235
Food Services	1,119	1,156	1,192	1,231	1,246	1,246	1,267	1,289
Health Services	1,270	1,312	1,341	1,387	1,398	1,393	1,415	1,444
Public Services	820	845	862	893	902	896	913	929
Technology	1,722	1,779	1,820	1,881	1,902	1,891	1,927	1,960
Other Vocational	30	31	31	33	33	33	34	34

TABLE F4
FULL-TIME EQUIVALENT COURSE ENROLLMENT SERVED, BY PROGRAM
MAUI COMMUNITY COLLEGE
FALL 1998 TO FALL 2005

	ACTUAL	PROJECTED						
	1998	1999	2000	2001	2002	2003	2004	2005
Total	1,592	1,635	1,667	1,721	1,735	1,722	1,751	1,786
General Education	950	976	994	1,024	1,031	1,022	1,039	1,060
Humanities	519	537	547	563	567	562	572	583
Natural Sciences	246	251	256	263	265	263	267	272
Social Sciences	167	170	173	179	180	178	181	185
Other General Ed	18	18	18	19	19	19	19	20
Vocational Education.....	642	659	673	697	704	700	712	726
Business	312	318	325	336	339	336	343	349
Food Services	75	77	79	82	83	83	84	86
Health Services	84	87	89	92	93	93	94	96
Public Services	55	56	57	60	60	60	61	62
Technology	114	119	121	125	127	126	128	131
Other Vocational	2	2	2	2	2	2	2	2

Windward Community College
Credit Students

Figure G1
Actual & Projected Headcount Enrollment

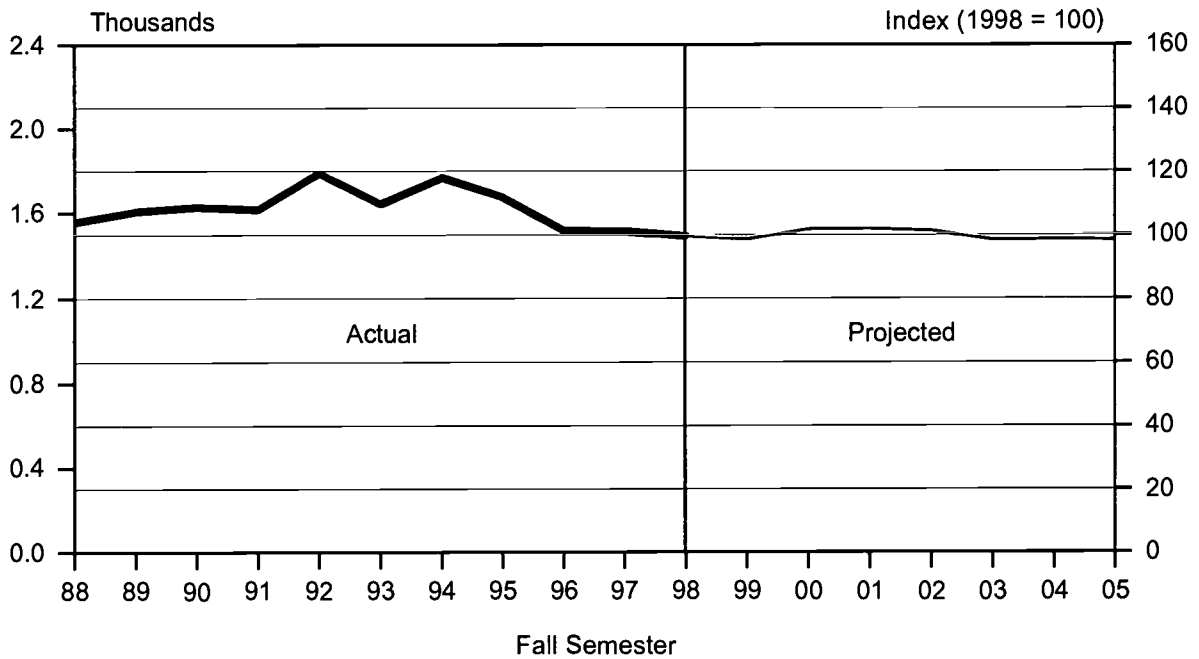


Figure G2
Historical Headcount Enrollment

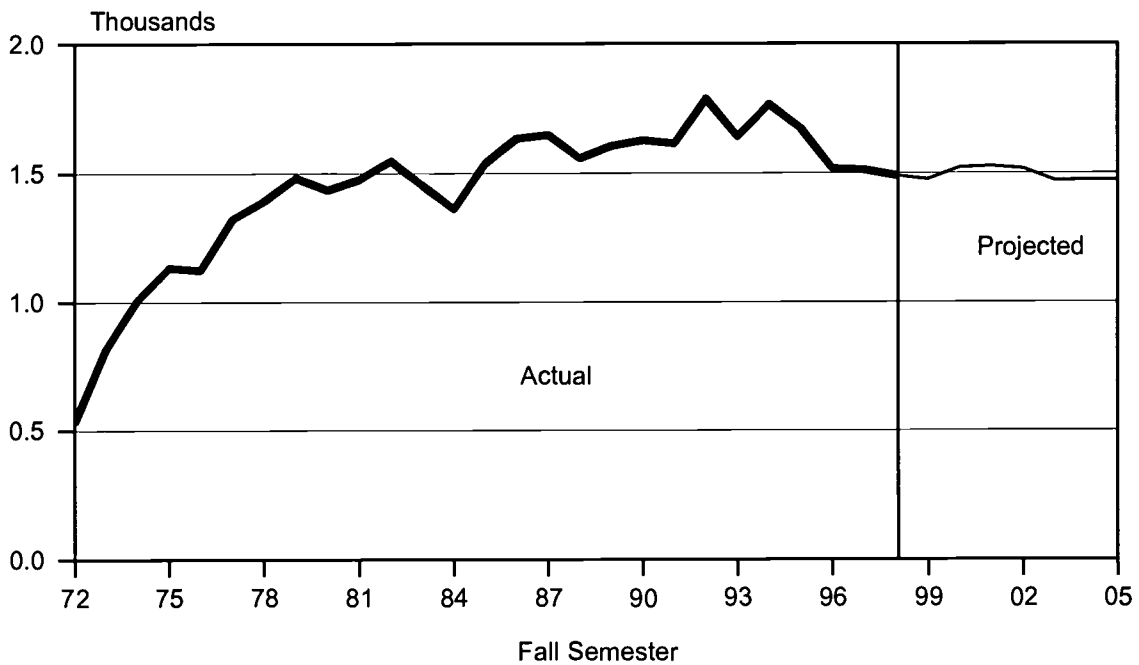


TABLE G1
 HEADCOUNT ENROLLMENT OF REGULAR STUDENTS, BY REGISTRATION STATUS
 WINDWARD COMMUNITY COLLEGE
 FALL 1992 TO FALL 2005

REGISTRATION STATUS	ACTUAL										PROJECTED				
	1992	1993	1994	1995	1996	1997	1998	1999	2000	2001	2002	2003	2004	2005	
TOTAL	1,787	1,642	1,767	1,674	1,518	1,513	1,491	1,477	1,521	1,526	1,518	1,473	1,475	1,474	
Liberal Arts	1,345	1,266	1,398	1,354	1,238	1,252	1,246	1,240	1,278	1,286	1,282	1,247	1,248	1,246	
Vocational Education	150	170	145	121	111	98	75	71	71	69	67	65	65	65	
Unclassified	292	206	224	199	169	163	170	166	172	171	169	161	162	163	
First-Time By HS Background	413	337	368	378	321	315	338	333	366	352	345	319	338	336	
Direct From Hawai'i Public HS	119	111	111	136	122	121	143	141	155	149	146	135	143	142	
Recent Hawai'i HS	81	42	70	66	55	60	51	50	55	53	52	48	51	51	
Other	213	184	187	176	144	134	144	142	156	150	147	136	144	143	
First-Time, By Program	413	337	368	378	321	315	338	333	366	352	345	319	338	336	
Liberal Arts	330	259	307	325	260	254	285	280	308	297	291	269	285	283	
Vocational Educ	34	49	25	22	20	22	20	20	22	21	20	19	20	20	
Unclassified	49	29	36	31	41	39	33	33	36	34	34	31	33	33	
Transfer	300	250	263	224	178	196	202	199	219	210	206	191	202	201	
Liberal Arts	202	179	189	169	126	154	148	146	160	154	151	140	148	147	
Vocational Educ	24	25	20	12	9	9	6	6	7	6	6	6	6	6	
Unclassified	74	46	54	43	43	33	48	47	52	50	49	45	48	48	
Continuing/Returning	1,074	1,055	1,136	1,072	1,019	1,002	951	945	936	964	967	963	935	937	
Liberal Arts	813	828	902	860	852	844	813	814	810	835	840	838	815	816	
Vocational Educ	92	96	100	87	82	67	49	45	42	42	41	40	39	39	
Unclassified	169	131	134	125	85	91	89	86	84	87	86	85	81	82	

TABLE G2
 HEADCOUNT ENROLLMENT, BY PROGRAM
 WINDWARD COMMUNITY COLLEGE
 FALL 1998 TO FALL 2005

PROGRAM	ACTUAL	PROJECTED						
	1998	1999	2000	2001	2002	2003	2004	2005
Total Students	1,491	1,477	1,521	1,526	1,518	1,473	1,475	1,474
General & Pre-Prof Ed	1,246	1,240	1,278	1,286	1,282	1,247	1,248	1,246
Liberal Arts	1,246	1,240	1,278	1,286	1,282	1,247	1,248	1,246
Vocational Education	75	71	71	69	67	65	65	65
Business	53	50	50	49	47	46	46	46
Technology	22	21	21	20	20	19	19	19
Unclassified	170	166	172	171	169	161	162	163
Regular Unclassified	159	155	160	160	158	150	151	152
Special Students	11	11	12	11	11	11	11	11
Early Admit	11	11	12	11	11	11	11	11

TABLE G3
STUDENT SEMESTER HOURS OFFERED, BY PROGRAM
WINDWARD COMMUNITY COLLEGE
FALL 1998 TO FALL 2005

	ACTUAL 1998	PROJECTED						
		1999	2000	2001	2002	2003	2004	2005
Total	13,391	13,278	13,672	13,725	13,660	13,261	13,277	13,266
General Education	12,336	12,244	12,616	12,675	12,618	12,253	12,268	12,257
Humanities	6,816	6,766	6,972	7,004	6,974	6,772	6,780	6,774
Natural Sciences	2,932	2,909	2,997	3,010	2,995	2,908	2,912	2,909
Social Sciences	2,339	2,323	2,394	2,406	2,396	2,328	2,330	2,328
Other General Educ	249	246	253	255	253	245	246	246
Vocational Education.....	1,055	1,034	1,056	1,050	1,042	1,008	1,009	1,009
Business	870	855	876	876	868	842	843	843
Technology	185	179	180	174	174	166	166	166

TABLE G4
FULL-TIME EQUIVALENT COURSE ENROLLMENT SERVED, BY PROGRAM
WINDWARD COMMUNITY COLLEGE
FALL 1998 TO FALL 2005

	ACTUAL 1998	PROJECTED						
		1999	2000	2001	2002	2003	2004	2005
Total	891	885	912	915	912	883	884	884
General Education	822	816	842	845	842	816	817	817
Humanities	456	451	465	467	465	451	452	452
Natural Sciences	195	194	200	201	200	194	194	194
Social Sciences	155	155	160	160	160	155	155	155
Other General Educ	16	16	17	17	17	16	16	16
Vocational Education.....	69	69	70	70	70	67	67	67
Business	57	57	58	58	58	56	56	56
Technology	12	12	12	12	12	11	11	11

APPENDIX A
HAWAII' I PUBLIC HIGH SCHOOL SENIORS, BY SCHOOL DISTRICT
1991-92 TO 2004-2005

SCHOOL DISTRICT	ACTUAL 1/											PROJECTED 2/			
	1991-92	1992-93	1993-94	1994-95	1995-96	1996-97	1997-98	1998-99	1999-00	2000-01	2001-02	2002-03	2003-04	2004-05	
TOTAL	9,278	9,051	9,517	9,753	9,671	9,033	9,459	9,523	9,725	9,771	9,574	9,223	9,571	9,846	
Oahu Districts	6,380	6,211	6,380	6,442	6,285	5,899	6,130	6,117	6,298	6,265	6,094	5,938	6,104	6,261	
Honolulu District	2,008	1,823	1,991	1,927	1,858	1,774	1,779	1,793	1,893	1,886	1,864	1,889	1,961	1,930	
Central District	1,923	1,872	1,801	1,945	1,933	1,742	1,819	1,744	1,750	1,701	1,588	1,576	1,559	1,645	
Leeward District	1,442	1,409	1,536	1,505	1,464	1,372	1,516	1,580	1,547	1,618	1,599	1,514	1,557	1,676	
Windward District	1,007	1,107	1,052	1,065	1,030	1,011	1,016	1,000	1,108	1,060	1,043	959	1,027	1,010	
Neighbor Island Districts ..	2,898	2,840	3,137	3,311	3,386	3,134	3,329	3,406	3,427	3,506	3,480	3,285	3,467	3,585	
Hawaii' i District	1,352	1,315	1,455	1,568	1,531	1,487	1,564	1,570	1,616	1,626	1,619	1,562	1,583	1,612	
Maui District	993	950	1,040	1,089	1,127	1,004	1,105	1,168	1,180	1,232	1,205	1,165	1,238	1,256	
Kaua' i District	553	575	642	654	728	643	660	668	631	648	656	558	646	717	

1/ Department of Education for the State of Hawaii.

2/ Department of Education, "Statewide Enrollment Projections, 1999-2000 to 2004-05," March 1999.



U.S. Department of Education
Office of Educational Research and Improvement (OERI)
National Library of Education (NLE)
Educational Resources Information Center (ERIC)



NOTICE

REPRODUCTION BASIS



This document is covered by a signed “Reproduction Release (Blanket) form (on file within the ERIC system), encompassing all or classes of documents from its source organization and, therefore, does not require a “Specific Document” Release form.



This document is Federally-funded, or carries its own permission to reproduce, or is otherwise in the public domain and, therefore, may be reproduced by ERIC without a signed Reproduction Release form (either “Specific Document” or “Blanket”).