

DOCUMENT RESUME

ED 432 612

TM 029 995

TITLE South Carolina 1998 SAT Report.
INSTITUTION South Carolina State Dept. of Education, Columbia.
PUB DATE 1998-09-00
NOTE 76p.
PUB TYPE Numerical/Quantitative Data (110) -- Reports - Descriptive (141)
EDRS PRICE MF01/PC04 Plus Postage.
DESCRIPTORS *College Entrance Examinations; *High School Seniors; High Schools; Public Schools; *Scores; Tables (Data); *Test Results
IDENTIFIERS *Scholastic Assessment Tests; *South Carolina

ABSTRACT

This report provides summary data for South Carolina students taking the Scholastic Assessment Test I (SAT I). The SAT I is the revised version of the Scholastic Aptitude Test students took in the past. This report reflects scores for seniors who anticipated graduating in 1998. Data are summarized for students in the United States, in South Carolina, in its 86 school districts, and in the state's high schools. National and state summaries include students in public and private schools, but the school district and high school data summaries include only public schools. Data are reported by student gender, ethnicity, educational level of parents, class rank, grade point average, and course participation. For South Carolina students, the average verbal score was 478 and the U.S. average verbal score was 505. The South Carolina average SAT I mathematics score was 473, compared to the national average of 512. Ten appendixes contain supplemental information about South Carolina student scores and the SAT I. (Contains 35 tables and 6 figures.) (SLD)

* Reproductions supplied by EDRS are the best that can be made *
* from the original document. *

SOUTH CAROLINA

1998

SAT

REPORT

PERMISSION TO REPRODUCE AND
DISSEMINATE THIS MATERIAL HAS
BEEN GRANTED BY

J.H. Foster

TO THE EDUCATIONAL RESOURCES
INFORMATION CENTER (ERIC)

1

U.S. DEPARTMENT OF EDUCATION
Office of Educational Research and Improvement
EDUCATIONAL RESOURCES INFORMATION
CENTER (ERIC)

This document has been reproduced as
received from the person or organization
originating it.

Minor changes have been made to
improve reproduction quality.

• Points of view or opinions stated in this
document do not necessarily represent
official OERI position or policy.

TM029995

Barbara S. Nielsen, Ed.D.
State Superintendent of Education

South Carolina State Department of Education

September 1998

SOUTH CAROLINA

1998 SAT REPORT

Barbara S. Nielsen, Ed.D.
State Superintendent of Education

South Carolina State Department of Education
September 1998

TABLE OF CONTENTS

Letter from the State Superintendent.....	v
SAT Data Summary	vii
Introduction.....	1
Background Information	2
Recentering the SAT Score Reporting Scale.....	4
Performance for South Carolina and Nation.....	5
Academic Preparation.....	5
State Results (SAT States).....	6
State Participation Rate	7
Analysis of South Carolina Data	8
Data by Gender	10
Data by Educational Level of Parents	11
Data by Ethnicity	11
Data by Class Rank.....	14
Data by Grade Point Average.....	14
Data by Course Participation.....	14
Districts Above National Average SAT Composite Score.....	18
Private Schools.....	18
High Schools Above National Average SAT Composite Score	20
Recommendations	22

Appendices

A.	Revision of South Carolina High School Requirements	25
B.	Description of SAT-I.....	29
C.	State Scores (all states).....	33
D.	District Scores	37
E.	High School Scores	43
F.	Cumulative Frequency Summary	53
G.	SAT Scores by Planned Years of Study	57
H.	SAT Data for Minority Ethnicities	61
I.	Parent Education and Family Income.....	67
J.	SAT Improvement Committee Strategies.....	71

September 1998

Dear South Carolinians:

Public schools in our state continue to communicate to parents and students the importance of taking challenging academic courses in high school. The 1998 SAT scores for South Carolina students continue to demonstrate that students who take 20 or more academic credits score higher on the SAT than those students who do not take as rigorous a course load.

During the 1997 legislative session, the General Assembly enacted legislation that will require students to take 24 credits beginning with the ninth-grade class of school year 1997-98. Students will take more academic courses as the graduation requirements in mathematics, science and foreign language have been strengthened.

The Committee for SAT Improvement provided a number of recommendations, including funding of the PSAT. During the 1998 legislative session, the General Assembly passed legislation to provide an opportunity for students to take the Preliminary SAT (PSAT) or Preliminary ACT (PLAN) in their sophomore year. A student obtaining an SAT score of 1,000 or higher and a "B" average is eligible for the "LIFE Scholarship," which provides academic assistance to students attending South Carolina colleges and universities.

I believe that steps taken to improve SAT scores will take a few years to show results; SAT scores should increase considerably by 2001.

We need to encourage our students to participate in a challenging and rigorous academic program of study. Please join me in calling for higher standards for our education system and in setting higher individual goals for our students.

Barbara S. Nielsen, Ed.D.
State Superintendent of Education

SAT DATA SUMMARY

1998

	South Carolina	Nation
Average Verbal Score	478	505
Average Mathematics Score	473	512
Average Composite Score		
All Students	951	1017
African-American	821	860
White	1010	1054
Male	974	1040
Female	934	998
Private School Student	1001	1062
Change From Last Year (All)	-2	+1
Number of Graduating Seniors Tested	22,973	1,172,779
Percent Tested	61	43
Average Composite Score (with 20 or more academic courses) ^a	1045	1096
Number Tested (with 20 or more academic courses) ^a	6,588	459,461
Percent Tested (with 20 or more academic courses) ^a	37	50
SAT Gains in Average Composite Score from 1988	+6	+11
South Carolina High School Requirements		
Section 59-39-100, S.C. Code of Laws, as amended	24 credits	
(beginning with the ninth-grade class of school year 1997-98)		

a) Academic courses as recognized by The College Board include credits in six academic areas: English, Mathematics, Natural Science, Foreign/Classical Languages, Social Science/History and Arts and Music.

INTRODUCTION

This report provides summary data for high school seniors taking the Scholastic Assessment Test known as SAT-I. Students take the test to provide colleges with information about how well they are prepared for a college-level curriculum. The SAT-I is the revised version of the Scholastic Aptitude Test (SAT). A description of this test can be located in Appendix B of this report.

Students taking the SAT do not include all students in a high school. Neither the state nor school districts are involved in funding or selecting the students who take this test. Instead, SAT is administered by The College Board, a private company, and students register to take the test directly with The College Board. High schools provide information to students about the test and registration forms.

This report reflects reported scores for seniors who anticipated graduating in 1998. If a student takes the SAT as a junior, the scores are not reported until the following school year -- the student's senior year. If students take the SAT more than once, the most recent score is used in the summary score report.

Data are summarized for seniors in the nation, in South Carolina, in the 86 school districts and in high schools in the state. The national and state summaries include seniors enrolled in both public and private high schools. School district and high school data summaries in this report include only public schools in the state.

The reporting of data summarized for students with 20 or more credits refers to students who have self-reported that their high school curriculum would include 20 or more academic credits. Academic courses, as recognized by The College Board, include credits in six academic areas: English, Mathematics, Natural Science, Foreign/Classical Languages, Social Science/History and Arts and Music.

The scoring scale was recentered in spring 1995. The data in this summary report reflect the new, recentered scale. Data for the prior years for all students also are reported using the recentered scale.

Data are also available on the Department's Home Page (<http://www.state.sc.us/sde>).

BACKGROUND INFORMATION

Students who take the SAT complete a demographic questionnaire, but some students do not respond to all the questions. The following table indicates the percentage of students who provided their ethnicity and the academic subjects they completed or planned to complete.

	Ethnicity		Academic Subjects	
	Indicated	92%	21,175	77%
Not Indicated	8%	1,798	23%	5,253

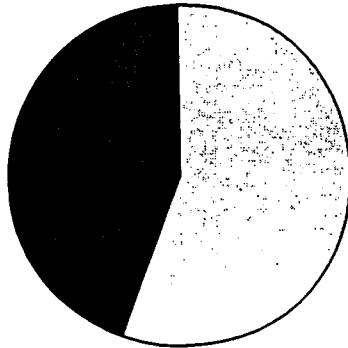
The SAT is administered in October, November, December, January, March, April, May and June of each year. October of the senior year is most popular time for students to take the test. Students may take the test more than once; the most recent score is used in the computation of the average SAT score. Test registration forms are available at the local high schools.

Year of Most Recent SAT Scores for Current Graduating Seniors						
Year of Most Recent SAT Administration	South Carolina			Nation		
	Number Tested	Percent Tested	Composite Score	Number Tested	Percent Tested	Composite Score
Senior Year	18,659	81	947	835,001	71	997
Junior Year	4,151	18	974	330,644	28	1068
Sophomore Year	151	1	900	6,255	1	1010
Freshman Year	12	0	930	879	0	992
Total	22,973	100	951	1,172,779	100	1017

1998 Percentage of South Carolina Public School Students Tested

African-American Females

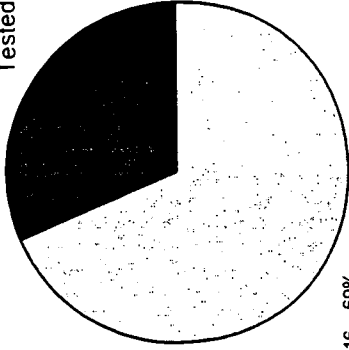
Tested 3,547 44%



Not Tested 4,474 56%

African-American Males

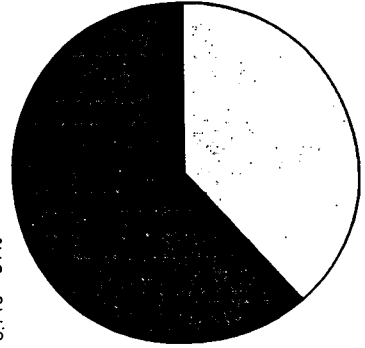
Tested 2,059 31%



Not Tested 4,516 69%

White Females

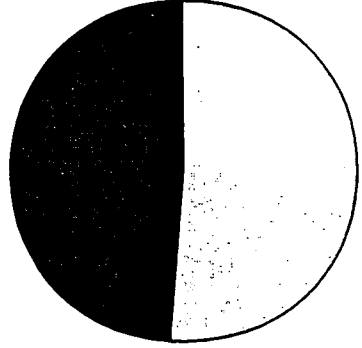
Tested 6,710 61%



Not Tested 4,207 39%

White Males

Tested 5,269 49%



Not Tested 5,574 51%

RECENTERING THE SAT SCORE REPORTING SCALE

The traditional SAT score reporting scale is a conversion of the raw score to a scale score that was anchored to a 1941 norm, or reference group, and established over 50 years ago. At the time the scale was established, a score of 500 was average. With a range of 200 to 800, scores of 400 to 600 were in the middle of the SAT score range. However, the 1941 population of 10,000 students consisted of a relatively small group of students and was based on an elite group taking the test. The original scale was representative of the students taking the test at that time, but is not representative of the nation now, particularly the million-plus population applying for college today.

Beginning with 1996 SAT scores, recentering reset the midpoint of the score range at 500, the middle of the 200-to-800 scale based on the 1993 population, the new reference group. As a result, the recentered verbal and math scores can be examined on a comparable scale. On the original scale, a 424 verbal score was comparable to a 478 Math Score. Recentering eliminated confusion about differences in math and verbal scores. The meaning of "average" performance is now easier to understand. The use of 500 as average is again meaningful. Student scores are interpreted in percentiles that are comparisons of scores with the scores of others taking the test.

For additional information, see *The New SAT and Balancing the Scales*, a brochure published by The College Board, Southern Regional Office. The College Board's Internet home page contains additional information (<http://www.collegeboard.org/index.html>).

Public School Students Meeting SAT Requirement For College Tuition Assistance

Students with Scores of 1000 or Higher

	All Students	Female	Males	African- Americans	Whites
Percent	39.5	36.0	44.3	13.6	52.0
Number	7,865	4,084	3,781	763	6,234
Tested	19,887	11,358	8,529	5,606	11,979

PERFORMANCE FOR SOUTH CAROLINA AND NATION

The average SAT verbal score in South Carolina decreased by 1 point between 1997 and 1998, from 479 to 478. The national average verbal score remained the same, 505. The average SAT math score in South Carolina decreased by 1 point, from 474 to 473. Nationally, math scores increased 1 point, from 511 to 512.

	South Carolina	Nation
Verbal		
Change in Verbal from last year	-1	0
Change in Verbal from 1994* to 1998	+5	+6
Mathematics		
Change in Math from last year	-1	+1
Change in Math from 1994* to 1998	0	+8
Composite Score Gain from 1994* to 1998	+5	+14

ACADEMIC PREPARATION

In terms of academic preparation, South Carolina has a smaller percentage of students taking a rigorous academic course load than the nation. The College Board, which administers the SAT, recommends that students take twenty academic credits in six academic areas. The academic areas are English, Mathematics, Natural Sciences, Foreign/Classical Languages, Social Sciences/History and Arts and Music. In 1997-98, South Carolina had 37 percent of students taking the SAT who expected to take the 20 or more academic credits recommended by the College Board, whereas the nation had 50 percent.

Students who completed/will complete 20 or more academic courses in 1998**	South Carolina			Nation		
	#	%	Composite Score	#	%	Composite Score
All Students	6,588	37	1045	459,461	50	1096
African-American Students	1,292	27	892	N/A	N/A	N/A
White Students	4,833	41	1086	N/A	N/A	N/A

For additional ethnic data, see Appendix H.

* Average SAT scores converted to the recentered scale for comparison purposes.

** Academic courses as recognized by the College Board include credits in six academic areas: English, Mathematics, Natural Science, Foreign/Classical Languages, Social Science/History, and Arts and Music.

STATE RESULTS

The SAT is primarily used in 23 states and the District of Columbia as a college admissions test. The percentage of seniors who elect to take the SAT ranges from a low of 47 percent in California to a high of 83 percent in District of Columbia. The SAT states are listed below in alphabetical order.

Average SAT Scores by State 1998				
	Verbal	Math	Composite Score	Participation Rate
Alaska	521	520	1041	52
California	497	516	1013	47
Connecticut	510	509	1019	80
Delaware	501	493	994	70
Dist. of Columbia	488	476	964	83
Florida	500	501	1001	52
Georgia	486	482	968	64
Hawaii	483	513	996	55
Indiana	497	500	997	59
Maine	504	501	1005	68
Maryland	506	508	1014	65
Massachusetts	508	508	1016	77
New Hampshire	523	520	1043	74
New Jersey	497	508	1005	79
New York	495	503	998	76
North Carolina	490	492	982	62
Oregon	528	528	1056	53
Pennsylvania	497	495	992	71
Rhode Island	501	495	996	72
South Carolina	478	473	951	61
Texas	494	501	995	51
Vermont	508	504	1012	71
Virginia	507	499	1006	66
Washington	524	526	1050	53

Source: The College Board, 1998

Appendix C provides data for all states.

STATE PARTICIPATION RATE

States with Highest Participation Rates in 1998

State	Verbal	Math	Composite Score	Participation Rate
DC	488	476	964	83
Connecticut	510	509	1019	80
New Jersey	497	508	1005	79
Massachusetts	508	508	1016	77
New York	495	503	998	76
New Hampshire	523	520	1043	74

States with Lowest Participation Rates in 1998

State	Verbal	Math	Composite Score	Participation Rate
Arkansas	568	555	1123	6
Iowa	593	601	1194	5
North Dakota	590	599	1189	5
South Dakota	584	581	1165	5
Utah	572	570	1142	4
Mississippi	562	549	1111	4

ANALYSIS OF SOUTH CAROLINA DATA

When comparing 1998 performance with 1994 performance, the average verbal score has increased 5 points in South Carolina, as compared to a increased of 6 points within that time period for the nation. The average math score remained the same in South Carolina; as compared to an increase of 8 points for the nation.

South Carolina and National Average SAT Scores 1994-1998						
Year	South Carolina			Nation		
	Verbal	Math	Composite Score	Verbal	Math	Composite Score
1994*	473	473	946	499	504	1003
1995*	478	473	951	504	506	1010
1996	480	474	954	505	508	1013
1997	479	474	953	505	511	1016
1998	478	473	951	505	512	1017
1994-1997	+5	0	+5	+6	+8	+14

*Average SAT scores converted to the recentered scale for comparison purposes.

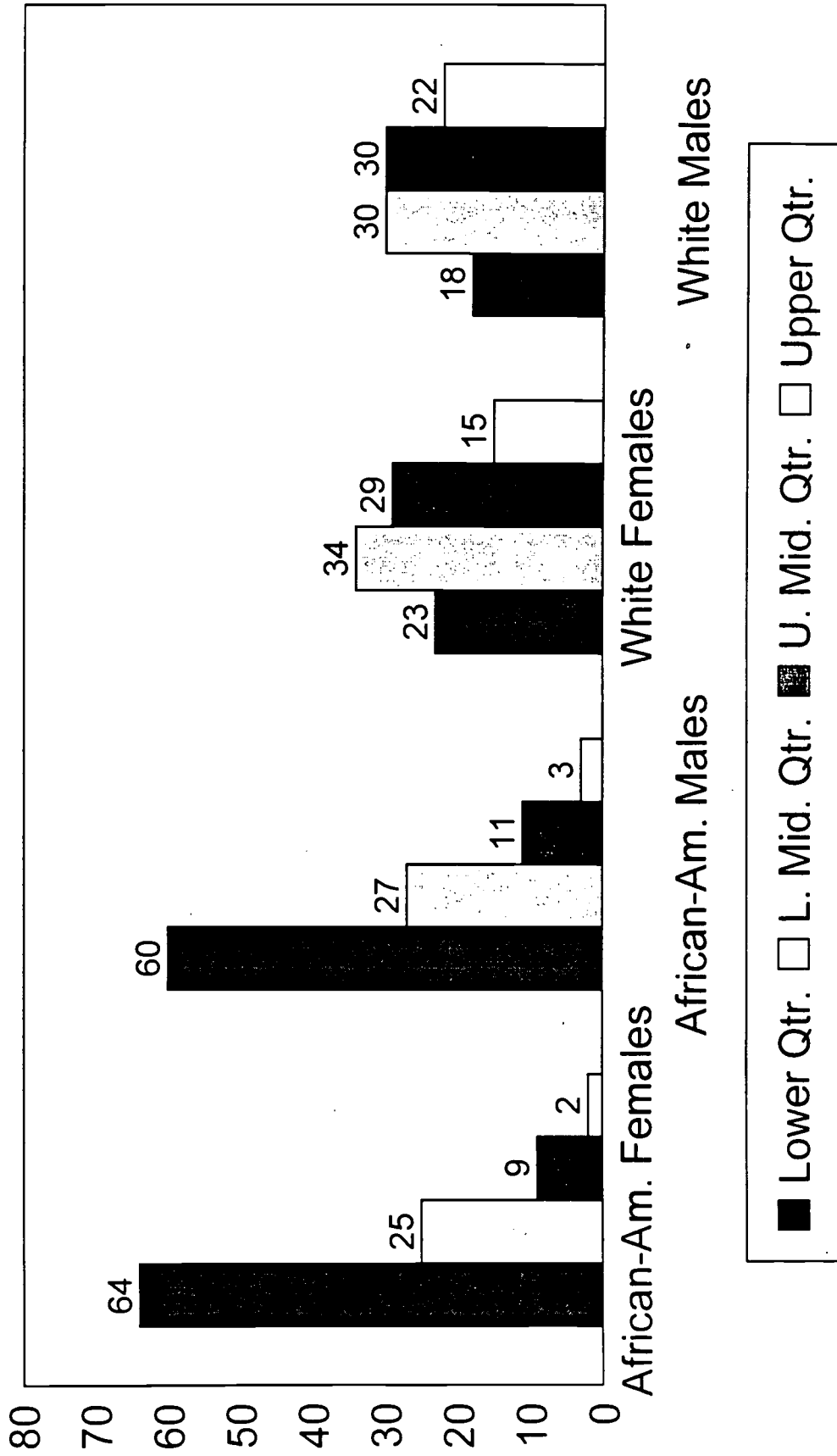
A comparison of scores by national quarter shows the gap in performance by ethnicity. The table below as well as the chart on the following page illustrates the differences.

Performance in Each National Quarter in 1998*				
(South Carolina Public School Students)				
	Lower Quarter	Lower Middle	Upper Middle	Upper Quarter
All Students	34	30	23	13
African-American Female	64	25	9	2
African-American Male	60	27	11	3
White Female	23	34	29	15
White Male	18	30	30	22
National (all students)	25	25	25	25

For additional ethnic data, see Appendix H.

*Percentages may not add to 100 due to rounding.

Percentage of South Carolina Public School Students Scoring in Each National Quarter for 1998



DATA BY GENDER

The average SAT verbal score for females in South Carolina decreased by 1 point between 1997 and 1998, from 475 to 474. The average SAT math score for females increased by 1 point between 1997 and 1998, from 459 to 460.

The average SAT verbal score for males in South Carolina decreased by 1 point between 1997 and 1998, from 484 to 483. The average SAT math score for males decreased by 1 point between 1997 and 1998, from 492 to 491.

	South Carolina		Nation	
	Male	Female	Male	Female
Verbal				
Change in Verbal from last year	-1 (484 to 483)	-1 (475 to 474)	+2 (507 to 509)	-1 (503 to 502)
Mathematics				
Change in Math from last year	-1 (492 to 491)	+1 (459 to 460)	+1 (530 to 531)	+2 (494 to 496)

From 1994 to 1998 males increased 9 points in their average SAT composite score; females increased 4 points.

Average SAT Scores and Point Change South Carolina and Nation by Gender								
Subgroup	Test	1994*	1995*	1996	1997	1998	1994-98 State Change	1998 Nation
Females	Verbal	471	477	478	475	474	+3	502
	Math	459	461	461	459	460	+1	496
Males	Verbal	475	480	484	484	483	+8	509
	Math	490	489	491	492	491	+1	531

* Average SAT scores converted to recentered scale for comparison purposes.

DATA BY EDUCATIONAL LEVEL OF PARENTS

Students indicate the educational level of their parents when completing the SAT registration application. In 1998, the percentage of students indicating that their parents only have high school diplomas or less is higher for African-American students (62) than for white students (36).

Parental Educational Level Reported by Student Parents' High School Diploma or Less Reported in Percentages												
	<u>South Carolina</u>									<u>Nation</u>		
	African- American			White			All			All		
	'96	'97	'98	'96	'97	'98	'96	'97	'98	'96	'97	'98
Percent Reporting	65	62	62	40	36	36	45	43	43	39	38	38

For additional ethnic data, see Appendix H.

DATA BY ETHNICITY

A larger percentage of South Carolina seniors elected to take the SAT when compared to the national percentage.

	<u>South Carolina</u>		<u>Nation</u>	
	#	%	#	%
Graduating Seniors Tested	22,973	61	1,172,779	43
African-American	6,035	N/A	114,912	N/A
White	14,051	N/A	704,462	N/A
Other Categories of Ethnicity*	1,089	N/A	230,399	N/A

For additional ethnic data, see Appendix H.

*Note: All students do not respond to questions about themselves, so subtotals for ethnicity do not sum to the total tested.

DATA BY ETHNICITY

African-American students continue to make lower scores than white students on the SAT. The average verbal score for African-American students was 414 and 508 for white students. The average mathematics score was 407 for African-American students and 502 for white students.

	South Carolina		Nation	
	African-American	White	African-American	White
Verbal				
Change in Verbal from last year	-1 (415 to 414)	0 (508)	0 (434)	0 (526)
Mathematics				
Change in Math from last year	0 (407)	0 (502)	+3 (423 to 426)	+2 (526 to 528)

For additional ethnic data, see Appendix H.

The average SAT verbal score for African-American students decreased by 1 point between 1997 and 1998, from 415 to 414. The average SAT math score remained the same, 407.

The average SAT verbal score for white students remained the same at 508 between 1997 and 1998. The average SAT math score remained the same, 502.

From 1994 to 1998 African-American students remained the same in the average SAT composite score, 821, while the average SAT composite score for white students increased by 10, to 1010 points.

Average SAT Scores and Point Change								
South Carolina and Nation by Ethnic Group								
Ethnic Group	Test	1994*	1995*	1996	1997	1998	1994-98 State Change	1998 Nation
African-American	Verbal	409	415	419	415	414	5	434
	Math	412	412	412	407	407	-5	426
White	Verbal	501	506	508	508	508	7	526
	Math	499	499	500	502	502	3	528

For additional ethnic data, see Appendix H.

* Average SAT scores converted to recentered scale for comparison purposes

DATA BY ETHNICITY

South Carolina								
	1997				1998			
	#	%	V	M	#	%	V	M
American Indian	207	1	458	451	168	1	463	457
Asian American	383	2	491	541	443	2	485	532
African American	5,699	28	415	407	6,035	28	414	407
Mexican American	58	0	478	471	58	0	491	486
Puerto Rican	75	0	487	481	57	0	481	458
Other Hispanic	86	0	482	480	111		477	493
White	13,444	67	508	502	14,051	66	508	502
Other	214	1	496	478	252	1	498	481
No Response	1,518	*	460	455	1,798	*	457	456

* Not included in calculating percentages.

Nation								
	1997				1998			
	#	%	V	M	#	%	V	M
American Indian	10,677	1	475	475	10,159	1	480	483
Asian American	89,236	9	496	560	94,066	9	498	562
African American	110,482	11	434	423	114,912	11	434	426
Mexican American	39,737	4	457	458	41,028	4	453	460
Puerto Rican	13,208	1	454	447	13,635	1	452	447
Other Hispanic	33,123	3	466	468	35,749	3	461	466
White	693,736	68	526	526	704,462	67	526	528
Other	31,050	3	512	514	35,762	3	511	514
No Response	105,792	*	489	502	123,006	*	490	503

* Not included in calculating percentages.

DATA BY CLASS RANK

Seniors who self-report high class ranks in high school have higher scores than other seniors. For students in South Carolina who reported themselves in the top 10 percent of their class, their SAT average verbal score was 565 and their average SAT math score was 565.

Scores by Class Rank				
	Verbal		Math	
	South Carolina	Nation	South Carolina	Nation
Top 10th	565	590	565	607
Second 10th	506	530	505	543
Second 5th	470	494	465	500
Third 5th	431	454	423	453

DATA BY GRADE POINT AVERAGE

High School Grade Point Average	South Carolina SAT Test Takers		South Carolina SAT Mean Scores		Nation SAT Test Takers		Nation SAT Mean Scores	
	Number	Percent	Verbal	Math	Number	Percent	Verbal	Math
A+ (97-100)	950	5	599	599	65,545	7	613	629
A (93-96)	2,706	13	554	551	160,624	15	569	582
A- (90-92)	2,745	13	518	517	168,453	16	542	554
B (80-89)	10,448	50	466	460	507,196	48	483	487
C (70-79)	4,054	19	414	407	141,256	13	430	428
D, E, or F (below 70)	122	1	394	378	4,516	0	408	411
No Response	1,948				122,189			

DATA BY COURSE PARTICIPATION

Students in South Carolina and the nation who report themselves as taking honors courses perform better on the SAT than other students.

	South Carolina			Nation		
	#	%	SAT	#	%	SAT
Honors English	6,651	32	552	394,277	38	567
Honors Mathematics	5,421	26	565	307,621	29	598

DATA BY COURSE PARTICIPATION

Participation rates for English courses for South Carolina students were similar to the nation.

Coursework	South Carolina			Nation		
	#	%	SAT Verbal	#	%	SAT Verbal
American Literature	17,256	84	493	880,185	85	519
British Literature	10,003	49	518	441,919	43	542
Composition	13,290	65	500	730,658	71	525
Grammar	15,596	76	491	771,350	75	517

The participation rate in Trigonometry and Calculus by South Carolina students was lower than the nation.

Coursework	South Carolina			Nation		
	#	%	SAT Math	#	%	SAT Math
Algebra	21,010	97	474	1,027,249	95	512
Geometry	20,172	93	479	1,007,512	93	516
Trigonometry	6,764	31	515	560,779	52	548
Calculus	3,935	18	576	264,406	25	610

DATA BY COURSE PARTICIPATION

South Carolina Math Coursework % and M/F 1997 and 1998									
	African American				White				
	1997		1998		1997		1998		
# of Test Takers	5,699		6,035		13,444		14,051		
% Male/Female	38/62		37/63		46/54		44/56		
# Male/Female	2,161/3,538		2,235/3,800		6,124/7,320		6,219/7,832		
	African American				White				
	1997		1998		1997		1998		
	%/#	M/F	%/#	M/F	%/#	M/F	%/#	M/F	
Algebra	97	38/62	97	37/63	98	46/54	98	44/56	
	5,480		5,812		13,077		13,637		
Geometry	88	37/63	90	36/64	95	45/55	95	44/56	
	5,003		5,402		12,741		13,305		
Trigonometry	33	35/65	28	36/64	36	47/53	32	46/54	
	1,844		1,692		4,837		4,521		
Pre-Calculus	31	34/66	32	35/65	47	46/54	49	44/56	
	1,732		1,945		6,302		6,895		
Computer Math	9	33/67	8	38/62	7	55/45	7	55/45	
	489		497		955		947		
Other Math	31	36/64	32	35/65	21	43/57	22	42/58	
	1,747		1,895		2,745		3,073		

Contact the Office of Research, South Carolina Department of Education, for course-taking patterns for the other ethnicities.

DATA BY COURSE PARTICIPATION

South Carolina Science Coursework % and M/F 1997 and 1998									
	African American				White				
	1997		1998		1997		1998		
# of Test Takers	5,699		6,035		13,444		14,051		
% Male/Female	38/62		37/63		46/54		44/56		
# Male/Female	2,161/3,538		2,235/3,800		6,124/7,320		6,219/7,832		
	African American				White				
	1997		1998		1997		1998		
	%/#	M/F	%/#	M/F	%/#	M/F	%/#	M/F	
Biology	97	38/62	97	37/63	98	45/55	97	44/56	
	5,481		5,838		13,076		13,578		
Chemistry	83	36/64	85	36/64	90	45/55	91	44/56	
	4,712		5,110		12,030		12,635		
Earth Science	29	39/61	28	39/61	32	47/53	32	47/53	
	1,624		1,708		4,248		4,500		
Physics	27	41/59	30	41/59	34	54/46	35	52/48	
	1,535		1,777		4,556		4,875		
Other Science	41	34/66	41	34/66	45	42/58	45	41/59	
	2,326		2,432		6,002		6,225		

Contact the Office of Research, South Carolina Department of Education, for course-taking patterns for the other ethnicities.

DISTRICTS ABOVE NATIONAL AVERAGE

The SAT is reported for high school seniors for each of the 86 school districts in South Carolina. All students in a district do not take the SAT; the percentage of students tested, by district, ranged from a low of 12 percent in Hampton 2 to a high of 80 percent in Lexington 5 in 1998.

In 1998, 6 school districts with average SAT composite scores exceeded the national average SAT composite score of 1017.

District	1997			1998		
	Percent Tested	Number Tested	Composite Score	Percent Tested	Number Tested	Composite Score
Anderson 1	49	182	1007	44	170	1019
Florence 5	57	48	1004	51	35	1018
Lexington 1	67	464	1032	69	547	1027
Lexington 5	83	725	1049	80	709	1051
York 3	51	411	967	52	387	1018
York 4	84	184	989	68	172	1028

In addition to the average SAT scores for students by school district, the chart in Appendix D provides the district average SAT scores for those students reporting that they expect to take 20 or more academic credits.

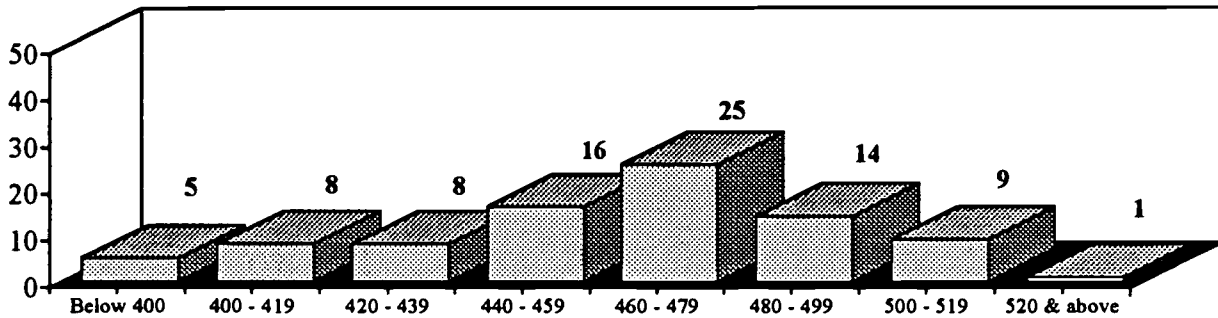
PRIVATE SCHOOLS

Data are not available for individual private schools. The state data by type of high school are provided below.

Type of High School	Tested	Composite
Public	19,892	950
Religiously Affiliated	1,013	1012
Independent	1,052	992
Private Total	2,065	1001
Not Known	1,016	

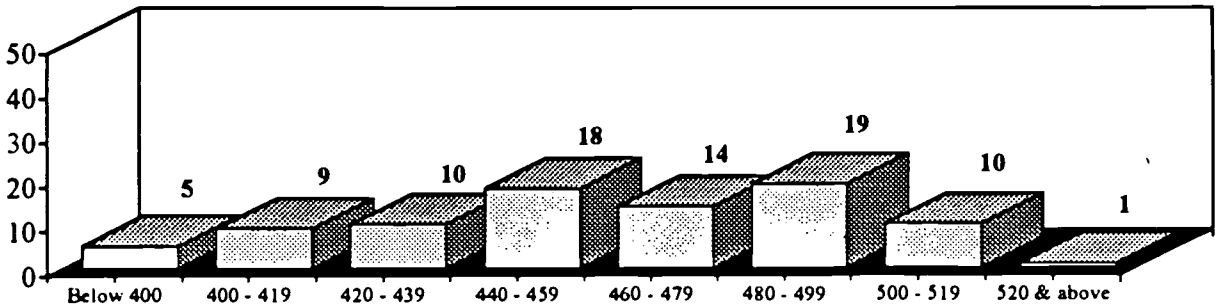
DISTRICT AVERAGE SAT SCORES

**Number of South Carolina School Districts in
SAT Score Intervals
Verbal - 1998**



National Average Score: 505 State Average Score: 478

**Number of South Carolina School Districts in
SAT Score Intervals
Math - 1998**



National Average Score: 512 State Average Score: 473

HIGH SCHOOLS ABOVE NATIONAL AVERAGE

The SAT is reported for high school seniors by high school. In South Carolina, the percentage of seniors who elected to take the SAT ranges from a low 12 percent at Estill High School in Hampton 2 School District to a high of 100 percent at Mayo High for Math and Science in Darlington School District.

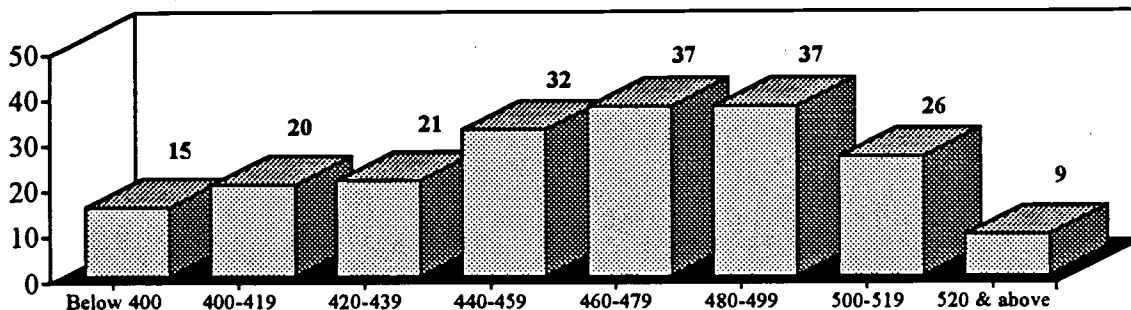
In 1998, 19 public high schools and the Governor's School for Science and Math with average SAT composite scores exceeded the 1998 national average SAT composite score of 1017.

District	School	1997			1998		
		Tested %	#	Composite Score	Tested %	#	Composite Score
Aiken	South Aiken High School	78	211	1035	74	217	1036
Anderson 1	Palmetto High School	38	58	1019	27	39	1039
Beaufort	Hilton Head High	75	180	1014	72	178	1022
Charleston	Academic Magnet School	99	67	1257	97	76	1213
Darlington	Mayo H S Math Sci Tech	88	14	1148	100	27	1077
Florence 5	Johnsonville High	57	48	1004	51	35	1018
Greenville	Greenville High Academy	NA	NA	NA	62	104	1041
Greenville	Wade Hampton High	71	160	1012	67	158	1020
Greenville	Riverside High School	82	221	1090	88	252	1071
Lexington 1	Lexington High School	75	345	1045	76	431	1028
Lexington 1	Pelion High	57	56	970	38	33	1039
Lexington 5	Chapin High School	85	137	1028	76	128	1063
Lexington 5	Irmo High School	84	361	1055	87	357	1056
Lexington 5	Dutch Fork High School	79	227	1051	72	222	1037
Pickens	D W Daniel High School	72	171	1065	70	154	1081
Richland 1	Dreher High School	76	176	1052	74	159	1049
Richland 2	Richland Northeast High	59	223	1023	71	276	1028
York 3	Northwestern High	60	256	975	62	249	1034
York 4	Fort Mill High	84	184	989	68	172	1028
State	Governor's School	*	58	1350	NA	62	1335

In addition to the average SAT scores for students by school, the chart in Appendix E provides the school average SAT scores for those students reporting that they expect to take 20 or more academic credits.

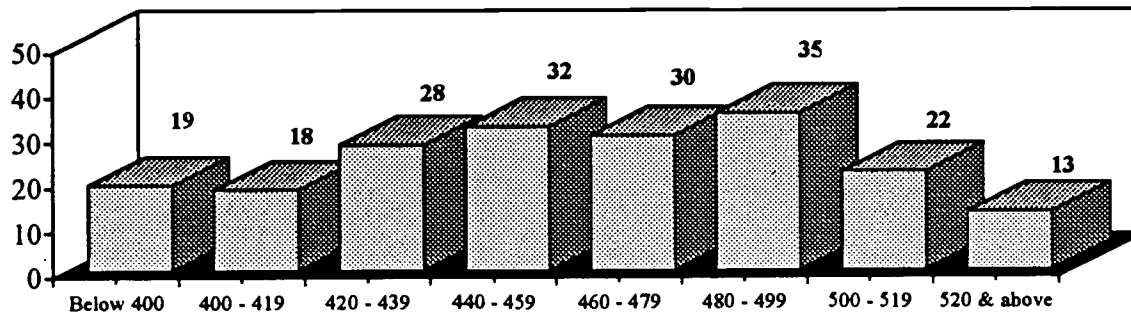
HIGH SCHOOL AVERAGE SAT SCORES

Number of South Carolina High Schools in SAT Score Intervals
Verbal - 1998



National Average Score: 505 State Average Score: 478

Number of South Carolina High Schools in SAT Score Intervals
Math - 1998



National Average Score: 512 State Average Score: 473

RECOMMENDATIONS

1. Students planning to attend four-year higher education institutions must take rigorous courses in the recommended subject areas and earn at least 24 units of credits before graduating from high school. Students need support from the home and the school in encouraging them to take the most challenging courses to prepare themselves for a college-level curriculum.
2. Students need to take the PSAT in 9th, 10th and 11th grades to prepare them for taking the SAT in the 11th and 12th grades. (The State pays for all 10th grade students to take PSAT). Students need to work with their teachers in analyzing their PSAT score report, identifying both strong and weak areas and focusing on improving skills in those identified weaker areas to be better prepared in taking the SAT.
3. The South Carolina Department of Education has begun identifying curriculum alignment teams and developing a self-study curriculum checklist for middle and high schools in preparing for curriculum alignment team visits. These teams will determine the extent to which courses are rigorous, the implementation of the grade-by-grade standards and end-of-course standards, the use of the curriculum frameworks, the integration of technology into the curriculum and the knowledge and skills tested on the SAT. These teams will work with faculties to ensure that curriculum is aligned to the new standards and assessment.
4. Local school districts and high schools need to review, analyze and study their PSAT Summary of Answers reports. Efforts need to focus on curriculum alignment with the new standards and improving instruction in the identified weaker areas to better prepare students for taking the SAT.
5. High schools need to pay particular attention to aligning curriculum and improving instruction in critical reading skills, including comprehension, vocabulary, sentence and paragraph structure, problem-solving skills, reasoning and higher level thinking skills.
6. In addition, schools need to focus attention on course content standards and skills in Algebra I and II, Geometry, Trigonometry, Pre-calculus, Calculus, Probability and Statistics; Physical/Earth Science, Biology, Chemistry, Physics and the Tech-Prep applied academic courses. The Math/Science hubs can provide technical assistance to schools to strengthen mathematics and science teaching. Local schools and hubs need to partner in maximizing the staff and resources of the hubs.
7. English and mathematics teachers in middle and high schools need to incorporate the SAT question for the day into their daily teaching activities. The question can be found on the SAT Calendar sent to all middle and high schools. Each question is a real SAT question and is aligned with the new standards.

RECOMMENDATIONS

8. Students need to begin taking college-preparation courses early in their high school years. For some students those courses could begin in middle school. By beginning early, students can be better prepared for college admissions tests (SAT) and college-level curriculum.
9. Schools need to ensure that all curriculum content areas, including the Tech-Prep applied academic courses, are rigorous and emphasize application of knowledge and technology.
10. Schools need to develop PSAT/SAT Improvement Plans as part of their strategic/accountability plans with the goal of raising their SAT scores. They should be reviewed and updated annually.
11. Parents and educators must develop high student expectations and standards for student learning. Parents/educators must insist that students take the most challenging and rigorous courses in high school to prepare for higher education institutions. Parents must insist that their children have access to rigorous courses and schools must offer a curriculum that reflects rigor and high standards.
12. For several years, the South Carolina Department of Education has published comparisons between course-taking patterns of students and the SAT scores. Students need to be enrolled in those courses recommended by The College Board (4 years of English; 4 years of mathematics, including Algebra I, II and Geometry, Trigonometry, Pre-calculus and Calculus; 3 years of natural science, including Physical/Earth Science, Biology, Chemistry and Physics; 4 years of social sciences, including World/American/European History, Government/Economics, Geography; 3 years of a foreign language; at least one year of computer science; and at least one year of study in the arts (visual and/or performing).
13. Four-year higher education institutions in South Carolina need to continue reviewing and raising admissions standards, admitting only those students who have earned at least 24 or more units in high school and who have at least a "C" average.
14. Students need to know there are financial rewards for those achieving academic excellence. A student planning to attend a four-year higher education institution in South Carolina can receive a \$2,000 LIFE Scholarship by graduating from high school with a "B" average and scoring 1000 or better on SAT-I. A student attending a two-year high education institution in South Carolina can receive \$1,000 LIFE Scholarship.

APPENDIX A

REVISION OF SOUTH CAROLINA
HIGH SCHOOL REQUIREMENTS

STATUTORY PROVISION:

Section 59-39-100. Issuance of uniform diplomas by accredited high school; units required.

Section 59-39-100 of the 1976 Code is amended to read:

"Section 59-39-1 00. Diplomas issued to graduates of accredited high schools within this State must be uniform in every respect and particularly as to color, size, lettering, and marking. The number of units required for a state high school diploma is twenty units as prescribed by the State Board of Education. Beginning in the 1986-87 academic year, a minimum of three units must be earned in mathematics and a minimum of two units must be earned in science.

One unit in computer science, if approved by the State Department of Education for this purpose, may be counted toward the mathematics requirement.

Students who earn one unit in science and six or more units in a specific occupational service area will meet the science requirements for a state high school diploma. Vocational programs operating on a 3-2-1 structure may count prevocational education as one of the six required units.

Beginning with the ninth-grade class of school year 1997-98 and thereafter, the number of units required for a high school diploma is twenty-four units as prescribed by the State Board of Education by regulation, with one additional unit required in mathematics, science, and computer science to include keyboarding. For students in a college preparatory track, as defined by the state board, one additional unit must be earned in a foreign language; and for students in a track designed to enter the work force, as defined by the state board, one additional vocational unit must be earned. Beginning with the ninth-grade class of school year 1997-98, if a student counts one unit of computer science toward his mathematics requirement as permitted above, one additional unit of computer science must be earned.

Nothing herein prohibits local school boards of trustees from awarding recognition to students who complete additional units and credits beyond those required by this section."

1997-98 Appropriation Act, Part II, Section 6.

APPENDIX B

DESCRIPTION OF SAT-I

DESCRIPTION OF SAT-I

The SAT-I (SAT) is an assessment composed of two sections - verbal reasoning and mathematics reasoning.

The verbal section includes the following:

19 questions	sentence completion
19 questions	analogies
40 questions	critical reading (new part)
<u>78 verbal questions - (75 minutes)</u>	

The mathematics section includes 10 questions in which students produce responses without a list of possible answers from which to choose. The use of calculators is acceptable. The mathematics section includes the following:

15 questions	quantitative comparisons
10 questions	student-produced responses
35 questions	problem-solving mathematics
<u>60 mathematics questions - (75 minutes)</u>	

The number of correct responses in raw scores on the verbal and mathematics sections of SAT is converted to scale scores. Scale scores range from 200 to 800 for each section of the test. Scores are also reported as combined verbal and mathematics scores, called a composite score with a range of 400 to 1600.

The use of scale scores allows comparisons of SAT scores from one test administration to another. Almost all students included in this summary report took the SAT on the recentered scale. For students who received scores prior to the spring of 1995, their scores have been converted to the recentered scale for purposes of having comparable data.

Students may take the SAT anytime during high school and may take the test more than once. Information about test administration, dates, fees, registration procedures and registration forms can be obtained from the school counselor's office in most high schools.

APPENDIX C

STATE SCORES
(ALL STATES)

SAT Table 2: SAT averages by state for 1988 and 1995-1998

Comparing or ranking states on the basis of SAT scores alone is invalid and strongly discouraged by the College Board.

States	1988		1995		1996		1997		1998		% Graduates Taking SAT*
	V	M	V	M	V	M	V	M	V	M	
Alabama	554	540	565	555	565	558	561	555	562	558	8%
Alaska	518	501	521	513	521	513	520	517	521	520	52%
Arizona	531	523	524	520	525	521	523	522	525	528	32%
Arkansas	554	536	556	542	566	550	567	558	568	555	6%
California	500	508	492	509	495	511	496	514	497	516	47%
Colorado	537	532	538	538	536	538	536	539	537	542	31%
Connecticut	513	498	507	502	507	504	509	507	510	509	80%
Delaware	510	493	505	494	508	495	505	498	501	493	70%
D.C.	479	461	485	471	489	473	490	475	488	476	83%
Florida	499	495	497	496	498	496	499	499	500	501	52%
Georgia	480	473	483	477	484	477	486	481	486	482	64%
Hawaii	484	505	483	507	485	510	483	512	483	513	55%
Idaho	543	523	544	532	543	536	544	539	545	544	16%
Illinois	540	540	563	574	564	575	562	578	564	581	13%
Indiana	490	486	492	494	494	494	494	497	497	500	59%
Iowa	587	588	589	595	590	600	589	601	593	601	5%
Kansas	568	557	576	571	579	571	578	575	582	585	9%
Kentucky	551	535	552	542	549	544	548	546	547	550	13%
Louisiana	551	533	560	552	559	550	560	553	562	558	8%
Maine	508	493	504	497	504	498	507	504	504	501	68%
Maryland	509	501	506	503	507	504	507	507	506	508	65%
Massachusetts	508	499	505	502	507	504	508	508	508	508	77%
Michigan	532	533	559	565	557	565	557	566	558	569	11%
Minnesota	546	549	580	591	582	593	582	592	585	598	9%
Mississippi	557	539	572	557	569	557	567	551	562	549	4%
Missouri	547	539	569	566	570	569	567	568	570	573	8%
Montana	547	547	549	553	546	547	545	548	543	546	24%
Nebraska	562	561	568	570	567	568	562	564	565	571	8%
Nevada	517	510	511	508	508	507	508	509	510	513	33%
New Hampshire	523	511	520	515	520	514	521	518	523	520	74%
New Jersey	500	495	496	503	498	505	497	508	497	508	79%
New Mexico	553	543	559	549	554	548	554	545	554	551	12%
New York	497	495	495	498	497	499	495	502	495	503	76%
North Carolina	478	470	488	482	490	486	490	488	490	492	62%
North Dakota	572	569	587	602	596	599	588	595	590	599	5%
Ohio	529	521	536	535	536	535	535	536	536	540	25%
Oklahoma	558	542	565	553	566	557	568	560	568	564	8%
Oregon	517	507	525	522	523	521	525	524	528	528	53%
Pennsylvania	502	489	496	489	498	492	498	495	497	495	71%
Rhode Island	508	496	502	490	501	491	499	493	501	495	72%
South Carolina	477	468	478	473	480	474	479	474	478	473	61%
South Dakota	585	573	579	576	574	566	574	570	584	581	5%
Tennessee	560	543	571	560	563	552	564	556	564	557	13%
Texas	494	490	495	501	495	500	494	501	494	501	51%
Utah	572	553	585	576	583	575	576	570	572	570	4%
Vermont	514	499	506	499	506	500	508	502	508	504	71%
Virginia	507	498	504	494	507	496	506	497	507	499	66%
Washington	525	517	519	517	519	519	523	523	524	526	53%
West Virginia	528	519	525	509	526	506	524	508	525	513	18%
Wisconsin	549	551	574	585	577	586	579	590	581	594	7%
Wyoming	550	545	551	544	544	544	543	543	548	546	10%
National	505	501	504	506	505	508	505	511	505	512	43%

*Based on the projection of high school graduates in 1998 by the Western Interstate Commission for Higher Education, and number of students in the Class of 1998 who took the SAT I: Reasoning Test. Updated projections in this column make it inappropriate to compare percentages for this year with those of previous years.

APPENDIX D

DISTRICT SCORES

Scholastic Assessment Test Performance for South Carolina's 1998 Graduating Seniors

District	All Seniors Taking the SAT										Seniors w/20 or More Academic Credits			
	Total Number of Seniors	Number Taking SAT		Percent Tested	Composite 1997		Composite 1998	Difference	Verbal Average Score	Math Average Score	Number	Composite	Verbal Average Score	Math Average Score
		1997	1998		1997	1998								
Abbeville	203	129	116	57	909	937	28	473	464	19	1045	521	524	
Aiken	1385	827	813	59	979	979	0	490	489	204	1084	540	544	
Allendale	102	41	32	31	796	801	5	394	407	2				
Anderson 1	386	182	170	44	1007	1019	12	514	505	97	1057	538	519	
Anderson 2	216	88	109	50	931	969	38	485	484	36	1075	547	528	
Anderson 3	123	47	43	35	994	967	-27	487	480	6	1050	543	507	
Anderson 4	120	66	67	56	963	952	-11	475	477	16	985	492	493	
Anderson 5	606	321	320	53	981	978	-3	494	484	88	1046	530	516	
Bamberg 1	134	47	48	36	950	942	-8	462	480	10	996	484	512	
Bamberg 2	48	24	23	48	750	787	37	397	390	1				
Barnwell 19	77	41	31	40	801	897	96	448	449	8	1075	531	544	
Barnwell 29	73	19	31	42	960	926	-34	454	472	10	1140	544	596	
Barnwell 45	133	96	69	52	916	882	-34	452	430	15	1014	528	486	
Beaufort	803	421	439	55	949	961	12	488	473	161	1051	534	517	
Berkeley	1476	527	552	37	968	955	-13	479	476	119	1033	514	519	
Calhoun	110	39	39	35	805	843	38	421	422	5	928	480	448	
Charleston	2054	1182	1243	61	932	933	1	477	456	354	1052	539	513	
Cherokee	433	214	215	50	905	916	11	460	456	52	923	463	460	
Chester	332	127	160	48	897	877	-20	437	440	47	911	451	460	
Chesterfield	499	227	260	52	896	862	-34	431	431	44	970	487	483	
Clarendon 1	84	22	28	33	805	807	2	406	401	6	795	412	383	
Clarendon 2	198	64	75	38	937	965	28	478	487	24	1023	505	518	
Clarendon 3	69	32	29	42	951	962	11	470	492	1				
Colleton	347	172	192	55	870	858	-12	432	426	46	918	468	450	
Darlington	575	310	334	58	921	884	-37	444	440	59	992	499	493	

*The College Board recognized college-bound preparation as 20 or more credits in six academic areas of English, Mathematics, Natural Science, Foreign/Classical Languages, Social Science/History, and Arts and Music.

** Differences indicates increase from last year. Large differences may be due to small N counts.

Note: If the number of students in a category is less than five, no test scores are computed for that category.

All Seniors Taking the SAT

District	Total Number of Seniors	Number Taking SAT				All Seniors Taking the SAT			Seniors w/20 or More Academic Credits					
		1997	1998	Taking SAT	Number	Percent Tested	Composite 1997	Composite 1998	Difference	Verbal Average Score	Math Average Score	Number	Composite	Verbal Average Score
Dillon 1	73	30	25	868	871	3	434	437	3	3	18	997	499	498
Dillon 2	230	95	88	862	912	50	453	459	50	50	16	1062	528	534
Dillon 3	85	28	34	971	994	23	488	506	23	23	130	1096	556	540
Dorchester 2	912	476	523	993	981	-12	496	485	-12	2	9	975	492	483
Dorchester 4	142	56	58	800	802	2	406	396	2	23	17	1009	503	506
Edgefield	207	93	115	871	894	23	445	449	23	-46	12	920	447	473
Fairfield	188	73	97	871	825	-46	405	420	-46	0	197	1017	520	497
Florence 1	982	587	650	936	936	0	475	461	0	-36	6	912	507	405
Florence 2	88	49	68	922	886	-36	456	430	-36	-45	25	921	467	454
Florence 3	263	109	138	861	816	-45	409	407	-45	65	1	921	467	454
Florence 4	79	39	28	780	845	65	426	419	65	14	8	1122	563	559
Florence 5	69	48	35	1004	1018	14	509	509	14	-5	88	1009	503	506
Georgetown	582	295	329	908	903	-5	453	450	-5	-5	619	1088	547	541
Greenville	3219	1845	2020	1000	995	-5	500	495	-5	-29	82	1022	504	518
Greenwood 50	414	276	295	970	941	-29	467	474	-29	-46	6	1005	510	495
Greenwood 51	73	24	53	979	933	-46	473	460	-46	43	13	1109	535	574
Greenwood 52	88	48	63	939	982	43	478	504	43	-20	13	1028	510	518
Hampton 1	138	70	70	900	880	-20	445	435	-20	152	2	1022	509	513
Hampton 2	60	17	7	815	967	152	476	491	152	-2	207	1022	406	346
Horry	1548	707	773	963	961	-2	477	484	-2	-61	7	752	406	346
Jasper	199	63	76	802	741	-61	375	366	-61	11	100	1037	524	513
Kershaw	568	301	281	963	974	11	488	486	11	-12	58	997	501	496
Lancaster	608	318	332	911	899	-12	451	448	-12	-33	60	1010	505	505
Laurens 55	299	133	154	960	927	-33	465	462	-33	37	22	1044	522	522
Laurens 56	201	89	92	928	965	37	479	486	37	19	7	906	457	449
Lee	136	72	53	751	770	19	382	388	19	19	7	906	457	449

*The College Board recognized college-bound preparation as 20 or more credits in six academic areas of English, Mathematics, Natural Science, Foreign/Classical Languages, Social Science/History, and Arts and Music.

** Differences indicates increase from last year. Large differences may be due to small N counts.

Note: If the number of students in a category is less than five, no test scores are computed for that category.

District	Total Number of Seniors	All Seniors Taking the SAT										Seniors w/20 or More Academic Credits		
		Number Taking SAT		Percent Tested	Composite		Difference	Verbal Average Score		Math Average Score	Number	Composite	Verbal Average Score	Math Average Score
		1997	1998		1997	1998		1997	1998					
Lexington 1	795	464	547	69	1032	1027	-5	515	512	192	1102	552	550	
Lexington 2	493	303	279	57	974	971	-3	487	484	113	1043	530	513	
Lexington 3	155	89	76	49	914	889	-25	442	447	27	982	492	490	
Lexington 4	113	56	66	58	936	932	-4	469	463	24	931	463	468	
Lexington 5	886	725	709	80	1049	1051	2	520	531	273	1112	552	560	
McCormick	71	39	32	45	815	892	77	460	432	3				
Marion 1	205	83	104	51	928	921	-7	461	460	45	958	484	474	
Marion 2	167	85	76	46	841	821	-20	419	402	8	874	459	415	
Marion 3	41	15	17	41	783	868	85	429	439	4				
Marion 4	24	15	6	25	922	818	-104	410	408	0				
Marlboro	307	123	135	44	839	838	-1	420	418	27	939	477	462	
Newberry	324	183	176	54	897	912	15	462	450	54	994	503	491	
Oconee	618	328	318	51	997	981	-16	491	490	123	1033	521	512	
Orangeburg 3	233	65	85	36	800	831	31	418	413	17	903	466	437	
Orangeburg 4	233	101	86	37	910	924	14	460	464	26	994	498	496	
Orangeburg 5	466	260	306	66	823	812	-11	402	410	81	848	418	430	
Pickens	918	453	474	52	1022	1012	-10	513	499	229	1073	542	531	
Richland 1	1372	752	811	59	913	893	-20	453	440	249	1003	506	497	
Richland 2	1052	583	683	65	1007	1001	-6	501	500	269	1079	544	535	
Saluda	111	61	61	55	852	897	45	449	448	9	1091	543	548	
Spartanburg 1	251	141	155	62	954	932	-22	473	459	32	1016	508	508	
Spartanburg 2	459	216	255	56	936	924	-12	465	459	73	986	498	488	
Spartanburg 3	204	84	99	49	928	982	54	494	488	29	1052	530	522	
Spartanburg 4	131	70	70	53	950	916	-34	454	462	21	882	433	449	
Spartanburg 5	251	157	155	62	909	933	24	475	458	42	1023	520	503	
Spartanburg 6	518	260	300	58	1011	987	-24	494	493	100	1066	534	532	

*The College Board recognized college-bound preparation as 20 or more credits in six academic areas of English, Mathematics, Natural Science, Foreign/Classical Languages, Social Science/History, and Arts and Music.

** Differences indicates increase from last year. Large differences may be due to small N counts.

Note: If the number of students in a category is less than five, no test scores are computed for that category.

District	Total Number of Seniors	All Seniors Taking the SAT										Seniors w/20 or More Academic Credits				
		Number Taking SAT		Percent Tested	Composite		Difference	Verbal Average Score		Math Average Score		Number	Composite		Verbal Average Score	Math Average Score
		1997	1998		1997	1998		1997	1998	1997	1998		1997	1998		
Spartanburg 7	458	293	324	71	989	1011	22	504	507	107	1067	533	534			
Sumter 2	516	162	182	35	879	893	14	450	443	75	952	481	471			
Sumter 17	505	269	259	51	973	965	-8	486	479	97	1039	528	511			
Union	285	126	157	55	897	893	-4	452	441	30	956	492	464			
Williamsburg	378	154	158	42	793	779	-14	390	389	39	819	411	408			
York 1	267	101	108	40	981	959	-22	467	492	35	1018	496	522			
York 2	213	113	101	47	993	997	4	492	505	22	1123	573	550			
York 3	741	411	387	52	967	1018	51	504	514	167	1083	540	543			
York 4	254	184	172	68	989	1028	39	511	517	82	1064	532	532			
State	37661	21684	22973	61	953	951	-2	478	473	6588	1045	526	519			

*The College Board recognized college-bound preparation as 20 or more credits in six academic areas of English, Mathematics, Natural Science, Foreign/Classical Languages, Social Science/History, and Arts and Music.

** Differences indicates increase from last year. Large differences may be due to small N counts.

Note: If the number of students in a category is less than five, no test scores are computed for that category.

APPENDIX E

HIGH SCHOOL SCORES

Scholastic Assessment Test Performance for South Carolina's 1998 Graduating Seniors

District	School	Total Number of Seniors 1998	All Seniors Taking the SAT										Seniors w/20 or More Academic Credits		
			Number Taking SAT 1997	Number Taking SAT 1998	% Tested	Total 1997	Total 1998	Diff	Verbal Ave Score	Math Ave Score	Number	Composite	Verbal Average Score	Math Average Score	
Abbeville	Abbeville High	110	68	61	55	933	959	26	483	476	7	1058	529	529	
	Calhoun Falls High	38	21	24	63	867	877	10	448	429	3				
	Dixie High	56	40	31	55	891	935	44	470	465	9	1088	539	549	
Aiken	Silver Bluff High	150	70	65	43	937	991	54	491	500	20	1051	519	532	
	Aiken High	250	186	173	69	979	973	-6	490	483	49	1130	565	565	
	South Aiken High	294	211	217	74	1035	1036	1	515	521	64	1108	540	568	
	Midland Valley High	238	97	91	38	973	940	-33	473	467	12	1044	529	515	
	North Augusta High	322	218	217	67	971	957	-14	480	477	48	1037	529	508	
	Ridge Spring-Monetta	62	21	23	37	839	884	45	440	444	4				
	Wagner-Salley High	69	24	27	39	844	924	80	471	453	7	1034	524	510	
Allendale	Allendale/Fairfax High	102	41	32	31	796	801	5	394	407	2				
Anderson 1	Palmetto High	146	58	39	27	1019	1039	20	520	519	24	1071	539	532	
	Wren High	240	124	131	55	1001	1013	12	512	501	73	1052	537	515	
Anderson 2	Belton Honea Path High	216	88	109	50	931	969	38	485	484	36	1075	547	528	
Anderson 3	Crescent High	123	47	43	35	994	967	-27	487	480	6	1050	543	507	
Anderson 4	Pendleton High	120	66	67	56	963	952	-11	475	477	16	985	492	493	
Anderson 5	T.L. Hanna High	297	208	201	68	997	998	1	503	495	50	1087	553	534	
	Westside High	309	111	119	39	954	942	-12	478	464	38	994	501	493	
Bamberg 1	Bamberg-Ehrhardt High	134	47	48	36	950	942	-8	462	480	10	996	484	512	
Bamberg 2	Denmark-Olar High	48	24	23	48	750	787	37	397	390	1				
Barnwell 19	Blackville-Hilda High	77	41	31	40	801	897	96	448	449	8	1075	531	544	
Barnwell 29	Williston-Elko High	73	19	31	42	960	926	-34	454	472	10	1140	544	596	
Barnwell 45	Barnwell High	133	96	69	52	916	882	-34	452	430	15	1014	528	486	

*The College Board recognized college-bound preparation as 20 or more credits in six academic areas of English, Mathematics, Natural Science, Foreign/Classical Languages, Social Science/History, and Arts and Music.

District	School	Total Number of Seniors 1998	All Seniors Taking the SAT						Seniors w/20 or More Academic Credits					
			Number Taking SAT		% Tested	Total 1997	Total 1998	Diff	Verbal Ave Score	Math Ave Score	Number	Composite	Verbal Average Score	Math Average Score
			1997	1998										
Beaufort	Beaufort High	300	127	137	46	901	898	-3	457	441	51	1005	512	493
	Hilton Head High	247	180	178	72	1014	1022	8	515	507	72	1093	553	540
	Battery Creek High	257	114	124	48	900	940	40	482	458	38	1031	527	504
Berkeley	Stratford High	460	191	173	38	1019	1012	-7	510	502	27	1058	536	522
	Berkeley High	257	96	124	48	964	956	-8	480	476	27	1051	521	530
	Cross High	80	34	38	48	780	803	23	404	399	6	904	467	437
	Goose Creek High	288	61	77	27	977	999	22	497	502	38	1068	530	538
	Hanahan High	150	61	67	45	1014	976	-38	493	483	9	1008	491	517
	Timberland High	242	75	72	30	879	837	-42	413	424	12	912	441	471
Calhoun	Calhoun County High	110	39	39	35	805	843	38	421	422	5	928	480	448
Charleston	Baptist Hill High	86	32	46	53	756	702	-54	352	350	6	747	392	355
	North Charleston High	210	88	82	39	834	859	25	447	412	24	923	475	448
	James Island High	229	143	142	62	959	1013	54	512	501	31	1125	568	557
	Garrett School	171	35	79	46	758	792	34	415	377	6	815	428	387
	Burke High	177	118	88	50	826	803	-23	400	403	19	910	457	453
	Lincoln High	55	19	26	47	835	783	-52	408	375	7	890	476	414
	Middleton High	227	163	141	62	923	933	10	482	451	52	997	517	480
	Wando High	360	275	303	84	991	1007	16	511	496	107	1100	558	542
	St. Andrews High	212	105	125	59	951	916	-35	474	442	39	998	519	479
	St. John's High	75	47	39	52	760	751	-9	374	377	5	810	390	420
Cherokee	R.B. Stall High	173	89	78	45	927	920	-7	466	454	7	1042	541	501
	Academic Magnet High	78	67	76	97	1257	1213	-44	630	583	50	1239	641	598
	Clark Corporate Academy			17			814		430	384	1			
Cherokee	Blacksburg High	69	30	33	48	910	881	-29	439	442	10	836	413	423
	Gaffney Sr. High	364	184	182	50	905	923	18	464	459	42	944	475	469
Chester	Chester High	192	78	93	48	905	854	-51	425	429	27	862	425	437
	Great Falls Middle-High	55	15	22	40	844	940	96	472	468	8	929	461	468
	Lewisville High	85	34	45	53	903	894	-9	444	450	12	1009	501	508

*The College Board recognized college-bound preparation as 20 or more credits in six academic areas of English, Mathematics, Natural Science, Foreign/Classical Languages, Social Science/History, and Arts and Music.

District	School	Total Number of Seniors 1998	All Seniors Taking the SAT										Seniors w/20 or More Academic Credits		
			Number Taking SAT		% Tested	Total 1997	Total 1998	Diff	Verbal Ave Score	Math Ave Score	Composite	Verbal Average Score	Math Average Score		
			1997	1998										Number	
Chesterfield	Cheraw High	196	99	101	52	898	882	-16	440	442	935	463	472		
	Chesterfield High	113	56	61	54	908	862	-46	438	424	943	499	444		
	McBee High	67	28	41	61	881	843	-38	416	427	1049	514	535		
	Central High	123	44	57	46	887	840	-47	417	423					
Clarendon 1	Scott's Branch High	84	22	28	33	805	807	2	406	401	795	412	383		
Clarendon 2	Manning High	198	64	75	38	937	965	28	478	487	1023	505	518		
Clarendon 3	East Clarendon High	69	32	29	42	951	962	11	470	492					
Colleton	Ruffin High	59	20	31	53	763	807	44	405	402					
	Walterboro High	288	152	161	56	884	868	-16	438	430	920	470	450		
Darlington	Hartsville High	256	163	171	67	935	888	-47	451	437	988	498	490		
	Lamar High	77	25	32	42	906	868	-38	428	440					
	Darlington High	216	107	100	46	874	822	-52	409	413	860	442	418		
	Mayo High for Math	27	14	27	100	1148	1077	-71	534	543	1115	556	559		
Dillon 1	Lake View High	73	30	25	34	868	871	3	434	437					
Dillon 2	Dillon High	230	95	88	38	862	912	50	453	459	997	499	498		
Dillon 3	Latta High	85	28	34	40	971	994	23	488	506	1062	528	534		
Dorchester 2	Summerville High	549	302	334	61	1010	980	-30	493	487	1117	562	555		
	Fort Dorchester High	364	174	189	52	966	984	18	501	483	1057	546	511		
Dorchester 4	St. George High	88	40	31	35	809	863	54	435	428	987	504	483		
	Harleyville-Ridgeville	53	16	27	51	777	730	-47	371	359					
Edgefield	Strom Thurmond High	207	93	115	56	871	894	23	445	449	1009	503	506		
Fairfield	Fairfield Central High	188	73	97	52	871	825	-46	405	420	920	447	473		

*The College Board recognized college-bound preparation as 20 or more credits in six academic areas of English, Mathematics, Natural Sciences, Foreign/Classical Languages, Social Science/History, and Arts and Music.

District	School	Total Number of Seniors 1998	All Seniors Taking the SAT						Seniors w/20 or More Academic Credits						
			Number Taking SAT 1997	Number Taking SAT 1998	% Tested	Total 1997	Total 1998	Diff	Verbal Ave Score	Math Ave Score	Number	Composite Score	Verbal Average Score	Math Average Score	
Florence 1	South Florence High	377	196	246	65	937	962	25	488	474	81	1013	516	497	
	Wilson High	276	134	157	57	853	829	-24	414	415	37	900	451	449	
	West Florence High	328	257	247	75	980	977	-3	500	477	79	1076	557	519	
Florence 2	Hannah Pamplico High	88	49	68	77	922	886	-36	456	430	6	912	507	405	
Florence 3	Lake City High	263	109	138	52	861	816	-45	409	407	25	921	467	454	
Florence 4	Timmonsville Comp High	79	39	28	35	780	845	65	426	419	1				
Florence 5	Johnsonville High	69	48	35	51	1004	1018	14	509	509	8	1122	563	559	
Georgetown	Andrews High	131	58	37	28	890	875	-15	436	439	5	1042	542	500	
	Choppee Middle/High	87	32	33	38	797	823	26	413	410	9	881	441	440	
	Georgetown High	193	117	133	69	907	913	6	458	455	40	1000	488	512	
	Pleasant Hill High	80	26	49	61	919	856	-63	432	424	6	982	500	482	
	Waccamaw High	91	62	77	85	980	967	-13	485	482	28	1063	538	525	
				79	108	51	930	910	-20	458	452	18	1038	517	521
Greenville	Blue Ridge High	163	76	94	58	977	942	-35	474	468	27	1039	517	522	
	Carolina Academy	101	32	40	40	853	842	-11	430	412	6	878	453	425	
	Eastside High	250	178	206	82	1037	1014	-23	502	512	67	1069	533	536	
	Greenville High Academy	167	124	104	62	973	1041	68	518	523	34	1103	545	558	
	Greer High	178	88	103	58	948	968	20	492	476	26	1087	555	532	
	Wade Hampton High	235	160	158	67	1012	1020	8	519	501	46	1141	579	562	
	Hillcrest High	354	221	236	67	994	972	-22	491	481	51	1100	557	543	
	J.L. Mann High	235	124	148	63	1010	1002	-8	503	499	49	1060	533	527	
	Mauldin High	332	222	245	74	1021	1017	-4	513	504	59	1080	544	536	
	Riverside High	288	221	252	88	1090	1071	-19	537	534	107	1146	571	575	
	Southside High	241	132	155	64	988	984	-4	493	491	74	1097	555	542	
	Travelers Rest High	240	116	110	46	975	970	-5	489	481	29	1068	545	523	
	Woodmont High	195	72	61	31	898	904	6	462	442	26	949	484	465	
	Greenwood 50	Emerald High	148	116	109	74	987	949	-38	474	475	29	998	493	505
		Greenwood High	266	160	186	70	958	936	-22	463	473	53	1036	510	526

*The College Board recognized college-bound preparation as 20 or more credits in six academic areas of English, Mathematics, Natural Science, Foreign/Classical Languages, Social Science-History, and Arts and Music.

District	School	Total Number of Seniors 1998	All Seniors Taking the SAT										Seniors w/20 or More Academic Credits		
			Number Taking SAT 1997	Number Taking SAT 1998	% Tested	Total 1997	Total 1998	Diff	Verbal Ave Score	Math Ave Score	Number	Composite Score	Verbal Average Score	Math Average Score	
Greenwood 51	Ware Shoals High	73	24	53	73	979	933	-46	473	460	6	1005	510	495	
Greenwood 52	Ninety Six High	88	48	63	72	939	982	43	478	504	13	1109	535	574	
Hampton 1	Wade Hampton High	138	70	70	51	900	880	-20	445	435	13	1028	510	518	
Hampton 2	Estill High	60	17	7	12	815	967	152	476	491	2				
Horry	Aynor High	109	49	61	56	986	970	-16	472	498	6	1150	583	567	
	North Myrtle Beach High	175	79	71	41	919	970	51	483	487	20	988	509	479	
	Conway High	429	156	193	45	949	943	-6	469	474	32	1038	519	519	
	Green Sea Floyds High	85	25	40	47	914	911	-3	454	457	10	1022	517	505	
	Loris High	149	41	55	37	975	922	-53	455	467	15	1039	499	540	
	Myrtle Beach High	268	134	160	60	982	986	4	494	492	54	1014	504	510	
	Socastee High	333	200	188	56	980	982	2	485	497	68	1022	505	517	
Jasper	Jasper County High	199	63	76	38	802	741	-61	375	366	7	752	406	346	
Kershaw	Bethune High	37	7	13	35	1034	956	-78	455	501	3				
	North Central High	81	44	30	37	833	919	86	482	437	6	969	517	452	
	Camden High	240	137	127	53	961	990	29	495	495	51	1053	533	520	
	Lugoff-Elgin High	210	113	111	53	1010	971	-39	485	486	40	1024	514	510	
Lancaster	Buford High	86	44	42	49	872	888	16	437	451	7	971	467	504	
	Indian Land High	74	33	53	72	898	918	20	471	447	16	1020	527	493	
	Andrew Jackson High	102	63	62	61	926	899	-27	449	450	8	982	496	486	
	Lancaster High	346	178	175	51	917	897	-20	449	448	27	995	496	499	
Laurens 55	Laurens District High	299	133	154	52	960	927	-33	465	462	60	1010	505	505	
Laurens 56	Clinton High	201	89	92	46	928	965	37	479	486	22	1044	522	522	
Lee	Bishopville High	86	44	28	33	771	768	-3	385	383	2				
	Mt. Pleasant High	50	28	25	50	717	773	56	379	394	5	850	434	416	

*The College Board recognized college-bound preparation as 20 or more credits in six academic areas of English, Mathematics, Natural Science, Foreign/Classical Languages, Social Science/History, and Arts and Music.

District	School	Total Number of Seniors 1998	All Seniors Taking the SAT						Seniors w/20 or More Academic Credits					
			Number Taking SAT 1997	Number Taking SAT 1998	% Tested	Total 1997	Total 1998	Diff	Verbal Ave Score	Math Ave Score	Number	Composite Score	Verbal Average Score	Math Average Score
Lexington 1	Gilbert High Lexington High Pelion High	143 565 87	63	83	58	1017	1014	-3	518	496	32	1090	545	545
			345	431	76	1045	1028	-17	514	514	151	1102	552	550
			56	33	38	970	1039	69	509	530	9	1140	577	563
Lexington 2	Airport High Brookland-Cayce High	236 257	145	125	53	955	968	13	488	480	64	1029	522	507
			158	150	58	991	977	-14	488	489	48	1073	544	529
Lexington 3	Batesburg-Leesville	155	89	76	49	914	889	-25	442	447	27	982	492	490
Lexington 4	Swansea High	113	56	66	58	936	932	-4	469	463	24	931	463	468
Lexington 5	Chapin High Irmo High School Dutch Fork High	168 411 308	137	128	76	1028	1063	35	526	537	56	1065	533	532
			361	357	87	1055	1056	1	523	533	127	1145	565	580
			227	222	72	1051	1037	-14	511	526	90	1094	545	549
McCormick	McCormick High	71	39	32	45	815	892	77	460	432	3			
Marion 1	Marion High	205	83	104	51	928	921	-7	461	460	45	958	484	474
Marion 2	Mullins High	167	85	76	46	841	821	-20	419	402	8	874	459	415
Marion 3	Terrell's Bay High	41	15	17	41	783	868	85	429	439	4			
Marion 4	Brittons Neck High	24	15	6	25	922	818	-104	410	408	0			
Marlboro	Marlboro County High	307	123	135	44	839	838	-1	420	418	27	939	477	462
Newberry	Newberry High Mid-Carolina High Whitmire High	175 116 33	96	98	56	909	909	0	456	453	35	996	507	489
			60	57	49	913	925	12	472	453	18	1003	501	502
			27	21	64	820	893	73	464	429	1			
Oconee	Tamasee-Salem High Seneca High Walhalla High West-Oak High	31 214 189 185	18	10	32	955	949	-6	456	493	2			
			126	121	57	989	1012	23	502	510	57	1056	529	527
			101	103	54	1011	957	-54	478	479	34	1030	517	513
			83	84	45	1001	968	-33	493	475	30	991	511	480

*The College Board recognized college-bound preparation as 20 or more credits in six academic areas of English, Mathematics, Natural Science, Foreign/Classical Languages, Social Science-History, and Arts and Music.

District	School	Total Number of Seniors 1998	All Seniors Taking the SAT										Seniors w/20 or More Academic Credits		
			Number Taking SAT		% Tested	Total 1997	Total 1998	Diff	Verbal Ave Score	Math Ave Score	Number	Composite	Verbal Average Score	Math Average Score	
			1997	1998											
Orangeburg 3	Holly Hill Roberts High	196	54	69	35	821	825	4	417	408	16	899	466	433	
		37	11	16	43	696	851	155	419	432	1				
Orangeburg 4	Edisto High	147	57	57	39	907	939	32	466	473	15	1008	501	507	
		35	20	14	40	927	932	5	470	462	9	988	500	488	
Orangeburg 5	Hunter-Kinard-Tyler	52	24	15	29	903	859	-44	428	431	2				
		49	15	17	35	837	903	66	459	444	8	866	438	428	
Orangeburg 5	Bowman High	361	226	269	75	820	808	-12	398	410	72	846	416	430	
		56	19	20	36	844	785	-59	412	373	1				
Pickens	Daniel High	220	171	154	70	1065	1081	16	544	537	78	1159	582	577	
		302	128	155	51	987	970	-17	488	482	82	1017	512	505	
Pickens	Easley High	140	46	46	33	953	979	26	510	469	18	1047	541	506	
		256	108	119	46	1025	988	-37	507	481	51	1041	530	511	
Richland 1	Columbia High	171	106	104	61	882	884	2	445	439	38	943	472	471	
		214	176	159	74	1052	1049	-3	526	523	69	1155	582	573	
Richland 1	Dreher High	161	64	67	42	782	761	-21	390	371	11	824	416	408	
		218	121	147	67	969	964	-5	492	472	44	1088	553	535	
Richland 1	A.C. Flora High	112	42	57	51	789	776	-13	388	388	13	864	422	442	
		160	103	95	59	837	843	6	434	409	31	904	459	445	
Richland 1	Keenan High	304	140	165	54	870	822	-48	417	405	42	885	450	435	
				6			621		313	308	0				
Richland 1	Lower Richland High			11			821		428	393	1				
Richland 2	C.R. Neal Cities in Schools														
Richland 2	Spring Valley High	372	283	230	62	1012	998	-14	498	500	96	1047	525	522	
		387	223	276	71	1023	1028	5	518	510	113	1113	566	547	
Richland 2	Richland Northeast High	292	77	177	61	941	964	23	479	485	60	1067	533	534	
Saluda	Ridgeview High														
Saluda	Saluda High	111	61	61	55	852	897	45	449	448	9	1091	543	548	
Spartanburg 1	Chapman High	176	113	120	68	939	919	-20	467	452	28	1022	514	508	
		75	28	35	47	1018	978	-40	494	484	4				

*The College Board recognized college-bound preparation as 20 or more credits in six academic areas of English, Mathematics, Natural Science, Foreign/Classical Languages, Social Science-History, and Arts and Music.

District	School	Total Number of Seniors 1998	All Seniors Taking the SAT					Seniors w/20 or More Academic Credits						
			Number Taking SAT		% Tested	Total 1997	Total 1998	Diff	Verbal Ave Score	Math Ave Score	Number	Composite	Verbal Average Score	Math Average Score
			1997	1998										
Spartanburg 2	Boiling Springs High Chesnee High	322 138	158 58	190 65	59 47	961 872	941 876	-20 4	475 439	466 437	58 15	1005 911	510 452	495 459
Spartanburg 3	Broome High	204	84	99	49	928	982	54	494	488	29	1052	530	522
Spartanburg 4	Woodruff High	131	70	70	53	950	916	-34	454	462	21	882	433	449
Spartanburg 5	J.F. Byrnes High	251	157	155	62	909	933	24	475	458	42	1023	520	503
Spartanburg 6	Paul M. Dorman High	518	260	300	58	1011	987	-24	494	493	100	1066	534	532
Spartanburg 7	Spartanburg High	458	293	324	71	989	1011	22	504	507	107	1067	533	534
Sumter 2	Crestwood High Lakewood High	285 232	85 59	103 78	36 34	888 854	904 881	16 27	454 445	450 436	48 27	952 951	481 480	471 471
Sumter 17	Sumter High	505	269	259	51	973	965	-8	486	479	97	1039	528	511
Union	Jonesville High Lockhart High Union High	41 16 228	12 3 111	14 14 129	34 88 57	790 878 908	867 878 897	77 -11	434 448 454	433 430 443	1 2 27	961	498	463
Williamsburg	Hemingway High Kingstree Senior High C.E. Murray High	106 180 92	36 80 38	46 72 40	43 40 43	800 790 793	782 781 771	-18 -9 -22	391 393 383	391 388 388	11 19 9	787 809 881	382 409 452	405 400 429
York 1	York Comp High	267	101	108	40	981	959	-22	467	492	35	1018	496	522
York 2	Clover High	213	113	101	47	993	997	4	492	505	22	1123	573	550
York 3	Northwestern High Rock Hill High	403 338	256 155	249 138	62 41	975 952	1034 990	59 38	514 487	520 503	112 55	1105 1040	550 522	555 518
York 4	Fort Mill High	254	184	172	68	989	1028	39	511	517	82	1064	532	532
State	Governor's School		58	62		1350	1335	-15	669	666	43	1350	671	679

*The College Board recognized college-bound preparation as 20 or more credits in six academic areas of English, Mathematics, Natural Science, Foreign/Classical Languages, Social Science History, and Arts and Music.

63

APPENDIX F

CUMULATIVE FREQUENCY SUMMARY

Cumulative Frequency Summary
 (South Carolina Public School Students)
 1998 SAT Scores

Composite Score Range	Statistic	All Students	20 or More Academic Credits	African-American Females	African-American Males	White Female	White Male
1400-1600	Number	304	213	1	2	81	181
	Percent	1.5	3.6	0.0	0.1	1.2	3.4
1300-1600	Number	884	579	5	8	304	449
	Percent	4.4	9.8	0.1	0.4	4.5	8.5
1200-1600	Number	2,213	1,298	49	46	845	1,019
	Percent	11.1	21.9	1.4	2.2	12.6	19.3
1100-1600	Number	4,505	2,320	158	125	1,841	1,888
	Percent	22.7	39.2	4.5	6.1	27.4	35.8
1000-1600	Number	7,865	3,482	431	332	3,250	2,984
	Percent	39.5	58.8	12.2	16.1	48.4	56.6
Below 1000	Number	12,022	2,441	3,116	1,727	3,460	2,285
	Percent	60.5	41.2	87.8	83.9	51.6	43.4
Total Tested		19,887	5,923	3,547	2,059	6,710	5,269

APPENDIX G

SAT SCORES
BY
PLANNED YEARS OF STUDY

COURSE-TAKING PATTERNS OF HIGH SCHOOL STUDENTS
(Years of Study Taken or Planned)
1998

Courses in Math

Years of Math Study	Number Tested	Percent Tested		State SAT Verbal	State SAT Math
		State	Nation		
More Than 4 Years	3,492	17	13	528	546
4 Years**	10,609	51	57	482	476
3 Years*	5,987	29	26	451	433
2 Years	508	2	3	447	430
1 Year	73	0	0	442	441
One-Half Year	33	0	0	444	448

Courses in Natural Science

Years of Natural Science Study	Number Tested	Percent Tested		SAT Verbal	SAT Math
		State	Nation		
More Than 4 Years	1,306	6	9	542	549
4 Years	6,079	30	41	510	506
3 Years**	9,059	44	37	469	462
2 Years*	3,120	15	10	442	435
1 Year	643	3	2	435	431
One-Half Year	183	1	1	413	408

Courses in Foreign and Classical Languages

Years of Foreign Language Study	Number Tested	Percent Tested		SAT Verbal	SAT Math
		State	Nation		
More Than 4 Years	453	2	6	568	567
4 Years	1,686	8	21	554	542
3 Years**	4,217	20	30	517	511
2 Years*	12,194	59	34	466	462
1 Year	1,302	6	5	417	412
One-Half Year	819	4	4	401	397

* Current minimum requirement for graduation.

** Minimum requirement for graduation for class of 2001.

Note: Foreign language requirement refers to students planning to attend a four-year college.

APPENDIX H

SAT DATA
FOR
MINORITY ETHNICITIES

ACADEMIC PREPARATION

Students who completed/will complete 20 or more academic courses in 1998*	South Carolina		
	#	%	Composite Score
American Indian or Alaskan Native	41	31	1,045
Asian, Asian American, or Pacific Islander	163	47	1,099
Hispanic or Latino**	35	38	998

* Academic courses as recognized by the College Board include credits in six academic areas: English, Mathematics, Natural Science, Foreign/Classical Languages, Social Science/History, and Arts and Music.

** Includes students who reported themselves as *other Hispanic*; information on Puerto Rican and Mexican or Mexican American students was not available.

Performance in Each National Quarter in 1998*									
(Public School Students)									
		Lower Quarter		Lower Middle		Upper Middle		Upper Quarter	
		#	%	#	%	#	%	#	%
American Indian or Alaskan Native	Female	30	41	26	36	11	15	6	8
	Male	23	37	21	33	11	17	8	13
Asian, Asian American, or Pacific Islander	Female	53	27	49	25	55	28	42	21
	Male	34	20	49	29	31	19	53	32
Hispanic***	Female	37	32	31	27	37	32	9	8
	Male	29	31	23	24	31	33	11	12

*Percentages may not add to 100 due to rounding.

*** Includes students who reported themselves as Hispanic, Puerto Rican, Mexican or Mexican American students.

Parental Educational Level Reported by Student Parents' High School Diploma or Less Reported in Percentages				
	South Carolina			
	1995	1996	1997	1998
American Indian or Alaskan Native	56%	48%	46%	45%
Asian, Asian American, or Pacific Islander	39%	44%	38%	39%
Hispanic or Latino**	43%	41%	32%	30%

** Includes students who reported themselves as *other Hispanic*; information on Puerto Rican and Mexican or Mexican American students was not available.

DATA BY ETHNICITY

Graduating Seniors Tested		
	South Carolina	
	#	Composite Score
American Indian or Alaskan Native	168	920
Asian, Asian American, or Pacific Islander	443	1017
Hispanic or Latino Background:		
Mexican or Mexican American	58	977
Puerto Rican	57	939
Other Hispanic/Latino	111	970
Other	252	979

Average SAT Scores and Point Change								
South Carolina and Nation by Ethnic Group								
Ethnic Group	Test	1994*	1995*	1996	1997	1998	1994-98 State Change	1998 Nation
American Indian or Alaskan Native	Verbal	457	452	465	458	463	+6	480
	Math	456	449	453	451	457	+1	483
Asian, Asian American, or Pacific Islander	Verbal	489	489	490	491	485	-4	498
	Math	531	528	534	541	532	+1	562
Hispanic or Latino Background:								
Mexican or Mexican American	Verbal	466	483	492	478	491	+25	453
	Math	474	477	487	471	486	+12	460
Puerto Rican	Verbal	492	480	492	487	481	-11	452
	Math	475	463	473	481	458	-17	447
Other Hispanic	Verbal	496	489	494	482	477	-19	461
	Math	501	488	491	480	493	-8	466
Other**	Verbal	497	493	516	496	498	+1	511
	Math	481	475	490	478	481	0	514

* Average SAT scores converted to recentered scale for comparison purposes.

** Include students who reported themselves as belonging to a race or ethnicity other than African American, White, or any of the groups listed above.

South Carolina	Verbal (Point Change from last year)		Mathematics (Point Change from last year)	
American Indian or Alaskan Native	+5	(458 to 463)	+6	(451 to 457)
Asian, Asian American, or Pacific Islander	-6	(491 to 485)	-9	(541 to 532)
Hispanic or Latino Background:				
Mexican or Mexican American	+13	(478 to 491)	+15	(471 to 486)
Puerto Rican	-6	(487 to 481)	-23	(481 to 458)
Other Hispanic	-5	(482 to 477)	+13	(480 to 493)
Other**	+2	(496 to 498)	+3	(478 to 481)

** Include students who reported themselves as belonging to a race or ethnicity other than African American, white, or any of the groups listed above.

APPENDIX I

SAT SCORES
BY
PARENT EDUCATION AND FAMILY INCOME

Highest Level of the Parent Education

Parent Education Level	Number Tested	Percent Tested		SAT Verbal	SAT Math
		State	Nation		
No High School Diploma	685	3	4	410	411
High School Diploma	8,466	40	34	450	445
Associate's Degree	2,413	12	8	469	464
Bachelor's Degree	5,456	26	28	503	497
Graduate Degree	3,944	19	25	531	526

Family Income Level

Income Level	Number Tested	Percent Tested		SAT Verbal	SAT Math
		State	Nation		
Less than \$10,000	1,182	6	5	406	396
\$10,000 - \$20,000	2,371	12	9	432	426
\$20,000 - \$30,000	2,524	13	11	459	450
\$30,000 - \$40,000	2,953	15	13	477	470
\$40,000 - \$50,000	2,345	12	11	487	480
\$50,000 - \$60,000	2,167	11	11	493	488
\$60,000 - \$70,000	1,648	9	9	503	500
\$70,000 - \$80,000	1,352	7	8	512	513
\$80,000 - \$100,000	1,373	7	9	521	520
More than \$100,000	1,430	7	13	534	536
No Response	3,628				

APPENDIX J

SOUTH CAROLINA DEPARTMENT OF EDUCATION
SAT Improvement Committee Strategies

SAT IMPROVEMENT COMMITTEE

MAJOR GOAL: To Improve SAT Scores in South Carolina, While Maintaining the Participation Rates, by Implementing the Following Strategies

Strategies	Responsibility
1. Curriculum Alignment Teams will be sent to assist all Middle & High Schools in evaluating instructional delivery and content. The alignment will be with standards and courses.	State Department of Education <i>Russ Bedenbaugh, Carolyn Donges & John Hudgens</i>
2. All School Districts develop and implement a PSAT and SAT Improvement Plan and incorporate it into their strategic plan with the goal of raising their SAT scores.	State Department of Education <i>Nancy Sargeant</i>
3. The State Legislature to provide funding for all 10th grade students to take the PSAT and for schools and School Districts to order and utilize the PSAT Summary of Answers Report.	State Legislature State Department of Education <i>Karen Home & Carolyn Donges</i>
4. Develop an SAT calendar to include both verbal and math questions for each day (M-F) for teachers to incorporate into their lesson plans.	State Department of Education <i>Carolyn Donges & John Hudgens</i>
5. Develop and provide Staff Development Training for Teachers, Counselors and Administrators on SAT improvement strategies to include: + Developing and/or updating SAT improvement materials and resources for classroom use ensuring that they are aligned with Academic Standards and Curriculum Framework + Administering a Mini-SAT to Faculty + Locating sample questions using technology + Providing information on SAT resources/materials + Using the SAT Calendar questions + Using the Student, School and District Summary Of Answer Report for PSAT and SAT	State Department of Education Office of Standards and Professional Development <i>Russ Bedenbaugh, Carolyn Donges, Karen Home & John Hudgens</i>
6. Provide sample SAT questions to local and regional newspapers. + Office of Public Information at SDE send questions for the week to newspapers using questions from the SAT Calendar	State Department of Education Office of Public Information <i>Mary Anne Byrd</i>
7. Encourage business and industry to request a high school transcript when interviewing prospective employees for jobs/positions.	State Department of Education <i>Camilla Hertwig, Karen Home & John Hudgens</i>
8. Provide incentives to schools to develop and implement a school model and/or prototype on how they demonstrated improving their SAT scores at their school. (This model would need to be able to be replicated and funding for this incentive could be solicited from the corporate, business/industry community.)	State Legislature State Department of Education <i>Carolyn Donges, Karen Home & John Hudgens</i>
9. Develop statewide High School SAT Competition with appropriate rewards.	State Department of Education <i>Carolyn Donges, Mac Goodwin & John Hudgens</i>

SAT Coordinating Team: John Hudgens, 803/736-3828
Karen Home, 803/734-4110
Carolyn Donges, 803/734-8364



U.S. Department of Education
Office of Educational Research and Improvement (OERI)
National Library of Education (NLE)
Educational Resources Information Center (ERIC)



TM029995

NOTICE

REPRODUCTION BASIS



This document is covered by a signed "Reproduction Release (Blanket) form (on file within the ERIC system), encompassing all or classes of documents from its source organization and, therefore, does not require a "Specific Document" Release form.



This document is Federally-funded, or carries its own permission to reproduce, or is otherwise in the public domain and, therefore, may be reproduced by ERIC without a signed Reproduction Release form (either "Specific Document" or "Blanket").