

DOCUMENT RESUME

ED 431 453

JC 990 375

AUTHOR Frank, Jean
 TITLE Howard Community College's 1992-1996 Transfer Graduates: A Trend Analysis.
 INSTITUTION Howard Community Coll., Columbia, MD. Office of Planning and Evaluation.
 PUB DATE 1998-12-00
 NOTE 14p.
 PUB TYPE Reports - Research (143)
 EDRS PRICE MF01/PC01 Plus Postage.
 DESCRIPTORS Academic Achievement; Articulation (Education); *College Transfer Students; Community Colleges; Enrollment; Higher Education; Student Adjustment; Student Experience; Student Surveys
 IDENTIFIERS *Howard Community College MD

ABSTRACT

This report aims to increase awareness regarding the characteristics, goals, and academic accomplishments of the students who graduated from Howard Community College (HCC) and transferred to four-year campuses. The data compiled in this report on transfer students were collected as part of follow-up surveys sent to all HCC graduates approximately 1 year after graduation. The report describes and compares the demographics and academic characteristics of fiscal year (FY) 1992, FY 1993, FY 1994, FY 1995, and FY 1996 graduates of HCC who transferred to a four-year institution within a year of graduating and responded to graduate surveys. The report analyzes the characteristics of these graduates as they left HCC and their academic experiences at the transfer institutions during the first year of transfer. Highlighted findings are as follows. The average transfer graduate at HCC between 1992 and 1996 was a 25-year old female, who completed her studies within 4 years, graduating with a cumulative GPA of 3.25. Of the 65 credits earned at HCC, 59 were accepted at the Maryland public four-year institution to which she transferred. One year after graduating from HCC, she had completed 24 credits at the receiving institution, was majoring in the same or a related field as her major at HCC, and was earning a GPA of 3.2. After 1 year at the four-year institution, she rated the transfer preparation received at HCC as 4.2 on a 5-point scale (where 1 is "very poor" and 5 is "very good"). Contains 19 tables and charts. (JJL)

 * Reproductions supplied by EDRS are the best that can be made *
 * from the original document. *



1992 - 1996 TRANSFER GRADUATES: A TREND ANALYSIS

December 1998
Office of Planning and Evaluation

U.S. DEPARTMENT OF EDUCATION
Office of Educational Research and Improvement
EDUCATIONAL RESOURCES INFORMATION
CENTER (ERIC)

DC 990375
This document has been reproduced as
received from the person or organization
originating it.

Minor changes have been made to
improve reproduction quality.

• Points of view or opinions stated in this
document do not necessarily represent
official OERI position or policy.

BEST COPY AVAILABLE

"PERMISSION TO REPRODUCE THIS
MATERIAL HAS BEEN GRANTED BY

J. Frank

TO THE EDUCATIONAL RESOURCES
INFORMATION CENTER (ERIC)."

**HOWARD COMMUNITY COLLEGE'S
1992 - 1996 TRANSFER GRADUATES:
A TREND ANALYSIS**

Prepared by Jean Frank, Research Analyst

December 1998

**Office of Planning and Evaluation
Howard Community College**

HOWARD COMMUNITY COLLEGE'S 1992 - 1996 TRANSFER GRADUATES: A TREND ANALYSIS

Introduction

Awareness of the characteristics, goals and academic accomplishments of the students who graduated from Howard Community College (HCC) and transferred to four-year campuses provides valuable feedback as the college evaluates its efforts and plans for its future.

The data compiled in this report on transfer graduates were collected as part of follow-up surveys that were sent to all HCC graduates approximately one year after graduation. Not included in this analysis are the students who transferred to a four-year campus without graduating from HCC; each year fewer than 20 percent of those who transfer from HCC do so after earning a degree. The methodology used in collecting the data used in this analysis as well as a summary of the characteristics of all graduates and of all respondents are reported in the 1998 publication **1992-1996 Graduates: A Trend Analysis**.

This report describes and compares the demographic and academic characteristics of FY92, FY93, FY94, FY95 and FY96 graduates of HCC who transferred to a four-year institution within a year of graduating and responded to the graduate surveys. It analyzes the characteristics of these graduates as they left HCC and their academic experiences at the transfer institutions during the first year of transfer.

Characteristics of Transfer Graduates

The majority of transfer respondents were female and constituted between 54 and 70 percent of all transfer respondents over the five years surveyed. Seven to 12 percent of the transfer respondents were African American and between 2 and 6 percent were Asian. The largest age group of these respondents was the 16 to 22 group in most years, although the median age was 25 and more than 25 percent were over 30 years old when they transferred.

The most important goal for these graduates when they first entered HCC was preparing for transfer; earning a certificate or degree was the second most prevalent goal. However, a number of these graduates who transferred entered HCC with a goal that was unrelated to transfer or degree completion, such as self-enrichment or career preparation, and approximately 20 percent earned their degrees in occupational rather than transfer programs.

The percentage of graduates who had a grade point average of at least 3.0 fluctuated between 63 percent in 1993 and 75 percent in 1996. The mean grade point average was above 3.0 in each survey.

The average number of credits earned by transfer graduates while they attended HCC has been

slightly more than 60. In 1996 more students transferred with fewer than 60 credits earned at HCC, indicating they had transferred into HCC with credits from other colleges. In 1996, 84 percent completed their studies at HCC within four years. In prior years the percent of transfer graduates who had been at HCC for five or more years was somewhat greater.

Transfer Graduates One Year After Graduating

One year after graduating from HCC, more than 40 percent of all graduates had transferred. More than half of those who transferred were attending a four-year college or university as full-time students. About one third of the transfer students were also employed full time, and another third were employed part-time.

In the early 1990's 80 percent of transfer respondents attended a Maryland public institution the year after graduating from HCC. The three Maryland campuses most frequently cited as the transfer institution were UM College Park, UM Baltimore County and Towson University. During the last two surveys, an increasing percentage reported they had transferred to an out-of-state campus; the percentage over the five years ranged from 7 to 19. The percentage of transfer respondents attending a private institution in Maryland ranged from 6 to 11 percent.

Most transfer respondents, 80 to 90 percent, intended to earn a bachelor's degree. At least three-fourths reported that their current major was in the same or somewhat related academic field. In 1996 that percentage increased to 91 percent, with only four respondents reporting to be enrolled in a different field.

One year after graduating from HCC, the average number of credit hours completed by the respondents at the transfer campus ranged from 21 to 26. Fewer than 4 percent over the five years reported a grade point average of less than 2.0 at their transfer institution. Between 59 and 72 percent reported an average at their transfer campus of at least 3.0.

The median number of credits earned at HCC and not accepted at the transfer institution has fluctuated, but has generally been equivalent to one or two courses. Two principal reasons that credits were not accepted included graduates earning more than 60 credits at HCC and a comparable courses being offered at the transfer institution.

Over the five years, transfer graduates rated their preparation for transfer between 4.1 and 4.3 on a five-point scale, where 1 was "very poor" and 5 was "very good."

Summary

The average transfer graduate at HCC between 1992 and 1996 was a 25 - year old female who earned an associate degree. She achieved her most important entry goal of preparing for transfer and completed her studies at HCC within four years, graduating with a cumulative grade point average of 3.25. Of the 65 credits earned at HCC, 59 were accepted at the Maryland public four-year institution to which she transferred. When credit was lost in the transfer, it was most likely to be because she had earned more than 60 credits while at HCC.

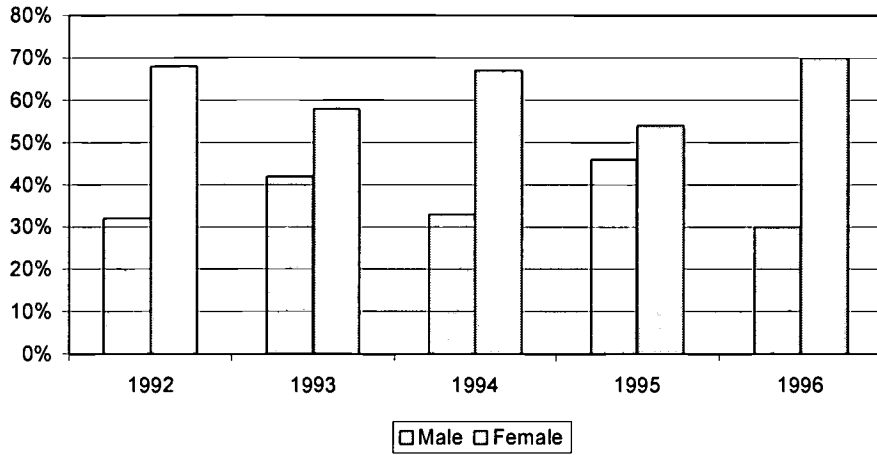
One year after graduating from HCC, she has completed 24 credits at the transfer campus with a grade point average of 3.2, majoring in the same or related field as her major at HCC. After completing almost a full year at her transfer institution, she rated the preparation for transfer that she received at HCC as "good" (4.2 on a five-point scale where 1 is "very poor" and 5 is "very good").

**CHARACTERISTICS OF RESPONDENTS WHO TRANSFERRED
HOWARD COMMUNITY COLLEGE GRADUATES
FY 1992 - 1996**

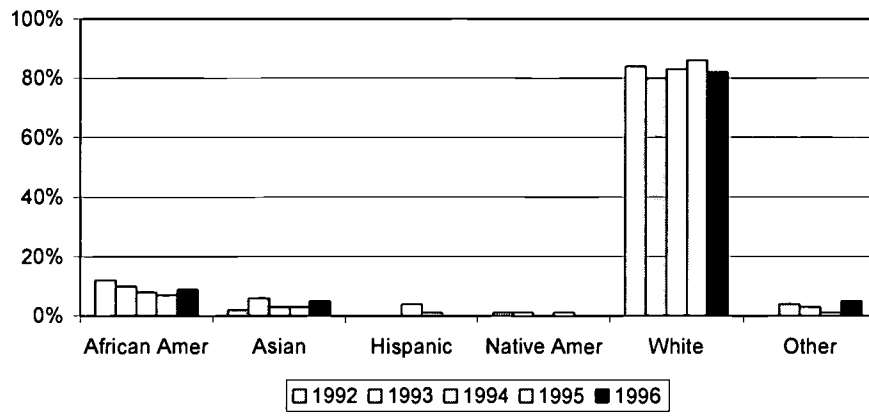
	FISCAL YEAR									
	1992		1993		1994		1995		1996	
	N	%	N	%	N	%	N	%	N	%
Highest Degree at HCC										
Total Transfer Respondents	90	100%	84	100%	75	100%	71	100%	44	100%
Associate Degrees	90	100%	83	99%	75	100%	70	99%	43	98%
Certificates	0	0%	1	1%	0	0%	1	1%	1	2%
Gender										
Male	29	32%	35	42%	25	33%	33	46%	13	30%
Female	61	68%	49	58%	50	67%	38	54%	31	70%
Ethnicity										
African American	11	12%	8	10%	6	8%	5	7%	4	9%
Asian	2	2%	5	6%	2	3%	2	3%	2	5%
Hispanic	0	0%	0	0%	3	4%	1	1%	0	0%
Native American	1	1%	1	1%	0	0%	1	1%	0	0%
White	76	84%	67	80%	62	83%	61	86%	36	82%
Other	0	0%	3	4%	2	3%	1	1%	2	5%
Age										
Median Age	24		25		25		25		25	
16 - 22	36	40%	28	33%	26	35%	23	32%	21	48%
23 - 29	29	32%	31	37%	30	40%	23	32%	8	18%
30 - 39	15	17%	16	19%	13	17%	16	23%	11	25%
40 - 59	10	11%	9	11%	6	8%	9	13%	4	9%
>59	0	0%	0	0%	0	0%	0	0%	0	0%
Most Important Entry Goal at HCC										
Prepare for Career Entry	4	4%	5	6%	4	5%	0	0%	1	2%
Prepare for Different Career	6	7%	2	2%	6	8%	8	11%	5	11%
Update Skills	4	4%	4	5%	3	4%	3	4%	0	0%
Prepare for Transfer	59	66%	47	56%	43	57%	38	54%	25	57%
Self-Enrichment	0	0%	2	2%	0	0%	1	1%	0	0%
Occupational Exploration	1	1%	2	2%	1	1%	2	3%	0	0%
Academic Exploration	0	0%	2	2%	1	1%	1	1%	1	2%
Obtain Promotion	1	1%	1	1%	0	0%	3	4%	1	2%
Earn a Certificate or Degree	11	12%	16	19%	9	12%	12	17%	6	14%
Other	4	4%	3	4%	8	11%	3	4%	5	11%
Achieved Most Important Goal										
	90	100%	84	100%	70	93%	71	100%	36	82%
Grade Point Average at HCC (mean)										
	3.3		3.2		3.3		3.2		3.3	
<1.00	0	0%	0	0%	0	0%	0	0%	0	0%
1.00 - 1.99	1	1%	0	0%	0	0%	0	0%	0	0%
2.00 - 2.99	27	30%	31	37%	20	27%	22	31%	11	25%
3.00 - 4.00	62	69%	53	63%	55	73%	49	69%	33	75%
Credits Earned at HCC										
Average Credits Earned	65		65		65		68		61	
<30	1	1%	3	4%	1	1%	3	4%	2	5%
30 - 59	20	22%	27	32%	19	25%	15	21%	19	43%
60 - 80	61	68%	41	49%	45	60%	38	54%	17	39%
>80	8	9%	13	15%	10	13%	15	21%	6	14%
Years to Degree Completion at HCC										
Average	4.0		4.1		3.8		3.9		3.6	
1 - 2 Years	24	27%	18	21%	22	29%	19	27%	15	34%
3 - 4 Years	41	46%	34	40%	31	41%	31	44%	22	50%
5 - 10 Years	22	24%	25	30%	20	27%	17	24%	5	11%
Over 10 Years	2	2%	2	2%	2	3%	1	1%	2	5%
Unknown	1	1%	5	6%	0	0%	3	4%	0	0%

Note: Data were compiled from the HCC graduation files and Graduate Follow-Up Survey Results.

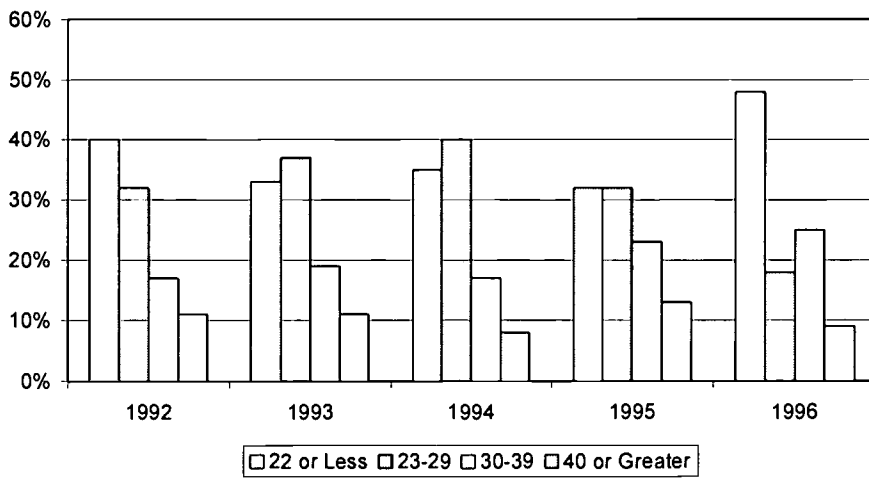
Gender of Transfer Respondents



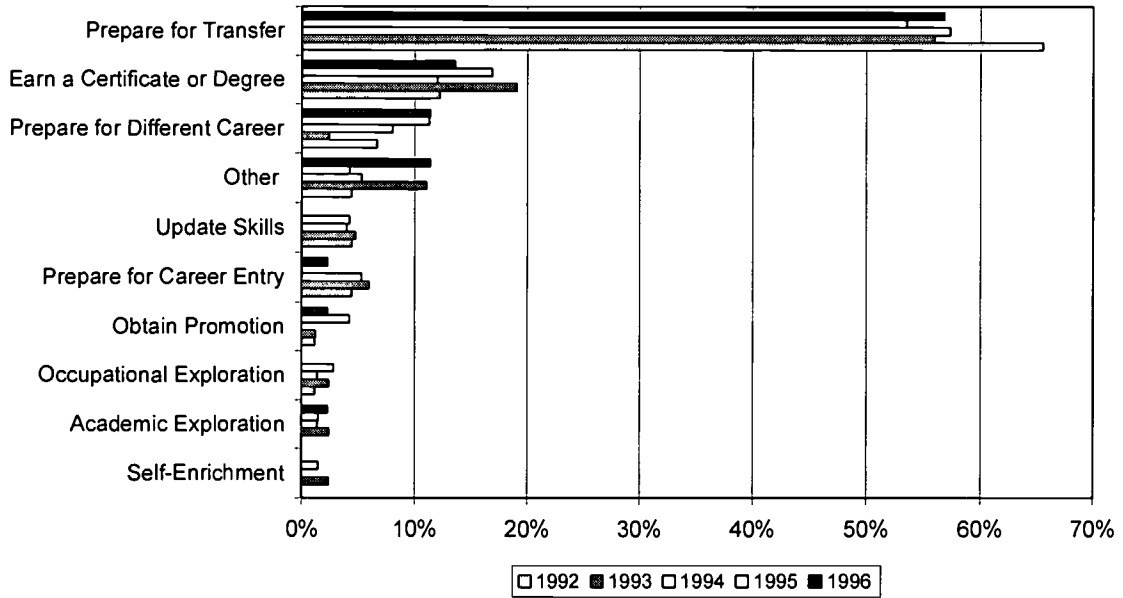
Ethnicity of Transfer Respondents



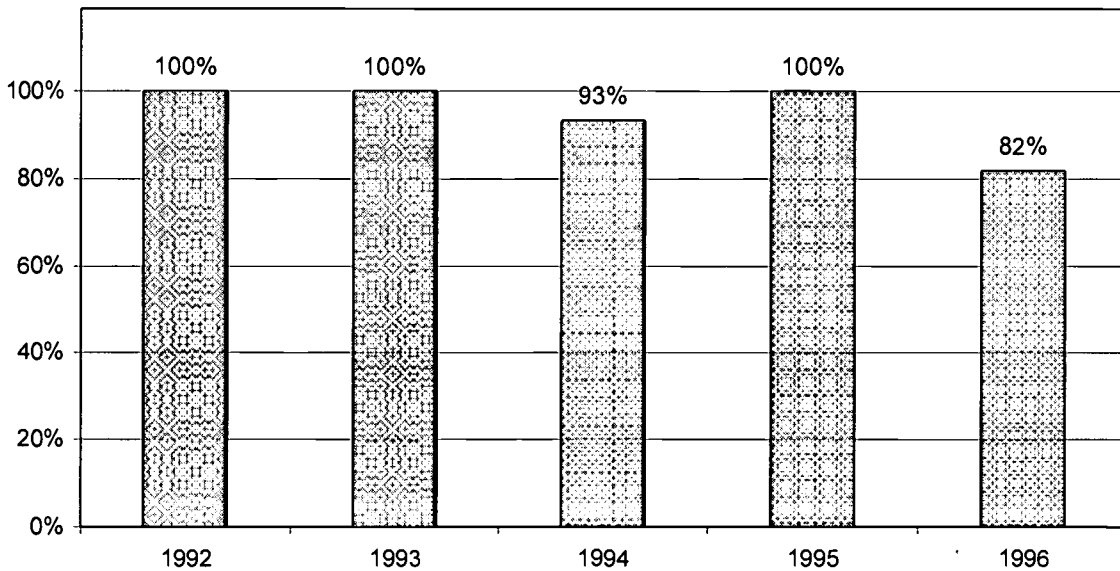
Age of Transfer Respondents



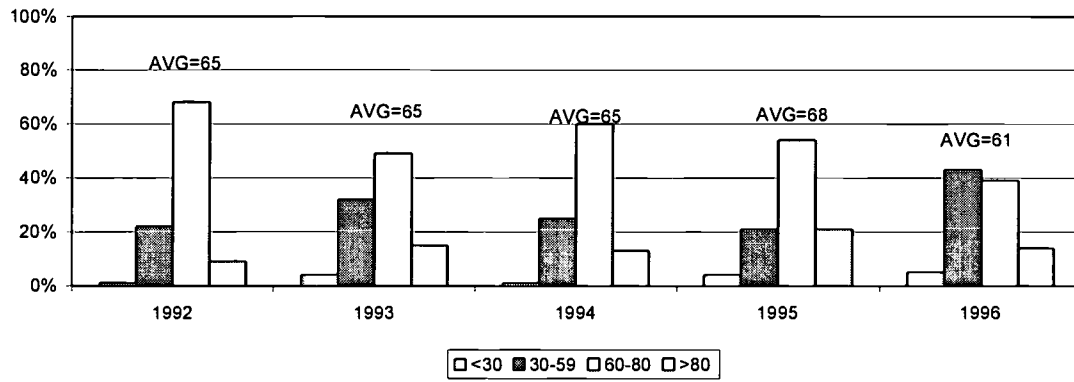
Most Important Entry Goal



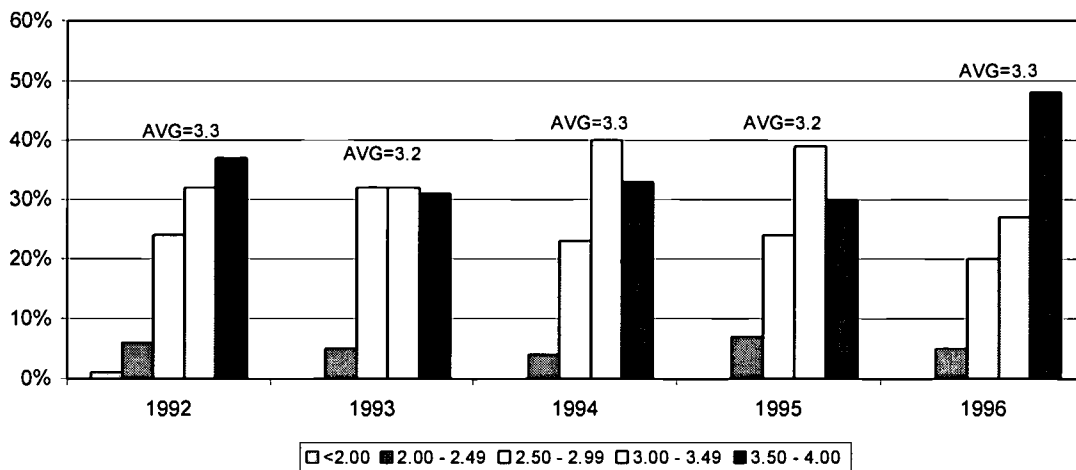
Achieved Most Important Goal



Credits Earned at HCC

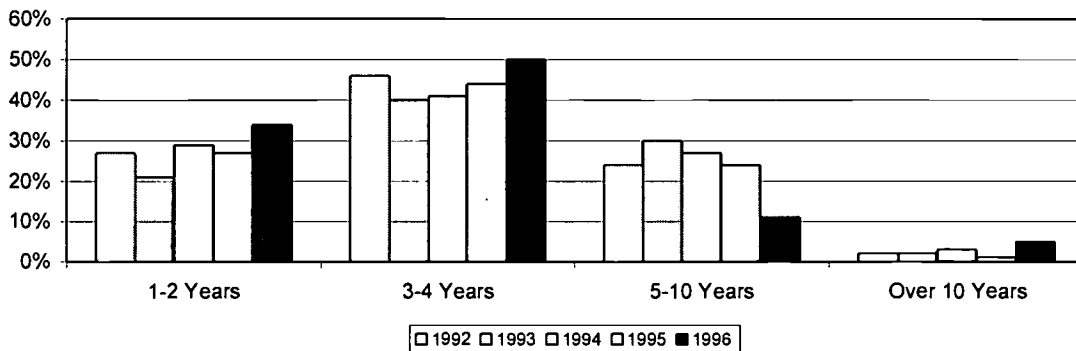


Grade Point Average at HCC



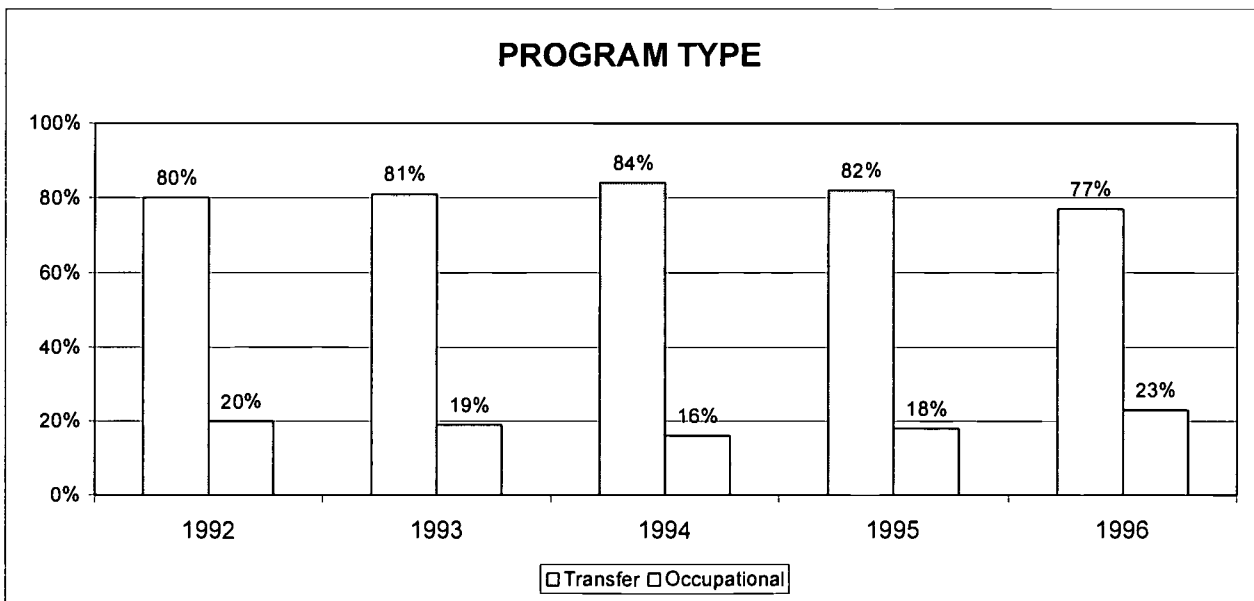
Years To Completion at HCC

1996 Average = 3.6



**TRANSFER RESPONDENTS' PROGRAMS OF STUDY
WHILE ATTENDING HOWARD COMMUNITY COLLEGE
FY 1992 - 1996**

Program Type	FISCAL YEAR									
	1992		1993		1994		1995		1996	
	N	%	N	%	N	%	N	%	N	%
Total	90		84		75		71		44	
Transfer	72	80%	68	81%	63	84%	58	82%	34	77%
Occupational	18	20%	16	19%	12	16%	13	18%	10	23%
Transfer Programs										
Arts & Sciences	20	22%	15	18%	30	40%	24	34%	11	25%
Engineering	2	2%	1	1%	2	3%	3	4%	1	2%
General Studies	11	12%	14	17%	13	17%	13	18%	11	25%
Teacher Education	18	20%	11	13%	4	5%	4	6%	5	11%
Business Administration	20	22%	23	27%	14	19%	14	20%	6	14%
Computer Science	1	1%	4	5%	0	0%	0	0%	0	0%
Subtotal Transfer Programs	72	80%	68	81%	63	84%	58	82%	34	77%
Occupational Programs										
Accounting (disc 93)	0	0%	0	0%	1	1%	0	0%	0	0%
Business Management	8	9%	5	6%	5	7%	6	8%	3	7%
Office Technology	0	0%	2	2%	1	1%	0	0%	1	2%
Data Processing	2	2%	0	0%	0	0%	0	0%	0	0%
Comp Tech/Comp Supp Tech	0	0%	0	0%	0	0%	0	0%	0	0%
Micro Computer Appl (disc 95)	1	1%	1	1%	0	0%	0	0%	0	0%
Network Administration (added 93)	0	0%	0	0%	0	0%	0	0%	0	0%
Nursing/Pract. Nursing (LPN added 93)	4	4%	3	4%	3	4%	4	6%	4	9%
Cardiovascular Tech (added 94)	0	0%	0	0%	0	0%	0	0%	0	0%
Computer Aided Design	0	0%	1	1%	0	0%	1	1%	1	2%
Electronics Tech	0	0%	2	2%	0	0%	1	1%	0	0%
Construction Tech (disc 95)	2	2%	0	0%	0	0%	0	0%	0	0%
Biomedical Eng Tech	1	1%	2	2%	1	1%	0	0%	0	0%
Plant Science	0	0%	0	0%	0	0%	1	1%	0	0%
Early Childhood Devel	0	0%	0	0%	1	1%	0	0%	1	2%
Subtotal Occupational Programs	18	20%	16	19%	12	16%	13	18%	10	23%
Total for All Programs	90	100%	84	100%	75	100%	71	100%	44	100%



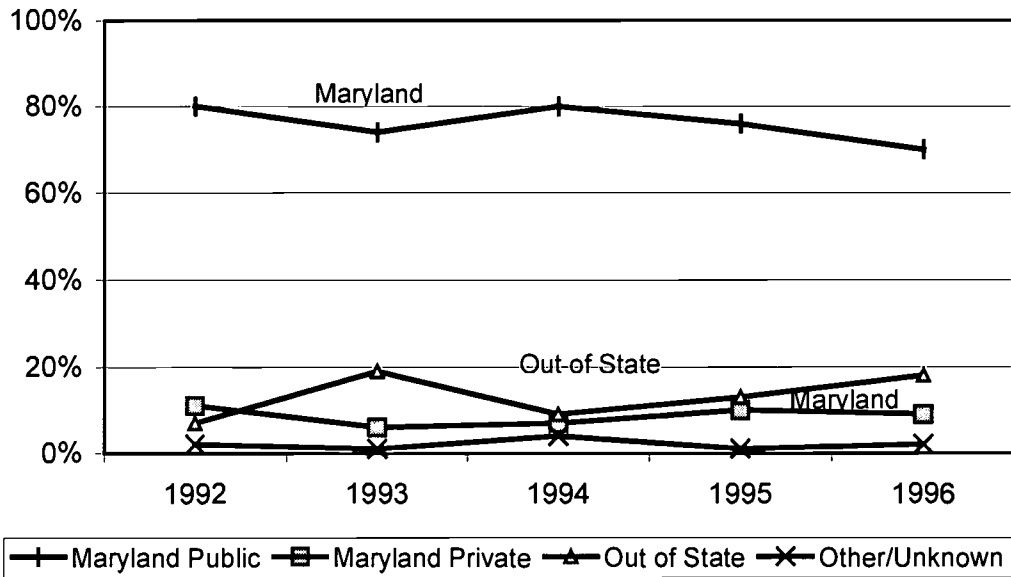
**CHARACTERISTICS OF TRANSFER RESPONDENTS
ONE YEAR AFTER GRADUATING FROM HOWARD COMMUNITY COLLEGE
FY 1992 - 1996**

	FISCAL YEAR									
	1992		1993		1994		1995		1996	
	N	%	N	%	N	%	N	%	N	%
Academic/Occupational Status*										
Employed Full Time	27	30%	30	36%	24	32%	27	38%	13	30%
Employed Part Time	31	34%	35	42%	24	32%	24	34%	18	41%
Full-Time Student	62	69%	46	55%	45	60%	37	52%	28	64%
Part-Time Student	18	20%	19	23%	20	27%	21	30%	9	20%
Active Military	1	1%	0	0%	1	1%	0	0%	0	0%
Full-Time Homemaker	3	3%	4	5%	0	0%	2	3%	2	5%
Unemployed and Seeking a Job	7	8%	2	2%	2	3%	1	1%	1	2%
Unemployed and Not Seeking a Job	1	1%	1	1%	5	7%	1	1%	0	0%
Retired	0	0%	1	1%	0	0%	0	0%	0	0%
Type of Transfer Institution										
Maryland Public	72	80%	62	74%	60	80%	54	76%	31	70%
Maryland Private	10	11%	5	6%	5	7%	7	10%	4	9%
Out of State	6	7%	16	19%	7	9%	9	13%	8	18%
Other/Unknown	2	2%	1	1%	3	4%	1	1%	1	2%
Intend to Earn Bachelor's Degree	81	90%	73	87%	67	89%	57	80%	39	89%
Major at Transfer Campus										
Same Field as at HCC	49	54%	38	45%	27	36%	31	44%	24	55%
Somewhat Related Field as HCC	26	29%	27	32%	31	41%	23	32%	16	36%
Different Field from HCC	13	14%	15	18%	16	21%	16	23%	4	9%
Unknown	2	2%	4	5%	1	1%	1	1%	0	0%
Credit Hours Completed at Transfer Campus										
Average	21		26		23		25		n/a	
7 or Fewer	11	12%	14	17%	10	13%	9	13%	8	18%
8 - 15	33	37%	21	25%	23	31%	23	32%	4	9%
16 - 30	27	30%	17	20%	22	29%	15	21%	10	23%
>30	15	17%	22	26%	14	19%	17	24%	18	41%
Unknown	4	4%	10	12%	6	8%	7	10%	4	9%
Mean GPA at Transfer Campus										
Average	3.1		3.2		3.3		3.2		n/a	
<1.00	0	0%	1	1%	1	1%	1	1%	0	0%
1.00 - 1.99	2	2%	1	1%	1	1%	2	3%	1	2%
2.00 - 2.99	30	33%	12	14%	13	17%	15	21%	11	25%
3.00 - 4.00	53	59%	54	64%	54	72%	43	61%	31	70%
Unknown	5	6%	16	19%	6	8%	10	14%	1	2%
Credits Lost in Transfer										
Median	4		9		6		8		3	
Changed Major	0	0%	4	5%	2	3%	1	1%	3	7%
Earned Over 60 Credits	20	22%	13	15%	19	25%	9	13%	8	18%
No Comparable Course Offered	12	13%	8	10%	22	29%	13	18%	4	9%
Other	11	12%	3	4%	5	7%	7	10%	3	7%
No Credits Lost in Transfer	47	52%	56	67%	27	36%	41	58%	26	59%
Mean Rating of Transfer Preparation	4.3		4.2		4.1		4.2		4.1	
<i>(on a five-point scale)</i>										

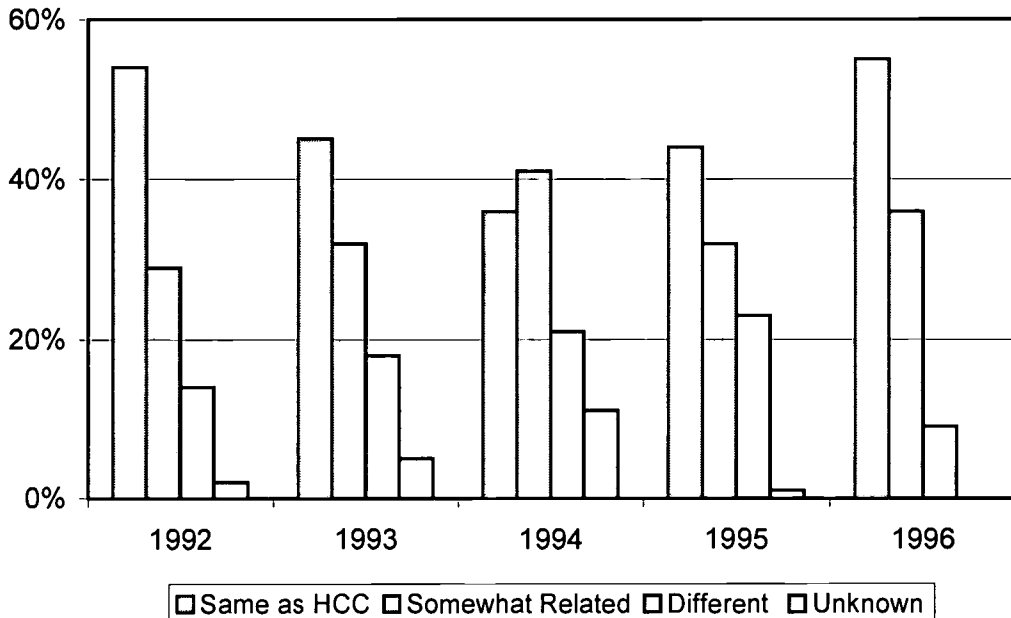
Note: Data were self-reported and compiled from the HCC Graduate Follow-Up Survey Results. Transfer graduates were those who attended a four-year institution full or part time within a year of graduating from HCC. * Included are all academic/occupational statuses that apply for each student at the time of survey. Includes multiple responses for most students.

BEST COPY AVAILABLE

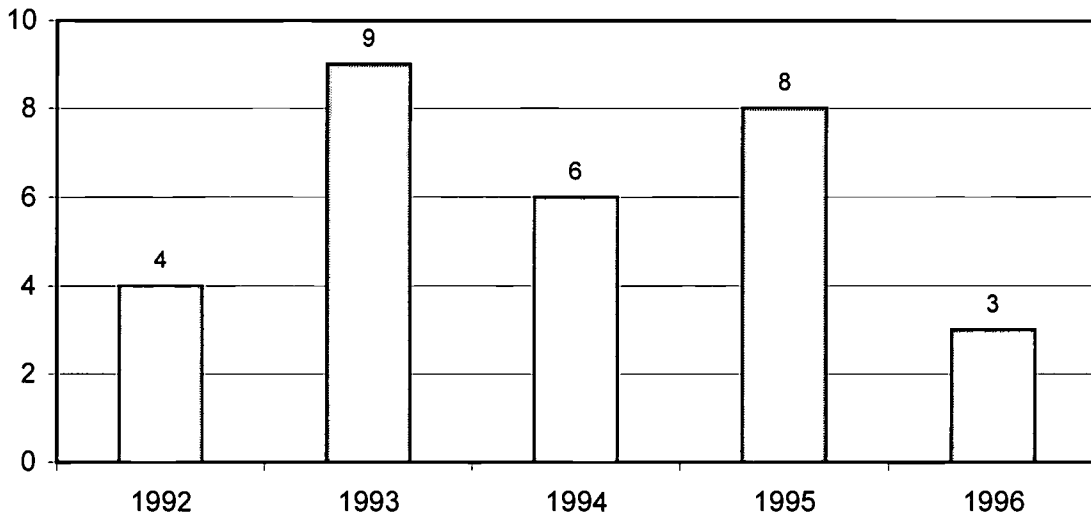
Type of Transfer Institution



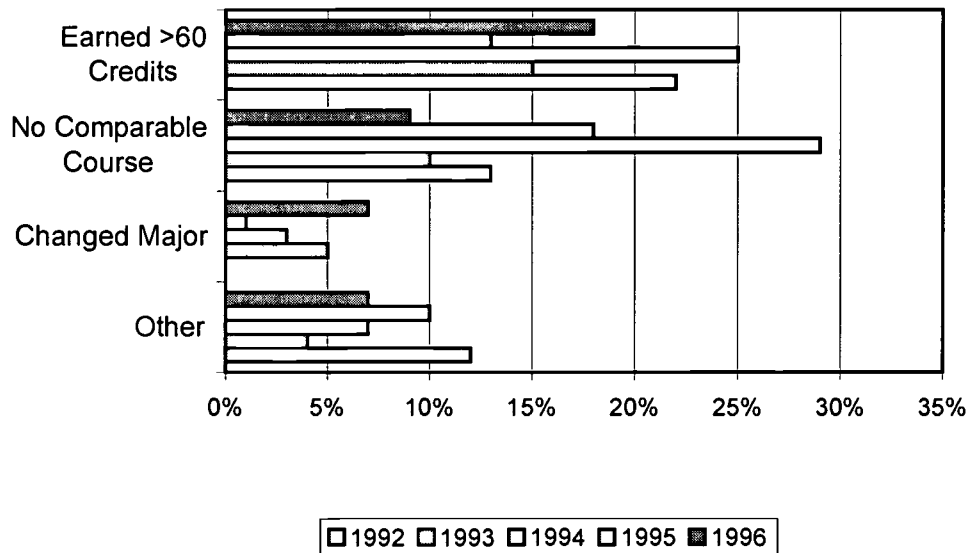
Major at Transfer Campus



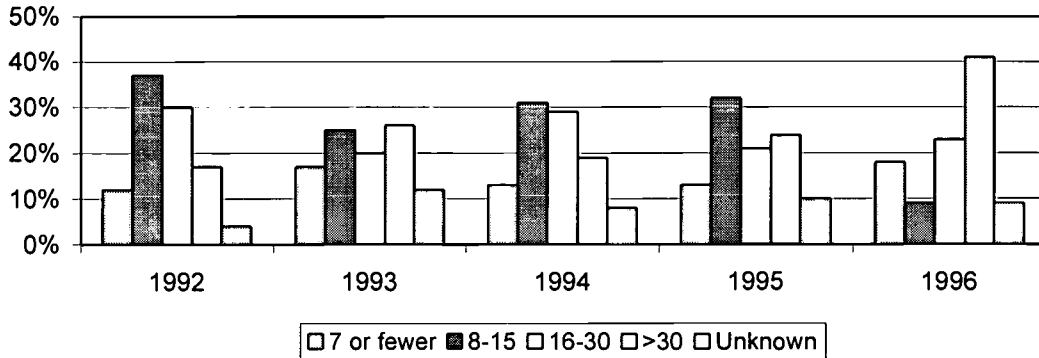
Median Credits Not Accepted in Transfer



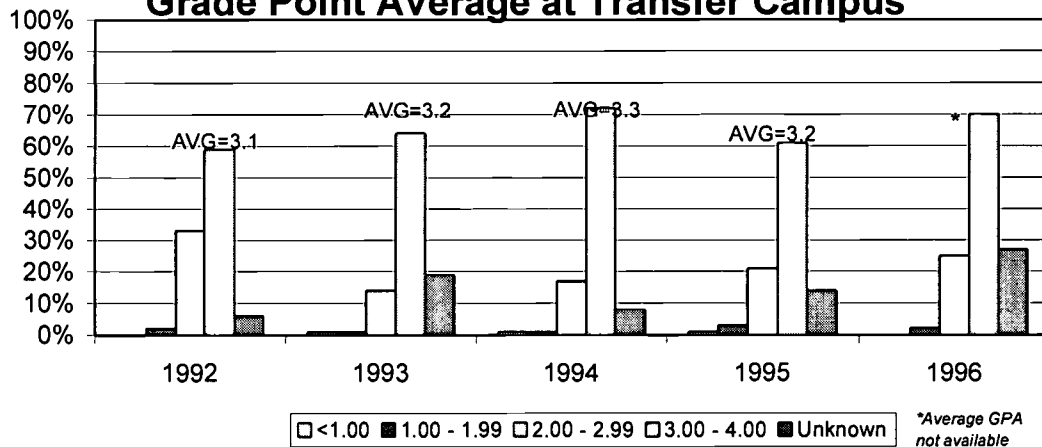
Reasons Credits Not Accepted in Transfer



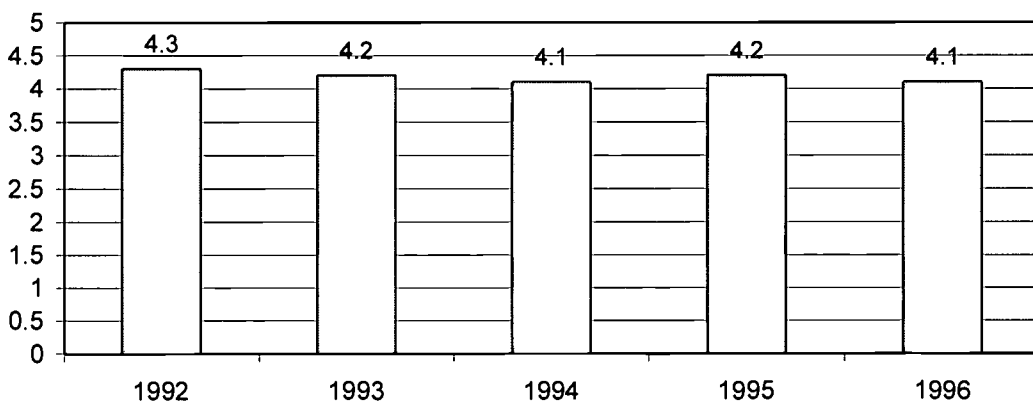
Credit Hours Completed at Transfer Campus One Year After Graduating From HCC



Grade Point Average at Transfer Campus



Students' Rating of Transfer Preparation





U.S. Department of Education
Office of Educational Research and Improvement (OERI)
National Library of Education (NLE)
Educational Resources Information Center (ERIC)



JC990 376

NOTICE

REPRODUCTION BASIS



This document is covered by a signed "Reproduction Release (Blanket) form (on file within the ERIC system), encompassing all or classes of documents from its source organization and, therefore, does not require a "Specific Document" Release form.



This document is Federally-funded, or carries its own permission to reproduce, or is otherwise in the public domain and, therefore, may be reproduced by ERIC without a signed Reproduction Release form (either "Specific Document" or "Blanket").