

DOCUMENT RESUME

ED 430 015

TM 029 728

AUTHOR Frye, Barbara J.; Fugerer, Barbara; Harvey, Shelby; McKay, Lyn; Robinson, Oscar
TITLE SAM: A Student Achievement Model Designed To Empower Teachers and Increase Student Achievement through Action Research.
PUB DATE 1999-00-00
NOTE 19p.
PUB TYPE Reports - Descriptive (141)
EDRS PRICE MF01/PC01 Plus Postage.
DESCRIPTORS *Academic Achievement; *Action Research; Data Analysis; Data Collection; Educational Assessment; Elementary Secondary Education; Models; *Teacher Empowerment

ABSTRACT

The Student Achievement Mode (SAM) gives teachers a system for collecting and analyzing data in order to increase student achievement in classrooms and schools. Developed in 1 school, the model is currently used in 63 elementary and 8 secondary schools in a large school district in Florida. The purpose of SAM is to increase student achievement, increase student ownership and responsibility in the learning process, and increase the effectiveness of teachers through their involvement in a continual process of inquiry. Student performance data, observational data, anecdotal notes, and survey data reveal that the model has improved teachers' involvement in problem-solving educational issues and has led to higher student achievement. (Contains 5 tables and 18 references.) (Author)

* Reproductions supplied by EDRS are the best that can be made *
* from the original document. *

Running head: SAM: A STUDENT ACHIEVEMENT MODEL

ED 430 015

SAM: A Student Achievement Model Designed to Empower Teachers and Increase Student Achievement Through Action Research

Barbara J. Frye

University of South Florida

Barbara Fugerer, Shelby Harvey, Lyn McKay, and Oscar Robinson

Pinellas County Schools

TM029728

U.S. DEPARTMENT OF EDUCATION
Office of Educational Research and Improvement
EDUCATIONAL RESOURCES INFORMATION
CENTER (ERIC)

- This document has been reproduced as received from the person or organization originating it.
- Minor changes have been made to improve reproduction quality.

• Points of view or opinions stated in this document do not necessarily represent official OERI position or policy.

PERMISSION TO REPRODUCE AND DISSEMINATE THIS MATERIAL HAS BEEN GRANTED BY

Barbara Frye

TO THE EDUCATIONAL RESOURCES INFORMATION CENTER (ERIC)

Abstract

The Student Achievement Model (SAM) gives teachers a system for collecting and analyzing data in order to increase student achievement in classrooms and schools. Developed in one school, the model is currently used in 63 elementary and 8 secondary schools in a large school district in Florida. The purpose of SAM is to increase student achievement, increase student ownership and responsibility in the learning process, and increase the effectiveness of teachers through their involvement in a continual process of inquiry. Student performance data, observational data, anecdotal notes, and survey data reveal that the model has improved teachers' involvement in problem-solving educational issues and has led to higher student achievement.

SAM: A Student Achievement Model Designed to Empower Teachers and
Increase Student
Achievement Through Action Research

School reform, renewal or improvement is changing from the model of the expert coming in and telling teachers what research says and what they need to do in their classrooms to a process of involving teachers in a continual inquiry into how to make their teaching more effective (Huberman, 1992; Joyce and Calhoun, 1995). Schaefer (1967) says that the school must become the center of inquiry and that students need to be involved in what Hopkins (1997) calls powerful learning, where students have a greater control and understanding of their own learning. This project was designed to first investigate the impact of school-wide inquiry on student achievement in one school and second, to investigate a model for involving teachers, schools and students throughout a large school district in classroom and school inquiry. The project, which has involved a university professor, district supervisors, school administrators, and classroom teachers for the past six years began in one elementary school and during the 1998-99 academic year will involve students, teachers, parents, and administrators in 63 elementary schools and 8 secondary schools. The goal of the project was and continues to be to increase student achievement, increase student ownership and responsibility in the learning process, and increase the effectiveness of teachers through their involvement in a continual process of inquiry. For the purposes of this paper, we will share the development of the teacher inquiry or teacher research model, the

dissemination of this model in a very large school district, and the impact it has had on students and teachers.

Teacher research or inquiry is a frequently advocated process (e.g., Elliott, 1991; Patterson, Santa, Short, & Smith: Shannon, 1996; Stenhouse, 1985), but teacher researchers often face formidable challenges such as finding their research going unrewarded and at times estranged from peers (Cochran-Smith & Lytle, 1993). The dominant practices in schools such as standardized testing, required textbooks, and inflexible schedules often place teachers in the position of juggling the needs of students with the needs of the research, resulting in a lack of time for collecting and analyzing data, reflecting, sharing, writing and revising (Hollingsworth, 1996; Macrorie, 1987; Mohr & MacLean, 1987; Whittaker, 1988). Based on evidence that teacher inquiry is less overwhelming and confusing when conducted in long-term, close-knit communities (e.g., Elliott & Adelman, 1996; Goswami & Stillman, 1987; Mohr & MacLean, 1987), we set out to develop a model which gave teachers a system for collecting and analyzing data on a timely basis and allowed them ample time to study and interpret the data they collected. Our hope was that this would result in a "close-knit" community of teachers conducting action research.

Methods

We began this project by involving the teachers from School A in actively studying their students' performance data in reading and writing within classrooms and across grade levels. Calhoun (1991) describes schoolwide action research as a five-phased process where faculty members select an area or problem of collective

interest, collect, organize, and interpret on-site data related to their areas of interest, and then take action based on their interpretations. We basically used the same process or cycle using the terminology of Plan, Do, Study, and Act (PDSA) which is used in systems which embrace and implement the theories of Total Quality Management (TQM) (Byrnes, Cornesky & Byrnes, 1992).

We took the districts' informal assessments (e.g. running records, dictation survey, concepts of print, and deadline writing) which are administered three times per year and developed computer templates. Teachers type in their students' scores and are instantly given graphs showing the percentages of students below, on and above grade level as shown in Tables A 1 and A 3. When appropriate, the templates are designed to show teachers specific areas where students are having problems such as "focus" or "word choice" in writing as shown in Table A 2 or "author's purpose" in reading as shown in Table A 4. Teachers are then given opportunities to sit down in grade level teams to discuss trends in their data. Based on careful study and discussion, decisions were made at the classroom, grade-level and school level. Important in this project was the commitment of teachers and administrators to avoid using this process to evaluate individual teachers. We constantly reinforced the fact that we all were working together as a team to improve the learning of all students.

After two years, we had an established model for teacher inquiry which gave teachers a process by which they could align curriculum, instruction, and assessment. We called it the Student Achievement Model (SAM) as shown in Table A 3. Student performance data, observational data, and anecdotal notes indicated

that the model was effective and that teachers were extremely positive about their involvement in the process. We spent the following two years in a summer school project called the Student Achievement Institute (SAI) which paired teachers from other schools with mentoring teachers from School A. These teachers spent six weeks involved in implementing SAM with the hopes that they would go back to their home schools and continue the cycle of inquiry. The demand for training became so great by individual schools, that Achievement Teams were formed and schools that had a commitment from at least 66 percent of their faculty were supported in the process of adapting this model. Presently, 75 percent of a school's faculty must make a commitment to support the use of the model before it is implemented.

Results and Conclusions

Student performance data, observational data, anecdotal notes, and survey data were and continue to be collected to determine the impact of this ongoing project.

Randomly sampled reading achievement data collected from 350 primary and 200 intermediate students of 28 teachers involved in this project indicate a higher rate of achievement for students in classrooms where teachers were employing SAM when compared to the district as a whole. Measures for the primary grades included scores from a test of alphabet knowledge (91% mastery compared to 75%), Marie Clay's (1993) Dictation Survey (48% mastery compared to

22%), and running records (83% on or above grade level compared to 65%). The median CTBS scores for students in grades 3 through 5 was a 76 (75.5% at or above the 50th percentile) in SAM classrooms compared to a 66 (63.9% at or above the 50th percentile) across the district.

Fourth grade Florida Writes Scores from the School A, which has a challenging population of students, increased from an average of 2.2 in 1993 to 3.7 in 1998, which is higher than the district (3.4) and the state (3.0) averages. A school in the district with a similar population of students averaged a 2.8 out of a possible 6 on this same test.

In 1997, an attitude survey was administered to over 1000 teachers and administrators and revealed that 90 percent of those participating in this project were satisfied or very satisfied in terms of the computer templates, the support they received, and their experience working with peers to solve "teaching" problems using SAM. A levels of use survey was sent to all teachers using SAM during the 1997-1998 school year with 606 out of about 1000 returning them. Ninety-two percent of the teachers indicated that they used their assessment data to plan instruction, evaluate classroom instructional needs, and evaluate individual student's instructional needs. Eighty percent said that they also used these data to evaluate their own teaching. The results of the survey also revealed that as teachers became more experienced implementing SAM, they were more likely to engage in unscheduled discussions about their data with colleagues, share data with their students, and to share data with parents.

Perhaps the most interesting data are anecdotal and observational and reveal

profound changes in teachers' attitudes and actions. As teachers began to feel comfortable working with assessment data, they asked for changes to be made in the templates. For example, it was a general consensus among teachers in School A that a major reason for poor performance in their classrooms was due to the transient nature of their population of students. The templates were changed so that teachers could see students' performance across their entire class and then with new students removed. They found that new students were not necessarily the reason for poor performance, but they could more accurately assess the impact of their own teaching by studying the performance of students they had taught the entire year.

Teachers used the information they gleaned from their data in constructive and powerful ways due to the fact that they felt "safe" and confident that this information would not be used to evaluate their performance, but rather to help them enhance their teaching. For example, it is common to hear teachers complain each fall that students arrive in their classrooms not possessing the knowledge or skills they should. A group of teachers using SAM asked if they could find out how their students performed when they moved to the next grade. Templates were designed so that teachers could see how their children performed in the next year compared to the other teachers at their grade level. In the few cases where one teacher's students were performing considerably lower than her colleague's students, heads were put together to solve this problem. At School A two primary teachers with interns volunteered to go into the classroom of a teacher whose students were not performing well and whose students from the previous year were

also not fairing well in the next grade level. They went in each day and worked with individuals and small groups. They provided valuable modeling for this teacher and helped to accelerate the progress of her current students.

When allowed the time and flexibility to problem-solve, teachers have shown that they can come up with creative and effective solutions. For example, upon discovering that the students of newer teachers at School A who were placed in portable classrooms behind the school, were not performing as well when compared to students in other classrooms, veteran teachers volunteered to move to the portables and the newer teachers were moved into the main building and placed next to more experienced teachers who could act as mentors.

Teacher and schoolwide action research is empowering to teachers and can lead to improved student achievement. The Student Achievement Model (SAM), which is actually a process embedded in the larger district initiative of Total Quality Management (TQM) or Integrated Management Systems (IMS), has been a successful vehicle to begin this initiative. Teachers who have been involved with SAM over the past several years are interested in pursuing action research to solve other educational problems and to find instructional techniques which will ensure higher student achievement. They have learned the importance of collecting reliable and valid data to inform their teaching. These teachers also understand the importance of aligning their classroom goals with the district's and state's expectations for student achievement. Their research projects are designed to study instructional methods that will assist them in helping their students meet learning expectations effectively and efficiently. We are currently in the beginning stages of establishing a

network to support these teachers in their individual and group inquiries. Presently 32 teachers are conducting research projects in their classrooms and will present their findings at the district's Quality Expo in April.

References

Byrnes, M., Cornesky, R. A., & Byrnes, L. W. (1992). The Quality Teacher: An Introduction to Total Quality Management in Education. Alexandria, VA: Association for Supervision and Curriculum Development.

Calhoun, E. F. (1994). How to use action research in the self-renewing school. Alexandria, VA: Association for Supervision and Curriculum Development.

Clay, M. (1993). An observation survey of early literacy achievement. Portsmouth, NH: Heinemann.

Cochran-Smith, M., & Lytle, S. L. (1993). Inside/outside: Teacher research and knowledge. New York: Teachers College Press.

Elliott, J. (1991). Action research for educational change. Milton Keynes and Philadelphia: Open University Press.

Feldman, A., & Atkin, J. M. (1995). Embedding action research in professional practice. In S.E. Noffke & R.B. Stevenson (EDS.), Educational action research: Becoming practically critical (pp. 127-137). New York: Teachers College Press.

Glickman, C. D. (1993). Reviewing America's schools: A guide for school-based action. San Francisco: Jossey-Bass.

Goswami, D., & Stillman, P. R. (1987). Reclaiming the classroom. Portsmouth, NH: Heinemann.

Hopkins, D. (1993). A Teacher's guide to classroom research (2nd Ed.). Buckingham: Open University Press.

Huberman, M. (1993). Linking the practitioner and researcher communities for school improvement. School Effectiveness and Improvement, V4(1) 1-16.

Joyce, B., & Calhoun, E. (1995). School renewal: An inquiry, not a formula. Educational Leadership, V52(7), 51-55.

Macrorie, K. (1987). Research as odyssey. In D. Goswami & P. R. Stillman (EDS.), Reclaiming the classroom: teacher research as an agency for change (pp. 49-58). Portsmouth, NH: Heinemann.

Mohr, M. M., & MacLean, M. S. (1987). Working together: A guide for teacher-researchers. Urbana, IL: National Council of Teachers of English.

Patterson, L., Santa, C.M., Short, K. G., & Smith, K. (Eds.) (1993). Teachers are researchers: Reflection and action. Newark, DE: International Reading Association.

Shaefer, R.J. (1967). The school as a center of inquiry. New York: Harper and Row.

Shannon, P. (1996). Teachers researching during troubling times. Teacher Research: the Journal of Classroom Inquiry, 4(1), 12-23.

Stenhouse, L. (1985). Research as a basis for teaching. London: Heinemann.

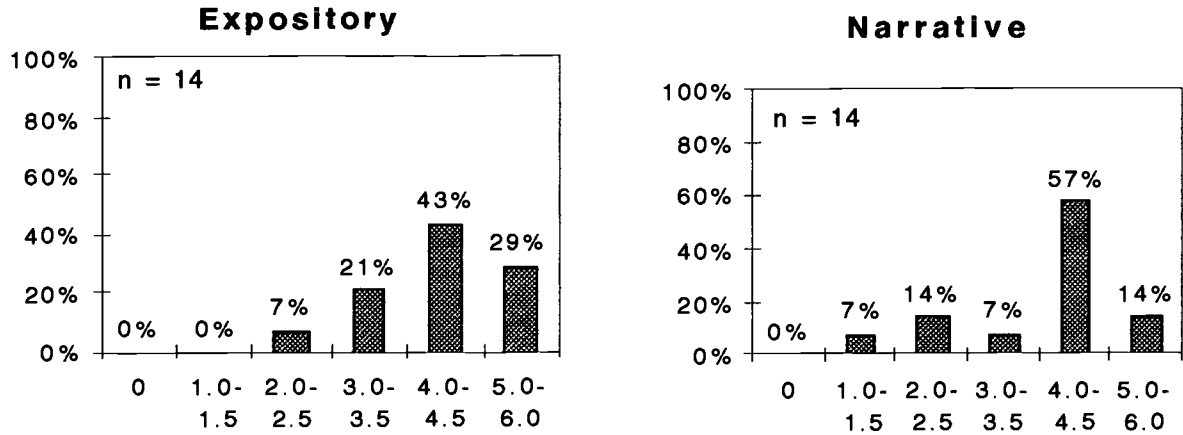
Whittaker, J. (1988). Curriculum in action: An approach to evaluation. In J. Nias & S. Groundwater-Smith (Eds.), The inquiring teacher: supporting and sustaining teacher research (pp. 197-215).

Appendix

Table A1

Hometown Elementary Grade 4

Demand Writing--May



Expository and Narrative Scores

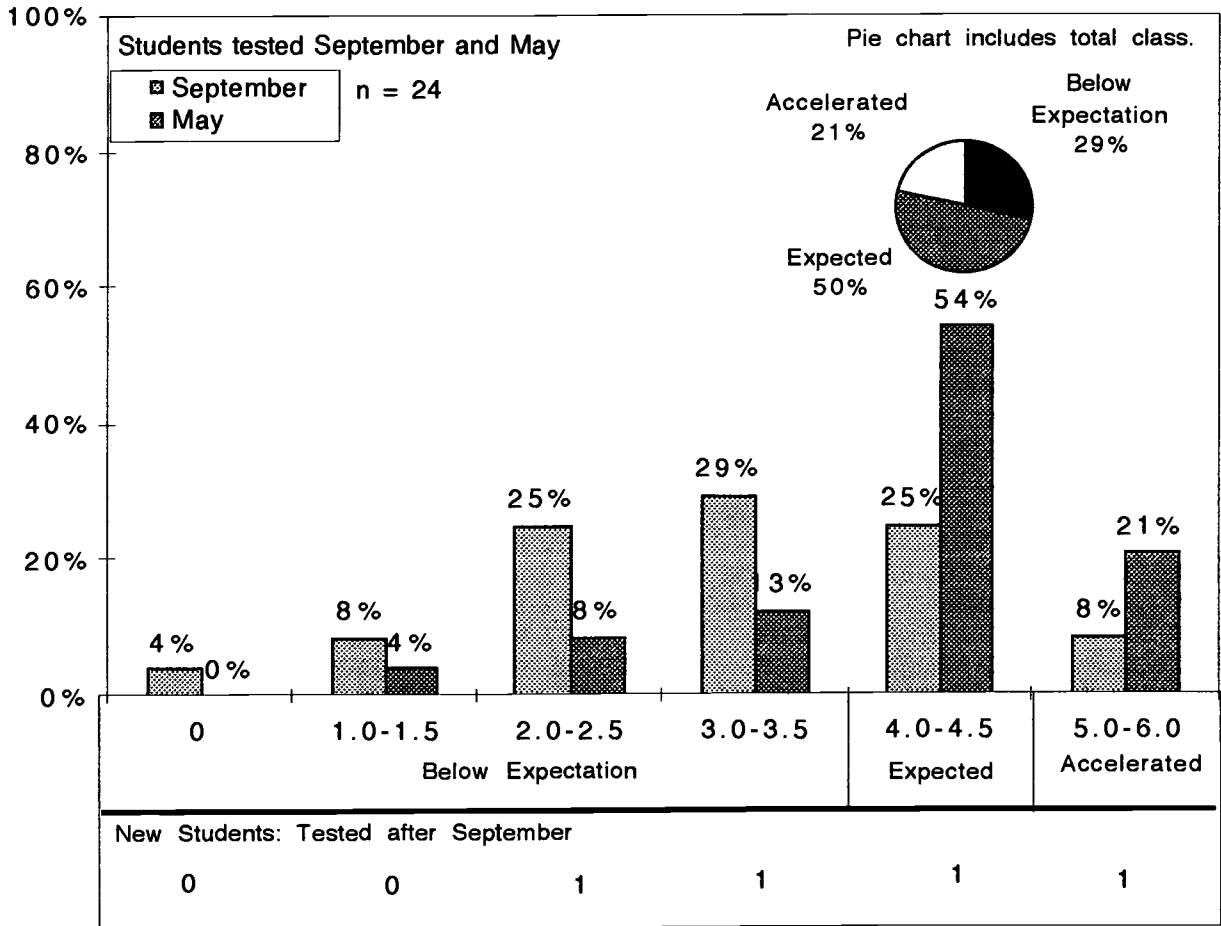


Table A 2

Grade 4 Levels of Knowledge

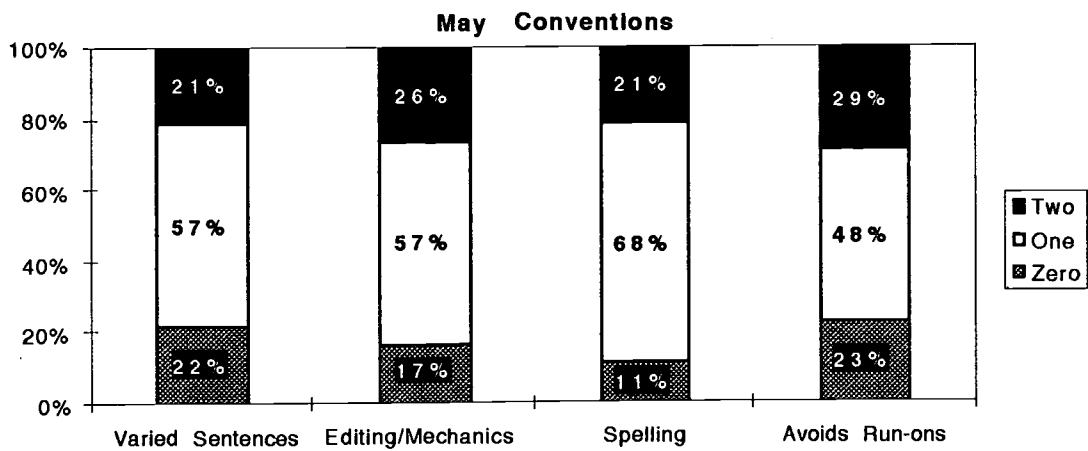
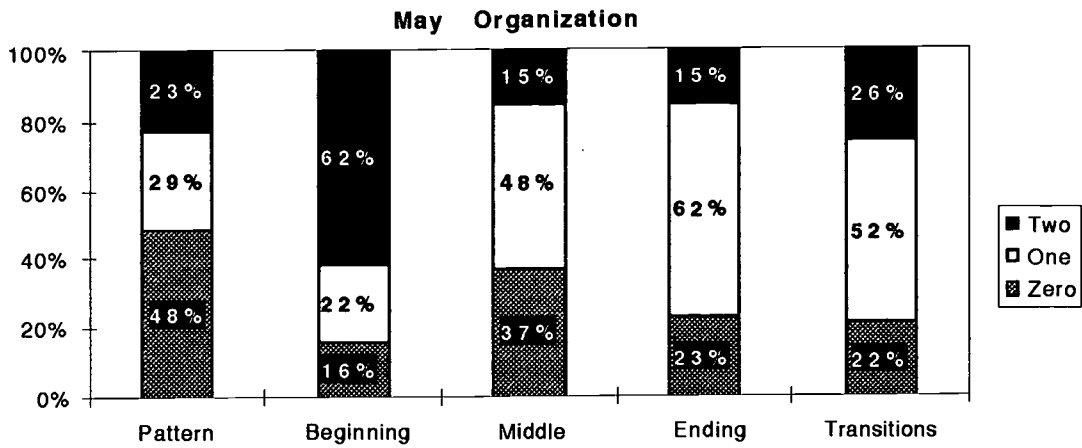
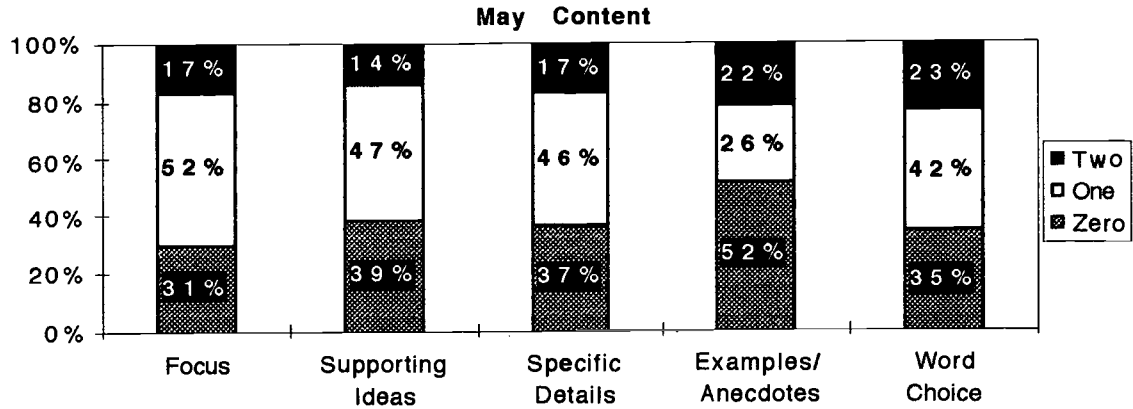
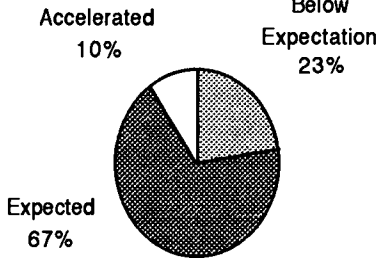


Table A 3

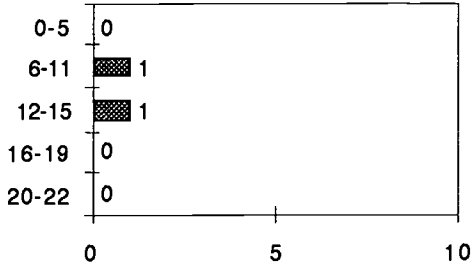
Hometown Elementary Grade 4

May PR-FCAT Performance:

Total Class

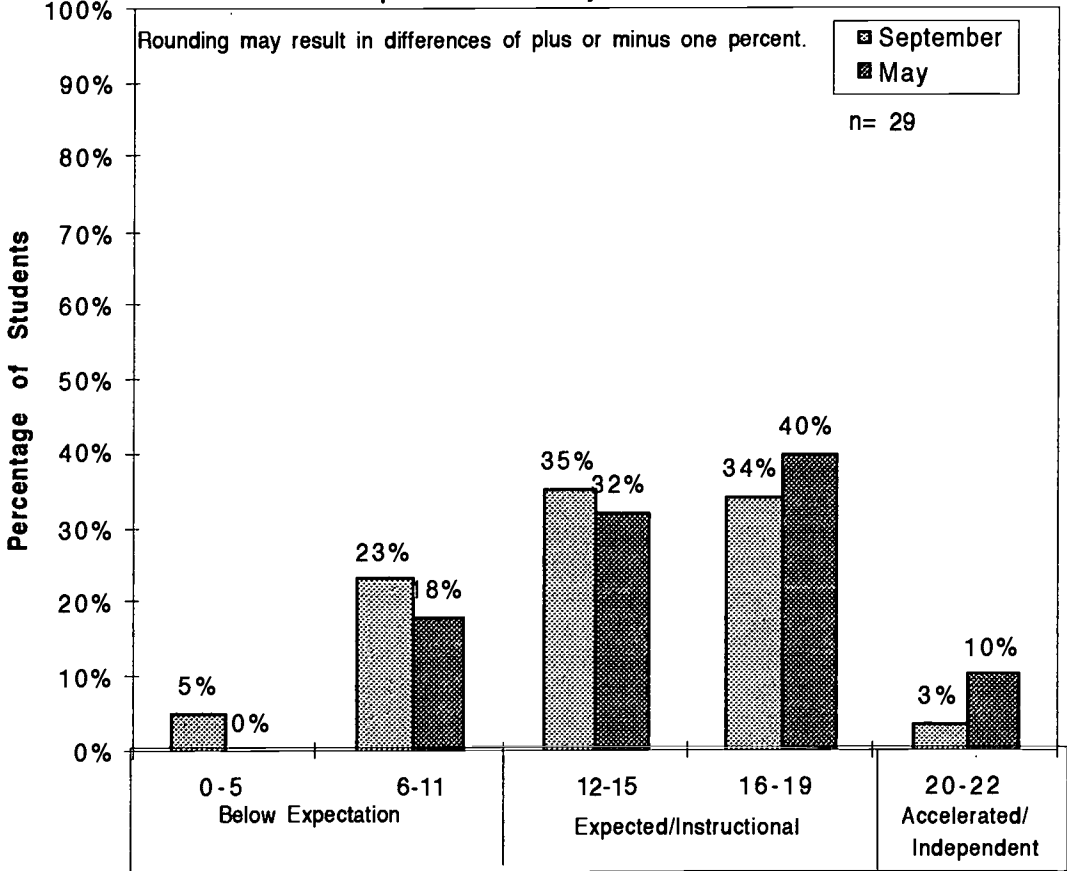


New Students:
Tested after September



Students tested September and May

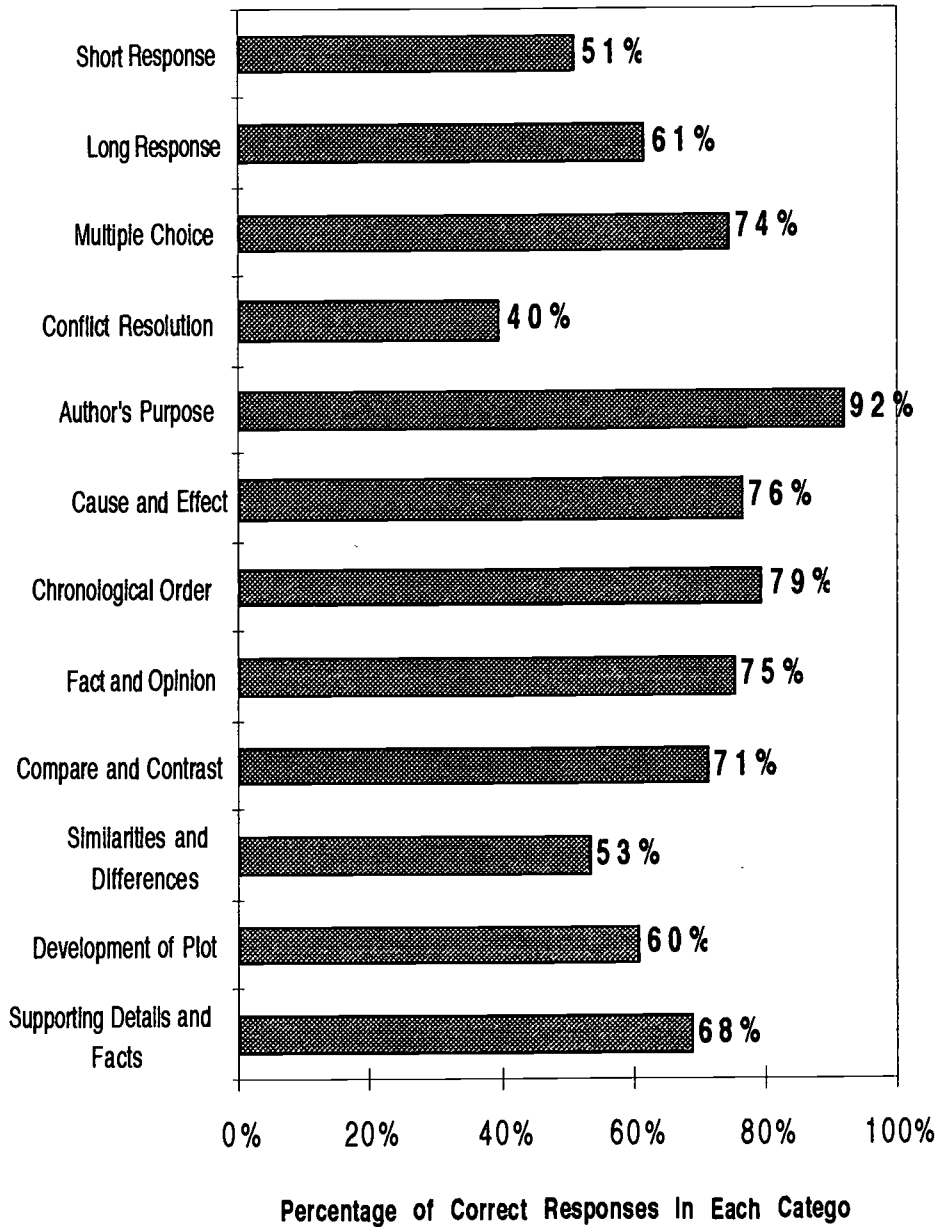
Number of Students



PR-FCAT Raw Score:

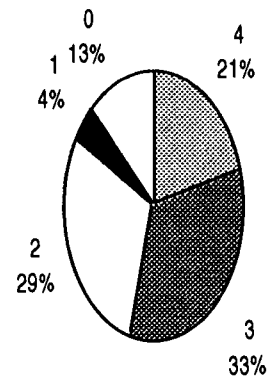
Table A 4

Item Analysis for Grade 5 PR-FCAT--May

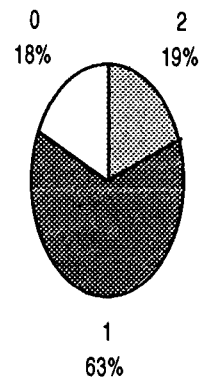


Breakdown of Scores

Long Response Question



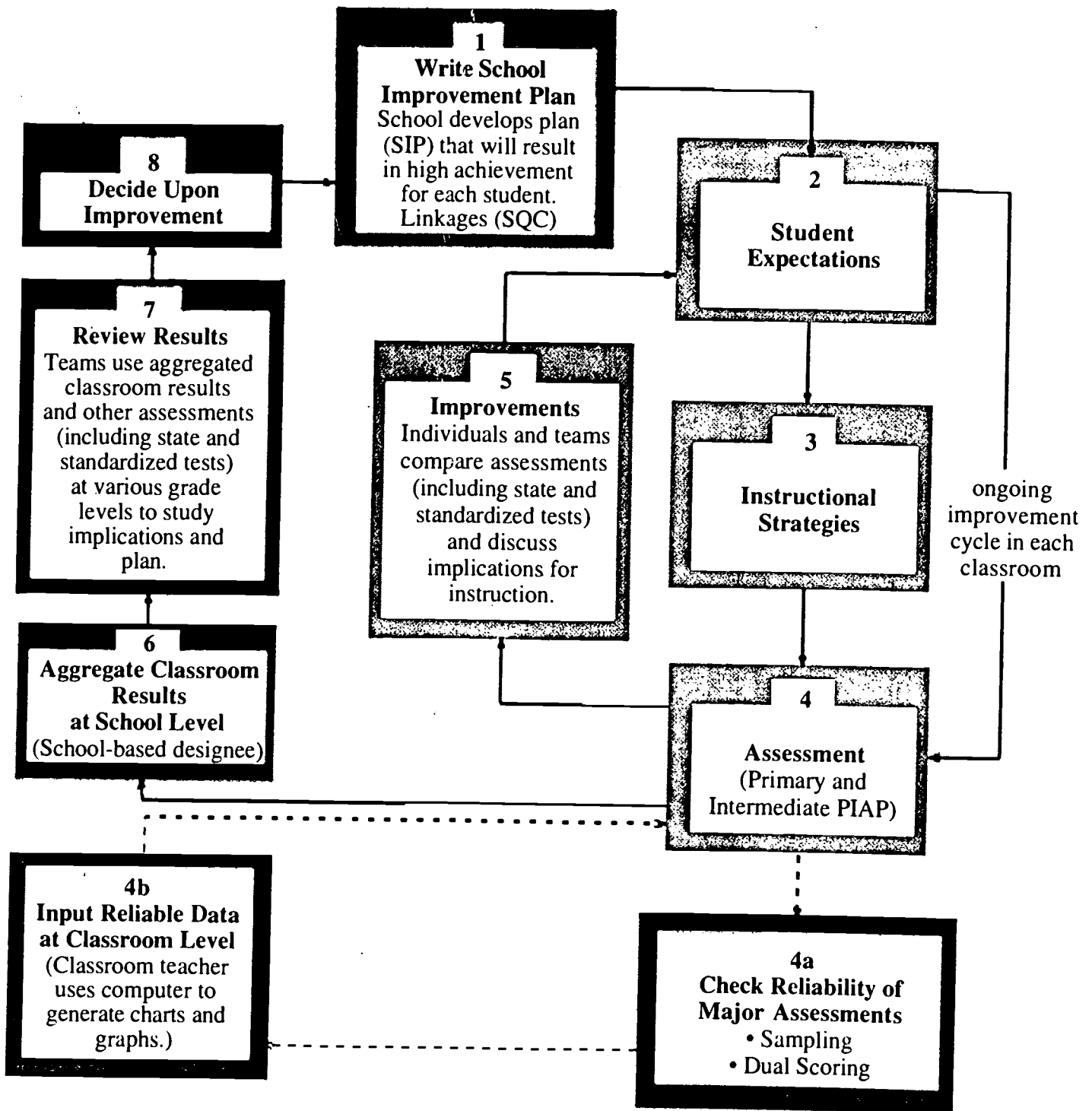
Short Response Questions

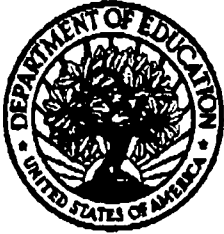


Student Achievement Model

A process for increasing student achievement

Aligning Student Expectations, Instructional Strategies, and Assessment within an Integrated System of Process Improvement





U.S. Department of Education
Office of Educational Research and Improvement (OERI)
National Library of Education (NLE)
Educational Resources Information Center (ERIC)



TM029728

REPRODUCTION RELEASE
(Specific Document)

I. DOCUMENT IDENTIFICATION:

Title: SAM: A Student Achievement Model Designed to Empower Teachers & Increase Student Achievement Through Action Research
Author(s): Barbara J Frye, Barbara Fugerer, Shelby Harvey, Lynn McKay + Oscar Robinson
Corporate Source:
Publication Date:

II. REPRODUCTION RELEASE:

In order to disseminate as widely as possible timely and significant materials of interest to the educational community, documents announced in the monthly abstract journal of the ERIC system, Resources in Education (RIE), are usually made available to users in microfiche, reproduced paper copy, and electronic media, and sold through the ERIC Document Reproduction Service (EDRS).

If permission is granted to reproduce and disseminate the identified document, please CHECK ONE of the following three options and sign at the bottom of the page.

The sample sticker shown below will be affixed to all Level 1 documents

PERMISSION TO REPRODUCE AND DISSEMINATE THIS MATERIAL HAS BEEN GRANTED BY
Sample
TO THE EDUCATIONAL RESOURCES INFORMATION CENTER (ERIC)

Level 1

[Checked box]

Check here for Level 1 release, permitting reproduction and dissemination in microfiche or other ERIC archival media (e.g., electronic) and paper copy.

The sample sticker shown below will be affixed to all Level 2A documents

PERMISSION TO REPRODUCE AND DISSEMINATE THIS MATERIAL IN MICROFICHE, AND IN ELECTRONIC MEDIA FOR ERIC COLLECTION SUBSCRIBERS ONLY, HAS BEEN GRANTED BY
Sample
TO THE EDUCATIONAL RESOURCES INFORMATION CENTER (ERIC)

Level 2A

[Empty box]

Check here for Level 2A release, permitting reproduction and dissemination in microfiche and in electronic media for ERIC archival collection subscribers only

The sample sticker shown below will be affixed to all Level 2B documents

PERMISSION TO REPRODUCE AND DISSEMINATE THIS MATERIAL IN MICROFICHE ONLY HAS BEEN GRANTED BY
Sample
TO THE EDUCATIONAL RESOURCES INFORMATION CENTER (ERIC)

Level 2B

[Empty box]

Check here for Level 2B release, permitting reproduction and dissemination in microfiche only

Documents will be processed as indicated provided reproduction quality permits. If permission to reproduce is granted, but no box is checked, documents will be processed at Level 1.

I hereby grant to the Educational Resources Information Center (ERIC) nonexclusive permission to reproduce and disseminate this document as indicated above. Reproduction from the ERIC microfiche or electronic media by persons other than ERIC employees and its system contractors requires permission from the copyright holder. Exception is made for non-profit reproduction by libraries and other service agencies to satisfy information needs of educators in response to discrete inquiries.

Sign here, please

Signature: Barbara Frye
Printed Name/Position/Title: Associate Professor
Organization/Address: USE 140 7th Ave S, St. Peter, FL 33701
Telephone: 727-392-6365
E-Mail Address:
Date: 4/12/99

(over)