

DOCUMENT RESUME

ED 428 533

EF 005 572

TITLE Schools of Interest 6.
INSTITUTION North Carolina State Dept. of Public Instruction, Raleigh.
Div. of School Planning.
PUB DATE 1986-00-00
NOTE 89p.; For other reports in this series, see EF 005 570-574,
ED 095 661-662, and ED 159 782.
PUB TYPE Guides - Non-Classroom (055) -- Reports - Descriptive (141)
EDRS PRICE MF01/PC04 Plus Postage.
DESCRIPTORS Construction Costs; *Educational Facilities Design;
*Educational Facilities Improvement; Educational Facilities
Planning; Elementary Secondary Education; *Public Schools;
*School Construction
IDENTIFIERS North Carolina

ABSTRACT

North Carolina local public school boards have the statutory responsibility for operating public schools and for entering into contracts for design and construction of their schools. This document presents examples of plans for school buildings planned or constructed during the last few years, as of 1986, representing a wide range of educational philosophies and design solutions. Elementary, Middle, and High School buildings are included. Each offering provides the floor plan, photographs or line drawings of the school, and costs and contractor information. (GR)

* Reproductions supplied by EDRS are the best that can be made *
* from the original document. *

SCHOOLS OF INTEREST 6



ED 428 533

FF 005 572

PERMISSION TO REPRODUCE AND
DISSEMINATE THIS MATERIAL HAS
BEEN GRANTED BY

E. Brumback

TO THE EDUCATIONAL RESOURCES
INFORMATION CENTER (ERIC)

1

U.S. DEPARTMENT OF EDUCATION
Office of Educational Research and Improvement
EDUCATIONAL RESOURCES INFORMATION
CENTER (ERIC)
 This document has been reproduced as
received from the person or organization
originating it.
 Minor changes have been made to
improve reproduction quality.

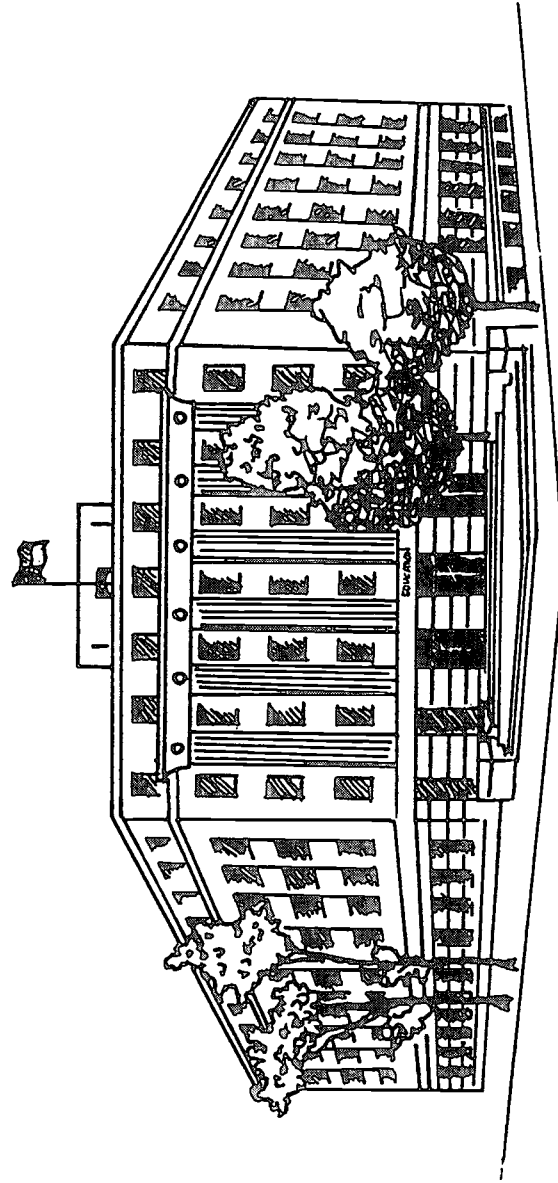
• Points of view or opinions stated in this
document do not necessarily represent
official OERI position or policy.

DIVISION OF SCHOOL PLANNING
NORTH CAROLINA DEPARTMENT OF PUBLIC INSTRUCTION

**A. CRAIG PHILLIPS, STATE SUPERINTENDENT
NORTH CAROLINA DEPARTMENT OF PUBLIC INSTRUCTION**

**WILLIAM W. PEEK, SENIOR ASSOCIATE STATE SUPERINTENDENT
NORTH CAROLINA DEPARTMENT OF PUBLIC INSTRUCTION**

**DARRELL SPENCER, DIRECTOR
DIVISION OF SCHOOL PLANNING**



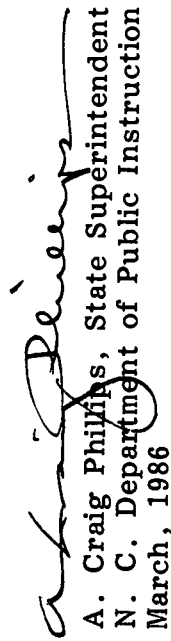
Cover: Northern High Gym , Durham County; under construction.

FOREWORD

In North Carolina, the statutory responsibility for operating public schools is assigned to local boards of education. A board of education also has the legal responsibility and authority for entering into contracts for the design and construction of public school buildings within its jurisdiction.

Charged with these responsibilities, conscientious school boards and superintendents keep abreast of recent developments and trends in public education, utilize extensive professional resources and plan continuously for the improvement of educational programs and facilities.

We commend this sixth edition of Schools of Interest to you. Since the first edition in 1971, these documents have served to stimulate effective and imaginative school planning and to strengthen and improve building programs. The staff of the Department of Public Instruction is available for consultation and assistance in all aspects of the planning process.



A. Craig Phillips, State Superintendent
N. C. Department of Public Instruction
March, 1986

PREFACE

We are pleased to present several examples of schools constructed in recent years. As with the previous five publications, the Division of School Planning is keenly aware that there are many other schools which are worthy of presentation. Almost all administrative units have a new school or an addition to an older school which is of particular educational or architectural interest and significance. These outstanding schools across the state are a result of quality planning by professional educators, school board members and design professionals.

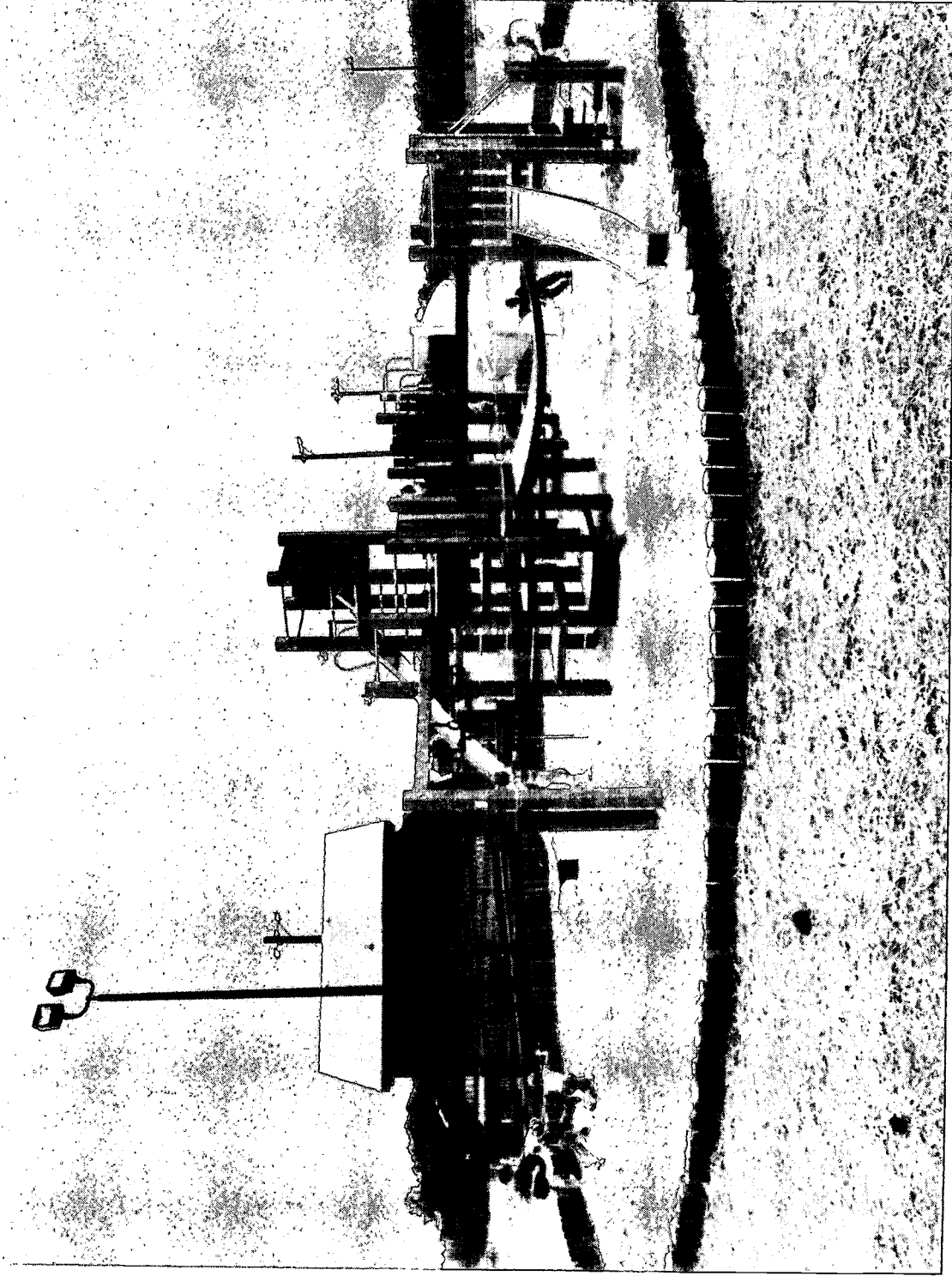
Each school is an expression of local preferences and objectives. Through school planning, each community has expressed its own individuality. The public school planning process is remarkably responsive in this respect.

The process of public school programming, planning, design and construction has continued to mature during the 1970's and 1980's. School administrators and boards of education demand flexibility in school design. Likewise, there is increased concern for quality of materials and workmanship. There is continued interest in energy conservation and solar applications for lighting and heating; there is continued interest in planning facilities which are easy to maintain and operate. School design, however, continues to reflect a sensitivity to children and teachers in providing quality space for learning.

The objective of this publication is to stimulate good planning. Staff members of the Division of School Planning are available to work with local superintendents and their boards of education toward this objective.



Darrell Spencer, Director
Division of School Planning
N. C. Department of Public Instruction
March, 1986



Knightsdale Elementary Park, Wake County

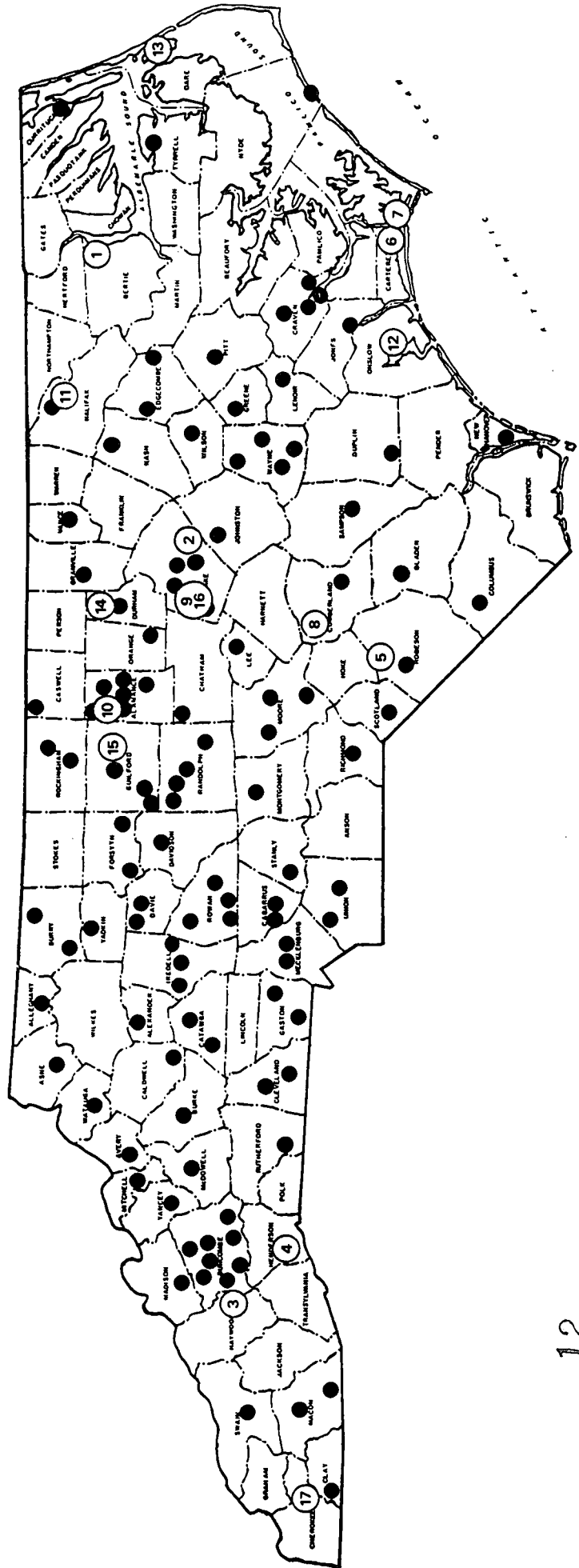
CONTENTS

- 1 WEST COLERAIN ELEMENTARY
- 2 KNIGHTDALE ELEMENTARY
- 3 PENN AVENUE-MORNING STAR
- 4 ATKINSON ELEMENTARY
- 5 PETERSON ELEMENTARY
- 6 MOREHEAD CITY MIDDLE
- 7 BEAUFORT MIDDLE
- 8 ALBRITTON MIDDLE
- 9 APEX MIDDLE

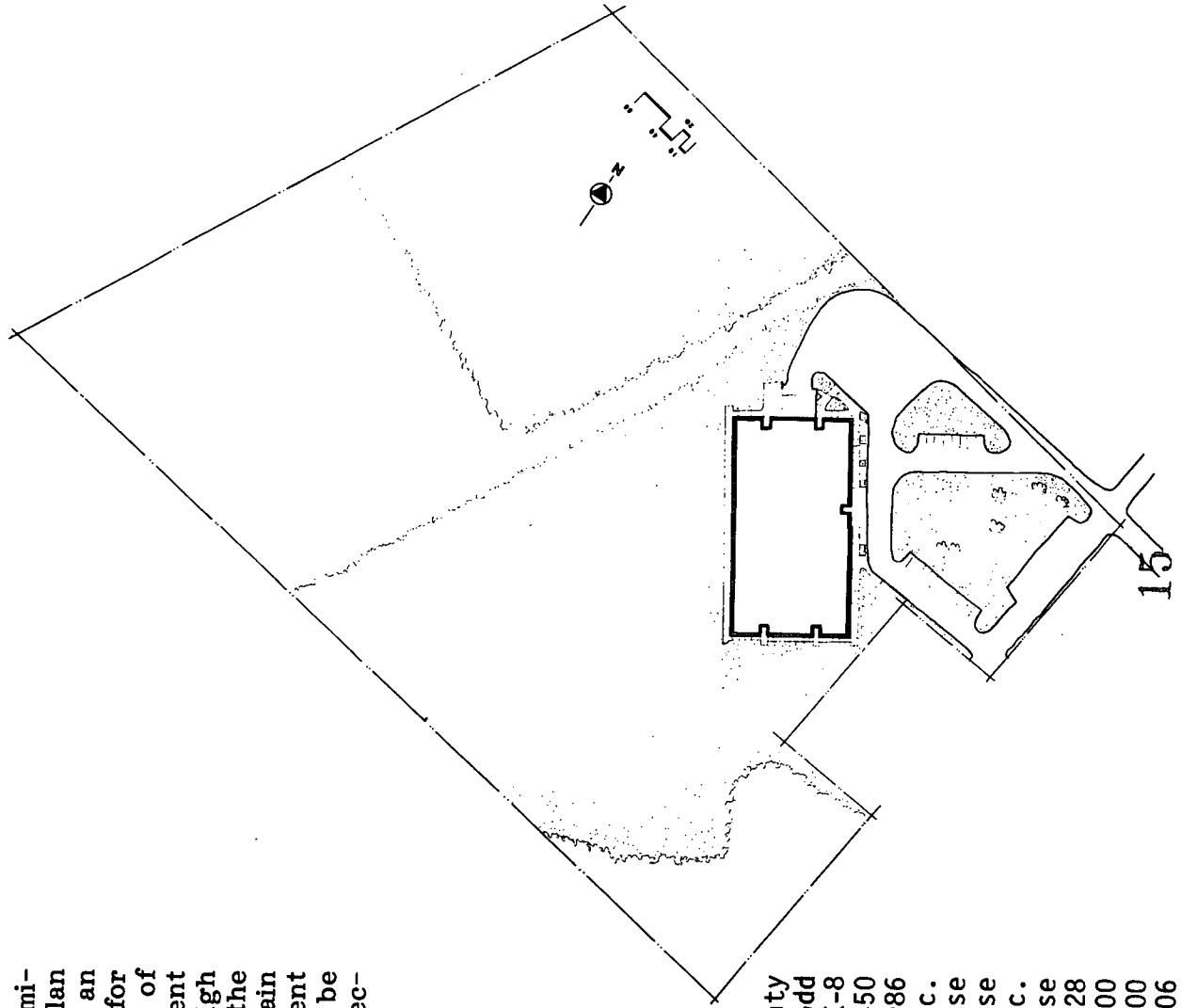
- BERTIE COUNTY
- WAKE COUNTY
- HAYWOOD COUNTY
- HENDERSON COUNTY
- RED SPRINGS
- CARTERET COUNTY
- CARTERET COUNTY
- FORT BRAGG
- WAKE COUNTY

- 10 WESTERN MIDDLE
- 11 CHALONER MIDDLE
- 12 DEPENDENT HIGH
- 13 MANTEO HIGH
- 14 NORTHERN HIGH GYM
- 15 GATEWAY EDUCATION CENTER
- 16 APEX ELEMENTARY PARK
- 17 CHEROKEE CULTURAL ARTS

- ALAMANCE COUNTY
- ROANOKE RAPIDS
- CAMP LEJEUNE
- DARE COUNTY
- DURHAM COUNTY
- GREENSBORO
- WAKE COUNTY
- CHEROKEE COUNTY

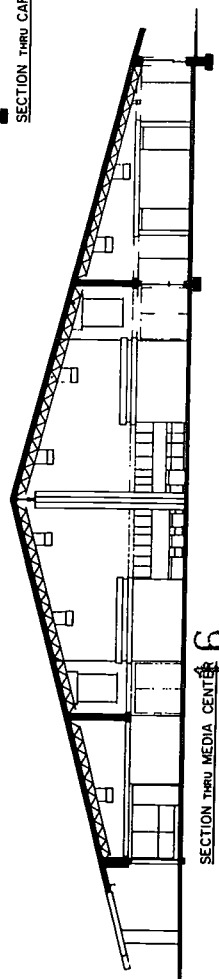
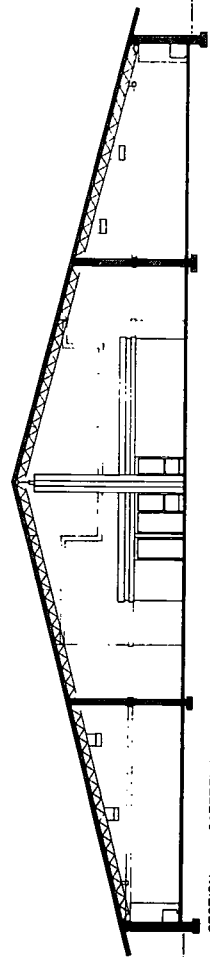
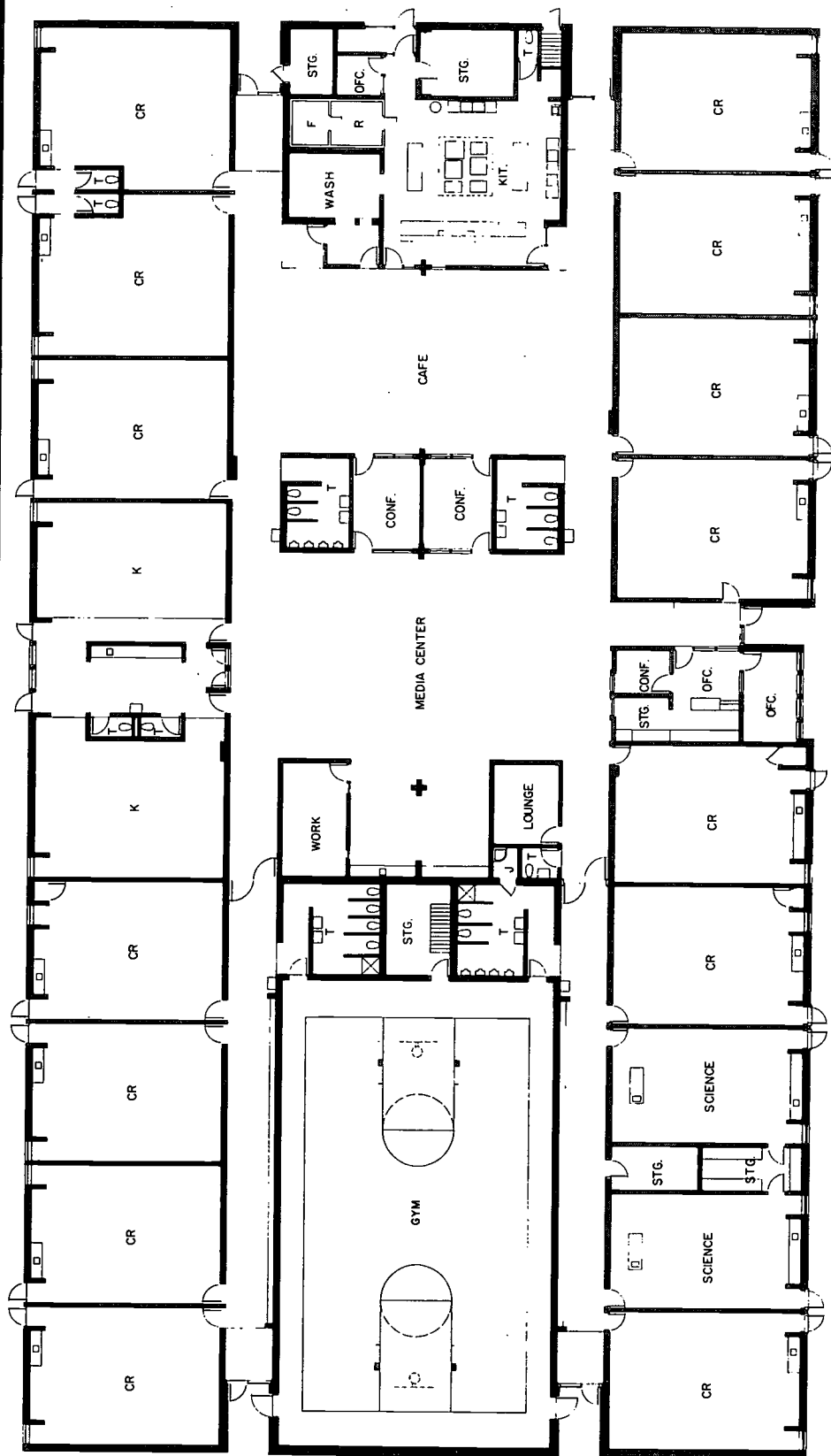


A very low construction budget was the chief determinant for the plan and design. The architect's plan took advantage of this limitation and produced an exceptional school building. The high ceiling areas for use by large groups are located along the high part of the sloping exposed roof structure. The adjacent classrooms also have the spatial advantage of high ceilings at the corridor lines and low ceilings at the exterior wall lines. The library and cafeteria gain additional spaciousness by being open to adjacent corridors. Here is proof that low cost schools can be designed without omitting the most important architectural amenity of space.



Administrative Unit	Bertie County
Superintendent	Gregory T. Todd
Grade Organization	K-8
Approximate Capacity	450
Opening Date	Fall, 1986
Architects	Alpha Design Group, Inc.
Landscape Architect	In-house
Structural Engineers	In-house
Mechanical Engineers	Bigger & Agnew, Inc.
Electrical Engineers	In-house
Square Footage	33,528
Total Cost	\$1,603,974.00
Site Development Cost	\$126,524.00
Building Cost Per Square Foot	\$.44.06

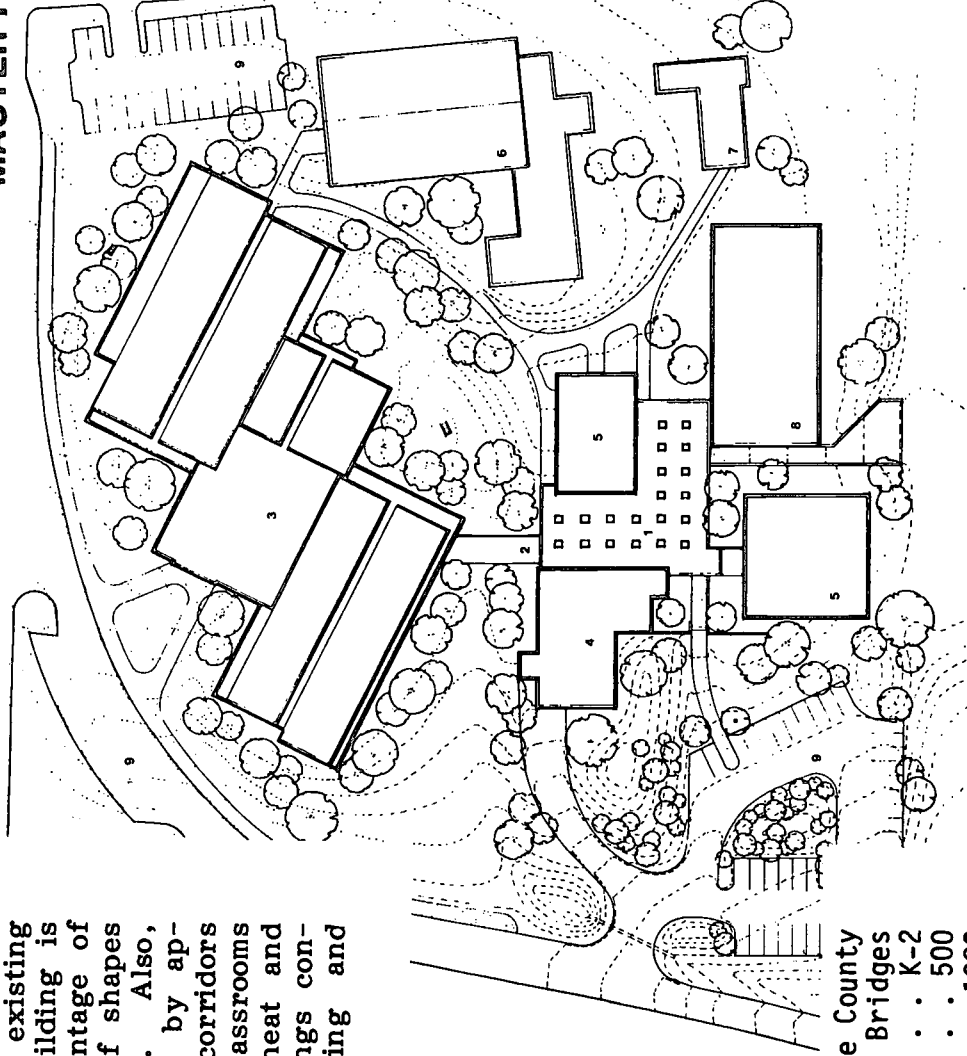
WEST COLERAIN ELEMENTARY 1



KNIGHTDALE ELEMENTARY

The original school was housed in a two-story 1922 building. It was demolished and the new classrooms and library were built to replace it. Other existing facilities have been renovated. The new building is unique because it is designed to take advantage of passive solar heating and lighting. The roof shapes are the result of solar design considerations. Also, the classroom shed roofs follow site contours by appearing to step down the hillside. Interior corridors are ramped. The shed roofs necessitate classrooms with high ceilings in order to bring solar heat and light deep inside each room. The high ceilings contribute a great deal to hot weather cooling and comfort.

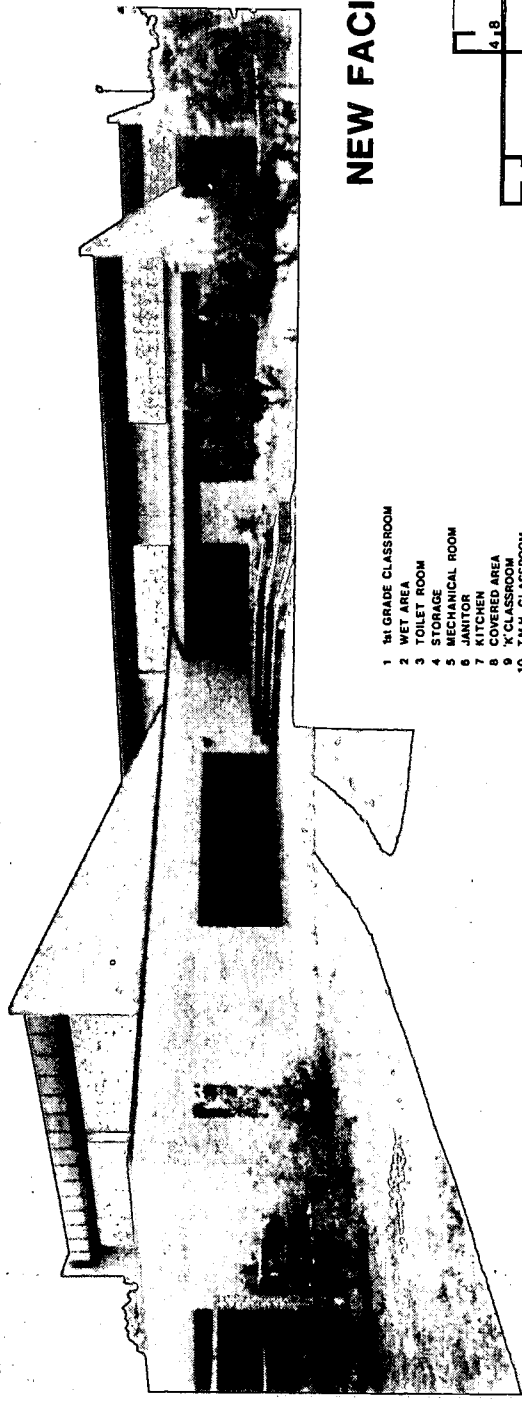
MASTER PLAN



- 1 COVERED PATIO
- 2 COVERED WALKWAY
- 3 CLASSROOM, MEDIA & ADMINISTRATION BLDG.
- 4 CAFETERIA
- 5 EXISTING CLASSROOM BUILDING
- 6 GYM BUILDING
- 7 FUTURE BUILDING
- 8 PARKING

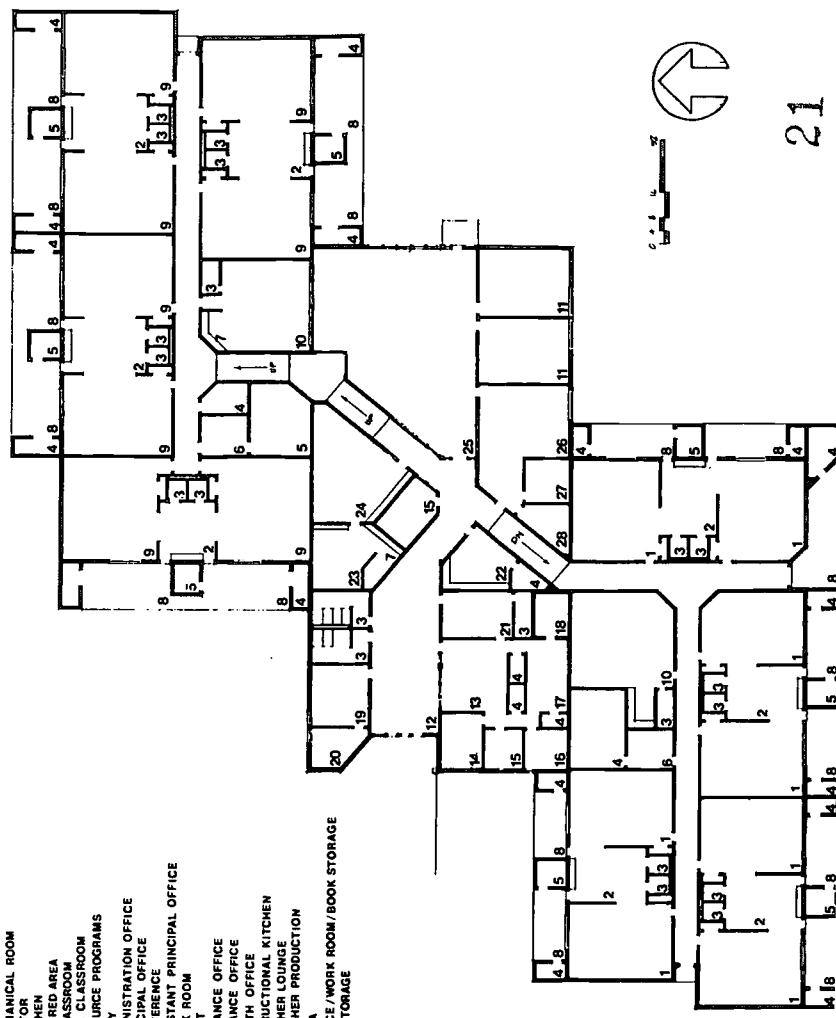


Administrative Unit	Make County
Superintendent	Robert E. Bridges
Grade Organization	K-2
Approximate Capacity	500
Opening Date	January, 1983
Architects	Smith-Sinnett Architects, P.A.
Landscape Architect	McNeely & Associates
Structural Engineers	Lasater-Hopkins, Engineers
Mechanical Engineers	Shelton Y. Adcock
Electrical Engineers	Shelton Y. Adcock
Square Footage	43,000
Total Cost	\$1,701,434.00
Site Development Cost	\$191,360.00
Building Cost Per Square Foot	\$39.57



NEW FACILITIES FLOOR PLAN

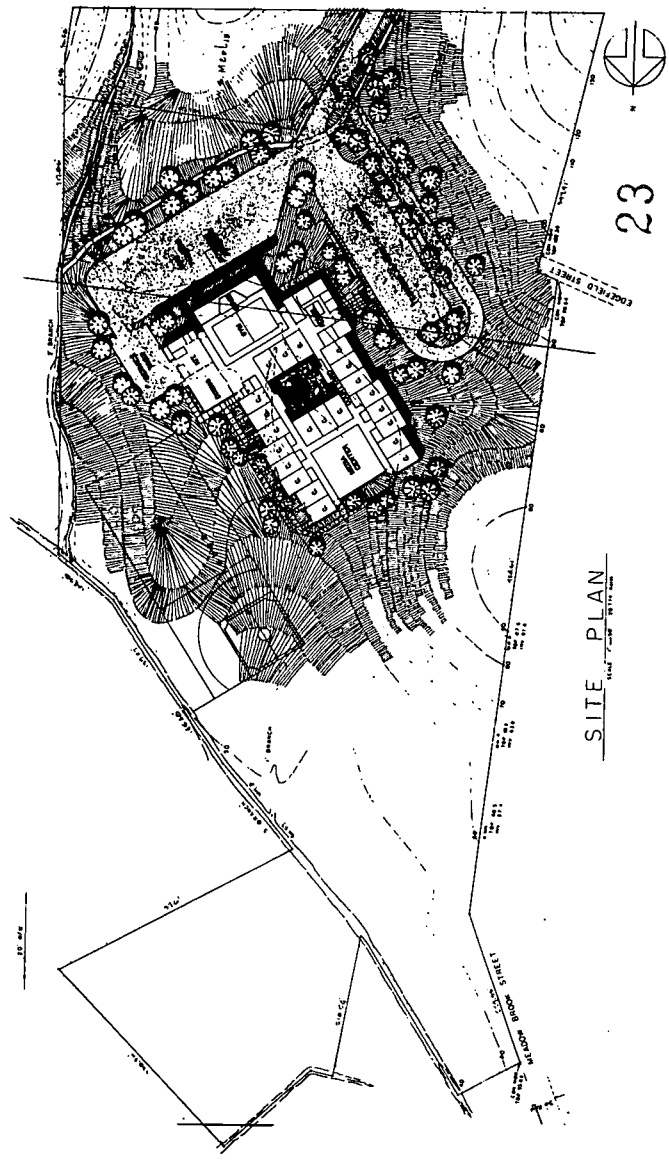
- 1 1st GRADE CLASSROOM
- 2 WET AREA
- 3 TOILET ROOM
- 4 STORAGE
- 5 MECHANICAL ROOM
- 6 JANITORY
- 7 KITCHEN
- 8 COVERED AREA
- 9 K' CLASSROOM
- 10 T.M.H. CLASSROOM
- 11 RESOURCE PROGRAMS
- 12 LOBBY
- 13 ADMINISTRATION OFFICE
- 14 PRINCIPAL OFFICE
- 15 CONFERENCE
- 16 ASSISTANT PRINCIPAL OFFICE
- 17 WORK ROOM
- 18 VAULT
- 19 GUIDANCE OFFICE
- 20 HEALTH OFFICE
- 21 INSTRUCTIONAL KITCHEN
- 22 TEACHER LOUNGE
- 23 MEDIA
- 24 OFFICE/WORK ROOM/BOOK STORAGE
- 25 A.X. STORAGE
- 26 T.V.

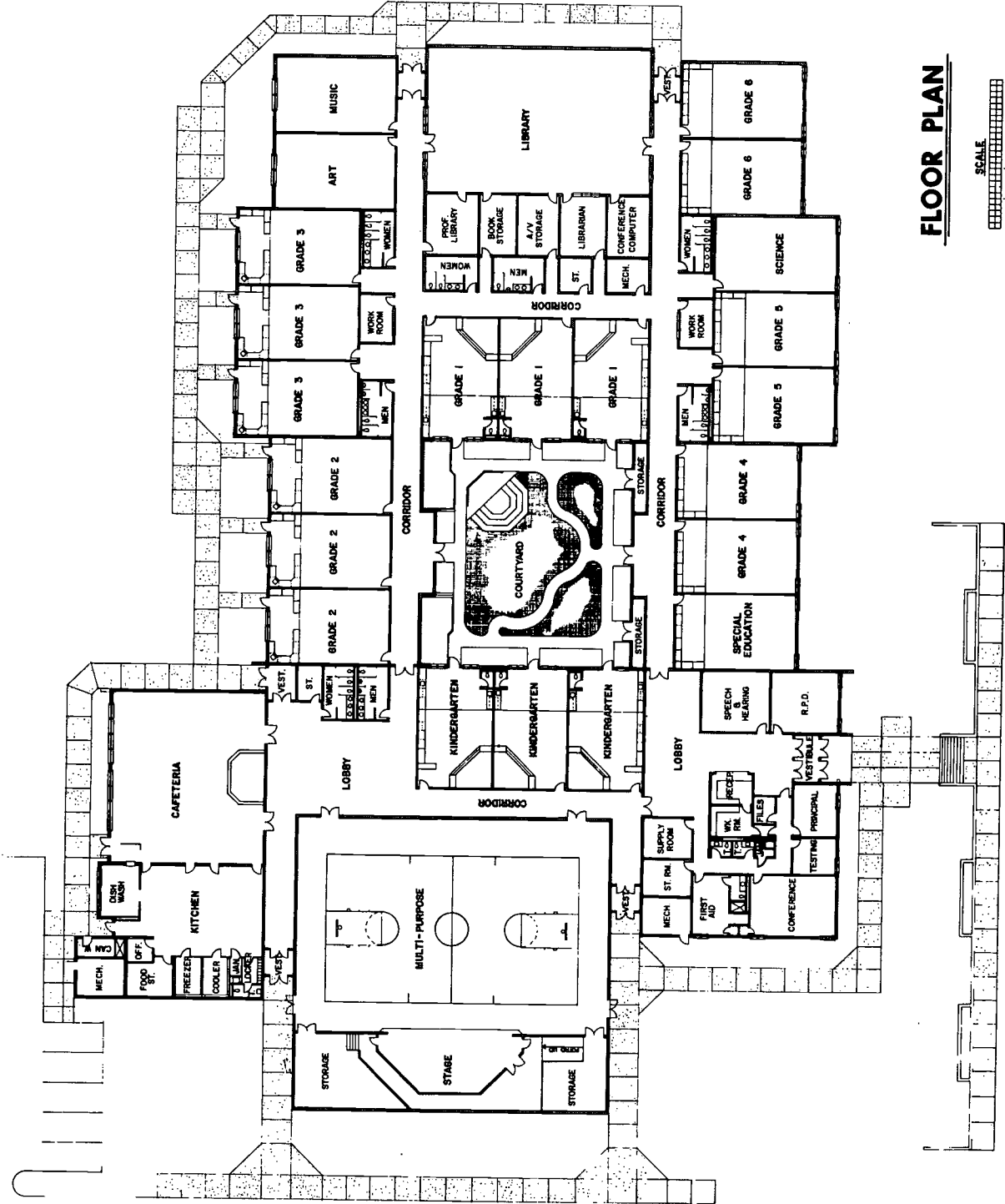


3 PENN AVENUE-MORNING STAR

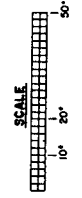
Two schools have been built using this plan. The plan is unique for an elementary school because it includes separate classrooms for music, art and science. Other planning features include separate entrances for the administrative area and a stage in the gymnasium and the cafeteria. Also, the bus passengers have a spacious lobby as is appropriate for large numbers of bus passengers. The interior courtyard is an important design feature as a source of light and air for classrooms. Finishes and equipment include terrazzo corridor and cafeteria floors, simplified heating and cooling controls and metal roofing.

Administrative Unit	Haywood County
Superintendent	Charles C. McConnell
Grade Organization	K-6
Approximate Capacity	550
Opening Date	Spring, 1986
Architects	Foy & Lee Associates
Landscape Architect	John A. Broadbooks, ASLA
Structural Engineers	Sutton, Kennerly & Associates
Mechanical Engineers	Reece, Noland & McElrath Engineers
Electrical Engineers	Reece, Noland & McElrath Engineers
Square Footage	66,000
Total Cost	\$2,879,065.00
Site Development Cost	\$250,000.00
Building Cost Per Square Foot	\$43.62



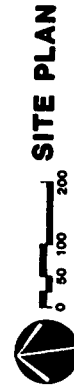
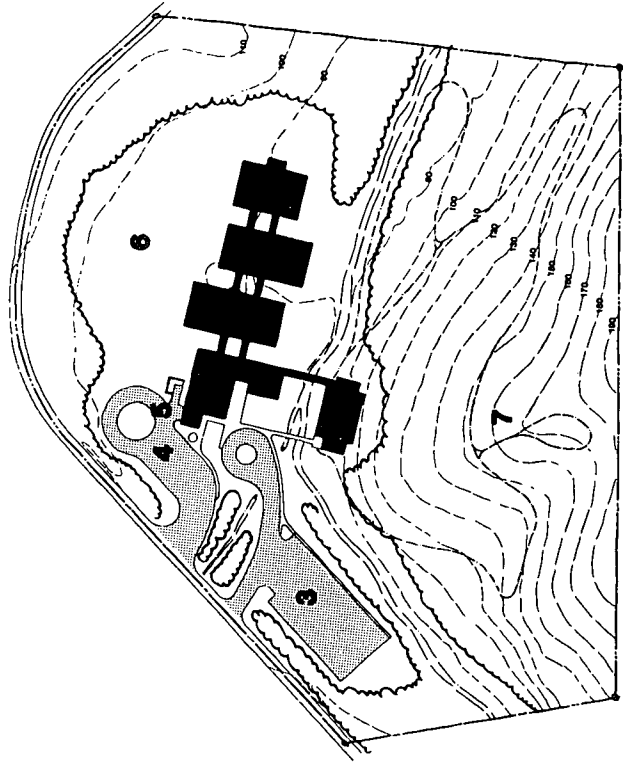


FLOOR PLAN



Two parallel corridors designed as collectors for passive solar heat connect a series of rectangular classroom buildings. The accompanying corridor section drawing explains how the solar heated air is distributed. Lots of glass along the corridors and in the classrooms contributes to the extraordinary school environment. The generally mild climate of North Carolina makes it possible to design school buildings such as this. Also, this is a more humane environment for children than the almost windowless schools which have become a standard approach to energy conservation design.

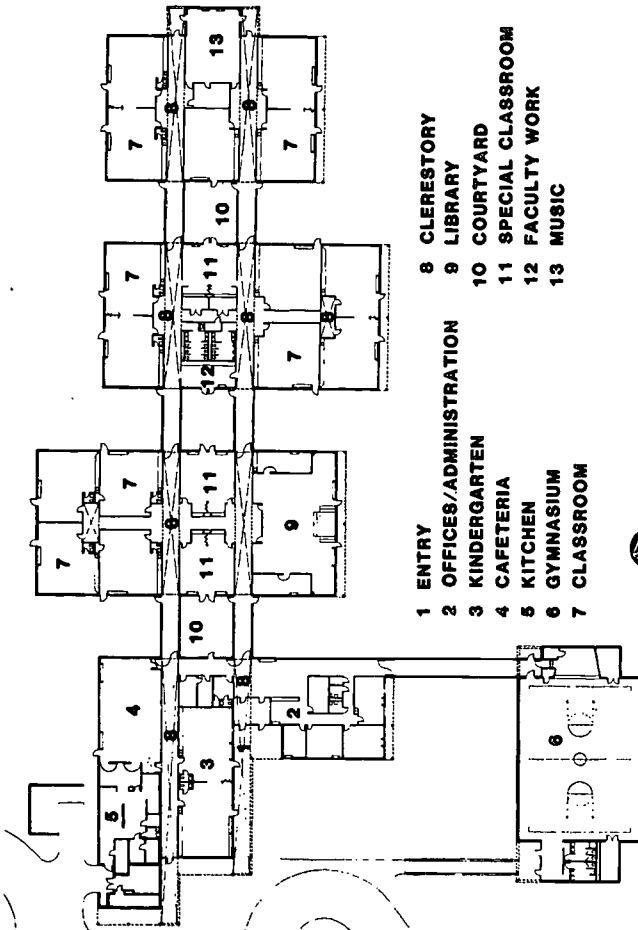
Administrative Unit	Henderson County
Superintendent	Glenn C. Marlow
Grade Organization	K-6
Approximate Capacity	440
Opening Date	June, 1983
Architects	Six Associates, Inc.
Landscape Architect	In-house
Structural Engineers	In-house
Mechanical Engineers	In-house
Electrical Engineers	In-house
Square Footage	47,855
Total Cost	\$2,274,181.00
Site Development Cost	\$300,000.00
Building Cost Per Square Foot	\$.45.38



SITE PLAN

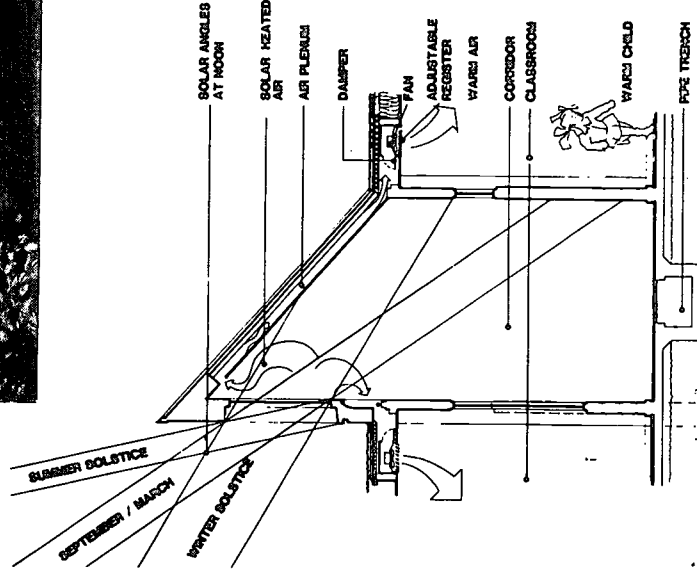
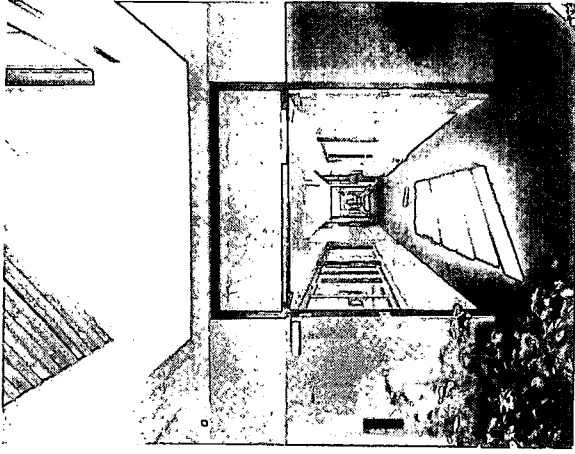
- 1 GYM**
- 2 CLASSROOM BUILDING**
- 3 PARKING**
- 4 BUS PARKING**
- 5 SERVICE**
- 6 PLAYING FIELDS**
- 7 TRAILS**

ATKINSON ELEMENTARY 4

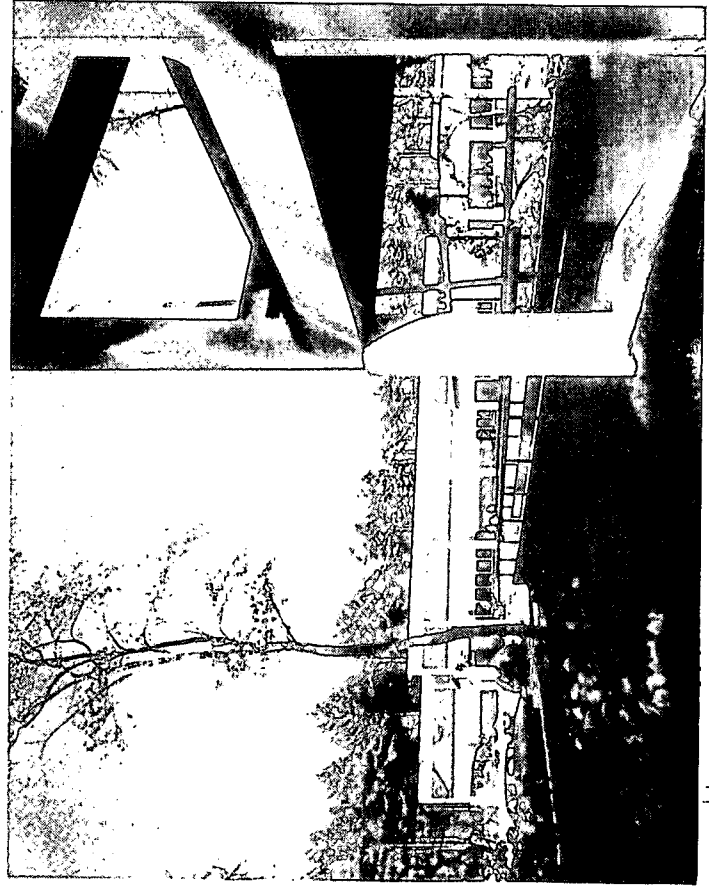


- 1 ENTRY
- 2 OFFICES/ADMINISTRATION
- 3 KINDERGARTEN
- 4 CAFETERIA
- 5 KITCHEN
- 6 GYMNASIUM
- 7 CLASSROOM
- 8 CLERESTORY
- 9 LIBRARY
- 10 COURTYARD
- 11 SPECIAL CLASSROOM
- 12 FACULTY WORK
- 13 MUSIC

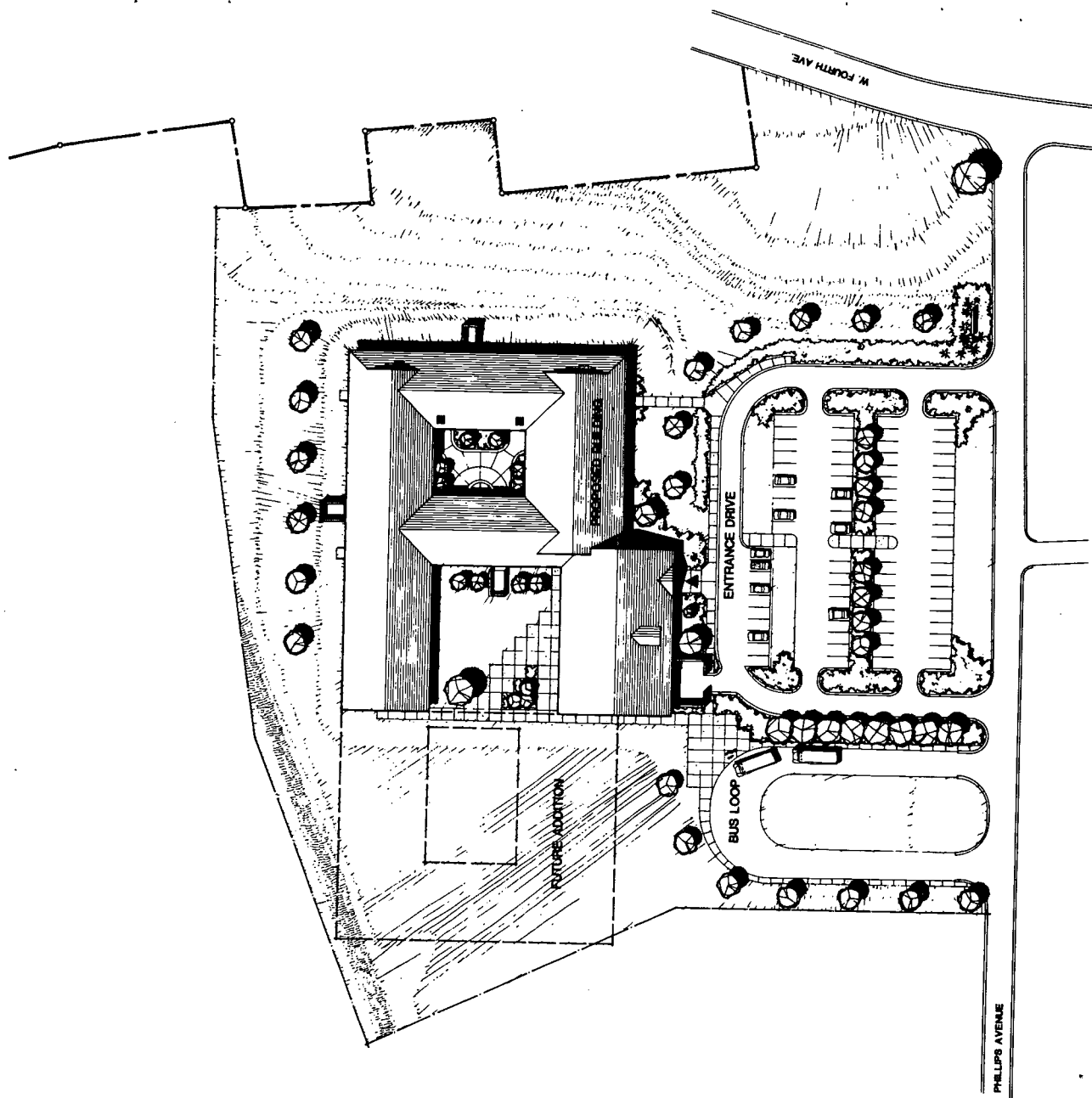
FLOOR PLAN



SECTION THRU CLERESTORY



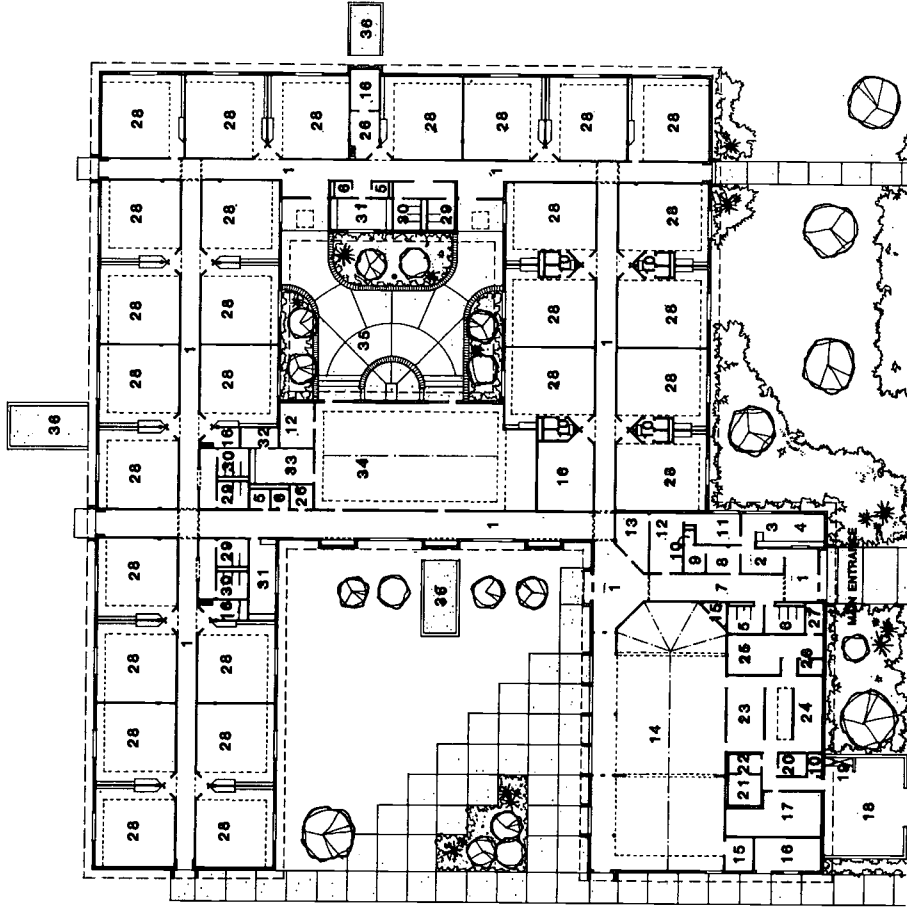
The spring of 1984 will be remembered because of the tornados that destroyed many buildings in southeastern North Carolina. The old Peterson Elementary School was one of them. It was necessary to evaluate the situation quickly and determine how to proceed with educational and financial planning. Generous federal financial assistance became available; so educational programming and schematic design proceeded rapidly. Red Springs administrators, the architects and the Division of School Planning staff quickly agreed on a site plan and architectural design. The attractive and economical school building which resulted from this collaboration is now being constructed.



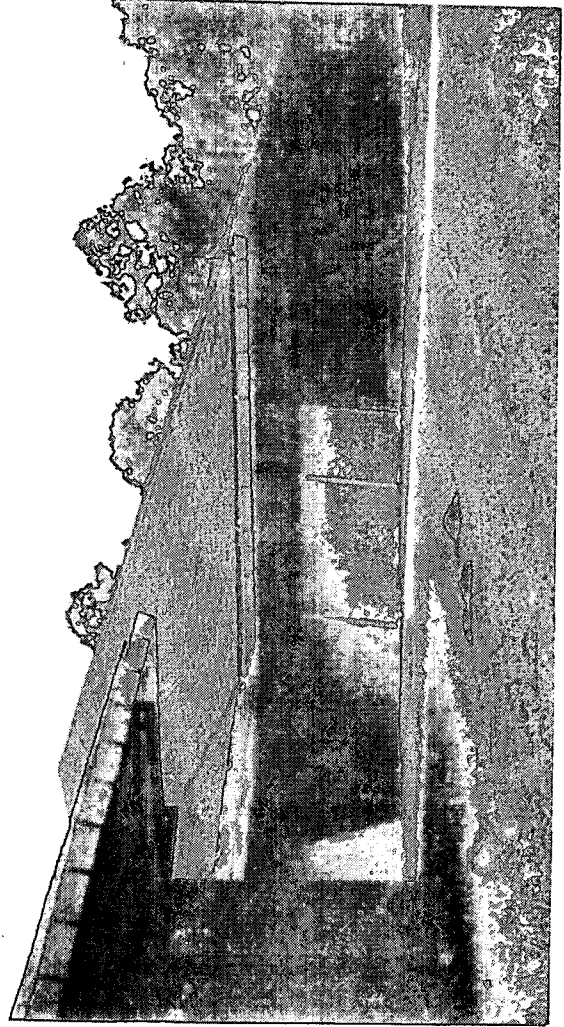
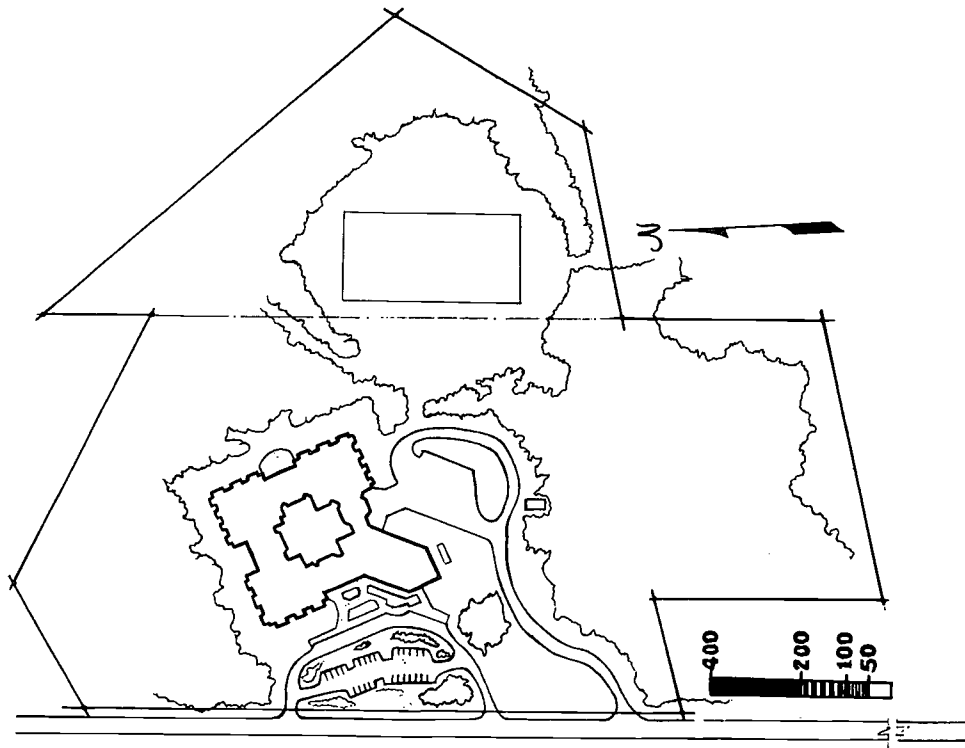
SITE PLAN
0 10 20 40 80 120
N

LEGEND

- 1 LOBBY
- 2 WAITING / LOUNGE
- 3 SECRETARY / RECEPTION
- 4 WORK AREA
- 5 MEN
- 6 WOMEN
- 7 CORRIDOR
- 8 NURSE
- 9 EXAM
- 10 TOILET
- 11 PRINCIPAL
- 12 CONFERENCE
- 13 ASSISTANT PRINCIPAL
- 14 DINING / MULTI-PURPOSE STORAGE
- 15 MECHANICAL
- 16 DRY STORAGE
- 17 UTILITY YARD
- 18 CAN WASH
- 19 OFFICE
- 20 FREEZER
- 21 REFRIGERATOR
- 22 SERVING
- 23 KITCHEN
- 24 DISHWASHING
- 25 JANITOR
- 26 ELECTRICAL
- 27 CLASSROOM
- 28 BOYS
- 29 GIRLS
- 30 TEACHER'S WORK
- 31 AUDIO VISUAL STORAGE
- 32 OFFICE / MEDIA WORK
- 33 MEDIA CENTER
- 34 COURTYARD
- 35 MECHANICAL YARD



Administrative Unit	Red Springs City
Superintendent	John C. Ray
Grade Organization	K-3
Approximate Capacity	630
Opening Date	Fall, 1986
Architects	Hayes-Howell & Associates
Landscape Architect	In-house
Structural Engineers	W. H. Gardner, Jr., & Associates
Mechanical Engineers	McKnight-Smith Engineers, Inc.
Electrical Engineers	McKnight-Smith Engineers, Inc.
Consultants	Food Design
Square Footage	51,100
Total Cost	\$2,308,780.00
Site Development Cost	\$278,390.00
Building Cost Per Square Foot	\$49.50

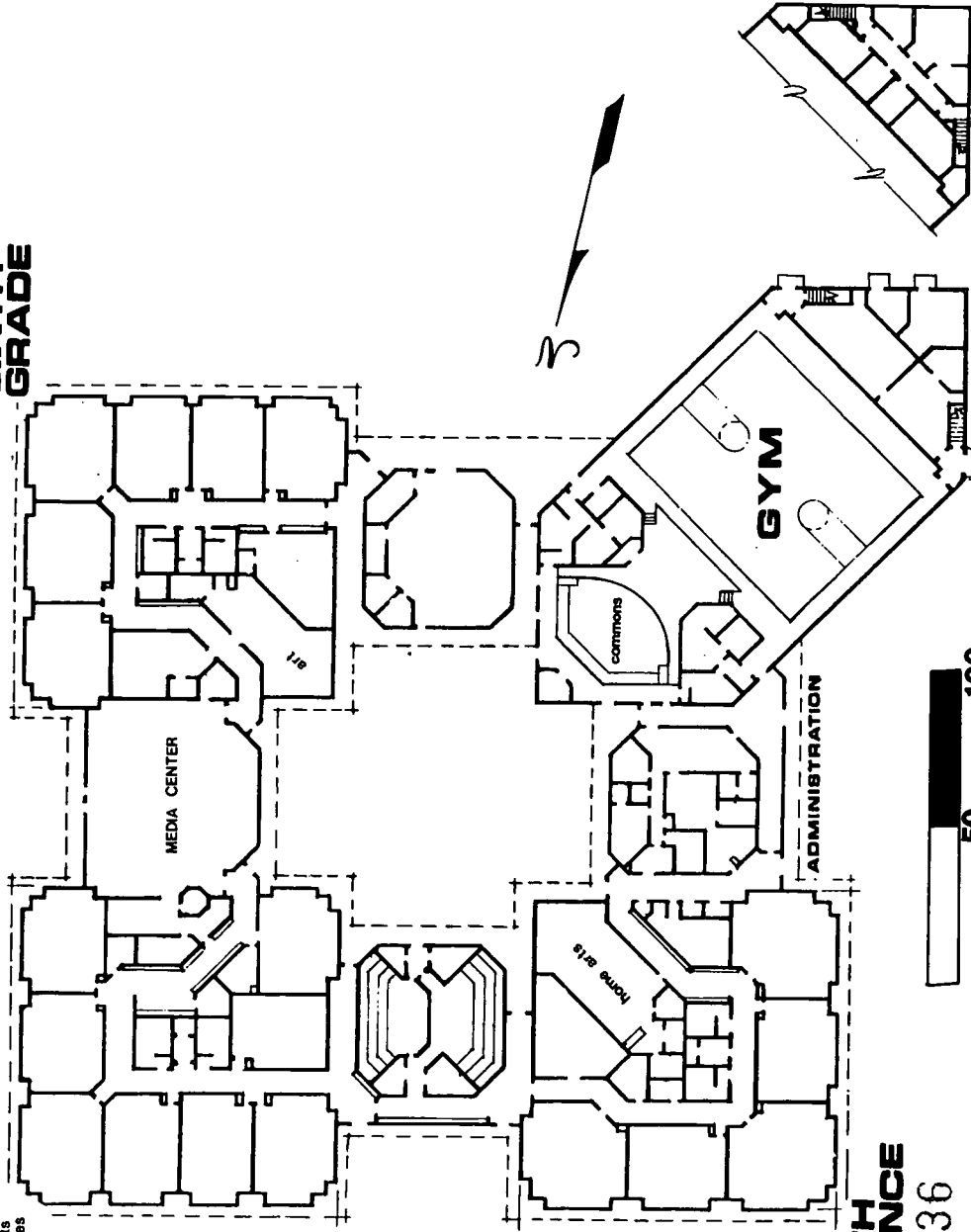


Administrative Unit	Carteret County
Superintendent	T. L. Lee
Grade Organization	6-8
Approximate Capacity	630
Opening Date	November 23, 1980
Architects	James B. Willis, Jr.
Landscape Architect	Bell Design Group
Structural Engineers	Bigger & Agnew, Inc.
Mechanical Engineers	Fenner & Proffitt, Engineer
Electrical Engineers	Fenner & Proffitt, Engineer
Square Footage	70,953
Total Cost	\$2,738,379.00
Site Development Cost	Included above
Building Cost Per Square Foot	\$38.59

School buildings planned around courtyards have an architectural focus missing from the conventional double-loaded corridor schools. Here the courtyard is defined by three separate hipped roof classroom buildings and a gymnasium building. The sloping exterior walls are unusual for school buildings. The bermed and landscaped site is an additional feature of this compact quadrangle of school buildings.

LASS
language arts
social studies

**SIXTH
GRADE**



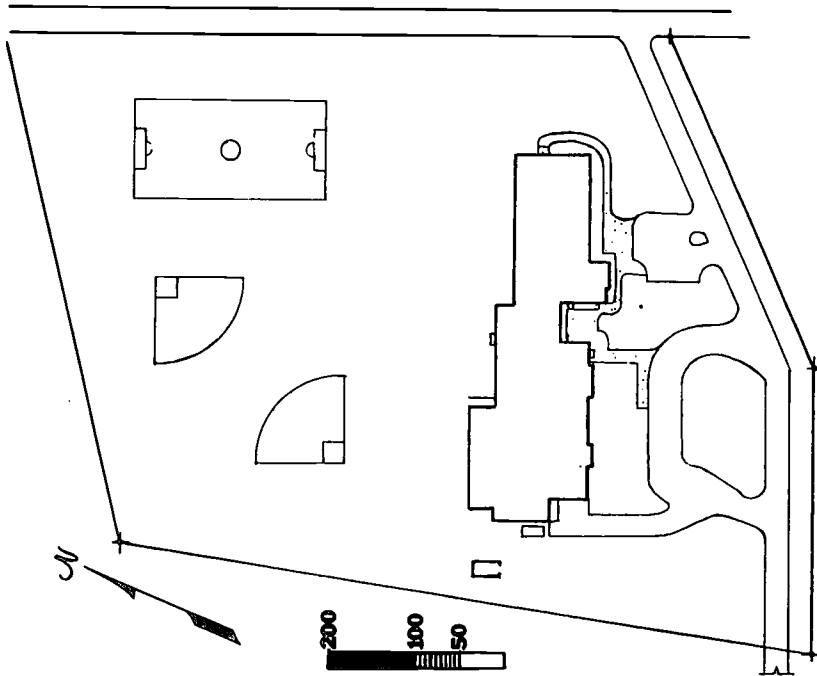
**MATH
SCIENCE**

36

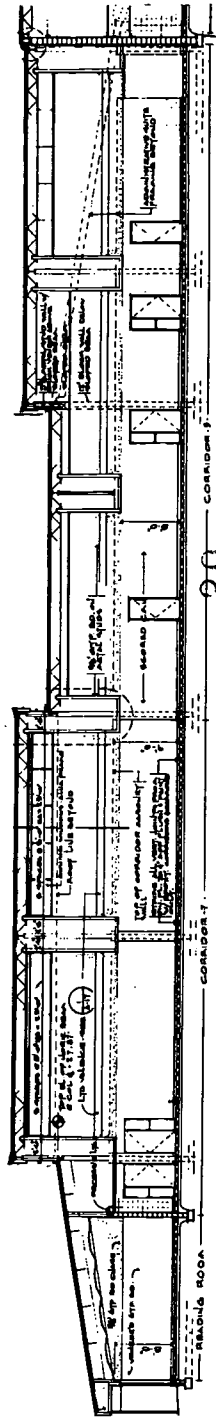
37

BEAUFORT MIDDLE

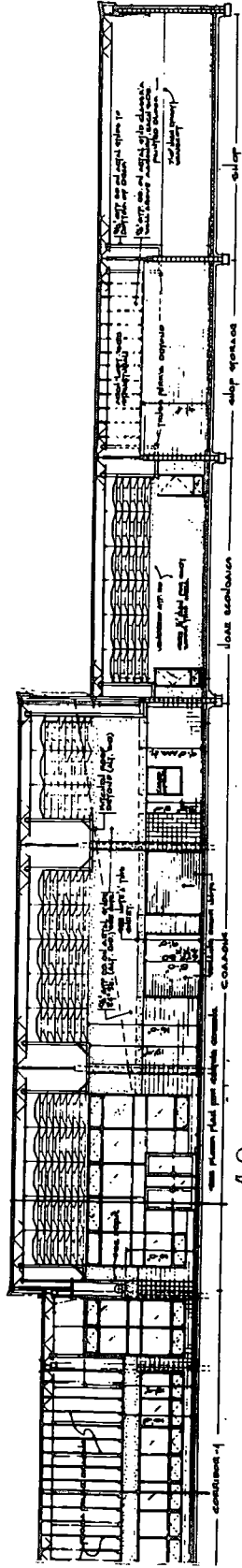
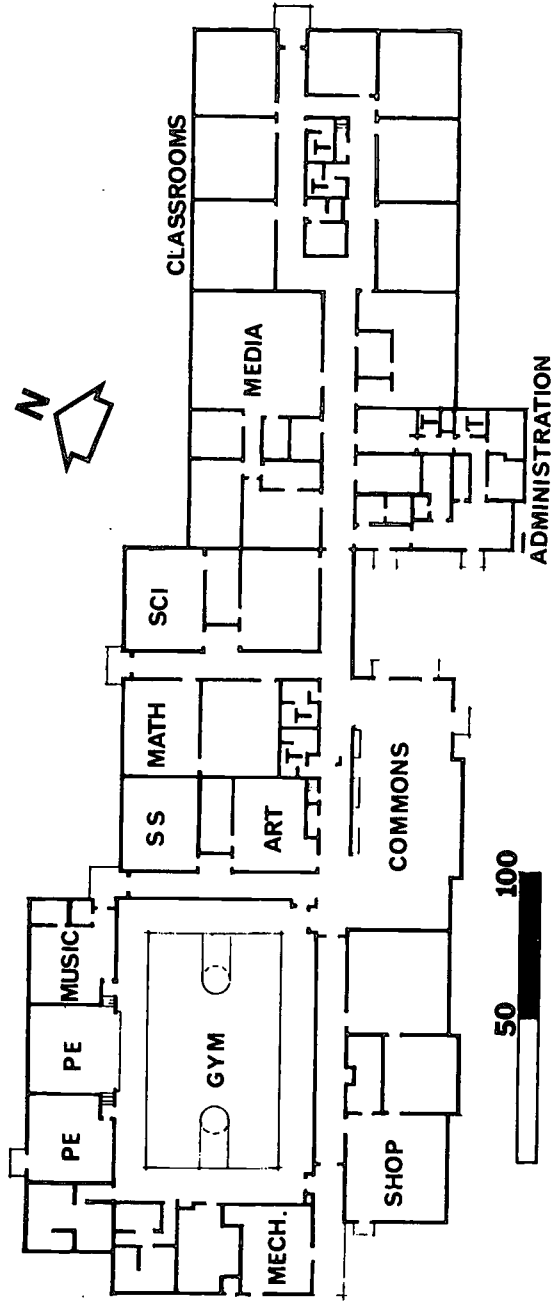
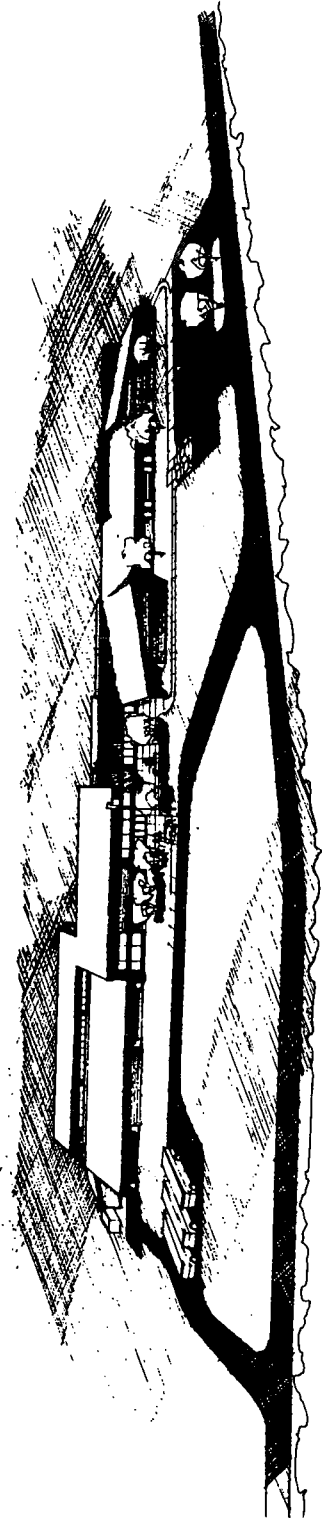
The landscape architect's site planning is an attractive introduction to the heart of this school. The open courtyard complements the open area inside which is the cafeteria/commons. Only the kitchen and serving line are enclosed. The exterior sloping roofs permit areas such as classrooms and the library to have sloping ceilings related to the roof slopes. This small school has architectural features not usually attempted with a low construction budget.

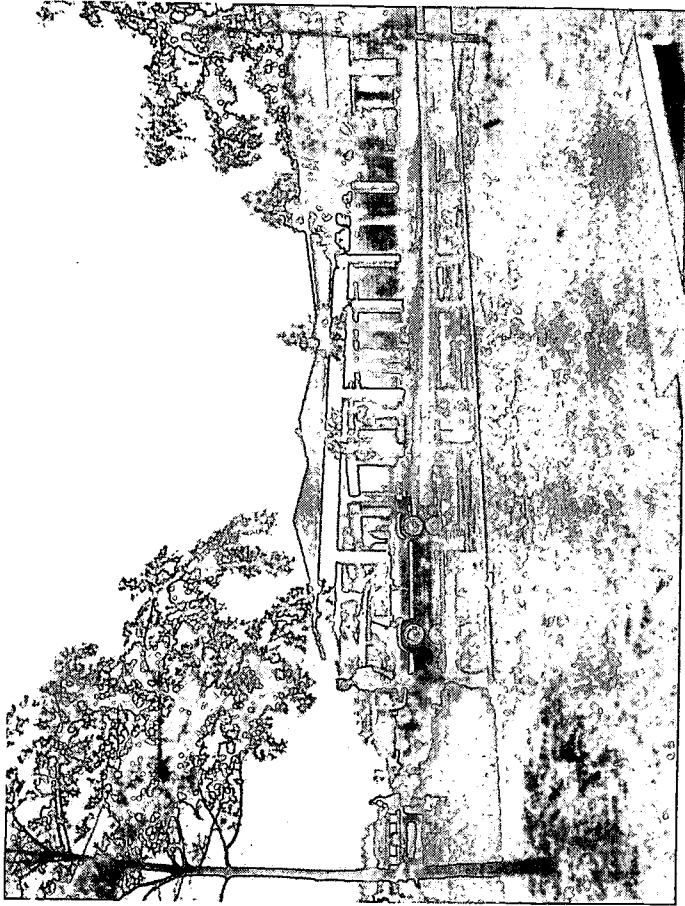
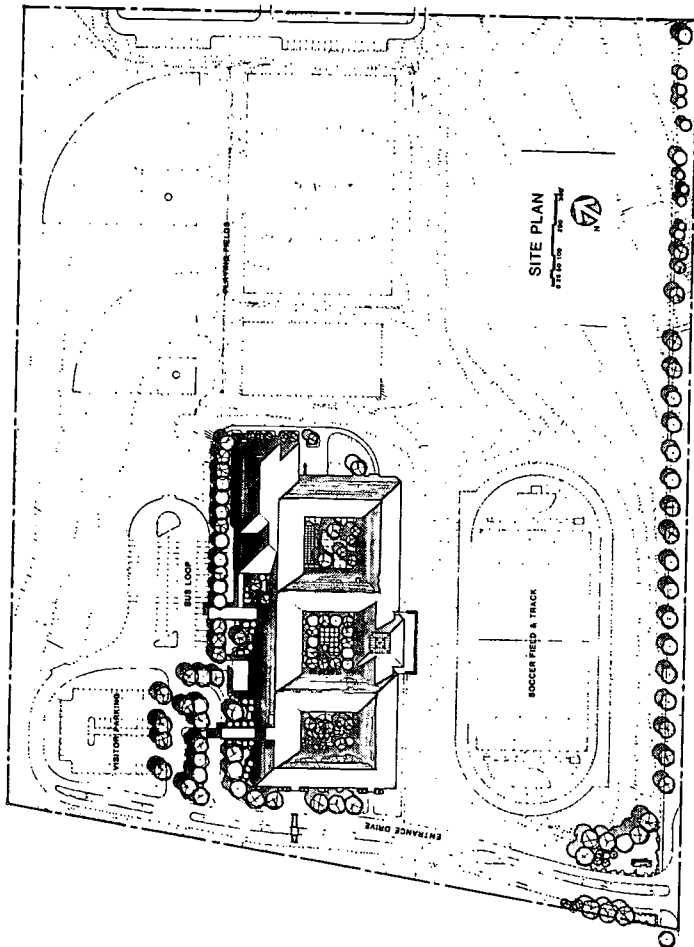


Administrative Unit	Carteret County
Superintendent	T. L. Lee
Grade Organization	6-8
Approximate Capacity	350
Opening Date	Fall, 1980
Architects	Ballard, McKim & Sawyer
Landscape Architect	Jerry Turner & Associates
Structural Engineers	McKim & Creed Engineers
Mechanical Engineers	Fenner & Proffitt, Inc.
Electrical Engineers	Fenner & Proffitt, Inc.
Square Footage	52,000
Total Cost	\$1,875,000.00
Site Development Cost	Included above
Building Cost Per Square Foot	\$.36.05



BEAUFORT MIDDLE 7



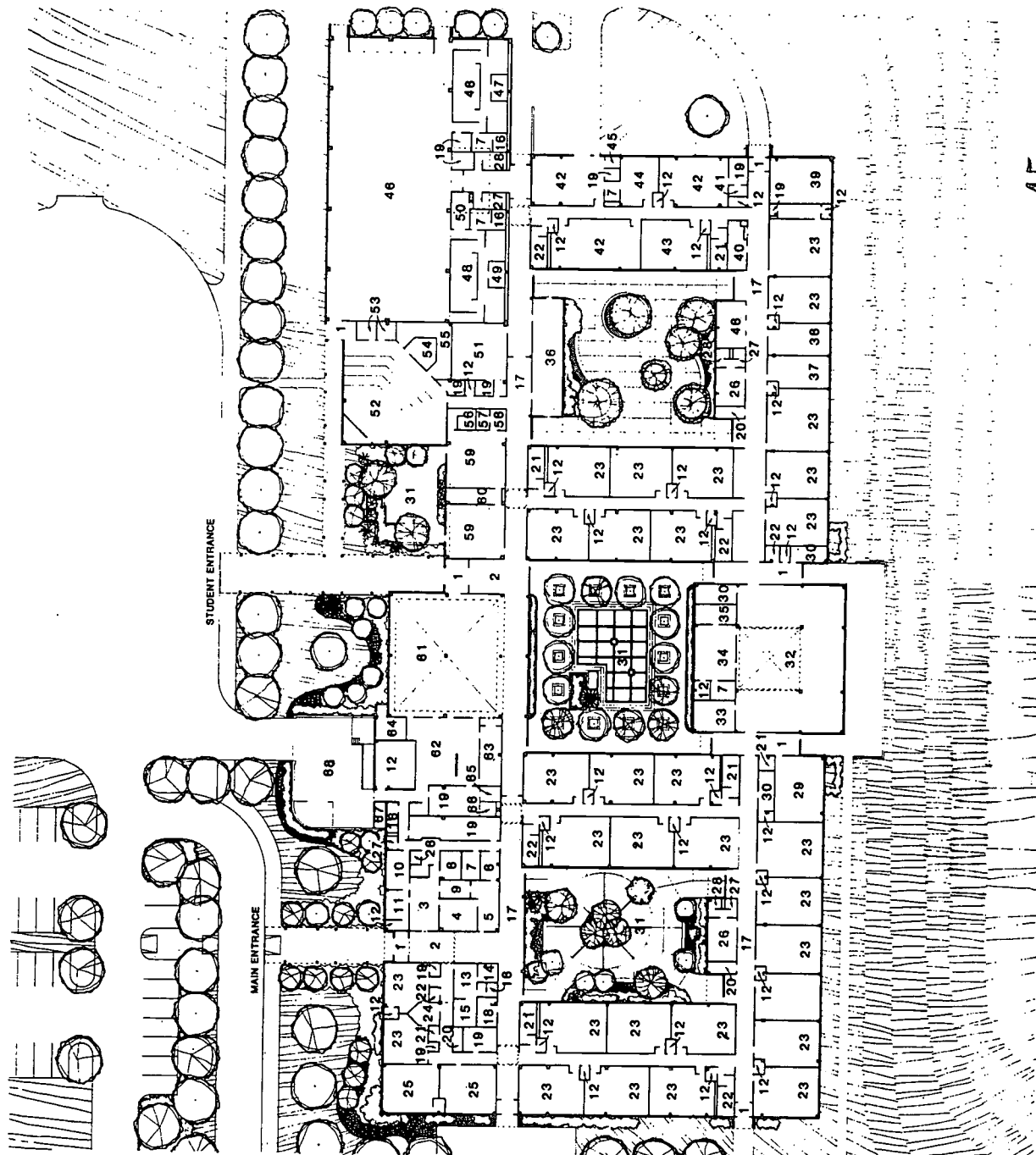


Here is another example of a school at a North Carolina military post which has been programmed for quality design and construction. A long sloping site was one of the determinants of the plan shape. The three courtyards provide architectural focal points for the entire scheme. This extensive middle school building was thoroughly programmed during several conferences which involved the design architects and engineers, the Fort Bragg School staff, the Division of School Planning staff, the post engineers and the United States Department of Education.

Administrative Unit	Federal Schools-Fort Bragg
Superintendent	Joseph V. Brust
Grade Organization	5-8
Approximate Capacity	900
Opening Date	August, 1983
Architects	Hayes-Howell & Associates
Landscape Architect	Lewis Clarke & Associates
Structural Engineers	W. H. Gardner, Jr., & Associates
Mechanical Engineers	Buffaloe-Morgan & Associates, Inc.
Electrical Engineers	Buffaloe-Morgan & Associates, Inc.
Consultants	Food Design
Square Footage	\$5,177,300.00
Total Cost	\$636,000.00
Site Development Cost	
Building Cost Per Square Foot	\$.45.57

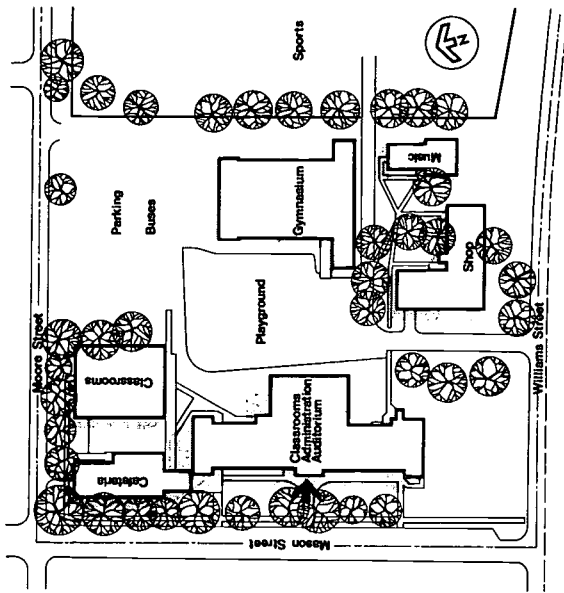
LEGEND

- 1 VESTIBULE
- 2 LOBBY
- 3 RECEPTION
- 4 CONFERENCE
- 5 GUIDANCE
- 6 TESTING
- 7 OFFICE
- 8 WORK ROOM
- 9 RECORDS
- 10 PRINCIPAL
- 11 ASSISTANT PRINCIPAL
- 12 MECHANICAL
- 13 NURSE
- 14 EXAM
- 15 SICK ROOM
- 16 TOILET
- 17 CORRIDOR
- 18 STAFF LOUNGE
- 19 STORAGE
- 20 JANITOR
- 21 BOYS
- 22 GIRLS
- 23 CLASSROOM
- 24 CONFERENCE / OBSERVATION
- 25 RESOURCE
- 26 FACULTY
- 27 MEN
- 28 WOMEN
- 29 MULTI-PURPOSE
- 30 AUDIO-VISUAL STORAGE
- 31 COURTYARD
- 32 MEDIA CENTER
- 33 PROFESSIONAL LIBRARY
- 34 STAFF / PRODUCTION
- 35 T.V. DISTRIBUTION
- 36 GREENHOUSE LAB
- 37 READING LAB
- 38 MATH LAB
- 39 LANGUAGE LAB
- 40 OCCUPATION CENTER
- 41 RECORDING STUDIO
- 42 OCCUPATION LAB
- 43 LANGUAGE ARTS
- 44 DRAFTING
- 45 PAINT
- 46 GYM
- 47 GIRL'S SHOWER
- 48 LOCKERS
- 49 BOY'S SHOWER
- 50 LAUNDRY / JANITOR
- 51 CHORAL
- 52 BAND
- 53 PRACTICE
- 54 OFFICE / PROJECTION
- 55 INSTRUMENT STORAGE
- 56 DARK ROOM
- 57 KILN / DRYING
- 58 GLAZING
- 59 ART
- 60 ART STORAGE
- 61 DINING
- 62 KITCHEN
- 63 DISHWASHING
- 64 ELECTRICAL
- 65 REFRIGERATOR
- 66 FREEZER
- 67 CAN WASH
- 68 MECHANICAL YARD

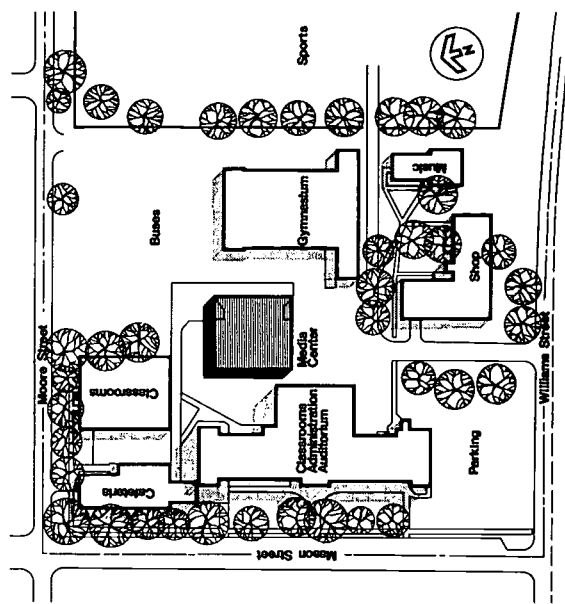


It is unusual for an architectural firm to be able to carry out the original plan of phased construction on a school site. The first phase media center was included in "Schools of Interest 5." The second phase, two-story classroom building makes the most of a sloping and crowded site. The building is architecturally strong without compromising educational program requirements. Phase three is now proceeding and completes the campus. This project demonstrates how an extremely crowded site can successfully contain an entire middle grades program when the community insists on it.

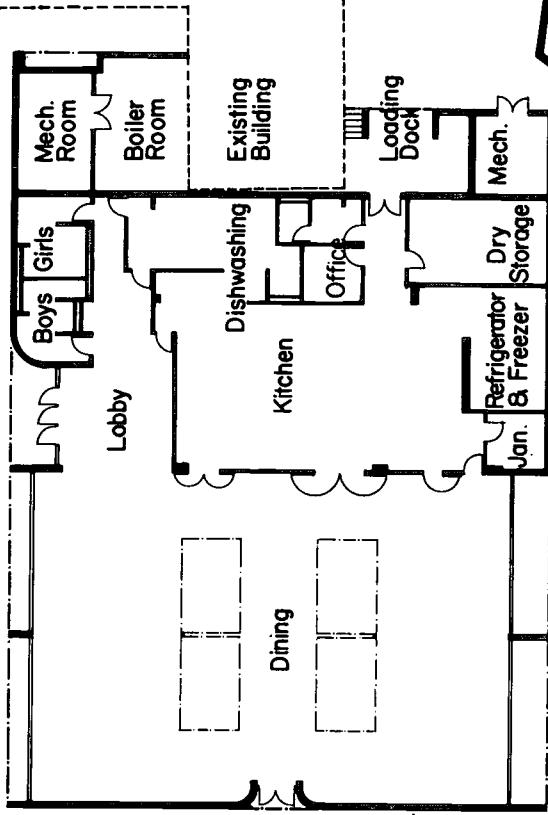
Administrative Unit	Wake County
Superintendent	Robert E. Bridges
Grade Organization	6-8
Approximate Capacity	600
Opening Date	January, 1984
Architects	Shawcroft-Taylor
Landscape Architect	In-house
Structural Engineers	David Fischetti
Mechanical Engineers	Progressive Design Collaborative, Inc.
Electrical Engineers	Progressive Design Collaborative, Inc.
Square Footage	\$66,883
Total Cost	\$2,592,286.00
Site Development Cost	\$51,500.00
Building Cost Per Square Foot	\$38.76



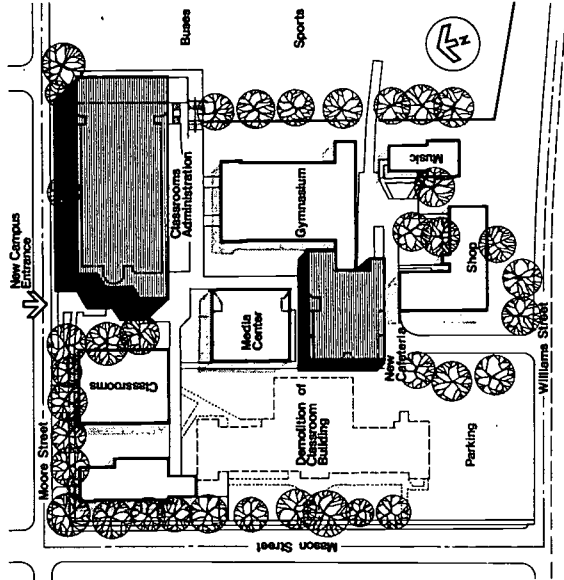
Existing Conditions



Phase 1
47

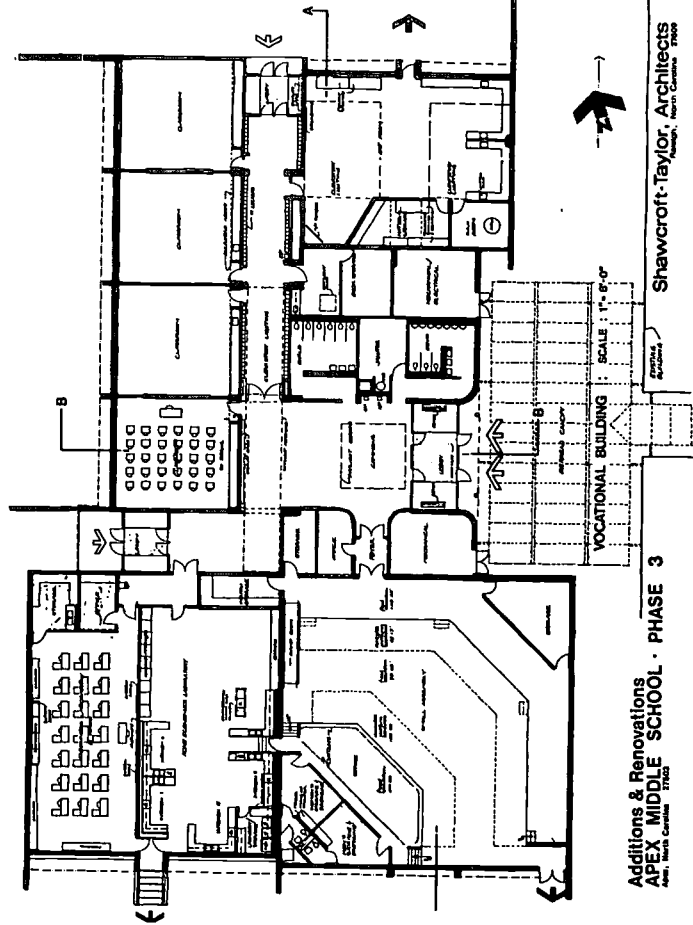


Cafeteria



Phase 2

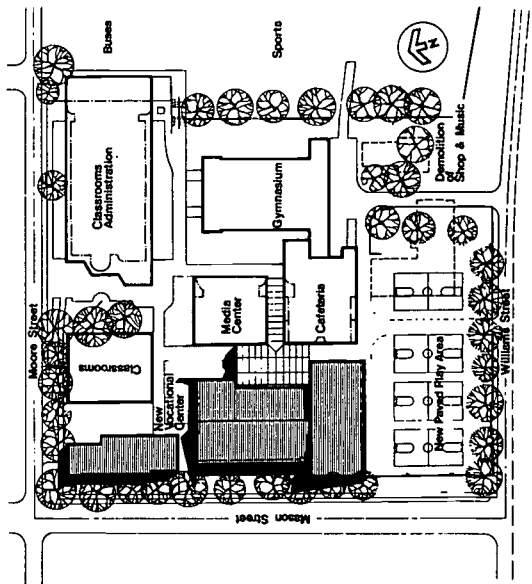
3



Additions & Renovations
APEX MIDDLE SCHOOL - PHASE 3

Shawcraft-Taylor, Architects

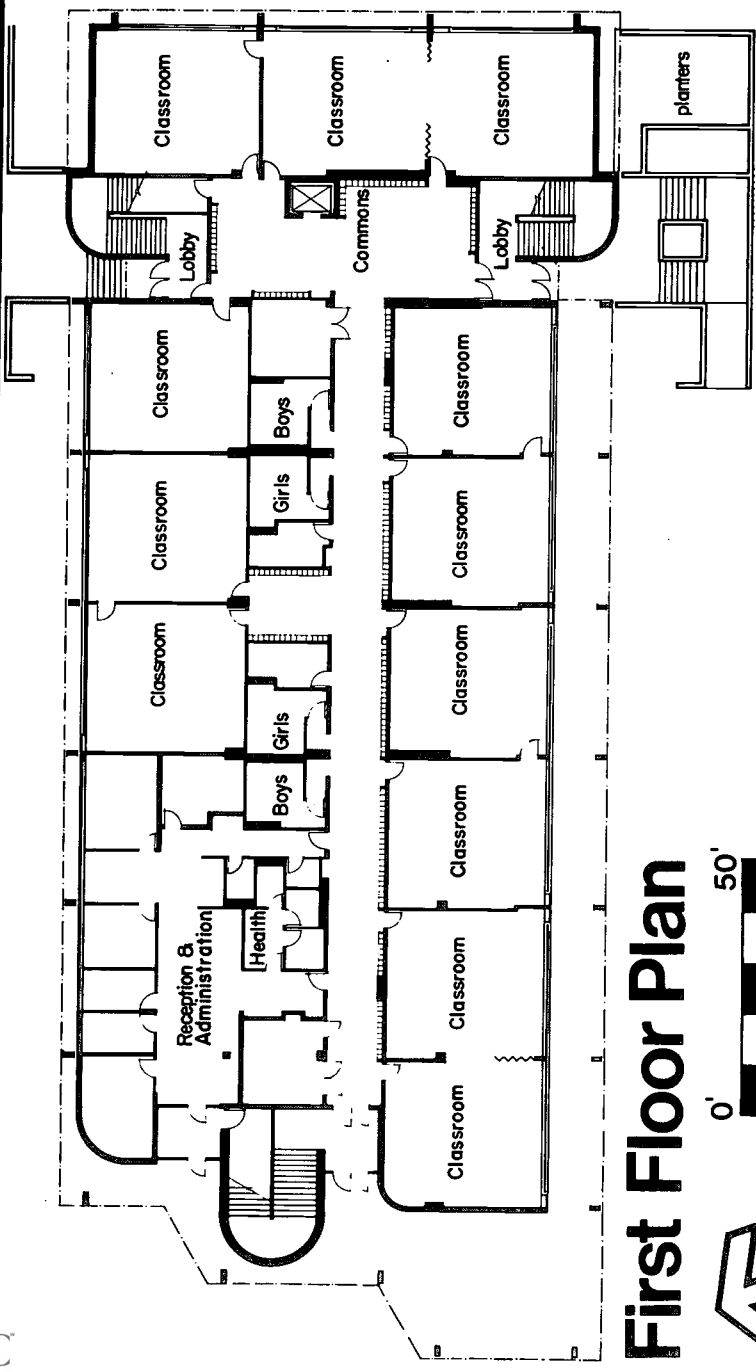
49



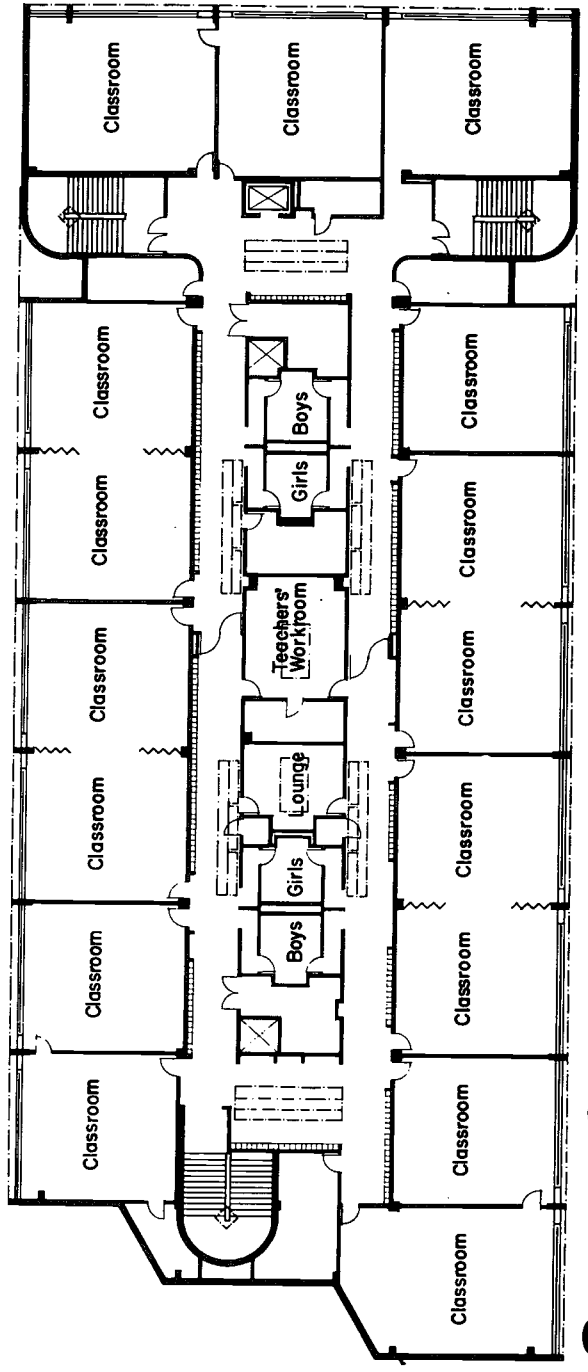
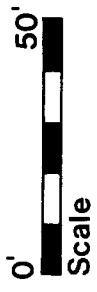
Phase 3

4

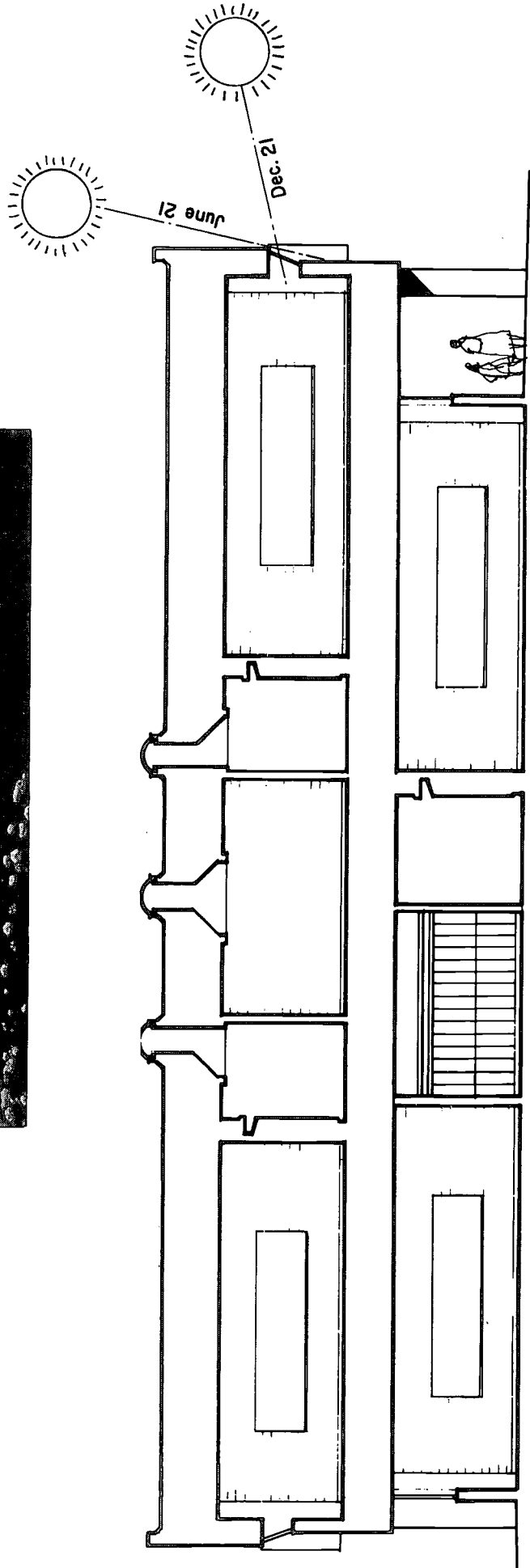
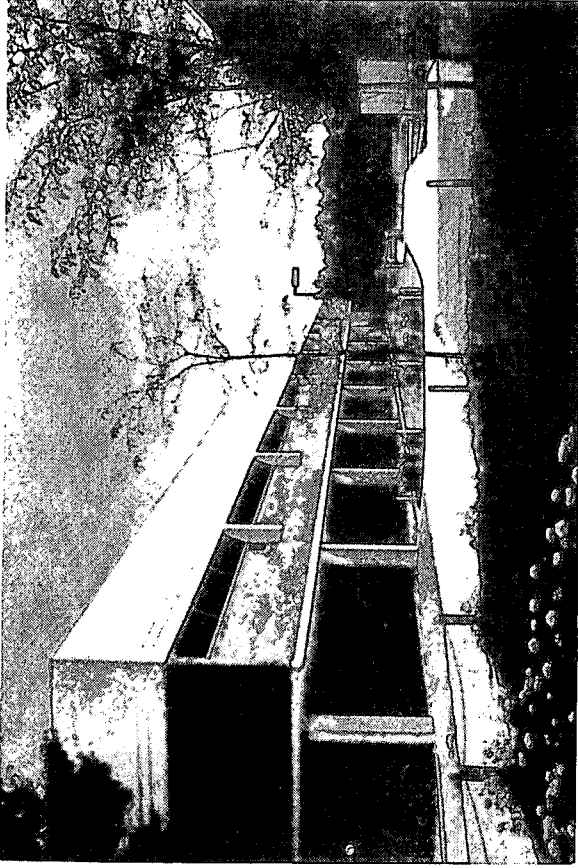
48



First Floor Plan



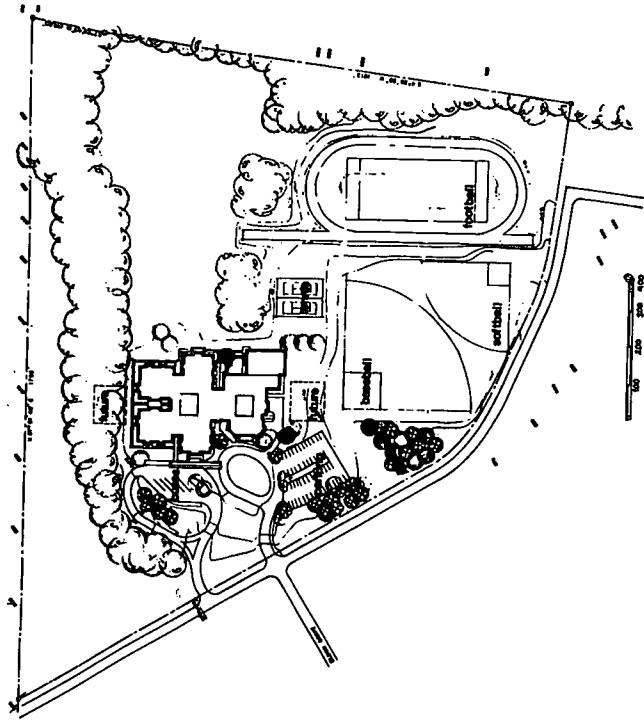
Second Floor Plan



Section thru Classrooms

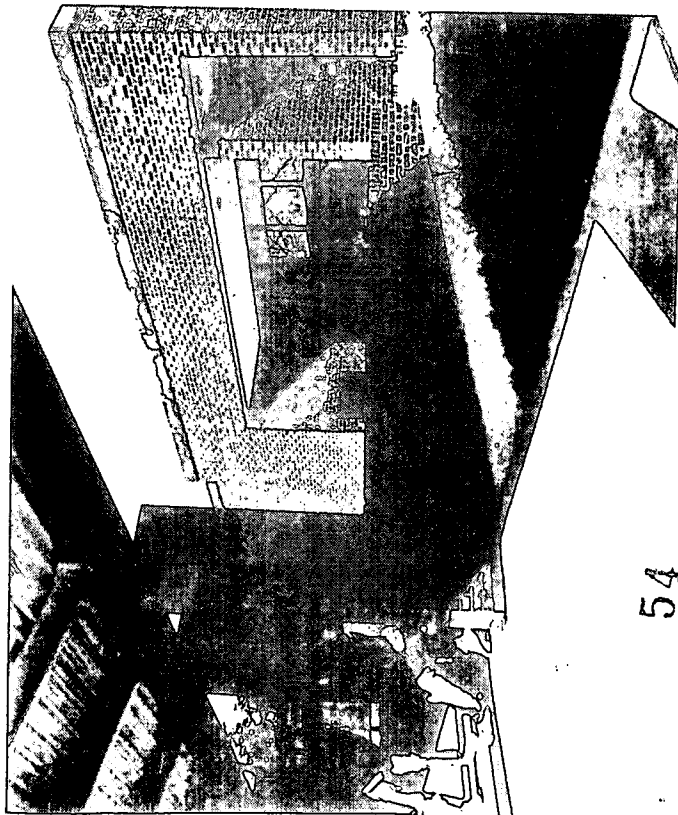


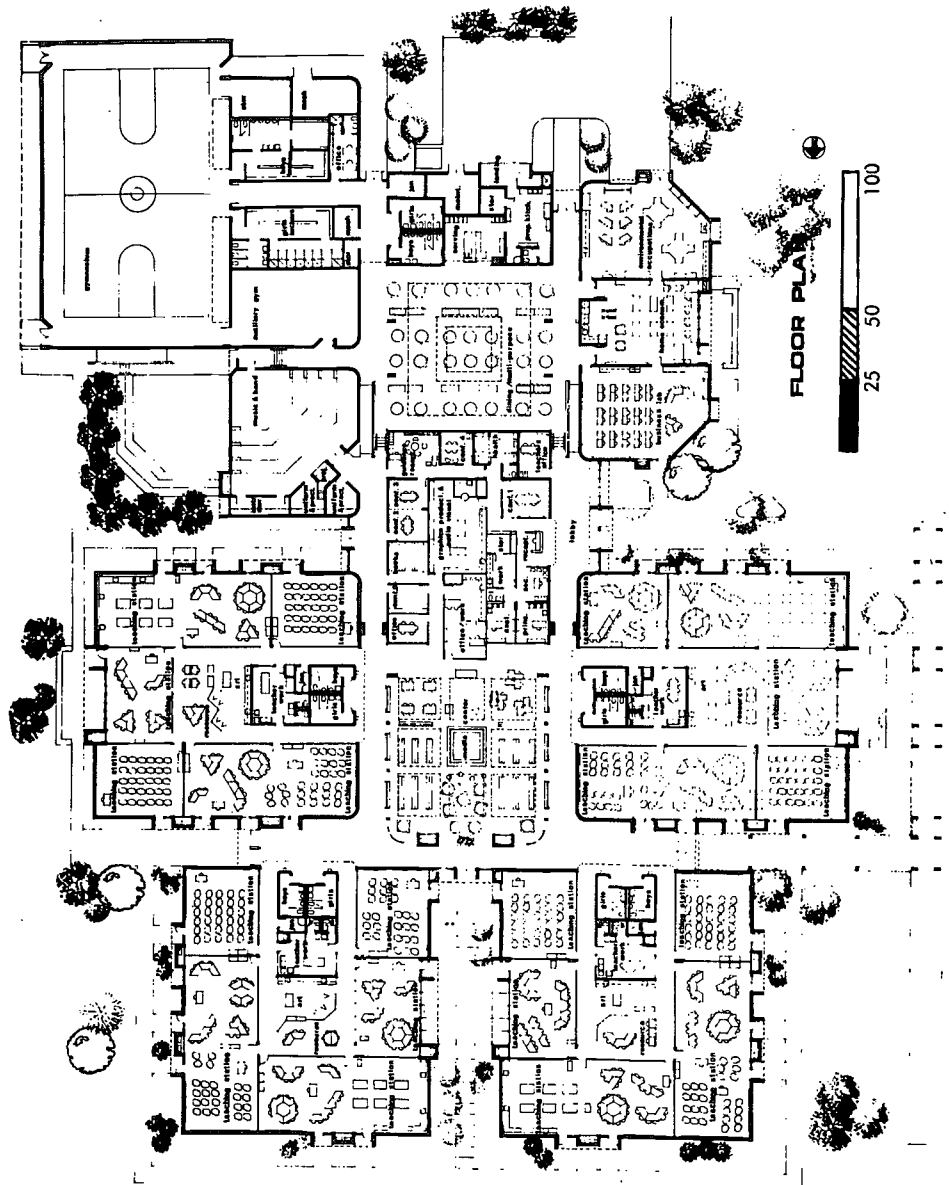
A cluster plan is reasonable for all school grade organizations. It is especially functional for a middle school and junior high school. The clusters can be arranged by grades or by departmentalization of curriculum groups. Clusters can be varied by area, shape and degree of connection to a central core. Even the structural systems and HVAC systems can vary from cluster to cluster when design criteria change. Central cores can contain the speciality areas and one-of-a-kind areas which are used by all of the children and staff. Western Middle School is a successful example of a well-planned cluster school.



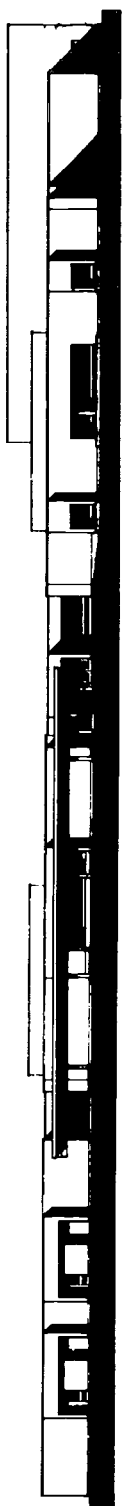
SITE

Administrative Unit	Alamance County
Superintendent	Leonard H. Simmons
Grade Organization	6-8
Approximate Capacity	900
Opening Date	January, 1979
Architects	Smart-Isley-Herring, Inc.
Landscape Architect	In-house
Structural Engineers	In-house
Mechanical Engineers	In-house
Electrical Engineers	In-house
Square Footage	69,000
Total Cost	\$2,213,054.00
Site Development Cost	Included above
Building Cost Per Square Foot	\$29.68



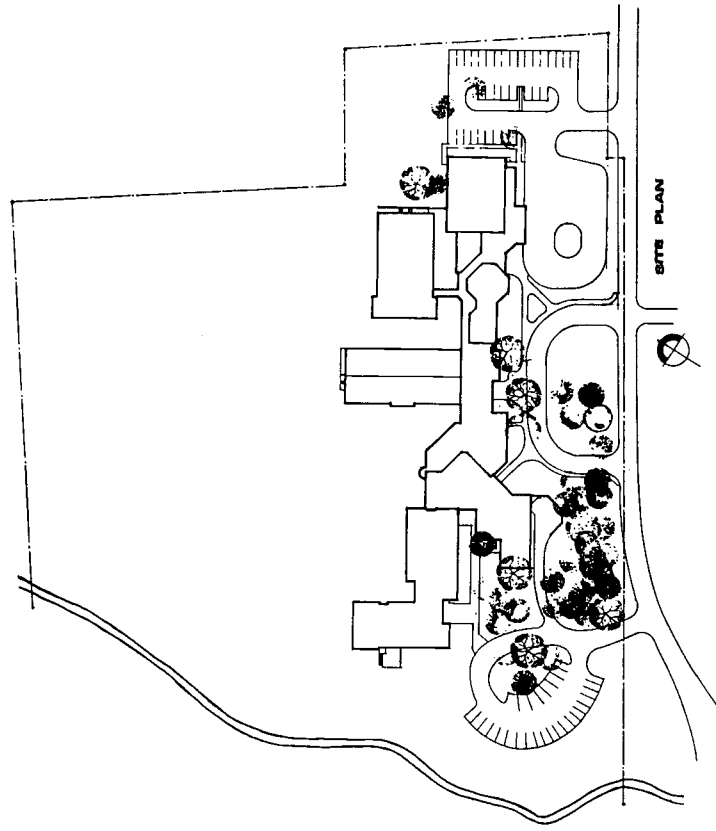


FLOOR PLAN
25 50 100



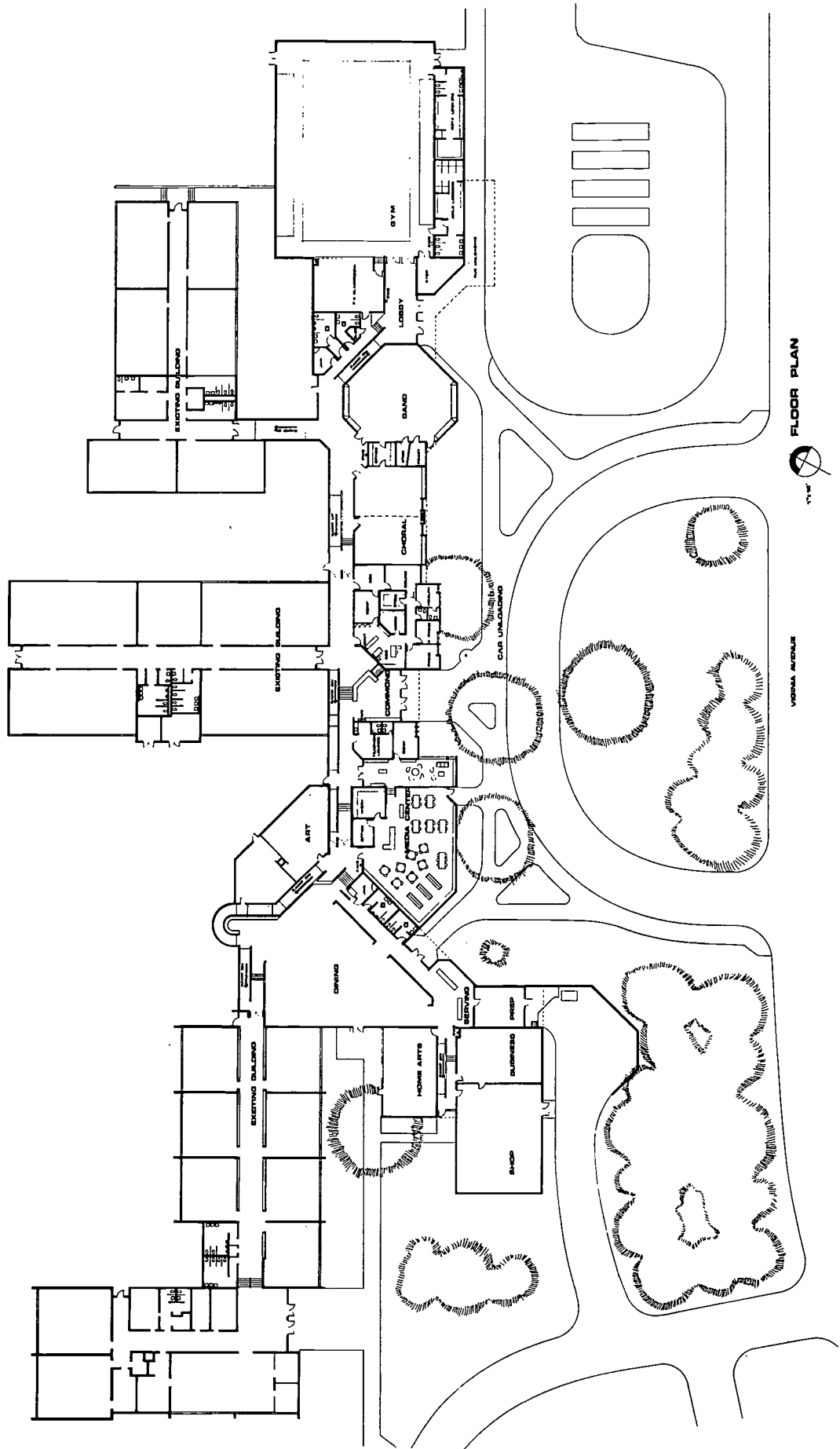
11 CHALONER MIDDLE

Many school campuses have a series of buildings from different periods of construction. Frequently, these campuses are difficult to organize educationally and to administer. Also, energy conservation possibilities are limited. The challenge at Chaloner was to connect all existing buildings by adding needed new facilities, adapt to a site with many floor evaluations and provide more clearly defined vehicle and pedestrian traffic patterns. The shapes of the new plan are the result of making the necessary adaptations to existing patterns. The addition has unified a collection of ordinary school buildings and has established stronger visual identity for the school.



Administrative Unit	Roanoke Rapids City
Superintendent	Robert C. Clary
Grade Organization	6-8
School Capacity	900
Opening Date	August, 1982
Architects	George M. Smart Architect, Inc.
Landscape Architect	In-house
Structural Engineers	Kimley-Horn & Associates, Inc.
Mechanical Engineers	L. E. Wooten & Company
Electrical Engineers	L. E. Wooten & Company
Square Footage	39,121
Total Cost	\$1,931,800.00
Site Development Cost	Included above
Building Cost Per Square Foot (includes costs for renovation of existing building)	\$.49.37

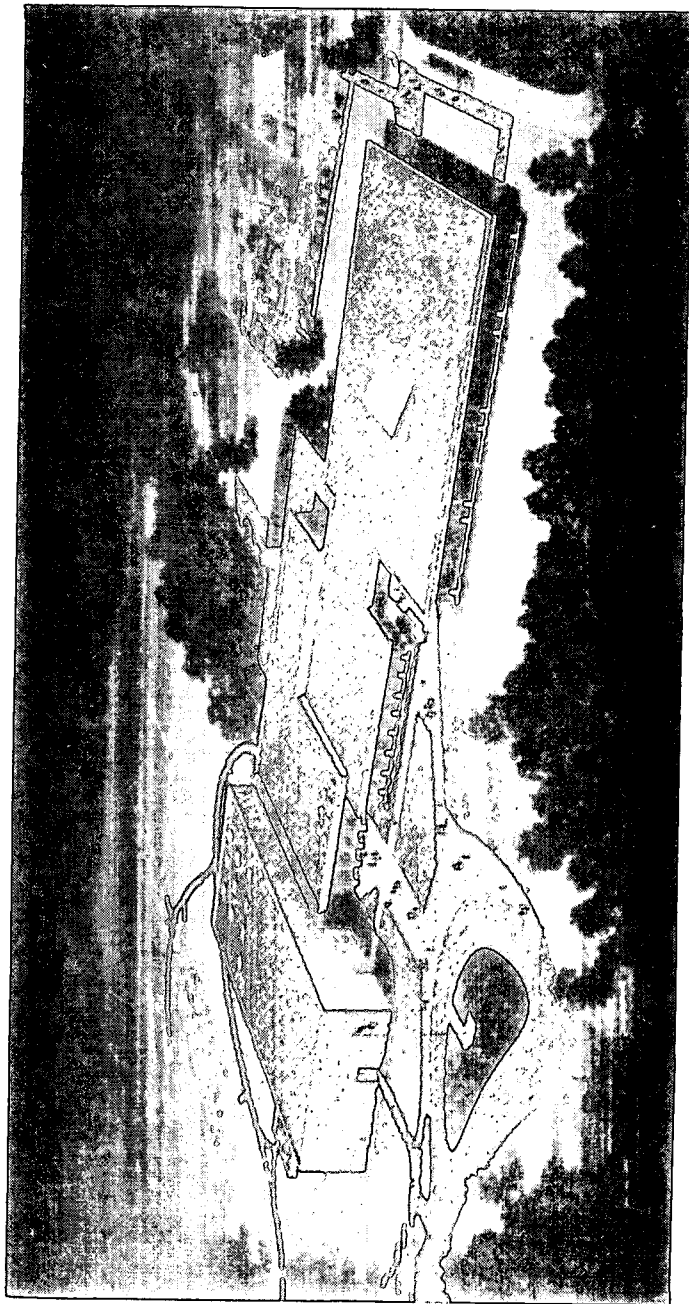
CHALONER MIDDLE 11



FLOOR PLAN



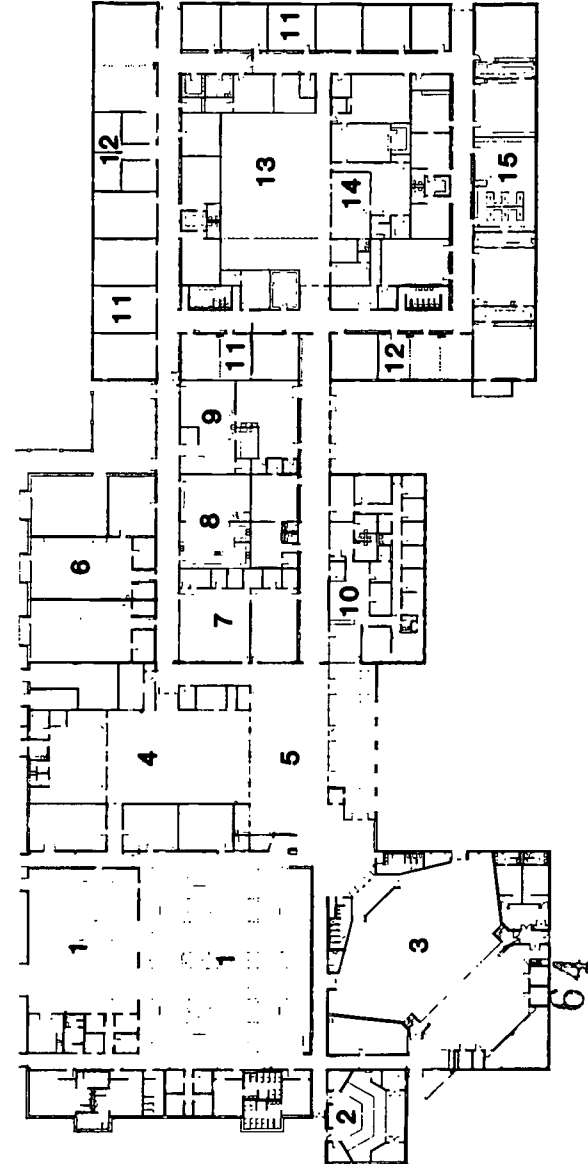
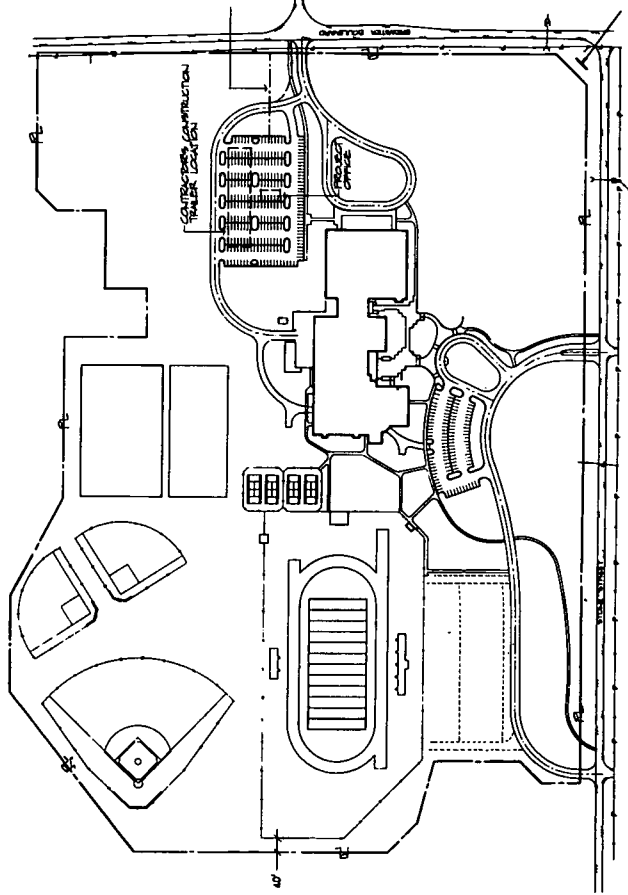
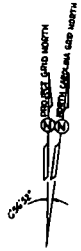
VIRGINIA AVENUE



Construction began in May, 1985. The project proceeded along the recommended path of educational specifications prepared by the Camp Lejeune superintendent of schools and his staff. It continued with architectural interpretation of the educational specifications and schematic sketches. The resulting plan clearly separates regular classrooms and their support areas. The library core is surrounded by support areas and special activity rooms. Also, the plan is arranged so that areas for large groups are accessible from a common lobby or "commons." Other interior circulation patterns are clear and direct.

Administrative Unit	Federal Schools-Camp Lejeune
Superintendent	E. Conrad Sloan
Grade Organization	9-12
Approximate Capacity	600
Opening Date	Fall, 1987
Architects	Ballard, McKim & Sawyer
Landscape Architect	Jerry Turner & Associates
Structural Engineers	McKim & Creed, Engineers
Mechanical Engineers	Cheatham & Associates
Electrical Engineers	Baldwin Associates
Square Footage	120,819
Total Cost	(estimated) \$8 million
Site Development Cost	Included above
Building Cost Per Square Foot	(estimated) \$66.67

DEPENDENT HIGH 12

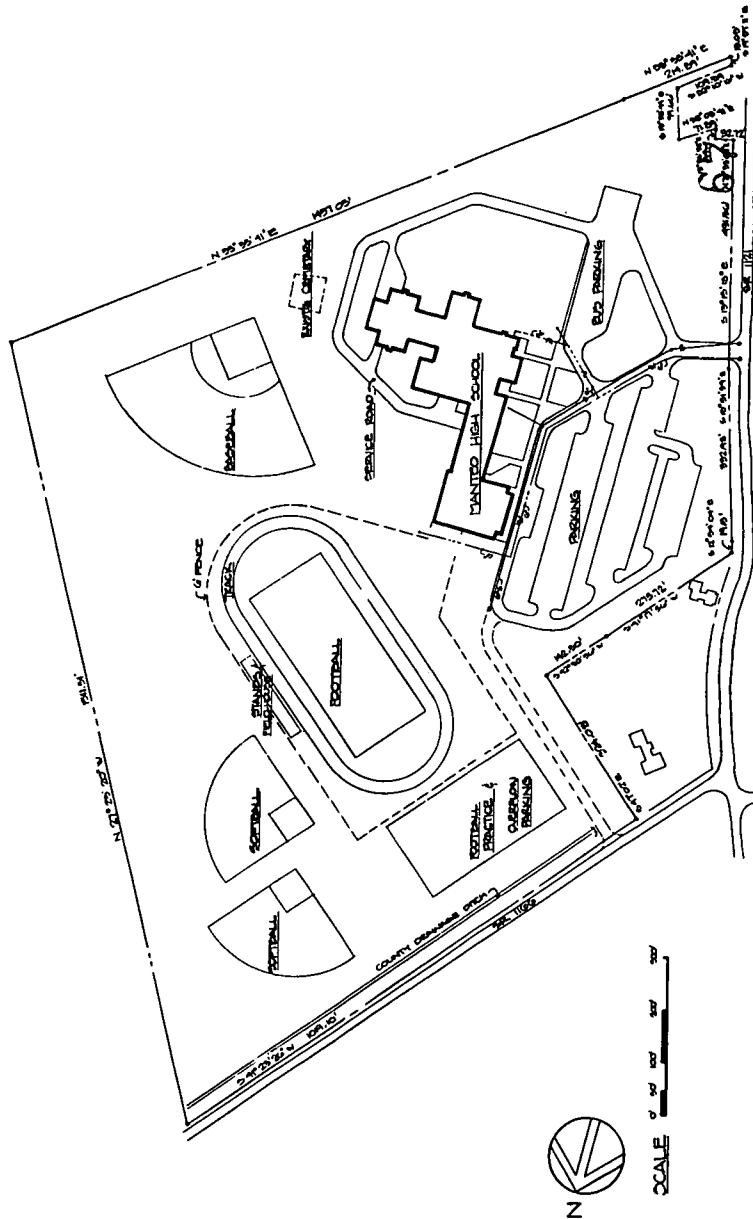


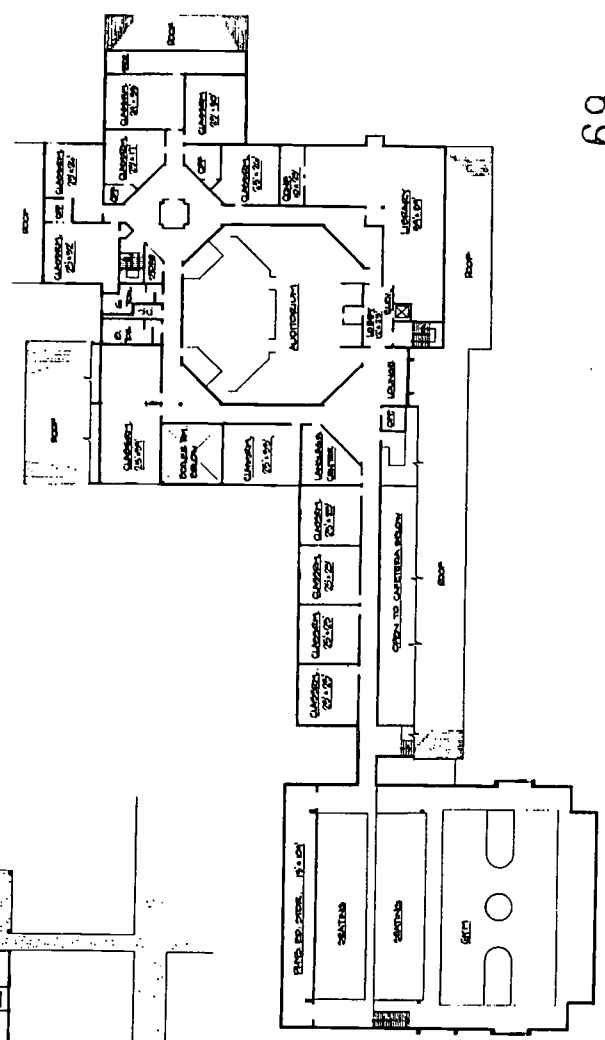
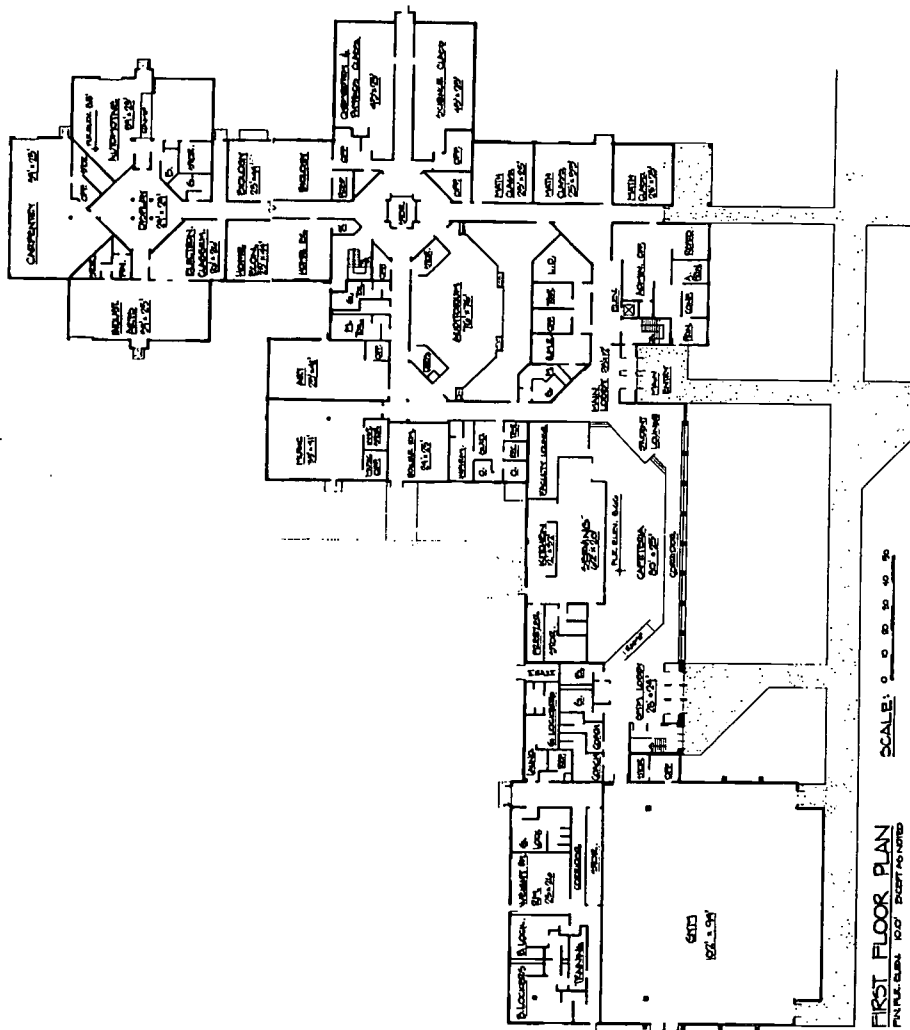
- 1-Gymnasium
- 2-Band and Music
- 3-Auditorium
- 4-Kitchen and Dining
- 5-Commons
- 6-Shop
- 7-Business
- 8-Home Economics
- 9-Arts
- 10-Administration
- 11-Classrooms
- 12-Seminars
- 13-Library
- 14-Audio Visual
- 15-Science and Math

Here is an example of interior traffic patterns determining the two main features of the school. They are the cafeteria and the auditorium. The cafeteria is an attractive open space defined by the corridor and separated from it by a ramp and a low railing. This open space visually connects the main lobby and the gymnasium lobby. The arena type auditorium extends the seating areas over two levels, from the first floor to the second floor. It can be entered from either floor.

Exterior materials are brick veneer, industrial type metal siding and standing seams prefinished metal roofing. The site is suitably finished with curbs and gutters at main parking areas and entrances.

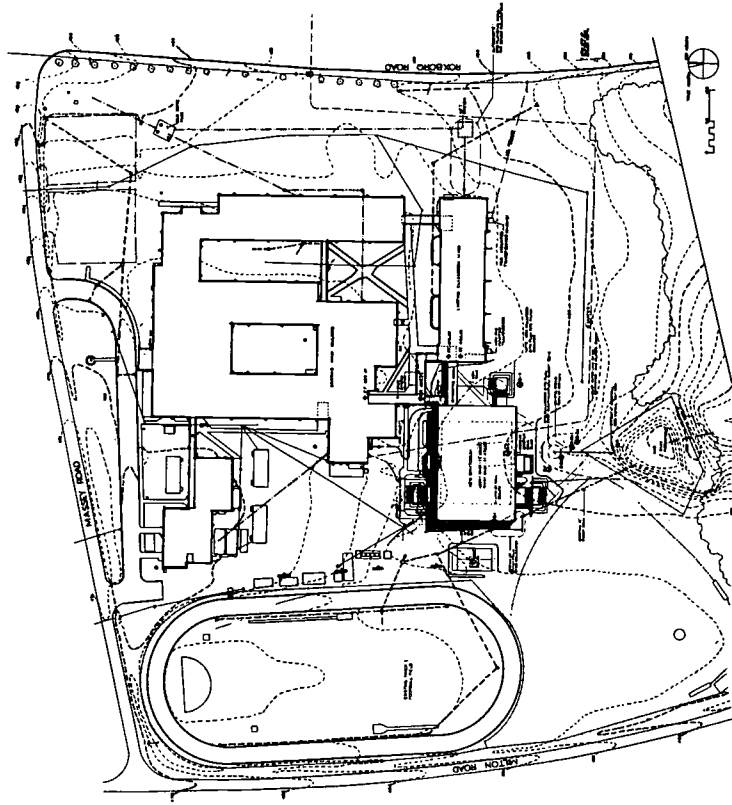
Administrative Unit	Dare County
Superintendent	Stephen G. Basnight, Jr.
Grade Organization	9-12
Approximate Capacity	650
Opening Date	April, 1983
Architects	Nauta Associates
Landscape Architect	In-house
Structural Engineers	Structures, Inc.
Mechanical Engineers	Gillan & Hartman, Inc.
Electrical Engineers	Gillan & Hartman, Inc.
Square Footage	89,700
Total Cost	\$3,849,618.00
Site Development Cost	Not included above
Building Cost Per Square Foot	\$42.92



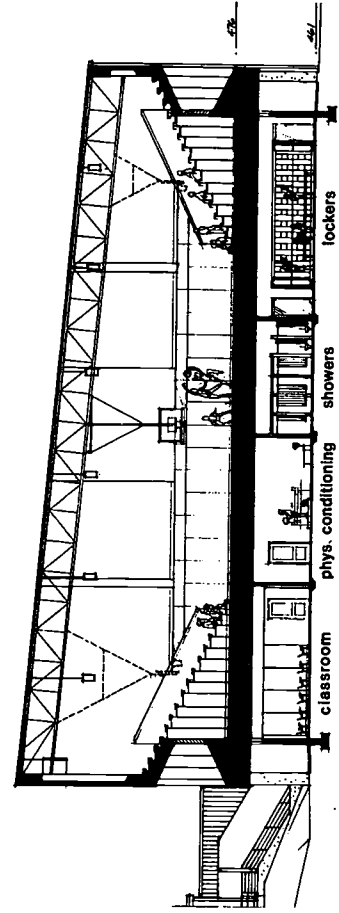


14. NORTHERN HIGH GYM

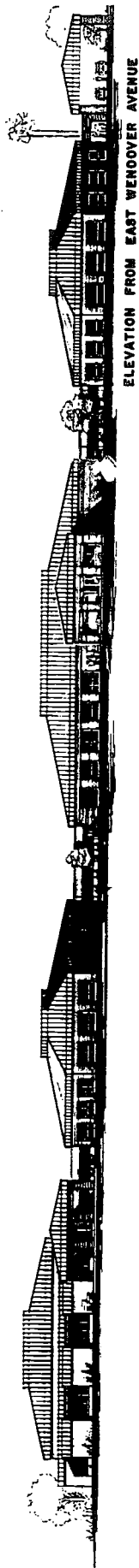
Large schools on crowded sites require that additional construction be compact. This two-story gymnasium is adjacent to a recently built two-story classroom building. The ground floor dressing rooms and special rooms are adjacent to play fields. Large public areas are on the upper floor. Acoustical design was an important consideration. The building frame is steel throughout. The exterior skin is standard prefinished metal siding and Kalwall daylighting panels.



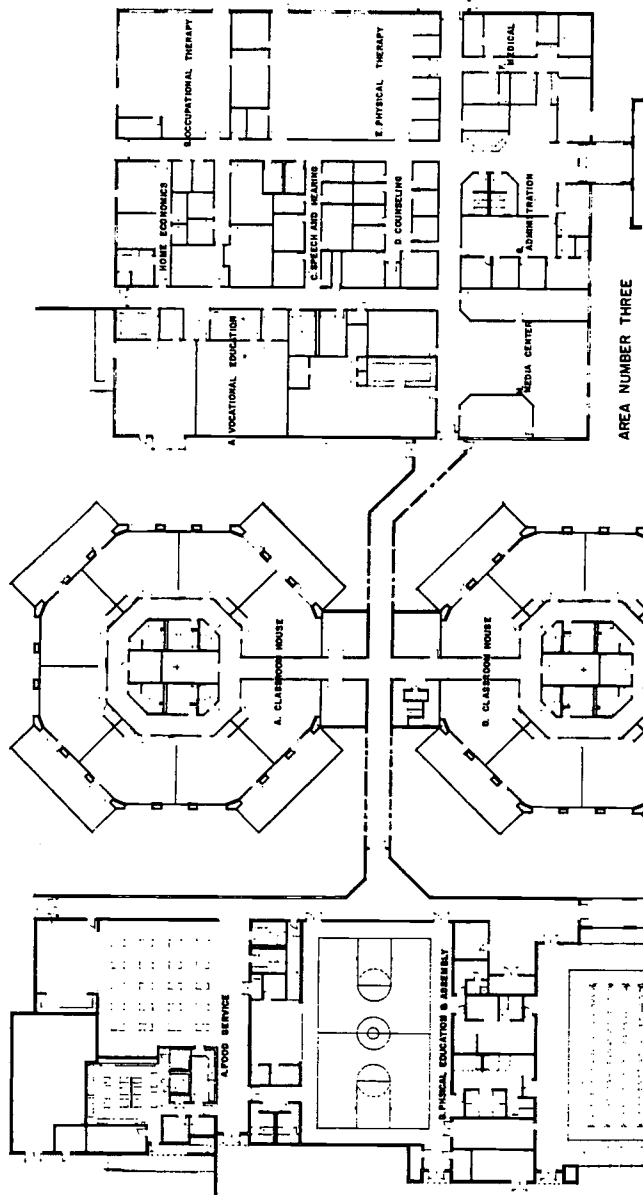
Administrative Unit.	Durham County
Superintendent	Larry D. Coble
Grade Organization10-12
School Capacity.1,780
Opening DateMarch, 1983
Architects	DePasquale, Thompson, & Wilson
Landscape Architect.By owner
Structural EngineersGeorge K. Coffin & Associates
Mechanical EngineersKnott & Roberts, P.A.
Electrical EngineersKnott & Roberts, P.A.
Square Footage39,750
Total Cost	\$.2,440,267.00
Site Development Cost.	Included above
Building Cost Per Square Foot.	\$.61.00



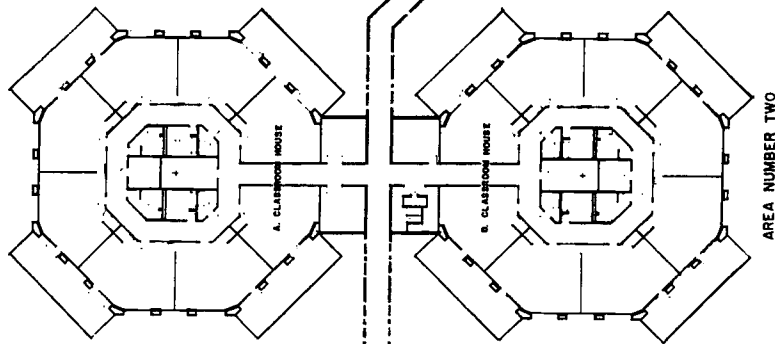
GATEWAY EDUCATIONAL CENTER 15



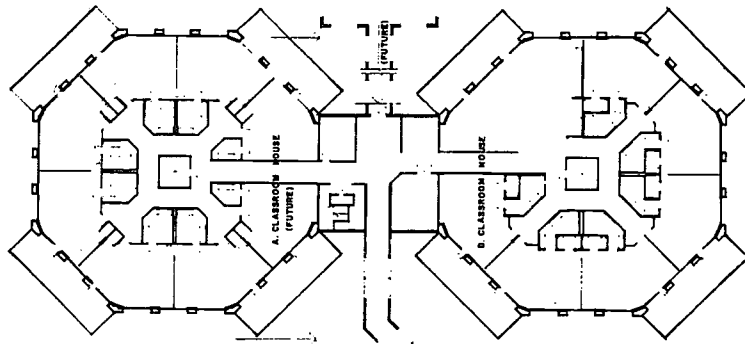
ELEVATION FROM EAST WENOVER AVENUE



AREA NUMBER THREE



AREA NUMBER TWO



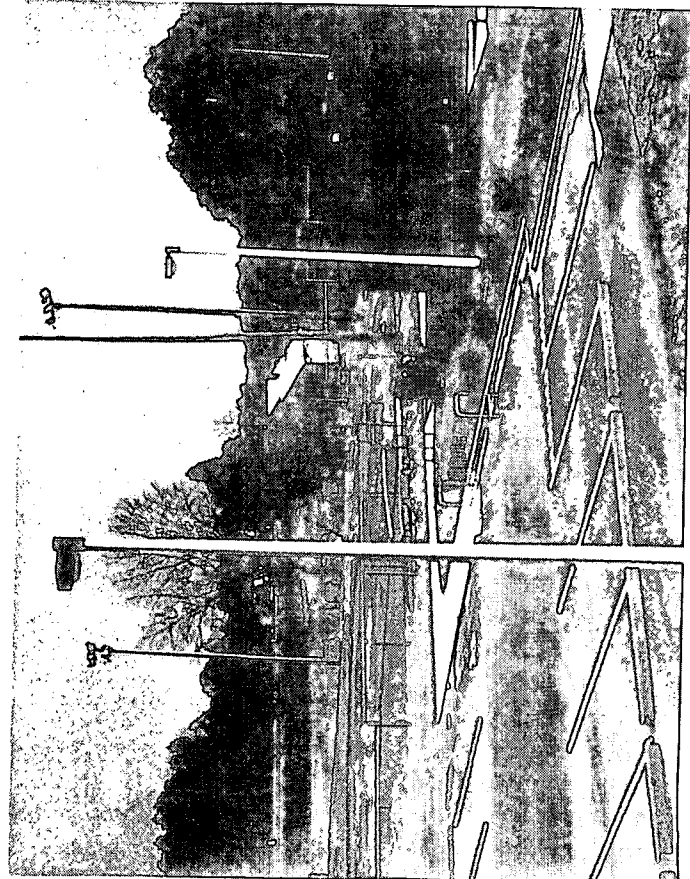
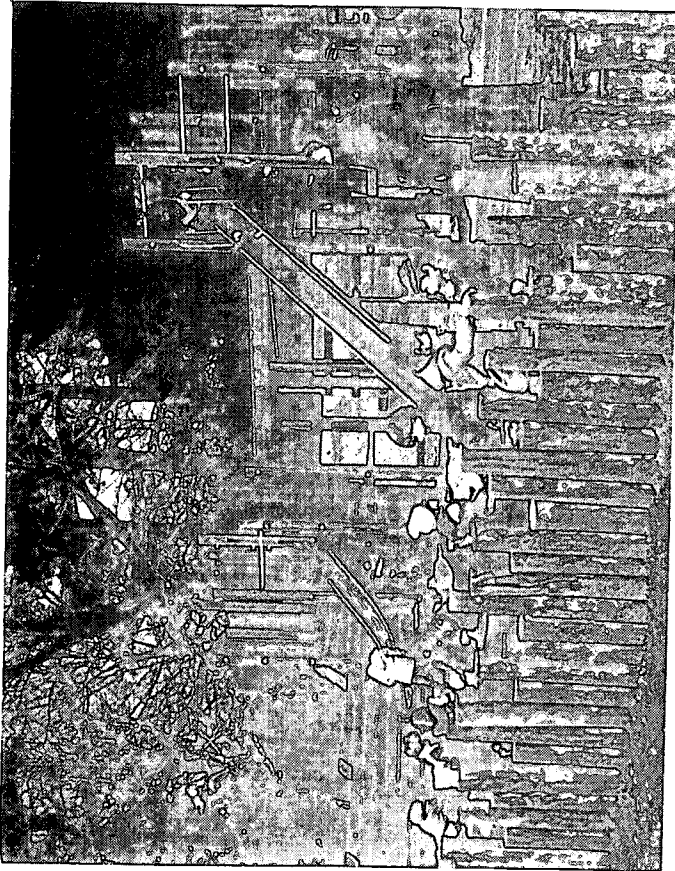
AREA NUMBER FOUR

FLOOR PLAN

4 10 20 40 80

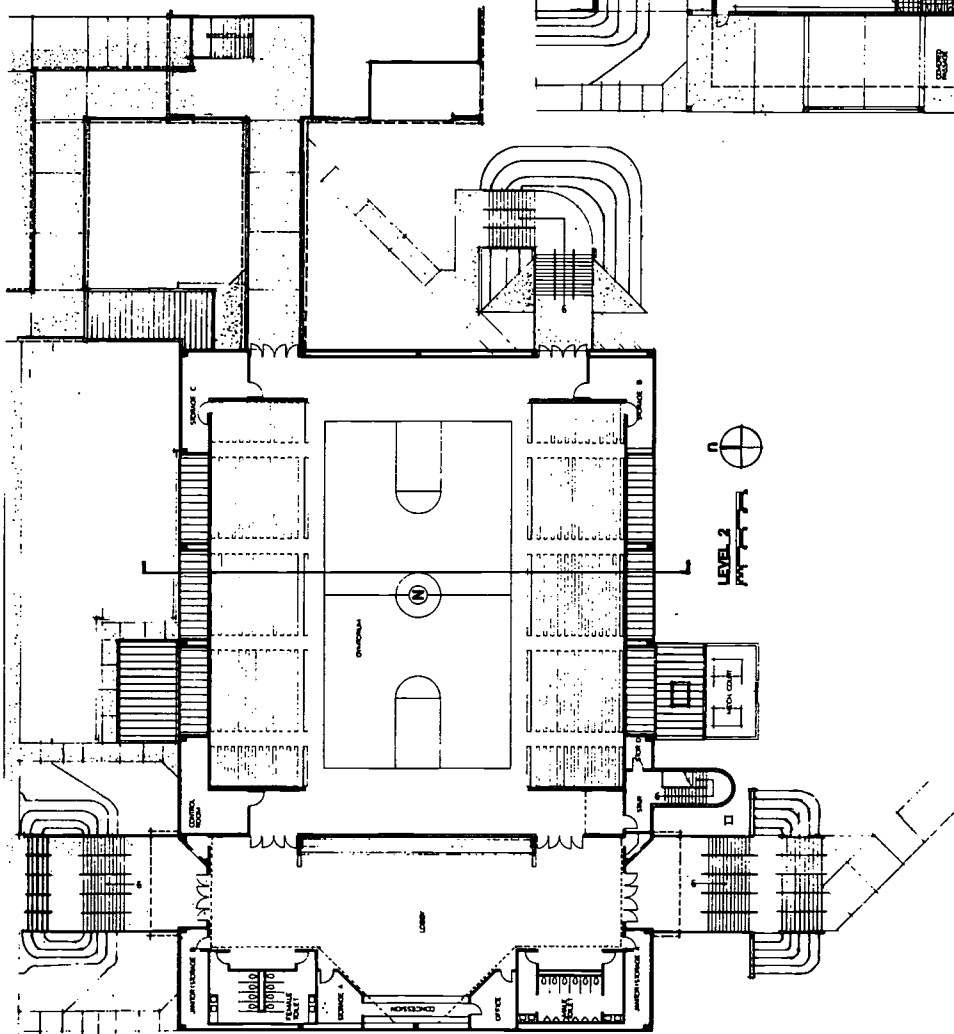
16 APEX ELEMENTARY PARK

The Wake County Parks Department and the Wake County Schools agreed upon a cooperative program whereby public parks, toilets, shelters and playgrounds would be designed and constructed on school sites. Three other projects have been completed. They are located at Swift Creek Elementary School, Knightdale Elementary School (see #2) and West Millbrook Junior High School. All four projects were designed by Wake County Parks staff people. Each project was coordinated with Wake County school people so that local site and community needs could be accommodated. These model projects demonstrate how public school sites can be fully developed as "community schools."

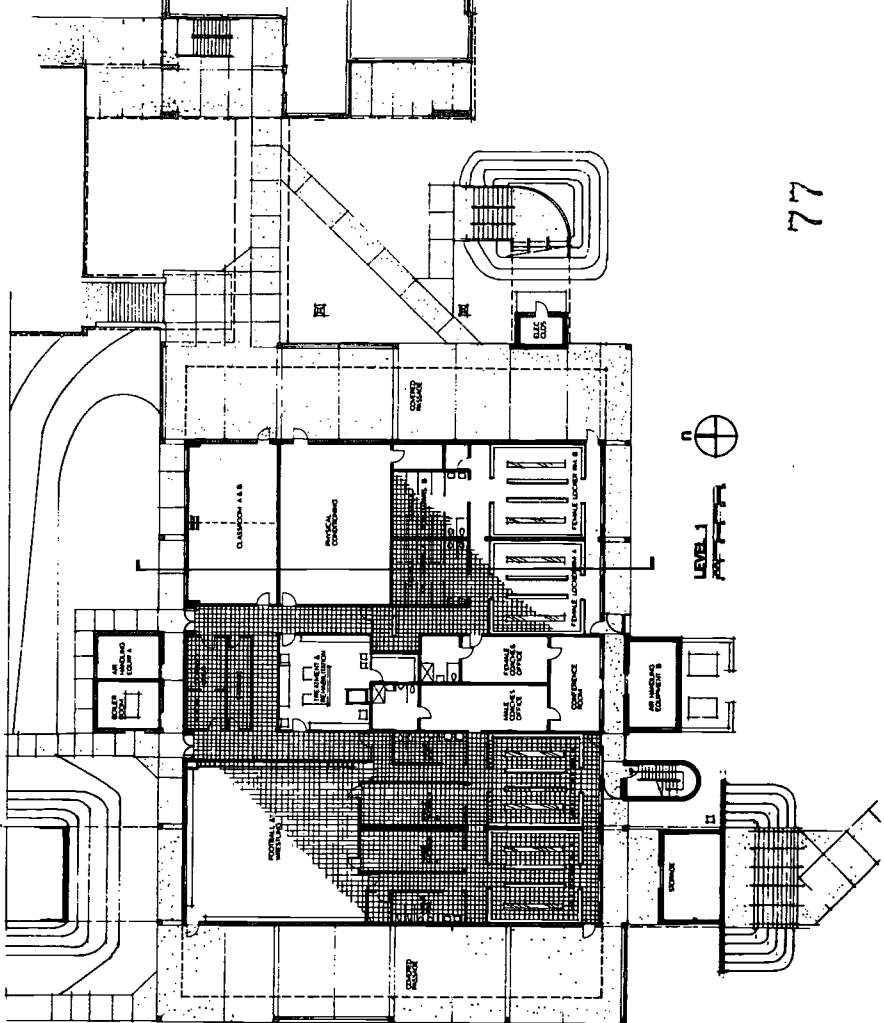


Administrative Unit	Wake County
Superintendent	Robert E. Bridges
Grade Organization	0
Opening Date	Fall, 1982
Architects	Wake County Parks & Recreation Department
Landscape Architect	In-house
Structural Engineers	In-house
Mechanical Engineers	In-house
Electrical Engineers	Booth & Associates, Inc.
Square Footage	Park
Total Cost	\$243,008.00
Site Development Cost	Included above

NORTHERN HIGH GYM 14

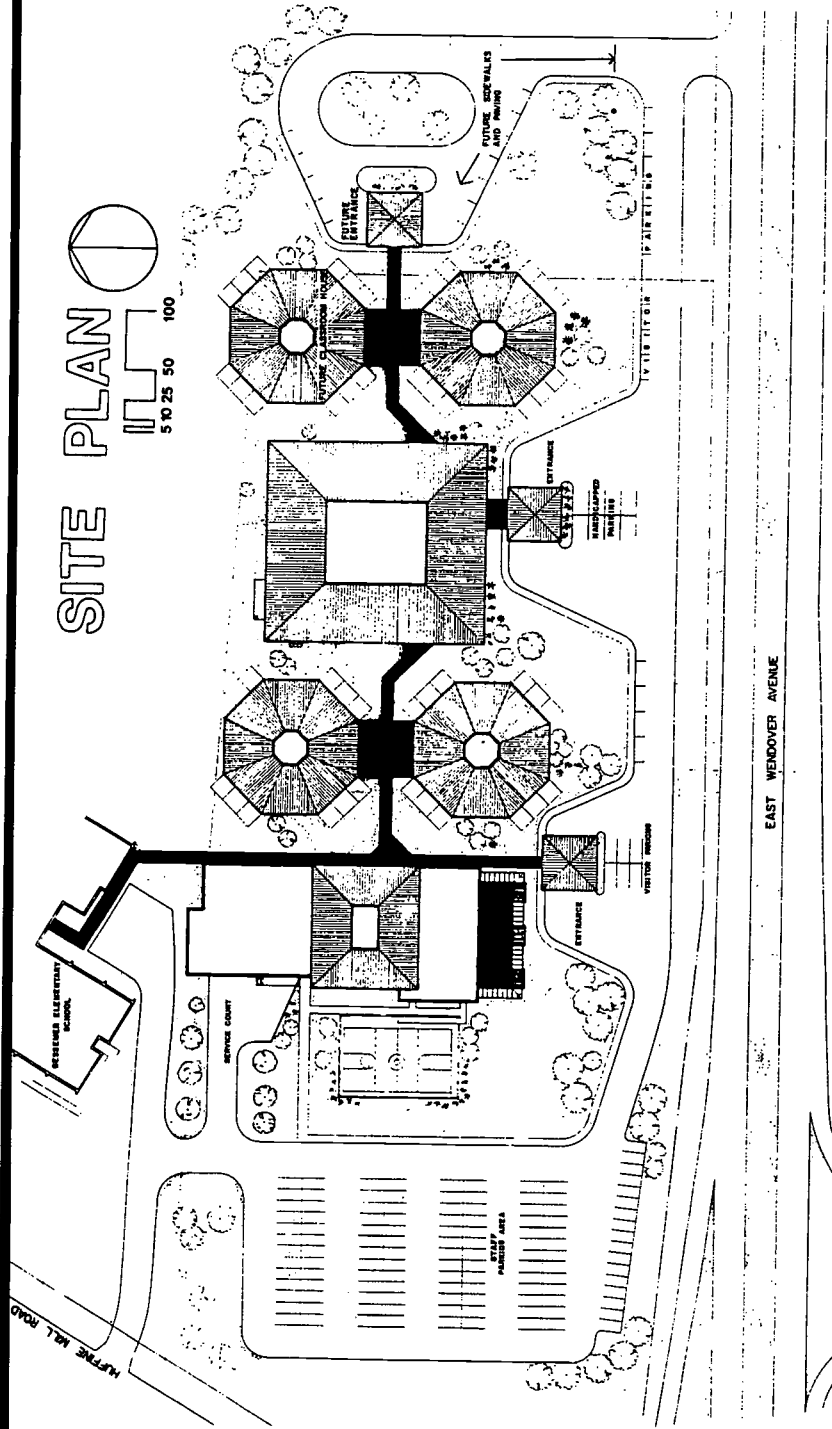


76



77

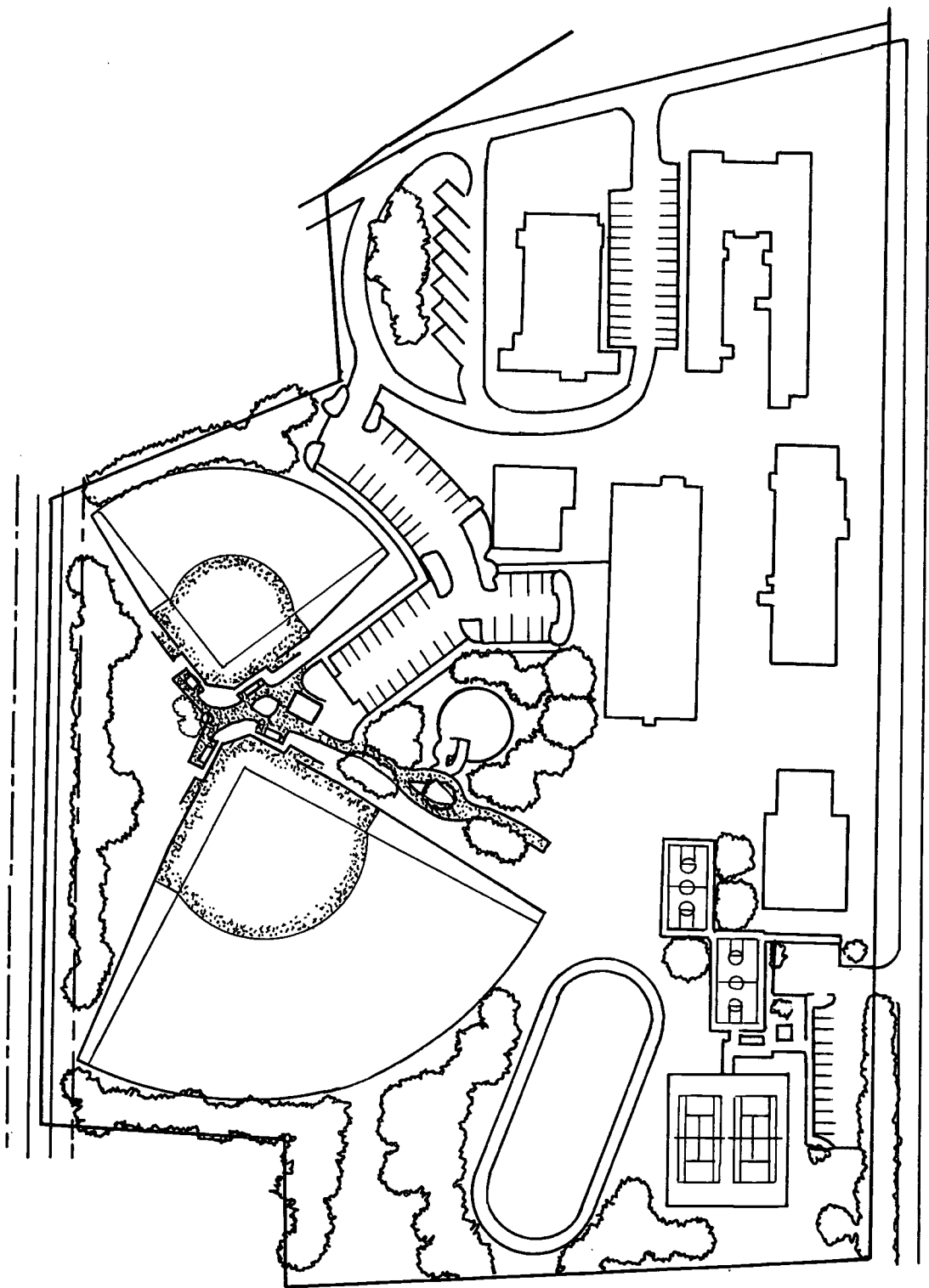
15 GATEWAY EDUCATIONAL CENTER



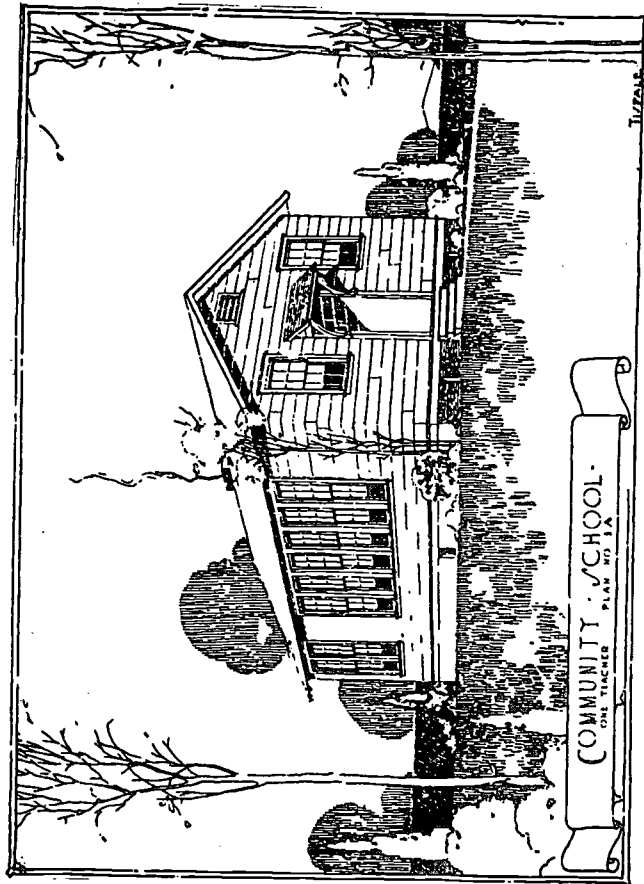
This large cerebral palsy and orthopedic facility was planned to serve all of Guilford County. It is available to physically handicapped students of any age who are unable to attend a regular school, including preschool age children and adults. Architectural interpretation of the educational specifications resulted in three main planning groups. They are food service, physical and occupational therapy and administration and classroom facilities. A nearby school has a covered walk which connects to the Gateway Education Center cafeteria.

Administrative Unit	Greensboro City
Superintendent	Joseph R. Brooks
Grade Organization	Ages 0-21
Approximate Capacity	130
Opening Date	1983
Architects	J. Hyatt Hammond Associates, Inc.
Landscape Architect	In-house
Structural Engineers	In-house
Mechanical Engineers	In-house
Electrical Engineers	In-house
Square Footage	105,214
Total Cost	\$4,458,735.00
Site Development Cost	Included above
Building Cost Per Square Foot	\$42.38

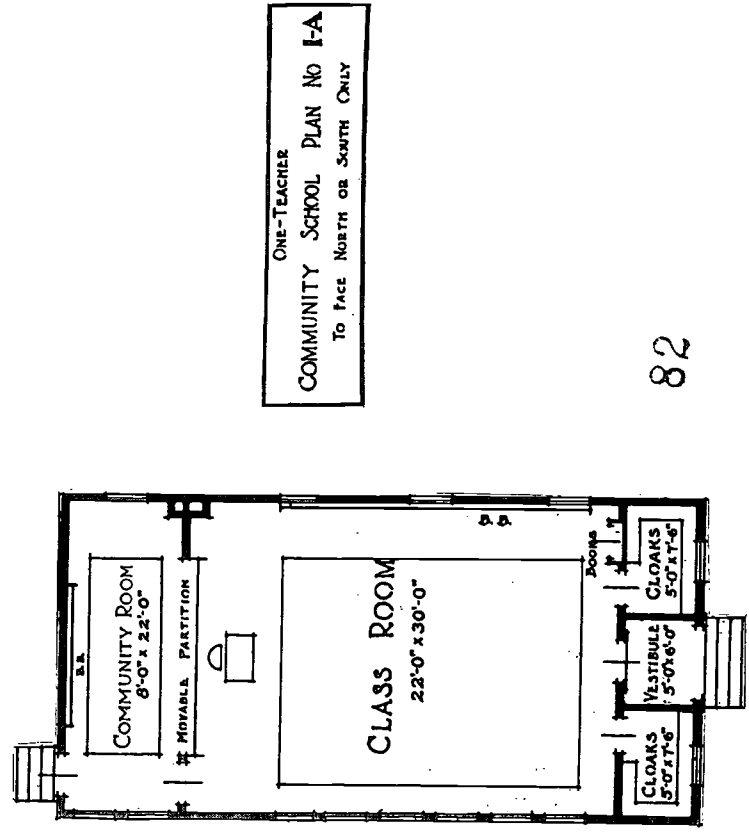
APEX ELEMENTARY PARK 16

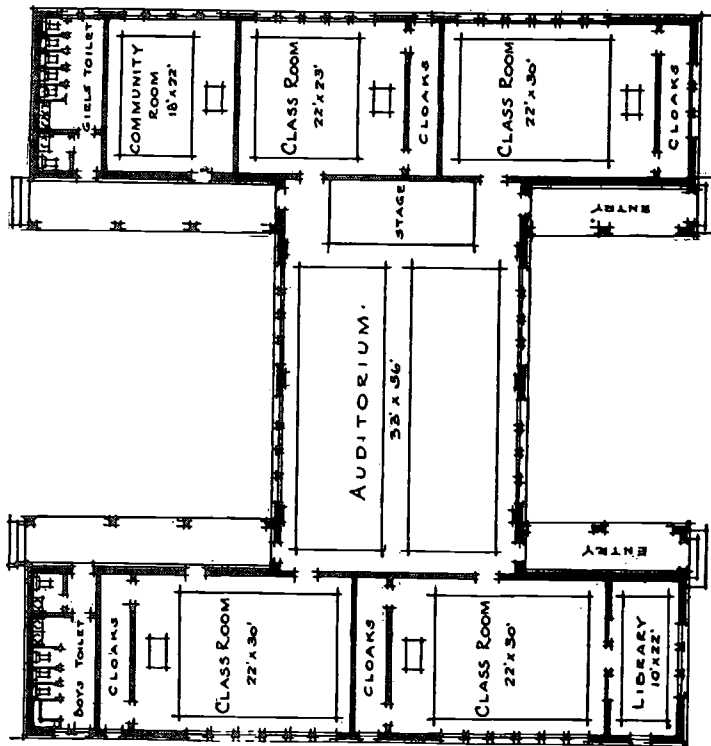
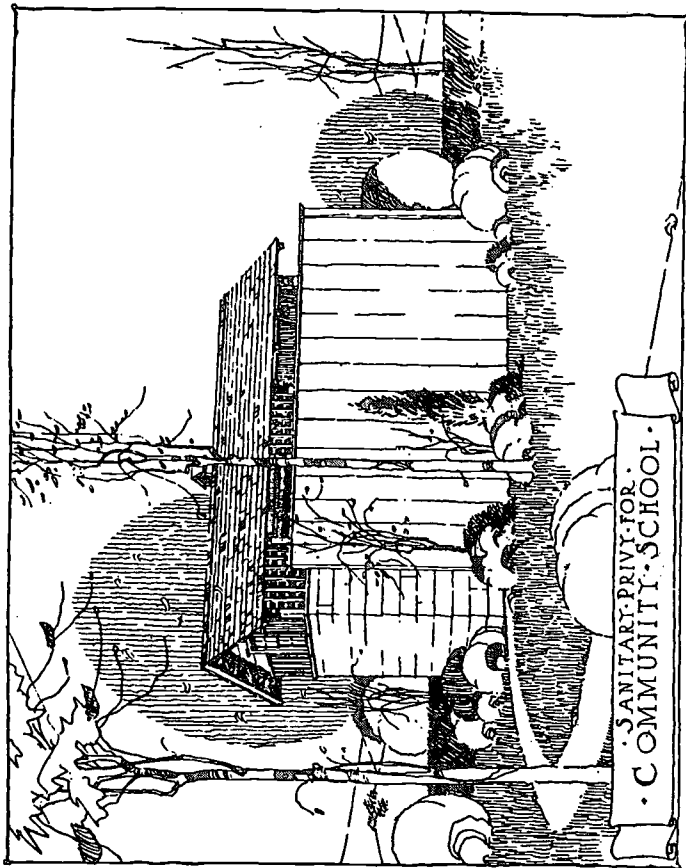
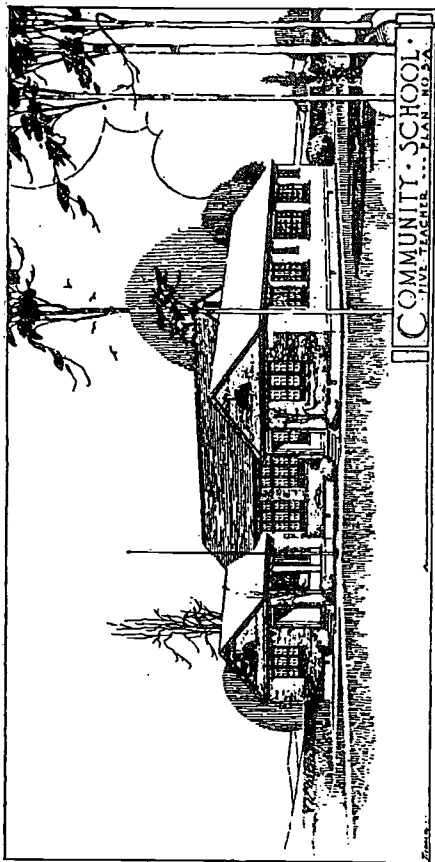


0 75' 150'

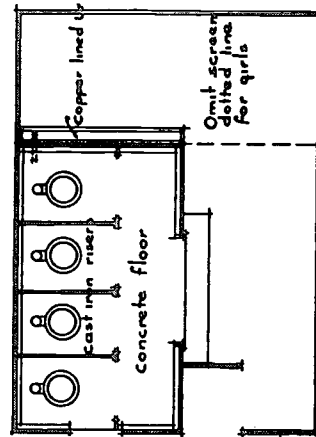


The Julius Rosenwald Fund was chartered in 1917 and during the twenties was concerned, among other things, with the promotion of schools for the blacks. Donations of standard plans and funds to the Interstate School Building Service at Peabody College enabled school systems throughout the south to build standard community schools for both black and white children. Most recognizable of the Rosenwald plan schools is the scheme which has classrooms located around and opening directly into a central auditorium. The plan exhibited many of the positive features of the later open plan school. Unfortunately the plan had serious safety deficiencies in case of fire. Inexpensive construction, age, lack of routine maintenance and the termite have resulted in the disappearance of this interesting but potentially dangerous type of school facility.





FLOOR PLAN No. 5-A
 COMMUNITY SCHOOL
 TO FACE NORTH OR SOUTH ONLY

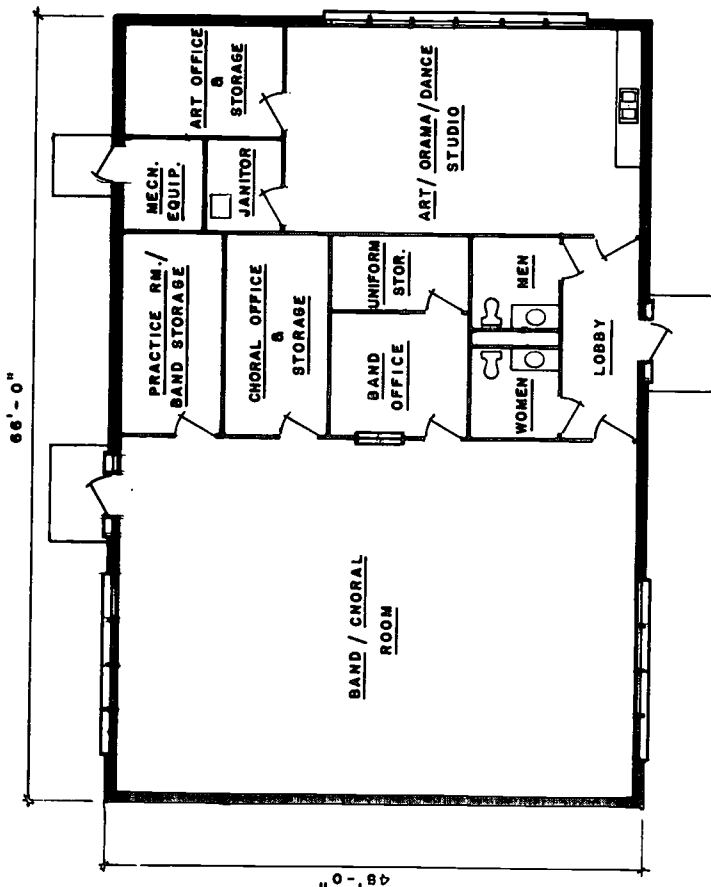


PLAN FOR PIT PRIVY

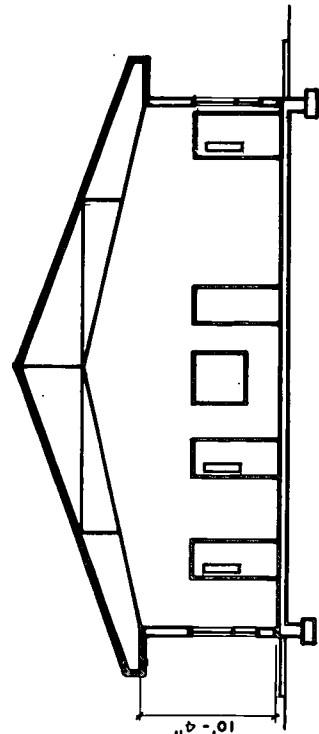
17 CHEROKEE CULTURAL ARTS

Cherokee County Schools needed a building that could be built at Hiwassee Dam, Andrews High School and Murphy High School. The cultural arts program and facilities were intended to be accessible to school children and the community. The design program is successful and the users are satisfied. Need anything more be said?

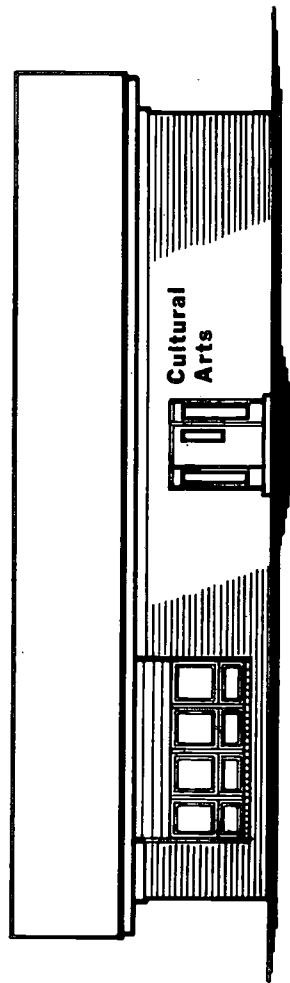
Administrative Unit	Cherokee County
Superintendent	William Roy Pipes
Grade Organization7-12
Approximate Capacity40
Opening Date	Fall, 1985
Architects	Eric Townson
Landscape ArchitectIn-house
Structural Engineers	Reece, Noland & McElrath Engineers
Mechanical Engineers	Reece, Noland & McElrath Engineers
Electrical Engineers	Reece, Noland & McElrath Engineers
Square Footage	2,970
Total Cost	\$332,772.00
Site Development Cost	Included above
Building Cost Per Square Foot	\$.37.34



FLOOR PLAN
1/8" = 1' - 0"



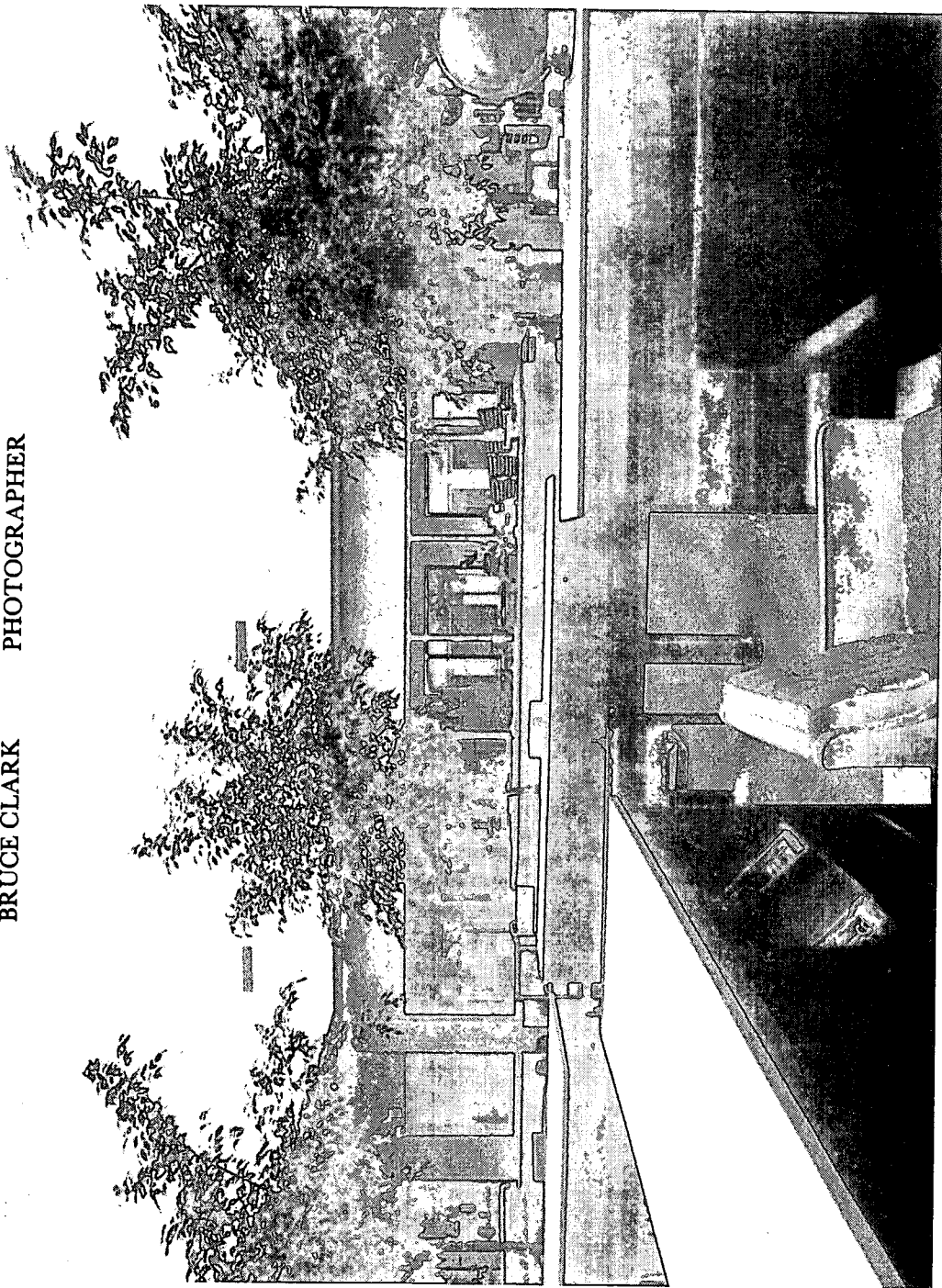
SECTION AT BAND ROOM
1/8" = 1' - 0"



FRONT ELEVATION
8 7/8" = 1' - 0"

THIS PUBLICATION WAS WRITTEN
AND PREPARED BY THESE PEOPLE:

CHARLES REED, Jr.	ARCHITECT
ROLF W. SEIFERT	ARCHITECT
GERALD H. KNOTT	ARCHITECT
RANDY L. CRAVEN	ARTIST
MARY R. LOVIN	SECRETARY
BETTY M. MELIN	SECRETARY
DENISE B. STRICKLAND	SECRETARY
BRUCE CLARK	PHOTOGRAPHER



88 Albritton Middle, Fort Bragg; Media Center with large Kalwall skylight.



U.S. Department of Education
Office of Educational Research and Improvement (OERI)
National Library of Education (NLE)
Educational Resources Information Center (ERIC)



NOTICE

REPRODUCTION BASIS



This document is covered by a signed "Reproduction Release (Blanket) form (on file within the ERIC system), encompassing all or classes of documents from its source organization and, therefore, does not require a "Specific Document" Release form.



This document is Federally-funded, or carries its own permission to reproduce, or is otherwise in the public domain and, therefore, may be reproduced by ERIC without a signed Reproduction Release form (either "Specific Document" or "Blanket").