

DOCUMENT RESUME

ED 424 881

JC 980 460

TITLE John Wood Community College...And How We Serve. Annual Report 1997-98.

INSTITUTION John Wood Community Coll., Quincy, IL.

PUB DATE 1998-00-00

NOTE 9p.

PUB TYPE Reports - Descriptive (141)

EDRS PRICE MF01/PC01 Plus Postage.

DESCRIPTORS Academic Achievement; Annual Reports; College Administration; College Faculty; Community Colleges; *Educational Facilities; Educational Finance; *Enrollment; Program Development; *School Community Relationship; Two Year Colleges

IDENTIFIERS *John Wood Community College IL

ABSTRACT

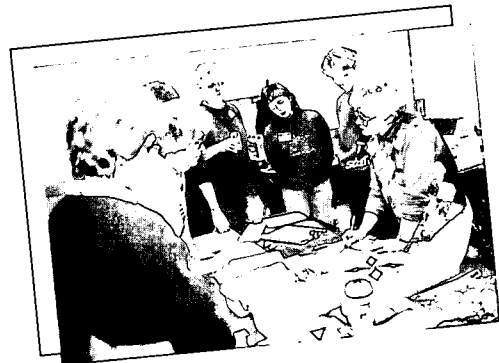
This report defines the operations and goals of John Wood Community College in Illinois (JWCC) for 1997-98. It reviews JWCC's curriculum, college transfer courses and degrees offered, career programs, workforce development for area businesses and industries, developmental studies for underprepared students, and adult education for high school completion. Successes and faculty/staff accomplishments are noted, and the college's effectiveness in serving its community is discussed. Following a message from the president, the report introduces JWCC's new Technology Center (the first building of what will eventually be a four-building core campus), lists cooperative agreements that have benefited the community, discusses the 5.6% enrollment increase, cites student and staff awards, reviews enhanced academic programs, and comments on college revenues and expenditures. The report concludes with a look at the year in review, citing JWCC's expanded curriculum, staff, facilities, and student body as positive changes for the college. (AS)

 * Reproductions supplied by EDRS are the best that can be made *
 * from the original document. *

000000 103287



00000103288



U.S. DEPARTMENT OF EDUCATION
Office of Educational Research and Improvement
EDUCATIONAL RESOURCES INFORMATION
CENTER (ERIC)

This document has been reproduced as received from the person or organization originating it.

Minor changes have been made to improve reproduction quality.

• Points of view or opinions stated in this document do not necessarily represent official OERI position or policy.

PERMISSION TO REPRODUCE AND DISSEMINATE THIS MATERIAL HAS BEEN GRANTED BY

W. Simpson

TO THE EDUCATIONAL RESOURCES INFORMATION CENTER (ERIC)

1

JOHN WOOD COMMUNITY COLLEGE . . . AND HOW WE SERVE

JC 900 400

"It is our goal to fully develop the individual to his or her capabilities and in so doing contribute to a productive workforce and responsible citizenship in our community . . ."

□ President's Message

The mission of John Wood Community College is multifaceted as stipulated by the statutes of the State of Illinois and implemented through the policies of our elected Board of Trustees. To fulfill this complex mission, the college offers a wide and varied curriculum plus many services to our students.



As you review this report, you will learn more about what the College does, how well it does it, and how efficiently it operates. You will learn JWCC is comprehensive in its curriculum, offering traditional college transfer courses and degrees, a variety of career programs, workforce development for area businesses and industries, developmental studies for underprepared students, and adult education for high school completion. You will learn about the successes of our students and the accomplishments of our faculty and staff. Finally, you will learn about the effectiveness of our public stewardship.

These are exciting, yet complicated times for JWCC. We are experiencing growth of our student body, an expanded curriculum, new staff, and new facilities. While responding to these positive changes, we intend to continue to offer to residents of our district meaningful and appropriate educational opportunities that are both affordable and convenient. It is our goal to fully develop the individual to his or her capabilities and in so doing contribute to a productive workforce and responsible citizenship in our community in the years to come.

It is my hope you find this report informative and that it helps you understand the operations and purposes of your community college. As always, we welcome your comments and ideas.

William Simpson

Dr. William Simpson
President



John Wood Community College Board of Trustees



Mary Ellen Orr, Chair
Perry



James Bent, Vice-Chair
Camp Point



Judith L. Tucker, Secretary
Versailles



Emily Bagent, 1997-98 Student Trustee
Pittsfield



Russell E. Koeller
New Canton



John D. McCarthy
Quincy



Dr. Robert C. Scholz, Jr.
Quincy



Thomas N. Troutner
Pittsfield

John Wood Community College's ongoing efforts to serve the community moved to a higher level with the opening of the Science and Technology Center on the new campus at 48th and Harrison streets in Quincy. This center is the first building of what will eventually be a four-building core campus. The new campus will allow JWCC—for the first time in its 24-year history—to provide students with a spacious, technologically-advanced learning environment designed specifically for their needs.

Classes were first offered in the center in January 1998 and an open house and dedication were held in April.

The new center houses classrooms, laboratories and faculty offices for the health sciences and natural science programs. Computer-based programs, as well as the electronics and electricity programs, will be moved to the new center late in 1998. The center features state-of-the-art laboratories and all classrooms are wired with structured cabling for advanced data transmission capabilities.

Center Dedicated

More than 400 persons attended the dedication ceremony. Speakers included Dr. Joseph Cipfl, President and CEO of the Illinois Community College Board; Quincy Mayor Chuck Scholz; and representatives of the Board of Trustees, faculty, administration and student body. Representative Art Tenhouse (R-96) and former Trustee Gary Speckhart were among those joining the guest speakers and trustees for the ribbon-cutting ceremony.

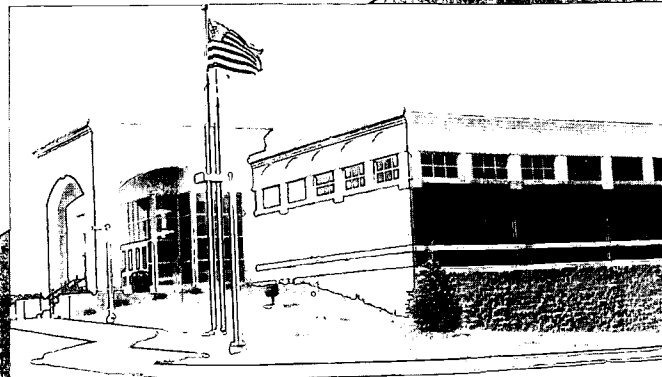
Leadership provided by Senator Laura Kent Donahue (R-48) and Representative Tenhouse played a key role in the state legislature's funding 75 percent (\$1.8 million) of the \$2.4 million project.

Campus Development Continues

Planning for the next two buildings, which will house general classrooms, support services and administrative offices, has already begun and college officials are hopeful that construction can begin in 2000 or 2001.

The fourth building, planned for future development, will be a vocational-technical/fine arts/conference center. An "enhanced" campus even further into the future will include a gym and fitness center, a maintenance and storage building and an outdoor theatre.

The College and community have formed the **Community Arboretum Committee**, which is planning landscaping at the new campus and developing an arboretum and natural area that can be used by individuals and groups from throughout the area.



JWCC SCIENCE AND TECHNOLOGY CENTER DEDICATED

APRIL 19, 1998



BEST COPY AVAILABLE

4



Dr. Donald Spencer, President of Western Illinois University, and Dr. Simpson sign dual enrollment agreement.

COMMUNITY BENEFITS FROM COOPERATIVE AGREEMENTS

Local residents are benefiting from cooperative agreements John Wood signed and reaffirmed with area schools and businesses this year.

■ **Dual Admission** - JWCC and Western Illinois University signed a dual admission agreement which allows students to be admitted to and become eligible for student services at both schools simultaneously.

■ **Articulation** - JWCC signed articulation agreements with Quincy University and Culver-Stockton College, allowing students graduating from JWCC to transfer to either four-year institution as juniors with all general education requirements satisfied.

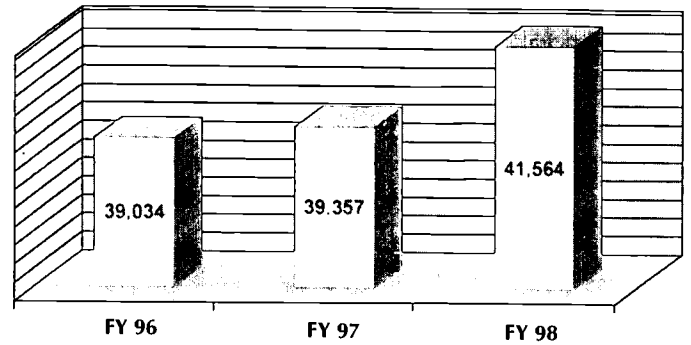
■ **On-Site** - JWCC has signed agreements with Quincy, West Pike, and Brown County high schools which call for the College to offer a broad range of college-credit courses to students on-site during the high school day. A cooperative agreement with DOT Foods, initiated in 1996, continues to benefit local residents through a variety of courses the College offers at Dot Foods Learning Center in Mt. Sterling.

NON-CREDIT COURSE ENROLLMENT UP

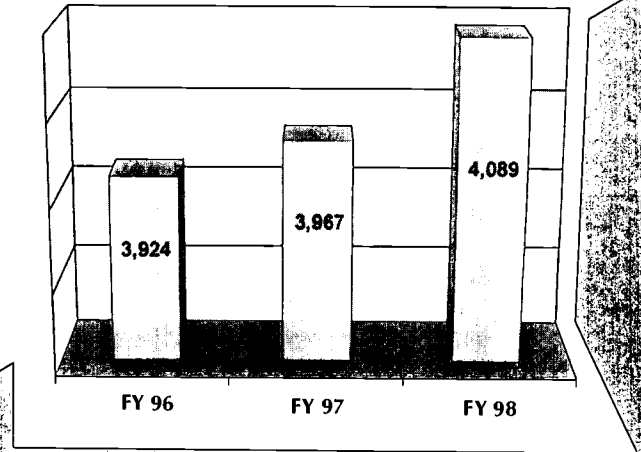
Learning has become a lifelong pursuit. The mission of a comprehensive community college includes offering not only credit courses but also non-credit courses, seminars and conferences that meet District residents' needs for continuing education, professional development, and personal enrichment opportunities. Non-credit courses are not funded with tax dollars and are self-supporting.

JWCC's Community Services area, which coordinates the College's non-credit classes, had a total of **10,866** attendees in non-credit courses this year (duplicated headcount) compared to **10,450** the previous year. The number of participants in courses carrying Continuing Education Units increased by 39% this year.

□ Credit Hours



□ Headcount



In-district
Out-of-district
Out-of-state
Foreign

Male
Female

Full-time
Part-time

Enrollment Increases

Credit Course Enrollment Increases For Third Consecutive Year

Credit hour production is one of the most widely accepted measures of productivity and health at a community college. John Wood's credit hour enrollment increased **5.6 percent** in Fiscal Year 1998 compared to the previous year. This is the third consecutive year of enrollment increases -- a solid indication of public confidence in and satisfaction with JWCC.

Headcount enrollment -- the number of persons enrolled -- also increased each of the three years. To date, **more than 45,000 area residents** have taken credit courses at John Wood.



■ **The JWCC Swine Specialist Team - Brad Stoecker, Litchfield; Matt Zanger, Quincy; Chad Gerard, Beardstown; and Matthew Perry, Bement** - took **first place** in swine livestock specialist competition and third overall in the livestock specialist category at the **National Postsecondary Agricultural Students (NPAS) Conference** this spring. Zanger, Perry and Stoecker also took the top three places in individual competition in the swine livestock specialist category.

■ **Kitty Coons, Quincy**, was one of five community college students from the state honored as **"1997 Scholars"** by the **Illinois Community College Faculty Association**.

■ The JWCC chapter of **BACCHUS** (Boost Alcohol Consciousness Concerning the Health of University Students) was one of only two community college chapters nationwide honored as an Outstanding Chapter at the group's annual conference in November.

■ **Kyle Pryor, New Cambria (MO)**, catcher for the Trail Blazers, was the first JWCC player in any sport to be named **NJCAA First Team All-America**. Pryor was also selected to the **First Team All-Region (24)** and finished second in the **NJCAA National Poll** in homers.

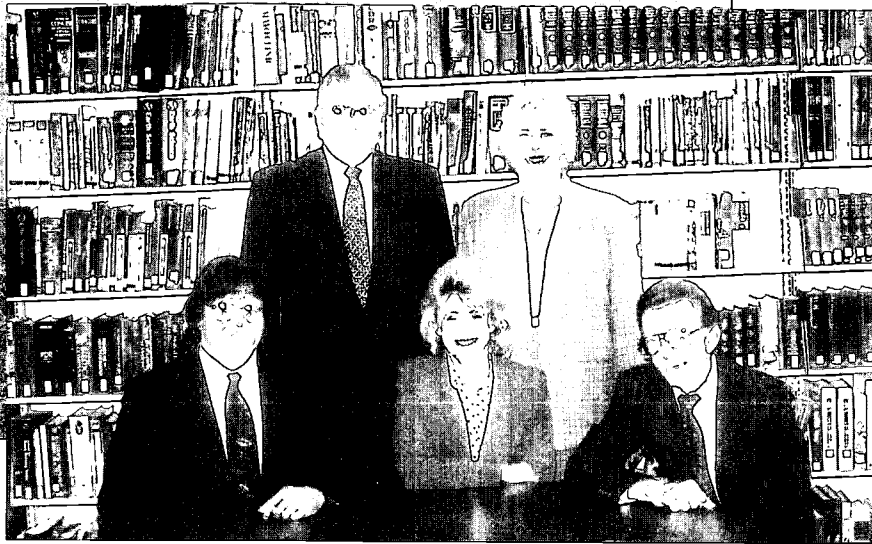
00000100290



■ JWCC students **Dollye Bradshaw, Kinderhook, and Kitty Coons** were among sixty scholars from Illinois who were named to the **Phi Theta Kappa (International Honor Society) All USA Community and Junior College Academic Team**. The group was recognized at a breakfast ceremony at the Capitol rotunda and photographed with Governor Jim Edgar.

FY 98 Credit Enrollment = 4,089 (Unduplicated Headcount)

Residency	Age	
	16 & under	14
	17-20	1202
	21-30	1376
	31-39	683
	40-55	677
	56-99	134
	Unknown	3
		1,576
		2,513
	Intent/Goal	
	Prepare to transfer	1691
	Improve skills (present job)	440
	Technical training	1209
	GED/Basic skills	349
	Personal interest	372
	Unknown/other	28
		41%
		59%



Gary DeClue, Larry Fischer, Carolyn Warren, Carole Bradshaw, and Charles DeVerger represented the College at the 20th annual NISOD Convention this year.

JWCC FACULTY HONORED AT NATIONAL CONVENTION

A highlight of the academic year was JWCC's participation in the 20th annual NISOD (National Institute for Staff and Organizational Development) Conference on Teaching and Leadership Excellence in Austin. Two faculty members were honored and three made presentations at the conference, the world's largest gathering of community college educators.

Carolyn Warren, Early Childhood Education Instructor, and **Charles DeVerger**, Natural Sciences Instructor, were recipients of the prestigious **Excellence in Teaching** medallion.

Carole Bradshaw, Director of the Pittsfield Education Center; **Gary DeClue**, Chair of the Department of Humanities; and **Larry Fischer**, Director of Agricultural Programs, presented workshops at the conference.

COLLEGE EXPANDING AND ENHANCING ACADEMIC PROGRAMS

JWCC historically has tailored its instructional programs to meet the needs of district residents and this year added and redesigned several programs in direct response to industry demands for specific training.

Electronics Technology - RF Communication Option represents a redesign of the former Broadcast Electronics Technology program; students now receive a core degree in electronics while concentrating on a specialty area.

Electrical Technology, preparing students for careers as electricians, serves an emerging need in the district and enrollment is strong.

Manufacturing Technology was implemented to meet area industries' needs for new, highly trained workers to replace retiring machinists.

Office Technology has been redesigned to provide office professionals with a core curriculum and a choice of specialty areas that meet the demands of today's employers.

The **Physical Therapist Assistant** program is a candidate for accreditation with the American Physical Therapy Association.



Jim Mentesti, President of Great River Economic Development Foundation, congratulates JWCC's Mike Denum (Director of Business and Industry Programs) and Ed Van Leer (Coordinator of the Procurement Center) on the Milestone Award.

COLLEGE SERVES AREA BUSINESSES

JWCC's **Procurement Technical Assistance Center** was honored this year for its accomplishments in helping local companies win government contracts. JWCC's center was one of just five in the state receiving the **Milestone Award** in 1997 for winning more than \$150 million in government contracts since the office opened 12 years ago.

The **Business and Industry/Procurement** areas served 80 companies during the past year, an increase of 10 percent over the previous year.

JWCC and CIMEC
Open Quincy Field Office

JWCC and the Central Illinois **Manufacturing Extension Center (CIMEC)** cooperatively opened a field office in Quincy to assist local small and mid-sized manufacturers in their efforts to modernize, boost productivity and profits, and compete globally.

The Board of Trustees and staff of John Wood Community College are dedicated to providing comprehensive educational and extracurricular opportunities to the community while also serving as responsible stewards of the College's resources. The College completed Fiscal Year 1998 with a surplus which can be used to help finance future construction.

Careful management of resources is allowing the College to respond to the increased demands for services--as evidenced by three years of steady growth in enrollment--and, at the same time, reallocate resources toward development of the new campus without special taxes to fund the construction. The 25 percent local funding for construction of the Science and Technology Center was achieved primarily through utilization of fund balances and a JWCC Foundation campaign. The match for construction of the next two buildings will be achieved by the sale of existing facilities and real estate, the healthy fund balance, and local donations through the Foundation. In addition, the College is being granted a \$1.5 million credit toward its match in recognition of local monies spent on previous projects.

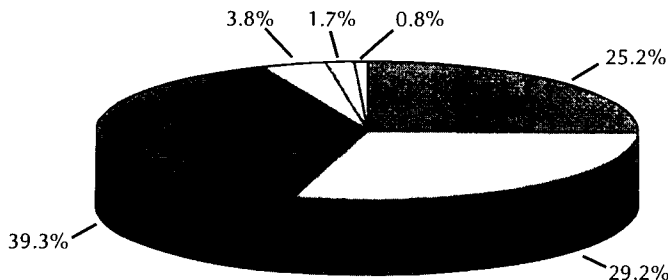
An enrollment increase of 5.6 percent, development of a new campus without additional tax requests, and a budget year which concluded with a surplus are all indications of a strong, healthy community college.

FISCAL YEAR ENDS WITH SURPLUS

Earmarked for future construction

JOHN WOOD COMMUNITY COLLEGE - DISTRICT NO. 539 FY 98 Revenues/Expenditures

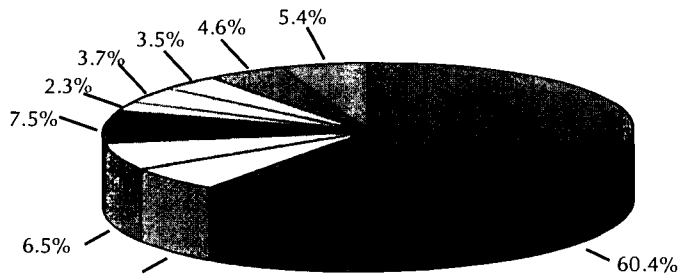
FY 98 Actual Operating Revenues



REVENUES: \$7,094,971

39.3%	Student Tuition and Fees	\$2,789,587
29.2%	State Government Sources	\$2,072,642
25.2%	Local Government Sources	\$1,785,112
3.8%	Sales and Services Fee	\$269,880
1.7%	Investment Revenue	\$122,598
0.8%	Facilities & Other Revenues	\$55,152

FY 98 Actual Operating Expenditures



EXPENDITURES: \$6,863,767

60.4%	Salaries	\$4,146,335
7.5%	Materials and Supplies	\$511,770
6.5%	Contractual Services	\$445,657
6.1%	Employee Benefits	\$415,864
5.4%	Other Expenditures	\$370,968
4.6%	Capital Outlay	\$318,875
3.7%	Fixed Charges	\$255,444
3.5%	Utilities	\$241,780
2.3%	Conference and Meeting	\$157,074

000000 103291

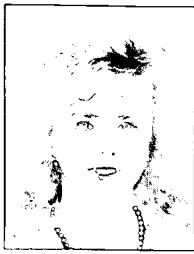
ADULT ED PROGRAM SAVES STATE DOLLARS

John Wood Community College's **Adult Education Program** was recognized this year for saving the State of Illinois almost one-third of a million dollars in public assistance funds during Fiscal Year 1997, according to Daniel J. Miller of the Illinois State Board of Education.

"Of the public assistance students served at John Wood, 39 subsequently increased their earnings enough to have their assistance grant reduced or canceled," Miller said in a letter to the College. "The estimated savings attributed to John Wood Community College total \$330,180."

Keith Bailey, Director of JWCC's **Adult Education Program**, said that JWCC's programs have saved taxpayers an estimated \$2 million over the past six years.

Year in Review



Toni Dunker



Rhonda Basinger



Louise Crede



Barbara Woodyard

Child Care Connection, and has served on both boards. ♦ **Barbara Woodyard**, Community Services Assistant in Community Education, was named Part-time Staff Member of the Year. **Woodyard** shares responsibilities for coordinating the College's conferences and fairs. She has revised the registration system and reorganized procedures for several community education events. ♦

Jeff Galle, Coordinator of Swine Management, was elected Vice-President and Treasurer of the Illinois Pork Producers Association Board of Directors. ♦ The **JWCC library collection** became available via CarlWeb. ♦



Planning began for an expansion that will almost double the space of the **Pittsfield Education Center**, providing additional classrooms, an expanded computer lab, and an area for conferences and meetings. ♦

Dr. John Letts, Dean of Students, was elected President-Elect of the National Council on Student Development. ♦ **Carla Gosney**, Director of the Retired and Senior Volunteer Program (**RSVP**), was accepted by the National Registry of Who's Who as a Life Member and received the Senator Lillian Schlagenhauf Award for Public Service at the Quincy YWCA Women of Achievement awards ceremony. ♦



Computer Technology Instructor **Marty Otto** was inducted into Sigma Beta Delta international honor society in business management and administration. ♦

Joyce Miller, Languages and Literature Instructor, was selected to participate in the Leaders program, a national leadership training program for administrators and faculty in higher education. ♦ **Gerry Carter**, Dean of Community Services, was named to represent the college on the Quincy Sister City Commission. ♦

Larry Fischer, Director of Agricultural Programs, was one of five land-grant university alumni in the country to receive the Volunteer Service Award from the National Agriculture Alumni Development Association in recognition of his contributions to the University of Illinois College of Agricultural, Consumer and Environmental Sciences. ♦

More than 600 citizen volunteers working through **RSVP** contributed **99,808 hours** of service for 65 agencies and organizations in **Adams County**. The value of this service is estimated at just under **\$700,000**. ♦

Dr. Sue Darby, Dean of Instruction, presented a seminar on mentoring to develop women leaders in community colleges at the national conference of Women in Higher Education in San Francisco. ♦



Dr. Bill Simpson was elected Vice-Chairman of the Leadership Committee of the Illinois Council of Community College Presidents. ♦

Alan Steigelman, Dean of Administration, and **Duane Taylor**, Executive Director of the Foundation and Assistant to the President, graduated from the Quincy Area Chamber of Commerce Community Leadership Academy. ♦

Karen Voss, Financial Assistant, successfully completed the Certified Public Accountant exam. ♦



Keith Bailey, Director of Adult Education, was honored for his work in the area of education by HELPS Ministries. ♦

Consistent with its mission to assist the College and its students, the **JWCC Foundation** awarded more than **\$53,000** in scholarships to deserving JWCC students this year. The Foundation's ninth annual Golf Classic, held in Quincy in May, raised more than **\$6,000** toward scholarships. ♦

The **JWCC Truck Driver Training Program** was selected as the lead school in the new Illinois Skill Standards Program for entry-level truck drivers. **Don Hess**, Director, was elected President of the Association of Publicly Funded Truck Driving Schools. ♦

The **Music Department's** Fall and Holiday Dinner Concerts posted record attendance and the Department initiated an annual spring tour to area schools. ♦

JOHN WOOD COMMUNITY COLLEGE
150 SOUTH 48TH STREET
QUINCY, IL 62301
(217) 224-6500
<http://www.jwcc.edu>

John Wood Community College does not discriminate on the basis of race, color, national or ethnic origin, sex, religion, age, disability or other factors prohibited by law. **John Wood Community College** is accredited by the North Central Association of Colleges and Schools.

About the Cover

Laboratory, Science and Technology Center
(Photo by *The Quincy Herald-Whig*)
Office Technology Computer Lab
(Photo by *John Gebhardt*)
JWCC Chamber Ensemble
(Photo by *Kimberly Harvey*)
Continuing Education Quilting Class
(Photo by *John Gebhardt*)

JWCC recognized four employees as **Faculty and Staff Members of the Year for 1997-98**. **Toni Dunker**, Coordinator of Agriculture Business Management, was named Full-time Faculty Member of the Year. **Dunker** has been with the College since 1992. She has served as President of the Illinois Association of Community College Agriculture Instructors and was one of 30 agriculturists selected for the most recent class of the Illinois Agricultural Leadership Program. ♦ **Rhonda Basinger**, an associate faculty member in the Music Department since 1992, was named Part-time Faculty Member of the Year. **Basinger** has been associate faculty and college organist at Culver-Stockton College and organist/choir director at St. John's Episcopal Church in Quincy. ♦ **Louise Crede**, Director of Community Education, was selected Full-time Staff Member of the Year. **Crede** joined the College in 1980 and was named Director of her area in 1990. She has been the driving force behind the development of the Youth Conference, Futures Unlimited Conference, and the sampler. **Crede** also helped found agencies, Quanaa and the West Central



U.S. Department of Education
Office of Educational Research and Improvement (OERI)
National Library of Education (NLE)
Educational Resources Information Center (ERIC)



980460
JL 980460

REPRODUCTION RELEASE

(Specific Document)

I. DOCUMENT IDENTIFICATION:

Title: Annual Report 1997-98	
Author(s): Public Information Office	
Corporate Source: John Wood Community College	Publication Date: Nov. 1998

II. REPRODUCTION RELEASE:

In order to disseminate as widely as possible timely and significant materials of interest to the educational community, documents announced in the monthly abstract journal of the ERIC system, *Resources in Education* (RIE), are usually made available to users in microfiche, reproduced paper copy, and electronic media, and sold through the ERIC Document Reproduction Service (EDRS). Credit is given to the source of each document, and, if reproduction release is granted, one of the following notices is affixed to the document.

If permission is granted to reproduce and disseminate the identified document, please CHECK ONE of the following three options and sign at the bottom of the page.

The sample sticker shown below will be affixed to all Level 1 documents

The sample sticker shown below will be affixed to all Level 2A documents

The sample sticker shown below will be affixed to all Level 2B documents

PERMISSION TO REPRODUCE AND DISSEMINATE THIS MATERIAL HAS BEEN GRANTED BY

Sample

TO THE EDUCATIONAL RESOURCES INFORMATION CENTER (ERIC)

1

PERMISSION TO REPRODUCE AND DISSEMINATE THIS MATERIAL IN MICROFICHE, AND IN ELECTRONIC MEDIA FOR ERIC COLLECTION SUBSCRIBERS ONLY, HAS BEEN GRANTED BY

Sample

TO THE EDUCATIONAL RESOURCES INFORMATION CENTER (ERIC)

2A

PERMISSION TO REPRODUCE AND DISSEMINATE THIS MATERIAL IN MICROFICHE ONLY HAS BEEN GRANTED BY

Sample

TO THE EDUCATIONAL RESOURCES INFORMATION CENTER (ERIC)

2B

Level 1



Level 2A



Level 2B



Check here for Level 1 release, permitting reproduction and dissemination in microfiche or other ERIC archival media (e.g., electronic) and paper copy.

Check here for Level 2A release, permitting reproduction and dissemination in microfiche and in electronic media for ERIC archival collection subscribers only

Check here for Level 2B release, permitting reproduction and dissemination in microfiche only

Documents will be processed as indicated provided reproduction quality permits. If permission to reproduce is granted, but no box is checked, documents will be processed at Level 1.

I hereby grant to the Educational Resources Information Center (ERIC) nonexclusive permission to reproduce and disseminate this document as indicated above. Reproduction from the ERIC microfiche or electronic media by persons other than ERIC employees and its system contractors requires permission from the copyright holder. Exception is made for non-profit reproduction by libraries and other service agencies to satisfy information needs of educators in response to discrete inquiries.

Sign here, →

Signature: William Simpson	Printed Name/Position/Title: William Simpson / PRESIDENT	
Organization/Address: JOHN WOOD COMMUNITY COLLEGE 150 S. 48TH ST QUINCY, IL 62301	Telephone: 217/2246564 / 4101	FAX: 217/2244208
	E-Mail Address: SIMPSON@jwcc.edu	Date: 12/1/98



III. DOCUMENT AVAILABILITY INFORMATION (FROM NON-ERIC SOURCE):

If permission to reproduce is not granted to ERIC, or, if you wish ERIC to cite the availability of the document from another source, please provide the following information regarding the availability of the document. (ERIC will not announce a document unless it is publicly available, and a dependable source can be specified. Contributors should also be aware that ERIC selection criteria are significantly more stringent for documents that cannot be made available through EDRS.)

Publisher/Distributor:

Address:

Price:

IV. REFERRAL OF ERIC TO COPYRIGHT/REPRODUCTION RIGHTS HOLDER:

If the right to grant this reproduction release is held by someone other than the addressee, please provide the appropriate name and address:

Name:

Address:

V. WHERE TO SEND THIS FORM:

Send this form to the following ERIC Clearinghouse:

Willy Yu
ERIC® Clearinghouse for Community
Colleges
University of California, Los Angeles
3051 Moore Hall, Box 951521
Los Angeles, CA 90095-1521