

DOCUMENT RESUME

ED 413 350

TM 027 660

TITLE Recent Trends of Selected Statistics, 1996.
 INSTITUTION North Carolina State Dept. of Public Instruction, Raleigh.
 Financial and Personnel Services.
 PUB DATE 1996-06-00
 NOTE 28p.
 PUB TYPE Numerical/Quantitative Data (110)
 EDRS PRICE MF01/PC02 Plus Postage.
 DESCRIPTORS Academic Achievement; College Entrance Examinations;
 Dropouts; Educational Finance; *Educational Trends;
 Elementary Secondary Education; *Enrollment; Gifted; *Public
 Schools; School Districts; *School Statistics; Special
 Education; State Programs; Tables (Data); *Test Results;
 Testing Programs; Trend Analysis
 IDENTIFIERS *North Carolina; Scholastic Assessment Tests

ABSTRACT

Tables in this publication provide statistical information about North Carolina's public schools from 1986-87 through 1995-96, although not all data are provided for the earlier years. Trend data are presented in graph form and summarized in table form in most instances. In 1986-87, the state had 1,963 public schools to serve its school age population (1987) of 1,564,747. In the 1995-96 school year, the state's 1,984 public schools served a school-age population of 1,668,278. In keeping with the increase in the total number of students, the state has experienced an increase in the number of students who receive services for exceptional children, whether gifted or disabled. Over the period from 1989-90 to 1994-95, the state's dropout rate has declined from 6.36% to 4.79%. The total number of high school graduates annually has declined reflecting the higher enrollment at the lower grades in recent years. Average Scholastic Assessment Test scores in North Carolina have increased slightly, but the state's average score remains below the national average. Information about educational trends in North Carolina is presented in the following categories: (1) general statistics; (2) students; (3) personnel; (4) financial; and (5) individual program data. (Contains 18 figures and 17 tables.) (SLD)

 * Reproductions supplied by EDRS are the best that can be made *
 * from the original document. *

U.S. DEPARTMENT OF EDUCATION
Office of Educational Research and Improvement
EDUCATIONAL RESOURCES INFORMATION
CENTER (ERIC)

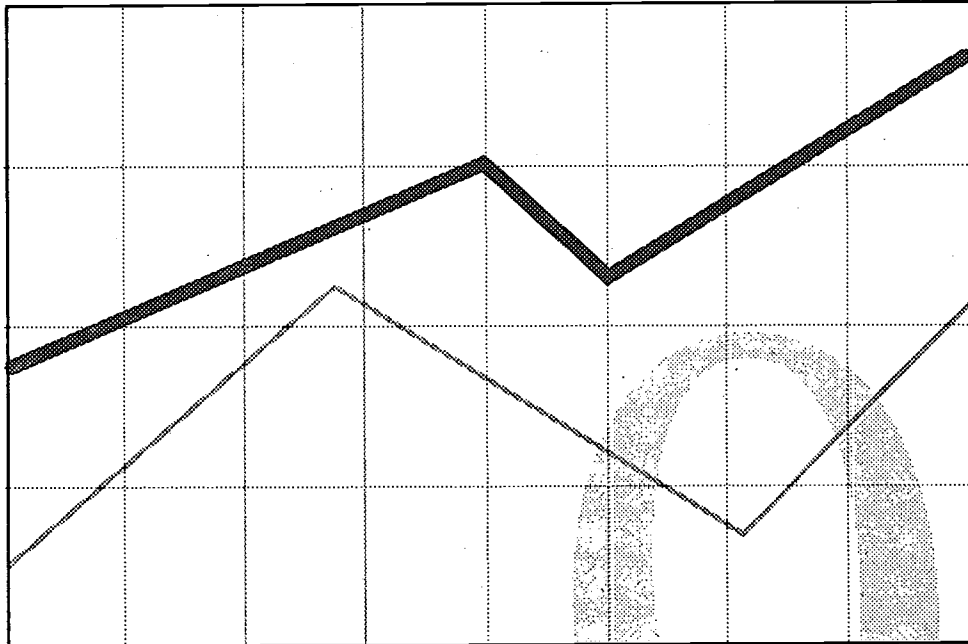
This document has been reproduced as received from the person or organization originating it.

Minor changes have been made to improve reproduction quality.

• Points of view or opinions stated in this document do not necessarily represent official OERI position or policy.

Recent *trends*

of selected statistics



PERMISSION TO REPRODUCE AND
DISSEMINATE THIS MATERIAL
HAS BEEN GRANTED BY

E. Brumbach

TO THE EDUCATIONAL RESOURCES
INFORMATION CENTER (ERIC)

TM027660



Public Schools of North Carolina

State Board of Education • Jay Robinson, Chairman

Department of Public Instruction • Bob Etheridge, State Superintendent

Financial and Personnel Services

Statistical Research Section

June, 1996

State Board of Education

301 N. Wilmington Street
Raleigh, North Carolina 27601-2825

Jay M. Robinson
Chairman
Wilmington

Prezell R. Robinson
Vice Chairman
Raleigh

Kenneth R. Harris
Chairman Emeritus
Charlotte

Barbara M. Tapscott
Chairman Emeritus
Burlington

Dennis A. Wicker
Lieutenant Governor
Raleigh

Harlan E. Boyles
State Treasurer
Raleigh

Kathy A. Taft
Greenville

Margaret B. Harvey
Kinston

Evelyn B. Monroe
Pinehurst

Lowell Thomas
Blowing Rock

Robert R. Douglas
Asheville

Jane P. Norwood
Charlotte

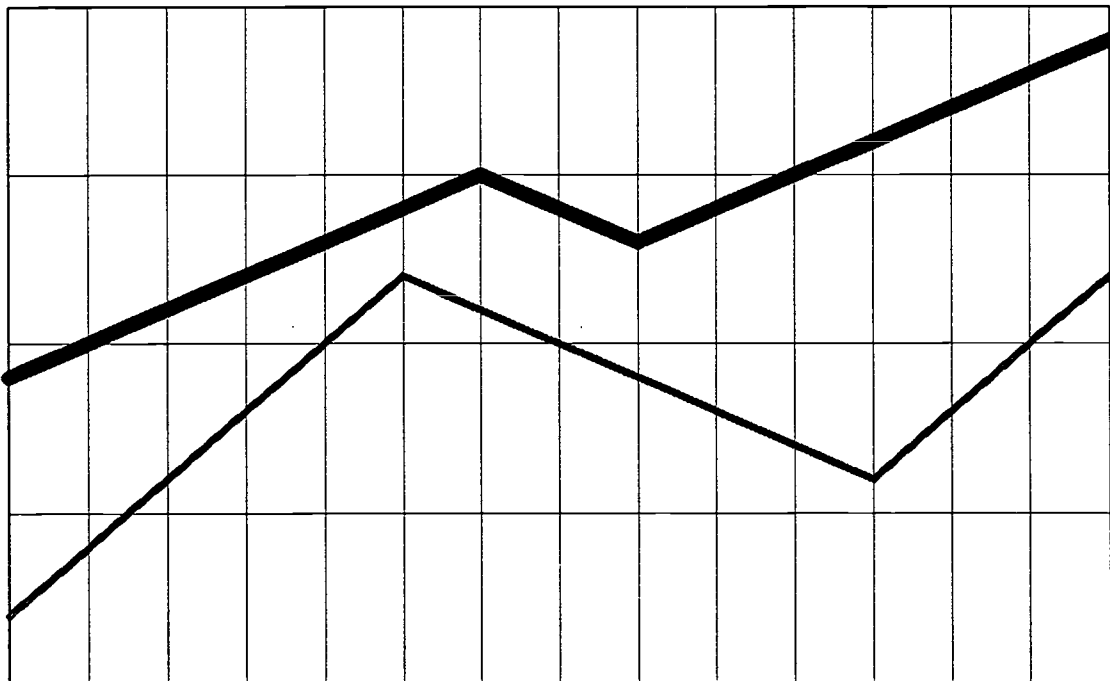
Eddie Davis, III
Durham

BEST COPY AVAILABLE

Recent Trends of Selected Statistics

1996

PUBLIC SCHOOLS OF NORTH CAROLINA



Statistical Research Section/Financial and Personnel Services

Public Schools of North Carolina

Jay Robinson, Chairman • State Board of Education

Bob Etheridge, State Superintendent • Department of Public Instruction

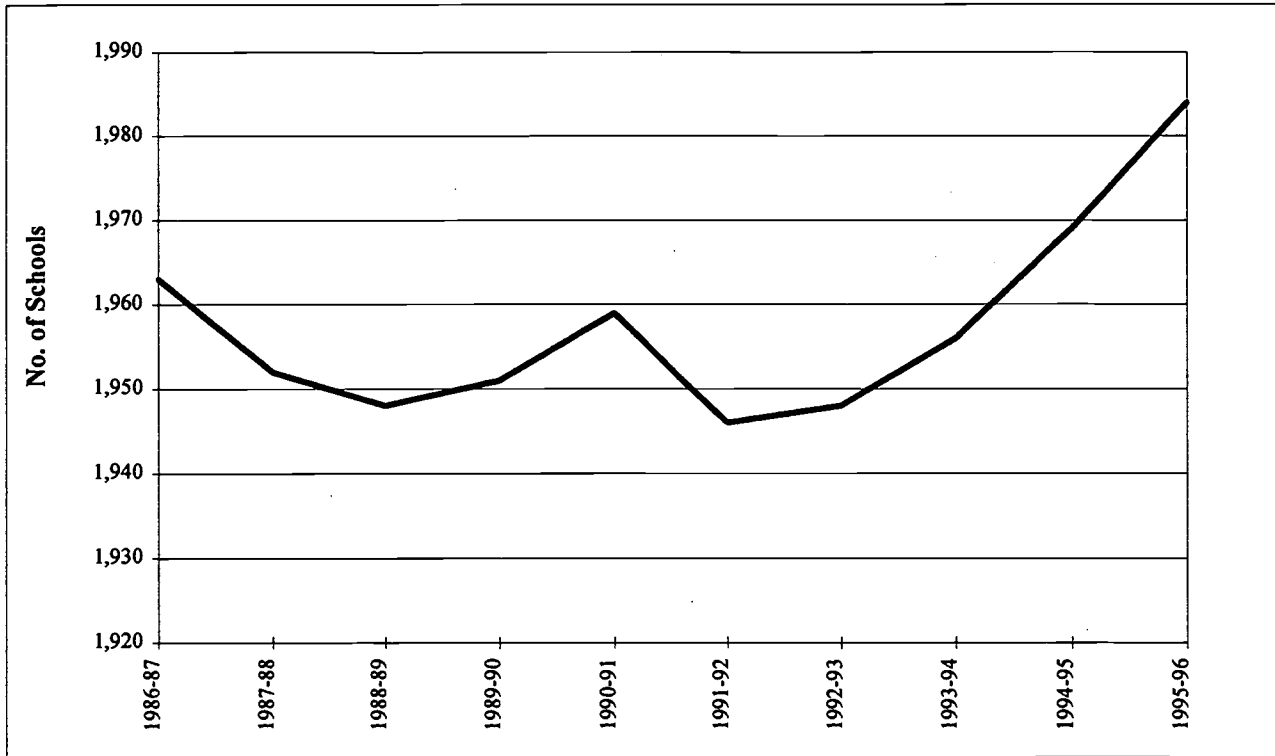
June 1996

Contents

	<u>Page</u>
<u>General</u>	
Number of North Carolina Public Schools	4
North Carolina Estimated School Age Population	5
 <u>Students</u>	
Pupils in Membership Identified and Served by Exceptional Children Programs	7
High School Dropout and Retention Data	8
Number of Public High School Graduates	9
Average Daily Membership (Best Three of Four)	10
End-of-Grade Testing	11
Average Total Scholastic Aptitude Test Score for N. C. and the Nation	12
 <u>Personnel</u>	
Number of Employees by Source of Funds for the Department of Public Instruction	14
Public School Full-Time Personnel by Major Activity Groups	15
Estimated Average Salaries of N. C. Public School Teachers	16
Pupil-Teacher Ratio for North Carolina Public Schools	17
 <u>Financial</u>	
Trend of Per Pupil Expenditures in Current and 1982-84 Constant Dollars	19
Public School Expenditures as Percent of Total General Fund Expenditures	20
 <u>Individual Program Data</u>	
Textbooks	22
Child Nutrition	23
Public School Transportation	24

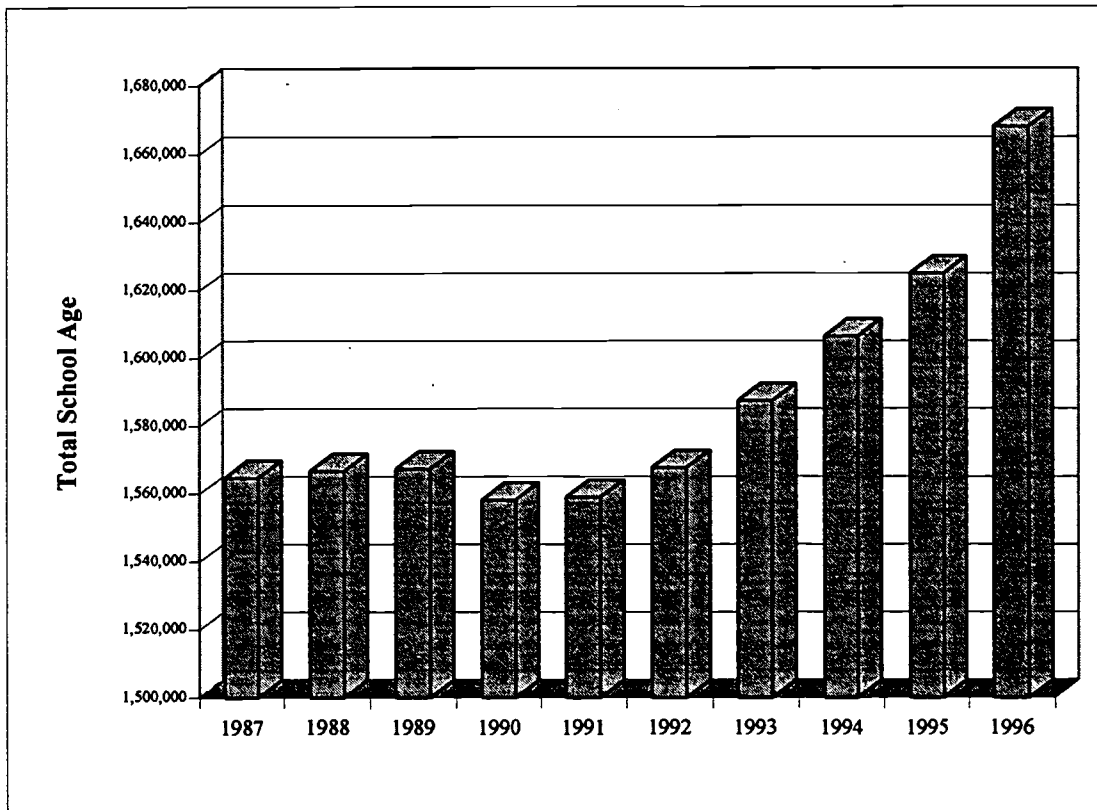
General

Number of North Carolina Public Schools



Year	<u>Elementary (K-8)</u>		<u>Secondary (9-12)</u>		<u>Combined</u>		TOTAL
	No.	%	No.	%	No.	%	
1986-87	1,444	73.6	293	14.9	226	11.5	1,963
1987-88	1,445	74.0	289	14.8	218	11.2	1,952
1988-89	1,454	74.7	291	14.9	203	10.4	1,948
1989-90	1,466	75.1	294	15.1	191	9.8	1,951
1990-91	1,484	75.8	296	15.1	179	9.1	1,959
1991-92	1,484	76.2	297	15.3	165	8.5	1,946
1992-93	1,511	77.6	301	15.4	136	7.0	1,948
1993-94	1,523	77.9	303	15.5	130	6.6	1,956
1994-95	1,524	77.4	305	15.5	140	7.1	1,969
1995-96	1,551	78.2	306	15.4	127	6.4	1,984

North Carolina Estimated School Age Population

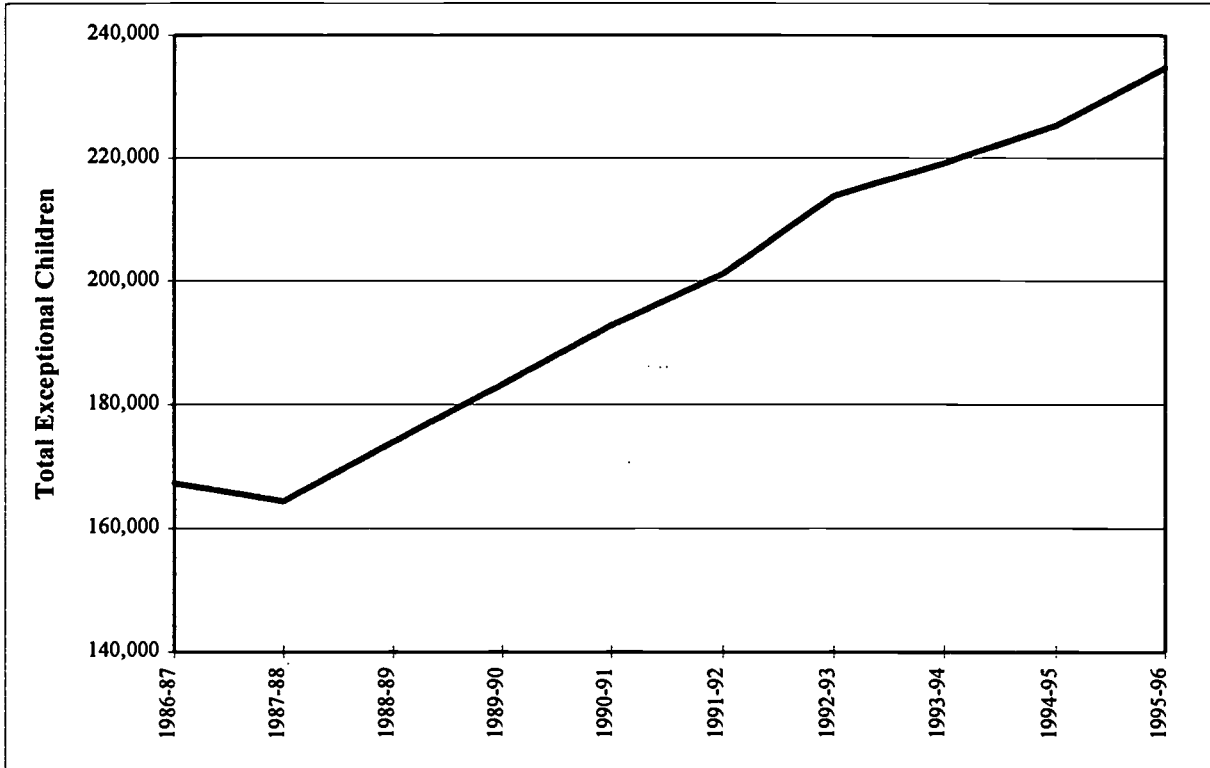


Year	Ages 3-4	Ages 5-9	Ages 10-14	Ages 15-19	Total School Age	N. C. Population
1987	166,852	426,657	458,455	512,783	1,564,747	6,407,498
1988	168,487	426,868	455,032	516,363	1,566,750	6,487,438
1989	170,015	426,715	451,211	519,475	1,567,416	6,559,406
1990	182,017	438,985	437,771	499,432	1,558,205	6,657,106
1991	186,629	445,086	441,218	486,108	1,559,041	6,752,401
1992	194,104	454,960	441,071	477,697	1,567,832	6,840,211
1993	202,877	465,912	446,470	472,271	1,587,530	6,949,095
1994	208,520	479,079	449,961	469,032	1,606,592	7,023,663
1995	207,642	493,521	454,387	469,602	1,625,152	7,098,336
1996	205,485	513,669	469,127	479,997	1,668,278	7,259,273

Source: Demographics Unit, Office of State Budget

Students

**Pupils in Membership Identified and Served
by Exceptional Children Programs**
(Unduplicated Count as of December 1)

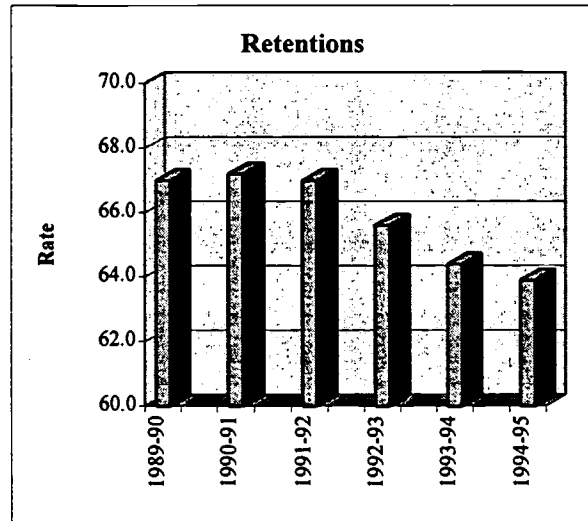
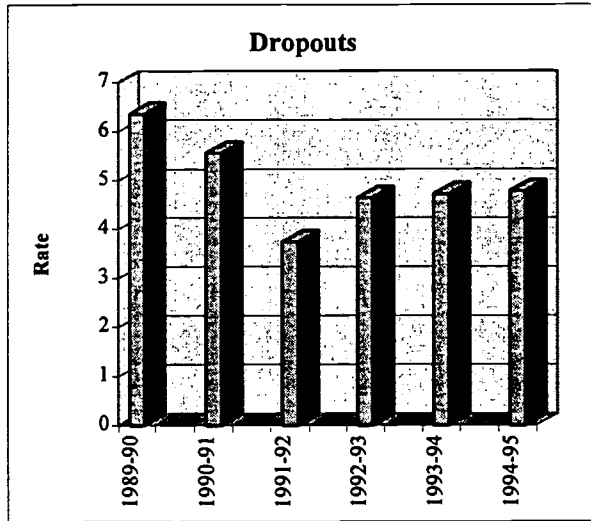


Year	Academically		Total
	Gifted	Handicapped*	
1986-87	61,229	106,047	167,276
1987-88	58,213	106,185	164,398
1988-89	62,580	111,334	173,914
1989-90	66,642	116,556	183,198
1990-91	72,382	120,384	192,766
1991-92	75,750	125,409	201,159
1992-93	83,450	130,386	213,836
1993-94	85,286	133,907	219,193
1994-95	87,564	137,728	225,292
1995-96	88,901	145,802	234,703

* "Handicapped" includes pregnant girls.

Source: Exceptional Children/ Instructional and Accountability Services

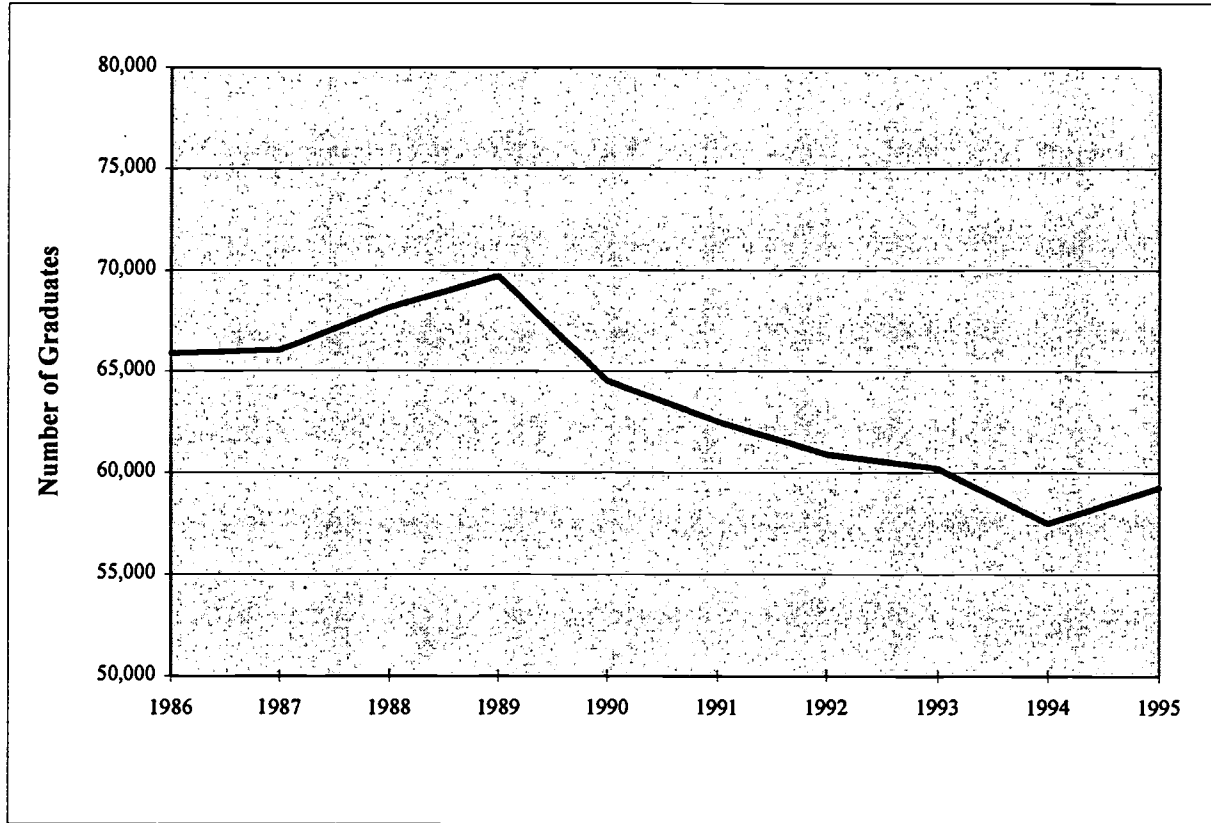
High School Dropout and Retention Data (Grades 9-12 Including Extended Day)



	Retention Rate	Number of Dropouts	Dropout Rate
1989-90	67.0	20,961	6.36
1990-91	67.2	17,856	5.57
1991-92	67.0	12,649	3.75
1992-93	65.6	14,608	4.65
1993-94	64.4	16,267	4.73
1994-95	63.9	16,789	4.79

Source: Student Support Services/Instructional and Accountability Services

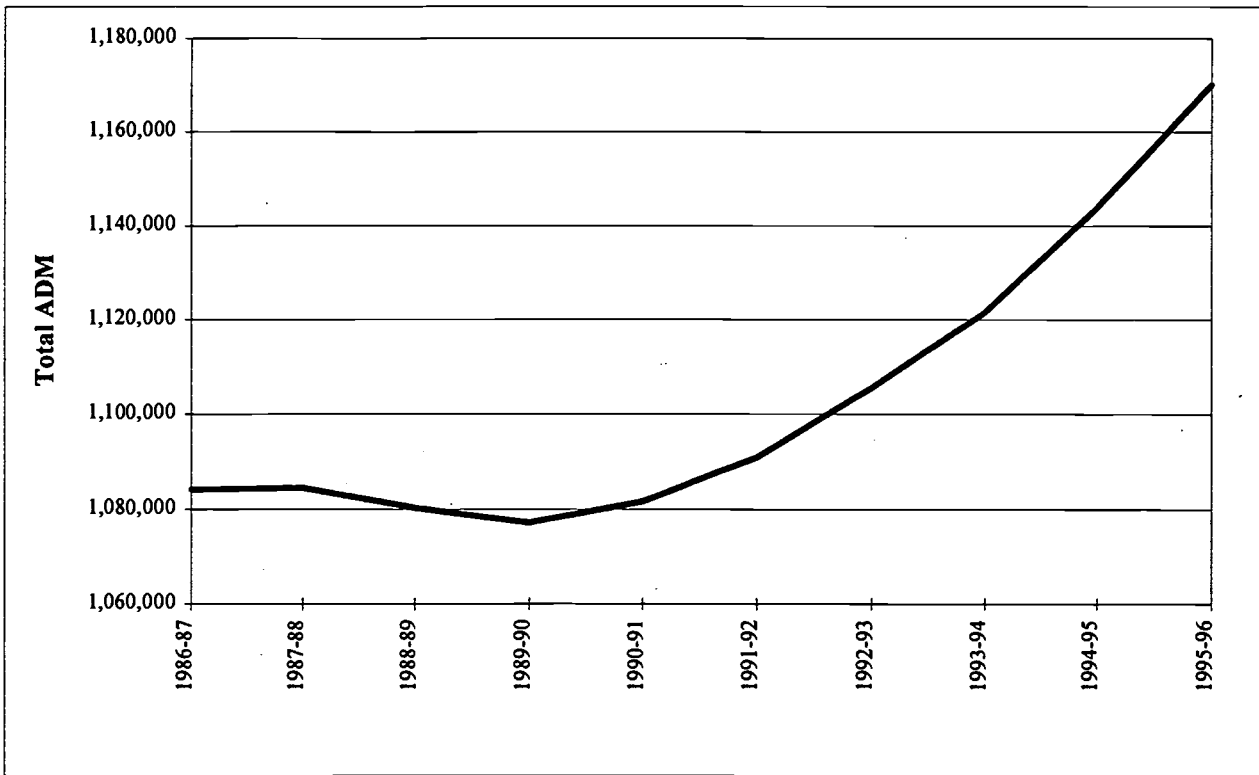
Number of Public High School Graduates



Year	Racial Origin			TOTAL
	White	Black	Other	
1986	46,030	18,477	1,358	65,865
1987	47,148	17,593	1,304	66,045
1988	48,704	18,050	1,394	68,148
1989	49,239	18,944	1,526	69,709
1990	44,736	18,062	1,723	64,521
1991	42,987	17,845	1,701	62,533
1992	41,898	17,139	1,874	60,911
1993	41,379	16,906	1,926	60,211
1994	39,553	15,871	2,071	57,495
1995	40,890	16,220	2,162	59,272

Average Daily Membership

Best Three of Four Months

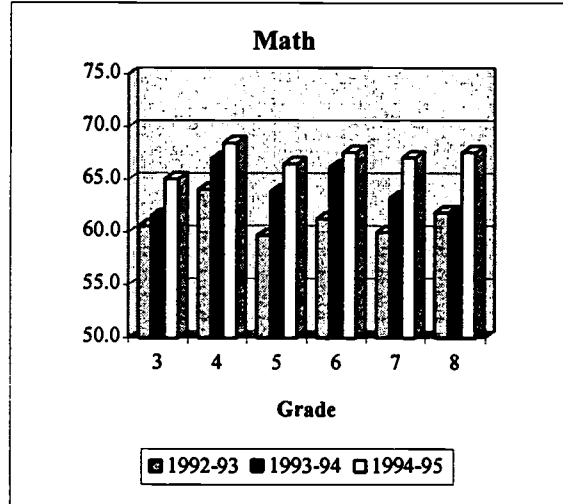
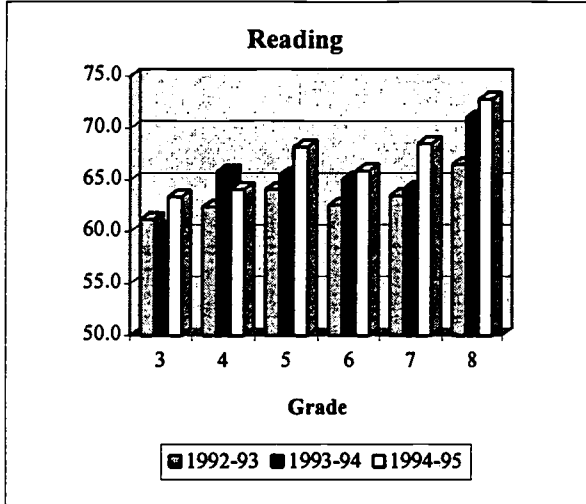


	Grades				TOTAL
	K	1-3*	4-8**	9-12	
1986-87	81,492	251,454	416,932	334,268	1,084,146
1987-88	85,026	254,414	415,552	329,574	1,084,566
1988-89	85,196	258,410	418,050	318,642	1,080,298
1989-90	86,500	260,943	422,261	307,444	1,077,148
1990-91	88,431	263,614	429,541	300,052	1,081,638
1991-92	88,527	267,776	435,810	298,837	1,090,950
1992-93	90,032	272,620	443,655	299,241	1,105,548
1993-94	93,678	277,847	449,595	300,424	1,121,544
1994-95	97,764	284,548	457,755	303,755	1,143,822
1995-96	100,884	296,077	467,180	306,037	1,170,178

* Includes TMH students.

** Includes exceptional students.

Percent of Students at or Above Grade Level

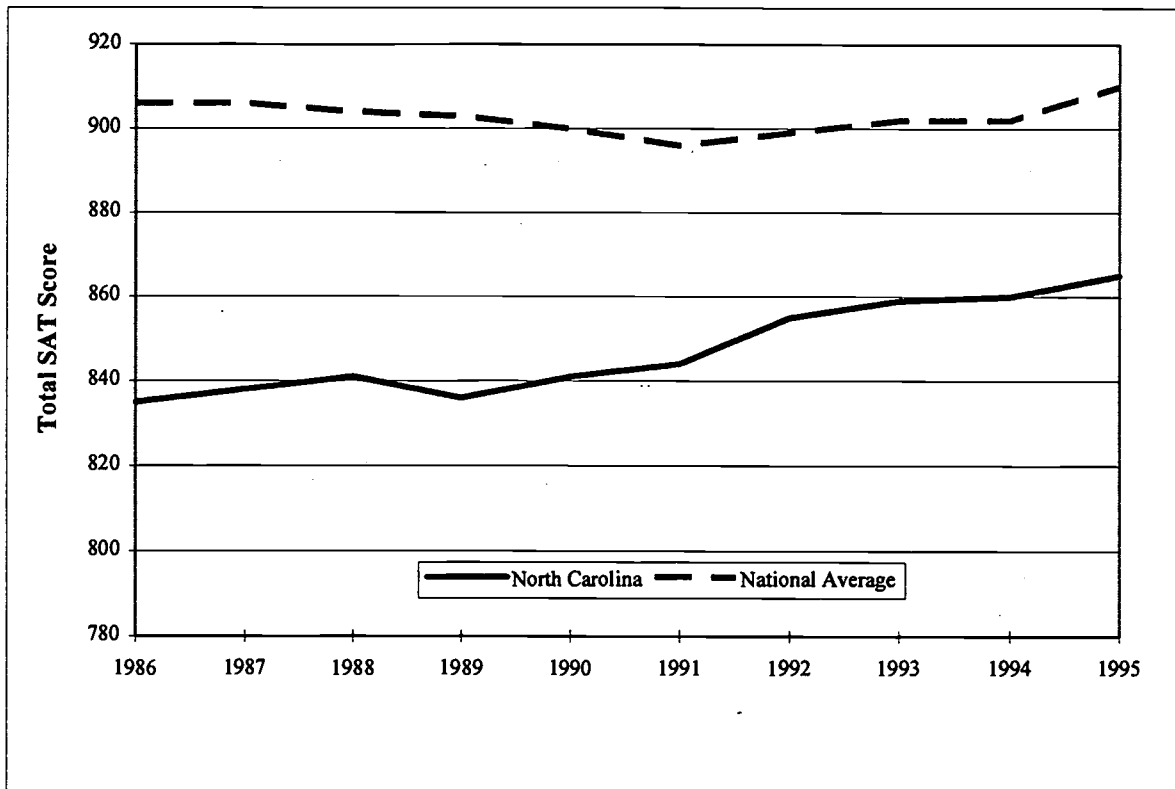


Grade	1992-93*		1993-94		1994-95	
	Reading	Math	Reading	Math	Reading	Math
3	61.2	60.6	60.4	61.6	63.4	65.1
4	62.4	64.1	65.8	67.0	64.1	68.5
5	64.1	59.7	65.5	63.9	68.2	66.5
6	62.6	61.3	65.1	66.2	65.9	67.6
7	63.5	60.0	64.2	63.3	68.5	67.1
8	66.5	61.9	71.0	61.9	72.8	67.6

* First year of transition from CAT to End-of-Grade Testing.

Source: 1994-95 State Testing Results, Office of Instructional & Accountability Services, Division of Accountability

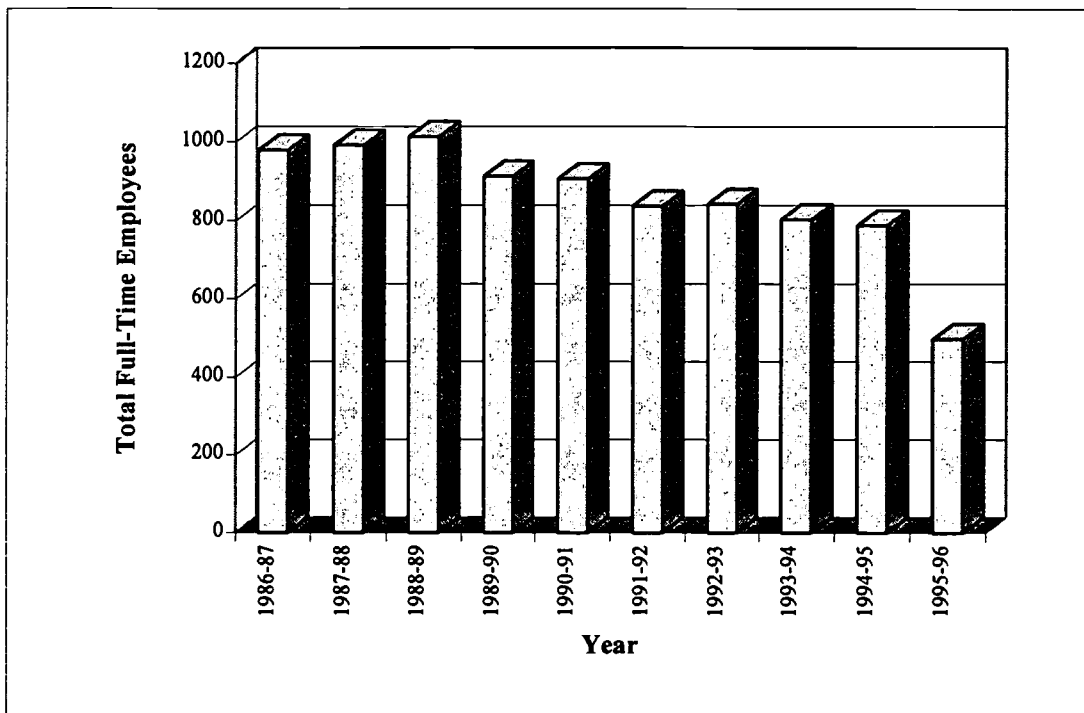
Average Total Scholastic Aptitude Test Score for North Carolina and the Nation



	North Carolina			National Average		
	Verbal	Math	Total	Verbal	Math	Total
1986	399	436	835	431	475	906
1987	400	438	838	430	476	906
1988	401	440	841	428	476	904
1989	397	439	836	427	476	903
1990	401	440	841	424	476	900
1991	400	444	844	422	474	896
1992	405	450	855	423	476	899
1993	406	453	859	424	478	902
1994	405	455	860	423	479	902
1995	411	454	865	428	482	910

Personnel

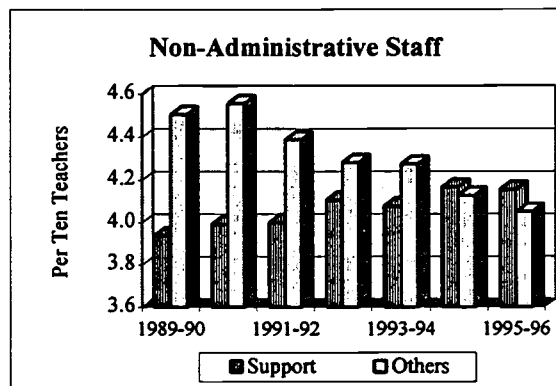
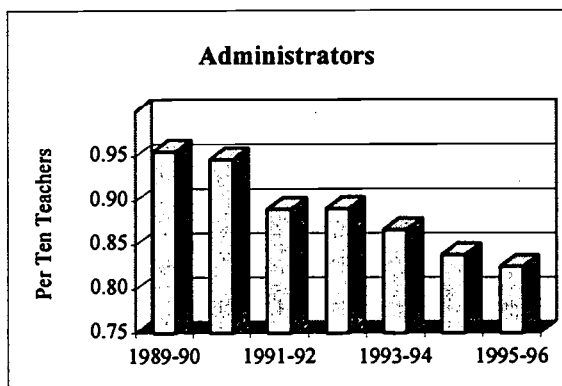
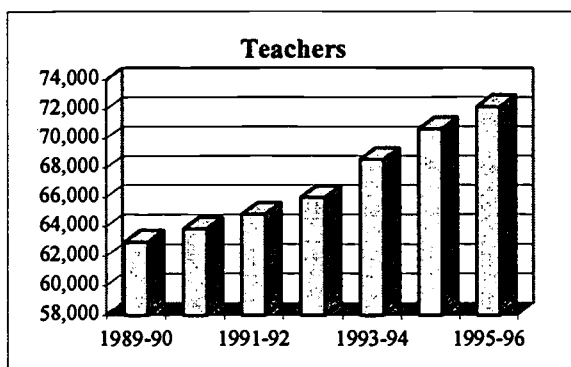
Number of Full-Time Employees by Source of Funds for the Department of Public Instruction



	State	Federal	Receipts	TOTAL
1986-87	728.0	233.5	18.0	979.5
1987-88	741.5	237.3	14.0	992.8
1988-89	724.4	277.6	12.0	1,014.0
1989-90	692.5	207.5	14.0	914.0
1990-91	677.3	189.2	40.5	907.0
1991-92	608.6	188.4	41.5	838.5
1992-93	610.6	190.9	41.5	843.0
1993-94	570.9	191.6	41.0	803.5
1994-95	568.2	178.8	42.0	789.0
1995-96	364.3	86.7	47.5	498.5

Note: The numbers are F.T.E. (full-time equivalent) as of 6/18/96.
Source: Personnel Relations, DPI

Public School Full-Time Personnel by Major Activity Groups



	1989-90	1990-91	1991-92	1992-93	1993-94	1994-95	1995-96
TEACHERS							
State	56,348	57,381	58,456	59,471	61,160	63,519	64,939
Federal	2,747	2,897	3,091	3,085	3,384	3,219	3,051
Local	3,852	3,574	3,291	3,430	4,022	3,921	4,183
Total	62,947	63,852	64,838	65,986	68,566	70,659	72,173
SUPPORT*							
State	20,414	21,009	21,499	22,494	23,116	24,546	25,064
Federal	1,260	1,476	1,534	1,668	1,868	1,847	1,903
Local	3,125	3,007	2,906	2,934	2,977	3,045	3,022
Total	24,799	25,492	25,939	27,096	27,961	29,438	29,989
ADMINISTRATORS**							
State	4,995	4,984	4,734	4,816	4,788	4,763	4,881
Federal	151	149	186	192	208	187	183
Local	865	911	853	873	949	978	892
Total	6,011	6,044	5,773	5,881	5,945	5,928	5,956
OTHERS***							
State	12,401	13,530	12,452	13,068	12,950	13,284	13,836
Federal	494	830	928	1,035	1,326	2,203	1,494
Local	15,463	14,730	15,070	14,151	15,029	13,677	13,899
Total	28,358	29,090	28,450	28,254	29,305	29,164	29,229
TOTAL PERSONNEL							
State	94,158	96,904	97,141	99,849	102,014	106,112	108,720
Federal	4,652	5,352	5,739	5,980	6,786	7,456	6,631
Local	23,305	22,222	22,120	21,388	22,977	21,621	21,996
TOTAL	122,115	124,478	125,000	127,217	131,777	135,189	137,347

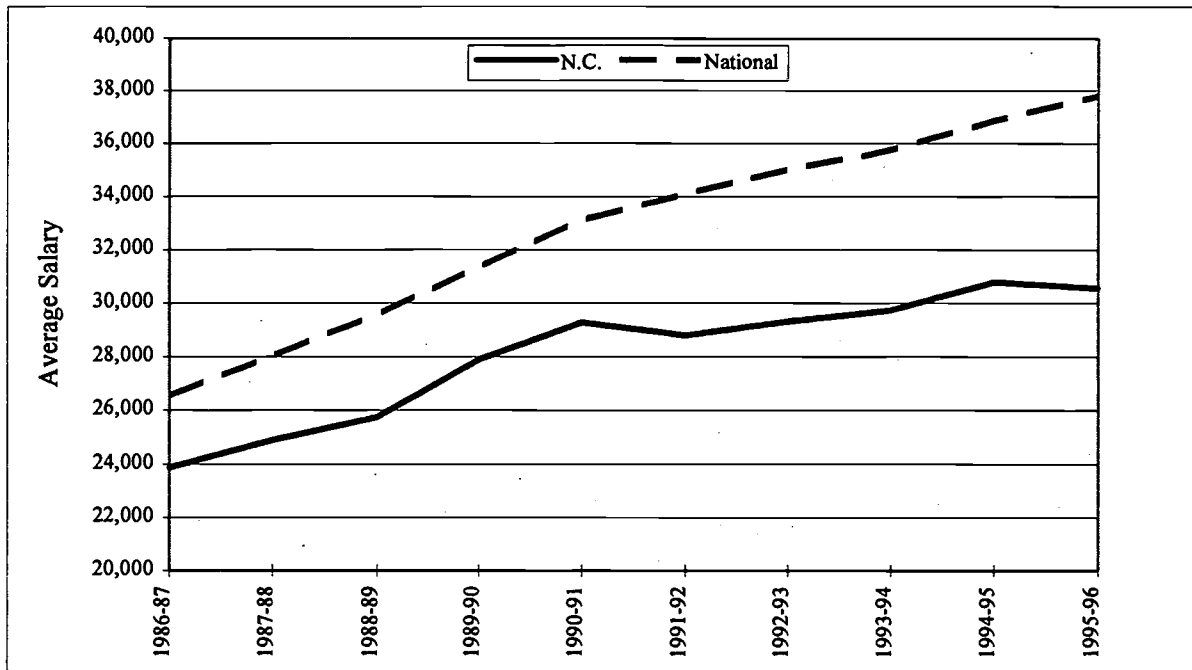
* Includes guidance, librarians, psychologist, teacher assistants, and other professional staff.

** Includes superintendents, assoc./asst. superintendents, principals, asst. principals, and consultants/supervisors.

***Includes technicians, clerical/secretarial, service workers, skilled crafts, and unskilled laborers.

Note: Vocational funded personnel have been included with State funds.

Estimated Average Salaries of North Carolina Public School Teachers



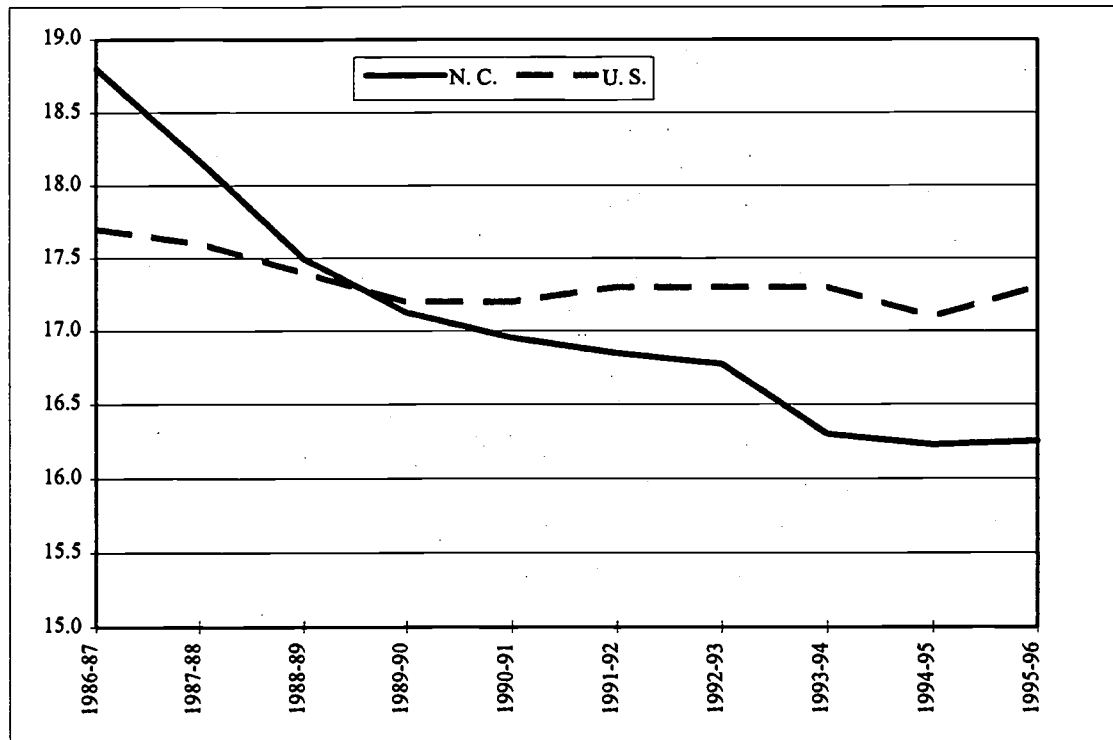
Year	N. C. Average	N. C. Rank	National Average	Year	N.C. Average	N.C. Rank	National Average
1970-71	7,772	38	9,269	1983-84	18,311	40	21,935
1971-72	8,593	29	9,705	1984-85	20,812	33	23,595
1972-73	9,162	27	10,164	1985-86	22,340	32	25,201
1973-74	10,223	20	10,778	1986-87	23,879	28	26,556
1974-75	11,002	21	11,513	1987-88	24,900	29	28,029
1975-76	11,269	27	12,600	1988-89	25,738	34	29,570
1976-77	11,910	28	13,357	1989-90	27,883	31	31,361
1977-78	12,772	29	14,247	1990-91	29,276	29	33,123
1978-79	13,676	28	15,057	1991-92	28,791	36	34,098
1979-80	14,117	32	15,966	1992-93	29,315	37	35,017
1980-81	15,861	30	17,590	1993-94	29,728	38	35,756
1981-82	16,947	35	19,157	1994-95	30,793	40	36,874
1982-83*	17,585	38	20,725	1995-96 **	30,564	42	37,794

* Starting with 1982-83, figures include longevity pay.

** Preliminary estimate.

Source: Rankings of the States, National Education Association.

Pupil-Teacher Ratio for North Carolina Public Schools



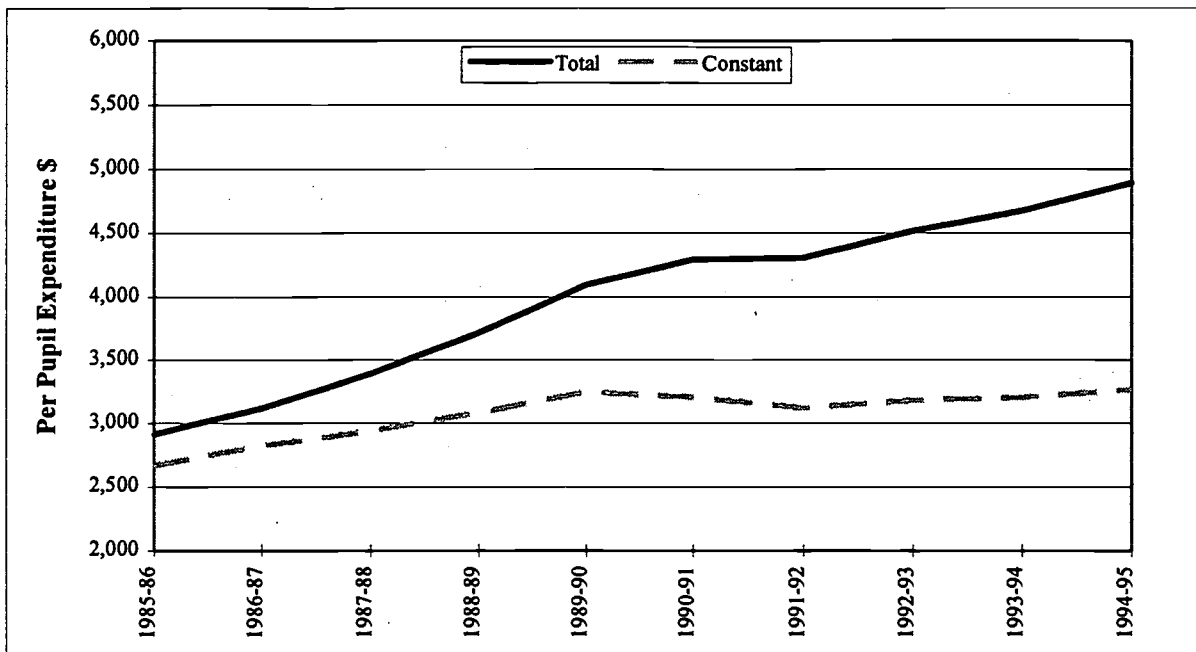
	Source of Funds			TOTAL	U. S.
	State	Federal	Local		
1986-87	21.1	402.0	265.8	18.8	17.7
1987-88	20.5	397.9	261.7	18.2	17.6
1988-89	19.6	394.4	281.9	17.5	17.4
1989-90	19.1	392.5	279.9	17.1	17.2
1990-91	18.9	373.7	302.9	17.0	17.2
1991-92	18.7	353.4	331.9	16.8	17.3
1992-93	18.6	358.8	322.7	16.8	17.3
1993-94	18.4	332.0	279.4	16.3	17.3
1994-95	18.1	356.2	292.4	16.2	17.1
1995-96	18.1	384.4	280.4	16.3	17.3

Note: Based on first month membership. Vocational funded personnel were included with State funds.

Source: *Rankings of the States*, NEA

Financial

Trend of Per Pupil Expenditures in Current and 1982-84 Constant Dollars

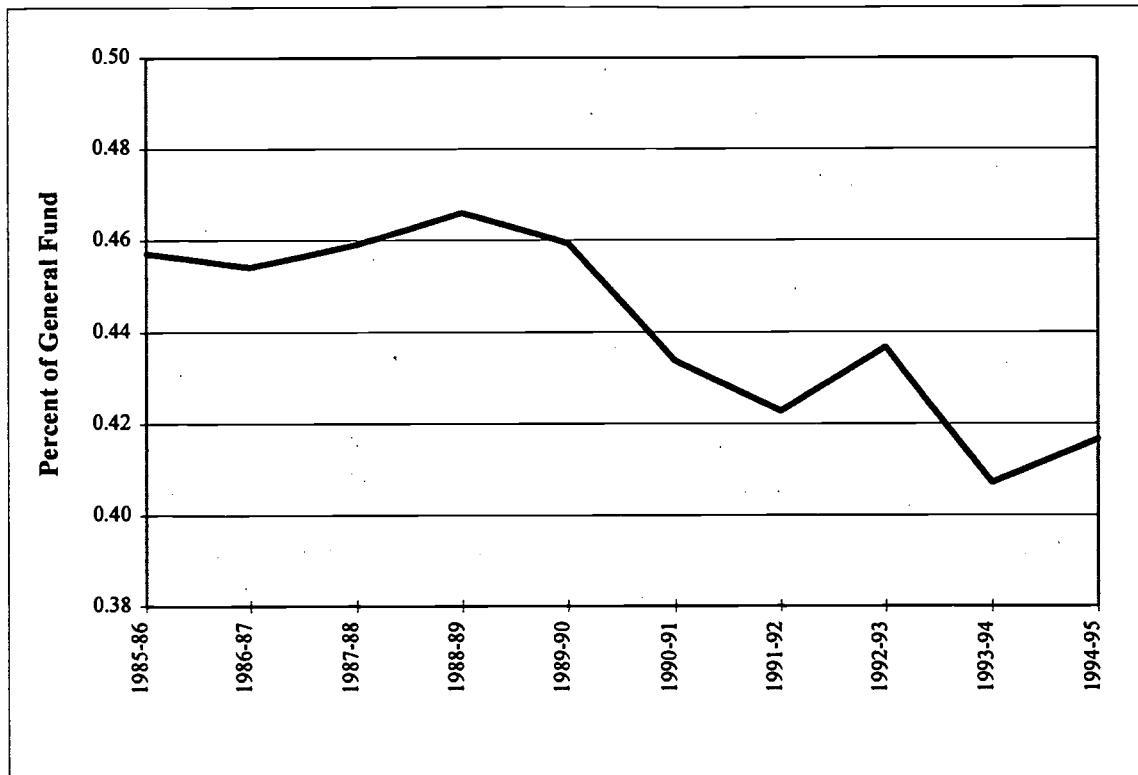


Year	Per Pupil Expenditure			Total	PPE Constant Dollars	As a Percent of Total		
	State	Federal	Local			State	Federal	Local
1980-81	1,243	248	453	1,944	2,253	63.9	12.8	23.3
1981-82	1,328	211	495	2,034	2,164	65.2	10.4	24.4
1982-83	1,345	220	524	2,089	2,140	64.4	10.5	25.1
1983-84	1,446	231	580	2,257	2,228	64.0	10.3	25.7
1984-85	1,688	238	649	2,575	2,445	65.5	9.3	25.2
1985-86	1,975	251	689	2,915	2,667	67.8	8.6	23.6
1986-87	2,130	243	745	3,118	2,822	68.3	7.8	23.9
1987-88	2,349	262	781	3,392	2,939	69.3	7.7	23.0
1988-89	2,605	277	833	3,715	3,083	70.1	7.5	22.4
1989-90	2,872	291	932	4,095	3,247	70.2	7.1	22.7
1990-91	3,009	316	968	4,293	3,208	70.0	7.4	22.6
1991-92	2,974	345	986	4,305	3,122	69.1	8.0	22.9
1992-93	3,066	389	1,062	4,517	3,183	67.9	8.6	23.5
1993-94	3,169	397	1,109	4,675	3,206	67.8	8.5	23.7
1994-95	3,381	382	1,130	4,893	3,267	69.1	7.8	23.1

Note: Per pupil expenditures are calculated by using final average daily membership.

Price Deflator: CPI - All urban consumers.

Public School Expenditures as a Percent of Total General Fund Expenditures



	General Fund		Public School		
	Expenditures	Increase From Prior Year	Expenditures	Increase From Prior Year	% of General Fund
1985-86	\$ 4,718,355,241	12.7%	\$ 2,156,921,328	16.3%	45.7%
1986-87	5,051,335,794	7.1%	2,293,921,501	6.4%	45.4%
1987-88	5,600,754,852	10.9%	2,571,179,747	12.1%	45.9%
1988-89	6,131,757,409	9.5%	2,857,740,313	11.1%	46.6%
1989-90	6,773,120,129	10.5%	3,111,034,727	8.9%	45.9%
1990-91	7,323,216,884	8.1%	3,176,190,223	2.1%	43.4%
1991-92	7,652,718,443	4.5%	3,235,476,119	1.9%	42.3%
1992-93	7,783,840,508	1.7%	3,399,653,728	5.1%	43.7%
1993-94	8,811,247,835	13.2%	3,587,786,193	5.5%	40.7%
1994-95	9,718,292,682	10.3%	4,048,929,070	12.9%	41.7%

Individual Program Data

Textbooks

	1991-92	1992-93	1993-94	1994-95	1995-96
No. of Textbooks Sold	1,651,348	1,962,901	897,532	1,799,616	*
<u>No. of Textbooks on SBE Adopted List:</u>					
Elementary	536	615	586	738	1,884
High School	506	496	528	533	677
<u>Average Cost Per Textbook on SBE Adopted List:</u>					
Elementary	\$14.41	\$15.13	\$18.20	\$32.87	\$91.79 **
High School	\$17.77	\$20.12	\$22.52	\$23.50	\$117.96 **

* Information not available at the time of publication.

** Textbooks and classroom instruction kits.

Source: Textbook Services/Division of School Support

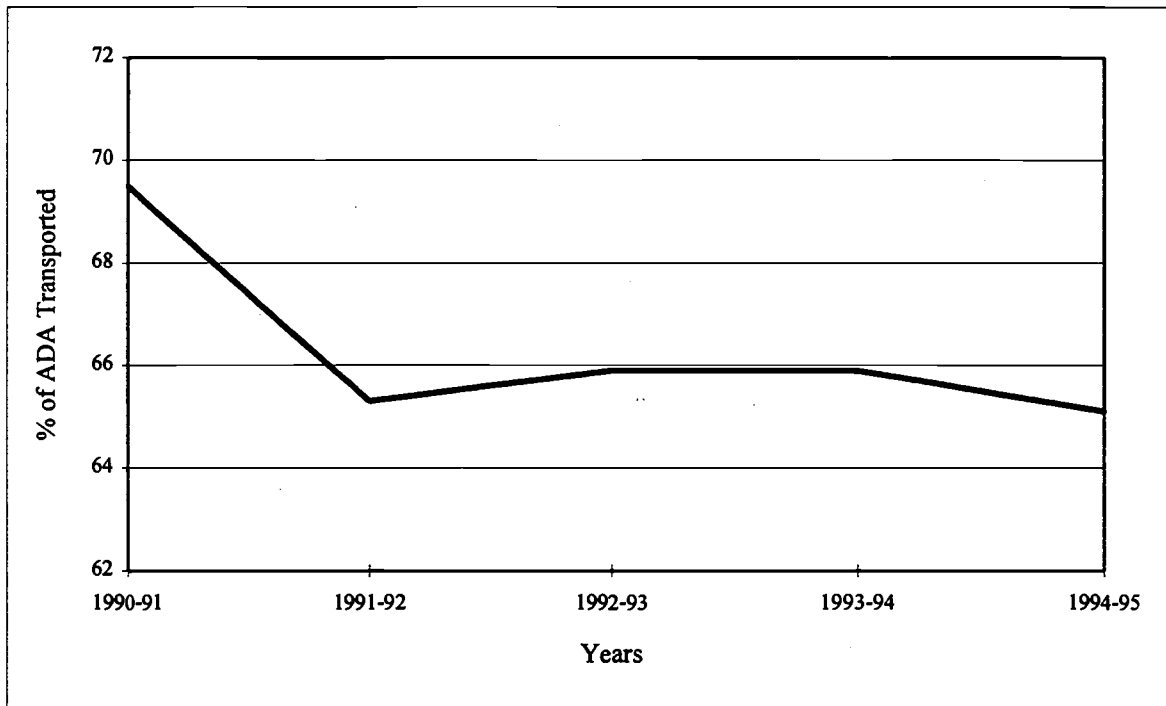
Child Nutrition

	1991-92	1992-93	1993-94	1994-95	1995-96
STATE FUNDS					
State Revenue Matching Requirement	\$6,885,959	\$6,885,959	\$6,885,959	\$7,159,637	\$7,200,311
No. of Child Nutrition Supervisors	202	204.5	209	210	211
Supervisor's Average Salary	\$41,018	\$40,849	\$42,306	\$43,814	\$46,158
FEDERAL FUNDS					
<u>Lunch Program</u>					
No. of Schools in National Lunch Program *	2,033	2,040	2,030	1,916	1,918
Lunches Served Daily	671,397	690,825	673,530	681,859	697,117
Percent Paid	52%	51%	51%	50%	50%
Percent at Reduced Price	8%	8%	8%	8%	8%
Percent Served Free	40%	41%	41%	42%	42%
<u>Breakfast Program</u>					
No. of Schools in Breakfast Program *	1,804	1,852	1,907	1,760	1,799
Breakfasts Served Daily	163,680	176,306	173,475	184,735	195,357
Percent Paid	14%	14%	14%	16%	16%
Percent at Reduced Price	7%	7%	7%	7%	8%
Percent Served Free	79%	79%	79%	77%	76%

* Includes non-profit private schools.

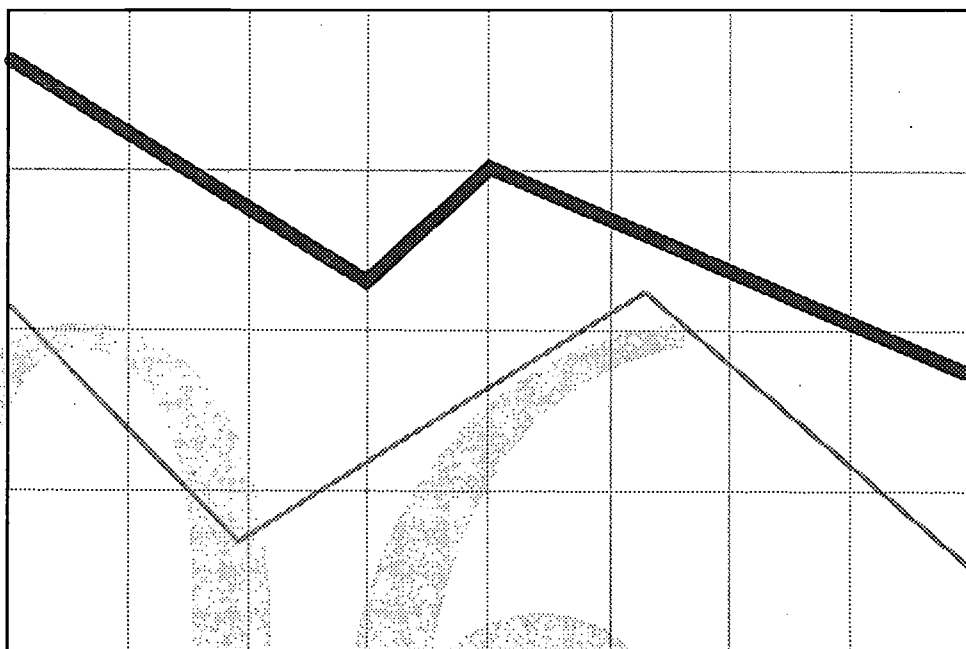
Source: Child Nutrition/Division of School Support

Public School Transportation



	1990-91	1991-92	1992-93	1993-94	1994-95
Pupils Transported Daily	704,623	668,278	681,894	692,615	697,563
Percent of ADA Transported	69.5	65.3	65.9	65.9	65.1
No. of Buses Operated	13,049	12,794	12,836	12,866	12,891
Average No. of Pupils Transported Per Bus	53.6	51.8	53.0	53.6	53.9
Total Annual Mileage for all Buses	124,846,564	123,717,726	126,603,519	128,925,153	133,477,288
Average Daily Mileage for all Buses	693,592	687,321	703,353	716,251	741,540
Daily Mileage Per Bus	53	54	55	56	58
Expenditure Per Mile	\$1.15	\$1.05	\$1.19	\$1.38	\$1.41
Expenditure Per Pupil Transported by Bus	\$205.36	\$195.97	\$221.19	\$257.22	\$272.75
Expenditure Per Bus	\$11,015.17	\$10,146.28	\$11,721.75	\$13,778.36	\$14,688.24

Source: Transportation Services/Division of School Support



BEST COPY AVAILABLE



U.S. DEPARTMENT OF EDUCATION
Office of Educational Research and Improvement (OERI)
Educational Resources Information Center (ERIC)



NOTICE

REPRODUCTION BASIS



This document is covered by a signed "Reproduction Release (Blanket)" form (on file within the ERIC system), encompassing all or classes of documents from its source organization and, therefore, does not require a "Specific Document" Release form.



This document is Federally-funded, or carries its own permission to reproduce, or is otherwise in the public domain and, therefore, may be reproduced by ERIC without a signed Reproduction Release form (either "Specific Document" or "Blanket").