

DOCUMENT RESUME

ED 408 910

HE 030 253

TITLE Enrollment Forecasts 1997-2010. Texas Institutions of Higher Education. Study Paper 27. Revised.

INSTITUTION Texas Higher Education Coordinating Board, Austin.

PUB DATE Jan 97

NOTE 64p.

AVAILABLE FROM Texas Higher Education Coordinating Board, P.O. Box 12788, Austin, TX 78711; phone: 512-483-6130; fax: 512-483-6127; World Wide Web: <http://www.thecb.state.tx.us>.

PUB TYPE Numerical/Quantitative Data (110)

EDRS PRICE MF01/PC03 Plus Postage.

DESCRIPTORS Community Colleges; Educational Policy; Enrollment; Enrollment Influences; *Enrollment Projections; Enrollment Trends; Higher Education; Long Range Planning; Public Policy; *State Universities; *Statewide Planning; Technical Institutes; Two Year Colleges

IDENTIFIERS *Texas

ABSTRACT

This report contains enrollment projections for public higher education in Texas from 1997 through 2010. Based on current population projections and recent patterns in college and university attendance, enrollment in Texas institutions is expected to reach one million by the year 2005. Enrollment in public universities is expected to increase approximately 3.14 percent from 1995 to 2000, 3.99 percent from 2000 to 2005, and 3.49 percent from 2005 to 2010. One of the highest priorities of Texas higher education is to increase minority representation through enrollment and retention. It is projected that by the year 2010, Hispanic and Black enrollment rates will be at parity with Anglo/Other rates for 1995. By 2010, the ethnic mix of students enrolled in Texas higher education will approximate the ethnic mix for the general population of Texans in the same age range. Tables provide detail on: fall headcount enrollment forecasts at all institutions of higher education and at Texas public universities; enrollment forecasts and forecasted changes for community colleges and technical colleges; fall resident enrollment by age and ethnicity for public universities community colleges, and technical colleges; and fall enrollment by resident and nonresident status for public universities, community colleges, and technical colleges. (JLS)

* Reproductions supplied by EDRS are the best that can be made *
* from the original document. *

Enrollment Forecasts 1997-2010

Texas Institutions of Higher Education

Study Paper 27 Revised January 1997

PERMISSION TO REPRODUCE AND
DISSEMINATE THIS MATERIAL
HAS BEEN GRANTED BY

Texas Higher Education
Coordinating Board

TO THE EDUCATIONAL RESOURCES
INFORMATION CENTER (ERIC)

U.S. DEPARTMENT OF EDUCATION
Office of Educational Research and Improvement
EDUCATIONAL RESOURCES INFORMATION
CENTER (ERIC)

This document has been reproduced as
received from the person or organization
originating it.

Minor changes have been made to improve
reproduction quality.

• Points of view or opinions stated in this docu-
ment do not necessarily represent official
OERI position or policy.

Texas Higher Education Coordinating Board

1/25/97 030 253

Texas Higher Education Coordinating Board

Leonard Rauch (Chair)	Houston
William C. Atkinson	Bryan
Martin Basaldúa, M.D.	Kingwood
Dolores Hutto Carruth, M.D.	Irving
Joaquin G. Cigarroa, Jr., M.D.	Laredo
Robert I. Fernandez	Fort Worth
Rene Haas	Corpus Christi
Jodie L. Jiles	Houston
Joseph R. Krier	San Antonio
Steve Late	Odessa
Wendy Marsh	Amarillo
Janie S. McGarr	Dallas
Andrew Melontree	Tyler
Martha Miller	Texarkana
Tom C. Nichols	Lubbock
Robert W. Shepard	Harlingen
Carlos Villa	El Paso
Pamela P. Willeford	Austin

Coordinating Board Mission

The mission of the Texas Higher Education Coordinating Board is to provide the Legislature advice and comprehensive planning capability for higher education, to coordinate the effective delivery of higher education, to efficiently administer assigned statewide programs, and to advance higher education for the people of Texas.

Coordinating Board Philosophy

The Texas Higher Education Coordinating Board will promote access to quality higher education across the state with the conviction that access without quality is mediocrity and that quality without access is elitism. The Board will be open, ethical, responsive, and committed to public service. The Board will approach its work with a sense of purpose and responsibility to the people of Texas and is committed to the best use of public monies.

FOREWORD

Enrollments in Texas public universities have remained steady over the past several years while enrollments at public community colleges have increased. Between 1991 and 1995, the public university fall headcount enrollment declined by 6,656 students (1.63 percent) and public community and technical college enrollment increased by 17,306 (4.4 percent).

In public universities, the number of Black and Hispanic students increased by 13,193 (13.8 percent) while the number of Anglo students declined 19,849 (6.4 percent). For the community and technical colleges, enrollment of Black and Hispanic students increased by 25,954 (21.6 percent) while enrollment of Anglo students declined by 8,648 (3.2 percent).

Past enrollment forecasts have been reasonably accurate for public universities overall, but have failed to adequately anticipate the rapid enrollment growth and shifts at some individual universities and at the community colleges. Several procedural modifications have been made in the forecast to better reflect these enrollment trends.

Information about enrollment trends and expectations, always fundamental to higher education planning, is even more critical in times of limited resources and growing numbers of students. Many institutions have adopted or are considering enrollment management policies. Consequently, a forecasting procedure that employs a variety of variables that influence enrollment can provide valuable information to those who must manage, plan for, and finance higher education.

The procedures employed in this enrollment forecast revision are based on past enrollment and population trends as related to geographic location, age, and race/ethnicity. But the enrollment outcomes are also influenced by other factors, such as the number of high school graduates, increased participation by ethnic groups, and local policies.

As in the last revision, the same forecast model was used for public universities, community colleges, and technical colleges.

Table of Contents

Page

Foreword	i
Enrollment in Texas Colleges and Universities to 2010	1
Texas Public College and University Forecasts	17
Concept	17
Historical Enrollment	18
Texas Population Projections	22
Enrollment Rate Alternatives	24
Resident Enrollment Forecast Alternatives for 1996	24
Resident Enrollment "Best Fit" Rate Selection	29
Adjustment for High School Graduates	29
Resident Enrollment Forecast	34
Nonresident Enrollment Ratios	34
Draft Total Enrollment Forecast and Adjustments	38
Enrollment Forecast For Texas Independent Colleges and Universities	40
Addendum: Parity Enrollment Forecast	42
Concept	42
Conclusion	42
Forecast Procedure	45

List of Tables

1A. Fall Headcount Enrollment Forecasts Texas -- Institutions of Higher Education	3
1B. Forecasted Changes in Fall Headcount Enrollment Changes	3
2. Fall Headcount Enrollment Forecasts -- Texas Public Universities	4
3. Forecasted Changes In Fall Headcount Enrollment -- Public Universities ...	6
4. Total Enrollment Forecast -- Community Colleges and Technical Colleges ...	8
5. Forecasted Changes in Fall Headcount Enrollment -- Public Community and Technical Colleges	12
6A. Fall Resident Enrollment by Age and Ethnicity -- Public Universities	19
6B. Resident and Nonresident Enrollment for Public Universities	19
7A. Fall Resident Enrollment by Age and Ethnicity -- Public Community Colleges	20
7B. Resident and Nonresident Enrollment for Public Community Colleges	20
8A. Fall Resident Enrollment by Age and Ethnicity -- Public Technical Colleges .	21
8B. Resident and Nonresident Enrollment for Public Technical Colleges	21

9.	Texas Statewide Population	23
10	1994 Resident Enrollment Alternative Forecasts -- Public Universities	26
11.	1994 Resident Enrollment Alternative Forecasts -- Public Community and Technical Colleges	27
12.	Resident Enrollment -- Public Universities Comparison of Actual to Forecast Resident Enrollment for 1996	31
13.	Resident Enrollment -- Public Community and Technical Colleges Comparison of Actual to Forecast Resident Enrollment for 1996	32
14.	Nonresident Enrollment Ratios -- Public Universities	35
15.	Nonresident Enrollment Ratios -- Community and Technical Colleges	36
16.	Adjustments to Draft Enrollment Forecast Based on Local Conditions	39
17.	Actual Enrollment	40
18.	Enrollment Forecast -- Independent Institutions	41
19.	Texas Public University Resident Enrollment -- Comparison of Parity and Trend Forecasts	43
20.	Texas Public Community College Resident Enrollment -- Comparison of Parity and Trend Forecasts	44
21.	Comparison of Ethnic Mix (Percent) for Parity Forecast And Population Projections for Age Group 15-34	45
24.	Parity Total Enrollment Forecast	46

List of Graphs

Figure 1.	Enrollment Forecast Development Process	16
Figure 2.	Texas Public University Parity Enrollment Forecast	43
Figure 3.	Texas Public Community and Technical College Parity Enrollment Forecast	44

ENROLLMENT IN TEXAS COLLEGES AND UNIVERSITIES TO 2010

Based on current population projections and recent patterns in college and university attendance, enrollment in Texas institutions of higher education is expected to reach 1 million by the year 2005. This figure represents an increase of more than 92,000 students over 1996 enrollment, producing an annual growth rate of approximately 1 percent during the nine-year period. Enrollments are expected to rise at close to the same rate in the ensuing five-year period -- from 2005 to 2010 -- with an increase of over 41,000 students for an average annual growth rate of just under 1 percent.

Enrollment in public universities is expected to increase approximately 3.14 percent from 1995 to 2000, approximately 3.99 percent from 2000 to 2005, and 3.49 percent from 2005 to 2010. The numerical increase from 1996 to 2010 is projected at approximately 46,892 students, representing an average annual increase of .84 percent. Enrollment in community colleges is expected to follow the same general pattern, but with a greater rate of increase. Public community colleges are projected to enroll 73,623 more students from 1996 to 2010. In the year 2010, total enrollment is projected to reach approximately 444,000 in the universities and approximately 486,000 in community/junior colleges.

Enrollment in the Texas State Technical Colleges (TSTC) System will increase by about 827 students over the forecast period.

Enrollment at independent (private) institutions should reach about 107,000 in 2010, an increase of more than 9,500 from 1996. Three independent junior colleges are included as a part of the independent college and university forecast.

Anticipated changes in the state's demographic structure and student age distribution patterns are likely to influence growth strongly at all institutions of higher education. Students between the ages of 15 and 34 constitute the largest enrollment group -- 86.11 percent in public universities and 80.4 percent in public community and technical colleges. Consequently, changes in the 15- to -34 population in Texas can significantly affect future enrollments. The age 35 and over population will continue to grow. The participation of this age group in higher education will become an increasingly significant factor in future enrollments.

Enrollment forecasts for 2000, 2005, and 2010, by type of institution, are shown in Table 1. Tables 2 and 3 show enrollment forecasts and the magnitude of change for public universities; tables 4 and 5 show enrollment forecasts and the magnitude of change for the public community and technical colleges. The following points should be kept in mind when interpreting the forecasts:

- The forecast model is influenced strongly by historical resident enrollment patterns at each institution and projected population changes by county.

Therefore, those forecasts may not accurately reflect future enrollments because institutions may modify recruitment efforts (especially those involving Hispanics), different population concentrations may develop, or effective enrollment management policies may be adopted by institutions.

- Enrollments will be affected by the Texas economy. Enrollments usually expand when unemployment increases, in part because students want to prepare for better jobs. The availability of financial aid also influences student's decisions to enter or return to college.

Table 1A
 FALL HEADCOUNT ENROLLMENT FORECASTS
 TEXAS INSTITUTIONS OF HIGHER EDUCATION

INSTITUTIONS	FORECAST									
	1994	1995	1996 ¹	1997	1998	2000	2005	2010		
Public Universities	406,466	400,563	397,731	401,685	405,905	413,153	429,640	444,623		
Public Community Colleges	400,821	401,049	412,464	423,047	430,174	440,630	462,492	486,087		
Independent Colleges and Universities	92,648	95,944	97,436	99,022	99,821	100,877	104,206	107,305		
Texas State Technical Colleges	7,732	7,557	8,058	8,317	8,417	8,494	8,590	8,885		
TOTAL, ALL INSTITUTIONS	907,169	905,113	915,689	932,071	944,317	963,154	1,004,928	1,046,900		

Table 1B
 FORECASTED CHANGES IN
 FALL HEADCOUNT ENROLLMENT CHANGES

INSTITUTIONS	1995-2000		2000-2005		2005-2010	
	Number	Percent	Number	Percent	Number	Percent
Public Universities	12,590	3.14%	16,487	3.99%	14,983	3.49%
Public Community Colleges	39,581	9.87%	21,862	4.96%	23,595	5.10%
Independent Colleges and Universities	4,933	5.14%	3,329	3.30%	3,099	2.97%
Texas State Technical Colleges	937	12.40%	96	1.13%	296	3.45%
TOTAL, ALL INSTITUTIONS	58,041	6.41%	41,774	4.34%	41,973	4.18%

¹ Preliminary headcount enrollment data.

Table 2
 FALL HEADCOUNT ENROLLMENT FORECASTS
 TEXAS PUBLIC UNIVERSITIES

INSTITUTIONS	1994	1995	1996 ¹	1997	1998	2000	2005	2010
Angelo State University	6,276	6,102	6,198	6,317	6,387	6,444	6,493	6,431
Lamar University	8,693	8,414	8,426	8,377	8,409	8,389	8,207	7,915
Midwestern State University	5,819	5,832	5,643	5,676	5,708	5,737	5,814	5,779
Prairie View A&M University	5,849	5,999	6,167	6,366	6,417	6,505	6,762	7,157
Sam Houston State University	12,906	12,439	12,568	12,755	12,883	13,080	13,553	13,690
Southwest Texas State University	20,889	20,917	20,882	21,134	21,347	21,678	22,857	23,526
Stephen F. Austin State University	12,204	11,736	11,690	11,695	11,812	11,980	12,417	12,473
Sul Ross State University	2,418	2,420	2,521	2,575	2,601	2,640	2,710	2,805
Sul Ross - Rio Grande College	726	753	866	906	924	952	1,001	1,058
Tarleton State University	6,460	6,533	6,371	6,488	6,579	6,702	7,014	7,053
Texas A&M International University ²	1,964	2,510	2,683	2,848	2,918	3,026	3,272	3,622
Texas A&M University ³	39,174	38,654	38,632	39,000	39,000	39,000	39,000	39,000
Texas A&M University-Commerce	7,941	7,650	7,542	7,395	7,458	7,537	7,825	8,060
Texas A&M University-Corpus Christi ²	5,152	5,545	5,687	5,889	6,161	6,466	6,768	6,962
Texas A&M University at Galveston	1,237	1,240	1,202	1,243	1,258	1,275	1,309	1,305
Texas A&M University-Kingsville	6,548	5,976	6,117	6,122	6,217	6,316	6,493	6,760
Texas A&M University-Texarkana	1,210	1,184	1,148	1,179	1,179	1,177	1,167	1,162
Texas Southern University	10,093	9,377	7,950	8,205	8,251	8,344	8,629	9,102
Texas Tech University	24,083	24,185	24,721	24,903	25,384	25,933	26,937	27,160
Texas Woman's University	10,059	9,810	9,779	10,003	10,121	10,323	11,080	11,897
The University of Texas at Arlington	23,202	22,121	20,544	19,500	19,890	20,614	22,081	23,651
The University of Texas at Austin ³	47,957	47,905	48,025	48,000	48,000	48,000	48,000	48,000

INSTITUTIONS	1994	1995	1996 ¹	1997	1998	2000	2005	2010
The University of Texas at Brownsville	2,205	2,459	2,648	2,829	2,909	3,019	3,203	3,292
The University of Texas at Dallas	8,487	9,008	9,501	9,693	9,914	10,033	10,541	11,256
The University of Texas at El Paso	17,188	16,275	15,393	15,985	16,207	16,464	17,190	18,919
The University of Texas of the Permian Basin	2,315	2,217	2,194	2,236	2,253	2,277	2,369	2,446
The University of Texas at San Antonio	17,579	17,369	17,547	18,043	18,372	19,830	21,543	23,236
The University of Texas at Tyler	3,987	3,783	3,463	3,521	3,540	3,554	3,638	3,702
The University of Texas-Pan American	13,750	13,360	12,672	13,181	13,481	14,448	15,631	16,914
University of Houston	31,297	30,757	30,780	30,969	31,154	31,467	32,999	34,203
University of Houston-Clear Lake	7,229	7,095	6,968	6,880	6,885	6,876	7,057	7,316
University of Houston-Downtown	7,715	7,676	7,947	8,275	8,335	8,440	8,931	9,618
University of Houston-Victoria	1,616	1,518	1,809	1,839	1,856	1,888	2,003	2,106
University of North Texas	25,605	25,114	24,964	25,063	25,419	25,974	28,319	30,368
West Texas A&M University	6,633	6,630	6,483	6,596	6,675	6,764	6,825	6,679
SENIOR STATEWIDE TOTALS	406,466	400,563	397,731	401,685	405,905	413,153	429,640	444,623

Notes: ¹ Preliminary headcount enrollment data.

² Institution changed to 4-year status.

³ Institution enrollment management policies in place.

Table 3
**FORECASTED CHANGES IN FALL HEADCOUNT ENROLLMENT
 PUBLIC UNIVERSITIES**

INSTITUTIONS	1995 - 2000		2000 - 2005		2005 - 2010	
	Number	Percent	Number	Percent	Number	Percent
Angelo State University	342	5.6%	49	0.8%	(62)	-1.0%
Lamar University	(25)	-0.3%	(181)	-2.2%	(293)	-3.6%
Midwestern State University	(95)	-1.6%	77	1.3%	(35)	-0.6%
Prairie View A&M University	506	8.4%	258	4.0%	395	5.8%
Sam Houston State University	641	5.2%	473	3.6%	137	1.0%
Southwest Texas State University	761	3.6%	1,178	5.4%	670	2.9%
Stephen F. Austin State University	244	2.1%	437	3.7%	56	0.5%
Sul Ross State University	220	9.1%	70	2.7%	95	3.5%
Sul Ross Rio Grande College	199	26.4%	48	5.0%	57	5.7%
Tarleton State University	169	2.6%	312	4.7%	39	0.6%
Texas A&M International University	516	20.6%	246	8.1%	350	10.7%
Texas A&M University	346	0.9%	0	0.0%	0	0.0%
Texas A&M University-Commerce	(113)	-1.5%	288	3.8%	235	3.0%
Texas A&M University-Corpus Christi	921	16.6%	302	4.7%	195	2.9%
Texas A&M University at Galveston	35	2.8%	35	2.8%	(4)	-0.3%
Texas A&M University-Kingsville	340	5.7%	177	2.8%	267	4.1%
Texas A&M University-Texarkana	(7)	-0.6%	(10)	-0.9%	(6)	-0.5%
Texas Southern University	(1,033)	-11.0%	285	3.4%	473	5.5%
Texas Tech University	1,748	7.2%	1,003	3.9%	223	0.8%
Texas Woman's University	513	5.2%	757	7.3%	816	7.4%
The University of Texas at Arlington	(1,507)	-6.8%	1,468	7.1%	1,570	7.1%
The University of Texas at Austin	95	0.2%	0	0.0%	0	0.0%

INSTITUTIONS	1995 - 2000		2000 - 2005		2005 - 2010	
	Number	Percent	Number	Percent	Number	Percent
The University of Texas at Brownsville	560	22.8%	184	6.1%	88	2.8%
The University of Texas at Dallas	1,025	11.4%	509	5.1%	714	6.8%
The University of Texas at El Paso	189	1.2%	726	4.4%	1,729	10.1%
The University of Texas of the Permian Basin	60	2.7%	92	4.0%	77	3.3%
The University of Texas at San Antonio	2,461	14.2%	1,714	8.6%	1,692	7.9%
The University of Texas at Tyler	(229)	-6.1%	84	2.4%	64	1.8%
The University of Texas-Pan American	1,088	8.1%	1,183	8.2%	1,283	8.2%
University of Houston	710	2.3%	1,532	4.9%	1,203	3.7%
University of Houston-Clear Lake	(219)	-3.1%	182	2.7%	259	3.7%
University of Houston-Downtown	764	10.0%	490	5.8%	687	7.7%
University of Houston-Victoria	370	24.4%	115	6.1%	103	5.1%
University of North Texas	860	3.4%	2,345	9.0%	2,049	7.2%
West Texas A&M University	134	2.0%	61	0.9%	(146)	-2.1%
UNIVERSITY STATEWIDE TOTALS	12,590	3.1%	16,487	4.0%	14,983	3.5%



Table 4
TOTAL ENROLLMENT FORECAST -- COMMUNITY COLLEGES AND TECHNICAL COLLEGES

INSTITUTIONS	1994	1995	1996 ¹	1997	1998	2000	2005	2010
Alamo Community College District								
Northwest Vista ²	0	12	801	1,500	2,400	4,032	6,811	7,896
Palo Alto College	7,102	7,499	7,603	7,887	7,966	8,103	8,352	8,797
San Antonio College	20,483	21,205	21,517	21,572	21,707	21,908	22,533	23,508
St. Philip's College	7,270	7,126	7,913	8,154	8,211	8,309	8,635	9,059
Alvin Community College	3,844	3,681	3,985	3,963	4,015	4,077	4,209	4,319
Amarillo College	7,234	7,016	7,172	7,275	7,350	7,427	7,586	7,682
Angelina College	3,860	3,595	3,903	4,044	4,060	4,045	3,984	4,000
Austin Community College	25,276	25,618	25,545	26,254	26,489	26,794	28,256	30,136
Bee County College	2,417	2,496	2,732	2,848	2,880	2,912	3,265	3,605
Blinn College	9,017	9,319	9,729	10,108	10,225	10,339	10,499	10,484
Brazosport College	3,096	3,101	3,388	3,434	3,525	3,667	4,049	4,470
Central Texas College District	6,044	6,360	5,944	6,136	6,209	6,299	6,635	6,973
Cisco Junior College	2,600	2,623	2,560	2,615	2,636	2,641	2,632	2,638
Clarendon College	788	794	787	829	834	838	813	797
College of the Mainland	3,975	3,546	3,745	3,808	3,830	3,837	3,851	3,915
Collin County Community College District	9,751	10,200	10,586	11,169	11,446	11,984	13,448	14,738
Dallas County Community College District								
Brookhaven College	7,654	7,459	7,538	7,532	7,579	7,657	8,169	8,835
Cedar Valley College	2,835	2,744	2,829	2,791	2,823	2,870	3,020	3,184
Eastfield College	8,737	8,406	8,014	7,919	8,004	8,141	8,635	9,235
El Centro College	5,388	5,119	4,808	4,784	4,808	4,847	5,108	5,516
Mountain View College	6,106	6,024	5,506	5,519	5,585	5,707	6,208	6,789

INSTITUTION	1994	1995	1996 ¹	1997	1998	2000	2005	2010
North Lake College	6,108	5,857	5,888	5,838	5,873	5,926	6,265	6,688
Richland College	11,988	11,648	11,736	11,667	11,714	11,786	12,369	13,130
Del Mar College	10,759	10,377	10,676	10,949	11,078	11,241	11,421	11,705
El Paso Community College District	19,972	19,662	19,238	19,430	19,625	20,019	21,360	23,418
Frank Phillips College	1,140	1,114	1,021	1,043	1,060	1,045	964	915
Galveston College	2,460	2,218	2,323	2,366	2,391	2,413	2,446	2,513
Grayson County College	3,011	2,958	3,048	3,090	3,103	3,084	3,032	3,026
Hill College	2,220	2,450	2,505	2,596	2,660	2,735	2,773	2,744
Houston Community College System	33,478	33,569	33,967	34,769	35,042	35,520	37,391	39,554
Howard County Junior College District								
Howard College at Big Spring	2,265	2,290	2,004	2,040	2,063	2,076	2,090	2,096
Southwest Collegiate Institute of the Deaf	98	98	98	98	98	100	104	106
Kilgore College	4,351	4,159	4,312	4,391	4,423	4,420	4,341	4,278
Lamar Technical Institute	1,419	1,297	1,608	1,643	1,698	1,743	1,772	1,777
Lamar University-Orange	1,473	1,489	1,513	1,508	1,514	1,505	1,452	1,409
Lamar University-Port Arthur	2,470	2,233	2,474	2,543	2,551	2,545	2,492	2,436
Laredo Community College	6,980	6,887	7,409	7,777	7,922	8,074	8,544	9,804
Lee College	5,621	5,752	5,954	6,111	6,159	6,219	6,396	6,627
McLennan Community College	5,540	5,561	5,336	5,400	5,428	5,438	5,495	5,540
Midland College	3,887	3,759	4,008	4,104	4,205	4,317	4,413	4,402
Navarro College	3,110	3,128	3,421	3,484	3,550	3,640	3,790	3,864
North Central Texas College	4,075	4,094	4,151	4,220	4,305	4,425	4,801	5,127

INSTITUTIONS	1994	1995	1996 ¹	1997	1998	2000	2005	2010
North Harris Montgomery County College	19,056	19,076	21,670	22,375	22,605	22,925	23,786	24,561
Northeast Texas Community College	2,284	2,139	2,064	2,114	2,123	2,120	2,090	2,049
Odessa College	4,445	4,590	4,870	4,945	5,003	5,044	5,057	5,094
Panola College	1,477	1,657	1,771	1,839	1,885	1,942	2,000	2,060
Paris Junior College	2,647	2,883	2,914	2,994	3,008	2,997	2,996	3,012
Ranger Junior College	773	838	852	868	879	882	878	877
San Jacinto College District								
Central Campus	9,742	9,859	9,886	10,177	10,246	10,331	10,708	11,110
North Campus	3,912	4,214	4,081	4,240	4,272	4,317	4,485	4,713
South Campus	5,157	5,410	5,342	5,502	5,537	5,574	5,742	5,951
South Plains College	5,760	5,652	5,803	5,846	5,919	5,970	5,960	5,930
South Texas Community College ²	2,334	3,267	5,520	6,900	8,280	10,474	11,945	13,859
Southwest Texas Junior College	3,139	3,256	3,271	3,406	3,422	3,430	3,451	3,684
Tarrant County Junior College District								
Northeast Campus	11,906	11,741	9,985	9,892	9,993	10,160	10,936	11,589
Northwest Campus	4,578	4,327	3,970	3,923	3,985	4,092	4,501	4,856
South Campus	10,337	10,493	8,130	8,042	8,155	8,346	9,027	9,582
Southeast Campus ²	0	0	3,997	4,597	5,056	6,007	6,695	6,864
Temple Junior College	2,472	2,450	2,806	2,893	2,951	3,013	3,162	3,324
Texarkana College	3,924	3,553	4,408	4,275	4,270	4,222	4,059	4,014
Texas Southmost College	6,309	6,550	6,892	7,297	7,414	7,482	7,524	8,154
Trinity Valley Community College	4,278	4,574	4,501	4,650	4,720	4,791	4,895	4,974

23

22A

INSTITUTIONS	1994	1995	1996 ¹	1997	1998	2000	2005	2010
Tyler Junior College	7,891	7,582	7,675	7,672	7,714	7,752	7,710	7,726
Vernon Regional Junior College	1,801	1,721	1,845	1,915	1,924	1,931	1,914	1,885
Victoria College	3,564	3,585	3,598	3,704	3,741	3,770	3,717	3,611
Weatherford College	2,591	2,345	2,346	2,452	2,509	2,596	2,772	2,859
Western Texas College	1,147	1,024	1,010	1,024	1,030	1,035	1,008	977
Wharton County Junior College	3,395	3,720	3,962	4,296	4,490	4,723	5,063	5,041
COMMUNITY COLLEGE STATEWIDE TOTALS	400,821	401,049	412,464	423,047	430,174	440,630	462,492	486,087
Texas State Technical College-Harlingen	2,887	3,054	3,099	3,246	3,296	3,327	3,348	3,650
Texas State Technical College-Sweetwater	916	859	1,025	1,053	1,063	1,065	1,059	1,044
Texas State Technical College-Waco	3,431	3,644	3,934	4,018	4,059	4,103	4,182	4,191
Texas State Technical College Statewide Totals	7,234	7,557	8,058	8,317	8,417	8,494	8,590	8,885

Notes: ¹ Preliminary headcount enrollment data.

² Institutions with less than five years of historical data. Projections were based on population increases.

Table 5
 FORECASTED CHANGES IN FALL HEADCOUNT ENROLLMENT --
 PUBLIC COMMUNITY AND TECHNICAL COLLEGES

INSTITUTIONS	1995 - 2000		2000 - 2005		2005 - 2010	
	Number	Percent	Number	Percent	Number	Percent
Alamo Community College District						
Northwest Vista	4,020	n/a ¹	2,779	68.9%	1,085	15.9%
Palo Alto College	604	8.1%	249	3.1%	446	5.3%
San Antonio College	703	3.3%	625	2.9%	976	4.3%
St. Philip's College	1,183	16.6%	326	3.9%	424	4.9%
Alvin Community College	396	10.8%	132	3.2%	110	2.6%
Amarillo College	411	5.9%	159	2.1%	96	1.3%
Angelina College	450	12.5%	(60)	-1.5%	16	0.4%
Austin Community College	1,176	4.6%	1,462	5.5%	1,880	6.7%
Bee County College	416	16.7%	352	12.1%	340	10.4%
Blinn College	1,020	11.0%	160	1.6%	(15)	-0.1%
Brazosport College	566	18.3%	382	10.4%	421	10.4%
Central Texas College District	(61)	-1.0%	335	5.3%	339	5.1%
Cisco Junior College	18	0.7%	(9)	-0.3%	6	0.2%
Clarendon College	44	5.5%	(24)	-2.9%	(17)	-2.1%
College of the Mainland	291	8.2%	14	0.4%	64	1.7%
Collin County Community College District	1,784	17.5%	1,464	12.2%	1,289	9.6%
Dallas County Community College District						
Brookhaven College	198	2.7%	512	6.7%	666	8.2%
Cedar Valley College	126	4.6%	149	5.2%	164	5.4%
Eastfield College	(265)	-3.2%	494	6.1%	600	7.0%
El Centro College	(272)	-5.3%	261	5.4%	408	8.0%

INSTITUTIONS	1995 - 2000		2000 - 2005		2005 - 2010	
	Number	Percent	Number	Percent	Number	Percent
Mountain View College	(317)	-5.3%	501	8.8%	581	9.4%
North Lake College	69	1.2%	340	5.7%	423	6.8%
Richland College	138	1.2%	583	5.0%	761	6.2%
Del Mar College	864	8.3%	180	1.6%	284	2.5%
El Paso Community College District	357	1.8%	1,342	6.7%	2,058	9.6%
Frank Phillips College	(69)	-6.2%	(82)	-7.8%	(49)	-5.1%
Galveston College	195	8.8%	33	1.4%	67	2.7%
Grayson County College	126	4.3%	(52)	-1.7%	(5)	-0.2%
Hill College	285	11.6%	37	1.4%	(29)	-1.1%
Houston Community College System	1,951	5.8%	1,871	5.3%	2,164	5.8%
Howard County Junior College District						
Howard College at Big Spring	(214)	-9.3%	14	0.7%	6	0.3%
Southwest Collegiate Institute of the Deaf	2	2.0%	5	5.0%	2	1.9%
Kilgore College	261	6.3%	(79)	-1.8%	(63)	-1.5%
Lamar Technical Institute	446	34.4%	29	1.7%	5	0.3%
Lamar University-Orange	16	1.1%	(53)	-3.5%	(43)	-2.9%
Lamar University-Port Arthur	312	14.0%	(52)	-2.0%	(57)	-2.3%
Laredo Community College	1,187	17.2%	470	5.8%	1,260	14.8%
Lee College	467	8.1%	177	2.9%	231	3.6%
McLennan Community College	(123)	-2.2%	57	1.1%	45	0.8%
Midland College	558	14.8%	97	2.3%	(12)	-0.3%
Navarro College	512	16.4%	150	4.1%	73	1.9%
North Central Texas College	331	8.1%	375	8.5%	326	6.8%
North Harris Montgomery County College	3,849	20.2%	862	3.8%	774	3.3%

INSTITUTIONS	1995 - 2000		2000 - 2005		2005 - 2010	
	Number	Percent	Number	Percent	Number	Percent
Northeast Texas Community College	(19)	-0.9%	(30)	-1.4%	(40)	-1.9%
Odessa College	454	9.9%	14	0.3%	37	0.7%
Panola Junior College	285	17.2%	59	3.0%	59	3.0%
Paris Junior College	114	4.0%	(1)	0.0%	15	0.5%
Ranger Junior College	44	5.3%	(4)	-0.5%	(1)	-0.1%
San Jacinto College District						
Central Campus	472	4.8%	377	3.7%	402	3.8%
North Campus	103	2.4%	168	3.9%	228	5.1%
South Campus	164	3.0%	169	3.9%	209	3.6%
South Plains College	318	5.6%	(10)	3.0%	(30)	-0.5%
South Texas Community College	7,207	220.6%	1,471	-0.2%	1,913	16.0%
Southwest Texas Junior College	174	5.3%	21	14.4%	233	6.8%
Tarrant County Junior College District						
Northeast Campus	(1,581)	-13.5%	777	7.7%	653	6.0%
Northwest Campus	(235)	-5.4%	409	10.0%	354	7.9%
South Campus	(2,147)	-20.5%	681	8.2%	554	6.1%
Southeast Campus	6,007	n/a	688	11.5%	169	2.5%
Temple Junior College	563	23.0%	149	5.0%	161	5.1%
Texarkana College	669	18.8%	(163)	-3.9%	(45)	-1.1%
Texas Southmost College	932	14.2%	42	0.6%	630	8.4%
Trinity Valley Community College	217	4.7%	104	2.2%	79	1.6%
27 Tyler Junior College	170	2.2%	(42)	-0.5%	16	0.2%
Vernon Regional Junior College	210	12.2%	(16)	-0.8%	(29)	-1.5%
Victoria College	185	5.2%	(53)	-1.4%	(106)	-2.9%

28

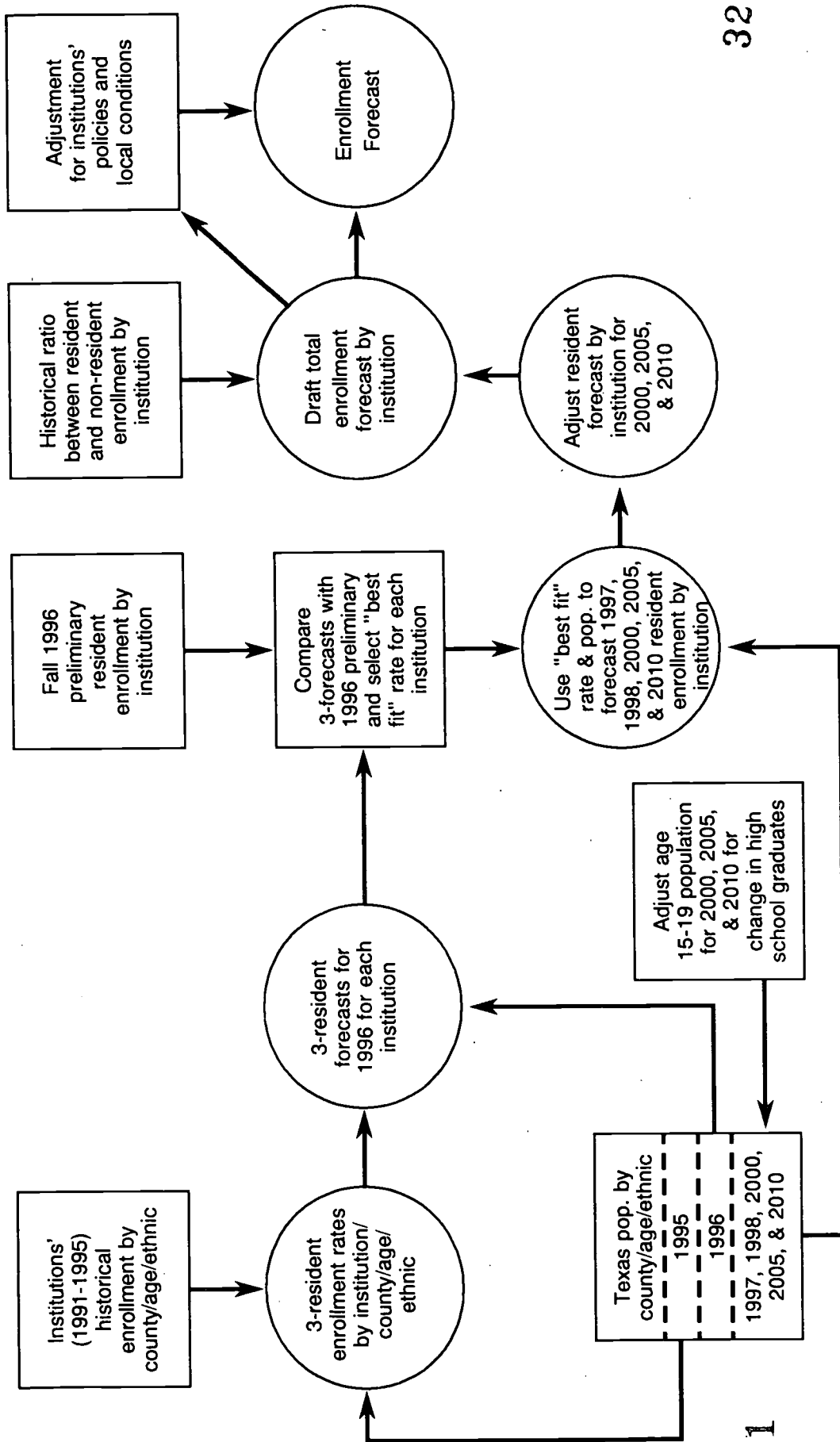
INSTITUTIONS	1995 - 2000		2000 - 2005		2005 - 2010	
	Number	Percent	Number	Percent	Number	Percent
Weatherford College	251	10.7%	177	6.8%	86	3.1%
Western Texas College	11	1.1%	(27)	-2.6%	(30)	-3.0%
Wharton County Junior College	1,003	27.0%	340	7.2%	(22)	-0.4%
Community College Statewide Totals	39,591	9.9%	21,862	5.0%	23,595	5.1%
Texas State Technical College-Harlingen	273	8.9%	22	0.7%	301	9.0%
Texas State Technical College-Sweetwater	206	24.0%	(5)	-0.5%	(15)	-1.4%
Texas State Technical College-Waco	459	12.6%	79	1.9%	10	0.2%
Texas State Technical College Statewide Totals	937	12.4%	96	1.1%	296	3.5%

Notes: ¹ Institution did not have enrollment in 1995.

FIGURE 1

Enrollment Forecast Development Process

Texas Higher Education Coordinating Board



TEXAS PUBLIC COLLEGE AND UNIVERSITY FORECASTS

CONCEPT

Enrollment forecasts were made for each of the state's public colleges and universities. Aggregate enrollment for the 35 public universities, the 50 public community college districts, and the three public technical colleges was determined by summing institutional fall headcount enrollments. The forecast methodology employed five years of age-, ethnic-, and race-specific historical enrollments by Texas counties. These enrollment data were combined with age-, ethnic-, and race-specific demographic data. The forecast model used multiple regression analysis techniques modified by expected enrollment policies and other conditions affecting enrollments at individual institutions. A general description of the methodology follows:

- Resident enrollment, which reflects in-state students, is based on population estimates. Five-year (1991-1995) historical enrollments by county, age groups, and race/ethnic groups (Hispanic, Black and Anglo/Other) for each institution were combined with compatible population data to develop three alternative, age-specific enrollment rates for each of the three race/ethnic groups in each of the 254 counties for 1996. These rates, combined with 1996 population estimates, were used to compute three alternative in-state resident enrollments for each institution for 1996.
- The 15-19 population projections for 1997, 1998, 1999, 2000, 2005 and 2010 were modified to reflect increases in the number of students eligible to attend college due to expected relative increases in the number of high school graduates.
- The three alternative forecasts were compared with the institutions' preliminary resident enrollment for fall 1996 and with past enrollment trends. Also taken into consideration was the accuracy of the past forecasts. A "best fit" enrollment was selected for each institution and adjusted as necessary by applying a multiplier.
- Enrollment rates and multipliers which produced the "best fit" were applied to projected population by county/age/race/ethnic data for the years 1997, 1998, 2000, 2005 and 2010 to obtain a forecast of resident enrollment for each institution. The resulting forecast was based on a fixed rate for the entire forecast period. However, some institutions have indicated by performance over the past five years the enrollment rates of some race/ethnic groups are increasing at a greater rate than the population growth, thus increasing the college-going rate for these ethnic groups. Forecasts were adjusted, where appropriate, in anticipation of a continued improvement in enrollment rates.
- Nonresident enrollment, which includes both out-of-state and foreign students, was determined by examining the five-year historical record (1991-1995) and

computing a ratio of nonresident to resident students for each institution. These historical data were compared with the preliminary fall 1996 enrollment of nonresident students for each institution. The "best fit" ratio was selected for each institution and used to compute nonresident enrollment.

- The adjusted resident enrollment and the computed nonresident enrollment for each institution were combined to obtain a draft total enrollment forecast for the years 1997, 1998, 2000, 2005 and 2010.
- An additional adjustment was made to the draft total enrollment based on known enrollment management policies at some institutions.
- Also, the draft forecast was sent to each institution for review and response. Based on conditions unique to specific institutions and which could not be accounted for in the methodology, some adjustments were made.

HISTORICAL ENROLLMENT

Tables 6A, 6B, 7A, 7B, 8A, and 8B provide a sample of enrollment data. Data in these tables are for all public universities, public community colleges, and public technical colleges statewide by age and ethnic group. This same enrollment information is available for each of the 35 public universities, the 50 public community college districts, and three public technical colleges at the county level. Between 1991 and 1995, enrollments decreased by a small amount at public universities -- 6,656 students (2 percent). At public community colleges, enrollment increased by 17,564 students or 4.5 percent.

At both types of institutions, enrollment increases have been greater for Hispanics and Blacks than for Anglo/Other students. Nevertheless, in 1995, Anglo/Other students made up 72.7 percent of enrollment at public universities and 64.5 percent at public community colleges. Approximately 87 percent of all public university students and 82 percent of community and technical college students were under 35 years of age. Texas residents comprised 90 percent of all students at public universities and 91 percent at public community colleges.

The public technical colleges experienced an enrollment increase of slightly over 4 percent or 307 students between 1991 and 1995. Anglo/Other students make up about 51.3 percent and Hispanics about 42 percent of their enrollment. More than 98 percent of technical college students are Texas residents.

Table 6A
FALL RESIDENT ENROLLMENT BY AGE AND RACE/ETHNICITY --
PUBLIC UNIVERSITIES

Year	Age 15-19	Age 20-24	Age 25-29	Age 30-34	Age 35-39	Age 40-up	All Ages
1991							
Anglo/Other	54,627	119,129	36,745	23,437	17,407	23,942	275,287
Hispanic	14,991	26,106	8,339	4,420	2,857	3,188	59,901
Black	8,653	12,932	3,645	2,461	1,878	2,000	31,569
All Race/Ethnic	78,271	158,167	48,729	30,318	22,142	29,130	366,757
1992							
Anglo/Other	51,620	118,880	36,555	23,047	17,329	25,191	272,622
Hispanic	15,128	28,379	8,967	4,748	3,099	3,611	63,932
Black	8,438	13,644	3,925	2,655	2,051	2,271	32,984
All Race/Ethnic	75,186	160,903	49,447	30,450	22,479	31,073	369,538
1993							
Anglo/Other	51,768	115,525	35,381	21,801	16,378	25,196	266,049
Hispanic	15,468	29,622	9,295	4,839	3,184	3,720	66,128
Black	8,110	14,028	3,834	2,662	2,045	2,342	33,021
All Race/Ethnic	75,346	159,175	48,510	29,302	21,607	31,258	365,198
1994							
Anglo/Other	52,464	111,870	35,759	20,614	15,604	25,492	261,803
Hispanic	15,749	30,611	10,245	5,136	3,315	4,161	69,217
Black	7,876	13,913	3,983	2,665	2,074	2,571	33,082
All Race/Ethnic	76,089	156,394	49,987	28,415	20,993	32,224	364,102
1995							
Anglo/Other	51,886	109,081	36,069	19,012	14,560	24,636	255,244
Hispanic	15,940	30,999	10,942	5,126	3,318	4,059	70,384
Black	7,891	13,561	4,390	2,633	2,266	2,790	33,531
All Race/Ethnic	75,717	153,641	51,401	26,771	20,144	31,485	359,159

Table 6B
RESIDENT AND NONRESIDENT ENROLLMENT FOR PUBLIC UNIVERSITIES

Year	Resident Enrollment	Nonresident Enrollment	Total Enrollment
1991	366,757	40,462	407,219
1992	369,538	41,168	410,706
1993	365,198	42,116	407,314
1994	364,102	42,364	406,466
1995	359,159	41,474	400,633

Table 7A
FALL RESIDENT ENROLLMENT BY AGE AND RACE/ETHNICITY - -
PUBLIC COMMUNITY COLLEGES

	Ages 15-19	Ages 20-24	Ages 25-29	Ages 30-34	Ages 35-39	Ages 40-Up	All Ages
1991							
Anglo/Other	57,375	71,580	36,561	30,894	23,372	32,783	252,565
Hispanic	18,514	26,155	11,351	7,893	5,187	6,299	75,399
Black	7,776	9,742	5,986	5,248	3,438	3,787	35,977
All Race/Ethnic	83,665	107,477	53,898	44,035	31,997	42,869	363,941
1992							
Anglo/Other	59,459	74,666	36,566	31,256	24,443	34,205	260,595
Hispanic	20,086	29,578	12,079	8,513	5,731	6,746	82,733
Black	7,811	105,848	6,480	5,606	3,817	4,243	38,805
All Race/Ethnic	87,356	115,092	55,125	45,375	33,991	45,194	382,133
1993							
Anglo/Other	60,260	73,427	34,137	29,200	23,340	33,617	253,981
Hispanic	20,974	31,373	12,355	8,548	5,995	6,923	86,168
Black	7,462	10,734	6,264	5,484	3,898	4,258	38,100
All Race/Ethnic	88,696	115,534	52,756	43,232	33,233	44,798	378,249
1994							
Anglo/Other	61,077	70,935	32,472	26,855	21,861	32,792	245,992
Hispanic	22,799	34,006	13,301	8,837	6,142	7,433	92,518
Black	7,716	10,916	6,143	5,547	4,141	4,604	39,067
All Race/Ethnic	91,592	115,857	51,916	41,239	32,144	44,829	377,577
1995							
Anglo/Other	64,046	69,646	32,258	24,573	20,684	32,210	243,417
Hispanic	24,289	36,182	14,110	8,747	6,339	7,777	97,444
Black	8,023	10,814	6,058	5,236	4,082	4,830	39,043
All Race/Ethnic	96,358	116,642	52,426	38,556	31,105	44,817	379,904

Table 7B
RESIDENT AND NONRESIDENT ENROLLMENT FOR PUBLIC COMMUNITY COLLEGES

Year	Resident Enrollment	Nonresident Enrollment	Total Enrollment
1991	363,941	19,544	383,485
1992	382,133	17,445	399,578
1993	378,249	21,899	400,148
1994	377,577	22,746	400,323
1995	379,904	21,145	401,049

Table 8A
FALL RESIDENT ENROLLMENT BY AGE AND RACE/ETHNICITY --
PUBLIC TECHNICAL COLLEGES

	Age 15-19	Age 20-24	Age 25-29	Age 30-34	Age 35-39	Age 40-Up	All Ages
1991							
Anglo/Other	983	1,420	662	466	365	417	4,313
Hispanic	1,048	1,211	348	221	142	150	3,120
Black	92	105	51	30	33	21	332
All Race/Ethnic	2,123	2,736	1,061	717	540	588	7,765
1992							
Anglo/Other	929	1,395	676	435	315	488	4,238
Hispanic	991	1,295	443	244	170	161	3,304
Black	97	114	45	28	35	28	347
All Race/Ethnic	2,017	2,804	1,164	707	520	677	7,889
1993							
Anglo/Other	923	1,366	578	435	343	495	4,140
Hispanic	771	1,055	345	200	120	116	2,607
Black	97	141	51	36	45	31	401
All Race/Ethnic	1,791	2,562	974	671	508	642	7,148
1994							
Anglo/Other	972	1,335	569	406	350	545	4,177
Hispanic	1,008	1,189	339	181	128	134	2,979
Black	112	114	53	48	35	43	405
All Race/Ethnic	2,092	2,638	961	635	513	722	7,561
1995							
Anglo/Other	1,058	1,335	561	358	344	524	4,180
Hispanic	1,011	1,342	402	193	117	152	3,217
Black	138	136	62	55	31	64	486
All Race/Ethnic	2,207	2,813	1,025	606	492	740	7,883

Table 8B
RESIDENT AND NONRESIDENT ENROLLMENT FOR PUBLIC TECHNICAL COLLEGES

Year	Resident Enrollment	Nonresident Enrollment	Total Enrollment
1991	7,765	50	7,815
1992	7,889	69	7,958
1993	7,148	86	7,234
1994	7,561	171	7,732
1995	7,883	31	7,914

TEXAS POPULATION PROJECTIONS

This revised enrollment forecast used the Texas Comptroller of Public Accounts' population projections, completed in winter 1995-96, which used a cohort-component technique. Projections from a base population -- from the 1990 Census -- were made individually for people with a common characteristic (in this case age, gender, and race/ethnicity) for fertility, mortality, and migration.

Age, gender and race/ethnicity-specific fertility rates were computed using recorded births and place of residence of the mother. This information was obtained from the Texas Department of Health. Data on women by age (10-49) and race/ethnicity were obtained from the 1990 Census of the population.

Life survival rates for Anglos, Hispanics, Blacks and Others were computed using 1993-94 life tables constructed from Texas Department of Health mortality data. Migration rates were derived using net migration estimates by age, gender and race/ethnicity in Texas for 1980-1990. Using this as a base, migration rates were computed for Anglo/Other, Hispanic and Black populations for the 1980-1990 period. To deal with the migration component, which is the most difficult to project, alternative scenarios of growth were developed. All scenarios used the same set of mortality and fertility rates but differed in the assumptions relative to net migration. Population projections used in this revised enrollment forecast assumed that migration rates will be 75 percent of the average 1980-1990 rates.

Statewide population projections show several significant features of the future Texas population (See Table 9):

- Between 1997 and 2010, the total population will grow at an average annual rate of about 1.3 percent.
- Hispanics will continue to be the fastest growing ethnic group. In 1997, Hispanics will comprise about 28.5 percent of the population; by 2010, this share will reach 34 percent. The Black share will remain constant (11.6 percent) while the Anglo share will decline from 57.4 percent in 1997 to approximately 51.4 percent in 2010.
- The 40-year-old-and-above age group will grow at a faster rate than the younger age groups.
- The 15- to 34-year-old population, will make up about 30.3 percent of the total in 1997, will drop to 28.6 percent in 2010. The Anglo population in this age group will decline in numbers between 1997 and 2010. Hispanic, Black and Other populations will increase. Overall, the 15- to 34-year-old group will increase at less than 1 percent per year until 2005 and is then expected to increase slightly over 1 percent per year between 2005 and 2010.
- In the 13-year period from 1997 to 2010, the entire 15- to 19-year old group will increase by 12 percent.

Table 9 - TEXAS STATEWIDE POPULATION

Year	Age	Age	Age	Age	Age	Age	Age	Age	All
Ethnicity	0-14	15-19	20-24	25-29	30-34	35-39	40-Up	Ages	Ages
1997									
Anglo	2,197,885	738,815	704,475	762,376	841,360	966,377	4,944,341	11,155,629	
Hispanic	1,700,385	506,928	498,945	466,394	466,271	432,807	1,468,448	5,540,178	
Black	611,764	194,567	183,982	180,179	185,724	194,205	713,895	2,264,316	
Other	104,705	36,713	36,848	38,696	41,359	46,089	172,261	476,671	
All Race/Ethnic	4,614,739	1,477,023	1,424,250	1,447,645	1,534,714	1,639,478	7,298,945	19,436,794	
1998									
Anglo	2,180,417	755,254	707,876	762,268	805,309	957,608	5,051,240	11,219,972	
Hispanic	1,738,624	522,096	503,687	481,723	470,128	447,569	1,539,487	5,703,314	
Black	616,050	198,003	184,196	183,642	181,493	194,397	737,782	2,295,563	
Other	106,032	38,068	37,440	39,431	41,387	46,581	184,575	493,514	
All Race/Ethnic	4,641,123	1,513,421	1,433,199	1,467,064	1,498,317	1,646,155	7,513,084	19,712,363	
2000									
Anglo	2,132,644	769,421	719,180	739,739	758,917	917,470	5,254,135	11,291,506	
Hispanic	1,813,456	539,659	511,181	509,749	472,250	473,926	1,688,299	6,008,520	
Black	622,392	198,888	188,235	185,804	173,726	192,751	785,140	2,346,936	
Other	108,358	39,636	38,764	40,305	41,600	46,988	210,330	525,981	
All Race/Ethnic	4,676,850	1,547,604	1,457,360	1,475,597	1,446,493	1,631,135	7,937,904	20,172,943	
2005									
Anglo	2,026,042	748,746	775,396	732,548	748,292	754,874	5,677,454	11,463,352	
Hispanic	2,025,525	554,971	569,466	543,681	537,922	489,295	2,095,840	6,816,700	
Black	637,108	202,469	199,519	187,404	183,969	172,475	894,706	2,477,650	
Other	117,685	38,599	44,485	43,577	45,411	46,620	277,929	614,306	
All Race/Ethnic	4,806,360	1,544,785	1,588,866	1,507,210	1,515,594	1,463,264	8,945,929	21,372,008	
2010									
Anglo	1,941,359	721,319	765,011	799,570	751,224	749,431	5,929,082	11,656,996	
Hispanic	2,171,049	674,055	593,318	613,333	581,707	561,207	2,510,630	7,705,299	
Black	642,450	217,136	205,852	200,964	188,209	183,849	979,098	2,617,558	
Other	124,664	45,062	44,036	50,623	49,623	51,328	349,913	715,249	
All Race/Ethnic	4,879,522	1,657,572	1,608,217	1,664,490	1,570,763	1,545,815	9,768,723	22,695,102	

Although Table 9 indicates the populations at the statewide level only, similar data are available for each of the 254 Texas counties.

ENROLLMENT RATE ALTERNATIVES

The five-year (1991-95) resident enrollment database and the population database were used to obtain enrollment rates for each of the three race/ethnic groups (Anglo/Other, Hispanic and Black) by county and age groups for each institution. Three alternative rates were calculated as follows:

1995 Race/Ethnic Rate: The total number of students in a specific age/ethnic/race group from each county attending each institution in 1995 divided by the total number of people of the specific age/ethnic/race group living in the county.

Trend Race/Ethnic Rates: Using five years of observed enrollment data, two straight-line arithmetic trend enrollments were developed by age/ethnic/race groups and county for each institution. These were: (1) the 1991-1995 five-year trend and (2) the five-year trend extended to 1997. The equation $Y_c = a + bx$ was used, where:

a is the mean enrollment over the five-year period;

b is the deviation from the center year multiplied by the observed enrollment, summed and divided by the sum of the squares of the deviations; and

$x = +2$ for the five-year trend, $+4$ for the five-year trend extended to 1997.

The predicted trend enrollment (Y_c) for each age/ethnic/race group was divided by the total number of people of the specific age/ethnic/race group living in the county for the corresponding year.

Each of these three alternative enrollment rates contained attendance rates for each of the 254 counties at each institution by six age groups (15-19, 20-24, 25-29, 30-34, 35-39, and 40 and above) for three race/ethnic groups (Anglo/Other, Hispanic and Black).

RESIDENT ENROLLMENT FORECAST ALTERNATIVES FOR 1996

Previously computed enrollment rates for each county were multiplied by the corresponding age/race/ethnic/county population estimates for 1996. This produced three alternative forecasts of students by age/ethnicity/race from each county expected to attend each institution in 1996. Age groups were then summed to obtain statewide

forecasts of Anglo/Other, Hispanic, and Black students at each institution in 1996. Total resident enrollment for each of the three alternatives was obtained by summing the race/ethnic enrollment. The three alternative resident enrollments for each institution are shown in Tables 10 and 11.

Table 10

1996 RESIDENT ENROLLMENT ALTERNATIVE FORECASTS -- PUBLIC UNIVERSITIES

	1995 Rate	1996 (Trend) Rate	1997 (Trend) Rate
Angelo State University	5,943	5,920	6,029
Lamar University	8,079	8,105	7,604
Midwestern State University	5,280	5,381	5,466
Prairie View A&M University	5,168	5,173	5,482
Sam Houston State University	12,284	12,343	12,371
Southwest Texas State University	20,612	20,229	19,884
Stephen F. Austin State University	11,647	11,744	11,197
Sul Ross State University	2,392	2,466	2,749
Sul Ross - Rio Grande College	750	787	880
Tarleton State University	6,588	6,519	6,688
Texas A&M International University	2,439	2,232	2,690
Texas A&M University	33,165	33,192	32,732
Texas A&M University at Commerce	7,441	7,569	7,441
Texas A&M University at Corpus Christi	5,569	5,537	6,276
Texas A&M University at Galveston	881	961	1,025
Texas A&M University at Kingsville	5,678	5,957	5,922
Texas A&M University at Texarkana	833	832	744
Texas Southern University	8,296	8,666	8,631
Texas Tech University	21,658	21,161	20,818
Texas Woman's University	8,970	9,107	9,416
The University of Texas at Arlington	20,278	20,488	19,102
The University of Texas at Austin	38,848	38,127	36,969
The University of Texas at Brownsville	2,495	2,410	2,811
The University of Texas at Dallas	7,665	7,579	7,180
The University of Texas at El Paso	14,557	14,591	14,001
The University of Texas of the Permian Basin	2,147	2,219	2,264
The University of Texas at San Antonio	16,692	16,925	17,536
The University of Texas at Tyler	3,650	3,739	3,722
The University of Texas-Pan American	13,667	13,514	13,491
University of Houston	27,432	27,135	25,700
Univ. of Houston-Clear Lake	6,497	6,566	6,486
Univ. of Houston-Downtown	6,354	5,860	5,191
Univ. of Houston-Victoria	1,517	1,546	1,780
University of North Texas	22,228	22,105	21,285
West Texas A&M University	6,307	6,387	6,645
SENIOR STATEWIDE TOTALS	364,006	360,841	352,144

Table 11
1996 RESIDENT ENROLLMENT ALTERNATIVE FORECASTS --
PUBLIC COMMUNITY AND TECHNICAL COLLEGES

	1995 Rate	1996 (Trend) Rate	1997 (Trend) Rate
Alamo CCD Northwest Vista	n/a ¹	n/a ¹	n/a ¹
Alamo CCD Palo Alto College	7,104	6,979	7,885
Alamo CCD San Antonio College	20,569	19,667	20,001
Alamo CCD St. Philip's College	6,629	6,791	7,410
Alvin Community College	3,680	3,730	3,545
Amarillo College	6,628	6,702	6,824
Angelina College	3,564	3,780	4,053
Austin Community College	25,197	25,038	25,844
Bee County College	2,518	2,522	2,607
Blinn College	9,148	9,204	10,169
Brazosport College	3,143	3,015	2,751
Central Texas College District	5,447	5,470	6,051
Cisco Junior College	2,658	2,805	2,947
Clarendon College	737	849	920
College of the Mainland	3,538	3,728	3,660
Collin County Community College District	10,041	9,572	9,626
DCCCD Brookhaven College	7,151	7,183	6,508
DCCCD Cedar Valley College	2,760	2,730	2,397
DCCCD Eastfield College	8,371	8,416	7,581
DCCCD El Centro College	5,054	5,093	4,189
DCCCD Mountain View College	6,008	5,958	5,604
DCCCD North Lake College	5,606	5,662	5,367
DCCCD Richland College	11,193	11,226	10,447
Del Mar College	10,024	10,119	9,493
El Paso Community College District	19,648	19,746	21,073
Frank Phillips College	1,059	1,142	1,236
Galveston College	2,137	2,290	2,331
Grayson County College	2,783	2,833	2,694
Hill College	2,457	2,462	2,729
Houston Community College System	26,751	26,678	26,762
Howard College at Big Spring	2,270	2,352	2,420
Kilgore College	4,086	4,184	4,025
Lamar Technical Institute	1,290	1,339	1,214
Lamar University-Orange	1,392	1,435	1,189
Lamar University-Port Arthur	2,235	2,367	2,146
Laredo Community College	6,852	6,919	7,548

	1995 Rate	1996 (Trend) Rate	1997 (Trend) Rate
Lee College	5,721	5,598	5,657
McLennan Community College	5,510	5,541	5,418
Midland College	3,769	3,729	3,532
Navarro College	2,924	2,937	2,943
North Central Texas College	3,961	4,052	4,261
North Harris Montgomery County College	19,000	19,059	19,659
Northeast Texas Community College	2,135	2,240	2,395
Odessa College	4,634	4,558	4,417
Panola College	1,565	1,534	1,655
Paris Junior College	2,701	2,652	2,914
Ranger Junior College	831	909	1,031
San Jacinto College-Central Campus	9,060	8,942	8,669
San Jacinto College-North Campus	3,997	3,833	3,707
San Jacinto College-South Campus	5,040	4,875	4,694
South Plains College	5,537	5,611	5,686
South Texas Community College	3,426	3,982	5,528
Southwest Collegiate Institute of the Deaf	84	129	145
Southwest Texas Junior College	3,307	3,299	3,606
Tarrant County-Northeast Campus	11,806	11,775	11,093
Tarrant County-Northwest Campus	4,378	4,383	3,853
Tarrant County-South Campus	10,609	10,414	9,902
Tarrant County-Southeast Campus	n/a ¹	n/a ¹	n/a ¹
Temple Junior College	2,397	2,484	2,572
Texarkana College	2,512	2,571	2,515
Texas Southmost College	6,757	6,472	6,535
Trinity Valley Community College	4,598	4,479	4,588
Tyler Junior College	7,560	7,532	7,244
Vernon Regional Junior College	1,588	1,705	1,763
Victoria College	3,562	3,572	3,726
Weatherford College	2,376	2,545	2,671
Western Texas College	999	1,144	1,246
Wharton County Junior College	3,759	3,607	3,803
COMMUNITY COLLEGE TOTALS	389,821	390,141	392,668
Texas State Technical College-Harlingen	3,145	2,888	2,813
Texas State Technical College-Sweetwater	868	959	1,074
Texas State Technical College-Waco	3,595	3,513	3,701
Texas State Technical College Totals	7,608	7,360	7,588

Notes: ¹ Institution did not have enrollment in 1995.

RESIDENT ENROLLMENT "BEST FIT" RATE SELECTION

The next step was to select, for each institution, one of the three resident enrollment rate alternatives. The following criteria were used:

1. The enrollment forecast produced for 1996, when compared with the preliminary 1996 enrollment and five-year trend, must be the one closest to the enrollment which follows the general trend of the historical enrollment pattern. If the historical enrollment pattern is increasing, the selected alternative should be greater than the preliminary 1996 enrollment. If the pattern is decreasing, the selected alternative should be less than the preliminary 1996 enrollment. If the pattern is stable, the nearest alternative should be selected without regard to its relationship to the preliminary 1996 enrollment.
2. If the historical pattern is increasing or decreasing, the 1996 enrollment produced by the selected alternative must fall within 3 percent of the preliminary 1996 enrollment. If the historical pattern is stable, the 1996 enrollment produced by the selected alternative must fall within plus or minus 1 percent of the preliminary 1996 enrollment. If necessary, a multiplier can be computed to satisfy this condition.

The selected "best fit" alternative (see Tables 12 and 13) determined which rate to use for each institution in forecasting 1997, 1998, 2000, 2005 and 2010 enrollment. The multiplier, if needed, was used to augment the forecast for each year.

ADJUSTMENT FOR HIGH SCHOOL GRADUATES

The number of high school graduates can help determine the number of people in the age 15-19 cohort eligible to attend college. This pool of potential college students changes for a county when there is a significant change in the high school graduation trend for a race/ethnic group. The current forecast model captured these changing trends by using the following procedure:

1. Using a five-year historical record of the number of high school graduates and the population 15-19 ratios were computed for each county, by race/ethnicity, as shown below:

Years		Ratios of Change		Ratio
From	To	High School (1)	Pop 15-19 (2)	HS/Pop (3)
90	91	91 grads/90 grads	91 pop/90 pop	Ratio(1)/Ratio(2)
91	92	92 grads/91 grads	92 pop/91 pop	Ratio(1)/Ratio(2)
92	93	93 grads/92 grads	93 pop/92 pop	Ratio(1)/Ratio(2)
93	94	94 grads/93 grads	94 pop/93 pop	Ratio(1)/Ratio(2)
94	95	95 grads/94 grads	95 pop/94 pop	Ratio(1)/Ratio(2)

2. Using the values of Ratio(3) above as independent variables, a straight-line arithmetic trend equation was used to compute multipliers for the years 2000, 2005 and 2010 for each county by race/ethnicity (Anglo/Other, Hispanic, Black). These multipliers were then applied to the 15-19 population data base, by county, race, ethnicity. Results of less than one were assigned a multiplier value of one. Counties with a very small number of graduates (less than five) and/or persons age 15-19 did not produce realistic multipliers. Limits were established based on a visual review of the data.

Table 12
RESIDENT ENROLLMENT - - PUBLIC UNIVERSITIES
COMPARISON OF ACTUAL TO FORECAST RESIDENT ENROLLMENT FOR 1996

	1996 Preliminary Resident Enrollment	"Best Fit" Resident Enrollment	Selected Rate
Angelo State University	5,928	5,920	Trend 96
Lamar University	8,013	8,079	95
Midwestern State University	4,999	5,016	95
Prairie View A&M University	5,269	5,328	Trend 96
Sam Houston State University	12,282	12,284	95
Southwest Texas State University	20,280	20,229	Trend 96
Stephen F. Austin State University	11,399	11,197	Trend 97
Sul Ross State University	2,459	2,466	Trend 96
Sul Ross Rio Grande College	844	854	Trend 97
Tarleton State University	6,262	6,323	Trend 96
Texas A&M International University	2,532	2,582	Trend 97
Texas A&M University	32,881	32,732	Trend 97
Texas A&M University at Commerce	6,810	6,771	95
Texas A&M University at Corpus Christi	5,608	5,680	95
Texas A&M University at Galveston	863	881	95
Texas A&M University at Kingsville	5,669	5,678	95
Texas A&M University at Texarkana	809	832	Trend 96
Texas Southern University	7,414	7,383	95
Texas Tech University	21,817	21,658	95
Texas Woman's University	8,800	8,970	95
The University of Texas at Arlington	18,876	18,720	Trend 97
The University of Texas at Austin	38,815	38,848	95
The University of Texas at Brownsville	2,593	2,620	95
The University of Texas at Dallas	7,671	7,665	95
The University of Texas at El Paso	13,380	13,581	Trend 97
The University of Texas of the Permian Basin	2,167	2,147	95
The University of Texas at San Antonio	16,774	16,925	Trend 96
The University of Texas at Tyler	3,345	3,395	95
The University of Texas-Pan American	12,355	12,547	Trend 97
University of Houston	27,368	27,135	Trend 96
University of Houston-Clear Lake	6,265	6,162	Trend 97
University of Houston-Downtown	6,880	6,862	95
University of Houston-Victoria	1,757	1,780	Trend 97
University of North Texas	22,803	22,228	95
West Texas A&M University	5,936	6,055	95

Table 13
**RESIDENT ENROLLMENT - - PUBLIC COMMUNITY AND TECHNICAL COLLEGES
 COMPARISON OF ACTUAL TO FORECAST RESIDENT ENROLLMENT FOR 1996**

	1996 Preliminary Resident Enrollment	"Best Fit" Resident Enrollment	Selected Rate
Alamo CCD Northwest Vista	800	n/a ¹	n/a ¹
Alamo CCD Palo Alto College	6,994	7,104	95
Alamo CCD San Antonio College	20,649	20,569	95
Alamo CCD St. Philip's College	7,348	7,410	Trend 97
Alvin Community College	3,923	3,842	Trend 96
Amarillo College	7,050	7,097	Trend 97
Angelina College	3,820	3,931	Trend 96
Austin Community College	24,717	25,197	95
Bee County College	2,698	2,763	Trend 97
Blinn College	9,320	9,572	Trend 96
Brazosport College	3,350	3,237	95
Central Texas College District	5,023	5,032	Trend 96
Cisco Junior College	2,525	2,581	Trend 96
Clarendon College	729	714	95
College Of the Mainland	3,679	3,728	Trend 96
Collin County Community College District	10,045	10,342	95
DCCCD Brookhaven College	7,187	7,151	95
DCCCD Cedar Valley College	2,792	2,730	Trend 96
DCCCD Eastfield College	7,882	7,808	Trend 97
DCCCD El Centro College	4,647	4,650	Trend 97
DCCCD Mountain View College	5,419	5,380	Trend 97
DCCCD North Lake College	5,522	5,528	Trend 97
DCCCD Richland College	11,242	11,178	Trend 97
Del Mar College	10,415	10,423	Trend 96
El Paso Community College District	18,723	19,059	95
Frank Phillips College	952	974	95
Galveston College	2,189	2,222	95
Grayson County College	2,816	2,833	Trend 96
Hill College	2,421	2,457	95
Houston Community College System	27,922	28,100	Trend 97
Howard College at Big Spring	1,974	1,975	95
Kilgore College	4,151	4,184	Trend 96
Lamar Technical Institute	1,572	1,553	Trend 96
Lamar University-Orange	1,331	1,364	95
Lamar University-Port Arthur	2,454	2,509	Trend 96

	1996 Preliminary Resident Enrollment	"Best Fit" Resident Enrollment	Selected Rate
Laredo Community College	7,144	7,263	95
Lee College	5,884	5,950	95
McLennan Community College	5,224	5,255	Trend 97
Midland College	3,956	3,882	95
Navarro College	3,129	3,129	95
North Central Texas College	3,917	3,961	95
North Harris Montgomery County College	21,316	21,625	Trend 97
Northeast Texas Community College	2,019	2,028	95
Odessa College	4,817	4,819	95
Panola College	1,655	1,690	95
Paris Junior College	2,715	2,755	95
Ranger Junior College	828	831	95
San Jacinto College-Central Campus	9,550	9,513	95
San Jacinto College-North Campus	4,006	4,077	95
San Jacinto College-South Campus	5,156	5,141	95
South Plains College	5,557	5,537	95
South Texas Community College	5,381	5,528	Trend 97
Southwest Collegiate Institute of the Deaf	84	81	95
Southwest Texas Junior College	3,221	3,299	Trend 96
Tarrant County-Northeast Campus	9,934	9,762	Trend 97
Tarrant County-Northwest Campus	3,960	3,853	Trend 97
Tarrant County-South Campus	8,113	7,922	Trend 97
Tarrant County-Southeast Campus	3,980	n/a ¹	n/a ¹
Temple Junior College	2,674	2,675	Trend 97
Texarkana College	2,985	2,982	Trend 96
Texas Southmost College	6,864	7,027	95
Trinity Valley Community College	4,417	4,479	Trend 96
Tyler Junior College	7,537	7,381	Trend 96
Vernon Regional Junior College	1,778	1,745	Trend 97
Victoria College	3,572	3,643	Trend 96
Weatherford College	2,310	2,352	95
Western Texas College	964	969	95
Wharton County Junior College	3,813	3,917	Trend 97
Texas State Technical College-Harlingen	3,075	3,090	Trend 96
Texas State Technical College-Sweetwater	1,014	1,017	Trend 96
Texas State Technical College-Waco	3,825	3,886	Trend 97

Notes: ¹ Institution does not have five years of historical data.

RESIDENT ENROLLMENT FORECAST

The selected "best fit" enrollment rate alternative and multiplier for each institution and for each ethnic group were applied to the corresponding age/ethnic/race group projected population (with age 15-19 adjusted) for 1997, 1998, 2000, 2005 and 2010 by county. Age groups were summed for each year, by race and ethnic group, to provide county total enrollment for Anglo/Other, Hispanic and Black students at each institution for each of the forecast years. County enrollments were summed by institution and year to provide total Anglo/Other, Hispanic, and Black student forecasts for each institution. Finally, the race and ethnic enrollments for each institution were summed to produce total resident enrollment.

NONRESIDENT ENROLLMENT RATIOS

The percent of resident students varies from 99 percent to 58 percent at public universities and from 100 percent to 68 percent at public community and technical colleges. Therefore, it was necessary to determine a means of accounting for expected nonresident students in each university. This was done by selecting a representative "nonresident factor" for each institution, based on historical data from 1991 to 1995. The ratios of nonresident to resident enrollment were compared with the preliminary 1996 nonresident to resident ratios for each institution. By observing the historical trend, a forecast ratio which was compatible with the trend and the preliminary 1996 ratio was selected for each institution. The selected ratio became a factor used later in the forecast process to determine nonresident enrollment forecasts for each institution. See Tables 14 and 15 for the 1991-95 average, 1995, preliminary 1996, and selected ratios.

Table 14
NONRESIDENT ENROLLMENT RATIOS -- PUBLIC UNIVERSITIES

Institutions	1991-95 Average	1995	Prelim 1996	Selected
Angelo State University	.056	.050	.046	.050
Lamar University	.058	.050	.052	.052
Midwestern State University	.088	.120	.129	.120
Prairie View A&M University	.194	.180	.170	.180
Sam Houston State University	.033	.030	.023	.023
Southwest Texas State University	.030	.030	.030	.030
Stephen F. Austin State University	.017	.020	.026	.020
Sul Ross State University	.026	.030	.025	.026
Sul Ross Rio Grande College	.038	.040	.026	.038
Tarleton State University	.014	.010	.017	.014
Texas A&M University	.180	.180	.175	.180
Texas A&M University-Commerce	.043	.040	.107	.080
Texas A&M University-Corpus Christi	.009	.020	.014	.010
Texas A&M University at Galveston	.438	.420	.393	.420
Texas A&M University-Kingsville	.069	.080	.079	.079
Texas A&M University-Texarkana	.401	.430	.419	.410
Texas A&M International University	.095	.070	.060	.070
Texas Southern University	.182	.140	.072	.100
Texas Tech University	.134	.130	.133	.133
Texas Woman's University	.105	.110	.111	.110
The University of Texas at Arlington	.087	.090	.088	.088
The University of Texas at Austin	.247	.250	.237	.237
The University of Texas at Brownsville	.015	.020	.021	.020
The University of Texas at Dallas	.115	.180	.239	.210
The University of Texas at El Paso	.139	.150	.150	.150
The University of Texas of the Permian Basin	.041	.040	.012	.030
The University of Texas at San Antonio	.046	.050	.046	.046
The University of Texas at Tyler	.049	.050	.035	.049
The University of Texas-Pan American	.020	.020	.026	.020
University of Houston	.132	.130	.125	.130
University of Houston-Clear Lake	.087	.100	.112	.100
University of Houston-Downtown	.203	.220	.155	.203
University of Houston-Victoria	.018	.020	.030	.020
University of North Texas	.139	.140	.075	.130
West Texas A&M University	.073	.080	.092	.080

Table 15
NONRESIDENT ENROLLMENT RATIOS --
COMMUNITY AND TECHNICAL COLLEGES

Institutions	Average 1991-95	1995	Prelim 1996	Selected
Alamo CCD Northwest Vista	n/a ¹	n/a ¹	.001	.001
Alamo CCD Palo Alto College	.103	.070	.080	.095
Alamo CCD San Antonio College	.071	.040	.040	.040
Alamo CCD St. Philip's College	.122	.090	.071	.090
Alvin Community College	.013	.020	.016	.016
Amarillo College	.010	0	.017	.013
Angelina College	.019	.020	.021	.020
Austin Community College	.027	.030	.032	.030
Bee County College	.017	.010	.012	.012
Blinn College	.040	.040	.042	.040
Brazosport College	.012	.010	.011	.012
Central Texas College District	.201	.190	.155	.190
Cisco Junior College	0	0	.014	0
Clarendon College	.103	.100	.074	.100
College of the Mainland	.011	.010	.018	.011
Collin County Community College District	.062	.040	.051	.050
DCCCD Brookhaven College	.047	.050	.047	.047
DCCCD Cedar Valley College	.010	.010	.013	.010
DCCCD Eastfield College	.013	.010	.017	.013
DCCCD El Centro College	.021	.020	.034	.021
DCCCD Mountain View College	.013	.010	.016	.013
DCCCD North Lake College	.039	.050	.062	.050
DCCCD Richland College	.037	.040	.042	.040
Del Mar College	.052	.060	.024	.052
El Paso Community College District	.042	.030	.027	.030
Frank Phillips College	.068	.070	.068	.068
Galveston College	.048	.050	.058	.050
Grayson County College	.074	.070	.076	.074
Hill College	.033	.030	.034	.033
Houston Community College System	.234	.270	.178	.234
Howard College at Big Spring	.025	.020	.015	.020
Kilgore College	.025	.030	.037	.030
Lamar Technical Institute	.027	.010	.022	.022
Lamar University-Orange	.067	.080	.120	.100
Lamar University-Port Arthur	.019	0	.008	.010
Laredo Community College	.052	.040	.036	.040

Institutions	Average 1991-95	1995	Prelim 1996	Selected
Lee College	.015	.020	.012	.015
McLennan Community College	.019	.020	.021	.020
Midland College	.032	.030	.013	.030
Navarro College	.091	.100	.085	.090
North Central Texas College	.060	.050	.056	.056
North Harris Montgomery County College	.025	.020	.016	.020
Northeast Texas Community College	.017	.020	.022	.020
Odessa College	.018	.010	.011	.011
Panola College	.058	.070	.066	.066
Paris Junior College	.104	.080	.068	.080
Ranger Junior College	.052	.020	.028	.028
San Jacinto College-Central Campus	.100	.100	.034	.090
San Jacinto College-North Campus	.045	.070	.018	.045
San Jacinto College-South Campus	.088	.080	.034	.060
South Plains College	.041	.040	.042	.041
South Texas Community College	.002	0	.025	.010
Southwest Collegiate Institute of the Deaf	.265	.180	.143	.180
Southwest Texas Junior College	.018	.010	.015	.015
Tarrant County-Northeast Campus	0	0	.005	.002
Tarrant County-Northwest Campus	0	0	.003	.001
Tarrant County-South Campus	0	0	.002	0
Tarrant County-Southeast Campus	n/a ¹	n/a ¹	.004	.004
Temple Junior College	.031	.040	.047	.040
Texarkana College	.500	.430	.323	.430
Texas Southmost College	.007	0	.004	.007
Trinity Valley Community College	.020	.020	.019	.020
Tyler Junior College	.023	.020	.018	.020
Vernon Regional Junior College	.110	.090	.036	.090
Victoria College	.025	.030	.007	.022
Weatherford College	.014	.020	.015	.015
Western Texas College	.045	.050	.046	.046
Wharton County Junior College	.017	.020	.038	.020
Texas State Technical College-Harlingen	.025	.020	.008	.020
Texas State Technical College-Sweetwater	.023	.030	.011	.023
Texas State Technical College-Waco	.004	.010	.028	.010

Notes: ¹ Institution did not have enrollment in 1995.

DRAFT TOTAL ENROLLMENT FORECAST AND ADJUSTMENTS

At this point in the forecast process, total resident enrollment forecasts for 1997, 1998, 2000, 2005 and 2010, plus a nonresident factor, were available for each institution. Multiplying the selected nonresident factor by the resident enrollment produced nonresident enrollment by institution and year. Adding the nonresident and resident enrollments resulted in a base total enrollment forecast for each institution in 1997, 1998, 2000, 2005 and 2010. The selected alternative used to forecast resident enrollment and the factor which produced nonresident enrollment were controlled by quantifiable historical enrollment patterns and expected demographic changes. Consequently, the enrollment forecasts which they produced did not take into account future changes in the status of institutions or internal, nonquantifiable conditions which could influence enrollment at a specific college or university. These were addressed, to some degree, by making adjustments to institutional draft forecasts as appropriate:

- Some public universities have, or intend to establish, policies that will cap enrollment at specific levels. For these institutions, the model could possibly forecast an excess number of students. In cases where this occurred, the excess was subtracted and redistributed to other institutions. In general terms, this was accomplished as follows:

Excess resident students, by race/ethnicity, were determined for each year (1997, 1998, 2000, 2005 and 2010).

- The Texas Legislature authorized Texas A&M University-Corpus Christi to convert to four-year status beginning in fall 1994. Lower division students entered Texas A&M International University in fall 1995. Historical enrollment trends could not accurately predict changes in these institutions. The institutions provided estimates of future enrollments and these estimates were integrated into the overall forecasts.
- Texas State Technical College-Amarillo merged with Amarillo College in fall 1995.
- Alamo Community College District and Tarrant County Community College District opened new campuses in fall 1996.

Table 16
**ADJUSTMENTS TO DRAFT ENROLLMENT FORECAST
 BASED ON LOCAL CONDITIONS**

Institutions	1997	1998	2000	2005	2010
Tarleton State University	30	35	40	40	45
Texas Tech University	0	200	400	600	1,000
The University of Texas at Arlington	(970)	(635)	0	200	400
The University of Texas at San Antonio ¹	500	650	1,950	3,250	4,500
The University of Texas - Pan American	0	0	500	1,000	1,000
University of North Texas	0	100	200	500	700
Total, Public Universities	(440)	350	3,090	5,590	7,645
Panola Community College	0	34	99	196	318

Notes: ¹ Institution adding an additional campus.

ENROLLMENT FORECAST FOR TEXAS INDEPENDENT COLLEGES AND UNIVERSITIES

Forecasts of total enrollment for the independent colleges and universities were obtained by first determining the historical correlation between independent and public university total enrollments for the period 1986 to 1995, as follows:

Table 17
ACTUAL ENROLLMENT

Year	Public Universities (X)	Independent Senior Institutions (Y)
1986	356,962	79,947
1987	365,882	80,124
1988	385,422	81,946
1989	399,948	83,974
1990	405,682	85,677
1991	407,219	86,810
1992	410,706	89,114
1993	407,314	90,570
1994	406,569	92,646
1995	400,633	95,276

These observed data were used to develop the following regression equation:

$$Y_i = \bar{Y} + \frac{\sum xY}{\sum x^2} (X_i - \bar{X}) \quad \text{or}$$

$$Y_i = 86,745 + .214035 (X_i - 394,634)$$

Where:

- Y_i is the predicted value of enrollment at independent colleges and universities
- X_i is the predicted value of enrollment at public universities
- \bar{Y} is the mean of the Y observations (independent senior institutions)
- \bar{X} is the mean of the X observations (public universities)
- x is the deviation of X observations from the mean

After forecasts for public universities were made, these values were substituted for X_i as shown below:

1997 - 402,425
1998 - 405,755
2000 - 410,163
2005 - 424,050
2010 - 436,978

The regression equation was used to predict the enrollment for independent colleges and universities. An additional multiplier was added to account for past error. The following forecast was predicted:

Table 18
ENROLLMENT FORECAST -- INDEPENDENT INSTITUTIONS

<u>Year</u>	<u>Independent Institutions</u>
1997	97,784
1998	98,573
2000	99,616
2005	102,904
2010	105,964

ADDENDUM

PARITY ENROLLMENT FORECAST

CONCEPT

One of the highest priorities of Texas higher education is to increase minority representation through enrollment and retention. The methodology which produced the forecasts in Tables 1 through 5 recognizes demonstrated increases in minority enrollment rates and future changes in minority population groups that can influence college attendance. However, only a limited provision was made to include expectations of higher minority enrollments which could materialize because of increased success in recruiting, counseling, remediation and retention. Many of these actions are well under way, and it is reasonable to assume that they will have a significant impact on higher education enrollment.

This study of increased minority participation examines Texas higher education enrollment forecasts based on the following additional assumptions:

- By the year 2010, Hispanic and Black enrollment rates will be at parity with the Anglo/Other rates for 1995.
- The ethnic mix of students enrolled in Texas higher education will approximate the ethnic mix for the 15-34-year-old Texas population by 2010.

CONCLUSION

A comparison of public university race/ethnic enrollment based on the assumptions listed above (parity forecast) and those following the trend procedure is shown in Table 19. The graph in Figure 2 illustrates the difference in total university enrollment. For public universities, the parity forecast is higher by 61,246 students (16.2 percent) in 2000, 125,141 (31.75 percent) in 2005, and 191,978 (47.14 percent) in 2010. Should these parity forecast enrollments be reached, institutions would have proportionately higher enrollments than those shown in Table 2. Some public universities have placed enrollment caps in effect, and the impact on institutions without those limits would be even more pronounced.

The same information for public community colleges is illustrated in Table 20 and Figure 3. Community and technical college enrollment would increase by 28,259 students (6.9 percent) in 2000, 122,595 (26.51 percent) in 2005, and 92,941 (20.92 percent) in 2010.

At both the universities and community colleges, minority students would account for the increases to fulfill the parity forecast in 2010, the public universities would have to recruit and retain 147,386 more Hispanic students and 44,589 more Black students than indicated by current enrollment trends. It would be necessary for the community and technical colleges to recruit and retain 62,761 more Hispanic students and 30,180 more Black students.

Table 19
**TEXAS PUBLIC UNIVERSITY RESIDENT ENROLLMENT --
 COMPARISON OF PARITY AND TREND FORECASTS**

	Anglo/Other	Hispanic	Black	Total
2000				
Parity	261,422	127,726	50,044	439,194
Trend	263,419	79,373	35,156	377,948
Difference	(1,997)	48,353	14,888	61,246
Difference (%)	-0.76%	60.92%	42.35%	16.2%
2005				
Parity	267,600	185,069	66,558	519,228
Trend	271,822	85,755	36,511	374,087
Difference	(4,222)	99,314	30,047	125,141
Difference (%)	-1.55%	115.81%	82.3%	31.75%
2010				
Parity	273,778	242,411	83,071	599,263
Trend	273,778	95,025	38,482	407,285
Difference	0	147,386	44,589	191,978
Difference (%)	0.00%	155.1%	115.87%	47.14%

Figure 2

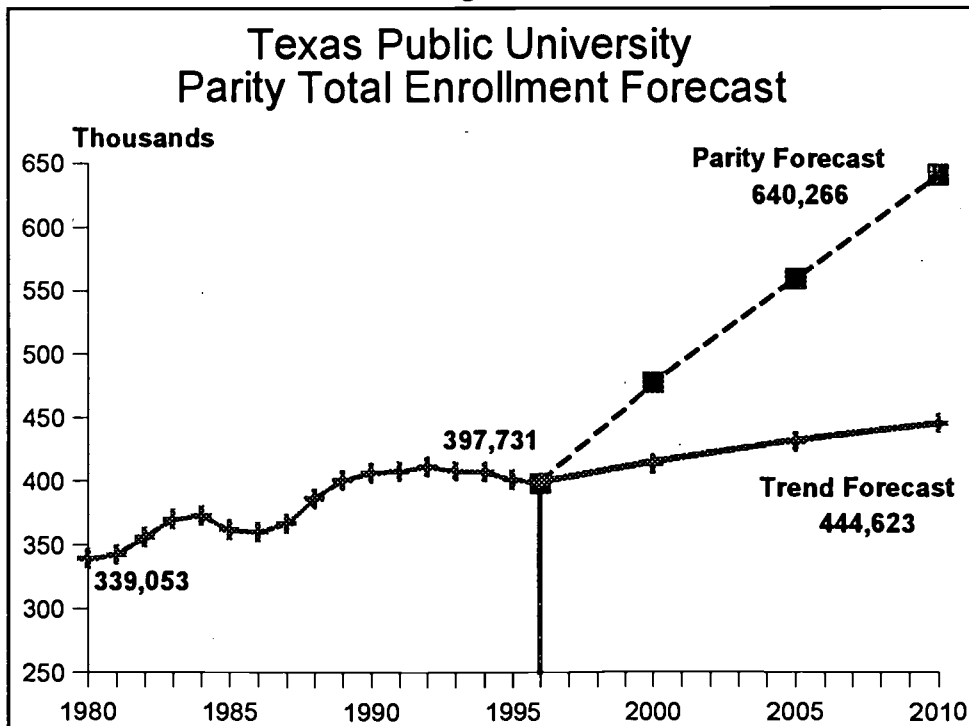
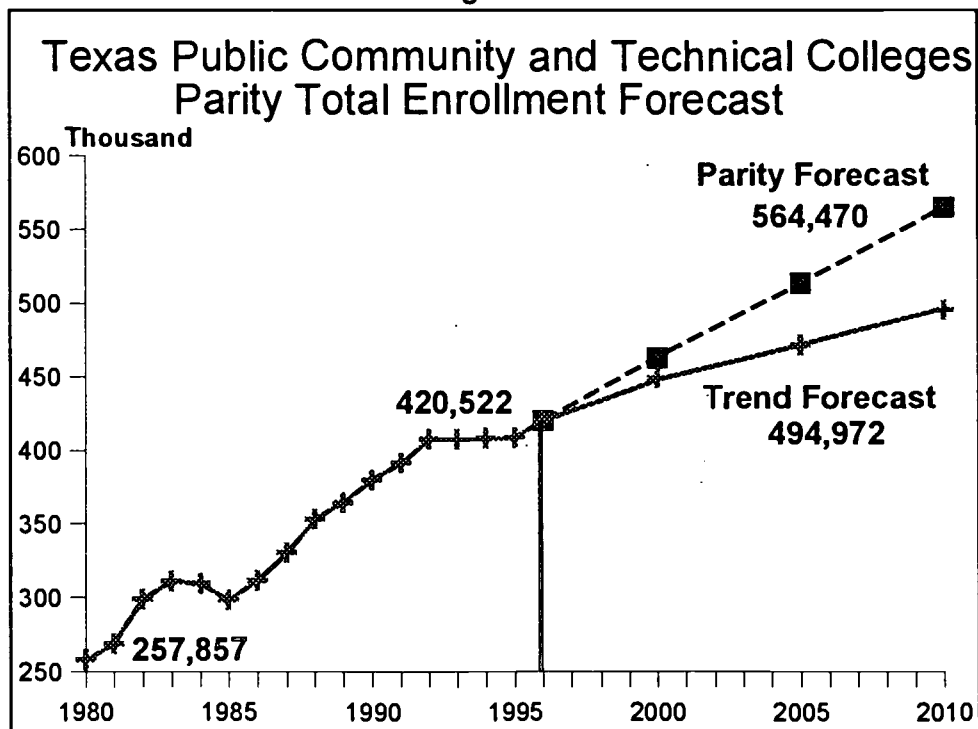


Table 20
TEXAS PUBLIC COMMUNITY AND TECHNICAL COLLEGE RESIDENT ENROLLMENT -- COMPARISON OF PARITY AND TREND FORECASTS

	Anglo/Other	Hispanic	Black	Total
2000				
Parity	252,196	133,940	51,479	437,615
Trend	254,802	113,187	41,367	409,356
Difference	(2,606)	20,753	10,112	28,259
Difference (%)	-1.02%	18.34%	24.45%	6.90%
2005				
Parity	256,795	167,219	63,430	487,443
Trend	258,672	123,134	42,870	424,676
Difference	(1,877)	44,085	20,560	62,767
Difference (%)	-0.73%	35.85%	47.96%	14.78%
2010				
Parity	261,394	200,498	75,380	537,271
Trend	261,394	137,737	45,200	444,330
Difference	0	62,761	30,180	92,941
Difference (%)	0.00%	45.57%	66.77%	20.92%

Figure 3



FORECAST PROCEDURE

Enrollment rates were computed for each public university and community and technical college by race/ethnic groups based on 1995 Anglo/Other rates. In general, the same process was used as described in the "Enrollment Rate Alternative" section for public universities. Hispanic and Black rates were set to Anglo/Other rates unless these minority rates were higher. Then the actual Hispanic or Black computed rate was used. The rates were combined with projected population to produce each forecasted enrollment for 2010 by race/ethnic group for each institution. Forecasts for the 35 public universities were summed by race/ethnic group, and race/ethnic group totals were combined to obtain a total public university and community and technical college enrollment forecast. The race/ethnic and total resident enrollment for other years were adjusted to obtain a proportionate change between 1995 and 2010. (See Tables 19 and 20).

The phase-in race/ethnic enrollment forecast was then compared with the race/ethnic population mix in the 15- to 34-year-old group for each year to determine compatibility. (See Table 19). Adjustments to race/ethnic forecasts for public universities and community colleges were made for 2010. Adjustments did not change the totals. The result was a resident enrollment forecast based on race/ethnic enrollment rate parity and population mix compatibility as shown in Table 21.

Table 21
COMPARISON OF RACE/ETHNIC MIX (PERCENT) FOR PARITY FORECAST
AND POPULATION PROJECTIONS FOR AGE GROUP 15-34

	2000		2005		2010	
	Enroll Ratio	Pop. (%)	Enroll Ratio	Pop. (%)	Enroll Ratio	Pop. (%)
<u>Public Univ.</u>						
Anglo/Other	59.5	53.1	51.5	51.6	45.7	49.6
Hispanic	29.1	34.3	35.6	35.8	40.5	37.9
Black	11.4	12.6	12.8	12.6	13.9	12.5
<u>Community and Technical Col.</u>						
Anglo/Other	57.6	53.1	52.7	51.6	48.7	49.6
Hispanic	30.6	34.3	34.3	35.8	37.3	37.9
Black	11.8	12.6	13.0	12.6	14.0	12.5

Nonresident enrollment was assumed to be the same as computed by the trend forecast model. Table 22 shows the total parity forecast with the nonresident increment was added.

Table 22
PARITY TOTAL ENROLLMENT FORECAST

	<u>2000</u>	<u>2005</u>	<u>2010</u>
<u>Public Universities</u>			
Resident	439,194	519,228	599,263
Nonresident	37,886	39,601	41,003
Total	477,080	558,829	640,266
 <u>Community and Technical</u>			
<u>Colleges</u>			
Resident	437,615	487,443	537,271
Nonresident	25,404	26,149	27,199
Total	463,019	513,592	564,470

The Texas Higher Education Coordinating Board does not discriminate on the basis of race, color, national origin, gender, religion, age or disability in employment or the provision of services.

For more information contact:

Dr. David W. Gardner
Texas Higher Education Coordinating Board
Division of Research, Planning, and Finance
P.O. Box 12788
Austin, TX 78711

512 483-6150

512 483-6147 (Fax)

Internet: Gardnerdd@thehb.state.tx.us



U.S. DEPARTMENT OF EDUCATION
Office of Educational Research and Improvement (OERI)
Educational Resources Information Center (ERIC)



NOTICE

REPRODUCTION BASIS



This document is covered by a signed "Reproduction Release (Blanket)" form (on file within the ERIC system), encompassing all or classes of documents from its source organization and, therefore, does not require a "Specific Document" Release form.



This document is Federally-funded, or carries its own permission to reproduce, or is otherwise in the public domain and, therefore, may be reproduced by ERIC without a signed Reproduction Release form (either "Specific Document" or "Blanket").