

DOCUMENT RESUME

ED 407 564

CE 073 997

TITLE Accredited Distance Study Degrees. Graduates and Employers Evaluate Their Worth.

INSTITUTION Distance Education and Training Council, Washington, DC.

PUB DATE Aug 94

NOTE 52p.

AVAILABLE FROM Distance Education and Training Council, 1601 18th Street, N.W., Washington, DC 20009-2529; <http://www.detc.org> (\$5).

PUB TYPE Reports - Evaluative (142) -- Tests/Questionnaires (160)

EDRS PRICE MF01/PC03 Plus Postage.

DESCRIPTORS Comparative Analysis; Conventional Instruction; Correspondence Study; Degrees (Academic); \*Distance Education; \*Educational Attitudes; \*Educational Quality; \*Employer Attitudes; Followup Studies; Graduate Surveys; \*Graduates; Higher Education; National Surveys; Questionnaires; Two Year Colleges

IDENTIFIERS Employer Surveys

ABSTRACT

The quality and value of accredited distance study degrees were evaluated through a survey of a random sample of graduates of 10 Distance Education and Training Council-accredited distance study institutions throughout the United States and a follow-up survey of some of the graduates' supervisors. Of the 674 graduates surveyed, 148 (24%) responded, and 45% elected to have their supervisors surveyed. Ninety-four percent of the graduates considered their course material sufficiently comprehensive, 67% rated home study more difficult than the "classroom education" they had experienced, 53% rated the overall instructional services offered by their correspondence/distance institutions as superior, 96% considered their degree to have been worth the effort, 46% rated their distance degree more valuable than resident school degrees in the same subject/field, and 47% rated their degree as valuable as other resident school degrees. Of the 55% of contacted supervisors who completed questionnaires, 84% knew that their employee had earned an academic degree by correspondence/distance study, 94% thought that the graduate they supervised compared favorably in knowledge, skills, and attitudes with subordinates holding resident degrees, and 92% said that they would be inclined to hire and supervisor other individuals holding correspondence/distance study degrees. (Forty-five graphs are included. Both survey instruments are appended.) (MN)

\*\*\*\*\*  
 \* Reproductions supplied by EDRS are the best that can be made \*  
 \* from the original document. \*  
 \*\*\*\*\*

# Accredited Distance Study Degrees

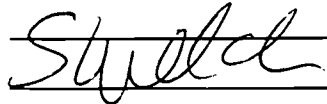
## Graduates and Employers Evaluate Their Worth

U.S. DEPARTMENT OF EDUCATION  
Office of Educational Research and Improvement  
EDUCATIONAL RESOURCES INFORMATION  
CENTER (ERIC)

- This document has been reproduced as received from the person or organization originating it.
- Minor changes have been made to improve reproduction quality.

- Points of view or opinions stated in this document do not necessarily represent official OERI position or policy.

"PERMISSION TO REPRODUCE THIS  
MATERIAL HAS BEEN GRANTED BY



TO THE EDUCATIONAL RESOURCES  
INFORMATION CENTER (ERIC)."

Conducted by the  
**Distance Education and Training Council**

# **Accredited Distance Study Degrees: Graduates and Employers Evaluate Their Worth**

Published by the  
Distance Education and Training Council  
1601 18th Street, NW  
Washington, D.C. 20009-2529  
(202) 234-5100

© August 1994

Printed by ICI University  
Irving, Texas

The Distance Education and Training Council (DETC), formerly the National Home Study Council, is a voluntary association of accredited distance study institutions. DETC was founded in 1926 to promote sound educational standards and ethical business practices within the correspondence/distance study field. The independent DETC Accrediting Commission is listed by the United States Department of Education as a "nationally recognized accrediting agency." The Accrediting Commission is also a recognized member of the Commission on Recognition of Postsecondary Accreditation (CORPA).

## Table of Contents

Foreword.....	1
Survey Method.....	2
Survey Summary .....	2
Response Rates by Institution .....	5
Personal.....	6
Degrees Awarded & Time to Earn Degree.....	7
Reasons for Selecting Distance Study .....	8
Course Material Was Comprehensive .....	9
Level of Difficulty .....	10
Challenged by Level of Difficulty .....	11
Knowledge & Competence of Faculty.....	12
Faculty Understanding of Materials .....	13
Adequately Tested on Course Materials .....	14
Satisfaction with the Instructional Services .....	15
Goals When Enrolled in Program .....	16
Ways Benefited by Obtaining Degree .....	18
Degree Was Worth Effort Required .....	21
Program Provided Education .....	20
Increase in Income Due to Degree .....	22
Job Promotion Due to Degree .....	23
Successful in Transferring Credits .....	24
Satisfaction with Degree Program .....	25
Rate Degree in Comparison with Resident School Degrees .....	26

Recommendation of Degree Program .....	30
Would Enroll in Another Degree Program .....	31
Strong Points of Distance Study Method .....	32
Weak Points of Distance Study Method .....	33
Other Comments on School, Program or Method .....	34
Survey Questions of Supervisors of Home Study Degree Holders...	35
Appendix I - Survey on Home Study Degrees .....	41
Appendix II - Survey of Supervisors of Home Study Degree Holders .....	45

## Foreword

In May 1994 the Distance Education and Training Council (formerly the National Home Study Council) surveyed graduates of DETC-accredited member institutions. Members were asked to send in a random sampling of 100 names of graduates from their degree programs.<sup>1</sup> The degrees awarded are primarily vocational ones earned by working adults.

The Accrediting Commission of the Distance Education and Training Council accredited its first academic degree offered by correspondence/distance study in January 1979. In 1983 the DETC conducted its first survey of graduates and their employers and reported the results in a report entitled, "Accredited Home Study Degrees: Graduates and Employers Evaluate Their Worth."

The purposes of these surveys were to obtain information on how DETC degree graduates felt about their distance study experience, how this degree had affected their careers or personal life, and how employers felt about individuals who had earned a degree through distance study.

Ten DETC institutions sent 674 graduates' names and addresses. Adjusting for the 44 non-deliverable survey forms mailed, there was a total of 148 responses received, for a response rate of 24%.

A follow-up survey of the employers of the graduates (in which 55% of the surveyed supervisors responded), was conducted.

The results of these surveys certainly reflect favorably on accredited distance study degrees. The attached tables of data underscore the theme that distance study degrees are valuable, worthwhile credentials . . . particularly to the student and to his or her employer.

This report provides positive testimony to the rigor, depth and worth of accredited degrees earned via distance study. We invite you to study the tables of data which follow. Further information about this survey and the data in this report—or about the distance study field—may be obtained by contacting the Distance Education and Training Council at 202-234-5100.

<sup>1</sup> Some institutions provided fewer than 100 names. Rather, they submitted the names of all graduates to date.

## Survey Method

The Distance Education and Training Council asked the 10 accredited distance study institutions (see page 5) offering academic degrees to submit labels with the names and addresses of a random sampling of graduates from the degree program(s).

In all, 674 names were submitted. In May 1994, a mail survey questionnaire (see Appendix I) was mailed to each of the names. A return envelope was included. A total of 674 surveys were mailed, including 158 to foreign countries (7 to Canada). A total of 148 responses were returned to the Distance Education and Training Council. Forty-four envelopes were returned marked "undeliverable." The response rate was 24%, which is considered good in mail surveys of this type, since there were no follow-up mailings to the non-respondents.

A second survey of the graduates' job supervisors is shown at Appendix II. Sixty-seven graduates gave permission for DETC to survey their supervisors. A total of 37 supervisor surveys were received, giving an excellent response rate of 55% (none were returned "undeliverable").

## Survey Summary

### Graduate Survey Results

According to the results of the 1994 survey of 674 (24% responded) graduates of academic degree programs offered by accredited DETC member institutions the following emerged:

1. The largest average percentage (34%) were ages 26-30; the second largest being ages 36-40 (20%). The largest average percentage (14%) of income was the \$31,000 - \$35,000 range; the second being 13% at \$26,000 - \$30,000 (see page 6).
2. Some 71% of the degrees were awarded at the Associate degree level; 18% were Bachelor degrees; and 11% were Masters degrees. It took an average of 3 years to earn an Associate degree, 4 years to earn a Bachelors degree, and 2 years to earn a Masters degree (see page 7).
3. Graduates had selected the distance study method because it was the most convenient way for them (36%). Other reasons given for electing to study by the correspondence/distance study method were: work schedule (33%), family constraints

(12%), study at your own pace (10%), costs less (6%) and unable to take courses at a traditional colleges or university (3%) (see page 8).

4. Ninety-four percent thought that the course material was sufficiently comprehensive to satisfy their needs (see page 9).
5. The majority (67%) rated home study more difficult in regards to the level of difficulty and the challenge of the program compared with “classroom education” they had experienced (see page 10).
6. The majority (61%) said that they were always challenged by the level of difficulty of the course(s) (see page 11).
7. When rating the depth of knowledge and teaching competence of the faculty, 55% of the graduates chose “superior” (see page 12).
8. The majority (86%) said that the assistance they received from faculty always reflected an adequate understanding of the course materials (see page 13).
9. When asked if the graduate found the examinations and assigned projects to adequately test their understanding of the course materials, 85% answered “in most cases” (see page 14).
10. Fifty-three percent rated their satisfaction “superior” with the overall instructional services offered by the institution (see page 15).
11. When asked what their goals were when they enrolled in the program, the highest rated answers were: 77% said “personal satisfaction,” 76% said “to learn more about a subject,” and 65% said “improve job skills” (see pages 16-17).
12. When asked to rate the ways they benefited by obtaining a degree, 75% said “personal satisfaction,” 65% said “enjoyment of learning,” and 62% said “improve job skills” (see pages 18-19).
13. When asked, “To what extent do you think this degree program provided the knowledge, skills, and education you were seeking,” 61% chose “superior” (see page 20).
14. Ninety-six percent said that they thought the degree they earned was worth the effort (see page 21).
15. When asked, “All things considered, how would you rate your satisfaction with the degree program,” the majority (63%) answered “superior” (see page 25).



16. When rating the degree in comparison with other resident school degrees in the same subject/field, 46% rated it “more valuable,” and an additional 47% rated it “just as valuable” (see pages 26-29).
17. Ninety-five percent said that they would recommend the degree program to a friend (see page 30).
18. Eighty percent said that they would enroll in another degree program offered via distance study (see page 31).

### **Supervisor Survey Results**

In a separate survey of the graduate’s supervisors (45% elected to have their supervisors surveyed by DETC; 55% of the supervisors responded), the following emerged:

1. Eighty-four percent of the supervisors knew that the person had earned an academic degree by correspondence/distance study (see page 35).
2. Ninety-four percent of the supervisors thought that the graduate they supervised compared favorably in knowledge, skills and attitude with subordinates with resident degrees (see page 36).
3. When asked, “Do you think that this person performs better on the job because of the degree earned?” 81% said “Yes” (see page 37).
4. Ninety-two percent said that they would be inclined to hire or supervise other employees who have earned their degrees by correspondence/distance study (see page 38).
5. Ninety-seven percent said that they would encourage others to enroll in accredited distance education degree programs to increase their job competence (see page 39).
6. When asked to rate the value of the degree earned by their employee compared to a resident school degree in the same field, 70% rated the degree “just as valuable,” and an additional 14% rated it “more valuable” (see page 40).

## Response Rates by Institution

Institution	Surveys Mailed	Surveys Received	Response Rate
Berean College	36	7	20%
California College for Health Sciences	95	19	20%
Cleveland Institute of Electronics	100	30	30%
Grantham College of Engineering	100	31	31%
Institute of Physical Therapy	3	1	33%
ICI University	100	8	8%
ICS Center for Degree Studies	120	41	34%
IMC-International Management Centres	98	8	8%
Paralegal Institute	2	1	50%
Peoples College of Independent Studies	20	2	10%

Total Surveys Mailed: 674

Total Surveys Received: 148

Undeliverable Surveys: 44

Response Rate: .2349 or 24%

## Personal

### Age:

18-20 (0%)	46-50 (9%)
21-25 (1%)	51-55 (4%)
26-30 (34%)	56-60 (3%)
31-35 (14%)	61-65 (1%)
36-40 (20%)	66-70 (0%)
41-45 (14%)	

### Income (in thousands):

\$10-15 (11%)	\$41-45 (8%)
\$16-20 (11%)	\$46-50 (7%)
\$21-25 (9%)	\$51-55 (8%)
\$26-30 (13%)	\$56-60 (3%)
\$31-35 (14%)	\$61-65 (1%)
\$36-40 (10%)	\$66-above (5%)

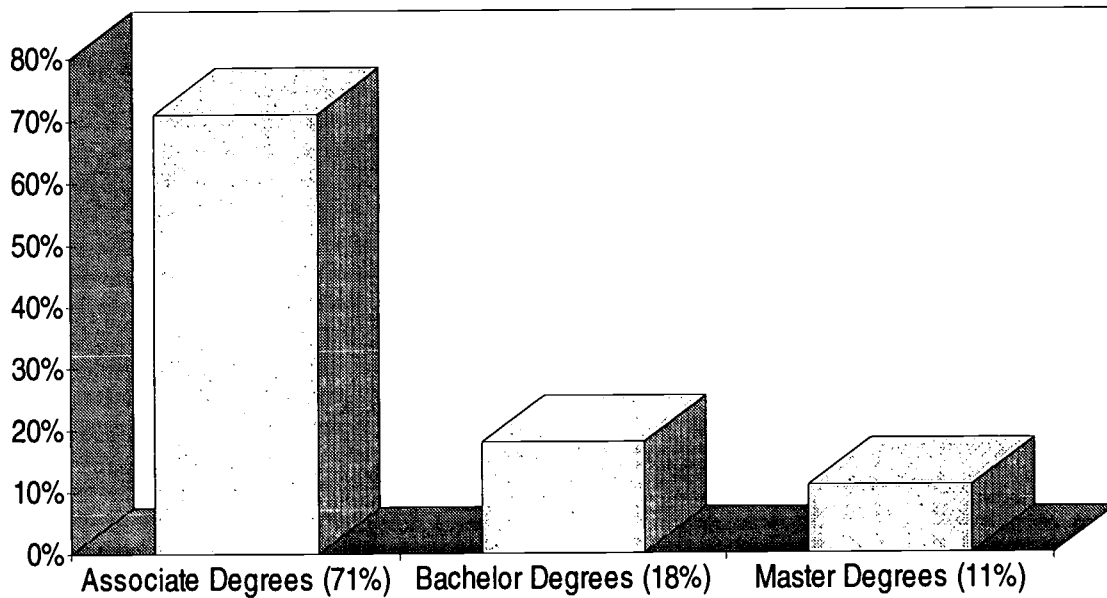
## Questions 1 & 2

### Degrees Awarded & Time to Earn Degrees

1. *What academic degree did you earn from this institution?*
2. *How many years did it take you to earn your degree?*

Averages:      Associate (3 yrs.)      Bachelor (4 yrs.)      Master (2 yrs.)

### Answer

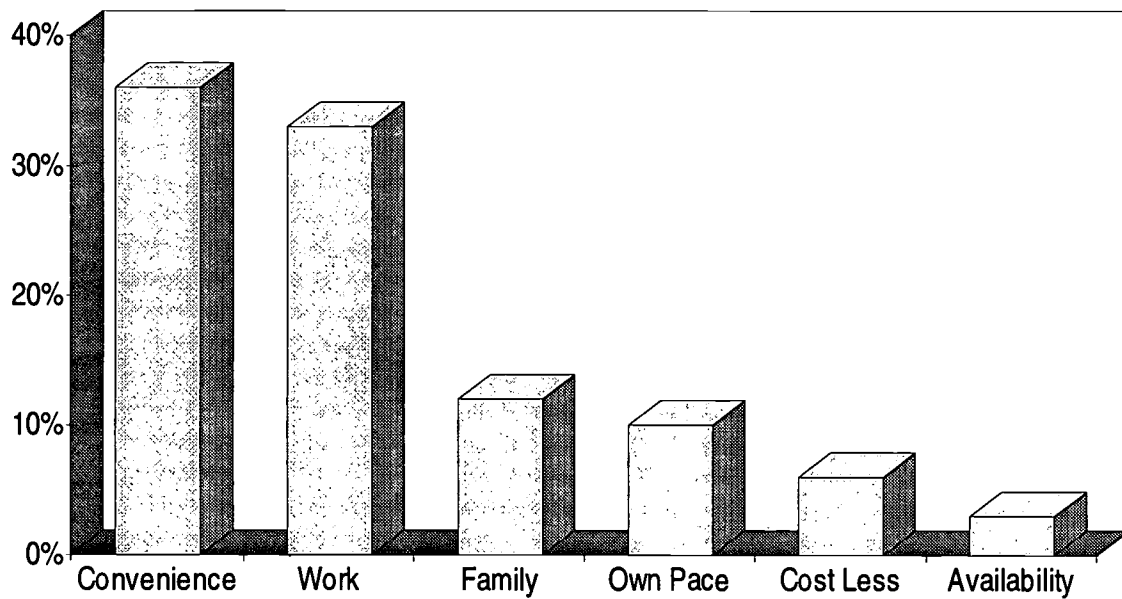


### Question 3

#### Reasons for Selecting Distance Study

3. *Why did you elect to study by the correspondence/home study method?*

#### Answer



Convenience = 36%  
Work Schedule = 33%  
Family Constraints = 12%  
Study at Own Pace = 10%  
Cost Less = 6%  
Availability = 3%

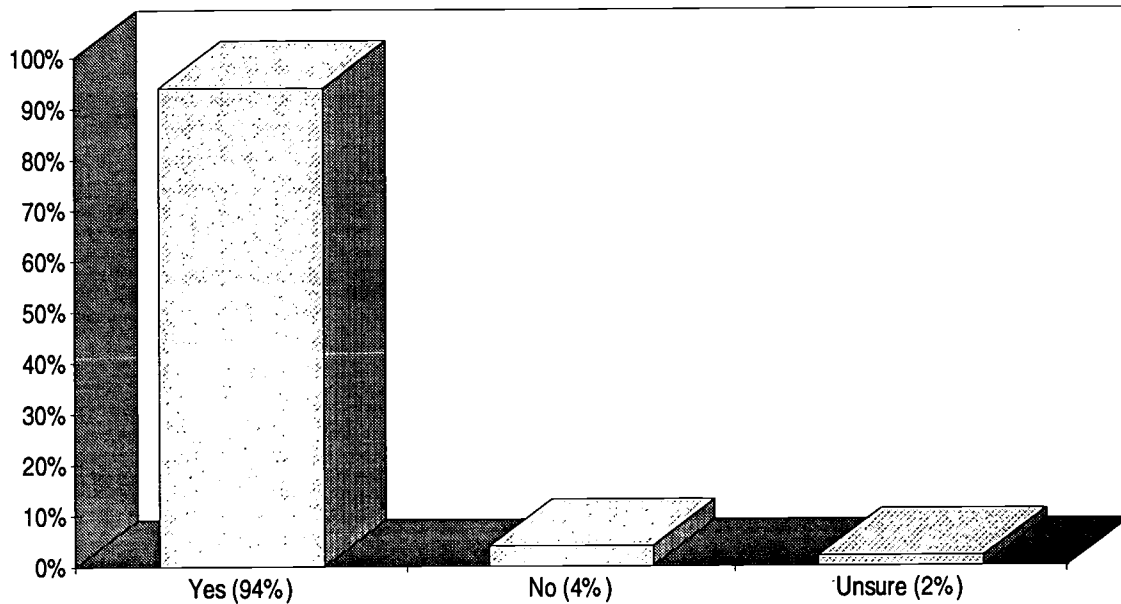
### Question 4

#### Course Material Was Comprehensive

4. *Did you think the course material was sufficiently comprehensive to satisfy your needs?*

- a. Yes
- b. No
- c. Unsure

#### Answer



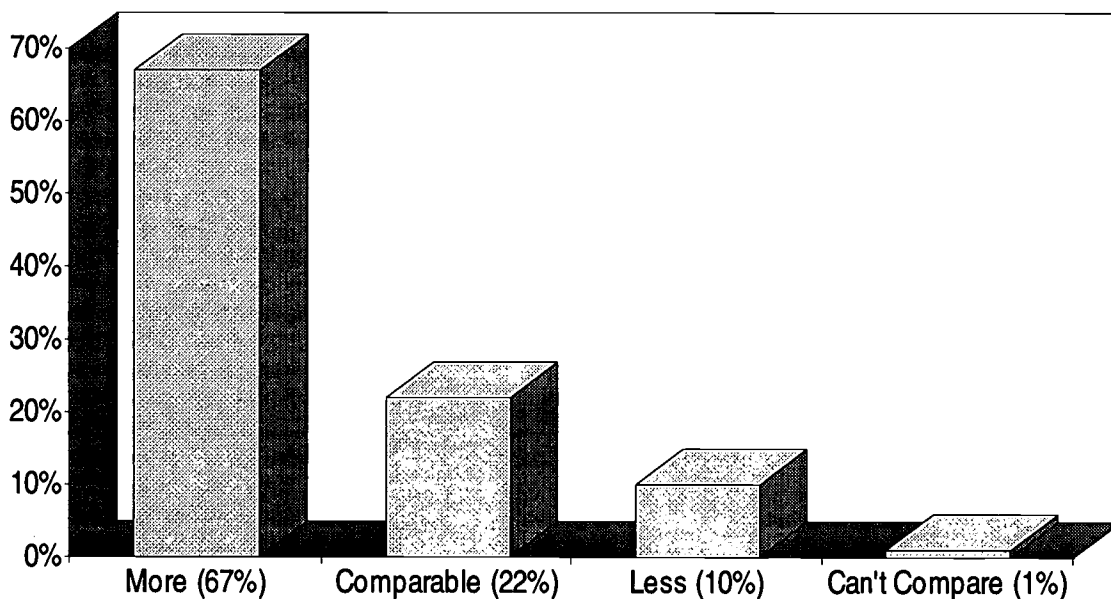
### Question 5

#### Level of Difficulty

5. Compared to "classroom education" you have had, what do you think about the level of difficulty and the challenge of this degree program?

- a. home study was **more** difficult
- b. home study was comparable
- c. home study was **less** difficult
- d. unable to compare the two

#### Answer



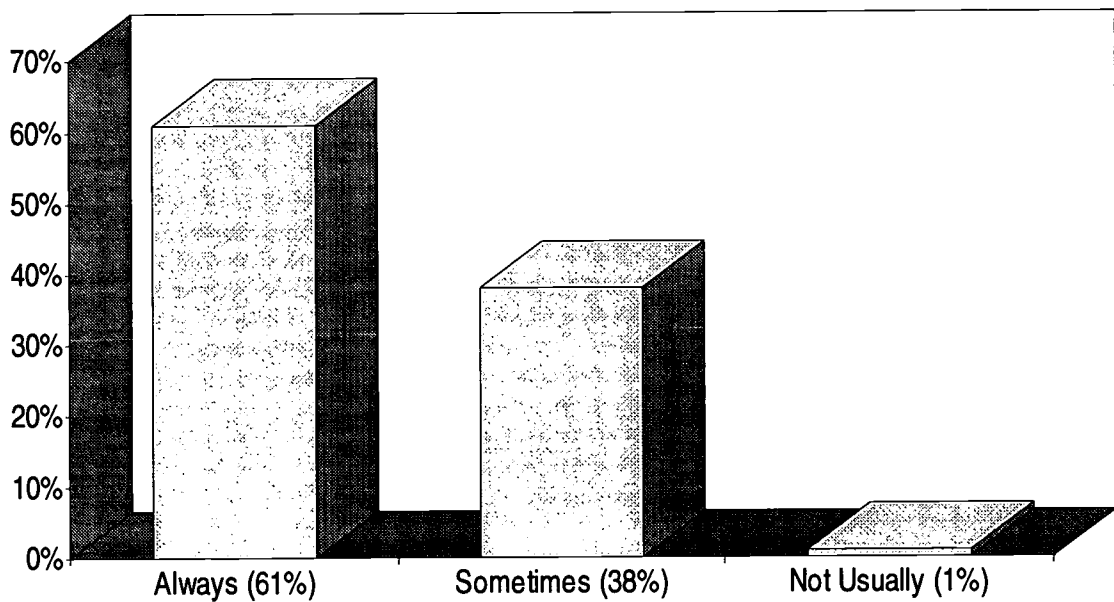
### Question 6

#### Challenged by Level of Difficulty

6. *Were you challenged by the level of difficulty of the course(s)?*

- a. always
- b. sometimes
- c. not usually

### Answer





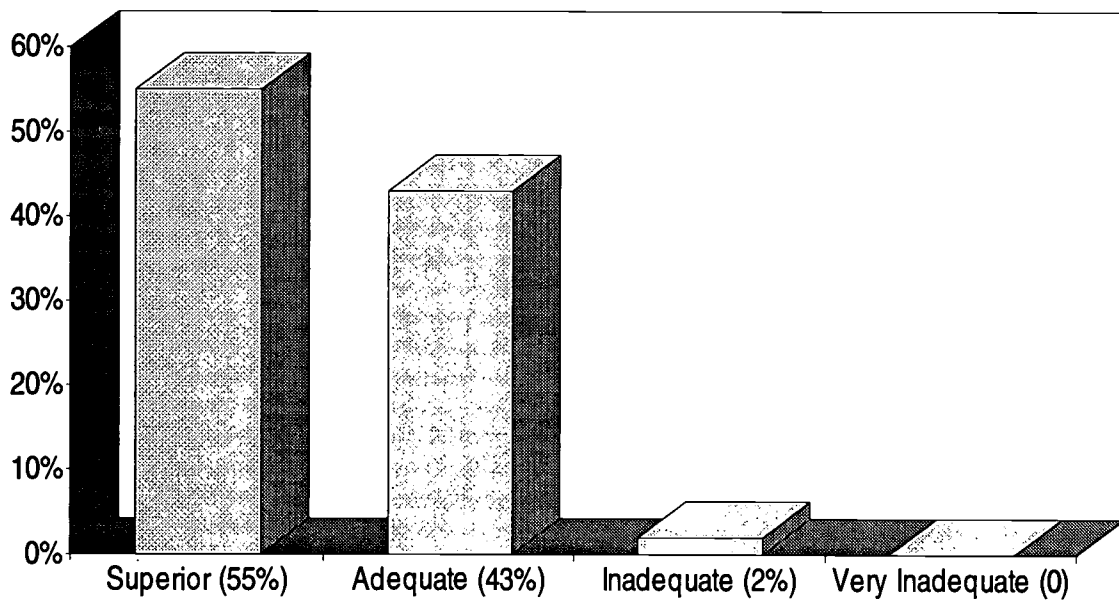
### Question 7

#### Knowledge & Competence of Faculty

7. How would you rate the depth of knowledge and teaching competence of the faculty?

- a. superior
- b. adequate
- c. inadequate
- d. very inadequate

### Answer



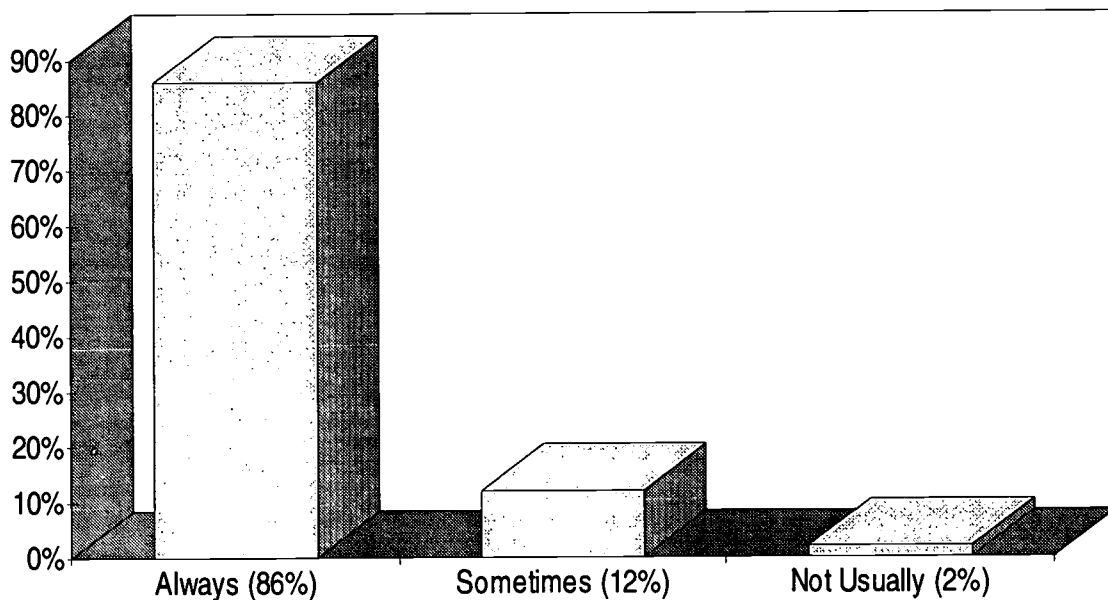
### Question 8

#### Faculty Understanding of Materials

8. *Did assistance you received from faculty reflect an adequate understanding of the course materials?*

- a. always
- b. sometimes
- c. not usually

#### Answer



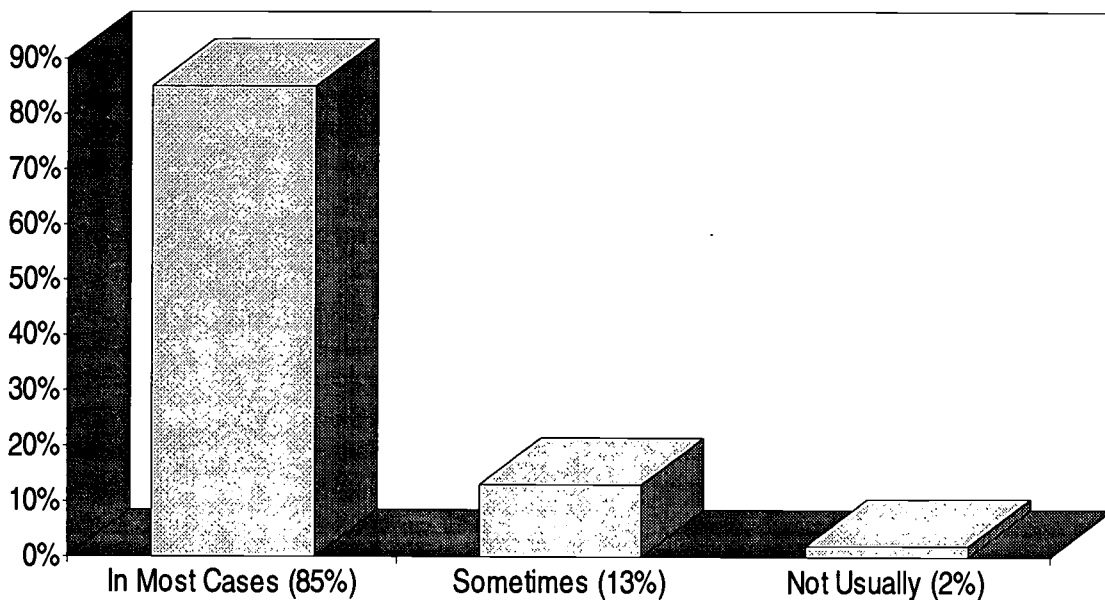
### Question 9

#### Adequately Tested on Course Materials

9. *Did you find the examinations and assigned projects to adequately test your understanding of the course materials?*

- a. in most cases
- b. sometimes
- c. not usually

### Answer



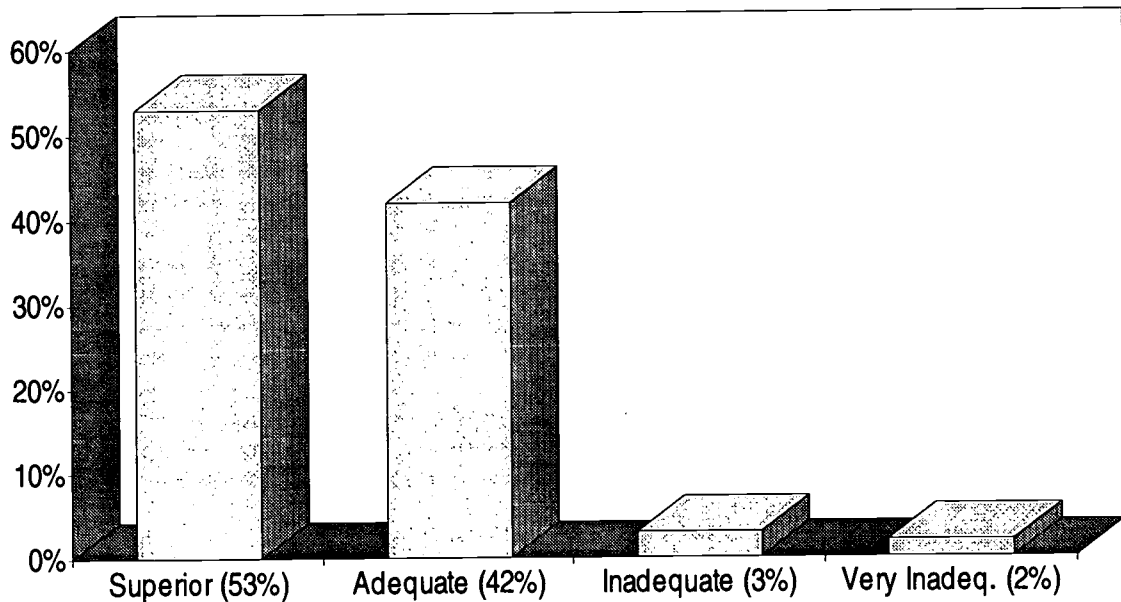
## Question 10

### Satisfaction with the Instructional Services

10. Overall, how would you rate your satisfaction with the instructional services offered by the institution?

- a. superior
- b. adequate
- c. inadequate
- d. very inadequate

### Answer



### Question 11

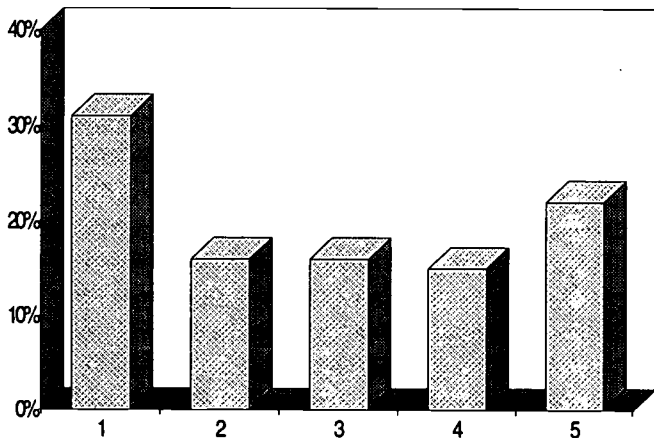
#### Goals When Enrolled in Program

11. How would you rate the following as your goals when you enrolled in the degree program?

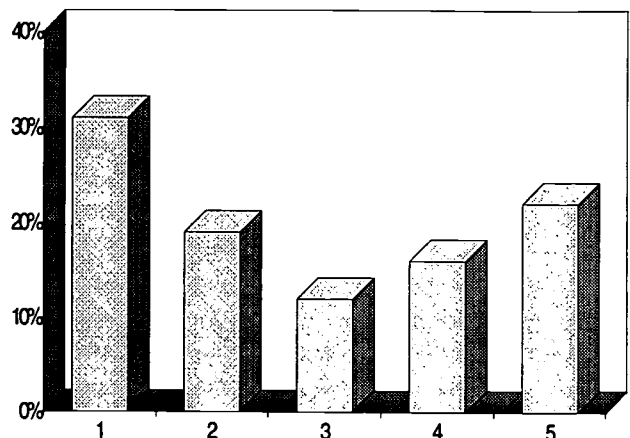
#### Answers

	Low	1	2	3	4	5	High
a. earn more money		31%	16%	16%	15%	22%	
b. get a promotion		31%	19%	12%	16%	22%	
c. prepare for a new job		12%	5%	32%	19%	32%	
d. improve job skills		7%	1%	7%	20%	65%	
e. qualify for professional license		20%	9%	21%	18%	32%	
f. obtain credential		13%	4%	7%	19%	57%	
g. personal satisfaction		0%	1%	7%	15%	77%	
h. learn more about subject		1%	1%	6%	16%	76%	

**Earn More Money**

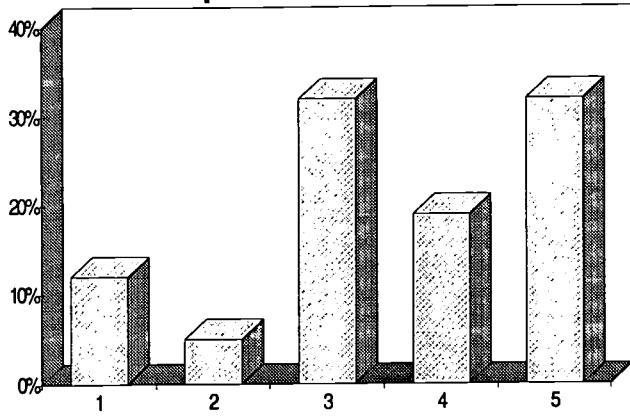


**Get a Promotion**

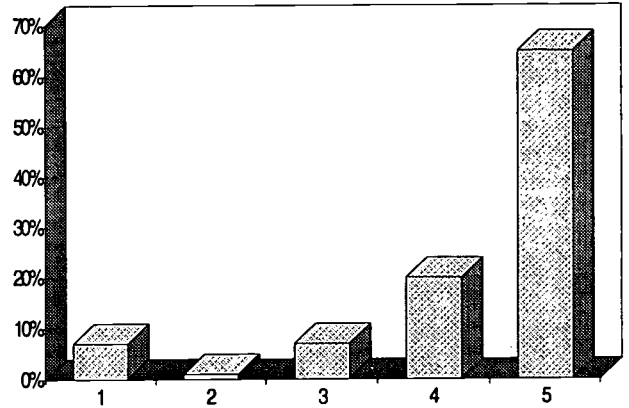


Question 11, continued

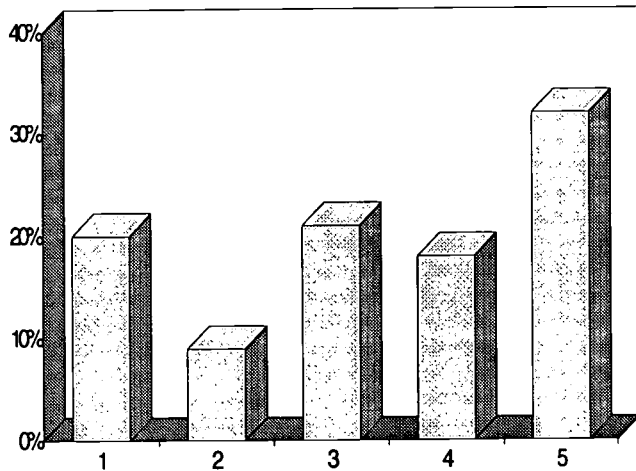
Prepare for a New Job



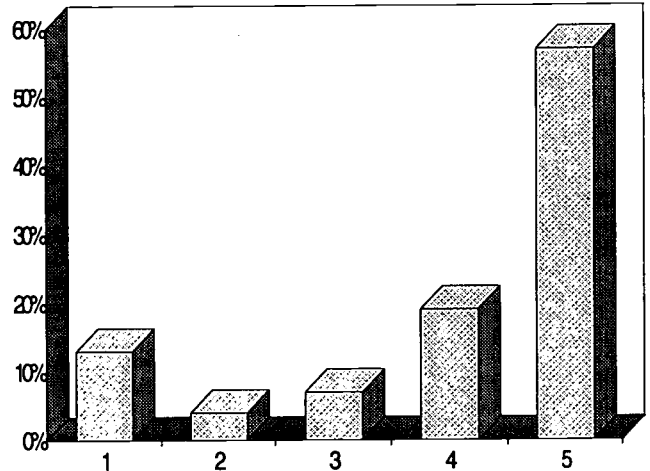
Improve Job Skills



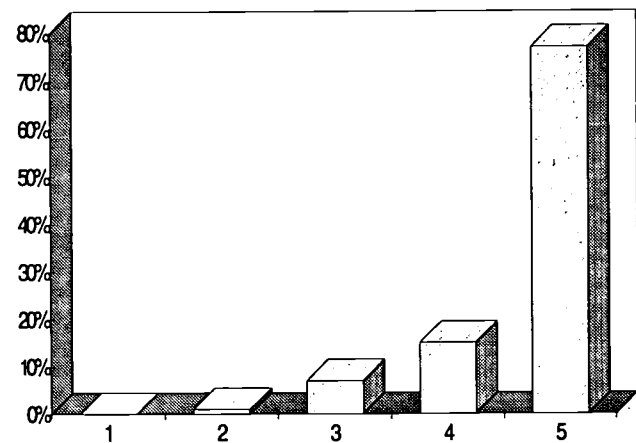
Qualify for Professional License



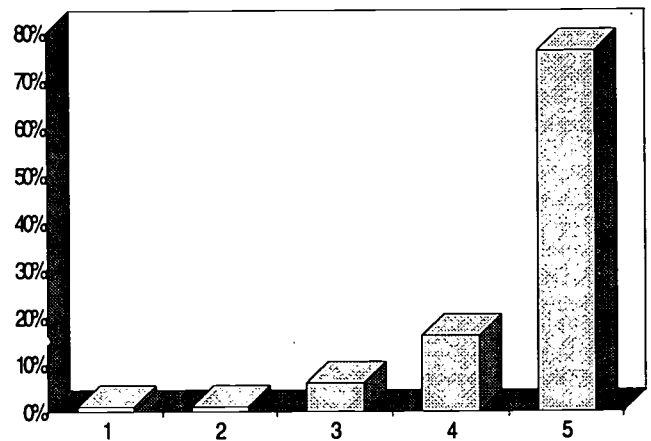
Obtain Credential



Personal Satisfaction



Learn More About Subject



### Question 12

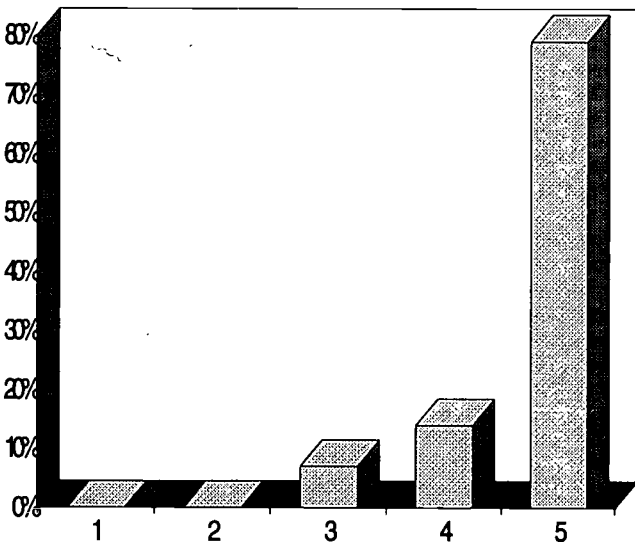
#### Ways Benefited by Obtaining Degree

12. How would you rate the following as ways you benefited from obtaining this degree?

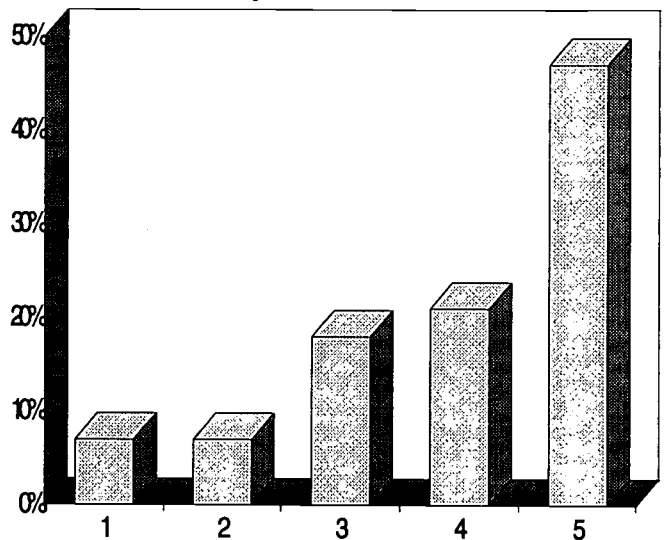
#### Answers

	Low	1	2	3	4	5	High
a. personal satisfaction		0%	0%	7%	14%	79%	
b. proper credentials		7%	7%	18%	21%	47%	
c. enjoyment of learning		3%	1%	11%	20%	65%	
d. improve job skills		2%	3%	12%	21%	62%	
e. qualify for professional license		23%	7%	32%	7%	31%	
f. job promotion		20%	8%	26%	9%	37%	
g. increase in income		31%	9%	24%	13%	23%	
h. access to higher degree		8%	6%	27%	14%	45%	

**Personal Satisfaction**

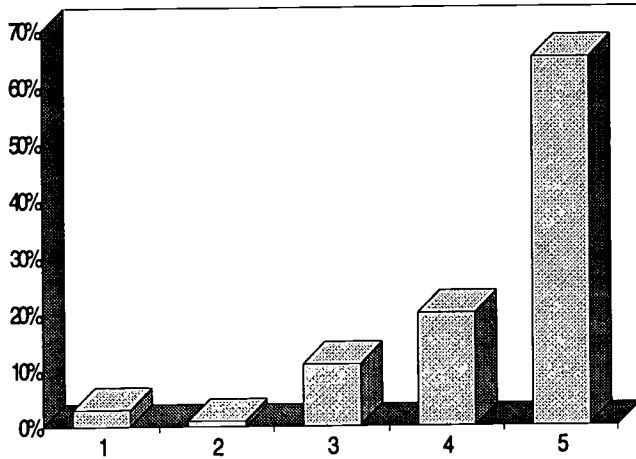


**Proper Credentials**

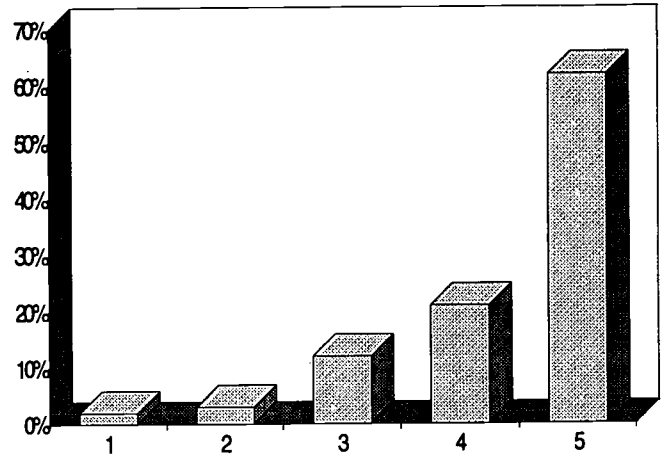


Question 12, continued

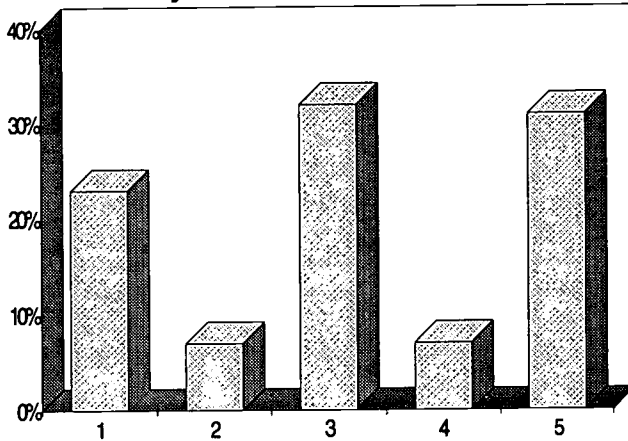
Enjoyment of Learning



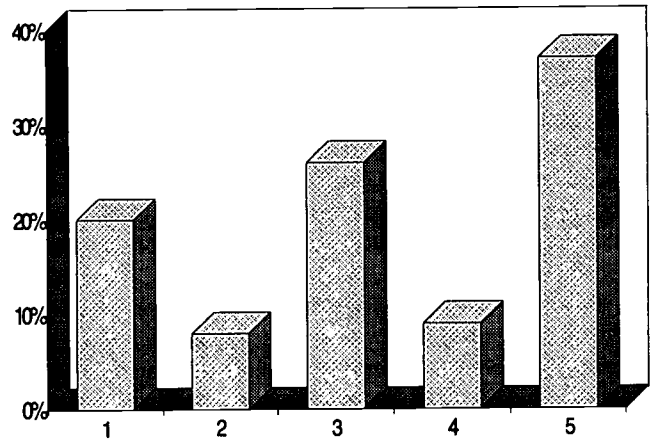
Improve Job Skills



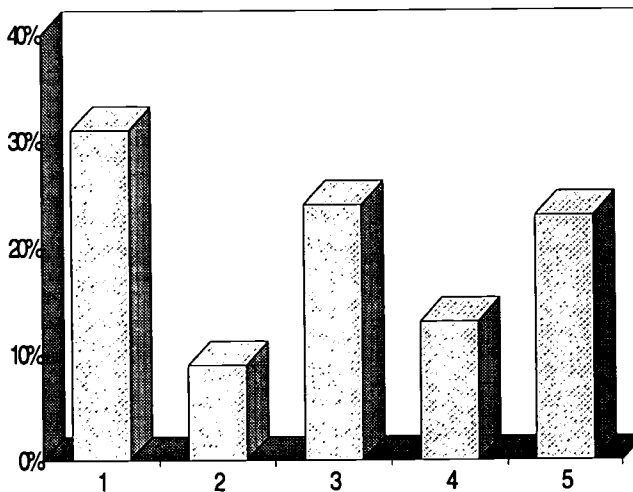
Qualify for Professional License



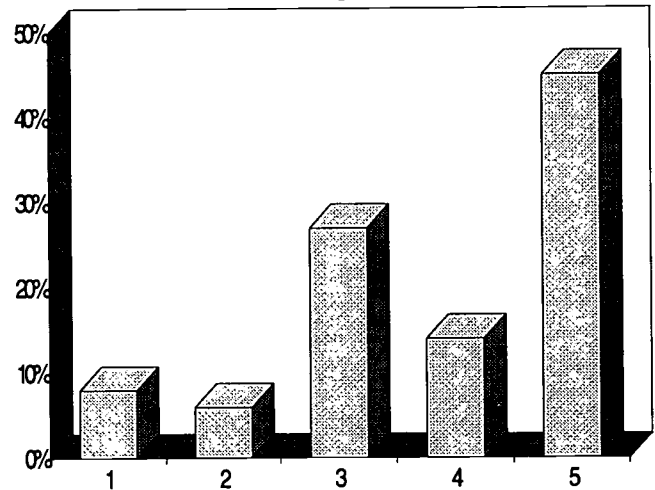
Job Promotion



Increase in Income



Access to Higher Degree





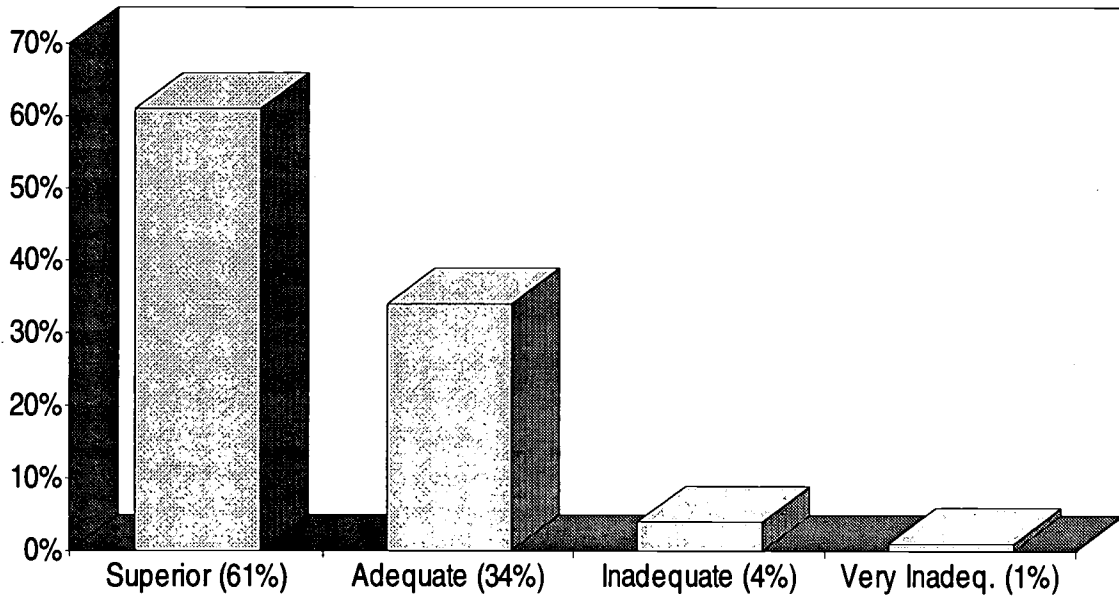
### Question 13

#### Program Provided Education

13. *To what extent do you think this degree program provided the knowledge, skills, and education you were seeking?*

- a. superior
- b. adequate
- c. inadequate
- d. very inadequate

#### Answer



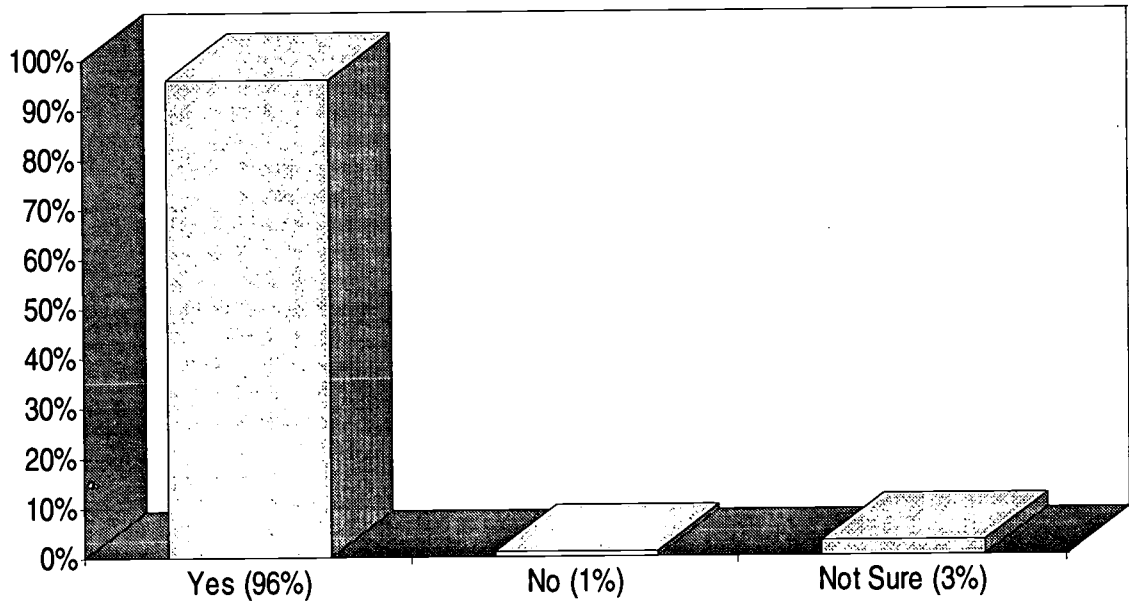
### Question 14

#### Degree Was Worth Effort Required

14. Was the degree you earned by home study/correspondence worth the effort required?

- a. Yes
- b. No
- c. Not sure

#### Answer

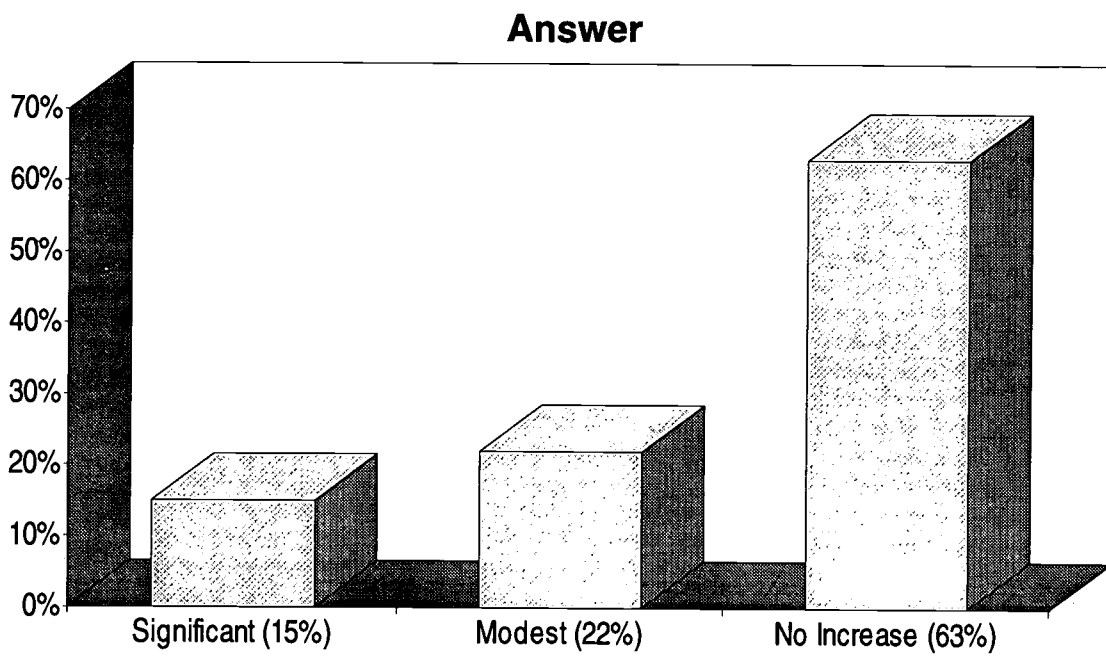


### Question 15

#### Increase in Income Due to Degree

15. *Have you had an increase in income due to earning your degree?*

- a. Yes, a significant amount
- b. Yes, a modest amount
- c. No increase



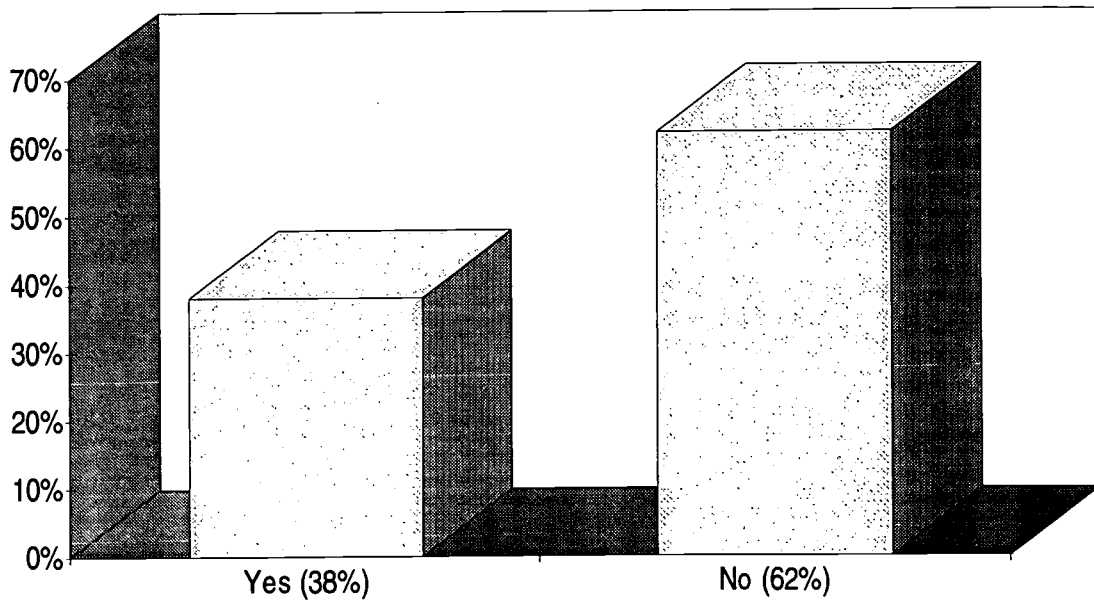
### Question 16

#### Job Promotion Due to Degree

16. *Have you had a job promotion or change in careers that improved your life as a result of earning your degree?*

- a. Yes
- b. No

#### Answer

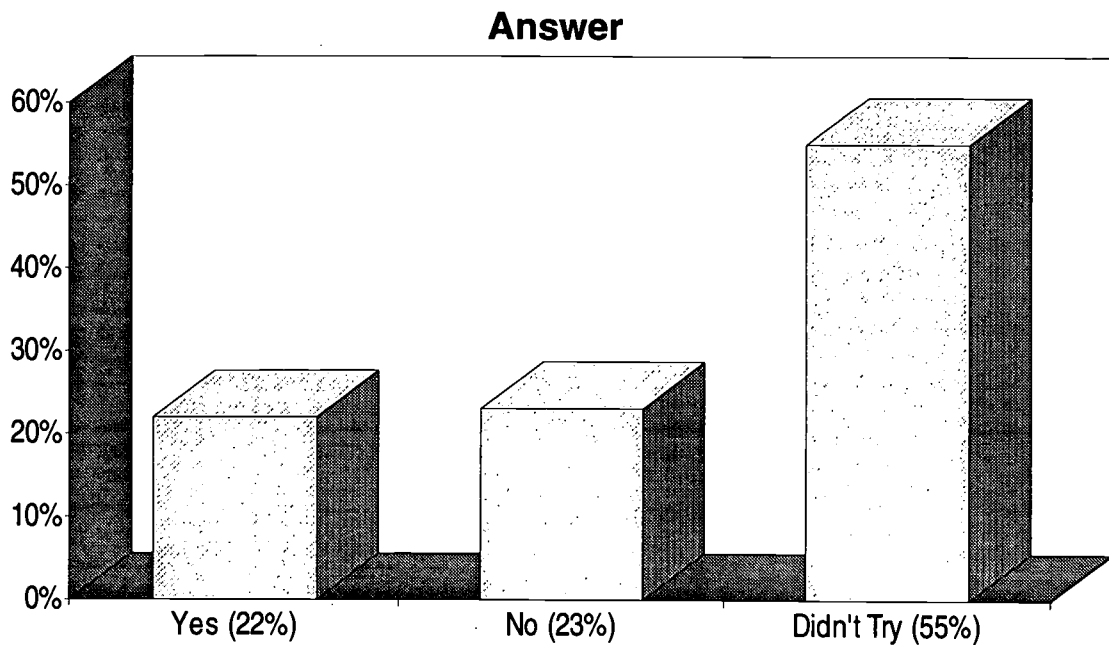


### Question 17

#### Successful in Transferring Credits

17. *If you have tried to have your degree work accepted by other academic institutions, were you successful in getting acceptance of transfer credit?*

- a. Yes
- b. No
- c. Did not try to transfer work



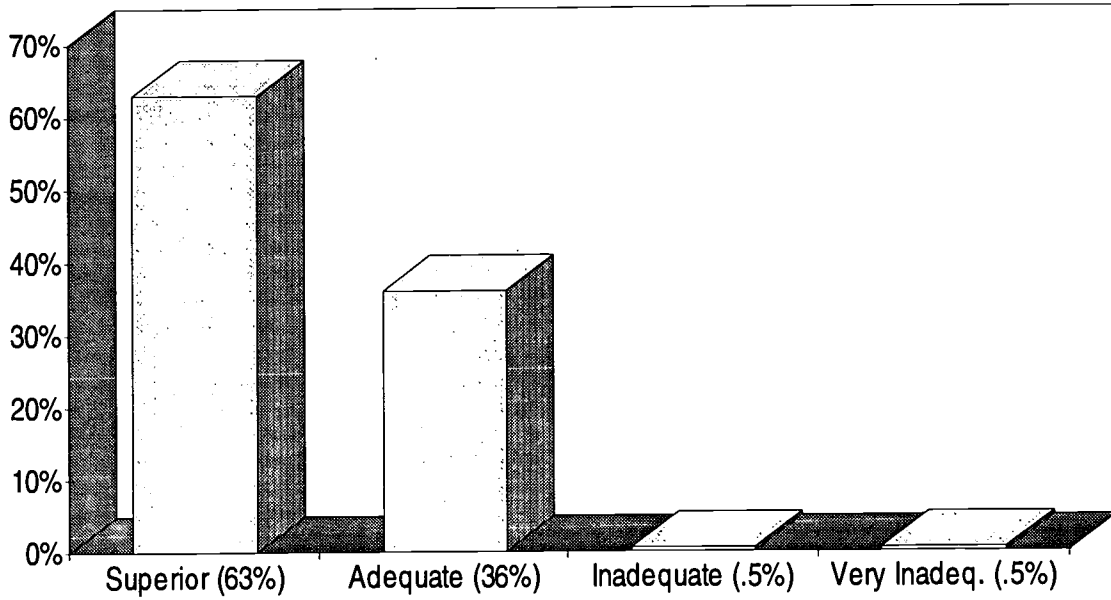
### Question 18

#### Satisfaction with Degree Program

18. All things considered, how would you rate your satisfaction with the degree program?

- a. superior
- b. adequate
- c. inadequate
- d. very inadequate

#### Answer



## Question 19

### Rate Degree in Comparison with Resident School Degrees

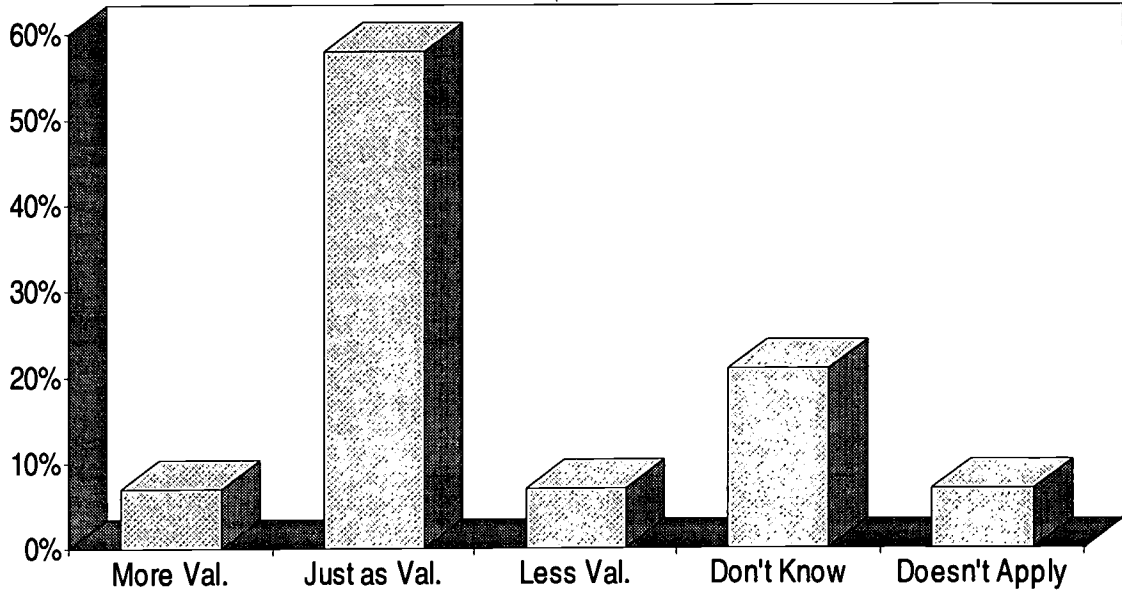
19. *How do you think the following people would rate your degree in comparison with other resident school degrees in the same subject/field?*
- a. Your present (or most recent) employer
  - b. Your present (or most recent) co-workers
  - c. Your spouse
  - d. Your relatives
  - e. Your friends
  - f. Yourself

### Answers

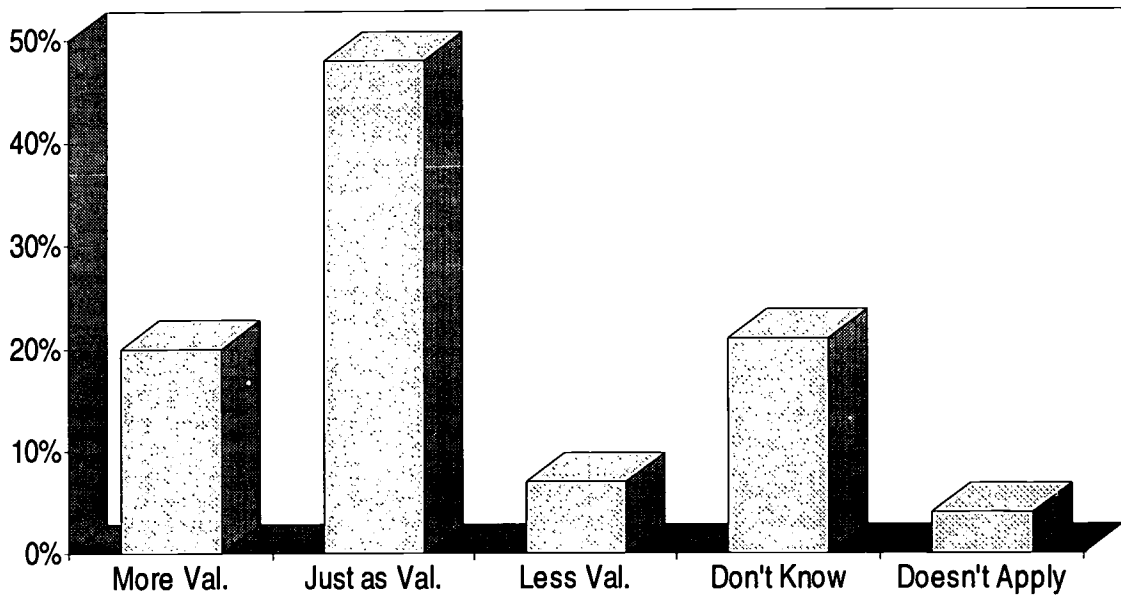
	More Val.	Just as Val.	Less Val.	Don't Know	Doesn't Apply
a. your present (or most recent) employer	7%	58%	7%	21%	7%
b. your present (or most recent) co-workers	20%	48%	7%	21%	4%
c. your spouse (if applicable)	35%	40%	6%	3%	16%
d. your relatives (parents, other family)	20%	46%	6%	14%	14%
e. your friends	11%	56%	11%	10%	12%
f. yourself	46%	47%	6%	1%	0%

Question 19, continued

Your Present Employer



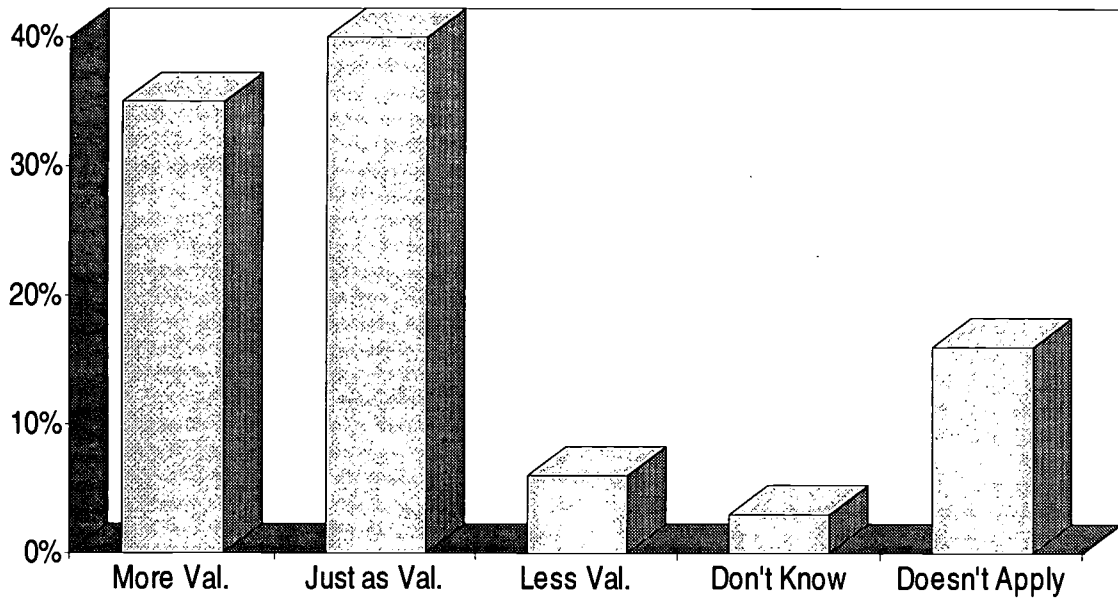
Your Present Co-Workers



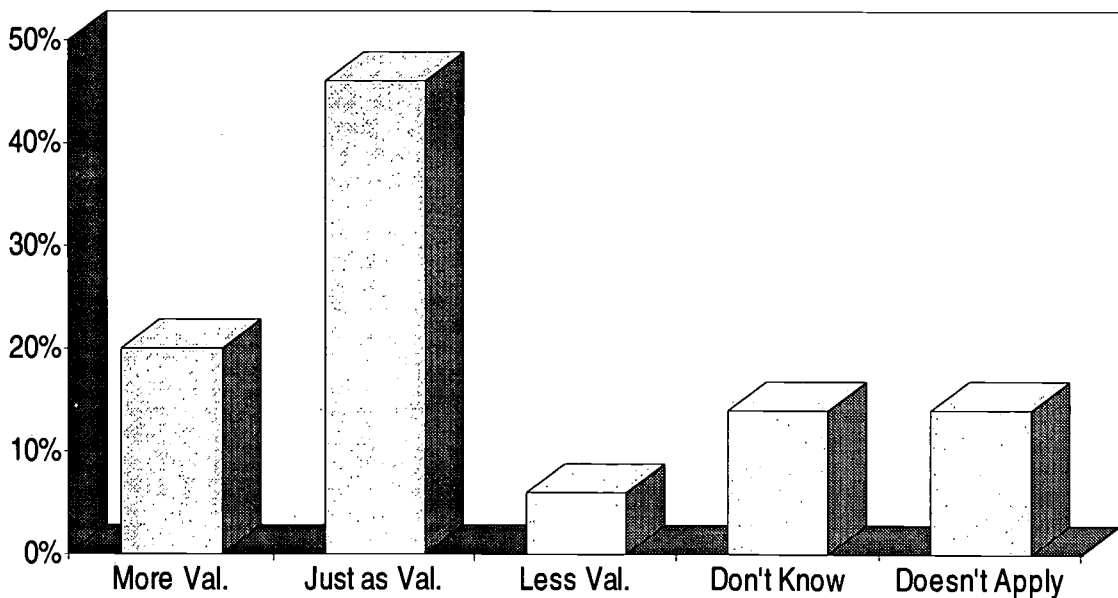


Question 19, continued

Your Spouse

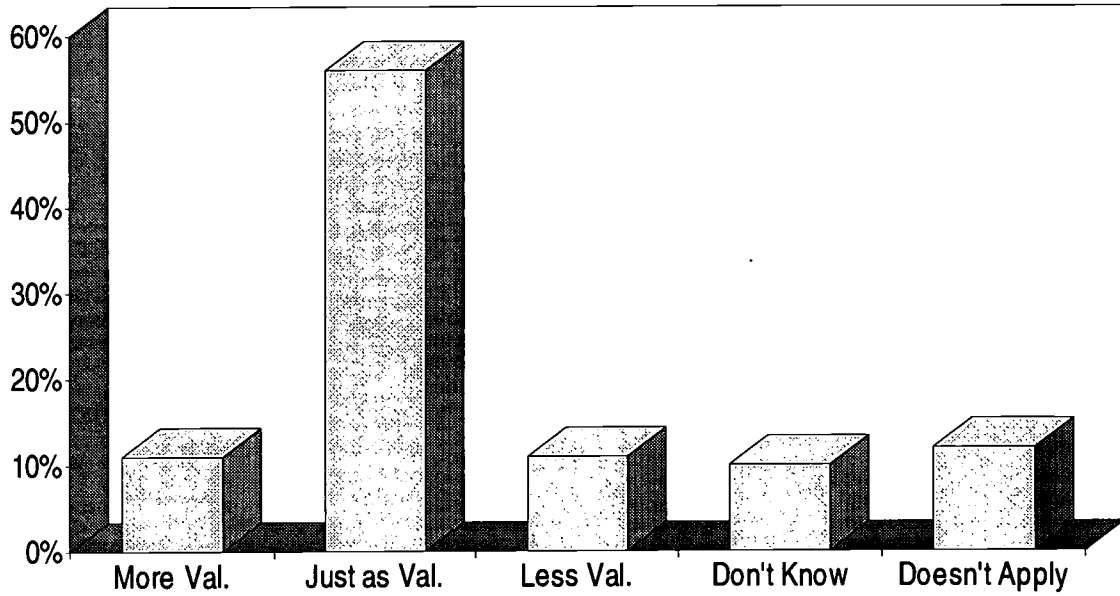


Your Relatives

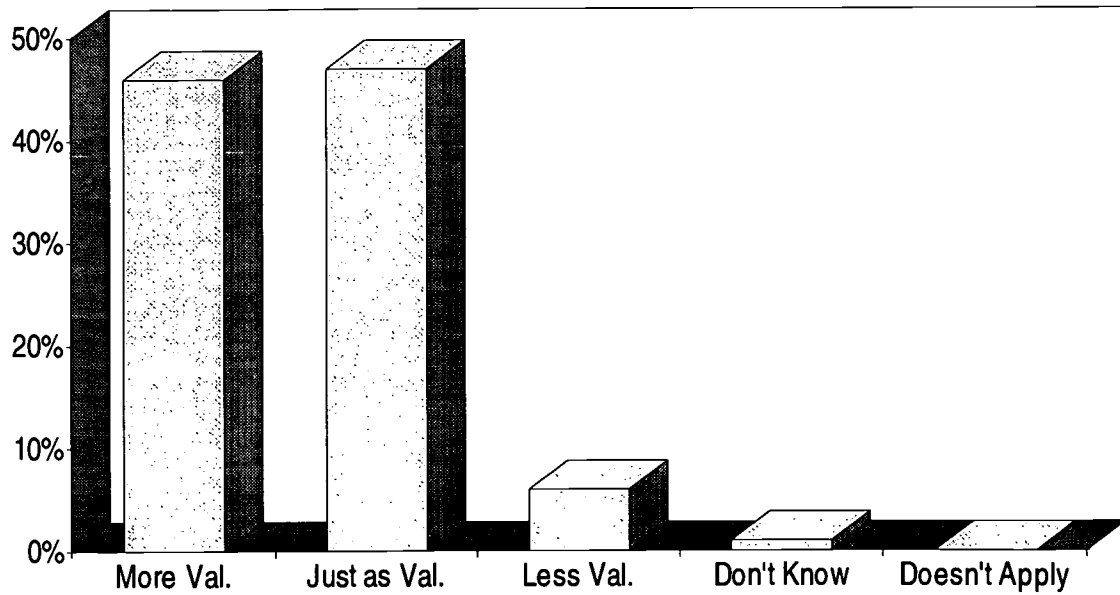


Question 19, continued

Your Friends



Yourself



### Question 20

#### Recommendation of Degree Program

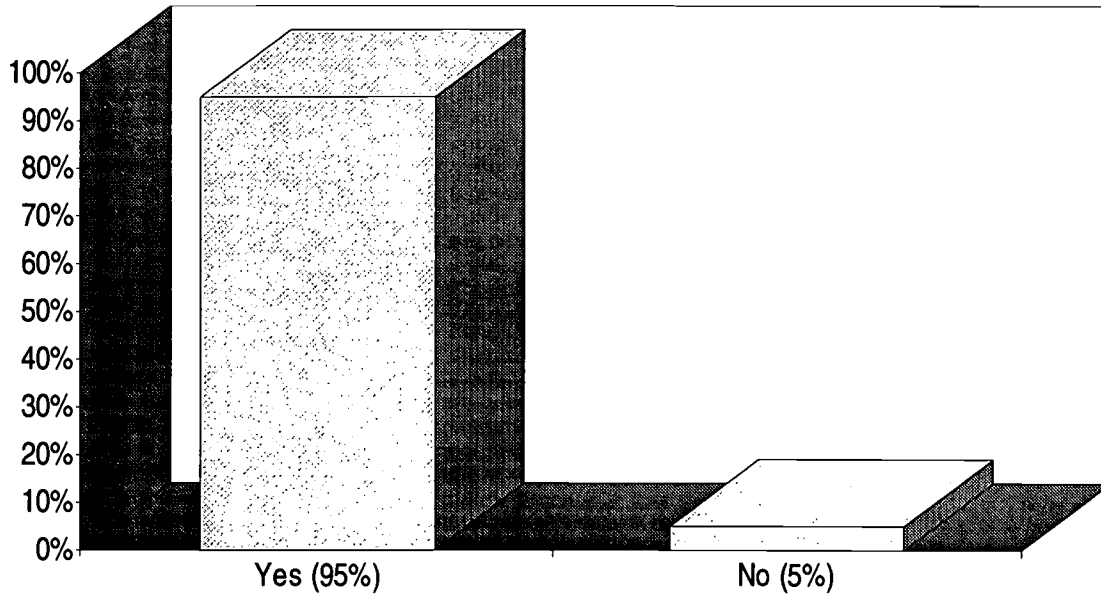
20. *Would you recommend this degree program to a friend?*

- a. Yes
- b. No

If No, why not?

- Too long
- Not respected in field

#### Answer



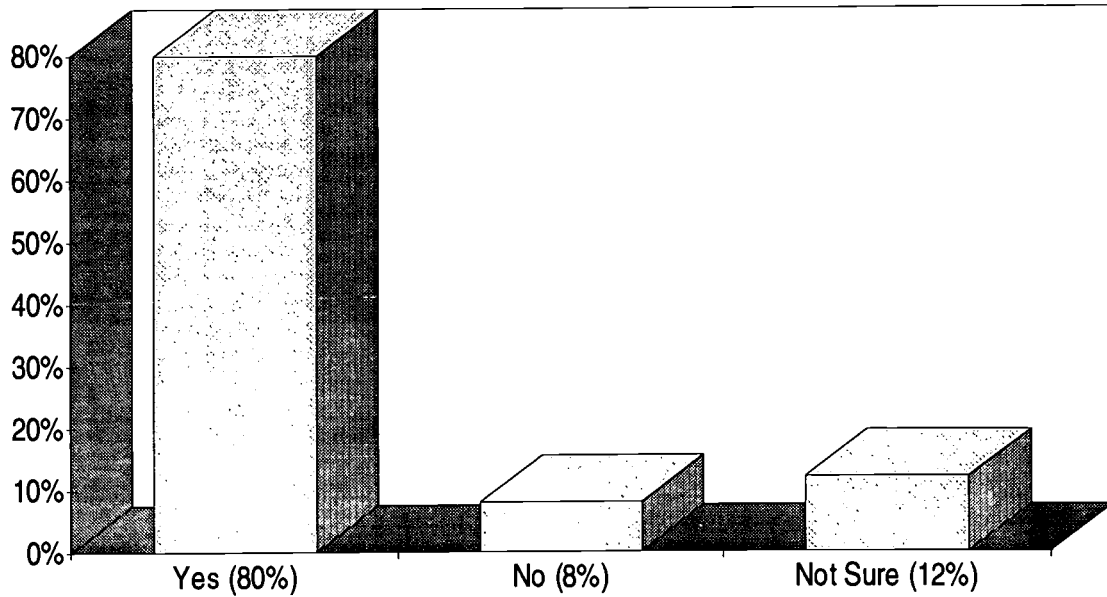
### Question 21

Would Enroll in Another Degree Program

21. *Would you enroll in another degree program offered by distance study?*

- a. Yes
- b. No
- c. Not sure

### Answer



## Question 22

### Strong Points of Distance Study Method <sup>2</sup>

22. *List any strong points of the correspondence/distance study method you experienced:*

I did not feel pressure to have lessons done by a set date. When I was busy I could study less and then study more when I wasn't busy.

The ability to study as my work schedule allowed. Also able to dwell on any particular topics that caught my fancy.

Instructors were always willing to answer questions or help with any problems, and were knowledgeable in the field.

Study at own pace, access to instructors, lack of political bias in materials, less cost.

A concerned and involved faculty. More economically feasible.

Personal satisfaction in determination and discipline, time management. Good to know information. Good knowledge transfer method.

Made it absolutely necessary to understand material (no "grading on a curve" or relying on other students to help you "cram" for tests).

Sufficient time to understand the more difficult portions was available as opposed to classroom education.

Good hands-on lab material; bulletin board access to instructors via computer.

Required more intense study, covering all information and not just the high points.

You try to figure the problems yourself which makes you retain information much longer.

The material is much more in-depth than classroom studies. This is the first time in all my years of school where I was required to cover every book, cover to cover.

The material is more practical, less theoretical. The material is presented over and over again, mixed in as needed.

Application of learned knowledge is applied immediately and directly.

This form of education inspires one to learn how to learn. One must actually study the subject matter more intensely.

<sup>2</sup> A sampling of the responses.

### Question 23

#### Weak Points of Distance Study Method <sup>3</sup>

23. *List any weak points of the correspondence/distance education method you experienced:*

Credit acceptance, mail delays.

Lots of self-discipline needed.

There could have been more teaching aids such as video tape, slide tape, etc.

I would have liked to see more modem/computer BBS type access.

Lack of direct immediate feedback on questions or problems.

Occasionally had to wait for materials.

Not being able to ask questions directly and ask for a variance in problem solving.

Lack of face to face contact, easy to procrastinate.

Lack of ability to discuss with other students.

Long time needed to complete studies.

You're on your own. You must be willing to do a lot of research at times and be able to teach yourself. Had to get used to being alone a lot, but its worth it!

Most people do not know how much is required of correspondence students and have less respect for them than others.

Pronunciation of new words.

Inability to express my view if different than professor's.

<sup>3</sup> A sampling of the responses.

## Question 24

### Other Comments on School, Program or Method <sup>4</sup>

24. *Do you have any other comments on your school, program, or the correspondence/distance education method of learning?*

I feel that I have learned the subject (electronics) at the AA level very well. Better than most.

I loved it. I am now pursuing a baccalaureate degree in Electronics Engineering.

Inform everyone of the quality of the programs, to earn the necessary respect we deserve for time and effort exerted. We are secondary degree holders.

Enjoyed the experience. I actually looked forward to study 2 hours a day. Home study courses good for background information.

I feel that I was served very well by my school. It was an exciting experience.

With regard to my location and working schedule, this program made it possible to achieve my AAS degree.

Very valuable learning tool—adequate to get job in field.

It worked for me! Without it I don't believe I would have been able to earn my degree.

Challenging and most satisfactory for me.

Well worth the effort. I am continuing my education with another correspondence program.

I used all the information from my studies and recently opened my own business.

I appreciated the quality of the courses. They were very comprehensive and educational.

Accredited correspondence offers an educational option that is second to none for completing a degree program with flexibility and good materials.

I highly recommend home study to anyone who does not have the time to sit in a classroom but can avail themselves at home to study at their own pace.

School seems to be steadily improving over the years—new programs, updating courses, etc.

With faxes, modems, etc., this method of education can only get better!

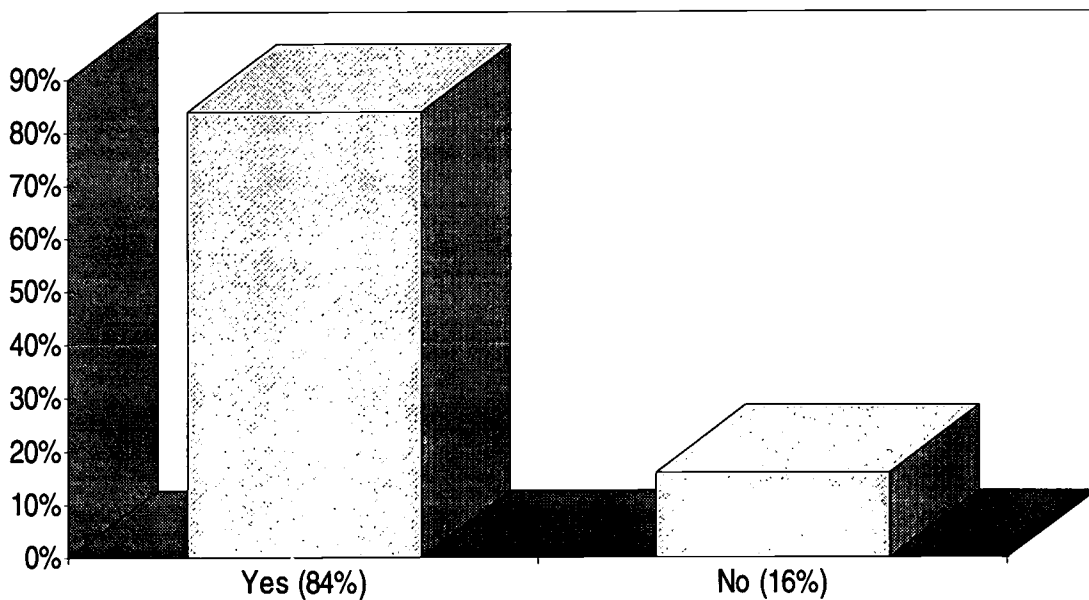
<sup>4</sup> A sampling of the responses.

## Survey Questions of Supervisors of Home Study Degree Holders

### Question 1

Did you know that this person had earned an academic degree by correspondence/distance study?

#### Answer

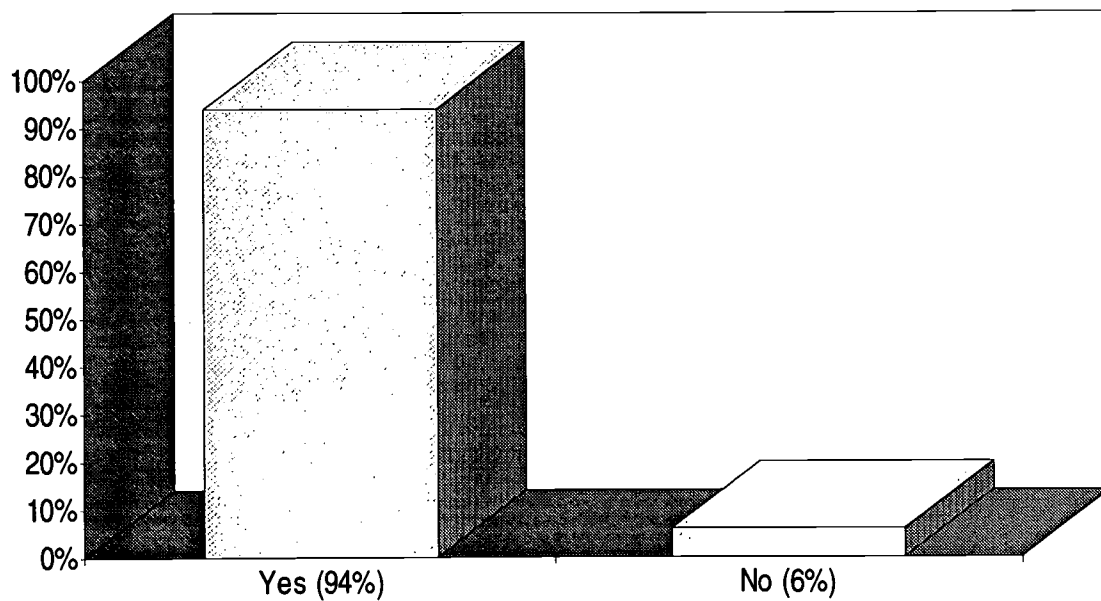




## Question 2

Compared to other individuals you supervise or know who have earned "resident school" degrees of a comparable nature, does this person compare favorably in terms of equivalent knowledge, skills, and attitude?

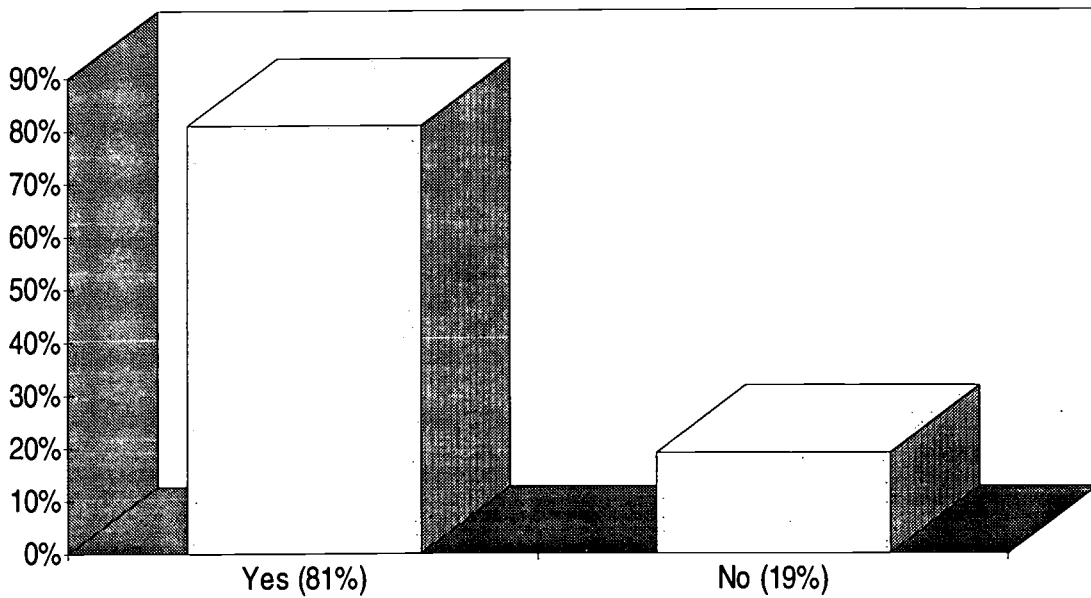
### Answer



### Question 3

Do you think that this person performs better on the job because of the degree earned?

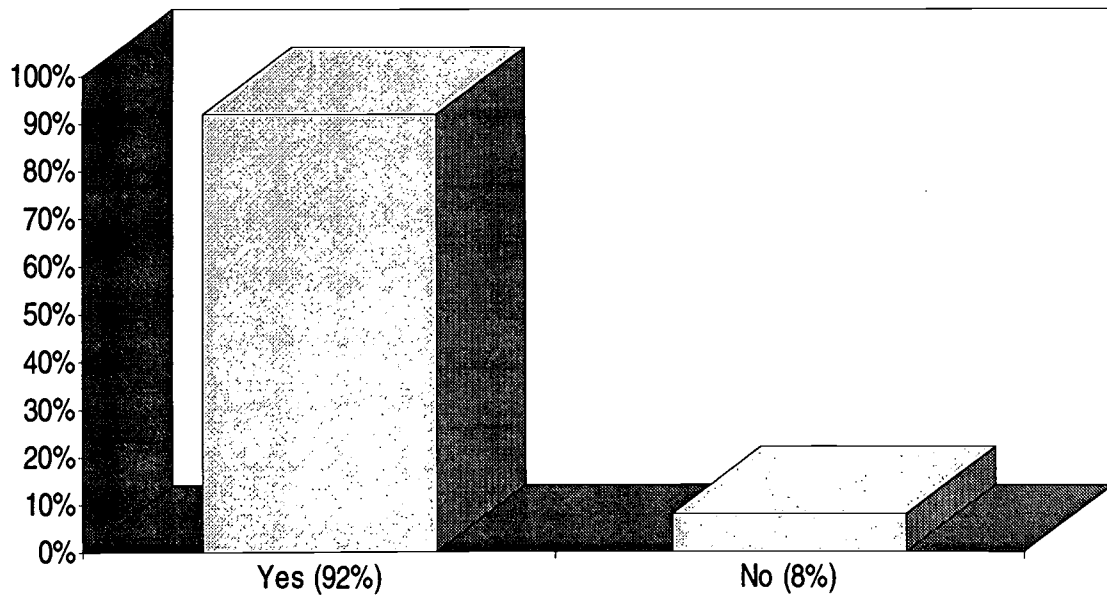
#### Answer



### Question 4

Are you favorably inclined toward hiring or supervising other employees who have earned their degrees by correspondence/distance study?

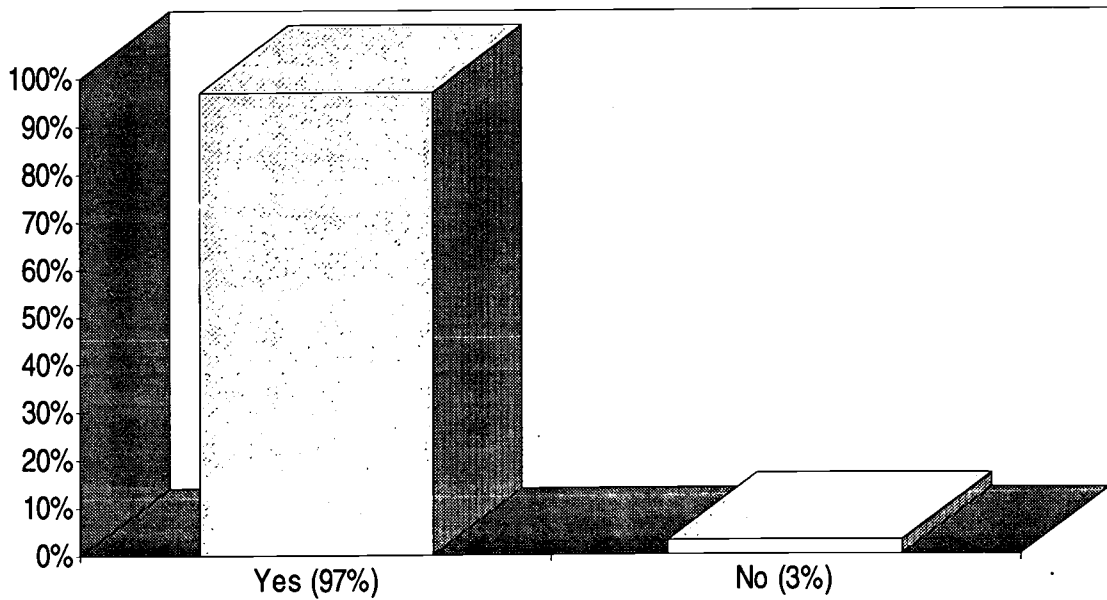
### Answer



### Question 5

Would you encourage others such as subordinates or colleagues to enroll in accredited distance education degree programs to increase their job competence?

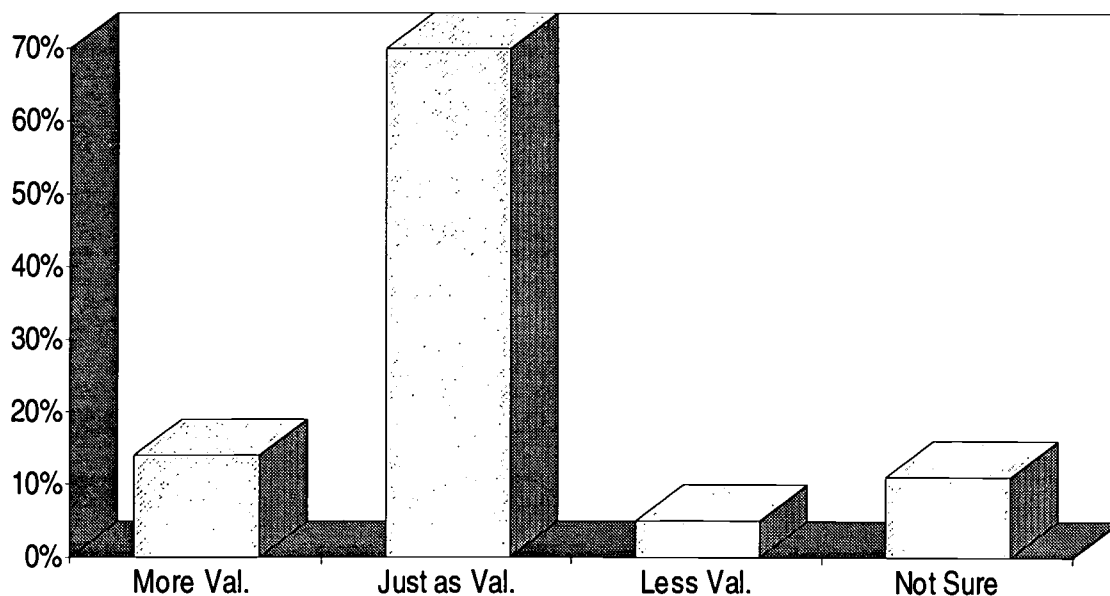
#### Answer



## Question 6

From your viewpoint as a supervisor, how do you rate the value of this person's academic degree compared to resident school degrees in the same field?

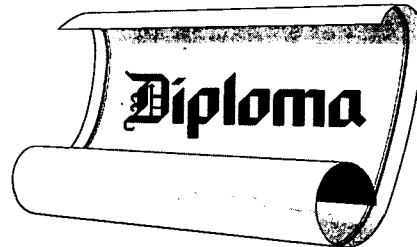
### Answer



More Valuable = 14%  
Just as Valuable = 70%  
Less Valuable = 5%  
Not Sure = 11%

## Appendix I - Survey on Home Study Degrees

### Survey on Home Study Degrees



Conducted by the Distance Education and Training Council

#### Purpose of Survey

The Distance Education and Training Council (formerly the National Home Study Council) is studying the value and effectiveness of academic degrees earned by correspondence/distance study. The Council's aim is to earn greater public acceptance and national recognition of such degrees offered by its accredited member institutions, including your alma mater. As a degree holder, you can help the Council present a case for greater public acceptance. Please take a few moments to answer the following questions and return this survey in the enclosed envelope. Thank you for your help with this important project.

Your Name: \_\_\_\_\_ Today's Date: \_\_\_\_\_

School from which you earned your degree: \_\_\_\_\_

Age:

- |                                  |                                       |
|----------------------------------|---------------------------------------|
| <input type="checkbox"/> 18 - 20 | <input type="checkbox"/> 46 - 50      |
| <input type="checkbox"/> 21 - 25 | <input type="checkbox"/> 51 - 55      |
| <input type="checkbox"/> 26 - 30 | <input type="checkbox"/> 56 - 60      |
| <input type="checkbox"/> 31 - 35 | <input type="checkbox"/> 61 - 65      |
| <input type="checkbox"/> 36 - 40 | <input type="checkbox"/> 66 - 70      |
| <input type="checkbox"/> 41 - 45 | <input type="checkbox"/> Other: _____ |

Annual Income (in thousands):

- |                                    |                                       |
|------------------------------------|---------------------------------------|
| <input type="checkbox"/> \$10 - 15 | <input type="checkbox"/> \$41 - 45    |
| <input type="checkbox"/> \$16 - 20 | <input type="checkbox"/> \$46 - 50    |
| <input type="checkbox"/> \$21 - 25 | <input type="checkbox"/> \$51 - 55    |
| <input type="checkbox"/> \$26 - 30 | <input type="checkbox"/> \$56 - 60    |
| <input type="checkbox"/> \$31 - 35 | <input type="checkbox"/> \$61 - 65    |
| <input type="checkbox"/> \$36 - 40 | <input type="checkbox"/> \$66 - above |

#### Questions

1. What academic degree did you earn from this institution? \_\_\_\_\_
2. How many years did it take you to earn your degree? \_\_\_\_\_ years
3. Why did you elect to study by the correspondence/home study method? \_\_\_\_\_  
 \_\_\_\_\_  
 \_\_\_\_\_

May 1994

(more)

BEST COPY AVAILABLE

Survey on Home Study Degrees - Page 2

4. Did you think the course material was sufficiently comprehensive to satisfy your needs?

- a. Yes
- b. No
- c. Unsure

5. Compared to "classroom education" you have had, what do you think about the level of difficulty and the challenge of this degree program?

- a. home study was **more** difficult
- b. home study was comparable
- c. home study was **less** difficult
- d. unable to compare the two

6. Were you challenged by the level of difficulty of the course(s)?

- a. always
- b. sometimes
- c. not usually

7. How would you rate the depth of knowledge and teaching competence of the faculty?

- a. superior
- b. adequate
- c. inadequate
- d. very inadequate

8. Did assistance you received from faculty reflect an adequate understanding of the course materials?

- a. always
- b. sometimes
- c. not usually

9. Did you find the examinations and assigned projects to adequately test your understanding of the course materials?

- a. in most cases
- b. sometimes
- c. not usually

10. Overall, how would you rate your satisfaction with the instructional services offered by the institution?

- a. superior
- b. adequate
- c. inadequate
- d. very inadequate

11. How would you rate the following as your goals when you enrolled in the degree program?

	Low	High
a. earn more money	1	2 3 4 5
b. get a promotion	1	2 3 4 5
c. prepare for new job	1	2 3 4 5
d. improve job skills	1	2 3 4 5
e. qualify for professional license	1	2 3 4 5
f. obtain credential	1	2 3 4 5
g. personal satisfaction	1	2 3 4 5
h. learn more about subject	1	2 3 4 5

Other: \_\_\_\_\_

12. How would you rate the following as ways you benefited from obtaining this degree?

	Low	High
a. personal satisfaction	1	2 3 4 5
b. proper credentials	1	2 3 4 5
c. enjoyment of learning	1	2 3 4 5
d. improve job skills	1	2 3 4 5
e. qualify for professional license	1	2 3 4 5
f. job promotion	1	2 3 4 5
g. increase in income	1	2 3 4 5
h. access to higher degree	1	2 3 4 5

Other: \_\_\_\_\_

Survey on Home Study Degrees - Page 3

13. To what extent do you think this degree program provided the knowledge, skills, and education you were seeking?

- a. superior
- b. adequate
- c. inadequate
- d. very inadequate

14. Was the degree you earned by home study/ correspondence worth the effort required?

- a. Yes
- b. No
- c. Not sure

15. Have you had an increase in income due to earning your degree?

- a. Yes, a significant amount
- b. Yes, a modest amount
- c. No increase

16. Have you had a job promotion or change in careers that improved your life as a result of earning your degree?

- a. Yes
- b. No

17. If you have tried to have your degree work accepted by other academic institutions, were you successful in getting acceptance of transfer credit?

- a. Yes
- b. No. Why not? \_\_\_\_\_

c. Did not try to transfer work

18. All things considered, how would you rate your satisfaction with the degree program?

- a. superior
- b. adequate
- c. inadequate
- d. very inadequate

19. How do you think the following people would rate your degree in comparison with other resident school degrees in the same subject/field? (Check only one box for each line)

	More Valuable	Just as Valuable	Less Valuable	Don't Know	Doesn't Apply
a. Your present (or most recent) employer	<input type="checkbox"/>	<input type="checkbox"/>	<input type="checkbox"/>	<input type="checkbox"/>	<input type="checkbox"/>
b. Your present (or most recent) co-workers	<input type="checkbox"/>	<input type="checkbox"/>	<input type="checkbox"/>	<input type="checkbox"/>	<input type="checkbox"/>
c. Your spouse (if applicable)	<input type="checkbox"/>	<input type="checkbox"/>	<input type="checkbox"/>	<input type="checkbox"/>	<input type="checkbox"/>
d. Your relatives (parents, other family)	<input type="checkbox"/>	<input type="checkbox"/>	<input type="checkbox"/>	<input type="checkbox"/>	<input type="checkbox"/>
e. Your friends	<input type="checkbox"/>	<input type="checkbox"/>	<input type="checkbox"/>	<input type="checkbox"/>	<input type="checkbox"/>
f. Yourself	<input type="checkbox"/>	<input type="checkbox"/>	<input type="checkbox"/>	<input type="checkbox"/>	<input type="checkbox"/>

20. Would you recommend this degree program to a friend?

- a. Yes
  - b. No
- (If No, why not?) \_\_\_\_\_

21. Would you enroll in another degree program offered by distance study?

- a. Yes. What subject? \_\_\_\_\_
- b. No
- c. Not sure

22. List any strong points of the correspondence/distance study method you experienced: \_\_\_\_\_

\_\_\_\_\_

\_\_\_\_\_

\_\_\_\_\_

BEST COPY AVAILABLE



*Survey on Home Study Degrees - Page 4*

23. List any weak points of the correspondence/distance education method you experienced: \_\_\_\_\_  
\_\_\_\_\_  
\_\_\_\_\_

25. May we survey (by mail) your current supervisor to obtain his or her opinion on your home study degree?

- a. Yes
- b. No

If yes, please print below the name, title, and full address of the person in your organization to whom we should write:

24. Do you have any other comments on your school, program, or the correspondence/distance education method of learning?  
\_\_\_\_\_  
\_\_\_\_\_  
\_\_\_\_\_  
\_\_\_\_\_

Name: \_\_\_\_\_

Title: \_\_\_\_\_

Address: \_\_\_\_\_  
\_\_\_\_\_  
\_\_\_\_\_

A sample of the *Survey of Supervisors of Home Study Degree Holders* that we will mail to your employer is enclosed.

Thank you for helping with this important project. Mail your survey as soon as possible to: Sally Welch, Distance Education and Training Council, 1601 18th Street, N.W., Washington, D.C. 20009-2529, U.S.A. in the enclosed envelope.

The Distance Education and Training Council (formerly the National Home Study Council) is a voluntary association of accredited distance education schools. The Council was founded in 1926 to promote sound educational standards and ethical business practices within the correspondence/distance study field. The independent Accrediting Commission is listed by the U.S. Department of Education as a "nationally recognized accrediting agency." The Accrediting Commission is also a recognized member of the Commission on Recognition of Postsecondary Accreditation.

**Distance Education and Training Council**

1601 18th Street, N.W.  
Washington, D.C. 20009-2529  
(202) 234-5100; fax (202) 332-1386

## Appendix II - Survey of Supervisors of Home Study Degree Holders

DISTANCE EDUCATION AND TRAINING COUNCIL  
1601 18th Street, N.W. • Washington, D.C. 20009-2529 • (202) 234-5100; fax (202) 332-1386



June 24, 1994

Mr. John Doe  
Area Manager  
John Doe Corporation  
463 Swansea Mall Drive  
Anywhere, MA 22222

Dear Mr. Doe:

The Distance Education and Training Council (formerly the National Home Study Council) is conducting a national study of the value and effectiveness of academic degrees earned by students who have studied by the correspondence/distance study method with institutions accredited by the Council's Accrediting Commission. As the employer of an individual who has earned such a degree, we are writing to seek your opinion.

Ms. Cindy Smith has given us your name so that we could send you this survey. Please answer the few questions on the other side of this letter and return it to us as soon as possible.

We value your opinion and appreciate your cooperation. Thank you.

Sincerely yours,

  
Michael P. Lambert  
Executive Director

sw

Formerly the National Home Study Council • DETC is a nationally recognized, nonprofit association of accredited correspondence institutions.

BEST COPY AVAILABLE

## Survey of Supervisors of Home Study Degree Holders

Your Name: \_\_\_\_\_ Title: \_\_\_\_\_

Organization: \_\_\_\_\_

How long have you known the person named on the other side of this letter? \_\_\_\_\_ Years

- Yes  No 1. Before receiving this letter, did you know that this person had earned an academic degree by correspondence/distance study?
- Yes  No 2. Compared to other individuals you supervise or know who have earned "resident school" degrees of a comparable nature, does this person compare favorably in terms of equivalent knowledge, skills, and attitude?
- Yes  No 3. Do you think that this person performs better on the job because of the degree earned?
- Yes  No 4. Are you favorably inclined toward hiring or supervising other employees who have earned their degrees by correspondence/distance study?
- Yes  No 5. Would you encourage others such as subordinates or colleagues to enroll in accredited distance education degree programs to increase their job competence?
6. From your viewpoint as a supervisor, how do you rate the value of this person's academic degree compared to resident school degrees in the same field?
- a. More valuable
  - b. Just as valuable
  - c. Less valuable
  - e. Not sure
- Yes  No 7. Are there any other comments you would like to share? \_\_\_\_\_  
\_\_\_\_\_  
\_\_\_\_\_

Please return this form to: Sally Welch, DETC, 1601 18th Street, N.W., Washington, D.C. 20009-2529, U.S.A.

**DETC**

**Distance Education and Training Council**

**1601 18th Street, NW**

**Washington, D.C. 20009-2529**

**(202) 234-5100**



**U.S. DEPARTMENT OF EDUCATION**  
*Office of Educational Research and Improvement (OERI)*  
*Educational Resources Information Center (ERIC)*



## NOTICE

### REPRODUCTION BASIS



This document is covered by a signed "Reproduction Release (Blanket)" form (on file within the ERIC system), encompassing all or classes of documents from its source organization and, therefore, does not require a "Specific Document" Release form.



This document is Federally-funded, or carries its own permission to reproduce, or is otherwise in the public domain and, therefore, may be reproduced by ERIC without a signed Reproduction Release form (either "Specific Document" or "Blanket").