

ED 404 311

SP 037 134

TITLE Missouri Directory of Approved Professional Education Programs: Two-Year and Four-Year Colleges and Universities. Revised.

INSTITUTION Missouri State Board of Education, Jefferson City.

PUB DATE Sep 96

NOTE 80p.

AVAILABLE FROM Missouri Department of Elementary and Secondary Education, P.O. Box 480, Jefferson City, MO 65102-0480.

PUB TYPE Reference Materials - Directories/Catalogs (132)

EDRS PRICE MF01/PC04 Plus Postage.

DESCRIPTORS *Admission Criteria; Colleges; Elementary Secondary Education; Higher Education; *Preservice Teacher Education; *Schools of Education; State Standards; Teacher Certification; *Teacher Education Programs; Two Year Colleges; Universities

IDENTIFIERS *Missouri

ABSTRACT

This directory provides information on Missouri institutions of higher education with professional and pre-professional teacher education programs. The institutions listed have met rigorous standards and are officially approved by the Missouri State Board of Education. The four-year institutions listed offer complete professional programs from which candidates may be recommended for Missouri certification. The two-year colleges offer approved pre-professional courses, which may be transferred to the four-year institutions and counted as partial fulfillment of the requirements for certification. Part one provides institutional data, admission test requirements, and information on basic programs for four-year institutions. Part two lists institutional data and approved education courses for two-year institutions. Part three is a listing of institutions by programs offered. Teacher education contacts for four-year and two-year institutions are included.

(ND)

* Reproductions supplied by EDRS are the best that can be made *

* from the original document. *

ED 404 311

Missouri Directory of Approved Professional Education Programs

U.S. DEPARTMENT OF EDUCATION
Office of Educational Research and Improvement
EDUCATIONAL RESOURCES INFORMATION
CENTER (ERIC)

- ☐ This document has been reproduced as received from the person or organization originating it.
- ☐ Minor changes have been made to improve reproduction quality.
- Points of view or opinions stated in this document do not necessarily represent official OERI position or policy.

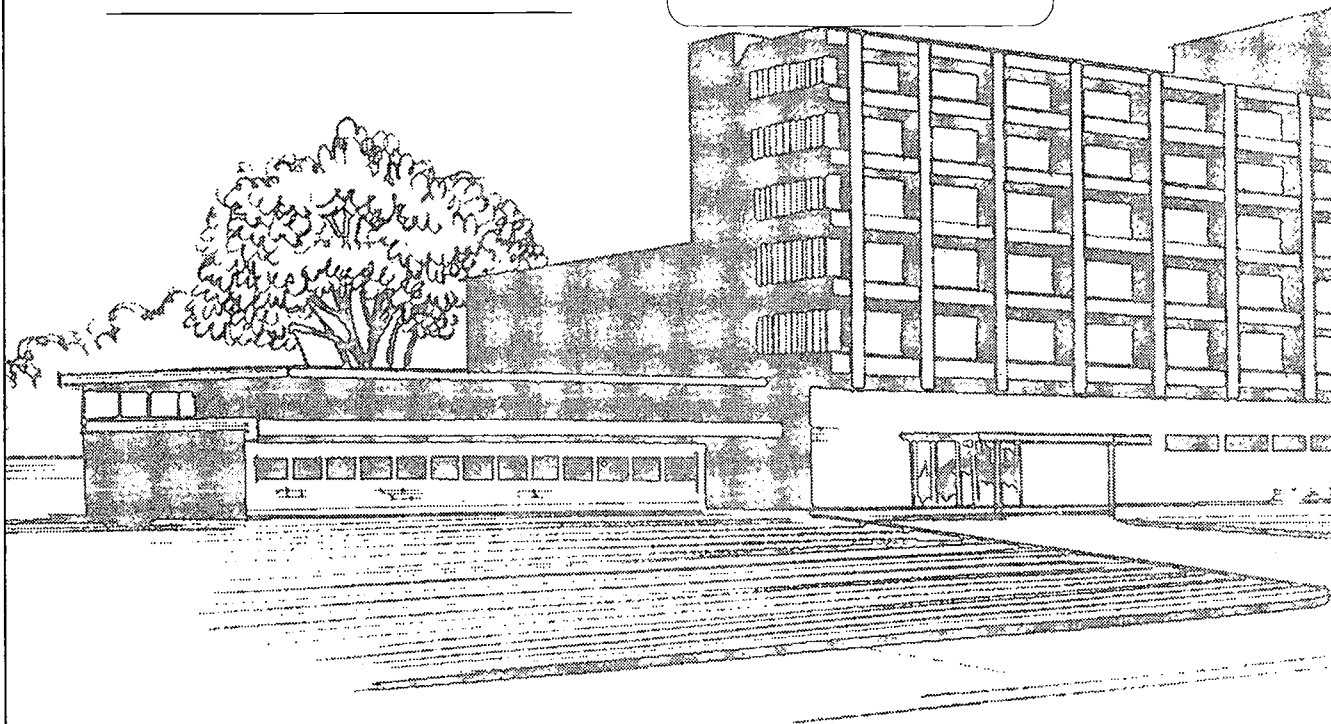
September 1996

PERMISSION TO REPRODUCE AND
DISSEMINATE THIS MATERIAL
HAS BEEN GRANTED BY

T. W. Tyson

TO THE EDUCATIONAL RESOURCES
INFORMATION CENTER (ERIC)

**Two-Year and Four-Year
Colleges and Universities**



Missouri Department of Elementary and Secondary Education

BEST COPY AVAILABLE

637134

MISSOURI STATE BOARD OF EDUCATION

Sharon M. Williams, President, Independence
Betty Preston, Vice President, Chillicothe
Rice Pete Burns, Jr., Sikeston
Gary M. Cunningham, St. Louis

Thomas R. Davis, Sedalia
Peter F. Herschend, Branson
Russell V. Thompson, Columbia
Jacqueline D. Wellington, St. Louis

Dr. Robert E. Bartman
Commissioner of Education

Dr. L. Celeste Ferguson
Assistant Commissioner
Urban and Teacher Education

Dr. J. Mike Lucas
Director of Teacher Education

Missouri Directory of Approved Professional Education Programs

. . .

Revised September 1996

**Inquiries regarding this directory or Missouri's Professional Education
Program approval process may be addressed to:**

**Dr. J. Mike Lucas, Director of Teacher Education
Missouri Department of Elementary and Secondary Education
P.O. Box 480
Jefferson City, Missouri 65102-0480
Telephone 573/751-0371 or Fax 573/526-3580**

FOREWORD

This directory is designed to assist you in locating information pertaining to Missouri institutions of higher education with professional and pre-professional education programs. The institutions listed in this directory have met rigorous standards and are officially approved by the Missouri State Board of Education. The four-year institutions that are included offer complete professional programs from which candidates may be recommended for Missouri certification. The two-year institutions that are included offer approved pre-professional courses, which may be transferred to the four-year institutions and counted as partial fulfillment of the requirements for certification.

Missouri State Board of Education Rule 5CSR 80-805.015, Procedures and Standards for Approval of Professional Education Programs in Missouri, specifies that institutions and professional education programs must be evaluated every five years by an on-site review team composed of public school personnel and educators from other institutions of higher education with Board-approved professional education programs. Based on the report of the evaluation team, and the recommendation of the Commissioner of Education, the Board may approve, provisionally approve, or deny approval to each professional education program.

Missouri State Board of Education approval is granted for a term of five years. However, two-year provisional approval may be granted by the Board when a program does not comply with one or more of the Board's standards, but the institution provides sufficient evidence of plans and resources to comply with the standards within the two-year period. Institutions are prohibited from recommending students for certification from programs that have been denied approval.

Dr. Robert E. Bartman
Commissioner of Education

TABLE OF CONTENTS

State Map showing locations of four-year colleges.....	iii
State Map showing locations of two-year colleges.....	iv

Four-Year Colleges & Universities

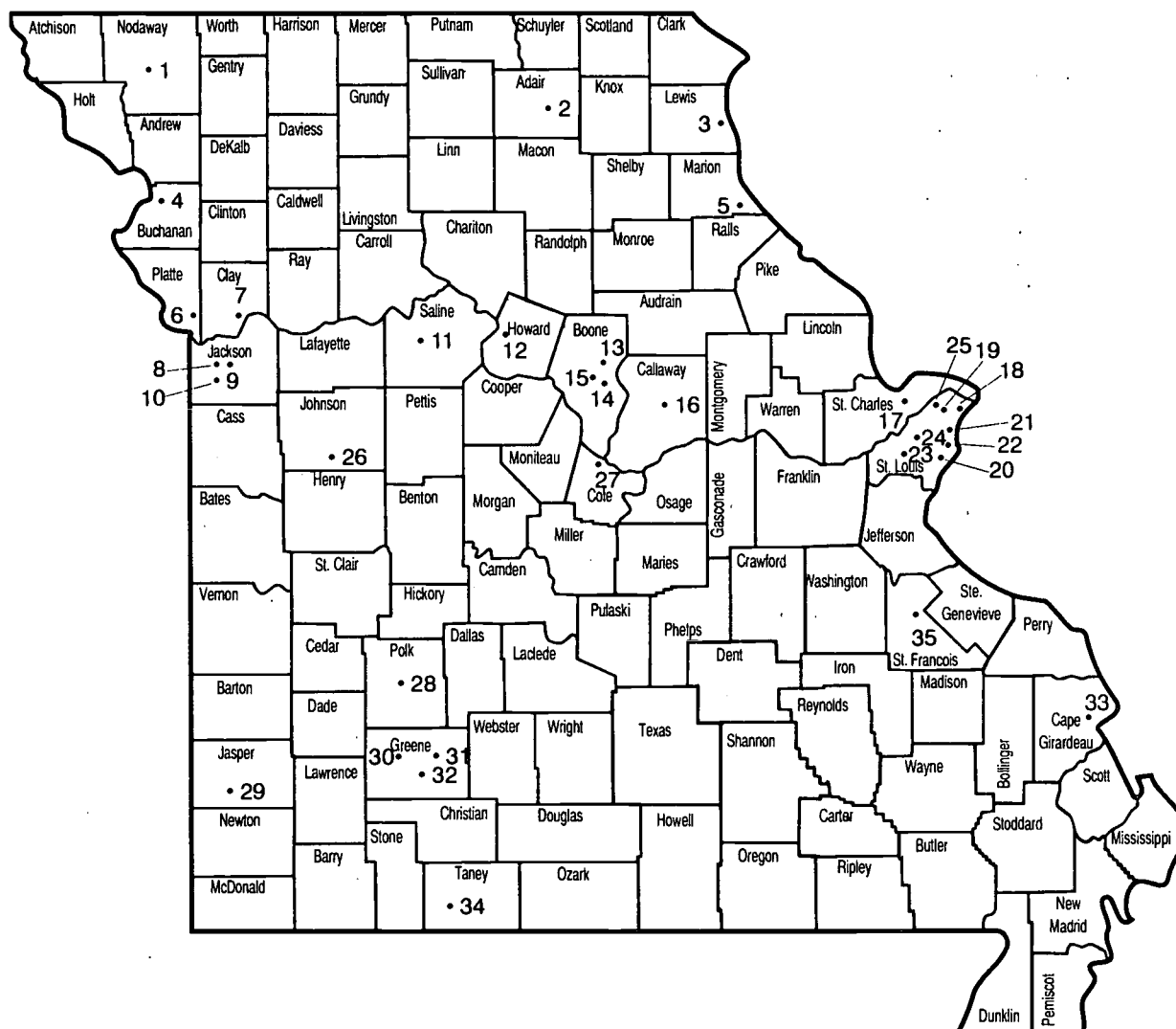
Avila College.....	1
Central Methodist College.....	2
Central Methodist College at Mineral Area College.....	3
Central Missouri State University.....	4
College of the Ozarks.....	5
Columbia College.....	6
Culver-Stockton College.....	7
Drury College.....	8
Evangel College.....	9
Fontbonne College.....	10
Hannibal-LaGrange College.....	11
Harris-Stowe State College.....	12
Lincoln University.....	13
Lindenwood College.....	14
Maryville University-Saint Louis.....	15
Missouri Baptist College.....	16
Missouri Southern State College.....	17
Missouri Valley College.....	18
Missouri Western State College.....	19
Northeast Missouri State University.....	20
Northwest Missouri State University.....	21
Park College.....	22
Rockhurst College.....	23
Saint Louis University.....	24
Southeast Missouri State University.....	25
Southwest Baptist University.....	26
Southwest Missouri State University.....	27
Stephens College.....	28
University of Missouri - Columbia.....	29
University of Missouri - Kansas City.....	30
University of Missouri - Saint Louis.....	31
Washington University.....	32
Webster University.....	33
William Jewell College.....	34
William Woods University.....	35

Two-Year Colleges & Universities

Crowder College.....	37
East Central College.....	38
Jefferson College.....	39
Longview Community College.....	40
Maple Woods Community College.....	41
Mineral Area College.....	42
Moberly Area Community College.....	43
North Central Missouri College.....	44
Penn Valley Community College.....	45
St. Charles County Community College.....	46
St. Louis Community College - Florissant Valley.....	47
St. Louis Community College - Forest Park.....	48
St. Louis Community College - Meramec.....	49
State Fair Community College.....	50
Three Rivers Community College.....	51
Part III : Listing of institutions by programs offered.....	53

7

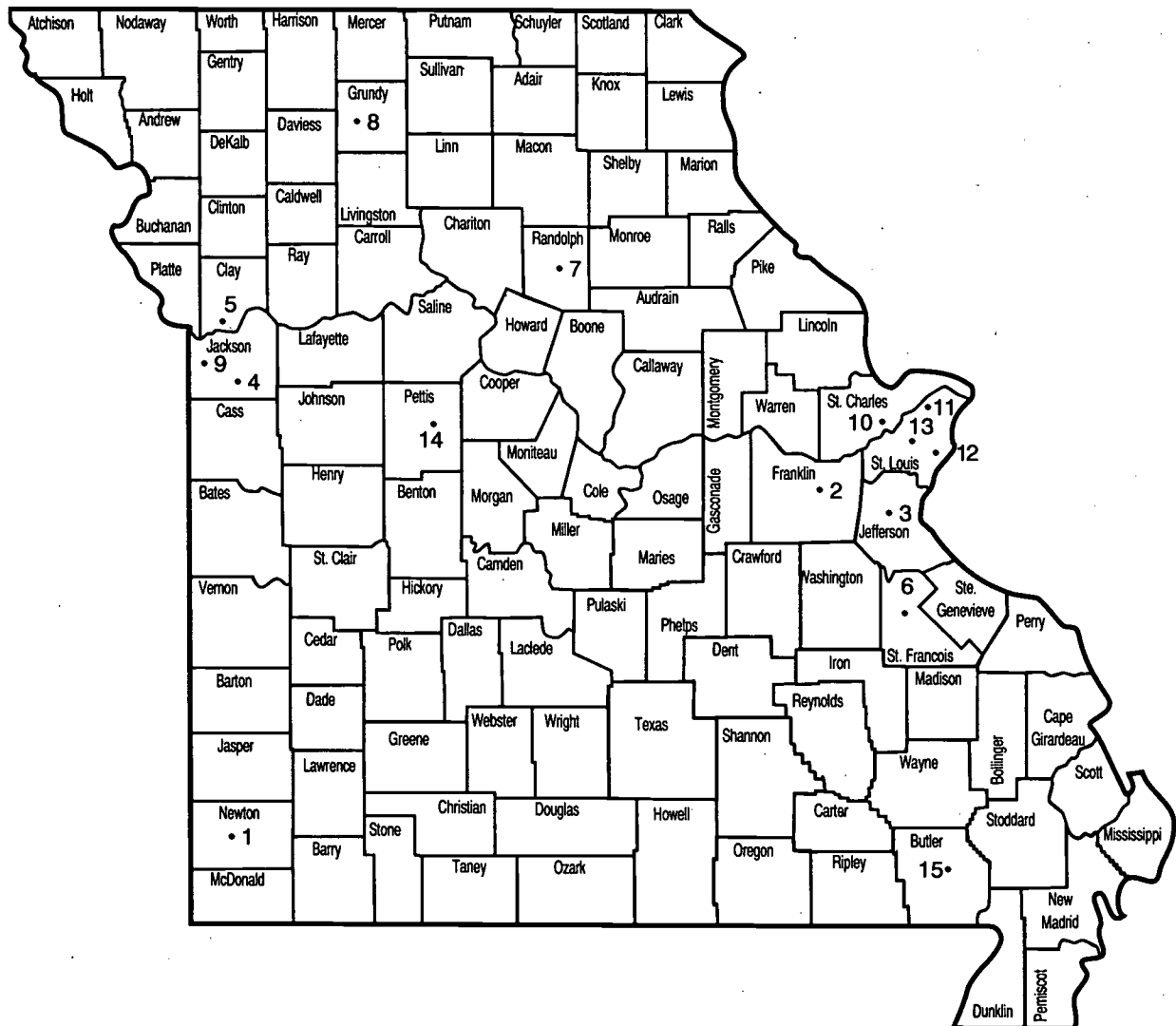
Four-Year Institutions With State Approved Teacher-Education Programs



Numerical Key

- | | | |
|---|--------------------------------------|--|
| 1 — Northwest Missouri State University | 13 — Columbia College | 25 — University of Missouri-St. Louis |
| 2 — Northeast Missouri State University | 14 — Stephens College | 26 — Central Missouri State University |
| 3 — Culver-Stockton College | 15 — University of Missouri-Columbia | 27 — Lincoln University |
| 4 — Missouri Western State College | 16 — William Woods University | 28 — Southwest Baptist University |
| 5 — Hannibal-LaGrange College | 17 — Lindenwood College | 29 — Missouri Southern State College |
| 6 — Park College | 18 — Webster University | 30 — Southwest Missouri State University |
| 7 — William Jewell College | 19 — Washington University | 31 — Evangel College |
| 8 — Avila College | 20 — Harris-Stowe State College | 32 — Drury College |
| 9 — Rockhurst College | 21 — Fontbonne College | 33 — Southeast Missouri State University |
| 10 — University of Missouri-Kansas City | 22 — Saint Louis University | 34 — College of the Ozarks |
| 11 — Missouri Valley College | 23 — Maryville University-St. Louis | 35 — Central Methodist College at
Mineral Area College (Park Hills) |
| 12 — Central Methodist College | 24 — Missouri Baptist College | |

Two-Year Institutions With State Approved Teacher-Education Programs



Numerical Key

- | | |
|------------------------------------|--|
| 1 — Crowder College | 9 — Penn Valley Community College |
| 2 — East Central College | 10 — St. Charles Co. Community College |
| 3 — Jefferson College | 11 — St. Louis Community College-Florissant Valley |
| 4 — Longview Community College | 12 — St. Louis Community College-Forest Park |
| 5 — Maple Woods Community College | 13 — St. Louis Community College-Meramec |
| 6 — Mineral Area College | 14 — State Fair Community College |
| 7 — Moberly Area Community College | 15 — Three Rivers Community College |
| 8 — North Central Missouri College | |

PART I

Four-Year Institutions and Approved Programs

AVILA COLLEGE
11901 Wornall Road
Kansas City, MO 64145-1698

Institution Head

Dr. Larry Kramer

President

(816) 942-8400 Ext. 2214

Certification Officer

Sister Marie Georgette Eshbacher

(816) 942-8400 Ext 2207

Teacher Education Contact Person

Dr. Laura Sloan

School of Education

(816) 942-8400 Ext. 2263

FAX: (816) 942-3362

Date of Initial Approval: 9/90

Approved Through: 9/98

Tests Required for Admission to Teacher Education: ACT - No minimum score required
CBASE

Basic Programs:

Early Childhood(PK-3)*

Elementary (1-8)

Middle School (4-8)***

Secondary:

Art (K-12)

Business Education (7-12)

English (7-12)

Mathematics (7-12)

Science

Biology (7-12)

Chemistry (7-12)

Social Studies (7-12)

Speech and Theater (7-12)

Unified Science (9-12)****

Biology

Chemistry

Vocal Music (K-12)

Special Education:

Mild/Moderate Disabilities (K-12)

Behavioral Disordered

Learning Disabled

Mentally Handicapped

Key for Status of Programs

- * Endorsement Only - Accompanies a valid stand-alone teaching certificate
- ** Provisional Approval - Temporary, pending program modifications
- *** Interim Approval - Temporary, pending initial program review
- **** Effective September 1997

CENTRAL METHODIST COLLEGE
411 Central Methodist Square
Fayette, MO 65248

Institution Head

Dr. Marianne Inman
President

(816) 248-3391 Ext. 221

Certification Officer

Kay Winegard, Registrar
(816) 248-3391 Ext. 210

Teacher Education Contact Person

Dr. Sandra Kinder, Chair
Department of Education
(816) 248-3391 Ext. 493
FAX: (816) 248-1148

Date of Initial Approval: March 1989

Approved Through: 9/97

Tests Required for Admission to Teacher Education: ACT - 20
CBASE

Basic Programs:

Early Childhood (PreK-3)

Elementary (1-8)

Secondary:

English (7-9*, 7-12)

Foreign Language: (K-9*, K-12)

French

German

Spanish

Health (K-9*, K-12, 7-12)

Mathematics (7-9*, 7-12)

Music: (K-9*, K-12)

Instrumental

Instrumental/Vocal

Vocal

Physical Ed. (K-9, 7-12, K-12)

Science: (7-12)

Biology

Chemistry

Earth Science

General Science (7-9)*

Social Studies (7-9*, 7-12)

Speech and Theatre (7-12)

Key for Status of Programs

- * Endorsement Only - Accompanies a valid stand-alone teaching certificate
- ** Provisional Approval - Temporary, pending program modifications
- *** Interim Approval - Temporary, pending initial program review
- **** Effective September 1997

CENTRAL METHODIST COLLEGE AT MINERAL AREA COLLEGE

Box 1000
Park Hills, MO 63601

Teacher Education Contact Person

Ms. Carolyn Gordon, Dean
Coordinator of Elementary Ed. Dept.
(314) 431-4593 Ext: 221
FAX: (314) 431-6807

Date of Initial Approval: 10/92

Approved Through: 9/97 (Commensurate with Central Methodist College - Fayette)

Tests Required for Admission to Teacher Education: ACT - No minimum score reported
CBASE

Basic Programs

Elementary (1-8)

Key for Status of Programs

- * Endorsement Only - Accompanies a valid stand-alone teaching certificate
- ** Provisional Approval - Temporary, pending program modifications
- *** Interim Approval - Temporary, pending initial program review
- **** Effective September 1997

CENTRAL MISSOURI STATE UNIVERSITY

Administration Bldg 202
Warrensburg, MO 64093

Institution Head

Dr. Ed Elliott
President
(816) 543-4111
Fax: (816) 543-8020

Certification Officer

Dr. Larry Keisker, Director
Clinical Services/Certification
(816) 543-4881

Teacher Education Contact Person

Dr. Tom Edmunds, Interim Dean
College of Ed/Human Services
(816) 543-4272
Fax: (816) 543-4167

Date of Initial Approval: Not reported

Approved Through: 12/99

Tests Required for Admission to Teacher Education: ACT - No minimum score
reported
CBASE

Basic Programs:

Early Childhood (PreK-3)
Elementary (1-8)
Middle School (4-8)
Secondary:
 Art (K-9*, K-12)
 Business Education (7-12)
 Driver's Education (7-12)*
 English (7-9*, 7-12)
 Foreign Language: (K-9*, K-12)
 French
 German
 Spanish
 Health (7-12)
 Industrial Arts (K-12)
 Journalism (7-12)
 Mathematics (7-9*, 7-12)
 Music: (K-9*, K-12)
 Instrumental
 Instrumental/Vocal
 Vocal
 Physical Ed (K-9, 7-12, K-12)
 Science: (7-12)
 Biology
 Chemistry
 Earth Science
 General Science (7-9)*
 Physics
 Social Studies (7-9*, 7-12)
 Speech and Theatre (7-9*, 7-12)

Special Ed: (K-12)

Early Childhood Special Ed.
Mild/Moderate Disabilities:
 Behavioral Disordered
 Learning Disabled
 Mentally Handicapped
Severely Developmentally Disabled
Vocational Education: (7-12)
 Agriculture
 Home Economics

Advanced Programs

Adult Basic Education
Counselor (K-12/K-8/7-12)*
ESOL (K-12)*
Gifted Education (K-12)*
Instruct. Media Tech. (K-12)*
Learning Resource Dir. (K-12)*
Librarian (K-12)*
Principal (K-8/4-8/7-12)*
Special Reading (Remedial) (K-12)*
Psychological Examiner (K-12)*
Special Ed. Director (K-12)*
Speech/Language Spec. (K-12)*
Superintendent (K-12)*
Vocational School Director (K-12)*

Key for Status of Programs

- * Endorsement Only - Accompanies a valid stand-alone teaching certificate
** Provisional Approval - Temporary, pending program modifications
*** Interim Approval - Temporary, pending initial program review
**** Effective September 1997

COLLEGE OF THE OZARKS
Point Lookout, MO 65726

Institution Head
Dr. Jerry C. Davis
President
(417) 334-6411

Certification Officer
Dr. Ray Gibson
(417) 334-6411 Ext. 4286

Teacher Education Contact Person
Dr. Ray Gibson
Director of Teacher Education
(417) 334-6411 Ext. 4286
FAX: (417) 335-2618

Date of Initial Approval: 10/94

Approved Through: 10/2002

Tests Required for Admission to Teacher Education: ACT - No minimum score
reported
CBASE

Basic Programs:

Elementary Education (1-8)

Secondary:

Art (K-9*, K-12)
Business Education (7-12)
English (7-9*, 7-12)
Foreign Language: (K-9*, K-12)
French
Spanish
Health (K-9*, K-12, 7-12)
Industrial Technology (K-9*, K-12)
Mathematics (7-9*, 7-12)
Music: (K-9*, K-12)
Instrumental
Instrumental/Vocal
Vocal
Physical Education (K-9, 7-12, K-12)
Science: (7-12)
Biology
Chemistry
General Science (7-9*)
Social Studies (7-9*, 7-12)
Vocational Education
Home Economics (7-12)

Key for Status of Programs

- * Endorsement Only - Accompanies a valid stand-alone teaching certificate
- ** Provisional Approval - Temporary, pending program modifications
- *** Interim Approval - Temporary, pending initial program review
- **** Effective September 1997

COLUMBIA COLLEGE

1001 Rogers
Columbia, MO 65216

Institution Head

Dr. Gerald T. Brouder
President
(573) 875-8700

Certification Officer

Dr. Novelle Dunathan, Head
Education and Psychology Dept.
(573) 875-7538

Teacher Education Contact Person

Dr. Novelle Dunathan, Head
Education and Psychology Dept.
(573) 875-7538
FAX: (573) 875-7209

Date of Initial Approval: 1972

Approved Through: 1/98

Tests Required for Admission to Teacher Education: ACT - 21
CBASE

Basic Programs:

Elementary (1-8)

Middle School (4-8)

Secondary

Art (K-9*, K-12)

Business Education (7-12)

English (7-9*, 7-12)

Mathematics (7-9*, 7-12)

Science: (7-12)

Biology

Chemistry

General Science (7-9*)

Social Studies (7-9*, 7-12)

Key for Status of Programs

- * Endorsement Only - Accompanies a valid stand-alone teaching certificate
- ** Provisional Approval - Temporary, pending program modifications
- *** Interim Approval - Temporary, pending initial program review
- **** Effective September 1997

CULVER-STOCKTON COLLEGE

One College Hill
Canton, MO 63435

Institution Head

Dr. Edwin B. Strong, Jr.
President
(217) 231-6510

Certification Officer

Barbara Conover
Registrar
(217) 231-6540

Teacher Education Contact Person

Dr. Sue Abegglen
Director of Teacher Education
(217) 231-6433
FAX: (217) 231-6611

Date of Initial Approval: 5/90

Approved Through: 11/98

Tests Required for Admission to Teacher Education: ACT - Score on file
CBASE

Basic Programs:

Early Childhood (B-3)***

Elementary (1-8)

Secondary

Art (K-9*, K-12)

English (7-9*, 7-12)

Health (K-9*, 7-12, K-12)

Mathematics (7-9*, 7-12)

Music: (K-9*, 7-12, K-12)

Instrumental

Instrumental/Vocal

Vocal

Physical Ed. (K-9, 7-12, K-12)

Science: (7-12)

Biology

General Science (7-9*)

Social Studies (7-9*, 7-12)

Speech & Theater (7-9*, 7-12)

Special Education (K-12)

Mild/Moderate Disabilities (K-12)

Behavioral Disordered*

Cross Categorical*/***

Learning Disabled*

Mentally Handicapped*

Key for Status of Programs

- * Endorsement Only - Accompanies a valid stand-alone teaching certificate
- ** Provisional Approval - Temporary, pending program modifications
- *** Interim Approval - Temporary, pending initial program review
- **** Effective September 1997

DRURY COLLEGE
900 N. Benton Avenue
Springfield, MO 65802

Institution Head

Dr. John E. Moore, Jr.
President
(417) 873-7879

Advanced Programs Contact Person

Dr. Daniel R. Beach
Director of Teacher Education
(417) 873-7271

Teacher Education Contact Person

Dr. Daniel R. Beach
Director of Teacher Education
(417) 873-7271
FAX: (417) 873-7432

Certification Officer

Dr. Daniel Beach
Director of Teacher Education
(417) 873-7271

Date of Initial Approval: Not reported

Approved Through: 5/2002

Tests Required for Admission to Teacher Education: ACT - 21
CBASE

Basic Programs:

Elementary (1-8)

Secondary:

Art (K-9*, K-12)

English (7-9*, 7-12)

Foreign Language: (K-9*, K-12)

French

German

Spanish

Journalism (7-12)

Mathematics (7-9*, 7-12)

Music: (K-9*, K-12)

Instrumental

Instrumental/Vocal

Vocal

Physical Education (7-12)

Science: (7-12)

Biology

Chemistry

Physics

Social Studies (7-9*, 7-12)

Speech & Theater (7-9*, 7-12)

Unified Science (9-12)****

Biology

Chemistry

Physics

Advanced Programs:

Gifted Education (K-12)*

Key for Status of Programs

- * Endorsement Only - Accompanies a valid stand-alone teaching certificate
- ** Provisional Approval - Temporary, pending program modifications
- *** Interim Approval - Temporary, pending initial program review
- **** Effective September 1997

EVANGEL COLLEGE
1111 N. Glenstone Avenue
Springfield, MO 65802

Institution Head

Dr. Robert H. Spence
President
(417) 865-2811

Certification Officer

Geraldine Jackson
Coordinator of Admissions/Records
(417) 865-2815 Ext. 7202

Teacher Education Contact Person

Mrs. Rebecca Huechteman, Chair
Department of Education
(417) 865-2811 Ext. 7298
FAX: (417) 865-1574

Date of Initial Approval: 1959

Approved Through: 9/2003

Tests Required for Admission to Teacher Education: ACT - 18
CBASE

Basic Programs:

Early Childhood (PreK-3)

Elementary (1-8)

Middle School (5-9)*

Secondary:

Art (K-9*, K-12)

Business Education (7-12)

English (7-9*, 7-12)

Foreign Language: (K-9*, K-12)

French

Spanish

Health (K-9*, 7-12, K-12)

Mathematics (7-9*, 7-12)

Music (K-9*, K-12)

Instrumental

Instrumental/Vocal

Vocal

Physical Ed. (K-9, K-12, 7-12)

Science: (7-12)

Biology

General Science (7-9*)

Social Studies (7-9*, 7-12)

Speech and Theater (7-9*, 7-12)

Special Education:

Mild/Moderate Disabilities (K-12)

Learning Disabled

Behavioral Disordered

Key for Status of Programs

- * Endorsement Only - Accompanies a valid stand-alone teaching certificate
- ** Provisional Approval - Temporary, pending program modifications
- *** Interim Approval - Temporary, pending initial program review
- **** Effective September 1997

FONTBONNE COLLEGE
6800 Wydown Boulevard
St. Louis, MO 63105-3098

Institution Head
Dr. Dennis Golden
President
(314) 889-1419

Certification Officer
Marcia Gower, Registrar
(314) 889-1472

Teacher Education Contact Person
Dr. Judith Weaver Failoni
Chairperson, Dept. of Education/
Special Education
(314) 889-4512
FAX: (314) 889-1451

Date of Initial Approval: Not reported

Approved Through: 12/2000

Tests required for Admission to Teacher Education: ACT - No minimum score
reported
CBASE

Basic Programs:

Early Childhood (Pre K-3)

Elementary (1-8)

Middle School (5-8)

Secondary:

Art (K-9*, K-12)

English (7-9*, 7-12)

Mathematics (7-9*, 7-12)

Science:

Biology (7-12)

Social Studies (7-9*, 7-12)

Speech and Theater (7-9*, 7-12)

Special Education

Deaf/Hearing Impaired (K-12)

Early Childhood Special Ed (P-K)

Mild/Moderate Disabilities: (K-12)

Behavioral Disordered

Cross-Categorical***

Learning Disabled

Mentally Handicapped

Speech/Language Specialist

Vocational:

Home Economics (7-12)

Advanced Programs:

Special Reading (Remedial) (K-12)*

Key for Status of Programs

- * Endorsement Only - Accompanies a valid stand-alone teaching certificate
- ** Provisional Approval - Temporary, pending program modifications
- *** Interim Approval - Temporary, pending initial program review
- **** Effective September 1997

HANNIBAL-LAGRANGE COLLEGE

2800 Palmyra Road
Hannibal, MO 63401-1999

Institution Head

Dr. Woodrow W. Burt
President
(573) 221-3675 Ext. 252

Certification Officer

Janet Ferguson
(573) 221-3675 Ext. 294

Teacher Education Contact Person

Jane Schafer
Director of Teacher Ed/
Education Division Chair
(573) 221-3675 Ext. 296
FAX: (573) 221-6594

Date of Initial Approval: 3/84

Provisionally Approved Through: 1/97

Tests required for Admission to Teacher Education: ACT 18
CBASE

Basic Programs:

Early Childhood (Pre K-3)

Elementary (1-8)

Secondary:

Art (K-12)

Business Education (7-12)

English (7-9*, 7-12)

Mathematics (7-9*, 7-12)

Music: (K-12)

Instrumental

Instrumental/Vocal

Vocal

Social Studies (7-9*, 7-12)

Key for Status of Programs

- * Endorsement Only - Accompanies a valid stand-alone teaching certificate
- ** Provisional Approval - Temporary, pending program modifications
- *** Interim Approval - Temporary, pending initial program review
- **** Effective September 1997

HARRIS-STOWE STATE COLLEGE

3026 Laclede Avenue
St. Louis, MO 63103

Institution Head

Dr. Henry Givens, Jr.
President
(314) 340-3366

Certification Officer

Mrs. Mary K. Jones, Registrar
(314) 340-3601

Teacher Education Contact Person

Dr. Nancy Gammon, Chair
Department of Teacher Education
(314) 340-3661
FAX: (314) 340-3322

Date of Initial Approval: 9/89

Approved Through: 9/97

Tests required for Admission to Teacher Education: ACT - Score on file needed
CBASE

Basic Programs:

Early Childhood Pre K-3

Elementary (1-8)

Middle School (4-8)

Secondary:

Mathematics (7-9*, 7-12)

Science:

General Science (7-9*)

Social Studies (7-9)*

Special Education:

Mild/Moderate Disabilities (K-12)***

Behavioral Disordered

Learning Disabled

Mentally Handicapped

Advanced Program:

Gifted Education (K-12)*/**

Special Reading (Remedial) (K-12)*

Key for Status of Programs

- * Endorsement Only - Accompanies a valid stand-alone teaching certificate
- ** Provisional Approval - Temporary, pending program modifications
- *** Interim Approval - Temporary, pending initial program review
- **** Effective September 1997

LINCOLN UNIVERSITY
820 Chestnut
Jefferson City, MO 65102-0029

Institution Head
Dr. Donald L. Mullett
Interim President
(573) 681-5000

Certification Officer
Dr. Marilyn Hofmann
(573) 681-5250

Teacher Education Contact Person
Dr. Marilyn Hofmann, Acting Head
Department of Education
(573) 681-5250
FAX: (573) 681-5566

Date of Initial Approval: Not reported

Approved Through: 2/2002

Tests required for Admission to Teacher Education: ACT - No minimum score
reported
CBASE

Basic Programs:

Elementary (1-8)

Middle School (4-8)

Secondary:

Art (K-12)

Business Education (7-12)

English (7-12)

Health (K-12)

Mathematics (7-12)

Music: (K-12)

Instrumental

Vocal

Physical Education (K-9, 7-12, K-12)

Science: (7-12)

Biology

Chemistry

Physics

Social Studies (7-12)

Special Education: (K-12)

Mild/Moderate Disabilities: (K-12)

Learning Disabled

Mentally Handicapped

Advanced Programs:

Counselor (K-8, 7-12)*

Principal (K-8, 7-12)*

Special Education Director (K-12)*

Key for Status of Programs

- * Endorsement Only - Accompanies a valid stand-alone teaching certificate
- ** Provisional Approval - Temporary, pending program modifications
- *** Interim Approval - Temporary, pending initial program review
- **** Effective September 1997

LINDENWOOD COLLEGE
209 S. Kingshighway
St. Charles, MO 63301

Institution Head

Dr. Dennis C. Spellmann
President
(314) 949-4900

Certification Officer

Dr. Janet Aucutt-Fever
(314) 949-2000

Teacher Education Contact Person

Dr. Larry Doyle, Dean
Education Division
(314) 949-4905
FAX: (314) 949-4992

Date of Initial Approval: Not reported

Approved Through: 1/2001

Tests required for Admission to Teacher Education: ACT - No minimum score
reported
CBASE

Basic Programs:

Early Childhood (Pre K-3)

Elementary (1-8)

Secondary:

Art (K-9*, K-12)

Business Education (7-12)

English (7-9*, 7-12)

Foreign Language: (K-9*, K-12)

French

Spanish

Mathematics (7-9*, 7-12)

Music (K-9*, K-12)

Instrumental

Vocal

Physical Education (K-9, K-12, 7-12)

Science: (7-12)

Biology

Social Studies (7-9*, 7-12)

Special Education:

Early Childhood (P-K)

Mild/Moderate Disabilities (K-12)

Behavioral Disordered

Learning Disabled

Mentally Handicapped

Advanced Programs:

Counselor (K-12)*

Gifted (K-12)*

Principal (K-8, 7-12)*

Psychological Examiner*

Special Reading (Remedial) (K-12)*

Key for Status of Programs

- * Endorsement Only - Accompanies a valid stand-alone teaching certificate
- ** Provisional Approval - Temporary, pending program modifications
- *** Interim Approval - Temporary, pending initial program review
- **** Effective September 1997

24

MARYVILLE UNIVERSITY
13550 Conway Road
St. Louis, MO 63141-7299

Institution Head

Dr. Keith Lovin
President
(314) 529-9330

Certification Officer

Dr. Mary Ellen Finch, Dean
(314) 529-9466

Teacher Education Contact Person

Dr. Mary Ellen Finch
Dean, School of Education
(314) 529-9466
FAX: (314) 529-9921

Date of Initial Approval: Not reported

Approved Through: 1/98

Tests required for Admission to Teacher Education: ACT - N/A
CBASE

Basic Programs:

Early Childhood (PK-3)

Elementary 1-8

Middle School 4-8

Secondary:

Art (K-9*, K-12)

English (7-9*, 7-12)

Mathematics (7-9*, 7-12)

Science(7-12)

Biology

Chemistry

Physics

Social Studies (7-9*, 7-12)

Unified Science (9-12)****

Biology

Chemistry

Physics

Advanced Program:

Gifted (K-12)*

Key for Status of Programs

- * Endorsement Only - Accompanies a valid stand-alone teaching certificate
- ** Provisional Approval - Temporary, pending program modifications
- *** Interim Approval - Temporary, pending initial program review
- **** Effective September 1997

MISSOURI BAPTIST COLLEGE

1 College Park Drive
St. Louis, MO 63141-8698

Institution Head

Dr. R. Alton Lacey
President
(314) 434-1115

Certification Officer

Dr. JoAnn Miller
(314) 434-1115

Teacher Education Contact Person

Dr. Roberta Ross-Fisher
Director of Teacher Education
(314) 434-1115 Ext. 2331
FAX: (314) 434-7596

Date of Initial Approval: Not reported

Approved Through: 11/99

Tests Required for Admission to Teacher Education: ACT - Score on File Needed
CBASE

Basic Programs:

Early Childhood (Pre K-3)

Elementary (1-8)

Middle School (4-8)

Secondary:

Driver's Education (7-12)*

English (7-9*, 7-12)

Health (K-9*, K-12, 7-12)

Mathematics (7-9*, 7-12)

Music:(K-12)

Instrumental

Instrumental/Vocal

Vocal

Physical Education (K-9, K-12, 7-12)

Science:(7-12)

Biology

Chemistry

General Science (7-9*)

Social Studies (7-9*, 7-12)

Advanced Programs:

Librarian (K-12)*

Key for Status of Programs

- * Endorsement Only - Accompanies a valid stand-alone teaching certificate
- ** Provisional Approval - Temporary, pending program modifications
- *** Interim Approval - Temporary, pending initial program review
- **** Effective September 1997

MISSOURI SOUTHERN STATE COLLEGE

3950 E. Newman Road
Joplin, MO 64801-1595

Institution Head

Dr. Julio Leon
President
(417) 624-8181

Certification Officer

Dr. Michael Horvath, Dean
(417) 625-9746

Teacher Education Contact Person

Dr. Michael Horvath
Dean, School of Education/
Psychology/and Physical Ed.
(417) 625-9314
FAX: (417) 625-9771

Date of Initial Approval: 1973

Approved Through: 9/2000

Tests Required for Admission to Teacher Education: ACT - 20
CBASE

Basic Programs:

Early Childhood (PK-3)

Elementary (1-8)

Middle School (4-8)

Secondary:

Art (K-9*, K-12)

Business Education (7-12)

English (7-9*, 7-12)

Foreign Language (7-9*, 7-12)

Spanish

Mathematics (7-9*, 7-12)

Music (K-9*, K-12)

Instrumental

Instrumental/Vocal

Vocal

Physical Ed. (K-9*, K-12, 7-12)

Science: (7-12)

Biology

Chemistry

Physics

Social Studies (7-12, 7-9*)

Speech and Theater (7-9*, 7-12)

Special Education:

Mild/Moderate Disabilities: (K-12)

Behavioral Disordered

Cross Categorical***

Learning Disabled

Mentally Handicapped

BEST COPY AVAILABLE

Advanced Programs:

Special Reading/Remedial (K-12)*

ESOL*/***

Key for Status of Programs

- * Endorsement Only - Accompanies a valid stand-alone teaching certificate
- ** Provisional Approval - Temporary, pending program modifications
- *** Interim Approval - Temporary, pending initial program review
- **** Effective September 1997

MISSOURI VALLEY COLLEGE
500 East College
Marshall, MO 65340

Institution Head

Dr. J. Kenneth Bryant
President
(816) 886-6924 EXT. 108

Certification Officer

Clyde Williams
Registrar
(816) 886-6924

Teacher Education Contact Person

Dr. Dennis Ehlert
Dean of the Division of Education/
Physical Education
(816) 886-6924 EXT 170
FAX: (816) 886-9818

Date of Initial Approval: 1977

Approved Through: 9/97

Tests Required for Admission to Teacher Education: ACT - Score on file in
registrar's office
CBASE

Basic Programs:

Early Childhood (PK-3)**

Elementary (1-8)

Secondary:

English (7-9*, 7-12)

Mathematics (7-9*, 7-12)

Physical Education (K-9, 7-12, K-12)

Health (K-12)*/**

Science: (7-12)

Biology

General Science

Social Studies (7-9*, 7-12)

Speech and Theater (7-9*, 7-12)

Special Education:

Early Childhood Special Ed (P-K)**

Mild/Moderate Disabilities (K-12)**

Cross Categorical

Learning Disabled

Mentally Handicapped

Key for Status of Programs

- * Endorsement Only - Accompanies a valid stand-alone teaching certificate
- ** Provisional Approval - Temporary, pending program modifications
- *** Interim Approval - Temporary, pending initial program review
- **** Effective September 1997

MISSOURI WESTERN STATE COLLEGE

4525 Downs Drive
St. Joseph, MO 64507

Institution Head

Dr. Janet Gorman Murphy
(816) 271-4237

Certification Officer

Dr. Jerry R. Aschermann
(816) 271-4300

Teacher Education Contact Person

Dr. Diana Winston, Chair
Department of Education
(816) 271-4366
FAX: (816) 271-4574

Date of Initial Approval: 1970

Approved Through: 2/97

Tests Required for Admission to Teacher Education: ACT - 21
CBASE

Basic Programs:

Early Childhood (PK-3)

Elementary (1-8)

Middle School (4-8)***

Secondary:

Art (K-9*, K-12)

English (7-9*, 7-12)

Foreign Language (K-9*, K-12)

French

German

Spanish

Journalism (7-12)

Mathematics (7-9*, 7-12)

Music: (K-9*, K-12)

Instrumental

Instrumental/Vocal

Vocal

Physical Education (K-12)

Science: (7-12)

Biology

Chemistry

General Science (7-9*)

Physics

Social Studies (7-9*, 7-12)

Speech and Theater (7-9*, 7-12)

Special Education:

Early Childhood Special Ed (P-K)

Mild/Moderate Disabilities (K-12)

Behavioral Disordered

Learning Disabled

Mentally Handicapped

Key for Status of Programs

- * Endorsement Only - Accompanies a valid stand-alone teaching certificate
- ** Provisional Approval - Temporary, pending program modifications
- *** Interim Approval - Temporary, pending initial program review
- **** Effective September 1997

NORTHWEST MISSOURI STATE UNIVERSITY

800 University Drive
Maryville, MO 64468

Institution Head

Dr. Dean L. Hubbard
President
(816) 562-1212

Advanced Programs Contact Person

Dr. Frances Shipley
Dean, Graduate School
(816) 562-1145

Teacher Education Contact Person

Dr. Joseph F. Ryan
Dean, College of Education and
Human Services
(816) 562-1671
FAX: (816) 562-1992

Certification Officer

Kim Hullinger
(816) 562-1671

Date of Initial Approval: 1954

Approved Through: 9/2002

Tests Required for Admission to Teacher Education: ACT -No minimum score
reported
CBASE

Basic Programs:

Early Childhood (Pre K-3)

Elementary (1-8)

Middle School (4-8)

Secondary:

Art (K-9*, K-12)

Business Education (7-12)

Driver's Education (7-12)*

English (7-9*, 7-12)

Foreign Language: (K-9*, 7-12)

French

Spanish

Health (7-12)

Mathematics (7-9*, 7-12)

Music: (K-9*, K-12)

Instrumental

Vocal

Physical Ed. (K-9, 7-12)

Science (7-12)

Biology

Chemistry

Earth Science

General Science (7-9*)

Physics

Social Studies (7-9*, 7-12)

Speech & Theater (7-9*, 7-12)

Special Education:

Early Childhood Spec. Ed. (P-K)

Mild/Moderate Disabilities (K-12)

Behavioral Disordered

Learning Disabled

Mentally Handicapped

Unified Science (9-12)****

Biology

Chemistry

Earth Science

General Science

Physics

Vocational: (7-12)

Vocational Agriculture

Vocational Business Ed.

Vocational Home Economics

Advanced Programs:

Special Reading (Remedial)(K-12)*

Counselor (K-8, 7-12, K-12)*

Principal (K-8, 5-9, 7-12)*

Superintendent (K-12)*

Key for Status of Programs

- * Endorsement Only - Accompanies a valid stand-alone teaching certificate
** Provisional Approval - Temporary, pending program modifications
*** Interim Approval - Temporary, pending initial program review
**** Effective September 1997

PARK COLLEGE
8700 N.W. River Park Drive
Parkville, MO 64152

Institution Head

Dr. Donald J. Breckon
(816) 741-2000 Ext. 6202

Certification Officer

M. Eileen West, Registrar
(816) 741-2000 Ext. 271

Teacher Education Contact Person

Dr. Patricia Hutchens McClelland, Chair
Department of Teacher Education
(816) 741-2000 Ext. 727
FAX: (816) 741-4911

Date of Initial Approval: Not reported

Approved Through: 12/99

Tests Required for Admission to Teacher Education: ACT - No minimum score
reported
CBASE

Basic Programs:

Early Childhood (Pre K-3)

Elementary (1-8)

Secondary:

Art (K-9*, K-12)

English (7-9*, 7-12)

Journalism (7-12)

Mathematics (7-9*, 7-12)

Science: (7-12)

Biology

Chemistry

Social Studies (7-9*, 7-12)

Key for Status of Programs

- * Endorsement Only - Accompanies a valid stand-alone teaching certificate
- ** Provisional Approval - Temporary, pending program modifications
- *** Interim Approval - Temporary, pending initial program review
- **** Effective September 1997

ROCKHURST COLLEGE
1100 Rockhurst Road
Kansas City, MO 64110

Institution Head

Rev. Peter B. Ely, S.J.
President
(816) 501-4000

Certification Officer

Dr. Joan Caulfield
Chairperson
(816) 501-4140

Teacher Education Contact Person

Dr. Joan Caulfield, Chairperson
Department of Education
(816) 501-4140
FAX: (816) 501-4646

Date of Initial Approval: Not reported

Approved Through: 9/2000

Tests Required for Admission to Teacher Education: ACT - 20
CBASE

Basic Programs:

Elementary (1-8)

Secondary:

Business Education (7-12)

English (7-9*, 7-12)

Foreign Language:

French (K-9*, K-12)

Spanish (K-9*, K-12)

Mathematics (7-9*, 7-12)

Science: (7-12)

Biology

Chemistry

General Science (7-9)*

Physics

Social Studies (7-9*, 7-12)

Key for Status of Programs

- * Endorsement Only - Accompanies a valid stand-alone teaching certificate
- ** Provisional Approval - Temporary, pending program modifications
- *** Interim Approval - Temporary, pending initial program review
- **** Effective September 1997

SAINT LOUIS UNIVERSITY

221 N. Grand Blvd
St. Louis, MO 63103

Institution Head

Rev. Lawrence Biondi, S.J.
(314) 977-2222

Certification Officer

Dr. Geraldine C. Hufker
Coordinator of Teacher Education
(314) 977-2507

Teacher Education Contact Person

Dr. Ann M. Rule
Chair, Department of Education
(314) 977-2508
FAX: (314) 977-3214

Date of Initial Approval: 1957

Approved Through: Pending Board Approval

Tests Required for Admission to Teacher Education: ACT - No minimum score
reported
CBASE

Basic Programs:

Early Childhood (PK-3)

Elementary (1-8)

Middle School (4-8)

Secondary:

Art (K-9*, K-12)

English (7-12)

Foreign Language (K-9*), K-12)

French

German

Spanish

Mathematics (7-9*, 7-12)

Science: (7-12)

Biology

General Science (7-9))*

Social Studies (7-9*, 7-12)

Special Education:

Early Childhood Spec. Ed

Mild/Moderate Disabilities (K-12)

Behavioral Disordered

Learning Disabled

Mentally Handicapped

Advanced Programs:

Counselor (K-8, 7-12, K-12)*

Principal (K-8, 5-9, 7-12)*

Psychological Examiner (K-12)*

Special Education Director (K-12)*

Special Reading (Remedial)(K-12)*

Speech/Language Specialist (K-12)*

Superintendent (K-12)*

Key for Status of Programs

- * Endorsement Only - Accompanies a valid stand-alone teaching certificate
- ** Provisional Approval - Temporary, pending program modifications
- *** Interim Approval - Temporary, pending initial program review
- **** Effective September 1997

SOUTHEAST MISSOURI STATE UNIVERSITY

One University Plaza
Cape Girardeau, MO 63701-4799

Institution Head

Dr. Dale Nitzschke
President
(573) 651-2000

Advanced Programs Contact Person

Dr. Sheila Caskey, Dean
Graduate School & Extended Learning
(573) 651-2192

Teacher Education Contact Person

Dr. Shirley Stennis-Williams
Dean, College of Education
(573) 651-2123
FAX: (573) 651-2410

Certification Officer

Dr. Timothy Miller
Director, Teacher Certification & Adm.
(573) 651-2556

Date of Initial Approval: 1919

Approved Through: 12/99

Tests Required for Admission to Teacher Education: ACT - 22
CBASE

Basic Programs:

Early Childhood (PK-3)

Elementary (1-8)

Secondary:

Art (K-9*, K-12)

Business Education (7-12)

English (7-9*, 7-12)

Foreign Language (K-9*, K-12)

French

Spanish

Industrial Arts (K-9*, K-12)

Journalism (7-12)

Mathematics (7-9*, 7-12)

Music (K-9*, K-12)

Instrumental

Instrumental/Vocal

Vocal

Physical Ed. (K-9, K-12, 7-12)

Science: (7-12)

Biology

Chemistry

Earth Science

Physics

Social Studies (7-9*, 7-12)

Speech/Theater (7-9*, 7-12)

Special Education:(K-12)

Early Childhood

Mild/Moderate Disabilities (K-12)

Behavioral Disordered

Learning Disabled

Mentally Handicapped

Severely Developmentally Dis.

Speech/Language Specialist

Vocational Education (7-12)

Home Economics

School Director

Advanced Programs:

Adult Basic Education

Counselor (K-8, 7-12)*

ESOL (K-12)*

Gifted (K-12)*

Principal (K-8, 7-12)*

Psychological Examiner (K-12)*

Special Education Director (K-12)*

Special Reading (Remedial)(K-12)*

Superintendent (K-12)*

Key for Status of Programs

- * Endorsement Only - Accompanies a valid stand-alone teaching certificate
** Provisional Approval - Temporary, pending program modifications
*** Interim Approval - Temporary, pending initial program review
**** Effective September 1997

SOUTHWEST BAPTIST UNIVERSITY

1600 University Avenue
Bolivar, MO 65613-2496

Institution Head

Dr. C. Pat Taylor
President
(417) 326-5281

Certification Officer

Dr. John Wheeler
(417) 326-1715

Teacher Education Contact Person

Dr. Judy Bryant
Chair, Department of Education
(417) 326-1715
FAX: (417) 326-1719

Date of Initial Approval: March, 1990

Approved Through: 9/98

Tests Required for Admission to Teacher Education: ACT - No minimum score
required
CBASE

Basic Programs:

Early Childhood (Pre K-3)

Middle School (4-8)

Elementary (1-8)

Secondary:

Art (K-9*, K-12)

Business Education (7-12)

Driver's Education (7-12)*

English (7-9*, 7-12)

Foreign Language (K-9)*

Spanish

Health (K-9*, K-12)

Mathematics (K-9*, K-12, 7-12)

Music (K-9*, K-12)

Instrumental

Instrumental/Vocal

Vocal

Physical Ed. (K-9, K-12, 7-12)

Science (7-12)

Biology

Chemistry

General Science (7-9*)

Physics

Social Studies (7-9*, 7-12)

Speech/Theatre (7-9*, 7-12)

Key for Status of Programs

- * Endorsement Only - Accompanies a valid stand-alone teaching certificate
- ** Provisional Approval - Temporary, pending program modifications
- *** Interim Approval - Temporary, pending initial program review
- **** Effective September 1997

SOUTHWEST MISSOURI STATE UNIVERSITY

901 S. National Avenue
Springfield, MO 65804

Institution Head

Dr. John H. Keiser
President
(417) 836-8500

Certification Officer

Dr. Woody Buckner
(417) 836-5253

Teacher Education Contact Person

Dr. Sandra Wagner, Associate Dean
College of Education
(417) 836-5138
FAX: (417) 836-4884

Date of Initial Approval: Not reported

Approved Through: 10/2000

Tests Required for Admission to Teacher Education: ACT - 22
CBASE

Basic Programs:

Early Childhood (Pre K-3)
Elementary Education (1-8)
Middle School (4-8)

Secondary:

Art (K-9*, K-12)
Business Education (7-12)
Driver's Education (7-12)*
English (7-9*, 7-12)
Foreign Language: (K-9*, K-12)
French
German
Latin
Spanish

Health (K-9*, K-12, 7-12)
Industrial Arts (K-9*, K-12)
Journalism (7-12)
Mathematics (7-9*, 7-12)
Music: (K-9*, K-12)
Instrumental
Instrumental/Vocal
Vocal
Physical Ed. (K-9, K-12, 7-12)
Science: (7-12)
Biology
Chemistry
Earth Science
General Science (7-9)
Physics

Social Studies (7-9*, 7-12)
Speech & Theater (7-9*, 7-12)

Special Ed: K-9, K-12, 7-12

Deaf/Hearing Impaired
Early Childhood Special Ed
Mild/Moderate Disabilities: K-12
Behavioral Disordered
Cross Categorical***
Learning Disabled
Mentally Handicapped
Speech/Language Specialist
Unified Science (9-12)****
Biology
Chemistry
Earth Science
General Science
Physics

Vocational Education 7-12
Agriculture
Business and Office Education
Home Economics

Advanced Programs:

Adult Education
Counselor (K-8, 7-12, K-12)*
ESOL *
Instructional Media Tech. (K-12)*
Librarian (K-12)*
Principal (K-8, 4-8, 7-12)*
School Psy. Examiner (K-12)*
Special Ed. Director (K-12)*
Special Reading (K-12)*
Superintendent (K-12)*
Vocational School Director (K-12)*

Key for Status of Programs

- * Endorsement Only - Accompanies a valid stand-alone teaching certificate
** Provisional Approval - Temporary, pending program modifications
*** Interim Approval - Temporary, pending initial program review
**** Effective September 1997

STEPHENS COLLEGE

P.O. Box 2001
Columbia, MO 65215

Institution Head

Dr. Marcia S. Kierscht
President
(573) 442-2211

Certification Officer

Dr. P. Terrett Teague
(573) 876-7261

Teacher Education Contact Person

Dr. P. Terrett Teague
Director, Teacher Education
(573) 876-7260
FAX: (573) 876-7248

Date of Initial Approval: 1983

Approved Through: 3/99

Tests Required for Admission to Teacher Education: ACT - No minimum score
reported
CBASE

Basic Programs:

Early Childhood (PreK-3)

Elementary (1-8)

Special Education:

Early Childhood Special Education***

Key for Status of Programs

- * Endorsement Only - Accompanies a valid stand-alone teaching certificate
- ** Provisional Approval - Temporary, pending program modifications
- *** Interim Approval - Temporary, pending initial program review
- **** Effective September 1997

TRUMAN STATE UNIVERSITY
200 McClain Hall
Kirksville, MO 63501

Institution Head
Dr. Jack Magruder
President
(816) 785-4100

Certification Officer
Ms. Joanne Jackson
Certification Officer
(816) 785-4680

Teacher Education Contact Person
Dr. Patricia Miller
Head, Division of Education
(816) 785-4383
FAX: (816) 785-4393

Date of Initial Approval: 11/89

Approved Through: 4/98

Tests Required for Admission to Teacher Education: ACT not required
GRE (General) is required 50th
percentile scores preferred
CBASE

Basic Programs:

Elementary (1-8)

Middle School (5-9)***

Secondary:

Art (K-9*, K-12)

English (7-9*, 7-12)

Foreign Language: (K-9*, K-12)

French

Spanish

Health (K-9*, K-12, 7-12)

Journalism (7-12)

Mathematics (7-9*, 7-12)

Music (K-9*, K-12, 7-12)

Instrumental

Instrumental/Vocal

Vocal

Physical Ed. (K-9, K-12, 7-12)

Science: (7-12)

Biology

Chemistry

General Science (7-9*)

Physics

Social Studies (7-9*, 7-12)

Speech and Theater (7-9*, 7-12)

Special Ed.

Mild/Moderate Disabilities: (K-12)

Behavioral Disordered

Learning Disabled

Mentally Handicapped

Speech/Lang. Specialist (K-12)

Advanced Programs:

Counselor (7-12, K-9, K-12)*

Librarian (K-12)*

Principal(K-8,4-8, 7-12)*

Key for Status of Programs

- * Endorsement Only - Accompanies a valid stand-alone teaching certificate
- ** Provisional Approval - Temporary, pending program modifications
- *** Interim Approval - Temporary, pending initial program review
- **** Effective September 1997

UNIVERSITY OF MO-COLUMBIA

101 Hill Hall
Columbia, MO 65211

Institution Head
Dr. Richard Wallace
Interim Chancellor
(573) 882-3387

Advanced Programs Contact Person
Dr. Steve Graham
Associate Dean, College of Education
(573) 882-7403

Teacher Education Contact Person
Dr. Sharon L. Huntze
Associate Dean, College of Ed.
(573) 882-7831
FAX (573) 882-5071

Certification Officer
Dr. Sharon L. Huntze
Associate Dean, College of Ed.
(573) 882-7831

Date of Initial Approval: 11/92

Approved Through: 11/2001

Tests Required for Admission to Teacher Education: ACT - 22
CBASE

Basic Programs:

Early Childhood (PreK-3)

Elementary (1-8)

Secondary:

Art (K-9*, K-12)

Business Education (7-12)

English (7-9*, 7-12)

Foreign Language (K-9*, K-12)

French

German

Latin

Spanish

Health (K-9*, K-12, 7-12)

Industrial Arts (K-9*, K-12)

Mathematics (7-9*, 7-12)

Music (K-9*, K-12)

Instrumental

Instrumental/Vocal

Vocal

Physical Ed. (K-9, K-12, 7-12)

Science (7-12)

Biology

Chemistry

Earth Science

Physics

Social Studies (7-9*, 7-12)

Speech and Theatre (7-9*, 7-12)

Vocational Education (7-12)

Agriculture

Business Education

Home Economics

Marketing Education

Special Education

Mild/Moderate Disabilities (K-12)

Learning Disabled

Behavioral Disordered

Mentally Handicapped

Severely Developmentally Disabled

Advanced Programs

Counselor (K-9, 7-12)*

Early Childhood Spec. Ed.*

Gifted Education (K-12)*

Principal (K-8, 4-8, 7-12)*

Psychological Examiner (K-12)*

Special Reading (Remedial) (K-12)*

School Librarian (K-12)*

School Psychologist (K-12)*

Special Ed. Administrator (K-12)*

Speech/Language Specialist (K-12)*

Superintendent (K-12)*

Vocational School Director (K-12)*

Key for Status of Programs

- * Endorsement Only - Accompanies a valid stand-alone teaching certificate
** Provisional Approval - Temporary, pending program modifications
*** Interim Approval - Temporary, pending initial program review
**** Effective September 1997

UNIVERSITY OF MO-KANSAS CITY
5100 Rockhill Road
Kansas City, MO 64110-2499

Institution Head

Dr. Eleanor B. Schwartz
Chancellor
(816) 235-1101

Certification Officer

Ms. Bonita Murphy
Academic Advisor
(816) 235-2474

Teacher Education Contact Person

Dr. Linda L. Edwards, Interim Dean
School of Education
(816) 235-2236
FAX: (816) 235-5270

Date of Initial Approval: Not reported

Approved Through: 4/99

**Tests Required for Admission to Teacher Education: ACT - No minimum score
reported
C-BASE**

Basic Programs:

Early Childhood (Pre K-3)

Elementary (1-8)

Middle School (4-8)

Secondary:

Art (K-12, K-9*, 9-12)***

English (7-9*, 7-12)

Foreign Language: (K-9*, K-12)

French

German

Spanish

Mathematics (7-9*, 7-12)

Music: (K-9*, K-12)

Instrumental

Vocal

Physical Education (K-9, K-12, 7-12)

Science: (7-12)

Biology

Chemistry

Earth Science

Physics

Social Studies (7-9*, 7-12)

Advanced Programs:

Mild/Moderate Disabilities (K-12)

Behavioral Disordered*

Learning Disabled*

Counselor (K-8, 7-12)*

ESOL (K-12)*/**

Principal (K-8, 4-8, 7-12)*

Special Education Director (K-12)*

Special Reading (Remedial) (K-12)*

Superintendent (K-12)*

Key for Status of Programs

- * Endorsement Only - Accompanies a valid stand-alone teaching certificate
- ** Provisional Approval - Temporary, pending program modifications
- *** Interim Approval - Temporary, pending initial program review
- **** Effective September 1997

UNIVERSITY OF MO-ST. LOUIS
8001 Natural Bridge Road
St. Louis, MO 63121

Institution Head
Dr. Blanche Touhill
Chancellor
(314) 516-5254

Certification Officer
Ms. Nancy Ashford, Director
Student Services and Records
(314) 516-5937

Teacher Education Contact Person
Dr. Thomas Schnell, Interim Dean
School of Education
(314) 516-5109
FAX: (314) 516-5227

Date of Initial Approval: Not reported

Approved Through: 9/2000

Tests Required for Admission to Teacher Education: ACT - 20
CBASE

Basic Programs:

Early Childhood (PreK-3)

Elementary (1-8)

Middle School (4-8)

Secondary:

Business Education (7-12)

English (7-9*, 7-12)

Foreign Language (K-9*, K-12)

French

German

Spanish

Mathematics (7-9*, 7-12)

Music (K-9*, K-12)

Instrumental

Instrumental/Vocal

Vocal

Physical Ed. (K-9, K-12, 7-12)

Science (7-12)

Biology

Chemistry

Physics

General Science (7-9*)

Social Studies (7-9*, 7-12)

Speech/Theatre (7-9*, 7-12)

Special Education

Early Childhood Spec. Ed. (Pre-K)

Mild/Moderate Disabilities (K-12)

Behavioral Disordered

Learning Disabled

Mentally Handicapped

Advanced Programs:

Adult

Counselor (K-8, 7-12, K-12)*

Gifted (K-12)*

Instructional Media Tech. (K-12)*

Principal (K-8, 4-8, 7-12)*

Special Reading/Remedial (K-12)*

Psychological Examiner (K-12)*

School Psychologist (K-12)

Special Ed. Director (K-12)*

Superintendent (K-12)*

BEST COPY AVAILABLE

Key for Status of Programs

- * Endorsement Only - Accompanies a valid stand-alone teaching certificate
- ** Provisional Approval - Temporary, pending program modifications
- *** Interim Approval - Temporary, pending initial program review
- **** Effective September 1997

WASHINGTON UNIVERSITY

One Brookings Drive
St. Louis, MO 63130

Institution Head
Dr. Mark Wrighton
Chancellor
(314) 935-5100

Certification Officer
Dr. Donna Gardner
Certification Officer
(314) 935-6791

Teacher Education Contact Person
Dr. James Wertsch, Chair
Department of Education
(314) 935-6724
FAX: (314) 935-4982

Date of Initial Approval: 1954

Approved Through: 9/2002

Tests Required for Admission to Teacher Education: ACT - No minimum score
required
CBASE

Basic Programs:

Early Childhood Education (Pre K-3)

Elementary (1-8)

Middle School (5-9)***

Secondary:

Art (K-9*, K-12)

English (7-9*, 7-12)

Foreign Language (K-9*, K-12)

French

German

Japanese

Latin

Russian

Spanish

Mathematics (7-9*, 7-12)

Science (7-12)

Biology

Chemistry

Earth Science

Physics

Social Studies (7-9*, 7-12)

Speech/Theatre (7-9*, 7-12)**

Special Education (K-12)

Deaf/Hearing Impaired

Key for Status of Programs

- * Endorsement Only - Accompanies a valid stand-alone teaching certificate
- ** Provisional Approval - Temporary, pending program modifications
- *** Interim Approval - Temporary, pending initial program review
- **** Effective September 1997

WEBSTER UNIVERSITY
470 E. Lockwood Avenue
St. Louis, MO 63119-3194

Institution Head
Dr. Richard S. Meyers
President
(314) 968-6996

Certification Officer
Ms. Kay Easton
Director of Teacher Certification
(314) 968-7058

Teacher Education Contact Person
Dr. Brenda Pyfe, Acting Dean
Education Department
(314) 968-6913
FAX: (314) 968-7118

Date of Initial Approval: 1963

Approved Through: 2/2002

Tests Required for Admission to Teacher Education: ACT - No minimum score
reported
CBASE

Basic Programs:

Early Childhood (Pre K-3)
Elementary (1-8)
Middle School (5-9)***
Secondary:
 Art (K-9*, K-12)
 English (7-9*, 7-12)
 Foreign Language (K-9*, K-12)
 French
 Spanish
 Mathematics (7-9*, 7-12)
 Music (K-9*, K-12)
 Instrumental
 Instrumental/Vocal
 Vocal
 Science: (7-12)
 Biology
 General Science (7-9*)
 Social Studies (7-9*, 7-12)
Special Education: (K-9, 7-12, K-12)
 Early Childhood Special Education
 Mild/Moderate Disabilities (K-12)
 Behavioral Disordered
 Learning Disabled
 Mentally Handicapped
 Severe Developmental Disabled

Advanced Programs:

Gifted Education (K-12)*/**
Instructional Media Tech. (K-12)*
Special Reading (Remedial)(K-12)*

Key for Status of Programs

- * Endorsement Only - Accompanies a valid stand-alone teaching certificate
** Provisional Approval - Temporary, pending program modifications
*** Interim Approval - Temporary, pending initial program review
**** Effective September 1997

WILLIAM JEWELL COLLEGE
500 College Hill
Liberty, MO 64068

Institution Head

Dr. W. Christian Sizemore
President
(816) 781-7700

Certification Officer

Dr. M.J. Stockton
(816) 781-7700 Ext. 5499

Teacher Education Contact Person

Dr. Faye E. Moore
Director, Chair of Teacher Education
(816) 781-7700 Ext. 5497
FAX: (816) 781-3164

Date of Initial Approval: 1983

Approved Through: 4/99

Tests Required for Admission to Teacher Education: ACT - No minimum score
reported
CBASE

Basic Programs:

Early Childhood (Pre K-3)

Elementary (1-8)

Secondary:

English (7-9*, 7-12)

Foreign Language: (K-9*, K-12)

French***

German***

Spanish***

Health (7-12) No new students accepted into program

Mathematics (7-9*, 7-12)

Music:

Instrumental (K-12)

Instrumental/Vocal (K-12)

Vocal (K-9*, K-12)

Physical Education (K-9, K-12, 7-12) No new students accepted into program

Science: (7-12)

Biology

Chemistry

General Science (7-9*)

Social Studies (7-9*, 7-12)

Speech & Theatre (7-9*, 7-12)

Key for Status of Programs

- * Endorsement Only - Accompanies a valid stand-alone teaching certificate
- ** Provisional Approval - Temporary, pending program modifications
- *** Interim Approval - Temporary, pending initial program review
- **** Effective September 1997

WILLIAM WOODS UNIVERSITY
200 West Twelfth Street
Fulton, MO 65251

Institution Head

Dr. Jahnae H. Barnett
President
(573) 642-2251

Certification Officer

Brenda Williamson
Registrar
(573) 642-2251

Teacher Education Contact Person

Dr. Betty Tutt, Chair
Department of Education/Physical Ed.
(573) 642-2251 Ext. 4348
FAX: (573) 592-1146

Date of Initial Approval: 1967

Approved Through: 12/2001

Tests Required for Admission to Teacher Education: ACT - 18
CBASE

Basic Programs:

Early Childhood (Pre K-3)

Elementary

Middle School (5-9)***

Secondary

Art (K-12)

English (7-9*, 7-12)

Mathematics (7-9*, 7-12)

Physical Education (K-12)

Unified Science:

Biology (7-12)

Social Studies (7-9*, 7-12)

Special Education (K-12)

Mild/Moderate Disabilities:

Behavioral Disordered

Learning Disabled

Mentally Handicapped

Advanced Programs:

Principal (K-8, 4-8, 7-12)*

Key for Status of Programs

- * Endorsement Only - Accompanies a valid stand-alone teaching certificate
- ** Provisional Approval - Temporary, pending program modifications
- *** Interim Approval - Temporary, pending initial program review
- **** Effective September 1997

PART II

Two-Year Institutions and Approved Courses

CROWDER COLLEGE
601 Laclede
Neosho, Missouri 64850

Institution Head
Dr. Kent Farnsworth
President

Teacher Education, Contact Person
Dr. John Rucker
Dean of Instruction

Telephone:
(417) 451-3223

Telephone: Fax:
(417) 451-4700 (417) 451-4280

Approved Through: 9/2001

COURSES OFFERED

EDUC 202	Physical Education for Children	3 credit hours
EDUC 205	Music for Elementary Teachers	3 credit hours
EDUC 206	Children's Literature	3 credit hours
EDUC 220	Elementary Field Observation	2 credit hours
PSYC 210	Child Psychology	3 credit hours
PSYC 215	Adolescent Psychology	3 credit hours

EAST CENTRAL COLLEGE

Prairie Dell Rd.
Union, Missouri 63084

Institution Head
Dr. Dale L. Gibson
President

Teacher Education, Contact Person
Dr. William Kennedy
Vice Pres., Curriculum/Instruction

Telephone:
(314) 583-5193

Telephone: Fax:
(314) 583-5193 (314) 583-6601

Approved Through: Interim Approval

COURSES OFFERED

AR 2023	Art for Children	3 credit hours
ED 1031	Elementary/Secondary Education	3 credit hours
1032	Field Experience	
1033		
EN 2033	Literature for Children	3 credit hours
MU 2043	Music for Children	3 credit hours
PE 2052	Physical Education for Children	3 credit hours
PY 2203	Child Psychology	3 credit hours
PY 2503	Adolescent Psychology	3 credit hours

JEFFERSON COLLEGE
1000 Viking Drive
Hillsboro, Missouri 63050

Institution Head
Dr. Gregory D. Adkins
President

Teacher Education, Contact Person
Dr. Dan Steadman
Vice President/Academic Affairs

Telephone
(314) 789-3951

Telephone Fax:
(314) 789-3951 EXT 300 (314) 789-4012

Approved Through: 9/2001

COURSES OFFERED

ART 155	Art for Children	3 credit hours
EDU 101	Intro. Classroom Teaching	3 credit hours
ENG 120	Literature for Children	3 credit hours
MUS 120	Music for Children	3 credit hours
PED 123	Physical Ed. for Children	3 credit hours
PSY 170	Child Development	3 credit hours
PSY 171	Adolescent Psychology	3 credit hours

LONGVIEW COMMUNITY COLLEGE
500 Longview Road
Lee's Summit, Missouri 64081

Institution Head

Aldo W. Leker
President

Teacher Education, Contact Person

Ms. Barbara Eubank
Director of Teacher Education

Telephone

(816) 672-2000

Telephone

(816) 672-2210

Fax:

(816) 672-2334

Approved Through: 12/99

COURSES OFFERED

ART 190	Art for Elementary Teachers	3 credit hours
EDUC 100	Introduction to Education	3 credit hours
EDUC 101-104	Participation in Education	3 credit hours
EDUC 205	Physical Ed. for Elem. Teachers	2 credit hours
EDUC 210	Music for Elementary Teachers	3 credit hours
EDUC 215	Children's Literature	3 credit hours
PSYC 240	Child Development	3 credit hours
PSYC 245	Adolescent Psychology	3 credit hours

MAPLE WOODS COMMUNITY COLLEGE

2601 Northeast Barry Road
Kansas City, Missouri 64156

Institution Head

Dr. Stephen R. Brainard
President

Teacher Education, Contact Person

Dr. F. Dean Cone
Instructor/Coordinator Teacher Ed.

Telephone:

(816) 437-3050

Telephone

(816) 437-3225

Fax:

(816) 437-3049

Approved Through: 9/2000

COURSES OFFERED

EDUC 100	Introduction to Education	3 credit hours
EDUC 101-104	Participation in Education	1-4 credit hours
EDUC 190	Art for Elementary Teachers	3 credit hours
EDUC 205	Physical Ed. for Elem. Teachers	3 credit hours
EDUC 210	Music for Elementary Teachers	3 credit hours
EDUC 215	Children's Lit. for Elem. Teachers	3 credit hours
PSYC 240	Child Development	3 credit hours
PSYC 245	Adolescent Psychology	3 credit hours

MINERAL AREA COLLEGE

**P.O. Box 1000
Park Hills, MO 63601**

Institution Head

**Dr. Dixie A. Kohn
President**

Teacher Education, Contact Person

**Dr. James Bullis
Dean of Instruction**

Telephone:

(314) 431-4593

Telephone

(314) 431-4593

Fax:

(314) 431-2321

Approved Through: 12/96

COURSES OFFERED

ART 194	Art for Elementary Teachers	3 credit hours
ENG 245	Children's Literature	3 credit hours
MUS 245	Music for Children	3 credit hours
PED 101	Physical Ed for the Elem School	3 credit hours
PSY 118	Child Development	3 credit hours
PSY 119	Adolescent Psychology	3 credit hours
SOC 120	Introduction to Teaching	3 credit hours

MOBERLY AREA COMMUNITY COLLEGE

College and Rollins
Moberly, MO 65270

Institution Head

Ms. Evelyn E. Jorgenson
President

Teacher Education, Contact Person

Ms. Bonnie Humphrey
Dean of Academic Affairs

Telephone:

(816) 263-4110

Telephone:

(816) 263-4110

Fax:

(816) 253-6448

Approved Through: Interim Approval

COURSES OFFERED

ART 225	Arts Methods for the Elem. Teacher	3 credit hours
LAL 252	Literature for Children	3 credit hours
MUS 275	Music for Elementary Teachers	3 credit hours
PSY 201	Child Growth & Development	3 credit hours

NORTH CENTRAL MISSOURI COLLEGE

1301 Main Street
Trenton, Missouri 64683

Institution Head
Dr. James E. Selby
President

Teacher Education, Contact Person
Dr. Frank Veeman
Dean of Instruction

Telephone:
(816) 359-3948

Telephone: Fax:
(816) 359-3948 EXT 300 (816) 359-2211

Approved Through: Interim Approval

COURSES OFFERED

ED 101	Introduction to Classroom Teaching	3 credit hours
EN 196	Literature for Children	3 credit hours
SO 226	Adolescent Psychology	3 credit hours
SO 225	Child Psychology	3 credit hours

PENN VALLEY COMMUNITY COLLEGE

3201 Southwest Trafficway
Kansas City, Missouri 64111

Institution Head

Dr. E. Paul Williams
President

Teacher Education, Contact Person

Dr. Karen Herzog
Dean of Instruction

Telephone:

(816) 759-4000

Telephone:

(816) 759-4343

Fax:

(816) 759-4161

Term of Approval: **Interim Approval**

COURSES OFFERED

CDCG 217	Literature for Children	3 credit hours
EDUC 100	Introduction to Teaching	3 credit hours
EDUC 101-104	Participation in Education	1-4 credit hours
EDUC 190	Art for Elementary Teachers	3 credit hours
EDUC 205	Physical Ed. for Elem. Teachers	3 credit hours
EDUC 210	Music for Elementary Teachers	3 credit hours
PSYC 240	Child Development	3 credit hours
PSYC 245	Adolescent Psychology	3 credit hours

ST. CHARLES COUNTY COMMUNITY COLLEGE

4601 Mid Rivers Mall Drive

St. Peters, Missouri 63376

Institution Head

Dr. Donald D. Shook
President

Teacher Education, Contact Person

Dr. Joyce Lindstrom
Education Coordinator

Telephone:

(314) 922-8380

Telephone:

Fax:

(314)922-8000 EXT 4344 (314)922-8352

Approved Through: 9/99

COURSES OFFERED

EDU 210	Intro to Classroom Teaching	3 credit hours
EDU 225	Children's Literature	3 credit hours
EDU 242	Art for Children	3 credit hours
EDU 244	Physical Ed for Elementary Grades	3 credit hours
EDU 246	Elementary Music Methods	3 credit hours
PSY 201	Child Psychology	3 credit hours
PSY 215	Adolescent Psychology	3 credit hours

ST. LOUIS COMMUNITY COLLEGE - FLORISSANT VALLEY

3400 Pershall Road
St. Louis, Missouri 63135

Institution Head
Dr. Irving P. McPhail
President

Teacher Education, Contact Person
Dr. Ruth Brinkman
Coordinator/Teacher Education

Telephone:
(314) 595-4200

Telephone:
(314) 595-4390

Approved Through: 7/2000

COURSES OFFERED

EDU 120	Art for Children	3 credit hours
EDU 200	Introduction to Classroom Teaching	3 credit hours
EDU 211	Foundations of Education	3 credit hours
ENG 226	Children's Literature	3 credit hours
MUS 129	Music for the Classroom Teacher	3 credit hours
PE 254	Physical Ed in the Elem School	3 credit hours
PSY 203	Child Psychology	3 credit hours
PSY 214	Adolescent Psychology	3 credit hours

ST. LOUIS COMMUNITY COLLEGE - FOREST PARK

5600 Oakland Avenue
St. Louis, Missouri 63110

Institution Head

Dr. Henry D. Shannon
President

Teacher Education, Contact Person

Dr. Diane Denney
Director/Teacher Education

Telephone:

(314) 644-9100

Telephone

Fax:

(314) 644-9282 (314) 644-9636

Approved Through: 12/99

COURSES OFFERED

EDU 200	Introduction to Classroom Teaching	3 credit hours
EDU 211	Foundations of Education	3 credit hours
MUS 129	Music for the Classroom Teacher	3 credit hours
PSY 203	Child Psychology	3 credit hours
PSY 214	Adolescent Psychology	3 credit hours

ST. LOUIS COMMUNITY COLLEGE - MERAMEC
11333 Big Bend Boulevard
St. Louis, Missouri 63122

Institution Head
Richard A. Black
President

Teacher Education, Contact Person
Dr. Fredna Scroggins
Behavioral Science Department

Telephone:
(314) 984-7500

Telephone: Fax:
(314) 984-7681 (314) 984-7117

Approved Through: 7/2000

COURSES OFFERED

EDU 120	Art for Children	3 credit hours
EDU 129	Music for the Classroom Teacher	3 credit hours
EDU 200	Introduction to Classroom Teaching	3 credit hours
EDU 211	Foundations of Education	3 credit hours
ENG 226	Children's Literature	3 credit hours
PE 254	Physical Ed in Elementary Schools	3 credit hours
PSY 203	Child Psychology	3 credit hours
PSY 214	Adolescent Psychology	3 credit hours

STATE FAIR COMMUNITY COLLEGE

3201 West 16th Street
Sedalia, Missouri 65301

Institution Head
Dr. Marvin R. Fielding

Teacher Education, Contact Person
Shirley Evans
Dean/Instruction

Telephone Fax:
(816) 530-5800

Telephone Fax:
(816) 530-5800 (816) 530-5820

Approved Through: 10/1998

COURSES OFFERED

EDUC 101	Foundations of Education	3 credit hours
EDUC 102	Introduction to Field Experience	1-2 credit hours
ENGL 231	Children's Literature	3 credit hours
PEPRO 201	Physical Ed in the Elem. School	2 credit hours
PSYCH 102	Child Psychology	3 credit hours

THREE RIVERS COMMUNITY COLLEGE

2080 Three Rivers Boulevard
Poplar Bluff, Missouri 63901

Institution Head
Dr. Stephen M. Poort

Teacher Education, Contact Person
Dr. Mary Phyfer
Vice President

Telephone:
(573) 840-9600

Telephone Fax:
(573) 840-9667 (573) 840-9604

Approved Through: Interim Approval

COURSES OFFERED

ARTS 223	Art for the Elementary Teacher	3 credit hours
EDUC 290	Orientation to Teaching	2 credit hours
ENGL 253	Children's Literature	3 credit hours
HPER 233	Physical Ed for the Elem Teacher	3 credit hours
MUSC 263	Music for the Elementary Teacher	3 credit hours
PSYC 223	Child Psychology	3 credit hours
PSYC 233	Adolescent Psychology	3 credit hours

PART III

Listing of Institutions by Programs Offered

BASIC EDUCATION PROGRAMS

Art

Avila College
Central MO State University
College of the Ozarks
Columbia College
Culver-Stockton College
Drury College
Evangel College
Fontbonne College
Hannibal LaGrange College
Lincoln University
Lindenwood College
Maryville University-St. Louis

MO Southern State College
MO Western State College
Northwest MO State University
Park College
Saint Louis University
Southeast MO State University
Southwest Baptist University
Southwest MO State University
Truman State University
University of MO-Columbia
University of MO-Kansas City
Washington University
Webster University
William Woods University

Biology

Avila College
Central Methodist College
Central MO State University
College of the Ozarks
Columbia College
Culver-Stockton College
Drury College
Evangel College
Fontbonne College
Lincoln University
Lindenwood College
Maryville University-St. Louis
MO Baptist College
MO Southern State College
MO Valley College
MO Western State College

Northwest MO State University
Park College
Rockhurst College
Saint Louis University
Southeast MO State University
Southwest Baptist University
Southwest MO State University
Truman State University
University of MO-Columbia
University of MO-Kansas City
University of MO-St. Louis
Washington University
Webster University
William Jewell College
William Woods University

Business Education

Avila College
Central MO State University
College of the Ozarks
Columbia College
Evangel College
Hannibal LaGrange College
Lincoln University
Lindenwood College
MO Southern State College

Northwest MO State University
Rockhurst College
Southeast MO State University
Southwest Baptist University
Southwest MO State University
University of MO-Columbia
University of MO-St. Louis

BEST COPY AVAILABLE

Chemistry

Avila College
Central Methodist College
Central MO State University
College of the Ozarks
Columbia College
Drury College
Lincoln University
Maryville University-St. Louis
MO Baptist College
MO Southern State College
MO Western State College
Northwest MO State University

Park College
Rockhurst College
Southeast MO State University
Southwest Baptist University
Southwest MO State University
Truman State University
University of MO-Columbia
University of MO-Kansas City
University of MO-St. Louis
Washington University
William Jewell College

Driver Education

Central MO State University
Missouri Baptist College

Northwest MO State University
Southwest Baptist University
Southwest MO State University

Early Childhood

Avila College
Central Methodist College
Central MO State University
Culver-Stockton College
Evangel College
Fontbonne College
Hannibal LaGrange College
Harris-Stowe State College
Lindenwood College
Maryville University-St. Louis
MO Baptist College
MO Southern State College
MO Valley College
MO Western State College

Northwest MO State University
Park College
Saint Louis University
Southeast MO State University
Southwest Baptist University
Southwest MO State University
Stephens College
University of MO-Columbia
University of MO-Kansas City
University of MO-St. Louis
Washington University
Webster College
William Jewell College
William Woods University

Earth Science

Central Methodist College
Central MO State University
Northwest MO State University
Southeast MO State University

Southwest MO State University
University of MO-Columbia
University of MO-Kansas City
Washington University

Elementary

Avila College
Central Methodist College
Central Methodist College - Mineral Area College
Central MO State University
College of the Ozarks
Columbia College
Culver Stockton College
Drury College
Evangel College
Fontbonne College
Hannibal LaGrange College
Harris-Stowe State College
Lincoln University
Lindenwood College
Maryville University-St. Louis
MO Baptist College
MO Southern State College
MO Valley College

MO Western College
Northwest MO State University
Park College
Rockhurst College
Saint Louis University
Southeast MO State University
Southwest Baptist University
Southwest MO State University
Stephens College
Truman State University
University of MO-Columbia
University of MO-Kansas City
University of MO-St. Louis
Washington University
Webster University
William Jewell College
William Woods University

English

Avila College
Central Methodist College
Central MO State University
College of the Ozarks
Columbia College
Culver-Stockton College
Drury College
Evangel College
Fontbonne College
Hannibal LaGrange College
Lincoln University
Lindenwood College
Maryville University-St. Louis
Missouri Baptist College
Missouri Southern State College
Missouri Valley College

Missouri Western State College
Northwest MO State University
Park College
Rockhurst College
Saint Louis University
Southeast MO State University
Southwest Baptist University
Southwest MO State University
Truman State University
University of MO-Columbia
University of MO-Kansas City
University of MO-St. Louis
Washington University
Webster University
William Jewell College
William Woods University

French

Central Methodist College
Central MO State University
College of the Ozarks
Drury College
Evangel College
Lindenwood College
MO Western State College
Northwest MO State University
Rockhurst College
Saint Louis University

Southeast MO State University
Southwest MO State University
Truman State University
University of MO-Columbia
University of MO-Kansas City
University of MO-St. Louis
Washington University
Webster University
William Jewell College
William Woods University

BEST COPY AVAILABLE

General Science

Central Methodist College
Central MO State University
College of the Ozarks
Columbia College
Culver-Stockton College
Evangel College
Harris-Stowe State College
Maryville University-St. Louis
Missouri Baptist College
Missouri Valley College

Missouri Western State College
Northwest MO State University
Rockhurst College
Saint Louis University
Southwest Baptist University
Southwest MO State University
Truman State University
University of MO-St. Louis
Webster University
William Jewell College

German

Central Methodist College
Central MO State University
Drury College
MO Western State College
Saint Louis University
Southwest MO State University

University of MO-Columbia
University of MO-Kansas City
University of MO-St. Louis
Washington University
Webster University
William Jewell College

Health

Central Methodist College
Central MO State University
College of the Ozarks
Culver-Stockton College
Evangel College
Lincoln University
Missouri Baptist College

Missouri Valley College
Northwest MO State University
Southwest Baptist University
Southwest MO State University
Truman State University
University of MO-Columbia
William Jewell College

Industrial Technology

Central Missouri State University
College of the Ozarks

Southeast MO State University
Southwest MO State University
University of MO-Columbia

Instrumental Music

Central Methodist College
Central MO State University
College of the Ozarks
Culver-Stockton College
Drury College
Evangel College
Hannibal LaGrange College
Lincoln University
Missouri Baptist College
Missouri Southern State College
Missouri Western State College

Northwest MO State University
Southeast MO State University
Southwest Baptist University
Southwest MO State University
Truman State University
University of MO-Columbia
University of MO-Kansas City
University of MO-St. Louis
Webster University
William Jewell College

Instrumental & Vocal Music

Central Methodist College
Central MO State University
College of the Ozarks
Culver-Stockton College
Drury College
Evangel College
Hannibal LaGrange College
Lindenwood College
Missouri Baptist College
Missouri Southern State College

Missouri Western State College
Southeast MO State University
Southwest Baptist University
Southwest MO State University
Truman State University
University of MO-Columbia
University of MO-St. Louis
Webster University
William Jewell College

Japanese

Washington University

Journalism

Central MO State University
Drury College
MO Western State College

Park College
Southeast MO State University
Southwest MO State University
Truman State University

Latin

Southwest MO State University
University of MO-Columbia

Washington University

Mathematics

Avila College
Central Methodist College
Central MO State University
College of the Ozarks
Columbia College
Culver-Stockton College
Drury College
Evangel College
Fontbonne College
Hannibal LaGrange College
Harris-Stowe State College
Lincoln University
Lindenwood College
Maryville University-St. Louis
Missouri Baptist College
Missouri Southern State College
Missouri Valley College

MO Western State College
Northwest MO State University
Park College
Rockhurst College
Saint Louis University
Southeast MO State University
Southwest Baptist University
Southwest MO State University
Truman State University
University of MO-Columbia
University of MO-Kansas City
University of MO-St. Louis
Washington University
Webster University
William Jewell College
William Woods University

BEST COPY AVAILABLE

Middle School

Avila College
Central MO State University
Columbia College
Evangel College
Fontbonne College
Harris-Stowe State College
Lincoln University
Maryville University-St. Louis
Missouri Baptist University
MO Southern State College
MO Western State College

Northwest MO State University
Saint Louis University
Southwest Baptist University
Southwest MO State University
Truman State University
University of MO-Kansas City
University of MO-St. Louis
Washington University
Webster University
William Woods University

Physical Education

Central Methodist College
Central MO State University
College of the Ozarks
Culver-Stockton College
Drury College
Evangel College
Lincoln University
Lindenwood College
MO Baptist College
MO Southern State University
MO Valley College

MO Western State College
Northwest MO State University
Southeast MO State University
Southwest Baptist University
Southwest MO State University
Truman State University
University of MO-Columbia
University of MO-Kansas City
University of MO-St. Louis
William Woods University

Physics

Central MO State University
Drury College
Lincoln University
Maryville University-St. Louis
MO Southern State College
MO Western State College
Northwest MO State University
Rockhurst College

Southeast MO State University
Southwest Baptist University
Southwest MO State University
Truman State University
University of MO-Columbia
University of MO-Kansas City
University of MO-St. Louis
Washington University

Russian

Washington University

Social Studies

Avila College
Central Methodist College
Central MO State University
College of the Ozarks
Columbia College
Culver-Stockton College
Drury College
Evangel College
Fontbonne College
Hannibal LaGrange College
Harris-Stowe State College
Lincoln University
Lindenwood College
Maryville University-St. Louis
MO Baptist College
MO Southern State College
MO Valley College

MO Western State College
Northwest MO State University
Park College
Rockhurst College
Saint Louis University
Southeast MO State University
Southwest Baptist University
Southwest MO State University
Truman State University
University of MO-Columbia
University of MO-Kansas City
University of MO-St. Louis
Washington University
Webster University
William Jewell College
William Woods University

Spanish

Central Methodist College
Central MO State University
College of the Ozarks
Drury College
Evangel College
Lindenwood College
MO Southern State College
MO Western State College
Northwest MO State University
Rockhurst College
Saint Louis University

Southeast MO State University
Southwest Baptist University
Southwest MO State University
Truman State University
University of MO-Columbia
University of MO-Kansas City
University of MO-St. Louis
Washington University
Webster University
William Jewell College
William Woods University

Special Education- Deaf/Hearing Impaired

Fontbonne College
Southwest MO State University

Washington University

Special Education - Early Childhood

Central MO State University
Fontbonne College
Lindenwood College
MO Valley College
Missouri Western State College
Northwest MO State University
Saint Louis University

Southeast MO State University
Southwest MO State University
Stephens College
University of MO-Columbia
University of MO-St. Louis
Webster University

Special Education - Mild Moderate/Behavioral Disordered

Avila College
Central MO State University
Culver-Stockton College
Evangel College
Fontbonne College
Harris-Stowe State College
Lindenwood College
Missouri Southern State College
Missouri Western State College
Northwest Mo State University

Saint Louis University
Southeast MO University
Southwest MO State University
Truman State University
University of MO-Columbia
University of MO-Kansas City
University of MO-St. Louis
Webster University
William Woods University

Special Education - Mild Moderate/Cross Categorical

Fontbonne College
MO Southern State College

MO Valley College
Southwest MO State University

Special Education -Mild Moderate/ Learning Disabled

Avila College
Central MO State University
Culver-Stockton College
Evangel College
Fontbonne College
Harris-Stowe State College
Lincoln University
Lindenwood College
Missouri Southern State College
Missouri Valley State College
Missouri Western State College

Northwest MO State University
Saint Louis University
Southeast MO State University
Southwest MO State University
Truman State University
University of MO-Columbia
University of MO-Kansas city
University of MO-St. Louis
Webster University
William Woods University

Special Education - Mild Moderate/Mentally Handicapped

Avila College
Central MO State University
Culver-Stockton College
Fontbonne College
Harris-Stowe State College
Lincoln University
Lindenwood College
Missouri Southern State College
Missouri Valley College
Missouri Western State College

Northwest MO State University
Saint Louis University
Southeast MO University
Southwest MO State University
Truman State University
University of MO-Columbia
University of MO-St. Louis
Webster University
William Woods University

Special Education - Severely Developmentally Disordered

Central MO State University
Southeast MO State University

University of MO-Columbia
Webster University

Special Education - Speech and Language Specialist

Central MO State University
Fontbonne College
Saint Louis University

Southeast MO State University
Southwest MO State University
Truman State University
University of Mo-Columbia

Speech and Theater

Avila College
Central Methodist College
Central MO State University
Culver-Stockton College
Drury College
Evangel College
Fontbonne College
Missouri Southern State College
Missouri Valley College

Missouri Western State College
Northwest Mo State University
Southeast MO State University
Southwest Baptist University
Southwest MO State University
Truman State University
University of MO-Columbia
University of MO-St. Louis
Washington University
William Jewell College

Vocal Music

Avila College
Central Methodist College
Central MO State University
College of the Ozarks
Culver-Stockton College
Drury College
Evangel College
Hannibal-LaGrange College
Lincoln University
Missouri Baptist College
Missouri Southern State College
Missouri Western State College

Northwest MO State University
Southeast MO State University
Southwest Baptist University
Southwest MO State University
Truman State University
University of MO-Columbia
University of MO-Kansas City
University of MO-St. Louis
Webster University
William Jewell College

Vocational Agriculture

Central MO State University
Northwest MO State University

Southwest MO State University
University of MO-Columbia

Vocational Business

Northwest MO State University
Southwest MO State University

University of MO-Columbia

Vocational Home Economics

Central MO State University
College of the Ozarks
Fontbonne College
Northwest MO State University

Southeast MO State University
Southwest MO State University
University of MO-Columbia

Vocational - Marketing

University of MO-Columbia

BEST COPY AVAILABLE

ADVANCED EDUCATION PROGRAMS

Adult Education

Central MO State University
Southeast MO State University

Southwest MO State University
University of MO-Columbia
University of MO-St. Louis

Counselor

Central Mo State University
Lincoln University
Lindenwood College
Northwest MO State University
Saint Louis University

Southeast MO State University
Southwest MO State University
Truman State University
University of MO-Columbia
University of MO-Kansas City
University of MO-St. Louis

ESOL

Central MO State University
MO Southern State College
Southeast MO State University

Southwest MO State University
University of MO-Kansas City

Gifted Education

Central MO State University
Drury College
Harris-Stowe State College
Lindenwood College
Maryville University-St. Louis

Southeast MO State University
University of MO-Columbia
University of MO-St. Louis
Webster University

Instructional Media Technician

Central MO State University
Southwest MO State University

University of MO-St. Louis
Webster University

Learning Resource Director

Central MO State University

University of MO-Columbia

Librarian

Central MO State University
Missouri Baptist University

Southwest MO State University
Truman State University
University of MO-Columbia

Principal

Central MO State University
Lincoln University
Lindenwood College
Northwest MO State University
Saint Louis University
Southeast MO State University

Southwest MO State University
Truman State University
University of MO-Columbia
University of MO-Kansas City
University of MO-St. Louis
William Woods University

BEST COPY AVAILABLE

School Psychological Examiner

Central MO State University
Lindenwood College
Saint Louis University
Southeast MO State University

Southwest MO State University
University of MO-Columbia
University of MO-St. Louis

School Psychologist

University of MO-Columbia

University of MO-St. Louis

Special Education Director

Central MO State University
Lincoln University
Saint Louis University
Southeast MO State University

Southwest MO State University
University of MO-Columbia
University of MO-Kansas City
University of MO-St. Louis

Special Reading

Central MO State University
Fontbonne College
Harris Stowe State College
Lindenwood College
Missouri Southern State College
Northwest MO State University

Saint Louis University
Southeast MO State University
Southwest MO State University
University of MO-Columbia
University of MO-Kansas City
University of MO-St. Louis
Webster University

Superintendent

Central MO State University
Northwest MO State University
Saint Louis University
Southeast MO State University

Southwest MO State University
University of MO-Columbia
University of MO-Kansas City
University of MO-St. Louis

Vocational School Director

Central MO State University
Northwest MO State University

Southeast MO State University
Southwest MO State University
University of MO-Columbia

TWO-YEAR PREPROFESSIONAL EDUCATION PROGRAMS/COURSES

ADOLESCENT PSYCHOLOGY

Crowder College
East Central College
Jefferson College
Longview Community College
Maple Woods Community College
Mineral Area College
North Central MO College

Penn Valley Community College
St. Charles Co. Community College
St. Louis Comm. College - Flo Valley
St. Louis Comm. College - Forest Park
St. Louis Comm. College - Meramec
Three Rivers Community College

ART FOR CHILDREN

East Central College
Jefferson College
Longview Community College
Maple Woods Community College
Mineral Area College
Moberly Area Community College

Penn Valley Community College
St. Charles County Community College
St. Louis Comm. College - Flo Valley
St. Louis Comm. College - Meramec
Three Rivers Community College

CHILD DEVELOPMENT/PSYCHOLOGY

Crowder College
East Central College
Jefferson College
Longview Community College
Maple Woods Community College
Mineral Area College
Moberly Area Community College

North Central Missouri College
Penn Valley Community College
St. Charles Co. Community College
St. Louis Comm. College - Flo Valley
St. Louis Comm. College - Forest Park
St. Louis Comm. College - Meramec
State Fair Community College
Three Rivers Community College

EXPLORATORY COURSES AND/OR OBSERVATIONAL EXPERIENCES

Crowder College
East Central College
Jefferson College
Longview Community College
Maple Woods Community College
Mineral Area College
North Central Missouri College

Penn Valley Community College
St. Charles County Community College
St. Louis Comm. College - Flo. Valley
St. Louis Comm. College - Forest Park
St. Louis Community College - Meramec
State Fair Community College
Three Rivers Community College

LITERATURE FOR CHILDREN

Crowder College
East Central College
Jefferson College
Longview Community College
Maple Woods Community College
Mineral Area College
Moberly Area Community College

North Central Missouri College
Penn Valley Community College
St. Charles County Community College
St. Louis Comm. College - Flo Valley
St. Louis Community College - Meramec
State Fair Community College
Three Rivers Community College

BEST COPY AVAILABLE

MUSIC FOR CHILDREN

Crowder College
East Central College
Jefferson College
Longview Community College
Maple Woods Community College
Mineral Area College

Moberly Area Community College
Penn Valley Community College
St. Charles County Community College
St. Louis Comm. College - Flo Valley
St. Louis Comm. College - Forest Park
St. Louis Community College - Meramec
Three Rivers Community College

PHYSICAL EDUCATION FOR CHILDREN

Crowder College
East Central College
Jefferson College
Longview Community College
Maple Woods Community College
Mineral Area College

Penn Valley Community College
St. Charles Co. Community College
St. Louis Comm. College - Flo Valley
St. Louis Community College - Meramec
State Fair Community College
Three Rivers Community College

**TEACHER EDUCATION CONTACTS
FOUR-YEAR COLLEGES/UNIVERSITIES**

Dr. Laura Sloan,
School of Education
Avila College
11901 Wornall Road
Kansas City, MO 64145-1698
(816) 942-8400 EXT 2263
FAX: (816) 942-3362

Ms Carolyn Gordon, Dean
Coordinator of Elementary Ed. Dept.
Central Methodist College - Mineral Area
Box 1000
Park Hills, MO 63601
(314) 431-4593 Ext. 221
FAX: (314) 431-6807

Dr. Ray Gibson
Director of Teacher Education
College of Education
Point Lookout, MO 65726
(417) 334-6411 Ext. 4286
FAX: (417) 335-2618

Dr. Sue Abegglen
Director of Teacher Education
Culver-Stockton College
One College Hill
Canton, MO 63435
(217) 231-6433
FAX: (217) 231-6611

Mrs. Rebecca Huechteman, Chair
Department of Education
Evangel College
1111 N. Glenstone Avenue
Springfield, MO 65802
(417) 865-2811 Ext. 7298
FAX: (417) 865-1574

Ms. Jane Schafer
Director of Teacher Education;
Education Division Chair
Hannibal LaGrange College
2800 Palmyra Road
Hannibal, MO 63401-1999
(573) 221-3675 Ext. 296
FAX: (573) 221-6594

Dr. Sandra Kinder, Chair
Department of Education
Central Methodist College
411 Central Methodist Square
Fayette, MO 65248
(816) 248-3391 Ext. 493
FAX: (816) 248-1148

Dr. Tom Edmunds, Interim Dean
College of Education/Human Services
Central MO State University
Administration Bldg. 202
Warrensburg, Mo 64093
(816) 543-4272
FAX: (816) 543-4167

Dr. Novelle Dunathan, Head
Education and Psychology Dept.
Columbia College
1001 Rogers
Columbia, MO 65216
(573) 875-7538
FAX: (573) 875-7209

Dr. Daniel R. Beach
Director of Teacher Education
Drury College
900 N. Benton Avenue
Springfield, MO 65802
(417) 873-7271
FAX: (417) 873-7432

Dr. Judith Weaver-Failoni
Chairperson, Department of Education/
Special Education
Fontbonne College
6800 Wydown Boulevard
St. Louis, MO 63105-3098
(314) 889-4512
FAX: (314) 889-1451

Dr. Nancy Gammon, Chair
Department of Teacher Education
Harris-Stowe State college
3026 Laclede Avenue
St. Louis, MO 63103
(314) 340-3661
FAX: (314) 340-3322

Dr. Marilyn Hofmann, Acting Dean
Department of Education
Lincoln University
820 Chestnut
Jefferson City, MO 65102-0029
(573) 681-5250
FAX: (573) 681-5566

Dr. Mary Ellen Finch
Dean, School of Education
Maryville University
13550 Conway Road
St. Louis, MO 63141-7299
(314) 529-9466
FAX: (314) 529-9921

Dr. Michael Horvath
Dean, School of Education/
Psychology/and Physical Education
MO Southern State College
3950 E. Newman Road
Joplin, MO 64801-1595
(417) 625-9314
FAX: (417) 625-9771

Dr. Diana Winston, Chair
Department of Education
MO Western State College
4525 Downs Drive
St. Joseph, MO 64507
(816) 271-4366
FAX: (816) 271-4574

Dr. Patricia Hutchens McClelland, Chair
Department of Teacher Education
Park College
8700 N.W. River Park Drive
Parkville, MO 64152
(816) 741-2000 Ext. 727
FAX: (816) 741-4911

Dr. Ann Rule, Chair
Department of Education
Saint Louis University
221 N. Grand Blvd.
St. Louis, MO 63103
(314) 977-2508
FAX: (314) 977-3214

Dr. Larry Doyle, Dean
Education Division
Lindenwood College
209 S. Kingshighway
St. Charles, MO 63301
(314) 949-4905
FAX: (314) 949-4992

Dr. Roberta Ross-Fisher
Director of Teacher Education
Missouri Baptist College
1 College Park Drive
St. Louis, MO 63141-8698
(314) 434-1115 Ext. 2331
FAX: (314) 434-7596

Dr. Dennis Ehlert
Dean of the Division of Education/
Physical Education
Missouri Valley College
500 East College
Marshall, MO 65340
(816) 886-6924 Ext. 170
FAX: (816) 886-9818

Dr. Joe F. Ryan, Dean
College of Education/Human Services
Northwest MO State University
800 University Drive
Maryville, MO 64468
(816) 562-1671
FAX: (816) 562-1992

Dr. Joan Caulfield, Chairperson
Department of Education
Rockhurst College
1100 Rockhurst Road
Kansas City, MO 64110
(816) 501-4140
FAX: (816) 501-4646

Dr. Shirley Stennis-Williams, Dean
College of Education
Southeast MO State University
One University Plaza
Cape Girardeau, MO 63701-4799
(573) 651-2123
FAX: (573) 651-2410

Dr. Judy Bryant, Chair
Department of Education
Southwest Baptist University
1600 University Avenue
Bolivar, MO 65613-2496
(417) 326-1715
FAX: (417) 326-1719

Dr. P. Terrett Teague, Director
Teacher Education
Stephens College
P.O. Box 2001
Columbia, MO 65215
(573) 876-7260
FAX: (573) 876-7248

Dr. Sharon L. Huntze, Associate Dean
College of Education
University of MO-Columbia
101 Hill Hall
Columbia, MO 65211
(573) 882-7831
FAX: (573) 882-5071

Dr. Thomas Schnell, Interim Dean
School of Education
University of MO-St. Louis
8001 Natural Bridge Road
St. Louis, MO 63121
(314) 516-5109
FAX: (314) 516-5227

Dr. Brenda Fyfe, Acting Dean
Education Department
Webster University
470 E. Lockwood Avenue
St. Louis, MO 63119-3194
(314) 968-6913
FAX: (314) 968-7118

Dr. Betty Tutt, Chair
Department of Education/Physical Ed.
William Woods University
200 W. Twelfth Street
Fulton, MO 65251
(573) 642-2251 Ext. 4348
FAX: (573) 592-1146

Dr. Sandra Wagner, Associate Dean
College of Education
Southwest MO State University
901 S. National Avenue
Springfield, MO 65804
(417) 836-5138
FAX: (417) 836-4884

Dr. Patricia Miller, Head
Division of Education
Truman State University
200 McClain Hall
Kirksville, MO 63501
(816) 785-4383
FAX: (816) 785-4393

Dr. Linda L. Edwards, Interim Dean
School of Education
University of MO-Kansas City
5100 Rockhill Road
Kansas City, MO 64110-2499
(816) 235-2236
FAX: (816) 235-5270

Dr. James Wertsch, Chair
Department of Education
Washington University
One Brookings Drive
St. Louis, MO 63130
(314) 935-6724
FAX: (314) 935-4982

Dr. Faye E. Moore, Director
Chair of Teacher Education
William Jewell College
500 College Hill
Liberty, MO 64068
(816) 781-7700 Ext. 5497
FAX: (816) 781-3164

TEACHER EDUCATION CONTACTS
TWO-YEAR COLLEGES/UNIVERSITIES

Dr. John Rucker
Dean of Instruction
Crowder College
601 Laclede
Neosho, MO 64850
(417) 451-4700
FAX: (417) 451-4280

Dr. Dan Steadman
Vice President/Academic Affairs
Jefferson College
1000 Viking Drive
Hillsboro, Mo 63050
(314) 789-3951 Ext. 300
FAX: (314) 789-4012

Dr. F. Dean Cone, Instructor/ Coordinator
Teacher Education
Maple Woods Community College
2601 Northeast Barry Road
Kansas City, MO 64156
(816) 437-3225
FAX: (816) 437-3049

Ms. Bonnie Humphrey
Dean of Academic Affairs
Moberly Area Community College
College and Rollins
Moberly, Mo 65270
(816) 263-4110
FAX: (816) 253-6448

Dr. Karen Herzog
Dean of Instruction
Penn Valley Community College
3201 Southwest Trafficway
Kansas City, MO 64111
(816) 759-4343
FAX: (816) 759-4161

Dr. Ruth Brinkman
Coordinator/Teacher Education
St. Louis Community College - Florissant Valley
3400 Pershall Road
St. Louis, MO 63135
(314) 595-4390
FAX: (314) 595-2101

Dr. William Kennedy, Vice President
Curriculum/Instruction
East Central College
Prairie Dell Road
Union, MO 63084
(314) 583-5193
FAX: (314) 583-6601

Ms. Barbara Eubank
Director, Teacher Education
Longview Community College
500 Longview Road
Lee's Summit, MO 64081
(816) 672-2210
FAX: (816) 672-2334

Dr. James Bullis
Dean of Instruction
Mineral Area College
P.O. Box 1000
Park Hills, MO 63601
(314) 431-4593
FAX: (314) 431-2321

Dr. Frank Veeman
Dean of Instruction
North Central MO College
1301 Main Street
Trenton, MO 64683
(816) 359-3948 Ext. 300
(816) 359-2211

Dr. Joyce Lindstrom
Education Coordinator
St. Charles Co. Community College
4601 Mid Rivers Mall Drive
St. Peters, MO 63376
(314) 922-8000 Ext 4344
(314) 922-8352

Dr. Diane Denney
Director/Teacher Education
St. Louis Comm. College - Forest Park
5600 Oakland Avenue
St. Louis, MO 63110
(314) 644-9282
FAX: (314) 644-9636

Dr. Fredna Scroggins
Behavioral Science Department
St. Louis Community College - Meramec
11333 Big Bend Blvd.
St. Louis, MO 63122
(314) 984-7681
FAX: (314) 984-7117

Ms. Shirley Evans
Dean/Instruction
State Fair Community College
3201 West 16th Street
Sedalia, Mo 65301
(816) 530-5800
FAX: (816) 530-5820

Dr. Mary Phyfer
Vice President
Three Rivers Community College
2080 Three Rivers Boulevard
Poplar Bluff, MO 63901
(573) 840-9667
FAX: 840-9604



U.S. DEPARTMENT OF EDUCATION
Office of Educational Research and Improvement (OERI)
Educational Resources Information Center (ERIC)



NOTICE

REPRODUCTION BASIS



This document is covered by a signed "Reproduction Release (Blanket)" form (on file within the ERIC system), encompassing all or classes of documents from its source organization and, therefore, does not require a "Specific Document" Release form.



This document is Federally-funded, or carries its own permission to reproduce, or is otherwise in the public domain and, therefore, may be reproduced by ERIC without a signed Reproduction Release form (either "Specific Document" or "Blanket").