

DOCUMENT RESUME

ED 388 846

CE 070 242

AUTHOR Bolton, Jean  
 TITLE Putting the Learner First: Support through Flexible Learning. Mendip Papers. MP 073.  
 INSTITUTION Staff Coll., Bristol (England).  
 PUB DATE 94  
 NOTE 24p.  
 AVAILABLE FROM FEDA Blagdon, Coombe Lodge, Blagdon, Bristol BS18 6RG, England, United Kingdom.  
 PUB TYPE Reports - Descriptive (141)

EDRS PRICE MF01/PC01 Plus Postage.  
 DESCRIPTORS Access to Education; \*College Programs; Continuing Education; \*Degree Requirements; Educational Innovation; Foreign Countries; Instructional Innovation; \*Learning Modules; \*Open Education; Technical Institutes; Two Year Colleges; Units of Study; Vocational Schools  
 IDENTIFIERS Great Britain

ABSTRACT

Many British colleges of further education are moving toward a more flexible and learner-centered curriculum. Pressures for these changes are both internal and external: the colleges' funding methodology encourages student retention and achievement, and being flexible is now an economic necessity for many colleges. This two-part paper first looks at the issues facing colleges that may be considering modularizing some or all of their programs in an effort to provide more flexibility. These issues include the following: the reasons for modularizing (such as providing access to education, increasing learner autonomy, and expanding into new markets); designing a modular program; managing change; staff development; and addressing other institutional needs. The second part of the paper is a case study looking at Barnsley College (England)--how it funded and introduced a highly successful and innovative flexible curriculum and is evolving into a learning rather than a teaching institution. The paper contains 21 references. (KC)

\*\*\*\*\*  
 \* Reproductions supplied by EDRS are the best that can be made \*  
 \* from the original document. \*  
 \*\*\*\*\*

CE

ED 388 846

# Mendip Papers

## Putting the learner first: support through flexible learning

Jean Bolton

MP073

U.S. DEPARTMENT OF EDUCATION  
Office of Educational Research and Improvement  
EDUCATIONAL RESOURCES INFORMATION  
CENTER (ERIC)

This document has been reproduced as received from the person or organization originating it

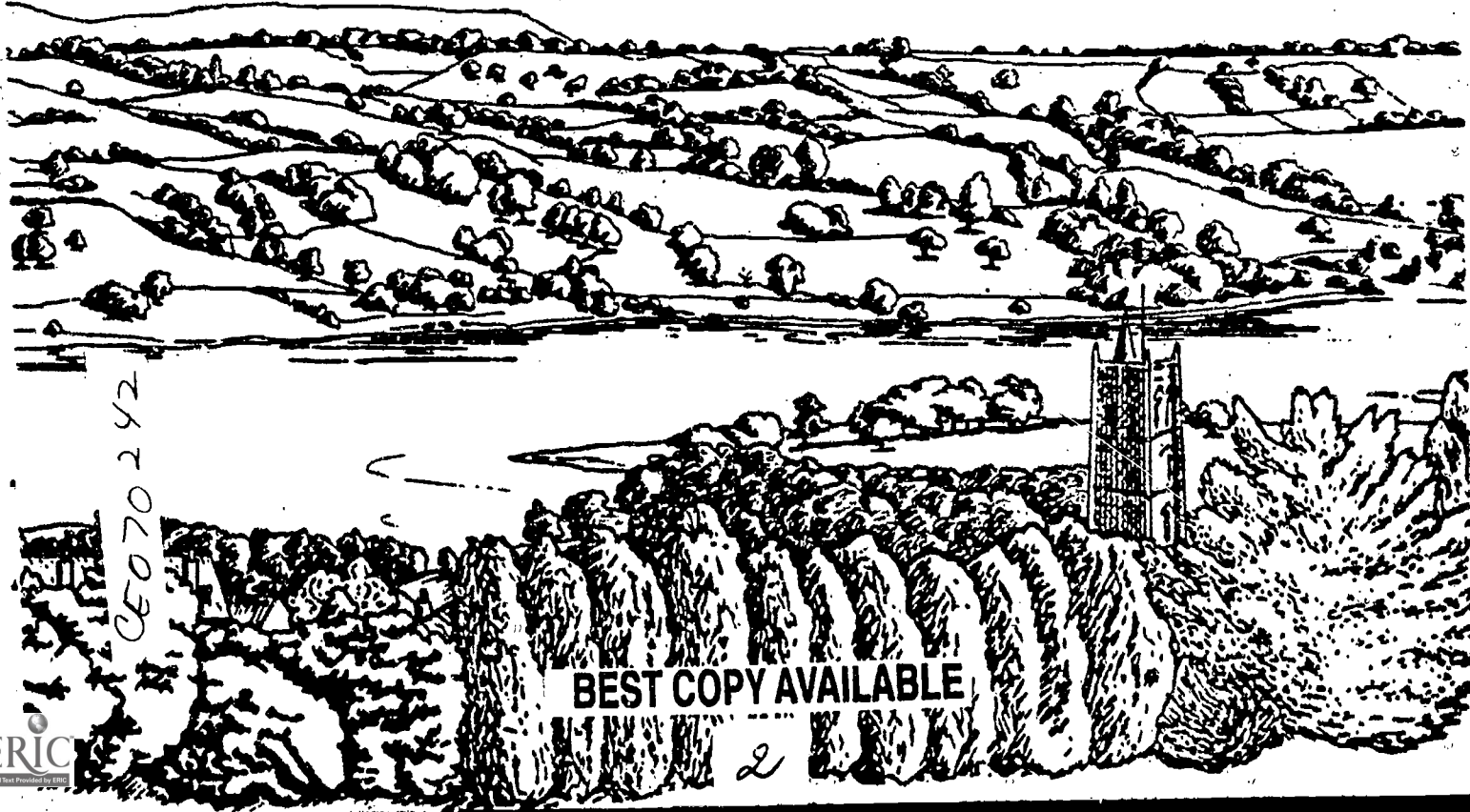
Minor changes have been made to improve reproduction quality

• Points of view or opinions stated in this document do not necessarily represent official OERI position or policy

"PERMISSION TO REPRODUCE THIS MATERIAL HAS BEEN GRANTED BY

*P. Logan*

TO THE EDUCATIONAL RESOURCES INFORMATION CENTER (ERIC)."



CE 070 242

BEST COPY AVAILABLE

**Putting the learner  
first: support through  
flexible learning**

Jean Bolton



MP 073

The views expressed in this Mendip Paper are those of the contributor(s).  
They should not be taken to represent the policy of The Staff College.

### **About the author**

#### **Jean Bolton, Head of Learning Support, Barnsley College**

As Head of Learning Support, Jean Bolton's role is primarily focused on providing high quality and accessible cross-college systems of support. Her responsibilities include the implementation of the personal tutorial and APL systems, the induction programmes and the core skills framework and the co-ordination of flexible learning, which includes both learning centres and vocationally-oriented learning bases.

Previously Open Learning Workshop Manager at Rotherham College of Arts and Technology, Jean has had involvement with open and flexible learning for many years; her APL programme **Which way now?** recently gained a national award.

Series edited and designed at The Staff College by Pippa Toogood, Susan Leather and Alison Brewer, Publications Department, and produced by the Reprographics Department.

Published by The Staff College  
Coombe Lodge, Blagdon, Bristol BS18 6RG  
Telephone 0761 462503 (From April 1995: 01761 462503)  
Fax 0761 463104 or 463140 (Publications Section)  
(Fax from April 1995: 01761 463104 or 01761 463140)

Registered with the Charity Commissioners

© The Staff College 1994

All rights are reserved. No part of this publication may be reproduced, stored in a retrieval system, or transmitted, in any form or by any means, electronic, electrical, chemical, optical, photocopying, recording or otherwise, without the prior permission of the copyright owner.

# Putting the learner first: support through flexible learning

Jean Bolton

## Contents

- 1 INTRODUCTION
- 1 PART 1: MODULAR COURSE PROVISION
- 8 PART 2: FLEXIBLE PROVISION AT BARNESLEY COLLEGE
- 14 REFERENCES AND BIBLIOGRAPHY

## INTRODUCTION

Many colleges are moving towards a more flexible and learner-centred curriculum. Pressures for change are both internal and external. The FEFC's funding methodology encourages student retention and achievement. Being flexible is now an economic necessity for many colleges.

This paper is in two parts. The first looks at the issues facing colleges who may be considering modularising some or all of their provision in an effort to provide more flexibility of provision.

The second part is a case study looking at Barnsley College – how it funded and introduced a highly successful and innovative flexible curriculum and is evolving into a learning rather than a teaching institution.

## PART 1: MODULAR COURSE PROVISION

*Editor's note: This paper was originally published as a conference paper and delivered in Szczecin, Poland.*

### What is a module?

The term 'module' is regularly used, but what does it actually mean?

There are many ways of defining a module within a learning context. A module can be defined in terms of assessment procedures (e.g. under direct observation or production of written evidence), delivery/time

(e.g. the module will run for one and a half hours per week for 12 weeks), or learning outcome/content (e.g. the student should be able to explain the need for and methods of computer security, to quote a SCOTVEC example).

One early definition was given by B and M Goldschmid (1972):

An autonomous, independent entity in a planned series of learning activities designed to help the student to attain certain clearly defined objectives.

Whichever definition is used, modules must be organised in terms of output (i.e. learning) rather than input (i.e. teaching) and should have the following elements and characteristics:

- a structured content;
- the learning context and an indication of pre-requisites;
- aims and objectives;
- a learner guide or route way so that the student knows the level, learning methodology and mode of delivery;
- assessment procedures;
- progression paths;
- ability to be assessed and accredited singly;
- can be accumulated towards a terminal qualification;
- recognition by national validating bodies;
- set at an appropriate level;
- include learning tasks that emphasis practical application of skills and knowledge.

## Why modularise a course/the curriculum?

The philosophy behind the modularity of course design is that teaching and learning activities can be quantified and measured. FE colleges are increasingly needing to define their success in terms of outcomes rather than inputs (e.g. how many learners achieve success in a given qualification or how much added value has been gained by the

individual learner). A modular curriculum can help them to achieve measurable outcomes on an on-going basis, as integrated in the design of National Vocational Qualifications (NVQs) and General National Vocational Qualifications (GNVQs). Modular courses can introduce flexibility into an inflexible system, reduce costs or increase responsiveness to learners' needs. The central rationale is that learners concentrate on and achieve short-term goals, thus improving participation and motivation.

Modules can serve many functions resulting in the establishment ensuring more flexibility in its provision. Modules can be:

- part of a linear progressed learning programme;
- a servicing module;
- an optional element for a mainstream course;
- part of an entitlement curriculum;
- a core skills module underpinning a mainstream programme;
- part of personal interest/lifelong learning for all.

A module usually consists of three sections:

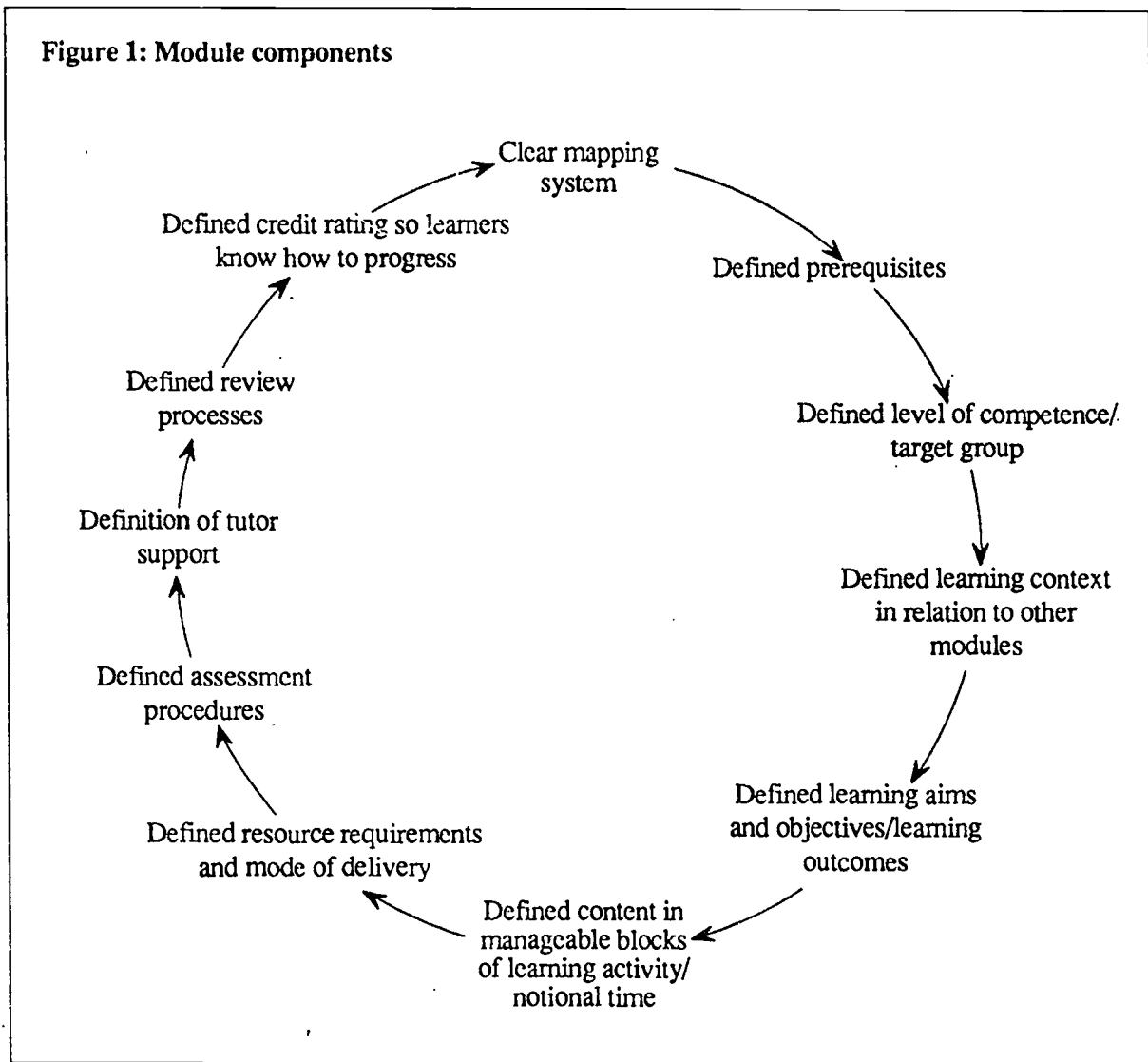
- an entry system which guides the learner through the most appropriate route, incorporating diagnostic assessment and support;
- the module itself, which defines and describes the learning, aims and objectives, contents, etc.
- an exit system which continues to route the learner to the next educational step.

Each module has the following components (see Figure 1).

These small units of learning and assessment are the building blocks towards building up a completed programme of learning.

Before discussions take place on module content, an institution needs to look at the wider implications of modularisation. What are the reasons for

**Figure 1: Module components**



modularising the curriculum? What will the benefits be both to the institution and the learners? These benefits obviously vary but the main ones can be summarised as:

- *Clear access and exit routes.*  
Learners have clear entry and exit points within the programme. Opportunities for study, assessment and accreditation are clearly visible.
- *Increased learner autonomy.*  
Learners have increased control over the pace and timescale of their learning programme. This dismantles 'time serving' and repetition of knowledge and experience previously gained. However, one of the implications of this is that as learners are given greater

responsibility for managing their own learning, they need increased training and support in such areas as study skills and time management if they are to be successful.

- *Expansion into new markets.*  
A variety of learners can access a menu of opportunities to suit their own needs and a range of clients can be catered for simultaneously, e.g. a full-time 16-19 year old student may gain modules alongside a mature, employed learner who wishes to access part of the qualification in a limited time.
- *Credit accumulation can be over a period of time, not necessarily in a linear progression.*  
Modules become building blocks to



qualifications and can be built upon at will using roll-on, roll-off provision.

- *Modules can be delivered and studied in a variety of modes.*

Learners may wish to be taught in a group for one module, gain another via open and distance learning methods and use learning workshops to help them gain the competences for a further module. Again, this improves access as learners can learn throughout the year, not just in a set, traditional time structure.

- *Increased coherence and flexibility.*

Modularisation allows learners to plan their own individual learning route, which may include the accreditation of prior learning (APL) to enable them to 'fast track' to qualifications.

- Modular structures may be a focus for developments in increasing flexibility within institutions, providing an entitlement curriculum and a responsive service to a variety of clients and their needs.

## Designing a modular programme

There are many issues to be addressed when designing a modular curriculum, not least of which in ensuring a coherent rather than a fragmented experience for both learners and staff. Thus, the design of a modular programme has to aim to achieve clarity, relevance and a coherency of approach, to ensure continuity of the learning experience.

Resourcing is another issue. Historically, college resources have been devolved to departments or sections who can jealously guard their territorial rights. This may result in a loss of efficiency across an institution, as when whole or part learning programmes are repeated across college, thus duplicating staffing and materials costs.

At times it may be appropriate to look at merging groups of learners across sessions in a week, enabling small group work or individual one-to-one sessions to take place at other times. Modularisation can help this process by looking at

commonality across learning programmes, in core skills for example, and delivering them in a variety of ways to students across departments or sections. Such a move could save time in materials production and staffing costs, increase flexibility of provision, and bring about changes in staff attitudes to the planning and sharing of learning resources.

It may also be that different learning programmes at the same level receive differing amounts of staffing time with all the implications of inequality which follow as a result. Modularising the provision involves timetabling to enable a common time grid across college so that learning programmes at the same level receive similar amounts of staff time. This may free up students to gain access to other qualifications, in addition to their primary learning goal.

## Managing change

Once institutions have looked at the benefits (or lack of them) that modularisation can bring, they then need to look at *why* they wish to change. Is it to bring them up to date with other colleges? Make them more efficient? Make them more responsive to client needs? They also need to look at how they will bring about this change – how will it be made effective initially and then embedded into working practices?

As in any change model, change must:

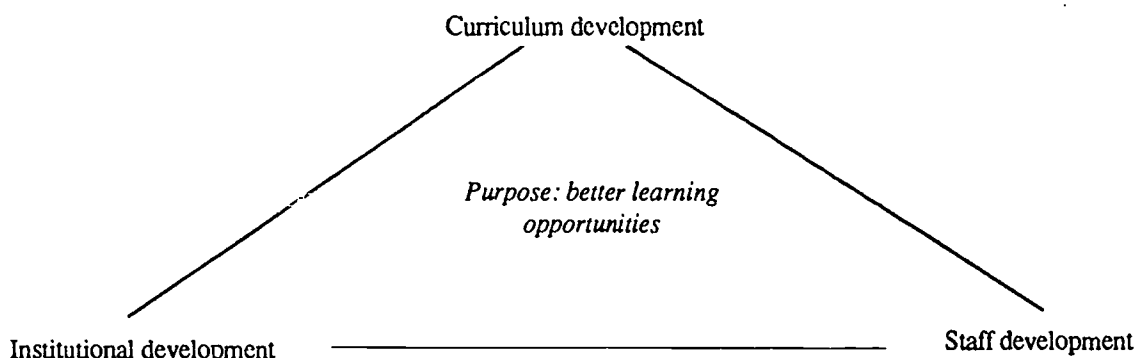
- be owned not imposed;
- be understood, supported and promoted by the management team;
- be part of a shared vision of the way forwards;
- be seen as opening up new opportunities for both staff and learners;
- not make staff feel vulnerable and threatened.

Other factors need to be taken into consideration and progress made on a variety of broad fronts (see Figure 2).

Staff development is obviously the prime vehicle for raising awareness of the need to change, but it must be supported by changes in the organisation, i.e. by addressing resourcing, timetabling and



**Figure 2: title needed**



Source: Further Education Unit (1989) **Towards a framework for curriculum entitlement.**

curriculum issues. For change to be successful there needs to be:

- a shared vision of future developments across the establishment;
- clarity about what needs to change;
- a policy or plan of how to achieve that change;
- a statement of new objectives;
- action plans for individuals/teams;
- adequate resources;
- appropriate additional training based on a training needs analysis.

There needs to be extensive discussion and collaboration in order to prepare the groundwork before implementation. Thought must be given to how the proposed changes will affect other systems within the institution. For example, a modular structure may affect:

- management information systems (timetabling, recording of achievement, administrative support);
- central admissions systems;
- pastoral/tutorial support systems;
- guidance and counselling provisions;
- teaching/delivery systems;
- strategies for staff training and development.

## Staff development

Staff development is of prime importance. A move towards a flexible modular curriculum involves changes in the teacher's role. These changes are a result of the way in which the totality of the learning experience has been reviewed and amended. As the emphasis is placed on learning rather than teaching, so staff have to reconsider the organisation of a learning programme and its necessary components, i.e. large group work, small group work, practical assessment sessions, tutorials and workshop support.

Increasingly, staff are becoming 'qualification route managers' who help learners to achieve the qualification in the most appropriate way. They may:

- advise on the accreditation of prior learning;
- act as guidance/careers advisers to plan progression routes;
- act as personal tutors, to help the learner produce a realistic action plan;
- negotiate the actual learning programme and its delivery mode;
- assess the competence of the learner against national standards;
- above all, translate the jargon and terms of modularisation into practical reality for the learner.

Academic staff are no longer just defined in terms of their class contact, i.e. teaching groups of students over a period of time. They now need to plan approaches such as flexible learning and directed private study into a personal learning route for each individual. They may also have to consider which medium is the most appropriate to use – video, computer, multimedia – and take that into consideration when planning integrated, valid and cost-effective assessment methods. It may be that staff require training in:

- guidance skills;
- module design skills;
- writing flexible learning materials;
- team building skills;
- tutorial skills including action planning and recording of achievement;
- APL techniques;
- assessment skills;
- organisational skills such as flexible timetabling.

Time will be well spent in quantifying these needs through a training needs analysis (TNA) and then working towards fulfilling them as it will ensure staff feel in control of the process and thus better able to solve problems as they arise.

Modules, like other curriculum innovations, require not only leadership but debate and the developments of staff consensus. Staff need time to absorb new ideas, opportunity for reflection and training and then to gain confidence through manageable innovation. There is evidence that some modular schemes may have been introduced 'over-hastily'.

### **Addressing other institutional needs**

What then are the services that need to be in place to underpin an effective modular curriculum? Staff development needs have already been taken into consideration but what else is required to ensure

success? What range of appropriate infrastructures? The following are suggested:

- guidance and counselling systems;
- tutorial systems;
- action planning/recording of achievement services;
- administrative services;
- management information services, including student tracking;
- assessment services;
- learning support services;
- open and distance learning modes of delivery supported by an appropriate range of materials.

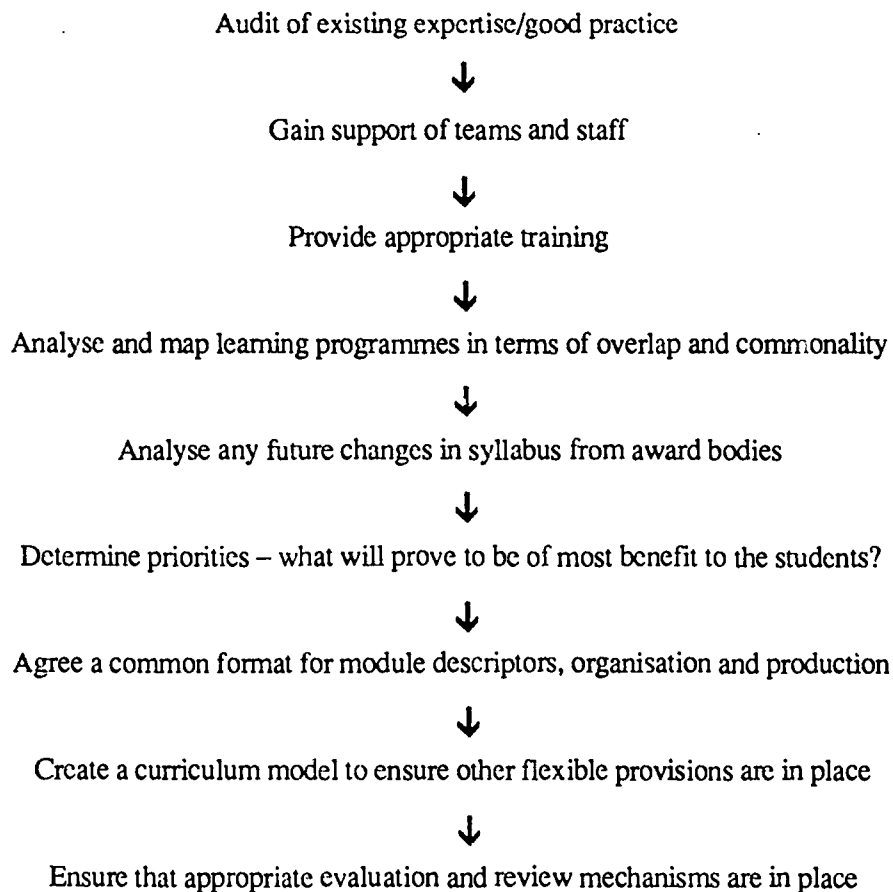
All these need to be integrated so that, as far as the learner is concerned, she or he receives the most appropriate service. It is not always necessary to move away from the more traditional taught class as long as there is planned provision for individual progression in terms of the pace, time and place of learning.

When establishments first begin to consider modularising a curriculum, they should ask themselves the following questions:

- Is the learning programme to be wholly or partly modularised?
- Should the programme be new or built upon an existing one?
- Should an existing programme be supported by a range of supporting modules and then gradually modularised or vice versa?
- Will the modules be used via individual open or distance learning or by group sessions?

It may be that when an institution fully investigates or audits the amount of work that has already been done in this area, it is pleasantly surprised. One way forward is suggested in Figure 3.

**Figure 3: Flowchart for progress**



## Conclusion

In summary, modularisation (the process by which the curriculum is reconstructed into modules of delivery or assessment) can bring about developments in access and credit accumulation, and can open up new markets. However, other elements of the flexible provision need to be in place to support and underpin this curriculum development. Staff development and training is of prime importance to ensure a productive team-

working approach to auditing and mapping the curriculum. The recognition of commonality and overlap can result in efficiency gains for the institution and enable it to respond more effectively to changes in client demands.

Educational establishments are continuing to move towards being learning rather than teaching establishments; away from the tradition pattern of provision which has been provider-centred to one that is learner-centred. Modularisation helps them to further this process.

## **PART 2: FLEXIBLE PROVISION AT BARNESLEY COLLEGE**

*Editor's note: This section was previously published as a case study in Towards lifelong learning. (Staffordshire Open Learning Unit.)*

Barnsley College was formed in September 1990 by the amalgamation of three colleges – a sixth form college, a college of arts and a college of technology. It is a tertiary college being the major provider of post-16 education in Barnsley. The four main sites, near the town centre, are within walking distance of each other, and together with a number of outposts, make up the 11 sites the college owns. It is a large college, offering a wide portfolio of over 800 courses ranging from agriculture to hair and beauty; it has 7250 FTEs (full-time equivalent students) and approximately 16,000 enrolments.

### **The move towards flexibility**

The college's mission statement states (amongst other items): 'We aim to be a nationally recognised leader in the provision of education and training for the post-16 community by ... providing more opportunities for education and training at all levels, improving success rates and raising achievement levels.'

Central to Barnsley College's mission statement are the two desires to increase the availability of learning opportunities for our community and to raise achievement levels. It was the determination to realise these desires rather than any belief in major efficiency gains which led the college to increase substantially its commitment to flexible learning. It may be possible in the long-term to demonstrate major efficiency gains from the introduction of flexible learning. Indeed, given the emphasis that the funding methodology introduced by the Further Education Funding Council (FEFC) places upon retention and achievement, such proof may be possible sooner rather than later. It does appear to be the case that flexible learning introduced within a structured and supportive framework has a major affect in persuading 'marginal' students to stay the course rather than drop out.

It was recognised that if flexible learning provision was to be made available in a meaningful way, there

would need to be a large investment, both one-off capital funding and on-going recurrent funding, if the objectives of increasing non-traditional learner groups, flexibility of provision, and implementing an integrated personal and learning support system for all clients were to be achieved.

It was this recognition that persuaded the college management to follow a radical course of action in top-slicing the college budget by 15 per cent in May 1992. This provided the funding necessary to introduce large-scale flexible learning provision.

### **Senior management direction**

Reading this the facts slip by easily but the reality was very different. Once the commitment to flexible provision had been made by senior management, systems had to be set in place to deal with resources, accommodation and staff development. All full-time vocational learning programmes would be top-sliced by 15 per cent. This money, which included both staffing and materials costs, would then be used to develop flexible learning right across the college. Barnsley College, like many other institutions, had already experimented with workshops for maths and English and, though performing a very worthwhile function, they had had a marginal effect on the rest of the institution. The proposed changes went much further and involved the organisation of learning programmes in all areas of the college.

### **Accommodation changes**

So what did we do following May 1992? Over that summer, the top floor of the former sixth form college and an old hall in the arts college were converted into learning centres. In addition, walls were knocked down to create a CAD/CAM suite of rooms on another site. On yet another site, an IT learning centre/base was created, again by knocking down walls to create a larger area.

All of these large spaces were carpeted, curtained, furnished with new tables and chairs where required, and given computers and technology equipment. When the majority of staff returned after the summer break, they found new 'spaces', the use of which meant adjusting their approaches to teaching and learning. Without these changes in accommodation,

which were a symbol of the senior management's support, the changes in teaching and learning would have been more difficult if not impossible.

For the first time we had a cross-college, cross-site mechanism, which delivered the same service to all student groups. It allowed any student to access the college's support structure at a variety of points across the week and across sites. It was here that the learner could go if s/he wanted to find out about careers, UCAS applications, finance, information on college course, and learning support.

### Attitudinal changes

The learning centres also incorporate the libraries and librarians into a learning support system. Learners can come to the learning centres, find a book or a CD-ROM or find out how to use a computer to word process their assignment all in the same place. We have tried to move towards the concept of serving the client so that when someone asks for information in a learning centre, if they need to talk to someone more often than not the member of staff comes to them rather than vice versa. This reduced the familiar scene of would-be students wandering around corridors, hoping for guidance and not being able to access it.

### Cross-college staff development programme

While co-ordinating the resourcing and accommodation was time-consuming and necessary, the most important aspect was dealing with staff – their fears and insecurities that such a massive change engenders. Staff are often very fearful about change and need to be reassured that the implementation of flexible learning will not mean that their role becomes redundant. That was the major anxiety – that if new centres were introduced, filled with computers and open and flexible learning materials, academic staff roles would be minimised or the quality of the learning experience for their students would suffer.

We drew up a short staff development programme, supported by an open learning pack for support and reference which was delivered across the sites, across the week and across the days, during May

and June. This programme aimed to allow staff to voice their fears about the projected changes and give them reassurances and strategies for coping. Our message was very simple: we trust your expertise as professionals, we recognise that there is a wealth of good practice already in existence within Bamsley College that may not be recognised as flexible learning, we offer a very broad definition of flexible learning, and we ask what support is required to enable staff to perform their jobs even better than they do already, incorporating flexible learning initiatives.

We also ensured that we listened closely to what teams and members of staff actually wanted. Some required banks of materials, others, development in writing flexible learning, others required hardware and software. As far as possible (budget allowing) we tried to meet these requests.

Part of the rationale behind the top-slicing was that 50 per cent would go towards the development of *learning centres*, which dealt with information, advice and guidance across the college. The other 50 per cent would go towards *learning bases*, which dealt with flexibility in the vocational areas. Thus the unit of resource was ploughed back into developing certain areas, with priorities being decided by the sections themselves via flexible learning committees. In the first year we developed learning bases in CAD/CAM, information technology, office skills, social care, electronics and languages. Since then learning bases have been developed in health studies, health and beauty, catering, business and management, science, higher education, construction, music technology, art and design, sports studies and extra information technology.

### Re-appraisal of the curriculum

Staff now have to take a variety of factors into consideration when planning their programme provision: taught time, learning centre time, learning base time, tutorial provision and supported self study. All have to be plaited together into one coherent and integrated whole, which at times has to be amended in the light of such curriculum developments as GNVQs – for which Bamsley College was one of the pilot colleges.



There have been difficulties, obviously. One of them was that in that first year both students and staff were new to the concept and had to 'feel their way' in terms of organisation. In May 1993, at the end of the first year, a conference on flexible learning was organised within the college, with the keynote speech being given by the chief executive, followed by sessions led by practitioners within the college. This proved to be the turning point. Staff could now recognise their skills, realise how much progress they had made and share their ideas with colleagues. New flexible models of timetabling, staffing and organisation were disseminated, and a list of staff development needs was drawn up. Support sessions were then planned and implemented in response to those needs.

Both the learning centres and the learning bases were implemented as part of a recognition that colleges need to become learning centres focused on meeting learner needs. This means that colleges must offer a wide range of opportunities within a coherent framework allowing for the acquisition of core and transferable skills, a choice (and variety) of attendance patterns and learning style with access to knowledge, application and skills-based learning as appropriate, alongside assessment systems that promote achievement rather than emphasise failure. The whole of this offer has to be subject to meaningful quality review and evaluation, not for its own sake but to ensure that action is taken to improve the quality continuously.

### Increased levels of resources

The facilitation and development of autonomous learning in students does not happen overnight. Considerable support is required not only in the transitional initial stages but also later on, as students grow more confident about their learning, they also grow more specific in their demands. The college needed, therefore, to improve and increase both its physical (accommodation, equipment, materials) and human resources, particularly staff involved in counselling, guidance, advice and support of students within a flexible learning system. The enhancement of these resources plays a key role in the implementation of the empowerment strategies which are central to the college's mission.

### Re-appraisal of staff roles

Over the years, there has been and continues to be, a refining and recognition of the roles of staff within the delivery of flexible learning systems. One of the major successes of the changes has been the integration of the library staff into the learning support staff. The librarians themselves are the managers of the learning centres. They have an overview of resources, staffing and students. As a team, they make recommendations regarding future policy. They work closely with a variety of staff, including clerical support officers, academic staff as duty tutors, and academic staff as action planning/review tutors. Another of the successes has been the resulting integration of tutorial provision and learning support, as review sessions actually take place in the learning centre, with immediate access to careers and core skills advice and support.

Developments in flexible learning initiatives have resulted in a clarification of the role of academics – as learning managers who negotiate and assess a learning programme. Alongside them are learning facilitators who work to the learning managers and who help to support the learners. The college is now running a TEC-funded 'training the facilitators' project to fulfil the need for well-trained staff; but an interesting offshoot of this development has been the recognition of an overall team ethos in which every individual's part is recognised, with the provision of a quality, corporate response. We are all there to serve the needs of the learner as best we can. The teams themselves, which may be drawn from representatives across the college structure, are currently setting their own quality standards and performance indicators. All are reviewing their roles as a matter of course.

A significant facet of flexible learning is the emphasis on resources; these may be paper- or computer-based. In Barnsley College, a flexible learning officer has been appointed to enhance and encourage the production of flexible learning materials across the college. The officer works closely with staff from all the areas in college and helps them to amend existing material, or produce new material in response to student need. By liaising closely with a design and printing unit within college, which helps to produce material to an

extremely high standard in-house, the officer has been able to minimise costs and waiting times. The college has produced the award-winning open learning package *Which way now?*, which helps learners to assess their future career and learning choices; the *Opportunities for you* package, which take students through the UCAS applications; a GNVQ support pack, which deals with recording achievement; distance learning programmes in GCSE and A level English; and a variety of other internal programmes.

To address the issue of computer-based resources, the college has appointed a learning technologies unit, which appraises the users' needs and gives advice on hardware and software. Over the past three years, 350 machines have been bought and networked for use in the learning centres. Students have a menu of software applications that they can access such as word processing, databases, spreadsheets, cv writing and CD-ROMs. They are available to all students at any time the learning centres are open. Learners are now actively encouraged to use computers to produce assignments integrating, for example, spreadsheets and thus provide evidence of core skills requirements.

All students are issued annually with a 'Tracker Pack©' floppy disk which incorporates national award-winning action planning software developed within the college. This program is disk-bound which means learners can access any one of the computers in the learning centres or learning bases to record their short- and long-term goals and print out their record of achievement. The personal development, empowerment and autonomy of the learner are encouraged and supported through Tracker Pack© and the infrastructure of support across learning centres, bases and the continuously developing tutorial framework. This development by itself has also been a major influence on how learners, including adults, regard the use of computers. They approach them with much less fear and with much greater appreciation.

Another development involving computers has been the use of the OLAF (Open Learning Administrators' Friend). All students are issued with a college card with a bar code which records all their personal details. As they come into the learning centres and learning bases, they swipe in (and swipe

out on exit) using their college cards and this records their attendance. From this can be extrapolated details and patterns of attendance: a valuable aid in planning staffing levels.

## Development in the role of learning centres

An interesting feature for those involved in flexible learning is to watch how it is constantly changing in the light of new demands. Bamsley College is no exception to this, and is perhaps more responsive than most. The learning centres themselves are changing – from being initially centres for information and guidance to centres that deliver short flexible learning courses and tutorial support. Duty tutors are now seen as being extremely important to the future of the college in that they can give impartial advice on all the college's provision rather than simply guiding learners to their own subject areas and will enable the learner to access the most appropriate person within the institution. In the light of the FEFC's guidelines, this role becomes even more central. These duty tutors are currently being trained towards the D36 unit of the TDLB Awards, to enable them to advise on APL where appropriate. They will also offer tutorial support for a variety of short open learning programmes which will enable access to their own programme are. They serve a variety of functions, both general and specialist, all of which result in an up-skilling rather than a deskilling of staff.

## Core skill support

The learning centres are now seen as the providers of learning support for core skills. Of particular importance in GNVQs, core skills are encouraged to occur naturally in the learning programme, yet there are times when a learner needs extra practice or cannot easily gain access to that particular skill within a vocational context. They and their tutor can turn to core skills teams to ensure that the full range of evidence is gained. This is recorded on the student's Tracker Pack©.

A complete flexible, modular framework of core skills has been accredited through the South Yorkshire Open College Federation (SYOCF) for all those students within college who are not



studying GNVQs. However, this framework follows the national standards set by GNVQs.

## General access points (GAPs)

There have also been changes in the definition of what is seen as a learning centre. These now exist in a variety of places – in a local library, a community centre, a school. In Barnsley they are called GAPs – general access points – and there are 10 of them scattered across the borough. They serve as mini learning centres for learners, primarily adults, who would find it difficult to access the central provision. They offer a variety of programmes, with the underlying ethos that these ‘tasters’ will encourage learners to take up the college’s provision at a later date when it is appropriate for their individual needs.

Funded through the European ‘Rechar’ fund, they have proved to be a great success both with clients and the college. By their very existence, they help to promote and encourage greater flexibility of response to the community’s requirements.

## Saturday college

It was this desire to increase the availability of learning opportunities that led to the implementation of ‘Saturday college’ on January 1994. The learning centre provision, and a major college site, are open on Saturday mornings for those who want to study, use the facilities such as the computers, take a short course themselves or encourage their children to do so. Response so far has been very encouraging, with this provision reaching learners who would not ordinarily think of using the college.

## Guidance programmes

One of the classes of Saturday college is that called ‘Career exploration class’. This has been developed within the college as part of an FEU guidance project. It builds upon the APL **Which way now?**

programme, by offering group sessions for those learners who are unsure about their future career choice, and also about their future programmes. It is planned to continue this provision over the summer, after the project is finished, as staff consider this to be a valuable part of the college’s portfolio – enabling the community of Barnsley to gain access to the most appropriate part of Barnsley College’s provision.

## Summary

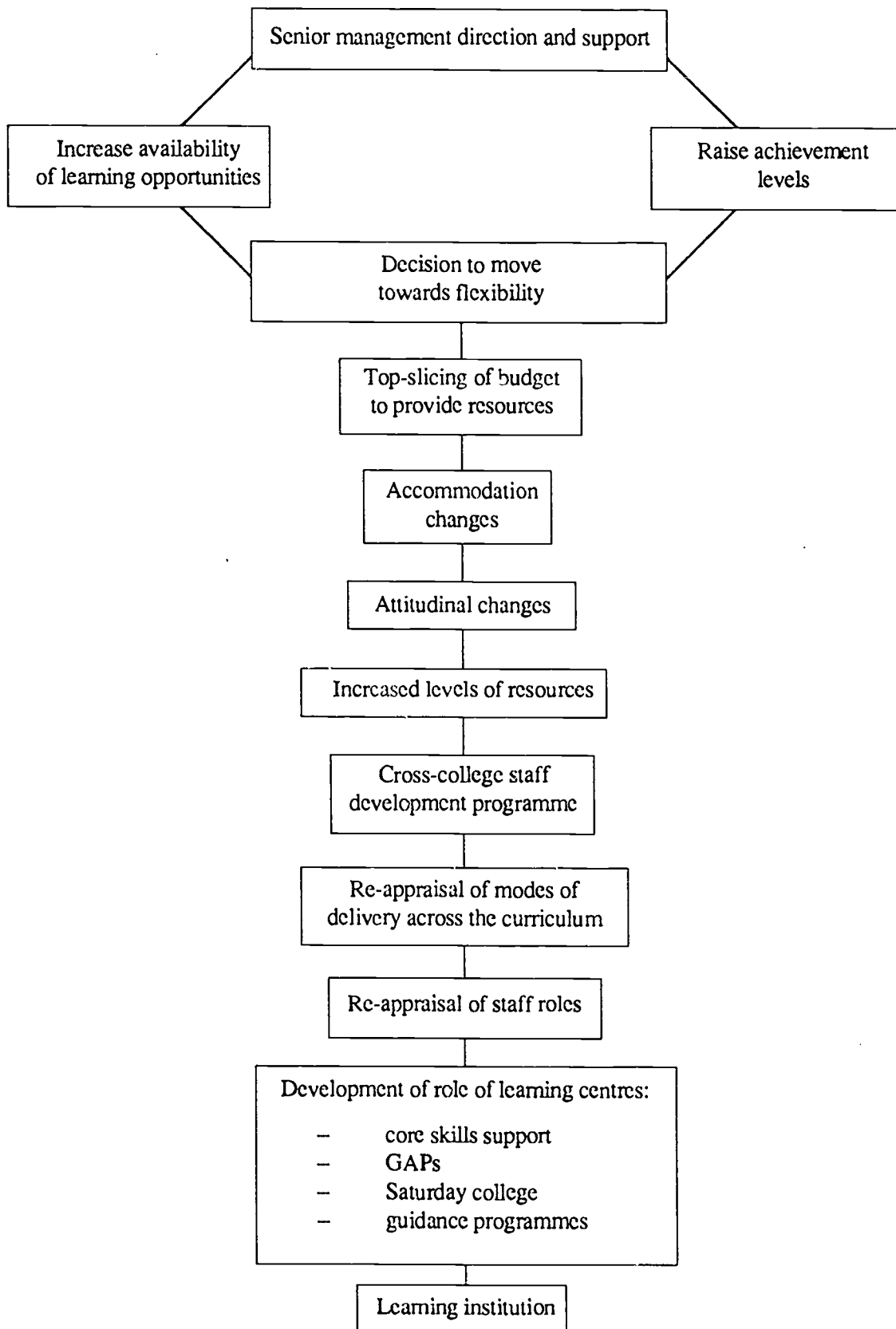
In summary, the developments in flexible learning and learning support have come about largely as a result of clear senior management direction and support. The top-slicing mechanism funded the necessary changes in accommodation and resourcing but, as stated previously, this funding needs to be on-going and takes a great deal of co-ordination.

## *Towards a learning institution*

All of these changes would have been unsuccessful if staff development on a massive scale had not taken place to provide the reassurance and framework needed. This staff development is on-going and underpins the whole of the development. There have been changes in staffing, but hopefully these will not be seen as cost cutting or efficiency savings. The basis for the model of Barnsley College’s approach to flexible learning involved recognising the value of a wide variety of staff within the learning process, all having a clear commitment to providing a high quality customer service. It is this fundamental attitudinal change that is the most exciting; its permeation has changed staff attitudes to our learners.

We are now a servicing institution, putting the clients’ needs first. In the process we are finally moving towards being a learning, rather than a teaching, institution – much more flexible in our response to our local community.

Figure 4: Flexible provision at Barnsley College – progress chart



## REFERENCES AND BIBLIOGRAPHY

Barnsley College (1993a) **Which way now?** Barnsley College

Barnsley College (1993b) **Open learning staff development programme.** Barnsley College

Barnsley College (1994) **Staff development programme: in writing flexible learning materials.** Barnsley College

Bell, G H and W Wade (1993) **Modular course design in Britain. The journal of further and higher education. Vol 17 no 1 pp3-12**

Council for National Academic Awards (1990) **The modular option. CNAA information services discussion paper 2. CNAA**

Council for National Academic Awards (1990) **The modular option. CNAA information services discussion paper 5. CNAA**

Coventry Technical College (1989) **Being flexible.** Coventry Technical College

Crossley, M and G Clarke (1993) **Implementing the process of modularisation in higher education: some transnational issues. Higher education quarterly. Vol 47 No 4 Autumn. pp334-56**

Department of Employment (1993) **Access to lifelong learning: planned access to learning network.** WRFE Development Fund

Farley, M *et al.* (1986) **Modularisation and the new curricula. Coombe Lodge Report. Vol 19 No 4. The Further Education Staff College**

Field, M (1993) **APL: developing more flexible colleges.** Routledge

Further Education Unit (1989) **Towards a framework for curriculum entitlement.** FEU

Further Education Unit (1992) **A basis for credit? Developing a post-16 credit accumulation and transfer framework: a paper for discussion.** FEU

Further Education Unit (1993a) **Challenges for colleges.** FEU

Further Education Unit (1993b) **A basis for credit: Developing a post-16 credit accumulation and transfer framework: feedback and developments.** FEU

Further Education Unit (1994) **Modular A levels. FEU briefing notes.** FEU

Gartside, P (1990) **The National Certificate in Scotland: five years on. Coombe Lodge Report. Vol 22 No 4. The Further Education Staff College**

Goldschmid, B and M (1972) **Modular instruction in higher education: a review.** Montreal McGill University

Northern Ireland Council for Educational Development (1989) **Modules in the curriculum.** NICED

Theodossin, E (1986) **The modular market.** The Further Education Staff College

UNESCO (1991) **The modular approach in technical education.** UNESCO

## About the Mendip Papers

The Mendip Papers are a topical series of booklets written specially for managers in further and higher education. As managers and governors take on new responsibilities and different roles they face new challenges, whether in the areas of resource and financial management or in the pursuit of quality, the recruitment of students and the development of new personnel roles. The Mendip Papers provide advice on these issues and many more besides.

Some of the papers provide guidance on issues of the moment. Others offer analysis, providing summaries of key recent research studies or surveys. The authors are experts in their areas and offer insights into the ways in which the fields of post-school education and training are changing.

Mendip Papers provide up-to-date information on important current issues in vocational education and

training, as well as summaries of research studies and surveys, along with informed and sometimes controversial perspectives on the issues. Managers need Mendip Papers to keep abreast of current developments and to deal with key problems and challenges. Staff development officers and trainers will find them invaluable as a basis for in-college management training and staff development activities.

The list of Mendip Papers is growing steadily. If you have tackled a particular piece of research or conducted a survey in the fields of further, higher or adult education, or have undertaken an innovative management initiative which would be of interest to other managers, please contact the series editor, Lynton Gray, at the Further Education Development Agency (formerly The Staff College) with a view to publishing your work and disseminating it throughout the post-school education system.

## Titles in the series

### Curriculum management

MP073	<b>Putting the learner first: support through flexible learning</b> Jean Bolton	1994	£3.50
MP 071	<b>Learning difficulties and the power of labelling in ABE</b> Sue Bergin and Andy Johnson	1994	£3.50
MP 060	<b>Explaining non-completion rates in Scottish universities</b> Alan Woodley	1994	£3.50
MP 058	<b>A flexible approach to learning: articulating courses</b> J E McLachlan and Vivienne Wood	1994	£3.50
MP 019	<b>Solving the problem of mathematics</b> Sir Roy Harding CBE	1991	£2.50

### Further education and vocational education and training

MP 072	<b>Vocational qualifications and SLDD learners – a work based learning approach</b> Margaret Levy	1994	£4.00
MP 067	<b>Raising quality in a competitive environment: the Dutch experience</b> Jan Maas	1994	£4.00
MP 066	<b>Raising quality in a competitive environment: the New Zealand experience</b> Margaret McCall and Bob Willyams	1994	£4.00
MP 065	<b>Raising quality in a competitive environment: the Canadian experience</b> Robert Gordon and Bill Sinnett	1994	£4.00
MP 064	<b>Raising quality in a competitive environment: the British experience</b> Geoffrey Melling and John Graystone	1994	£4.00
MP 056	<b>'Funding learning' and all that: a synopsis of six reports</b> Bob Kedney and Alison Scott	1993	£5.00
MP 047	<b>Prison education's role in challenging offending behaviour</b> Paul Ripley	1993	£3.00
MP 046	<b>Preparing and presenting project reports in education management</b> Lynton Gray	1992	£3.00

MP 043	<b>Post-16 participation: the success story</b> David Pardey	1992	£5.00
MP 022	<b>Prison education in England and Wales (revised)</b> Paul Ripley	1993	£2.50
MP 011	<b>Essential acronyms in further, higher and adult education (revised June 1994)</b> John Graystone and Margaret King	1994	£3.50

### Human resources

MP 069	<b>A focus for human resource management in FE</b> Andrew Betts	1994	£3.50
MP 063	<b>Strategic evaluation of staff development</b> Jonathan Simmons	1994	£4.00
MP 052	<b>Investors in People in the college context: the Weymouth College experience</b> Caroline Cheeseman and Anne Tate	1993	£4.50
MP 051	<b>Coping with incapability</b> Bob Saunders and Bob Kedney	1993	£5.00
MP 050	<b>Job evaluation in the FE corporation</b> Bob Saunders	1993	£6.00
MP 040	<b>Power, authority, autonomy and delegation: a discursive journey round some big words</b> Colin Turner	1992	£4.50
MP 039	<b>Soft-systems methodology: an approach to problem-solving in the management of education</b> Jorji Kowszun	1992	£3.50
MP 037	<b>Job analysis and the preparation of job descriptions</b> Bob Saunders	1992	£4.50
MP 035	<b>Leadership and its functions in further and higher education</b> Derek Marsh	1992	£4.50
MP 033	<b>Motivating staff</b> Colin Turner	1992	£3.50
MP 027	<b>Creativity and management</b> Colin Turner	1991	£4.00
MP 013	<b>The role of the new vice-principal</b> Christine Megson	1991	£3.50

## Legislation and governance

MP 078	<b>Managing contract change</b> Bob Kedney and Ted Ulas	1995	£5.00
MP 042	<b>Reviewing the college disciplinary procedure</b> Bob Kedney and Bob Saunders	1992	£5.00
MP 041	<b>Governance and incorporation: style and strategy</b> Bob Kedney	1992	£4.00
MP 038	<b>The effects of employment legislation on collective bargaining</b> Bob Saunders	1992	£3.00
MP 036	<b>Governing corporate colleges (revised)</b> John Graystone	1992	£6.00
MP 032	<b>FE incorporation checklist for managers (revised)</b> John Graystone	1992	£5.00
MP 025	<b>FE funding and delegation schemes – an exegesis</b> David Atkinson	1991	£4.00
MP 018	<b>Effective meetings</b> John Graystone	1991	£3.00
MP 016	<b>Education reform legislation in the UK: a summary</b> John Graystone	1991	£4.00

## Organisational theory

MP 015	<b>Structures – fact and fiction</b> Colin Turner	1991	£5.00
MP 008	<b>The perception of threat and the reality of decline in organisations</b> Colin Turner	1991	£3.50
MP 007	<b>Organisational culture</b> Colin Turner	1990	£4.50
MP 006	<b>Socialisation into organisations</b> Colin Turner	1990	£2.50
MP 005	<b>Responding to change: the need for flexible college structures and practices</b> Colin Turner	1990	£2.50



## Planning and marketing

MP074	Strategic planning for adult education Pablo Foster and Bob Powell	1994	£5.00
MP 061	Strategic planning in FE: the impact of incorporation Rick Dearing	1994	£3.00
MP 057	Using market research to aid educational decision-making Peter Davies	1993	£4.50
MP 055	Towards parity of esteem? Marketing Advanced GNVQs Peter Davies	1993	£5.50
MP 049	Academic planning in the corporate college Alison Scott, Bob Kedney and Lynton Gray	1993	£4.50
MP 048	The competitive-positioning of further education colleges Ali Bakir	1993	£4.50
MP 031	Establishing customer needs and perceptions Bert Roberts	1992	£5.00

## Quality and performance

MP 081	Quality programme costs in further education Ian Beach	1995	£5.00
MP 080	Managing quality assurance at the FE/HE interface Edited by Sue Brownlow	1995	£4.50
MP 077	FFEC inspection and the role of the internal nominee Malcolm Tipper	1995	£3.00
MP 075	The industrial and philosophical origins of quality assurance Edward Sallis	1994	£5.00
MP 070	A framework for quality management Edward Sallis	1994	£5.00
MP 059	Equal outcomes – equal experiences? Edited by Sue Brownlow	1994	£5.50
MP 045	The Northern Ireland further education quality assurance survey Gerard Devlin	1992	£3.00
MP 034	Management and accountability in professional organisations Society for Research into Higher Education; editor Dr Helen Brown	1992	£5.00

MP 028	<b>Developing common PIs and assessing effectiveness and quality</b> Peter Allsop	1991	£3.00
MP 020	<b>College quality assurance systems</b> Ed Sallis and Peter Hingley	1991	£5.50
MP 010	<b>Performance indicators and adult education</b> Pablo Foster	1991	£4.50
MP 009	<b>The National Quality Survey</b> Ed Sallis	1990	£4.50

### Resources and technology

MP 082	<b>Management accounts for FE colleges: a guide for governors and senior managers</b> Andrew Grice	1995	£4.50
MP 079	<b>Financing accommodation developments</b> Edited by Sue Brownlow	1995	£5.00
MP 076	<b>Value for money case studies</b> Edited by Bob Kedney	1995	£3.50
MP 068	<b>Learning and technology in the further education sector</b> eds. Lynton Gray and Ann-Marie Warrender, with a contribution from Sir Gordon Higginson	1994	£4.50
MP 062	<b>Funding flexibility</b> Bob Kedney and Sue Brownlow	1994	£5.50
MP 054	<b>50 or more ways to reduce costs: opportunity analysis and selection</b> Bob Kedney and Trefor Davies	1993	£5.00
MP 053	<b>Designing a college accommodation strategy</b> Bob Kedney	1993	£5.50
MP 044	<b>The management of resource-based learning</b> Jeff Cooper	1993	£3.00
MP 029	<b>PCFC funding: the first three years</b> Tony Jeans	1991	£3.50
MP 021	<b>Accommodation planning – one polytechnic's experience</b> Michael Murphy	1991	£5.00
MP 004	<b>Management staff ratios and unit costs</b> Bob Kedney	1991	£3.00