

DOCUMENT RESUME

ED 379 981

HE 028 082

TITLE Fall Enrollment Report.
 INSTITUTION Colorado Commission on Higher Education, Denver.
 PUB DATE Nov 94
 NOTE 27p.
 PUB TYPE Statistical Data (110) -- Reports - Descriptive (141)

EDRS PRICE MF01/PC02 Plus Postage.
 DESCRIPTORS Community Colleges; *Enrollment; Full Time
 Equivalency; In State Students; Out of State
 Students; Postsecondary Education; *Private Colleges;
 Proprietary Schools; *State Colleges; State Surveys;
 State Universities; Tables (Data); Vocational
 Schools
 IDENTIFIERS *Colorado

ABSTRACT

This report provides opening fall headcount enrollment data for Colorado public postsecondary institutions, independent (private nonprofit) institutions, proprietary institutions, and the U.S. Air Force Academy from 1985 through 1994. The report also provides full-time equivalent (FTE) enrollment data for public institutions. The bulk of the report consists of 8 figures and 12 tables that provide information on: (1) fall headcount enrollment; (2) headcount enrollment distribution by institutional type; (3) FTE enrollment estimates versus actual enrollments; (4) in-state FTE enrollment; (5) out-of-state FTE enrollment; (6) total FTE enrollment; (7) total FTE enrollment by student level; and (8) special funded in-state FTE enrollment. Data highlights include: opening fall headcount enrollment at public institutions decreased 1.0 percent from fall 1993 to 1994, while fall headcount enrollment at each of the three Colorado independent institutions increased.
 (MDM)

 * Reproductions supplied by EDRS are the best that can be made *
 * from the original document. *

U.S. DEPARTMENT OF EDUCATION
Office of Educational Research and Improvement
EDUCATIONAL RESOURCES INFORMATION
CENTER (ERIC)

This document has been reproduced as received from the person or organization originating it

Minor changes have been made to improve reproduction quality

• Points of view or opinions stated in this do not necessarily represent ERIC position or policy

ERIC
Full Text Provided by ERIC

"PERMISSION TO REPRODUCE THIS MATERIAL HAS BEEN GRANTED BY

Colorado Commission
on Higher Education

TO THE EDUCATIONAL RESOURCES INFORMATION CENTER (ERIC)."

CONTENTS

EXECUTIVE SUMMARY	iii
INTRODUCTION	1
Public Postsecondary Institutions	2
Independent (private, nonprofit) Postsecondary Institutions	6
Area Vocational Schools and Proprietary Postsecondary Institutions	6
FULL-TIME EQUIVALENT (FTE) STUDENTS	7
In-State Full-Time Equivalent Enrollment	8
Out-of-State Full-Time Equivalent Enrollment	12
Total Full-Time Equivalent Enrollment	16
Total Full-Time Equivalent Enrollment by Student Level	19
Special Funded Full-Time Equivalent Enrollment	22

LIST OF FIGURES

Figure 1	Fall Headcount Enrollment	2
Figure 2	Headcount Enrollment Distribution by Institutional Type	5
Figure 3	In-State Full-Time Equivalent Enrollment	8
Figure 4	In-State Full-Time Equivalent Enrollment Distribution by Institutional Type	11
Figure 5	Out-of-State Full-Time Equivalent Enrollment	12
Figure 6	Out-of-State Full-Time Equivalent Enrollment Distribution by Institutional Type	15
Figure 7	Total Full-Time Equivalent Enrollment	16
Figure 8	Full-Time Equivalent Enrollment Distribution by Student Level	19

LIST OF TABLES

Table 1	Opening Fall Headcount	3
Table 1A	Opening Fall Headcount Percent Change	4
Table 2	Full-Time Equivalent Enrollment Estimates versus Actual	7
Table 3	In-State Full-Time Equivalent Enrollment	9
Table 3A	In-State Full-Time Equivalent Enrollment Percent Change	10
Table 4	Out-of-State Full-Time Equivalent Enrollment	13
Table 4A	Out-of-State Full-Time Equivalent Enrollment Percent Change	14
Table 5	Total Full-Time Equivalent Enrollment	17
Table 5A	Total Full-Time Equivalent Enrollment Percent Change	18
Table 6	Total Full-Time Equivalent Enrollment by Student Level	20
Table 6A	Total Full-Time Equivalent Enrollment Distribution by Student Level	21
Table 7	Special Funded In-State Full-Time Equivalent Enrollment	22

EXECUTIVE SUMMARY

The Commission collects enrollment data and produces a fall enrollment report annually. The report includes historical headcount and full-time equivalent (FTE) data, and provides an enrollment outlook for the current year. Some of this year's findings are:

- Opening fall headcount enrollment at Colorado public institutions is 179,140, a decrease of 1.0% compared to fall 1993. This follows a 0.7% decrease last year which was the first decrease over the last ten years.
- 1994-95 in-state FTE enrollment at Colorado public institutions is expected to decrease to 115,380, 0.1% below 1993-94 enrollment. This is the second year of in-state FTE declines. Although total in-state enrollment is down, enrollment at 18 of the 28 institutions is increasing.
- Out-of-state FTE enrollment at Colorado public institutions is expected to decrease this year; the first decrease over the last ten years. 15 of the 28 institutions increased out-of-state enrollment.
- Although total FTE enrollment at Colorado public institutions is projected to decline 0.1% to 136,590 in 1994-95, 17 of the 28 public postsecondary institutions increased during 1994-95.
- Fall headcount enrollment at each of the three Colorado independent institutions increased.
- 83 of the 97 Colorado proprietary institutions surveyed responded and reported a headcount enrollment of 20,690. Their enrollment ranged from 4 to 2,426 students.

INTRODUCTION

This report provides opening fall headcount enrollment data for Colorado public postsecondary institutions, independent (private, non-profit) institutions, proprietary institutions, and the United States Air Force Academy. Headcount enrollment is the actual number of students who enrolled, regardless of the number of classes in which they enrolled. In addition, full-time equivalent (FTE) enrollment is provided for the public institutions. FTE is a calculation of the total number of student credit hours, divided by the number of hours equivalent to a full-time student course load¹. Data is reported by individual institution, governing board, and institutional type. Also, FTE enrollment is reported by student residency status, in-state and out-of-state, and by undergraduate and graduate level of instruction.

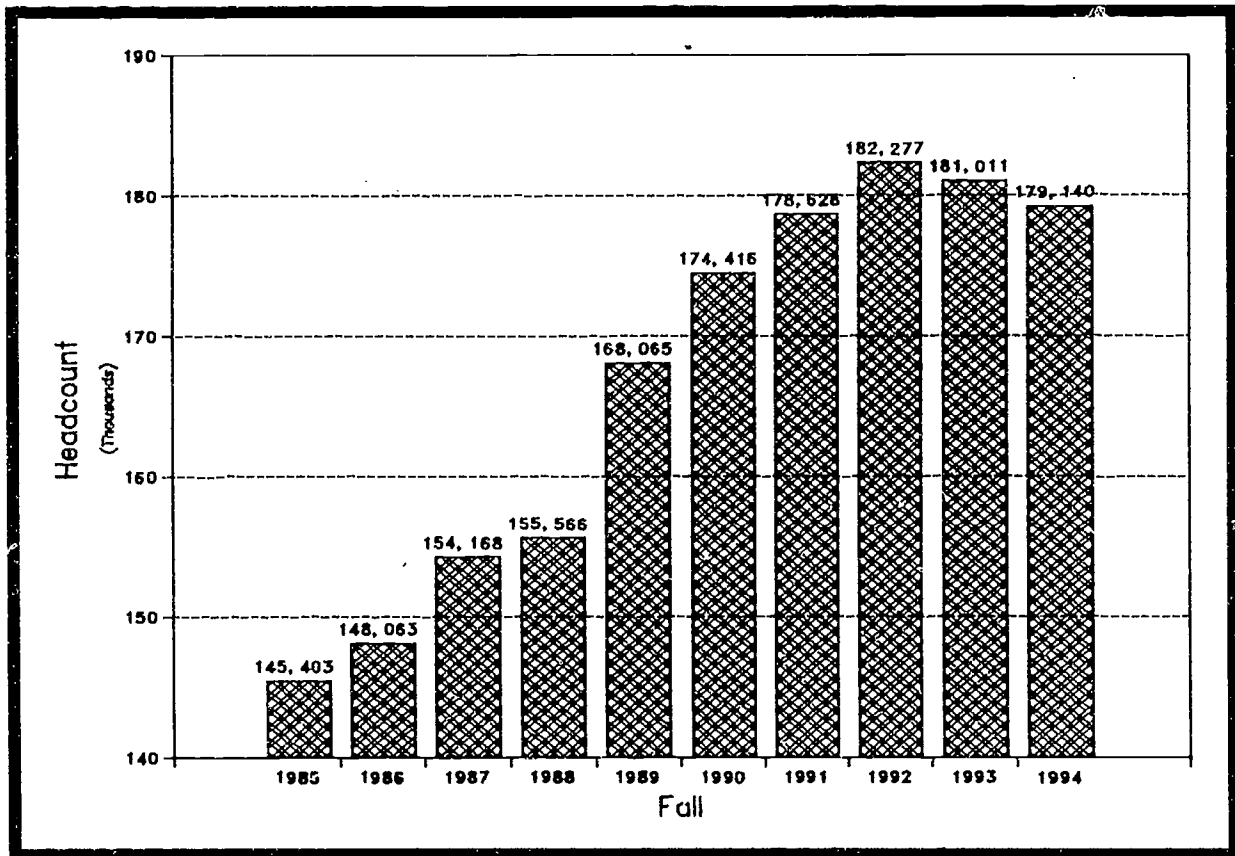
Reported data is derived from annual institutional reports to the Colorado Commission on Higher Education (CCHE), and the National Center for Educational Statistics. The Commission also collects headcount data from public institutions, and two of the independent institutions, as part of its Student Unit-Record Data System (SURDS). SURDS data is collected at the end of each term and will usually show a higher total headcount than the "opening" headcount reported here.

¹For most institutions, this is 30 credit hours per academic year. For institutions on a quarter system, the divisor is 45 credits.

Public Postsecondary Institutions

Fall headcount enrollment at Colorado public postsecondary institutions is 179,140, a decrease of 1.0% compared to fall 1993. This follows a 0.7% decrease last year which was the first public higher education headcount enrollment decrease over the last ten years. Figure 1 shows the enrollment since 1985.

Figure 1
Opening Fall Headcount Enrollment
Colorado Public Institutions



The largest increases in the two-year sector occurred at Otero Junior College (12.0%) and at Mesa State College (6.0%) in the four-year sector. Institutions with the largest decreases in the two-year sector were Morgan Community College (-12.3%) and Fort Lewis College (-3.9%) in the four-year sector. Table 1 and 1A provide the opening headcount data at each institution.

Table 1

Board/Institution	Opening Fall Headcount									
	1985	1986	1987	1988	1989	1990	1991	1992	1993	1994
Regents of Univ. of Colorado:										
Univ of Colo - Boulder	22,767	23,123	23,548	24,072	24,364	25,176	25,571	25,091	25,013	24,548
Univ of Colo - Colo Springs	5,595	5,702	5,873	5,853	5,940	5,983	6,039	5,750	5,724	5,801
Univ of Colo - Denver	10,591	10,617	10,191	10,096	10,470	10,613	10,932	11,089	10,677	10,536
Univ of Colo - Health Sci Ctr ¹	1,475	1,454	1,462	1,596	1,652	1,704	2,092	2,120	2,305	2,286
State Board of Agriculture:										
Colorado State University - E&G	17,601	17,906	18,731	19,387	19,647	20,290	20,469	20,706	20,584	20,938
Colorado State University - PVM	483	475	461	498	502	505	498	504	526	523
Fort Lewis College	3,697	3,606	3,738	3,842	3,984	4,001	4,080	4,096	4,279	4,110
Univ Southern Colorado	4,135	3,693	3,946	3,953	4,257	4,343	4,338	4,488	4,583	4,500
Trustees of Colo School of Mines:										
Colorado School of Mines	2,758	2,520	2,335	2,332	2,360	2,486	2,599	2,901	2,969	3,092
Board of Trustees Univ. No. Colo.:										
Univ Northern Colorado	9,040	9,257	9,608	9,408	9,645	10,239	10,494	10,328	10,647	10,594
Trustees of State Colleges:										
Adams State College	1,880	2,017	2,177	2,329	2,395	2,361	2,380	2,391	2,281	2,284
Mesa State College	3,440	3,634	3,845	3,942	4,168	4,306	4,230	4,267	4,364	4,626
Metro State College of Denver	14,614	13,634	15,051	15,599	16,286	16,669	17,062	17,020	17,021	16,976
Western State College	2,354	2,021	2,198	2,305	2,291	2,396	2,488	2,670	2,453	2,442
CCCOES:										
Arapahoe Community College	5,482	6,624	6,618	6,576	6,674	7,483	7,459	7,392	7,410	7,433
Community College of Aurora	2,162	2,629	3,039	3,424	4,226	4,227	4,550	4,920	4,708	4,543
Community College of Denver	2,751	3,226	2,704	3,317	4,408	5,064	5,415	6,251	5,955	5,842
Front Range Community College	5,150	5,494	5,294	5,697	8,522	9,666	10,557	10,595	10,722	10,258
Lamar Community College	338	377	413	466	844	888	645	803	786	722
Morgan Community College	564	595	465	438	500	504	631	782	887	778
Otero Junior College	685	749	687	801	742	739	823	770	950	1,064
Pikes Peak Community College	5,143	5,236	5,645	5,843	5,898	6,128	6,517	6,695	6,734	6,781
Pueblo Community College	1,329	1,603	1,941	2,037	2,806	2,943	3,211	3,342	3,629	3,841
Red Rocks Community College	3,718	3,807	4,149	4,409	4,962	5,288	5,325	6,427	6,541	6,333
Trinidad State Junior College	638	832	879	1,269	1,349	1,191	1,262	1,239	1,157	1,116 ²
Local District Colleges:										
Aims Community College	5,630	5,298	5,649	5,536	6,799	7,353	7,381	8,185	5,579	6,062
Colorado Mountain College	7,556	6,643	7,758	7,315	8,920	8,699	8,314	8,081	7,766	7,538
Colorado Northwestern CC	1,235	1,468	1,396	1,239	1,180	1,161	1,504	1,525	1,704	1,648
Northeastern Junior College	2,592	3,823	4,367	1,987	2,274	2,010	1,762	1,849	2,057	1,923
BOARD SUMMARY:										
Regents of Univ. of Colorado	40,428	40,896	41,074	41,617	42,426	43,476	44,634	44,050	43,719	43,173
State Board of Agriculture	25,916	25,680	26,876	27,680	28,390	29,139	29,385	29,794	29,972	30,071
Trustees of Colo School of Mines	2,758	2,520	2,335	2,332	2,360	2,486	2,599	2,901	2,969	3,092
Board of Trustees Univ. No. Colo.	9,040	9,257	9,608	9,408	9,645	10,239	10,494	10,328	10,647	10,594
Trustees of State Colleges	22,288	21,306	23,271	24,175	25,140	25,732	26,160	26,348	26,119	26,328
CCCOES	27,960	31,172	31,834	34,277	40,931	44,121	46,395	49,216	49,479	48,711
State Summary										
State Summary	128,390	130,831	134,998	139,489	148,892	155,193	159,667	162,637	162,905	161,969
Local District Summary										
Local District Summary	17,013	17,232	19,170	16,077	19,173	19,223	18,961	19,640	18,106	17,171
Public Institution Summary:										
Public Institution Summary:	145,403	148,063	154,168	155,566	168,065	174,416	178,628	182,277	181,011	179,140
Private, Non-Profit Institutions:										
Regis University	3,300	3,699	3,666	4,337	4,343	5,429	5,891	5,316	5,771	6,321
The Colorado College	1,945	1,968	1,972	1,968	1,901	1,960	1,953	1,957	1,950	1,952
University of Denver	7,276	7,044	6,953	7,020	7,266	7,609	8,019	8,213	8,339	8,522
Federal:										
United States Air Force Academy	4,536	4,532	4,479	4,518	4,622	4,462	4,464	4,357	4,239	4,032

¹The pharmacy program was transferred from the University of Colorado - Boulder to University of Colorado - Health Sciences Center in 1991.

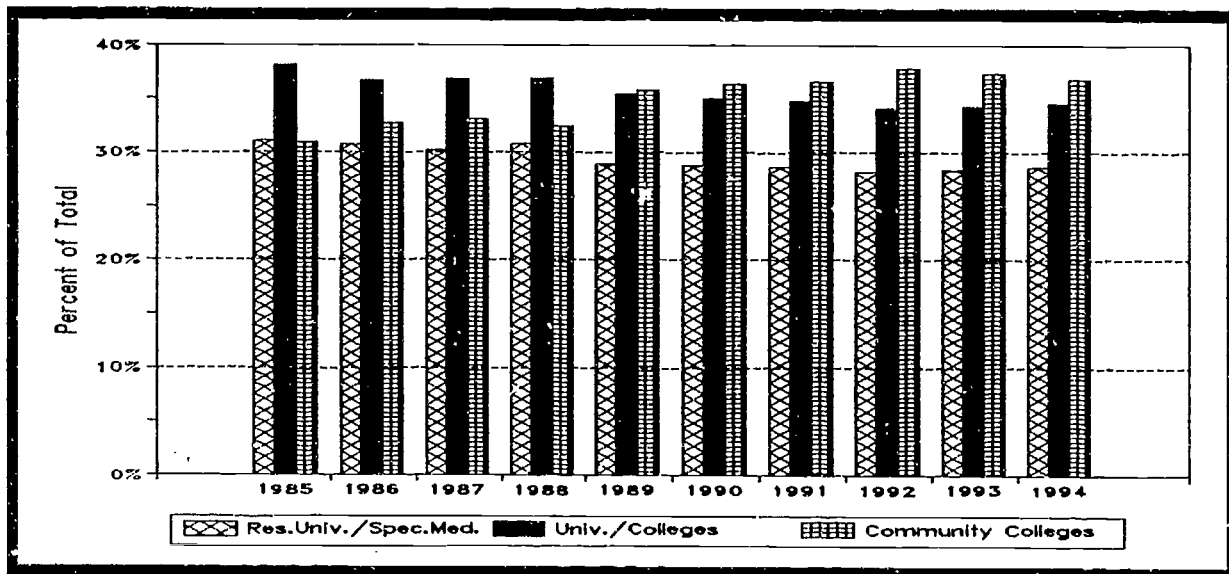
²Excludes 353 students at Alamosa, who are funded under the area vocational school appropriation for FY 1994-95.

Table 1A

Board/Institution	Opening Fall Headcount Percent Change from Previous Year								
	1986	1987	1988	1989	1990	1991	1992	1993	1994
Regents of Univ. of Colorado:									
Univ of Colo - Boulder	1.6	1.8	2.2	1.2	3.3	1.6	-1.9	-0.3	-1.9
Univ of Colo - Colo Springs	1.9	3.0	-0.3	1.5	0.7	0.9	-4.8	-0.5	1.3
Univ of Colo - Denver	0.2	-4.0	-0.9	3.7	1.4	3.0	1.4	-3.7	-1.3
Univ of Colo - Health Sci Ctr	-1.4	0.6	9.2	3.5	3.1	22.8	1.3	8.7	-0.8
State Board of Agriculture:									
Colorado State University - E&G	1.7	4.6	3.5	1.3	3.3	0.9	1.2	-0.6	1.7
Colorado State University - PVM	-1.7	-2.9	8.0	0.8	0.6	-1.4	1.2	4.4	-0.6
Fort Lewis College	-2.5	3.7	2.8	3.7	0.4	2.0	0.4	4.5	-3.9
Univ Southern Colorado	-10.7	6.9	0.2	7.7	2.0	-0.1	3.5	2.1	-1.8
Trustees of Colo School of Mines:									
Colorado School of Mines	-8.6	-7.3	-0.1	1.2	5.3	4.5	11.6	2.3	4.1
Board of Trustees Univ. No. Colo.:									
Univ Northern Colorado	2.4	3.8	-2.1	2.5	6.2	2.5	-1.6	3.1	-0.5
Trustees of State Colleges:									
Adams State College	7.3	7.9	7.0	2.8	-1.4	0.8	0.5	-4.6	0.1
Mesa State College	5.6	5.8	2.5	5.7	3.3	-1.8	0.9	2.3	6.0
Metro State College of Denver	-6.7	10.4	3.6	4.4	2.4	2.4	-0.2	0.0	-0.3
Western State College	-14.1	8.8	4.9	-0.6	4.6	3.8	7.3	-8.1	-0.4
CCCOES:									
Arapahoe Community College	20.8	-0.1	-0.6	1.5	12.1	-0.3	-0.9	0.2	0.3
Community College of Aurora	21.6	15.6	12.7	23.4	0.0	7.6	8.1	-4.3	-3.5
Community College of Denver	17.3	-16.2	22.7	32.9	14.9	6.9	15.4	-4.7	-1.9
Front Range Community College	6.7	-3.6	7.6	49.6	13.4	9.2	0.4	1.2	-4.3
Lamar Community College	11.5	9.5	12.8	81.1	5.2	-27.4	24.5	-2.1	-8.1
Morgan Community College	5.5	-21.8	-5.8	14.2	0.8	25.2	23.9	13.4	-12.3
Otero Junior College	9.3	-8.3	16.6	-7.4	-0.4	11.4	-6.4	23.4	12.0
Pikes Peak Community College	1.8	7.8	3.5	0.9	3.9	6.3	2.7	0.6	0.7
Pueblo Community College	20.6	21.1	4.9	37.8	4.9	9.1	4.1	8.6	5.8
Red Rocks Community College	2.4	9.0	6.3	12.5	6.6	0.7	20.7	1.8	-3.2
Trinidad State Junior College	30.4	5.6	44.4	6.3	-11.7	6.0	-1.8	-6.6	-3.5
Local District Colleges:									
Aims Community College	-5.9	6.6	-2.0	22.8	8.1	0.4	10.9	-19.6	-7.9
Colorado Mountain College	-12.1	16.8	-5.7	21.9	-2.5	-4.4	-2.8	-3.9	-2.9
Colorado Northwestern CC	18.9	-4.9	-11.2	-4.8	-1.6	29.5	1.4	11.7	-3.3
Northeastern Junior College	47.5	14.2	-54.5	14.4	-11.6	-12.3	4.9	11.2	-6.5
BOARD SUMMARY:									
Regents of Univ. of Colorado	1.2	0.4	1.3	1.9	2.5	2.7	-1.3	-0.8	-1.2
State Board of Agriculture	-0.9	4.7	3.0	2.6	2.6	0.8	1.4	0.6	0.3
Trustees of Colo School of Mines	-8.6	-7.3	-0.1	1.2	5.3	4.5	11.6	2.3	4.1
Board of Trustees Univ. No. Colo.	2.4	3.8	-2.1	2.5	6.2	2.5	-1.6	3.1	-0.5
Trustees of State Colleges	-4.4	9.2	3.9	4.0	2.4	1.7	0.7	-0.9	0.8
CCCOES	11.5	2.1	7.7	19.4	7.8	5.2	6.1	0.5	-1.6
State Summary	1.9	3.2	3.3	6.7	4.2	2.9	1.9	0.2	-0.6
Local District Summary	1.3	11.2	-16.1	19.3	0.3	-1.4	3.6	-7.8	-5.2
Public Institution Summary:	1.8	4.1	0.9	8.0	3.8	2.4	2.0	-0.7	-1.0
Private, Non-Profit Institutions:									
Regis University	12.1	-0.9	18.3	0.1	25.0	8.5	-9.8	8.6	9.5
The Colorado College	1.2	0.2	-0.2	-3.4	3.1	-0.4	0.2	-0.4	0.1
University of Denver	-3.2	-1.3	1.0	3.5	4.7	5.4	2.4	1.5	2.2
Federal:									
United States Air Force Academy	-0.1	-1.2	0.9	2.3	-3.5	0.0	-2.4	-2.7	-4.9

Figure 2 displays the distribution of headcount enrollment by institutional type¹ for the public institutions. Between 1985 and 1992, the community college enrollment share increased while the other two sectors decreased. In 1989, the community college share exceeded the universities and colleges share for the first time. Over the last two years, however, the community college share decreased while the other sectors share increased slightly.

Figure 2
Headcount Enrollment
Distribution by Institutional Type



When interpreting headcount data, it is important to note that institutions report enrollment to CCHE early in the academic term. For example, community colleges offer many courses that start after the reporting date, or are open to enrollment throughout the term. These institutions will have a higher headcount at the end of the fall term. Since the data is collected at the same time each year, however, multi-year comparisons are a good indicator of enrollment trends.

¹ Research Universities/Specialized Medical include the Colorado School of Mines, Colorado State University, Colorado State University - Professional Veterinary Medicine, the University of Colorado - Boulder, and the University of Colorado - Health Sciences Center.

Universities and Colleges include all other public four-year institutions in the state.

Community Colleges include the CCCOES institutions and the local district community colleges.

Independent (private, nonprofit) Postsecondary Institutions

Fall 1994 enrollment at each of the three Colorado independent institutions increased. Regis University had the largest increase, 9.5%. The University of Denver continues to increase, though at a slower rate than occurred in the early 1990's. Enrollment at The Colorado College has not changed significantly over the ten year period. The United States Air Force Academy enrollment decreased by -4.9%. That trend is expected to continue as the military academies adjust to the decrease in military forces.

Area Vocational Schools and Proprietary Postsecondary Institutions

Area vocational schools and proprietary institutions provide varied programs, including certificates through master's and first-professional degrees, and annually report enrollment data to CCHE and the National Center for Education Statistics through the Integrated Postsecondary Education Data System (IPEDS) survey. The six area vocational schools reported fall 1994 enrollment of 7,861. 83 of the 97 Colorado proprietary institutions surveyed responded and reported enrollment of 20,690. Their enrollment ranged from 4 to 2,426 students. While enrollment information about these institutions is limited, it is important to note the service they provide to a large number of individuals.

FULL-TIME EQUIVALENT (FTE) STUDENTS

Public institutions also report the number of student credit hours taken by students reported on the opening fall headcount report. The fall data is used to estimate full-time equivalent (FTE) student enrollment for the current fiscal year. Since FTE student enrollment is used in the budget process, an early indication of the total enrollment for the current fiscal year is useful in evaluating budgetary impact.

Table 2 compares last year's 1993-94 FTE estimates with the actual 1993-94 FTE by board. Last year's report over-estimated the final in-state FTE by 1.3% (117,010 FTE estimate versus 115,457 final, a difference of 1,553 FTE). The in-state estimates ranged from a 0.1% under-estimate for the Regents of the University of Colorado, to a 4.6% over-estimate for the Local District Colleges.

The out-of-state estimates ranged from a 4.9% under-estimate for the Local District Colleges to a 2.6% over-estimate for the Board of Trustees University of Northern Colorado. Statewide, the out-of-state estimate was 0.5% above the actual levels.

Table 2

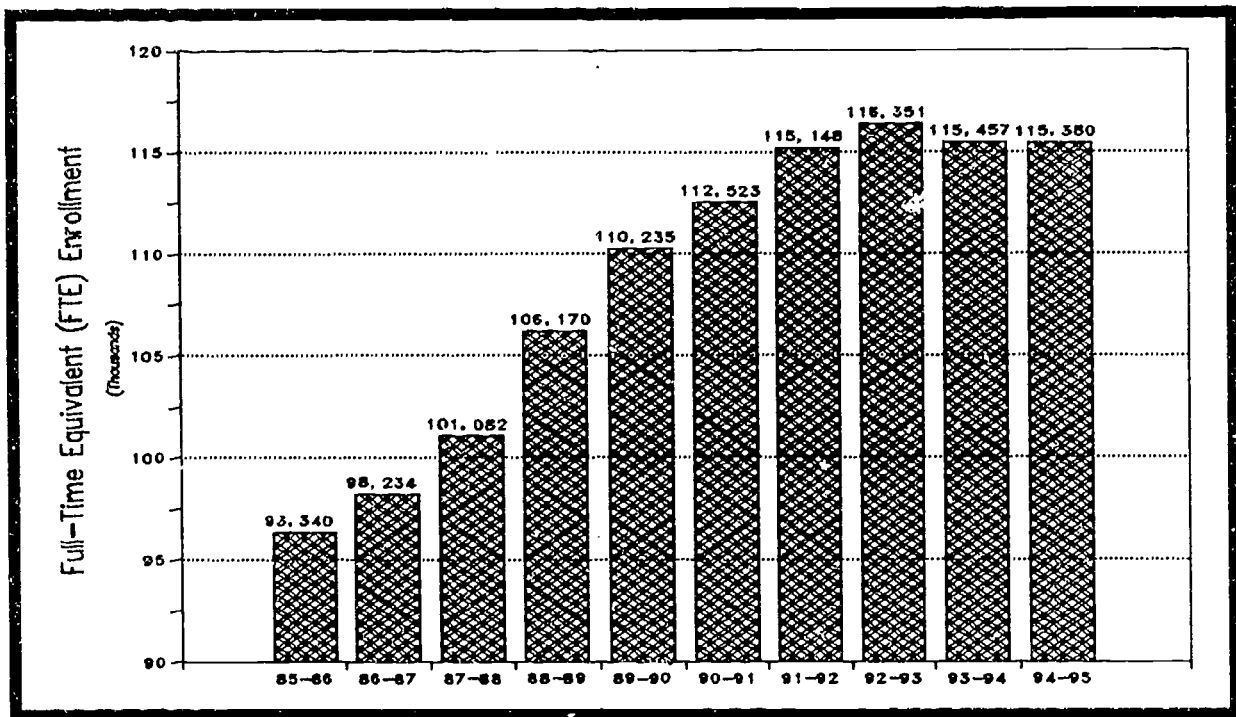
Board	FY 1993-94 Full-Time Equivalent (FTE) Student Enrollment Estimates versus Actual								
	In-State			Out-of-State			Total		
	Actual	Estimate	Over/Under Estimate	Actual	Estimate	Over/Under Estimate	Actual	Estimate	Over/Under Estimate
BOARD SUMMARY:									
Regents of Univ. of Colorado	25,330	25,310	-0.1%	7,938	7,970	0.4%	33,268	33,280	-0.0%
State Board of Agriculture	21,338	21,420	0.4%	6,640	6,640	0.0%	27,978	28,060	0.3%
Trustees of Colo School of Mines	1,983	1,990	0.4%	1,023	1,030	0.7%	3,006	3,020	0.5%
Board of Trustees Univ No. Colo.	8,749	8,780	0.4%	1,091	1,120	2.6%	9,840	9,900	0.6%
Trustees of State Colleges	18,519	18,770	1.3%	1,843	1,890	2.5%	20,362	20,660	1.4%
CCCOES	30,770	31,550	2.5%	1,871	1,890	1.0%	32,641	33,440	2.4%
State Summary	106,689	107,820	1.0%	20,406	20,540	0.7%	127,095	128,360	1.0%
Local District Summary	8,768	9,190	4.6%	818	780	-4.9%	9,586	9,970	3.9%
Public Institution Summary:	115,457	117,010	1.3%	21,224	21,320	0.5%	136,681	138,330	1.2%

In-State Full-Time Equivalent Enrollment

1994-95 in-state FTE enrollment is expected to decrease to 115,380, 0.1% below 1993-94 enrollment. This is the second year that in-state FTE has decreased. Figure 3 displays the in-state FTE enrollment change since 1985-86. According to estimates, the 1994-95 FTE enrollment level will be the third highest of the last 10 years. Tables 3 and 3A provide in-state FTE student data for all public institutions from 1985-86 to 1994-95 (Estimated). These tables provide the actual level and percent change by institution and summary group.

In the four-year sector, 9 of 13 institutions have increasing enrollment. Mesa State College is increasing at the highest rate (5.3%). In the two-year sector, 9 of the 15 two-year institutions are increasing. Otero Junior College (6.8%) and Pueblo Community College (6.4%) are increasing at the highest rates. Overall, change in the system is mixed, with two-year and four-year, and urban and rural institutions both increasing and decreasing.

Figure 3
In-State Full-Time Equivalent Enrollment
Colorado Public Institutions



Enrollment by Summary Group

Enrollment increased in 4 of the 7 summary groups (board/local district). The Trustees of the Colorado School of Mines and the State Colleges are expected to increase at the highest rates, 2.4% and 1.9%, respectively. Enrollment at the Colorado Community College and Occupational Education System (CCCOES) is expected to be flat for 1994-95. Enrollment at the Regents of the University of Colorado and Local District College institutions are expected to decrease this year.

Table 3

Board/Institution	In-State Full-Time Equivalent (FTE) Student Enrollment									
	FY85-86	FY86-87	FY87-88	FY88-89	FY89-90	FY90-91	FY91-92	FY92-93	FY93-94	FY94-95 ¹
Regents of Univ. of Colorado:										
Univ of Colo - Boulder	13,607	13,939	14,078	14,371	14,723	15,176	15,456	14,809	15,097	14,830
Univ of Colo - Colo Springs	3,299	3,465	3,520	3,631	3,813	3,841	3,884	3,752	3,669	3,700
Univ of Colo - Denver	5,984	6,159	6,176	6,071	6,282	6,396	6,585	6,794	6,564	6,450
State Board of Agriculture:										
Colorado State University - E&G	13,854	14,192	14,233	14,486	14,386	14,317	14,496	14,584	14,531	14,670
Colorado State University - PVM	404	380	366	344	341	333	333	327	337	330
Fort Lewis College	3,016	2,967	3,107	3,148	3,187	2,934	2,854	2,783	2,838	2,710
Univ Southern Colorado	3,601	3,269	3,327	3,459	3,635	3,661	3,711	3,754	3,632	3,650
Trustees of Colo School of Mines:										
Colorado School of Mines	1,859	1,616	1,495	1,458	1,622	1,596	1,743	1,910	1,983	2,030
Board of Trustees Univ. No. Colo.:										
Univ Northern Colorado	7,867	7,819	8,248	8,205	8,222	8,598	8,717	8,651	8,749	8,780
Trustees of State Colleges:										
Adams State College	1,748	1,925	1,972	2,146	2,119	1,972	1,928	1,931	1,748	1,810
Mesa State College	2,911	3,004	2,990	3,082	3,210	3,299	3,280	3,320	3,382	3,560
Metro State College of Denver	10,135	10,711	11,242	11,531	11,911	12,200	12,343	12,162	11,996	12,100
Western State College	2,113	1,821	1,881	1,863	1,718	1,588	1,584	1,602	1,393	1,400
CCCOES:										
Archuleta Community College	2,818	3,128	3,205	3,428	3,765	3,876	3,880	3,849	3,832	3,800
Community College of Aurora	926	1,120	1,343	1,613	2,064	2,094	2,359	2,514	2,658	2,740
Community College of Denver	2,540	2,641	2,424	2,971	3,287	3,622	3,873	4,240	4,365	4,370
Front Range Community College	2,949	3,054	3,074	4,290	5,096	5,686	5,926	6,187	6,061	5,770
Lamar Community College	388	417	425	493	621	608	586	612	581	600
Morgan Community College	388	434	537	589	541	535	566	712	807	750
Otero Junior College	542	575	519	614	591	633	666	677	749	800
Pikes Peak Community College	3,528	3,492	3,969	4,226	4,318	4,366	4,571	4,717	4,437	4,600
Pueblo Community College	1,312	1,514	1,619	2,016	2,212	2,288	2,472	2,696	2,623	2,790
Red Rocks Community College	2,030	2,029	2,366	2,585	2,762	3,026	3,037	3,365	3,598	3,620
Trinidad State Junior College	811	851	910	958	1,051	1,038	1,023	1,049	1,059	930 ¹
Local District Colleges:										
Aims Community College	3,427	3,472	3,640	4,018	4,056	4,180	4,454	4,544	3,992	3,750
Colorado Mountain College	1,999	1,883	2,119	2,284	2,248	2,358	2,344	2,279	2,456	2,530
Colorado Northwestern CC	582	640	624	628	629	658	782	807	750	690
Northeastern Junior College	1,702	1,717	1,673	1,662	1,825	1,644	1,685	1,724	1,570	1,620
BOARD SUMMARY:										
Regents of Univ. of Colorado	22,890	23,563	23,774	24,073	24,818	25,413	25,925	25,355	25,330	24,980
State Board of Agriculture	20,875	20,808	21,033	21,437	21,549	21,245	21,394	21,448	21,338	21,360
Trustees of Colo School of Mines	1,859	1,616	1,495	1,458	1,622	1,596	1,743	1,910	1,983	2,030
Board of Trustees Univ. No. Colo.	7,867	7,819	8,248	8,205	8,222	8,598	8,717	8,651	8,749	8,780
Trustees of State Colleges	16,907	17,461	18,085	18,622	18,958	19,059	19,135	19,015	18,519	18,870
CCCOES	18,232	19,255	20,391	23,783	26,308	27,772	28,959	30,618	30,770	30,770
State Summary	88,630	90,522	93,026	97,578	101,477	103,683	105,873	106,997	106,689	106,790
Local District Summary	7,710	7,712	8,056	8,592	8,758	8,840	9,275	9,354	8,768	8,590
Public Institution Summary:	96,340	98,234	101,082	106,170	110,235	112,523	115,148	116,351	115,457	115,380

¹Estimate.

¹Excludes 340 FTE at Alamosa, who are funded under the area vocational school appropriation for FY 1994-95.

Table 3A

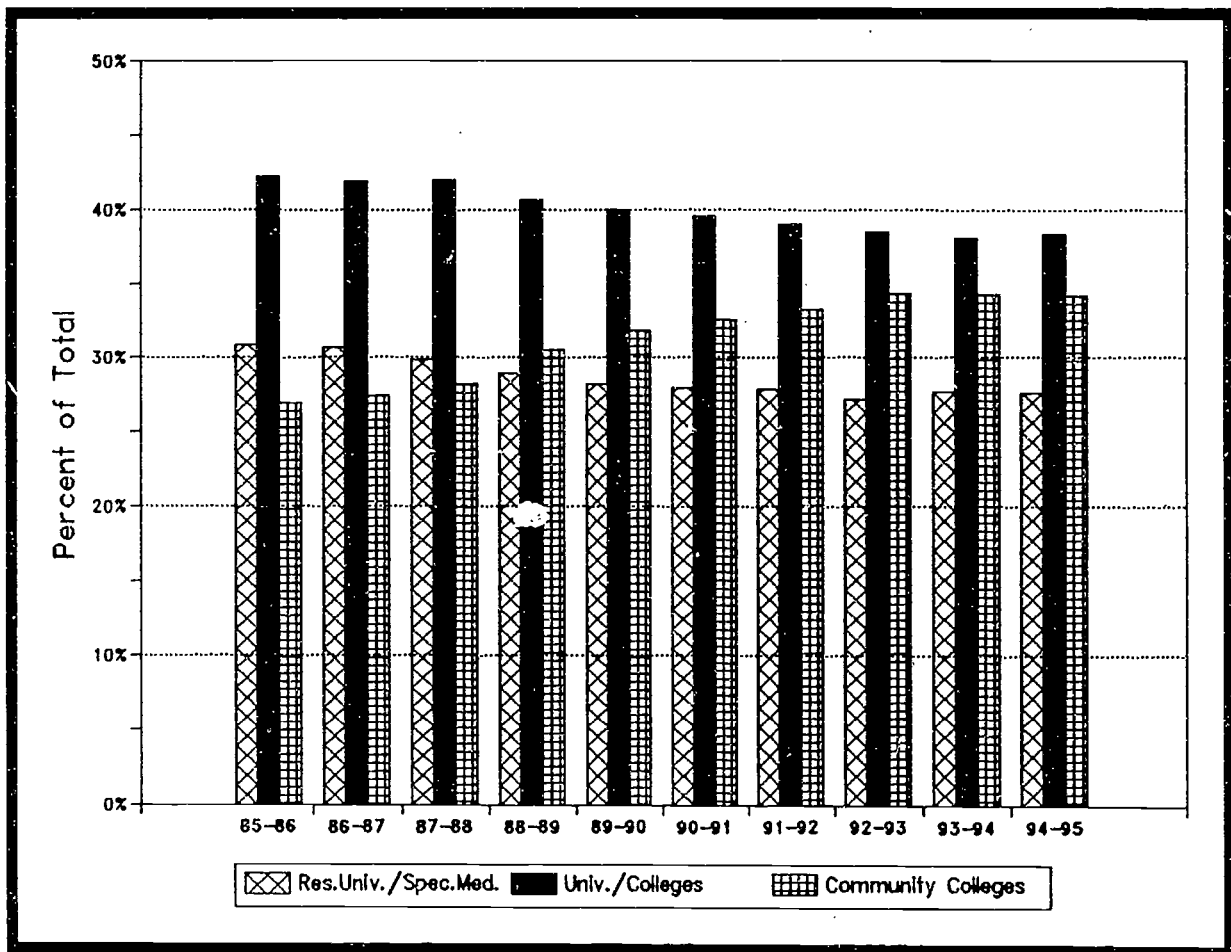
Board/Institution	In-State FTE Percent Change from Previous Year								
	FY86-87	FY87-88	FY88-89	FY89-90	FY90-91	FY91-92	FY92-93	FY93-94	FY94-95*
Regents of Univ. of Colorado:									
Univ of Colo - Boulder	2.4	1.0	2.1	2.4	3.1	1.8	-4.2	1.9	-1.8
Univ of Colo - Colo Springs	5.0	1.6	3.2	5.0	0.7	1.1	-3.4	-2.2	0.8
Univ of Colo - Denver	2.9	0.3	-1.7	3.5	1.8	3.0	3.2	-3.4	-1.7
State Board of Agriculture:									
Colorado State University - E&G	2.4	0.3	1.8	-0.7	-0.5	1.3	0.6	-0.4	1.0
Colorado State University - PVM	-5.9	-3.7	-6.0	-0.9	-2.3	0.0	-1.8	3.1	-2.1
Fort Lewis College	-1.6	4.7	1.3	1.2	-7.9	-2.7	-2.5	2.0	-4.5
Univ Southern Colorado	-9.2	1.8	4.0	5.1	0.7	1.4	1.2	-3.2	0.5
Trustees of Colo School of Mines:									
Colorado School of Mines	-13.1	-7.5	-2.5	11.2	-1.6	9.2	9.6	3.8	2.4
Board of Trustees Univ. No. Colo.:									
Univ Northern Colorado	-0.6	5.5	-0.5	0.2	4.6	1.4	-0.8	1.1	0.4
Trustees of State Colleges:									
Adams State College	10.1	2.4	8.8	-1.3	-6.9	-2.2	0.2	-9.5	3.5
Mesa State College	3.2	-0.5	3.1	4.2	2.8	-0.6	1.2	1.9	5.3
Metro State College of Denver	5.7	5.0	2.6	3.3	2.4	1.2	-1.5	-1.4	0.9
Western State College	-13.8	3.3	-1.0	-7.8	-7.6	-0.3	1.1	-13.0	0.5
CCCOES:									
Arapahoe Community College	11.0	2.5	7.0	9.8	2.9	0.1	-0.8	-0.4	-0.8
Community College of Aurora	21.0	19.9	20.1	28.0	1.5	12.7	6.6	5.7	3.1
Community College of Denver	4.0	-8.2	22.6	10.6	10.2	6.9	9.5	2.9	0.1
Front Range Community College	3.6	0.7	39.6	18.8	11.6	4.2	4.4	-2.0	-4.8
Lamar Community College	7.5	1.9	16.0	26.0	-2.1	-3.6	4.4	-5.1	3.3
Morgan Community College	11.9	23.7	9.7	-8.1	-1.1	5.8	25.8	13.3	-7.1
Otero Junior College	6.1	-9.7	18.3	-3.7	7.1	5.2	1.7	10.6	6.8
Pikes Peak Community College	-1.0	13.7	6.5	2.2	1.1	4.7	3.2	-5.9	3.7
Pueblo Community College	15.4	6.9	24.5	9.7	3.4	8.0	9.1	-2.7	6.4
Red Rocks Community College	-0.0	16.6	9.3	6.8	9.6	0.4	10.8	6.9	0.6
Trinidad State Junior College	4.9	6.9	5.3	9.7	-1.2	-1.4	2.5	1.0	-12.2
Local District Colleges:									
Aims Community College	1.3	4.8	10.4	0.9	3.1	6.6	2.0	-12.1	-6.1
Colorado Mountain College	-5.8	12.5	7.8	-1.6	4.9	-0.6	-2.8	7.8	3.0
Colorado Northwestern CC	10.0	-2.5	0.6	0.2	4.6	18.8	3.2	-7.1	-8.0
Northeastern Junior College	0.9	-2.6	-0.7	9.8	-9.9	3.1	1.7	-8.9	3.2
BOARD SUMMARY:									
Regents of Univ. of Colorado	2.9	0.9	1.3	3.1	2.4	2.0	-2.5	-0.1	-1.4
State Board of Agriculture	-0.3	1.1	1.9	0.5	-1.4	0.7	0.3	-0.5	0.1
Trustees of Colo School of Mines	-13.1	-7.5	-2.5	11.2	-1.6	9.2	9.6	3.8	2.4
Board of Trustees Univ. No. Colo.	-0.6	5.5	-0.5	0.2	4.6	1.4	-0.8	1.1	0.4
Trustees of State Colleges	3.3	3.6	3.0	1.8	0.5	0.4	-0.6	-2.6	1.9
CCCOES	5.6	5.9	16.6	10.6	5.6	4.3	5.7	0.5	0.0
State Summary	2.1	2.8	4.9	4.0	2.2	2.1	1.1	-0.3	0.1
Local District Colleges	0.0	4.5	6.7	1.9	0.9	4.9	0.9	-6.3	-2.0
Public Institution Summary:	2.0	2.9	5.0	3.8	2.1	2.3	1.0	-0.8	-0.1

*Estimate.

Enrollment by Institutional Type

Community colleges share of headcount enrollment (all students without regard to class load) exceeds both the other sectors (see Figure 2). In FTE (a calculation of the total number of student credit hours divided by the number of hours equivalent to a full-time student course load) the universities and colleges are projected to have the largest share of enrollment, 38.3%, compared to the community colleges, 34.1%, and the research universities/specialized medical institutions¹, 27.6%, for 1994-95. Between 1985-86 and 1992-93, the community college share of enrollment usually increased, and exceeded the research universities/specialized medical share for the first time in 1988-89. The Community College share, however, decreased in 1993-94 and is estimated to decrease this year.

Figure 4
In-State FTE Enrollment
Distribution by Institutional Type



¹Does not include the University of Colorado - Health Sciences Center (UCHSC). FTE data for UCHSC is not available.

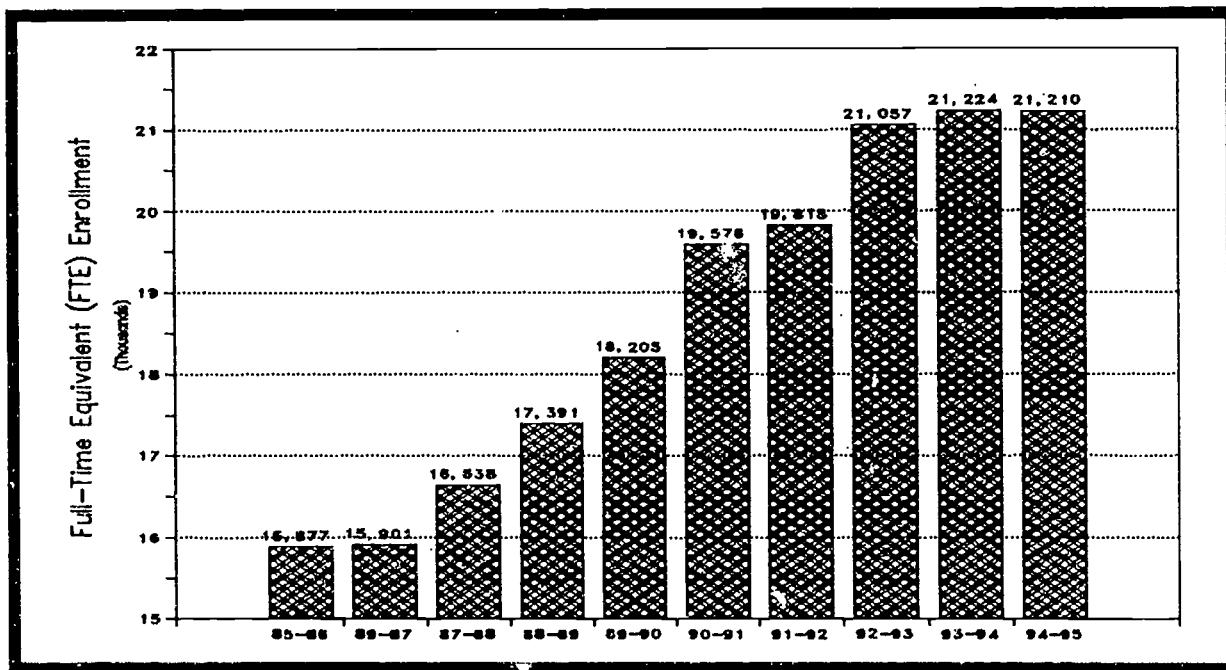
Out-of-State Full-Time Equivalent Enrollment

Out-of-state FTE is expected to decrease this year; the first decrease over the last ten years. Figure 5 shows the out-of-state enrollment change since 1985-86. The 1994-95 level is expected to decrease 0.1% to 21,210. Tables 4 and 4A provide out-of-state FTE student data for all public institutions from 1985-86 to 1994-95 (Estimated). These tables provide the actual level and percent change by institution and summary group.

Out-of-state enrollment is increasing at 8 of 13 four-year, and 7 of 15 two-year institutions. The total out-of-state enrollment rate of change is expected to be about the same as the in-state change.

While the out-of-state enrollment is a small part of community colleges total enrollment, community colleges have experienced significant increases since 1989-90. The 1993-94 and 1994-95 community college out-of-state enrollment growth, however, appears to be below the changes experienced in the early 1990's.

Figure 5
Out-of-State Full-Time Equivalent Enrollment
Colorado Public Institutions



Enrollment by Summary Group

6 of the 7 summary groups (board/local district) are experiencing out-of-state enrollment growth this year. The largest increases are expected at the Colorado School of Mines and the Community College and Occupational Education System (CCCOES), up 4.6% and 3.7%, respectively. Out-of-state enrollment at the Regents of the University of Colorado are projected to decrease by 2.6%.

Table 4

Board/Institution	Out-of-State Full-Time Equivalent (FTE) Student Enrollment									
	FY85-86	FY86-87	FY87-88	FY88-89	FY89-90	FY90-91	FY91-92	FY92-93	FY93-94	FY94-95*
Regents of Univ. of Colorado:										
Univ of Colo - Boulder	6,495	6,681	7,146	7,287	7,322	7,745	7,374	7,547	7,145	6,930
Univ of Colo - Colo Springs	233	174	151	163	179	185	205	231	247	230
Univ of Colo - Denver	368	289	292	269	323	361	423	460	516	570
State Board of Agriculture:										
Colorado State University - E&G	2,847	3,008	3,286	3,615	3,996	4,335	4,446	4,567	4,642	4,600
Colorado State University - PVM	372	374	375	380	378	376	371	366	397	400
Fort Lewis College	642	626	655	699	752	857	939	1,084	1,193	1,220
Univ Southern Colorado	378	321	266	248	304	272	273	310	408	460
Trustees of Colo School of Mines:										
Colorado School of Mines	900	904	842	810	708	774	830	948	1,023	1,070
Board of Trustees Univ. No. Colo.:										
Univ Northern Colorado	677	683	775	787	843	945	1,055	1,055	1,091	1,100
Trustees of State Colleges:										
Adams State College	246	289	309	330	377	407	450	419	416	440
Mesa State College	122	159	210	235	257	262	251	313	352	380
Metro State College of Denver	384	352	345	317	307	334	343	337	311	310
Western State College	384	355	431	546	615	685	767	840	764	740
CCCOES:										
Arapahoe Community College	305	263	225	244	249	231	248	296	278	300
Community College of Aurora	35	47	46	56	85	59	49	41	44	50
Community College of Denver	244	220	164	140	142	186	159	246	238	270
Front Range Community College	79	75	115	156	188	265	308	405	422	410
Lamar Community College	53	46	60	59	72	60	51	63	73	70
Morgan Community College	14	20	11	12	8	3	18	45	39	20
Otero Junior College	29	24	31	28	24	45	60	61	50	60
Pikes Peak Community College	221	156	124	109	134	132	131	169	149	120
Pueblo Community College	12	14	17	18	30	42	45	48	52	50
Red Rocks Community College	115	142	118	112	151	192	208	278	342	400
Trinidad State Junior College	262	235	193	153	156	187	218	192	184	190
Local District Colleges:										
Aims Community College	112	71	82	129	69	57	55	60	60	60
Colorado Mountain College	210	235	262	377	425	441	377	457	554	570
Colorado Northwestern CC	69	77	55	56	60	70	79	118	126	120
Northeastern Junior College	69	61	52	56	51	68	85	101	78	70
BOARD SUMMARY:										
Regents of Univ. of Colorado	7,096	7,144	7,589	7,719	7,824	8,291	8,002	8,238	7,938	7,730
State Board of Agriculture	4,239	4,329	4,582	4,942	5,430	5,840	6,029	6,327	6,640	6,680
Trustees of Colo School of Mines	900	904	842	810	708	774	830	948	1,023	1,070
Board of Trustees Univ. No. Colo.	677	683	775	787	843	945	1,055	1,055	1,091	1,100
Trustees of State Colleges	1,136	1,155	1,295	1,428	1,556	1,688	1,811	1,909	1,843	1,870
CCCOES	1,369	1,242	1,104	1,087	1,239	1,402	1,495	1,844	1,871	1,940
State Summary	15,417	15,457	16,187	16,773	17,600	18,940	19,222	20,321	20,406	20,390
Local District Summary	460	444	451	618	605	636	596	736	818	820
Public Institution Summary:	15,877	15,901	16,638	17,391	18,205	19,576	19,818	21,057	21,224	21,210

*Estimate.

BEST COPY AVAILABLE

Table 4A

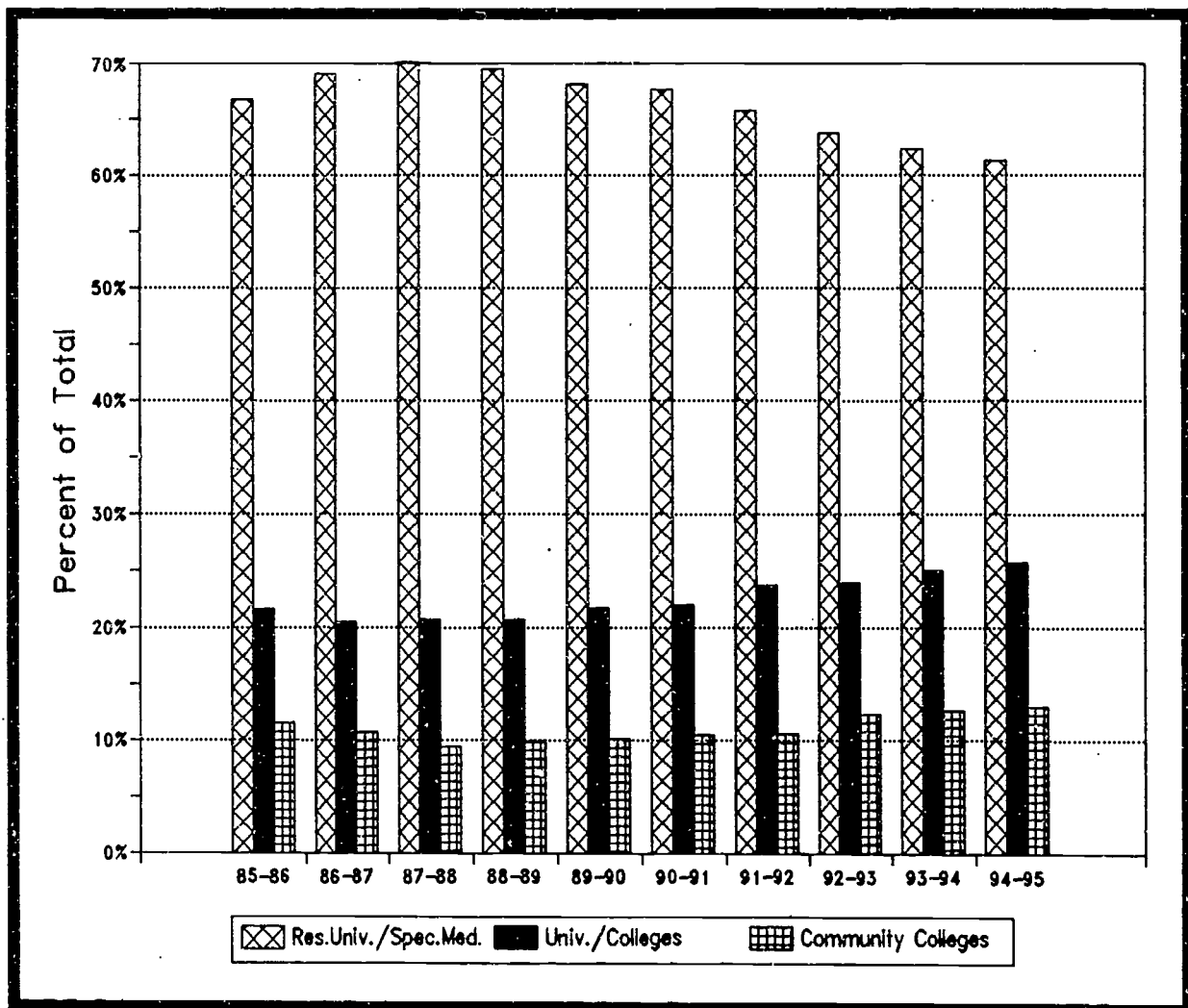
Board/Institution Public Institutions	Out-of-State FTE Percent Change from Previous Year								
	FY86-87	FY 87-88	FY88-89	FY89-90	FY90-91	FY91-92	FY92-93	FY93-94	FY94-95*
Regents of Univ. of Colorado:									
Univ of Colo - Boulder	2.9	7.0	2.0	0.5	5.8	-4.8	2.3	-4.9	-3.4
Univ of Colo - Colo Springs	-25.3	-13.2	7.9	9.8	3.4	10.8	12.7	6.9	-6.9
Univ of Colo - Denver	-21.5	1.0	-7.9	20.1	11.8	17.2	8.7	12.2	10.5
State Board of Agriculture:									
Colorado State University - E&G	5.7	9.2	10.0	10.5	8.5	2.6	2.7	1.6	-0.9
Colorado State University - PVM	0.5	0.3	1.3	-0.5	-0.5	-1.3	-1.3	8.5	0.8
Fort Lewis College	-2.5	4.6	6.7	7.6	14.0	9.6	15.4	10.1	2.3
Univ Southern Colorado	-15.1	-17.1	-6.8	22.6	-10.5	0.4	13.6	31.6	12.7
Trustees of Colo School of Mines:									
Colorado School of Mines	0.4	-6.9	-3.8	-12.6	9.3	7.2	14.2	7.9	4.6
Board of Trustees Univ. No. Colo.:									
Univ Northern Colorado	0.9	13.5	1.5	7.1	12.1	11.6	0.0	3.4	0.8
Trustees of State Colleges:									
Adams State College	17.5	6.9	6.8	14.2	8.0	10.6	-6.9	-0.7	5.8
Mesa State College	30.3	32.1	11.9	9.4	1.9	-4.2	24.7	12.5	8.0
Metro State College of Denver	-8.3	-2.0	-8.1	-3.2	8.8	2.7	-1.7	-7.7	-0.3
Western State College	-7.6	21.4	26.7	12.6	11.4	12.0	9.5	-9.0	-3.1
CCCOES:									
Arapahoe Community College	-13.8	-14.4	8.4	2.0	-7.2	7.4	19.4	-6.1	7.9
Community College of Aurora	34.3	-2.1	21.7	51.8	-30.6	-16.9	-16.3	7.3	13.6
Community College of Denver	-9.8	-25.5	-14.6	1.4	31.0	-14.5	54.7	-3.3	13.4
Front Range Community College	-5.1	53.3	35.7	20.5	41.0	16.2	31.5	4.2	-2.8
Lamar Community College	-13.2	30.4	-1.7	22.0	-16.7	-15.0	23.5	15.9	-4.1
Morgan Community College	42.9	-45.0	9.1	-33.3	-62.5	500.0	150.0	-13.3	-48.7
Otero Junior College	-17.2	29.2	-9.7	-14.3	87.5	33.3	1.7	-18.0	20.0
Pikes Peak Community College	-29.4	-20.5	-12.1	22.9	-1.5	-0.8	29.0	-11.8	-19.5
Pueblo Community College	16.7	21.4	5.9	66.7	40.0	7.1	6.7	8.3	-3.8
Red Rocks Community College	23.5	-16.9	-5.1	34.8	27.2	8.3	33.7	23.0	17.0
Trinidad State Junior College	-10.3	-17.9	-20.7	2.0	19.9	16.6	-11.9	-4.2	3.3
Local District Colleges:									
Aims Community College	-36.6	15.5	57.3	-46.5	-17.4	-3.5	9.1	0.0	0.0
Colorado Mountain College	11.9	11.5	43.9	12.7	3.8	-14.5	21.2	21.2	2.9
Colorado Northwestern CC	11.6	-28.6	1.8	7.1	16.7	12.9	49.4	6.8	-4.8
Northeastern Junior College	-11.6	-14.8	7.7	-8.9	33.3	25.0	18.8	-22.8	-10.3
BOARD SUMMARY:									
Regents of Univ. of Colorado	0.7	6.2	1.7	1.4	6.0	-3.5	2.9	-3.6	-2.6
State Board of Agriculture	2.1	5.8	7.9	9.9	7.6	3.2	4.9	4.9	0.6
Trustees of Colo School of Mines	0.4	-6.9	-3.8	-12.6	9.3	7.2	14.2	7.9	4.6
Board of Trustees Univ. No. Colo.	0.9	13.5	1.5	7.1	12.1	11.6	0.0	3.4	0.8
Trustees of State Colleges	1.7	12.1	10.3	9.0	8.5	7.3	5.4	-3.5	1.5
CCCOES	-9.3	-11.1	-1.5	14.0	13.2	6.6	23.3	1.5	3.7
State Summary	0.3	4.7	3.6	4.9	7.6	1.5	5.7	0.4	-0.1
Local District Colleges	-3.5	1.6	37.0	-2.1	5.1	-6.3	23.5	11.1	0.2
Public Institution Summary:	0.2	4.6	4.5	4.7	7.5	1.2	6.3	0.8	-0.1

*Estimate.

Enrollment by Institutional Type

In 1994-95, the research universities/specialized medical institutions¹ accounted for the largest share of out-of-state enrollment, 61.3%, compared to the universities and colleges, 25.7%, and the community colleges, 13.0%. Since 1987-88, the research universities/specialized medical institutions share of out-of-state enrollment has decreased, while the community college and universities/colleges shares increased. Figure 6 shows the distribution of out-of-state FTE by institutional type for ten years.

Figure 6
Out-of-State FTE Enrollment
Distribution by Institutional Type



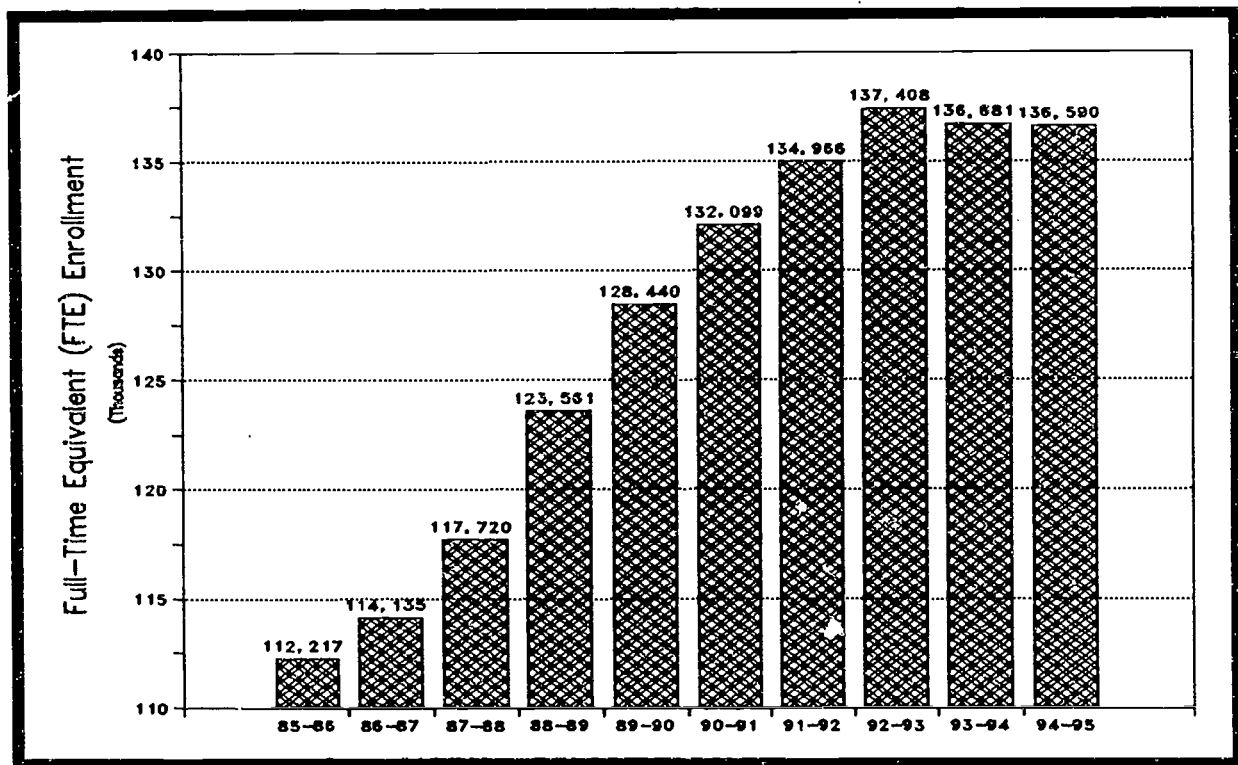
¹Does not include the University of Colorado - Health Sciences Center (UCHSC). FTE data for UCHSC is not available.

Total Full-Time Equivalent Enrollment

Total FTE enrollment is projected to increase at 17 of 28 public postsecondary institutions during 1994-95. Increases range from +0.4% at the University of Colorado - Colorado Springs and the University of Northern Colorado to 7.6% at Otero Junior College. Tables 5 and 5A provide total FTE student data for all public institutions from 1985-86 to 1994-95 (Estimated). These tables provide the actual level and percent change by institution and summary group.

Although total FTE enrollment increased each year from 1986-87 to 1992-93, it decreased slightly over the last two years (Figure 7). The 1994-95 rate of decrease for total enrollment is projected to be 0.1%, down from last year's 0.5% drop.

Figure 7
Total Full-Time Equivalent Enrollment
Colorado Public Institutions



Enrollment by Summary Group

Total FTE enrollment at 5 of the 7 summary groups (board/local district) is up from last year. The largest increase was 3.1% at the Colorado School of Mines, followed by the State Colleges increase of 1.9%. The Regents of the University of Colorado and the Local District Colleges are expecting slight decreases.

Table 5

Board/Institution	Total Full-Time Equivalent (FTE) Student Enrollment									
	FY85-86	FY86-87	FY87-88	FY88-89	FY89-90	FY90-91	FY91-92	FY92-93	FY93-94	FY94-95 [^]
Regents of Univ. of Colorado:										
Univ of Colo - Boulder	20,102	20,620	21,224	21,658	22,045	22,921	22,830	22,356	22,272	21,760
Univ of Colo - Colo Springs	3,532	3,639	3,671	3,794	3,992	4,026	4,089	3,983	3,916	3,930
Univ of Colo - Denver	6,352	6,448	6,468	6,340	6,605	6,757	7,008	7,254	7,080	7,020
State Board of Agriculture:										
Colorado State University - E&G	16,701	17,200	17,519	18,101	18,382	18,652	18,942	19,151	19,173	19,270
Colorado State University - PVM	776	754	741	724	719	709	704	693	734	730
Fort Lewis College	3,658	3,593	3,762	3,847	3,939	3,791	3,793	3,867	4,031	3,930
Univ Southern Colorado	3,979	3,590	3,593	3,707	3,789	3,933	3,984	4,064	4,040	4,110
Trustees of Colo School of Mines:										
Colorado School of Mines	2,759	2,520	2,337	2,268	2,330	2,370	2,573	2,858	3,006	3,100
Board of Trustees Univ. No. Colo.:										
Univ Northern Colorado	8,544	8,502	9,023	8,992	9,065	9,543	9,772	9,706	9,840	9,880
Trustees of State Colleges:										
Adams State College	1,994	2,214	2,281	2,476	2,496	2,379	2,378	2,350	2,164	2,250
Mesa State College	3,033	3,163	3,200	3,317	3,467	3,561	3,531	3,633	3,734	3,940
Metro State College of Denver	10,519	11,063	11,587	11,848	12,218	12,534	12,686	12,499	12,307	12,410
Western State College	2,497	2,176	2,312	2,409	2,333	2,273	2,351	2,442	2,157	2,140
CCCOES:										
Arapahoe Community College	3,123	3,391	3,430	3,672	4,014	4,107	4,128	4,145	4,110	4,100
Community College of Aurora	961	1,167	1,389	1,669	2,149	2,153	2,408	2,555	2,702	2,790
Community College of Denver	2,784	2,861	2,588	3,111	3,429	3,808	4,032	4,486	4,603	4,640
Front Range Community College	3,028	3,129	3,189	4,446	5,284	5,951	6,234	6,592	6,483	6,180
Lamar Community College	441	463	485	552	693	668	637	675	654	670
Morgan Community College	402	454	548	601	549	538	584	757	846	770
Otero Junior College	571	599	550	642	615	678	726	738	799	860
Pikes Peak Community College	3,749	3,648	4,093	4,335	4,452	4,498	4,702	4,886	4,586	4,720
Pueblo Community College	1,324	1,528	1,636	2,034	2,242	2,330	2,517	2,744	2,675	2,840
Red Rocks Community College	2,145	2,171	2,484	2,697	2,913	3,218	3,245	3,643	3,940	4,020
Trinidad State Junior College	1,073	1,086	1,103	1,111	1,207	1,225	1,241	1,241	1,243	1,120
Local District Colleges:										
Aims Community College	3,539	3,543	3,722	4,147	4,125	4,237	4,509	4,604	4,052	3,810
Colorado Mountain College	2,209	2,118	2,381	2,661	2,673	2,799	2,721	2,736	3,010	3,100
Colorado Northwestern CC	651	717	679	684	689	728	861	925	876	810
Northeastern Junior College	1,771	1,778	1,725	1,718	1,876	1,712	1,780	1,825	1,648	1,690
BOARD SUMMARY:										
Regents of Univ. of Colorado	29,986	30,707	31,363	31,792	32,642	33,704	33,927	33,593	33,268	32,710
State Board of Agriculture	25,114	25,137	25,615	26,379	26,979	27,085	27,423	27,775	27,978	28,040
Trustees of Colo School of Mines	2,759	2,520	2,337	2,268	2,330	2,370	2,573	2,858	3,006	3,100
Board of Trustees Univ. No. Colo.	8,544	8,502	9,023	8,992	9,065	9,543	9,772	9,706	9,840	9,880
Trustees of State Colleges	18,043	18,616	19,380	20,050	20,514	20,747	20,946	20,924	20,362	20,740
CCCOES	19,601	20,497	21,495	24,870	27,547	29,174	30,454	32,462	32,641	32,710
State Summary	104,047	105,979	109,213	114,351	119,077	122,623	125,095	127,318	127,095	127,180
Local District Summary	8,170	8,156	8,507	9,210	9,363	9,476	9,871	10,090	9,586	9,410
Public Institution Summary:	112,217	114,135	117,720	123,561	128,440	132,099	134,966	137,408	136,681	136,590

^Estimate.

Table 5A

Board/Institution	Total FTE Percent Change from Previous Year								
	FY86-87	FY87-88	FY88-89	FY89-90	FY90-91	FY91-92	FY92-93	FY93-94	FY94-95 ^a
Regents of Univ. of Colorado:									
Univ of Colo - Boulder	2.6	2.9	2.0	1.8	4.0	-0.4	-2.1	-2.4	-2.3
Univ of Colo - Colo Springs	3.0	0.9	3.4	5.2	0.9	1.6	-2.6	-1.7	0.4
Univ of Colo - Denver	1.5	0.3	-2.0	4.2	2.3	3.7	3.5	-2.4	-0.8
State Board of Agriculture:									
Colorado State University - E&G	3.0	1.9	3.3	1.6	1.5	1.6	1.1	0.1	0.5
Colorado State University - PVM	-2.8	-1.7	-2.3	-0.7	-1.4	-0.7	-1.6	5.9	-0.5
Fort Lewis College	-1.8	4.7	2.3	2.4	-3.8	0.1	2.0	4.2	-2.5
Univ Southern Colorado	-9.8	0.1	3.2	6.3	-0.2	1.3	2.0	-0.6	1.7
Trustees of Colo School of Mines:									
Colorado School of Mines	-8.7	-7.3	-3.0	2.7	1.7	8.6	11.1	5.2	3.1
Board of Trustees Univ. No. Colo.:									
Univ Northern Colorado	-0.5	6.1	-0.3	0.8	5.3	2.4	-0.7	1.4	0.4
Trustees of State Colleges:									
Adams State College	11.0	3.0	8.5	0.8	-4.7	-0.0	-1.2	-7.9	4.0
Mesa State College	4.3	1.2	3.7	4.5	2.7	-0.8	2.9	2.8	5.5
Metro State College of Denver	5.2	4.7	2.3	3.1	2.6	1.2	-1.5	-1.5	0.8
Western State College	-12.9	6.3	4.2	-3.2	-2.6	3.4	3.9	-11.7	-0.8
CCCOES:									
Arapahoe Community College	8.6	1.2	7.1	9.3	2.3	0.5	0.4	-0.8	-0.2
Community College of Aurora	21.4	19.0	20.2	28.8	0.2	11.8	6.1	5.8	3.3
Community College of Denver	2.8	-9.5	20.2	10.2	11.1	5.9	11.3	2.6	0.8
Front Range Community College	3.3	1.9	39.4	18.8	12.6	4.8	5.7	-1.7	-4.7
Lamar Community College	5.0	4.8	13.8	25.5	-3.6	-4.6	6.0	-3.1	2.4
Morgan Community College	12.9	20.7	9.7	-8.7	-2.0	8.6	29.6	11.8	-9.0
Otero Junior College	4.9	-8.2	16.7	-4.2	10.2	7.1	1.7	8.3	7.6
Pikes Peak Community College	-2.7	12.2	5.9	2.7	1.0	4.5	3.9	-6.1	2.9
Pueblo Community College	15.4	7.1	24.3	10.2	3.9	8.0	9.0	-2.5	6.2
Red Rocks Community College	1.2	14.4	8.6	8.0	10.5	0.8	12.3	8.2	2.0
Trinidad State Junior College	1.2	1.6	0.7	8.6	1.5	1.3	0.0	0.2	-9.9
Local District Colleges:									
Aims Community College	0.1	5.1	11.4	-0.5	2.7	6.4	2.1	-12.0	-6.0
Colorado Mountain College	-4.1	12.4	11.8	0.5	4.7	-2.8	0.6	10.0	3.0
Colorado Northwestern CC	10.1	-5.3	0.7	0.7	5.7	18.3	7.4	-5.3	-7.5
Northeastern Junior College	0.4	-3.0	-0.4	9.2	-8.7	4.0	2.5	-9.7	2.5
BOARD SUMMARY:									
Regents of Univ. of Colorado	2.4	2.1	1.4	2.7	3.3	0.7	-1.0	-1.0	-1.7
State Board of Agriculture	0.1	1.9	3.0	2.3	0.4	1.2	1.3	0.7	0.2
Trustees of Colo School of Mines	-8.7	-7.3	-3.0	2.7	1.7	8.6	11.1	5.2	3.1
Board of Trustees Univ. No. Colo.	-0.5	6.1	-0.3	0.8	5.3	2.4	-0.7	1.4	0.4
Trustees of State Colleges	3.2	4.1	3.5	2.3	1.1	1.0	-0.1	-2.7	1.9
CCCOES	4.6	4.9	15.7	10.8	5.9	4.4	6.6	0.6	0.2
State Summary	1.9	3.1	4.7	4.1	3.0	2.0	1.8	-0.2	0.1
Local District Summary	-0.2	4.3	8.3	1.7	1.2	4.2	2.2	-5.0	-1.8
Public Institution Summary:	1.7	3.1	5.0	3.9	2.8	2.2	1.8	-0.5	-0.1

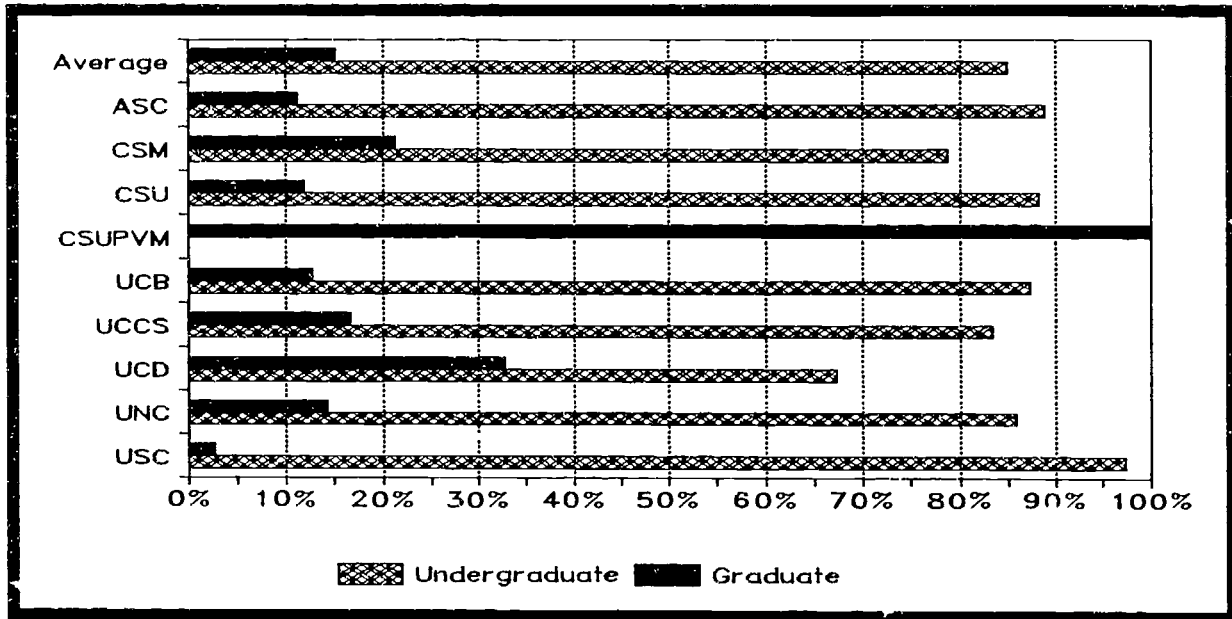
^aEstimate.

Total Full-Time Equivalent Enrollment by Student Level

In 1993-94, 15.1% of the enrollment at the 10 institutions¹ offering graduate level instruction during the last ten years was at the graduate level. Overall, the graduate share has not changed significantly during that period. The graduate share has ranged from a low of 14.6% in 1984-85 to a high of 16.0% in 1986-87. Tables 6 and 6A provide 1984-85 to 1993-94 total FTE student data by graduate and undergraduate level. Figure 8 displays the 1993-94 distribution of that data.

Western State College has phased out its graduate programs, and currently does not offer graduate level instruction. The Colorado State University - Professional Veterinary Medicine only offers graduate level instruction. Excluding those institutions, the University of Colorado - Denver has the highest percentage of graduate level FTE, 32.7%, followed by the Colorado School of Mines, 21.3%. The University of Southern Colorado had the lowest graduate share at 2.7%. The graduate share of the University of Southern Colorado enrollment increased during the mid 1980's, dropped to 1.3% in 1989-90, but has increased each year since.

**Figure 8
Distribution of FY 1993-94 FTE Enrollment
by Student Level and Institution**



¹Does not include the University of Colorado - Health Sciences Center (UCHSC). Comparable FTE data for UCHSC is not available.

Table 6

Institution	Institutions with Graduate Level Instruction Full-Time Equivalent (FTE) Student Enrollment by Student Level									
	FY84-85	FY85-86	FY86-87	FY87-88	FY88-89	FY89-90	FY90-91	FY91-92	FY92-93	FY93-94
Adams State College										
Undergraduate	1,733	1,774	1,887	1,971	2,117	2,146	2,113	2,108	2,081	1,921
Graduate	287	220	327	310	360	350	266	270	268	243
Total	2,020	1,994	2,214	2,281	2,477	2,496	2,379	2,378	2,349	2,164
Colorado School of Mines										
Undergraduate	2,379	2,240	1,944	1,800	1,686	1,747	1,806	1,980	2,212	2,355
Graduate	502	520	576	537	581	584	565	594	646	636
Total	2,881	2,760	2,520	2,337	2,267	2,331	2,371	2,574	2,858	2,991
Colorado State University - E&G										
Undergraduate	15,046	14,770	15,068	15,778	16,063	16,274	16,501	16,712	16,905	16,893
Graduate	1,933	1,931	2,132	1,741	2,038	2,107	2,150	2,230	2,246	2,280
Total	16,979	16,701	17,200	17,519	18,101	18,381	18,651	18,942	19,151	19,173
Colorado State University - PVM										
Undergraduate	815	776	755	740	724	719	708	704	692	774
Graduate	815	776	755	740	724	719	708	704	692	774
Total	815	776	755	740	724	719	708	704	692	774
Univ of Colo - Boulder										
Undergraduate	17,618	17,635	18,162	18,660	19,055	19,425	20,076	19,895	19,447	19,426
Graduate	2,385	2,468	2,459	2,563	2,603	2,619	2,845	2,935	2,909	2,846
Total	20,003	20,103	20,621	21,223	21,658	22,044	22,921	22,830	22,356	22,272
Univ of Colo - Colo Springs										
Undergraduate	3,016	2,888	2,963	3,005	3,101	3,305	3,337	3,372	3,338	3,263
Graduate	621	644	675	666	693	687	689	717	644	653
Total	3,637	3,532	3,638	3,671	3,794	3,992	4,026	4,089	3,982	3,916
Univ of Colo - Denver										
Undergraduate	4,606	4,441	4,289	4,324	4,266	4,476	4,500	4,643	4,895	4,774
Graduate	1,816	1,911	2,159	2,144	2,074	2,129	2,257	2,364	2,359	2,322
Total	6,422	6,352	6,448	6,468	6,340	6,605	6,757	7,007	7,254	7,096
Univ Northern Colorado										
Undergraduate	7,661	7,365	7,206	7,604	7,688	7,728	8,131	8,324	8,271	8,450
Graduate	1,235	1,180	1,296	1,419	1,304	1,337	1,412	1,448	1,435	1,390
Total	8,896	8,545	8,502	9,023	8,992	9,065	9,543	9,772	9,706	9,840
Univ Southern Colorado										
Undergraduate	4,399	3,818	3,415	3,455	3,644	3,889	3,876	3,920	3,969	3,932
Graduate	165	161	175	138	63	50	58	64	95	108
Total	4,564	3,979	3,590	3,593	3,707	3,939	3,934	3,984	4,064	4,040
Western State College										
Undergraduate	2,276	2,183	1,891	2,009	2,145	2,249	2,273	2,350	2,442	2,157
Graduate	290	315	285	303	264	84
Total	2,566	2,498	2,176	2,312	2,409	2,333	2,273	2,350	2,442	2,157
Summary										
Undergraduate	58,734	57,114	56,825	58,606	59,765	61,239	62,613	63,304	63,560	63,171
Graduate	10,049	10,126	10,839	10,561	10,704	10,666	10,950	11,326	11,294	11,252
Total	68,783	67,240	67,664	69,167	70,469	71,905	73,563	74,630	74,854	74,423

BEST COPY AVAILABLE

Table 6A

Institution	Institutions with Graduate Level Instruction Distribution of FTE by Student Level									
	FY84-85	FY85-86	FY86-87	FY87-88	FY88-89	FY89-90	FY90-91	FY91-92	FY92-93	FY93-94
Adams State College Undergraduate Graduate	85.8 14.2	89.0 11.0	85.2 14.8	86.4 13.6	85.5 14.5	86.0 14.0	88.8 11.2	88.6 11.4	88.6 11.4	88.8 11.2
Colorado School of Mines Undergraduate Graduate	82.6 17.4	81.2 18.8	77.1 22.9	77.0 23.0	74.4 25.6	74.9 25.1	76.2 23.8	76.9 23.1	77.4 22.6	78.7 21.3
Colorado State University - E&G Undergraduate Graduate	88.6 11.4	88.4 11.6	87.6 12.4	90.1 9.9	88.7 11.3	88.5 11.5	88.5 11.5	88.2 11.8	88.3 11.7	88.1 11.9
Colorado State University - PVM Undergraduate Graduate	100.0	100.0	100.0	100.0	100.0	100.0	100.0	100.0	100.0	100.0
Univ of Colo - Boulder Undergraduate Graduate	88.1 11.9	87.7 12.3	88.1 11.9	87.9 12.1	88.0 12.0	88.1 11.9	87.6 12.4	87.1 12.9	87.0 13.0	87.2 12.8
Univ of Colo - Colo Springs Undergraduate Graduate	82.9 17.1	81.8 18.2	81.4 18.6	81.9 18.1	81.7 18.3	82.8 17.2	82.9 17.1	82.5 17.5	83.8 16.2	83.3 16.7
Univ of Colo - Denver Undergraduate Graduate	71.7 28.3	69.9 30.1	66.5 33.5	66.9 33.1	67.3 32.7	67.8 32.2	66.6 33.4	66.3 33.7	67.5 32.5	67.3 32.7
Univ Northern Colorado Undergraduate Graduate	86.1 13.9	86.2 13.8	84.8 15.2	84.3 15.7	85.5 14.5	85.3 14.7	85.2 14.8	85.2 14.8	85.2 14.8	85.9 14.1
Univ Southern Colorado Undergraduate Graduate	96.4 3.6	96.0 4.0	95.1 4.9	96.2 3.8	98.3 1.7	98.7 1.3	98.5 1.5	98.4 1.6	97.7 2.3	97.3 2.7
Western State College Undergraduate Graduate	88.7 11.3	87.4 12.6	86.9 13.1	86.9 13.1	89.0 11.0	96.4 3.6	100.0	100.0	100.0	100.0
Summary Undergraduate Graduate	85.4 14.6	84.9 15.1	84.0 16.0	84.7 15.3	84.8 15.2	85.2 14.8	85.1 14.9	84.8 15.2	84.9 15.1	84.9 15.1

Special Funded Full-Time Equivalent Enrollment

In addition to standard resident instruction credit hours, a number of special programs created by the General Assembly and the Commission receive general fund support. While some of these programs have a long history, several were recently established. Data in Table 7 is included in the Tables 3 and 5. Since each of these programs has an effect on the distribution of state funds, the data is identified separately to provide an understanding of the potential impact of these programs.

While the basic skills courses have been offered and state-funded for many years, CCHE only began collecting separately identifiable basic skill data in 1989-90. In 1993-94, the programs listed in Table 7 produced total of 7,546 FTE or 7.5% of the total in-state FTE generated that year.

Table 7

	In-State Full-Time Equivalent (FTE) Student Enrollment Special Funded Enrollment									
	FY84-85	FY85-86	FY86-87	FY87-88	FY88-89	FY89-90	FY90-91	FY91-92	FY92-93	FY93-94
Armed Forces ¹	384	769	930	1,089	1,132	1,384	1,190	1,209
Basic Skills ²	3,922	4,423	4,586	4,991	4,366
Vestibule Labs ³	517	1,048	1,284	949	1,271	790	725	752	851	1,131
Off-Campus ⁴	95	215	202	347	361	395	399
PSE ⁵	182	361	313	441

¹Members of the armed forces or their dependents that are granted in-state tuition status.

²Basic skills courses (including Academic Skills and Preparatory Courses) that can be claimed for state FTE funding at community colleges, Adams State College, and Mesa State College.

³A vestibule lab is instruction, supervised by faculty, without tuition or attributable credit, for which fundable credit hours are imputed. It is designed to offer spot remediation to bridge the gap between high school and college, and is only funded at community colleges, Adams State College, and Mesa State College.

⁴Commission approved off-campus state-funded programs. Includes alternative access sites, off-campus urban, and off-campus rural.

⁵High school students enrolling under provisions of the Postsecondary Enrollment Options Act.



printed on recycled paper

1194/275