

DOCUMENT RESUME

ED 378 010

RC 019 926

TITLE Directory of Native Education Resources in the Mid-Continent Region.

INSTITUTION Mid-Continent Regional Educational Lab., Aurora, CO.; Native Education Initiative of the Regional Educational Labs.

SPONS AGENCY Office of Educational Research and Improvement (ED), Washington, DC.

PUB DATE 94

CONTRACT RP91002001; RP91002010

NOTE 55p.; For national directory, see ED 359 014.

AVAILABLE FROM Mid-Continent Regional Educational Laboratory, 2550 S. Parker Road, Suite 500, Aurora, CO 80014 (\$10).

PUB TYPE Reference Materials - Directories/Catalogs (132)

EDRS PRICE MF01/PC03 Plus Postage.

DESCRIPTORS \*American Indian Culture; \*American Indian Education; \*American Indian Reservations; Boarding Schools; Colleges; Cultural Maintenance; Educational Improvement; Elementary Schools; Elementary Secondary Education; Higher Education; Mass Media; Museums; \*Organizations (Groups); Publications; Secondary Schools; \*Services; Technical Assistance; \*Tribes

IDENTIFIERS Bureau of Indian Affairs Schools; Colorado; Kansas; Missouri; Nebraska; North Dakota; South Dakota; Wyoming

ABSTRACT

This directory lists over 300 organizations found in North Dakota, South Dakota, Nebraska, Kansas, Colorado, Missouri, and Wyoming, as well as national organizations, that provide educational resources for Native Americans. Additionally, many of the organizations have objectives that focus on the social and economic betterment of Native Americans and the preservation of Native culture. The first section lists national associations, organizations, clearinghouses, federal government agencies, and centers based in the seven-state region. The remainder of the directory lists organizations by state. Listings include federally recognized tribes; state-government and private agencies; American Indian centers; post-secondary institutions and related organizations; Bureau of Indian Affairs and church-supported elementary and secondary schools; media and libraries; and museums, monuments, and parks. Most entries include address, contact person, and a brief description of the organization's objectives and services. (LP)

\*\*\*\*\*  
 \* Reproductions supplied by EDRS are the best that can be made \*  
 \* from the original document. \*  
 \*\*\*\*\*

ED 378 010

*Directory of  
Native  
Education  
Resources  
in the  
Mid-continent  
Region*

1994

U.S. DEPARTMENT OF EDUCATION  
Office of Educational Research and Improvement  
EDUCATIONAL RESOURCES INFORMATION  
CENTER (ERIC)

✓ This document has been reproduced as  
received from the person or organization  
originating it.

ⓘ Minor changes have been made to improve  
reproduction quality.

• Points of view or opinions stated in this docu-  
ment do not necessarily represent official  
OERI position or policy.

**MREL**

RC 019 926

# Directory of Native Education Resources in the Mid-continent Region

Mid-continent Regional Educational Laboratory

and

The Native Education Initiative  
of the Regional Educational Laboratories

Joann Sebastian Morris      *Senior Program Associate*

Norma Brown      *Production Assistant*

Jeanne Deak      *Production Assistant*

This directory is a companion volume to the *1993 Native Education Directory: Organizations and Resources for Educators of Native Peoples of the United States and Territories*. It is intended to be used as a first-line source of information; i.e., the brief descriptions, when available, are meant only to suggest the content and scope of each organization's objectives and services. The organizations listed in this Directory reflect the Mid-continent region and inclusion does not suggest endorsement of any organization by McREL. We wish to thank all the people who responded generously with their time and correspondence in providing information for this directory. **This is a first edition and is subject to revision.**

**Native Education Initiative  
of the  
Regional Educational Laboratories**

**Joann Sebastian Morris  
Mid-continent Regional Educational Laboratory**

**Patricia Cahape  
Appalachia Educational Laboratory and  
ERIC Clearinghouse on Rural Education and Small Schools**

**Elise Trumbull Estrin and Sharon Nelson-Barber  
Far West Laboratory for Educational Research and Development**

**Iris Heavy Runner  
North Central Regional Educational Laboratory**

**Patrick Weasel Head and Anita Tsinnajinnie  
Northwest Regional Educational Laboratory**

**Margaret Melanie Lion  
Research for Better Schools (RBS)**

**Nancy Fuentes  
Southwest Educational Development Laboratory**

**Nancy Livesay  
Southeastern Regional Vision for Education**

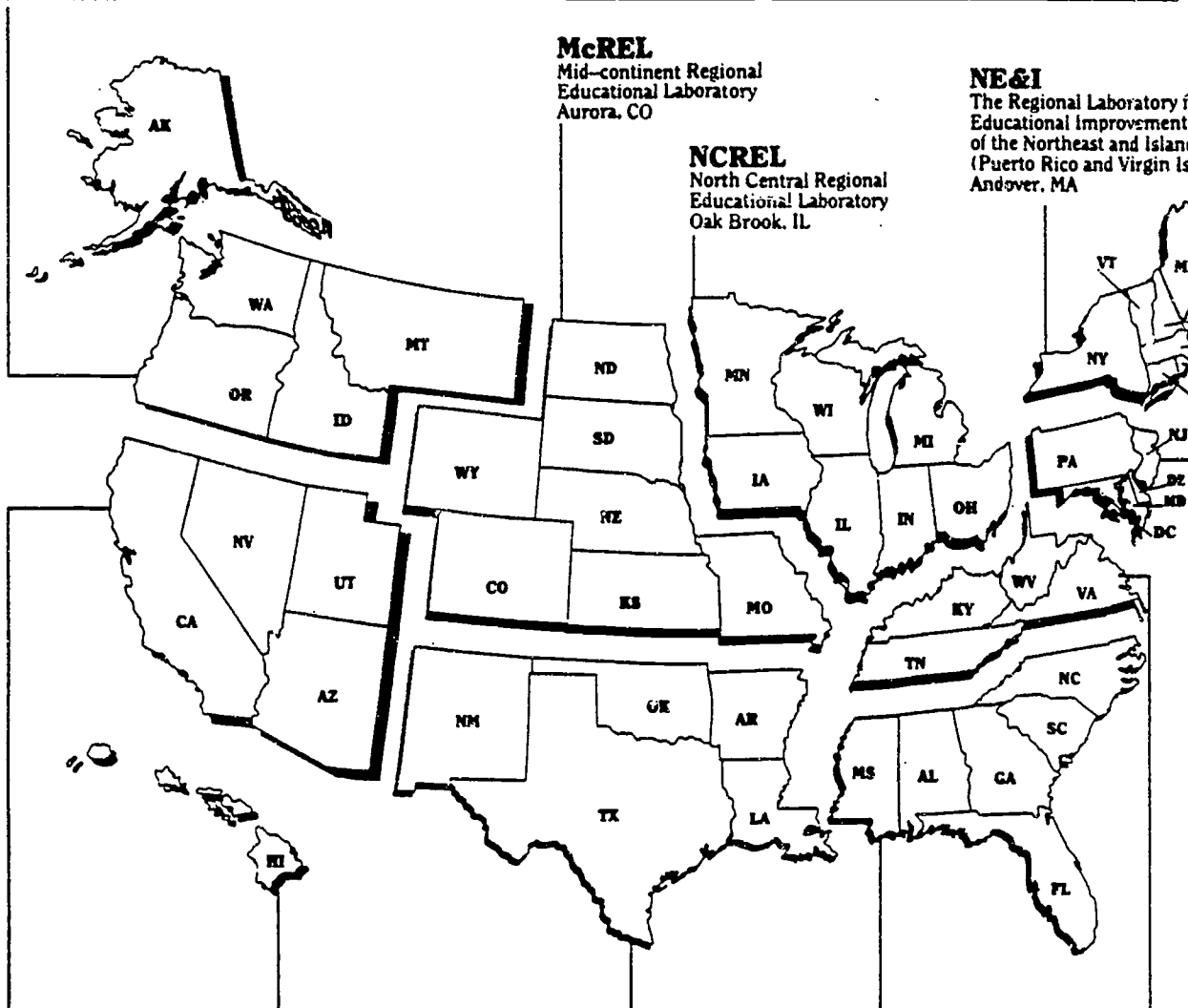
# REGIONAL EDUCATIONAL LABORATORIES

**NWREL**  
Northwest Regional  
Educational Laboratory  
Portland, OR

**McREL**  
Mid-continent Regional  
Educational Laboratory  
Aurora, CO

**NCREL**  
North Central Regional  
Educational Laboratory  
Oak Brook, IL

**NE&I**  
The Regional Laboratory for  
Educational Improvement  
of the Northeast and Islands  
(Puerto Rico and Virgin Islands)  
Andover, MA



**RBS**  
Research for  
Better Schools  
Philadelphia, Pa.

**FWL**  
Far West Laboratory  
for Educational Research  
and Development  
San Francisco, CA

**PREL**  
Pacific Region  
Educational Laboratory  
Honolulu, HI  
• American Samoa  
• Commonwealth of the  
Northern Mariana Islands  
• Federated States of Micronesia  
Kosrae, Pohnpei, Chuuk and Yap  
• Guam  
• Republic of the Marshall Islands  
• Republic of Palau

**SEDL**  
Southwest Educational  
Development Laboratory  
Austin, TX

**SERVE**  
South Eastern Regional  
Vision for Education  
Greensboro, NC

**AEL**  
Appalachia  
Educational  
Laboratory  
Charleston, WV

This project has been funded at least in part with Federal funds from the U.S. Department of Education under contract numbers RP91002001 through RP91002010. The content of this publication does not necessarily reflect the views or policies of the U.S. Department of Education nor does mention of trade names, commercial products, or organizations imply endorsement by the U.S. Government.

*Mid-continent Regional Educational Laboratory (McREL) is one of the original laboratories created by Congress in 1966. Today, the 10 laboratories' enduring mission is to improve the quality of education by helping policymakers and practitioners apply the best available knowledge from research, development, and practice. McRel serves the seven mid-continent states of Colorado, Kansas, Missouri, Nebraska, North Dakota, South Dakota and Wyoming. As a non-profit agency, we are guided by a board of directors made up of leaders from public and private education, business, and communities throughout our region. Funded by the Department of Education's Office of Educational Research and Improvement (OERI), McREL also receives support from other government and state contracts, private and federal grants. We are located at 2550 South Parker Road, Suite 500, Aurora, CO 80014, 303/337-0990.*

Table of Contents

Section	Page
<b>National*</b>	
National Associations, Organizations, Clearinghouses, and Centers . . .	1
Federal Government Agencies . . . . .	4
<b>Colorado</b>	
Federally Recognized Tribes . . . . .	7
State Government and Private Agencies/Organizations . . . . .	7
American Indian Centers . . . . .	8
Post-Secondary Institutions and Related Organizations . . . . .	9
Media . . . . .	9
Libraries . . . . .	10
Museums, Monuments and Parks . . . . .	11
<b>Kansas</b>	
Federally Recognized Tribes . . . . .	13
State Government and Private Agencies/Organizations . . . . .	13
American Indian Centers . . . . .	13
Post-Secondary Institutions and Related Organizations . . . . .	14
BIA/Church Supported Elementary/Secondary Schools . . . . .	14
Media . . . . .	14
Libraries . . . . .	14
Museums, Monuments and Parks . . . . .	15
<b>Missouri</b>	
Federally Recognized Tribes . . . . .	17
Non-federally Recognized Tribes . . . . .	17
American Indian Centers . . . . .	17
Libraries . . . . .	17
Museums, Monuments and Parks . . . . .	18
<b>Nebraska</b>	
Federally Recognized Tribes . . . . .	19
State Government and Private Agencies/Organizations . . . . .	19
American Indian Centers . . . . .	20
Post-Secondary Institutions and Related Organizations . . . . .	20
Media . . . . .	20
Libraries . . . . .	20
Museums, Monuments and Parks . . . . .	21

\*Descriptions marked with an asterisk (\*) are taken directly from the 1993 Native Education Directory: Organizations and Resources for Educators of Native Peoples of the United States and Territories.



Table of Contents  
(Cont'd)

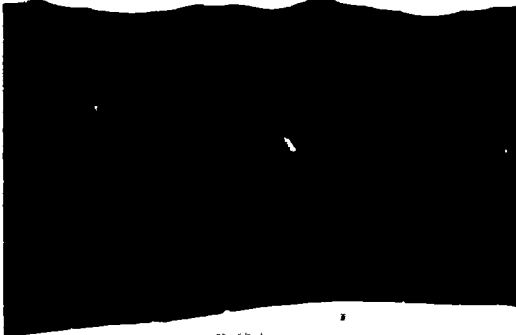
Section	Page
<b>North Dakota</b>	
Federally Recognized Tribes . . . . .	.23
Non-federally Recognized Tribes . . . . .	.23
State Government and Private Agencies/Organizations . . . . .	.23
Post-Secondary Institutions and Related Organizations . . . . .	.24
BIA/Church Supported Elementary/Secondary Schools . . . . .	.25
Media . . . . .	.26
Libraries . . . . .	.27
Museums, Monuments and Parks . . . . .	.27
<b>South Dakota</b>	
Federally Recognized Tribes . . . . .	.29
State Government and Private Agencies/Organizations . . . . .	.29
American Indian Centers . . . . .	.30
Post-Secondary Institutions and Related Organizations . . . . .	.30
BIA/Church Supported Elementary/Secondary Schools . . . . .	.32
Media . . . . .	.34
Libraries . . . . .	.35
Museums, Monuments and Parks . . . . .	.36
<b>Wyoming</b>	
Federally Recognized Tribes . . . . .	.39
State Government and Private Agencies/Organizations . . . . .	.39
American Indian Centers . . . . .	.39
Post-Secondary Institutions and Related Organizations . . . . .	.39
BIA/Church Supported Elementary/Secondary Schools . . . . .	.39
Media . . . . .	.40
Libraries . . . . .	.40
Museums, Monuments and Parks . . . . .	.40
<b>Index</b>	

\*Descriptions marked with an asterisk (\*) are taken directly from the 1993 Native Education Directory: Organizations and Resources for Educators of Native Peoples of the United States and Territories.





***National***



## National

### National Associations, Organizations, Clearinghouses and Centers

**American Indian Culture Research Center**  
P. O. Box 98  
Blue Cloud Abbey  
Marvin, SD 57251  
Rev. Stanislaus Maudlin, O.S.B., Exec. Dir.  
605/432-5528

Founded in 1969, the center supports Indian leaders and educators in rebuilding the Indian community; and aids in teaching the non-Indian public about the Indian culture and philosophy. They have compiled and oral history and photographic collection; distribute films, records and tapes; provide assistance grants to Indian college students; conduct workshops and seminars; and maintain speakers bureau and a library. Publications include the *Blue Cloud Quarterly*.

**American Indian Science and Engineering Society (AISES)**  
1630 - 30th Street - Ste. 301  
Boulder, CO 80301-1014  
Norbert S. Hill, Jr., Executive Director  
303/492-8658  
FAX: 303/492-3400

AISES is a private, nonprofit organization founded in 1977 that seeks to bridge science and technology with traditional Native values. Another goal of AISES is to increase the number of scientists, engineers, business and health professionals in the country. AISES offers a variety of services including an annual national conference, precollege summer programs, teacher training programs, scholarship programs for college students, job placement programs for members of AISES, and an honorary Sequoyah Fellowship. AISES' full-color quarterly magazine *Winds of Change*, provides information on educational opportunities and the society's activities and promotes the involvement of professionals in American Indian concerns. A quarterly education newsletter is also published by AISES.

**Association of Community Tribal Schools (ACTS)**  
616 4th Avenue N.  
Sisseton, SD 57262  
Roger Bordeaux, Executive Director  
605/698-3953

ACTS provides advocacy, communication, training, and other services to schools, communities, and tribes interested in operating their own elementary and/or secondary school systems.

**Buffalo Bill Memorial Association**  
Buffalo Bill Historical Center  
P. O. Box 1000  
Cody, WY 82414  
Peter H. Hassrick, Director  
307/587-4771  
800/533-3838

Founded in 1917, its purpose is the preservation and exhibition of Western Americana pertaining to the Rocky Mountain and Northern Plains regions. They operate the Buffalo Bill Museum, Whitney Gallery of Western Art, the Winchester Arms Museum, the Plains Indian Museum, and a library. Publications include the *American West*, 6/yr. and a quarterly newsletter.

**Council of Energy Resource Tribes (CERT)**  
1999 Broadway - Ste. 2600  
Denver, CO 80202-5726  
David Lester, Executive Director  
Leslie Jackson, Manager of Ed. Programs  
303/297-2378  
FAX: 303/296-5690

Founded in 1975, CERT promotes the general welfare of member tribes through the protection, conservation, control and prudent management of their oil, coal, natural gas, uranium and other resources. They provide technical assistance to tribes in energy resource management, conduct programs to enhance tribal planning and management capabilities, and sponsor workshops.

**Council of Energy Resource Tribes (CERT) Education Fund, Inc.**

The Tribal Resource Institute in Business, Engineering, and Science (TRIBES) is an academic program sponsored by the CERT Education Fund, Inc. The TRIBES program prepares young Indian students to become the technical and managerial experts needed by American Indian tribes and the nation for the prudent management of energy resources.

**Crazy Horse Memorial Foundation**  
Avenue of the Chiefs  
The Black Hills  
Crazy Horse, SD 57730  
Ruth Ziolkowski, Chairperson  
605/673-4681

Founded in 1948, the foundation's purpose is to finish carving Thunderhead Mountain into the memorial statue of the Sioux Chief, Crazy Horse, astride his horse (563' high and 641' long) begun by sculptor Korczak Ziolkowski, 1908-1982. Her goals

## National

are to build and maintain a university, museum, and medical center for American Indians. They maintain a library and offer scholarships to American Indians. Publications include the *Crazy Horse Progress*, quarterly newsletter; *Korczak: Storyteller in Stone* (biography); *Crazy Horse and Korczak*; and *Saga of Sitting Bull's Bones*.

**Dakota Women of All Red Nations**  
Box 516  
Fort Yates, ND 58538  
Madonna Thunder Hawk, Chairperson

Originally founded in 1978 as Women of All Red Nations, it is a grass roots organization of American Indian women seeking to advance the Indian Self-determination movement. Publications include reports on health problems of American Indian women. They host an annual conference.

**National Center for American Indian and Alaska Native Mental Health Research**  
Dept. of Psychiatry-Univ. of Colorado  
Health Sciences Center, A011-13  
4455 East 12th Avenue  
Denver, CO 80220  
Dr. Spero M. Manson, Director  
303/372-3232  
FAX: 303/372-3579

The National Center for American Indian and Alaska Native Mental Health Research is one of five minority group mental health research and development centers funded by the National Institute of Mental Health (NIMH) but is the only one concerned with the mental health status of American Indians and Alaska Natives. The primary objectives of the Center include the identification of psychiatric and psychological problems affecting American Indian and Alaska Native populations and the promotion and coordination of research projects designed to improve mental health service delivery systems. The center publishes special reports and an annual journal.

**National Education Association-Western Region**  
One Tabor Center  
1200 - 17th Street, Suite 620  
Denver, CO 80202  
Phillip Moeckli, Director  
303/572-6060

This is the western regional office of the NEA, the nation's largest teachers union. They serve the nine western states of Arizona, Colorado, Kansas, Nebraska, New Mexico, Oklahoma, Texas, Utah, and Wyoming.

**National Indian Business Council**  
3575 South Fox  
Englewood, CO 80110  
Dr. Gregory W. Frazier, Executive Director  
303/762-6579

Its purpose is to promote the development of American Indian and Alaska Native owned and operated businesses on and off reservations. They offer the following services: market research; assists in mergers and acquisitions; training; management and technical assistance; information dissemination; job marketing and placement assistance; fund-raising; workshops and seminars; and maintaining a national computerized list of Indian businesses. Publications include the *Smoke Signals*, newsletter; *Directory of Indian/Alaska Native Owned and Operated Businesses*, \$75.00.

**National Indian Employment Resource Center**  
10068 University Park Station  
P. O. Box 10068  
Denver, CO 80210  
Randolph J. Punley, Director  
303/698-2911

Founded in 1982, the center promotes the employment of American Indians and Alaska Natives through educational, public relations and related efforts. It houses a library.

**National Indian Health Board**  
1385 S. Colorado Blvd., Suite A708  
Denver, CO 80222  
Gordon Belcourt, Executive Director  
303/759-3075

Founded in 1972, its purpose is to elevate the health status of American Indians and Alaska Natives equal to that of the rest of the U.S. population; to secure maximum tribal and consumer participation in the delivery of health services to Indian people; and to enhance and promote education of Indian health issues. Sponsors annual health conference. Publications include the *NIHB Health Reporter*, newsletter.

**National Renewable Energy Laboratory**

1617 Cole Blvd.  
Golden, CO 80401  
Steve Ladd, Education Programs & Training  
Service Coordinator  
303/231-7833  
FAX: 303/231-1199

The laboratory promotes math and science education and provides summer science teacher institutes.

**National Urban Indian Council**

10068 University Park Station  
P. O. Box 10068  
Denver, CO 80210  
Gregory W. Frazier, Chief Executive  
303/698-2911

Founded in 1977, its purpose is to promote the social and economic self-sufficiency of off-reservation American Indians and Alaska Natives. They have community economic development; housing, employment and training; health, education, and advocacy for off-reservation Indian people. Publications include the *Source Document of Urban American Indians and Alaska Natives*. The Council also houses a library.

**Native American Fish & Wildlife Society**

750 Burbank Street  
Boulder, CO 80020  
Patricia K. Manor, Administrator  
303/446-1725

The society runs the Indian Youth Practicum program to encourage Indian youth to pursue careers in the fish and wildlife field.

**Native American Public Broadcasting Consortium (NAPBC)**

P.O. Box 83111  
Lincoln, NE 68501-3111  
Frank Blythe, President/Director  
402/472-3522  
1/800/793-4250  
FAX: 402/472-8675

Established in 1976, the NAPBC is a nonprofit organization founded to promote and encourage the creation, production, and distribution of quality television and educational programming by, for, and about Native Americans. Library catalogs and other publications are available upon request.

**Native American Rights Fund (NARF)**

1506 Broadway  
Boulder, CO 80302  
John Echohawk, Executive Director  
Melody McCoy, Education Specialist  
303/477-8760  
FAX: 303/443-7776

NARF provides direct legal representation to Native American tribes, groups, and individuals in cases of major significance to a great number of Native Americans. The nonprofit Indian law firm represents 40 tribes in 20 states on matters involving jurisdiction, sovereignty issues, taxation, boundary disputes, and protection of natural resources for tribes. Established in 1970, NARF has a semiannual newsletter, *NARF Legal Review*, and produces an annual report and several other handbooks and manuals, such as the *Handbook of Federal Indian Education Laws*.

**North American Indian Women's Association**

P. O. Box 805  
Eagle Butte, SD 57625  
Marcella LeBau, President

Founded in 1970, the association serves women 18 years old and over who are members of federally recognized tribes, by promoting inter-tribal communications, awareness of Native American culture, betterment of family life, health and education. They host an annual meeting.

**TIPI Press**

St. Joseph's Indian School  
P. O. Box 89  
Chamberlain, SD 57325  
Rev. Tom Westhoven  
605/734-6021

This printing company promotes better understanding of the Sioux culture, and better understanding of Catholic/Christian evangelization among Plains Indian Tribes and appreciation for Sioux art and artists through prints, calendars, and note cards.

**Western Interstate Commission for Higher Education**

P.O. Drawer P  
Boulder, CO 80301-9752  
Susan Berally, Senior Project Director  
303/541-0200  
FAX: 303/541-0291

The western states established the Western Interstate Commission for Higher Education (WICHE) as a regional agency for research, service, and planning.

## National

---

**White Bison, Inc.**  
6755 Earl Drive  
Colorado Springs, CO 80918  
Don Coyhis, Executive Director  
719/548-1000  
FAX: 719/548-9407

White Bison is a nonprofit American Indian organization dedicated to developing the full potential of America's youth through effective leadership training, implementation of the four laws of community change, promotion of cultural community change programs and imparting the teachings of the Medicine Wheel. They offer programs to assist American Indian and other culturally diverse communities in building visions of "Community Wellness". A holistic approach is used to empower people, honoring traditional and spiritual values to build a community that is mentally healthy for all children. These programs are offered to both urban and tribal communities, as well as business organizations. The programs are designed to encourage lifestyles of excellence by focusing on education, building self-esteem, providing examples of sobriety, as well as building value systems for men, women, families and organizations.

### Federal Government Agencies

**U.S. Department Of The Interior**  
**Bureau Of Indian Affairs**  
**Education Line Offices**

**Cheyenne River Agency**  
Bureau of Indian Affairs  
Eagle Butte, SD 57625  
Cherie Farlee  
605/964-8722

**Crow Break/Lower Brule Agencies**  
Bureau of Indian Affairs  
P. O. Box 139  
Fort Thompson, SD 57339  
Dan Schroyer  
605/245-2398  
FAX: 605/245-2399

**Pine Ridge Agency**  
Bureau of Indian Affairs  
Pine Ridge, SD 57770  
Basil Brave Heart  
605/455-2480  
FAX: 605/455-2249

**Rosebud Agency**  
Bureau of Indian Affairs  
P. O. Box 669  
Mission, SD 57555  
Neva Sherwood  
605/856-4478  
FAX: 605/856-4487

**Sisseton Agency**  
Bureau of Indian Affairs  
Sisseton, SD 57262  
Blossom Keeble  
605/698-3375

**Standing Rock Agency**  
Bureau of Indian Affairs  
Fort Yates, ND 58538  
Bobby Thompson  
701/854-3497

**Turtle Mountain Agency**  
Bureau of Indian Affairs  
Belcourt, ND 58316  
Doreen Bruce, Superintendent  
701/477-3191

### U.S. Department Of Education Indian Education Technical Assistance Centers

**Indian Education Technical Assistance Center i**  
ORBIS - Ste. 700  
1411 K Street NW  
Washington, D.C. 20005  
Gwen Shunatona, Director  
202/628-4444  
800-621-2998  
FAX: 202/628-2241  
Serving: MO (in McREL's region)

**Indian Education Technical Assistance Center ii**  
United Tribes Technical College  
3315 University Dr.  
Bismarck, ND 58504  
Jack Tobias, Director  
701/258-0437  
800-437-8054  
FAX: 701/258-0454  
Serving: KS, NE, ND, SD (in McREL's region)

**Indian Education Technical Assistance Center III**

School of Education  
Gonzaga University  
302 E. Sharp  
Spokane, WA 99258  
Livia Millard, Director  
509/328-4220, ext. 2812  
800-533-2554  
FAX: 509/484-6965  
Serving: CO, WY (in McREL's region)

**U.S. Department Of Education  
Desegregation Assistance Centers****Mountain States Equity Center**

Metro State College of Denver  
Campus Box 63  
P. O. Box 173362  
Denver, CO 80217-3362  
Gerald Brown, Director  
303/556-2999  
FAX: 303/556-8505  
Serving: CO, ND, SD, WY (in McREL's region)

**Midwest Desegregation Assistance Center**

Kansas State University  
401 Bluemont Hall  
Manhattan, KS 66506  
Charles Rankin  
913/532-6408  
FAX: 913/532-7304  
Serving: KS, MO, NE (in McREL's region)

**U.S. Department Of Education  
Multifunctional Resource Centers And Evaluation  
Assistance Centers**

**Evaluation Assistance Center (EAC) -West New**  
Mexico Highlands University  
121 Tijeras NE, Ste. 2100  
Albuquerque, NM 87102  
Paul Martinez  
800/247-4269  
505/242-7447  
FAX: 505/242-7558

EAC-West is funded by the U.S. Department of Education through ESEA Title VII, Office of Bilingual Education and Minority Language Affairs. The purpose of EAC-West is to provide technical assistance on program evaluation to Title VII funded programs including: transitional bilingual education; special alternative instruction programs; special population; family English literacy; and academic

excellence. The service area encompasses 23 states west of the Mississippi River, excluding Texas. Pacific Island nations receiving Title VII funding are also included in the EAC-West region.

**Multifunctional Resource Center-Service Area 6**

University of Wisconsin, Madison  
Wisconsin Center for Education Research  
1025 W. Johnson Street  
Madison, WI 53706  
Minerva Coyne  
608/263-4216  
FAX: 608/263-6448  
Serving: ND, SD (in McREL's region)

Provides technical assistance and training to practitioners involved in the education of limited-English-proficient (LEP) students. Specializes in the collection and dissemination of information about educational technology in bilingual programs.

**Multifunctional Resource Center-Service Area 7**

InterAmerica Research Associates  
2360 E. Devon Ave., Ste 3011  
Des Plaines, IL 60018  
Judith A. Kwiat  
708/296-6070  
FAX: 708/296-7892  
Serving: KS, MO, NE (in McREL's region)

Provides technical assistance and training to practitioners involved in the education of limited-English-proficient (LEP) students. Specializes in the collection and dissemination of information about counseling for LEP students' education.

**Multifunctional Resource Center-Service Area 11**

Interface Network, Inc.  
4800 SW Griffith Dr., Ste 202  
Beaverton, OR 97005  
Esther Puentes  
503/644-5741  
FAX: 503/626-2305  
Serving: WY (in McREL's region)

Provides technical assistance and training to practitioners involved in the education of limited-English-proficient (LEP) students. Specializes in the collection and dissemination of information about early childhood education for LEP students.

## National

---

**U.S. Department Of Education  
Resource Centers For Drug-Free Schools  
& Communities**

**Midwest Regional Center for Drug-Free Schools and  
Communities**  
1900 Spring Rd., Ste. 300  
Oak Brook, IL 60521  
Maxine Womble  
708/571-4710  
Serving: MO, NE, ND, SD (in McREL's region)

**Southwest Regional Center for Drug-Free Schools and  
Communities**  
The University of Oklahoma  
555 Constitution Ave., Ste. 138  
Norman, OK 73037-0005  
Mike Lowther  
405/325-1454  
Serving: CO, KS (in McREL's region)

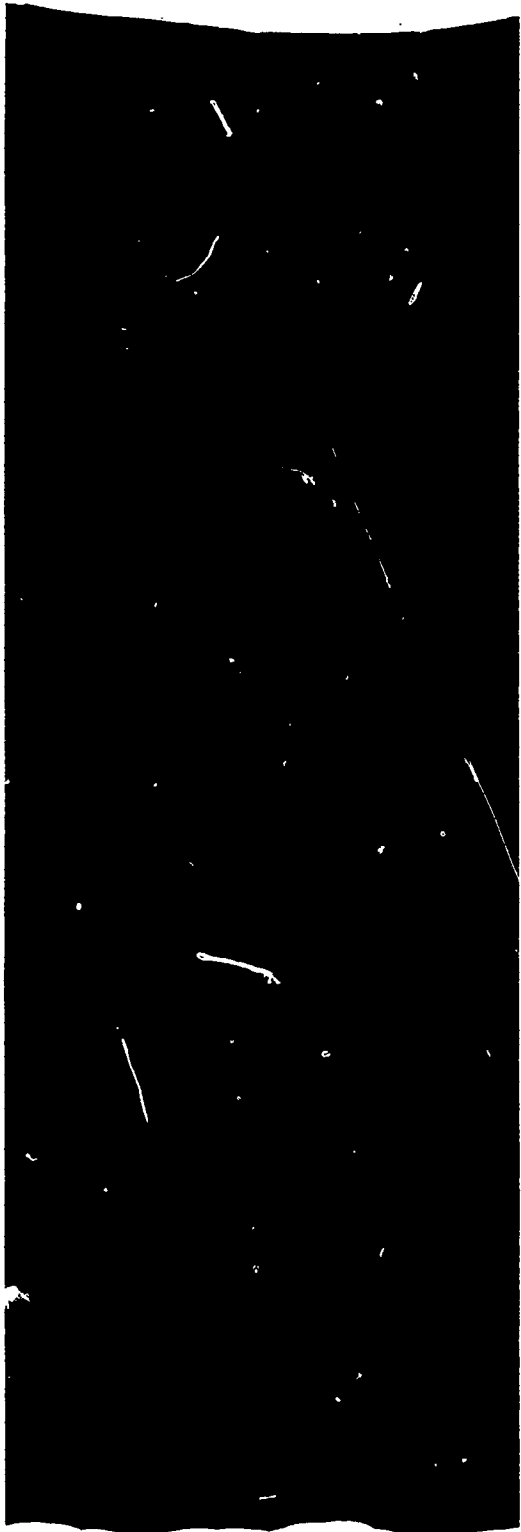
**Western Regional Center for Drug-Free Schools and  
Communities**  
101 SW Main, Ste. 500  
Portland, OR 97204  
Judith Johnson  
800/547-6339  
503/275-9634  
FAX: 503/275-9489  
Serving: WY (in McREL's region)

**U.S. Department Of Health And Human Services  
Head Start Bureau**

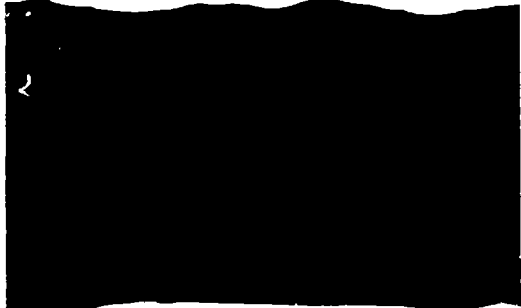
**American Indian Program**  
Administration for Children and Families  
Department of Health and Human Services  
P. O. Box 1182  
Washington, D.C. 20013  
202/254-0437

**Head Start Region 7**  
Department of Health and Human Services  
601 E. 12th Street  
Room 384, Federal Bldg.  
Kansas City, MO 64106  
Thomas Mayer, Program Manager  
816/426-5401  
FAX: 816/426-2888  
Serving: KS, MO, NE (in McREL's region)

**Head Start Region 8**  
Department of Health and Human Services  
1961 Stout Street, Room 1194  
Denver, CO 80294  
Debbie Blacketter, Program Specialist  
303/844-2522  
FAX: 303/844-2624  
Serving: CO, ND, WY, SD (in McREL's region)



***Colorado***





## Colorado

### Federally Recognized Tribes

#### **Southern Ute Reservation**

P. O. Box 737  
Ignacio, CO 81137  
Leonard C. Burch, Chairperson  
303/563-4525

Tribe: Southern Ute. In residence: 1,100. Area: 307,000 acres. Located along the Colorado-New Mexico border. They host an annual Sun Dance, Bear Dance, and Ute Fair.

#### **Ute Mountain Ute Reservation**

Tribal Office Bldg.  
Towaoc, CO 81334  
303/565-3751  
FAX: 303/565-7412  
Judy Knight Frank, Chairperson

Tribe: Ute Mountain Ute. In residence: 1,500. Area: 590,000 acres. Located in Colorado, New Mexico, and Utah.

### State Government and Private Agencies/Organizations

#### **American Indian Education Advisory Council**

Denver Public Schools  
975 Grant Street  
Denver, CO 80203  
303/764-3579  
FAX: 303/764-3247

The American Indian Education Advisory Council (AIEAC) was established by the Denver Public Schools Board of Education in the fall of 1987. The 21-member council was created to foster positive working relationships between the American Indian community and Denver Public Schools to build and enhance educational opportunities for American Indian students. Their objectives are to: Recognize and reflect the unique cultural and academic needs of American Indian children and develop specialized programs and activities; promote parents' involvement in policy and decision making; establish and maintain improved communication with American Indian parents; implement affirmative action guidelines that effectively recruit American Indian teachers and school administrators when and where appropriate; assist in the development of educational needs assessment through consultation with community groups, parents, and the Board of Education; and review, evaluate and develop curriculum that pertains to the presentation of American Indian people.

#### **Circle of Learning**

Early Childhood Education Center  
Denver Indian Center  
4407 Morrison Road  
Denver, CO 80219  
Lisa Harjo, Director  
303/936-2688

The Circle of Learning program embodies a cultural approach to teaching in a preschool setting for 3 and 4-year olds. Indian culture is interwoven into all classroom activities. Talking circles begin each day. The program has developed and sells a multi-cultural preschool curriculum model called *The Circle Never Ends*.

#### **Colorado American Indian Foundation**

200 E. Colfax, Suite 130  
Denver, CO 80203  
Linda Rose, President  
303/866-3027  
FAX: 303/866-5469

The mission of the foundation is to inspire and support all American Indian/Alaska Native people to invest in themselves and in the well-being of their community. Areas on which they focus include: health, positive role models, children and youth, economic development, education, and cultural integrity. Goals will be achieved through the development of positive collaboration within the Native community and among other groups.

#### **Colorado Commission on Indian Affairs**

130 State Capitol  
Denver, CO 80203-1792  
Mary Jo Dennis, Director  
303/866-3027  
FAX: 303/866-5469

The office is governed by an 11-member commission appointed by the governor. Established in 1976, it is the official liaison between the two Ute tribes and the state. The Commission works to improve the government to government relationship of the Indian people of Colorado.

#### **Colorado Department of Education**

Educational Equity Programs and Services  
201 E. Colfax, Ave., Room 206  
Denver, CO 80203  
Jeanette Ray-Goins, Director  
303/866-6676  
FAX: 303/830-0793

## Colorado

---

**Colorado Indian Education Association**  
1933 Niagra Street  
Denver, CO 80220  
Jan Jacobs, Chair  
303/764-3579

The Colorado Indian Education Association (CIEA) was incorporated in 1986 to focus on the educational needs of Colorado Indians, both children and adults. State-wide meetings and occasional workshops and staff development sessions are held for members and guests. CIEA works with the Colorado Commission on Indian Affairs on legislative issues upon request. Publications include: *Teaching About Columbus in 1992 and Beyond: A Resource Packet for Teachers* (1992) and *A Bibliography for Teachers* (1993).

**Native American Counseling and Psychological Consultation**  
1777 South Bellaire Street  
Suite 201  
Denver, CO 80222  
303/692-0054

Native American Counseling is a collective group of therapists dedicated to the provision of quality mental health care to the Front Range Native American Community. The group is comprised of a variety of specialty areas. All staff members are experienced in working with Native Americans. They offer the following services to the Indian community: Individual psychotherapy for adults, adolescents, and children; Family therapy; Group therapy; Marital and pre-marital counseling; Parenting techniques; Cross-cultural consultation and services. In addition, arrangements may also be made for traditional Indian healing as an adjunct to ongoing therapy for Indians who prefer traditional approaches.

**Project For Indian Education**  
Byers Alternative School  
150 South Pearl Street, Room 103  
Denver, Colorado 80209  
Debra D. Echo-Hawk, Project Specialist  
303/764-3497

Funded by Title V-C federal dollars, the project offers a wide range of services to schools with significant American Indian student populations in the Denver Public Schools system. Goals of the project are to reduce absenteeism and dropouts, improve academic performance, and reinforce pride in Indian culture, traditions and history. Staff development opportunities are also offered Denver Public School teachers. A newsletter is produced. The project is guided by a parent committee. An extensive resource

room is available to educators and interested community members.

**Title V-C Indian Education Program**  
Boulder Valley Public Schools  
6500 Arapahoe  
P.O. Box 9011  
Boulder, CO 80301  
Theresa M. Halsey, Coordinator  
303/447-5074

A federally funded project, it offers direct services to students, teaching staff and community based on an annual needs assessment. Students services include tutoring, academic counselling, scholarship information, special events, and Indian language and culture classes. A monthly newsletter informs education staff and community members of upcoming events of interest to youth and families. An Indian Parent Committee provides direction to the program.

**Western American Indian Chamber**  
1660 - 17th Street, Ste. 200  
Denver, CO 80202  
Ben Sherman, Director  
303/620-9292  
FAX: 303/534-0221

The Western American Indian Chamber was formed by a group of American Indian individuals and businesses in response to a real need for an association that would work for the common benefit of the members. The Chamber was launched in early 1989 and now provides a number of programs to help build a stronger American Indian business community in the region. The Chamber now has a diverse membership roster consisting of American Indian individuals and businesses, non-Indian businesses and individuals, and representatives from public sector agencies and corporate industry.

## American Indian Centers

**Denver Indian Center**  
4407 Morrison Rd.  
Denver, CO 80219  
303/937-0401

The Denver Indian Center was established and incorporated as a non-profit corporation on October 11, 1983, to engage in such activities that will expand opportunities for, and benefits from, better education, job opportunities, economic development, health, housing, safety and the establishment of

human civil rights for all America Indians within the Denver metropolitan area in the State of Colorado. The Center serves a diverse group of tribes the majority of which represent the Southwest and Northern and Southern Plains. Current estimates indicate approximately 18,200 American Indians residing in the six-county service area. These people have moved to Denver for a variety of reasons. Most come seeking economic stability and security for their families. The Denver Indian Center provides educational, social, cultural and employment assistance in order to enhance this transition from reservation to urban life, including the following programs: Adult educations, early childhood education, employment and training, senior citizens, social and human services and Vision Quest.

**Denver Indian Health Board**  
1739 Vine Street  
Denver, CO 80206  
303/320-3974  
FAX: 303/320-1576

**Eagle Lodge — American Indian Alcoholism Rehabilitation Program**  
1264 Race Street  
Denver, CO 80206  
Pat Chaney, Executive Director  
303/393-7773  
303/329-6789  
FAX: 303/393-1613

A community based program established in 1972. Offering residential and out patient programs consisting of intervention, assessment treatment and/or prevention activities.

### **Post-Secondary Institutions and Related Organizations**

**Colorado State University**  
Native American Student Services  
312 Student Services Building  
Fort Collins, CO 80523  
Carolyn K. Fiscus, Director  
303/491-1332  
FAX: 303/491-5010

Native American Student Service connects the student with programs and services developed to help them enjoy and succeed in college by helping students develop social skills and coping skills to make the transition from home culture to university life; educating the university and Fort Collins communities about Native American culture,

philosophies, history, and the needs of Native students; recruiting Native American students; and serving as advocates during students' stay at the University.

**University of Colorado at Boulder**  
SMART Program - The Graduate School  
308 Regent Administrative Center  
Campus Box 26  
Boulder, CO 80309-0026  
Barbara Kraus, Director  
303/492-5773  
FAX: 303/492-5777

The SMART internship program centers on a student-faculty mentor relationship in which the students are individually guided in their research and creative efforts. During the program, students, in cooperation with their faculty mentors, design, carry out, and formally present individual research and creative projects.

### **Media**

**KGNU - Public Radio**  
1900 Folsom St., #100  
P. O. Box 865  
Boulder, CO 80302  
303/449-4885

Native-American Radio News Program.

**KSUT - FM**  
P. O. Box 737  
Ignacio, CO 81137  
303/563-4507

**Echo**  
Ute Mountain Tribe  
Towaoc, CO 81334

**Journal of the National Center for American Indian and Alaska Native Mental Health Research**  
University Press of Colorado  
P.O. Box 849  
Niwot, CO 80544  
303/530-5337  
FAX: 303/530-5306

*The Journal of the National Center offers a sensitive and authoritative source of information to readers unfamiliar with important issues facing American Indians and Alaska Natives, in addition to providing researchers of all disciplines with a better understanding of current mental health issues and*

## Colorado

---

concerns of this population. The journal can be useful to mental and public health providers and administrators, tribal health program staff, social workers, and those who work within the court systems, all of whom evaluate service delivery systems. The journal also provides valuable data for proposal writing as well as for program planning and evaluation. Local understanding of approaches to etiology, disease, social functioning, health, and healing is a rich source for creating modern alternatives for mental health services. As part of the Center's commitment to research and development in American Indian and Alaska Native mental health, the editors encourage research in areas where little is known.

**NARF Legal Review**  
1506 Broadway  
Boulder, CO 80302  
303/447-8760

The NARF Legal Review is a publication of the Native American Rights Fund. It provides articles on current legal issues, such as land claims and religious freedom. Updates of recent court cases that impact Native individuals and communities are included, as are resources and publication lists. There is no charge for subscriptions.

**Native American Newsletter**  
Fort Lewis College  
Durango, CO 81301

**Native Monthly Reader, The**  
Red Sun Institute  
P. O. Box 122  
Crestone, CO 81131  
719/256-4848  
FAX: 719/256-4849

*The Native Monthly Reader*, a scholastic newspaper for grades 5 through 12, reaches over 5,000 students monthly throughout the United States and Canada. Many colleges, museums, libraries and organizations have found the paper beneficial, and of interest to their adult population as well. The reader focuses on Native topics presented in a positive format, highlighting the numerous contributions Native people are making and featuring creative writing, poetry and works of art expressing Native culture and tradition. Red Sun Institute also offers a curriculum supplement entitled *Tradition and Environment*, available for cultural sensitivity training at various educational levels, from secondary to college.

**OYATE News**  
Campus Box 135  
Boulder, CO 80309

**Southern Ute Drum**  
P.O. Box 737  
Ignacio, CO 81137

**Ute Bulletin**  
P.O. Box 400  
Ft. Duschesne, UT 84026

**Winds of Change: A Magazine for American Indians**  
AISES Publishing, Inc.  
1630 30th Street, Ste. 301  
Boulder, CO 80301-1014  
James R. Weidlein, Managing Editor  
303/344-9099  
FAX: 303/444-6607

*Winds of Change* is a quarterly magazine published by AISES Publishing, Inc. for the American Indian Science & Engineering Society. The magazine is especially for American Indians and provides a link between the traditional Indian communities and a technical society. *Winds of Change* targets American Indians interested in all professions. Subject matter emphasizes job opportunities, career improvement, corporate recruitment, role models, company perspectives, and tribal economic development.

## Libraries

**Colorado Springs Fine Arts Center Library**  
30 West Dale Street  
Colorado Springs, CO 80903  
303/634-5581

The library contains extensive ethnological collections on Plains and Southwest Indians; Mesa Verde Plains and Mountain Indian materials; source materials on the history of the Indian wars; materials from the Rosebud Indian Agency, 1885-1890; and a photograph collection.

**Frederick H. Douglas Memorial Library**  
Denver Art Museum  
100 West 14th Ave. Parkway  
Denver, CO 80204  
303/575-2256

Their holdings include more than 50,000 volumes; 80 journals; and a special collection on the American Indian.

**Koshare Indian Library**  
Koshare Indian Museum  
115 West 18th Street  
LaJunta, CO 81050

This reference-only collection contains 2,000 volumes on Indian history, religion, legends, art, handicrafts, and other topics.

**Mesa Verde Research Library**  
P. O. Box 38  
Mesa Verde National Park, CO 81330  
303/529-4475  
FAX: 303/529-4498

The library maintains more than 6,500 volumes on archaeology and ethnography, with many on the Indians of the Mesa Verde area, and other North American tribes. Interlibrary loans are possible.

**National Indian Law Library**  
Native American Rights Fund  
1522 Broadway  
Boulder, CO 80302-6296  
303/447-8760

The library, open to the public, serves as a clearinghouse for legal materials pertinent to Indian law, including federal and tribal law. The collection includes cases, briefs, pleadings, orders, legal opinions, government documents, memoranda, treatises, studies, books, articles, reports, and legislative histories pertinent to federal Indian law. Publications include *National Indian Law Catalogue*, an index to Indian legal materials and resources; the *Bibliography on Indian Economic Development, Second Edition*; and *Indian Claims Commission Decisions and Index*. Interlibrary loans are available.

**Resource Center Library**  
National Urban Indian Council  
National Indian Employment Resource Center  
10068 University Park Station  
P. O. Box 10068  
Denver, CO 80210  
303/689-2911

This library, not available to the general public, maintains American Indian/Alaskan Native off-reservation documents, contains publications on employment-related subjects, extensive listings of employment opportunities, and other books concerning Indian people, law, foundations and population.

## Museums, Monuments and Parks

**Adams State College Museum**  
ES Bldg.  
Alamosa, CO 81102  
303/589-7011

Exhibits Pueblo Indian cultural artifacts, primarily pottery; Navajo weaving.

**Colorado State Museum**  
Colorado Historical Society Museum  
1300 Broadway  
Denver, CO 80203  
303/866-3682

Extensive ethnological and photographic collections of Plains and Southwest Indians; source materials on the Indian Wars; materials from the Rosebud Indian Agency, 1885 to 1890. Publications include *The Colorado Magazine*.

**Denver Art Museum**  
100 W. 14th Ave. Parkway  
Denver, CO 80204  
303/575-2256

Collection of North American Indian art; also, an ethnographic collection of Indian women's traditional dress, Navajo and Pueblo pottery, Hopi kachina dolls, Blackfeet ceremonial equipment, and wood carvings of the Northwest Coast. Publications include *Indian Leaflet Series*; *Material Culture Notes*.

**Denver Museum of Natural History**  
City Park  
Denver, CO 80205  
303/370-6357

The museum includes the Hall of Prehistoric People of the Americas: exhibits on early man, and collections of Paleo-Indian specimens. Special collection include Crane Collection of American Indian materials.

**Historical Museum and Institute of Western Colorado**  
4th and Ute  
Grand Junction, CO 81501

Special collections include Ute Indian Collection and Teller Indian School Collection: Basketry, artifacts, manuscripts and photographs of the Ute Indians are included.

## Colorado

---

### **Koshare Indian Museum**

115 W. 18th Street  
La Junta, CO 81050  
303/384-4801

Indian arts and crafts museum. Publications include *Koshare News*. Indian arts and crafts are sold.

### **Mesa Verde National Park Museum**

Mesa Verde, CO 81330  
303/529-4475

The museum is set in a prehistoric Pueblo Indian community - pit houses, cliff dwellings, etc. The museum preserves Anasazi archaeological remains dating from 500-1330 A.D.

### **The Taylor Museum for Southwestern Studies**

Colorado Springs Fine Arts Center  
30 West Dale Street  
Colorado Springs, CO 80903  
303/634-5581

Collections of American Indian arts of the Pacific Northwest, Great Plains, Great Basin, and California, including: Navajo rugs and blankets, Pueblo woven textiles, baskets and pottery, Zuni fetishes, Mimbres bowls, kachinas, and jewelry. They have special collections, publish, and house a library.

### **Ute Indian Museum**

P. O. Box 1736  
17253 Chipeta Dr.  
Montrose, CO 81402  
303/249-3098

Indian history museum located on the site of Chief Ouray's 400 acre farm. Depicts the history of the Utes through use of dioramas and objects which the Utes made and used; photographs and maps; portraits of some Ute leaders.

### **Ute Mountain Tribal Park**

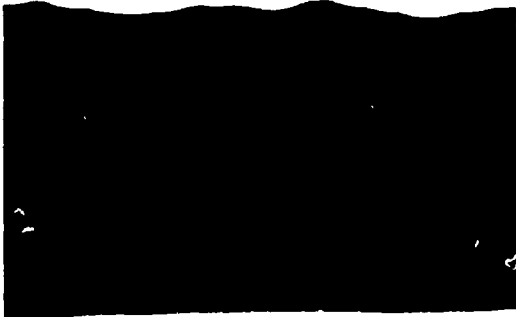
General Delivery  
Towaoc, CO 81334  
303/565-3751, ext. 282  
303/565-8548

The park is part of the Ute Mountain Reservation and encompasses approximately 125,000 acres. Within the boundaries of the park are hundreds of surface ruins and cliff dwellings, historic Ute wall paintings, and ancient petroglyphs. Tours are scheduled daily and are accompanied by a Ute Indian Guide who interprets the archeological and historical sites in the park.





*Kansas*



## Kansas

### Federally Recognized Tribes

**Delaware-Muncie Tribe**  
P. O. Box 274  
Pomona, KS 66076

**Iowa Reservation**  
Route 1, Box 58A  
White Cloud, KS 66094  
Leon Campbell, Chairperson  
913/595-3258

Tribe: Iowa. In residence: 300. Located in Kansas and Nebraska.

**Kickapoo Reservation**  
P.O. Box 271  
Horton, KS 66439  
Emery Negonsott, Chairperson  
913/486-2131  
FAX: 913/486-2801

Tribe: Kickapoo. In residence: 600.

**Prairie Potawatomi Reservation**  
14880 "K" Road  
Mayetta, KS 66509-9114  
Gary E. Mitchell, Chairperson  
913/966-2255  
FAX: 913/966-2144

Tribe: Prairie Potawatomi. In residence: 1,250.

**Sac and Fox Tribe of The Missouri Reservation**  
R.R. 1, Box 60  
Reserve, KS 66434  
Sandra Keo, Chairperson  
913/742-7471  
FAX: 913/742-3785

Tribe: Sac and Fox of the Missouri. Located in Kansas and Nebraska.

**Swan Creek and Black River Chippewas**  
519 Willot Street  
Ottawa, KS 66067

### State Government and Private Agencies/Organizations

**Kansas Association for Native American Education**  
Haskell Indian Nations University  
P. O. Box H-1304  
155 Indian Avenue  
Lawrence, KS 66046  
Don Nieto, Chairman  
913/749-8404

**Kansas Department of Education Outcomes Team**  
120 E. 10th Street  
Topeka, KS 66612  
Sheryl Jones  
913/296-7933

**Research & Training Associates**  
10950 Grandview, Suite 300  
Overland Park, KS 66210  
Judy Pfannenstiel, President & CEO  
W. Luke Enemy Hunter, Senior Research Associate  
913/451-8117  
FAX: 913/451-8190

Established in 1984, this organization has three main contracts providing technical assistance to Chapter I schools. Their primary service area includes the 8 states of Missouri, Nebraska, North Dakota and South Dakota (in common with McREL) and Iowa, Illinois, Minnesota and Wisconsin. They also operate a national, rural technical assistance center under contract with the Bureau of Indian Affairs (BIA), and conduct evaluations of the BIA's Family and Children's Education (FACE) program, a family literacy initiative.

### American Indian Centers

**The Indian Center of Lawrence**  
P. O. Box 1016  
1423 Haskell  
Lawrence, KS 66044  
Charmain Billy, Executive Director  
913/841-7202

A social services agency providing assistance to over 100 tribes in the Haskell/Lawrence area of Kansas. The Center processes applications for emergency services for food, clothing and shelter; relief for rent and utilities; and Warm Hearts. The Center also operates the area's food pantry and Tall Grass Gift Shop which sells Indian arts and crafts on consignment.



## **Kansas**

### **Mid-American All-Indian Center**

650 North Seneca  
Wichita, KS 67203  
Jerry L. Aday, Executive Director  
316/262-5221  
FAX: 316/262-4216

Wichita Indian Health Center/The Hunter Health Clinic, Inc.

2318 East Central  
Wichita, KS 67214  
Susette Schwartz, Executive Director  
316/262-2415  
FAX: 316-262-0741

The Hunter Health Clinic, Inc., an Urban Indian Clinic (1978) and a "Community Health Center" (September, 1985), is a private nonprofit medical center, originally incorporated in June of 1980. Hunter provides medical and dental care, a Licensed Specialist Clinical Social Worker, limited transportation, social services, prescriptions, food programs, shelter referrals, multilingual medical and social services staff (Asian, Hispanic) and a Department of Native American Services (Native American Registrar).

### **Post-Secondary Institutions and Related Organizations**

Haskell Indian Nations University  
P.O. Box H-1304  
Lawrence, KS 66044  
Bob G. Martin, President  
Gaye Leia King, Dir. of Teacher Ed. Program  
913/749-8404  
FAX: 913/749-8411

The Department of Natural and Social Sciences provides exceptional preparation and course work for students so they may successfully transfer to colleges and universities as first semester juniors. The Humanities Department fosters an understanding of human values and traditions which lead to value judgements about the nature, meaning, and purpose of human experience and human culture. The humanities include Indian literature, English, speech communication, reading, journalism, and the fine arts (arts, music, and theater). The Health and Physical Education department acquaints Native American students with the physical elements of living, such as: 1) physical fitness; 2) diet and nutrition; 3) mental health; and 4) emotional well-being. The Business department offers programs for associate of arts, associate of science, and associate of applied science

degrees that meet the needs of private industry, and federal and tribal governments. The Teacher Education program is based on a strong commitment to preparing graduates with a program that supports the study and appreciation of American Indian and Alaska Native cultural values.

### **BIA/Church Supported Elementary/Secondary Schools**

Kickapoo Nation School  
P. O. Box 106  
Powhattan KS 66527  
Joseph Fast Horse, Superintendent  
913/474-3550

Day School; Grades K-12. Under jurisdiction of Anadarko Area Office.

### **Media**

Drumbeat  
U.S. Penitentiary  
Leavenworth, KS 66048

Haskell Leader  
155 Indian Avenue  
Lawrence, KS 66046-4800

Little Indian Center Newsletter  
2326 Louisiana Street  
Box 1016  
Lawrence, KS 66044

NISH-NA-BA  
P.O. Box 2  
Lansing, KS 66043

### **Libraries**

Cultural Heritage and Arts Center Library  
P. O. Box 1275  
Dodge City, KS 67801

The library's collection consists of more than 2,000 books, films and records on North American Indians with an emphasis on tribes of the Southwest.

Kansas State Historical Society Library  
Memorial Bldg.  
120 West 10th St.  
Topeka, KS 66612

A special collection of approximately 3,500 books on American Indians and the West, also Kansas State public records and documents; microfilm, maps, paintings and drawings, and photographs are maintained.

**Mid-America All Indian Center Library**  
650 North Seneca  
Wichita, KS 67203

Their collection contains over 400 volumes on the American Indian.

### Museums, Monuments and Parks

**Coronado-Quivira Museum**  
221 E Ave. South  
Lyons, KS 67554  
316/257-3941

The museum exhibits Coronado and Quivira Indian artifacts, and Papago Indian baskets, pre-1934.

**El Quartejejo Kiva Indian Museum**  
c/o News Chronicle Printing Co., Inc.  
P. O. Box 218  
Scott City, KS 67871

The museum displays Cheyenne and Pueblo artifacts, especially those of Taos; and includes Indian war material.

**The Indian Museum**  
Mid-America All-Indian Center  
650 N. Seneca  
Wichita, KS 67203

Located on the site of old Indian Council grounds, it maintains collections of American Indian art and artifacts; Indian life, art, and religion. Publications include *Gallery Notes*, a quarterly newsletter.

**Iowa, Sac and Fox Presbyterian Mission**  
Route 1, Box 152C  
Highland, KS 66035  
913/442-3304

Housed in a three story stone house which served as a mission to the Iowa, and Sac and Fox Indians, the museum displays Iowa, and Sac and Fox Indian artifacts.

**KAW Indian Mission**  
500 North Mission  
Council Grove, KS 66846  
316/767-5410

Mission school opened by the Methodist Episcopal Church in 1851 for the Kaw (Kansa) Indians. An historic house and museum featuring Kaw Indian relics.

**Kansas Museum of History**  
Kansas State Historical Society  
6425 SW Sixth  
Topeka, KS 66615-1099

Founded in 1876, its collection features Indian relics - tools, utensils and clothing of Kansas Indian tribes.

**Last Indian Raid Museum**  
258 S. Penn Ave.  
Oberlin, KS 67749  
913/475-2712

This history museum is located on the site of the 1878 last Indian raid on Kansas soil and displays Indian artifacts.

**The Menninger Foundation Museum & Archives**  
5600 West 6th Street  
Topeka, KS 66601

The museum contains archaeological and anthropological display rooms featuring American Indian history and prehistory, focusing on Indian healing ceremony artifacts, and emotional expression in handicrafts.

**Museum of Anthropology**  
University of Kansas  
Lawrence, KS 66045  
913/864-4245

Founded in 1979, it maintains a collection of over 100,000 prehistoric American Indian artifacts, mainly from the Midwestern U.S.; about 4,000 North American Indian ethnographic items from the Plains, Southwest, and Northwest Coast; and an extensive skeletal collection. They have a special collection which includes contemporary American Indian art displayed in the Lawrence, Kansas Indian Art Show. Publications include a quarterly newsletter.

**Old Depot Museum**  
Tecumseh and Main  
Ottawa, KS 66067

They have a special collection: Indians of Franklin County and early Indian clothing. Displays include scrolls of membership in the Chippewa Tribe, and maps locating tribal lands.

## **Kansas**

---

### **Pawnee Indian Village Museum**

Box 475, RR #1  
Republic, KS 66964  
913/361-2255

This archaeology museum is located on the best preserved Pawnee earth lodge site on the Plains. Exhibits include artifacts to illustrate Pawnee life and customs. They host Pawnee Days Celebration each Fall.

### **Riley County Historical Museum**

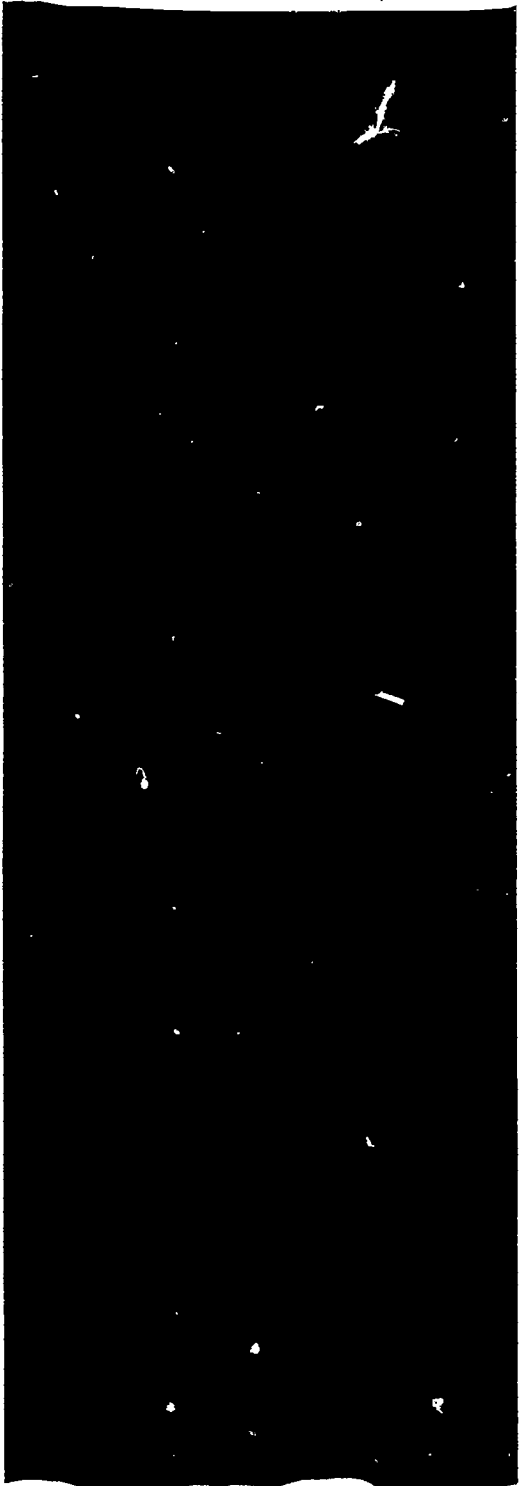
Memorial Auditorium Bldg.  
11th and Poyntz Ave.  
Manhattan, KS 66502

They have a special collection, the Walter Collection, including 900 Indian relics and artifacts of Northeast Kansas and southwest Nebraska. Publications include a newsletter.

### **Shawnee Methodist Mission**

3403 West 53rd  
Shawnee Mission, KS 66205  
913/262-0867

The building is a re-creation of the Indian Manual Labor school, operated from 1830-1862, for Shawnee children and other tribes. A slide show tells the history of the Mission.



***Missouri***

## Missouri

### Federally Recognized Tribes

#### Eastern Shawnee Reservation

P.O. Box 350  
Seneca, MO 64865  
George J. Captain, Chief  
918/666-2435  
FAX: 918/666-3325

Tribes: Eastern Shawnee. In residence: 375. Area: 210 acres. Publications include "Shooting Star," a tribal newsletter.

### Non-Federally Recognized Tribes

#### Northern Cherokee Community Association

1502 East Broadway, Suite 201  
Columbia, MO 65201  
Beverly Baker-Northrup, Chief  
314/443-8424  
FAX: 314/443/8424

### American Indian Centers

#### American Indian Center

4115 Connecticut  
St. Louis, MO 63116  
Evelyne Voelker, Executive Director  
314/773-3316  
FAX: 314/773-7160

The American Indian Center was established in 1974 and provides services to 35 counties in the states of Missouri (20 counties) and Illinois (15 counties). Services provided include: Emergency assistance with food, clothing and shelter; counselling; heritage classes; education assistance; health screening and referral; and Indian Child Welfare including foster and adoptive placement, community education and cultural activities.

#### Heart of America Indian Center

1340 East Admiral Blvd.  
Kansas City, MO 64124  
Chester Ellis, Executive Director  
816/421-7608  
FAX: 816/421-6493

#### Southwest Missouri Indian Center

2422 West Division  
Springfield, MO 65802  
Mike Fields, Executive Director  
417/869-9550  
FAX: 417-869-0922

The center was established to alleviate the problems of low-income Native American Indians in the urban setting; to provide understanding between Indian people and the surrounding European-American community; and to provide cultural presentations to assist in the learning process. They provide social services, counseling, emergency services, referral, alcohol and drug abuse prevention program. Publications include the *Rising Sun Newsletter*, a monthly newsletter.

### Libraries

#### Missouri Historical Society Library

Jefferson Memorial Bldg.  
St. Louis, MO 63112  
314/746-4500

Holdings of more than 2,000 volumes on the American Indian are housed here.

#### National Archives - K.C. Branch

2312 East Bannister Rd.  
Kansas City, MO 64131  
816/926-7271

The archives contain federal Indian records created on Indian reservations and schools in North and South Dakota, Minnesota, Kansas and Nebraska. Also, records of the Bismarck, Flandreau, Haskell, Pierre, Pipestone, Rapid City and Wahpeton Indian schools are maintained. Census information, tribal enrollment rosters, annuity payrolls, individual Indian bank account ledgers, land allotment rolls, employee payrolls and student case files; also extensive series of superintendent's/agent's correspondence files is available.

#### Southeast Missouri State University Library

Cape Girardeau, MO 63701

An extensive collection on North American archaeology and Indians is held in the library.

#### University of Missouri, K.C.

**General Library**  
5100 Rockhill Rd.  
Kansas City, MO 64110  
816/235-1671

The library contains the special Snyder Collection of Americana including 25,000 volumes of historical and Indian-related works.

## Museums, Monuments and Parks

**Kansas City Museum**  
3218 Gladstone Blvd.  
Kansas City, MO 66123  
816/483-8300

Founded in 1939, the American Indian collections number about 1,600 pieces, most of which were collected by Ida and Daniel Dyer during his tenure as Indian Agent at Fort Reno, Oklahoma in 1884-85. Artifacts are from Southern and Central Plains, Eastern Woodlands, the Southwest and Northwest Coast Indian cultures. Publications include a bi-monthly newsletter.

**Lyman Archaeological Research Center Museum**  
Route 1  
Miami, MO 65344

The museum contains 23 exhibits, including extensive research and study collection of the Oneonta, a protohistoric Missouri Indian tribe, and Woodland and Archaic artifacts. Publications include: *Missouri Indian Tribe in Archaeology and History*.

**Missouri State Museum**  
State Capitol  
Jefferson City, MO 65101  
314/751-2854

Collections include Musquakie ceremonial material, Missouri pottery, Kema Cave artifacts, Indian burial mound material, stone artifacts and other Indian artifacts.

**Museum of Anthropology**  
University of Missouri  
104 Swallow Hall  
Columbia, MO 65211  
314/882-3764

They maintain collections of ethnographic material from the Plains, Southwest Indians, Eskimo, and Mexican cultures.

**The St. Louis Art Museum**  
Forest Park  
St. Louis, MO 63110  
314/721-0072

A collection of artifacts, pottery, carvings, basketry and clothing of the Pueblo, Plains, West Coast, and Mound Building Indians is maintained. A bulletin is published.

**Towosahgy State Historic Site**  
Big Oak Tree State Park  
P. O. Box 35  
East Prairie, MO 63845

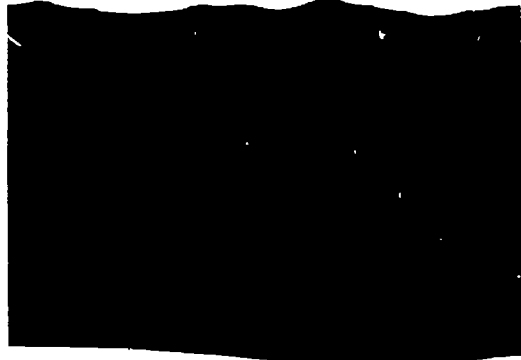
Exhibits include Indian artifacts excavated from the site of a 1000-1400 A.D. Mississippian Culture Civic Ceremonial Center.

**William Rockhill Nelson Gallery and Atkins Museum of Fine Arts**  
4525 Oak Street  
Kansas City, MO 64111  
816/561-4000

They exhibit Native arts of the Americas, with emphasis on the Southwest, Mesoamerica and South America.



*Nebraska*



## Nebraska

### Federally Recognized Tribes

**Iowa Reservation**  
Route 1, Box 58A  
White Cloud, KS 66094  
Leon Campbell, Chairperson  
913/595-3258

Tribe: Iowa. In residence: 300. Located in Kansas and Nebraska.

**Omaha Reservation**  
P. O. Box 368  
Macy, NE 68039  
Dr. Rudi Mitchell, Chairman  
402/837-5391  
FAX: 402/837-5308

Tribe: Omaha. In residence: 1,500. Area: 27,700 acres. Located in Nebraska and Iowa. Tribal Council. Winnebago Agency.

**Pine Ridge Reservation**  
Box H  
Pine Ridge, SD 57770  
John Steele, President  
605/867-5821  
FAX: 605/867-5659

Tribe: Oglala Sioux. Located 60 miles east of the Black Hills, extending into Nebraska. Area: 1,560,196 acres in South Dakota and 90,000 acres in Nebraska.

**Sac and Fox Tribe of The Missouri Reservation**  
R.R. 1, Box 60  
Reserve, KS 66434  
Sandra Keo, Chairperson  
913/742-7471  
FAX: 913/742-3785

Tribe: Sac and Fox of the Missouri. Located in Nebraska and Kansas.

**Santee Sioux Reservation**  
Route 2, Box 163  
Niobrara, NE 68760  
Richard Kittl, Chairperson  
402/857-3302  
FAX: 402/857-2307

Tribe: Santee Sioux. In residence 400. Area: 3600 acres.

### Winnebago Reservation

Post Office Box 687  
Winnebago, NE 68071  
John Blackhawk, Chairperson  
402/878-2272  
FAX: 402/878-2963

Tribe: Winnebago. In residence: 1,000. Area: 27,000 acres. Located in Nebraska and Iowa (off-reservation lands in Iowa.)

### State Government and Private Agencies/Organizations

**Nebraska Department of Education**  
301 Centennial Mall S.  
P.O. Box 94987  
Lincoln, NE 68509  
Nancy Rowch, Director  
402/471-2477  
FAX: 402/471-0117

**Nebraska Indian Commission**  
P. O. Box 94981  
Lincoln, NE 68509-4981  
Stephen Provost, Director  
402/471-3475  
FAX: 402/471-3392

The 14-member Commission on Indian Affairs, commonly referred to as the Nebraska Indian Commission, came into existence on April 7, 1970 when Governor Norbert Tiemann issued an Executive Order creating it. In 1971, the eighty-second Legislature voted to designate it a permanent State agency. Its purpose is to join representatives of all Indians in Nebraska to do all things which it may determine to enhance the cause of Indian rights and to develop solutions to problems common to all Nebraska Indians. The Commission functions are to: Promote state and federal legislation beneficial to the Indian community in Nebraska; coordinate existing programs relating to the Indian Community in such areas as housing, education, welfare, medical and dental care, employment, economic development, law and order, and related problems; work with other state and federal government agencies and federal and state elected officials in the development of new programs; keep the Governor's office apprised of the situation in the Indian community; provide the public with information and education relevant to Indian affairs in the State of Nebraska; and develop programs to encourage the total involvement of Indian people in activities for the common benefit of the Indian community.



## Nebraska

**Nebraska Inter-Tribal Development Corporation**  
Route 1, Box 66A  
Winnebago, NE 68071  
Frank LaMere, Executive Director  
402/878-2242

Organization servicing three tribes (Omaha, Santee, Winnebago) in Nebraska. Services provided include: WICHE, Employment Development, Weatherizing, JPTA and RSVP.

### American Indian Centers

**Lincoln Indian Center, Inc.**  
1100 Military Rd.  
Lincoln, NE 68508  
Charlene Johnson, Executive Director  
402/438-5231  
FAX: 402/438-5236

The Indian Center, Inc. is a community-based, nonprofit Community Development Corporation which was established in 1969. Its Administration Office is located in Lincoln, with satellite offices located in Omaha, 245 St. Mary's Ave. and Scottsbluff, 721 E. Overland. The Indian Center was originally established to provide Native Americans in Nebraska with the human services necessary to become self-sufficient in an urban setting while retaining their cultural identity. Since the construction of the 22,000 square foot administrative facility in 1979, it has equally promoted multi-cultural awareness through the delivery of services to all eligible Nebraskans. Services offered through the Center include: HIV/AIDS Prevention; Adult Education; Alcohol and Drug Abuse and Indian Child Welfare Counselling; Employment Development; Health Services; Housing; Minority Youth Substance Abuse Intervention; Teen Pregnancy Prevention; Commodities (CSFP); Senior Center Program; Community Services; Cultural Center Program; and Small Business Resource Center.

### Post-Secondary Institutions and Related Organizations

**Nebraska Indian Community College**  
P.O. Box 752  
Winnebago, NE 68701  
Thelma Thomas, President  
402/878-2414  
FAX: 402/878-2522

The Nebraska Indian Community College is a co-educational liberal arts and vocational education institution chartered by the Omaha, Santee Sioux and Winnebago tribes of Nebraska.

### Media

**Nebraska Indian Territory News**  
P.O. Box 94914  
Lincoln, NE 68509

**Winnebago Indian News**  
P.O. Box 687  
Winnebago, NE 68071

### Libraries

**Center for Great Plains Studies**  
University of Nebraska  
1213 Oldfather Hall  
Lincoln, NE 68588-0314

The center contains a collection of Western art and fiction with emphasis on Plains Indian nations; a collection of videotapes on several Nebraska tribes for use as elementary and secondary school curriculum material; ten one-hour tapes concentrate on oral tradition and include storytelling, history, and elders' reminiscences by members of the Lakota, Brule Sioux, Santee Sioux, Omaha, Pawnee and Winnebago tribes.

**Native American Public Broadcasting Consortium Library**  
P. O. Box 83111  
Lincoln, NE 68501  
402/472-3522

This media library contains a collection of videotapes and films, including North American Indian programs which have been screened and evaluated by the Consortium for technical quality and accuracy of portrayal and content. Topics include history, culture, education, economic development, current events and the arts.

**Nebraska State Historical Society Library**  
1500 R Street  
Lincoln, NE 68508

The library includes holdings of more than 70,000 volumes on Nebraska history, Indians of the Great Plains, and genealogy; and 465 photographs in the John A. Anderson Photo Collection of Brule Sioux.

## Museums, Monuments and Parks

**Fort Kearney Museum**  
311 South Central Ave.  
Kearney, NE 68847

This museum displays Indian art from the Rosebud  
Indian Reservation.

**Fort Robinson Museum**  
Nebraska State Historical Society  
P. O. Box 304  
Crawford, NE 69339

Exhibits include archaeological and ethnological items,  
and microfilm records of Red Cloud and Spotted Tail  
Indian Agencies.

**Hastings Museum**  
1330 North Burlington  
Hastings, NE 68901

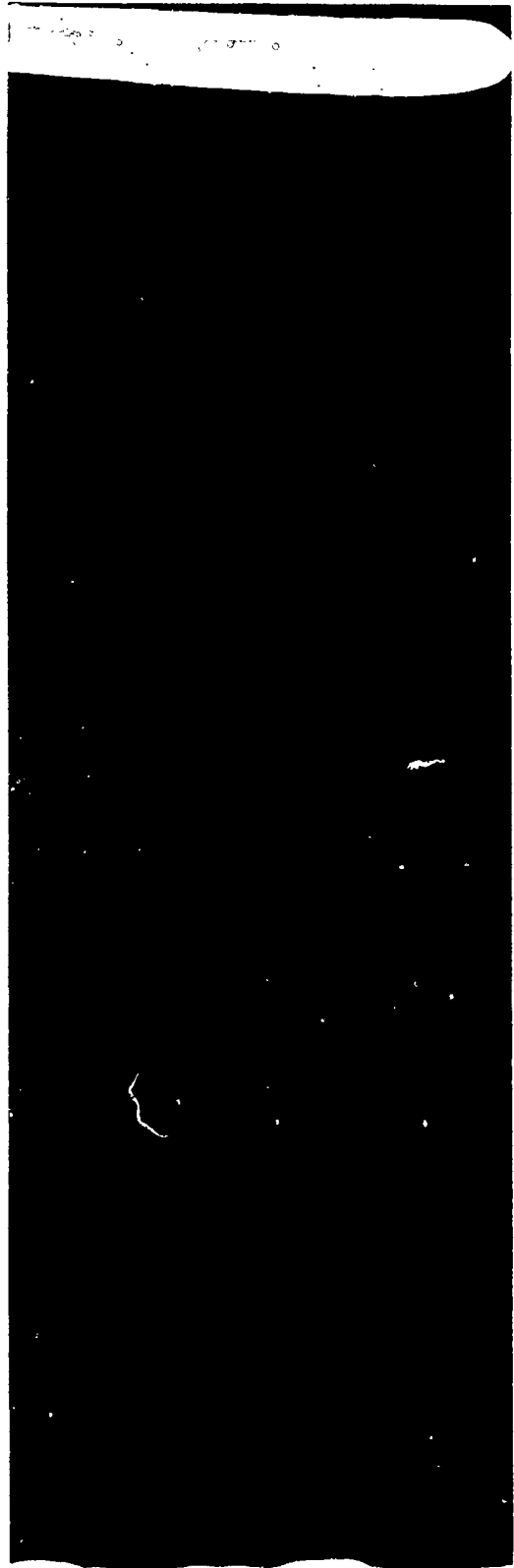
A collection of Indian artifacts, mostly from the Sioux  
Indian tribes. They have produced an Indian film and  
other publications.

**Museum of The Fur Trade**  
HC 74, Box 18  
Chadron, NE 69337  
308/432-3843

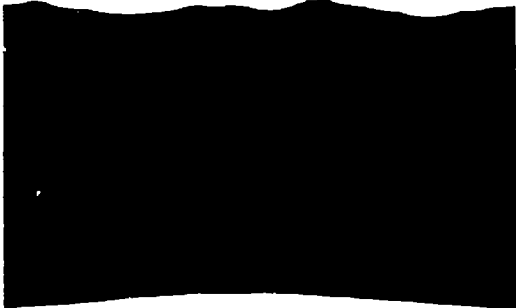
Founded in 1955, it maintains a collection of material  
illustrating the cultures of North American Indians,  
and the influence of the fur trade on those cultures.  
It is a restored and outfitted 1837 Indian trading post  
and warehouse with an Indian garden for crops  
obtained from Mandan, Dakota, Assiniboine, Arikara,  
Hidatsa and Omaha Indians. Publications include a  
quarterly magazine.

**Nebraska State Historical Museum**  
P. O. Box 82554  
131 N. Centennial Mall  
Lincoln, NE 68501  
402/471-3270

It features collections in art, anthropology, and  
archaeology; including regalia and artifacts of Indians  
of Nebraska and the central Plains. Publications  
include *Nebraska History*, a quarterly magazine, and  
a monthly newsletter.



***North Dakota***



## North Dakota

### Federally Recognized Tribes

**Devil's Lake Sioux Reservation**  
Sioux Community Center  
Post Office Box 359  
Fort Totten, ND 58335  
Peter Belgarde, Chairperson  
701/766-4221  
FAX: 701/766-4126

Tribe: Sisseton-Wahpeton Sioux. In residence: 3,125. Area: 185,045 acres. Located along the Cheyenne River.

**Fort Berthold Reservation**  
Tribal Administration Bldg.  
HC 3, Box 2  
New Town, ND 58763  
Wilbur Wilkinson, Chairperson  
701/627-4781  
FAX: 701/627-3805

Tribes: Mandan, Hidatsa and Arikara. In residence: 3,500. Area: 980,000 acres. Located above Garrison Dam on the Missouri River, southwest of Minot, North Dakota. Operates schools at Mandaree, White Shield and Twin Buttes, ND; Museum at 4-Bears complex in New Town, ND; and Library at Fort Berthold Community College. Publish the *Mandan, Hidatsa & Arikara Times*, a tribal newspaper.

**Ojibwa Of The Red River**  
P.O. Box 900  
Belcourt, ND 58316  
701/477-6451

Tribe: Ojibwa (Chippewa). In residence: 850. Located in northeast North Dakota.

**Standing Rock Sioux Tribe Reservation**  
Post Office Box D  
Fort Yates, ND 58538  
Jesse J. Taken Alive, Chairman  
701/854-3491

Tribes: Teton Sioux (SD) and Yankton Sioux (ND). In residence: 8,000 (3,800 Yankton Sioux in North Dakota, and 4,200 Teton Sioux in South Dakota). Area: 306,000 acres (ND); 540,000 acres (SD). Located 60 miles south of Bismarck, ND in North and South Dakota.

### Turtle Mountain Reservation

Post Office Box 900  
Belcourt, ND 58316  
Richard LaFromboise, Chairperson  
701/477-6451  
FAX: 701/477-6836

Tribe: Chippewa. In residence: 8,750. Area: 34,528 acres. Located southwest of the Canadian border.

### Non-Federally Recognized Tribes

**Christian Pembina Chippewa Tribe**  
Belcourt, ND 58316

**Little Shell Band of North Dakota**  
Dunseith, ND 58329

### State Government and Private Agencies/Organizations

**Dakota Women Of All Red Nations**  
P. O. Box 69  
Fort Yates, ND 58538  
Mabel Ann Phillips, Chairperson  
701/854-7592

The organization advocates for American Indian treaty rights and runs a Health Education Program. Publications include a newsletter.

**Indian Affairs Commission of North Dakota**  
State Capitol Bldg.  
600 E. Boulevard Ave., 1st Floor - Judicial Wing  
Bismarck, ND 58505-0330  
Debora Painte, Executive Director  
701/224-2428

This office was the first such commission in the United States, established in 1947. The Commission is composed of the governor of the state as the chair, the four tribal chairpersons, and four commissioners appointed at large. The Commission serves as a liaison and referral office.

## North Dakota

---

**Job Service North Dakota**  
Box 1537  
Bismarck, ND 59502  
Adrian M. Crowfeather  
701/224-2735

**North Dakota Association for Bilingual & Bicultural Education**  
P. O. Box 700  
New Town, ND 58763  
Marc Bluestone, Secretary  
701/627-4048

**North Dakota Department of Public Instruction  
Indian Education Programs**  
600 East Boulevard Ave, 9th Floor  
Bismarck, ND 58505-0440  
Cheryl Kulas, Director  
701/224-2250  
FAX: 701/224-2461

Administers several state and federal grants to provide services to education agencies throughout the state serving American Indian, refugee, and limited-English-proficient/bilingual students. These grants support: (a) state administered Indian education programs such as in-service training, and technical and development assistance to school districts and agencies serving Indian learners (includes administration of a state-funded Indian curriculum development program; (b) bilingual and English-as-a-second-language (ESL) programs (includes statewide data collection about limited-English-proficient students); and (c) assistance to school districts serving newly-arriving refugees.

**North Dakota Indian Education Association**  
P. O. Box 199  
Fort Totten, ND 58335  
Patricia Walking Eagle  
701/766-4161

### Post-Secondary Institutions and Related Organizations

**Fort Berthold Community College**  
P.O. Box 490  
New Town, ND 58763  
Karen Gillis, President  
701/627-3665  
701/627-4738  
FAX: 701/627-3609

This small nontraditional campus signals a personal approach to education. Located near the scenic Lake

Sakakawea area of the Fort Berthold Reservation in New Town, North Dakota, its students have the benefit of regular personal access to the instructors and student support staff. The curriculum is founded in liberal arts, which integrates successfully with most professional and paraprofessional career pursuits.

**Little Hoop Community College**  
P.O. Box 269  
Fort Totten, ND 58335  
Dr. Merrill Berg, President  
701/766-4415  
FAX: 701/766-4077

Little Hoop Community College is a fully accredited, tribally chartered college serving the residents and communities on and near the Devils Lake Sioux Reservation, Fort Totten, North Dakota. It was founded in October, 1974, and operated from 1974-1981 as a satellite campus of Lake Region Community College. In 1981, Little Hoop Community College initiated the accreditation process and became an autonomous higher education institution.

The mission of the Little Hoop Community College is to provide comprehensive post-secondary education which addresses both traditional and contemporary aspects of learning. Their focus is to educate students to live successfully in this multicultural world. LHCC also provides a variety of community services, such as family counseling, alcohol and drug abuse programs, job training and economic development. The College prides itself on meeting the diverse needs of its students. Administrators, instructors, and staff often go beyond their established responsibilities in encouraging students' success.

**Standing Rock College**  
HCI, Box 4  
Fort Yates, ND 58538  
David Archambault, President  
701/854-3861  
FAX: 701/854-3403

The Business Administration degree offers students the opportunity to complete the first and second year of course work. This degree is flexible so that students continuing their education may tailor their program to their particular interest such as Accounting, Marketing, or Management.

**Turtle Mountain Community College**  
 P. O. Box 340  
 Belcourt, ND 58316  
 Gerald "Carty" Monette, President  
 701/477-5605  
 FAX: 701/477-5028

Project Reach is an integral part of the TMCC CED/ABE program. Two components comprise the project—Learning Disabilities and Literacy. The primary objective of these two components is to provide the necessary services to those individuals who need special and remedial help toward attaining their GED diploma.

**United Tribes Technical College**  
 3315 University Dr.  
 Bismarck, ND 58501  
 Dr. David Gipp, President  
 701/255-3285

Organized in 1969 as the first tribally-controlled residential vocational school in the nation, UTTC is committed to the economic, social and cultural advancement of Indian people. UTTC strives to maintain a residential learning environment where all students and their families are provided housing, an elementary school, a child development center and recreational facilities, all in an Indian setting. Counseling, career planning and placement, medical services and other support services are also available. Located on a 105 acre campus, three miles south of Bismarck, the school is a state chartered non-profit corporation owned and operated by the five reservations located in whole or in part within North Dakota. The education programs, with emphasis on vocational or technical studies, are specifically geared toward American Indian students who have not had such opportunities. Eleven certificate programs and four two-year degree programs are offered. United Tribes Technical College is fully accredited to offer certificate granting and specified two-year Associate of Applied Science Degrees through 1995.

**University of North Dakota**  
 Indians Into Medicine  
 School of Medicine  
 501 N. Columbia Rd.  
 Grand Forks, ND 58203  
 Gene DeLorme, Director  
 701/777-3037  
 FAX: 701/777-3277

Established in 1973, INMED assists American Indian students in preparing for health careers. Assistance includes academic, financial, and personal support.

Summer academic enrichment programs are provided for junior high, high school, college, and medical preparatory students. INMED distributes a quarterly newsletter, *Serpent, Staff and Drum*.

**University of North Dakota**  
 RAIN Program  
 College of Nursing  
 P. O. Box 9025  
 Grand Forks, ND 58202-9025  
 Dr. LaVonne Russell, Director  
 701/777-3224 (will accept collect calls)  
 FAX: 701/777-4558

The Recruitment/Retention of American Indians into Nursing (RAIN) Program is a support program serving Indian students preparing for a career in Nursing. The Project assists students in the areas of academic, financial, and personal support. The University of North Dakota (UND) ranks among the top higher education institutions in the nation in respect to the number of American Indian students enrolled, the variety and substance of American Indian programs, and the number and success of American Indian alumni.

### **BIA/Church Supported Elementary/Secondary Schools**

**Dunseith Day School**  
 P. O. Box 310  
 Dunseith, ND 58329  
 Viola Carlson, Principal  
 701/263-4636  
 FAX: 701-263-4200

Day school; grades K-6. Under jurisdiction of Turtle Mountain Agency.

**Four Winds Community School**  
 P. O. Box 199  
 Fort Totten, ND 58335  
 Judy Ami, Principal  
 701/766-4161  
 FAX: 701/766-4766

Day school; grades K-6. Under jurisdiction of Aberdeen Area Office.

**Mandaree Day School**  
 P. O. Box 488  
 Mandaree, ND 58757  
 Tex Hall, Principal  
 701/759-3311  
 FAX: 701/759-3274

## North Dakota

---

Day school; grades K-12. Under jurisdiction of Fort Berthod Agency.

**Ojibwa Indian School**  
P. O. Box 600  
Belcourt, ND 58316  
Loretta DeLong, Principal  
701/477-3108  
FAX: 701/477-6037

Boarding school; grades K-8. Under jurisdiction of Turtle Mountain Agency.

**Standing Rock Community School**  
P. O. Box 377  
Fort Yates, ND 58538  
Linda Lawrence, Elementary Principal  
Roman Weiler, High School Principal  
701/854-3865 (K-6)  
701/854-3461 (7-12)

Boarding school; grades K-12. Enrollment is approximately 800. Under jurisdiction of Standing Rock Agency.

**Theodore Jamerson Elementary School**  
United Tribes Technical College  
3315 University Rd.  
Bismarck, ND 58501  
Sam Azure, Principal  
701/255-3285  
FAX: 701/255-1844

Boarding school; grades K-8, plus pre-school and nursery. Enrollment is up to 100. Under jurisdiction of Aberdeen Area Office.

**Turtle Mountain Community School**  
P.O. Box 440  
Belcourt, ND 58316  
Roman Marcellais, Elem. Principal  
Louis Dauphinais, Middle School Principal  
Rosemary Jaros, High School Principal  
701/477-6471  
FAX: 701/477-6470

Day school; grades K-8 and 9-12. Enrollment is 405. Under jurisdiction of Turtle Mountain Agency.

**Twin Buttes Day School**  
R.R. 1, Box 65  
Halliday, ND 58636  
Joyce Burr, Principal  
701/938-4396  
FAX: 701/938-4398

Day school; grades K-8. Under jurisdiction of Fort Berthold Agency.

**Wahpeton Indian School**  
832 N. 8th Street  
Wahpeton, ND 58075  
Robert Hall, Principal  
701/642-3796  
FAX: 701/642-5880

Boarding school; grades 4-8. Enrollment is 250. Under jurisdiction of Aberdeen Area Office.

**White Shield School**  
HC 1, Box 45  
Roseglen, ND 58775  
Tom Presley, Principal  
701/743-4350  
FAX: 701/743-4501

Day school; grades K-12. Under jurisdiction of Fort Berthod Agency.

## Media

**KEYA - FM**  
P. O. Box 190  
Belcourt, ND 58316  
701/477-5686

**KMHA - FM**  
P.O. Box 220  
New Town, ND 58763  
701/627-3333

**Dakota Student**  
Univ. Stations  
P.O. Box 8177  
Grand Forks, ND 58201

**Ft. Berthold Communications**  
P.O. Box 220  
New Town, ND 58763  
701/627-3333

**O'Yate Ho**  
P.O. Box 27  
Fort Totten, ND 58335

**Standing Rock Cable TV Service**  
P.O. Box 470  
Fort Yates, ND 58538  
Helen Hanley, Owner  
701/854-3895



**Tribal Newsletter**  
P.O. Box D  
Fort Yates, ND 58538

**Turtle Mtn. Artist Board**  
R.R. 2, Box 61  
Rolette, ND 58366

**United Tribes News**  
3315 University Dr.  
Bismarck, ND 58504

**Wahpeton Highlights**  
Wahpeton Indian School  
Wahpeton, ND 58075

### Libraries

**Minot State College**  
Memorial Library  
Minot, ND 58701  
701/857-3200

The library maintains a special collection on Indians in the North Central States.

**State Historical Society of North Dakota Library**  
North Dakota Heritage Center  
Capitol Grounds  
Bismarck, ND 58505  
701/224-2666

The Heritage Center includes holdings of 20,000 volumes on North Dakota history and the history of the American Indian; an extensive photographs archive; government documents; genealogical collections; sound and visual recordings, including American Indian music.

### Museums, Monuments and Parks

**Buffalo Trails Museum**  
Box 22  
Epping, ND 58843  
701/859-3512/4361

Founded in 1966, it depicts Indian culture native to the Upper Missouri area. Exhibits include Plains Indian artifacts, a diorama of an Assiniboin Indian village, and a diorama of a fortified Hidatsa village.

**Fort Abraham Lincoln State Historical Park Museum**  
Route 2, Box 139  
Mandan, ND 58554  
701/258-0203

They maintain a collection of Mandan Indian artifacts, as well as 7th Cavalry and Custer items.

**North Dakota Museum of Art**  
P. O. Box 7305, University Station  
Grand Forks, ND 58202  
701/777-4195

They feature American Indian art.

**State Historical Society of North Dakota**  
North Dakota Heritage Center  
Capitol Grounds  
Bismarck, ND 58505  
James E. Sperry, Superintendent  
701/224-2666

Collections include ethnological, ethnographical, and prehistory materials of all types dating throughout the eras of known occupation of the northern Great Plains by human beings (circa 10,000 B.C. to present.) Publications include *North Dakota History: Journal of the Northern Great Plains; and Plains Talk*, a newsletter. Extensive state archives are available.

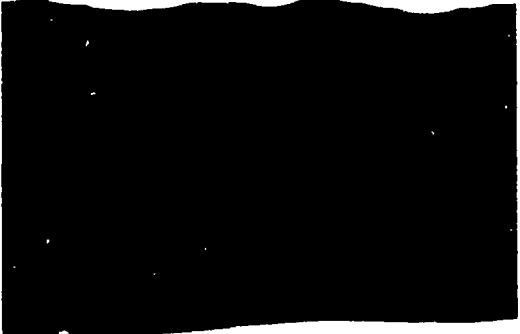
**Standing Rock Sioux Tribe Reservation Museum**  
Post Office Box D  
Fort Yates, ND 58538  
701/854-3491

**Three Affiliated Tribes Museum**  
Fort Berthold Reservation  
New Town, ND 58763  
701/627-4477





***South Dakota***



## South Dakota

### Federally Recognized Tribes

#### **Cheyenne River Reservation**

P. O. Box 590  
Eagle Butte, SD 57625  
Greg Bourland, Chairperson  
605/964-4155  
FAX: 605/964-4151

Tribe: Cheyenne River Sioux. In residence: 5,000.  
Area: 2,811,480 acres. Located in Dewey and  
Zeibach Counties.

#### **Crow Creek Reservation**

P.O. Box 50  
Fort Thompson, SD 57339  
Duane Big Eagle, Chairperson  
605/245-2221  
FAX: 605/245-2470

Tribe: Crow Creek Sioux. In residence: 2,100. Area:  
125,000 acres.

#### **Flandreau Santee Sioux Reservation**

P. O. Box 283  
Flandreau, SD 57028  
William J. Schumacher, Chairperson  
605/997-3891  
FAX: 605/997-3878

Tribe: Santee Sioux. In residence: 400. Area: 2,180  
acres.

#### **Lower Brule Reservation**

P.O. Box 187  
Lower Brule, SD 57548  
Michael Jandreau, Chairperson  
605/473-5561  
FAX: 605/473-5606

Tribe: Lower Brule Sioux. In residence: 1,000. Area:  
114,500 acres.

#### **Pine Ridge Reservation**

P.O. Box H  
Pine Ridge, SD 57770  
John Steele, Chairperson  
605/867-5821  
FAX: 605/867-5659

Tribe: Oglala Sioux. In residence: 13,500. Area:  
1,560,196 acres (SD) and 90,000 acres (Nebraska).  
Located 60 miles east of the Black Hills, extending  
into Nebraska.

#### **Rosebud Sioux Tribe Reservation**

P.O. Box 430  
Rosebud, SD 57570  
William Kindle, Chairperson  
605/747-2381  
FAX: 605-747-2243

Tribe: Rosebud Sioux. In residence: 9,500. Area:  
964,778 acres. Located in south-central South  
Dakota, adjoining the Nebraska State line.

#### **Sisseton-Wahpeton Reservation**

P.O. Box 509  
Agency Village, SD 57262  
Arnold R. Ryan, Chairperson  
605/698-3911  
FAX: 605/698-7907

Tribe: Sisseton-Wahpeton Sioux. In residence: 3,850.  
Area: 105,000 acres. Located in North and South  
Dakota (only a minor portion in North Dakota.)

#### **Standing Rock Sioux Tribe Reservation**

P.O. Box D  
Fort Yates, ND 58538  
Jesse J. Taken Alive, Chairperson  
701/854-7231

Tribes: Teton Sioux (SD) & Yankton Sioux (ND). In  
residence: 8,000 (3,800 Yankton Sioux in North  
Dakota, & 4,200 Teton Sioux in South Dakota).  
Area: 306,000 acres (ND); 540,000 acres (SD).  
Located 60 miles south of Bismarck, ND.

#### **Yankton Sioux Reservation**

Route 3, Box 248  
Marty, SD 57361  
Darrell Drapeau, Chairperson  
605/384-3641  
FAX: 605/384-5687

Tribe: Yankton Sioux. In residence: 2,500. Area:  
35,000 acres.

#### **State Government and Private Agencies/Organizations**

##### **St. Joseph's Lakota Development Council**

St. Joseph's Indian School  
Chamberlain, SD 57326  
605/734-6021

This non-profit organization sells products (leather-  
work, beadwork, quilts, etc.) through mail order and  
wholesale-retail.

## **South Dakota**

---

**South Dakota Indian Education Association**  
P.O. Box 62  
Batesland, SD 57716  
Chris Bordeaux, President  
6055/867-5633

**South Dakota Office on Indian Affairs**  
118 W. Capitol, Room 305  
Pierre, SD 57501  
Francis Whitebird, Director  
605/773-3415

This office serves as a liaison between the Governor and the Indian Nations of South Dakota.

**South Dakota Department of Education and Cultural Affairs**  
Indian Education Program  
700 Governors Dr.  
Pierre, SD 57501-2291  
Don L. Schanandore, Director  
605/773-3566  
FAX: 605/773-6139

The Indian Education Program Office represents the State in collaborative projects with tribes and Indian communities. Statistics are maintained on the status of Indian education in the State. A special drop out needs assessment and prevention initiative was sponsored by this office. Numerous workshops are offered statewide.

## **American Indian Centers**

**All Indian Association**  
Eagle Butte, SD 57570

**Han-Pa-O-Ye**  
P.O. Box 624  
Northern State College  
Aberdeen, SD 57401

**South Dakota Urban Indian Health, Inc.**  
122 East Dakota  
Pierre, SD 57501  
605/224-8841  
FAX: 605/224-6852

Organization servicing the Pierre, Aberdeen and Sioux Falls areas of South Dakota. Centers provide the following: limited clinical services, optical service, substance abuse treatment and mental health treatment and counselling.

**Sioux San Alcoholism Program**  
Hope Lodge  
3200 Canyon Lake Dr.  
Rapid City, SD 57702  
605/342-8925  
FAX: 605/348-8833

Established in the late 1960's for the treatment of alcoholism. The center is a twelve bed facility with a staff of eleven providing the following services: in-patience alcohol treatment, co-dependence treatment, support groups and Alcoholics Anonymous.

**Minnehaha Indian Club**  
1413 Thompson Drive  
Sioux Falls, SD 57105

**Lakota Aomiciye**  
Black Hills State College  
Spearfish, SD 57783

## **Post-Secondary Institutions and Related organizations**

**Cheyenne River Community College**  
P. O. Box 220  
Eagle Butte, SD 57625  
Dawn Lawrence, President  
605/964-8635  
FAX: 605/964-1144

The Cheyenne River Community College (CRCC) is a tribally-chartered institution of higher education which offers Associate of Arts degrees, and other degree programs through affiliation agreements with other degree-granting institutions. The college is the culmination of a community initiative to obtain higher education services which dates back to 1968.

Their mission is to provide post-secondary learning opportunities that meet the holistic learning needs of the Cheyenne River Reservation community. All learning opportunities are structured to incorporate and maintain Lakota cultural components and provide knowledge, skills, and values necessary to attain personal and professional goals.

The college offers associate level degree programs in vocational education, liberal arts and business. Additional degree programs are offered through affiliation with Presentation College and Northern State College, both in Aberdeen, SD. To insure access and quality, the college offers a diverse delivery system and evaluates student learning through outcomes-based assessment.

The administration has moved from a surplus, pre-World War II wooden barracks, to a modern 2,200 square foot office building. The college is also expanding to reach the needs of the outlying, geographically isolated communities. The Hoyekiyapi Win College Center in Cherry Creek, on the western edge of the reservation, is the first established off-campus site of the College.

**Institute of American Indian Studies**  
 University of South Dakota  
 414 E. Clark Street  
 Dakota Hall, Room 12  
 Vermillion, SD 57069  
 605/677-5209  
 FAX: 605/677-5073

Located in Dakota Hall 12 on the University of South Dakota campus, the Institute of American Indian Studies serves as the focal point for American Indian-related projects, activities, and programs. Established in 1955, the work of the Institute includes organizing campus programs to promote education and awareness of American Indian culture, issues, and problems; assisting USD efforts to recruit and retain American Indian students, faculty, and staff; encouraging increased levels of research on American Indian life; and strengthening relations with tribes, tribal colleges, and other appropriate American Indian organizations in the state and regions. The library contains the Dr. Joseph H. Cash Collection, including volumes on North American frontier history with special emphases on South Dakota's American Indians, the mining industry, and western literature. Located in the Institute's offices, the collection is available for use by students and researchers. The Institute also maintains the Oral History Center which houses the American Indian Research Project and the South Dakota Oral History Project.

**Oglala Lakota College**  
 P.O. Box 490  
 Kyle, SD 57752  
 Elgin Bad Wound, President  
 605/455-2321  
 FAX: 605/455-2787

Oglala Lakota College is a North Central accredited, degree-granting higher education institution located on the Pine Ridge Indian Reservation, in the southwest portion of the state of South Dakota. The Pine Ridge reservation is the second largest Indian reservation in the United States, having a tribal membership of 19,246, and a land base extending over 7,000 square miles. The Pine Ridge Indian Reservation is the home of the Oglala band of the

Lakota people. Degrees range from a Masters Degree in Tribal Management, 8 Bachelors degrees, and 23 Associate degrees. These degrees consist of a Bachelors and Associate degree in Lakota Studies.

**Sinte Glaska University**  
 Rosebud Sioux Reservation  
 P. O. Box 490  
 Rosebud, SD 57570-0490  
 Lionel Bordeaux, President  
 605/747-2263  
 FAX: 605/747-2098

Sinte Gleska University is chartered by the Rosebud Sioux Tribe to provide post secondary education on the Rosebud Indian Reservation. The College offers associate of applied science degrees in building maintenance, building trades, data processing, forest technology, natural resources, and secretarial science. Associate of arts degrees offered include: general business, elementary education, child development, fine arts, general studies, human services, and Lakota studies. Bachelor of arts degrees are offered in human services, including criminal justice emphasis, mental health emphasis, or a combination. Bachelor of science degrees are offered in elementary education, including concentrations in Lakota studies/social studies, early childhood education, middle school, or selected. A master of education in elementary education is also available.

**Sisseton-Wahpeton Community College**  
 Agency Village  
 P. O. Box 689  
 Sisseton, SD 57262  
 Gwen Hill, President  
 605/698-3966  
 FAX: 605/698-3132

Sisseton-Wahpeton Community College is a comprehensive two year community college. Fully accredited and chartered by the Sisseton-Wahpeton nation, it awards two year degrees and certificates in academic programs, vocational education, nursing (RN), adult education and Dakota studies. The college has won national recognition for its work in Native American languages and has recently completed a major expansion of its library.

**South Dakota**

---

**BIA/Church Supported  
Elementary/Secondary Schools**

**American Horse School**

P. O. Box 660  
Allen, SD 57714  
Donald Standing Elk, Principal  
605/455-2480  
FAX: 605/455-2249

Day school; grades K-8. Under jurisdiction of Pine Ridge Agency.

**Cheyenne-Eagle Butte School**

Eagle Butte, SD 57625  
Gloria Wilkinson, Principal  
605/964-8744

Boarding school; grades K-12. Enrollment is 900.  
Under jurisdiction of Cheyenne River Agency.

**Crazy Horse School**

P. O. Box 260  
Wanblee, SD 57577  
Tom Raymond, Elementary Principal  
Bob Foudray, Secondary Principal  
605/462-6511  
FAX: 605/462-6510

Day school; grades K-12. Under jurisdiction of Pine Ridge Agency.

**Crow Creek Tribal Schools**

High School -  
P. O. Box 12  
Stethan, SD 57346  
Norma Tibbitts, Principal  
605/352-2455

Boarding school; grades 7-12. Under jurisdiction of Crow Creek/Lower Brule Agency.

**Elementary School -**

P.O. Box 469  
Ft. Thompson, SD 57339-0469  
Sherman Monroe, Principal  
605/245-2372

Day School; grades K-6. Enrollment is 200. Under jurisdiction of Crow Creek/Lower Brule Agency.

**Enemy Swim Day School**

R.R. 1, Box 87  
Waubay, SD 57273  
Edna Greenhagen, Principal  
605/947-4605

Day school; grades K-3. Under jurisdiction of Sisseton Agency.

**Flandreau Indian School**

1000 North Crescent Street  
Flandreau, SD 57023  
Ron Gorneau, Principal  
605/997-2724  
FAX: 605/997-2601

Boarding school; grades 9-12. Enrollment is 650.  
Under jurisdiction of Aberdeen Area Office.

**Little Eagle Day School**

Little Eagle, SD 57639  
Adele F. Little Dog, Principal  
605/823-4235

Day school; grades K-8. Enrollment is 100. Under jurisdiction of Standing Rock Agency.

**Little Wound Day School**

P. O. Box 500  
Kyle, SD 57752  
Edwin Del Rio Martinez, Superintendent  
605/455-2461  
FAX: 605/455-2340

Day school; grades K-12. Enrollment is 500. Under jurisdiction of Pine Ridge Agency.

**Loneman Day School**

P. O. Box 50  
Oglala, SD 57764  
Ray Phipps, Ph.D., Principal  
605/867-5633

Day school; grades K-8. Under jurisdiction of Pine Ridge Agency.

**Lower Brule Day School**

P. O. Box 245  
Lower Brule, SD 57548  
Betty Belkham, Elementary Principal  
Cody Russell, Secondary Principal  
605/473-5382 (Elementary)  
605/473-5510 (Secondary)

Day school; grades K-12. Enrollment is 225. Under jurisdiction of Crow Creek/Lower Brule Agency.

**Manderson Day School**  
P.O. Box 350  
Manderson, SD 57756  
R.J. Trujillo, Principal  
605/867-5433

Day school; grades K-8. Enrollment is 225. Under jurisdiction of Pine Ridge Agency.

**Marty Indian School**  
P. O. Box 187  
Marty, SD 57361  
Neil Goter, Secondary Principal  
John Wranek, Elementary Principal  
605/384-5431

Boarding school; grades K-12. Under jurisdiction of Aberdeen Area Office.

**Pierre Indian Learning Center**  
HCR 31, Box 148  
Pierre, SD 57501-9408  
Darrell Jeanotte, Principal  
605/224-8661

Boarding school; grades 1-8. Enrollment is 100. Special education school for children with learning disabilities or emotional problems. Contract school serving 15 reservations in North and South Dakota, and Nebraska. Under the jurisdiction of Aberdeen Area Office.

**Pine Ridge School**  
P.O. Box 1202  
Pine Ridge, SD 57770  
Gerald Ray, Principal  
605/867-5198

Boarding school; grades K-12. Enrollment is 1,000. Under jurisdiction of Pine Ridge Agency.

**Porcupine Day School**  
P.O. Box 180  
Porcupine, SD 57772  
Stanton Curtis, Principal  
605/867-5336

Day school; grades K-8. Under jurisdiction of Pine Ridge Agency.

**Promise Day School**  
HCR 30, Box 10  
Mobridge, SD 57601  
Tina Farmer, Principal  
605/733-2148

Day school; grades K-8. Under jurisdiction of Cheyenne River Agency.

**Red Cloud Indian School**  
Holy Rosary Mission  
Pine Ridge, SD 57770

Robert Brave Heart, Secondary Principal  
Don Wince, Elementary Principal  
605/867-5491

Boarding school; grades K-12. They have a Montessori pre-school (ages 3 and up, including some first graders).

**Red Scaffold Day School**  
HCR 71, Box 97  
Dupree, SD 57626  
605/538-4315

Day school; grades K-12. Under jurisdiction of Cheyenne River Agency.

**Rock Creek Day School**  
Bullhead, SD 57621  
Emmet White Temple, Principal  
605/823-4971

Day school; grades K-8. Under jurisdiction of Standing Rock Agency.

**Rosebud Dormitories**  
P.O. Box 669  
Mission, SD 57555  
Eustace Night Shield, Home Living Specialist  
605/856-4486

Dormitory school; grades 1-12. Enrollment is 250. Under jurisdiction of Rosebud Agency.

**St. Francis Indian School**  
P.O. Box 155  
St. Francis, SD 57572  
Harlan Krein, Superintendent  
Mark Bordeaux, Elementary Principal  
Bob Sage, High School Principal  
605/747-2299

Boarding school; grades K-12. Under jurisdiction of Rosebud Agency.

## South Dakota

---

**Swift Bird Day School**  
HCR 3, Box 119  
Gettysburg, SD 57442  
George Schreiber, Principal  
605/733-2143

Day school; grades K-8. Under jurisdiction of Cheyenne River Agency.

**Takini School**  
HC 77, Box 537  
Howes, SD 57748  
Don Farlee, Secondary Principal  
Mary Ann Bowman, Elementary Principal  
605/538-4399

Day school; grades K-12. Enrollment is 260.

**Tiospa Zina Tribal School**  
P. O. Box 719  
Agency Village, SD 57262  
Ted Brancov, Secondary Principal  
Michelle Knee, Elementary Principal  
605/698-3953  
FAX: 605/698-7873

Day school; grades K-12. Under jurisdiction of Sisseton Agency.

**White Horse Day School**  
P.O. Box 7  
White Horse, SD 57661  
Merlyn Schutterle, Principal  
605/733-2183

Day school; grades K-8. Under jurisdiction of Cheyenne River Agency.

**Wounded Knee District School**  
P. O. Box 350  
Manderson, SD 57756  
A.J. Trujillo, Principal  
605/867-5433

Day school; grades K-8. Enrollment is 225. Under jurisdiction of Pine Ridge Agency.

### Media

**Dakota Wowapipi**  
P.O. Box 157  
Marty, SD 57361

**Drumbeat**  
Crow Creek High School  
Stephan, SD 57346

**Eagle Butte News**  
P.O. Box 210  
Eagle Butte, SD 57629

**Flandreau Spirit**  
Flandreau Indian High School  
Flandreau, SD 57028

**Indian Country Today**  
(formerly The Lakota Times)  
P. O. Box 2180  
1920 Lombardy Dr.  
Rapid City, SD 57709-2180  
605/341-0011  
FAX: 605/341-6940

*Indian Country Today* is the only national American Indian newspaper published weekly. It contains three sections, including *The Lakota Times*, which focuses on news from South Dakota Indian communities. *Indian Country Today* highlights news of national and immediate importance. Their Washington, DC bureau office provides the latest information about policy and legislative issues and changes impacting tribal communities.

**Indian Education Newsletter**  
P.O. Box 1193  
Pierre, SD 57501

**Indian Studies Bulletin**  
University of South Dakota  
Vermillion, SD 57069

**Little Sioux**  
Rosebud Educational Society  
St. Francis, SD 57572

**Native Times**  
P.O. Box 3300  
Rapid City, SD 57709

**News Bulletin**  
Cheyenne River Agency  
Eagle Butte, SD 57625

**Paha Sapa Wahosi**  
Black Hills State College  
Spearfish, SD 57783

**Pierre Indian Learning Center News**  
Star Route 3  
Pierre, SD 57501



**Project Media Watch**  
317 South Henry  
Pierre, SD 57501

**Red Cloud Country**  
Red Cloud Indian School  
Pine Ridge, SD 57770

**Rosebud Sioux Herald**  
P.O. Box 65  
Rosebud, SD 57570

**Sioux Journal**  
Eagle Butte, SD 57625

**Sioux Sun**  
PHS Indian Hospital  
Rapid City, SD 57701

**Sisseton Agency News**  
Sisseton BIA Agency  
Sisseton, SD 57262

**SOTA IYA YE YAPI**  
P.O. Box 506  
Agency Village, SD 57262

**UTSD Newsletter**  
P.O. Box 1193  
Pierre, SD 57501

**WNAX**  
3rd and Mulberry  
Yankton, SD 57078

**KILI - FM**  
Lakota Communications  
P. O. Box 150  
Porcupine, SD 57772  
605/867-5002

American Indian Radio Project.

**KINI - FM**  
Rosebud Educational Society  
P. O. Box 146  
St. Francis, SD 57572  
605/747-2291

**KUSD - TV**  
310 E. Clark Street  
Vermillion, SD 57069  
605/677-5861

## Libraries

**American Indian Culture Research Center Library**  
Box 98  
Blue Cloud Abbey  
Marvin, SD 57251  
605/432-5528

The library holds a collection of more than 8,000 books on American Indian culture.

**Badlands National Monument Library**  
P. O. Box 72  
Interior, SD 57750

A collection of 1,000 books and 500 bound periodicals on the Badlands and Indians of South Dakota is maintained.

**The Center for Western Studies Library**  
Augustana College  
29th & S. Summit  
Sioux Falls, SD 57197  
605/336-4007

This public library maintains a collection of 30,000 volumes of Trans-Mississippi West and Upper Great Lakes archaeology, anthropology and ethnology.

**Crazy Horse Memorial Foundation Library**  
Ave. of the Chiefs, The Black Hills  
Crazy Horse, SD 57730-9998  
605/673-4681

The library contains a collection of 15,000 volumes on art, Indian culture and history.

**The Heritage Center Library**  
Red Cloud Indian School  
Pine Ridge, SD 57770  
605/867-5491

The library maintains a collection of 1,000 volumes on Indian history and culture.



## South Dakota

**Institute of American Indian Studies Library**  
University of South Dakota  
Vermillion, SD 57069  
605/677-5209

The library houses the American Indian Research Project and maintains a collection of 1,500 oral interview tapes with emphasis on tribes of the Northern Plains; also a collection of about 1,000 books on ethnology and contemporary affairs of the northwest Plains Indians. It is open to the public by appointment.

**Lakota Archives and Historical Research Center**  
Sinte Gleska College  
P. O. Box 490  
Rosebud, SD 57570  
605/747-2263

The college library, open to the public, maintains the records of the Rosebud Sioux Tribe and Sinte Gleska College; a large collection of Native American periodicals and manuscript material related to the Rosebud Sioux Reservation, including records of the Episcopal Mission which date back to the 1870's.

**The Oglala Lakota Historical Center Library**  
Box 490  
Oglala Lakota College  
Kyle, SD 57752  
605/455-2321

Holdings include tribal college and government records; personal papers of Dr. Valentine T. McGillycuddy; photographs and oral histories, and other historical material.

**South Dakota Historical Resource Center**  
Memorial Bldg.  
Pierre, SD 57501

The center's collection contains 1,000 books concerning Indian history and culture, with emphasis on the Sioux Indians.

**W.H. Over State Museum Library**  
414 East Clark  
Vermillion, SD 57069  
605/677-5228

A collection on Northern Plains ethnography and history is maintained.

## Museums, Monuments and Parks

**Agricultural Heritage Museum**  
South Dakota State University  
Brookings, SD 57007

Their special collection includes the Indian Agricultural Heritage Collection of South Dakota.

**American Indian Culture Research Center**  
Blue Cloud Abbey  
Marvin, SD 57251  
605/432-5528

The center maintains a collection of Maria pottery and other artifacts. The research library consists of 2,500 Native-American books.

**Bear Butte State Park**  
2209 Thompson Street  
Sturgis, SD 57785  
605/347-3176

Located on an American Indian traditional religious site, exhibits include archaeological site materials, Indian clothing and religious artifacts.

**Buechel Memorial Lakota Museum**  
St. Francis Indian Mission  
350 South Oak Street, Box 149  
St. Francis, SD 57572  
605/747-2828

This Sioux Indian museum exhibits ethnographic material of the reservation period of the Rosebud and Pine Ridge Sioux. Publications include *A Grammar of Lakota*; *Everyday Lakota*; *Dictionary*; *Bible History in Lakota*; *Lakota Prayer Book*; *Lakota Names and Traditional Uses of Native Plants by Sigangu People*; *Crying for a Vision*; *A Rosebud Sioux Trilogy*. Indian arts and crafts are sold.

**Center for Western Studies**  
Augustana College  
P. O. Box 727  
Sioux Falls, SD 57197  
605/336-4007

The historical, research and archival center maintains a collection of American art work and artifacts. Publications include *Sundancing at Rosebud and Pine Ridge*.

**Dacotah Prairie Museum**  
21 South Main St.  
Box 395  
Aberdeen, SD 57401

The museum exhibits Sioux Indian artifacts - beadwork, quillwork, decorated ceremonial and functional leather items, pictographs, ghost dress, and pictures. Sales shop features contemporary Sioux handicrafts.

**Dakota Territorial Museum**  
P. O. Box 1033  
Yankton, SD 57078

The museum exhibits Indian artifacts from the Dakota territory, including the history of Yankton.

**Harvey V. Johnson American Indian Cultural Center Museum**  
Cheyenne River Reservation  
P. O. Box 857  
Eagle Butte, SD 57625

**The Heritage Center**  
Red Cloud Indian School  
Pine Ridge, SD 57770  
605/867-5491

Founded in 1982, this Indian art museum is housed in the 1888 Holy Rosary Mission, the site of the battle the day after the Wounded Knee Massacre. It maintains a collection of paintings by American Indians artists, mainly Oglala Sioux as well as star quilt, beadwork, quillwork and pottery collections, graphics, Eskimo prints and Northwest Coast prints.

**Indian Museum of North America**  
Crazy Horse Memorial Foundation  
Avenue of the Chiefs-The Black Hills  
Crazy Horse, SD 57730-9998  
605/673-4681

Exhibits include Indian art and artifacts. Publications include *Crazy Horse Progress*.

**Oscar Howe Cultural Center**  
119 West Third  
Mitchell, SD 57301

A center housing collection of twelve paintings by Oscar Howe, honoring the Sioux artist.

**Robinson Museum**  
500 E. Capitol  
Memorial Building  
Pierre, SD 57501  
605/773-3797

A special collection contains primarily Sioux Indian artifacts. Publications include *South Dakota History*, a quarterly.

**Sioux Indian Museum**  
P. O. Box 1504  
Rapid City, SD 57709  
605/348-0557

Administered by the federal Indian Arts and Crafts Board, they exhibit historic Sioux arts and other American Indian arts and crafts of the U.S. They have a one-person exhibition series and a museum sales shop.

**Siouxland Heritage Museum**  
**The Pettigrew Museum**  
131 North Duluth  
Sioux Falls, SD 57104

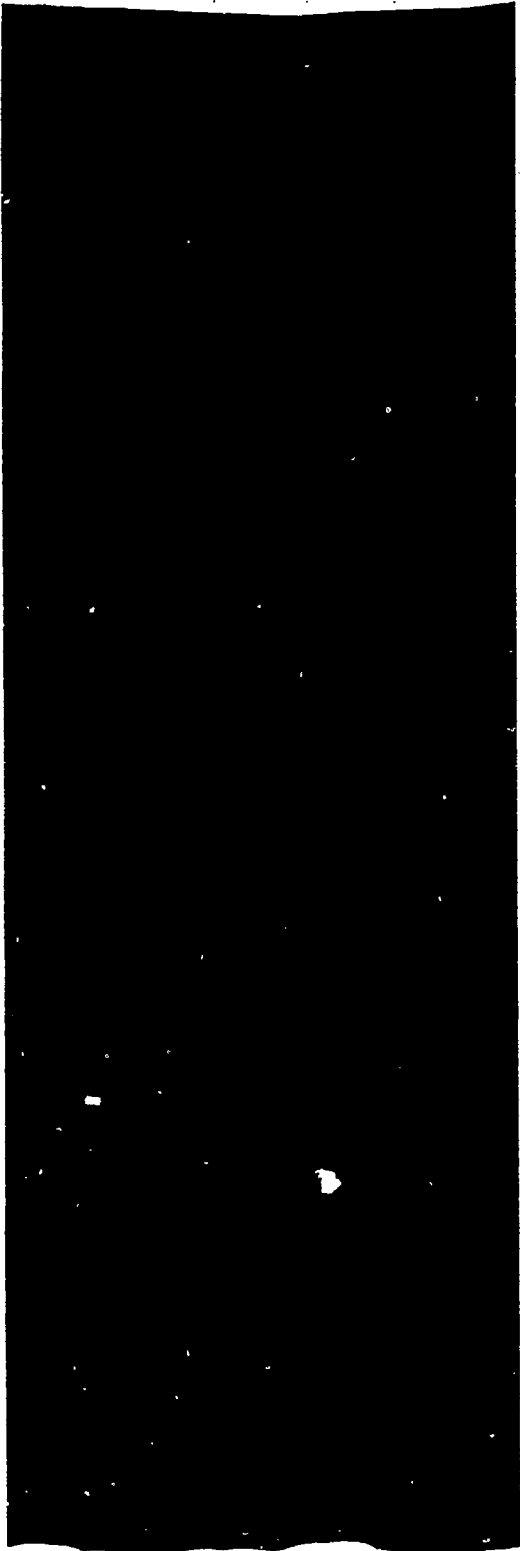
Special collections of the Pettigrew-Drady Indian collection emphasize Dakota (Sioux) Indian artifacts, circa 1870-1920, including clothing, tools, pipes, weapons, tepee, ghost dance shirts, and a photographic collection covering 1870-1900.

**South Dakota State Museum**  
Cultural Heritage Center  
Pierre, SD 57501-2217  
605/773-3458

Founded in 1901, it exhibits Sioux items collected by Delorme W. Robinson prior to 1910, the Mary C. Collins collection of Lakota items. Lakota game pieces collected by J. Walker, and paintings by Oscar Howe.

**W.H. Over State Museum**  
414 East Clark  
Vermillion, SD 57069  
605/677-5228

Founded in 1882, it displays Sioux artifacts from the late 19th century to the present. Special collections include the Clark Memorial Collection of Plains Indian artifacts, and Stanley J. Morrow historical photographs, from 1869-1883.



*Wyoming*



## Wyoming

### Federally Recognized Tribes

**Northwestern Band of Shoshone Nation**  
Star Route 2W  
Rock Springs, WY 82901

Tribe: Shoshone

**Wind River Reservation**  
P. O. Box 538 (Shoshone)  
P. O. Box 396 (Arapahoe)  
Fort Washakie, WY 82514  
Darwin St. Clair, Shoshone Chairperson  
307/332-3532/4932  
Harvey Spoonhunter, Arapahoe Chairperson  
307/332-6120/5006

Tribes: Arapaho and Shoshone. In residence: 5,000 (tribal roll: 7000). Area: 1,887,372 acres. Located in east-central Wyoming.

### State Government and Private Agencies/Organizations

**Division of Health Care Financing**  
6101 Yellowstone Road, Room 259 - B  
Cheyenne, WY 82002  
Maureen Kierman, Managing Consultant  
307/777-6034

Provides health services to Medicaid eligible Native Americans.

**Professional Teaching Standards Board**  
Hathaway Bldg.  
2300 Capitol Avenue  
2nd Floor  
Cheyenne, WY 82002  
Linda Stowers, Director  
307/777-6261  
FAX: 307/777-6234

Provides certification for teachers, administrators and other personnel. Also certifies Arapahoe and Shoshone language instructors and provides in-service and staff development programs.

**Wyoming Governor's Indian Liaison Commission**  
Community Services  
Hathaway Bldg. - Room 361  
Cheyenne, WY 82002  
Gary Maier  
307/777-6779

**Wyoming Indian Education Association**  
P.O. Box 90  
Ft. Washakie, WY 82514  
Larry Murrey, President  
307/332-9249

**Wyoming State Indian Commission**  
2660 Peck Avenue  
Riverton, WY 82501

### American Indian Centers

**Thunderchild Treatment**  
VA Hospital, Bldg. 24  
Sheridan, WY 82801  
307/672-3484

### Post-Secondary Institutions and Related Organizations

**University of Wyoming**  
Indian Education Office (IEO)  
American Indian Studies  
P. O. Box 3431  
Laramie, WY 82071-3254  
307/766-6521  
FAX: 303/766-2697

The Indian Education Office (IEO) provides support services to American Indian students who attend the University of Wyoming. The IEO offers a holistic approach with a supportive atmosphere and coordinates efforts with other UW offices, the student's tribe, and the student's family.

### BIA/Church Supported Elementary/Secondary Schools

**St. Stephens Indian School**  
P. O. Box 345  
St. Stephen, WY 82524  
Carl Baxter, Secondary Principal  
Robert Stearmer, Elementary Principal  
307/856-4147

Boarding school; grades K-12. Under jurisdiction of Billings Area Office.

## Wyoming

**Wyoming Indian Elementary School**  
Box 340, Lander Route  
Ethete, WY 82520  
Scott Wiblemo, Principal  
307/332-2053

Public school servicing the Wind River Reservation.  
Grades K-8 with over 300 students.

**Wyoming Indian High School**  
636 Blue Sky Highway  
Ethete, WY 82520  
Loni Hoffman, Principal  
307/332-9765

Public school servicing the Wind River Reservation.  
Grades 9-12 with over 150 students.

### Media

**KIEA - FM**  
Wind River Indian Education Association  
Wyoming Indian High School  
Ethete, WY 82520  
307/332-2793

American Indian Radio Project.

**Thunderchild News**  
Building 24, VAMC  
Sheridan, WY 82801

**Wyoming Indian High School**  
Box 145 Lander Route  
Ethete, WY 82520

### Libraries

**Harold McCracken Research Library**  
Buffalo Bill Historical Center  
P. O. Box 1000  
720 Sheridan Ave.  
Cody, WY 82414  
307/587-4771

The library houses a collection of 1,500 volumes on the Plains Indians; some material on the Sheepeaters; and vertical files on specific tribes, in the 19th to 20th Century. Collections of Yellowstone National Park Indians photos and photographs by Anne Black, D. H. Barry, J.H. Sharp, and L.A. Huggman; and Bureau of American Ethnology Annual Reports from the 1880's to 1940's are also maintained.

**Wyoming State Archives and Historical Department -  
Department of Commerce**  
2301 Central Avenue  
Barrett Building  
Cheyenne, WY 82002  
Jim Donahue, Administrator  
307/777-7826

### Museums, Monuments and Parks

**Arapahoe Cultural Museum**  
Wind River Reservation  
P. O. Box 127  
Ethete, WY 82520

**Bradford Brinton Memorial Museum**  
P. O. Box 23  
Big Horn, WY 82833  
307/672-3173

Exhibits include American Indian regalia, bead and quill work, tools, baskets, blankets, weapons, and interpretive materials; focusing mostly on Plains tribes but also the Southwest and Northwest Coast tribes.

**Colter Bay Indian Art Museum**  
Grand Teton National Park  
Moose, WY 83013

It displays approximately 1,500 items of American Indian art collected by David Vernon from most culture areas, with emphasis on Northern Plains and Eastern Woodlands, from 1875-1925. Special programs include Indian culture films, guided tours, and Indian crafts demonstrations.

**Plains Indian Museum**  
Buffalo Bill Historical Center  
P. O. Box 1000  
720 Sheridan Ave.  
Cody, WY 82414  
307/587-4771

The museum contains collections of ethnographic and archaeological material, and Indian artifacts.

**University of Wyoming  
Anthropology Museum**  
Anthropology Building  
Laramie, WY 82071  
307/766-5136

A collection of American Indian artifacts is maintained.

Wyoming State Museum - Department of Commerce  
2301 Central Avenue  
Barrett Building  
Cheyenne, WY 82002  
Dona Bachaman, Director  
307/777-7510

Displays focus on Sioux, Arapaho, Cheyenne,  
Blackfeet, Shoshone and Flathead Indian artifacts.

**Add Us to McREL's *Directory of Native Education Resources***

Is your organization involved in the education of Native students? Does your organization or publication serve a statewide, multi-state, or national audience? If so, then you should be in the next edition of the *Directory of Native Education Resources* in the Mid-Continent Region. Please fill out the form below and mail it back to us. We will add your organization to our database and will get back in touch when we begin our next revision.

Organization: \_\_\_\_\_

Address: \_\_\_\_\_

\_\_\_\_\_

\_\_\_\_\_

\_\_\_\_\_

Contact: \_\_\_\_\_

Phone (1): \_\_\_\_\_

Phone (2): \_\_\_\_\_

FAX: \_\_\_\_\_

Description: In 100 words or less, describe programs and periodicals of this organization that are related to the education of Native children and adults.

Mail to:  
Mid-Continent Regional Education Laboratory  
2550 South Parker Road, Suite 500, Aurora, CO 80014