

ED 375 884

JC 940 600

AUTHOR Grosset, Jane; Estrada, Daniel  
 TITLE A Profile of CCP (Community College of Philadelphia)  
 Transfer Students Enrolled at [the] State System of  
 Higher Education Universities during the Fall 1993  
 Semester. Institutional Research Report No. 79.  
 INSTITUTION Philadelphia Community Coll., PA. Office of  
 Institutional Research.  
 PUB DATE Aug 94  
 NOTE 34p.; For a related report, see JC 940 598.  
 PUB TYPE Reports - Research/Technical (143)

EDRS PRICE MF01/PC02 Plus Postage.  
 DESCRIPTORS \*Academic Achievement; \*College Transfer Students;  
 Community Colleges; Females; Followup Studies; \*Grade  
 Point Average; Higher Education; Males; \*Outcomes of  
 Education; School Holding Power; \*Student  
 Characteristics; Tables (Data); Two Year Colleges  
 IDENTIFIERS Community Colleges of Philadelphia PA

## ABSTRACT

A study was conducted at the Community College of Philadelphia (CCP) to examine characteristics and outcomes for 216 former students who had transferred to State System of Higher Education (SSHE) universities in fall 1993. The SSHE universities provided data on the students regarding major, credits transferred, current enrollment status, cumulative grade point average (GPA), gender, race, and age. In addition, CCP collected information from the institutional database on graduation status, number of semesters enrolled, and cumulative credits earned at CCP. Study findings included the following: 1) while females comprised approximately two-thirds of the student body at CCP, only 48.1% of the transfers were female; (2) 79.2% of the transfer students were between 18 and 25 years of age, 9.3% were between 26 and 30, 7.3% were between 31 and 40, and 4.2% were 41 or older; (3) 48.4% of the students were White, while 45.6% were Black; (4) an average of 68 credits were transferred; (5) 62.8% earned a GPA between 2.0 and 2.99 at the transfer university, while 19.6% earned a GPA between 3.0 and 4.0, and 17.6% between 0 and 1.99; (6) at CCP, 55.5% of the transfers had earned a GPA between 2.0 and 2.99, 36.6% between 3.0 and 4.0, and 7.9% between 0 and 1.99; (7) over half of the students had enrolled at CCP for 4 to 8 semesters, and 30.1% had earned either an associate degree or certificate prior to transfer; and (8) the most common programs of study at SSHE universities were education, business, and social science programs. Data tables are included. (KP)

\*\*\*\*\*  
 \* Reproductions supplied by EDRS are the best that can be made \*  
 \* from the original document. \*  
 \*\*\*\*\*



**A Profile of CCP Transfer Students Enrolled at  
State System Higher Education Universities  
During the Fall 1993 Semester**

U.S. DEPARTMENT OF EDUCATION  
Office of Educational Research and Improvement  
EDUCATIONAL RESOURCES INFORMATION  
CENTER (ERIC)

- This document has been reproduced as received from the person or organization originating it
- Minor changes have been made to improve reproduction quality
- Points of view or opinions stated in this document do not necessarily represent official OERI position or policy

"PERMISSION TO REPRODUCE THIS  
MATERIAL HAS BEEN GRANTED BY

J. Grosset

TO THE EDUCATIONAL RESOURCES  
INFORMATION CENTER (ERIC)

**Institutional Research  
Report # 79  
Jane Grosset  
Daniel Estrada  
August 1994**

**BEST COPY AVAILABLE**

JC 9410 600

## Introduction

The CCP Office of Institutional Research received information from the State System of Higher Education (SSHE) about former CCP students who transferred to SSHE universities during the Fall 1993 semester. The 14 universities that comprise the SSHE and the number of former CCP students who transferred to each university are reported in Table 1 in the Appendix. During the studied time period, 226 former CCP students were identified as SSHE transfers. Most transferred to either West Chester (36.3%) or Cheyney (29.2%).

Considering the relatively high rate of transfer that has been documented in a number of institutional research reports that preceded this one, it is clear that most CCP transfers choose to attend non-SSHE universities. Geographic proximity is the likely explanation for this occurrence. It was reported in a 1970 statewide study that 51% of Pennsylvania community college transfers enrolled in a university located within an 18 mile radius of the community college they attended. At that time, an added 21% transferred to colleges within an 18 to 50 mile radius. While these figures are nearly 25 years old, it appears that geographic proximity continues to be an important consideration for CCP transfers. With the exception of West Chester and Cheyney, most of the SSHE universities are not located near Philadelphia, and this is reflected in the

enrollment figures in Table 1 in the Appendix. Figure 1 in the Appendix is a map of Pennsylvania on which the location of SSHE universities is shown.

Each SSHE university provided the following information about CCP transfer students:

- Major
- Credits transferred from CCP and other colleges attended by the student
- Full-time/part-time enrollment status
- Cumulative GPA
- Gender
- Race
- Age

The following CCP-related information was added from the institutional data base for each identified student:

- CCP graduation status
- # of semesters enrolled at CCP
- # of cumulative credits earned at CCP

In this report, information has been provided only for those universities that enrolled at least five former CCP students over the studied time period. This criterion excluded five universities from subsequent analyses and resulted in a sample of 216 students.

#### Gender

Overall, males were slightly more likely than females to be transfers to the SSHE (Figure 2), although this was not

true across all universities (Table 2). The schools that enrolled a greater percentage of females included Cheyney, West Chester and Bloomsburg.

Compared with the gender profile of College-wide enrollments, which currently is approximately two-thirds female and one-third male, it is apparent that females are disproportionately underrepresented among transfers to SSHE universities.

#### Age

Younger students were more likely to transfer into the SSHE than were older students (Figure 3). Seventy-nine percent (79%) of student transfers to SSHE universities were between 18 and 25 years of age at the time of transfer. The remaining students fell into the following age groups: 9.3% were between 26 and 30 years; 7.4% were aged 31 to 40; and 4.2% were over the age of 40 when they transferred. Compared with the age profile of recent College-wide enrollments, it appears as though younger CCP students were more likely to be SSHE transfers than were older students.

There was some variation in age across SSHE universities (Table 3). All transfer students to Kutztown, Lockhaven and Shippensburg were between 18 and 25 years old. Cheyney, West Chester and Bloomsburg transfer enrollments were characterized by greatest age diversity.

### Race

CCP transfers into the SSHE universities were slightly more likely to be white (48.4%) than black (45.6%). Small numbers of Hispanic and Asian students were identified as transfers (Figure 4). Hispanic and Asian students were underrepresented among SSHE transfers. The proportions of Asians and Hispanics among College-wide enrollments are larger than their proportions among the transfers.

Cheyney and Kutztown transfer enrollments were characterized as most racially homogeneous across the SSHE universities included in Table 4; nearly all transfers to Cheyney were black while nearly all transfers to Kutztown were white.

The universities which enrolled the greatest proportion of minority transfer students other than Cheyney were Bloomsburg, Millersville and East Stroudsburg.

### Credits Transferred

Overall, former CCP students transferred an average of 68 credits into the SSHE (Table 5). It should be noted that the credits in Table 5 include credits transferred from all prior colleges. Consequently, if a student earned credits at a college in addition to CCP, prior to transferring to the SSHE university, these credits would be reflected in the values reported in Table 5. Former CCP students who

transferred the largest number of credits enrolled at Bloomsburg, East Stroudsburg, Lockhaven and West Chester. Fewest credits were transferred into Kutztown.

A large number of CCP credits were accepted by SSHE universities. Over 46 percent of the students transferred 76 credits or more, representing 3 years of full-time college credit (Figure 5).

#### GPA Earned at Transfer University

Overall, 82% of the former CCP students earned a GPA of at least a 2.0 (Figure 6). A small percentage of transfers (17.6%) earned GPAs between 0 and 1.99. This information is more positive than transfer information provided by the SSHE in years past. In IR Report #74 it was reported that 25% of CCP transfers to the SSHE in years prior to Fall 1993 earned GPAs between 0 and 1.99.

Table 6 contains the cumulative GPAs earned at the SSHE universities. Students enrolled at Bloomsburg, on average, performed the best out of all the transfers to SSHE universities. All of the 5 students at Bloomsburg earned a GPA between 2.0 and 4.0. On the other hand, students enrolled at Millersville experienced greatest academic difficulty as measured by GPA. Students at Cheyney and West Chester, who comprise most of the student transfers to the SSHE, performed well in terms of GPA as seen in Table 6.

Note that in Table 6 most of the transfers with missing

GPAs were first semester transfers at the time that the information was gathered; consequently there were no GPAs established by these students.

#### GPA Earned at CCP

CCP cumulative GPA information, which appears in Figure 8, indicates that students met with slightly more academic success at CCP than at the transfer university. Whereas 35.4% of the CCP GPAs were between 3.0 and 4.0, only 12.8% of the transfer University GPAs fell within this range. Students who transferred to Bloomsburg earned highest GPAs at CCP while students who transferred to Cheyney and East Stroudsburg earned lowest GPAs (Table 7).

Table 8 contains correlation coefficients associated with GPAs at CCP and the SSHE university. Intuitively, a large positive coefficient would be expected since this would indicate that better academic performance at CCP was statistically associated with better academic performance at the transfer school. This was not the case for any of the transfer schools. Moderately sized positive coefficients were associated with Millersville and West Chester and, to a lesser extent, Cheyney. There was virtually no association between student academic performance at CCP and East Stroudsburg and Indiana University. The most troubling coefficients in Table 8 are those associated with Shippensburg and Bloomsburg which indicate that students who earned highest GPAs at CCP, earned lowest GPAs at these two



SSHE universities. On a cautionary note, this information is based on small sample sizes and should be viewed accordingly.

### CCP Retention

Tables 9 and 10 contain CCP persistence measures. Table 9 contains mean values for the number of semesters students were enrolled at CCP and cumulative CCP credits earned prior to transfer. The third column in Table 9 contains the average number of credits per semester. Overall, transfers to the SSHE were enrolled an average of 5.4 semesters at CCP and completed an average 41.4 CCP credits prior to transfer. These averages can be seen in the bar graphs in Figures 9A and 9B. Students who transferred to Bloomsburg and West Chester typically were enrolled at CCP for more semesters than CCP students who transferred elsewhere. Students who transferred to Kutztown were at CCP for the least number of semesters.

Students who transferred to Bloomsburg, West Chester and Lockhaven earned the largest number of CCP credits prior to transferring while transfers to Kutztown, Shippensburg and East Stroudsburg earned fewest credits. Dividing the average cumulative credits earned by the average number of enrolled semesters gives an approximation of the average semester credit load while at CCP. Based on this calculation, transfers to Kutztown, and Shippensburg enrolled in heavier semester course loads while they were at CCP than other transfers. Students at Cheyney typically took the lightest

semester credit load while enrolled at CCP. Based on this calculation, most of the transfers fell into the 'Part-time' category at CCP (Figure 9C).

Figure 10 and Table 10 contains CCP graduation information. Overall, 30.1% of SSHE transfers earned either an associates degree (28.2%) or certificate (1.9%) from CCP prior to transfer. Transfers to Bloomsburg and West Chester were most likely to have been CCP graduates while no CCP graduates were included among the transfers to Kutztown and Shippensburg.

#### Program of Study

Programs of study at SSHE universities appear in Tables 11A thru 11J. In general, students enrolled in a wide variety of programs at the transfer universities. Since it is easier to observe patterns in program enrollments when analyzing large numbers of transfers, program enrollments at Cheyney and West Chester will be highlighted here.

Elementary Teacher Education was the most popular Cheyney program (24.2%) for CCP transfers (Table 11B). Other Cheyney education-related curricula that attracted former CCP students included Pre-Elementary Early Childhood Education (10.6%) and Special Education (3.0%). 10.6% of CCP transfers to Cheyney enrolled in the Business Administration and Management program. Other business-related enrollments included: Accounting (6.1%), Hotel, Motel and Restaurant Mgmt. (3.0%) and Taxation (1.5%). The General Social

Science program had an enrollment of 13.6%. Small numbers of former CCP students enrolled in Psychology and Political Science-Government at Cheyney.

The same program enrollment patterns were evident in the West Chester distribution (Table 11J). The Elementary Teacher Education program attracted the largest percentage (19.5%) of CCP transfers and a sizeable percentage of enrollments in other education-related programs such as Music Teacher Education (6.1%), Special Education (3.7%), Social Studies Teacher Education (3.7%) and Pre-Elementary Early Childhood Education (2.4%). Business Administration and Management enrollments accounted for 9.8% of CCP student transfers and Accounting had an enrollment of 8.5%. Psychology accounted for 7.3% of West Chester program enrollments.

For the remaining SSHE universities, it was generally true that students enrolled in education, business and social science programs.

#### Summary

SSHE universities, with the exception of West Chester and Cheyney, have not attracted large numbers of CCP transfer students. This is likely because of the distance of most SSHE universities from Philadelphia and the consequent inconvenience for students interested in commuter rather than residential arrangements.

Transfers to the SSHE are somewhat atypical of the CCP student body. SSHE transfers tend to be younger, more likely

to be male, and less likely to be either Asian or Hispanic than are College-wide enrollments.

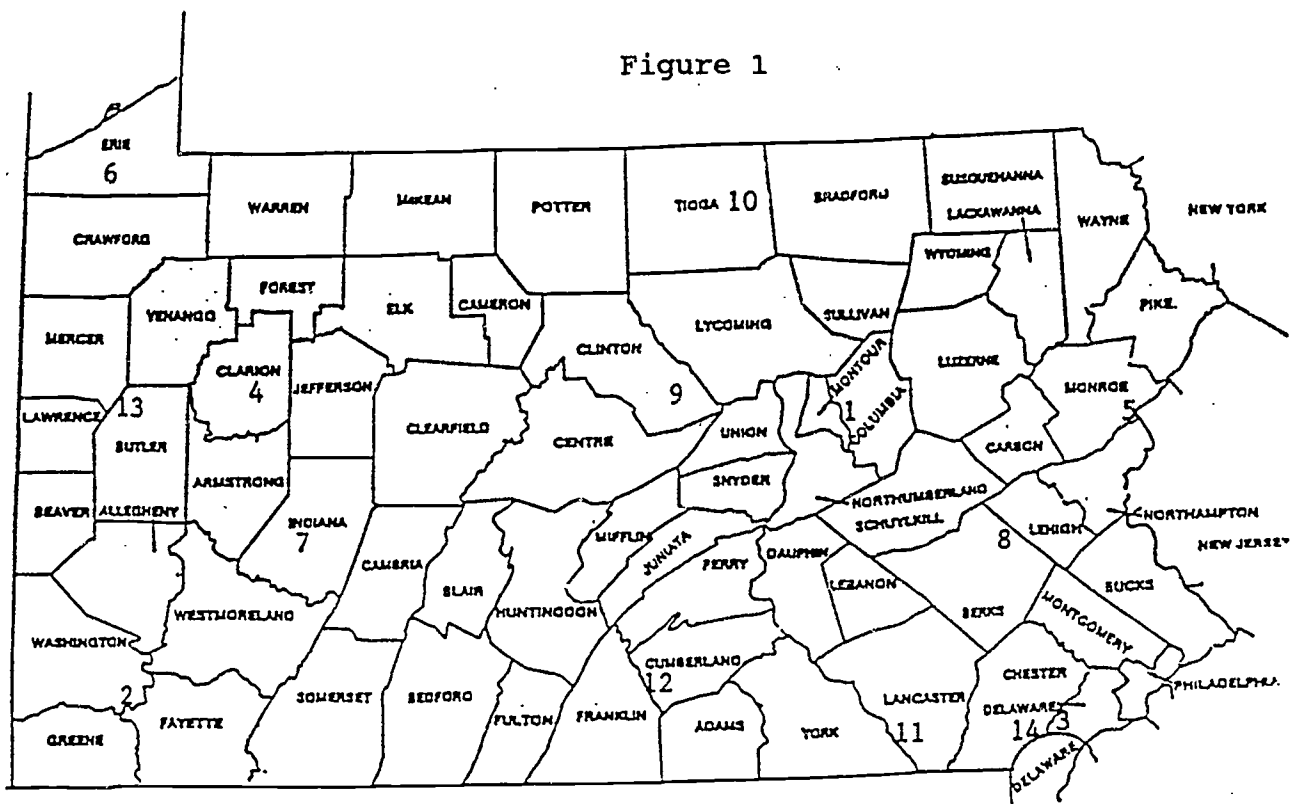
Based on cumulative GPA, approximately 82% of CCP transfers to the SSHE met with academic success at the SSHE university they attended. It appears as though CCP transfers experienced some level of transfer shock since GPAs at the transfer university were, on average, lower than GPAs earned at CCP. There was also an inconsistent relationship between student academic performance at CCP and performance at some of the transfer universities. Students who earned high GPAs at CCP were not always the most likely transfers to earn high GPAs at the SSHE university.

Prior to transfer, students in this study persisted at CCP for a fairly long time. Slightly fewer than one-third of the transfers were CCP graduates and the average transfer student earned 41 CCP credits prior to departure.

The most popular programs of study at SSHE universities were in three areas: 1) education, 2) business and 3) social science programs.

APPENDIX

Figure 1



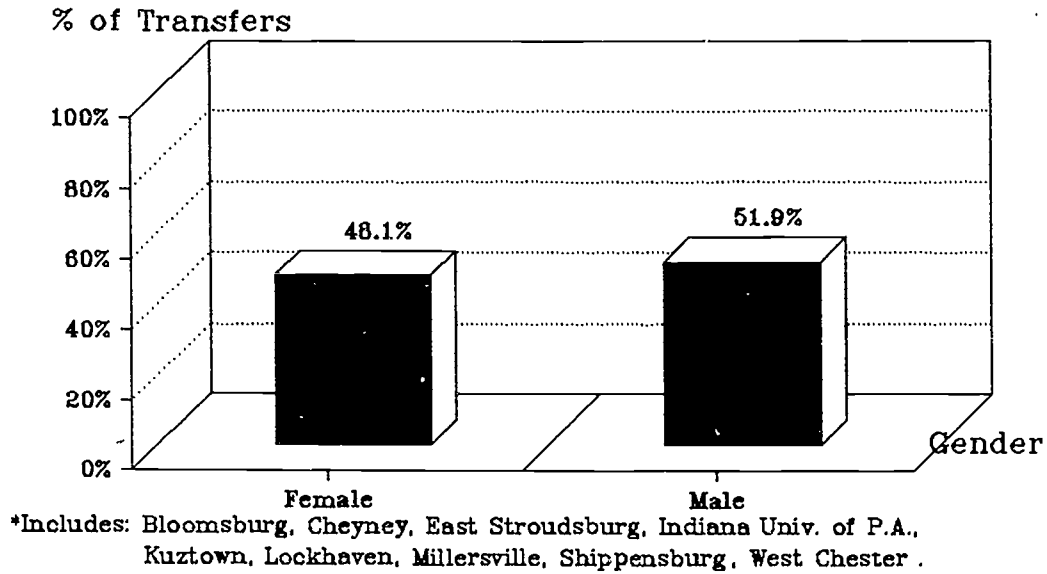
THE STATE SYSTEM OF HIGHER EDUCATION

1. BLOOMSBURG UNIVERSITY OF PENNSYLVANIA
2. CALIFORNIA UNIVERSITY OF PENNSYLVANIA
3. CHEYNEY UNIVERSITY OF PENNSYLVANIA
4. CLARION UNIVERSITY OF PENNSYLVANIA
5. EAST STROUDSBURG UNIVERSITY OF PENNSYLVANIA
6. EDINBORO UNIVERSITY OF PENNSYLVANIA
7. INDIANA UNIVERSITY OF PENNSYLVANIA
8. KUTZTOWN UNIVERSITY OF PENNSYLVANIA
9. LOC. HAVEN UNIVERSITY OF PENNSYLVANIA
10. MANSFIELD UNIVERSITY OF PENNSYLVANIA
11. MILLERSVILLE UNIVERSITY OF PENNSYLVANIA
12. SHIPPENSBURG UNIVERSITY OF PENNSYLVANIA
13. SLIPPERY ROCK UNIVERSITY OF PENNSYLVANIA
14. WEST CHESTER UNIVERSITY OF PENNSYLVANIA

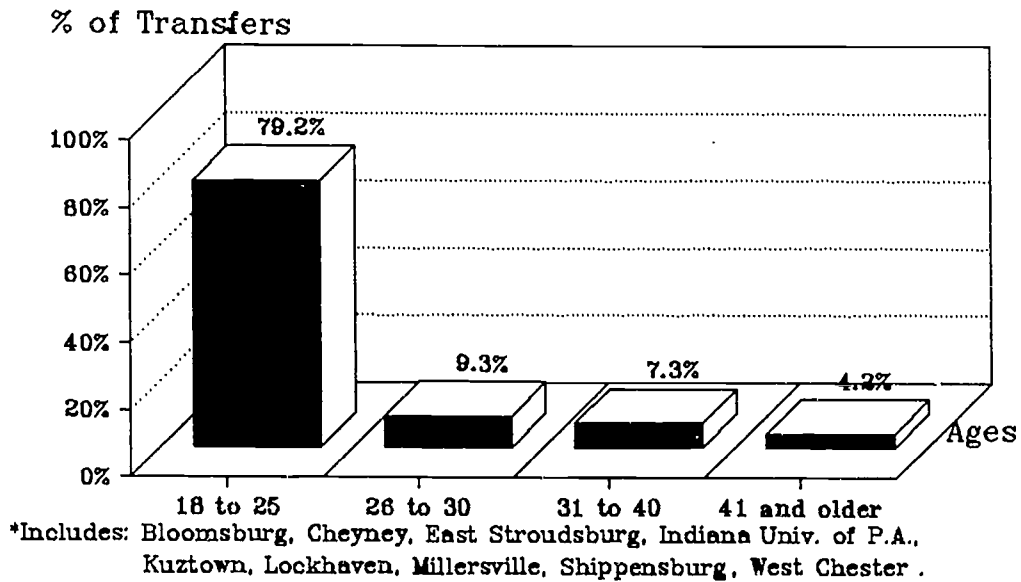
**Table 1**  
**CCP Transfers Enrolled at**  
**State System Universities During**  
**Fall 1993**

University	#	%
Bloomsburg	5	2.2
California Univ. of PA.	2	0.9
Cheyney	66	29.2
Clarion Univ. of PA.	2	0.9
East Stroudsburg	13	5.8
Edinboro	1	0.4
Indiana Univ. of PA.	15	6.6
Kutztown	9	4.0
Lockhaven	9	4.0
Mansfield	2	0.9
Millersville	12	5.3
Shippensburg	5	2.2
Slippery Rock	3	1.3
West Chester	<u>82</u>	<u>36.3</u>
Total	226	100.0

**Figure 2**  
**Gender of CCP Transfers to**  
**State System Universities \***  
 N = 216



**Figure 3**  
**Age at Transfer to**  
**State System Universities \***  
 N = 216





**Table 2**  
**Gender of CCP Transfers to**  
**State System Universities**

**Gender**

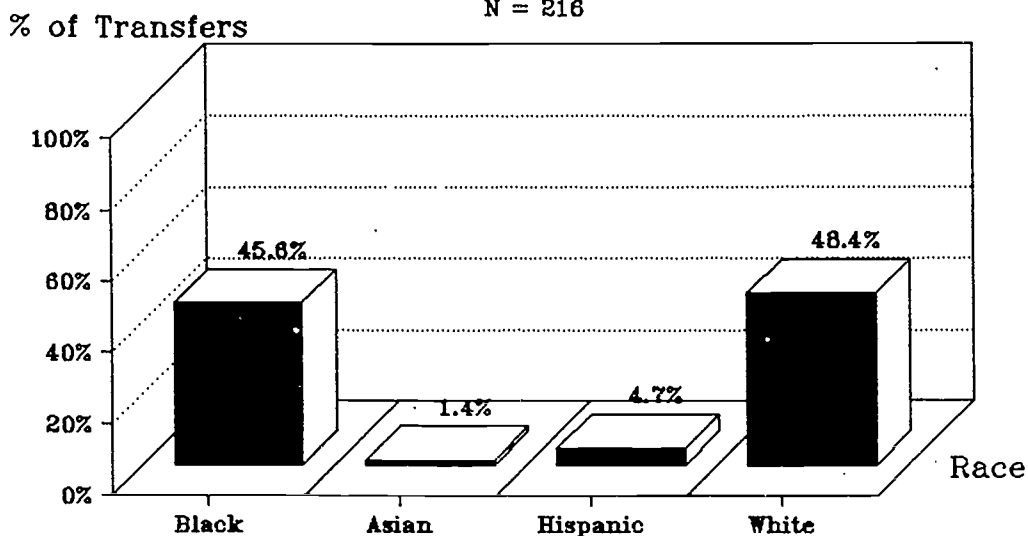
<b>University</b>	<b>#</b>	<b>Male (%)</b>	<b>#</b>	<b>Female (%)</b>
Bloomsburg	2	(40.0)	3	(60.0)
Cheyney	28	(42.4)	38	(57.6)
East Stroudsburg	7	(53.8)	6	(46.2)
Indiana Univ. of PA.	11	(73.3)	4	(26.7)
Kutztown	7	(77.8)	2	(22.2)
Lockhaven	5	(55.6)	4	(44.4)
Millersville	9	(75.0)	3	(25.0)
Shippensburg	4	(80.0)	1	(20.0)
West Chester	<u>39</u>	<u>(47.6)</u>	<u>43</u>	<u>(52.4)</u>
Total	112	(51.9)	104	(48.1)

**Table 3**  
**Age at Transfer to**  
**State System Universities**

**Age**

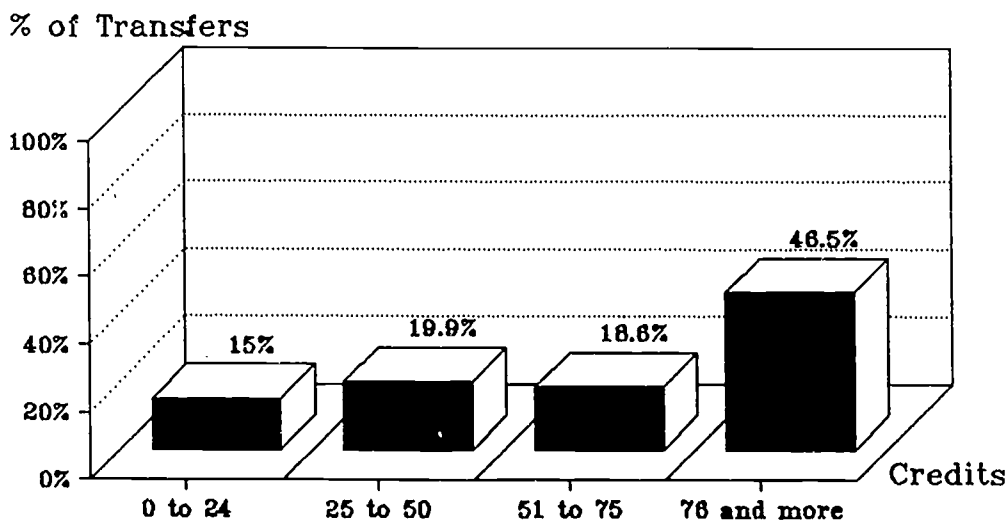
University	18 to 25		26 to 30		31 to 40		41 +	
	#	(%)	#	(%)	#	(%)	#	(%)
Bloomsburg	3	(60.0)	1	(20.0)	1	(20.0)	0	
Cheyney	48	(72.7)	6	(9.1)	7	(10.6)	5	(7.6)
East Stroudsburg	12	(92.3)	1	(7.7)	0		0	
Indiana Univ. of PA.	14	(93.3)	1	(6.7)	0		0	
Kutztown	9	(100.0)	0		0		0	
Lockhaven	8	(100.0)	0		0		0	
Millersville	11	(91.7)	0		1	(8.3)	0	
Shippensburg	5	(100.0)	0		0		0	
West Chester	<u>61</u>	<u>(74.6)</u>	<u>10</u>	<u>(12.2)</u>	<u>7</u>	<u>(8.5)</u>	<u>4</u>	<u>(4.9)</u>
Total	171	(79.2)	20	(9.3)	16	(7.3)	9	(4.2)

**Figure 4**  
**Race of CCP Transfers to**  
**State System Universities \***  
 N = 216



\*Includes: Bloomsburg, Cheyney, East Stroudsburg, Indiana Univ. of P.A., Kutztown, Lockhaven, Millersville, Shippensburg, West Chester

**Figure 5**  
**Total Credits Transferred to**  
**State System Universities \***  
 N = 226



\*Includes: Bloomsburg, Cheyney, East Stroudsburg, Indiana Univ. of P.A., Kutztown, Lockhaven, Millersville, Shippensburg, West Chester

**Table 4**  
**Race of CCP Transfers to State System Universities**

University	Black		Asian		Hispanic		White	
	#	(%)	#	(%)	#	(%)	#	(%)
Bloomsburg	0		2	(40.0)	1	(20.0)	2	(40.0)
Cheyney	65	(98.5)	0		1	(1.5)	0	
East Stroudsburg	5	(38.5)	0		0		8	(61.5)
Indiana Univ. of PA.	3	(20.0)	0		1		11	(73.3)
Kutztown	1	(11.1)	0		0		8	(88.9)
Lockhaven	1	(11.1)	0		1	(11.1)	7	(77.8)
Millersville	7	(58.3)	0		0		4	(33.3)
Shippensburg	0		0		1	(20.0)	4	(80.0)
West Chester	<u>16</u>	<u>(19.5)</u>	<u>1</u>	<u>(1.2)</u>	<u>2</u>	<u>(2.4)</u>	<u>81</u>	<u>(82.7)</u>
Total	98	(45.6)	3	(1.4)	10	(4.7)	104	(48.4)

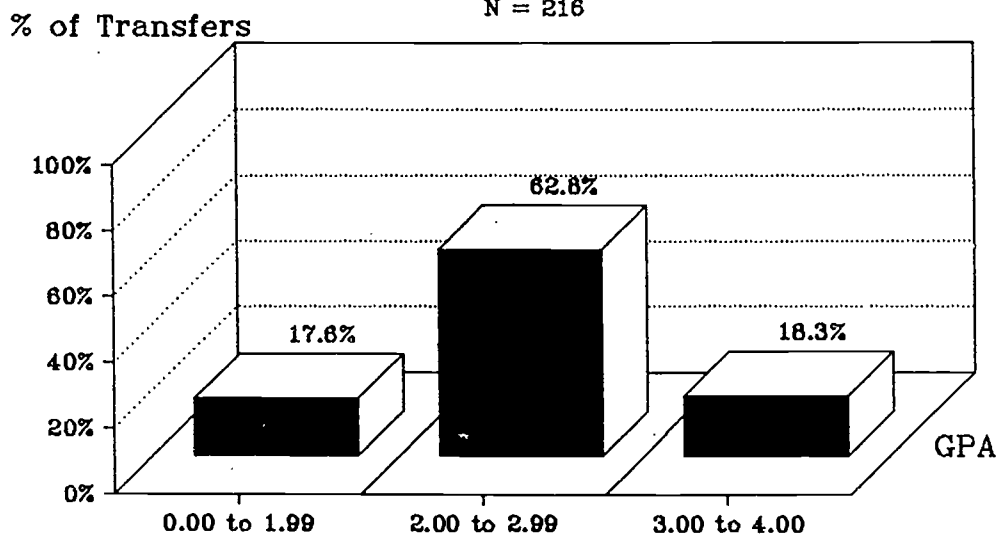
**Table 5**  
**Total Credits Transferred To State System Universities**  
**Credits Transferred \***

University	Mean	Median
Bloomsburg	95.6	104.0
Cheyney	59.1	64.5
East Stroudsburg	80.6	85.0
Indiana Univ. of PA.	61.2	53.0
Kutztown	21.3	22.0
Lockhaven	73.8	85.0
Millers- ville	69.4	65.0
Shippens- burg	66.0	61.0
West Chester	80.2	80.0
Overall	68.0	65.5

\*Includes credits from all previously attended colleges

**Figure 6**  
**Cumulative GPA Earned at**  
**State System Universities \***

N = 216

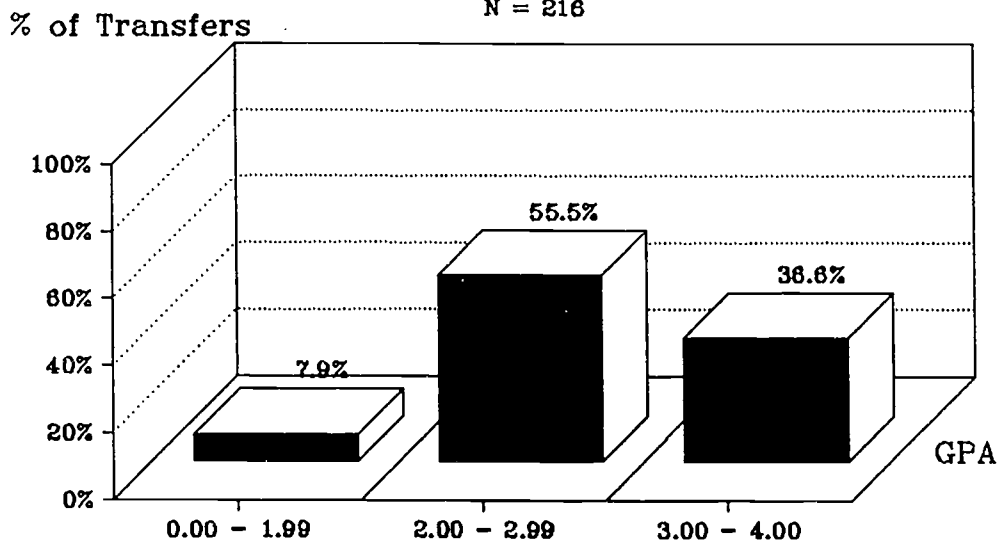


\*Includes: Bloomsburg, Cheyney, East Stroudsburg, Indiana Univ. of P.A.,  
 Kutztown, Lockhaven, Millersville, Shippensburg, West Chester.

**Figure 7**

**Cumulative GPA Earned at CCP by Students**  
**Who Transferred to State System Universities \***

N = 216



\*Includes: Bloomsburg, Cheyney, East Stroudsburg, Indiana Univ. of P.A.,  
 Kutztown, Lockhaven, Millersville, Shippensburg, West Chester.

**Table 6**  
**Cumulative GPA Earned at State System Universities**  
**GPA \***

University	0 #	- 1.99 (%)	2.0 #	- 2.99 (%)	3.0 #	- 4.0 (%)	GPA MISSING #
Bloomsburg	0		4	(80.0)	1	(20.0)	0
Cheyney	6	(9.1)	31	(47.0)	13	(19.7)	16
East Stroudsburg	1	( 7.7)	9	(69.2)	0		3
Indiana Univ. of PA.	3	(20.0)	7	(46.7)	0		5
Kutztown	0		0		0		9
Lockhaven	1	(11.1)	5	(55.6)	0		3
Millersville	5	(41.7)	4	(33.3)	0		3
Shippensburg	1	(20.0)	4	(40.0)	0		2
West Chester	<u>9</u>	<u>(11.0)</u>	<u>31</u>	<u>(37.8)</u>	<u>15</u>	<u>(18.3)</u>	<u>27</u>
Total	26	(17.6)	93	(62.8)	29	(19.6)	68

\*GPA information was not available for all students.

Table 7

**Cumulative GPA Earned at CCP by  
Students Who Transferred to  
State System Universities**

**GPA**

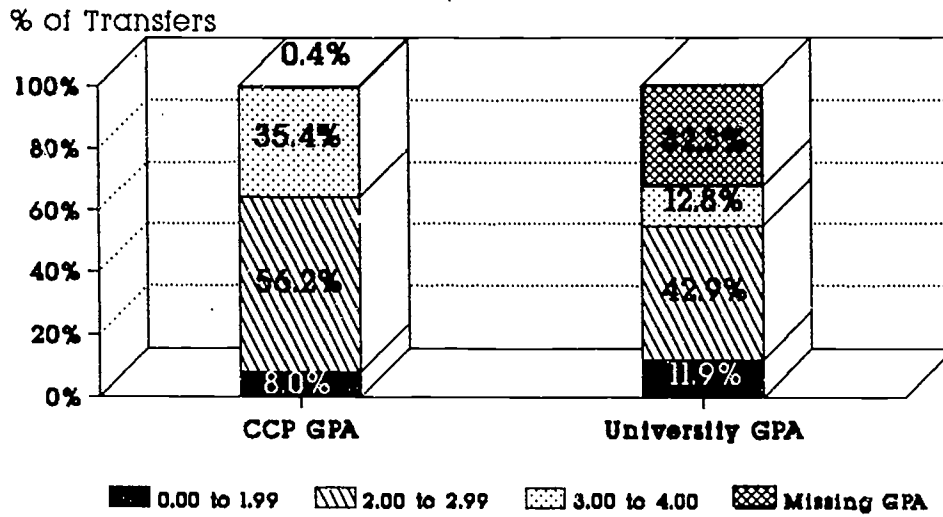
University	0 - 1.99		2.0 - 2.99		3.0 - 4.0	
	#	(%)	#	(%)	#	(%)
Bloomsburg	0		1	(20.0)	4	(80.0)
Cheyney	13	(19.7)	41	(62.1)	12	(18.2)
East Stroudsburg	3	(23.1)	7	(53.8)	3	(23.1)
Indiana Univ. of PA.	0		12	(80.0)	3	(20.0)
Kutztown	0		6	(66.7)	3	(33.3)
Lockhaven	0		6	(66.7)	3	(33.3)
Millersville	1	( 8.3)	3	(25.0)	8	(66.7)
Shippensburg	0		2	(40.0)	3	(60.0)
West Chester	<u>0</u>	<u>      </u>	<u>42</u>	<u>(51.2)</u>	<u>40</u>	<u>(48.8)</u>
Total	17	( 7.9)	120	(55.5)	79	(36.6)



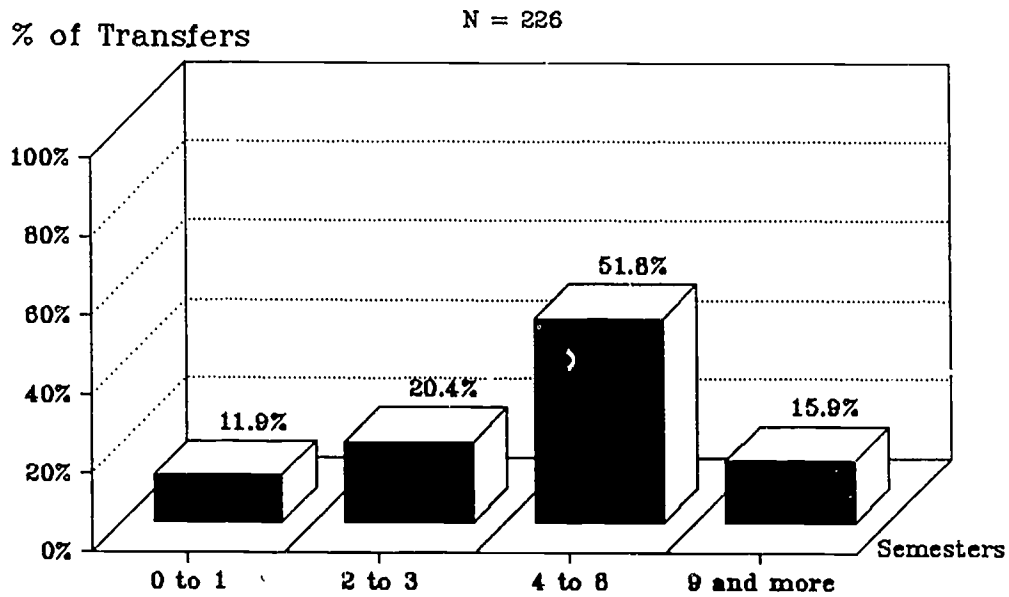
**Table 8**  
**Correlations Between CCP GPA and**  
**State System University GPA**

University	Correlation Coefficient	# of Students
Bloomsburg	-.436	5
Cheyney	.409	50
East Stroudsburg	.297	10
Indiana Univ. of PA.	.301	9
Kutztown	GPA information not provided by College	
Lockhaven	.388	6
Millersville	.509	9
Shippensburg	-.902	3
West Chester	.483	55

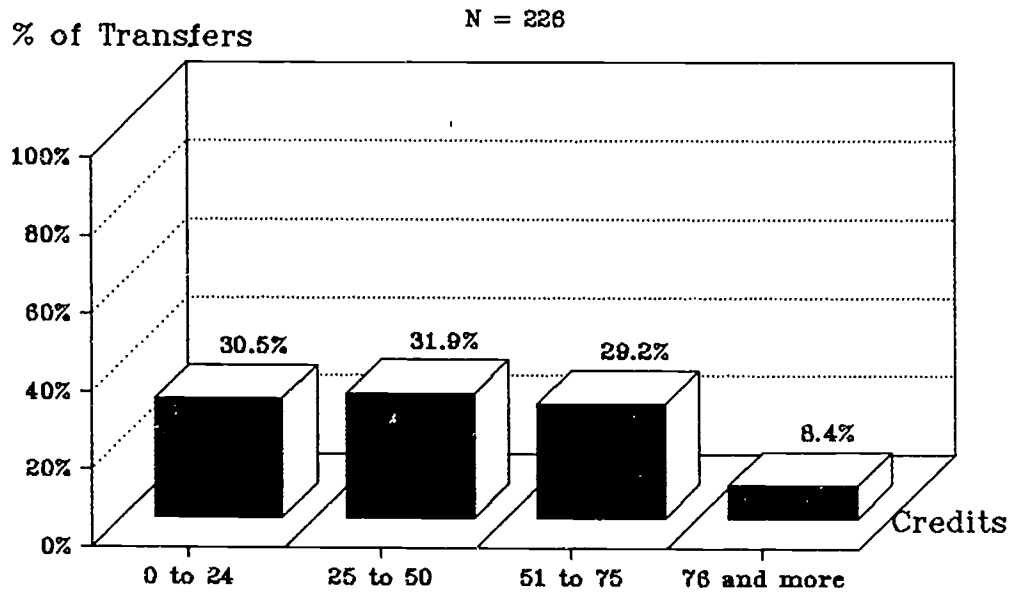
**Figure 8**  
**TRANSFER UNIVERSITY GPA AND**  
**CCP GPA**



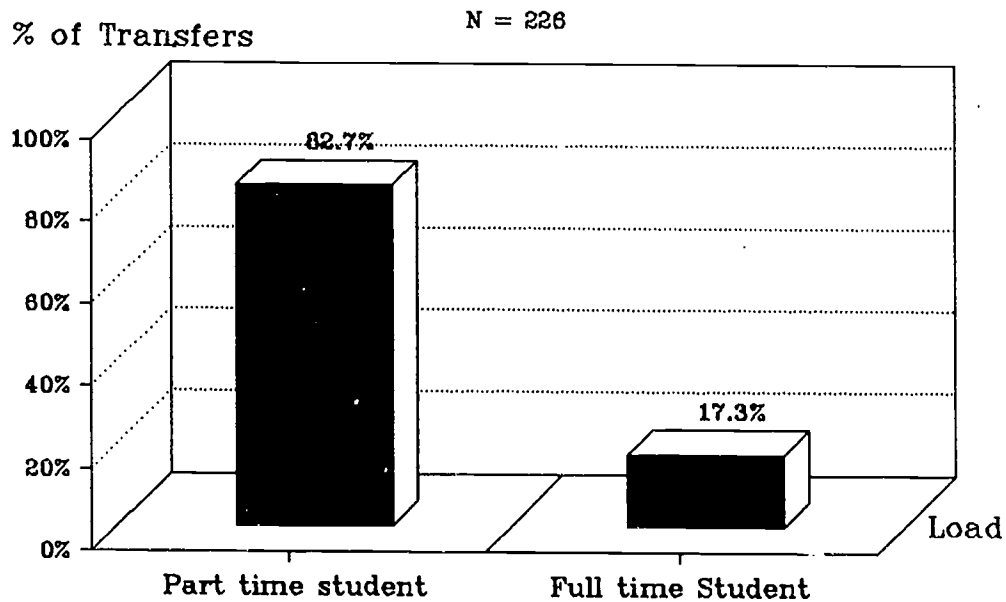
**Figure 9A**  
**Number of Semesters at CCP**



**Figure 9B**  
**Cumulative Hours at CCP**



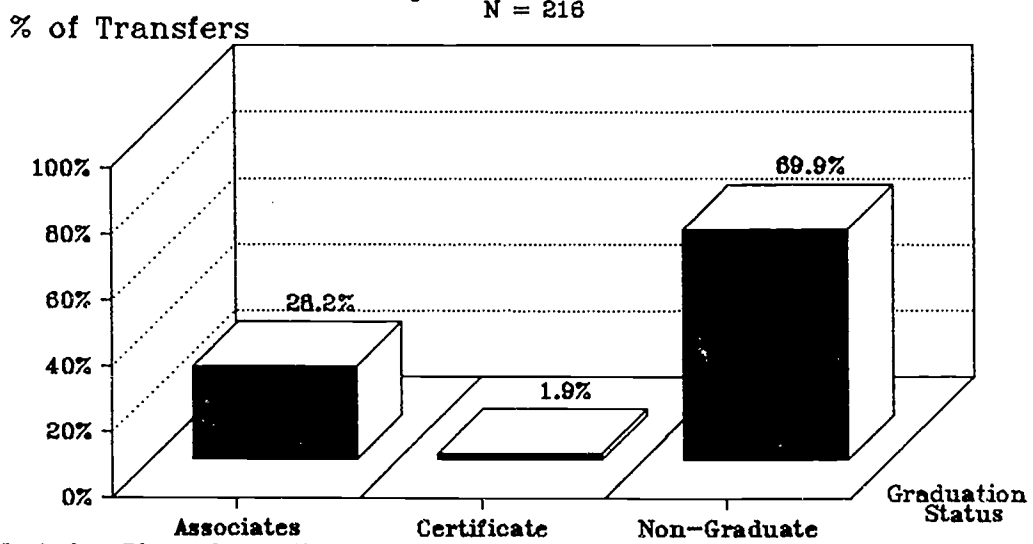
**Figure 9C**  
**Semester Credit Load at CCP**



**Table 9**  
**CCP Retention Measures of Trainers to**  
**State System Universities**  
**Persistence Measure**

University	# Semesters Enrolled at CCP Mean	Cumulative Hours Earned at CCP Mean	Semester Credit Load Mean
Bloomsburg	7.60	68.00	8.95
Cheyney	5.15	31.20	6.10
East Stroudsburg	3.39	28.31	8.36
Indiana Univ. of PA.	5.14	37.79	7.34
Kutztown	2.33	24.00	10.43
Lockhaven	5.44	50.00	9.19
Millersville	3.80	34.33	9.03
Shippensburg	2.80	28.20	10.07
West Chester	6.55	54.42	8.27
Overall	5.40	41.42	7.67

Figure 10  
CCP Graduation Status of Transfers  
to State System Universities \*



\*Includes: Bloomsburg, Cheyney, East Stroudsburg, Indiana Univ. of P.A.,  
Kutztown, Lockhaven, Millersville, Shippensburg, West Chester.

Table 10

**CCP Graduation Status of Transfers to  
State System Universities**

**Degree Status**

University	Associate		Certificate		Non-Graduate	
	#	(%)	#	(%)	#	(%)
Bloomsburg	3	(60.0)	0		2	(40.0)
Cheyney	17	(25.8)	0		49	(74.2)
East Stroudsburg	2	(15.4)	0		11	(84.6)
Indiana Univ. of PA.	2	(13.3)	0		13	(86.7)
Kutztown	0		0		9	(100.0)
Lockhaven	2	(22.2)	1	(11.1)	6	(66.7)
Millersville	2	(16.7)	0		10	(83.3)
Shippensburg	0		0		5	(100.0)
West Chester	<u>33</u>	<u>(40.2)</u>	<u>3</u>	<u>( 3.7)</u>	<u>46</u>	<u>(56.1)</u>
Total	61	(28.2)	4	( 1.9)	151	(69.9)

**Table 11A**  
**CCP Transfer Students**  
**Program of Study at Bloomsburg University**

Program	#	%
Computer and Information Sciences	2	40.0
Elementary Teacher Education	2	40.0
Mass Communications	$\frac{1}{5}$	20.0
Total	<u>5</u>	

**Table 11B**  
**CCP Transfer Students**  
**Program of Study at Cheyney**

Program	#	%
Accounting	4	6.1
Biology, General	1	1.5
Biological and Physical Sciences	1	1.5
Business Administration & Mgnt, Gen.	7	10.6
Chemistry, General	1	1.5
Communications	2	3.0
Computer and Information Sciences	1	1.5
Elementary Teacher Education	16	24.2
Hotel, Motel & Restaurant Mgnt.	2	3.0
Mathematics	1	1.5
Parks, Recreation Mgnt.	2	3.0
Political Science and Government	2	3.0
Pre-Elementary Early Childhood Ed.	7	10.6
Psychology, General	1	1.5
Social Science, General	9	13.6
Special Education, General	2	3.0
Taxation	1	1.5
Unknown	<u>5</u>	7.6
Total	<u>66</u>	

**Table 11C**  
**CCP Transfer Students**  
**Program of Study at East Stroudsburg**

Program	#	%
Biology, General	1	7.7
Business Administration & Mgmt, Gen.	1	7.7
Computer and Information Sciences	1	7.7
Economics, General	1	7.7
Physical Education	2	15.4
Political Science and Government	1	7.7
Pre-Elementary Early Childhood Ed.	2	15.4
Radio Television	2	15.4
Sociology	1	7.7
Unknown	<u>1</u>	7.7
Total	13	

**Table 11D**  
**CCP Transfer Students**  
**Program of Study at Indiana Univ. of PA**

Program	#	%
Biology, General	1	6.7
Communications, General	1	6.7
Criminology	2	13.3
History, General	1	6.7
Hotel, Motel & Restaurant Mgmt.	1	6.7
Mathematics	1	6.7
Occupational Safety	2	13.3
Psychology, General	1	6.7
Respiratory Therapy	3	20.0
Unknown	<u>2</u>	13.3
Total	15	

**Table 11E**  
**CCP Transfer Students**  
**Program of Study at Kutztown**

Program	#	%
Business Administration & Mgmt, Gen.	2	22.2
Elementary Teacher Education	1	11.1
Physics, General	1	11.1
Psychology, General	1	11.1
Social Studies Teacher Education	2	22.2
Special Education, General	1	11.1
Unknown	<u>1</u>	11.1
Total	9	



**Table 11F**  
**CCP Transfer Students**  
**Program of Study at Lockhaven**

Program	#	%
English Language and Education	1	11.1
Management Science	2	22.2
Pre-Elementary Early Childhood Ed.	2	22.2
Psychology, General	1	11.1
Social Work	1	11.1
Unknown	2	22.2
Total	9	

**Table 11G**  
**CCP Transfer Students**  
**Program of Study at Mansfield**

Program	#	%
Business Administration & Mgmt, Gen.	2	33.3
English Language & Literature	2	33.3
Spanish Language & Literature	2	33.3
Total	6	

**Table 11H**  
**CCP Transfer Students**  
**Program of Study at Millersville**

Program	#	%
Art, General	1	8.3
Biology, General	1	8.3
Business Administration & Mgmt, Gen.	5	41.7
Computer and Information Sciences	1	8.3
Social Studies Teacher Education	1	8.3
Social Work	1	8.3
Special Education, General	1	8.3
Unknown	1	8.3
Total	12	

**Table 11I**  
**CCP Transfer Students**  
**Program of Study at Shippensburg**

Program	#	%
Chemistry, General	1	20.0
Criminal Justice Studies	1	20.0
English Language and Literature	1	20.0
Human Resources Mgnt.	1	20.0
Psychology, General	<u>1</u>	20.0
Total	5	

**Table 11J**  
**CCP Transfer Students**  
**Program of Study at West Chester**

Program	#	%
Accounting	7	8.5
Biology, General	2	2.4
Business Administration & Mgnt, Gen.	8	9.8
Business Managerial	1	1.2
Chemistry, General	1	1.2
Criminal Justice Studies	4	4.9
Dental Hygienist	2	2.4
Drama Theater Arts, General	1	1.2
Earth and Planetary Science	1	1.2
Elementary Teacher Education	16	19.5
English Language and Education	3	3.7
Health System / Health Ser. Adm.	2	2.4
History, General	1	1.2
Liberal Arts and Science	2	2.4
Mathematics	1	1.2
Music Teacher Education	5	6.1
Nursing	4	4.9
Philosophy	1	1.2
Pre-Elementary Early Childhood Ed.	2	2.4
Psychology, General	6	7.3
Social Studies Teacher Education	3	3.7
Sociology	1	1.2
Special Education, General	3	3.7
Toxicology	1	1.2
Unknown	<u>4</u>	4.9
Total	82	