

ED 373 673

HE 027 659

TITLE Fact Book. Fiscal Year 1994.
 INSTITUTION South Dakota Board of Regents, Pierre.
 PUB DATE [94]
 NOTE 44p.
 PUB TYPE Statistical Data (110) -- Reports - Descriptive (141)

EDRS PRICE MF01/PC02 Plus Postage.
 DESCRIPTORS Academic Persistence; *Budgets; *College Admi. Admission; College Admission; Crime; Degrees (Academic); *Enrollment; Faculty Mobility; Geographic Distribution; Higher Education; Loan Repayment; Mission Statements; State Surveys; *State Universities; Student Attitudes; *Student Costs; Student Financial Aid; Teacher Salaries; Trend Analysis; Tuition

IDENTIFIERS *South Dakota

ABSTRACT

This annual report provides a variety of information about the state of higher education in South Dakota. The bulk of the report consists of tables and charts that summarize: (1) the structure of the South Dakota Board of Regents; (2) the institutional missions of South Dakota's six state universities and two special schools; (3) admission requirements; (4) operating budgets and mean budgeted salaries; (5) historical tuition rates from 1966 through 1994; (6) student financial aid programs; (7) average financial aid awards; (8) student loan default rates; (9) historical fall term enrollments from 1972-1993; (10) plans for South Dakota high school graduates from 1970-1993; (11) projections of South Dakota high school graduates from 1994-2009; (12) student geographic distribution and enrollment by site; (13) student persistence rates; (14) campus crime rates; (15) special schools profiles; (16) faculty profiles, salaries by rank, and turnover rates; (17) management ratios; (18) degrees conferred and degree trends from 1987-1993; and (19) data on physical plant. (MDM)

 * Reproductions supplied by EDRS are the best that can be made *
 * from the original document. *

FACT BOOK

Fiscal Year 1994

ED 373 673

AE 627659

U.S. DEPARTMENT OF EDUCATION
Office of Educational Research and Improvement
EDUCATIONAL RESOURCES INFORMATION
CENTER (ERIC)

This document has been reproduced as
received from the person or organization
originating it.

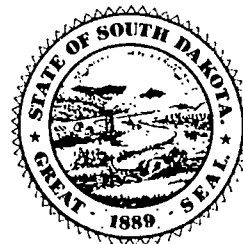
Minor changes have been made to
improve reproduction quality.

• Points of view or opinions stated in this
document do not necessarily represent
official OERI position or policy.

"PERMISSION TO REPRODUCE THIS
MATERIAL HAS BEEN GRANTED BY

South Dakota Board
of Regents

TO THE EDUCATIONAL RESOURCES
INFORMATION CENTER (ERIC)."



South Dakota
Board of Regents

BEST COPY AVAILABLE

South Dakota Board of Regents

Office of the Executive Director
207 East Capitol Avenue
Pierre, South Dakota 57501-3159
(605) 773-3455 FAX (605) 773-5320

Thomas R. Olsen, President

Tom Olsen has served as President of the South Dakota Board of Regents since April 1993, having previously served as Secretary of the Board in 1992. A graduate of SDSU with a B.S. in mathematics, Mr. Olsen held the commission of Captain in the U.S. Air Force and now farms near Wessington Springs. He was appointed to the Board of Regents in October 1989, and his current term will expire in March 1995.

Bob Brancel, Vice President

Bob Brancel was appointed in March 1991 and has served as Vice President of the Board since April 1993. Mr. Brancel earned a B.S. in electronics engineering from SDSU, an M.B.A. from USD and has done graduate work in management science at the University of Colorado. He recently retired as Executive Vice President of BankWest in Pierre and also serves as Chairman of the Board of Farmers State Bank in Faith. His current term expires in March 1997.

James F. Hart, Secretary

Jim Hart, who is President and Chief Executive Officer of Hand County State Bank in Miller, received his degree in accounting from the USD School of Business. Mr. Hart was appointed to the Board of Regents in March 1992 and was elected Secretary of the Board in April 1993. He also serves as a member of the South Dakota Community Foundation. His current term will expire in March 1998.

David Gienapp

David Gienapp was appointed to the Board of Regents in July 1993. Prior to his Regental appointment, Mr. Gienapp served as President of the State Board of Education. A partner in the Madison law firm of Arneson, Issenhuth, Gienapp & Blair, Mr. Gienapp earned a B.A. degree from USD and a Juris Doctorate from the University of Wyoming. His current term expires in March 1997.

Max Gruenwald

Max Gruenwald was appointed to the Board of Regents in April 1987 and reappointed in March 1991. He served as President of the Board in 1990 and as Vice President for two years in 1988 and 1989. Mr. Gruenwald, who served as a Lieutenant in the United States Navy, attended Yankton College before earning both his baccalaureate degree and his law degree from USD. He is now a practicing attorney in Milbank. His current term expires in March 1997.

Cathy Hall

Cathy Hall was appointed to the Board of Regents in June 1988 and reappointed in March 1993. She served as Vice President in 1991 and 1992 and as Secretary in 1990. Ms. Hall, a Certified Public Accountant who owns a management consultation and planning firm, received a bachelor's degree in fine arts from NSU and has done graduate work in accounting at USD. Her current term will expire in March 1999.

Pat Lebrun

Pat Lebrun was appointed to the Board of Regents in March 1987 and reappointed in March 1993. She has served five years as an officer, including President of the Board in 1991 and 1992, Vice President in 1990, and Secretary in 1988 and 1989. Ms. Lebrun is president of Lebrun Investment Company in Rapid City and holds a baccalaureate degree from the University of North Dakota and an M.B.A. from USD. Her current term expires in March 1999.

Charles Ritter, Student Regent

Chuck Ritter was appointed in July 1992. He previously served as President of the SDSU Student Association and completed an Internship with the Board of Regents and a one-year exchange program at Rhode Island College. Mr. Ritter graduated from SDSU in 1992 with a B.S. in speech communications and is currently in the M.B.A. program at USD. His term expires in July 1994.

Karl Wegner

Karl Wegner, Sioux Falls, was appointed to the Board of Regents in March 1992. Now retired, he has served as Founding Dean of the four-year degree Medical School at USD, Pathology Chief at Sioux Valley Hospital and Founder/Medical Director of the Laboratory of Clinical Medicine. A former U.S. Marine Captain, Dr. Wegner earned his B.A. from Yale and his M.D. from Harvard. His current term expires in March 1998.

Howell W. Todd, Executive Director

Howell Todd was named Executive Director of the South Dakota Board of Regents in 1989. Previously, he served the Tennessee Board of Regents from 1981 to 1989, most recently as Vice Chancellor for Administration and Executive Assistant to the Chancellor. Dr. Todd received his baccalaureate degree from the University of Tennessee, his master's degree from the University of Mississippi and his Ph.D. from the University of Illinois at Urbana-Champaign.

General

Table of Contents. 1-2
 Regental Committee Structure 3
 Institutional Missions 4-5
 Admission Requirements. 6

Financial Affairs

Operating Budgets. 7
 All Funds Summary 8
 Budgeted Mean Salaries and FTE 8-10

Tuition & Fees

Historical Tuition Rates, FY1966-FY1994. 11
 FY1994 Tuition & Fees Schedule 12-13
 Percentage of Student Support. 13
 Historical Tuition & Fees Charges, FY1985-FY1994 14
 Regional Tuition & Fees Comparison, FY1991-FY1993 14

Financial Aid

Student Financial Aid by Program 15
 State Funded Financial Aid Programs. 15
 Average Financial Aid Award 16
 Student Loan Default Rates. 16
 Average Student Loan Indebtedness 16

Enrollment

Student Profile, Fall 1993 Headcount 17
 Historical Fall Headcount/FTE Enrollment 18-19
 Enrollment by Term, Spring 1993-Fall 1993. 19
 New Registrants Enrollment, Fall 1993 Headcount. 20
 Transfer Enrollment, Fall 1993 Headcount. 20
 Plans of South Dakota High School Graduates, 1970-1993 21
 Projections of South Dakota High School Graduates, Spring 1994-Spring 2009. 21
 Student Geographic Distribution, Fall 1993 22
 Enrollment by Site of Instruction. 23



Student Right-to-Know

Student Persistence Rates, Fall 1991 through Fall 1992..... 24
 Campus Crime Report, January 1, 1992 through December 21, 1992..... 24

Special Schools

SDSD Historical Enrollment, Fall 1987-1993..... 25
 SDSD On-Campus Enrollment, Fall 1993..... 25
 SDSVH Historical Enrollment, 1987-1993..... 25

Human Resources

Faculty Salaries by Professorial Rank..... 26
 Faculty Profile by University..... 27
 Turnover Report..... 28

Management Ratios

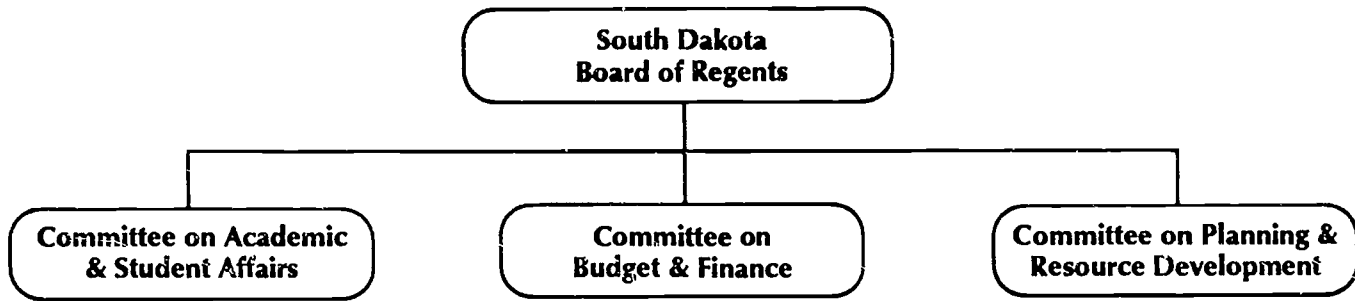
Historical Costs Per Student FTE..... 29
 FY1994 Operating Budgets by Program..... 29
 Student-Faculty Ratio..... 30

Degrees Conferred

Degrees Conferred, FY1993..... 31
 Degree Trends, FY1987-FY1993..... 31
 Degrees Conferred by Discipline, FY1993..... 32-34

Physical Plant

Academic/Revenue Buildings, Cost vs. Replacement..... 35
 Residence Facility Utilization..... 35
 Size of Physical Plant..... 36
 Building Construction or Improvement..... 37-38
 Self-Liquidating Projects..... 39
 Utility Recap..... 40



Board of Regents Standing Committees

Committee on Academic & Student Affairs

Karl Wegner, Chair
 David Gienapp
 Max Gruenwald
 Pat Lebrun
 Tom Olsen, Ex-officio
 Staffed by Michel Hillman

Committee on Budget & Finance

Bob Brancel, Chair
 Cathy Hall
 James Hart
 Charles Ritter
 Tom Olsen, Ex-officio
 Staffed by Sheila Hillman

The standing committees consist of four Regents appointed by the President of the Board. The Committee on Planning and Resource Development consists of the entire membership and is chaired by the President of the Board. The standing committees and their jurisdiction are:

Committee on Academic & Student Affairs

Accreditation
 Articulation Activities
 Enrollment
 Financial Aid, Tuition Waiver and Scholarships
 Faculty Rank, Tenure, and Promotions
 Faculty/Staff Development Service Policies
 Graduation Lists
 Guidance and Counseling
 Leaves and Sabbaticals
 Libraries
 Program Review and Development
 Reciprocity, Academic Compacts, Slot Programs
 Student Relations

Committee on Budget & Finance

Accounting
 Audit
 Bonding
 Budget
 Career Service/Exempt Personnel Activities
 Facilities and Physical Plant
 HEFF and School & Public Lands Fund
 Inventory
 Investments
 Maintenance and Repair
 Payroll
 Personnel Actions
 Purchasing and Printing
 Salaries and Fringe Benefits
 Travel and Contractual Review
 Tuition and Fees

Committee on Planning & Resource Development

Foundations
 Fund Raising/Gifts and Donations
 Public Information
 Research and Grant Proposals
 System and Institutional Planning

The Universities

Black Hills State University

Spearfish, South Dakota 57799-1797
Dr. Clifford Trump, President
Telephone (605) 642-6111

The role of Black Hills State University is that of a liberal arts university providing programs in the liberal arts and sciences; education with special emphasis on the preparation of elementary, middle level, and secondary teachers; human services; wellness; business, travel industries management and tourism. Complementing these programs is a series of pre-professional, one and two-year terminal, and junior college programs. Degrees are authorized at the associate, baccalaureate, and masters levels.

Northern State University

Aberdeen, South Dakota 57401-7198
Dr. John Hutchinson, President
Telephone (605) 622-2521

The role of Northern State University is that of a liberal arts university providing programs in the arts and sciences, education, business, and the fine arts with special emphasis on the preparation of students for careers in business and education. Complementing these programs are pre-professional, one and two-year terminal, and junior college programs in fulfillment of its responsibility for college transfer programs in northeastern South Dakota. Degrees are authorized at the associate, baccalaureate, and masters levels.

South Dakota State University

Brookings, South Dakota 57007-2298
Dr. Robert Wagner, President
Telephone (605) 688-4111

The role of South Dakota State University is that of the state's comprehensive land-grant research institution meeting the spirit of the Morrill Land Grant Act of 1862 and providing programs in agriculture, professional fields, science, applied sciences, humanities and the arts. Furthermore, the Agricultural Experiment Station and Cooperative Extension Service programs operate consistent with the provisions of the Hatch Act of 1887 and the Smith-Lever Act of 1914. Degrees are authorized at the associate, baccalaureate, masters, and doctoral levels.

Dakota State University

Madison, South Dakota 57042-1799
Dr. Jerald Tunheim, President
Telephone (605) 256-5112

The role of Dakota State University is that of an institution specializing in programs in computer management, computer information systems, electronic data processing and related programs. Degrees are authorized at the associate and baccalaureate levels. SDCL13-59-2.2, the mission change legislation of 1984, authorizes graduate programs at the institution with the approval of the Board; select graduate courses have been authorized. A special emphasis is the preparation of elementary and secondary teachers with expertise in the use of computer technology and information processing in the teaching and learning process. A secondary purpose is to offer two-year and one-year programs and short courses for application and operator training in areas authorized.

South Dakota School of Mines & Technology

Rapid City, South Dakota 57701-3995
Dr. Richard Gowen, President
Telephone (605) 394-2411

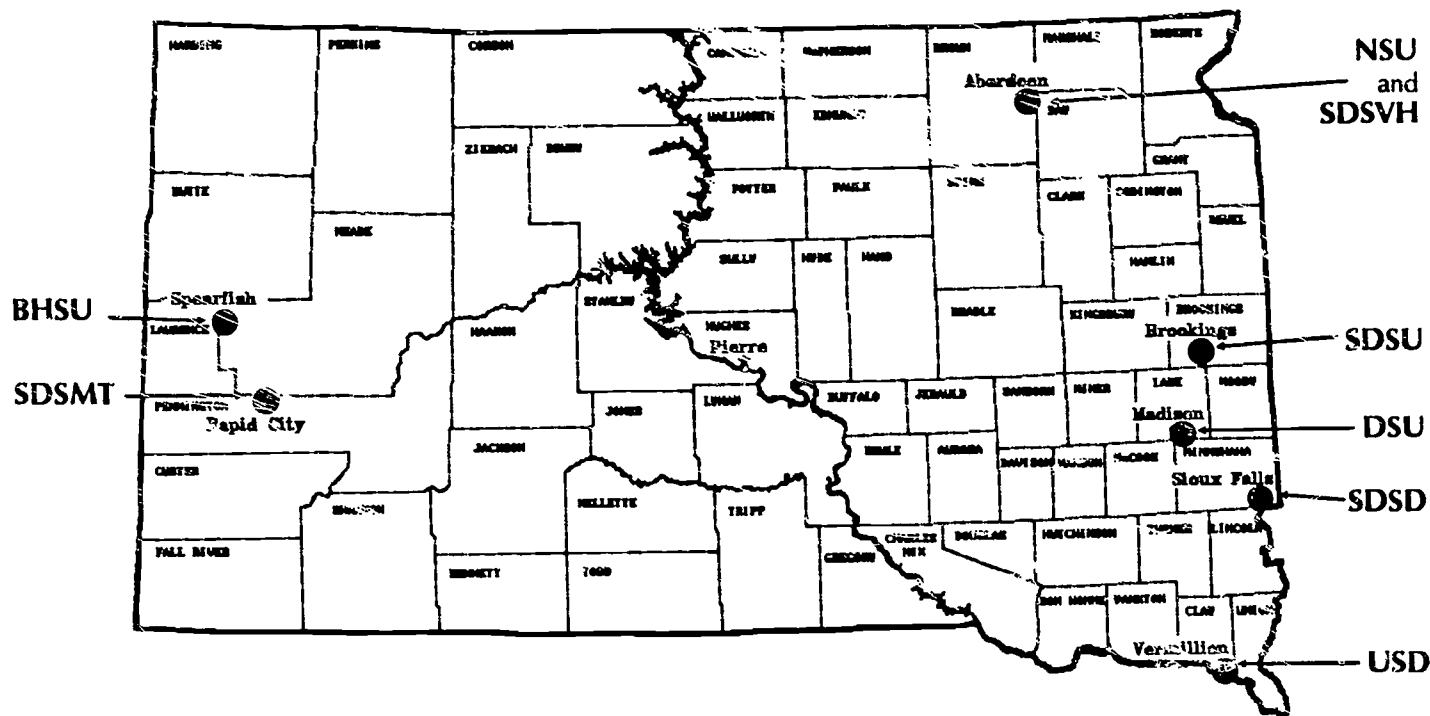
The role of the South Dakota School of Mines and Technology is that of a university specializing in undergraduate and graduate education emphasizing science and engineering. Degrees are authorized at the baccalaureate, masters, and doctoral levels.

University of South Dakota

Vermillion, South Dakota 57069-2390
Dr. Betty Turner Asher, President
Telephone (605) 677-5641

The role of the University of South Dakota is that of the state's comprehensive research university providing graduate and undergraduate programs in the liberal arts and sciences and in professional education including fine arts, education, business, law, and medicine. Degrees are authorized at the associate, baccalaureate, masters, education specialist, and doctoral levels.

South Dakota Board of Regents Institutions



The Special Schools

South Dakota School for the Deaf
Sioux Falls, South Dakota 57103-1899
Larry Puthoff, Superintendent
Telephone (605) 339-6700 Voice/TDD

The role and mission of the South Dakota School for the Deaf is to meet the educational needs of sensory impaired children from birth through age twenty-one in the state of South Dakota by serving in dual leadership and resource roles in the statewide efforts to serve these children. This mission will be carried out through cooperative efforts with all appropriate state agencies, educational cooperatives, local education agencies and colleges and universities. It is recognized that the mission of the South Dakota School for the Deaf is a significant part of the continuum of services in the statewide delivery system for children in need of special education or special education and related services.

South Dakota School for the Visually Handicapped
Aberdeen, South Dakota 57401-7699
Marjorie Kaiser, Superintendent
Telephone (605) 622-2580

The role and mission of the South Dakota School for the Visually Handicapped is to provide statewide services to meet the educational needs of sensory impaired children from birth through age twenty-one in South Dakota by serving in a dual leadership and resource role in the statewide efforts to serve these students. This mission will be carried out through cooperative efforts with all appropriate state agencies, educational cooperatives, local education agencies and colleges and universities. It is recognized that the mission of the South Dakota School for the Visually Handicapped is a significant part of the continuum of services in the statewide delivery system for children in need of special education or special education and related services.



Minimum Course Requirements*

All baccalaureate or general studies students under twenty-one (21) years of age including students transferring with less than twenty-four (24) credit hours must meet the following minimum course requirements:

1. Four years of English - courses with major emphasis upon grammar, composition, or literary analysis; one year of debate instruction may be included to meet this requirement.

2. Two years of mathematics, with a third year of either advanced mathematics OR laboratory science - Algebra, geometry, trigonometry or other advanced mathematics including accelerated or honors mathematics (algebra) provided at the 8th grade level; not included are arithmetic, business mathematics, general mathematics or other similar courses.

3. Two years of Laboratory Science with a third year of either laboratory science OR advanced mathematics - Courses in biology, chemistry, or physics in which at least one (1) regular laboratory period is scheduled each week. Accelerated or honors science (biology, physics or chemistry) provided in the 8th grade will be accepted. Qualifying "physical science courses (with lab)" will be decided on a case by case basis by the Department of Elementary and Secondary Education.

4. Three years of Social Studies - History, economics, sociology, geography, government-including U.S. and South Dakota, American Problems, etc.

5. One-half year of Computer Science

6. One-half year of Fine Arts - Art or Music appreciation, analysis or performance.

Students who have completed the minimum course requirements, but who have not obtained a "C" (2.0 equivalent) average grade in the above courses must meet the requirements of A or B below.

A. South Dakota and Minnesota resident students must meet the following requirements:

1. Admission to USD, SDSU, and SDSMT will be granted if a student falls within one of the following categories:

- a) Rank in the top half of student's high school graduating class; or
- b) An ACT composite score of 21 (22 Enhanced ACT) or above; or
- c) Selection in an exception group limited in size to 3% of the previous year's freshman class; minimum of 18 ACT (20 Enhanced ACT) composite score or upper two-thirds of the high school graduating class. Students in this group must have demonstrated talent such as artistic, musical, or athletic.

2. Admission to BHSU, NSU, and DSU will be granted if a student falls within one of the following categories:

- a) Rank in the top two-thirds of the student's high school graduating class; or
- b) An ACT composite score of 18 (20 Enhanced ACT) or above; or
- c) Selection in an exception group limited in size to 3% of the previous year's freshman class; minimum of 15 ACT (18 Enhanced ACT) composite score or upper three-fourths of the high school graduating class. Students in this group must have demonstrated talent such as artistic, musical or athletic.

Each campus will provide a progress report by June 30 of each year on students admitted in the exception group identified in 1c and 2c. This report will provide information on academic progress of all students admitted in the exception group by type of talent, major, sex, and year of admission.

OR

B. NON-RESIDENT students must meet the following requirements:

1. Admission to USD, SDSU, and SDSMT will be granted if a student falls within one of the following categories:

- a) Rank in the top half of the student's high school graduating class; or
- b) An ACT composite score of 22 (23 Enhanced ACT) or above.

2. Admission to BHSU, DSU, and NSU will be granted if a student falls within one of the following categories:

- a) Rank in the top two-thirds of the student's high school graduating class; or
- b) An ACT composite score of 18 (20 Enhanced ACT) or above.

Mandatory Mathematics Placement Procedure

Since Fall 1989, each campus has had a mandatory mathematics placement procedure for incoming freshmen. The instruments and criteria used for mandatory placement are at the discretion of each institution.

Requirements for Provisional Admittance

Provisional admittance requirements apply to all baccalaureate or general studies students under twenty-one (21) years of age including students transferring with less than twenty-four (24) credit hours.

A student who meets the requirements of A or B, but fails to meet the minimum course requirements in English, Mathematics, Laboratory Science, Social Science, Fine Arts or Computer Science, may be admitted provisionally and may meet the requirements by satisfactorily completing appropriate college courses of an equivalent type in that area for credit (basis: one year high school course = 3.0 credit hours). These credits will be earned above and beyond any college program requirements unless the credits are earned during the student's first semester in college with a grade of "C" or better. These requirements must be satisfied before graduation and within two (2) years of admittance or transfer to a baccalaureate program.

Non-Traditional, Junior/Senior Transfer Students

Non-traditional students (21 years of age or older) and students transferring with more than twenty-four (24) credit hours into a baccalaureate or general studies program shall be admitted at the discretion of the institution. Non-traditional students in baccalaureate programs are encouraged to fulfill the minimum course requirements.

One-Year Certificate and Two-Year Associate Degree Programs

Students shall be admitted to Certificate and Associate Degree Programs at the discretion of the institution.

* The minimum course requirements listed for admission are condensed from actual Board Policy.

Operating Budgets

Fiscal Year 1994

	State Funds	Federal Funds	Other Funds	Total Funds
BHSU	8,211,240	4,047,373	9,338,985	21,597,598
FTE	205.5	14.4	138.1	358.0
DSU	5,870,277	1,377,048	3,629,856	10,877,181
FTE	139.1	1.4	58.3	198.8
NSU	9,862,207	3,668,399	6,103,611	19,634,217
FTE	241.4	7.6	71.1	320.1
SDSMT	10,940,892	4,302,944	7,878,306	23,122,142
FTE	245.2	31.6	112.4	389.2
SDSU	35,065,773	10,599,333	29,205,185	74,870,291
FTE	919.4	83.4	377.3	1,380.1
Agricultural Experiment Station	6,223,230	5,498,784	5,802,384	17,524,398
FTE	176.1	118.0	75.2	369.3
Cooperative Extension Service	4,837,282	4,836,445	371,435	10,045,162
FTE	124.4	116.0	4.5	244.9
Animal Disease Research & Diagnostic Lab	860,104	0	933,787	1,793,891
FTE	24.5	0.0	16.4	40.9
USD	31,017,397	8,689,023	21,930,681	61,637,101
FTE	761.1	55.2	343.7	1,160.0
Medical School	8,735,017	2,208,754	3,696,579	14,640,350
FTE	155.1	29.8	43.6	228.5
Universities Subtotal*	100,967,786	32,684,120	78,086,624	211,738,530
FTE	2,511.7	193.6	1,100.9	3,806.2
SDSD	2,068,626	116,317	79,259	2,264,202
FTE	55.7	2.2	0.0	57.9
SDSVH	1,470,771	54,327	32,594	1,557,692
FTE	49.2	1.0	0.0	50.2
Executive Director	977,094	0	0	977,094
FTE	16.0	0.0	0.0	16.0
Regents Information Systems	702,188	0	1,412,189	2,114,377
FTE	19.0	0.0	3.0	22.0
System Wide Items	11,391,416	463,536	2,362,212	14,217,164
FTE	0.0	0.0	50.0	50.0
South Dakota Library Network	0	0	550,000	550,000
FTE	0.0	0.0	4.0	4.0
Total	138,233,514	45,862,293	93,327,063	277,422,860
FTE	3,131.7	460.6	1,297.6	4,889.9

SOURCE: FY94 Operating Budgets

NOTE: Universities subtotal does not include Agricultural Experiment Station, Cooperative Extension Service, Animal Disease Research & Diagnostics Lab (ADRDL) or Medical School

All Funds Summary
FY93 to FY94 base

	FY93 Base Funds	Expansion/ Reduction	FY94 Base Funds
General Funds	121,303,693	8,095,397	129,399,090
School and Public Lands	1,714,543	0	1,714,543
Higher Ed. Fac. Funds	6,729,255	390,626	7,119,881
Subtotal State Funds	129,747,491	8,486,023	138,233,514
Federal Funds	35,822,884	3,114,962	38,937,846
Federal Appropriated	6,349,593	574,844	6,924,437
Other Funds	77,830,272	15,496,791	93,327,063
Total	249,750,240	27,672,620	277,422,860
FTE	4,510.3	379.6	4,889.9

NOTE: Includes SDSA and SDSVH.

Budgeted Mean Salaries by Category
State Funds - FY94

	Non-Instnct. Administrator	Instructional Administrator	Faculty	Professional/ Technical	Career Service	Part-time Temporary	Total
BHCUJ	270,790	385,532	3,721,289	701,721	1,111,629	98,844	6,289,805
FTE	4.00	7.65	108.12	19.80	62.41	3.52	205.50
Mean Salary	67,698	50,396	34,418	35,440	17,812	28,081	30,607
DSU	295,045	243,543	2,176,570	448,437	1,010,005	64,524	4,238,124
FTE	4.85	4.50	59.15	13.80	55.70	1.15	139.15
Mean Salary	60,834	54,121	36,797	32,495	18,133	56,108	30,457
NSU	358,543	264,906	4,555,195	622,591	1,407,570	175,633	7,384,438
FTE	5.00	5.35	125.14	10.94	82.20	4.90	241.40
Mean Salary	71,709	49,517	36,401	33,099	17,124	35,843	30,590
SDSMT	302,996	204,896	5,375,808	849,235	1,520,647	86,246	8,339,828
FTE	4.00	3.81	126.73	23.67	83.46	3.52	245.19
Mean Salary	75,749	53,778	42,419	35,878	18,220	24,502	34,014
SDSU	445,227	1,327,744	17,622,656	2,171,170	5,174,606	316,826	27,062,229
FTE	6.00	21.92	476.74	58.86	298.90	56.98	919.40
Mean Salary	74,205	60,572	36,965	36,887	17,326	5,560	25,435
Agricultural Experiment	6,612	224,519	2,636,169	585,444	1,212,889	16,513	4,682,146
FTE	0.10	3.63	69.38	23.49	68.49	11.31	176.10
Mean Salary	66,120	61,851	38,161	24,923	17,709	1,460	26,588

(Continued on following page)

Budgeted Mean Salaries by Category State Funds - FY94

(Continued from preceding page)

	Non-Instruct. Administrator	Instructional Administrator	Faculty	Professional/ Technical	Career Service	Part-time Temporary	Total
SDSU continued							
Cooperative Extension	0	40,169	970,669	2,162,297	465,711	23,905	3,662,751
FTE	0.00	0.70	21.82	73.39	27.52	0.97	124.40
Mean Salary	0	57,384	44,485	29,463	16,923	24,644	29,443
ADRDL	30,000	0	408,183	19,176	250,203	5,706	713,268
FTE	0.50	0.00	8.56	1.00	13.73	0.71	24.50
Mean Salary	60,000	0	47,685	19,176	18,223	8,037	29,113
USD	494,389	1,274,596	15,500,515	1,777,011	4,175,726	523,691	23,745,928
FTE	6.64	22.11	413.65	49.15	238.24	31.31	761.10
Mean Salary	74,456	57,648	37,473	36,155	17,527	16,726	31,199
Medical School	53,098	695,485	4,608,918	248,915	999,923	37,134	6,643,473
FTE	0.67	7.04	80.79	7.65	57.24	1.68	155.07
Mean Salary	79,251	98,790	57,048	32,538	17,469	22,104	42,842
Universities Subtotal *	2,166,990	3,701,217	48,952,033	6,570,165	14,404,183	1,265,764	77,060,352
FTE	30.49	65.34	1,309.53	184.09	820.91	101.38	2,511.74
Mean Salary	71,072	56,646	37,381	35,690	17,547	12,485	30,680
SDSD	95,999	44,500	714,364	188,439	384,990	0	1,428,292
FTE	2.00	1.00	26.20	5.20	21.30	0.00	55.70
Mean Salary	48,000	44,500	27,266	36,238	18,075	0	25,643
SDSVH	90,014	41,537	411,654	44,402	460,348	3,770	1,051,725
FTE	2.00	1.00	16.00	1.50	28.50	0.20	49.20
Mean Salary	45,007	41,537	25,728	29,601	16,153	18,850	21,377
Executive Director	338,160	0	0	310,199	0	0	648,359
FTE	5.00	0.00	0.00	11.00	0.00	0.00	16.00
Mean Salary	67,632	0	0	28,200	0	0	40,522
Regents Inform. Systems	64,300	0	0	43,870	477,183	0	585,353
FTE	1.00	0.00	0.00	1.00	17.00	0.00	19.00
Mean Salary	64,300	0	0	0	28,070	0	30,808
Total	2,845,173	4,747,427	58,701,990	10,172,907	18,655,430	1,352,792	96,475,719
FTE	41.76	78.71	1,531.98	308.32	1,054.69	116.25	3,131.71
Mean Salary	68,132	60,315	38,318	32,995	17,688	11,637	30,806

SOURCE: FY94 Operating Budgets

* NOTE: Universities Subtotal does not include Agricultural Experiment Station, Cooperative Extension Service, Animal Disease Research & Diagnostics Lab (ADRDL) or Medical School

Historical Budgeted University Salaries by Category State Funds FY89-FY94

Salaries	Faculty	Exempt Employees	Career Service	Part-time Temporary	Total
FY94	48,952,033	12,438,372	14,404,183	1,265,764	77,060,352
FY93	45,799,655	11,912,805	13,771,333	1,153,922	72,637,715
FY92	42,658,709	11,078,324	12,941,876	1,096,369	67,775,278
FY91*	39,219,339	10,118,842	11,914,749	1,179,071	62,432,001
FY90*	36,139,802	9,576,402	11,418,196	1,039,861	58,174,261
FY89*	32,511,280	8,946,374	11,005,765	843,129	53,306,548

Percentage of Total Budgeted Salaries

FY94	63.5%	16.1%	18.7%	1.6%	100.0%
FY93	63.1%	16.4%	19.0%	1.6%	100.0%
FY92	62.9%	16.3%	19.1%	1.6%	100.0%
FY91*	62.8%	16.2%	19.1%	1.9%	100.0%
FY90*	62.1%	16.5%	19.6%	1.8%	100.0%
FY89*	61.0%	16.8%	20.6%	1.6%	100.0%

FTE

FY94	1,310.2	279.3	820.9	101.4	2,511.7
FY93	1,265.8	275.9	816.2	101.4	2,459.3
FY92	1,153.7	261.7	806.7	57.8	2,279.9
FY91*	1,096.0	247.6	802.5	66.6	2,212.7
FY90*	1,073.7	249.7	798.4	70.3	2,192.1
FY89*	1,003.8	244.3	801.4	94.2	2,143.7

Percentage of Total Budgeted FTEs

FY94	52.2%	11.1%	32.7%	4.0%	100.0%
FY93	51.5%	11.2%	33.2%	4.1%	100.0%
FY92	50.6%	11.5%	35.4%	2.5%	100.0%
FY91*	49.5%	11.2%	36.3%	3.0%	100.0%
FY90*	49.0%	11.4%	36.4%	3.2%	100.0%
FY89*	46.8%	11.4%	37.4%	4.4%	100.0%

*Adjusted to remove ADRDL from SDSU proper as per Legislative action in the FY92 budget.

Percent of Budgeted Salaries State Funds FY94

	Faculty	Exempt	Career Service	Part-Time
BHSU	59.2%	21.6%	17.7%	1.6%
DSU	51.4%	23.3%	23.8%	1.5%
NSU	61.7%	16.9%	19.1%	2.4%
SDSMT	64.5%	16.3%	18.2%	1.0%
SDSU	65.1%	14.6%	19.1%	1.2%
USD	65.3%	14.9%	17.6%	2.2%
Total	63.5%	16.1%	18.7%	1.6%

Percent of Budgeted FTEs State Funds FY94

	Faculty	Exempt	Career Service	Part-Time
BHSU	52.9%	15.0%	30.4%	1.7%
DSU	42.5%	16.6%	40.0%	0.8%
NSU	51.8%	12.1%	34.1%	2.0%
SDSMT	51.7%	12.8%	34.0%	1.4%
SDSU	51.9%	9.4%	32.5%	6.2%
USD	54.3%	10.2%	31.3%	4.1%
Total	52.2%	11.1%	32.7%	4.0%

NOTE: Does not include Medical School, Agricultural Experiment, Cooperative Extension or ADRDL.

Historical Tuition Rates
FY1966-FY1994

Fiscal Year	Institution	Undergr. Resident	Undergr. Nonresid.	Graduate Resident	Graduate Nonresid.	Fiscal Year	Institution	Undergr. Resident	Undergr. Nonresid.	Graduate Resident	Graduate Nonresid.
FY66	Universities	9.50	20.00			FY82	Universities	24.48	54.00	36.75	69.30
	Colleges	9.50	20.00				Colleges	23.40	48.50	35.10	63.80
FY67	Universities	9.50	20.00			FY83	Universities	26.70	58.89	40.08	75.57
	Colleges	9.50	20.00				Colleges	25.53	52.89	38.28	69.57
FY68	Universities	9.50	25.00			FY84	Universities	28.57	64.78	42.89	83.13
	Colleges	9.50	20.00				Colleges	27.32	58.18	40.96	76.53
FY69	Universities	9.50	25.00			FY85	Universities	30.50	69.50	46.00	89.00
	Colleges	9.50	20.00				Colleges	29.50	62.50	44.00	82.00
FY70	Universities	11.50	27.50			FY86	Universities	32.25	73.50	48.50	94.00
	Colleges	10.50	22.50				Colleges	31.25	66.50	46.50	86.50
FY71	Universities	11.50	27.50	15.00	30.00	FY87	Universities	34.00	78.00	51.00	100.00
	Colleges	10.50	22.50	13.50	25.00		Colleges	33.00	70.00	50.00	92.00
FY72	Universities	11.50	27.50	15.00	30.00	FY88	Universities	35.50	81.00	53.00	104.00
	Colleges	10.50	22.50	13.50	25.00		Colleges	34.50	73.00	52.00	96.00
FY73	Universities	12.50	30.50	18.00	36.00	FY89	Universities	35.50	81.00	53.00	104.00
	Colleges	11.50	25.00	16.50	31.00		Colleges	34.50	73.00	52.00	96.00
FY74	Universities	14.25	36.00	25.00	50.00	FY90	SDSM,T,SDSU,USD	37.30	85.05	55.65	109.20
	Colleges	13.25	31.00	23.50	45.00		BHSU,DSU,NSU	36.25	76.65	54.60	100.80
FY75	Universities	14.25	36.00	25.00	50.00		DSU/Spring Sem.	36.25	36.25	54.60	54.60
	Colleges	13.25	31.00	23.50	45.00	FY91	SDSM,T,SDSU,USD	39.20	89.30	58.45	114.65
FY76	Universities	16.75	38.50	27.50	52.50		BHSU,NSU	38.05	80.50	57.35	105.85
	Colleges	15.75	33.50	26.00	47.50		DSU	38.05	38.05	57.35	57.35
FY77	Universities	17.50	41.00	28.75	55.00	FY92	SDSM,T,SDSU,USD	41.15	94.70	61.40	121.55
	Colleges	16.50	36.00	27.25	50.00		BHSU,NSU	39.95	85.35	60.25	112.20
FY78	Universities	17.50	41.00	28.75	55.00		DSU	39.95	39.95	60.25	60.25
	Colleges	16.50	36.00	27.25	50.00	FY93	SDSM,T,SDSU,USD	43.00	100.40	64.15	128.85
FY79	Universities	18.60	42.10	29.85	56.10		BHSU,NSU	41.75	90.50	62.95	118.95
	Colleges	17.60	37.10	28.35	51.10		DSU	41.75	41.75	62.95	62.95
FY80	Universities	19.50	44.55	30.75	58.55	FY94	SDSM,T,SDSU,USD	44.10	105.40	66.40	135.95
	Colleges	18.50	39.55	29.25	53.55		BHSU,NSU	42.80	95.05	65.15	125.50
FY81	Universities	22.45	49.50	33.75	63.55		DSU	42.80	42.80	65.15	65.15
	Colleges	21.45	44.50	32.25	58.55						

FY1994 Tuition & Fees Schedule

	BHSU	DSU	NSU	SDSMT	SDSU	USD
Tuition - Cr Hr						
Undergraduate Resident	42.80	42.80	42.80	44.10	44.10	44.10
Undergraduate Non-Resident	95.05	42.80	95.05	105.40	105.40	105.40
Undergraduate National Guard	21.40	21.40	21.40	22.05	22.05	22.05
Undergraduate Over 65	10.70	10.70	10.70	11.03	11.03	11.03
Undergraduate Child of SD Alumnus	42.80	42.80	42.80	44.10	44.10	44.10
Undergraduate Minn. Reciprocity	42.80	42.80	42.80	44.10	44.10	44.10
Undergraduate Wyoming Residents	42.80	42.80	42.80	44.10	44.10	44.10
Undergraduate North Dakota Residents			42.80			
Western Undergraduate Exchange	64.20		64.20	66.15	66.15	66.15
Undergraduate State Employee	21.40	21.40	21.40	22.05	22.05	22.05
Undergraduate ROTC Resident	21.40	21.40	21.40	22.05	22.05	22.05
Graduate Resident	65.15	65.15	65.15	66.40	66.40	66.40
Graduate Non-Resident	125.50	65.15	125.50	135.95	135.95	135.95
Graduate Assistant	21.72	21.72	21.72	22.13	22.13	22.13
Graduate Over 65	16.29	16.29	16.29	16.60	16.60	16.60
Graduate Child of SD Alumnus	65.15	65.15	65.15	66.40	66.40	66.40
Graduate Minn. Reciprocity	65.15	65.15	65.15	66.40	66.40	66.40
Graduate Wyoming Residents	65.15	65.15	65.15	66.40	66.40	66.40
Graduate North Dakota Residents			65.15			
Graduate State Employee	32.58	32.58	32.58	33.20	33.20	33.20
Medical School - Resident - Annual						7,575.00
Medical School - Non-Resident - Annual						16,185.00
Self-Support and Correspondence - Cr Hr						
Undergraduate Taught In-State	68.25	68.25	68.25	68.25	68.25	68.25
Undergraduate Taught Out-of-State	99.75	99.75	99.75	99.75	99.75	99.75
Graduate Taught In-State	89.25	89.25	89.25	89.25	89.25	89.25
Graduate Taught Out-of-State	115.50	115.50	115.50	115.50	115.50	115.50
Undergrad. West River Graduate Center					104.00	
Graduate West River Graduate Center					116.00	
Undergraduate - EAFB (SDSU-BST/EET)	71.00				140.00	128.25
Graduate Programs - EAFB				149.25		149.25
Graduate Program - Aberdeen						89.25
Neonatal Nurse Practitioner Resident - Annual					3,000.00	
Neonatal Nurse Practitioner Non-Resident - Annual					4,000.00	
Neonatal Clinical - Clinical					200.00	
Five Fees						
Application Fee	15.00	15.00	15.00	15.00	15.00	15.00
Transcripts	2.00	2.00	2.00	2.00	2.00	2.00
Late Registration	10.00	10.00	10.00	10.00	10.00	10.00
Late Payment (Plus \$1/Day-Max \$35)	10.00	10.00	10.00	10.00	10.00	10.00
Reinstatement Fee	10.00	10.00	10.00	10.00	10.00	10.00
Exam for Credit - Course	45.00	45.00	45.00	45.00	45.00	45.00
International Student Fee - One-Time	100.00	100.00	100.00	100.00	100.00	100.00
Required Fees						
University Support - Cr Hr	16.84	17.75	13.65	16.00	16.11	16.50
Deferred Maintenance - Cr Hr	1.00	1.00	1.00	1.00	1.00	1.00
General Activity Cr Hr (Max. 12)	9.95	10.60	10.59	12.41	10.11	10.39
Summer - Cr Hr (Max. 12)	3.00	4.00	2.60	1.83	5.71 ¹	3.16
Student Health Cr Hr (Max. 12)			1.16		1.94	
Semester	20.00	19.17		19.00		36.75
Summer - Cr Hr (Max. 12)			0.60		1.19 ¹	3.96
Salary Enhancement Fees - Cr Hr						
Engineering & Computer Science				11.00		
Engineering Education					11.00	
Business School						3.00
Law School						12.00
Special Discipline Fees						
Engineering & Lab - Cr Hr				15.50		
Engineering & Lab - Course					15.50	
Science Lab - Course	15.50	15.50	15.50			15.50
Flight Training - Course					550.00	

FY1994 Tuition & Fees Schedule

	BHSU	DSU	NSU	SDSMT	SDSU	USD
Special Discipline Fees (continued)						
Pharmacy Major - Semester 3 - 9					235.00	
Pharmacy Major - Semester 10					275.00	
Pharmacy Doctoral Track Fee - Sem 5-8					500.00	
Pharmacy Doctoral Track Fee - Sem 9-12					700.00	
Nursing Major - Semester					240.00	225.00
Nursing Graduate - Semester					80.00	
Nurse Practitioner Practicum - Sem					425.00	
RN Upward Mobility - Semester					80.00	
Law School - Semester						157.50
Dental Hygiene - Semester						100.00
Occupational Therapy - Semester						175.00
Physical Therapy - Semester						200.00
Medical Technology - Sem						75.00
Physicians Assistant - Sem						50.00
Medical Student - Sem						50.00
Professional Education Major						
Sophomore/Junior Field Experience	100.00		100.00		100.00	100.00
Sophomore/Junior Field Experience - Course		14.29				
Junior Field Experience - VTI Instructor - Sem		25.00				
Senior Field Experience - Sem	200.00	200.00	200.00		200.00	200.00
Senior Field Experience - VTI Instructor - Sem		100.00				
Master's Level Internships - One-Time	100.00		100.00		100.00	100.00
Specialist Level Internships - One-Time						200.00
Doctoral Level Internships - One-Time						300.00
Residence Halls²						
Double Occupancy - Semester	610.00	565.00	537.00	560.00	520.00	572.00
Single Occupancy - Semester	810.00	730.00	808.00	760.00	697.00	757.00
Summer - Double - Week	44.94	32.00	43.00	38.00	32.50	32.00
Summer - Single - Week	56.71	40.00	66.75	45.00	43.50	42.00
Family Housing - 1 Bdrm - Month					224.00	175.00
Family Housing - 2 Bdrm - Month					270.00	
State Court - Month					158.00	
Staurolite Hall - Per Room Sem					1,280.00	
Cherry Street Apts - Double Occupancy						691.81
Food Service²						
Minimum - Semester	545.70	615.00	495.73	240.00	427.00	642.00
Maximum - Semester	695.50	675.00	662.68	650.00	736.75	697.00
Vehicle Registration						
Automobile - Semester	16.25	15.00	13.50	15.00	24.00	26.25
Automobile - Non-Preferred - Semester		5.00				
Automobile - Summer	6.75				12.00	11.00
Motorcycle - Semester	16.25			15.00	9.00	5.25
Motorcycle - Summer	6.75				7.00	7.35

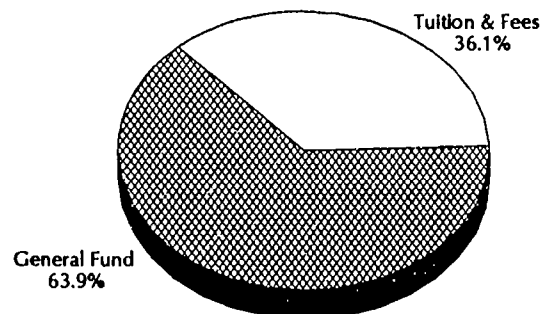
1. Maximum of 9 credit hours.

2. Other variations to Food Service and Residence Halls may exist.

NOTE: All rates effective at the end of the 1993 spring term except BHSU Ellsworth program. Tuition waivers established by SDCL are not included in this schedule.

Percentage of Student Support - Fiscal Year 1993

	Amount	Percent
Tuition 100%	32,239,923	
Fees	17,917,548	
Total Student Support	50,157,471	36.1%
General Fund Appropriation	114,648,912	
Tuition 80%	25,966,938	
Net General Funds	88,681,974	63.9%



Historical Tuition and Fees Charges
Full-Time Students - FY85 through FY94

	FY85	FY86	FY87	FY88	FY89	FY90	FY91	FY92	FY93	FY94
Undergraduate Resident										
BHSU	1,286	1,384	1,521	1,580	1,658	1,724	1,781	1,871	2,127	2,219
DSU	1,281	1,412	1,535	1,585	1,631	1,690	1,782	2,061	2,157	2,262
NSU	1,222	1,335	1,419	1,542	1,584	1,646	1,735	1,835	1,978	2,120
SDSMT	1,266	1,466	1,608	1,768	1,808	1,881	1,973	2,085	2,187	2,291
SDSU	1,301	1,469	1,628	1,742	1,763	1,835	1,936	2,045	2,146	2,248
USD	1,305	1,512	1,628	1,722	1,804	1,908	1,985	2,089	2,190	2,294
Undergraduate Non-Resident										
BHSU	2,342	2,496	2,705	2,812	2,890	3,016	3,140	3,324	3,687	3,891
DSU	2,337	2,524	2,719	2,817	2,331	1,690	1,782	2,061	2,157	2,262
NSU	2,278	2,447	2,603	2,774	2,816	2,939	3,094	3,288	3,538	3,792
SDSMT	2,514	2,786	3,016	3,224	3,264	3,409	3,576	3,799	4,024	4,253
SDSU	2,549	2,789	3,036	3,198	3,219	3,363	3,539	3,759	3,983	4,210
USD	2,553	2,832	3,036	3,178	3,260	3,436	3,588	3,802	4,027	4,256
Graduate Resider.										
BHSU	1,370	1,461	1,609	1,669	1,731	1,801	1,867	1,959	2,174	2,271
DSU	1,360	1,484	1,619	1,670	1,706	1,769	1,860	2,101	2,196	2,306
NSU	1,306	1,412	1,518	1,637	1,668	1,735	1,828	1,930	2,062	2,197
SDSMT	1,372	1,551	1,680	1,813	1,847	1,923	2,016	2,129	2,229	2,337
SDSU	1,397	1,541	1,692	1,794	1,810	1,884	1,981	2,089	2,188	2,293
USD	1,401	1,583	1,693	1,779	1,843	1,950	2,027	2,129	2,228	2,336
Graduate Non-Resident										
BHSU	2,282	2,421	2,617	2,725	2,787	2,910	3,031	3,205	3,518	3,719
DSU	2,272	2,444	2,627	2,726	2,234	1,769	1,860	2,101	2,196	2,306
NSU	2,218	2,372	2,526	2,693	2,724	2,844	2,992	3,176	3,405	3,646
SDSMT	2,404	2,643	2,856	3,037	3,071	3,208	3,365	3,572	3,782	4,007
SDSU	2,429	2,633	2,868	3,018	3,034	3,169	3,330	3,532	3,740	3,963
USD	2,433	2,675	2,869	3,003	3,067	3,236	3,376	3,573	3,781	4,006

SOURCE: FY85 through FY94 Tuition and Fee Rate Schedules

NOTE: Charges are based on 32 credit hours for undergraduates and 24 credit hours for graduate students. Optional fees are not included unless paid by all full-time students. USD does not include the Medical School or the Law School.

Regional Tuition & Fees Comparison
Average Cost and Cost Rank of Public Institutions

Undergraduate Resident	FY91 Rank	FY92 Rank	FY93 Rank	Graduate Resident	FY91 Rank	FY92 Rank	FY93 Rank				
Idaho	1,153	2	1,223	1	Idaho	1,528	4	1,615	4	1,725	3
Iowa	1,887	7	2,072	7	Iowa	2,181	7	2,381	7	2,574	7
Minnesota	2,179	8	2,385	8	Minnesota	2,478	8	2,673	8	2,872	8
Montana	1,414	3	1,486	3	Montana	1,358	2	1,427	1	1,595	1
Nebraska	1,590	4	1,727	4	Nebraska	1,380	3	1,527	2	1,734	4
North Dakota	1,807	5	1,877	5	North Dakota	2,105	6	2,187	6	2,360	6
South Dakota	1,865	6	1,998	6	South Dakota	1,930	5	2,056	5	2,180	5
Wyoming	1,148	1	1,293	2	Wyoming	1,148	1	1,554	3	1,722	2
Average Cost	1,734		1,863		Average Cost	1,841		1,928		2,155	
Undergraduate Non-Resident				Graduate Non-Resident							
Idaho	3,213	3	3,439	3	Idaho	3,641	5	3,892	4	4,459	3
Iowa	5,730	8	6,073	8	Iowa	6,069	8	6,425	8	6,968	8
Minnesota	4,153	6	5,116	7	Minnesota	3,952	6	4,253	5	4,555	4
Montana	3,292	4	3,742	4	Montana	3,122	3	3,558	3	4,643	5
Nebraska	3,055	1	3,361	2	Nebraska	2,530	1	2,811	1	3,316	1
North Dakota	4,518	7	4,673	6	North Dakota	5,309	7	5,489	7	5,940	7
South Dakota	3,120	2	3,339	1	South Dakota	2,992	2	3,193	2	3,404	2
Wyoming	3,568	5	4,097	5	Wyoming	3,568	4	4,358	6	4,794	6
Average Cost	3,778		4,215		Average Cost	3,678		3,981		4,480	

SOURCE: FY91 through FY93 Board of Regents Regional Tuition Survey.

NOTE: The averages include both colleges and universities and are not weighted. The cost was calculated using 32 hours for an undergraduate and 24 hours for a graduate student.

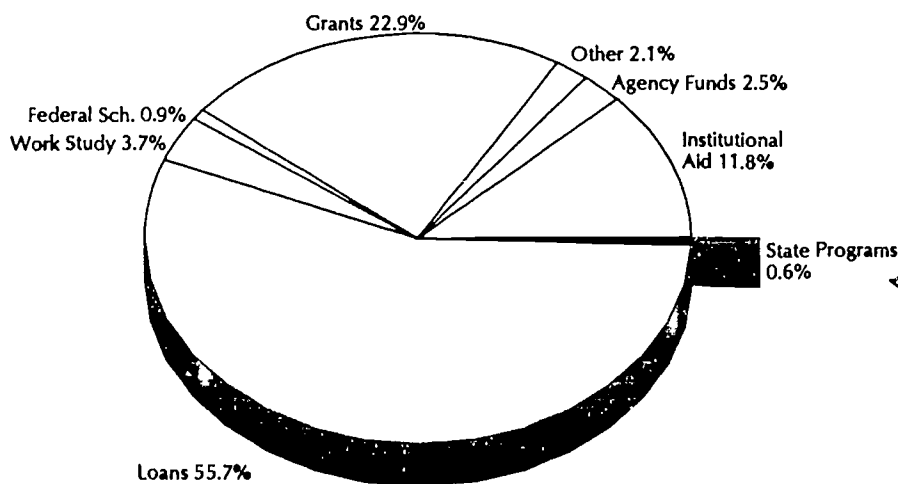
Student Financial Aid by Program
Fiscal Year 1993

	BHSU	DSU	NSU	SDSMT	SDSU	USD	Total
Grants	2,546,979	1,062,449	2,364,365	1,200,925	5,322,143	4,754,298	17,251,159
Loans	3,136,724	1,743,822	4,872,624	2,309,450	13,525,530	16,329,053	41,917,203
Work-Study	342,923	282,339	509,543	254,882	682,234	684,483	2,756,404
Federal Scholarship	0	0	3,330	108,890	335,761	202,236	650,217
State Programs	57,338	17,545	61,264	32,269	135,654	133,018	437,088
Institutional Aid	473,821	291,625	569,956	1,430,350	2,703,950	3,390,385	8,860,087
Agency Funds	366,648	51,988	280,877	368,601	366,047	449,909	1,884,070
Other	145,969	17,315	127,343	287,509	550,175	438,023	1,566,334
Total	7,070,402	3,467,083	8,789,302	5,992,876	23,621,494	26,381,405	75,322,562

State Funded Programs
Fiscal Year 1993

	Student Incentive Grants	Superior Scholarships	Indian Scholarships	Total
BHSU	43,961	3,000	10,377	57,338
DSU	17,545	0	0	17,545
NSU	47,553	1,500	12,211	61,264
SDSMT	20,019	10,500	1,750	32,269
SDSU	99,404	24,750	11,500	135,654
USD	83,018	30,000	20,000	133,018
Total	311,500	69,750	55,838	437,088

Financial Aid by Program
Fiscal Year 1993



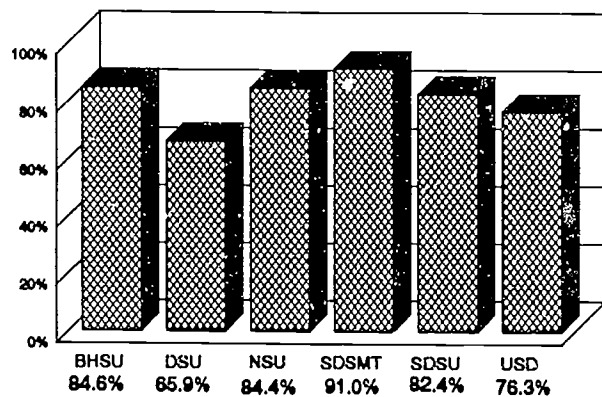
State Programs
Fiscal Year 1993

Indian Scholarships	12.8%
Superior Scholarships	16.0%
Student Incentive Grants	71.3%

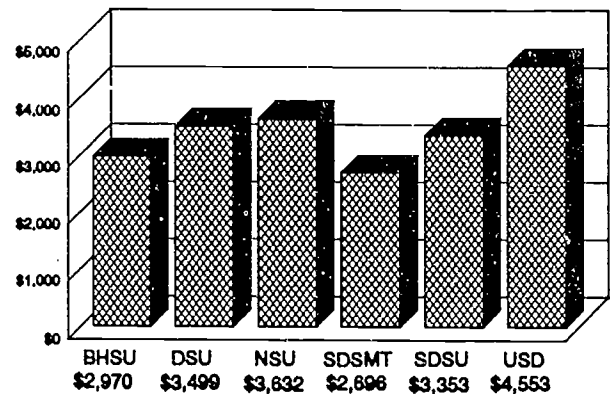
Average Financial Aid Award
Fall 1992/Fiscal Year 1993

	Headcount Enrollment	Unduplicated Recipients	Percentage Receiving Financial Aid	Financial Aid Total Amount	Average Award
BHSU	2,814	2,381	84.6%	7,070,402	2,970
DSU	1,504	991	65.9%	3,467,083	3,499
NSU	2,868	2,420	84.4%	8,789,302	3,632
SDSMT	2,444	2,223	91.0%	5,992,876	2,696
SDSU	8,550	7,044	82.4%	23,621,494	3,353
USD	7,591	5,794	76.3%	26,381,405	4,553
Total	25,771	20,853	80.9%	75,322,562	3,612

Percent of Students Receiving Financial Aid
Fall 1992 Enrollment/Fiscal Year 1993



Average Award per Student
Fiscal Year 1993

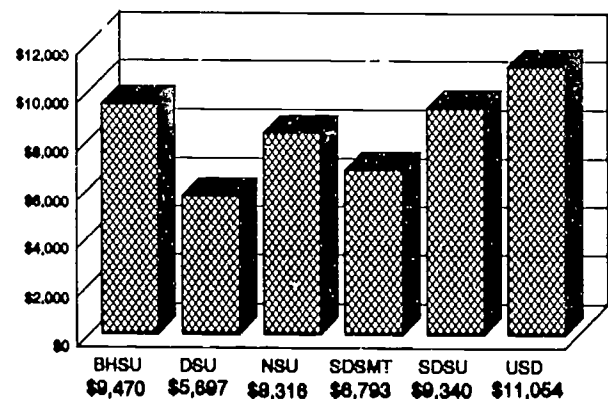


Student Loan Default Rates
Fiscal Year 1993

	Perkins	Stafford*	Nursing	Pharmacy
BHSU	7.10%	7.43%	N/A	N/A
DSU	1.31%	2.57%	N/A	N/A
NSU	4.30%	5.60%	N/A	N/A
SDSMT	4.93%	2.90%	N/A	N/A
SDSU	3.90%	4.00%	1.20%	0.60%
USD	7.10%	4.16%	1.69%	N/A

* Guaranteed Student Loan

Average Student Loan Debt
Fall 1992/Spring 1993 Graduate - Bachelor's Degree



Student Profile by University Fall 1993 Headcount

	BHSU		DSU		NSU		SDSMT		SDSU		USD		Total	
CLASSIFICATION														
Freshman	1,092	38.0%	553	35.4%	1,083	37.8%	867	34.8%	2,566	28.6%	1,786	23.2%	7,947	30.0%
Sophomore	490	17.1%	194	12.4%	496	17.3%	414	16.6%	1,593	17.8%	1,398	18.1%	4,585	17.3%
Junior	503	17.5%	170	10.9%	409	14.3%	369	14.8%	1,511	16.9%	1,268	16.5%	4,230	16.0%
Senior	690	24.0%	219	14.0%	529	18.5%	368	14.8%	1,972	22.0%	1,095	14.2%	4,873	18.4%
Special/Terminal	28	1.0%	427	27.3%	139	4.8%	226	9.1%	181	2.0%	405	5.3%	1,406	5.3%
Graduate Student	67	2.3%	0	0.0%	211	7.4%	246	9.9%	1,143	12.7%	1,755	22.8%	3,422	12.9%
RESIDENCY														
Resident	2,180	76.0%	1,309	83.7%	2,454	85.6%	1,766	70.9%	6,476	72.2%	5,603	72.7%	19,788	74.8%
Non-resident	690	24.0%	254	16.3%	413	14.4%	724	29.1%	2,490	27.8%	2,104	27.3%	6,675	25.2%
GENDER														
Men	1,189	41.4%	543	34.7%	1,271	44.3%	1,691	67.9%	4,565	50.9%	3,384	43.9%	12,643	47.8%
Women	1,681	58.6%	1,020	65.3%	1,596	55.7%	799	32.1%	4,401	49.1%	4,323	56.1%	13,820	52.2%
AGE														
Undergraduate														
16 or younger	2	0.1%	4	0.3%	2	0.1%	1	0.0%	1	0.0%	7	0.1%	17	0.1%
17-23	1,867	66.6%	871	55.7%	1,992	75.0%	1,463	65.3%	6,415	82.0%	4,740	79.7%	17,348	75.3%
24-29	412	14.7%	183	11.7%	300	11.3%	394	17.6%	726	9.3%	607	10.2%	2,622	11.4%
30-35	224	8.0%	133	8.5%	163	6.1%	194	8.7%	325	4.2%	295	5.0%	1,334	5.8%
36-65	295	10.5%	366	23.4%	197	7.4%	188	8.4%	354	4.5%	299	5.0%	1,699	7.4%
66 or older	3	0.1%	6	0.4%	2	0.1%	2	0.1%	2	0.0%	3	0.1%	18	0.1%
Total Undergrad.	2,803		1,563		2,656		2,244		7,823		5,952		23,041	
Graduate														
23 or younger	0	0.0%	0	0.0%	14	6.6%	25	10.2%	120	10.5%	319	18.2%	478	14.0%
24-29	12	17.9%	0	0.0%	57	27.0%	119	48.4%	423	37.0%	602	34.3%	1,213	35.4%
30-35	19	28.4%	0	0.0%	44	20.9%	65	26.4%	222	19.4%	302	17.2%	652	19.1%
36-65	35	52.2%	0	0.0%	96	45.5%	37	15.0%	378	33.1%	526	30.0%	1,072	31.3%
66 or older	1	1.5%	0	0.0%	0	0.0%	0	0.0%	0	0.0%	6	0.3%	7	0.2%
Total Graduate	67		0		211		246		1,143		1,755		3,422	
ETHNIC ORIGIN														
White/Caucasian	2,703	94.2%	1,508	96.5%	2,741	95.6%	2,183	87.7%	8,509	94.9%	7,213	93.6%	24,857	93.9%
American Indian	120	4.2%	12	0.8%	66	2.3%	52	2.1%	100	1.1%	211	2.7%	561	2.1%
Black/Non-Hispanic	10	0.3%	20	1.3%	15	0.5%	29	1.2%	39	0.4%	57	0.7%	170	0.6%
Asian/Pacific	16	0.6%	18	1.2%	27	0.9%	56	2.2%	298	3.3%	176	2.3%	591	2.2%
Spanish Surname	21	0.7%	5	0.3%	7	0.2%	24	1.0%	19	0.2%	45	0.6%	121	0.5%
Unknown/Missing	0	0.0%	0	0.0%	0	0.0%	131	5.3%	0	0.0%	0	0.0%	131	0.5%
Information Refused	0	0.0%	0	0.0%	11	0.4%	15	0.6%	1	0.0%	5	0.1%	32	0.1%
TOTAL ENROLLMENT	2,870		1,563		2,867		2,490		8,966		7,707		26,463	

SOURCE: Fall 1993 Higher Education Enrollment Report, state support enrollment.

Historical Fall Headcount Enrollments

Year	BHSU	DSU	NSU	SDSMT	SDSU	USD	USD/S	System Totals	Change Fall to Fall	Spring Totals	Year
1993	2,870	1,563	2,867	2,490	8,966	7,707	0	26,436	2.58%		
1992	2,814	1,504	2,868	2,444	8,550	7,591	0	25,771	3.97%	23,961	1993
1991	2,734	1,465	2,818	2,450	8,090	7,231	0	24,788	4.67%	23,006	1992
1990	2,545	1,311	3,113	2,253	7,642	6,817	0	23,681	6.01%	21,832	1991
1989	2,412	1,224	3,108	2,118	7,080	6,397	0	22,339	5.75%	20,869	1990
1988	2,282	1,111	3,066	1,958	6,871	5,836	0	21,124	3.58%	19,656	1989
1987	2,130	958	3,029	1,931	6,723	5,622	0	20,393	0.62%	19,062	1988
1986	2,139	940	2,889	2,023	6,765	5,511	0	20,267	-0.74%	19,310	1987
1985	2,117	867	2,818	2,260	6,837	5,520	0	20,419	-3.94%	18,822	1986
1984	2,280	977	2,718	2,583	6,940	5,758	0	21,256	-7.41%	19,854	1985
1983	2,218	1,246	2,718	2,908	7,028	6,001	837	22,956	-0.19%	21,507	1984
1982	2,080	1,151	2,716	2,805	7,289	6,175	784	23,000	0.63%	21,847	1983
1981	2,173	1,107	2,706	2,718	7,167	6,220	764	22,855	5.02%	21,855	1982
1980	2,099	1,000	2,603	2,393	6,848	5,968	852	21,763	6.05%	20,868	1981
1979	2,054	895	2,459	2,158	6,464	5,663	828	20,521	1.57%	19,435	1980
1978	1,967	841	2,370	1,930	6,537	5,734	825	20,204	0.49%	19,206	1979
1977	1,852	902	2,425	1,812	6,489	5,812	814	20,106	2.26%	19,097	1978
1976	1,803	922	2,353	1,682	6,464	5,608	830	19,662	0.46%	18,866	1977
1975	1,875	870	2,369	1,609	6,412	5,632	805	19,572	4.97%	18,807	1976
1974	1,771	710	2,195	1,489	6,181	5,560	740	18,646	-0.48%	17,744	1975
1973	1,726	832	2,277	1,469	6,217	5,326	888	18,735	-5.66%	17,490	1974
1972	1,854	961	2,550	1,586	6,386	5,502	1,019	19,858	-6.77%	18,699	1973

Historical Fall FTE Enrollments

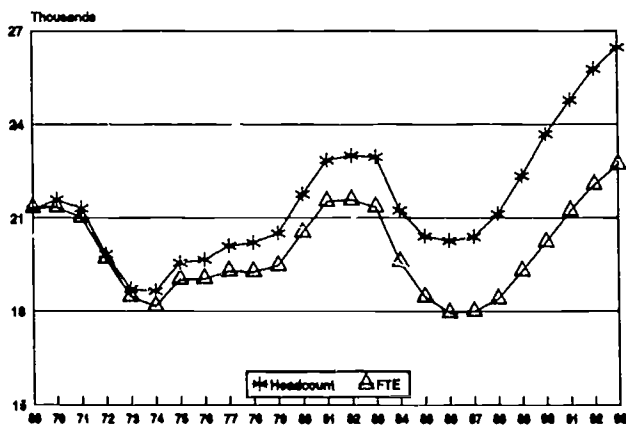
Year	BHSU	DSU	NSU	SDSMT	SDSU	USD	USD/S	System Totals	Change Fall to Fall	Spring Totals	Year
1993	2,525	1,055	2,403	2,059	7854	6,818	0	22,714	2.96%		
1992	2,441	1,042	2,365	2,027	7,469	6,717	0	22,061	3.96%	20,423	1993
1991	2,379	959	2,286	1,997	7,143	6,457	0	21,220	4.83%	19,741	1992
1990	2,242	880	2,334	1,850	6,833	6,105	0	20,243	4.84%	18,881	1991
1989	2,095	859	2,378	1,762	6,379	5,835	0	19,308	4.91%	18,185	1990
1988	1,949	829	2,355	1,708	6,218	5,346	0	18,405	2.23%	17,296	1989
1987	1,841	704	2,425	1,672	6,139	5,223	0	18,004	0.30%	16,810	1988
1986	1,847	710	2,321	1,742	6,268	5,063	0	17,951	-2.74%	16,923	1987
1985	1,854	752	2,304	1,917	6,416	5,214	0	18,457	-5.83%	17,033	1986
1984	2,033	942	2,320	2,183	6,653	5,469	0	19,600	-8.19%	18,082	1985
1983	2,002	1,183	2,345	2,527	6,728	5,723	840	21,348	-1.08%	19,708	1984
1982	1,881	1,116	2,381	2,520	7,053	5,881	750	21,582	0.20%	20,269	1983
1981	2,027	1,052	2,363	2,473	7,034	5,835	755	21,539	4.92%	20,265	1982
1980	1,944	950	2,305	2,179	6,654	5,644	853	20,529	5.34%	19,347	1981
1979	1,919	868	2,209	1,966	6,287	5,406	833	19,488	1.14%	18,175	1980
1978	1,853	814	2,124	1,800	6,466	5,381	831	19,269	-0.11%	18,020	1979
1977	1,798	892	2,228	1,751	6,474	5,332	816	18,291	1.19%	17,979	1978
1976	1,744	899	2,216	1,609	6,493	5,306	798	19,065	0.14%	17,977	1977
1975	1,773	845	2,165	1,584	6,548	5,318	806	19,039	4.78%	17,945	1976
1974	1,693	706	2,039	1,452	6,423	5,101	757	18,171	1.70%	17,170	1975
1973	1,663	842	2,165	1,432	6,441	5,046	896	18,485	-6.19%	17,050	1974
1972	1,775	970	2,454	1,541	6,674	5,232	1,059	19,705	-6.31%	18,355	1973

NOTE: Prior to Fall 1987, USD enrollments included Graduate Business students at Ellsworth AFB and prior to Fall 1988, SDSMT enrollments included students in on-campus, non-state-funded courses. With these enrollments excluded: USD Fall 1986 headcount enrollment would have been 5,377 or 134 students less and FTE enrollment would have been 5,015 or 48 FTEs less; SDSMT Fall 1987 enrollment would have been 1,887 or 44 students less and FTE enrollment would have been 1,643 or 29 FTEs less. All FTEs are based on 15 credit hours for Undergraduates, 12 credit hours for Master's and Doctor's, 15 credit hours for Law and 19 credit hours for Medicine. FTE totals may not be exact due to rounding.

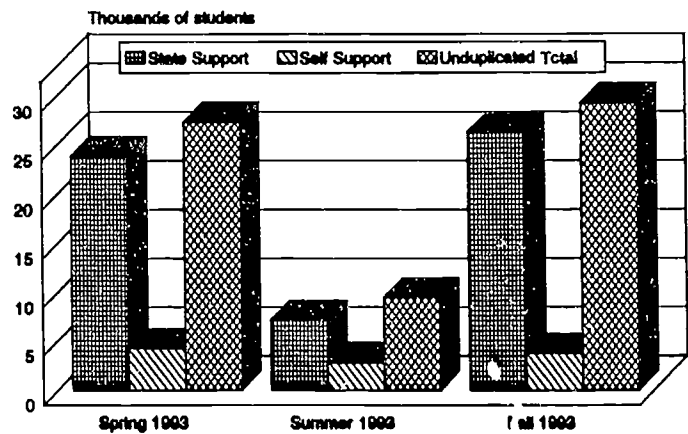
Enrollment by Term
Spring 1993 through Fall 1993

	State Support		Self Support		Unduplicated Total	
	Headcount	FTE	Headcount	FTE	Headcount	FTE
Spring 1993 Enrollment						
BHSU	2,701	2,302.2	1,544	601.9	4,081	2,904.0
DSU	1,254	983.5	36	2.4	1,289	985.9
NSU	2,566	2,117.8	553	131.0	3,058	2,249.3
SDSMT	2,227	1,790.7	28	5.6	2,229	1,796.3
SDSU	8,107	7,007.3	934	265.2	8,905	7,273.3
USD	7,106	6,221.5	1,185	321.9	7,981	6,548.0
Total	23,961	20,423.0	4,290	1,328.6	27,543	21,756.8
Summer 1993 Enrollment						
BHSU	577	162.1	946	251.6	1,280	413.7
DSU	383	106.1	20	2.0	396	108.1
NSU	1,101	485.7	485	65.1	1,532	550.7
SDSMT	594	169.6	84	23.8	666	193.3
SDSU	2,623	816.2	666	148.4	3,220	964.5
USD	1,908	792.8	586	129.0	2,415	921.8
Total	7,186	2,532.5	2,787	619.9	9,509	3,152.1
Fall 1993 Enrollment						
BHSU	2,870	2,524.5	1,282	531.2	4,017	3,055.8
DSU	1,563	1,055.2	23	1.5	1,585	1,056.7
NSU	2,867	2,403.1	456	110.7	3,202	2,514.0
SDSMT	2,490	2,058.9	35	11.0	2,497	2,069.9
SDSU	8,966	7,853.8	779	253.9	9,601	8,109.2
USD	7,707	6,818.2	1,169	333.7	8,496	7,154.8
Total	26,463	22,713.7	3,764	1,242.0	29,398	23,960.4

Historical Fall Enrollment
1969 through 1993



Enrollment by Term
Headcount 1993



New Registrants Enrollment
State Support Students - Fall 1993 Headcount

	BHSU	DSU	NSU	SDSMT	SDSU	USD	Total
First Time Freshmen	577	220	671	437	1,701	1,268	4,874
First Time Transfer	386	163	180	271	547	469	2,016
Readmit After Absence	76	27	111	122	209	231	776
Total New Registrants	<u>1,039</u>	<u>410</u>	<u>962</u>	<u>830</u>	<u>2,457</u>	<u>1,968</u>	<u>7,666</u>
Graduate Transfers	8	0	22	0	2	2	34

Transfer Enrollment
State Support Students - Fall 1993 Headcount

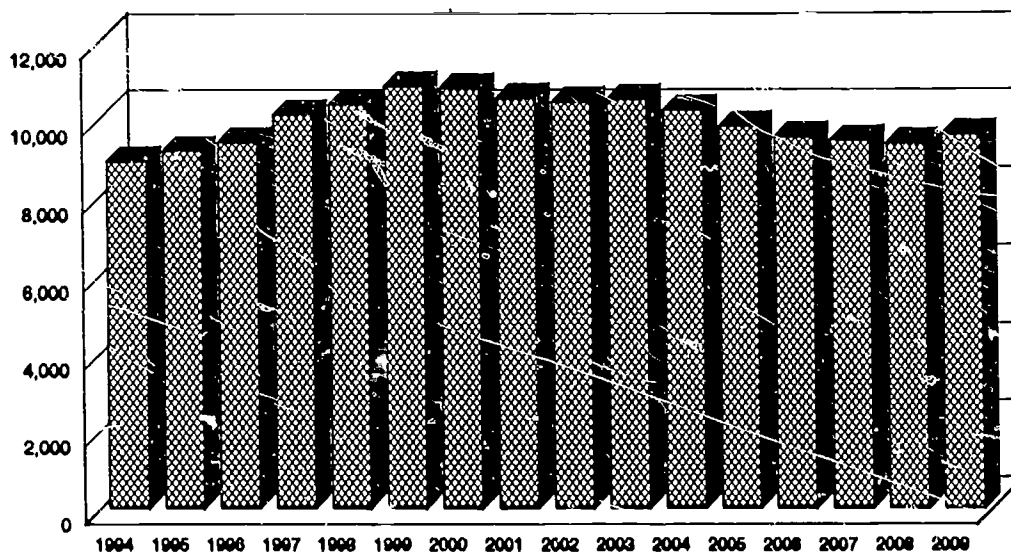
Transfer from	Transfer to						Total
	BHSU	DSU	NSU	SDSMT	SDSU	USD	
S.D. Public Universities							
BHSU	X	0	4	3	10	19	36
DSU	2	X	8	0	17	9	36
NSU	4	0	X	0	37	9	50
SDSMT	7	0	4	X	23	21	55
SDSU	8	3	28	3	X	34	76
USD	9	0	16	4	39	X	68
S.D. Private Institutions							
Augustana College	3	0	2	0	15	6	26
Dakota Wesleyan University	1	0	3	0	6	7	17
Huron University	0	0	4	0	11	2	17
Kilian Community College	0	0	0	0	1	0	1
Mount Marty College	0	0	9	0	5	13	27
National College	0	0	0	1	0	1	2
Oglala Lakota College	1	0	1	0	1	2	5
Presentation College	1	0	17	0	4	1	23
Sinte Gleska University	0	0	0	0	3	2	5
Sioux Falls College	0	0	0	0	8	8	16
Sisseton-Wahpeton Community College	0	0	0	0	0	1	1
Technical Institutes							
Southeast Area Technical Institute	0	0	0	0	0	4	4
Western Dakota Technical Institute	3	0	0	0	0	0	3
20 or More Transfers							
Mankato State University, Mn	0	0	3	0	16	5	24
Southwest State University, Mn	1	0	0	0	19	11	31
Worthington Community College, Mn	0	0	0	0	24	6	30
Western Iowa Technical College	0	0	0	0	4	20	24
Other Institutions	80	1	94	49	271	245	740
In Process	266	159	11	232	96	45	809
Total Transfers	<u>386</u>	<u>163</u>	<u>204</u>	<u>292</u>	<u>610</u>	<u>471</u>	<u>2,126</u>

**Plans of South Dakota High School Graduates
1970 through 1993**

	Total High School Graduates	Total College Bound	Percent College bound	Bound for In-State College	Percent In-State Bound	Bound for Out-of-State College	Percent Out-of-State Bound
1993	8,604	4,654	54.1%	3,367	72.2%	1,292	27.8%
1992	8,044	4,133	57.4%	3,029	73.3%	1,104	26.7%
1991	7,772	4,329	55.7%	3,022	70.0%	1,307	30.0%
1990	8,309	4,681	56.3%	3,292	70.3%	1,389	29.7%
1989	8,871	4,852	54.7%	3,429	70.7%	1,423	29.3%
1988	8,842	4,748	53.7%	3,278	69.0%	1,470	31.0%
1987	8,597	4,544	52.9%	3,222	70.9%	1,322	29.1%
1986	8,382	4,383	52.3%	3,147	71.8%	1,236	28.2%
1985	8,949	4,532	50.6%	3,332	73.5%	1,200	26.5%
1984	9,304	4,432	47.6%	3,404	76.8%	1,028	23.2%
1983	9,904	4,640	46.8%	3,628	78.2%	1,012	21.8%
1982	10,550	4,925	46.7%	3,940	80.0%	985	20.0%
1981	11,177	5,271	47.2%	4,197	79.6%	1,074	20.4%
1980	11,444	5,108	44.6%	4,153	81.3%	955	18.7%
1979	11,844	5,282	44.6%	4,246	80.4%	1,036	19.6%
1978	11,349	4,848	43.2%	4,107	84.7%	741	15.3%
1977	12,026	5,004	41.6%	4,127	82.5%	877	17.5%
1976	12,096	5,096	42.1%	4,309	84.6%	787	15.4%
1975	12,304	4,881	39.7%	4,140	84.8%	741	15.2%
1974	12,329	4,700	40.5%	4,008	85.3%	692	14.7%
1973	12,573	4,511	35.9%	3,869	85.8%	642	14.2%
1972	12,575	5,416	43.0%	4,604	85.0%	812	15.0%
1971	12,754	5,740	45.0%	4,764	83.0%	976	17.0%
1970	12,724	5,937	46.7%	5,079	85.5%	858	14.5%

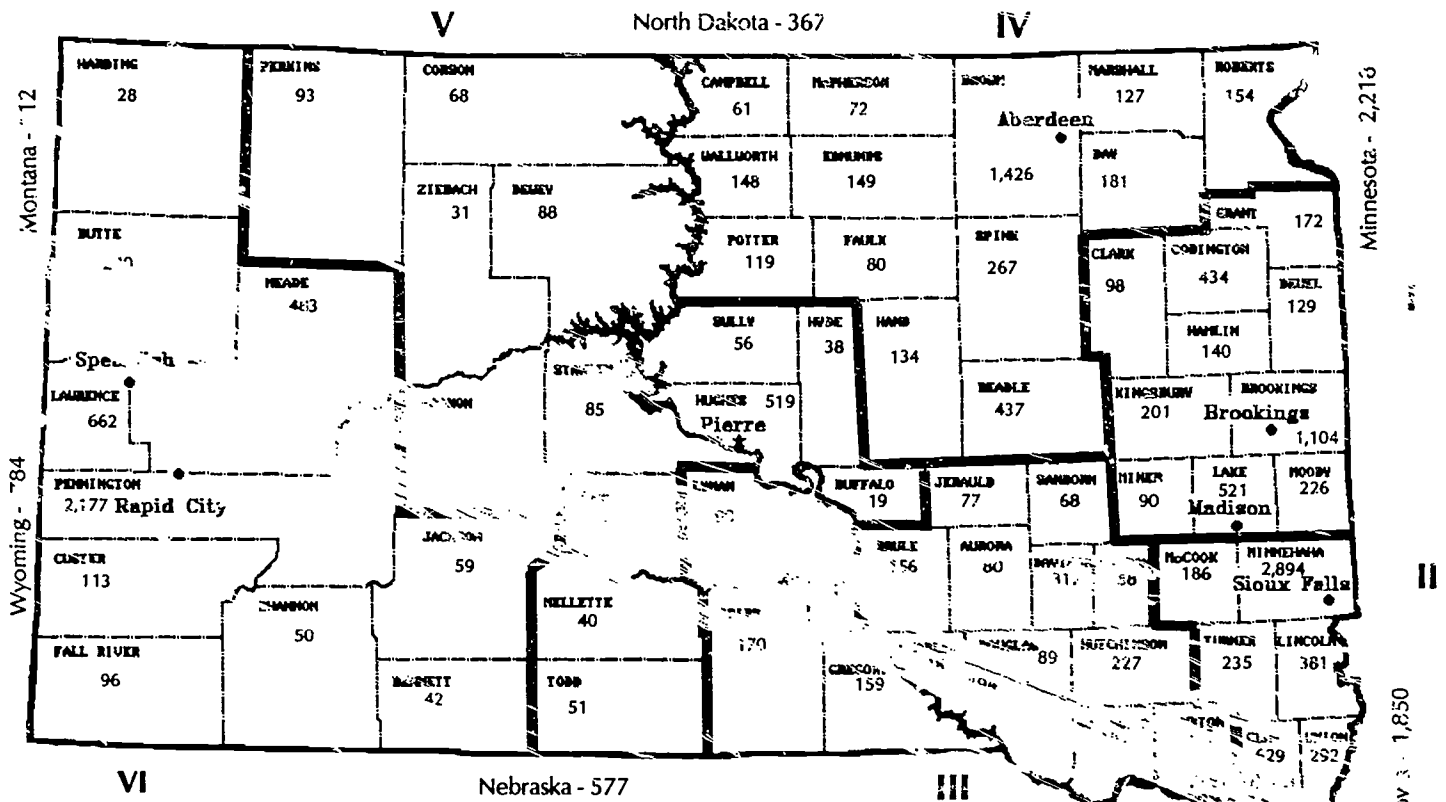
SOURCE: S.D. Department of Education & Cultural Affairs, Division of Elementary and Secondary Education, Fall Guidance Surveys.

**Projections of South Dakota High School Graduates
1994 through 2009**



SOURCE: Western Interstate Commission for Higher Education.

Geographic Distribution by County
Fall 1993 Enrollment



Fall 1993 State Support Enrollment by Geographic Origin

	BHSU	DSU	NSU	SDSMT	SDSIJ	USD	Total	% Sys. Total
SD Planning Districts*								
District I Total	30	522	229	42	1,946	346	3,115	11.8%
District II Total	46	394	107	130	1,569	2,371	4,617	17.4%
District III Total	99	192	185	122	778	1,053	2,429	9.2%
District IV Total	84	104	1,665	126	934	442	3,355	12.7%
District V Total	226	71	166	112	365	273	1,213	4.6%
District VI Total	1,569	29	98	1,173	520	561	3,950	14.9%
SD County Unknown	0	0	0	5	7	0	12	0.0%
In-State Total	2,054	1,312	2,450	1,710	6,119	5,046	18,691	70.6%
Contiguous States								
Iowa	11	42	10	11	505	1,271	1,850	7.0%
Minnesota	22	84	153	75	1,587	297	2,218	8.4%
Montana	50	0	6	29	11	16	112	0.4%
Nebraska	17	9	3	82	95	371	577	2.2%
North Dakota	24	7	185	60	60	31	367	1.4%
Wyoming	53	8	5	139	57	62	784	3.0%
Total Contiguous	657	150	362	396	2,295	2,048	5,908	22.3%
Other States	145	74	32	127	281	414	1,073	4.1%
Non USA Students	14	27	23	257	271	199	791	3.0%
Total	2,870	1,563	2,867	2,490	8,966	7,707	26,463	

* South Dakota Planning Districts were used to regionalize county enrollment data.

Enrollment by Site of Instruction
 Fall 1993 Headcount Enrollment by State Support and Self Support

Site	University	State Support	Self Support	Unduplicated Total	Site	University	State Support	Self Support	Unduplicated Total	
Aberdeen	DSU	5	0	135	Mitchell	DSU	18	0	23	
	NSU	0	100			SDSU	0	5		
	SDSU	8	2			Total	18	5		
	USD	6	15		Montrose	SDSU	0	4	4	
	Total	19	117			Total	0	4		
Beresford	USD	0	31	31	Murdo	DSU	14	0	14	
	Total	0	31			Total	14	0		
Bowdle	DSU	17	0	17	Off Campus Extension	SDSU	73	0	371	
	Total	17	0			USD	17	283		
Brookings	DSU	5	0	16		Total	90	283		
	USD	11	0		Pierre	DSU	19	0	353	
	Total	16	0			NSU	13	46		
Cheyenne, WY	SDSU	0	8	8		SDSU	42	223		213
	Total	0	8		USD	39	28			
	DeSmet	DSU	12		0	12	Total	113	297	
		Total	12		0		Pine Ridge	BHSU	0	
Dupree	NSU	0	5	5	Total	0		32		
	Total	0	5		Rapid City	NSU	1	0	213	
Eagle Butte	DSU	12	0	SDSU		103	6			
	NSU	0	202	USD		88	19			
	Total	12	202	Total		192	25			
Ellsworth AFB	BHSU	0	1,198	1,553	Sioux Falls Center for Public Higher Education	DSU	67	0	787	
	SDSU	0	220			SDSU	86	164		
	USD	0	153			USD	229	275		
	Total	0	1,571			Total	382	439		
Fairfax	DSU	7	0	7	Sioux City, IA	USD	0	93	93	
	Total	7	0			Total	0	93		
Fort Meade	SDSU	16	0	16	Sioux Falls	DSU	100	0	255	
	Total	16	0			NSU	2	0		
Fort Thompson	SDSU	0	7	7		SDSU	125	0		
	Total	0	7			USD	16	12		
Gillette, WY	BHSU	0	30	30	Total	243	12			
	Total	0	30		Spearfish	BHSU	0	15	30	
Gregory	SDSU	0	35	35		USD	15	0		
	Total	0	35			Total	15	15		
Huron	SDSU	12	0	12	Sturgis	BHSU	0	10	37	
	Total	12	0			SDSU	0	26		
Main Campus	BHSU	2,870	0	25,298		USD	0	1		
	DSU	1,296	0			Total	0	37		
	NSU	2,903	108		Wagner	DSU	18	0	18	
	SDSMT	2,547	55			Total	18	0		
	SDSU	8,564	92		Watertown	DSU	4	0	35	
	USD	7,381	285			NSU	3	0		
Total	25,561	540	SDSU	1		0				
Martin	DSU	0	23	32		USD	27	0		
	SDSU	9	0		Total	35	0			
McIntosh	Total	9	23	15	Yankton	USD	0	11	11	
	DSU	15	0			Total	0	11		
	SDSU	0	8		All Sites	Total	26,816	3,830	29,712	
Total	15	8								

NOTE: Enrollments are unduplicated by site. Off Campus Extension courses are held at more than one site. State Support Enrollments are as of September 14, 1993. Self Support Enrollments are as of the end of the term.

Student Right-to-Know Report

	BHSU	DSU	NSU	SDSMT	SDSU	USD	Total
Student Persistence Rates							
Fall 1991 through Fall 1992							
Fall 1991 Cohort ¹	492	209	512	349	1,315	1,159	4,036
Completions 6/30/92 (degree conferred)	0	0	7	0	0	9	16
Completion Percentage	0.0%	0.0%	1.4%	0.0%	0.0%	0.8%	0.4%
Persisters Enrolled Fall 1992	228	138	310	226	1,039	825	2,766
Persister Percentage	46.3%	66.0%	60.5%	64.8%	79.0%	71.2%	68.5%
Attrition	264	71	195	123	276	325	1,254
Attrition Percentage	53.7%	34.0%	38.1%	35.2%	21.0%	28.0%	31.1%

Campus Crime Report
January 1 - December 31, 1992
Occurrences Reported

Criminal Homicide							
Murder and Non-negligent Homicide	0	0	0	0	0	0	0
Manslaughter by Negligence	0	0	0	0	0	0	0
Forcible Rape							
Rape by Force	1	1	1	0	1	5	9
Attempts to Commit Forcible Rape	0	0	0	0	0	2	2
Robbery							
Firearm	0	0	0	0	0	0	0
Knife or Cutting Instrument	0	0	0	0	0	0	0
Other Dangerous Weapon	0	0	0	0	0	0	0
Strong-Arm (hands, fist, feet, etc.)	0	0	0	0	0	1	1
Assault							
Firearm	0	0	0	0	0	0	0
Knife or Cutting Instrument	0	0	0	0	0	0	0
Other Dangerous Weapon	0	0	0	1	0	0	1
Hands, Fist, Feet, Aggravated Injury, etc.	0	0	0	2	1	4	7
Other Assaults, Simple, Not Aggravated	0	0	0	2	2	3	7
Burglary							
Forcible Entry	0	0	0	2	34	7	43
Unlawful Entry-No Force	0	0	14	3	82	1	100
Attempted Forcible Entry	0	0	0	0	1	1	2
Larceny-Theft (except motor vehicle)	12	16	8	8	102	182	328
Motor Vehicle Theft							
Automobiles	2	0	0	0	0	3	5
Trucks and Buses	0	0	0	0	0	0	0
Other Vehicles	0	0	0	2	0	0	2
Total Occurrences Reported	15	17	23	20	223	209	507
Arrests Reported							
Liquor Law Violations	1	0	1	1	14	20	37
Drug Abuse Violations	0	0	0	0	1	0	1
Weapons Possessions	0	0	0	0	0	0	0
Total Arrests Reported	1	0	1	1	15	20	38

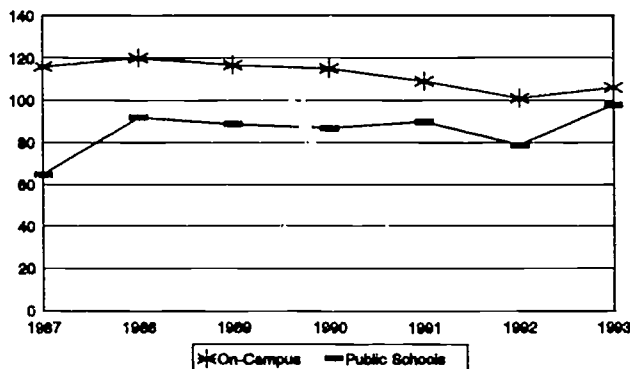
1. The Cohort includes students who are first-time, full-time, degree-seeking freshmen and who are enrolled in state support classes.

South Dakota School for the Deaf

SDSD Historical Enrollment
Fall Semesters - 1987 through 1993

	Audiological Evaluations	Preschool thru Grade 12	Early Childhood	Public School
1993	1,442	70	36	98
1992	1,146	64	37	79
1991	808	76	33	90
1990	1,400	73	42	87
1989	1,341	72	45	89
1988	1,414	69	51	92
1987	1,351	68	48	65

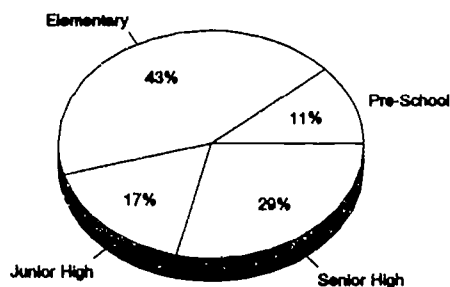
SDSD Historical Enrollment



SDSD On-Campus Enrollment
Fall 1993

Pre-School	8
Elementary School	30
Junior High School	12
Senior High School	20
Total On-Campus	70

SDSD On-Campus Enrollment

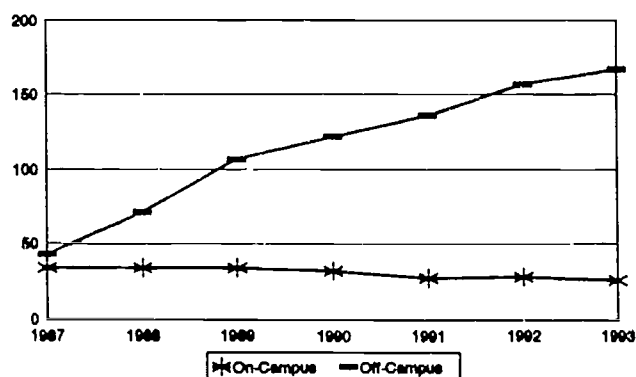


South Dakota School for the Visually Handicapped

SDSVH Historical Enrollment
Fall Semesters - 1987-1993

	On-Campus Students	Off-Campus Students	Total Enrollment
1993	26	167	193
1992	28	157	185
1991	27	136	163
1990	32	122	154
1989	34	107	141
1988	34	71	105
1987	34	43	77

SDSVH Historical Enrollment



Faculty Salaries by Professorial Rank State Funds FY1994

	Nine Month Faculty			Over Nine Month Faculty			All Faculty		
	FTE	Budgeted	Average	FTE	Budgeted	Average	FTE	Budgeted	Average
BHSU									
Professor	25.8	1,049,578	40,760	0.0	0	0	25.8	1,049,578	40,760
Associate Professor	11.6	398,479	34,278	0.4	22,744	56,860	12.0	421,223	35,029
Assistant Professor	43.8	1,386,635	31,695	0.0	0	0	43.8	1,386,635	31,695
Instructor	4.5	119,829	26,629	0.5	12,720	25,440	5.0	132,549	26,510
Total	85.6	2,954,521	34,505	0.9	35,464	39,404	86.5	2,989,985	34,556
DSU									
Professor	8.0	356,270	44,534	1.5	88,141	58,761	9.5	444,411	46,780
Associate Professor	7.0	250,219	35,746	2.4	117,367	49,943	9.4	367,586	39,314
Assistant Professor	16.0	549,606	34,350	1.4	63,866	46,960	17.4	613,472	35,338
Instructor	5.2	140,311	27,113	2.8	79,200	28,085	8.0	219,511	27,456
Total	36.2	1,296,406	35,837	8.0	348,574	43,409	44.2	1,644,980	37,213
NSU									
Professor	25.5	1,131,991	44,392	0.8	38,700	48,375	26.3	1,170,691	44,513
Associate Professor	27.1	921,535	33,955	2.0	69,996	34,998	29.1	991,531	34,026
Assistant Professor	33.6	970,444	28,882	3.1	123,846	39,950	36.7	1,094,290	29,817
Instructor	15.9	436,378	27,445	2.8	92,017	32,863	18.7	528,395	28,256
Total	102.1	3,460,348	33,878	8.7	324,559	37,306	110.8	3,784,907	34,147
SDSMT									
Professor	39.9	1,876,249	47,057	9.3	553,203	59,376	49.2	2,429,452	49,390
Associate Professor	28.4	1,193,534	42,061	0.8	45,475	54,657	29.2	1,239,009	42,420
Assistant Professor	23.3	836,651	35,942	0.0	0	0	23.3	836,651	35,942
Instructor	5.6	142,669	25,600	0.0	0	0	5.6	142,669	25,600
Total	97.1	4,049,103	41,701	10.1	598,678	58,989	107.2	4,647,781	43,337
SDSU									
Professor	93.1	4,076,580	43,787	30.6	1,720,749	56,326	123.7	5,797,329	46,885
Associate Professor	55.8	2,050,148	36,774	12.1	541,277	44,845	67.8	2,591,425	38,210
Assistant Professor	101.4	3,293,486	32,480	16.4	637,336	38,767	117.8	3,930,822	33,357
Instructor	38.8	1,095,298	28,264	2.4	74,293	31,614	41.1	1,169,591	28,456
Total	289.0	10,515,512	36,386	61.4	2,973,655	48,423	350.4	13,489,167	38,495
USD									
Professor	69.7	3,323,082	47,670	10.4	670,055	64,428	80.1	3,993,137	49,846
Associate Professor	64.3	2,331,101	36,276	8.6	398,647	46,300	72.9	2,729,748	37,461
Assistant Professor	95.8	3,298,313	34,447	6.2	229,646	37,220	101.9	3,527,959	34,615
Instructor	16.6	387,484	23,342	7.1	213,271	30,123	23.7	600,755	25,370
Total	246.3	9,339,980	37,918	32.3	1,511,619	46,857	278.6	10,851,599	38,953
Total									
Professor	261.9	11,813,750	45,102	52.6	3,070,848	58,418	314.5	14,884,598	47,328
Associate Professor	194.2	7,145,016	36,801	26.3	1,195,506	45,522	220.4	8,340,522	37,840
Assistant Professor	313.8	10,335,135	32,938	27.1	1,054,694	38,962	340.8	11,389,829	33,416
Instructor	86.5	2,321,969	26,844	15.6	471,501	30,322	102.1	2,793,470	27,374
Total	856.4	31,615,870	36,919	121.4	5,792,549	47,695	977.8	37,408,419	38,257

SOURCE: PayPerS Report. Excludes vacancies, Auxiliary Services, AES, CES and Medical School. Includes filled positions as of July 1, 1993.

Faculty Profile by University

Fall 1993 State Funded Faculty with greater than or equal to .5 FTE

	BHSU	DSU	NSU	SDSMT	SDSU	USD	Total
Age							
35 or younger	13 13%	8 14%	22 19%	8 7%	56 12%	63 15%	170 13%
36-45	32 31%	28 48%	41 35%	48 41%	176 38%	146 35%	471 37%
46-55	38 37%	13 22%	37 32%	38 32%	151 33%	132 32%	409 32%
56-65	20 19%	8 14%	15 13%	22 19%	79 17%	67 16%	211 17%
66 or older	0 0%	1 2%	1 1%	1 1%	2 0%	8 2%	13 1%
Gender							
Female	29 28%	23 40%	30 26%	20 17%	144 31%	135 32%	381 30%
Male	74 72%	35 60%	86 74%	97 83%	320 69%	281 68%	893 70%
Rank							
Instructor	9 9%	12 21%	21 18%	4 3%	57 12%	33 8%	136 11%
Assistant Professor	55 53%	23 40%	38 33%	28 24%	152 33%	156 38%	452 35%
Associate Professor	13 13%	12 21%	30 26%	34 29%	95 20%	113 27%	297 23%
Professor	26 25%	11 19%	27 23%	51 44%	160 34%	114 27%	389 31%
Highest Degree Attained							
Bachelor	3 3%	5 9%	0 0%	0 0%	9 2%	15 4%	32 3%
Master	43 42%	27 47%	42 36%	23 20%	149 32%	89 21%	373 29%
Doctor	57 55%	26 45%	74 64%	94 80%	306 66%	312 75%	869 68%
Terminal Degree							
Non-Terminal Degree	40 39%	29 50%	39 34%	22 19%	146 31%	70 17%	346 27%
Terminal Degree	63 61%	29 50%	77 66%	95 81%	318 69%	346 83%	928 73%
Tenure							
Non-Tenure	54 52%	32 55%	61 53%	67 57%	228 49%	218 52%	660 52%
Tenure	49 48%	26 45%	55 47%	50 43%	236 51%	198 48%	614 48%
Ethnic Origin							
White/Caucasian	96 93%	57 98%	101 87%	106 91%	439 95%	389 94%	1,188 93%
American Indian	3 3%	0 0%	1 1%	0 0%	1 0%	4 1%	9 1%
Black/Non-Hispanic	0 0%	0 0%	0 0%	0 0%	4 1%	1 0%	5 0%
Asian/Pacific	3 3%	1 2%	13 11%	10 9%	16 3%	16 4%	59 5%
Spanish Surname	1 1%	0 0%	1 1%	1 1%	4 1%	6 1%	13 1%
Information Refused/Unknown	0 0%	0 0%	0 0%	0 0%	0 0%	0 0%	0 0%
Total	103	58	116	117	464	416	1,274

Turnover Report

Fiscal Year 1993

	Net Turnover ¹					Gross Turnover ²						
	Faculty	Prof. Tech.	Non-Instr. Admin.	Instr. Admin.	Career Service	Total Net	Faculty	Prof. Tech.	Non-Instr. Admin.	Instr. Admin.	Career Service	Total Gross
Executive Director												
Terminations	0	0	0	0	0	0	0	0	0	0	0	0
Positions	0	14	5	0	18	37	0	14	5	0	18	37
Percent of Total	0.0%	0.0%	0.0%	0.0%	0.0%	0.0%	0.0%	0.0%	0.0%	0.0%	0.0%	0.0%
BHSU												
Terminations	8	2	0	1	8	19	11	2	0	2	10	25
Positions	110	47	4	5	133	299	110	47	4	5	133	299
Percent of Total	7.3%	4.3%	0.0%	20.0%	6.0%	6.4%	10.0%	4.3%	0.0%	40.0%	7.5%	8.4%
DSU												
Terminations	5	2	0	2	7	16	6	3	0	2	11	22
Positions	60	32	5	8	84	189	60	32	5	8	84	189
Percent of Total	8.3%	6.3%	0.0%	25.0%	8.3%	8.5%	10.0%	9.4%	0.0%	25.0%	13.1%	11.6%
NSU												
Terminations	7	0	0	1	7	15	14	0	1	1	9	25
Positions	124	17	6	7	130	284	124	17	6	7	130	284
Percent of Total	5.6%	0.0%	0.0%	14.3%	5.4%	5.3%	11.3%	0.0%	16.7%	14.3%	6.9%	8.8%
SDSMT												
Terminations	3	2	0	0	19	24	21	4	2	0	24	51
Positions	155	39	5	0	156	355	155	39	5	0	156	355
Percent of Total	1.9%	5.1%	0.0%	0.0%	12.2%	6.8%	13.5%	10.3%	40.0%	0.0%	15.4%	14.4%
SDSU												
Terminations	27	22	2	1	68	120	35	29	2	1	85	152
Positions	480	296	9	21	644	1,450	480	296	9	21	644	1,450
Percent of Total	5.6%	7.4%	22.2%	4.8%	10.6%	8.3%	7.3%	9.8%	22.2%	4.8%	13.2%	10.5%
USD												
Terminations	25	30	1	0	58	114	45	34	1	1	71	152
Positions	464	180	10	30	522	1,206	464	180	10	30	522	1,206
Percent of Total	5.4%	16.7%	10.0%	0.0%	11.1%	9.5%	9.7%	18.9%	10.0%	3.3%	13.6%	12.6%
SDSD												
Terminations	1	0	0	0	5	6	1	0	0	0	8	9
Positions	26	4	2	1	20	53	26	4	2	1	20	53
Percent of Total	3.8%	0.0%	0.0%	0.0%	25.0%	11.3%	3.8%	0.0%	0.0%	0.0%	40.0%	17.0%
SDSVH												
Terminations	2	0	0	0	1	3	2	0	0	0	1	3
Positions	16	2	2	1	34	55	16	2	2	1	34	55
Percent of Total	12.5%	0.0%	0.0%	0.0%	2.9%	5.5%	12.5%	0.0%	0.0%	0.0%	2.9%	5.5%
Total												
Terminations	78	58	3	5	173	317	135	72	6	7	219	439
Positions	1,435	631	48	73	1,741	3,928	1,435	631	48	73	1,741	3,928
Percent of Total	5.4%	9.2%	6.3%	6.8%	9.9%	8.1%	9.4%	11.4%	12.5%	9.6%	12.6%	11.2%

1. Net Turnover excludes turnover due to death, retirement, terminal contracts, grant expirations, fixed contracts, reduction in force, involuntary termination, temporary, emergency, seasonal, lateral transfers within Regental system and long term disability. RIS reported in Regents, AES, ADRDL and CES reported in SDSU, and Medical School reported in USD. Positions are based upon average number of positions.

2. Gross Turnover excludes transfers, promotions and demotions between agencies and institutions. RIS reported in Executive Director, AES, ADRDL and CES reported in SDSU, and Medical School reported in USD. Positions are based upon average number of positions.

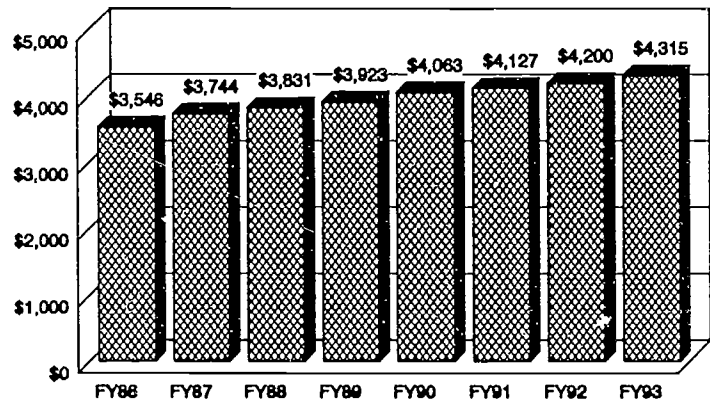
Historical Costs Per Student FTE

State Funds - FY89 to FY93

	FY89	FY90	FY91	FY92	FY93
BHSU	2,958	2,924	2,903	2,987	3,118
DSU	5,345	5,436	5,647	5,465	5,239
NSU	3,220	3,522	3,701	3,980	4,000
SDSMT	4,675	4,861	4,894	4,771	5,033
SDSU	4,030	4,254	4,194	4,152	4,309
USD	3,991	4,039	4,215	4,421	4,516
Total	3,923	4,063	4,127	4,200	4,315

Historical Costs Per Student FTE

State Funds - FY86 to FY93



SOURCE: Available Funds-Expenditures: Higher Education Enrollment Information, Fall FTE Enrollments.

NOTE: Expenditures Include: General, S&PL and HEFF (Program 07). Does not include items budgeted in Executive Director's Office, RIS, Medical School, AES, CES or Special Bills. SDSU includes Auxiliary Services. SDSMT enrollments for FY88 were reduced by 29 FTEs to remove students in on-campus, non-state funded courses. Prior years were not adjusted.

FY94 Operating Budgets by Program

State Funds Budgeted per FTE Student

Program	BHSU	DSU	NSU	SDSMT	SDSU	USD	TOTAL
Instruction	4,784,088	2,974,154	5,776,113	6,677,456	23,737,134	20,746,426	64,695,370
Cost Per FTE	1,895	2,819	2,404	3,243	3,022	3,149	2,877
Research	0	0	77,701	257,099	260,129	234,710	829,729
Cost Per FTE	0	0	32	125	33	36	37
Public Service	135,626	151,913	0	104,839	0	202,279	594,657
Cost Per FTE	54	144	0	51	0	31	26
Academic Support	1,016,578	909,938	1,169,006	1,383,315	4,027,862	3,406,410	11,913,109
Cost Per FTE	403	862	486	672	513	517	530
Student Services	622,923	569,879	662,452	431,017	1,334,171	1,398,953	5,019,395
Cost Per FTE	247	540	276	209	170	212	223
Institutional Support	1,043,026	827,103	1,226,961	1,350,033	2,724,968	2,762,912	9,935,003
Cost Per FTE	413	784	511	656	347	419	442
Operations & Plant Maint.	608,999	437,290	836,666	737,133	2,981,509	2,265,707	7,867,304
Cost Per FTE	241	414	348	358	380	344	350
Scholarships & Fellowships	0	0	113,218	0	0	0	113,218
Cost Per FTE	0	0	47	0	0	0	5
Auxiliary Enterprises	0	0	0	0	0	0	0
Cost Per FTE	0	0	0	0	0	0	0
Total Institution	8,211,240	5,870,277	9,862,207	10,940,892	35,065,773	31,017,397	100,967,786
Cost Per FTE	3,253	5,563	4,104	5,314	4,465	4,708	4,491
Fall 1993 Student FTE	2,525	1,055	2,403	2,059	7,854	6,583	22,478

SOURCE: FY94 Operating Budget & Board of Regents Higher Education Enrollment Information, Fall 1993 FTE.

NOTE: Does not include Medical School, AES, CES or ADRDL. State Funds include General, S&PL and HEFF (Program 07).

Student-Faculty Ratio

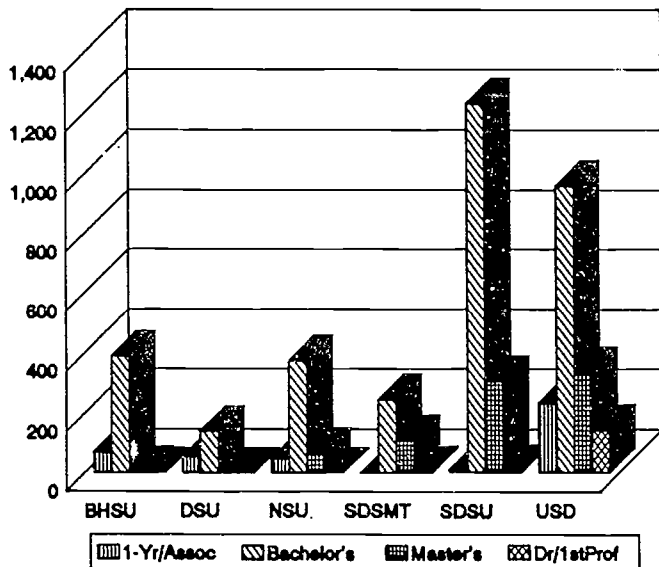
Student FTE/Instructional FTE - FY1985 through FY1994

	BHSU	DSU	NSU	SDSMT	SDSU	USD*	Total
FY1994							
Student FTE	2,524.5	1,055.2	2,403.1	2,058.9	7,853.8	6,582.8	22,478.3
Instructional FTE	105.9	57.2	122.7	115.9	462.6	399.3	1,263.5
Student Faculty Ratio	23.8	18.5	19.6	17.8	17.0	16.5	17.8
FY1993							
Student FTE	2,440.6	1,042.1	2,364.7	2,027.4	7,469.1	6,489.2	21,833.1
Instructional FTE	99.3	54.0	119.8	111.9	432.0	402.4	1,219.4
Student Faculty Ratio	24.6	19.3	19.7	18.1	17.3	16.1	17.9
FY1992							
Student FTE	2,378.7	958.7	2,286.0	1,997.0	7,142.9	6,239.6	21,002.9
Instructional FTE	96.0	52.5	119.6	103.5	385.5	355.2	1,112.3
Student Faculty Ratio	24.8	18.3	19.1	19.3	18.5	17.6	18.9
FY1991							
Student FTE	2,241.7	879.9	2,334.1	1,849.6	6,832.8	5,885.4	20,023.5
Instructional FTE	86.48	49.1	125.0	100.9	367.7	327.0	1,056.1
Student Faculty Ratio	25.9	17.9	18.7	18.3	18.6	18.0	19.0
FY1990							
Student FTE	2,094.7	858.8	2,378.0	1,762.1	6,379.3	5,620.0	19,092.9
Instructional FTE	82.9	47.8	125.5	101.0	369.5	317.7	1,044.4
Student Faculty Ratio	25.3	18.0	18.9	17.4	17.3	17.7	18.3
FY1989							
Student FTE	1,948.6	829.0	2,355.2	1,708.2	6,218.0	5,123.2	18,182.2
Instructional FTE	80.9	45.0	114.1	94.6	355.5	285.6	975.7
Student Faculty Ratio	24.1	18.4	20.6	18.1	17.5	17.9	18.6
FY1988							
Student FTE	1,841.1	703.7	2,425.0	1,671.9	6,139.4	4,999.5	17,780.6
Instructional FTE	84.0	45.0	117.4	97.2	352.3	282.3	978.2
Student Faculty Ratio	21.9	15.6	20.7	17.2	17.4	17.7	18.2
FY1987							
Student FTE	1,847.0	710.2	2,320.8	1,742.4	6,268.1	4,836.9	17,725.4
Instructional FTE	84.0	51.3	116.1	105.8	348.6	278.0	983.8
Student Faculty Ratio	22.0	13.8	20.0	16.5	18.0	17.4	18.0
FY1986							
Student FTE	1,853.5	752.3	2,304.1	1,916.6	6,416.5	4,984.3	18,227.3
Instructional FTE	84.5	54.6	113.0	110.3	347.1	283.7	993.2
Student Faculty Ratio	21.9	13.8	20.4	17.4	18.5	17.6	18.4
FY1985							
Student FTE	2,032.8	942.0	2,319.7	2,183.4	6,652.5	5,226.5	19,356.9
Instructional FTE	81.8	56.6	118.4	112.6	342.1	292.3	1,003.8
Student Faculty Ratio	24.9	16.6	19.4	19.4	19.4	17.9	19.3

SOURCE: The Student FTE source is the Higher Education Enrollment Report, FY85-FY94. Instructional FTE includes the State Funds Program 01 Faculty and Graduate Assistants included in the FY94 Operating Budgets.

*NOTE: Medical School enrollments and instructional FTE are not included in USD.

Degrees Conferred
Fiscal Year 1993



Degree Trends
FY1987 through FY1993

		1Yr/Assoc	Bachelors	Masters	Doctors	1st Prof	Total
FY1993	BHSU	70	388	5	0	0	463
	DSU	55	140	0	0	0	195
	NSU	49	375	68	0	0	492
	SDSMT	0	246	109	5	0	360
	SDSU	11	1,235	306	10	0	1,562
	USD	236	962	336	34	112	1,680
	Total	421	3,346	824	49	112	4,752
FY1992	BHSU	75	363	5	0	0	443
	DSU	33	143	0	0	0	176
	NSU	70	366	62	0	0	498
	SDSMT	0	227	88	5	0	320
	SDSU	17	1,163	243	5	0	1,428
	USD	205	888	322	48	114	1,541
	Total	400	3,150	720	58	114	4,406
FY1991	BHSU	59	339	5	0	0	403
	DSU	52	127	0	0	0	179
	NSU	100	347	61	0	0	508
	SDSMT	0	226	77	7	0	310
	SDSU	10	1,064	265	7	0	1,346
	USD	181	732	311	33	91	1,348
	Total	402	2,835	719	47	91	4,094
FY1990	BHSU	50	309	4	0	0	363
	DSU	57	117	0	0	0	174
	NSU	55	368	74	0	0	497
	SDSMT	0	202	58	6	0	266
	SDSU	3	1,094	254	10	0	1,361
	USD	138	749	334	27	88	1,336
	Total	303	2,839	724	43	88	3,997
FY1989	BHSU	47	371	8	0	0	426
	DSU	53	105	0	0	0	158
	NSU	70	364	71	0	0	505
	SDSMT	0	244	68	3	0	315
	SDSU	12	1,074	255	10	0	1,351
	USD	87	745	365	34	106	1,337
	Total	269	2,903	767	47	106	4,092
FY1988	BHSU	40	279	12	0	0	331
	DSU	51	98	0	0	0	149
	NSU	61	359	66	0	0	486
	SDSMT	0	248	65	8	0	321
	SDSU	9	1,074	255	7	0	1,345
	USD	72	779	320	33	104	1,308
	Total	233	2,837	718	48	104	3,940
FY1987	BHSU	44	286	12	0	0	342
	DSU	55	105	0	0	0	160
	NSU	81	365	69	0	0	515
	SDSMT	0	331	56	4	0	391
	SDSU	13	1,155	226	9	0	1,403
	USD	53	703	317	51	125	1,249
	Total	246	2,945	680	64	125	4,060

Degrees & Other
Formal Awards Conferred
Fiscal Year 1993

	1-Year	Assoc	Bach	Masters	Doctors	1st Prof	Total
BHSU	0	70	388	5	0	0	463
% of Column Total	0.0	16.7	11.6	0.6	0.0	0.0	9.7
DSU	0	55	140	0	0	0	195
% of Column Total	0.0	13.1	4.2	0.0	0.0	0.0	4.1
NSU	1	48	375	68	0	0	492
% of Column Total	100.0	11.4	11.2	8.3	0.0	0.0	10.4
SDSMT	0	0	246	109	5	0	360
% of Column Total	0.0	0.0	7.4	13.2	10.2	0.0	7.6
SDSU	0	11	1235	306	10	0	1,562
% of Column Total	0.0	2.6	36.9	37.1	20.4	0.0	32.9
USD	0	236	962	336	34	112	1,680
% of Column Total	0.0	56.2	28.8	40.8	69.4	100.0	35.4
TOTAL	1	420	3,346	824	49	112	4,752

SOURCE: The source for all degrees conferred data is the annual IPEDS Completions Report. The dates for each year are July 1-June 30.

Bachelor's, Master's, Doctor's and First Professional Degrees Conferred

Fiscal Year 1993

	BHSU	DSU	NSU	SDSMT	SDSU	USD	Total
First Professional							
Medicine MD	0	0	0	0	0	40	40
Law	0	0	0	0	0	72	72
First Professional Total	0	0	0	0	0	112	112
Bachelor's, Master's & Doctor's							
01 Agribusiness & Agriculture Productions							
Bachelor's	0	0	0	0	80	0	80
Subtotal	0	0	0	0	80	0	80
02 Agricultural Sciences							
Bachelor's	0	0	0	0	94	0	94
Master's	0	0	0	0	13	0	13
Doctor's	0	0	0	0	5	0	5
Subtotal	0	0	0	0	112	0	112
03 Renewable Natural Resources							
Bachelor's	0	0	0	0	32	0	32
Master's	0	0	0	0	19	0	19
Subtotal	0	0	0	0	51	0	51
08 Marketing Operations/Marketing & Distribution							
Bachelor's	10	0	0	0	0	0	10
Master's	0	0	0	0	0	0	0
Subtotal	10	0	0	0	0	0	10
09 Communications							
Bachelor's	11	0	0	0	55	48	114
Master's	0	0	0	0	2	7	9
Subtotal	11	0	0	0	57	55	123
11 Computer & Information Sciences							
Bachelor's	0	24	0	28	21	19	92
Master's	0	0	0	10	0	3	13
Subtotal	0	24	0	38	21	22	105
13 Education							
Bachelor's	148	54	129	0	30	177	538
Master's	4	0	68	0	146	100	318
Doctor's	0	0	0	0	0	29	29
Subtotal	152	54	197	0	176	306	885
14 Engineering							
Bachelor's	0	0	0	185	112	0	297
Master's	0	0	0	87	33	5	125
Doctor's	0	0	0	3	0	0	3
Subtotal	0	0	0	275	145	5	425
15 Engineering & Engineering Related Technologies							
Bachelor's	4	0	4	0	25	0	33
Master's	0	0	0	0	14	0	14
Subtotal	4	0	4	0	39	0	47
16 Foreign Languages							
Bachelor's	2	0	0	0	11	7	20
Subtotal	2	0	0	0	11	7	20

	BHSU	DSU	NSU	SDSMT	SDSU	USD	Total
19 Home Economics							
Bachelor's	0	0	0	0	94	0	94
Master's	0	0	0	0	8	0	8
Subtotal	0	0	0	0	102	0	102
23 English Language & Literature/Letters							
Bachelor's	11	8	8	0	56	46	129
Master's	0	0	0	0	7	21	28
Subtotal	11	8	8	0	63	67	157
24 Liberal Arts & Sciences/Gen. Studies & Humanities							
Bachelor's	0	0	0	0	25	11	36
Master's	0	0	0	0	0	7	7
Subtotal	0	0	0	0	25	18	43
26 Biological Sciences/Life Sciences							
Bachelor's	8	0	10	0	45	57	120
Master's	0	0	0	0	12	10	22
Doctor's	0	0	0	0	0	0	0
Subtotal	8	0	10	0	57	67	142
27 Mathematics							
Bachelor's	2	0	3	8	30	8	51
Master's	0	0	0	0	5	7	12
Subtotal	2	0	3	8	35	15	63
31 Parks, Recreation, Leisure & Fitness Studies							
Bachelor's	5	1	12	0	40	8	66
Master's	1				8		9
Subtotal	6	1	12	0	48	8	75
38 Philosophy/Religion							
Bachelor's	0	0	0	0	0	4	4
Subtotal	0	0	0	0	0	4	4
40 Physical Sciences							
Bachelor's	4	1	3	25	11	12	56
Master's	0	0	0	12	7	4	23
Doctor's	0	0	0	2	2	0	4
Subtotal	4	1	3	39	20	16	83
42 Psychology							
Bachelor's	24	0	24	0	41	74	163
Master's	0	0	0	0	0	8	8
Doctor's	0	0	0	0	0	3	3
Subtotal	24	0	24	0	41	85	174
43 Protective Services							
Bachelor's	0	0	0	0	0	60	60
Subtotal	0	0	0	0	0	60	60
44 Public Administration & Services							
Bachelor's	10	0	4	0	0	0	14
Master's	0	0	0	0	0	12	12
Subtotal	10	0	4	0	0	12	26
45 Social Sciences & History							
Bachelor's	36	0	45	0	214	60	355
Master's	0	0	0	0	5	11	16
Doctor's	0	0	0	0	3	0	3
Subtotal	36	0	45	0	222	71	374

Degrees Conferred

Fiscal Year 1994

	BHSU	DSU	NSU	SDSMT	SDSU	USD	Total
48 Precision Production Trades							
Bachelor's	0	0	0	0	3	0	3
Subtotal	0	0	0	0	3	0	3
50 Visual & Performing Arts							
Bachelor's	7	2	2	0	16	11	38
Master's	0	0	0	0	0	15	15
Subtotal	7	2	2	0	16	26	53
51 Health Professions & Related Sciences							
Bachelor's	10	8	2	0	200	118	338
Master's	0	0	0	0	27	24	51
Doctor's	0	0	0	0	0	2	2
Subtotal	10	8	2	0	227	144	391
52 Business Management							
Bachelor's	96	42	129	0	0	242	509
Master's	0	0	0	0	0	102	102
Subtotal	96	42	129	0	0	344	611
Bachelor's, Master's & Doctor's Total							
Bachelor's	388	140	375	246	1,235	962	3,346
Master's	5	0	68	109	306	336	824
Doctor's	0	0	0	5	10	34	49
Total	393	140	443	360	1,551	1,332	4,219

SOURCE: IPEDS Completions, 1992-93

One-Year and Two-Year Degrees and Awards Conferred

Fiscal Year 1993

	BHSU	DSU	NSU	SDSMT	SDSU	USD	Total
One-Year Degrees and Awards							
52 Business and Management	0	0	1	0	0	0	1
Subtotal	0	0	1	0	0	0	1
Two-Year Degrees and Awards							
02 Agricultural Sciences	0	0	0	0	11	0	11
04 Architecture & Environmental Design	0	0	1	0	0	0	1
10 Communication Technologies	1	0	0	0	0	0	1
11 Computer & Information Sciences	0	2	0	0	0	0	2
15 Engineering & Engineering Related Technologies	0	0	5	0	0	0	5
24 Liberal/General Studies	49	0	2	0	0	0	51
26 Life Sciences	0	0	0	0	0	0	0
43 Protective Services	0	0	0	0	0	8	8
44 Public Affairs	0	0	5	0	0	0	5
48 Precision Production Trades	11	0	0	0	0	0	11
50 Visual & Performing Arts	0	0	2	0	0	0	2
51 Health Professions and Related Sciences	0	37	1	0	0	228	266
52 Business and Management	9	16	32	0	0	0	57
Subtotal	70	55	48	0	11	236	420
One-Year and Two-Year Program Totals	70	55	49	0	11	236	421

SOURCE: IPEDS Completions 1992-93

Academic Buildings Initial Cost/Replacement Value

	Gross Area in Sq. Ft.	Initial Cost	Replace. Value	Initial Cost Per Sq. Ft.	Replace. Cost Per Sq. Ft.
BHSU	471,799	14,526,549	32,078,785	30.79	67.99
DSU	250,948	4,793,349	22,170,957	19.10	88.35
NSU	526,389	14,453,120	48,322,199	27.46	91.80
SDSMT ¹	474,932	13,335,783	48,317,209	28.08	101.74
SDSU	1,734,143	40,788,566	154,609,922	23.52	89.16
USD	1,332,165	28,626,657	133,588,266	21.49	100.28
SDSD ²	97,075	2,124,391	6,303,859	21.88	64.94
SDSVH	65,170	1,125,000	6,051,516	17.26	92.86
Total	4,952,621	119,773,415	451,442,713	24.18	91.15

1. Figures exclude Liberal Arts Building.
2. Figures exclude Simpson/French, Girls Dorm, and Old School buildings.

Revenue Buildings Initial Cost/Replacement Value

	Gross Area in Sq. Ft.	Initial Cost	Replace. Value	Initial Cost Per Sq. Ft.	Replace. Cost Per Sq. Ft.
BHSU	234,704	6,145,943	15,627,593	26.19	66.58
DSU	162,021	2,585,586	12,250,481	15.96	75.61
NSU	215,945	3,274,960	18,267,304	15.17	84.59
SDSMT	163,920	2,090,000	12,003,911	12.75	73.23
SDSU	705,082	12,287,906	56,799,210	17.43	80.56
USD	503,929	8,593,283	40,971,402	17.05	81.30
Total	1,985,601	34,977,678	155,919,901	17.62	78.53

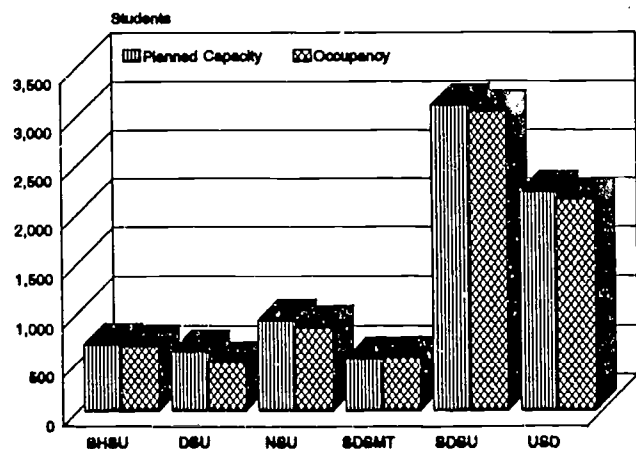
Source: FACINV02 report from Facilities Inventory System. 1993 Replacement Costs.

Residence Facility Utilization Fall 1993

	Designed Capacity ¹	Planned Capacity ²	Current Occupancy	% Occupied of Planned Capacity
BHSU	674	684	663	96.9%
DSU	630	610	497	81.5%
NSU	930	922	856	92.8%
SDSMT	571	538	548	101.9%
SDSU ³	3,230	3,127	3,058	97.8%
USD	2,261	2,227	2,151	96.6%
Total	8,296	8,108	7,773	95.9%

1. Designed Capacity is the capacity for which the buildings were originally designed. Married Student Housing and Campus Apartments are only reflected with a Designed Capacity of one student.
2. Planned Capacity includes design changes and administrative decisions such as using double rooms as single or triple rooms.
3. Does not include students at the off-campus motel rental.

Capacity vs. Occupancy Fall 1993



Size of Physical Plant - Academic Buildings

Fiscal Year 1993

	Number of Buildings	Sq.Ft. of Bldgs. Maintained	Sq.Ft. of Bldgs. Heated	Sq.Ft. of Bldgs. Air Conditioned
BHSU	14	471,799	471,799	201,611
DSU	12	250,948	249,065	143,744
NSU	21	526,389	522,289	297,098
SDSMT	16	474,932	473,456	221,194
SDSU	113	1,609,131	1,674,817	920,000
USD	44	1,311,202	1,309,666	465,400
SDSD	6	97,085	92,575	55,000
SDSVH	1	65,170	65,170	630
Total	227	4,854,324	4,906,555	2,304,677

Size of Physical Plant - Revenue Buildings

Fiscal Year 1993

	Number of Buildings	Sq.Ft. of Bldgs. Maintained	Sq.Ft. of Bldgs. Heated	Sq.Ft. of Bldgs. Air Conditioned
BHSU*	6	177,096	177,096	5,000
DSU	6	162,021	162,021	57,392
NSU	6	215,945	215,945	42,352
SDSMT	4	163,920	163,920	76,605
SDSU	29	705,082	705,082	165,896
USD	14	503,929	503,929	320,336
Total	65	1,927,993	1,927,993	667,581

* Does not include Residence Facilities added after the end of FY93.

Size of Physical Plant - Total Facilities

Fiscal Year 1993

	Number of Acres	Number of Buildings	Sq.Ft. of Bldgs. Maintained	Sq.Ft. of Bldgs. Heated	Sq.Ft. of Bldgs. Air Conditioned
BHSU	123.0	20	648,895	648,895	206,611
DSU	56.2	18	412,969	411,086	201,136
NSU	72.5	27	742,334	738,234	339,450
SDSMT	118.0	20	638,852	637,376	297,799
SDSU	262.0	142	2,314,213	2,379,899	1,085,896
USD	216.0	58	1,815,131	1,813,595	785,736
SDSD	22.0	6	97,085	92,575	55,000
SDSVH	10.0	1	65,170	65,170	630
Total	879.7	292	6,782,317	6,834,548	2,972,258

NOTE: SDSU does not include Agricultural Experiment Station.

SOURCE: Management Summaries from each campus

Selected Building Construction or Improvements
 Authorized by Legislative Acts - 1965 to 1993

Year	Construction or Improvement Type	Funded Amount	Funding Source	Year	Construction or Improvement Type	Funded Amount	Funding Source
Black Hills State University				1969	Warehouse Building	20,000	NONSTATE
1965	Dormitory	500,000	RB	1969	Student Union Addition	865,000	RB
1966	Classroom Building	900,000	HEFF	1970	Power Plant Addition	190,000	HEFF,G
1966	Student Union Building	300,000	RB	1971	Electrical Engineering/Physics Building	1,819,000	HEFF,G
1967	Dormitory - Dining Hall	1,800,000	RB	1972	Atmos. Science Resource Bldg.Add.	40,500	FF,G
1971	Library - Learning Center	1,657,500	HEFF,RB,G	1973	Physical Plant Garage	420,000	F Dis, APP,G
1972	Stadium/Intramural Complex	400,000	RB	1974	McLaury Building Phase II	163,000	APP,FF,G
1972	Dormitory (Pangburn Improvements)	80,000	RB	1974	Athletic Field Improvements	150,000	APP,FF,G
1977	Physical Plant Maint. & Storage Facility	400,000	APP,FF,G	1974	Physical Education Center	2,600,000	HEFF,BA,RB,G
1983	Physical Education Facility	7,947,000	None	1975	Upgrade Electrical System	125,000	APP,FF,G
1987	Physical Education Facility	2,947,000	HEFF,City,G	1976	McLaury Building Phase III	240,000	APP,FF,G
1993	Jonas Hall Addition	300,000	LOC	1983	Classroom Building	3,445,000	None
Dakota State University				1984	Chemistry/Chem. Engr. Bldg. Phase II	154,500	HEFF,FF,G
1965	Dormitory	525,000	RB	1986	Relocate Steel Storage Building	71,000	HEFF,FF,G
1966	Library	400,000	HEFF	1988	Facility to Store Drilling Cores	35,000	FF,G
1966	Classroom Building	900,000	APP	1992	O'Harra Stadium Renovation	150,000	APP
1966	Athletic Field Improvement	25,000	APP	South Dakota State University			
1966	Dining Facility Addition	175,000	RB	1966	Poultry Science Facility	125,000	APP
1967	Dormitory	700,000	RB	1966	Classroom Building	1,710,000	APP
1968	Hospital Bldg. (Admin. Bldg.)	200,000	HEFF,G	1966	Physical Plant Facility	100,000	APP
1969	Heating Plant Addition	463,000	HEFF,G	1966	Animal Disease Res. & Diag. Lab	600,000	APP
1969	Dormitory	820,000	RB	1966	Student Union Building	2,800,000	RB
1970	Classroom - Science Building	1,100,000	HEFF,G	1967	Dormitory	1,750,000	LOC
1977	Parking Lot	25,000	Sale of Prop.	1967	Supplement Poultry Science Bldg	175,000	APP
1984	Central Control System	125,000	HEFF,FF,G	1967	Power Plant Expansion	450,000	APP
1986	Classroom Building	1,200,000	BA,FF,G	1968	Supplement ADRDL	25,000	APP
1993	Storage Building	35,000	LOC	1968	Married Student Housing Facility	620,000	RB
Northern State University				1970	Multi-Use Physical Education Center	3,685,000	BA,RB,HEFF,G
1965	Dormitory - Dining Hall	1,500,000	RB	1970	Storage and Maintenance Shops	60,000	G
1966	Complete Mewaldt-Jensen Building	110,000	HEFF	1970	Plant Science Facility	200,000	APP
1966	Student Union Addition	400,000	RB	1971	Animal Disease Research Buildings	No Limit	FF,G
1966	Tennis Courts	30,000	G	1971	Garage and Storage Buildings	No Limit	FF,G
1968	Multi-Use Classroom Building	1,225,000	BA,HEFF	1971	Swine Barns	No Limit	FF,G
1969	Heating Plant Addition	232,000	HEFF,G	1973	Home Management Lab	160,000	H & AUX FAC
1970	Dormitory	1,400,000	RB	1974	Electric Substation	340,000	APP,G
1973	Phys. Plant Storage Bldg. Rem. & Add.	339,000	APP,G	1974	Central Control System	132,000	APP,FF,G
1974	Stadium	500,000	APP	1974	Animal Sciences Facility	4,600,000	HEFF,BA,RB,G
1974	Tennis Courts	50,000	G	1974	Pugsley Hall Renovation	806,000	HEFF,G
1975	Tennis Courts	105,000	GRNTS,G	1974	Scobey Hall	637,000	HEFF,G
1977	Library Renovation	564,300	FF,G,RB	1974	Library	4,200,000	HEFF,BA,RB,G
1980	Fuel Oil Storage Facility	20,000	APP,FF,G	1975	Supplemental Constr. - Electric Subst.	135,000	APP
1983	Physical Education Facility	8,915,000	HEFF,City,G	1975	Alumni Center	190,000	G
1993	Beulah Williams Library A&E Study	50,000	None	1975	Seed House	100,000	FND
South Dakota School of Mines & Technology				1976	Ash Handling Equipment	175,000	APP,F,G
1967	Dormitory	1,050,000	RB	1977	Warehouse Facility	85,000	LOC,FF,G
1967	Library	600,000	HEFF,G	1977	Feed Processing Research Unit	980,000	RB,FF
1969	Dormitory	1,230,000	RB	1977	Lincoln Library Renovation	350,000	HEFF,FF,G
				1977	Heating Plant	445,000	APP,FF,G
				1977	Heating Plant Equipment	295,000	APP,FF,G

Selected Building Construction or Improvements
 Authorized by Legislative Acts - 1965 to 1993

Year	Construction or Improvement Type	Funded Amount	Funding Source	Year	Construction or Improvement Type	Funded Amount	Funding Source
1978	Centralized Storage Facility	250,000	APP,FF,G	1974	Science Center	4,000,000	HEFF,BA,RB,G
1978	Highmore Storage Facility	20,000	FF,G	1974	Physical Educ. Facility (\$8,800,000)	5,200,000	BA,RB
1978	Rapid City Field Lab & Storage Facility	65,000	FF,G			3,600,000	G
1979	Phase I Horticulture Facility	521,000	RB,G	1974	Interlock Control System Phase III	163,000	APP,FF,G
1979	Shepard Hall Pharmacy Addition	612,400	RB,G	1975	Electric Substation Phase I	200,000	APP
1979	Livestock Pavilion Remodel	100,000	APP,FF,G	1976	Storage Building	3,000	DM,FF,G
1979	Home Management Lab	310,200	APP,RB,FF,G	1977	Lee Medical & Science Hall Rencv.	541,000	HEFF,FF,G
1980	Ag Heritage Museum - Livestock Pav.	50,600	APP,FF,G	1978	Phase I Master Electr. Primary Distrib.	204,000	APP,FF,G
1983	Phase I Horticulture Forestry Facility	250,000	HEFF,FF,G	1978	Old Main Building Repair	75,000	APP,FF,G
1984	Electrical Distribution System	250,000	HEFF,FF,G	1978	Hazardous Chemicals Storage Facility	25,000	FF,G
1985	Replace Livestock Research Facility	45,000	APP,FF,G	1979	Phase I Armory Remodel	648,700	APP,FF,G
1985	Livestock Feed Facility	80,000	FF,G	1979	School of Law	4,250,000	RB,G
1987	Hortic./Forestry & Wildlife/Fish. Bldg.	1,500,000	HEFF (partial)	1980	Electric Boiler	500,000	APP,FF,G
1988	Agricultural Research Units	100,000	APP	1983	Phase III Armory Remodel	250,000	HEFF,FF,G
1988	Dairy Livestock Barn	500,000	BA	1985	Food Service Warehouse	200,000	LOC,FF,G
1988	Repair of Cottonwood Research Unit	10,000	APP	1986	Coyote Student Union Remodel	732,000	LOC
1988	Biostress Lab	12,600,000	FF,BA,G,LOC	1991	I.D. Weeks Library Addition	6,800,000	HEFF
1989	Hog Research Facility	-----	-----	1993	Chi Main Renovation	2,500,000	FF Loan
1989	Hog Research Facility	378,000	APP,P,LOC				
1992	Lambing Facility	570,000	APP,LOC				
1992	ADRDL Laboratory Fire Life Safety	80,000	APP				
1992	ADRDL Laboratory Planning	242,000	APP				
1993	ADRDL Construction	5,900,000	BA,FF				
University of South Dakota				South Dakota School for the Deaf			
1965	Dining Hall	450,000	RB	1969	Physical Education Building/Swimming Pool	185,000	APP
1965	Dormitories	1,800,000	RB	1970	Supplemental Approp. P.E. Bldg/Pool	65,000	APP
1965	Adult Education Center	300,000	APP,G	1976	Storage Facility	3,000	DM
1966	Activities Building	15,000	APP	1977	Educational Facility	1,800,000	APP
1967	Supplemental/Activities Building	35,000	APP	1988	Fire/Life Safety Remodeling	200,000	BA
1967	Medical Science Building Addition	458,785	HEFF	1991	Fire/Life Safety Remod. Continuation	158,050	BA
1967	Dormitory - Dining Hall	2,350,000	RB	1992	Residential Facility	1,000,000	LOC
1968	Dormitories	1,750,000	RB				
1969	Heating Plant Addition	279,000	HEFF,G	South Dakota School for the Visually Handicapped			
1969	Physical Educ. Bldg & Swimming Pool	35,000	APP	1960	SDSVH Building	800,000	APP
1971	Fine Arts Center	3,050,000	HEFF,G	1966	Gymnasium Addition	165,000	APP
1973	Storage Facility	25,000	DM,G	1985	Stabilize and Repair Building	321,133	APP,FF,G
1973	Air Conditioning Student Housing	92,000	RB	1986	Pressure Grouting	321,133	APP
				1992	Asbestos Abatement	248,918	APP

Table Legend

APP	Appropriated Funds	GRNT	Grants
BA	Building Authority	H & AUX FAC	Housing & Auxiliary Facility System
DM	Deferred Maintenance	HEFF	Higher Education Facilities Fund
F DIS	Federal Disaster	LOC	Local Funds
FF	Federal Funds	P	Private Activity Bond Proceeds
G	Gifts	RB	Revenue Bonds

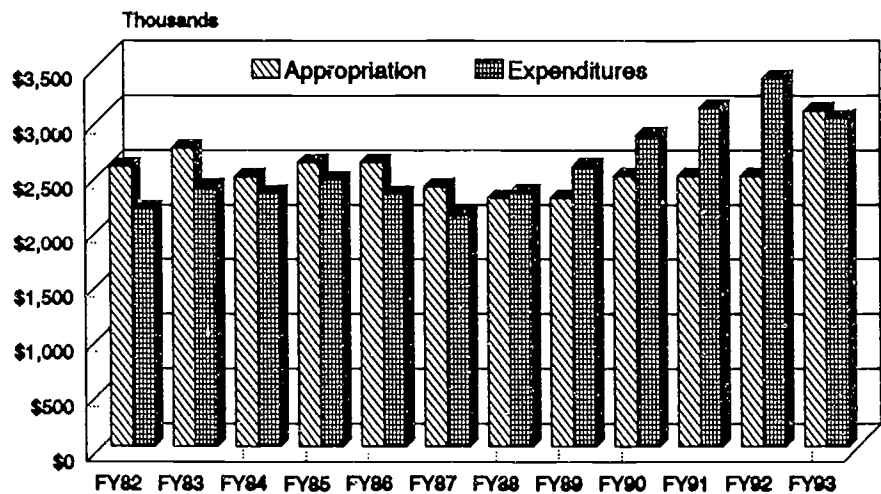
Self-Liquidating Projects
As of June 30, 1993

Campus	Construction Project	Project Number	Original Contract Date	Revenue Bond Original Issue	Amount Outstanding
BHSU	Student Union/Heidepreim Hall Dormitory	SD-39-CH-37(S)	3-29-63	725,000	252,000
	Thomas Hall Dormitory	SD-39-CH-54(D)	9-24-65	500,000	230,000
	Student Union	SD-39-CH-67(S)	2-29-68	300,000	156,000
	1992 Apartment Complex		9-25-92	3,865,000	3,865,000
	Total			<u>\$5,390,000</u>	<u>\$4,503,000</u>
DSU	Zimmerman Hall Dormitory	SD-39-CH-29(D)	3-11-63	417,000	178,000
	Higbie Hall Dormitory	SD-39-CH-47(D)	9-01-64	414,000	286,000
	Trojan Center Student Union	SD-39-CH-48(S)	9-01-64	224,000	154,000
	Emry Hall Dormitory	SD-39-CH-58(D)	5-25-67	482,000	344,000
	Richardson Hall Dormitory	SD-39-CH-70	3-25-69	658,000	474,000
Total			<u>\$2,195,000</u>	<u>\$1,436,000</u>	
NSU	Jerde Hall Dormitory and Dining	SD-39-CH-59(DS)	2-20-67	1,500,000	710,000
	Total			<u>\$1,500,000</u>	<u>\$710,000</u>
SDSMT	March/Dake Hall Dormitory	SD-39-CH-11(D)	1-25-58	357,000	73,000
	Surbeck Center Student Union	SD-39-CH-28(S)	11-21-61	311,000	54,000
	Palmerton Hall Dormitory	SD-39-CH-63(D)	Auth. 1967	640,000	482,000
	Surbeck Center Addition	SD-39-CH-75(S)	10-09-70	865,000	440,000
	Total			<u>\$2,173,000</u>	<u>\$1,049,000</u>
SDSU	Brown, Waneta & State Court Dormitories	SD-39-CH-5(D)	1-01-57	2,090,000	315,000
	Mathews & Grove Commons Dorm/Dining	SD-39-CH-24(D)	4-01-61	1,700,000	396,000
	Pierson & Medary Commons Dorm/Dining	SD-39-CH-42(D)	10-01-63	1,925,000	642,000
	Binnewies & Young Dormitory	SD-39-CH-61(D)	10-01-67	3,750,000	1,805,000
	Student Union	SD-39-CH-80(S)	7-01-71	2,800,000	1,085,000
	State Village Married Student Housing	SD-39-CH-77(D)	12-01-70	620,000	330,000
	Larson Commons Dining Hall Series	SD-39-CH-61(DS)	10-01-67	750,000	290,000
	1992 Housing/Auxiliary Facilities		12-01-92	10,510,000	10,510,000
	Total			<u>\$24,145,000</u>	<u>\$15,373,000</u>
USD	Julian Addition/Cypress Court Dormitories	SD-39-CH-7(D)	8-23-67	1,110,000	117,000
	Burgess Hall/Redwood Court Dormitories	SD-39-CH-19(D)	9-16-59	790,000	180,000
	Brookman & Norton Hall Dormitories	SD-39-CH-27(D)	9-21-62	1,175,000	432,000
	Mickelson & Beede Hall Dormitories	SD-39-CH-46(D)	12-16-64	1,800,000	1,153,000
	Richardson Hall Dormitory	Project I	7-03-67	850,000	120,000
Total			<u>\$5,725,000</u>	<u>\$2,002,000</u>	
Grand Total					<u>\$25,073,000</u>

Utilities Expenditures
FY92 - FY93

	FY92 Actual	FY93 Actual
BHSU	452,182	448,723
DSU	112,243	124,029
NSU	218,694	228,366
SDSMT	243,576	300,500
SDSU	903,467	1,065,697
USD	677,355	716,578
SDSD	71,531	75,634
SDSVH	47,263	46,055
Total	2,726,311	3,005,582

Utilities History
FY82 to FY93 - State Funds



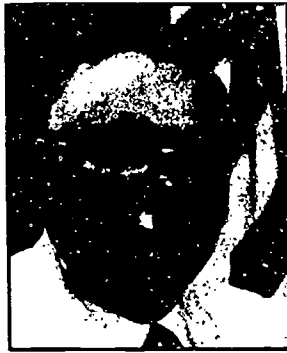
Higher Education Utilities Historical Recap
FY82 to FY93

Fiscal Year	Appropriation	Expenditures	% Change Expenditures	Appropriation Expenditure Variance	Deferred Expenditures	Reversion/Shortfall
FY82	2,566,826	2,175,478		15.2%		391,348
FY83	2,733,289	2,377,566	9.29%	13.0%		355,723
FY84	2,468,389	2,317,286	-2.54%	6.1%		151,103
FY85	2,599,885	2,442,173	5.39%	6.1%		157,712
FY86	2,599,885	2,308,912	-5.46%	11.2%		290,973
FY87	2,380,001	2,119,968	-8.18%	10.9%		260,033
FY88	2,273,886	2,323,886	9.62%	-2.2%		-50,000
FY89	2,273,886	2,513,886	8.18%	-10.6%	50,000	-290,000
FY90	2,473,886	2,559,351	1.81%	-3.5%	290,000	-375,465
FY91	2,473,886	2,734,932	6.86%	-10.6%	375,465	-636,511
FY92	2,473,886	2,726,311	-0.32%	-10.2%	636,511	-888,936
FY93	3,073,886	3,005,582	10.24%	2.2%	888,936	-820,631

NOTE: FY88 expenditures exceeded the budget by approximately \$50,000. These expenditures were deferred until FY89. The shortfall in FY89 then grew to \$290,000. This shortfall was again deferred into the following year. Despite additional appropriations, the FY90 shortfall grew to a sizeable \$375,465. The \$375,465 was deferred into FY91. The accumulated FY91 shortfall of \$636,511 was deferred into FY92 and the shortfall grew to \$888,936. Despite the additional appropriation in FY93, the deficit by the end of the year was \$820,631. The institutions will absorb the cumulative shortfall.



Thomas R. Olsen
President



Bob Brancel
Vice President



James F. Hart
Secretary



David Gienapp



Max Gruenwald



Cathy Hall



Pat Lebrun



Charles Ritter



Karl Wegner



Howell W. Todd
Executive Director

South Dakota Board of Regents Staff

Academic Affairs

Michel Hillman, Director
Paul Gough, Assistant Director
Gini Dvorak, Information Specialist

Budget & Finance

Sheila Hillman, Director
Monte Kramer, Assistant Director
David Hanson, Personnel Officer
Kathy Johnson, Fiscal Analyst

Research

Richard Van Den Hul, Director

General Counsel

James Shekleton

Regents Information Systems

Warren Wilson, Director
David J. Hansen, Assistant Director
Donald D. Yost, Assistant Director
Rachel A. Barari, Assistant Director

South Dakota Library Network
Gary Johnson, Director