

DOCUMENT RESUME

ED 365 389

JC 940 066

TITLE University and Community College System of Nevada.
Enrollment Report, Fall 1993.

INSTITUTION Nevada Univ. and Community Coll. System, Reno. Office
of the Chancellor.

PUB DATE Dec 93

NOTE 37p.

PUB TYPE Statistical Data (110) -- Reports -
Research/Technical (143)

EDRS PRICE MF01/PC02 Plus Postage.

DESCRIPTORS Community Colleges; *Enrollment; Enrollment Rate;
*Enrollment Trends; Full Time Equivalency; Full Time
Students; Higher Education; Noncredit Courses; Part
Time Students; School Demography; State Universities;
*Student Characteristics; Two Year Colleges

IDENTIFIERS *University and Community College System of Nevada

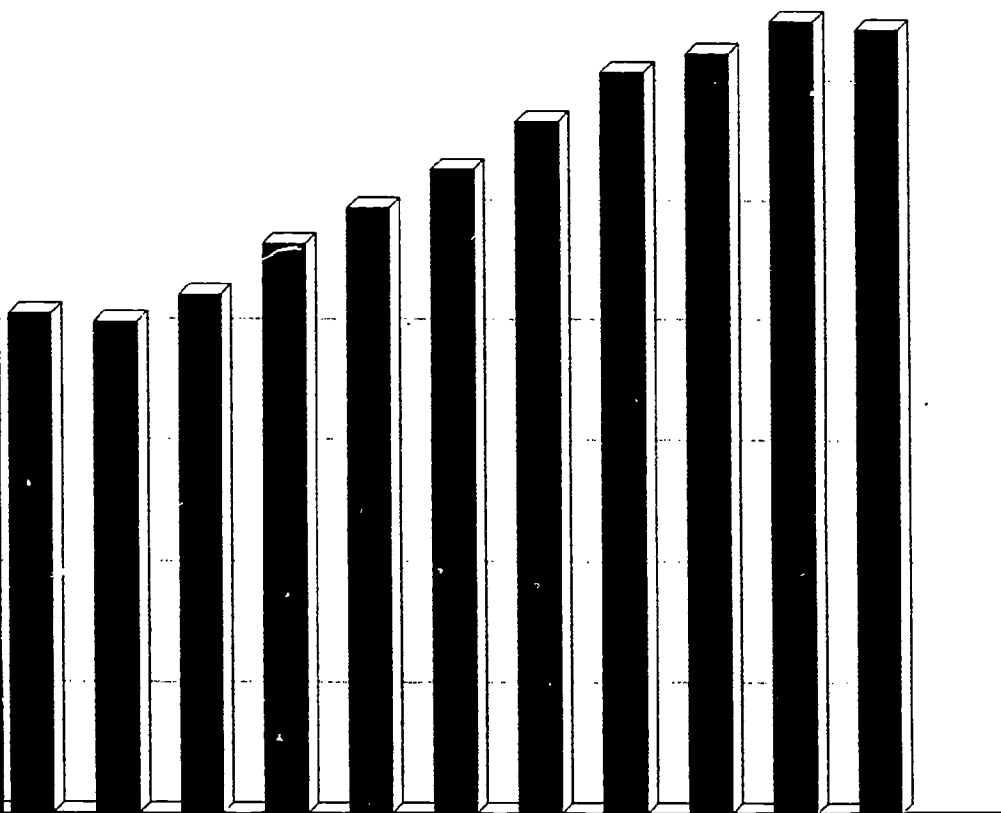
ABSTRACT

In fall 1993, the University and Community College System of Nevada (UCCSN) enrolled 65,124 state-supported students, and an additional 12,976 students in self-supported programs such as continuing education, correspondence courses, community services, and contract education programs. In fall 1993, for the first time in 9 years, student full-time equivalent (FTE) enrollment in the UCCSN decreased, with both FTE and headcount enrollments reduced by 1.1% over fall 1992. The enrollment decline followed significant funding cuts for the system, which led to systemwide staffing cuts. Systemwide, state-supported fall headcount enrollment increased by 60.4% from 1984 to 1993, an increase of over 24,500 students. Total enrollment in the system's four community colleges increased nearly 65%, from 20,197 students in 1984 to 33,305 students in 1993. The community college increase accounted for 53% of total enrollment growth in the UCCSN over this period. The majority of UCCSN students attend on a part-time basis, with only 31% of 1993 students attending full-time. At community colleges, 87% of the students attend part-time, while 49% of university students attend part-time. Over half (56%) of the students attending UCCSN campuses are women, and 75% are white. The total number of non-resident students enrolled in the UCCSN in 1993 was approximately 6,000, including 1,228 students who enrolled under the system's Good Neighbor Policy. The bulk of the report consists of charts and tables showing enrollment trends by college. (ECC)

* Reproductions supplied by EDRS are the best that can be made *
* from the original document. *

ENROLLMENT REPORT

FALL 1993



UNIVERSITY AND COMMUNITY COLLEGE SYSTEM OF NEVADA

DECEMBER 1993

"PERMISSION TO REPRODUCE THIS
MATERIAL HAS BEEN GRANTED BY

W. Fox

TO THE EDUCATIONAL RESOURCES
INFORMATION CENTER (ERIC)."

BEST COPY AVAILABLE

U.S. DEPARTMENT OF EDUCATION
Office of Educational Research and Improvement
EDUCATIONAL RESOURCES INFORMATION
CENTER (ERIC)

This document has been reproduced as
received from the person or organization
originating it.

Minor changes have been made to improve
reproduction quality.

• Points of view or opinions stated in this docu-
ment do not necessarily represent official
OERI position or policy.

990 040 066
JC

UNIVERSITY AND COMMUNITY COLLEGE SYSTEM OF NEVADA
BOARD OF REGENTS

Dr. James Eardley, Chairman

Mrs. Shelley Berkley

Dr. Jill Derby

Mr. Joseph Foley

Mrs. Dorothy S. Gallagher

Mr. Madison Graves II

Dr. Lonnie Hammargren

Mr. Daniel Klaich

Mrs. Nancy Price

Mrs. Carolyn Sparks

Mrs. June Whitley

Dr. John A. Richardson, Interim Chancellor

UCCSN Enrollment Report
Fall 1993

Prepared by Office of Academic Affairs

Ms. Karen J. Steinberg
Interim Vice Chancellor for Academic and Student Affairs

Ms. Tamela Gorden
Research Analyst

UNIVERSITY AND COMMUNITY COLLEGE SYSTEM OF NEVADA

FALL 1993

ENROLLMENT REPORT

The University and Community College System of Nevada (UCCSN) currently enrolls a total of 65,124 state supported students. In addition, all campuses enroll students in non-state supported programs such as continuing education, correspondence courses, community services, and contract education programs. The community colleges reported an additional 12,976 students (unduplicated headcount) in self-supported programs.

For the first time in nine years, student FTE enrollment in the University and Community College System of Nevada has decreased. The last time the UCCSN had declining enrollments was in 1983 and 1984; since that time enrollments have increased every year until this year. However, the fall 1993 state supported headcount enrollment of 65,124 students is a decrease of 1.1% from total system enrollment in fall 1992. Fall 1993 FTE enrollment also decreased by 1.1%, to a total enrollment of 35,619 full-time equivalent students. This enrollment pattern follows significant funding cuts for the UCCSN, which led to systemwide staffing cuts, which obviously affected enrollment.

Systemwide state supported fall headcount enrollment has grown 60.4% from 1984 to 1993. In ten years, enrollment has grown from 40,613 students to 65,124 students, an increase of over 24,500 students. Total enrollment in the four community colleges has increased nearly 65%, from 20,197 students in 1984 to 33,305 in 1993. The 13,108 student increase at the community colleges from 1984 to 1993 accounts for 53% of the total system headcount enrollment growth over this period.

Systemwide fall FTE enrollment has grown 67% from 1984 to 1993, a larger growth rate than headcount enrollment over the same period. Over the ten-year period 1984 to 1993, systemwide FTE enrollment has grown from 21,331 to 35,619, an increase of 14,288 FTE students. Total FTE enrollment in the two universities has increased 55.6% from 14,165 in 1984 to 22,040 in 1993. This increase of 7,875 students accounts for 55% of the total system FTE enrollment growth from 1984 to 1993. FTE enrollment in the four community colleges increased 6,413 FTE students from 7,166 in 1984 to 13,579 in 1993, a growth rate of 89.5%.

The majority of UCCSN students attend on a part-time basis. Thirty-one percent of 1993 students attend UCCSN campuses full-time, a slight decrease from the proportion of students who attended full-time in 1992 (33%). Eighty-seven percent of community college students attend part-time, and 49% of university students attend part-time. Fifty-six percent of students attending UCCSN campuses are women, and 75% are white.

FALL 1993 ENROLLMENT

HIGHLIGHTS

Growth

- The UCCSN currently enrolls 35,619 full-time equivalent (FTE) students. Although this represents a decrease of 379 FTE students, or 1.1% from fall 1992, it is an increase of 67% from the fall of 1984.
- The community colleges currently enroll 13,579 FTE students, a decrease of 263 students, or 2% from the fall 1992 semester and an increase of 89.5% from the fall of 1984.
- The universities currently enroll 22,040 FTE students, a decrease of 116 FTE students, or 0.5% from the fall 1992 semester and an increase of 55.6% from the fall of 1984.
- The UCCSN is currently serving 65,124 state supported students. This is a decrease of 692 students or 1.1% from the fall of 1992 and an increase of 60.4% from the fall of 1984.
- The UCCSN community colleges currently serve 35,305 state supported students, a decrease of 1,314 students, or 3.8% less than the number enrolled in fall 1992 and an increase of 64.9% from the fall of 1984.
- The total headcount for the UCCSN community colleges, including both state supported and non-state supported classes, is 46,281.
- The universities currently serve 31,819 state supported students, an increase of 622 students or 2.0% over the number enrolled in fall 1992 and an increase of 55.9% over the fall of 1984.

Composition of the 1993 Student Body

- 69% of UCCSN students are part-time students.
- 49% of university students are part-time students, up from 48% in 1992.
- 87% of community college students are part-time students, up from 86% 1992.
- 56% of all students in fall 1993 are female, a slightly larger proportion than in 1992.
- 75% of all UCCSN students in fall 1993 are white, 16.7% are minority students, 3.0% are nonresident alien, and 5.4% are of unknown status.
- Student age data are collected every other year. The following UCCSN age data were reported for fall 1993:

Systemwide, 27.6% of students are between 18 and 21 years of age.

33.5% of students are 22 to 29 years of age.

20.4% of students are 30 to 39 years of age.

11.9% of students in 1993 are between 40 to 49 years of age, 5.5% are over 50 years of age, and 1.1% are under 18 years of age.

Special Issues

Because the issue of out-of-state students has received much attention this year, specific information about this topic is included below:

- The total number of non-resident students enrolled in the UCCSN in fall 1993 is approximately 6,000. This number also includes students who attend UCCSN institutions under special tuition policies such as Good Neighbor, Children of Alumni and WICHE Western Undergraduate Exchange (WUE) programs.
- In fall 1993, 1,228 students enrolled in UCCSN institutions under the Good Neighbor Policy.
- 283 students enrolled in UCCSN institutions under the WICHE/WUE program in fall 1993.
- At the universities, UNR reports 1,284 students in fall 1993 are California residents, an increase of 17.9% over fall 1992 (1,088). UNLV reports 802 students are California residents, an increase of 90% from fall 1992 (422).

TABLE 1

University and Community College System of Nevada
Student FTE Enrollments
Fall 1984-1993*

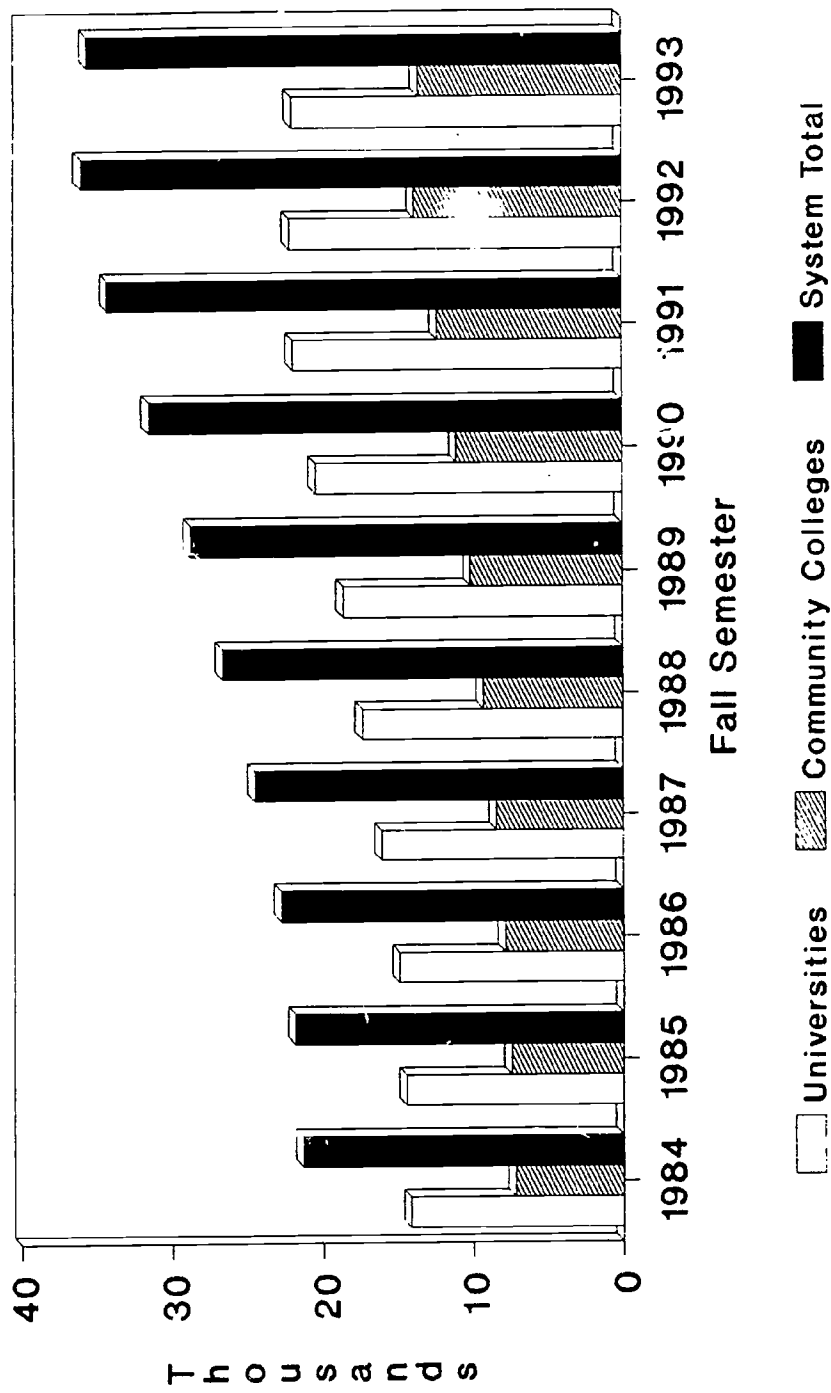
	Fall 1984	Fall 1985	Fall 1986	Fall 1987	Fall 1988	Fall 1989	Fall 1990	Fall 1991	Fall 1992	Fall 1993	9-Year % Change
Universities**											
UNLV	6,958	7,381	7,773	8,593	9,624	10,835	12,141	13,106	12,944	12,885	85.2%
UNR	<u>7,207</u>	<u>7,068</u>	<u>7,159</u>	<u>7,497</u>	<u>7,743</u>	<u>7,772</u>	<u>8,299</u>	<u>8,821</u>	<u>9,212</u>	<u>9,155</u>	27.0%
University Sub-total	14,165	14,449	14,932	16,090	17,367	18,607	20,440	21,927	22,156	22,040	55.6%
Community Colleges**											
CCSN	3,470	3,550	3,692	4,179	4,492	5,024	5,402	6,253	7,426	7,137	105.7%
WNCC	401	463	466	474	538	590	725	828	933	906	125.9%
TMCC	2,296	2,387	2,566	2,627	2,883	3,036	3,283	3,515	3,718	3,726	62.3%
WNCC	<u>999</u>	<u>1,007</u>	<u>1,125</u>	<u>1,167</u>	<u>1,372</u>	<u>1,478</u>	<u>1,646</u>	<u>1,726</u>	<u>1,765</u>	<u>1,810</u>	81.2%
Community College Sub-total	7,166	7,407	7,849	8,447	9,285	10,128	11,056	12,322	13,842	13,579	89.5%
SYSTEM TOTAL	21,331	21,856	22,781	24,537	26,652	28,735	31,496	34,249	35,998	35,619	67.0%

* Figures may not total due to rounding.

** University Registrar's First Reports; Community Colleges as of 10/15.

IR 11/93

Student FTE Enrollment, Fall 1984 - 1993

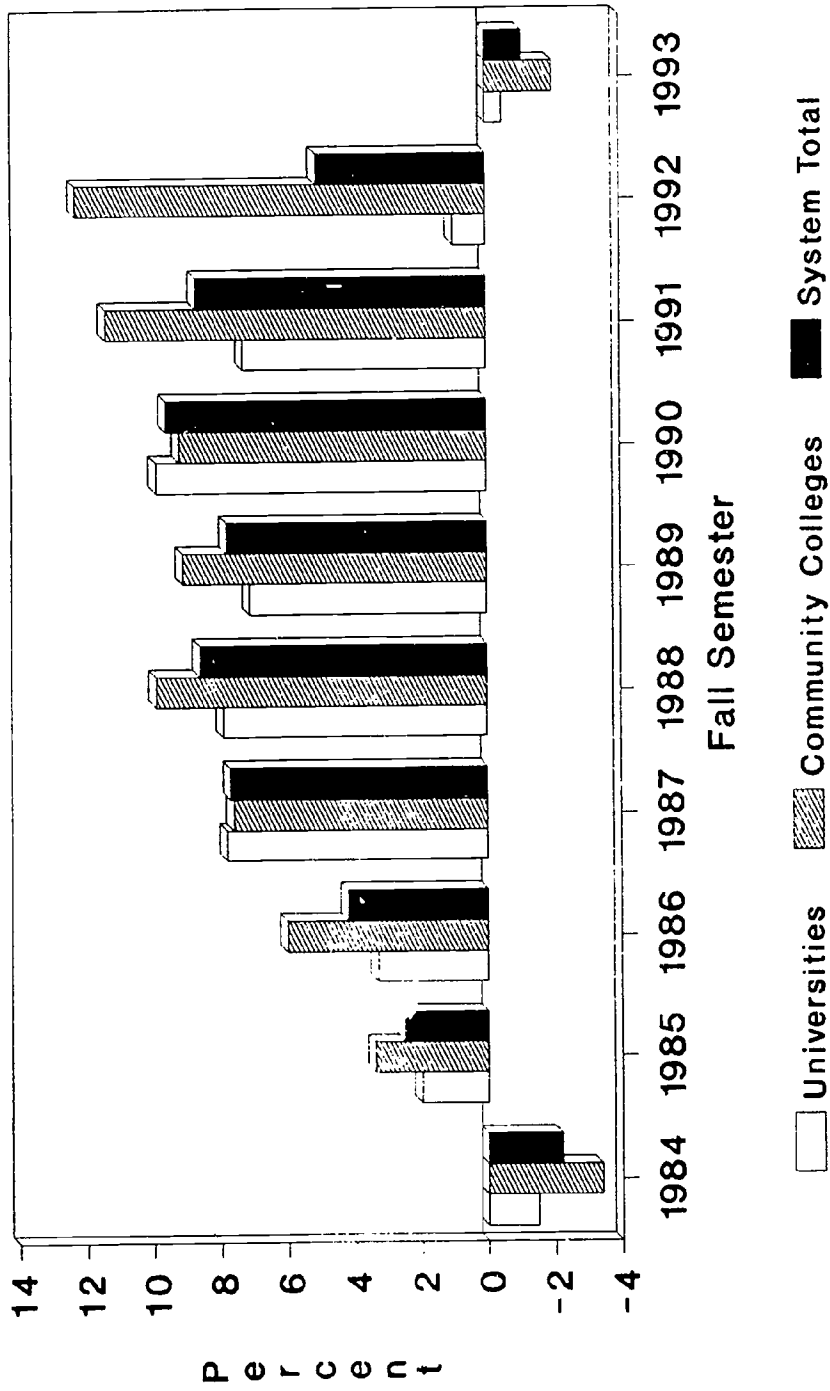


IR 11/93

10

11

Percent Change in FTE Enrollment, Fall 1984 - 1993



IR 11/93

TABLE 2

University and Community College System of Nevada
State-Supported
Student Headcount Enrollments
Fall 1984-1993*

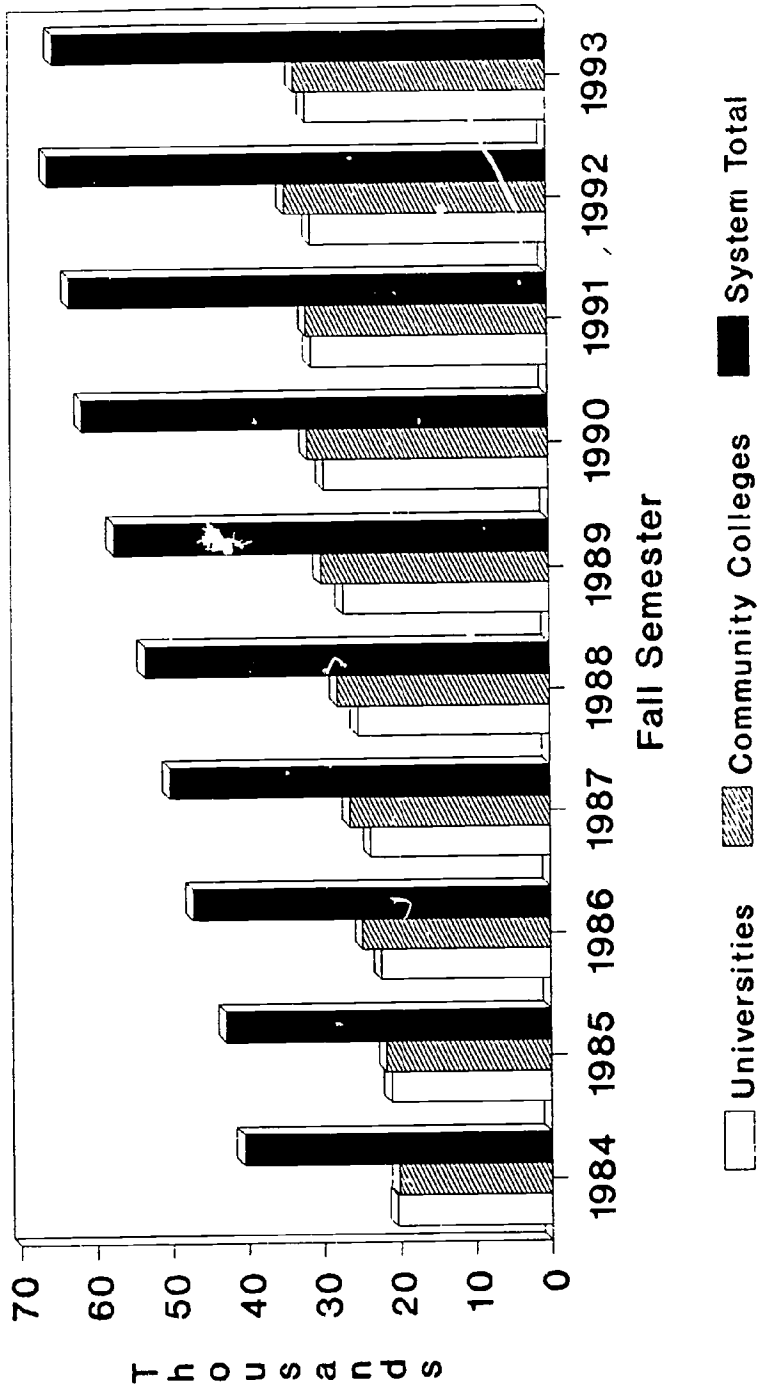
	Fall 1984	Fall 1985	Fall 1986	Fall 1987	Fall 1988	Fall 1989	Fall 1990	Fall 1991	Fall 1992	Fall 1993	9-Year % Change
Universities**											
UNLV	10,894	11,856	12,722	13,757	14,800	16,332	18,192	19,504	19,209	19,682	80.7%
UNR	<u>9,522</u>	<u>9,260</u>	<u>9,613</u>	<u>9,947</u>	<u>10,506</u>	<u>10,922</u>	<u>11,467</u>	<u>11,714</u>	<u>11,988</u>	<u>12,137</u>	27.5%
University Sub-total	20,416	21,116	22,335	23,704	25,306	27,254	29,679	31,218	31,197	31,819	55.9%
Community Colleges**											
CCSN	9,143	10,029	11,763	12,677	13,032	14,491	15,135	15,551	18,111	17,118	87.2%
NINCC	1,480	1,928	1,764	1,973	1,872	2,060	2,277	2,481	2,883	2,490	68.2%
TMCC	6,422	6,493	7,390	7,889	8,538	8,675	9,211	9,116	8,938	9,041	40.8%
WNCC	<u>3,152</u>	<u>3,320</u>	<u>3,898</u>	<u>3,916</u>	<u>4,627</u>	<u>4,901</u>	<u>5,178</u>	<u>4,688</u>	<u>4,687</u>	<u>4,656</u>	47.7%
Community College Sub-total	20,197	21,770	24,815	26,455	28,069	30,127	31,801	31,836	34,619	33,205	64.9%
SYSTEM TOTAL	40,613	42,886	47,150	50,159	53,375	57,381	61,480	63,054	65,816	65,124	60.4%

* Figures may not total due to rounding.

** University Registrar's First Reports; Community Colleges as of 10/15.

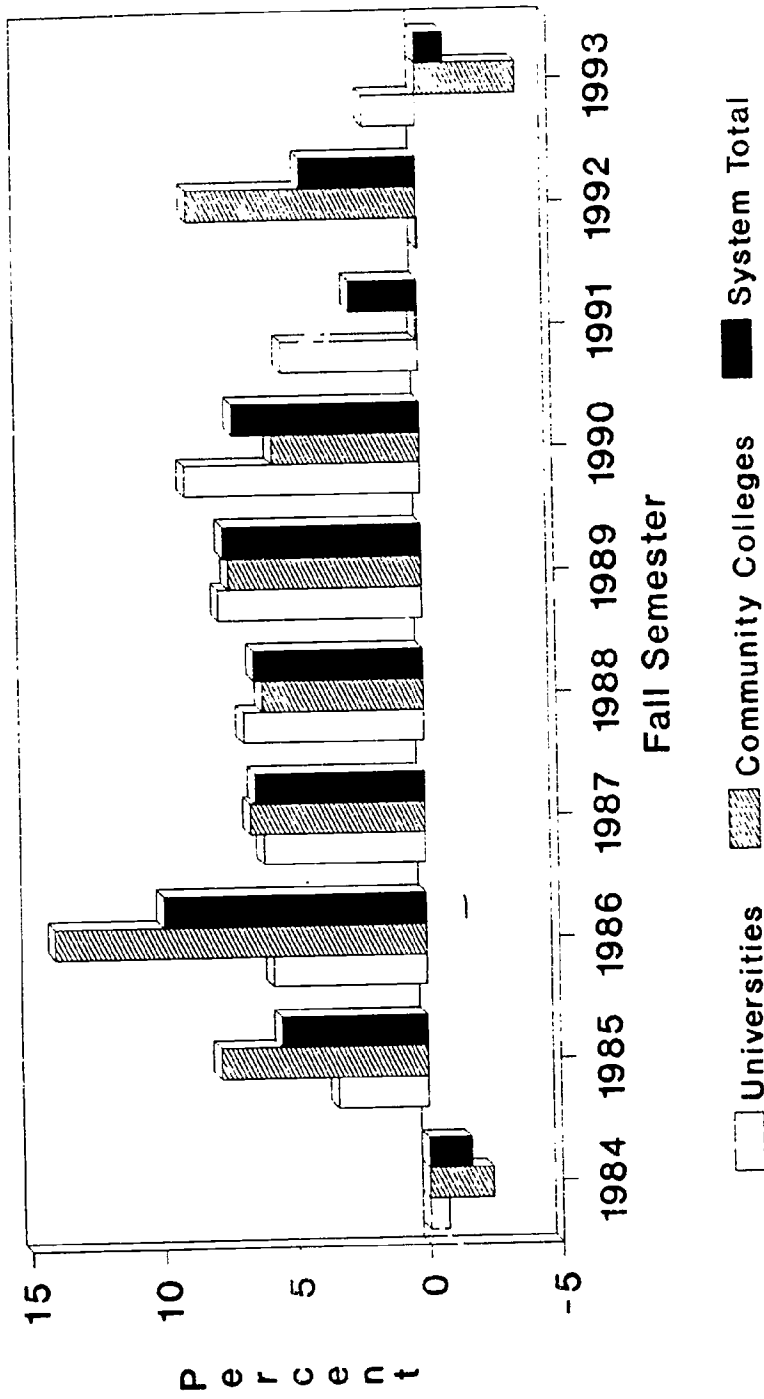
IR 11/93

Student Headcount Enrollment (State Supported) Fall 1984 - 1993



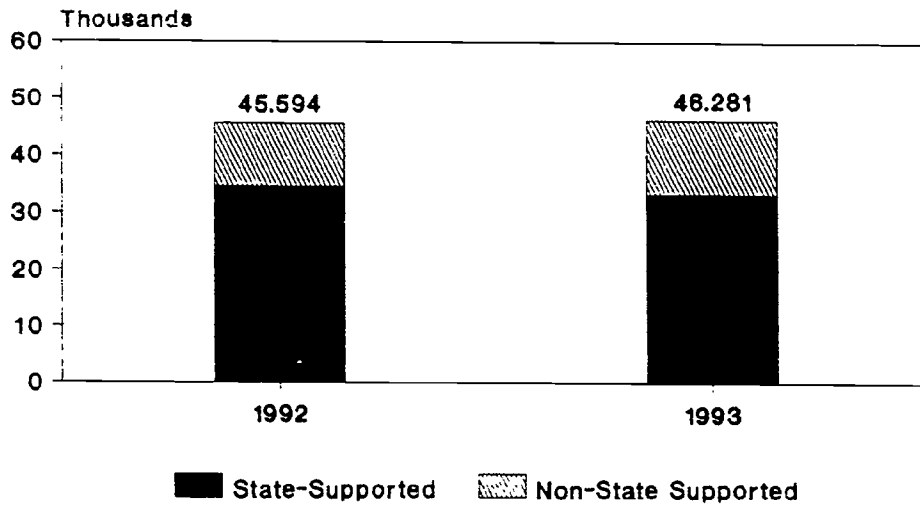
IR 11/93

Percent Change in Headcount Enrollment, (State Supported) Fall 1984 - 1993



IR 11/93

Community College Headcount Enrollment Fall 1992/1993



IR 11/93

TABLE 3

Community College Headcount Enrollment* Fall 1992/1993

	Fall 1992			Fall 1993		
	State Supported	Non-State Supported	Campus Total	State Supported	Non-State Supported	Campus Total
CCSN	18,111	4,692	22,803	17,118	5,549	22,667
NNCC	2,883	362	3,245	2,490	166	2,656
TMCC	8,938	4,880	13,818	9,041	6,767	15,808
WNCC	<u>4,687</u>	<u>1,041</u>	<u>5,728</u>	<u>4,656</u>	<u>494</u>	<u>5,150</u>
TOTAL	34,619	10,975	45,594	33,305	12,976	46,281

* Headcount is unduplicated count of classes both for academic credit and non-credit classes.

IR 11/93

TABLE 4

University and Community College System of Nevada
Enrollment Trends - Full-Time/Part-Time

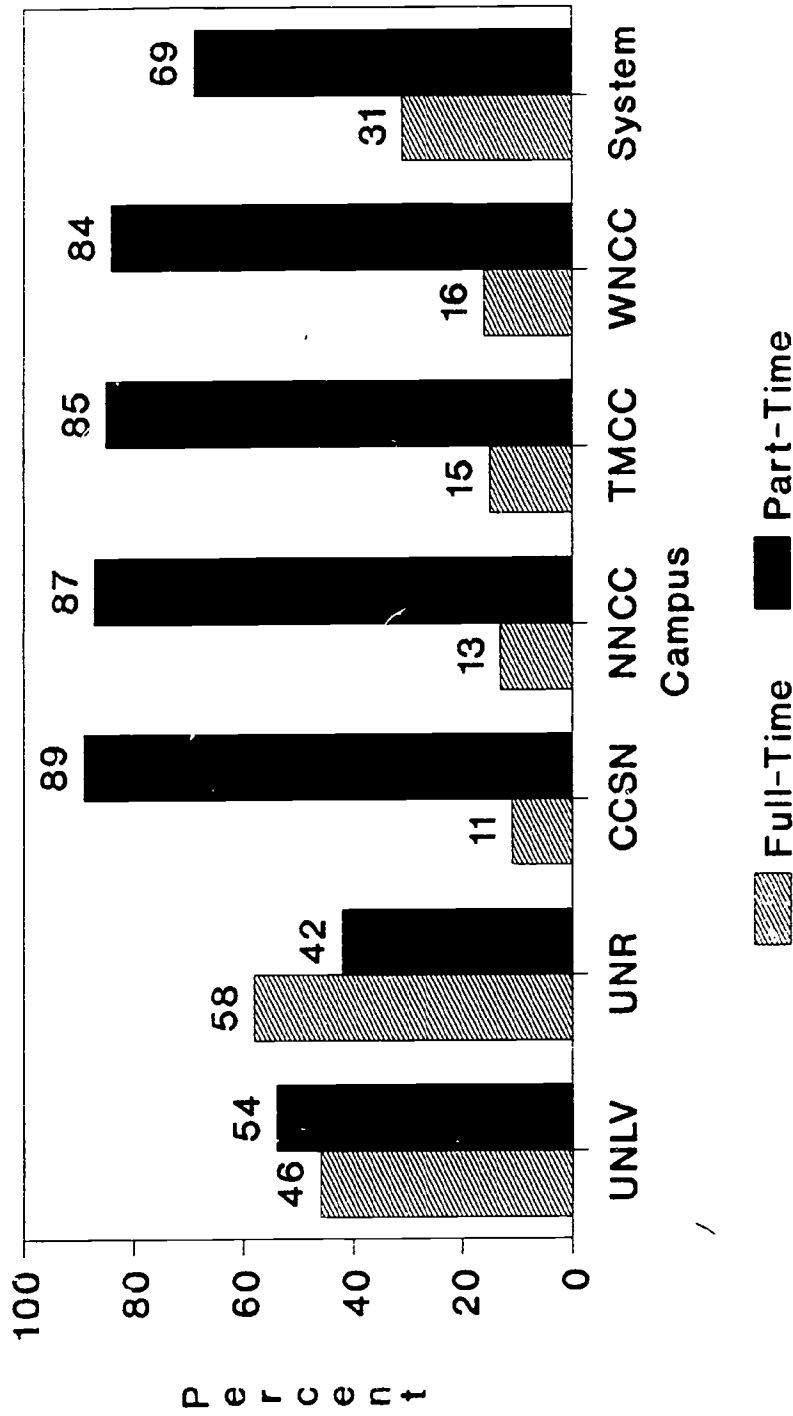
<u>Universities</u>	<u>1984</u>	<u>1985</u>	<u>1986</u>	<u>1987</u>	<u>1988</u>	<u>1989</u>	<u>1990</u>	<u>1991</u>	<u>1992</u>	<u>1993</u>
Full-Time	52%	50%	48%	49%	49%	45%	51%	51%	52%	51%
Part-Time	48%	50%	52%	51%	51%	55%	49%	49%	48%	49%
<u>Community Colleges</u>										
Full-Time	11%	15%	8%	10%	11%	11%	11%	13%	14%	13%
Part-Time	89%	85%	92%	90%	89%	89%	89%	87%	86%	87%
<u>Systemwide</u>										
Full-Time	31%	32%	27%	29%	30%	30%	30%	32%	33%	31%
Part-Time	69%	68%	73%	71%	70%	70%	70%	68%	67%	69%

* Full-Time undergraduate students are defined as those students enrolled for 12 or more semester credits.
Full-Time graduate students are defined as those students enrolled for 9 or more semester credits.

Source: U.S. Department of Education, National Center for Statistics,
"Fall Enrollment Survey", 1984-1993.

IR 11/93

Percent of Students Enrolled Full-Time/Part-Time, Fall 1993

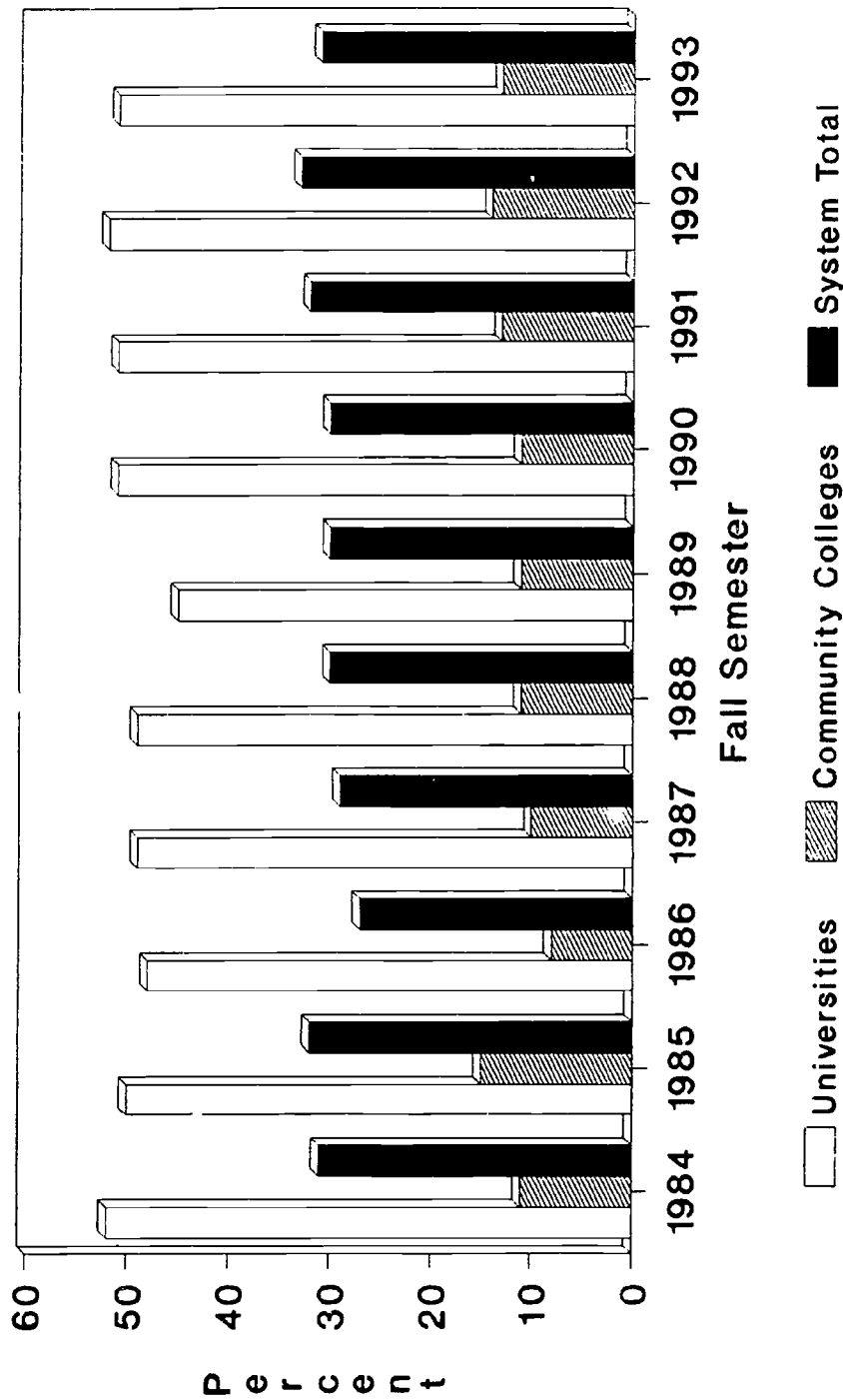


IR 11/93

92

23

Percent of Students Enrolled Full-Time, Fall 1984 - 1993



IR 11/93

TABLE 5

Systemwide Enrollment
Percent by Gender and Racial-Ethnic Designation
1984-1993*

<u>Gender</u>	<u>1984</u>	<u>1985</u>	<u>1986</u>	<u>1987</u>	<u>1988</u>	<u>1989</u>	<u>1990</u>	<u>1991</u>	<u>1992</u>	<u>1993</u>
Male	50%	45%	45%	43%	45%	44%	44%	44%	45%	44%
Female	50%	55%	55%	57%	55%	56%	56%	56%	55%	56%
 <u>Racial-Ethnic Designation</u>										
Non-Resident/Alien	1.3%		1.4%		1.3%		1.4%	1.1%	2.2%	3.0%
Black	3.9%		4.0%		4.3%		4.6%	4.8%	4.8%	4.7%
American Indian	2.7%		1.5%		1.5%		1.6%	1.4%	1.5%	1.5%
Asian	2.4%		2.7%		3.2%		4.0%	4.5%	4.9%	4.8%
Hispanic	3.0%		4.1%		5.1%		5.4%	5.8%	6.1%	5.7%
White	87.0%		86.4%		84.6%		79.7%	77.1%	75.1%	75.0%
Unknown							3.2%	5.3%	5.4%	5.4%

* Figures may not add to 100% due to rounding.

Source: U.S. Department of Education, National Center for Statistics, "Fall Enrollment", 1984-1993

IR 11/93

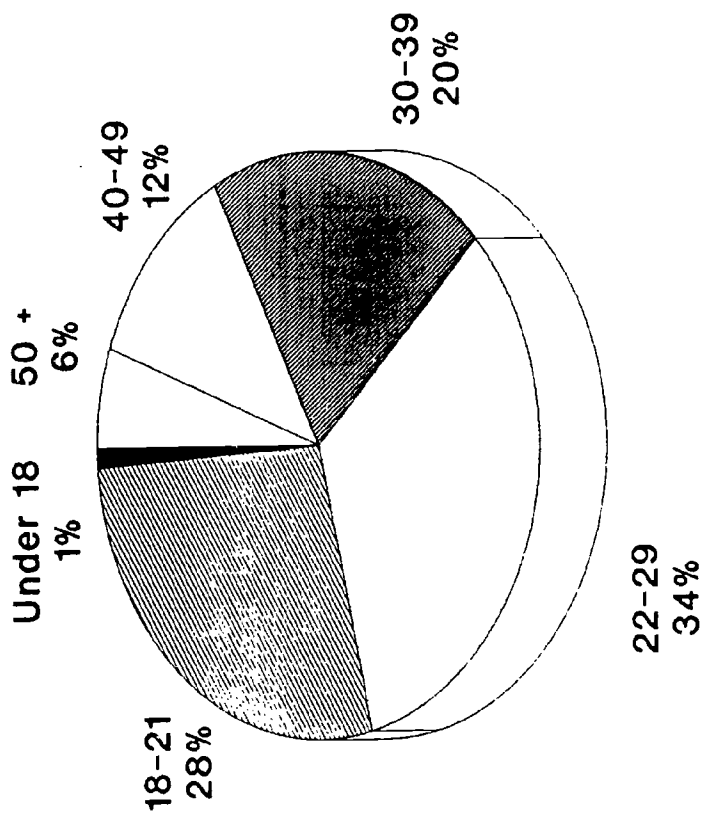
TABLE 6
University and Community College System of Nevada
Student Age By Campus, Fall 1993*

Campus	<u>AGE</u>					
	<u>Under 18</u>	<u>18-21</u>	<u>22-29</u>	<u>30-39</u>	<u>40-49</u>	<u>50 +</u>
UNLV						
Full-Time	0.5%	22.8%	17.1%	3.6%	1.4%	0.3%
Part-Time	<u>0.2%</u>	<u>9.5%</u>	<u>22.8%</u>	<u>11.9%</u>	<u>6.9%</u>	<u>3.0%</u>
Total	0.7%	32.2%	40.0%	15.5%	8.4%	3.3%
UNR						
Full-Time	0.4%	28.4%	20.4%	5.5%	2.8%	0.5%
Part-Time	<u>0.2%</u>	<u>5.4%</u>	<u>15.0%</u>	<u>11.9%</u>	<u>7.2%</u>	<u>2.3%</u>
Total	0.6%	33.7%	35.5%	17.4%	10.0%	2.8%
CCSN						
Full-Time	0.1%	6.0%	2.8%	1.3%	0.7%	0.2%
Part-Time	<u>1.0%</u>	<u>19.1%</u>	<u>28.8%</u>	<u>21.8%</u>	<u>12.1%</u>	<u>6.2%</u>
Total	1.1%	25.0%	31.5%	23.1%	12.8%	6.4%
NNCC						
Full-Time	0.0%	6.0%	3.0%	2.8%	1.1%	0.2%
Part-Time	<u>6.2%</u>	<u>8.7%</u>	<u>15.6%</u>	<u>27.2%</u>	<u>17.4%</u>	<u>11.9%</u>
Total	6.2%	14.6%	18.6%	29.9%	18.5%	12.1%
TMCC						
Full-Time	0.1%	7.4%	5.1%	1.8%	0.9%	0.2%
Part-Time	<u>0.6%</u>	<u>15.4%</u>	<u>25.3%</u>	<u>22.2%</u>	<u>13.7%</u>	<u>7.2%</u>
Total	0.7%	22.8%	30.5%	24.0%	14.6%	7.5%
WNCC						
Full-Time	0.1%	6.5%	4.0%	3.2%	1.4%	0.4%
Part-Time	<u>2.4%</u>	<u>10.8%</u>	<u>18.9%</u>	<u>23.9%</u>	<u>17.5%</u>	<u>11.0%</u>
Total	2.5%	17.3%	22.9%	27.0%	18.8%	11.4%
SYSTEM						
Full-Time	0.3%	15.4%	10.7%	3.0%	1.4%	0.3%
Part-Time	<u>0.8%</u>	<u>12.2%</u>	<u>22.8%</u>	<u>17.4%</u>	<u>10.4%</u>	<u>5.2%</u>
Total	1.1%	27.6%	33.5%	20.4%	11.9%	5.5%

* Figures may not total 100% due to rounding.

Source: U.S. Department of Education, National Center for Education Statistics, "Fall Enrollment", 1993

STUDENT AGE UCCSN, Fall 1993



IR 11/93

University and Community College System of Nevada
STUDENT FTE ENROLLMENT*
 Fall Semester 1993

	<u>Fall 1992</u>	<u>Fall 1993</u>	<u>% Change</u>
Universities* *			
UNR			
University Regular Enrollment			
Lower Division	3,169	3,170	0.0%
Upper Division	2,262	2,221	-1.8%
Graduate	1,702	1,600	-6.0%
Sub-total	7,133	6,991	-2.0%
Engineering Related Programs			
Undergraduate	1,387	1,481	6.8%
Graduate	370	346	-6.5%
Nursing			
Undergraduate	106	119	12.3%
Graduate	10	16	60.0%
Medical School	206	202	-1.9%
Sub-total	2,079	2,164	4.1%
TOTAL Undergraduate	7,130	7,193	0.9%
TOTAL Graduate	2,082	1,962	-5.8%
TOTAL FTE Enrollment	9,212	9,155	-0.6%
UNLV			
University Regular Enrollment			
Lower Division	5,752	5,526	-3.9%
Upper Division	3,243	3,374	4.0%
Graduate	1,542	1,568	1.7%
Sub-total	10,537	10,468	-0.7%
Engineering Related Programs			
Undergraduate	1,917	1,884	-1.7%
Graduate	183	209	14.2%
Nursing			
Undergraduate	192	205	6.8%
Graduate	26	27	3.8%
Radiology	89	92	3.4%
Sub-total	2,407	2,417	0.4%
TOTAL Undergraduate	11,193	11,081	-1.0%
TOTAL Graduate	1,751	1,804	3.0%
TOTAL FTE Enrollment	12,944	12,885	-0.5%

University and Community College System of Nevada
 STUDENT FTE ENROLLMENT
 Fall Semester 1993

	<u>Fall 1992</u>	<u>Fall 1993</u>	<u>% Change</u>
Community Colleges**			
CCSN			
Regular Programs	5,404	5,167	-4.4%
Vocational/Technical	1,203	1,120	-6.9%
Developmental	395	361	-8.7%
Rural Programs	264	347	31.7%
Dental Hygiene	24	26	10.5%
Nursing	136	116	-14.4%
TOTAL	7,426	7,137	-3.9%
NNCC			
Regular Programs	447	431	-3.6%
Vocational/Technical	119	110	-7.6%
Developmental	45	36	-20.0%
Rural Programs	297	302	1.7%
Nursing	25	27	8.0%
TOTAL	933	906	-2.9%
TMCC			
Regular Programs	2,653	2,776	4.6%
Vocational/Technical	642	573	-10.7%
Developmental	297	259	-12.8%
Dental Assisting	21	18	-14.3%
Radiological Technician	21	20	-4.8%
Nursing	84	80	-4.8%
TOTAL	3,718	3,726	0.2%
WNCC			
Regular Programs	882	904	2.5%
Vocational/Technical	181	186	2.8%
Developmental	124	81	-34.7%
Rural Programs	530	565	6.6%
Nursing	48	74	54.2%
TOTAL	1,765	1,810	2.5%
<hr/>			
SYSTEM TOTAL	35,998	35,619	-1.1%
<hr/>			

* Figures may not total due to rounding.

** University First Reports, Community Colleges as of 10/15/93.

IR 11/93

University and Community College System of Nevada
STUDENT HEADCOUNT ENROLLMENT*
Fall Semester 1993

	<u>Fall 1992</u>	<u>Fall 1993</u>	<u>% Change</u>
Universities**			
UNR			
State Supported Enrollments			
Lower Division	3,385	3,834	13.3%
Upper Division	5,042	4,775	-5.3%
Graduate	2,958	3,004	1.6%
Non-Degree	603	524	-13.1%
Sub-total	11,988	12,137	1.2%
Non-State Supported Enrollments			
Academic Credit Enrollment	627	1,128	79.9%
Non-Credit Enrollment	5,326	4,369 (1)	-18.0%
Sub-total	5,953	5,497	-7.7%
UNLV			
State Supported Enrollments			
Lower Division	6,505	6,119	-5.9%
Upper Division	7,756	8,213	5.9%
Graduate	3,342	3,705	10.9%
Non-Degree	1,606	1,645	2.4%
Sub-total	19,209	19,682	2.5%
Non-State Supported Enrollments			
Academic Credit Enrollment	1,243	1,370	10.2%
Non-Credit Enrollment	13,449 (2)	13,579 (3)	1.0%
Sub-total	14,692	14,949	1.7%

* Figures may not total due to rounding.

**University First Reports, Community Colleges as of 10/15/93.

University and Community College System of Nevada
 STUDENT HEADCOUNT ENROLLMENT
 Fall Semester 1993
 Page two

	<u>Fall</u> <u>1992</u>	<u>Fall</u> <u>1993</u>	<u>% Change</u>
Community Colleges**			
CCSN			
<u>Unduplicated Headcount</u>			
Academic Credit Classes			
State Supported	18,111	17,118	-5.5%
Non-State Supported	---	---	---
Sub-total	18,111	17,118	-5.5%
Non-Credit Classes			
Non-State Supported	4,692	5,549	18.3%
TOTAL UNDUPLICATED HEADCOUNT	22,803	22,667	-0.6%
<u>Duplicated Headcount</u>			
(Non-State Supported, Non-Credit)			
Adult Basic Education	1,205	1,800	49.4%
Apprenticeship	1,025	1,300	26.8%
Community Services	4,471	3,825	-14.4%
Continuing Education	136	521	283.1%
Contract Education/Econ Dev	1,136	1,056	-7.0%
TOTAL	7,973	8,502	6.6%
NNCC			
<u>Unduplicated Headcount</u>			
Academic Credit Classes			
State Supported	2,883	2,490	-13.6%
Non-State Supported	95	70	-26.3%
Sub-total	2,978	2,560	-14.0%
Non-Credit Classes			
Non-State Supported	267	96	-64.0%
TOTAL UNDUPLICATED HEADCOUNT	3,245	2,656	-18.2%
<u>Duplicated Headcount</u>			
(Non-State Supported, Non-Credit)			
Adult Basic Education	241	312	29.5%
Apprenticeship	---	---	---
Community Services	70	105	50.0%
Continuing Education	---	73	100.0%
Contract Education/Econ Dev	91	265	191.2%
TOTAL	402	755	87.8%

University and Community College System of Nevada
 STUDENT HEADCOUNT ENROLLMENT
 Fall Semester 1993
 Page three

	<u>Fall 1992</u>	<u>Fall 1993</u>	<u>% Change</u>
TMCC			
<u>Unduplicated Headcount</u>			
Academic Credit Classes			
State Supported	8,938	9,041	1.2%
Non-State Supported	538	591	9.9%
Sub-total	9,476	9,632	1.6%
Non-Credit Classes			
Non-State Supported	4,342	6,176	42.2%
TOTAL UNDUPLICATED HEADCOUNT	13,818	15,808	14.4%
<u>Duplicated Headcount</u>			
(Non-State Supported, Non-Credit)			
Adult Basic Education	488	657	34.6%
Apprenticeship	---	---	---
Community Services	2,784	4,023	44.5%
Continuing Education	---	---	---
Contract Education/Econ Dev	1,298	1,821	40.3%
TOTAL	4,570	6,501	42.3%
WNCC			
<u>Unduplicated Headcount</u>			
Academic Credit Classes			
State Supported	4,687	4,656	-0.7%
Non-State Supported	85	99	16.5%
Sub-total	4,772	4,755	-0.4%
Non-Credit Classes			
Non-State Supported	956	936	-2.1%
TOTAL UNDUPLICATED HEADCOUNT	5,728	5,691	-0.6%
<u>Duplicated Headcount</u>			
(Non-State Supported, Non-Credit)			
Adult Basic Education	---	---	---
Apprenticeship	---	---	---
Community Services	675	594	-12.0%
Continuing Education	83	135	62.7%
Contract Education/Econ Dev	198	346	74.7%
TOTAL	956	1,075	12.4%

FOOTNOTES

- (1) These enrollments not available on a semester basis; these figures are to 9/30/93 only.
- (2) These enrollments are not available on a semester basis. These figures are for 3/92-10/92 minus summer enrollments (reported separately).
- (3) These enrollments are not available on a semester basis. These figures are for 3/93-10/93 minus summer enrollments (reported separately).

IR 11/93

University and Community College System of Nevada
Summer Session Headcount
1993

Summer 1993 (1)	
UNR	12,308
UNLV	15,641
CCSN	4,676
NNCC	797
TMCC	5,597
WNCC	1,700

(1) Data include enrollment in both academic credit classes
and non-credit classes.

IR 11/93

UCCSN

