

ED 365 211

HE 027 002

AUTHOR Stapleton, Laura; Ludwig, Meredith J.
 TITLE Student Charges at Public Institutions. Annual Survey 1990-91.
 INSTITUTION American Association of State Colleges and Universities, Washington, D.C.; National Association of State Universities and Land Grant Colleges, Washington, D.C.
 PUB DATE 91
 NOTE 112p.; For related documents, see HE 027 000-003 for the 1988-89 survey, see ED 304 082.
 AVAILABLE FROM NASULGC Office of Public Affairs, One Dupont Circle, Suite 710, Washington, DC 20036-1191.
 PUB TYPE Reports - Research/Technical (143) -- Statistical Data (110)
 EDRS PRICE MF01/PC05 Plus Postage.
 DESCRIPTORS *Access to Education; College Housing; *Educational Finance; Enrollment Trends; Expenditure per Student; Financial Support; Higher Education; Inflation (Economics); Land Grant Universities; National Surveys; Parent Financial Contribution; *Public Colleges; State Colleges; *State Universities; *Student Costs; Student Needs; Tuition

ABSTRACT

The 1991 report on student charges at public colleges and universities describes the costs of attending about 90 percent of the national, publicly assisted, four-year institutions. The report uses data compiled by the American Association of State Colleges and Universities (AASCU) and the National Association of State Universities and Land-Grant Colleges (NASULGC). The report covers trends in student charges for both member and non-affiliated institutions. It also covers issues including 2-year comparisons of average undergraduate charges; average room and board costs; and average charges for graduate students and students in first professional schools of law, medicine, dentistry, and veterinary medicine. A key finding is that the overall rate of increase in student charges appears to be moderating at public colleges and universities. Faculty salary increases, decreasing appropriations, and repair cost were cited as the forces behind most tuition and fees increases. The average rates of increase for resident and non-resident undergraduate tuition in 1990 were comparable, 7.2 and 7.5 percent respectively. In comparison in 1989 resident undergraduate charges increased 7.7 percent and nonresident charges increased a full 10.4 percent. Appendixes include cost information for specific colleges and universities. (JB)

 * Reproductions supplied by EDRS are the best that can be made *
 * from the original document. *

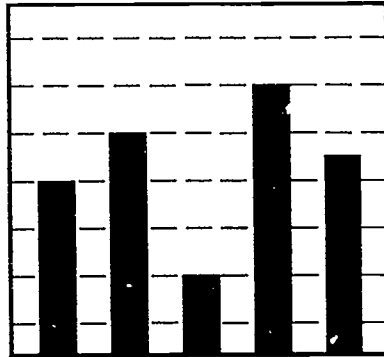
American Association of State

Colleges and Universities

and

National Association of State

Universities and Land-Grant Colleges



Student Charges at Public Institutions

Annual Survey 1990-91

HEA 27002

U.S. DEPARTMENT OF EDUCATION
Office of Educational Research and Improvement
EDUCATIONAL RESOURCES INFORMATION
CENTER (ERIC)

- This document has been reproduced as received from the person or organization originating it.
- Minor changes have been made to improve reproduction quality.

• Points of view or opinions stated in this document do not necessarily represent official OERI position or policy.

PERMISSION TO REPRODUCE THIS
MATERIAL HAS BEEN GRANTED BY

NASULGC

AASCU

TO THE EDUCATIONAL RESOURCES
INFORMATION CENTER (ERIC)

**Student Charges
At Public Institutions
Annual Survey 1990-1991**

By

Laura Stapleton

Meredith J. Ludwig

American Association of State Colleges and Universities
Office of Association Research

In Cooperation With

Robert L. Aaron

National Association of State Universities and
Land-Grant Colleges
Office of Communications Services

Copyright 1991 by American Association of State Colleges and Universities
National Association of State Universities and Land-
Grant Colleges
Washington, D.C.

CONTENTS

EXECUTIVE SUMMARY.....	4
FINDINGS.....	6
Table 1/Graph 1 1989 and 1990 Average Undergraduate Tuition/Fees Charges.....	9
Table 2/Graph 2 1989 and 1990 Average Undergraduate Room and Board Charges.....	10
Table 3/Graph 3 1989 and 1990 Average Graduate Tuition/Fees Charges.....	11
Table 4/Graph 4 1989 and 1990 Average First Professional Program Charges.....	12
Table 5 State-by-State Increases for Undergraduate Residents.....	13
OVERALL AVERAGES FOR AASCU, NASULGC, AND NONAFFILIATED COLLEGES AND UNIVERSITIES.....	6
AASCU CAMPUSES.....	6
NASULGC CAMPUSES.....	7
FIRST PROFESSIONAL CHARGES: All Membership Categories.....	7
FACTORS AFFECTING STUDENT CHARGES.....	15
Table 6 Factors Affecting Student Charges.....	15
Graph 5 Factors Affecting Student Charges.....	17
RESPONSES TO ECONOMIC CONDITIONS.....	16
Table 7 Responses to Economic Conditions.....	16
Graph 6 Responses to Economic Conditions.....	17
HIGHER EDUCATION OUTLOOK.....	18
METHODOLOGY.....	20
APPENDICES.....	22
Appendix A Undergraduate Charges - AASCU Members.....	22
Appendix B Graduate Charges - AASCU Members.....	34
Appendix C Undergraduate Charges - NASULGC Members.....	46
Appendix D Graduate Charges - NASULGC Members.....	52
Appendix E Charges and Nonaffiliated Institutions.....	58
Appendix F First Professional Charges.....	62

EXECUTIVE SUMMARY

The overall rate of increase in student charges is moderating at public colleges and universities, although news of mid-year increases in many states has produced fear of increased charges and lower levels of service in the future, according to the results of the 1990 survey of student charges at public colleges and universities. Faculty salary increases, decreasing appropriations, and repair costs are the forces behind the tuition and fees increases, according to responses from the state colleges and universities participating in the annual survey.

The average rates of increase for resident and nonresident undergraduate tuition in 1990 were comparable, 7.2 and 7.5 percent respectively. The previous year's survey results showed nonresident student charges increasing almost 3 percentage points more than resident charges. In 1989, resident undergraduate charges increased 7.7 percent while nonresident charges increased a full 10.4 percent.

In 1990, undergraduate average room and board charges increased at a steeper rate than that in previous years. Overall, room and board charges increased at an average rate of 6.0 percent, compared with last year's rise of 5.4 percent.

Asked to predict the impact of state economic conditions on their institutions, survey respondents reported fears of deteriorating physical plants, difficulty in the retention of faculty and staff, and cuts in student services. A summary of state-by-state increases in undergraduate resident student charges is included in this report.

The 1990-1991 report on student charges at public colleges and universities is a joint project of the American Association of State Colleges and Universities (AASCU) and the National Association of State Universities and Land-Grant Colleges (NASULGC). These organizations represent 90 percent of the nation's publicly supported, four-year institutions of higher education.

The more than 370 AASCU-member institutions represented in this report enroll almost 3 million students. Sixty-two percent of AASCU institutions are comprehensive universities; 29 percent are general baccalaureate institutions with primary emphasis on undergraduate education; and 5 percent are doctoral-level institutions. AASCU members grant more than 322,000 bachelor's degrees annually--approximately 33 percent of the nation's total, about 26 percent of the nation's master's degrees each year, and 6 percent of the nation's doctoral degrees.

NASULGC represents 149 institutions of higher learning--53 principal state universities, 72 land-grant campuses, and university system administration offices. NASULGC-member campuses

enroll more than 2.7 million students and award upwards of a half-million degrees annually, including three-fifths of all U.S. doctorates. By the late 1980s, NASULGC-member campuses claimed more than 17 million alumni.

This report details this year's trends in student charges for AASCU and NASULGC-member campuses, along with the student charges trends of nonaffiliated institutions. Appendices include cost information for specific colleges and universities. The report covers several important issues, including two-year comparisons of average undergraduate charges, average room and board costs; and average charges for graduate students and students in first professional schools of law, medicine, dentistry, and veterinary medicine. For information about this report, call Meredith Ludwig at 202/293-7070 or Robert Aaron at 202/778-8018.

FINDINGS

OVERALL AVERAGES FOR AASCU, NASULGC, AND NONAFFILIATED COLLEGES AND UNIVERSITIES

In the Fall 1990 survey of student charges at public, four-year institutions, 530 colleges and universities responded to the survey questionnaire. These colleges and universities included 345 AASCU members, 114 NASULGC members, 20 members of both AASCU and NASULGC, and 51 nonaffiliated, public, four-year colleges and universities. Please note that the 1989 charge reported for a particular institution in the 1990 report may differ slightly from that reported in the 1989 report. The reporting institutions are offered the opportunity to revise or correct their figures of the previous year. In almost all cases, however, the base year numbers are within a few dollars of those reported previously.

Undergraduate Tuition and Fees Charges. Based on a response of 503 public colleges and universities, the 1990 overall average tuition for in-state students was \$1,819, a 7.2-percent increase over the revised 1989 average of \$1,697. For the 501 public colleges and universities responding to the survey, the average tuition and fees charge for out-of-state students in 1990 was \$4,800, a 7.5-percent increase over the 1989 revised average charge of \$4,465, reflecting an increase of \$335. (Table 1/Graph 1)

Room and Board. In a comparison of undergraduate room and board charges between 1989 and 1990, of the 407 public colleges and universities responding to this portion of the survey, the average 1990 charge was \$3,067, a 6-percent increase over the revised 1989 average of \$2,893, for a \$174 increase. (Table 2/Graph 2)

Graduate Tuition and Fee Charges. Of the 450 public colleges and universities responding, the in-state tuition and fee charges for graduate students rose by 7.5 percent. The average 1990 charge was \$2,080, a \$145 increase over the revised 1989 average charge of \$1,935.

For out-of-state graduate students, the average tuition and fee charge increased by 7.7 percent. For the 449 respondents, the average nonresident charge was \$4,923, a \$350 increase over the revised 1989 average of \$4,573. (Table 3/Graph 3)

AASCU CAMPUSES

Undergraduate Tuition and Fee Charges. Based on responses from 357 AASCU-member institutions, the average in-state tuition and fee charge for Fall 1990 was \$1,700, up from the 1989 revised average charge of \$1,580, an increase of \$120 and 7.6 percent. For nonresident students, of the 356 respondents, the 1990 tuition and fee charge rose 7.6 percent to \$4,463. This increase reflected a \$316 increase over the revised 1989 figure of \$4,147. (Table 1/Graph 1)

Room and Board. Of the 291 member institutions responding to this year's survey, the average combined room and board charge for 1990 was \$2,929, up from a revised 1989 charge of \$2,765, for an average increase of \$164 and a 5.9-percent increase. (Table 2/Graph 2)

Graduate Tuition and Fee Charges. For the 309 AASCU institutions responding to the survey, the average in-state graduate tuition and fee charge for 1990 was \$1,897, a 7.8-percent increase over the revised 1989 average of 1,760. For out-of-state graduate students, the 1990 average tuition and fee charge was \$4,520, an 8-percent increase over the revised 1989 average of \$4,185; an average dollar increase of \$335. (Table 3/Graph 3)

NASULGC CAMPUSES

Undergraduate Tuition and Fee Charges. For the 129 NASULGC-member institutions responding to the survey, the average 1990 charge for in-state tuition and fees was \$2,124, a 6.5-percent increase over the 1989 revised average of \$1,994. This is a dollar increase of \$130 in a year-to-year comparison. For out-of-state students, 128 NASULGC-member institutions reported. The 1990 average for these schools was \$5,601, a 7.4-percent increase over the 1989 revised average of \$5,213. (Table 1/Graph 1)

Room and Board. For a year-to-year comparison of the 113 NASULGC institutions responding to this question, the 1990 average was \$3,299, a 6.4-percent increase over the revised 1989 average of \$3,101 or an average increase of \$198. (Table 2/Graph 2)

Graduate Tuition and Fee Charges. For the 127 NASULGC-member institutions responding to the survey, the average in-state graduate tuition was \$2,456, a 6.9-percent increase over the 1989 revised figure of \$2,297, reflecting an average increase of \$159. For nonresident graduate students, the increase in tuition and fees was an average 7.0 percent, reported by 126 institutions. The average 1990 charge was \$5,704, an average increase of \$374 over the 1989 revised charge of \$5,330. (Table 3/Graph 3)

FIRST PROFESSIONAL CHARGES: All Membership Categories Combined

LAW. Sixty-five institutions responded to the survey question about in-state tuition and fees. The 1990 average in-state tuition was \$3,158, an average increase of \$298 and a 10.4-percent increase over the revised 1989 average of \$2,860. For nonresident charges, 64 institutions responded to the survey question. The 1990 tuition increased by an average of \$652 from \$6,657 in 1989 to \$7,309 in 1990, a 9.8-percent increase.

MEDICINE. Seventy-five institutions responded to the survey question about in-state medical tuition and fees. The increase for in-state medical school tuition and fees appears to have slowed for the second year in a row, showing a modest rise of only 6 percent.

The average reported 1989 revised charge was \$5,697, an increase of \$343, for a 1990 average of \$6,040. For out-of-state medical students, 74 institutions responded showing an increase of only 5.1 percent, up to \$13,510 from the 1989 revised average charge of \$12,853. This increase reflected an average increase of \$657. (Table 4/Graph 4)

VETERINARY MEDICINE. Twenty-four institutions responded to the survey question about tuition and fees for in-state students in veterinary programs. The 1990 average was \$4,882. This was a 6.2-percent increase over the revised 1989 average of \$4,599 and an average increase of \$283. Of the 23 institutions reporting figures for out-of-state charges in veterinary programs, a 5.3-percent increase over 1989 figures was noted. The 1990 average was \$11,417, an increase of \$579 over the revised 1989 average charge of \$10,838. (Table 4/Graph 4)

DENTISTRY. Thirty-one institutions reported figures for dental tuition and fees for in-state programs. For these charges, the average annual figure was \$5,891, an increase of .8 percent from the 1989 revised charge of \$5,844. This change reflects an average increase of \$47. For the 30 institutions that reported figures for out-of-state numbers, their average dental charge increased a modest 5.1 percent to \$12,938 from the revised 1989 charge of \$12,306.

TABLE 1
1989 AND 1990 AVERAGE UNDERGRADUATE TUITION/FEE CHARGES

	<u>N</u>	<u>1989</u>	<u>1990</u>	<u>Pct. Increase</u>
Resident				
AASCU	357	1,580	1,700	7.6
NASULGC	129	1,994	2,124	6.5
NON-AFFILIATED	36	1,667	1,762	5.7
OVERALL	503	1,697	1,819	7.2
Nonresident				
AASCU	356	4,147	4,463	7.6
NASULGC	128	5,213	5,601	7.4
NON-AFFILIATED	36	4,661	4,927	5.7
OVERALL	501	4,465	4,800	7.5

GRAPH 1

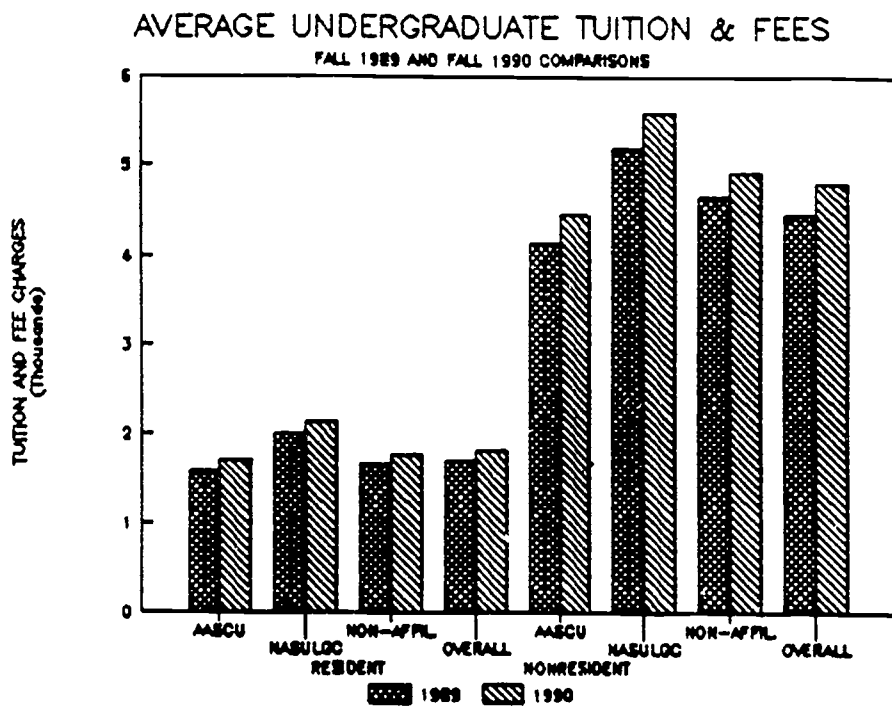


TABLE 2
1989 AND 1990 AVERAGE UNDERGRADUATE ROOM AND BOARD CHARGES

	<u>N</u>	<u>1989</u>	<u>1990</u>	<u>Pct. Increase</u>
AASCU	291	2,765	2,929	5.9
NASULGC	113	3,101	3,299	6.4
NONAFFILIATED	15	3,528	3,690	4.6
OVERALL	407	2,893	3,067	6.0

GRAPH 2

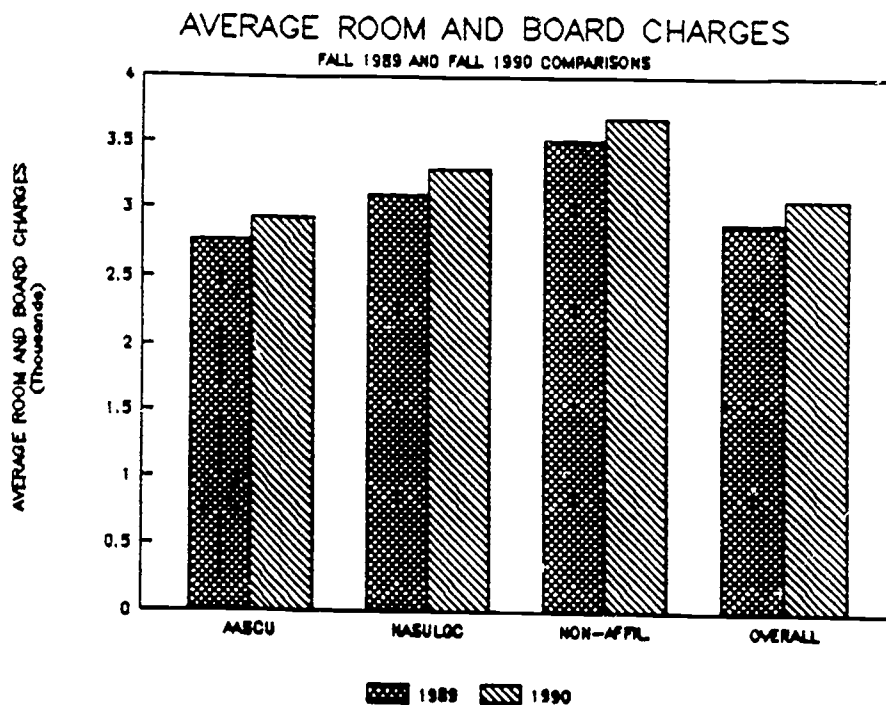


TABLE 3
1989 AND 1990 AVERAGE GRADUATE TUITION/FEE CHARGES

	<u>N</u>	<u>1989</u>	<u>1990</u>	Pct. Increase
Resident				
AASCU	309	1,760	1,897	7.8
NASULGC	127	2,297	2,456	6.9
NON-AFFILIATED	33	2,121	2,247	5.9
OVERALL	450	1,935	2,080	7.5
Nonresident				
AASCU	309	4,185	4,520	8.0
NASULGC	126	5,330	5,704	7.0
NON-AFFILIATED	33	5,085	5,371	5.6
OVERALL	449	4,573	4,923	7.7

GRAPH 3

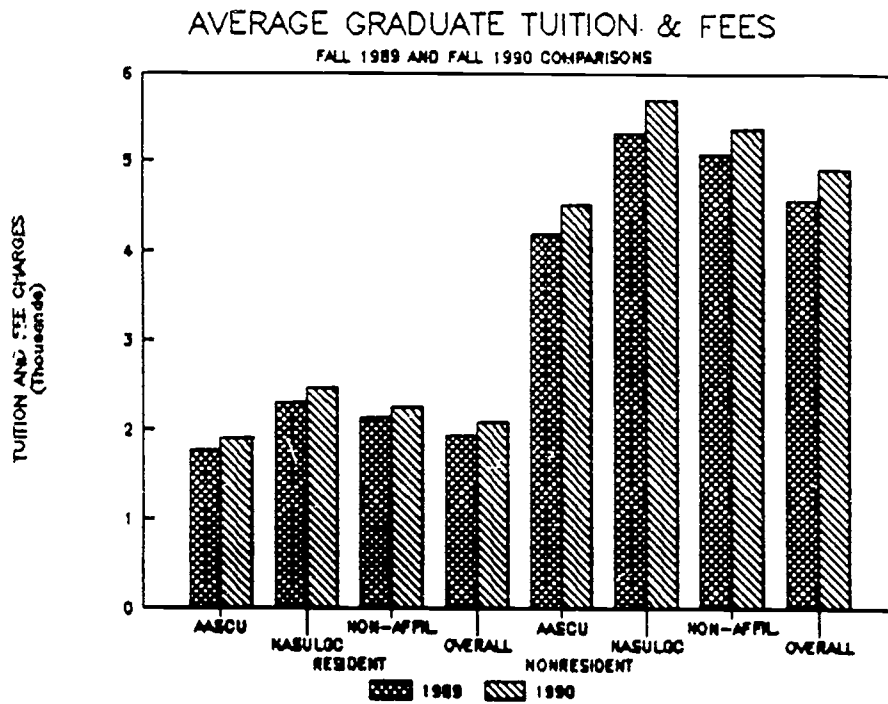
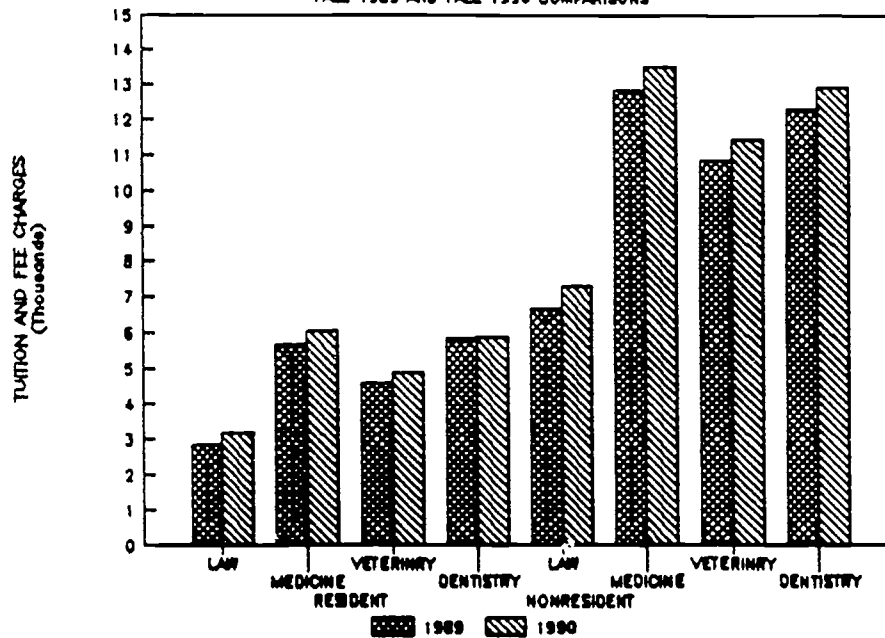


TABLE 4
1989 AND 1990 AVERAGE FIRST PROFESSIONAL PROGRAM CHARGES
(AASCU and NASULGC)

	<u>N</u>	<u>1989</u>	<u>1990</u>	<u>Pct. Increase</u>
LAW				
Resident	65	2,860	3,158	10.4
Nonresident	64	6,657	7,309	9.8
MEDICINE				
Resident	75	5,697	6,040	6.0
Nonresident	74	12,853	13,510	5.1
VETERINARY MED.				
Resident	24	4,599	4,882	6.2
Nonresident	23	10,838	11,417	5.3
DENTISTRY				
Resident	31	5,844	5,891	.8
Nonresident	30	12,306	12,938	5.1

GRAPH 4

AVERAGE PROFESSIONAL PROGRAM CHARGES
FALL 1989 AND FALL 1990 COMPARISONS



Following are average tuitions in 1989 and 1990 and the corresponding percent changes for each state or territory in the United States. The diverse missions of the public colleges and universities participating in our survey affect the tuition and fee charges. These differences are masked in the overall averages.

TABLE 5
STATE-BY-STATE INCREASES FOR UNDERGRADUATE RESIDENTS

<u>State or Territory</u>	<u>1989 Fall Average</u>	<u>1990 Fall Average</u>	<u>Percent Change</u>	<u>Public Colleges and Universities in the AASCU/NASULGC Survey Population</u>	<u>Number of Respondents 1989 and 1990</u>
AK	1,332	1,662	24.8	3	1
AL	1,464	1,561	6.6	17	13
AR	1,223	1,288	5.3	11	10
AZ	1,362	1,499	10.1	3	3
CA	1,114	1,196	7.4	33	29
CO	1,555	1,668	7.3	14	10
CT	1,533	1,766	15.2	8	6
DC	664	664	0.0	2	1
DE	2,095	2,211	5.5	2	2
FL	1,247	1,339	7.4	9	9
GA	1,531	1,606	4.9	18	18
GU	1,408	1,408	0.0	1	1
HI	1,122	1,122	0.0	3	3
IA	1,821	1,880	3.2	3	3
ID	1,129	1,190	5.4	4	3
IL	2,126	2,177	2.4	12	12
IN	1,822	1,930	5.9	14	14
KS	1,472	1,581	7.4	8	7
KY	1,262	1,395	10.5	8	8
LA	1,632	1,675	2.6	15	11
MA	1,818	2,306	26.8	15	11
MD	2,067	2,219	7.4	15	11
ME	1,987	2,253	13.4	8	8
MI	2,283	2,432	6.5	15	14
MN	1,954	2,113	8.1	10	10
MO	1,554	1,694	9.0	13	13
MS	1,743	1,807	3.7	9	8
MT	1,394	1,415	1.5	6	6
NC	1,037	1,131	9.1	16	16
ND	1,464	1,634	11.6	6	6
NE	1,457	1,533	5.2	7	5
NH	2,569	2,827	10.0	3	3
NJ	2,362	2,681	13.5	14	13
NM	1,208	1,292	7.0	6	6
NV	1,200	1,380	15.0	2	2
NY	1,519	1,546	1.8	42	34
OH	2,351	2,529	7.6	24	14

STATE-BY-STATE INCREASES FOR UNDERGRADUATE RESIDENTS Continued

<u>State or Territory</u>	<u>1989 Fall Average</u>	<u>1990 Fall Average</u>	<u>Percent Change</u>	<u>Public Colleges and Universities in the AASCU/NASULGC Survey Population</u>	<u>Number of Respondents 1989 and 1990</u>
OK	1,279	1,317	3.0	15	12
OR	1,717	1,864	8.6	8	7
PA	2,903	3,054	5.2	24	22
PR	676	742	9.8	6	3
RI	2,013	2,206	9.6	2	2
SC	1,999	2,184	9.3	11	10
SD	1,781	1,865	4.7	8	6
TN	1,361	1,474	8.3	10	9
TX	943	976	3.5	39	33
UT	1,428	1,530	7.1	4	3
VA	2,487	2,625	5.5	15	14
VI	984	1,172	19.1	1	1
VT	3,124	3,453	10.5	4	4
WA	1,595	1,725	8.2	6	6
WI	1,742	1,836	5.4	14	13
WV	1,269	1,441	13.6	12	10
WY	1,003	1,148	14.5	1	1

FACTORS AFFECTING STUDENT CHARGES

For the fifth consecutive year, the most often-cited reason for increases in student charges was faculty salary increases. Of the 530 institutions that responded to the survey, 37.7 percent of survey respondents cited faculty salary increases; 31.3 percent of respondents cited decreasing appropriations; and 30.6 percent claimed equipment and facilities replacement or repair as a key factor affecting the level of student charges. (Table 6/Graph 5)

When given the opportunity to "write in" other factors that affected student charges, 24 respondents noted "general inflation," and 7 other respondents added "increased operating costs." Twenty-three respondents claimed that "legislative action regarding the relationship of tuition and cost" affected their student charges, and 13 claimed that the "appropriations increase is inadequate to cover rising costs."

TABLE 6
FACTORS AFFECTING STUDENT CHARGES

<u>Factor</u>	<u>Percent Responding</u>
A - Increasing enrollments	12.8
B - Decreasing appropriations	31.3
C - Faculty salary increases	37.7
D - Equipment and facilities replacement or repair	30.6
E - New categories of fees	11.1
F - Increased use of institutionally funded student aid	12.6
G - Recruitment of students	8.5
H - Recruitment of faculty	8.1
I - Retention and enrollment management programs	8.1
J - Institutional costs of assessment of student outcomes	4.3
K - Formula funding inequities	13.2

RESPONSES TO ECONOMIC CONDITIONS

Because many states have reported lowered revenues resulting from tightened state economies, attention has been focused on the effect this situation may have on higher education. Part of the 1990 survey addressed the issue of sudden economic downturns that many states may be experiencing, and asked respondents to describe their institutions' response to these changing fiscal needs.

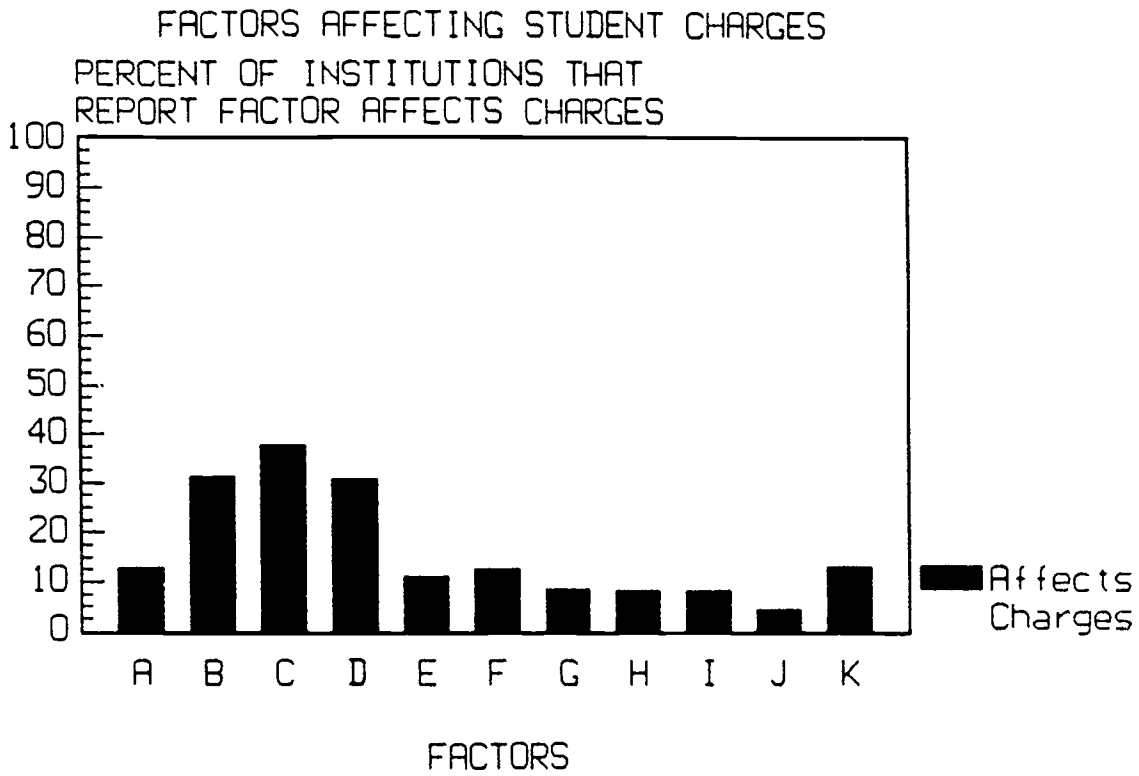
The most common response to the lack of sufficient funds was to leave nonteaching positions unfilled. More than one-third of the respondents, 34.7 percent, claimed that this action was being utilized to alleviate some fiscal pressure. Thirty percent of the respondents stated that their institution was deferring new construction, repair, or rehabilitation of campus buildings. A reduction in operating expenses was reported by 30 percent of responding institutions. (Table 7/Graph 6)

Other "write-in" responses include one university that is capping enrollment and several others reporting program cuts or consolidations. A handful of institutions added "minimum salary increases," but most of the write-ins--21--indicated that available resources, such as research and library funds, would be limited. Massachusetts, a state whose financial difficulties have been chronicled in the press, reports an institution that is considering one-week furloughs for all nonstudent employees and another that has eliminated part-time faculty entirely.

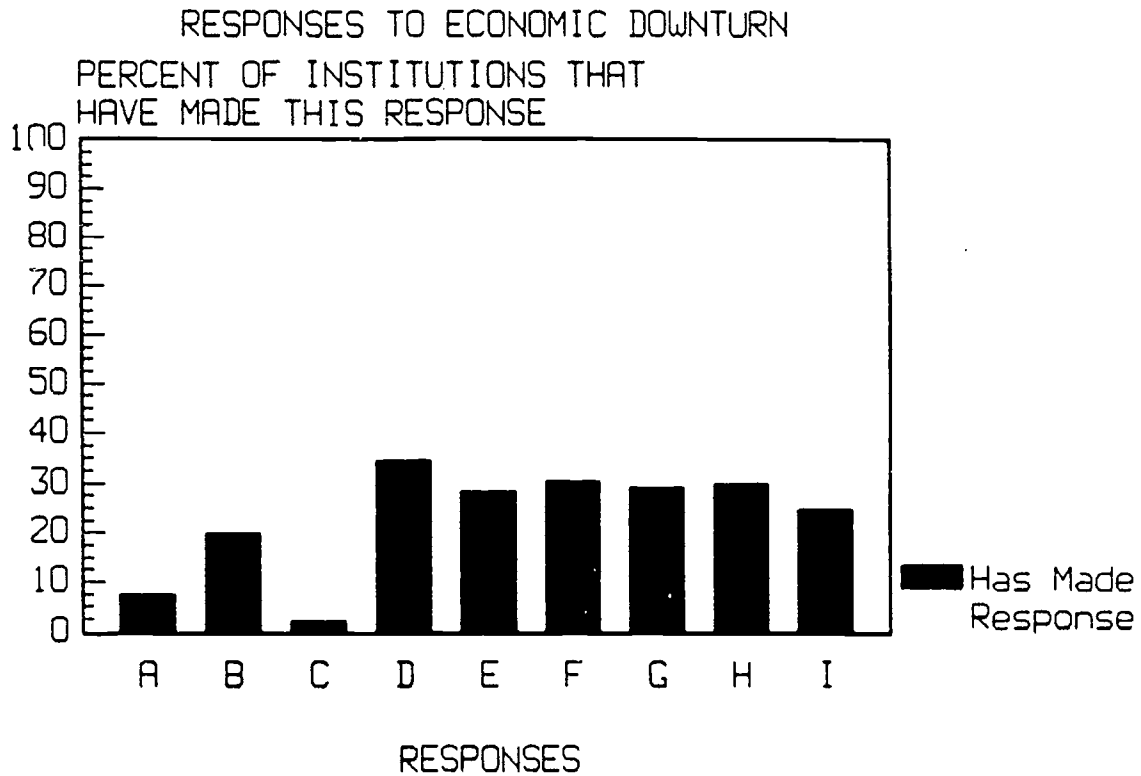
TABLE 7
RESPONSES TO STATE ECONOMIC DOWNTURNS

<u>Institutional Response</u>	<u>Percent Responding</u>
A - Tuition surcharges are being assessed	7.4
B - Existing fees are increased	19.8
C - Special one-time fees are being assessed	1.9
D - Nonteaching positions are being left unfilled	34.7
E - Faculty positions are being left unfilled	28.3
F - New construction, repair, or rehab is being deferred	30.4
G - Out-of-state travel funds are reduced	29.2
H - Nonpersonnel operating expenses are reduced	30.0
I - Funds for maintenance and grounds are reduced	24.7

GRAPH 5



GRAPH 6



HIGHER EDUCATION OUTLOOK

Asked whether they expected relief from the effects of the economic downturn in the next one to two years, 7.4 percent of the respondents said yes while a full 40.4 percent proclaimed "No." AASCU members tended to be more pessimistic, with 42.4 percent of the respondents not expecting any relief. Only 34.8 of the NASULGC respondents did not expect relief.

Of the respondents who expected relief, the most common reasons behind their thinking were:

- *The national economy will improve.
- *Enrollments will increase.
- *The state economy will improve.
- *The state will experience population growth.
- *The institution is pursuing private-sector funds.

Survey respondents were asked what long-term effects could result from the tough economic conditions that their state currently faces. Two hundred and twenty-two institutions provided forecasts; following are some highlights:

ALABAMA - experienced a relatively low increase in undergraduate tuition in 1990, 6.6 percent, but is bracing for a deterioration in physical plant facilities. Of the eight schools projecting long-term effects, half of them stated that maintenance would continue to be deferred.

ARIZONA - felt an increase of 10.1 percent in undergraduate student charges in 1990. Arizona is experiencing increased enrollments while receiving less funding. The three schools that responded to the survey all envisioned less service for students in the future, claiming that the institutions will have an "inability to properly meet demand [and will have] class over-crowding," "smaller expenditures per student," and "no new programs, [with the] possible elimination of present programs."

CALIFORNIA - will likely experience greater demand for education, but less funding. California's undergraduate resident student charges saw an increase of 7.4 percent in 1990, and 29 respondents feared "reduction in program service levels" and "difficulties accommodating enrollment demand" in the future. Currently, the University of California faces decreases in enrollment, faculty and staff, postponement in building new campuses to serve the growing number of students, and loss of its envied academic prowess because of the governor's proposed cut in operating expenses of \$2.2 million (New York Times, "Budget Cuts Jar University of California," January 21, 1991).

CONNECTICUT - was hit with a 15.2-percent undergraduate resident tuition hike in 1990. Five of the six Connecticut survey respondents anticipated lower enrollment in the future. One college was considering a possible cap on enrollment, and most felt

that "in the long run, we will serve fewer students by offering fewer sections and our physical plant will continue to deteriorate."

FLORIDA - saw an average in-state undergraduate tuition increase of 7.4 percent. Institutions in the state reported mixed expectations for the future. One university thought there would be no long-term effects because the "1991 legislature will probably raise revenue through increased fees and added taxes," while another school saw a dismal picture: "reduced efforts in both faculty and student recruitment [and] maintenance problems due to deferred maintenance of equipment and buildings."

ILLINOIS - felt only a 2.4 increase in undergraduate resident tuition this year, but all respondents did not see such a rosy picture next year. Illinois universities' main concern appears to be the retention of staff and faculty. One university summed up all anticipated changes, predicting "loss of quality faculty to other geographic areas; difficulty in maintaining an aging physical plant; difficulty in maintaining quality."

MASSACHUSETTS - was plagued by the highest increase per state in undergraduate resident tuition in 1990: 26.8 percent. Massachusetts' budget woes have institutions bracing for the worst: "Clearly, any growth or development is limited with major emphasis on maintenance of quality programs. We anticipate a loss of enrollment because of rising costs, loss of faculty because of fiscal instability and public policy ambiguity and loss of economic potential for the Commonwealth." Examples of these effects are provided by Terry Zoulas, a spokesman for the Massachusetts Board of Regents, who states, "Lights are dimmer, library hours are shorter and the library often doesn't have the books that students ask for" (New York Times, "Budget Cuts Jar University of California" January 21, 1991).

NORTH CAROLINA - saw undergraduate student charges increase by 9.1 percent. Some institutions are cautiously approaching the future with "reassessment of all operations, and allotments more closely aligned with our role and mission," while other universities consider the outlook more bleak, stating that there will be "increased tuition, ceiling placed on enrollment, increased teaching loads, new research facilities not funded, [and] and inability to meet the needs of the geographic region we serve."

NEW JERSEY - was hit with a 13.5-percent increase in undergraduate resident tuition and fees. The 12 respondents who supplied long-term projections appeared not to be discouraged by their economic situation. Many institutions claimed that there would only be a "delay in achieving goals" and a "loss of some special programs and services."

PENNSYLVANIA - felt only an increase of 5.2 percent in in-state undergraduate student charges in 1990. The University of Pittsburgh System was estimating a shortfall of approximately \$14.5

million at the time of the survey, and another university claimed that "most plan for a smaller institution including probably the elimination of several nonessential programs." In response to budget cut projections from the State System of Higher Education in Pennsylvania, Clarion University has developed a contingency plan if its budget is cut by approximately \$1.3 million, "the shortfall can be met through...curbing expenses, deferring maintenance and rehabilitation projects, and reducing purchases of new equipment" (Clarion University of Pennsylvania NEWS, "Contingency Budget Plan Outlined for Clarion," January 18, 1991).

SOUTH CAROLINA - saw undergraduate resident tuition rise by 9.3 percent in 1990. Institutions in South Carolina are planning to maintain their current services with less funding, but with mixed emotions. One university claims there will be "increased stress on faculty and staff because of the necessity of serving more students with fewer people," while another school states that "we'll be required to do more with less--a not altogether bad situation since we'll get closer to the 'basics.'"

TEXAS - enjoyed one of the lower increases in in-state undergraduate tuition and fees in 1990: 3.5 percent. Half of the survey respondents from Texas provided projections for the future, most of them cheerless. Many fear loss of quality faculty and staff, further deferred maintenance, and some reduced student services.

VIRGINIA - had only a moderate increase of 5.5 percent in undergraduate resident student charges in 1990. But 11 respondents painted bleak pictures of their institutions' fiscal health in 1991. One university points out that "programs will have to be re-examined and savings realized from reductions in level of service or elimination entirely." At George Mason University the operating budget was cut by 11.9 percent in 1990 and may be cut by as much as 19.9 percent this year. "To cope with that, the university has frozen hiring, lowered its thermostats this winter and turned off the late-night lights in some outlying parking lots. With fewer adjunct faculty members, courses have been dropped; the university is even considering eliminating some degree programs" (The Washington Post, "GMU Cuts Intrude on Education," January 15, 1991).

METHODOLOGY

The fall 1990 AASCU/NASULGC student charges survey forms were mailed in October 1990 to approximately 575 public four-year institutions of higher education in the United States and its territories. As in previous years, the 1990 survey forms were sent to universities and colleges with the 1989 figures printed on the form. Participants were asked to review and correct last year's information in addition to providing the 1990 information. These

revisions result in our use of the term "revised" 1989 averages or "revised" 1989 student charges.

The survey consisted of two pages. The first included the annual charges for tuition, mandatory fees, and room and board paid by resident and nonresident undergraduate, graduate, and first-professional students in law, medicine, dentistry, and veterinary medicine programs. The survey's second page concerned factors affecting current student charges and effects of tightened economic conditions on higher education services.

Institutions adhere to particular conventions in reporting student charges information. Some respondents report annual student charges for a typical full-time student based on the number of credit hours necessary to graduate in four years. Others use the "typical" load of 12-15 credit hours per semester. This year we asked respondents to provide the annual number of credit hours used to calculate the annual student charges. Forty-eight percent of the respondents used 24 credit hours as the basis of calculating undergraduate charges, and 27 percent used 30 credit hours. Overall, the average number of credit hours used in calculation was 27. Thirty-eight percent of the respondents stated that 24 credit hours were used to calculate annual graduate student charges; 18 credit hours was used by 29 percent of the survey respondents. Overall, the average number of credit hours used in calculation of graduate tuition and fees was 23.

Institutionally reported charges included in this study may differ from the actual charges paid by students. Actual annual costs are affected by student choice of room and board options offered by colleges and universities, different course-load alternatives, and tuition reduction options. Average student charges adjusted by enrollments can be obtained from other organizations such as The College Board or the National Center for Education Statistics (NCES).

All institutions involved in this study are state assisted and student charges are established and regulated by system and institutional governing boards. A degree of consistency throughout the state can be expected with regard to student charges. Differences are closely related to the variety of institutional missions within each state.

Some idiosyncrasies are important to note because they affect the way institutions are listed in the appendices. There are approximately 19 institutions that are members of both AASCU and NASULGC. Included in this category are many of the campuses of the City University of New York system, which is itself a member of NASULGC. For the sake of year-to-year reporting consistency, these institutions are listed separately in the NASULGC appendices. The nonaffiliated institutions are reported separately in Appendix E.

**APPENDIX A
UNDERGRADUATE CHARGES: FALL 1989 AND FALL 1990
MEMBERS - AASCU**

	Tuition and Fees				1990 Room and Board		
	Resident		Non-resident		Room	Board	Combined
	1989	1990	1989	1990			
ALABAMA							
Alabama A & M University	1248	1298	2236	2286	794	1242	2036
Alabama State University	1044	1268	2004	2428	1100	810	1910
Athens State College		1560		1560			1000
Auburn University at Montgomery	1215	1317	3645	3951	1380		1882
Jacksonville State University	1200	1320	1800	1980	920	962	2055
Livingston University	1401	1524	1401	1524	690	1365	2208
Troy State University	1320	1395	1984	2020			3600
University of Alabama in Huntsville	1805	1996	3610	3992	1995	1605	2770
University of Montevallo	1744	1834	2884	3544			2264
University of North Alabama	1152	1224	1612	1728	976	1288	2264
University of South Alabama	1875	1905	2475	2505	1365	1395	2760
ARIZONA							
Northern Arizona University	1362	1540	4954	5916	1260	1354	2614
ARKANSAS							
Arkansas State University	1400	1400	2650	2650			2400
Arkansas Tech University	1260	1260	2460	2460	960	1120	2080
Henderson State University	1200	1280	2400	2480	856	992	1848
Southern Arkansas University	1050	1050	1680	1680			2100
University of Arkansas at Little Rock	1475	1550	3705	3890			1930
University of Arkansas at Monticello	1350	1410	3088	3230	680	1250	2116
University of Central Arkansas	1239	1290	2730	2550	1136	980	
CALIFORNIA							
California Maritime Academy	1154	1361	3814	4838	1300	2295	3595
California Polytechnic State University	953	1025	6623	7195	1944	1953	3897
California State Polytechnic Univ., Pomona	784	856	6454	7026	2195	1923	4118
California State University, Bakersfield	825	911	6495	7081	1750	1726	3476
California State University, Chico	836	910	6506	7080	2148	1572	3720
California State University, Dominguez Hills	790	871	6460	7041			2376
California State University, Fresno	840	914	6510	7084	1814	1951	3765
California State University, Fullerton	880	952	6550	7122			2712
California State University, Hayward	823	895	6493	7065			2385
California State University, Long Beach	818	890	6488	7060	3050	1276	4326

California State University, Los Angeles	822	890	6492	7060	2489
California State University, Northridge	900	972	6570	7142	3250
California State University, Sacramento	820	892	6490	7062	4148
California State University, San Bernardino	840	912	6510	7082	3863
California State University, Stanislaus	834	916	6504	7086	3795
Humboldt State University	867	939	6537	7109	3606
San Diego State University	846	962	6516	7132	3828
San Francisco State University	824	896	6494	7066	4204
Sonoma State University	846	918	6516	7088	4332

COLORADO

Adams State College	1350	1444	3510	3786	2612
Fort Lewis College	1348	1420	4692	5048	2866
Mesa State College	1328	1432	3476	3317	2932
Metropolitan State College	1434	1618	4622	4735	
University of Colorado at Colorado Springs	1775	1913	5378	5777	
University of Colorado at Denver	1478	1666	6192	6738	
University of Northern Colorado	1726	1820	4462	5190	3210
University of Southern Colorado	1537	1601	5275	5525	3370
Western State College of Colorado	1480	1542	4234	4614	2958

CONNECTICUT

Central Connecticut State University	1625	1865	4035	4657	3714
Eastern Connecticut State University	1632	2011	4042	4803	3202
Southern Connecticut State University	1454	1690	3864	4584	3440
Western Connecticut State University	1632	1852	4042	4644	3104

DISTRICT OF COLUMBIA

University of the District of Columbia	664	664	2464	2464	
--	-----	-----	------	------	--

FLORIDA

Florida A & M University	1267	1364	4026	4675	2480
Florida Atlantic University	1300	1350	3800	4350	3495
University of Central Florida	1255	1340	4014	4651	3720
University of North Florida	1216	1325	3975	4636	3060
University of West Florida	1194	1320	3953	4622	3415

GEORGIA

Albany State College	1521	1599	3903	4077	2250
Armstrong State College	1365	1413	3747	3899	2850
Augusta College	1368	1431	3750	3909	2835

**APPENDIX A
UNDERGRADUATE CHARGES: FALL 1989 AND FALL 1990
MEMBERS - AASCU**

	Tuition and Fees				1990 Room and Board		
	Resident		Nonresident		Room	Board	Combined
	1989	1990	1989	1990			
Columbus College	1365	1413	3747	3891	960	1185	2745
Georgia College	1416	1476	3798	3954	1200	1530	2145
Georgia Southern University	1506	1563	3888	4041	945	1275	2730
Georgia Southwestern College	1446	1527	3828	4005			2220
Georgia State University	1665	1812	5490	5790			
Kennesaw State College	1296	1344	3678	3822	885	1200	2085
Savannah State College	1521	1569	3903	4047	1215		
Southern College of Technology	1383	1431	3765	3909	990	1380	2370
Valdosta State College	1509	1557	3891	4035	1125	1179	2304
West Georgia College	1524	1587	3906	4065			
GUAM							
University of Guam	1408	1408	2136	2136	880		
HAWAII							
University of Hawaii at Hilo	1200	1200	3490	3490	1075	1476	2551
IDAHO							
Boise State University	1234	1244	3134	3144			2427
Idaho State University	1056	1160	2986	3160			2511
Lewis-Clark State College		1120		3020			2658
ILLINOIS							
Chicago State University	1784	1784	4952	4952			2574
Eastern Illinois University	2112	2126	5280	5294			
Governors State University	1646	1646	4838	4838			2560
Illinois State University	2240	2306	5672	5738			
Northeastern Illinois University	1909	1909	5077	5077			2736
Northern Illinois University	2384	2555	5812	5983			
Sangamon State University	1644	1644	4764	4764	1071		3095
Southern Illinois University at Edwardsville	1798	1817	4724	4736			2734
Western Illinois University	2061	2121	5229	5289			
INDIANA							
Ball State University	1992	2110	4590	4870	1445	1513	2790
Indiana State University	1992	2104	4726	5056			2958
Indiana University - East	1724	1826	4214	4548			



Indiana University - Southeast
 Indiana University Northwest
 Indiana University at Kokomo
 Purdue University, Calumet
 University of Southern Indiana

1734 1836 4224 4558
 1724 1826 4214 4558
 1710 1812 4200 4534
 1739 1843 4284 4543
 1605 1688 3900 4095

IOWA

University of Northern Iowa

1810 1880 4650 4790

2334

KANSAS

Emporia State University
 Fort Hays State University
 Pittsburg State University
 Washburn University of Topeka
 Wichita State University

1301 1382 3195 3504
 1396 1470 3290 3600
 1264 1358 3158 3480
 2188 2342 3178 3632
 1493 1590 4292 4715

1110 1310 2420
 1326 1159 2485
 3664
 2734
 2700

KENTUCKY

Eastern Kentucky University
 Kentucky State University
 Morehead State University
 Murray State University
 Northern Kentucky University
 Western Kentucky University

1180 1300 3300 3660
 1180 1312 3300 3672
 1190 1320 3310 3680
 1170 1290 3290 3650
 1170 1290 3290 3650
 1160 1320 3280 3680

1066 1510 2576
 1114 1354 2468
 1120 1378 2498
 990 1290 2280
 1320
 950 1930 2880

LOUISIANA

Grambling State University
 Louisiana State University in Shreveport
 Louisiana Tech University
 McNeese State University
 Nicholls State University
 Northeast Louisiana University
 Northwestern State University of Louisiana
 Southeastern Louisiana University
 University of Southwestern Louisiana

1800 1812 3350 3362
 1460 1480 3650 3670
 1822 1841 2977 2996
 1414 1626 2764 3176
 1509 1509 3309 3309
 1608 1615 2970 3199
 1753 1767 3553 3567
 1603 1703 3403 3503
 1515 1575 3265 3325

1550 1062 2612
 2115
 980 1000 1980
 1950
 980 1162 2142
 980 1300 2280
 1952

MAINE

Maine Maritime Academy
 University of Maine at Augusta
 University of Maine at Farmington
 University of Maine at Fort Kent
 University of Maine at Machias

3020 3325 5150 5650
 1755 1965 4185 4695
 1860 2070 4290 4800
 1770 1980 4200 4710
 1795 2005 4225 4735

1290 2500 3790
 1778 1610 3388
 1675 1720 3395
 1440 1650 3090

**APPENDIX A
UNDERGRADUATE CHARGES: FALL 1989 AND FALL 1990
MEMBERS - AASCU**

	Tuition and Fees				1990 Room and Board		
	Resident		Nonresident		Room	Board	Combined
	1989	1990	1989	1990			
University of Maine at Presque Isle	1710	2070	4140	4800	1728	1556	3284
University of Southern Maine	1898	2214	5228	5994	1970	1874	3844
MARYLAND							
Bowie State University	1991	2125	3533	3791	1959	1540	3499
Coppin State College	2050	2121	3592	3755			
Frostburg State University	1862	2016	3390	3666	1937	1820	3757
Morgan State University	1922	2124	3832	4048	2200	1820	4020
Salisbury State University	2188	2330	3730	3996	2100	1790	3890
Towson State University	2014	2248	3554	3972	2660	1590	4250
University of Baltimore	1906	2047	3376	3635			
University of Maryland, Baltimore County	2204	2390	5860	6340	2004	1780	3784
MASSACHUSETTS							
Bridgewater State College		2116		5191	2050	1344	3394
Fitchburg State College	1440	1654	4268	4729	1980	1124	3104
Massachusetts College of Art	1900	3295	4804	7075	3350	1680	5030
Massachusetts Maritime Academy	1378	1592	4282	5372	1610	2115	3725
North Adams State College	1675	2250	4475	5325	2000	1500	3500
Salem State College	1560	1250	4398	4325	1950	1475	3425
Southeastern Massachusetts University	1677	2113	4985	6048			4092
University of Lowell	2281	2750	5409	6660	2220	1634	3854
University of Massachusetts, Boston	2195	3046	6586	7899			
Westfield State College	1493	1941	4331	5016	2410	1188	3598
Worcester State College	1414	1612	4252	4687	2490	1140	3630
MICHIGAN							
Central Michigan University	2005	2129	4950	5275			3359
Eastern Michigan University	1995	2090	4835	4930	1576	1750	3411
Ferris State University	2223	2397	4524	4881			3018
Grand Valley State University	2016	2092	4632	4870			3300
Lake Superior State University	1920	2040	3819	4119			3454
Northern Michigan University	1925	2054	3786	3914			3326
Oakland University	2212	2356	5855	6424	1285	1927	3257
Saginaw Valley State University	2131	2271	4363	4650			3212
University of Michigan, Dearborn	2278	2426	7242	7860	1376	1999	3375
Western Michigan University	2130	2334	5018	5535			33

MINNESOTA

Bemidji State University	1778	1885	2792	3055	1597	1100	2697
Mankato State University	1884	1976	2966	3224			2388
Metropolitan State University	1657	1762	2739	3010			
Moorhead State University	1853	2054	2935	3302			2364
Southwest State University	1800	1880	2900	3050		1100	2565
St. Cloud State University	1872	1967	2954	3215		831	2379
University of Minnesota, Duluth	2258	2501	5262	5856		1671	3000
Winona State University	1869	1996	2952	3244			2430

MISSISSIPPI

Alcorn State University	1700	1750	2882	2932	1010	890	1990
Delta State University	1604	1706	2786	2888	680	1010	1690
Jackson State University		1786		2968	1430	1180	2610
Mississippi University for Women	1780	1840	2962	3032			2092
Mississippi Valley State University	1700	1725	2882	2907	925	1000	1925
University of Southern Mississippi	1834	1948	3016	3130	1186	910	2096

MISSOURI

Central Missouri State University	1590	1680	2940	3060			2616
Harris/Stowe State College	984	1044	1928	2046			
Lincoln University	1436	1436	2756	2756	1082	1616	2698
Missouri Southern State College	1350	1450	2700	2900			2220
Missouri Western State College	1236	1446	2322	2706	856	1196	2052
Northeast Missouri State University	1398	1608	2658	3072			2304
Northwest Missouri State University	1320	1500	2415	2715	1050	1370	2420
Southeast Missouri State University	1420	1490	2750	2890	1560	990	2550
Southwest Missouri State University	1622	1790	3218	3530			2617
University of Missouri at St. Louis	1910	2004	5601	5998			

MONTANA

Eastern Montana College	1308	1389	2991	3072	1650	155	2805
Montana College of Mineral Science & Tech	1285	1321	3358	3394	1416	1962	3378
Northern Montana College	1282	1284	2965	2965			2919
Western Montana College	1274	1274	2945	2995			2902

NEBRASKA

Chadron State College	1316	1376	2036	2141			2196
Kearney State College	1360	1420	2080	2185			2108
University of Nebraska at Omaha	1464	1535	3774	3957			

**APPENDIX A
UNDERGRADUATE CHARGES: FALL 1989 AND FALL 1990
MEMBERS - AASCU**

	Tuition and Fees				1990 Room and Board		
	Resident		Nonresident		Room	Board	Combined
	1989	1990	1989	1990			
Wayne State College	1337	1421	2051	2186	990	1260	2250
NEVADA							
University of Nevada, Las Vegas	1200	1380	4200	4680	2892	1460	4352
NEW HAMPSHIRE							
Keene State College	2197	2549	5857	6409	2160	1270	3430
Plymouth State College	2196	2574	5856	6434	2250	1192	3442
NEW JERSEY							
Glassboro State College	2003	2303	2903	3203	2400	1700	4100
Jersey City State College	2003	2212	2603	2902	2600	1850	4450
Kean College of New Jersey	1950	2123	2640	2813	1820	1200	3020
Montclair State College	2168	2400	3032	3392	2742	1390	4132
New Jersey Institute of Technology	3560	4000	6620	7520	3192	1320	4512
Ramapo College of New Jersey	2145	2505	2745	3105	2910	1300	4210
Stockton State College	1952	2240	2592	2880	2450	1265	3715
Thomas A. Edison State College		330		660			4473
Trenton State College	2142	2790	3242	3865			3630
William Paterson College of New Jersey	2254	2466	2894	3106	2400	1230	
NEW MEXICO							
Eastern New Mexico University	1140	1230	4014	4248	994	1214	2208
New Mexico Highlands University	1104	1174	4062	4126	850	1030	1880
Western New Mexico University	966	1014	4100	4304	870	1240	2110
NEW YORK							
CUNY, Brooklyn College	1355	1385	4155	4185			
CUNY, College of Staten Island	1344	1356	4144	4156			
CUNY, Herbert Lehman College	1340	1340	4140	4140			
CUNY, John Jay College	1349	1349	4149	4149			
CUNY, Medgar Evers College	1302	1302	4102	4102			
CUNY, Queens College	1432	1433	4232	4233			
Empire State College	1387	1387	4737	4737	2700	1898	4598
Fashion Institute of Technology		1560		3910			
SUNY Institute of Technology at Utica/Rome	1487	1510	4837	4860			
State University College at Brockport	1511	1511	4861	4861	2070	1490	3560



State University College at Buffalo	1465	4815	2120	1570	3690
State University College at Cortland	1528	4878	1950	1420	3370
State University College at Fredonia	1515	4865	1930	1630	3560
State University College at Geneseo	1555	4905	2117	1300	3417
State University College at New Paltz	1495	4845	2100	1611	3711
State University College at Old Westbury	1410	4760	2670	1228	3898
State University College at Oneonta	1521	4871	2088	1650	3738
State University College at Oswego	1488	4838	2000	1420	3420
State University College at Plattsburgh	1485	4835	1900	1516	3416
State University College at Potsdam	1475	4825	2000	1600	3600
State University of New York at Purchase	1440	4790	2420	1552	3972

NORTH CAROLINA

Appalachian State University	1004	5376	1200	1000	2200
East Carolina University	978	5350	1860	1480	3340
Elizabeth City State University	1132	4974	1256	1108	2364
Fayetteville State University	1054	5426	1300	850	2150
North Carolina A & T State University	1007	5379	1585	1246	2668
North Carolina Central University	988	5360	1585	1246	2831
North Carolina School of the Arts	1372	6316	1040	1110	2999
Pembroke State University	800	4642	1040	1110	2150
University of North Carolina at Asheville	940	4782	1410	1400	2810
University of North Carolina at Charlotte	921	5293	1350	1242	2592
University of North Carolina at Greensboro	1269	5771	1580	1765	3345
University of North Carolina at Wilmington	1068	5440	1180	1000	3034
Western Carolina University	1126	5498	1320	1240	2180
Winston-Salem State University	884	4284	1320	1240	2560

NORTH DAKOTA

Dickinson State University	1359	3129	650	1100	1750
Mayville State University	1385	3155	745	1285	2030
Minot State University	1323	3093	690	1050	1740
Valley City State University	1338	3108	636	1284	1920

OHIO

Bowling Green State University	2644	5804	1424	1090	2514
Central State University	1809	2449	603	648	1251
Cleveland State University	2397	4797	1758	1250	3008
Kent State University	2826	5426			
Ohio State University, Lima	2106	6195			
Shawnee State University	1758	2208			

APPENDIX A
UNDERGRADUATE CHARGES: FALL 1989 AND FALL 1990
MEMBERS - AASCU

	Tuition and Fees			1990 Room and Board			
	Resident		Nonresident	Room	Board	Combined	
	1989	1990	1989				1990
University of Akron	2278	2432	4971	5308	2044	1156	3200
Wright State University	2244	2469	4488	4938	2295	1305	3600
Youngstown State University	2001	2190	3201	3390			3405
OKLAHOMA							
Cameron University	1289	1380	3240	4100			2100
Central State University	815	1055	2262	2811	719	1273	1992
East Central University	1269	1269	3142	3142	660	1328	1988
Northeastern Oklahoma State University	1214	1214	3094	3094			2224
Northwestern Oklahoma State University	1264	1277	3137	3282	636	1136	1772
Oklahoma Panhandle State University	1373	1373	3253	3253	600	1200	1800
Southeastern Oklahoma State University	1188	1221	3067	3110	760	1320	2080
Southwestern Oklahoma State University	1160	1160	2916	2916			1530
OREGON							
Eastern Oregon State College	1662	1764	1662	1764			2880
Oregon Institute of Technology	1761	1890	5022	5592			3180
Portland State University	1731	1917	4992	5676			3609
Southern Oregon State College	1692	1824	4482	4998			2955
Western Oregon State College	1686	1812	4476	4986			2872
PENNSYLVANIA							
Bloomsburg University of Pennsylvania	2398	2518	4254	4552	1460	1006	2466
California University of Pennsylvania	2548	2648	4404	4682	1440	1500	2940
Cheyney University of Pennsylvania	2388	2278	4204	4312	1372	1584	2956
Clarion University of Pennsylvania	2418	2659	4274	4791	1450	1100	2550
East Stroudsburg University of Pennsylvania	2392	2642	4248	4676	1753	952	2705
Edinboro University of Pennsylvania	2468	2590	4324	4624	1404	1500	2904
Indiana University of Pennsylvania	2484	2513	4340	4547	1332	1140	2472
Kutztown University of Pennsylvania	2380	2552	4236	4586	1708	840	2548
Lincoln University of Pennsylvania	2400	2510	3500	3730	1400	1300	2700
Lock Haven University of Pennsylvania	2178	2178	4034	4034	1490	1000	2676
Mansfield University of Pennsylvania	2453	2587	4309	4621			2490
Millersville University of Pennsylvania	2536	2278	4392	4312			2810
Penn State Erie, The Behrend College	3754	4048	7900	8444			3510
Pennsylvania State Univ. at Harrisburg	3754	4048	7900	8444			3510
Shippensburg University of Pennsylvania	2444	2694	4300	4728	1514	1080	2594

Slippery Rock University of Pennsylvania
 University of Pittsburgh at Bradford
 University of Pittsburgh at Johnstown
 West Chester University of Pennsylvania

2504 2668 4360 4702 1482 1312 2794
 4060 4262 8080 8834 1840 1346 3186
 4030 4262 8050 8834 1840 1346 3186
 2398 2528 4254 4562 1984 1010 2994

PUERTO RICO

University of Puerto Rico, Cayey Univ. Col.
 University of Puerto Rico, Humacao Univ. Col.

662 662 2000 2000
 652 729 839 839

RHODE ISLAND

Rhode Island College

1703 1850 4331 4714 1926 2300 4226

SOUTH CAROLINA

Coastal Carolina College of U. of S. Carolina
 Francis Marion College
 Lander College
 The Citadel Military College of S. Carolina
 University of South Carolina at Aiken
 University of South Carolina at Spartanburg
 Winthrop College

1750 1920 3890 4800 1135
 1550 1800 3100 3600 1480 1460 2940
 2090 2340 2990 2340
 2372 2513 5220 5666 810 1466 2276
 1700 1800 3540 4500 1470 1200 2670
 1750 1920 3890 4800 1708 960 2668
 2316 2568 4118 4612

SOUTH DAKOTA

Black Hills State University
 Dakota State University
 Northern State University
 South Dakota School of Mines & Technology

1724 1781 3016 3140 940 974 1914
 1690 1782 1690 1782 990 980 1970
 1646 1735 2939 3094 870 877 1747
 1881 1973 3409 3576 880 924 1804

TENNESSEE

Austin Peay State University
 East Tennessee State University
 Memphis State University
 Middle Tennessee State University
 Tennessee State University
 Tennessee Technological University
 University of Tennessee at Chattanooga
 University of Tennessee at Martin

1394 1522 4348 4520 1200 1100 2300
 1284 1390 4238 4594 1400 1600 3000
 1362 1474 4316 4678 1300
 1232 1346 4186 4550 1208 1132 2340
 1292 1396 4246 4600 356 986 2342
 1358 1462 4312 4666 1300 1400 2700
 1376 1488 4328 4692 1680
 1360 1476 4312 4680 1330 1260 2590

TEXAS

Angelo State University
 East Texas State University
 Lamar University

822 858 3270 3306 1953 1849 3200
 987 987 4107 4107 1338 1326 3802
 960 1020 4080 4140 4140 2664

**APPENDIX A
UNDERGRADUATE CHARGES: FALL 1989 AND FALL 1990
MEMBERS - AASCU**

	Tuition and Fees				1990 Room and Board		
	Resident		Nonresident		Room	Board	Combined
	1989	1990	1989	1990			
Laredo State University	870	870	3990	3990	1640		
Midwestern State University	1110	1200	4230	4250			2574
Pan American University	918	918	4038	4038			2288
Prairie View A & M University	931	931	4051	4051	1260	1678	2938
Sam Houston State University	856	916	3352	3412	1370	1300	2670
Southwest Texas State University	1042	1042	4162	4162	1624	1210	2834
Stephen F. Austin State University	910	910	4030	4030			2978
Tarleton State University	986	1084	4106	4204	1352	1170	2522
Texas A & I University	766	766	3262	3262	2624		2624
Texas A & M University at Galveston	1015	1125	4135	4245	1560	1559	3119
Texas Southern University	940	970	4316	4346			3320
Texas Woman's University	964	1064	4084	4184	1380	1502	2882
University of Houston - Clear Lake	980	980	4100	4100			3038
University of Houston - Downtown	902	902	3398	3398			3072
University of Houston - Victoria	816	816	2928	2928			
University of North Texas	830	920	3326	3416			
University of Texas at Dallas	806	806	3302	3302			2600
University of Texas at El Paso	925	930	4045	4050	2247	1440	3687
University of Texas at San Antonio	930	990	4050	4110	1699	2549	4248
University of Texas at Tyler	756	866	3252	3700	1350		
University of Texas of the Permian Basin	744	1206	3240	4950	1370	1424	2794
West Texas State University	958	968	4078	4088			
UTAH							
Weber State College	1290	1398	3495	3753	1200	1365	2565
VERMONT							
Castleton State College	2848	3080	5896	6392	2244	1842	4086
Johnson State College	2822	3070	5870	6382	2244	1842	4086
Lyndon State College	2838	3070	5886	6382	2244	1842	4086
VIRGIN ISLANDS							
University of the Virgin Islands	984	1172	2952	3246	1060	2600	3660
VIRGINIA							
Christopher Newport College	1830	1970	3560	4420	1400	1500	2900
Clinch Valley College	1870	2056	3338	3716			

George Mason University
 James Madison University
 Longwood College
 Mary Washington College
 Norfolk State University
 Old Dominion University
 Radford University
 Virginia Commonwealth University

2292 2496 5076 5952 2940 1680 4620
 2834 3062 5426 6145 2048 1860 3908
 2700 2880 4950 5616 2048 1860 3428
 2304 2362 4980 5318 2258 1736 3994
 1878 2180 4010 4610 3200
 2462 2510 4982 5774 2772 1382 4154
 2128 2178 4128 4706 1870 1690 3560
 2457 2719 6042 6699 2122 1410 3532

WASHINGTON

Central Washington University
 Eastern Washington University
 Evergreen State College
 Western Washington University

1563 1611 5415 5649 1449 1694 3143
 1518 1611 5325 5649 1368 1746 3114
 1317 1611 4581 5649 1140 1480 2620
 1518 1611 5325 5649 1140 1450 2590
 1487 1538 3577 3776 1670 1760 3430
 1254 1494 3044 3544 1560 1690 3250
 1160 1320 2890 3170 2800
 1232 1475 3082 3545
 1220 1432 3010 3542

WEST VIRGINIA

Bluefield State College
 Concord College
 Fairmont State College
 Glenville State College
 Marshall University
 Shepherd College
 West Liberty State College
 West Virginia Institute of Technology
 West Virginia State College

1176 1316 2926 3186
 1224 1416 3014 3376
 1190 1360 2980 3330
 1050 1280 2900 3150
 1487 1538 3577 3776
 1254 1494 3044 3544
 1160 1320 2890 3170
 1232 1475 3082 3545
 1220 1432 3010 3542

WISCONSIN

University of Wisconsin - Eau Claire
 University of Wisconsin - Green Bay
 University of Wisconsin - Oshkosh
 University of Wisconsin - Parkside
 University of Wisconsin - Platteville
 University of Wisconsin - River Falls
 University of Wisconsin - Stevens Point
 University of Wisconsin - Stout
 University of Wisconsin - Superior
 University of Wisconsin - Whitewater
 University of Wisconsin Centers

1735 1829 5096 5476 1264 1156 2420
 1682 1754 5043 5401 1200 1300 2500
 1689 1765 5050 5412 1190 800 1990
 1698 1781 5059 5428 1020 1240 2260
 1789 1876 5150 5522 1168 1020 2188
 1756 1837 5116 5484 1382 1232 2614
 1776 1879 5138 5526 1250 1213 2463
 1776 1866 5137 5513 1012 1200 2212
 1677 1754 5038 5401 1244 906
 1760 1846 5121 5493
 1251 1410 4135 4295

**APPENDIX B
GRADUATE TUITION AND FEES: FALL 1989 AND FALL 1990
MEMBERS - AASCU**

	Resident		Nonresident	
	1989	1990	1989	1990
ALABAMA				
Alabama A & M University	1422	1432	1800	1810
Alabama State University	1155	1396	2235	2716
Auburn University at Montgomery	1215	1317	3645	3951
Jacksonville State University	1250	1370	1875	2055
Livingston University	1575	1755	1575	1755
Troy State University	1530	1656	1785	2484
University of Alabama in Huntsville	1653	1758	3306	3516
University of Montevallo	1834	1860	2914	3660
University of North Alabama	1272	1344	1732	1848
University of South Alabama	1659	1689	2259	2289
ARIZONA				
Northern Arizona University	1362	1540	4954	5916
ARKANSAS				
Arkansas State University	1580	1580	2830	2830
Arkansas Tech University	1330	1330	2650	2650
Henderson State University	1536	1584	3072	3120
Southern Arkansas University	1271	1272	1876	1896
University of Arkansas at Little Rock	1940	2040	4170	4380
University of Central Arkansas	1263	1326	2496	2652
CALIFORNIA				
California Polytechnic State University	953	1025	6623	7195
California State Polytechnic Univ., Pomona	784	856	6454	7026
California State University, Bakersfield	825	911	6495	7081
California State University, Chico	839	910	6506	7080
California State University, Dominguez Hills	790	871	6460	7041
California State University, Fresno	840	914	6510	7084
California State University, Fullerton	880	952	6550	7122
California State University, Hayward	823	895	6493	7065
California State University, Long Beach	818	890	6488	7060
California State University, Los Angeles	822	890	6492	7060
California State University, Northridge	900	972	6570	7142
California State University, Sacramento	820	892	6490	7062
California State University, San Bernardino	840	912	6510	7082



California State University, Stanislaus
 Humboldt State University
 San Diego State University
 San Francisco State University
 Sonoma State University

6504
6537
6516
6494
6516

916
939
962
896
918

834
867
846
824
846

7086
7109
7132
7066
7088

COLORADO

Adams State College
 University of Colorado at Colorado Springs
 University of Colorado at Denver
 University of Northern Colorado
 University of Southern Colorado

4150
2884
6512
4728
5275

1666
1178
2242
2096
1601

1558
1078
2022
1970
1537

4478
3158
7084
5502
5525

CONNECTICUT

Central Connecticut State University
 Eastern Connecticut State University
 Southern Connecticut State University
 Western Connecticut State University

4239
4262
4082
4086

2109
2271
2050
2106

1839
1862
1682
1766

4891
5053
4832
4888

DISTRICT OF COLUMBIA

University of the District of Columbia

2464

1264

1264

2464

FLORIDA

Florida A & M University
 Florida Atlantic University
 University of Central Florida
 University of North Florida
 University of West Florida

4980
3800
4995
3694
4907

1891
1350
1897
1384
1841

1741
1300
1756
1265
1668

5777
4350
5783
4298
5728

GEORGIA

Albany State College
 Armstrong State College
 Augusta College
 Columbus College
 Georgia College
 Georgia Southern University
 Georgia Southwestern College
 Georgia State University
 Kennesaw State College
 Savannah State College

3903
3747
3750
3747
3798
3888
3828
3700
3678
3718

1599
1413
1431
1413
1476
1563
1527
1266
1344
1170

1521
1365
1368
1365
1416
1506
1446
1140
1296
1336

4077
3899
3909
3891
3954
4041
4005
3918
3822
3648

**APPENDIX B
GRADUATE TUITION AND FEES: FALL 1989 AND FALL 1990
MEMBERS -- AASCU**

	Resident		Nonresident	
	1989	1990	1989	1990
Southern College of Technology	1383	1431	3765	3909
Valdosta State College	1308	1338	3288	3378
West Georgia College	1524	1587	3906	4065
GUAM				
University of Guam	1884	1884	2388	2388
IDAHO				
Boise State University	1568	1578	3468	3478
Idaho State University	1420	1526	3320	3526
ILLINOIS				
Chicago State University	1880	1880	5240	5240
Eastern Illinois University	2208	2222	5568	5582
Governors State University	1730	1730	5090	5090
Illinois State University	2264	2330	5744	5810
Northeastern Illinois University	1798	1798	5158	5158
Northern Illinois University	2417	2579	5893	6055
Sangamon State University	1674	1674	4854	4854
Southern Illinois University at Edwardsville	1838	2165	4970	5297
Western Illinois University	2157	2217	5517	5577
INDIANA				
Ball State University	2132	2200	4730	4960
Indiana State University	2028	2160	4452	4776
Indiana University - East	1806	1913	3996	4234
Indiana University - Southeast	1816	1923	4006	4244
Indiana University Northwest	1806	1913	3996	4234
Indiana University at Kokomo	1792	1899	3982	4220
Purdue University, Calumet	1311	1391	2986	3164
University of Southern Indiana	1872	1968	3708	3936
IOWA				
University of Northern Iowa	2010	2070	5126	5280
KANSAS				
Emporia State University	1551	1646	3445	3780
Fort Hays State University	986	1386	2124	3096

Pittsburg State University
Washburn University of Topeka
Wichita State University

1514 1622 3408 3757
2368 2582 3268 3932
1793 1908 4592 5045

KENTUCKY

Eastern Kentucky University
Kentucky State University
Morehead State University
Murray State University
Northern Kentucky University
Western Kentucky University

1280 1420 3600 4020
1280 1432 3600 4032
1290 1440 3610 4040
1270 1410 3590 4010
1270 1410 3590 4010
1260 1440 3580 4040

LOUISIANA

Grambling State University
Louisiana State University in Shreveport
Louisiana Tech University
McNeese State University
Nicholls State University
Northeast Louisiana University
Northwestern State University of Louisiana
Southeastern Louisiana University
University of Southwestern Louisiana

1558 1558 3108 3108
1460 1480 3650 3670
1822 1841 2977 2996
1414 1616 2494 3166
1509 1509 3309 3309
1614 1621 3081 3205
1712 1722 3512 3522
1593 1673 3393 3473
1507 1562 3257 3312

37

MAINE

Maine Maritime Academy
University of Maine at Augusta
University of Maine at Farmington
University of Maine at Fort Kent
University of Maine at Machias
University of Maine at Presque Isle
University of Southern Maine

7200 8550 7200 8550
2325 2745 6435 7665
2430 2850 6540 7770
2340 2760 6450 7680
2365 2785 6475 7705
2280 2700 6390 7620
2295 2784 6405 7704

MARYLAND

Bowie State University
Coppin State College
Frostburg State University
Morgan State University
Salisbury State University
Towson State University
University of Baltimore

2194 2370 2194 1959
1558 1630 1558 1630
1800 1950 1800 1950
1296 1394 1530 1628
1368 1476 1440 1548
1806 1974 1826 2014
2106 2934 2106 2934

**APPENDIX B
GRADUATE TUITION AND FEES: FALL 1989 AND FALL 1990
MEMBERS - AASCU**

	Resident		Nonresident	
	1989	1990	1989	1990
University of Maryland, Baltimore County	2360	2574	4160	4392
MASSACHUSETTS				
Bridgewater State College		2378		5938
Fitchburg State College	1240	1280	1480	1520
Massachusetts College of Art	3650	3950	3650	3950
Southeastern Massachusetts University	1889	2338	5099	6413
University of Lowell	2350	2892	5381	7568
University of Massachusetts, Boston	2595	3540	6872	8232
Worcester State College	1644	1764	1836	1956
MICHIGAN				
Central Michigan University	2116	2248	4420	4708
Eastern Michigan University	2106	2210	4842	4946
Ferris State University	2880	3114	4860	5256
Grand Valley State University	2232	2352	4896	5282
Lake Superior State University	2700	2901	2700	2901
Northern Michigan University	1928	2046	2930	3030
Oakland University	2851	3099	6057	6651
Saginaw Valley State University	2436	2592	4668	4974
University of Michigan, Dearborn	2528	2790	8144	8990
Western Michigan University	2346	3171	5376	7341
MINNESOTA				
Bemidji State University	1654	1810	2284	2500
Mankato State University	1886	2106	2641	2934
Metropolitan State University	1721	1892	2475	2720
Moorhead State University	1917	2106	2671	2934
St. Cloud State University	1877	2097	2632	2925
University of Minnesota, Duluth	3197	3344	6137	6444
Winona State University	1934	2125	2688	2953
MISSISSIPPI				
Alcorn State University	1660	1350	2842	2532
Delta State University	1604	1706	2786	2888
Jackson State University		1786		2868
Mississippi University for Women	1780	1840	2962	3032
Mississippi Valley State University	1700	1725	2882	2907

University of Southern Mississippi

MISSOURI

Central Missouri State University 1632 1704 3600 3168
 Lincoln University 1844 1844 3572 3572
 Northeast Missouri State University 1500 1728 2862 3318
 Northwest Missouri State University 1224 1380 2268 2544
 Southeast Missouri State University 1440 1510 2790 2930
 Southwest Missouri State University 1442 1562 2858 3074
 University of Missouri at St. Louis 1357 1530 4417 5300

MONTANA

Eastern Montana College 1308 1389 2991 3072
 Montana College of Mineral Science & Tech 1285 1321 3358 3394
 Northern Montana College 1282 1284 2965 2965

NEBRASKA

Chadron State College 1115 1163 1691 1775
 Kearney State College 1148 1196 1724 1808
 University of Nebraska at Omaha 1462 1532 3322 3488
 Wayne State College 1154 1226 1730 1838

3

NEVADA

University of Nevada, Las Vegas 900 1080 3900 4380

NEW HAMPSHIRE

Keene State College 1760 2549 4430 6409
 Plymouth State College 2196 2685 5856 6545

NEW JERSEY

Glassboro State College 2352 2724 3072 3900
 Jersey City State College 2874 3018 3354 3522
 Kean College of New Jersey 3300 3630 4020 4350
 Montclair State College 2093 2349 2579 2907
 New Jersey Institute of Technology 4728 5340 6550 7540
 Trenton State College 3134 3765 3806 4733
 William Paterson College of New Jersey 2966 3274 3446 3754

NEW MEXICO

Eastern New Mexico University 1266 1362 4140 4380

**APPENDIX B
GRADUATE TUITION AND FEES: FALL 1989 AND FALL 1990
MEMBERS - AASCU**

	Resident		Nonresident	
	1989	1990	1989	1990
New Mexico Highlands University	1104	1174	4062	4126
Western New Mexico University	976	1134	4110	4424
NEW YORK				
CUNY, Brooklyn College	1970	1970	4770	4770
CUNY, College of Staten Island	1994	2319	4794	4809
CUNY, Graduate School and University Center	1917	1928	4717	4717
CUNY, Herbert Lehman College	1990	1990	4790	4790
CUNY, John Jay College	1961	1961	4761	4761
CUNY, Queens College	2003	2004	4805	4804
Empire State College	2187	2187	5502	5502
Fashion Institute of Technology		2360	4435	4435
SUNY Institute of Technology at Utica/Rome	2197	2220	5512	5535
State University College at Brockport	2311	2311	5626	5626
State University College at Buffalo	2175	2175	5490	5490
State University College at Cortland	2328	2272	5643	5587
State University College at Fredonia	2275	2279	5590	5594
State University College at Geneseo	2215	2235	5530	5550
State University College at New Paltz	2295	2331	5610	5646
State University College at Oneonta	2286	2302	5601	5617
State University College at Oswego	2175	2175	5490	5490
State University College at Plattsburgh	2285	2285	5600	5600
State University College at Potsdam	2175	2175	5490	5490
State University of New York at Purchase	2240	2305	5555	5620
NORTH CAROLINA				
Appalachian State University	1034	1190	5406	5722
East Carolina University	978	1240	5350	5630
Fayetteville State University	910	982	5282	5513
North Carolina A & T State University	1007	1113	5379	5645
North Carolina Central University	955	1022	5327	5553
North Carolina School of the Arts	1372	1437	6316	5169
Pembroke State University	800	842	4642	4788
University of North Carolina at Asheville	940	1084	4782	5071
University of North Carolina at Charlotte	921	1035	5293	5566
University of North Carolina at Greensboro	1269	1364	5771	6031
University of North Carolina at Wilmington	1068	1188	5440	5719
Western Carolina University	1068	1155	5440	5686



NORTH DAKOTA

Minot State University

1857

2016

4014

5382

OHIO

Bowling Green State University
 Cleveland State University
 Kent State University
 Ohio State University, Lima
 University of Akron
 Wright State University
 Youngstown State University

3438
 3024
 3010
 2991
 2944
 2838
 2721

3650
 3204
 3202
 3231
 3144
 3111
 2970

6598
 6042
 5610
 7686
 5188
 5082
 3921

7000
 6408
 6202
 8514
 5540
 5580
 4170

OKLAHOMA

Cameron University
 Central State University
 East Central University
 Northeastern Oklahoma State University
 Northwestern Oklahoma State University
 Southeastern Oklahoma State University

936
 1092
 1540
 1553
 1235
 1221

980
 1124
 1540
 1553
 1235
 1221

2306
 3127
 3823
 3836
 3062
 3047

2800
 2951
 3823
 3836
 3062
 3047

OREGON

Eastern Oregon State College
 Portland State University
 Southern Oregon State College
 Western Oregon State College

2508
 2511
 2475
 2469

2682
 2775
 2673
 2661

4107
 4113
 4074
 4068

4548
 4677
 4542
 4530

PENNSYLVANIA

Bloomsburg University of Pennsylvania
 California University of Pennsylvania
 Cheyney University of Pennsylvania
 Clarion University of Pennsylvania
 East Stroudsburg University of Pennsylvania
 Edinboro University of Pennsylvania
 Indiana University of Pennsylvania
 Kutztown University of Pennsylvania
 Lincoln University of Pennsylvania
 Lock Haven University of Pennsylvania
 Mansfield University of Pennsylvania
 Millersville University of Pennsylvania

2238
 2548
 2303
 2328
 2308
 2444
 2404
 2250
 3275
 2178
 2318
 2457

2394
 2648
 2278
 2511
 2466
 2572
 2425
 2350
 3525
 2178
 2452
 2278

2658
 2968
 2723
 2748
 2728
 2864
 4260
 2670
 4875
 4034
 2738
 2871

3000
 3254
 2884
 3091
 3072
 3178
 4449
 2956
 5225
 4034
 3058
 2884

**APPENDIX B
GRADUATE TUITION AND FEES: FALL 1989 AND FALL 1990
MEMBERS - AASCU**

	Resident		Nonresident	
	1989	1990	1989	1990
Penn State Erie, The Behrend College	4198	4520	8388	8960
Pennsylvania State Univ. at Harrisburg	4198	4520	8388	8960
Shippensburg University of Pennsylvania	2338	2588	2758	3194
Slippery Rock University of Pennsylvania	2504	2668	2927	3274
West Chester University of Pennsylvania	2310	2410	2730	3016
RHODE ISLAND				
Rhode Island College	1653	1801	3093	3475
SOUTH CAROLINA				
Coastal Carolina College of U. of S. Carolina	2228	2674	2228	2674
Lander College	2090	2340	2990	2340
The Citadel Military College of S. Carolina	1530	1710	1530	1710
University of South Carolina at Aiken	2688	2674	2688	2674
Winthrop College	2316	2568	2316	2568
SOUTH DAKOTA				
Black Hills State University	1801	1867	2910	3031
Dakota State University		1860	1860	1860
Northern State University	1735	1828	2844	2992
South Dakota School of Mines & Technology	1923	2016	3208	3365
TENNESSEE				
Austin Peay State University	1776	1778	4730	4732
East Tennessee State University	1666	1804	4620	5008
Memphis State University	1666	1804	4620	5008
Middle Tennessee State University	1614	1760	4568	4964
Tennessee State University	1674	1810	4628	5014
Tennessee Technological University	1740	1876	4694	5080
University of Tennessee at Chattanooga	1776	1922	4728	5126
University of Tennessee at Martin	1722	1868	4674	5072
TEXAS				
Angelo State University	669	683	2505	2519
East Texas State University	791	791	3310	3310
Lamar University	660	714	2532	2586
Laredo State University	696	690	3192	3192
Midwestern State University	705	1200	2577	3464

Pan American University	762	762	3258
Prairie View A & M University	788	788	3284
Sam Houston State University	856	916	3412
Southwest Texas State University	730	730	2602
Stephen F. Austin State University	766	766	3262
Tarleton State University	627	908	3404
Texas A & I University	766	766	3262
Texas Southern University	796	826	3322
Texas Woman's University	964	920	3416
University of Houston - Clear Lake	902	902	2630
University of Houston - Victoria	816	816	2828
University of North Texas	641	719	2591
University of Texas at Dallas	617	662	2534
University of Texas at El Paso	781	786	3282
University of Texas at San Antonio	624	684	2556
University of Texas at Tyler	567	740	2580
University of Texas of the Permian Basin	558	884	3278
West Texas State University	646	659	2531

UTAH

Weber State College	1320	1506	3606	4095
---------------------	------	------	------	------

VERMONT

Johnson State College	2538	2770	5586	6082
Lyndon State College	2628	2950	5676	6262

VIRGIN ISLANDS

University of the Virgin Islands	984	1010	1968	2020
----------------------------------	-----	------	------	------

VIRGINIA

George Mason University	2292	2496	5076	5952
James Madison University	2328	2256	5520	6120
Longwood College	2700	2880	4950	5616
Mary Washington College	1776	1824	3864	4224
Norfolk State University	2234	2630	4284	5590
Old Dominion University	2168	2348	4958	5696
Radford University	2226	2276	2740	3638
Virginia Commonwealth University	2888	3075	6028	6685

WASHINGTON

Central Washington University	2502	2604	7440	7899
-------------------------------	------	------	------	------

**APPENDIX B
GRADUATE TUITION AND FEES: FALL 1989 AND FALL 1990
MEMBERS - AASCU**

	Resident		Nonresident	
	1989	1990	1989	1990
Eastern Washington University	2457	2604	7440	7899
Evergreen State College	1860	2457	5550	7446
Western Washington University	2457	2604	7440	7899
WEST VIRGINIA				
Marshall University	1597	1652	3887	4126
Univ. of West VA, College of Grad. Studies	1160	1218	3360	3696
West Virginia Institute of Technology	1422	1656	3582	4032
WISCONSIN				
University of Wisconsin - Eau Claire	2082	2197	6099	6585
University of Wisconsin - Green Bay	2095	2190	6112	6578
University of Wisconsin - Oshkosh	2102	2201	6119	6589
University of Wisconsin - Parkside	2111	2217	6128	6605
University of Wisconsin - Platteville	2121	2226	6137	6614
University of Wisconsin - River Falls	2107	2208	6125	6596
University of Wisconsin - Stevens Point	2125	2250	6142	6638
University of Wisconsin - Stout	2120	2230	6137	6618
University of Wisconsin - Superior	2090	2190	6107	6578
University of Wisconsin - Whitewater	2132	2246	6149	6634

APPENDIX C
UNDERGRADUATE CHARGES: FALL 1989 AND FALL 1990
MEMBERS—NASULGC

	Tuition and Fees				1990 Room and Board		
	Resident		Nonresident		Room	Board	Combined
	1989	1990	1989	1990			
ALABAMA							
Alabama A & M University	1248	1298	2236	2286	794	1242	2036
Auburn University	1476	1476	4428	4428	1467		
University of Alabama	1724	1810	4260	4486	1720	1458	3178
University of Alabama in Birmingham	1823	1920	3473	3660			
ALASKA							
University of Alaska, Fairbanks	1332	1662	3156	4104	1040	1500	2540
ARIZONA							
Arizona State University	1362	1478	5484	6464			3341
University of Arizona	1362	1478	5484	6484	1536	1900	3436
ARKANSAS							
University of Arkansas, Fayetteville	1280	1598	3225	3950			2900
University of Arkansas, Pine Bluff	1260	1320	2998	3140	700	1120	1820
CALIFORNIA							
University of California, Berkeley	1672	1999	7472	8415			5305
University of California, Davis	1606	1701	7405	7617			4655
University of California, Irvine	1827	1875	7626	8291			4969
University of California, Los Angeles	1533	1602	7332	7518			4850
University of California, Riverside	1647	1614	7446	7530			4880
University of California, San Diego	1639	1734	7438	7650			5400
University of California, Santa Barbara	1683	1651	7482	7567			4736
COLORADO							
Colorado State University	2096	2223	6108	6589			3900
University of Colorado, Boulder		2256		9414	1696	1644	3340
CONNECTICUT							
University of Connecticut	2631	2975	6811	7775	2028	2230	4258
DELAWARE							
Delaware State College	1230	1295	2880	3170	1670	1100	2770
University of Delaware	2960	3126	7170	7916	1800	1500	3300

DISTRICT OF COLUMBIA
University of the District of Columbia

FLORIDA

Florida A & M University	1267	1364	4026	4675	1390	1090	2480
Florida State University	1227	1307	3986	4619	1730	1511	3241
University of Florida	1229	1320	3988	4630	1520	1810	3330
University of South Florida	1320	1400	4079	4711	1370	1660	3030

GEORGIA

Fort Valley State College	1530	1593	3912	4071	1050	1230	2280
Georgia Institute of Technology	1971	2216	5820	7604			4912
University of Georgia	1917	2001	5085	5313	1290	1650	2940

GUAM

University of Guam	1408	1408	2136	2136	880		
--------------------	------	------	------	------	-----	--	--

HAWAII

University of Hawaii	1327	1327	3777	3777	1408	1361	2769
----------------------	------	------	------	------	------	------	------

IDAHO

University of Idaho	1098	1166	3298	3506			2624
---------------------	------	------	------	------	--	--	------

ILLINOIS

Southern Illinois University at Carbondale	2167	2332	5287	5452			2768
University of Illinois at Chicago	2853	2913	6639	6699			4272
University of Illinois at Urbana-Champaign	2911	2969	6697	6755			3852

INDIANA

Indiana University	2095	2220	6170	6754	1442	1700	3142
Purdue University	2032	2152	6264	6764			3090

IOWA

Iowa State University	1826	1880	5982	6160			2720
University of Iowa	1826	1880	5982	6220	1441	1328	2769

KANSAS

Kansas State University		1571		4695			2580
University of Kansas	1450	1564	4248	4688			2496

KENTUCKY

Kentucky State University	1180	1312	3300	3672	1114	1354	2468
---------------------------	------	------	------	------	------	------	------

**APPENDIX C
UNDERGRADUATE CHARGES: FALL 1989 AND FALL 1990
MEMBERS—NASULGC**

	Tuition and Fees		1990 Room and Board				
	Resident 1989	Resident 1990	Nonresident 1989	Nonresident 1990	Room	Board	Combined
University of Kentucky	1560	1710	4320	4710	1242	1752	2582
University of Louisville	1488	1620	4248	4620			2994
LOUISIANA							
Louisiana State University, Baton Rouge	2017	2043	5217	5243	1610	1100	2710
MAINE							
University of Maine	2090	2397	5422	6177	1961	1984	3945
MARYLAND							
University of Maryland, College Park	2097	2269	5754	6325	2618	2094	4712
University of Maryland, Eastern Shore	2002	2114	5478	5764	2080	1454	3534
MASSACHUSETTS							
Massachusetts Institute of Technology	14500	15600	14500	15600	2720	2380	5100
University of Massachusetts, Amherst	2980	3867	7371	8720	2007	1536	3543
MICHIGAN							
Michigan State University	3163	3392	7629	8263	1344	1824	3168
University of Michigan	3463	3688	11416	12446			3853
Wayne State University		2685		5920	2577		
MINNESOTA							
University of Minnesota	2336	2626	5340	6044	1281	1851	3132
MISSISSIPPI							
Alcorn State University	1700	1750	2882	2932	1010	890	1990
Mississippi State University	1987	2061	3169	3243	1100	1440	2540
University of Mississippi	1987	2059	3169	3241	1334		
MISSOURI							
Lincoln University	1436	1436	2756	2756	1082	1616	2698
University of Missouri, Columbia	1906	2083	5458	5865	1446	1290	2736
University of Missouri, Kansas City	1922	2180	5282	5963	1875	1400	3275
University of Missouri, Rolla	2113	2307	5665	6090	1905	1445	3350
MONTANA							

Montana State University	1766	1745	3839	3818	2922
University of Montana	1448	1474	3521	3547	3212
					1636
					1576
NEBRASKA					
University of Nebraska, Lincoln	1810	1915	4435	4675	2625
NEVADA					
University of Nevada, Reno	1200	1380	4200	4680	3110
NEW HAMPSHIRE					
University of New Hampshire	3314	3358	8804	9638	3456
NEW JERSEY					
Rutgers, The State University of New Jersey	3102	3432	5770	6390	3946
NEW MEXICO					
New Mexico State University	1386	1488	5082	5184	2342
University of New Mexico	1372	1453	4860	5150	2970
NEW YORK					
CUNY, Bernard Baruch College	1350	1350	4150	4150	
CUNY, Brooklyn College	1355	1385	4155	4185	
CUNY, City College	1345	1345	4145	4145	
CUNY, College of Staten Island	1344	1356	4144	4156	
CUNY, Herbert Lehman College	1340	1340	4140	4140	
CUNY, Hunter College	1341	1347	4242	4247	
CUNY, Medgar Evers College	1302	1302	4102	4102	1780
CUNY, Queens College	1432	1433	4232	4233	
CUNY, York College	1322	1332	4122	4132	
Cornell University Statutory Colleges	5610	5944	10080	10844	2852
State University of New York, Albany	1478	1485	4828	4835	2261
State University of New York, Binghamton	1537	1578	4887	4928	2262
State University of New York, Buffalo	1490	1465	4840	4815	2120
State University of New York, Stony Brook	1495	1511	4845	4861	2338
NORTH CAROLINA					
North Carolina A & T State University	1007	1113	5379	5645	2668
North Carolina State University	1044	1126	5546	5792	3030
University of North Carolina at Chapel Hill	1008	1084	5510	5751	3470
NORTH DAKOTA					
North Dakota State University	1656	1662	3918	4182	2328

APPENDIX C
UNDERGRADUATE CHARGES: FALL 1989 AND FALL 1990
MEMBERS--NASULGC

	Tuition and Fees		1990 Room and Board				
	Resident 1989	Resident 1990	Nonresident 1989	Nonresident 1990	Room	Board	Combined
University of North Dakota	1724	2040	3986	5058	2148	1278	3426
OHIO							
Bowling Green State University	2644	2808	5804	6158	1424	1090	2514
Kent State University	2826	3006	5426	6006	1758	1250	3008
Miami University	3196	3388	6986	7368	1440	1660	3100
Ohio State University	2190	2343	6279	6942	1707	1767	4026
Ohio University	2556	2721	5415	5805	2337	1611	3948
University of Cincinnati	2679	2838	6393	6774	1824	810	2634
University of Toledo	2232	2526	5085	5781			
OKLAHOMA							
Langston University	1269	1248	3148	3004	880	1292	2172
Oklahoma State University	1528	1568	4485	4525			2876
University of Oklahoma	1513	1574	4470	4530	1542	1630	3172
OREGON							
Oregon State University	1707	1878	4968	5637			2810
University of Oregon	1782	1965	5043	5724			2790
PENNSYLVANIA							
Pennsylvania State University	3754	4048	7900	8444			3510
Temple University	4046	4354	7308	7952			4398
University of Pittsburgh, Pittsburgh Campus	4086	4314	8106	8886	2106	1408	3514
PUERTO RICO							
University of Puerto Rico	715	836			500		
RHODE ISLAND							
University of Rhode Island	2323	2561	6429	7065	2540	1884	4424
SOUTH CAROLINA							
Clemson University	2364	2470	6326	6600	1580	1438	3018
South Carolina State College	1650	1950	3380	3880	1136	1350	2486
University of South Carolina	2448	2560	5548	6400	1640	1300	2940
SOUTH DAKOTA							

South Dakota State University
University of South Dakota

1835 1936 3539 878 844 1722
1908 1985 3588 894 1180 2074

TENNESSEE

Tennessee State University
University of Tennessee, Knoxville

1292 1396 4600 1356 986 2342
1588 1712 4916 4540 2990

TEXAS

Prairie View A & M University
Texas A & M University
Texas Tech University
University of Houston
University of Texas, Austin

931 931 4051 1260 1678 2938
1200 1256 4376 1832 2052 3884
1416 1121 4476 4251 3249
990 990 4110 4110 3740
955 1021 4075 1500 1682 3182

UTAH

University of Utah
Utah State University

1494 1592 4190 1416 2772 4188
1500 1599 4131 2577

VERMONT

University of Vermont

3986 4590 11986 2596 1430 4026

VIRGIN ISLANDS

University of the Virgin Islands

984 1172 2952 1060 2600 3660

VIRGINIA

University of Virginia
VPI and State University
Virginia Commonwealth University
Virginia State University

2708 2966 8136 1497 1650 3147
2730 2955 6591 2122 1410 2680
2457 2719 6699 1781 2196 3532
3071 2768 5135 1781 2196 3977

WASHINGTON

University of Washington
Washington State University

1827 1953 5433 1890 1620 3510
1828 1954 5434 1574 1206 2780

WEST VIRGINIA

West Virginia University

1692 1777 4645 1912 1700 3612

WISCONSIN

University of Wisconsin - Madison
University of Wisconsin - Milwaukee

2004 2108 6832 1726 1380 3106
2054 2157 6881 1564 1624 3188

WYOMING

University of Wyoming

1003 1148 3039 1312 1854 3166

**APPENDIX D
GRADUATE TUITION AND FEES: FALL 1989 AND FALL 1990
MEMBERS—NASULGC**

	Resident		Nonresident	
	1989	1990	1989	1990
ALABAMA				
Alabama A & M University	1422	1432	1800	1810
Auburn University	1476	1476	4428	4428
University of Alabama	1724	1810	4260	4486
University of Alabama in Birmingham	1973	2070	3773	3960
ALASKA				
University of Alaska, Fairbanks	1770	2084	3120	3704
ARIZONA				
Arizona State University	1362	1478	5484	6484
University of Arizona	1362	1478	5484	6484
ARKANSAS				
University of Arkansas, Fayetteville	2000	2100	4230	4450
University of Arkansas, Pine Bluff		2040		3870
CALIFORNIA				
University of California, Berkeley	1852	2009	7651	8425
University of California, Davis	1805	1884	7614	7800
University of California, Irvine	1815	1863	7614	8279
University of California, Los Angeles	1519	2129	7318	8045
University of California, Riverside	1626	2022	7425	7938
University of California, San Diego	1618	1709	7417	7625
University of California, Santa Barbara	1642	2045	7441	7961
COLORADO				
Colorado State University	2344	2486	6350	6851
University of Colorado, Boulder		2722		9144
CONNECTICUT				
University of Connecticut	3060	3474	7070	8084
DELAWARE				
Delaware State College	1350	1510	2250	2580
University of Delaware	2776	2890	6980	7680

DISTRICT OF COLUMBIA
University of the District of Columbia

1264 1264 2464 2464

FLORIDA

Florida A & M University
Florida State University
University of Florida
University of South Florida

1741 1891 5777
1696 1831 5717
1697 1840 5730
1770 1905 5791

GEORGIA

Fort Valley State College
Georgia Institute of Technology
University of Georgia

1530 1593 4071
1971 2216 7604
1917 2001 5313

GUAM

University of Guam

1884 1884 2388 2388

HAWAII

University of Hawaii

1557 1557 4477 4477

IDAHO

University of Idaho

1452 1542 3652 3882

53

ILLINOIS

Southern Illinois University at Carbondale
University of Illinois at Chicago
University of Illinois at Urbana-Champaign

2163 2328 5448
3402 3462 8142
3358 3416 8038 8096

INDIANA

Indiana University
Purdue University

2197 2329 6488
2032 2152 6264 6764

IOWA

Iowa State University
University of Iowa

2162 2226 6422
2162 2226 6484

KANSAS

Kansas State University
University of Kansas

1750 1889 5025
1882 1882 5018

KENTUCKY

Kentucky State University

1280 1432 3600 4032

**APPENDIX D
GRADUATE TUITION AND FEES: FALL 1989 AND FALL 1990
MEMBERS—NASULGC**

	Resident		Nonresident	
	1989	1990	1989	1990
University of Kentucky	1700	1870	4740	5190
University of Louisville	1628	1780	4668	5100
LOUISIANA				
Louisiana State University, Baton Rouge	2020	2046	5220	5246
MAINE				
University of Maine	2542	3027	6652	7947
MARYLAND				
University of Maryland, College Park	3051	3337	5211	5761
University of Maryland, Eastern Shore	2736	2784	4872	4920
MASSACHUSETTS				
Massachusetts Institute of Technology	14500	15600	14500	15600
University of Massachusetts, Amherst	2954	3914	7231	8606
MICHIGAN				
Michigan State University	3534	3828	6855	7428
University of Michigan	5698	6210	11778	12840
Wayne State University		2782		5920
MINNESOTA				
University of Minnesota	3275	3437	6216	6527
MISSISSIPPI				
Alcorn State University	1660	1350	2842	2532
Mississippi State University	1987	2061	3169	3243
University of Mississippi	1987	2059	3169	3241
MISSOURI				
Lincoln University	1844	1844	3572	3572
University of Missouri, Columbia	1937	2104	5037	5407
University of Missouri, Kansas City	2036	2200	5132	5503
University of Missouri, Rolla	2120	2303	5221	5606
MONTANA				
Montana State University	1766	1745	3839	3818



University of Montana	1448	1474	3521	3547
NEBRASKA				
University of Nebraska, Lincoln	1906	2014	4432	4510
NEVADA				
University of Nevada, Reno	800	960	3800	4260
NEW HAMPSHIRE				
University of New Hampshire	2954	3500	8744	9580
NEW JERSEY				
Rutgers, The State University of New Jersey	3988	4422	5696	6316
NEW MEXICO				
New Mexico State University	1506	1608	5202	5304
University of New Mexico	1512	1602	5012	5310
NEW YORK				
CUNY, Bernard Baruch College	1923	1923	4723	4723
CUNY, Brooklyn College	1970	1970	4770	4770
CUNY, City College	1931	1931	4731	4731
CUNY, College of Staten Island	1994	2319	4794	4809
CUNY, Graduate School and University Center	1917	1928	4717	4717
CUNY, Herbert Lehman College	1990	1990	4790	4790
CUNY, Hunter College	1916	1916	4716	4716
CUNY, Queens College	2003	2004	4803	4804
Cornell University Statutory Colleges	6484	6828	6484	6828
State University of New York, Albany	2175	2175	5490	5490
State University of New York, Binghamton	2260	2270	5575	5585
State University of New York, Buffalo	2222	2175	5537	5490
State University of New York, Stony Brook	2211	2211	5526	5526
NORTH CAROLINA				
North Carolina A & T State University	1007	1113	5379	5645
North Carolina State University	1050	1138	5552	5805
University of North Carolina at Chapel Hill	1002	1078	5504	5746
NORTH DAKOTA				
North Dakota State University	1866	1878	4440	4758

**APPENDIX D
GRADUATE TUITION AND FEES: FALL 1989 AND FALL 1990
MEMBERS—NASULGC**

	Resident		Nonresident	
	1989	1990	1989	1990
University of North Dakota	1934	2250	4508	5616
OHIO				
Bowling Green State University	3438	3650	6598	7000
Kent State University	3010	3202	5610	6202
Miami University	3346	3546	7136	7526
Ohio State University	3075	3321	7770	8604
Ohio University	2781	3036	5640	6120
University of Cincinnati	4167	4416	8199	8688
University of Toledo	2886	3453	5739	6708
OKLAHOMA				
Langston University	984	970	2354	2334
Oklahoma State University	1540	1576	4512	4548
University of Oklahoma	1606	1655	4700	4749
OREGON				
Oregon State University	2487	2736	4089	4638
University of Oregon	2562	2823	4164	4725
PENNSYLVANIA				
Pennsylvania State University	4198	4520	8388	8960
Temple University	4610	5040	5786	6312
University of Pittsburgh, Pittsburgh Campus	5046	5526	9876	10836
PUERTO RICO				
University of Puerto Rico	1285	1466		
RHODE ISLAND				
University of Rhode Island	2333	2579	4875	5371
SOUTH CAROLINA				
Clemson University	2364	2470	2364	2470
South Carolina State College	1650	1650	1650	1650
University of South Carolina	2448	2674	2448	2674
SOUTH DAKOTA				
South Dakota State University	1884	1981	3169	3330

University of South Dakota	1950	2027	3236	3376
TENNESSEE				
Tennessee State University	1674	1810	4628	5014
University of Tennessee, Knoxville	1928	2078	4880	5282
TEXAS				
Prairie View A & M University	788	788	3284	3284
Texas A & M University	932	986	3428	3482
Texas Tech University	1416	1023	4476	3519
University of Houston	882	1041	3378	3537
University of Texas, Austin	811	877	3307	3373
UTAH				
University of Utah	1340	1426	3708	3960
Utah State University	1620	1728	4515	4824
VERMONT				
University of Vermont	3916	4494	11916	13096
VIRGIN ISLANDS				
University of the Virgin Islands	984	1010	1968	2020
VIRGINIA				
University of Virginia	2708	2966	7088	8136
VPI and State University	3186	3417	3600	4281
Virginia Commonwealth University	2888	3075	6028	6685
Virginia State University	3231	2958	5337	5758
WASHINGTON				
University of Washington	2838	3033	7083	7578
Washington State University	2838	3034	7084	7578
WEST VIRGINIA				
West Virginia University	1782	1871	4422	4865
WISCONSIN				
University of Wisconsin - Madison	2775	2918	8283	8783
University of Wisconsin - Milwaukee	2825	2967	8333	8832
WYOMING				
University of Wyoming	1003	1148	3039	3568

APPENDIX E
CHARGES AT NONAFFILIATED INSTITUTIONS: FALL 1990

	UNDERGRADUATE		GRADUATE		Combined Room and Board
	Resident	Nonresident	Resident	Nonresident	
ARKANSAS					
Southern Arkansas Univ., Technical Branch University of Arkansas, College of Medicine	720	1080	5720	11440	4014
CALIFORNIA					
San Jose State University	974	7144	974	7144	4288
University of California, San Francisco	1848	7764	1343	7764	
University of California, Santa Cruz	1813	8229	1809	8495	4787
COLORADO					
University of Colorado Health Sciences Center	3128	10541	1781	5936	
CONNECTICUT					
Charter Oak College	200	300			
FLORIDA					
Florida International University	1326	4637	1860	5746	3382
GEORGIA					
Medical College of Georgia	1882	5194	1882	5194	
North Georgia College	1494	3972	1494	3972	2190
HAWAII					
University of Hawaii, West Oahu	840	2490			
INDIANA					
Indiana University at South Bend	1826	4548	1913	4234	
Indiana/Purdue University at Fort Wayne	1839	4477	1405	3146	
Indiana/Purdue University at Indianapolis	2106	6256	2255	6414	
Purdue University, North Central Campus	1827	4527	1391	3164	
KANSAS					
University of Kansas Medical Center	1358	4482	1736	4872	
LOUISIANA					
Southern University in New Orleans	1452	3020	1472	3040	

95

RYLAND t. Mary's College of Maryland University of Maryland University College	2620 117	4220	190	260	3900
MICHIGAN Michigan Tech University University of Michigan, Flint	2541 2240	6012 7444	2541 2600	6012 8068	3186
MINNESOTA University of Minnesota, Morris	2486	5840			2880
MISSISSIPPI University of Mississippi Medical Center	1370	2550	1371	2553	
NEW JERSEY Rutgers University, Camden Campus Rutgers University, Newark Campus Univ. of Medicine & Dentistry of New Jersey	3279 3281 1816	6237 6239 3633	4372 4376 3894	6266 6270 5640	4035 4060
NEW MEXICO New Mexico Institute of Mining and Technology	1392	4840	1258	4120	
NEW YORK CUNY, New York City Technical College NY State College of Ceramics at Alfred Univ. SUNY College of Optometry SUNY Health Science Center at Brooklyn SUNY Health Science Center at Stony Brook SUNY Health Science Center at Syracuse SUNY Maritime College State Univ. College of Envir. Sci. & Forestry	1298 4600 1485 1350 1475 1670 1465	4098 6350 4835 4700 4825 5020 4815	6900 2255 2250 2150 2275 2180 2210	6900 5570 5565 3465 5590 5495 5525	4146 3776 3948 5250
OHIO Medical College of Ohio at Toledo			981	1231	
OKLAHOMA University of Oklahoma Health Sciences Center	1465	4627	1148	3468	
PENNSYLVANIA PSU, King of Prussia Graduate Center			214	214	

APPENDIX E
CHARGES AT NONAFFILIATED INSTITUTIONS: FALL 1990

	UNDERGRADUATE		GRADUATE		Combined Room and Board
	Resident	Nonresident	Resident	Nonresident	
Pennsylvania State Univ., Hershey Medical Ctr			4520	8960	
TEXAS					
U of Texas Health Science Ctr at Houston	1100	5780	888	4632	
U of Texas Health Science Ctr at San Antonio	673	3793	730	3860	2500
U of Texas Medical Branch at Galveston	1164	6180	786	3540	
University of Texas at Arlington	850	3346	850	3346	
UNDEFINED STATE					
Southern University, Shreveport-Bossier	415	930			
VIRGINIA					
Virginia Military Institute	3650	8570			3160

**APPENDIX F
FIRST PROFESSIONAL TUITION AND FEES: FALL 1990
MEMBERS - AASCU, NASULGC AND NONAFFILIATED**

	LAW		MEDICINE		VETERINARY		DENTISTRY	
	Res.	Nonres.	Res.	Nonres.	Res.	Nonres.	Res.	Nonres.
ALABAMA								
Auburn University			1806	4758	1875	5675		
University of Alabama	2472	5148	4566	13714			3582	6633
University of Alabama in Birmingham			4629	13777				
University of Alabama in Huntsville			5110	14258				
University of South Alabama			5832	11111				
ARIZONA								
Arizona State University	1478	6484						
University of Arizona	1478	6484	6192					
ARKANSAS								
University of Arkansas at Little Rock	2040	4380	5720	11440				
University of Arkansas, College of Medicine								
CALIFORNIA								
University of Calif., Hastings College of Law	2248	8664						
University of California, Berkeley	2415	8831			1901			
University of California, Davis	1905	7821	2312	8228				
University of California, Irvine			2239	8655				
University of California, Los Angeles	2169	8085	2129	8045			2129	8045
University of California, San Diego			1709	7625				
University of California, San Francisco			1848	7764			1848	7764
COLORADO								
Colorado State University					6671	25071		
University of Colorado Health Sciences Center			8228	34132			5612	16836
University of Colorado, Boulder	3230	9576						
CONNECTICUT								
University of Connecticut	4950	10350	7800	14550			7500	14350
University of Connecticut Health Center			7800	14550			8250	15750
FLORIDA								
Florida A & M University			1891	5777				
Florida State University	2034	6083	6258	15302	5351	12947	6258	15302
University of Florida	2560	7620						

University of South Florida

6264 15307

GEORGIA

Georgia State University
Medical College of Georgia
University of Georgia

2214

6294

4159 12059

4159 12059

2385

6465

2253 6069

2595 2595

HAWAII

University of Hawaii

1997

5817

4917 14577

IDAHO

Idaho State University
University of Idaho

1542

3882

1560 3560

3151 3151

ILLINOIS

Northern Illinois University
Southern Illinois University at Carbondale
Southern Illinois University at Edwardsville
University of Illinois at Chicago
University of Illinois at Urbana-Champaign

3475

5171

8155 22427

3292 9292

2815

6895

6207 16377

4872 11772

4000

9848

6068 16238

5040 12968

INDIANA

Indiana University
Indiana/Purdue University at Indianapolis
Purdue University

3240

8677

6016 13576

5766 11946

3166

8604

4684 11253

IOWA

Iowa State University
University of Iowa

2424

7698

5924 15350

4266 11416

4246 11994

KANSAS

Kansas State University
University of Kansas
University of Kansas Medical Center
Washburn University of Topeka

1882

5018

6336 12856

3363 9401

4254

5514

6336 12856

KENTUCKY

Northern Kentucky University
University of Louisville

2490

7390

4940 17090

4230 15810

.

**APPENDIX F
FIRST PROFESSIONAL TUITION AND FEES: FALL 1990
MEMBERS - AASCU, NASULGC AND NONAFFILIATED**

	LAW		MEDICINE		VETERINARY		DENTISTRY	
	Res.	Nonres.	Res.	Nonres.	Res.	Nonres.	Res.	Nonres.
LOUISIANA Louisiana State University, Baton Rouge					3386	11736		
MAINE University of Southern Maine	5000	9920						
MARYLAND University of Baltimore	4041	7023						
MICHIGAN Ferris State University Michigan State University University of Michigan Wayne State University	7959 3820	15884 8260	5049 8448 10952 7287	10245 18195 20514 14518	7126	14780	9086	16814
MINNESOTA University of Minnesota University of Minnesota, Duluth	4712	9077	6254 6171	12158 12077	6302	9280	6782	10000
MISSISSIPPI Mississippi State University University of Mississippi University of Mississippi Medical Center	2359	3541	6075	12075	4326	9006	4075	10075
MISSOURI University of Missouri, Columbia University of Missouri, Kansas City	3957 4085	8059 8154	7127 7650	11163 11682	4801	8839	6378	10118
MONTANA University of Montana	2835	4908						
NEBRASKA University of Nebraska Medical Center University of Nebraska, Lincoln	3012	6936	7503	13395			4984 7790	11534 14340
NEVADA University of Nevada, Reno			5060	11990				

NEW JERSEY

Rutgers University, Camden Campus
 Rutgers University, Newark Campus
 Univ. of Medicine & Dentistry of New Jersey

5657 8489
 5665 8497

10457 13723

10457 13723

NEW MEXICO

University of New Mexico

1848 6216

3064 8500

NEW YORK

Cornell University Statutory Colleges
 SUNY College of Optometry
 SUNY Health Science Center at Brooklyn
 SUNY Health Science Center at Stony Brook
 SUNY Health Science Center at Syracuse
 State University of New York, Stony Brook

9478 11628

5655 13055
 5670 13070
 5550 12950
 5675 13075
 5625 13025

6490 13890

NORTH CAROLINA

East Carolina University
 North Carolina Central University
 North Carolina State University
 University of North Carolina at Chapel Hill

1964 12752

1019 6692

1866 10833

1827 12657

2077 11477

65

NORTH DAKOTA

University of North Dakota

2442 6130

8162 21402

OHIO

Cleveland State University
 Medical College of Ohio at Toledo
 Northeastern Ohio Universities College of Med
 Ohio State University
 Ohio University
 University of Akron
 University of Cincinnati
 University of Toledo
 Wright State University

4102 8204

2418 3253
 7839 13839
 6453 18060
 6756 9840

5289 16143

5289 16143

5289 16143

3836 9456
 3544 6054
 4494 8766
 3799 7393

8106 14208
 7425 10350

OKLAHOMA

Northeastern Oklahoma State University
 Oklahoma State University

2900 7060

3845 10465

**APPENDIX F
FIRST PROFESSIONAL TUITION AND FEES: FALL 1990
MEMBERS -- AASCU, NASJLGC AND NONAFFILIATED**

	LAW		MEDICINE		VETERINARY		DENTISTRY	
	Res.	Nonres.	Res.	Nonres.	Res.	Nonres.	Res.	Nonres.
The Oklahoma College of Osteopathic Medicine			5240	12710				
University of Oklahoma	1987	5971	5370	12840			5390	12590
University of Oklahoma Health Sciences Center			5370	12840			5390	12590
OREGON								
Oregon State University					4593	16000		
University of Oregon	3576	5628						
PENNSYLVANIA								
Pennsylvania State Univ., Hershey Medical Ctr			13544	19442				
Temple University			15454	20070			12602	19070
University of Pittsburgh, Pittsburgh Campus			14716	20176			14156	20132
PUERTO RICO								
University of Puerto Rico			1466					
SOUTH CAROLINA								
University of South Carolina			3590	7600	4800	11000		
SOUTH DAKOTA								
University of South Dakota			2772	4458	7506	14616		
TENNESSEE								
East Tennessee State University					7072	11290		
Memphis State University	2304	5568						
University of Tennessee, Knoxville	2342	5606					3376	6440
TEXAS								
Prairie View A & M University					931	4051		
Texas A & M University					6413	22802		
Texas Southern University							5700	20100
Texas Tech University								
U of Texas Health Science Ctr at Houston	3130	5830						
U of Texas Health Science Ctr at San Antonio	3291	5991						
U of Texas Health Science Ctr at Galveston					5713	22102		4878
University of Houston	2985	5505			5690	22079		5946
University of Texas, Austin	3177	5697			5703	22091		19479
					2120	8680		

UTAH University of Utah	2701	6129	5232	10929		
VERMONT University of Vermont			10150	21700		
VIRGINIA George Mason University University of Virginia VPI and State University Virginia Commonwealth University	4084 4416	12988 10056	6956 7317	14756 15217	5809 5809	6487 12717
WASHINGTON University of Washington Washington State University	3033	7578	4926	12513	4926 12514	4926 12513
WEST VIRGINIA Marshall University West Virginia University	2771	6365	5454 5455	9864 9865		3311 7559
WISCONSIN University of Wisconsin -- Madison	3190	9123	9263	13434	7156	10354
WYOMING University of Wyoming	1148	3568				

American Association of State Colleges and Universities	National Association of State Universities and Land-Grant Colleges
Suite 700	Suite 710
202/857-1828	202/778-0818

One Dupont Circle
Washington, DC 20036

Code 300-1

BEST COPY AVAILABLE