

DOCUMENT RESUME

ED 364 590

TM 020 822

AUTHOR Paredes, Vicente; Sanchez, Mario
 TITLE Historical Retention Report, 1992-93. Publication Number 92.38.
 INSTITUTION Austin Independent School District, Tex. Office of Research and Evaluation.
 PUB DATE Sep 93
 NOTE 40p.
 PUB TYPE Statistical Data (110) -- Reports - Descriptive (141)

EDRS PRICE MF01/PC02 Plus Postage.
 DESCRIPTORS *Academic Failure; Educational Objectives; *Educational Trends; Elementary School Students; Elementary Secondary Education; *Grade Repetition; Graphs; Low Achievement; School Districts; School Statistics; Secondary School Students; *Student Promotion; Tables (Data); Trend Analysis; *Urban Schools

IDENTIFIERS *Austin Independent School District TX

ABSTRACT

Rate of retention in grade is a measure of the number of students who repeat the grade they were in the year before. This report of retention rates is produced annually for the Austin (Texas) Independent School District, but contains information produced after the beginning of the school year and data produced at the end of the school year (potential retainees). The retention rate in the district for all grades in 1992-93 was 3.6. This rate has declined about one-half of 1 percent each year for the last 4 years. While the retention rate for elementary schools and middle schools has been declining for about 6 years, the retention rate for high schools this year broke a 4-year pattern of increase; this year's decline brought the rate back to that of 1989-90. Because the retention of students is not considered consistent with the district's goals for all students, alternatives to retention are recommended. Eight figures (largely graphs) and 21 charts illustrate current and past retention rates. (SLD)

 * Reproductions supplied by EDRS are the best that can be made *
 * from the original document. *

1992-93

Historical Retention Report

Austin Independent School District
Austin, Texas
September 1993

U.S. DEPARTMENT OF EDUCATION
Office of Educational Research and Improvement
EDUCATIONAL RESOURCES INFORMATION
CENTER (ERIC)

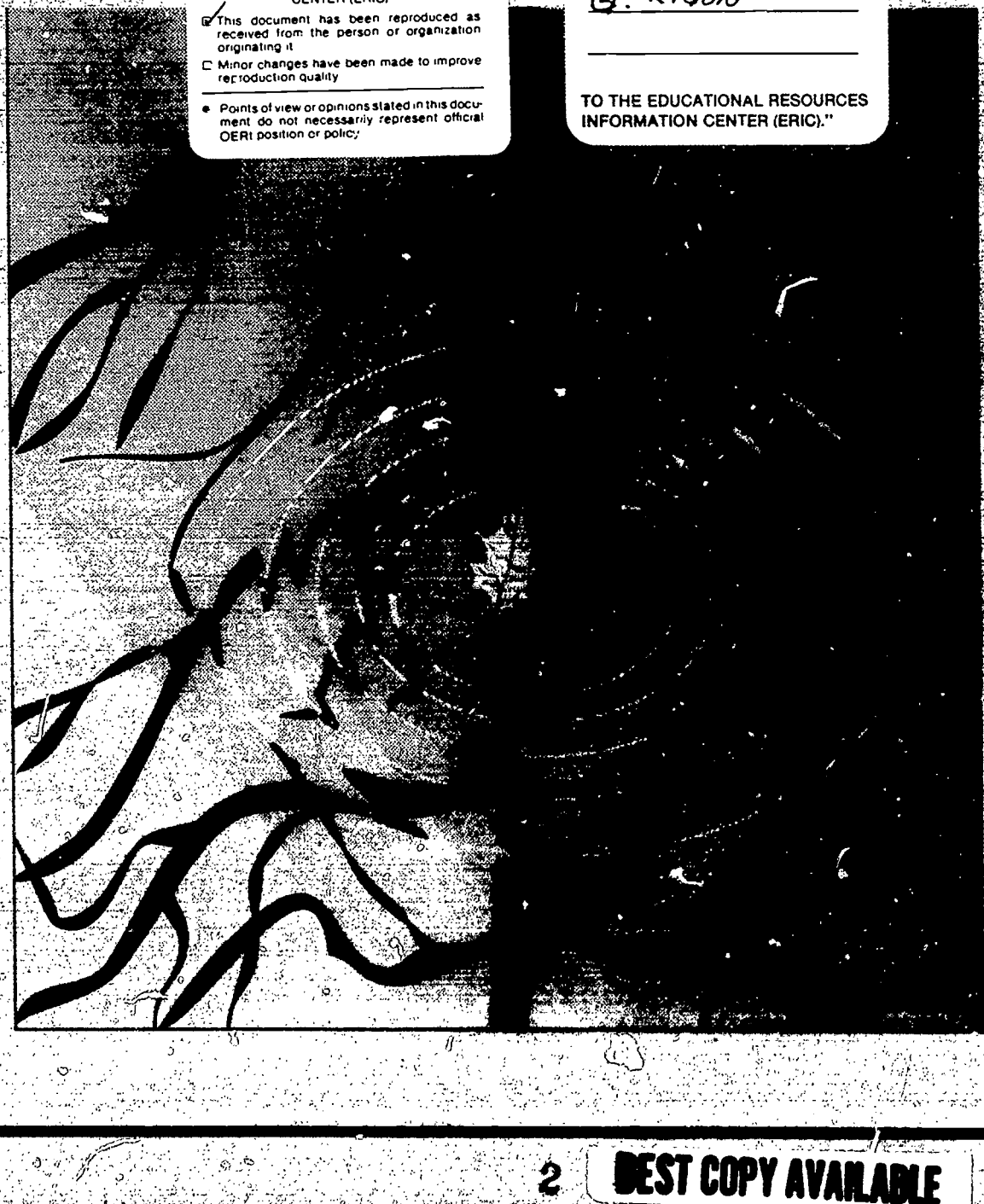
This document has been reproduced as received from the person or organization originating it

Minor changes have been made to improve reproduction quality

• Points of view or opinions stated in this document do not necessarily represent official OERI position or policy

"PERMISSION TO REPRODUCE THIS MATERIAL HAS BEEN GRANTED BY
G. LIGON

TO THE EDUCATIONAL RESOURCES INFORMATION CENTER (ERIC)."



HISTORICAL RETENTION REPORT, 1992-93

Executive Summary

Austin Independent School District
Office of Research and Evaluation

Authors: Vince Paredes and Mario Sanchez

Program Description

Rate of retention in grade is a measure of the number of students who repeat the grade they were in the year before. This report of retention rates is produced once a year but contains information produced after the beginning of the school year (actual retainees) and data produced at the end of the school year (potential retainees). Analyses of data for the most recent year as well as longitudinal data are given.

Included in this report are:

- Graphs and tables describing the most recent results.
- Historical retention charts by grade and year.

Major Findings

- The retention rate for all grades (K-12) in 1992-93 was 3.6. The retention rate has declined about one half of one percent, on the average for the District, each year for the last four years (Page 4).
- The retention rate for first grade was half of last year's. The retention rate for grades 7 (3.4%), 9 (20.9%), 10 (9.5%), and 11 (6.8%) remains among the highest; still, a marked improvement was observed over last year's rate (Page 5).
- Continuing a pattern observed for the last six years, retention rates for elementary and middle schools keep declining (Page 3).
- Retention rates for high schools in this year broke a four-year pattern of increase. With this year's decline (a rate of 11.8%), the retention rate was brought back to the level observed in 1989-90 (Page 4).
- The overall retention rates for the beginning of year (1991-93) were:

0.5	Elementary (K-5)
2.6	Middle School
11.8	High School

(Page 6).

Budget Implications

Mandate:

School Board Policy mandates the collection of retention information.

Funding Amount:

The amount required to educate a student for one year multiplied by the number of students retained.

Funding Source:

Local, State, and Federal.

Implications:

The retention of students is not consistent with the strategic objective that "every student will function at his/her optimal level of achievement and will progress successfully through the system." Alternatives to retention are recommended.

Contents

i	Executive Summary
1	Introduction
2	Overview
3	Summary of results
9	Historical retention charts
22	Appendix
	Definition of terms used in charts
	History of retention data collection

Introduction

Underlined terms used in this introduction are defined in the Appendix at the end of this report.

This report of retention rates is produced at the end of each school year. The information it contains is gathered after the beginning of the school year to reflect counts of actual retainees from the previous year. This report also includes information about potential retainees, students who:

- a) have been recommended to be retained the following year (elementary school)
- b) are below a given average of performance (middle school)
- c) failed to earn enough credits to be advanced (high school)

For a complete definition of these three groups, see the Appendix at the end of this report.

This report is divided into two sections:

Summary of Results. This section summarizes the results for the most recent years (Figures 1-8). The retention rates (percentages) in these figures are based upon the average daily membership (ADM) for the 1992-93 school year.

Historical Retention Charts. Each chart lists information about a grade or about a grade range (e.g., Chart K-5.) A detailed description of these tables can be found in page 10.

Overview

The retention rates for elementary and middle schools have declined steadily since 1987-88 (see Figure 1 and Figure 2). While the rates for high schools had climbed steadily from 1988-89 through 1991-92 with this year's decline, the retention rate for high schools was brought back to the level observed in 1989-90 (see Figure 3).

As a whole, the District has shown a steady decline in the retention rates of about one-half of one percent since 1989-90 (see Figure 4) and, except for 1989-90, the District retention rate has declined steadily since 1986-87.

A change in attitude of teachers toward retention has accompanied the general decline in retention rates. Teachers have become increasingly less inclined towards the option to retain a student. In 1987-88, 11% of the teachers disagreed with the statement, "[R]etention of students with serious achievement problems is beneficial." The percentage of teachers disagreeing with this statement increased steadily until 1991-92, the last year this question was asked, when the percentage of teachers disagreeing with the statement reached 22%.

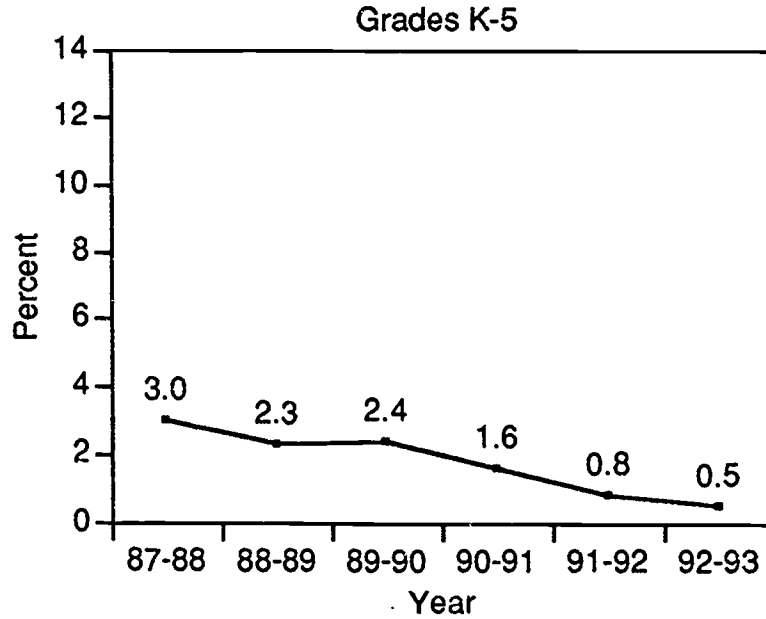
Research done by ORE and others has indicated that being overage for grade (or retained) contributes highly to the risk of dropping out of school. Retention rates for the District rose to an all-time high in 1986-87 (7.2% for grades K-12), probably as a result of the implementation of State Board of Education rules based upon House Bill 72. Since that time, alternative programs and changes in teacher and administrator attitudes have worked to reduce retention rates in AISD to the current rate of 3.6%. For a more detailed analysis of historical trend, see ORE Publication No. 89.13, "1989-90 Retention Report." Finally, it can be seen that students in the ninth grade have more trouble than others in staying on grade level. For more information concerning the transition to high school for ninth graders, see ORE publication 90.26, "Caution: Hazardous Grade."

Summary of Results

Six-Year Comparisons

Beginning-of-year retention rates

Figure 1



Retention rates for elementary and middle schools have generally declined over the past six years.

Figure 2

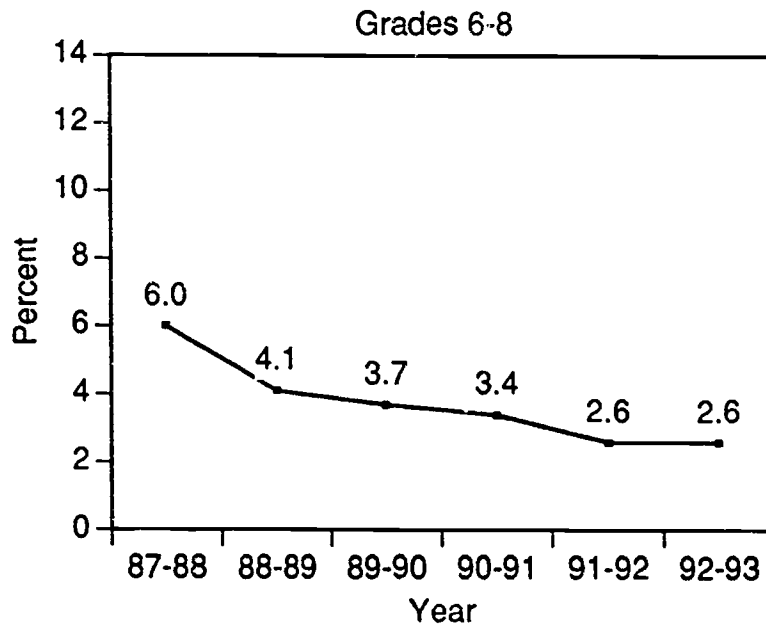
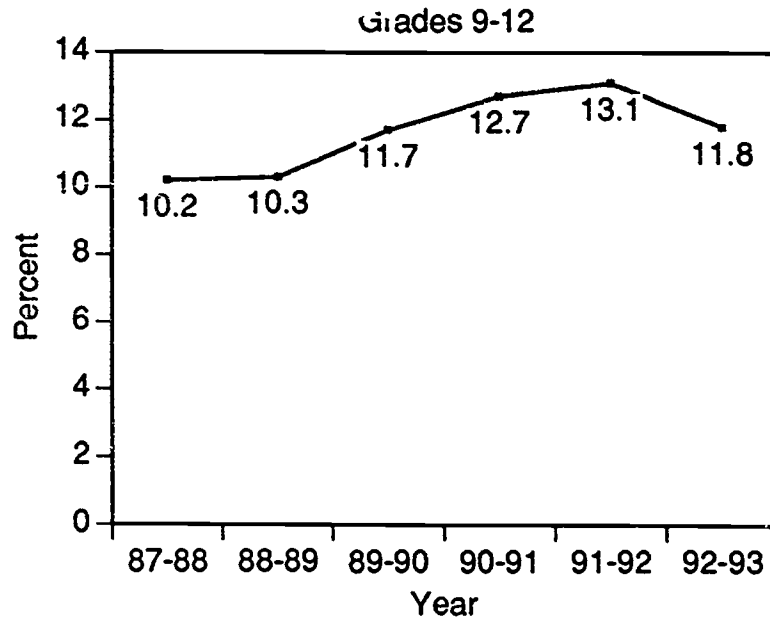
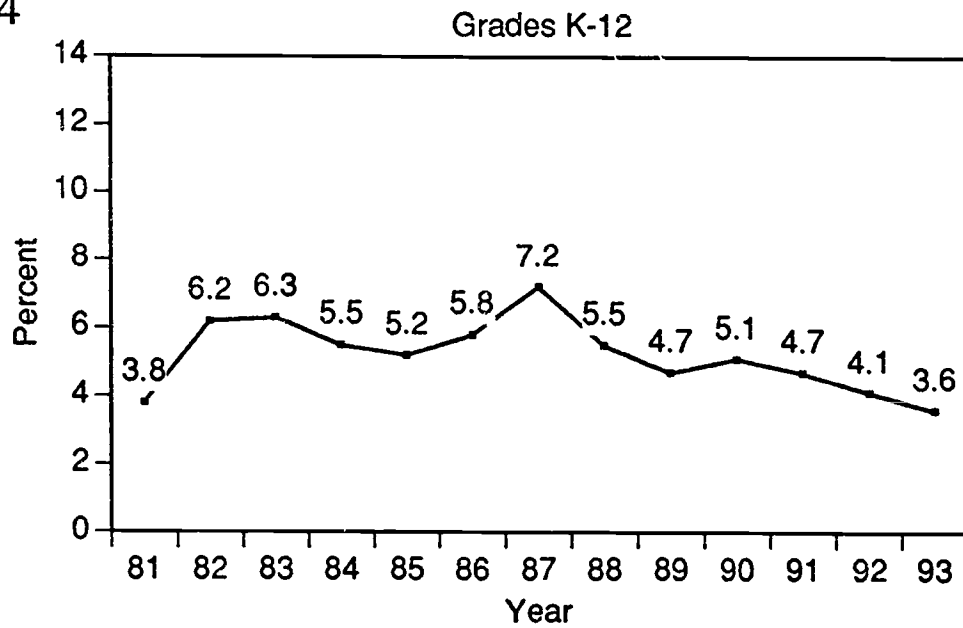


Figure 3



Even though retention rates at the high school level were on the rise for the previous four years, this year they declined back to the level observed in 1989-90.

Figure 4

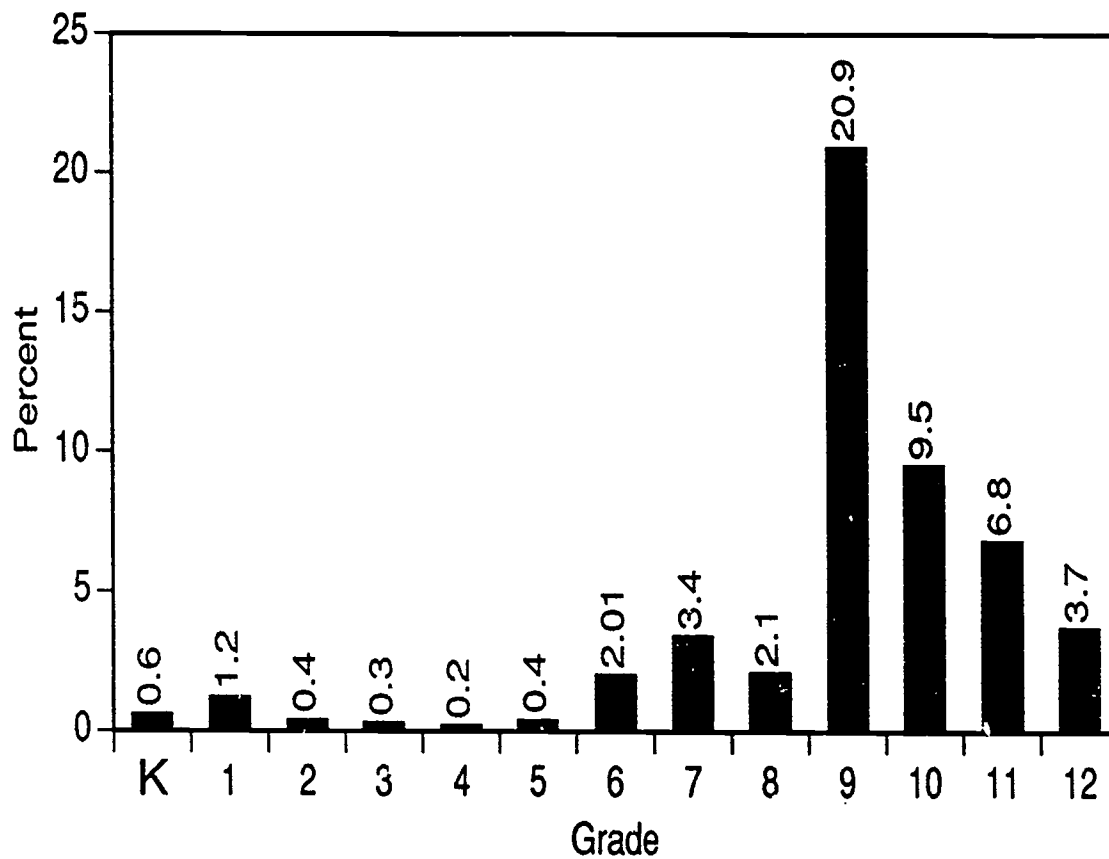


The retention rate for all grades (K-12) was 3.6 for this year. The retention rate has declined about one half of one percent each year for the last four years.

1992-93 Results by Grade

Beginning-of-year retention rates

Figure 5

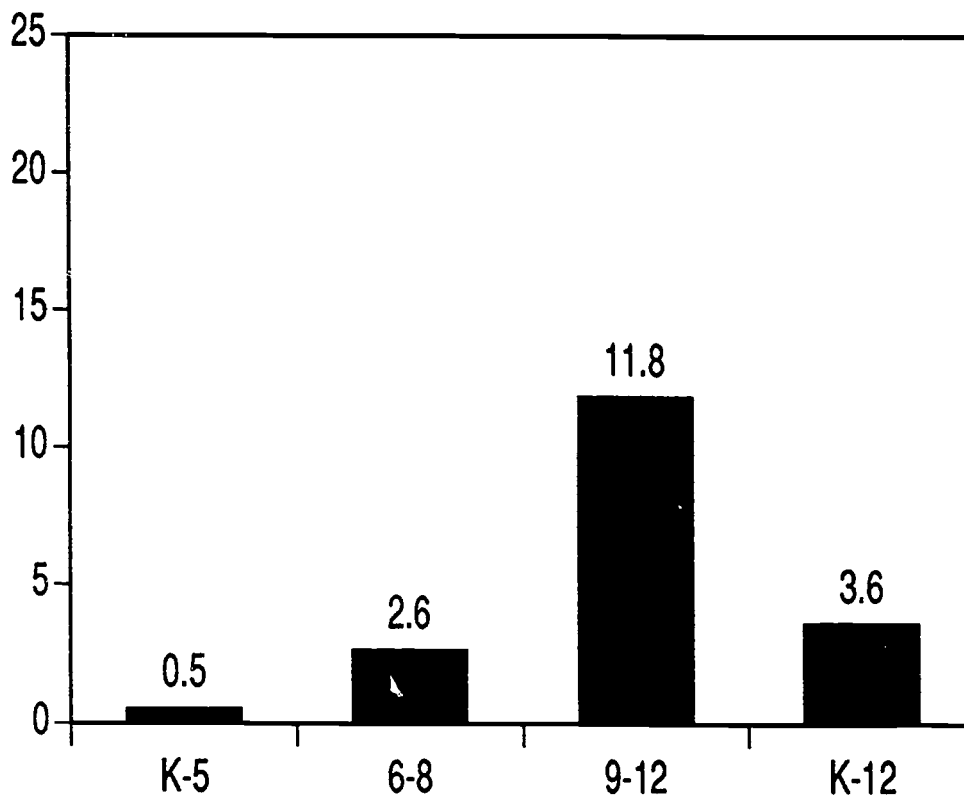


The rate of retention for first grade was half of last year's. Even though the rate of retention for grades 7, 9, 10, and 11 remains among the highest, there was a marked improvement compared to last year's rate (see Figure 7).

1992-93 Results by Grade Range

Beginning-of-year retention rates

Figure 6



The retention rate for high school remains the highest, above other grade levels and the District average. Still, a marked improvement can be observed from last year's rates (see Figure 7).

Change From Last Year

Actual retainees
1991-92 to 1992-93

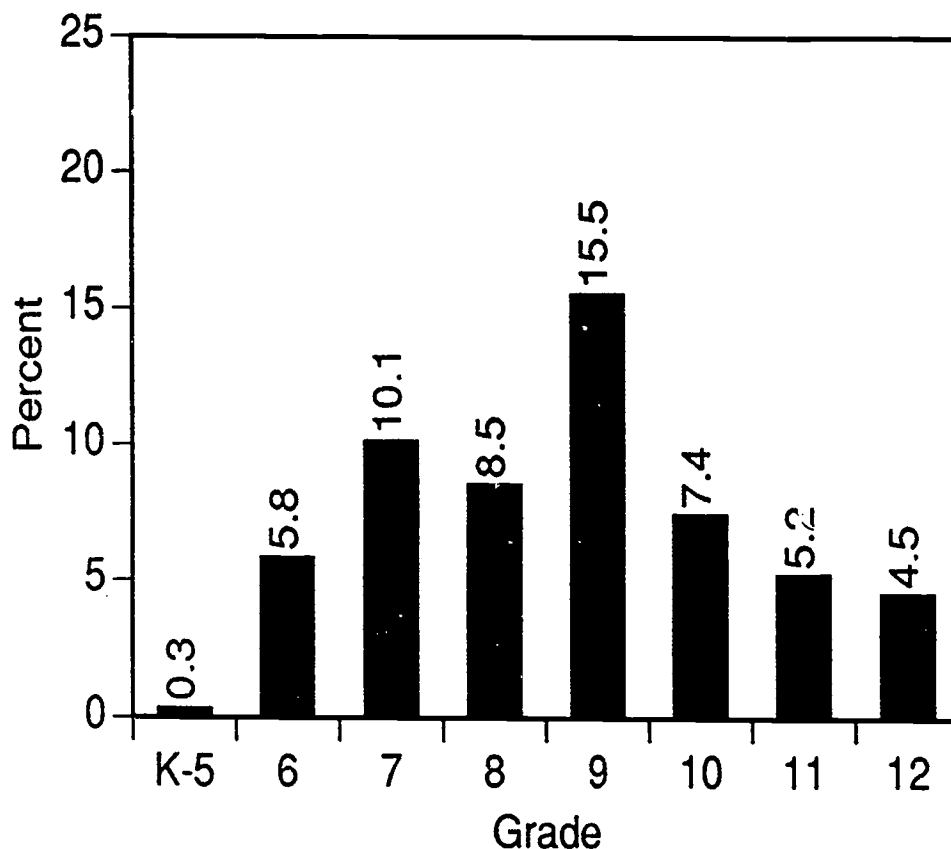
Figure 7

Grade	Change from last year	Amount of Change
K	No Change	
1	Down by...	1.5
2	Down by...	0.2
3	Down by...	0.1
4	Up by...	0.1
5	Up by...	0.1
6	Down by...	0.2
7	Down by...	0.1
8	Up by...	0.2
9	Down by...	1.6
10	Down by...	2.3
11	Down by....	1.2
12	Up by...	0.7

Potential Retainees

End-of-year 1992-93

Figure 8



Ways in which students are identified as potential retainees; at elementary, at middle school and at high school.

At the elementary level, students are recommended for retention by teachers in an identification process that ends in May.

At the middle school level, students must have an overall average of at least 70 and pass three of four major subjects (science, mathematics, English, and social studies) in order to be promoted to the next grade level. Or, if the student is below the 40th percentile of the norm reference test administered (NAPT), then the student must take a reading course and must pass four of five major courses (reading, science, mathematics, English, and social studies).

At the high school level, students must earn the number of credits required to advance to the next grade level. A student must earn 5 credits to advance to the tenth grade, 10 credits to advance to the eleventh grade, and 15 credits to advance to the twelfth grade.

Historical Retention Charts

Historical Retention Charts. Each chart lists information about a grade or about a grade range (e.g., Chart K-5.)

Within a chart, each line has two parts: the first part of the line lists information about end-of-year potential retainees. It begins with the school year and the number of potential retainees. The next two numbers in the line are the ADM and the end-of-year membership (EOY MEMB). The last two numbers are percentages calculated as follows: %ADM equals potential retainees divided by ADM, and %EOY MEMB equals potential retainees divided by EOY MEMB.

The second part of the line lists information about beginning-of-year actual retainees. It begins with the school year and the number of actual retainees (# retained). The next number reflects the fall reenrollment. The last three numbers are percentages calculated as follows: %ADM equals actual retainees divided by ADM (see first part of the line), the %EOY MEMB equals actual retainees divided by EOY MEMB. Finally, the % fall reenrollment equals actual retainees divided by fall reenrollment.

GRADE 00

<u>END OF YEAR</u>	<u>POTENTIAL RETAINEES</u>	<u>ADM</u>	<u>EOY MEMB</u>	<u>% ADM</u>	<u>% EOY MEMB</u>	<u>BEGINNING OF YEAR</u>	<u># RETAINED</u>	<u>FALL RE-ENROLLMENT</u>	<u>% ADM</u>	<u>% EOY MEMB</u>	<u>% FALL RE-ENROLLMENT</u>
88-89	.	5470	5622	.	.	89-90	91	5058	1.7	1.6	1.8
89-90	.	5647	7408	.	.	90-91	60	4999	1.1	1.1	1.2
90-91	.	5905	7634	.	.	91-92	35	5457	0.6	0.6	0.6
91-92	.	5856	7475	.	.	92-93	34	5373	0.6	0.6	0.6
92-93	.	6039	7529	.	.	93-94

GRADE 1

<u>END OF YEAR</u>	<u>POTENTIAL RETAINEES</u>	<u>ADM</u>	<u>EOY MEMB</u>	<u>% ADM</u>	<u>% EOY MEMB</u>	<u>BEGINNING OF YEAR</u>	<u># RETAINED</u>	<u>FALL RE-ENROLLMENT</u>	<u>% ADM</u>	<u>% EOY MEMB</u>	<u>% FALL RE-ENROLLMENT</u>
88-89	.	5904	6057	5.4	5.4	89-90	400	5485	6.8	6.6	7.3
89-90	328	6085	6079	5.4	5.4	90-91	290	5201	4.8	4.8	5.6
90-91	185	6093	6072	3.0	3.0	91-92	162	5630	2.7	2.7	2.9
91-92	79	6233	6200	1.3	1.3	92-93	76	5734	1.2	1.2	1.3
92-93	47	6051	5788	0.8	0.8	93-94

GRADE 2

<u>END OF YEAR</u>	<u>POTENTIAL RETAINEES</u>	<u>ADM</u>	<u>EOY MEMB</u>	<u>% ADM</u>	<u>% EOY MEMB</u>	<u>BEGINNING OF YEAR</u>	<u># RETAINED</u>	<u>FALL RE-ENROLLMENT</u>	<u>% ADM</u>	<u>% EOY MEMB</u>	<u>% FALL RE-ENROLLMENT</u>
88-89		5178	5405			89-90	105	4918	2.0	1.9	2.1
89-90	72	5774	5781	1.2	1.2	90-91	73	5133	1.3	1.3	1.4
90-91	33	5808	5795	0.6	0.6	91-92	37	5382	0.6	0.6	0.7
91-92	20	5944	5924	0.3	0.3	92-93	23	5475	0.4	0.4	0.4
92-93	29	6168	5916	0.5	0.5	93-94					

GRADE 3

<u>END OF YEAR</u>	<u>POTENTIAL RETAINEES</u>	<u>ADM</u>	<u>EOY MEMB</u>	<u>% ADM</u>	<u>% EOY MEMB</u>	<u>BEGINNING OF YEAR</u>	<u># RETAINED</u>	<u>FALL RE-ENROLLMENT</u>	<u>% ADM</u>	<u>% EOY MEMB</u>	<u>% FALL RE-ENROLLMENT</u>
88-89		4758	5100			89-90	64	4614	1.3	1.3	1.4
89-90	45	5425	5418	0.8	0.8	90-91	42	4803	0.8	0.8	0.9
90-91	24	5733	5731	0.4	0.4	91-92	23	5322	0.4	0.4	0.4
91-92	18	5807	5797	0.3	0.3	92-93	19	5421	0.3	0.3	0.4
92-93	11	5886	5597	0.2	0.2	93-94					

GRADE 4

<u>END OF YEAR</u>	<u>POTENTIAL RETAINEES</u>	<u>ADM</u>	<u>EOY MEMB</u>	<u>% ADM</u>	<u>% EOY MEMB</u>	<u>BEGINNING OF YEAR</u>	<u># RETAINED</u>	<u>FALL RE-ENROLLMENT</u>	<u>% ADM</u>	<u>% EOY MEMB</u>	<u>FALL RE-ENROLLMENT</u>
88-89		4515	4670			89-90	31	4223	0.7	0.7	0.7
89-90	24	5066	5040	0.5	0.5	90-91	25	4521	0.5	0.5	0.6
90-91	12	5334	5330	0.2	0.2	91-92	7	4967	0.1	0.1	0.1
91-92	14	5733	5721	0.2	0.2	92-93	13	5339	0.2	0.2	0.2
92-93	8	5830	5568	0.1	0.1	93-94					

GRADE 5

<u>END OF YEAR</u>	<u>POTENTIAL RETAINEES</u>	<u>ADM</u>	<u>EOY MEMB</u>	<u>% ADM</u>	<u>% EOY MEMB</u>	<u>BEGINNING OF YEAR</u>	<u># RETAINED</u>	<u>FALL RE-ENROLLMENT</u>	<u>% ADM</u>	<u>% EOY MEMB</u>	<u>FALL RE-ENROLLMENT</u>
88-89		4286	4476			89-90	32	4040	0.7	0.7	0.8
89-90	22	4668	4646	0.5	0.5	90-91	35	4148	0.7	0.8	0.8
90-91	11	5095	5087	0.2	0.2	91-92	16	4688	0.3	0.3	0.3
91-92	16	5315	5284	0.3	0.3	92-93	21	4777	0.4	0.4	0.4
92-93	21	5694	5408	0.4	0.4	93-94					

GRADES K-5

END OF YEAR	POTENTIAL RETAINEES	ADM	EOY MEMB	% ADM	% EOY MEMB	BEGINNING OF YEAR	# RETAINED	FALL RE-ENROLLMENT	% ADM	% EOY MEMB	% FALL RE-ENROLLMENT
86-87	87-88	935	.	3.0	.	.
87-88	88-89	746	.	2.3	.	.
88-89	.	30111	31330	.	.	89-90	723	28338	2.4	2.3	2.6
89-90	491	32665	34372	1.5	1.4	90-91	525	28805	1.6	1.6	1.8
90-91	265	33968	35649	0.8	0.7	91-92	280	31446	0.8	0.8	0.9
91-92	147	34888	36401	0.4	0.4	92-93	186	32119	0.5	0.5	0.6
92-93	116	35668	35806	0.3	0.3	93-94

GRADE 6 (ELEM)

END OF YEAR	POTENTIAL RETAINEES	ADM	EOY MEMB	% ADM	% EOY MEMB	BEGINNING OF YEAR	# RETAINED	FALL RE-ENROLLMENT	% ADM	% EOY MEMB	% FALL RE-ENROLLMENT
88-89	.	679	676	.	.	89-90	8	626	1.2	1.2	1.3
89-90	.	711	709	.	.	90-91	4	617	0.6	0.6	0.6
90-91	.	716	723	.	.	91-92	1	671	0.1	0.1	0.1
91-92	.	809	819	.	.	92-93	2	745	0.2	0.2	0.3
92-93	.	840	636	.	.	93-94

GRADES K-6 (ELEM)

<u>END OF YEAR</u>	<u>POTENTIAL RETAINNEES</u>	<u>ADM</u>	<u>EOY MEMB</u>	<u>% ADM</u>	<u>% EOY MEMB</u>	<u>BEGINNING OF YEAR</u>	<u># RETAINED</u>	<u>FALL RE-ENROLLMENT</u>	<u>% ADM</u>	<u>% EOY MEMB</u>	<u>% FALL RE-ENROLLMENT</u>
79-80	80-81	573	.	2.0	.	.
80-81	81-82	1251	.	4.3	.	.
81-82	82-83	1585	.	5.3	.	.
82-83	83-84	1133	.	3.9	.	.
83-84	84-85	1134	.	3.5	.	.
84-85	85-86	1331	.	4.1	.	.
85-86	86-87	1254	.	3.8	.	.
88-89	.	30790	32006	.	.	89-90	731	28964	2.4	2.3	2.5
89-90	.	33376	35081	.	.	90-91	529	29422	1.6	1.6	1.8
90-91	.	34684	36372	.	.	91-92	281	32117	0.8	0.8	0.9
91-92	.	35697	37220	.	.	92-93	188	32864	0.5	0.5	0.6
92-93	.	36508	36442	.	.	93-94

GRADE 6 (MIDDLE SCHOOL)

<u>END OF YEAR</u>	<u>POTENTIAL RETAINNEES</u>	<u>ADM</u>	<u>EOY MEMB</u>	<u>% ADM</u>	<u>% EOY MEMB</u>	<u>BEGINNING OF YEAR</u>	<u># RETAINED</u>	<u>FALL RE-ENROLLMENT</u>	<u>% ADM</u>	<u>% EOY MEMB</u>	<u>% FALL RE-ENROLLMENT</u>
88-89	.	3387	3487	.	.	89-90	123	3195	3.6	3.5	3.8
89-90	.	3800	3716	.	.	90-91	129	3416	3.4	3.5	3.8
90-91	.	3993	3907	.	.	91-92	87	3597	2.2	2.2	2.4
91-92	.	4266	4173	.	.	92-93	91	3867	2.1	2.2	2.4
92-93	.	4311	4233	.	.	93-94



GRADE 6 (ALL)

END OF YEAR	POTENTIAL RETAINEES	ADM	EOY MEMB	% ADM	% EOY MEMB	BEGINNING OF YEAR	# RETAINED	FALL RE-ENROLLMENT	% ADM	% EOY MEMB	% FALL RE-ENROLLMENT
88-89	.	4066	4194	.	.	89-90	142	3846	3.5	3.4	3.7
89-90	.	4511	4454	.	.	90-91	144	4062	3.2	3.2	3.5
90-91	.	4709	4630	.	.	91-92	103	4311	2.2	2.2	2.4
91-92	275	5075	4992	5.4	5.5	92-93	101	4651	2.0	2.0	2.2
92-93	300	5151	4869	5.8	6.2	93-94

GRADE 7

END OF YEAR	POTENTIAL RETAINEES	ADM	EOY MEMB	% ADM	% EOY MEMB	BEGINNING OF YEAR	# RETAINED	FALL RE-ENROLLMENT	% ADM	% EOY MEMB	% FALL RE-ENROLLMENT
88-89	.	4533	4083	.	.	89-90	189	3707	4.2	4.6	5.1
89-90	.	4283	4229	.	.	90-91	198	3877	4.6	4.7	5.1
90-91	.	4473	4423	.	.	91-92	158	4102	3.5	3.6	3.9
91-92	455	4708	4656	9.7	9.8	92-93	161	4310	3.4	3.5	3.7
92-93	508	5014	4952	10.1	10.3	93-94

GRADE 8

END OF YEAR	POTENTIAL RETAINEES	ADM	EOY MEMB	% ADM	% EOY MEMB	BEGINNING OF YEAR	# RETAINED	FALL RE-ENROLLMENT	% ADM	% EOY MEMB	% FALL RE-ENROLLMENT
88-89	.	4044	4008	.	.	89-90	133	3557	3.3	3.3	3.7
89-90	.	4099	4055	.	.	90-91	90	3717	2.2	2.2	2.4
90-91	.	4079	4014	.	.	91-92	76	3697	1.9	1.9	2.1
91-92	445	4324	4307	10.3	10.3	92-93	89	3935	2.1	2.1	2.3
92-93	381	4474	4418	8.5	8.6	93-94

GRADES 6-8 (SECONDARY)

END OF YEAR	POTENTIAL RETAINEES	ADM	EOY MEMB	% ADM	% EOY MEMB	BEGINNING OF YEAR	# RETAINED	FALL RE-ENROLLMENT	% ADM	% EOY MEMB	% FALL RE-ENROLLMENT
86-87	87-88	719	.	6.0	.	.
87-88	88-89	490	.	4.1	.	.
88-89	.	11964	11578	.	.	89-90	445	10459	3.7	3.8	4.3
89-90	.	12182	12000	.	.	90-91	417	11010	3.4	3.5	3.8
90-91	.	12545	12344	.	.	91-92	321	11396	2.6	2.6	2.8
91-92	.	13298	13136	.	.	92-93	341	12112	2.6	2.6	2.8
92-93	.	13799	13603	.	.	93-94

GRADES 7-8

END OF YEAR	POTENTIAL RETAINEES	ADM	EOY MEMB	% ADM	% EOY MEMB	BEGINNING OF YEAR	# RETAINED	FALL RE-ENROLLMENT	% ADM	% EOY MEMB	% FALL RE-ENROLLMENT
79-80						80-81	176		2.2		
80-81						81-82	181		2.2		
81-82						82-83	220		2.6		
82-83						83-84	200		2.4		
83-84						84-85	210		2.3		
84-85						85-86	285		3.3		
85-86						86-87	1066		12.6		
88-89		8577	8091			89-90	322	7264	3.8	4.0	4.4
89-90		8382	8284			90-91	288	7594	3.4	3.5	3.8
90-91		8552	8437			91-92	234	7799	2.7	2.8	3.0
91-92	900	9032	8963	10.0	10.0	92-93	250	8245	2.8	2.8	3.0
92-93	889	9488	9370	9.4	9.5						

GRADE 9

END OF YEAR	POTENTIAL RETAINEES	ADM	EOY MEMB	% ADM	% EOY MEMB	BEGINNING OF YEAR	# RETAINED	FALL RE-ENROLLMENT	% ADM	% EOY MEMB	% FALL RE-ENROLLMENT
88-89		4643	4713			89-90	1140	4109	24.6	24.2	27.7
89-90	640	5212	4812	12.3	13.3	90-91	1149	4354	22.0	23.9	26.4
90-91	596	5189	4754	11.5	12.5	91-92	1168	4337	22.5	24.6	26.9
91-92	638	5247	4806	12.2	13.3	92-93	1094	4344	20.9	22.8	25.2
92-93	847	5474	5000	15.5	16.9						

GRADE 10

<u>END OF YEAR</u>	<u>POTENTIAL RETAINEES</u>	<u>ADM</u>	<u>EOY MEMB</u>	<u>% ADM</u>	<u>% EOY MEMB</u>	<u>BEGINNING OF YEAR</u>	<u># RETAINED</u>	<u>FALL RE-ENROLLMENT</u>	<u>% ADM</u>	<u>% EOY MEMB</u>	<u>% FALL RE-ENROLLMENT</u>
88-89		3695	3365			89-90	301	2985	8.1	8.9	10.1
89-90	552	3540	3356	15.6	16.4	90-91	400	3115	11.3	11.9	12.8
90-91	192	3776	3608	5.1	5.3	91-92	447	3325	11.8	12.4	13.4
91-92	177	3705	3493	4.8	5.1	92-93	352	3232	9.5	10.1	10.9
92-93	279	3783	3577	7.4	7.8	93-94					

GRADE 11

<u>END OF YEAR</u>	<u>POTENTIAL RETAINEES</u>	<u>ADM</u>	<u>EOY MEMB</u>	<u>% ADM</u>	<u>% EOY MEMB</u>	<u>BEGINNING OF YEAR</u>	<u># RETAINED</u>	<u>FALL RE-ENROLLMENT</u>	<u>% ADM</u>	<u>% EOY MEMB</u>	<u>% FALL RE-ENROLLMENT</u>
88-89		3509	3067			89-90	233	2760	6.6	7.6	8.4
89-90	674	3179	2977	21.2	22.6	90-91	241	2699	7.6	8.1	8.9
90-91	134	3148	2951	4.3	4.5	91-92	253	2710	8.0	8.6	9.3
91-92	119	3248	3052	3.7	3.9	92-93	221	2822	6.8	7.2	7.8
92-93	169	3253	3021	5.2	5.6	93-94					

GRADE 12

END OF YEAR	POTENTIAL RETAINEES	ADM	EOY MEMB	% ADM	% EOY MEMB	BEGINNING OF YEAR	# RETAINED	FALL RE-ENROLLMENT	% ADM	% EOY MEMB	% FALL RE-ENROLLMENT
88-89		3153	3287	3.7	3.6	89-90	87	213	2.8	2.6	40.8
89-90	110	2947	3043	3.7	3.6	90-91	104	239	3.5	3.4	43.5
90-91	80	2828	2902	2.8	2.8	91-92	84	223	3.0	2.9	37.7
91-92	85	2777	2907	3.1	2.9	92-93	104	260	3.7	3.6	40.0
92-93	132	2955	3041	4.5	4.3	93-94					

GRADES 9-12

END OF YEAR	POTENTIAL RETAINEES	ADM	EOY MEMB	% ADM	% EOY MEMB	BEGINNING OF YEAR	# RETAINED	FALL RE-ENROLLMENT	% ADM	% EOY MEMB	% FALL RE-ENROLLMENT
79-80						80-81	1279		8.0		
80-81						81-82	1843		12.0		
81-82						82-83	1559		10.3		
82-83						83-84	1505		10.7		
83-84						84-85	1626		10.4		
84-85						85-86	1671		10.6		
85-86						86-87	1798		11.5		
86-87						87-88	1529		10.2		
87-88						88-89	1548		10.3		
88-89		15000	1432			89-90	1761	10067	11.7	12.2	17.5
89-90	1976	14878	14188	13.3	13.9	90-91	1894	10407	12.7	13.3	18.2
90-91	1002	14941	14215	6.7	7.0	91-92	1952	10595	13.1	13.7	18.4
91-92	1019	14977	14258	6.8	7.1	92-93	1771	10658	11.8	12.4	16.6
92-93	1427	15465	14639	9.2	9.7	93-94					

GRADES K-12

<u>END OF YEAR</u>	<u>POTENTIAL RETAINABLES</u>	<u>ADM</u>	<u>EOY MEMB</u>	<u>% ADM</u>	<u>% EOY MEMB</u>	<u>BEGINNING OF YEAR</u>	<u># RETAINED</u>	<u>FALL RE-ENROLLMENT</u>	<u>% ADM</u>	<u>% EOY MEMB</u>	<u>% FALL RE-ENROLLMENT</u>
79-80	80-81	2028	.	3.8	.	.
80-81	81-82	3275	.	6.2	.	.
81-82	82-83	3364	.	6.3	.	.
82-83	83-84	2838	.	5.5	.	.
83-84	84-85	2970	.	5.2	.	.
84-85	85-86	3287	.	5.8	.	.
85-86	86-87	4118	.	7.2	.	.
86-87	87-88	3183	.	5.5	.	.
87-88	88-89	2784	.	4.7	.	.
88-89	.	57754	58047	.	.	89-90	2948	49515	5.1	5.1	6.0
89-90	.	60436	61298	.	.	90-91	2851	50868	4.7	4.8	5.6
90-91	.	62170	62931	.	.	91-92	2569	54151	4.1	4.2	4.7
91-92	2341	63972	64614	3.7	3.6	92-93	2308	55673	3.6	3.7	4.1
92-93	2732	65772	64684	4.2	4.2	93-94

Appendix

Definitions of terms used in charts

Actual Retainees	Elementary or middle school students who are repeating a grade level, or high school students who did not earn enough credits to advance a grade level. This number is determined by comparing the student master file for the end of a school year with the updated student master file after the beginning of the next school year. (See also Potential Retainees.)
Average Daily Membership (ADM)	An average over the school year of the number of students enrolled in the District.
End-Of-Year Membership (EOYM)	The number of students officially enrolled at the end of a school year.
Fall Reenrollment	The number of students who returned to the District from the previous school year. The number of students that were on the student master file at the end of the school year and were also enrolled after the beginning of the next school year.
Potential Retainees (PR)	<p>A list of potential retainees is generated at the end of each school year. These students are retainees pending summer school, withdrawal, and other circumstances. At the elementary level, students are recommended for retention by teachers in an identification process that ends in May.</p> <p>At the middle school level, students must have an overall average of at least 70 and pass three of four major subjects (science, mathematics, English, and social studies) in order to be promoted to the next grade level. Or, if the student is below the 40th percentile of the norm: reference test administered (NAPT), then the student must take a reading course and must pass four of five major courses (reading, science, mathematics, English, and social studies).</p> <p>At the high school level, students must earn the number of credits required to advance to the next grade level. A student must earn 5 credits to advance to the tenth grade, 10 credits to advance to the eleventh grade, and 15 credits to advance to the twelfth grade.</p>

History of retention data collection

Results for the years 1980-81 through 1987-88 were taken from ORE publication No. 89.13 "1989-90 Retention Report." Results for 1988-89 were produced by the computer program SA\$RETEN (ORSLEP library). Results for 1989-90 and beyond are produced by a revision of SA\$RETEN named VP\$RET4 and VP\$RET5 (ORSSAS library). In 1993, the last two programs were renamed MS\$RET4 and MS\$RET5.

Before 1990, only results for composite grade levels K-6, 7-8, 9-12, and K-12 were recorded. Percentages for those years were based upon the average daily membership.

After 1990, the retention reporting process was expanded to include statistics that were not previously reported such as percent of end-of-year membership (% EOYM) and percent of fall reenrollment. Also, numbers for each individual level and for various composite grade levels are reported.

The student master files used in this report were designated complete and updated at four different times during the year. These files were also archived so that any desired post hoc analysis would be possible.

Austin Independent School District

Office of Research and Evaluation

Dr. Evangelina Mangino, Assistant Director

Authors:

Vicente Paredes, Research Analyst
Mario Sanchez, Research Analyst

Contributing Staff:

Stacy Buffington, Programmer/Analyst
Allan Meyer, Evaluation Associate
Ruth Fairchild, Secretary



Board of Trustees

Dr. Beatriz de la Garza, President
Kathy Rider, Vice President
Dr. Gary R. McKenzie, Secretary

Diana Castañeda
Liz Hartman
John Lay

Bernice Hart
Melissa Knippa
Ted Whatley

Superintendent of Schools
Dr. Terry N. Bishop