

DOCUMENT RESUME

ED 358 902

JC 930 337

TITLE The Five-Year Follow-Up Report: A Survey of 1986-1987 Graduates.

INSTITUTION Arrowhead Community Coll. Region, Grand Rapids, MN.

PUB DATE Jun 93

NOTE 19p.; For the survey of 1985-86 graduates, see ED 345 821.

PUB TYPE Reports - Research/Technical (143) -- Tests/Evaluation Instruments (160)

EDRS PRICE MF01/PC01 Plus Postage.

DESCRIPTORS *College Graduates; Community Colleges; Degrees (Academic); *Educational Attainment; Educational Status Comparison; Education Work Relationship; *Employment; Followup Studies; Graduate Surveys; Multicampus Colleges; *Outcomes of Education; Questionnaires; *Salaries; Two Year Colleges; Two Year College Students; Vocational Followup

IDENTIFIERS *Arrowhead Community College Region MN

ABSTRACT

In 1992, a survey was conducted of students who had graduated from the five colleges of the Arrowhead Community College Region (ACCR) during the 1986-87 academic year. Surveys were mailed to all 785 graduates, requesting information on their educational backgrounds, current employment, and assessment of their educational experience. Responses were received from 34% of the graduates (n=267), yielding the following results: (1) 37.8% of respondents had earned a bachelor's degree, while 1.9% had earned a master's degree; (2) the top fields for bachelor's degrees were accounting/business (23.8%), education (21.8%), engineering/science (12.9%), medical and health related fields (7.9%), and communications (5.0%); (3) 50.6% had earned additional higher education credits since graduating; (4) 72.2% of those employed were working 40 hours or more per week, while 24.5% of respondents were working 20 to 39 hours per week; (5) 27.8% of respondents earned between \$7.01 to \$10.00 per hour; (6) 13.9% of respondents who earned a bachelor's degree had gross earnings of more than \$16.00 per hour, while 48.5% earned between \$7.01 to \$16.00 per hour; (7) wholesale/retail trade and health care were the two largest categories of employment at 19.4%, followed by government (13.5%), education (12.7%), services (11.4%), finance, insurance, real estate (9.3%), manufacturing (8.9%), mining (3.0%), transportation (1.3%), and construction (0.8%); (8) 77.3% said their work was closely related to their community college education; and (9) 87.9% said their ACCR education was helpful in their present work, while 71.5% thought it helpful in continuing their education. The survey instrument, graphs, and tables of responses by ACCR college are included. (MAB)

* Reproductions supplied by EDRS are the best that can be made *
 * from the original document. *

ED358902

ARROWHEAD
COMMUNITY
COLLEGE
REGION

THE FIVE-YEAR FOLLOW-UP REPORT



A SURVEY OF 1986 - 1987 GRADUATES

JC 930 337

"PERMISSION TO REPRODUCE THIS
MATERIAL HAS BEEN GRANTED BY

G. Braxton-Brown

TO THE EDUCATIONAL RESOURCES
INFORMATION CENTER (ERIC)."

U.S. DEPARTMENT OF EDUCATION
Office of Educational Research and Improvement
EDUCATIONAL RESOURCES INFORMATION
CENTER (ERIC)

This document has been reproduced as
received from the person or organization
originating it

Minor changes have been made to improve
reproduction quality

• Points of view or opinions stated in this docu-
ment do not necessarily represent official
OERI position or policy

▶
H I B B I N G
I T A S C A
M E S A B I
RAINY RIVER
VERMILION
FOND DU LAC
D U L U T H
▶

The
FIVE-YEAR FOLLOW-UP
Report

A Survey of 1986 - 1987 Graduates

June 1993

Prepared by the
ARROWHEAD COMMUNITY COLLEGE REGION
Office of Institutional Research
Stephen C. Von Wald, Director

RESEARCH SUMMARY

THE FIVE-YEAR FOLLOW-UP REPORT

June 1993

ARROWHEAD COMMUNITY COLLEGE

1855 E. Highway 169
Grand Rapids,
Minnesota 55744
[218] 327-4580

INTRODUCTORY INFORMATION

- 785 students graduated from Arrowhead's five colleges during the 1986-1987 academic year.
 - ▷ 372 graduated with Associate in Arts degrees.
 - ▷ 290 earned Associate in Applied Science degrees.
 - ▷ 123 received one-year occupational certificates.
- 34% (267) of Arrowhead's 1986-1987 graduates responded to the survey.

EDUCATIONAL ACHIEVEMENTS

- The respondents were asked to indicate the highest educational level they had achieved since graduation.
 - ▷ 37.8% had earned a bachelor's degree.
 - ▷ 1.9% had earned a master's degree.
- Of those who had earned a bachelor's degree...
 - ▷ 21.8% majored in elementary or secondary education.
 - ▷ 23.8% majored in accounting or business.
 - ▷ 12.9% majored in engineering or science.
 - ▷ 7.9% majored in medical and health related fields.
 - ▷ 5.0% majored in communications.
- 41 of those who responded (15.4%) were currently continuing their educations; of those who specified, 5 were pursuing another one- or two-year degree, 13 were seeking bachelor's degrees, 12 were striving towards master's degrees, and 1 was seeking a doctorate.
- 50.6% stated that they had earned additional higher education credits since they graduated from an Arrowhead college.

▶
H I B B I N G
I T A S C A
M E S A B I
R A I N Y R I V E R
V E R M I L I O N
F O N D d u L A C
D U L U T H
▶

CURRENT EMPLOYMENT

- 72.2% of those employed who responded are working 40 hours or more per week and 24.5% are working 20 to 39 hours per week.
- 89.8% of those working who responded are employed permanently, 5.1% are employed on a temporary basis, and 5.1% have seasonal employment.
- Those who were employed indicated that they worked in the following categories:

Wholesale & Retail Trade	19.4%
Health Care	19.4%
Government (Federal, State, and Local)	13.5%
Education	12.7%
Services	11.4%
Finance, Insurance, & Real Estate	9.3%
Manufacturing	8.9%
Mining	3.0%
Transportation	1.3%
Construction8%

- The graduates were asked to state their current gross earnings by the hour. Of those who responded...
 - ▷ 16.2% earned \$7.00 or less per hour.
 - ▷ 27.8% earned \$7.01 to \$10.00 per hour.
 - ▷ 25.3% earned \$10.01 to \$13.00 per hour.
 - ▷ 19.2% earned \$13.01 to \$16.00 per hour.
 - ▷ 11.6% earned more than \$16.00 per hour.
- 13.9% of the respondents who had a bachelor's degree had gross earnings of more than \$16.00 per hour and 48.5% earned \$7.01 to 16.00 per hour.
- 77.3% said their work was directly or closely related to their community college education.
- 87.9% said their Arrowhead college education has been helpful or very helpful in their present work.
- 71.5% said their Arrowhead college education has been helpful or very helpful in continuing their education.

CONTENTS

INTRODUCTION	1
EDUCATIONAL ACHIEVEMENTS	1
CURRENT EMPLOYMENT	3
WRITTEN COMMENTS	6
SUMMARY	6
SURVEY QUESTIONNAIRE	A1
TABLES	B1

INTRODUCTION

A study of Arrowhead Community College graduates was conducted during the late summer and early fall of 1992. The study took the form of a survey which was mailed to Arrowhead students who had graduated during the 1986-1987 academic year. Of the 785 graduates from that year, 267 responded to the survey. That is a response rate of 34 percent.

The graduates were asked to provide some basic information about their educational backgrounds and current employment status. They were also asked to assess the value of the education they received at the community college in continuing their education and in their current employment.

During the 1986-1987 academic school year, 372 students graduated from Arrowhead's five colleges with an Associate in Arts degree, 290 students earned Associate in Applied Science degrees and 123 students earned one-year occupational certificates.

EDUCATIONAL ACHIEVEMENTS

In the Fall of 1987, Arrowhead Community Colleges conducted a follow-up survey of their 1986-87 graduates. The study showed that 80.9 percent of those who graduated with an Associate in Arts degree were continuing their education and were enrolled in an institution of higher education.

THE FIVE-YEAR FOLLOW-UP OF 1986-1987 GRADUATES

In the 1992 follow-up survey, graduates were asked to indicate the highest educational level they had achieved. Of the 267, 37.8 percent have gone on to earn bachelor's degrees, 1.9 percent have earned master's degrees. The distribution of degrees among the Arrowhead graduates responding to the survey is shown in Figure 1.

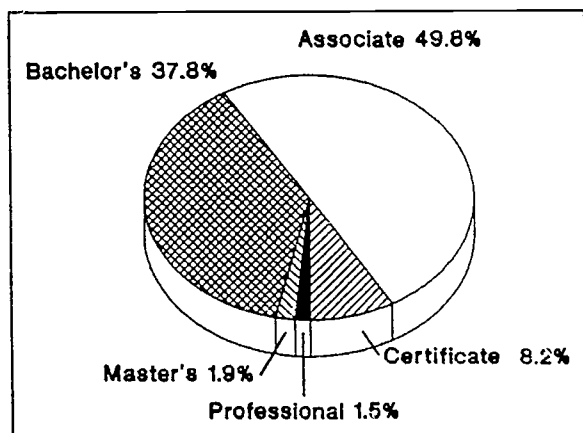


FIGURE 1 The Highest Educational Level Achieved thus Far.

The graduates were also asked to indicate the major field of study in which they earned their degree. The majors for the 101 bachelor and 5 master degrees are listed in Figure 2. There were four 1987 graduates who identified themselves in the professional category. One is an attorney, one a licensed social worker, one a real estate broker, and one is an Early Childhood Family Educator.

When asked if they were currently a student, 41 indicated that they were continuing their education at this time. Table 3a & b (page B2) shows the list of all the institutions they are currently attending and the majors and degrees they plan to earn. When provided,

the credit load for each student is also presented. These 41 graduates represent 15.4 percent of the survey respondents who are currently continuing their education.

BACHELOR'S DEGREE	
Accounting	10
Art	1
Biblical studies, Ministries	2
Biochemistry	1
Biology/Environmental Studies	3
Business Administration	14
Chemical Engineering	1
Clinical Laboratory Science	2
Communications	5
Computer Science/Engineering	4
Criminal Justice	3
Education	18
Electrical Engineering	3
English	2
Forest Resources Management	2
Health Information Administration	2
Human Resource Management	1
Indian Studies	1
Industrial Technology	2
Mathematics	4
Mechanical Engineering	1
Medical Technology	1
Nursing	1
Pharmacy	1
Physical Education, Recreation	2
Political Science/History	1
Psychology	4
Public Administration	1
Social Studies, Secondary Education	4
Social Work	2
Sociology	1
No Response	1
TOTAL 101	
MASTER'S DEGREE	
Communication Disorders (M.A.)	1
Criminal Justice (M.S.)	1
Industrial Safety/Hygiene (M.S.)	1
Special Education (L.D.)	1
Urban Forestry (M.S.)	1
TOTAL 5	

FIGURE 2 Major of Highest Degree Earned.

The second question on the survey questionnaire asked the graduates to indicate

THE FIVE-YEAR FOLLOW-UP OF 1986-1987 GRADUATES

the approximate number of credits they have earned since they graduated from an Arrowhead College. More than half, 50.6 percent, stated that they had earned additional higher education credits since they graduated. Figure 3 shows the credits earned by the graduates since they left their Arrowhead college. These figures would appear to be consistent with the number of respondents who had earned or who are pursuing bachelor's, master's and other degrees.

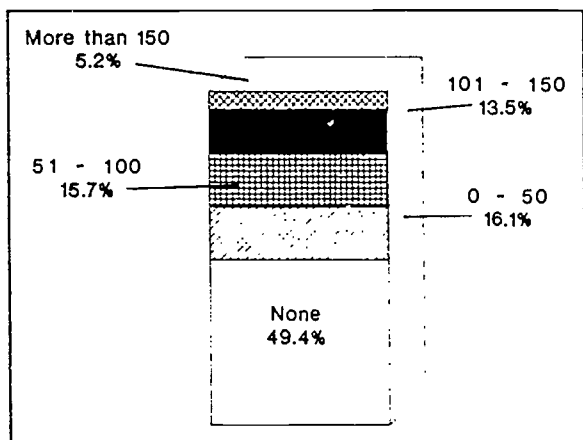


FIGURE 3 Credits Earned by 1987 Graduates Since They Left Their Arrowhead College.

CURRENT EMPLOYMENT

The fourth question on the survey questionnaire is actually a group of questions pertaining to the graduates' employment, condition of employment and employment status. The respondents were also asked to assess the value of the education they received while at their community college in relationship to their job and their continuing education, if applicable.

Arrowhead Community College Region

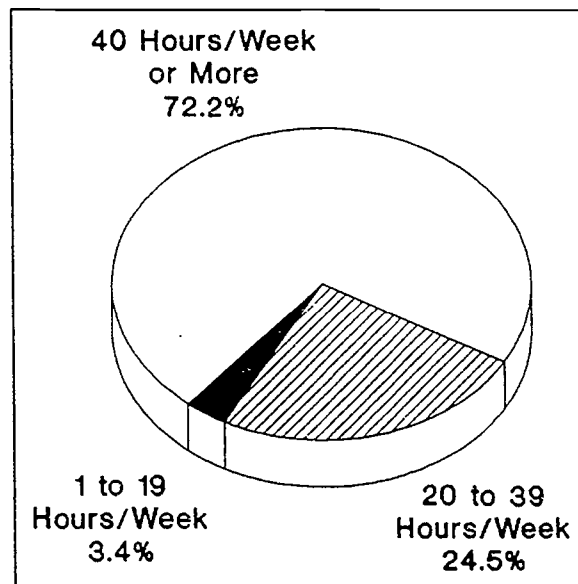


FIGURE 4 Number of Hours Worked Per Week.

As shown in Figure 4, nearly three-quarters (72.2 percent) of those responding to this question work 40 hours a week or more while another 24.5 percent work 20 to 39 hours a week. This accounts for 96.6 percent of all who responded to this question.

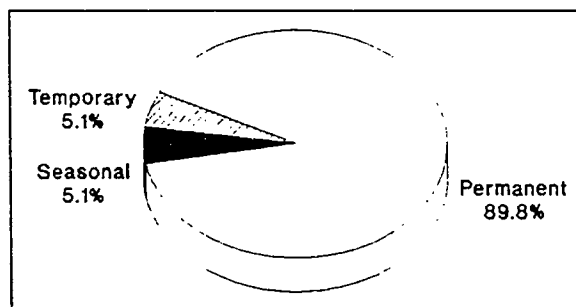


FIGURE 5 Condition of Employment.

Nearly nine of every ten (89.8%) of those who answered this question also stated that their condition of employment was

THE FIVE-YEAR FOLLOW-UP OF 1986-1987 GRADUATES

permanent. As shown in Figure 5, 5.1 percent were employed on a temporary basis and 5.1 percent classified themselves as seasonally employed.

Interestingly, when the graduates were asked to state the name of their employers, the result was that there were very few recurring names that appeared on the list. In fact, the list of employers is very diversified. While one might suspect that the larger employers in the area such as Blandin Paper, USX, LTV Steel, United Health Care, VRMC, MRMC or Boise Cascade might employ a large number of our graduates, the fact is that within this group of graduates only two or three respondents indicated that they were employed by the same employer.

CONSTRUCTION	2	.8%
EDUCATION	30	12.7
FINANCE, INSURANCE, & REAL ESTATE	22	9.3
GOVERNMENT		
FEDERAL	9	3.8
STATE	4	1.7
LOCAL	19	8.0
HEALTH CARE	46	19.4
MANUFACTURING	21	8.9
MINING	7	3.0
SERVICES	27	11.4
TRANSPORTATION	3	1.3
WHOLESALE & RETAIL TRADE	46	19.4
NO RESPONSE	1	.4
TOTAL	237	

FIGURE 6 Employment Distribution of 1986-1987 Graduates Within Industry Categories.

The responding graduates were also asked to indicate their gross earnings. Since nine of

ten of the graduates responding stated that they were permanently employed and seven of ten work 40 hours a week or more, it is useful to know the configuration of the wage distribution within this group. Figure 7 illustrates this distribution based on gross hourly earnings.

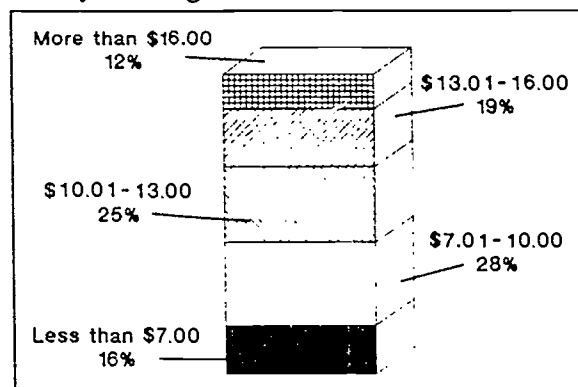


FIGURE 7 Hourly Gross Pay For All 1987 Graduates.

To get a clearer picture of the distribution of salaries and perhaps gain some insight into what influence, if any, the level of education has on the salaries earned by the respondents, their monthly wages were distributed based on their highest level of education. Figures 8a, 8b, and 8c show the results of this breakdown. Figures 8a and 8b show the distribution of salaries among graduates whose highest degree was a one-year certificate or an associate degree. Those who earned \$10.00-\$13.00 per hour were predominantly working in the fields of law enforcement, health care or skilled trades. Those earning more than \$13.00 an hour were in the fields of skilled trades and registered nursing.

THE FIVE-YEAR FOLLOW-UP OF 1986-1987 GRADUATES

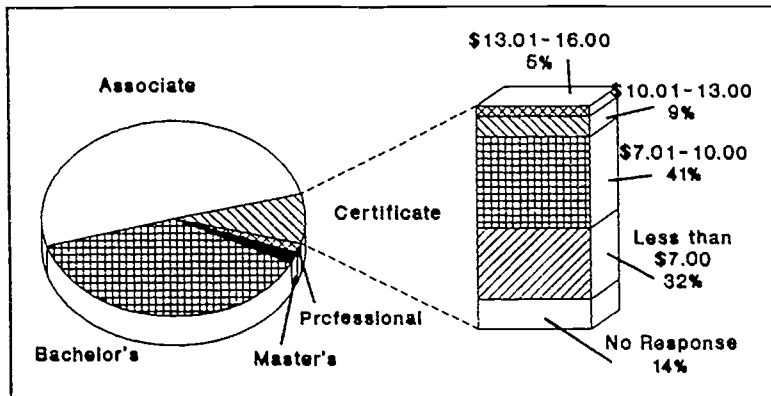


FIGURE 8a Certificate Salary Distribution.

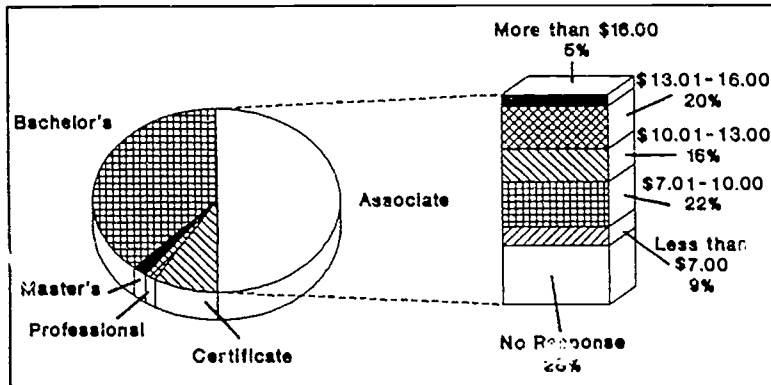


FIGURE 8b Associate Degree Salary Distribution.

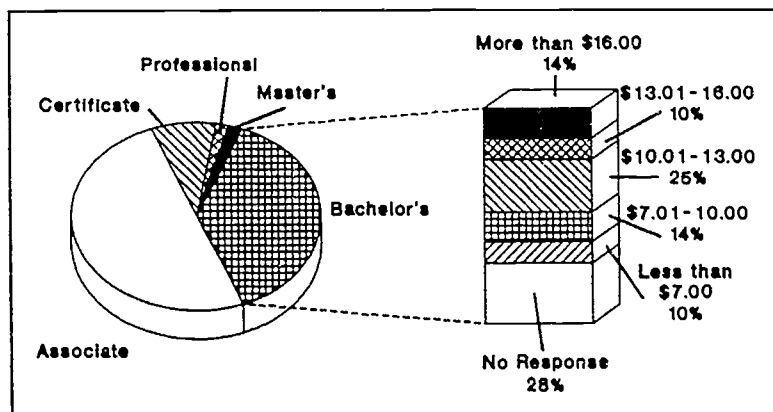


FIGURE 8c Bachelor's Degree Salary Distribution.

Those with bachelor's degrees who earned \$10.00-\$13.00 an hour were employed in the medical services, accounting, teaching and skilled trades. Those who earned more than \$13.00 an hour were working in engineering and specialized technical fields and health-related fields.

At the master's level, those working in specialized health care and safety earned \$13.00 an hour and more. No one with a master's degree indicated that they were currently earning more than \$3,200 a month.

Eighty-eight percent of the graduates who responded to this question indicated that they went to work for their current employer after they graduated from an Arrowhead college. However, 3 percent said that they were working for their employer before they started attending college. Nine percent indicated that they started working for their employer while attending college.

When asked to assess the relationship between their *present* employment and their

THE FIVE-YEAR FOLLOW-UP OF 1986-1987 GRADUATES

community college education, 77 percent of those responding said that their education was either directly or closely related.

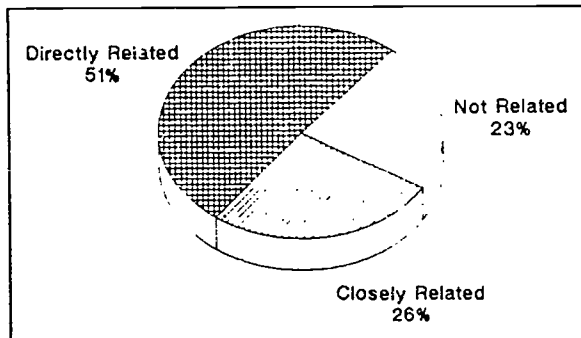


FIGURE 9 How Closely Related Is Your Present Job To Your Community College Education?

Then graduates were asked to assess the helpfulness or *value* of their community college education with respect to their work and to their continuing education. The results are shown in Figure 10. These two questions addressed the graduates' assessment of the value of their education in their work and learning lives. The response to both questions was positive.

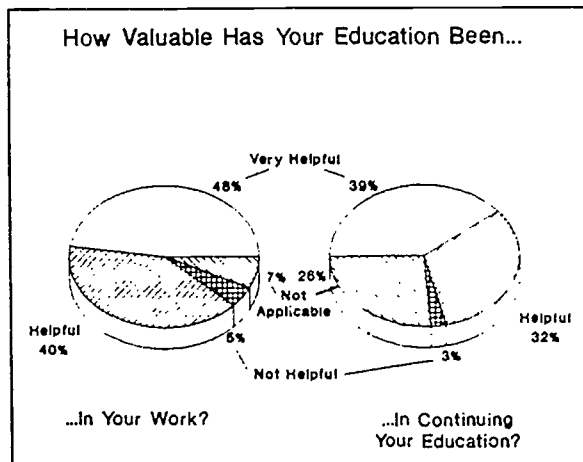


FIGURE 10 The Value Of Your Education

WRITTEN COMMENTS

At the end of the questionnaire, the survey participants are invited to make comments or suggestions about the college they had attended. The comments and suggestions were generally positive.

Three aspects of the colleges were identified out by the graduates: the college environment, the quality of education, and the faculty and staff of the colleges. The graduates made very positive remarks about each of these areas. For the most part, they felt they had received a quality education at Arrowhead Community Colleges.

The areas in which the respondents were either critical or made specific suggestions for improvement were counseling and advising.

SUMMARY

As we continue our follow-up of Arrowhead graduates in the coming years, we will be able to build on the information which we collected from this survey. It is our hope to isolate and clarify many of the concerns facing Arrowhead colleges and their students.

Many questions are being asked about college graduates. Where are they now? What are they doing now? Has their education made a difference in their lives? Do we help make that difference? What can we do to improve the institution and aid students in achieving their academic goals? We hope this report has begun to answer some of these questions.

FIVE YEAR FOLLOW-UP PLACEMENT SURVEY

This survey is sent to all graduates of Mesabi Community College. A confidential summary is prepared from it, and used to inform current students about the job market as well as to discover what our graduates are doing and what they have achieved. Your participation in this survey is appreciated. Please write-in or mark your replies to the following questions and mail the form back to the college as soon as you can.

1. Please list all educational levels you have achieved thus far.

	Degree Earned	Major	College(s)
Certificate (1-year)	_____	_____	_____
Associate (2-year) Degree	_____	_____	_____
Bachelor's (4-year) Degree	_____	_____	_____
Master's Degree	_____	_____	_____
PhD Degree	_____	_____	_____
Professional Degree (such as MD, DDS, LLD)	_____	_____	_____

2. Approximately how many credits have you earned since you graduated from Mesabi?

_____ Quarter credits AND / OR _____ Semester credits

3. If you are currently a student:

- What is the name of the school you currently attend or plan to attend? _____
- What is your major field of study? _____ Degree type? _____
- How many credits are you taking this term? _____ Quarter credits OR _____ Semester credits

4. And/or if you are currently employed:

- What is the name of your employer? _____
- What is your job title? _____
- How many hours a week do you work? _____
- What is the condition of your employment? Temporary Permanent Seasonal
- What are your present wages before deductions? \$_____ per hour
- When did you begin working for your present employer?
 Before attending Mesabi CC While attending Mesabi CC After leaving Mesabi CC

[OVER]

g. Is your present job related to the education you received at Mesabi Community College?

- Yes, directly related
- Yes, closely related
- No, not related

h. How helpful (valuable) has the education you received at Mesabi Community College been in your work?

- Very helpful
- Helpful
- Not helpful
- Not applicable

i. How helpful (valuable) has the education you received at Mesabi Community College been in your continuing education?

- Very helpful
- Helpful
- Not helpful
- Not applicable

j. Was the job placement assistance you received from Mesabi Community College helpful in finding employment?

- Very helpful
- Helpful
- Not helpful
- Did not use any assistance

You are welcome to make any comments or suggestions about Mesabi Community College below.

If your address has changed and you would like to update your records, please add the information below:

NAME: _____

ADDRESS: _____

CITY: _____ STATE: _____ ZIP: _____

THAT'S IT! THANKS AGAIN FOR PARTICIPATING IN THE SURVEY.
[OFFICE USE ONLY: _____ / _____ / _____]

Tables

Q 1. What is the highest educational level achieved thus far?

(Count and percentage by college)

	Hibbing	Itasca	Mesabi	Rainy River	Vermilion	Arrowhead
1 Year Certificate	2 3.3%	7 14.9%	4 4.7%	7 23.3%	2 4.5%	22 8.2%
Associate (2 Year) Degree	39 65.0%	18 38.3%	36 41.9%	16 53.3%	24 54.5%	133 49.8%
Bachelor's (4 Year) Degree	19 31.7%	17 36.2%	42 48.8%	6 20.0%	17 38.6%	101 37.8%
Master's Degree		3 6.4%	1 1.2%		1 2.3%	5 1.9%
Professional Degree			3 3.5%	1 3.3%		4 1.5%
No Response		2 4.3%				2 .7%
Total Responses	60	47	86	30	44	267

Q 2. Approximately how many credits have you earned since you graduated from the college?

(Count and percentage by college)

	Hibbing	Itasca	Mesabi	Rainy River	Vermilion	Arrowhead
None	34 56.7%	18 38.3%	43 50.0%	14 46.7%	23 52.3%	132 49.4%
1 - 50	9 15.0%	7 14.9%	11 12.8%	8 26.7%	8 18.2%	43 16.1%
51 - 100	8 13.3%	10 21.3%	12 14.0%	4 13.3%	8 18.2%	42 15.7%
101 - 150	8 13.3%	8 17.0%	14 16.3%	3 10.0%	3 6.8%	36 13.5%
More than 150	1 1.7%	4 8.5%	6 7.0%	1 3.3%	2 4.5%	14 5.2%
Total Responses	60	47	86	30	44	267

Q 3a & b. Graduates who are currently continuing their education

INSTITUTION	MAJOR	DEGREE	CREDITS
Arrowhead University	Undecided	MS	
Bemidji State University	Bus Adm.	BA	12
	Biology/Chemistry	BS	17
	Business	BA	15
	Education	MS	6
	Computer Science/Ed	MS	8
College of St Scholastica	Business	MS	8
	Business	BA	16
	Management	MS	3
Duluth Business University	Medical Office Admin		12
Fond du Lac Community College	Accounting		4
	Small Business Accounting		4
Itasca Community College	Real Estate I		3
Mesabi Community College	Comp/Business Application		4
	Liberal Arts	AA	6
Metro State University	Public Admin	BA	4
	Criminal Justice	BA	12
	Accounting	BS	4
Northwest Electronic Institute	Electronic Repair		
Rainy River Community College	Nursing	RN	5
	General	AA	3
Roosevelt University	Business	MS	10
St Cloud State University	Anthropology	BS	
	Elementary Education	BS	18
St Cloud State University/ Bemidji State University	Information Media	MS	
Syracuse University	Reading/Writing Connection	MS	9
University of Minnesota	Natural Resources	BS	18
University of Minnesota-Duluth	Resource Mgt	BS	
	EET		8
	Human Resource Mgt		4
	Business	BS	
University of Minnesota-Duluth/ College of St Scholastica	Social Work	MS	
University of Wisconsin-Stevens Point	Urban Forestry	MS	9
	Urban Forestry	BS	24
University of Wisconsin-Superior	Counseling and Guidance	MS	4
	Marketing/Bus/Art		
	Counseling, Psych	MS	9
Vermilion Community College	Accounting	AAS	
WM Mitchell College of Law	Law	JD	24
WM Rainey Harper College	Paralegal	CERT	5

B2

The Five-Year Follow-Up Report 1992

Q 3c. How many credits are you taking this term?

(Count and percentage by college)

	Hibbing	Itasca	Mesabi	Rainy River	Vermilion	Arrowhead
Less than 6	2 66.7%	4 44.4%	1 10.0%	3 100%	2 33.3%	12 38.7%
6 - 8	1 33.3%	1 11.1%	2 20.0%		1 16.7%	5 16.1%
9 - 11		1 11.1%	3 30.0%			4 12.9%
12 or more		3 33.3%	4 40.0%		3 50.0%	10 32.3%
Total Responses	3	9	10	3	6	31

Q 4c. How many hours a week do you work?

(Count and percentage by college)

	Hibbing	Itasca	Mesabi	Rainy River	Vermilion	Arrowhead
1 to 19 hours/week	3 5.6%	1 2.6%	1 1.3%	2 7.4%	1 2.3%	8 3.4%
20 to 39 hours/week	14 25.9%	16 42.1%	18 24.0%	3 11.1%	7 16.3%	58 24.5%
40 hours/week or more	37 68.5%	21 55.3%	56 74.7%	22 81.5%	35 81.4%	171 72.2%
Total Responses	54	38	75	27	43	237

Q 4d. What is the condition of your employment?

(Count and percentage by college)

	Hibbing	Itasca	Mesabi	Rainy River	Vermilion	Arrowhead
Temporary	3 5.7%	1 2.6%	3 4.1%	1 3.7%	4 9.3%	12 5.1%
Permanent	50 94.3%	34 89.5%	68 91.9%	25 92.6%	34 79.1%	211 89.8%
Seasonal		3 7.9%	3 4.1%	1 3.7%	5 11.6%	12 5.1%
Total Responses	53	38	74	27	43	235

Q 4e. What are your present hourly wages before deductions?

(Count and percentage by college)

	Hibbing	Itasca	Mesabi	Rainy River	Vermilion	Arrowhead
\$7.00/hour or less	4 10.0%	9 25.0%	10 16.1%	4 17.4%	5 13.5%	32 16.2%
\$7.01 - 10.00/hour	7 17.5%	17 47.2%	16 25.8%	4 17.4%	11 29.7%	55 27.8%
\$10.01 - 13.00/hour	8 20.0%	9 25.0%	19 30.6%	5 21.7%	9 24.3%	50 25.3%
\$13.01 - 16.00/hour	16 40.0%	1 2.8%	9 14.5%	4 17.4%	8 21.6%	38 19.2%
\$16.01/hour and above	5 12.5%		8 12.9%	6 26.1%	4 10.8%	23 11.6%
Total Responses	40	36	62	23	37	198

Present hourly wages by degree received

(Count and percentage by degree received)

	Certificate	Associate	Bachelor's	Master's	Professional	Arrowhead
No Response	3 13.6%	37 27.8%	28 27.7%	1 20.0%		69 26.0%
\$7.00/hour or less	7 31.8%	12 9.0%	10 9.9%	1 20.0%		30 11.3%
\$7.01 - 10.00/hour	9 40.9%	29 21.8%	14 13.9%	1 20.0%	2 50.0%	55 20.8%
\$10.01 - 13.00/hour	2 9.1%	21 15.8%	25 24.8%	1 20.0%	1 25.0%	50 18.9%
\$13.01 - 16.00/hour	1 4.5%	27 20.3%	10 9.9%			38 14.3%
\$16.01/hour and above		7 5.3%	14 13.9%	1 20.0%	1 25.0%	23 8.7%
Total Responses	22	133	101	5	4	265

B4

The Five-Year Follow-Up Report 1992

Q 4f. When did you begin working for your present employer?

(Count and percentage by college)

	Hibbing	Itasca	Mesabi	Rainy River	Vermilion	Arrowhead
Before attending the college			5 6.7%		2 4.7%	7 3.0%
While attending the college	3 5.7%	5 13.2%	9 12.0%	2 7.4%	3 7.0%	22 9.3%
After leaving the college	50 94.3%	33 86.8%	61 81.3%	25 92.6%	38 88.4%	207 87.7%
Total Responses	53	38	75	27	43	236

Q 4g. Is your present job related to the education you received at the college?

(Count and percentage by college)

	Hibbing	Itasca	Mesabi	Rainy River	Vermilion	Arrowhead
Yes, directly related	36 66.7%	21 52.5%	33 42.3%	10 37.0%	23 53.5%	123 50.8%
Yes, closely related	11 20.4%	16 40.0%	18 23.1%	7 25.9%	12 27.9%	64 26.4%
No, not related	7 13.0%	3 7.5%	27 34.6%	10 37.0%	8 18.6%	55 22.7%
Total Responses	54	40	78	27	43	242

Q 4h. How helpful (valuable) has the education you received at the college been in your work?

(Count and percentage by college)

	Hibbing	Itasca	Mesabi	Rainy River	Vermilion	Arrowhead
Very helpful	34 61.8%	20 48.8%	33 41.3%	14 50.0%	17 38.6%	118 47.6%
Helpful	15 27.3%	18 43.9%	35 43.8%	10 35.7%	22 50.0%	100 40.3%
Not helpful	4 7.3%	1 2.4%	3 3.8%	1 3.6%	3 6.8%	12 4.8%
Not applicable	2 3.6%	2 4.9%	9 11.3%	3 10.7%	2 4.5%	18 7.3%
Total Responses	55	41	80	28	44	248

Q 4i. How helpful (valuable) has the education you received at the college been in your continuing education?

(Count and percentage by college)

	Hibbing	Itasca	Mesabi	Rainy River	Vermilion	Arrowhead
Very helpful	23 43.4%	19 43.2%	29 38.2%	12 46.2%	12 27.9%	95 39.3%
Helpful	14 26.4%	14 31.8%	25 32.9%	6 23.1%	19 44.2%	78 32.2%
Not helpful	2 3.8%		2 2.6%	1 3.8%	1 2.3%	6 2.5%
Not applicable	14 26.4%	11 25.0%	20 26.3%	7 26.9%	11 25.6%	63 26.0%
Total Responses	53	44	76	26	43	242

Q 4j. Was the job placement assistance you received from the college helpful in finding employment?

(Count and percentage by college)

	Hibbing	Itasca	Mesabi	Rainy River	Vermilion	Arrowhead
Very helpful	4 7.1%	3 7.0%	4 5.2%		5 11.4%	16 6.5%
Helpful	1 1.8%	3 7.0%	2 2.6%	7 25.9%	8 18.2%	21 8.5%
Not helpful	10 17.9%	3 7.0%	6 7.8%	4 14.8%	11 25.0%	34 13.8%
Not applicable	41 73.2%	34 79.1%	65 84.4%	16 59.3%	20 45.5%	176 71.3%
Total Responses	56	43	77	27	44	247