

DOCUMENT RESUME

ED 358 801

HE 026 535

TITLE Utilization of Residence Hall Facilities, Fall 1992, with Trends from Fall 1983.

INSTITUTION State Univ. of New York, Albany. Central Staff Office of Institutional Research.

REPORT NO SUNY-R-9-93

PUB DATE Jun 93

NOTE 106p.

AVAILABLE FROM Office of Institutional Research, State University of New York, State University Plaza, Albany, NY 12246.

PUB TYPE Reports - Descriptive (141) -- Statistical Data (110)

EDRS PRICE MF01/PC05 Plus Postage.

DESCRIPTORS *Dormitories; *Educational Facilities; Facility Utilization Research; Higher Education; Income; Public Colleges; School Statistics; School Surveys; *Space Utilization; Statistical Data; Trend Analysis

IDENTIFIERS *State University of New York

ABSTRACT

This report presents utilization summary data in the form of 12 tables from all New York State-operated institutions of higher education having residence hall facilities. The tables provide information on such areas as occupancy rates, bed rental information, revenue-producing "other" utilization, and trends in facility utilization from fall 1983 through fall 1992. Findings include the following: (1) fall 1992 utilization of residence hall facilities was reported to be 59,211; (2) trend data indicate that, for 8 of the last 10 years, revenue producing utilization of residence hall for purposes other than resident student occupancy has generally increased; (3) the university centers at Albany, Binghamton, and Stony Brook each showed a decrease in utilization from last year; (4) fall 1992 data reveal that the percent utilization of net revenue producing adjusted design capacity for the University Colleges continued the downward trend noted last year after reaching its highest level in 8 years in fall 1990 (100.8 percent); and (5) of the 26 institutions surveyed, facilities at 16 were under-utilized, and 9 of these 16 were able to generate revenue through utilization other than student occupancy. The appendix contains a state location map for the institutions and a list of other publications concerning school information. (GLR)

 * Reproductions supplied by EDRS are the best that can be made *
 * from the original document. *

ED358801

UTILIZATION OF
RESIDENCE HALL FACILITIES, FALL 1992
WITH TRENDS FROM FALL 1983



STATE UNIVERSITY OF NEW YORK

PERMISSION TO REPRODUCE THIS
MATERIAL HAS BEEN GRANTED BY
Office of Institutional
Research, SUNY

TO THE EDUCATIONAL RESOURCES
INFORMATION CENTER (ERIC) "

U.S. DEPARTMENT OF EDUCATION
Office of Educational Research and Improvement
EDUCATIONAL RESOURCES INFORMATION
CENTER (ERIC)

- This document has been reproduced as received from the person or organization originating it
- Minor changes have been made to improve reproduction quality

- Points of view or opinions stated in this document do not necessarily represent official OERI position or policy

Office of
Institutional Research
Report No. 9-93

BEST COPY AVAILABLE

HE 026535

**UTILIZATION OF RESIDENCE HALL FACILITIES, FALL 1992
WITH TRENDS FROM FALL 1983**

Report Number 9-93

CENTRAL ADMINISTRATION OFFICE OF INSTITUTIONAL RESEARCH
STATE UNIVERSITY OF NEW YORK
June 1993

TABLE OF CONTENTS

	Page
PREFACE	v
INTRODUCTION	vii
SUMMARY OF DATA	ix
DEFINITIONS	xii

PART ONE -- DETAILED TABLES, FALL 1992

Table 1--Utilization of Original Design Capacity of Residence Hall Facilities, Fall 1992	3
Figure 1--Fall 1992 Utilization by Institution within Institution Type	5
Table 2--Utilization of Net Revenue Producing Adjusted Design Capacity, Fall 1992	6
Table 3--Student Occupancy of Net Revenue Producing Adjusted Design Capacity, Fall 1992	8
Table 4--Revenue-Producing "Other" Utilization and Percent of Revenue Generated, Fall 1992	17
Table 5--Utilization of Net Revenue Producing Adjusted Design Capacity by Rate, Fall 1992	19
Table 6--Distribution of Resident Assistant Bed Rental Waivers in Residence Hall Facilities, Fall 1992	27
Table 7--Resident Assistant Bed Rental Waivers in Residence Hall Facilities, Fall 1992	29

TABLE OF CONTENTS

Page

PART TWO -- TRENDS, FALL 1983 THROUGH FALL 1992

Table 8--Total Utilization of Net Revenue Producing Adjusted Design Capacity	33
Table 9--Percent Utilization of Net Revenue Producing Adjusted Design Capacity	34
Figure 2--Trends in Percent Utilization for Each Institution	35
Table 10--Non-Revenue Assignments in Residence Hall Facilities	42
Table 11--Revenue Producing Utilization of Residence Halls for Purposes Other Than Resident Student Occupancy	43
Table 12--Number of Students per Resident Assistant	44

PART THREE -- APPENDIX

Map of State University Institutions

Chronology of Dates of Establishment of Institutions of
The State University of New York

Publications List

PREFACE

This report on Utilization of Residence Hall Facilities consists of detailed data collected for the nineteenth annual survey which was conducted during the Fall of 1992. The report also contains summary data for Fall 1983 through Fall 1992. Detailed tables for Fall 1974 through Fall 1991 inclusive, are available in earlier reports published by this office (see the Publications List in the appendix). Details regarding the residence hall program are important in the planning and budgetary functions of each institution. While the survey was specifically designed to meet the data requirements of the State University Central Administration Offices of Institutional Research and Planning, Finance and Business, and Student Affairs and Special Programs, requests for these data have subsequently come from many sectors both inside and outside of the State University.

The study includes all State-operated institutions which have residence hall facilities. A listing of these institutions, organized by institution type, can be found on page vi; reference to institution type in this publication, therefore, includes only those institutions listed. Residence hall facilities available at locally sponsored Community Colleges under the program of the State University of New York are financed in a different manner and are not included in the study.

Graphic displays of percent utilization of residence hall facilities are again included in this publication. Trend data are displayed for each institution, as well as Fall 1992 utilization by institution within institution type.

A study of this complexity could not have been completed without the full cooperation of the institutional respondents and other Central Staff Offices. We also thank our secretarial staff headed by Mrs. Vikki Mazzone, who prepared the final transcript and distributed all copies of the publication.

Tommy Annas
Assistant Provost for Institutional Research

Sally Jack
Associate for Institutional Research

**State-Operated Institutions
with Residence Hall Facilities**

University Centers

Albany
Binghamton
Buffalo
Stony Brook

University Colleges

Brockport
Buffalo
Cortland
Fredonia
Geneseo
New Paltz
Old Westbury
Oneonta
Oswego
Plattsburgh
Potsdam
Purchase

Health Sciences Centers

Brooklyn
Syracuse

Specialized Colleges

Maritime
Utica/Rome

**Colleges of Technology/
Agriculture**

Alfred
Canton
Cobleskill
Delhi
Farmingdale
Morrisville

INTRODUCTION

The methodology and definitions used in this study have been developed to be consistent with the State University of New York Policies and Procedures Manual. Definitions of the basic concepts used in this report are provided beginning on page xii.

A general policy change occurred in University management of residence halls between 1985 and 1986. One manifestation of the change is the restructuring of dormitory fiscal operations into a Dormitory Income Fund Reimbursable (DIFR) structure. Accompanying this new structure is a series of alterations in rate setting and revenue generation:

1. The concept of a single University-wide standard double room rate has been replaced by the acceptance of institution-specific standard double room rates, which must fall within a specified range of the average of standard double room rates for all of the State-operated institutions of the State University of New York.
2. The ratio of superior and reduced rates to the standard double rate is now at the discretion of each institution, pending approval from Central Administration.
3. The algorithm to calculate the number of allowable Resident Assistant waivers has been greatly simplified. The RA factor concept has been discontinued, and an acceptable range of RA waivers from 4% to 6% of resident student occupancy (headcount) is now in effect.
4. It is now permissible to place lodgings into an inactive status under certain conditions.

For information about the policy, refer to the *Dormitory Income Fund Reimbursable (DIFR) Guidelines* published in November 1987 by the State University of New York Office of Finance and Business.

Three tables have been designed to provide supporting information to evaluate the effect of these policy initiatives on the utilization of residence halls. Table 5, *Utilization of Net Revenue Producing Adjusted Design Capacity by Rate*, shows the schedule of rates developed by each institution as of Fall 1992, as well as the occupancy of facilities at each rate. Tables 6 and 7, which deal with Resident Assistant Bed Rental Waivers, show the accepted range of bed rental waivers. Increased variability in amount of Resident Assistant Waivers (i.e. .66, .4, .74) has resulted in the necessity to report the more unusual waivers in terms of ranges rather than by actual waiver portion.

The report contains seven tables of data for Fall 1992:

Table 1 presents aggregated data which describes the original capacity of the residence hall facilities, the permanent and temporary adjustments to this original capacity, net available space and percent of actual utilization.

Table 2 provides more detailed data concerning the types of utilization of net available space depicted in Table 1. Resident student utilization as well as other types of utilization are arrayed in categories, as described in the column headings.

Table 3 focuses on resident student utilization summarized in Table 2. Data are arrayed by institution, type of accommodation and rate paid by the students.

Table 4 describes revenue-producing utilization of residence halls for other than student occupancy. Net utilization of each campus is arrayed with "other uses" data to clarify the relationship between amount of space available and "other" revenue-generating effort. "Other uses" data are arrayed within each category by bedcount, headcount, and percent of revenue generated.

Table 5 arrays the utilization of net revenue producing adjusted design capacity by rate. For each institution, revenue-producing utilization is shown in total, then detailed--along with the associated rates charged in Fall 1992--by utilization of non-married enrolled students; that of students accommodated as married; and other revenue-producing utilization. Also, the bedcount of unoccupied facilities is shown for non-married enrolled students and married students.

Table 6 displays, by institution, the distribution of Resident Assistant Bed Rental Waivers, total student occupancy, and the ratios of resident students to resident assistants. Because of an increase in unusual RA/Student ratios, they are now grouped into the following units/ranges: 2 to 1; 1 to 1 (the two most common ratios); .75 to .99; .60 to .74; and .59 or less.

Table 7 augments Table 6 and displays total resident student occupancy, the authorized range of bed rental waivers--from 4% to 6% of the total resident student occupancy--and the actual bed rental waivers used, in terms of bedcount and headcount (number of RA's). Finally, the resident student-to-resident assistant ratio is shown for each institution and as an overall ratio.

Tables 8 through 12 depict trends concerning utilization of residence hall facilities from Fall 1983 through Fall 1992:

Table 8, total utilization (headcount); Table 9, percent utilization; Table 10, non-revenue assignments; Table 11, revenue producing utilization for purposes other than resident student occupancy (bedcount); and Table 12, the ratio of students to resident assistants. The definitions over the ten year period are consistent with those described beginning on page xii.

SUMMARY OF DATA

In the Fall of 1992, the total current utilization of residence hall facilities (headcount) was reported to be 59,211. This level of occupancy represents the smallest utilization (headcount) in last ten years. The net revenue producing adjusted design capacity has decreased slightly from last year to 61,869 (bedcount). The occupancy level (95.7%) is lower by about 1% from last year and is the lowest level recorded in the past ten years.

Summary of Utilization of Original Design Capacity of Residence Hall Facilities State-Operated Institutions, State University of New York Fall 1983 Through Fall 1992

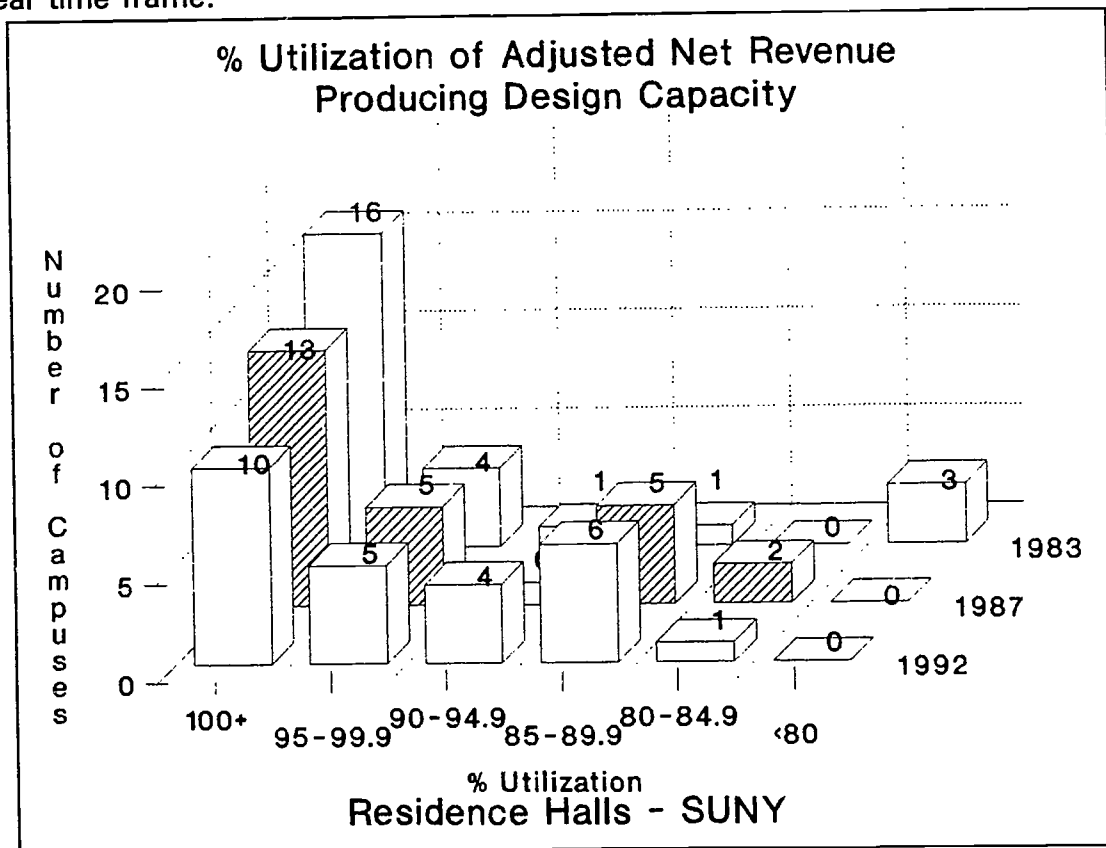
Year	Original Design Capacity (bedcount)	Net Revenue producing adjusted design capacity (Bedcount)	Total Utilization (headcount)	Percent Utilization of net revenue producing adjusted design capacity
Fall 1983	68,027	62,574	62,662	100.1
Fall 1984	68,431	62,746	61,554	98.1
Fall 1985	68,432	62,737	61,701	98.3
Fall 1986	68,432	62,488	61,506	98.4
Fall 1987	68,427	62,313	62,703	100.6
Fall 1988	68,837	63,141	63,957	100.3
Fall 1989	68,837	62,668	62,039	99.0
Fall 1990	68,951	62,438	62,324	99.8
Fall 1991	70,015	62,713	60,672	96.7
Fall 1992	70,015	61,869	59,211	95.7

The trend data indicate that for eight of the last ten years revenue producing utilization of residence halls for purposes other than resident

student occupancy has generally increased. Fall 1986 and Fall 1989 showed a decrease from the previous year (see Table 11) and Fall 1992 also shows a slight decrease from Fall 1991 which had the highest level in the last ten years.

While there were some increases and decreases in the number of students per resident assistant for individual institutions, the average number of students per resident assistant for each sector and for the system as a whole has remained relatively constant for the past ten years (see Tables 7 and 12).

The percent utilization of net revenue producing adjusted design capacity was reported as 95.7 percent in the Fall of 1992. This percent utilization represents a one percent decrease from last year, and indicates that the revenue producing adjusted design capacity of the University dormitories as a whole has grown while the utilization headcount has dwindled. The illustration below shows how this distribution of percent utilization by number of campuses has varied for select years in the last ten year time frame.



The University Centers at Albany, Binghamton, and Stony Brook, each show a decrease in utilization from last year. Buffalo is the only University Center showing a small increase in utilization from last year. The headcount

at Binghamton actually increased but due to increased capacity, the percent utilization dropped there. The largest changes occurred at Albany where the headcount for fall 1992 was 424 less than 1991, almost a seven percent drop in the number of students.

The Fall 1992 data reveal that the percent utilization of net revenue producing adjusted design capacity for the University Colleges continued the downward trend noted last year after reaching its highest level in eight years in Fall 1990 (100.8%). In actual headcount, all of the University colleges except for Old Westbury showed decreases in total utilization levels from Fall 1991 to Fall 1992.

The Fall 1991 data indicate that the percent utilization at the six Colleges of Technology/Agriculture remains high at 103.2%. While this is a higher percent utilization than last year, the actual utilization decreased by eleven headcount. The noted percent increase is primarily because a larger number of beds are off-line at Farmingdale.

Of the 26 institutions surveyed, facilities at 16 were under-utilized (showed a negative net utilization). Nine of these sixteen were able to generate revenue through utilization other than student occupancy. Based on projected revenues assigned to the Dormitory IFR for this year, one institution (Brockport), reported an estimated revenue generation of 0.0% for their "other utilization" facility. Percent of revenue generated for all "other utilizations", including the facility at Brockport, averaged 36.1% of the total possible student revenue generation, with a high of 100% and a low of 0.0% (see Table 4).

DEFINITIONS

[Note: Terms shown in capital letters as part of a definition are defined elsewhere in this section.]

Residential Capacity Descriptors

BEDCOUNT--a unit of measure used to describe the capacity of the facility for residential purposes.

ORIGINAL DESIGN CAPACITY--the original residential capacity of the facility (expressed as BEDCOUNT) as determined by architectural plans.

PERMANENT ADJUSTMENTS TO ORIGINAL DESIGN CAPACITY--permanent conversions of on-campus facilities which increase or decrease their residential capacity (expressed as BEDCOUNT).

NON-REVENUE ASSIGNMENTS--residential capacity (expressed as BEDCOUNT) exempted from revenue production for special uses such as for RESIDENT ASSISTANTS. These assignments are subject to annual review by Central Administration.

NET REVENUE PRODUCING ADJUSTED DESIGN CAPACITY--the capacity of the facility (expressed as BEDCOUNT) available for revenue producing uses. (ORIGINAL DESIGN CAPACITY, less NON-REVENUE ASSIGNMENTS, plus ADDITIONS OR DELETIONS TO ORIGINAL DESIGN.)

"SINGLE", "DOUBLE", "TRIPLE", ETC.--refers to the DESIGN CAPACITY of the facility, NOT its level of occupancy. For example, a "TRIPLE" is NOT a crowded double, but a facility DESIGNED for three occupants.

Actual Occupancy/Use Descriptors

HEADCOUNT--a measure of use which is the number of students or other persons occupying the facilities usually for residential purposes. Non-residential use of a facility, (e.g. office space) measured in terms of HEADCOUNT, is the number of students displaced by the use of the facility for other purposes.

RESIDENT STUDENT OCCUPANCY--the HEADCOUNT of enrolled students and their spouses who reside in residence hall facilities. (This excludes RESIDENT ASSISTANTS.)

RESIDENT ASSISTANTS--students assigned to and residing in residence hall facilities for the purpose of peer counseling and the betterment of the quality of life within the residence hall complex. The BEDCOUNT of facilities dedicated for RESIDENT ASSISTANT occupancy is exempted wholly or in

part from revenue production.

OTHER USES--uses of residence hall facilities for non-residential purposes such as office space or classrooms, or for residential use by students from other colleges or special non-student residential occupancy.

LEVEL OF OCCUPANCY--that is, **SUPERIOR** occupancy is a room occupied at the election of the student(s) by fewer people than its design capacity; **STANDARD** describes occupancy at the exact level of a unit's design capacity; and **REDUCED** occupancy refers to a room occupied by more people, not at the election of the student(s), than its design capacity.

Utilization Indices

PERCENT OF REVENUE GENERATED -- FOR REVENUE-PRODUCING OTHER USES...the estimated percent of revenue which this use will yield compared to what it would yield for regular student use at the given rate.

CURRENT UTILIZATION--the total actual utilization (expressed as **HEADCOUNT**) of an occupied facility's available revenue producing capacity. This is the sum of total **RESIDENT STUDENT OCCUPANCY** and total **OTHER USES**.

NET UTILIZATION--the **CURRENT UTILIZATION** less **NET REVENUE PRODUCING ADJUSTED DESIGN CAPACITY**. This figure is negative (-) if the facility is under-utilized and positive (+) if the facility is over-utilized.

PART ONE
DETAILED TABLES - FALL 1992

TABLE 1
UTILIZATION OF ORIGINAL DESIGN CAPACITY OF RESIDENCE HALL FACILITIES
STATE-OPERATED INSTITUTIONS, ① STATE UNIVERSITY OF NEW YORK, FALL 1992

INSTITUTION	B E D C O U N T										TOTAL UTILI- ZATION HEADCOUNT	NET UTILI- ZATION ②	PCT UTILI- ZATION OF NET REVENUE PRODUCING ADJUSTED DESIGN CAPACITY
	ORIGINAL DESIGN CAPACITY	PERMANENT ADJUST- MENTS	TEMPORARY ADJUST- MENTS AND OFFLINE	NON-REVENUE ASSIGNMENTS ②			NET REVENUE PRODUCING ADJUSTED DESIGN CAPACITY	TOTAL UTILI- ZATION HEADCOUNT	NET UTILI- ZATION ②	PCT UTILI- ZATION OF NET REVENUE PRODUCING ADJUSTED DESIGN CAPACITY			
				TOTAL	RESIDENT ASSISTANT WAIVERS	OTHER USES							
STATE-OPERATED INSTITUTIONS	70,015	-2,482	-1,418	4,246	3,018	1,228	61,869	59,211	-2,658	95.7%			
UNIVERSITY CENTERS	24,677	-47	-545	1,197	937	260	22,888	21,330	-1,558	93.2%			
ALBANY	6,683	13	-	233	186	47	6,463	5,660	-803	87.6%			
BINGHAMTON	4,912	5	-	286	260	26	4,631	4,397	-234	94.9%			
BUFFALO (INCLUDES HSC)	5,652	6	-151	425	265	160	5,082	4,943	-139	97.3%			
STONY BROOK (INCLUDES HSC)	7,430	-71	-394	253	226	27	6,712	6,330	-382	94.3%			
UNIVERSITY COLLEGES	33,504	-2,098	-562	2,280	1,617	663	28,564	27,353	-1,211	95.8%			
BROCKPORT	3,875	-1,016	-	104	104	-	2,755	2,721	-34	98.8%			
BUFFALO	2,859	-515	-	253	93	160	2,091	1,790	-301	85.6%			
CORTLAND	2,701	-14	-	337	195	142	2,350	2,421	71	103.0%			
FREDONIA	2,669	-48	-104	127	127	-	2,390	2,122	-268	88.8%			
GENESEO	3,195	-200	-	174	174	-	2,821	2,907	86	103.0%			
NEW PALTZ	2,573	-26	-	466	126	340	2,081	2,125	44	102.1%			
OLD WESTBURY	800	-10	-	47	46	1	743	743	0	100.0%			
ONEONTA	3,363	-22	-452	103	103	-	2,786	2,670	-116	95.8%			
OSWEGO	3,988	23	-2	250	250	-	3,759	3,585	-174	95.4%			
PLATTSBURGH	2,924	-8	-	140	140	-	2,776	2,390	-386	86.1%			
POTSDAM	2,937	-240	-	214	194	20	2,483	2,300	-183	92.6%			
PURCHASE	1,620	-22	-4	65	65	-	1,529	1,579	50	103.3%			
HEALTH SCIENCES CENTERS	1,016	-87	-	277	18	259	652	574	-78	88.0%			
BROOKLYN	480	-51	-	9	9	-	420	369	-51	87.9%			
SYRACUSE	536	-36	-	268	9	259	232	205	-27	88.4%			
SPECIALIZED COLLEGES	1,300	-	-	38	38	-	1,262	1,183	-79	93.7%			
MARTIME	900	-	-	26	26	-	874	798	-76	91.3%			
INST. OF TECH. AT UTICA/ROME	400	-	-	12	12	-	388	385	-3	99.2%			
COLLEGES OF TECH/AGRIC.	9,518	-250	-311	454	408	46	8,503	8,771	268	103.2%			
ALFRED	2,546	-5	-	120	120	-	2,421	2,041	-380	84.3%			
CANTON	864	-	-	36	36	-	828	980	152	118.4%			
COBLESKILL	1,845	-63	-	85	85	-	1,697	1,847	150	108.8%			
DELHI	1,238	-	-	55	55	-	1,183	1,280	97	108.2%			
FARMINGDALE	1,133	-103	-311	84	38	46	635	664	29	104.6%			
MORRISVILLE	1,892	-79	-	74	74	-	1,789	1,959	220	112.7%			

93/200-1 ALL FOOTNOTES APPEAR ON THE FOLLOWING PAGE

TABLE 1
UTILIZATION OF ORIGINAL DESIGN CAPACITY OF RESIDENCE HALL FACILITIES
STATE-OPERATED INSTITUTIONS. ① STATE UNIVERSITY OF NEW YORK, FALL 1992

Footnotes

- ① Excludes Empire State College, College of Environmental Science and Forestry, College of Optometry, and the Statutory Colleges.
- ② As reported by each institution, including assignments pending review by Central Administration, which is responsible for the approval of such assignments.
- ③ Net utilization equals current utilization less net revenue producing adjusted design capacity.

Figure 1: Fall 1992 Utilization by Institution and Institution Type

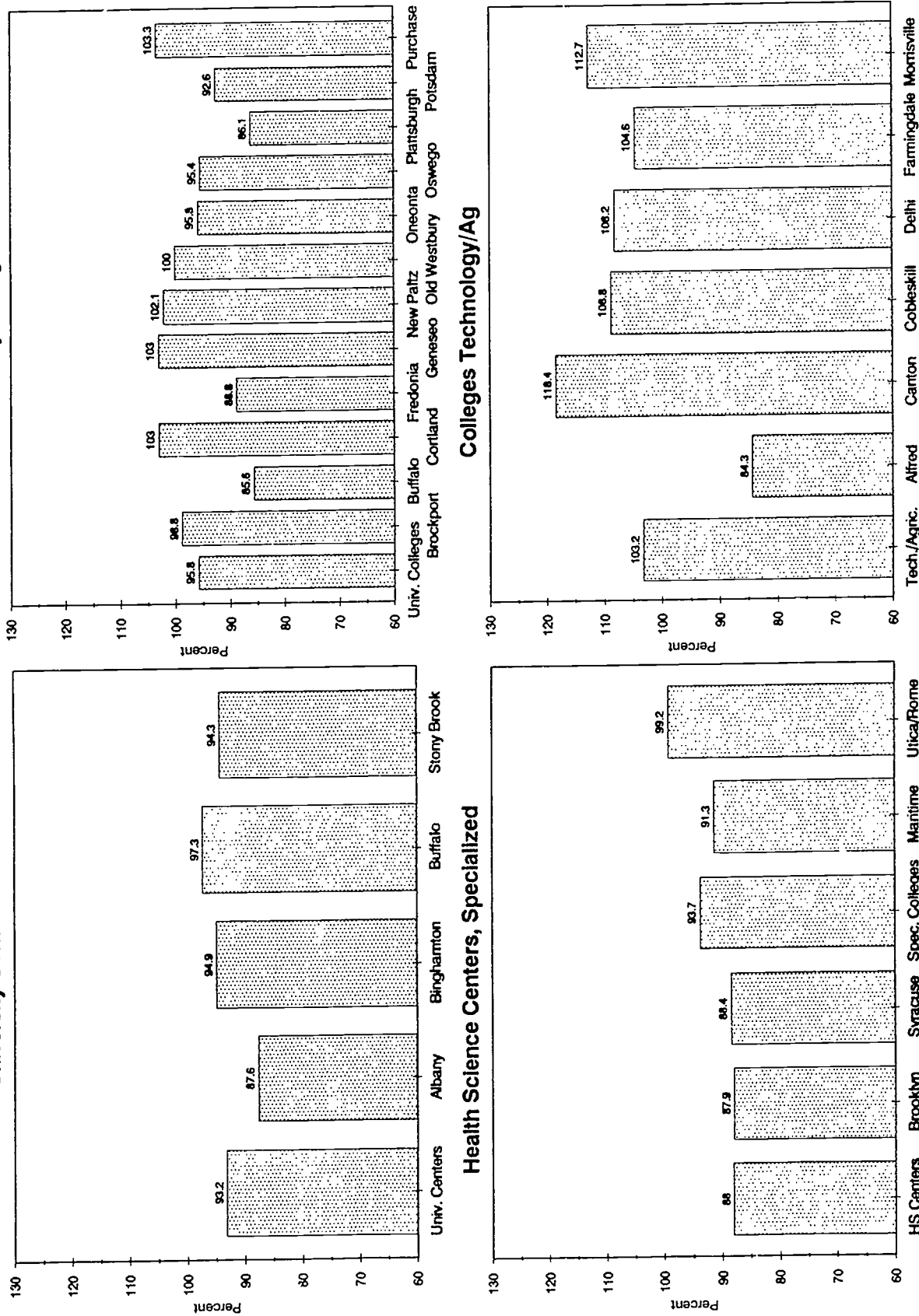


TABLE 2
 UTILIZATION OF NET REVENUE PRODUCING ADJUSTED DESIGN CAPACITY
 STATE-OPERATED INSTITUTIONS, STATE UNIVERSITY OF NEW YORK, FALL 1992

INSTITUTION	TOTAL		RESIDENT STUDENT OCCUPANCY		TOTAL		HOUSING FOR FACULTY, STAFF, OTHER		GUEST ROOMS, CONFERENCE CENTERS		ADMINISTRATIVE OFFICES, CLASSROOMS	
	BED-COUNT	HEAD-COUNT	BED-COUNT	HEAD-COUNT	BED-COUNT	HEAD-COUNT	BED-COUNT	HEAD-COUNT	BED-COUNT	HEAD-COUNT	BED-COUNT	HEAD-COUNT
STATE-OPERATED INSTITUTIONS	61,869	59,211	60,947	58,340	922	871	324	273	390	390	208	208
UNIVERSITY CENTERS	22,888	21,330	22,693	21,154	195	176	195	176	-	-	0	0
ALBANY	6,463	5,660	6,457	5,654	6	6	6	6	-	-	-	-
BINGHAMTON	4,631	4,397	4,631	4,397	-	-	-	-	-	-	-	-
BUFFALO (INCLUDES HSC)	5,082	4,943	5,052	4,932	30	11	30	11	-	-	-	-
STONY BROOK (INCLUDES HSC)	6,712	6,330	6,553	6,171	159	159	159	159	-	-	-	-
UNIVERSITY COLLEGES	28,564	27,353	27,989	26,792	575	561	86	72	387	387	102	102
BROCKPORT	2,755	2,721	2,554	2,520	201	201	-	-	201	201	-	-
BUFFALO	2,091	1,790	2,091	1,790	-	-	-	-	-	-	-	-
CORTLAND	2,350	2,421	2,350	2,421	-	-	-	-	-	-	-	-
FREDONIA	2,390	2,122	2,390	2,122	-	-	-	-	-	-	-	-
GENESEO	2,821	2,907	2,821	2,907	-	-	-	-	-	-	-	-
NEW PALTZ	2,081	2,125	2,081	2,125	-	-	-	-	-	-	-	-
OLD WESTBURY	743	743	743	743	-	-	-	-	-	-	-	-
ONEONTA	2,786	2,670	2,600	2,484	186	186	-	-	186	186	-	-
OSWEGO	3,759	3,585	3,759	3,585	-	-	-	-	-	-	-	-
PLATTSBURGH	2,776	2,390	2,712	2,326	64	64	64	64	-	-	-	-
POTSDAM	2,483	2,300	2,381	2,198	102	102	-	-	-	-	102	102
PURCHASE	1,529	1,579	1,507	1,571	22	8	22	8	-	-	-	-
HEALTH SCIENCES CENTERS	652	574	630	555	22	19	13	10	3	3	6	6
BROOKLYN	420	369	407	356	13	13	4	4	3	3	6	6
SYRACUSE	232	205	223	199	9	6	9	6	-	-	-	-
SPECIALIZED COLLEGES	1,262	1,183	1,132	1,068	130	115	30	15	-	-	100	100
MARITIME	874	798	744	683	130	115	30	15	-	-	100	100
INST. OF TECH. AT UTICA/ROME	388	385	388	385	-	-	-	-	-	-	-	-
COLLEGES OF TECH/AGRIC	8,503	8,771	8,503	8,771	-	-	-	-	-	-	-	-
ALFRED	2,421	2,041	2,421	2,041	-	-	-	-	-	-	-	-
CANTON	828	980	828	980	-	-	-	-	-	-	-	-
COBLESKILL	1,697	1,847	1,697	1,847	-	-	-	-	-	-	-	-
DELHI	1,183	1,280	1,183	1,280	-	-	-	-	-	-	-	-
FARMINGDALE	635	664	635	664	-	-	-	-	-	-	-	-
MORRISVILLE	1,739	1,959	1,739	1,959	-	-	-	-	-	-	-	-

ALL FOOTNOTES APPEAR ON THE FOLLOWING PAGE

23

23

TABLE 2
UTILIZATION OF NET REVENUE PRODUCING ADJUSTED DESIGN CAPACITY
STATE-OPERATED INSTITUTIONS, ① STATE UNIVERSITY OF NEW YORK, FALL 1992

Footnotes

① Excludes Empire State College, College of Environmental Science and Forestry, College of Optometry, and the Statutory Colleges.

② Headcount is the same as net revenue producing adjusted design capacity because there are no under-or-over-utilization measures for these cases. The number of adjusted design capacity beds used for such purposes as Guest Rooms, Conference Centers, Administrative Office Space, Classrooms, Educational Programs, State Agencies, etc., is the same as the total possible number of persons (students) who are displaced by these "Other Utilization" arrangements.

TABLE 3
STUDENT OCCUPANCY OF NET REVENUE PRODUCING ADJUSTED DESIGN CAPACITY
STATE-OPERATED INSTITUTIONS, (1) STATE UNIVERSITY OF NEW YORK, FALL 1992

INSTITUTION AND TYPE OF ACCOMMODATION	RESIDENT STUDENT OCCUPANCY (2)										UNOCCUPIED ACCOM- MODATION BEDCOUNT
	TOTAL		RELATIVE RATE PAID				REDUCED				
			SUPERIOR		STANDARD		REDUCED				
	BEDCOUNT	HEADCOUNT	BEDCOUNT	HEADCOUNT	BEDCOUNT	HEADCOUNT	BEDCOUNT	HEADCOUNT	BEDCOUNT	HEADCOUNT	
STATE-OPERATED INSTITUTIONS	60,947	58,340	2,626	1,332	56,006	54,343	1,325	2,665	990		
SINGLES	2,451	2,343	51	40	2,316	2,303	0	0	84		
DOUBLES	39,804	37,986	1,694	847	36,370	34,909	1,056	2,230	684		
TRIPLES	1,352	1,224	2	1	1,259	1,219	3	4	68		
QUADRUPLES	6,603	6,112	368	184	6,095	5,835	62	93	78		
QUINTUPLES	1,768	1,591	183	93	1,525	1,498	0	0	60		
SEXTUPLES	6,911	6,620	308	154	6,497	6,307	106	159	0		
(5) OTHER	2,078	2,464	20	13	1,944	2,272	98	179	16		
UNIVERSITY CENTERS	22,693	21,154	1,251	630	20,871	20,524	0	0	571		
SINGLES	864	827	0	0	827	827	0	0	37		
DOUBLES	11,000	10,296	394	197	10,291	10,099	0	0	315		
TRIPLES	1,148	1,047	0	0	1,083	1,047	0	0	65		
QUADRUPLES	4,035	3,635	352	176	3,605	3,459	0	0	78		
QUINTUPLES	1,442	1,270	183	93	1,199	1,177	0	0	60		
SEXTUPLES	3,364	3,187	306	153	3,058	3,034	0	0	0		
(5) OTHER	840	892	16	11	808	881	0	0	16		
ALBANY	6,457	5,654	834	417	5,517	5,237	0	0	106		
SINGLES	22	22	0	0	22	22	0	0	0		
DOUBLES	1,176	946	104	52	1,066	894	0	0	6		
TRIPLES	6	3	0	0	6	3	0	0	0		
QUADRUPLES	1,684	1,406	338	169	1,306	1,237	0	0	40		
QUINTUPLES	1,282	1,116	172	86	1,050	1,030	0	0	60		
SEXTUPLES	2,287	2,161	220	110	2,067	2,051	0	0	0		
OTHER	0	0	0	0	0	0	0	0	0		
BINGHAMTON	4,631	4,397	295	152	4,312	4,245	0	0	24		
SINGLES	3	3	0	0	3	3	0	0	0		
DOUBLES	2,298	2,194	168	84	2,130	2,110	0	0	0		
TRIPLES	152	95	0	0	128	95	0	0	24		
QUADRUPLES	773	689	14	7	759	682	0	0	0		
QUINTUPLES	160	154	11	7	149	147	0	0	0		
SEXTUPLES	1,059	1,008	86	43	973	965	0	0	0		
(6), (7) OTHER	186	254	16	11	170	243	0	0	0		

ALL FOOTNOTES ARE ON THE LAST PAGE

TABLE 3
STUDENT OCCUPANCY OF NET REVENUE PRODUCING ADJUSTED DESIGN CAPACITY
STATE-OPERATED INSTITUTIONS, (1) STATE UNIVERSITY OF NEW YORK, FALL 1992

INSTITUTION AND TYPE OF ACCOMMODATION	RESIDENT STUDENT OCCUPANCY (2)										UNOCCUPIED ACCOM- MODATION BEDCOUNT
	TOTAL		RELATIVE RATE PAID				REDUCED				
			SUPERIOR		STANDARD		REDUCED				
	BEDCOUNT	HEADCOUNT	BEDCOUNT	HEADCOUNT	BEDCOUNT	HEADCOUNT	BEDCOUNT	HEADCOUNT	BEDCOUNT	HEADCOUNT	
BUFFALO (INCLUDES HSC)	5,052	4,932	0	0	4,932	4,932	0	0	0	0	120
SINGLES	456	449	0	0	449	449	0	0	0	0	7
DOUBLES	2,466	2,402	0	0	2,402	2,402	0	0	0	0	64
TRIPLES	696	681	0	0	681	681	0	0	0	0	15
QUADRUPLES	1,416	1,382	0	0	1,382	1,382	0	0	0	0	34
QUINTUPLES	0	0	0	0	0	0	0	0	0	0	0
SEXTUPLES	18	18	0	0	18	18	0	0	0	0	0
OTHER	0	0	0	0	0	0	0	0	0	0	0
(8)											
STONY BROOK (INCLUDES HSC)	6,553	6,171	122	61	6,110	6,110	0	0	0	0	321
SINGLES	383	353	0	0	353	353	0	0	0	0	30
DOUBLES	5,060	4,754	122	61	4,693	4,693	0	0	0	0	245
TRIPLES	294	268	0	0	268	268	0	0	0	0	26
QUADRUPLES	162	158	0	0	158	158	0	0	0	0	4
QUINTUPLES	0	0	0	0	0	0	0	0	0	0	0
SEXTUPLES	0	0	0	0	0	0	0	0	0	0	0
OTHER	654	638	0	0	638	638	0	0	0	0	16
(10)											
(11)											
UNIVERSITY COLLEGES	27,989	26,792	1,325	677	25,544	24,987	752	1,128	0	0	368
SINGLES	467	459	29	29	429	430	0	0	0	0	9
DOUBLES	21,048	19,782	1,274	637	18,929	18,416	486	729	0	0	359
TRIPLES	135	134	0	0	135	134	0	0	0	0	0
QUADRUPLES	2,564	2,471	16	8	2,486	2,370	62	93	0	0	0
QUINTUPLES	326	321	0	0	326	321	0	0	0	0	0
SEXTUPLES	2,583	2,581	2	1	2,475	2,421	106	159	0	0	0
OTHER	866	1,044	4	2	764	895	98	147	0	0	0
(5)											
BROCKPORT	2,554	2,520	33	31	2,516	2,489	0	0	0	0	5
SINGLES	32	29	29	29	0	0	0	0	0	0	3
DOUBLES	732	722	4	2	726	720	0	0	0	0	2
TRIPLES	0	0	0	0	0	0	0	0	0	0	0
QUADRUPLES	852	838	0	0	852	838	0	0	0	0	0
QUINTUPLES	200	199	0	0	200	199	0	0	0	0	0
SEXTUPLES	738	732	0	0	738	732	0	0	0	0	0
OTHER	0	0	0	0	0	0	0	0	0	0	0
(12)											

TABLE 3
STUDENT OCCUPANCY OF NET REVENUE PRODUCING ADJUSTED DESIGN CAPACITY
STATE-OPERATED INSTITUTIONS, (1) STATE UNIVERSITY OF NEW YORK, FALL 1992

INSTITUTION AND TYPE OF ACCOMMODATION	RESIDENT STUDENT OCCUPANCY (2)										UNOCCUPIED ACCOM- MODATION BEDCOUNT
	TOTAL		RELATIVE RATE PAID						REDUCED		
			SUPERIOR		STANDARD						
	BEDCOUNT	HEADCOUNT	BEDCOUNT	HEADCOUNT	BEDCOUNT	HEADCOUNT	BEDCOUNT	HEADCOUNT	BEDCOUNT	HEADCOUNT	
BUFFALO (COLLEGE)	2,091	1,790	140	70	1,803	1,720	0	0	0	0	148
SINGLES	29	29	0	0	29	29	0	0	0	0	0
DOUBLES	2,062	1,761	140	70	1,774	1,691	0	0	0	0	148
TRIPLES	0	0	0	0	0	0	0	0	0	0	0
QUADRUPLES	0	0	0	0	0	0	0	0	0	0	0
QUINTUPLES	0	0	0	0	0	0	0	0	0	0	0
SEXTUPLES	0	0	0	0	0	0	0	0	0	0	0
OTHER	0	0	0	0	0	0	0	0	0	0	0
CORTLAND	2,350	2,421	38	19	2,244	2,300	68	102	0	0	0
SINGLES	22	22	0	0	22	22	0	0	0	0	0
DOUBLES	2,298	2,284	38	19	2,192	2,163	68	102	0	0	0
TRIPLES	30	30	0	0	30	30	0	0	0	0	0
QUADRUPLES	0	0	0	0	0	0	0	0	0	0	0
QUINTUPLES	0	0	0	0	0	0	0	0	0	0	0
SEXTUPLES	0	0	0	0	0	0	0	0	0	0	0
OTHER	0	85	0	0	0	85	0	0	0	0	0
FREDONIA	2,390	2,122	416	208	1,921	1,914	0	0	0	0	53
SINGLES	0	0	0	0	0	0	0	0	0	0	0
DOUBLES	2,248	1,982	412	206	1,783	1,776	0	0	0	0	53
TRIPLES	0	0	0	0	0	0	0	0	0	0	0
QUADRUPLES	0	0	0	0	0	0	0	0	0	0	0
QUINTUPLES	0	0	0	0	0	0	0	0	0	0	0
SEXTUPLES	0	0	0	0	0	0	0	0	0	0	0
OTHER	142	140	4	2	138	138	0	0	0	0	0
GENESE0	2,821	2,907	26	13	2,582	2,582	208	312	0	0	5
SINGLES	43	42	0	0	42	42	0	0	0	0	1
DOUBLES	2,742	2,829	26	13	2,504	2,504	208	312	0	0	4
TRIPLES	36	36	0	0	36	36	0	0	0	0	0
QUADRUPLES	0	0	0	0	0	0	0	0	0	0	0
QUINTUPLES	0	0	0	0	0	0	0	0	0	0	0
SEXTUPLES	0	0	0	0	0	0	0	0	0	0	0
OTHER	0	0	0	0	0	0	0	0	0	0	0

TABLE 3
STUDENT OCCUPANCY OF NET REVENUE PRODUCING ADJUSTED DESIGN CAPACITY
STATE-OPERATED INSTITUTIONS, (1) STATE UNIVERSITY OF NEW YORK, FALL 1992

INSTITUTION AND TYPE OF ACCOMMODATION (4)	RESIDENT STUDENT OCCUPANCY (2)										UNOCCUPIED ACCOM- MODATION BEDCOUNT
	TOTAL			RELATIVE RATE PAID							
				STANDARD			REDUCED				
	BEDCOUNT	HEADCOUNT	BEDCOUNT	HEADCOUNT	BEDCOUNT	HEADCOUNT	BEDCOUNT	HEADCOUNT	BEDCOUNT	HEADCOUNT	
NEW PALTZ	2,081	2,125	6	3	1,881	1,831	194	291	0	0	0
SINGLES	13	13	0	0	13	13	0	0	0	0	0
DOUBLES	1,040	1,053	6	3	938	906	96	144	0	0	0
TRIPLES	0	0	0	0	0	0	0	0	0	0	0
QUADRUPLES	124	128	0	0	114	113	10	15	0	0	0
QUINTUPLES	0	0	0	0	0	0	0	0	0	0	0
SEXTUPLES	480	487	0	0	438	424	42	63	0	0	0
(7) OTHER	424	444	0	0	375	375	46	69	0	0	0
OLD WESTBURY	743	743	0	0	743	743	0	0	0	0	0
SINGLES	157	157	0	0	157	157	0	0	0	0	0
DOUBLES	586	586	0	0	586	586	0	0	0	0	0
TRIPLES	0	0	0	0	0	0	0	0	0	0	0
QUADRUPLES	0	0	0	0	0	0	0	0	0	0	0
QUINTUPLES	0	0	0	0	0	0	0	0	0	0	0
SEXTUPLES	0	0	0	0	0	0	0	0	0	0	0
OTHER	0	0	0	0	0	0	0	0	0	0	0
ONEONTA	2,600	2,484	108	54	2,330	2,205	150	225	12	12	0
SINGLES	45	45	0	0	45	45	0	0	0	0	0
DOUBLES	858	799	90	45	678	637	78	117	12	12	0
TRIPLES	0	0	0	0	0	0	0	0	0	0	0
QUADRUPLES	1,004	948	16	8	940	868	48	72	0	0	0
QUINTUPLES	0	0	0	0	0	0	0	0	0	0	0
SEXTUPLES	693	692	2	1	667	655	24	36	0	0	0
(12) OTHER	0	0	0	0	0	0	0	0	0	0	0
OSWEGO	3,759	3,585	38	19	3,608	3,560	4	6	109	109	0
SINGLES	9	8	0	0	8	8	0	0	1	1	0
DOUBLES	3,750	3,532	38	19	3,600	3,507	4	6	108	108	0
TRIPLES	0	0	0	0	0	0	0	0	0	0	0
QUADRUPLES	0	0	0	0	0	0	0	0	0	0	0
QUINTUPLES	0	0	0	0	0	0	0	0	0	0	0
SEXTUPLES	0	0	0	0	0	0	0	0	0	0	0
(14) OTHER	0	45	0	0	0	45	0	0	0	0	0

TABLE 3
STUDENT OCCUPANCY OF NET REVENUE PRODUCING ADJUSTED DESIGN CAPACITY
STATE-OPERATED INSTITUTIONS, (1) STATE UNIVERSITY OF NEW YORK, FALL 1992

INSTITUTION AND TYPE OF ACCOMMODATION (4)	RESIDENT STUDENT OCCUPANCY (2)										UNOCCUPIED ACCOM- MODATION	
	TOTAL		SUPERIOR		STANDARD		REDUCED				BEDCOUNT	HEADCOUNT
	BEDCOUNT	HEADCOUNT	BEDCOUNT	HEADCOUNT	BEDCOUNT	HEADCOUNT	BEDCOUNT	HEADCOUNT	BEDCOUNT	HEADCOUNT		
	2,712	2,326	514	257	2,194	2,069	0	0	0	0		
PLATTSBURGH	2,712	2,326	514	257	2,194	2,069	0	0	0	0	0	4
SINGLES	49	45	0	0	45	45	0	0	0	0	0	4
DOUBLES	2,663	2,281	514	257	2,149	2,024	0	0	0	0	0	0
TRIPLES	0	0	0	0	0	0	0	0	0	0	0	0
QUADRUPLES	0	0	0	0	0	0	0	0	0	0	0	0
QUINTUPLES	0	0	0	0	0	0	0	0	0	0	0	0
SEXTUPLES	0	0	0	0	0	0	0	0	0	0	0	0
OTHER	0	0	0	0	0	0	0	0	0	0	0	0
POTSDAM	2,381	2,198	0	0	2,349	2,198	0	0	0	0	0	32
SINGLES	20	21	0	0	20	21	0	0	0	0	0	0
DOUBLES	1,780	1,648	0	0	1,748	1,648	0	0	0	0	0	32
TRIPLES	9	8	0	0	9	8	0	0	0	0	0	0
QUADRUPLES	104	75	0	0	104	75	0	0	0	0	0	0
QUINTUPLES	126	122	0	0	126	122	0	0	0	0	0	0
SEXTUPLES	264	242	0	0	264	242	0	0	0	0	0	0
OTHER	78	82	0	0	78	82	0	0	0	0	0	0
(6), (7)												
PURCHASE	1,507	1,571	6	3	1,373	1,376	128	192	0	0	0	0
SINGLES	48	48	0	0	48	48	0	0	0	0	0	0
DOUBLES	289	305	6	3	251	254	32	48	0	0	0	0
TRIPLES	60	60	0	0	60	60	0	0	0	0	0	0
QUADRUPLES	480	482	0	0	476	476	4	6	0	0	0	0
QUINTUPLES	0	0	0	0	0	0	0	0	0	0	0	0
SEXTUPLES	408	428	0	0	368	368	40	60	0	0	0	0
OTHER	222	248	0	0	170	170	52	78	0	0	0	0
(12), (7)												
HEALTH SCIENCES CENTERS	630	555	30	15	587	536	3	4	0	0	0	10
SINGLES	2	1	2	1	0	0	0	0	0	0	0	0
DOUBLES	592	519	26	13	556	506	0	0	0	0	0	10
TRIPLES	32	29	2	1	27	24	3	4	0	0	0	0
QUADRUPLES	4	6	0	0	4	6	0	0	0	0	0	0
QUINTUPLES	0	0	0	0	0	0	0	0	0	0	0	0
SEXTUPLES	0	0	0	0	0	0	0	0	0	0	0	0
OTHER	0	0	0	0	0	0	0	0	0	0	0	0

(3)

(3)

TABLE 3
STUDENT OCCUPANCY OF NET REVENUE PRODUCING ADJUSTED DESIGN CAPACITY
STATE-OPERATED INSTITUTIONS, (1) STATE UNIVERSITY OF NEW YORK, FALL 1992

INSTITUTION AND TYPE OF ACCOMMODATION (4)	RESIDENT STUDENT OCCUPANCY (2)										(3)	
	TOTAL		RELATIVE RATE PAID					UNOCCUPIED			ACCOM- MODATION	BEDCOUNT
	BEDCOUNT	HEADCOUNT	SUPERIOR		STANDARD		REDUCED					
			BEDCOUNT	HEADCOUNT	BEDCOUNT	HEADCOUNT	BEDCOUNT	HEADCOUNT	BEDCOUNT	HEADCOUNT		
BROOKLYN	407	356	2	1	395	355	0	0	0	0	10	0
SINGLES	2	1	2	1	0	0	0	0	0	0	0	0
DOUBLES	396	346	0	0	386	346	0	0	0	0	10	0
TRIPLES	9	9	0	0	9	9	0	0	0	0	0	0
QUADRUPLES	0	0	0	0	0	0	0	0	0	0	0	0
QUINTUPLES	0	0	0	0	0	0	0	0	0	0	0	0
SEXTUPLES	0	0	0	0	0	0	0	0	0	0	0	0
OTHER	0	0	0	0	0	0	0	0	0	0	0	0
SYRACUSE	223	199	28	14	192	181	3	4	0	0	0	0
SINGLES	0	0	0	0	0	0	0	0	0	0	0	0
DOUBLES	196	173	26	13	170	160	0	0	0	0	0	0
TRIPLES	23	20	2	1	18	15	3	4	0	0	0	0
QUADRUPLES	4	6	0	0	4	6	0	0	0	0	0	0
QUINTUPLES	0	0	0	0	0	0	0	0	0	0	0	0
SEXTUPLES	0	0	0	0	0	0	0	0	0	0	0	0
OTHER	0	0	0	0	0	0	0	0	0	0	0	0
SPECIALIZED COLLEGES	1,132	1,068	20	10	1,071	1,058	0	0	0	0	41	0
SINGLES	978	917	20	10	920	907	0	0	0	0	38	0
DOUBLES	137	137	0	0	137	137	0	0	0	0	0	0
TRIPLES	17	14	0	0	14	14	0	0	0	0	3	0
QUADRUPLES	0	0	0	0	0	0	0	0	0	0	0	0
QUINTUPLES	0	0	0	0	0	0	0	0	0	0	0	0
SEXTUPLES	0	0	0	0	0	0	0	0	0	0	0	0
OTHER	0	0	0	0	0	0	0	0	0	0	0	0
MARITIME	744	683	20	10	686	673	0	0	0	0	38	0
SINGLES	744	683	20	10	686	673	0	0	0	0	38	0
DOUBLES	0	0	0	0	0	0	0	0	0	0	0	0
TRIPLES	0	0	0	0	0	0	0	0	0	0	0	0
QUADRUPLES	0	0	0	0	0	0	0	0	0	0	0	0
QUINTUPLES	0	0	0	0	0	0	0	0	0	0	0	0
SEXTUPLES	0	0	0	0	0	0	0	0	0	0	0	0
OTHER	0	0	0	0	0	0	0	0	0	0	0	0

ALL FOOTNOTES ARE ON THE LAST PAGE

TABLE 3
STUDENT OCCUPANCY OF NET REVENUE PRODUCING ADJUSTED DESIGN CAPACITY
STATE-OPERATED INSTITUTIONS, (1) STATE UNIVERSITY OF NEW YORK, FALL 1992

INSTITUTION AND TYPE OF ACCOMMODATION (4)	RESIDENT STUDENT OCCUPANCY (2)										UNOCCUPIED ACCOM- MODATION BEDCOUNT	
	TOTAL		RELATIVE RATE PAID				REDUCED					
			SUPERIOR		STANDARD		REDUCED					
	BEDCOUNT	HEADCOUNT	BEDCOUNT	HEADCOUNT	BEDCOUNT	HEADCOUNT	BEDCOUNT	HEADCOUNT	BEDCOUNT	HEADCOUNT		
INST. OF TECH. AT UTICA/ROME	388	385	0	0	385	385	0	0	0	0	0	3
SINGLES	234	234	0	0	234	234	0	0	0	0	0	0
DOUBLES	137	137	0	0	137	137	0	0	0	0	0	0
TRIPLES	17	14	0	0	14	14	0	0	0	0	0	3
QUADRUPLES	0	0	0	0	0	0	0	0	0	0	0	0
QUINTUPLES	0	0	0	0	0	0	0	0	0	0	0	0
SEXTUPLES	0	0	0	0	0	0	0	0	0	0	0	0
OTHER	0	0	0	0	0	0	0	0	0	0	0	0
COLLEGES OF TECH/AGRIC.	8,503	8,771	0	0	7,933	7,238	570	1,533	0	0	0	0
SINGLES	140	139	0	0	140	139	0	0	0	0	0	0
DOUBLES	7,027	7,252	0	0	6,457	5,751	570	1,501	0	0	0	0
TRIPLES	0	0	0	0	0	0	0	0	0	0	0	0
QUADRUPLES	0	0	0	0	0	0	0	0	0	0	0	0
QUINTUPLES	0	0	0	0	0	0	0	0	0	0	0	0
SEXTUPLES	964	852	0	0	964	852	0	0	0	0	0	0
OTHER	372	528	0	0	372	496	0	32	0	0	0	0
ALFRED	2,421	2,041	0	0	2,421	2,041	0	0	0	0	0	0
SINGLES	11	10	0	0	11	10	0	0	0	0	0	0
DOUBLES	1,074	712	0	0	1,074	712	0	0	0	0	0	0
TRIPLES	0	0	0	0	0	0	0	0	0	0	0	0
QUADRUPLES	0	0	0	0	0	0	0	0	0	0	0	0
QUINTUPLES	0	0	0	0	0	0	0	0	0	0	0	0
SEXTUPLES	964	852	0	0	964	852	0	0	0	0	0	0
OTHER	372	467	0	0	372	467	0	0	0	0	0	0
CANTON	828	980	0	0	828	524	0	456	0	0	0	0
SINGLES	0	0	0	0	0	0	0	0	0	0	0	0
DOUBLES	828	980	0	0	828	524	0	456	0	0	0	0
TRIPLES	0	0	0	0	0	0	0	0	0	0	0	0
QUADRUPLES	0	0	0	0	0	0	0	0	0	0	0	0
QUINTUPLES	0	0	0	0	0	0	0	0	0	0	0	0
SEXTUPLES	0	0	0	0	0	0	0	0	0	0	0	0
OTHER	0	0	0	0	0	0	0	0	0	0	0	0

(3)

(3)

TABLE 3
STUDENT OCCUPANCY OF NET REVENUE PRODUCING ADJUSTED DESIGN CAPACITY
STATE-OPERATED INSTITUTIONS, (1) STATE UNIVERSITY OF NEW YORK, FALL 1992

INSTITUTION AND TYPE OF ACCOMMODATION (4)	RESIDENT STUDENT OCCUPANCY (2)										UNOCCUPIED ACCOM- MODATION BEDCOUNT
	TOTAL		RELATIVE RATE PAID						REDUCED		
			SUPERIOR		STANDARD						
	BEDCOUNT	HEADCOUNT	BEDCOUNT	HEADCOUNT	BEDCOUNT	HEADCOUNT	BEDCOUNT	HEADCOUNT	BEDCOUNT	HEADCOUNT	
COBLESKILL	1,697	1,847	0	0	1,337	1,337	360	510	0	0	0
SINGLES	32	32	0	0	32	32	0	0	0	0	0
DOUBLES	1,665	1,815	0	0	1,305	1,305	360	510	0	0	0
TRIPLES	0	0	0	0	0	0	0	0	0	0	0
QUADRUPLES	0	0	0	0	0	0	0	0	0	0	0
QUINTUPLES	0	0	0	0	0	0	0	0	0	0	0
SEXTUPLES	0	0	0	0	0	0	0	0	0	0	0
OTHER	0	0	0	0	0	0	0	0	0	0	0
DELHI	1,183	1,280	0	0	973	933	210	347	0	0	0
SINGLES	6	6	0	0	6	6	0	0	0	0	0
DOUBLES	1,177	1,242	0	0	967	927	210	315	0	0	0
TRIPLES	0	0	0	0	0	0	0	0	0	0	0
QUADRUPLES	0	0	0	0	0	0	0	0	0	0	0
QUINTUPLES	0	0	0	0	0	0	0	0	0	0	0
SEXTUPLES	0	0	0	0	0	0	0	0	0	0	0
OTHER	0	32	0	0	0	0	0	32	0	0	0
FARMINGDALE	635	664	0	0	635	664	0	0	0	0	0
SINGLES	91	91	0	0	91	91	0	0	0	0	0
DOUBLES	544	544	0	0	544	544	0	0	0	0	0
TRIPLES	0	0	0	0	0	0	0	0	0	0	0
QUADRUPLES	0	0	0	0	0	0	0	0	0	0	0
QUINTUPLES	0	0	0	0	0	0	0	0	0	0	0
SEXTUPLES	0	0	0	0	0	0	0	0	0	0	0
OTHER	0	29	0	0	0	29	0	0	0	0	0
MORRISVILLE	1,739	1,959	0	0	1,739	1,739	0	220	0	0	0
SINGLES	0	0	0	0	0	0	0	0	0	0	0
DOUBLES	1,739	1,959	0	0	1,739	1,739	0	220	0	0	0
TRIPLES	0	0	0	0	0	0	0	0	0	0	0
QUADRUPLES	0	0	0	0	0	0	0	0	0	0	0
QUINTUPLES	0	0	0	0	0	0	0	0	0	0	0
SEXTUPLES	0	0	0	0	0	0	0	0	0	0	0
OTHER	0	0	0	0	0	0	0	0	0	0	0

TABLE 3
STUDENT OCCUPANCY OF NET REVENUE PRODUCING ADJUSTED DESIGN CAPACITY
STATE-OPERATED INSTITUTIONS, (1) STATE UNIVERSITY OF NEW YORK, FALL 1992

Footnotes

- 1 Excludes Empire State College, College of Environmental Science and Forestry, College of Optometry, and the Statutory Colleges.
- 2 If headcount exceeds bedcount, the accommodation is over-utilized or "crowded". If bedcount exceeds headcount, the accommodation is under-utilized.
- 3 Unoccupied beds in rooms, suites, or apartments.
- 4 Includes rooms, suites, and apartments.
- 5 Other types of accommodations, including, but not limited to, space used as sleeping quarters not originally designed for that purpose, such as lounges and study areas where the adjusted design capacity bedcount is zero; and septuples and octuples with the appropriate adjusted design capacity bedcount
- 6 Consists of converted lounge space where adjusted capacity bedcount is zero.
- 7 Consists of septuples and/or octuples with the appropriate adjusted design capacity bedcount.
- 8 Consists of large room(s) designed to house six students.
- 9 Consists of two bedroom apartments which were designed to accommodate four students.
- 10 Consists of three bedroom apartments which were designed to accommodate six students.
- 11 Consists of studio, one bedroom, and four bedroom apartments. One bedroom and studio apartments are classified as "other", since these types of apartments were not specifically designed for student occupancy. They were originally designed as studios or one bedroom apartments, and based on the particulars of the facility, the design capacity varies.
- 12 Consist of smaller rooms which, together, were designed as suites or apartments to accommodate six students.
- 13 Consists of double rooms designed to accommodate two students, but also contain kitchen facilities.
- 14 Consists of space used for sleeping quarters not originally designed for that purpose, where the adjusted design capacity is zero.
- 15 Consists of converted study space where the adjusted design capacity bedcount is zero, and octuples consisting of smaller rooms, which, together, were designed as suites to accommodate eight students.

93/01-9
 SEJ
 January 4, 1993

Office of Institutional Research
 Central Administration
 State University of New York

TABLE 4
REVENUE--PRODUCING 'OTHER' UTILIZATION AND PERCENT OF REVENUE GENERATED ①
STATE--OPERATED INSTITUTIONS ② -- STATE UNIVERSITY OF NEW YORK, FALL 1992

INSTITUTION	③ NET UTILI- ZATION	TOTAL OTHER USES		HOUSING FOR FACULTY STAFF, OTHER			GUEST ROOMS, CONFERENCE CENTERS			ADMINISTRATIVE OFFICES, CLASSROOMS		
		BEDCT	% OF ④ REVENUE	BEDCT	HEADCT	% OF ④ REVENUE	BEDCT	HEADCT	% OF ④ REVENUE	BEDCT	HEADCT	% OF ④ REVENUE
STATE--OPERATED INSTITUTIONS	(2,658)	922	36.1 ⑤	324	273	87.8	390	4.2	208	208	29.6	
UNIVERSITY CENTERS	(1,558)	195	82.9	195	176	82.9	0	0	0	0		
ALBANY	(803)	6	100.0	6	6	100.0	-	-	-	-		
BINGHAMTON	(234)	-	-	-	-	-	-	-	-	-		
BUFFALO (INCLUDES HSC)	(139)	30	37.4	30	11	37.4	-	-	-	-		
STONY BROOK (INCLUDES HSC)	(382)	159	95.1	159	159	96.9	-	-	-	-		
UNIVERSITY COLLEGES	(1,211)	575	23.7	86	72	100.0	387	3.4	102	102	24.0	
BROCKPORT	(34)	201	0.0 ⑤	-	-	-	201	0.0	-	-		
BUFFALO (COLLEGE)	(301)	-	-	-	-	-	-	-	-	-		
CORTLAND	71	-	-	-	-	-	-	-	-	-		
FREDONIA	(268)	-	-	-	-	-	-	-	-	-		
GENESEO	86	-	-	-	-	-	-	-	-	-		
NEW PALTZ	44	-	-	-	-	-	-	-	-	-		
OLD WESTBURY	0	-	-	-	-	-	-	-	-	-		
ONEONTA	(116)	186	7.0	-	-	-	186	7.0	-	-		
OSWEGO	(174)	-	-	-	-	-	-	-	-	-		
PLATTSBURGH	(386)	64	100.0	64	64	100.0	-	-	-	-		
POTSDAM	(183)	102	24.0	-	-	-	-	-	102	102	24.0	
PURCHASE	50	22	100.0	22	8	100.0	-	-	-	-		
HEALTH SCIENCES CENTERS	(78)	22	100.0	13	10	100.0	3	3	6	6	100.0	
BROOKLYN	(51)	13	100.0	4	4	100.0	3	3	6	6	100.0	
SYRACUSE	(27)	9	100.0	9	6	100.0	-	-	-	-		
SPECIALIZED COLLEGES	(79)	130	27.3	30	15	18.0	0	0	100	100	28.0	
MARITIME	(76)	130	27.3	30	15	18.0	-	-	100	100	28.0	
INST. OF TECH. AT UTICA/ROME	(3)	-	-	-	-	-	-	-	-	-		
COLLEGES OF TECH./AGRIC.	268	0	-	0	0	-	0	0	0	0		
ALFRED	(380)	-	-	-	-	-	-	-	-	-		
CANTON	152	-	-	-	-	-	-	-	-	-		
COBLESKILL	150	-	-	-	-	-	-	-	-	-		
DELHI	97	-	-	-	-	-	-	-	-	-		
FARMINGDALE	29	-	-	-	-	-	-	-	-	-		
MORRISVILLE	220	-	-	-	-	-	-	-	-	-		

All footnotes are on the following page.

TABLE 4
REVENUE--PRODUCING 'OTHER' UTILIZATION AND PERCENT OF REVENUE GENERATED ①
STATE--OPERATED INSTITUTIONS ② -- STATE UNIVERSITY OF NEW YORK, FALL 1992

FOOTNOTES

- ① See the *DEFINITIONS* section for a description of "percent of revenue generated."
- ② Excludes Empire State College, College of Environmental Science and Forestry, College of Optometry, and the Statutory Colleges.
- ③ Net Utilization is derived in Table 1, and is displayed here to facilitate comparison between under--utilization and amount of revenue -- generating "other" utilization.
- ④ Total and subtotal percent columns are weighted averages.
- ⑤ Due to the Fall 1992 estimation of revenue generated for the Thompson Conference Center at Brockport (0%), this percent of revenue generated is substantially lower than it was several years ago.
- ⑥ While there are 201 beds assigned to Thompson Conference Center, the semester occupation varies substantially, and based on Fall 1992 estimations, there will not be any revenues assigned to the Dormitory IFR for 1992--93.

TABLE 5
 (1)
 UTILIZATION OF NET REVENUE PRODUCING ADJUSTED DESIGN CAPACITY BY RATE
 STATE-OPERATED INSTITUTIONS, (2) STATE UNIVERSITY OF NEW YORK, FALL 1992

INSTITUTION	TOTAL UTILIZATION		ENROLLED STUDENTS EXCEPT MARRIED				MARRIED STUDENTS				OTHER REVENUE USES			
	BEDCT	HEADCT	RATE CHARGED \$	BEDCT	HEADCT	UN-OCCUPIED	RATE CHARGED \$	BEDCT	HEADCT	UN-OCCUPIED	RATE CHARGED \$	BEDCT	HEADCT	
STATE-OPERATED TOTAL	61,869	59,211	59,504	57,830	869	546	510	28	922	871				
UNIVERSITY CENTERS	22,888	21,330	21,692	20,716	503	470	438	28	195	176				
ALBANY	6,463	5,660	6,349	5,654	108	0	0	0	6	6				
			2,089 (3)	834	417									
			1,939	48	47									
			1,723	22	15			2						
			1,472	326	296						1,472 (4)	6	6	
			1,305	5,119	4,879	106								
BINGHAMTON	4,631	4,397	4,579	4,377	0	52	20	0	0	0				
			2,220	16	8									
			1,690	1,023	809									
			1,485	9	6									
			1,480	90	69									
			1,440 (5)	3	12									
			1,410	0	2									
			1,280	3,406	3,407									
			1,130	12	50									
			1,010	20	14									
BUFFALO (INCLUDES HSC)	5,082	4,943	4,932	4,932	120	963 (6)	52	20	0	0	30	11		
			1,590	2	2									
			1,565	447	447			7						
			1,264	2,402	2,402			64			1,264 (7)	22	9	
			1,113	681	681			15						
			982	84	84			4			982 (7)	8	2	
			969	1,298	1,298			30						
			838	18	18									
STONY BROOK (INCLUDES HSC)	6,712	6,330	5,832	5,753	275	418	418	28	159	159				

All Footnotes appear at the end of the table

TABLE 5
(1)
UTILIZATION OF NET REVENUE PRODUCING ADJUSTED DESIGN CAPACITY BY RATE
STATE-OPERATED INSTITUTIONS, (2) STATE UNIVERSITY OF NEW YORK, FALL 1992

INSTITUTION	TOTAL UTILIZATION		ENROLLED STUDENTS EXCEPT MARRIED				MARRIED STUDENTS				OTHER REVENUE USES			
	BEDCT	HEADCT	RATE CHARGED \$	BEDCT	HEADCT	UN-OCCUPIED	RATE CHARGED \$	BEDCT	HEADCT	UN-OCCUPIED	RATE CHARGED \$	BEDCT	HEADCT	
														UN-OCCUPIED
STONY BROOK (INCLUDES HSC) (continued)			2,035 (8)	122	61									
			1,506	353	30									
			1,357	4,693	4,693	245	876 (9)	36	36	8	876 (9),(12)	20	20	
							662 (9)	56	56		662 (4),(9)	2	2	
							545 (9)	92	92		591 (4),(9)	2	2	
							481 (9)	2	2		545 (4),(9)	48	48	
							438 (9)	232	232	20	481 (4),(9)	6	6	
											438 (9),(10)	4	4	
											305 (4),(9)	6	6	
											285 (4),(9)	2	2	
											278 (9),(13)	6	6	
											203 (9),(13)	12	12	
											190 (9),(14)	6	6	
UNIVERSITY COLLEGES	28,564	27,353		27,664	26,785	315		10	7	0		575	561	
BROCKPORT	2,755	2,721		2,549	2,520	5		0	0	0		201	201	
			1,830 (3)	33	31	3								
			1,220	2,516	2,489	2								
BUFFALO (COLLEGE)	2,091	1,790		1,943	1,790	148		0	0	0		0	0	
			1,615 (3)	140	70									
			1,330	29	29	148								
			1,190	1,774	1,691									
CORTLAND	2,350	2,421		2,350	2,421	0		0	0	0		0	0	
			1,700	38	19									
			1,420	22	22									
			1,135	2,222	2,278									
			1,020 (16)	68	102									

51

52

All Footnotes appear at the end of the table

TABLE 5
 UTILIZATION OF NET REVENUE PRODUCING ADJUSTED DESIGN CAPACITY BY RATE
 STATE-OPERATED INSTITUTIONS, (2) STATE UNIVERSITY OF NEW YORK, FALL 1992

INSTITUTION	TOTAL UTILIZATION		ENROLLED STUDENTS EXCEPT MARRIED				MARRIED STUDENTS				OTHER REVENUE USES			
	BEDCT	HEADCT	RATE CHARGED \$	BEDCT	HEADCT	UN-OCCUPIED	RATE CHARGED \$	BEDCT	HEADCT	UN-OCCUPIED	RATE CHARGED \$	BEDCT	HEADCT	
FREDONIA	2,390	2,122		2,390	2,122	0		0	0	0	0	0	0	
			1,495 (3)	294	147									
			1,395 (3)	118	59									
			1,195 (17)	142	140									
			1,095	1,759	1,699									
			995	77	77									
GENESEO	2,821	2,907		2,816	2,907	5		0	0	0	0	0	0	
			2,013 (3)	26	13									
			1,182	963	963	5								
			1,158	1,068	1,068									
			1,135	388	388									
			1,111	163	163									
			918 (16)	208	312									
NEW PALTZ	2,081	2,125		2,081	2,125	0		0	0	0	0	0	0	
			1,838 (3)	6	3									
			1,531	13	13									
			1,225	1,868	1,818									
			917 (16)	194	291									
OLD WESTBURY	743	743		743	743	0		0	0	0	0	0	0	
			1,495	157	157									
			1,309	586	586									
ONEONTA	2,786	2,670		2,588	2,484	12		0	0	0	186	186	186	
			1,820 (3)	28	14									
			1,583 (3)	80	40									
			1,503	45	45									
			1,300	1,704	1,623									
			1,218	597	562	12								
			1,089 (16)	56	83									
			1,009 (16)	78	117									

All Footnotes appear at the end of the table

TABLE 5
 (1)
 UTILIZATION OF NET REVENUE PRODUCING ADJUSTED DESIGN CAPACITY BY RATE
 STATE-OPERATED INSTITUTIONS. (2) STATE UNIVERSITY OF NEW YORK, FALL 1992

INSTITUTION	TOTAL UTILIZATION		ENROLLED STUDENTS EXCEPT MARRIED				MARRIED STUDENTS				OTHER REVENUE USES			
	BEDCT	HEADCT	RATE CHARGED \$	BEDCT	HEADCT	UN-OCCUPIED	RATE CHARGED \$	BEDCT	HEADCT	UN-OCCUPIED	RATE CHARGED \$	BEDCT	HEADCT	
OSWEGO	3,759	3,585		3,650	3,585	109		0	0	0		0	0	
			1,878 (8)	38	19									
			1,365	8	8	1								
			1,265	3,600	3,552	108								
			1,115 (16)	4	6									
PLATTSBURGH	2,776	2,390		2,708	2,326	4		0	0	0		64	64	
			1,325 (9)	514	257									
			1,100	45	45	4								
			1,050	2,149	2,024						1,050 (4)	64	64	
POTSDAM	2,483	2,300		2,349	2,198	32		0	0	0		102	102	
			1,325	466	438									
			1,300	20	21									
			1,275	108	102									
			1,250	1,723	1,623	32								
			1,200 (19)	0	6									
			600 (20)	32	8									
PURCHASE	1,529	1,579		1,497	1,564	0		10	7	0		22	8	
			1,488	165	165									
			1,372	50	50									
			1,353	544	544		1,353	10	7					
			1,248 (22)	678	745									
			1,123	60	60						2,671	22	8	
HEALTH SCIENCES CENTERS	652	574		554	490	10		66	65	0		22	19	
BROOKLYN	420	369		360	322	10		37	34	0		13	513	

All Footnotes appear at the end of the table

TABLE 5
UTILIZATION OF NET REVENUE PRODUCING ADJUSTED DESIGN CAPACITY BY RATE
STATE-OPERATED INSTITUTIONS. (2) STATE UNIVERSITY OF NEW YORK, FALL 1992

INSTITUTION	TOTAL UTILIZATION			ENROLLED STUDENTS EXCEPT MARRIED					MARRIED STUDENTS					OTHER REVENUE USES		
	BEDCT	HEADCT	RATE CHARGED \$	BEDCT	HEADCT	UN-OCCUPIED	RATE CHARGED \$	BEDCT	HEADCT	UN-OCCUPIED	RATE CHARGED \$	BEDCT	HEADCT	RATE CHARGED \$	BEDCT	HEADCT
BROOKLYN (continued)			2,646 (3)	2	1											
			1,985 (3)	111	74									1,324 (4)	7	7
			1,324	160	160	7								1,070 (4)	6	6
			1,070	87	87	3	744 (23)	9	6							
							592 (23)	28	28							
SYRACUSE	232	205		194	168	0		29	31	0		9	9			6
			1,971 (3)	16	8											
			1,875 (3)	2	1						2,503 (24), (25)	4	6			
			1,725 (3)	10	5						2,281 (24), (25)	9	9			
			1,250	98	92						1,971 (24), (25)	16	16			
			1,091	68	62									1,250 (4)	9	6
SPECIALIZED COLLEGES	1,262	1,183		1,091	1,068	41		0	0	0		0	130			115
MARITIME	874	798		706	683	38		0	0	0		0	130			115
			2,480 (3)	20	10											
			1,240	686	673	38								700 (26)	100	100
														440 (27)	30	15
INST. OF TECH. AT UTICA/ROME	388	385		385	385	3		0	0	0		0	0			0
			1,480	234	234											
			1,380	78	78											
			1,280	59	59											
			1,080	14	14	3										
COLLEGES OF TECH./AGRIC.	8,503	8,771		8,503	8,771	0		0	0	0		0	0			0

All Footnotes appear at the end of the table

TABLE 5
 (1)
 UTILIZATION OF NET REVENUE PRODUCING ADJUSTED DESIGN CAPACITY BY RATE
 STATE-OPERATED INSTITUTIONS. (2) STATE UNIVERSITY OF NEW YORK, FALL 1992

INSTITUTION	TOTAL UTILIZATION		ENROLLED STUDENTS EXCEPT MARRIED				MARRIED STUDENTS				OTHER REVENUE USES			
	BEDCT	HEADCT	RATE CHARGED \$	BEDCT	HEADCT	UN-OCCUPIED	RATE CHARGED \$	BEDCT	HEADCT	UN-OCCUPIED	RATE CHARGED \$	BEDCT	HEADCT	
														UN-OCCUPIED
ALFRED	2,421	2,041		2,421	2,041	0		0	0	0	0	0	0	
			1,595 (28)	0	48									
			1,490 (28)	0	54									
			1,230	2,421	1,939									
CANTON	828	980		828	980	0		0	0	0	0	0	0	
			1,230	828	524									
			1,105 (16)	0	456									
COBLESKILL	1,697	1,847		1,697	1,847	0		0	0	0	0	0	0	
			1,480	32	32									
			1,275	1,305	1,305									
			1,125 (16)	360	510									
DELHI	1,183	1,280		1,183	1,280	0		0	0	0	0	0	0	
			1,210	973	965									
			1,130 (16)	188	282									
			1,110 (16)	22	33									
FARMINGDALE	635	664		635	664	0		0	0	0	0	0	0	
			1,345	91	91									
			1,170	544	573									
MORRISVILLE	1,739	1,959		1,739	1,959	0		0	0	0	0	0	0	
			1,225	1,739	1,739									
			1,095 (16)	0	220									

All Footnotes appear at the end of the table

TABLE 5
(1)
UTILIZATION OF NET REVENUE PRODUCING ADJUSTED DESIGN CAPACITY BY RATE
STATE-OPERATED INSTITUTIONS. (2) STATE UNIVERSITY OF NEW YORK, FALL 1992

F o o t n o t e s

- 1 Unless otherwise indicated, rate shown is per occupant, not per dwelling, for one semester time period. Rates are those current as of Fall 1992.
- 2 Excludes Empire State College, College of Environmental Science and Forestry, College of Optometry, and the Statutory Colleges.
- 3 This is a superior rate charged students whenever a room or suite is occupied by fewer persons than the designed capacity, with such occupancy being at the request of the occupants and not resulting from room assignments by the college over which the student has no control.
- 4 This "other revenue" use represents an estimated revenue generation of 100% of the total possible standard revenue at this rate.
- 5 An approved bed rental rate for a single room type is charged to students occupying designed single rooms as well as to students occupying rooms and suites converted from lounge space.
- 6 Married students are billed for the entire apartment (17 apartments total) at a semester rate of \$2,889 regardless of the number of individuals occupying an apartment.
- 7 This "other revenue" use represents a revenue generation of approximately 37% of the total possible standard revenue that could be generated from resident student occupancy.
- 8 This is a superior bed rental rate charged to a student occupying an originally designed double room and/or suite which has been converted to single occupancy housing.
- 9 These figures represent the rate per person per month.
- 10 This "other revenue" use represents an estimated revenue generation of 95% of the total possible standard revenue at this rate.
- 11 This "other revenue" use represents an estimated revenue generation of 92% of the total possible standard revenue at this rate.
- 12 This "other revenue" use represents an estimated revenue generation of 88% of the total possible standard revenue at this rate.
- 13 This "other revenue" use represents an estimated revenue generation of 98% of the total possible standard revenue at this rate.
- 14 This "other revenue" use represents an estimated revenue generation of 93% of the total possible standard revenue at this rate.
- 15 This "other revenue" rate represents a potential semester rate of \$1,220.00 per person, generated from student occupancy of the Thompson Conference Center. However, there are currently no revenues that are anticipated to be assigned to the Dormitory IFR for that occupancy. Thus, the projected revenue generation is 0.0% of the total possible standard revenue at the \$1,220.00 rate.

TABLE 5
UTILIZATION OF NET REVENUE PRODUCING ADJUSTED DESIGN CAPACITY BY RATE
STATE-OPERATED INSTITUTIONS. (2) STATE UNIVERSITY OF NEW YORK, FALL 1992

- 16 This is a reduced semester rate offered to students when dormitory facilities are occupied by more persons than the design capacity, including situations of occupancy by students in facilities such as converted lounges, study rooms, etc.
- 19 This is a rate charged students occupying a double room with a kitchen.
- 18 This "other revenue" use represents an estimated annual revenue generation of 6.6% of the total possible standard revenue at the \$1,118.00 rate during the academic year. The 6.6% is based on annualized revenue projections of approximately \$30,000 for this alternate use facility as compared to the total possible student revenue of approximately \$453,096 generated during an academic year.
- 19 This is an approved single bed rental rate charged to students occupying designed single rooms as well as to students occupying rooms converted from lounge space.
- 20 This is a bed rental rate charged to one person if the apartment is fully occupied (4 students/apt.). However, if only one person occupies an apartment, then the student is charged the full occupancy rate of \$2,400.
- 21 This "other revenue" use represents a revenue generation of approximately 24% of a \$1,250.00 semester rate.
- 22 This is a situation where a standard double bed rental rate applies to dormitory facilities that are occupied by more students than the design capacity.
- 23 Married students are billed monthly per apartment at this rate.
- 24 Married students are billed in this case for entire apartments at this semester rate regardless of the number of individuals occupying the apartments.
- 25 These figures were equated to a semester basis. The Fall rates (shown here) are less than the Spring rates because charges are actually on a monthly basis. There are fewer months (4 mo. payable) in the Fall semester.
- 26 This "other revenue" use represents an estimated annual revenue generation of 18% of the total possible standard revenue.
- 27 This "other revenue" use represents an estimated annual revenue generation of 28% of the total possible standard revenue.
- 28 This is a situation where an approved bed rental rate for designed single rooms is being charged students who are occupying converted study rooms.

62

63

TABLE 6
DISTRIBUTION OF RESIDENT ASSISTANT BED RENTAL WAIVERS IN RESIDENCE HALL FACILITIES
STATE-OPERATED INSTITUTIONS¹ STATE UNIVERSITY OF NEW YORK, FALL 1992

INSTITUTION	TOTAL		2.0.0		1.0.0		.75 TO .99		.60 TO .74		.59 OR LESS	
	BED RENTALS WAIVED	HEAD - COUNT	BED RENTALS WAIVED	HEAD - COUNT	BED RENTALS WAIVED	HEAD - COUNT	BED RENTALS WAIVED	HEAD - COUNT	BED RENTALS WAIVED	HEAD - COUNT	BED RENTALS WAIVED	HEAD - COUNT
STATE-OPERATED INSTITUTIONS	3,018	2,372	1,403	703	1,549	1,549	0	0	55	86	11	34
UNIVERSITY CENTERS	937	762	350	175	587	587	0	0	0	0	0	0
ALBANY	186	186	0	0	186	186	0	0	0	0	0	0
BINGHAMTON	260	152	216	108	44	44	0	0	0	0	0	0
BUFFALO (INCLUDES HSC)	265	198	134	67	131	131	0	0	0	0	0	0
STONY BROOK (INCLUDES HSC)	226	226	0	0	226	226	0	0	0	0	0	0
UNIVERSITY COLLEGES	1,617	1,108	1,022	511	593	593	0	0	0	0	2	4
BROCKPORT	104	94	20	10	84	84	0	0	0	0	0	0
BUFFALO (COLLEGE)	93	93	0	0	93	93	0	0	0	0	0	0
CORTLAND	195	111	168	84	27	27	0	0	0	0	0	0
FREDONIA	127	75	104	52	23	23	0	0	0	0	0	0
GENESEO	174	123	102	51	72	72	0	0	0	0	0	0
NEW PALTZ	126	63	126	63	0	0	0	0	0	0	0	0
OLD WESTBURY	46	46	0	0	46	46	0	0	0	0	0	0
ONEONTA	103	103	0	0	103	103	0	0	0	0	0	0
OSWEGO	250	142	216	108	34	34	0	0	0	0	0	0
PLATTSBURGH	140	92	96	48	44	44	0	0	0	0	0	0
POTSDAM	194	99	190	95	4	4	0	0	0	0	0	0
PURCHASE	65	67	0	0	63	63	0	0	0	0	2	4
HEALTH SCIENCES CENTERS	18	15	9	6	9	9	0	0	0	0	0	0
BROOKLYN	9	6	9 ²	6	0	0	0	0	0	0	0	0
SYRACUSE	9	9	0	0	9	9	0	0	0	0	0	0
SPECIALIZED COLLEGES	38	54	0	0	12	12	0	0	26	42	0	0
MARITIME	26	42	0	0	0	0	0	0	26	42	0	0
INST. OF TECH. AT UTICA/ROME	12	12	0	0	12	12	0	0	0	0	0	0
COLLEGES OF TECH./AGRIC.	408	433	22	11	348	348	0	0	29	44	9	30
ALFRED	120	135	0	0	91	91	0	0	29	44	0	0
CANTON	36	36	0	0	36	36	0	0	0	0	0	0
COBLESKILL	85	85	0	0	85	85	0	0	0	0	0	0
DELHI	55	76	0	0	46	46	0	0	0	0	9	30
FARMINGDALE	38	27	22	11	16	16	0	0	0	0	0	0
MORRISVILLE	74	74	0	0	74	74	0	0	0	0	0	0

ALL FOOTNOTES APPEAR ON THE FOLLOWING PAGE

TABLE 6
DISTRIBUTION OF RESIDENT ASSISTANT BED RENTAL WAIVERS IN RESIDENCE HALL FACILITIES
STATE-OPERATED INSTITUTIONS¹ STATE UNIVERSITY OF NEW YORK, FALL 1992

FOOTNOTES

- ① Excludes Empire State College, College of Environmental Science and Forestry, College of Optometry, and the Statutory Colleges.
- ② The students shown here as Resident Assistants have received whole or partial bed rental waivers as indicated by the distribution of such waivers. These Resident Assistants perform a range of assignments which vary in type and degree of commitment. Therefore, the ratios shown here do not necessarily reflect differences in Resident Assistant services available to students.
- ③ The actual bed rental waived is 1.50.

TABLE 7
RESIDENT ASSISTANT BED RENTAL WAIVERS IN RESIDENCE HALL FACILITIES,
STATE-OPERATED INSTITUTIONS, ① STATE UNIVERSITY OF NEW YORK, FALL 1992

INSTITUTION	STUDENT OCCUPANCY	AUTHORIZED RANGE OF BED RENTAL WAIVERS ②		TOTAL OF FRACTIONAL AND WHOLE BED RENTAL WAIVERS	NUMBER OF STUDENTS PER RESIDENT ASSISTANT
		HIGH (6% OF OCCUP) (4% OF OCCUP)	LOW (4% OF OCCUP)		
STATE-OPERATED INSTITUTIONS	58,340	3,500	2,333	3,018	24.6
UNIVERSITY CENTERS					
ALBANY	21,154	1,269	846	937	27.8
BINGHAMTON	5,654	339	226	186	30.4
BUFFALO (INCLUDES HSC)	4,397	264	176	260	28.9
STONY BROOK (INCLUDES HSC)	4,932	296	197	265	24.9
	6,171	370	247	226	27.3
UNIVERSITY COLLEGES	26,792	1,607	1,072	1,617	24.2
BROOKPORT	2,520	151	101	104	26.8
BUFFALO (COLLEGE)	1,790	107	72	93	19.2
CORTLAND	2,421	145	97	195	21.8
FREDONIA	2,122	127	85	127	28.3
GENESEO	2,907	174	116	174	23.6
NEW PALTZ	2,125	128	85	126	33.7
OLD WESTBURY	743	45	30	46	16.2
ONEONTA	2,484	149	99	103	24.1
OSWEGO	3,585	215	143	250	25.2
PLATTSBURGH	2,326	140	93	140	25.3
POTSDAM	2,198	132	88	194	22.2
PURCHASE	1,571	94	63	65	23.4
HEALTH SCIENCES CENTERS	555	33	22	18	37.0
BROOKLYN	356	21	14	9	59.3
SYRACUSE	199	12	8	9	22.1
SPECIALIZED COLLEGES	1,068	64	42	38	19.8
MARITIME	683	41	27	26	16.3
INST. OF TECH. AT UTICA/ROME	385	23	15	12	32.1
COLLEGES OF TECH./AGRIC.	8,771	527	351	408	20.3
ALFRED	2,041	122	82	120	15.1
CANTON	980	59	39	36	27.2
COBLESKILL	1,847	111	74	85	21.7
DELHI	1,280	77	51	55	16.8
FARMINGDALE	664	40	27	38	24.6
MORRISVILLE	1,959	118	78	74	26.5

All Footnotes are on the following page

TABLE 7
RESIDENT ASSISTANT BED RENTAL WAIVERS IN RESIDENCE HALL FACILITIES,
STATE-OPERATED INSTITUTIONS, STATE UNIVERSITY OF NEW YORK, FALL 1992

Footnotes

- ① Excludes Empire State College, College of Environmental Science and Forestry, College of Optometry, and the Statutory Colleges.
- ② The setting of guidelines for authorized bed rental waivers has been changed by the Central Administration Office of Student Affairs and Special Programs to a concept of an authorized range rather than an algorithm based on an Resident Assistant factor. The range extends from 4% (low) to 6% (high) of the resident student occupancy (headcount.) The resulting figures in these columns are thus measures of headcount.
- ③ The students shown here as Resident Assistants have received whole or partial bed rental waivers as indicated by distribution of such waivers. These Resident Assistants perform a range of assignments which vary in type and degree of commitment. Therefore, the ratios shown here do not necessarily reflect differences in Resident Assistant services available to students.

PART TWO
TRENDS
FALL 1983 - FALL 1993

72

TABLE 8
TOTAL UTILIZATION (HEADCOUNT) OF NET REVENUE PRODUCING ADJUSTED DESIGN CAPACITY OF RESIDENT HALL FACILITIES
STATE-OPERATED INSTITUTIONS, STATE UNIVERSITY OF NEW YORK
FALL 1983 THRU FALL 1992

INSTITUTION	FALL 1983	FALL 1984	FALL 1985	FALL 1986	FALL 1987	FALL 1988	FALL 1989	FALL 1990	FALL 1991	FALL 1992
STATE-OPERATED INSTITUTIONS	62,662	61,554	51,701	61,506	62,703	63,957	62,039	62,324	60,672	59,211
UNIVERSITY CENTERS	21,612	21,825	22,360	22,678	22,433	22,646	21,205	21,741	21,746	21,330
ALBANY	6,021	5,989	6,052	6,209	6,196	6,493	5,730	6,115	6,084	5,660
BINGHAMTON	3,846	4,163	4,421	4,387	4,244	4,273	4,146	4,178	4,246	4,397
BUFFALO (INCLUDES HSC)	4,748	4,881	4,958	5,206	5,188	5,228	5,063	5,098	4,906	4,943
STONY BROOK (INCLUDES HSC)	6,997	6,792	6,929	6,876	6,805	6,652	6,266	6,350	6,510	6,330
UNIVERSITY COLLEGES	29,527	28,604	28,512	28,336	29,370	30,265	29,725	29,789	28,390	27,353
BROCKPORT	2,844	2,610	2,484	2,281	2,534	2,848	2,890	2,985	2,738	2,721
BUFFALO (COLLEGE)	1,716	1,681	1,804	1,853	1,844	1,863	1,980	2,008	1,803	1,790
CORTLAND	2,586	2,745	2,844	2,734	3,008	2,979	2,762	2,631	2,588	2,421
FREDONIA	2,361	2,192	2,139	2,191	2,249	2,339	2,362	2,363	2,242	2,122
GENESEO	3,096	3,153	3,195	3,069	3,004	3,047	2,931	2,987	2,926	2,907
NEW PALTZ	2,175	1,976	1,986	2,132	2,348	2,523	2,337	2,394	2,367	2,125
OLD WESTBURY	740	754	754	752	756	756	756	746	743	743
ONEONTA	3,049	2,987	2,982	2,974	3,078	3,193	3,030	2,953	2,684	2,670
OSWEGO	3,968	3,839	3,934	4,069	3,917	3,992	3,943	3,922	3,792	3,585
PLATTSBURGH	2,741	2,768	2,642	2,672	2,748	2,658	2,598	2,605	2,554	2,390
POTSDAM	2,699	2,356	2,284	2,086	2,230	2,377	2,468	2,492	2,355	2,300
PURCHASE	1,552	1,543	1,464	1,523	1,654	1,690	1,668	1,703	1,598	1,579
HEALTH SCIENCES CENTERS	645	717	697	719	729	715	666	723	710	574
BROOKLYN	336	364	360	372	365	375	377	377	372	369
SYRACUSE	309	353	337	347	364	340	289	346	338	205
SPECIALIZED COLLEGES	889	858	747	706	699	729	639	719	1,044	1,183
MARITIME	889	858	747	706	699	729	639	719	692	798
INST. OF TECH. AT UTICA/ROME	N/A	N/A	N/A	N/A	N/A	N/A	N/A	N/A	352	385
COLLEGES OF TECH./AGRIC.	9,989	9,550	9,385	9,067	9,472	9,602	9,804	9,352	8,782	8,771
ALFRED	2,520	2,336	2,330	2,187	2,188	2,404	2,427	2,206	2,071	2,041
CANTON	1,067	1,070	1,055	854	1,022	1,053	1,080	1,050	1,006	980
COBLESKILL	2,090	1,953	1,923	1,983	2,045	1,901	1,955	1,869	1,804	1,847
DELHI	1,428	1,417	1,388	1,378	1,463	1,437	1,424	1,409	1,313	1,280
FARMINGDALE	1,049	993	869	834	828	897	941	869	745	664
MORRISVILLE	1,835	1,781	1,820	1,831	1,926	1,910	1,977	1,949	1,843	1,959

⊙ Excludes Empire State College, College of Environmental Science and Forestry, College of Optometry, and the Statutory Colleges

Office of Institutional Research
 Central Administration
 State University of New York

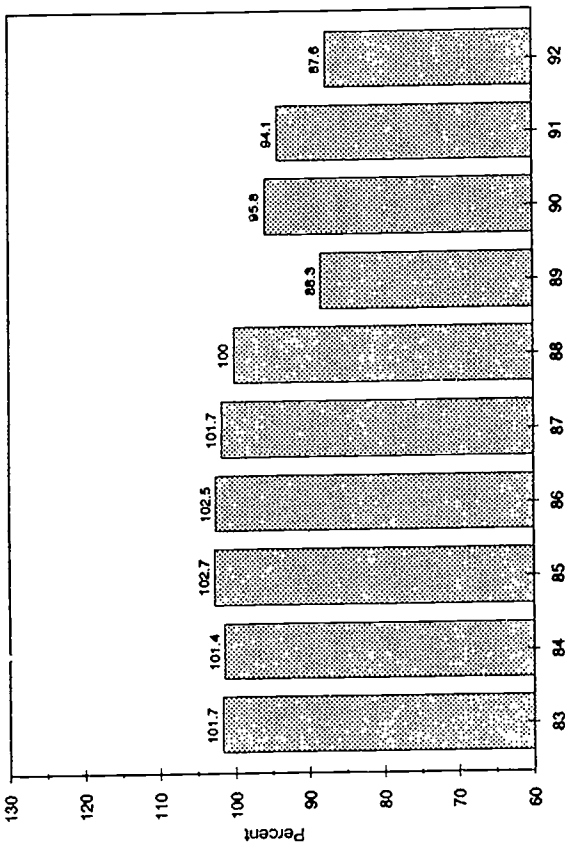
TABLE 9
PERCENT UTILIZATION OF NET REVENUE PRODUCING ADJUSTED DESIGN CAPACITY OF RESIDENCE HALL FACILITIES
① STATE UNIVERSITY OF NEW YORK, FALL 1983 THRU FALL 1992

INSTITUTION	FALL 1983	FALL 1984	FALL 1985	FALL 1986	FALL 1987	FALL 1988	FALL 1989	FALL 1990	FALL 1991	FALL 1992
STATE-OPERATED INSTITUTIONS	100.1	98.1	98.3	98.5	100.6	101.3	99.0	99.8	96.7	95.7
UNIVERSITY CENTERS	101.2	100.5	103.1	102.7	101.1	100.6	94.9	97.3	95.6	93.2
ALBANY	101.7	101.4	102.7	102.5	101.7	100.0	88.3	95.8	94.1	87.6
BINGHAMTON	105.0	101.2	107.5	106.6	103.2	103.9	100.8	101.6	98.0	94.9
BUFFALO (INCLUDES HSC)	95.6	98.4	100.2	100.6	99.3	100.1	97.1	97.8	94.0	97.3
STONY BROOK (INCLUDES HSC)	102.7	100.9	102.9	102.1	100.9	99.6	95.8	95.6	96.8	94.3
UNIVERSITY COLLEGES	96.2	93.8	93.5	95.8	99.3	100.4	99.5	100.8	97.5	95.8
BROCKPORT	78.3	71.5	68.0	86.0	87.8	87.6	95.6	98.8	99.7	98.8
BUFFALO (COLLEGE)	76.4	74.8	80.7	83.0	88.5	89.7	95.5	97.1	86.4	85.6
CORTLAND	101.8	108.3	111.9	107.6	117.4	115.8	107.1	102.7	107.0	103.0
FREDONIA	93.0	93.7	92.2	96.1	98.5	97.9	95.3	95.3	90.2	88.8
GENESEO	110.4	112.2	113.9	109.0	106.7	108.1	104.0	106.2	103.6	103.0
NEW PALTZ	95.1	86.4	87.2	94.0	98.4	105.7	103.1	105.6	104.4	102.1
OLD WESTBURY	100.0	100.0	100.0	100.0	100.0	100.0	100.0	100.0	100.0	100.0
ONEONTA	101.0	98.6	92.7	92.4	95.7	99.3	94.2	97.7	88.9	95.8
OSWEGO	105.3	101.9	104.4	108.0	104.0	105.9	104.6	103.8	100.7	95.4
PLATTSBURGH	97.6	98.6	94.0	96.9	99.9	96.4	94.1	94.3	92.3	86.1
POTSDAM	97.3	85.0	83.7	75.6	87.6	90.9	94.3	99.5	94.4	92.6
PURCHASE	101.4	103.1	106.6	99.3	107.9	110.2	110.1	111.1	106.2	103.3
HEALTH SCIENCES CENTERS	75.9	83.9	79.7	83.2	85.0	83.5	79.6	86.0	84.5	88.0
BROOKLYN	87.7	93.1	85.7	91.0	89.2	89.3	89.8	89.8	87.9	87.9
SYRACUSE	66.2	76.1	74.1	76.3	81.1	78.0	69.3	82.2	81.1	88.4
SPECIALIZED COLLEGES	102.5	98.6	85.5	80.8	80.1	83.4	73.3	82.6	82.9	93.7
MARITIME	102.5	98.6	85.5	80.8	80.1	83.4	73.3	82.6	79.5	91.3
INST. OF TECH. AT UTICA/ROME	N/A	N/A	N/A	N/A	N/A	N/A	N/A	N/A	90.3	99.2
COLLEGES OF TECH./AGRIC.	113.4	108.5	106.0	100.0	107.5	109.6	112.3	106.0	100.4	103.2
ALFRED	105.4	97.7	97.2	85.1	86.5	99.6	100.9	91.4	85.4	84.3
CANTON	129.5	129.9	123.4	103.1	123.4	127.4	130.8	127.4	122.1	118.4
COBLESKILL	123.0	115.2	112.6	111.3	119.7	111.4	114.7	109.6	105.8	108.8
DELHI	120.5	119.6	117.9	117.1	124.3	122.1	121.0	119.7	111.6	108.2
FARMINGDALE	108.1	102.4	89.0	85.7	100.0	100.0	107.2	90.2	83.3	104.6
MORRISVILLE	105.5	102.4	104.6	105.2	110.6	109.7	113.6	112.1	107.0	112.7

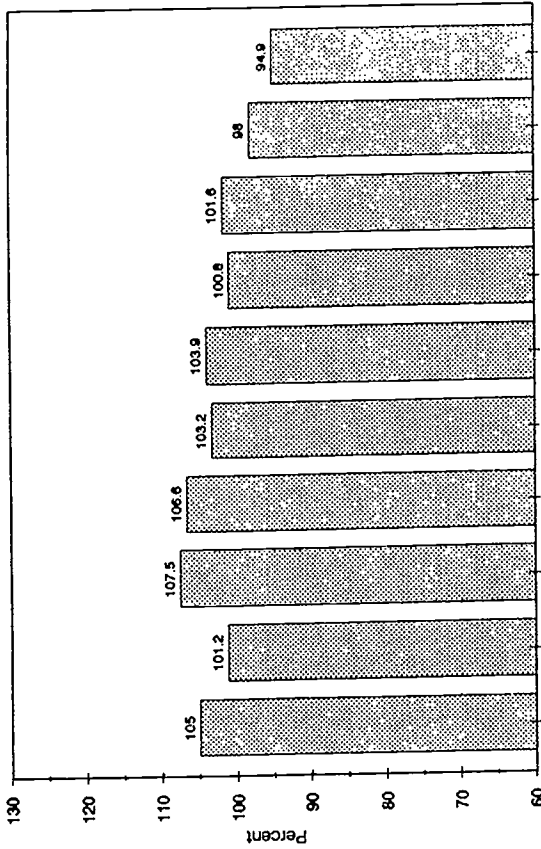
② Excludes Empire State College, College of Environmental Science and Forestry, College of Optometry, and the Statutory Colleges.

Figure 2: Trends in Percent Utilization for Each Institution

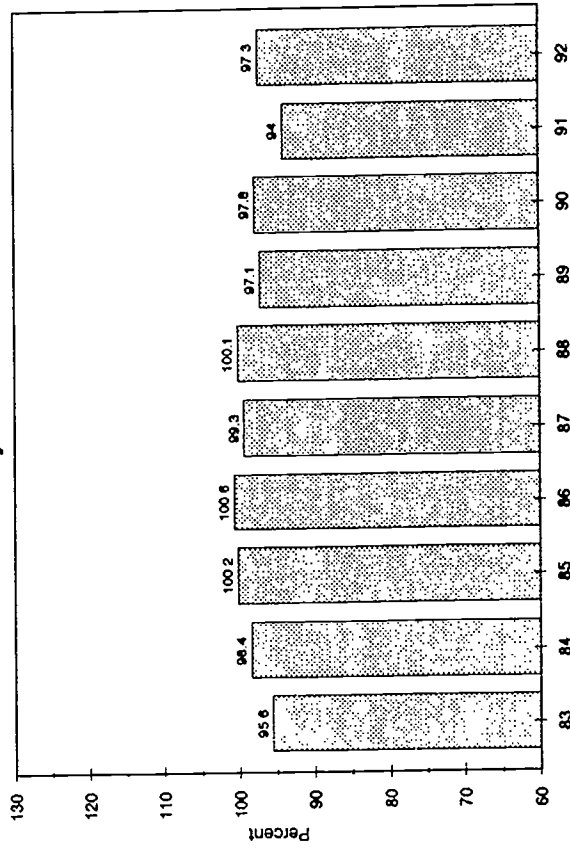
State University Center at Albany



State University Center at Binghamton



State University Center at Buffalo



State University Center at Stony Brook

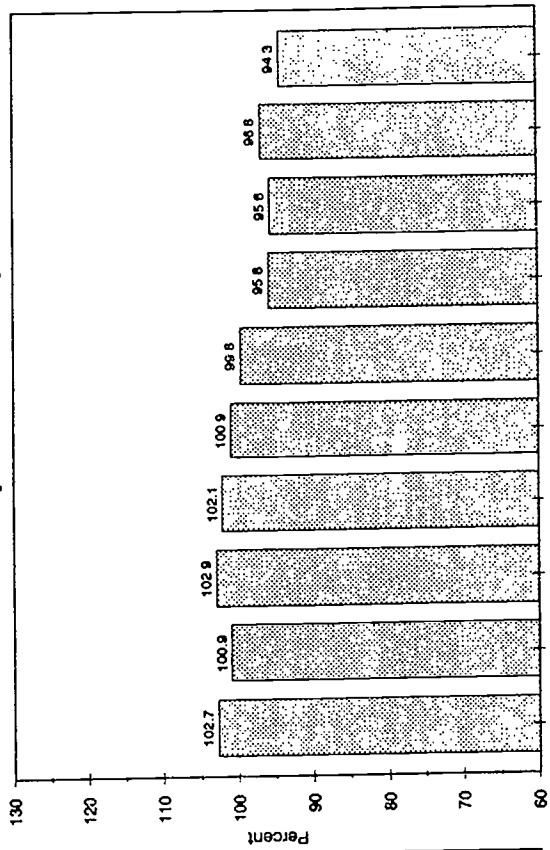


Figure 2: Trends in Percent Utilization for Each Institution
 State University College at Brockport
 State University College at Fredonia
 State University College at Cortland
 State University College at Buffalo

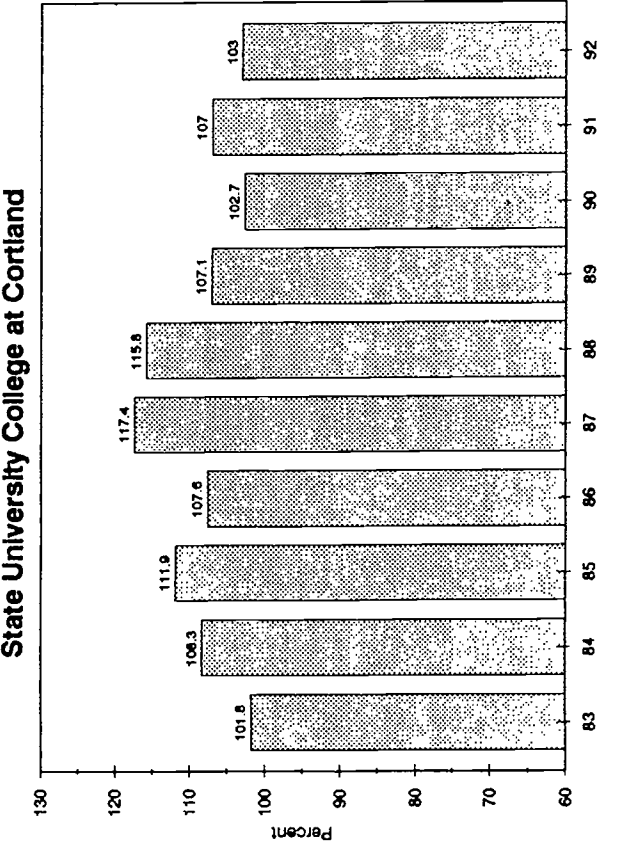
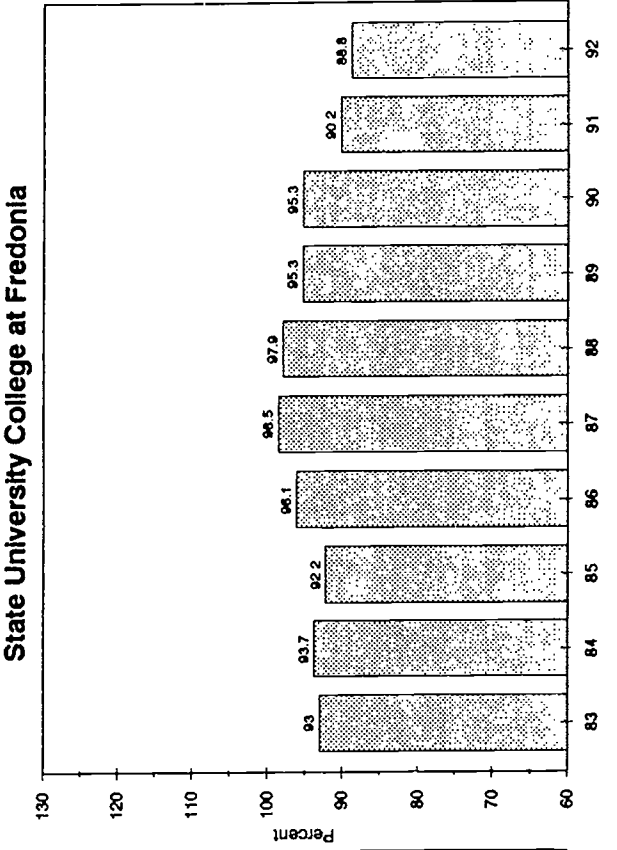
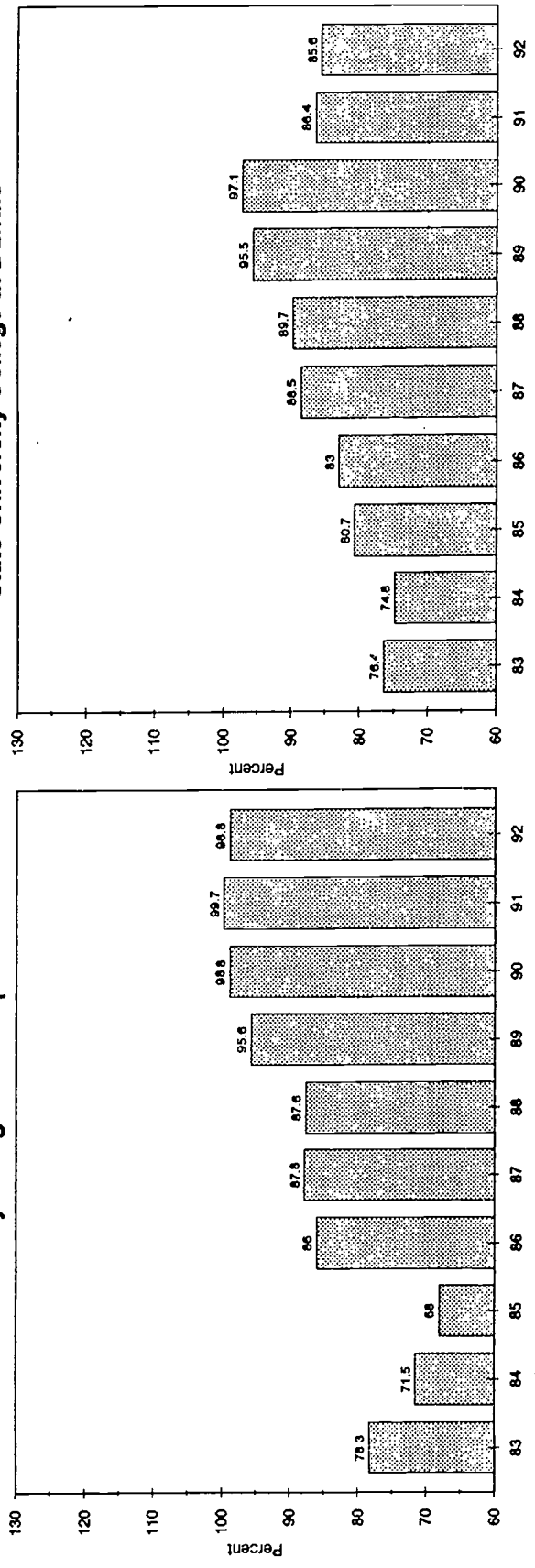
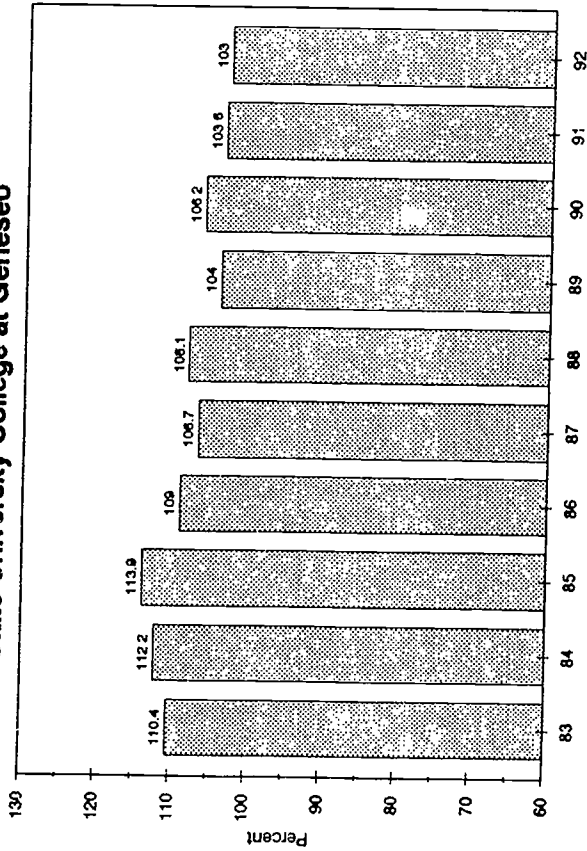
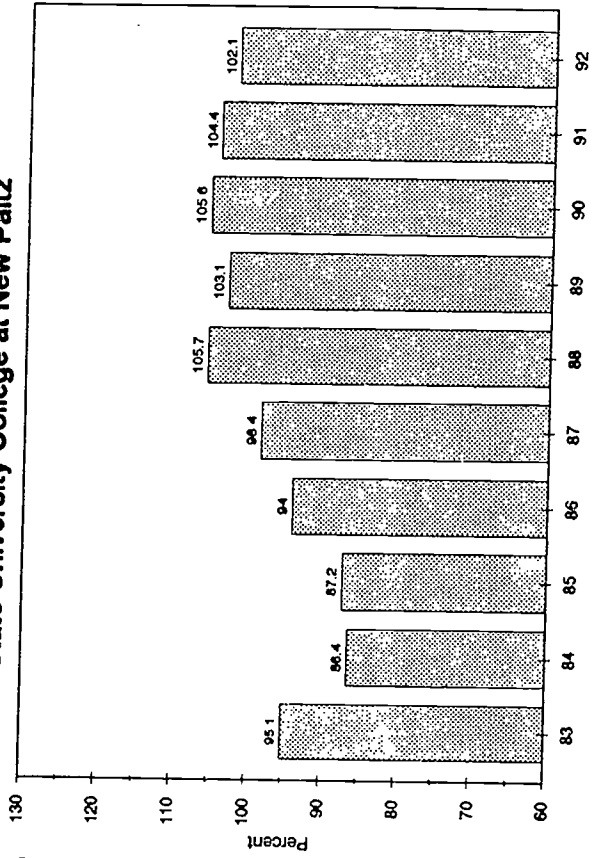


Figure 2: Trends in Percent Utilization for Each Institution

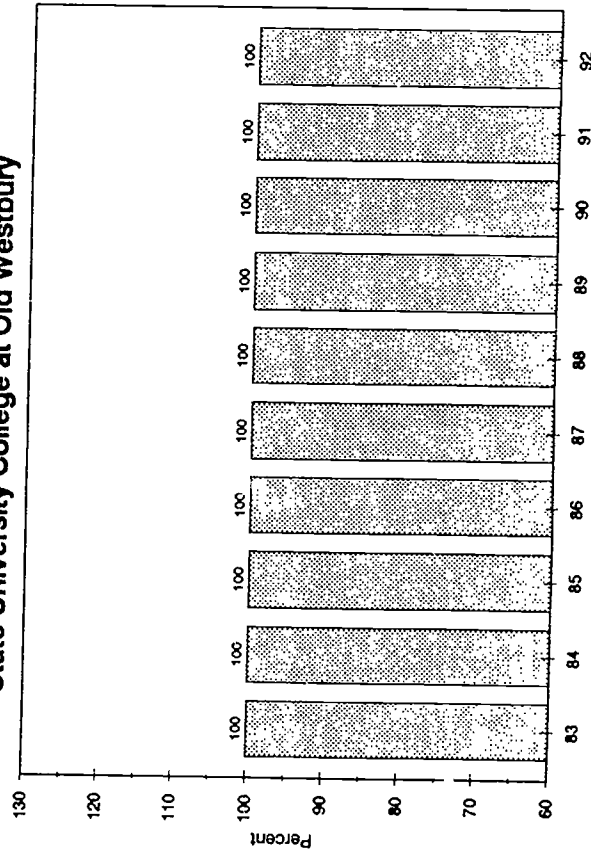
State University College at Geneseo



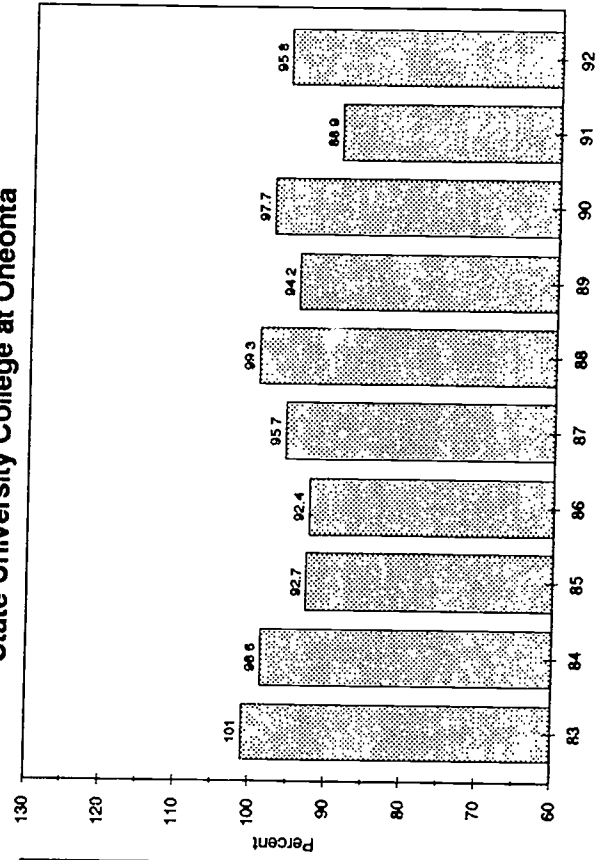
State University College at New Paltz



State University College at Old Westbury



State University College at Oneonta



82

82

Figure 2: Trends in Percent Utilization for Each Institution
 State University College at Oswego
 State University College at Plattsburgh

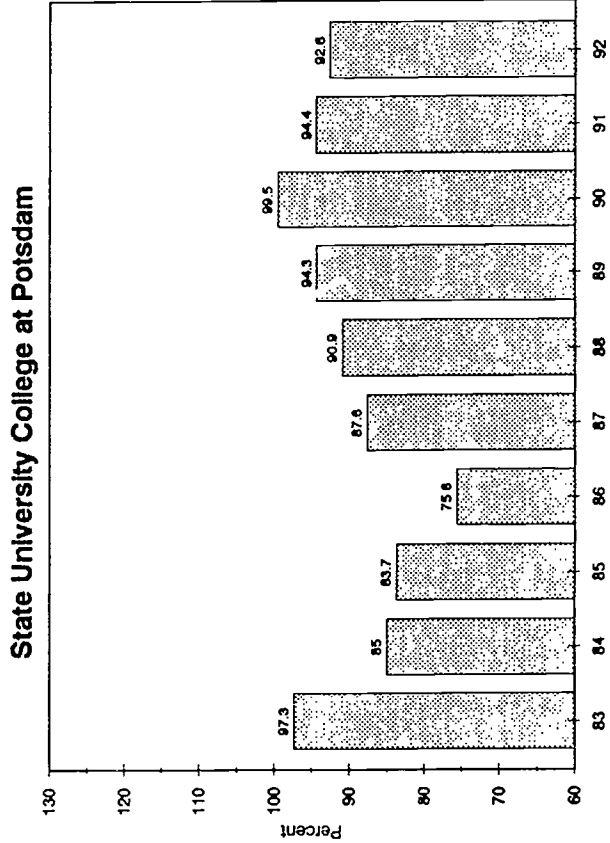
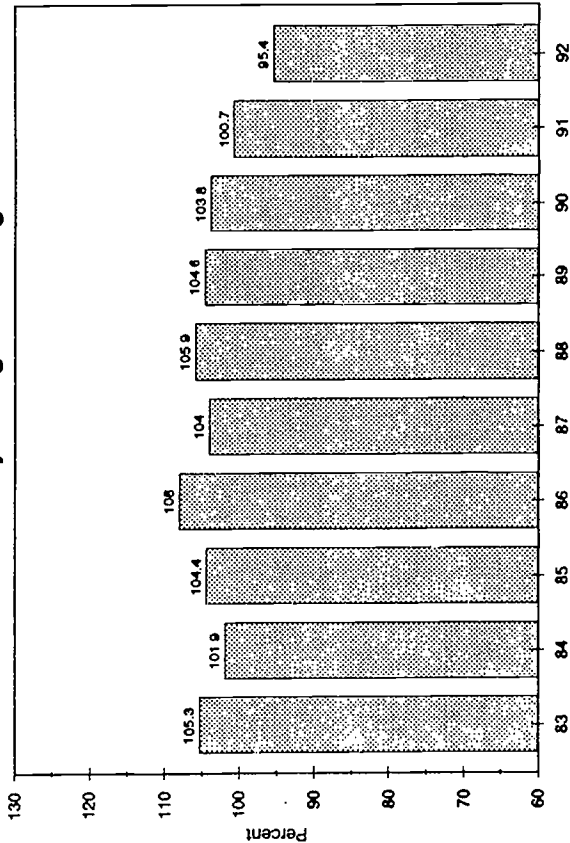
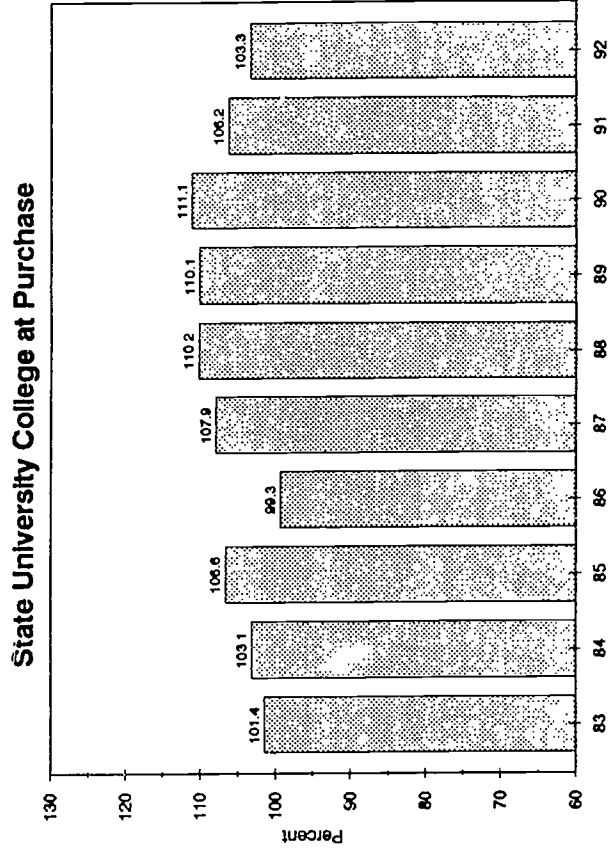
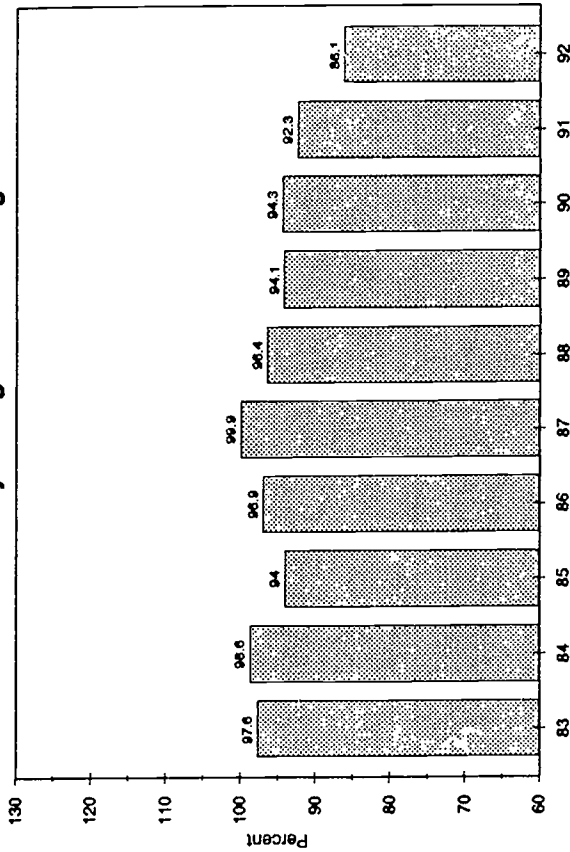
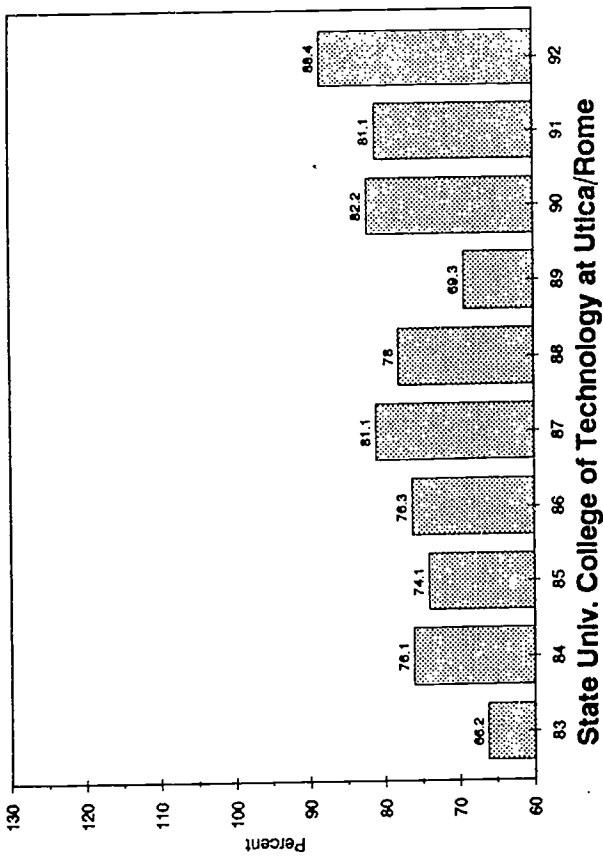
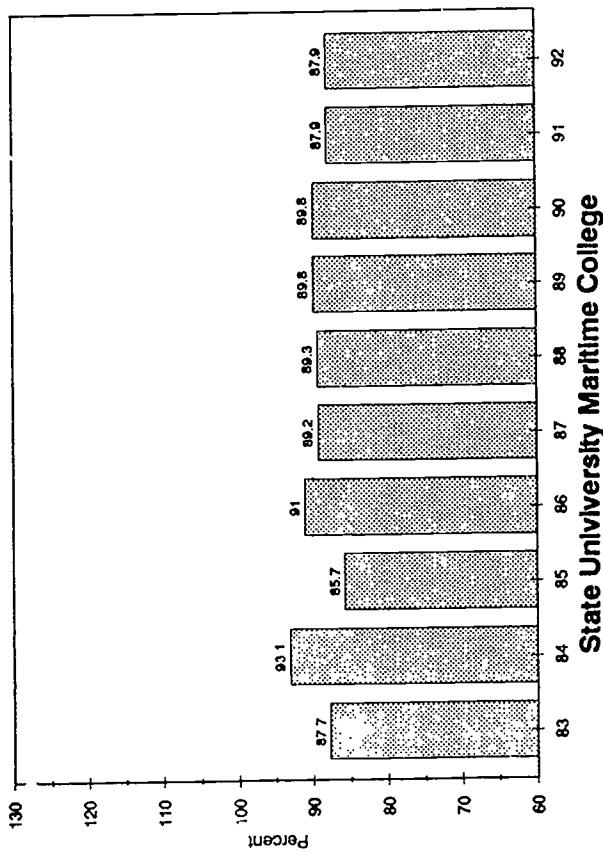


Figure 2: Trends in Percent Utilization for Each Institution

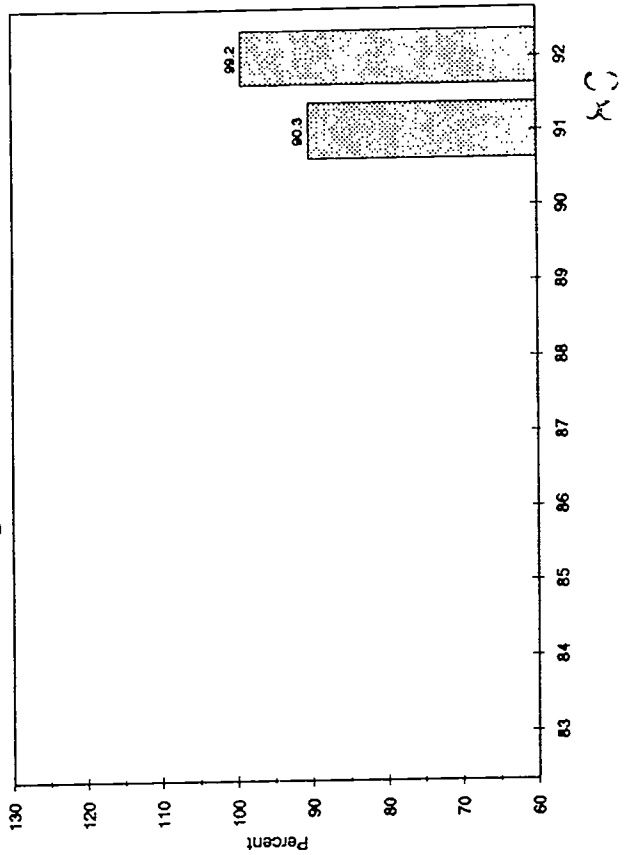
State Univ. Health Science Cntr. at Syracuse



State Univ. Health Science Cntr. at Brooklyn



State Univ. College of Technology at Utica/Rome



State University Maritime College

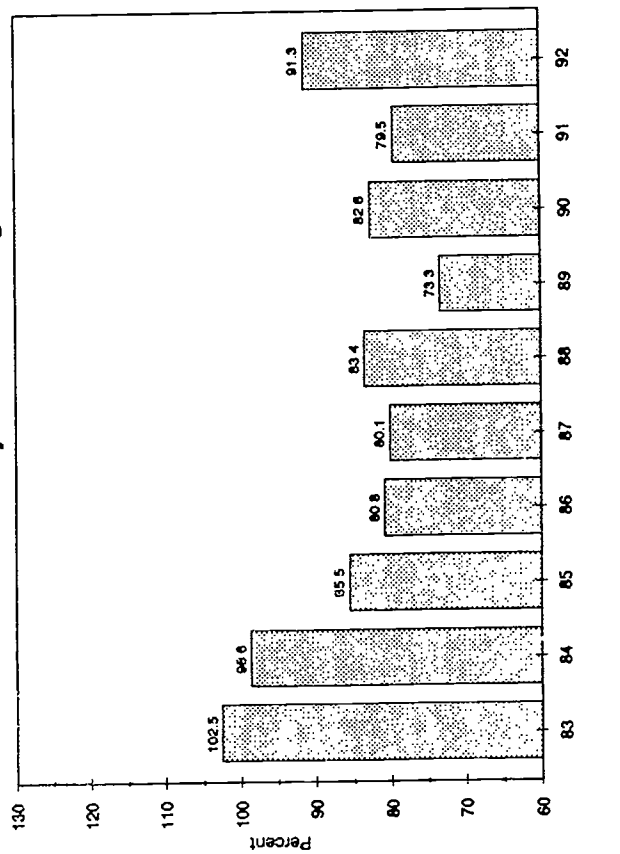
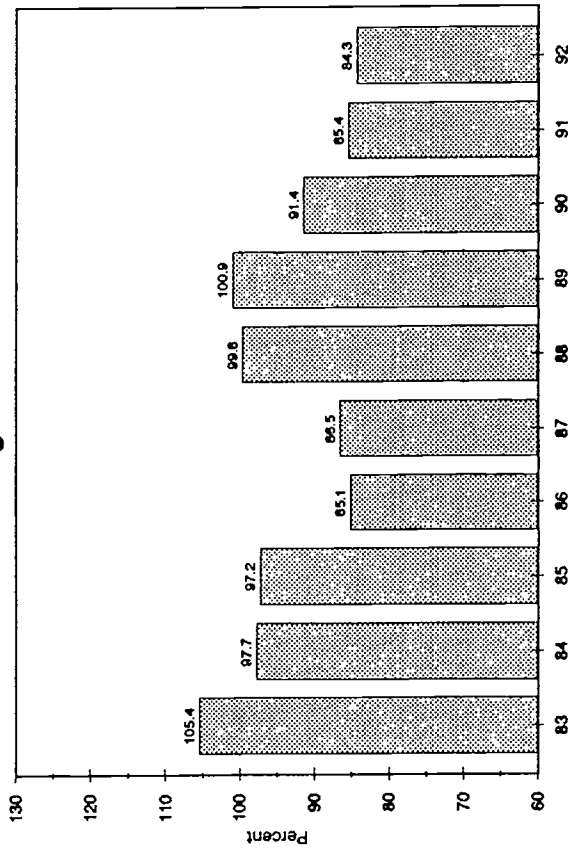
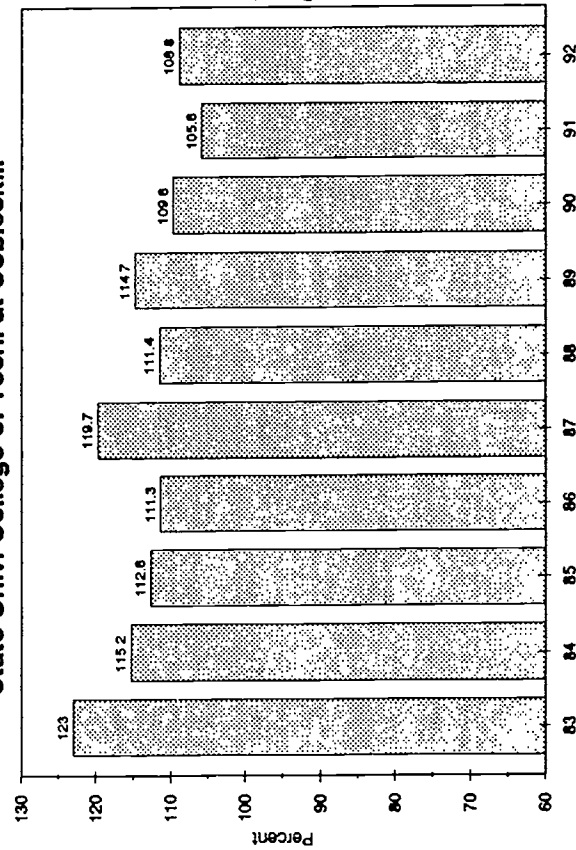


Figure 2: Trends in Percent Utilization for Each Institution

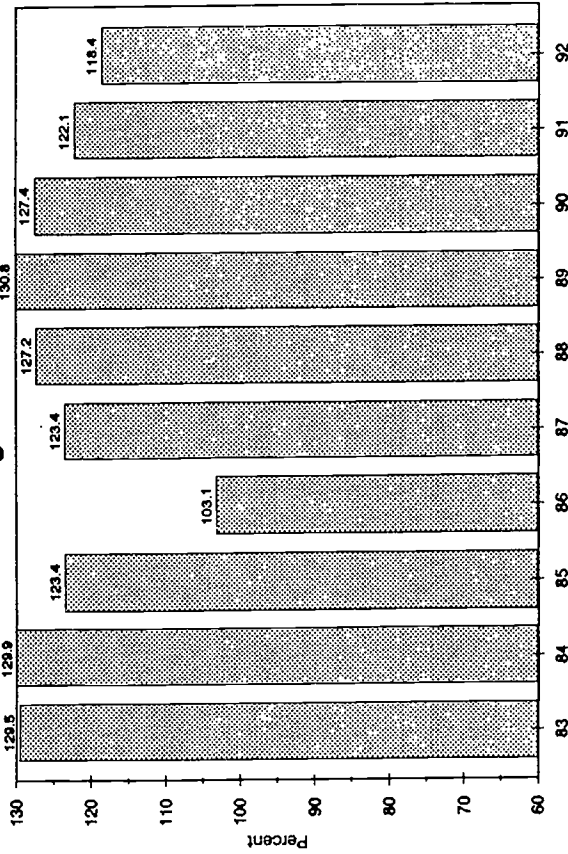
State Univ. College of Tech. at Alfred



State Univ. College of Tech. at Cobleskill



State Univ. College of Tech. at Canton



State Univ. College of Tech. at Delhi

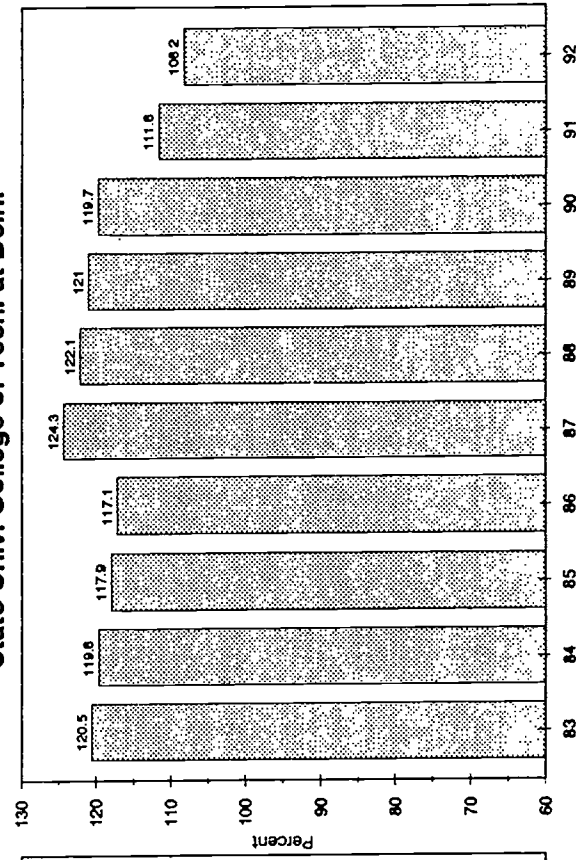
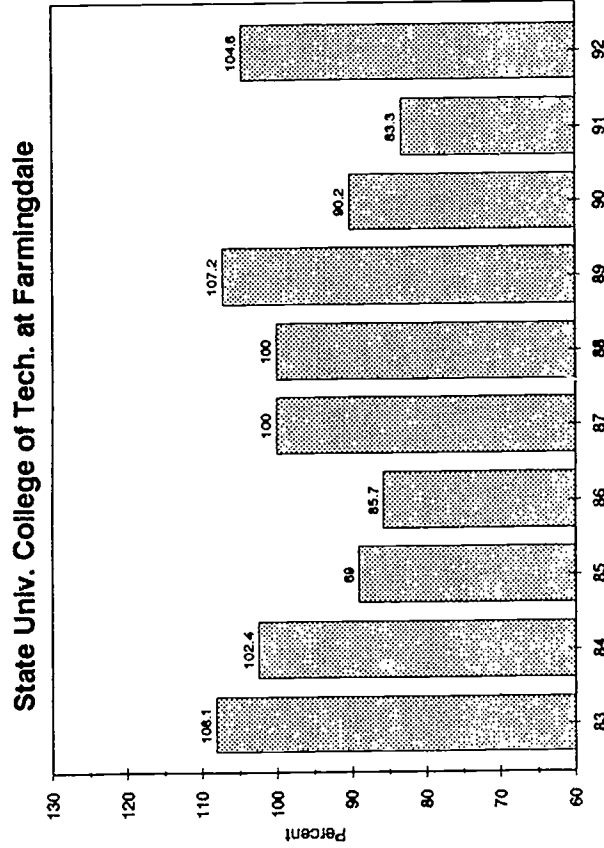
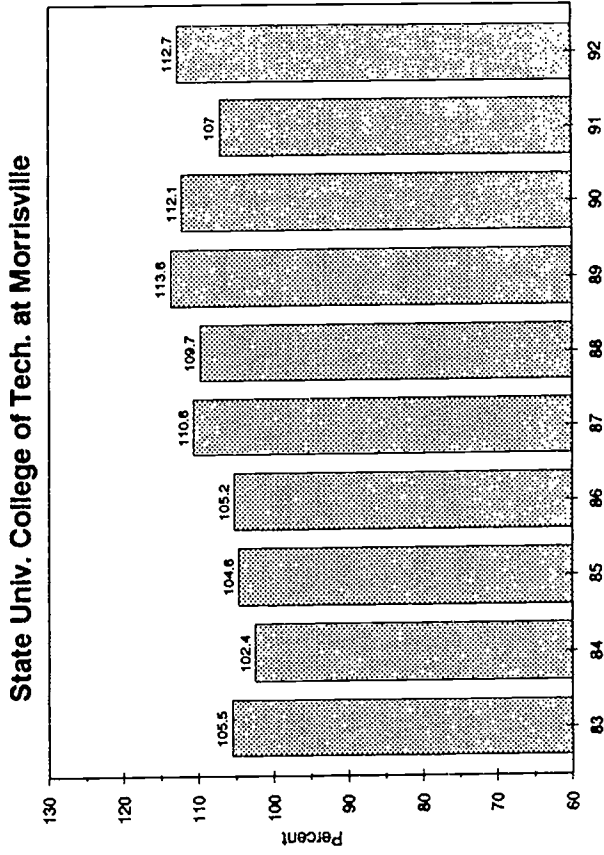


Figure 2: Trends in Percent Utilization for Each Institution



59

2

TABLE 10
NON-REVENUE ASSIGNMENTS IN RESIDENCE HALL FACILITIES
STATE-OPERATED INSTITUTIONS @ STATE UNIVERSITY OF NEW YORK
FALL 1983 THRU FALL 1992

INSTITUTION	FALL 1983	FALL 1984	FALL 1985	FALL 1986	FALL 1987	FALL 1988	FALL 1989	FALL 1990	FALL 1991	FALL 1992
STATE-OPERATED INSTITUTIONS	5,317	5,548	5,529	5,533	4,453	4,149	3,735	3,836	3,836	4,246
UNIVERSITY CENTERS	1,782	1,828	1,867	1,301	1,200	1,276	1,308	1,310	1,255	1,197
ALBANY	382	393	416	228	192	204	207	219	233	233
BINGHAMTON	317	269	272	255	255	256	256	256	279	286
BUFFALO (INCLUDES HSC)	700	702	718	482	432	433	445	444	439	425
STONY BROOK (INCLUDES HSC)	383	464	461	336	321	383	400	391	309	253
UNIVERSITY COLLEGES	2,792	2,982	2,958	3,730	2,677	2,352	1,855	1,962	1,931	2,280
BROCKPORT	224	204	210	1,199	98	124	121	126	105	104
BUFFALO (COLLEGE)	631	629	624	626	775	783	271	255	254	253
CORTLAND	153	160	153	153	127	120	113	130	127	337
FREDONIA	130	329	326	340	337	233	142	142	135	127
GENESEO	390	384	390	375	380	172	173	182	171	174
NEW PALTZ	272	272	278	258	160	160	280	280	280	466
OLD WESTBURY	60	46	46	38	38	38	36	46	49	47
ONEONTA	344	333	146	124	124	127	126	119	122	103
OSWEGO	245	244	245	243	243	243	243	243	243	250
PLATTSBURGH	116	118	112	159	164	159	155	155	150	140
POTSDAM	160	161	204	150	166	128	112	219	202	214
PURCHASE	67	102	224	65	65	65	83	65	93	65
HEALTH SCIENCES CENTERS	82	77	64	66	71	73	92	88	89	277
BROOKLYN	49	41	18	21	20	9	9	9	6	9
SYRACUSE	33	36	46	45	51	64	83	79	83	268
SPECIALIZED COLLEGES	33	30	26	26	27	26	28	30	40	38
MARITIME	33	30	26	26	27	26	28	30	30	26
INST. OF TECH. AT UTICA/ROME	N/A	N/A	N/A	N/A	N/A	N/A	N/A	N/A	10	12
COLLEGES OF TECH./AGRIC.	628	631	614	410	478	422	452	446	521	454
ALFRED	153	153	146	110	121	129	129	127	117	120
CANTON	40	40	40	36	36	36	38	40	40	36
COBLESKILL	146	149	137	74	137	75	77	77	77	85
DELHI	53	53	61	61	61	61	61	61	61	55
FARMINGDALE	163	163	157	57	51	49	75	67	136	84
MORRISVILLE	73	73	73	72	72	72	72	74	90	74

@ Excludes Empire State College, College of Environmental Science and Forestry, College of Optometry, and the Statutory Colleges

TABLE 11
REVENUE PRODUCING UTILIZATION OF RESIDENCE HALLS
FOR PURPOSES OTHER THAN RESIDENT STUDENT OCCUPANCY (BEDCOUNT)
① STATE UNIVERSITY OF NEW YORK
FALL 1983 THRU FALL 1992

INSTITUTION	FALL 1983	FALL 1984	FALL 1985	FALL 1986	FALL 1987	FALL 1988	FALL 1989	FALL 1990	FALL 1991	FALL 1992
STATE-OPERATED INSTITUTIONS	425	521	706	608	846	876	750	777	992	922
UNIVERSITY CENTERS	136	161	134	110	90	96	101	67	265	195
ALBANY	-	-	-	-	-	14	18	6	101	6
BINGHAMTON	-	-	-	-	-	-	-	-	-	-
BUFFALO (INCLUDES HSC)	-	-	-	-	-	-	-	-	28	30
STONY BROOK (INCLUDES HSC)	136	161	134	110	90	82	83	61	136	159
UNIVERSITY COLLEGES	289	323	536	350	661	641	520	541	548	575
BROCKPORT	185	185	193	-	201	197	201	201	201	201
BUFFALO (COLLEGE)	-	-	-	-	-	-	-	-	-	-
CORTLAND	-	-	-	-	-	-	-	-	-	-
FREDONIA	-	-	-	-	-	-	-	-	-	-
GENESEO	-	-	-	-	-	-	-	-	-	-
NEW PALTZ	-	-	-	-	120	120	-	-	-	-
OLD WESTBURY	-	-	-	-	-	-	-	-	-	-
ONEONTA	-	-	186	186	186	186	186	186	186	186
OSWEGO	-	-	-	-	-	-	-	-	-	-
PLATTSBURGH	-	-	15	24	14	14	9	30	59	64
POTSDAM	104	116	116	116	116	102	102	102	102	102
PURCHASE	-	22	26	24	24	22	22	22	0	22
HEALTH SCIENCES CENTERS	-	37	36	81	83	83	71	77	91	22
BROOKLYN	-	9	6	26	33	21	18	10	10	13
SYRACUSE	-	28	30	55	50	62	53	67	81	9
SPECIALIZED COLLEGES	0	0	0	4	12	56	58	92	88	130
MARITIME	0	0	0	4	12	56	58	92	88	130
INST. OF TECH. AT UTICA/ROME	N/A	N/A	N/A	N/A	N/A	N/A	N/A	N/A	0	0
COLLEGES OF TECH./AGRIC.	0	0	0	63	0	0	0	0	0	0
ALFRED	0	0	0	-	0	0	0	0	0	0
CANTON	0	0	0	-	0	0	0	0	0	0
COBLESKILL	0	0	0	63	0	0	0	0	0	0
DELHI	0	0	0	-	0	0	0	0	0	0
FARMINGDALE	0	0	0	-	0	0	0	0	0	0
MORRISVILLE	0	0	0	-	0	0	0	0	0	0

① Excludes Empire State College, College of Environmental Science and Forestry, College of Optometry, and the Statutory Colleges

TABLE 12
 NUMBER OF STUDENTS PER RESIDENT ASSISTANT ①
 STATE-OPERATED INSTITUTIONS ② -- STATE UNIVERSITY OF NEW YORK
 FALL 1983 THRU FALL 1992

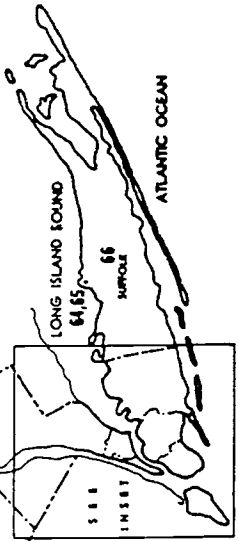
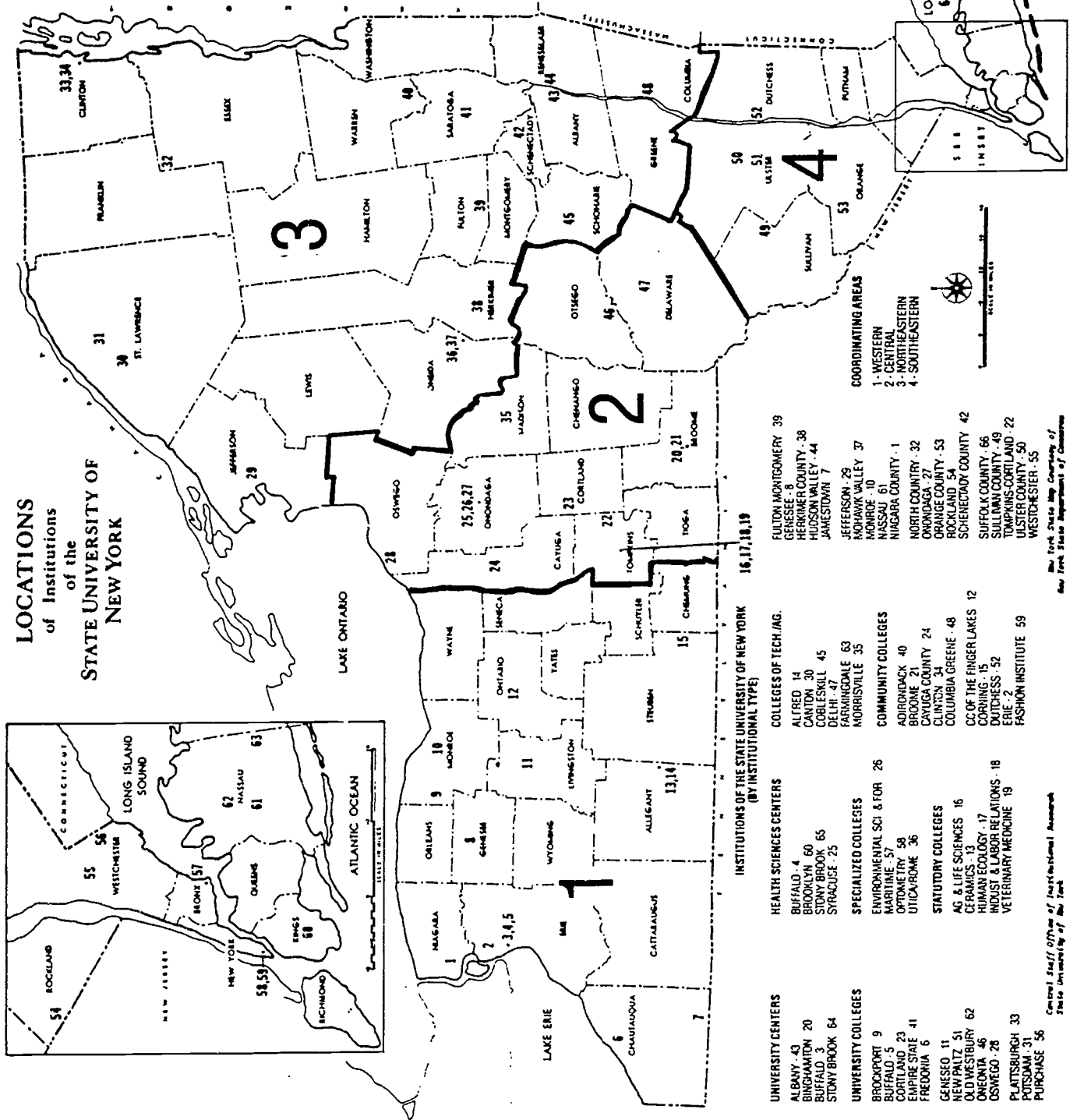
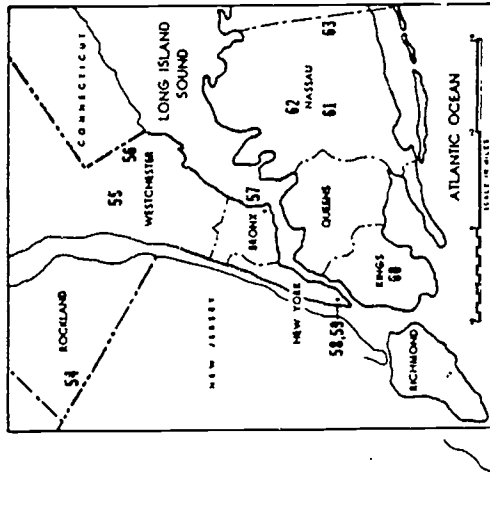
INSTITUTION	FALL 1983	FALL 1984	FALL 1985	FALL 1986	FALL 1987	FALL 1988	FALL 1989	FALL 1990	FALL 1991	FALL 1992
STATE-OPERATED INSTITUTIONS	25.0	24.6	25.0	24.9	25.6	25.6	25.0	24.6	24.4	24.6
UNIVERSITY CENTERS										
ALBANY	27.6	26.5	27.4	27.8	27.9	27.8	25.9	25.5	26.9	27.8
BINGHAMTON	33.3	32.4	32.7	34.5	34.4	34.8	30.8	32.8	32.2	30.4
BUFFALO (INCLUDES HSC)	27.9	28.1	29.9	29.6	28.7	28.9	28.0	28.2	29.9	28.9
BUFFALO (INCLUDES HSC)	25.5	26.0	26.5	27.0	26.6	26.9	24.6	24.7	24.2	24.9
STONY BROOK (INCLUDES HSC)	25.2	22.3	23.3	23.2	24.3	23.2	22.5	20.3	23.6	27.3
UNIVERSITY COLLEGES										
BROCKPORT	24.8	25.1	25.0	24.7	26.0	26.0	26.0	25.6	24.7	24.2
BUFFALO (COLLEGE)	25.1	26.1	25.2	24.5	23.8	23.3	24.2	25.3	26.7	26.8
CORTLAND	19.1	19.1	19.4	19.5	18.4	16.6	20.8	21.1	19.2	19.2
FREDONIA	15.8	16.5	17.6	16.8	26.9	28.9	28.5	23.7	24.4	21.8
GENESEO	28.4	31.8	31.0	31.3	31.7	31.6	30.7	30.7	29.1	28.3
NEW PALTZ	26.2	27.2	26.6	26.5	25.9	25.4	24.4	24.7	24.2	23.6
OLD WESTBURY	32.0	29.1	28.8	30.9	32.3	34.8	33.9	34.7	34.3	33.7
ONEONTA	41.1	41.9	41.9	41.8	21.0	21.0	21.0	16.2	16.2	16.2
OSWEGO	22.4	23.9	24.0	22.5	23.3	23.7	22.6	23.3	20.5	24.1
PLATTSBURGH	28.5	27.8	28.3	29.3	28.2	28.7	28.4	28.2	27.3	25.2
POTSDAM	29.8	30.1	28.6	28.8	29.7	28.7	28.1	28.0	27.1	25.3
PURCHASE	25.4	25.2	25.8	22.9	25.8	25.6	24.5	24.1	22.8	22.2
HEALTH SCIENCES CENTERS	23.9	23.2	22.7	22.6	24.5	25.1	24.8	25.3	23.9	23.4
BROOKLYN	33.9	32.6	33.2	32.1	34.5	33.9	31.8	34.4	33.2	37.0
SYRACUSE	56.0	44.4	50.6	49.4	56.2	59.3	60.0	61.2	60.3	59.3
SPECIALIZED COLLEGES	23.8	25.3	23.8	22.8	24.5	22.2	18.8	22.0	20.6	22.1
MARITIME	13.5	14.3	14.4	13.5	13.3	13.7	10.8	16.5	20.0	19.8
INST. OF TECH. AT UTICA/ROME	13.5	14.3	14.4	13.5	13.3	13.7	10.8	16.5	16.2	16.3
COLLEGES OF TECH./AGRIC.	N/A	N/A	N/A	N/A	N/A	N/A	N/A	N/A	35.2	32.1
ALFRED	22.3	21.2	21.2	20.9	21.7	21.7	22.1	20.8	19.5	20.3
CANTON	16.5	15.3	16.0	17.6	16.0	16.6	16.7	15.5	15.9	15.1
COBLESKILL	26.7	26.8	26.4	23.7	28.4	29.3	28.4	26.3	25.2	27.2
DELHI	25.2	22.7	26.0	25.9	27.6	25.3	25.4	24.3	23.4	21.7
FARMINGDALE	26.9	26.7	20.1	16.8	19.0	19.2	19.5	19.3	18.0	16.8
MORRISVILLE	25.0	23.6	24.1	21.4	23.0	23.0	24.1	20.2	18.6	24.6
	23.8	23.1	23.6	24.1	25.3	26.5	27.5	26.3	20.5	26.5

① Students reported as Resident Assistants perform a range of assignments which vary in type and commitment. Therefore, the ratios shown here do not necessarily reflect differences in Resident Assistant services available to students.

② Excludes Empire State College, College of Environmental Science and Forestry, College of Optometry, and the Statutory Colleges

PART THREE
APPENDIX

LOCATIONS of Institutions of the STATE UNIVERSITY OF NEW YORK



- ### INSTITUTIONS OF THE STATE UNIVERSITY OF NEW YORK (NUMERICAL LISTING)
1. NIAGARA COUNTY CC
 2. ERIE CC
 3. SUNY AT BUFFALO
 4. BUFFALO HEALTH SCIENCES CENTER
 5. SU COLLEGE AT BUFFALO
 6. SU COLLEGE AT FREDONIA
 7. JAMESTOWN CC
 8. GENESSEE CC
 9. SU COLLEGE AT BROOKPORT
 10. MORRIS CC
 11. SU COLLEGE AT GENESOO
 12. COMMUNITY COLLEGE OF THE FINGER LAKES
 13. COLLEGE OF CERAMICS
 14. COLLEGE OF TECHNOLOGY AT ALFRED
 15. CORNING CC
 16. NYS COLLEGE OF AG & LIFE SCIENCES
 17. NYS COLLEGE OF HUMAN ECOLOGY
 18. NYS SCHOOL OF INDUSTRIAL & LABOR RELATIONS
 19. SUNY COLLEGE OF VETERINARY MEDICINE
 20. SUNY AT BINGHAMTON
 21. BROOME CC
 22. TOMPKINS-CORTLAND CC
 23. SU COLLEGE AT CORTLAND
 24. CAYUGA COUNTY CC
 25. HSC AT SYRACUSE
 26. ENVIRONMENTAL SCIENCE & FORESTRY
 27. ONONDAGA CC
 28. SU COLLEGE AT OSWEGO
 29. JEFFERSON CC
 30. COLLEGE OF TECHNOLOGY AT CANTON
 31. SU COLLEGE AT POTSDAM
 32. NORTH COUNTY CC
 33. SU COLLEGE AT PLATTSBURGH
 34. CLINTON CC
 35. COLLEGE OF TECH & AG AT MORRISVILLE
 36. SU COLLEGE AT UTICA/ROME
 37. MOHAWK VALLEY CC
 38. HERKIMER COUNTY CC
 39. FULTON MONTGOMERY CC
 40. ADIRONDACK CC
 41. EMPIRE STATE COLLEGE
 42. SCHEMECTADY COUNTY CC
 43. SUNY AT ALBANY
 44. HUDSON VALLEY CC
 45. COLLEGE OF TECH & AG AT CORLESKILL
 46. SU COLLEGE AT ONEONTA
 47. COLLEGE OF TECHNOLOGY AT DELHI
 48. COLUMBIA-GREEN CC
 49. SULLYMAN COUNTY CC
 50. ULSTER COUNTY CC
 51. SU COLLEGE AT NEW PALTZ
 52. DUTCHESS CC
 53. ROCKLAND CC
 54. WESTCHESTER CC
 55. WESTCHESTER CC
 56. SU COLLEGE AT PURCHASE
 57. SUNNYSIDE COLLEGE
 58. STATE COLLEGE OF OPTOMETRY
 59. FASHION INSTITUTE OF TECHNOLOGY
 60. HSC AT BROOKLYN
 61. MASSAUC CC
 62. SU COLLEGE AT OLD WESTBURY
 63. COLLEGE OF TECHNOLOGY AT FARMINGDALE
 64. SUNY AT STONY BROOK
 65. STONY BROOK HEALTH SCIENCES CENTER
 66. SUFFOLK COUNTY CC

- ### INSTITUTIONS OF THE STATE UNIVERSITY OF NEW YORK (BY INSTITUTIONAL TYPE)
- | | |
|----------------------------|--------------------------------|
| UNIVERSITY CENTERS | HEALTH SCIENCES CENTERS |
| ALBANY - 43 | ALFRED - 14 |
| BINGHAMTON - 20 | CANTON - 30 |
| BUFFALO - 3 | CORLESKILL - 45 |
| STONY BROOK - 64 | DELHI - 47 |
| | FARMINGDALE - 63 |
| | MORRISVILLE - 35 |
| UNIVERSITY COLLEGES | SPECIALIZED COLLEGES |
| BROOKPORT - 9 | ENVIRONMENTAL SCI & FOR - 26 |
| BUFFALO - 5 | MARITIME - 57 |
| CORTLAND - 23 | OPTOMETRY - 58 |
| EMPIRE STATE - 41 | UTICA/ROME - 36 |
| FREDONIA - 6 | STATUTORY COLLEGES |
| GENESOO - 11 | AG & LIFE SCIENCES - 16 |
| NEW PALTZ - 51 | CERAMICS - 13 |
| OLD WESTBURY - 62 | HUMAN ECOLOGY - 17 |
| ONEONTA - 46 | INDUS & LABOR RELATIONS - 18 |
| OSWEGO - 28 | VETERINARY MEDICINE - 19 |
| PLATTSBURGH - 33 | |
| POTSDAM - 31 | |
| PURCHASE - 56 | |

- ### COORDINATING AREAS
- 1 - WESTERN
 - 2 - CENTRAL
 - 3 - NORTHEASTERN
 - 4 - SOUTHEASTERN



Central Staff Office of Institutional Research
State University of New York
New York State Department of Education

Chronology of Dates of Establishment of Institutions of the State University of New York

1811 to 1900

1901 to 1979

^a1948

11-12	21-30	31-40	41-50	51-60	61-70	71-80	81-90	91-100	01-10	11-20	21-30	31-40	41-50	51-60	61-70	71-79
-------	-------	-------	-------	-------	-------	-------	-------	--------	-------	-------	-------	-------	-------	-------	-------	-------

29	State University Number of Institutions	34	43	64	66
X	University Centers Albany 1844 ^b Binghamton 1946 ^c Buffalo 1846 Stony Brook 1950 ^c Stony Brook 1957 ^{bc} Stony Brook 1962 ^{bc}				
X	University Colleges Brockport 1841 Buffalo 1867 ^b Cortland 1867 ^b Cortland 1868 ^b Empire State Fredonia 1826 Genesee 1866 ^b Genesee 1871 ^b New Paltz 1828 Old Westbury 1885 ^b Oneonta 1867 ^b Oneonta 1867 ^b Oswego 1861 ^b Oswego 1867 ^b Plattsburgh 1889 ^b Potdam 1816 Purchase 1867 ^b Purchase 1965 ^{bc}				
	Health Science Centers Buffalo 1846 Brooklyn 1858 Stony Brook 1950 ^{bc} Stony Brook 1970 ^{bc} Syracuse 1834 Syracuse 1872 Syracuse 1950 ^{bc}				
X	Specialized Colleges Environmental Science and Forestry 1911 ^b Maritime 1913 ^b Optometry Utica/Rome 1874 Utica/Rome 1966 ^{bc} Utica/Rome 1971 ^{bc}				
X	Statutory Colleges Agriculture and Life Sci. 1900 ^b Ceramics 1904 ^b Human Ecology 1925 ^b Industrial & Labor Rel. 1944 ^b Veterinary Medicine 1894 ^b				
X	Colleges of Technology/Agriculture Alfred 1908 ^b Canton 1906 ^b Cobleskill 1911 ^b Delhi 1913 ^b Farmingdale 1912 ^b Mornsville 1908 ^b				
X	Community Colleges Adirondack 1946 ^b Broome 1946 ^b Cayuga County Clinton 1966 ^{bc} Columbia-Greene 1966 ^{bc} Community College of the Finger Lakes 1965 ^{bc} Corning 1956 ^{bc} Dutchess 1957 ^{bc} Erie 1944 ^{bc} Fashion Institute 1944 ^{bc} Fulton-Montgomery 1951 ^{bc} Genesee 1963 ^{bc} Genesee 1966 ^{bc} Herkimer County 1966 ^{bc} Hudson Valley 1945 ^{bc} Jamestown 1953 ^{bc} Jefferson 1950 ^{bc} Jefferson 1961 ^{bc} Mohawk Valley 1946 ^b Monroe 1961 ^{bc} Nassau 1946 ^b Nassau 1959 ^{bc} New York City 1946 ^b Niagara County 1962 ^{bc} North Country 1967 ^{bc} Onondaga 1961 ^{bc} Orange County 1950 ^{bc} Rockland 1959 ^{bc} Schenectady County 1967 ^{bc} Suffolk County 1959 ^{bc} Sullivan County 1962 ^{bc} Tompkins-Cortland 1967 ^{bc} Ulster County 1961 ^{bc} Ulster County 1946 ^b Ulster County 1946 ^b				



FOOTNOTES

^aOriginal constituent institutions of the State University of New York at its establishment in 1948.

^bDate of establishment as a state college or institution.

^cDate of incorporation into State University of New York.

^dAs of July 1, 1975, New York City Community College and the other community colleges (not shown here) sponsored by the New York City Board of Higher Education were no longer a part of the State University of New York.

NOTE: Dates preceding date indicated for establishment as a state college or institution refer to institutional antecedents of the present college or university. These may have been private institutions or controlled by a governmental entity other than the state. Intermediate institutional developments such as other college affiliation or date of first baccalaureate program offering have been omitted for the sake of brevity.

*The Health Sciences Centers at Buffalo and Stony Brook are shown separately here from their respective core campuses.

PUBLICATION LIST

PUBLICATION LIST
CENTRAL STAFF OFFICE OF INSTITUTIONAL RESEARCH

* Indicates OUT OF PRINT

REPORT TITLE

YEARS

ACADEMIC LIBRARY STATISTICS (Now done as a STATISTICAL RELEASE.)	DATA YEAR	1967-1969	1969-1970	1972-1975	1976-1977	1978-1979
▪	RPT. NO.	*8	*18	*12-76	*12-76	*12-80
▪	DATA YEAR	1980-1983				
▪	RPT. NO.	12-84				
AGE GROUP AND SEX OF STUDENTS	DATA YEAR	1974	1975	1976	1977	1978
▪	RPT. NO.	*8-75	*8-76	*8-77	8-78	8-79
▪	DATA YEAR	1979	1980	1981	1982	1983
▪	RPT. NO.	8-81	8-82	8-83	8-84	8-84A
▪	DATA YEAR	1984	1985	1986	1987	1988
▪	RPT. NO.	8-85	8-86	8-87	8-88	8-89
▪	DATA YEAR	1989	1990	1991	1992	
▪	RPT. NO.	8-90	8-91	8-92	8-93	
APPLICATION AND ENROLLMENT PATTERNS OF TRANSFER STUDENTS	DATA YEAR	1970	1971	1972	1973	1974
▪	RPT. NO.	*15	*29	*41	*6-75	*6-76
▪	DATA YEAR	1975	1976 & 1977	1978	1979	1983
▪	RPT. NO.	6-76A	6-79	6-80	6-81	6-84
▪	DATA YEAR	1984	1985	1986	1987	1988
▪	RPT. NO.	6-85	6-86	6-87	6-88	6-89
▪	DATA YEAR	1989	1990	1991		
▪	RPT. NO.	6-90	6-91	6-92		
ATTRITION & RETENTION OF FIRST-TIME, FULL-TIME STUDENTS IN TWO YEAR AND BACCALAUREATE DEGREE PROGRAMS (Partial history of later cohorts included starting with Rpt. 4-80.) (Postsecondary Opportunity Program Students included starting with Rpt. 4-87).	CLASS OF	1973	1974	1975 & 1976	1977 & 1978	1982
▪	RPT. NO.	*4-74	*4-76	*4-79	*4-80	4-85
▪	CLASS OF	1983	1984	1988	1989	
▪	RPT. NO.	4-87	4-87A	4-92	4-92A	
CAMPUS SCHOOL STATISTICS	DATA YEAR	1966-1968				
	RPT. NO.	*3				
CHARACTERISTICS OF INSTITUTIONS UNDER THE PROGRAM OF THE STATE UNIVERSITY OF NEW YORK	DATA YEAR	1970				
	RPT. NO.	*25				
DEGREES AND OTHER FORMAL AWARDS (Latest print-out available upon request.)	DATA YEAR	1968				
	RPT. NO.	*B-1				
DEGREE AND OTHER FORMAL PROGRAMS CURRENTLY OFFERED (Latest print-out available upon request.)	DATA YEAR	1969	1971	1980	1982	1984
▪	RPT. NO.	*	*26	*15-80	*15-82	15-84
▪	DATA YEAR	1987				
▪	RPT. NO.	15-87				
DIRECTORY OF SELECTED CAMPUS ADMINISTRATIVE PERSONNEL OF THE STATE UNIVERSITY OF NEW YORK	DATA YEAR	1971				
	RPT. NO.	*-				
EMPLOYEE CHARACTERISTICS AND SALARY STATISTICS	DATA YEAR	1970				
	RPT. NO.	*23				
*ENROLLMENT AND DEGREES GRANTED BY ACADEMIC PROGRAMS (Latest print-out available upon request.)	DATA YEAR	Annual 1975-1977 & Degrees 1974-75 to 1976-77				
	RPT. NO.	*14-78				

PUBLICATION LIST
CENTRAL STAFF OFFICE OF INSTITUTIONAL RESEARCH

* Indicates OUT OF PRINT

REPORT TITLE

YEARS

ENROLLMENT BY ACADEMIC PROGRAM (Latest print-out available upon request.)	DATA YEAR	1968	1968-1971	1969-1972		
	RPT. NO.	*C-1	*33	*5-74		
▪	DATA YEAR	Enrl. 1975-1977 & Degree	1974-75 to 1976-77			
▪	RPT. NO.		*14-78			
ENROLLMENT, HOUSING AND FINANCIAL AID OF MINORITY GROUP STUDENTS (See STATISTICAL RELEASES for later years.)	DATA YEAR	1968				
	RPT. NO.	*1				
FACULTY AND STAFF STATISTICS BY JOB CATEGORY, ETHNIC GROUP, TENURE, RANK AND SEX	DATA YEAR		1970			
	RPT. NO.		*-			
GEOGRAPHIC ORIGINS OF FIRST TIME STUDENTS (Now included in RPT. 2-84 to date.)	DATA YEAR	1968	1969	1970	1971	1972
	RPT. NO.	*6	*13	*22	*35	*39
▪	DATA YEAR	1973	1974	1975	1976	1977 & 1978
▪	RPT. NO.	*3-75	*3-76	*3-76A	*3-78	3-80
▪	DATA YEAR	1980 & 1981				
▪	RPT. NO.	3-83				
GEOGRAPHIC ORIGINS OF STUDENTS (Includes first time & transfer students from RPT. 2-84 to date.)	DATA YEAR	1968	1969	1970	1971	1972
	RPT. NO.	*5	*12	*21	*36	*42
▪	DATA YEAR	1973	1974	1976	1978	1977
▪	RPT. NO.	*2-75	*2-76	2-78	2-79	2-80
▪	DATA YEAR	1979	1981	1982	1983	1984
▪	RPT. NO.	2-81	2-83	2-84	2-84A	2-85
▪	DATA YEAR	1985	1986	1987	1988	1989
▪	RPT. NO.	2-86	2-87	2-88	2-89	*2-90
▪	DATA YEAR	1990	1991			
▪	RPT. NO.	2-91	2-92			
GEOGRAPHIC ORIGINS OF TRANSFER STUDENTS (Now included in RPT. 2-84 to date.)	DATA YEAR	1977 & 1978				
	RPT. NO.	17-80				
GRADUATE STUDENT ADMISSIONS SURVEY	DATA YEAR	1970	1971	1972	1973	1974
	RPT. NO.	*17	*32	*38	1-74	1-75
▪	DATA YEAR	1975	1976			
▪	RPT. NO.	1-76	1-77			
HEADCOUNT ENROLLMENT AND FULL TIME EQUIVALENT WORKLOAD STATISTICS OF CREDIT COURSE STUDENTS (Now done as a STATISTICAL RELEASE.)	DATA YEAR	1968-1969	1969-1970	1970-1971		
	RPT. NO.	*7	*10	*24		
HIGH SCHOOL STATUS OF FIRST-TIME CREDIT COURSE STUDENTS (Now done as a STATISTICAL RELEASE.)	DATA YEAR		1979 & 1980			
	RPT. NO.		18-82			
INSTRUCTIONAL LOCATION AWAY FROM THE MAIN CAMPUS	DATA YEAR	1979	1986	1987	1988	1989
	RPT. NO.	*16-80	16-87	16-88	16-89	16-90
▪	DATA YEAR	1990	1991			
▪	RPT. NO.	16-91	16-92			
INVENTORY OF SELECTED INTERINSTITUTIONAL COOPERATIVE ARRANGEMENTS	DATA YEAR		1971			
	RPT. NO.		*19			

**PUBLICATION LIST
CENTRAL STAFF OFFICE OF INSTITUTIONAL RESEARCH**

* Indicates OUT OF PRINT

REPORT TITLE

YEARS

MIGRATION OF U.S. COLLEGE STUDENTS WITH EMPHASIS ON NEW YORK STATE	DATA YEAR RPT. NO.	1968 *27			
MINORITY GROUP ENROLLMENT, HOUSING AND FINANCIAL AID STATISTICS	DATA YEAR RPT. NO.	1969-71 *34			
NON-CREDIT INSTRUCTIONAL ACTIVITIES	DATA MONTHS & YEAR RPT. NO.	1984 20-85	1/1-6/30, 198 20-85A	7/1-12/31, 1985 20-86	
▪	DATA MONTHS & YEAR RPT. NO.	1/1-6/30, 1986 20-87		7/1-12/31, 1986 20-87A	
▪	DATA MONTHS & YEAR RPT. NO.	1/1-6/30, 1987 20-88		7/1-12/31, 1987 20-88A	
▪	DATA MONTHS & YEAR RPT. NO.	1/1-6/30, 1988 20-89		7/1-12/31, 1988 20-89A	
▪	DATA MONTHS & YEAR RPT. NO.	1/1-6/30, 1989 20-90		7/1-12/31, 1989 20-90A	
▪	DATA MONTHS & YEAR RPT. NO.	1/1-6/30, 1990 20-91		7/1-12/31, 1990 20-91A	
▪	DATA MONTHS & YEAR RPT. NO.	1/1-6/30, 1991 20-92		7/1-12/31, 1991 20-92A	
▪	DATA MONTHS & YEAR RPT. NO.	1/1-6/30, 1992 20-93			
PLACEMENT OF PERSONS COMPLETING PREPARATION FOR EDUCATION CERTIFICATIONS	DATA YEAR RPT. NO.	1975 *13-76	1975-1976, 1976-1977 & 1977-78 *13-80		
PREPARATION OF EDUCATIONAL PERSONNEL (Now done as a STATISTICAL RELEASE.)	DATA YEAR RPT. NO.	1967-1968 *D-1	1969-1971 *28	1972-1975 *10-76	1973-1976 *10-76A
					1977-1979 *10-80
SUMMER CREDIT COURSE STUDENTS (Now done as a STATISTICAL RELEASE.)	DATA YEAR RPT. NO.	1968-70 *14	1971 *20		
TRENDS IN ENROLLMENT AND DEGREES (Latest report includes earlier years.)	DATA YEAR RPT. NO.	1948-1970 *11	1948-1972 *37	1948-1974 *7-75	1948-1976 *7-77
▪	DATA YEAR RPT. NO.	1948-1980 *7-81	1948-1984 7-85	1948-1985 7-86	1948-1986 7-87
▪	DATA YEAR RPT. NO.	1948-1988 7-89	1948-1989 7-90	1948-1990 7-91	1948-1991 7-92
TRENDS IN TUITION AND OTHER BASIC STUDENT CHARGES (Latest report includes earlier years.)	DATA YEAR RPT. NO.	1963-64-1992-93 19-93			
TUITION WAIVERS HONORED BY STATE-OPERATED INSTITUTIONS OF THE STATE UNIVERSITY OF NEW YORK	DATA YEAR RPT. NO.	1970-71 & 1971-72 *31			

PUBLICATION LIST
CENTRAL STAFF OFFICE OF INSTITUTIONAL RESEARCH

* Indicates OUT OF PRINT

REPORT TITLE

YEARS

REPORT TITLE	DATA YEAR	1974 & 1975	1976	1977	1978	1979
UTILIZATION OF RESIDENCE HALL FACILITIES	RPT. NO.	9-75	9-76	9-77	9-79	9-80
▪	DATA YEAR	1980	1981	1982	1983	1984
▪	RPT. NO.	9-81	9-81A	9-82	9-84	9-85
▪	DATA YEAR	1985	1986	1987	1988	1989
▪	RPT. NO.	9-86	9-87	9-88	9-89	9-90
▪	DATA YEAR	1990	1991	1992		
▪	RPT. NO.	9-91	9-92	9-93		