

DOCUMENT RESUME

ED 357 584

EC 302 131

AUTHOR Osfield, Kenneth
 TITLE State University System of Florida: Resource Guide to Programs and Services for Students with Disabilities. Second Edition.
 INSTITUTION State Univ. System of Florida, Tallahassee.
 PUB DATE Jan 93
 NOTE 38p.; For the first edition, see ED 343 285.
 AVAILABLE FROM Office for Student Services, University of Florida, P202 Peabody Hall, Gainesville, FL 32611 (available in alternative formats to students with disabilities).
 PUB TYPE Reference Materials - Directories/Catalogs (132)
 EDRS PRICE MF01/PC02 Plus Postage.
 DESCRIPTORS Assistive Devices (for Disabled); College Programs; *College Students; *Disabilities; Federal Legislation; Financial Support; Higher Education; *Resources; Scholarships; State Legislation; *State Universities; *Student Personnel Services
 IDENTIFIERS Florida; *State University System of Florida

ABSTRACT

This guide was developed to provide information about the programs and services of the State University System of Florida to potential students with disabilities. The guide begins with descriptions of the six categories of disabling conditions recognized by the system (visual impairments; physical impairments; hearing impairment; specific learning disabilities; speech impairment; and other impairments--cardiovascular and circulatory, mental, psychoneurotic, or personality disorders, blood serum disorders, respiratory disorders, diabetes and epilepsy), summaries of federal and state laws, and information about funding for auxiliary learning aids. Each of the nine state universities is then described in a two-page section outlining its programs and services. These sections include highlights of the institution, admission procedures, available publications, university statistics, services provided to individuals with specific disabilities by category, and addresses of relevant university departments and student organizations. The guide concludes with descriptions of scholarships and supporting agencies available to assist students with disabilities. (JDD)

 * Reproductions supplied by EDRS are the best that can be made *
 * from the original document. *

Resource Guide to Programs and Services for Students with Disabilities

ED357584



U.S. DEPARTMENT OF EDUCATION
Office of Educational Research and Improvement
EDUCATIONAL RESOURCES INFORMATION
CENTER (ERIC)

- This document has been reproduced as received from the person or organization originating it.
- Minor changes have been made to improve reproduction quality.
- Points of view or opinions stated in this document do not necessarily represent official OERI position or policy.



PERMISSION TO REPRODUCE THIS
MATERIAL HAS BEEN GRANTED BY

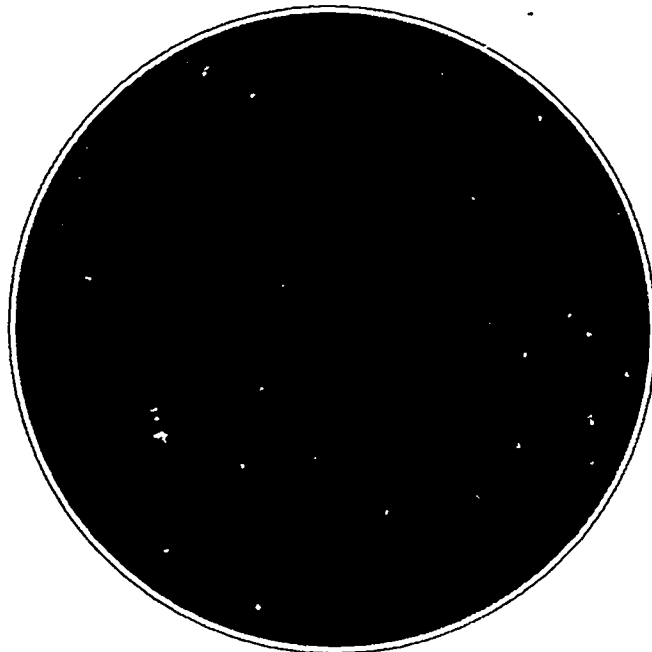
Kenneth
Osfield

TO THE EDUCATIONAL RESOURCES
INFORMATION CENTER (ERIC)™

A publication of the
State University System of Florida

State University System of Florida Resource Guide to Programs and Services for Students with Disabilities

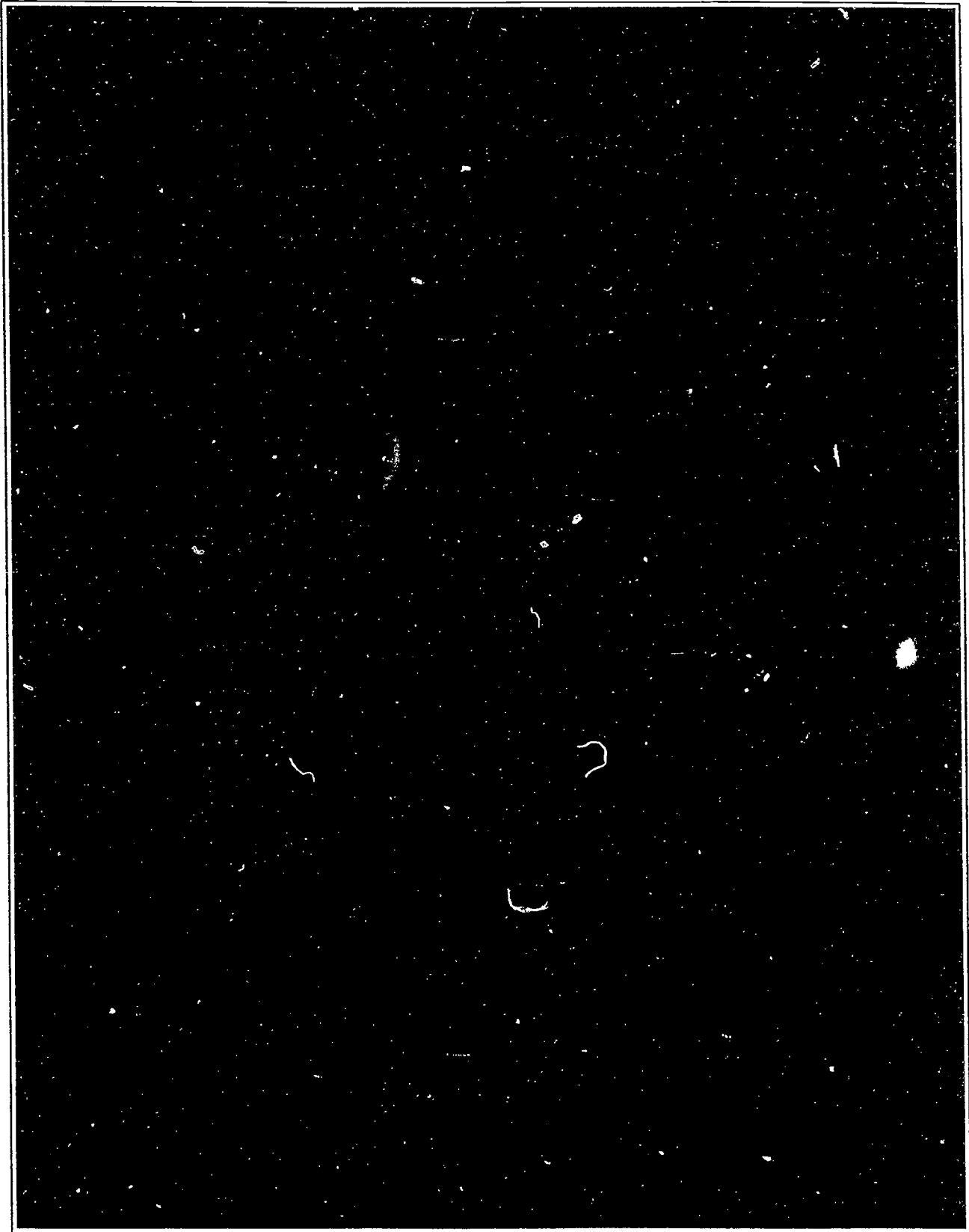
Second Edition
January, 1993



Published by
State University System of Florida
Office for Equal Opportunity Programs
325 W. Gaines Street, Suite 1446
Tallahassee, FL 32399-1950

Developed by
Kenneth Osfield
the University of Florida
Office for Student Services

ERIC Document Reproduction.
The November, 1991 Edition is available
as ERIC NO. EC 300964



Contents

Preface	4
State University System Institutions	5
Categories of Disabilities	6
Section 504	8
Americans with Disabilities Act	9
State Guidelines	
1991 State Board of Education, Board of Regents	10
Florida Relay Service	11
Ch 240, F. S. 1989 Postsecondary Education	12
Senate Bill 278H, Section 01, 407 Special Categories	12
Senate Bill 278H, Section 01, Specific Appropriation	12
Department of Education Rules, State Board of Education	12
State University System Institution Profiles	
Florida A&M University	14
Florida Atlantic University	16
Florida International University	18
Florida State University	20
University of Central Florida	22
University of Florida	24
University of North Florida	26
University of South Florida	28
University of West Florida	30
Scholarships	32
Hodgman Memorial Scholarship	32
Johnson Scholarship	32
Iacona Memorial Scholarship	32
Gore Foundation Scholarship	33
AFTER Scholarship	33
O'Connell Scholarship	33
Callahan Memorial Trust Scholarship	33
Ryan Disabled Student Scholarship	33
Supporting Agencies	34
Division of Vocational Rehabilitation	34
Division of Blind Services	34
Library for the Blind and Physically Handicapped	34
Advocacy Center for Persons with Disabilities	34

Alternative Formats

For students with disabilities, this publication is available in alternative formats. Please contact:

Office for Student Services
 University of Florida
 P202 Peabody Hall
 Gainesville, Florida 32611
 (904) 392-1261 (V/TDD)

Acknowledgments

Authored by Kenneth Osfield, University of Florida Office for Student Services.

Layout and Design by Billy Molasso, University of Florida Office for Student Services.

Funded and Edited by the State University System Office for Equal Opportunity Programs.

Proofreading provided by Dr. J. Michael Rollo, Associate Dean for Student Services, Rick Nelson, Susan King, and Paul Koukos.

Photographs provided by Office for Information and Publication Services

How to Use this Guide

The State University System of Florida's *Guide to Programs and Services for Students with Disabilities* (Second Edition) was developed to provide information about the programs and services of the State University System to potential students. This publication is designed to provide necessary information to students in an organized, brief manner.

Each of the nine state universities has a two page section, outlining the programs and services they offer students with disabilities. Each section is organized in the same manner, for ease of use. You will find:

On the left page: Highlights of the institution (as included in news publications and in the *1990 and 1991 State University System of Florida Annual Reports*), admission procedures, available publications, and university statistics.

On the right page: Outline of services provided specific disabilities by category and important addresses of each main campus, admissions, ADA/504 Compliance Officer, Coordinator for Programs and Services for Students with Disabilities and any student organizations involved with students with disabilities.

Other relevant resources have also been included in this guide. For example, summaries of the current federal and state laws are included so that you may further determine available assistance.

The final section of this guide includes a brief summary of supporting agencies and scholarships available to assist students with disabilities as they pursue their academic goals.

Where Do I Go If I Have Questions?

After reviewing this publication, if you have any questions or concerns, do not hesitate to contact one of the Coordinators of Programs and Services for Students with Disabilities in a State University System institution.

State University System

State University System

325 West Gaines Street
Tallahassee, FL 32399

Nine universities make up the State University System of Florida. Each institution provides different programs and services to assist students with disabilities. To learn more about individual institutions and their programs, consult the two-page section on each institution contained in this publication.

The nine state universities contained in this publication include:

Florida A&M University

Main Campus
Suite 301, FHAC
Tallahassee, FL 32307

Florida Atlantic University

Main Campus
Box 3091
Boca Raton, FL 33431

Florida International University

Main Campus
University Park Campus
Miami, FL 33199

Florida State University

Main Campus
Tallahassee, FL 32306

University of Central Florida

Main Campus
Orlando, FL 32816

University of Florida

Main Campus
Box 2946
Gainesville, FL 32602

University of North Florida

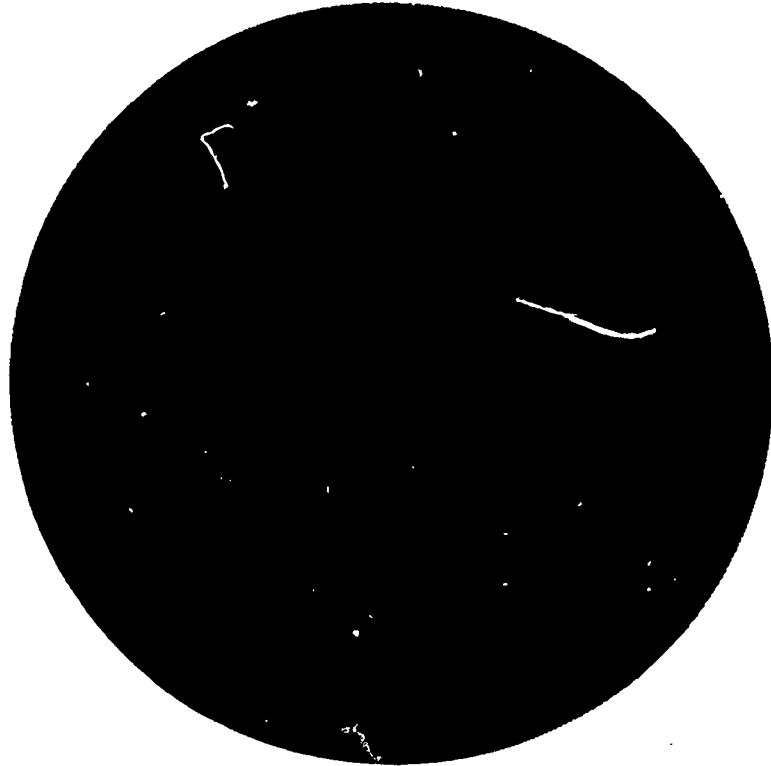
Main Campus
456 St. John's Bluff Rd.-S.
Jacksonville, FL 32216

University of South Florida

Main Campus
4202 E. Fowler Ave.
Tampa, FL 33620

University of West Florida

Main Campus
11000 University Parkway
Pensacola, FL 32514



Categories of Disabilities

In order to provide services to students with disabilities, each university asks for *voluntary* self-identification of students with a specific disability. This information is kept confidential and is used for the purpose of aiding students in achieving their fullest potential while at the university. In addition, each university is required to submit annually, a confidential summary to the Board of Regents which includes the number of students with disabilities by category.

Listed below are the six categories of disabling conditions the State maintains as of September, 1991.

1. Visual Impairment:

Disorders in the structure and function of the eye as manifested by at least one of the following: (1) visual acuity of 20/70 or less in the better eye after the best possible correction, (2) a peripheral field so constricted that it affects one's ability to function in an educational setting, (3) a progressive loss of vision which may affect one's ability to function in an educational setting. Examples include but are not limited to cataracts, glaucoma, nystagmus, retinal detachment, retinitis pigmentosa, and strabismus.

2. Physical Impairment:

Musculoskeletal and connective tissue disorders, neurovascular disorders. Physically disabling conditions which may require an adaptation to one's school

environment or curriculum. Examples include but are not limited to cerebral palsy, absence of some body member, clubfoot, nerve damage to the hand and arm, cardiovascular aneurysm (CVA), head injury and spinal cord injury, arthritis and rheumatism, intracranial hemorrhage, embolism, thrombosis (stroke), poliomyelitis, multiple sclerosis, Parkinson's disease, congenital malformation of brain cellular tissue, and physical disorders pertaining to muscles and nerves, usually as a result of disease or birth defect, including but not limited to muscular dystrophy and congenital muscle disorders.

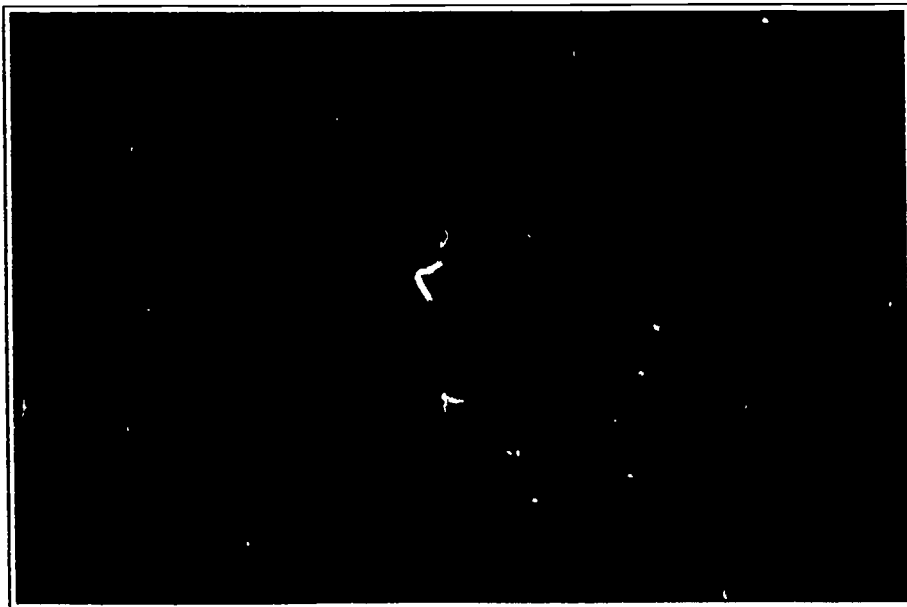
3. Hearing Impairment:

A hearing loss of 30 decibels or greater, pure tone average of 500, 1000, 2000 Hz, ANSI, unaided, in the better ear. Examples include but are not limited to conductive hearing impairment or deafness,

sensorineural hearing impairment or deafness, high or low tone hearing loss or deafness, and acoustic trauma hearing loss or deafness.

4. Specific Learning Disabilities:

A disorder in one or more of the basic psychological or neurological processes involved in understanding or in using spoken or written language. Disorders may be manifested in listening, thinking, reading, writing, spelling, or performing arithmetic calculations. Examples include dyslexia, dysgraphia, dysphasia, dyscalculia, and other specific learning disabilities in the basic psychological or neurological process. Such disorders do not include learning problems which are due primarily to visual, hearing, or motor handicaps, mental retardation, emotional disturbance, or an environmental deprivation.



5. Speech Impairment:

Disorders of language, articulation, fluency, or voice which interfere with communication, pre-academic or academic learning, vocational training, or social adjustment. Examples include but are not limited to cleft lip and/or palate with speech impairment, stammering, stuttering, laryngectomy, and aphasia.

6. Other Impairments:

Not limited to conditions listed below.

Cardiovascular and Circulatory Conditions.

Include but are not limited to congenital heart disease, rheumatic fever and chronic rheumatic heart disease, arteriosclerotic and degenerative heart disease, other diseases or conditions of the heart, other hypertensive diseases, varicose veins and hemorrhoids, and other conditions of the circulatory system.

Mental, Psychoneurotic, or Personality Disorders. Any emotional or behavioral neurosis that has, or could create, an unstable condition in the individual's actions. Include but not limited to psychotic disorders, psychoneurotic disorders, alcoholism, drug dependence, and other character, personality, and behavior disorders.

Blood Serum Disorders.

Hemophilia, sickle cell anemia, HIV/AIDS, and disorders where the cause is unknown.

Respiratory Disorders.

Tuberculosis of the respiratory system, emphysema, pneumoconiosis and asbestosis, bronchiectasis, chronic bronchitis and sinusitis, other diseases of respiratory system.

Diabetes. Epilepsy.

Other conditions that require an administrative or academic adjustment such as class schedules, parking, and course adjustments, and do not fit into any of the above categories may also qualify. Contact the Coordinator of Services and Programs for Students with Disabilities at a State University System institution for further information.

Should I tell the university about my disability?

That is for you to determine. The following information may help you in making a more informed decision.

1. It is illegal for any university to make pre-admission inquiries about a student's disability.
2. Students with disabilities apply under the same guidelines as all other students.
3. The only time your disability needs to be mentioned in the application process is if you wish to request special admission consideration.

Use question number 27 on the State University System Application Form to apply as a student with a disability (this is an option for you to consider when applying). Also, attach a letter explaining how your disability had an impact on the questionable grade(s), test score(s), or choice of high school courses. Once you ask for special consideration, the university then has the right to ask for relevant documentation to verify your disability. Any documentation provided is confidential and cannot be released to anyone without your permission.

In order to receive services at any State University System institution, you must register with the office responsible for programs and services for students with disabilities.

Documentation is necessary to verify every disability. In order to make sure that services are available on the first day of classes, make contact early, and provide all medical or psychoeducational information before classes begin. If you have learning disabilities, a "current" psychoeducational evaluation will be necessary. Contact universities of interest to see how "current" is defined. If you are still in high school, and the most current evaluation is older than three years, obtain a new evaluation before graduation. Evaluations in college are generally at the expense of the student.

Federal Rehabilitation Act

Section 504.

*Federal Register / Vol. 45, No. 92,
pg. 30937-30944*

Section 504 is designed to eliminate discrimination on the basis of handicap in any program or activity receiving federal financial assistance. It provides that no qualified handicapped person shall, on the basis of handicap, be excluded from participation in, be denied benefits of, or otherwise be subjected to discrimination under any program or activity which receives or benefits from federal financial assistance. Handicapped person means any person who has a physical or mental impairment which substantially limits one or

more major life activities, has a record of such an impairment, or is regarded as having such an impairment.

Admissions and Recruitment

Qualified handicapped persons may not, on the basis of handicap, be denied admission or be subjected to discrimination in admission or recruitment. Institutions may not make pre-admission inquiry as to whether an applicant for admission is a handicapped person. After admission, the university may make inquiries on a confidential basis as to handicaps that may require accommodation.

Academic Adjustments

Universities shall make such modifications to academic requirements as are necessary to ensure that such requirements do not discriminate or have the effect of discriminating, on the basis of handicap, against a qualified handicapped applicant or student. Academic requirements that the recipient can not demonstrate that are essential to the program of instruction being pursued by such student or to any directly related licensing requirement will not be regarded as discriminatory within the meaning of this section.

Modifications may include changes in the length of time permitted for the completion of degree requirements and adaptation of the manner in which specific courses are conducted. Universities shall take such steps as are necessary to ensure that no handicapped student is denied the benefits of, excluded from participation in, or otherwise subjected to discrimination under the education program or activity operated by the school because of the absence of educational auxiliary aids for students with impaired sensory, manual, or speaking skills.

Section 504 is too lengthy a document to include in this publication. If you wish a complete copy of the legislation, please contact the Equal Opportunity Programs Office at one of the State University System institutions.

Americans with Disabilities Act

The Americans with Disabilities Act (ADA) was signed into law on July 26, 1990. This act protects millions of Americans with disabling conditions from discriminatory practices in public accommodations (including colleges and universities), employment, transportation and telecommunications. The ADA extends the coverage of Section 504 of the Rehabilitation Act of 1973.

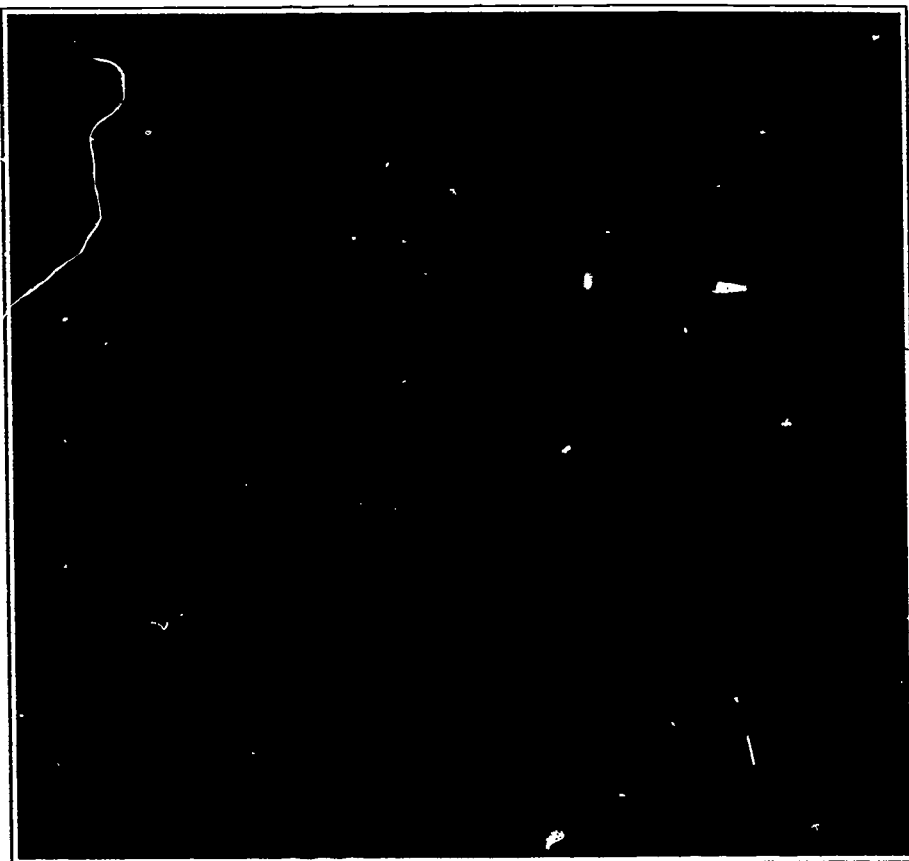
The ADA protects every person who either has, used to have, or is treated as having, a physical or mental disability which substantially limits one or more major life activity. Individuals who have serious contagious and non-contagious diseases such as HIV/AIDS, cancer, epilepsy or tuberculosis are also covered under the auspices of ADA.

Employment

State University System institutions, as employers of students, faculty and staff, may not discriminate against qualified individuals with disabling conditions and must reasonably accommodate the disabilities of qualified applicants or employees unless undue hardship would result.

Public Services

State University System institutions may not discriminate against qualified individuals with disabling conditions by excluding them from



participating in or denying them the benefits of the services, programs or activities of the university.

Public Accommodations

Public facilities of State University System institutions, including student unions, museums, athletic arenas, auditoriums, libraries, recreational facilities, etc., must be accessible to individuals with disabling conditions.

Telecommunications

Telecommunication relay services for hearing and speech impaired persons must be provided.

Questions

If you desire more complete information, please contact the ADA Coordinator at the addresses provided within this publication.

Note: Section 504 uses the term handicapped and ADA uses the term disabled. Section 504 will be amended to reflect the term disabled in the near future.

1991 State Board of Education, Board of Regents

6C-6.018 Substitution or Modification of Requirements for Program Admission, Undergraduate Transfer, and for Graduation by Students with Disabilities.

- (1) A university shall provide reasonable substitution or modification for any requirement for admission into an undergraduate or graduate program of study, or for entry into the upper division, or for graduation for any student who is hearing impaired, visually impaired, or dyslexic, or who has a specific learning disability where documentation can be provided that the student's failure to meet the requirement does not constitute a fundamental alteration in the nature of the program.
- (2) In determining whether to grant a substitution or modification, a university will consider pertinent documents including, but not limited to, a physician's statement, vocational rehabilitation records, and school records maintained as a result of

the exceptional child provisions of Public Law 94-142. The State Board of Education has prescribed in Rule 6A-10.041, FAC, the definitions of disabilities to which this Rule 6C-6.018 applies, and each university will provide the student the opportunity to present evidence to support his or her disabilities, and an appeals process.

Specific Authority
240.209(1), (3)(p) FS. Law Implemented 240.209(1), 240.152, 240.153 FS. History-New 4-20-87, Amended 9-15-91.

Ch 240. F. S. 1989. Postsecondary Education

240.152 Impaired and learning disabled persons; admission to postsecondary institutions; substitute requirements; rules.

Any person who is hearing impaired, visually impaired, dyslexic, or who has a specific learning disability shall be eligible for reasonable substitution for any requirement for admission to a state university, community college, or postsecondary vocational institution where documentation can be provided that the person's failure to meet the admission requirement is related to the disability. The State Board of Education, the Board of Regents,

and the State Board of Community Colleges shall adopt rules to implement this section and shall develop substitute admission requirements where appropriate. History-s. 1, ch. 86-194.

240.153 Impaired and learning disabled persons; graduation, study program admission, and upper division entry; substitute requirements; rules.

Any student in a state university, community college, or postsecondary vocational institution who is hearing impaired, visually impaired, dyslexic, or who has a specific learning disability shall be eligible for reasonable substitution for any requirement for graduation, for admission into a program of study, or for entry into upper division where documentation can be provided that the person's failure to meet the requirement is related to the disability and where the failure to meet the graduation requirement or program admission requirement does not constitute a fundamental alteration in the nature of the program. The State Board of Education, the Board of Regents, and the State Board of Community Colleges shall adopt rules to implement this section and shall develop substitute requirements where appropriate. History-s. 2, ch. 86-194.

Florida Relay Service

For students with hearing impairments, when trying to call a department on a University campus, use the Florida Relay Service if the department does not list a TDD number.

Things to Remember

- To make a call through the FRS, you only need a regular telephone and a TDD.
- Your call is answered by a Communication Assistant at the FRS Center in Miami. The assistant will serve as a liaison as you call the person you wish to reach. Each spoken word is typed into the TDD by the Communications Assistant. Your TDD response is relayed to the Communications

**To make a FRS call,
simply dial**

1-800-955-8771 (TDD)

1-800-955-8770 (V)

- Assistant who speaks to the hearing person who you called.
- There is no charge for this service, except on long distance calls, which are offered at discount rates.
- The service is available 24-hours a day, 365 days a year.
- The service should not be used in an emergency. Dial 911 first.
- All relay users should have their numbers ready when they call FRS.
- Hearing persons can reach the deaf, deaf-blind, hard of hearing and speech impaired by using the service.
- FRS should not handle TDD to TDD calls. Direct TDD calls should be made without FRS assistance.

For information on how to obtain a TDD, and other assistance, call 1-800-222-2346.

*Senate Bill 278H. Section
01. 407 Special Categories.
Grants and Aids. Auxiliary
Learning Aids for
Postsecondary
Handicapped Students
from general Revenue
Fund.*

Funds provided in Specific Appropriation 407 shall be used for auxiliary learning aid assistance for handicapped students who are attending a state university or public community college in Florida and shall be administered under rules adopted by the State Board of Education. Such rules shall include standards of eligibility providing that auxiliary aids will be restricted to students who are handicapped within the definition of Section 504 of the Rehabilitation Act of 1973, as amended, and who are not able to obtain auxiliary aid assistance under state or federal vocational rehabilitation programs or other governmental programs. Such rules shall provide for reimbursement to the institution by the Department of Education for auxiliary aid assistance provided under this program. The level of reimbursement of funds shall be based on the number of disabled students served in the prior year, the amount of institutional matching funds provided and the institution's Auxiliary Learning Aids expenditures for the prior year. Any funds herein appropriated and unencumbered at the end of the fiscal year shall revert to the General Revenue Fund unallocated. Participating

institutions shall be required to provide matching funds of at least 30 percent beginning in Fall 1991 and at least 40 percent beginning in Fall 1996. Eligible matching expenditures shall include equipment and personnel services which are dedicated to providing direct auxiliary instructional support to handicapped students.

*Senate Bill 278H. Section
01. Specific Appropriation.*

Upon request by the institution, an equal amount to 20 percent of an institution's allocation may be distributed at the time of allocation. Any funds provided in advance shall be deducted from the total amount the institution is eligible to be reimbursed for actual expenditures under its plan. At least once during the each year the allocation, expenditures and needs of all institution shall be reviewed. If this review shows that any institution is not spending this allocation at a rate that would exhaust the allocation by the end of the year, the Commissioner may adjust allocations between and among institutions. For 1992-93, the annual expenditure limit for individual students participating shall be \$5,500.

None of the appropriation for auxiliary learning aids shall be expended for hourly, OPS or salaried personnel except for persons who are necessary for providing direct auxiliary instructional support to handicapped students. With specific prior approval of the Department of Education, funds may be used to pay salaries of

interpreters for the deaf, learning disability specialists, readers, notetakers and tutors who work directly with disabled students in the learning environment and who are employed in full-time salaried positions where the workload justifies a full-time employee. At no time may any of the funds from this appropriation be expended for the salary of the institution's coordinator of disabled student services.

The Department of Education shall survey private colleges and universities to determine the number of student who are handicapped within the definition of Section 504 of the Rehabilitation Act of 1973. Based on its findings, the Department shall estimate the fiscal impact of expanding the auxiliary learning aids for postsecondary handicapped students program to include the eligible students in private universities. The Department shall include in its 1993-94 legislative budget request funds needed to serve handicapped students in private universities at the same level as handicapped students in the State University System are funded.

*Department of Education
Rules. State Board of
Education. 6A-10.28
Auxiliary Aid Assistance
for Handicapped Students.*

- 1) Funds appropriated in Item 271D of section 1 of Chapter 79-212, Laws of Florida, for auxiliary aid assistance for handicapped students attending a state university or a public

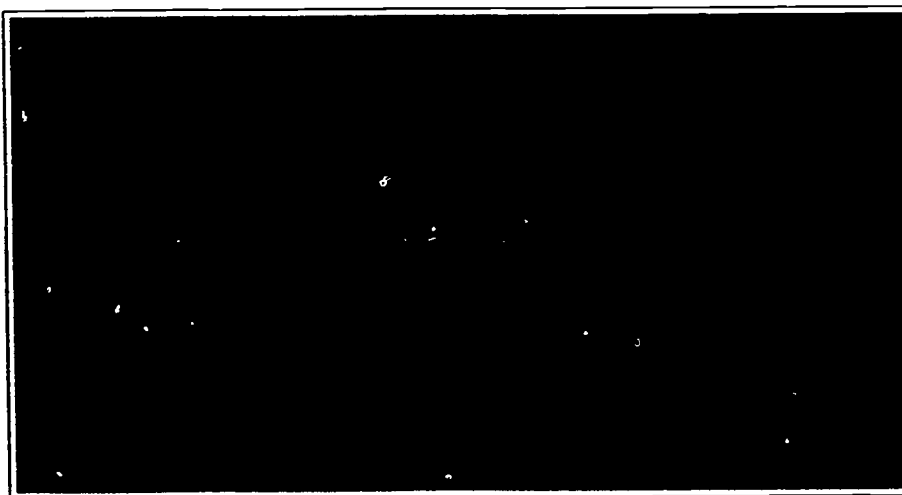
community college in Florida shall be distributed quarterly to participating institutions as reimbursement for eligible expenditures made by the institution pursuant to this rule.

- 2) Subject to the availability of funds appropriated for this purpose, a state university or a public community college shall be eligible to receive reimbursement of funds expended to purchase auxiliary aids as defined in subsection 84.44(d) C.F.R. needed by a student attending that institution who is handicapped within the definition of Section 504 of the Federal Rehabilitation Act of 1973, as amended, and who is not able to obtain the needed auxiliary aid assistance under state or federal vocational rehabilitation programs responsible for providing such assistance. Assistance provided under this rule shall be used solely for the provision of auxiliary aids as defined in the subsection 84.44 (d) of the federal regulations governing the Section 504 program of the Federal Rehabilitation Act of 1973, as amended. The reimbursement of expenditures for each handicapped student shall not exceed five thousand five hundred dollars (\$5,500) per academic year. The limitation of funds for reimbursement shall in no way obviate or alleviate the institution's responsibility to provide any auxiliary aids required by subsection 84.44(d) C.F.R.

- 3) In the event that a beneficiary of auxiliary aid assistance transfers from one state university or public community college in Florida to another, the benefits provided under this rule shall be transferred upon approval of the Department of Education.
- 4) Any auxiliary aid equipment provided to a handicapped student under this rule shall be the property of the institution, and upon completion of the course or program for which the student is enrolled, must be returned to the institution from which it was obtained.
- 5) With approval of the Department of Education, two (2) or more institutions may pool equipment in order to better meet the needs of handicapped students.
- 6) Each institution wishing to receive reimbursement for funds expended pursuant to Rule 6A-10.28(2), FAC, shall submit to the Commissioner at the end of each quarter (September 30, December 31,

March 31, and June 30) a report containing the following: (a) the name of each student provided auxiliary aid by the institution; (b) the nature of the student's handicap; (c) each auxiliary aid purchased for and provided to the student; (d) the actual expenditure by the institution for each aid provided; (e) a certification that the student was unable to secure the required assistance for this aid from any of the state or federal vocational rehabilitation programs responsible for such assistance.

- 7) Each quarterly report shall show institution expenditures for each quarter of the fiscal year and the total expenditure for the year to date. If more than one (1) student is provided assistance, a report containing the information in category (6) above shall be submitted for each student, and a summary report shall be submitted listing total expenditures for which the institution is requesting reimbursement for all eligible students.



Florida A&M University

General Program

In 1992, Florida A&M University was ranked number one, ahead of Harvard University, in the enrollment of National Achievement Scholars--the most sought after students in the nation.

Florida A&M offers 66 bachelor's and 16 master's degrees, as well as Ph.D.'s in pharmaceutical sciences and engineering. The university has five \$1 million Eminent Scholar Chairs in the schools of pharmacy, journalism, business and engineering. The Centel Foundation has pledged another \$1 million for a sixth endowed chair, also in engineering.

Florida A&M is second among historically black colleges and universities in federal research and development funding. In 1989, a Florida A&M professor received his second patent for a new steroid to treat rheumatism, arthritis, hay fever and asthma, without side effects from prolonged use.

Florida A&M's Coleman Library was recently renovated at a cost of \$6 million, adding 30,000 square feet of additional space. The 450,000-volume library has a state-of-the-art media center--the only one of its kind in Florida. The center features computer-equipped study carrels, a campus-wide closed-circuit television system, a teleconference center, graphic arts division and computer laboratory.

The world-famous Florida A&M "Marching 100" Band continues to receive national media coverage. In 1985, it became the first band outside of the Big 10 Conference to earn the Sousa Foundation's coveted Sudler Trophy. In 1989, the band represented the United States in the Bastille Day parade down the Champs Elysee in Paris, celebrating the 200th anniversary of the French Revolution. Recently, the band was selected to participate in the inauguration of President Bill Clinton in Washington, D.C.

The Florida Black Archives and Research Center and Museum, housed at Florida A&M, remains the nation's largest repository for African and African-American artifacts and papers.

Florida A&M is an equal employment and opportunity university and is committed to assuring that all persons are provided an equal opportunity to pursue employment and educational opportunities free from harassment and discrimination.

Publications

A pamphlet listing services for students with disabilities, as well as a student resource guide, is available to all students upon request to the Coordinator for Services and Programs for Students with Disabilities.

Admissions Procedures

Contact the Coordinator of Special Programs and Services for Students with Disabilities for information about admission procedures of Florida A&M University.

Fall, 1992 University Statistics for Students with Disabilities

Category	Hearing Impairments	Learning Disabilities	Physical Impairments	Speech Impairments	Visual Impairments	Other Disabilities	Registered Disabilities	Student Population
Number Students	2	58	5	0	2	5	72	9,487

Services Provided to Students with Disabilities

Hearing Impairments

- interpreter service
- transcription of notes
- notetakers

Learning Disabilities

- specially trained tutors
- study skills course
- talking computers
- special academic advising
- foreign language waiver
- Reading and Writing Center
- Kurzweil Personal Reader
- extended time on exams
- Franklin Language Master
- grade forgiveness policy
- paid tutors
- notetakers
- alternate testing
- CLAST waiver
- course substitution
- counseling (career, personal and academic)
- Comprehensive support services for LD students are available. Contact:

Dr. Sharon M. Wooten
Development and Evaluation
205 University Com.
Florida A&M University
Tallahassee, FL 32307
(904) 599-3180

Physical Impairments

- reader service
- accessible computers
- library access assistance
- extended time on exams
- campus orientation
- paid tutors
- transportation

Speech Impairments

- tapes and recorders
- Speech productions lab conducted by Florida A&M College of General Studies

Visual Impairments

- reader service
- no guide dog restrictions
- Kurzweil Personal Reader
- taping facilities
- campus orientation
- paid tutors
- notetakers
- alternate testing

Other disabilities

- determined by individual needs

Addresses

Main Campus Address:

Florida A&M University
Tallahassee, FL 32307

Admissions Office:

Florida A&M University
Tallahassee, FL 32307-0077
(904) 599-3796

ADA/504 Compliance Officer:

Ms. Mary R. Vaughn
Assistant to the President
Suite 301, FHAC
Tallahassee, FL 32307
(904) 599-3225

Coordinator of Services and Programs for Students with Disabilities:

Dr. Junious D. Brown
Suite 116, FHAC
Tallahassee, FL 32307
(904) 599-3541

Student Organization involved with Issues of Disability:

Dr. Sharon Wooten
Excellence Through
Caring Club
205 University Commons
Florida A&M University
Tallahassee, FL 32307
(904) 599-3180

BEST COPY AVAILABLE

Florida Atlantic University

General Program

Florida Atlantic University, which offers 41 master's and 14 Ph.D. programs in nine colleges, has the state's only ocean engineering program, which ranks among the top three in the United States.

Florida Atlantic is home to the Holocaust Research Center, which chronicles the Holocaust from 1933 to 1945. The Center is part of Florida Atlantic's growing Judaic Collections Center-the second largest collection of its kind in the state. In 1990, the university announced the establishment of its 11th Eminent Scholar chair, the Raddock Family Chair for the Study of the Holocaust.

In 1991, long time Florida Atlantic benefactor Charles E. Schmidt donated \$10 million to the university's arts and humanities program.

An interdisciplinary program in ethnic studies, focusing on the historical, social and cultural diversity of ethnic and minority groups in American Society, has been established at Florida

Atlantic. The program highlights the experiences of African-Americans, Asian-Americans, Hispanics and Native Americans in contemporary American Society.

Dr. Robert Taylor, director of Florida Atlantic's School of Accounting was named 1990 Outstanding Educator by the Florida Institute of CPA's. Graduates of the Accounting School recently achieved the nation's highest first-time passing rate on the Uniform CPA Examinations.

The Karen Slattery Educational Research Center for Child Development provides a model educational environment to children aged two to five, and practical experience to Florida Atlantic education students doing internships, supervised teaching and research.

Plans are approved for a \$65 million, 52-acre research park to attract research corporations to Florida Atlantic.

Two Broward based colleges have been established in Liberal Arts and Urban and Public Affairs. Former Florida Governor Reubin Askew joined Florida Atlantic

Faculty as Distinguished Visiting Professor in the Urban and Public Affairs School.

Florida Atlantic strives to provide equal access to a quality education by providing reasonable accommodations to qualified individuals. Contact the Office for Disabled Student Services for assistance.

Publications

A pamphlet listing services for students with disabilities is available upon request to the Coordinator of Services and Programs for Students with Disabilities.

Admissions Procedures

Students with disabilities may, at their request, receive special admissions considerations based on their disability. Check question #27 on the SUS Application. Applicants who would like special considerations are encourage to contact the Coordinator of Programs and Services for Students with Disabilities to obtain additional information.

Fall, 1992 University Statistics for Students with Disabilities

Category	Hearing Impairments	Learning Disabilities	Physical Impairments	Speech Impairments	Visual Impairments	Other Disabilities	Registered Disabilities	Student Population
Number Students	15	58	57	0	10	17	157	14,673

Services Provided to Students with Disabilities

Hearing Impairments

- interpreter service
- amplification systems
- TTY/TDD access
- note takers

Learning Disabilities

- specially trained tutors
- talking computers
- foreign language substitution
- Gordon Rule substitution
- volunteer tutors
- extended time on exams
- grade forgiveness policy
- taped textbooks
- notetakers
- alternate testing
- CLAST waiver

Students who have a documented learning disability may receive strategy tutoring from an LD specialist on staff. For more information on services and support contact:

Ms. Beverly Warde
LD Specialist
SSB Room 226A, Box 3091
Boca Raton, FL 33431
(407) 367-3880 (TDD/V)

Physical Impairments

- reader service
- accessible computers
- library access assistance
- volunteer tutors
- extended time on exams
- move class if not accessible
- notetakers
- alternate testing

Speech Impairments

- Communications Disorder Center for:
 1. Diagnosis
 2. Therapy

Visual Impairments

- reader service
- Optacon Machine
- talking computers
- no guide dog restrictions
- library access assistance
- volunteer tutors
- extended time on exams
- taping facilities
- taped textbooks
- notetakers
- alternate testing
- Visualtek

Other Disabilities

- Extended time for exams, and postponed dates for assignments for students with HIV/AIDS.

Addresses

Main Campus Address:

Florida Atlantic University
Box 3091
Boca Raton, FL 33431

Admissions Office:

Florida Atlantic University
Boca Raton, FL 33431-0991
(305) 367-3040

ADA/504 Compliance Officer:

Mr. Ricky T. Walker
Equal Opportunity Programs
Administration 373
Box 3091
Boca Raton, FL 33431
(407) 367-3004
238-3004 (SUNCOM)

Coordinator of Services and Programs for Students with Disabilities:

Dr. Brian R. Bryant
Library 175
Box 3091
Boca Raton, FL 33431
(407) 367-3880 (TDD/V)
238-3880 (SUNCOM)

Student Organization Involved with Issues of Disability:

Florida Atlantic University
Disabled Student Organization
Library-Room 175
Box 3091
Boca Raton, FL 33431
(407) 367-3880 (TDD/V)
(407) 238-3880 (SUNCOM)

BEST COPY AVAILABLE

Florida International University

General Program

For several years, Florida International University has been named as one of "America's Best Colleges" by *U.S. News and World Report*.

Founded in 1965 and opened to students in 1972, Florida International was the youngest university on the southern regional "Best Colleges" list. Florida International is one of the fastest-growing public university in the United States and the largest university in southern Florida. At the same time, academic standards have increased. Entering freshmen have grade point averages a full point over the national average and SAT scores more than 100 points above the national average.

The School of Public Affairs and Services has received a \$206,000 grant from the United States Agency for International Development for a project to study and strengthen legislative bodies in Latin America. The school has joined the State University of New

York in Albany and the Center for Democracy in Washington, D.C., to create the Consortium for Legislative Development.

Florida International's Latin American and Caribbean Center received a \$375,000 grant from the Andrew Mellon Foundation to initiate a new Caribbean research and training program. The prestigious Mellon Grant is one of the largest grants ever given in the United States to further Caribbean studies. The United States Department of Education designated the Center a Natural Resource center--the only stand-alone undergraduate center in the country given this distinction.

The School of Journalism and Mass Communications received full accreditation on a unanimous vote from the National Accrediting Council on Education in Journalism and Mass Communications (ACEJMC). Approximately 90 of the 360 journalism and mass communications programs at American colleges and universities are fully ACEJMC accredited. ACEJMC officials particularly praised the quality of teaching in the Florida International Program.

Disabled Student Services counselors work with students on an individual basis to design a program to assist the student. Assistance may be in the form of notetakers, readers, sign language interpreters for classes, library or laboratory assistants, or adaptive equipment.

Publications

A guide book for students with disabilities and a pamphlet listing services for students with disabilities is available upon request to the Coordinator for Disabled Student Services.

Admissions Procedures

Contact the Coordinator of Disabled Student Services for information.

Fall, 1992 University Statistics for Students with Disabilities

Category	Hearing Impairments	Learning Disabilities	Physical Impairments	Speech Impairments	Visual Impairments	Other Disabilities	Registered Disabilities	Student Population
Number Students	21	96	75	13	23	48	276	23,093

Services Provided to Students with Disabilities

Hearing Impairments

- interpreter service
- amplification systems
- TTY/TDD access
- visual alarms in residence halls
- notetakers
- extended exam time

Learning Disabilities

- talking computers
- foreign language waiver
- Gordon Rule waiver
- volunteer tutors
- Kurzweil Personal Reader
- extended exam time
- Franklin Language Master
- grade forgiveness policy
- taped textbooks
- notetakers
- alternate testing
- CLAST waiver
- special academic advising
- priority registration
- substitutions and waivers for admissions requirements

Physical Impairments

- reader service
- accessible computers
- library access assistance
- adaptive equipment
- extended exam times

- campus orientation
- alternate classrooms for inaccessible areas
- volunteer tutors
- notetakers
- alternate testing

Speech Impairments

- assistance in advising faculty of any special accommodations needed

Visual Impairments

- reader service
- talking computers
- talking calculators
- no guide dog restrictions
- library access assistance
- Kurzweil Personal Reader
- extended exam time
- Franklin Language Master
- braille and taping equipment
- campus orientation
- volunteer tutors
- taped textbooks
- notetakers
- alternate testing
- VTEKS
- Clast Waivers
- Gordon Rule Waiver

Other Disabilities

- notetakers
- adapted testing
- counseling referrals
- letters to instructors requesting needed accommodations

Addresses

Main Campus Address:

Florida International Univ.
University Park Campus
Miami, FL 33199

Admissions Office:

Florida International Univ.
PC 140
Miami, Florida 33199
(305) 348-2363

ADA/504 Compliance Officer:

Dr. Toni Eisner
Assistant Vice President
PC 215
Miami, FL 33199
(305) 348-2785

Coordinator of Services and Programs for Students with Disabilities:

Mr. Peter Manheimer
GC 225
Florida International Univ.
Miami, FL 33199
(305) 348-3532 (V)
(305) 348-3852 (TDD)

Student Organization involved with Issues of Disability:

PLUS IV
Mr. Peter Manheimer
GC 225
Miami, FL 33199
(305) 348-3532 (V)
(305) 348-3852 (TDD)

BEST COPY AVAILABLE

Florida State University

General Program

In 1991, Dr. Dale W. Lick became the 11th President of Florida State University.

Recognizing the diversity of Florida's population, Florida State adopted new curriculum requirements introducing students to cultures beyond the western civilization. Florida State is the first university in Florida to incorporate a multi-cultural element into its liberal-studies curriculum.

The Supercomputer Computations Research Institute received a new \$10 million Cray Supercomputer capable of performing 1.3 billion calculations per second. SCRI also installed the world's most powerful Thinking Machines Supercomputer to apply parallel processing techniques to the growing data-intensive computing applications encountered in industry and science.

Florida State is home to the National High Magnetic Field Laboratory, the national center for research in magnet-related technologies. The laboratory

welcomed Dr. J. Robert Schrieffer, winner of the 1972 Nobel Prize in Physics, to its staff. Dr. Schrieffer is the fifth Nobel Laureate to serve on the Florida State Faculty.

The university also received its largest private gift in 1991, an Ocala art museum's works of fine art and an endowment valued at \$42 million from Mr. Arthur I. Appleton of Ocala. The gift includes funding of an Eminent Scholar Superchair in the arts.

A national pollster donated 15 years of survey research on southern politics, a collection valued at \$6 million, to Florida State. The Florida State College of Communications opened the Tarrance Archives of Public Opinion Research with studies and interviews donated by the Houston survey research company, Tarrance and Associates.

Students in the School of Motion Picture, Television and Recording Arts won first prize in the college-level equivalent of television's "Emmy" awards. Florida State film school students have produced many award-winning films and video productions in national and international competitions.

The presence of a disability should not be an insurmountable handicap. At Florida State University there is a commitment to provide students with disabilities the most integrated and least restrictive educational and living environment possible. Services vary depending on individual needs.

Publications

A pamphlet listing services for students with disabilities is available on request to the Coordinator for Services and Programs for Students with Disabilities.

Admission Procedures

Students apply under the same circumstances as all other students. For information about admissions call (904) 644-6200.

Fall, 1992 University Statistics for Students with Disabilities

Category	Hearing Impairments	Learning Disabilities	Physical Impairments	Speech Impairments	Visual Impairments	Other Disabilities	Registered Disabilities	Student Population
Number Students	17	205	71	3	35	20	351	28,424

Services Provided to Students with Disabilities

Hearing Impairments

- interpreter service
- TTY/TDD access
- notetakers

Learning Disabilities

- talking computers
- academic advising
- cassette duplicator
- computer instruction
- Kurzweil Personal Reader
- extended time on exams
- Franklin Language Master
- editing
- taped textbooks
- notetakers
- alternate testing
- CLAST waiver possible

Physical Impairments

- accessible computers
- library access assistance
- loaner equipment
- special physical education lab
- adaptive equipment for computers
- extended time on exams
- campus orientation
- alternate classrooms for inaccessible areas
- notetakers

- alternate testing
- Wheelchair accessible van

Speech Impairments

- students work through Department of Communications and Speech Disorders

Visual Impairments

- students traditionally work through Division of Blind Services

Addresses

Main Campus Address:

Florida State University
Tallahassee, FL 32306

Admissions Office:

Florida State University
Box 5000
Tallahassee, FL 32314
(904) 644-6200

ADA/504 Compliance Officer:

Dr. Freddie L. Groomes
Executive Assistant to the President
301 Westcott
Florida State University
Tallahassee, FL 32306
(904) 644-5283

Coordinator of Services and Programs for Students with Disabilities:

Dr. Robin Leach
Disabled Student Services
303 Bryan Hall R-52
Tallahassee, FL 32306-2009
(904) 644-9569 (TDD/V)

Student Organization involved with Issues of Disability:

PACE
318 Bryan Hall R-52
Florida State University
Tallahassee, FL 32303-2009
(904) 644-9571 (TDD/V)

BEST COPY AVAILABLE

University of Central Florida

General Program

U.S. News and World Report has ranked the University of Central Florida among the top dozen regional universities in the South in its annual guides to the nation's best colleges and universities.

The University of Central Florida students consolidated their world-class computer programming reputation by capturing fifth place in the 15th Annual Association of Computing Machinery Scholastic Programming Competition in San Antonio, Texas. The competition put the University of Central Florida team ahead of teams from Ivy League and Nobel Laureate-laden state universities.

The University of Central Florida is the lead university in a consortium of Florida Universities supported by the Centers for Disease Control to develop ways to educate teachers on AIDS and the HIV Virus.

Two professors of the Mechanical Engineering and Aerospace Studies Department developed a laser process for shaping ceramic tiles

used to protect space shuttles during landing.

The crystal growing laboratory of the Center for Research in Electro-Optics and Lasers developed capabilities equal to any in the United States. Among its achievements: technology to grow laser crystals that provide access to blue wavelength, undersea communication, and developing a simplified technique for growing laser material needed for uses ranging from communications to medicine.

Construction is nearing completion on an \$8.6 million track and field house facility. Also under construction is a \$6.7 million art complex which will include classrooms, a gallery and an auditorium. Site preparation began in 1990 for a new 90,000 square foot student union.

The University of Central Florida's Student Disability Services can provide the following for students who have disabilities: information and orientation to campus facilities and services, assistance with registration for courses, assistance with classroom accommodations (including exam accommodations), The University of Central Florida disabled parking decals,

counseling, referral to campus and community services. The assistance provided depends on student's disability and needs.

Publications

An information sheet for services and programs for students with disabilities is available on request to the Director of Student Disability Services.

Admission Procedures

Apply for admission early. Applications for admission will be accepted up to one year in advance of the admission date. The university application for admission contains an optional question regarding disability if a student needs special consideration for admission. It is the student's responsibility to contact the Office of Student Disability Services to receive services.

Fall, 1992 University Statistics for Students with Disabilities

Category	Hearing Impairments	Learning Disabilities	Physical Impairments	Speech Impairments	Visual Impairments	Other Disabilities	Registered Disabilities	Student Population
Number Students	19	95	69	2	27	5	217	21,873

Services Provided to Students with Disabilities

Hearing Impairments

- interpreter service
- amplification system
- TTY/TDD access
- notetakers

Learning Disabilities

- talking computer
- Reading and Writing at SARC
- Kurzweil Reading Machine
- extended time on exams
- paid tutors (only at SARC)
- taped textbooks (only from RFB)
- notetakers
- electronic spell checker
- foreign language substitution

Physical Impairments

- library access assistance
- extended time on exams
- campus orientation
- alternate classrooms for inaccessible areas
- writers for exams
- notetakers

Speech Impairments

- Speech course substitution
- foreign language substitution

Visual Impairments

- reader referral service
- talking computer
- talking calculators
- no guide dog restrictions
- library access assistance
- closed-circuit video print enlargers
- large print exams
- Kurzweil Reading Machine
- extended time on exams
- campus orientation
- readers for exams
- paid tutors—only at SARC
- taped textbooks—only from RFB

Other Disabilities

- services provided based on individual needs

Addresses

Main Campus Address:

University of Central Florida
Orlando, FL 32816-0001

Admissions Office:

University of Central Florida
P.O. Box 160111
Orlando, FL, 32816-0111

ADA/504 Compliance Officer:

Ms. Janet P. Balanoff
Equal Opportunity/
Affirmative Action Programs
AD 330
University of Central Florida
Orlando, FL 32816-0030
(407) 823-2348

Coordinator of Services and Programs for Students with Disabilities:

Ms. Louise Friderici
Student Disability Services
AD 282
University of Central Florida
Orlando, FL 32816-0160
(407) 823-2371
(407) 823-2116 (TDD)

Student Organization involved with Issues of Disability:

No organization at the present time

BEST COPY AVAILABLE

University of Florida

General Program

The University of Florida is the state's oldest university and one of the three most comprehensive universities in the nation for the diversity of its academic programs.

The university offers 114 majors and 52 undergraduate degree programs, 152 master's and 89 doctoral degree programs in 87 of the university's 137 academic departments. The University of Florida has nationally recognized programs in business administration, engineering, education and research, architecture, journalism, fine arts, law education, agriculture, forestry and arts and sciences.

The state standard for health care is set on the University of Florida campus with Shands Teaching Hospital. The outstanding Health Science Center houses the colleges of medicine, nursing, pharmacy and health-related professions and the state's only colleges of dentistry and veterinary medicine.

The Institute of Food and Agriculture Sciences, with Colleges

of Agriculture and the School of Forestry and Conservation, cooperative extension service and agricultural experiment stations, help Florida's \$45 billion agriculture industry compete in the world market.

The University's student body is culturally diverse, representing every state in the union and many foreign countries.

Fifty-five Eminent Scholar Chairs, each endowed with at least \$1 million, enhance a faculty that includes Guggenheim and Danforth fellows, Fulbright and Rhodes Scholars, winners of the Kyoto and Pulitzer Prizes, and members of the National Academies and their foreign counterparts.

The University of Florida has become one of the 25 top research universities in the nation, with nearly \$190 million in research grants in one year.

The University of Florida ranked fifth in the nation in income from royalties and licenses--including \$2.2 million from the product "Gatorade" which was created at the University of Florida. Any student with a documented disability is eligible for indirect and direct services. The University of

Florida will work with students on an individual basis to provide the appropriate services as necessary for students to complete a degree. The University of Florida encourages questions and contact by students as early as possible in the college-seeking process.

Publication Information

Pamphlets listing overall services for students with disabilities, information on The University of Florida's taped textbook project and computer access project, an ADA/504 fact sheet, student handbook and faculty guide are available upon request.

Admission Procedures

Students with disabilities apply under general guidelines. Students are encouraged to explain areas in academic performance that may be questioned. If you wish special consideration, use question #27 on SUS application and attach a letter explaining how a specific disability impacted on academic performance.

Fall, 1992 University Statistics for Students with Disabilities

Category	Hearing Impairments	Learning Disabilities	Physical Impairments	Speech Impairments	Visual Impairments	Other Disabilities	Registered Disabilities	Student Population
Number Students	21	88	66	2	20	40	237	36,451

Services Provided to Students with Disabilities

Hearing Impairments

- interpreter service
- amplification systems
- visual doorbell in residence halls
- TDD access
- visual alarms in residence halls
- notetakers
- student signing group
- foreign language substitution

Physical Impairments

- reader service
- accessible computers
- library access assistance
- loaner equipment
- special P.E. Lab
- adaptive equipment for computers
- extended time on exams
- alternate classrooms for inaccessible areas
- notetakers
- alternate testing
- transportation
- wheel chair basketball
- pool lift

Speech Impairments

- speech and hearing clinic
- faculty liaison service

Learning Disabilities

- talking computers
- foreign language substitution

- Gordon Rule substitution
- Reading and Writing Center
- Kurzweil Personal Reader
- extended time on exams
- Franklin Language Master
- taped textbooks
- notetakers
- alternate testing
- CLAST assistance
- The University of Florida currently does not have a LD specialist.

Visual Impairments

- reader service
- Optacon Machine
- talking computers - IBM
- talking computer - Apple
- no guide dog restrictions
- library access assistance
- Kurzweil Personal Reader
- extended time on exams
- Franklin Language Master
- braille & taping facilities
- taped textbooks
- note takers
- alternate testing
- Viewscan
- Braille & Speaks computer
- transportation
- large screen monitors
- program to teach use of computers

Other Disabilities

- counseling
- one-to-one assistance
- all of the services mentioned above

Addresses

Main Campus Address:

University of Florida
Box 2946
Gainesville, FL 32602-2946

Admissions Office:

University of Florida
Box 2946
Gainesville, FL 32602

ADA/504 Compliance Officer:

Mr. Kenneth Osfield
P 202 Peabody Hall
Gainesville, FL 32611
(904) 392-1261 V/TDD

Coordinator of Services and Programs for Students with Disabilities:

Mr. Kenneth Osfield
P 202 Peabody Hall
Gainesville, FL 32611
(904) 392-1261 V/TDD

Student Organizations involved with Issues of Disability:

Student Council of the Disabled
P 202 Peabody Hall
Gainesville, FL 32611
(904) 392-1261 (V/TDD)

ABLE
College of Law
Gainesville, FL 32611
(904) 392-8835 (V)

Disability Affairs Cabinet
305 J. Wayne Reitz Union
Gainesville, FL 32611
(904) 392-1665 (V)

BEST COPY AVAILABLE

General Program

Set on a series of wooded ridges interspersed with small lakes and streams, the University of North Florida provides a beautifully rustic setting for a comprehensive urban university. Its 12 miles of nature trails are the only such system on a United States college campus that have been designated National Recreational Trails.

More than 80 Jacksonville-area businesses are involved in direct partnership programs with the University of North Florida College of Business Administration. More than 80 percent of the students in the College of Business Administration are employees in area businesses, and more than 500 graduates are employed in Jacksonville's banking industry alone. The College of Business Administration also offers a basic course, Foundations in Business, which is taught by leading professionals who have built successful businesses.

The university offers 42 undergraduate and 23 master's programs. Twenty students were

admitted in the Fall of 1990 to the university's first doctoral program, an Ed.D. in Educational Leadership. A new Masters of Health Administration has also been added.

A \$400,000 gift from the AT&T Foundation established the Alliance for Tomorrow's Teachers Program in 1991, assisting the university in building one of the nation's most innovative and outstanding programs in education.

Through the University of North Florida Volunteer Center, students have pledged thousands of hours in volunteer time to help the homeless, educate the illiterate and feed the hungry.

The University of North Florida enrolls more than 270 foreign students from over 90 countries. The university sponsored a three-day conference on "Culture and Democracy" funded by a grant from the National Endowment for the Humanities. It also hosted the 41st annual meeting of the Negro Educational Review.

Disabled Student Services counselors work with students on an individual basis to design a program to assist the student.

Assistance may be in the form of notetakers, readers, sign language interpreters for classes, library or laboratory assistants, or adaptive equipment.

Publications

No publication information is available. Contact Coordinator of Services and Programs for Students with Disabilities for more information.

Admission Procedures

Contact the Coordinator of Programs and Services for Students with Disabilities for information about admission.

Fall, 1992 University Statistics for Students with Disabilities

Category	Hearing Impairments	Learning Disabilities	Physical Impairments	Speech Impairments	Visual Impairments	Other Disabilities	Registered Disabilities	Student Population
Number Students	9	10	18	0	6	1	44	9,073

Services Provided Students with Disabilities

Learning Disabilities

- proctors and extended time on examinations
- Reading and Writing Center
- special testing facility

Hearing Impairments

- interpreter service
- TDD access
- note takers
- note taking paper
- Audio Enhancement Devices
- visual alarms in residence halls
- The Academic Resource Center provides writing tutors for students using English as a second language.

Physical Impairments

- reader service
- computers
- special testing facility
- proctors and extended time on exams
- typists
- note takers
- note taking paper
- registration assistance

Speech Impairments

- services will vary depending upon request

Visual Impairments

- reader service
- talking computer
- brailier
- braille typewriter
- Visualtek
- proctors and extended time on exams
- typists
- note takers
- note taking paper
- special testing facility
- registration assistance
- tape recorders

Other Disabilities

- services will vary depending upon request
- All students at the University of North Florida are encouraged to use the Academic Resource Center, including tutors available for selected courses and the student skills seminar. All students are eligible to use the CLAST laboratory, and a study room set aside for disabled students.

Addresses

Main Campus Address:

University of North Florida
456 St. John's Bluff Rd. S.
Jacksonville, FL 32216

Admissions Office:

University of North Florida
Jacksonville, FL 32216
(904) 646-2624

ADA/504 Compliance Officer:

Ms. Malvelina P. Monell
Equal Opportunity Programs
President's Office BLDG. 1
Room 2439
4567 St. John's Bluff Rd. S.
Jacksonville, FL 32216
(904) 646-2507

Coordinator of Programs and Services for Students with Disabilities:

Dr. Robert E. Lee
Founders Hall Bldg. 2
Room 1003
4567 St. John's Bluff Rd. S.
Jacksonville, FL 32216
(904) 646-2766
(904) 646-2769 (TDD)

**No Student Organization
currently available.**

BEST COPY AVAILABLE

General Program

The University of South Florida is the 32nd largest university in the nation and the second largest public university in Florida. The University of South Florida has 11 schools and colleges on five campuses, offering 88 undergraduate, 85 graduate, two specialist in education and 20 doctoral degrees, including medicine.

In 1992, The University of South Florida's New College in Sarasota was ranked among *Money's* top 10 college values for the third year in a row.

The Suncoast Area Teacher's Training Program has been rated by the Educational Testing Service as one of the nation's five most innovative teaching programs. The University of South Florida has also earned national recognition in marine science, fine arts and engineering.

The campus newspaper, *The Oracle*, was named the best all-around student daily in the nation

by the Society of Professional Journalists. The Student Lecture Series won the coveted Drew Pearson Award for the most outstanding lecture series of any college or university in the United States.

The University of South Florida's Graphic Studio is the only university art program in the nation to have its collection placed in the archives at the National Gallery of Art in Washington D.C.

Some of the most prestigious names in English theatrical circles served as visiting artists in the University of South Florida's British International Theatre Program in early 1992.

A relationship between the University of South Florida and the United States Geological Survey has resulted in cooperative projects involving the University of South Florida graduate students and USGS scientists on wetlands, costal and marine research. The Eminent Scholar Lecture Series, co-sponsored by the University of South Florida, USGS and the *St. Petersburg Times*, is attracting world-class scientists to share their research results with the university community.

Academic accommodations are provided and coordinated through the Disabled Student Academic Services Office. Determination of eligibility for services should be completed prior to the start of the semester. Students are encouraged to contact the Disabled Student Academic Services Office early in the application process. All programs outlined in the University of South Florida catalog as well as all campus organizations are open and available to qualified students with disabilities.

Publications

A pamphlet listing services for students with disabilities is available upon request.

Admissions Procedures

The University does not make pre-admission inquiries regarding a student's disability. Students who do not claim a disability will be regularly admitted or denied. However, consideration of extenuating or special circumstances will be given in determining admission upon the receipt of documentation of a disability.

Fall, 1992 University Statistics for Students with Disabilities

Category	Hearing Impairments	Learning Disabilities	Physical Impairments	Speech Impairments	Visual Impairments	Other Disabilities	Registered Disabilities	Student Population
Number Students	30	94	103	0	36	21	284	34,145

Services Provided to Students with Disabilities

Hearing Impairments

- interpreter service
- amplification systems
- TTY/TDD access
- visual alarms in residence halls
- notetakers

Learning Disabilities

- talking computers
- foreign language substitution
- Gordon Rule waiver
- extended time on exams
- notetakers
- taped text books
- CLAST Waiver
- Learning Disability Specialist for learning strategy instruction. The LD specialist is *not* a tutor.
- Learning Disability evaluations are provided at no cost to enrolled students.
- Students are evaluated by committee to determine eligibility for LD classification.
- For more information on specific services and guidelines contact Disabled Student

Academic Services for pamphlet which lists guidelines.

Speech Impairments

- determined by individual needs of each student

Physical Impairments

- accessible computers
- library access assistance
- extended time on exams
- alternate classrooms for inaccessible areas
- notetakers

Visual Impairments

- reader service
- talking computers
- talking calculators
- no guide dog restrictions
- library access assistance
- extended time on exams
- campus orientation
- taped books
- notetakers
- Visualtek
- large print computers

Other Disabilities

- determined by individual needs of each student

Addresses

Main Campus Address:

University of South Florida
4202 E. Fowler Ave.
Tampa, FL 33620

Admissions Office:

University of South Florida
Tampa, FL 33620
(813) 974-3359

ADA/504 Compliance Officer:

Ms. Wilma L. Smith
Equal Opportunity
Affairs
ADM 274
Tampa, FL 33620
(813) 974-4373

Coordinator of Services and Programs for Students with Disabilities:

Ms. Roberta M. Armstrong
Disabled Student Academic
Services
SVC 2043,
University of South Florida
Tampa, FL 33620
(813) 974-4309 (V/TDD)

No Student organization currently available.

BEST COPY AVAILABLE

General Program

The University of West Florida's campus has been called "the most beautiful I have ever seen" by *Time* architecture critic Wolf Von Eckardt. The 1,000-acre nature preserve of rolling hills and woodlands borders the Escambia River. Its 300 acres of estuarine marshes enhance field and laboratory studies for biology students.

The University of West Florida has won the National Archeological Public Service Award for an archeological conservation and education project that became a model across the United States. The team found and developed a 2,000-year-old Indian village and a turn-of-the-century Creole settlement under a corporate headquarters construction site.

The University of West Florida Communication Arts department produces one television documentary per year on international issues. In 1990, faculty and students received wide acclaim for their Panama Canal

documentary, *Giving up the Canal*, televised nationally through the Public Broadcasting System.

The University of West Florida Department of Political Science master's program in Public Administration ranks among the top five in the nation for placing students in the prestigious Presidential Management Internship Program, a two-year internship in the federal government.

A University of West Florida volunteer service contributes thousands of hours and has earned special recognition from Volunteer Pensacola, a community organization which matches volunteers with local needs. The Center for Learning Through Organized Volunteer Efforts refers students to local agencies and co-sponsors programs to paint homes for elderly citizens and those with disabilities.

The University of West Florida offers a 12-week Summer Semester in Japan program at the University of West Florida Center in Kobe, Japan. Students take courses in Japanese language, culture history and international business.

The university provides equal access to educational opportunities to all qualified individuals with disabilities. The services that are provided for students with disabilities range from individualized aids in classroom testing to accessibility in programs, buildings, and activities. In addition to regular counseling services provided by the university, students may also be referred to the Office for Vocational Rehabilitation or to the Division of Blind Services for assistance.

Publications

A pamphlet listing services for students with disabilities is available upon request.

Admissions Procedures

Students who do not meet general admission requirements and have documented proof of visual impairment, hearing impairment, motor impairment, or specific learning disabilities may petition for substitution of admission requirements.

Fall, 1992 University Statistics for Students with Disabilities

Category	Hearing Impairments	Learning Disabilities	Physical Impairments	Speech Impairments	Visual Impairments	Other Disabilities	Registered Disabilities	Student Population
Number Students	10	23	22	3	10	11	79	7,521

Services Provided to Students with Disabilities

Hearing Impairments

- interpreter service

Learning Disabilities

- special academic advising
- extended time on exams
- paid tutors
- notetakers
- alternate testing
- Substitution for foreign language and Gordon Rule. Also, Grade Forgiveness Policy. Check University Catalogue for specifics.

Physical Impairments

- reader service
- library access assistance
- extended time on exams
- campus orientation
- alternate classrooms for inaccessible areas
- paid tutors
- notetakers
- alternate testing
- swim lift (pool)

Speech Impairments

- interpreter—if requested
- alternate testing (i.e. speech class)

Visual Impairments

- reader service
- library access assistance
- extended time on exams
- campus orientation
- paid tutors
- alternate testing
- mobility assistants
- Visualtek
- notetakers

Other Disabilities

- services in this category will vary

Addresses

Main Campus Address:

University of West Florida
11000 University Parkway
Pensacola, FL 32514-5750

Admissions Office:

University of West Florida
Pensacola, FL 32514
(904) 474-2224

ADA/504 Compliance Officer:

Dr. Omega S. Gardner
Executive Assistant to the President
Equal Opportunity Office
11000 University Parkway
Pensacola, FL 32514
(904) 474-2205

Coordinator of Services and Programs for Students with Disabilities:

Ms. Barbara Fitzpatrick
Student Affairs
11000 University Parkway
Building 21, Room 138
Pensacola, FL 32514

BEST COPY AVAILABLE

scholarships

The following scholarships are available to students with disabilities. They are designed to assist students with disabilities in acquiring a quality post-secondary education.

Hodgman Memorial Scholarship

The Jean Hodgman Memorial Scholarship annually awards one \$1000 scholarship to any junior or senior at any accredited four-year institution. Students interested in obtaining application information must contact Pat Friel of SUN-UP Foundation at (407) 725-7115.

Johnson Scholarship *State University System*

The Theodore R. and Vivian M. Johnson Scholarship Program, established by the Theodore R. and V. M. Johnson Foundation, is designed to assist undergraduate students with disabling conditions who attend any of the nine institutions within the State University System of Florida. The amount of each scholarship is \$2,000 for an academic year, and may be used to cover the cost of tuition, fees, room and board, books, and auxiliary aids such as notetakers, tutors, etc. Scholarships are renewable for a maximum of twelve semesters provided that the recipient makes satisfactory academic progress toward a degree and meets minimum performance

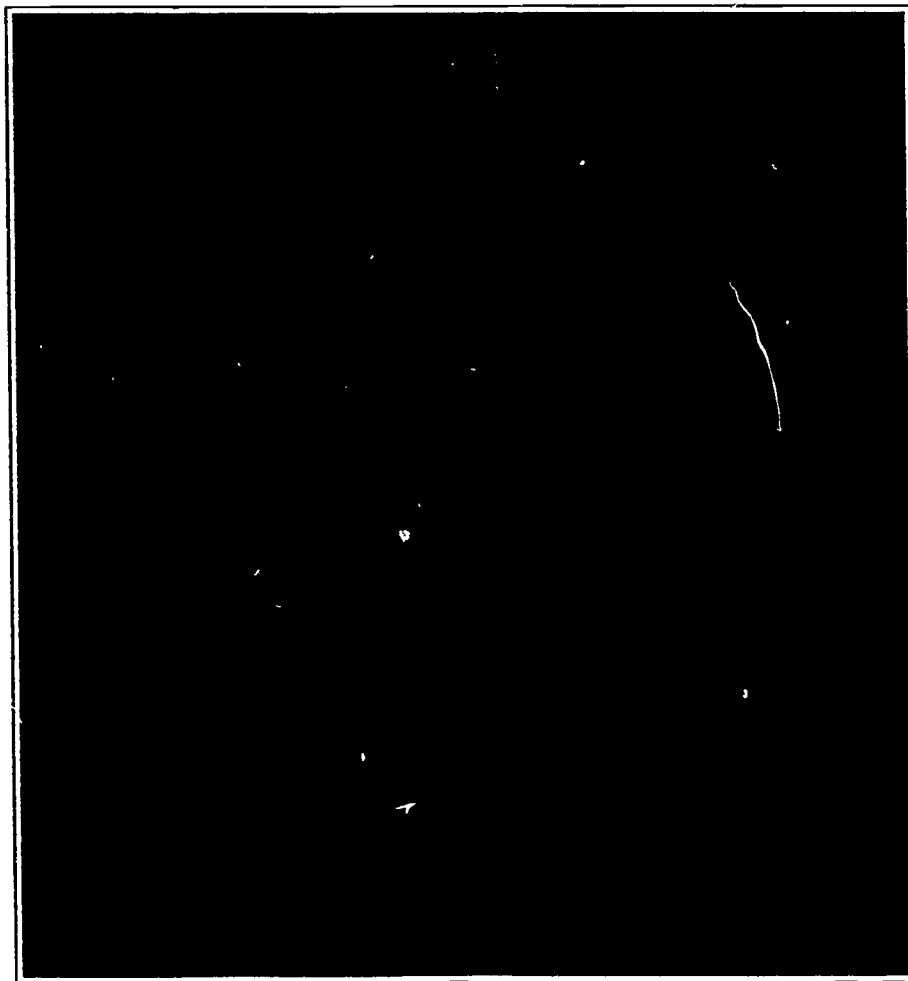
requirements. Award recipients must enroll for a minimum of nine credit hours each semester. Scholarships are based on documented severity of a disabling condition and demonstrated financial need.

Applications for the Johnson Scholarship are available in February. Students interested in obtaining application materials should contact the Coordinator for Programs and Services for Students with Disabilities or the Financial Aid Office at any State University institution.

Iacona Memorial Scholarship

Florida Atlantic University

The Matthew Iacona Memorial Scholarship Fund was established by the Palm Beach County Epilepsy Foundation for students enrolled in undergraduate or graduate programs in Exceptional Student Education at Florida Atlantic University and who demonstrate financial need. For more information, interested students should contact the Office of Student Financial Aid at (305) 367-3530.



Gore Foundation Scholarship

Florida Atlantic University

The Gore Foundation Scholarship was established for students with disabilities who need financial assistance to continue their education. Students interested in obtaining application information must contact the Gore Foundation directly at (305) 462-6643.

AFTER Scholarship

Florida Atlantic University

Scholarships are available through the Amputees For Training Education Rehabilitation organization for disabled students needing financial assistance for educational costs. AFTER can be reached at (305) 421-7711.

Rita O'Connell Scholarship

University of Florida

The Rita McTigue O'Connell Memorial Scholarship annually awards two \$1,000 scholarships to currently registered female students who have a physical disability. Scholarships are based on academic performance and involvement in university activities. This is not a need-based scholarship, and it is highly competitive. The application process begins January of each year and is completed in March. Students must be registered with the Office for Student Services. For more information call (904) 392-1261.

Callahan Memorial Trust Scholarship

University of Florida

The Eccleston Callahan Memorial Trust annually awards two \$500 scholarships to currently registered students with a disability. This is a financial need-based award. Students must be registered with the Student Financial Affairs Department. Call (904) 392-1275 for more information.

Ryan Disabled Student Scholarship

University of North Florida

Contact the Coordinator for Programs and Services for Students With Disabilities at the University of North Florida for more information.

Supporting Agencies

Division of Vocational Rehabilitation

Vocational Rehabilitation (VR) is a division within the Florida Department of Labor and Employment Security (LES). Rehabilitation Services are important when a physical or mental handicap interferes with your ability to work. VR's purpose is to help you prepare for, find and return to gainful employment.

Eligibility is determined by a VR Counselor after obtaining a complete understanding of the applicant's situation. Three things are important in determining eligibility for VR:

1. The applicant must have a physical, mental or emotional disability;
2. That disability must prevent the applicant from getting or keeping a job; and
3. The applicant must benefit from VR services in terms of employability.

For more information, contact:

Division of Vocational Rehabilitation
1709 A Mahan Drive
Tallahassee, FL 32399-0696
V (904) 488-8380
Suncom 278-8380
FAX (904) 488-8062
TDD (904) 922-2246

Division of Blind Services

Persons who are visually handicapped, blind or threatened with blindness are eligible for services. Basically, services are divided into two categories: (1) vocational rehabilitation services for potentially employable blind persons, and (2) medical, social, and rehabilitative services for blind children and other adults.

For more information, contact:

Department of Education
Division of Blind Services
Douglass Building, Suite 203
2540 Executive Center Cir. W.
Tallahassee, FL 32301
(904) 488-1330

Advocacy Center for Persons with Disabilities

Client Assistance Program

The purpose of the Client Assistance Program is to assist individual applicants or clients with their relationships with programs, projects and facilities, funded under the Rehabilitation Act of 1973. Generally, this is accomplished by assisting clients and applicants of the Division of Blind Services. We can provide information and referral services, as well as consultation and advice, mediation, negotiation, and informal and formal representation, on vocational rehabilitation issues.

For more information, contact:

Client Assistance Program
Webster Building, Suite 100
2671 Executive Center Cir. W.
Tallahassee, Florida 32301
V (800) 342-0823
TDD (800) 346-4127

Library for the Blind and Physically Handicapped

This library provides free service to individuals who are unable to utilize conventional print because of a physical condition. Reading material available includes over 20,000 titles recorded on disc and cassette tape, and several thousand titles in Braille. Users are furnished, without charge, specially designed phonographs and cassette tape players.

For more information, contact:

Division of Blind Services
Library for the Blind and Physically Handicapped
420 Platt Street
P.O. Box 2299
Daytona Beach, FL 32015
(904) 254-3824
(800) 342-5627

Index

A

Academic Adjustments 8, 10
Accommodations
 Public 9
ADA 9
Admissions and Recruitment 8, 10
Advocacy Center for Persons with
 Disabilities 34
AFTER Scholarship 33
Alternative Formats 3
Americans with Disabilities Act 9
Auxiliary Learning Aids 12

B

Blood Serum Disorders
 Defined 7

C

Callahan Memorial Trust Scholarship
 33
Cardiovascular and Circulatory
 Conditions
 Defined 7
Categories of Disabilities 6
Ch. 240, F. S. 1989, Postsecondary
 Education 10
Client Assistance Program 34

D

Diabetes 7
Division of Blind Services 34
Division of Vocational Rehabilitation
 34

E

Employment 9
Epilepsy 7

F

Federal Rehabilitation Act of 1973 8
Florida A&M University 14
Florida Atlantic University 16
 Scholarships 32
 AFTER Scholarship 33
 Gore Foundation Scholarship 33
 Iacona Memorial Scholarship 32

Florida International University 18
Florida State University 20

G

Gore Foundation Scholarship 33

H

Hearing Impairments
 Defined 6
Hodgman Memorial Scholarship 32
How to Use this Guide 4

I

Iacona Memorial Scholarship 32

J

Johnson Scholarship 32

L

Learning Aids 12
Library for the Blind and Physically
 Handicapped 34

M

Mental, Psychoneurotic or Personality
 Disorders
 Defined 7

O

O'Connell Scholarship 33
Other Impairments
 Defined 7

P

Physical Impairments
 Defined 6
Psychoneurotic or Personality Disor-
 ders
 Defined 7
Public Accommodations 9
Public Services 9

R

Respiratory Disorders
 Defined 7
Ryan Disabled Student Scholarship 33

S

Scholarships 32
 Section 504 8
 6C-6.018 Board of Regents Policy 10
 Specific Learning Disabilities
 Defined 6
 Speech Impairments 7
 Defined 7
 State Guidelines 10
 State University System
 Overview 5
 State University System Scholarships
 32
 Hodgman Memorial Scholarship 32
 Johnson Scholarship 32
 Supporting Agencies 34

T

Telecommunications 9

U

University of Central Florida 22
University of Florida 24
 Scholarships 33
 Callahan Memorial Trust Scholar-
 ship 33
 O'Connell Scholarship 33
 University of North Florida 26
 Scholarships 33
 Ryan Disabled Student Scholar-
 ship 33
 University of South Florida 28
 University of West Florida 30

The 1992-93 Resource Guide to Programs and Services for Students with Disabilities was produced on a Macintosh IICx using PageMaker 4.2.

Printed by Gandy Printers, Inc. of Tallahassee, Florida

This publication is designed as a resource guide to State University System of Florida Institutions and is in no way a binding contract of the universities listed. Programs and services may change as funding sources change. Please contact appropriate offices about specific programs and services.